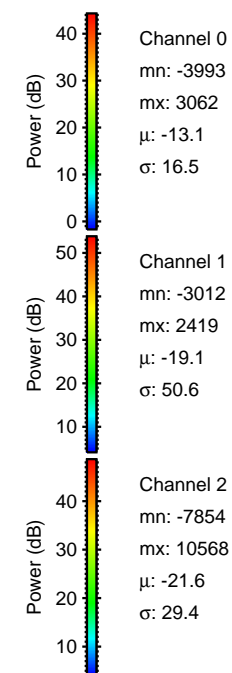
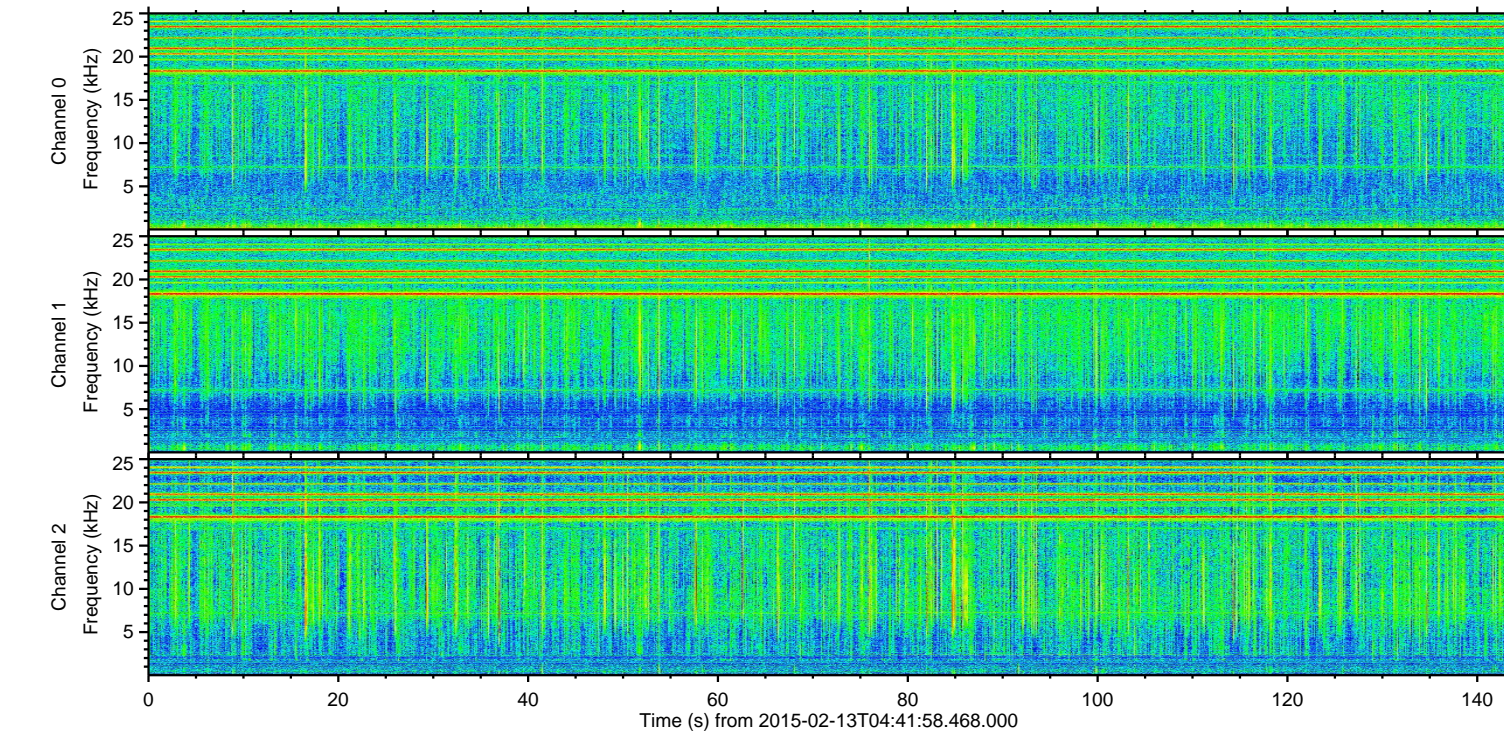
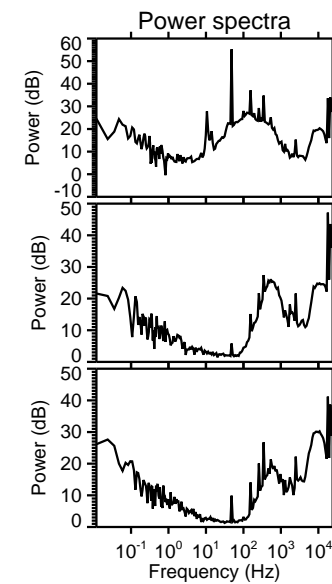
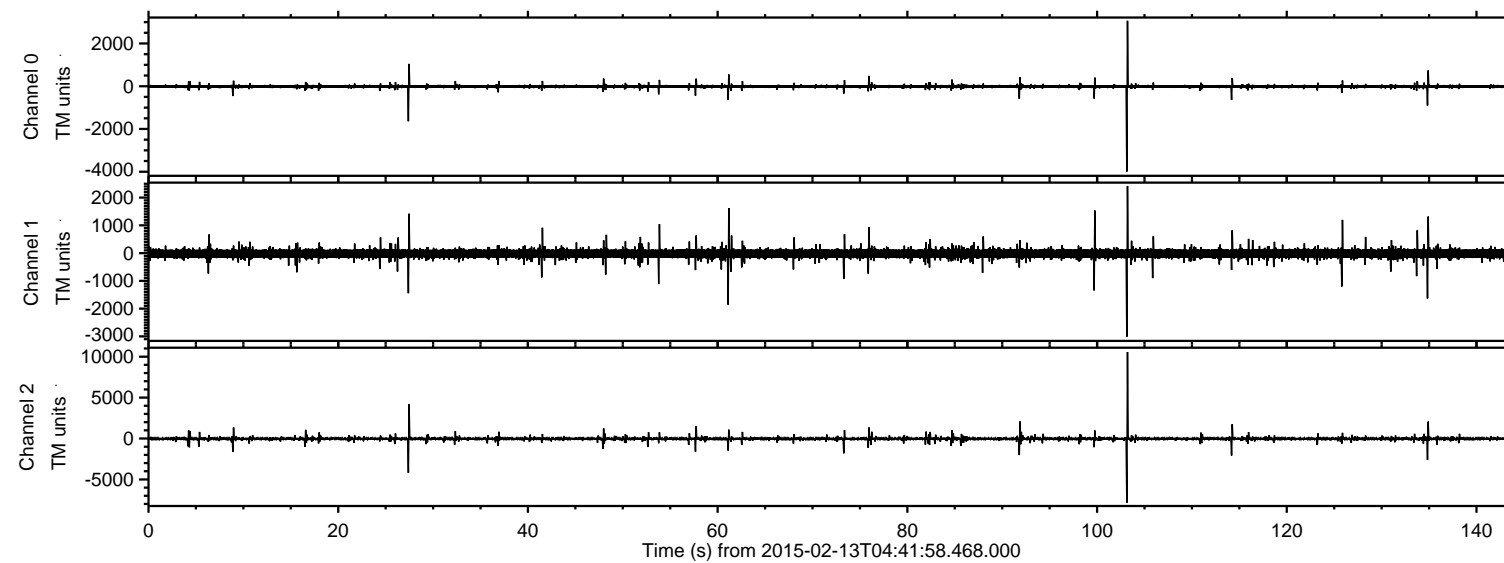


# ELMAVAN 3D WAVEFORMS (Measured data sampled at 50 kHz) 49806 packets of 144 samples from 2015-02-13T04:41:58.468.000.

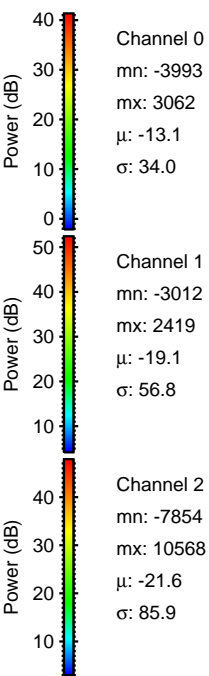
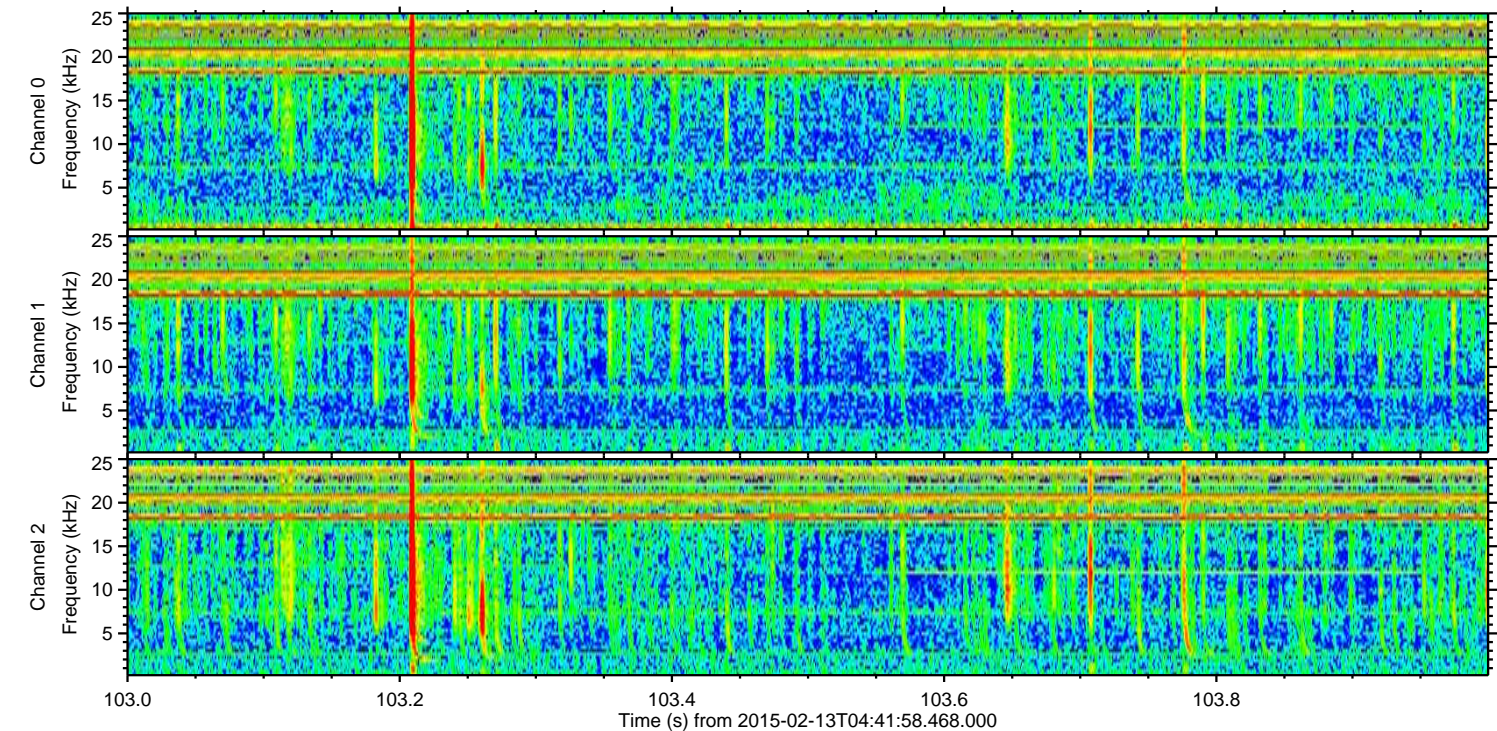
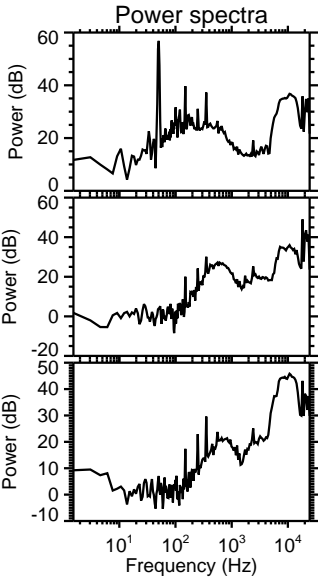
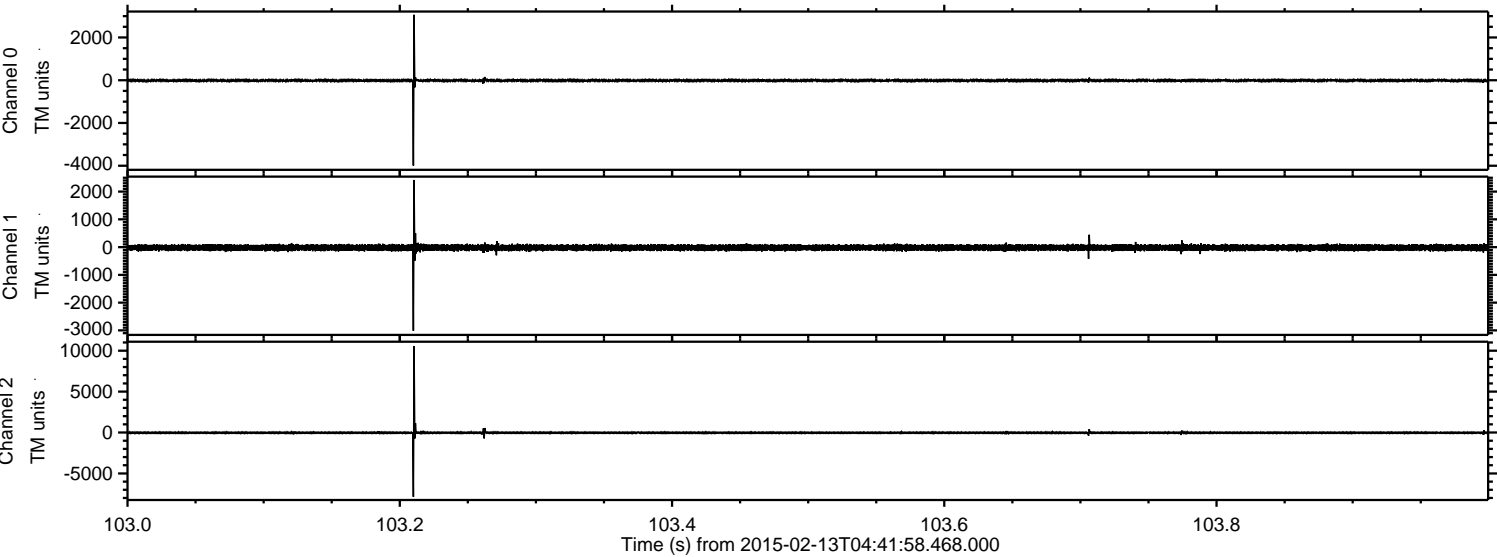
Processed Fri Feb 20 13:02:26 2015 by ELM ver.2012-10-06 from 001\_\_elm20150213\_044157\_\_dat00.bin





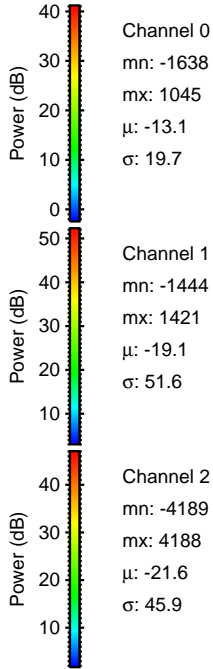
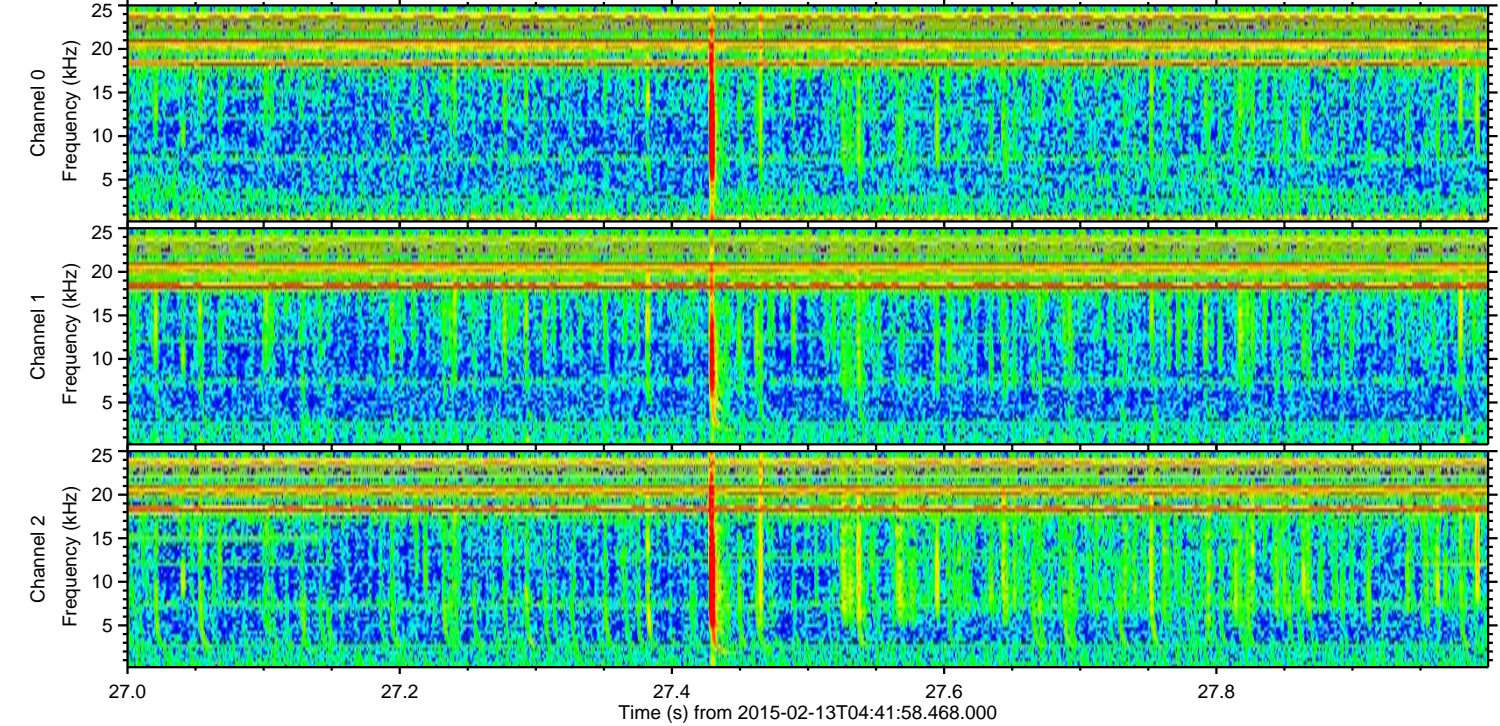
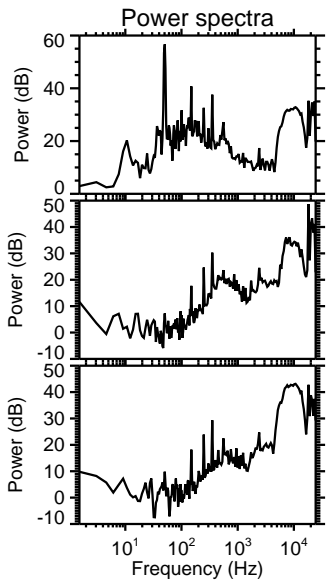
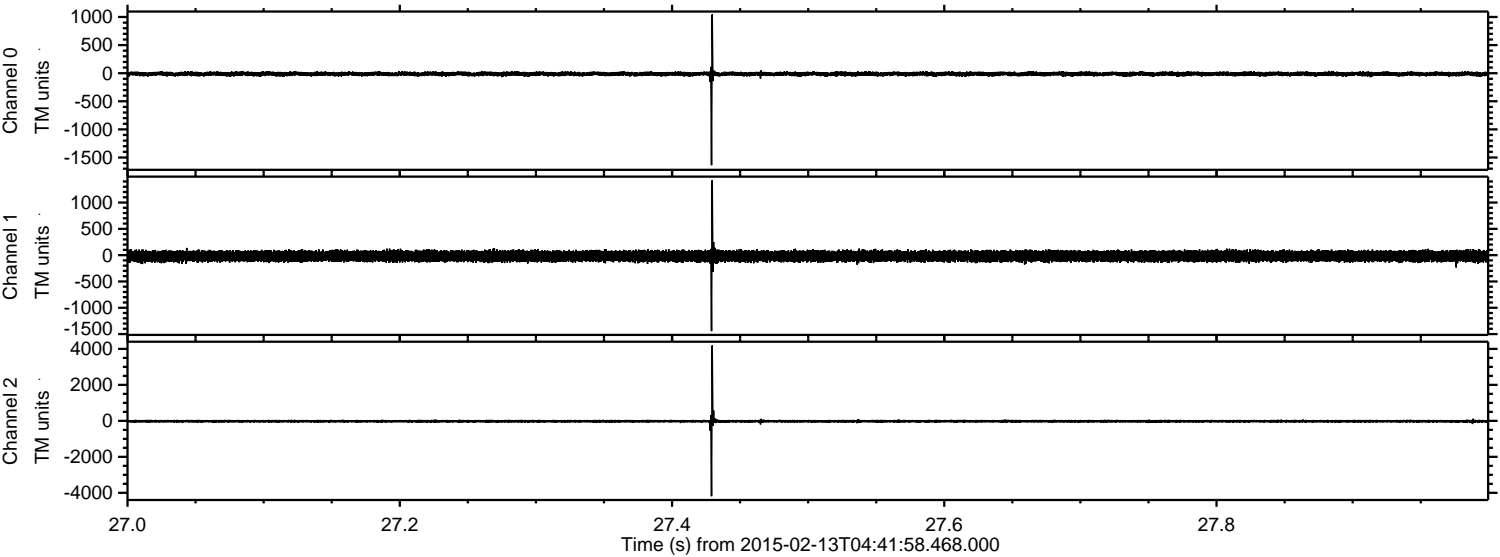
ELMAVAN 3D WAVEFORMS (Measured data sampled at 50 kHz) 49806 packets of 144 samples from 2015-02-13T04:41:58.468.000. Part 104/144

Processed Fri Feb 20 13:02:45 2015 by ELM ver.2012-10-06 from 001\_\_elm20150213\_044157\_\_dat00.bin





Processed Fri Feb 20 13:02:46 2015 by ELM ver.2012-10-06 from 001\_\_elm20150213\_044157\_\_dat00.bin



Channel 0  
mn: -1638  
mx: 1045  
 $\mu$ : -13.1  
 $\sigma$ : 19.7

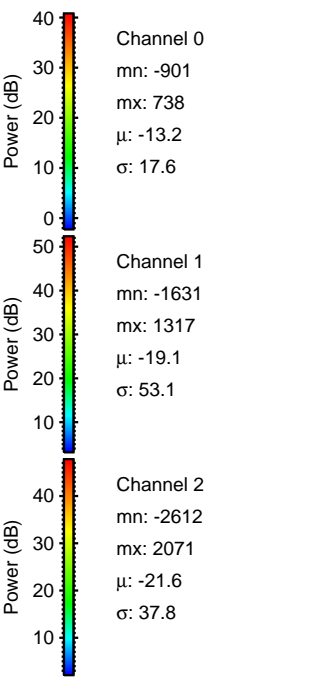
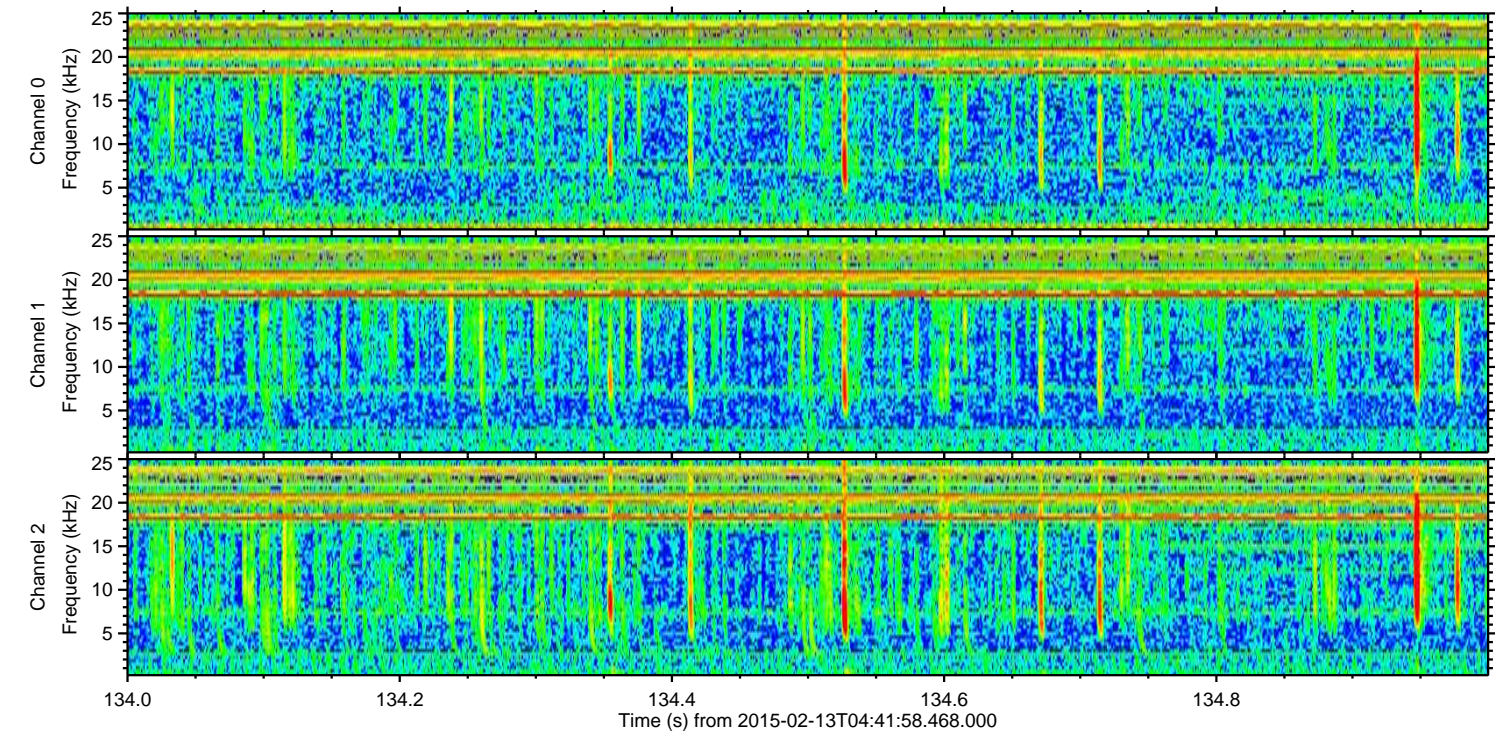
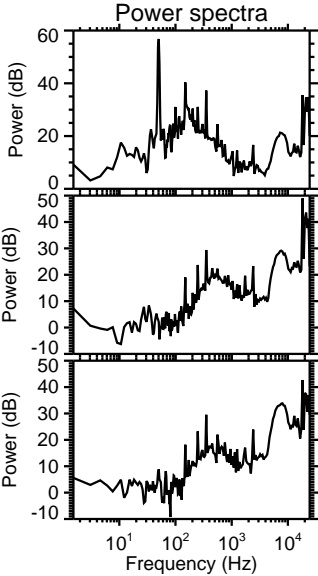
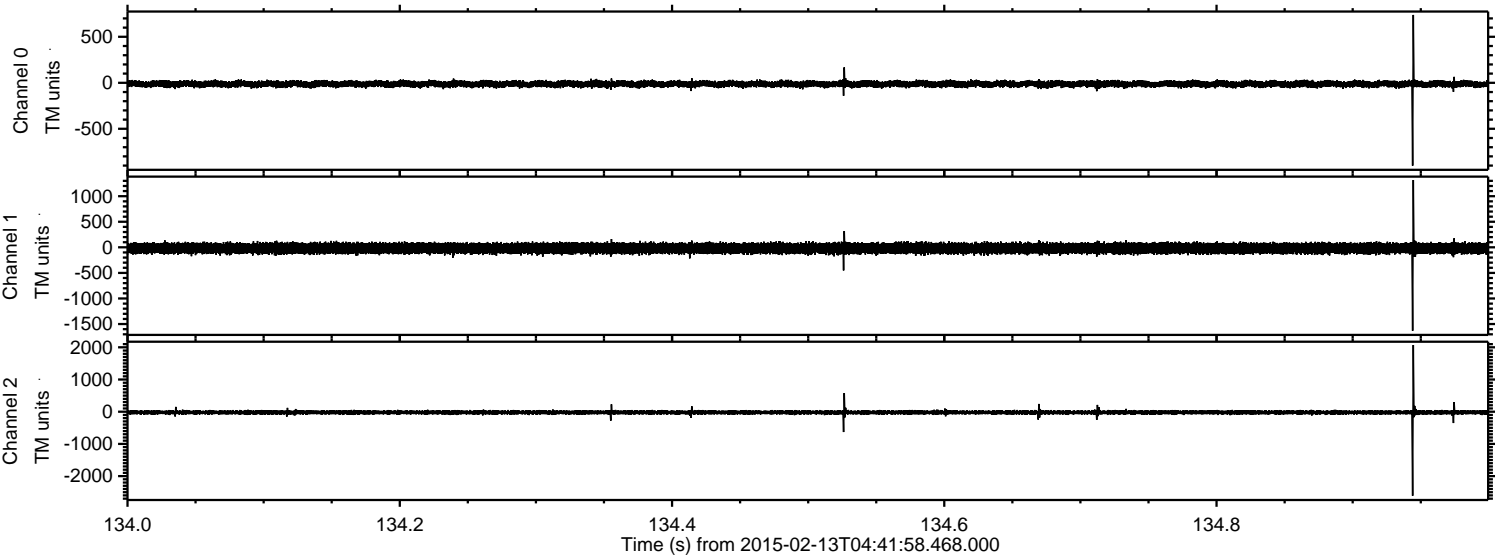
Channel 1  
mn: -1444  
mx: 1421  
 $\mu$ : -19.1  
 $\sigma$ : 51.6

Channel 2  
mn: -4189  
mx: 4188  
 $\mu$ : -21.6  
 $\sigma$ : 45.9



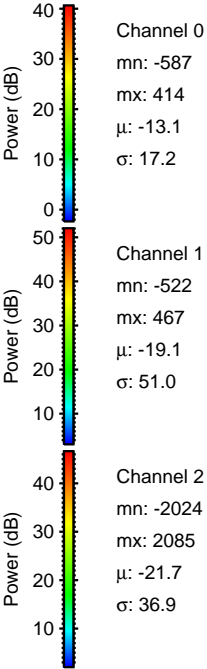
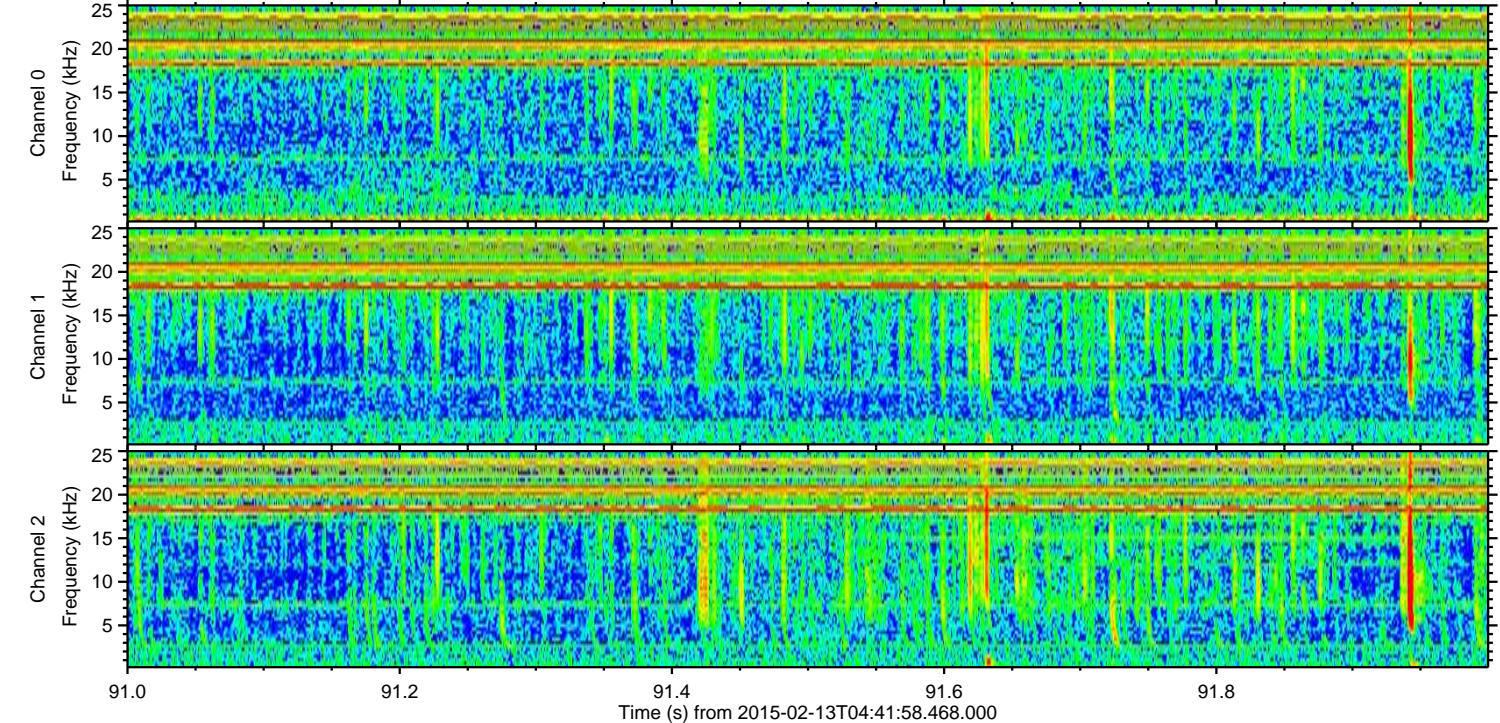
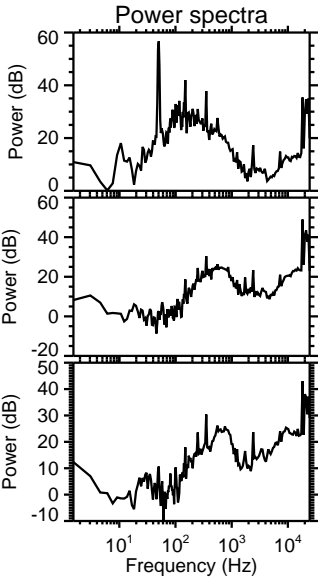
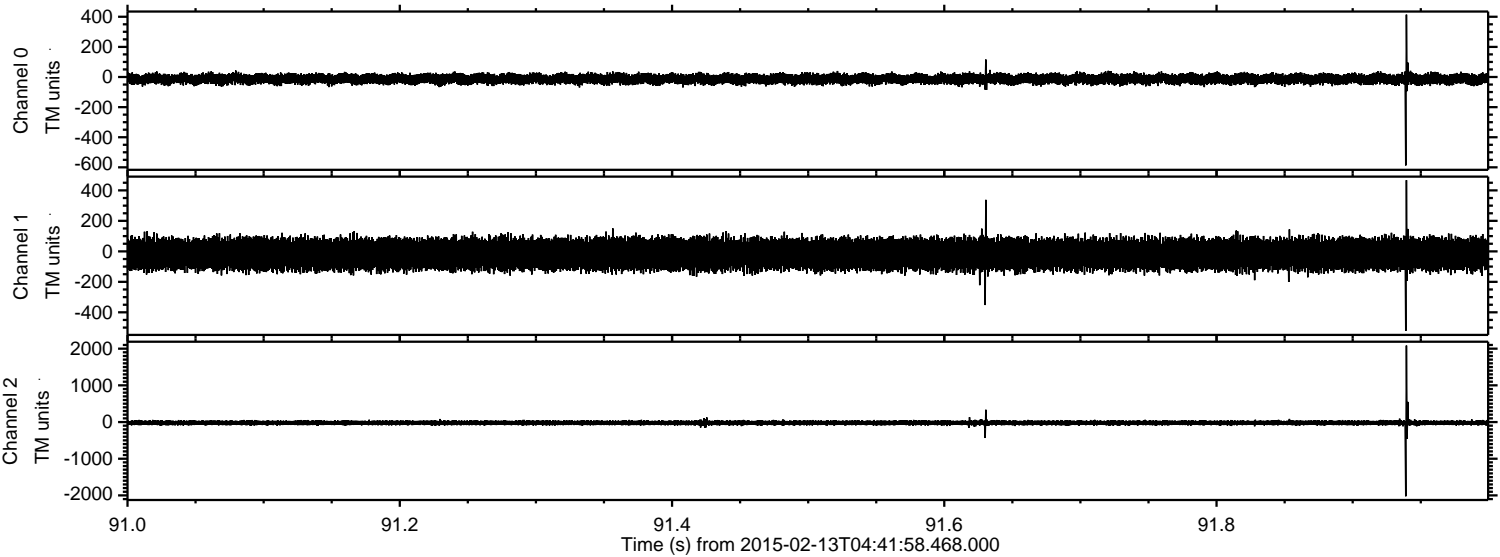
ELMAVAN 3D WAVEFORMS (Measured data sampled at 50 kHz) 49806 packets of 144 samples from 2015-02-13T04:41:58.468.000. Part 135/144

Processed Fri Feb 20 13:02:47 2015 by ELM ver.2012-10-06 from 001\_\_elm20150213\_044157\_\_dat00.bin





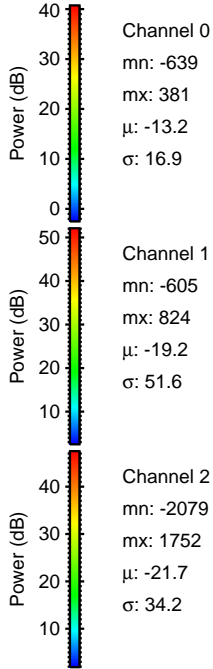
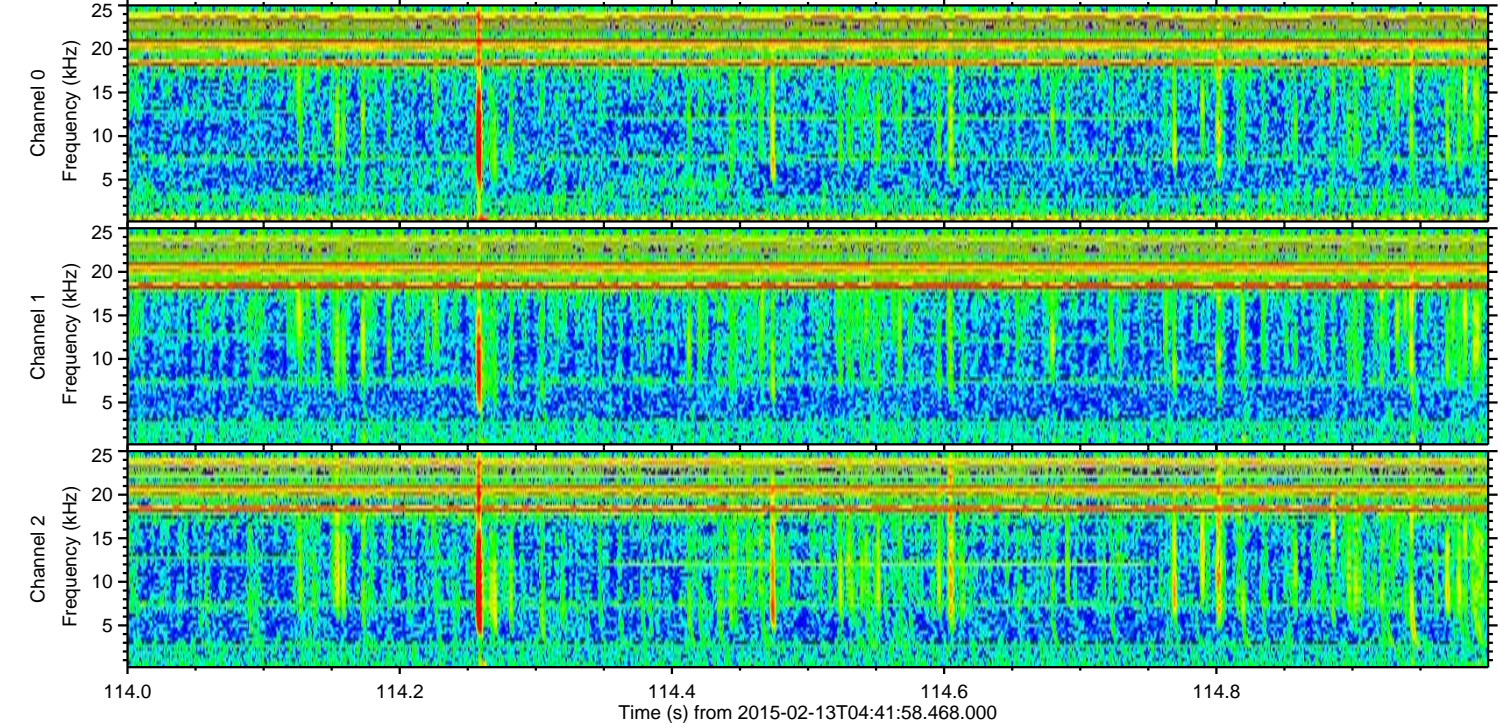
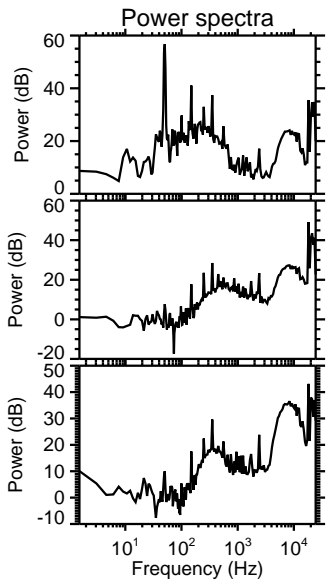
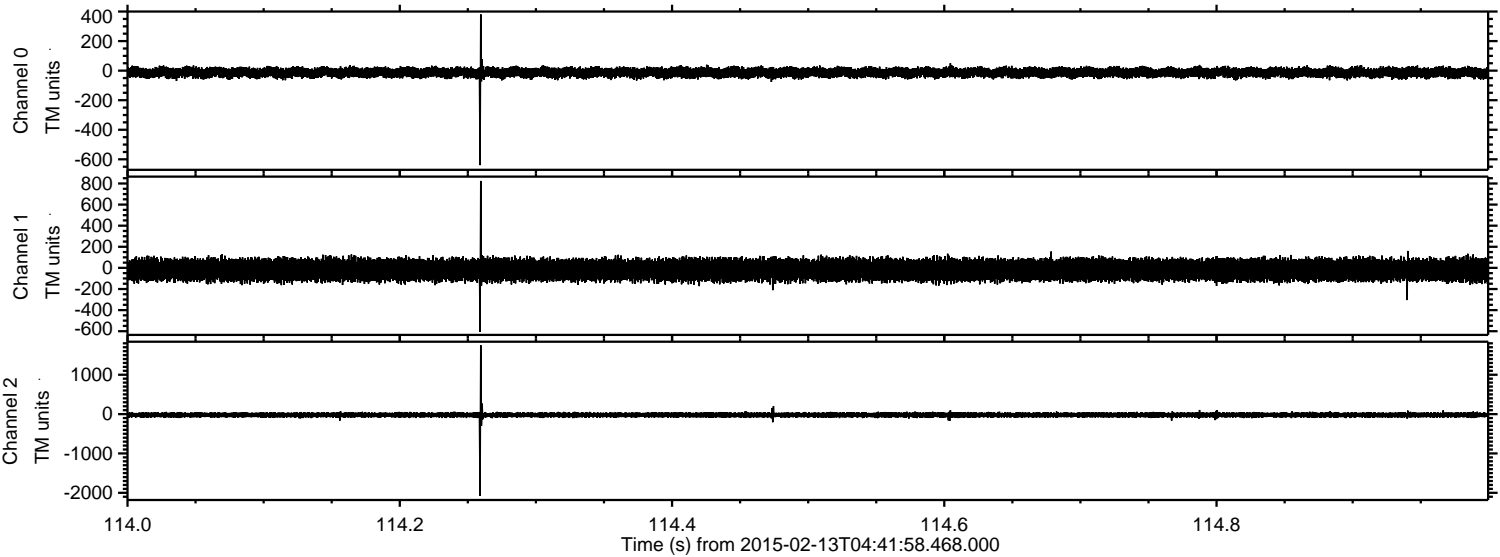
Processed Fri Feb 20 13:02:48 2015 by ELM ver.2012-10-06 from 001\_\_elm20150213\_044157\_\_dat00.bin





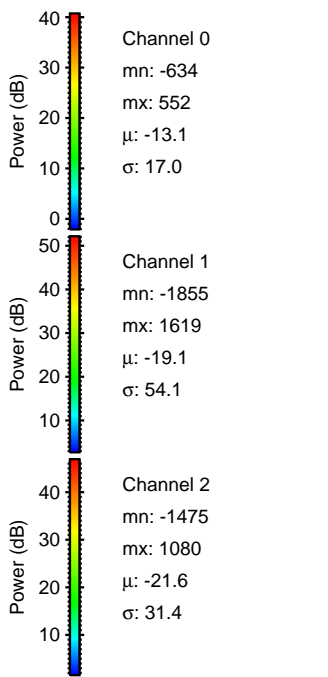
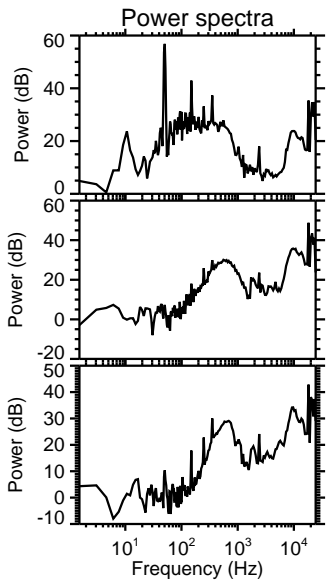
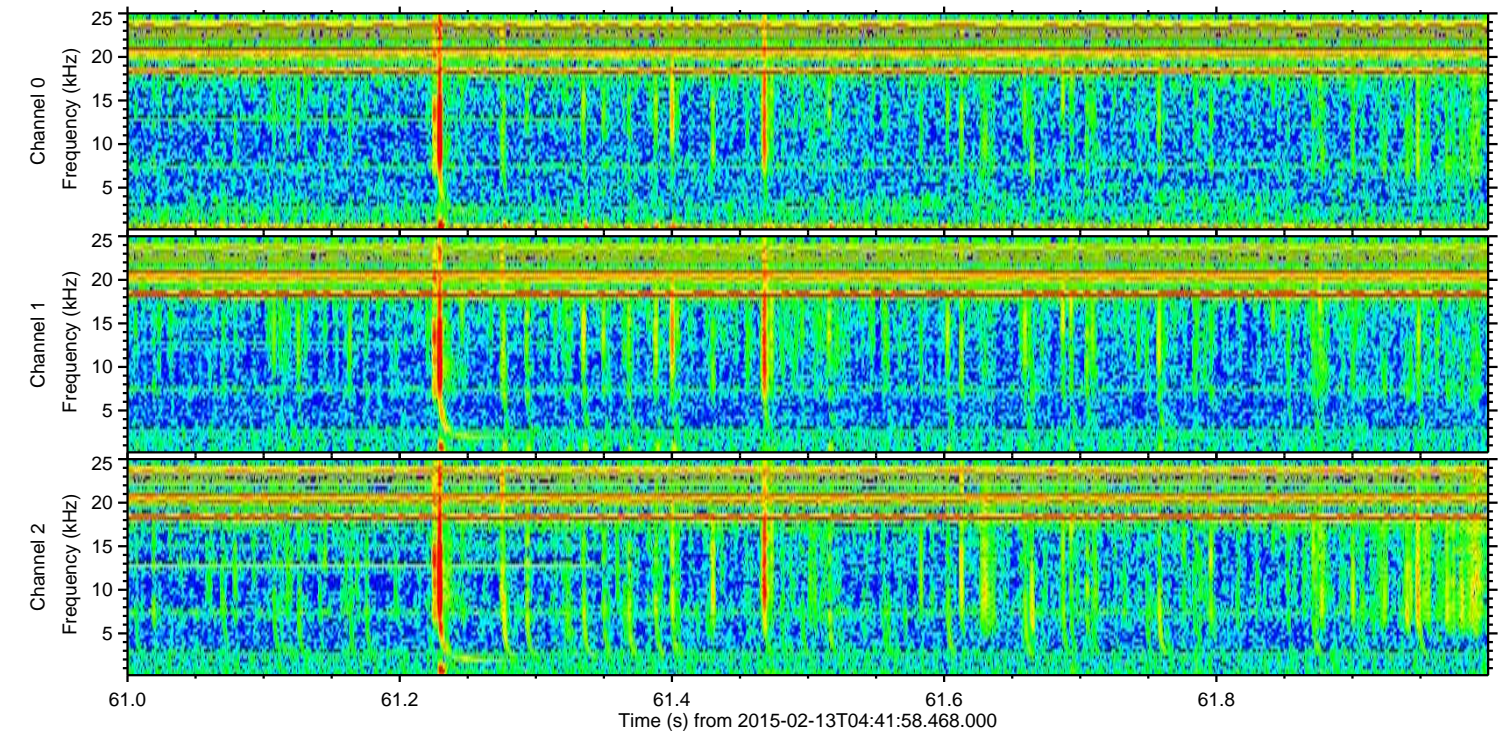
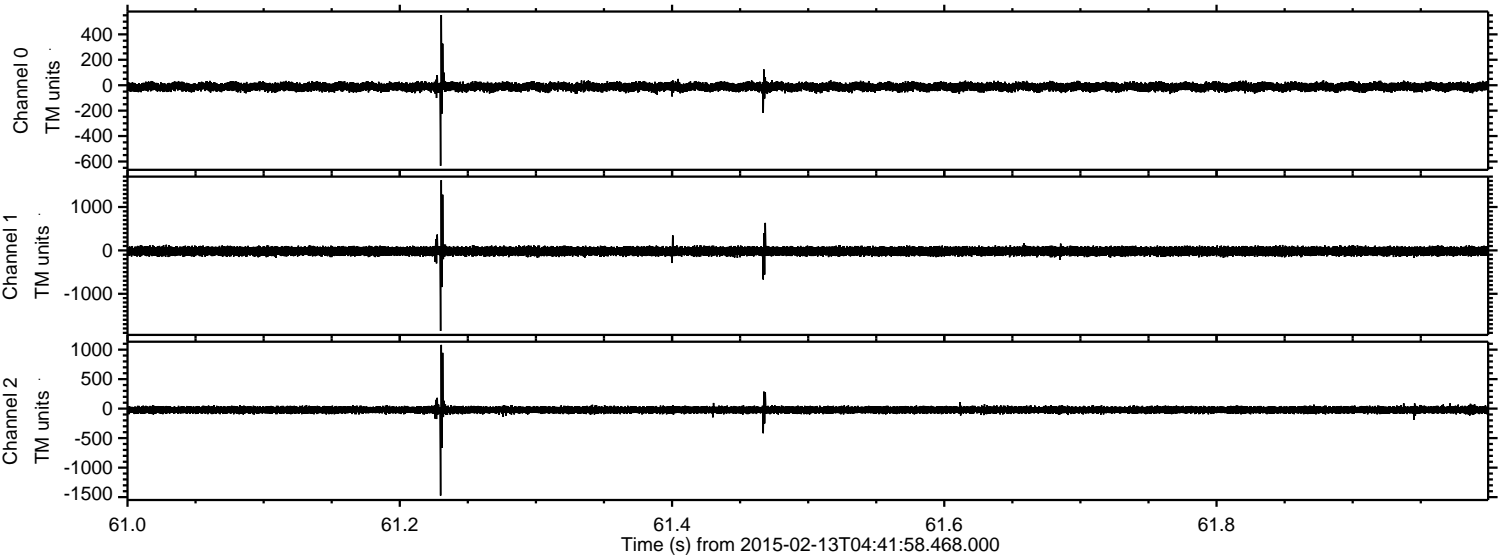
ELMAVAN 3D WAVEFORMS (Measured data sampled at 50 kHz) 49806 packets of 144 samples from 2015-02-13T04:41:58.468.000. Part 115/144

Processed Fri Feb 20 13:02:49 2015 by ELM ver.2012-10-06 from 001\_\_elm20150213\_044157\_\_dat00.bin



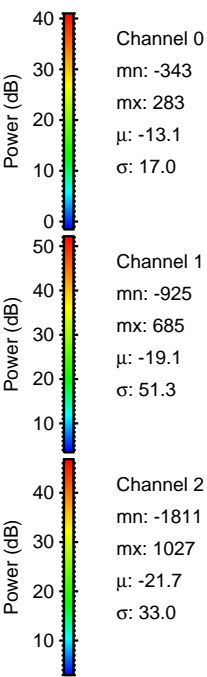
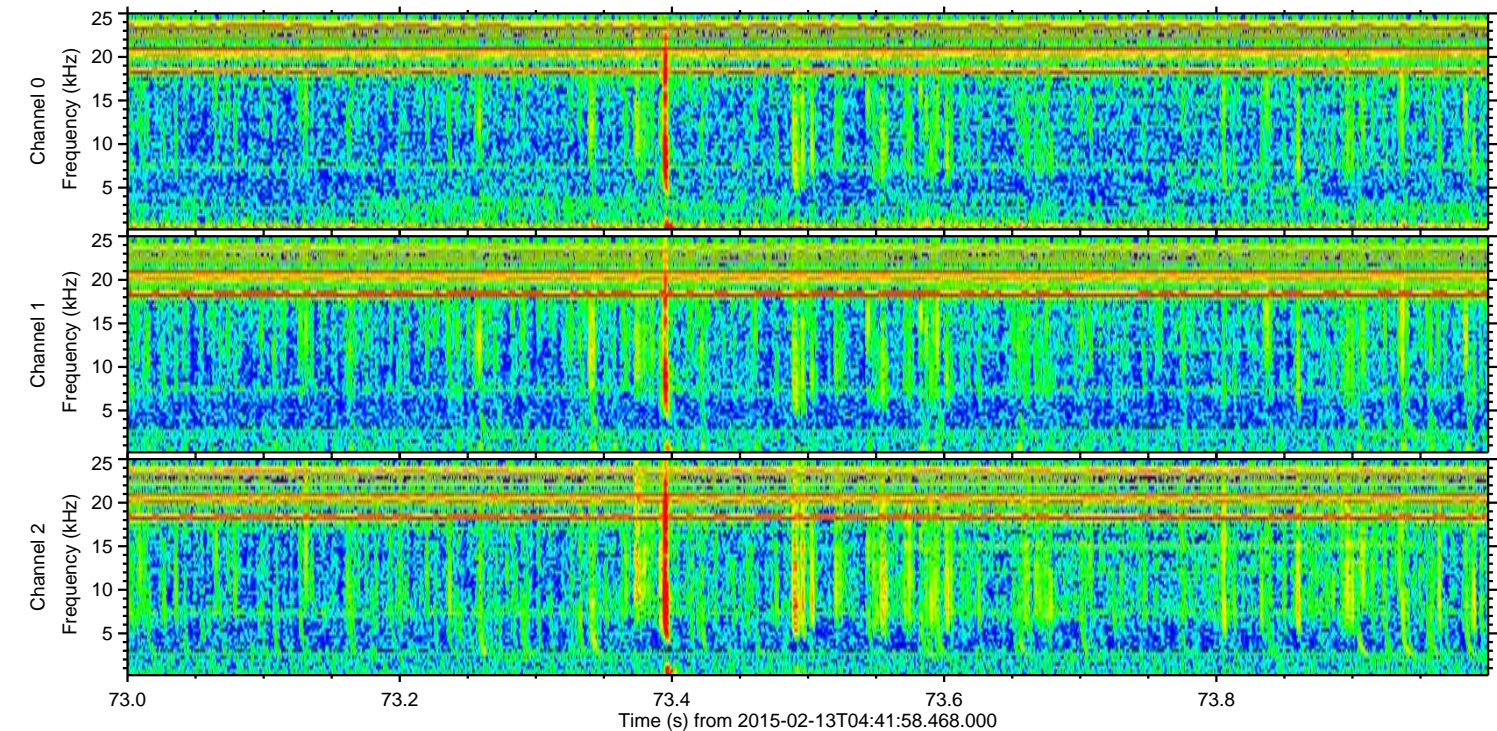
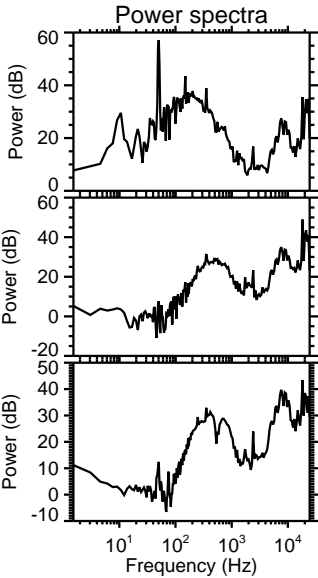
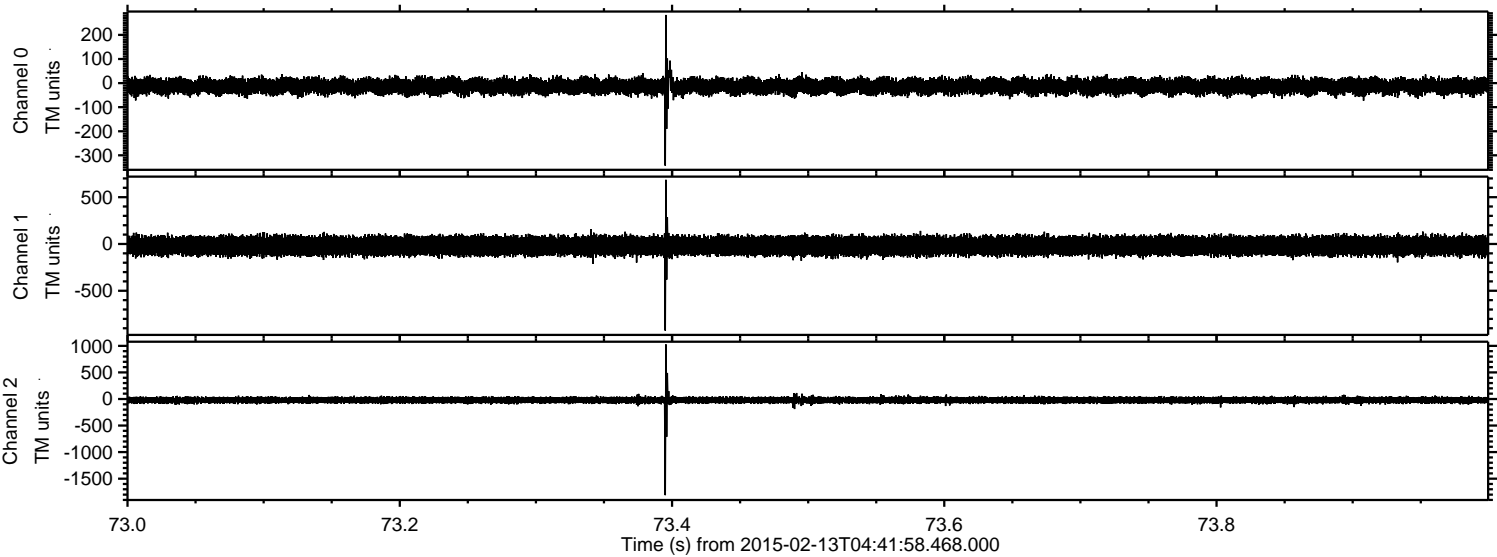


Processed Fri Feb 20 13:02:50 2015 by ELM ver.2012-10-06 from 001\_\_elm20150213\_044157\_\_dat00.bin



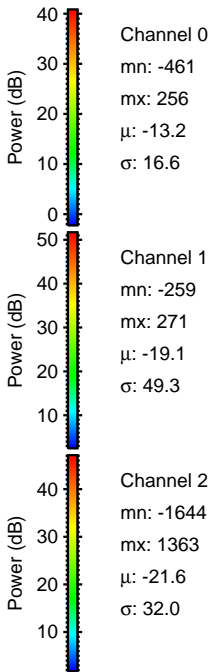
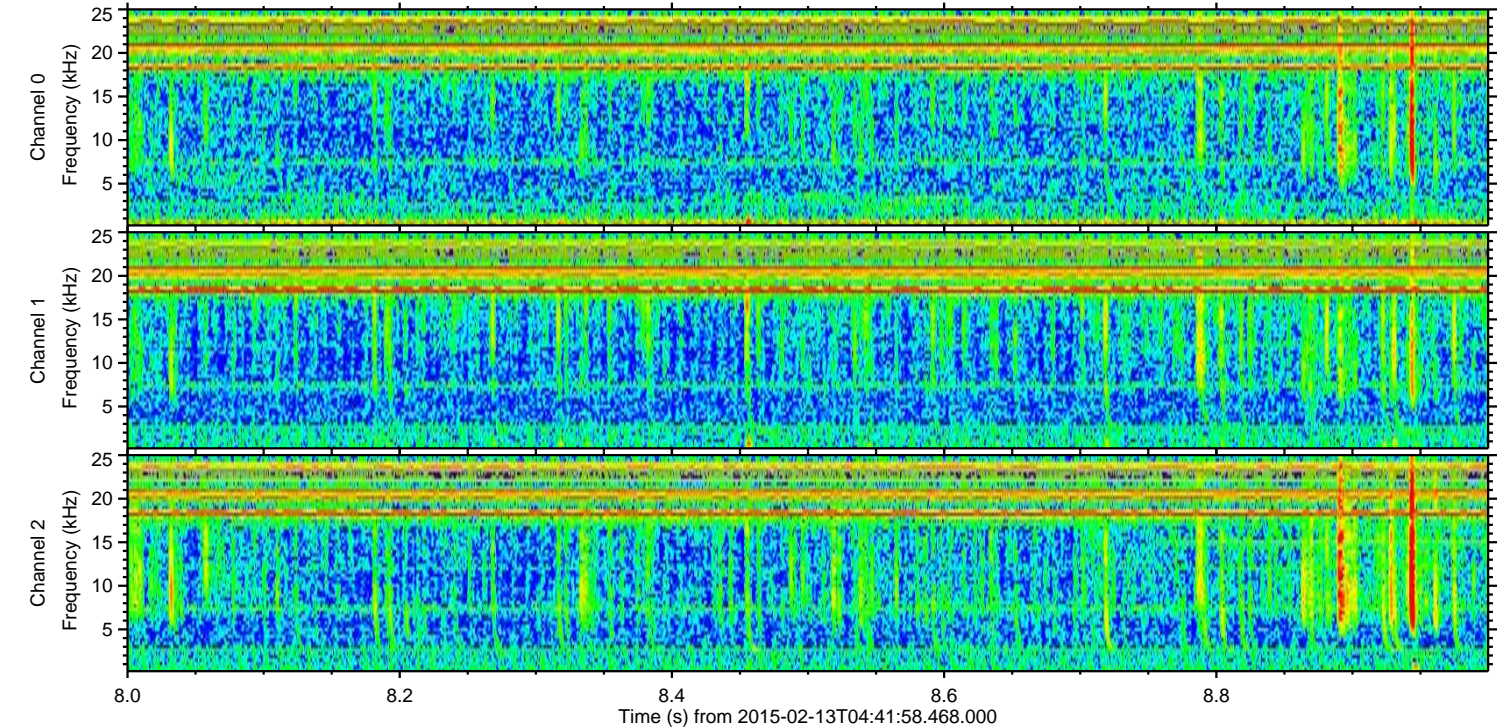
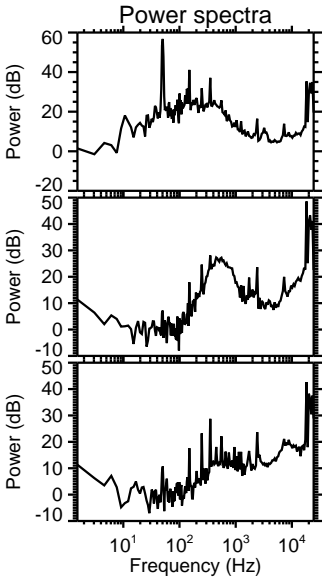
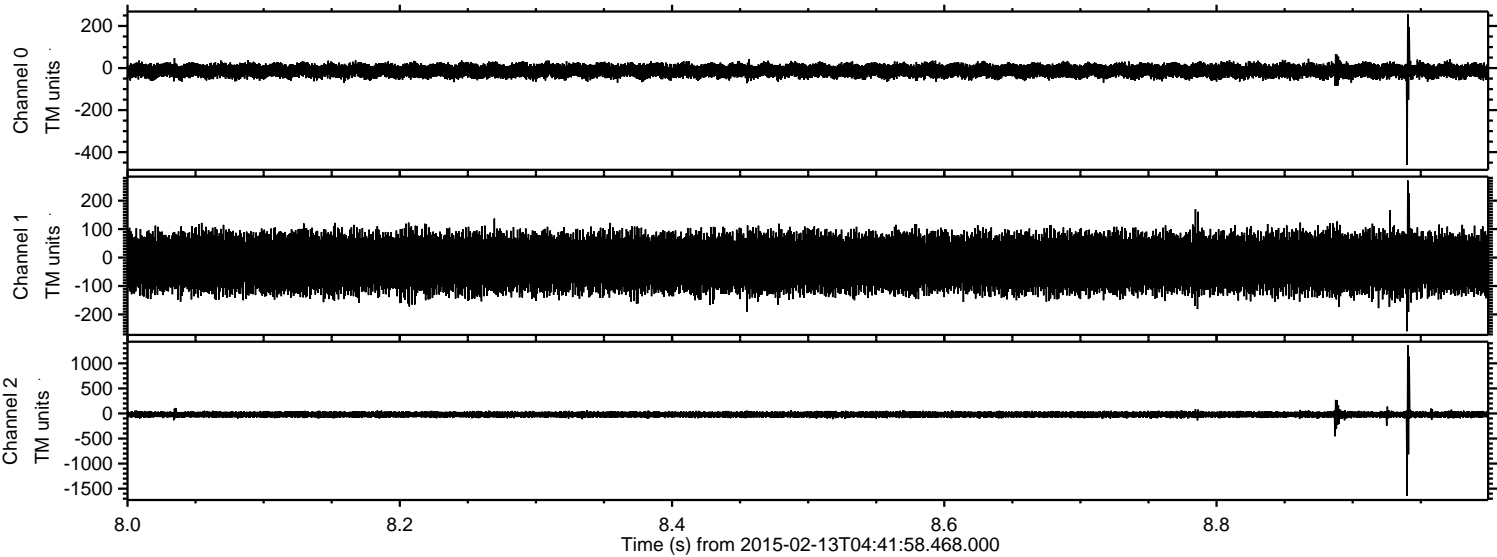


Processed Fri Feb 20 13:02:52 2015 by ELM ver.2012-10-06 from 001\_\_elm20150213\_044157\_\_dat00.bin



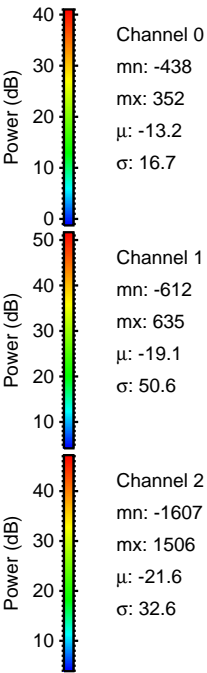
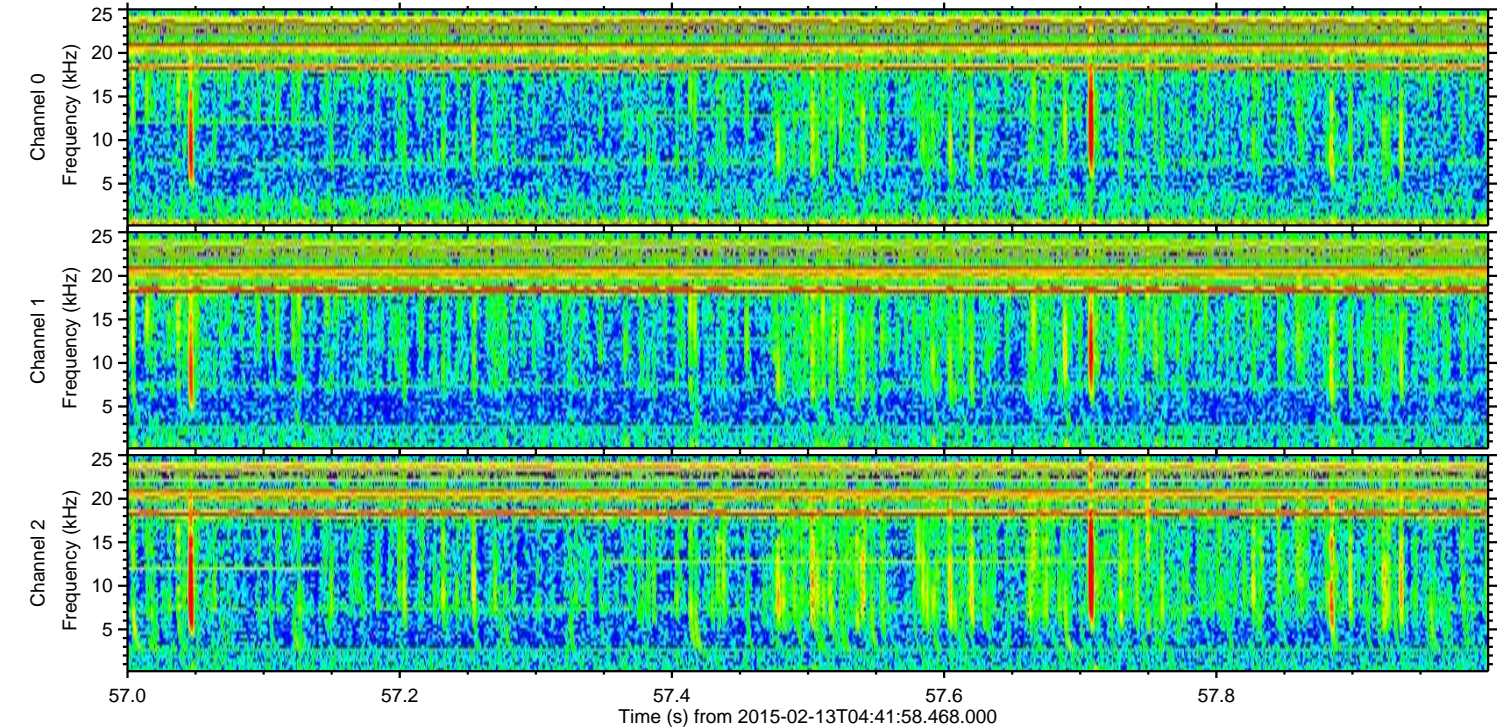
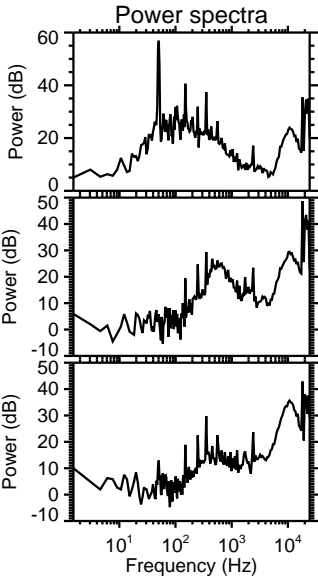
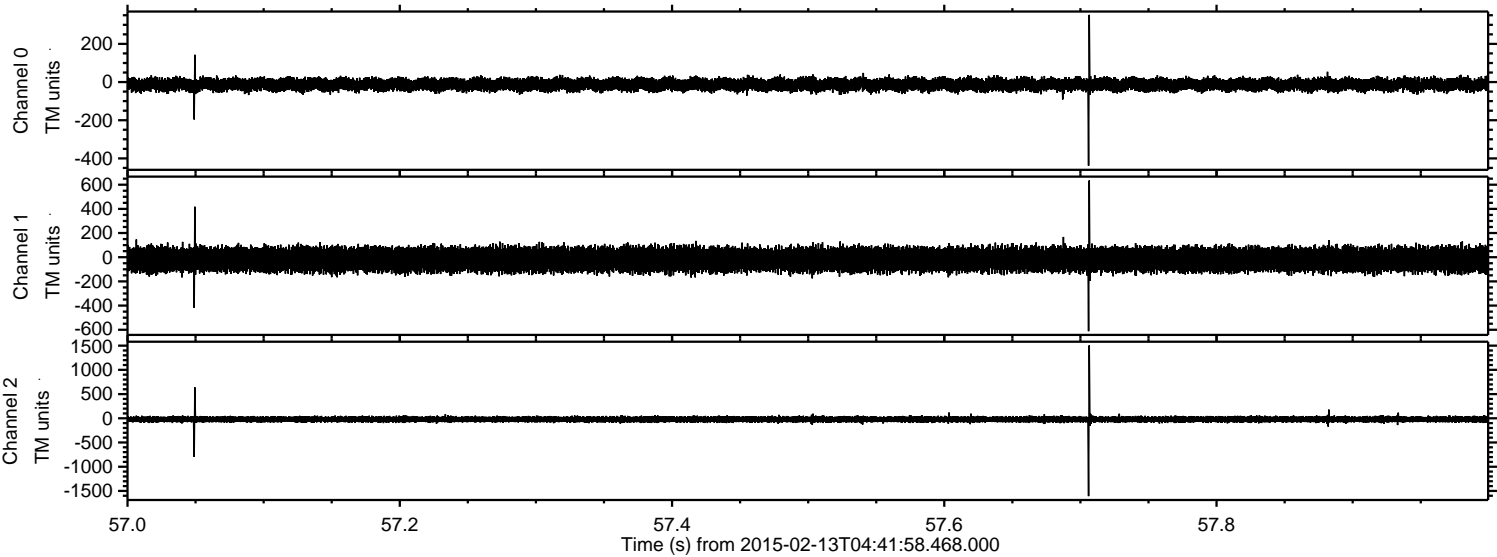


Processed Fri Feb 20 13:02:53 2015 by ELM ver.2012-10-06 from 001\_\_elm20150213\_044157\_\_dat00.bin



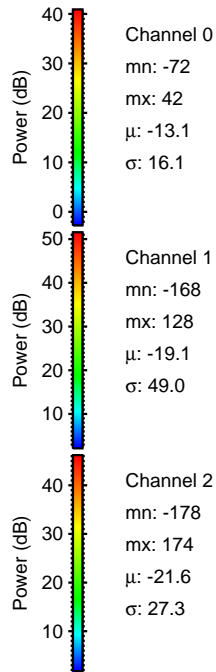
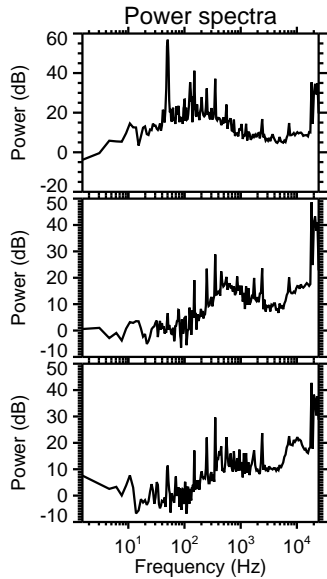
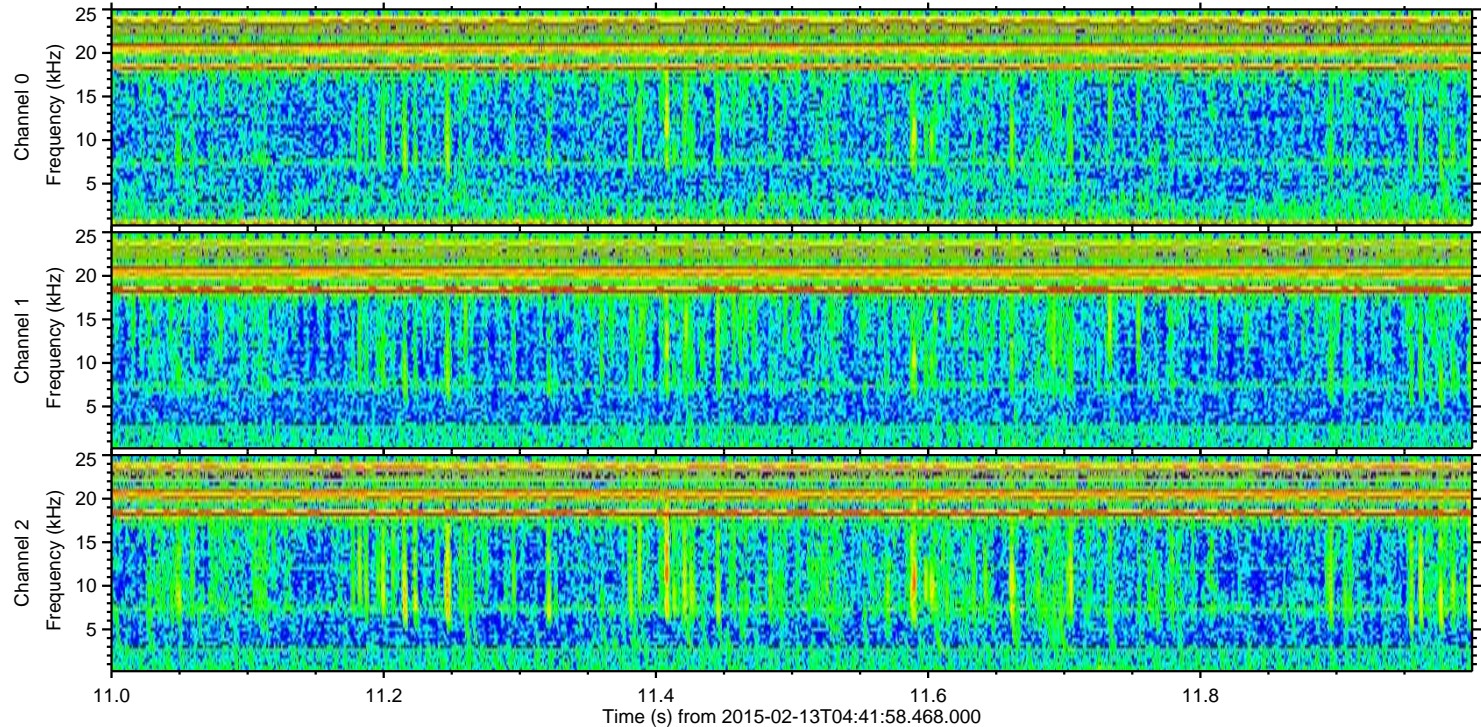
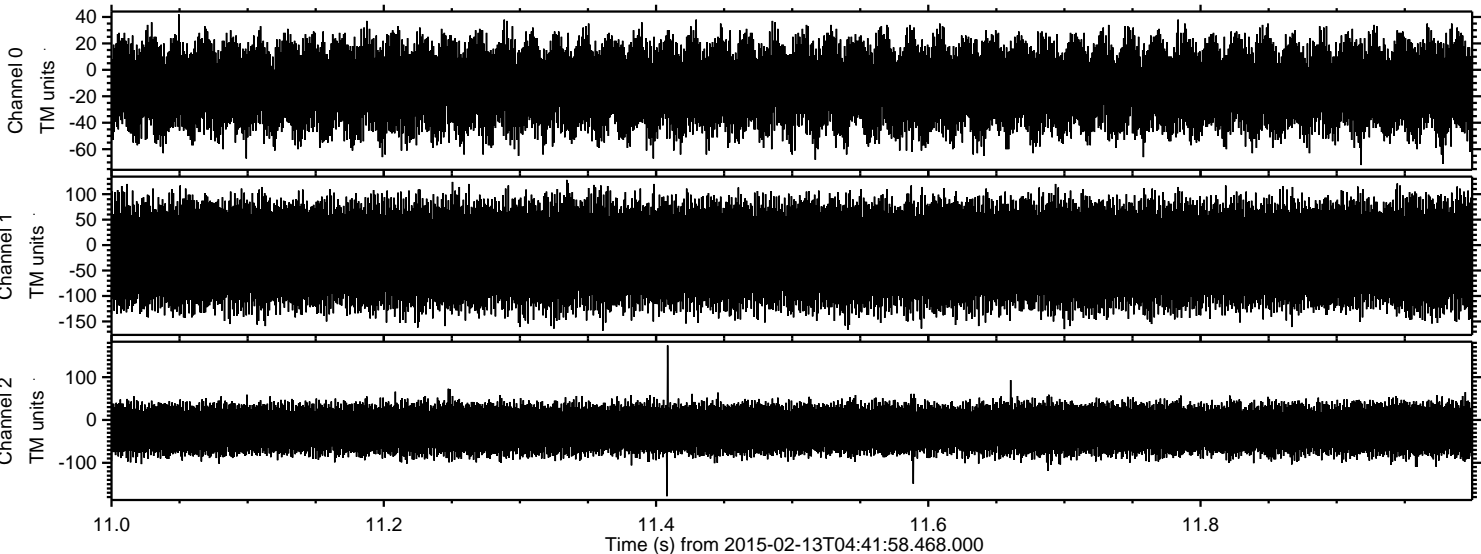


Processed Fri Feb 20 13:02:54 2015 by ELM ver.2012-10-06 from 001\_\_elm20150213\_044157\_\_dat00.bin





Processed Fri Feb 20 13:02:55 2015 by ELM ver.2012-10-06 from 001\_\_elm20150213\_044157\_\_dat00.bin



Channel 0  
mn: -72  
mx: 42  
 $\mu$ : -13.1  
 $\sigma$ : 16.1

Channel 1  
mn: -168  
mx: 128  
 $\mu$ : -19.1  
 $\sigma$ : 49.0

Channel 2  
mn: -178  
mx: 174  
 $\mu$ : -21.6  
 $\sigma$ : 27.3