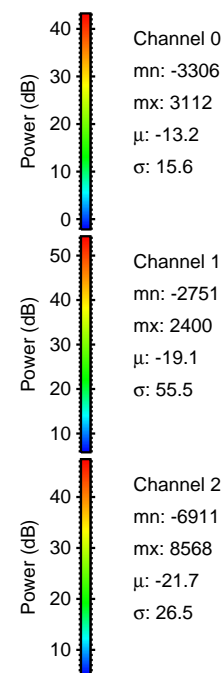
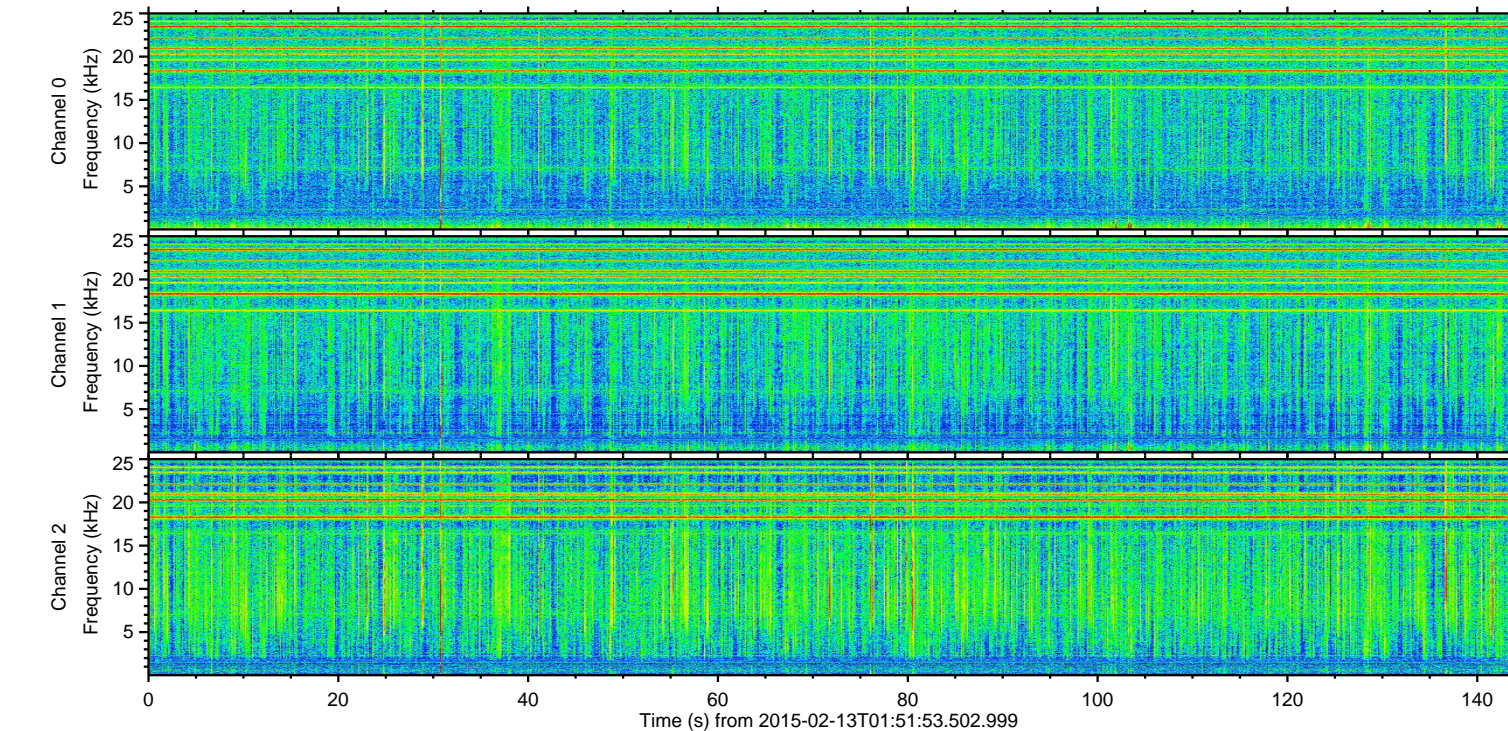
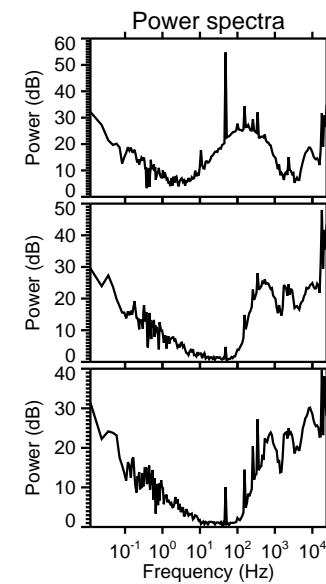
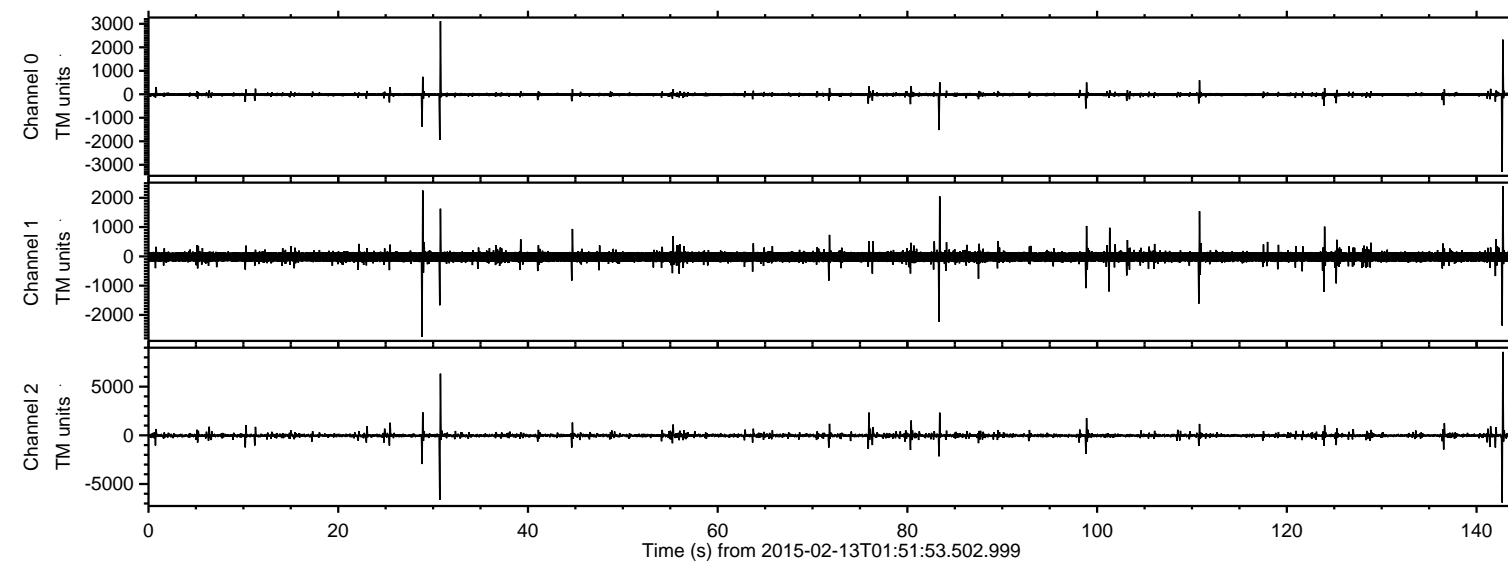


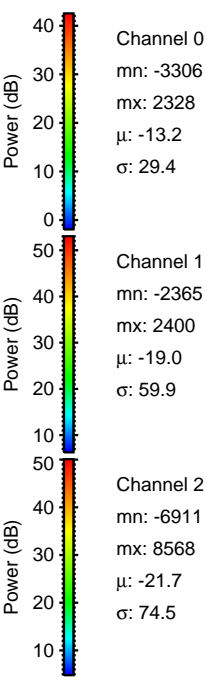
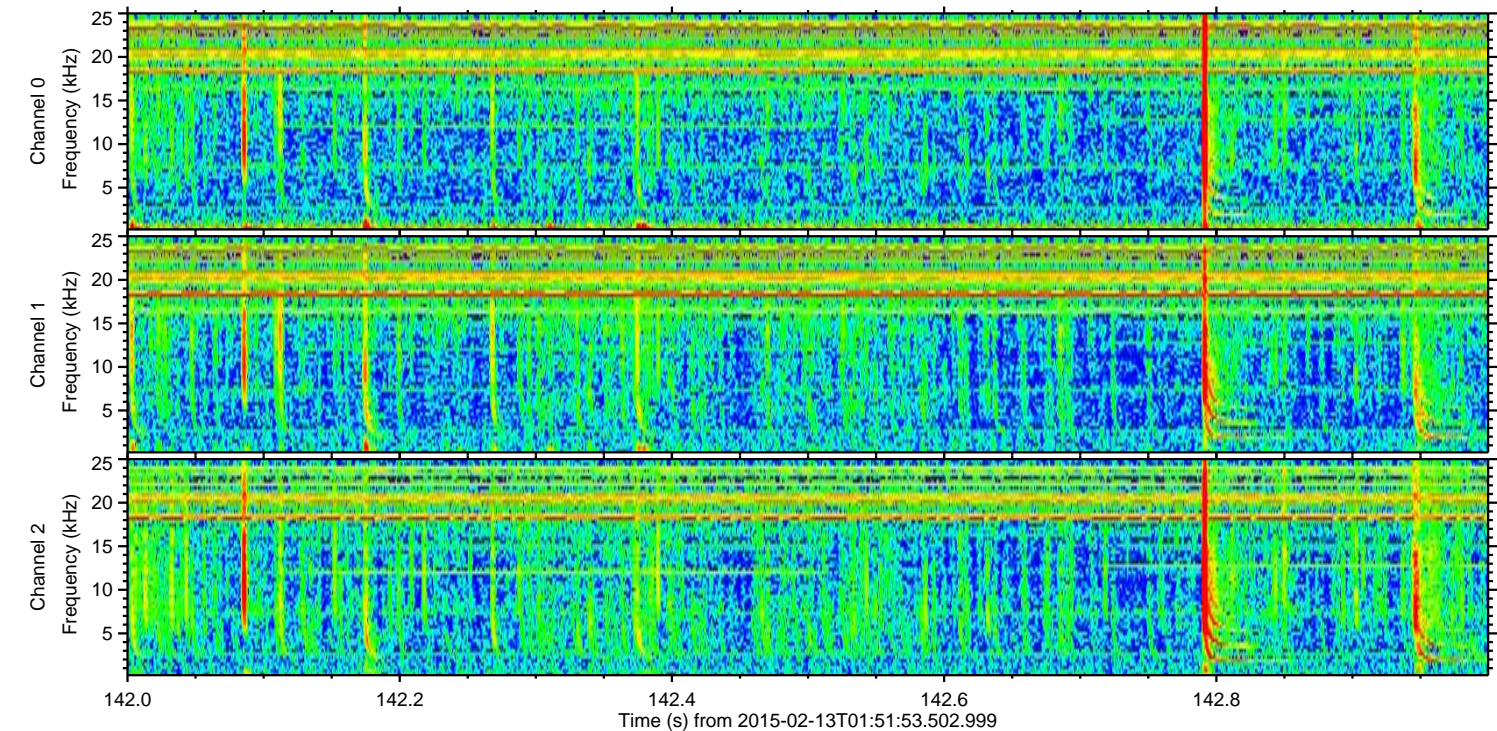
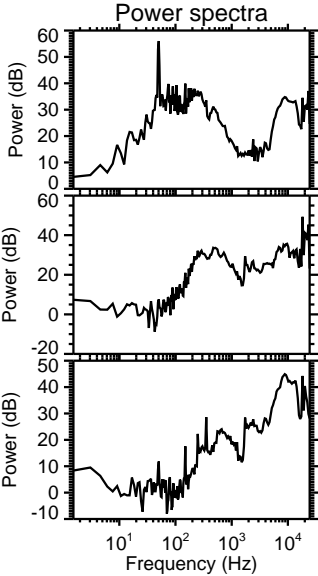
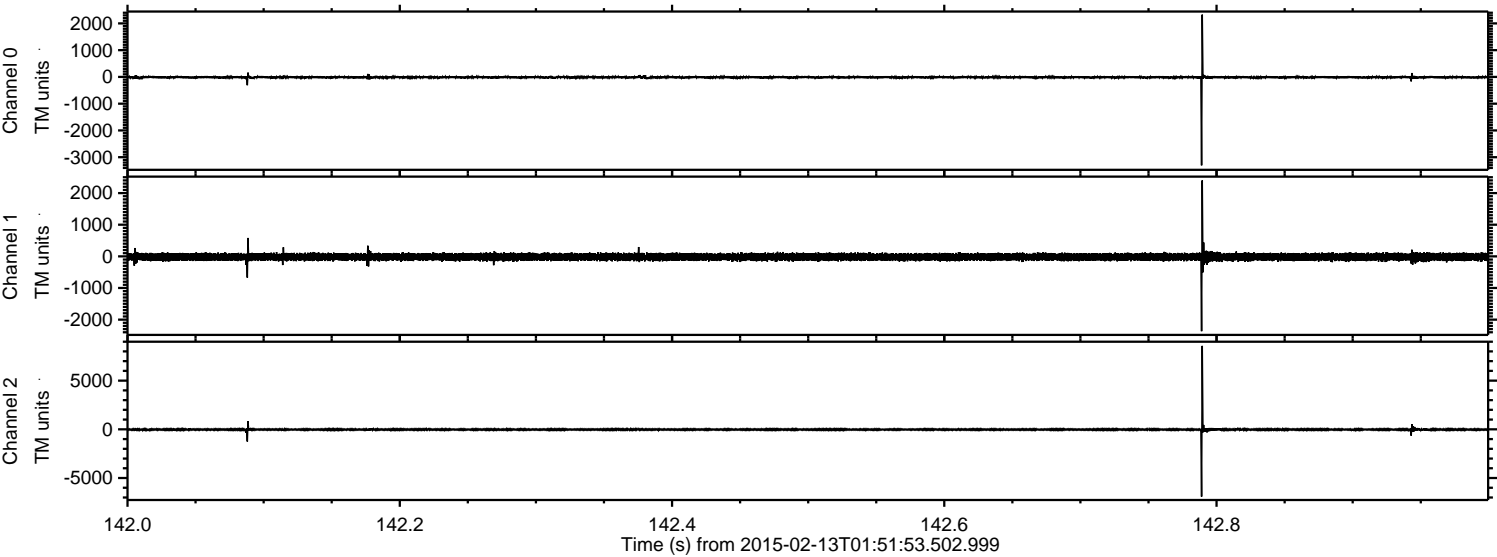
ELMAVAN 3D WAVEFORMS (Measured data sampled at 50 kHz) 49804 packets of 144 samples from 2015-02-13T01:51:53.502.999.

Processed Fri Feb 20 12:06:19 2015 by ELM ver.2012-10-06 from 001__elm20150213_015152__dat00.bin



ELMAVAN 3D WAVEFORMS (Measured data sampled at 50 kHz) 49804 packets of 144 samples from 2015-02-13T01:51:53.502.999. Part 143/144

Processed Fri Feb 20 12:06:43 2015 by ELM ver.2012-10-06 from 001__elm20150213_015152__dat00.bin



Power spectra

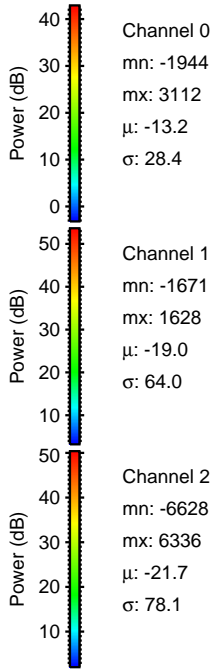
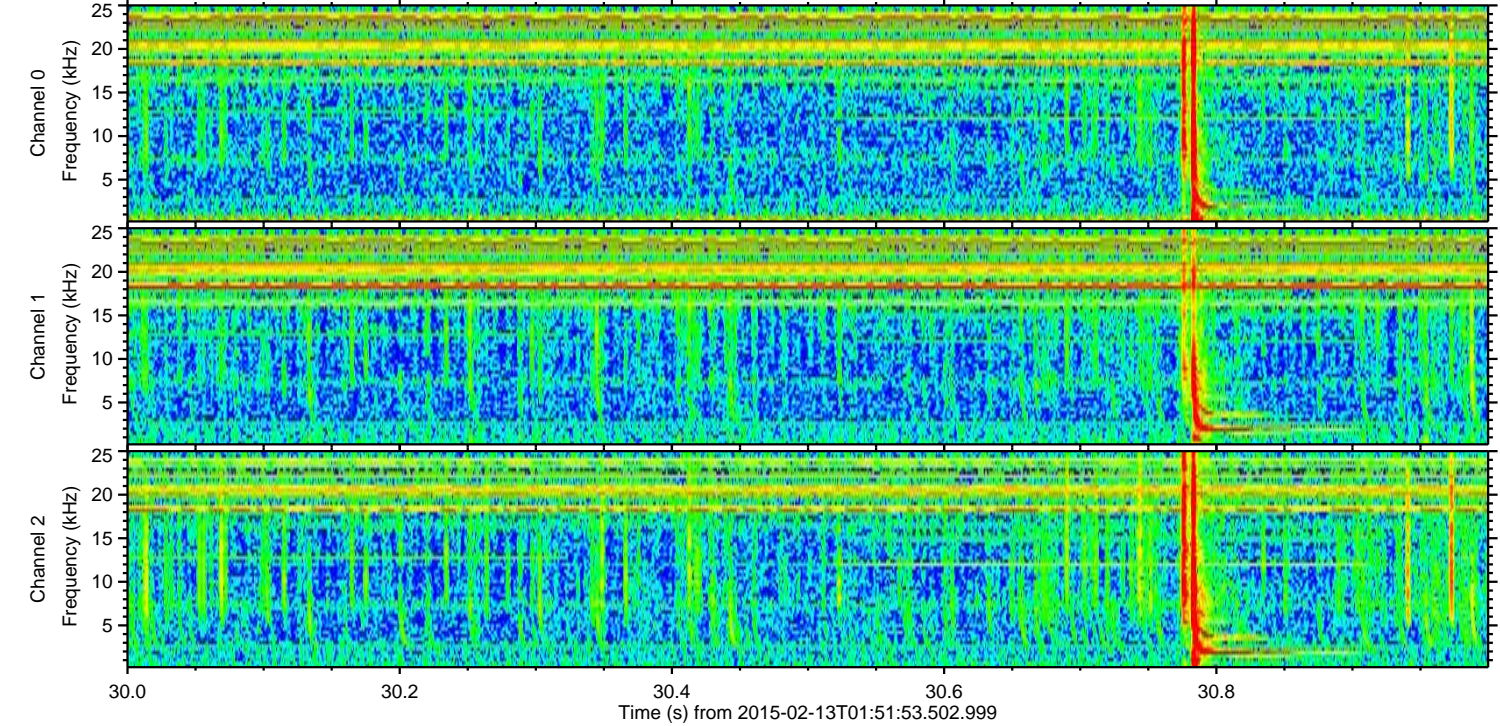
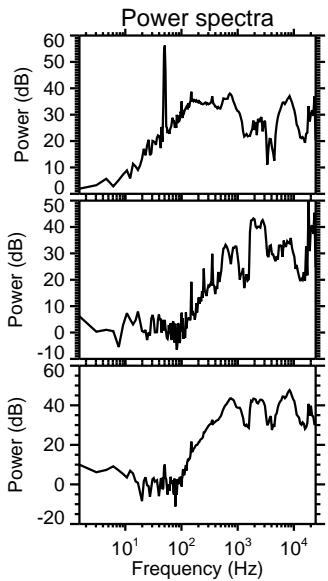
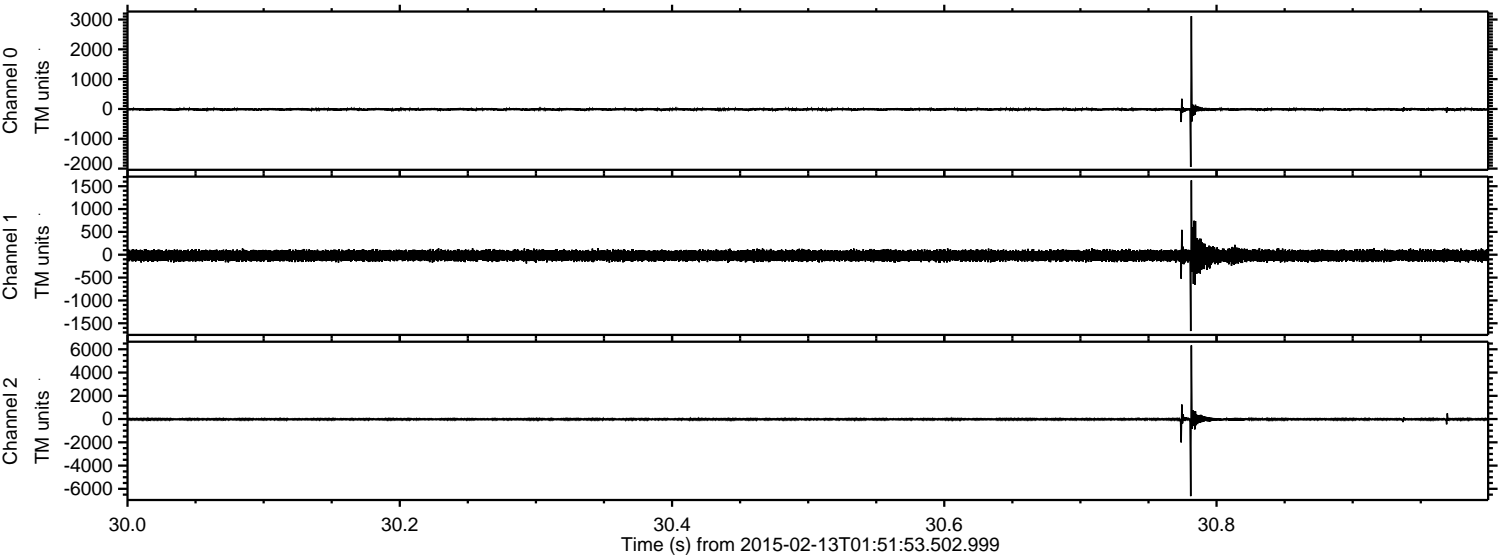
Channel 0
mn: -3306
mx: 2328
 μ : -13.2
 σ : 29.4

Channel 1
mn: -2365
mx: 2400
 μ : -19.0
 σ : 59.9

Channel 2
mn: -6911
mx: 8568
 μ : -21.7
 σ : 74.5

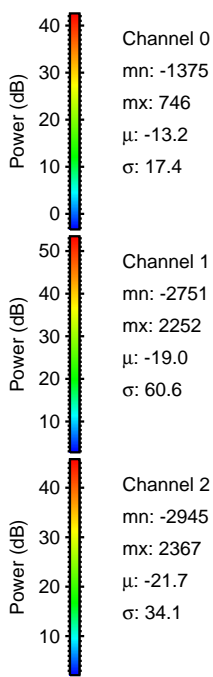
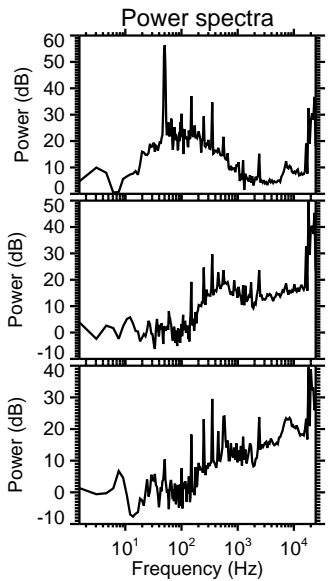
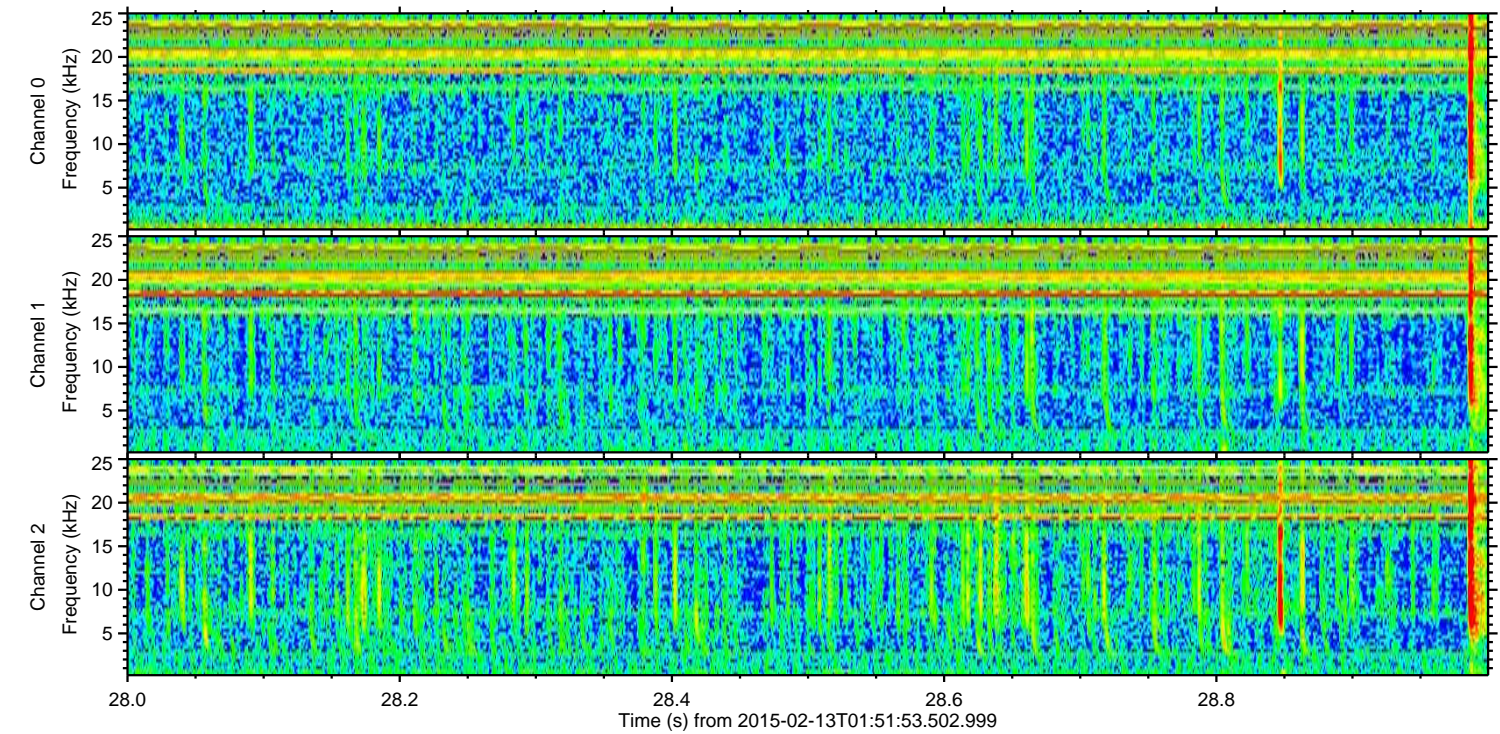
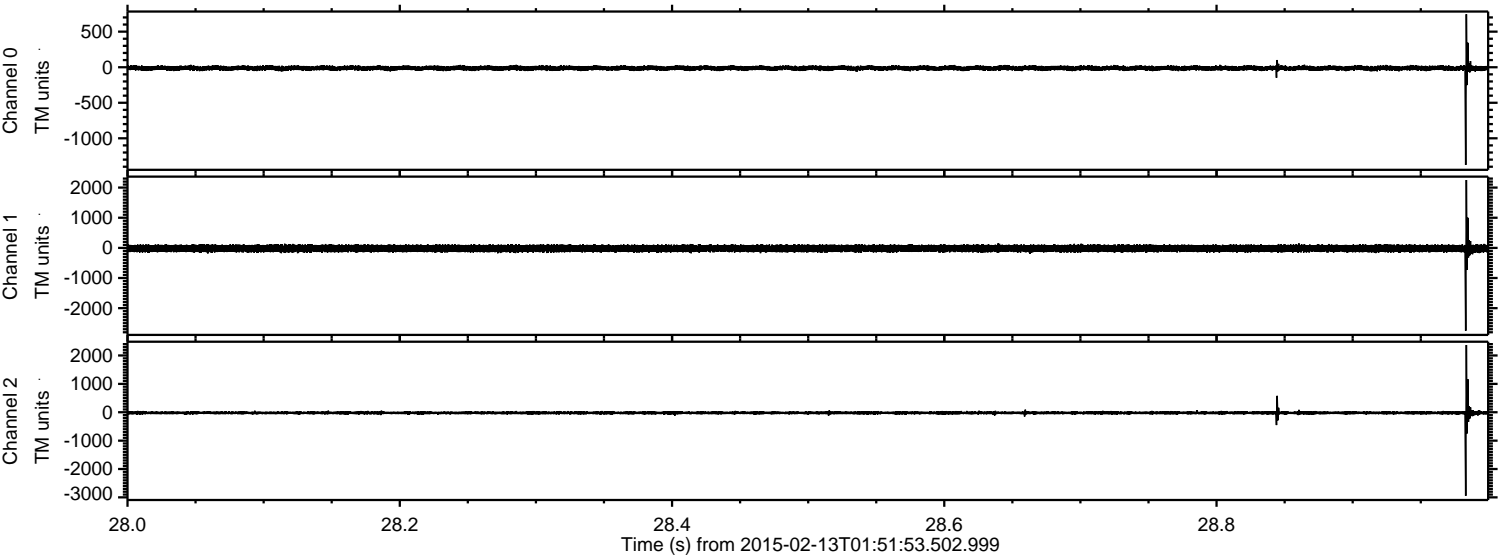
ELMAVAN 3D WAVEFORMS (Measured data sampled at 50 kHz) 49804 packets of 144 samples from 2015-02-13T01:51:53.502.999. Part 31/144

Processed Fri Feb 20 12:06:46 2015 by ELM ver.2012-10-06 from 001__elm20150213_015152__dat00.bin

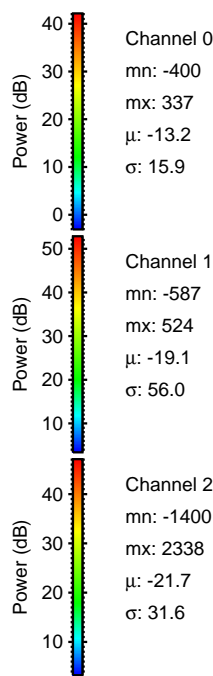
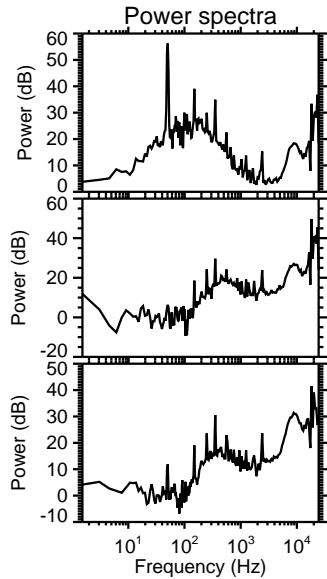
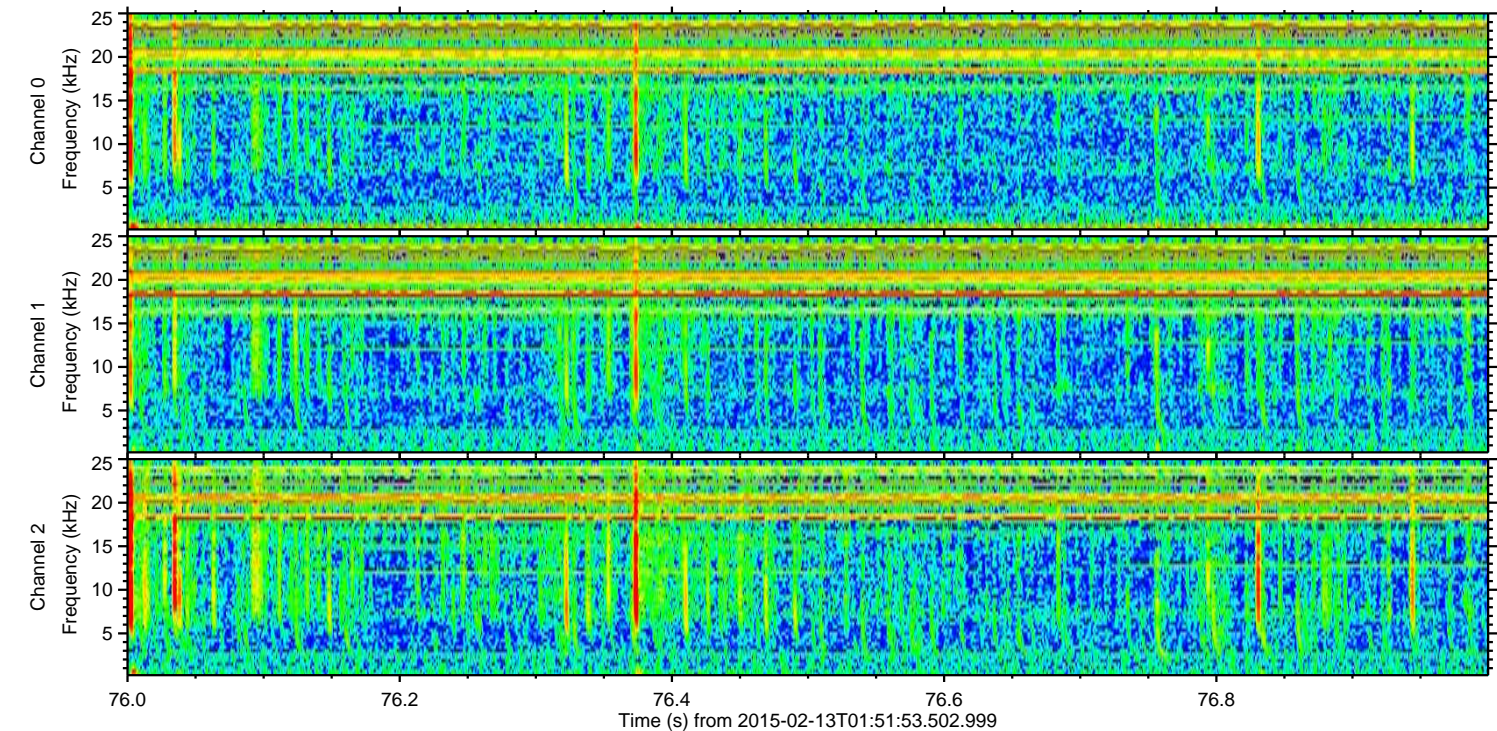
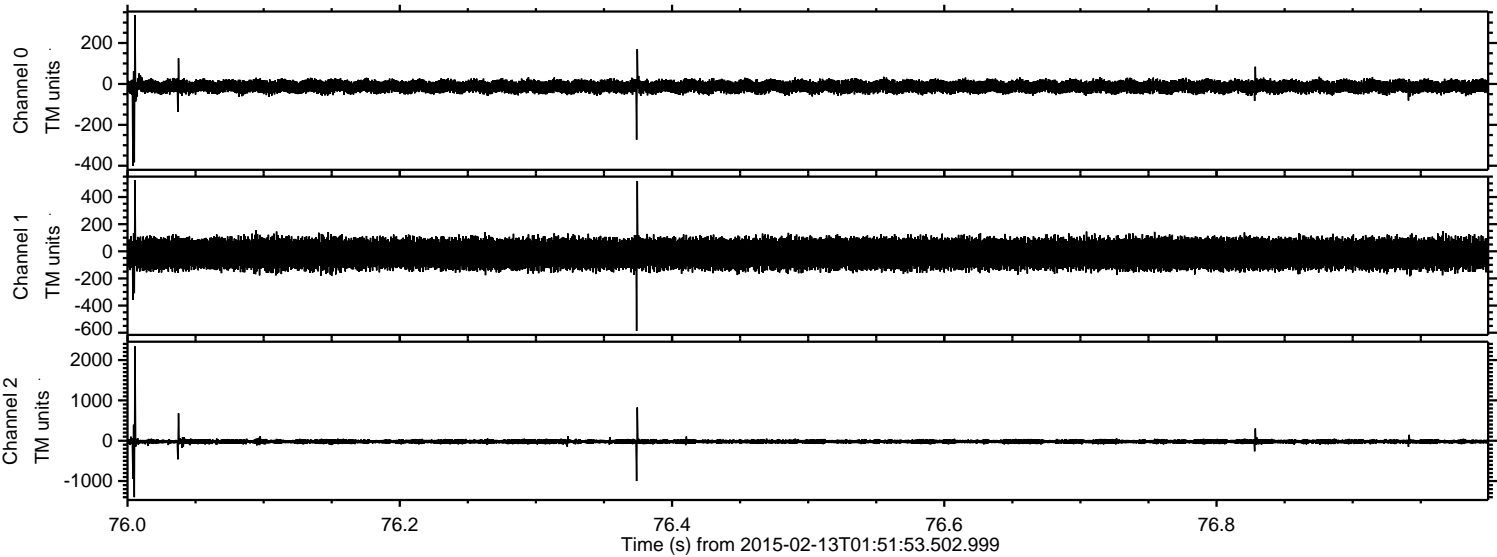


ELMAVAN 3D WAVEFORMS (Measured data sampled at 50 kHz) 49804 packets of 144 samples from 2015-02-13T01:51:53.502.999. Part 29/144

Processed Fri Feb 20 12:06:48 2015 by ELM ver.2012-10-06 from 001__elm20150213_015152__dat00.bin



Processed Fri Feb 20 12:06:51 2015 by ELM ver.2012-10-06 from 001__elm20150213_015152__dat00.bin



Power spectra

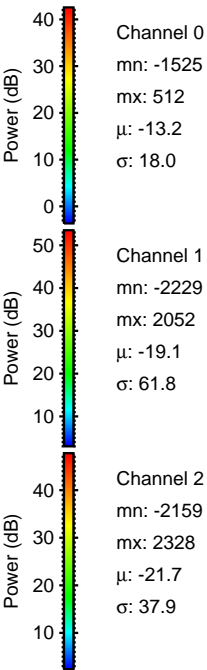
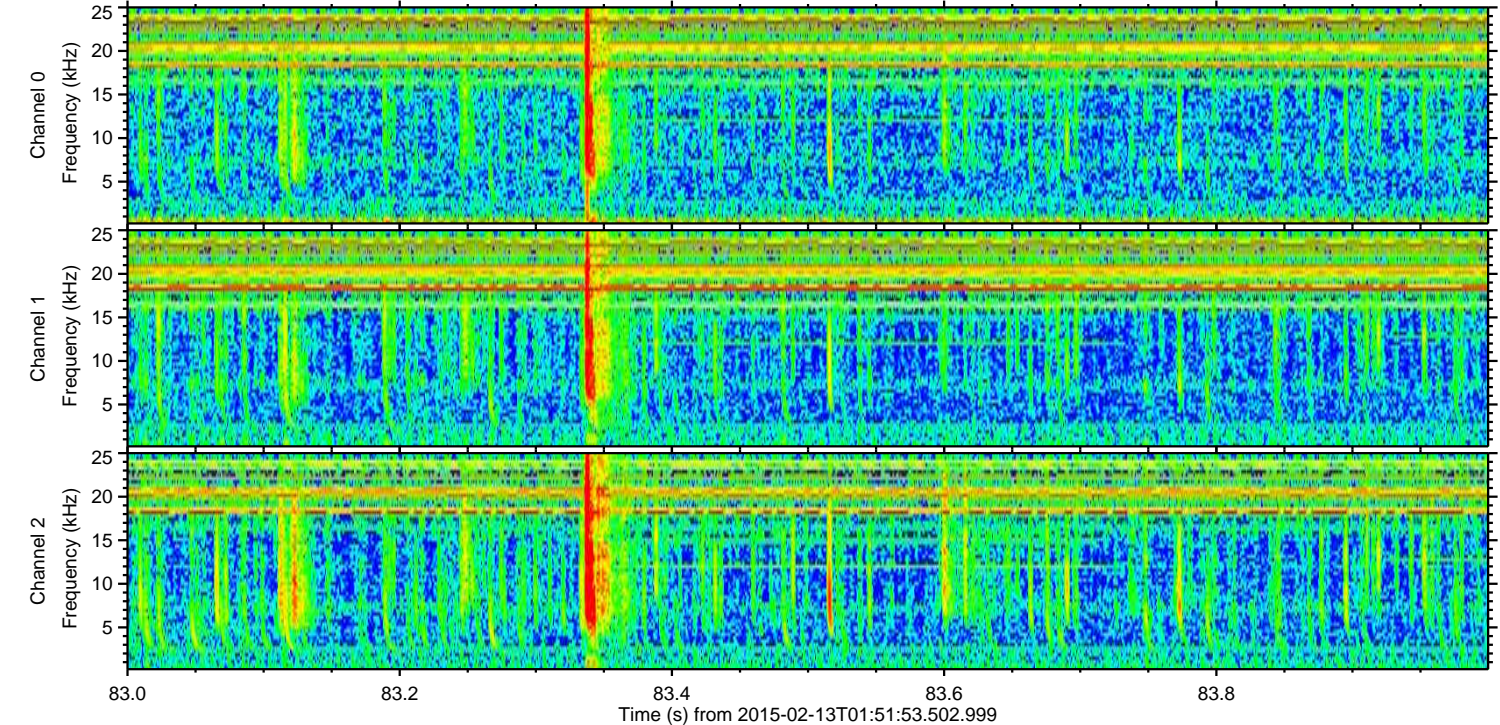
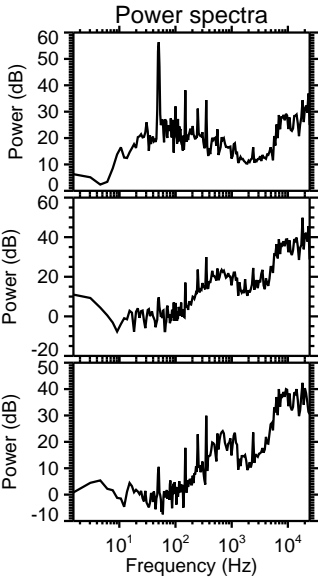
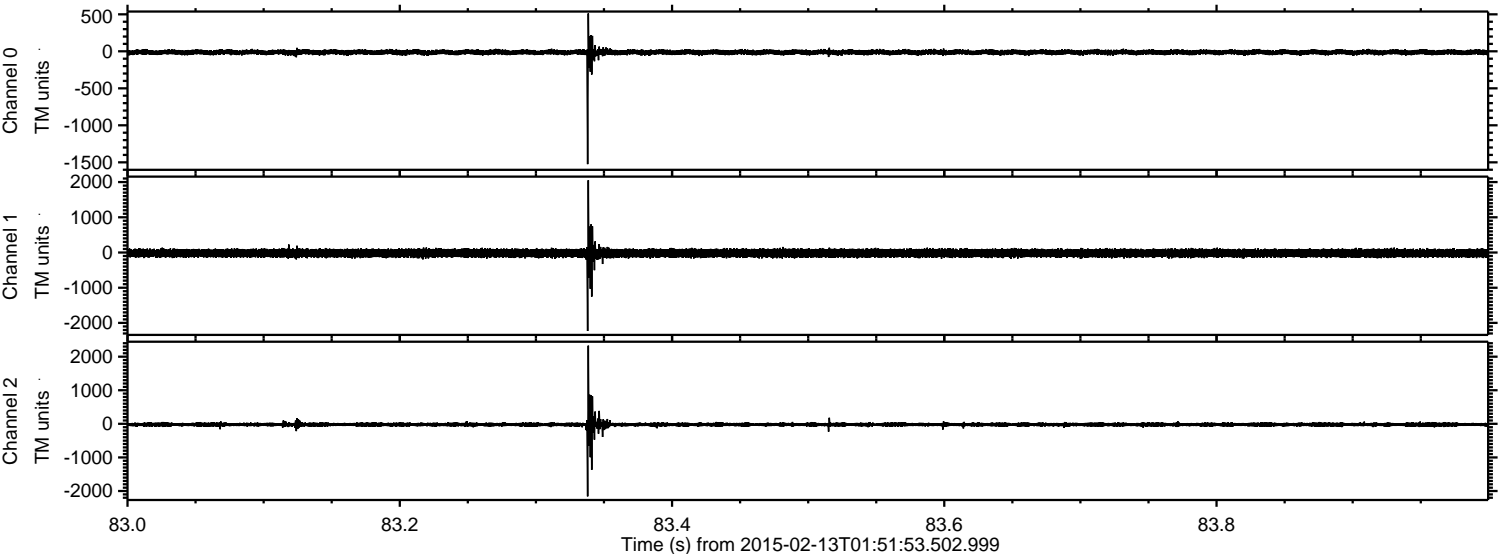
Channel 0
mn: -400
mx: 337
 μ : -13.2
 σ : 15.9

Channel 1
mn: -587
mx: 524
 μ : -19.1
 σ : 56.0

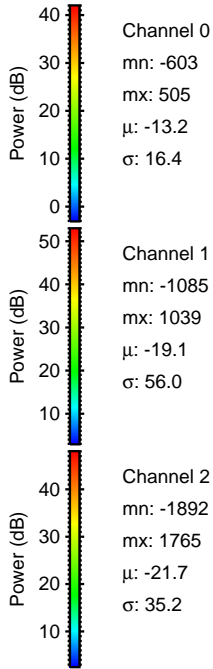
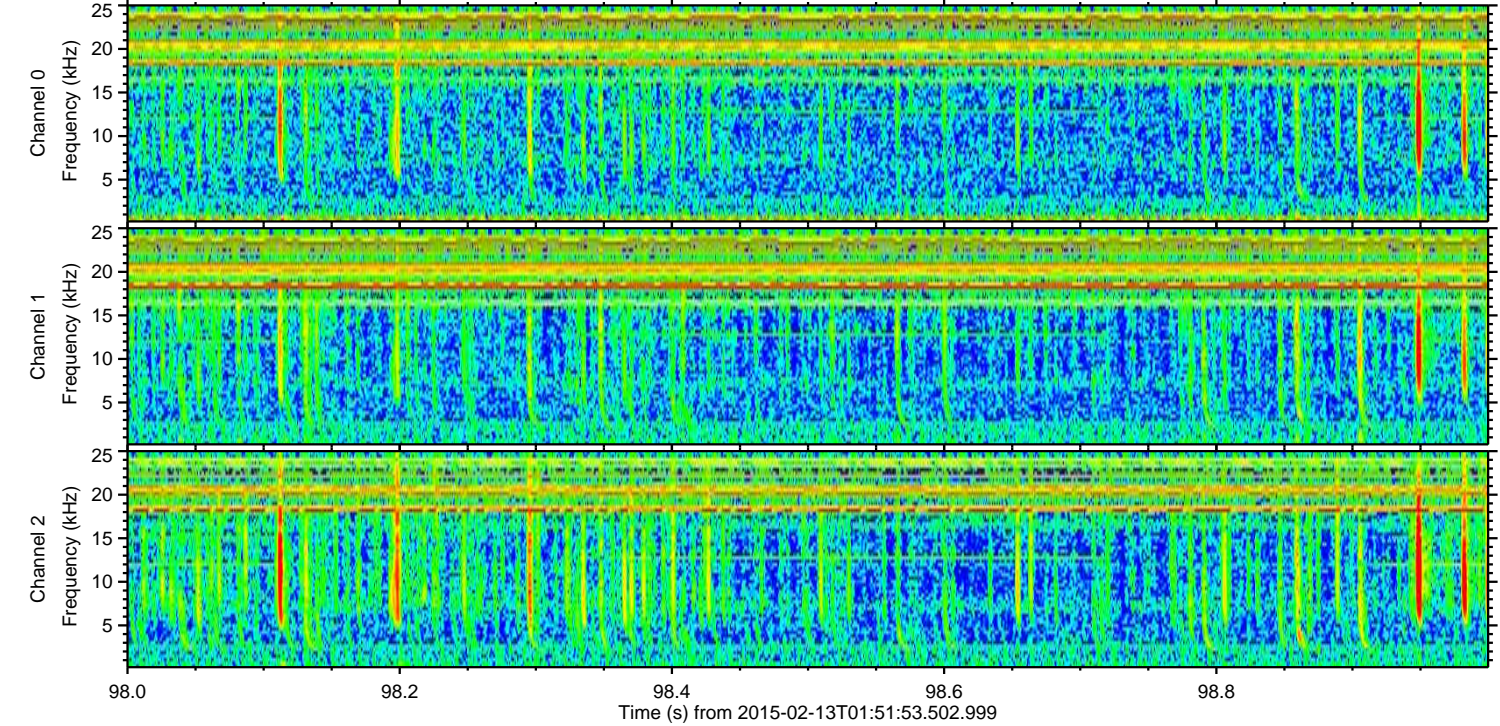
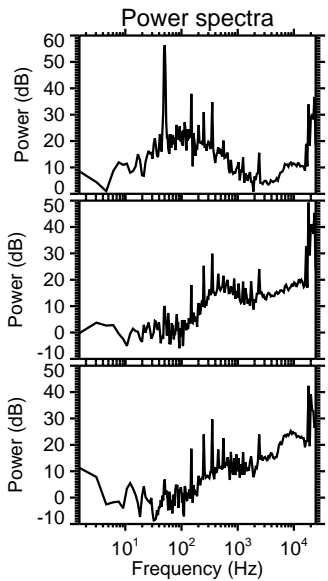
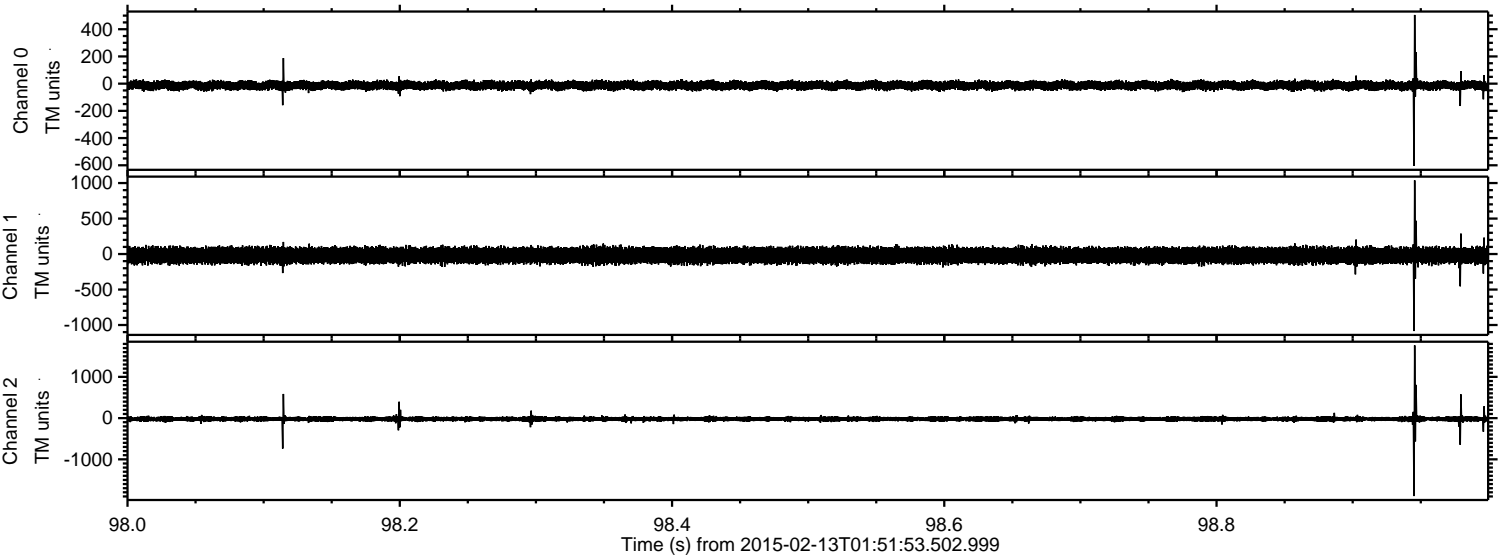
Channel 2
mn: -1400
mx: 2338
 μ : -21.7
 σ : 31.6

ELMAVAN 3D WAVEFORMS (Measured data sampled at 50 kHz) 49804 packets of 144 samples from 2015-02-13T01:51:53.502.999. Part 84/144

Processed Fri Feb 20 12:06:52 2015 by ELM ver.2012-10-06 from 001__elm20150213_015152__dat00.bin



Processed Fri Feb 20 12:06:54 2015 by ELM ver.2012-10-06 from 001__elm20150213_015152__dat00.bin



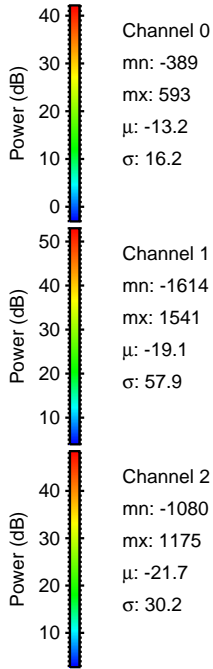
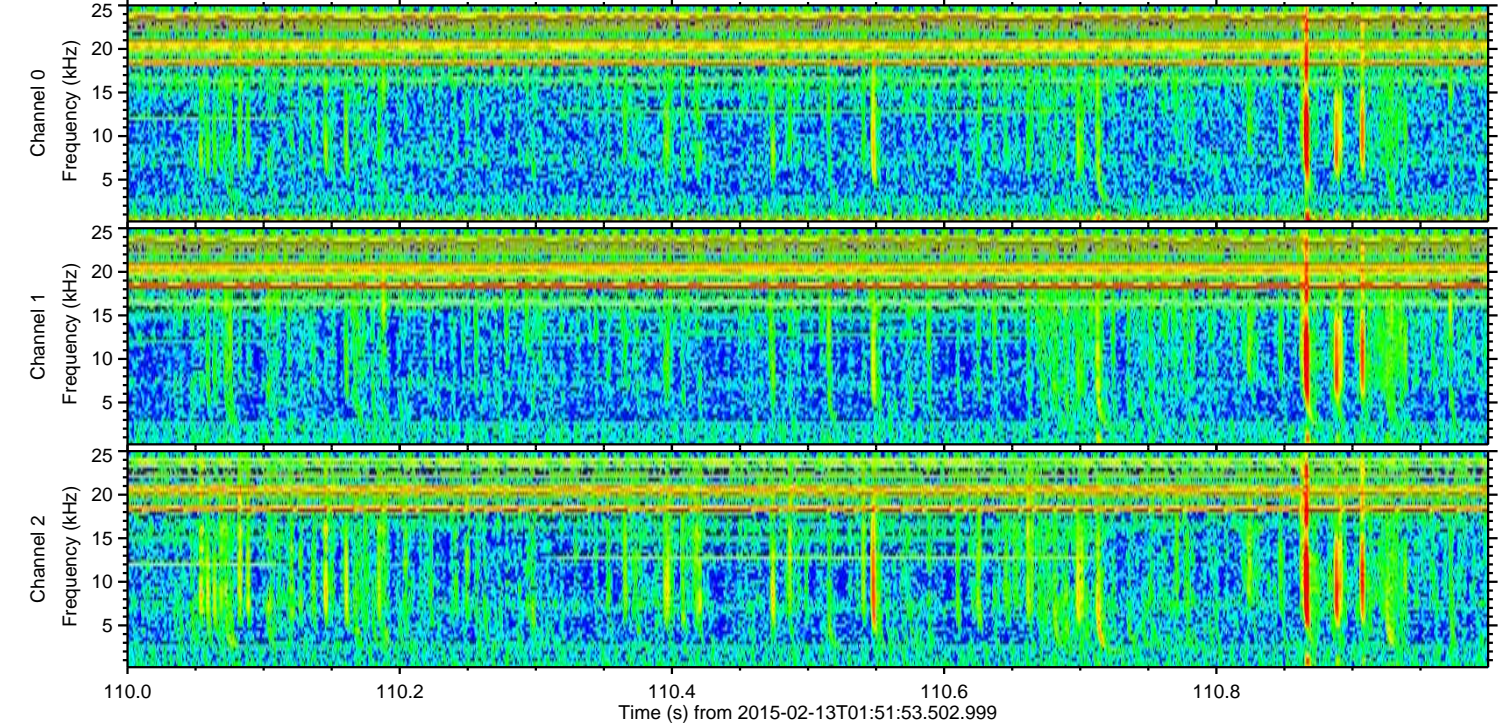
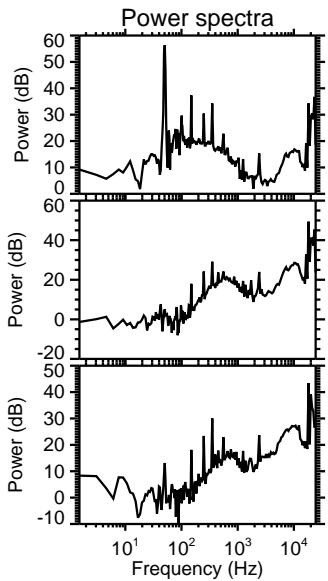
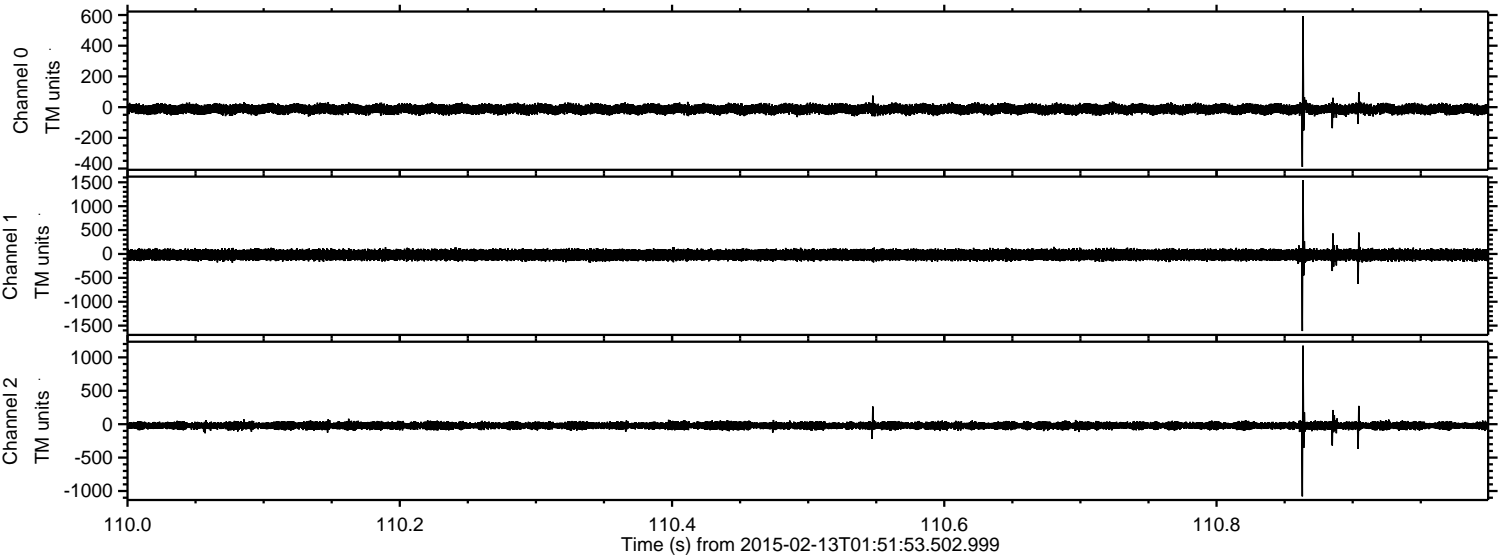
Channel 0
mn: -603
mx: 505
 μ : -13.2
 σ : 16.4

Channel 1
mn: -1085
mx: 1039
 μ : -19.1
 σ : 56.0

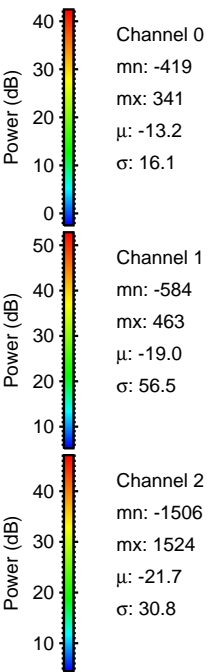
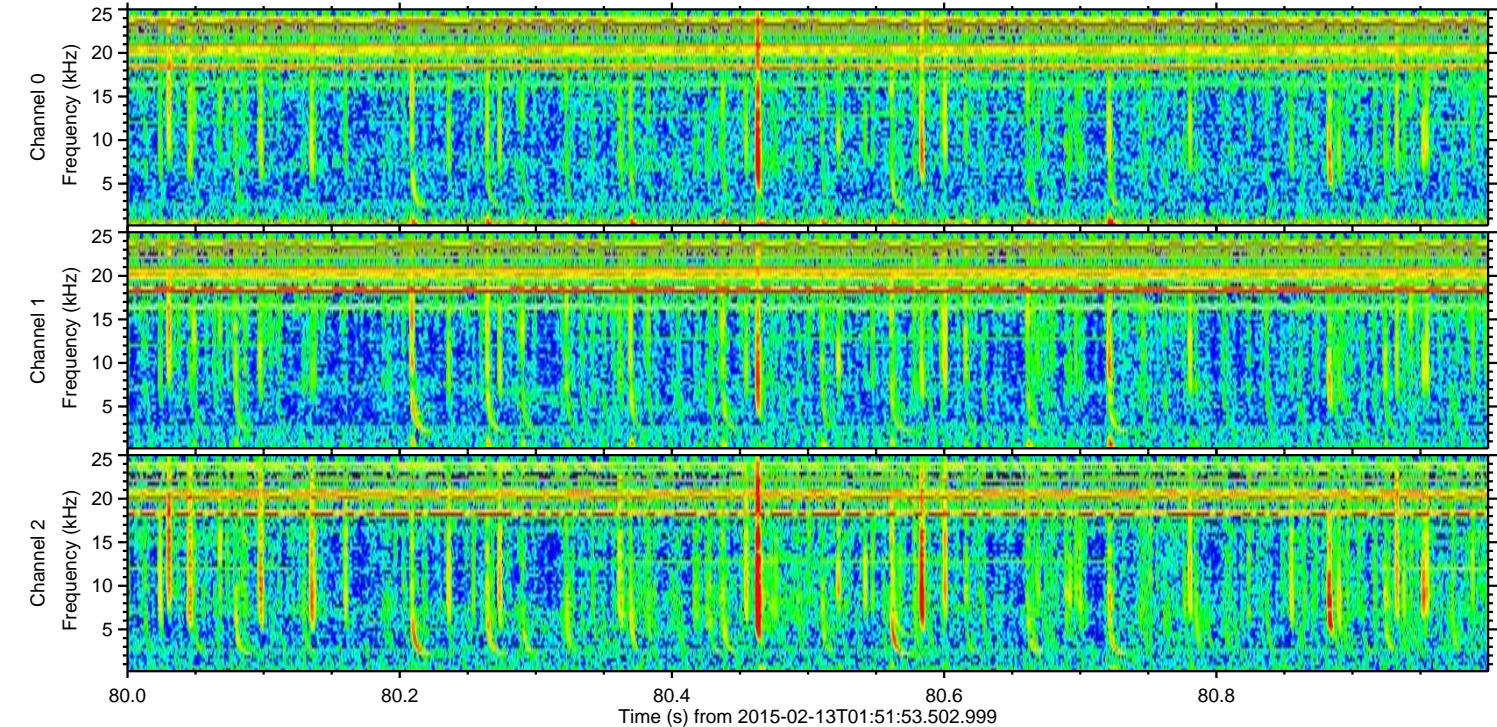
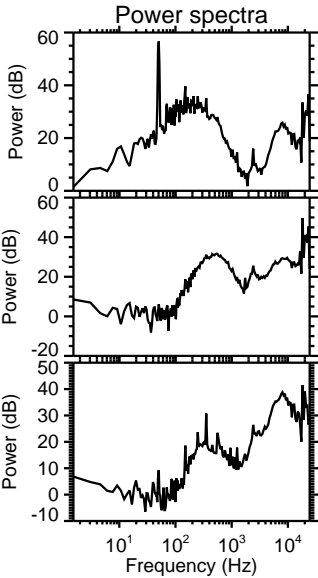
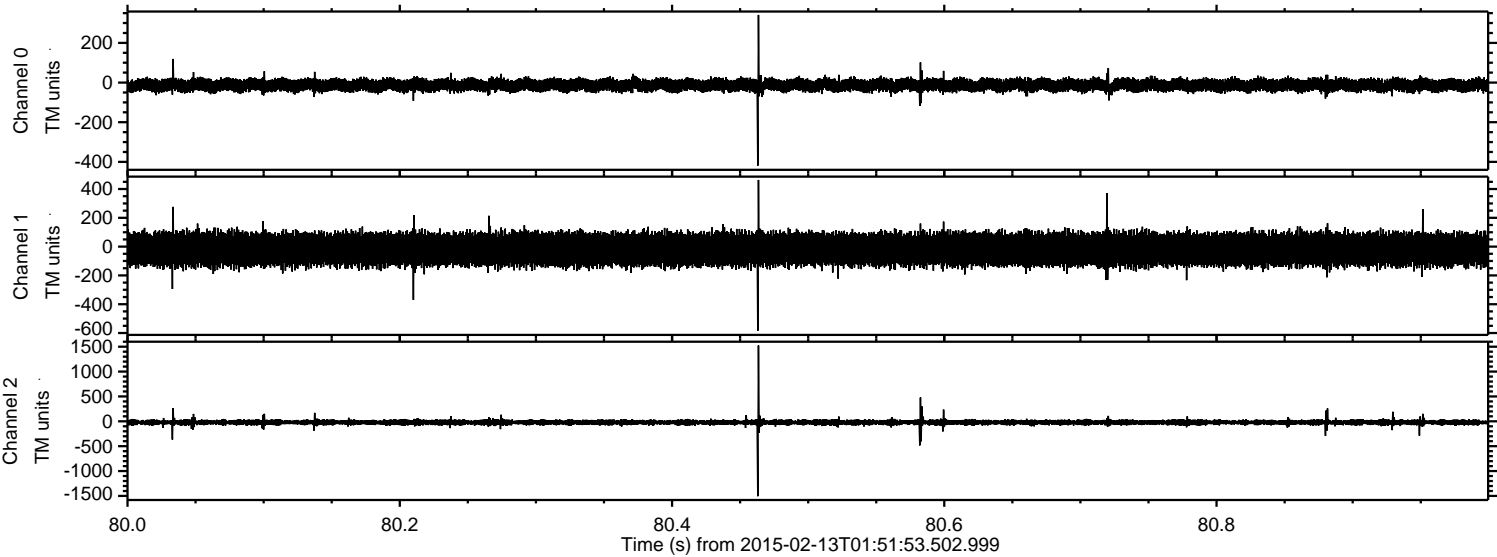
Channel 2
mn: -1892
mx: 1765
 μ : -21.7
 σ : 35.2

ELMAVAN 3D WAVEFORMS (Measured data sampled at 50 kHz) 49804 packets of 144 samples from 2015-02-13T01:51:53.502.999. Part 111/144

Processed Fri Feb 20 12:06:55 2015 by ELM ver.2012-10-06 from 001__elm20150213_015152__dat00.bin

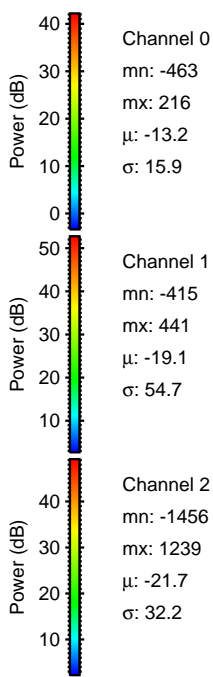
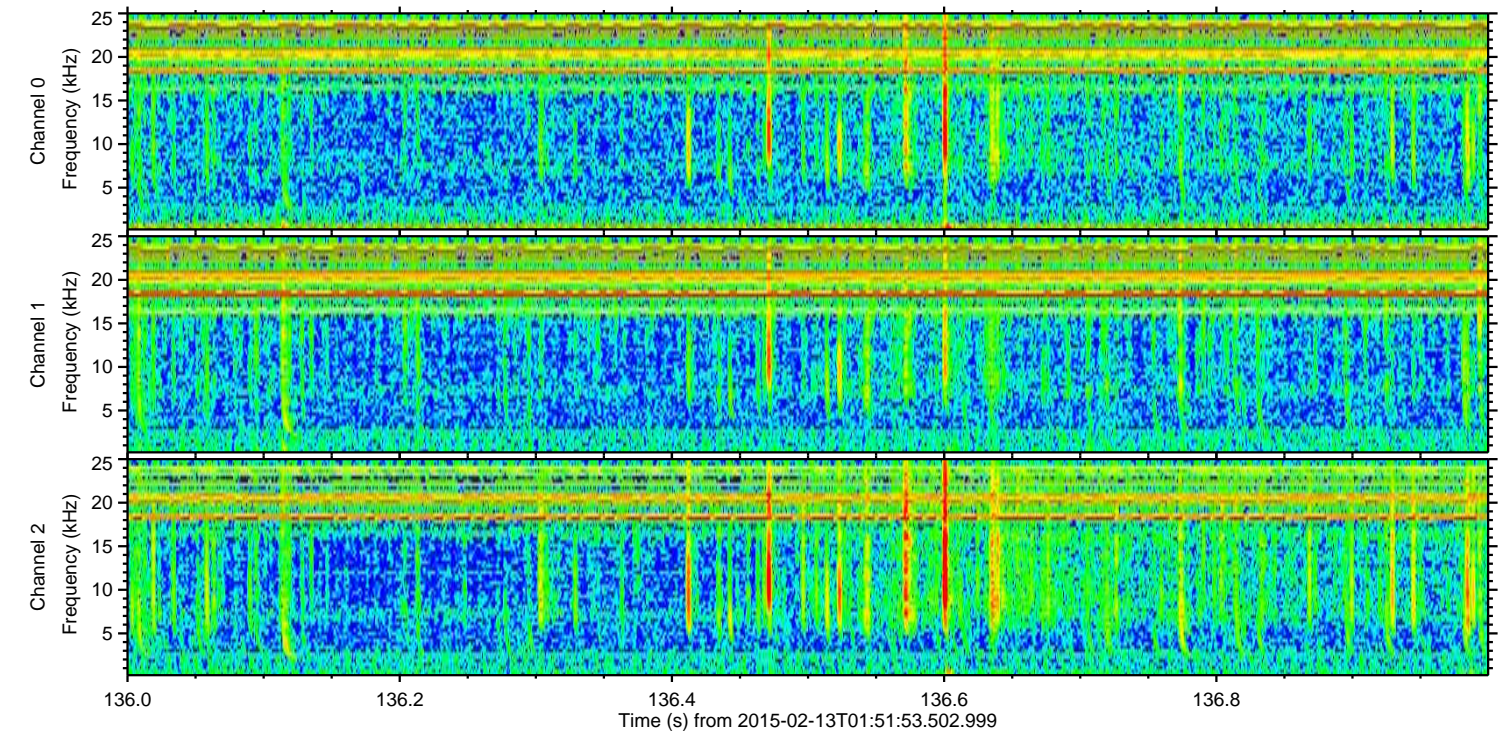
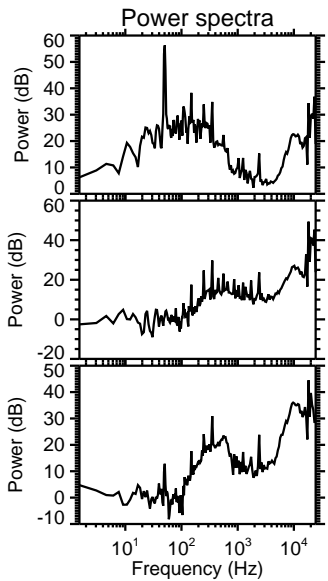
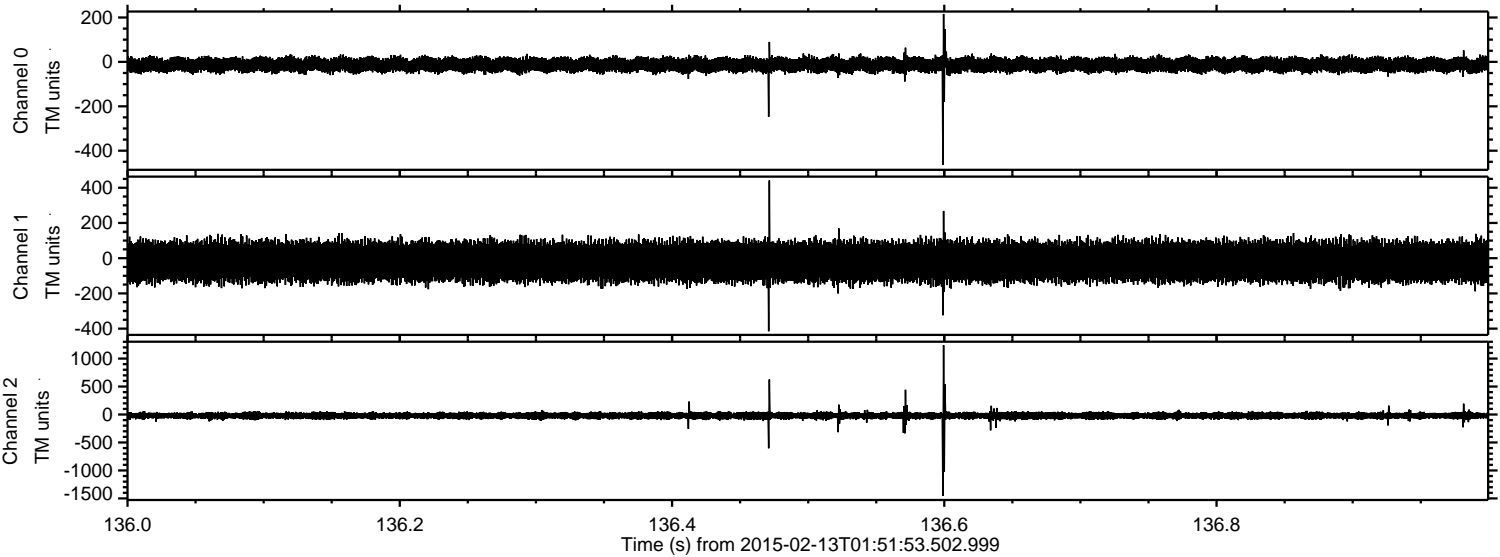


Processed Fri Feb 20 12:06:56 2015 by ELM ver.2012-10-06 from 001__elm20150213_015152__dat00.bin



ELMAVAN 3D WAVEFORMS (Measured data sampled at 50 kHz) 49804 packets of 144 samples from 2015-02-13T01:51:53.502.999. Part 137/144

Processed Fri Feb 20 12:06:57 2015 by ELM ver.2012-10-06 from 001__elm20150213_015152__dat00.bin



Channel 0
mn: -463
mx: 216
 μ : -13.2
 σ : 15.9

Channel 1
mn: -415
mx: 441
 μ : -19.1
 σ : 54.7

Channel 2
mn: -1456
mx: 1239
 μ : -21.7
 σ : 32.2

Processed Fri Feb 20 12:06:59 2015 by ELM ver.2012-10-06 from 001__elm20150213_015152__dat00.bin

