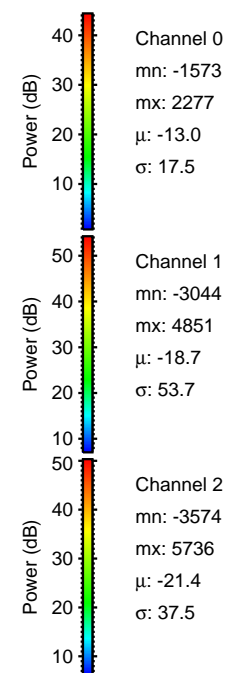
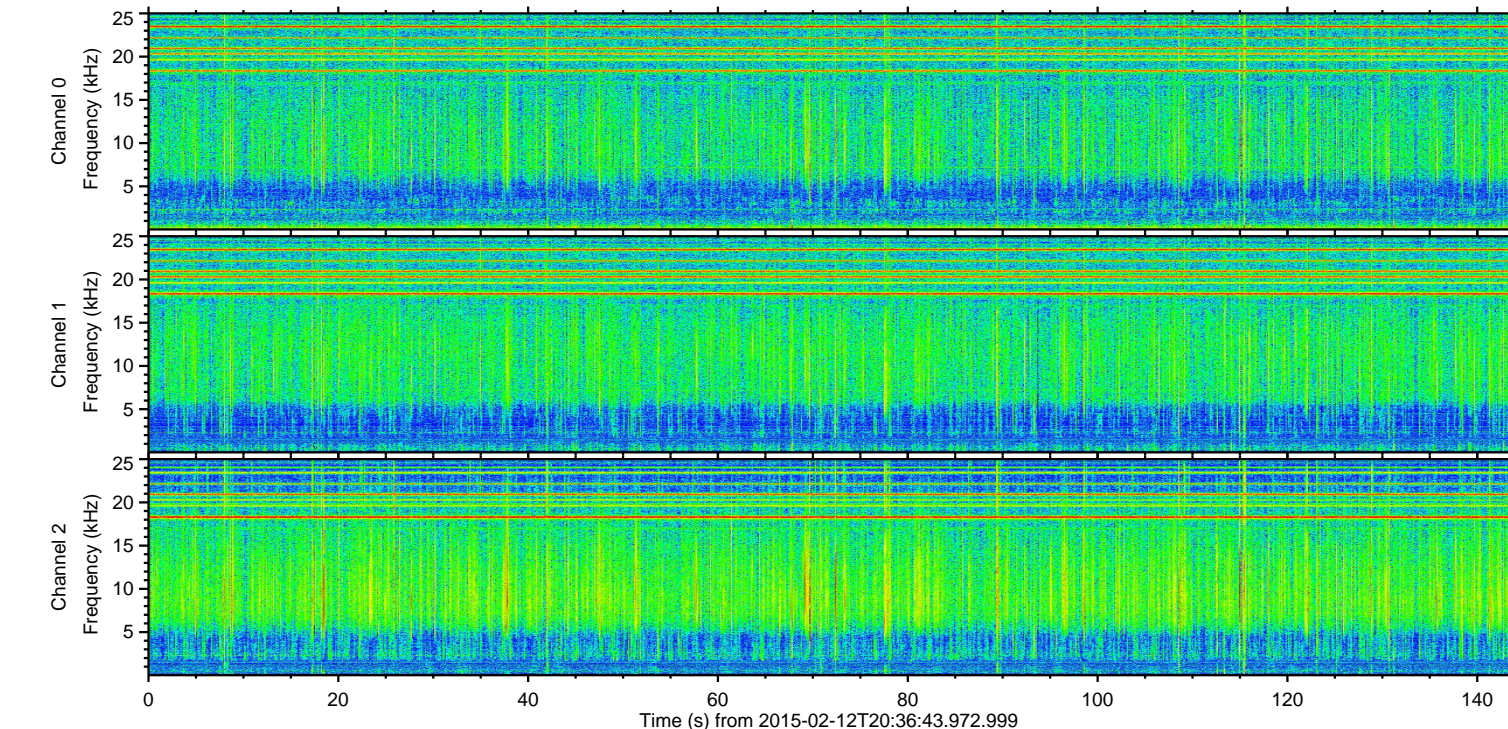
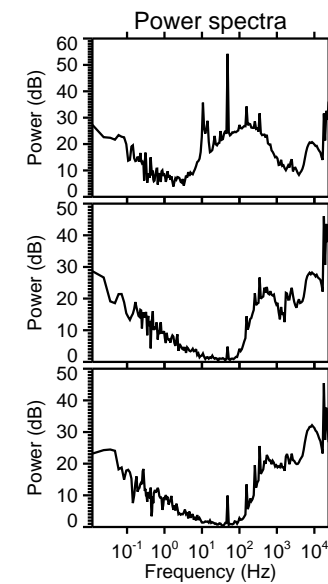
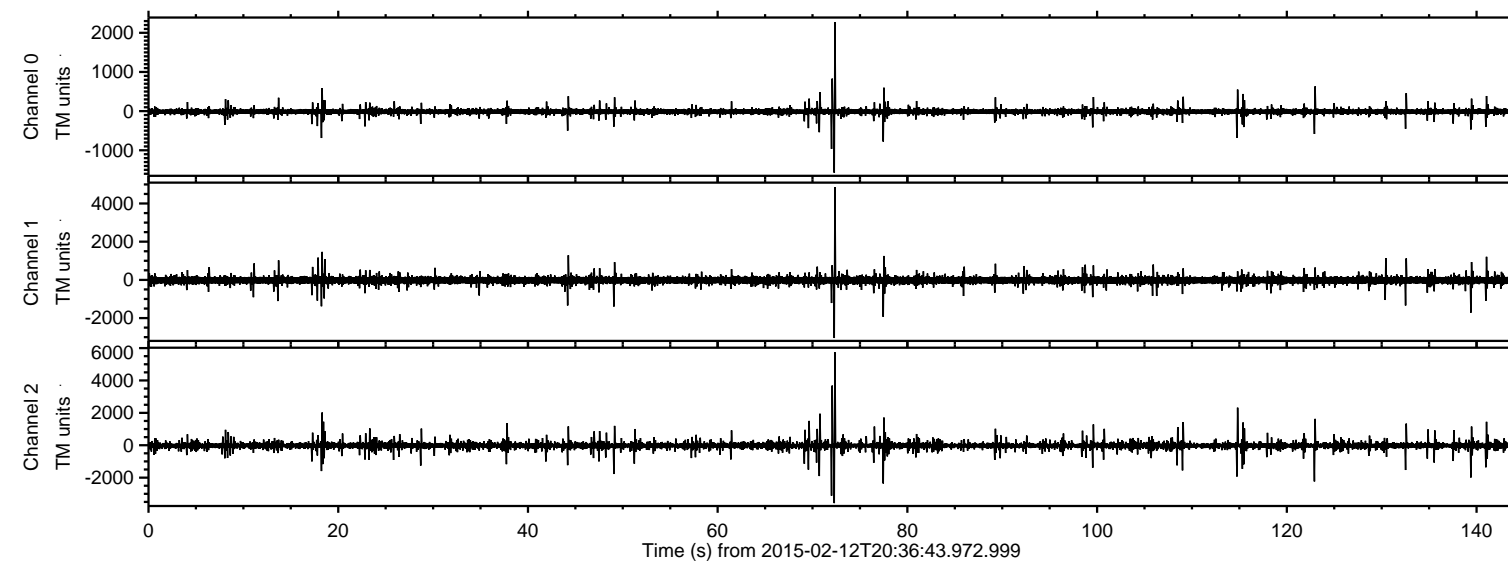


ELMAVAN 3D WAVEFORMS (Measured data sampled at 50 kHz) 49805 packets of 144 samples from 2015-02-12T20:36:43.972.999.

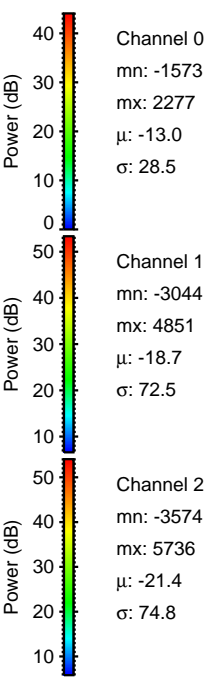
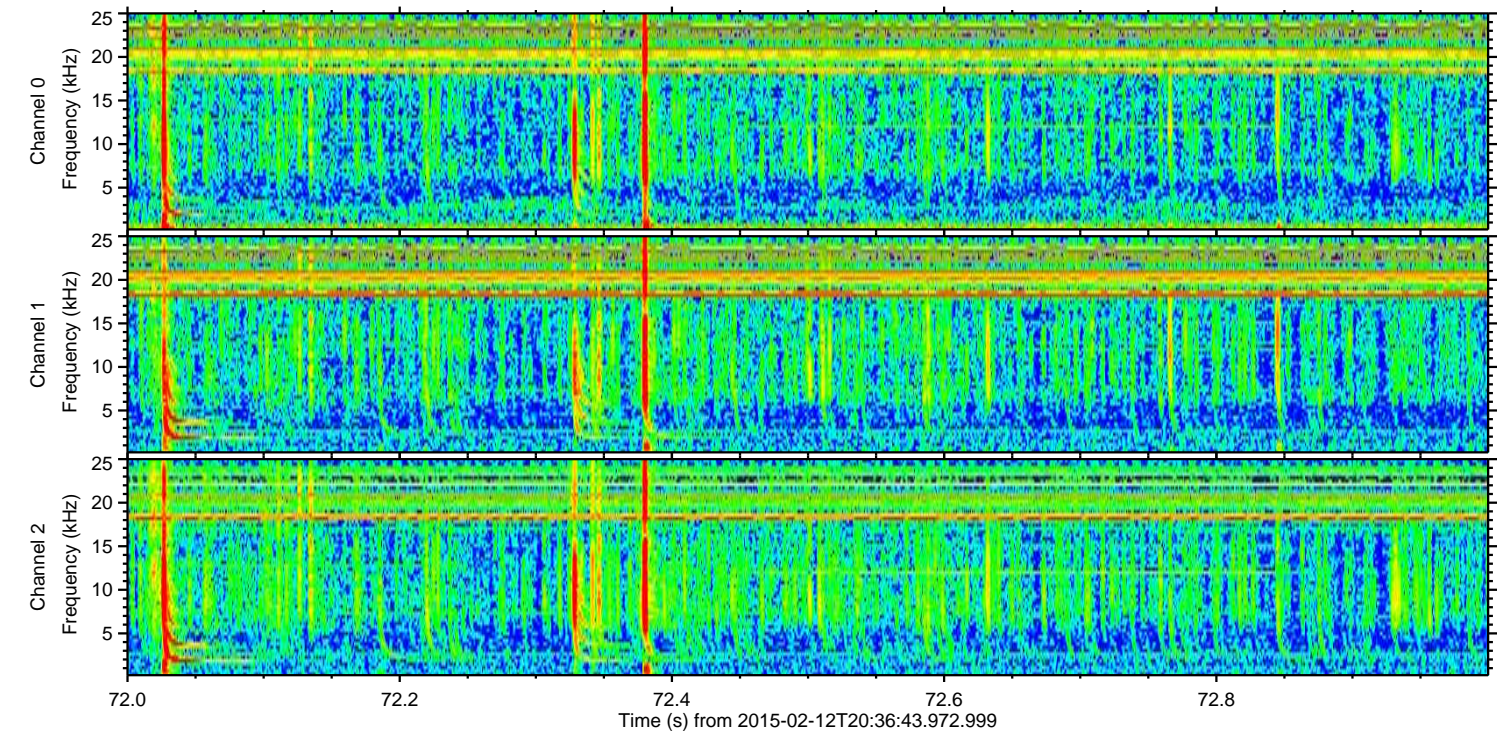
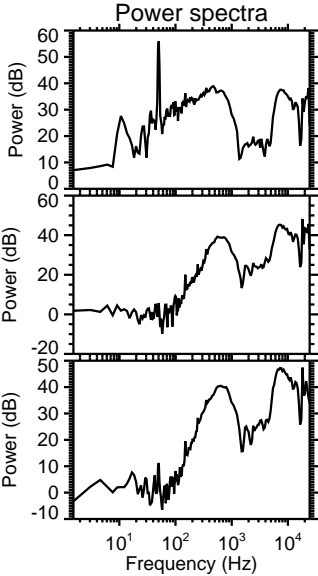
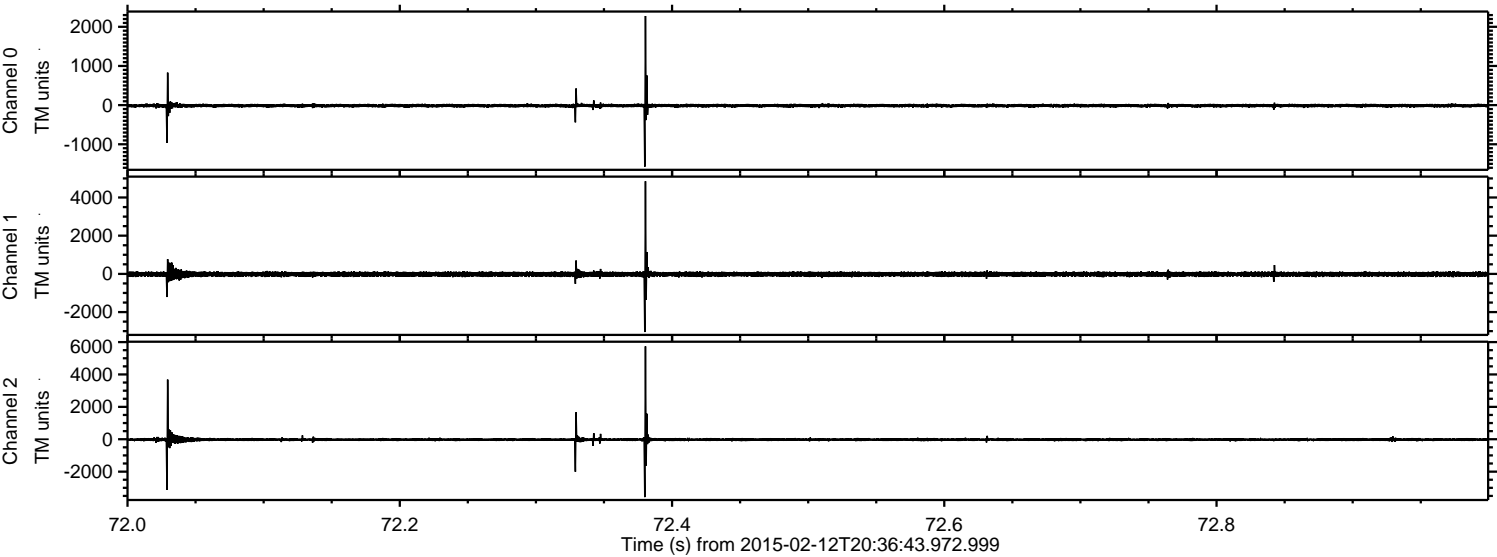
Processed Fri Feb 20 10:18:16 2015 by ELM ver.2012-10-06 from 001\_\_elm20150212\_203642\_\_dat00.bin





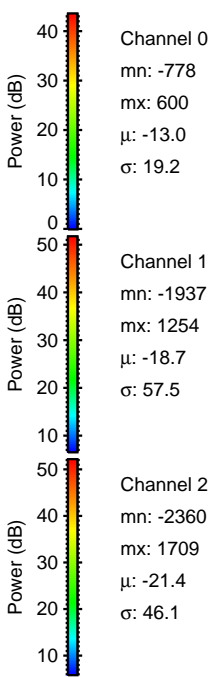
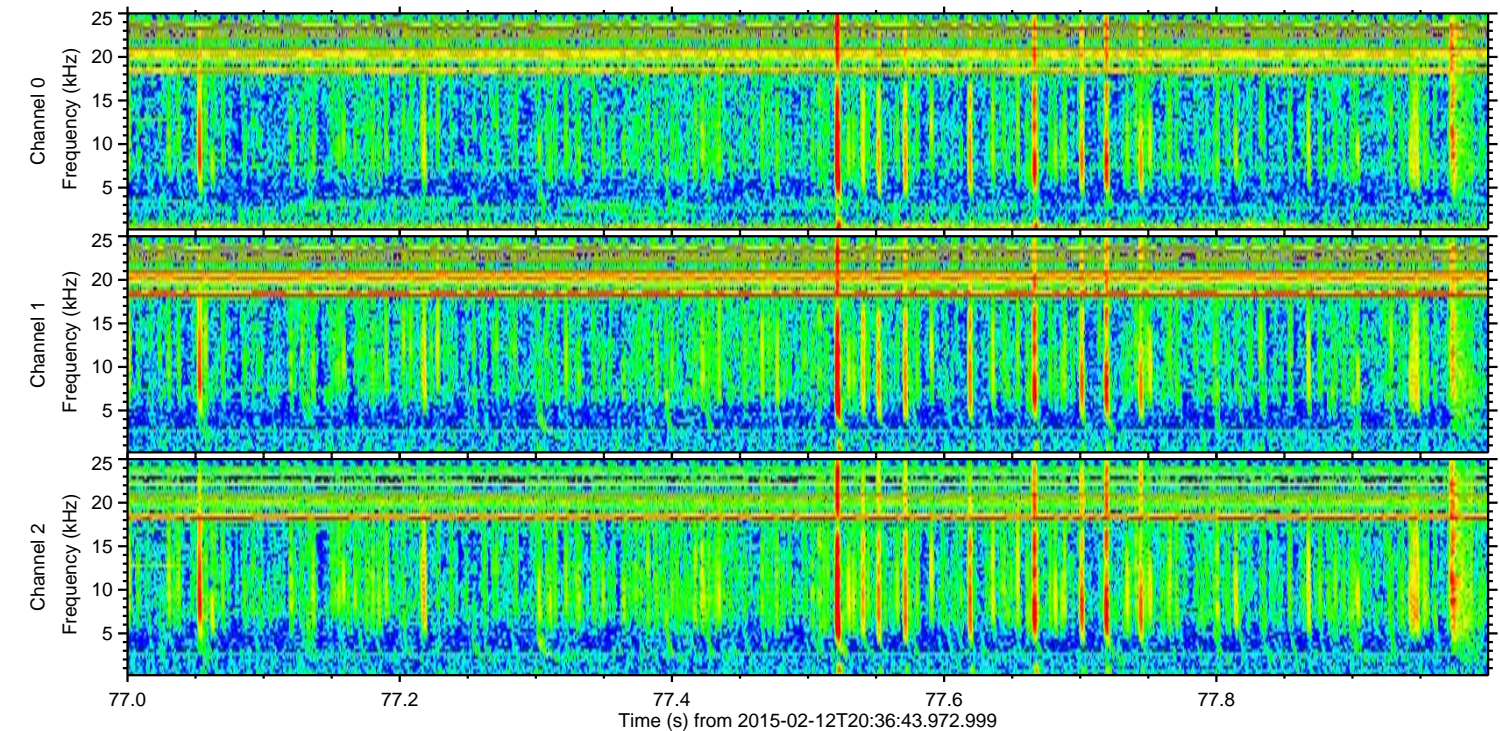
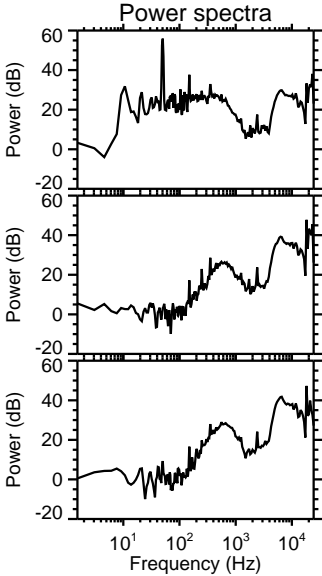
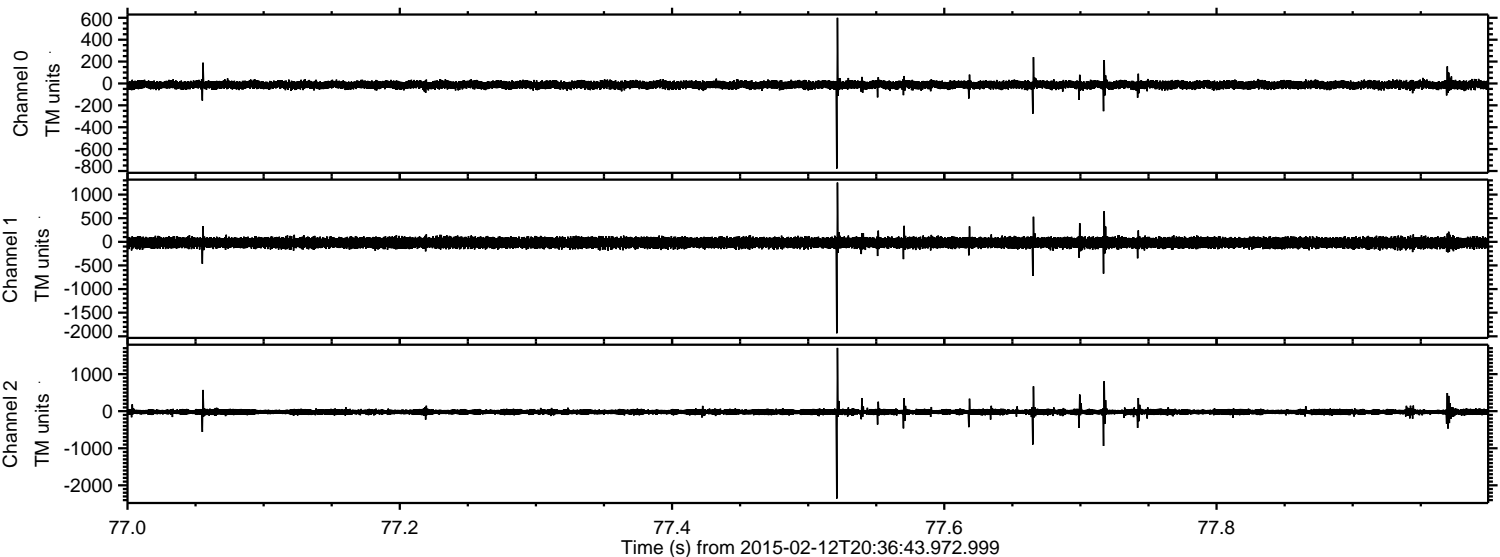
ELMAVAN 3D WAVEFORMS (Measured data sampled at 50 kHz) 49805 packets of 144 samples from 2015-02-12T20:36:43.972.999. Part 73/144

Processed Fri Feb 20 10:18:33 2015 by ELM ver.2012-10-06 from 001\_\_elm20150212\_203642\_\_dat00.bin





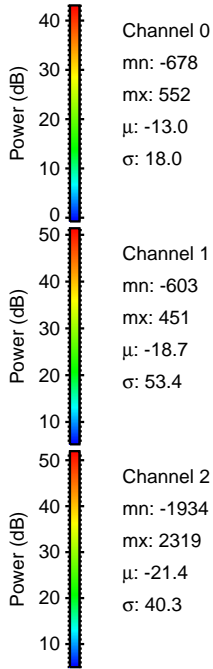
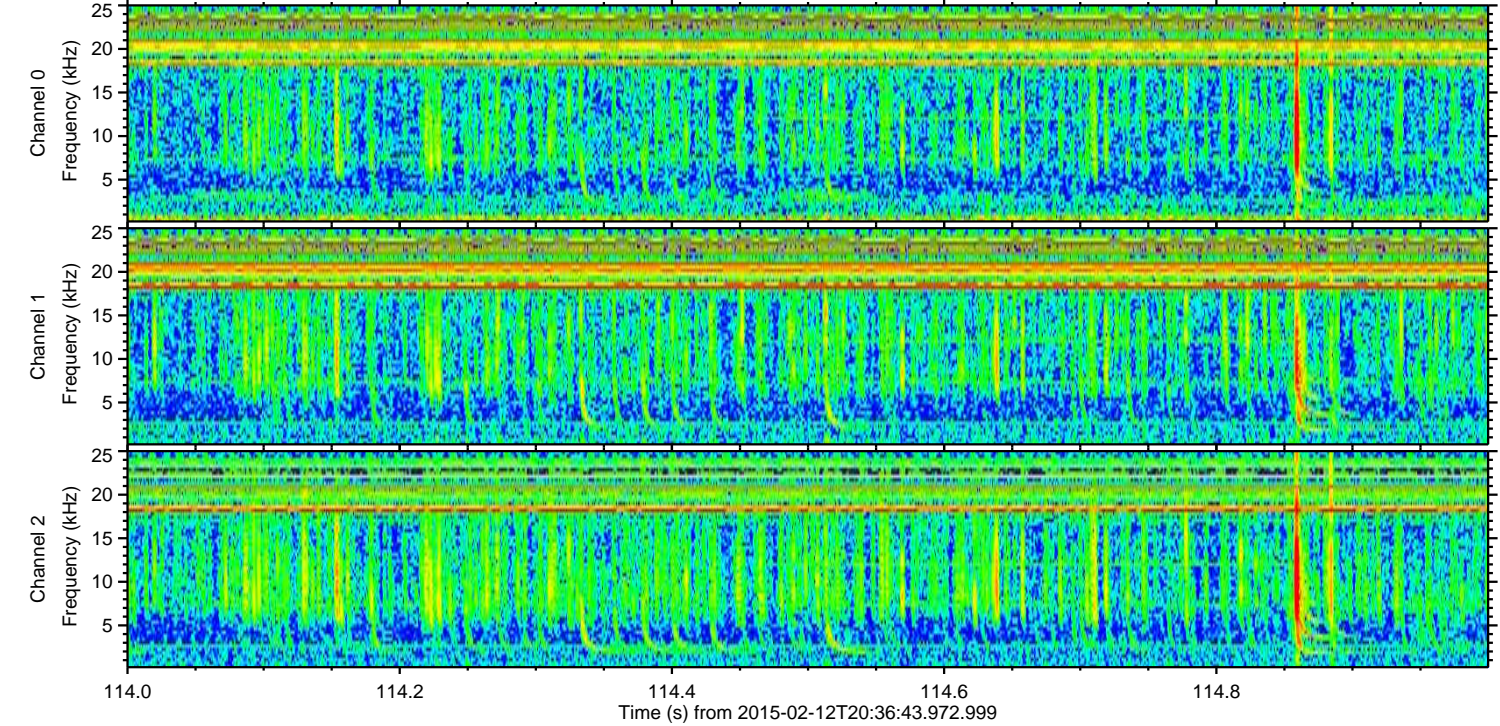
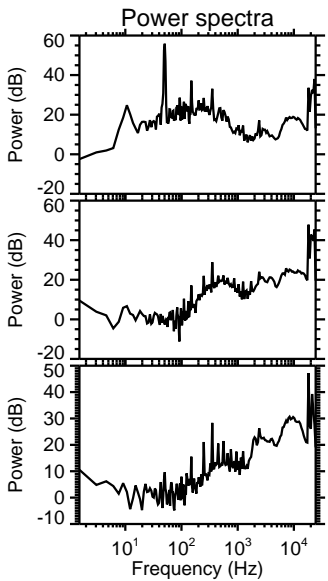
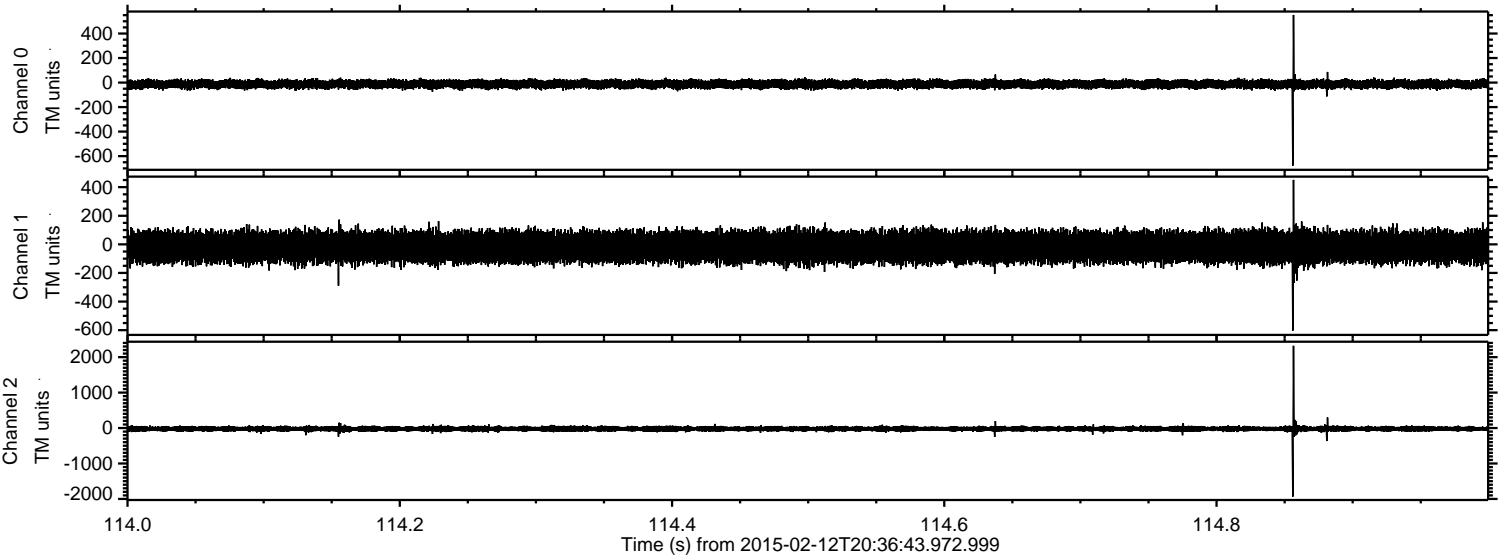
Processed Fri Feb 20 10:18:34 2015 by ELM ver.2012-10-06 from 001\_\_elm20150212\_203642\_\_dat00.bin





ELMAVAN 3D WAVEFORMS (Measured data sampled at 50 kHz) 49805 packets of 144 samples from 2015-02-12T20:36:43.972.999. Part 115/144

Processed Fri Feb 20 10:18:36 2015 by ELM ver.2012-10-06 from 001\_\_elm20150212\_203642\_\_dat00.bin



Channel 0  
mn: -678  
mx: 552  
 $\mu$ : -13.0  
 $\sigma$ : 18.0

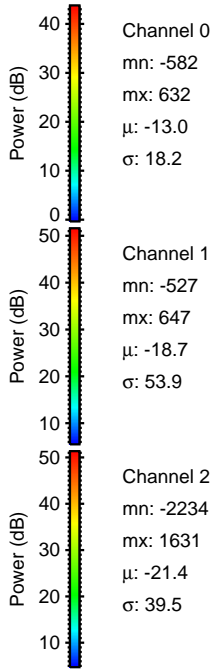
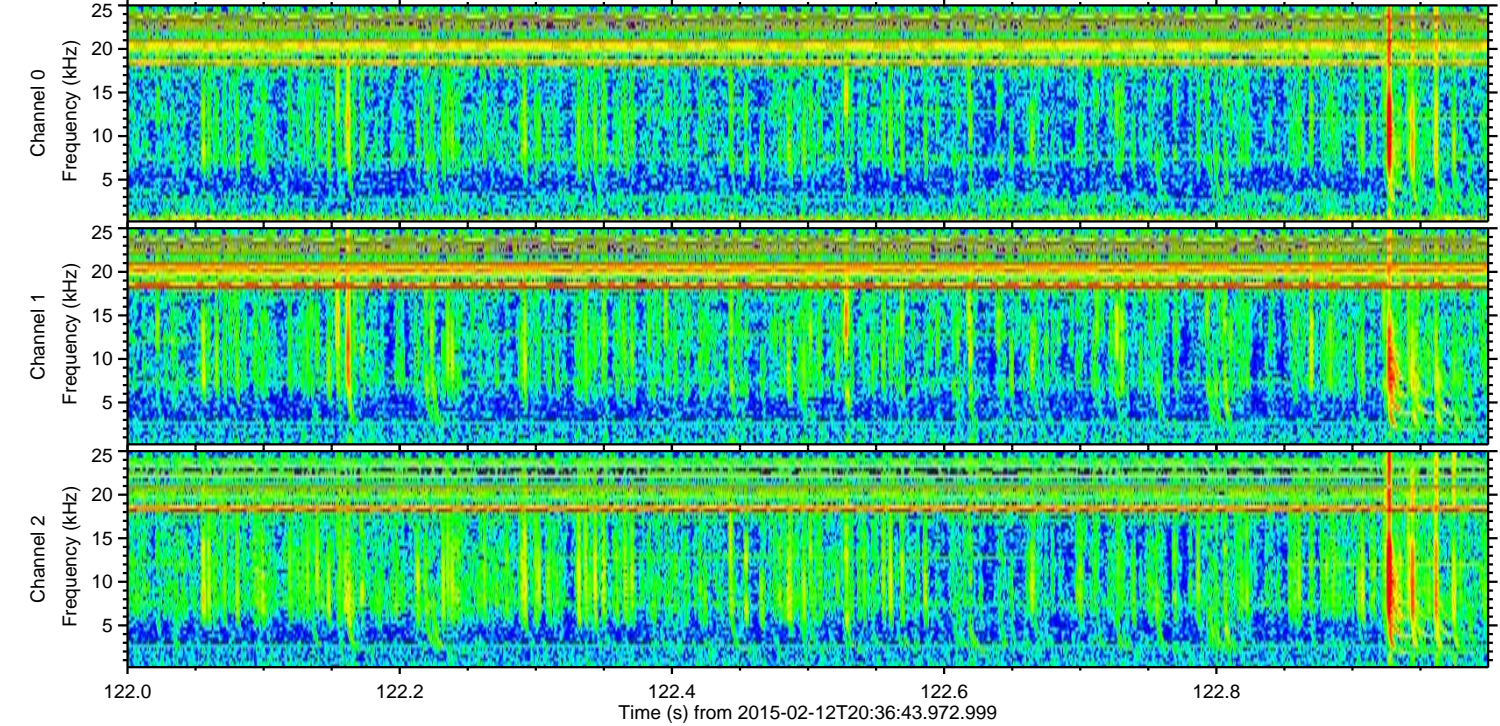
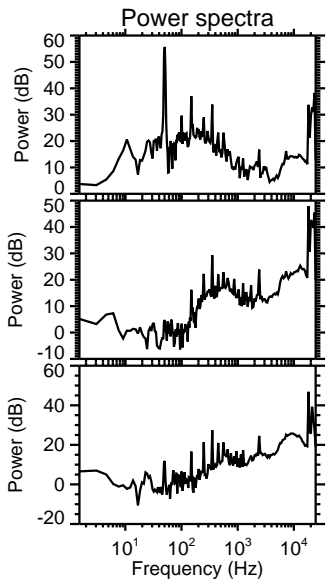
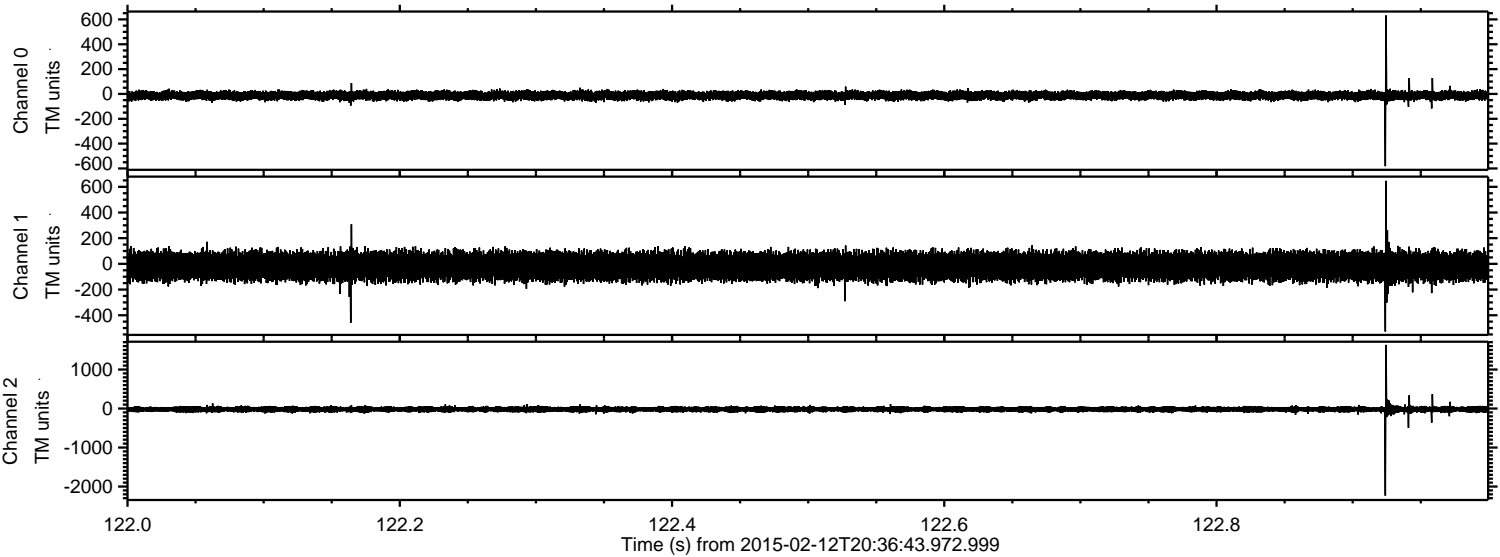
Channel 1  
mn: -603  
mx: 451  
 $\mu$ : -18.7  
 $\sigma$ : 53.4

Channel 2  
mn: -1934  
mx: 2319  
 $\mu$ : -21.4  
 $\sigma$ : 40.3



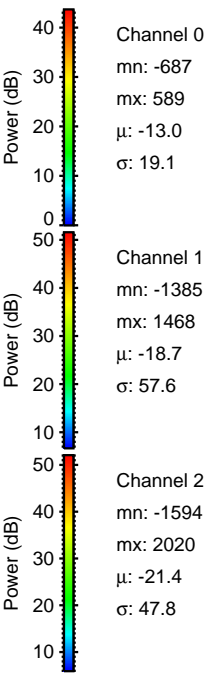
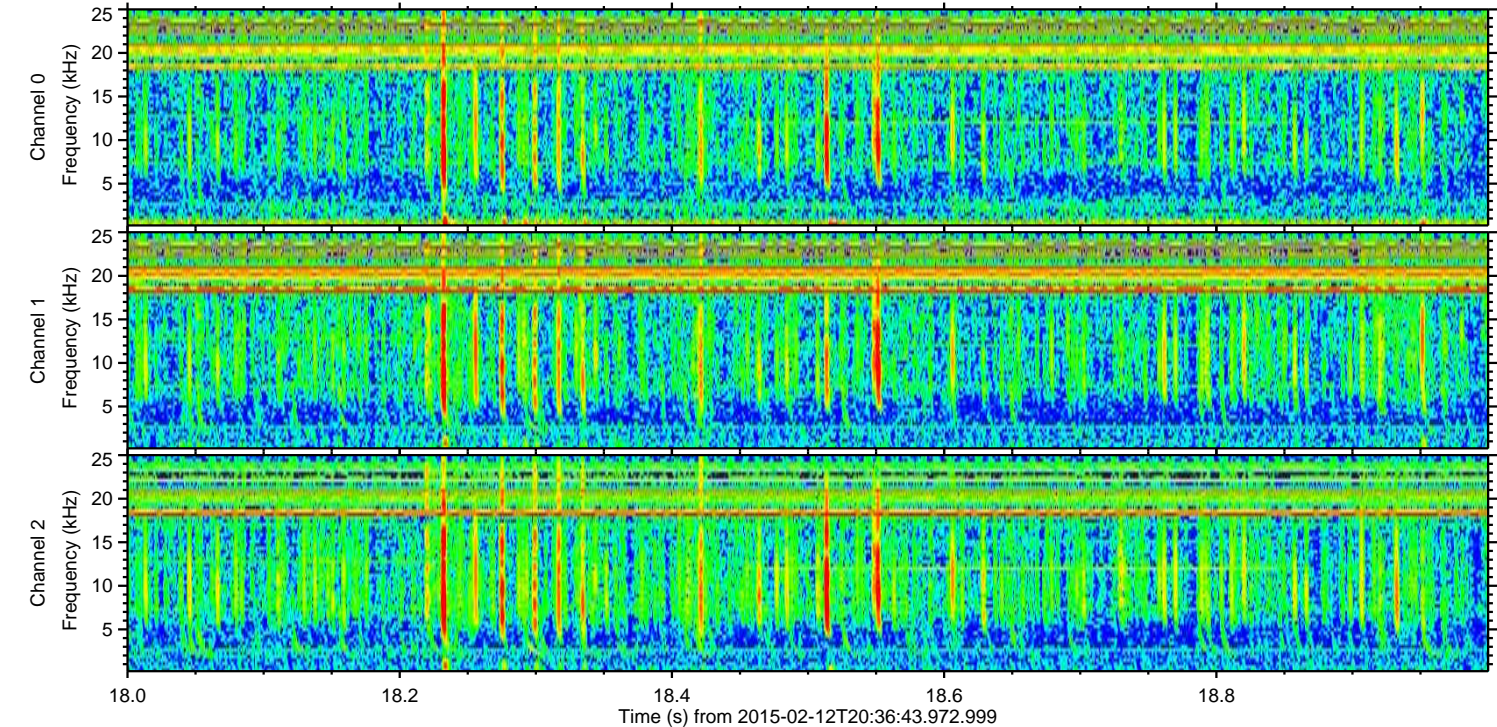
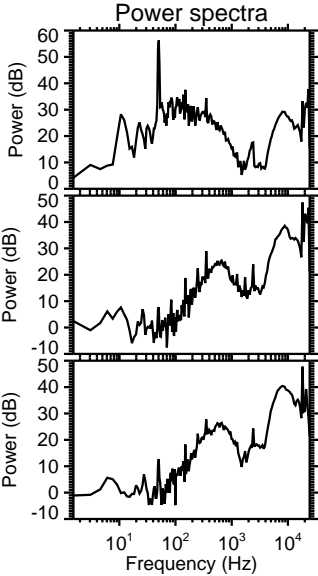
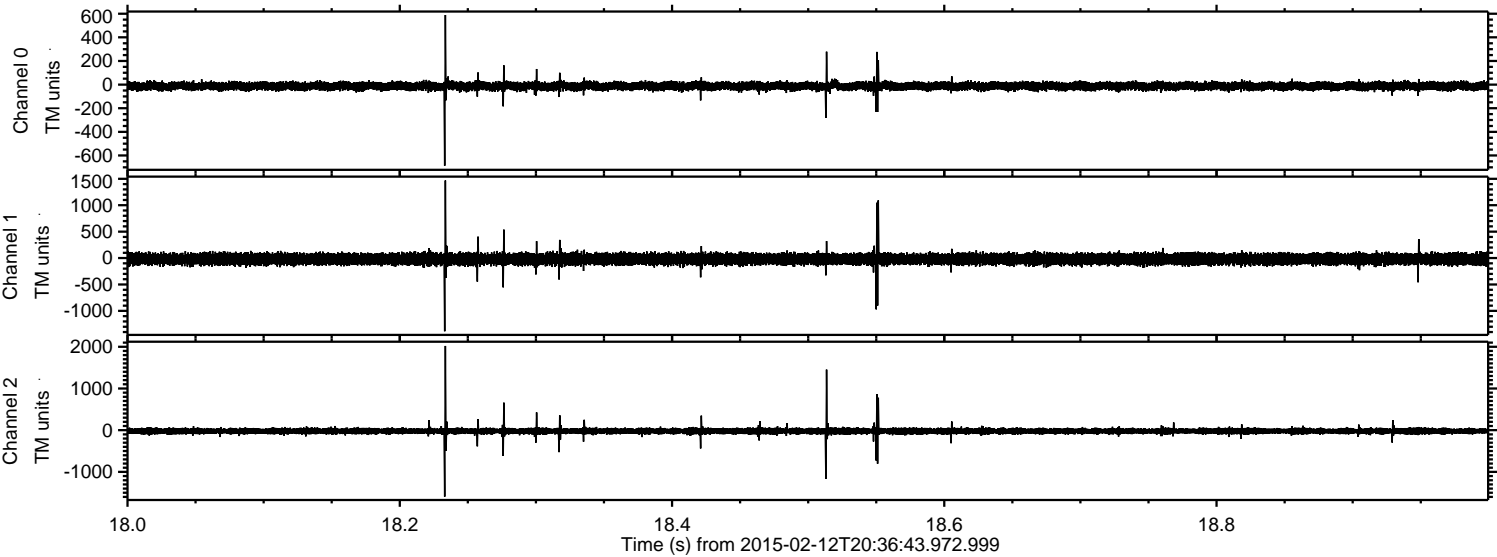
ELMAVAN 3D WAVEFORMS (Measured data sampled at 50 kHz) 49805 packets of 144 samples from 2015-02-12T20:36:43.972.999. Part 123/144

Processed Fri Feb 20 10:18:37 2015 by ELM ver.2012-10-06 from 001\_\_elm20150212\_203642\_\_dat00.bin





Processed Fri Feb 20 10:18:38 2015 by ELM ver.2012-10-06 from 001\_\_elm20150212\_203642\_\_dat00.bin



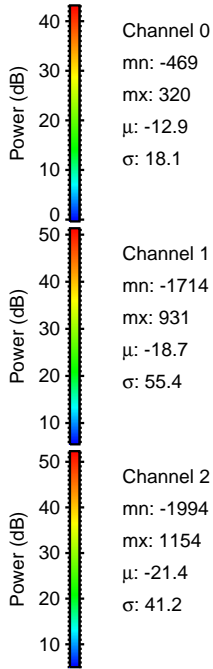
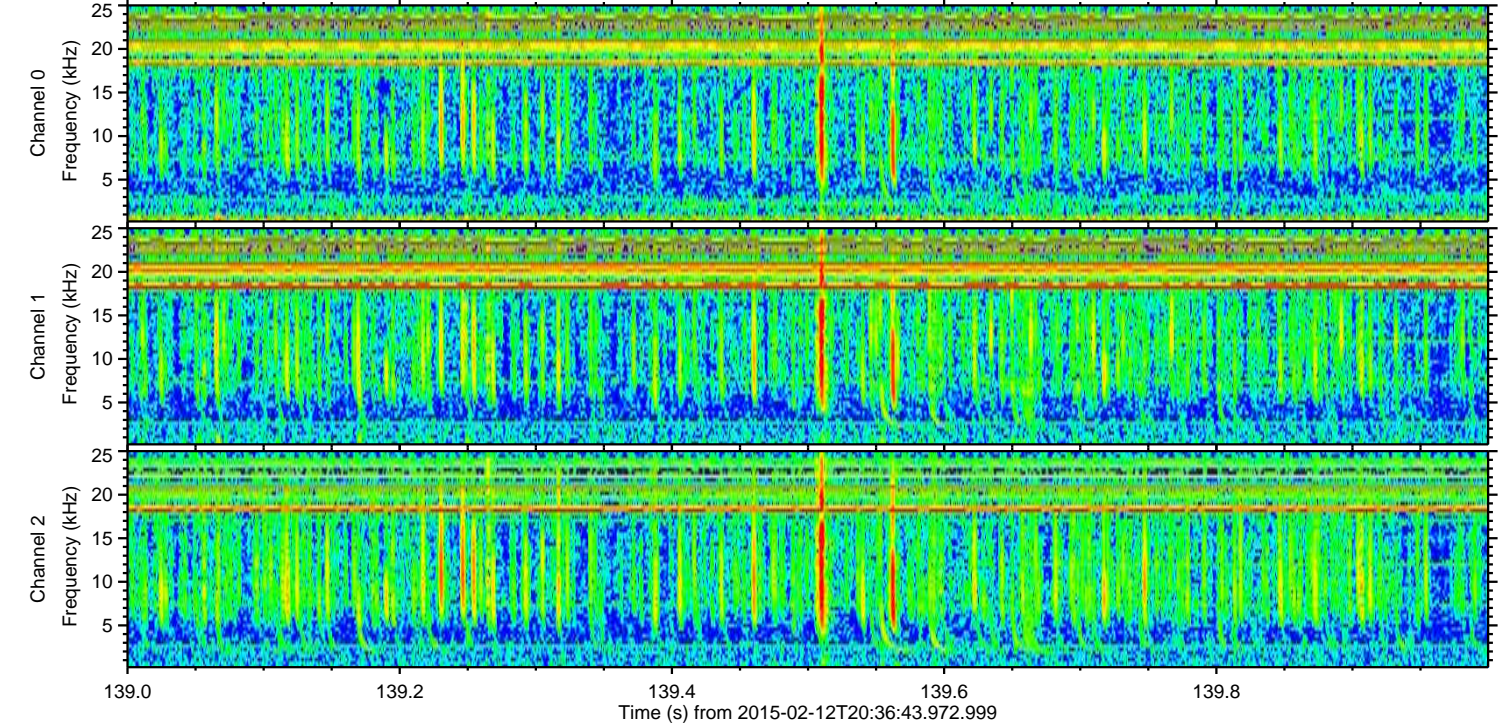
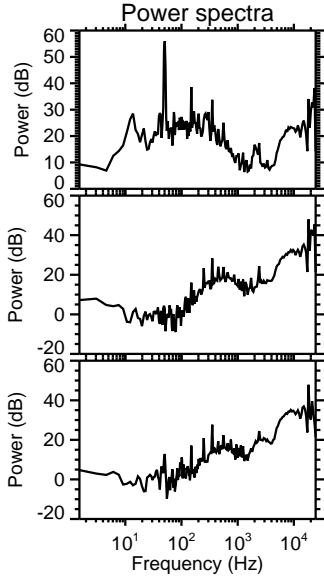
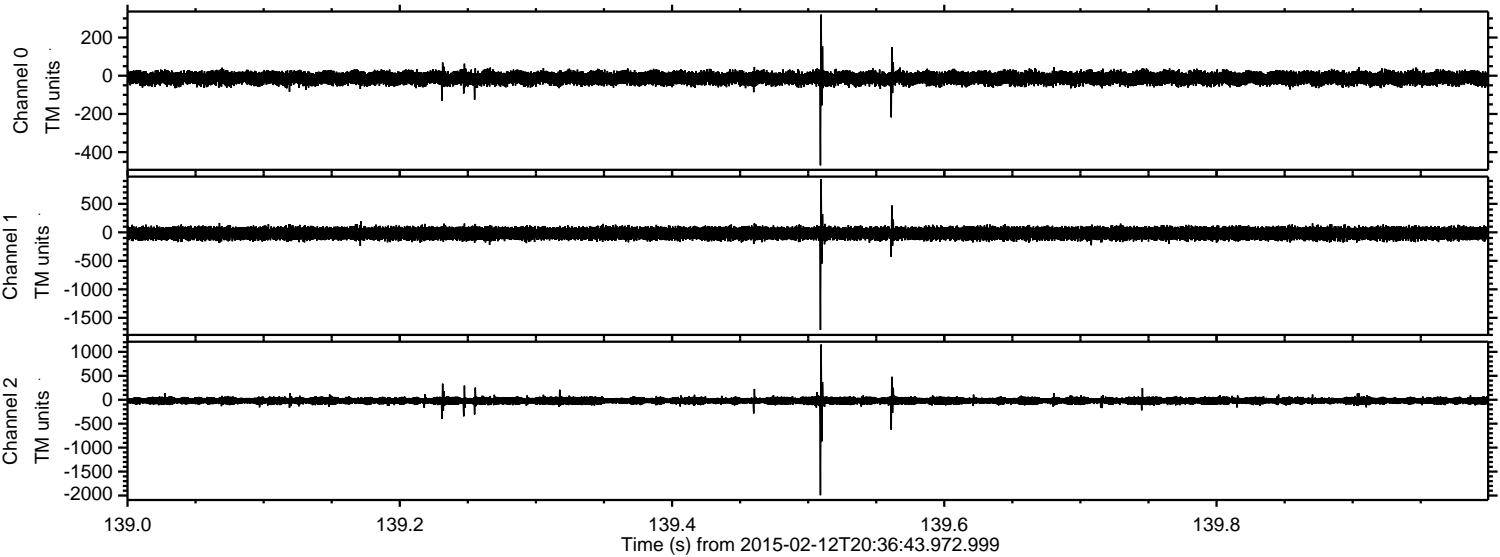
Channel 0  
mn: -687  
mx: 589  
 $\mu$ : -13.0  
 $\sigma$ : 19.1

Channel 1  
mn: -1385  
mx: 1468  
 $\mu$ : -18.7  
 $\sigma$ : 57.6

Channel 2  
mn: -1594  
mx: 2020  
 $\mu$ : -21.4  
 $\sigma$ : 47.8



Processed Fri Feb 20 10:18:39 2015 by ELM ver.2012-10-06 from 001\_\_elm20150212\_203642\_\_dat00.bin



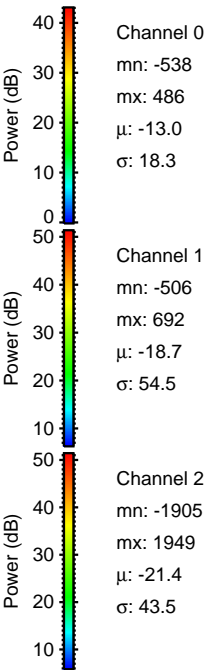
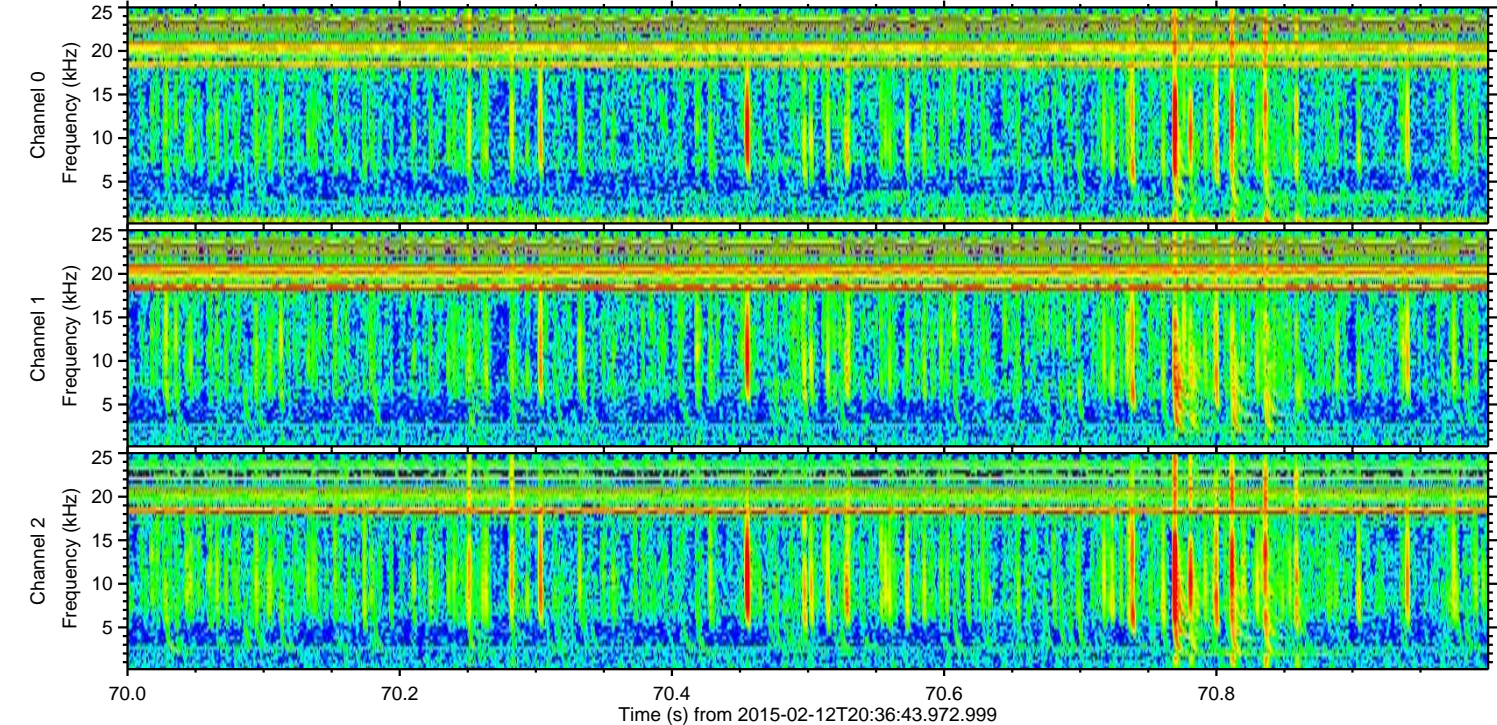
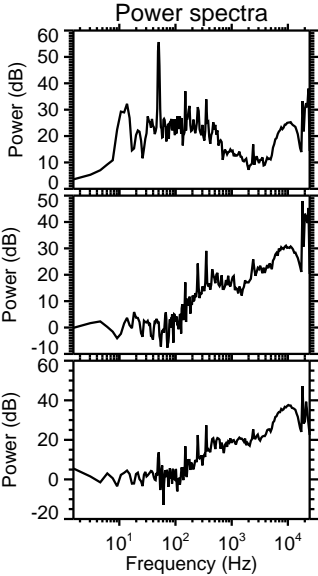
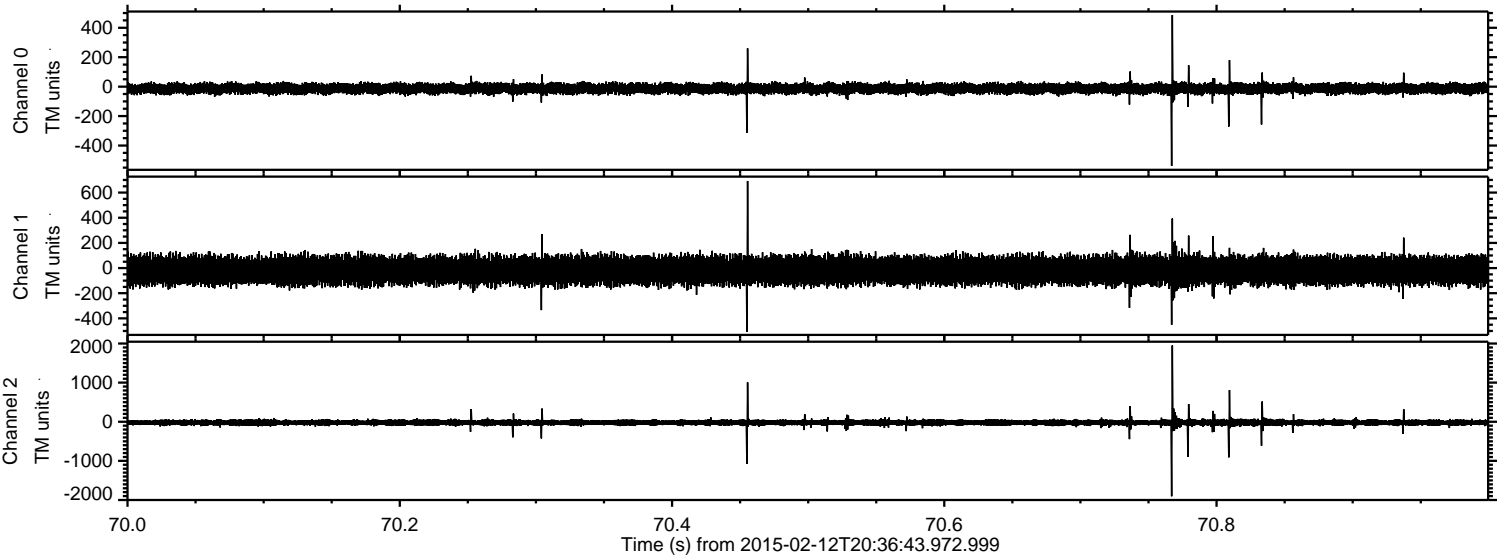
Channel 0  
mn: -469  
mx: 320  
 $\mu$ : -12.9  
 $\sigma$ : 18.1

Channel 1  
mn: -1714  
mx: 931  
 $\mu$ : -18.7  
 $\sigma$ : 55.4

Channel 2  
mn: -1994  
mx: 1154  
 $\mu$ : -21.4  
 $\sigma$ : 41.2

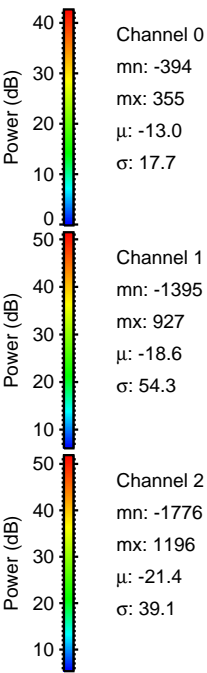
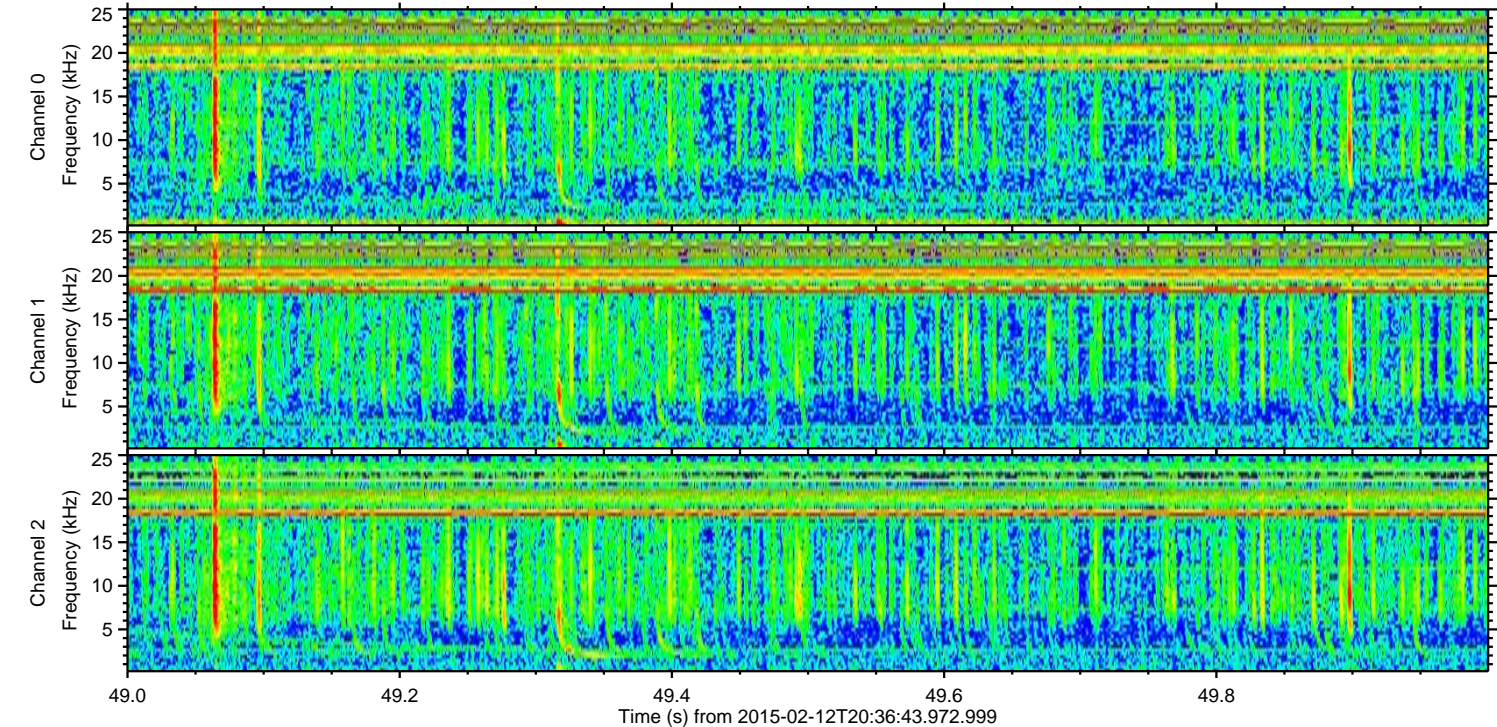
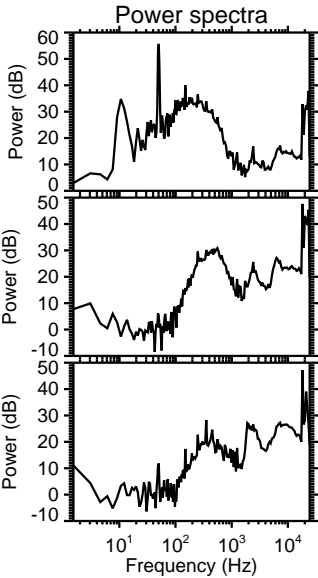
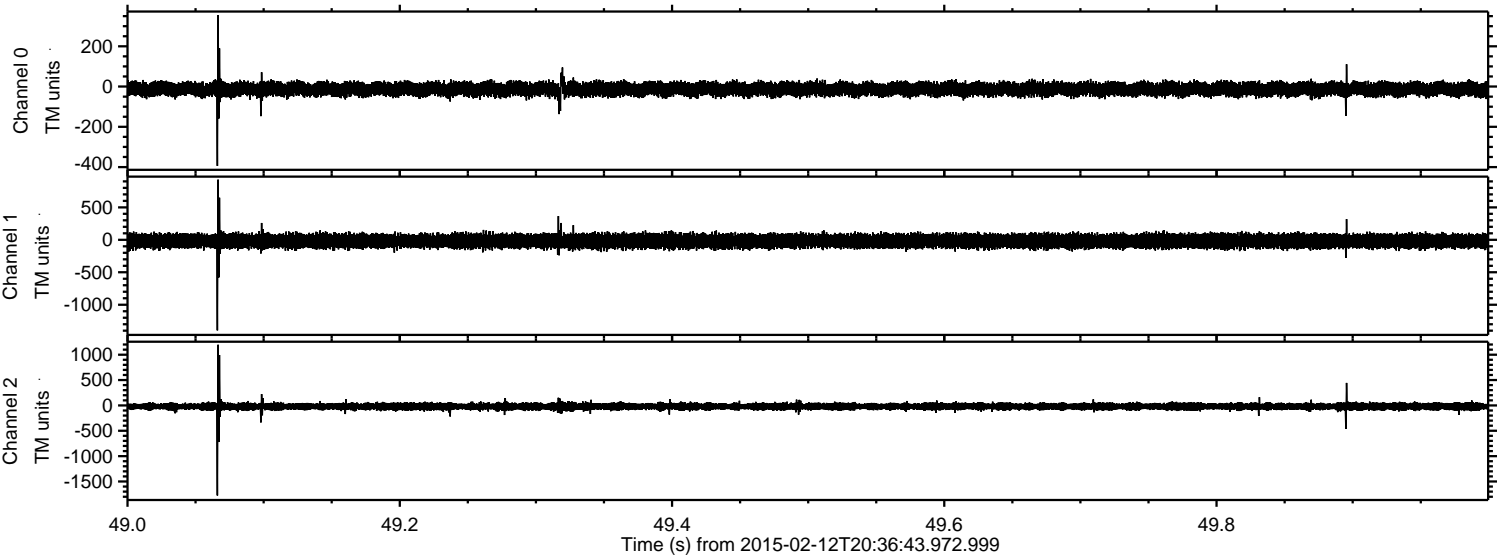


Processed Fri Feb 20 10:18:40 2015 by ELM ver.2012-10-06 from 001\_\_elm20150212\_203642\_\_dat00.bin





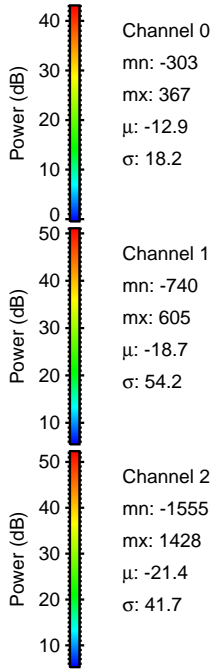
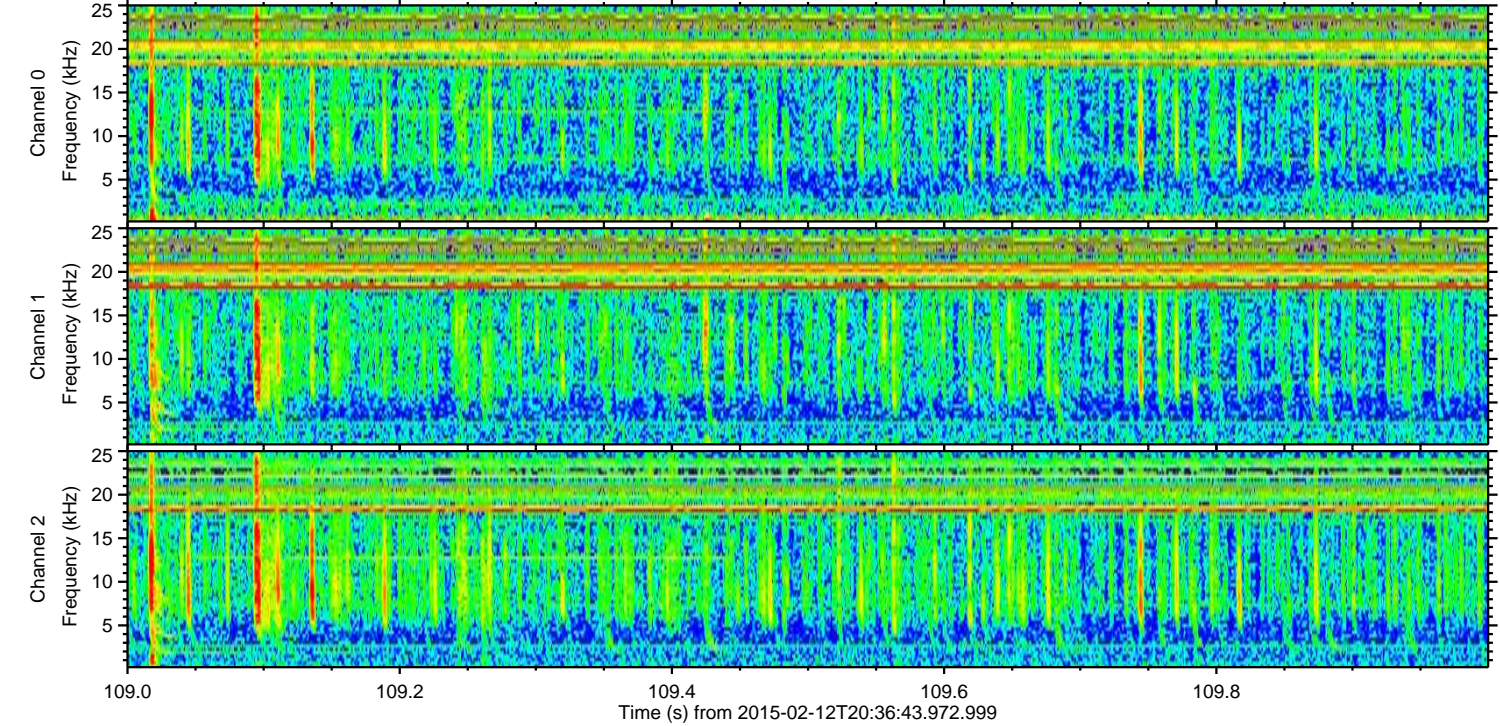
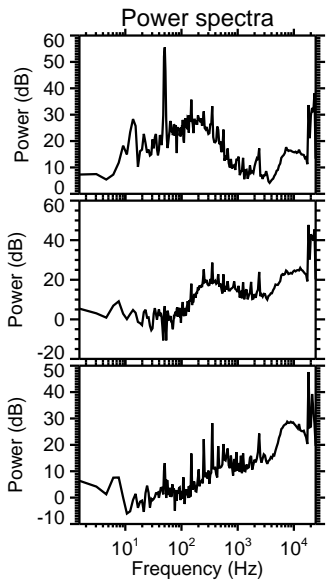
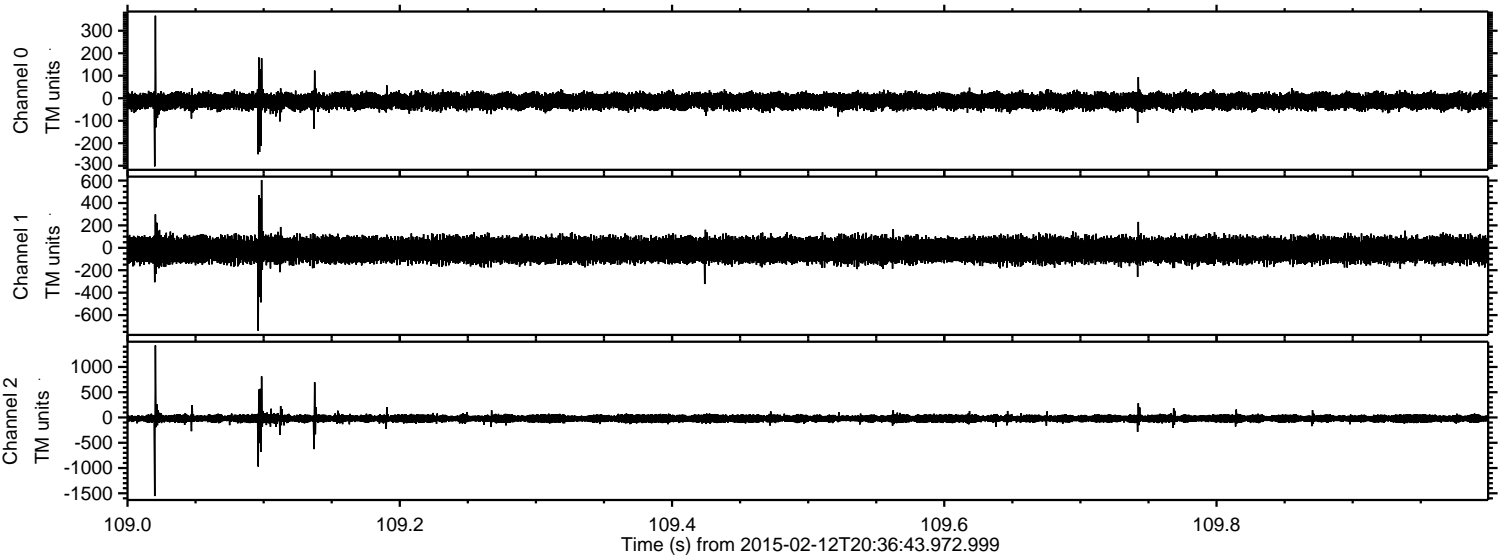
Processed Fri Feb 20 10:18:43 2015 by ELM ver.2012-10-06 from 001\_\_elm20150212\_203642\_\_dat00.bin





ELMAVAN 3D WAVEFORMS (Measured data sampled at 50 kHz) 49805 packets of 144 samples from 2015-02-12T20:36:43.972.999. Part 110/144

Processed Fri Feb 20 10:18:45 2015 by ELM ver.2012-10-06 from 001\_\_elm20150212\_203642\_\_dat00.bin





ELMAVAN 3D WAVEFORMS (Measured data sampled at 50 kHz) 49805 packets of 144 samples from 2015-02-12T20:36:43.972.999. Part 111/144

Processed Fri Feb 20 10:18:46 2015 by ELM ver.2012-10-06 from 001\_\_elm20150212\_203642\_\_dat00.bin

