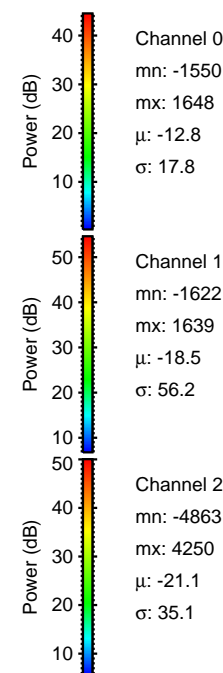
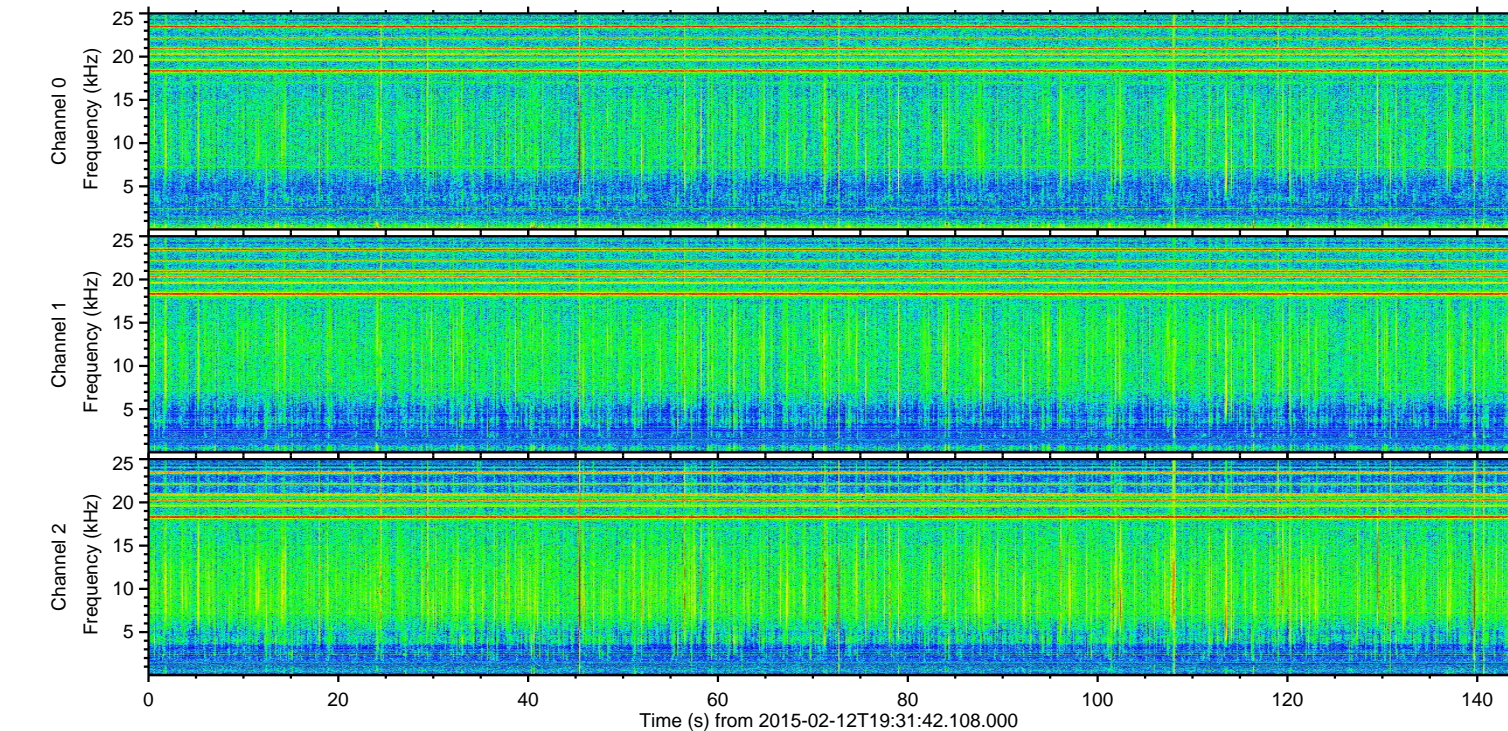
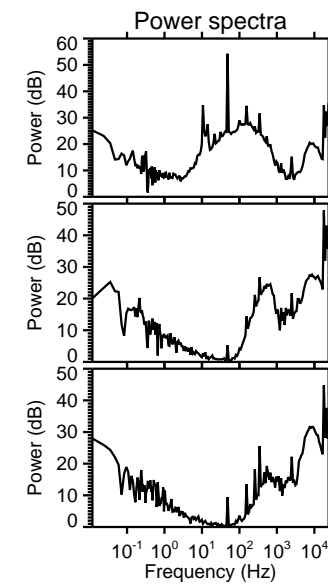
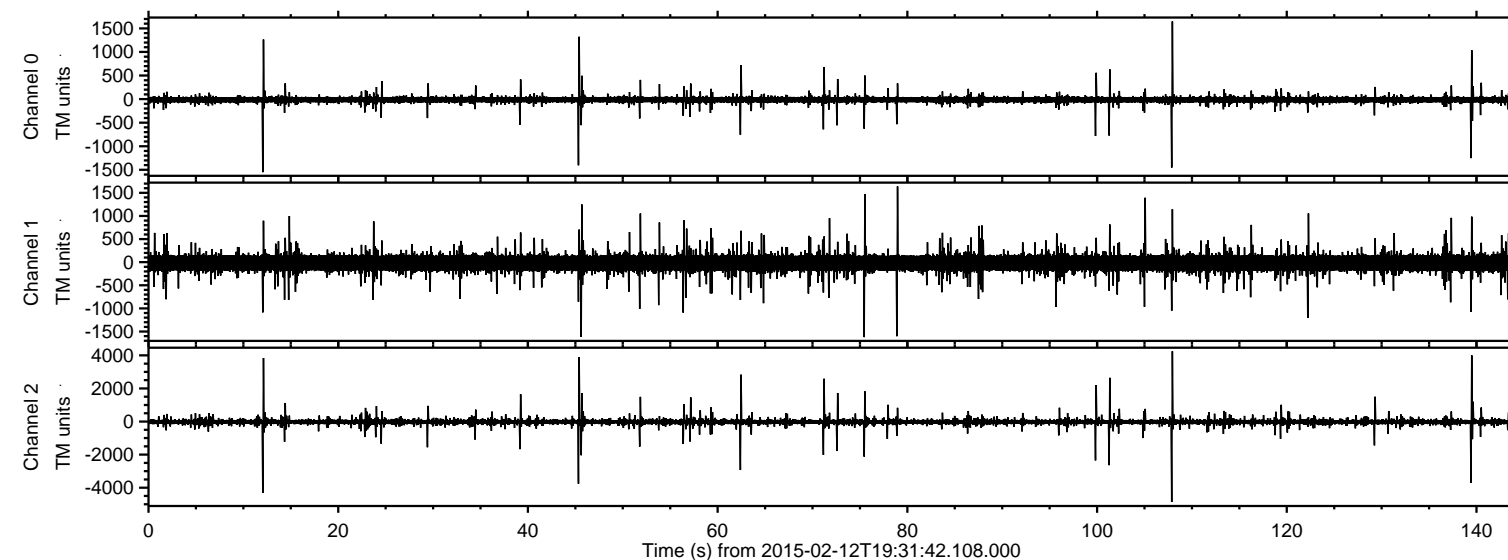


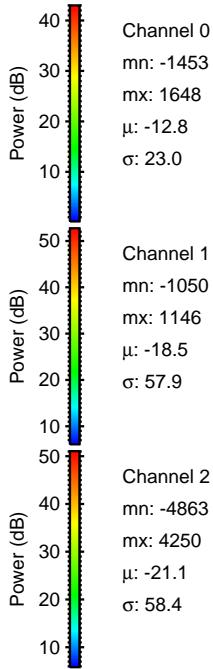
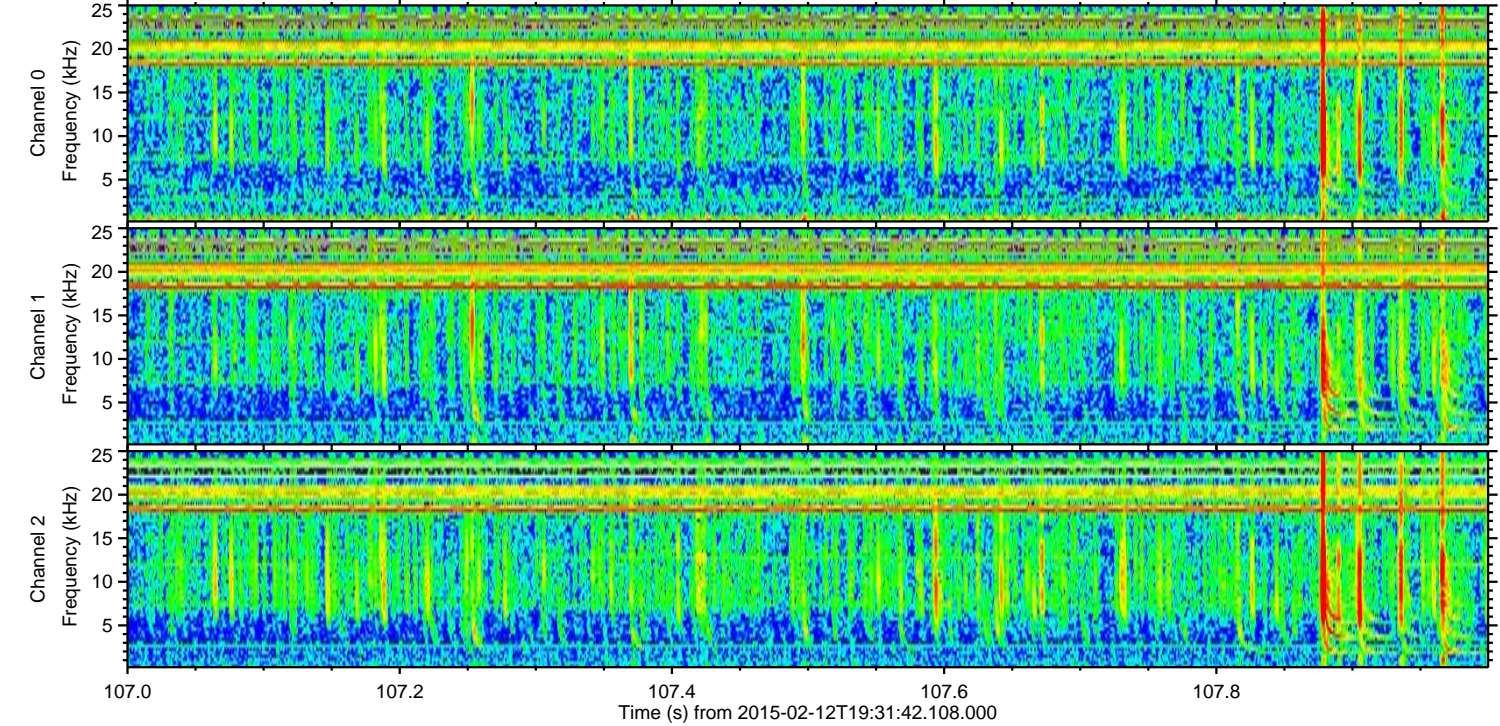
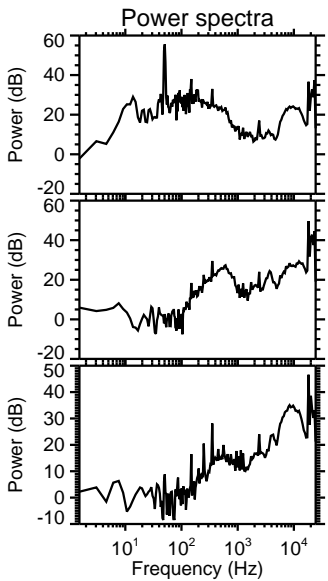
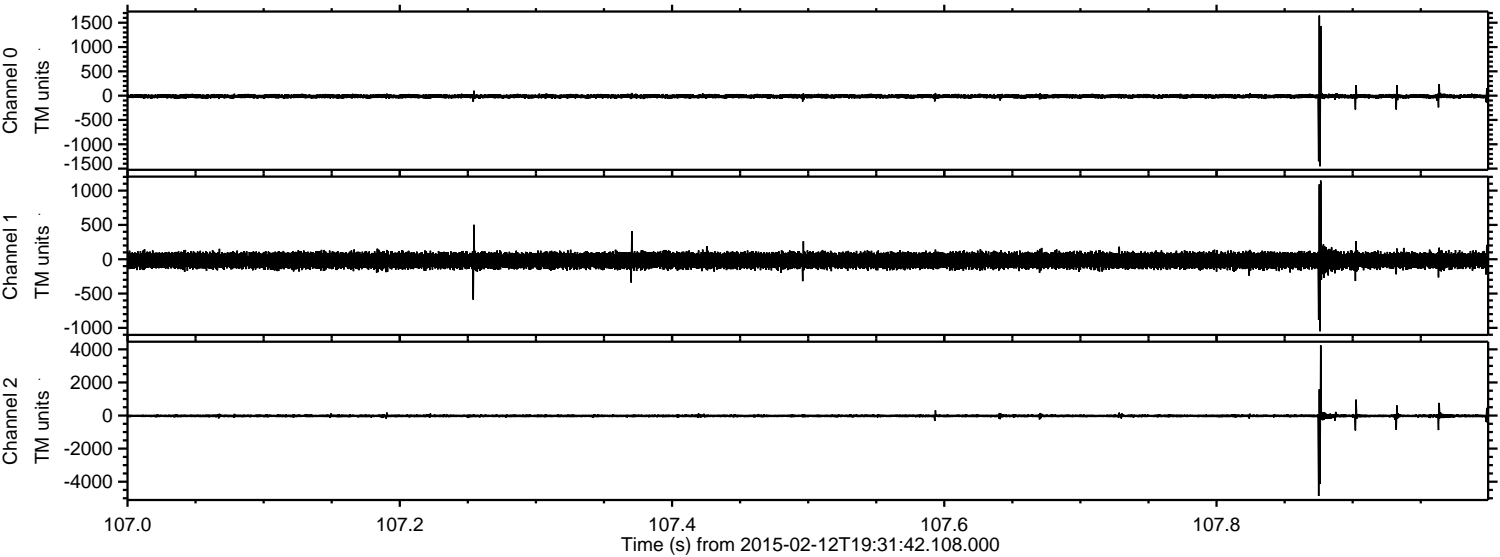
ELMAVAN 3D WAVEFORMS (Measured data sampled at 50 kHz) 49806 packets of 144 samples from 2015-02-12T19:31:42.108.000.

Processed Fri Feb 20 09:56:14 2015 by ELM ver.2012-10-06 from 001__elm20150212_193141__dat00.bin



ELMAVAN 3D WAVEFORMS (Measured data sampled at 50 kHz) 49806 packets of 144 samples from 2015-02-12T19:31:42.108.000. Part 108/144

Processed Fri Feb 20 09:56:33 2015 by ELM ver.2012-10-06 from 001__elm20150212_193141__dat00.bin



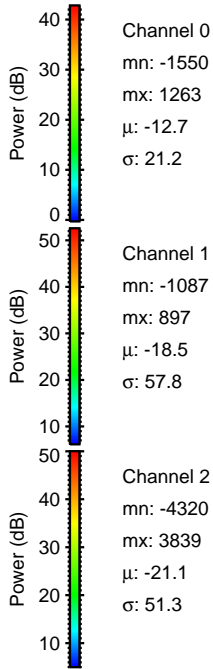
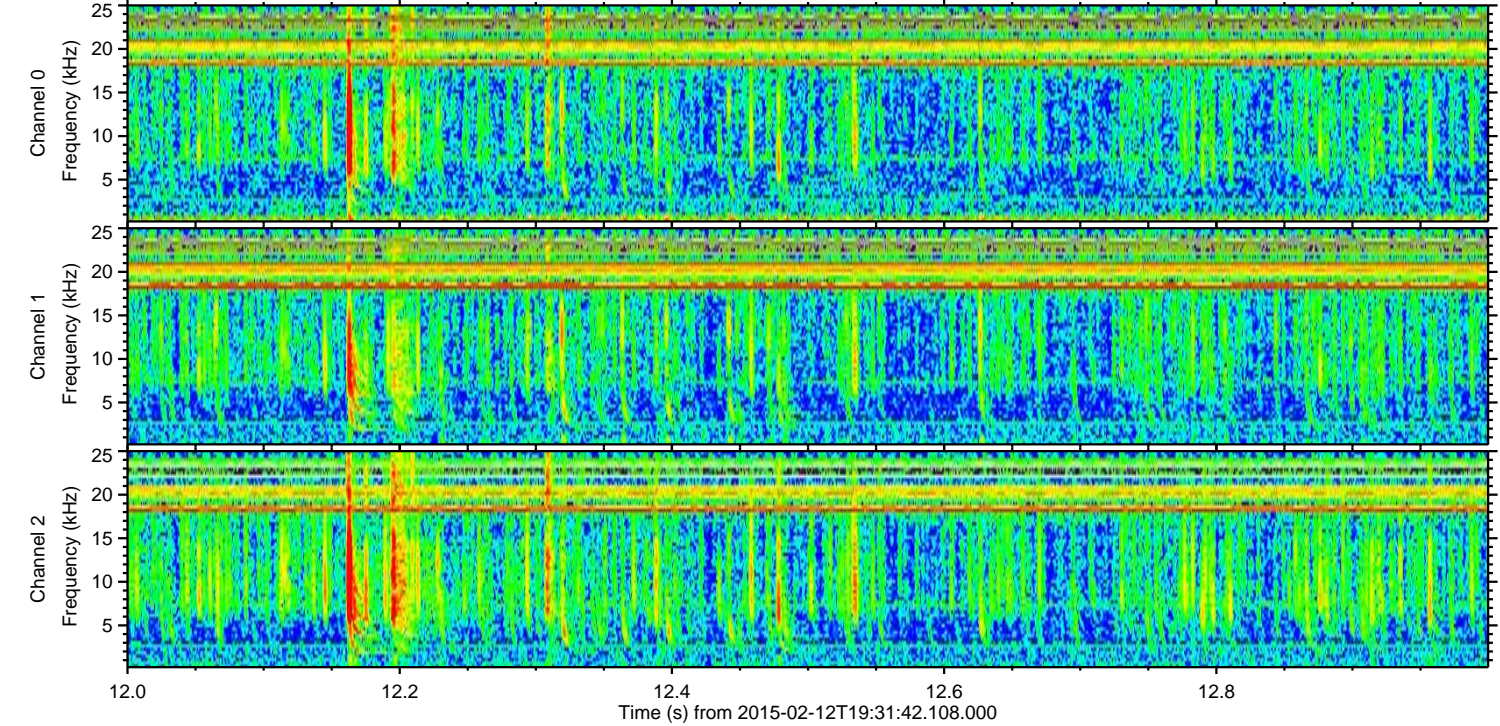
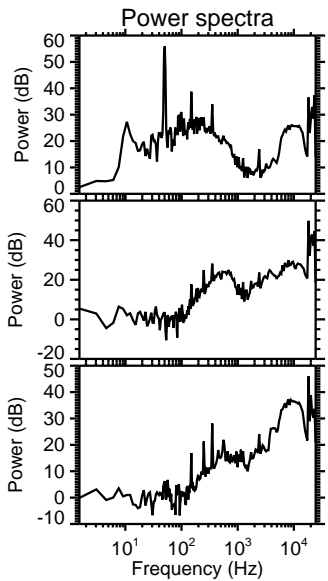
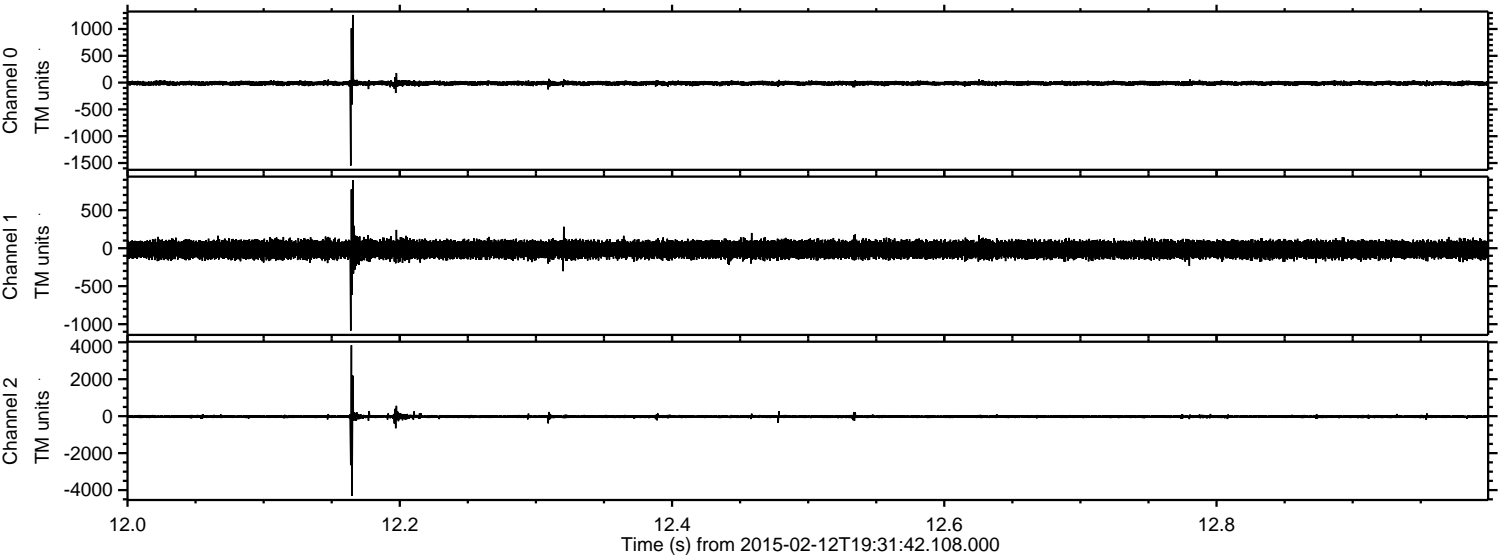
Channel 0
mn: -1453
mx: 1648
 μ : -12.8
 σ : 23.0

Channel 1
mn: -1050
mx: 1146
 μ : -18.5
 σ : 57.9

Channel 2
mn: -4863
mx: 4250
 μ : -21.1
 σ : 58.4

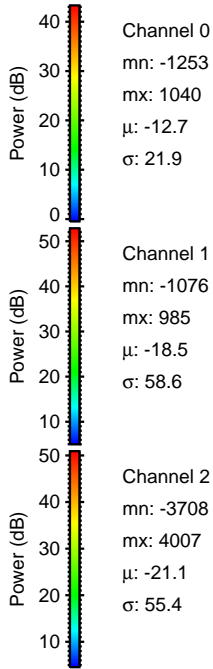
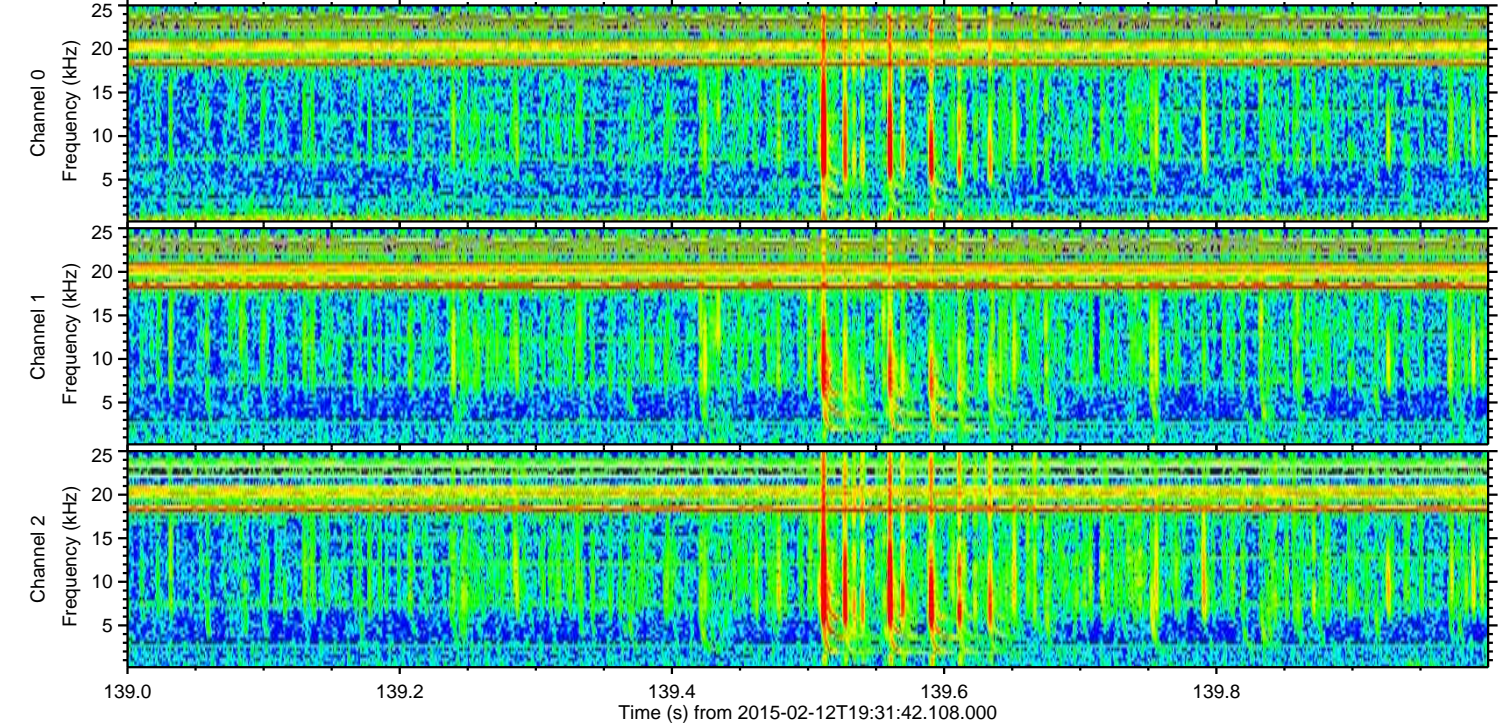
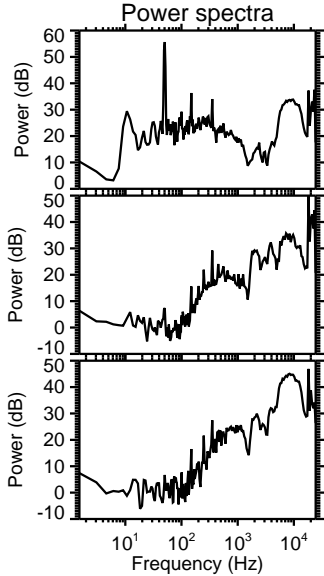
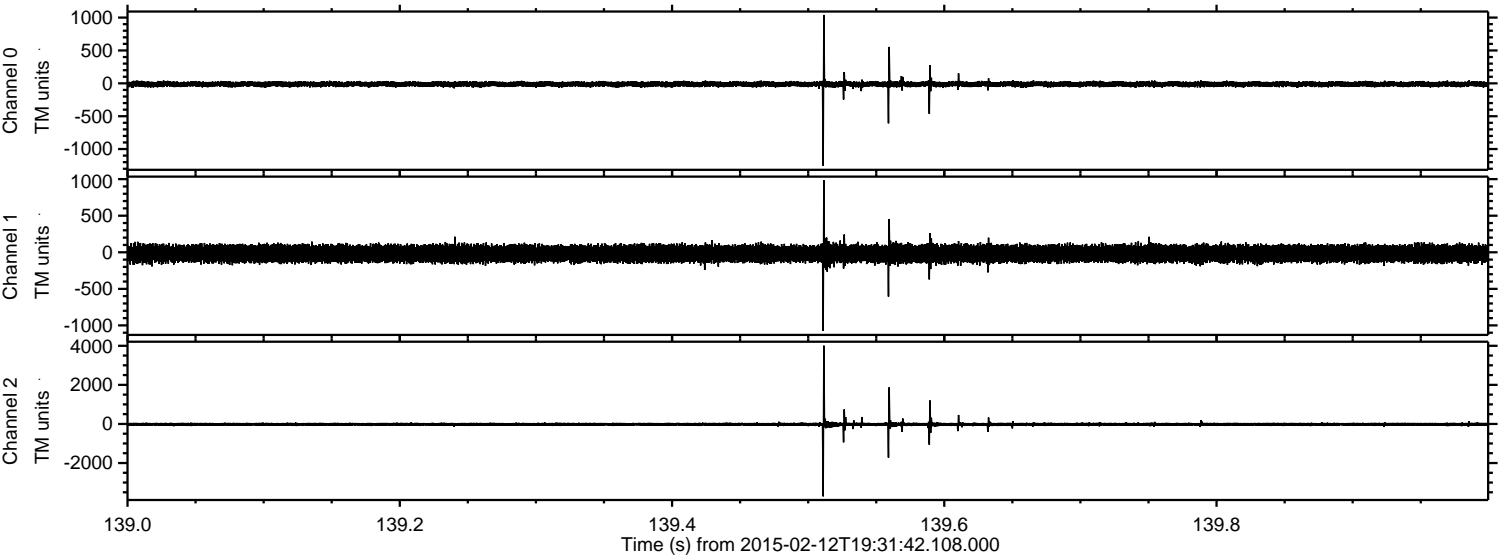
ELMAVAN 3D WAVEFORMS (Measured data sampled at 50 kHz) 49806 packets of 144 samples from 2015-02-12T19:31:42.108.000. Part 13/144

Processed Fri Feb 20 09:56:34 2015 by ELM ver.2012-10-06 from 001__elm20150212_193141__dat00.bin

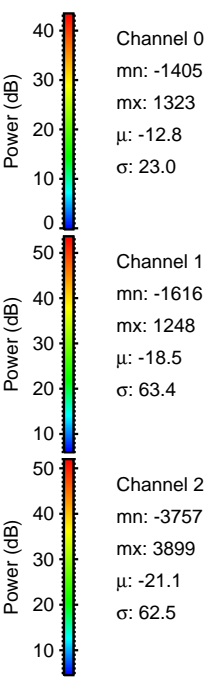
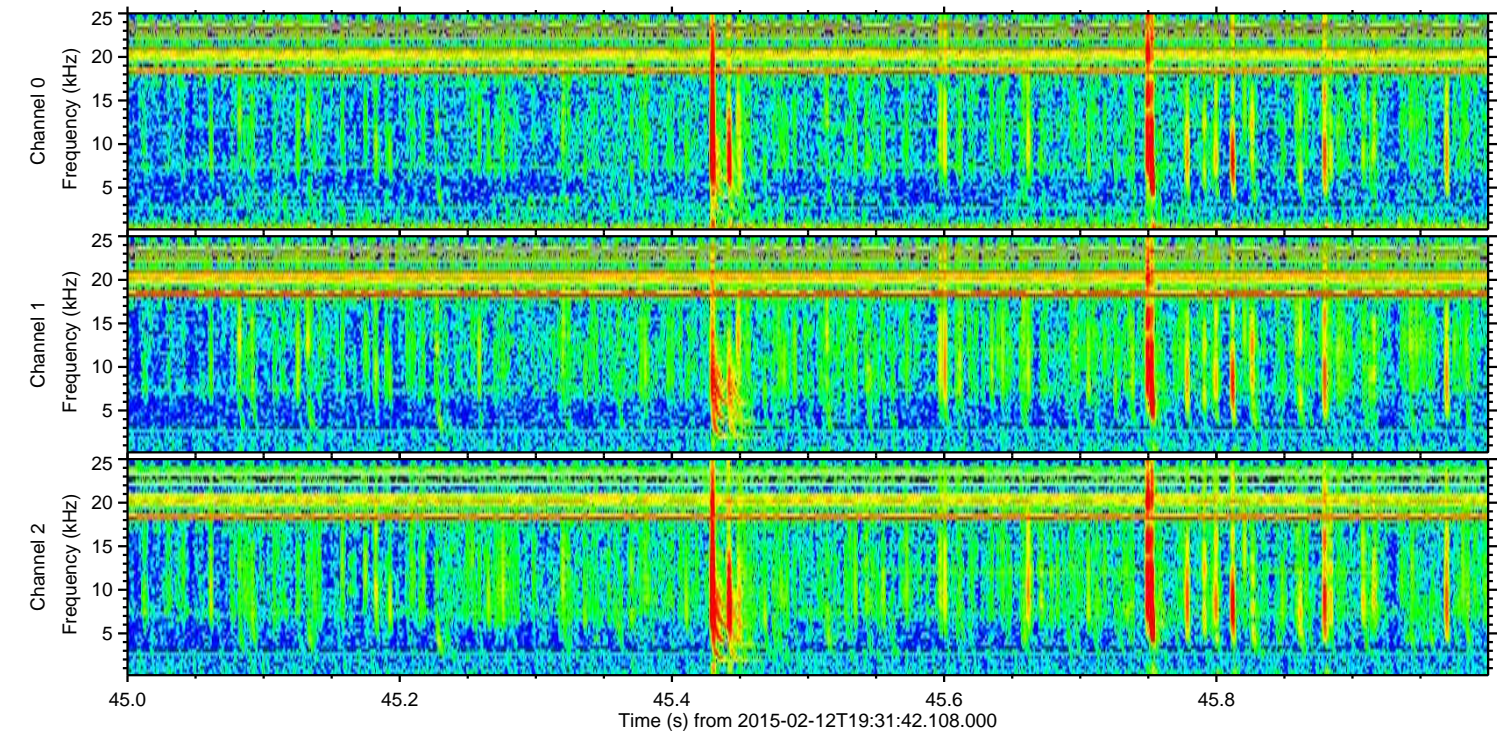
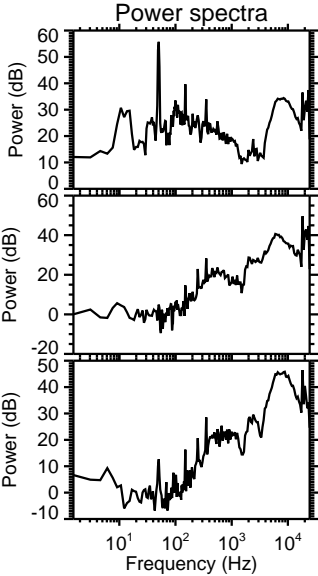
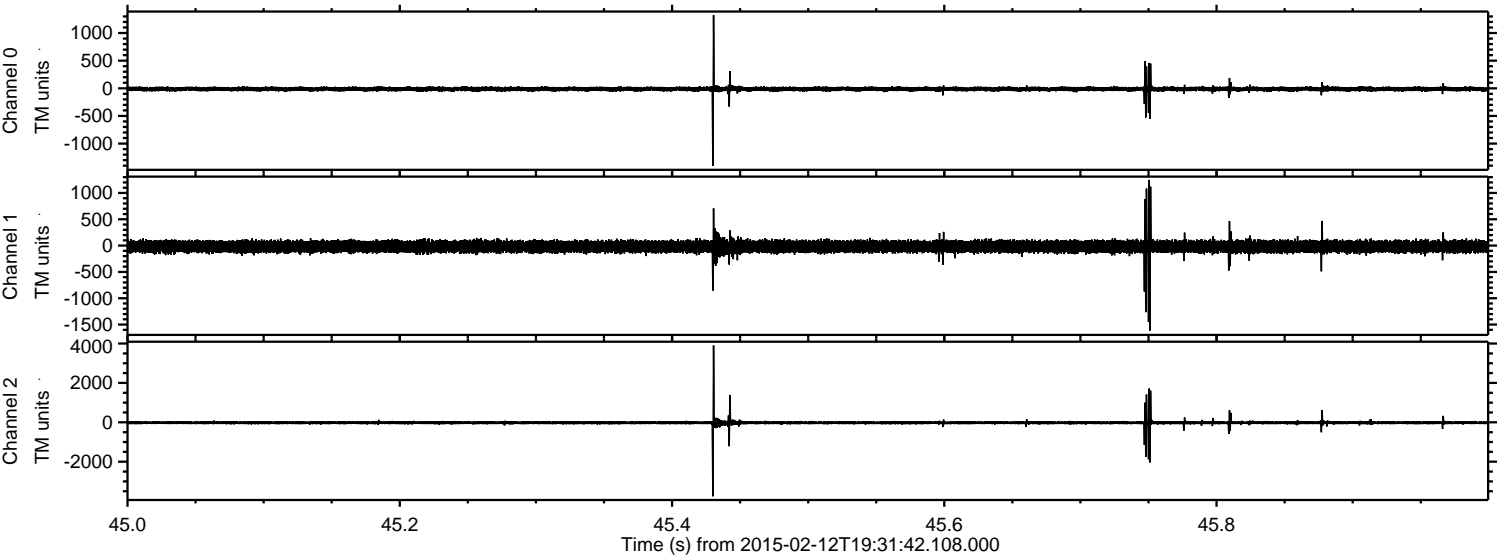


ELMAVAN 3D WAVEFORMS (Measured data sampled at 50 kHz) 49806 packets of 144 samples from 2015-02-12T19:31:42.108.000. Part 140/144

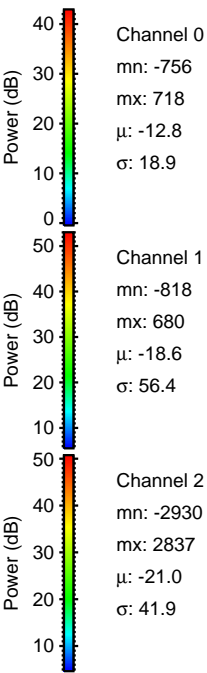
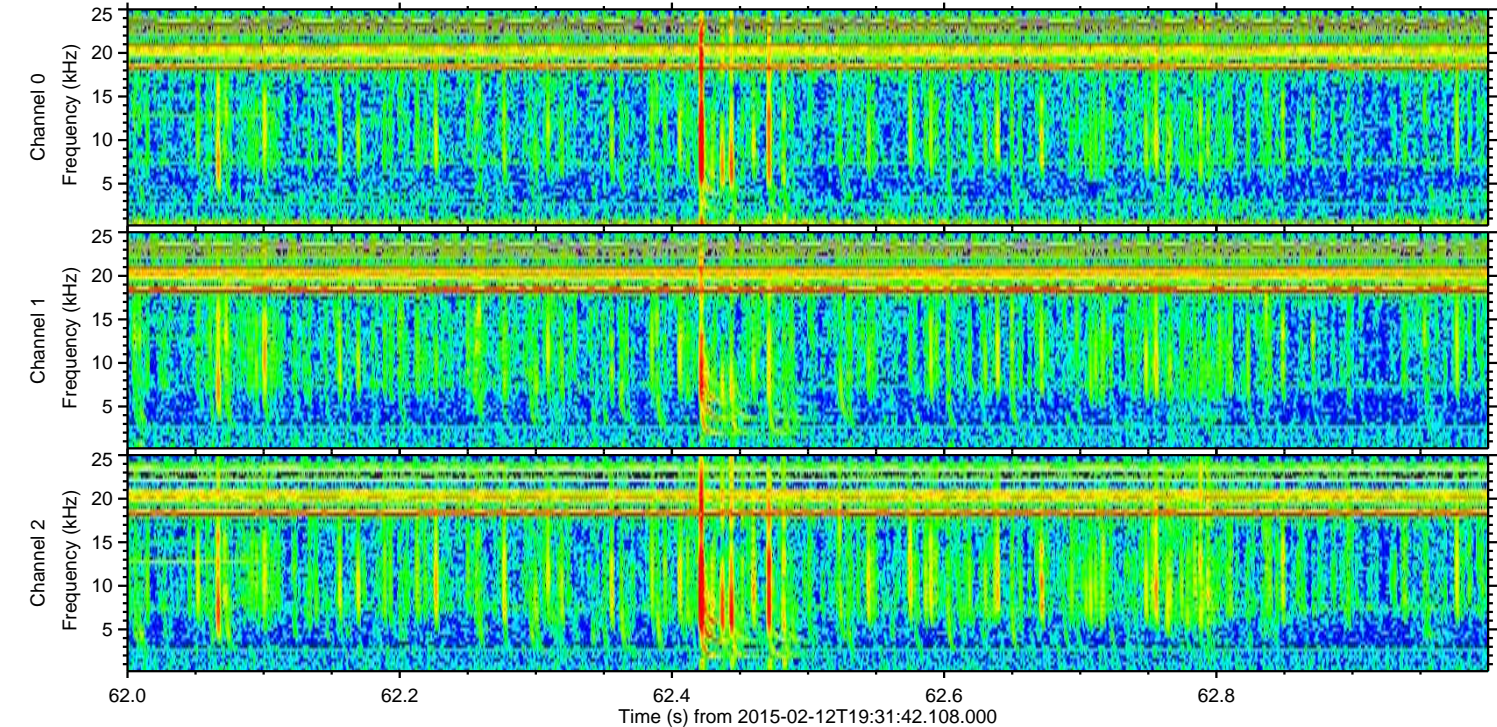
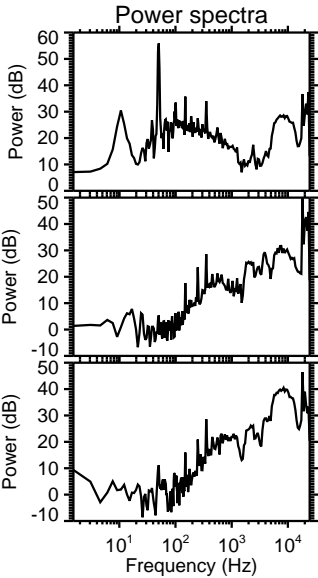
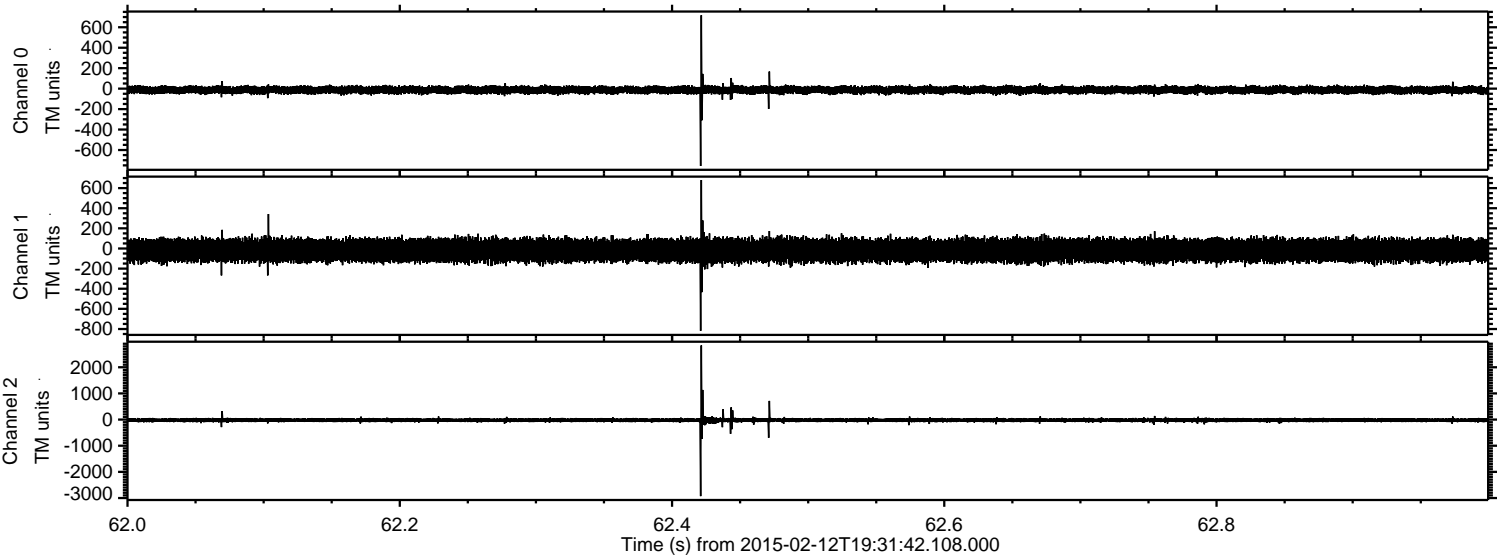
Processed Fri Feb 20 09:56:36 2015 by ELM ver.2012-10-06 from 001__elm20150212_193141__dat00.bin



Processed Fri Feb 20 09:56:37 2015 by ELM ver.2012-10-06 from 001__elm20150212_193141__dat00.bin



Processed Fri Feb 20 09:56:39 2015 by ELM ver.2012-10-06 from 001__elm20150212_193141__dat00.bin



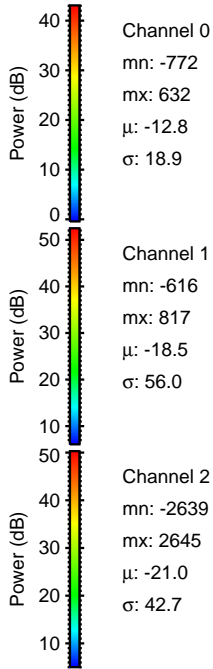
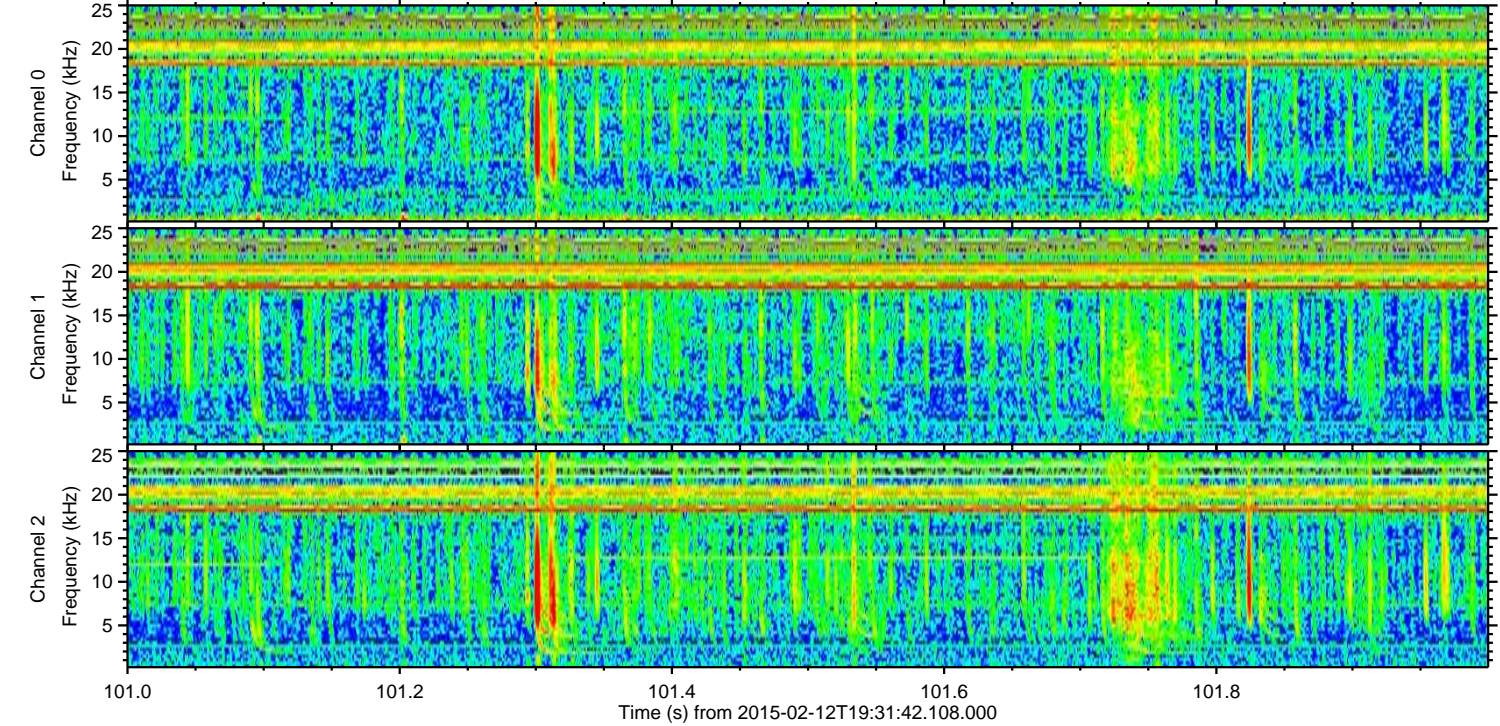
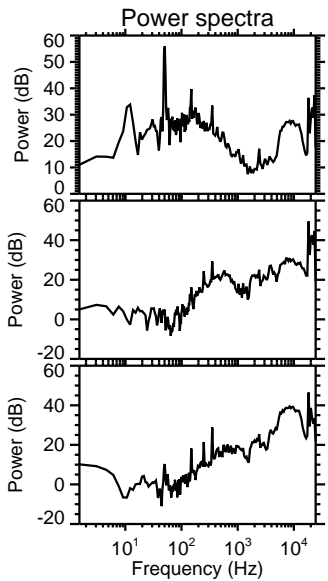
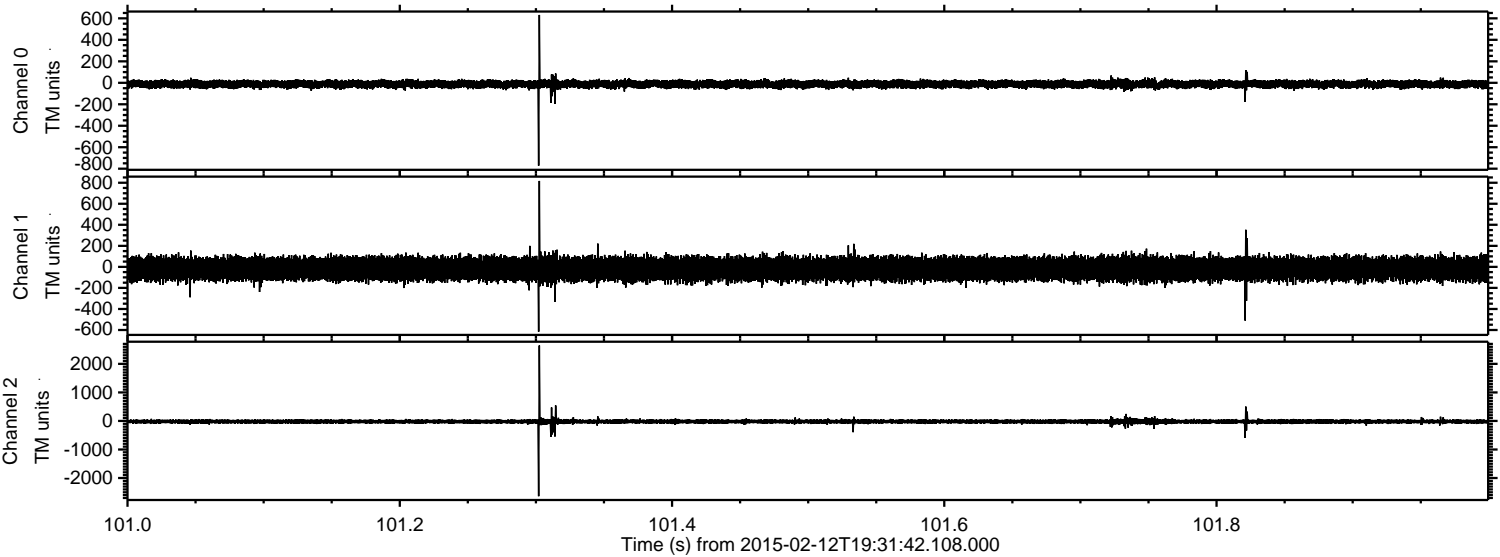
Channel 0
mn: -756
mx: 718
 μ : -12.8
 σ : 18.9

Channel 1
mn: -818
mx: 680
 μ : -18.6
 σ : 56.4

Channel 2
mn: -2930
mx: 2837
 μ : -21.0
 σ : 41.9

ELMAVAN 3D WAVEFORMS (Measured data sampled at 50 kHz) 49806 packets of 144 samples from 2015-02-12T19:31:42.108.000. Part 102/144

Processed Fri Feb 20 09:56:40 2015 by ELM ver.2012-10-06 from 001__elm20150212_193141__dat00.bin

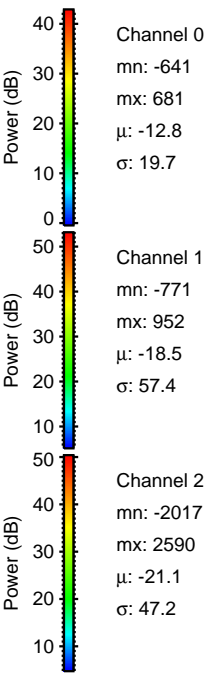
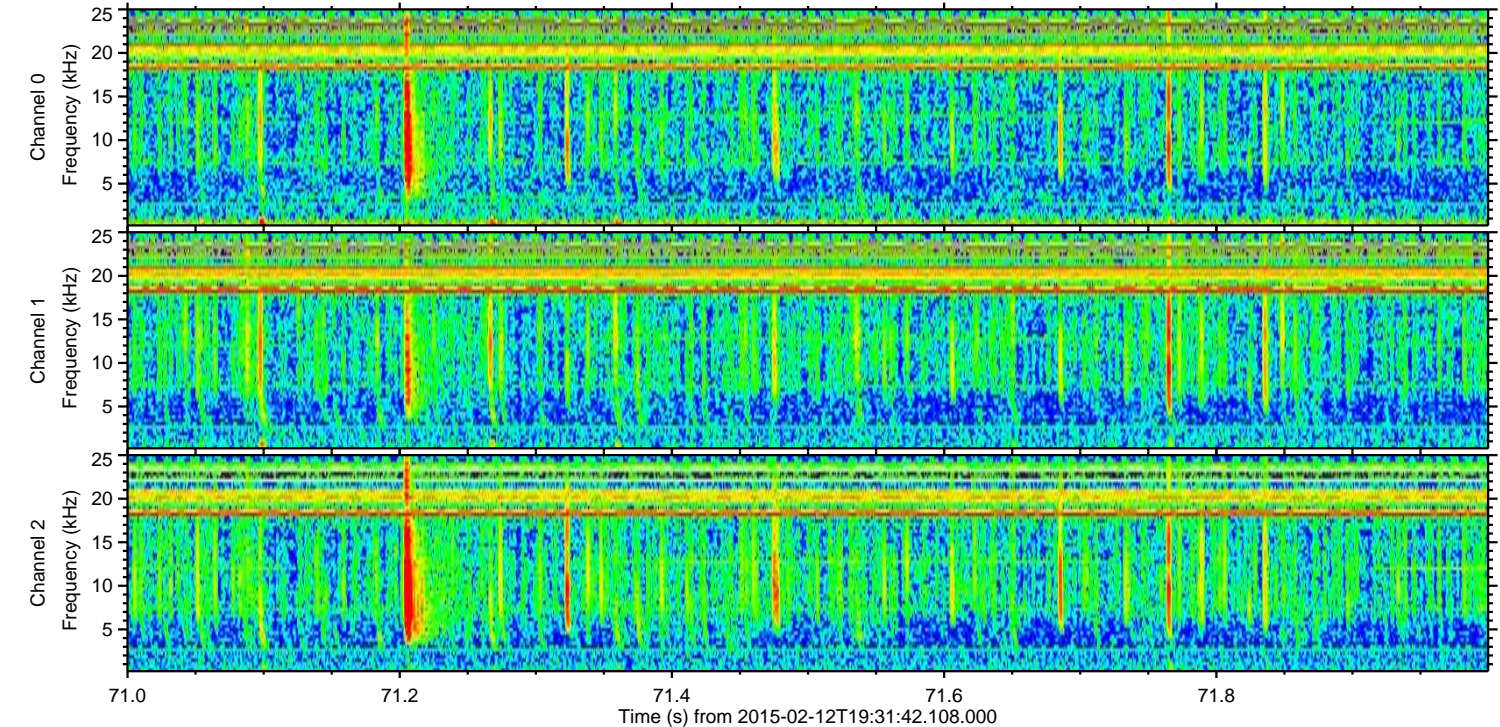
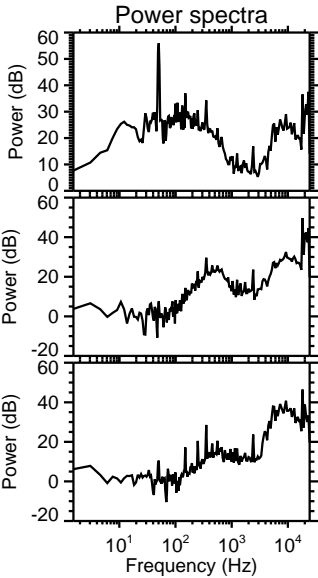
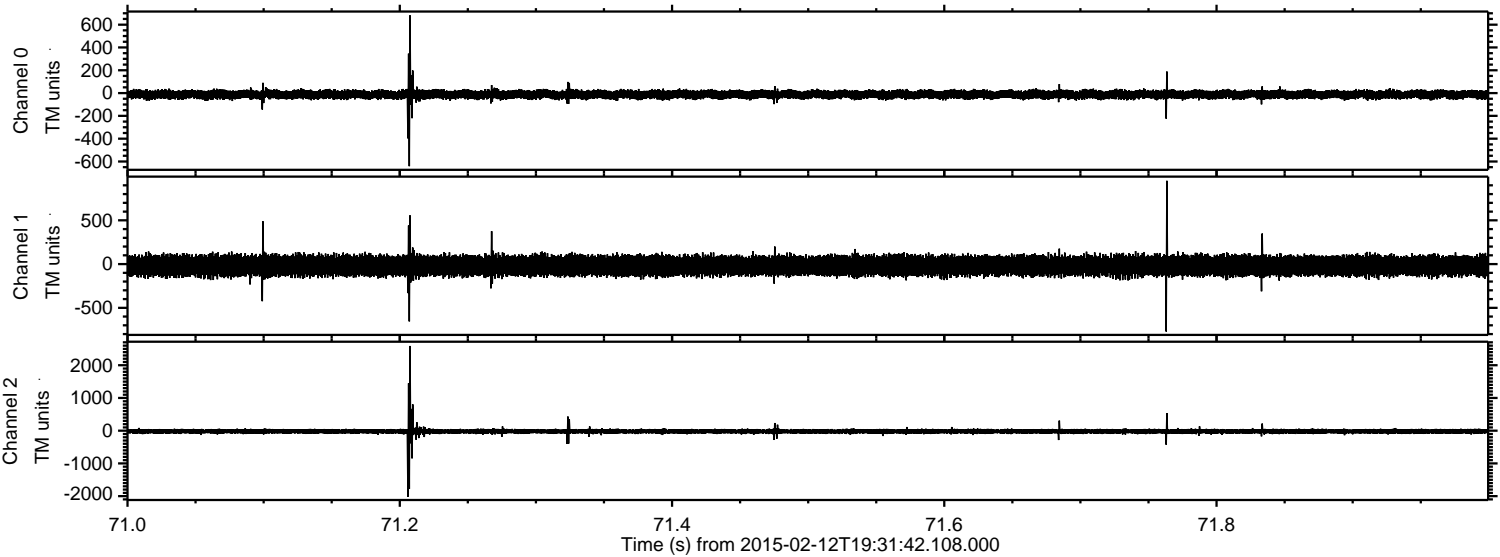


Channel 0
mn: -772
mx: 632
 μ : -12.8
 σ : 18.9

Channel 1
mn: -616
mx: 817
 μ : -18.5
 σ : 56.0

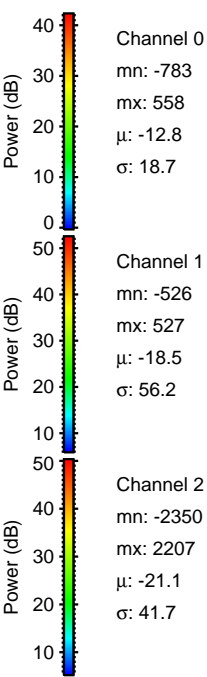
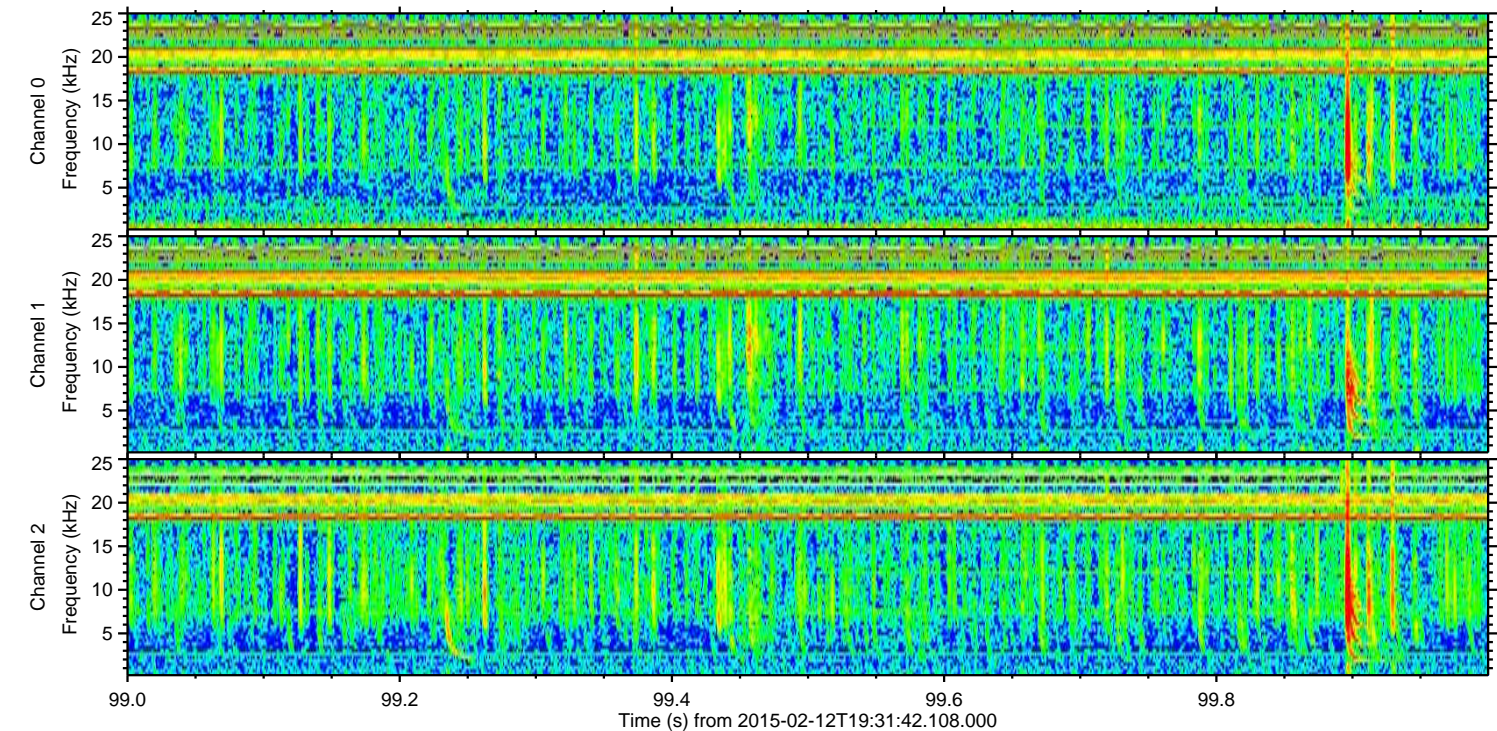
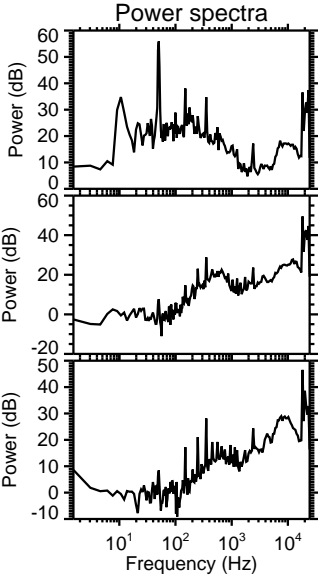
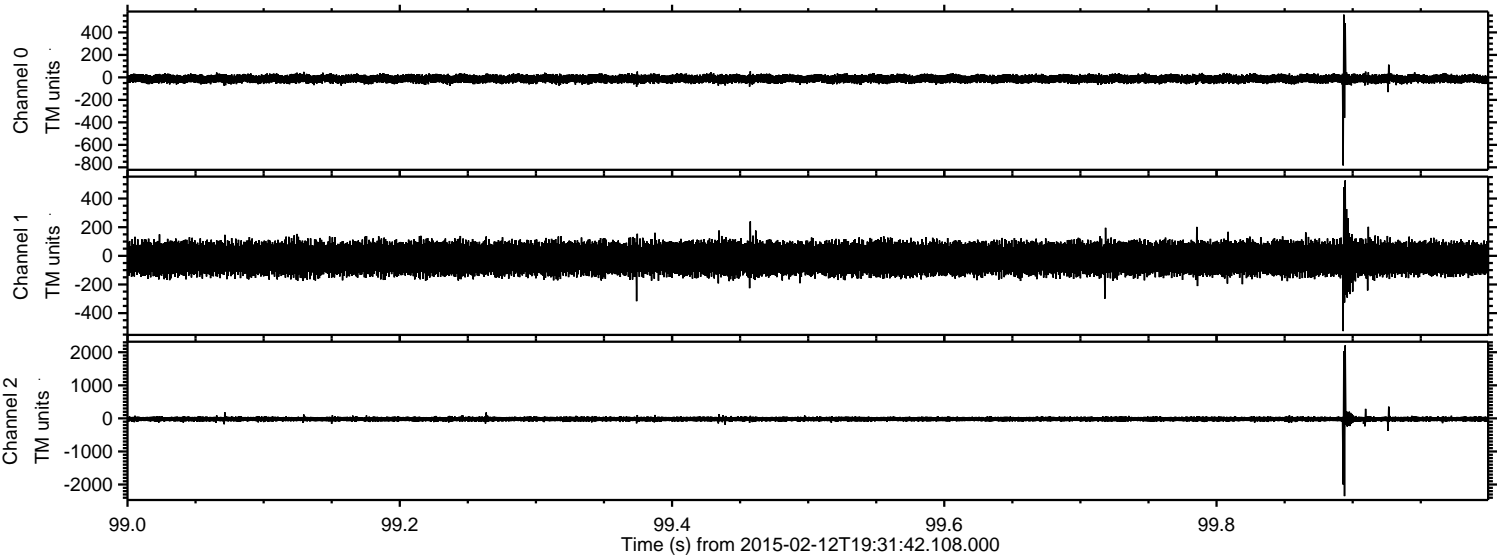
Channel 2
mn: -2639
mx: 2645
 μ : -21.0
 σ : 42.7

Processed Fri Feb 09 09:56:41 2015 by ELM ver.2012-10-06 from 001__elm20150212_193141__dat00.bin

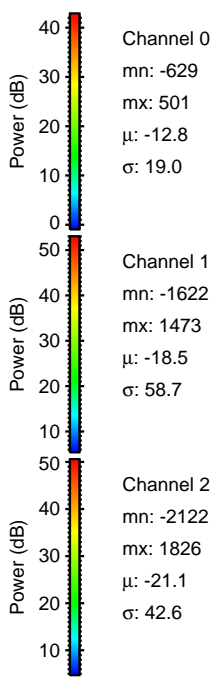
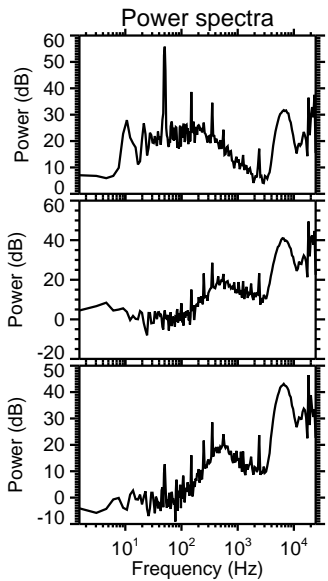
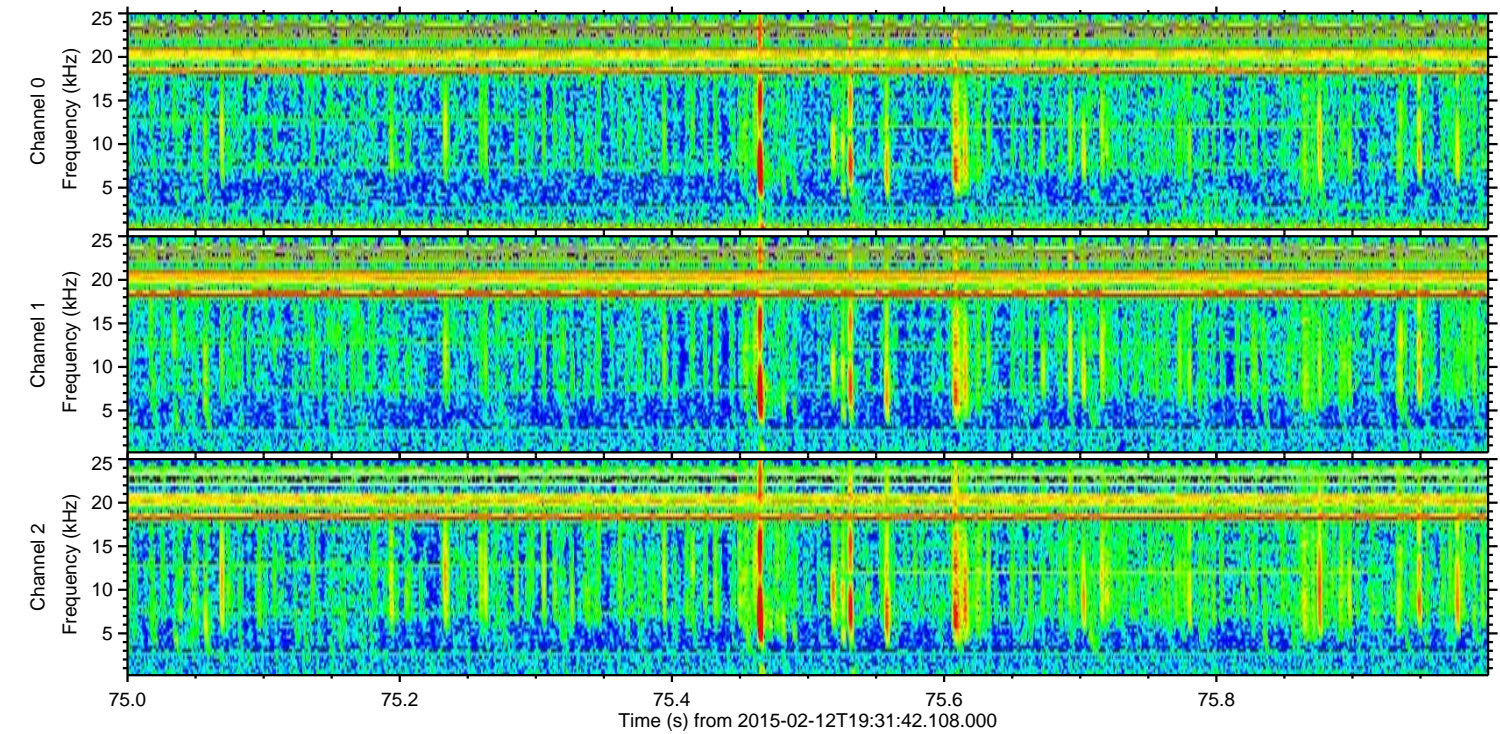
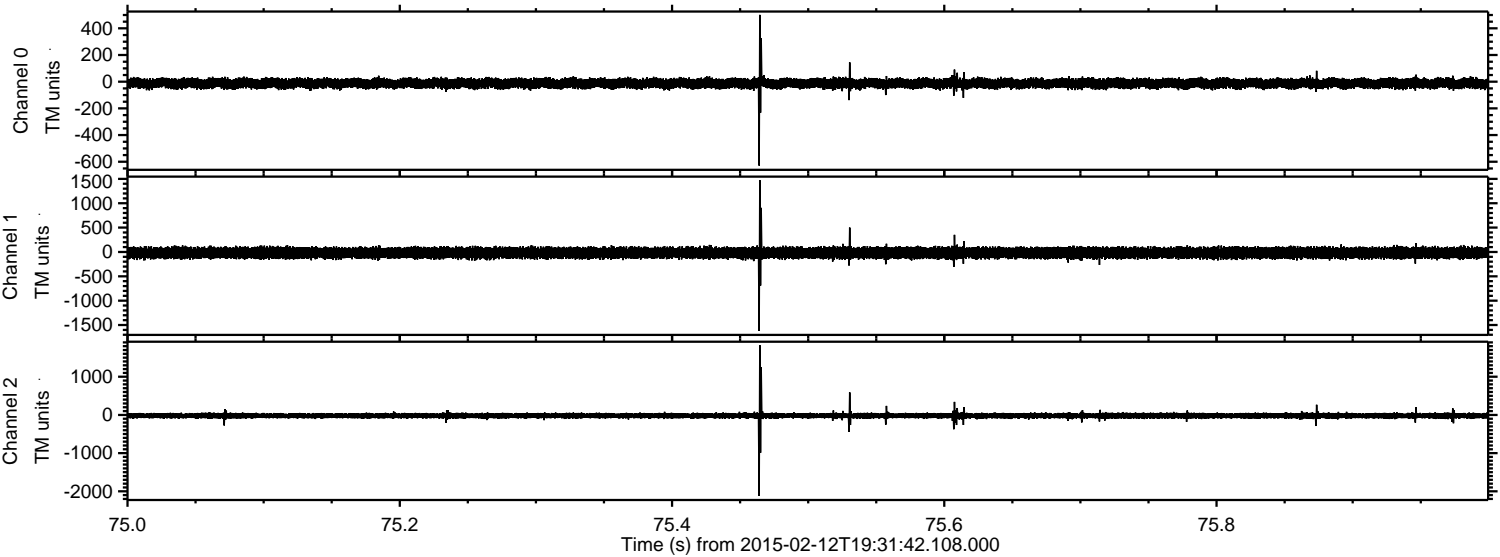


ELMAVAN 3D WAVEFORMS (Measured data sampled at 50 kHz) 49806 packets of 144 samples from 2015-02-12T19:31:42.108.000. Part 100/144

Processed Fri Feb 20 09:56:42 2015 by ELM ver.2012-10-06 from 001__elm20150212_193141__dat00.bin



Processed Fri Feb 20 09:56:43 2015 by ELM ver.2012-10-06 from 001__elm20150212_193141__dat00.bin



Channel 0
mn: -629
mx: 501
 μ : -12.8
 σ : 19.0

Channel 1
mn: -1622
mx: 1473
 μ : -18.5
 σ : 58.7

Channel 2
mn: -2122
mx: 1826
 μ : -21.1
 σ : 42.6

Processed Fri Feb 20 09:56:45 2015 by ELM ver.2012-10-06 from 001__elm20150212_193141__dat00.bin

