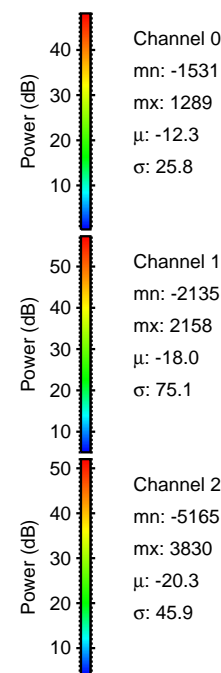
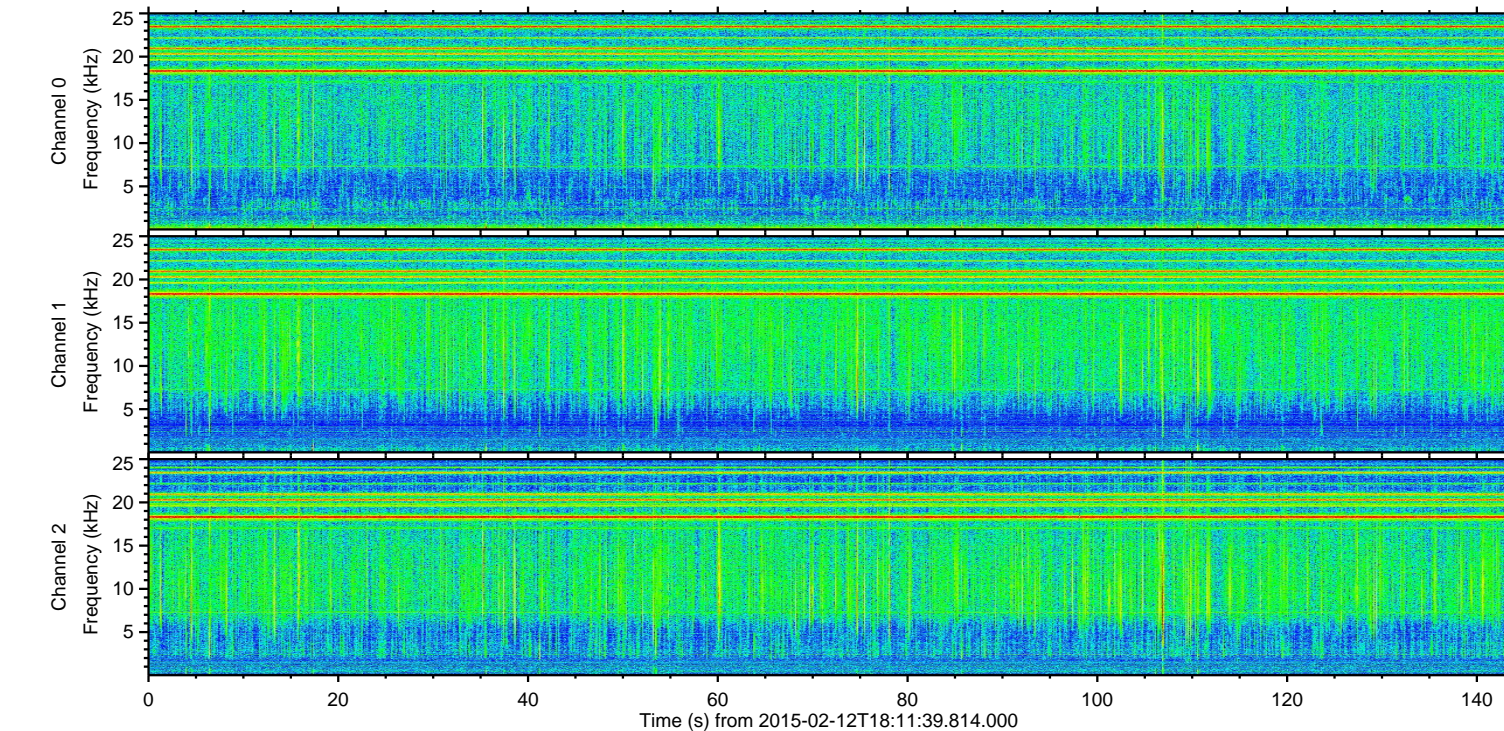
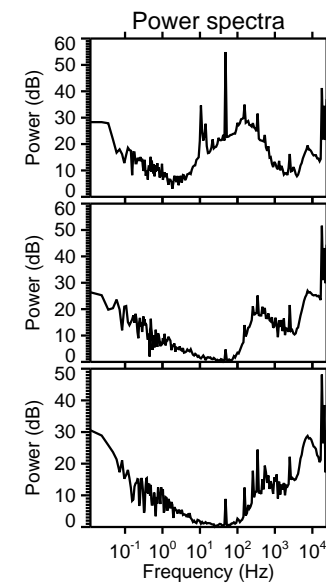
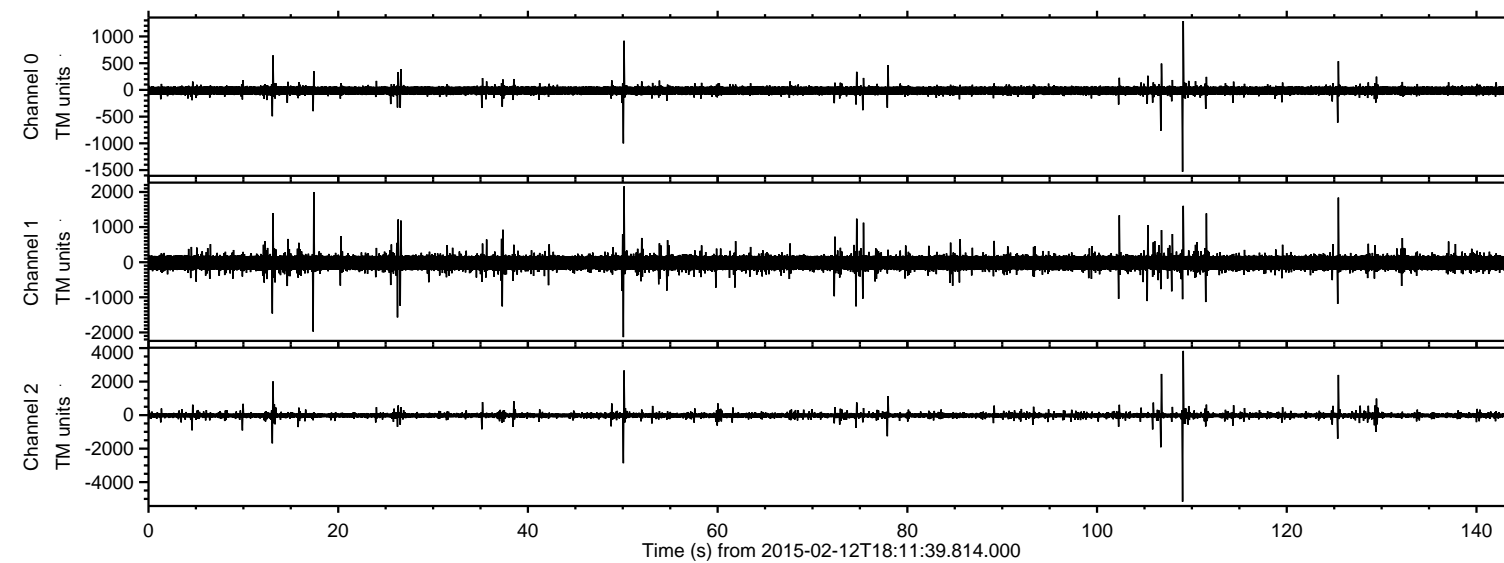


# ELMAVAN 3D WAVEFORMS (Measured data sampled at 50 kHz) 49807 packets of 144 samples from 2015-02-12T18:11:39.814.000.

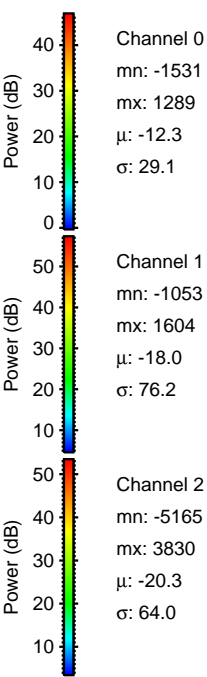
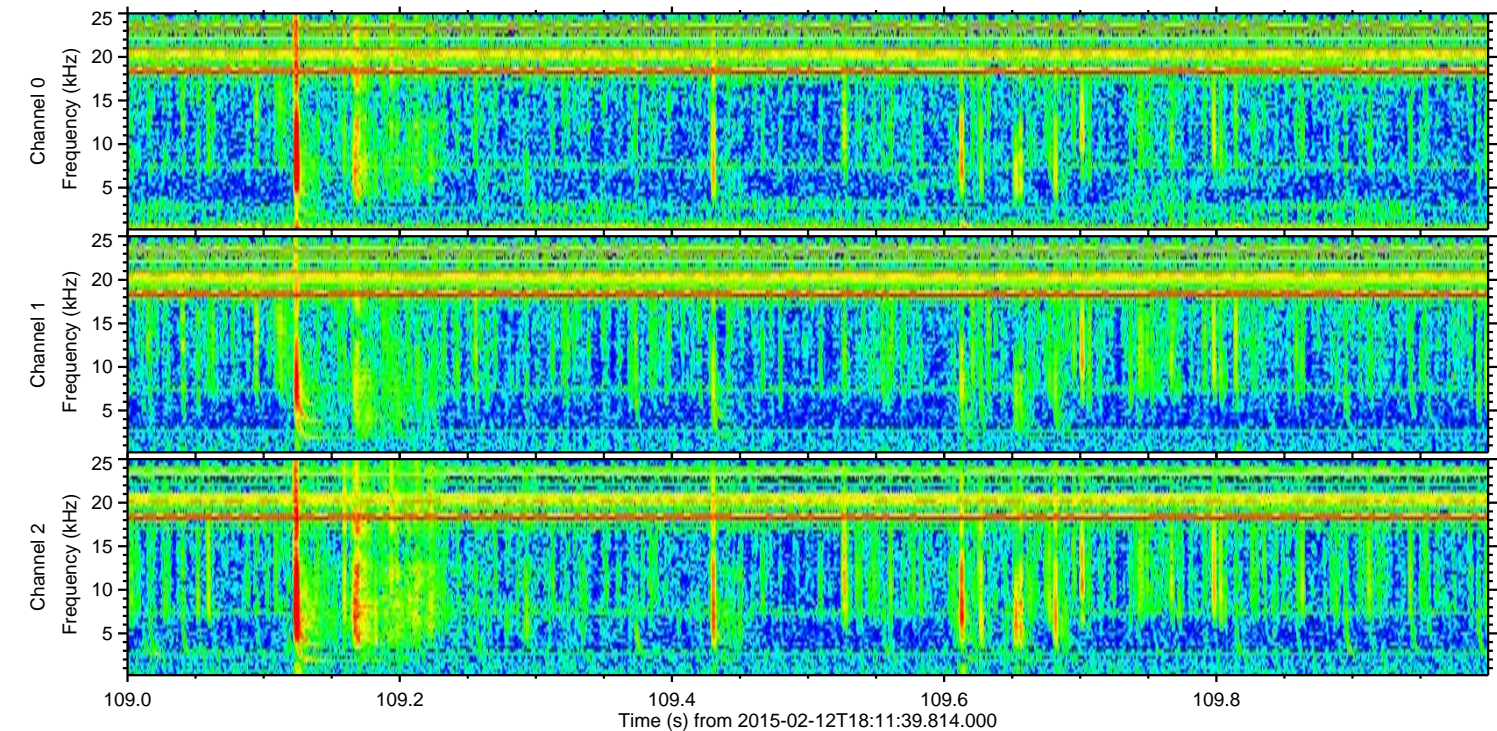
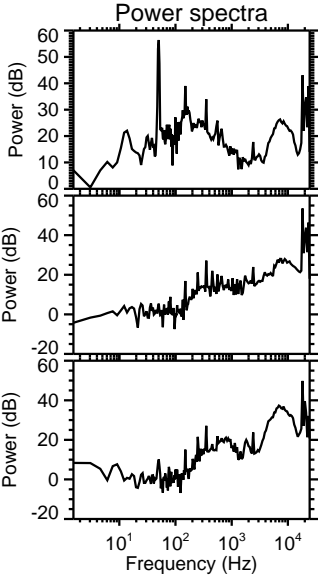
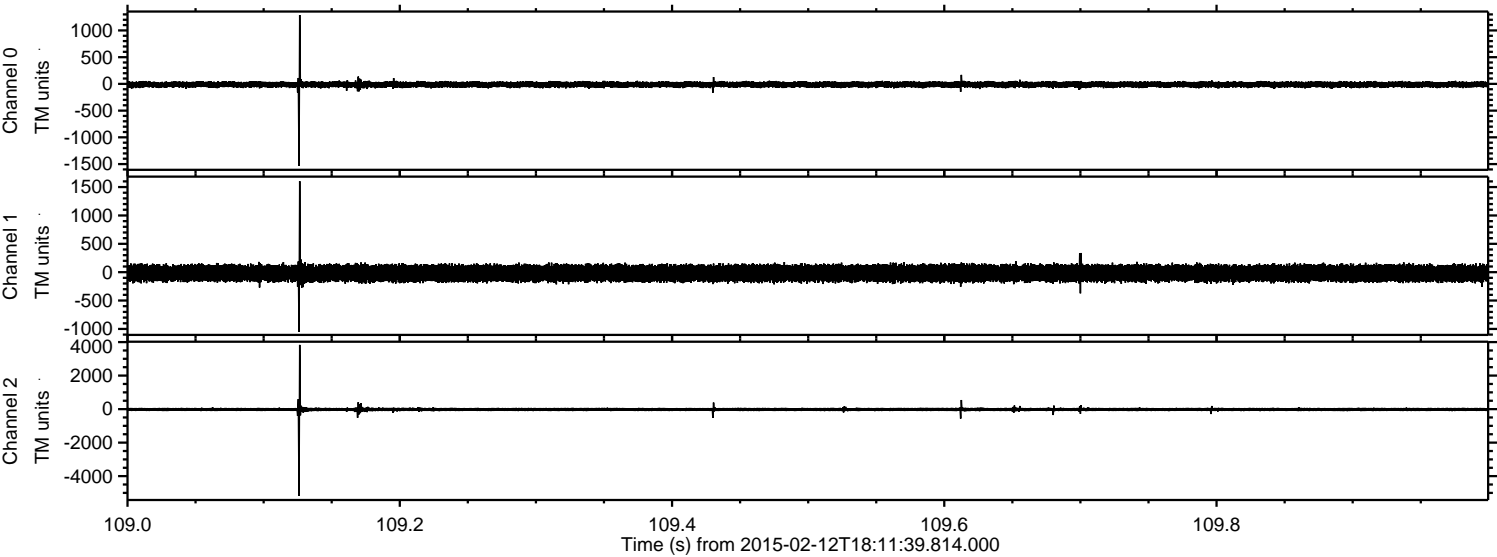
Processed Fri Feb 20 09:29:55 2015 by ELM ver.2012-10-06 from 001\_\_elm20150212\_181138\_\_dat00.bin





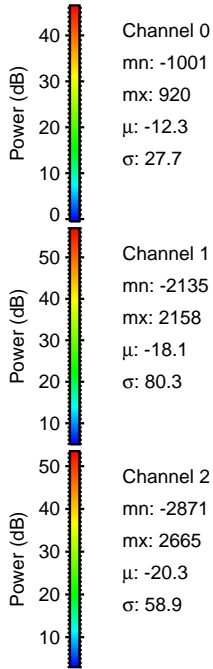
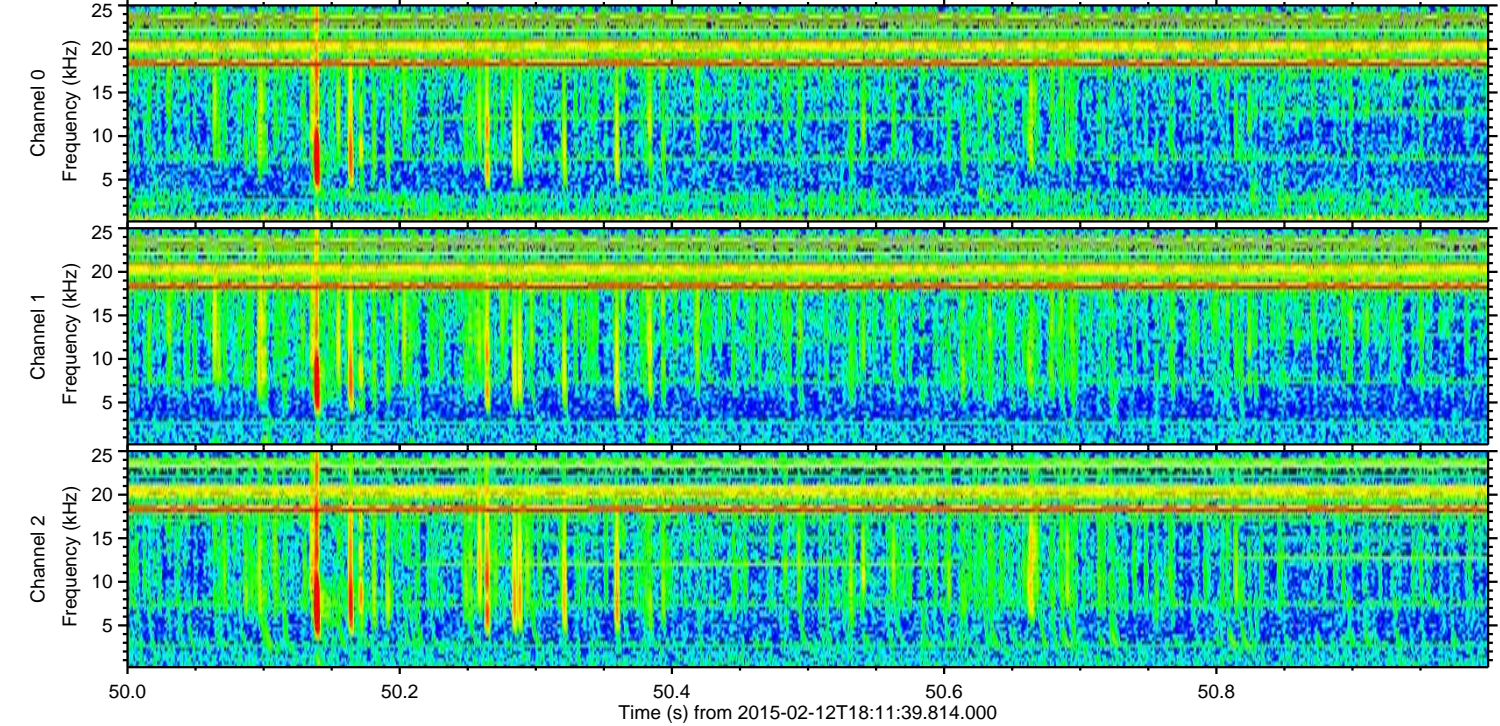
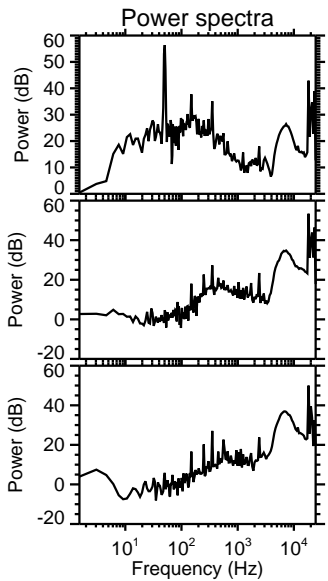
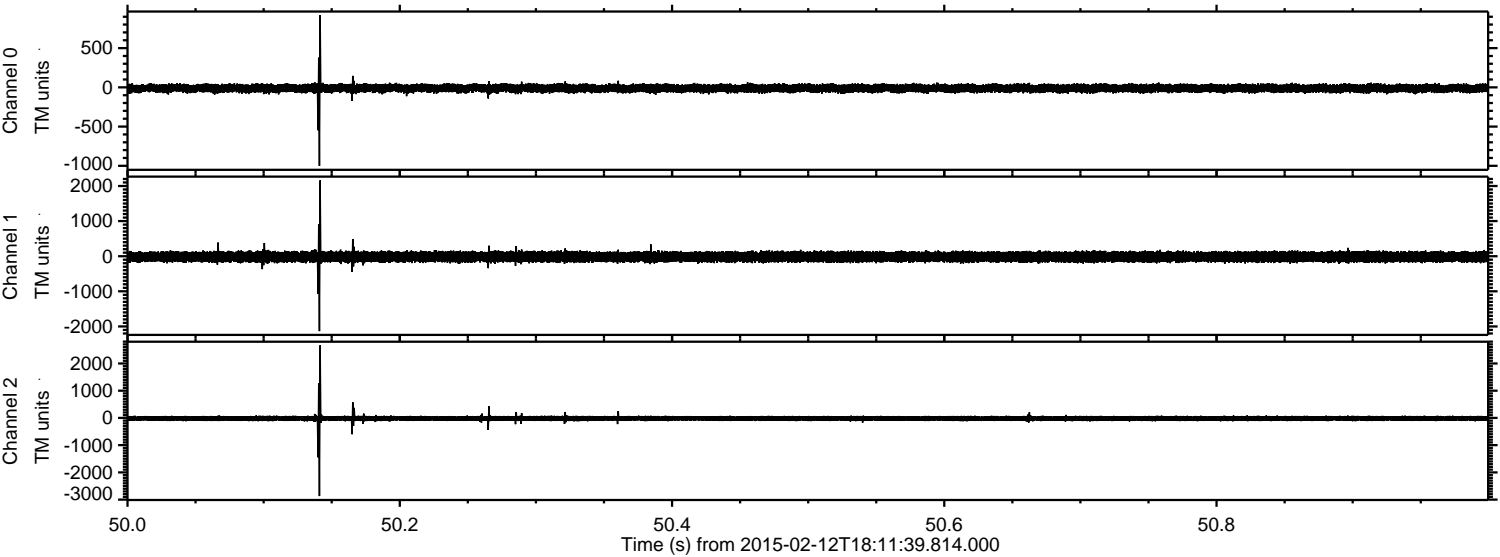
ELMAVAN 3D WAVEFORMS (Measured data sampled at 50 kHz) 49807 packets of 144 samples from 2015-02-12T18:11:39.814.000. Part 110/144

Processed Fri Feb 20 09:30:13 2015 by ELM ver.2012-10-06 from 001\_\_elm20150212\_181138\_\_dat00.bin





Processed Fri Feb 20 09:30:15 2015 by ELM ver.2012-10-06 from 001\_\_elm20150212\_181138\_\_dat00.bin



Channel 0  
mn: -1001  
mx: 920  
 $\mu$ : -12.3  
 $\sigma$ : 27.7

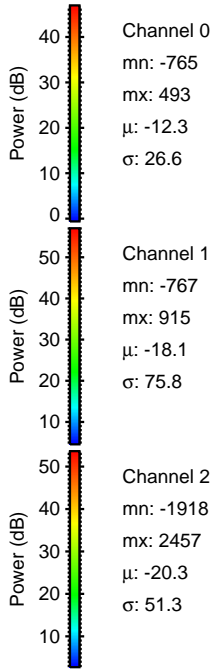
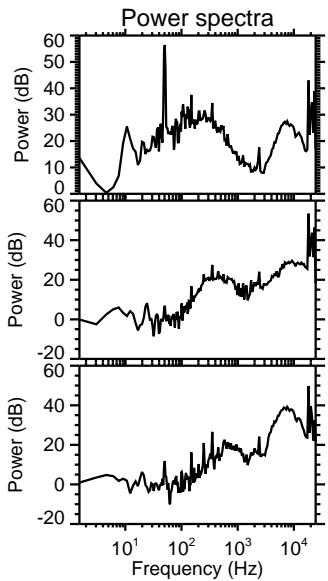
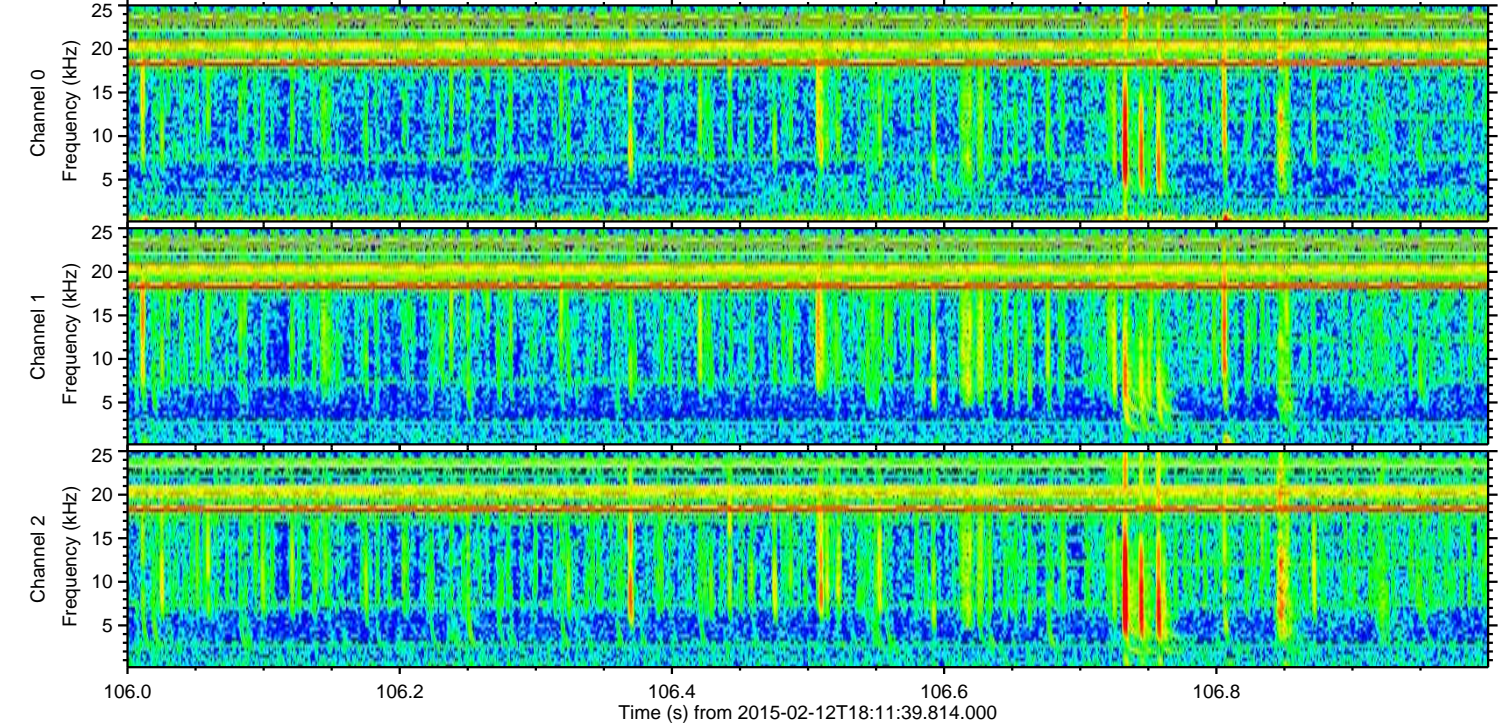
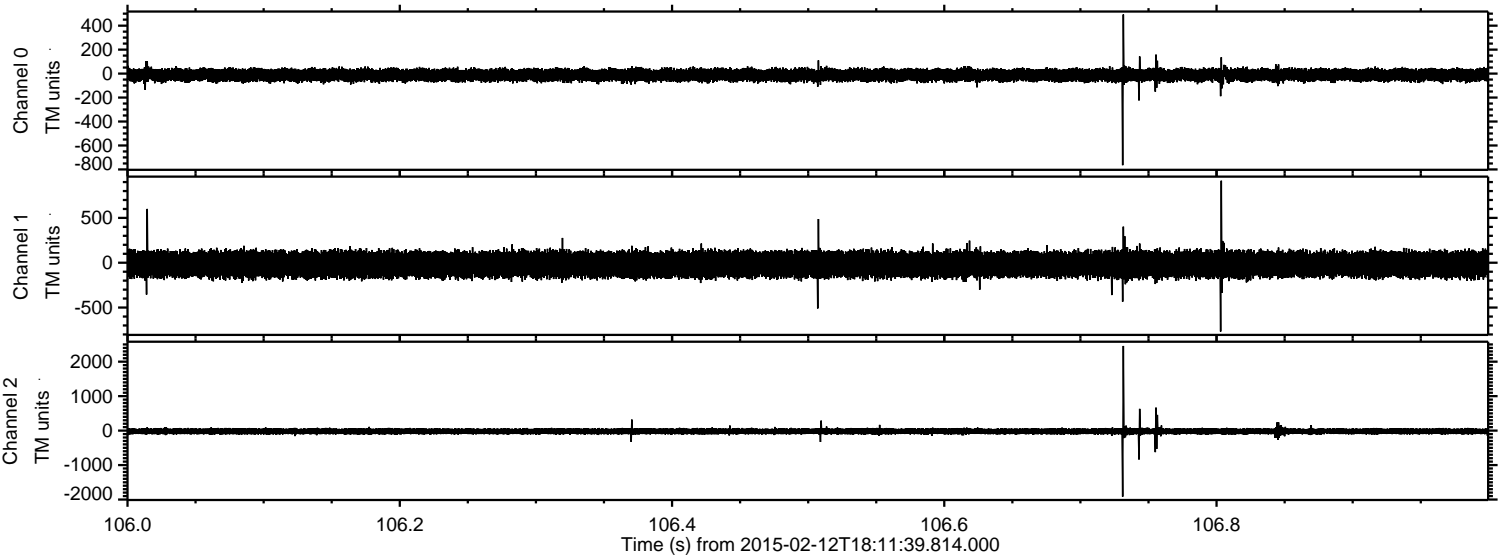
Channel 1  
mn: -2135  
mx: 2158  
 $\mu$ : -18.1  
 $\sigma$ : 80.3

Channel 2  
mn: -2871  
mx: 2665  
 $\mu$ : -20.3  
 $\sigma$ : 58.9



ELMAVAN 3D WAVEFORMS (Measured data sampled at 50 kHz) 49807 packets of 144 samples from 2015-02-12T18:11:39.814.000. Part 107/144

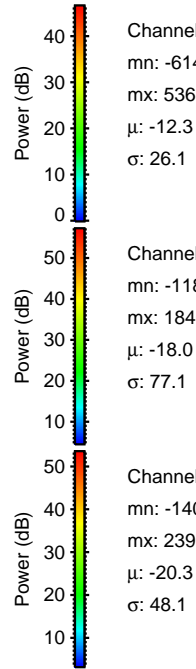
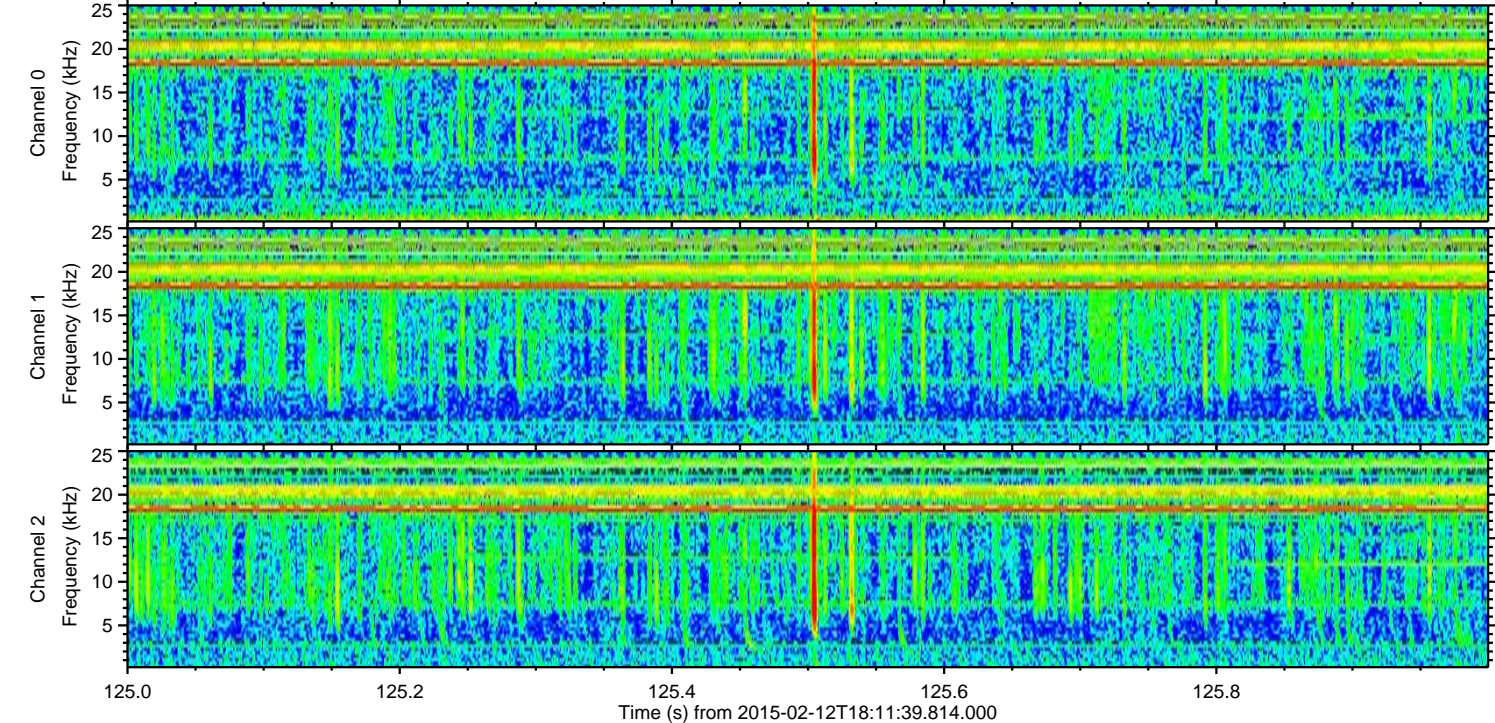
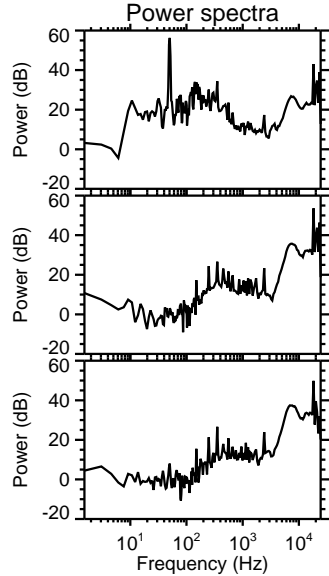
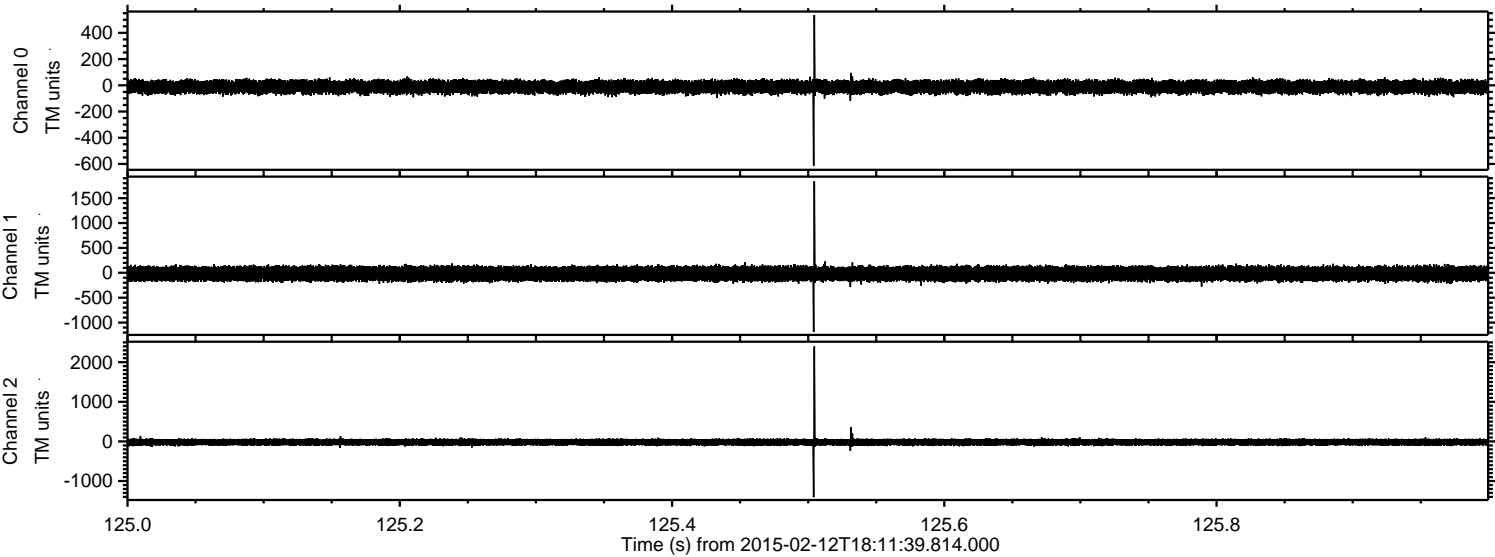
Processed Fri Feb 20 09:30:16 2015 by ELM ver.2012-10-06 from 001\_\_elm20150212\_181138\_\_dat00.bin





ELMAVAN 3D WAVEFORMS (Measured data sampled at 50 kHz) 49807 packets of 144 samples from 2015-02-12T18:11:39.814.000. Part 126/144

Processed Fri Feb 20 09:30:18 2015 by ELM ver.2012-10-06 from 001\_\_elm20150212\_181138\_\_dat00.bin



Channel 0  
mn: -614  
mx: 536  
 $\mu$ : -12.3  
 $\sigma$ : 26.1

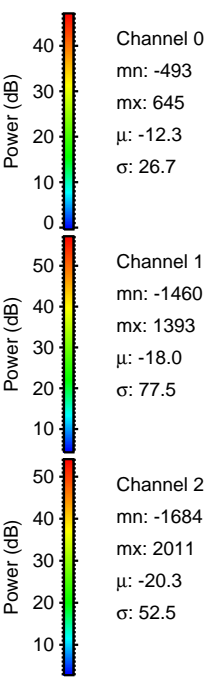
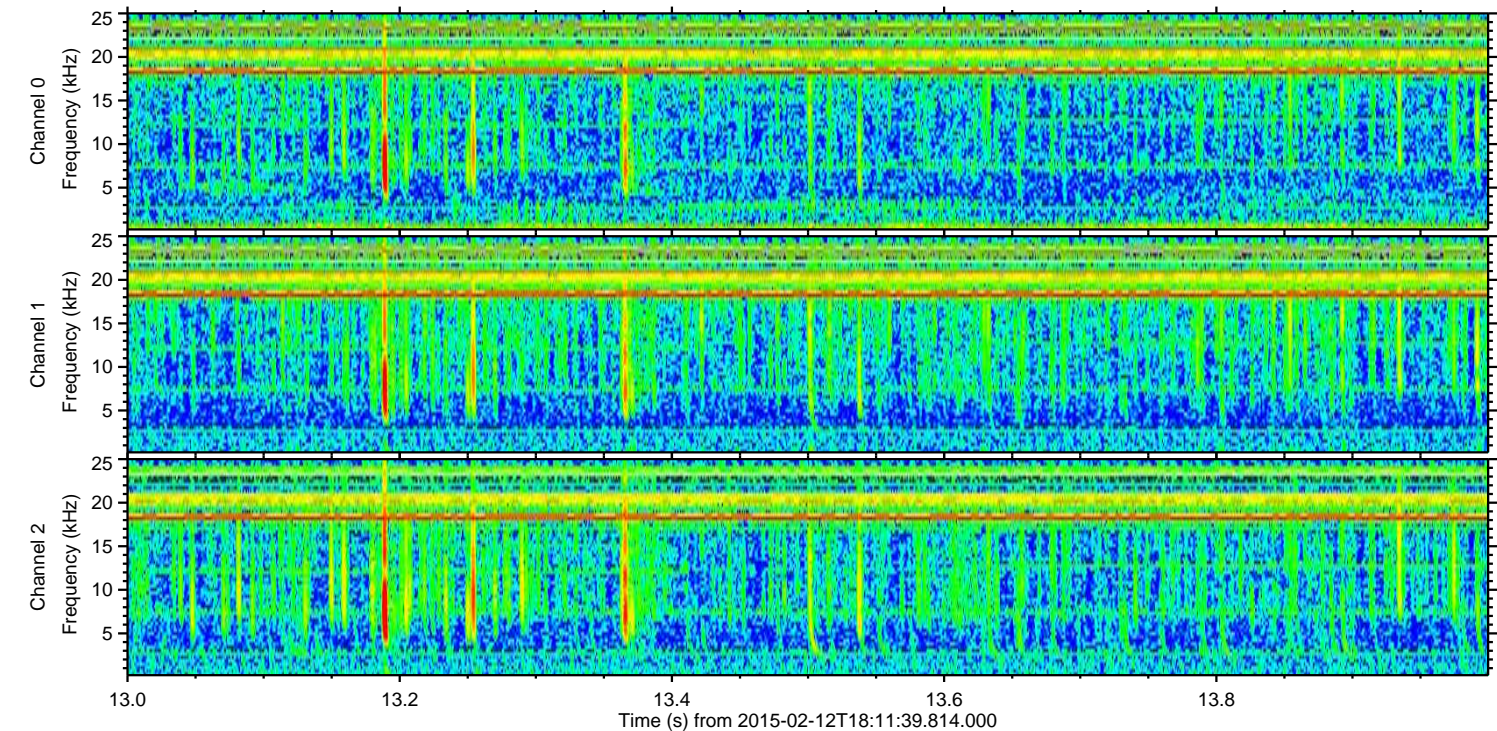
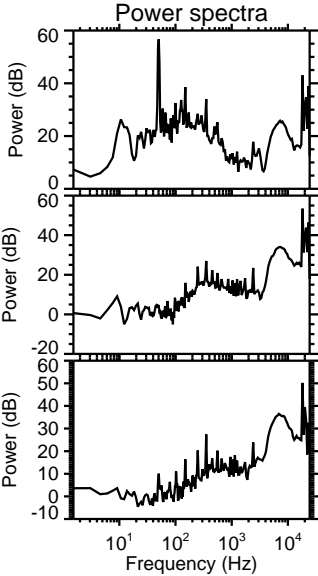
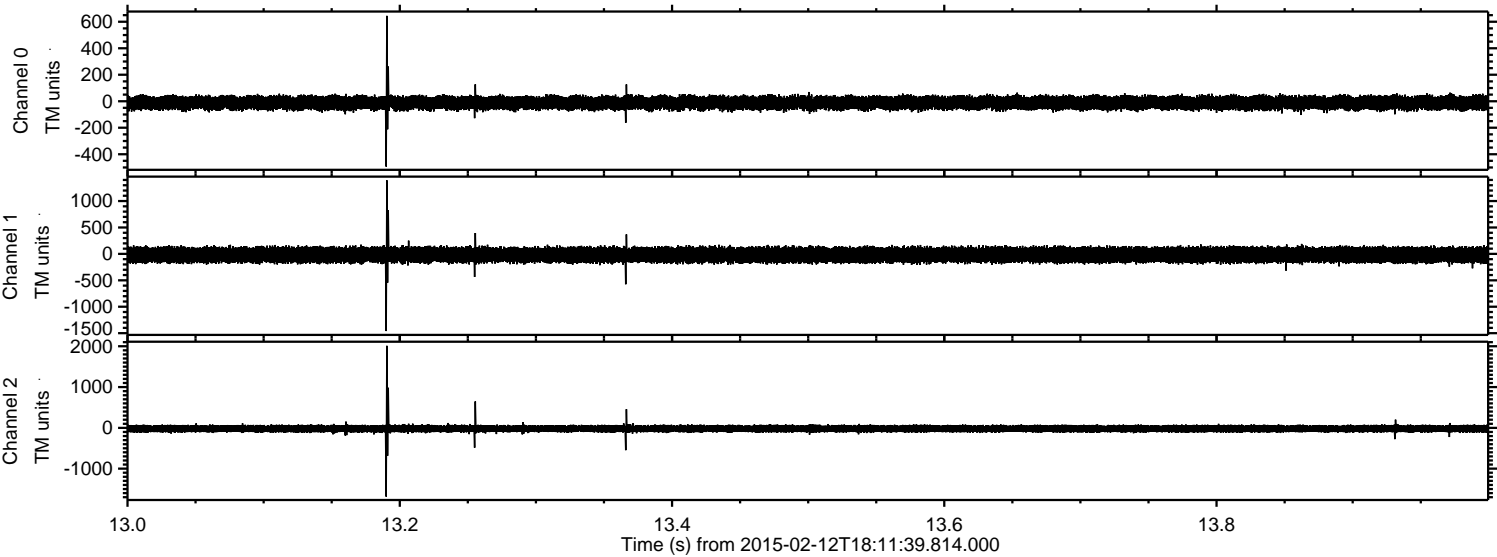
Channel 1  
mn: -1188  
mx: 1840  
 $\mu$ : -18.0  
 $\sigma$ : 77.1

Channel 2  
mn: -1408  
mx: 2397  
 $\mu$ : -20.3  
 $\sigma$ : 48.1



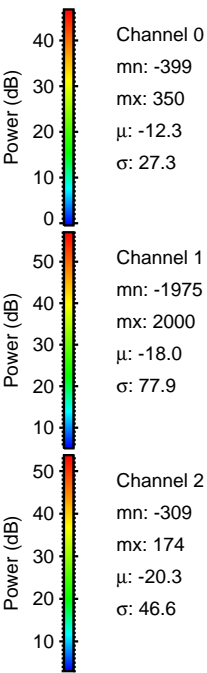
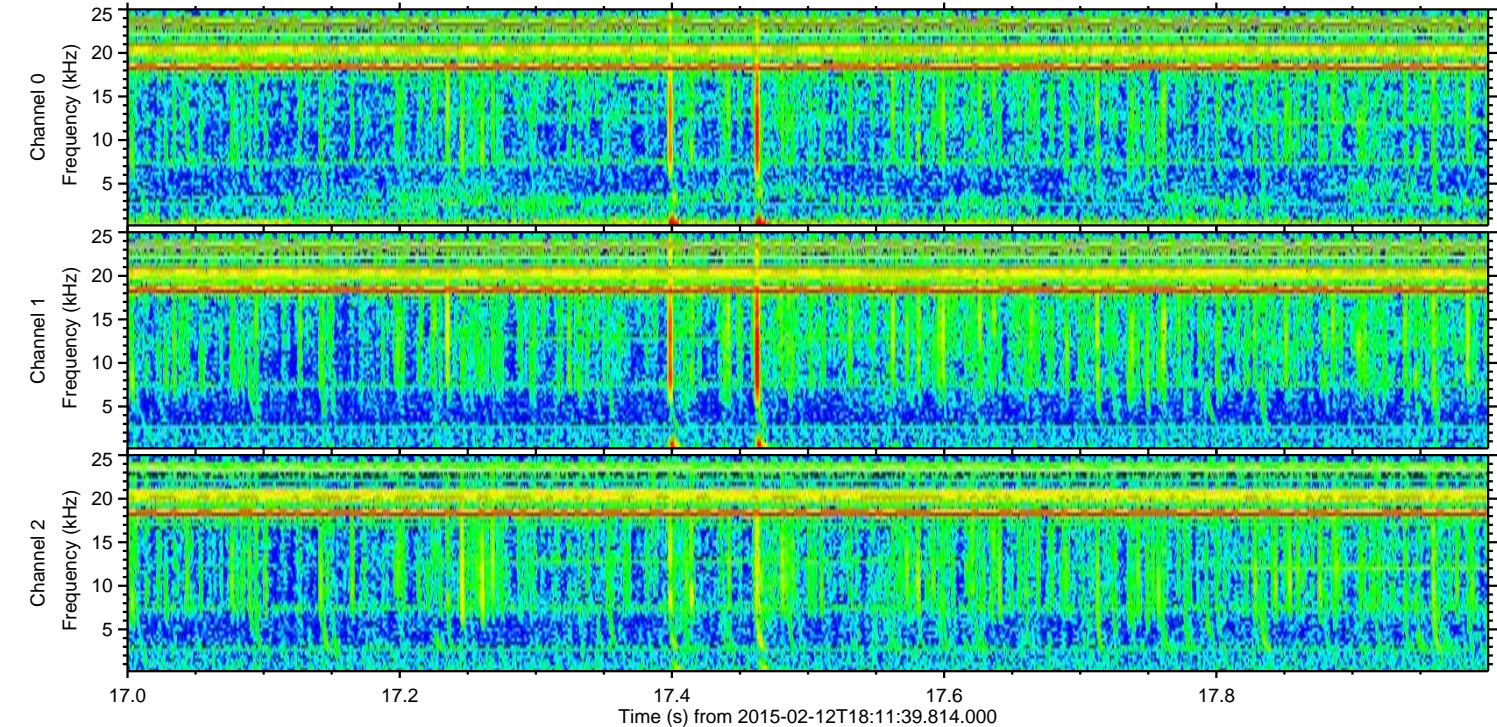
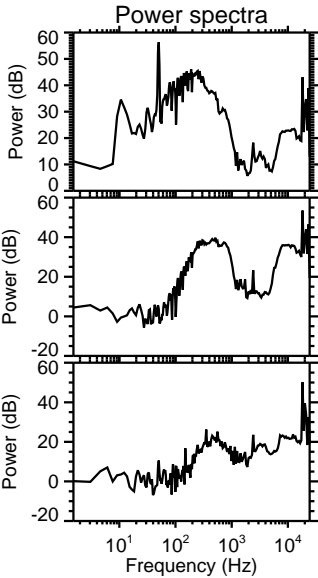
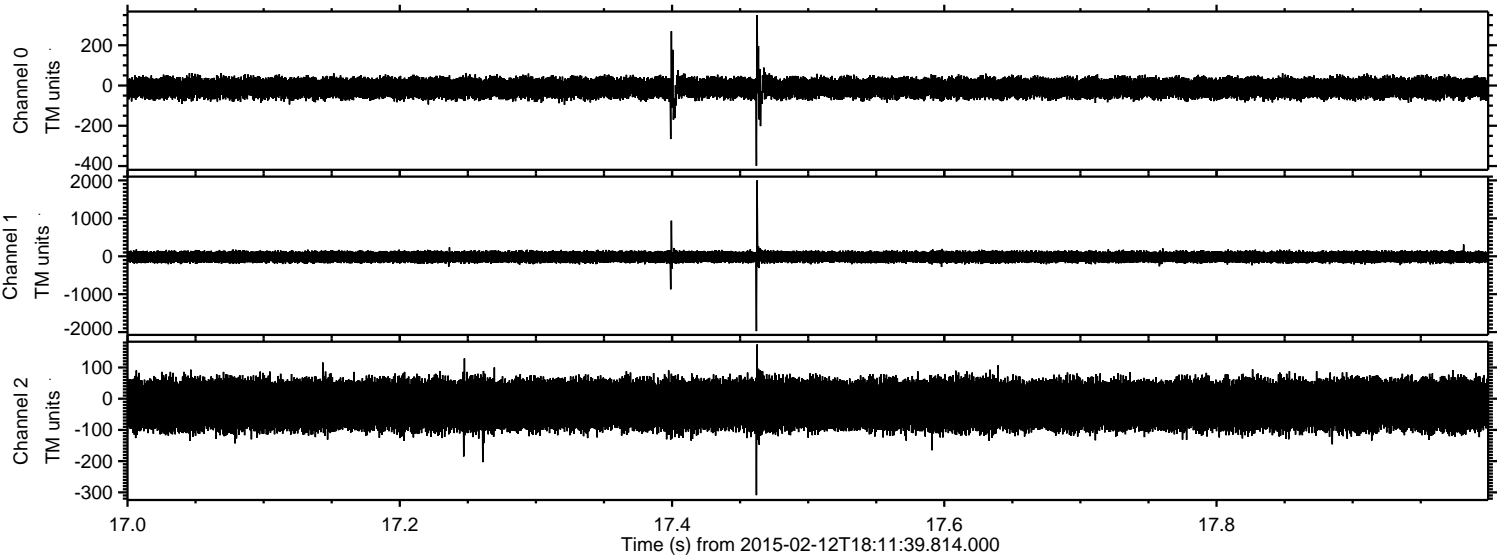
ELMAVAN 3D WAVEFORMS (Measured data sampled at 50 kHz) 49807 packets of 144 samples from 2015-02-12T18:11:39.814.000. Part 14/144

Processed Fri Feb 20 09:30:19 2015 by ELM ver.2012-10-06 from 001\_\_elm20150212\_181138\_\_dat00.bin



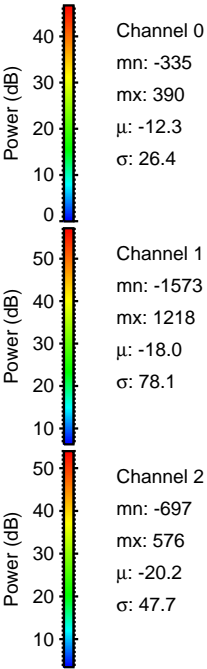
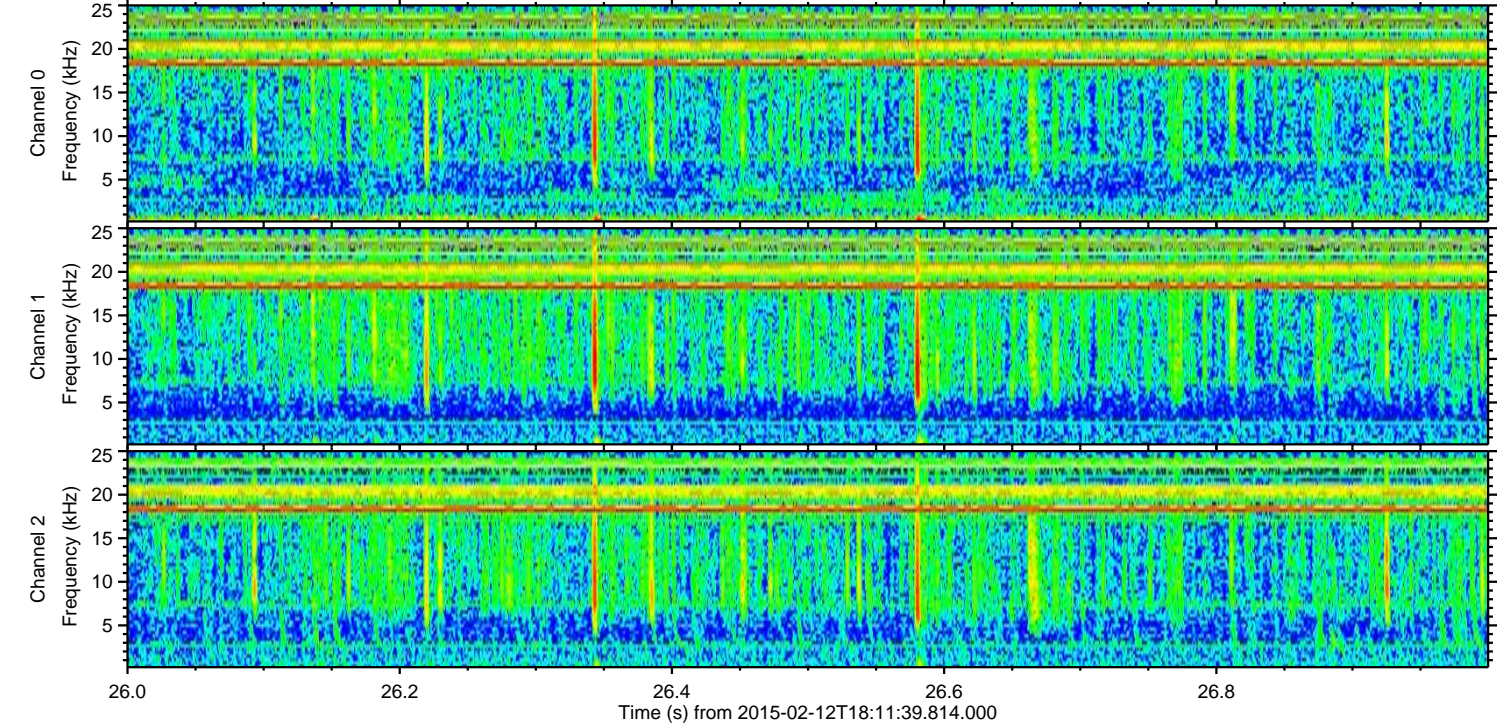
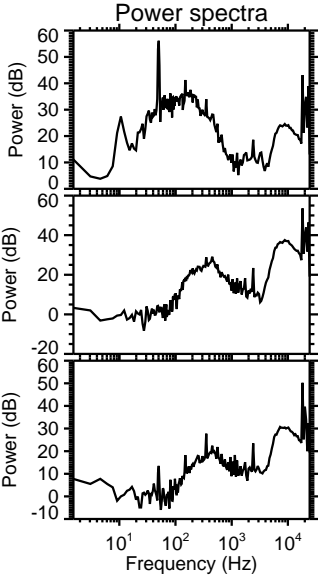
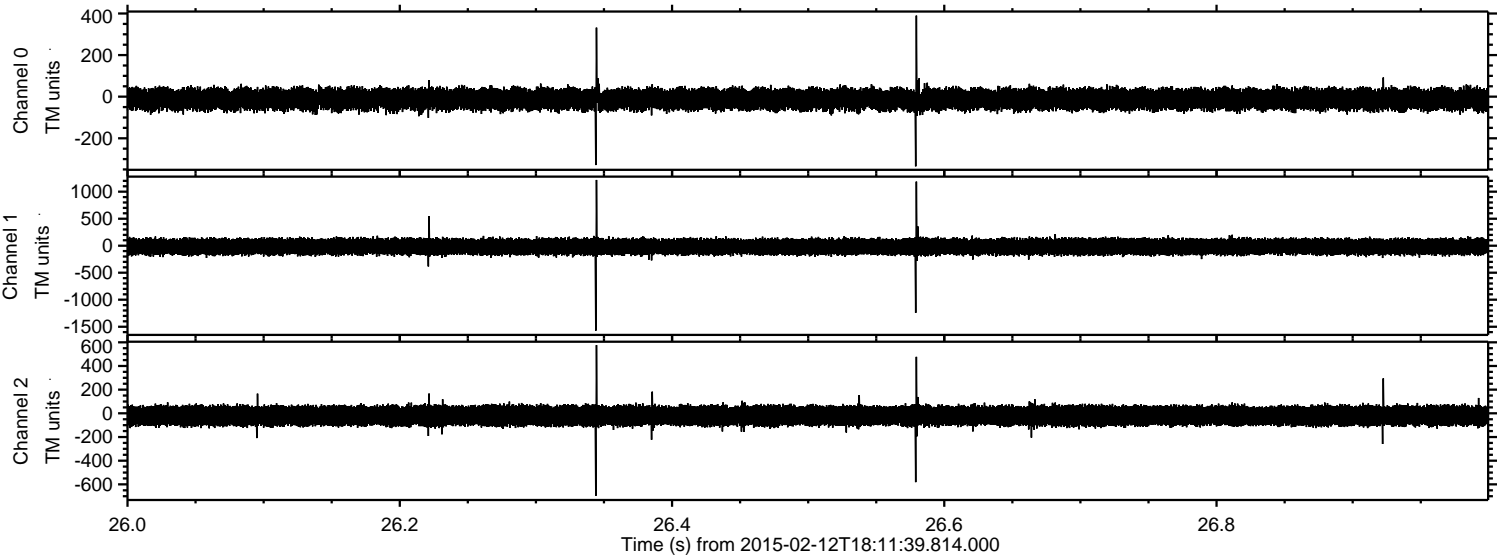


Processed Fri Feb 20 09:30:20 2015 by ELM ver.2012-10-06 from 001\_\_elm20150212\_181138\_\_dat00.bin





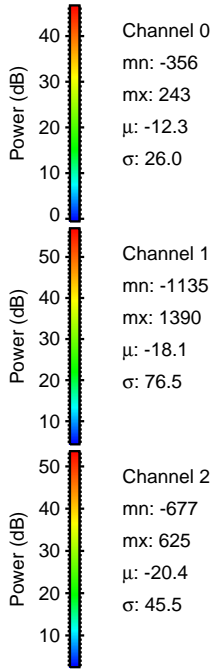
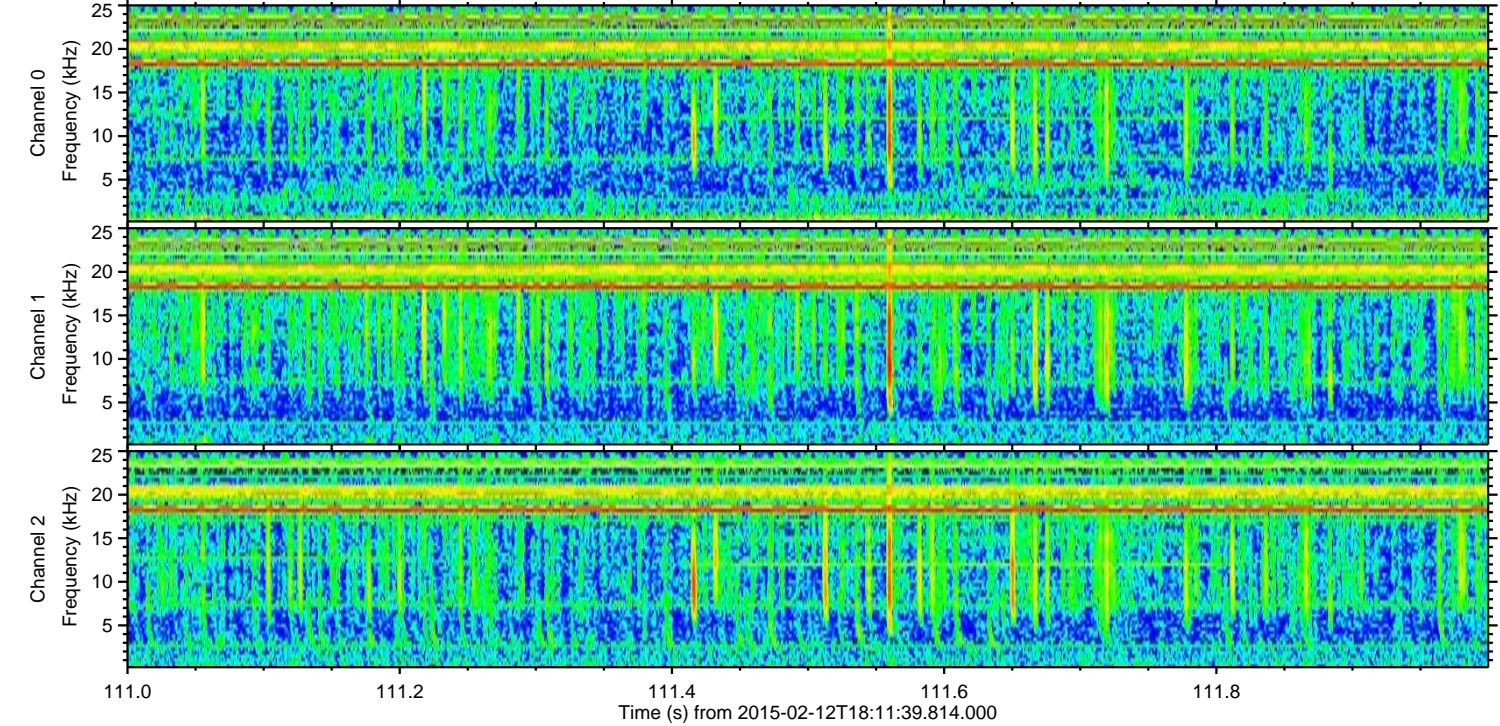
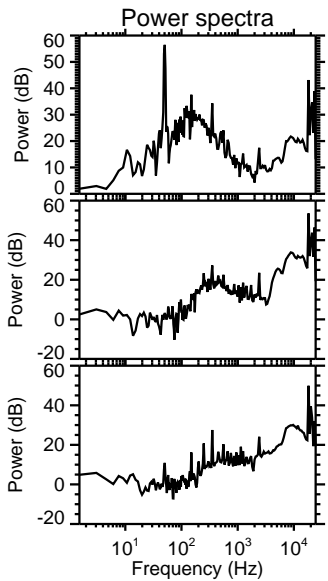
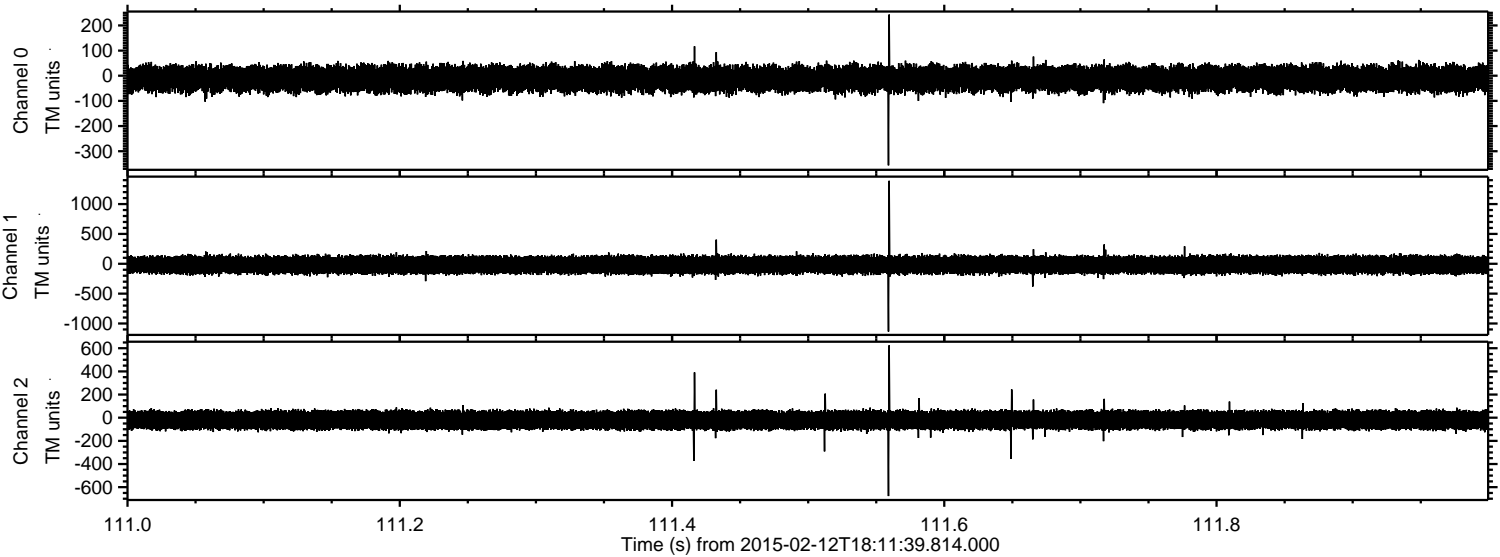
Processed Fri Feb 20 09:30:21 2015 by ELM ver.2012-10-06 from 001\_\_elm20150212\_181138\_\_dat00.bin





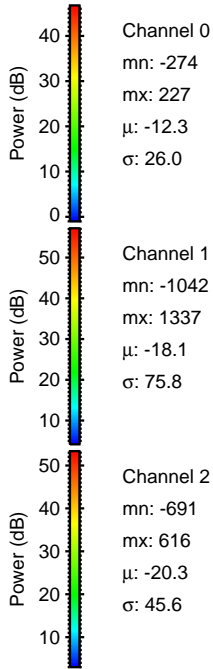
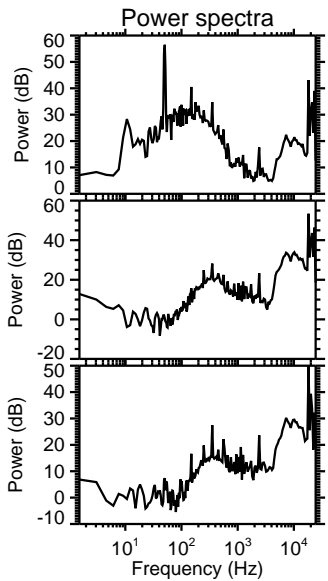
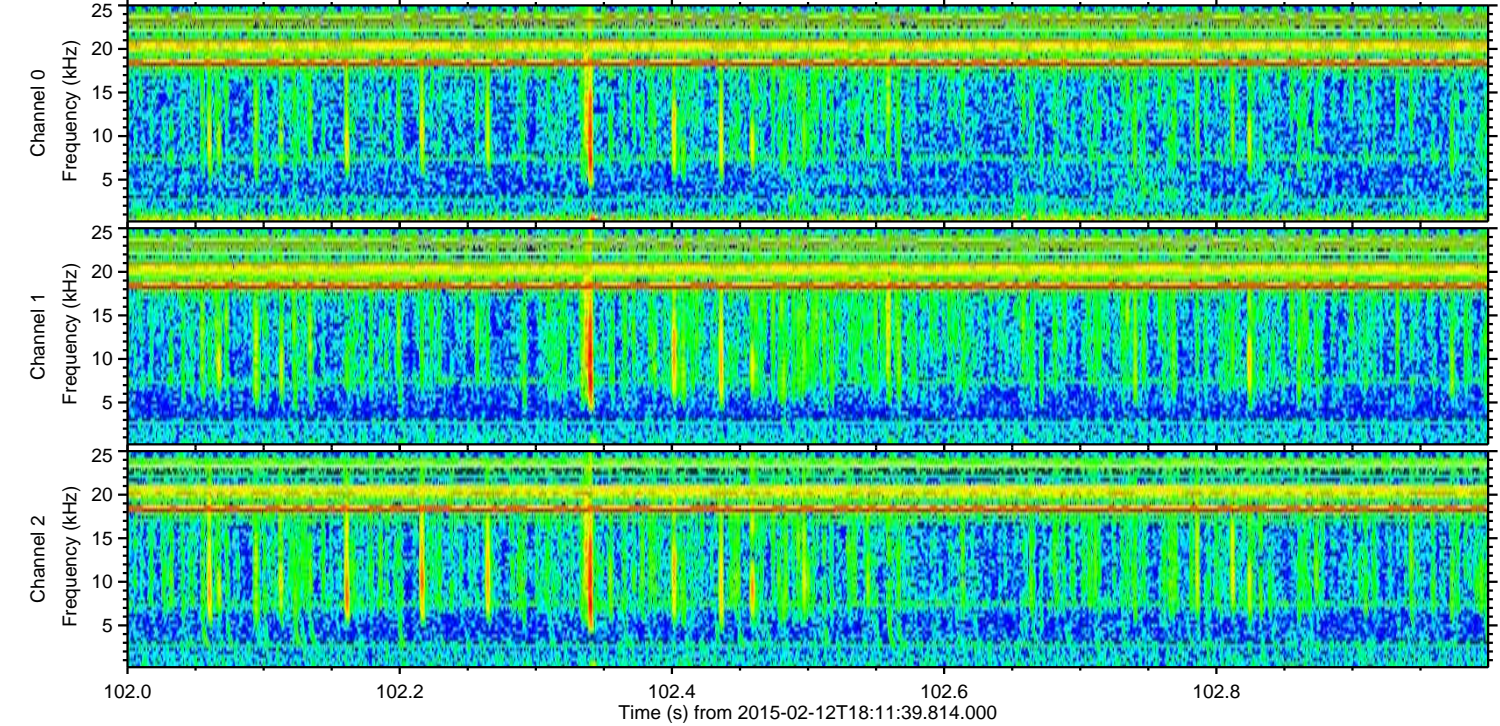
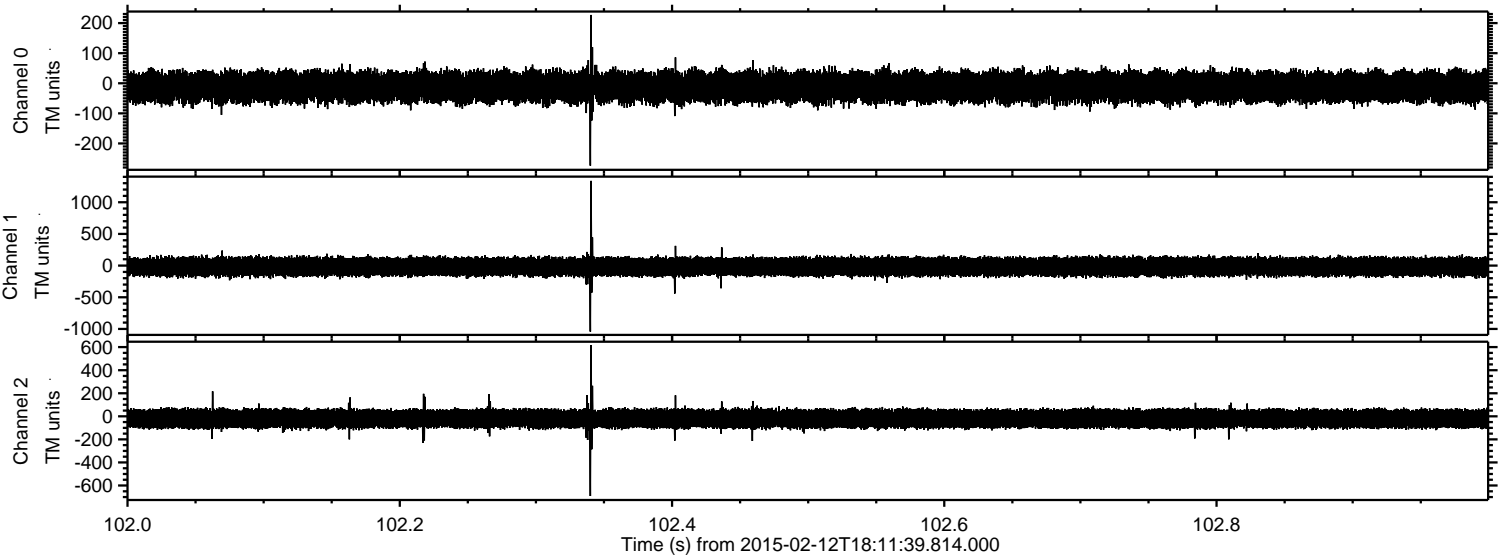
ELMAVAN 3D WAVEFORMS (Measured data sampled at 50 kHz) 49807 packets of 144 samples from 2015-02-12T18:11:39.814.000. Part 112/144

Processed Fri Feb 20 09:30:23 2015 by ELM ver.2012-10-06 from 001\_\_elm20150212\_181138\_\_dat00.bin





Processed Fri Feb 20 09:30:25 2015 by ELM ver.2012-10-06 from 001\_\_elm20150212\_181138\_\_dat00.bin



Channel 0  
mn: -274  
mx: 227  
 $\mu$ : -12.3  
 $\sigma$ : 26.0

Channel 1  
mn: -1042  
mx: 1337  
 $\mu$ : -18.1  
 $\sigma$ : 75.8

Channel 2  
mn: -691  
mx: 616  
 $\mu$ : -20.3  
 $\sigma$ : 45.6



Processed Fri Feb 20 09:30:27 2015 by ELM ver.2012-10-06 from 001\_\_elm20150212\_181138\_\_dat00.bin

