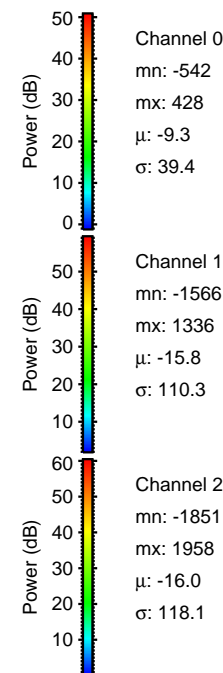
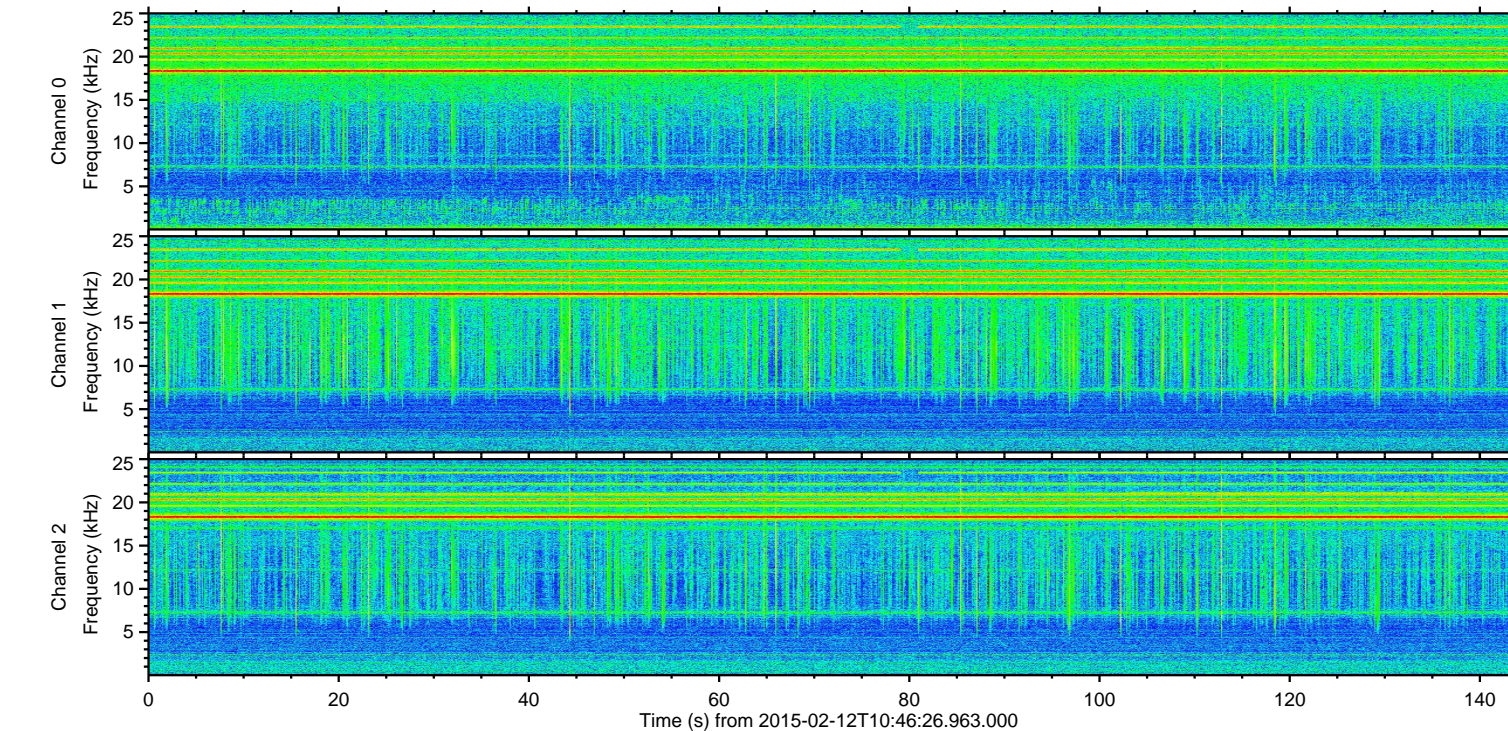
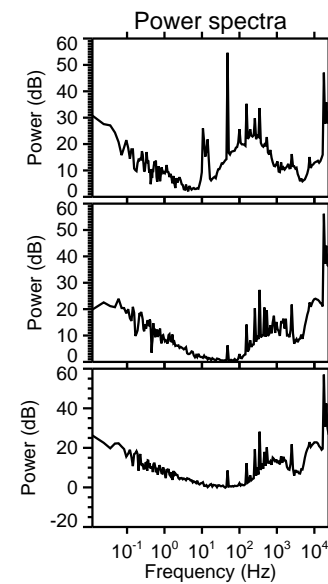
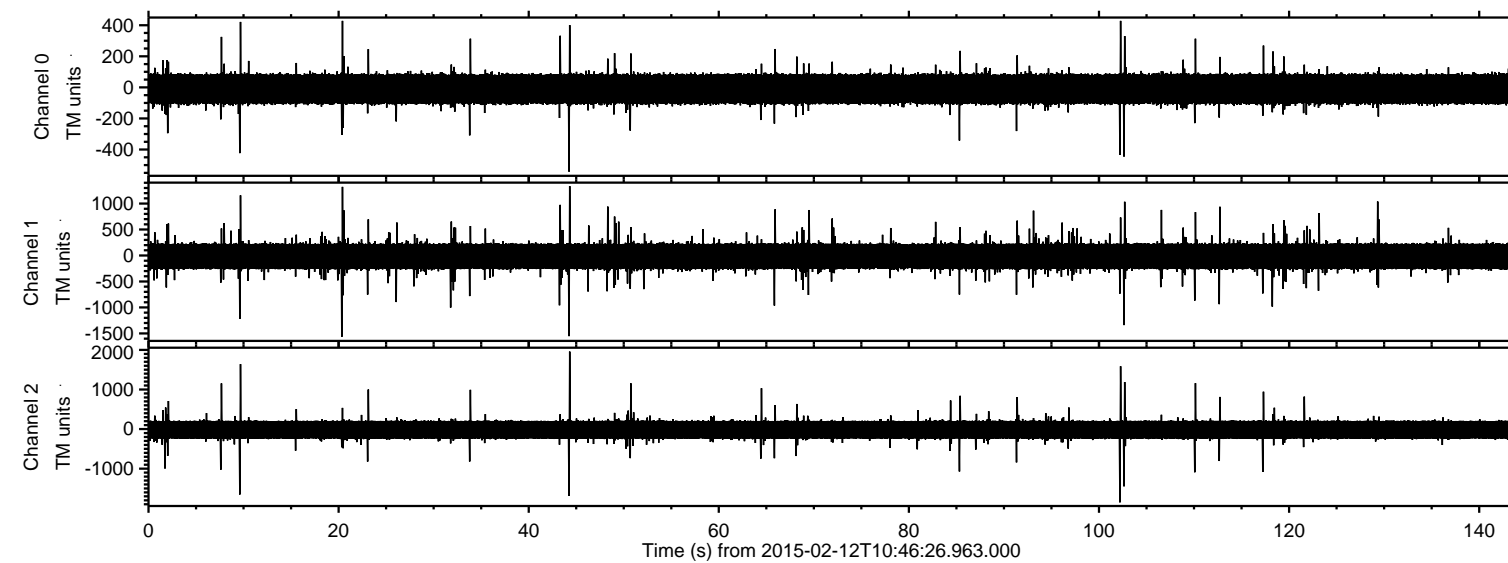


# ELMAVAN 3D WAVEFORMS (Measured data sampled at 50 kHz) 49706 packets of 144 samples from 2015-02-12T10:46:26.963.000.

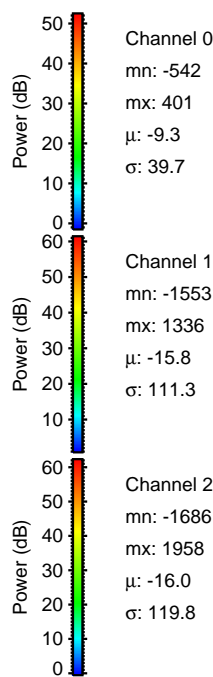
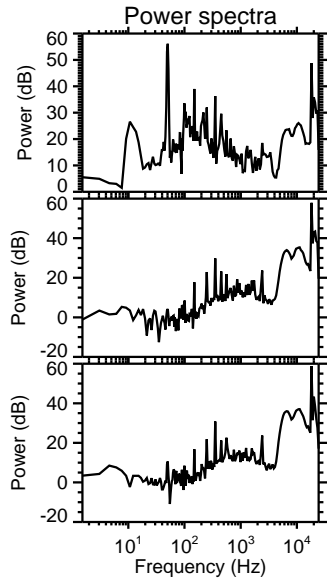
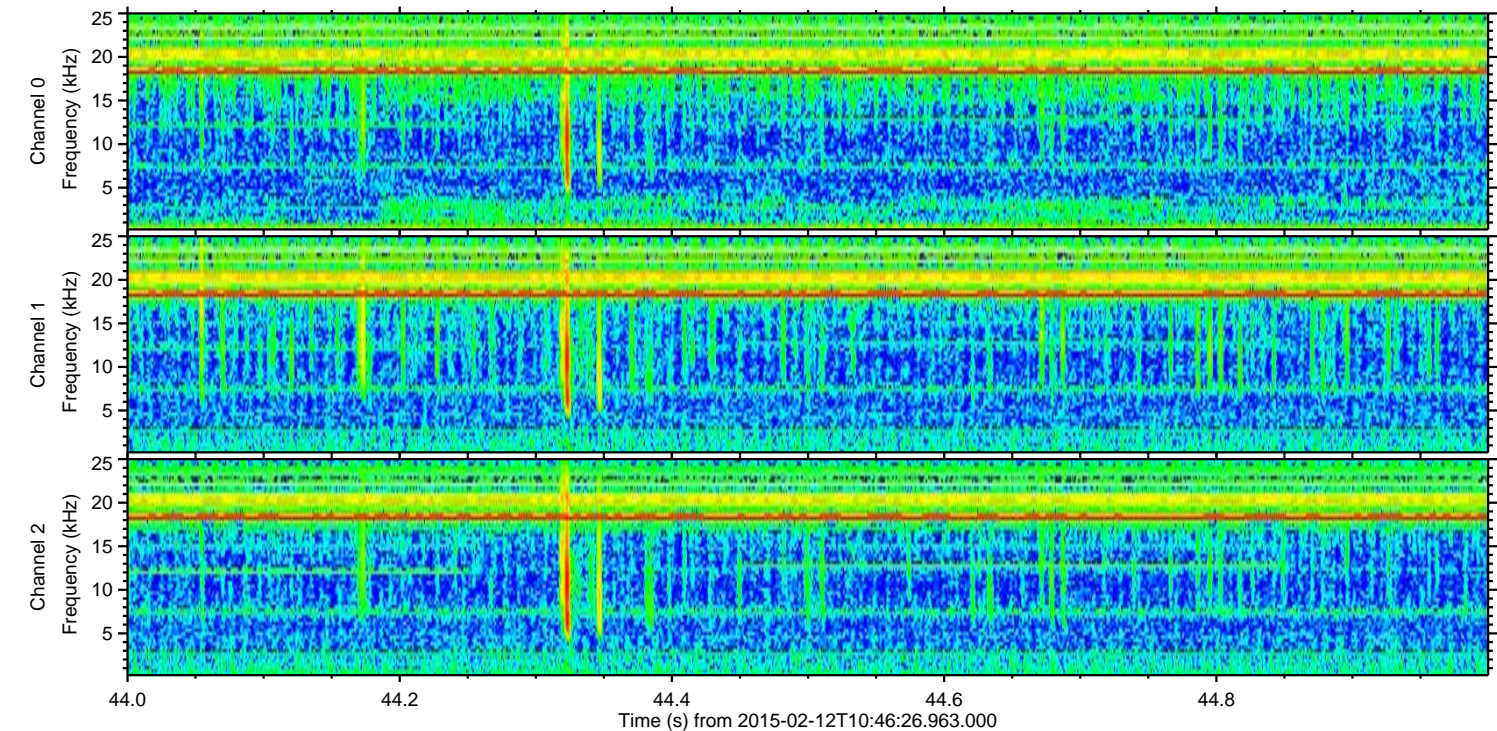
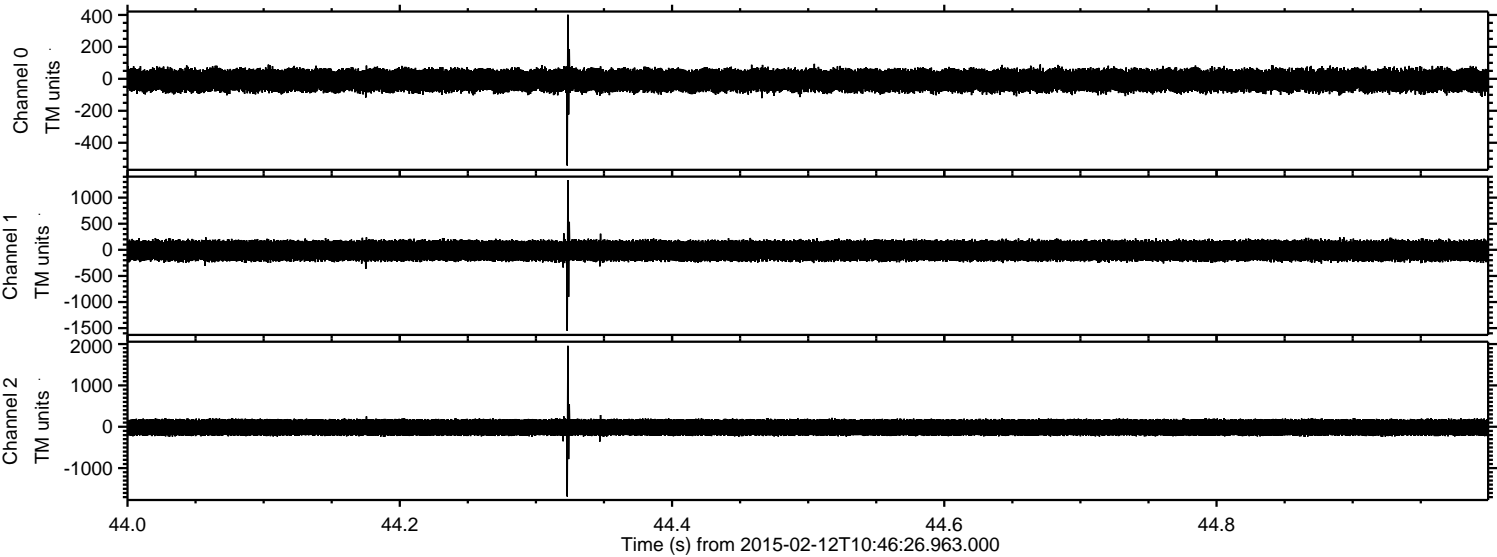
Processed Fri Feb 20 07:02:24 2015 by ELM ver.2012-10-06 from 001\_\_elm20150212\_104625\_\_dat00.bin





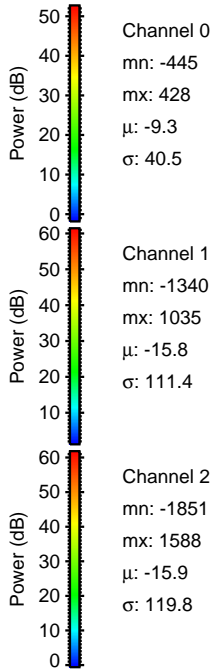
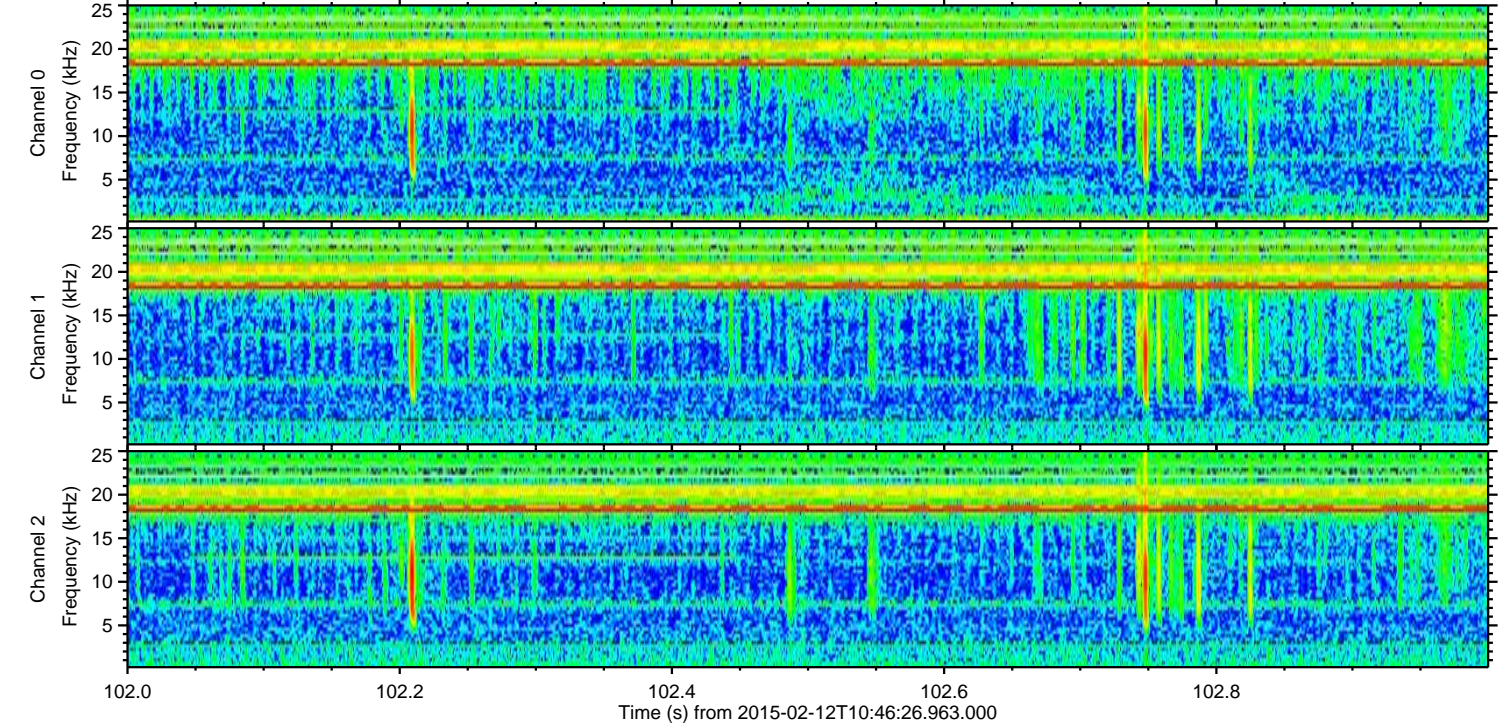
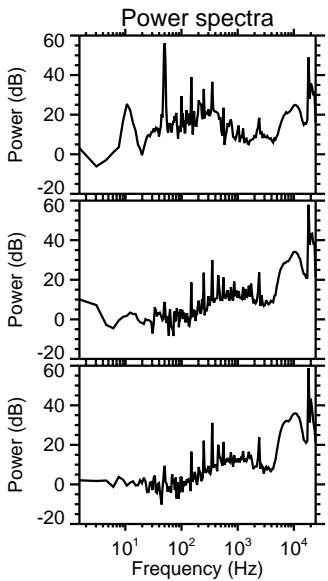
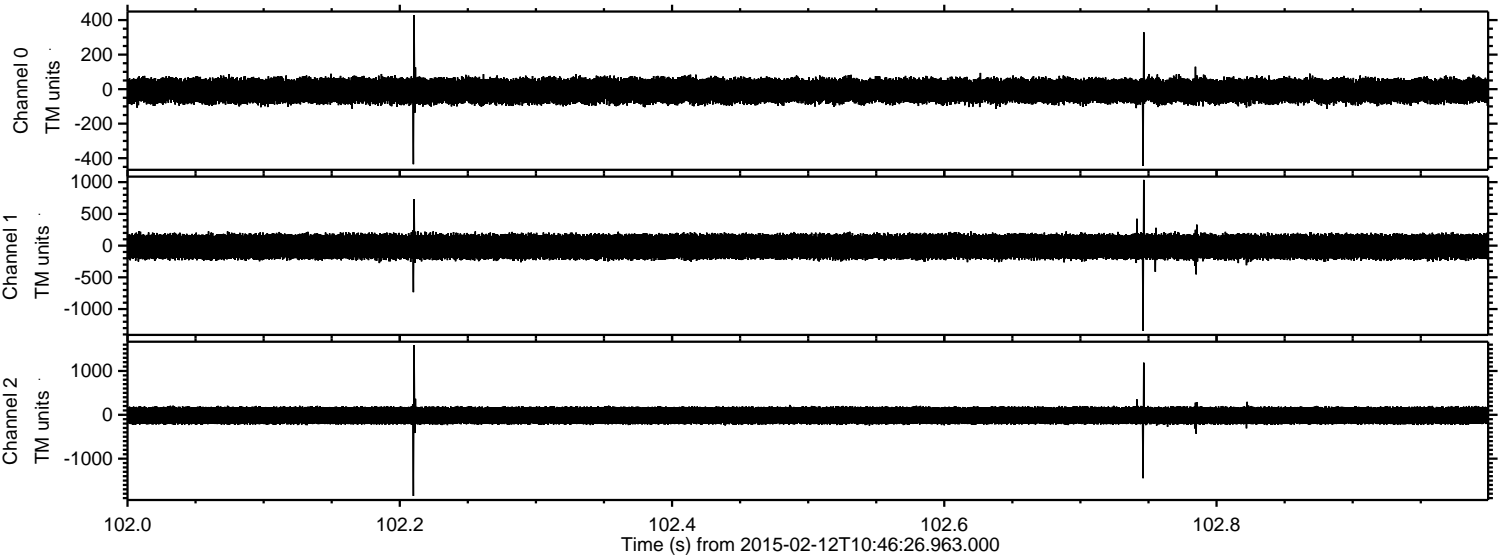
ELMAVAN 3D WAVEFORMS (Measured data sampled at 50 kHz) 49706 packets of 144 samples from 2015-02-12T10:46:26.963.000. Part 45/144

Processed Fri Feb 20 07:02:48 2015 by ELM ver.2012-10-06 from 001\_\_elm20150212\_104625\_\_dat00.bin



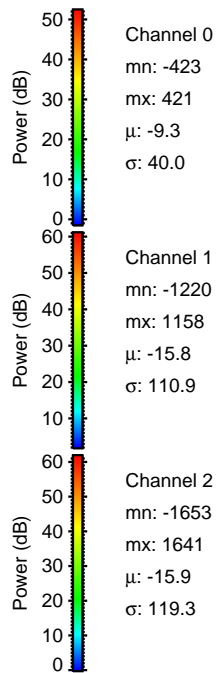
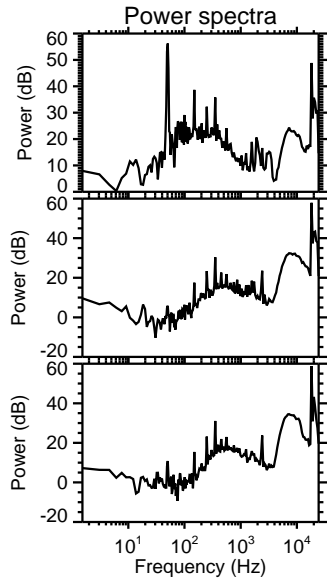
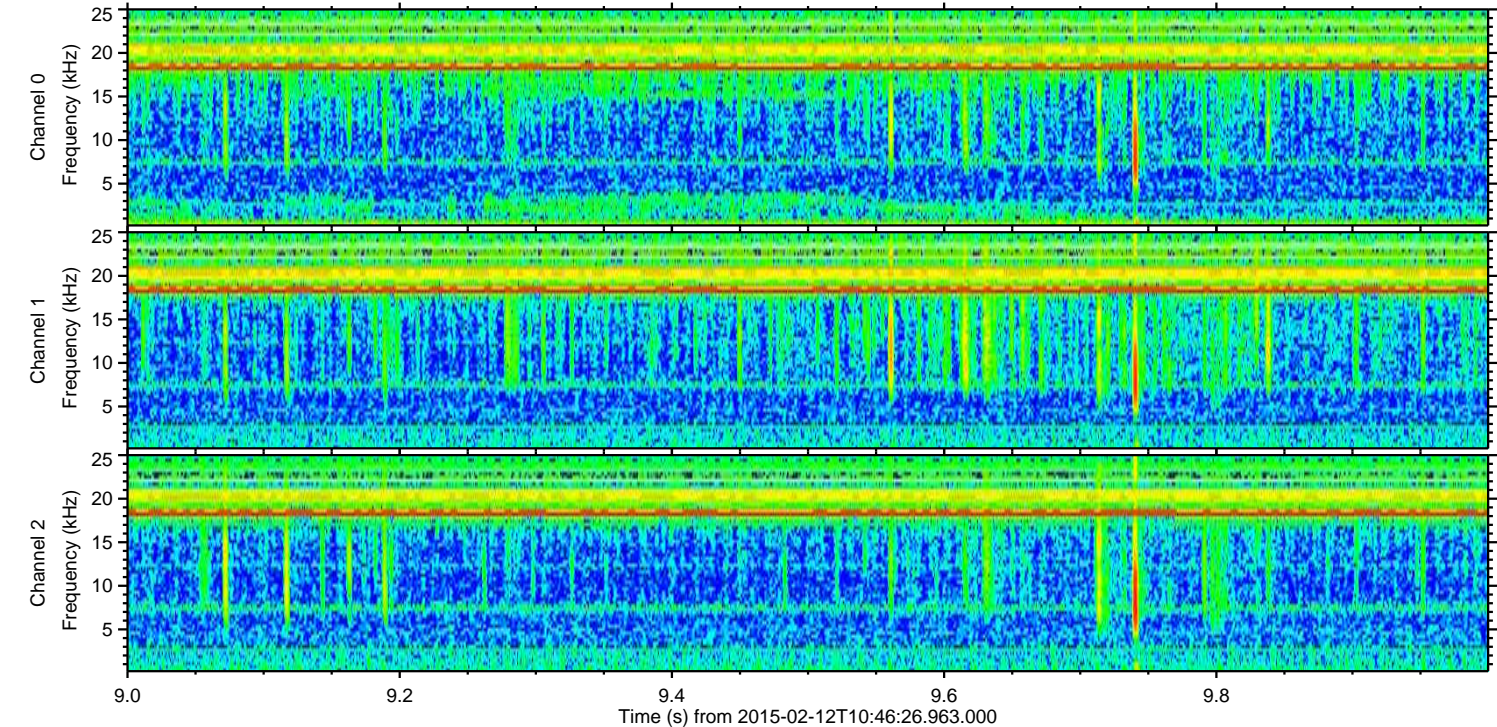
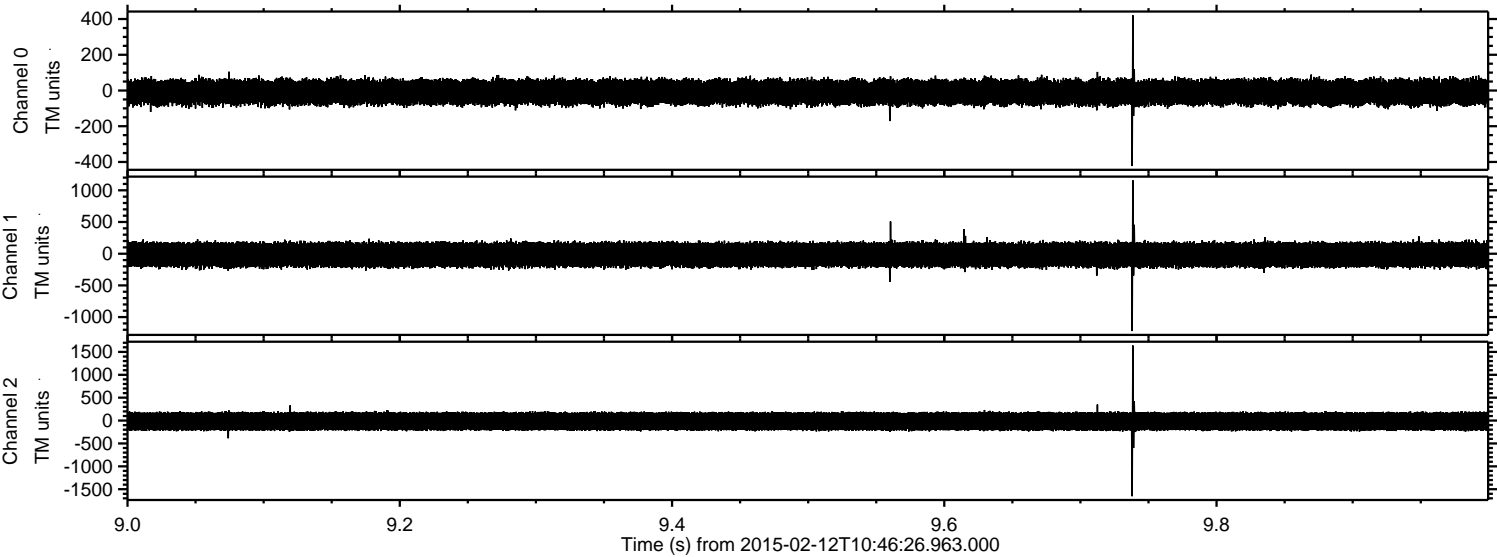


Processed Fri Feb 20 07:02:50 2015 by ELM ver.2012-10-06 from 001\_\_elm20150212\_104625\_\_dat00.bin





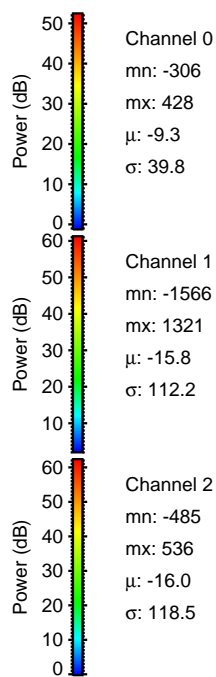
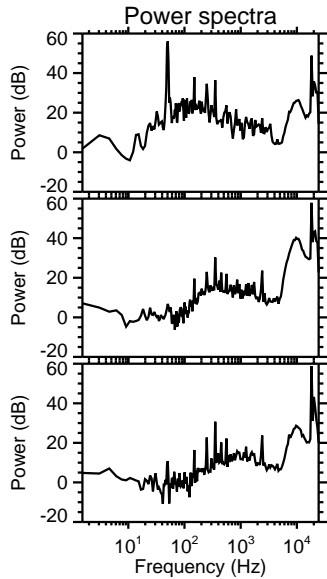
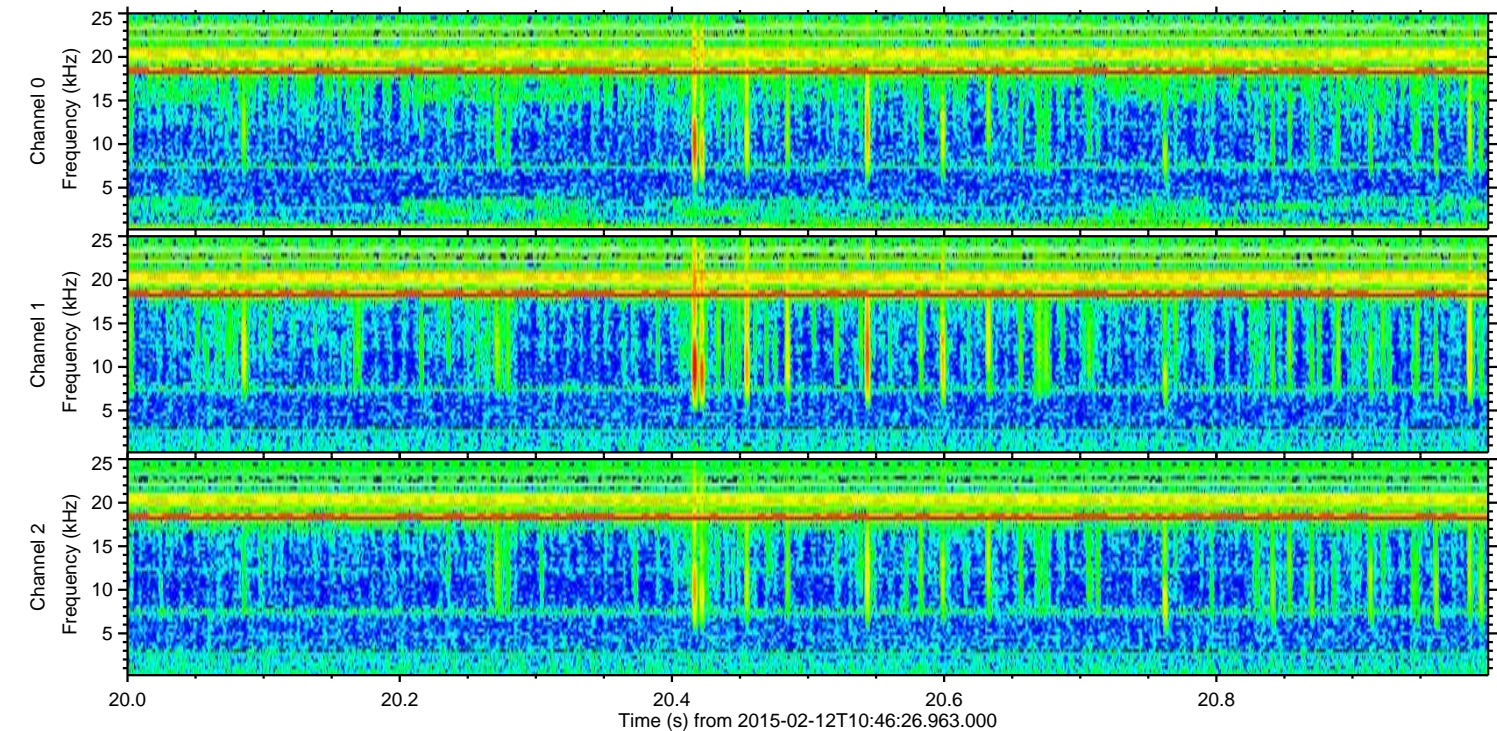
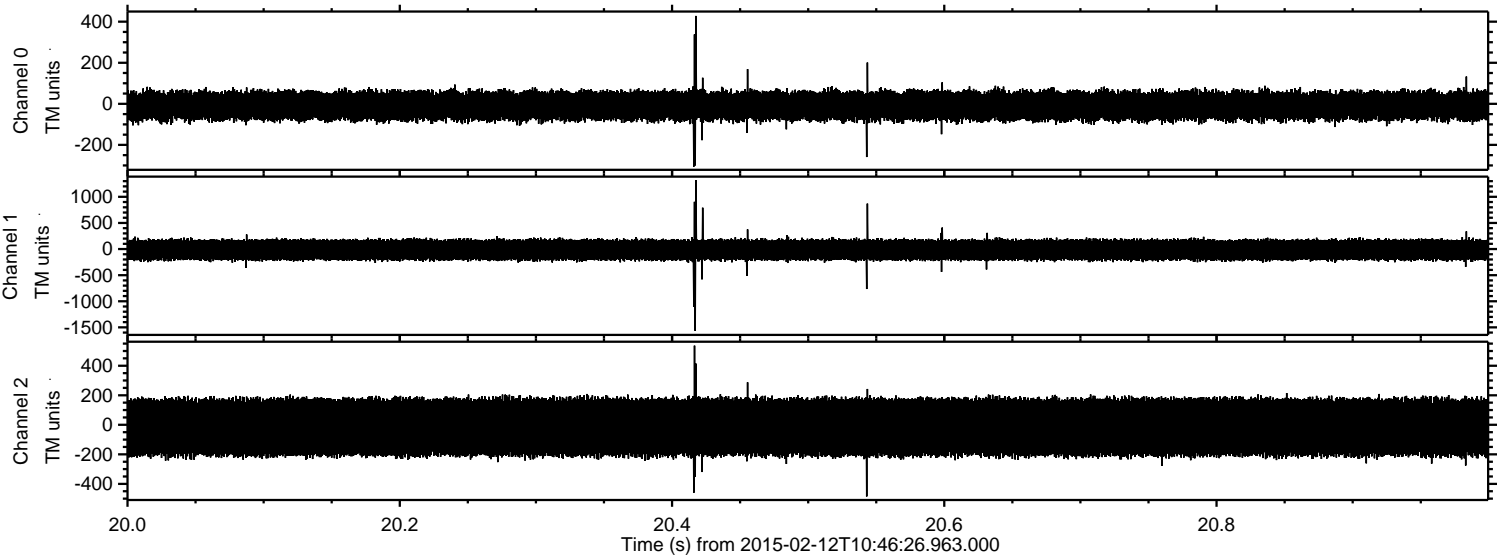
Processed Fri Feb 20 07:02:53 2015 by ELM ver.2012-10-06 from 001\_\_elm20150212\_104625\_\_dat00.bin





ELMAVAN 3D WAVEFORMS (Measured data sampled at 50 kHz) 49706 packets of 144 samples from 2015-02-12T10:46:26.963.000. Part 21/144

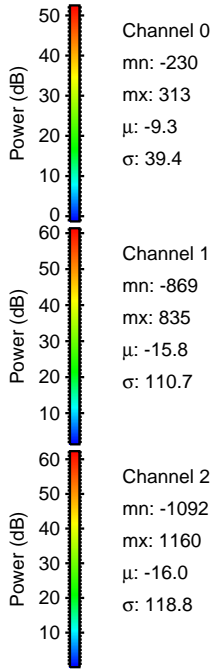
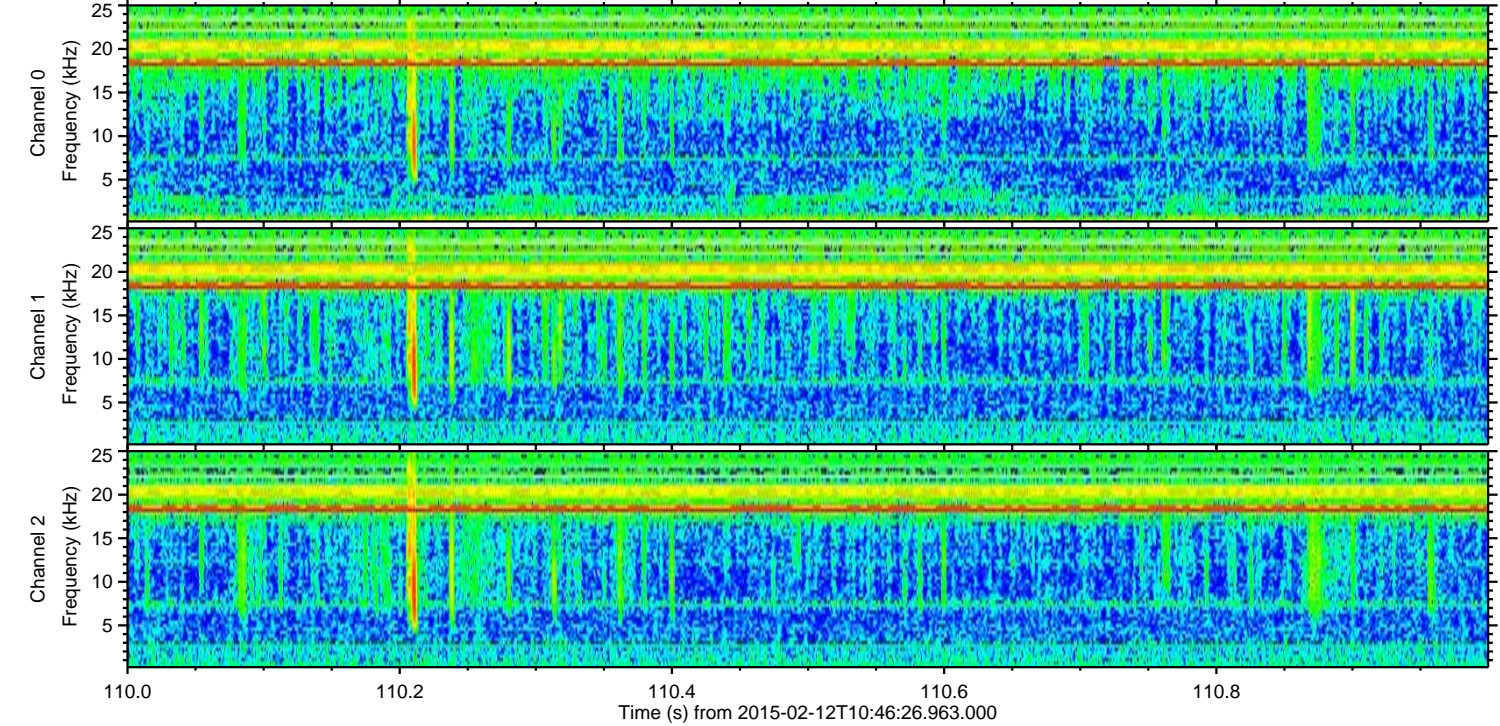
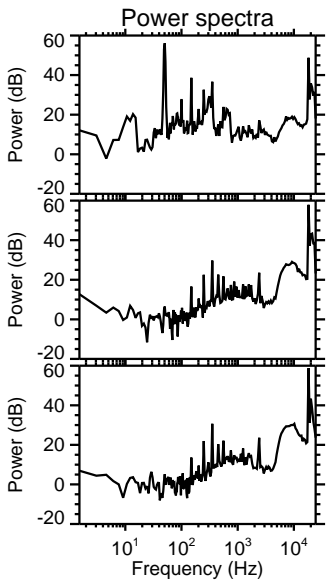
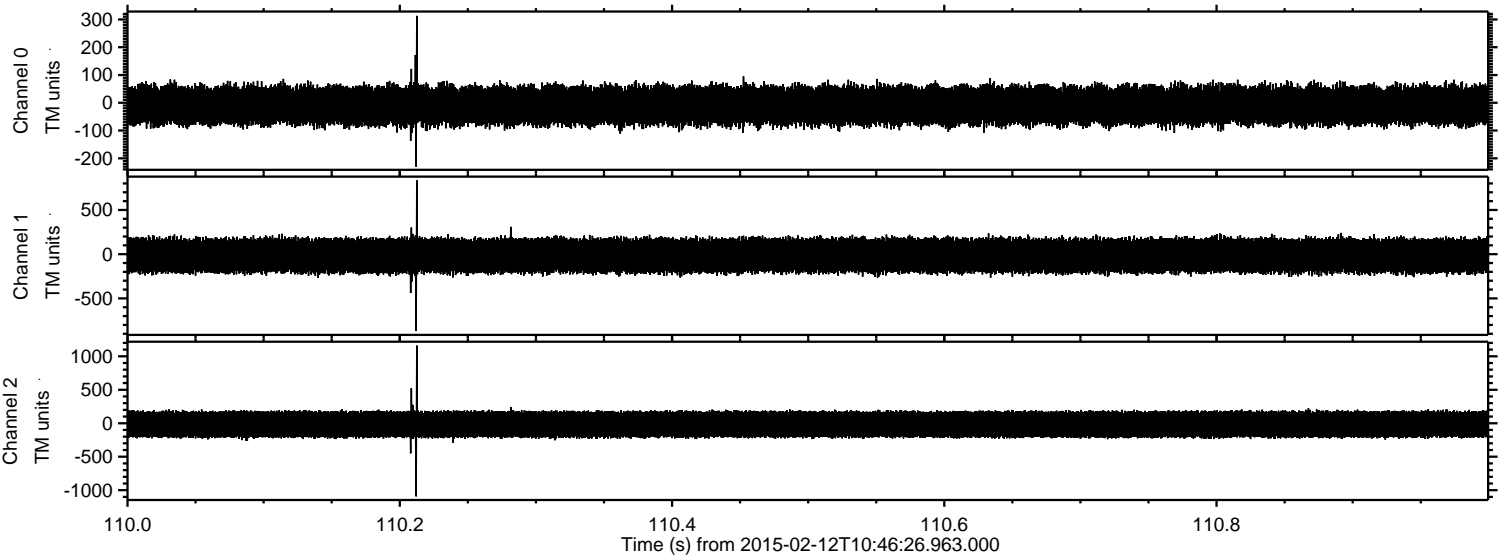
Processed Fri Feb 20 07:02:56 2015 by ELM ver.2012-10-06 from 001\_\_elm20150212\_104625\_\_dat00.bin





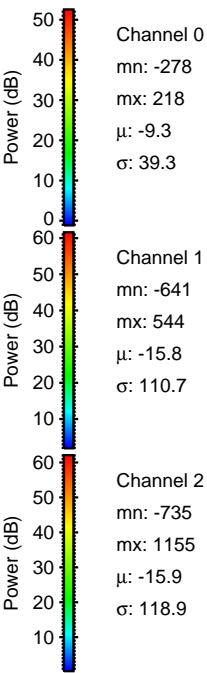
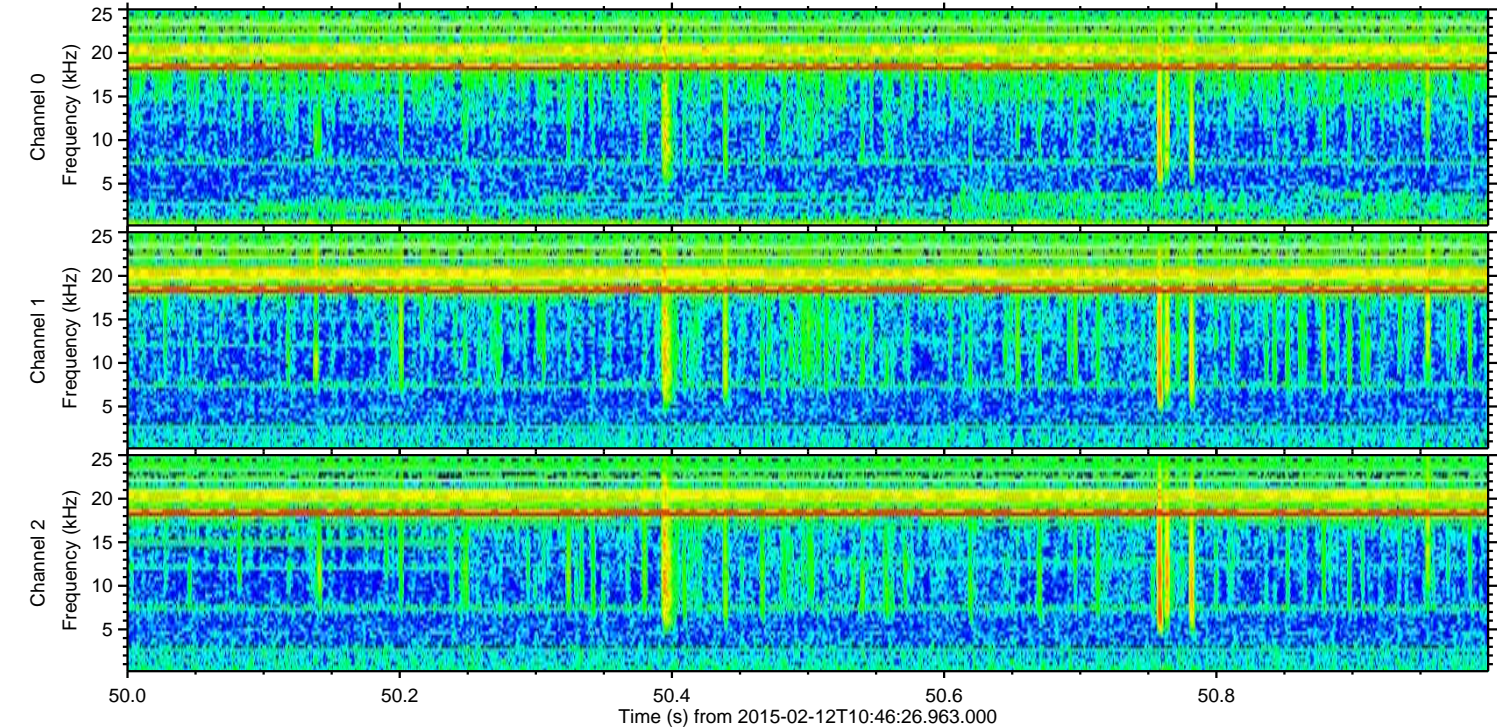
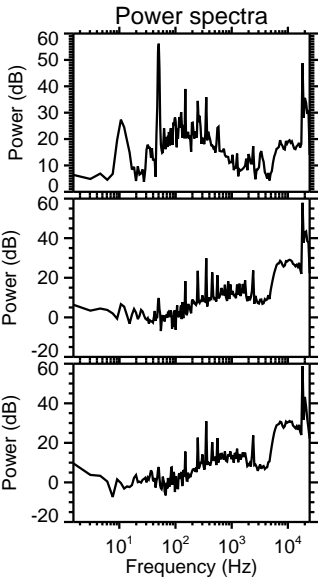
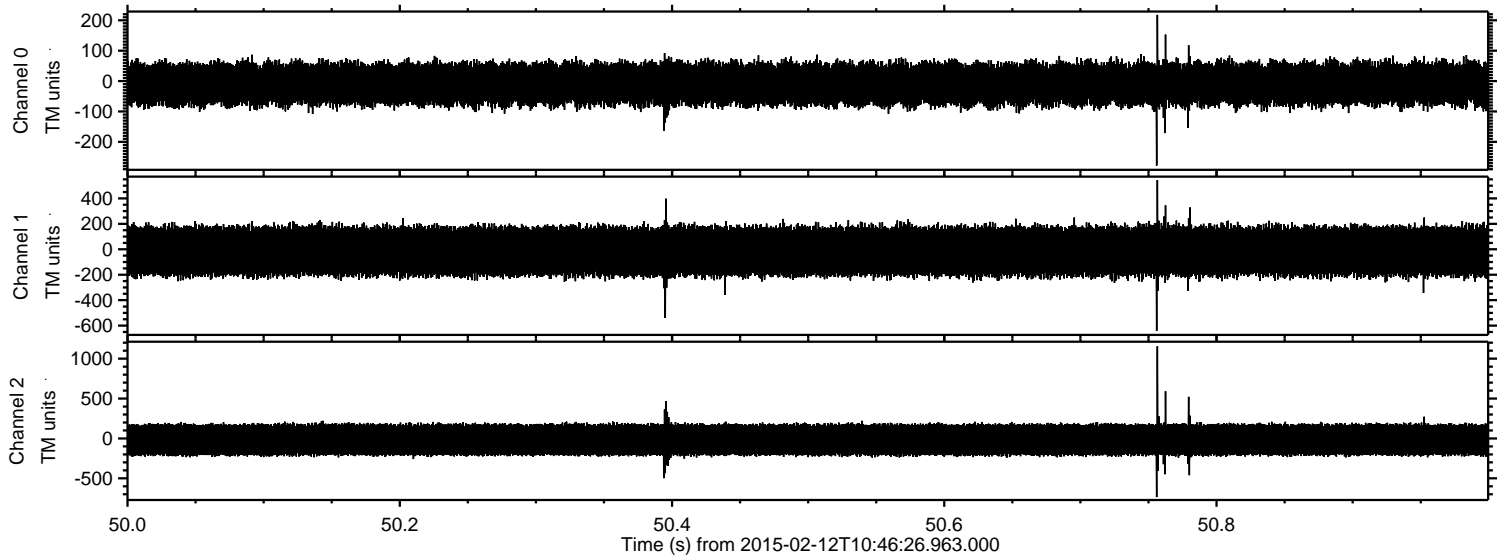
ELMAVAN 3D WAVEFORMS (Measured data sampled at 50 kHz) 49706 packets of 144 samples from 2015-02-12T10:46:26.963.000. Part 111/144

Processed Fri Feb 20 07:02:57 2015 by ELM ver.2012-10-06 from 001\_\_elm20150212\_104625\_\_dat00.bin



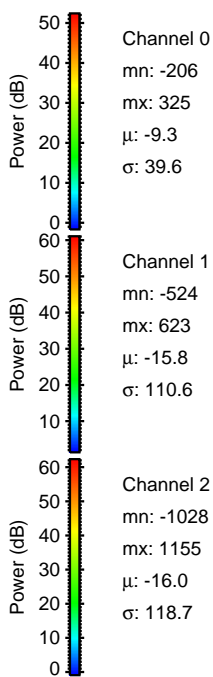
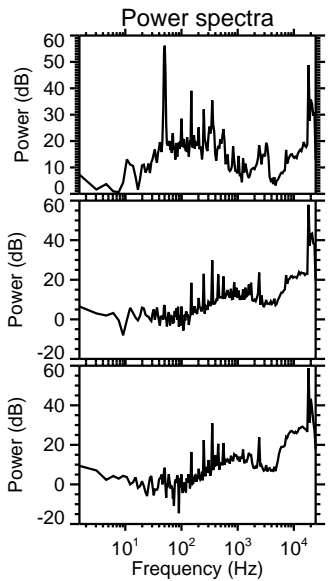
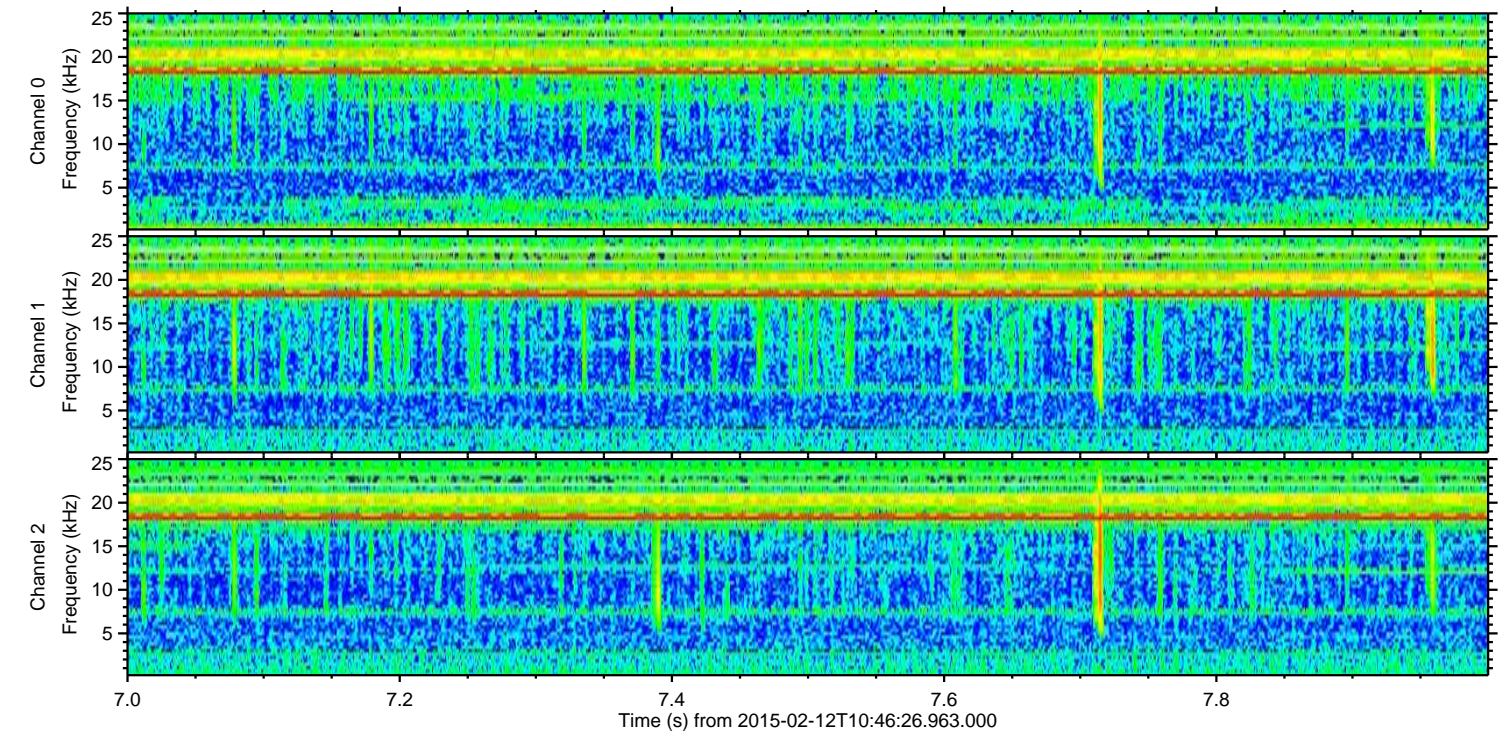
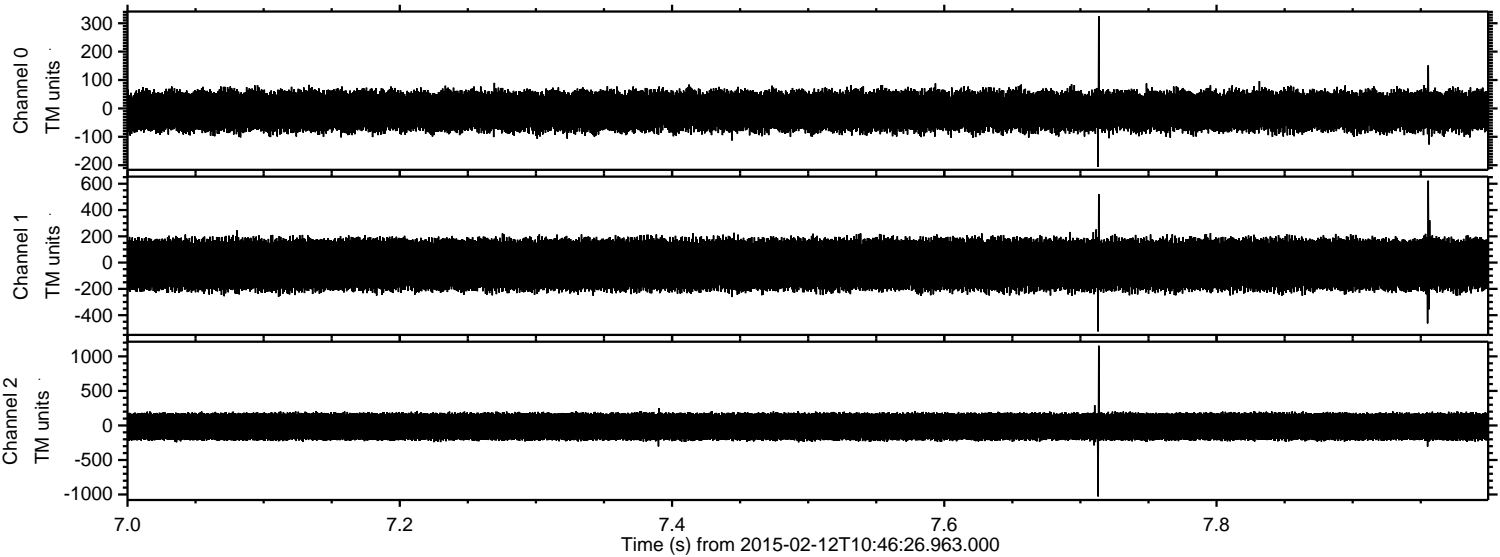


Processed Fri Feb 20 07:02:59 2015 by ELM ver.2012-10-06 from 001\_\_elm20150212\_104625\_\_dat00.bin





Processed Fri Feb 20 07:03:01 2015 by ELM ver.2012-10-06 from 001\_\_elm20150212\_104625\_\_dat00.bin



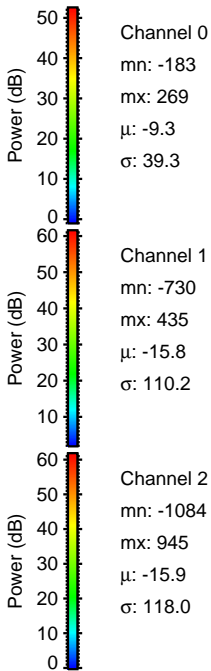
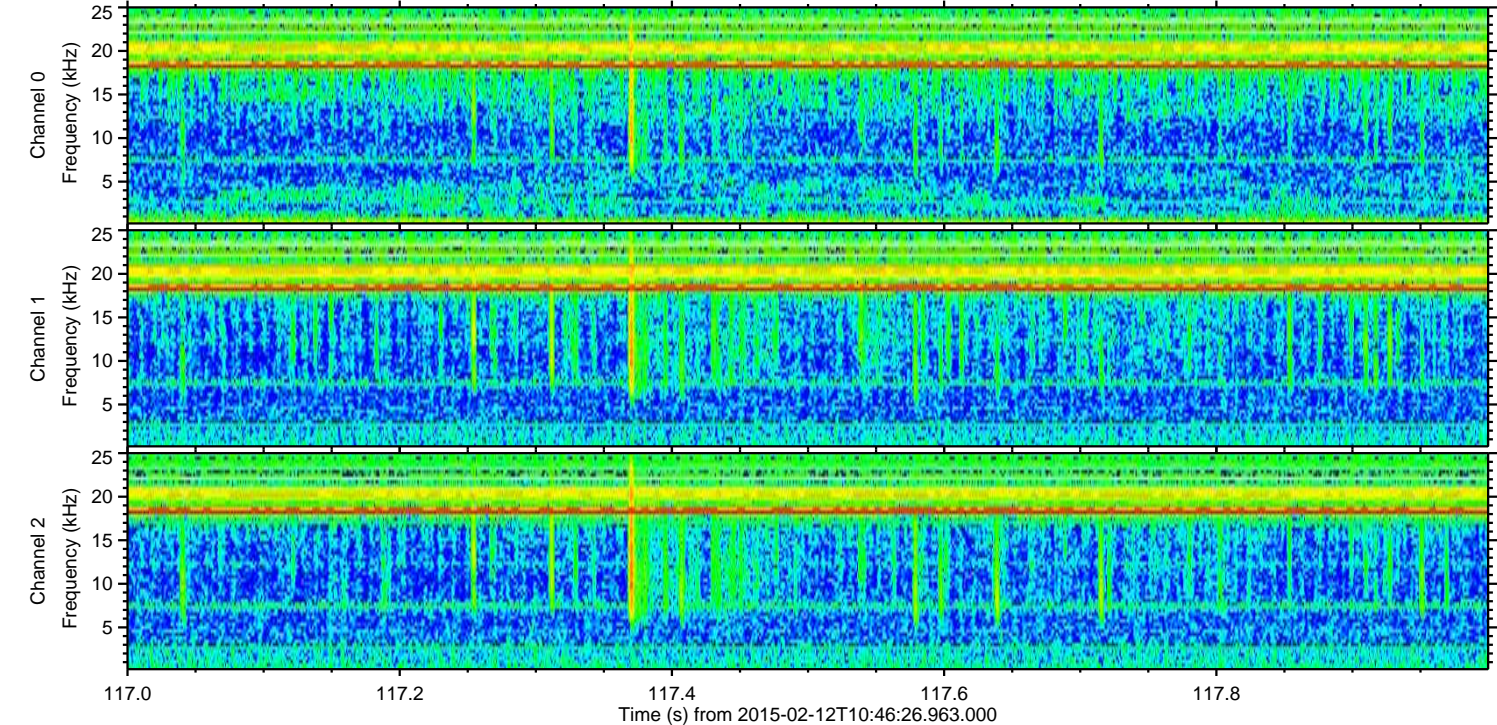
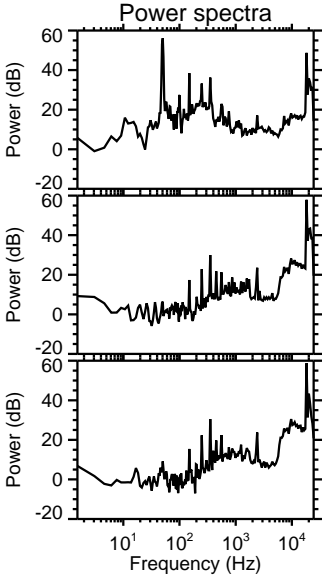
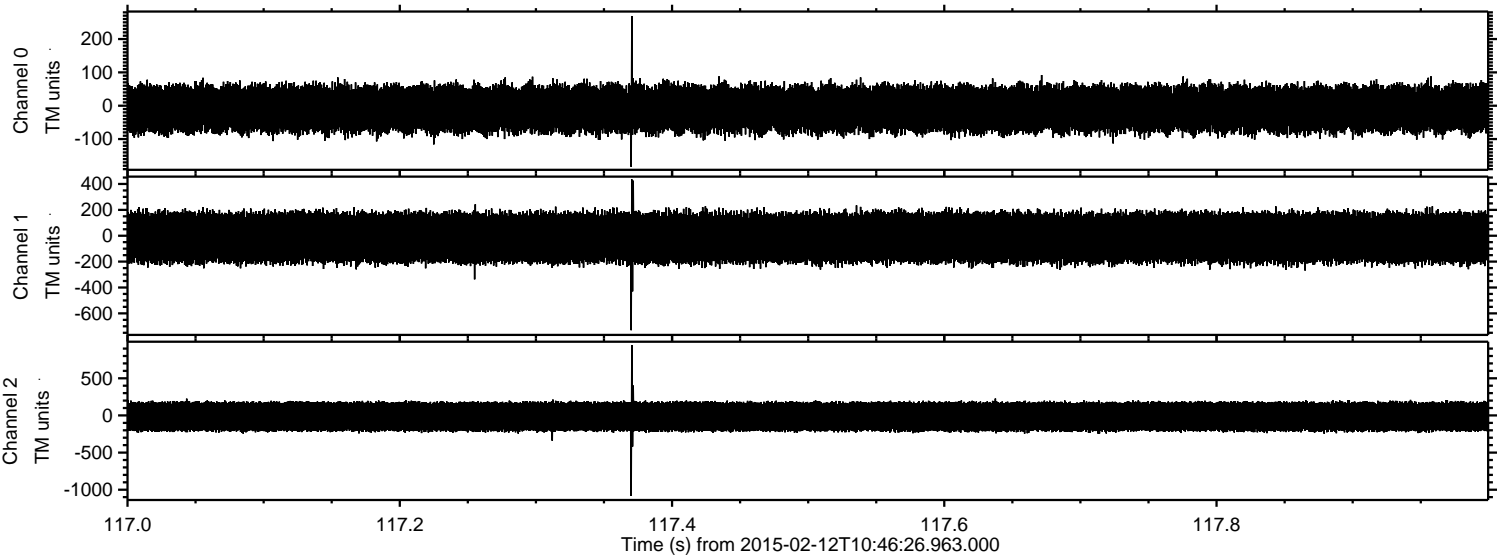
Channel 0  
mn: -206  
mx: 325  
 $\mu$ : -9.3  
 $\sigma$ : 39.6

Channel 1  
mn: -524  
mx: 623  
 $\mu$ : -15.8  
 $\sigma$ : 110.6

Channel 2  
mn: -1028  
mx: 1155  
 $\mu$ : -16.0  
 $\sigma$ : 118.7

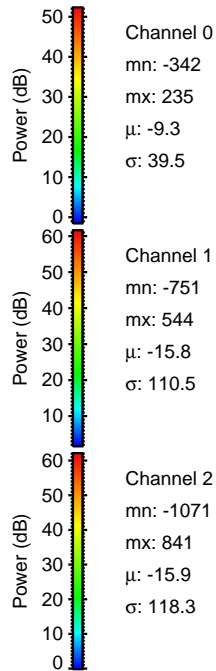
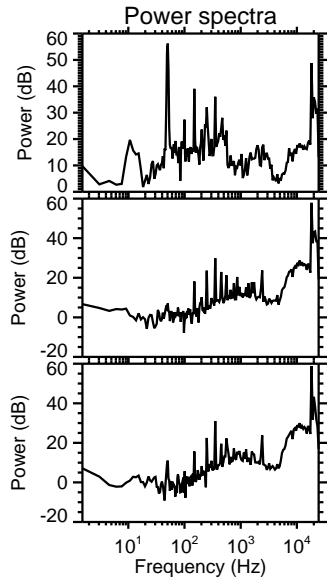
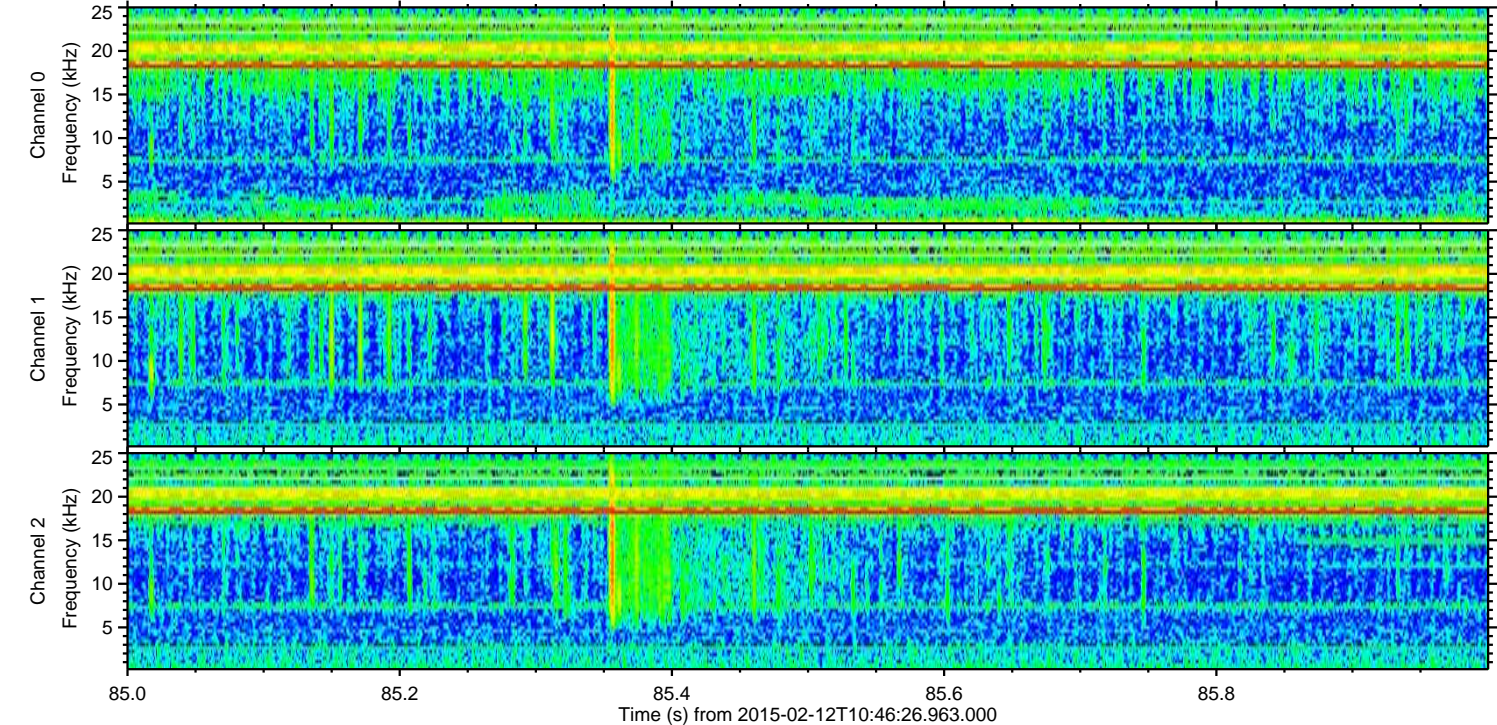
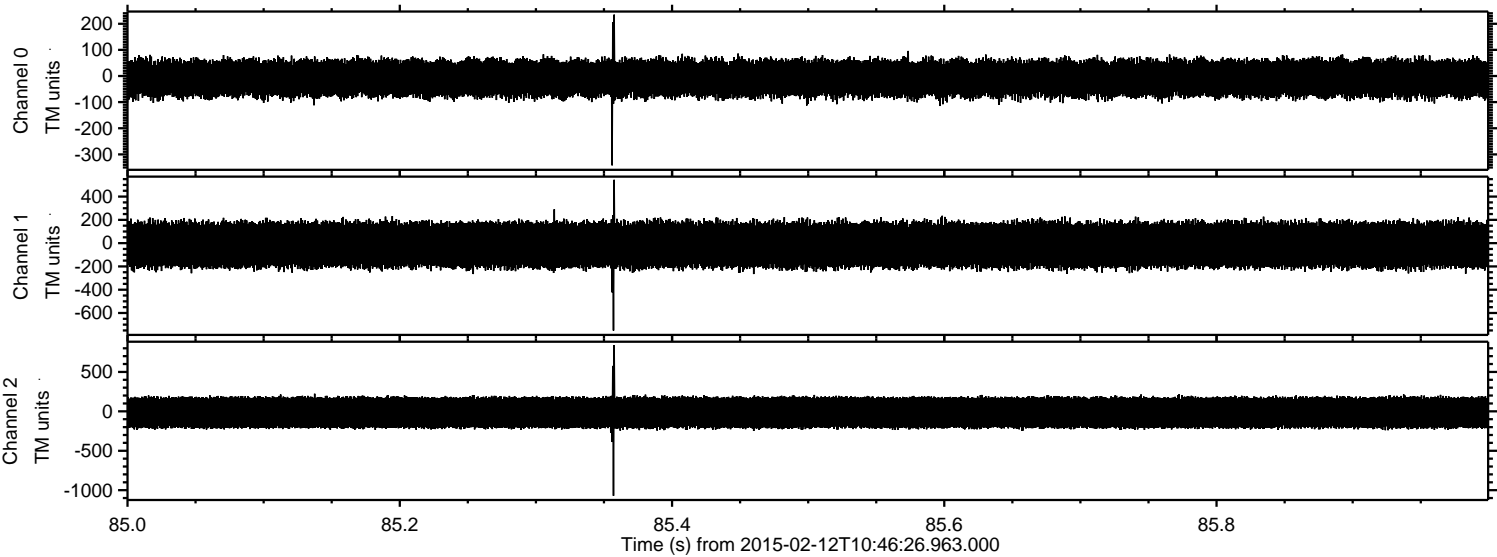


Processed Fri Feb 20 07:03:03 2015 by ELM ver.2012-10-06 from 001\_\_elm20150212\_104625\_\_dat00.bin





Processed Fri Feb 20 07:03:04 2015 by ELM ver.2012-10-06 from 001\_\_elm20150212\_104625\_\_dat00.bin



Channel 0  
mn: -342  
mx: 235  
 $\mu$ : -9.3  
 $\sigma$ : 39.5

Channel 1  
mn: -751  
mx: 544  
 $\mu$ : -15.8  
 $\sigma$ : 110.5

Channel 2  
mn: -1071  
mx: 841  
 $\mu$ : -15.9  
 $\sigma$ : 118.3



Processed Fri Feb 20 07:03:06 2015 by ELM ver.2012-10-06 from 001\_\_elm20150212\_104625\_\_dat00.bin

