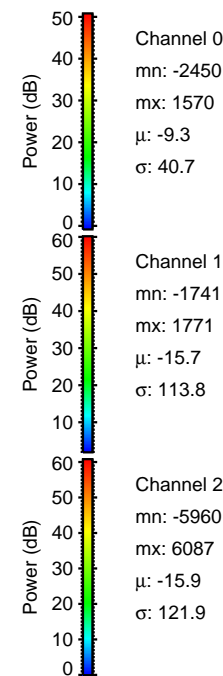
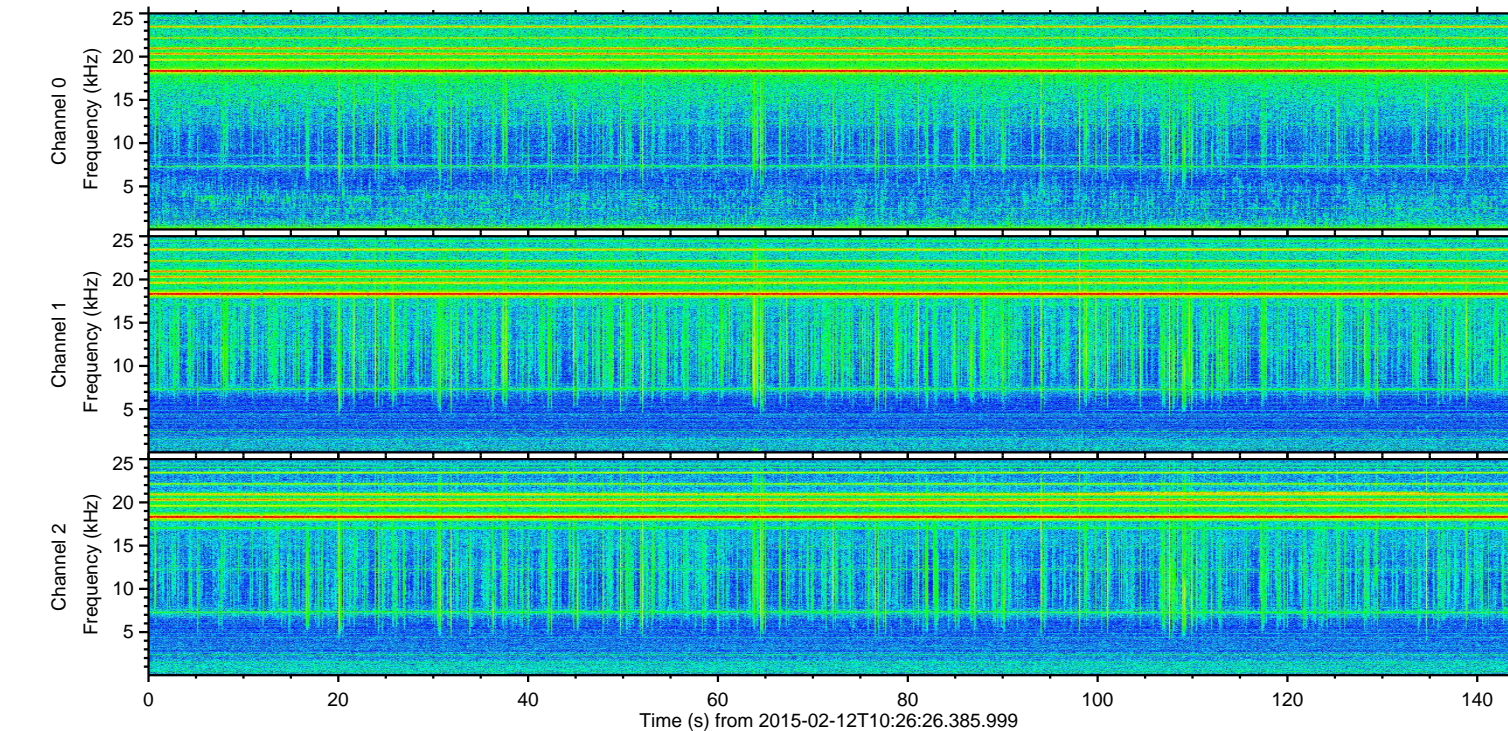
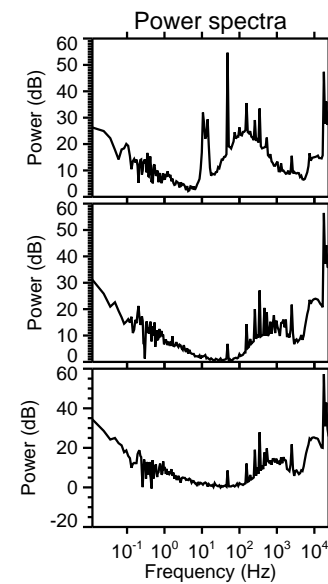
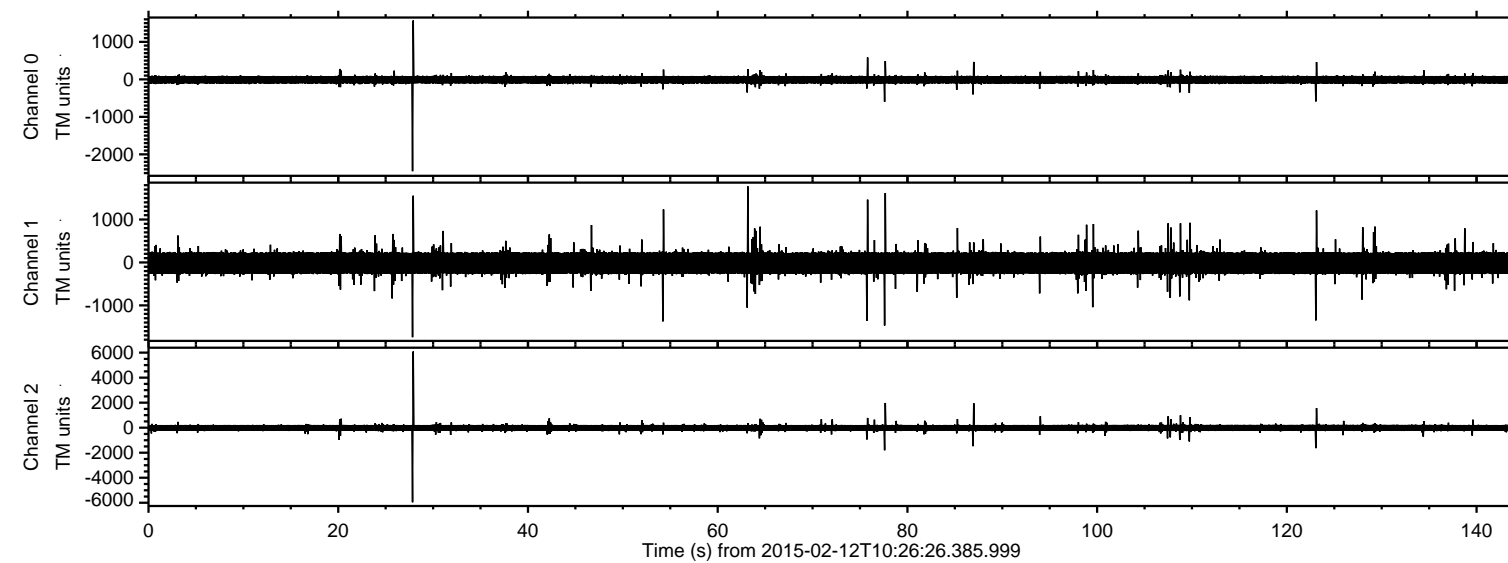
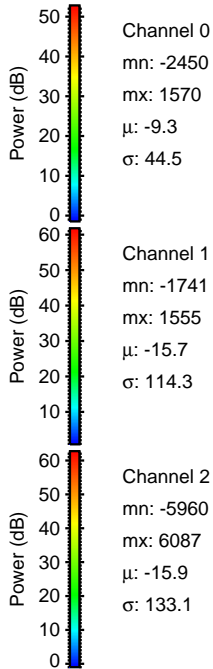
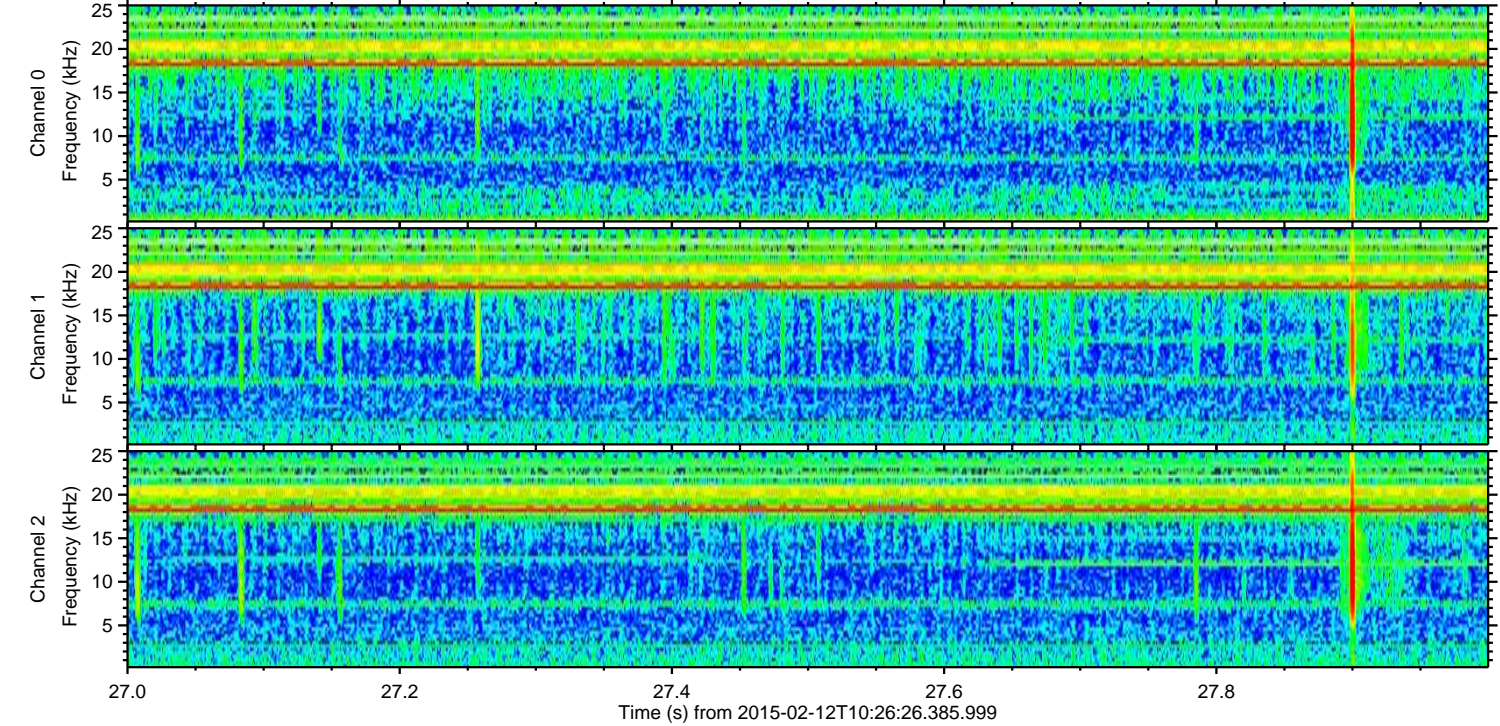
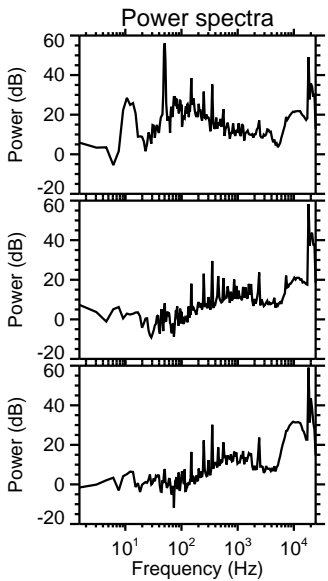
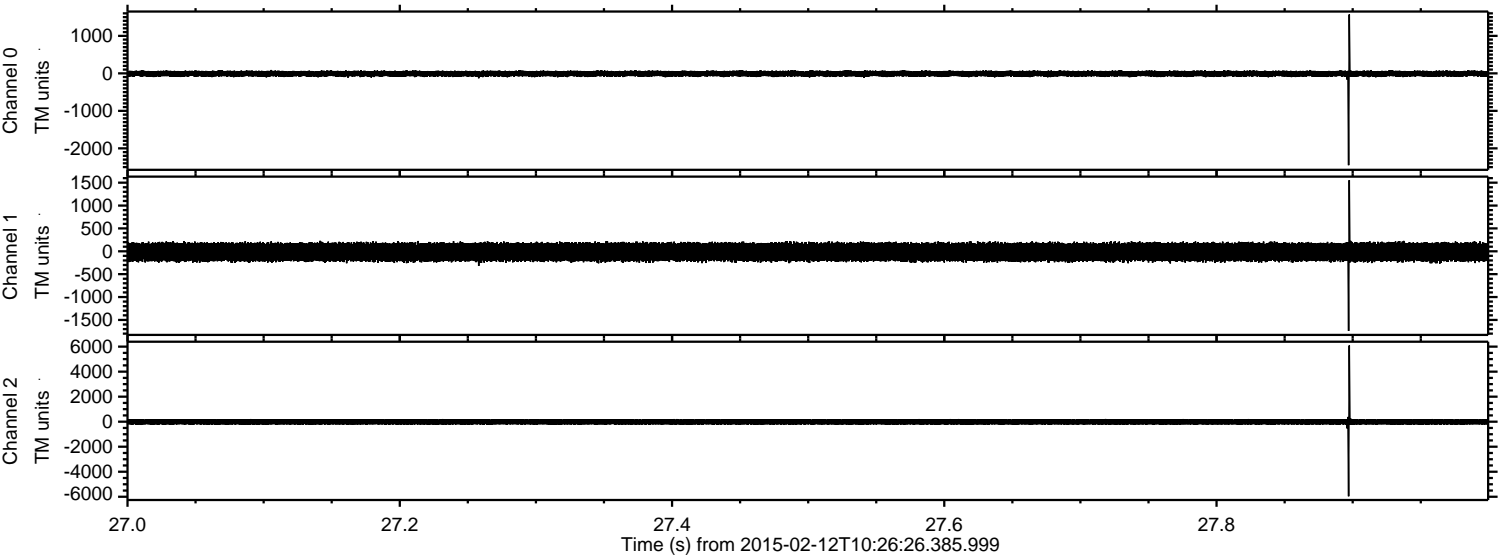


# ELMAVAN 3D WAVEFORMS (Measured data sampled at 50 kHz) 49803 packets of 144 samples from 2015-02-12T10:26:26.385.999.

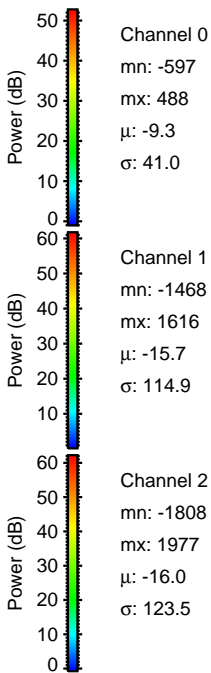
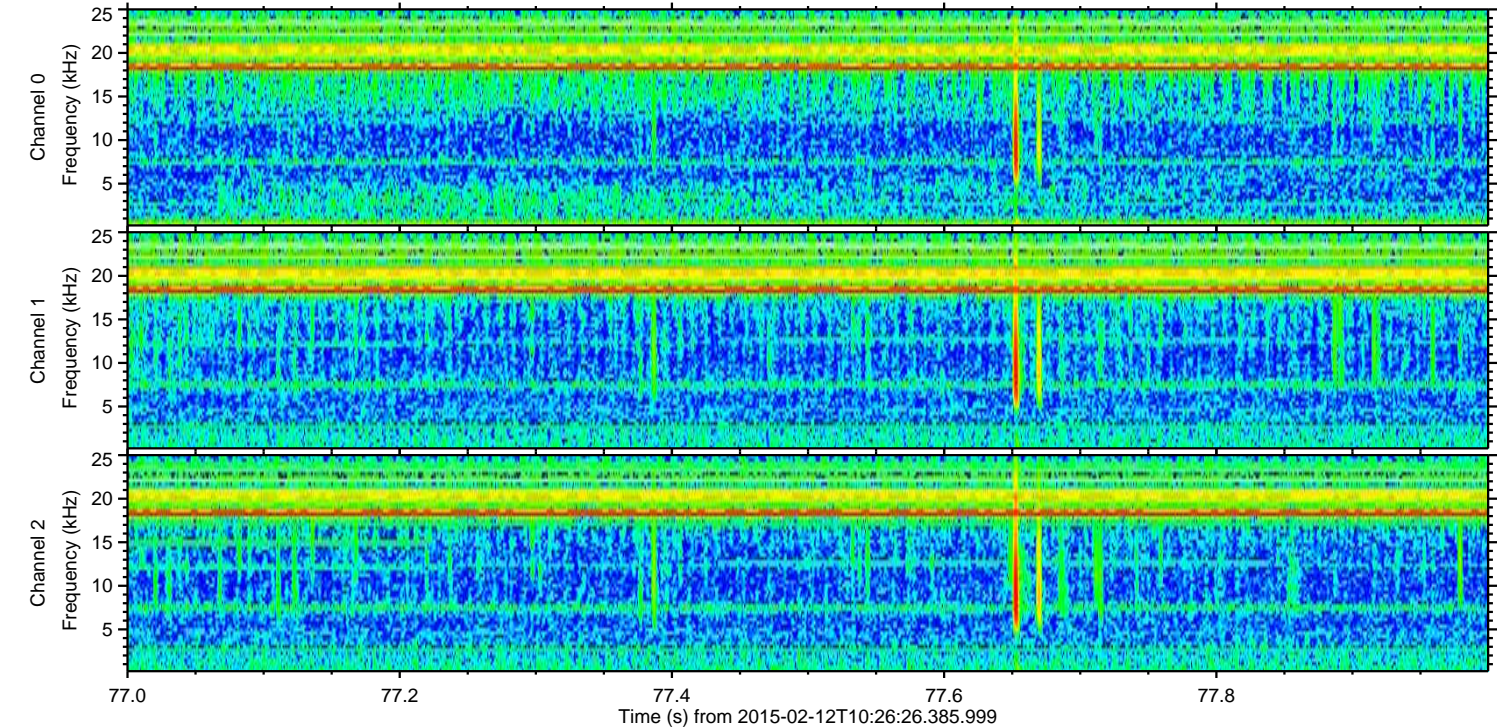
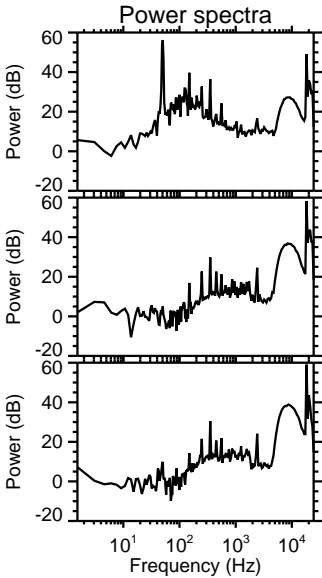
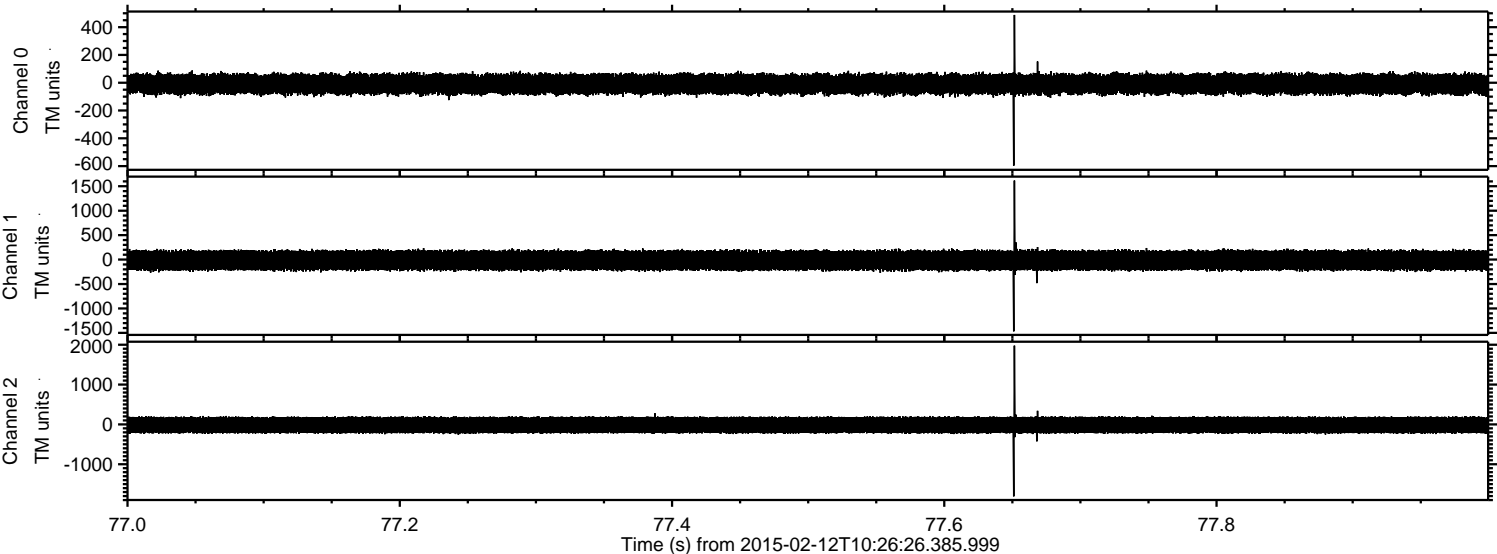
Processed Fri Feb 20 06:55:58 2015 by ELM ver.2012-10-06 from 001\_\_elm20150212\_102625\_\_dat00.bin



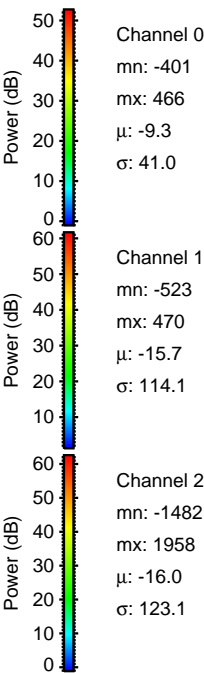
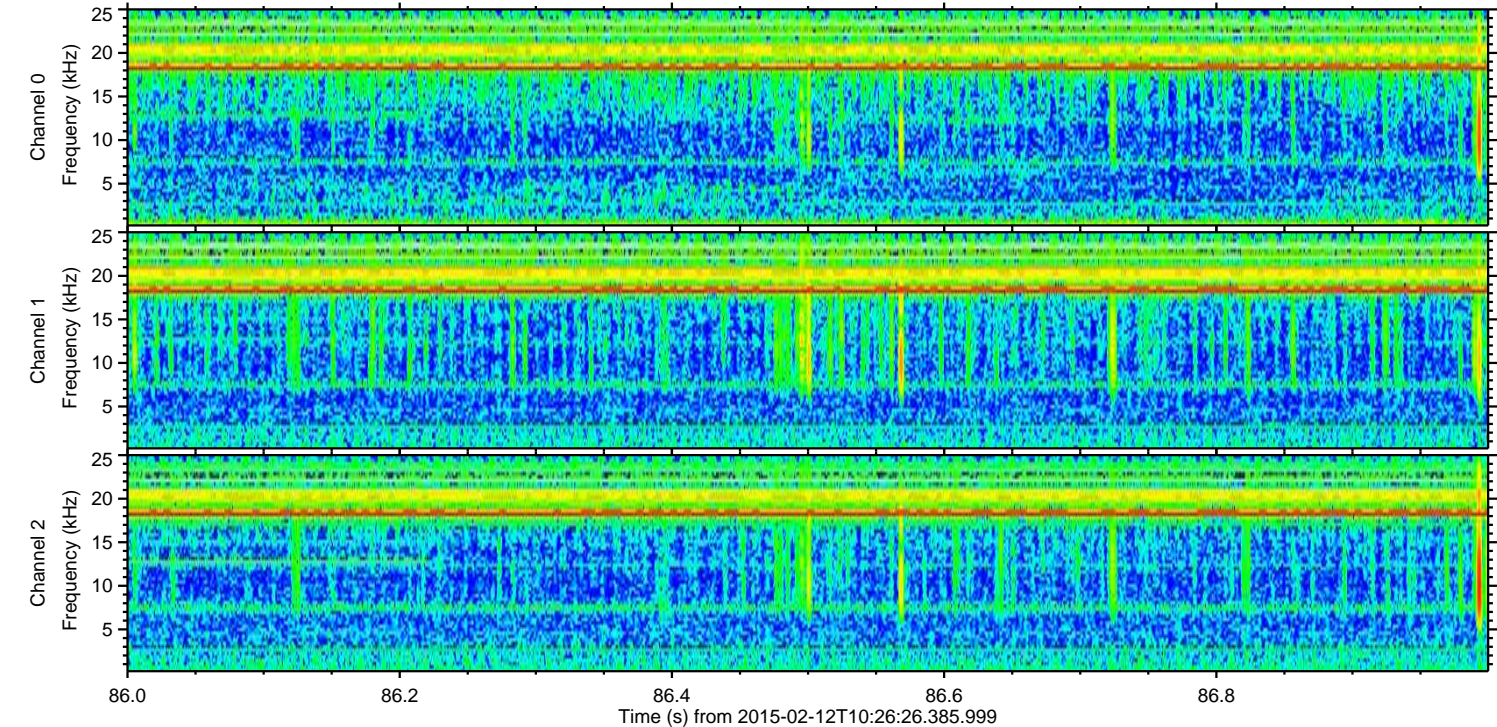
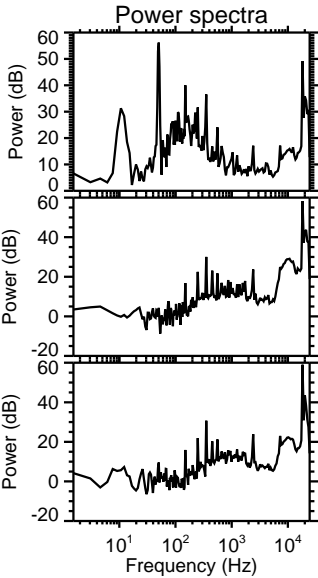
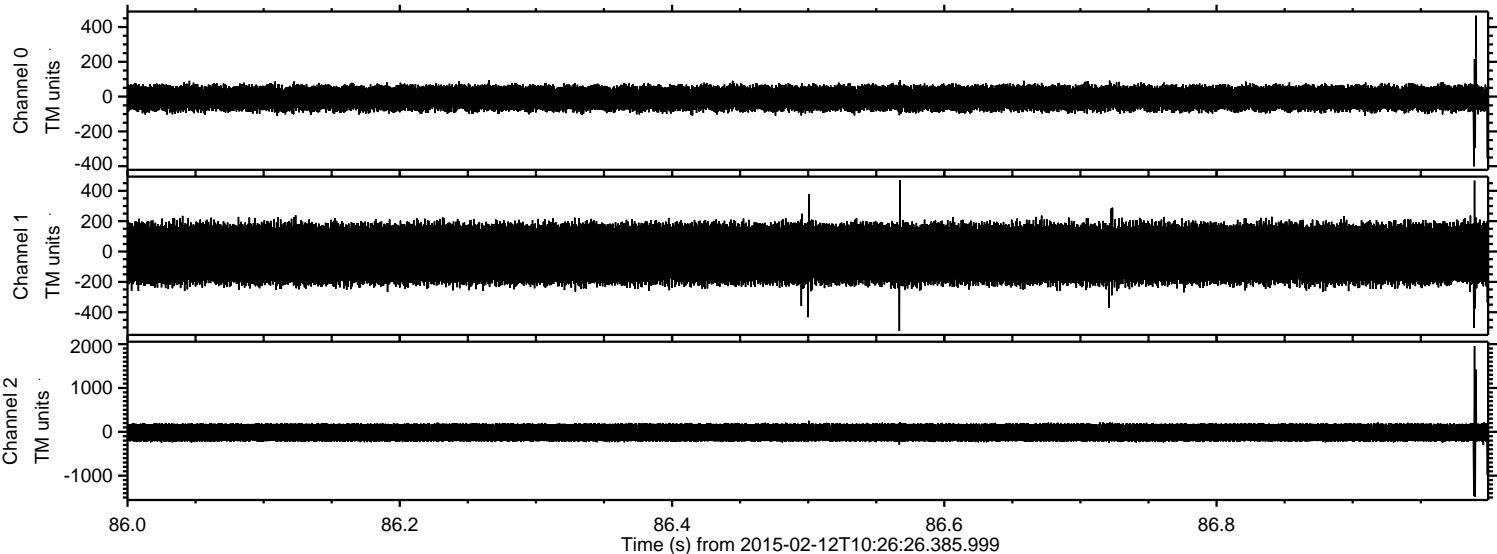
Processed Fri Feb 20 06:56:15 2015 by ELM ver.2012-10-06 from 001\_\_elm20150212\_102625\_\_dat00.bin



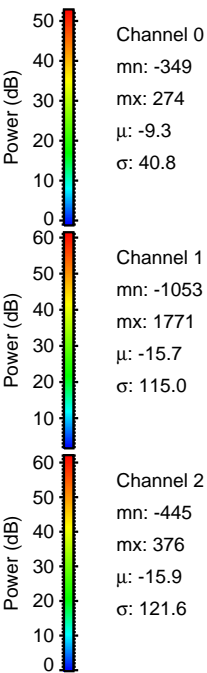
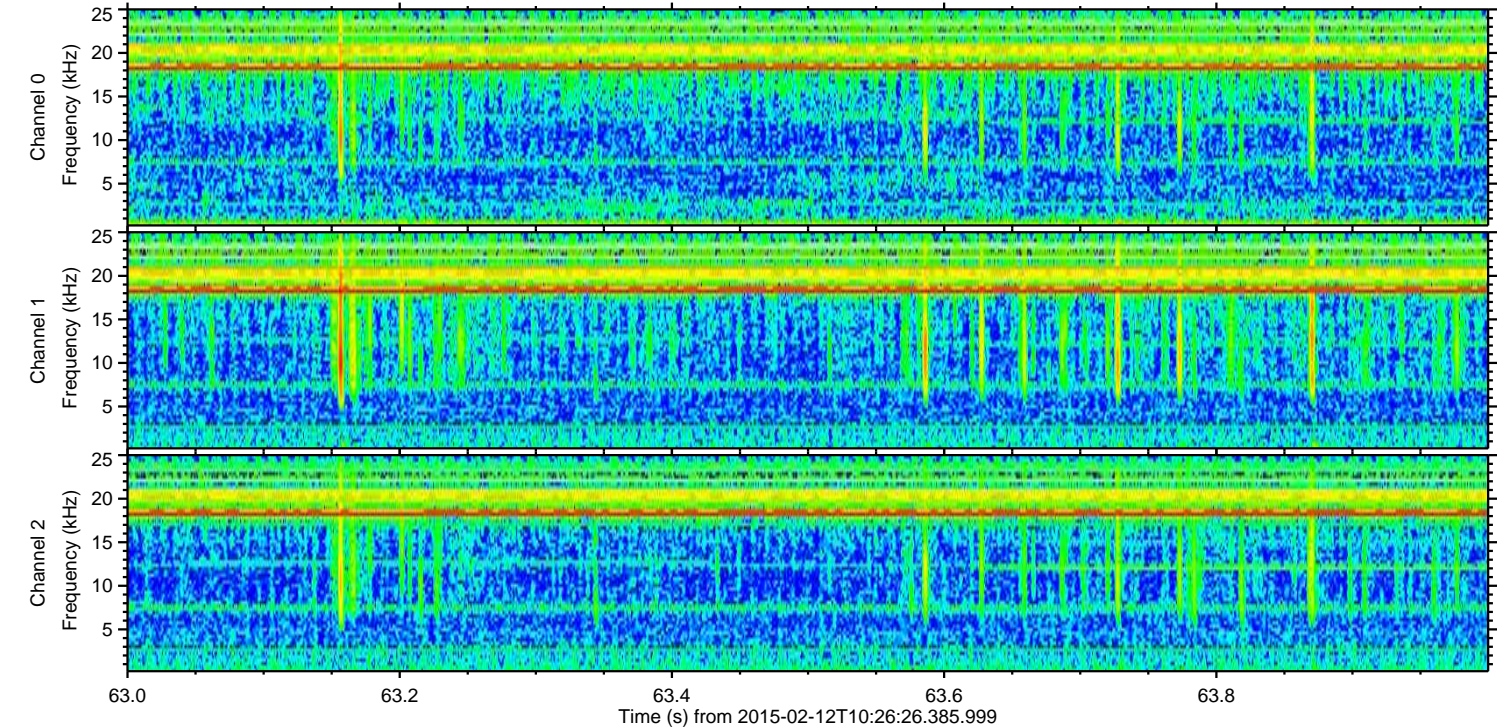
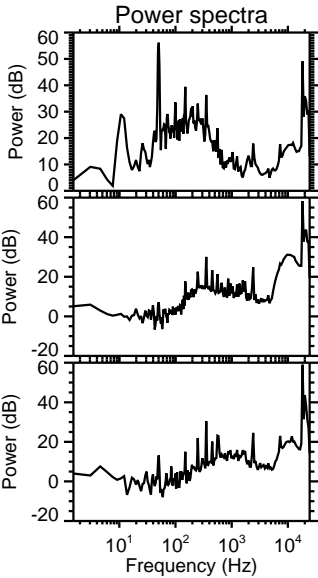
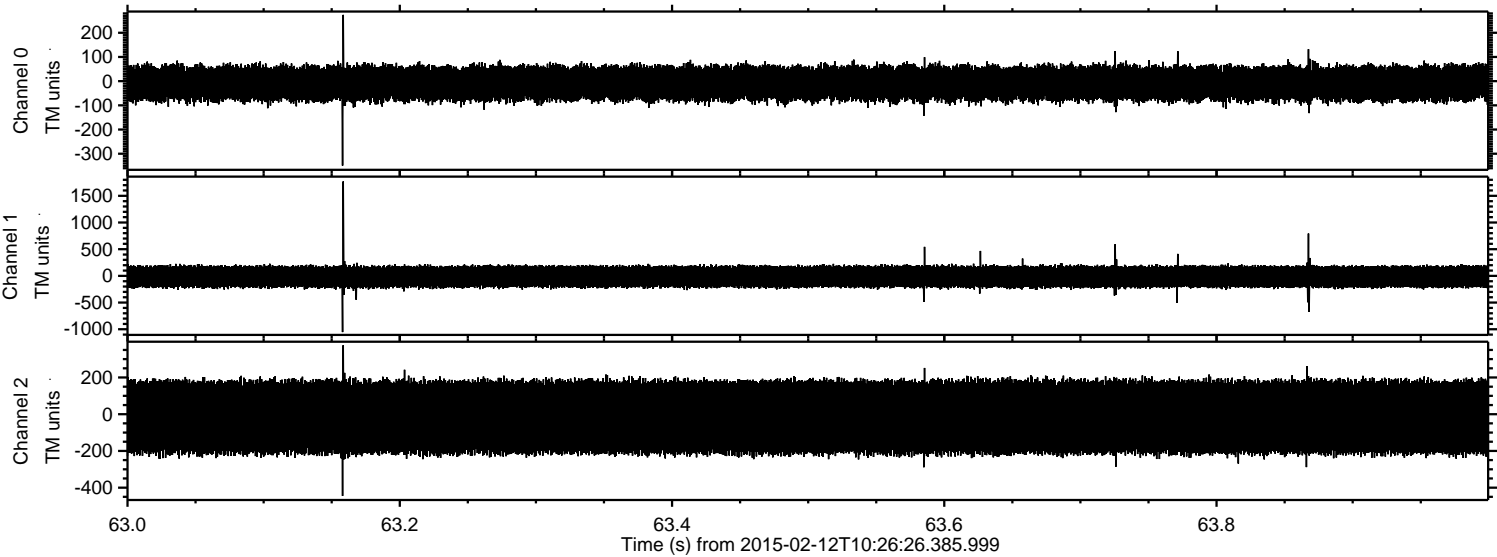
Processed Fri Feb 20 06:56:16 2015 by ELM ver.2012-10-06 from 001\_\_elm20150212\_102625\_\_dat00.bin



Processed Fri Feb 20 06:56:17 2015 by ELM ver.2012-10-06 from 001\_\_elm20150212\_102625\_\_dat00.bin

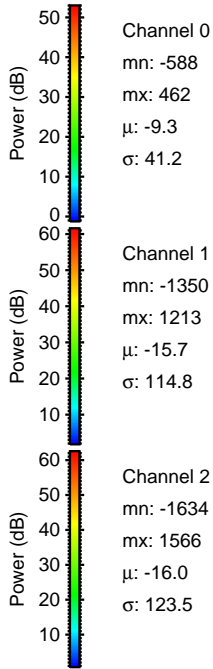
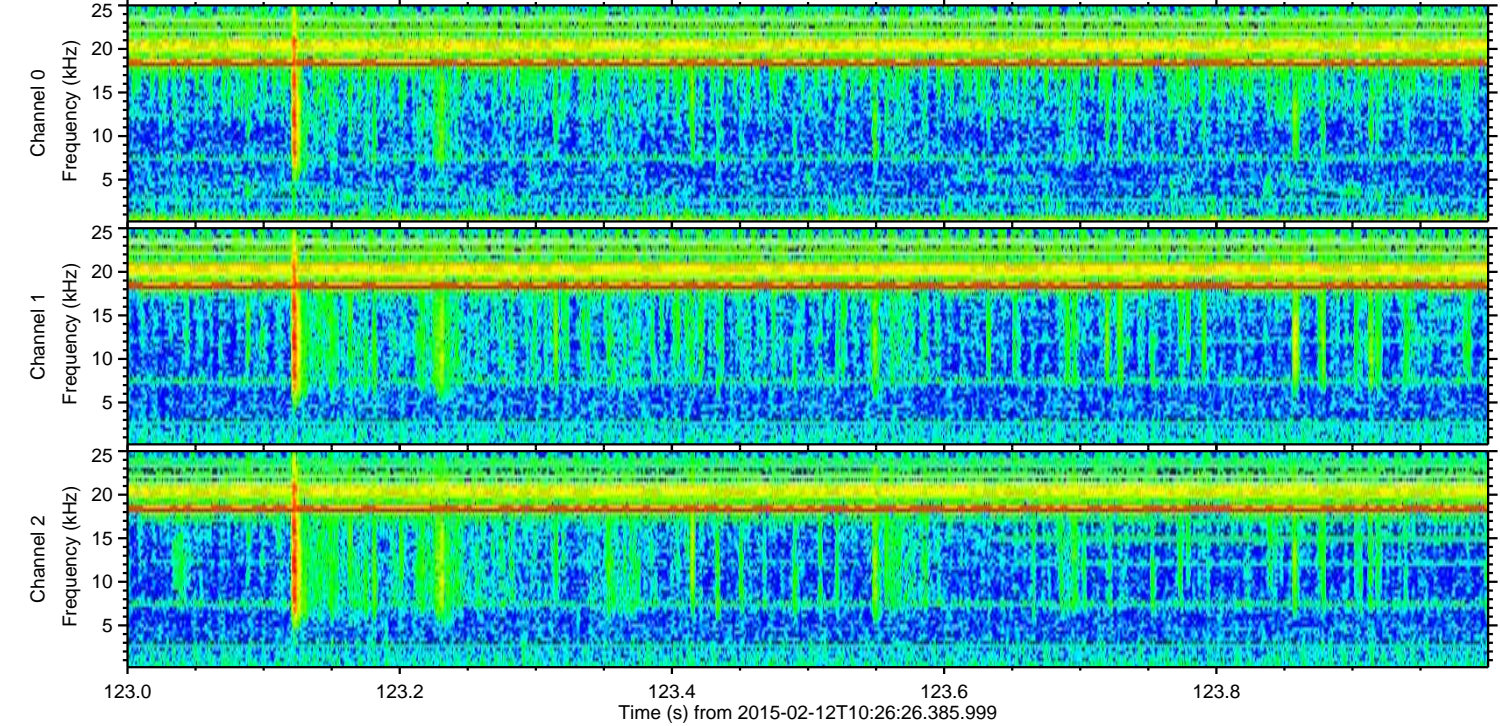
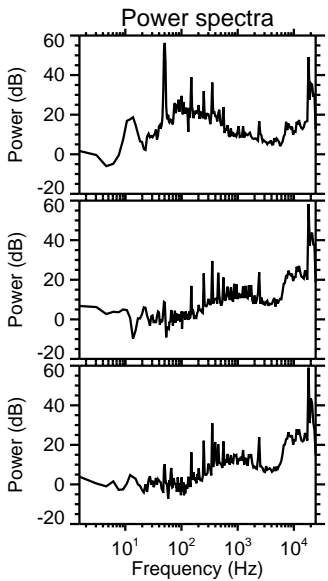
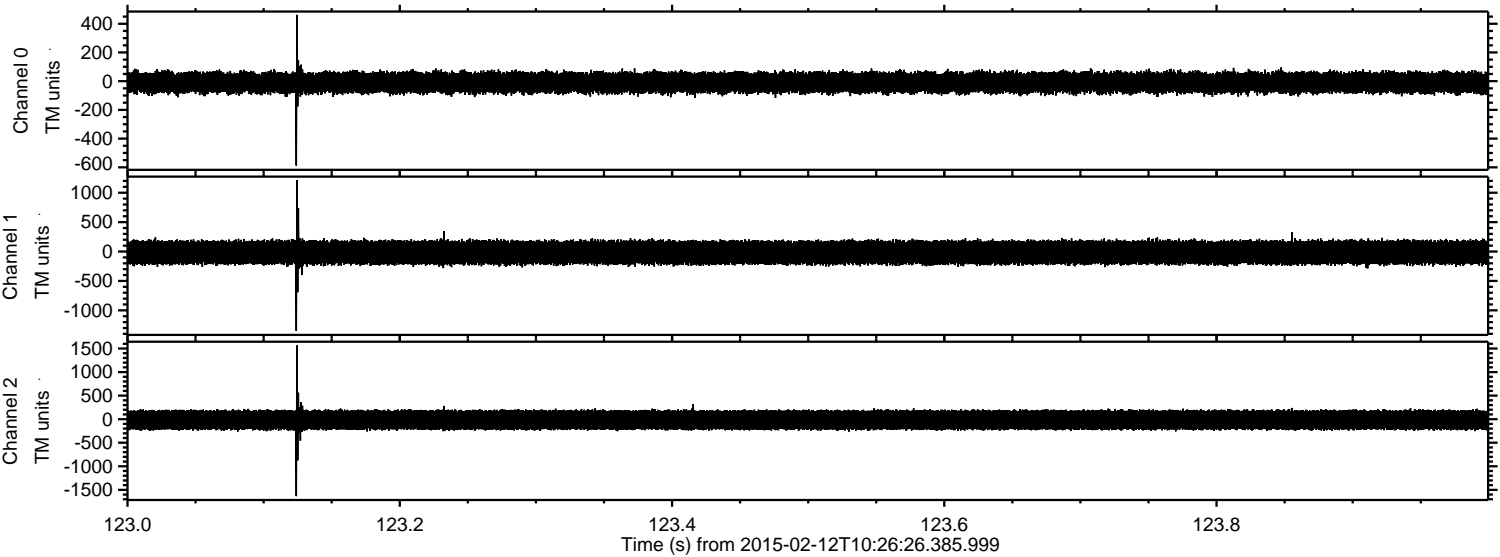


Processed Fri Feb 20 06:56:18 2015 by ELM ver.2012-10-06 from 001\_\_elm20150212\_102625\_\_dat00.bin

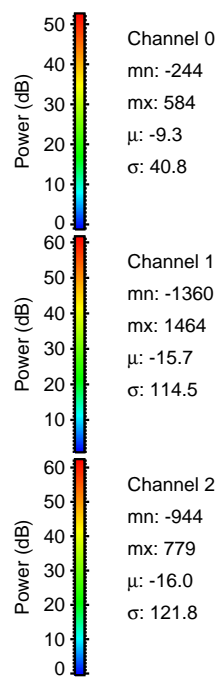
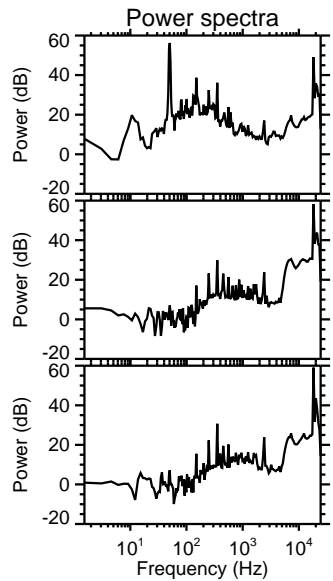
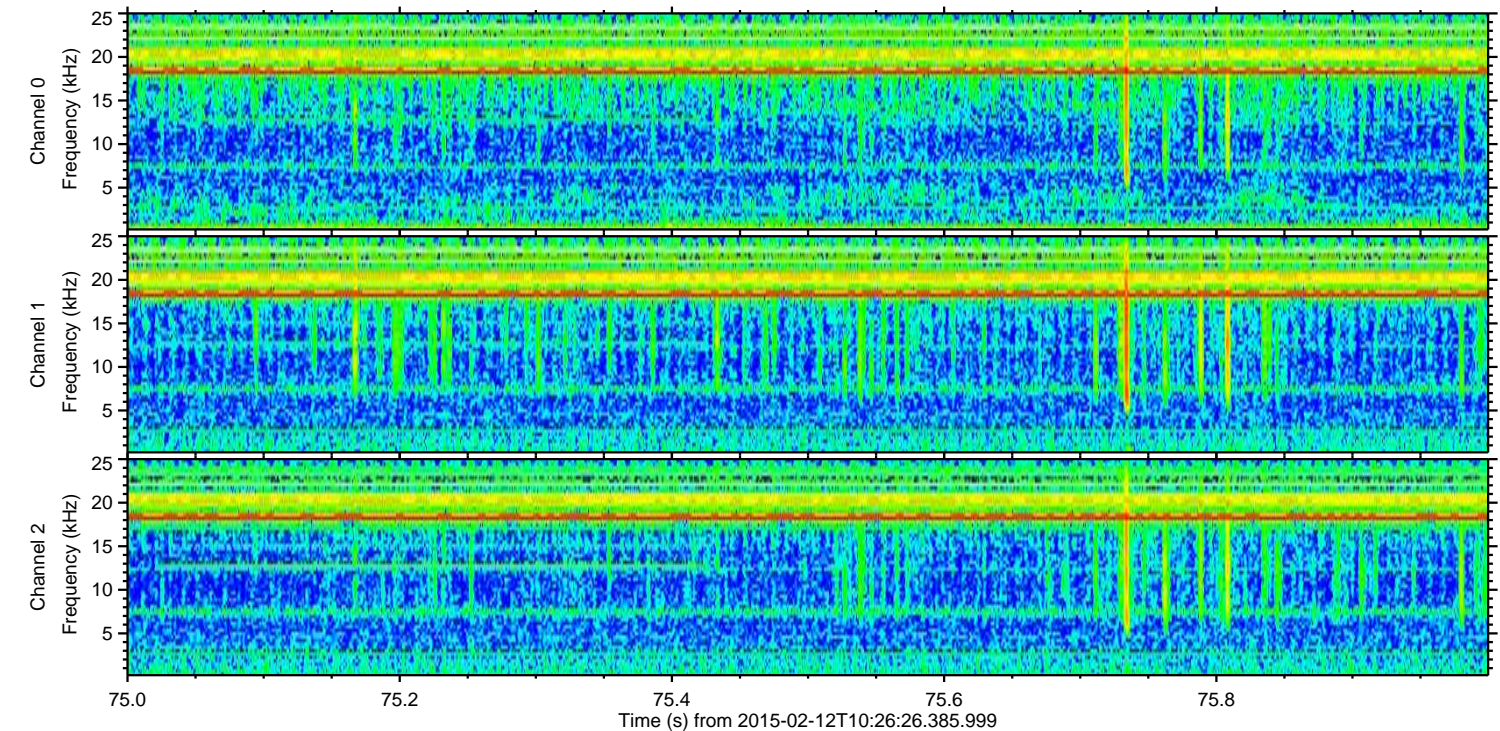
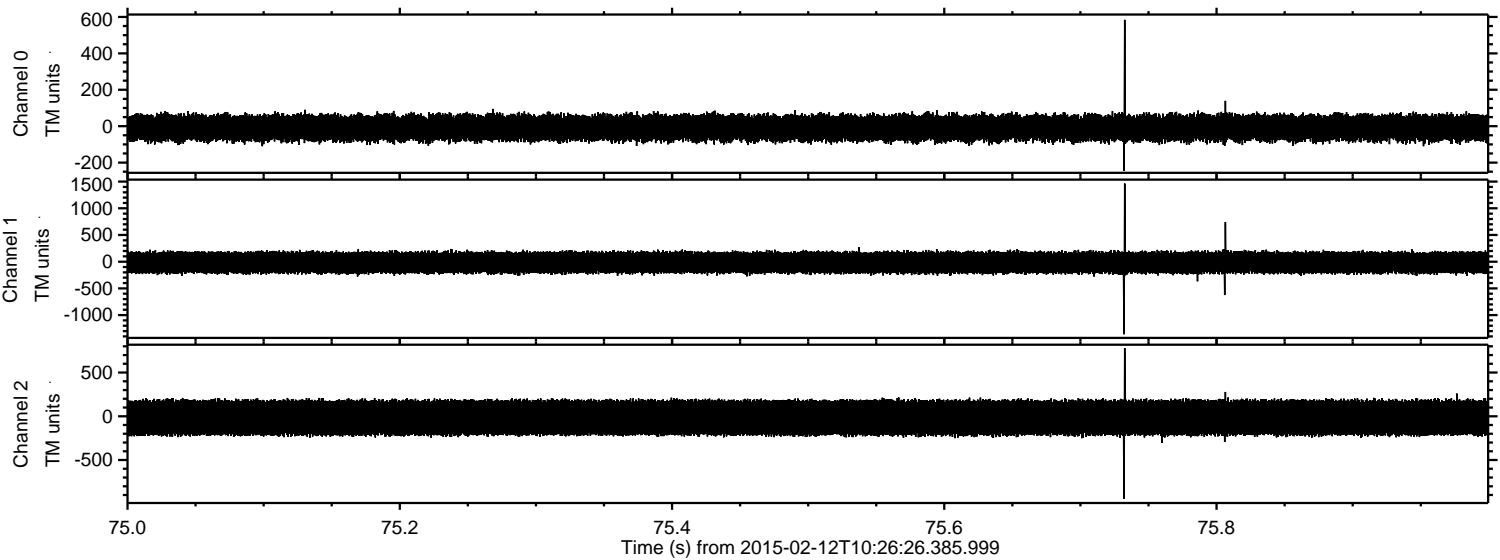


ELMAVAN 3D WAVEFORMS (Measured data sampled at 50 kHz) 49803 packets of 144 samples from 2015-02-12T10:26:26.385.999. Part 124/144

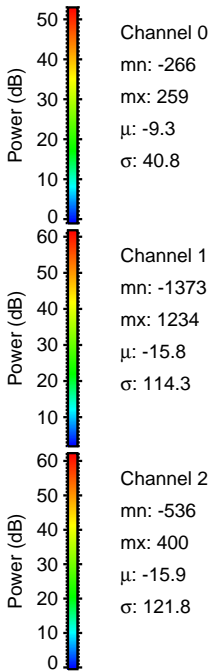
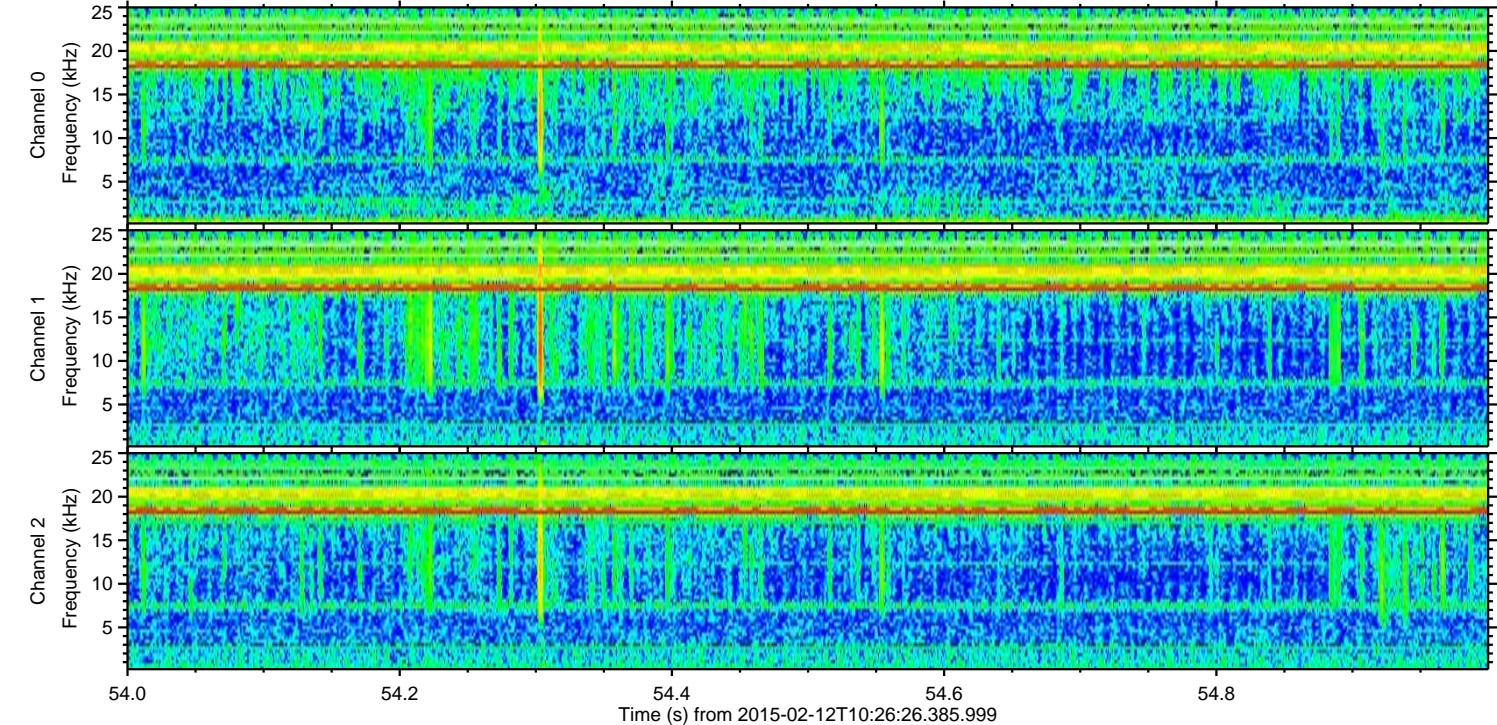
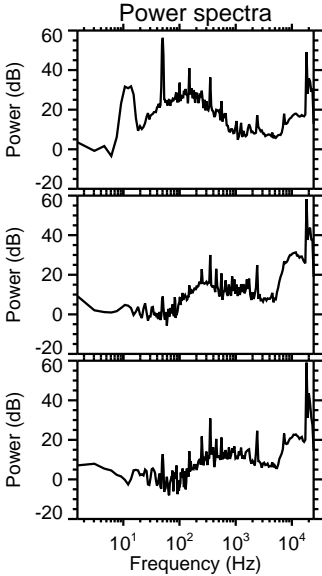
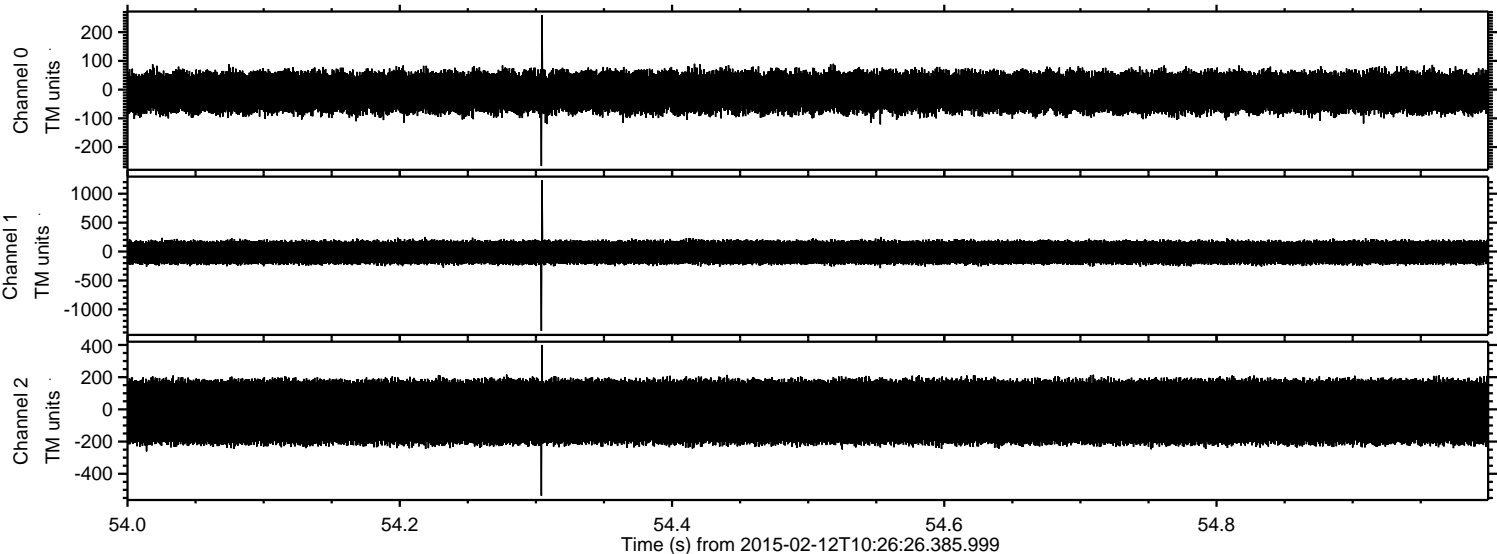
Processed Fri Feb 20 06:56:20 2015 by ELM ver.2012-10-06 from 001\_\_elm20150212\_102625\_\_dat00.bin



Processed Fri Feb 20 06:56:22 2015 by ELM ver.2012-10-06 from 001\_\_elm20150212\_102625\_\_dat00.bin

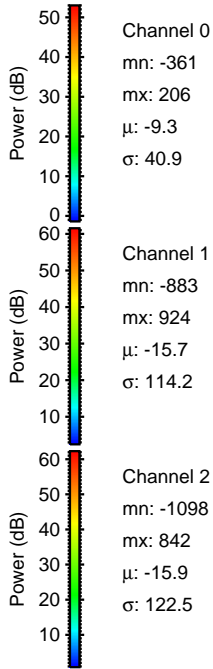
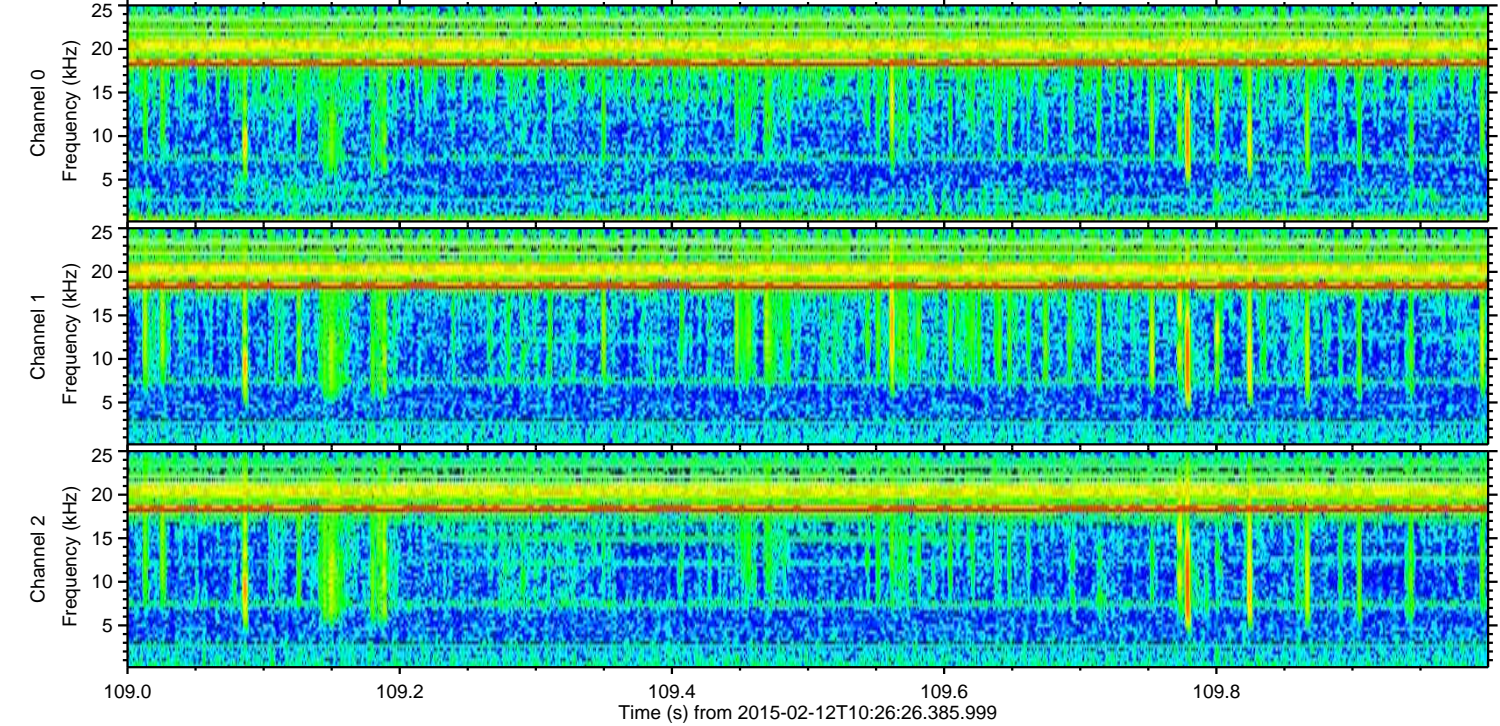
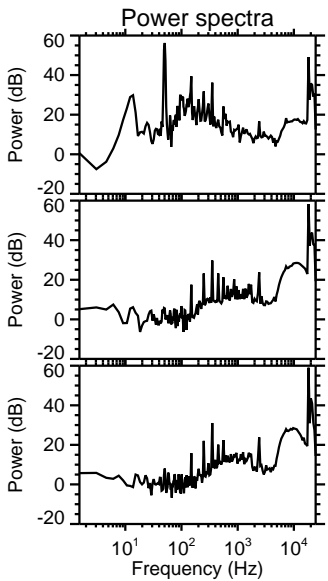
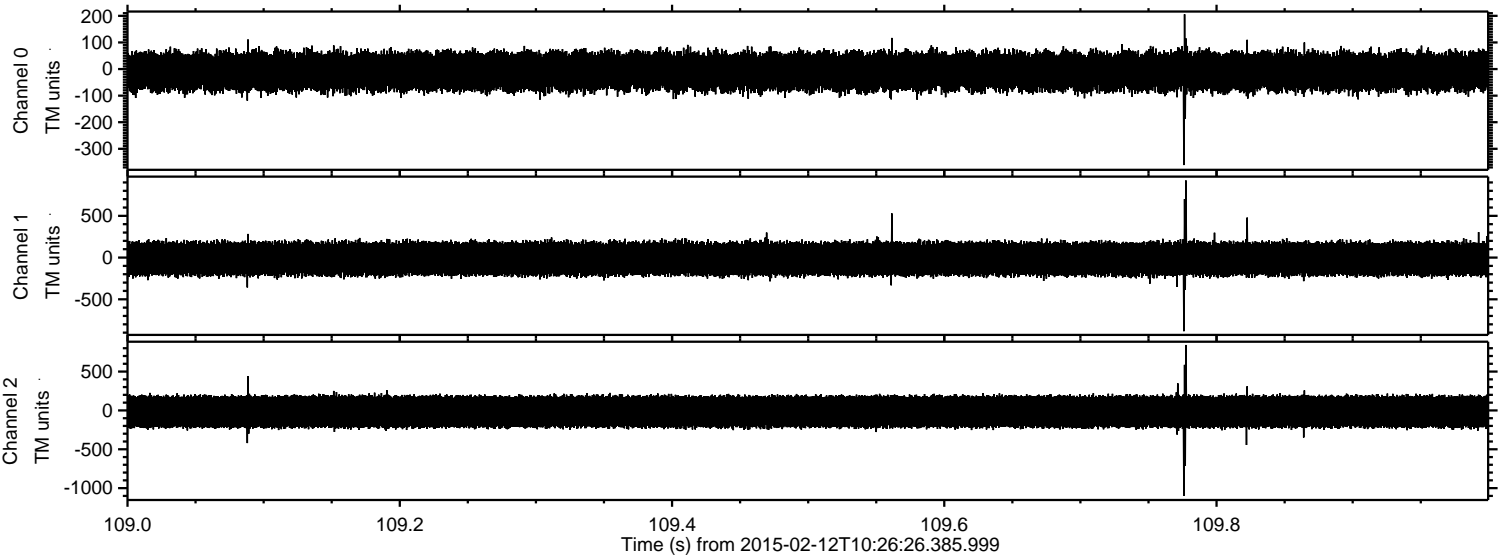


Processed Fri Feb 20 06:56:24 2015 by ELM ver.2012-10-06 from 001\_\_elm20150212\_102625\_\_dat00.bin

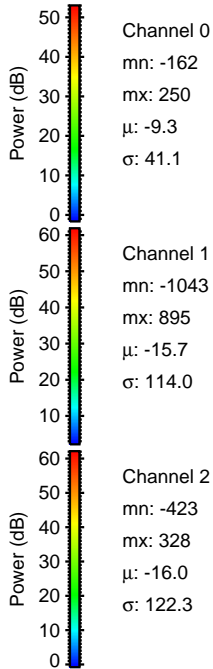
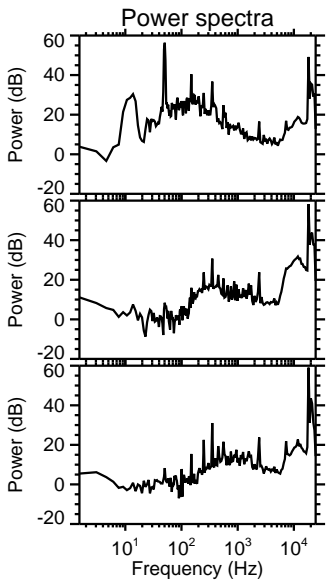
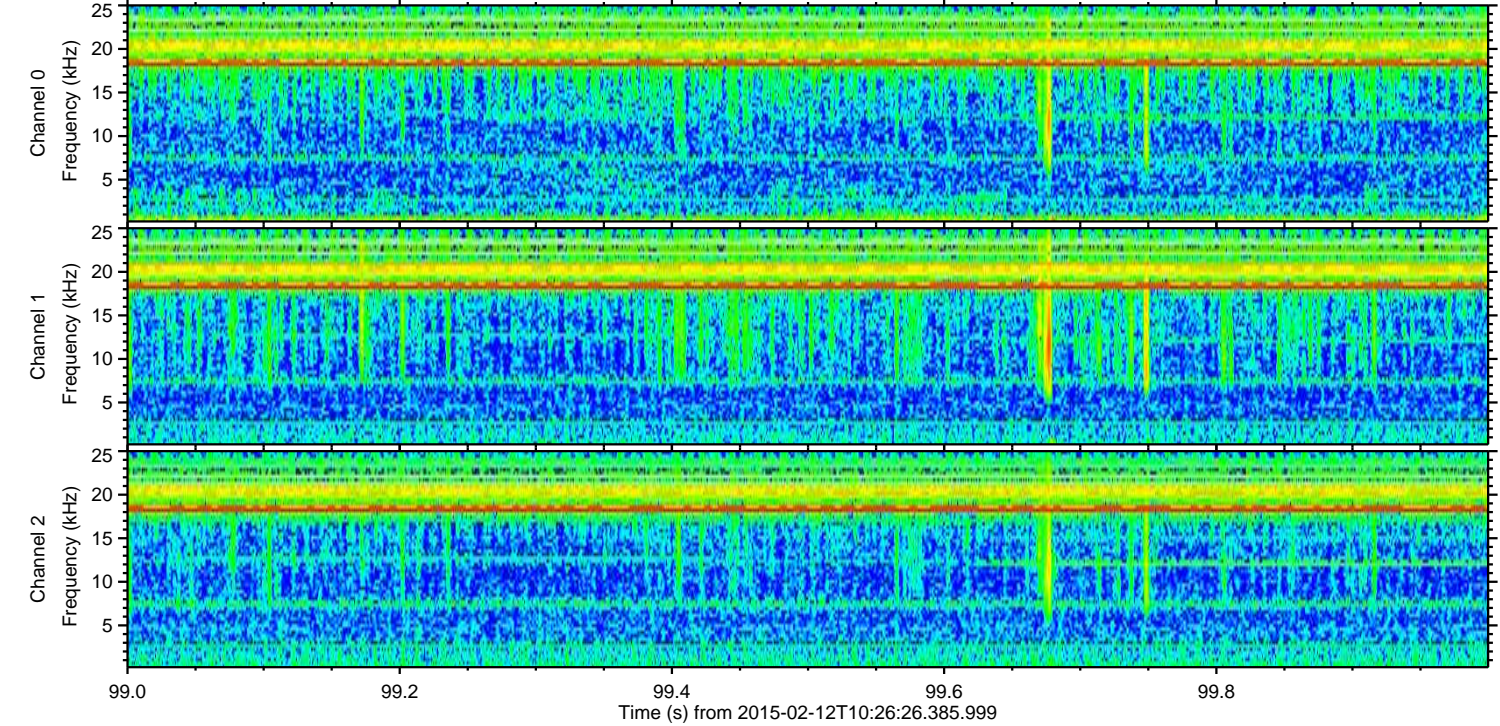
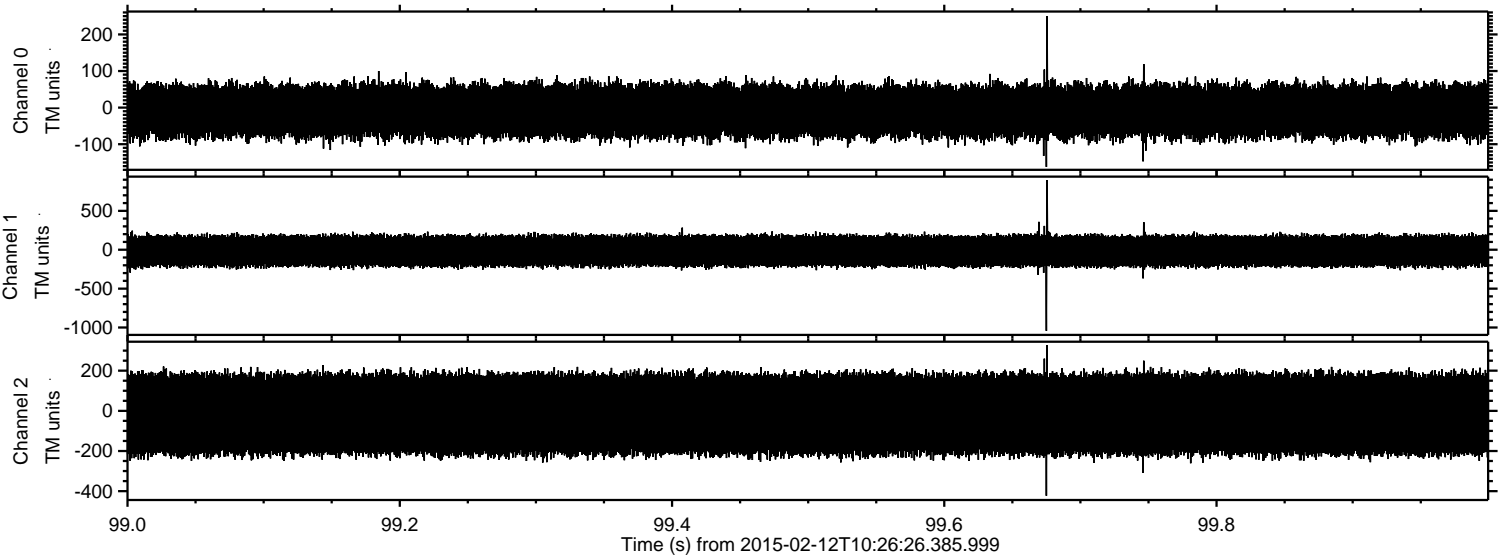


ELMAVAN 3D WAVEFORMS (Measured data sampled at 50 kHz) 49803 packets of 144 samples from 2015-02-12T10:26:26.385.999. Part 110/144

Processed Fri Feb 20 06:56:25 2015 by ELM ver.2012-10-06 from 001\_\_elm20150212\_102625\_\_dat00.bin



Processed Fri Feb 20 06:56:27 2015 by ELM ver.2012-10-06 from 001\_\_elm20150212\_102625\_\_dat00.bin



Channel 0  
mn: -162  
mx: 250  
 $\mu$ : -9.3  
 $\sigma$ : 41.1

Channel 1  
mn: -1043  
mx: 895  
 $\mu$ : -15.7  
 $\sigma$ : 114.0

Channel 2  
mn: -423  
mx: 328  
 $\mu$ : -16.0  
 $\sigma$ : 122.3

Processed Fri Feb 20 06:56:28 2015 by ELM ver.2012-10-06 from 001\_\_elm20150212\_102625\_\_dat00.bin

