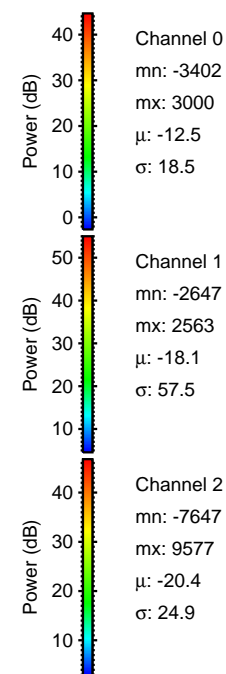
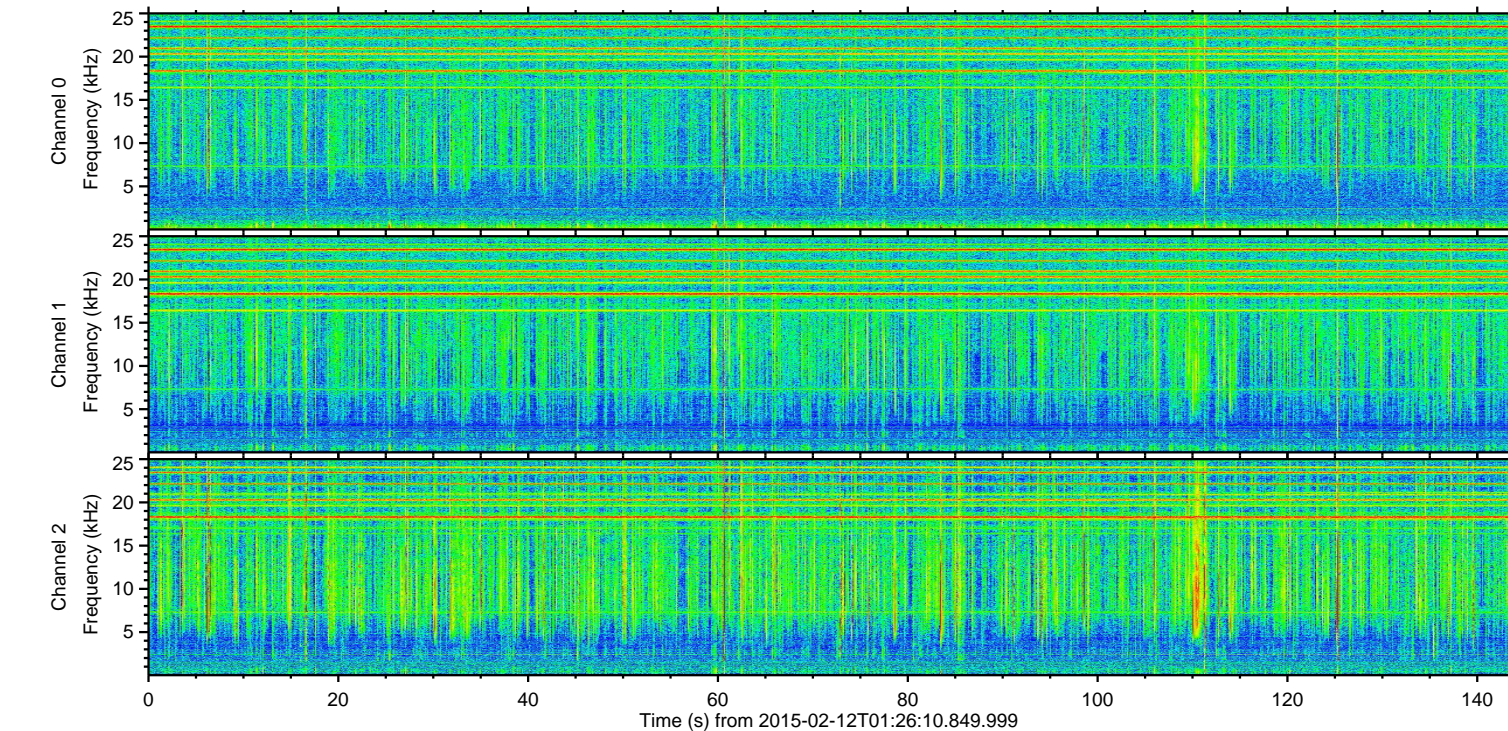
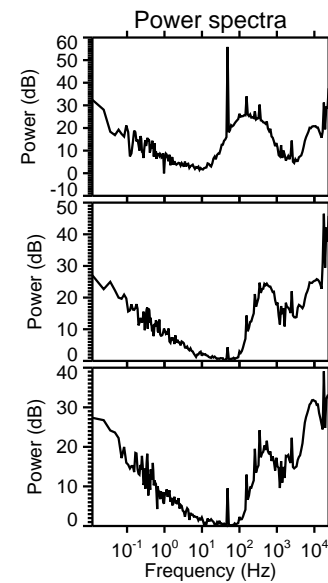
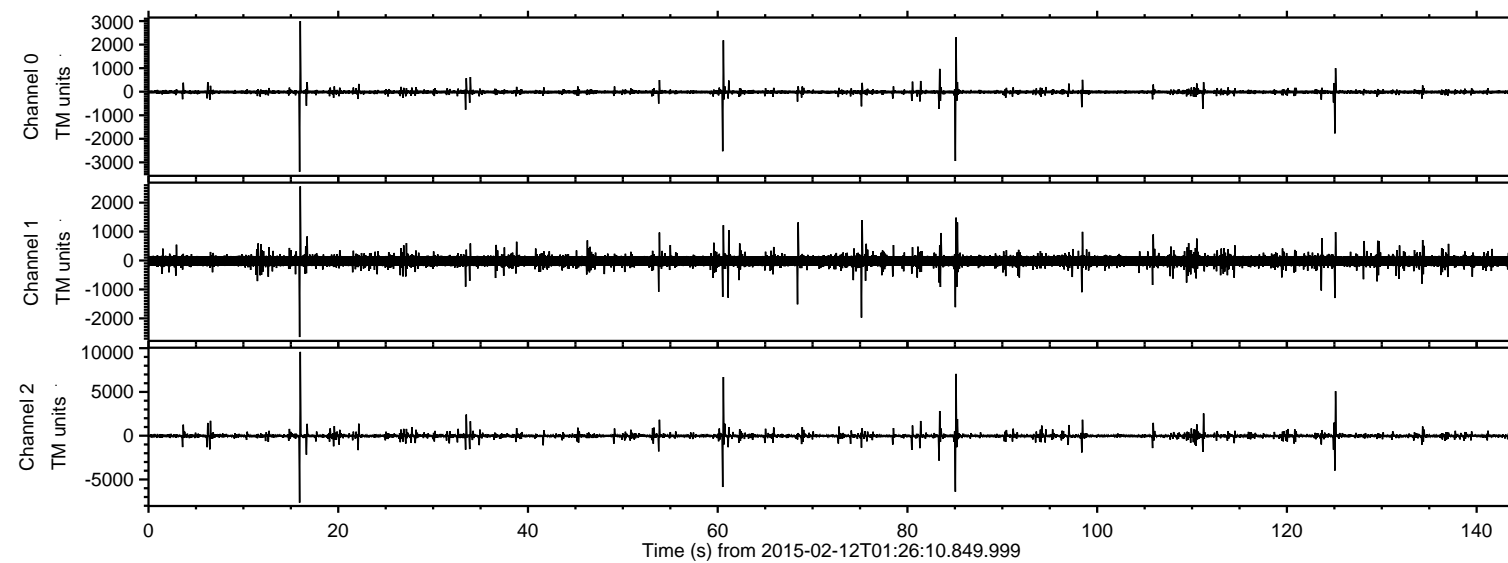


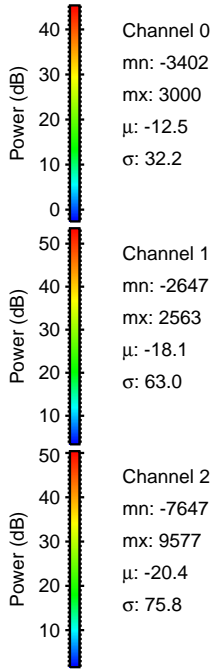
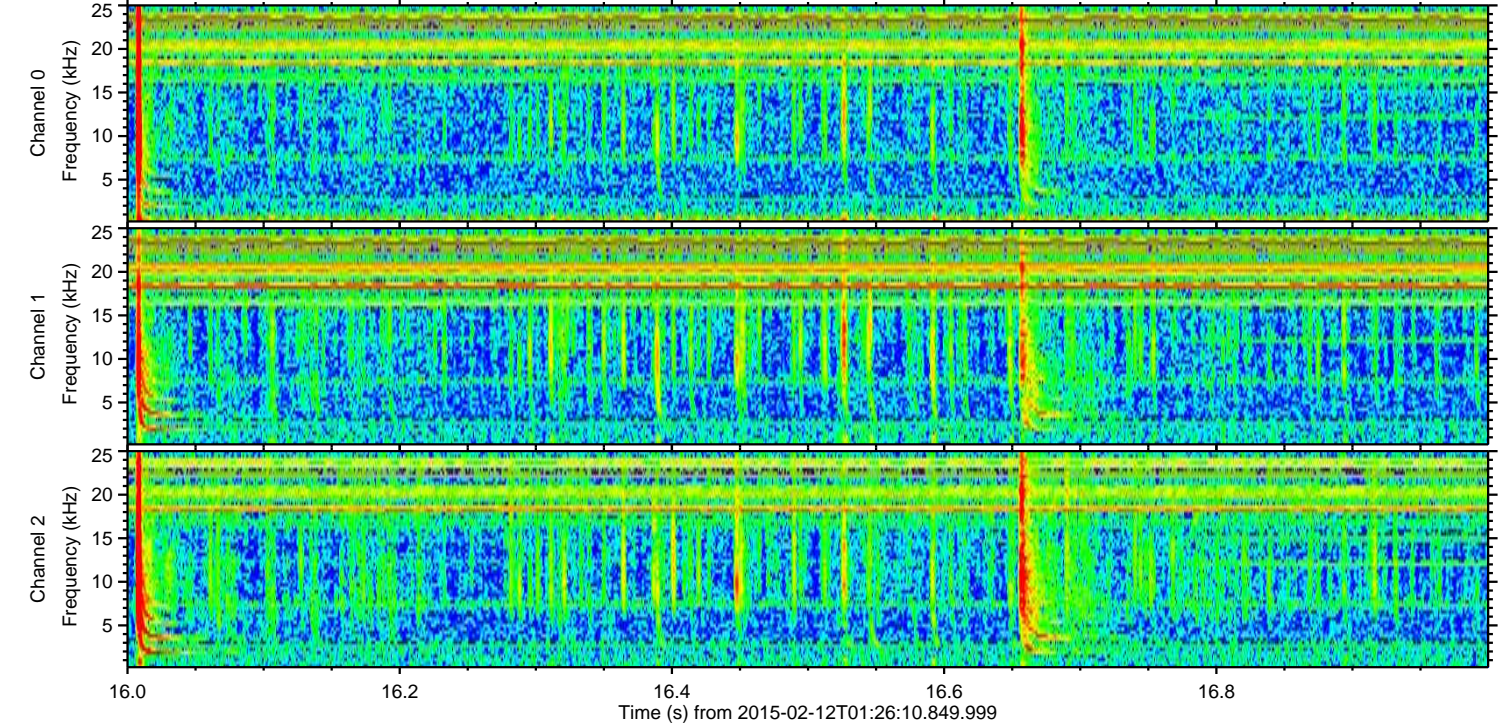
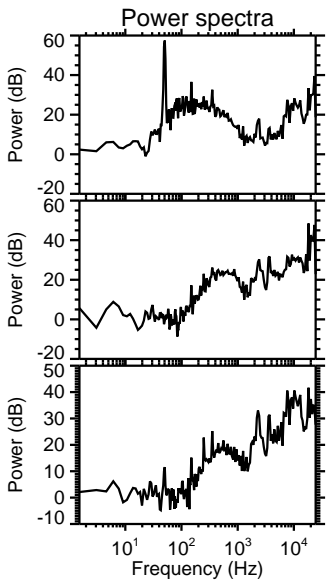
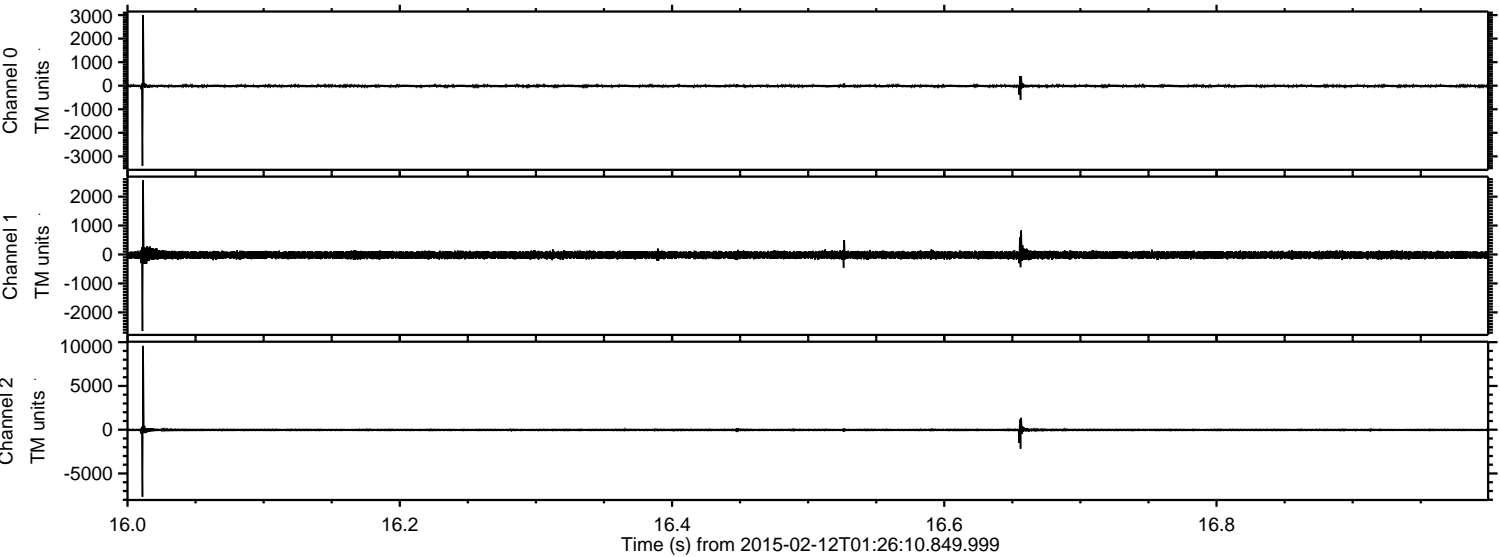
ELMAVAN 3D WAVEFORMS (Measured data sampled at 50 kHz) 49800 packets of 144 samples from 2015-02-12T01:26:10.849.999.

Processed Fri Feb 20 04:00:49 2015 by ELM ver.2012-10-06 from 001\_\_elm20150212\_012609\_\_dat00.bin





Processed Fri Feb 20 04:01:16 2015 by ELM ver.2012-10-06 from 001\_\_elm20150212\_012609\_\_dat00.bin



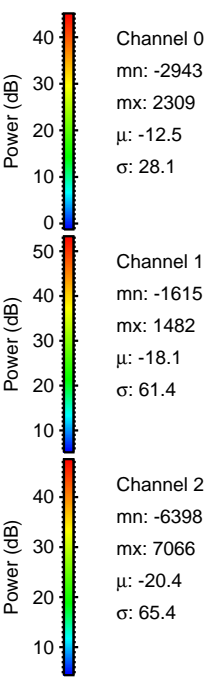
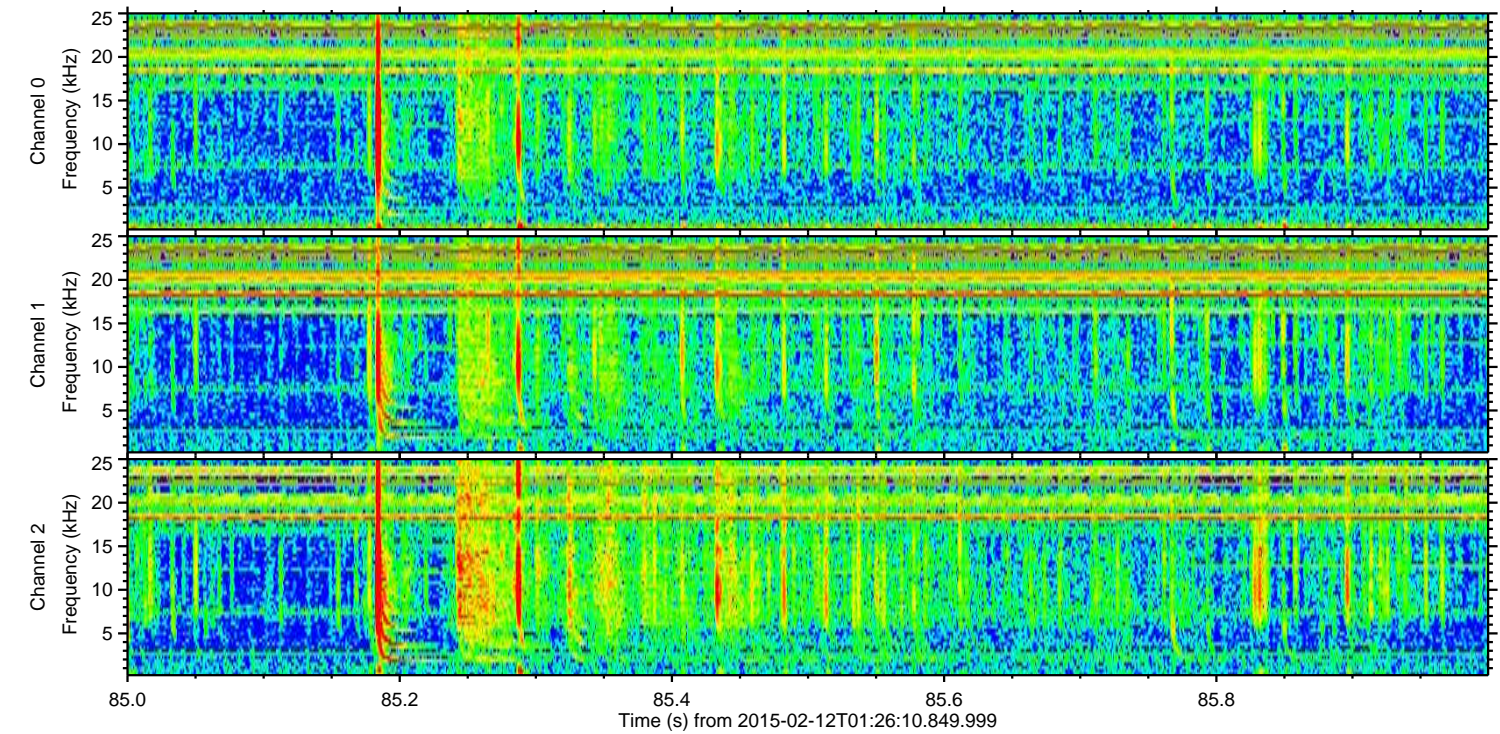
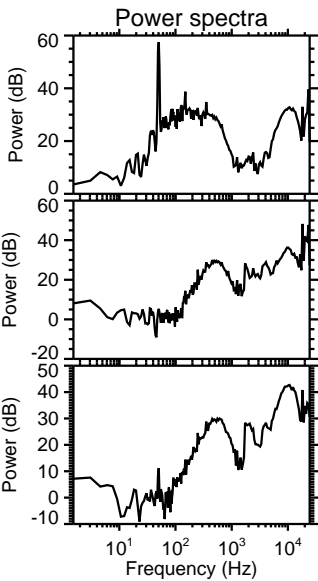
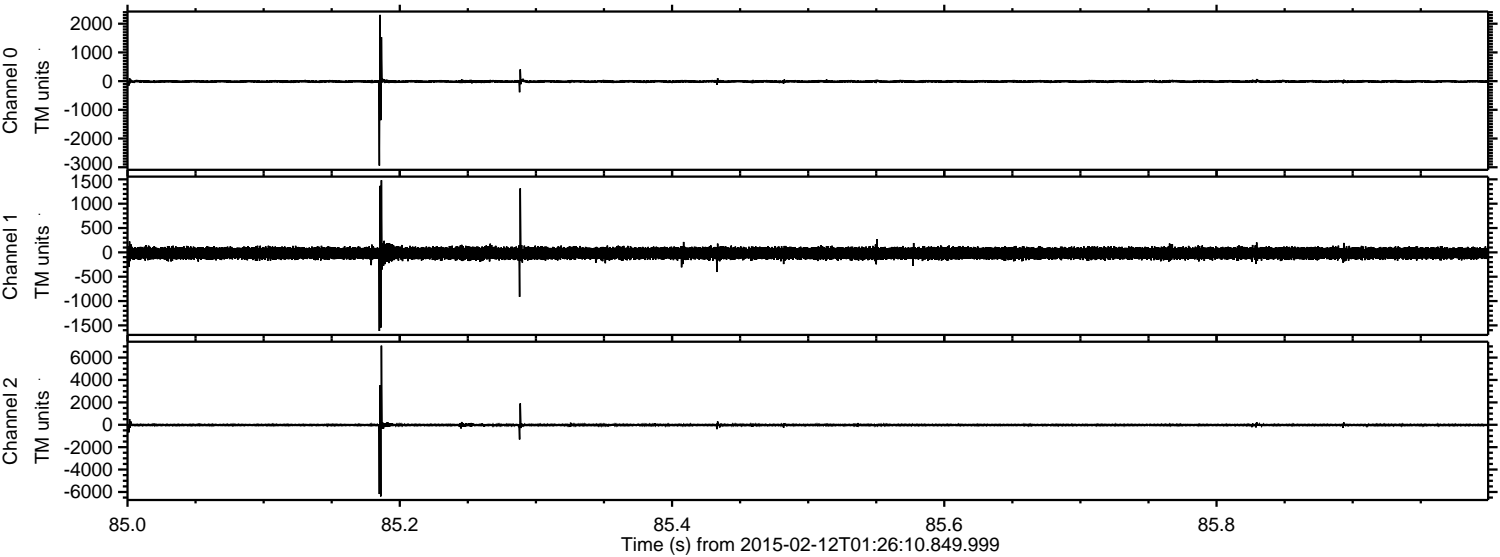
Channel 0  
mn: -3402  
mx: 3000  
 $\mu$ : -12.5  
 $\sigma$ : 32.2

Channel 1  
mn: -2647  
mx: 2563  
 $\mu$ : -18.1  
 $\sigma$ : 63.0

Channel 2  
mn: -7647  
mx: 9577  
 $\mu$ : -20.4  
 $\sigma$ : 75.8



Processed Fri Feb 20 04:01:20 2015 by ELM ver.2012-10-06 from 001\_\_elm20150212\_012609\_\_dat00.bin



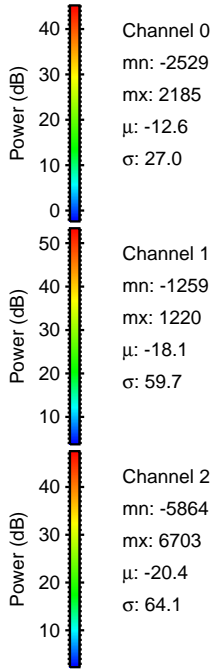
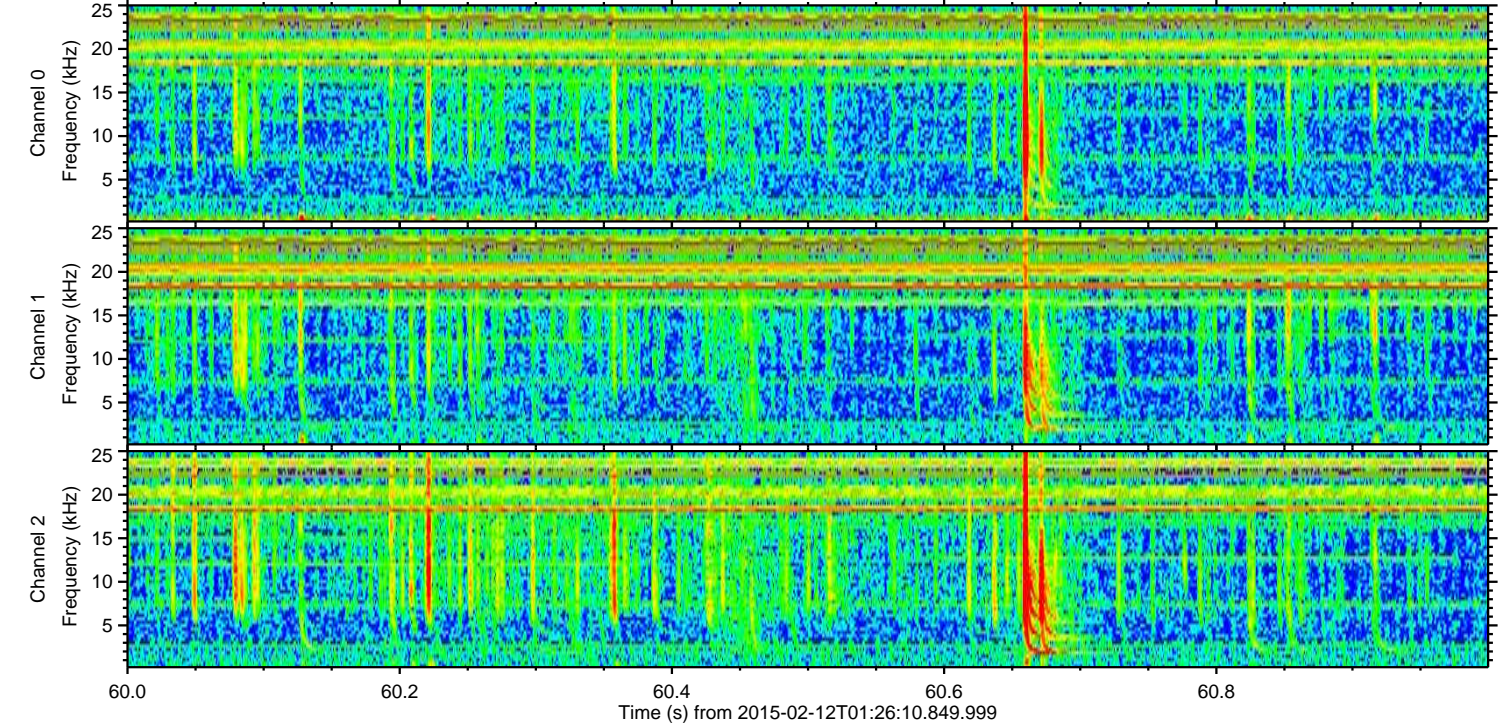
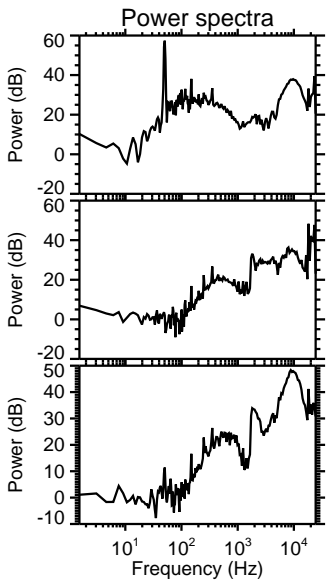
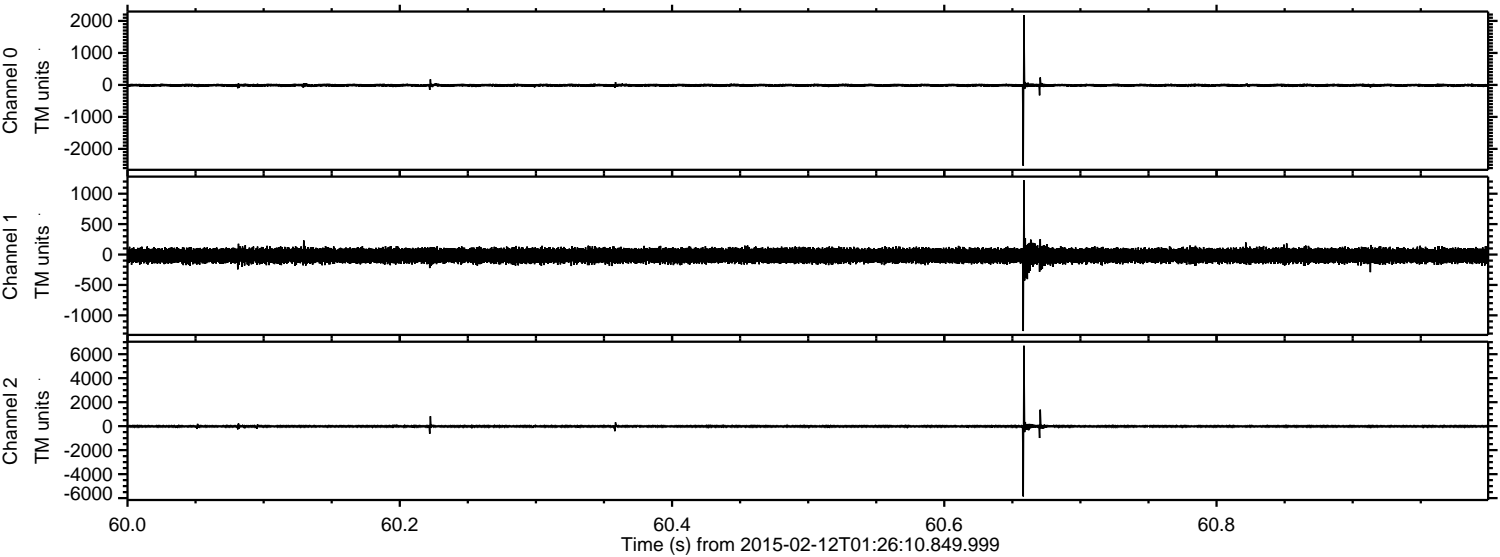
Channel 0  
mn: -2943  
mx: 2309  
 $\mu$ : -12.5  
 $\sigma$ : 28.1

Channel 1  
mn: -1615  
mx: 1482  
 $\mu$ : -18.1  
 $\sigma$ : 61.4

Channel 2  
mn: -6398  
mx: 7066  
 $\mu$ : -20.4  
 $\sigma$ : 65.4



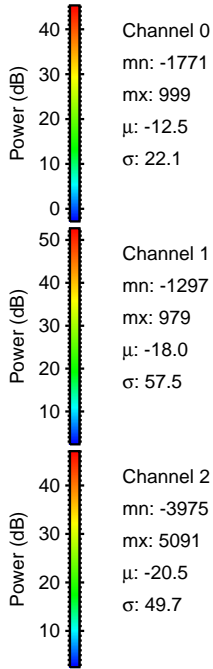
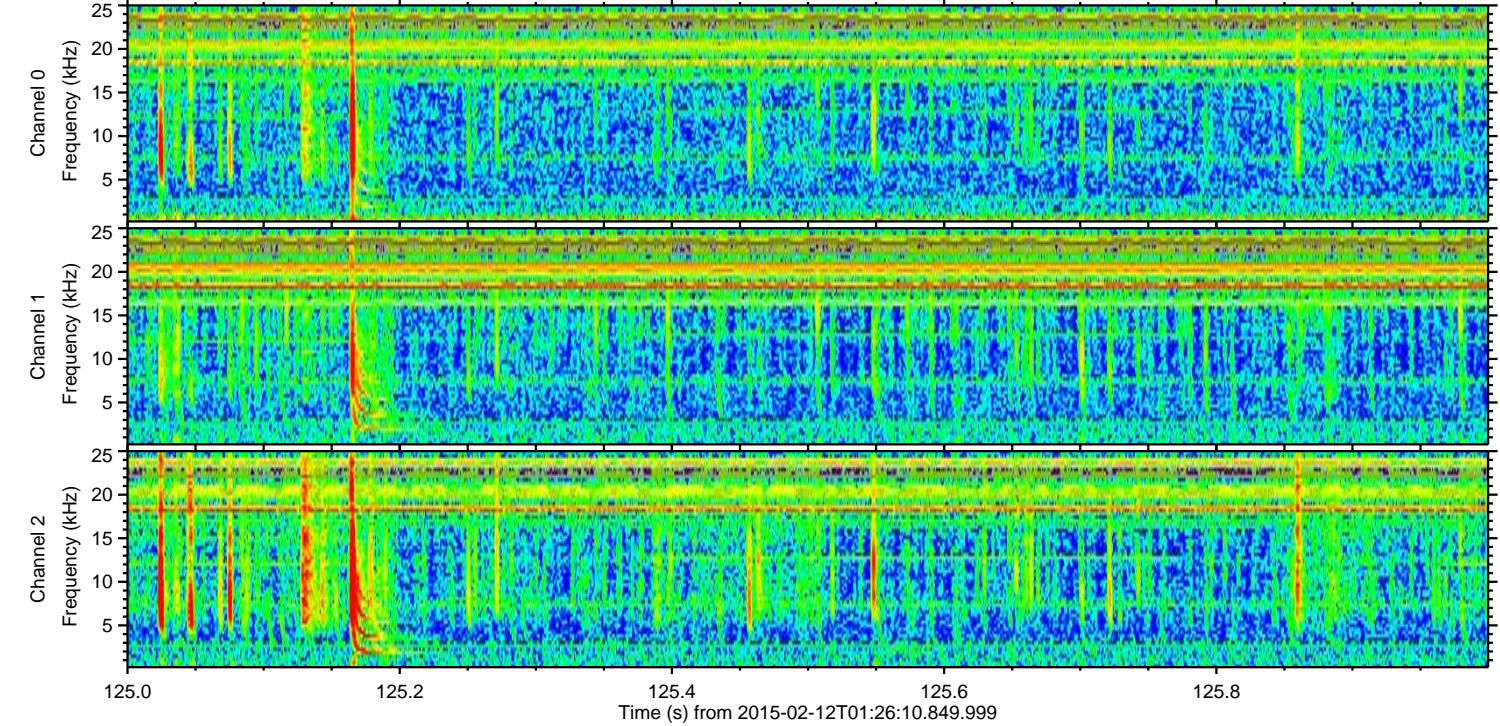
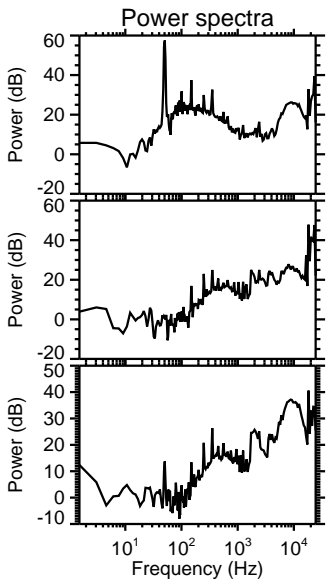
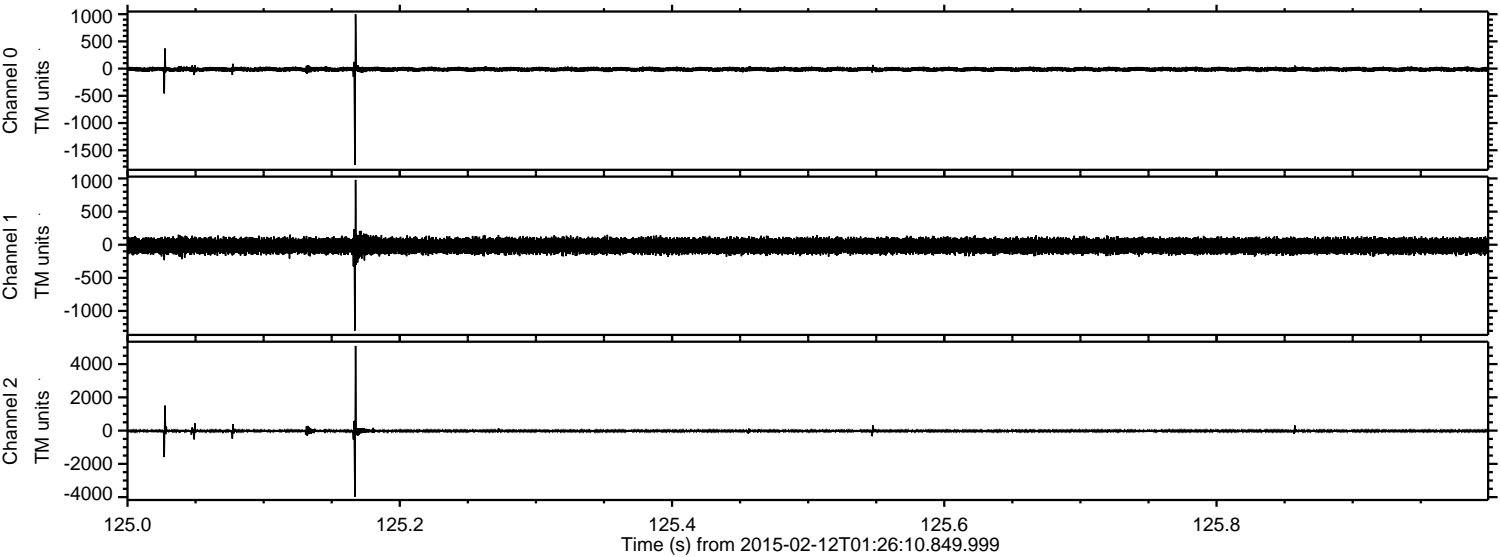
Processed Fri Feb 20 04:01:23 2015 by ELM ver.2012-10-06 from 001\_\_elm20150212\_012609\_\_dat00.bin





ELMAVAN 3D WAVEFORMS (Measured data sampled at 50 kHz) 49800 packets of 144 samples from 2015-02-12T01:26:10.849.999. Part 126/144

Processed Fri Feb 20 04:01:26 2015 by ELM ver.2012-10-06 from 001\_\_elm20150212\_012609\_\_dat00.bin



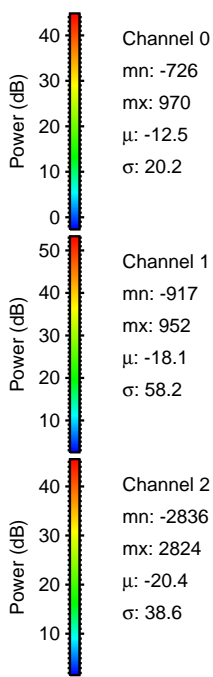
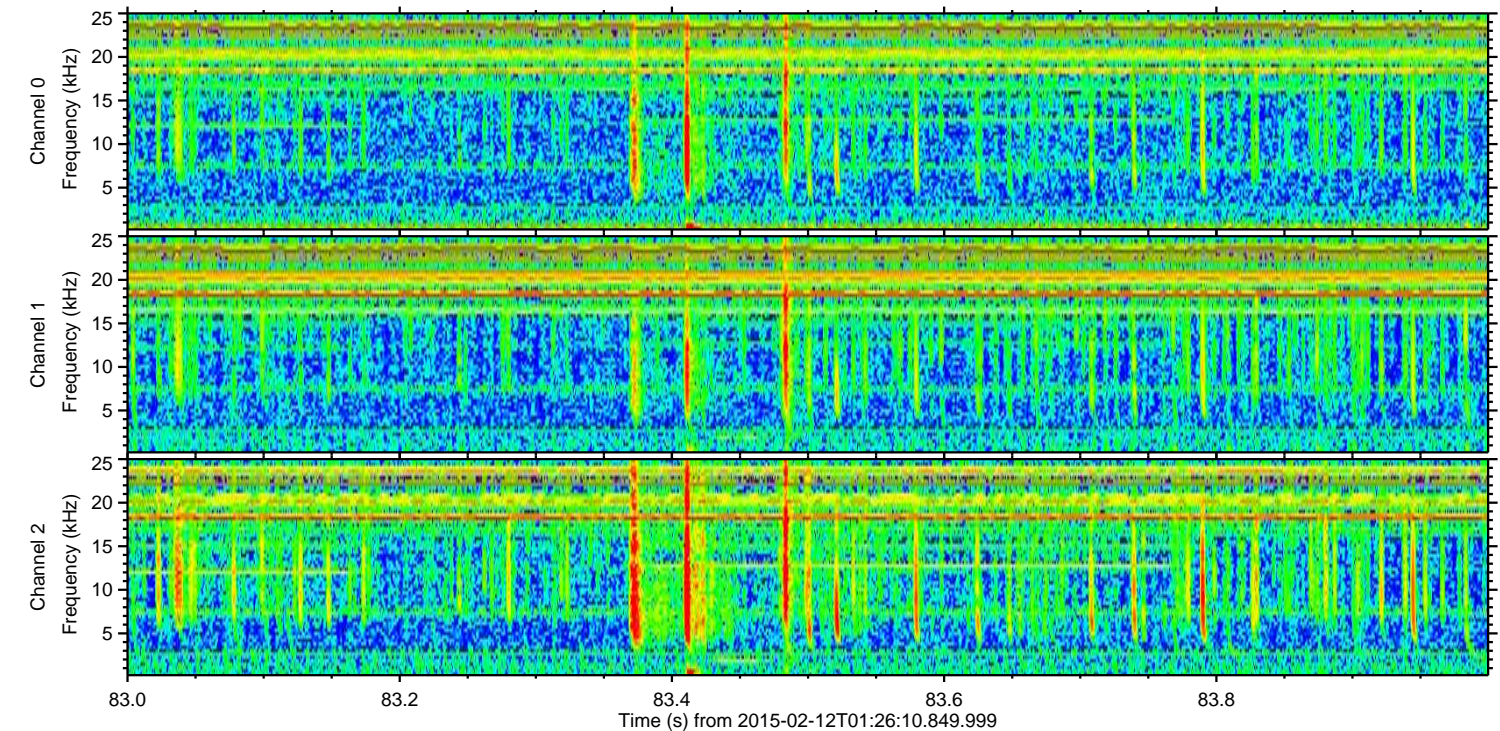
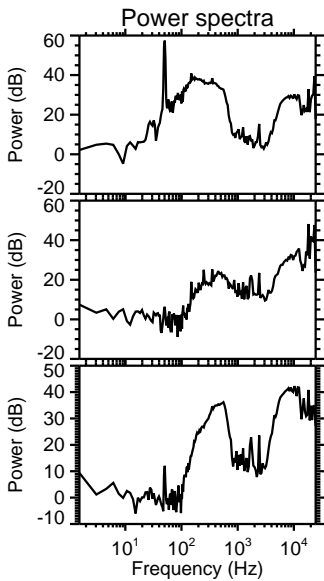
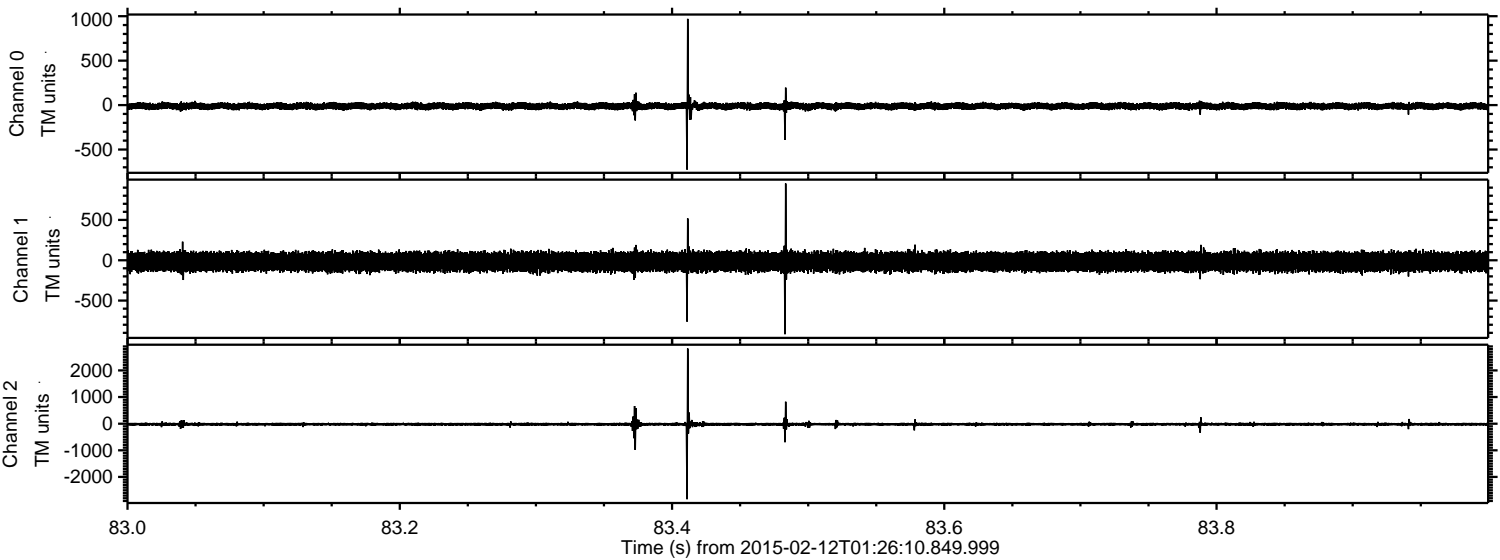
Channel 0  
mn: -1771  
mx: 999  
 $\mu$ : -12.5  
 $\sigma$ : 22.1

Channel 1  
mn: -1297  
mx: 979  
 $\mu$ : -18.0  
 $\sigma$ : 57.5

Channel 2  
mn: -3975  
mx: 5091  
 $\mu$ : -20.5  
 $\sigma$ : 49.7



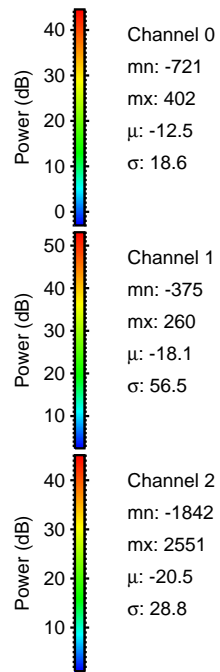
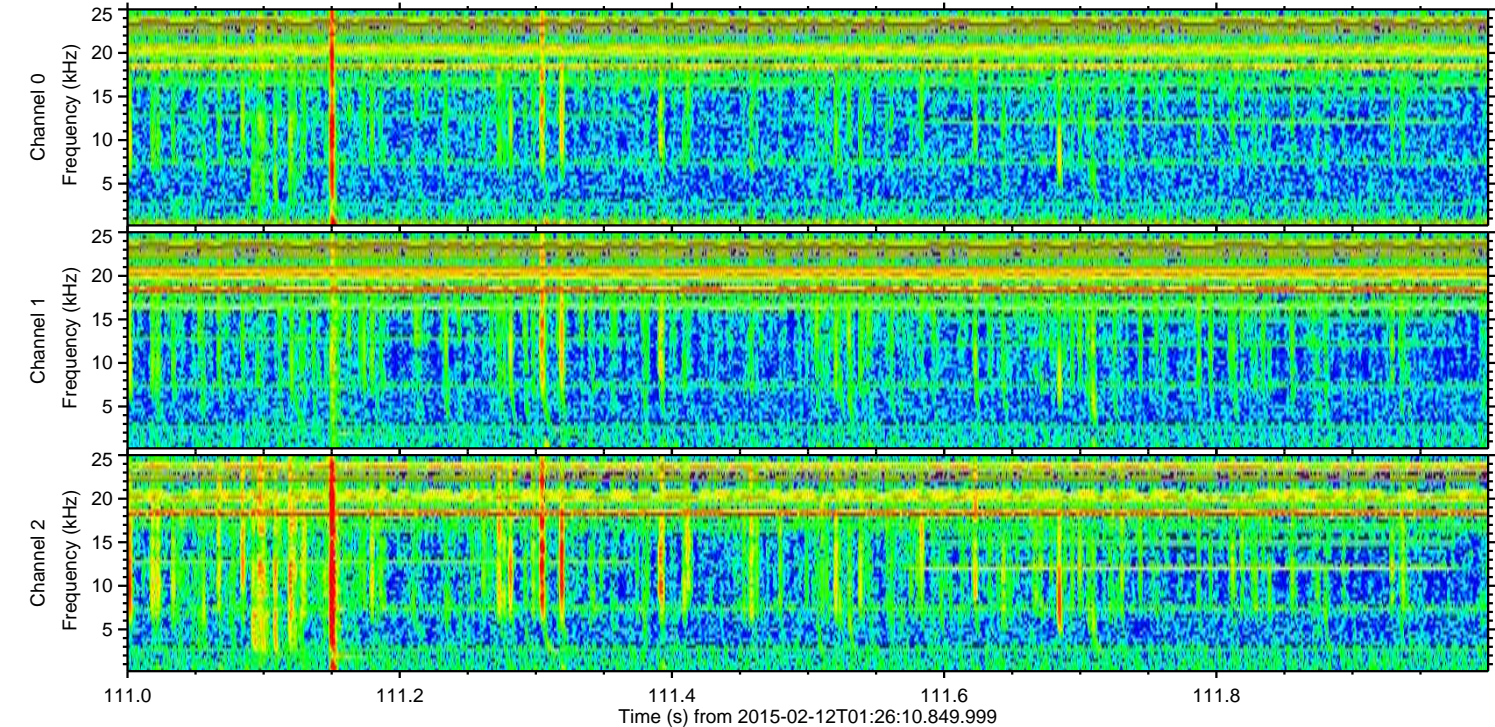
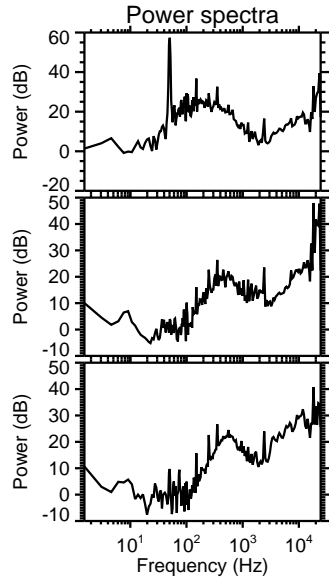
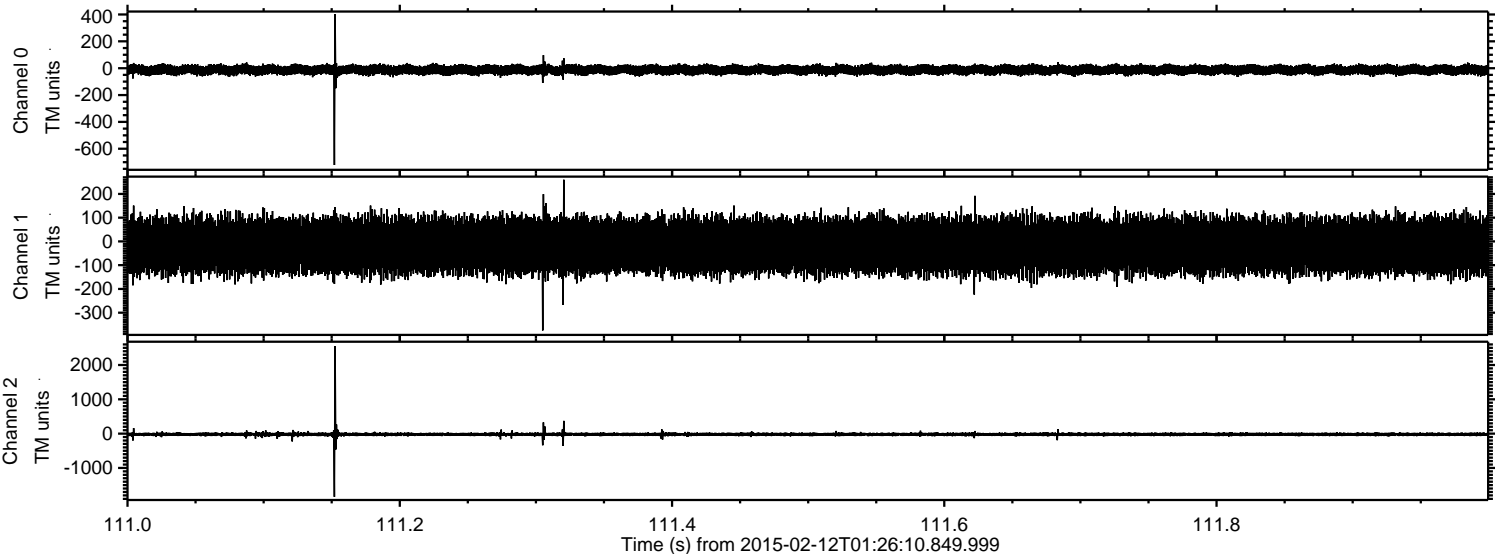
Processed Fri Feb 20 04:01:27 2015 by ELM ver.2012-10-06 from 001\_\_elm20150212\_012609\_\_dat00.bin





ELMAVAN 3D WAVEFORMS (Measured data sampled at 50 kHz) 49800 packets of 144 samples from 2015-02-12T01:26:10.849.999. Part 112/144

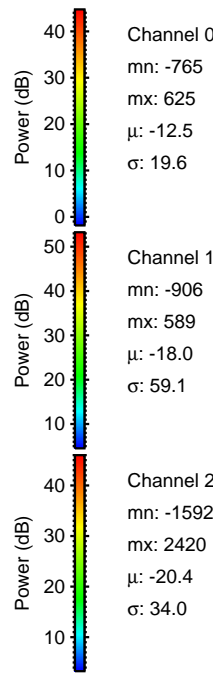
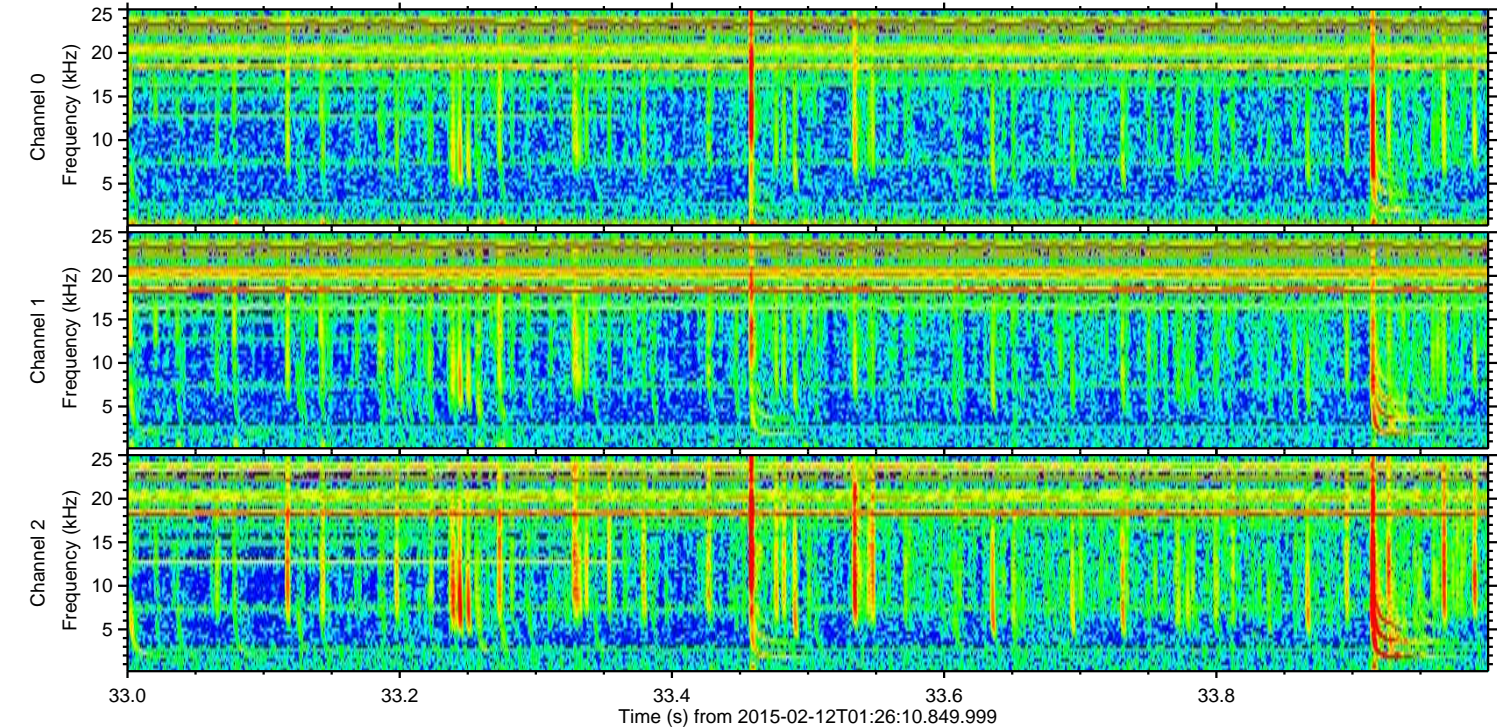
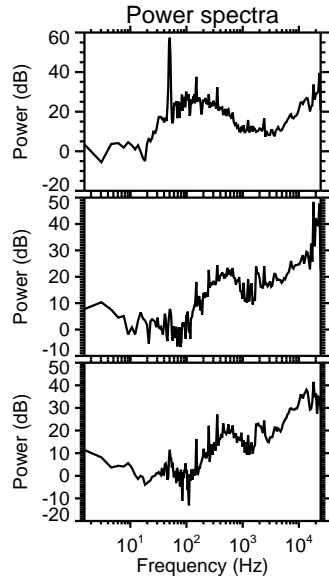
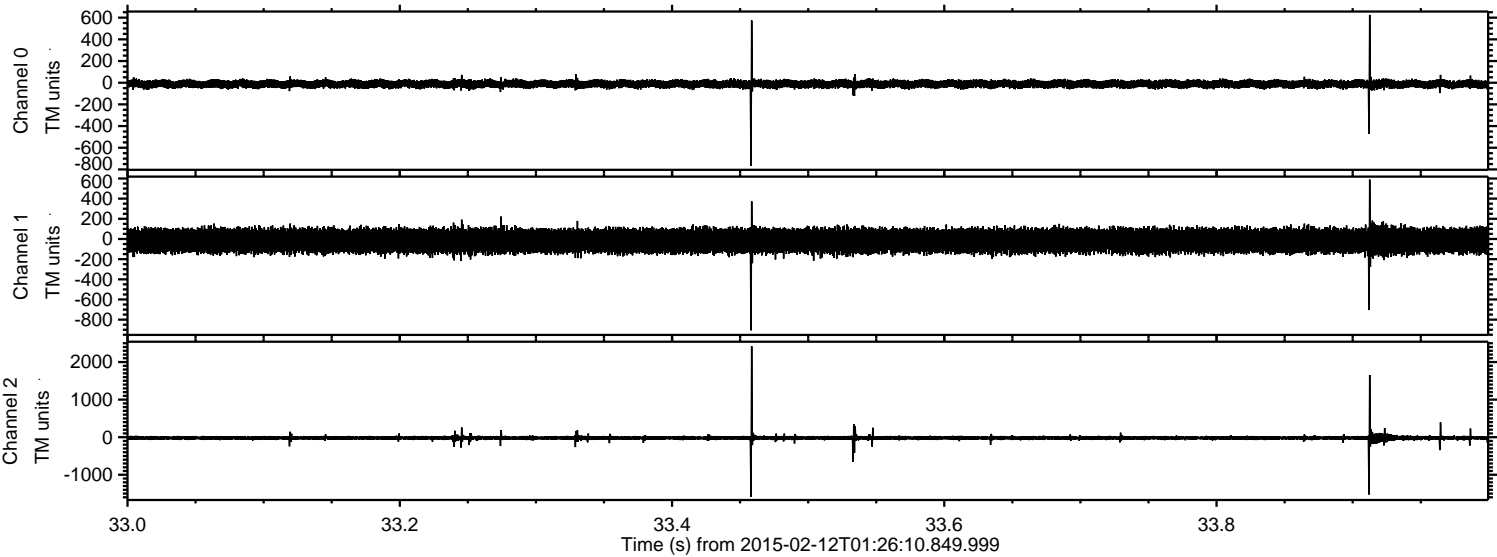
Processed Fri Feb 20 04:01:29 2015 by ELM ver.2012-10-06 from 001\_\_elm20150212\_012609\_\_dat00.bin





ELMAVAN 3D WAVEFORMS (Measured data sampled at 50 kHz) 49800 packets of 144 samples from 2015-02-12T01:26:10.849.999. Part 34/144

Processed Fri Feb 20 04:01:30 2015 by ELM ver.2012-10-06 from 001\_\_elm20150212\_012609\_\_dat00.bin



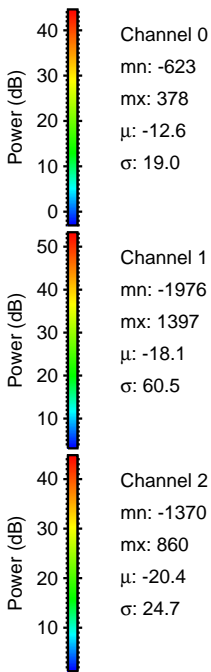
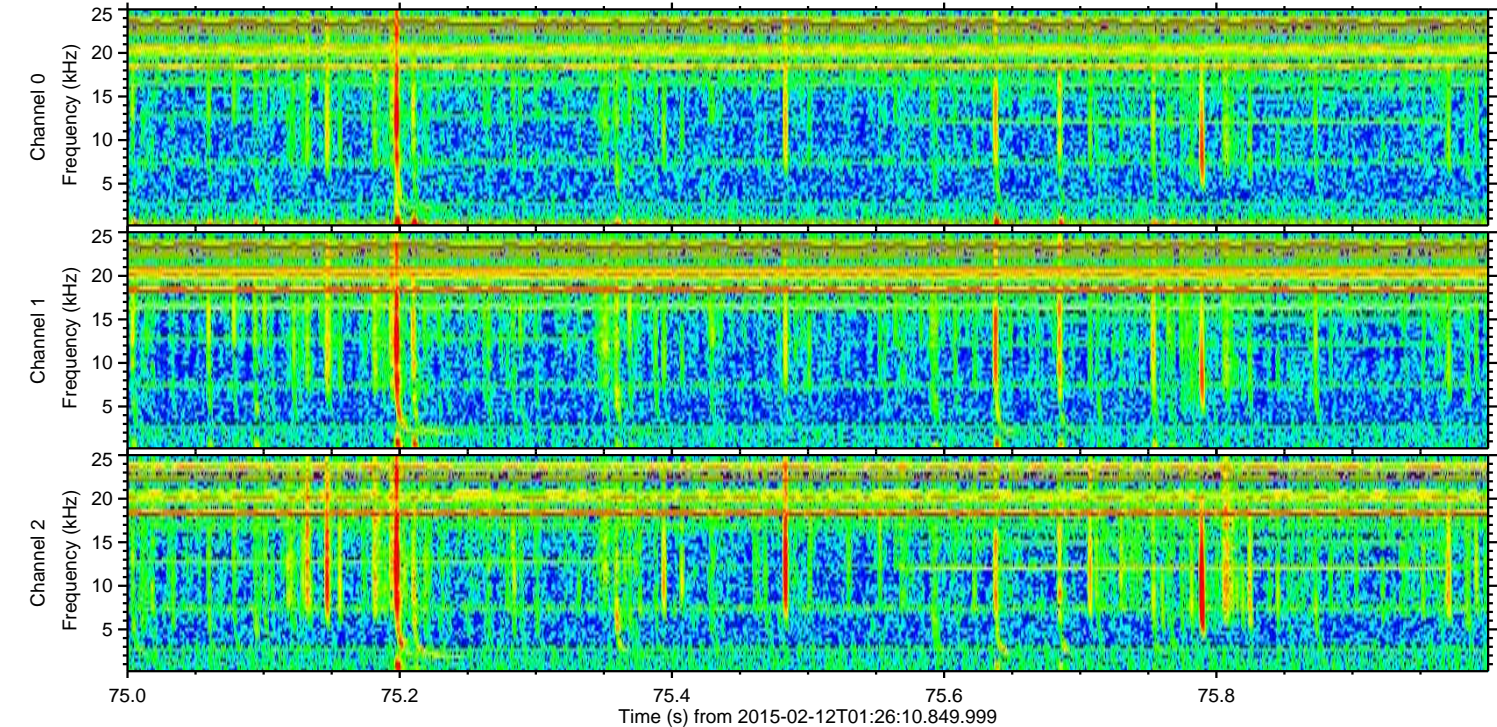
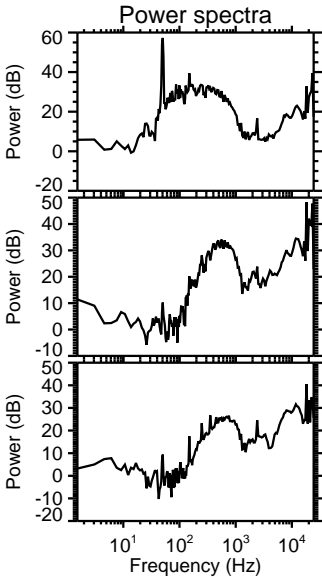
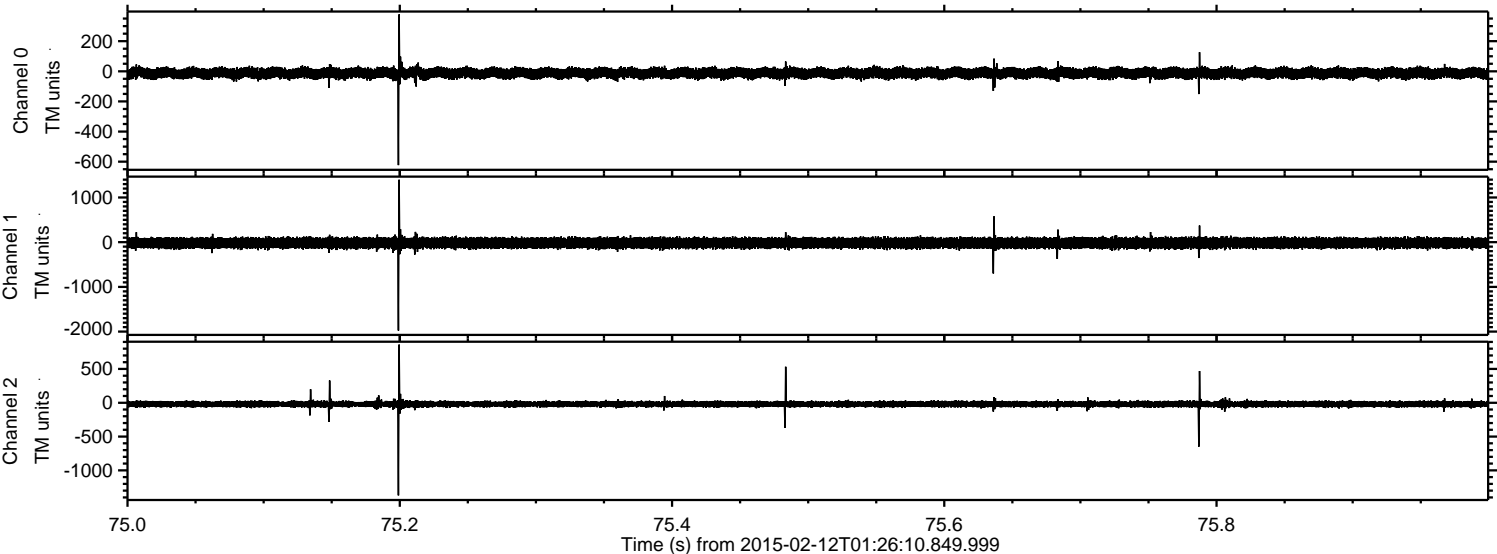
Channel 0  
mn: -765  
mx: 625  
 $\mu$ : -12.5  
 $\sigma$ : 19.6

Channel 1  
mn: -906  
mx: 589  
 $\mu$ : -18.0  
 $\sigma$ : 59.1

Channel 2  
mn: -1592  
mx: 2420  
 $\mu$ : -20.4  
 $\sigma$ : 34.0

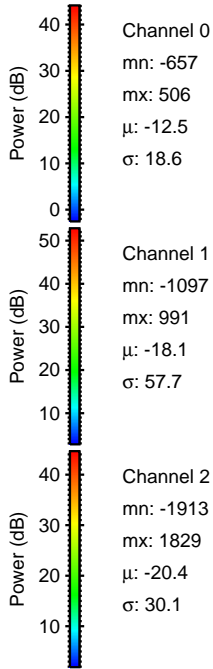
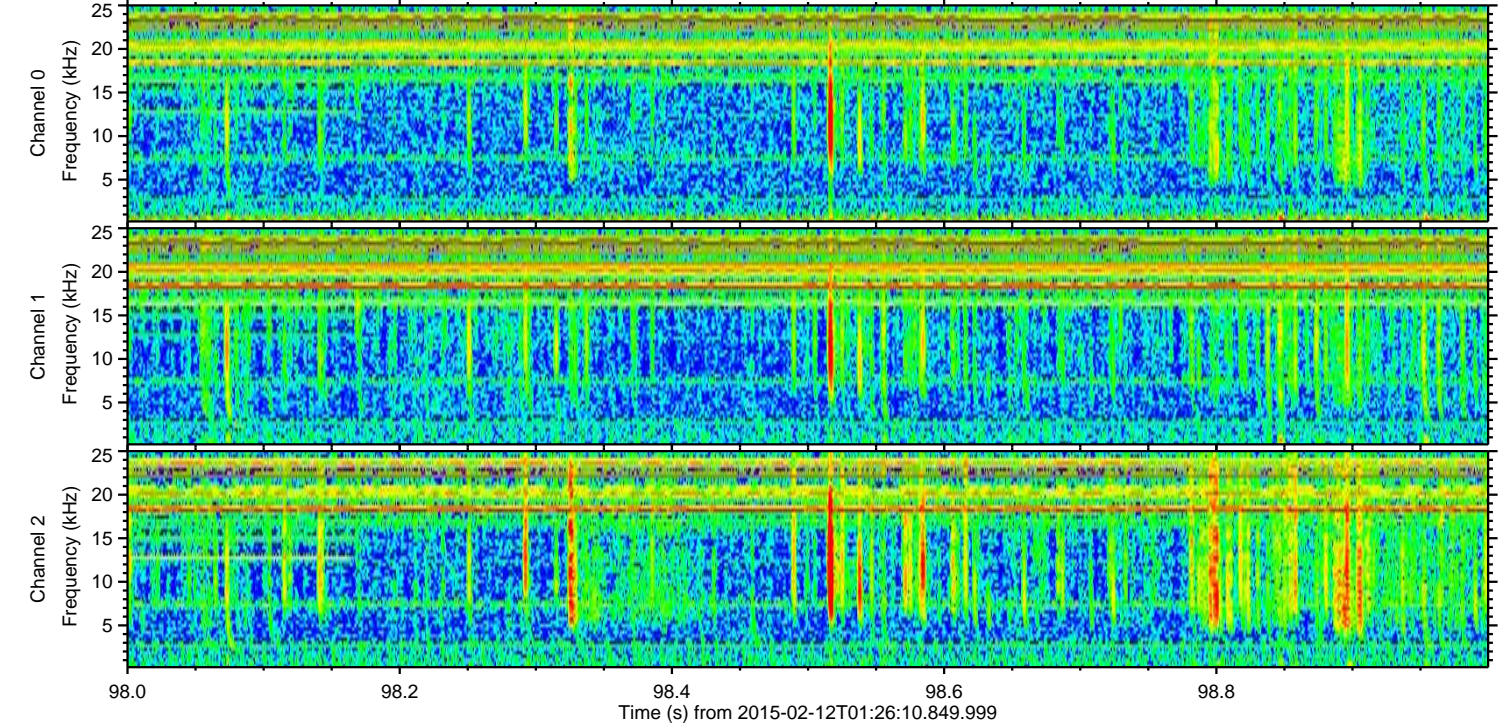
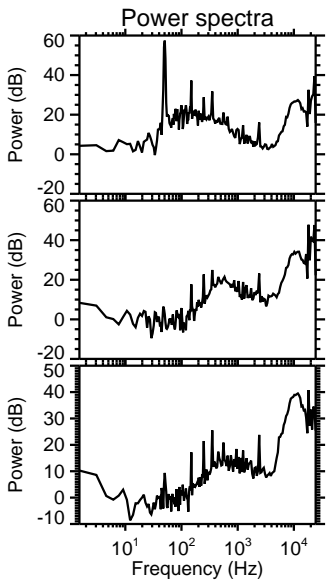
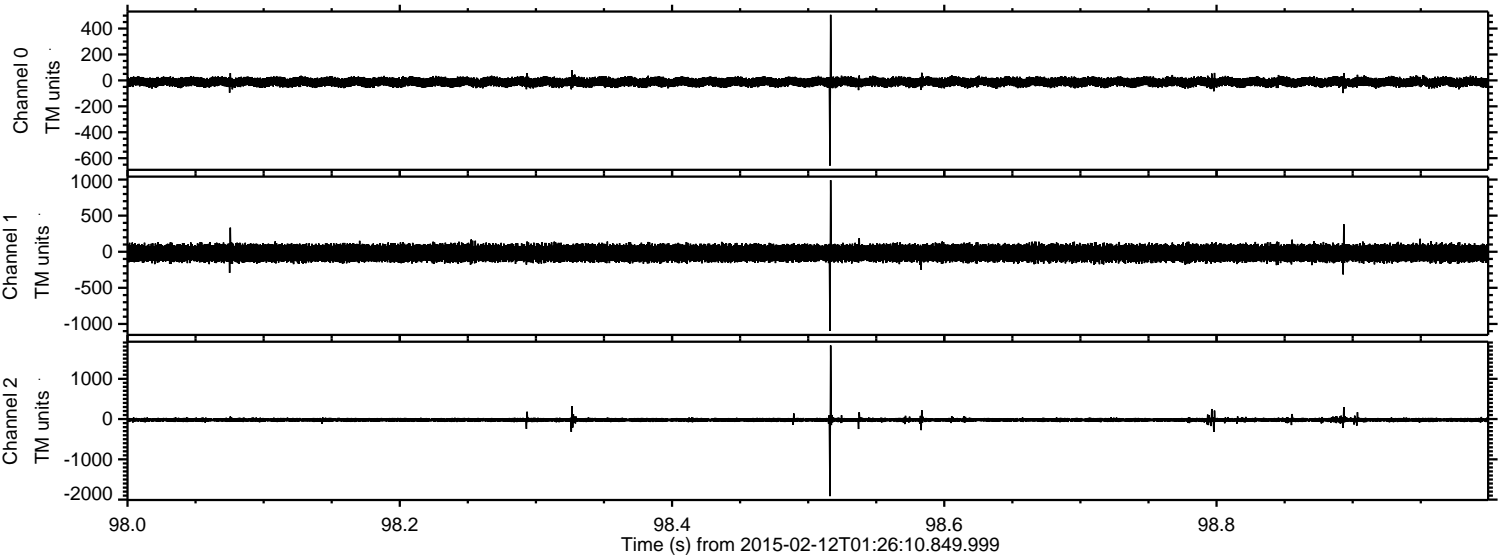


Processed Fri Feb 20 04:01:31 2015 by ELM ver.2012-10-06 from 001\_\_elm20150212\_012609\_\_dat00.bin





Processed Fri Feb 20 04:01:32 2015 by ELM ver.2012-10-06 from 001\_\_elm20150212\_012609\_\_dat00.bin



Channel 0  
mn: -657  
mx: 506  
 $\mu$ : -12.5  
 $\sigma$ : 18.6

Channel 1  
mn: -1097  
mx: 991  
 $\mu$ : -18.1  
 $\sigma$ : 57.7

Channel 2  
mn: -1913  
mx: 1829  
 $\mu$ : -20.4  
 $\sigma$ : 30.1



ELMAVAN 3D WAVEFORMS (Measured data sampled at 50 kHz) 49800 packets of 144 samples from 2015-02-12T01:26:10.849.999. Part 104/144

