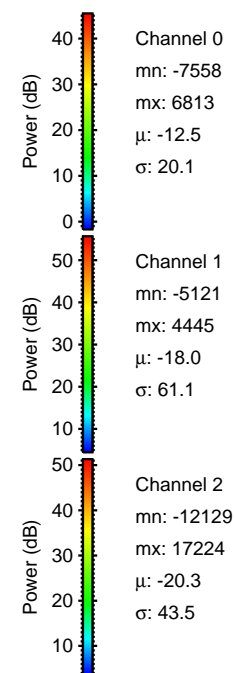
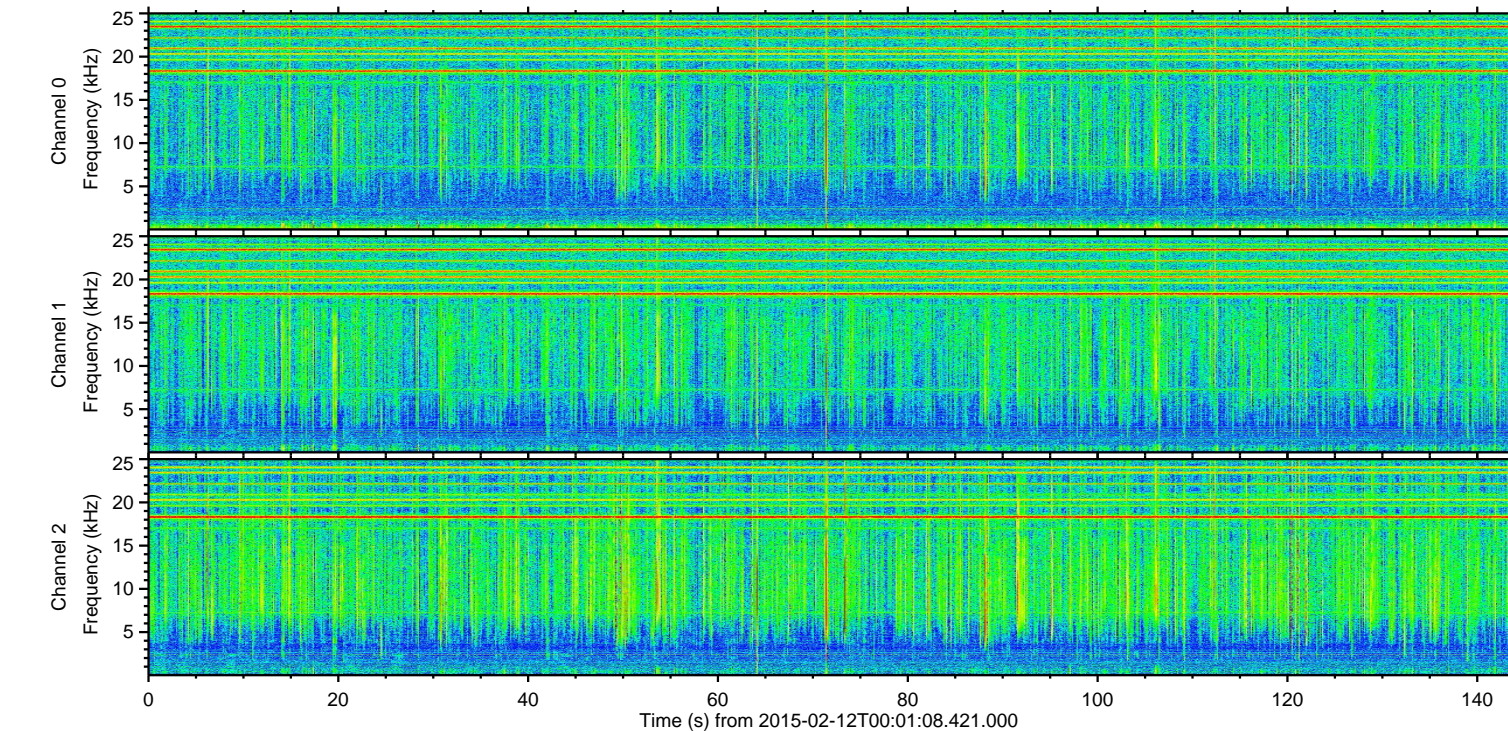
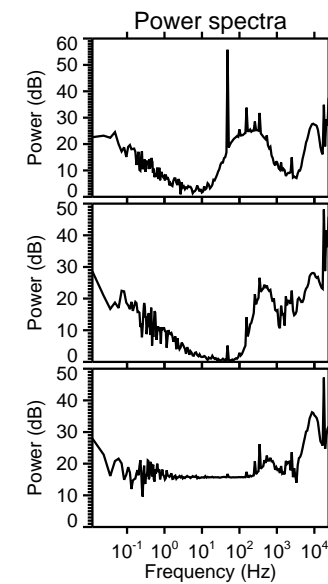
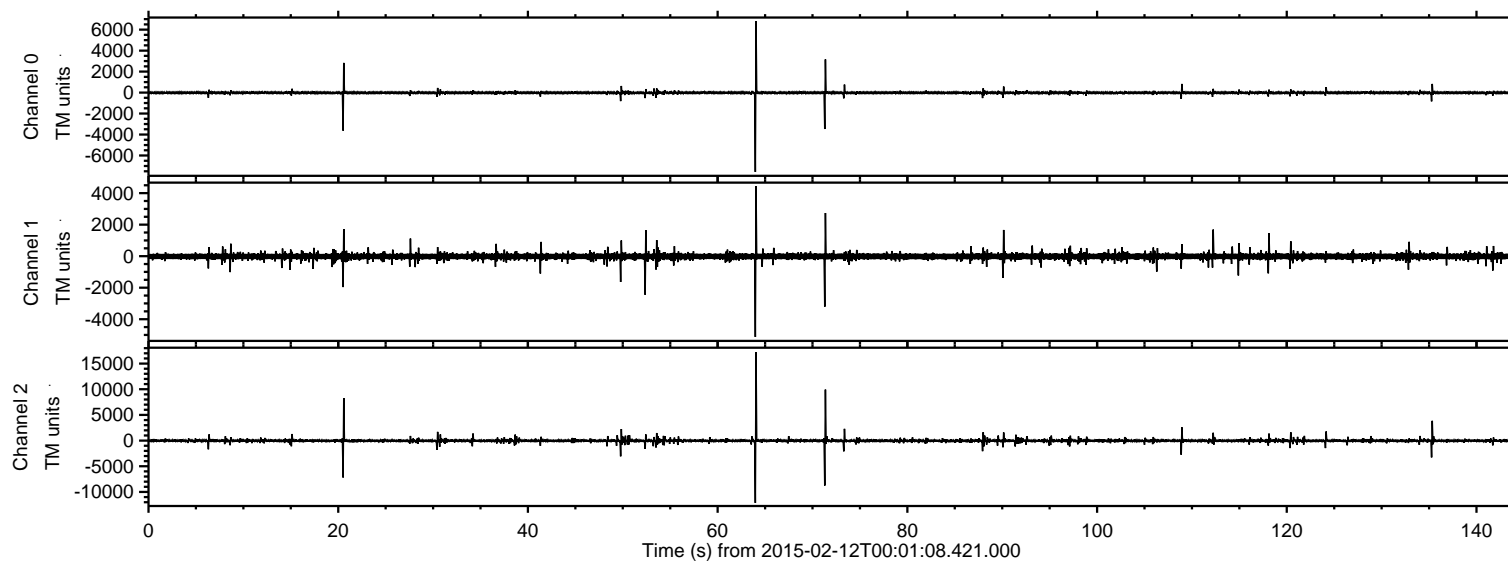
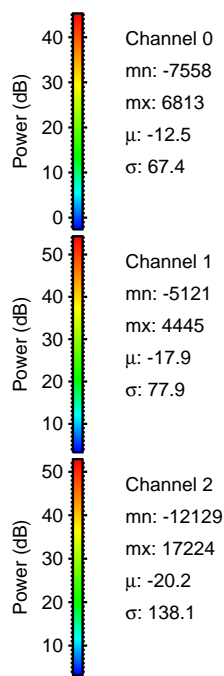
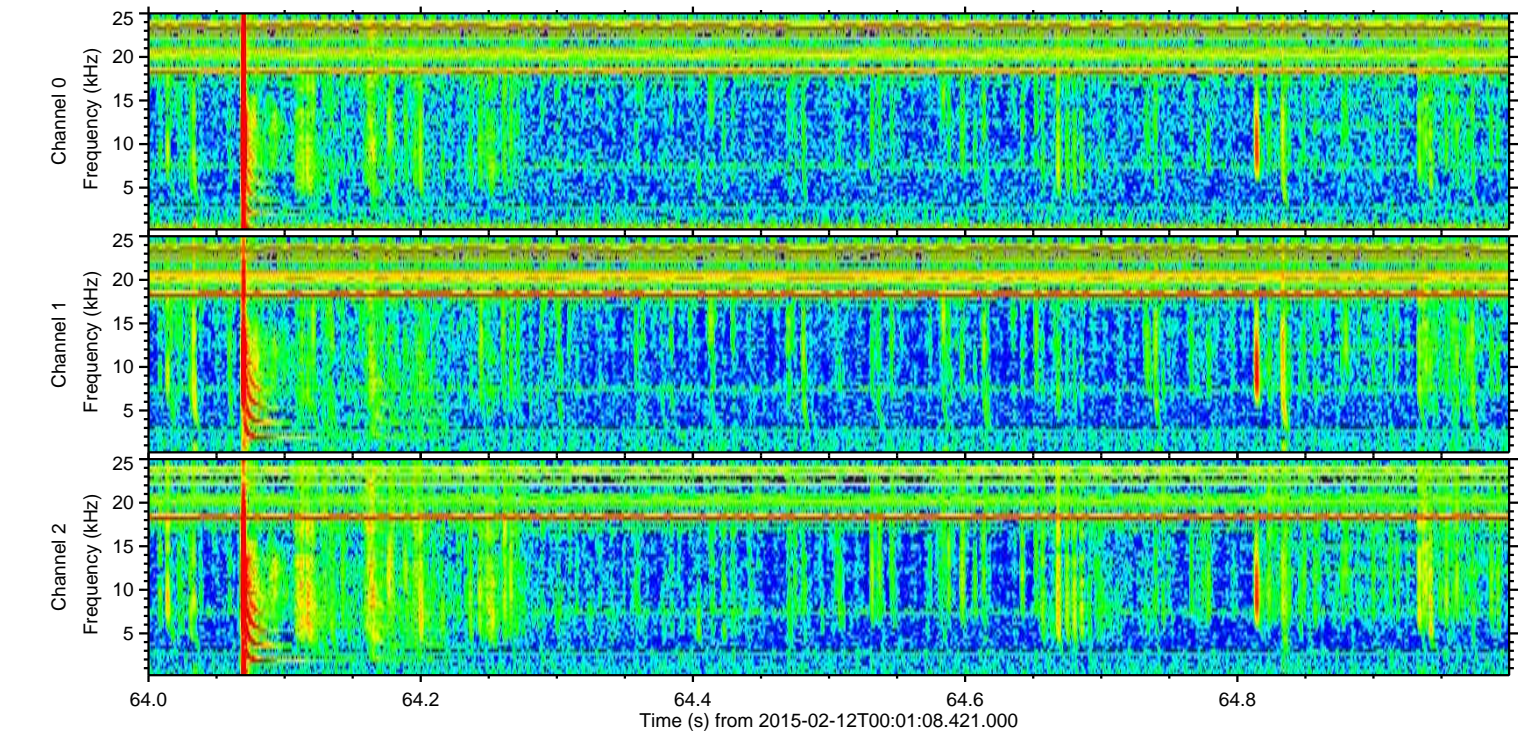
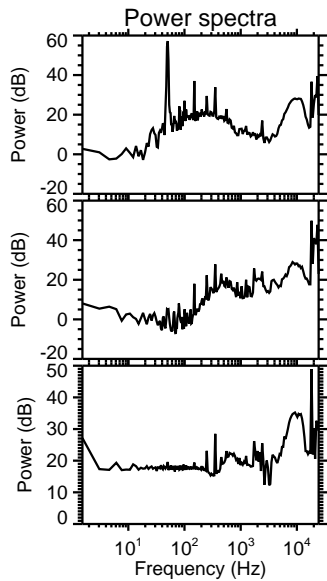
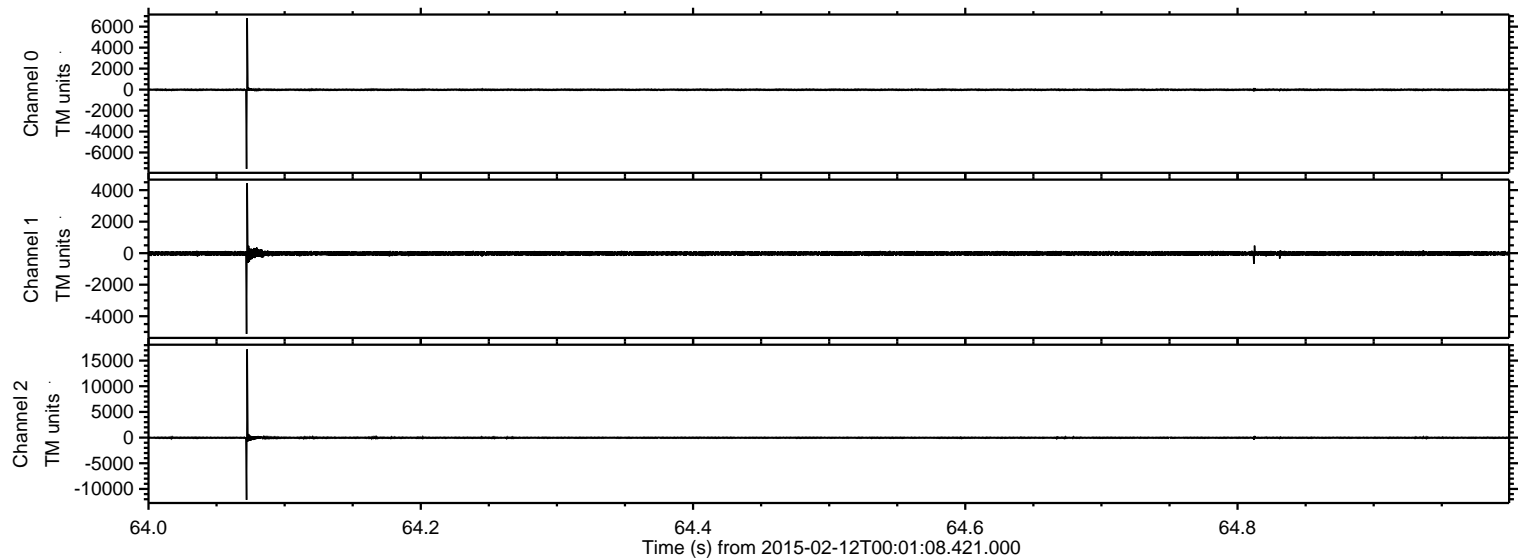


ELMAVAN 3D WAVEFORMS (Measured data sampled at 50 kHz) 49806 packets of 144 samples from 2015-02-12T00:01:08.421.000.

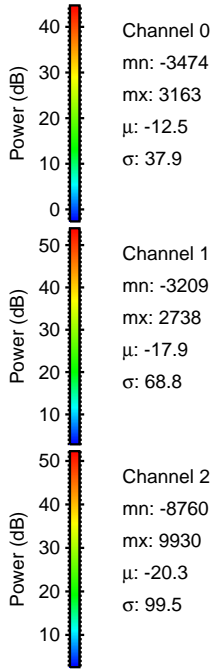
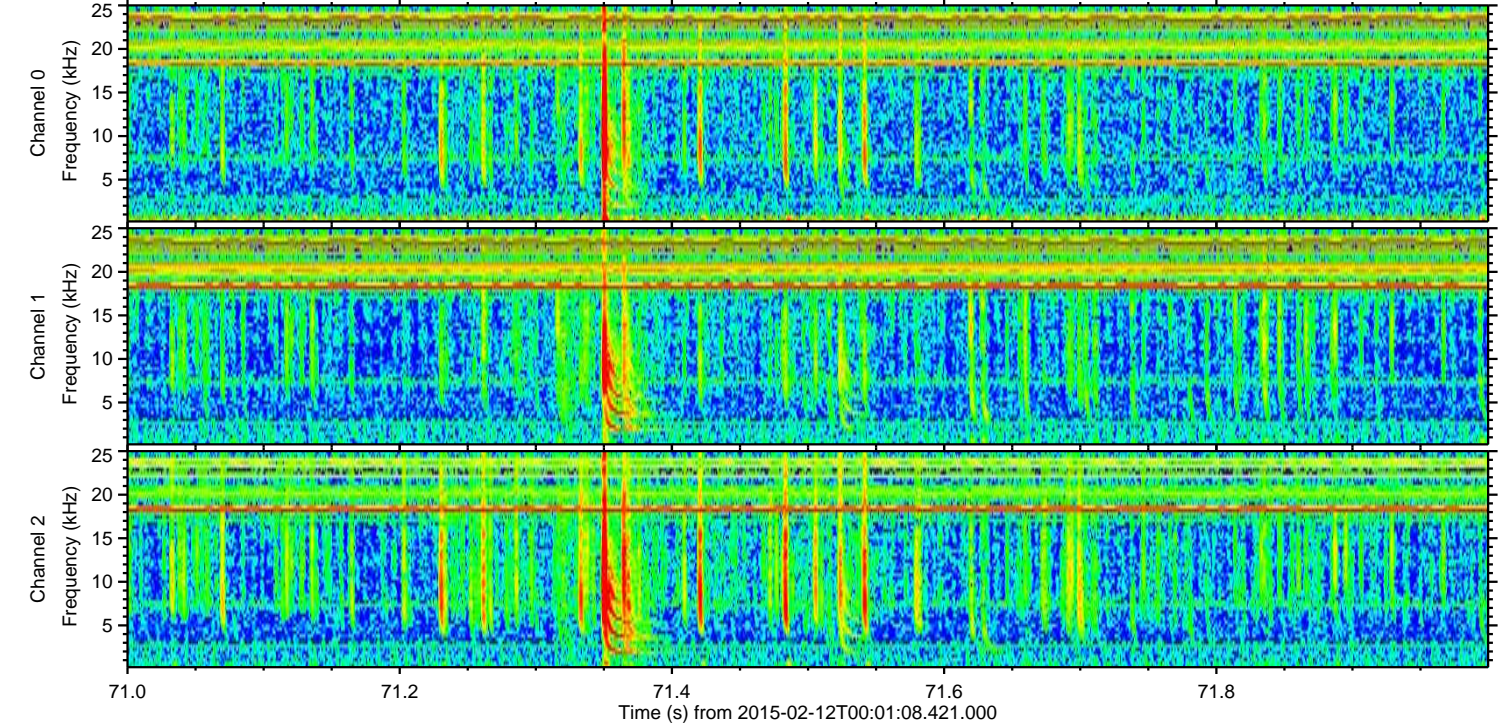
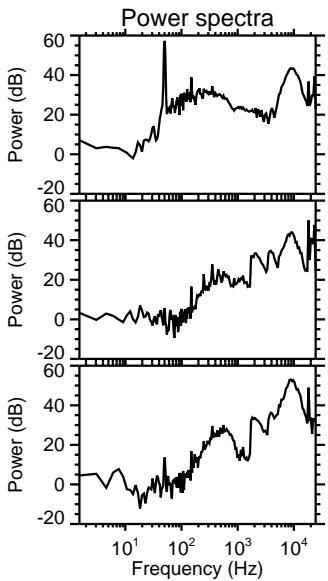
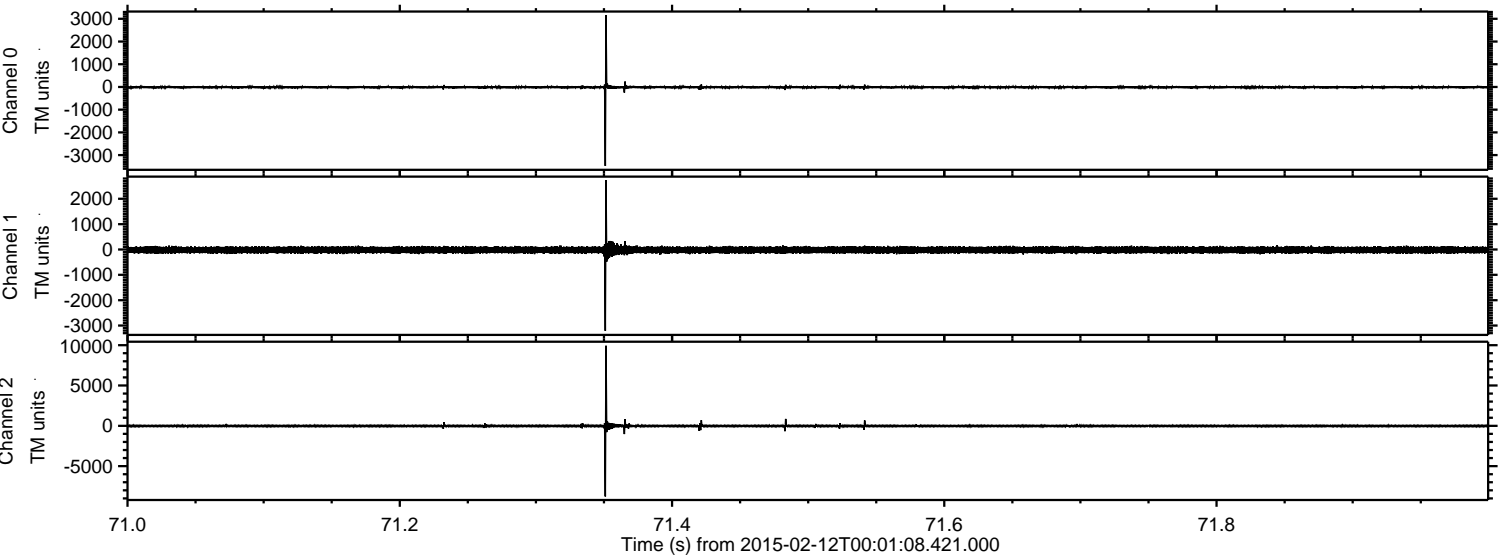
Processed Fri Feb 20 03:32:11 2015 by ELM ver.2012-10-06 from 001__elm20150212_000107__dat00.bin



Processed Fri Feb 20 03:32:28 2015 by ELM ver.2012-10-06 from 001__elm20150212_000107__dat00.bin

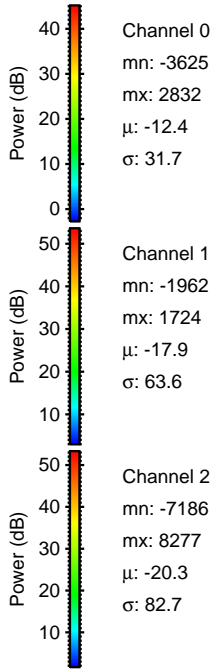
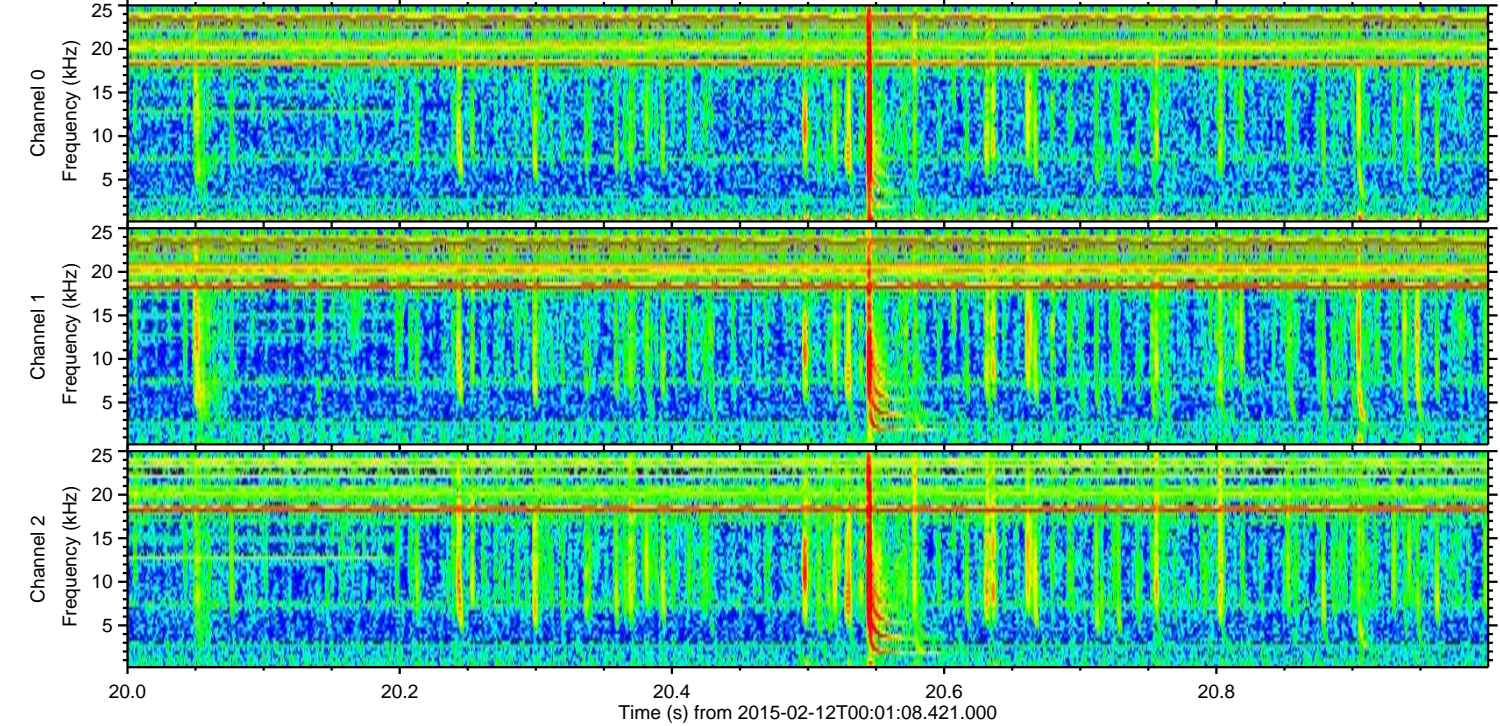
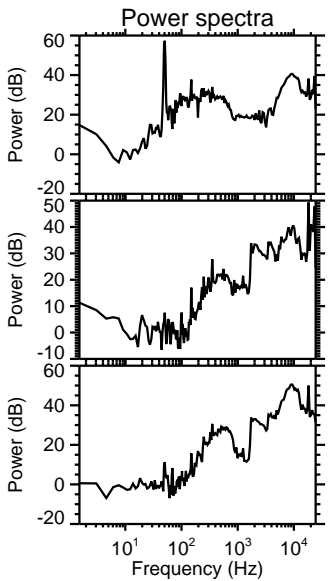
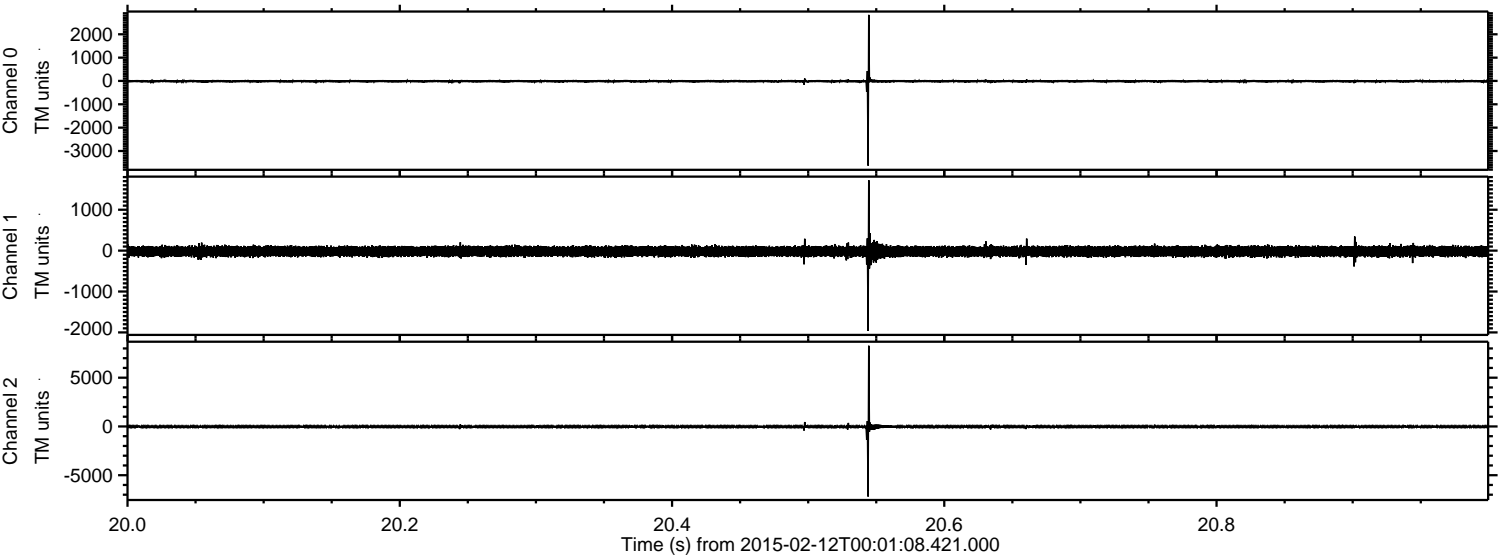


Processed Fri Feb 20 03:32:29 2015 by ELM ver.2012-10-06 from 001__elm20150212_000107__dat00.bin

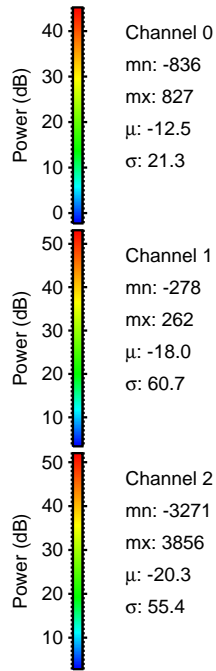
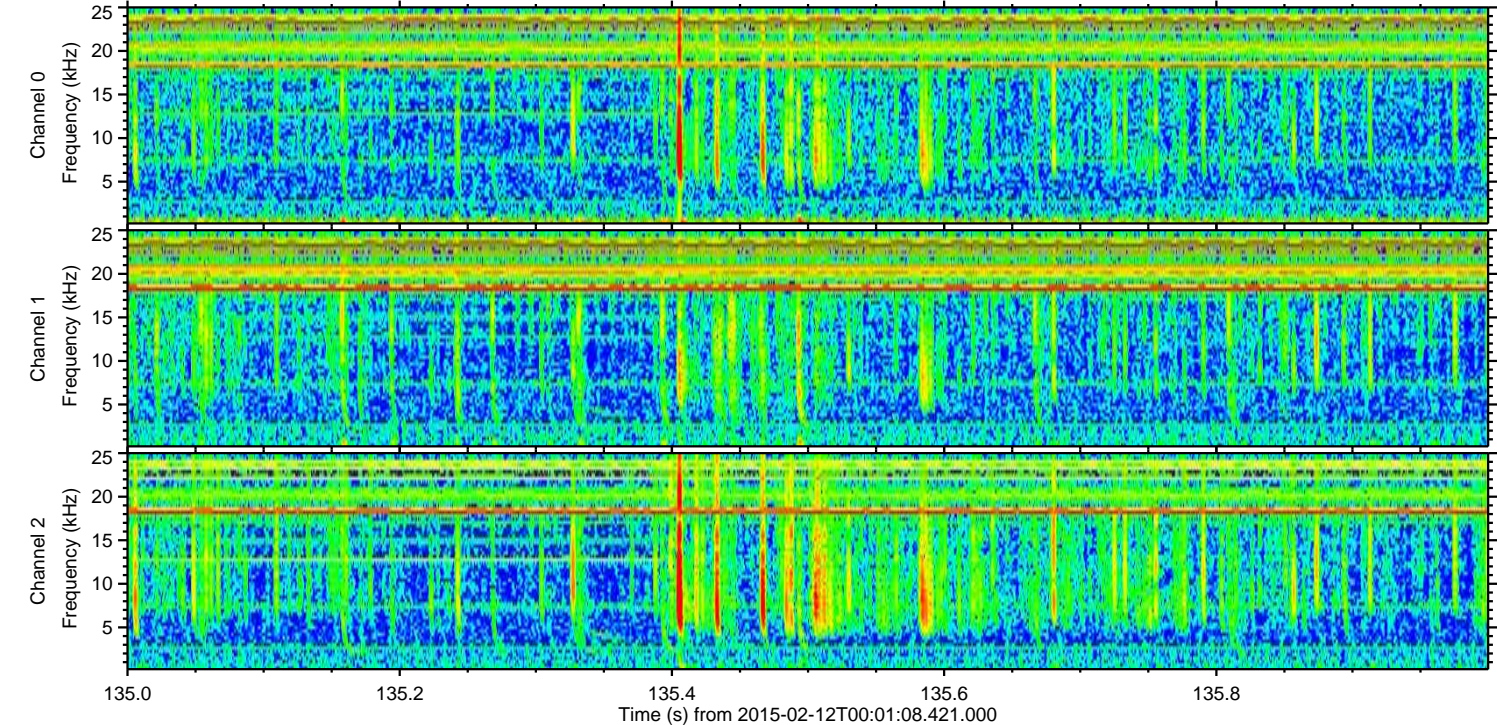
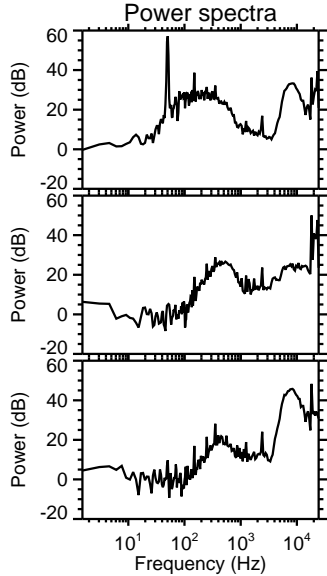
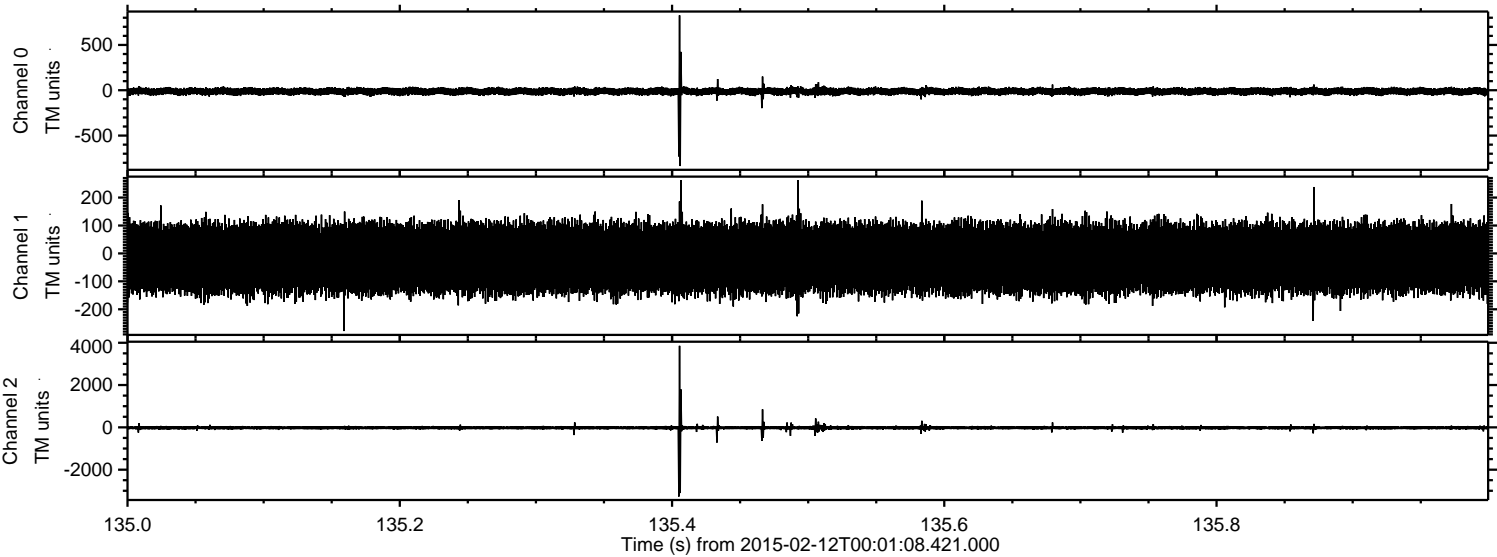


ELMAVAN 3D WAVEFORMS (Measured data sampled at 50 kHz) 49806 packets of 144 samples from 2015-02-12T00:01:08.421.000. Part 21/144

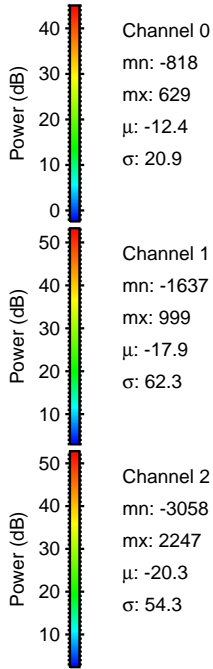
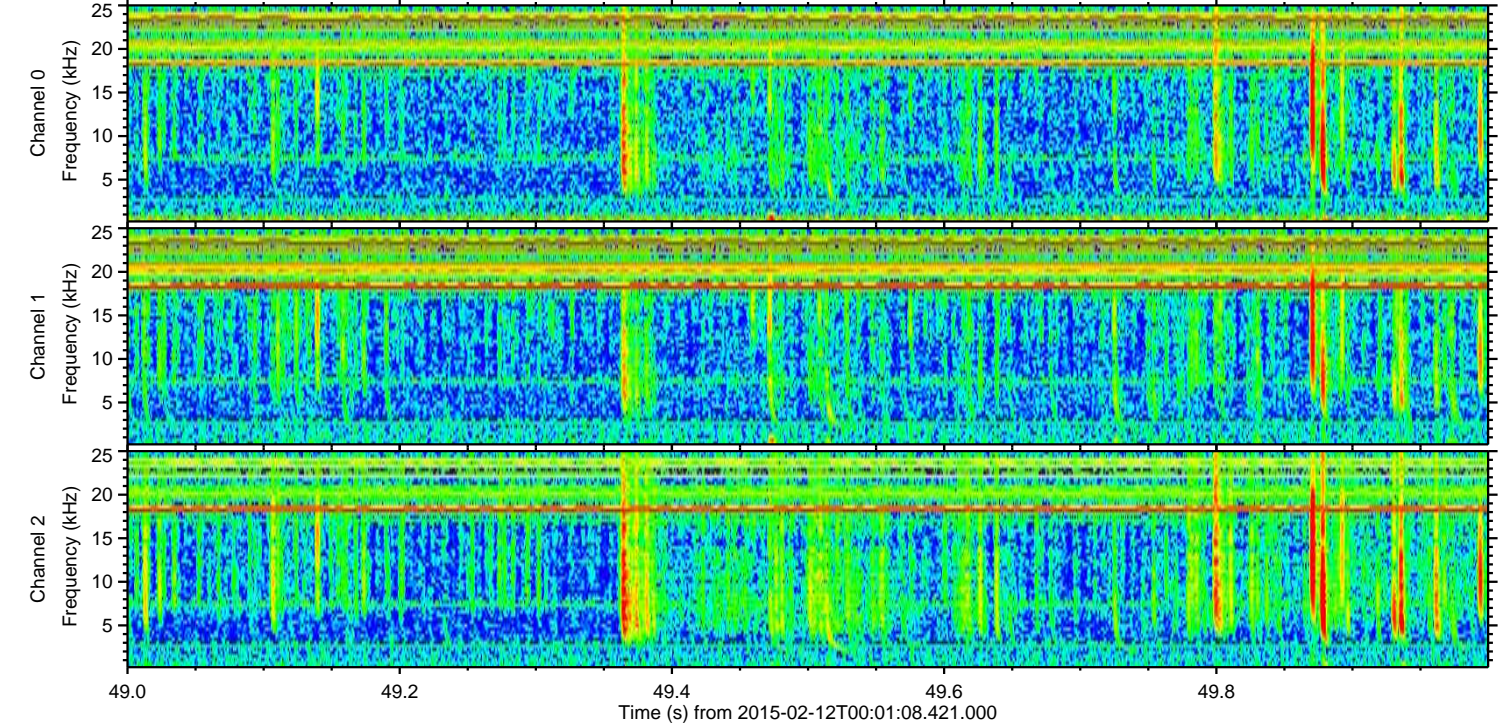
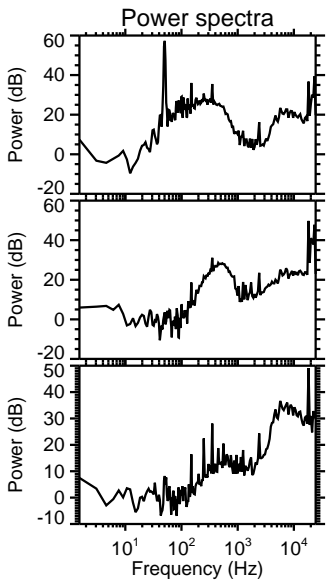
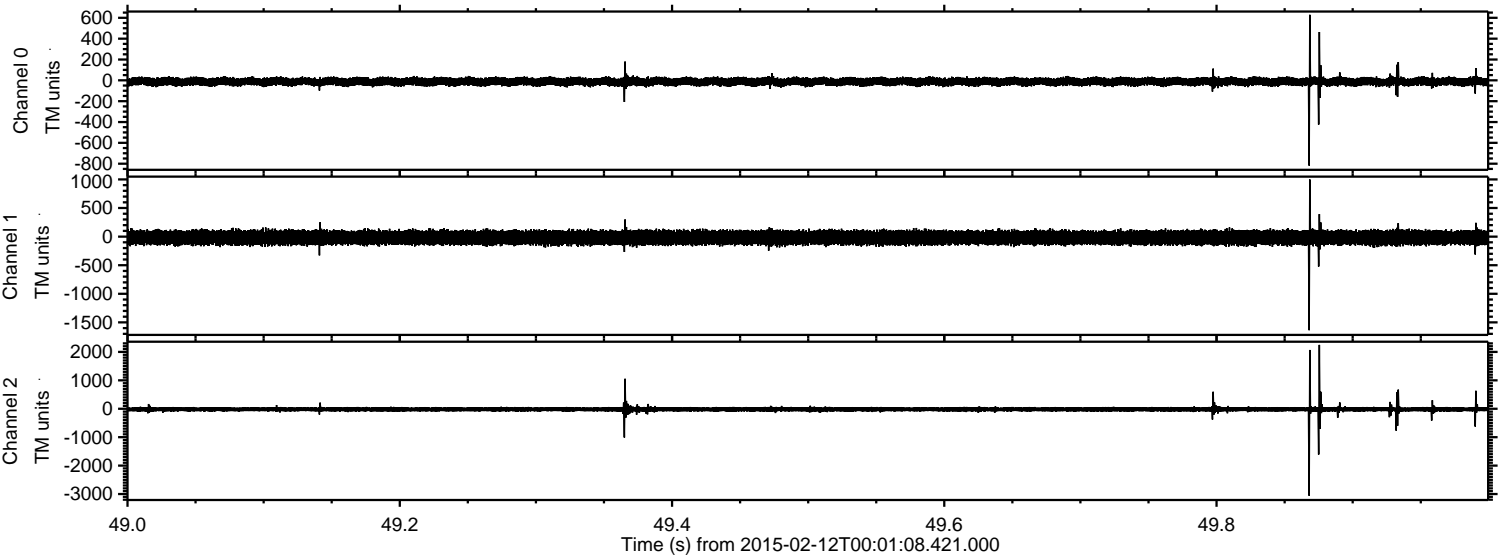
Processed Fri Feb 20 03:32:30 2015 by ELM ver.2012-10-06 from 001__elm20150212_000107__dat00.bin



Processed Fri Feb 20 03:32:31 2015 by ELM ver.2012-10-06 from 001__elm20150212_000107__dat00.bin



Processed Fri Feb 20 03:32:33 2015 by ELM ver.2012-10-06 from 001__elm20150212_000107__dat00.bin



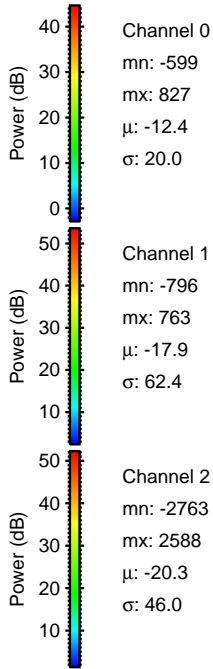
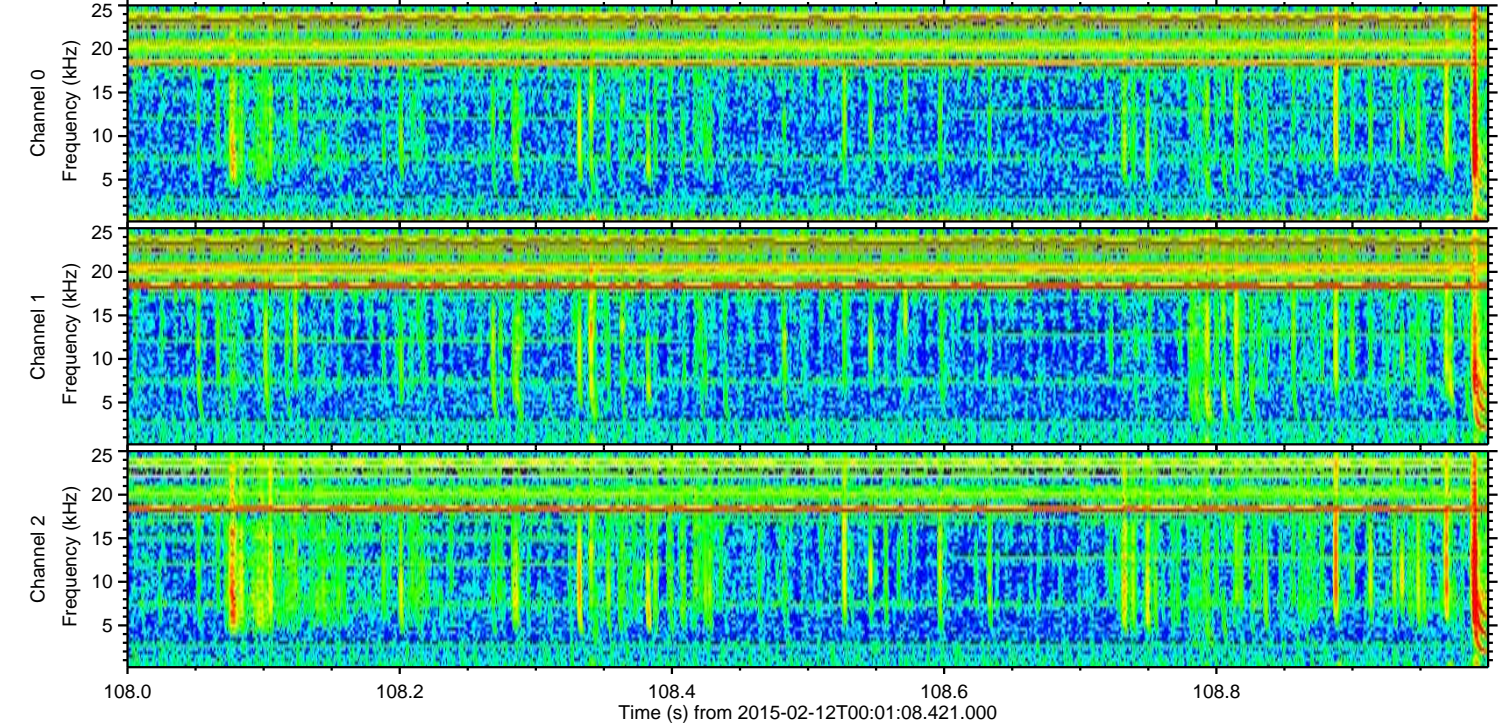
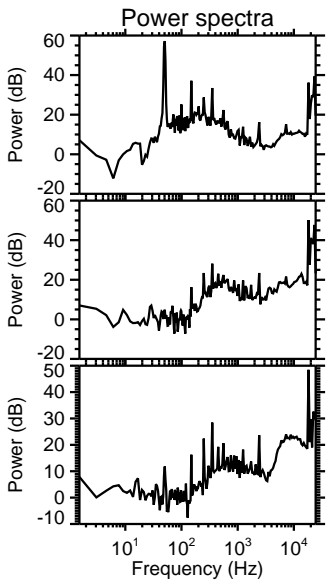
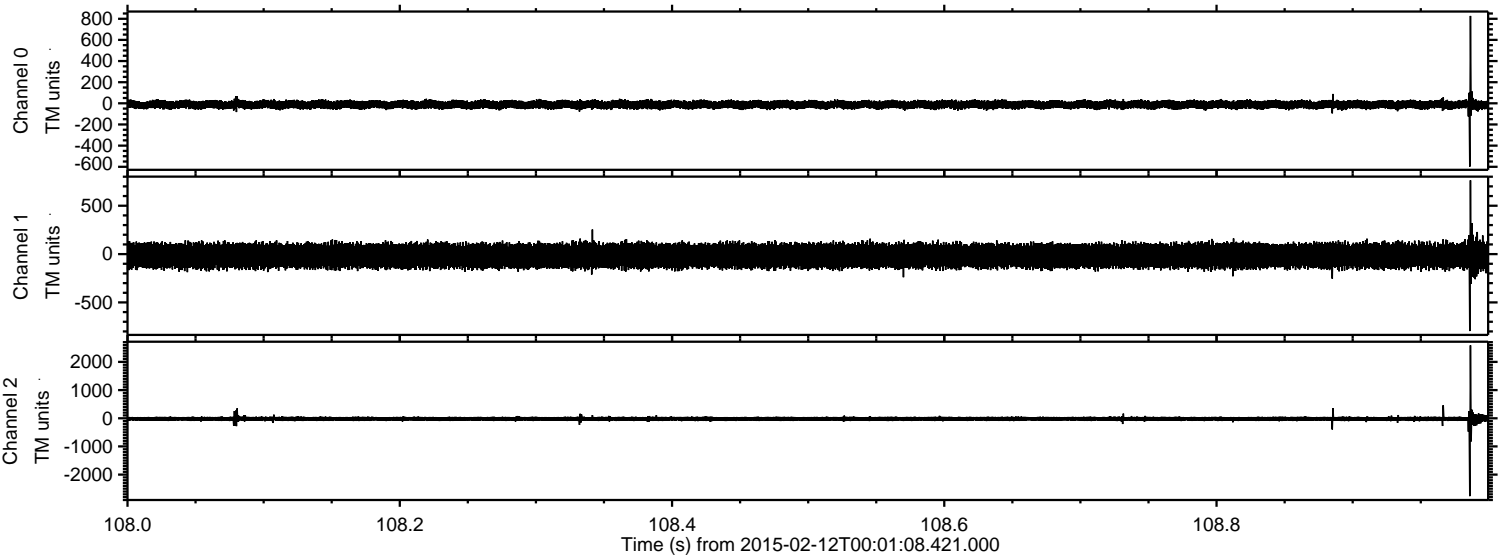
Channel 0
mn: -818
mx: 629
 μ : -12.4
 σ : 20.9

Channel 1
mn: -1637
mx: 999
 μ : -17.9
 σ : 62.3

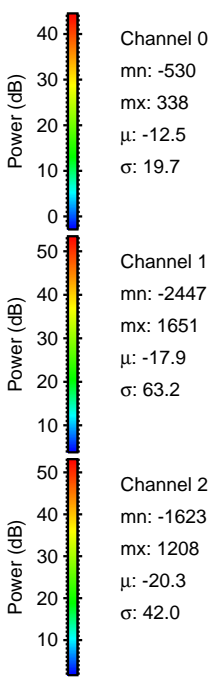
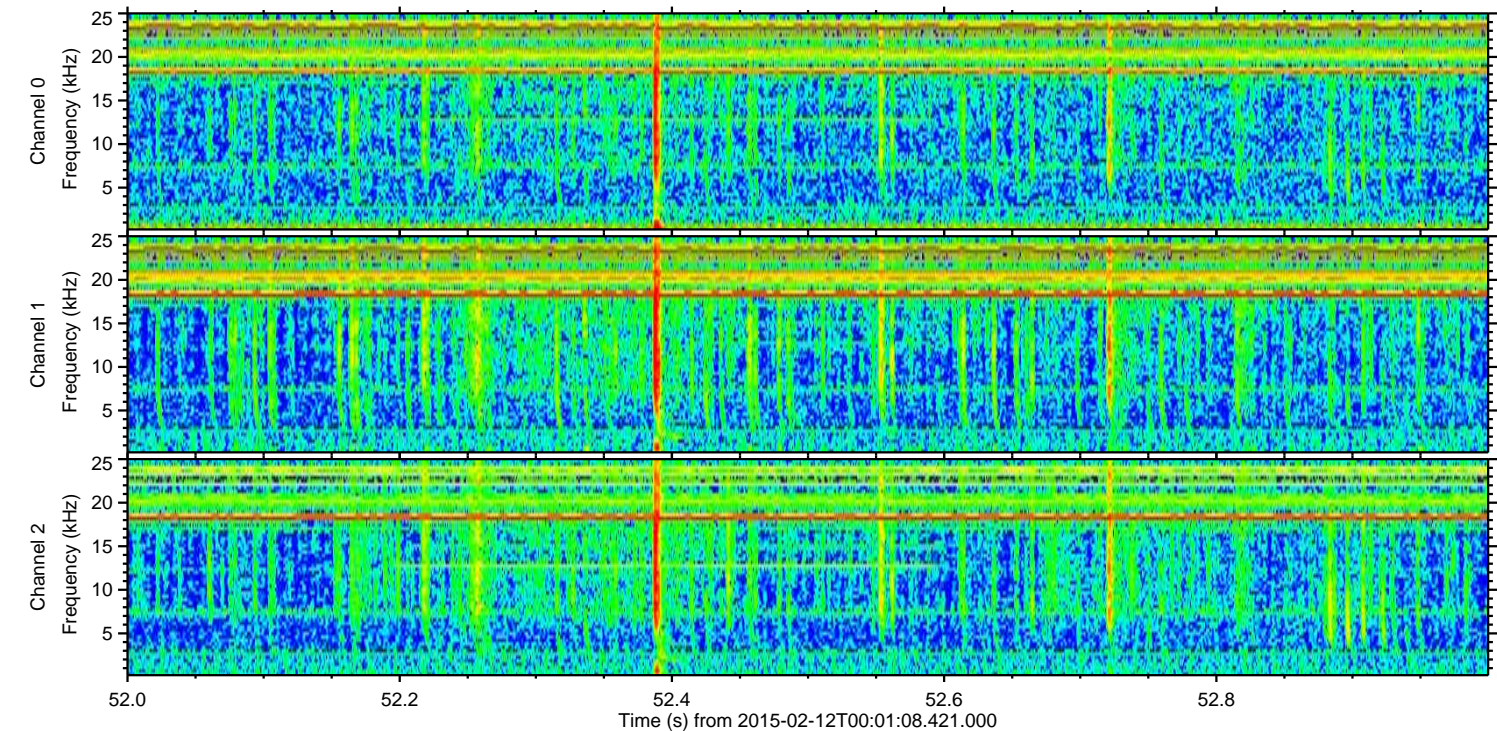
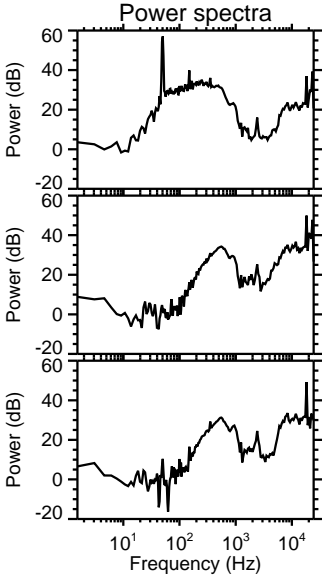
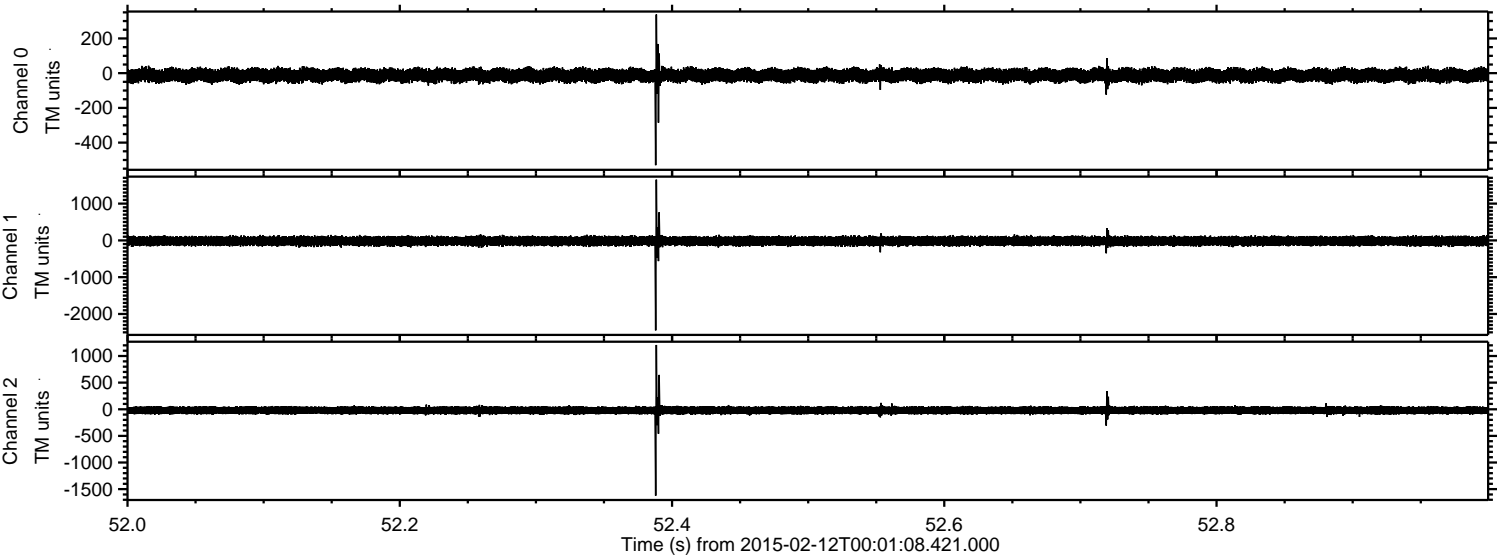
Channel 2
mn: -3058
mx: 2247
 μ : -20.3
 σ : 54.3

ELMAVAN 3D WAVEFORMS (Measured data sampled at 50 kHz) 49806 packets of 144 samples from 2015-02-12T00:01:08.421.000. Part 109/144

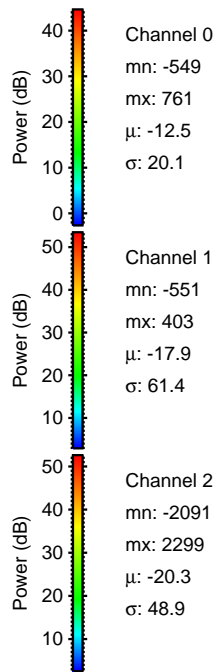
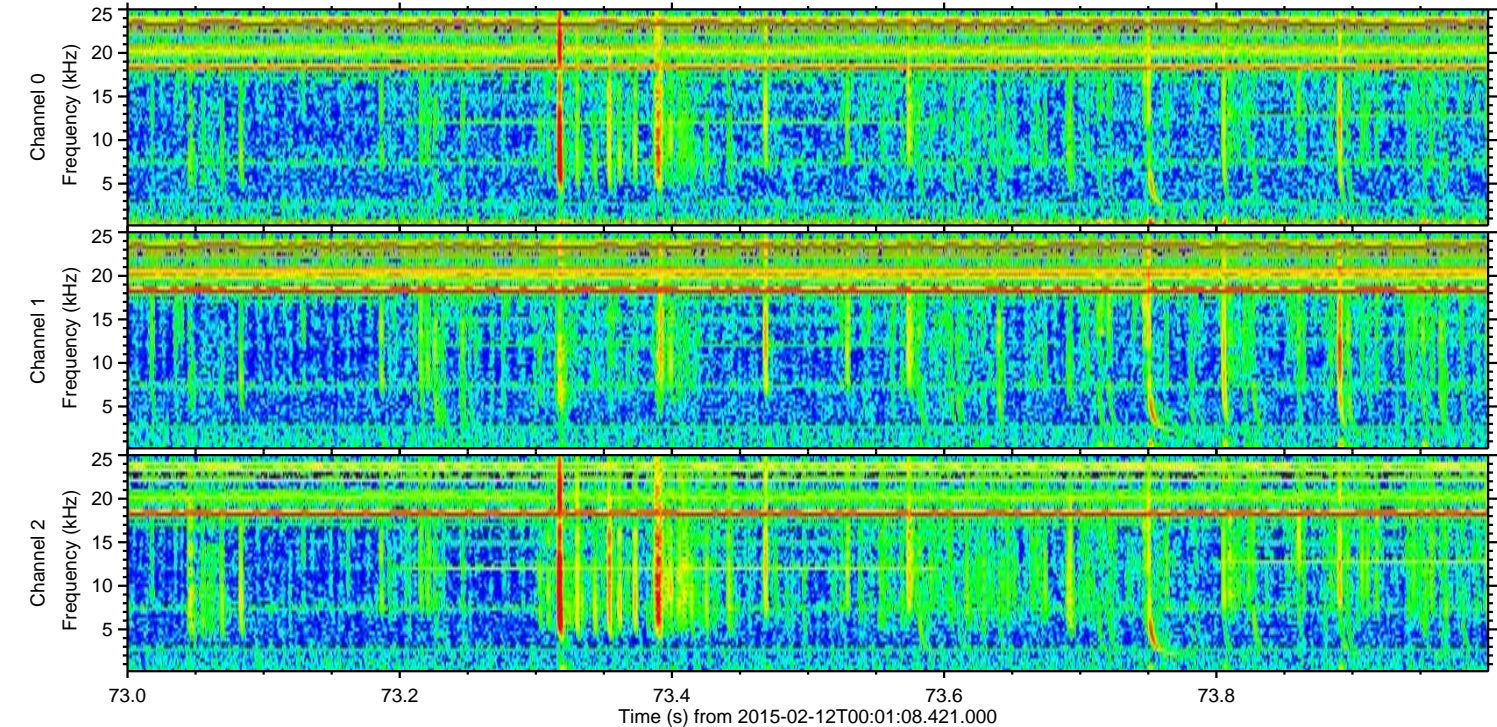
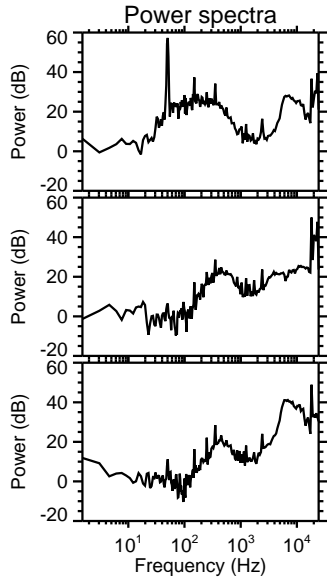
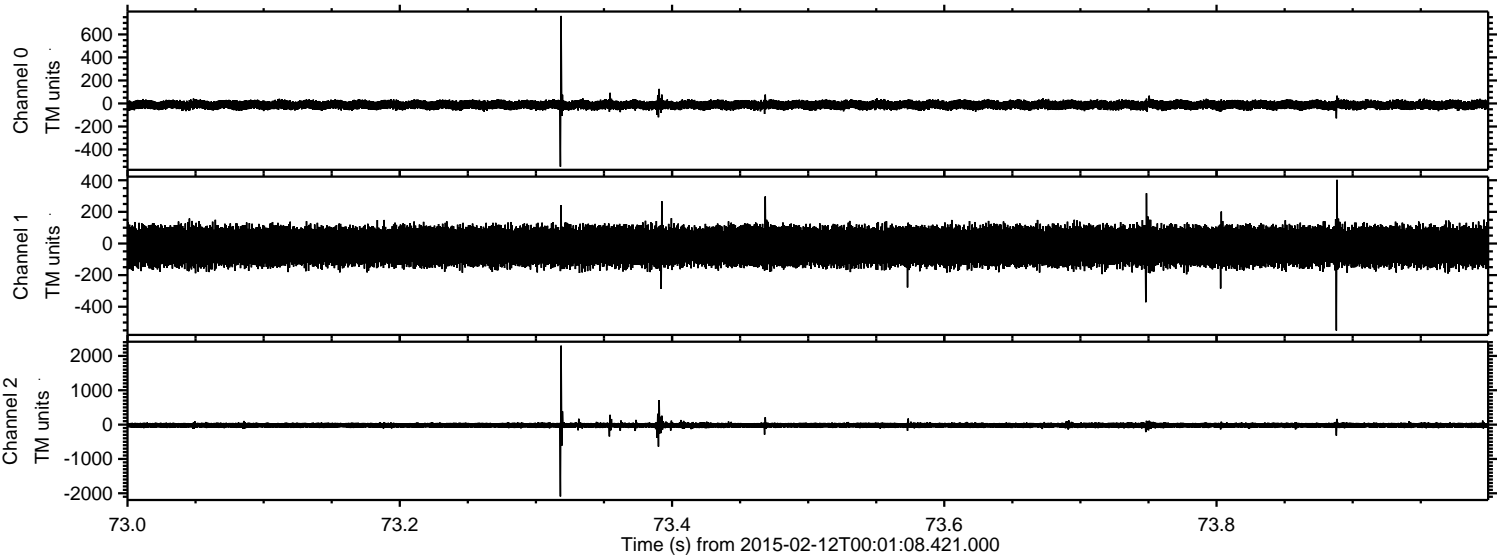
Processed Fri Feb 20 03:32:34 2015 by ELM ver.2012-10-06 from 001__elm20150212_000107__dat00.bin



Processed Fri Feb 20 03:32:35 2015 by ELM ver.2012-10-06 from 001__elm20150212_000107__dat00.bin



Processed Fri Feb 20 03:32:36 2015 by ELM ver.2012-10-06 from 001__elm20150212_000107__dat00.bin



Power spectra

Channel 0

mn: -549
mx: 761
 μ : -12.5
 σ : 20.1

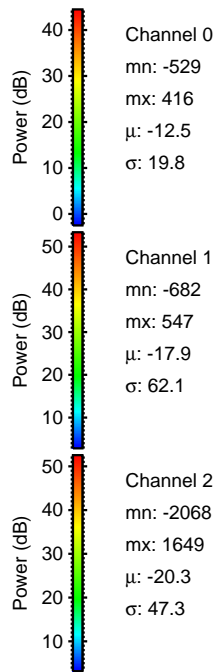
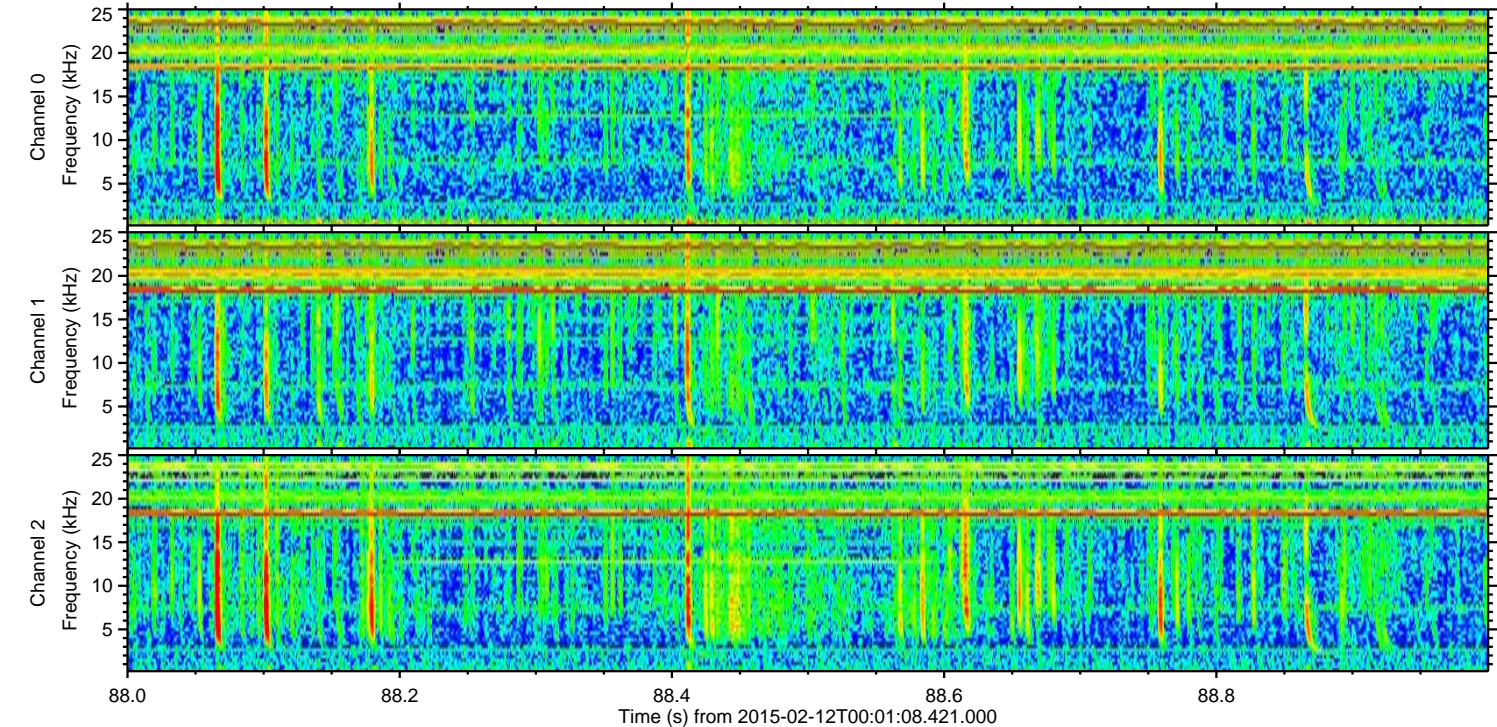
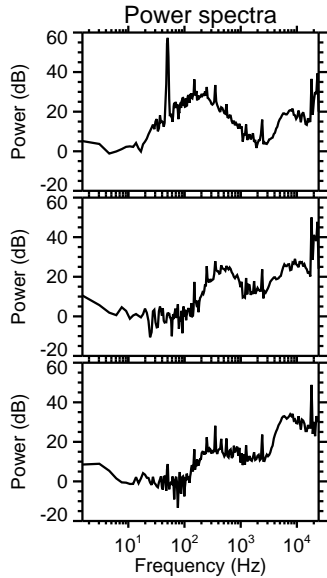
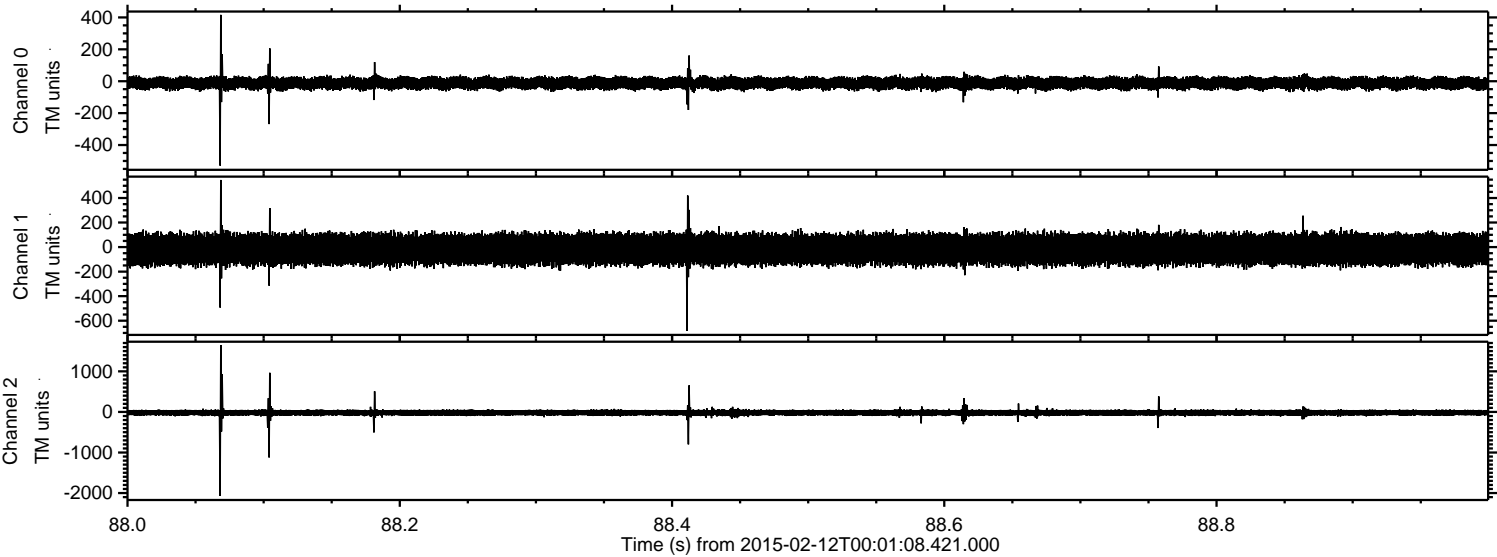
Channel 1

mn: -551
mx: 403
 μ : -17.9
 σ : 61.4

Channel 2

mn: -2091
mx: 2299
 μ : -20.3
 σ : 48.9

Processed Fri Feb 20 03:32:39 2015 by ELM ver.2012-10-06 from 001__elm20150212_000107__dat00.bin



Processed Fri Feb 20 03:32:41 2015 by ELM ver.2012-10-06 from 001__elm20150212_000107__dat00.bin

