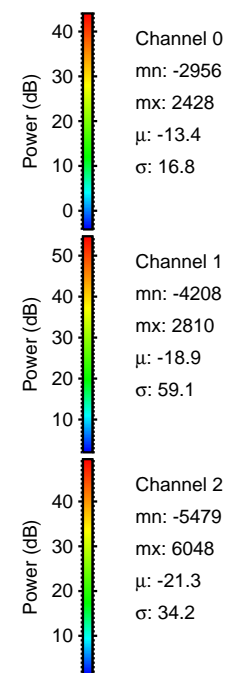
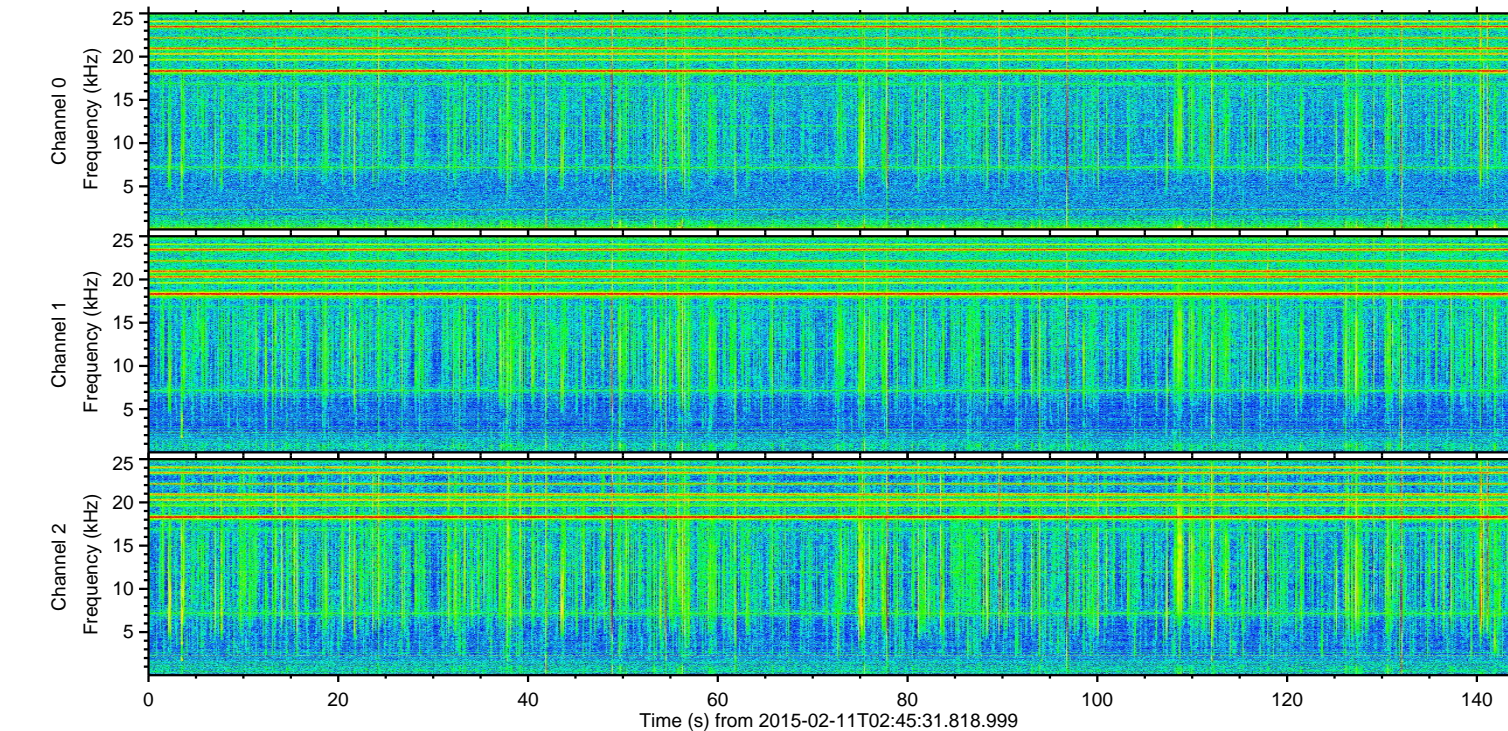
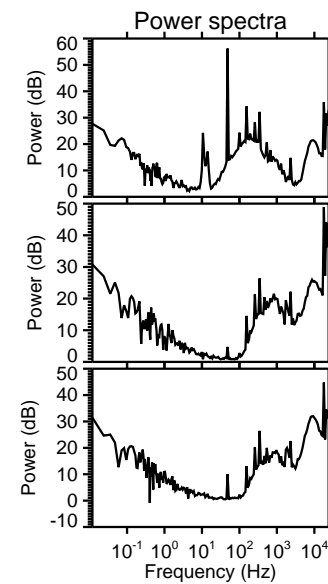
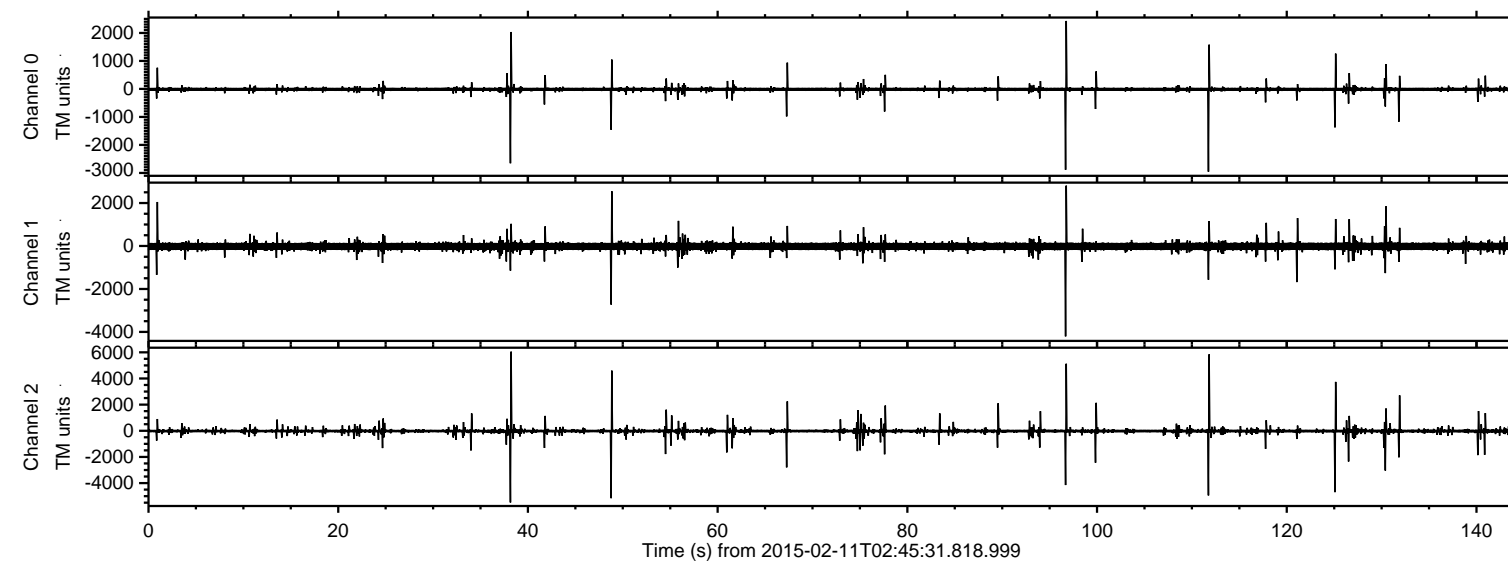


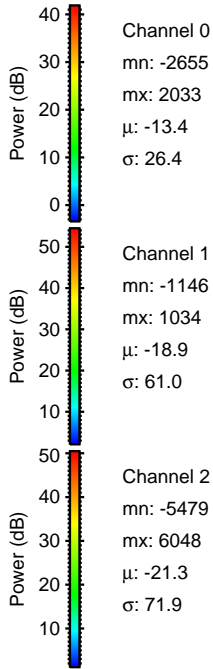
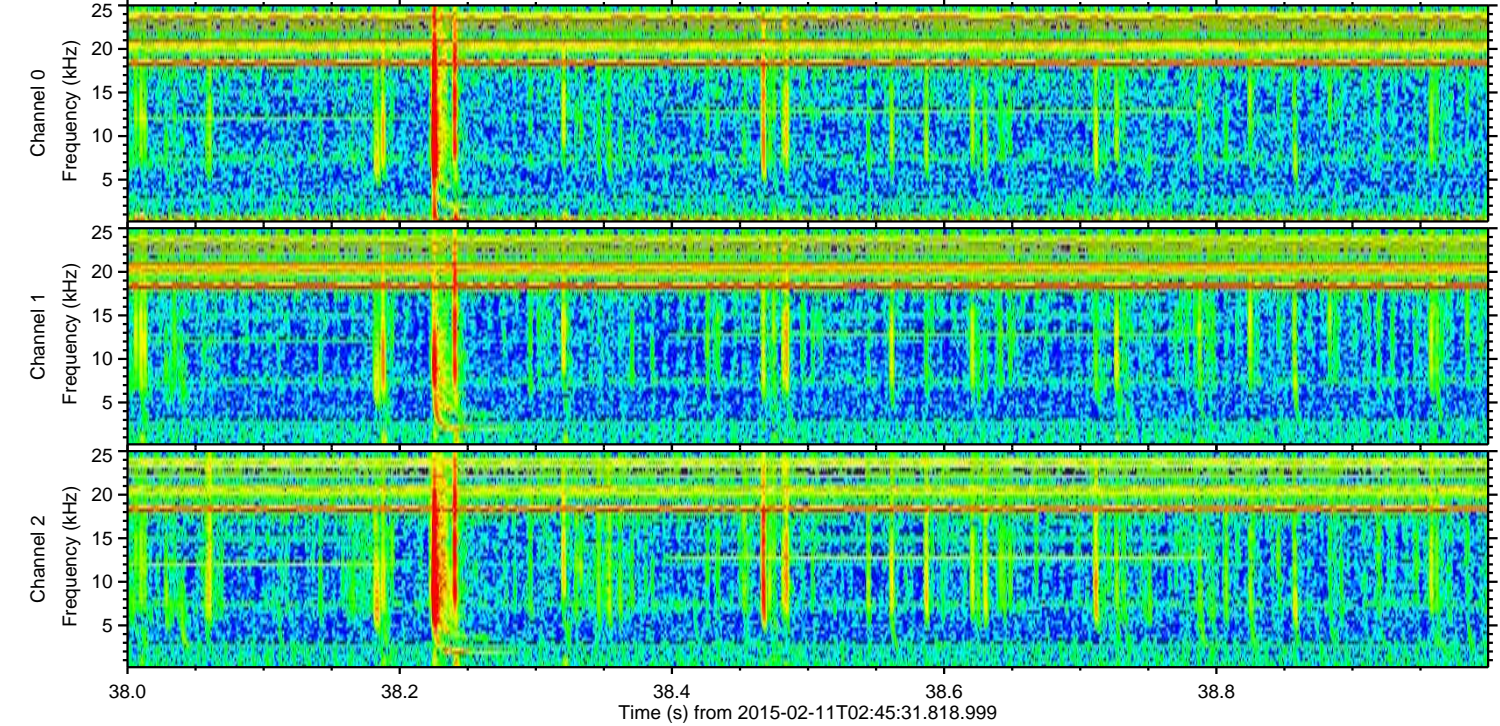
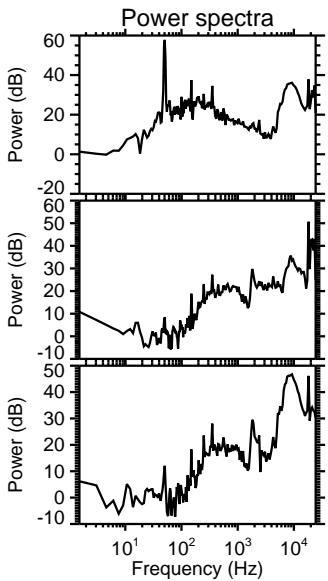
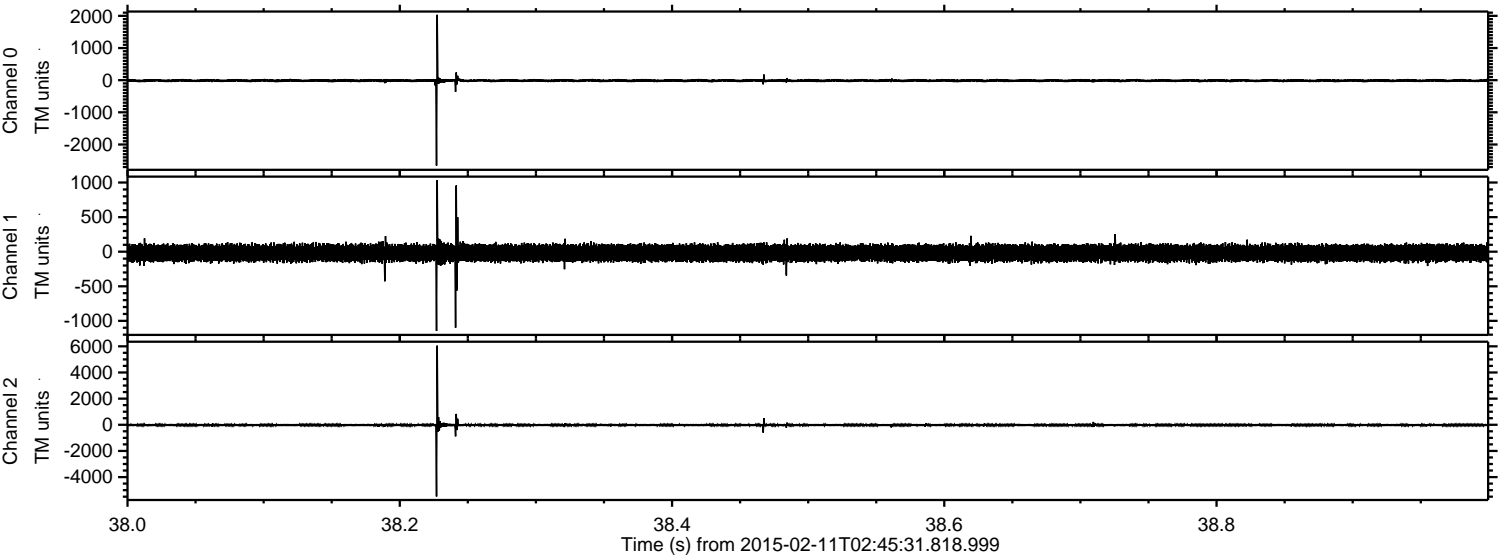
# ELMAVAN 3D WAVEFORMS (Measured data sampled at 50 kHz) 49807 packets of 144 samples from 2015-02-11T02:45:31.818.999.

Processed Thu Feb 19 19:58:53 2015 by ELM ver.2012-10-06 from 001\_\_elm20150211\_024530\_\_dat00.bin





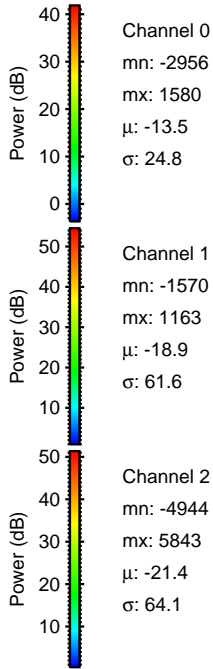
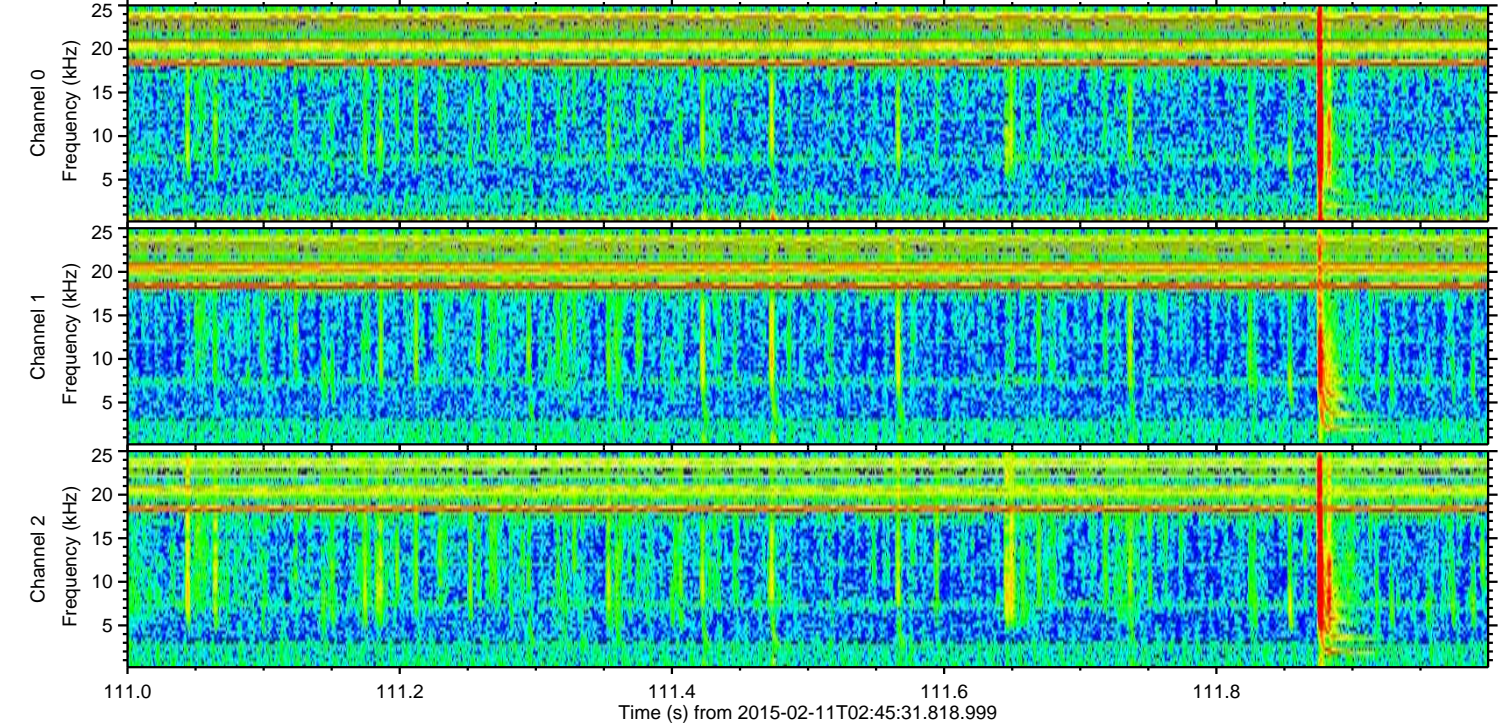
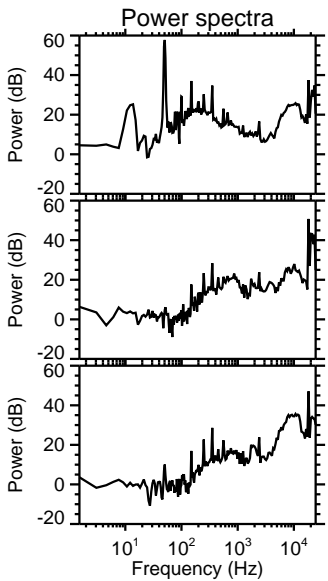
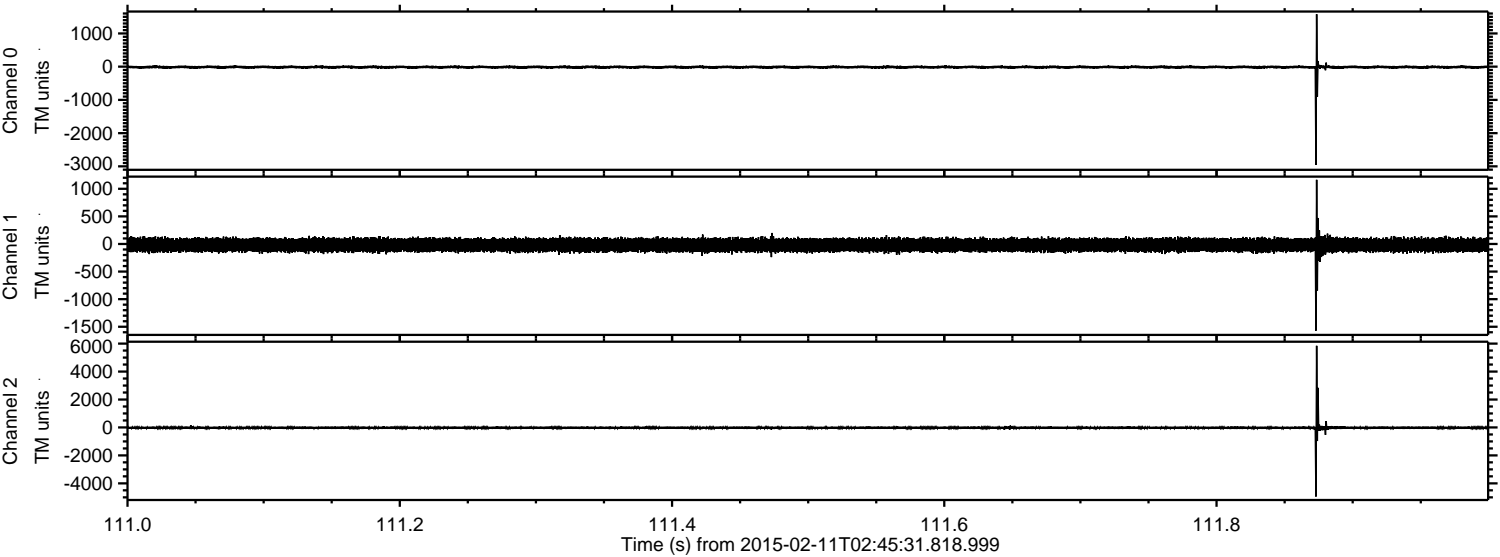
Processed Thu Feb 19 19:59:16 2015 by ELM ver.2012-10-06 from 001\_\_elm20150211\_024530\_\_dat00.bin





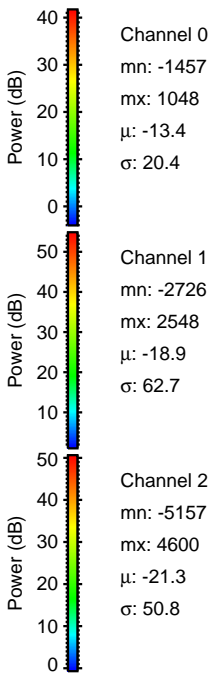
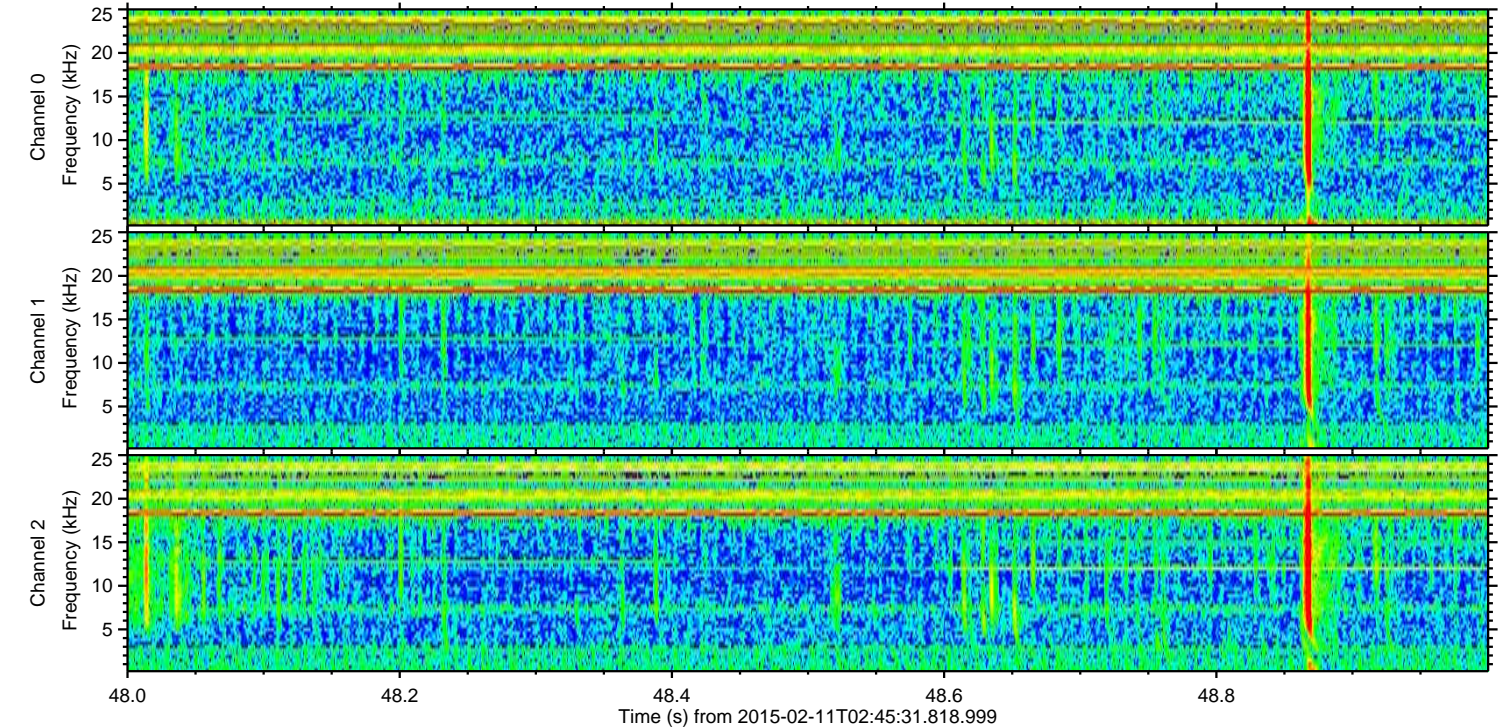
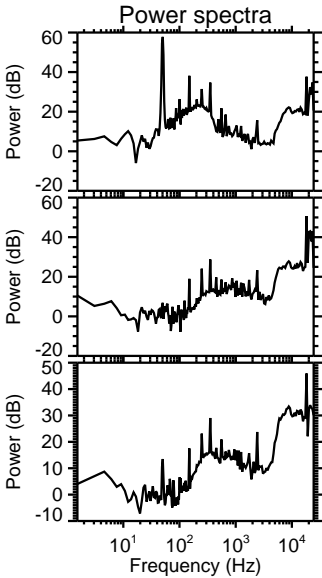
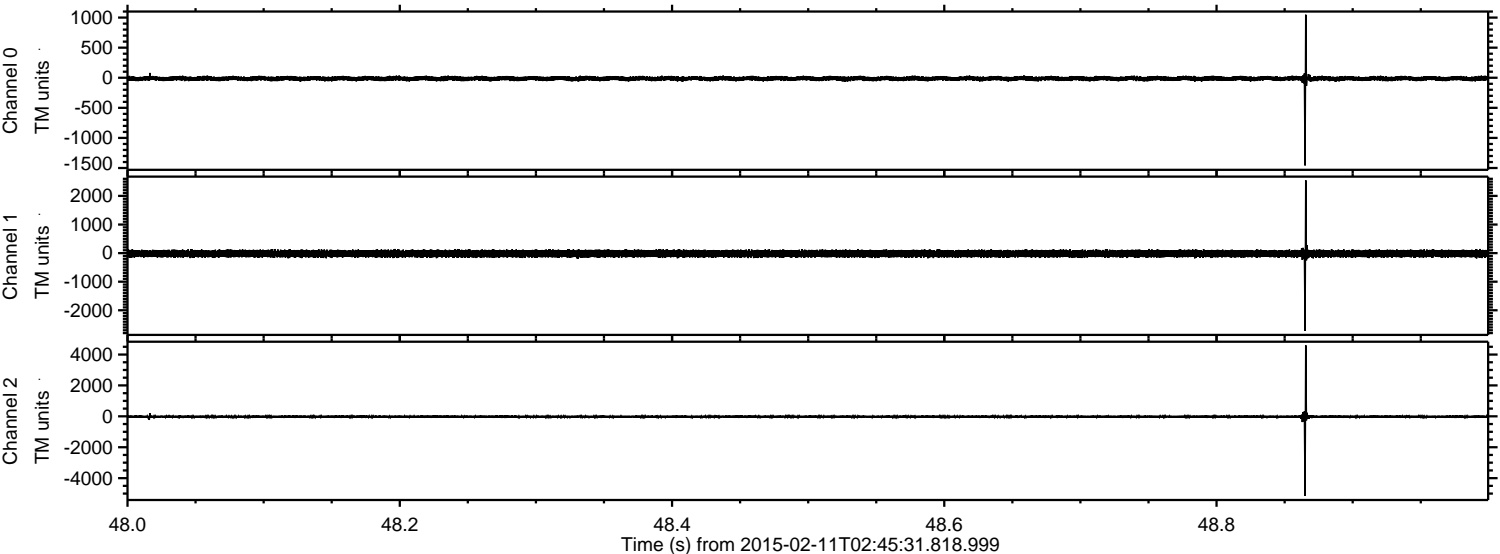
ELMAVAN 3D WAVEFORMS (Measured data sampled at 50 kHz) 49807 packets of 144 samples from 2015-02-11T02:45:31.818.999. Part 112/144

Processed Thu Feb 19 19:59:18 2015 by ELM ver.2012-10-06 from 001\_\_elm20150211\_024530\_\_dat00.bin



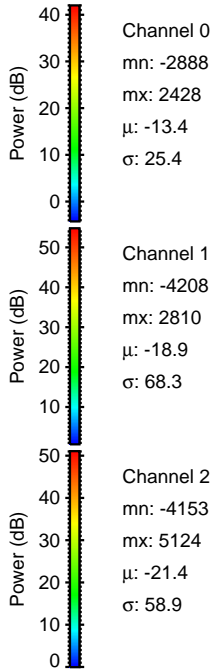
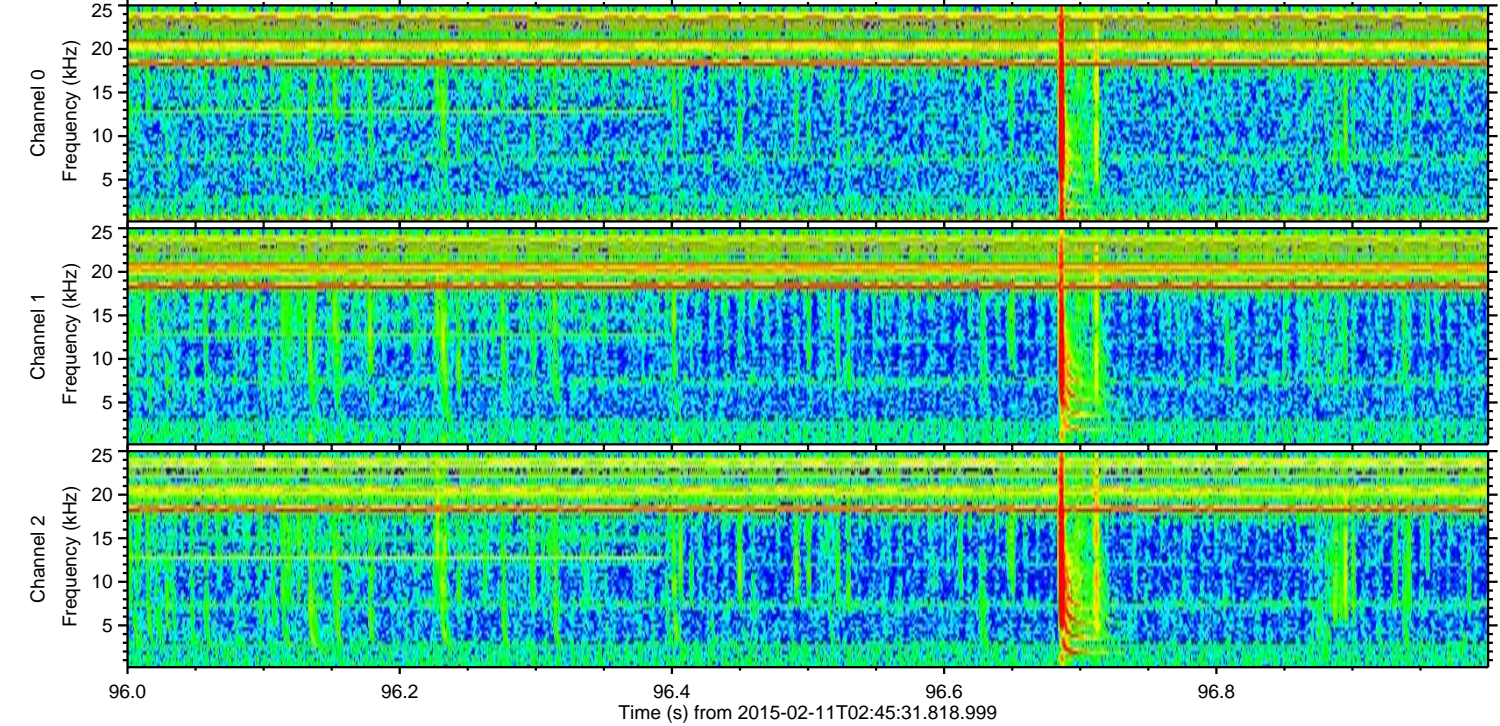
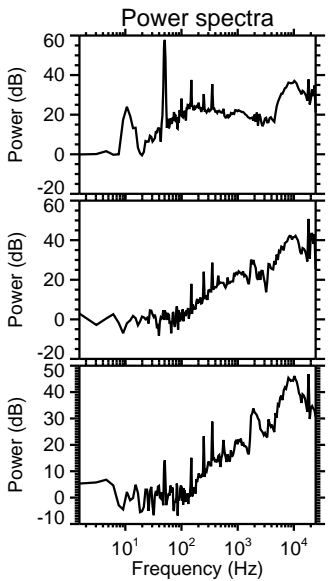
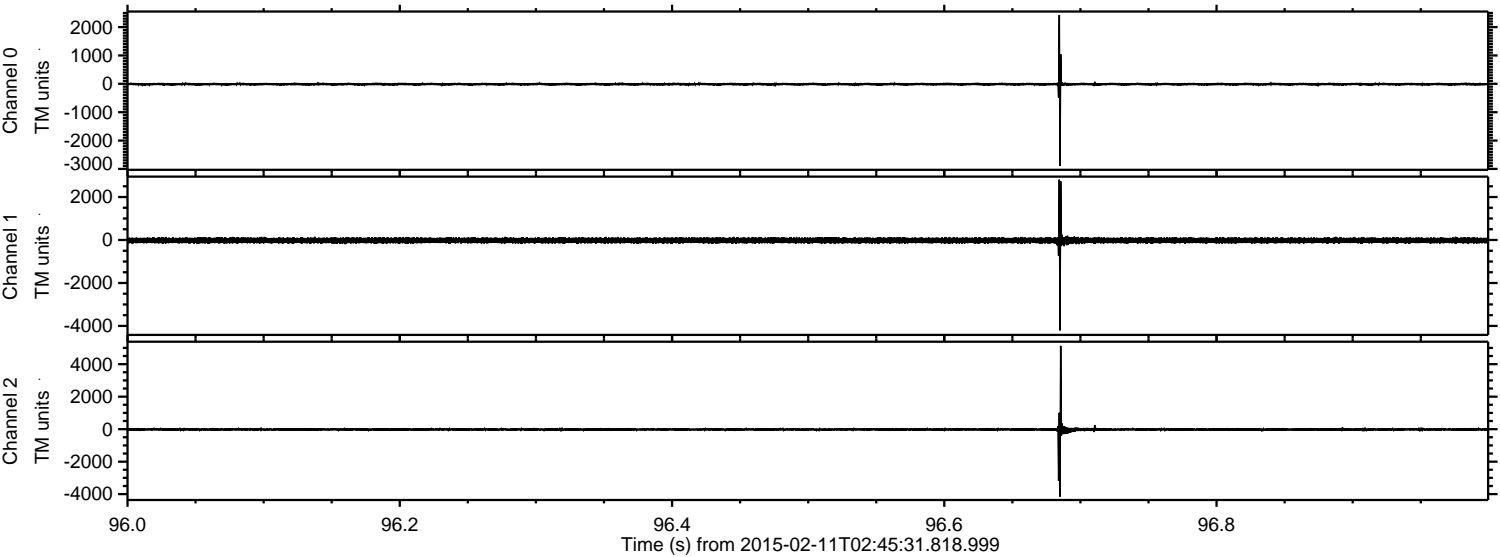


Processed Thu Feb 19 19:59:19 2015 by ELM ver.2012-10-06 from 001\_\_elm20150211\_024530\_\_dat00.bin





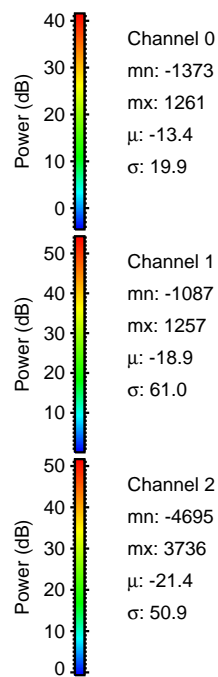
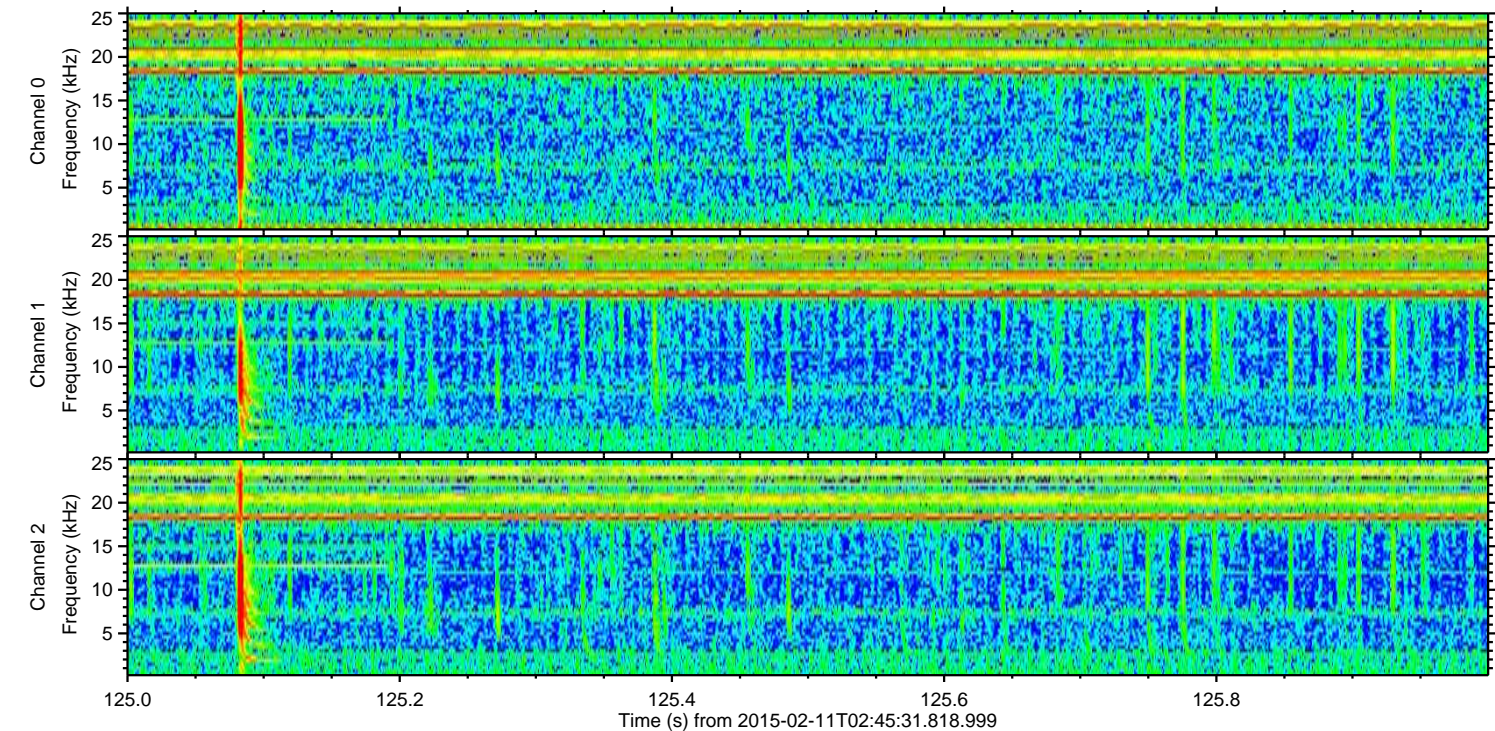
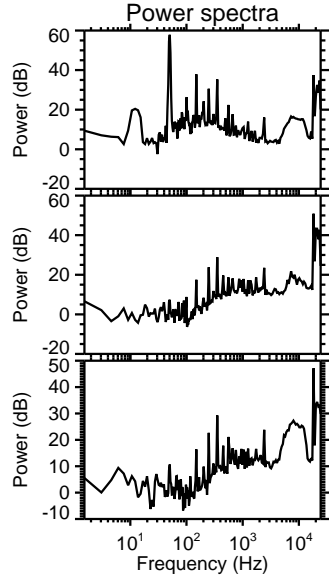
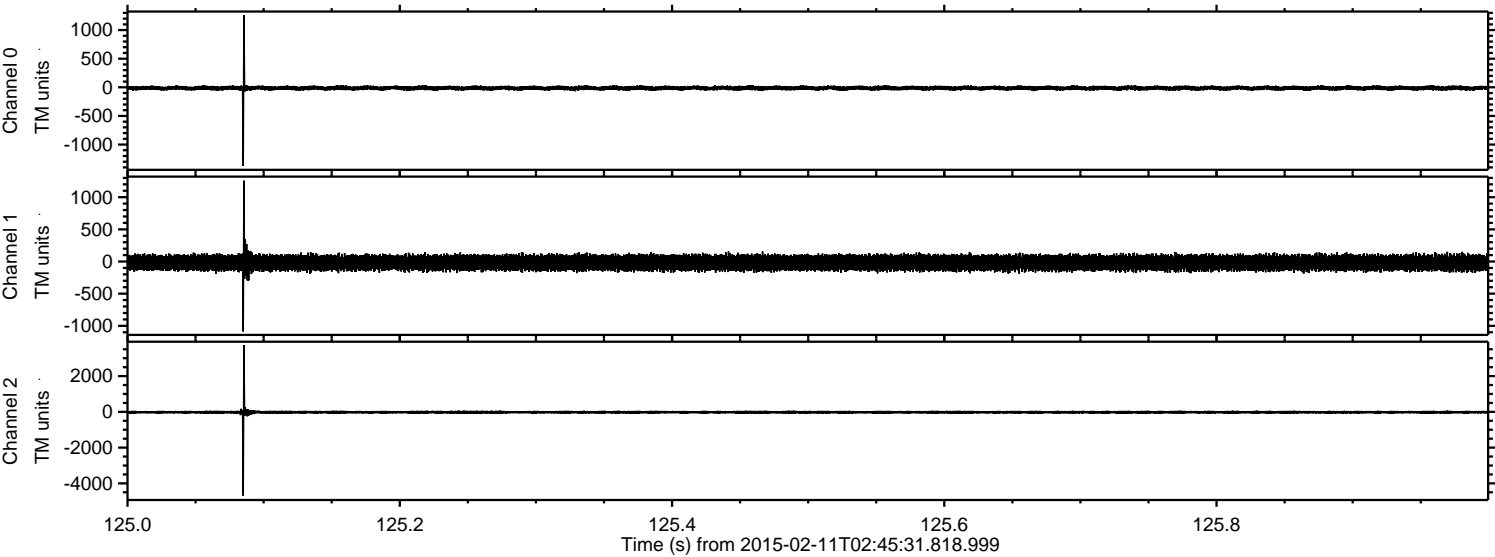
Processed Thu Feb 19 19:59:21 2015 by ELM ver.2012-10-06 from 001\_\_elm20150211\_024530\_\_dat00.bin





ELMAVAN 3D WAVEFORMS (Measured data sampled at 50 kHz) 49807 packets of 144 samples from 2015-02-11T02:45:31.818.999. Part 126/144

Processed Thu Feb 19 19:59:23 2015 by ELM ver.2012-10-06 from 001\_\_elm20150211\_024530\_\_dat00.bin



Channel 0  
mn: -1373  
mx: 1261  
 $\mu$ : -13.4  
 $\sigma$ : 19.9

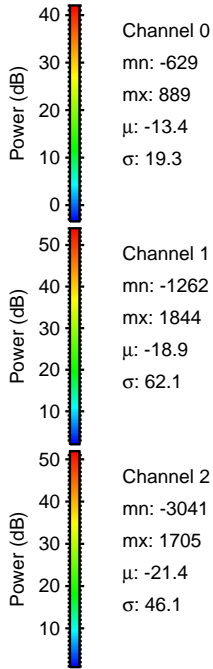
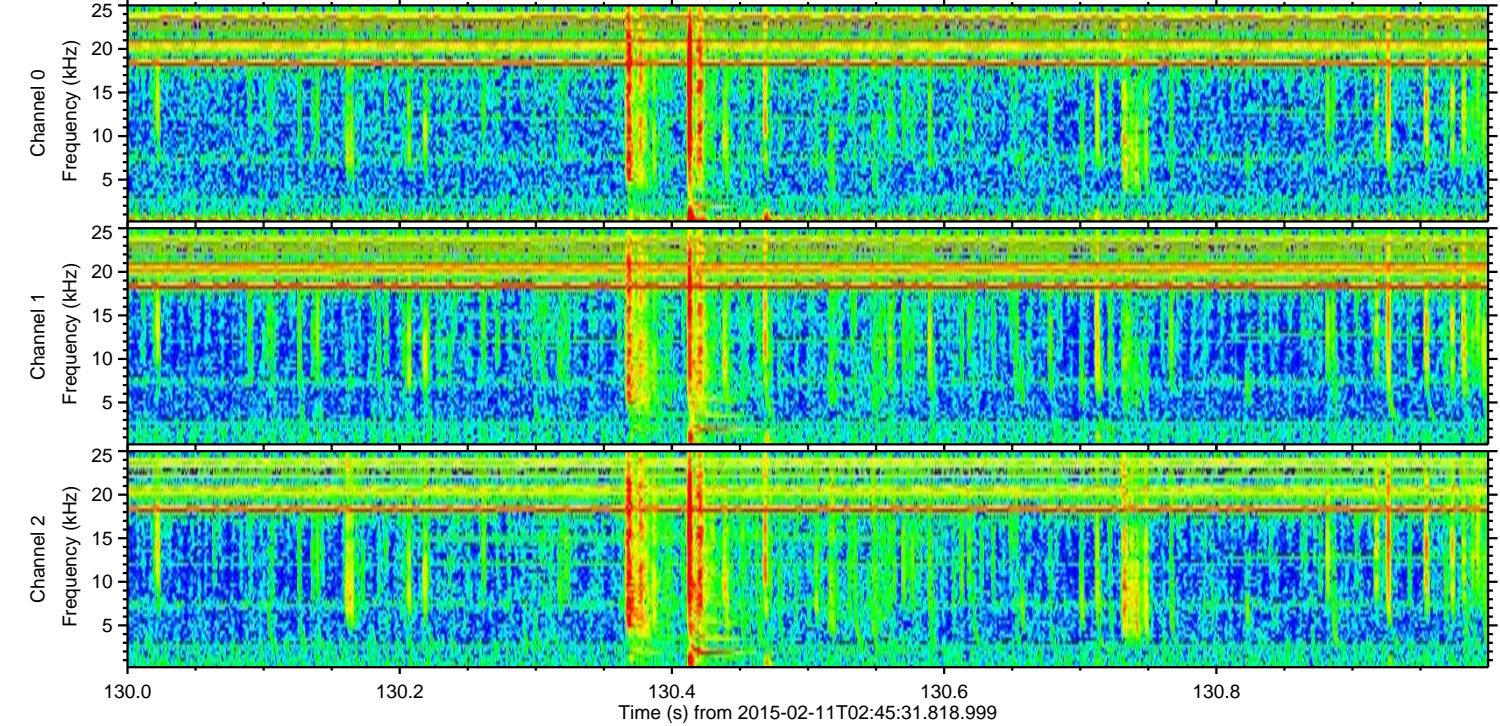
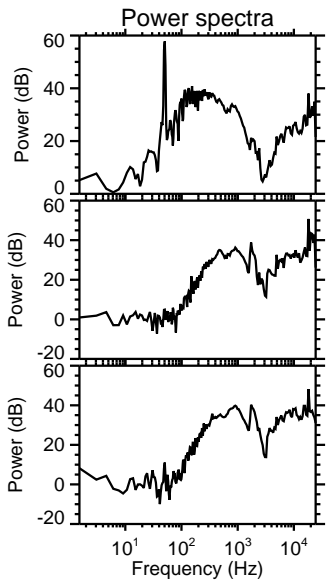
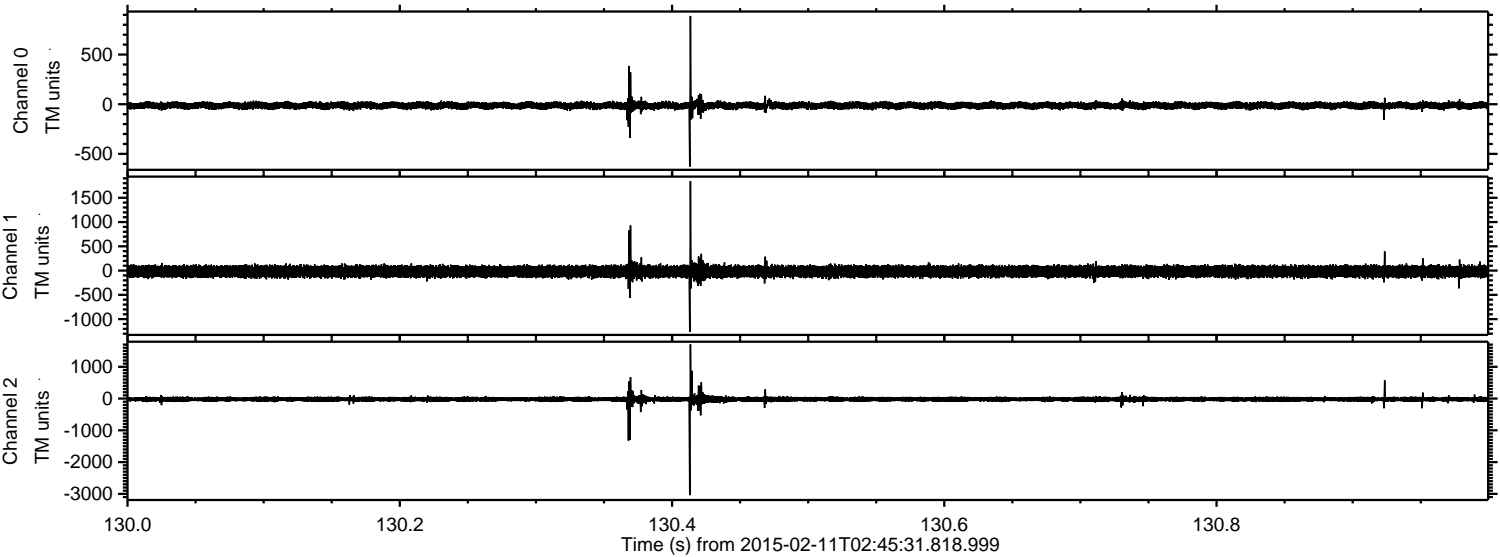
Channel 1  
mn: -1087  
mx: 1257  
 $\mu$ : -18.9  
 $\sigma$ : 61.0

Channel 2  
mn: -4695  
mx: 3736  
 $\mu$ : -21.4  
 $\sigma$ : 50.9



ELMAVAN 3D WAVEFORMS (Measured data sampled at 50 kHz) 49807 packets of 144 samples from 2015-02-11T02:45:31.818.999. Part 131/144

Processed Thu Feb 19 19:59:24 2015 by ELM ver.2012-10-06 from 001\_\_elm20150211\_024530\_\_dat00.bin



Channel 0  
mn: -629  
mx: 889  
 $\mu$ : -13.4  
 $\sigma$ : 19.3

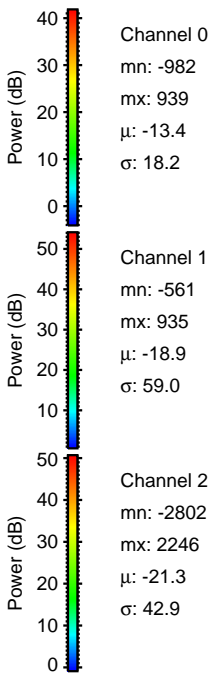
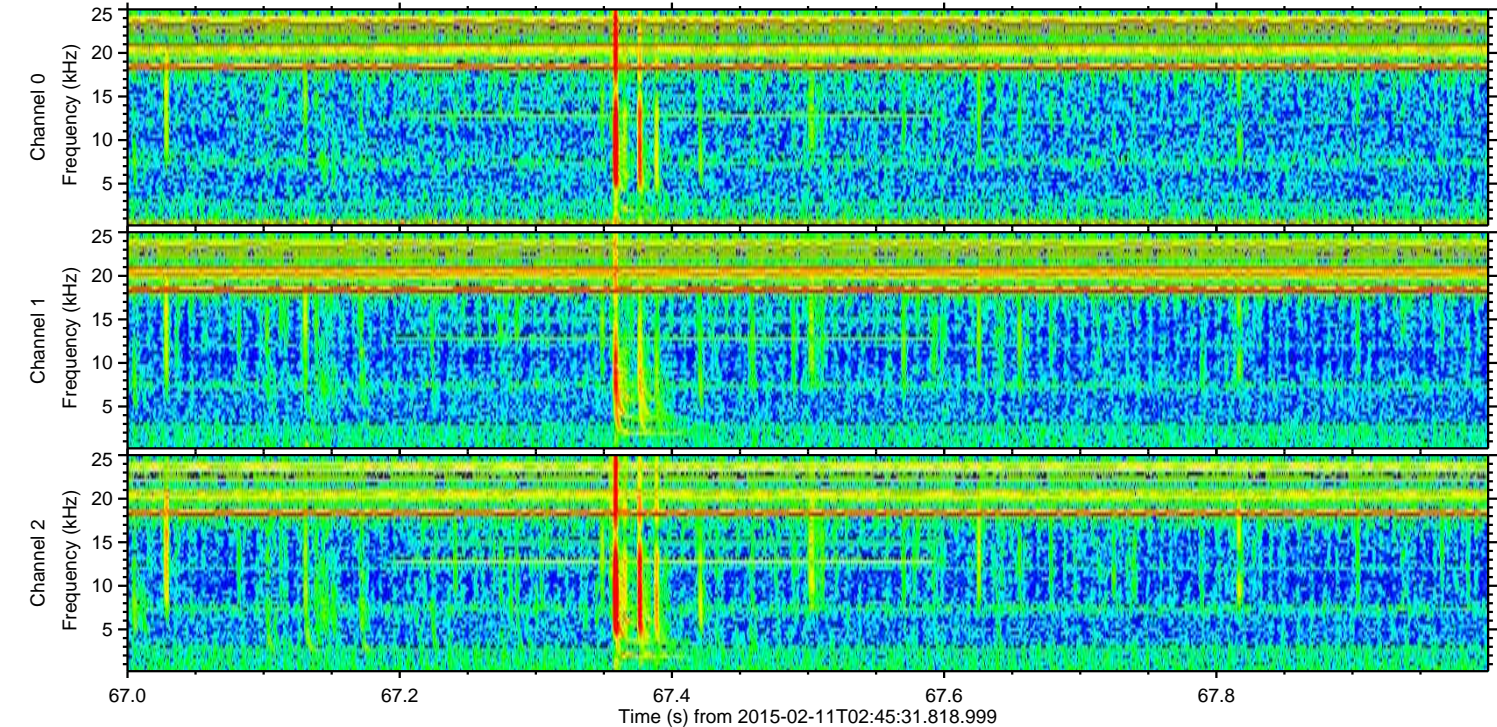
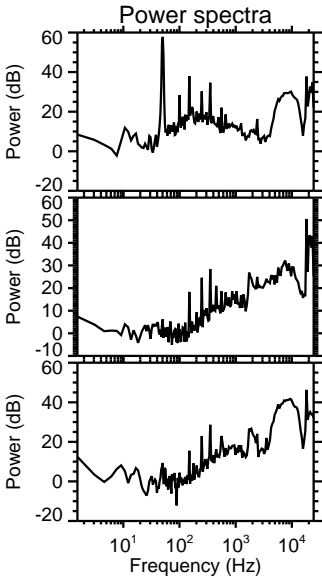
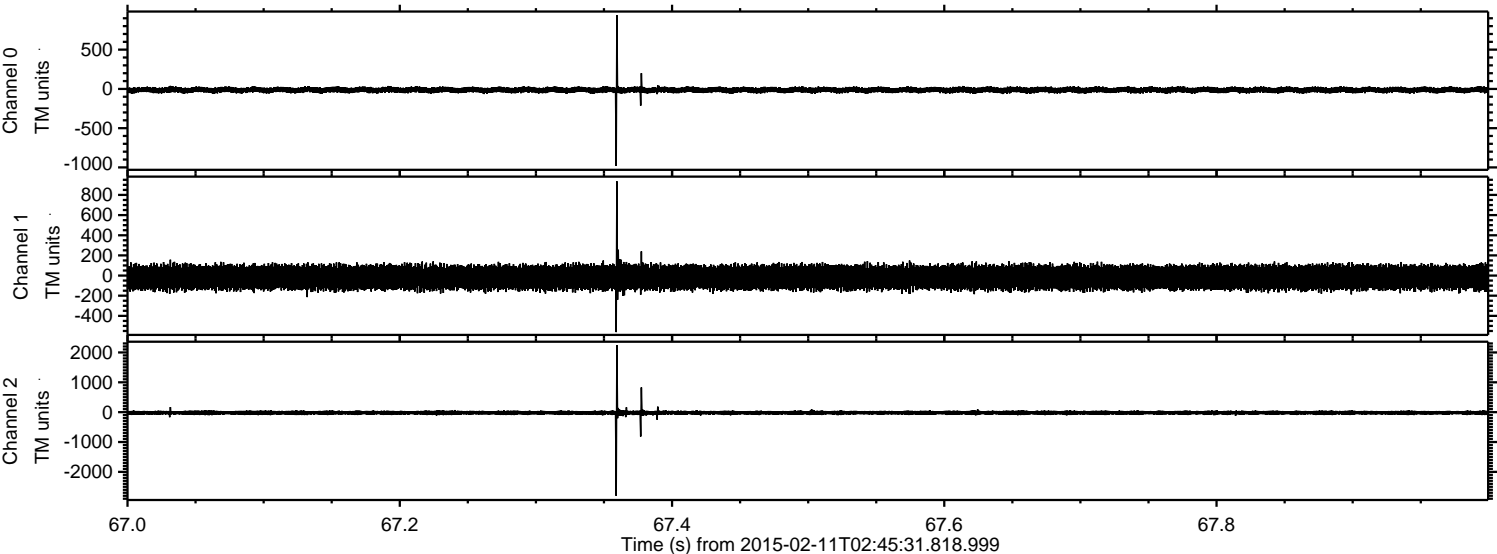
Channel 1  
mn: -1262  
mx: 1844  
 $\mu$ : -18.9  
 $\sigma$ : 62.1

Channel 2  
mn: -3041  
mx: 1705  
 $\mu$ : -21.4  
 $\sigma$ : 46.1



ELMAVAN 3D WAVEFORMS (Measured data sampled at 50 kHz) 49807 packets of 144 samples from 2015-02-11T02:45:31.818.999. Part 68/144

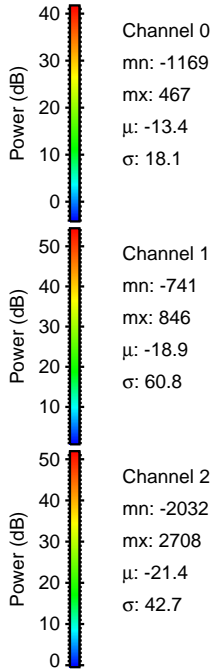
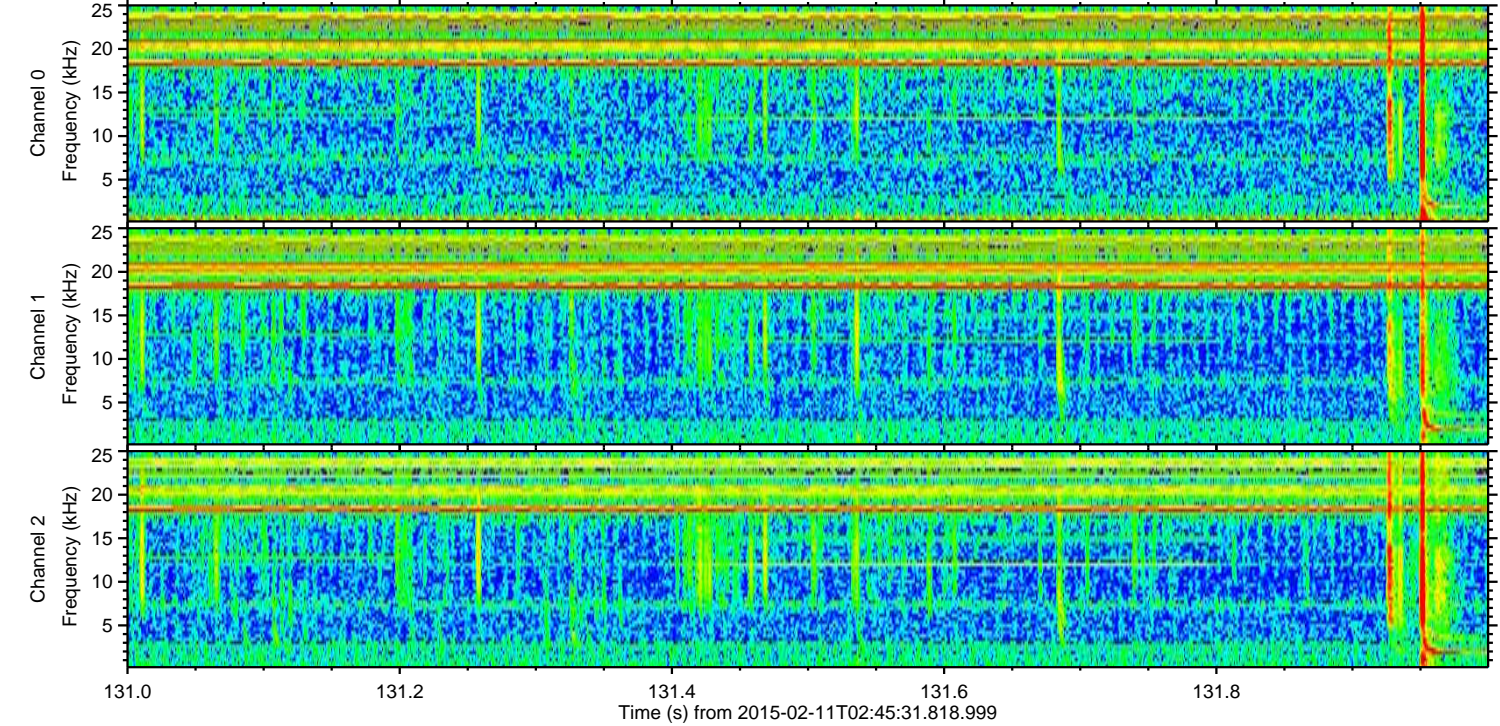
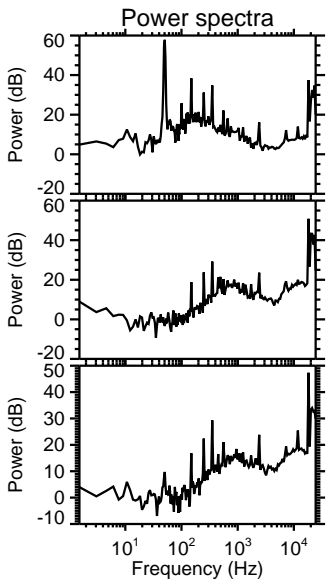
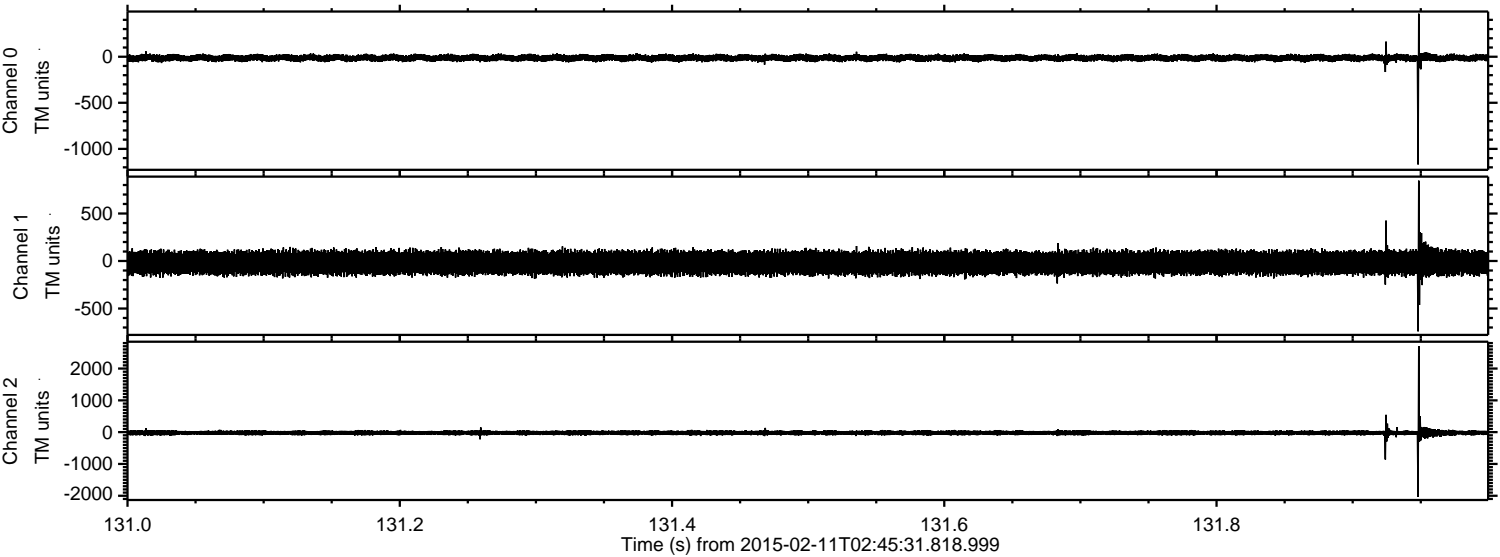
Processed Thu Feb 19 19:59:25 2015 by ELM ver.2012-10-06 from 001\_\_elm20150211\_024530\_\_dat00.bin





ELMAVAN 3D WAVEFORMS (Measured data sampled at 50 kHz) 49807 packets of 144 samples from 2015-02-11T02:45:31.818.999. Part 132/144

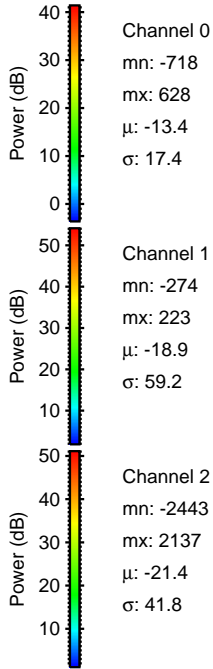
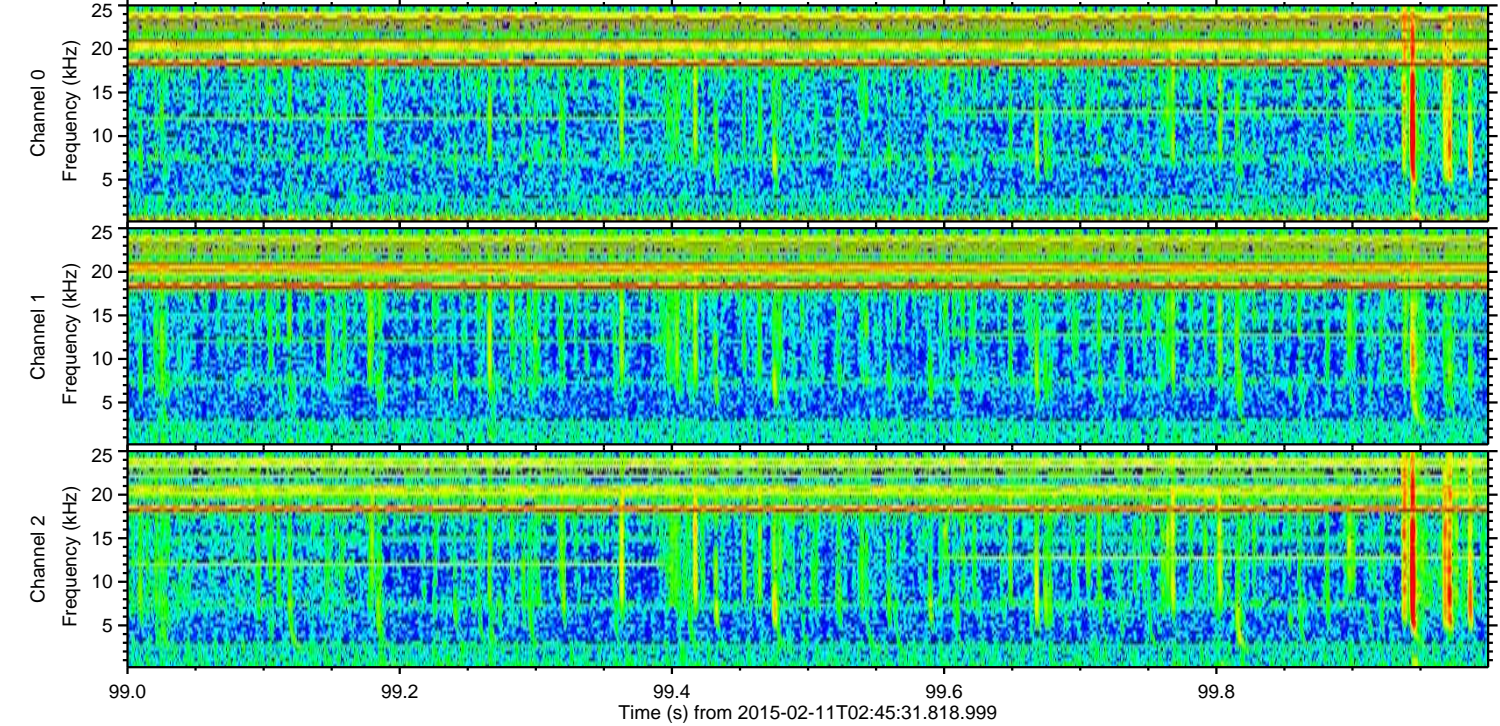
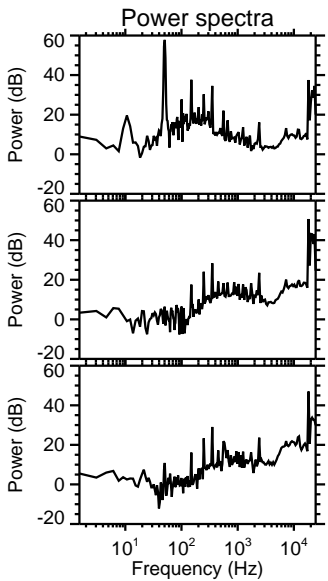
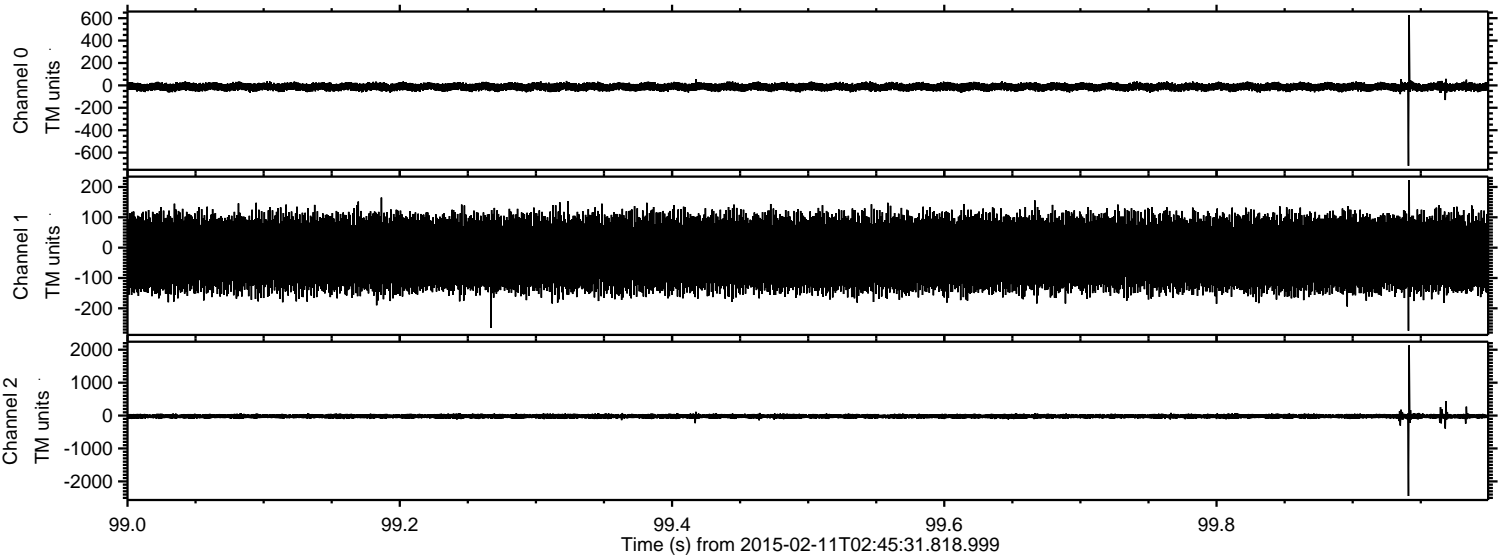
Processed Thu Feb 19 19:59:26 2015 by ELM ver.2012-10-06 from 001\_\_elm20150211\_024530\_\_dat00.bin





ELMAVAN 3D WAVEFORMS (Measured data sampled at 50 kHz) 49807 packets of 144 samples from 2015-02-11T02:45:31.818.999. Part 100/144

Processed Thu Feb 19 19:59:28 2015 by ELM ver.2012-10-06 from 001\_\_elm20150211\_024530\_\_dat00.bin



Channel 0  
mn: -718  
mx: 628  
 $\mu$ : -13.4  
 $\sigma$ : 17.4

Channel 1  
mn: -274  
mx: 223  
 $\mu$ : -18.9  
 $\sigma$ : 59.2

Channel 2  
mn: -2443  
mx: 2137  
 $\mu$ : -21.4  
 $\sigma$ : 41.8



ELMAVAN 3D WAVEFORMS (Measured data sampled at 50 kHz) 49807 packets of 144 samples from 2015-02-11T02:45:31.818.999. Part 20/144

Processed Thu Feb 19 19:59:29 2015 by ELM ver.2012-10-06 from 001\_\_elm20150211\_024530\_\_dat00.bin

