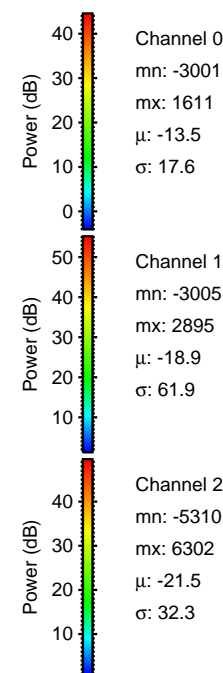
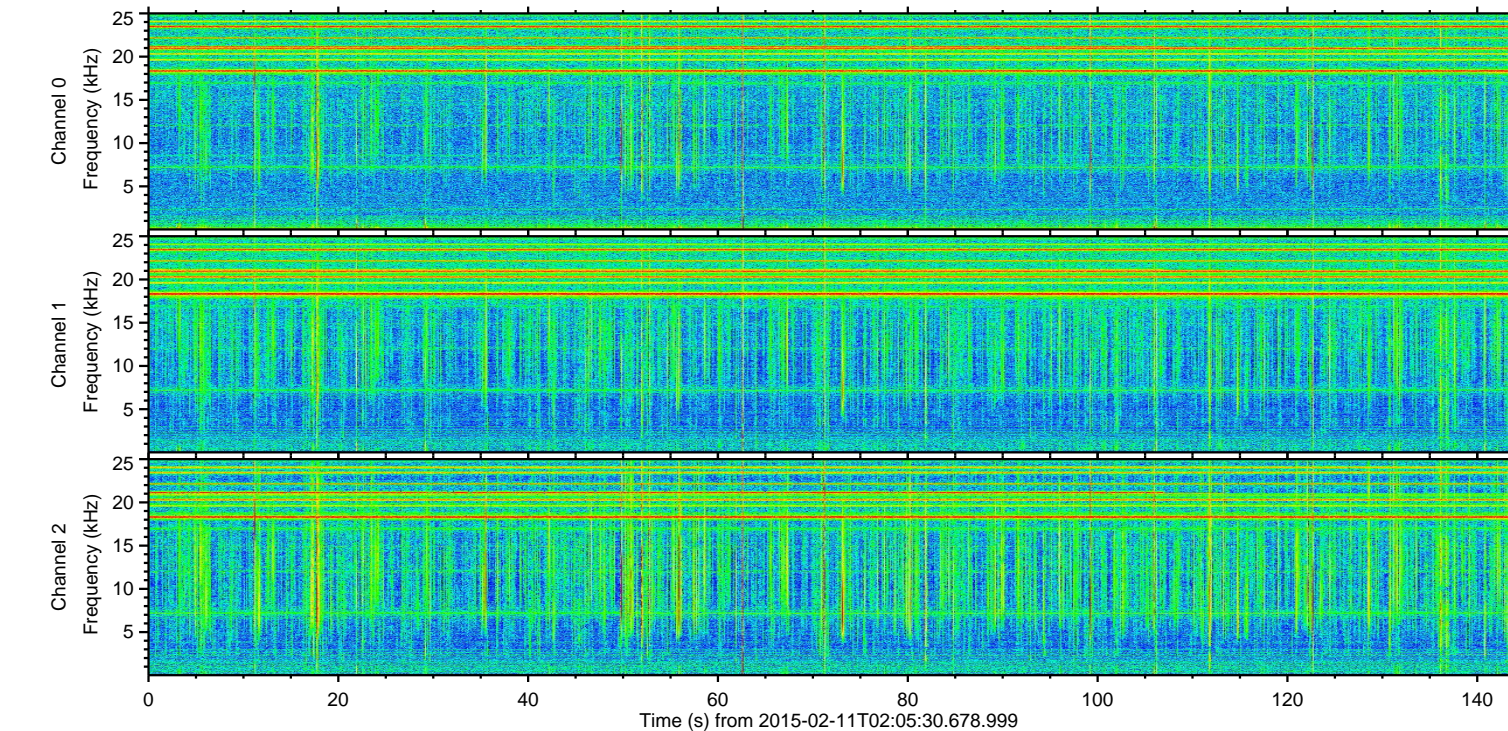
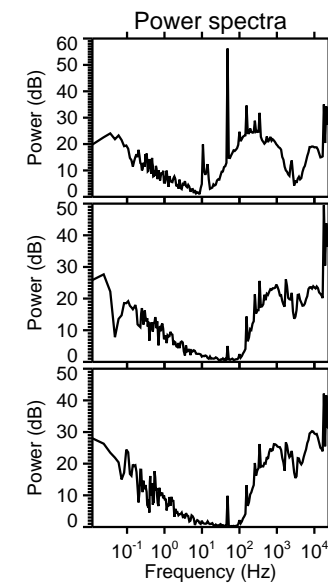
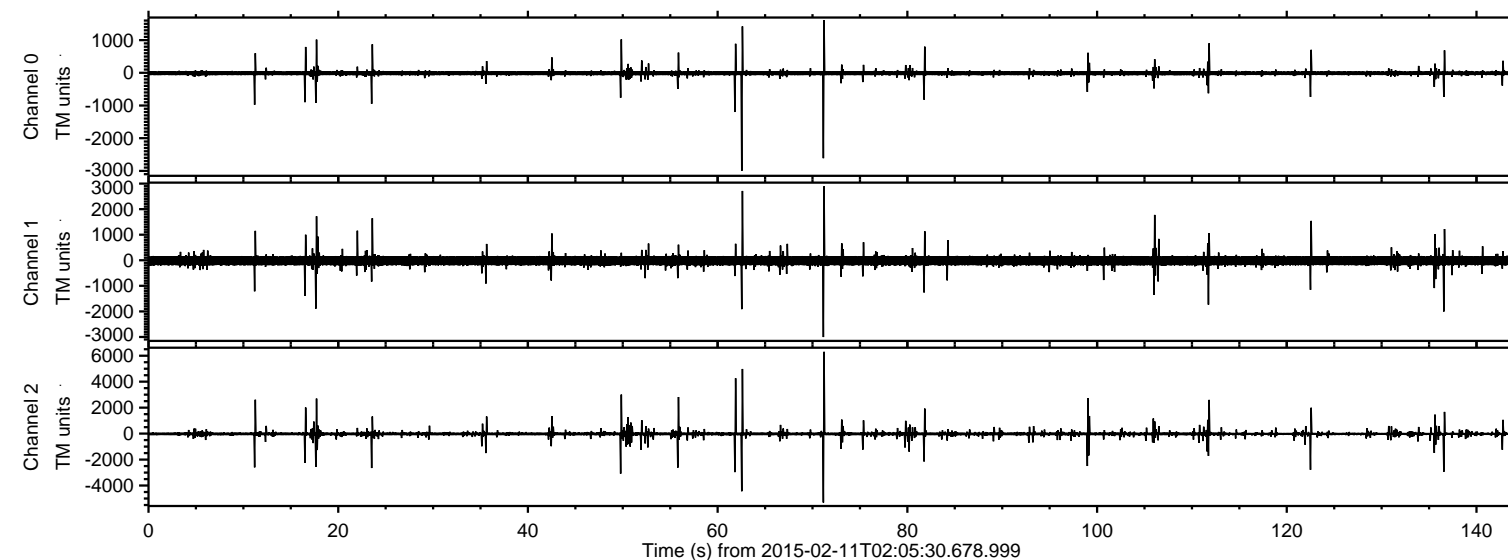


ELMAVAN 3D WAVEFORMS (Measured data sampled at 50 kHz) 49806 packets of 144 samples from 2015-02-11T02:05:30.678.999.

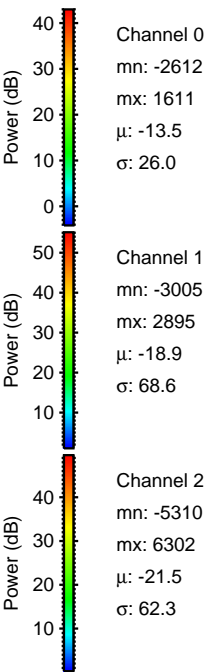
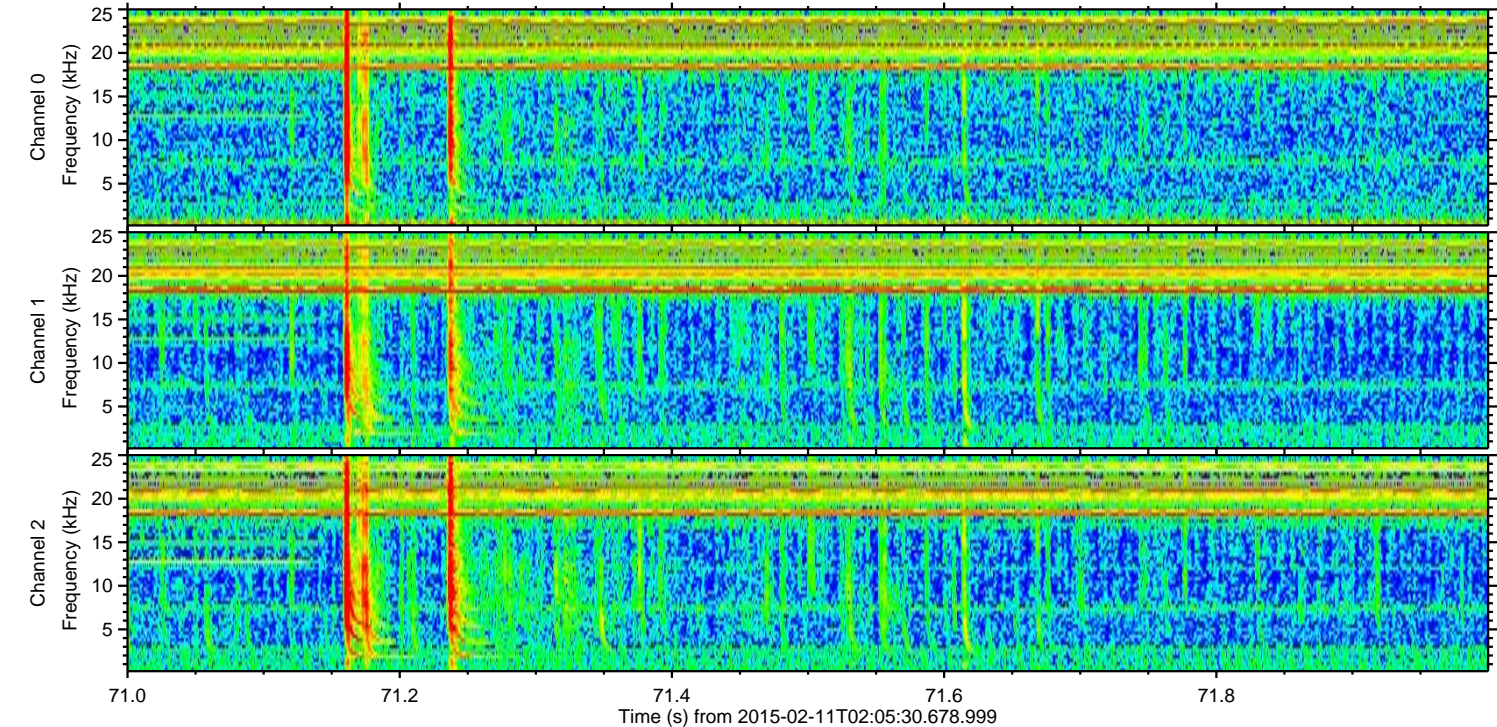
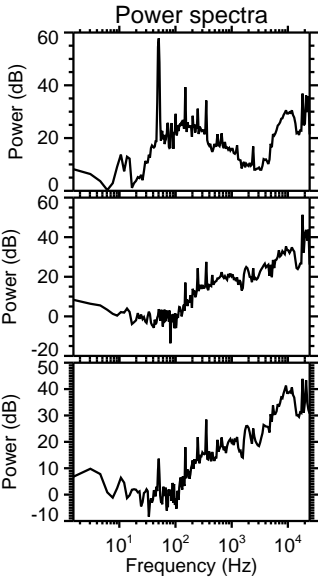
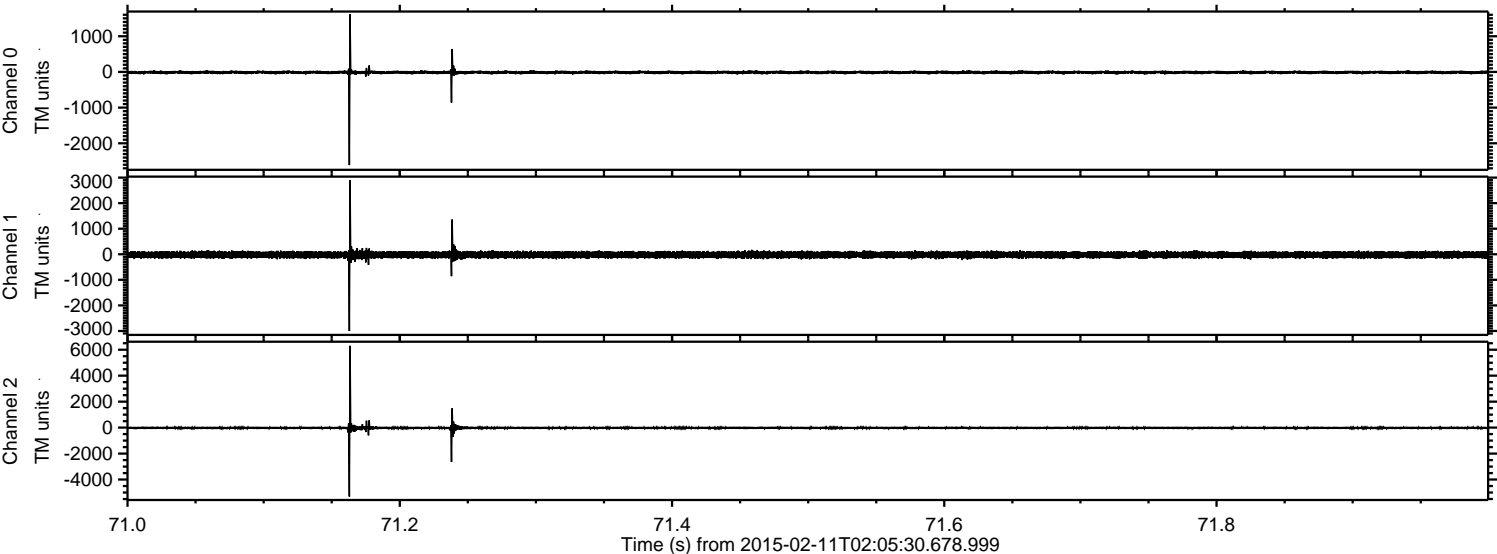
Processed Thu Feb 19 19:44:25 2015 by ELM ver.2012-10-06 from 001\_\_elm20150211\_020529\_\_dat00.bin





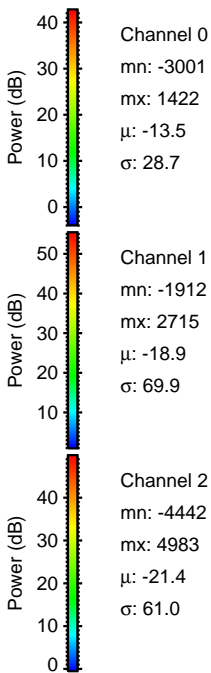
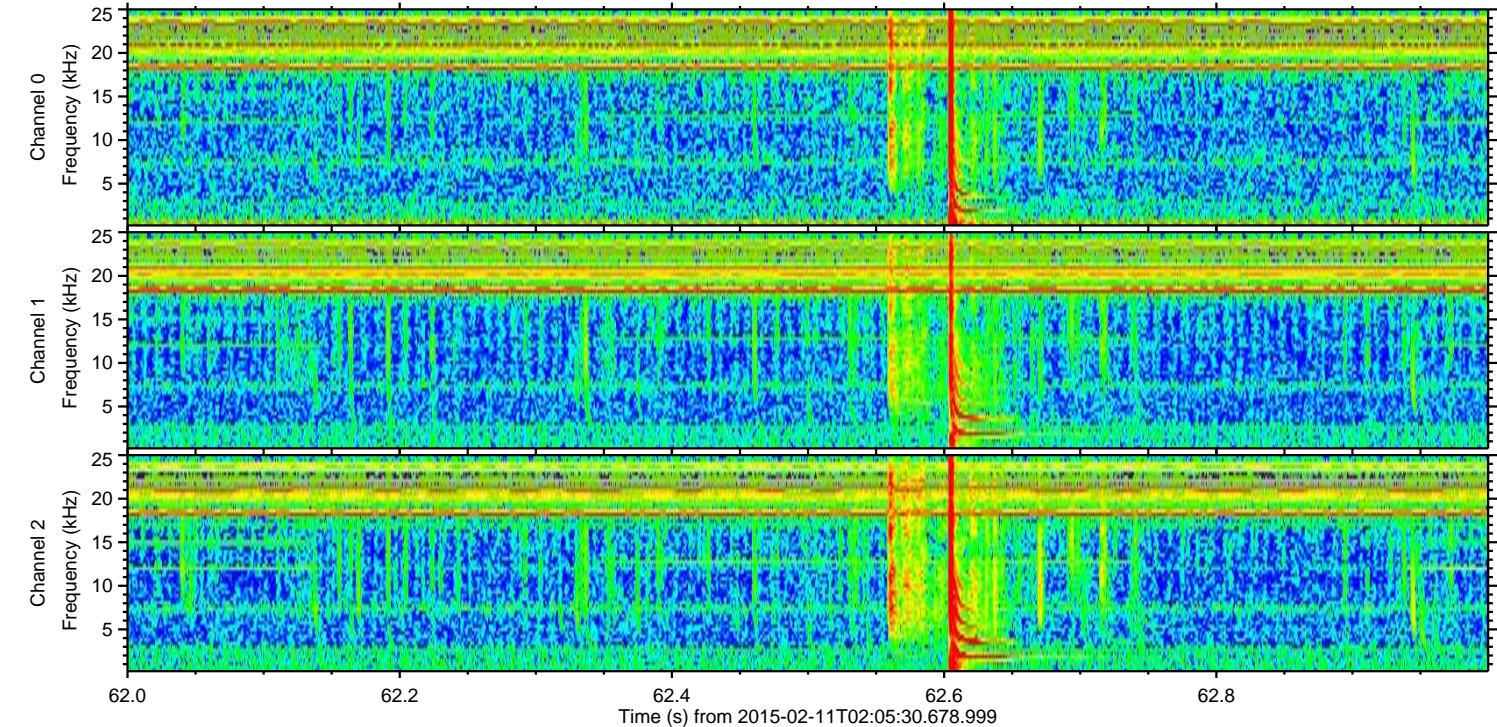
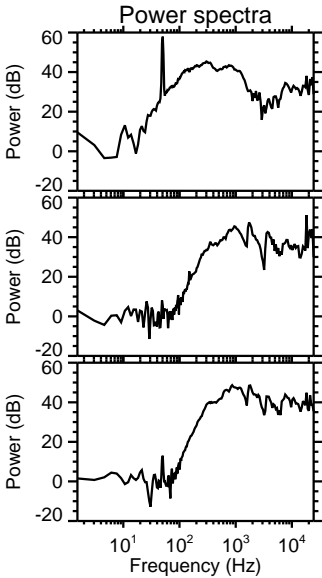
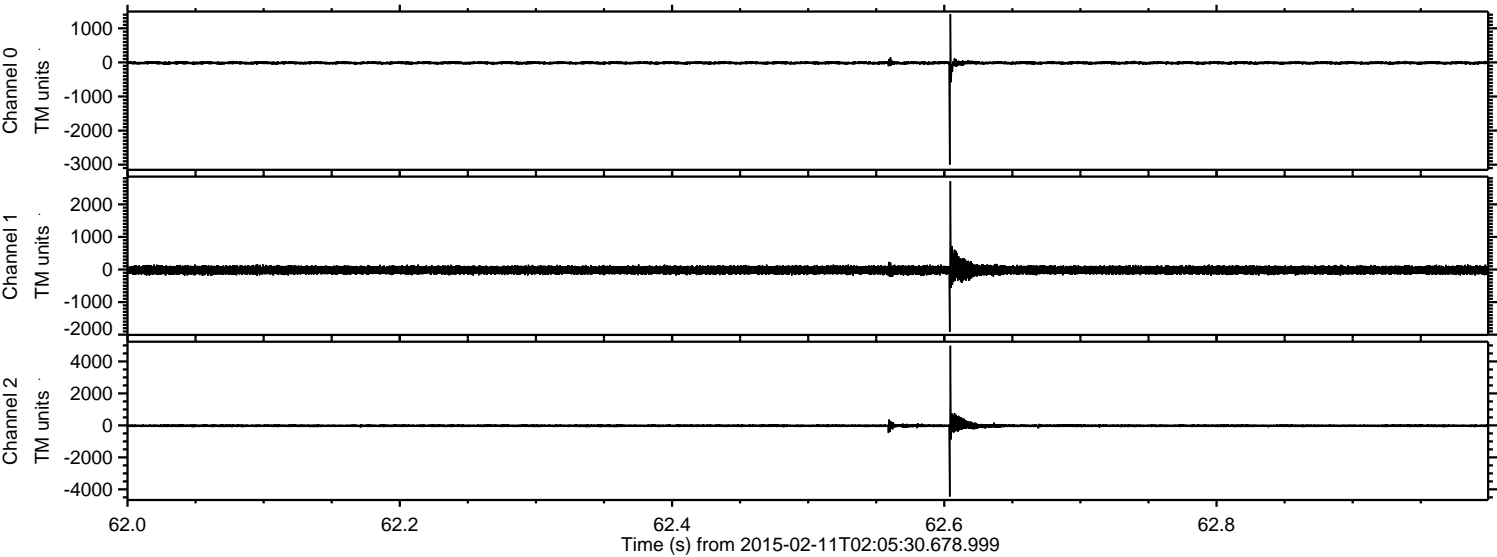
ELMAVAN 3D WAVEFORMS (Measured data sampled at 50 kHz) 49806 packets of 144 samples from 2015-02-11T02:05:30.678.999. Part 72/144

Processed Thu Feb 19 19:44:50 2015 by ELM ver.2012-10-06 from 001\_\_elm20150211\_020529\_\_dat00.bin



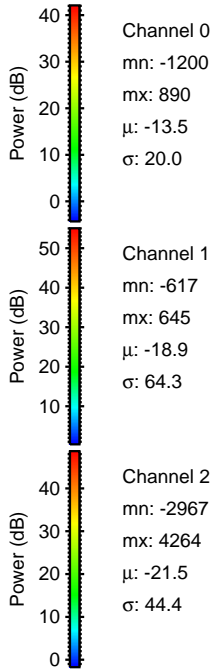
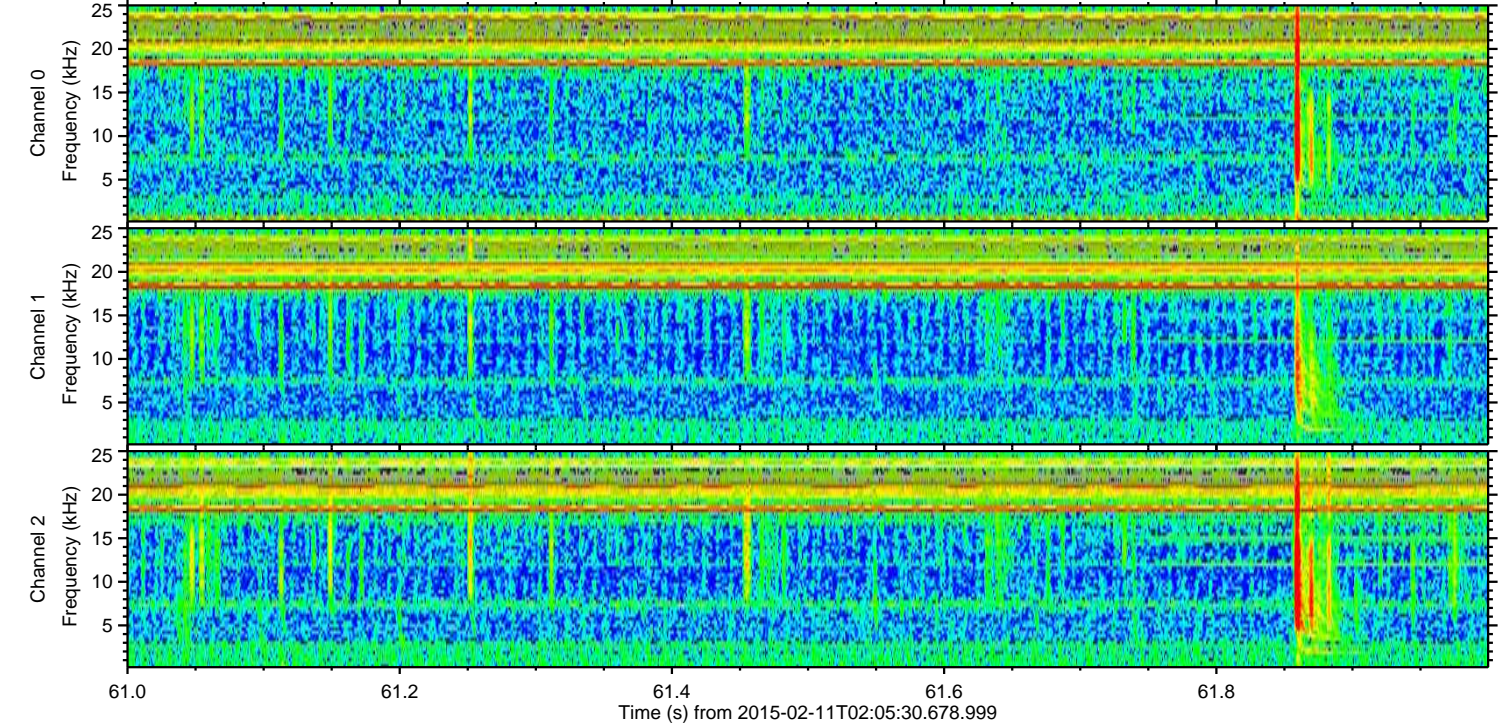
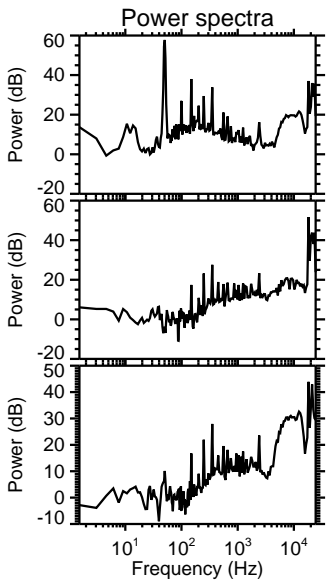
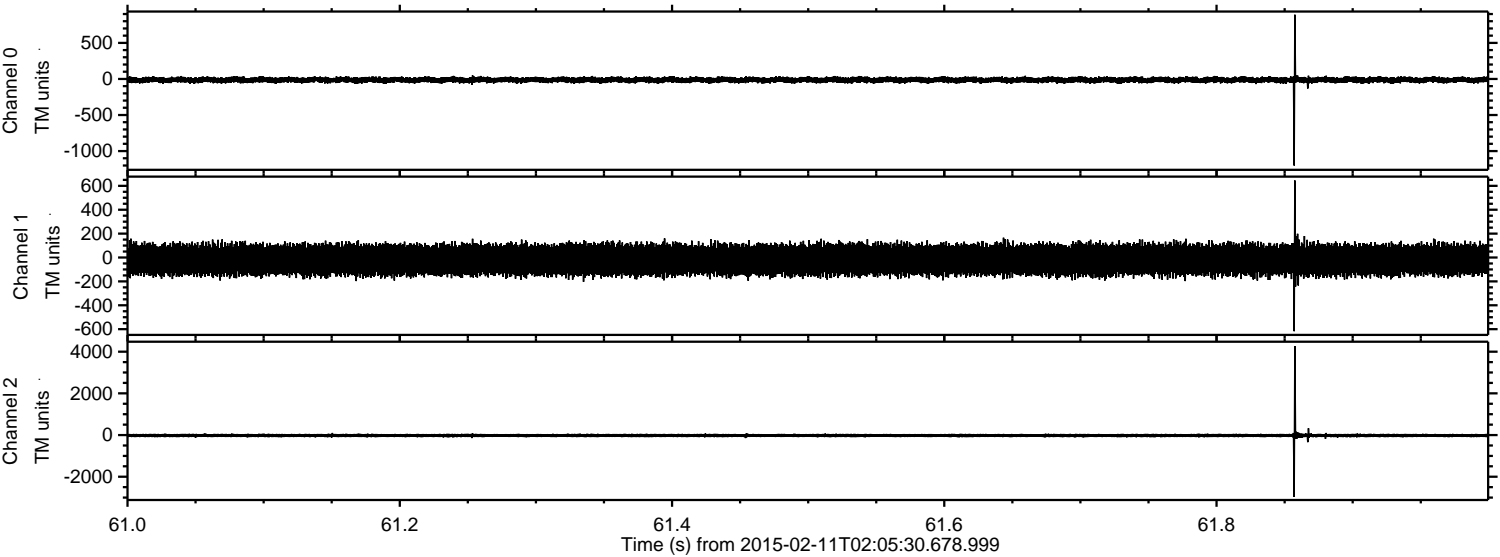


Processed Thu Feb 19 19:44:52 2015 by ELM ver.2012-10-06 from 001\_\_elm20150211\_020529\_\_dat00.bin





Processed Thu Feb 19 19:44:54 2015 by ELM ver.2012-10-06 from 001\_\_elm20150211\_020529\_\_dat00.bin



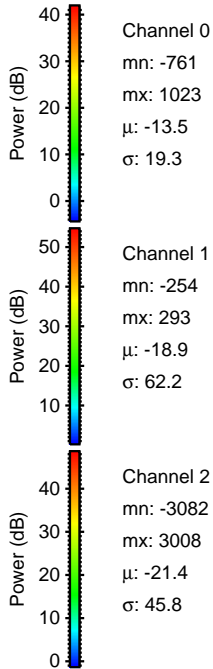
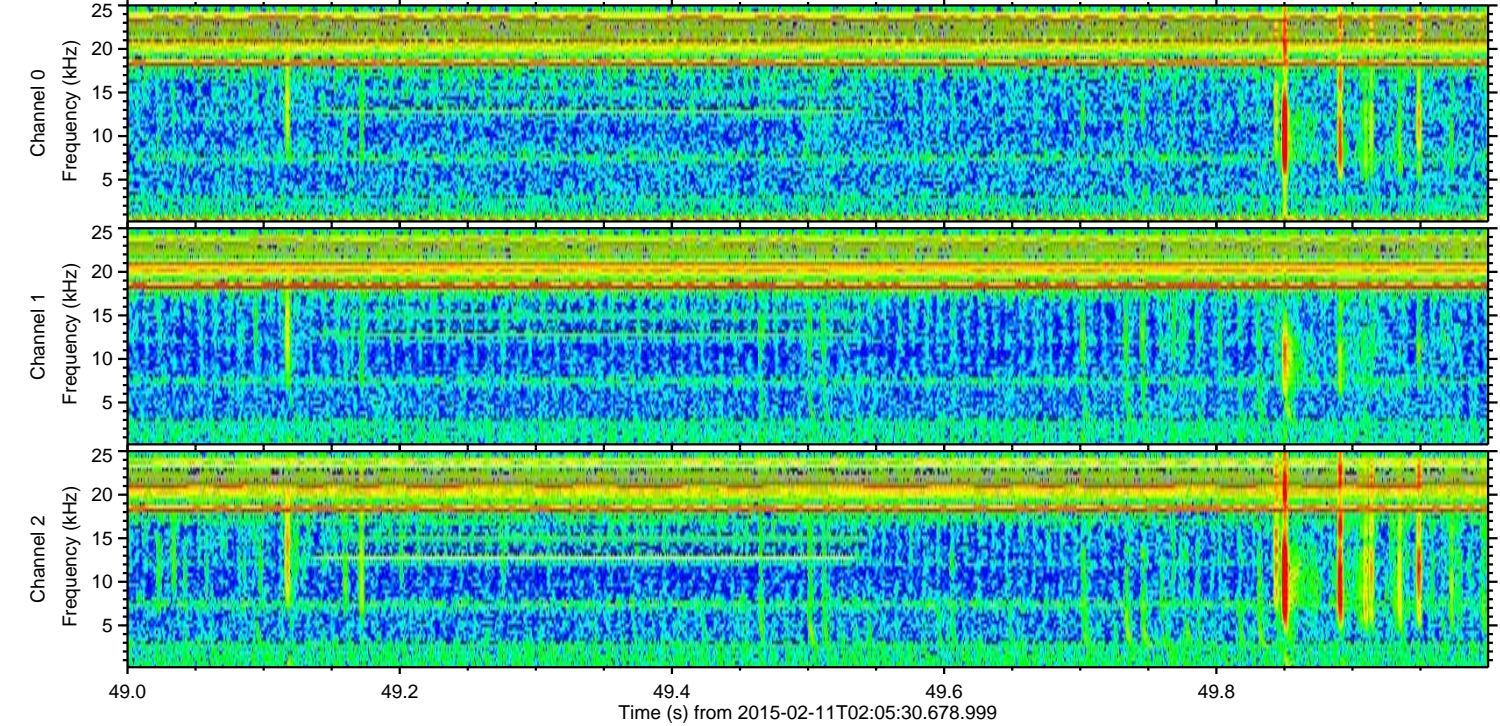
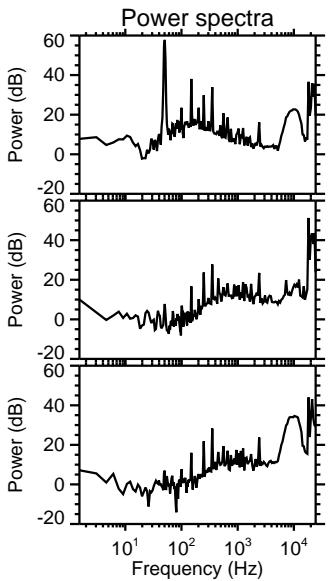
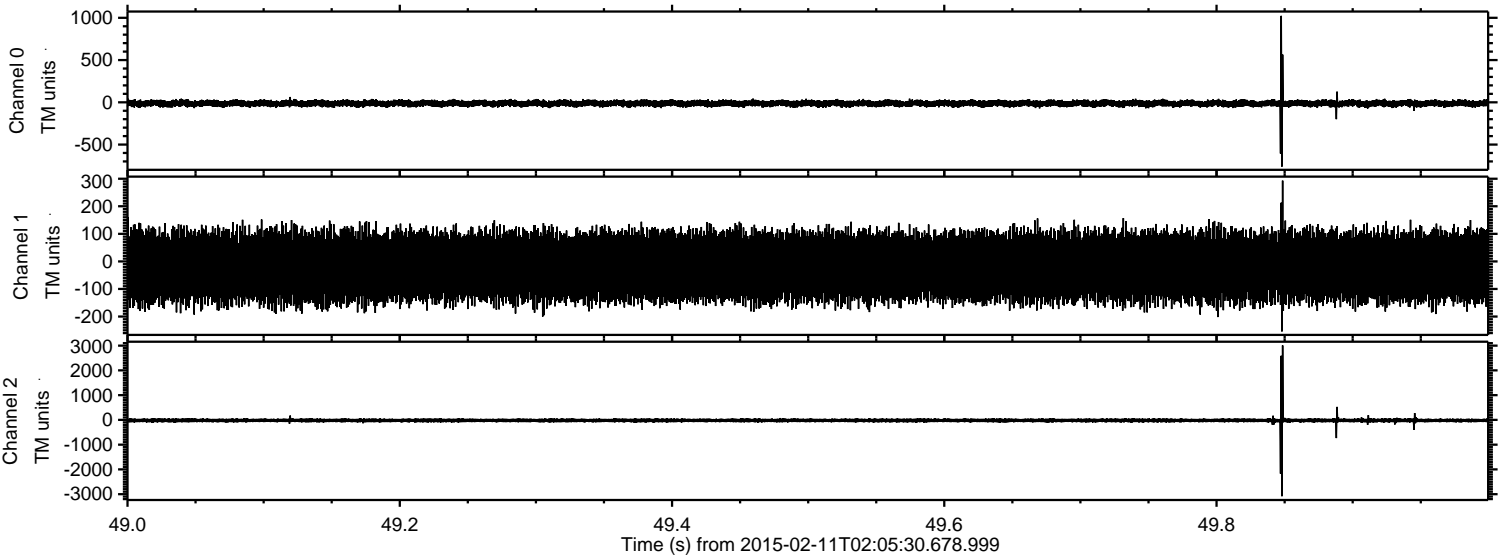
Channel 0  
mn: -1200  
mx: 890  
 $\mu$ : -13.5  
 $\sigma$ : 20.0

Channel 1  
mn: -617  
mx: 645  
 $\mu$ : -18.9  
 $\sigma$ : 64.3

Channel 2  
mn: -2967  
mx: 4264  
 $\mu$ : -21.5  
 $\sigma$ : 44.4



Processed Thu Feb 19 19:44:56 2015 by ELM ver.2012-10-06 from 001\_\_elm20150211\_020529\_\_dat00.bin



Channel 0  
mn: -761  
mx: 1023  
 $\mu$ : -13.5  
 $\sigma$ : 19.3

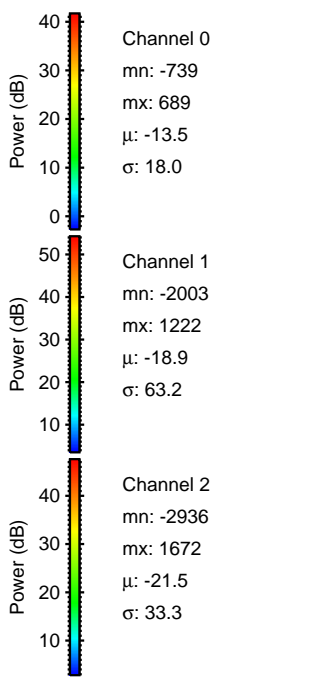
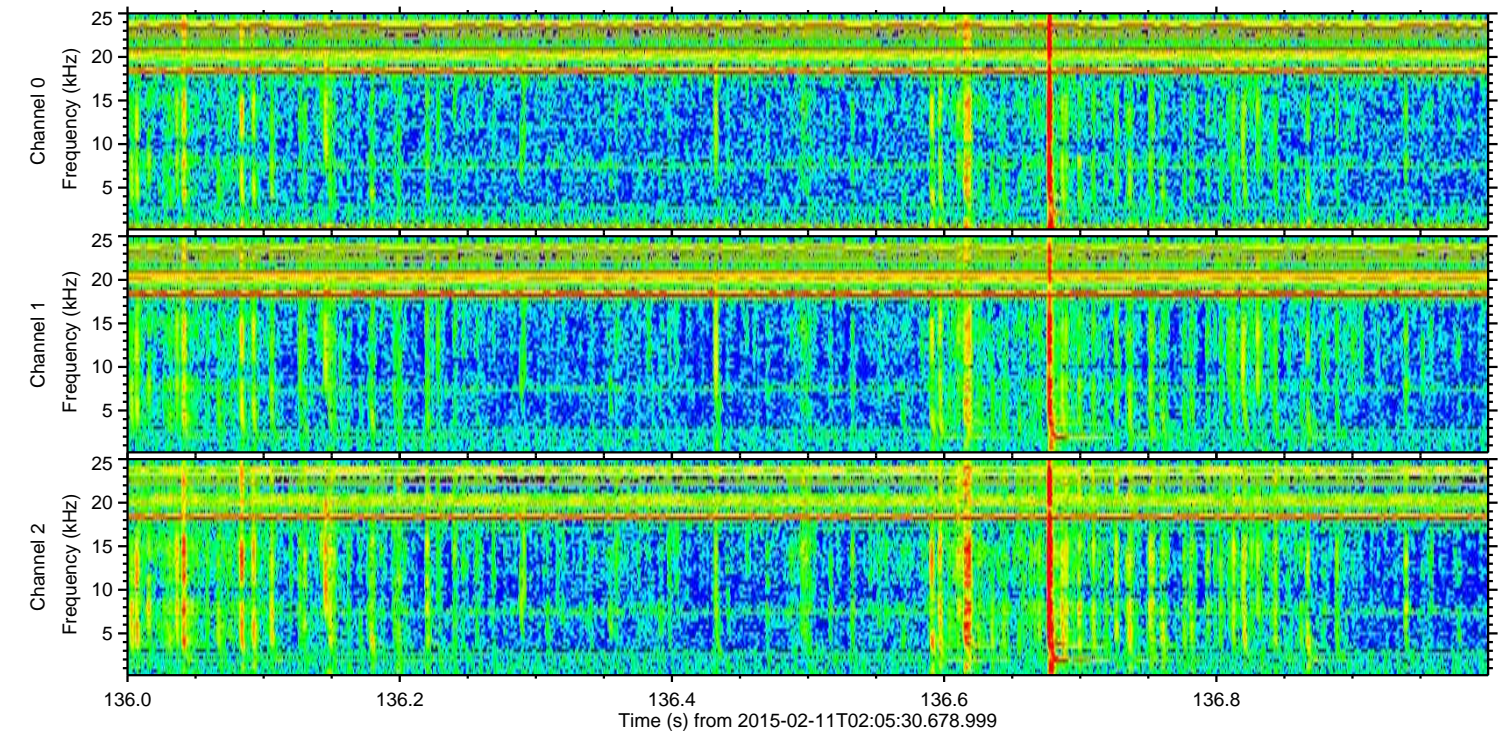
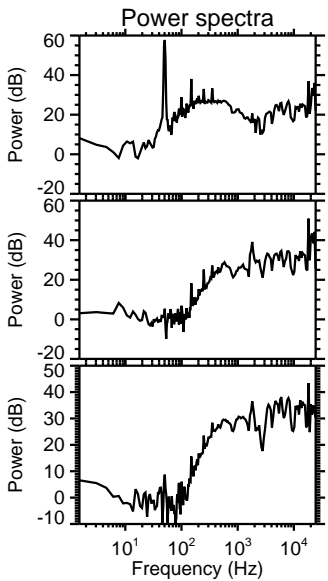
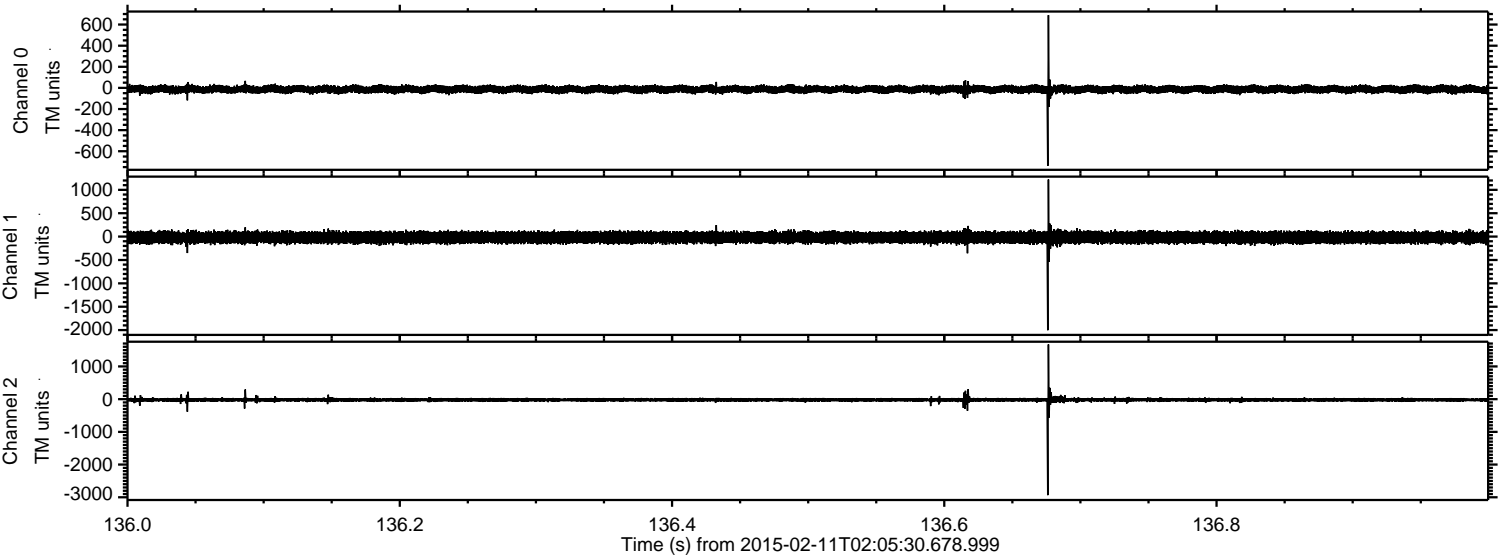
Channel 1  
mn: -254  
mx: 293  
 $\mu$ : -18.9  
 $\sigma$ : 62.2

Channel 2  
mn: -3082  
mx: 3008  
 $\mu$ : -21.4  
 $\sigma$ : 45.8



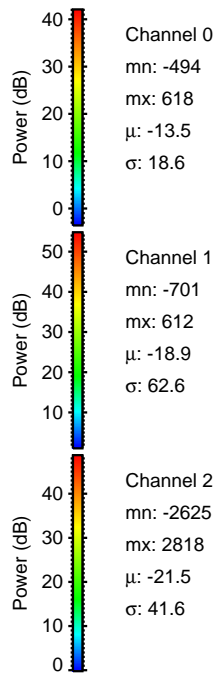
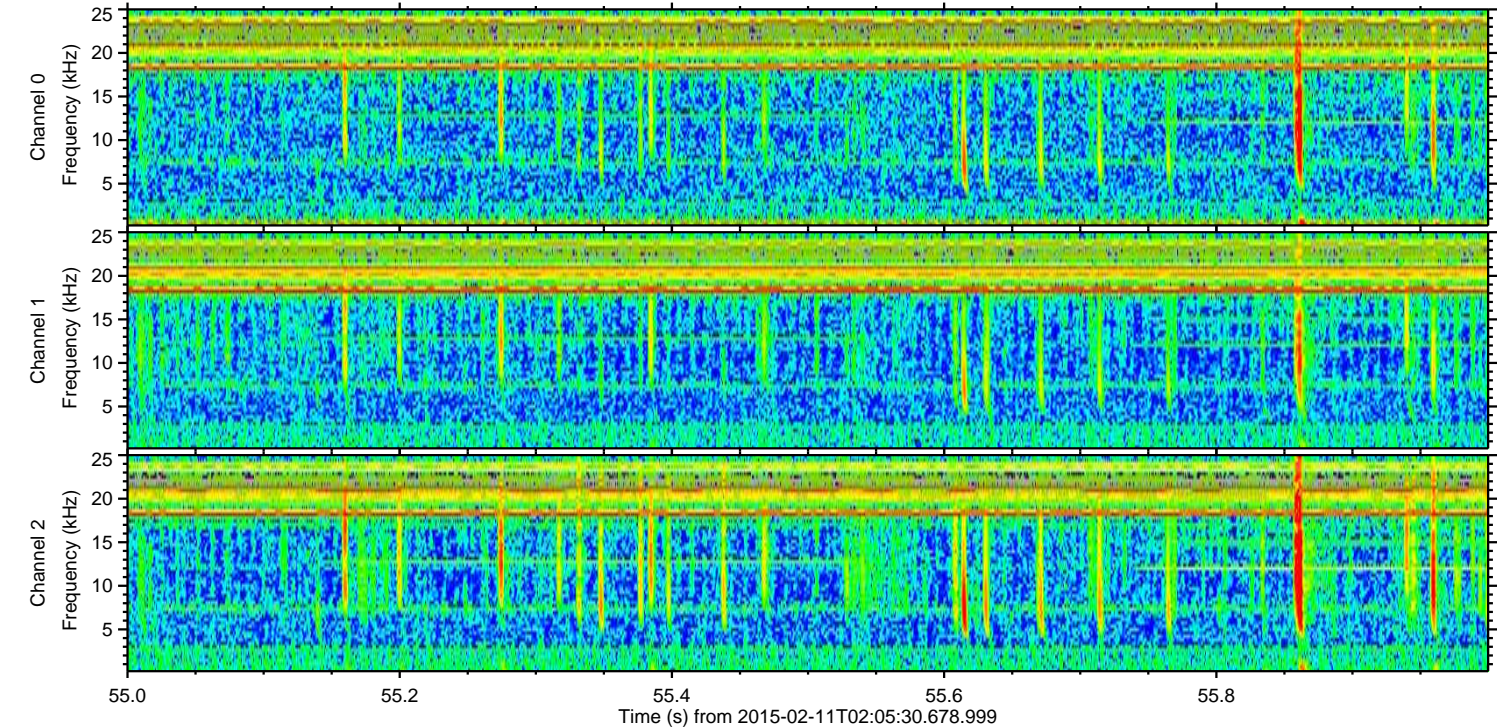
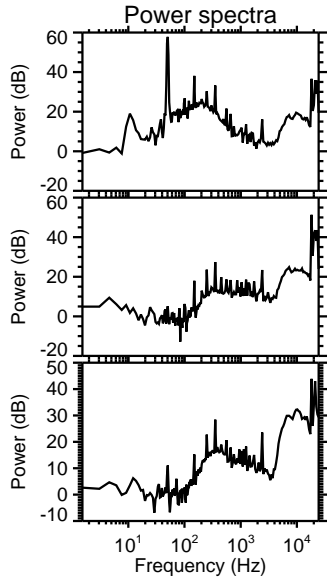
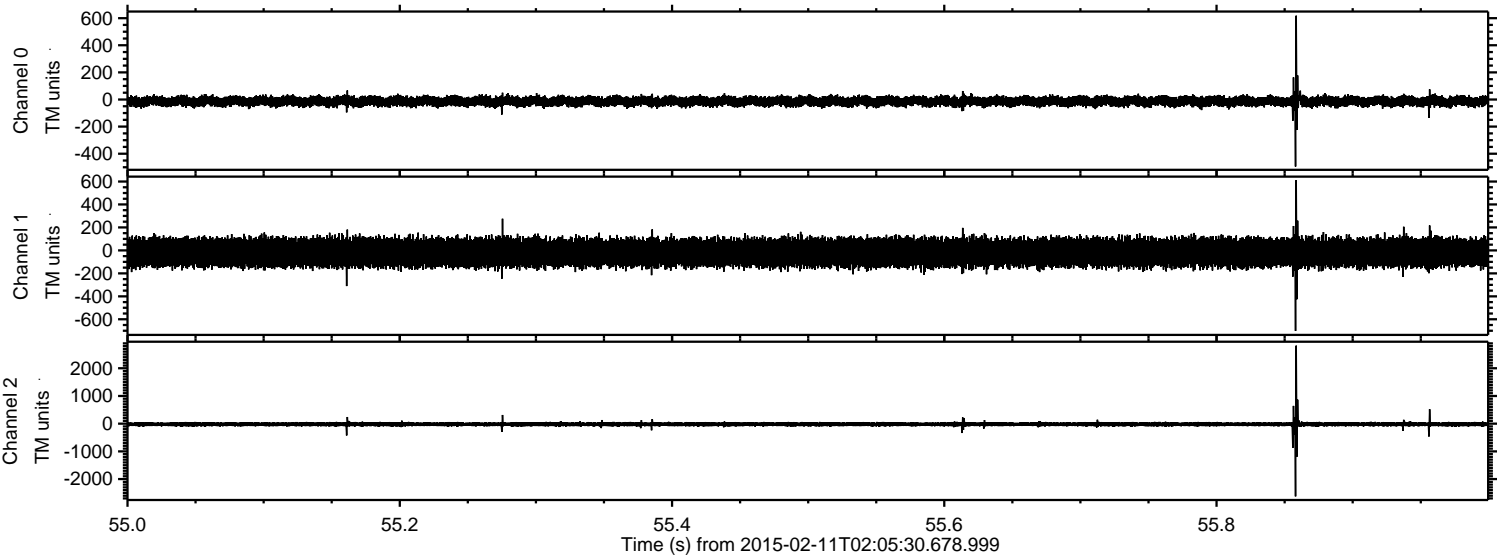
ELMAVAN 3D WAVEFORMS (Measured data sampled at 50 kHz) 49806 packets of 144 samples from 2015-02-11T02:05:30.678.999. Part 137/144

Processed Thu Feb 19 19:44:57 2015 by ELM ver.2012-10-06 from 001\_\_elm20150211\_020529\_\_dat00.bin





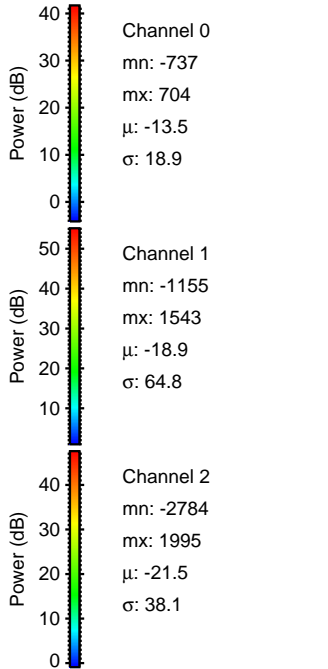
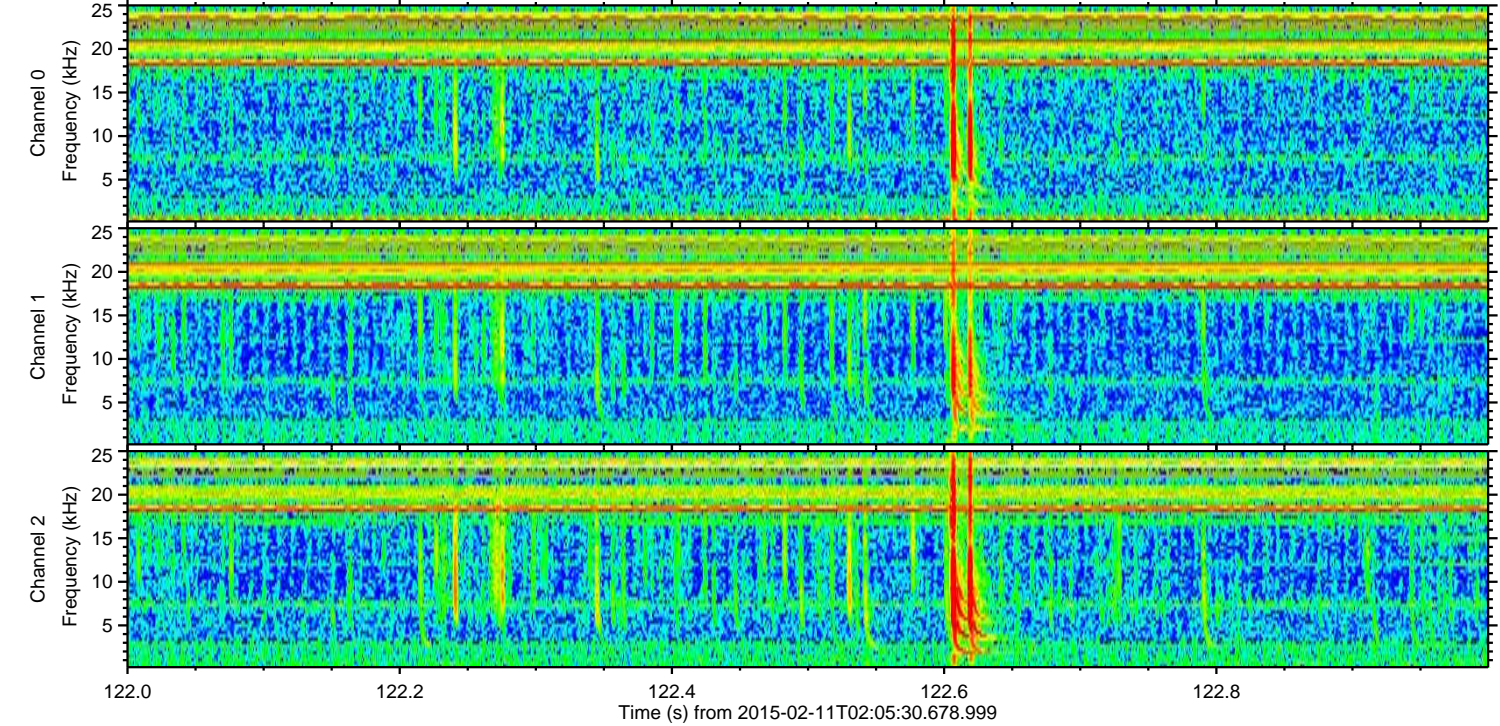
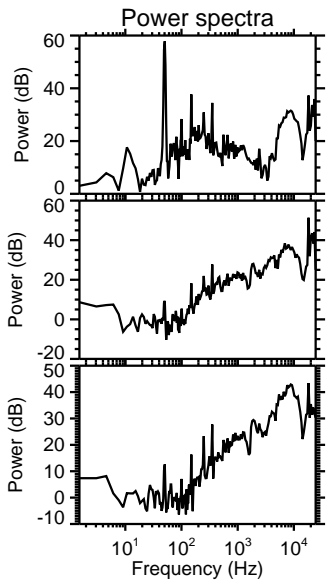
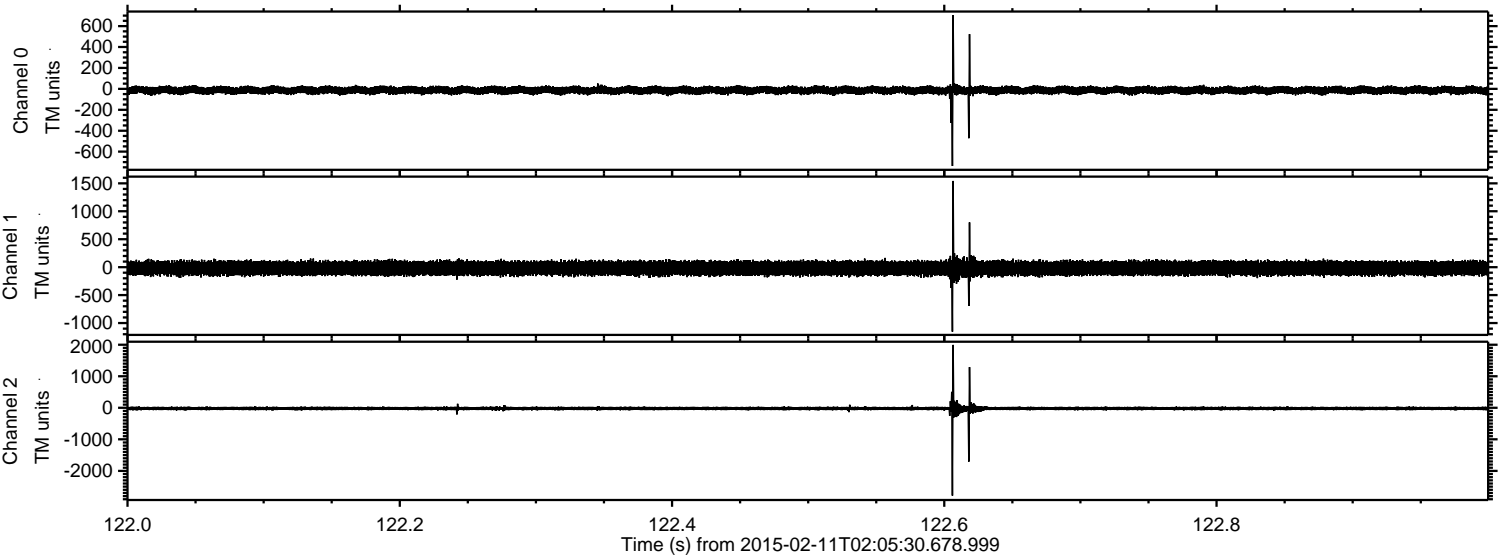
Processed Thu Feb 19 19:44:59 2015 by ELM ver.2012-10-06 from 001\_\_elm20150211\_020529\_\_dat00.bin





ELMAVAN 3D WAVEFORMS (Measured data sampled at 50 kHz) 49806 packets of 144 samples from 2015-02-11T02:05:30.678.999. Part 123/144

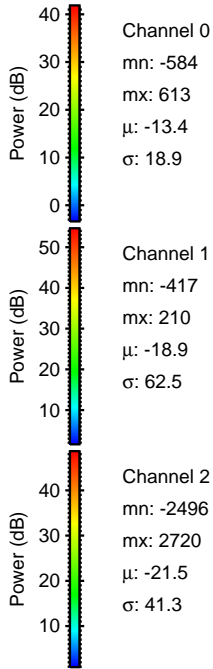
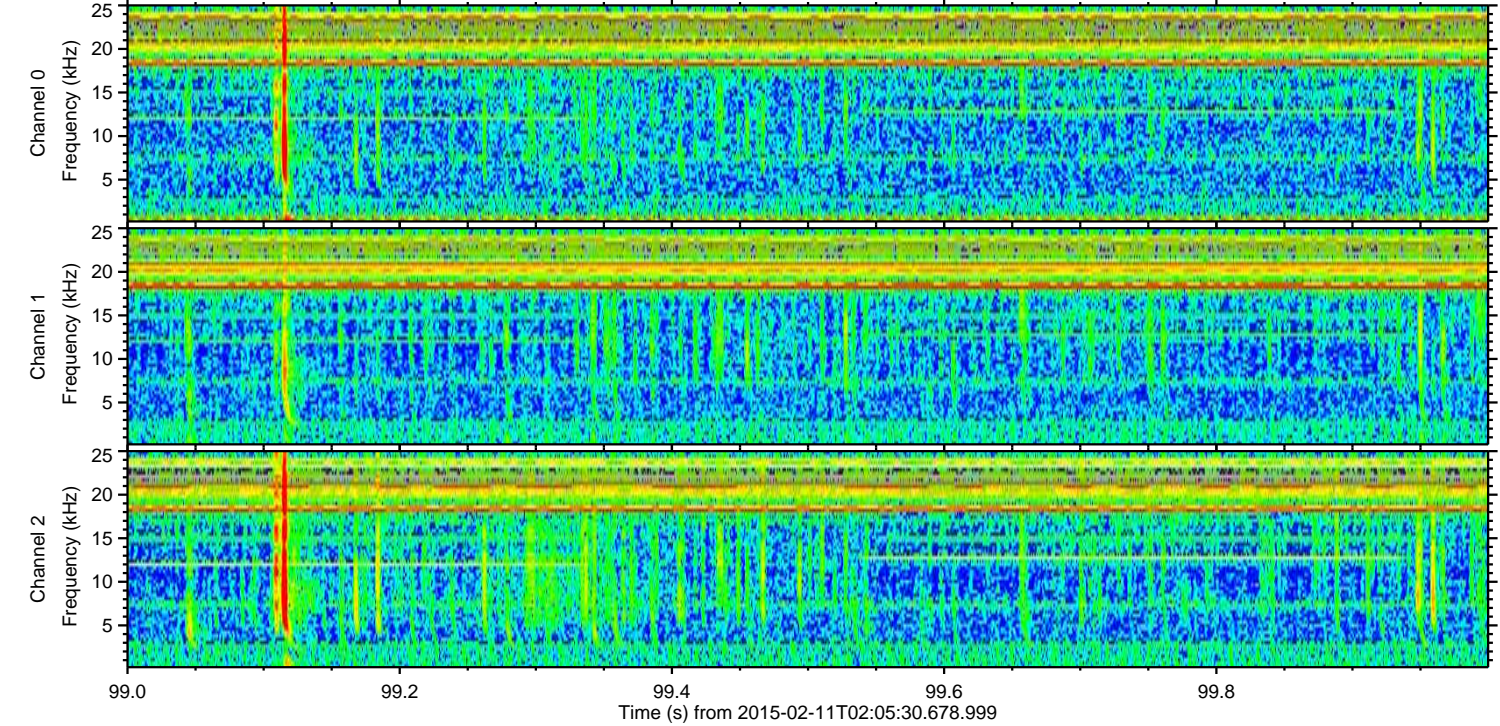
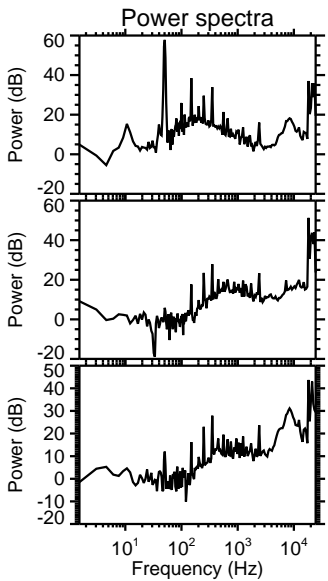
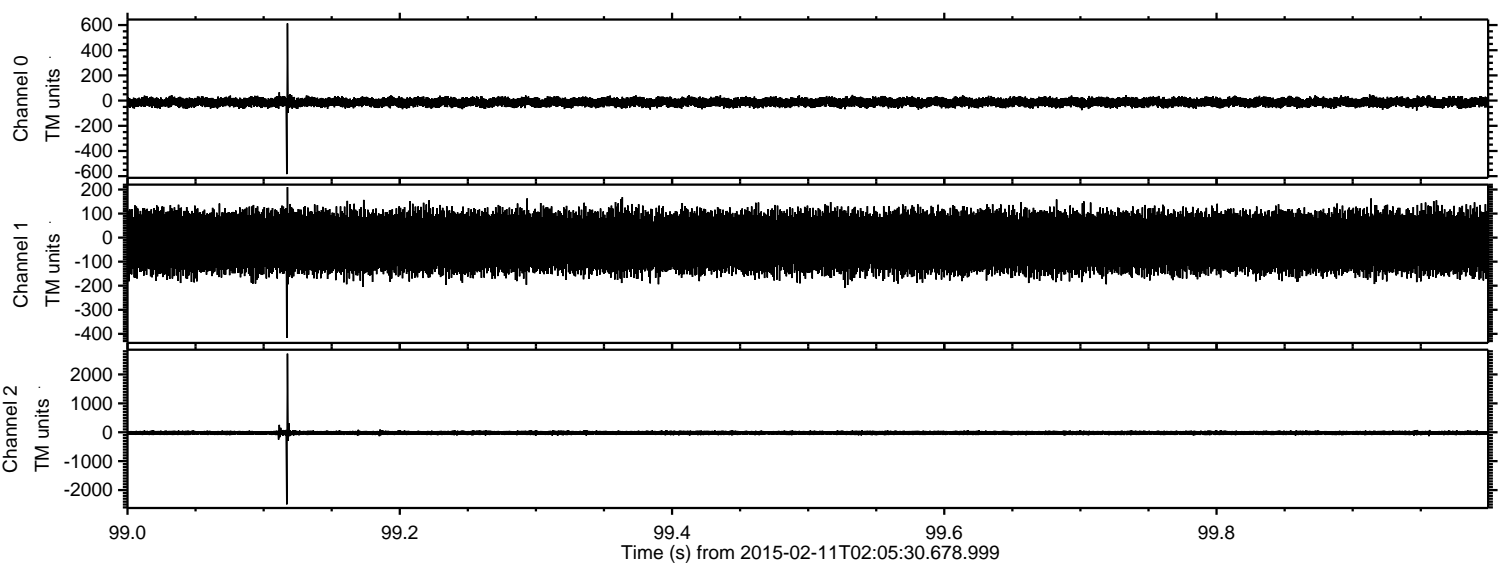
Processed Thu Feb 19 19:45:01 2015 by ELM ver.2012-10-06 from 001\_\_elm20150211\_020529\_\_dat00.bin





ELMAVAN 3D WAVEFORMS (Measured data sampled at 50 kHz) 49806 packets of 144 samples from 2015-02-11T02:05:30.678.999. Part 100/144

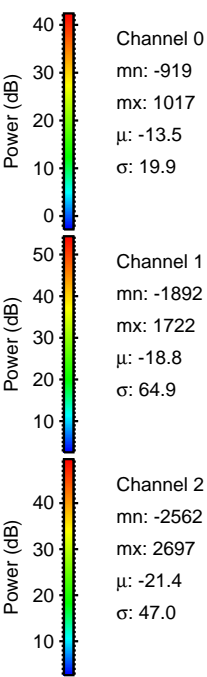
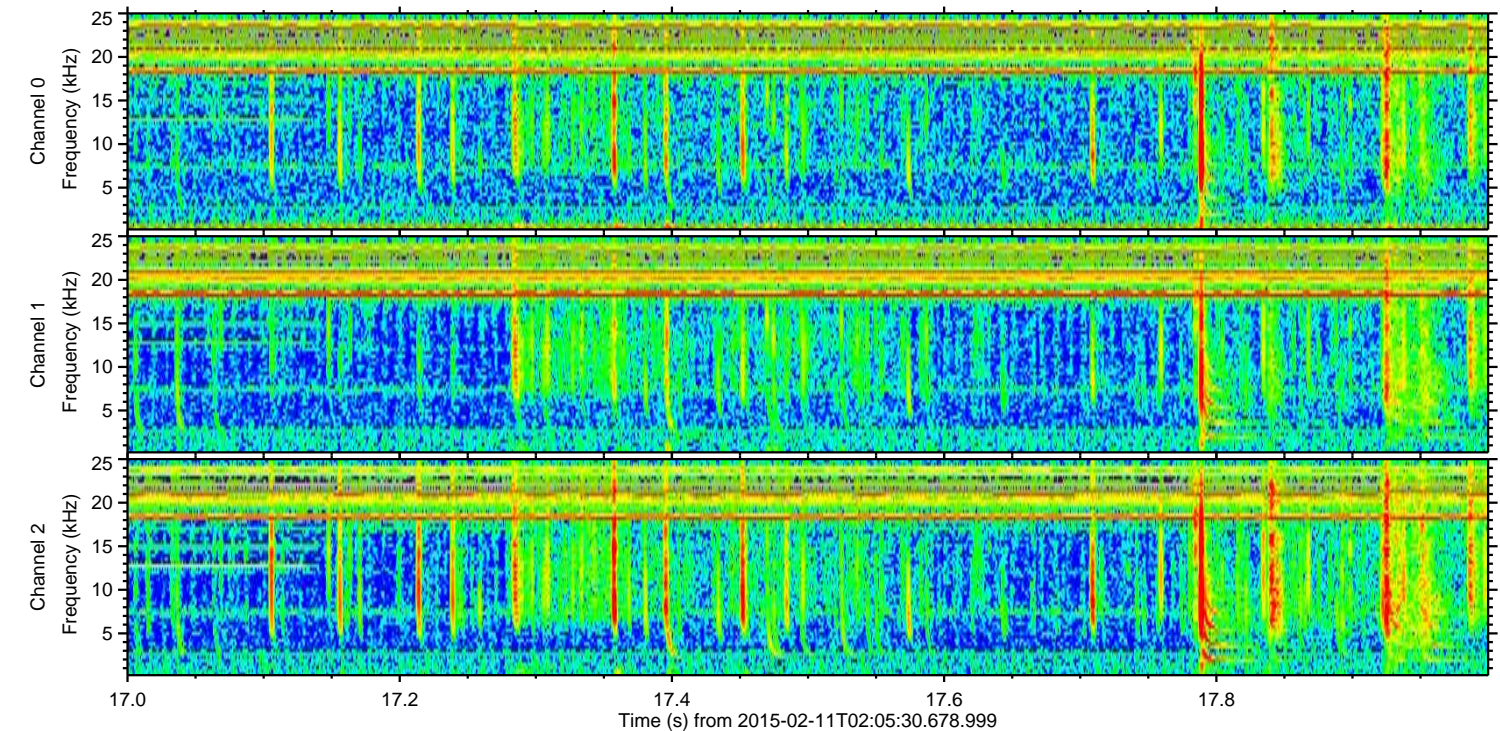
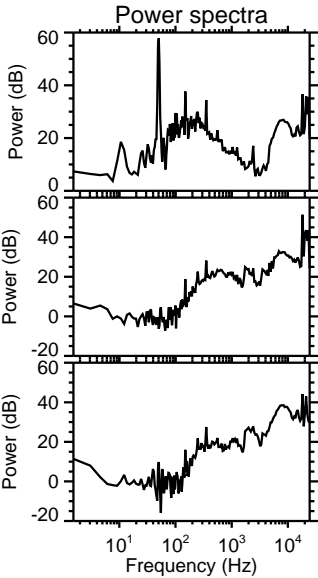
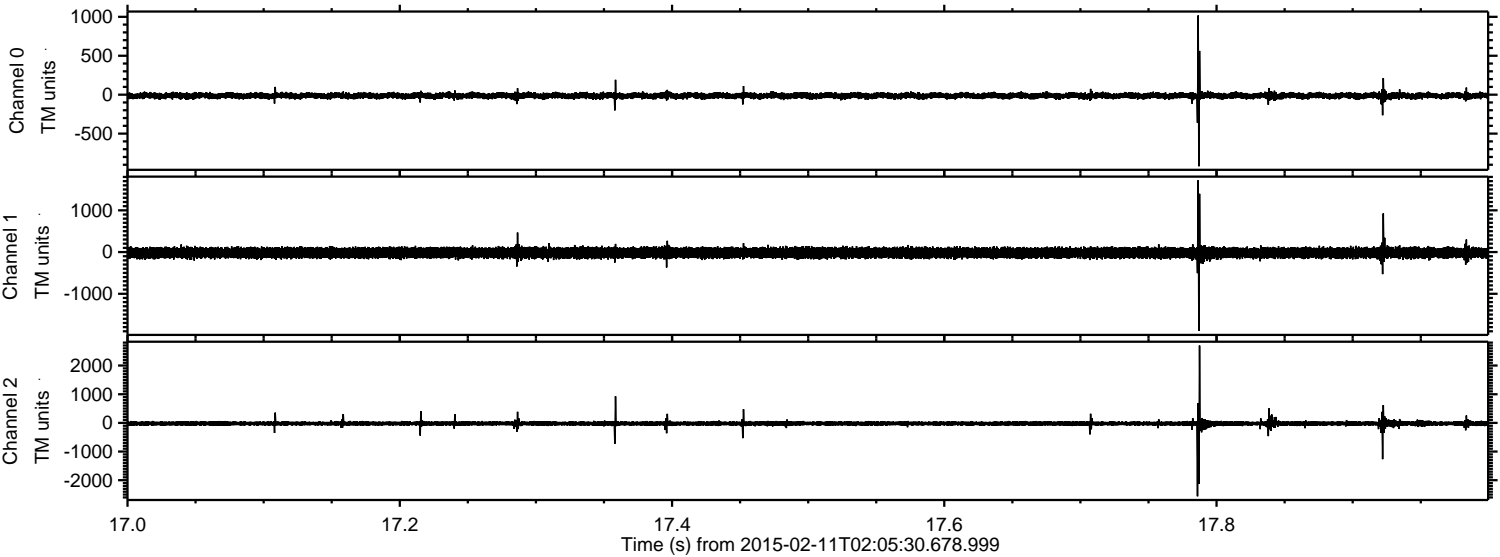
Processed Thu Feb 19 19:45:02 2015 by ELM ver.2012-10-06 from 001\_\_elm20150211\_020529\_\_dat00.bin





ELMAVAN 3D WAVEFORMS (Measured data sampled at 50 kHz) 49806 packets of 144 samples from 2015-02-11T02:05:30.678.999. Part 18/144

Processed Thu Feb 19 19:45:04 2015 by ELM ver.2012-10-06 from 001\_\_elm20150211\_020529\_\_dat00.bin



Channel 0  
mn: -919  
mx: 1017  
 $\mu$ : -13.5  
 $\sigma$ : 19.9

Channel 1  
mn: -1892  
mx: 1722  
 $\mu$ : -18.8  
 $\sigma$ : 64.9

Channel 2  
mn: -2562  
mx: 2697  
 $\mu$ : -21.4  
 $\sigma$ : 47.0



ELMAVAN 3D WAVEFORMS (Measured data sampled at 50 kHz) 49806 packets of 144 samples from 2015-02-11T02:05:30.678.999. Part 126/144

