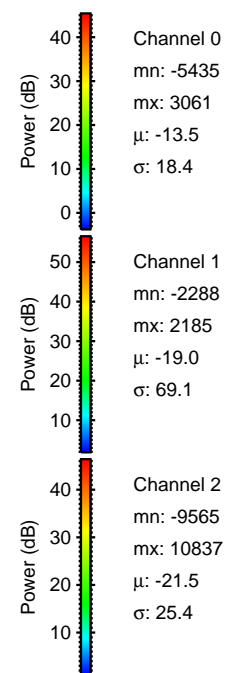
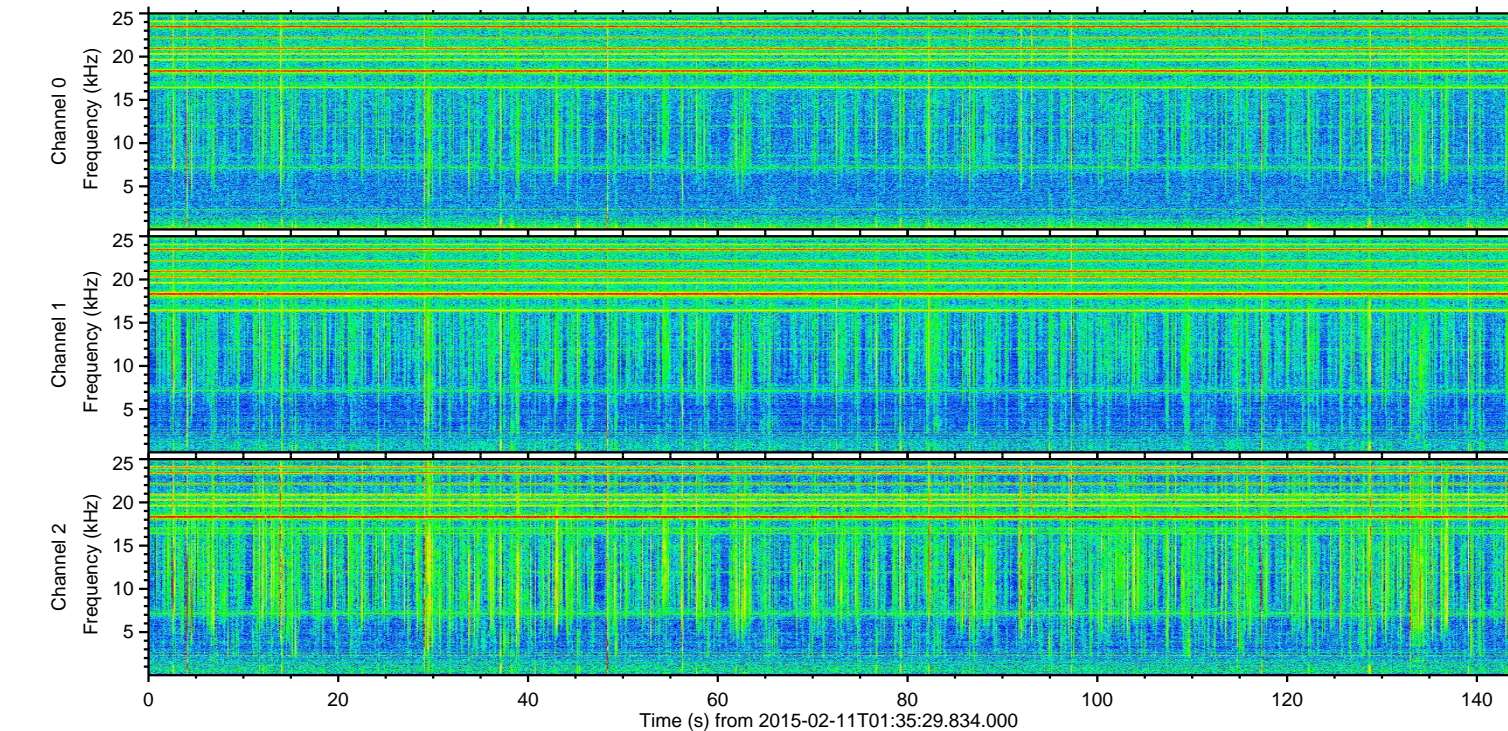
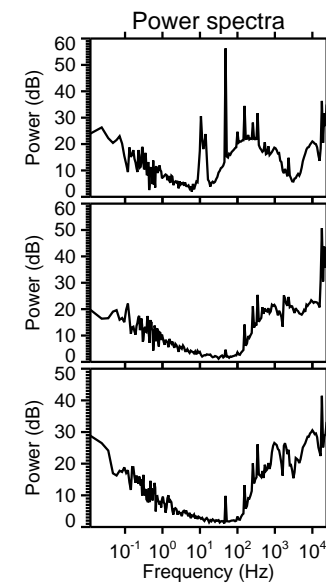
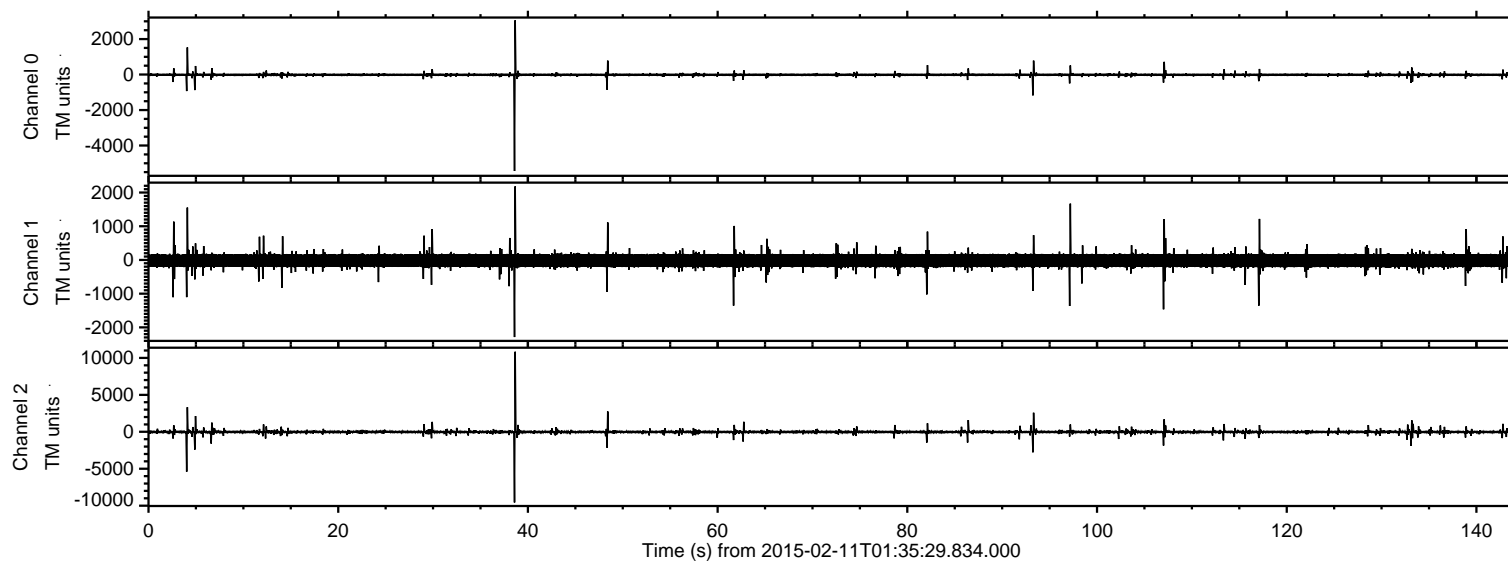


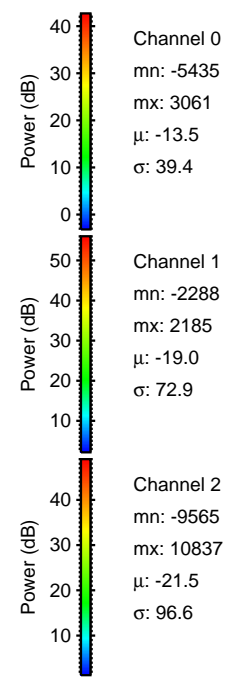
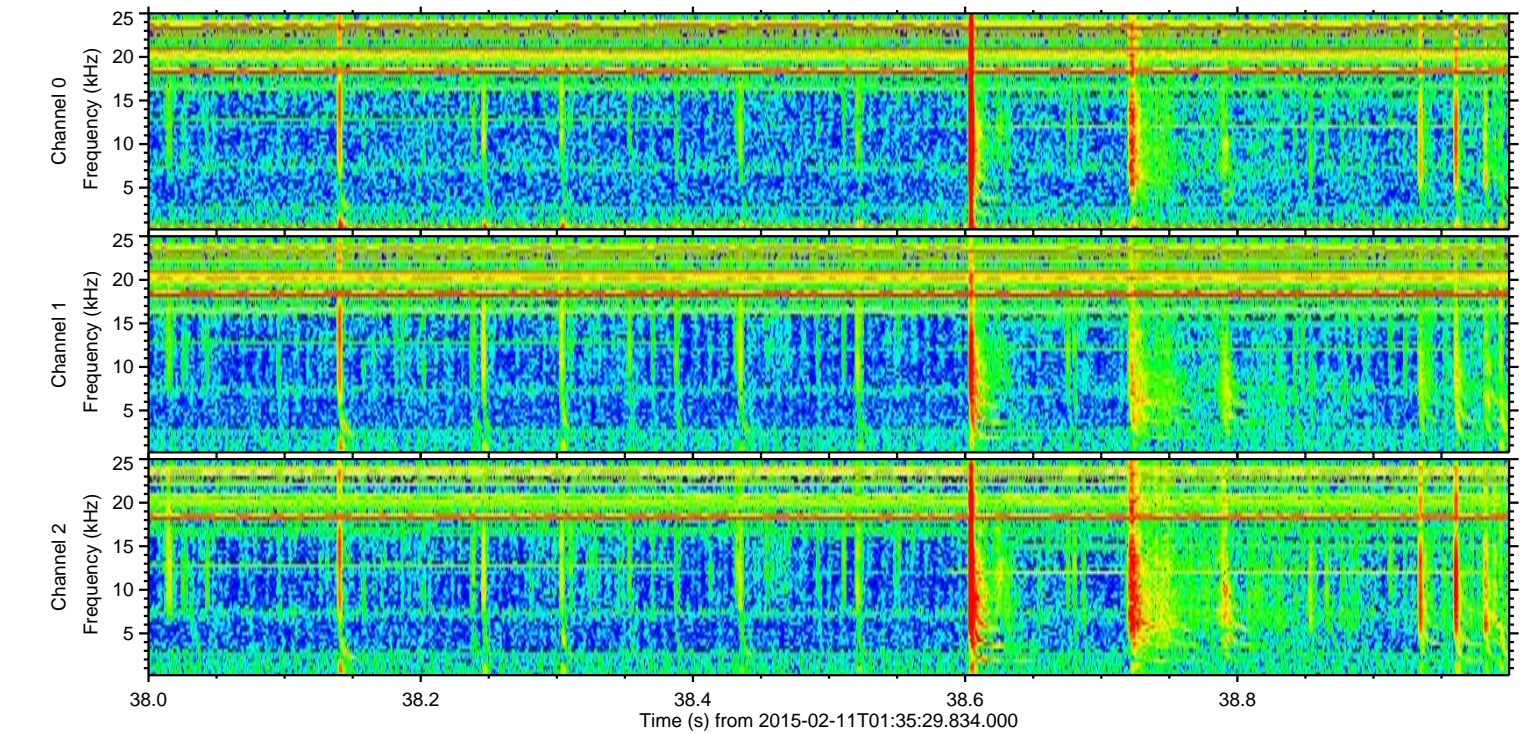
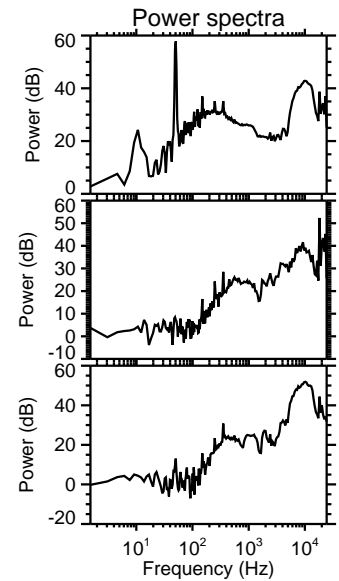
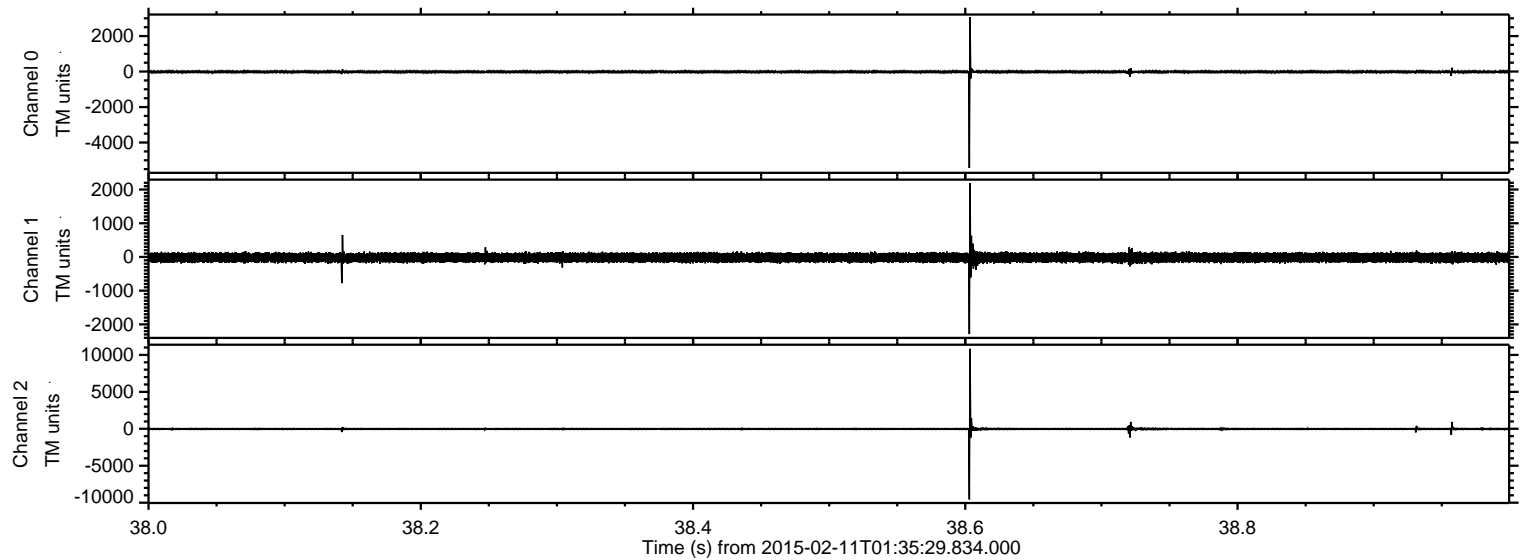
ELMAVAN 3D WAVEFORMS (Measured data sampled at 50 kHz) 49809 packets of 144 samples from 2015-02-11T01:35:29.834.000.

Processed Thu Feb 19 19:32:58 2015 by ELM ver.2012-10-06 from 001__elm20150211_013528__dat00.bin

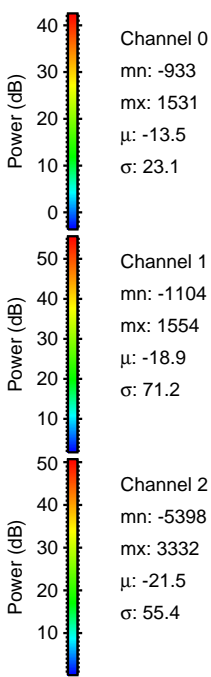
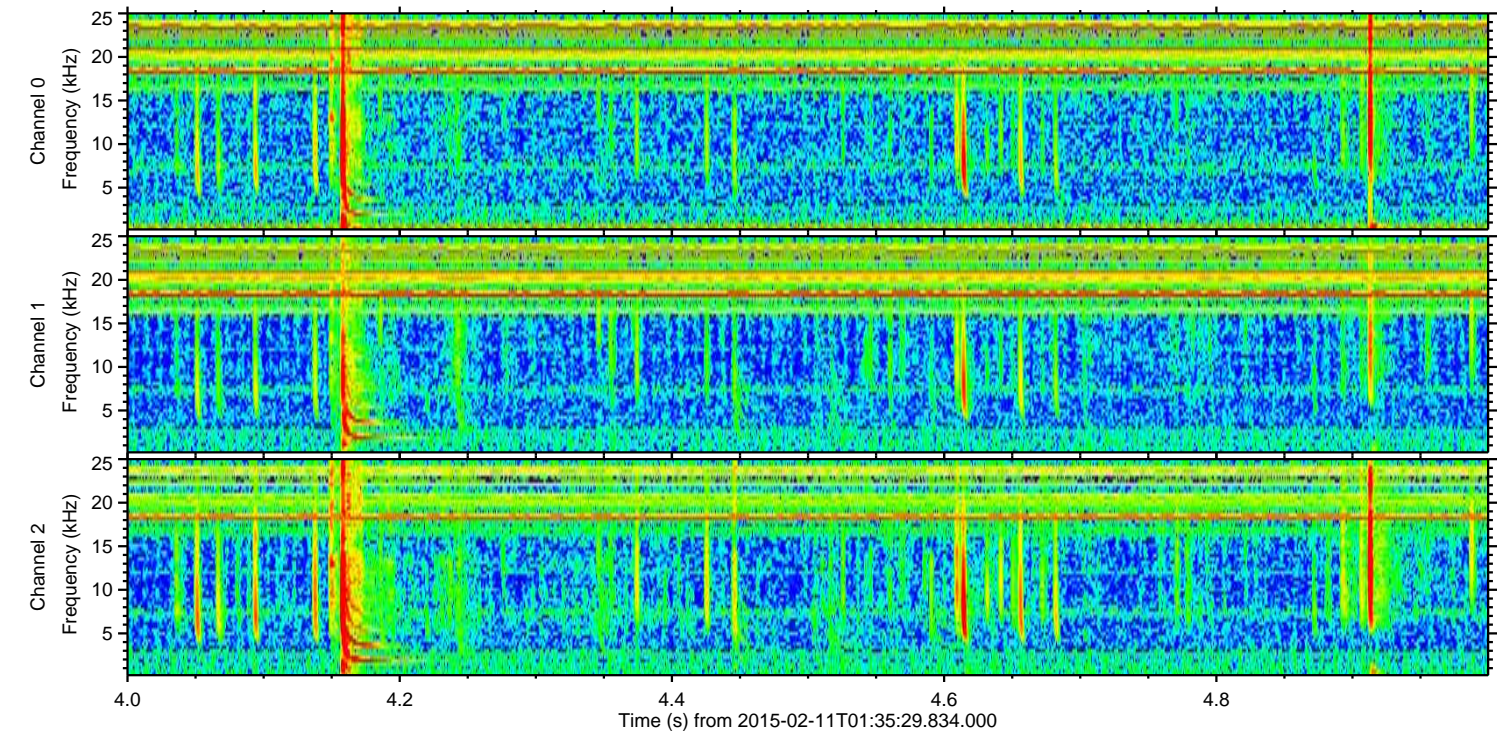
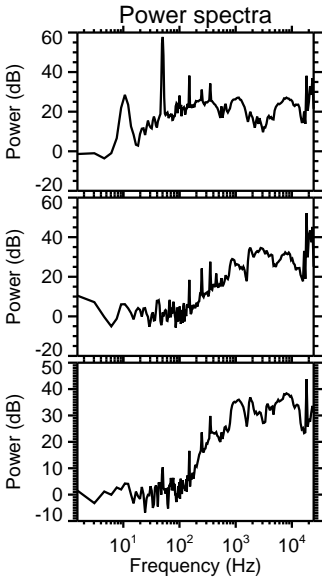
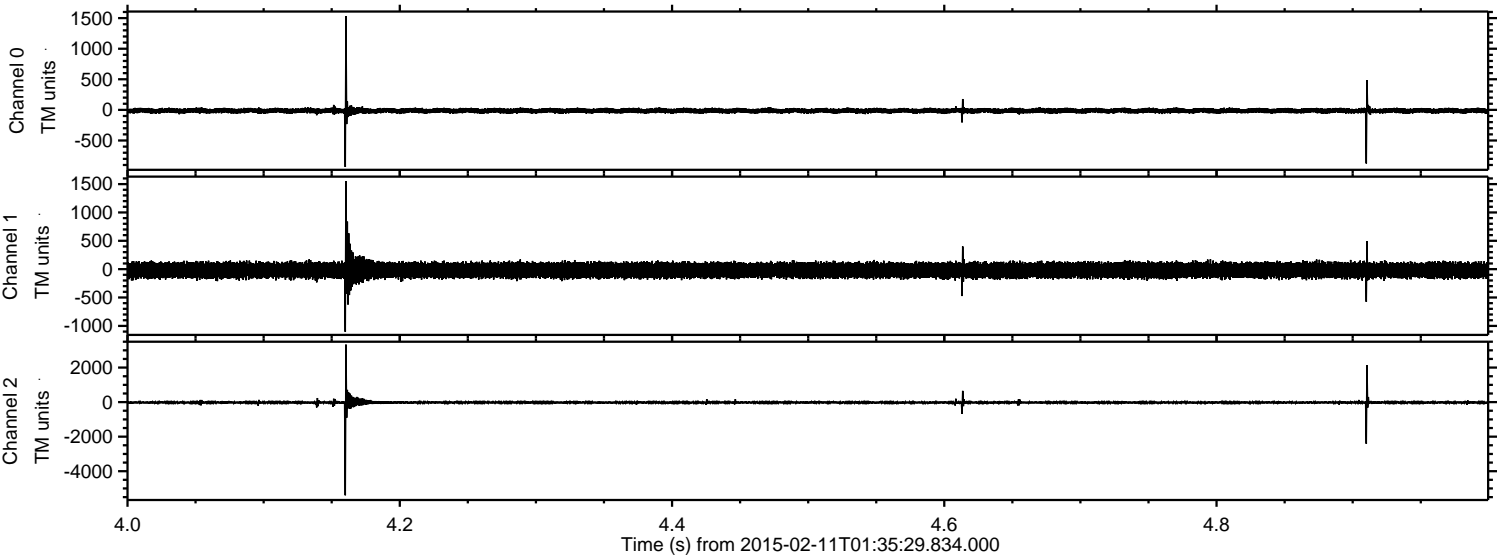


ELMAVAN 3D WAVEFORMS (Measured data sampled at 50 kHz) 49809 packets of 144 samples from 2015-02-11T01:35:29.834.000. Part 39/144

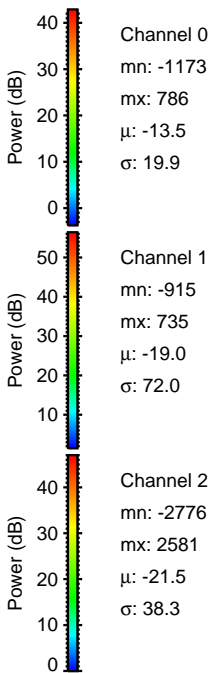
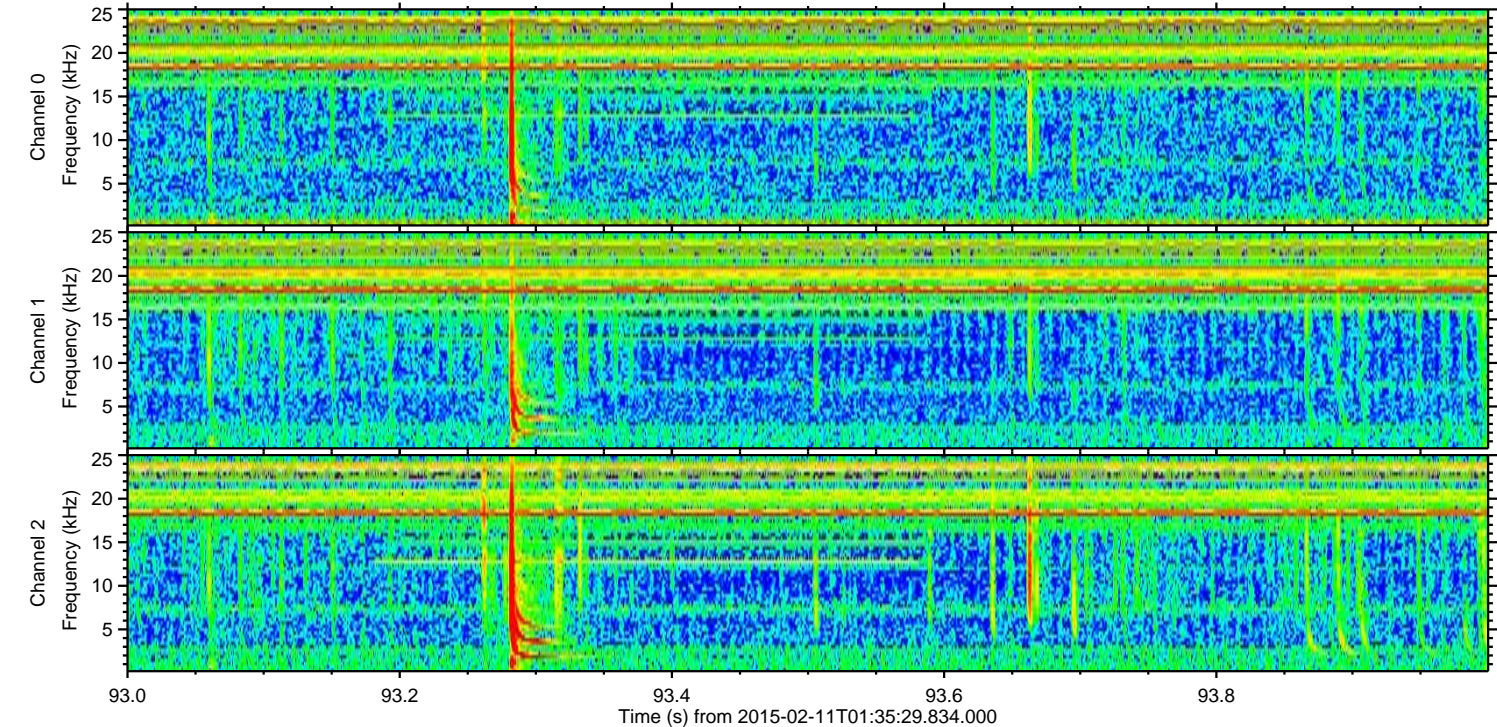
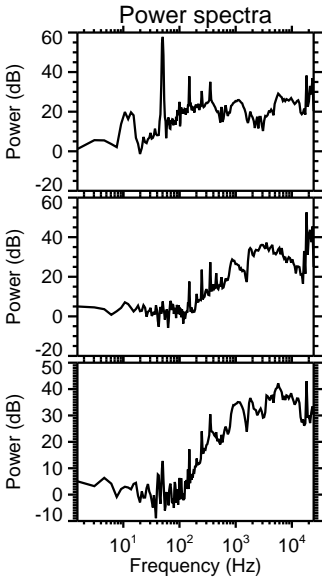
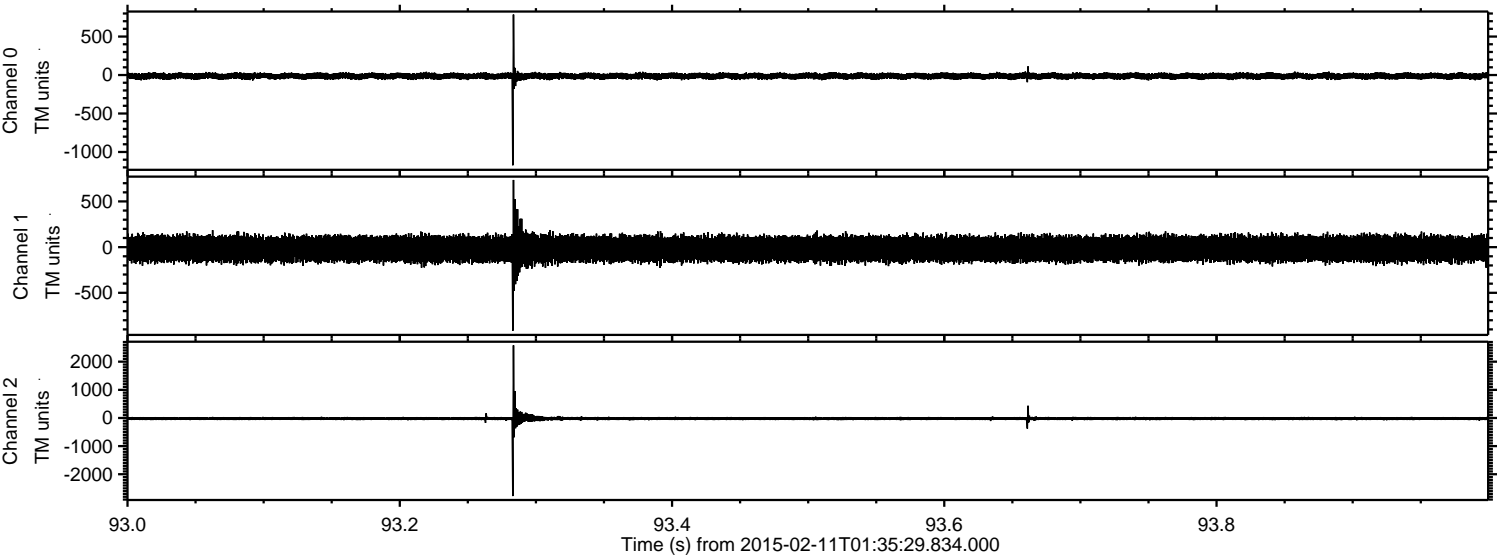
Processed Thu Feb 19 19:33:21 2015 by ELM ver.2012-10-06 from 001__elm20150211_013528__dat00.bin



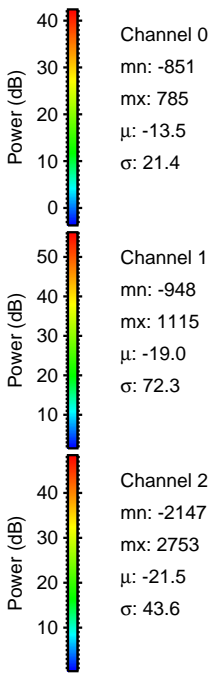
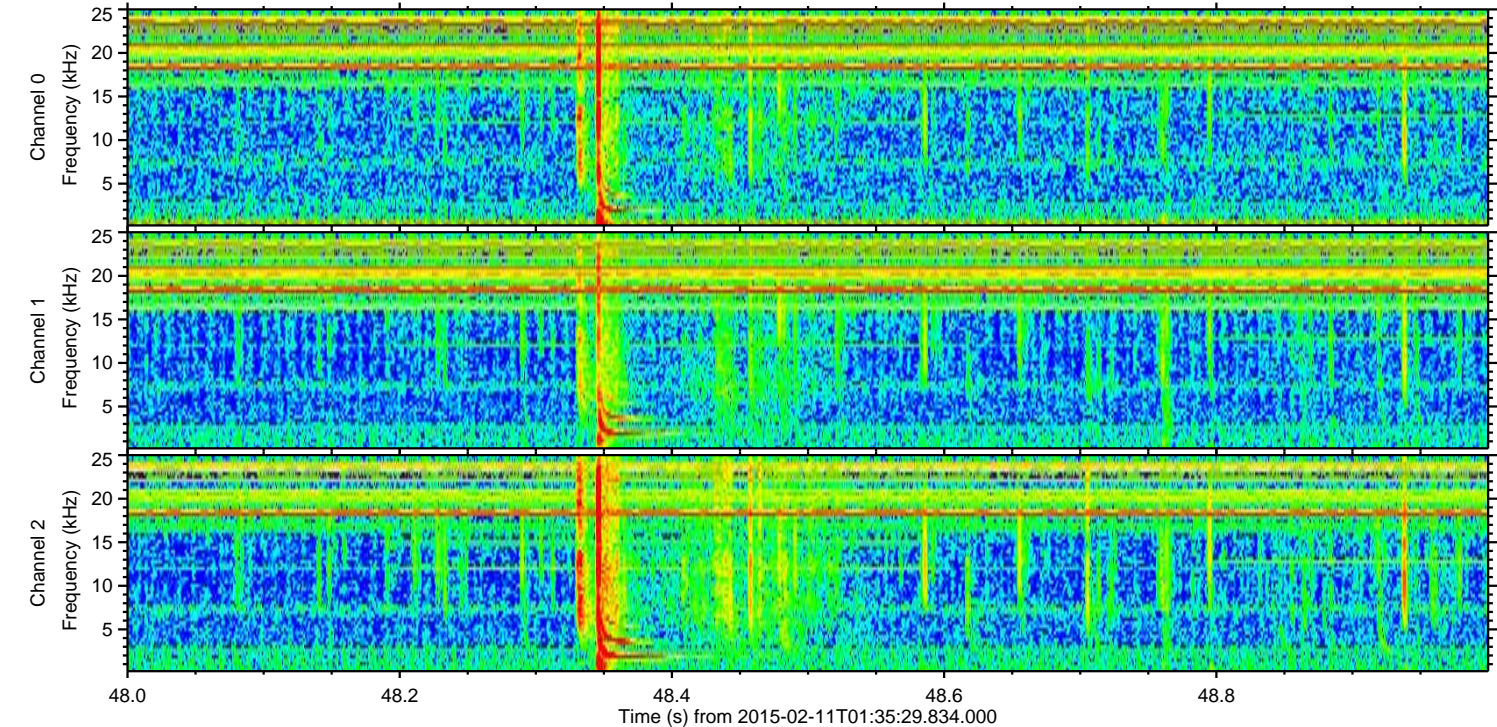
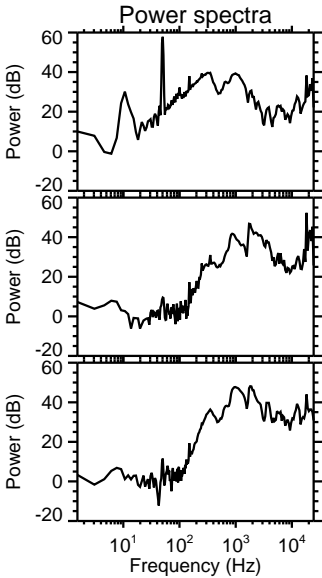
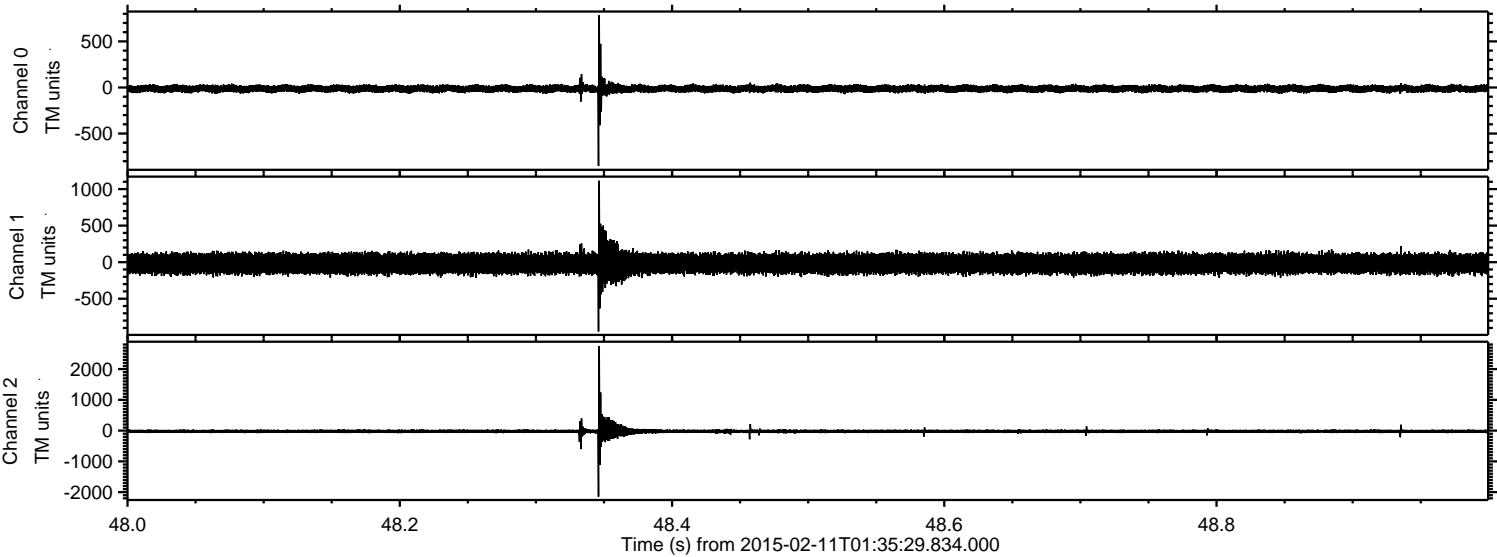
Processed Thu Feb 19 19:33:24 2015 by ELM ver.2012-10-06 from 001__elm20150211_013528__dat00.bin



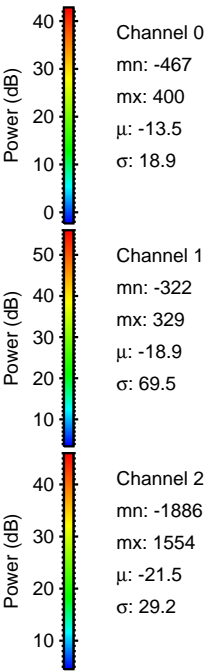
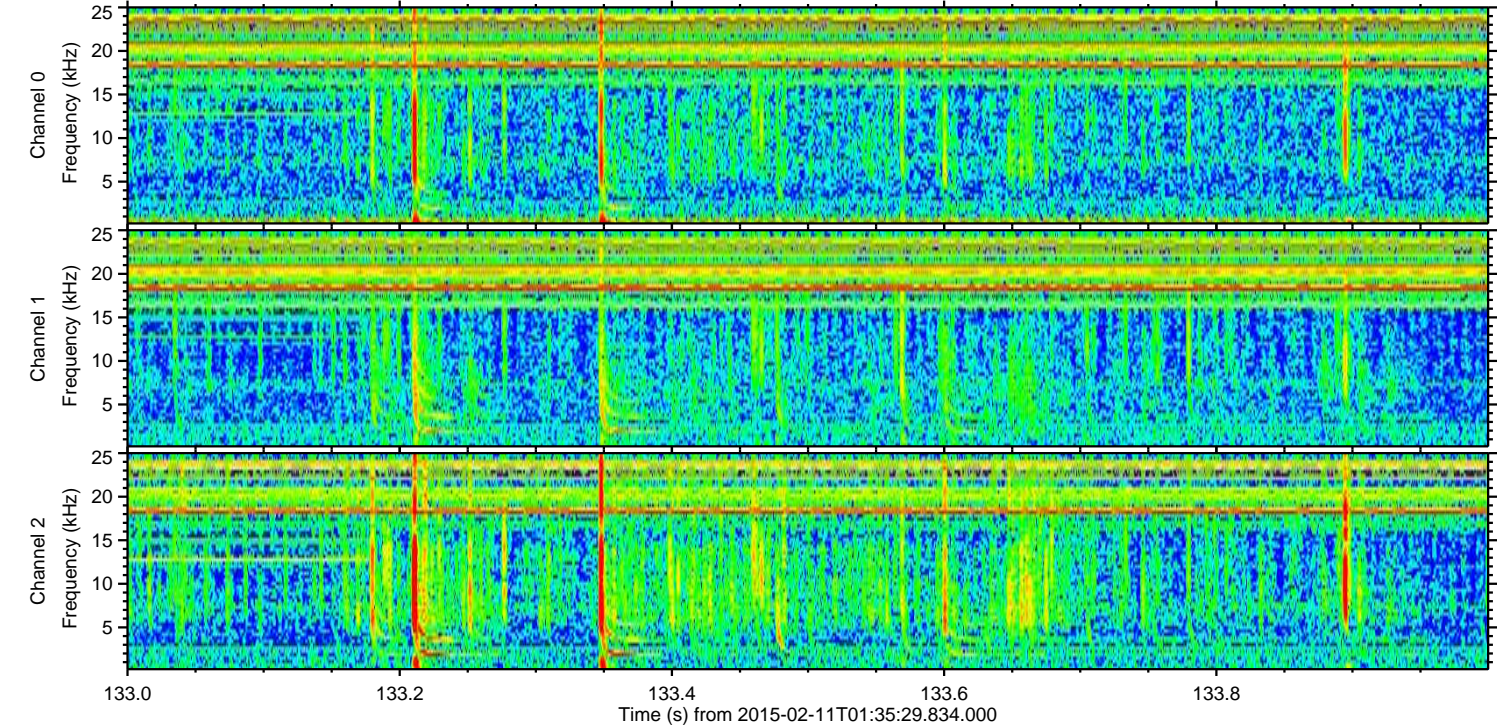
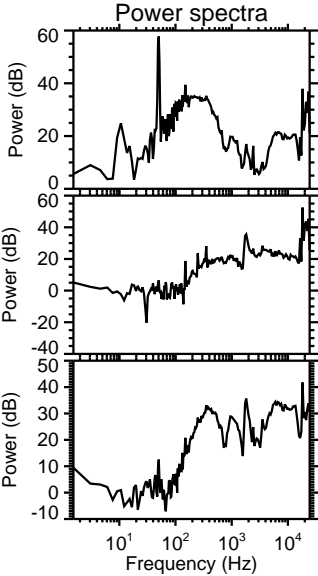
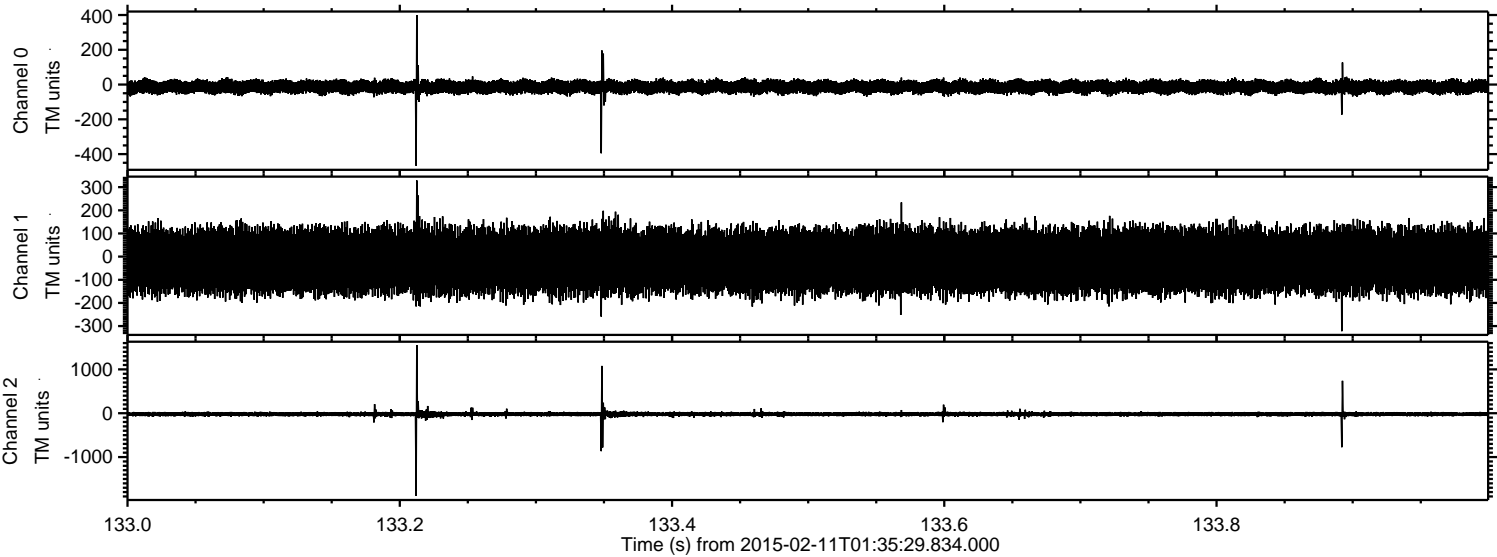
Processed Thu Feb 19 19:33:27 2015 by ELM ver.2012-10-06 from 001__elm20150211_013528__dat00.bin



Processed Thu Feb 19 19:33:29 2015 by ELM ver.2012-10-06 from 001__elm20150211_013528__dat00.bin

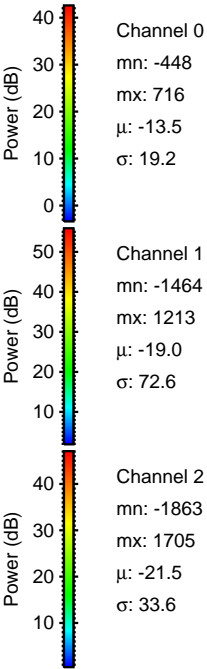
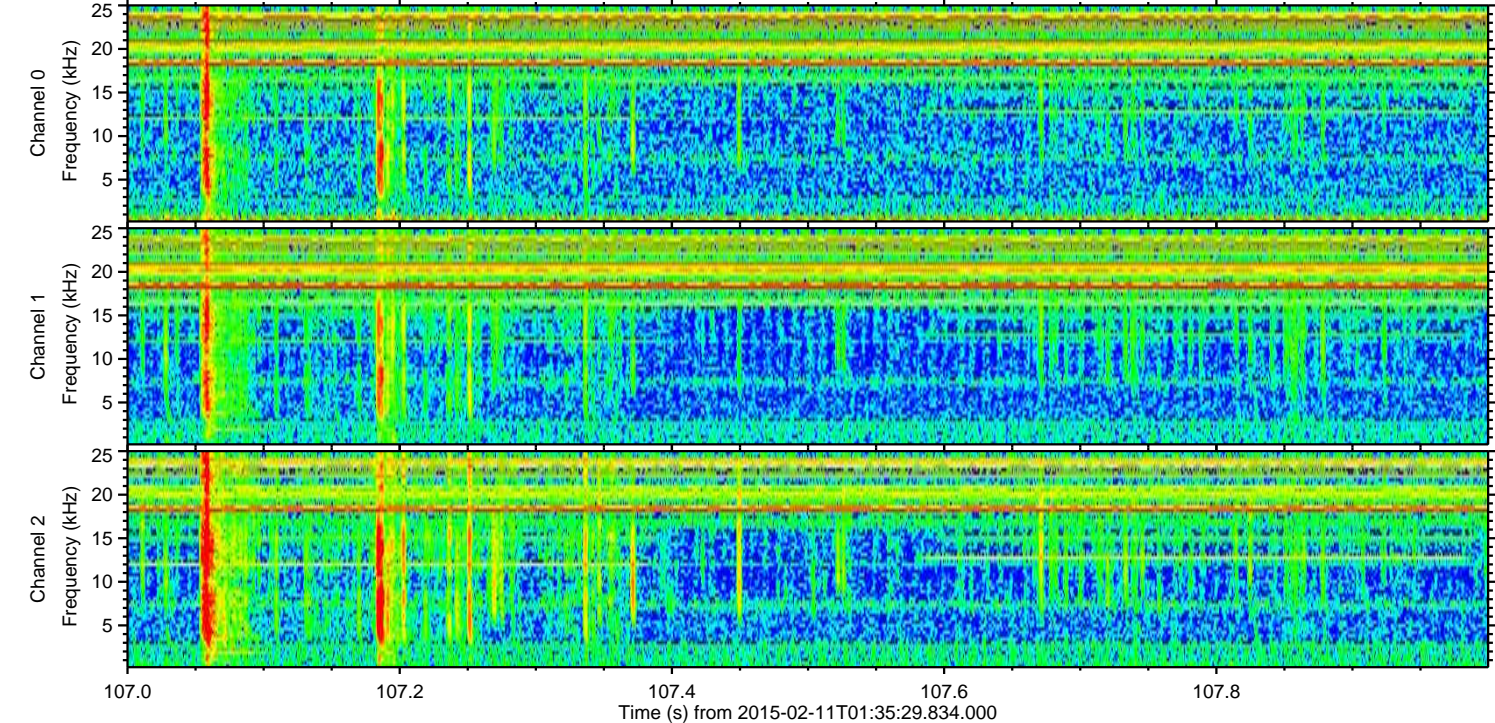
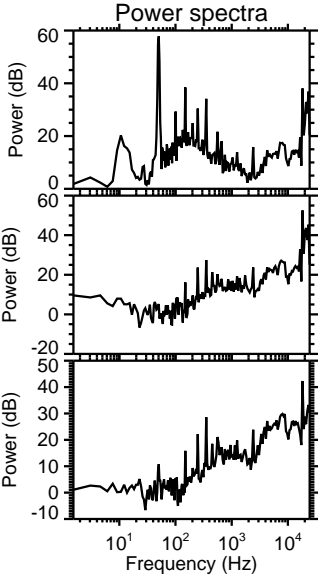
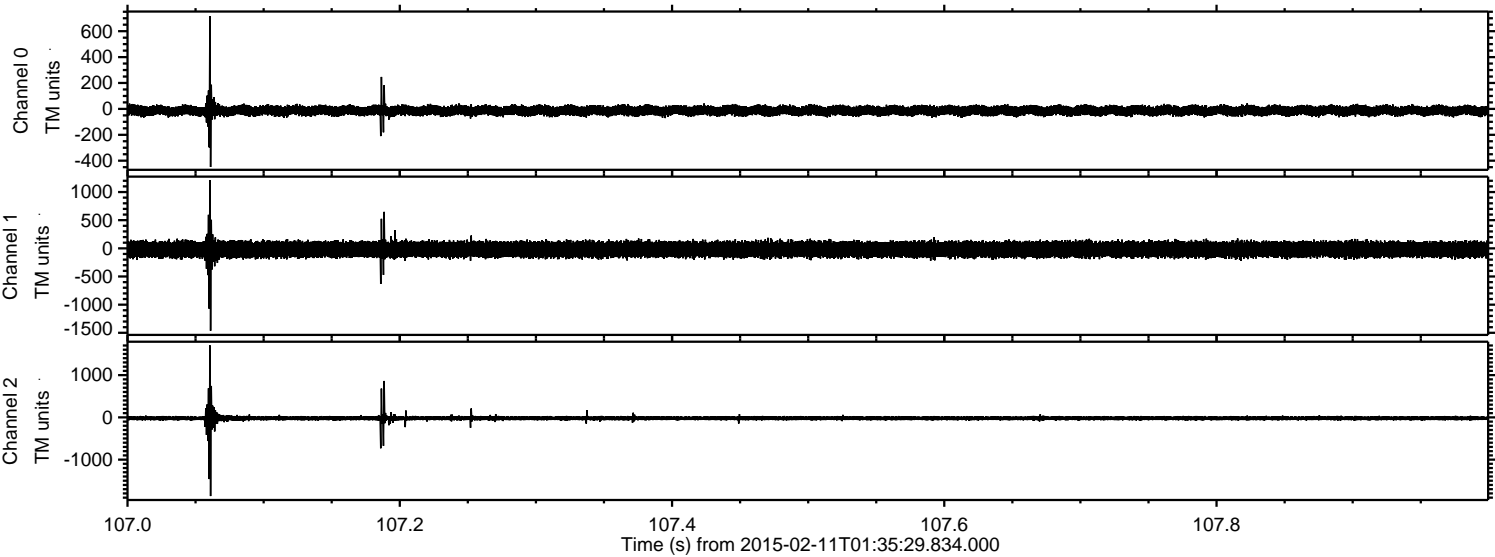


Processed Thu Feb 19 19:33:31 2015 by ELM ver.2012-10-06 from 001__elm20150211_013528__dat00.bin

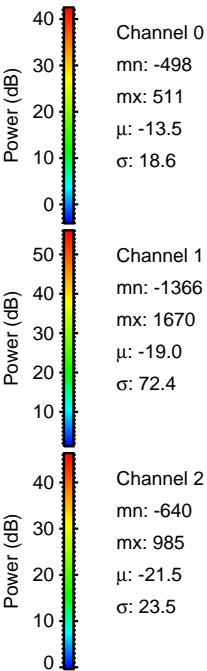
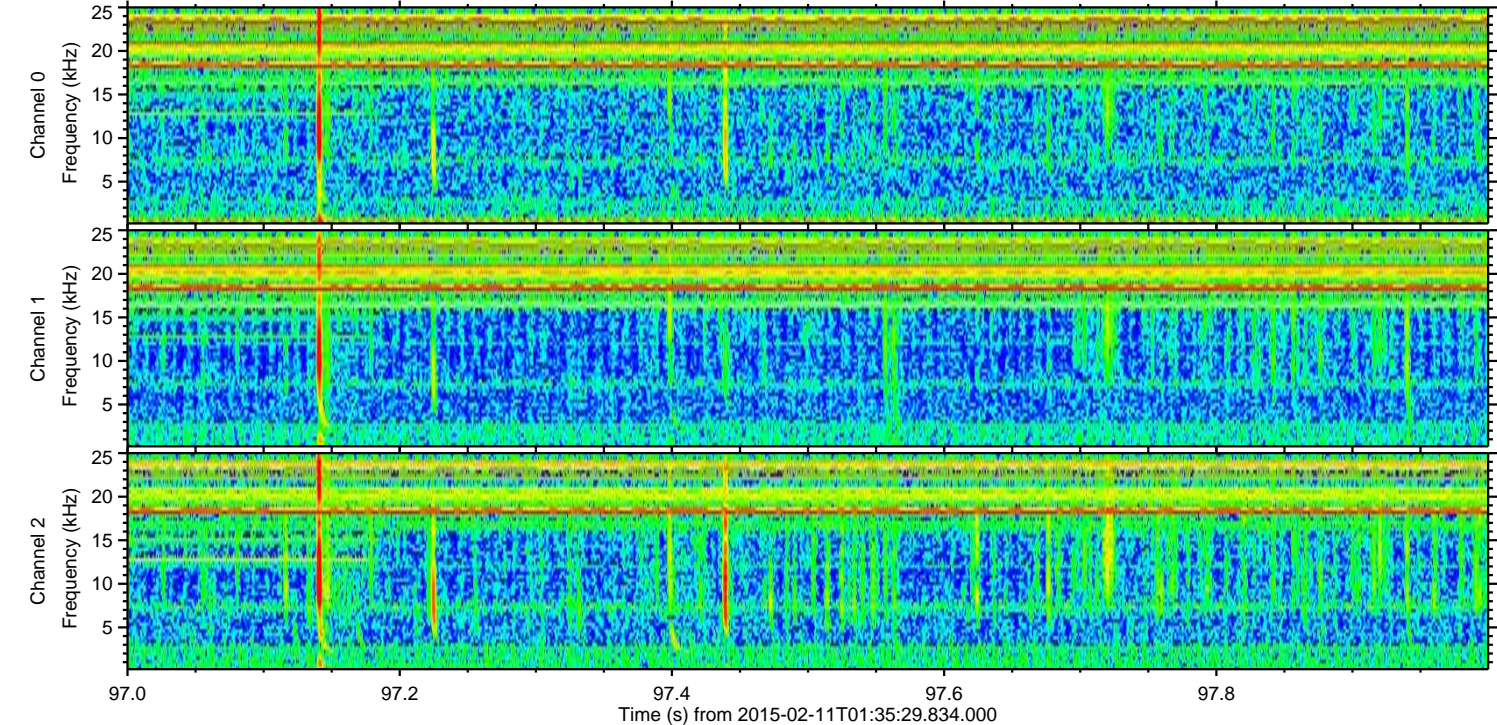
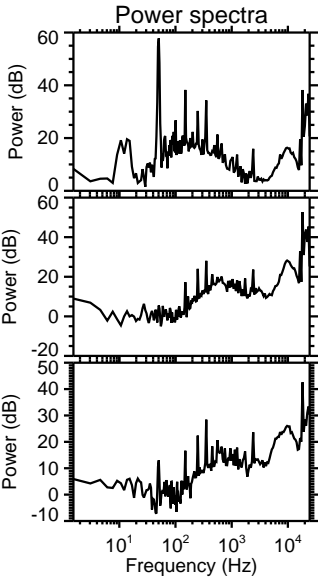
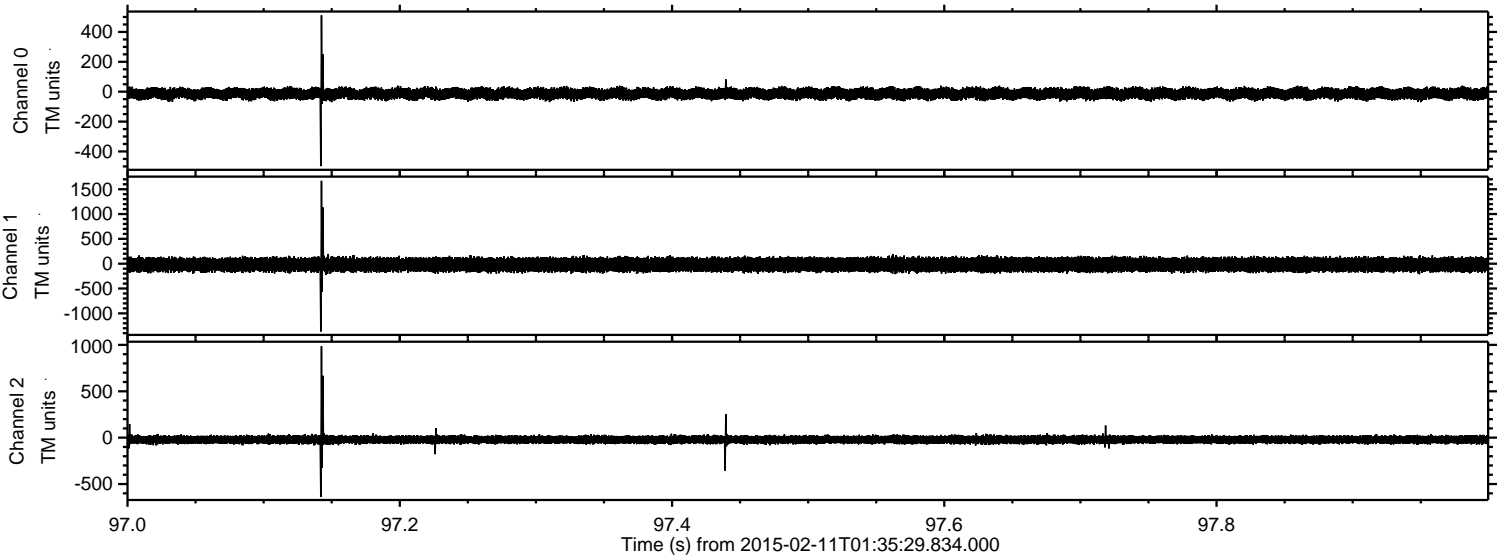


ELMAVAN 3D WAVEFORMS (Measured data sampled at 50 kHz) 49809 packets of 144 samples from 2015-02-11T01:35:29.834.000. Part 108/144

Processed Thu Feb 19 19:33:33 2015 by ELM ver.2012-10-06 from 001__elm20150211_013528__dat00.bin

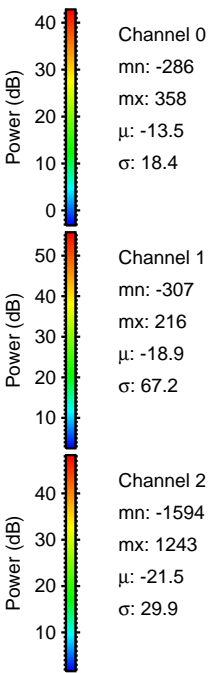
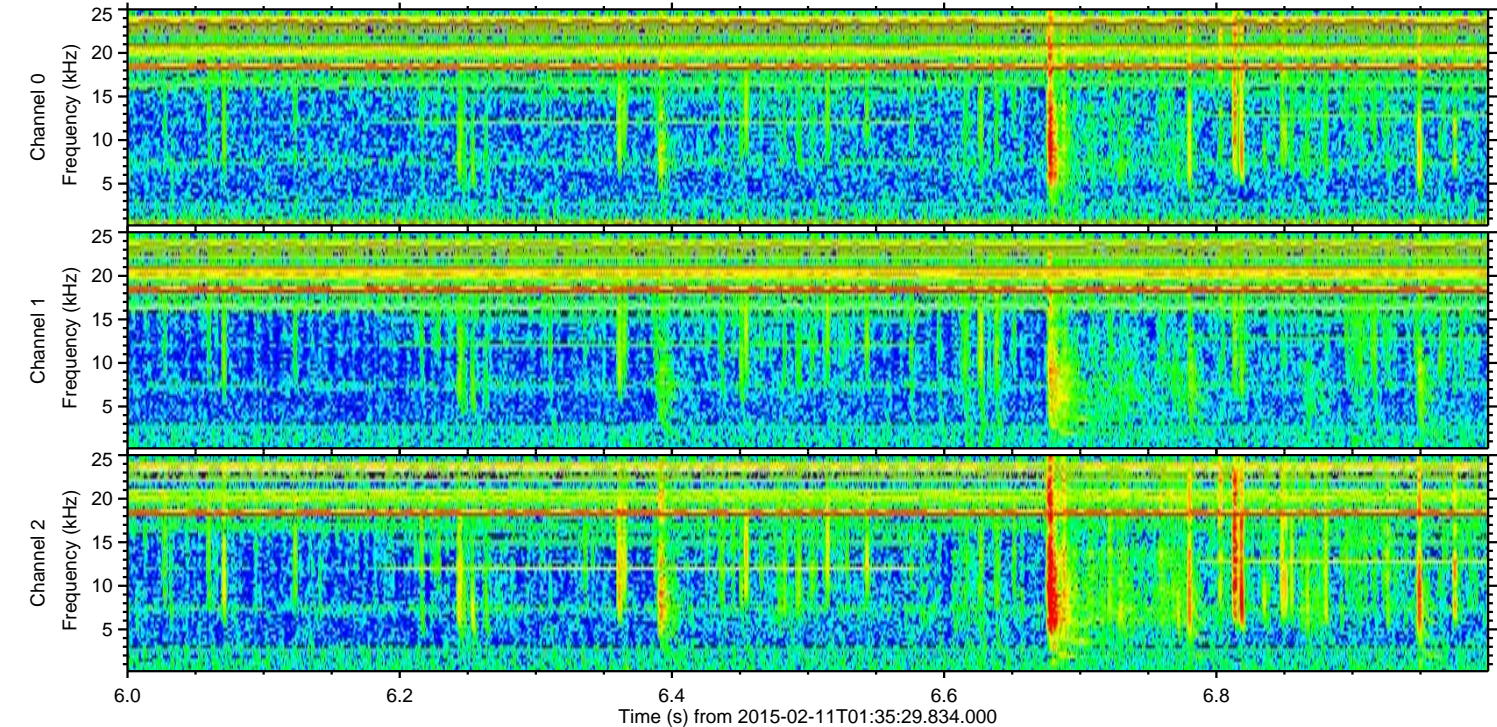
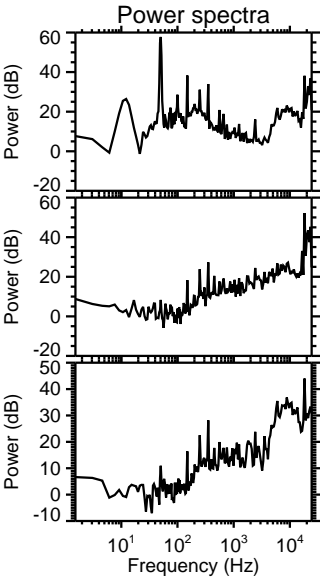
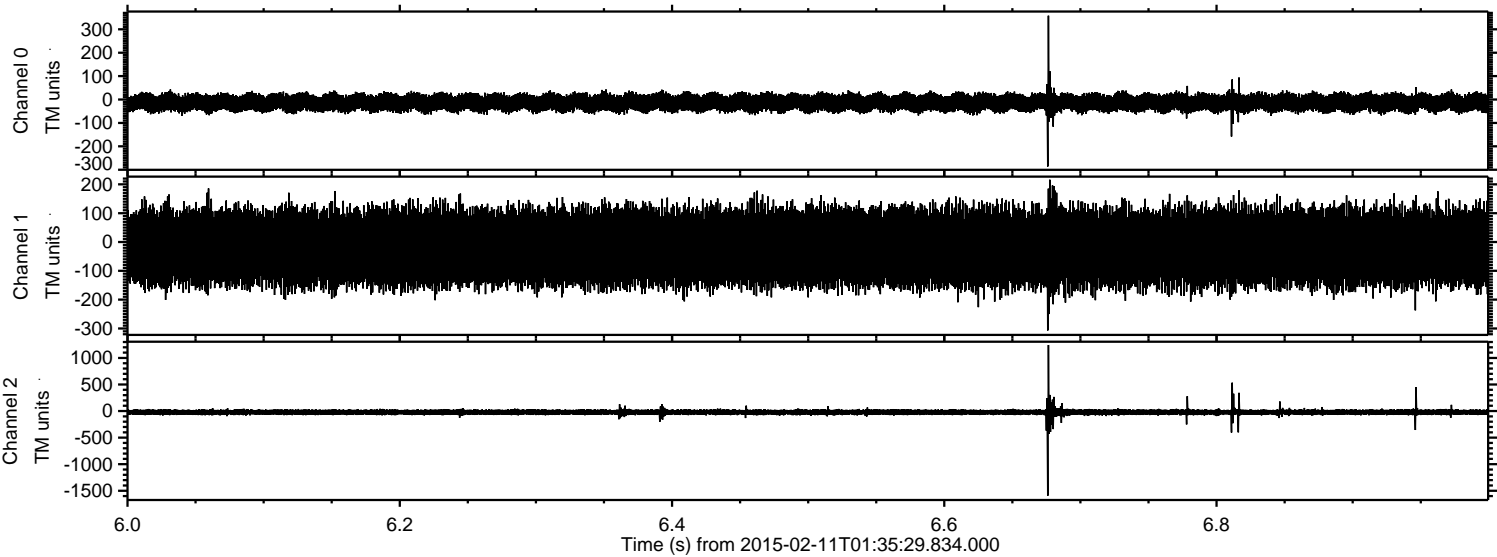


Processed Thu Feb 19 19:33:35 2015 by ELM ver.2012-10-06 from 001__elm20150211_013528__dat00.bin

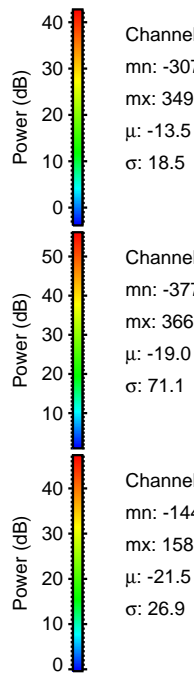
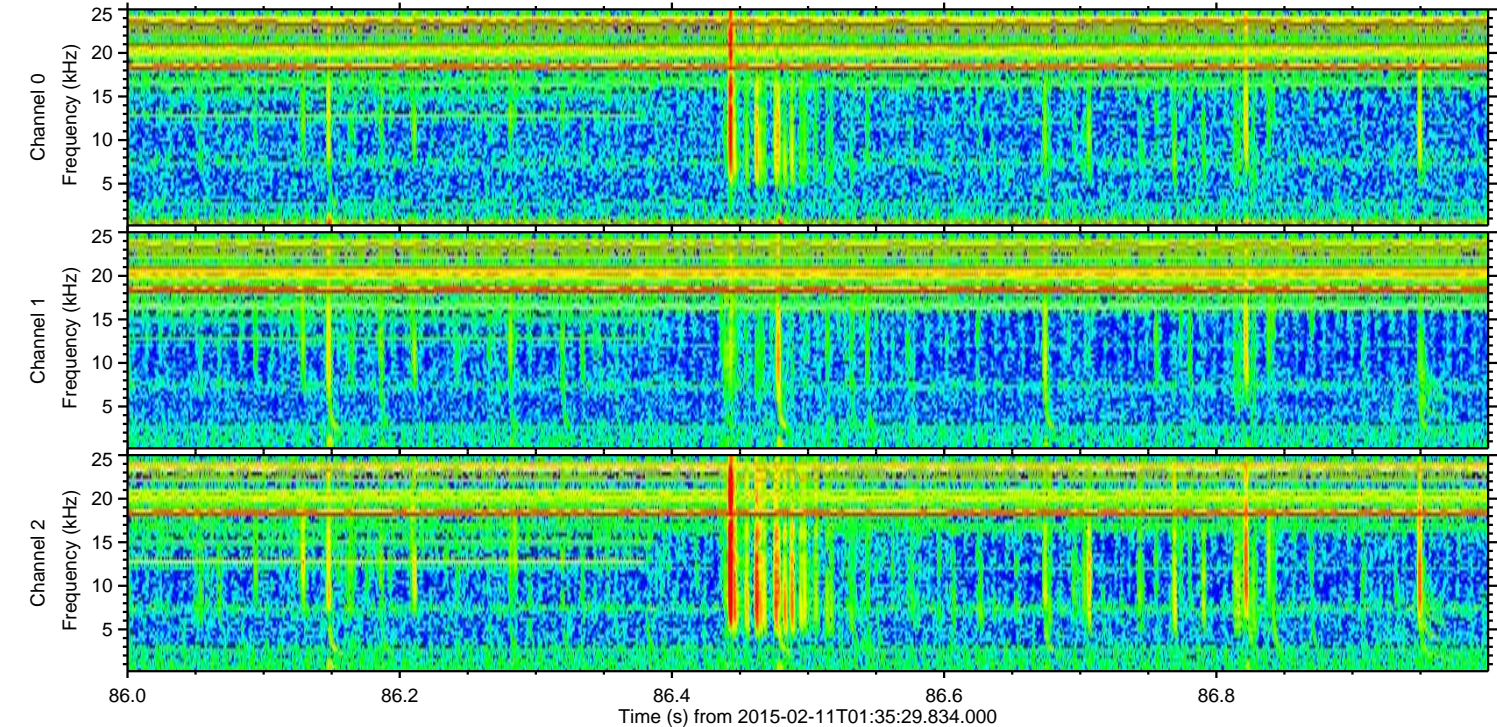
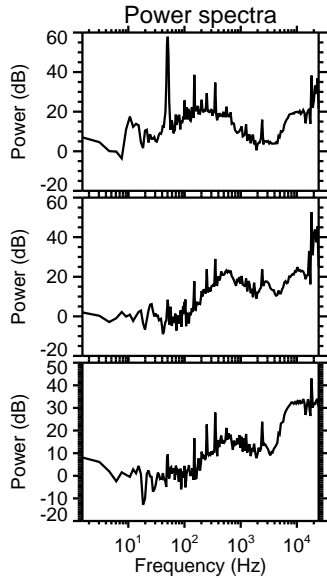
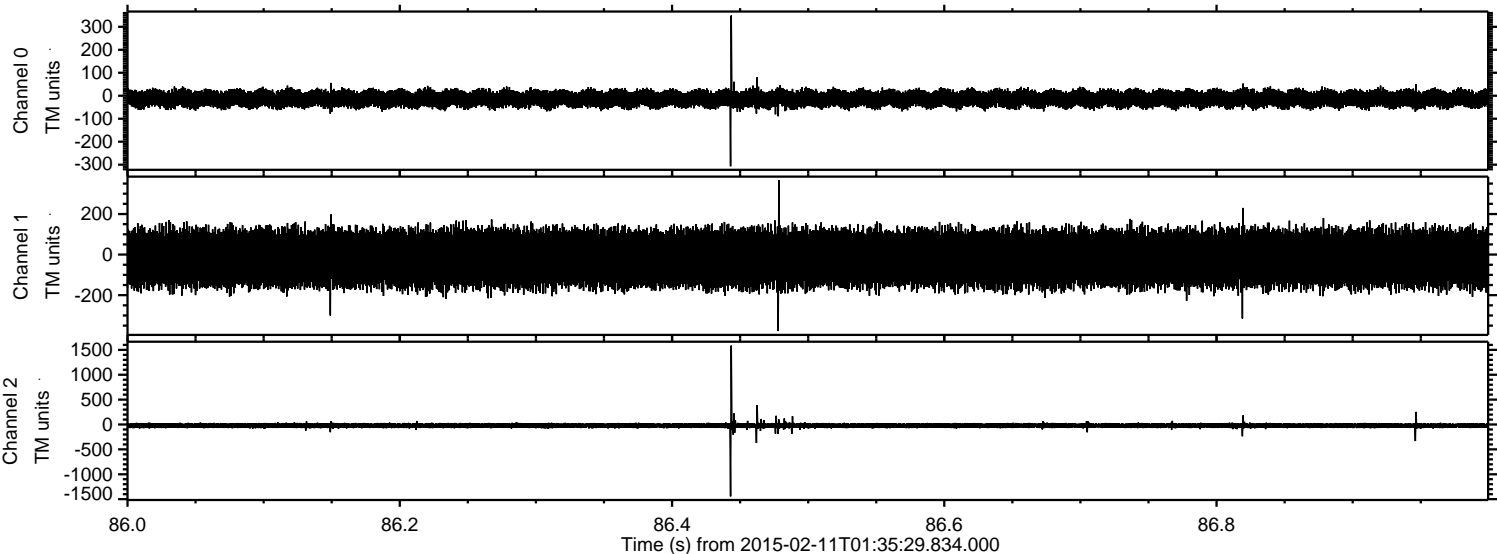


ELMAVAN 3D WAVEFORMS (Measured data sampled at 50 kHz) 49809 packets of 144 samples from 2015-02-11T01:35:29.834.000. Part 7/144

Processed Thu Feb 19 19:33:37 2015 by ELM ver.2012-10-06 from 001__elm20150211_013528__dat00.bin



Processed Thu Feb 19 19:33:38 2015 by ELM ver.2012-10-06 from 001__elm20150211_013528__dat00.bin



Channel 0
mn: -307
mx: 349
 μ : -13.5
 σ : 18.5

Channel 1
mn: -377
mx: 366
 μ : -19.0
 σ : 71.1

Channel 2
mn: -1445
mx: 1585
 μ : -21.5
 σ : 26.9

Processed Thu Feb 19 19:33:39 2015 by ELM ver.2012-10-06 from 001__elm20150211_013528__dat00.bin

