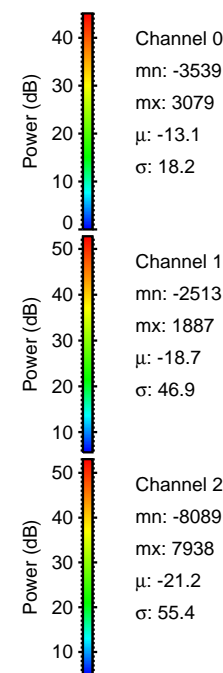
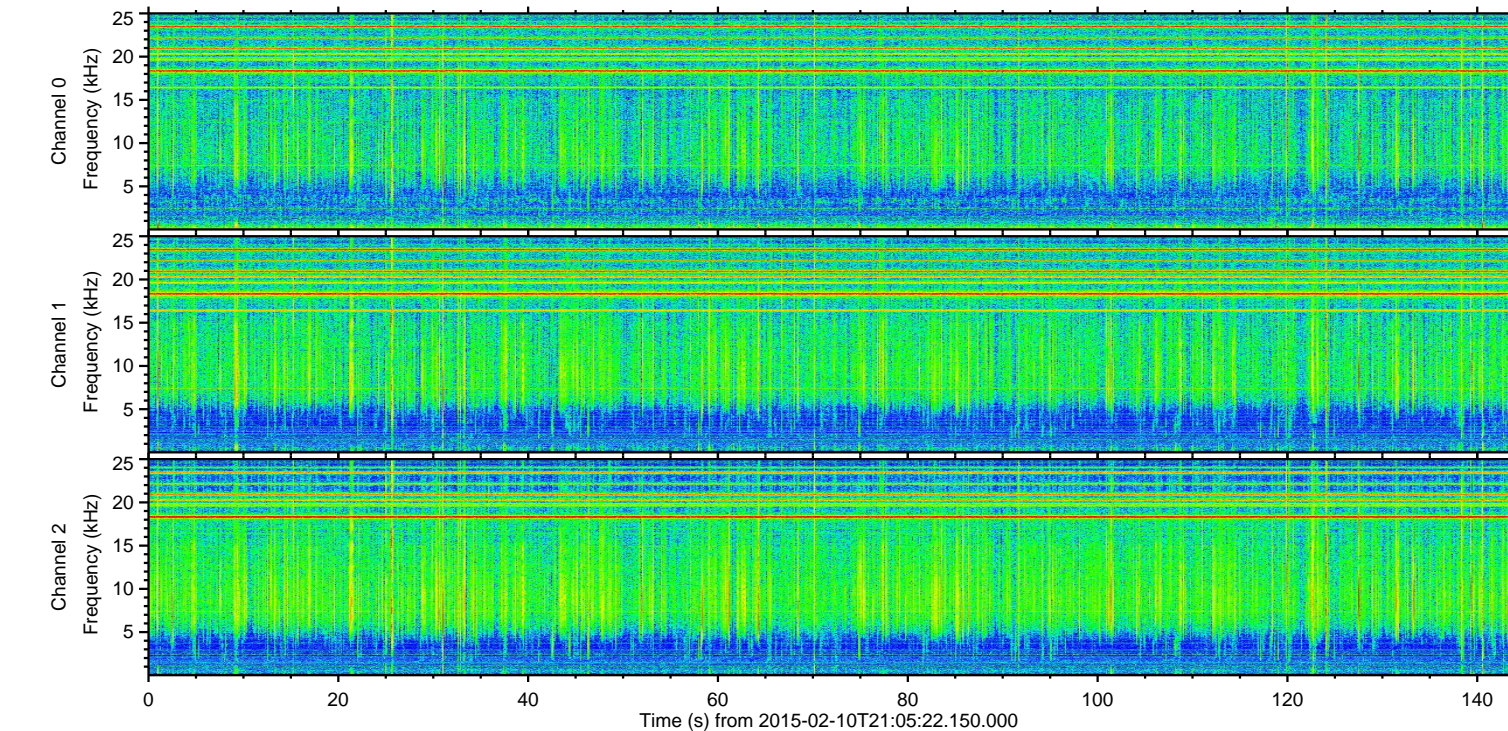
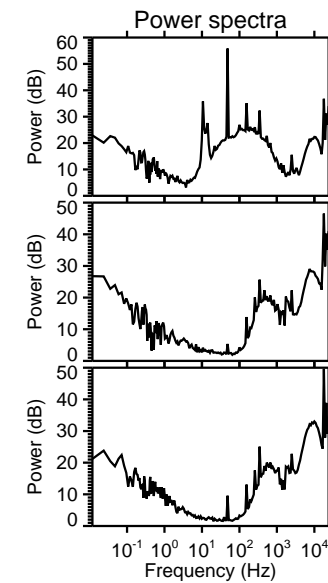
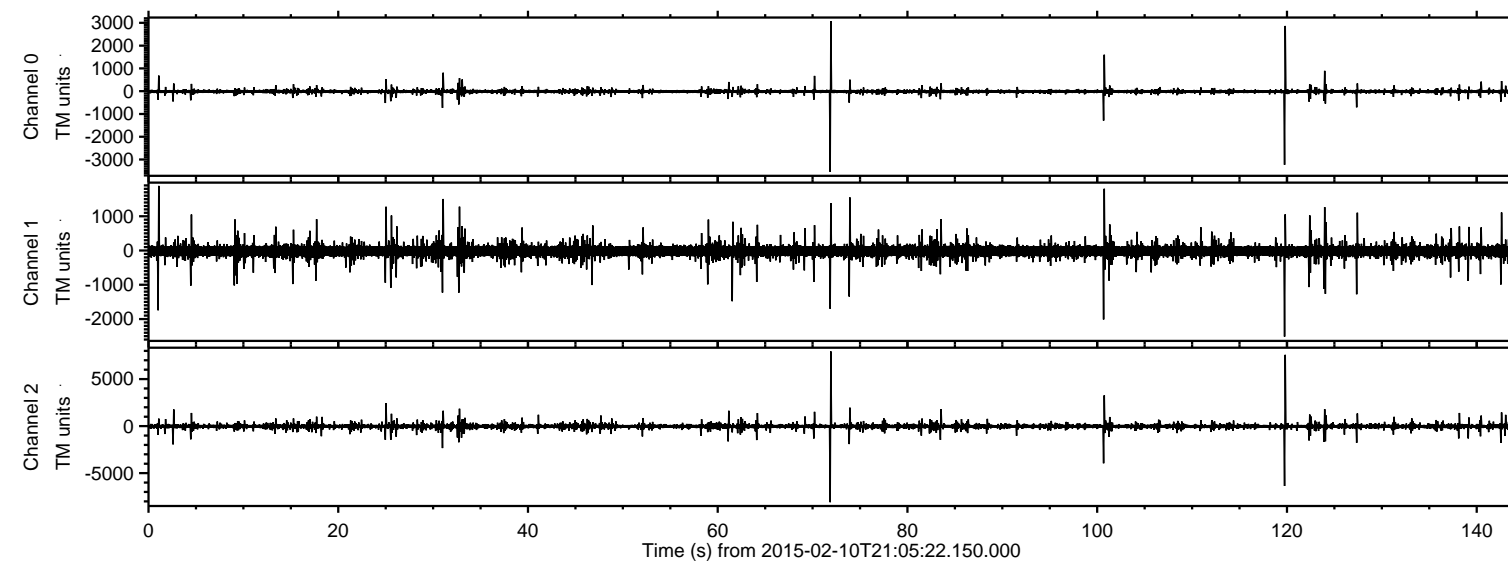


# ELMAVAN 3D WAVEFORMS (Measured data sampled at 50 kHz) 49799 packets of 144 samples from 2015-02-10T21:05:22.150.000.

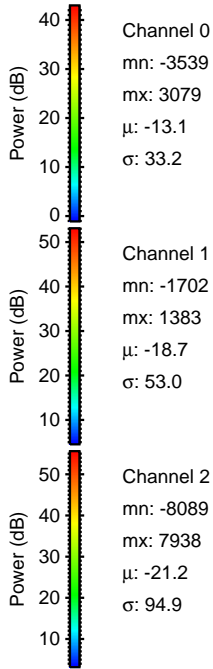
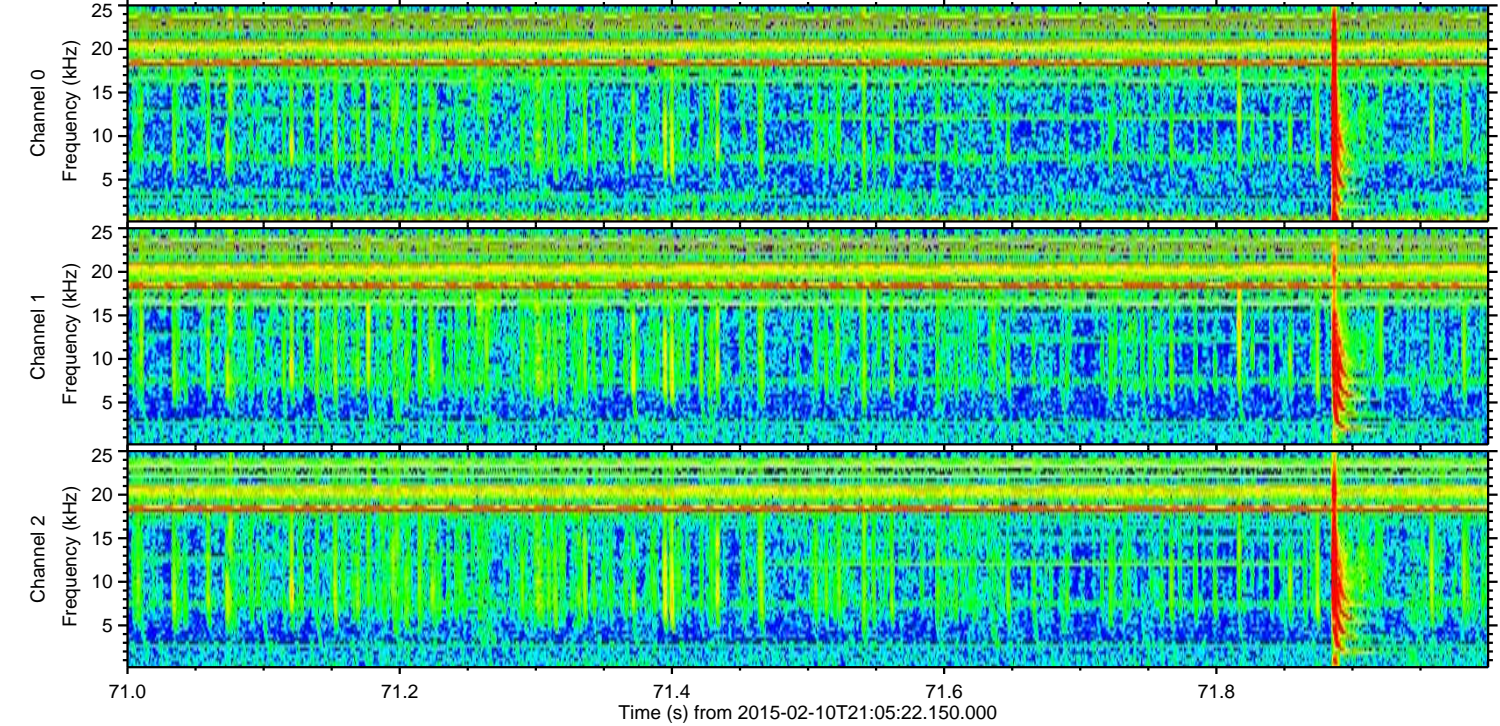
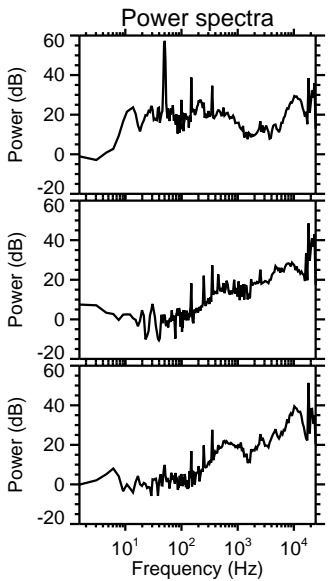
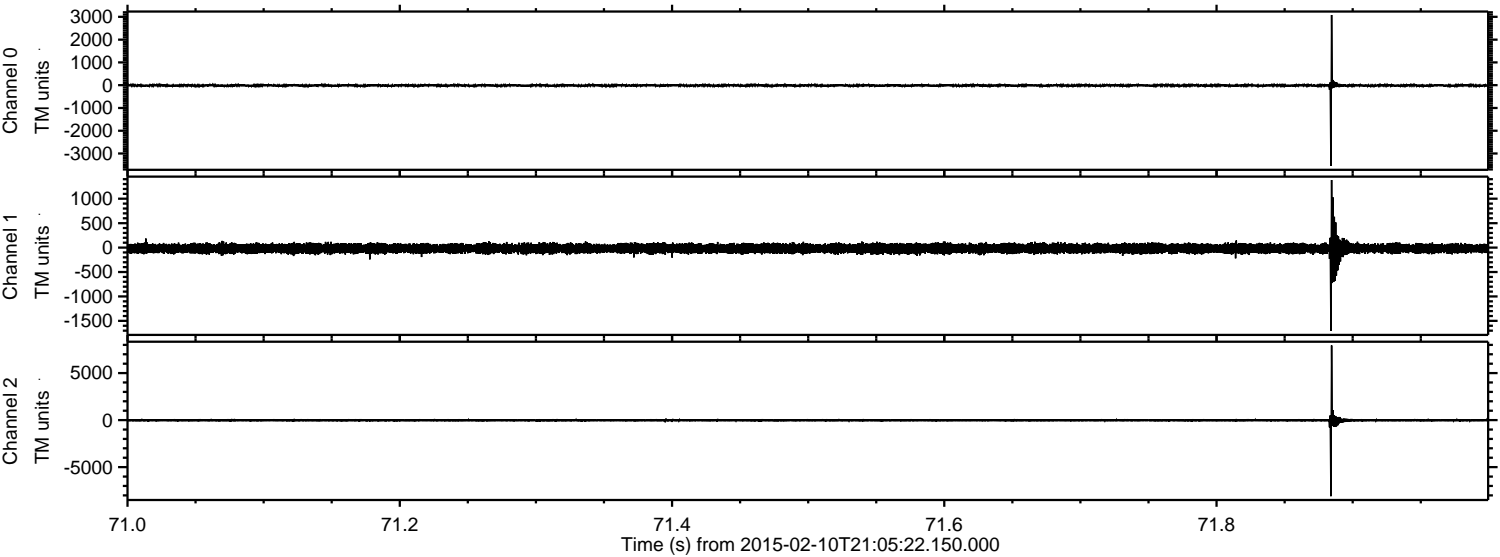
Processed Thu Feb 19 17:54:26 2015 by ELM ver.2012-10-06 from 001\_\_elm20150210\_210521\_\_dat00.bin





ELMAVAN 3D WAVEFORMS (Measured data sampled at 50 kHz) 49799 packets of 144 samples from 2015-02-10T21:05:22.150.000. Part 72/144

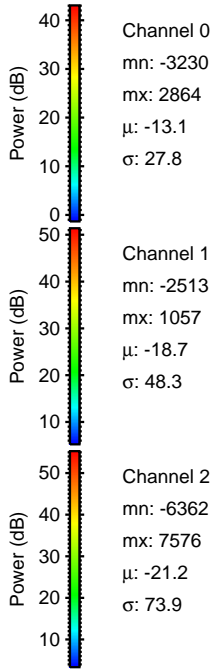
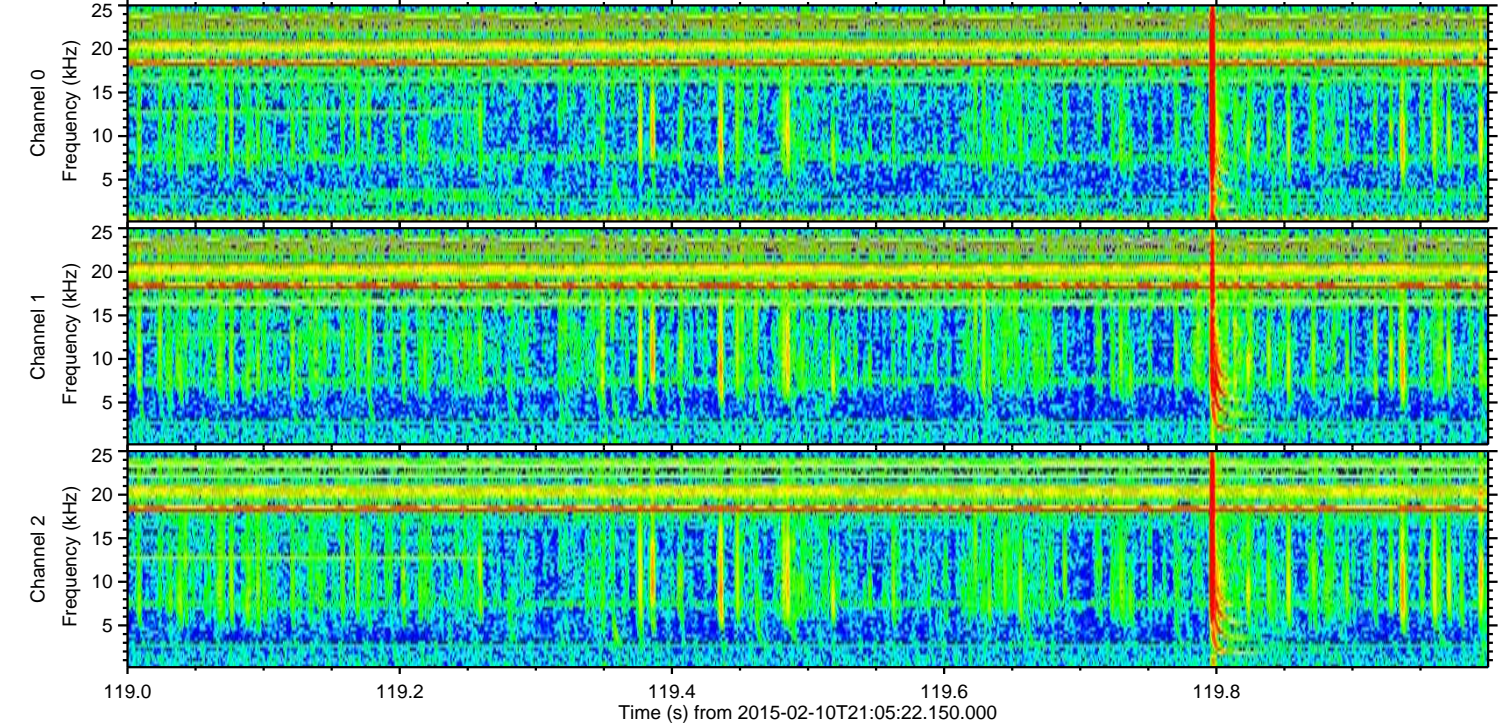
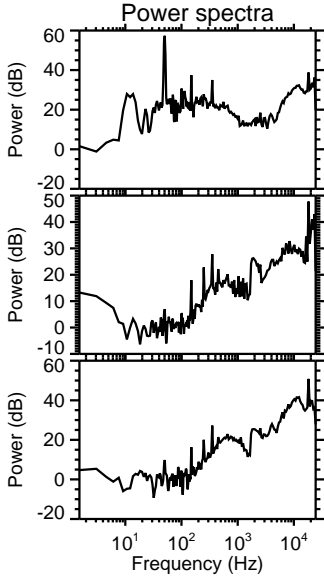
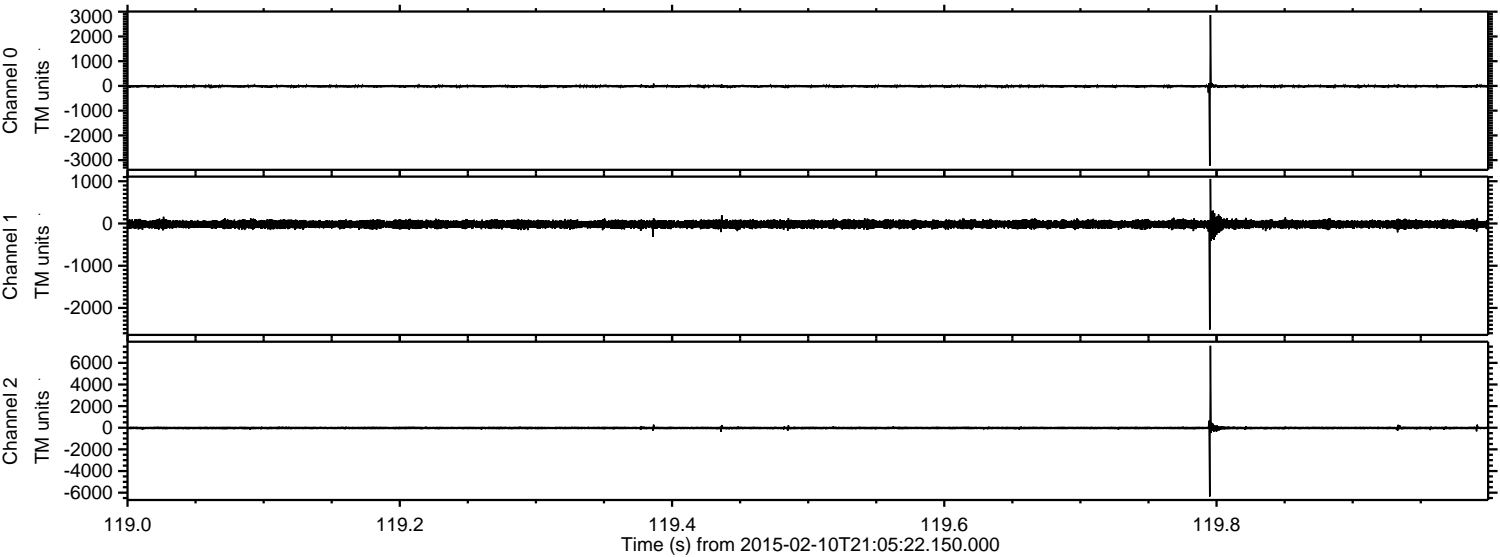
Processed Thu Feb 19 17:54:43 2015 by ELM ver.2012-10-06 from 001\_\_elm20150210\_210521\_\_dat00.bin





ELMAVAN 3D WAVEFORMS (Measured data sampled at 50 kHz) 49799 packets of 144 samples from 2015-02-10T21:05:22.150.000. Part 120/144

Processed Thu Feb 19 17:54:44 2015 by ELM ver.2012-10-06 from 001\_\_elm20150210\_210521\_\_dat00.bin



Channel 0  
mn: -3230  
mx: 2864  
 $\mu$ : -13.1  
 $\sigma$ : 27.8

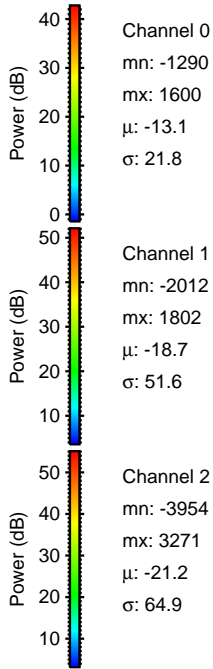
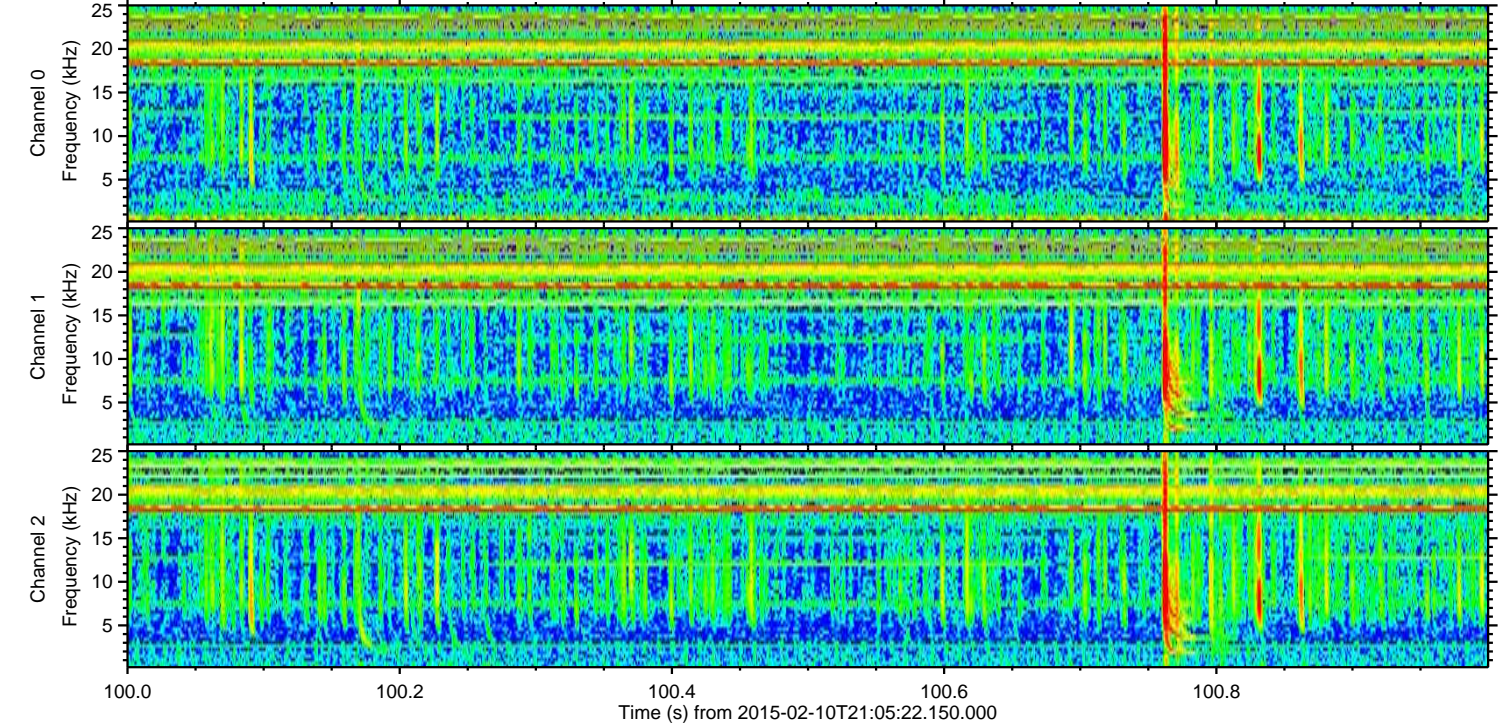
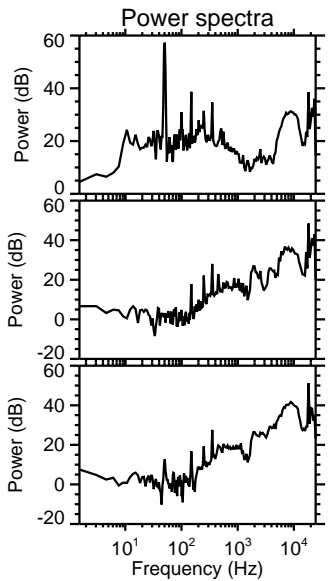
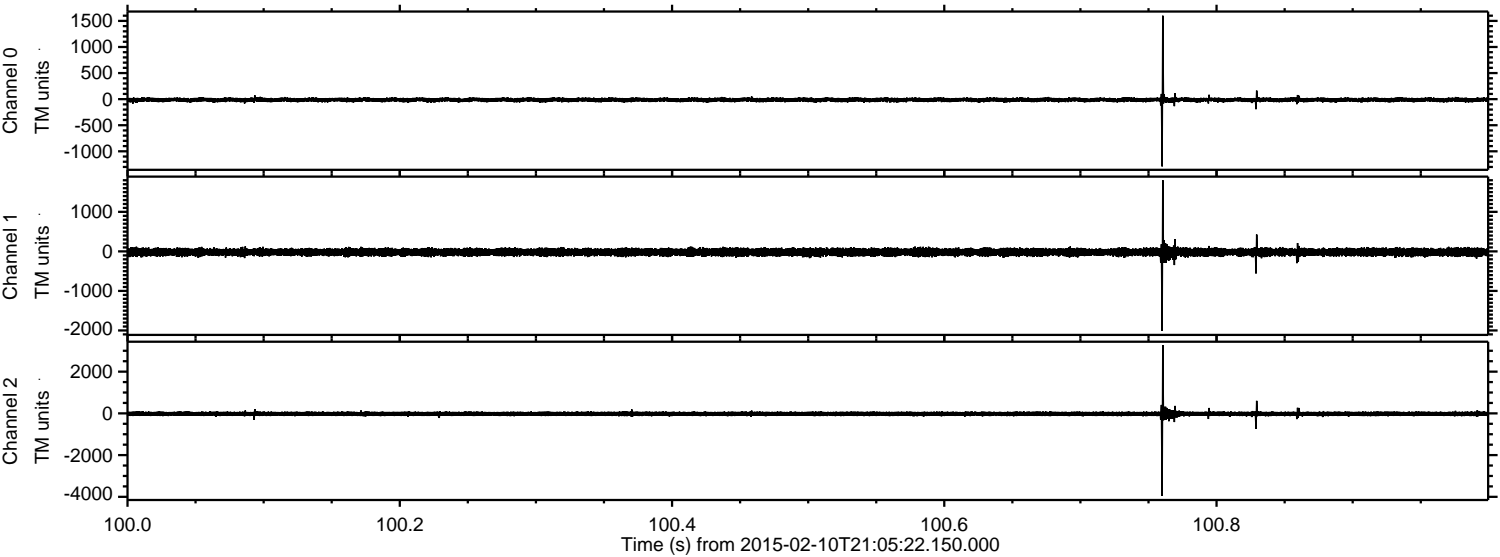
Channel 1  
mn: -2513  
mx: 1057  
 $\mu$ : -18.7  
 $\sigma$ : 48.3

Channel 2  
mn: -6362  
mx: 7576  
 $\mu$ : -21.2  
 $\sigma$ : 73.9



ELMAVAN 3D WAVEFORMS (Measured data sampled at 50 kHz) 49799 packets of 144 samples from 2015-02-10T21:05:22.150.000. Part 101/144

Processed Thu Feb 19 17:54:46 2015 by ELM ver.2012-10-06 from 001\_\_elm20150210\_210521\_\_dat00.bin



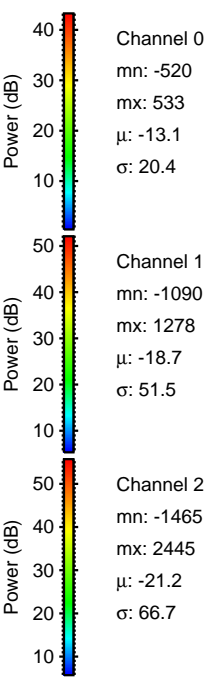
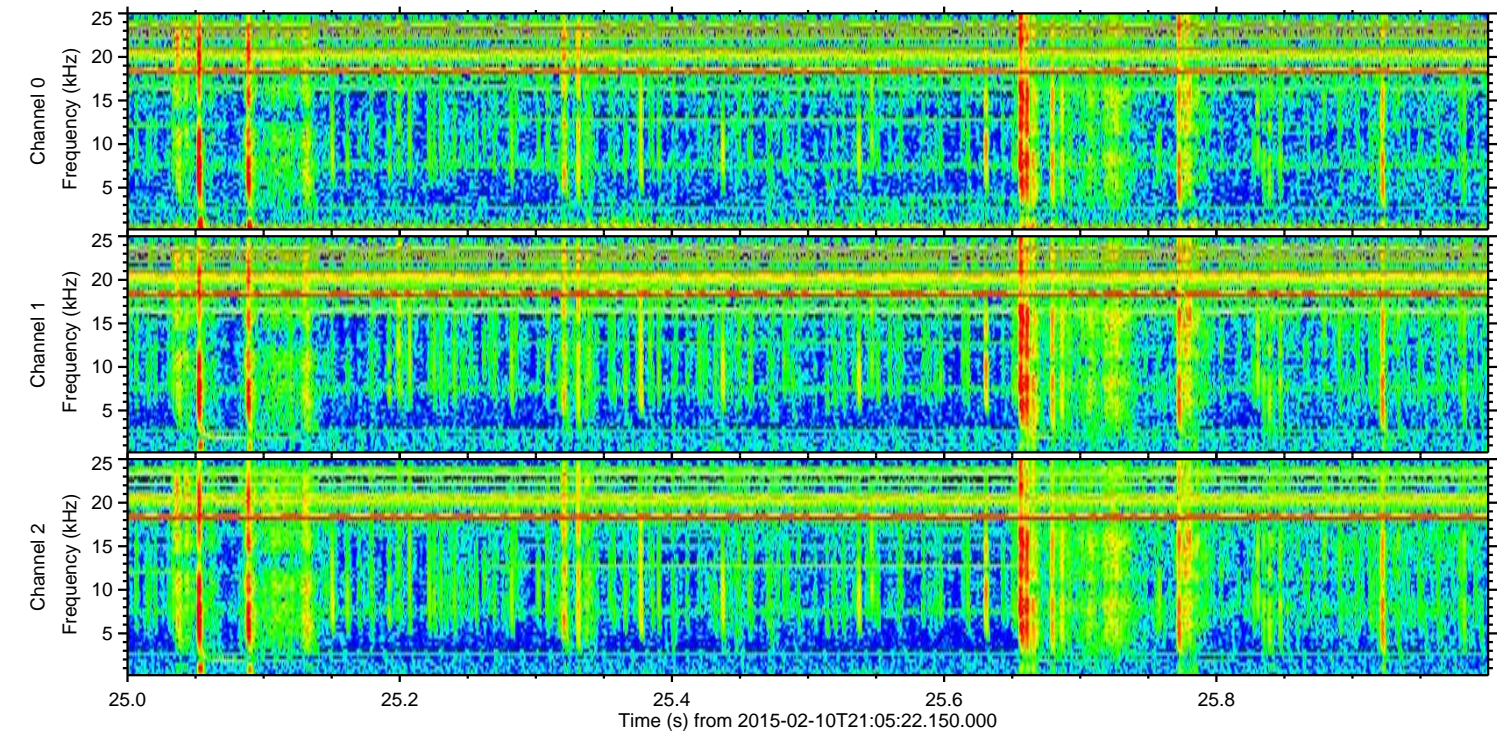
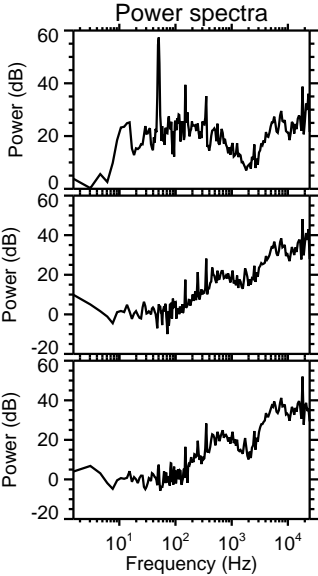
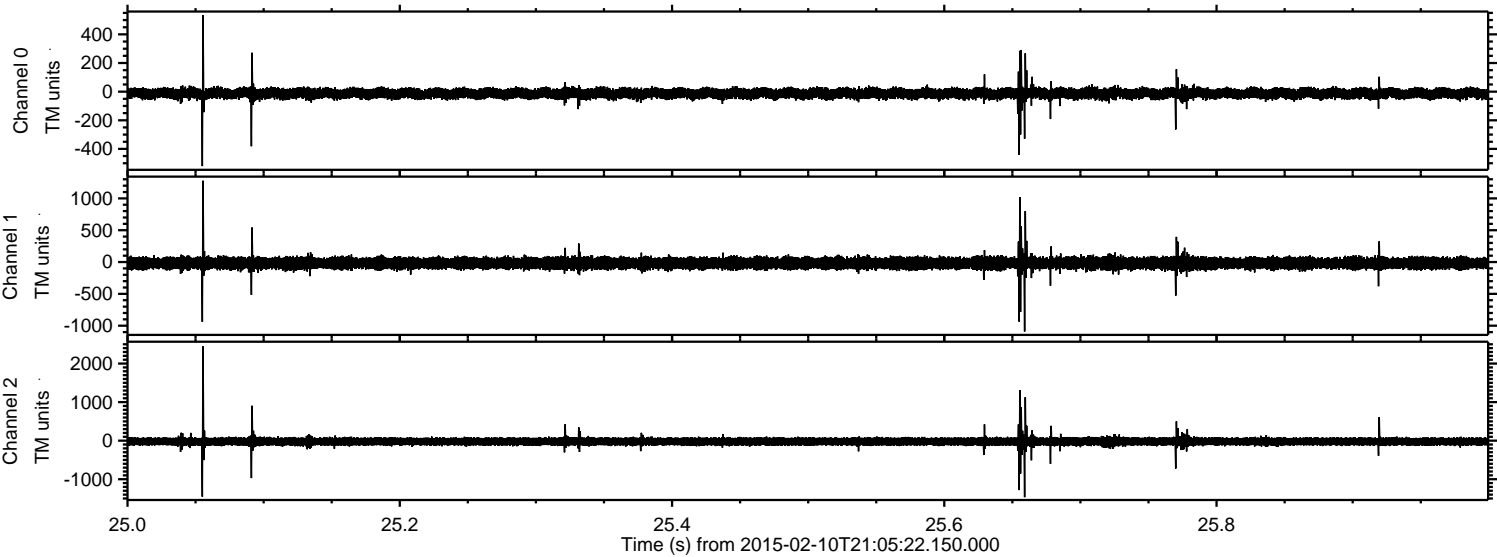
Channel 0  
mn: -1290  
mx: 1600  
 $\mu$ : -13.1  
 $\sigma$ : 21.8

Channel 1  
mn: -2012  
mx: 1802  
 $\mu$ : -18.7  
 $\sigma$ : 51.6

Channel 2  
mn: -3954  
mx: 3271  
 $\mu$ : -21.2  
 $\sigma$ : 64.9

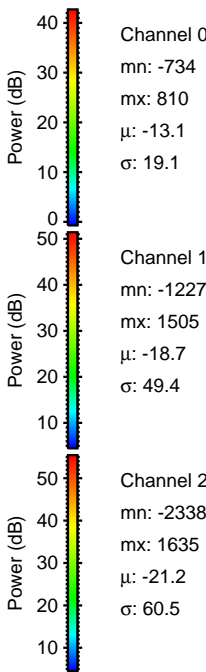
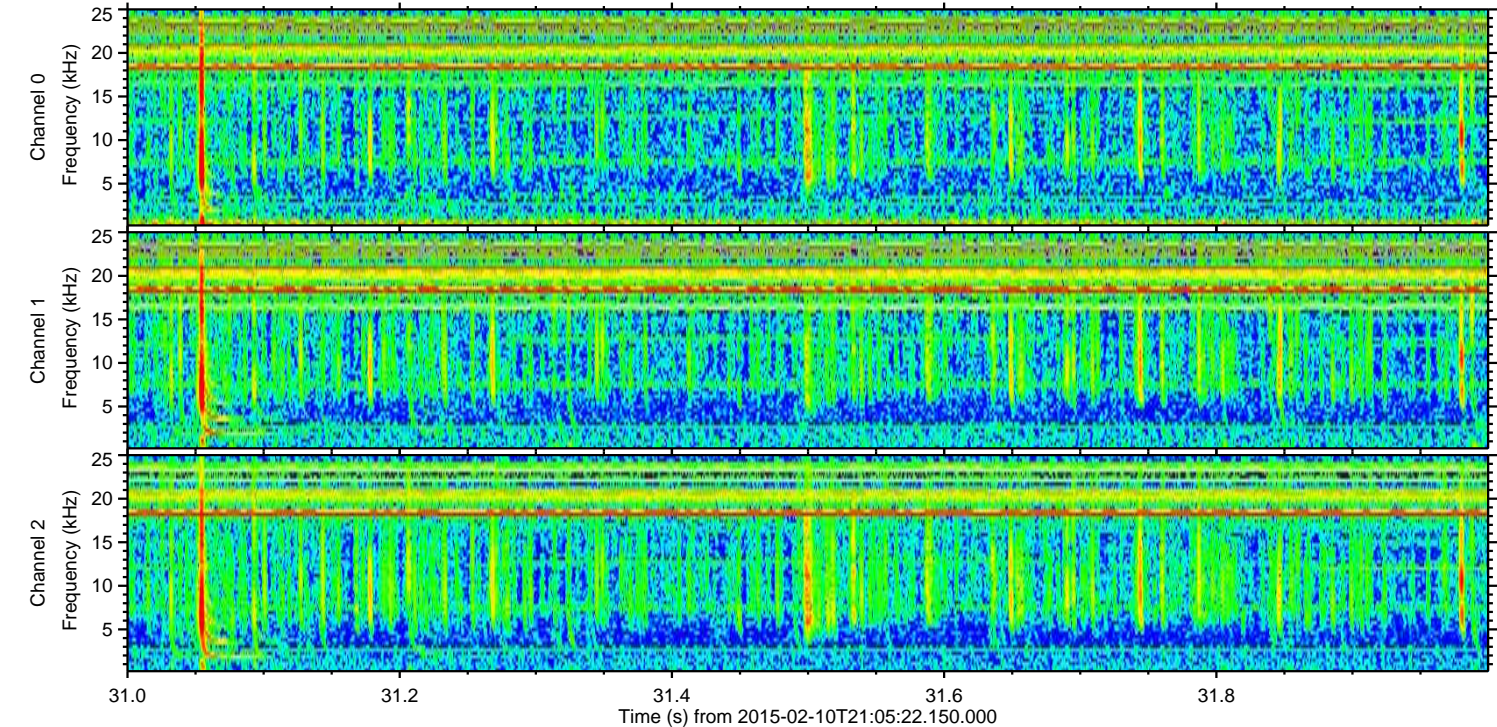
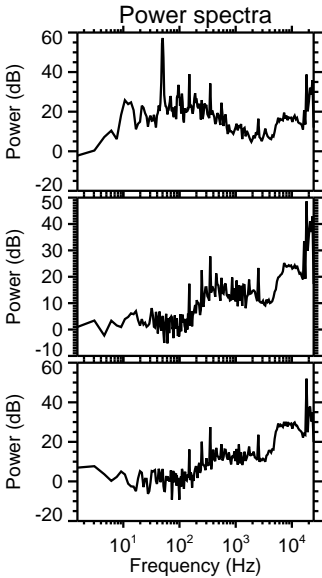
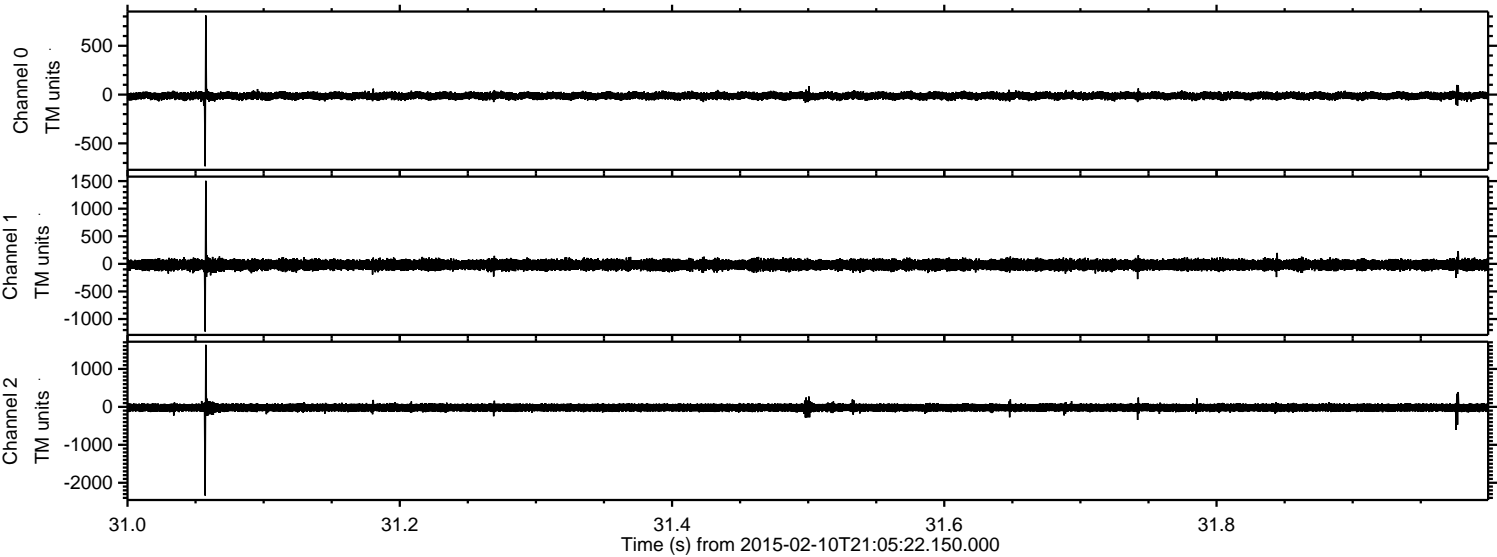


Processed Thu Feb 19 17:54:48 2015 by ELM ver.2012-10-06 from 001\_\_elm20150210\_210521\_\_dat00.bin



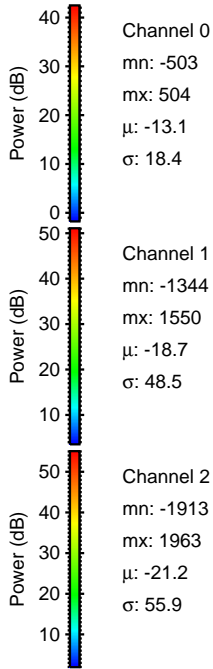
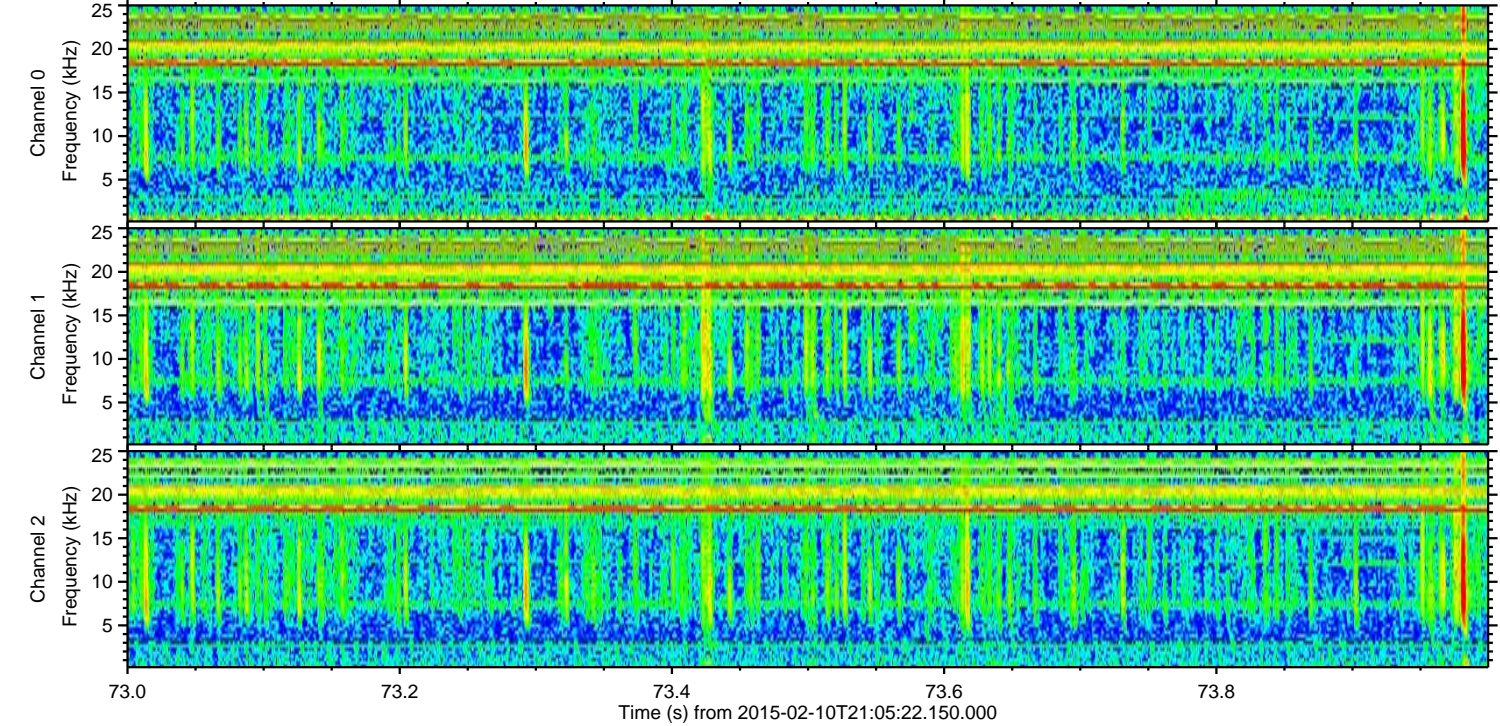
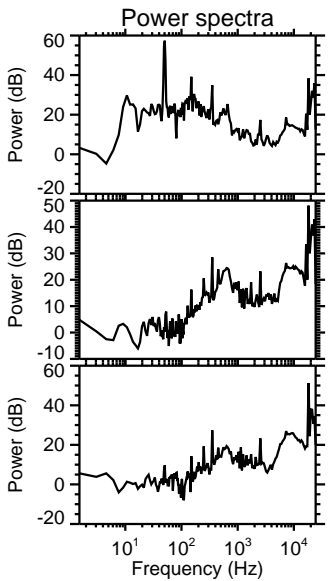
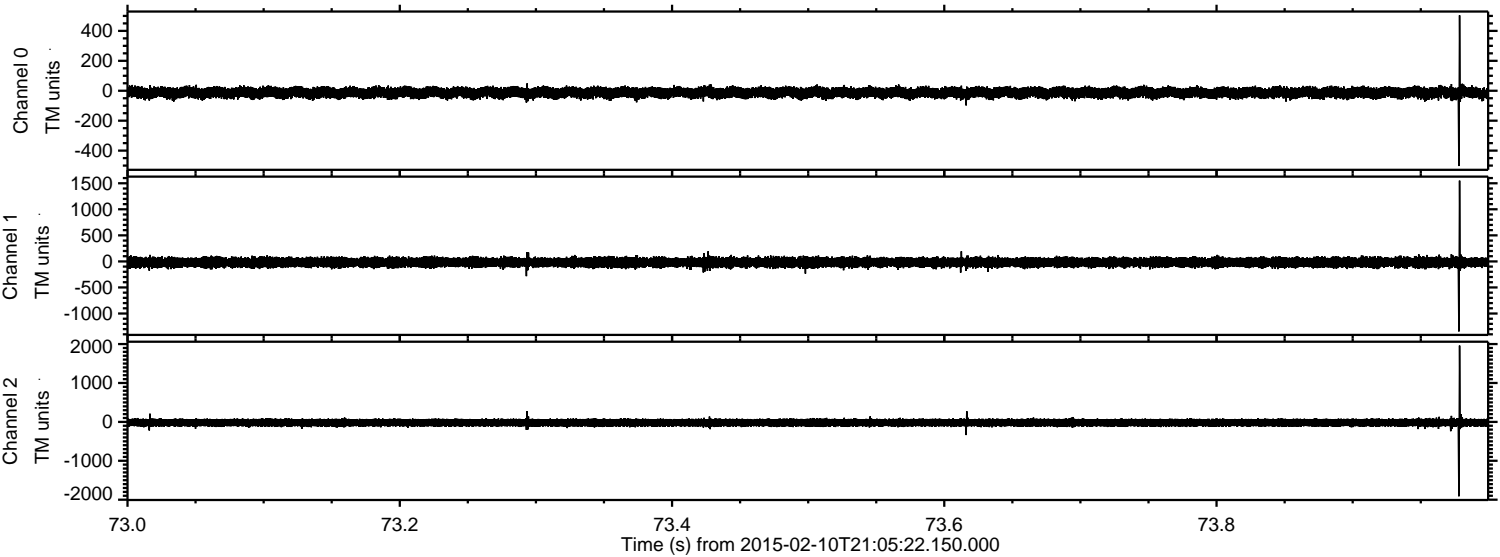


Processed Thu Feb 19 17:54:49 2015 by ELM ver.2012-10-06 from 001\_\_elm20150210\_210521\_\_dat00.bin





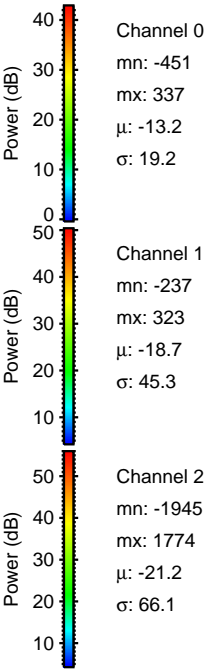
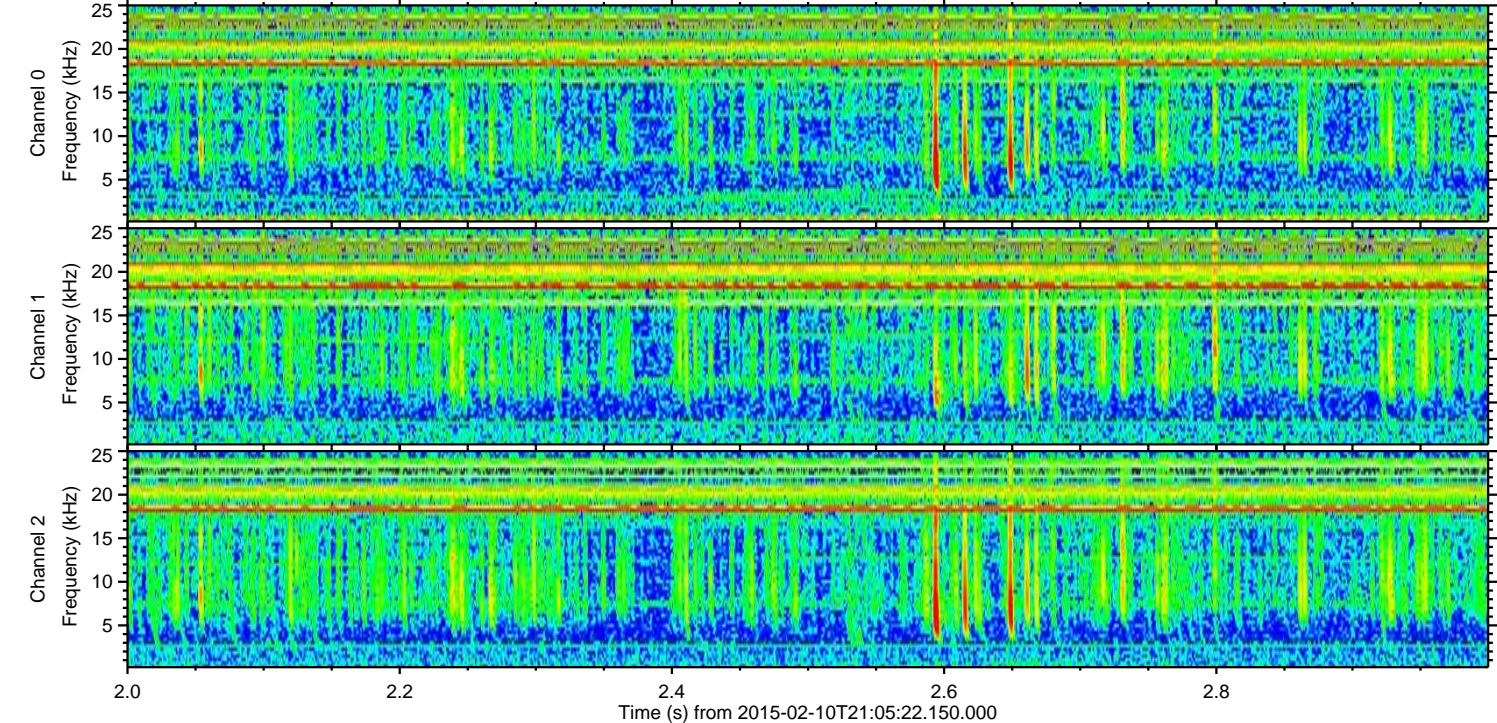
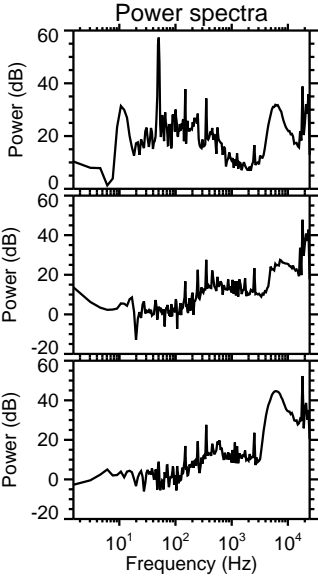
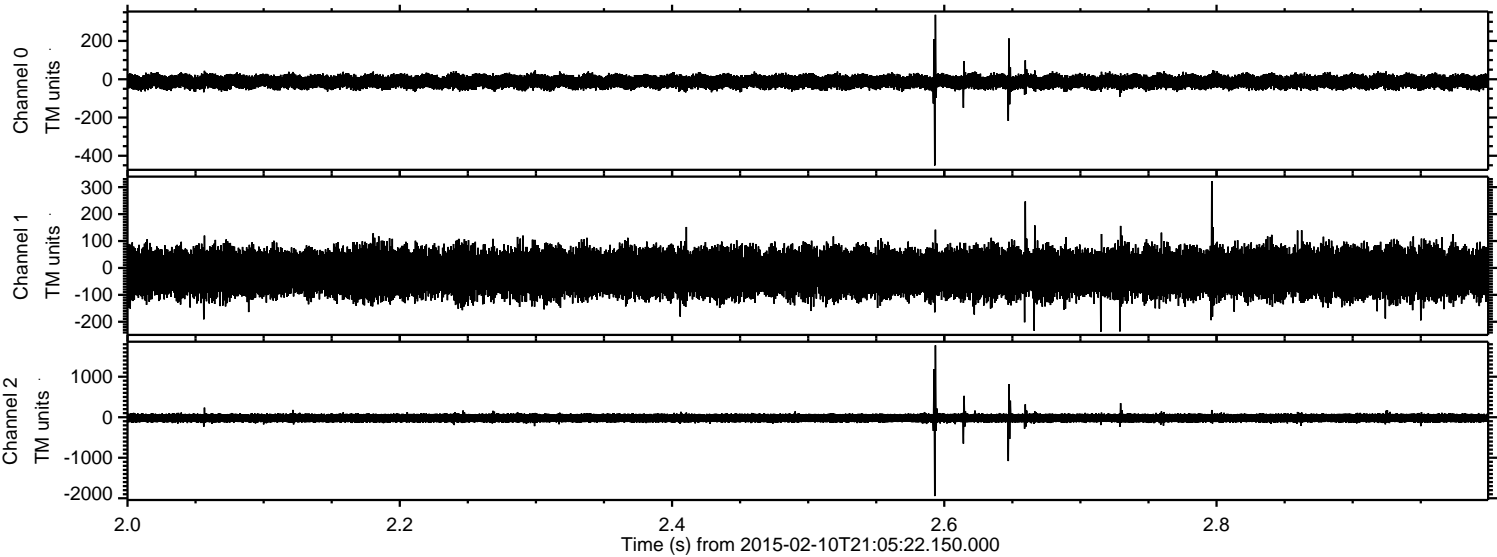
Processed Thu Feb 19 17:54:50 2015 by ELM ver.2012-10-06 from 001\_\_elm20150210\_210521\_\_dat00.bin





ELMAVAN 3D WAVEFORMS (Measured data sampled at 50 kHz) 49799 packets of 144 samples from 2015-02-10T21:05:22.150.000. Part 3/144

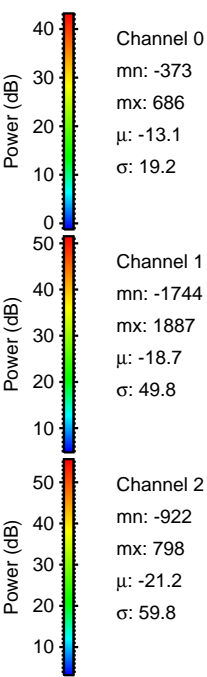
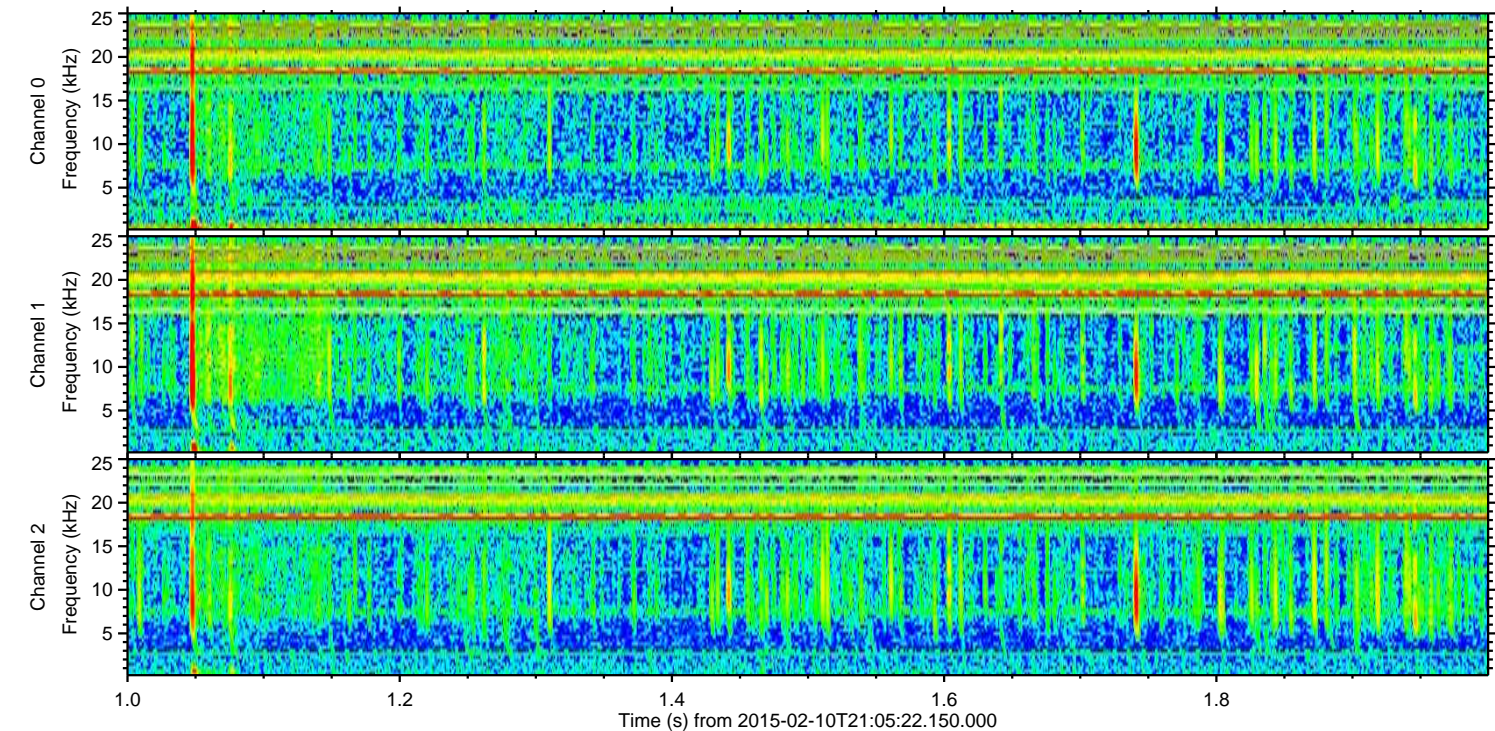
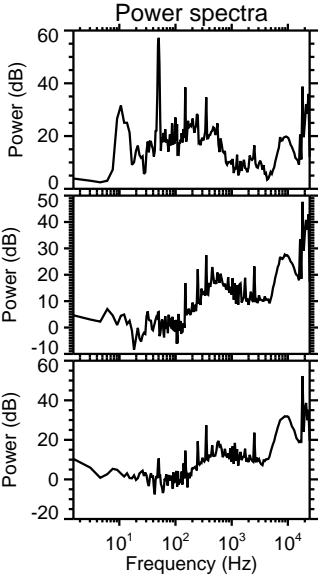
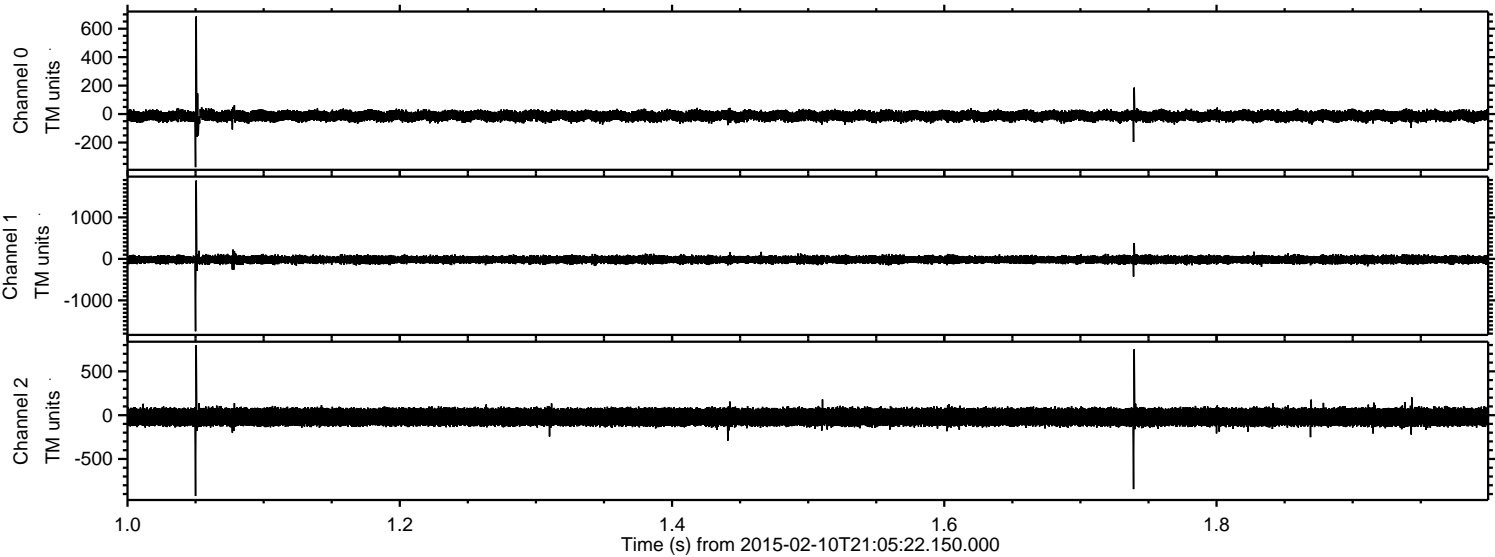
Processed Thu Feb 19 17:54:51 2015 by ELM ver.2012-10-06 from 001\_\_elm20150210\_210521\_\_dat00.bin





ELMAVAN 3D WAVEFORMS (Measured data sampled at 50 kHz) 49799 packets of 144 samples from 2015-02-10T21:05:22.150.000. Part 2/144

Processed Thu Feb 19 17:54:52 2015 by ELM ver.2012-10-06 from 001\_\_elm20150210\_210521\_\_dat00.bin



Channel 0  
mn: -373  
mx: 686  
 $\mu$ : -13.1  
 $\sigma$ : 19.2

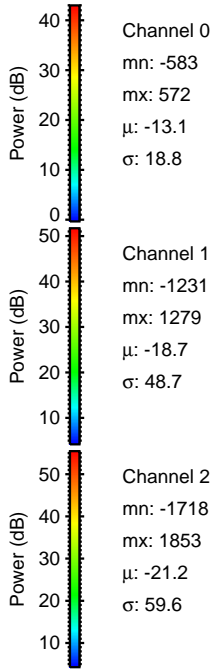
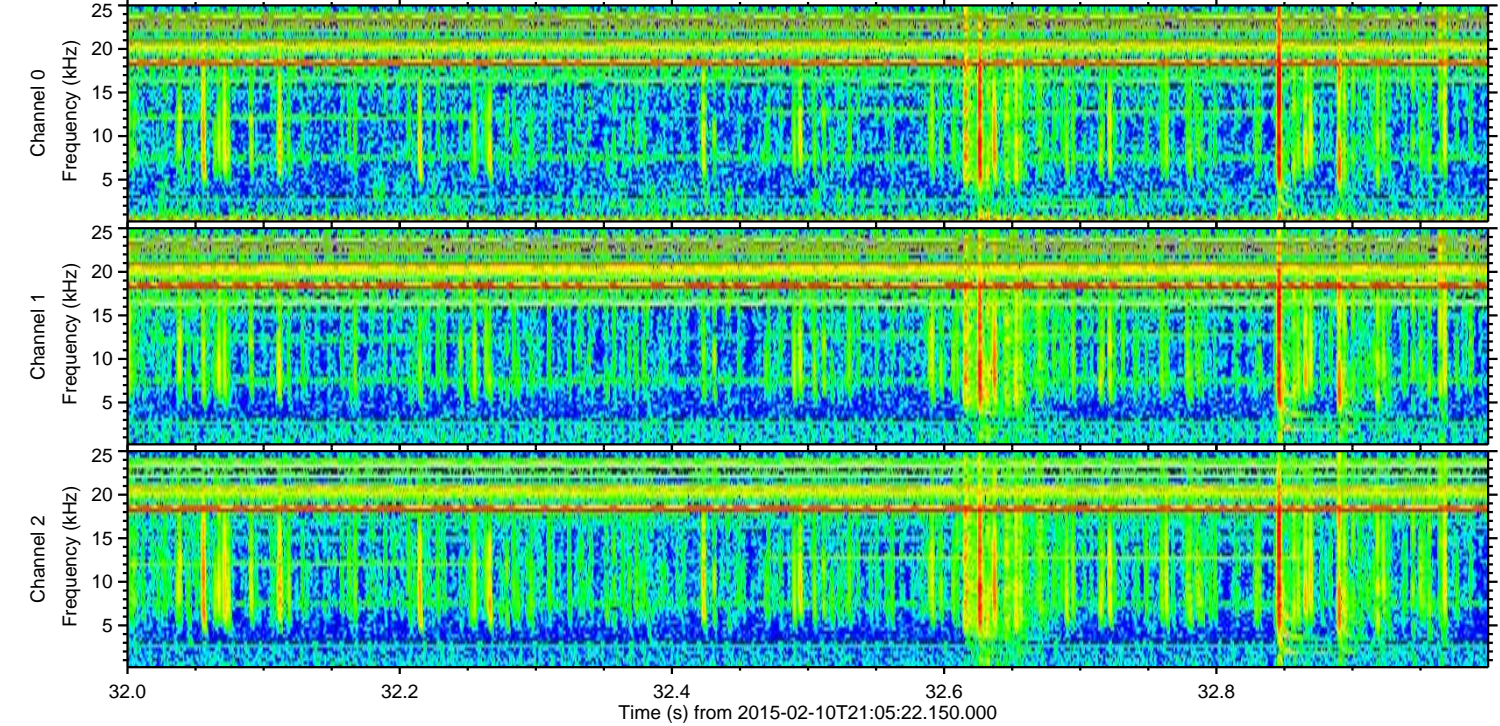
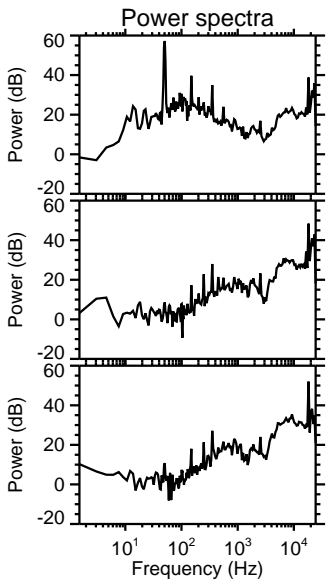
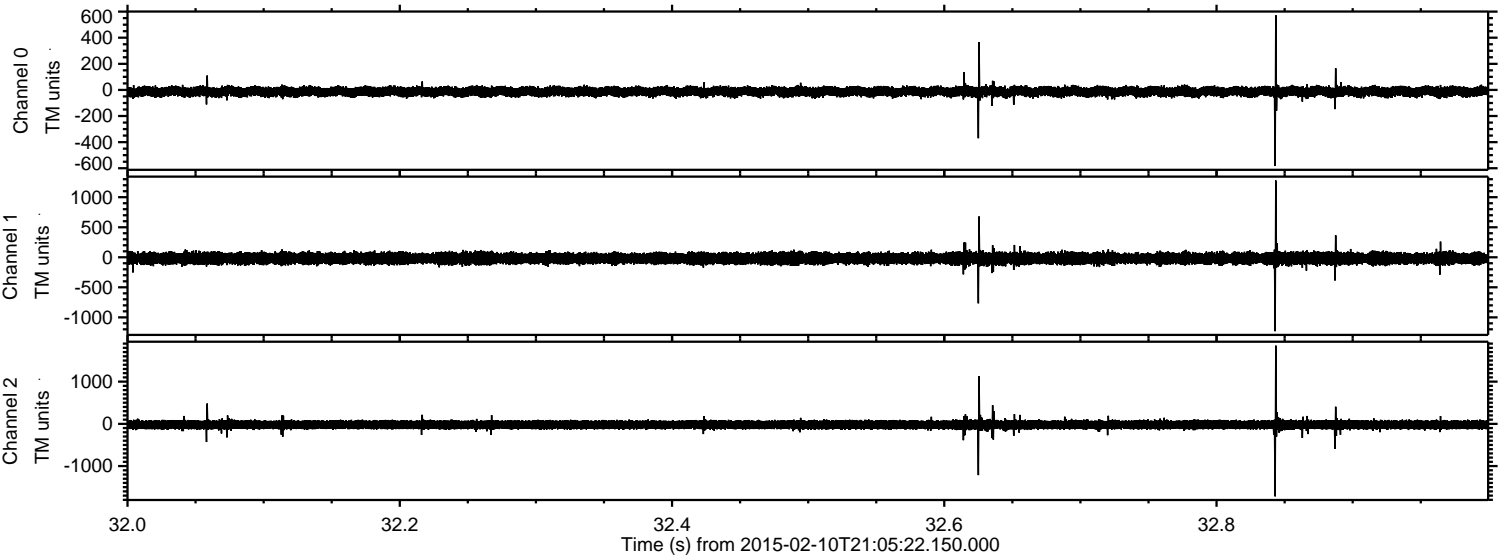
Channel 1  
mn: -1744  
mx: 1887  
 $\mu$ : -18.7  
 $\sigma$ : 49.8

Channel 2  
mn: -922  
mx: 798  
 $\mu$ : -21.2  
 $\sigma$ : 59.8



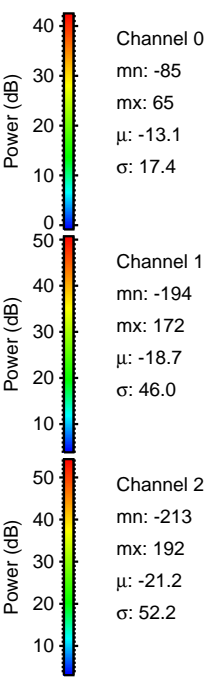
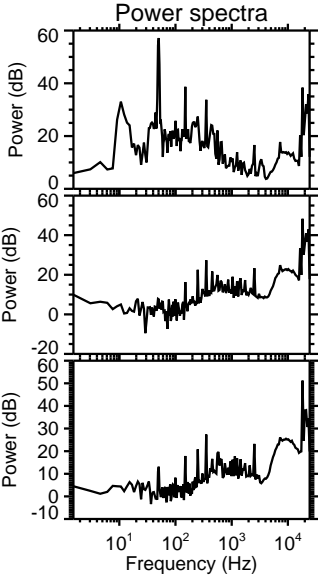
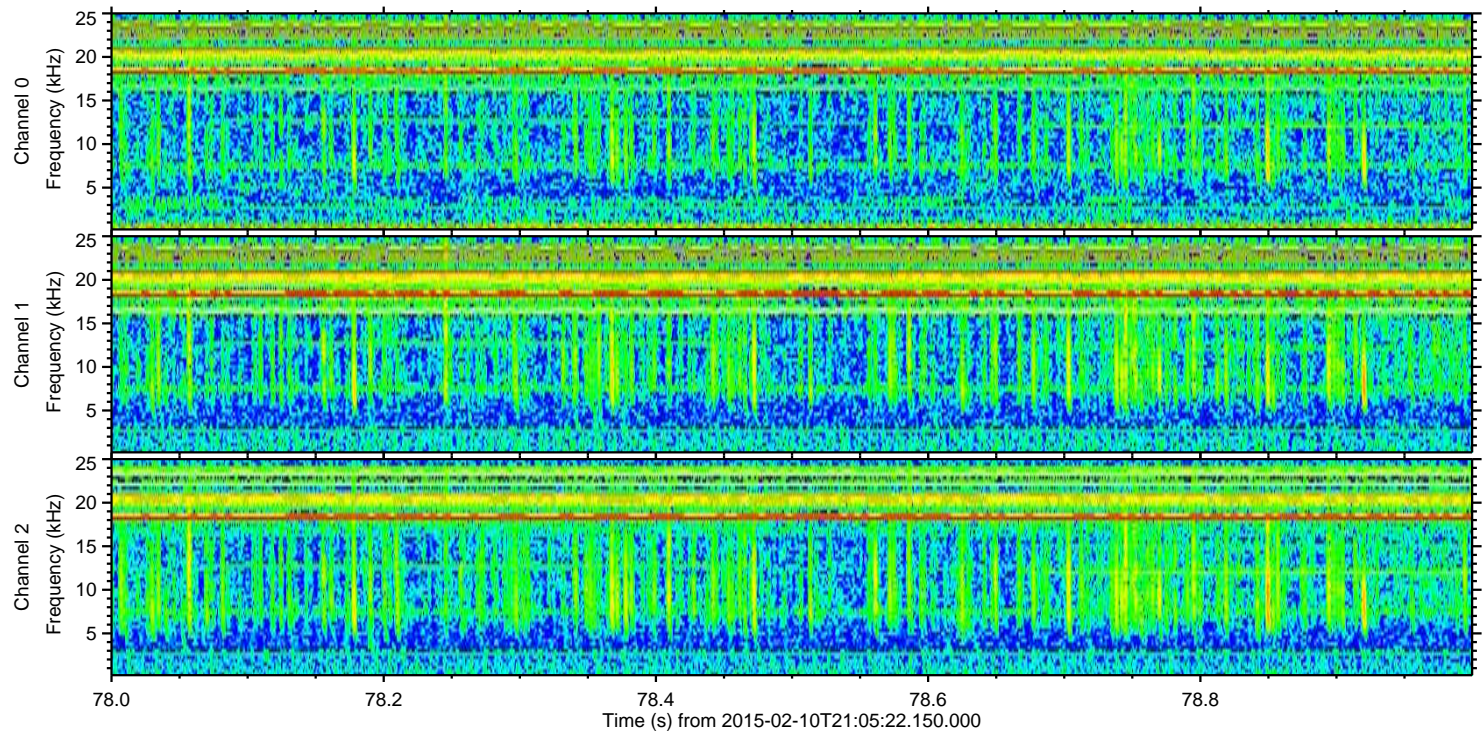
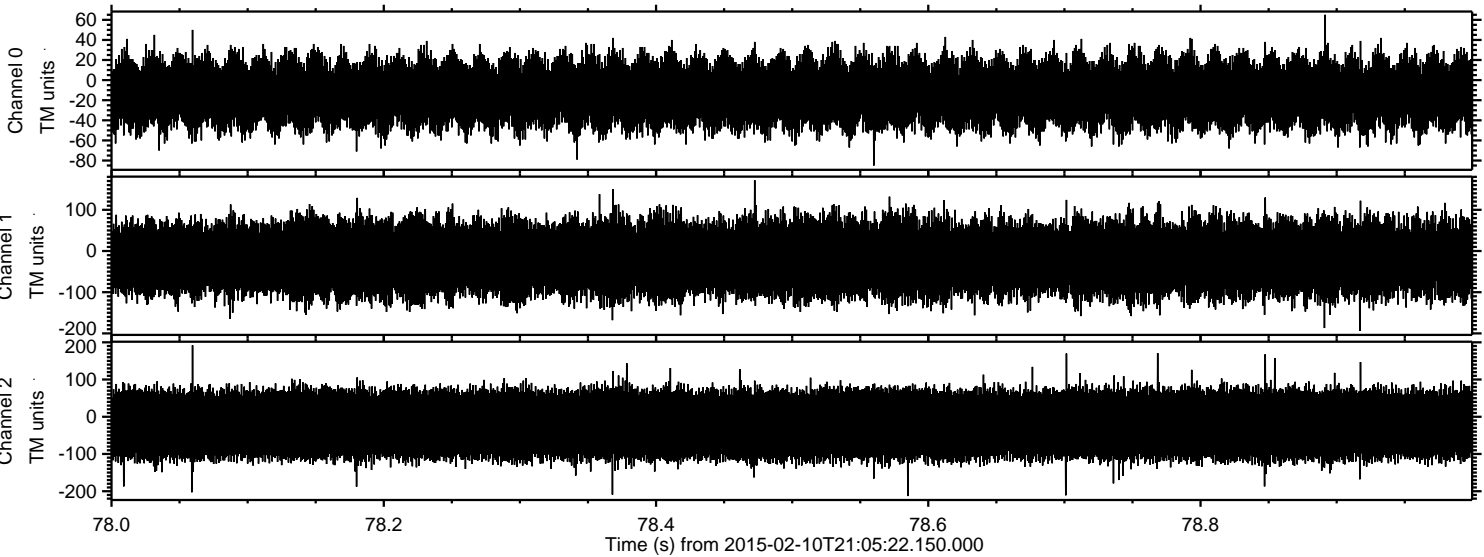
ELMAVAN 3D WAVEFORMS (Measured data sampled at 50 kHz) 49799 packets of 144 samples from 2015-02-10T21:05:22.150.000. Part 33/144

Processed Thu Feb 19 17:54:55 2015 by ELM ver.2012-10-06 from 001\_\_elm20150210\_210521\_\_dat00.bin





Processed Thu Feb 19 17:54:57 2015 by ELM ver.2012-10-06 from 001\_\_elm20150210\_210521\_\_dat00.bin



Channel 0  
mn: -85  
mx: 65  
 $\mu$ : -13.1  
 $\sigma$ : 17.4

Channel 1  
mn: -194  
mx: 172  
 $\mu$ : -18.7  
 $\sigma$ : 46.0

Channel 2  
mn: -213  
mx: 192  
 $\mu$ : -21.2  
 $\sigma$ : 52.2