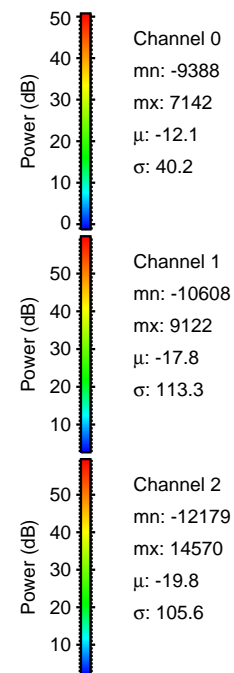
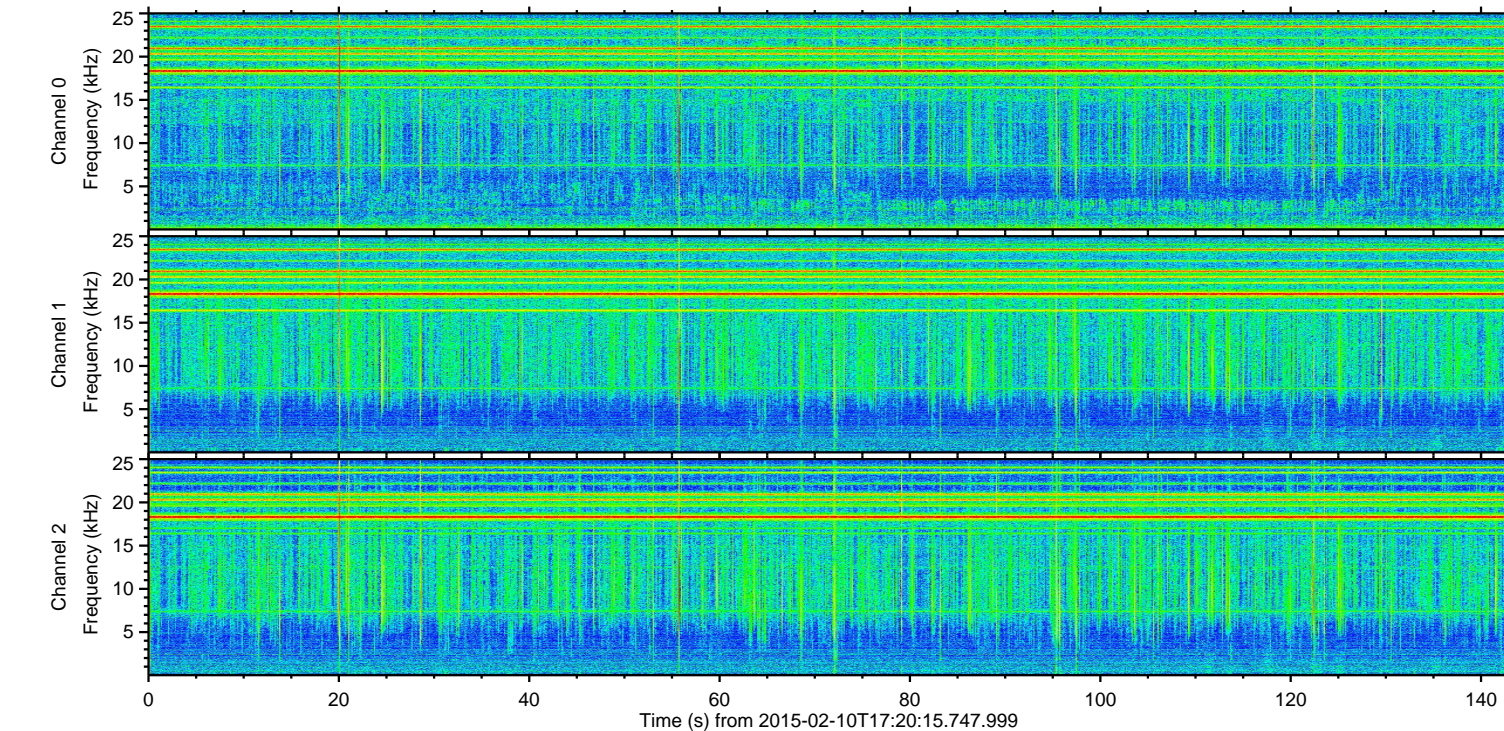
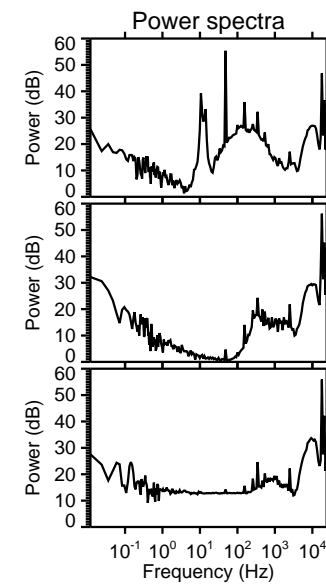
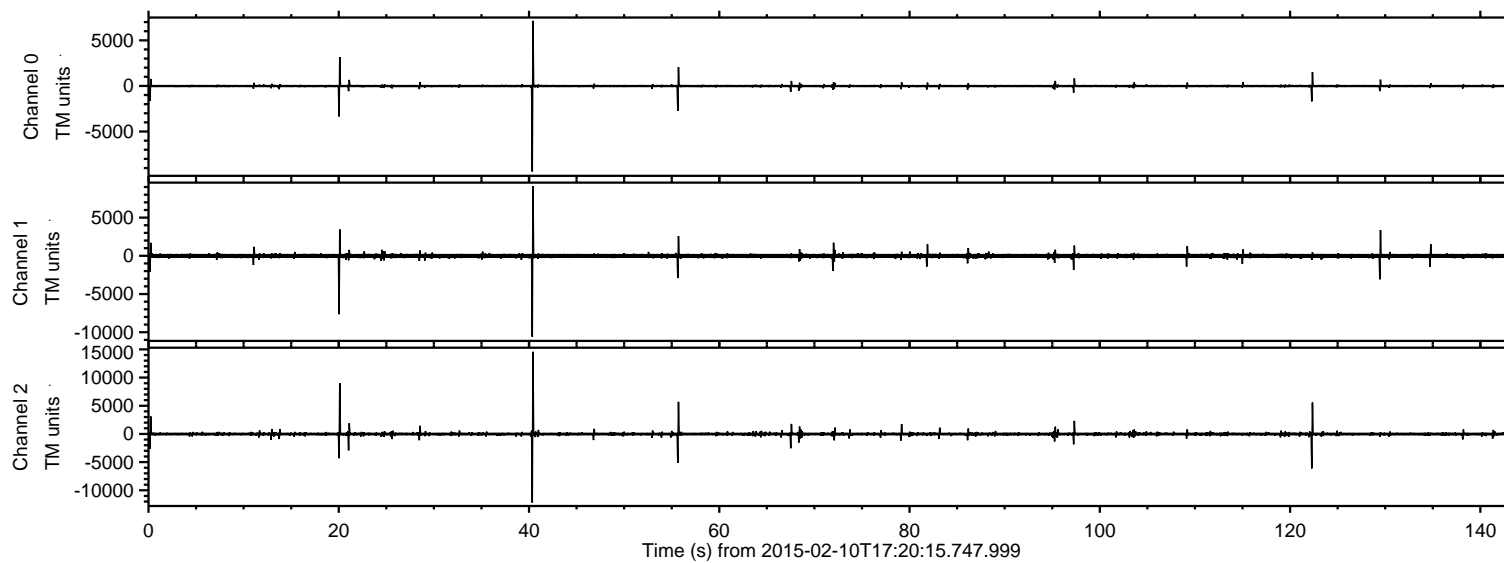
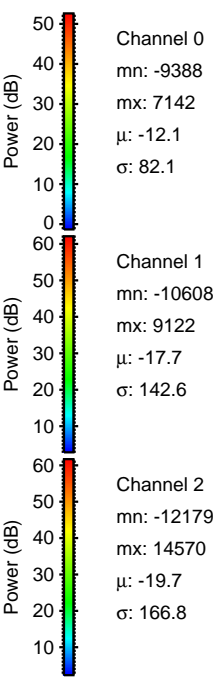
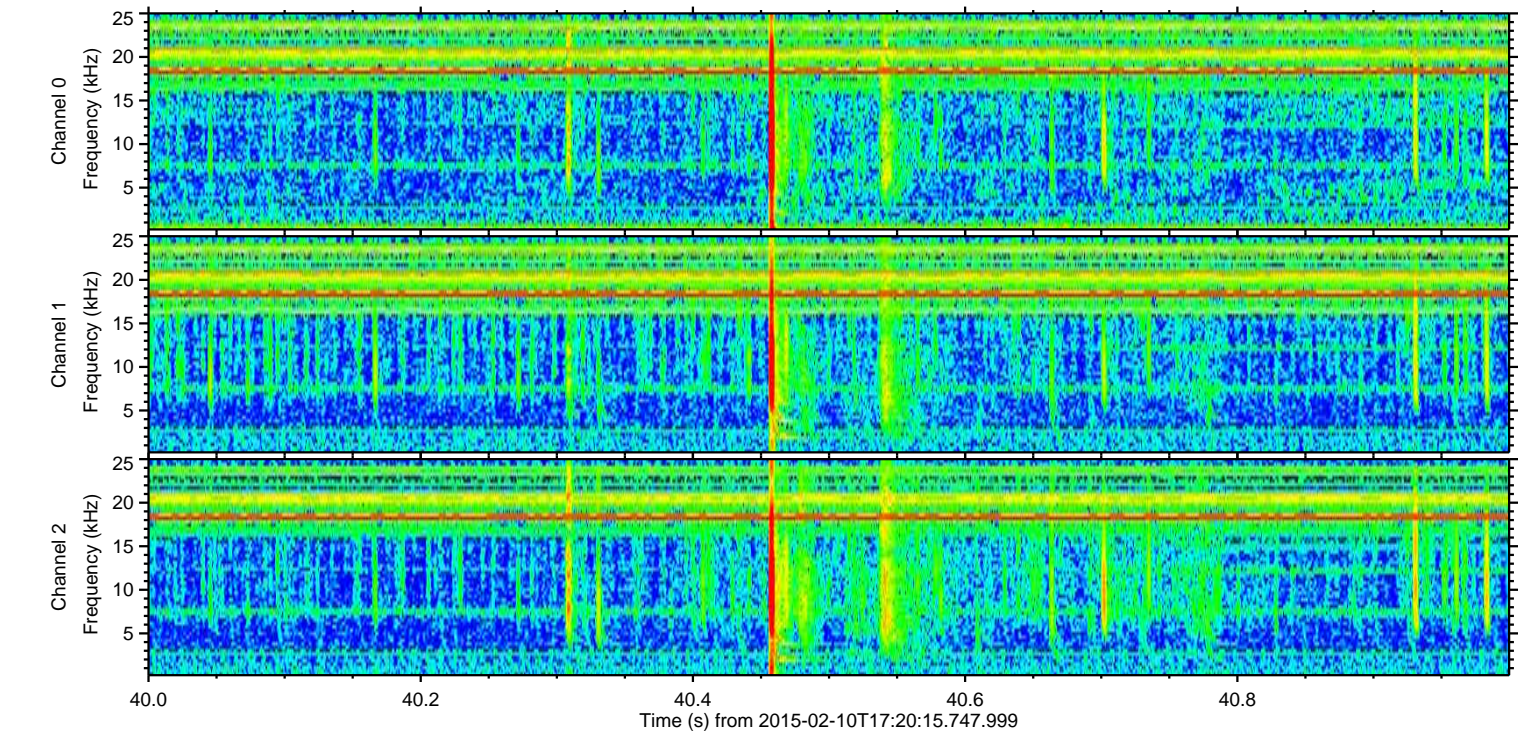
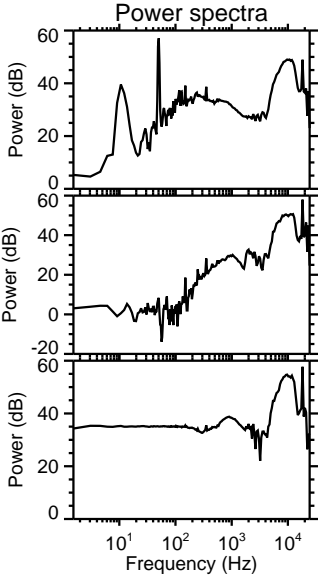
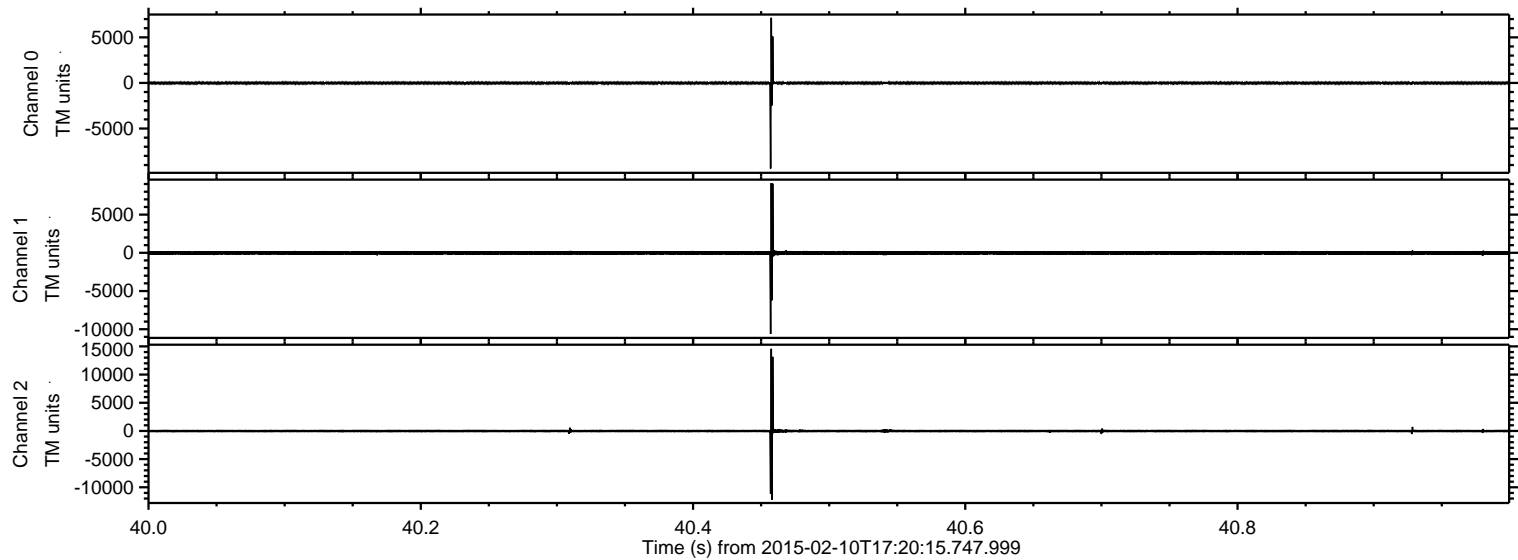


ELMAVAN 3D WAVEFORMS (Measured data sampled at 50 kHz) 49663 packets of 144 samples from 2015-02-10T17:20:15.747.999.

Processed Thu Feb 19 16:37:55 2015 by ELM ver.2012-10-06 from 001__elm20150210_172014__dat00.bin

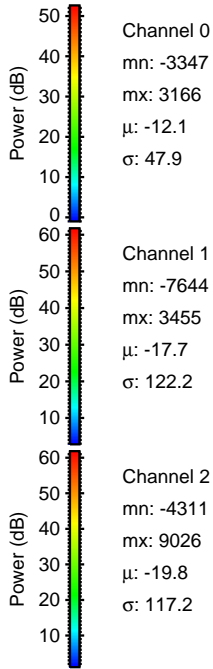
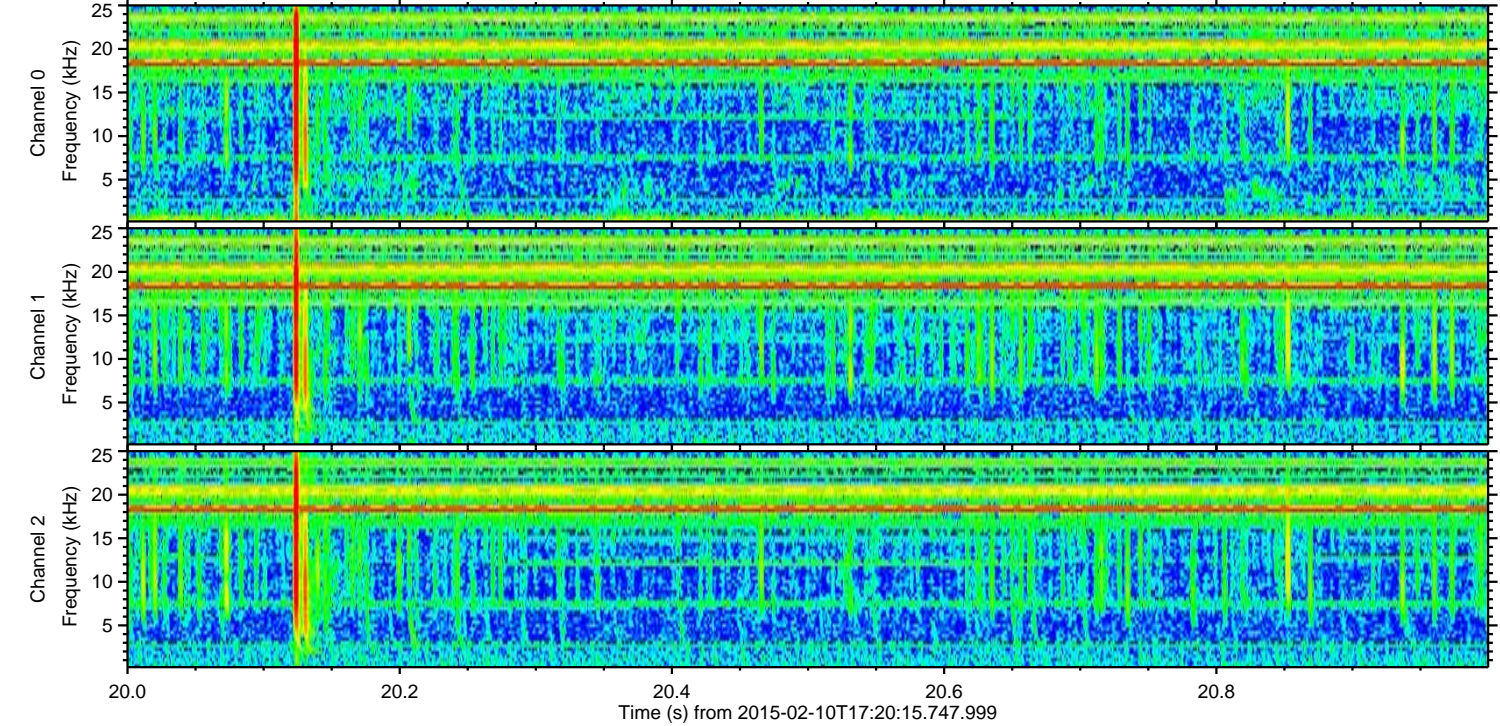
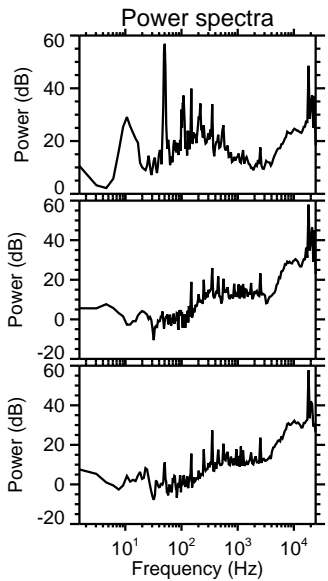
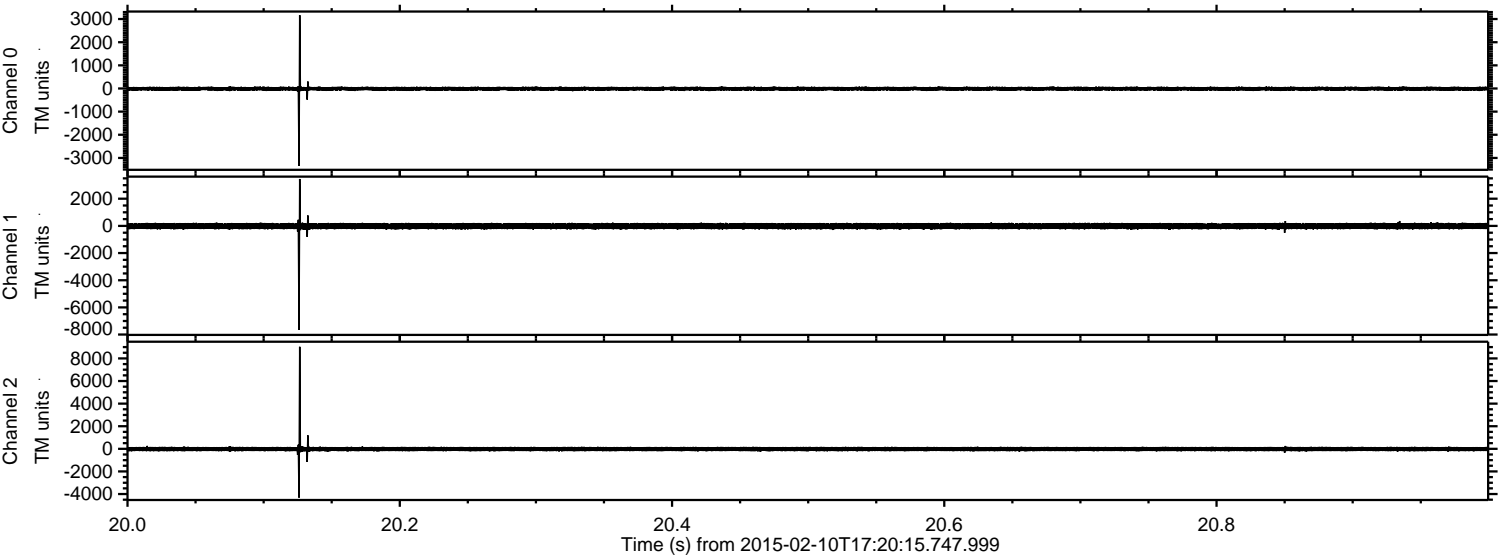


Processed Thu Feb 19 16:38:13 2015 by ELM ver.2012-10-06 from 001__elm20150210_172014__dat00.bin



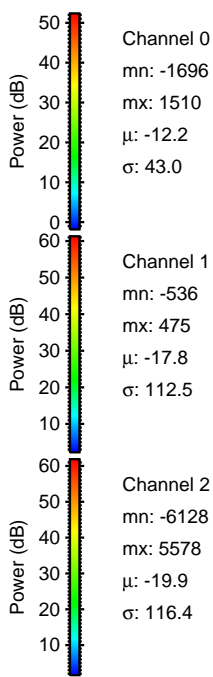
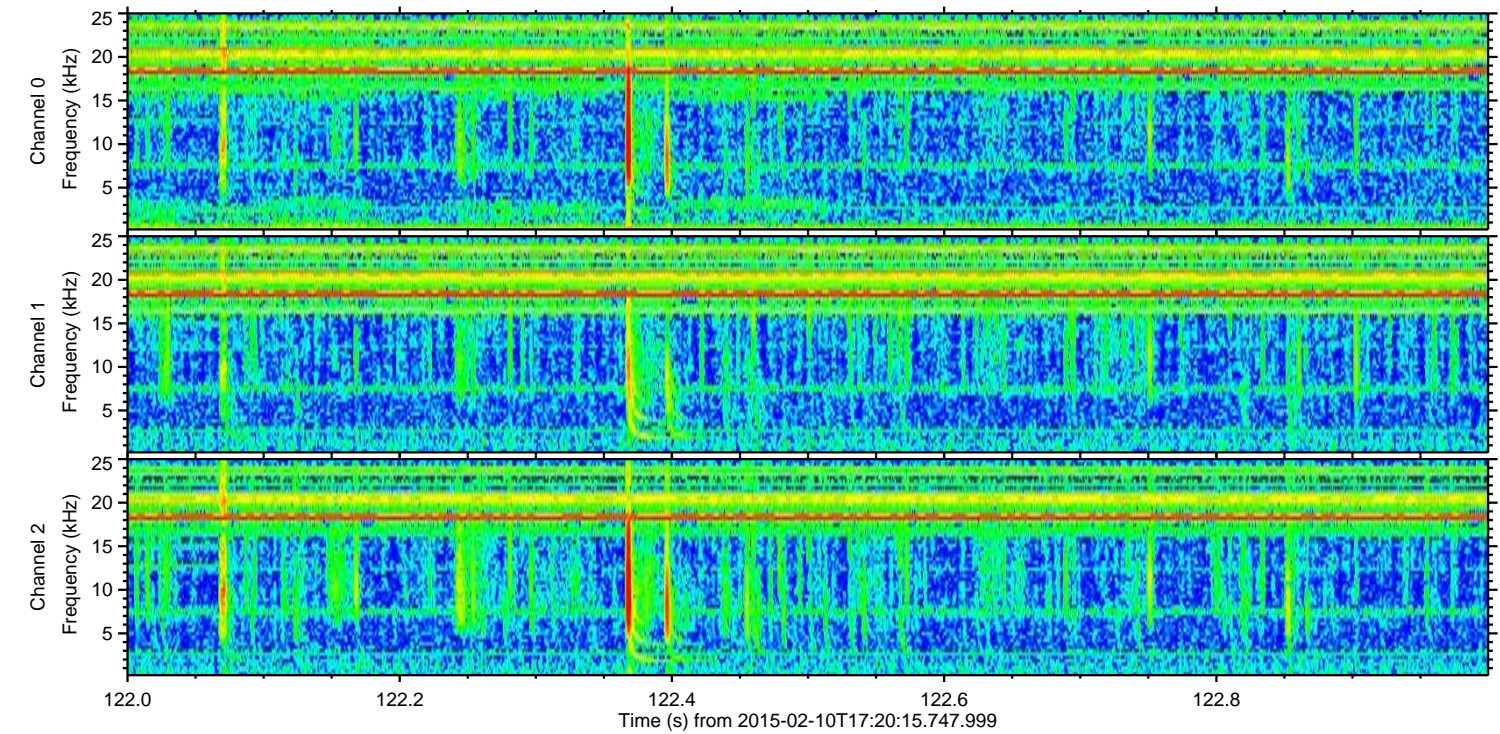
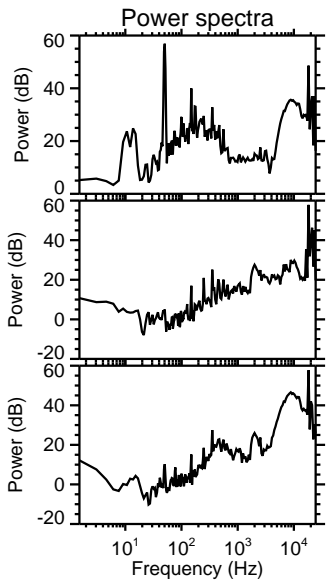
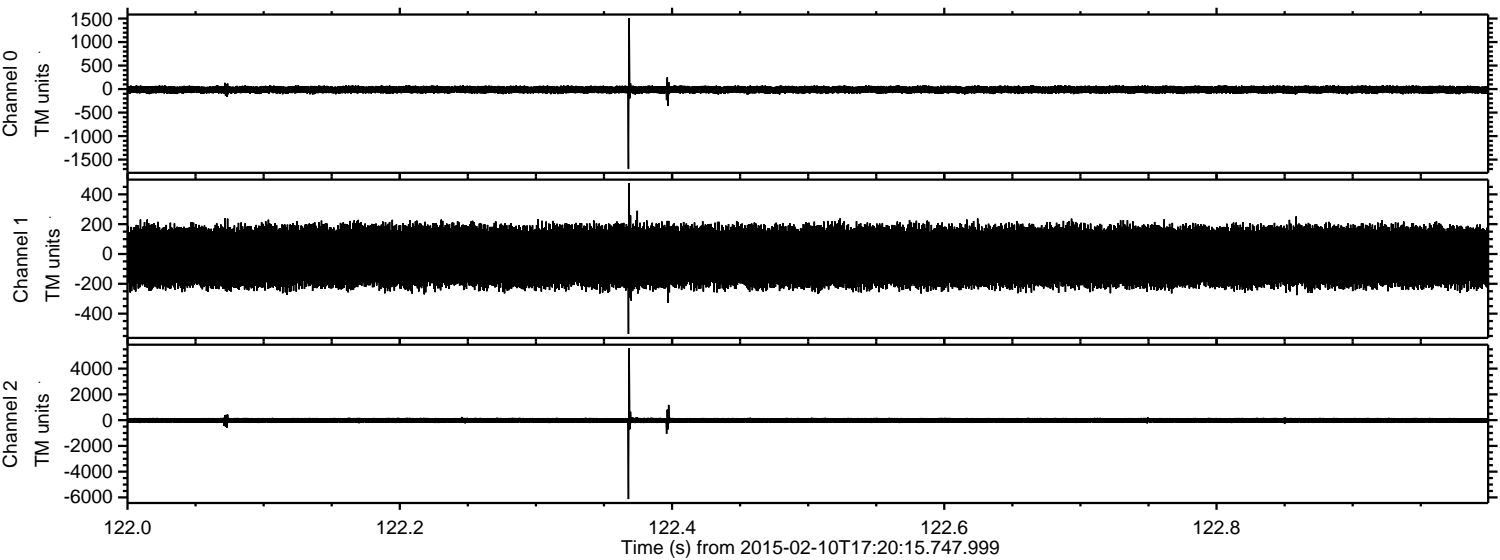
ELMAVAN 3D WAVEFORMS (Measured data sampled at 50 kHz) 49663 packets of 144 samples from 2015-02-10T17:20:15.747.999. Part 21/144

Processed Thu Feb 19 16:38:14 2015 by ELM ver.2012-10-06 from 001__elm20150210_172014__dat00.bin



ELMAVAN 3D WAVEFORMS (Measured data sampled at 50 kHz) 49663 packets of 144 samples from 2015-02-10T17:20:15.747.999. Part 123/144

Processed Thu Feb 19 16:38:15 2015 by ELM ver.2012-10-06 from 001__elm20150210_172014__dat00.bin

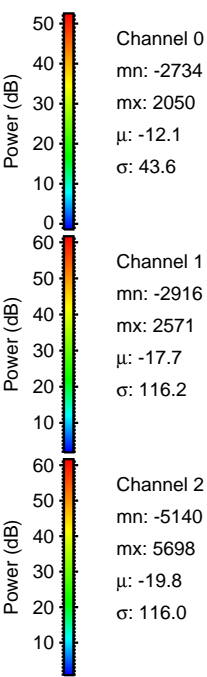
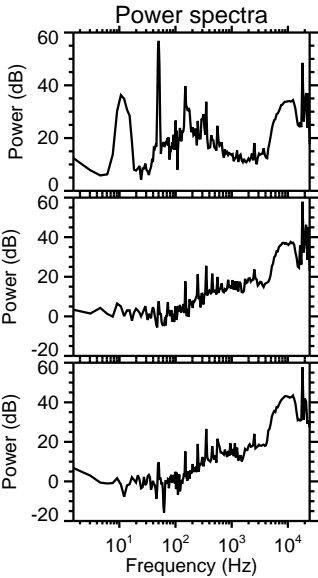
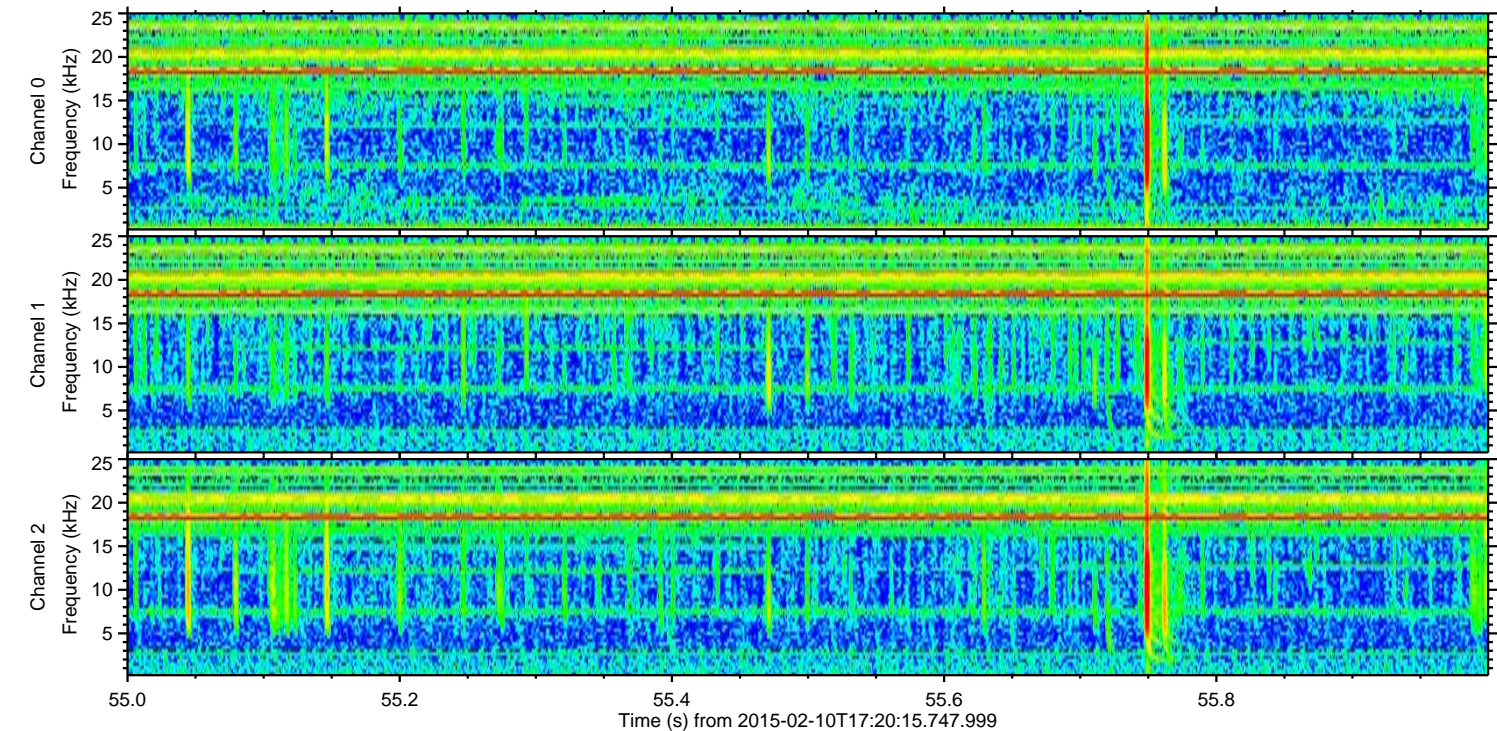
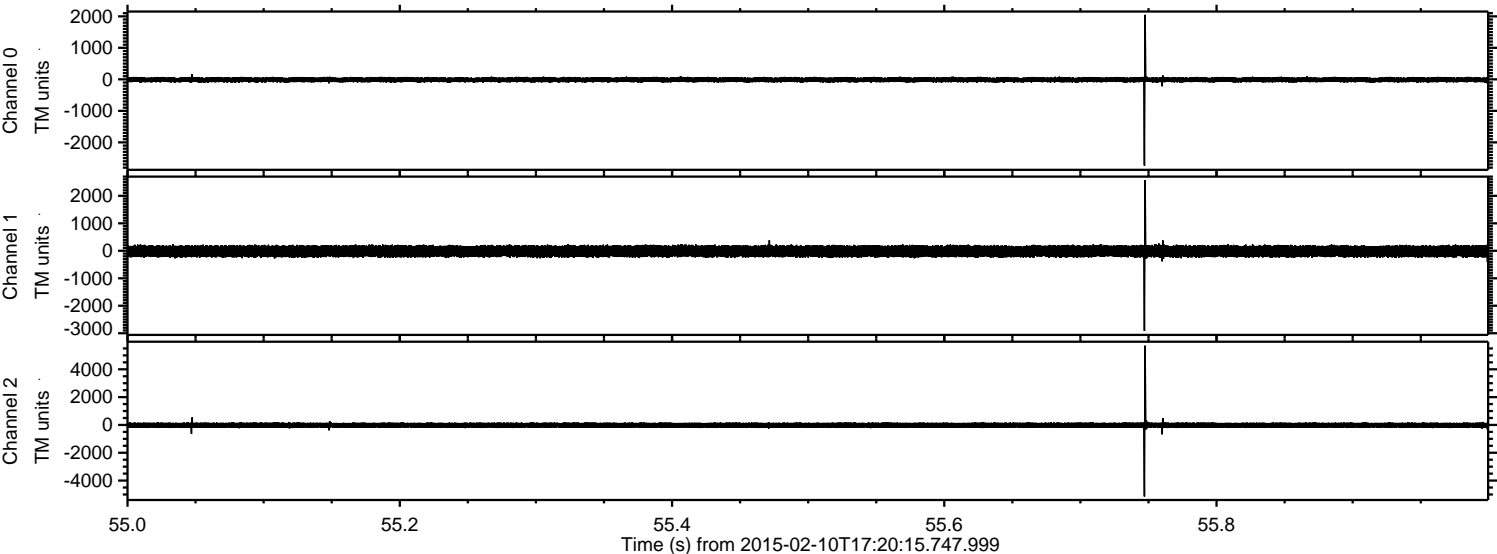


Channel 0
mn: -1696
mx: 1510
 μ : -12.2
 σ : 43.0

Channel 1
mn: -536
mx: 475
 μ : -17.8
 σ : 112.5

Channel 2
mn: -6128
mx: 5578
 μ : -19.9
 σ : 116.4

Processed Thu Feb 19 16:38:16 2015 by ELM ver.2012-10-06 from 001__elm20150210_172014__dat00.bin



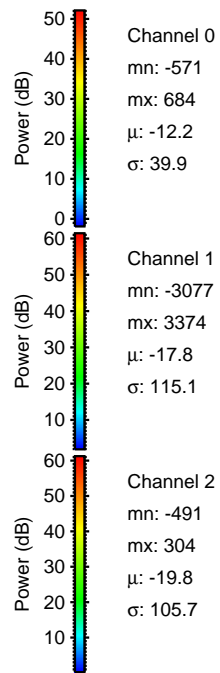
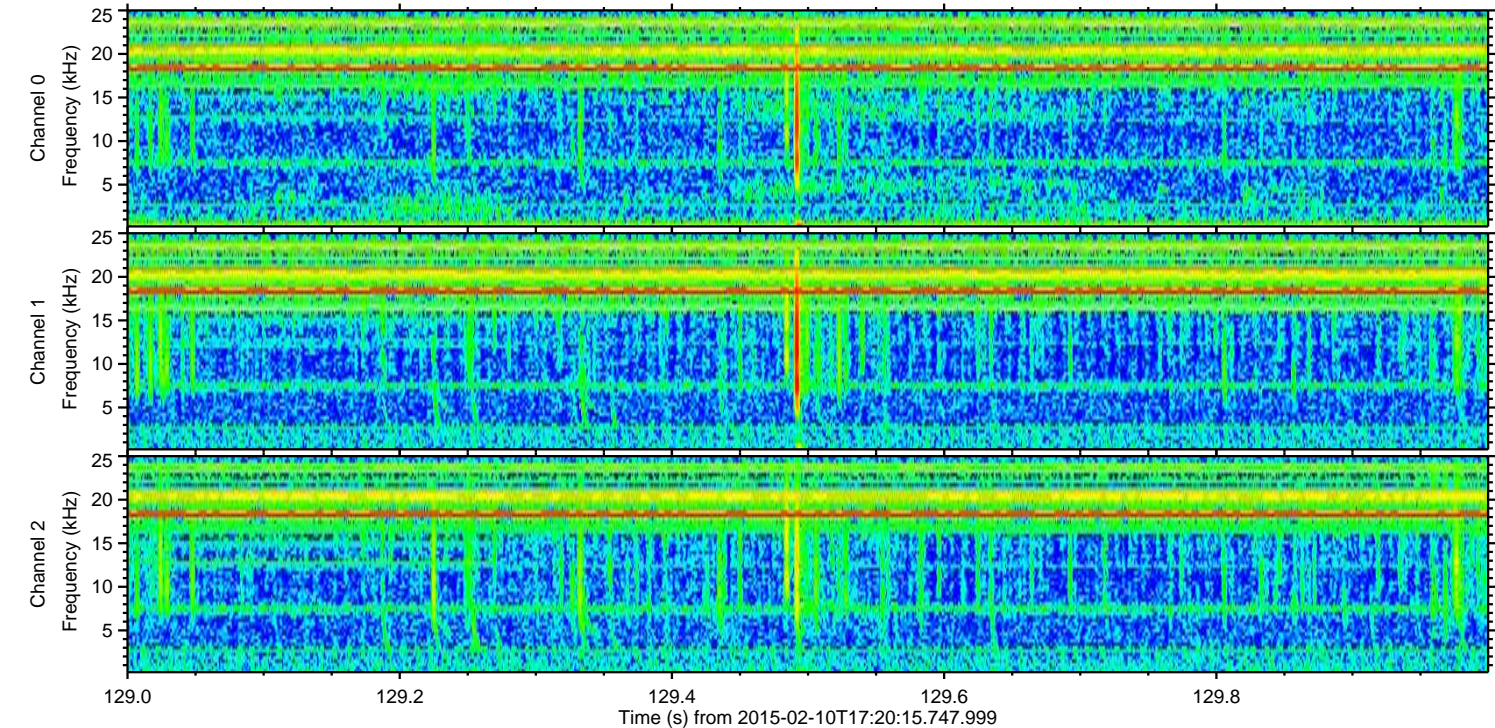
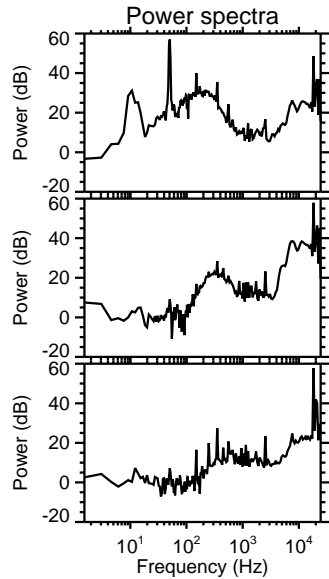
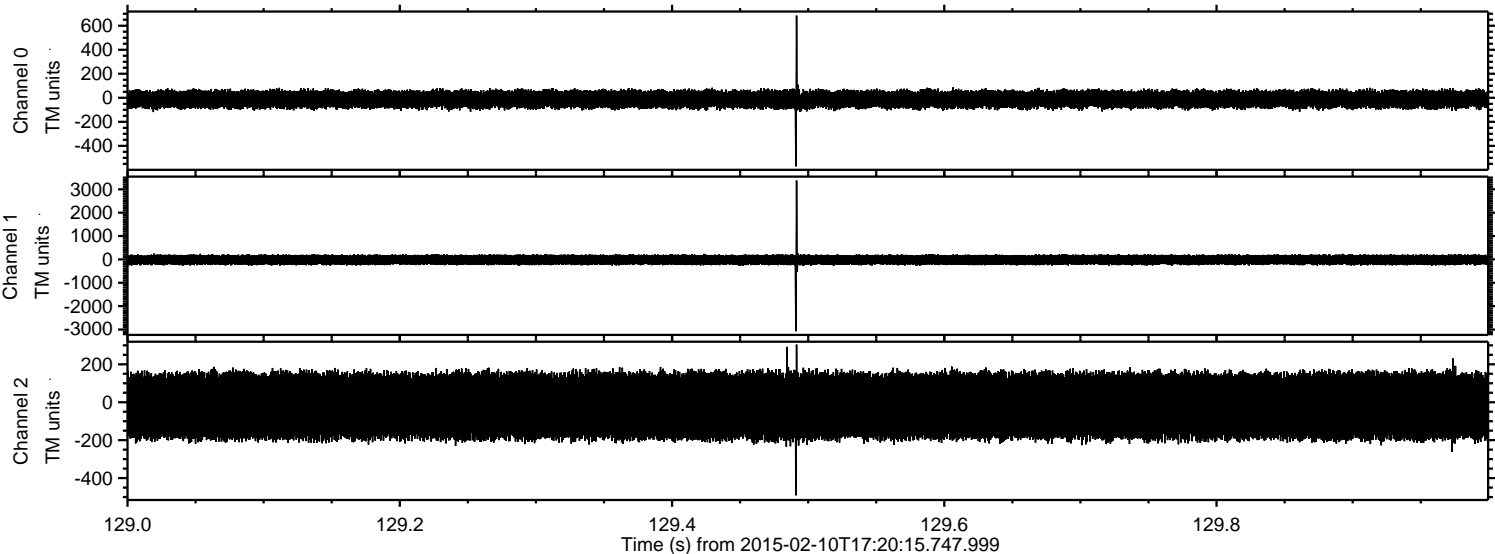
Channel 0
mn: -2734
mx: 2050
 μ : -12.1
 σ : 43.6

Channel 1
mn: -2916
mx: 2571
 μ : -17.7
 σ : 116.2

Channel 2
mn: -5140
mx: 5698
 μ : -19.8
 σ : 116.0

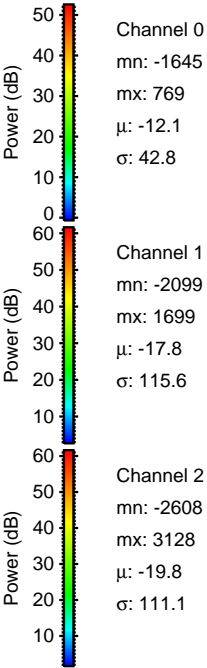
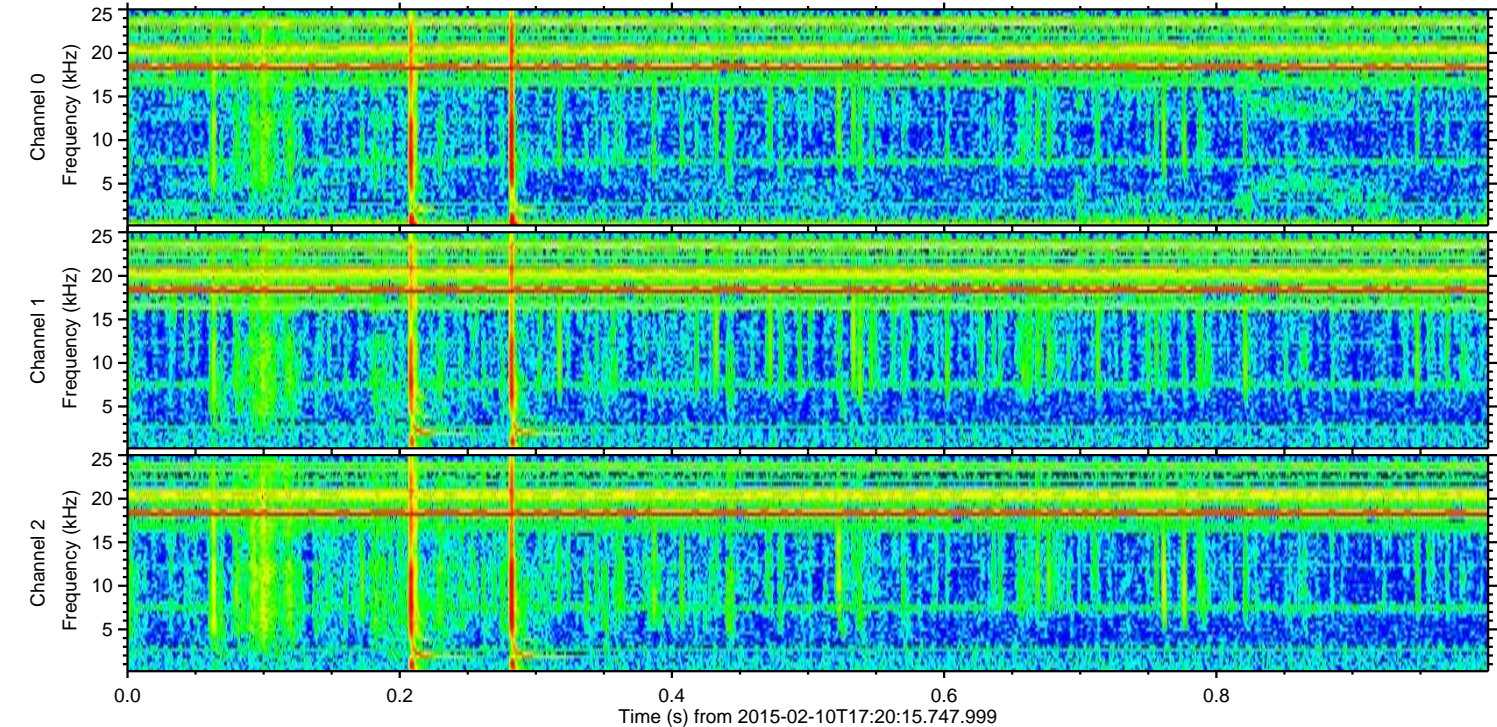
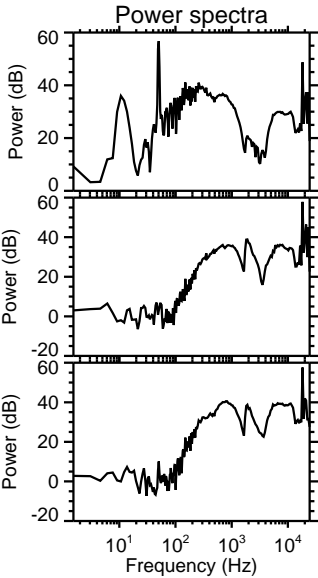
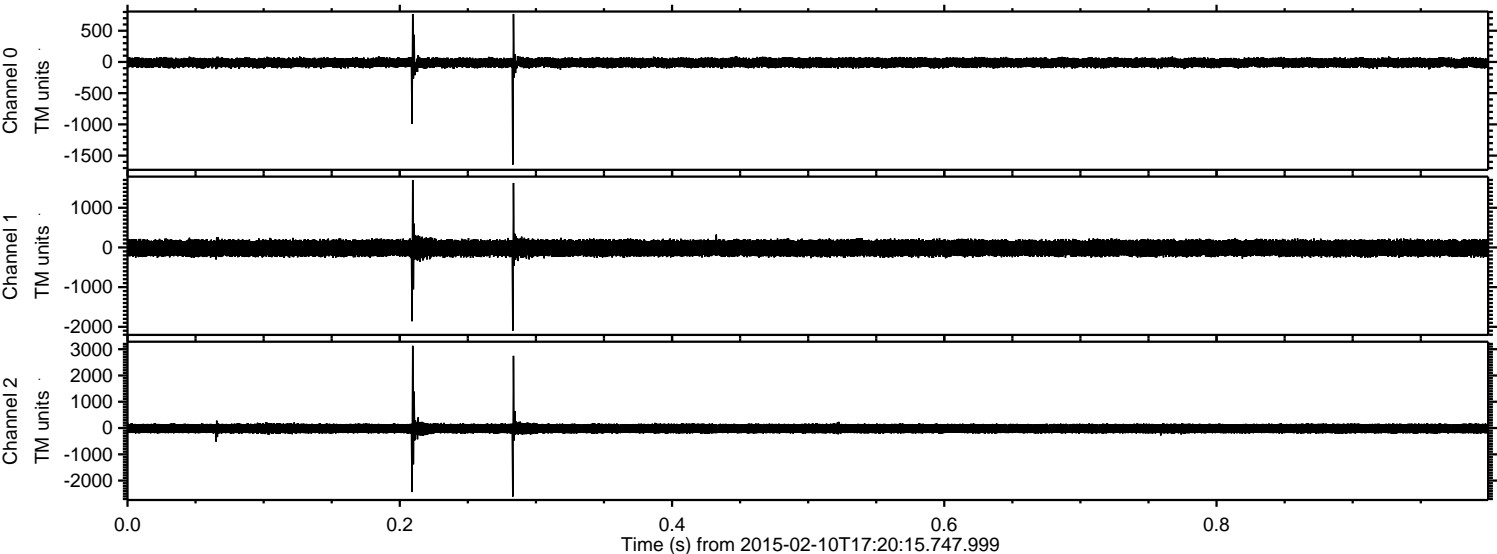
ELMAVAN 3D WAVEFORMS (Measured data sampled at 50 kHz) 49663 packets of 144 samples from 2015-02-10T17:20:15.747.999. Part 130/144

Processed Thu Feb 19 16:38:17 2015 by ELM ver.2012-10-06 from 001__elm20150210_172014__dat00.bin



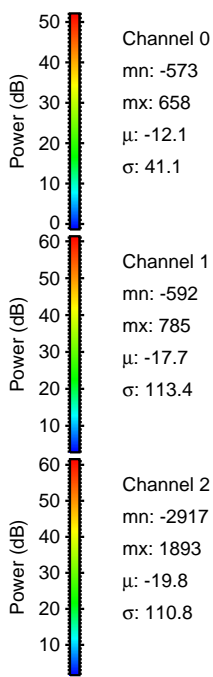
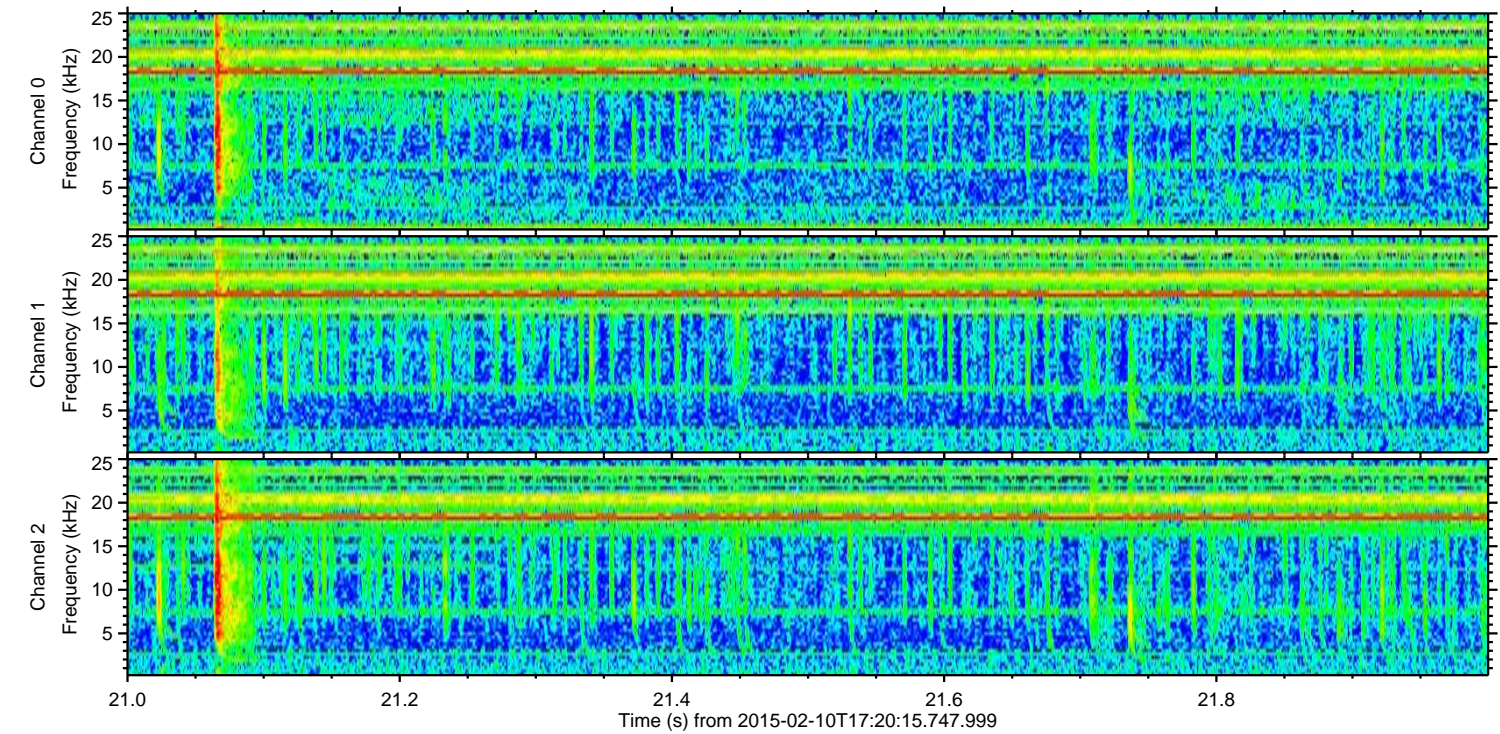
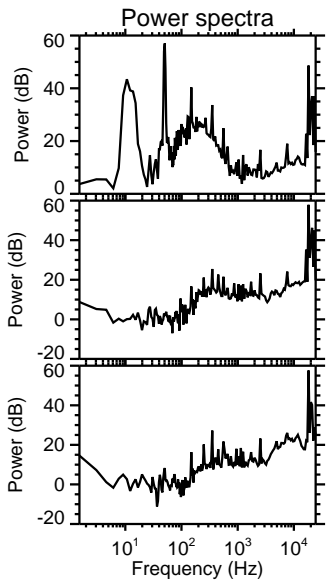
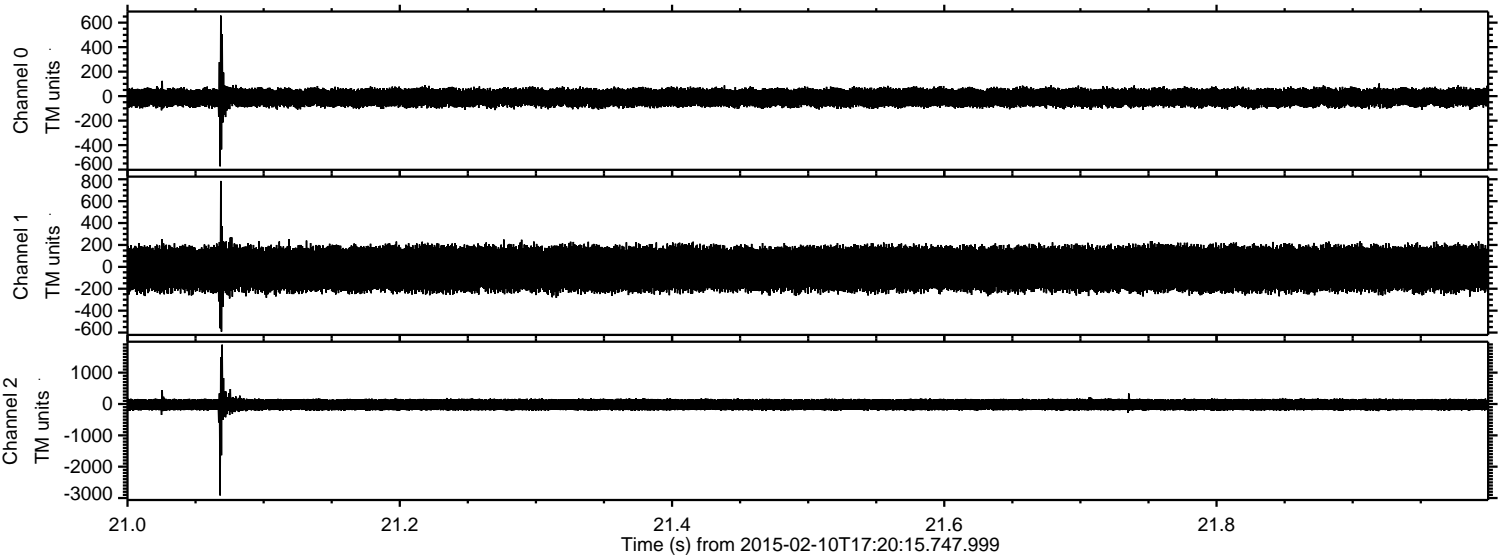
ELMAVAN 3D WAVEFORMS (Measured data sampled at 50 kHz) 49663 packets of 144 samples from 2015-02-10T17:20:15.747.999. Part 1/144

Processed Thu Feb 19 16:38:19 2015 by ELM ver.2012-10-06 from 001__elm20150210_172014__dat00.bin



ELMAVAN 3D WAVEFORMS (Measured data sampled at 50 kHz) 49663 packets of 144 samples from 2015-02-10T17:20:15.747.999. Part 22/144

Processed Thu Feb 19 16:38:22 2015 by ELM ver.2012-10-06 from 001__elm20150210_172014__dat00.bin

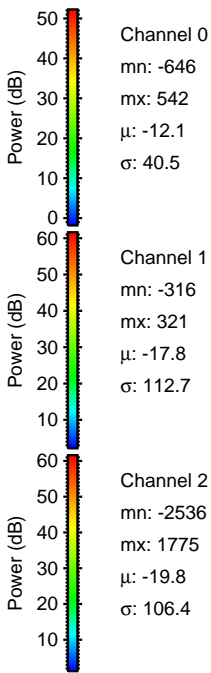
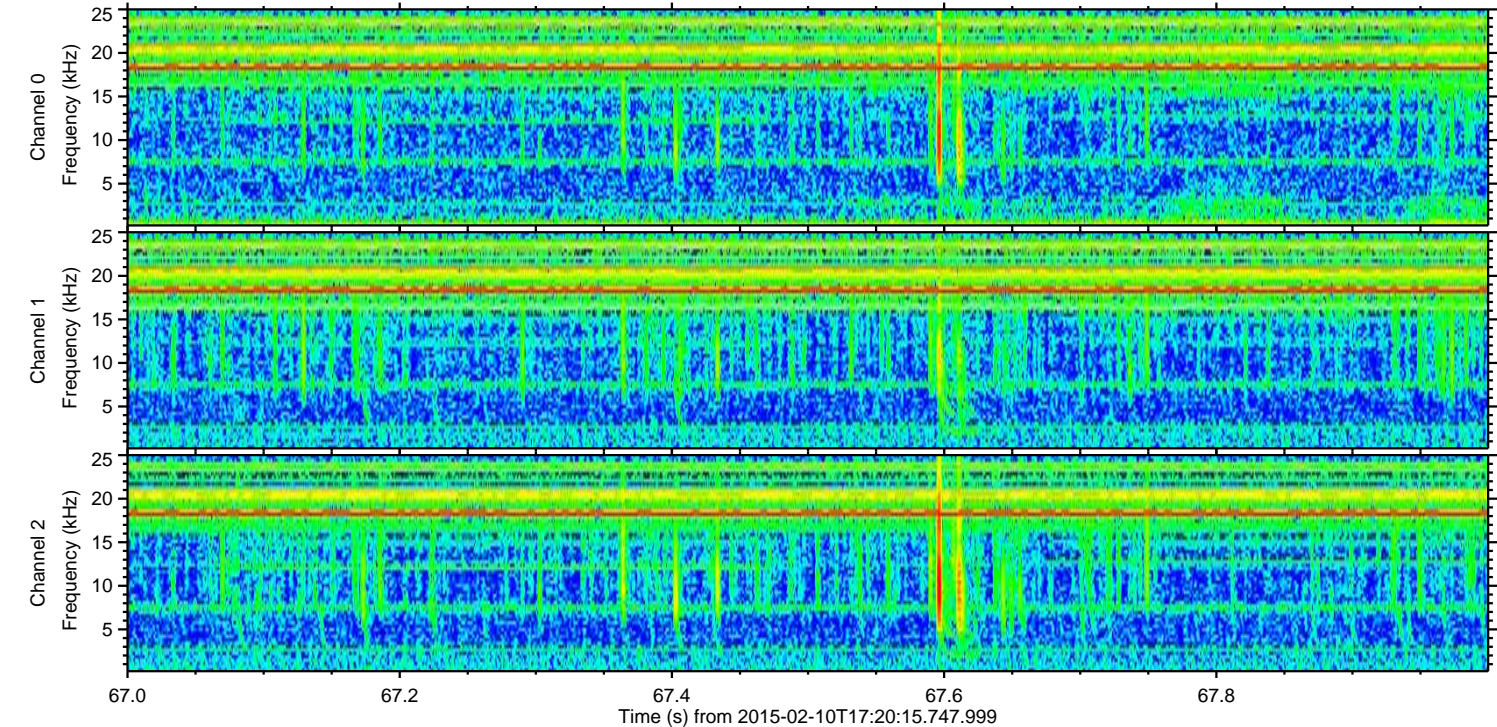
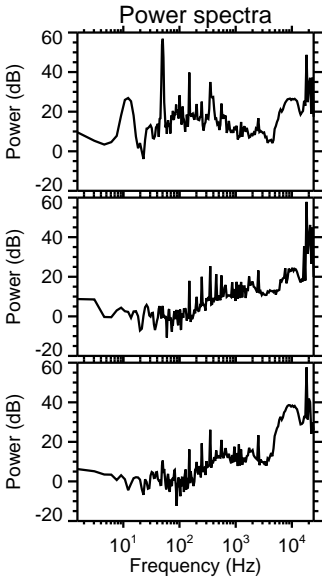
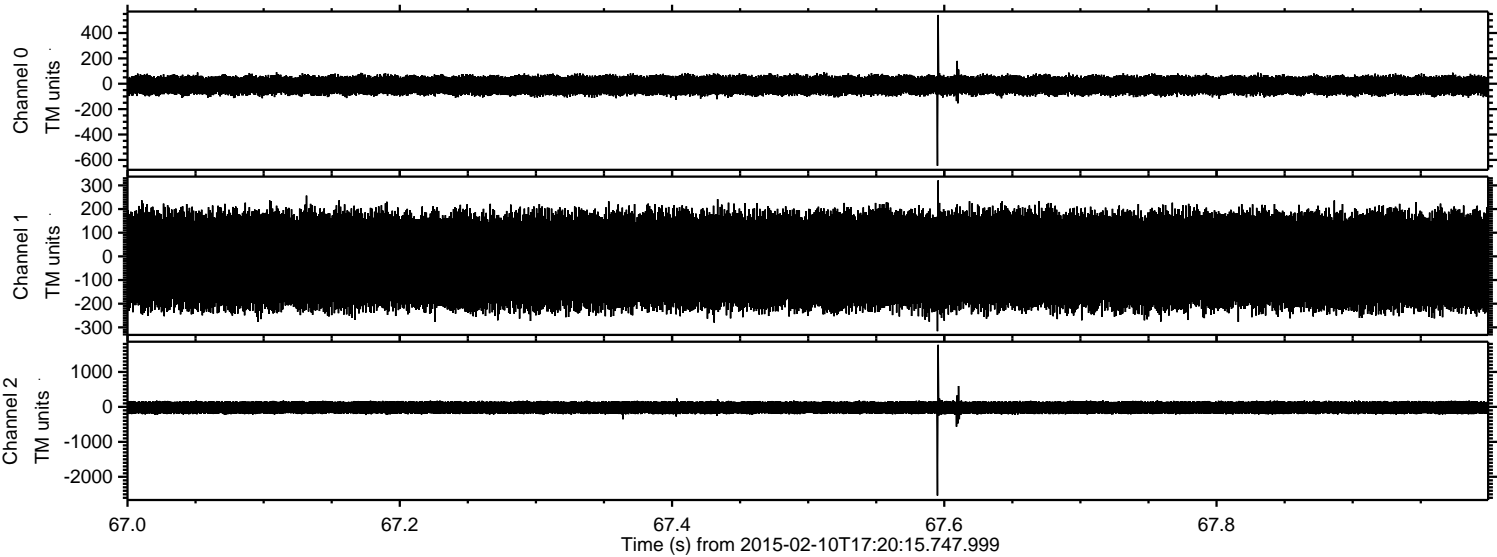


Channel 0
mn: -573
mx: 658
 μ : -12.1
 σ : 41.1

Channel 1
mn: -592
mx: 785
 μ : -17.7
 σ : 113.4

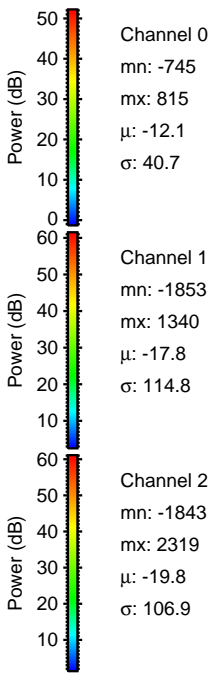
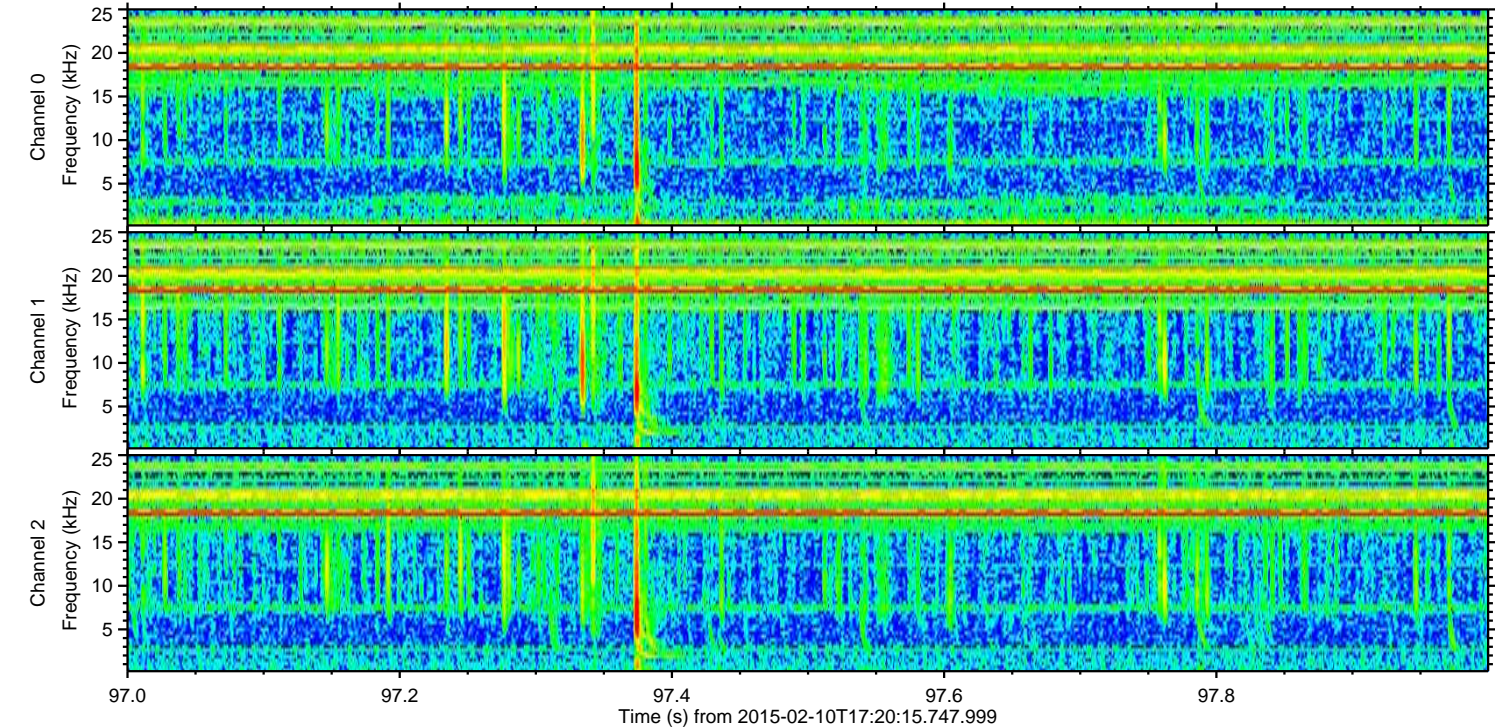
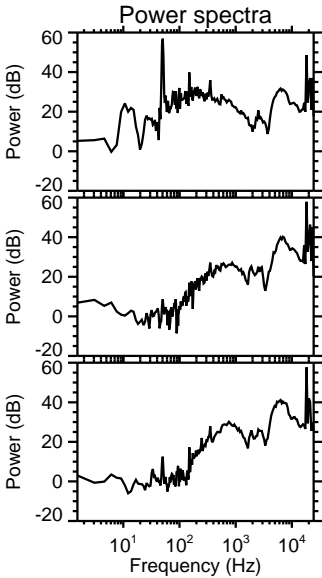
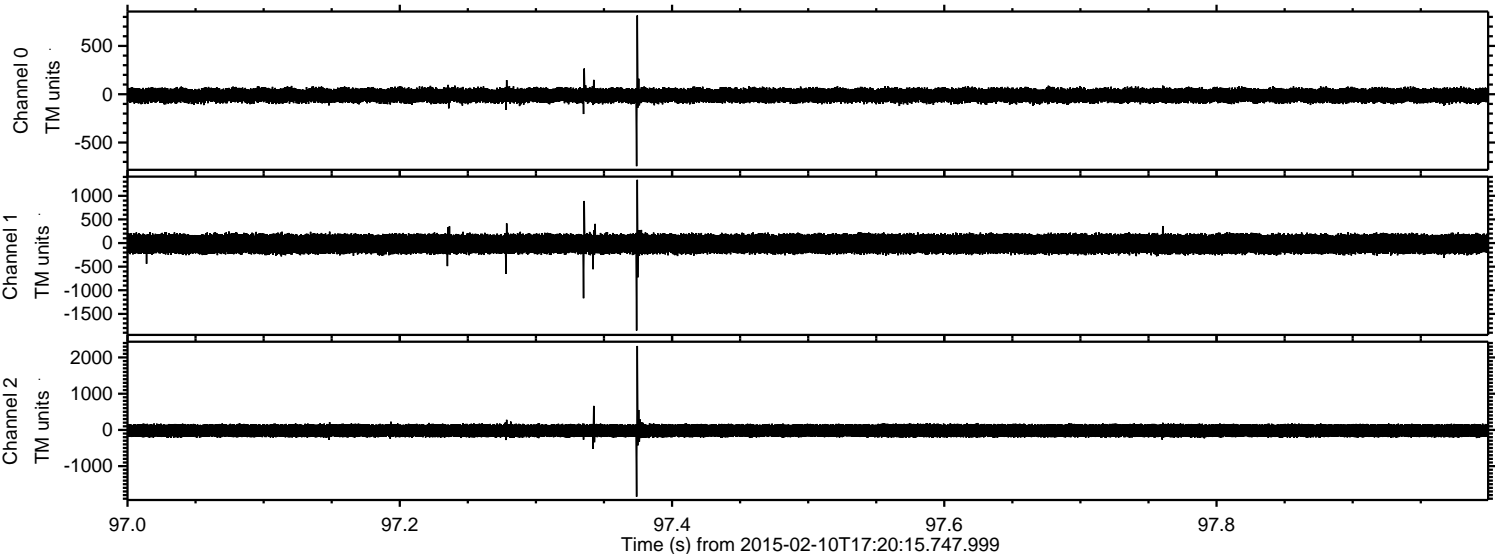
Channel 2
mn: -2917
mx: 1893
 μ : -19.8
 σ : 110.8

Processed Thu Feb 19 16:38:23 2015 by ELM ver.2012-10-06 from 001__elm20150210_172014__dat00.bin



ELMAVAN 3D WAVEFORMS (Measured data sampled at 50 kHz) 49663 packets of 144 samples from 2015-02-10T17:20:15.747.999. Part 98/144

Processed Thu Feb 19 16:38:24 2015 by ELM ver.2012-10-06 from 001__elm20150210_172014__dat00.bin



ELMAVAN 3D WAVEFORMS (Measured data sampled at 50 kHz) 49663 packets of 144 samples from 2015-02-10T17:20:15.747.999. Part 52/144

Processed Thu Feb 19 16:38:25 2015 by ELM ver.2012-10-06 from 001__elm20150210_172014__dat00.bin

