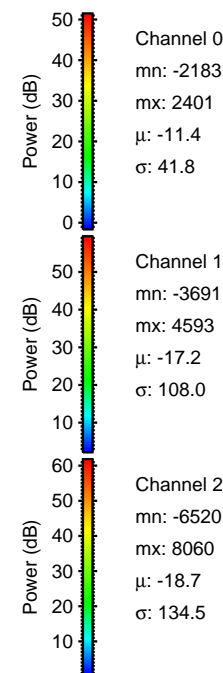
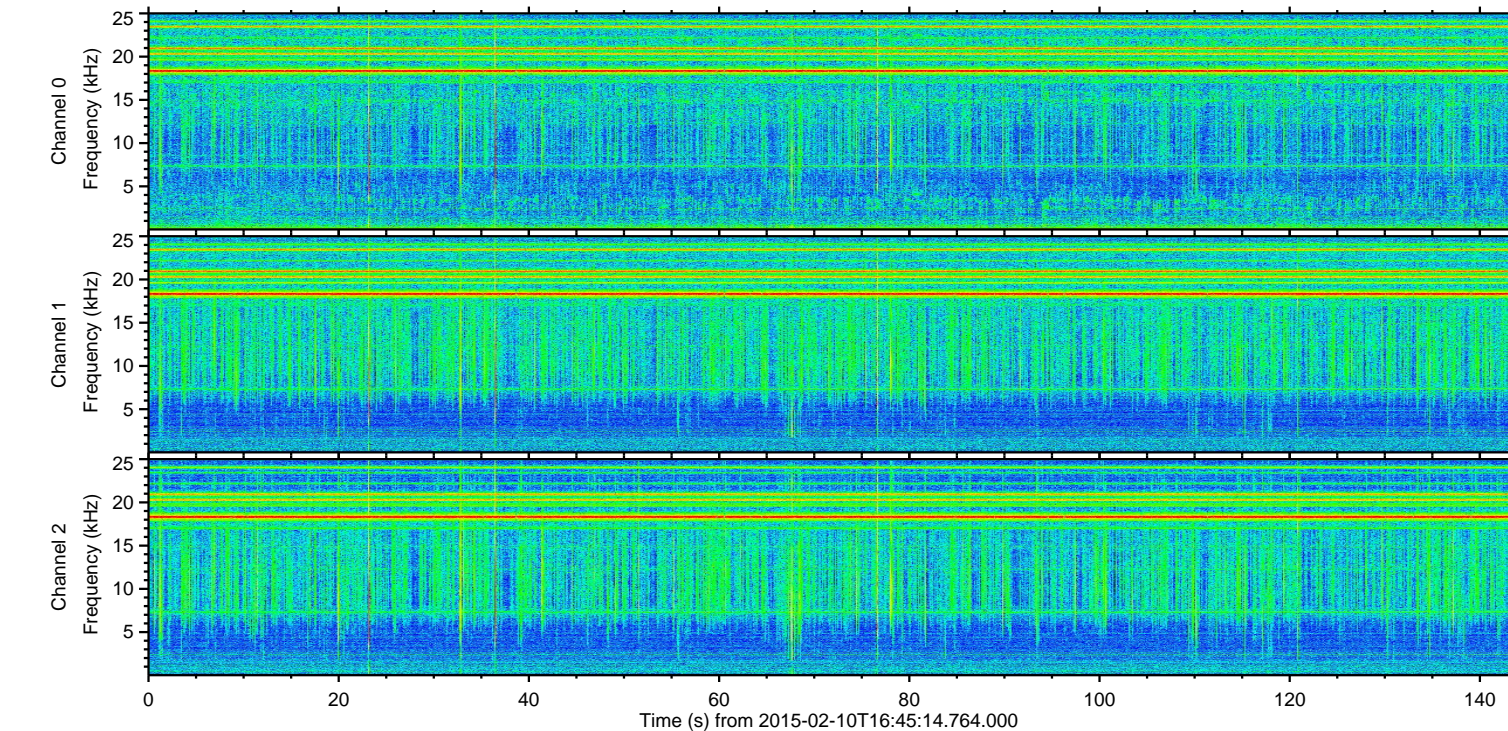
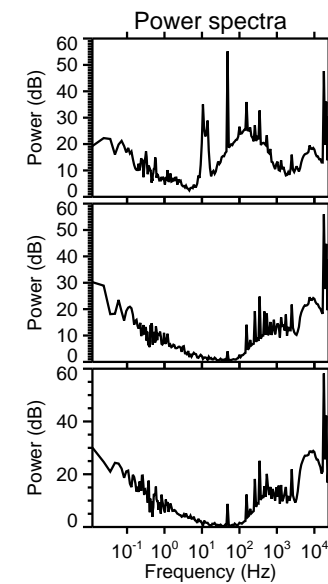
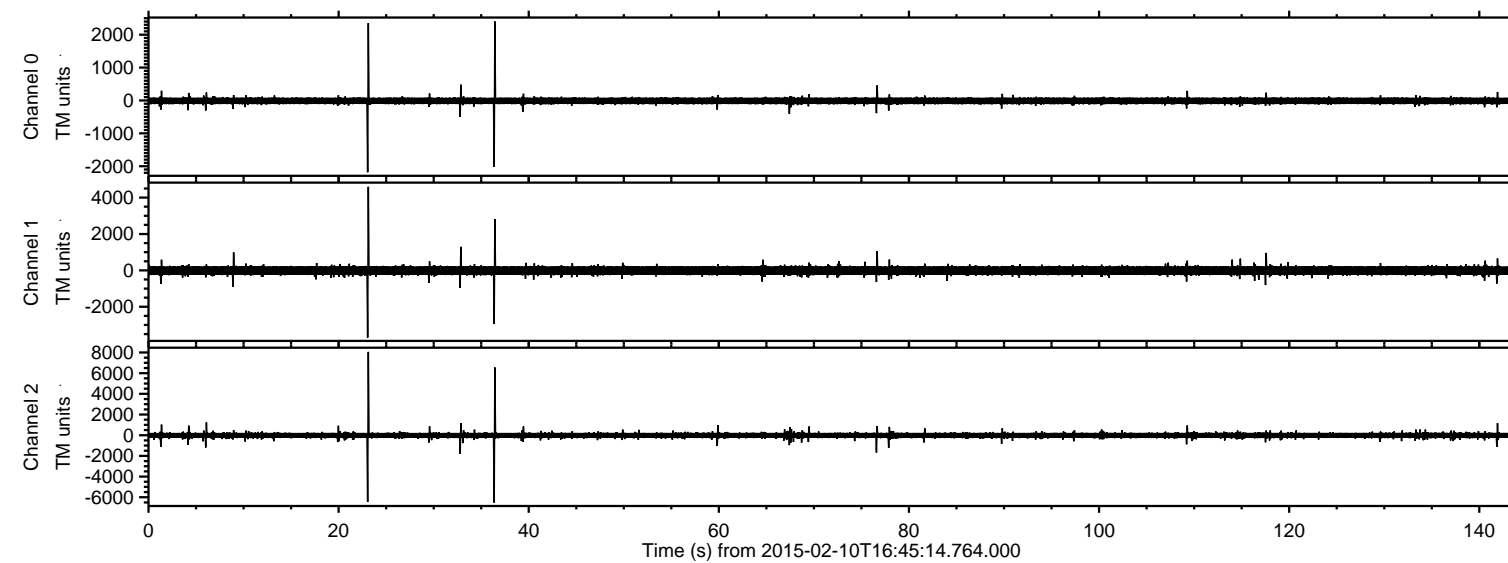


ELMAVAN 3D WAVEFORMS (Measured data sampled at 50 kHz) 49701 packets of 144 samples from 2015-02-10T16:45:14.764.000.

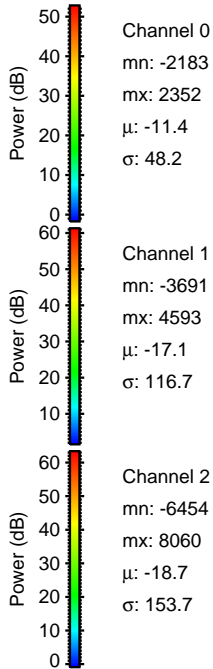
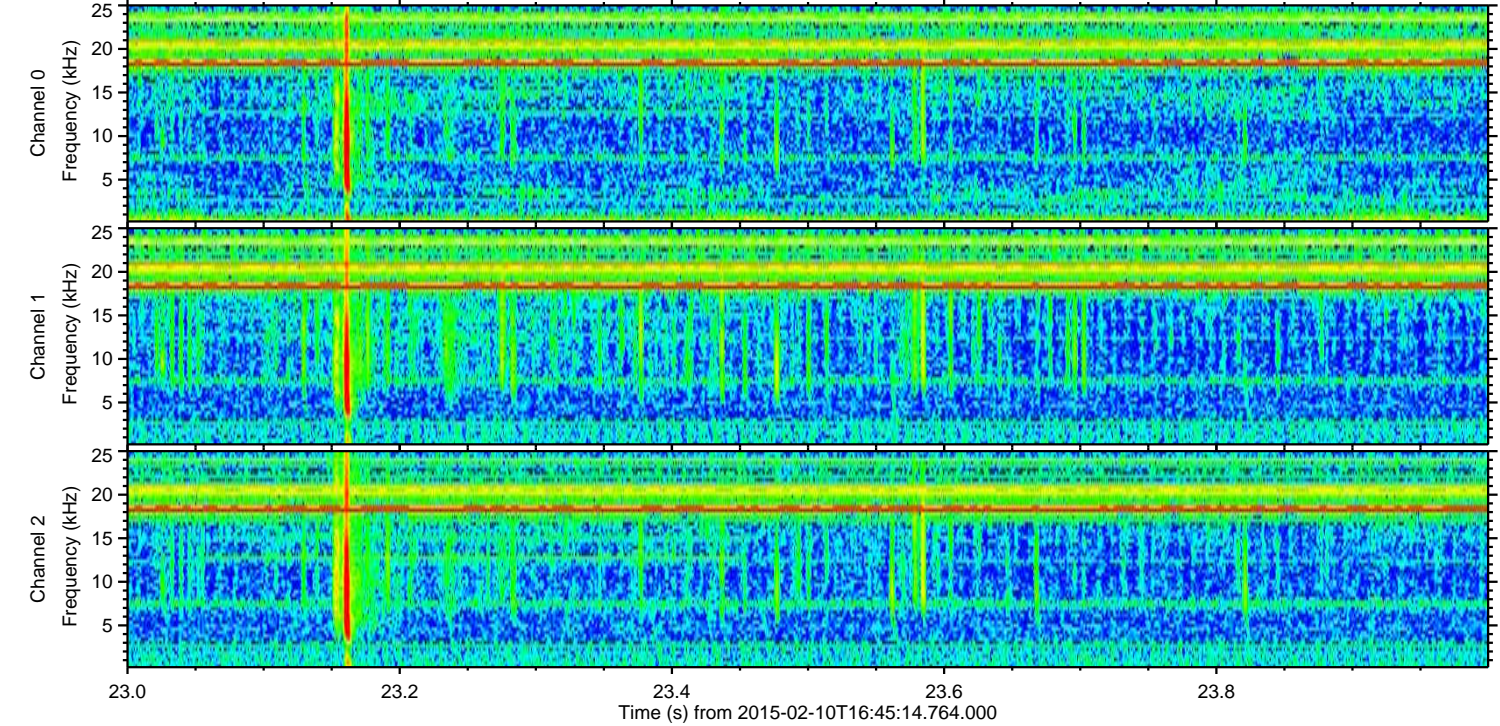
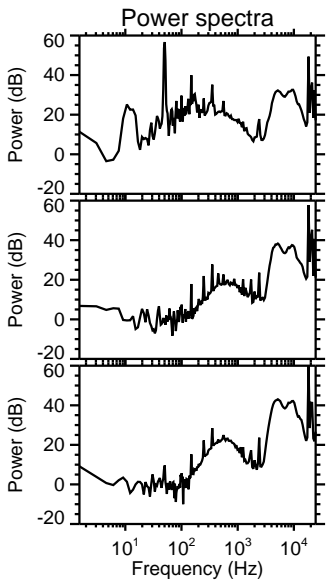
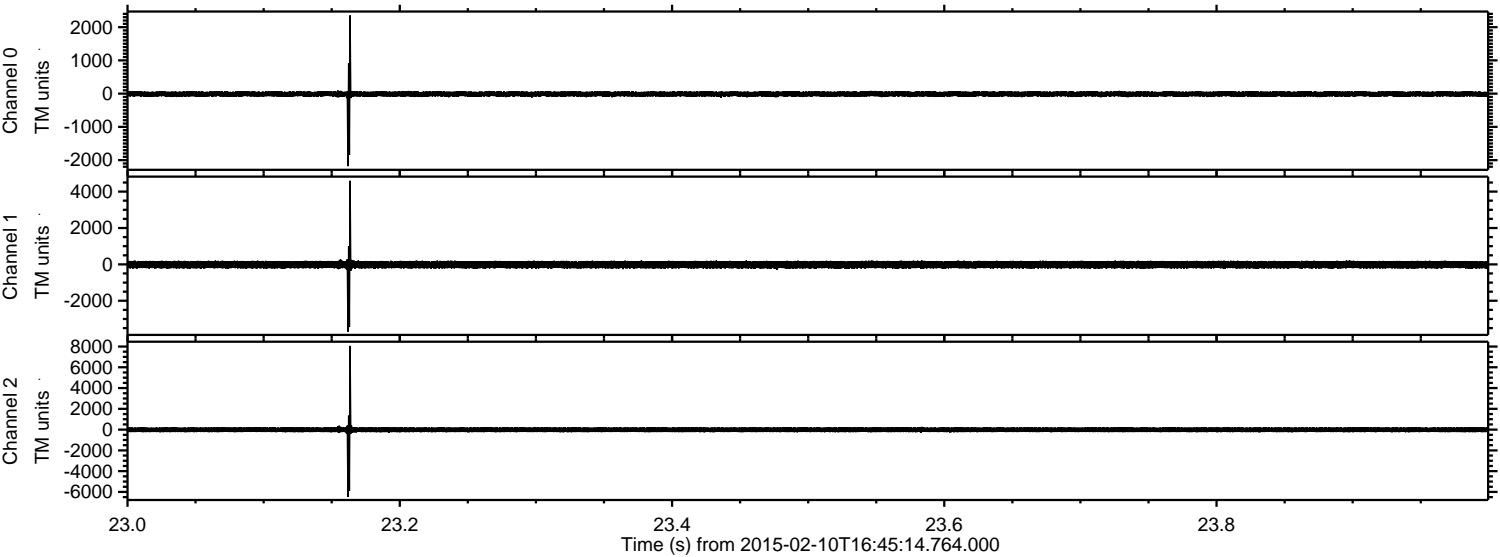
Processed Thu Feb 19 16:26:23 2015 by ELM ver.2012-10-06 from 001\_\_elm20150210\_164513\_\_dat00.bin





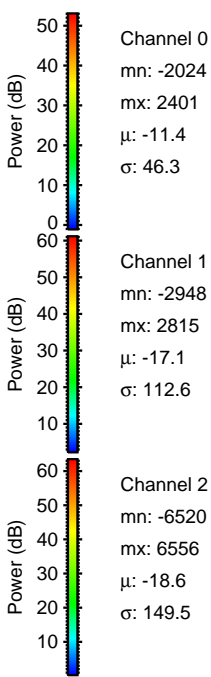
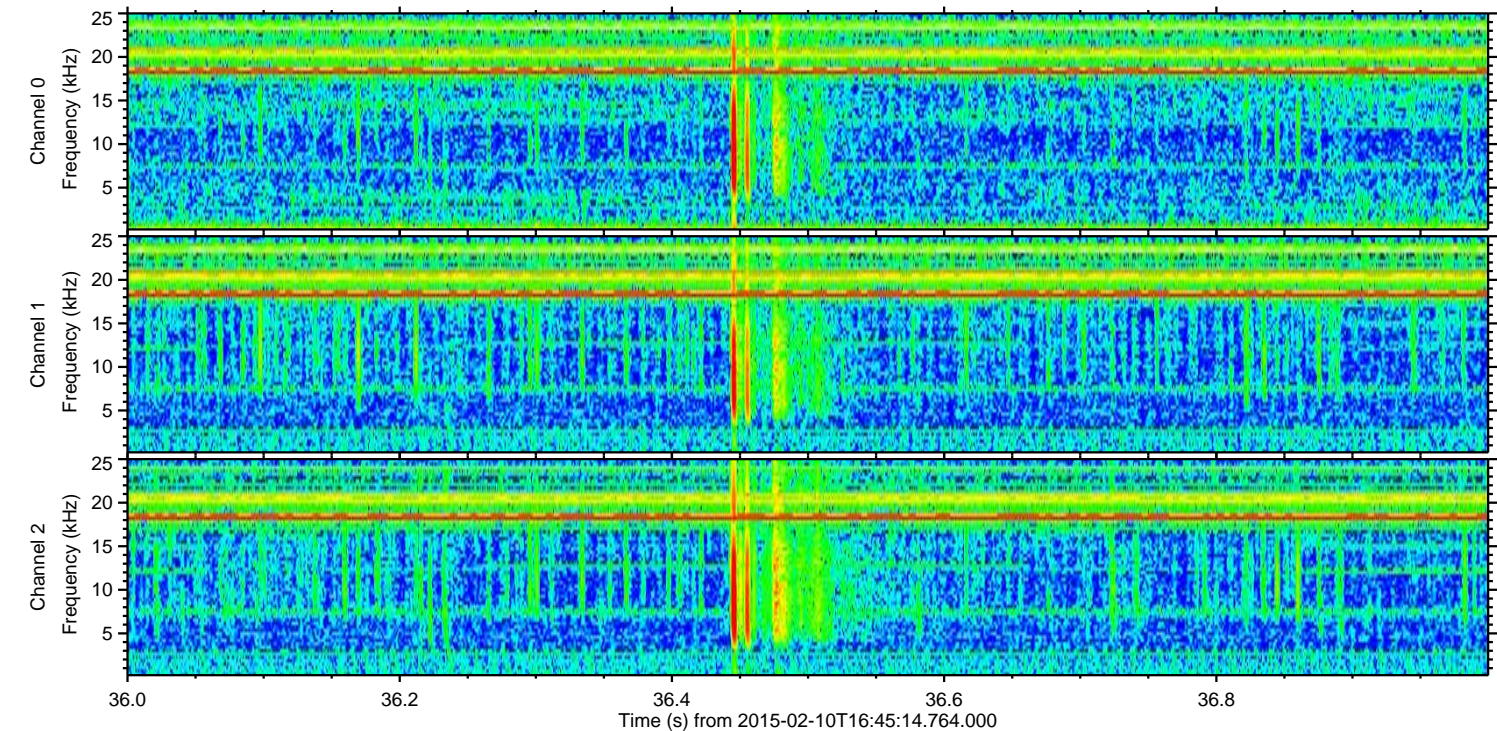
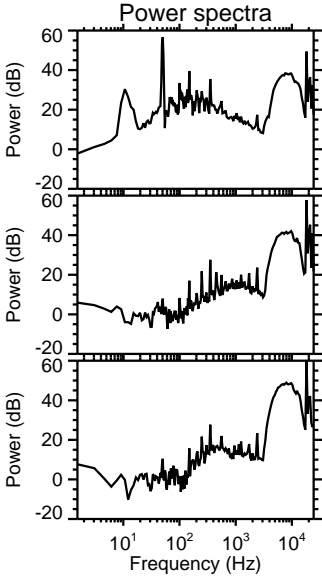
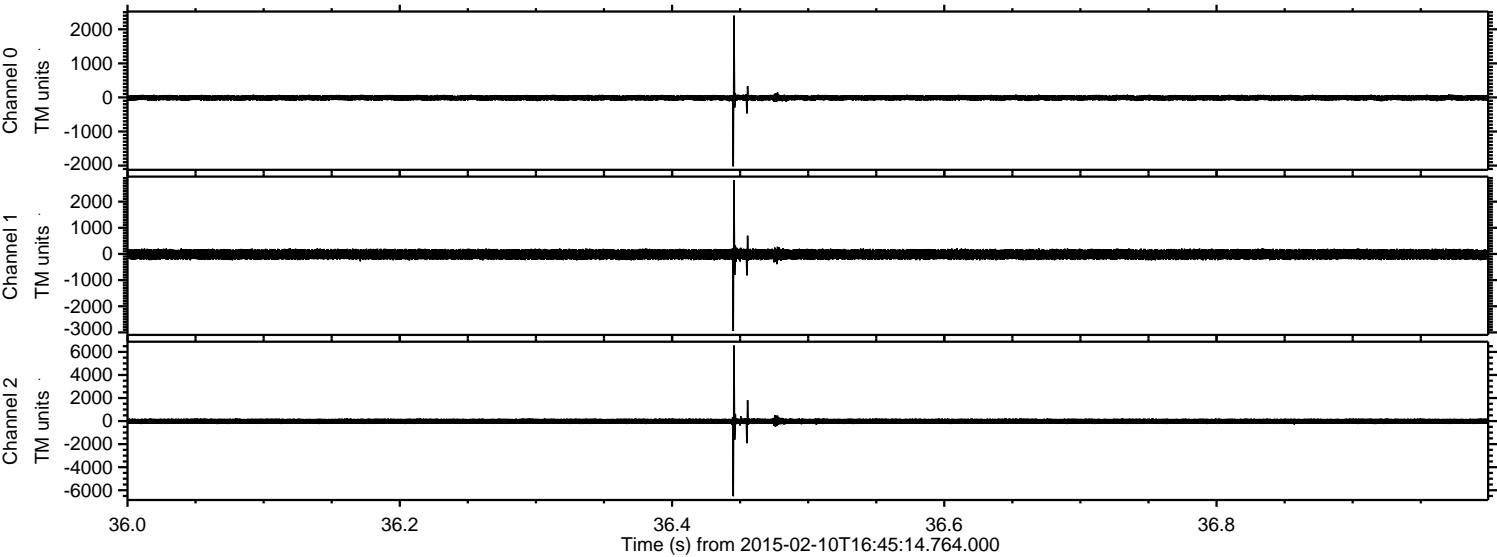
ELMAVAN 3D WAVEFORMS (Measured data sampled at 50 kHz) 49701 packets of 144 samples from 2015-02-10T16:45:14.764.000. Part 24/144

Processed Thu Feb 19 16:26:42 2015 by ELM ver.2012-10-06 from 001\_\_elm20150210\_164513\_\_dat00.bin



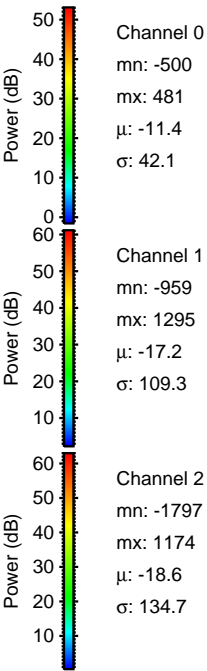
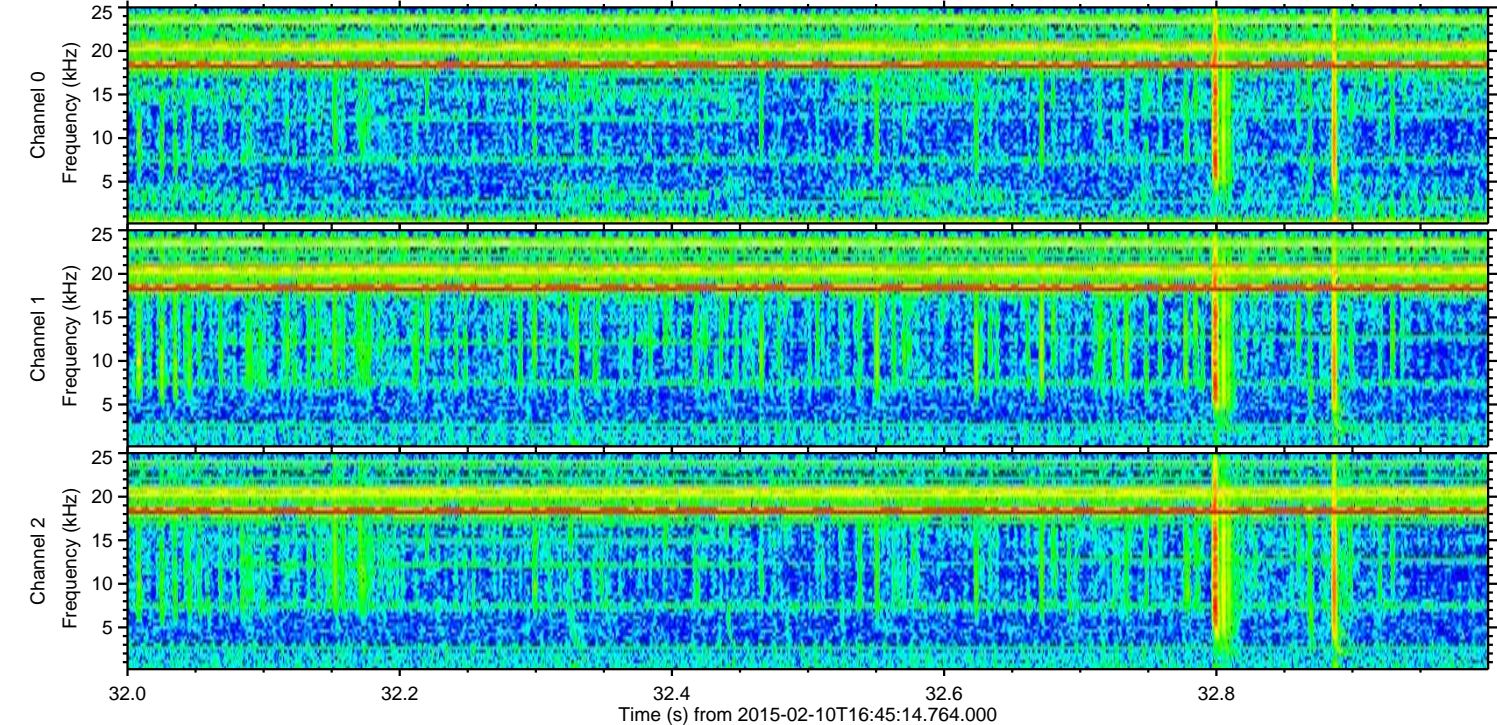
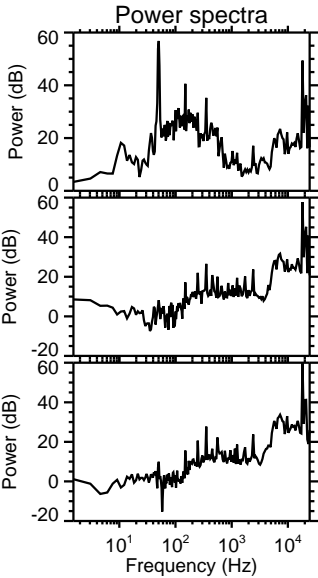
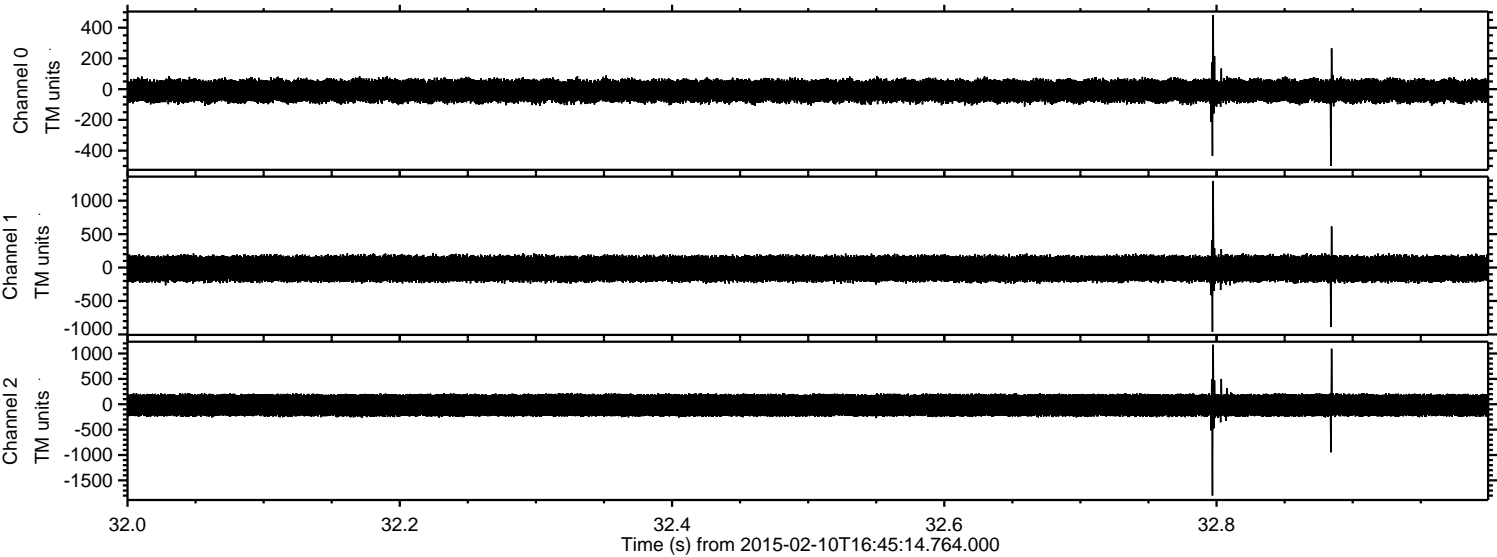


Processed Thu Feb 19 16:26:45 2015 by ELM ver.2012-10-06 from 001\_\_elm20150210\_164513\_\_dat00.bin



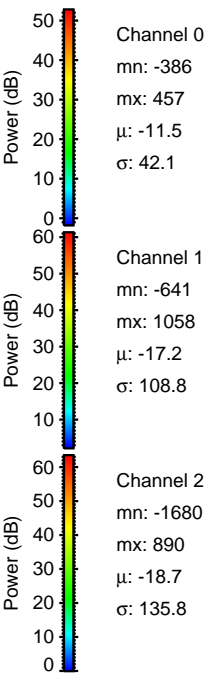
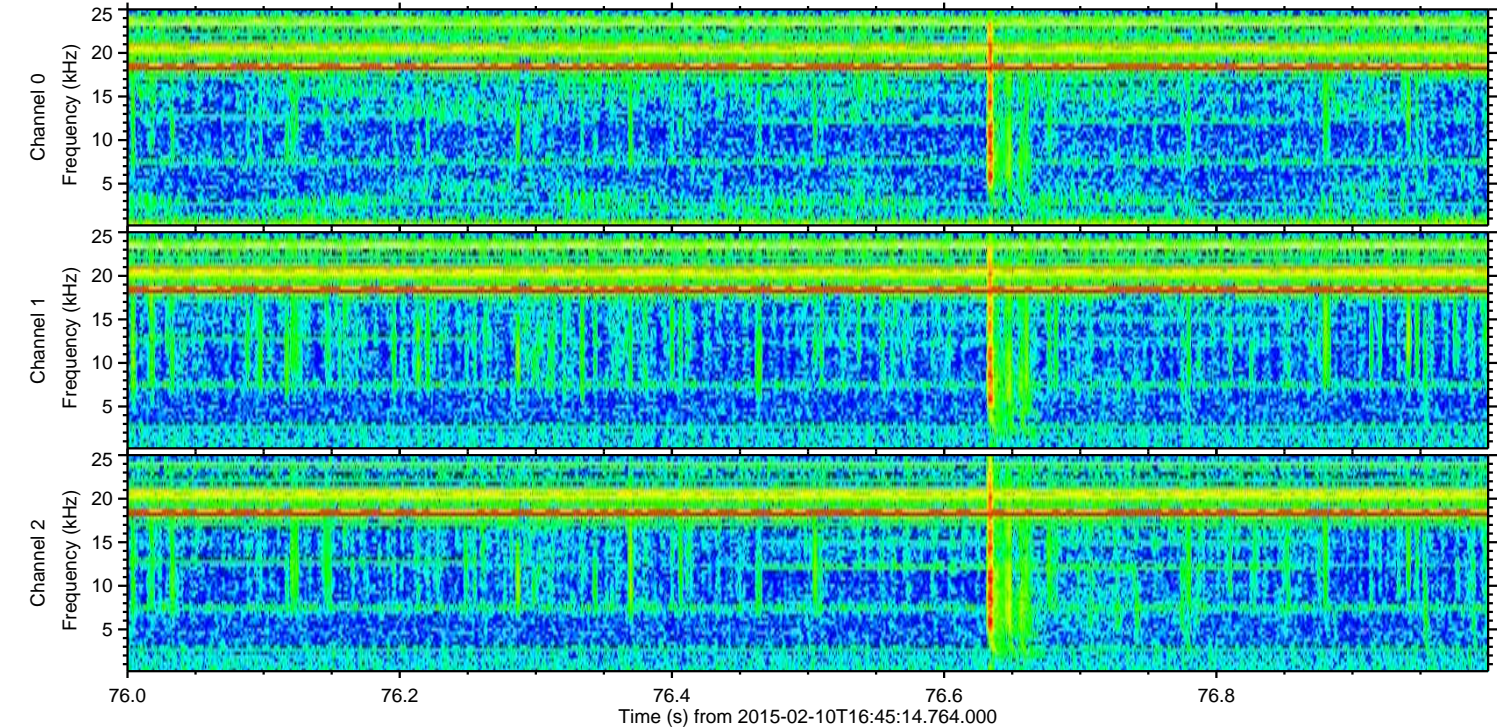
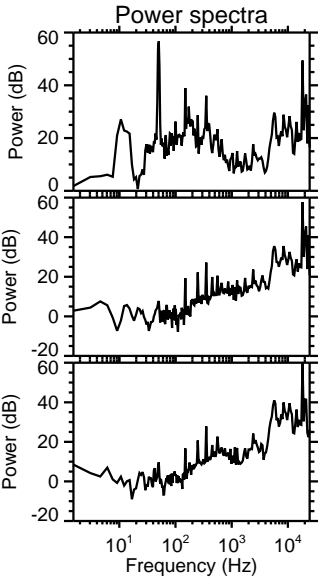
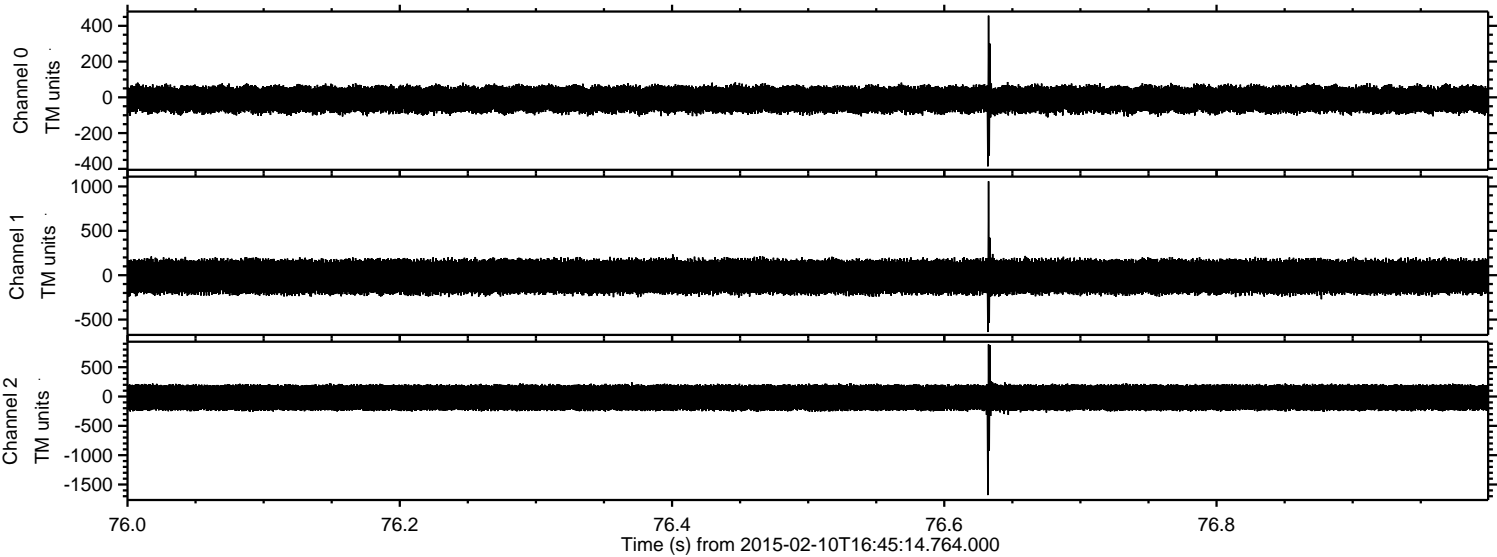


Processed Thu Feb 19 16:26:47 2015 by ELM ver.2012-10-06 from 001\_\_elm20150210\_164513\_\_dat00.bin



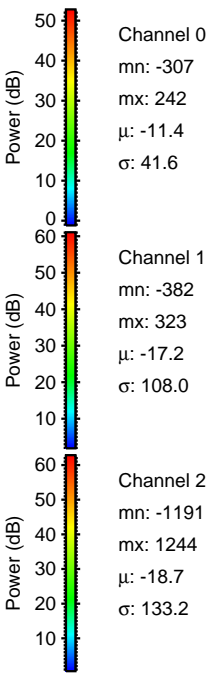
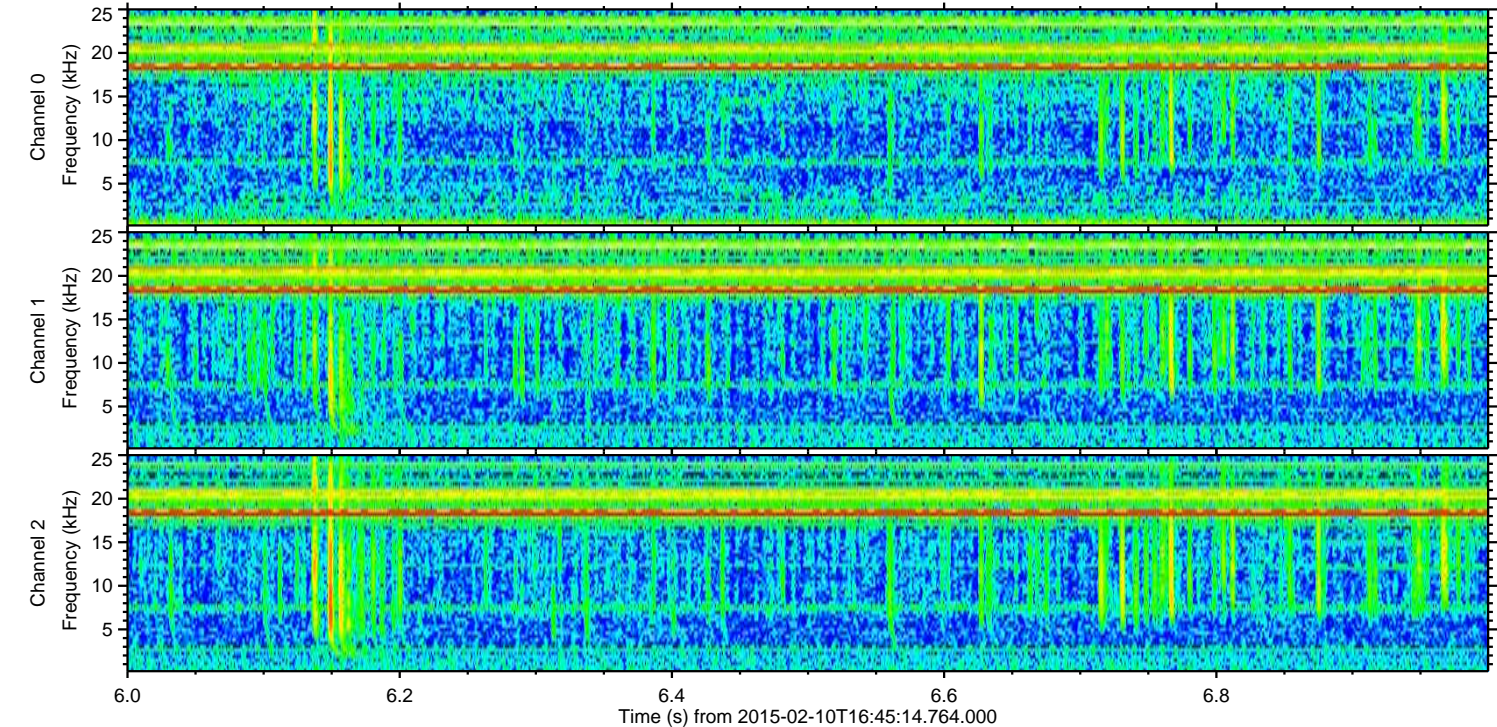
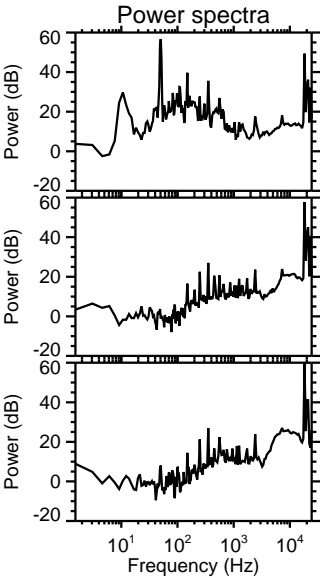
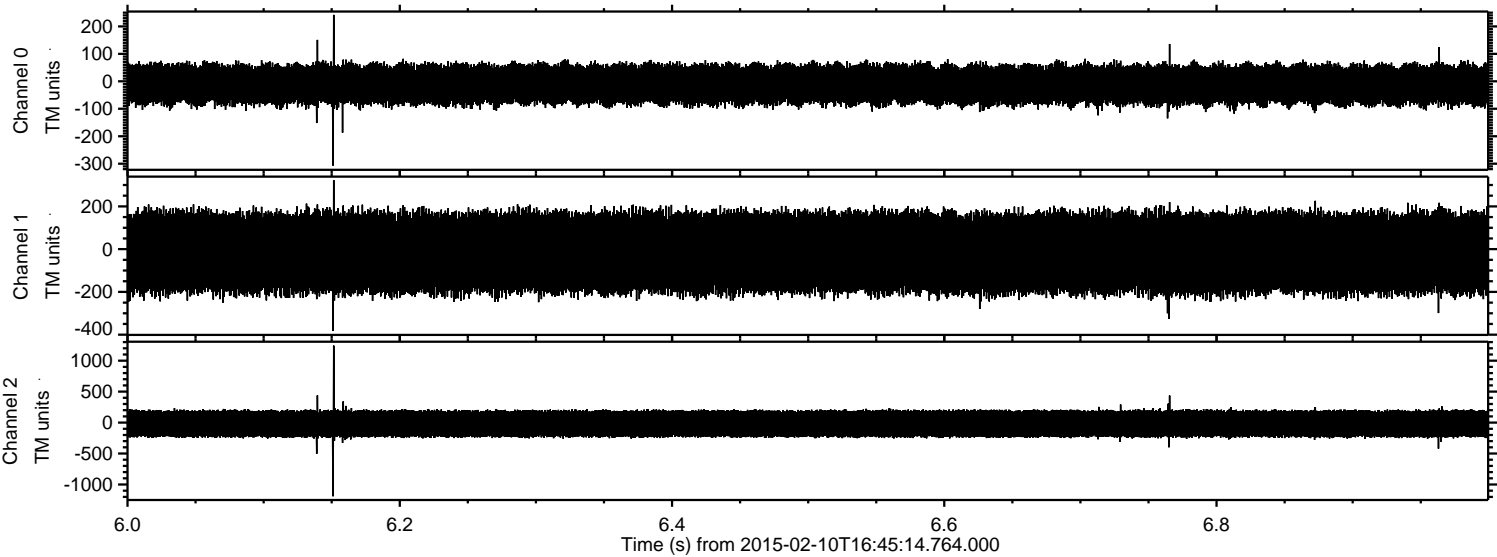


Processed Thu Feb 19 16:26:49 2015 by ELM ver.2012-10-06 from 001\_\_elm20150210\_164513\_\_dat00.bin



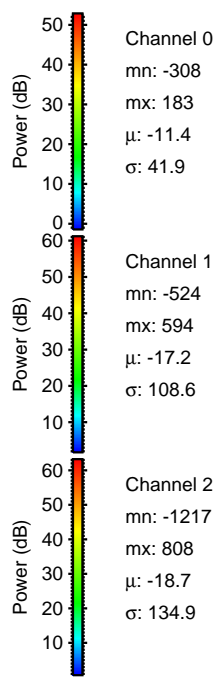
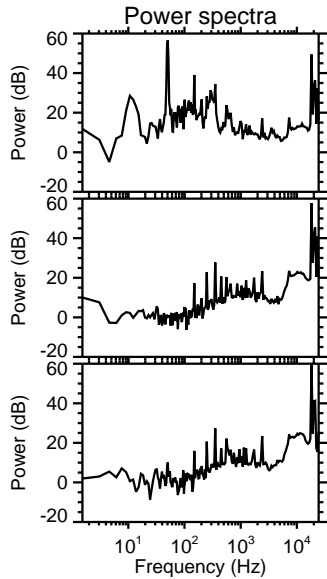
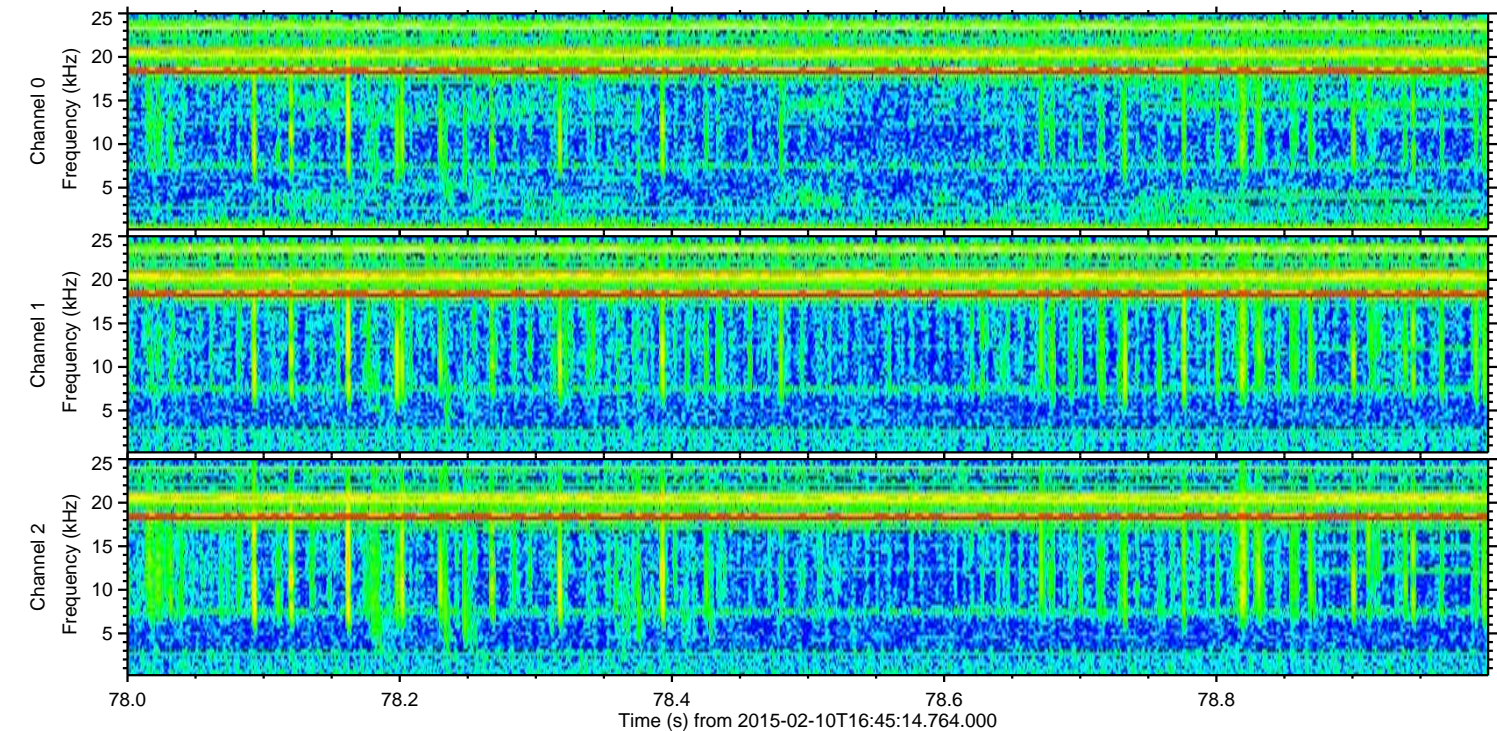
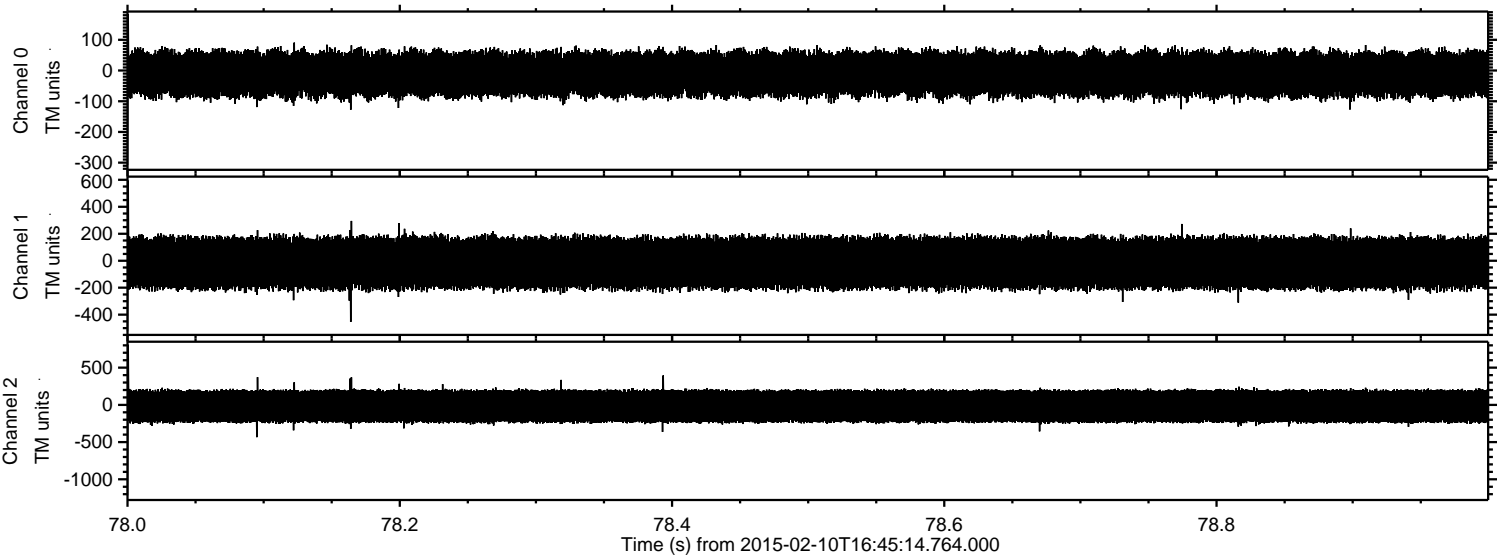


Processed Thu Feb 19 16:26:51 2015 by ELM ver.2012-10-06 from 001\_\_elm20150210\_164513\_\_dat00.bin





Processed Thu Feb 19 16:26:52 2015 by ELM ver.2012-10-06 from 001\_\_elm20150210\_164513\_\_dat00.bin



Channel 0  
mn: -308  
mx: 183  
 $\mu$ : -11.4  
 $\sigma$ : 41.9

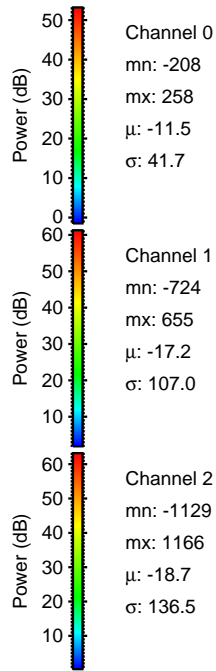
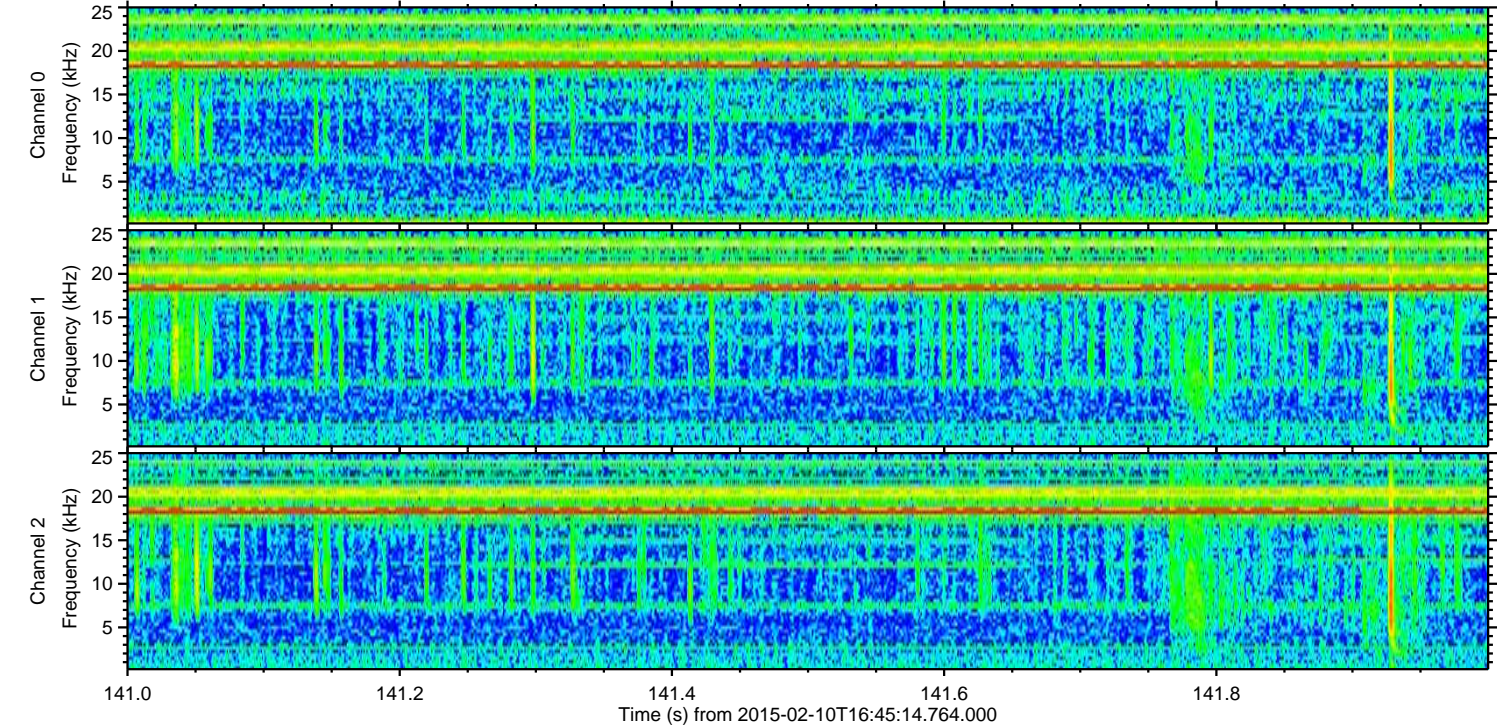
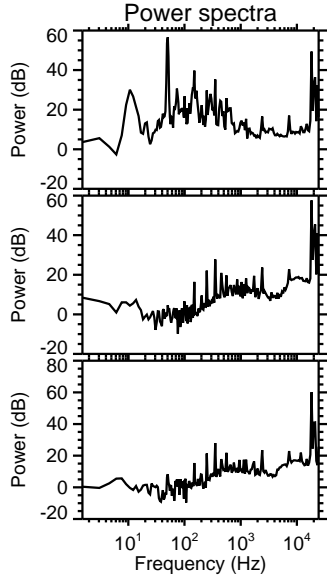
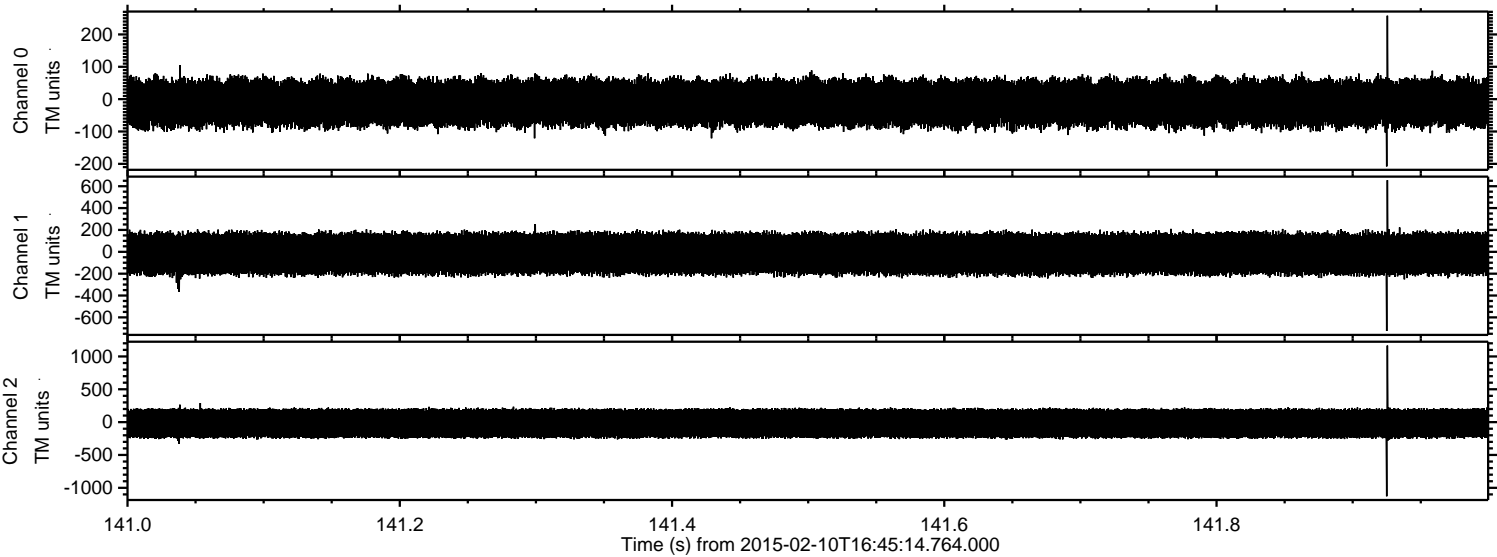
Channel 1  
mn: -524  
mx: 594  
 $\mu$ : -17.2  
 $\sigma$ : 108.6

Channel 2  
mn: -1217  
mx: 808  
 $\mu$ : -18.7  
 $\sigma$ : 134.9



ELMAVAN 3D WAVEFORMS (Measured data sampled at 50 kHz) 49701 packets of 144 samples from 2015-02-10T16:45:14.764.000. Part 142/144

Processed Thu Feb 19 16:26:53 2015 by ELM ver.2012-10-06 from 001\_\_elm20150210\_164513\_\_dat00.bin



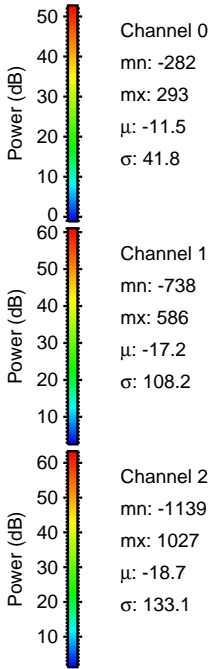
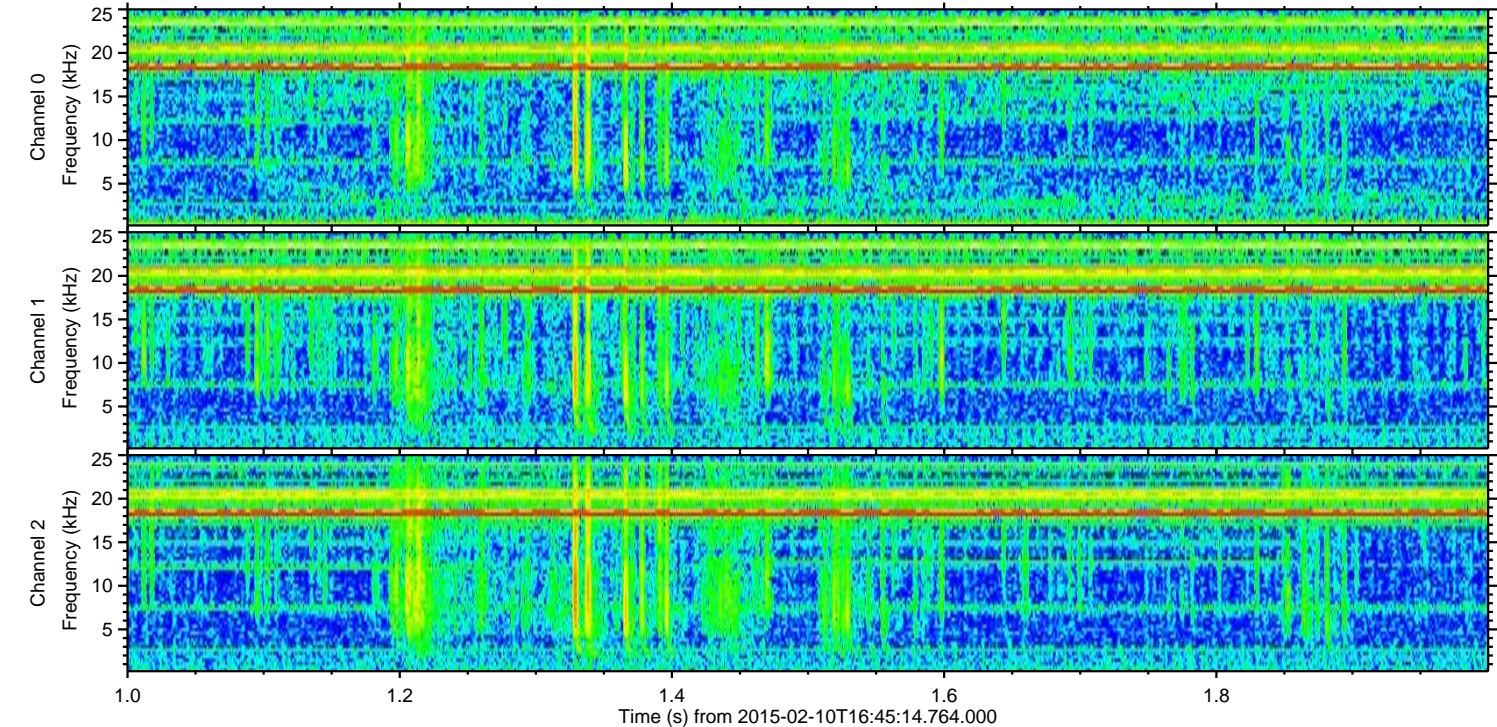
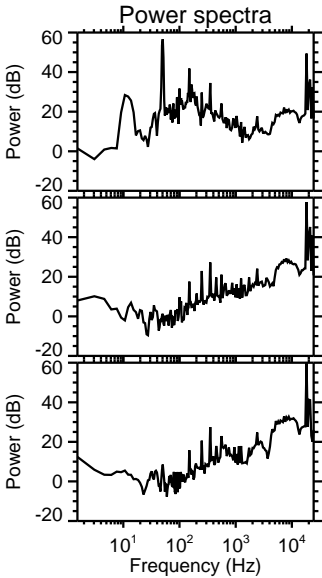
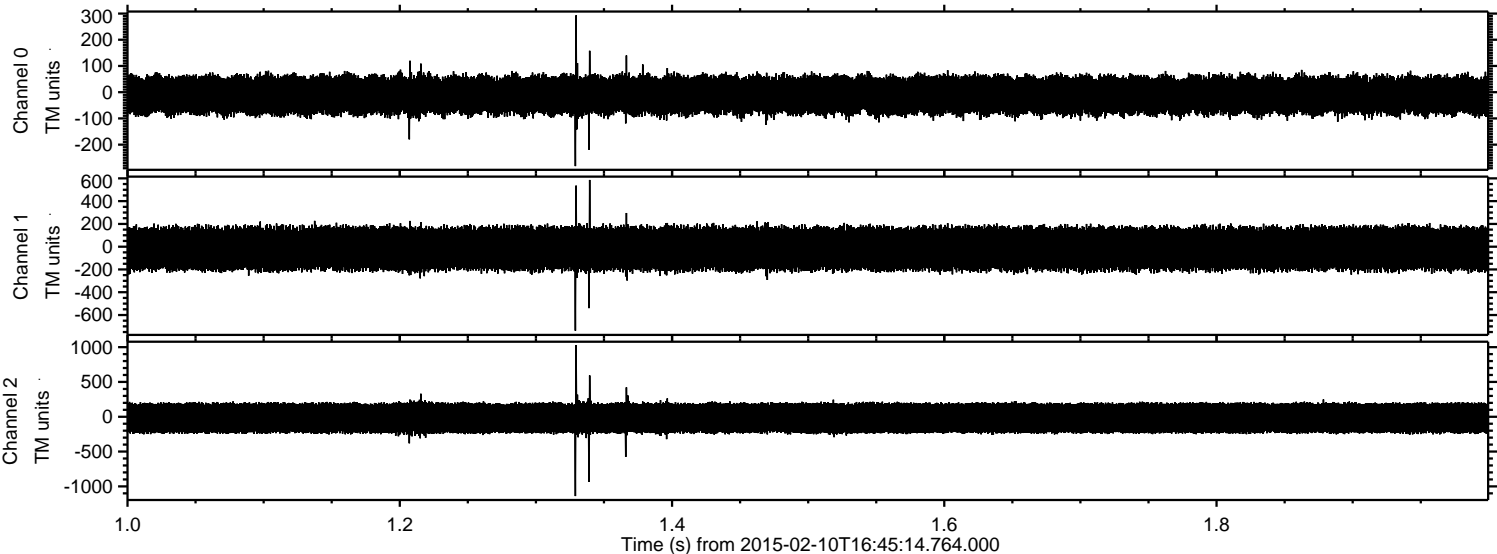
Channel 0  
mn: -208  
mx: 258  
 $\mu$ : -11.5  
 $\sigma$ : 41.7

Channel 1  
mn: -724  
mx: 655  
 $\mu$ : -17.2  
 $\sigma$ : 107.0

Channel 2  
mn: -1129  
mx: 1166  
 $\mu$ : -18.7  
 $\sigma$ : 136.5

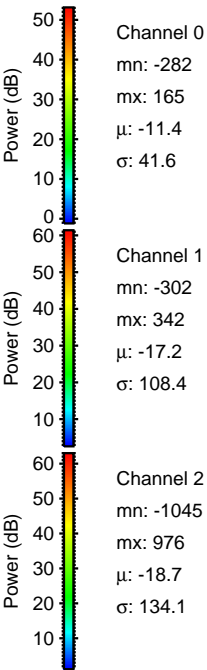
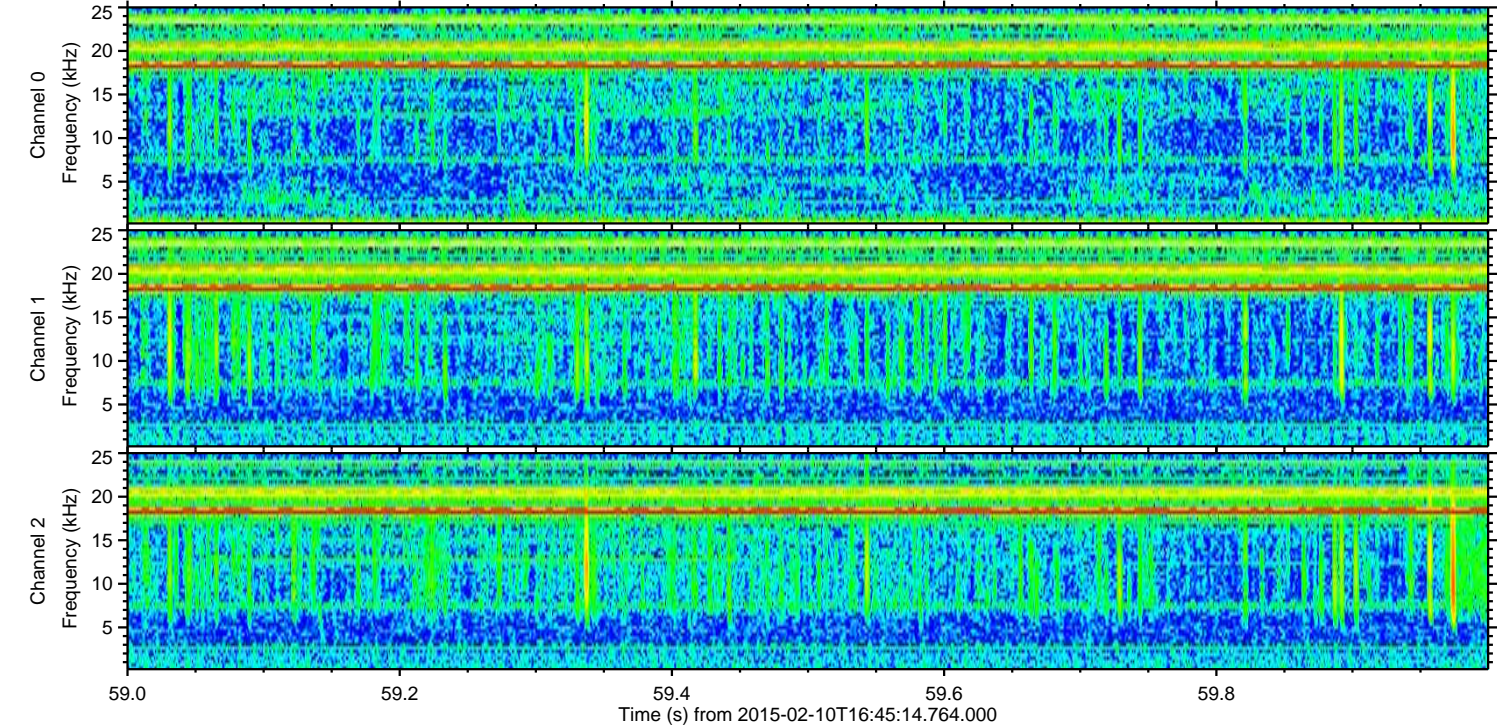
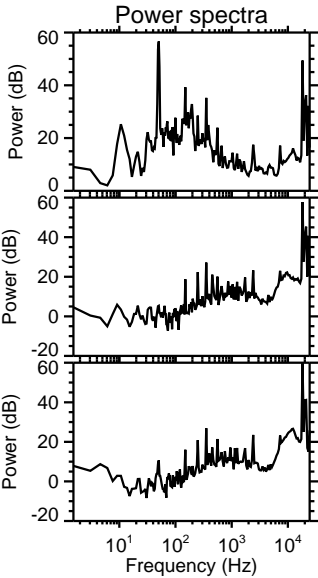
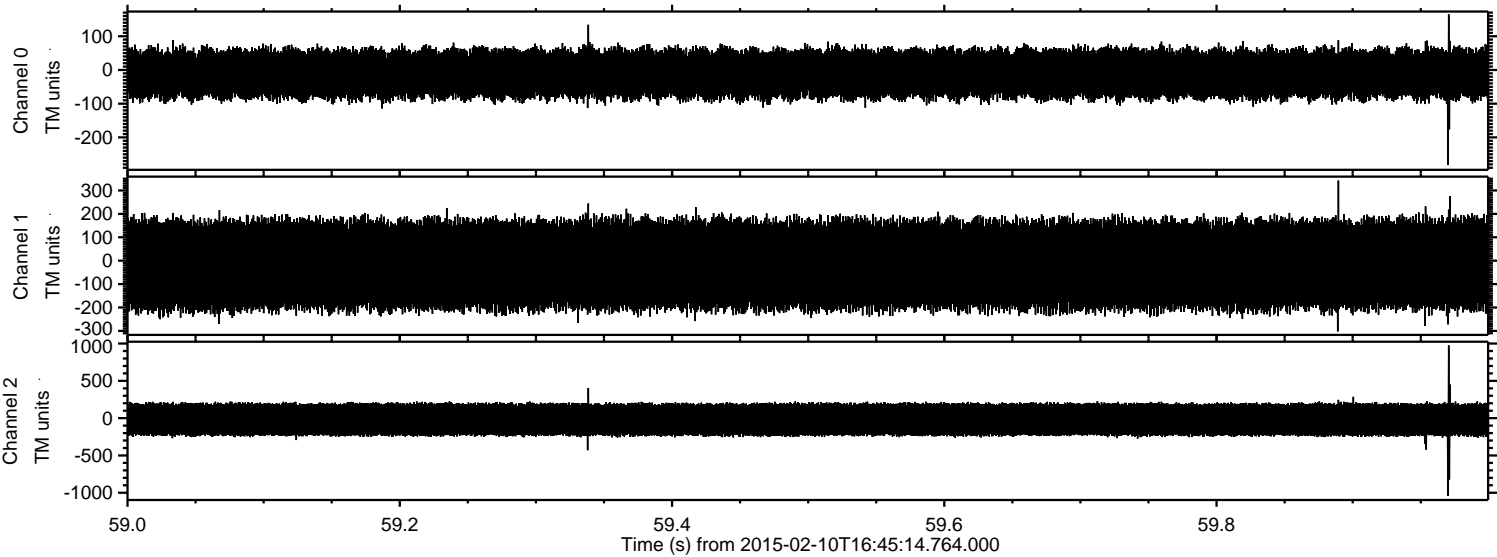


Processed Thu Feb 19 16:26:54 2015 by ELM ver.2012-10-06 from 001\_\_elm20150210\_164513\_\_dat00.bin





Processed Thu Feb 19 16:26:55 2015 by ELM ver.2012-10-06 from 001\_\_elm20150210\_164513\_\_dat00.bin





Processed Thu Feb 19 16:26:57 2015 by ELM ver.2012-10-06 from 001\_\_elm20150210\_164513\_\_dat00.bin

