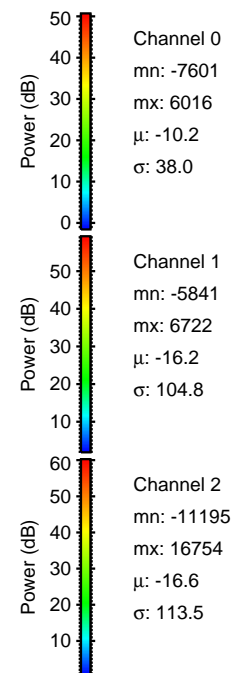
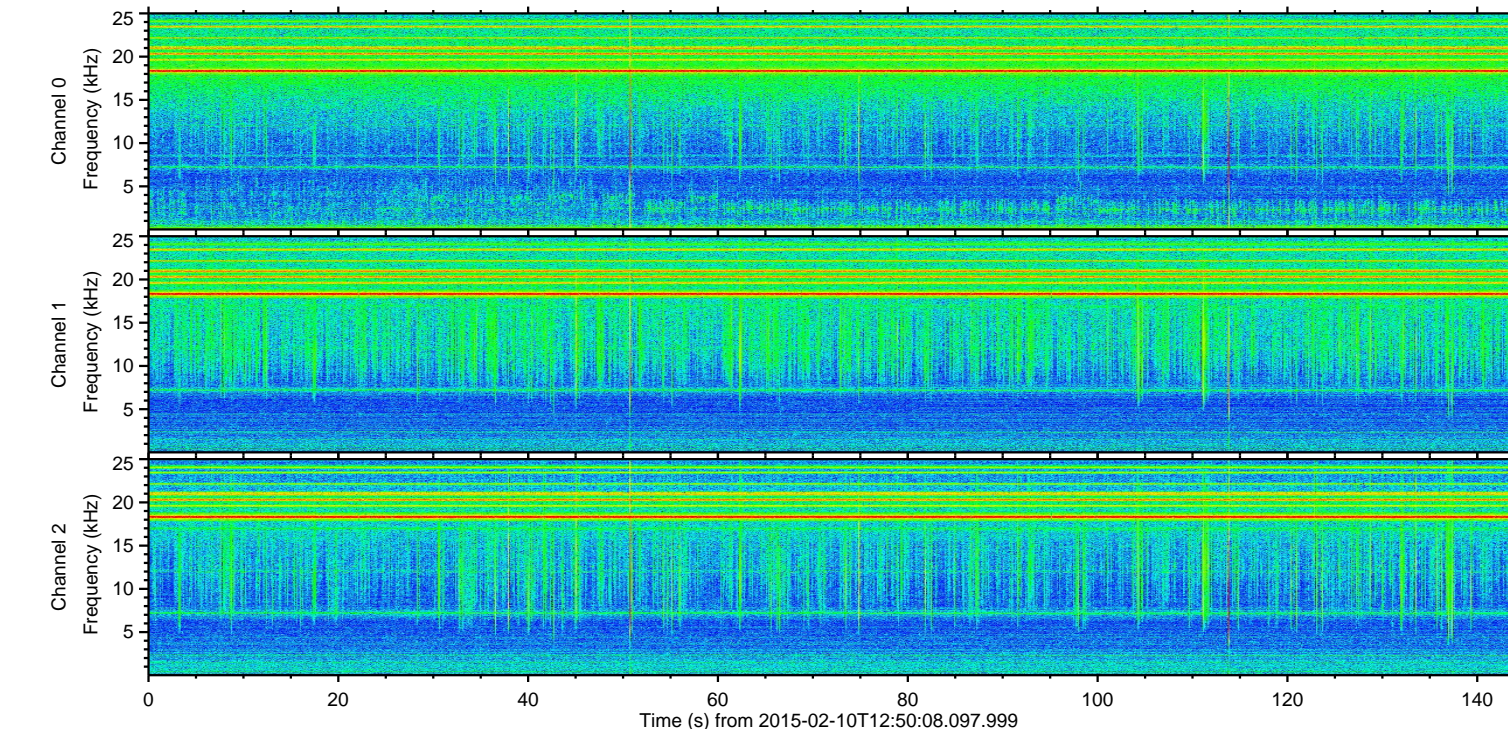
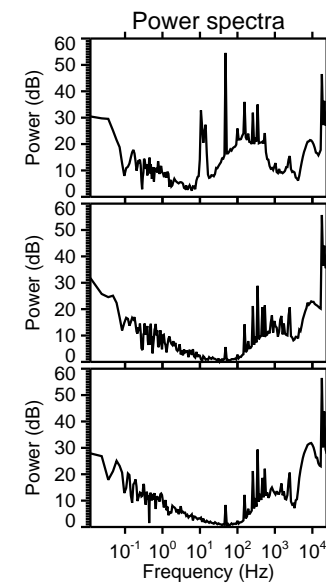
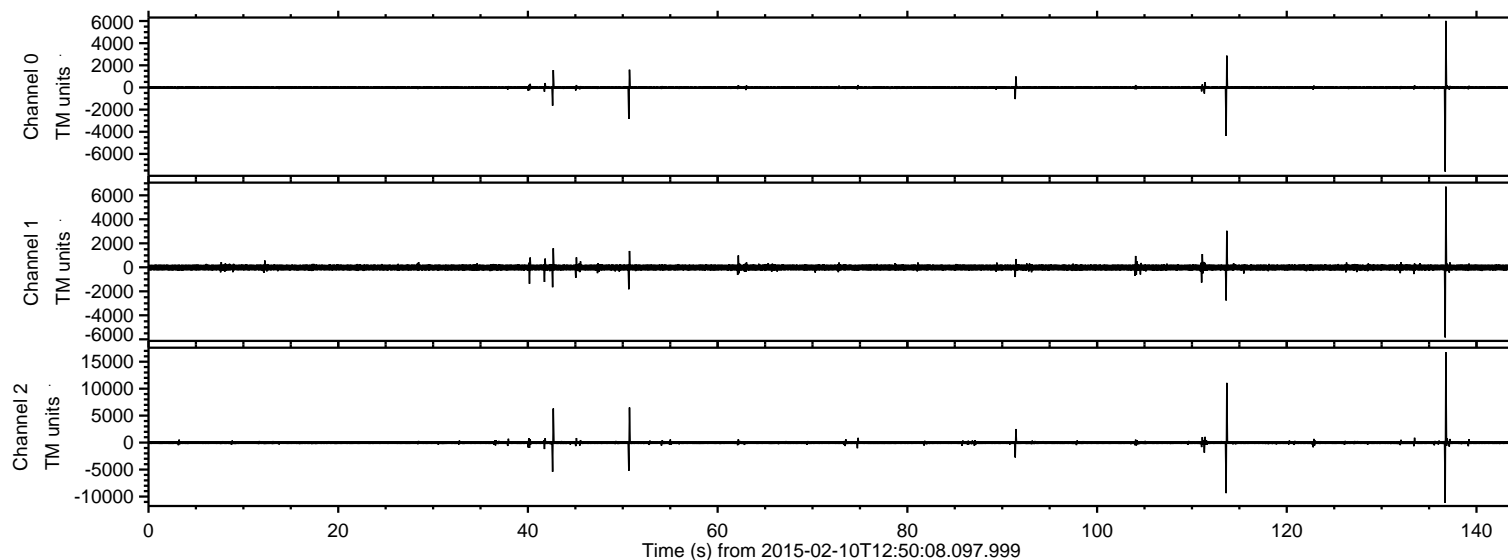


# ELMAVAN 3D WAVEFORMS (Measured data sampled at 50 kHz) 49806 packets of 144 samples from 2015-02-10T12:50:08.097.999.

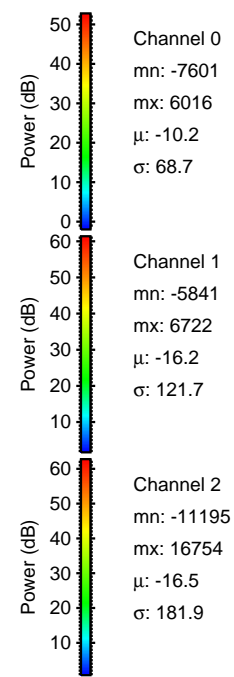
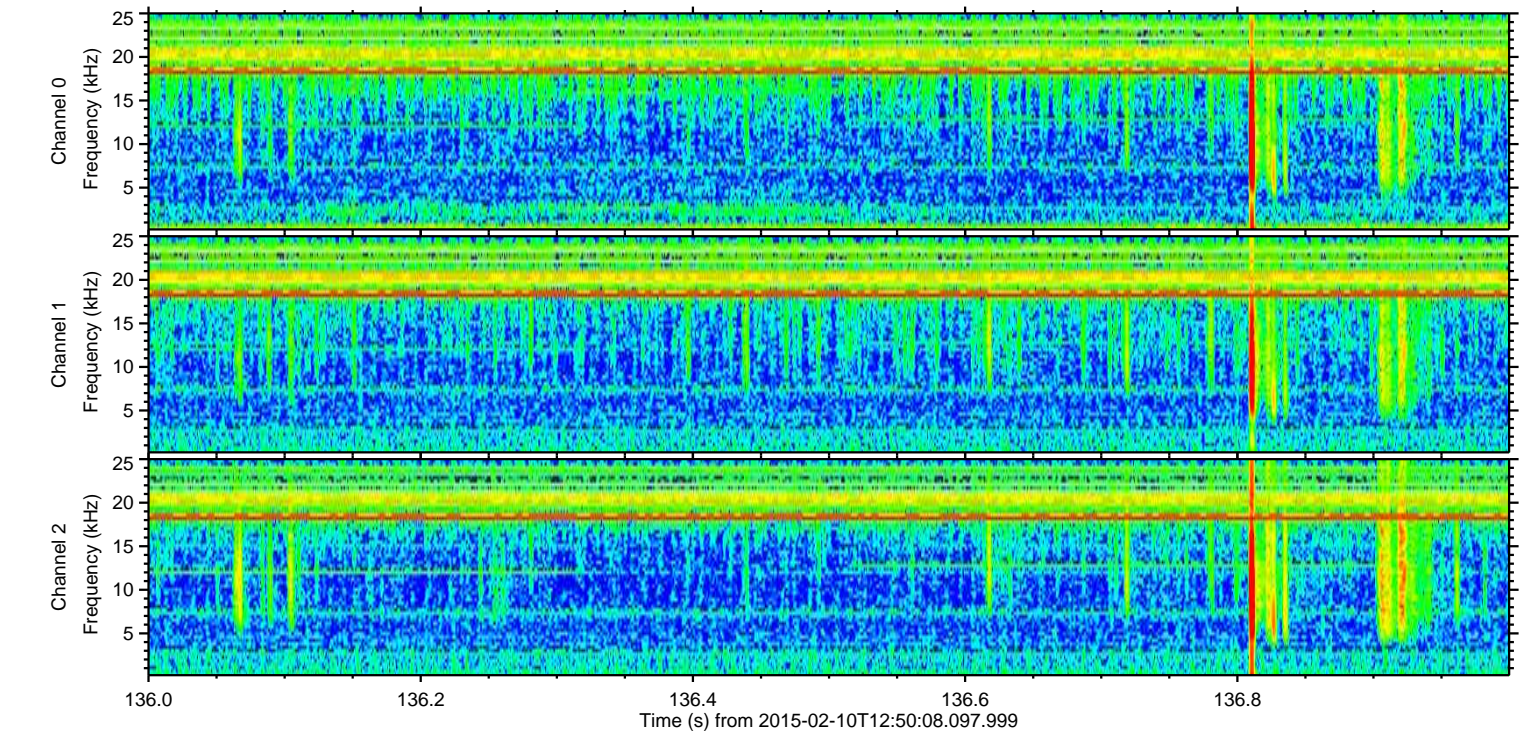
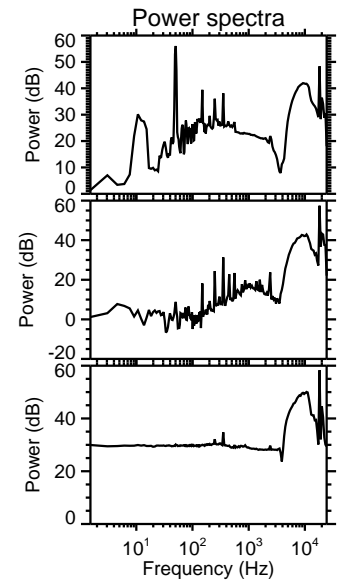
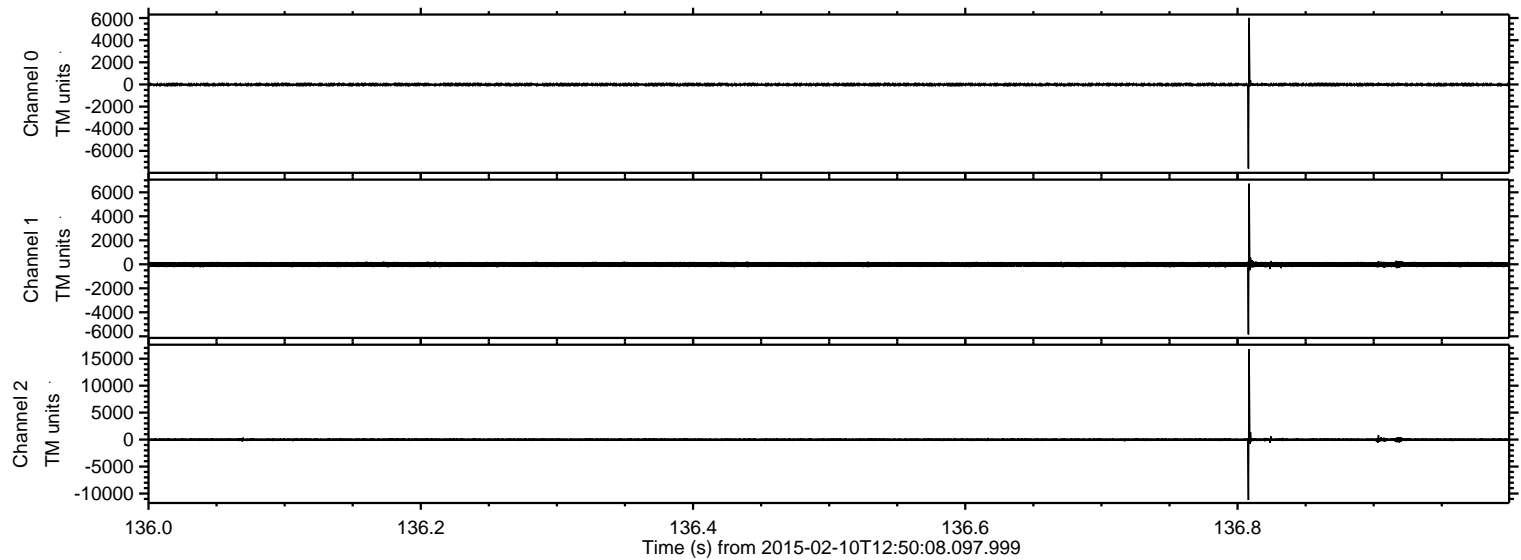
Processed Thu Feb 19 15:17:21 2015 by ELM ver.2012-10-06 from 001\_\_elm20150210\_125007\_\_dat00.bin





ELMAVAN 3D WAVEFORMS (Measured data sampled at 50 kHz) 49806 packets of 144 samples from 2015-02-10T12:50:08.097.999. Part 137/144

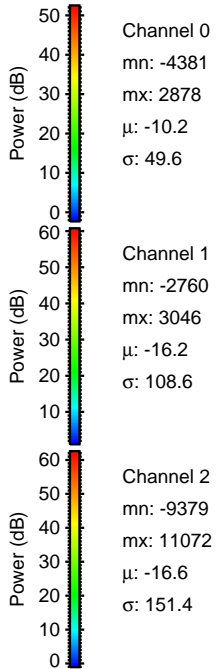
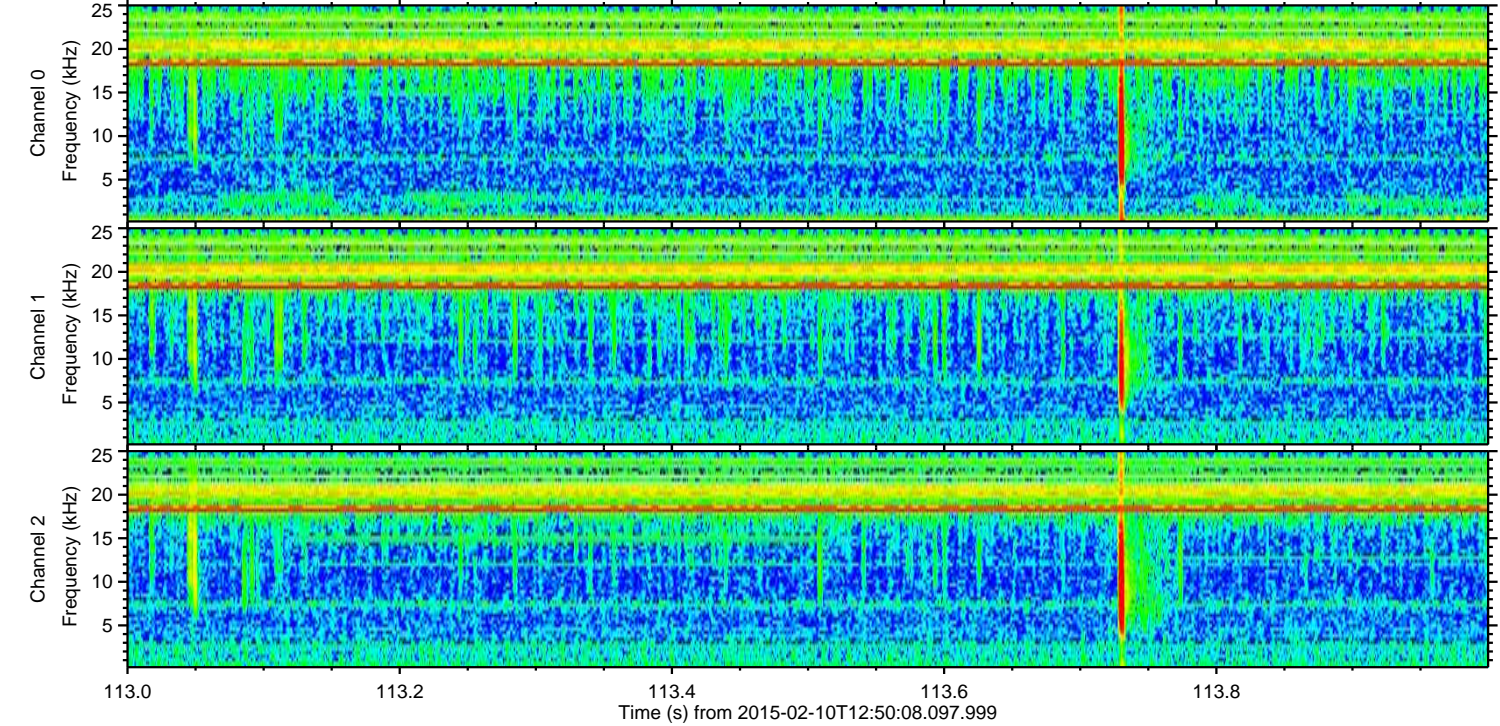
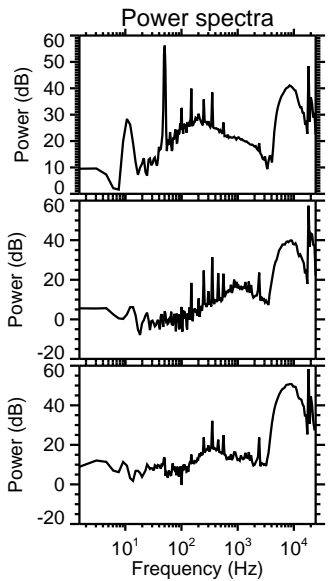
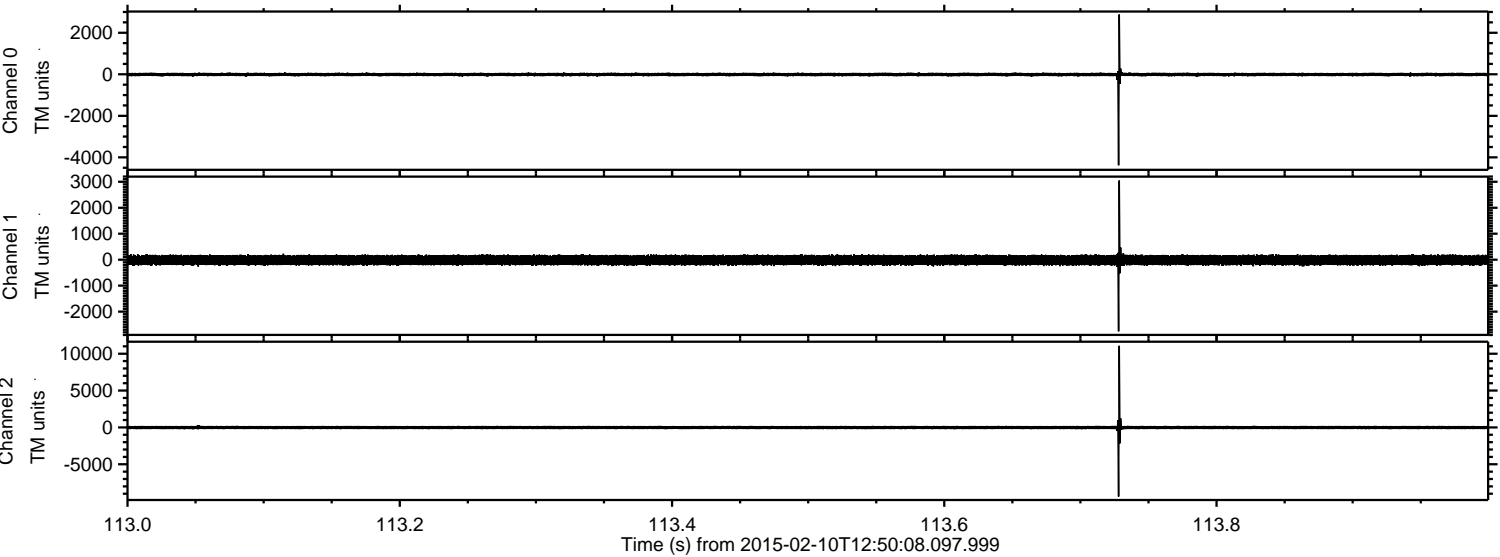
Processed Thu Feb 19 15:17:33 2015 by ELM ver.2012-10-06 from 001\_\_elm20150210\_125007\_\_dat00.bin





ELMAVAN 3D WAVEFORMS (Measured data sampled at 50 kHz) 49806 packets of 144 samples from 2015-02-10T12:50:08.097.999. Part 114/144

Processed Thu Feb 19 15:17:33 2015 by ELM ver.2012-10-06 from 001\_\_elm20150210\_125007\_\_dat00.bin



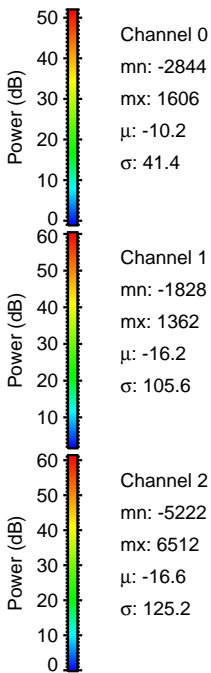
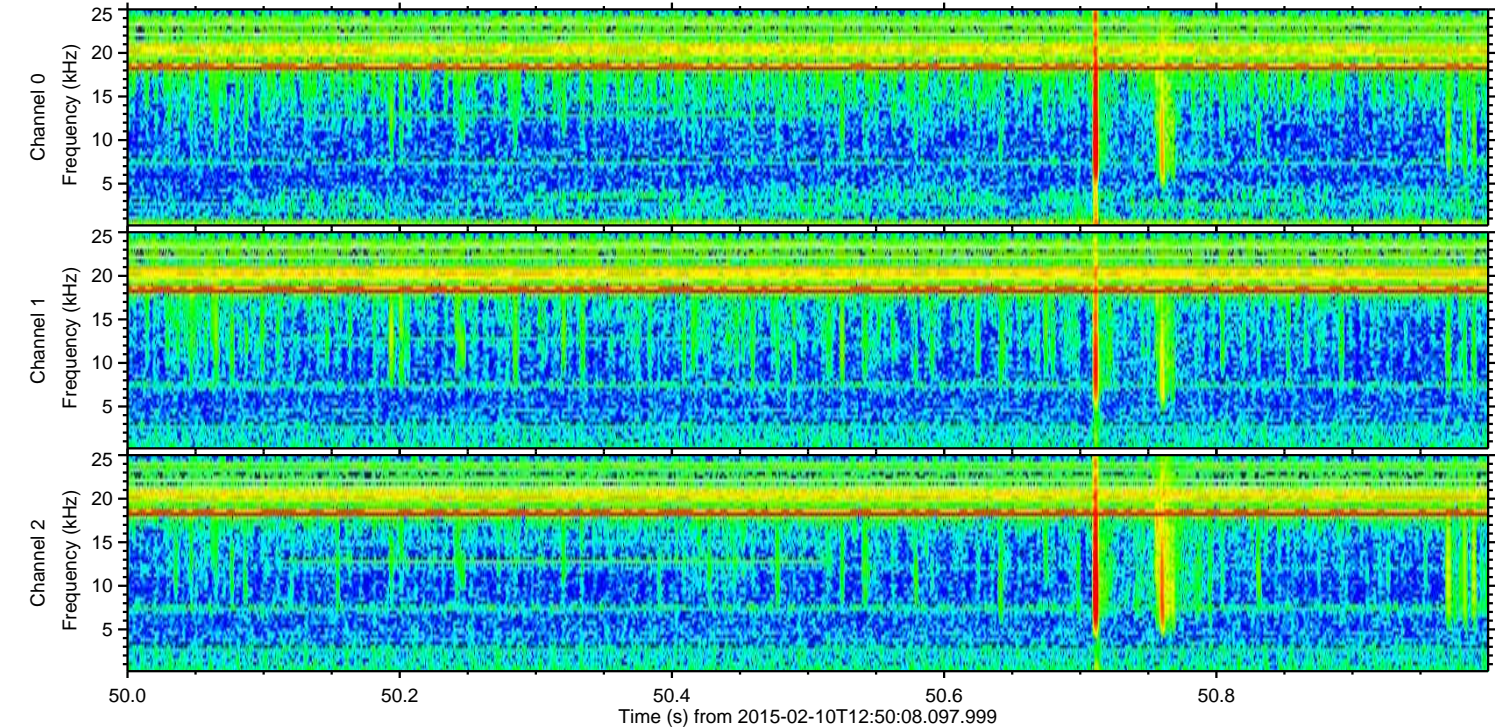
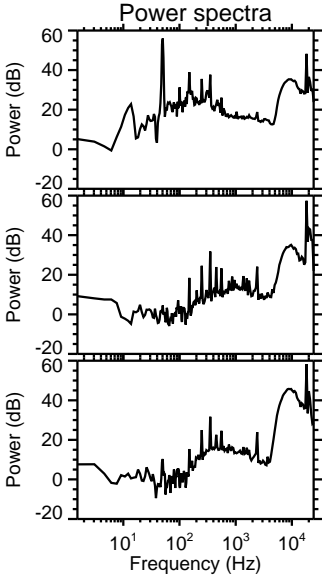
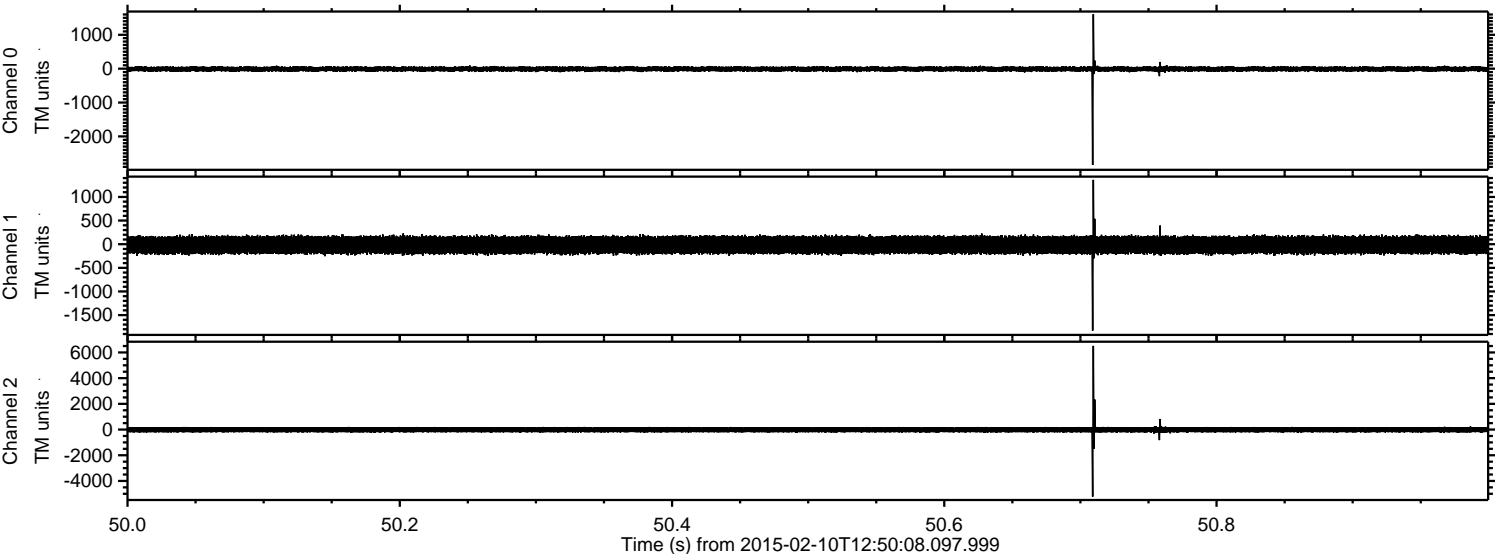
Channel 0  
mn: -4381  
mx: 2878  
 $\mu$ : -10.2  
 $\sigma$ : 49.6

Channel 1  
mn: -2760  
mx: 3046  
 $\mu$ : -16.2  
 $\sigma$ : 108.6

Channel 2  
mn: -9379  
mx: 11072  
 $\mu$ : -16.6  
 $\sigma$ : 151.4



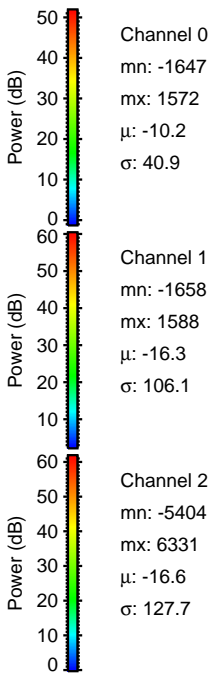
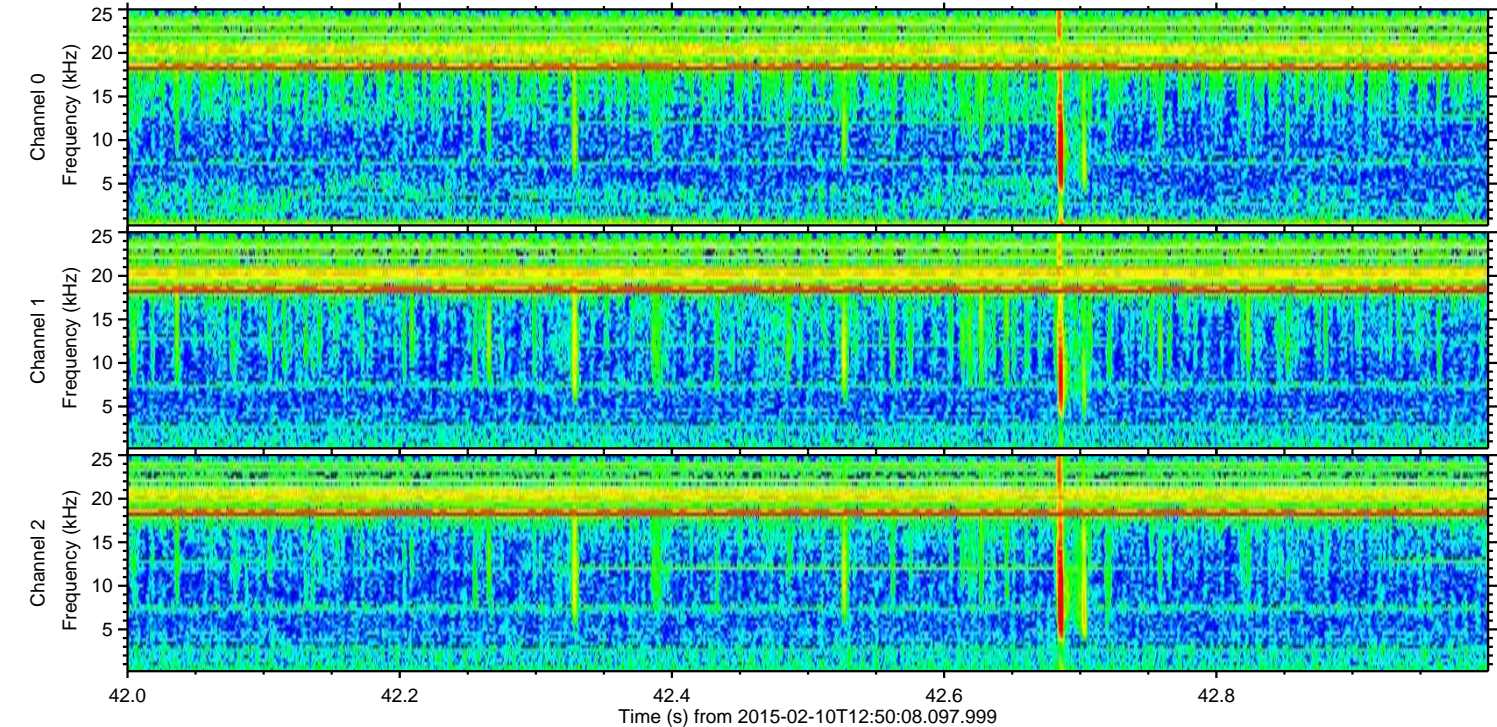
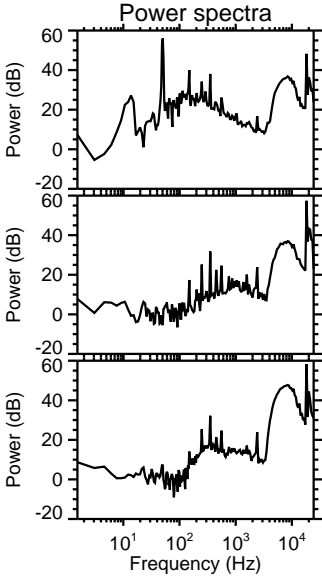
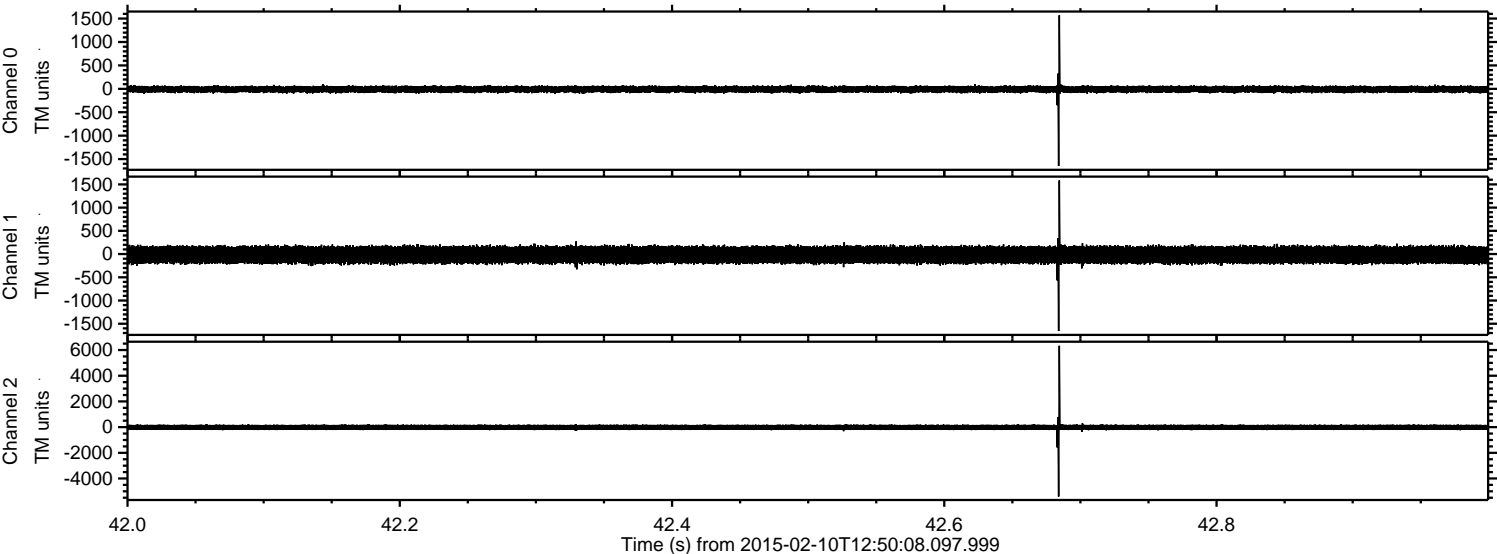
Processed Thu Feb 19 15:17:34 2015 by ELM ver.2012-10-06 from 001\_\_elm20150210\_125007\_\_dat00.bin





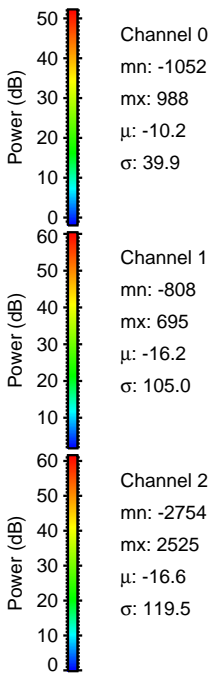
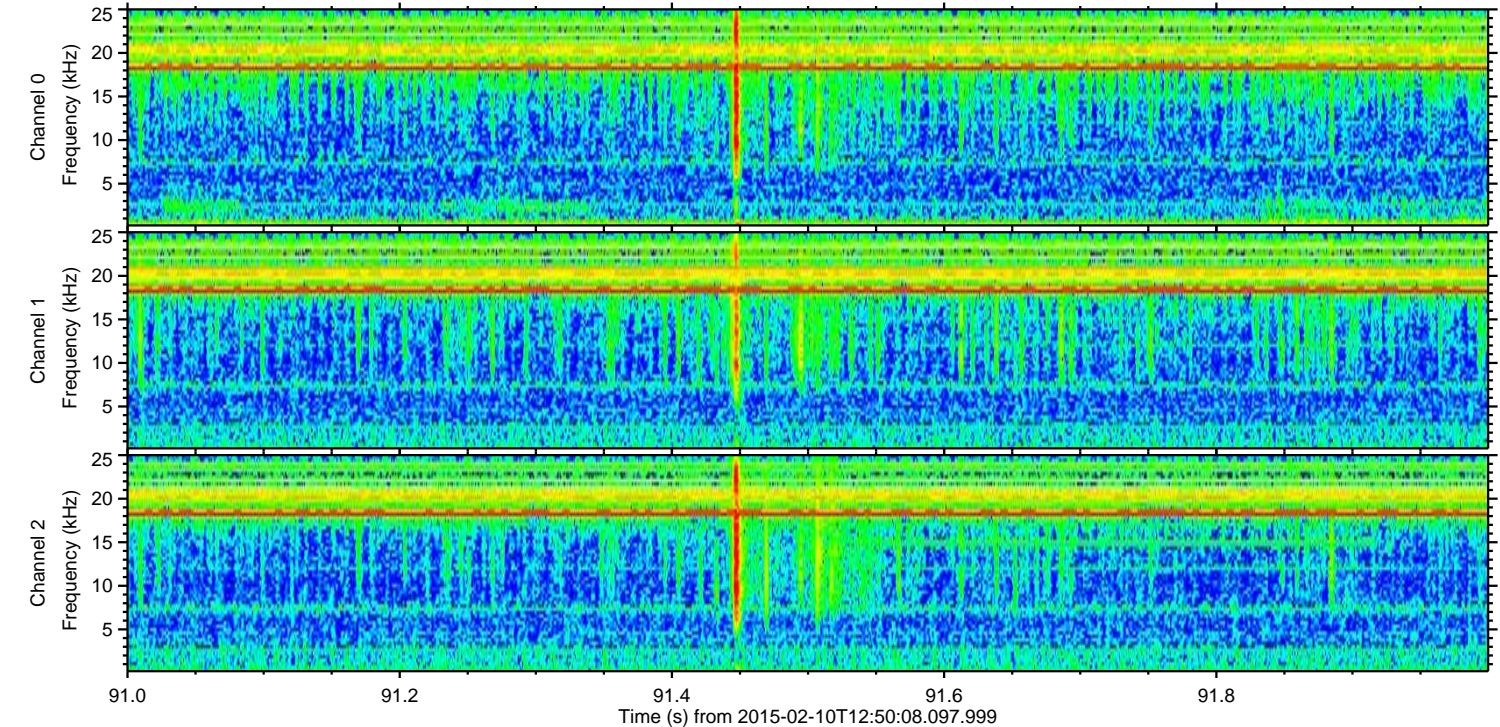
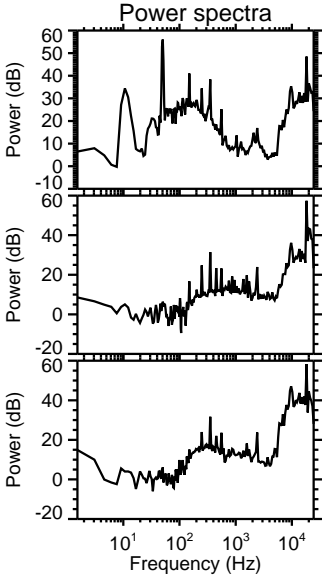
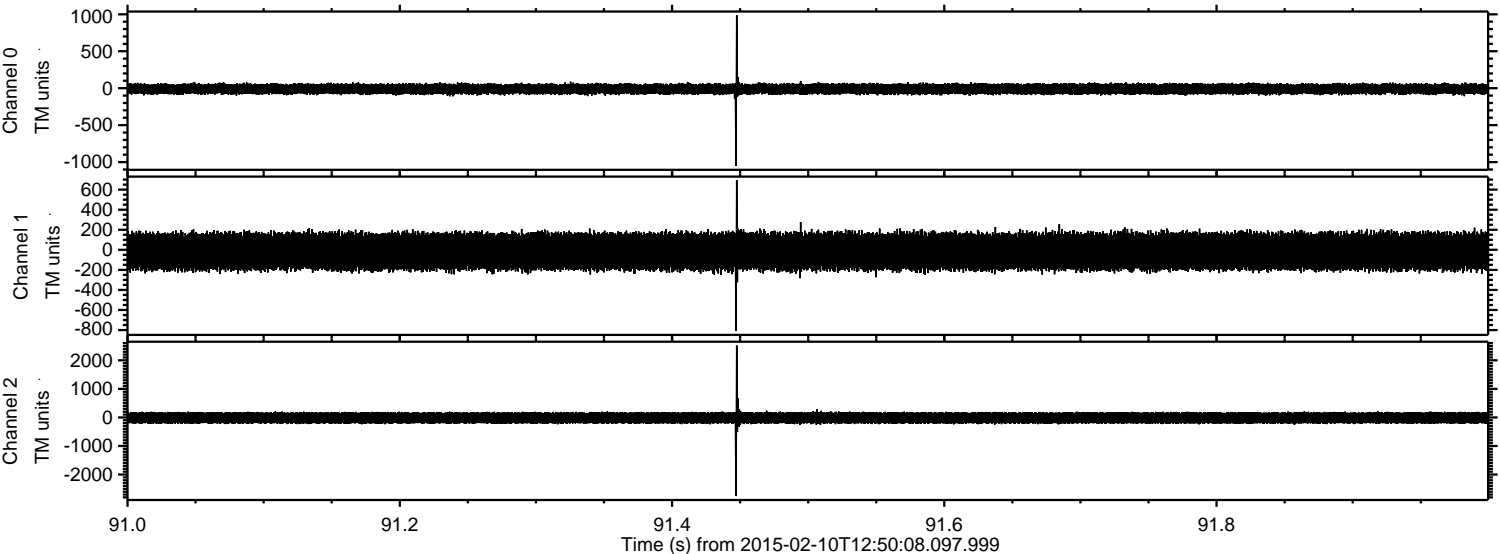
ELMAVAN 3D WAVEFORMS (Measured data sampled at 50 kHz) 49806 packets of 144 samples from 2015-02-10T12:50:08.097.999. Part 43/144

Processed Thu Feb 19 15:17:35 2015 by ELM ver.2012-10-06 from 001\_\_elm20150210\_125007\_\_dat00.bin





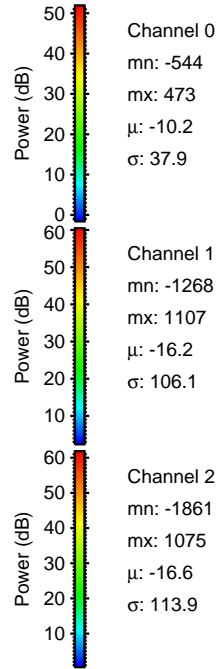
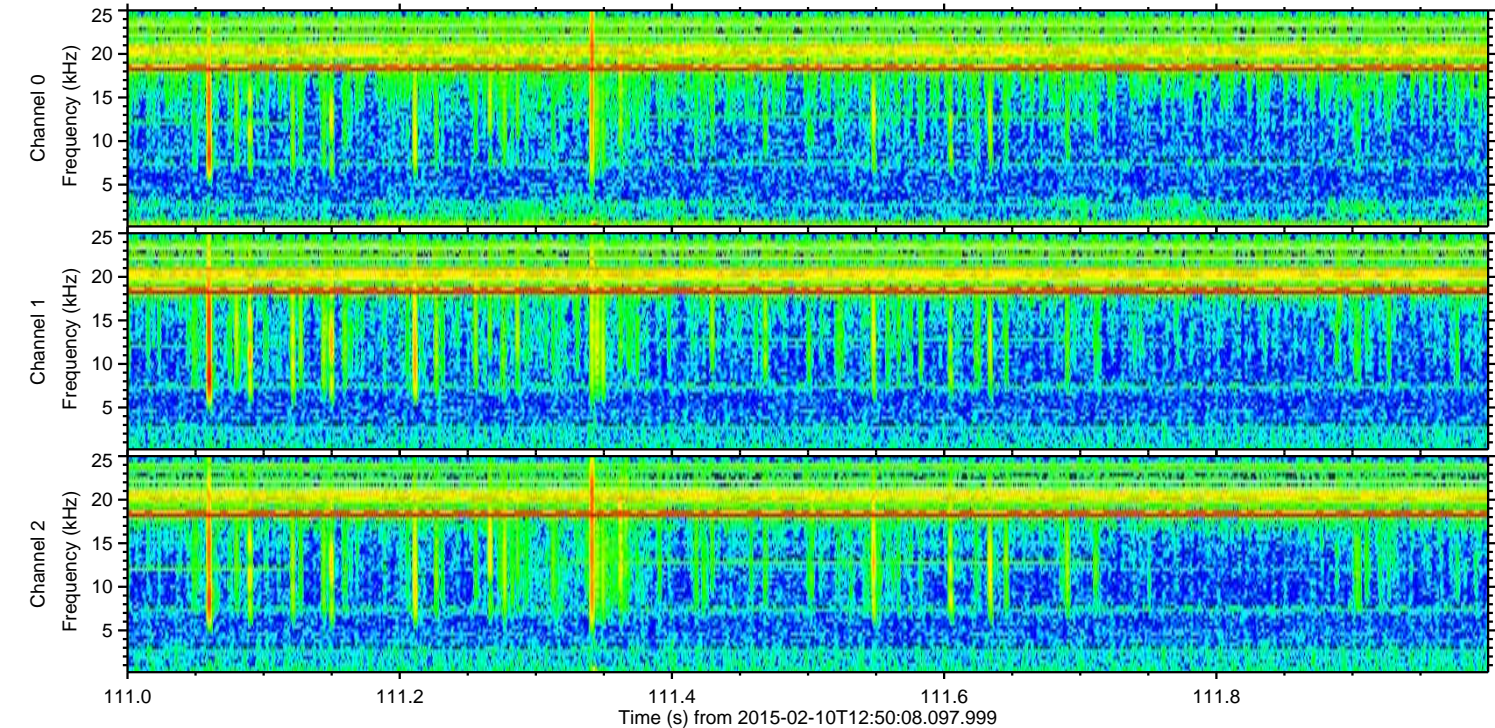
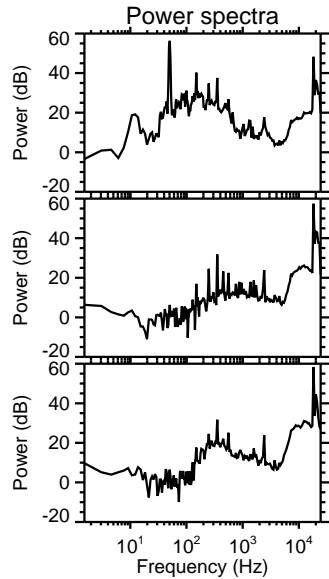
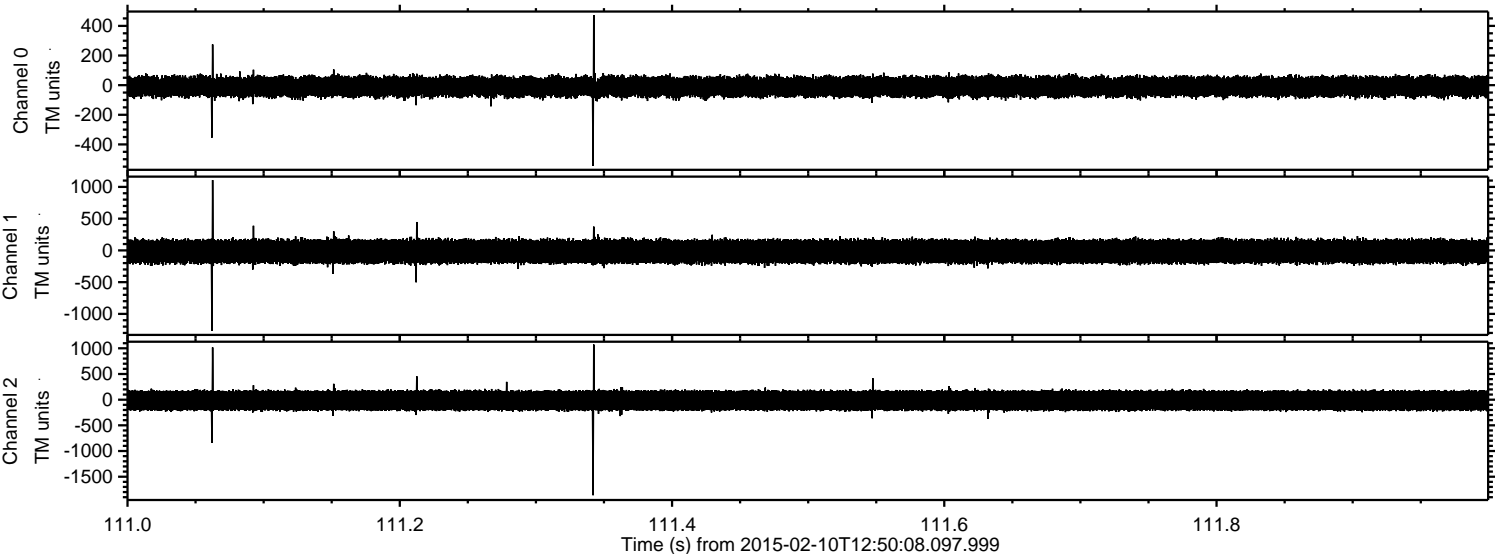
Processed Thu Feb 19 15:17:36 2015 by ELM ver.2012-10-06 from 001\_\_elm20150210\_125007\_\_dat00.bin





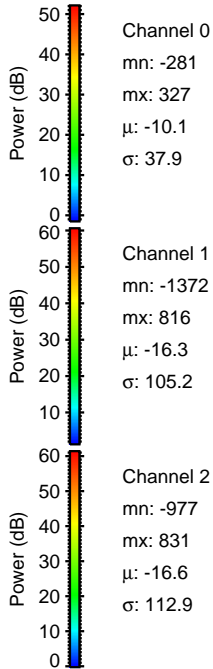
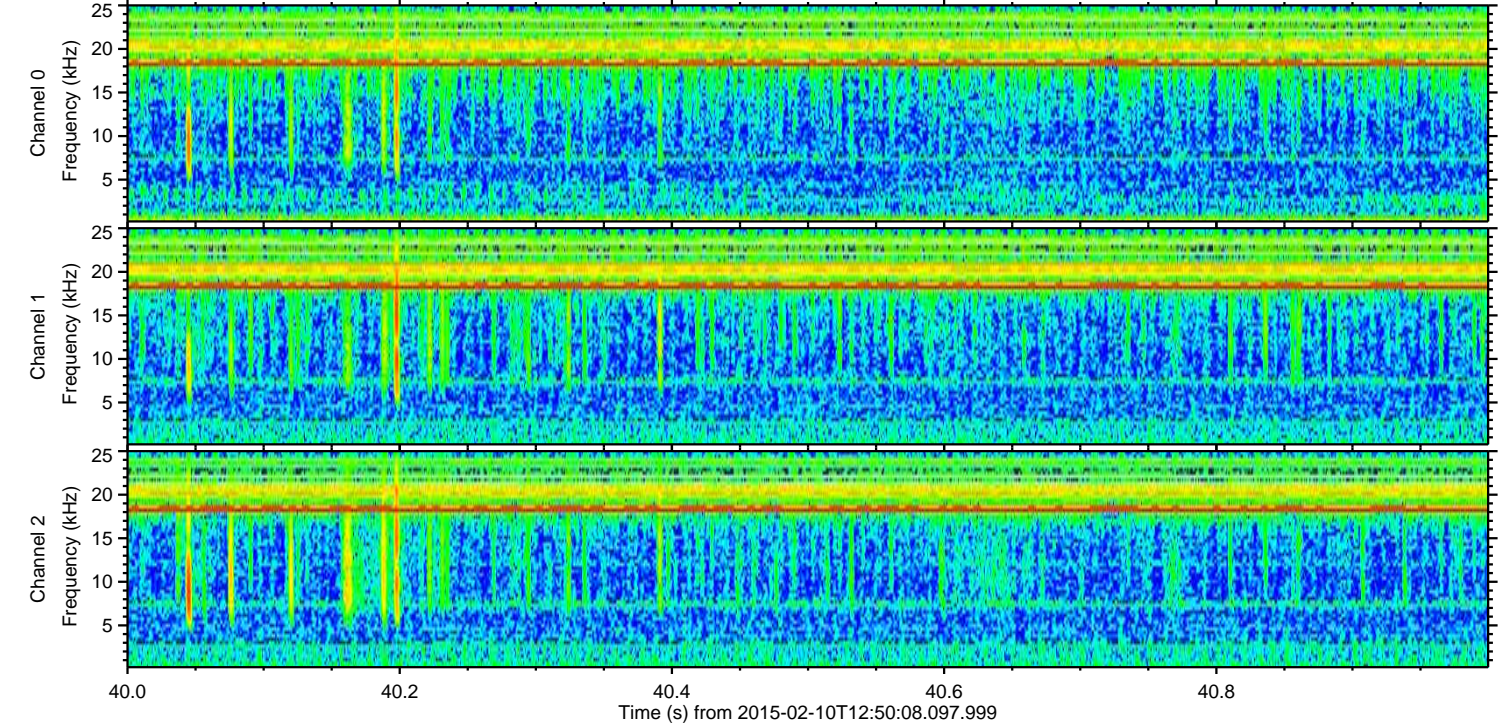
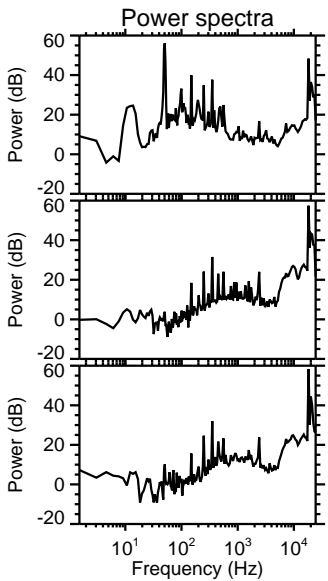
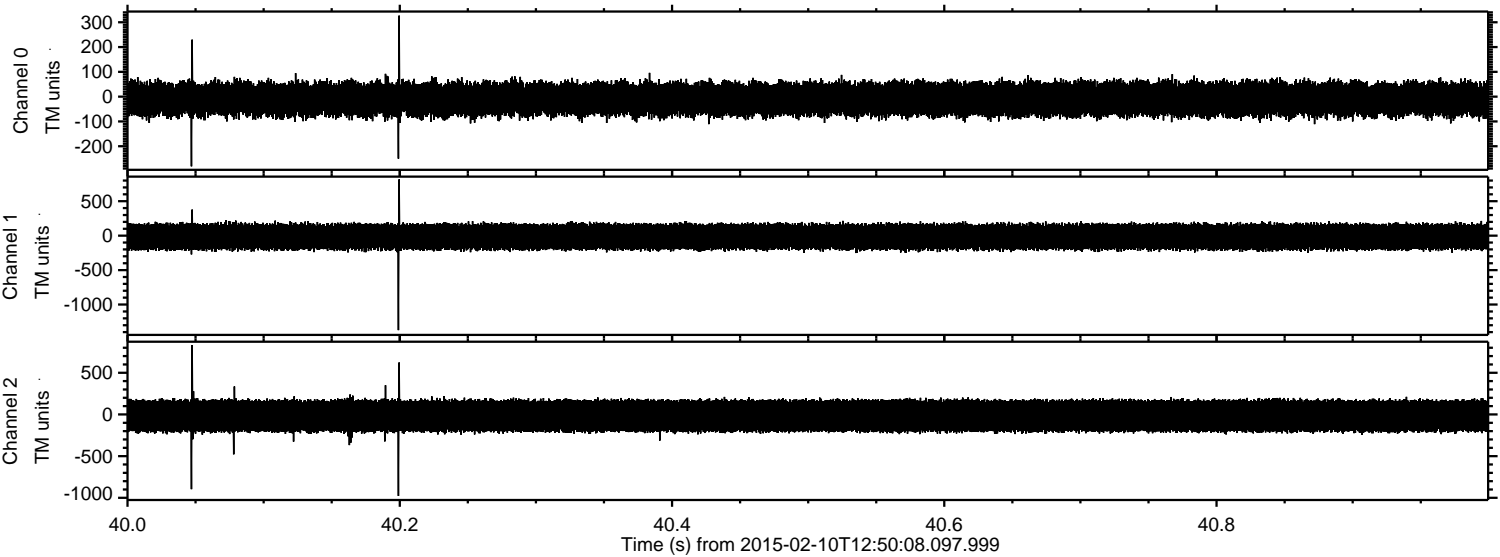
ELMAVAN 3D WAVEFORMS (Measured data sampled at 50 kHz) 49806 packets of 144 samples from 2015-02-10T12:50:08.097.999. Part 112/144

Processed Thu Feb 19 15:17:37 2015 by ELM ver.2012-10-06 from 001\_\_elm20150210\_125007\_\_dat00.bin





Processed Thu Feb 19 15:17:38 2015 by ELM ver.2012-10-06 from 001\_\_elm20150210\_125007\_\_dat00.bin



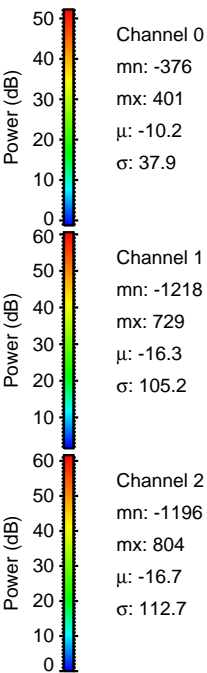
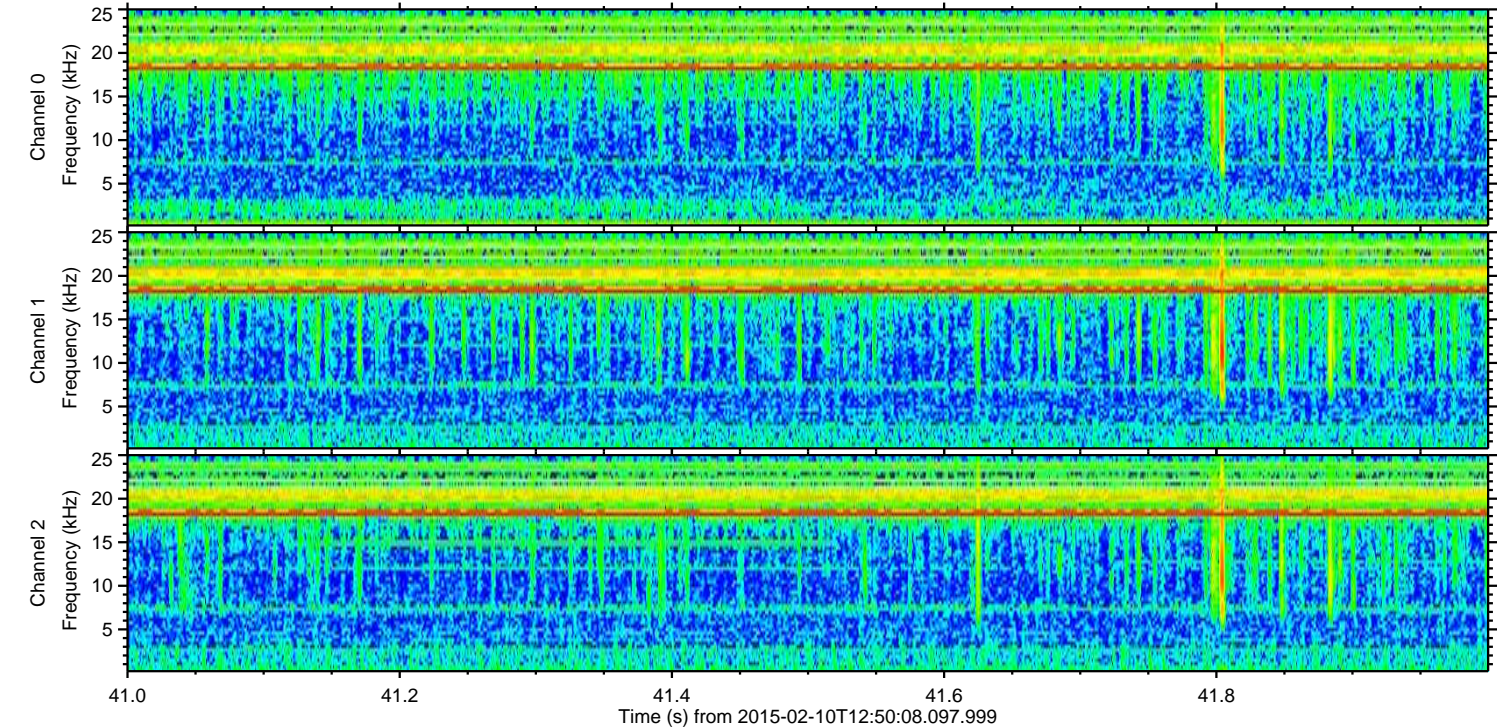
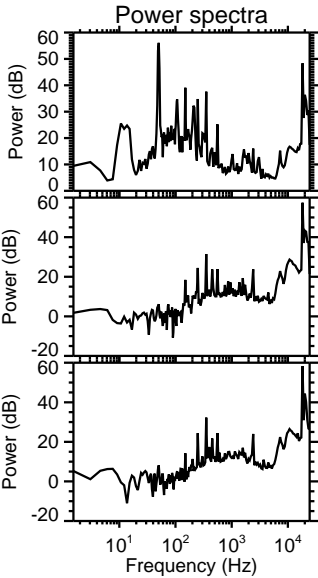
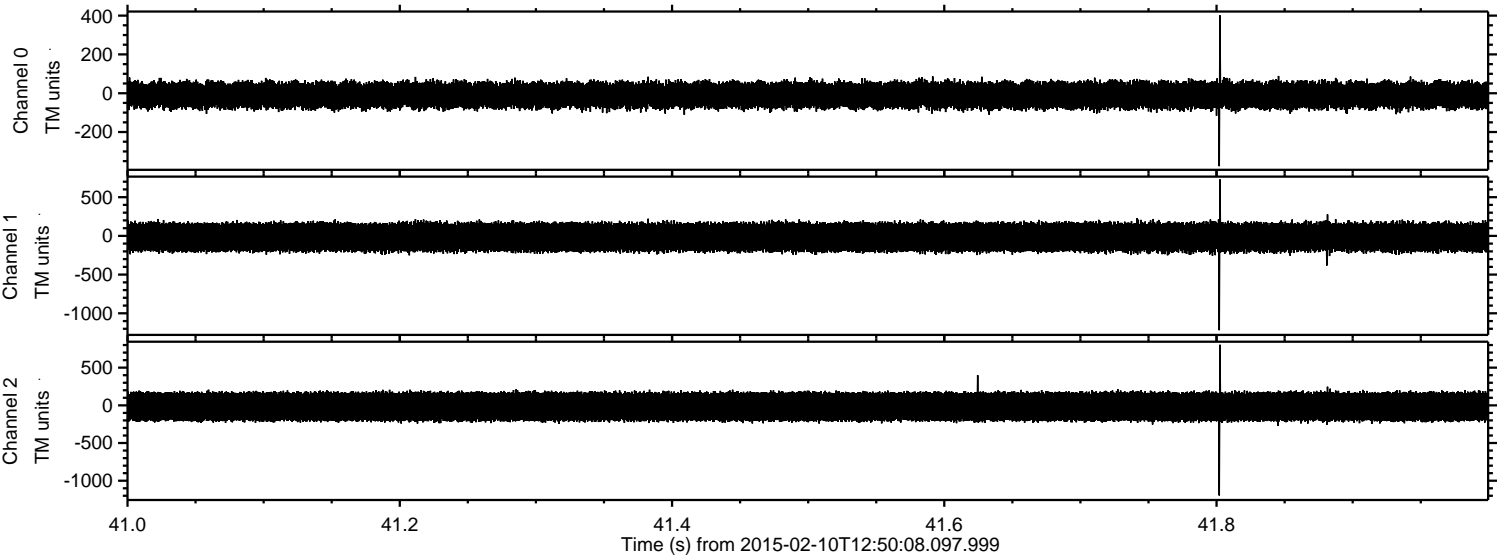
Channel 0  
mn: -281  
mx: 327  
 $\mu$ : -10.1  
 $\sigma$ : 37.9

Channel 1  
mn: -1372  
mx: 816  
 $\mu$ : -16.3  
 $\sigma$ : 105.2

Channel 2  
mn: -977  
mx: 831  
 $\mu$ : -16.6  
 $\sigma$ : 112.9

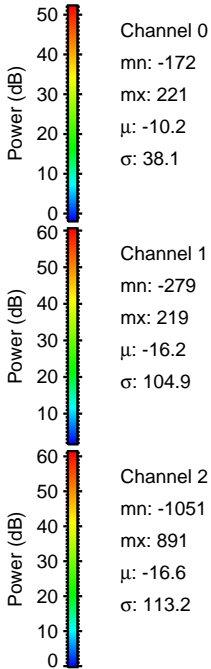
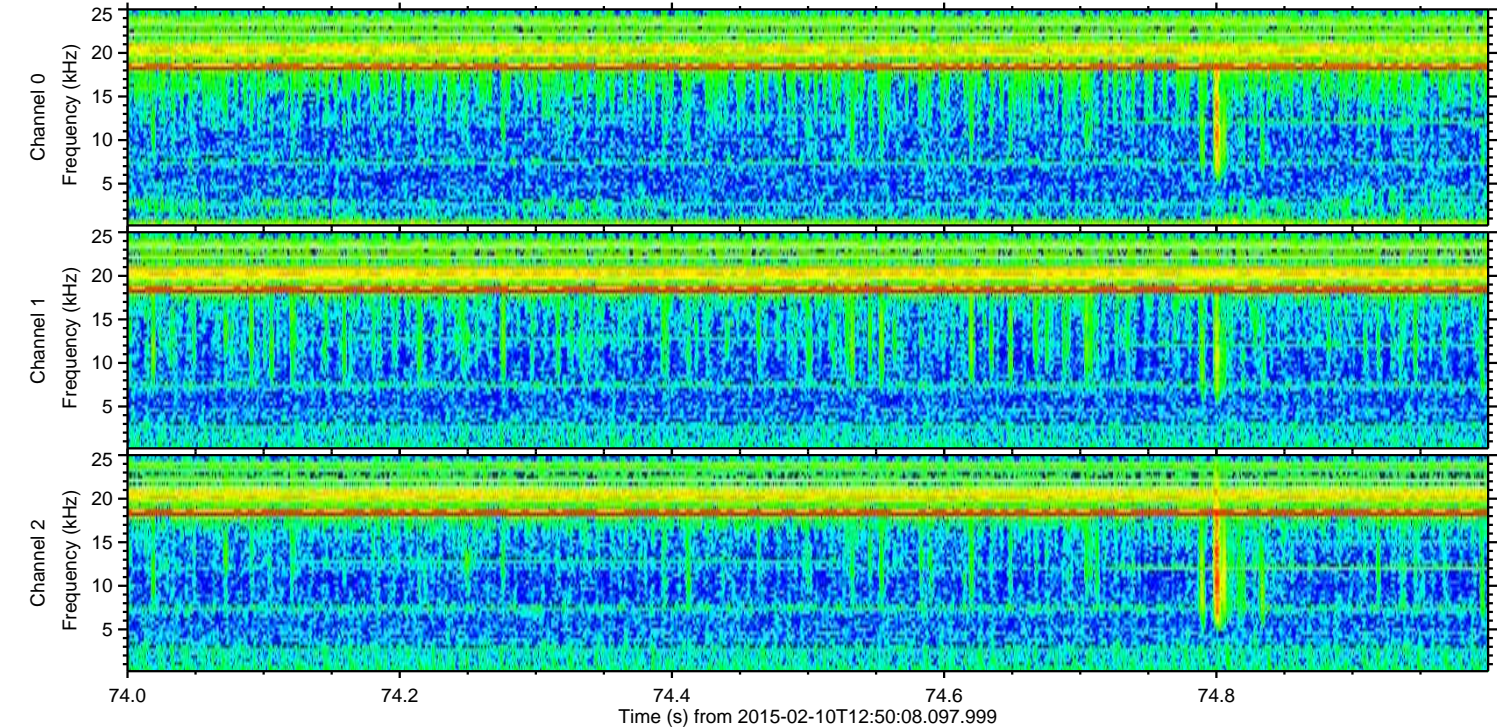
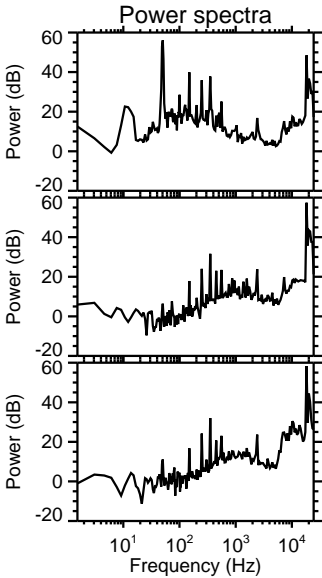
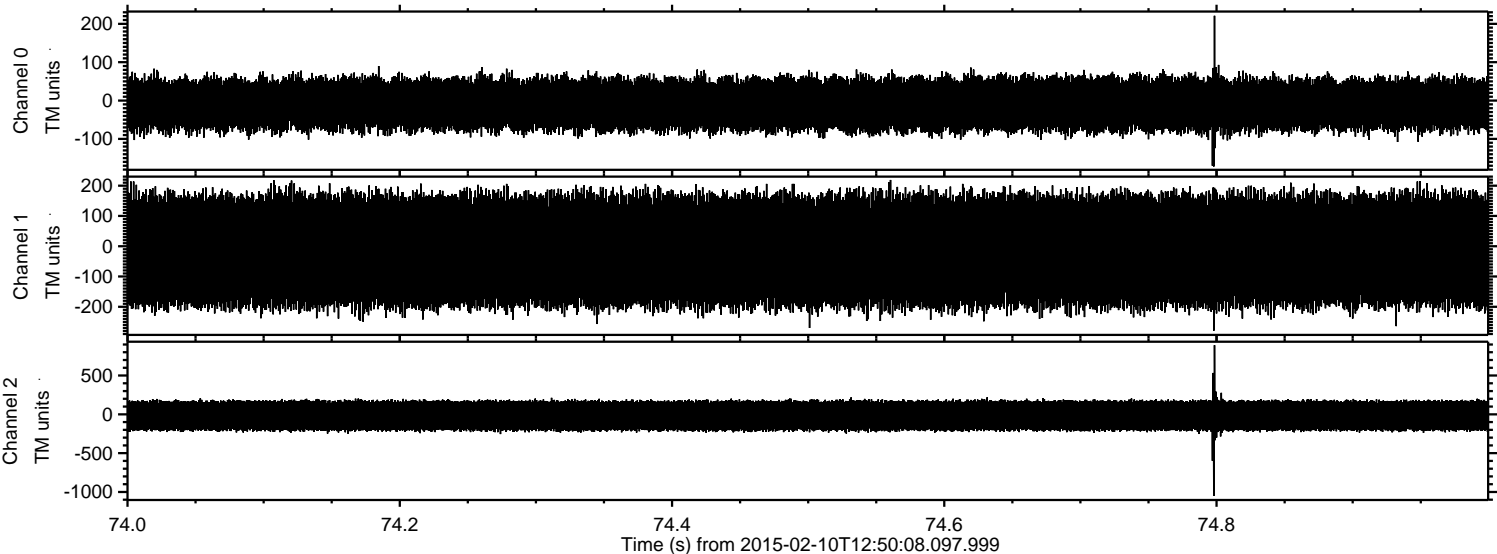


Processed Thu Feb 19 15:17:39 2015 by ELM ver.2012-10-06 from 001\_\_elm20150210\_125007\_\_dat00.bin





Processed Thu Feb 19 15:17:40 2015 by ELM ver.2012-10-06 from 001\_\_elm20150210\_125007\_\_dat00.bin





Processed Thu Feb 19 15:17:41 2015 by ELM ver.2012-10-06 from 001\_\_elm20150210\_125007\_\_dat00.bin

