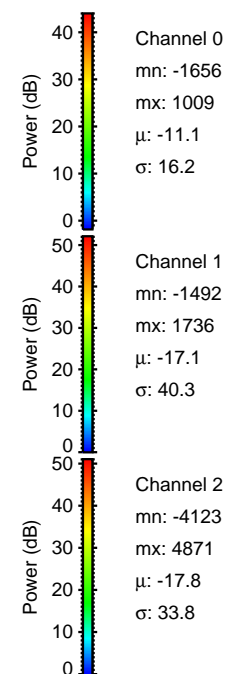
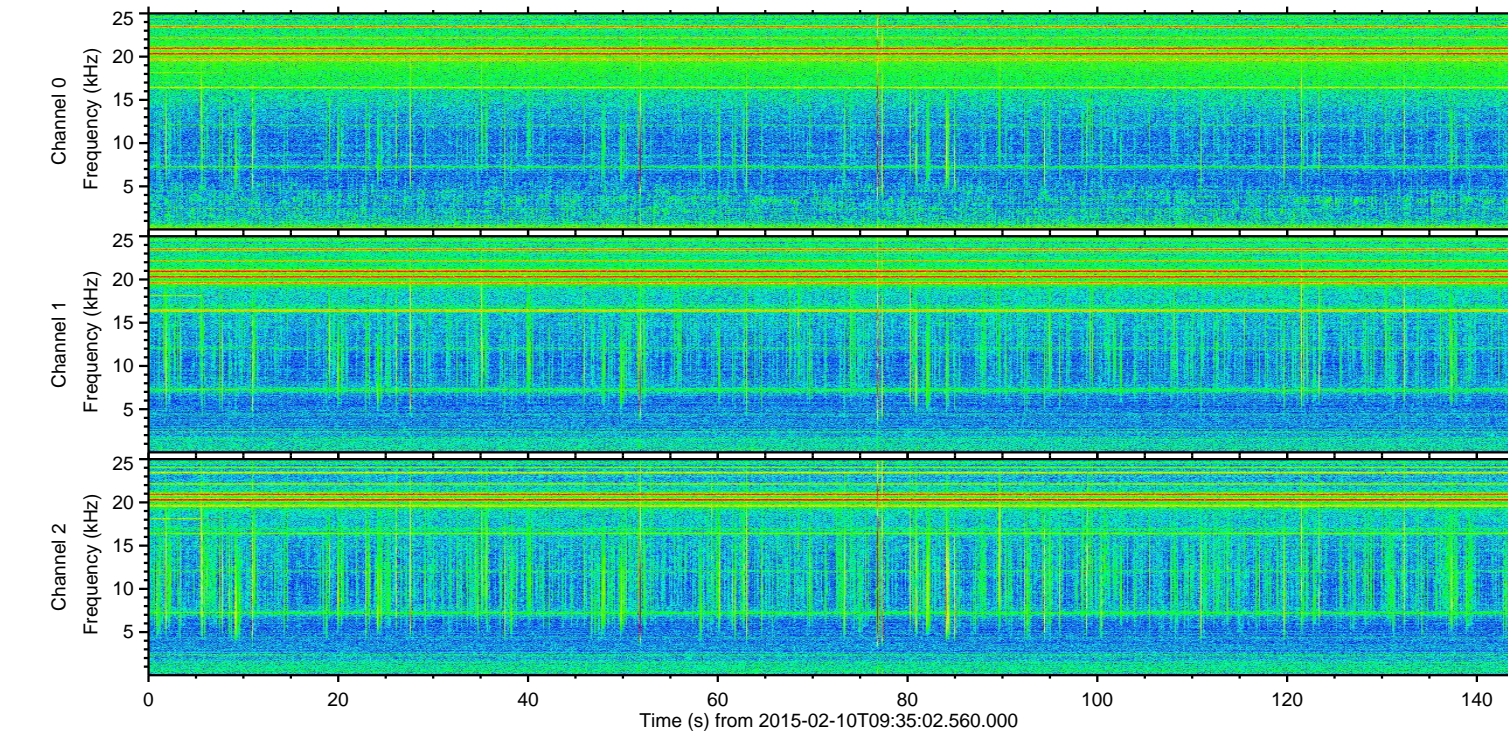
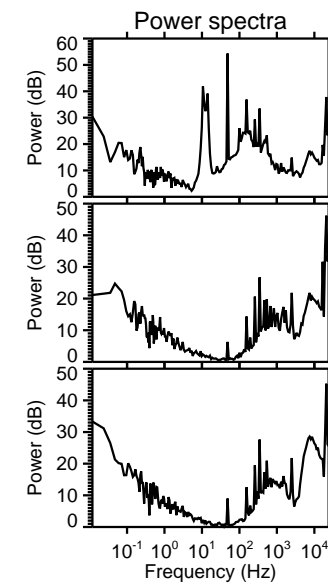
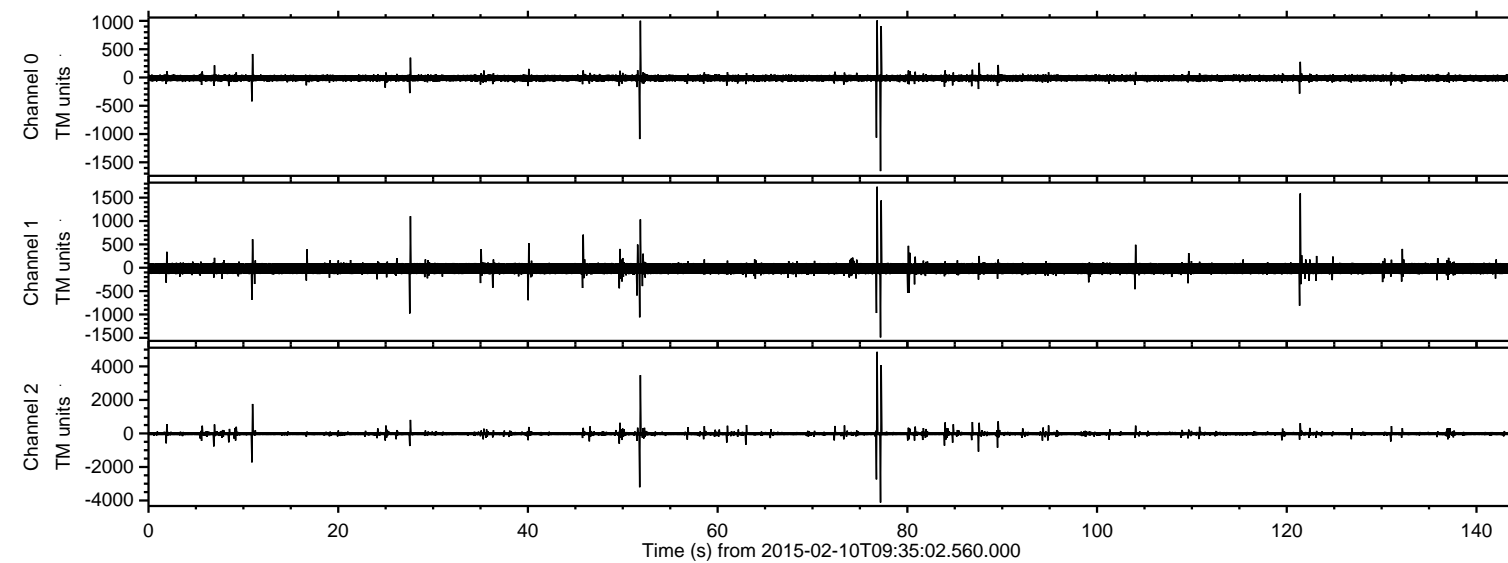
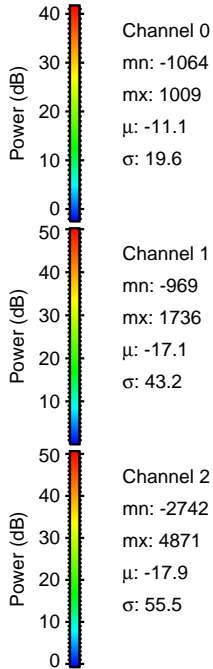
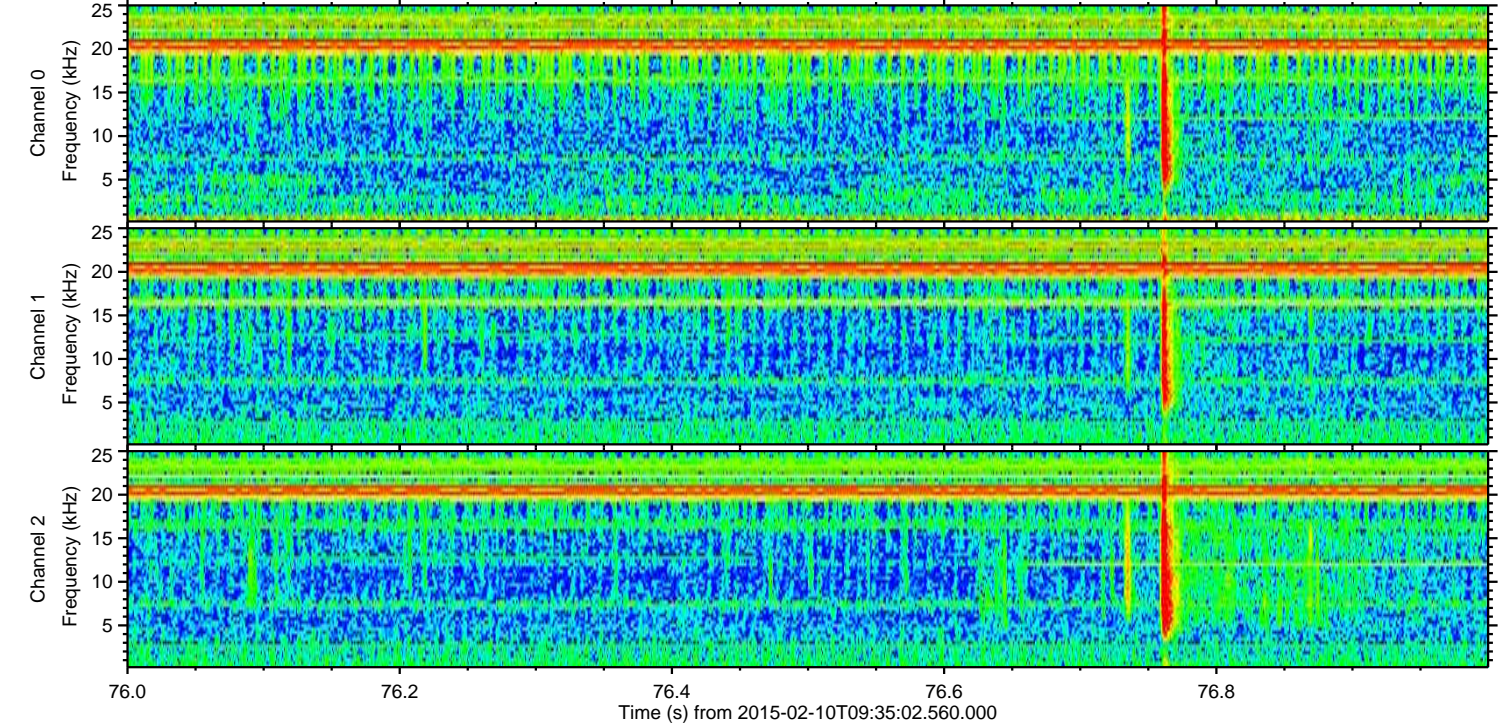
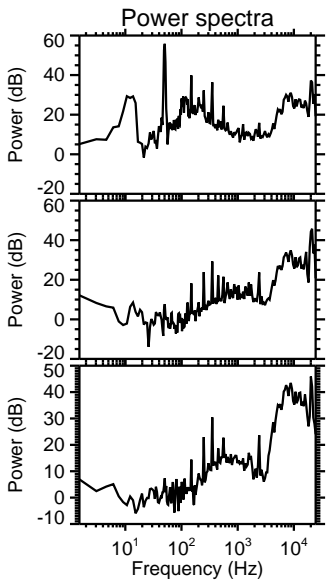
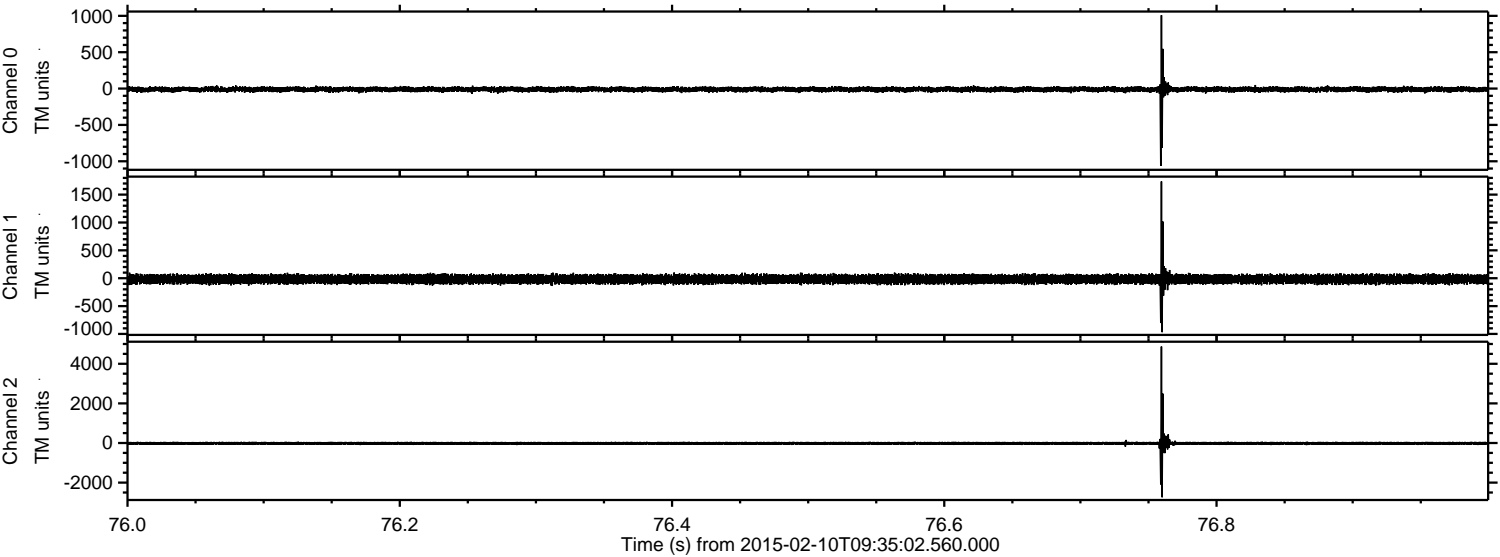


ELMAVAN 3D WAVEFORMS (Measured data sampled at 50 kHz) 49807 packets of 144 samples from 2015-02-10T09:35:02.560.000.

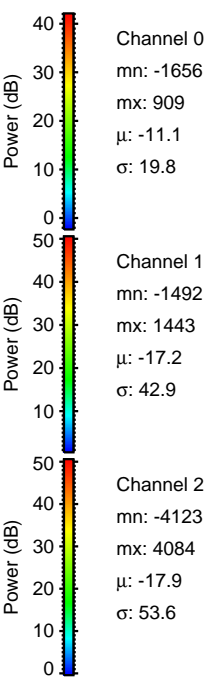
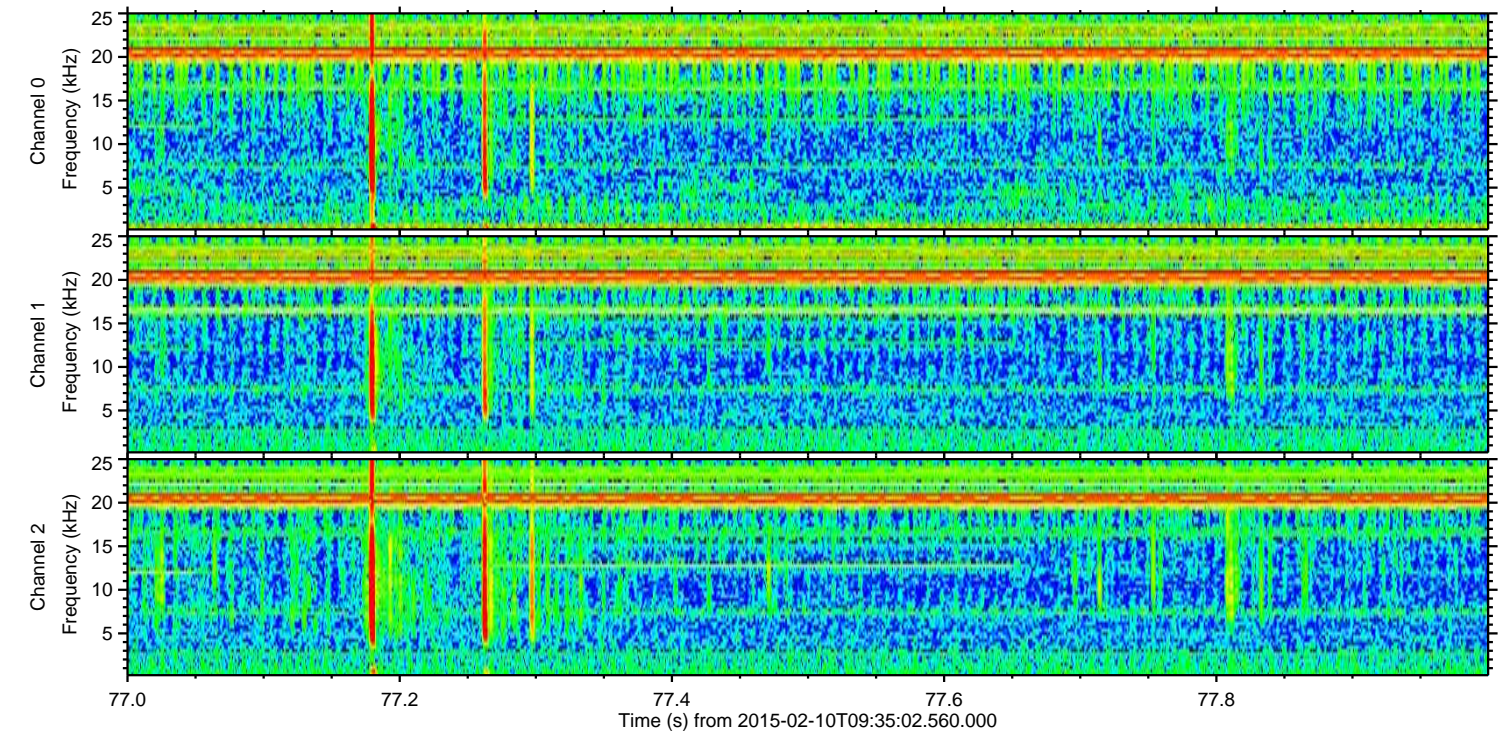
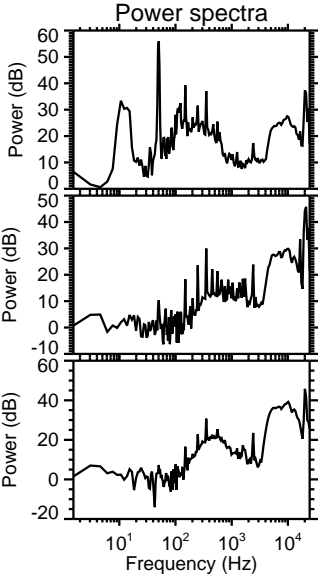
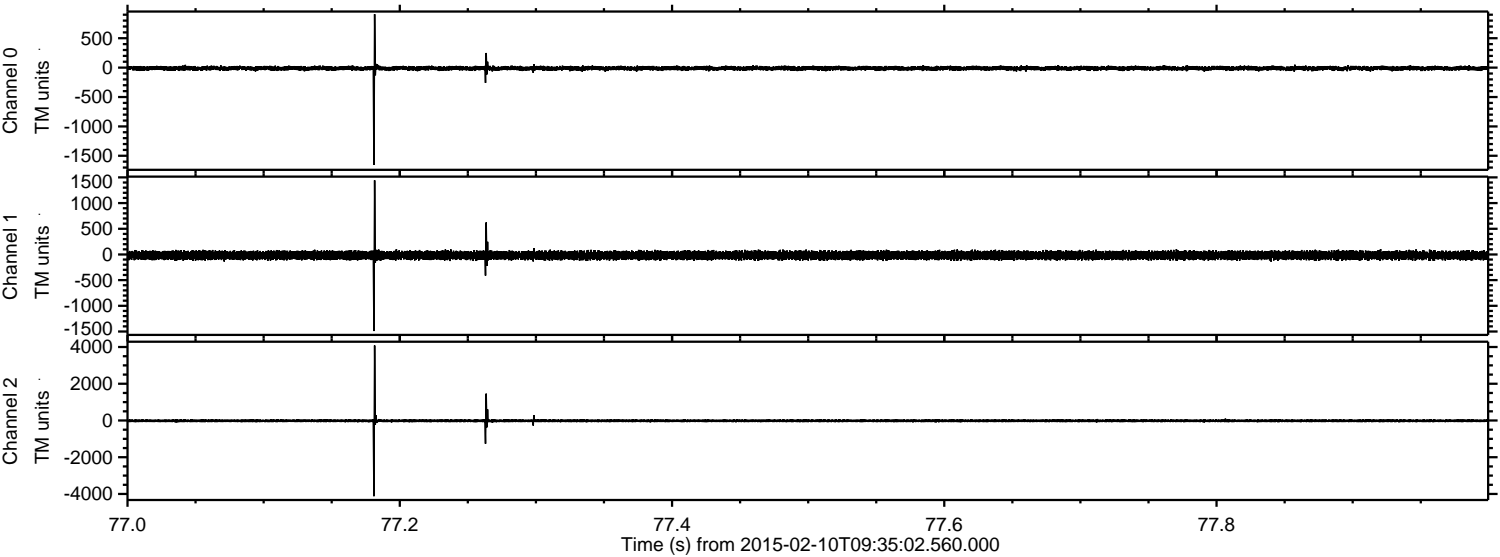
Processed Thu Feb 19 14:21:17 2015 by ELM ver.2012-10-06 from 001__elm20150210_093501__dat00.bin



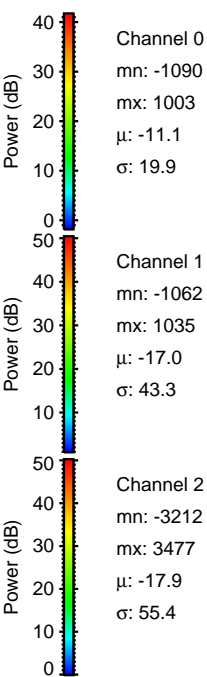
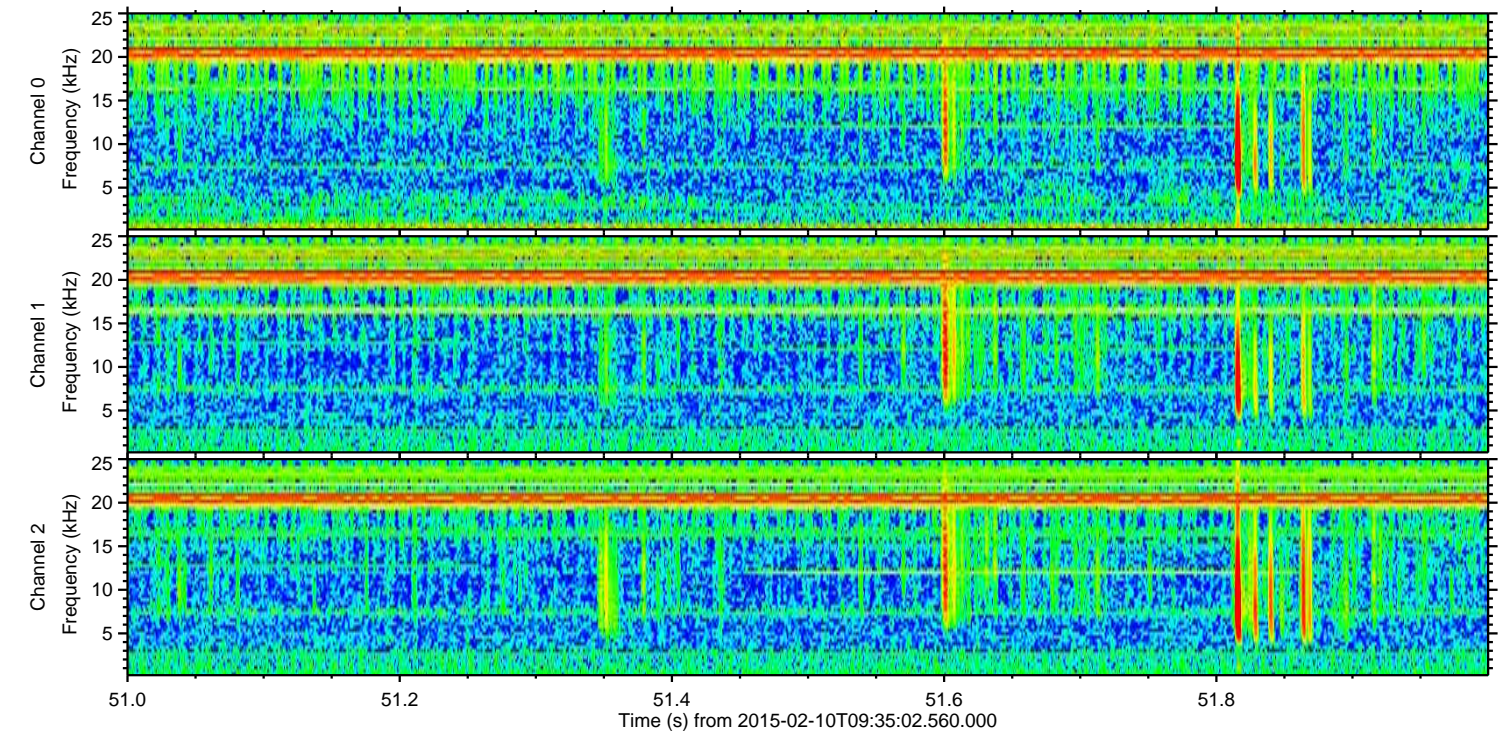
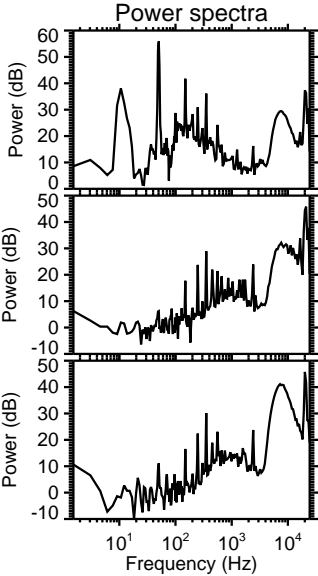
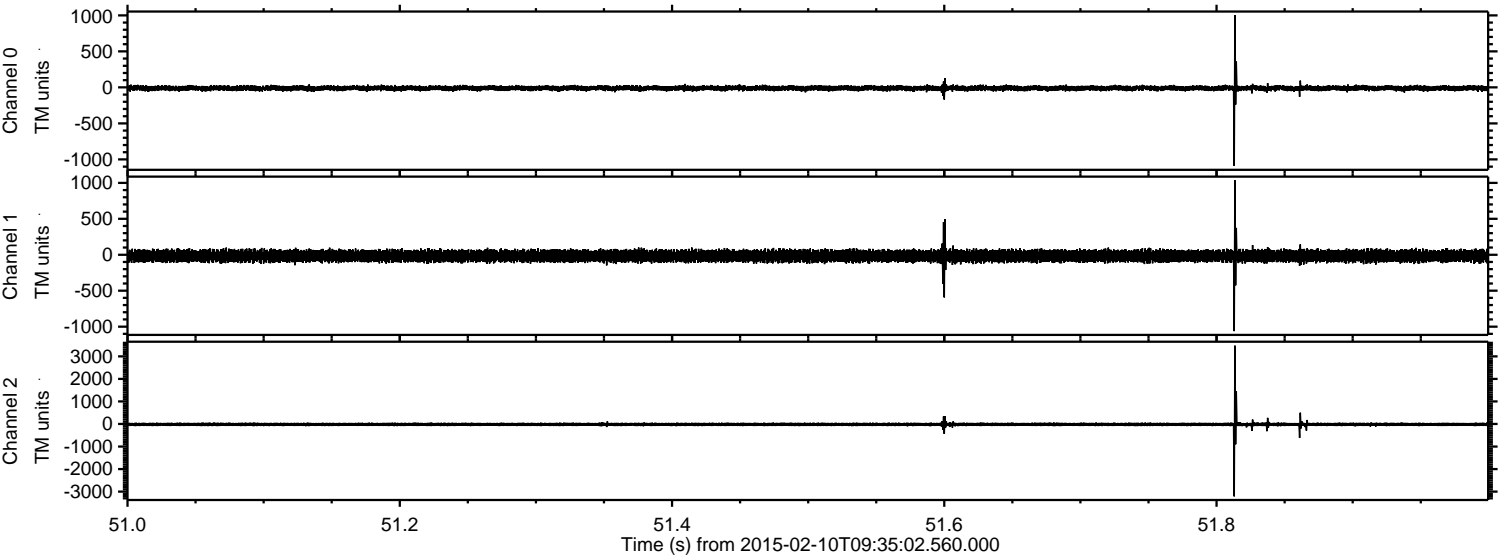
Processed Thu Feb 19 14:21:43 2015 by ELM ver.2012-10-06 from 001__elm20150210_093501__dat00.bin



Processed Thu Feb 19 14:21:45 2015 by ELM ver.2012-10-06 from 001__elm20150210_093501__dat00.bin



Processed Thu Feb 19 14:21:47 2015 by ELM ver.2012-10-06 from 001__elm20150210_093501__dat00.bin

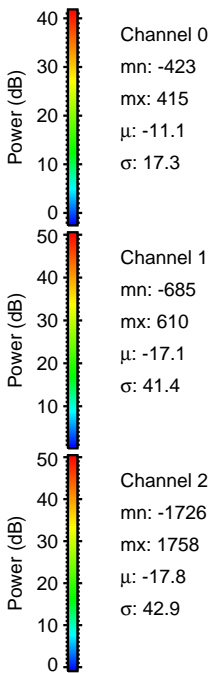
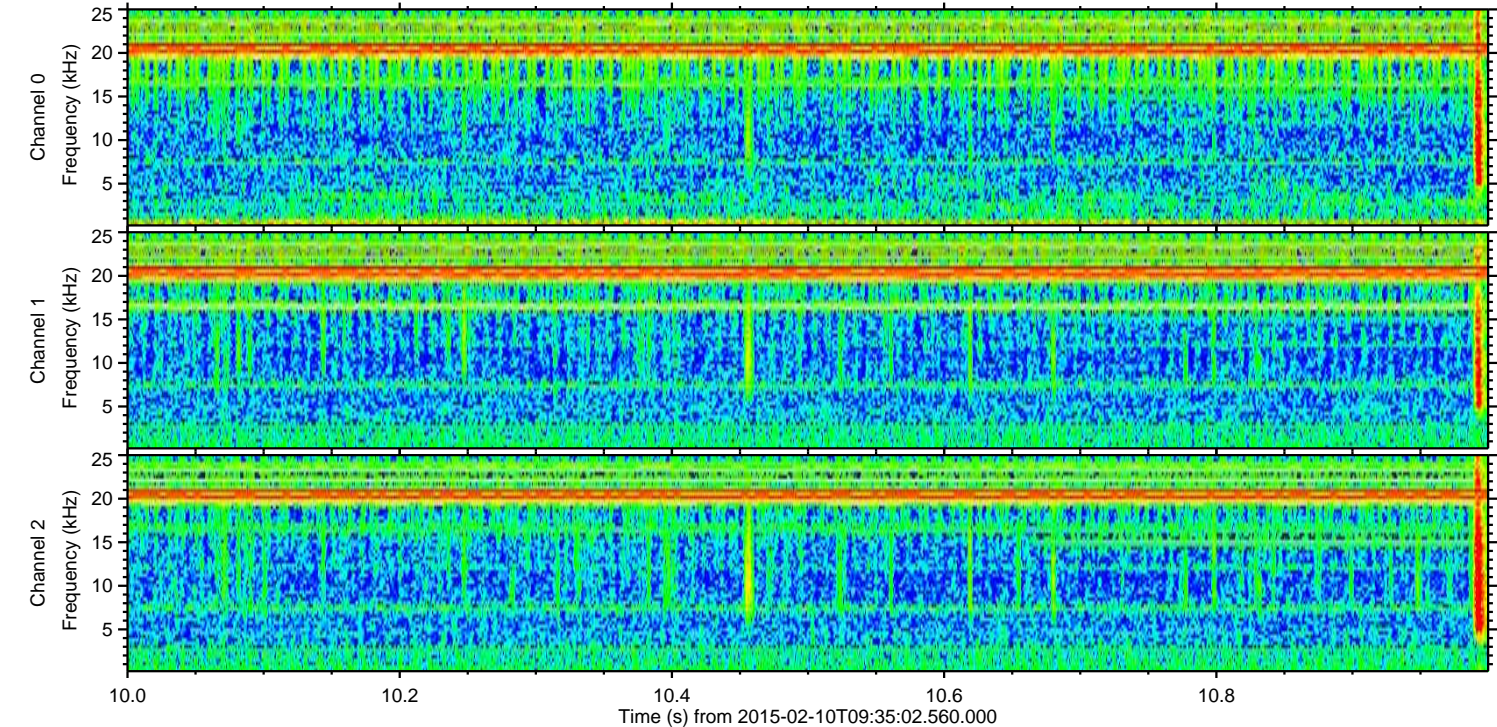
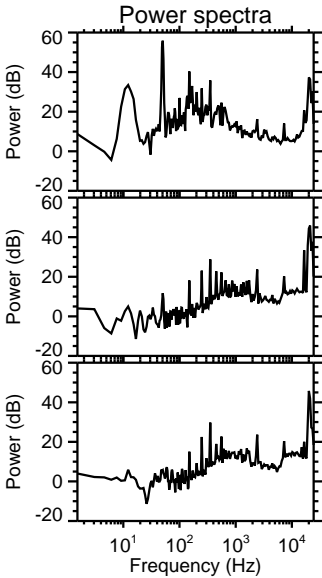
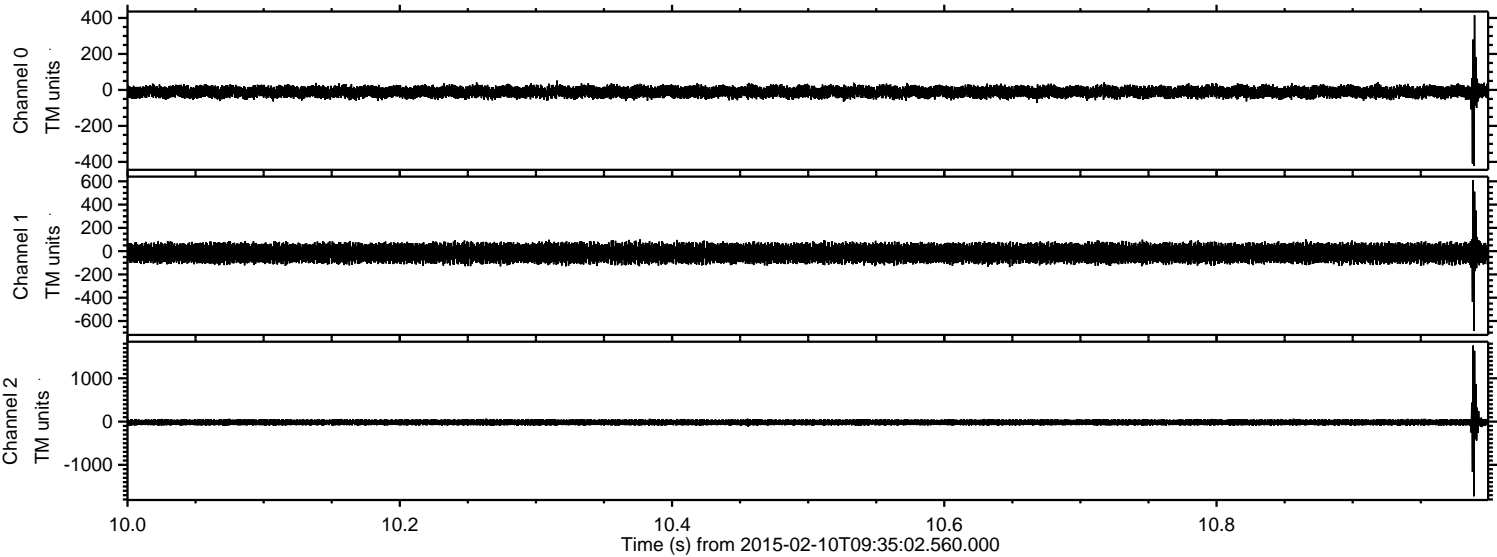


Channel 0
mn: -1090
mx: 1003
 μ : -11.1
 σ : 19.9

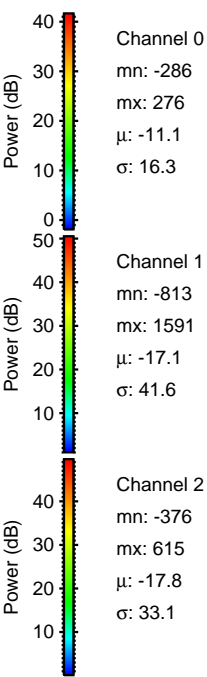
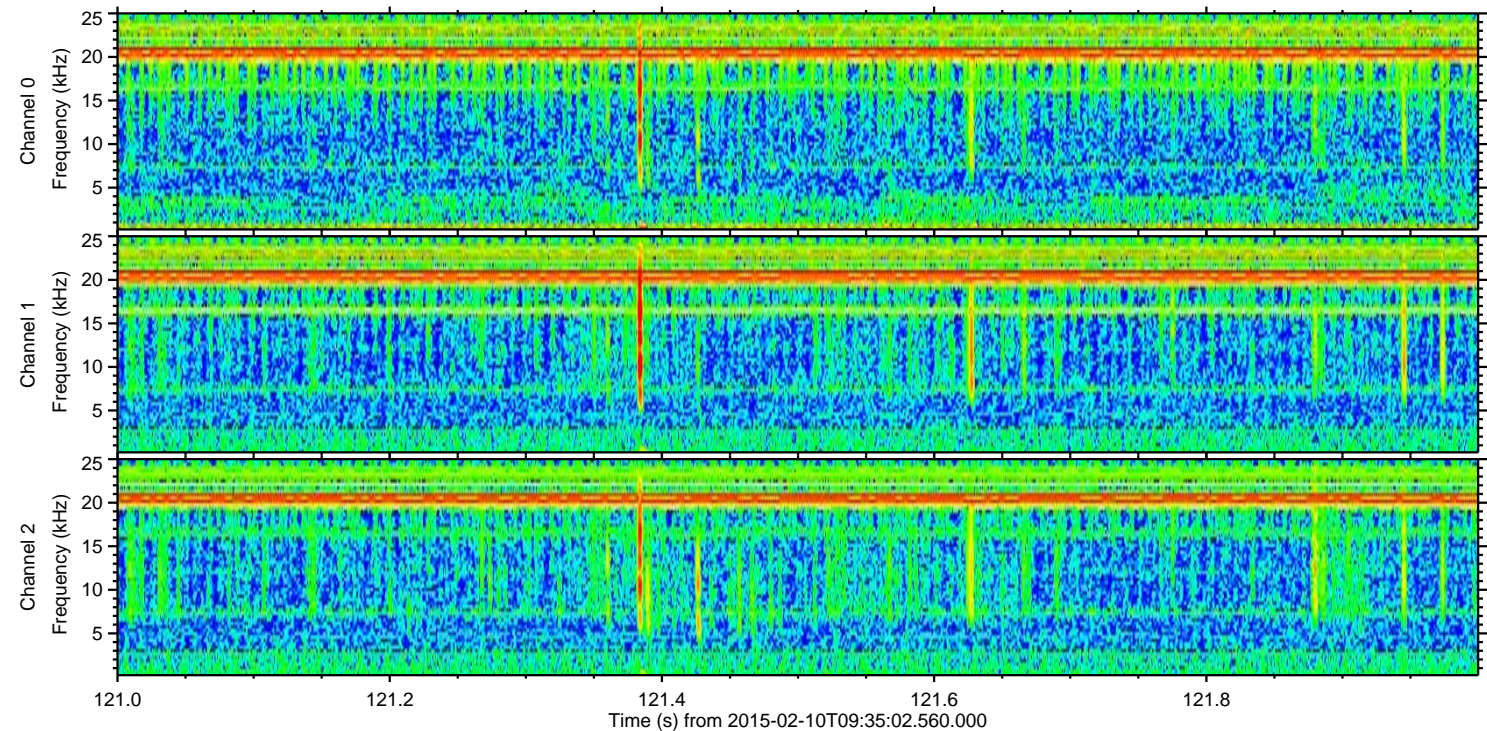
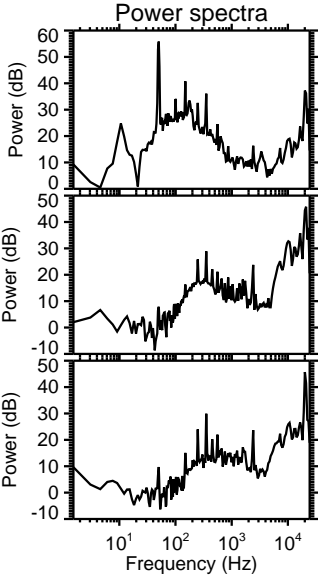
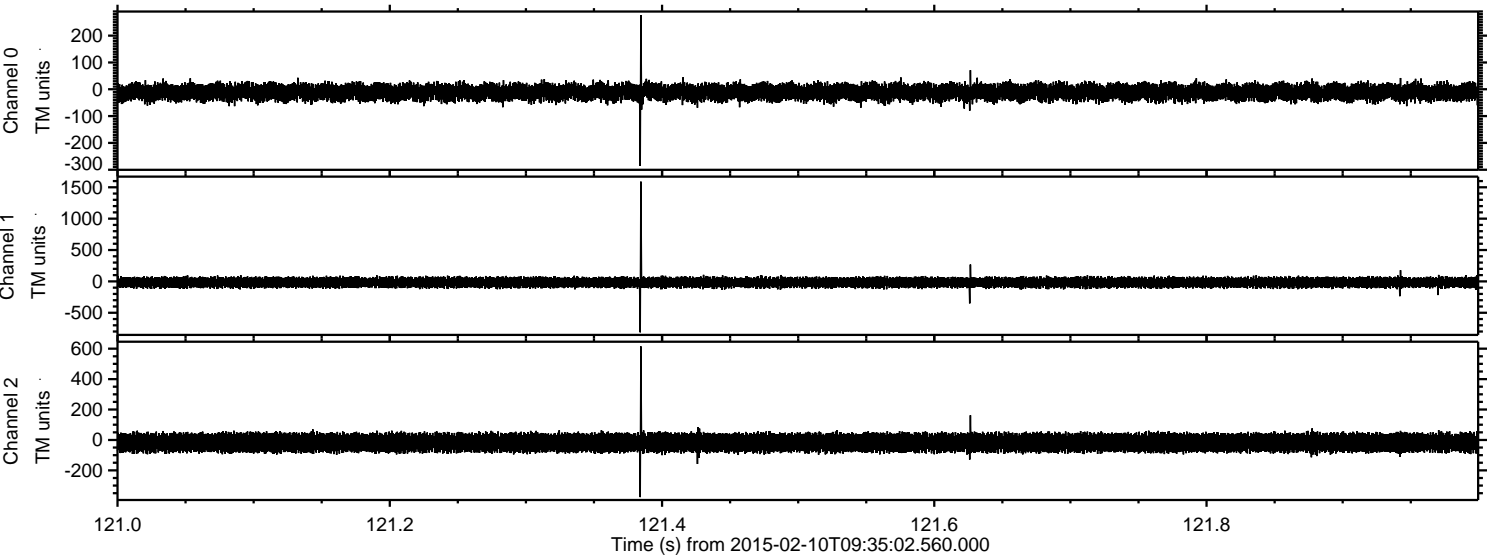
Channel 1
mn: -1062
mx: 1035
 μ : -17.0
 σ : 43.3

Channel 2
mn: -3212
mx: 3477
 μ : -17.9
 σ : 55.4

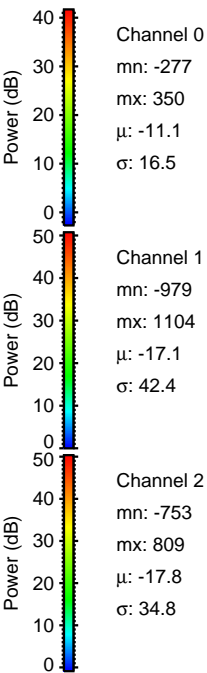
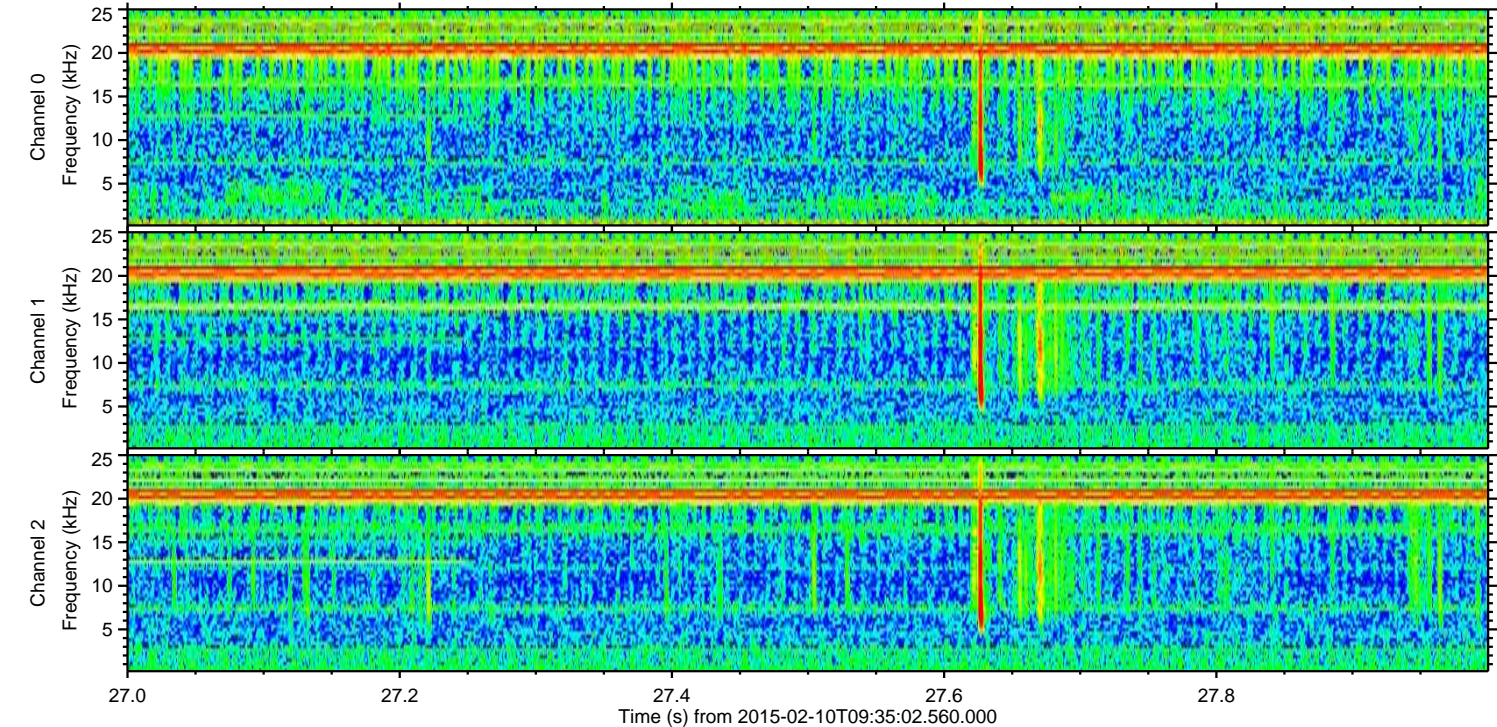
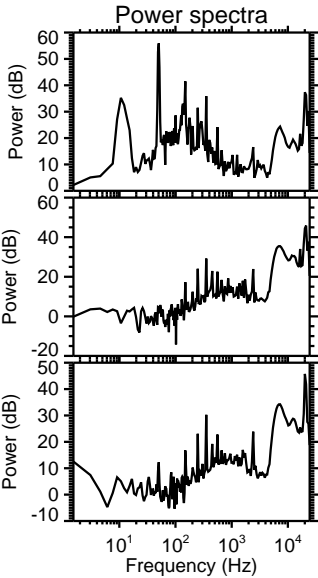
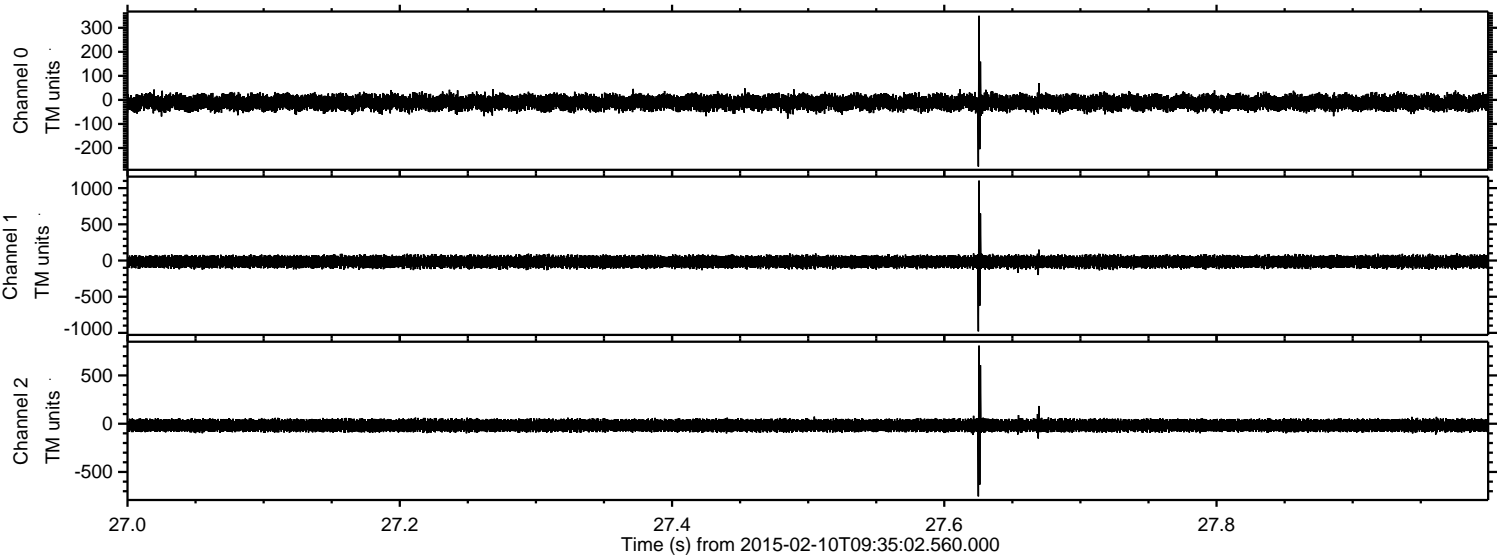
Processed Thu Feb 19 14:21:49 2015 by ELM ver.2012-10-06 from 001__elm20150210_093501__dat00.bin



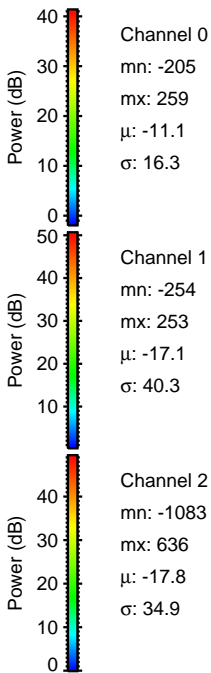
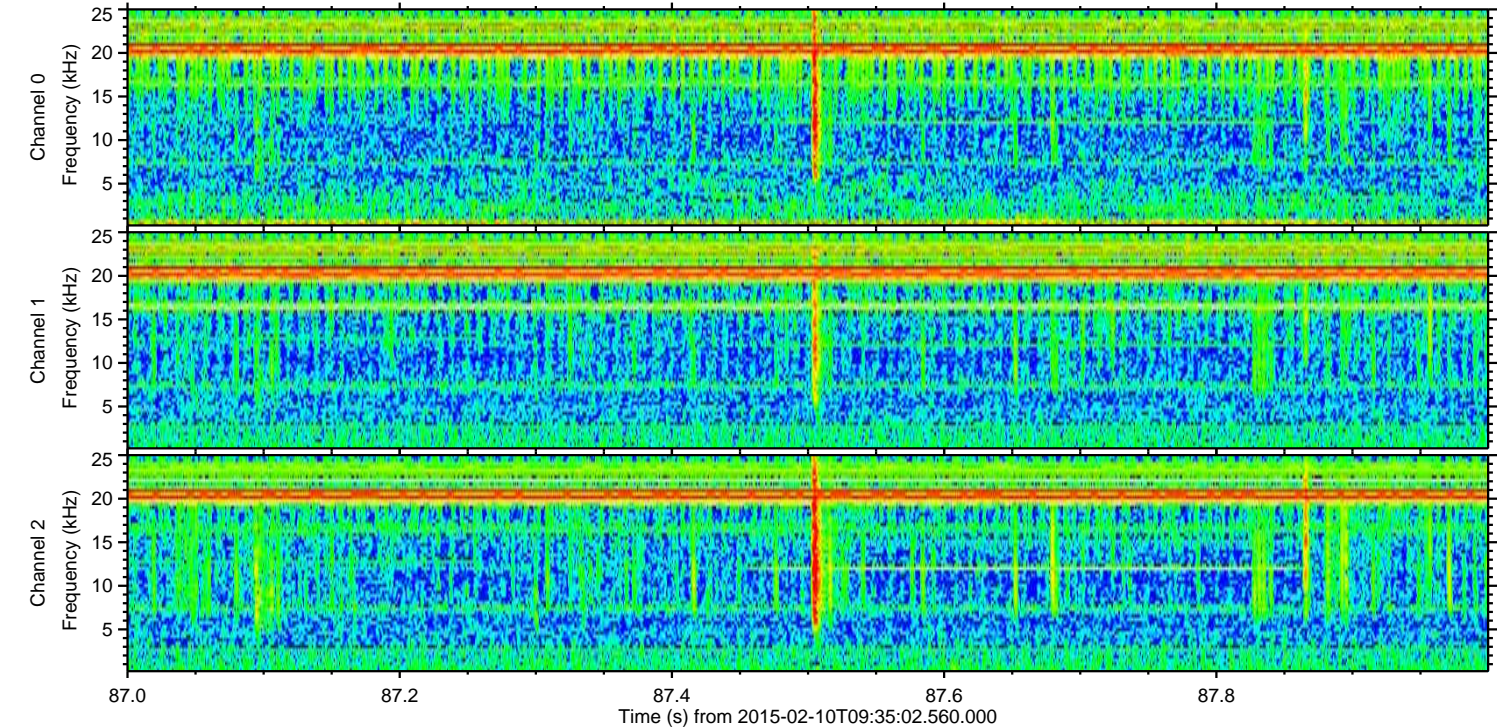
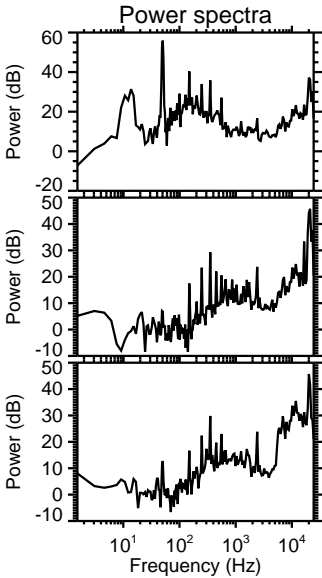
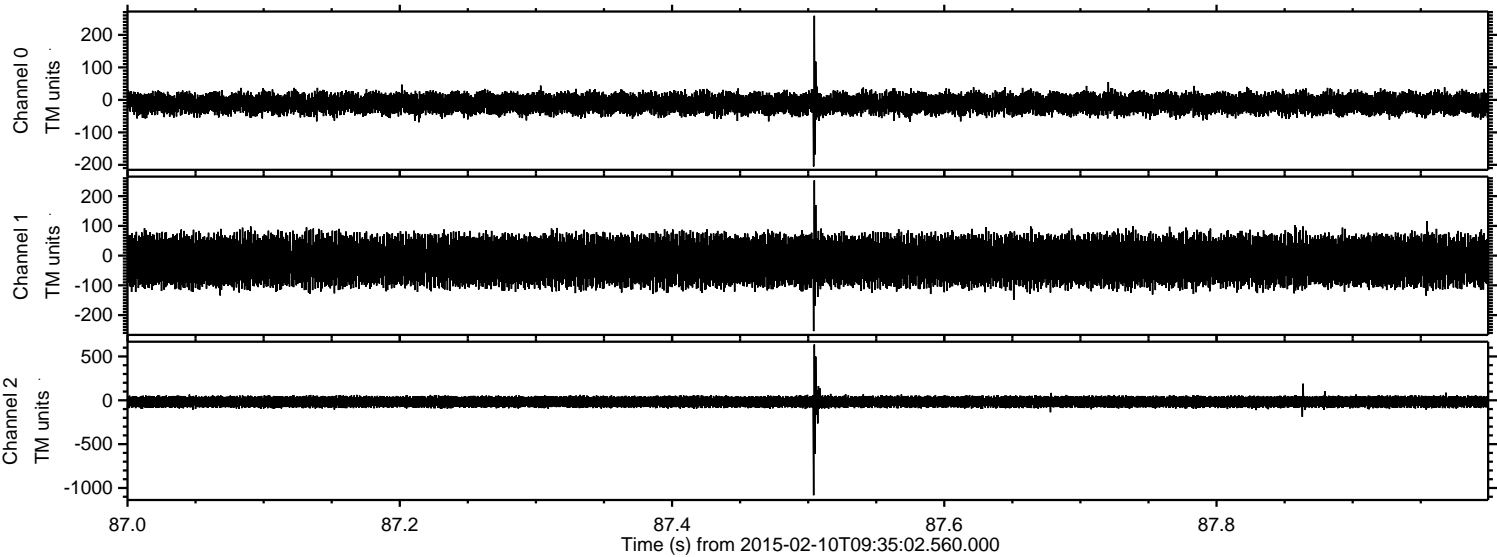
Processed Thu Feb 19 14:21:51 2015 by ELM ver.2012-10-06 from 001__elm20150210_093501__dat00.bin



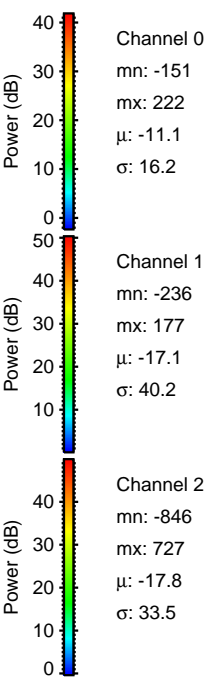
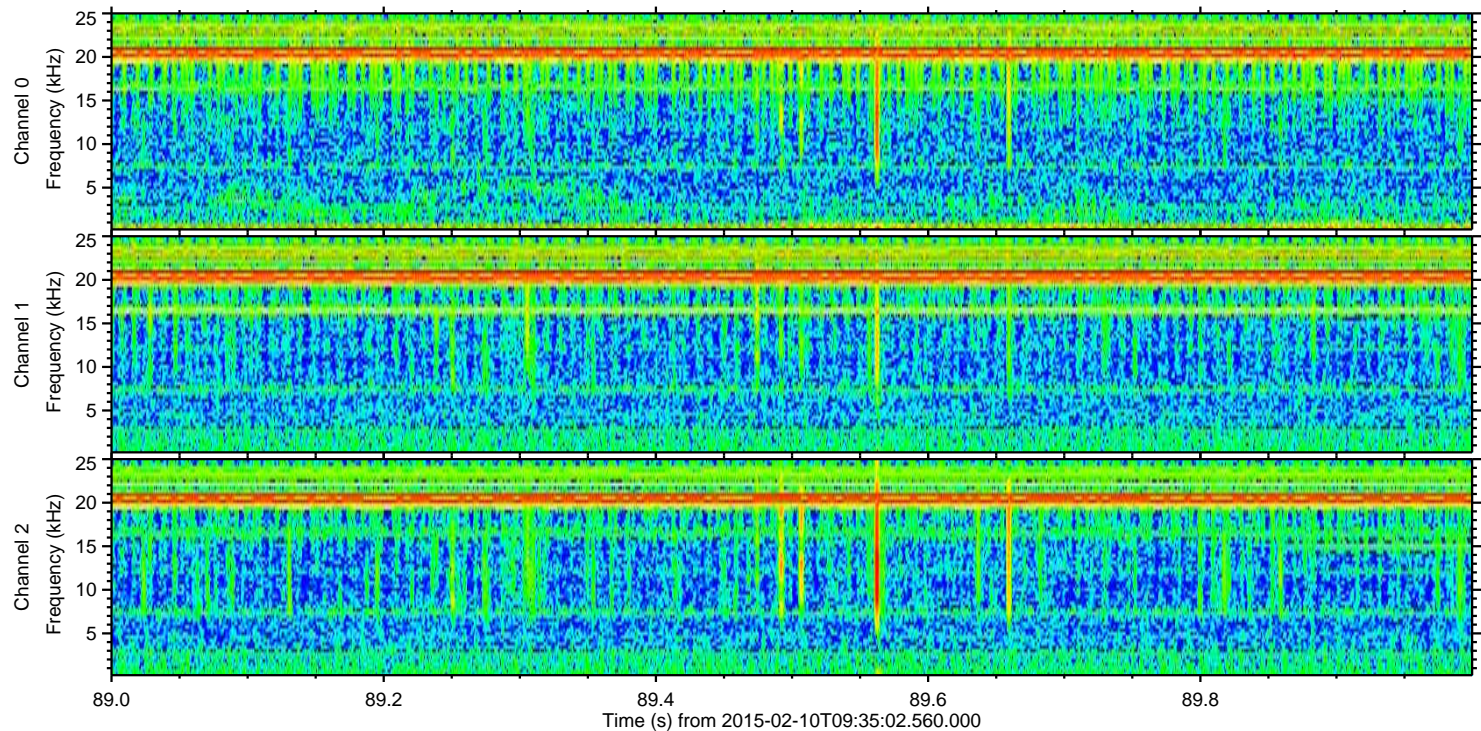
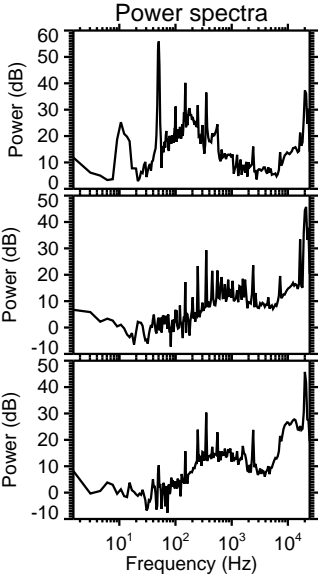
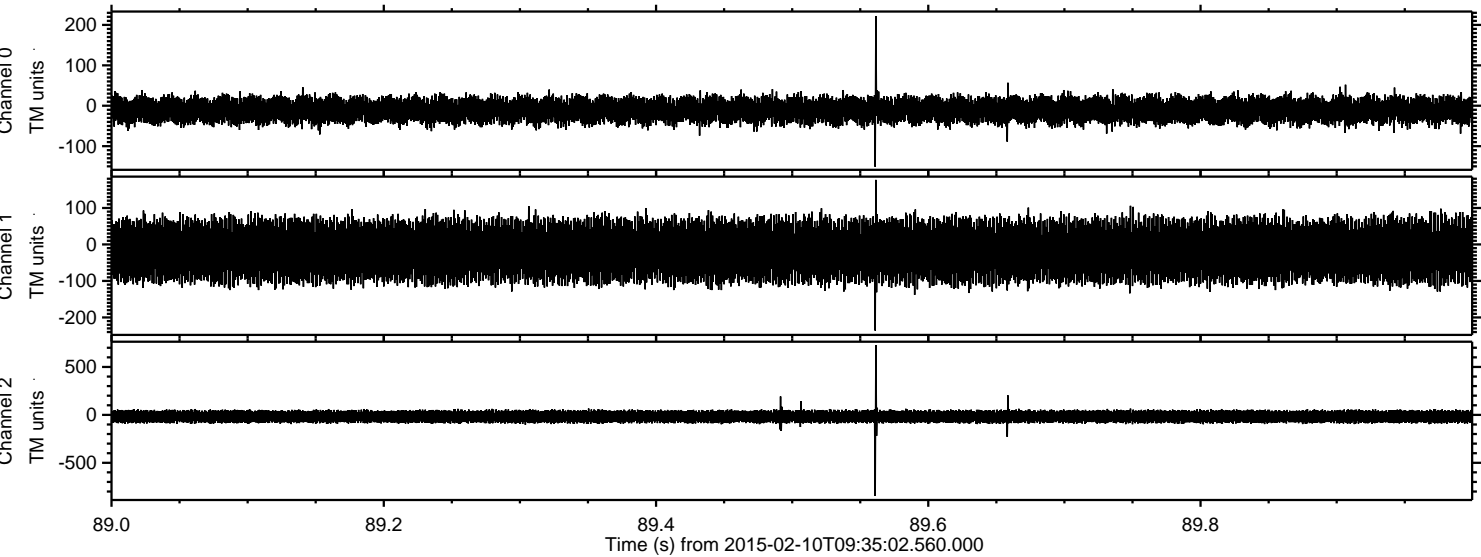
Processed Thu Feb 19 14:21:52 2015 by ELM ver.2012-10-06 from 001__elm20150210_093501__dat00.bin



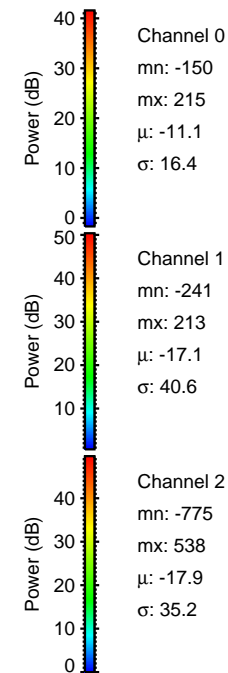
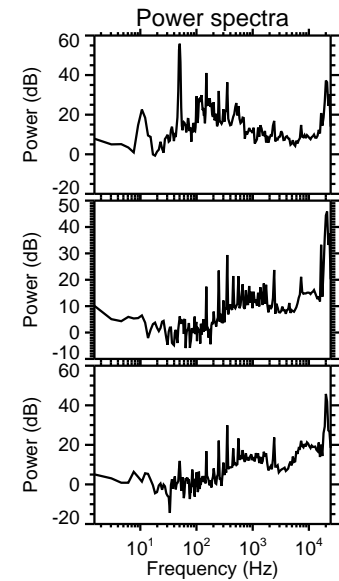
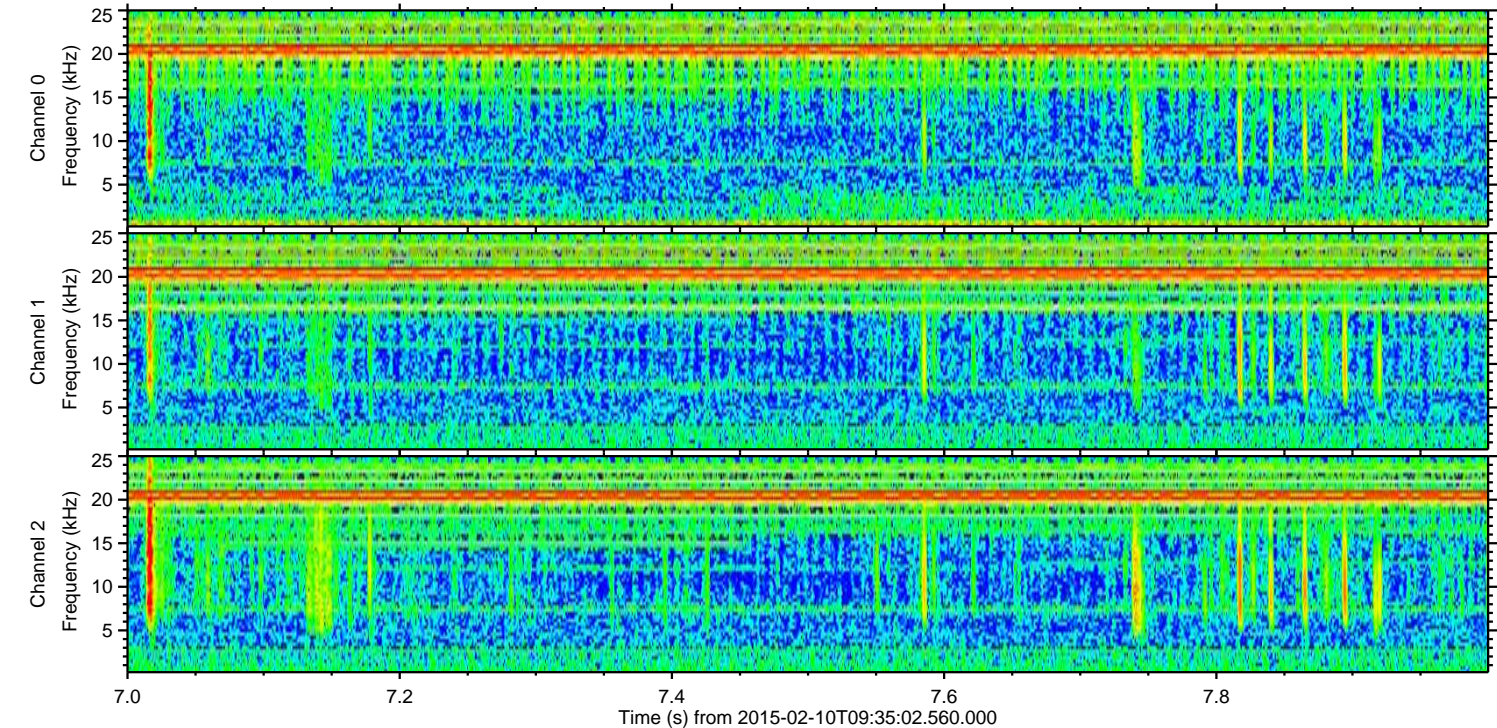
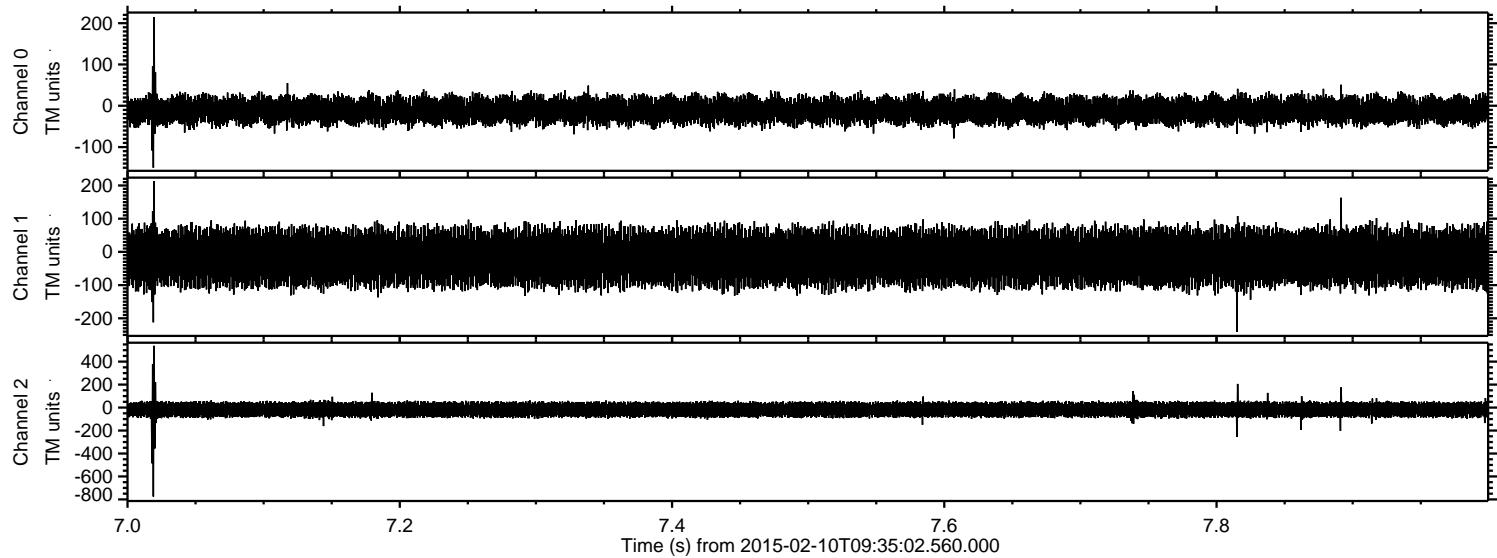
Processed Thu Feb 19 14:21:53 2015 by ELM ver.2012-10-06 from 001__elm20150210_093501__dat00.bin



Processed Thu Feb 19 14:21:54 2015 by ELM ver.2012-10-06 from 001__elm20150210_093501__dat00.bin



Processed Thu Feb 19 14:21:56 2015 by ELM ver.2012-10-06 from 001__elm20150210_093501__dat00.bin



Processed Thu Feb 19 14:21:57 2015 by ELM ver.2012-10-06 from 001__elm20150210_093501__dat00.bin

