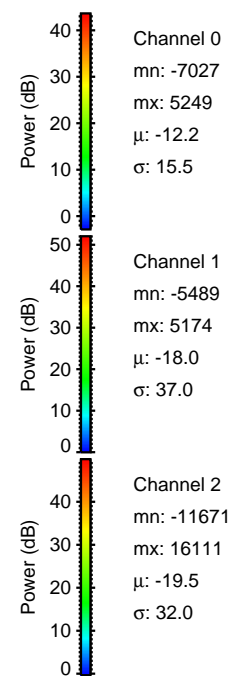
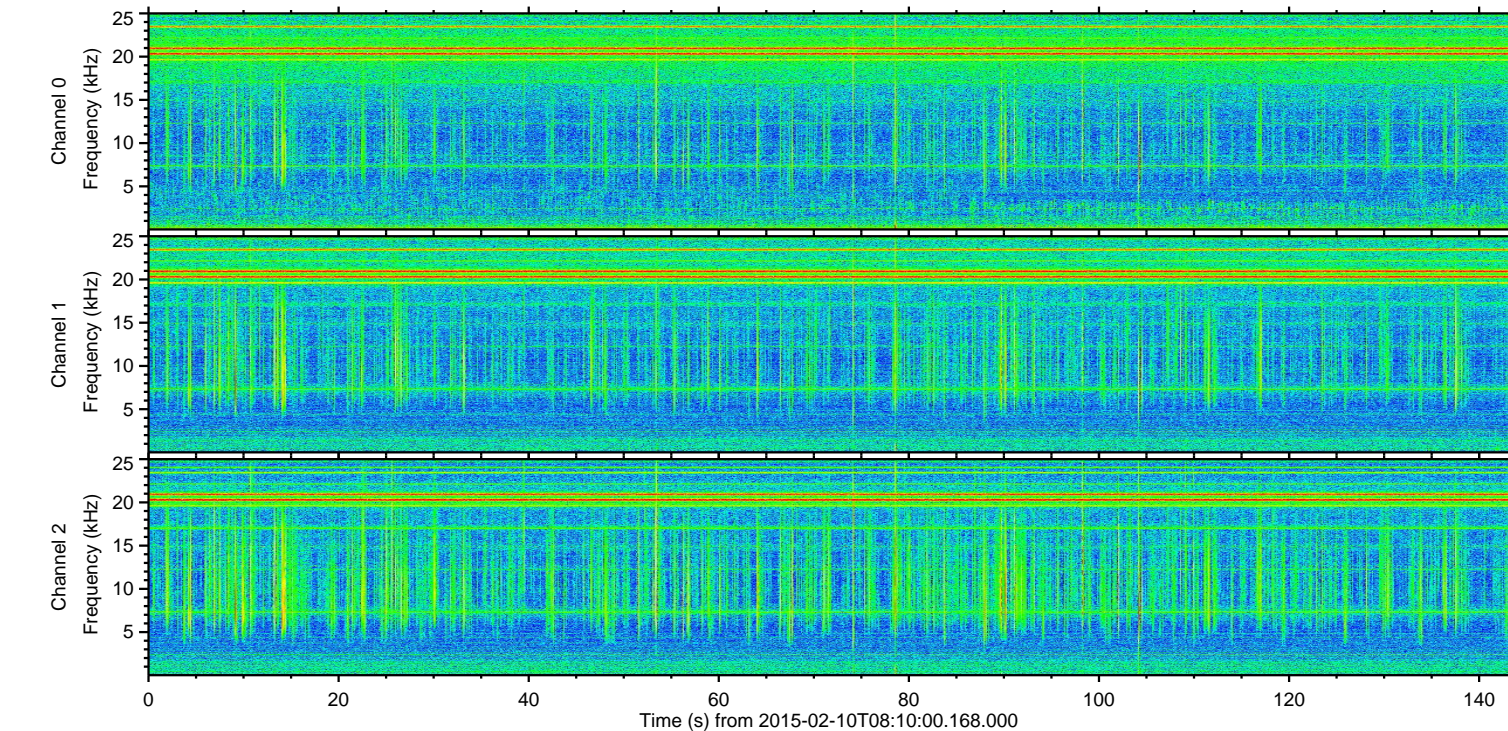
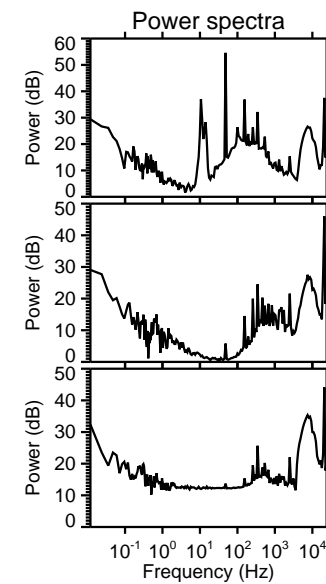
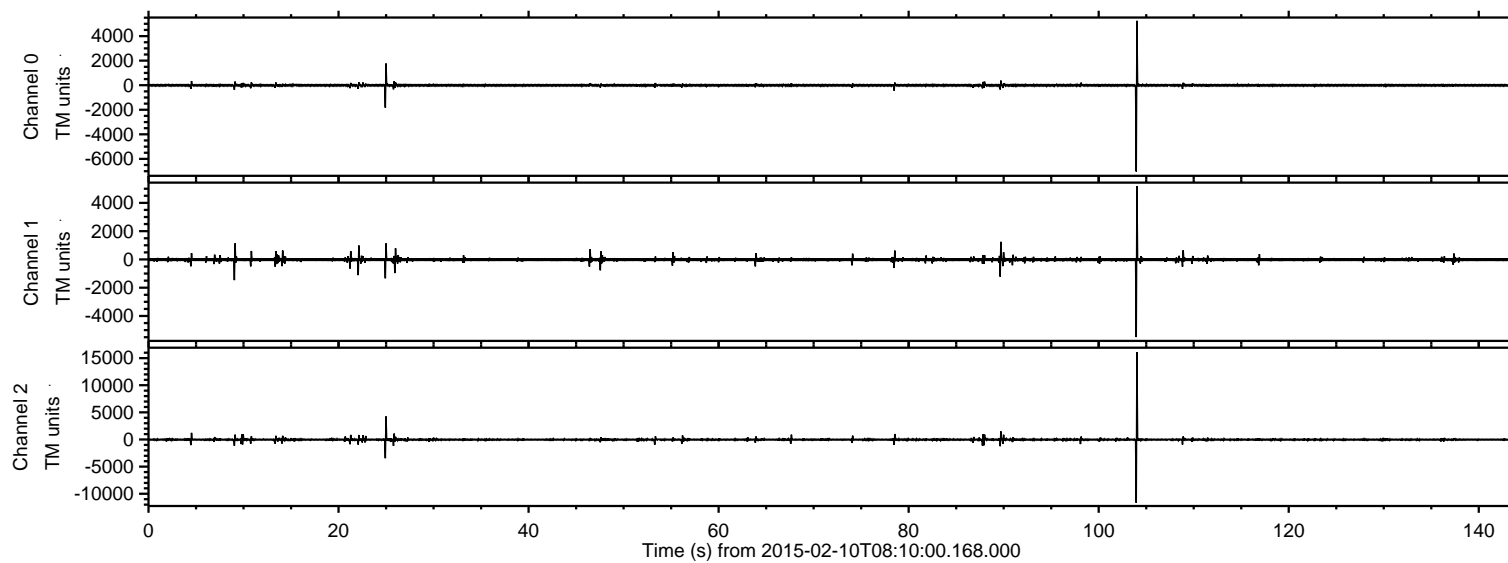


# ELMAVAN 3D WAVEFORMS (Measured data sampled at 50 kHz) 49721 packets of 144 samples from 2015-02-10T08:10:00.168.000.

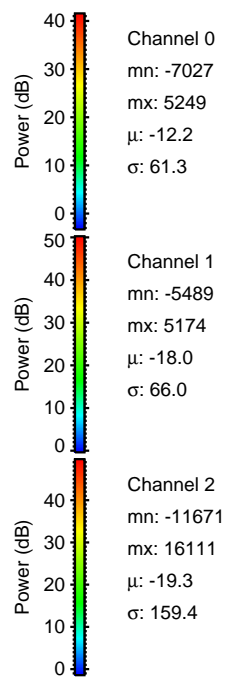
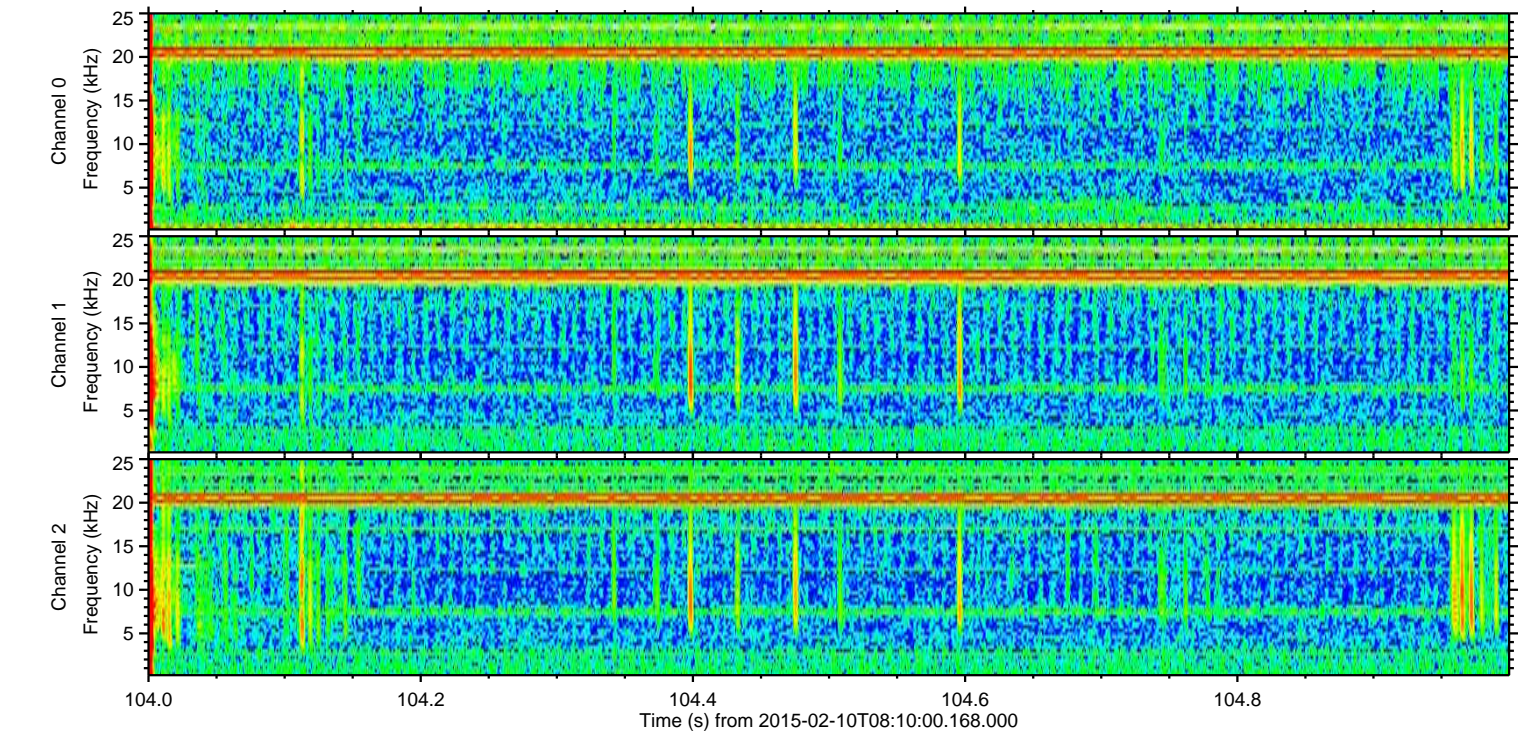
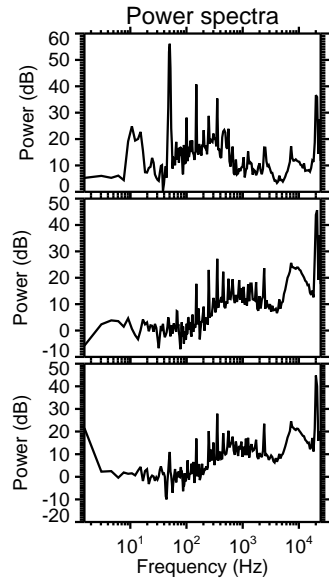
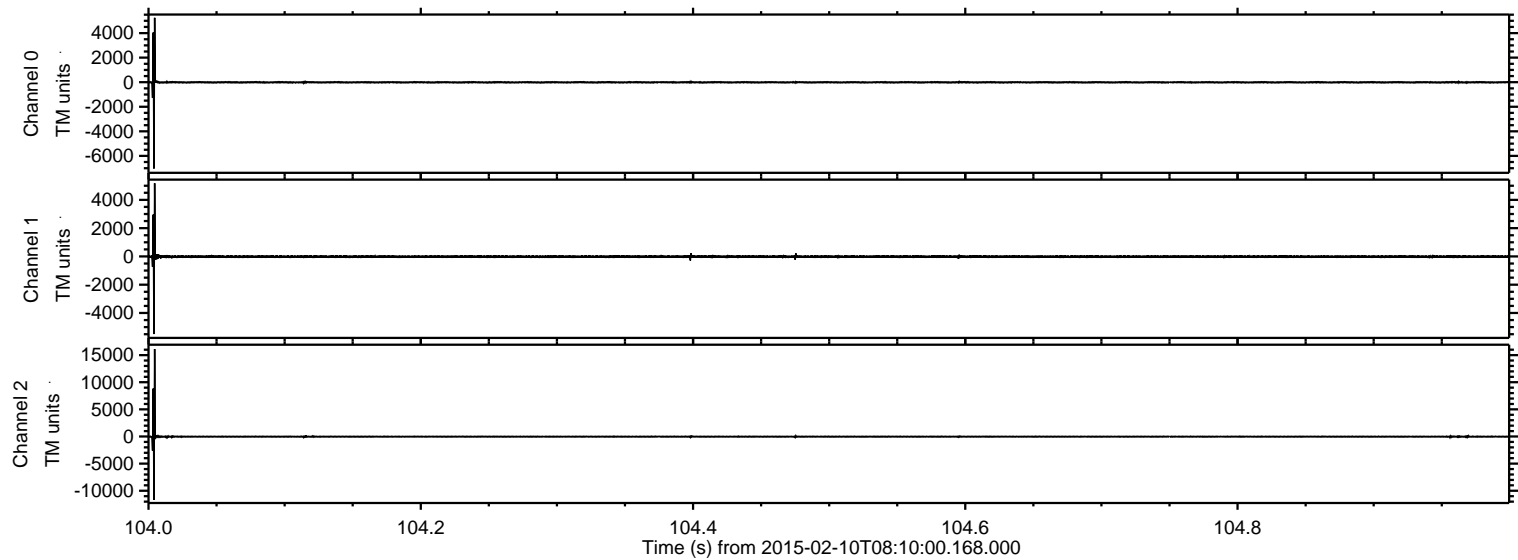
Processed Thu Feb 19 13:49:37 2015 by ELM ver.2012-10-06 from 001\_\_elm20150210\_080959\_\_dat00.bin





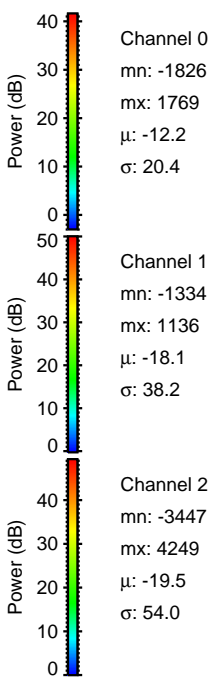
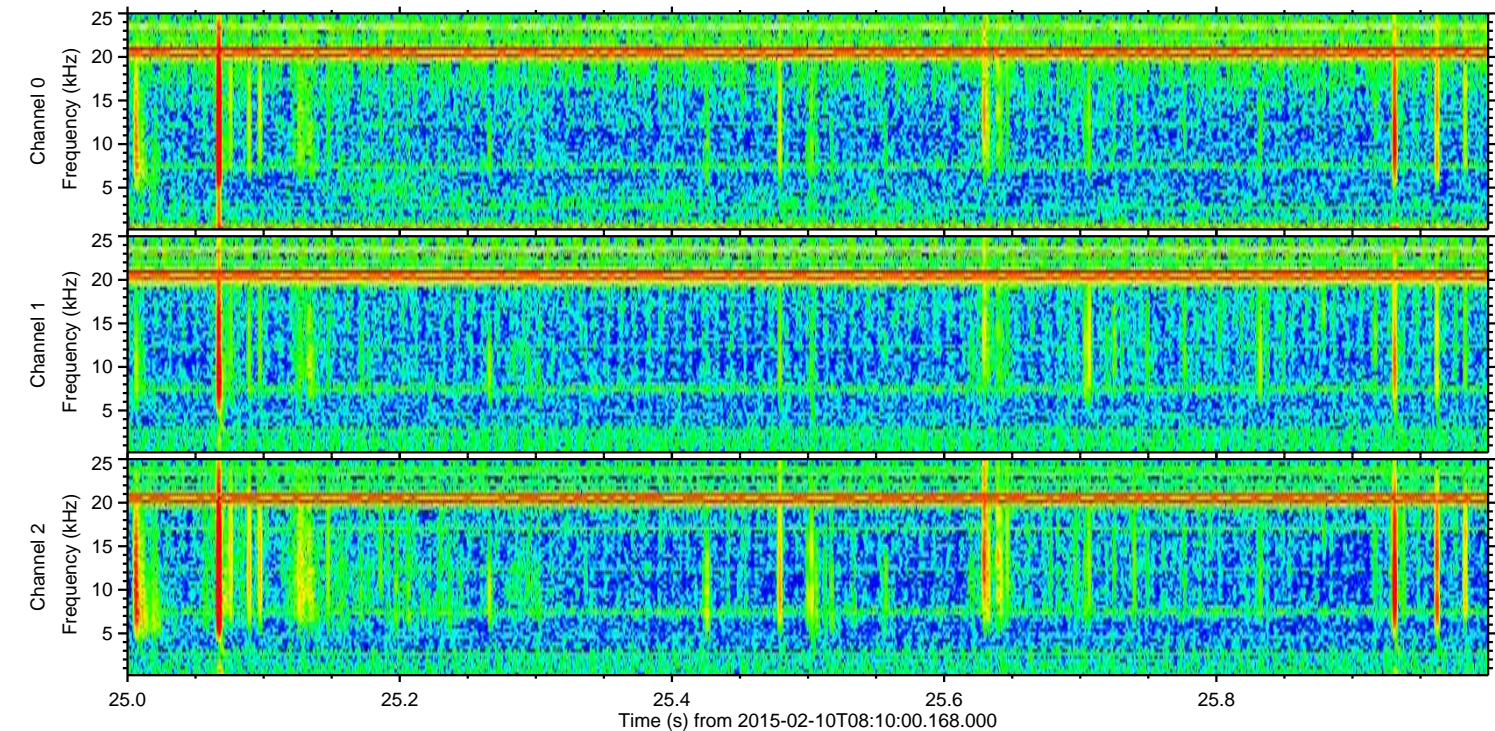
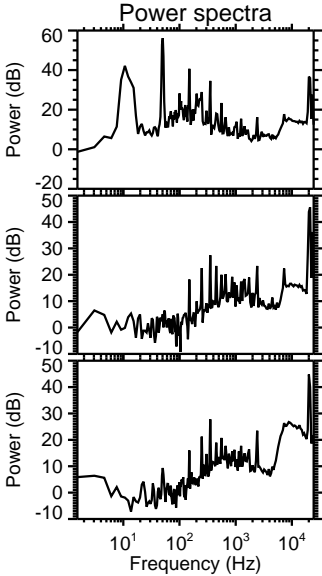
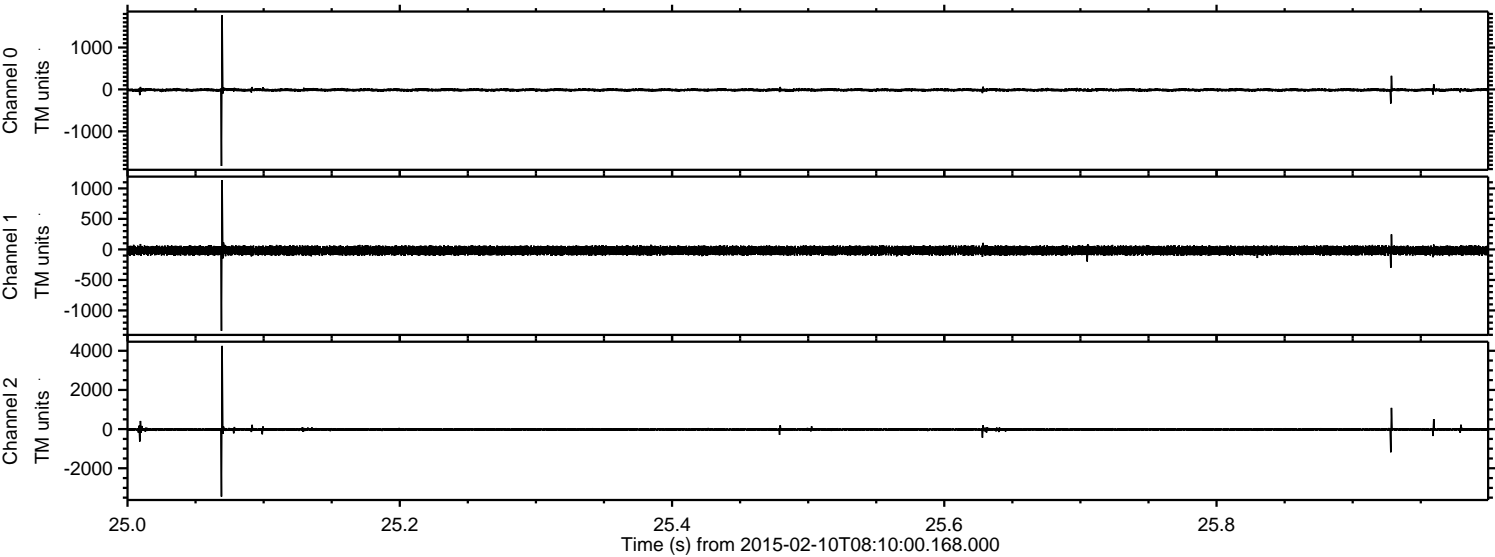
ELMAVAN 3D WAVEFORMS (Measured data sampled at 50 kHz) 49721 packets of 144 samples from 2015-02-10T08:10:00.168.000. Part 105/144

Processed Thu Feb 19 13:50:03 2015 by ELM ver.2012-10-06 from 001\_\_elm20150210\_080959\_\_dat00.bin



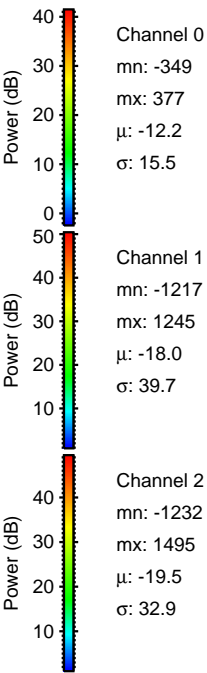
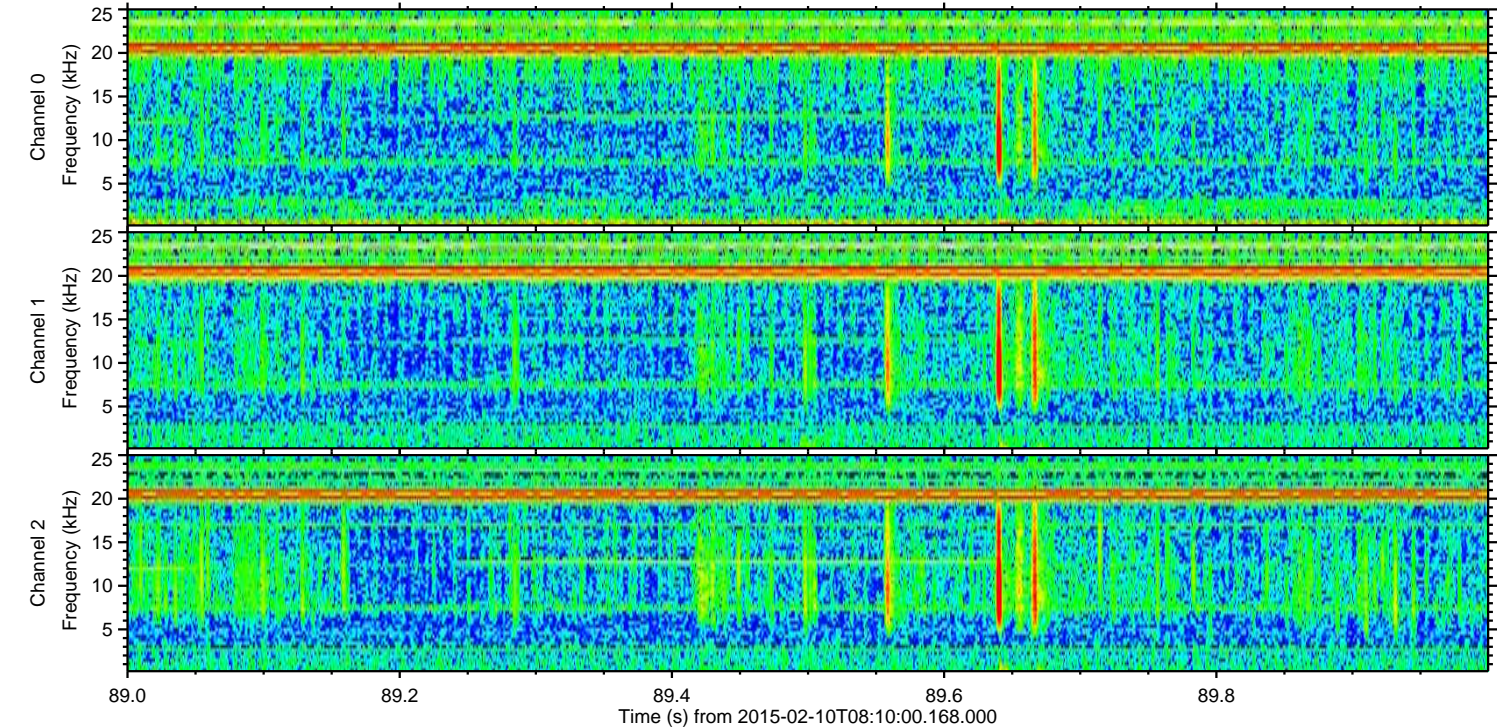
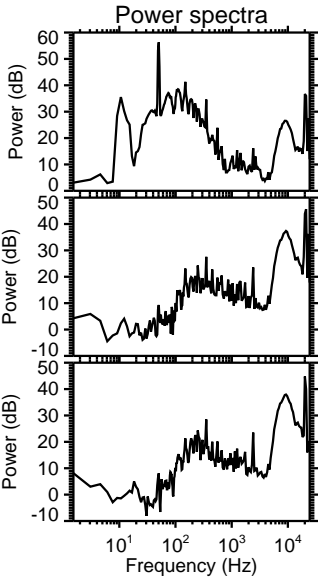
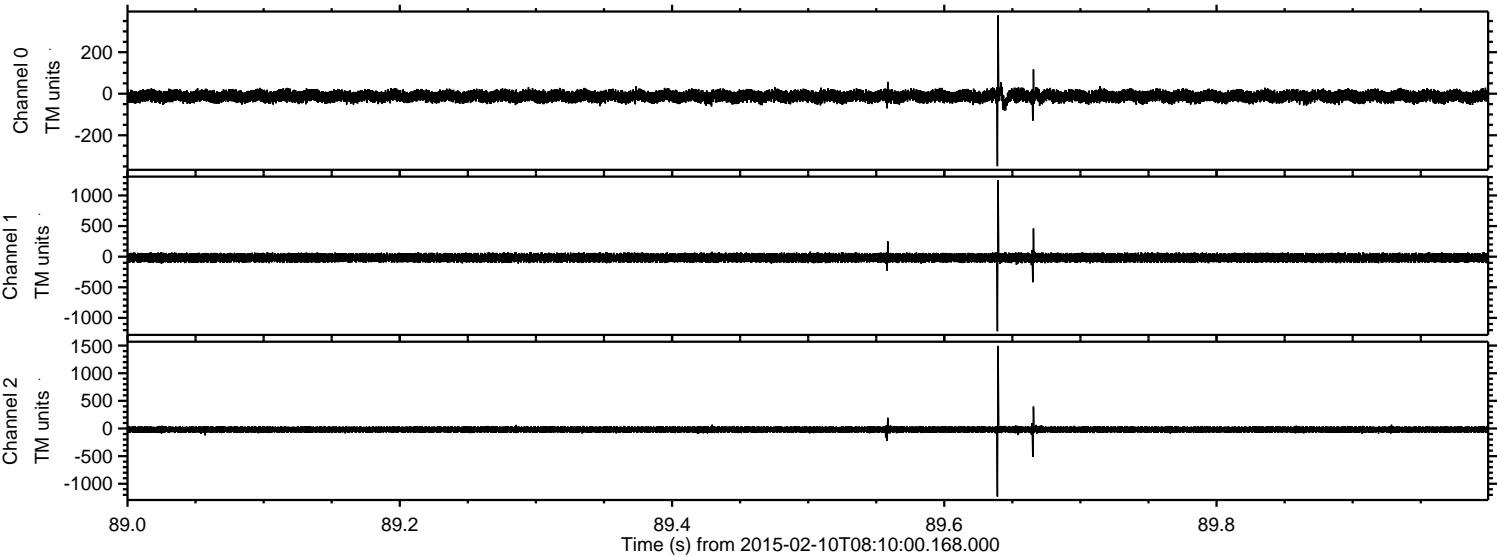


Processed Thu Feb 19 13:50:07 2015 by ELM ver.2012-10-06 from 001\_\_elm20150210\_080959\_\_dat00.bin





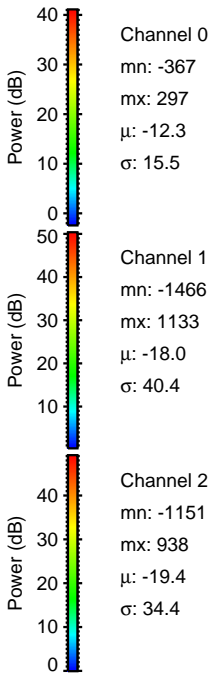
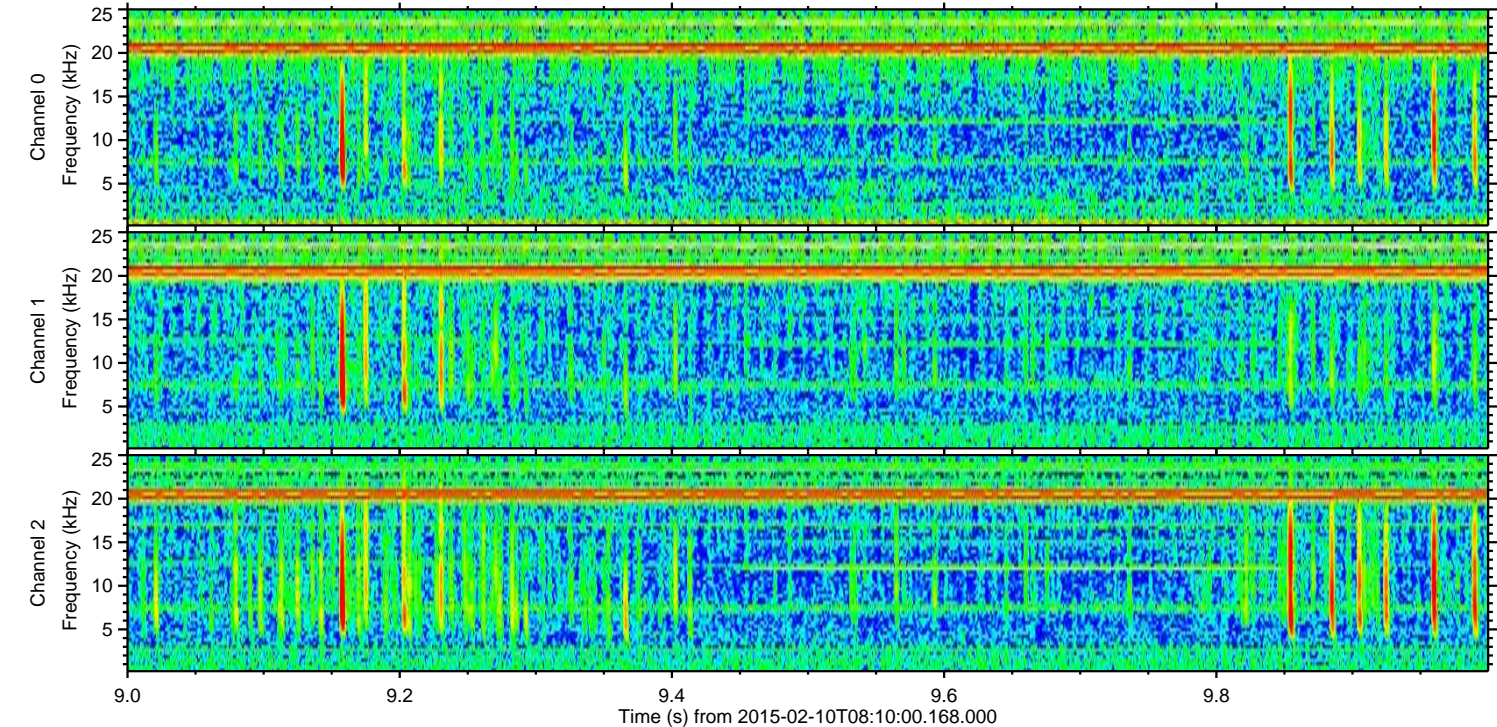
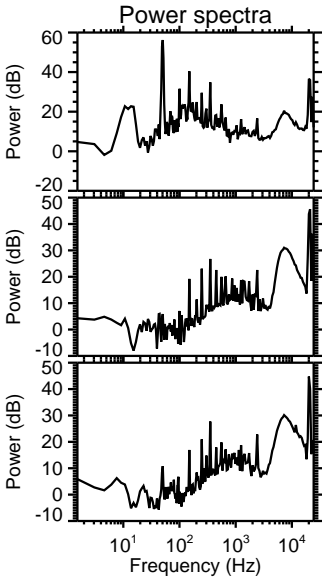
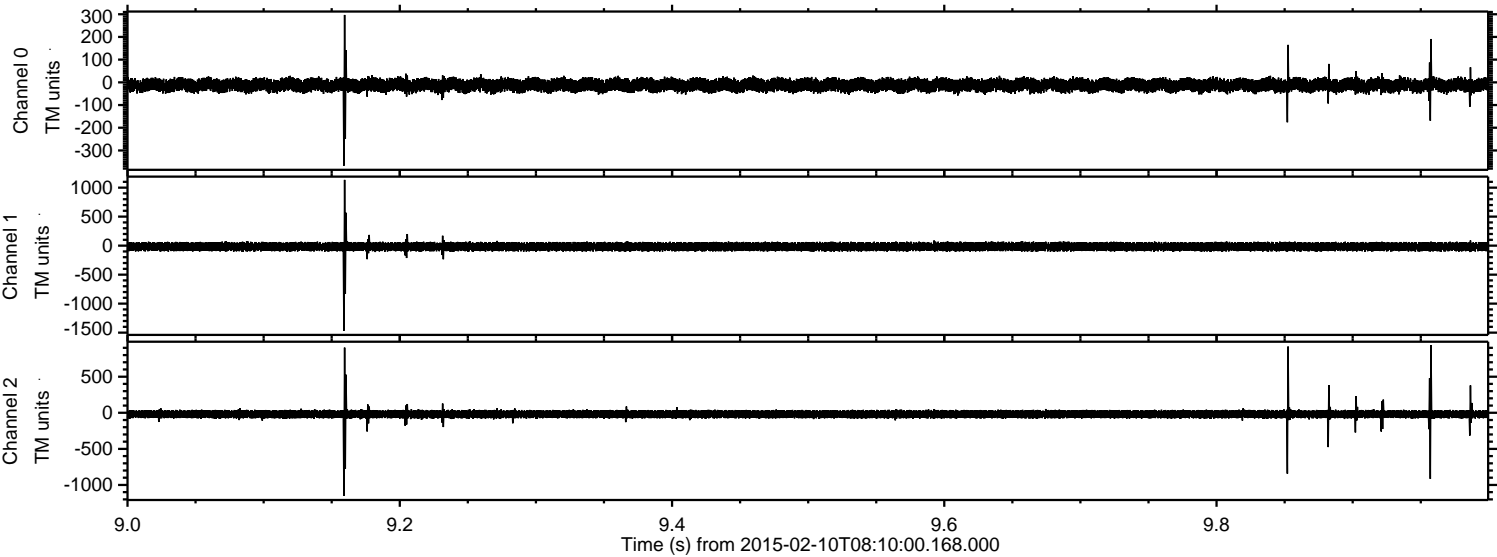
Processed Thu Feb 19 13:50:08 2015 by ELM ver.2012-10-06 from 001\_\_elm20150210\_080959\_\_dat00.bin





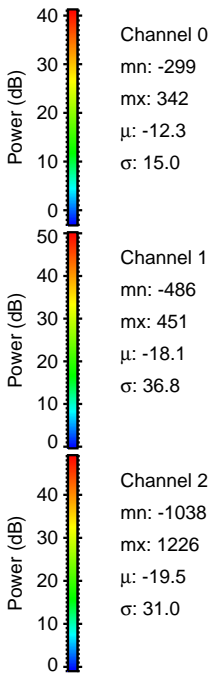
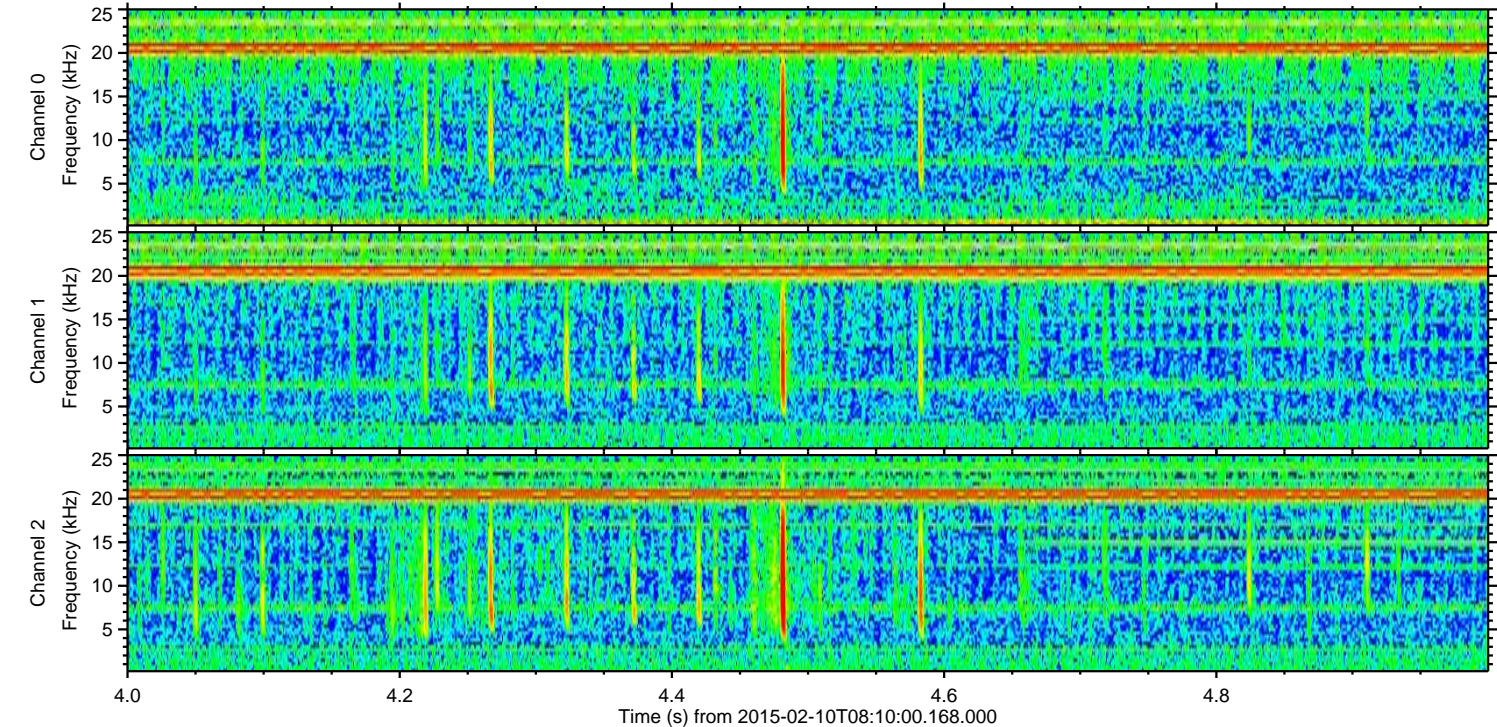
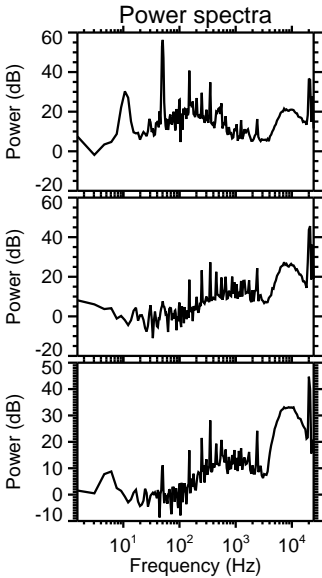
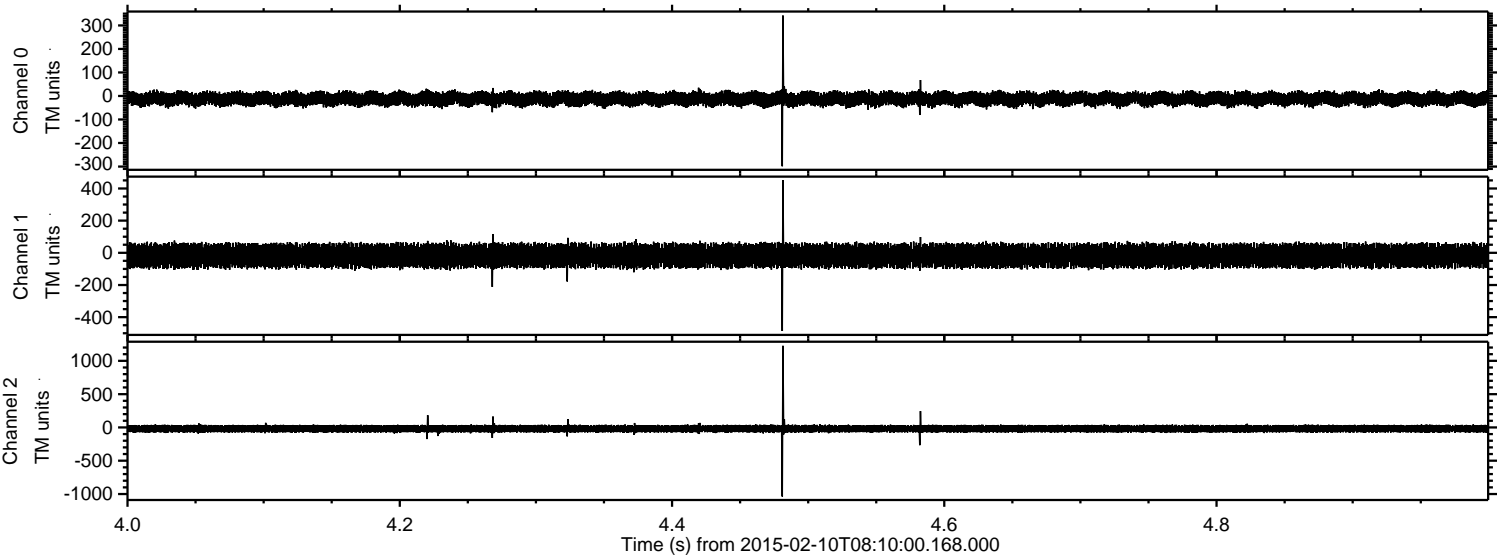
ELMAVAN 3D WAVEFORMS (Measured data sampled at 50 kHz) 49721 packets of 144 samples from 2015-02-10T08:10:00.168.000. Part 10/144

Processed Thu Feb 19 13:50:10 2015 by ELM ver.2012-10-06 from 001\_\_elm20150210\_080959\_\_dat00.bin



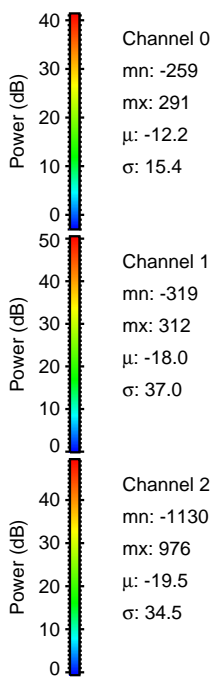
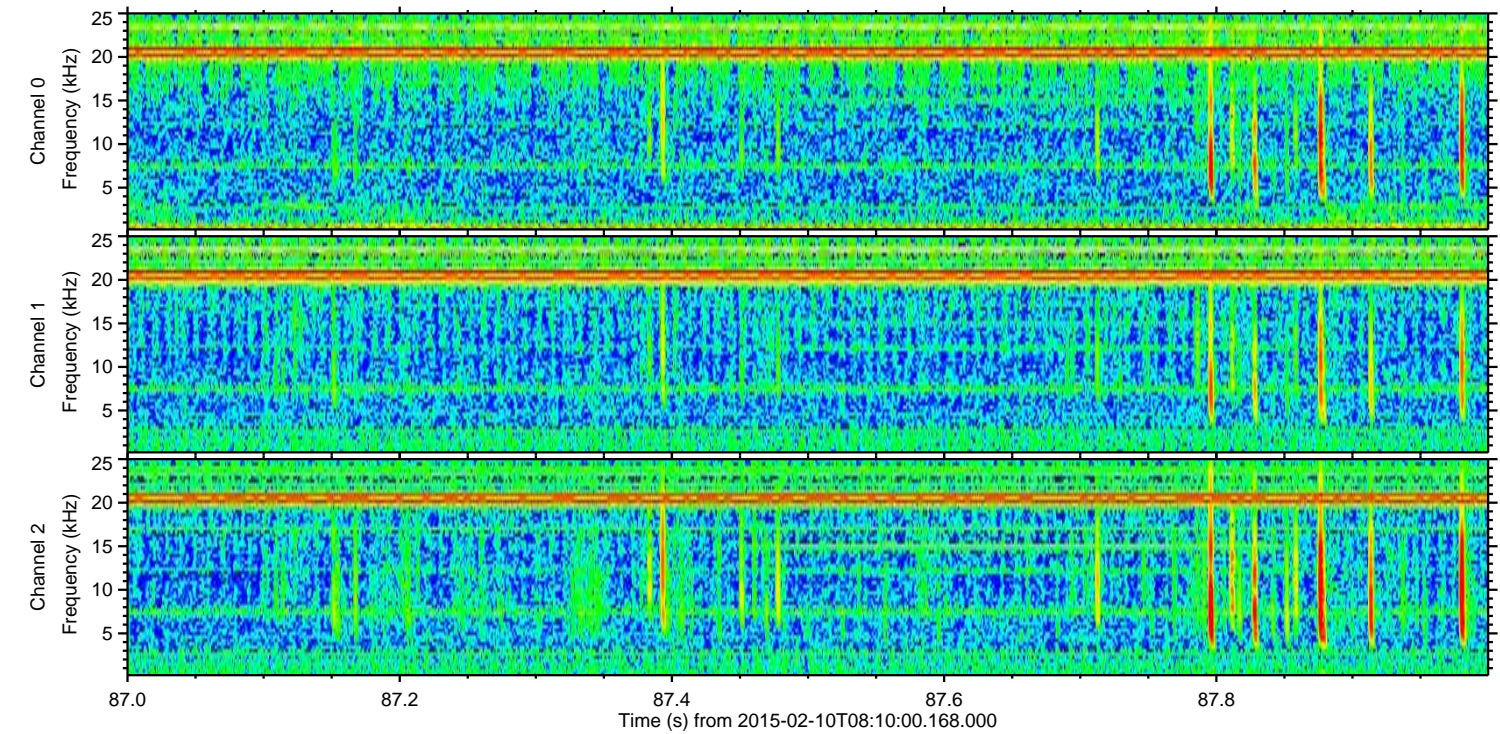
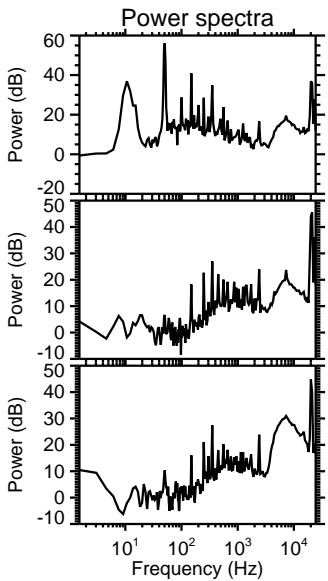
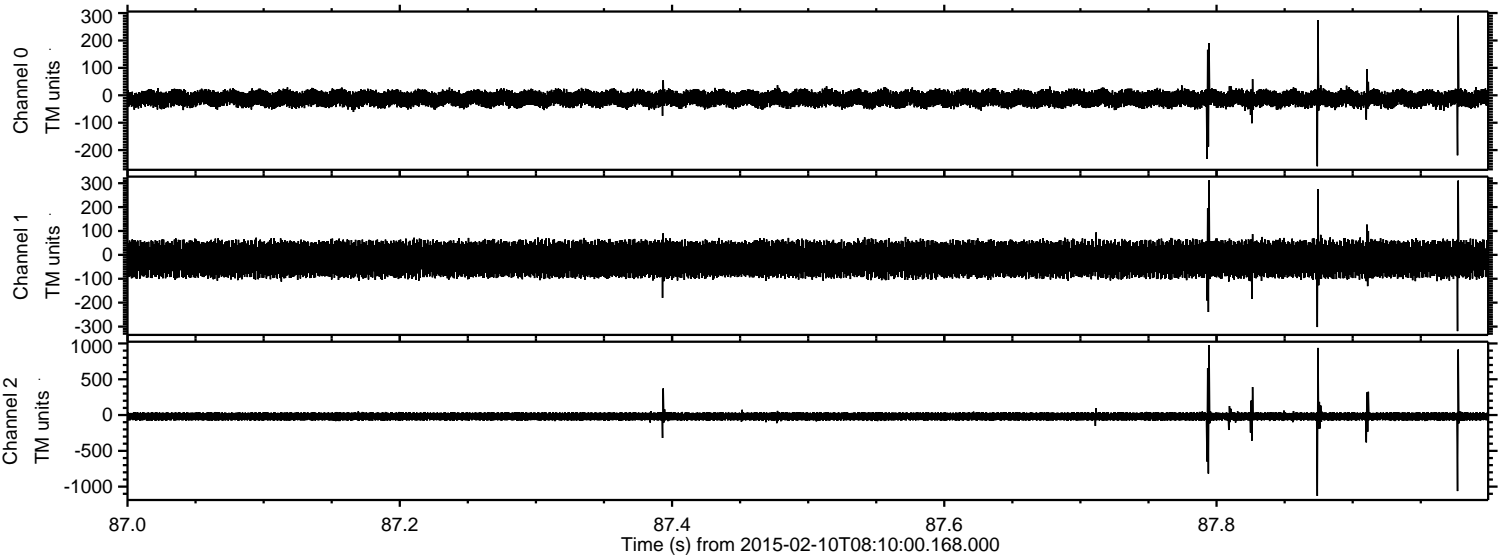


Processed Thu Feb 19 13:50:12 2015 by ELM ver.2012-10-06 from 001\_\_elm20150210\_080959\_\_dat00.bin





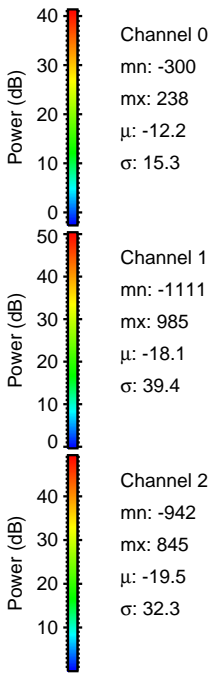
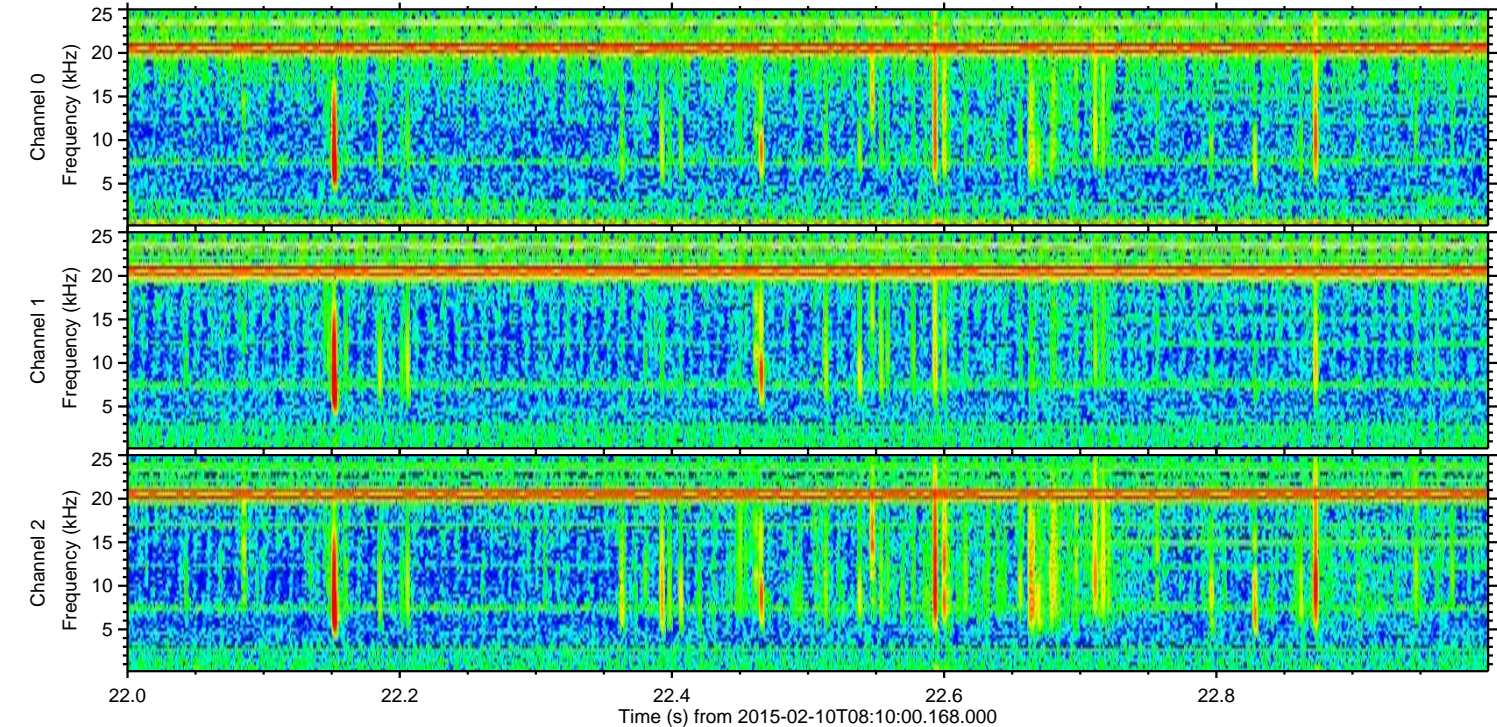
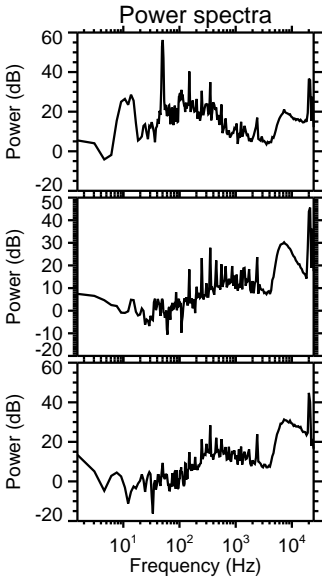
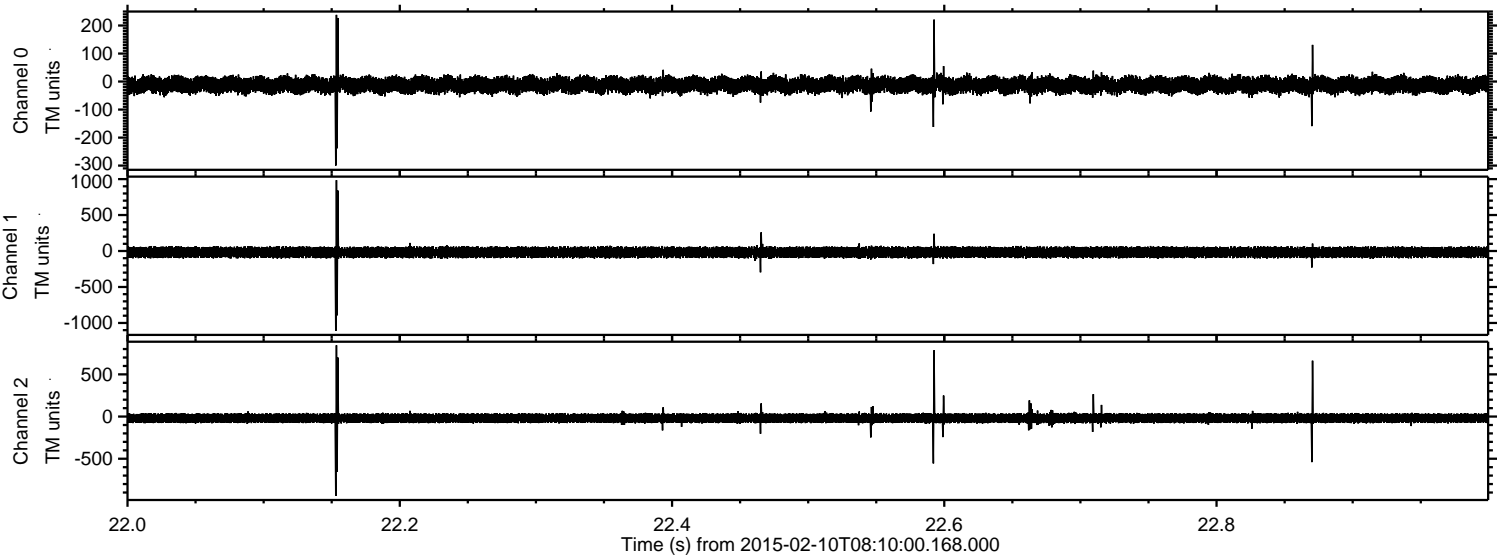
Processed Thu Feb 19 13:50:14 2015 by ELM ver.2012-10-06 from 001\_\_elm20150210\_080959\_\_dat00.bin





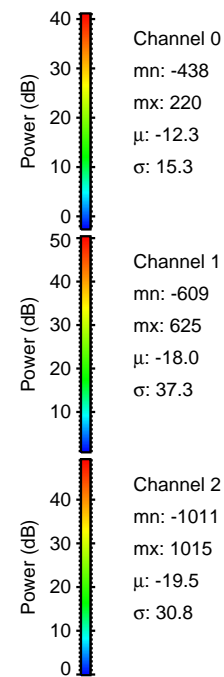
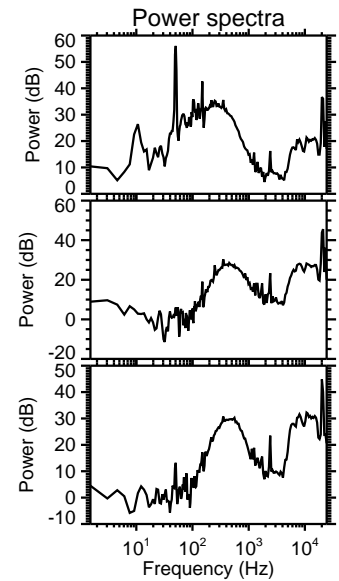
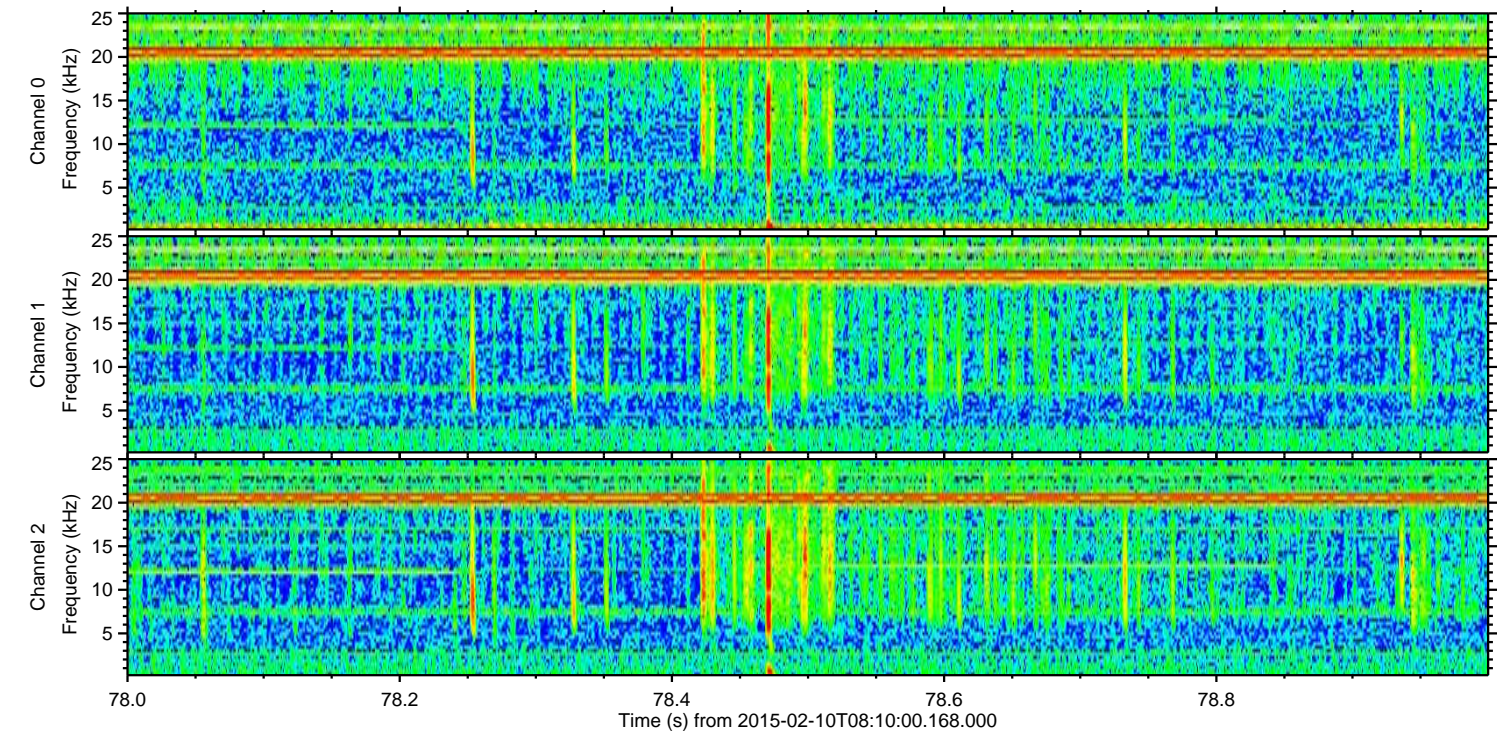
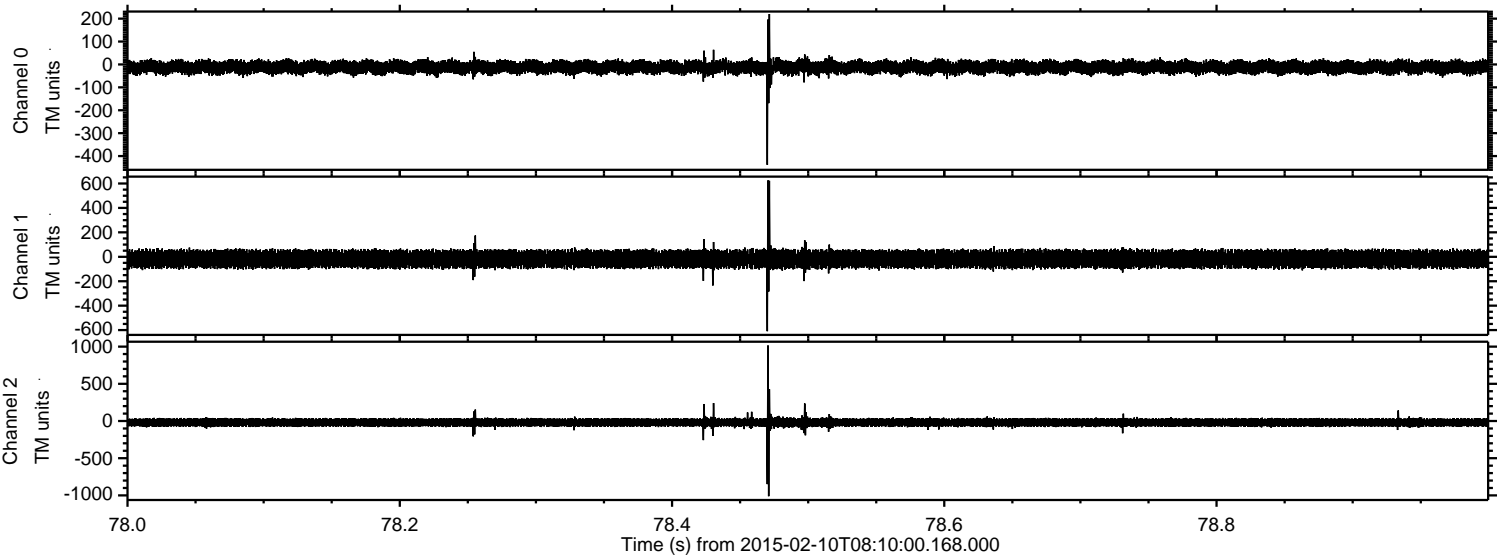
ELMAVAN 3D WAVEFORMS (Measured data sampled at 50 kHz) 49721 packets of 144 samples from 2015-02-10T08:10:00.168.000. Part 23/144

Processed Thu Feb 19 13:50:16 2015 by ELM ver.2012-10-06 from 001\_\_elm20150210\_080959\_\_dat00.bin



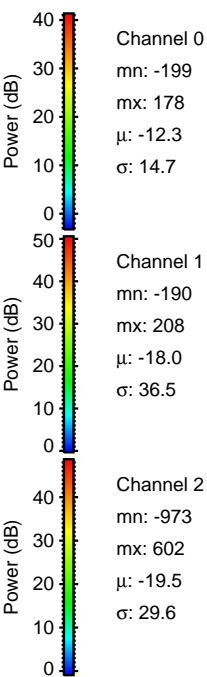
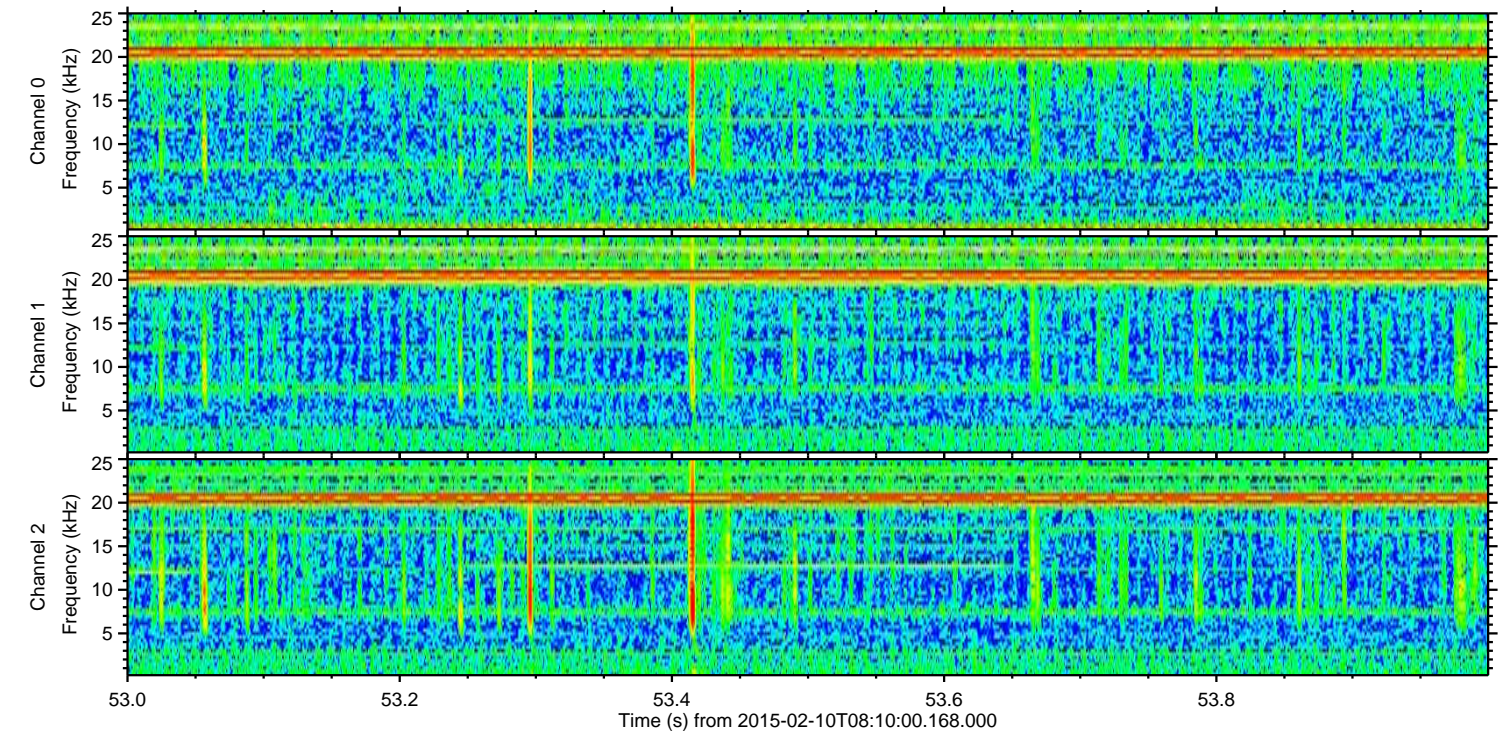
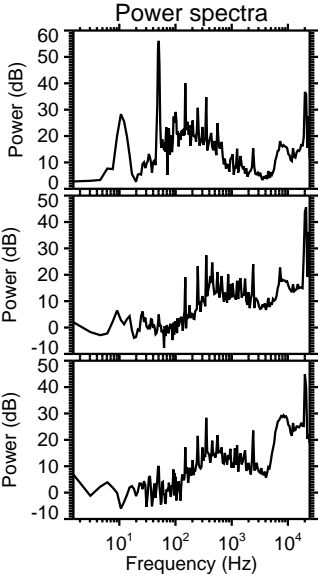
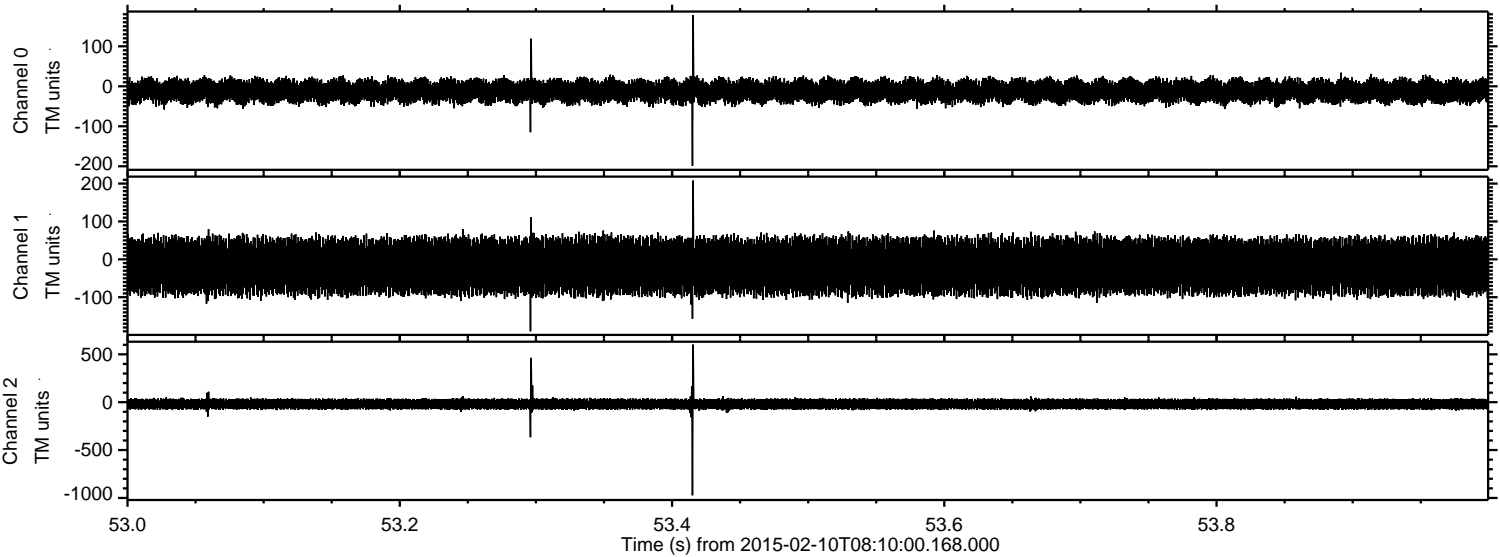


Processed Thu Feb 19 13:50:18 2015 by ELM ver.2012-10-06 from 001\_\_elm20150210\_080959\_\_dat00.bin





Processed Thu Feb 19 13:50:21 2015 by ELM ver.2012-10-06 from 001\_\_elm20150210\_080959\_\_dat00.bin





Processed Thu Feb 19 13:50:24 2015 by ELM ver.2012-10-06 from 001\_\_elm20150210\_080959\_\_dat00.bin

