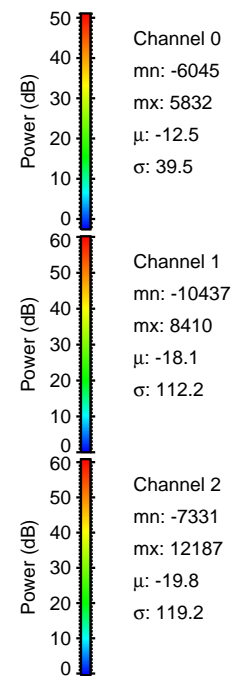
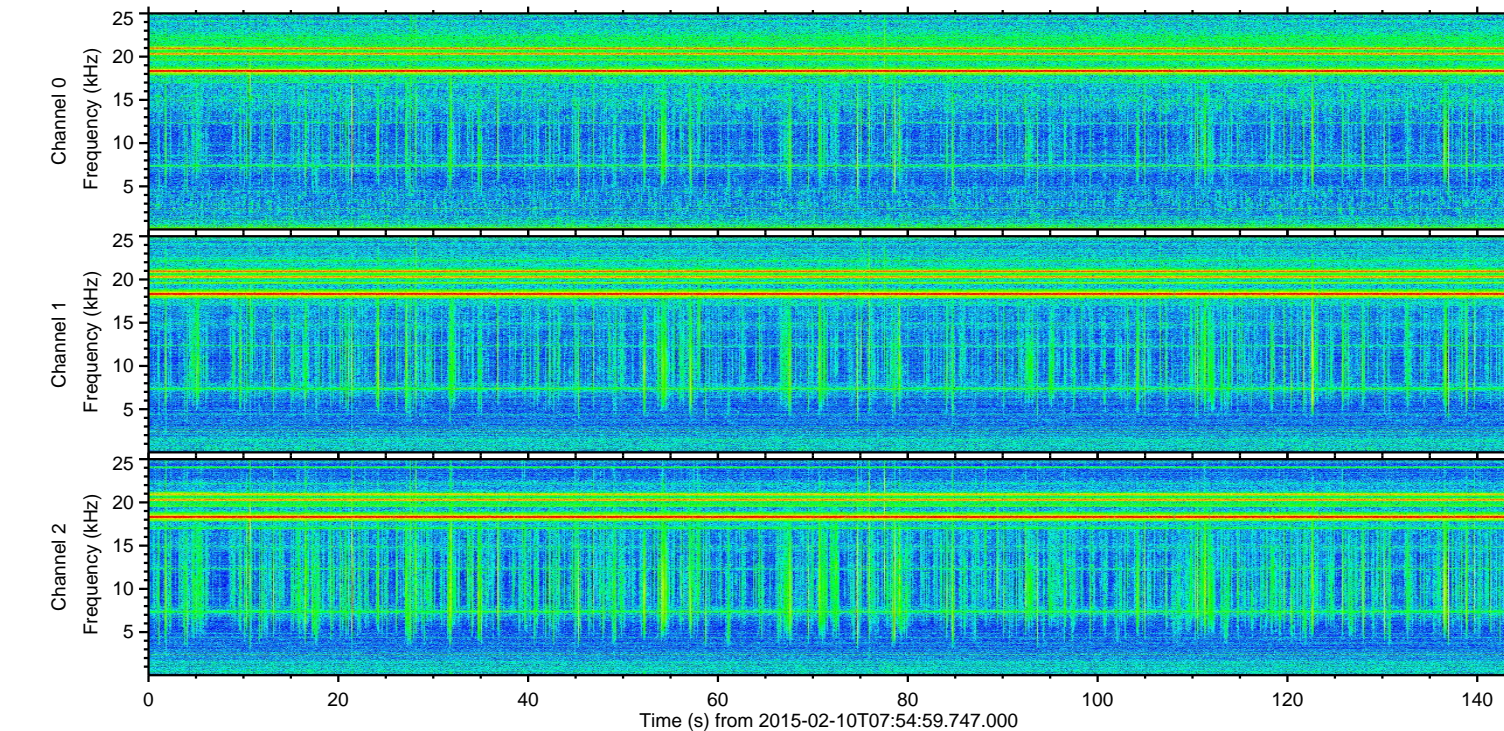
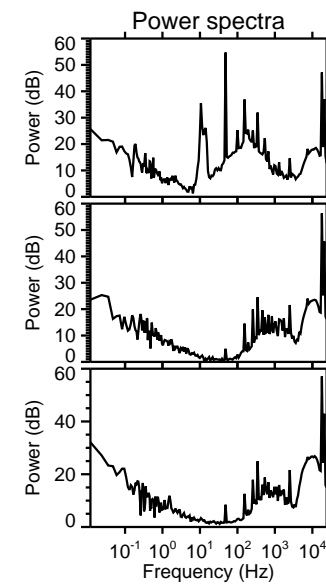
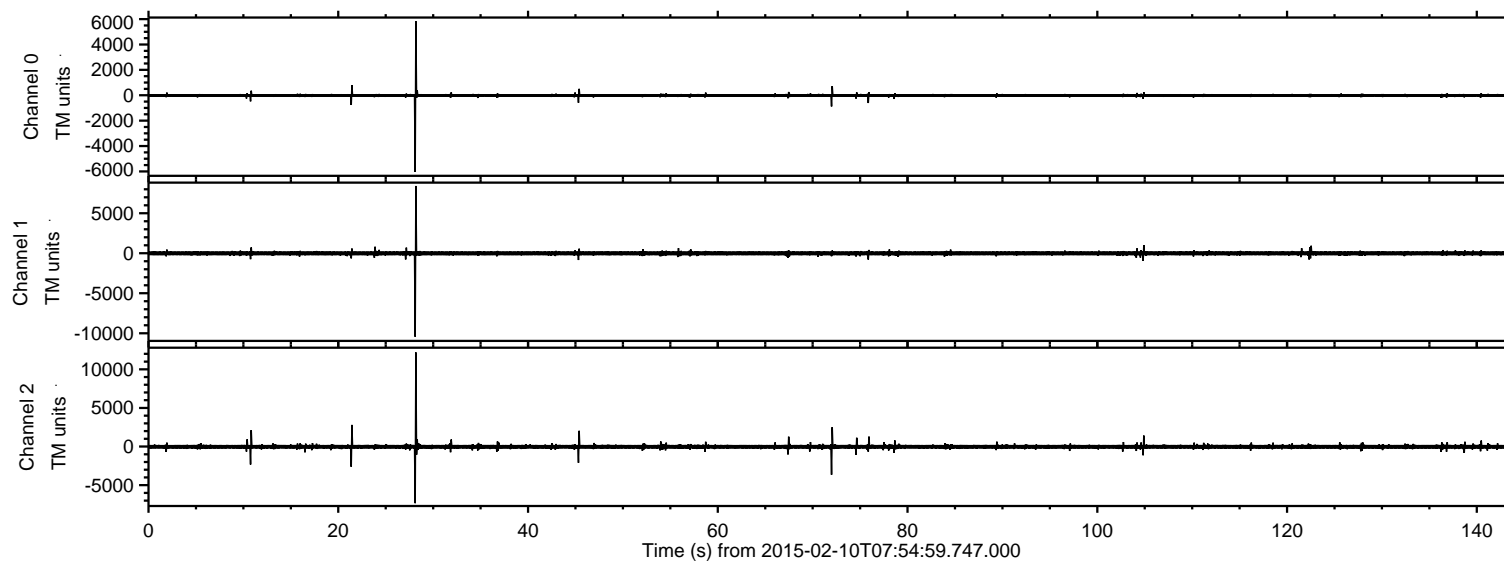
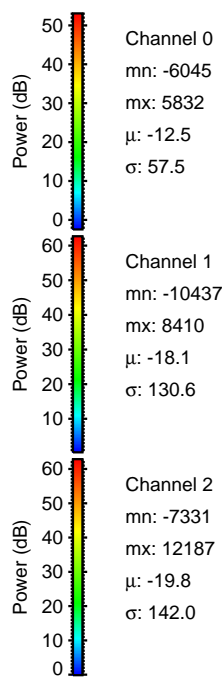
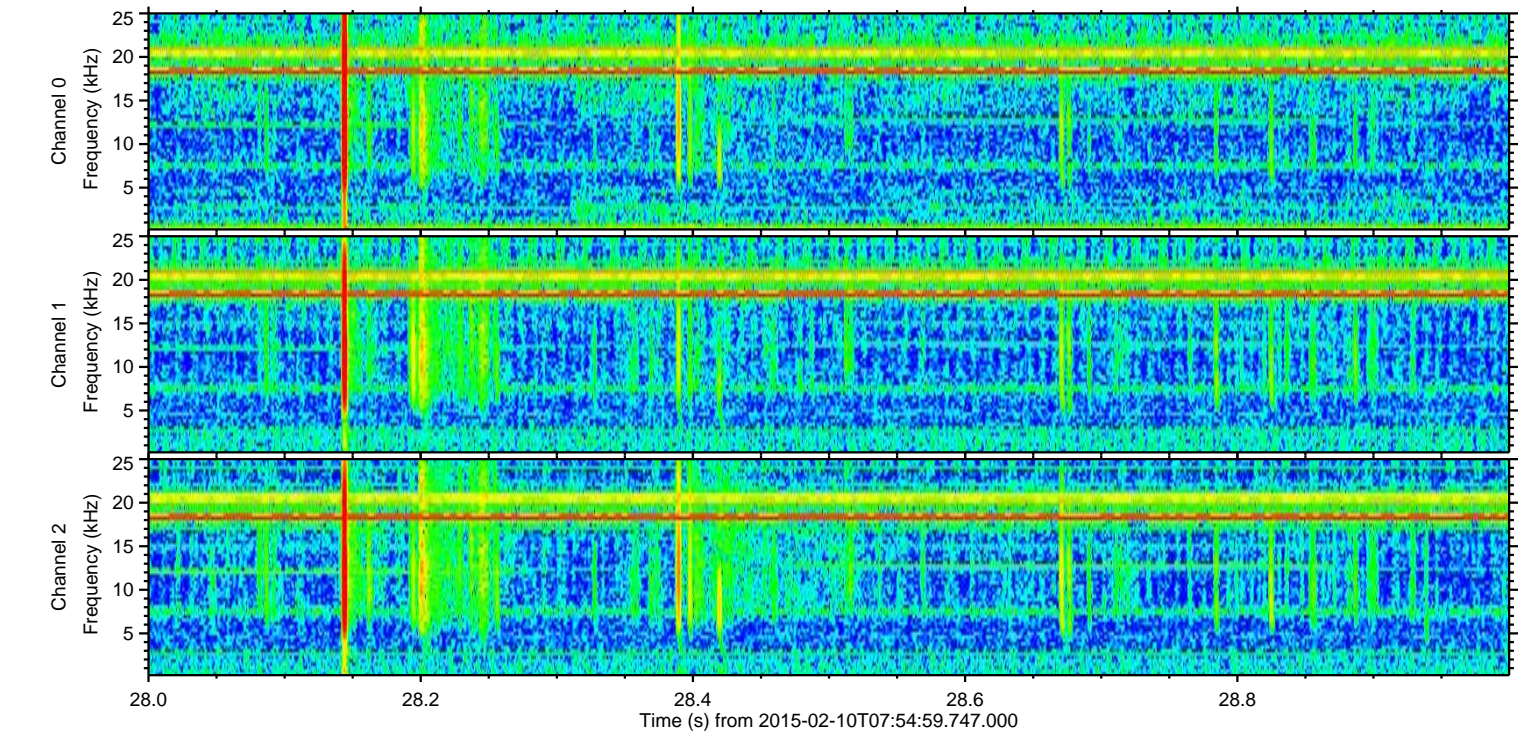
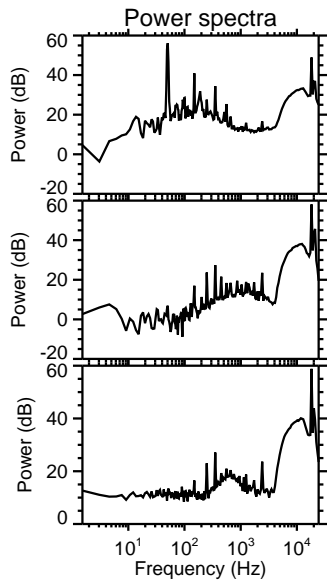
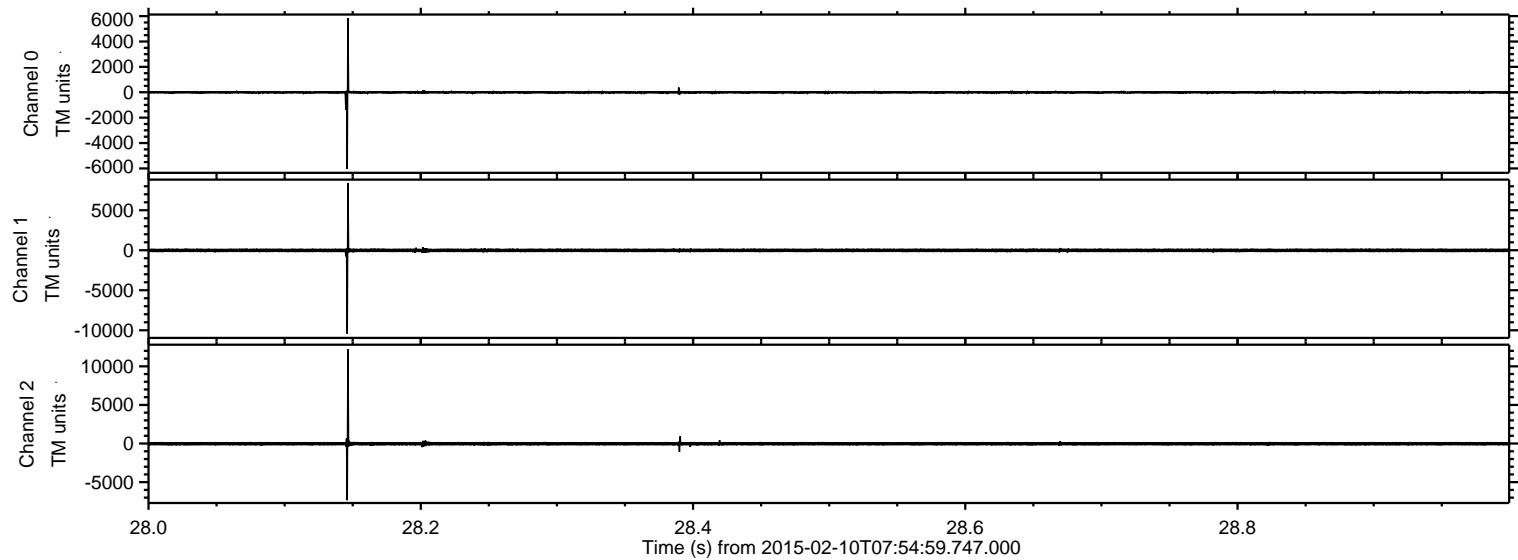


# ELMAVAN 3D WAVEFORMS (Measured data sampled at 50 kHz) 49794 packets of 144 samples from 2015-02-10T07:54:59.747.000.

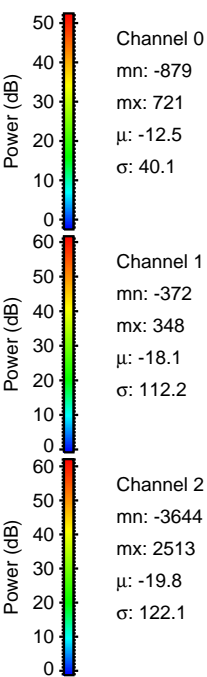
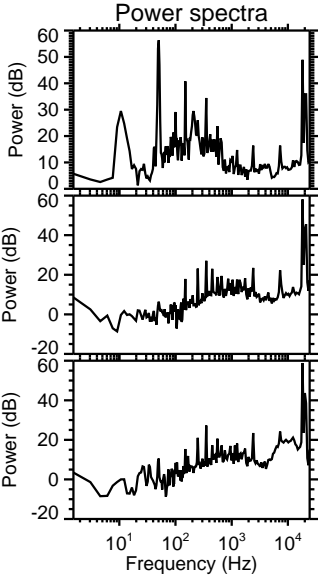
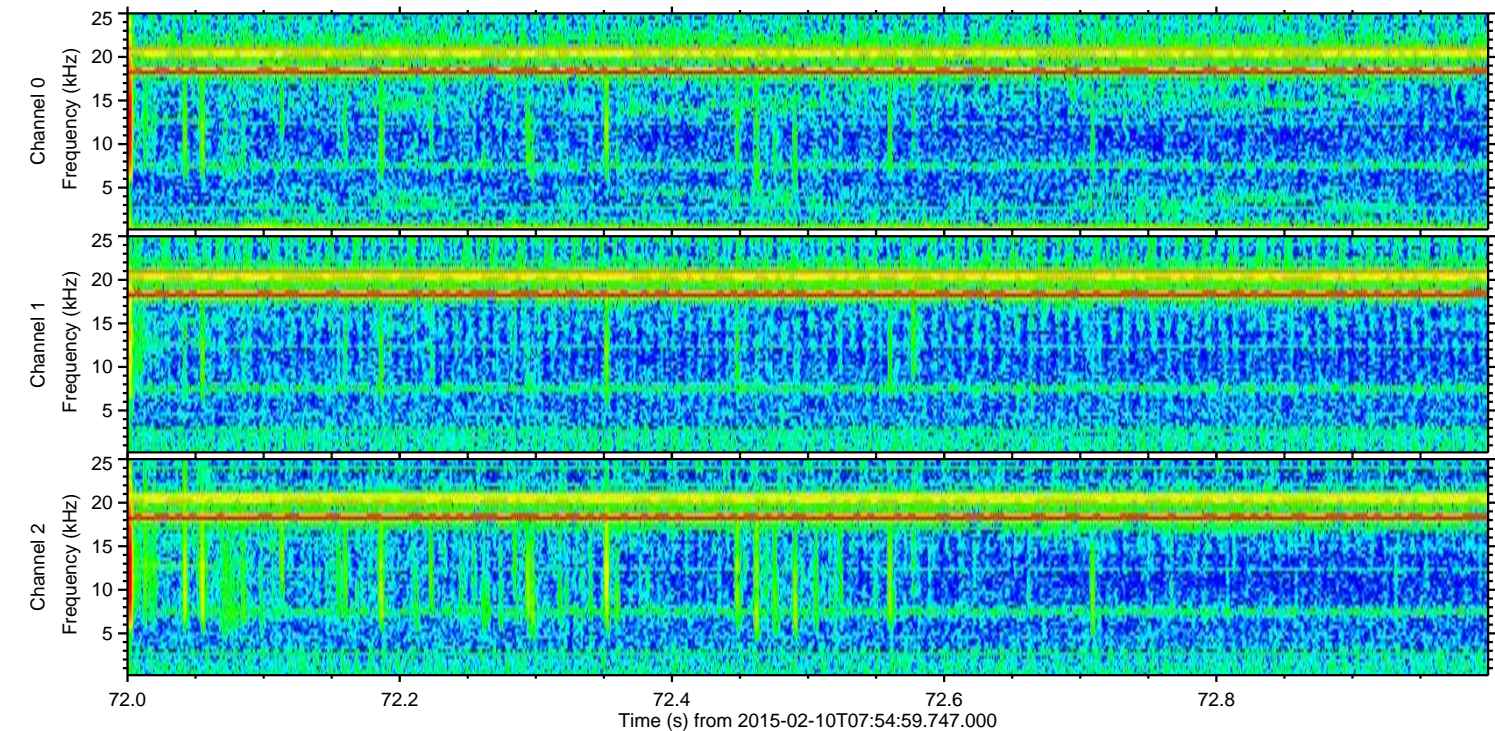
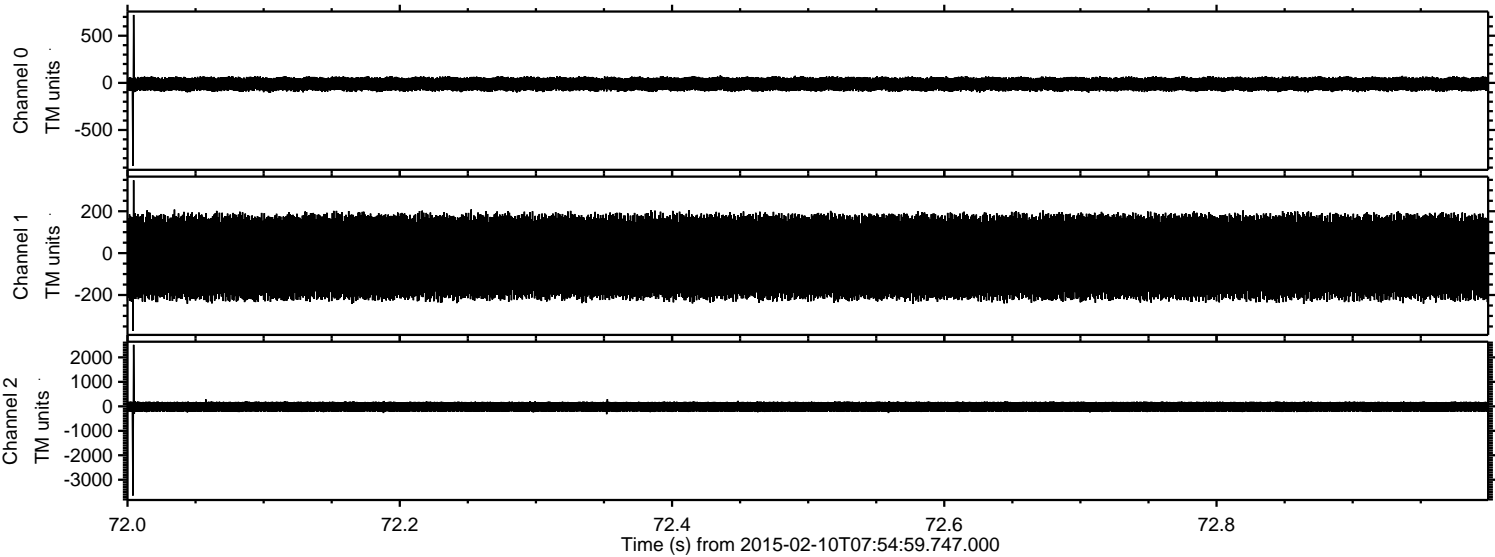
Processed Thu Feb 19 13:44:51 2015 by ELM ver.2012-10-06 from 001\_\_elm20150210\_075458\_\_dat00.bin



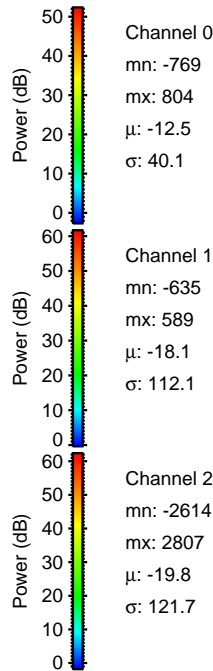
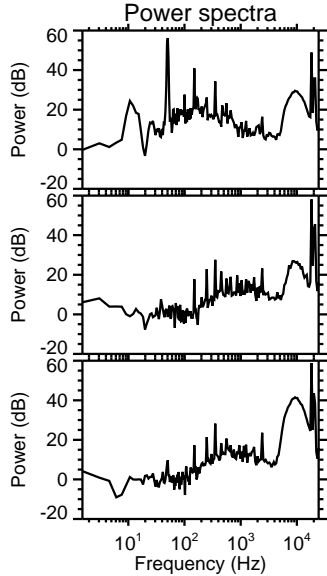
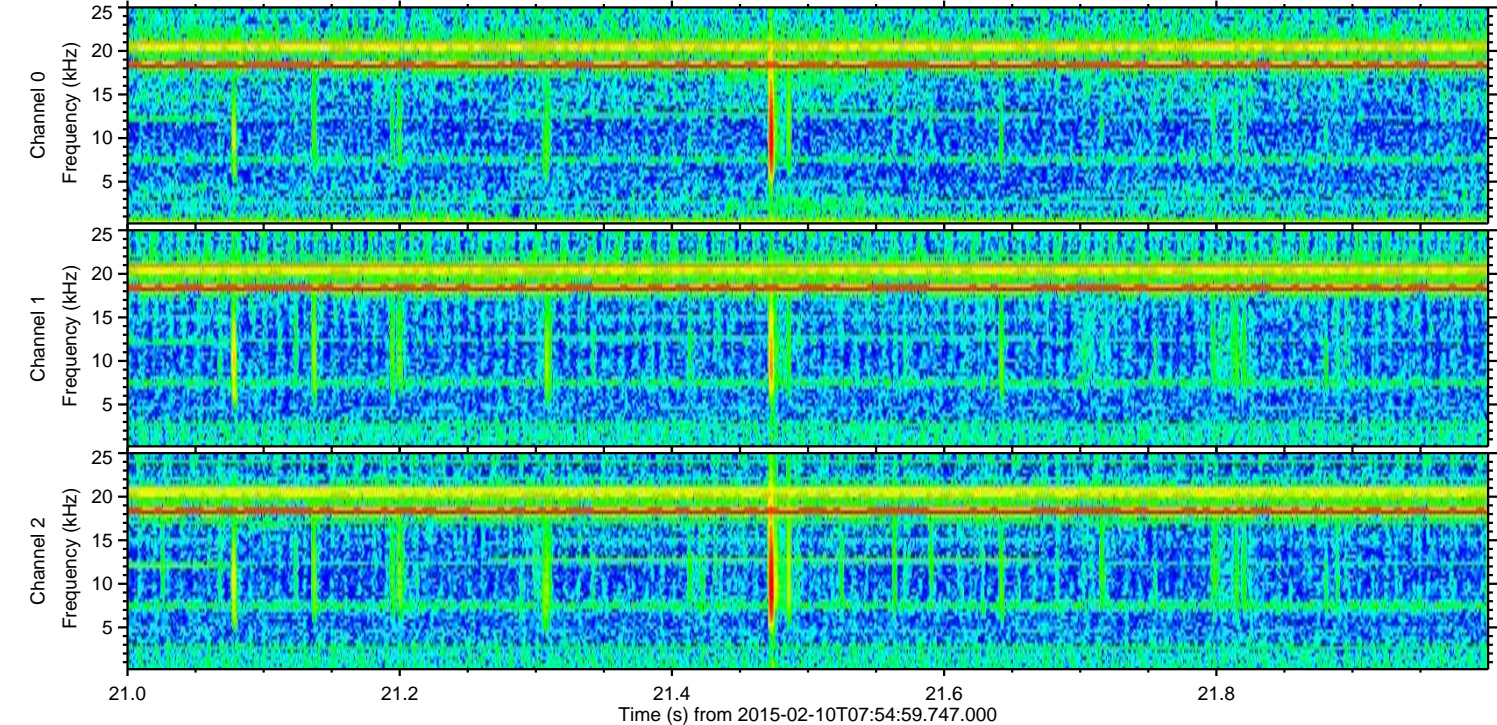
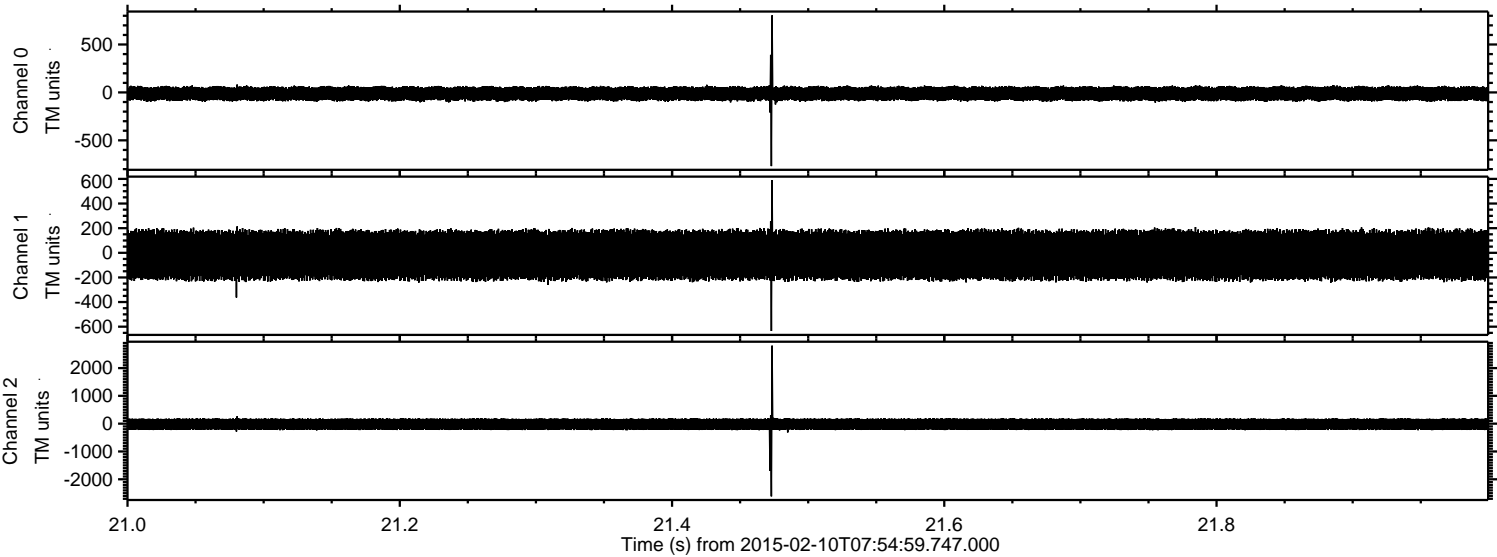
Processed Thu Feb 19 13:45:08 2015 by ELM ver.2012-10-06 from 001\_\_elm20150210\_075458\_\_dat00.bin



Processed Thu Feb 19 13:45:09 2015 by ELM ver.2012-10-06 from 001\_\_elm20150210\_075458\_\_dat00.bin



Processed Thu Feb 19 13:45:10 2015 by ELM ver.2012-10-06 from 001\_\_elm20150210\_075458\_\_dat00.bin

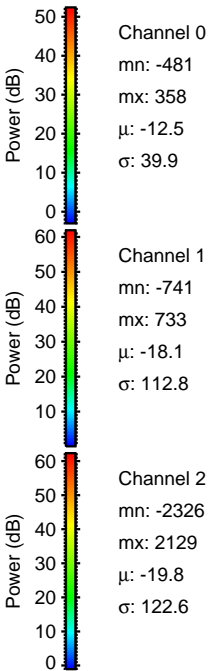
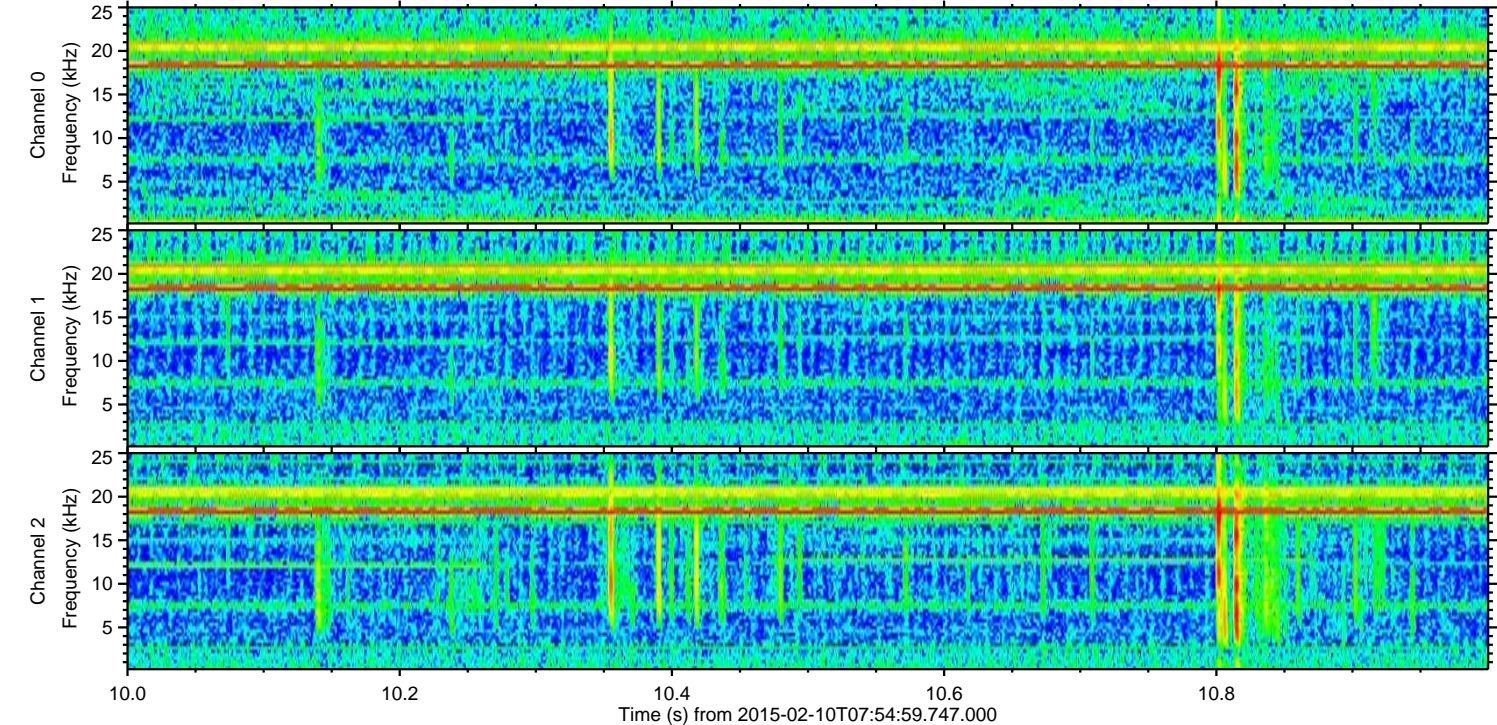
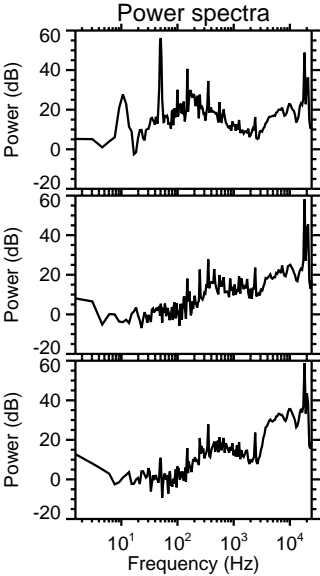
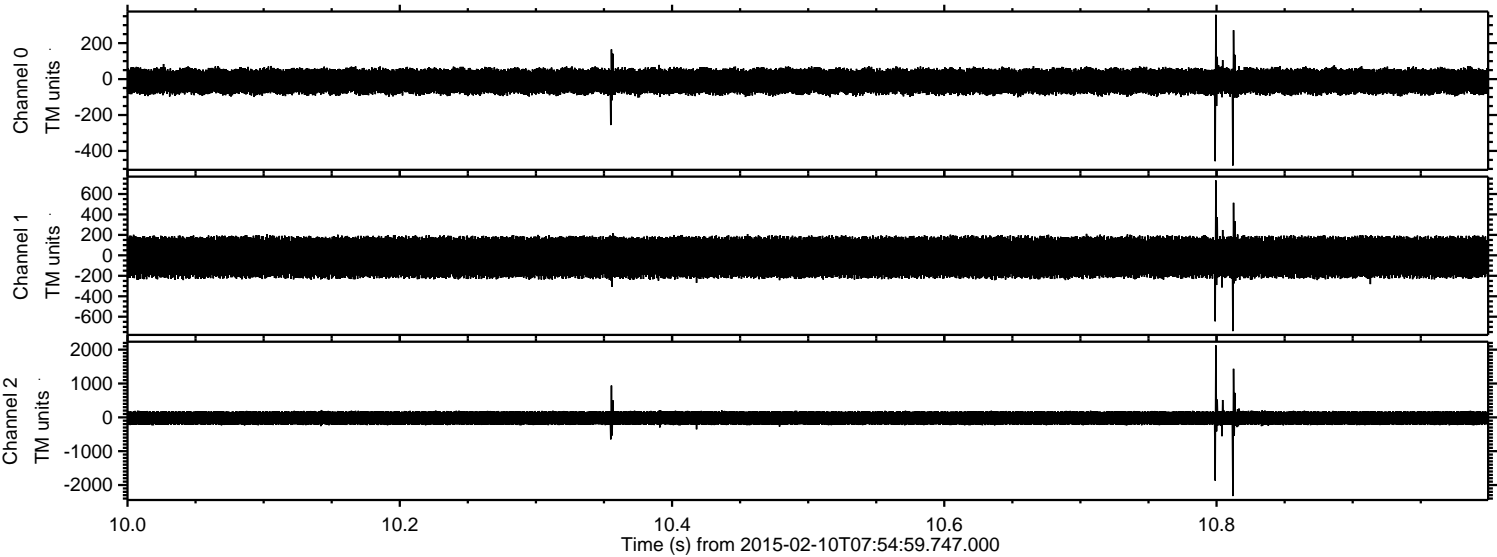


Channel 0  
mn: -769  
mx: 804  
 $\mu$ : -12.5  
 $\sigma$ : 40.1

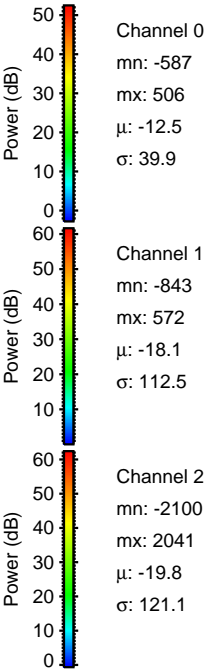
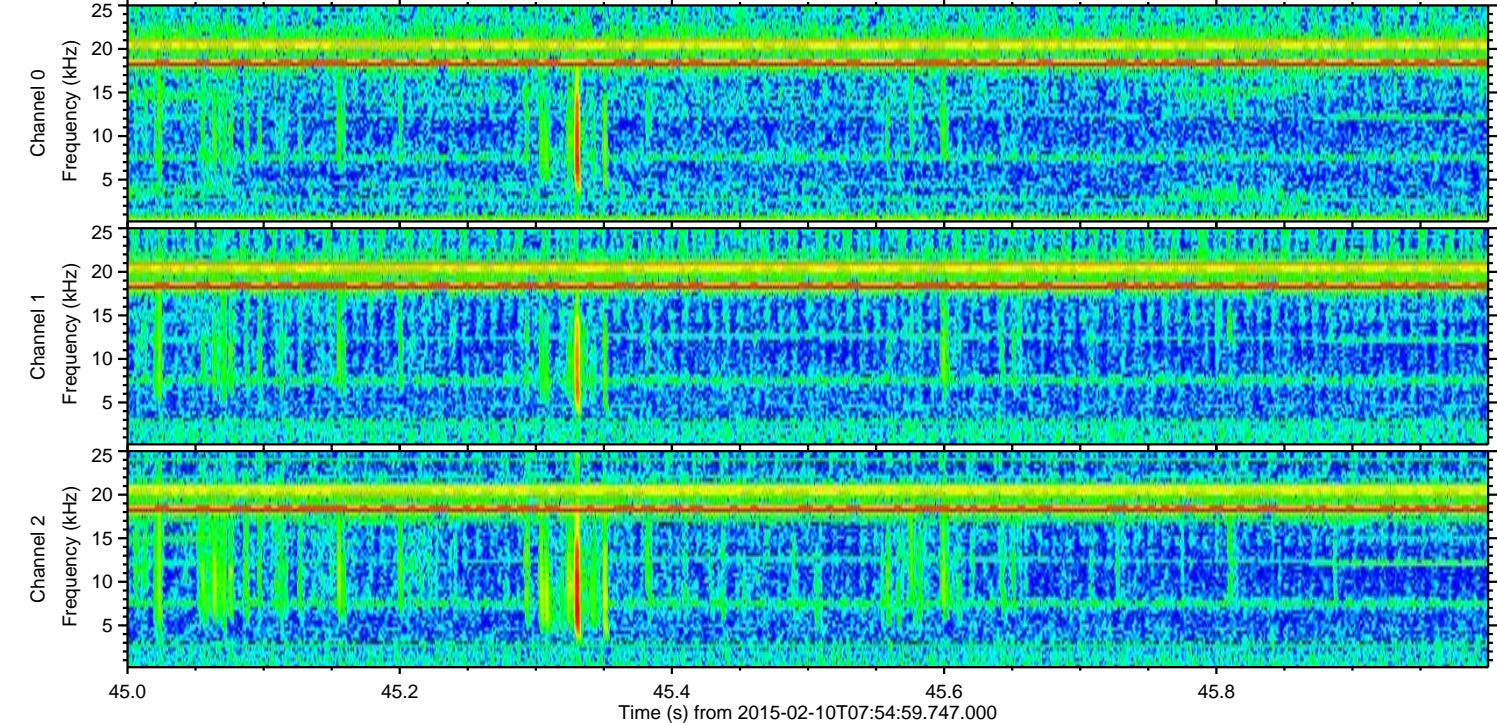
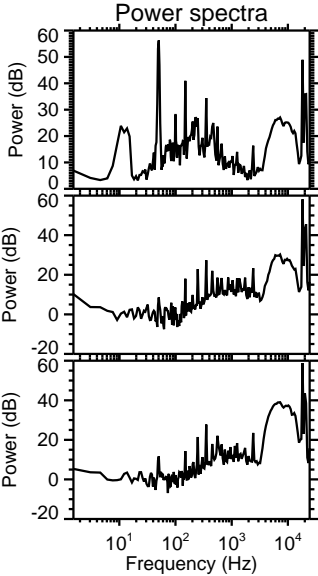
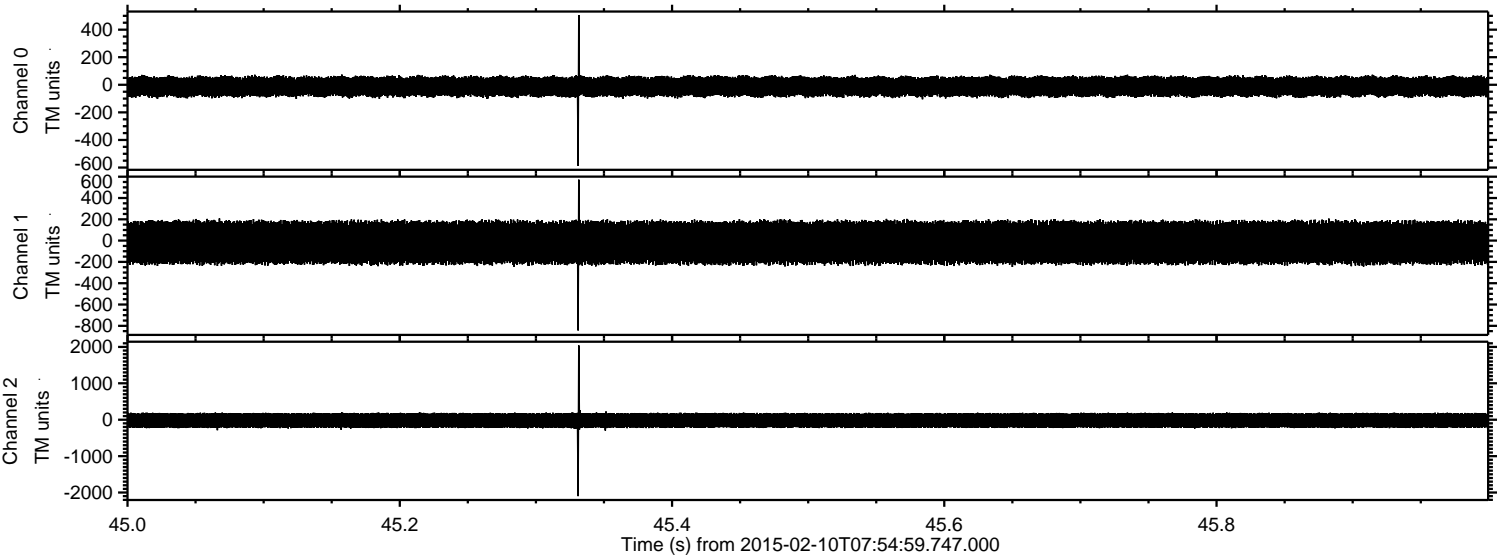
Channel 1  
mn: -635  
mx: 589  
 $\mu$ : -18.1  
 $\sigma$ : 112.1

Channel 2  
mn: -2614  
mx: 2807  
 $\mu$ : -19.8  
 $\sigma$ : 121.7

Processed Thu Feb 19 13:45:12 2015 by ELM ver.2012-10-06 from 001\_\_elm20150210\_075458\_\_dat00.bin



Processed Thu Feb 19 13:45:15 2015 by ELM ver.2012-10-06 from 001\_\_elm20150210\_075458\_\_dat00.bin



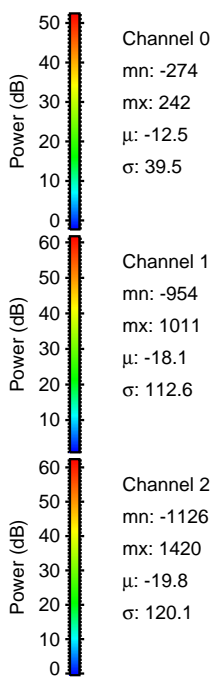
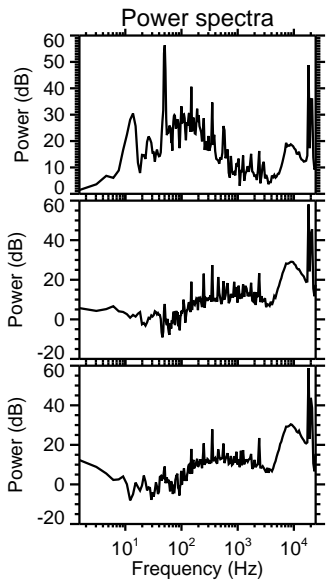
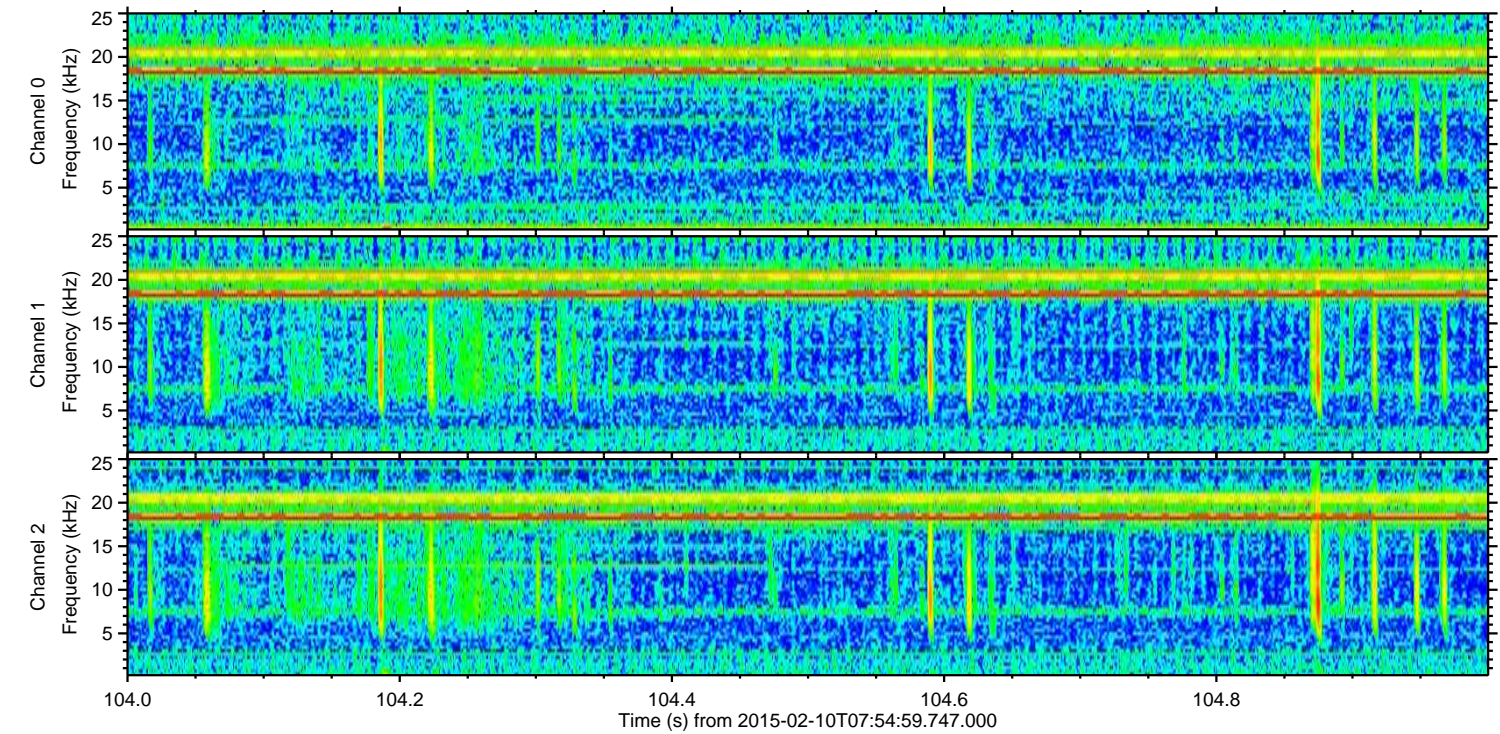
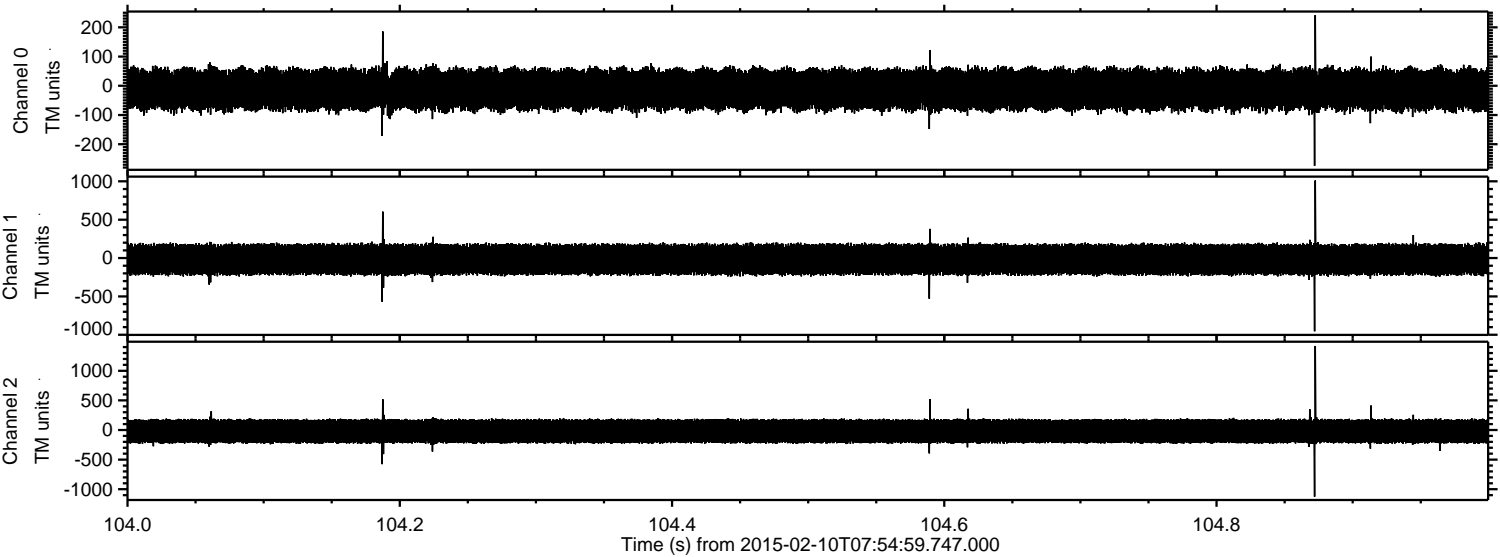
Channel 0  
mn: -587  
mx: 506  
 $\mu$ : -12.5  
 $\sigma$ : 39.9

Channel 1  
mn: -843  
mx: 572  
 $\mu$ : -18.1  
 $\sigma$ : 112.5

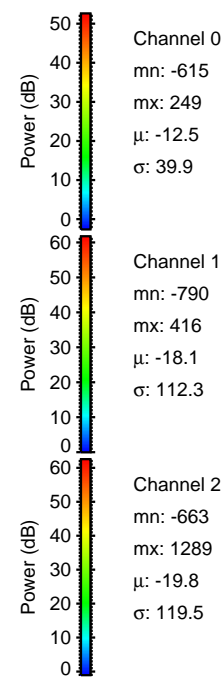
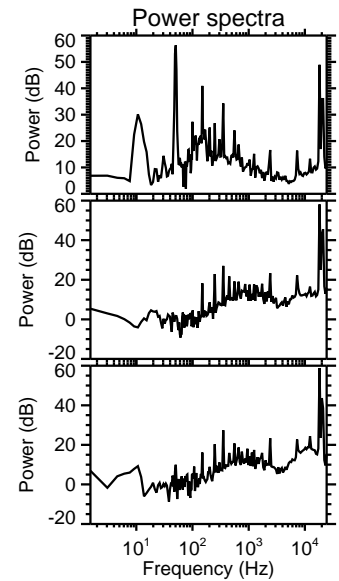
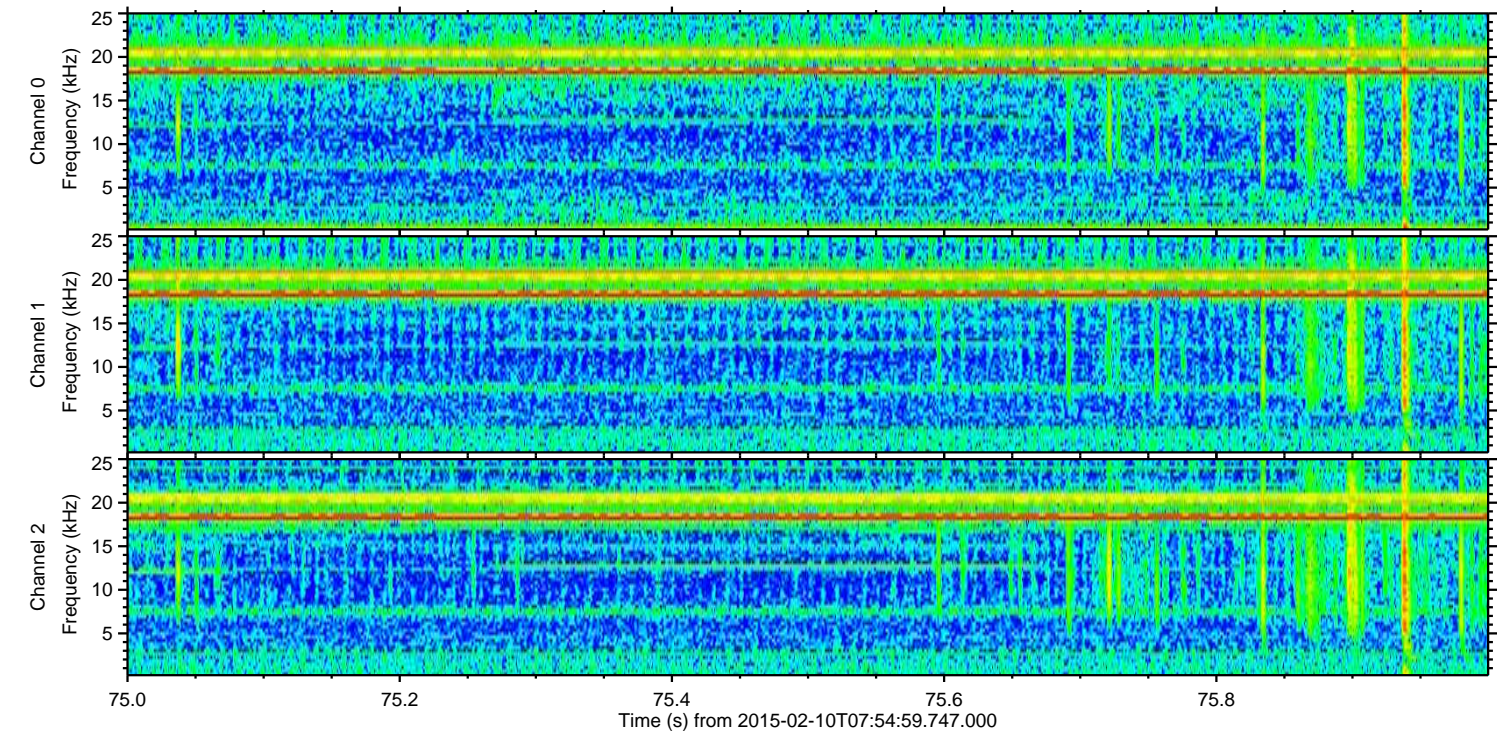
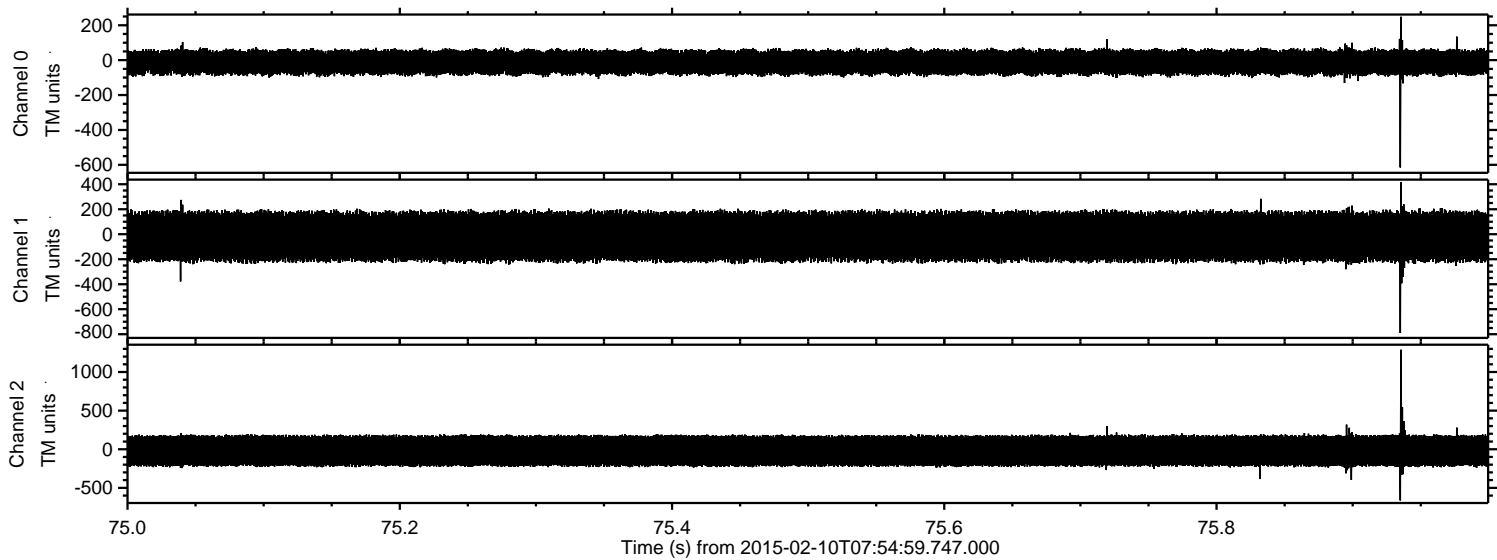
Channel 2  
mn: -2100  
mx: 2041  
 $\mu$ : -19.8  
 $\sigma$ : 121.1

ELMAVAN 3D WAVEFORMS (Measured data sampled at 50 kHz) 49794 packets of 144 samples from 2015-02-10T07:54:59.747.000. Part 105/144

Processed Thu Feb 19 13:45:17 2015 by ELM ver.2012-10-06 from 001\_\_elm20150210\_075458\_\_dat00.bin



Processed Thu Feb 19 13:45:18 2015 by ELM ver.2012-10-06 from 001\_\_elm20150210\_075458\_\_dat00.bin

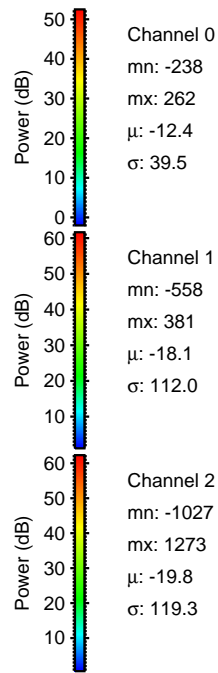
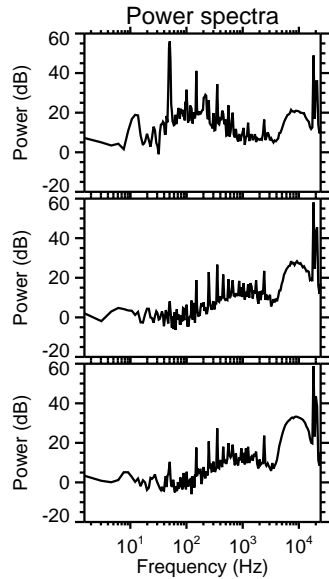
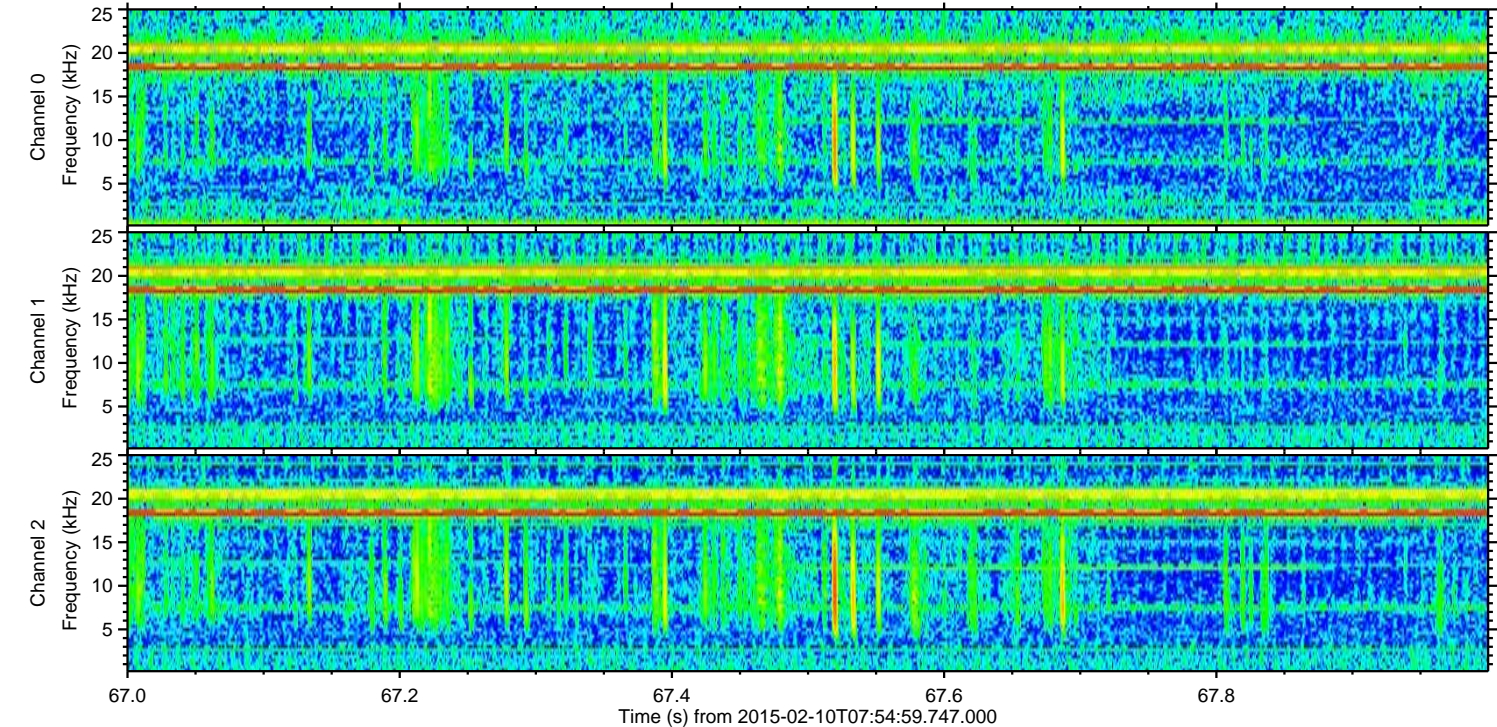
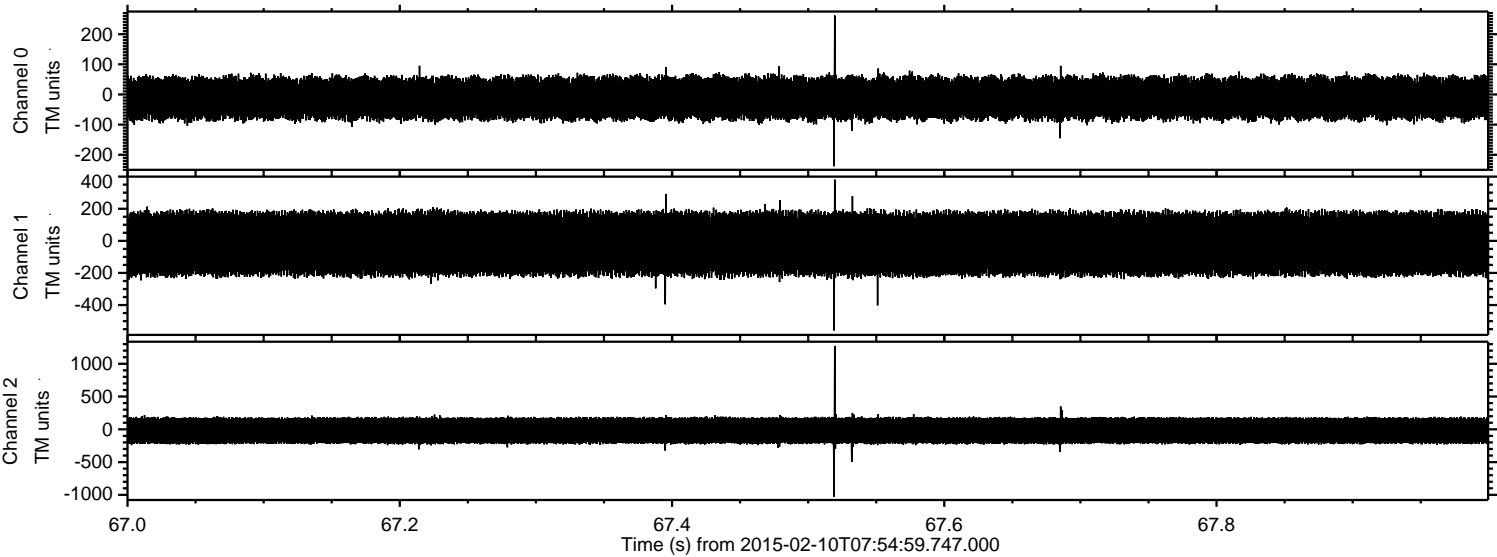


Channel 0  
mn: -615  
mx: 249  
 $\mu$ : -12.5  
 $\sigma$ : 39.9

Channel 1  
mn: -790  
mx: 416  
 $\mu$ : -18.1  
 $\sigma$ : 112.3

Channel 2  
mn: -663  
mx: 1289  
 $\mu$ : -19.8  
 $\sigma$ : 119.5

Processed Thu Feb 19 13:45:19 2015 by ELM ver.2012-10-06 from 001\_\_elm20150210\_075458\_\_dat00.bin

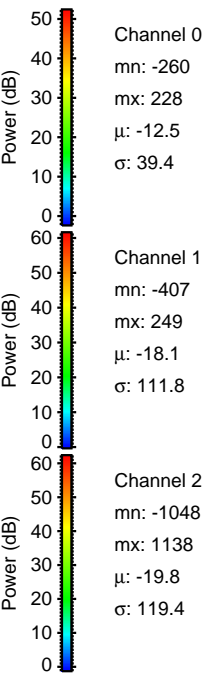
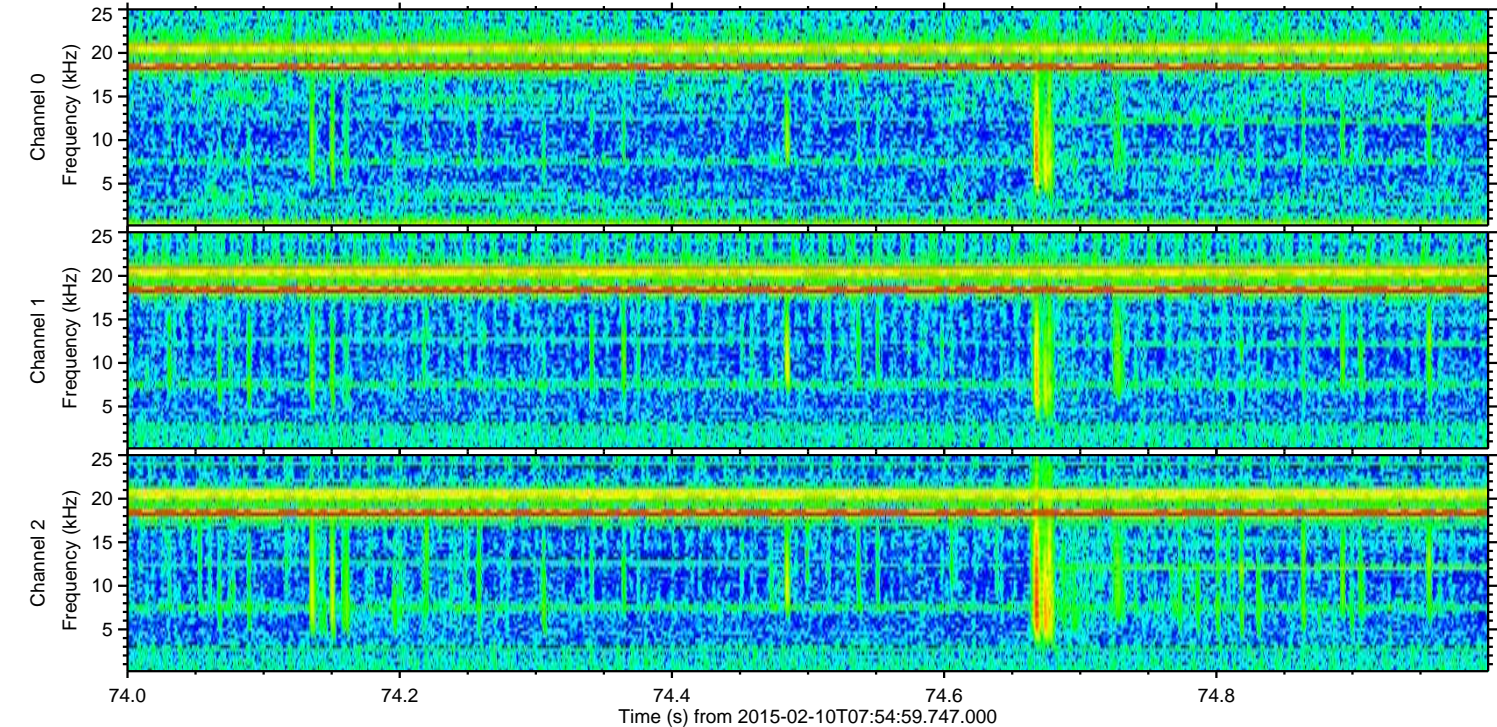
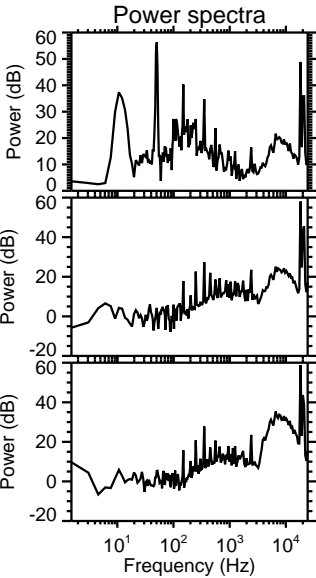
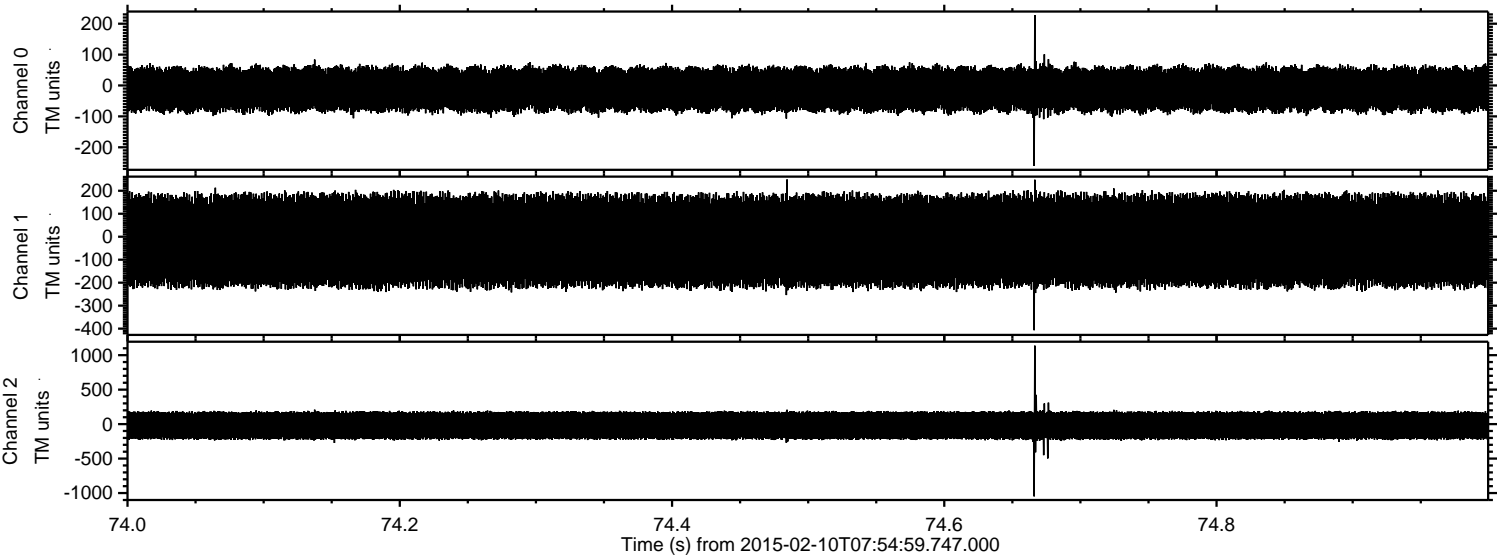


Channel 0  
mn: -238  
mx: 262  
 $\mu$ : -12.4  
 $\sigma$ : 39.5

Channel 1  
mn: -558  
mx: 381  
 $\mu$ : -18.1  
 $\sigma$ : 112.0

Channel 2  
mn: -1027  
mx: 1273  
 $\mu$ : -19.8  
 $\sigma$ : 119.3

Processed Thu Feb 19 13:45:20 2015 by ELM ver.2012-10-06 from 001\_\_elm20150210\_075458\_\_dat00.bin



Processed Thu Feb 19 13:45:22 2015 by ELM ver.2012-10-06 from 001\_\_elm20150210\_075458\_\_dat00.bin

