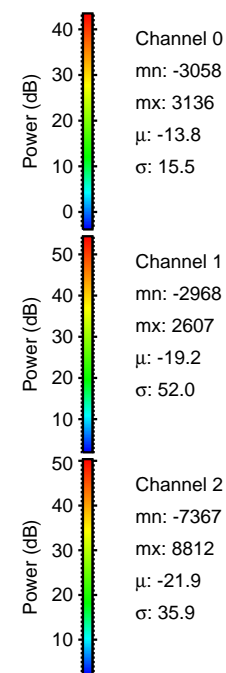
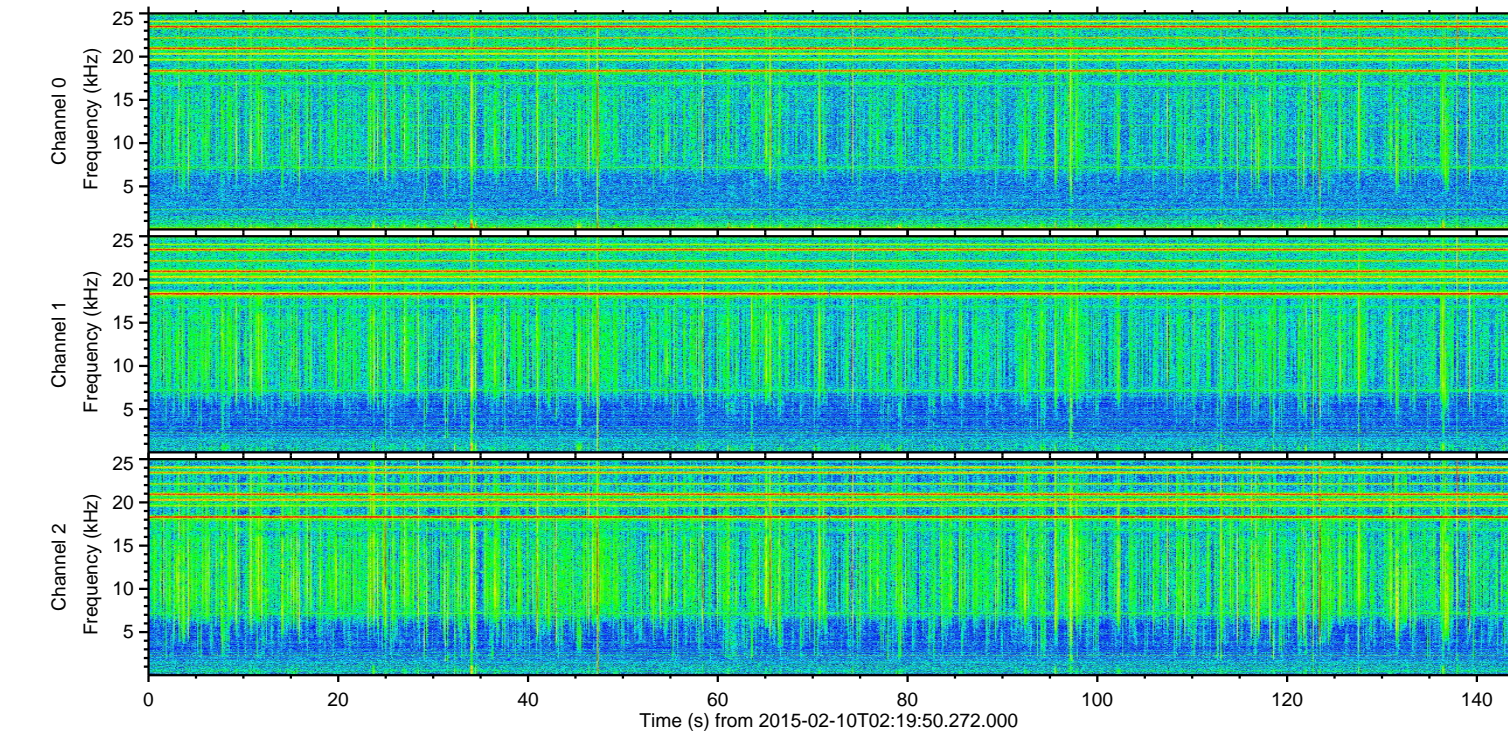
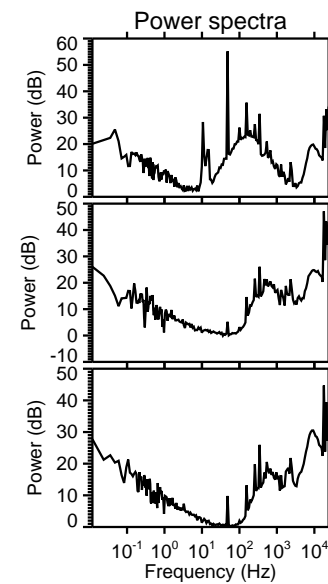
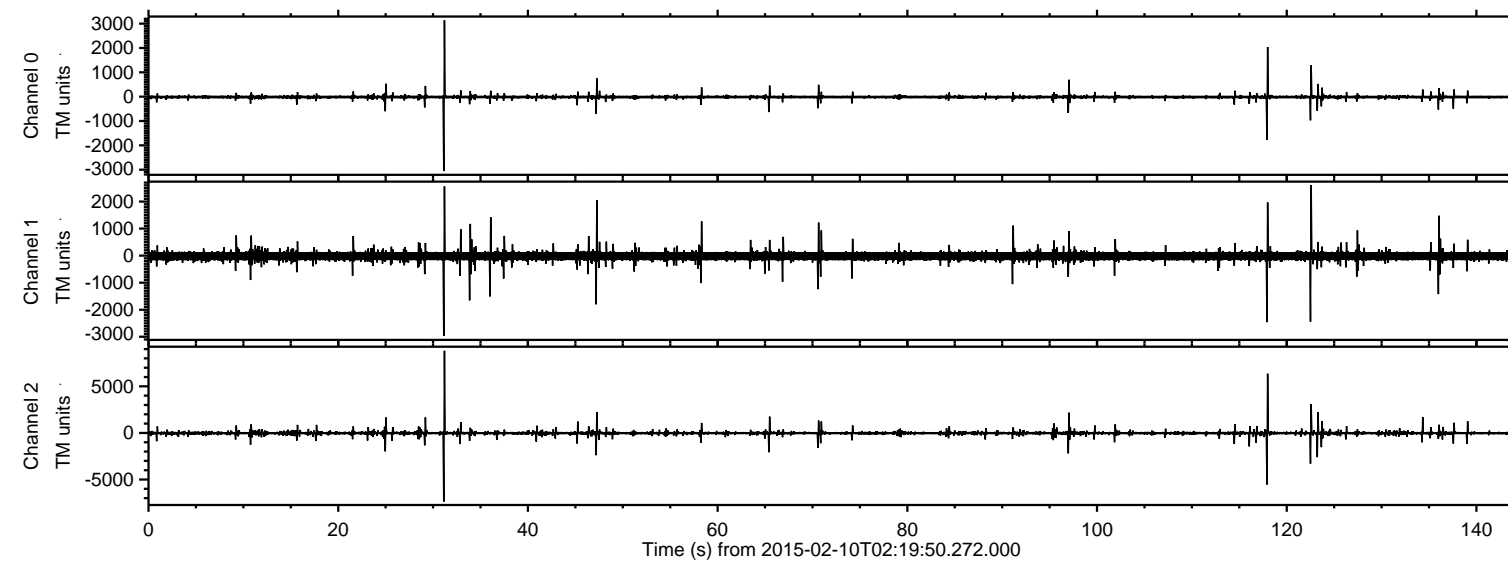
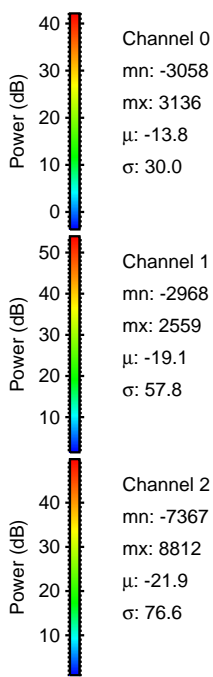
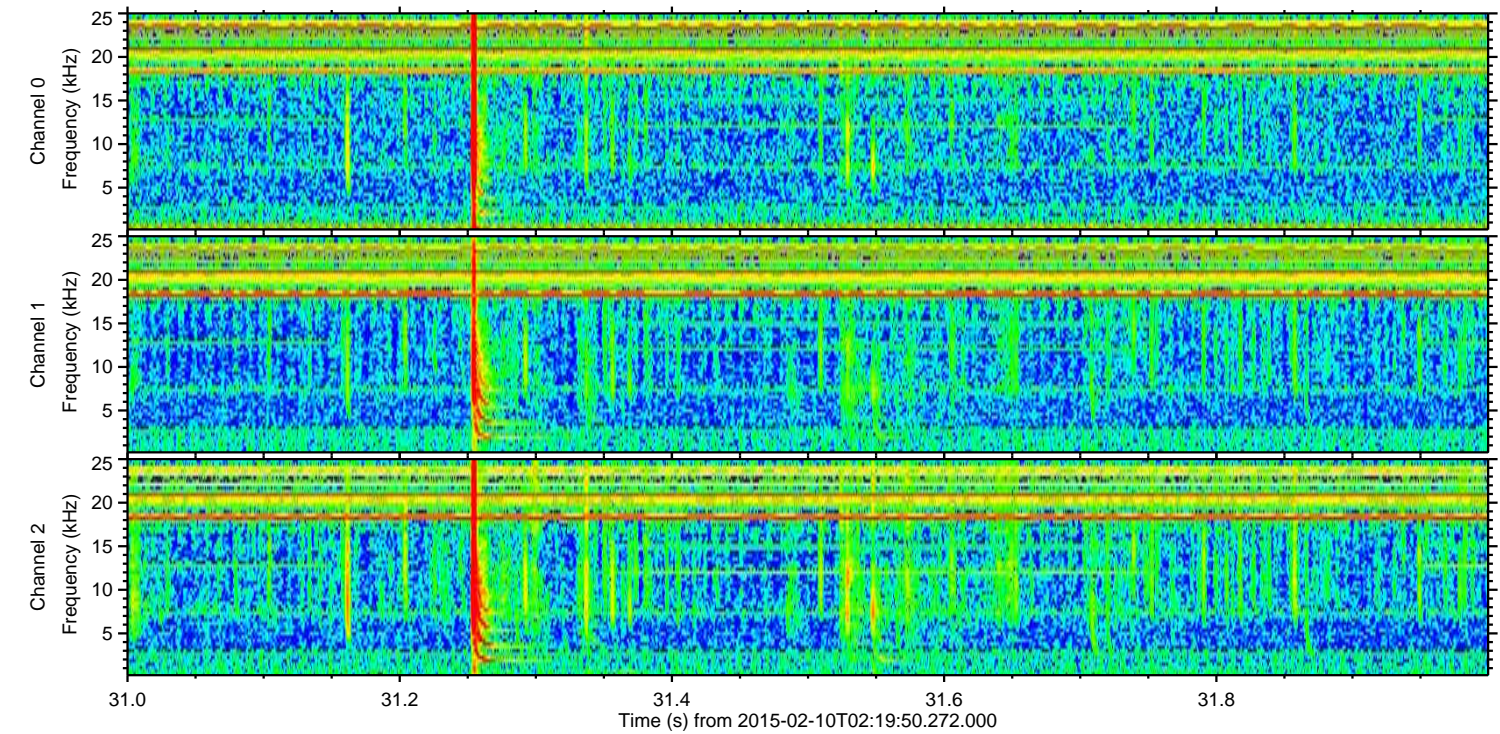
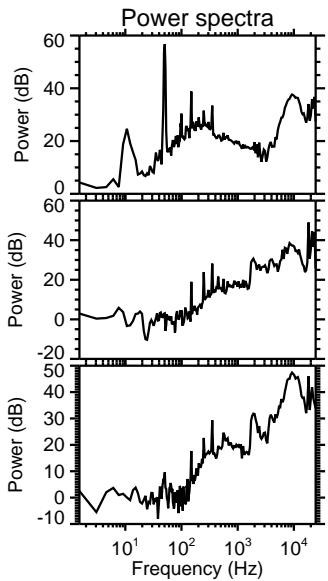
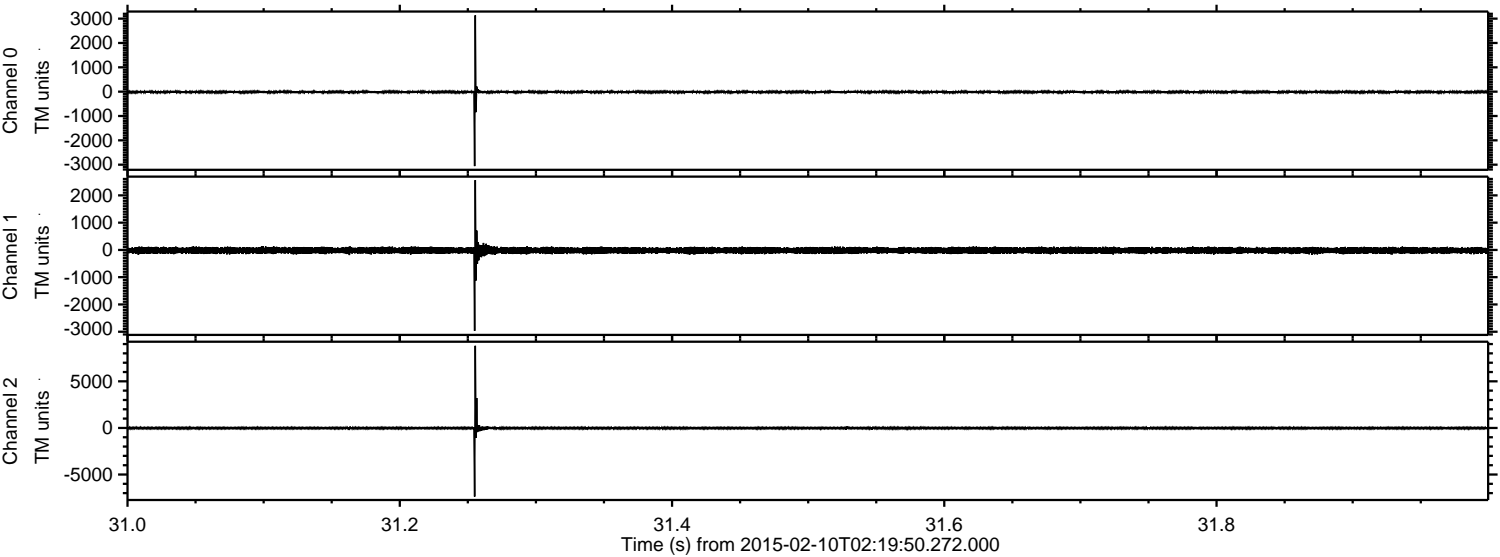


ELMAVAN 3D WAVEFORMS (Measured data sampled at 50 kHz) 49808 packets of 144 samples from 2015-02-10T02:19:50.272.000.

Processed Thu Feb 19 11:44:36 2015 by ELM ver.2012-10-06 from 001__elm20150210_021949__dat00.bin

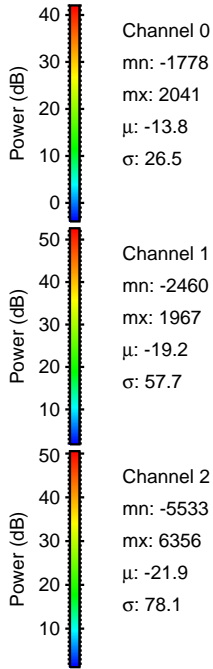
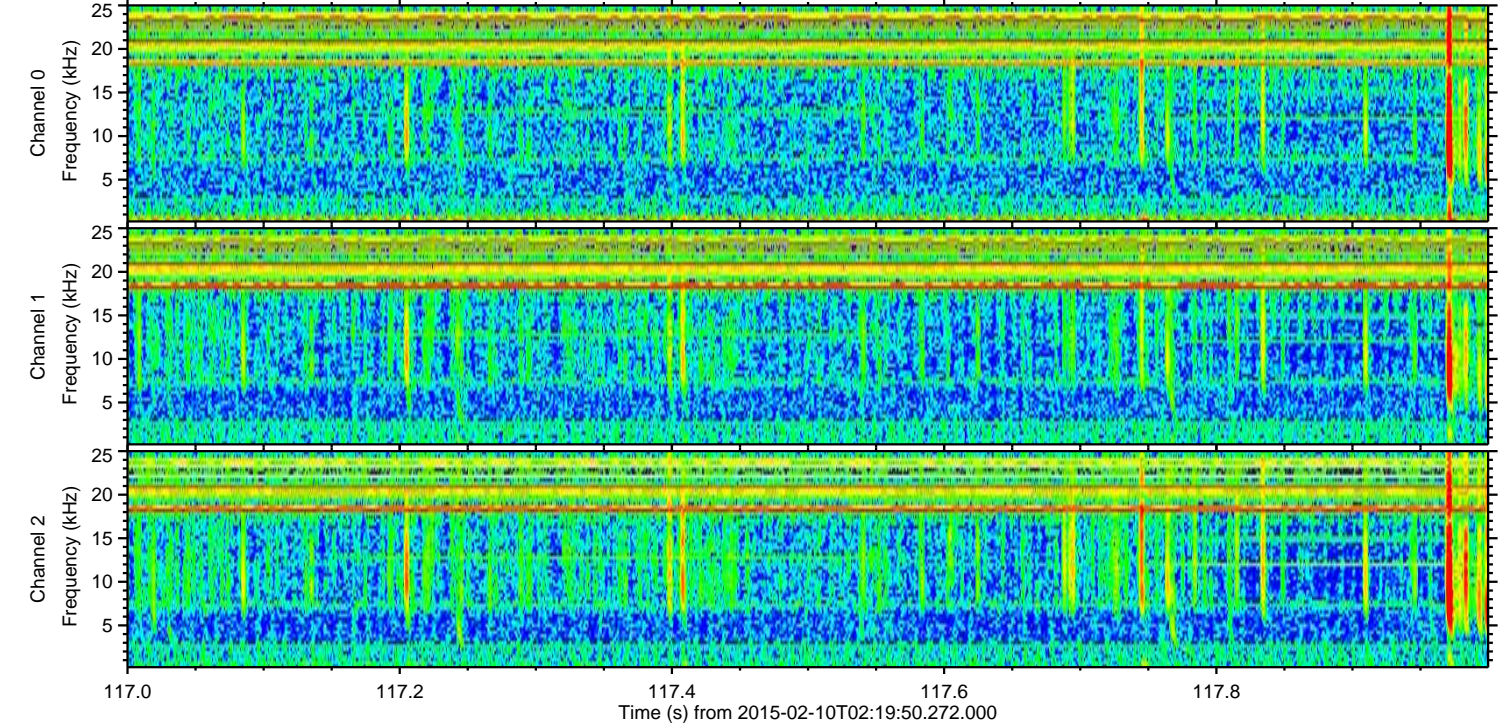
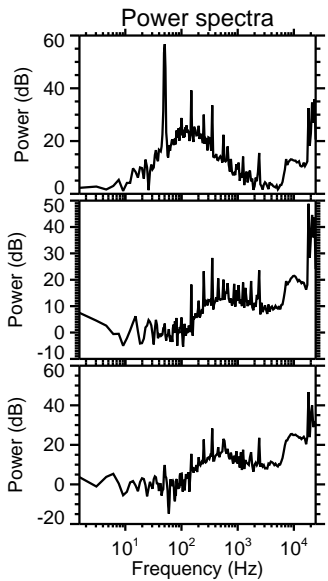
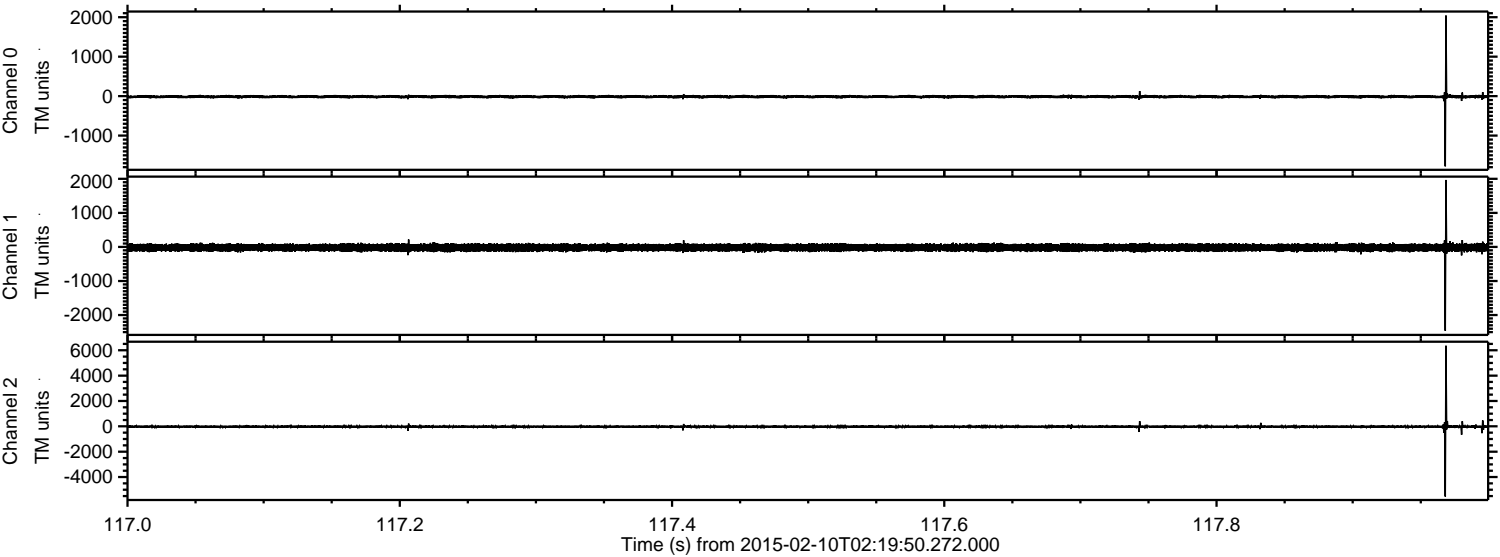


Processed Thu Feb 19 11:45:00 2015 by ELM ver.2012-10-06 from 001__elm20150210_021949__dat00.bin



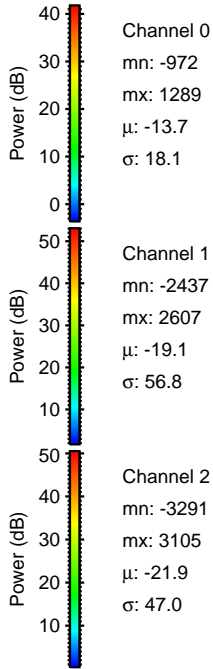
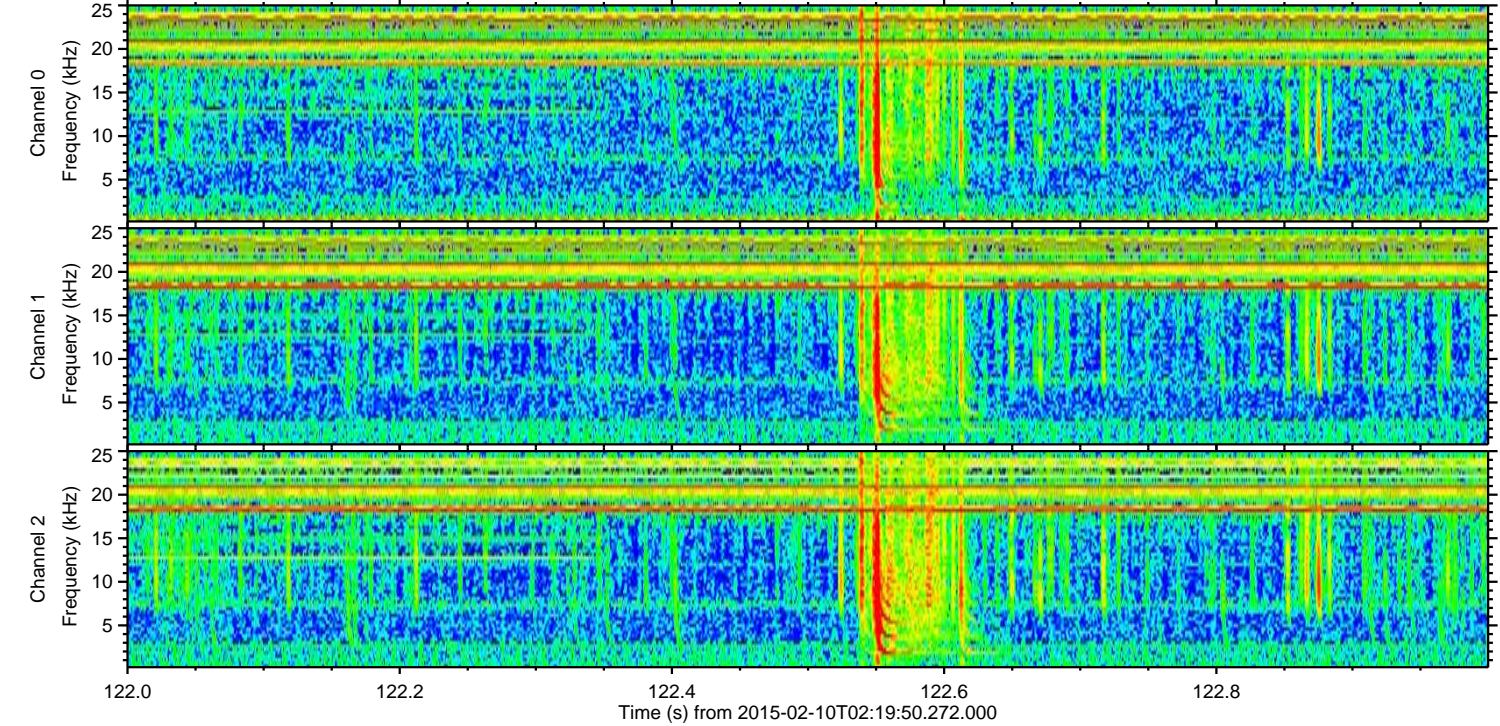
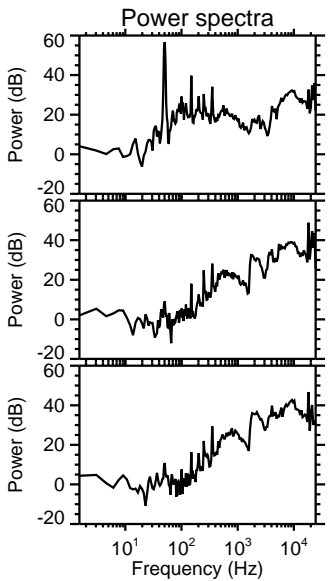
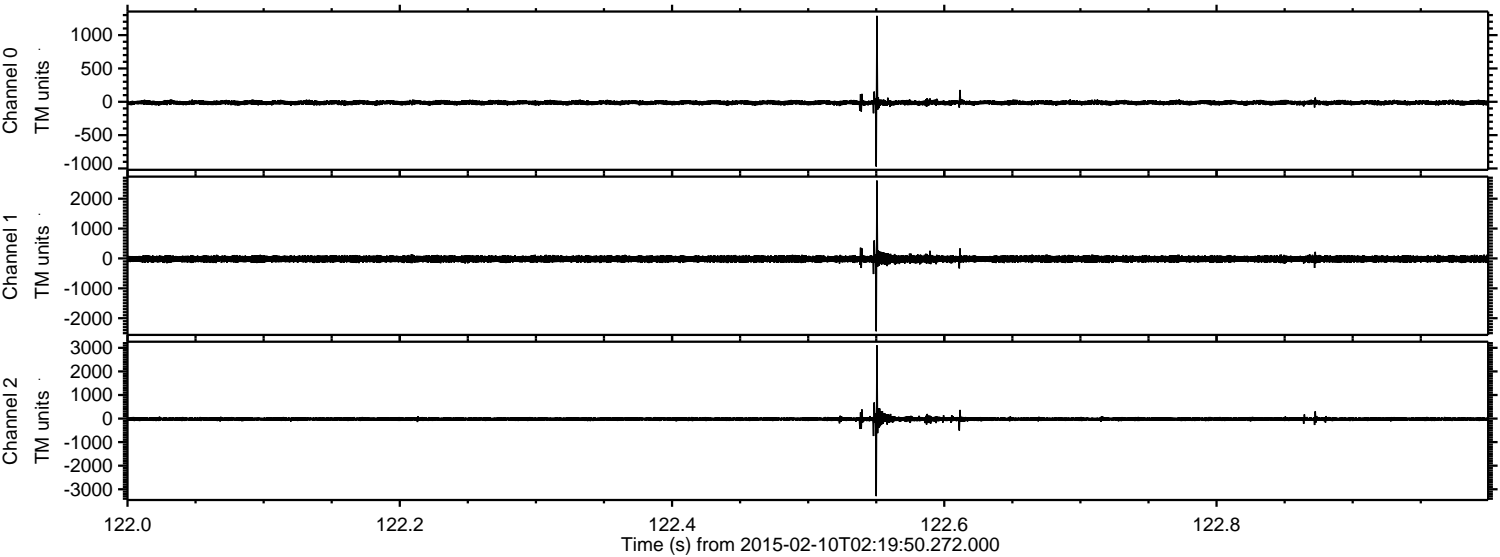
ELMAVAN 3D WAVEFORMS (Measured data sampled at 50 kHz) 49808 packets of 144 samples from 2015-02-10T02:19:50.272.000. Part 118/144

Processed Thu Feb 19 11:45:04 2015 by ELM ver.2012-10-06 from 001__elm20150210_021949__dat00.bin



ELMAVAN 3D WAVEFORMS (Measured data sampled at 50 kHz) 49808 packets of 144 samples from 2015-02-10T02:19:50.272.000. Part 123/144

Processed Thu Feb 19 11:45:08 2015 by ELM ver.2012-10-06 from 001__elm20150210_021949__dat00.bin



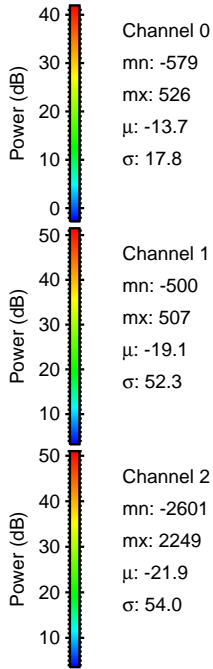
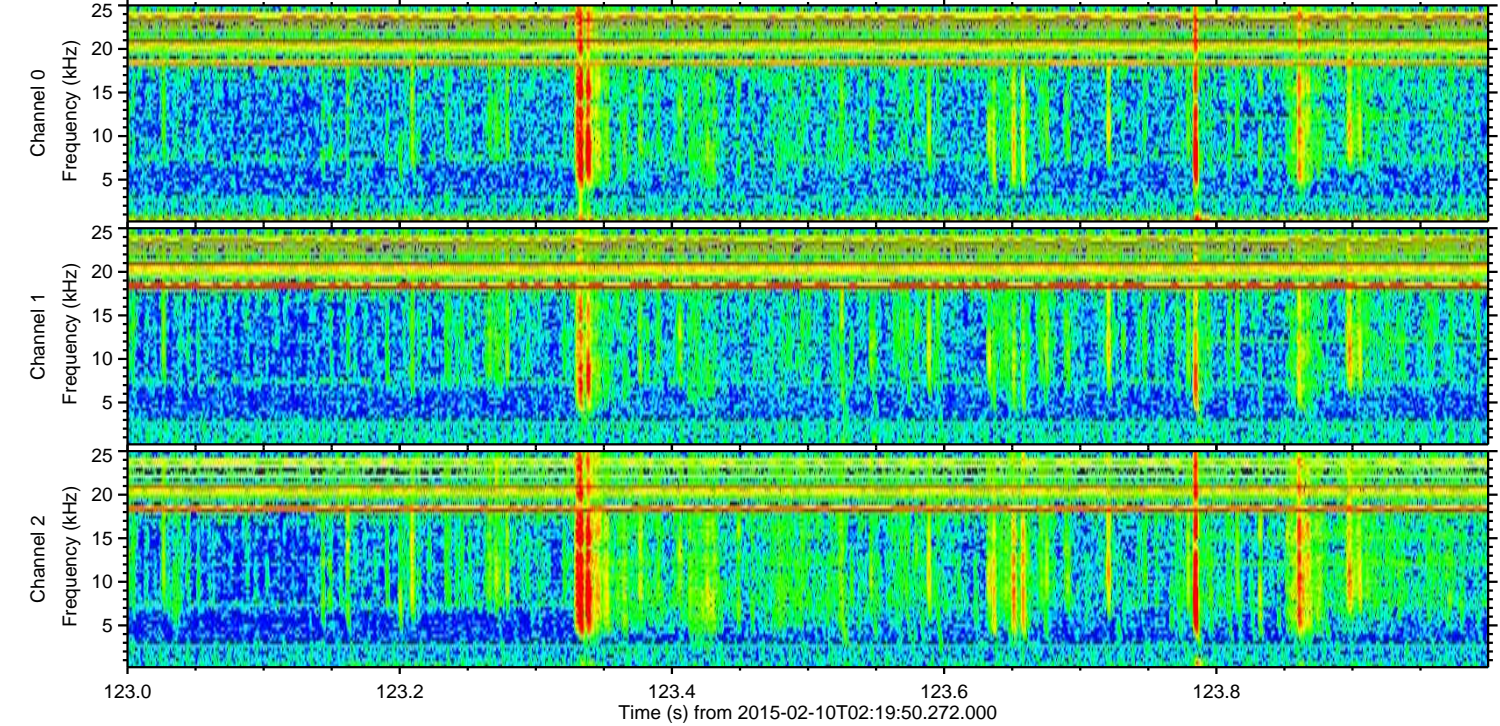
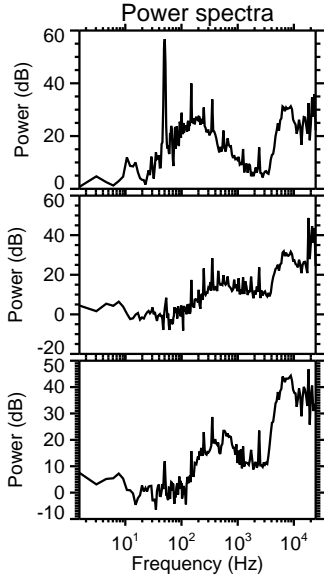
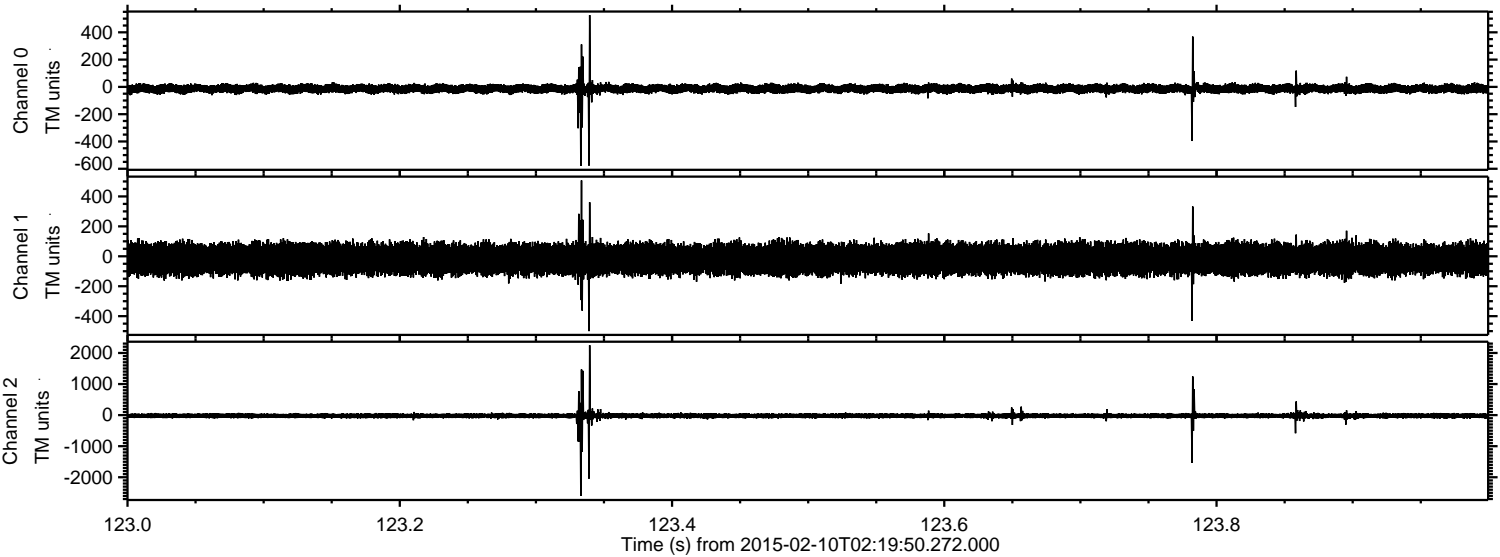
Channel 0
mn: -972
mx: 1289
 μ : -13.7
 σ : 18.1

Channel 1
mn: -2437
mx: 2607
 μ : -19.1
 σ : 56.8

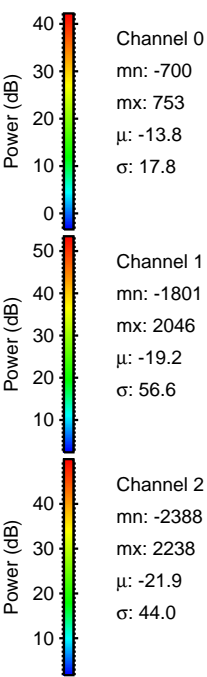
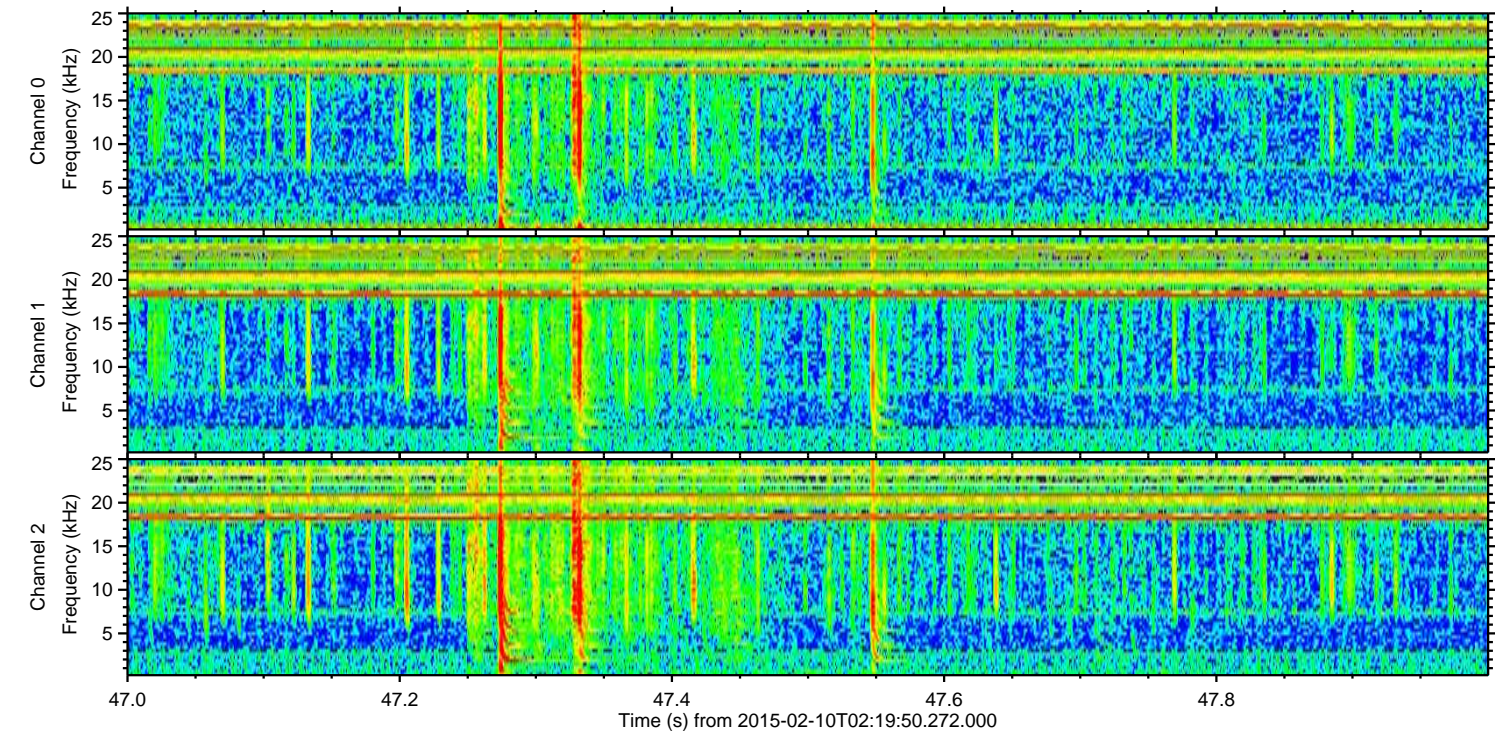
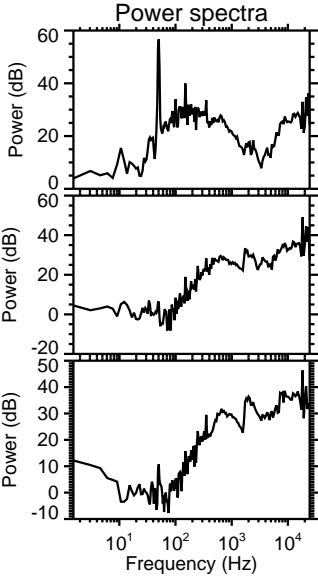
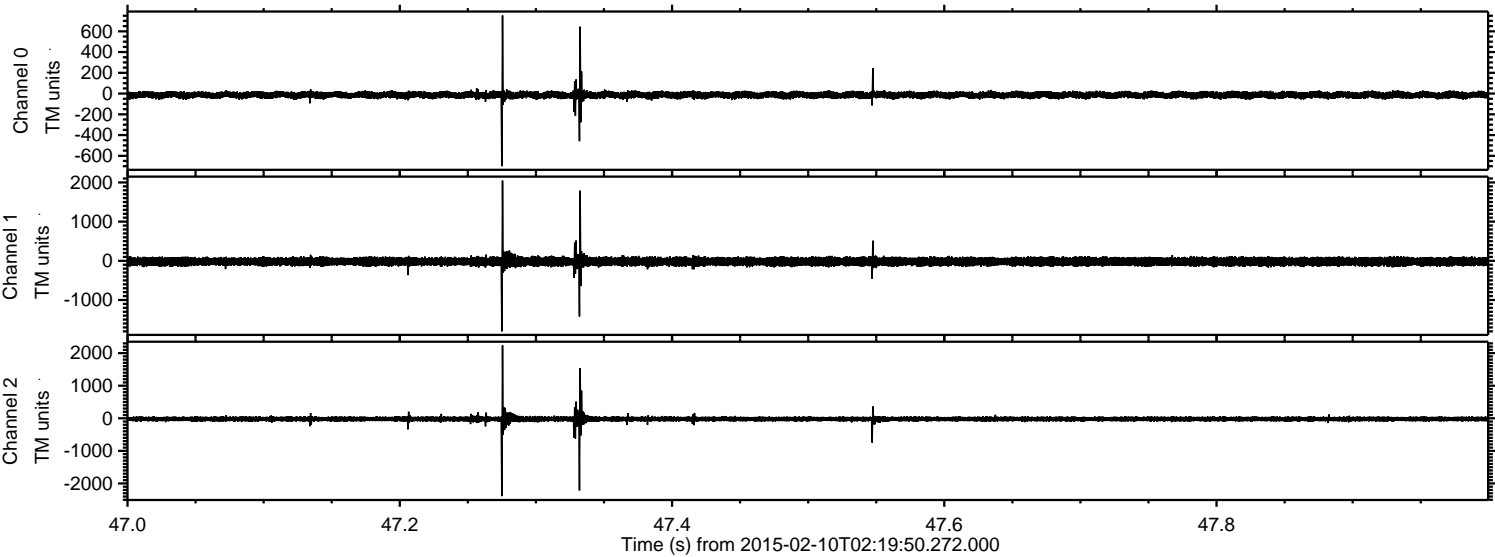
Channel 2
mn: -3291
mx: 3105
 μ : -21.9
 σ : 47.0

ELMAVAN 3D WAVEFORMS (Measured data sampled at 50 kHz) 49808 packets of 144 samples from 2015-02-10T02:19:50.272.000. Part 124/144

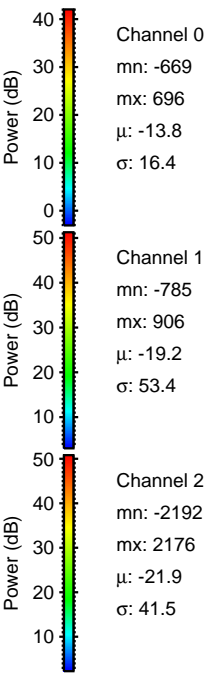
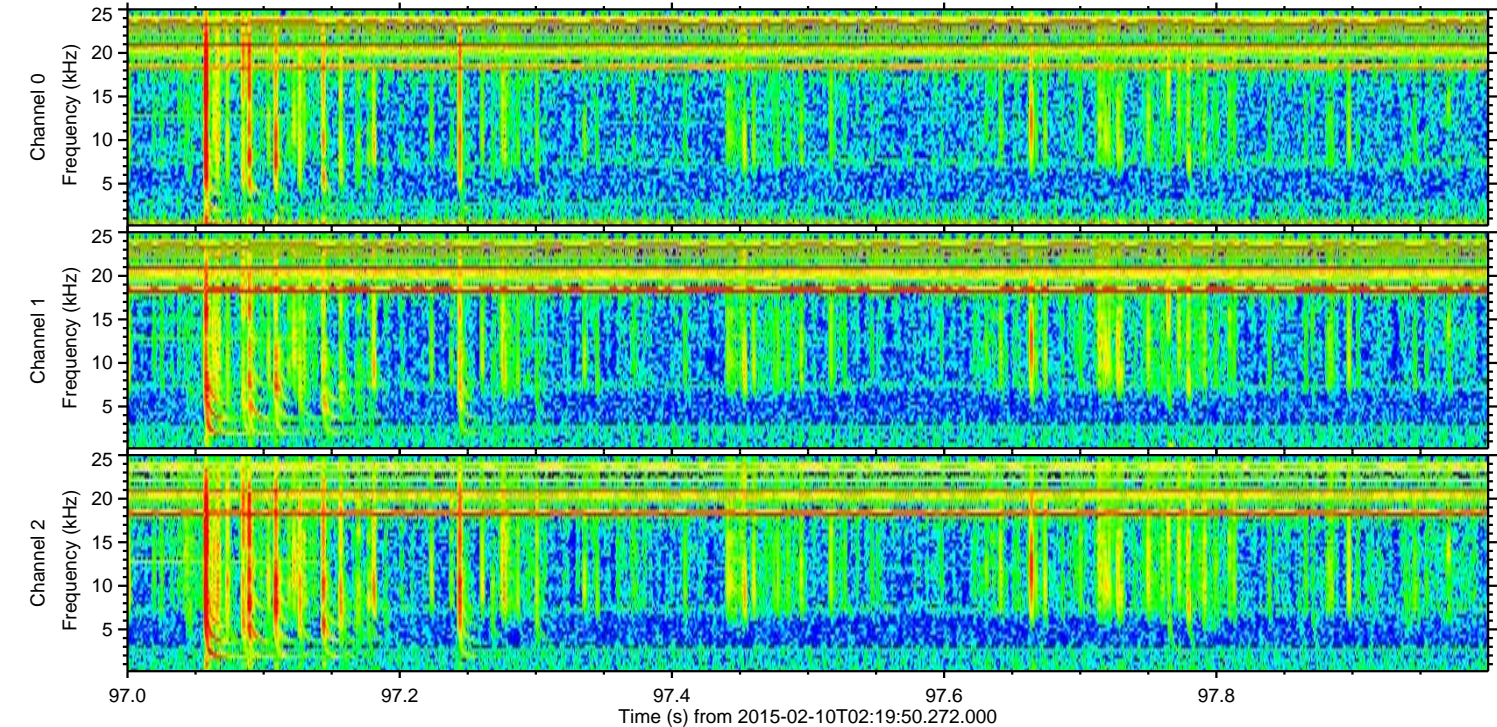
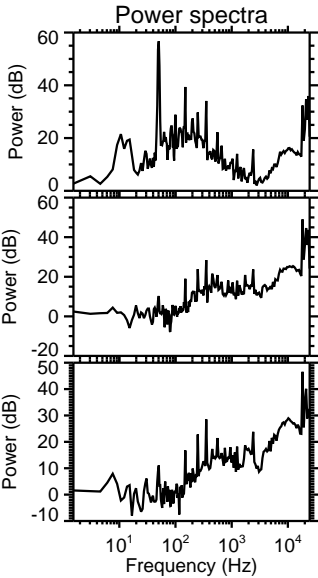
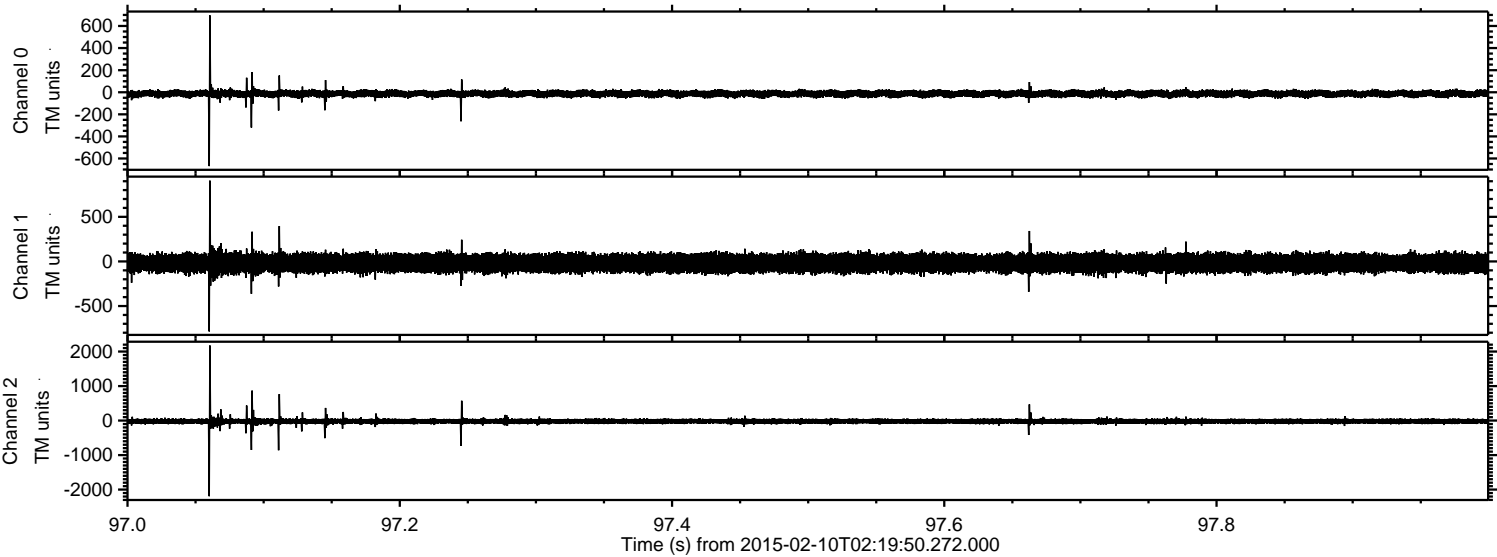
Processed Thu Feb 19 11:45:10 2015 by ELM ver.2012-10-06 from 001__elm20150210_021949__dat00.bin



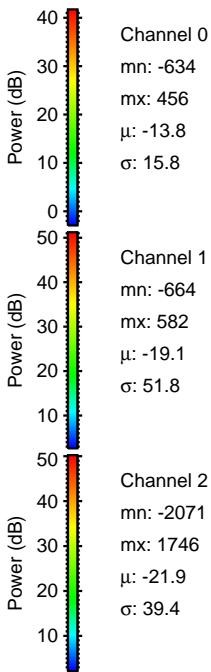
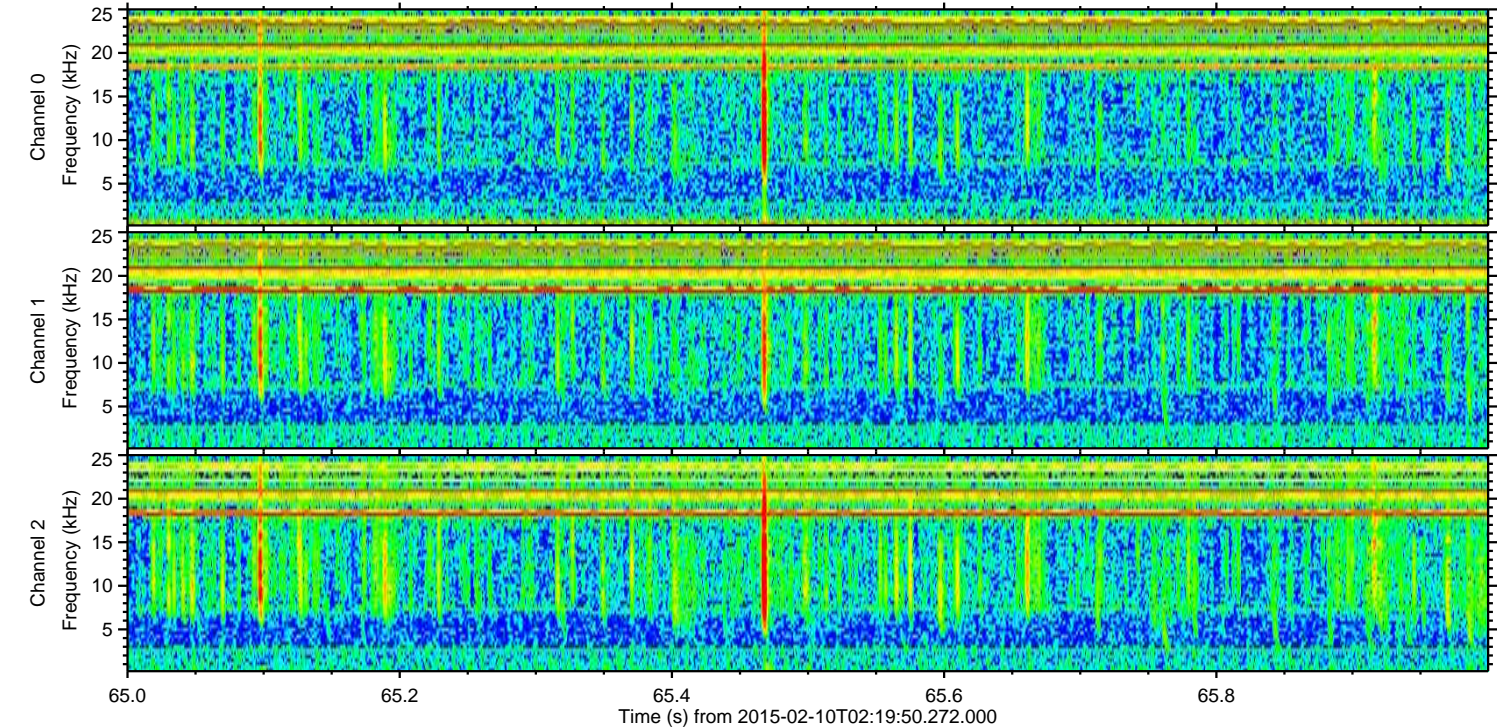
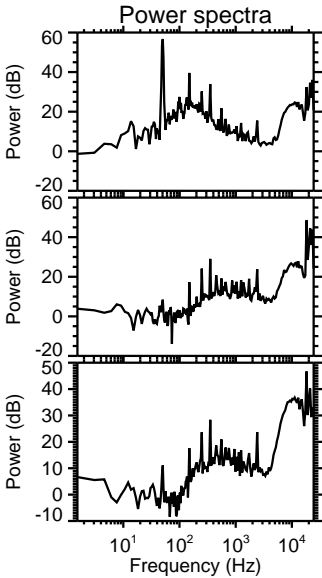
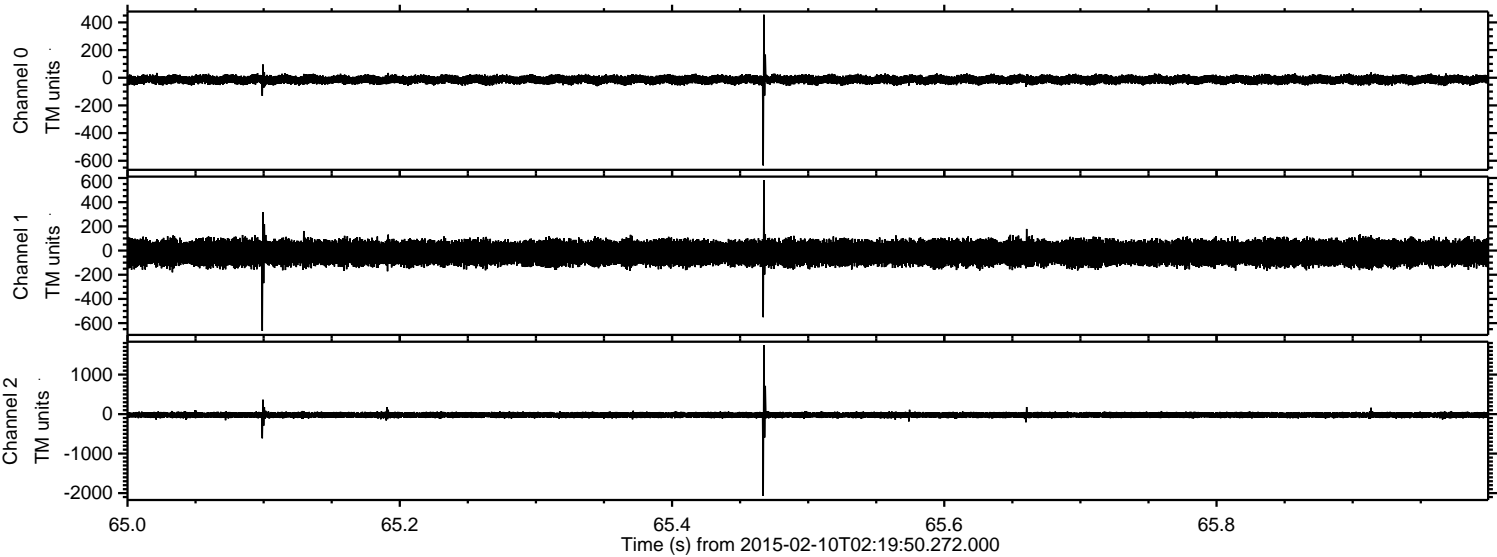
Processed Thu Feb 19 11:45:13 2015 by ELM ver.2012-10-06 from 001__elm20150210_021949__dat00.bin



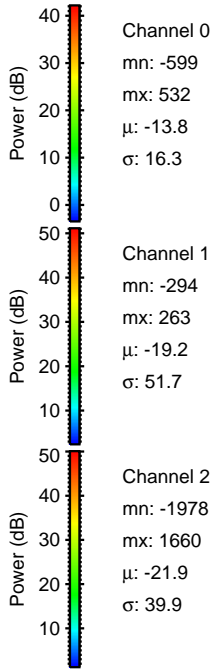
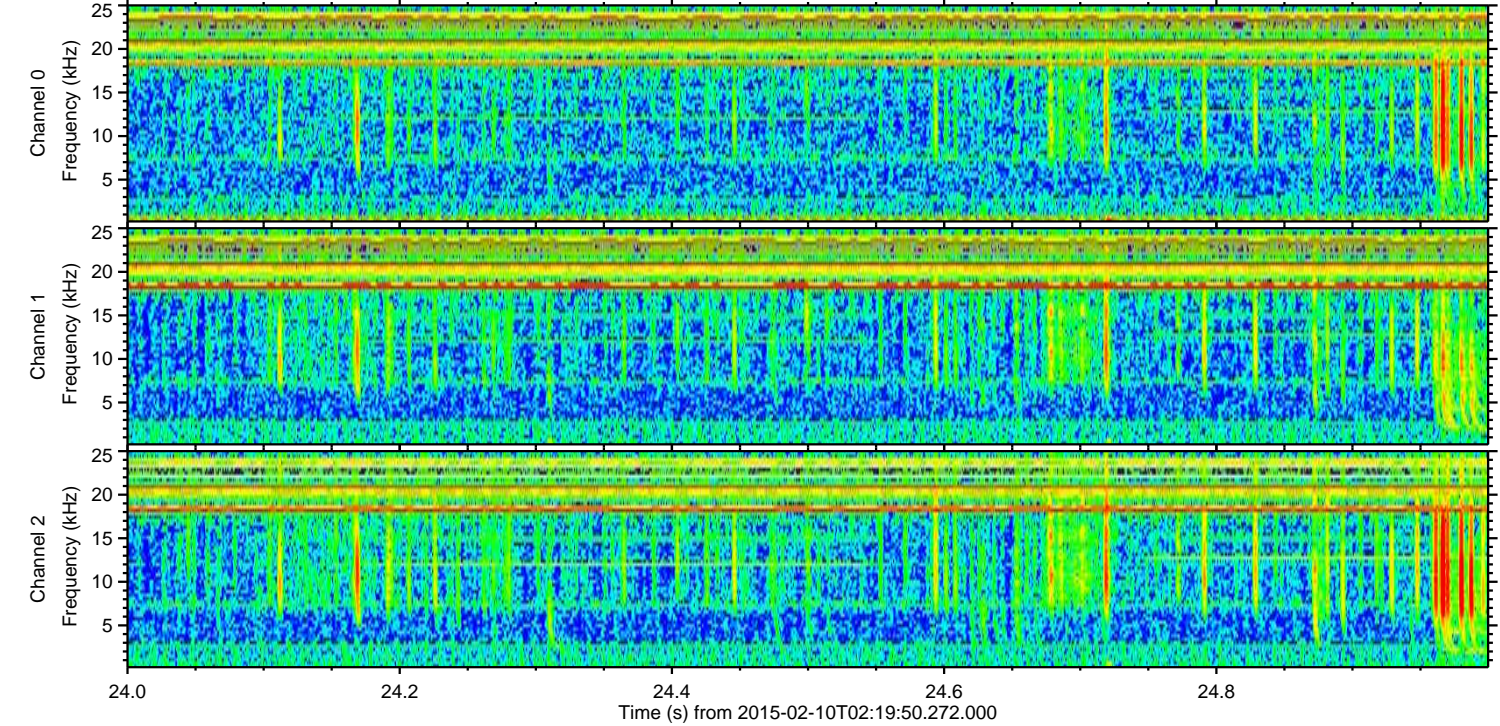
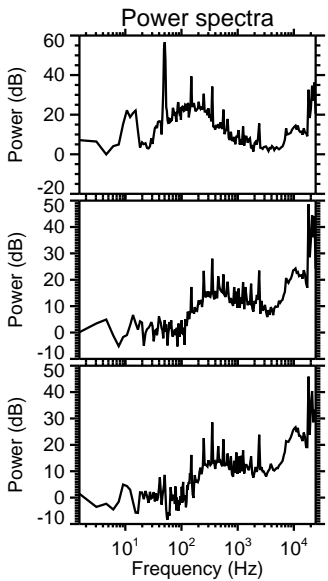
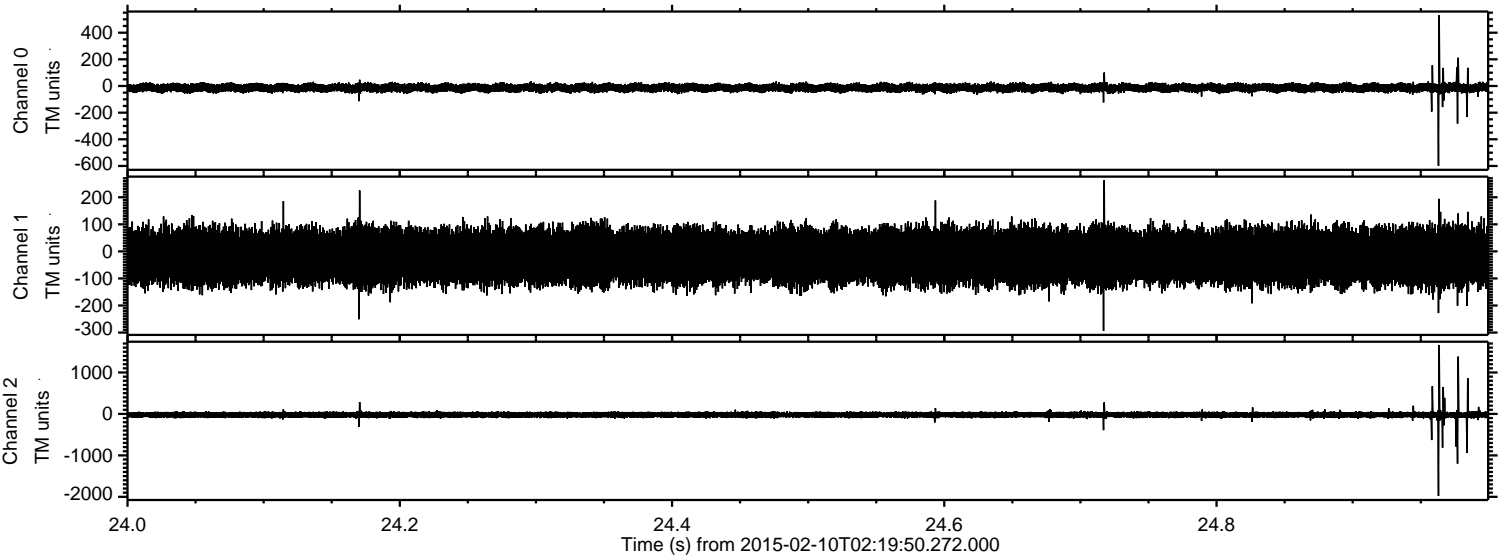
Processed Thu Feb 19 11:45:14 2015 by ELM ver.2012-10-06 from 001__elm20150210_021949__dat00.bin



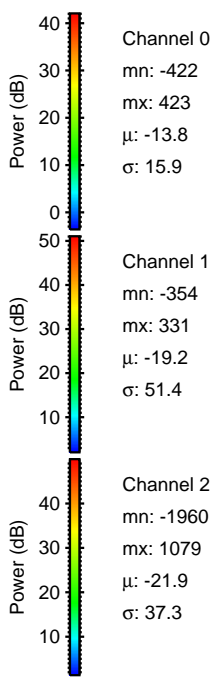
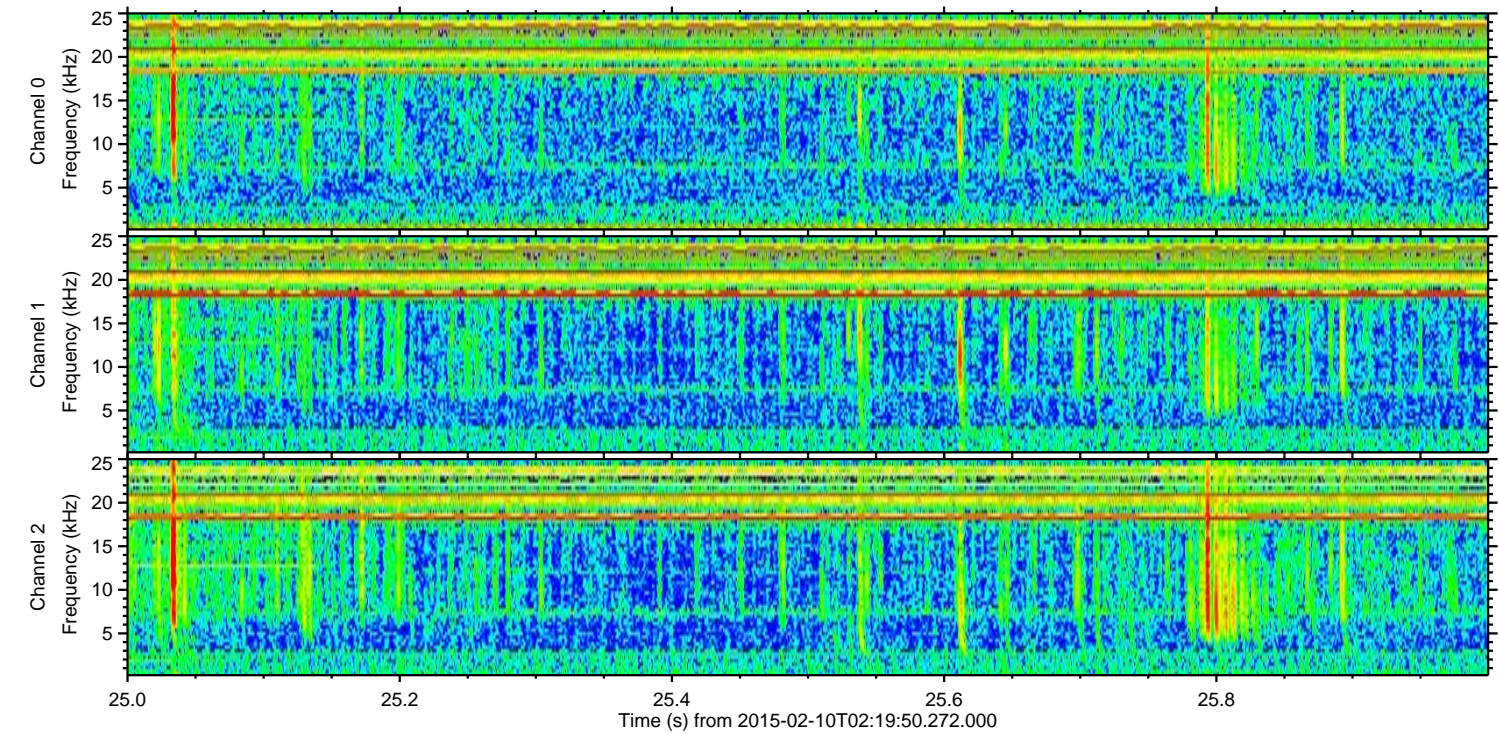
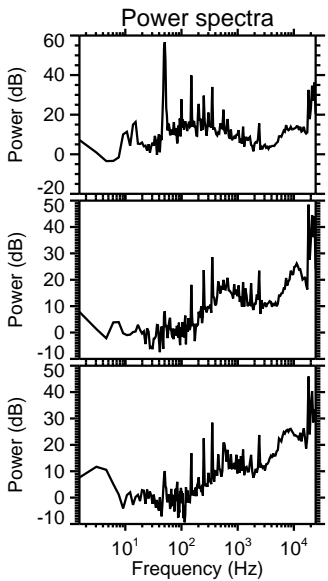
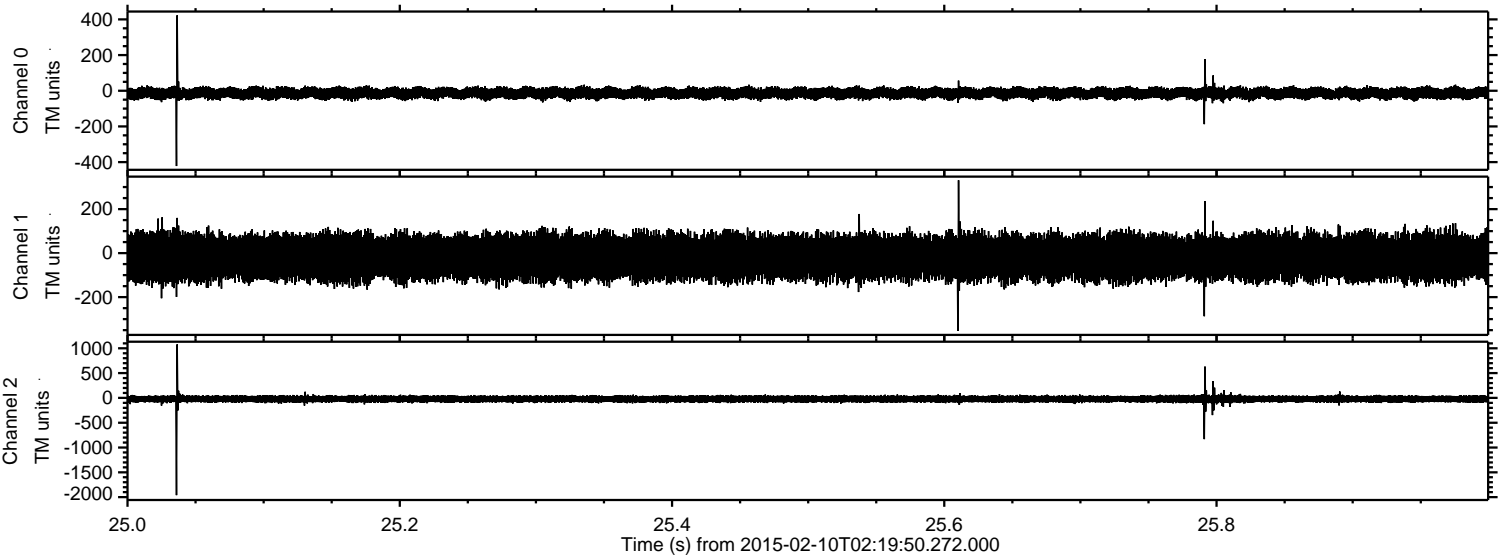
Processed Thu Feb 19 11:45:15 2015 by ELM ver.2012-10-06 from 001__elm20150210_021949__dat00.bin



Processed Thu Feb 19 11:45:16 2015 by ELM ver.2012-10-06 from 001__elm20150210_021949__dat00.bin



Processed Thu Feb 19 11:45:17 2015 by ELM ver.2012-10-06 from 001__elm20150210_021949__dat00.bin



Channel 0
mn: -422
mx: 423
 μ : -13.8
 σ : 15.9

Channel 1
mn: -354
mx: 331
 μ : -19.2
 σ : 51.4

Channel 2
mn: -1960
mx: 1079
 μ : -21.9
 σ : 37.3

Processed Thu Feb 19 11:45:19 2015 by ELM ver.2012-10-06 from 001__elm20150210_021949__dat00.bin

