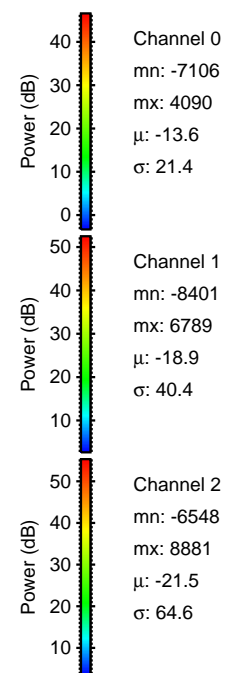
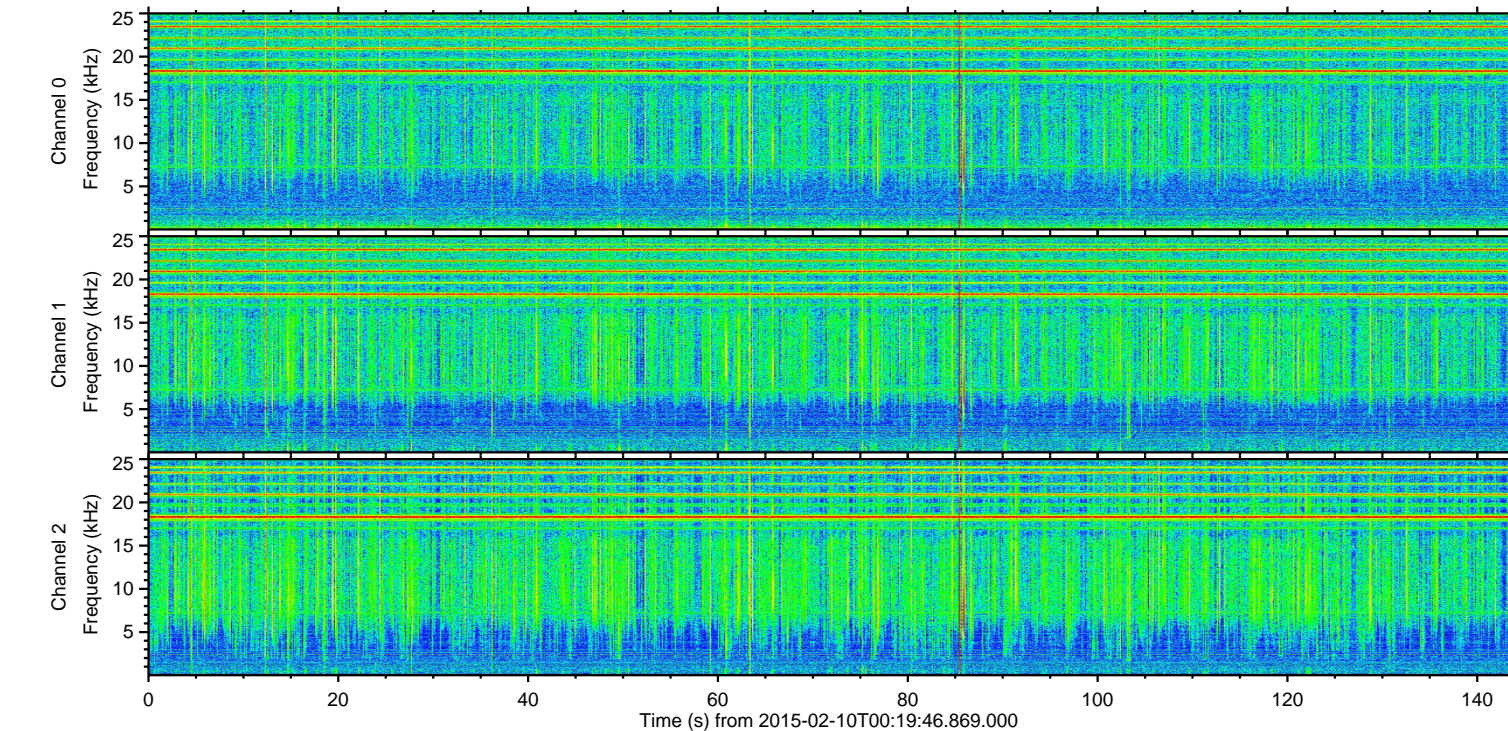
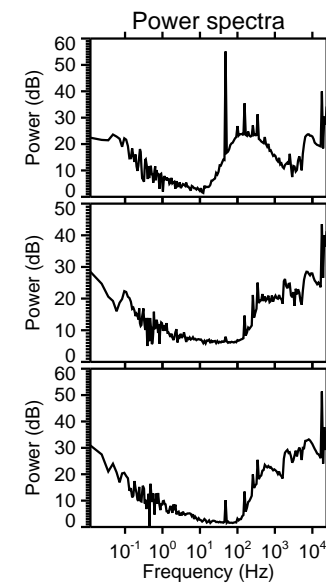
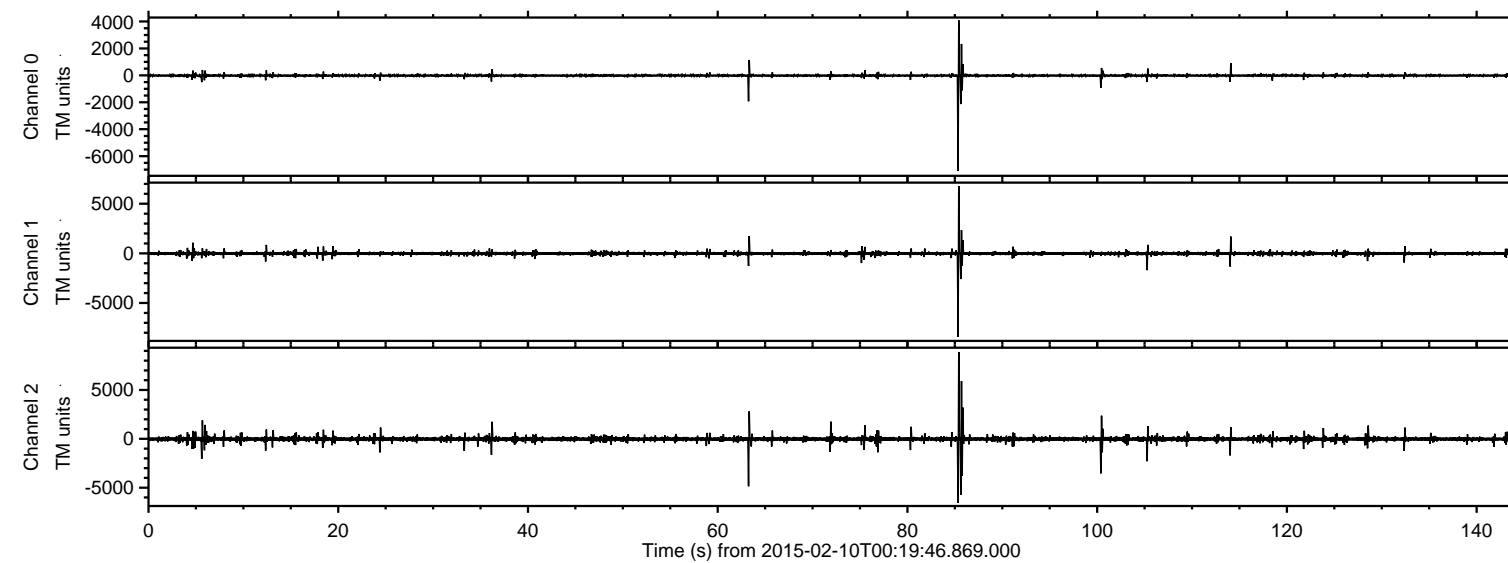


# ELMAVAN 3D WAVEFORMS (Measured data sampled at 50 kHz) 49802 packets of 144 samples from 2015-02-10T00:19:46.869.000.

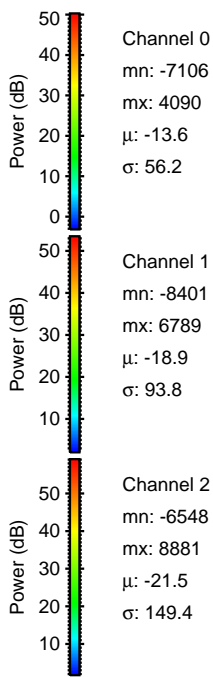
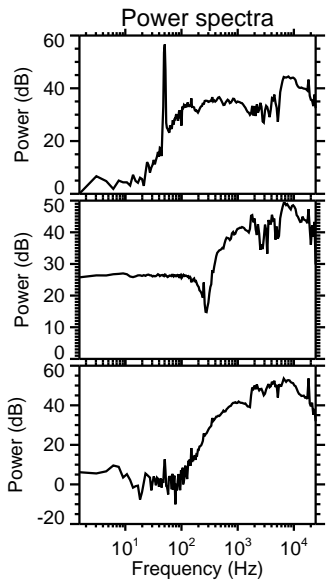
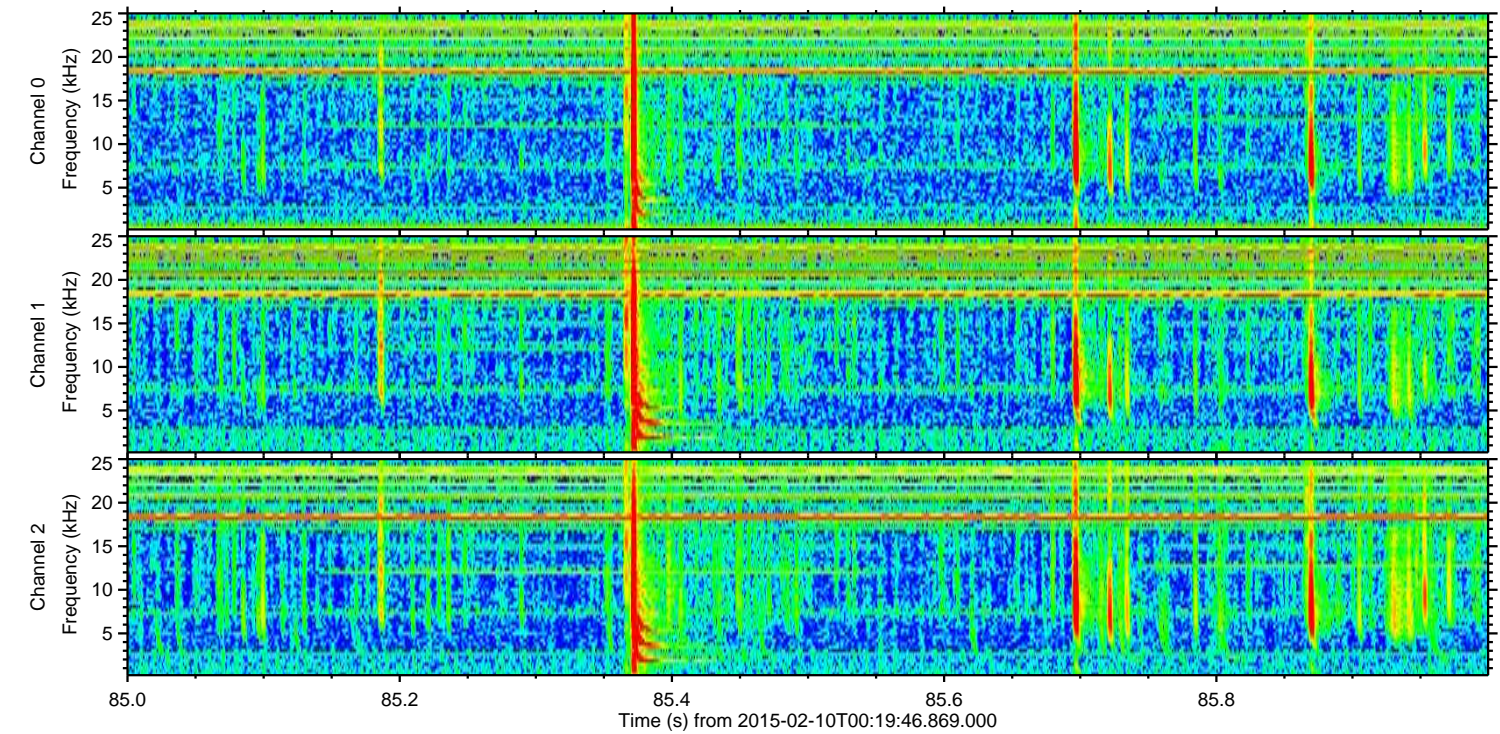
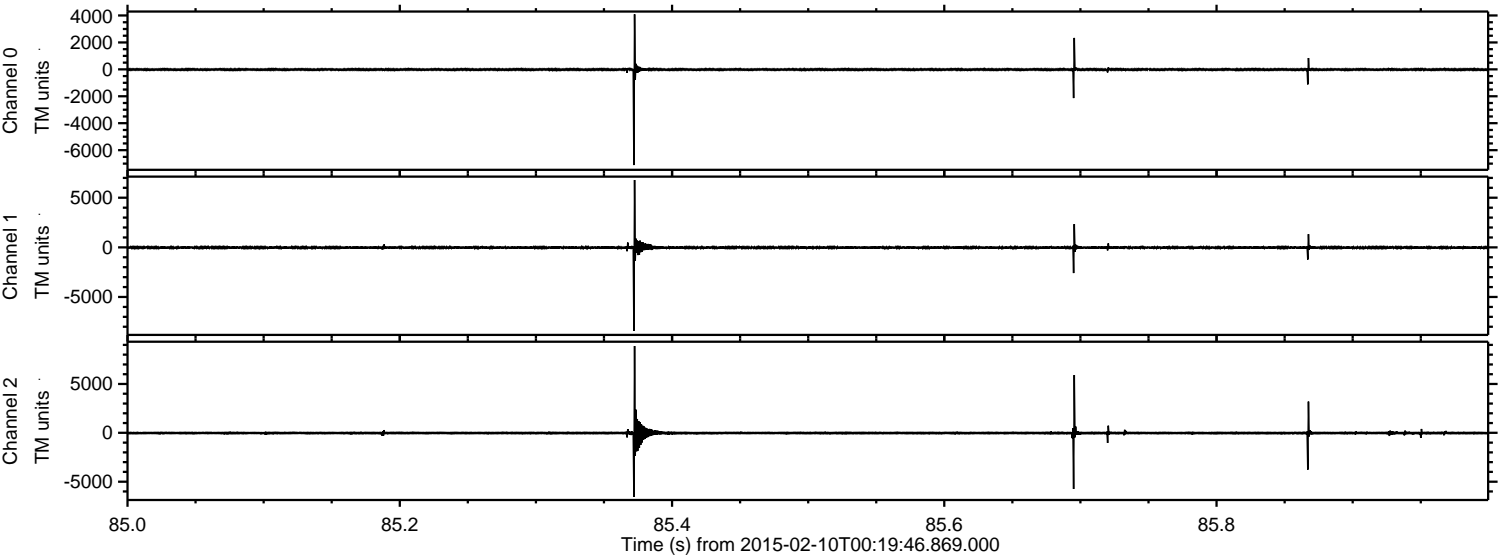
Processed Thu Feb 19 11:01:29 2015 by ELM ver.2012-10-06 from 001\_\_elm20150210\_001945\_\_dat00.bin





ELMAVAN 3D WAVEFORMS (Measured data sampled at 50 kHz) 49802 packets of 144 samples from 2015-02-10T00:19:46.869.000. Part 86/144

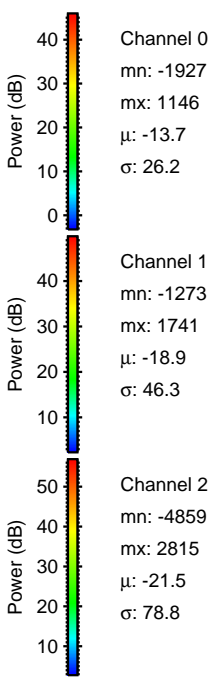
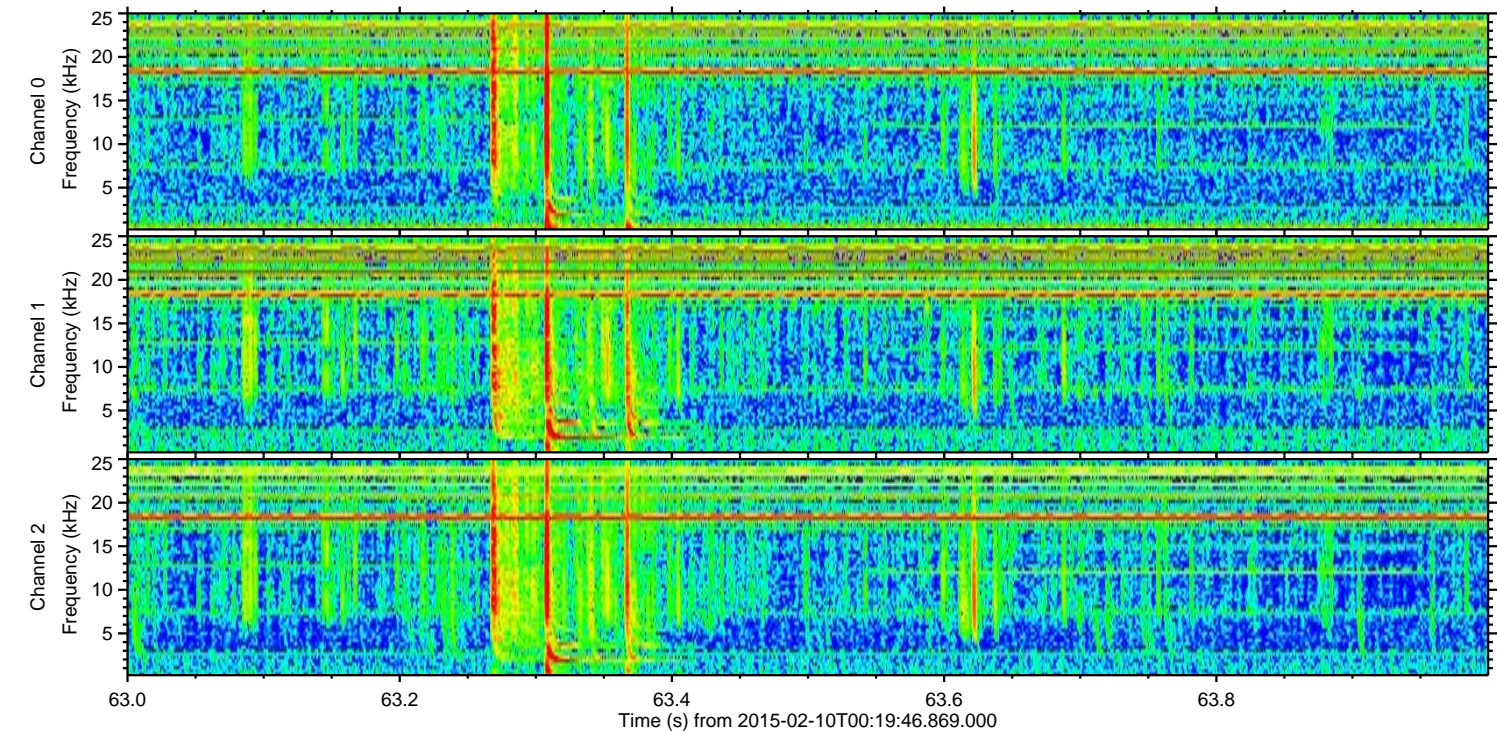
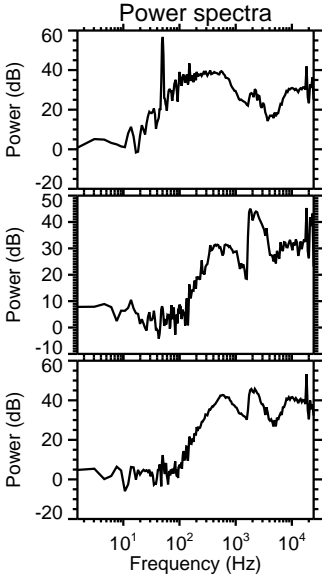
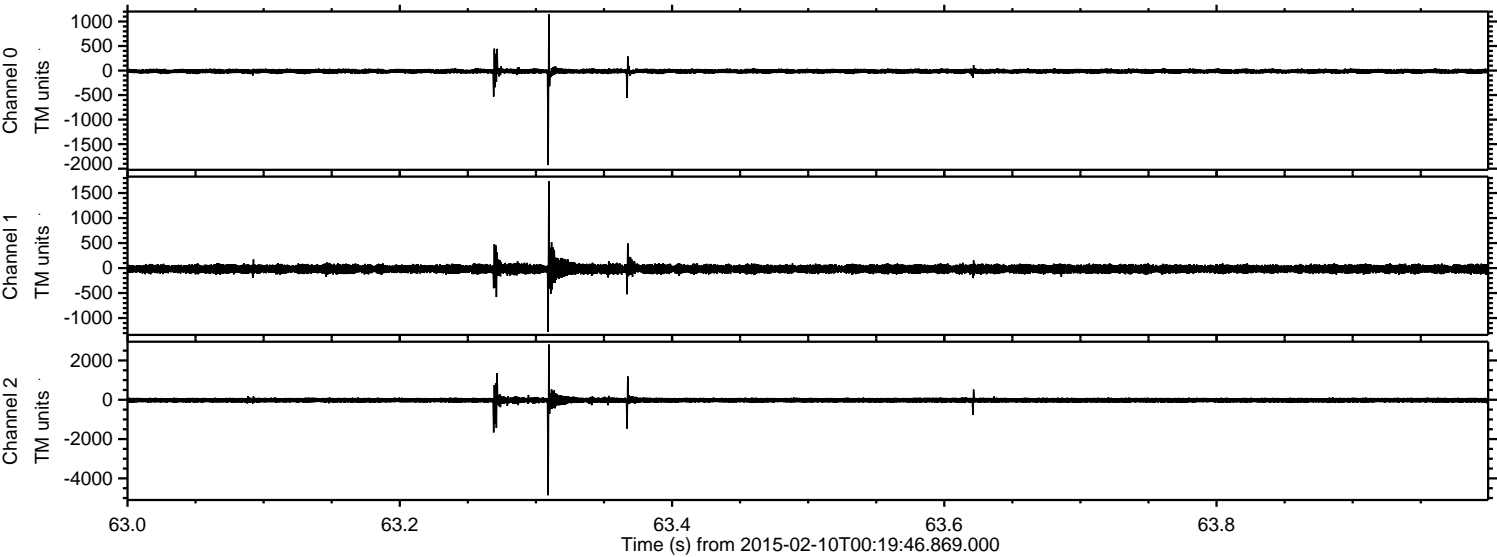
Processed Thu Feb 19 11:01:57 2015 by ELM ver.2012-10-06 from 001\_\_elm20150210\_001945\_\_dat00.bin





ELMAVAN 3D WAVEFORMS (Measured data sampled at 50 kHz) 49802 packets of 144 samples from 2015-02-10T00:19:46.869.000. Part 64/144

Processed Thu Feb 19 11:02:00 2015 by ELM ver.2012-10-06 from 001\_\_elm20150210\_001945\_\_dat00.bin



Channel 0  
mn: -1927  
mx: 1146  
 $\mu$ : -13.7  
 $\sigma$ : 26.2

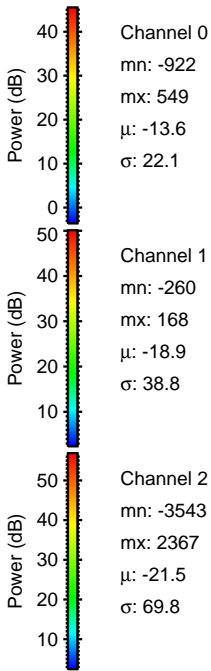
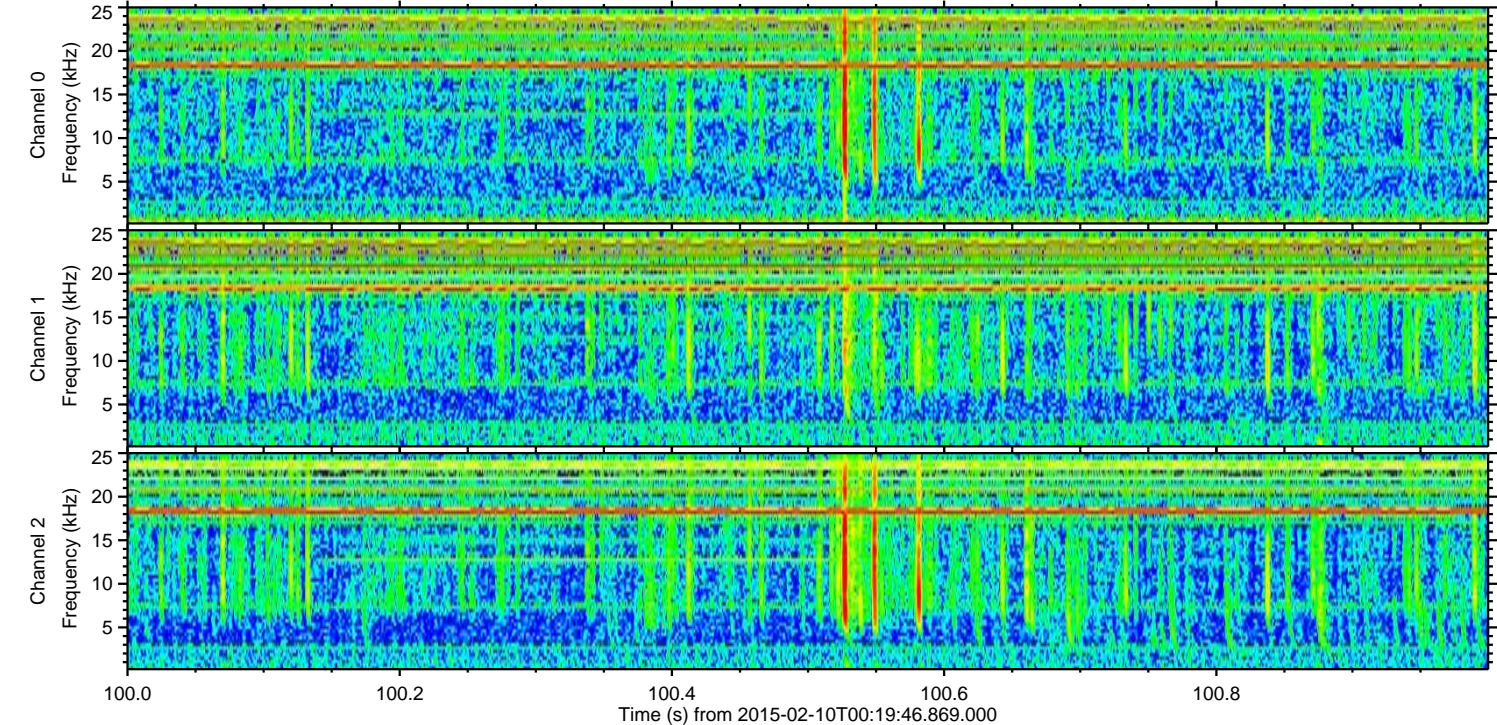
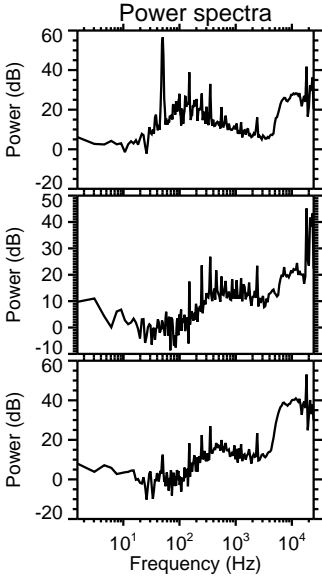
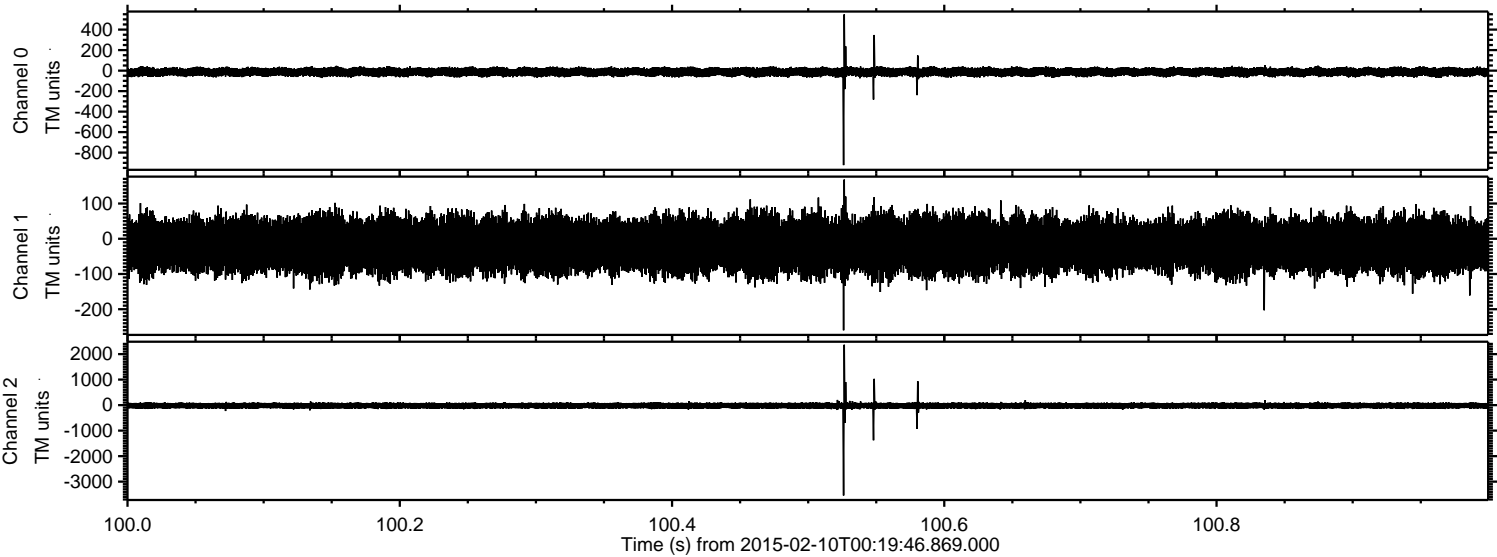
Channel 1  
mn: -1273  
mx: 1741  
 $\mu$ : -18.9  
 $\sigma$ : 46.3

Channel 2  
mn: -4859  
mx: 2815  
 $\mu$ : -21.5  
 $\sigma$ : 78.8



ELMAVAN 3D WAVEFORMS (Measured data sampled at 50 kHz) 49802 packets of 144 samples from 2015-02-10T00:19:46.869.000. Part 101/144

Processed Thu Feb 19 11:02:03 2015 by ELM ver.2012-10-06 from 001\_\_elm20150210\_001945\_\_dat00.bin



Channel 0  
mn: -922  
mx: 549  
 $\mu$ : -13.6  
 $\sigma$ : 22.1

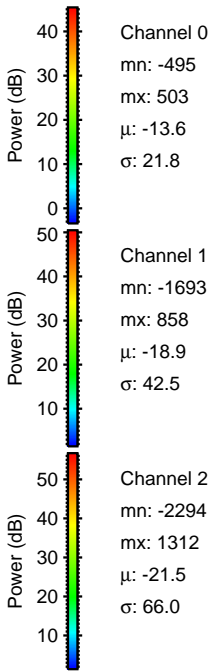
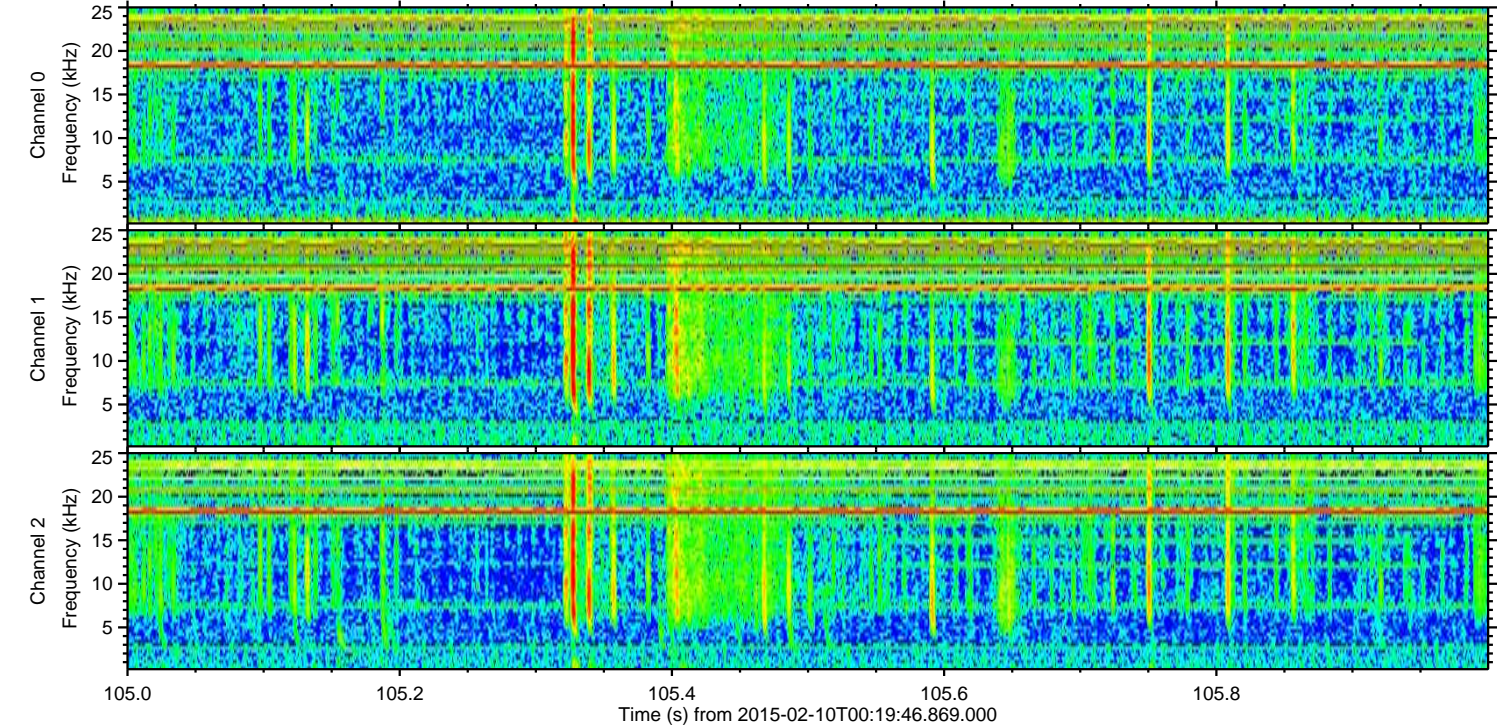
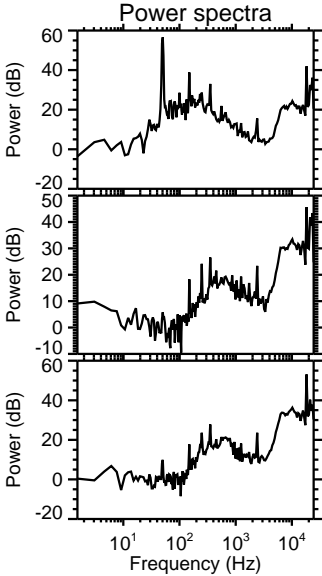
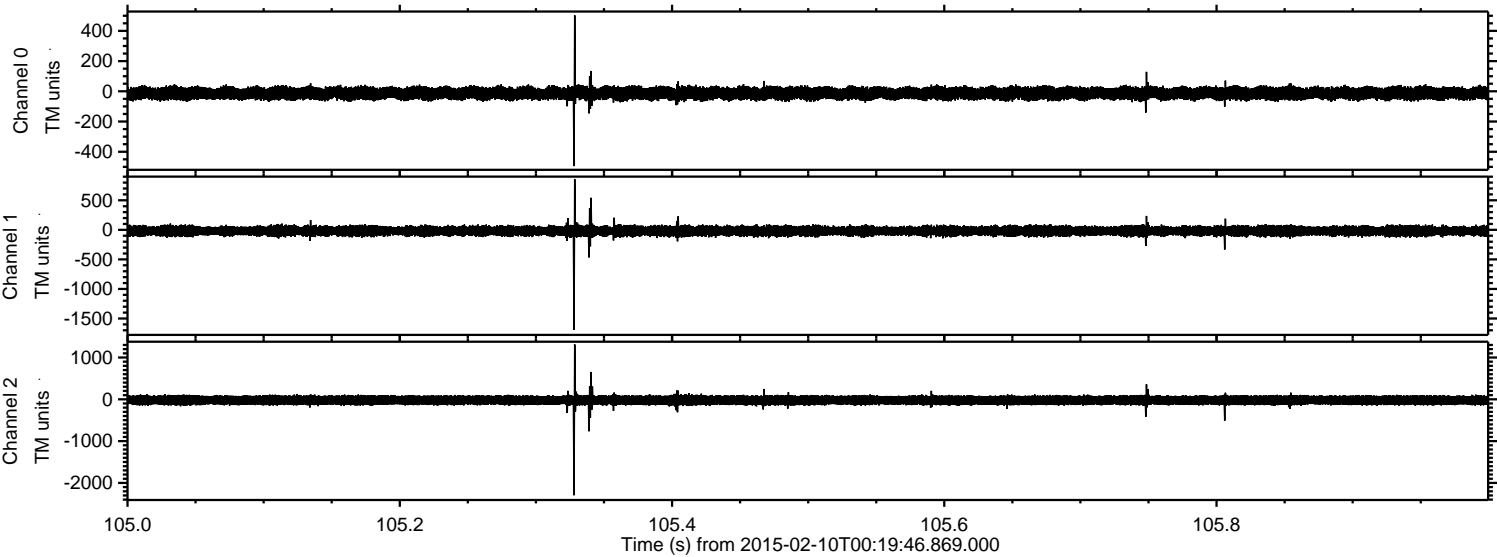
Channel 1  
mn: -260  
mx: 168  
 $\mu$ : -18.9  
 $\sigma$ : 38.8

Channel 2  
mn: -3543  
mx: 2367  
 $\mu$ : -21.5  
 $\sigma$ : 69.8



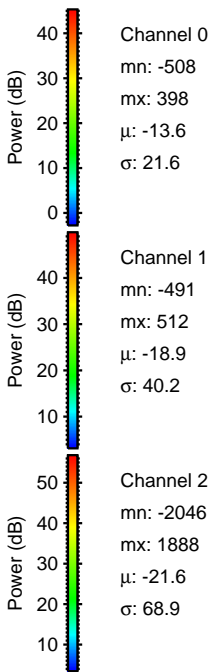
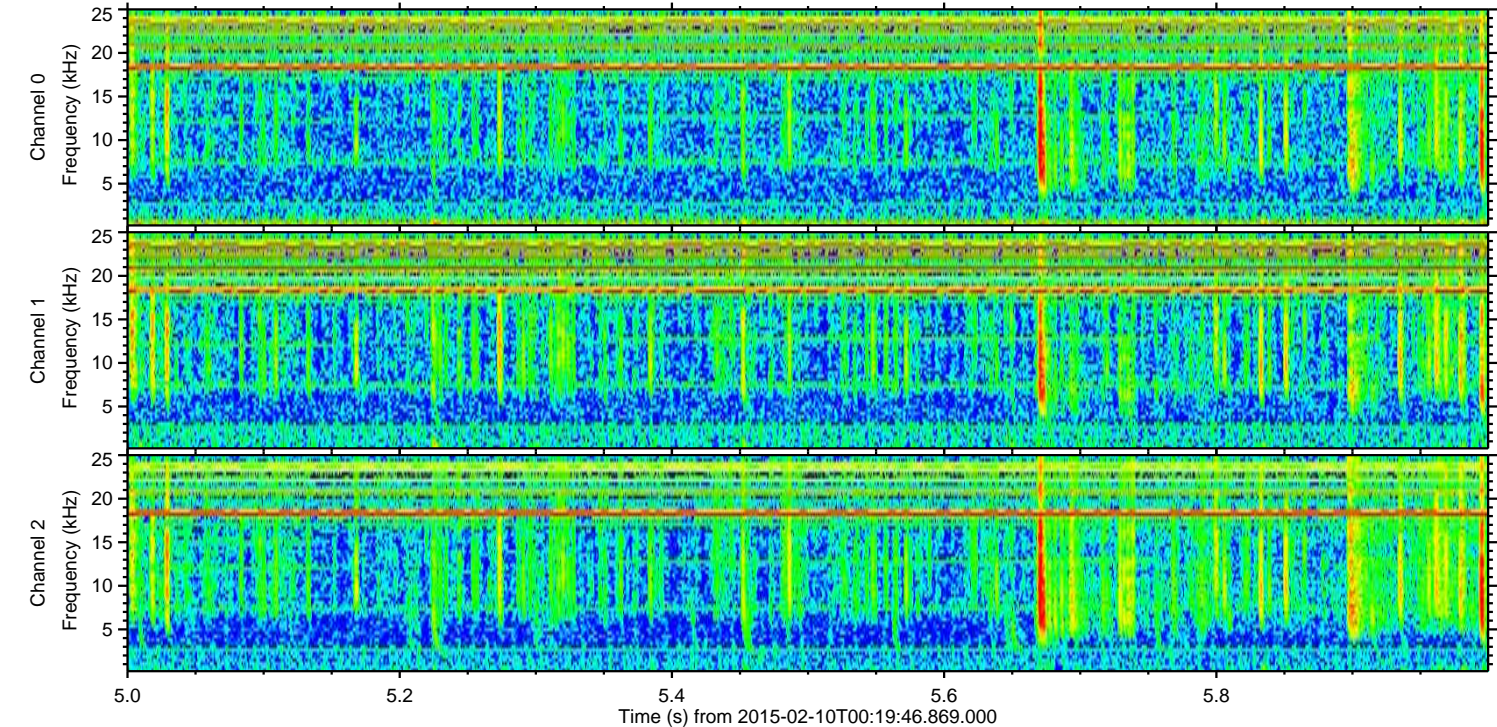
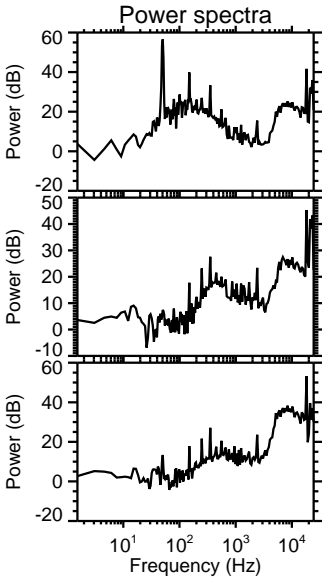
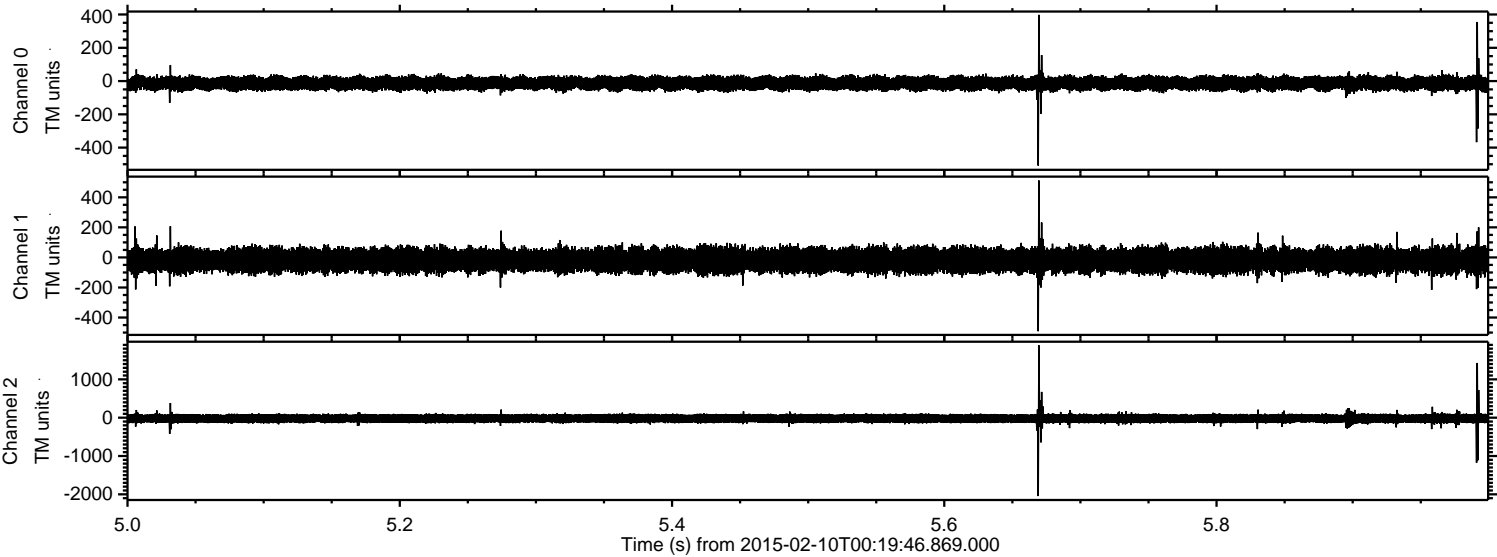
ELMAVAN 3D WAVEFORMS (Measured data sampled at 50 kHz) 49802 packets of 144 samples from 2015-02-10T00:19:46.869.000. Part 106/144

Processed Thu Feb 19 11:02:06 2015 by ELM ver.2012-10-06 from 001\_\_elm20150210\_001945\_\_dat00.bin



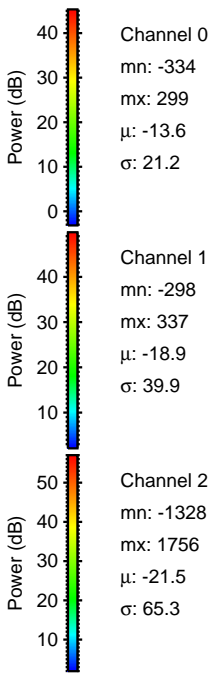
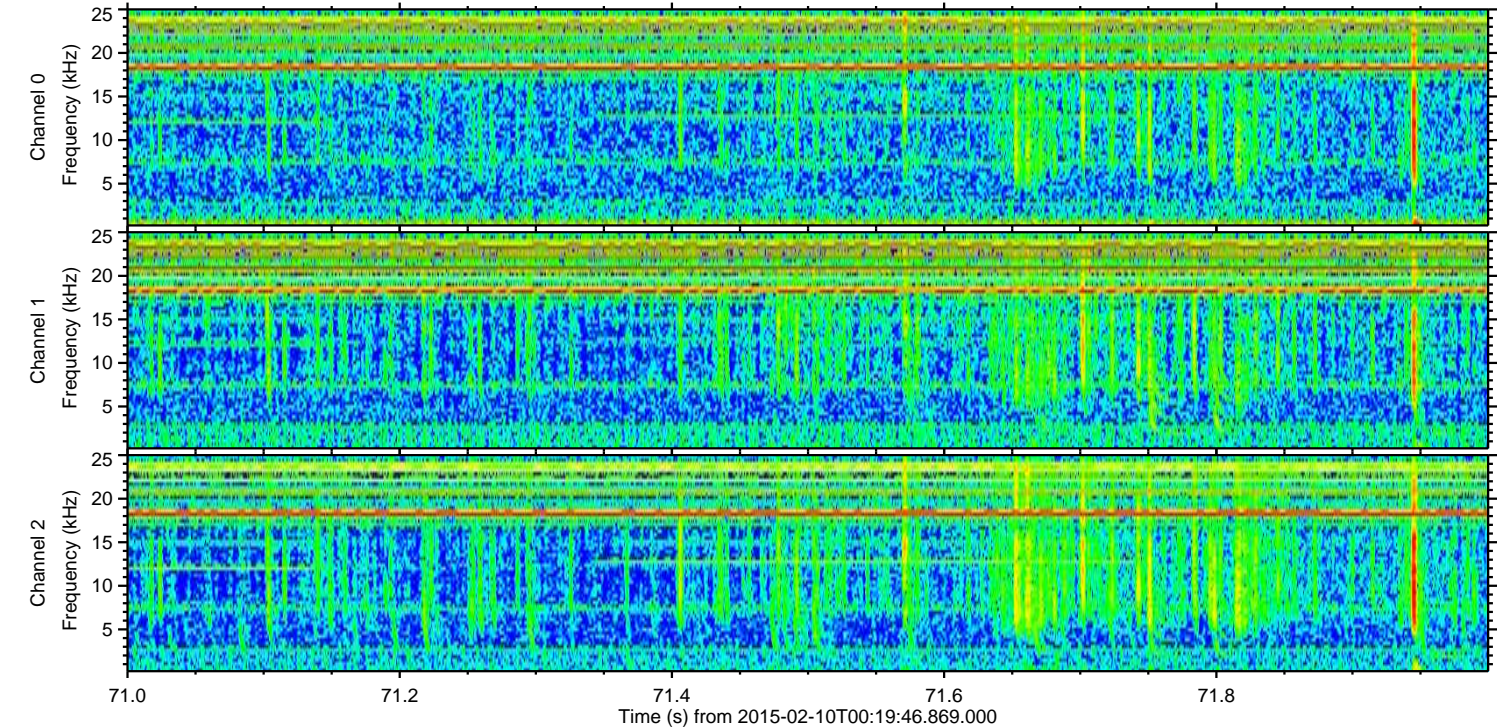
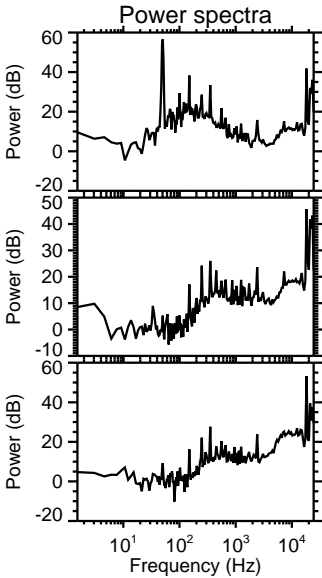
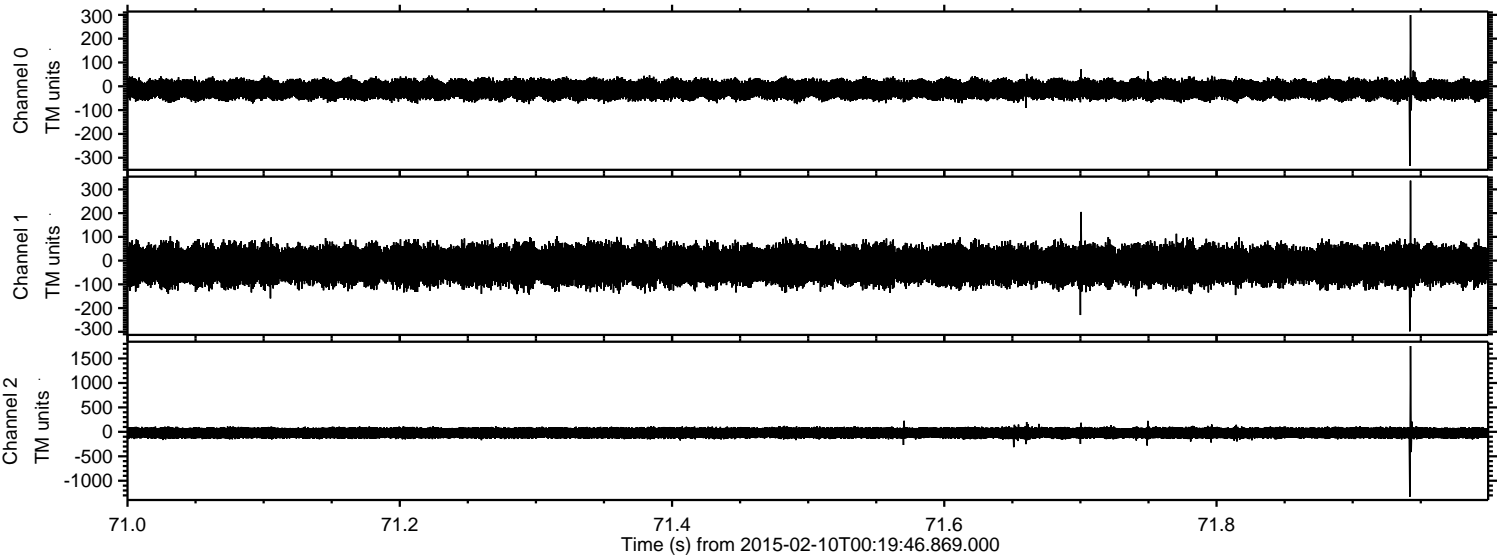


Processed Thu Feb 19 11:02:08 2015 by ELM ver.2012-10-06 from 001\_\_elm20150210\_001945\_\_dat00.bin



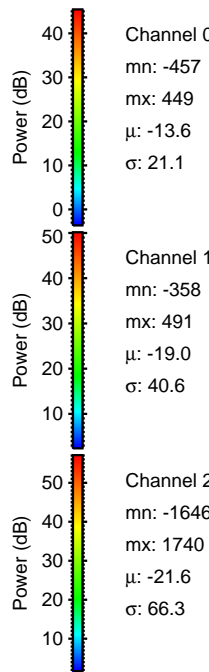
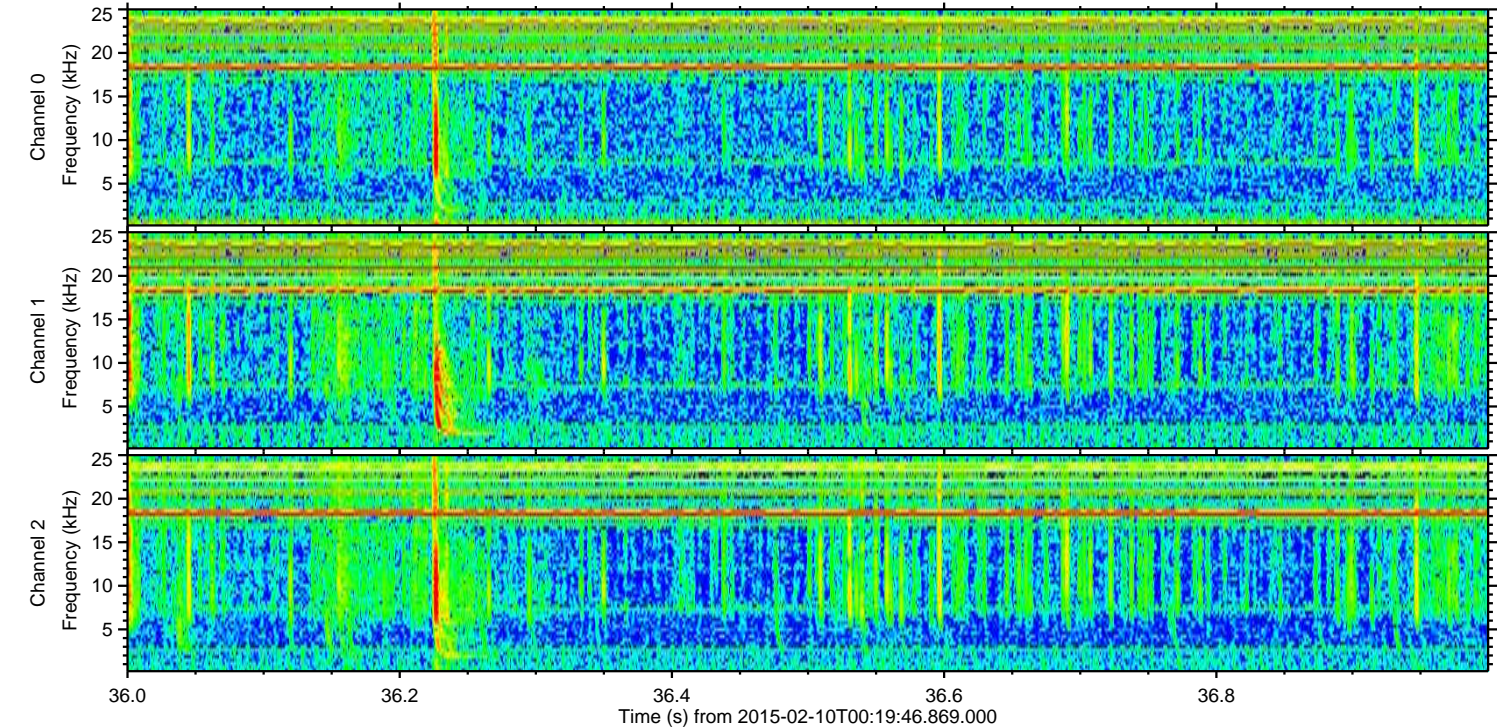
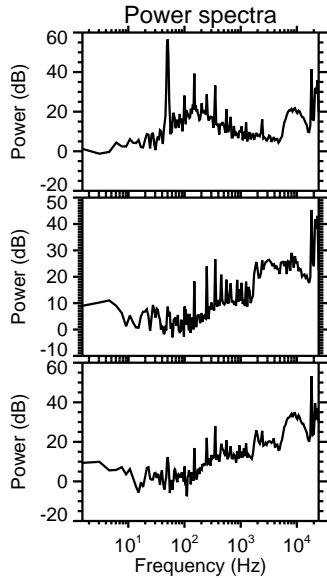
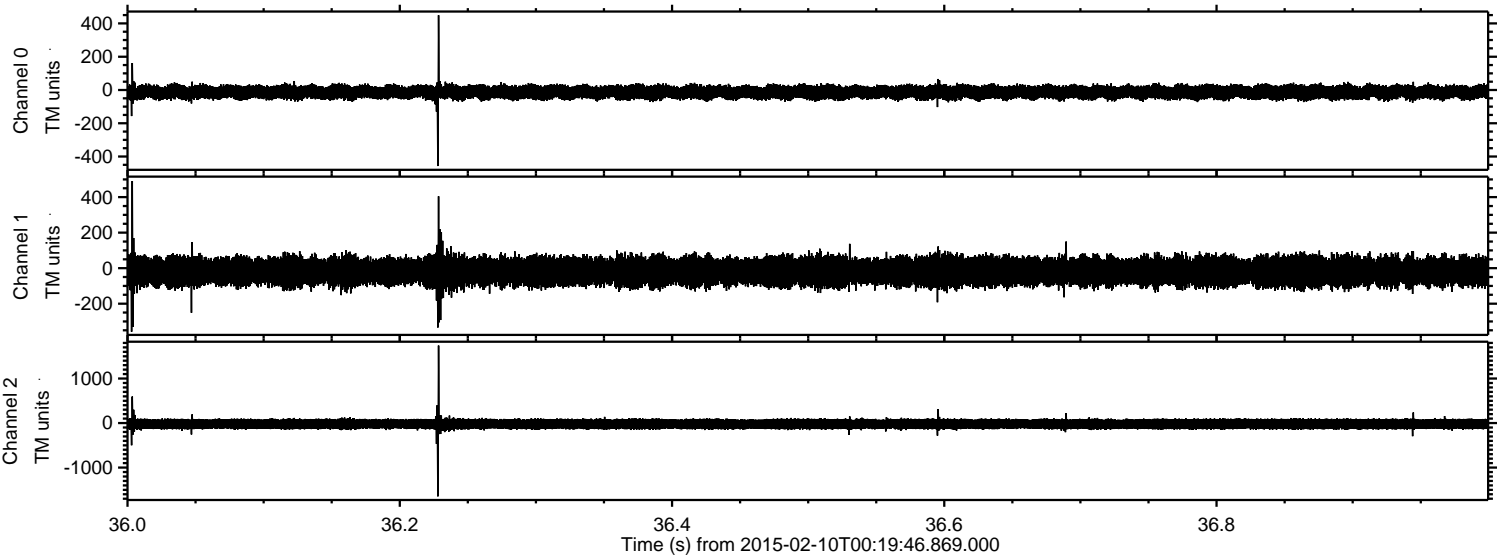


Processed Thu Feb 19 11:02:10 2015 by ELM ver.2012-10-06 from 001\_\_elm20150210\_001945\_\_dat00.bin





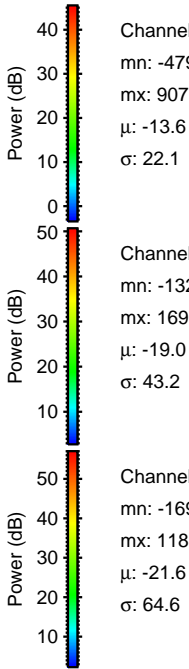
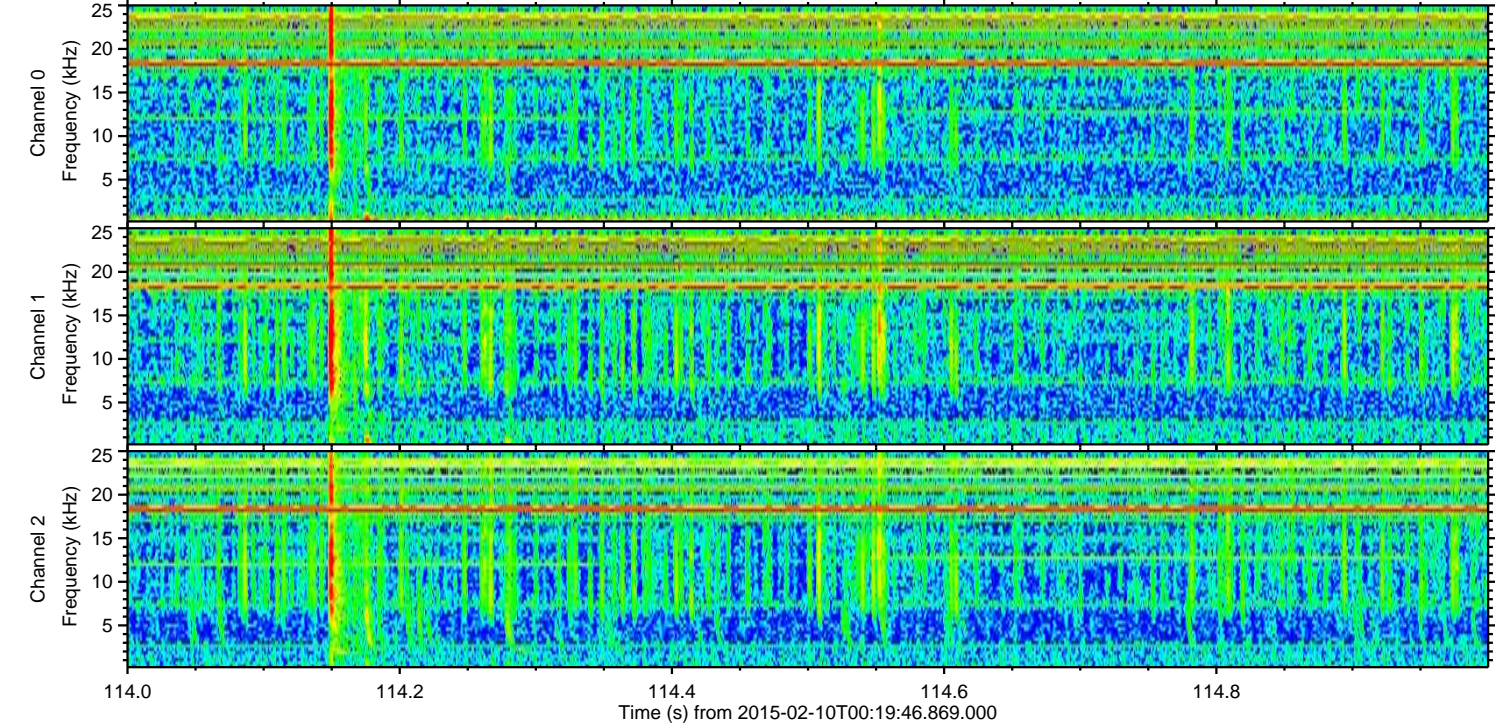
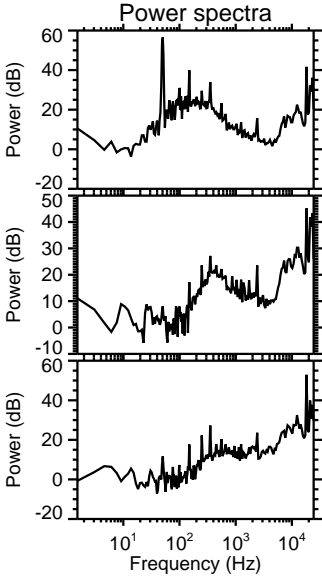
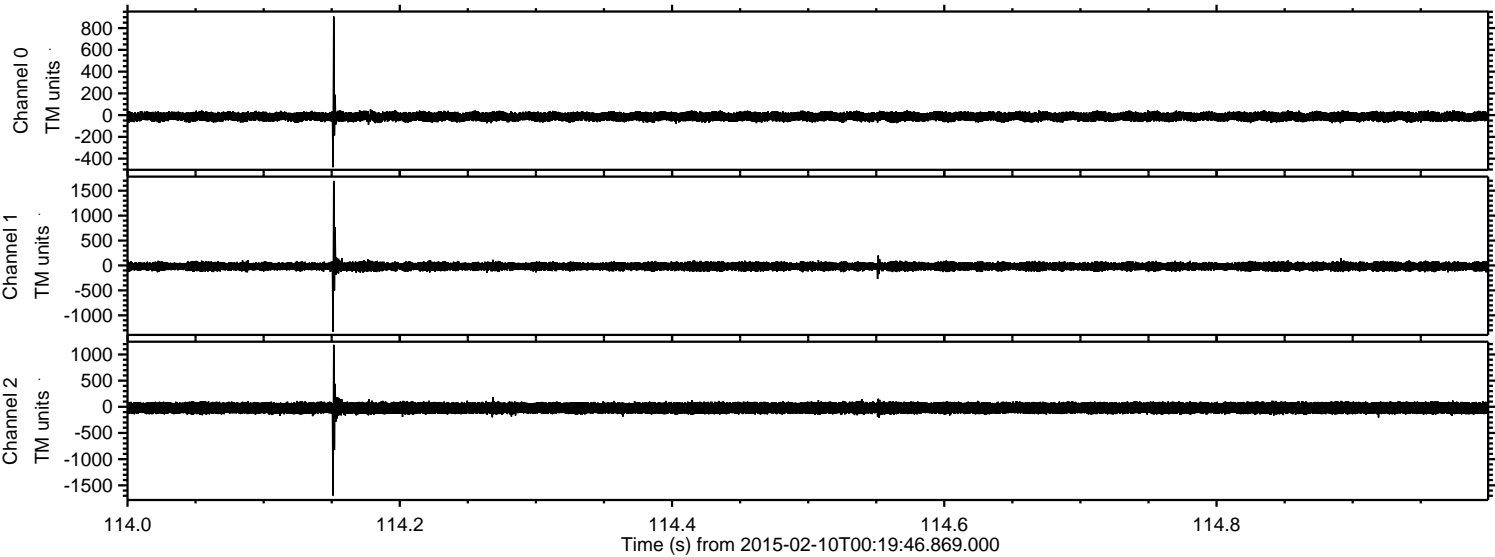
Processed Thu Feb 19 11:02:12 2015 by ELM ver.2012-10-06 from 001\_\_elm20150210\_001945\_\_dat00.bin





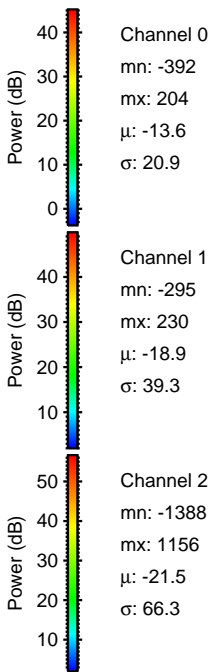
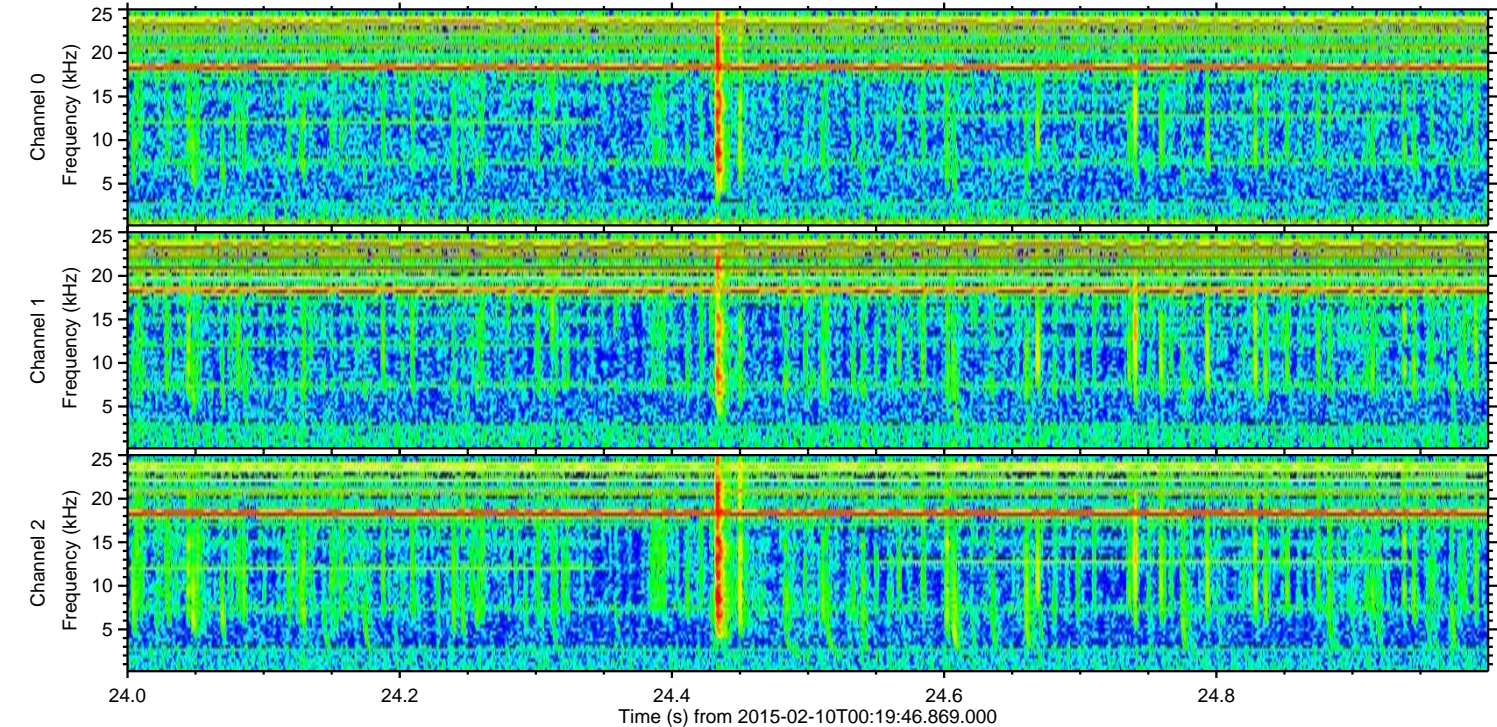
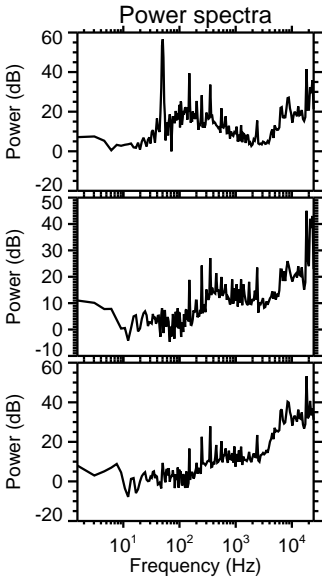
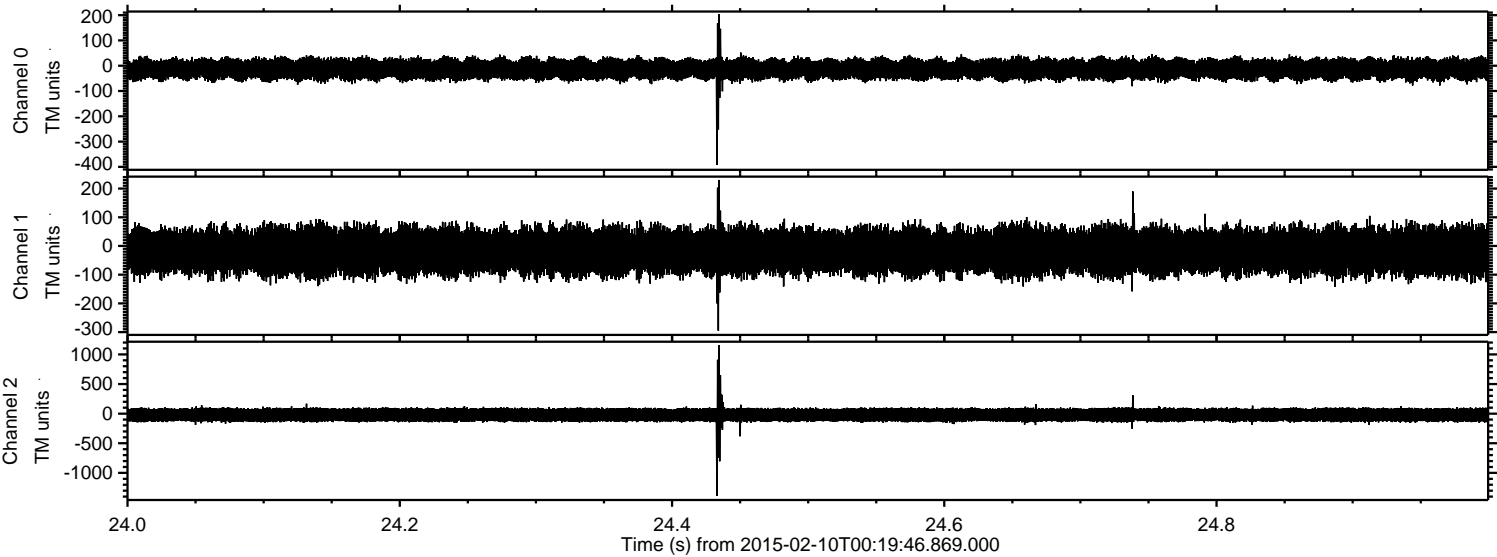
ELMAVAN 3D WAVEFORMS (Measured data sampled at 50 kHz) 49802 packets of 144 samples from 2015-02-10T00:19:46.869.000. Part 115/144

Processed Thu Feb 19 11:02:14 2015 by ELM ver.2012-10-06 from 001\_\_elm20150210\_001945\_\_dat00.bin





Processed Thu Feb 19 11:02:16 2015 by ELM ver.2012-10-06 from 001\_\_elm20150210\_001945\_\_dat00.bin





ELMAVAN 3D WAVEFORMS (Measured data sampled at 50 kHz) 49802 packets of 144 samples from 2015-02-10T00:19:46.869.000. Part 1/144

Processed Thu Feb 19 11:02:18 2015 by ELM ver.2012-10-06 from 001\_\_elm20150210\_001945\_\_dat00.bin

