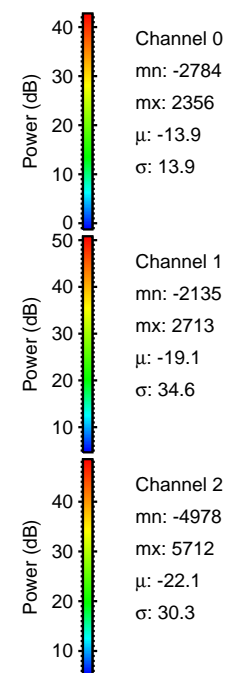
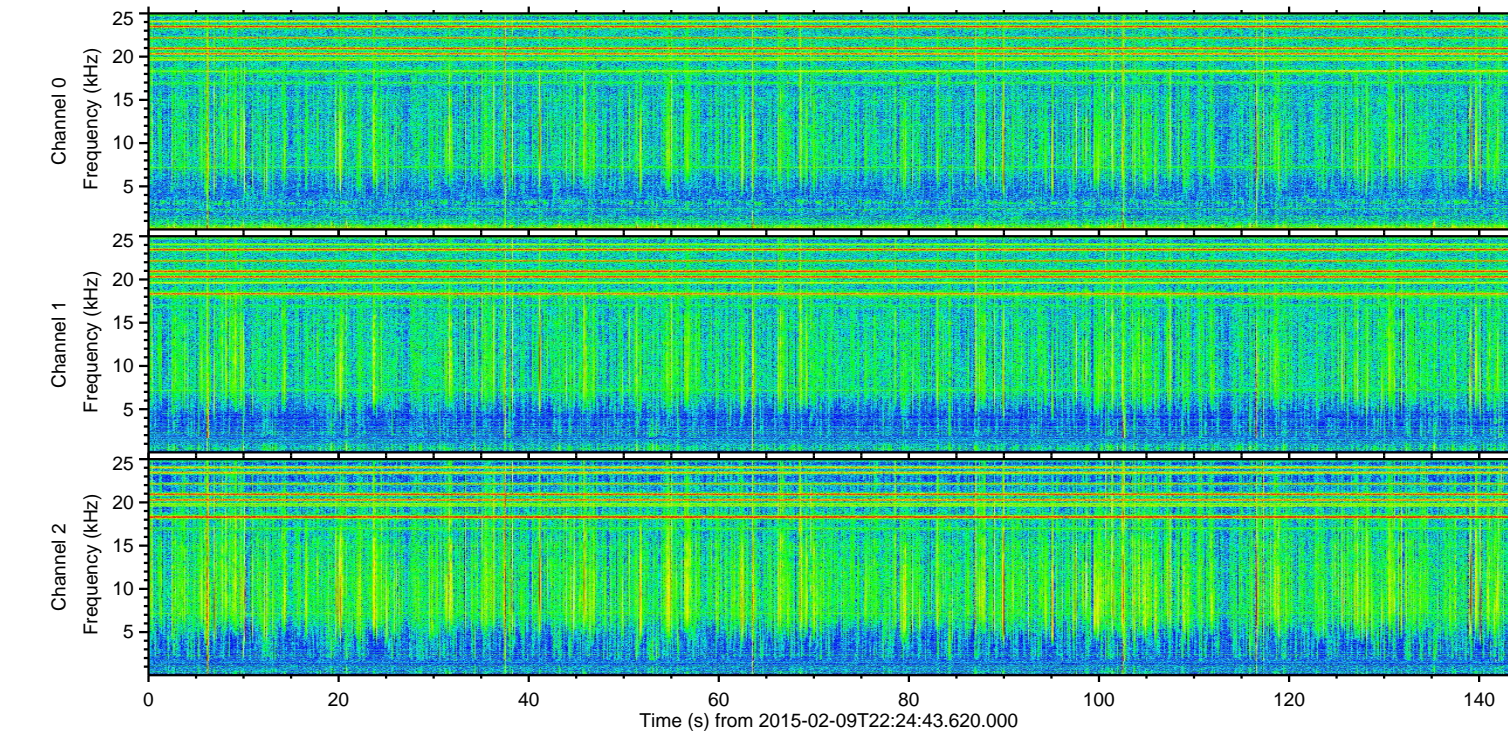
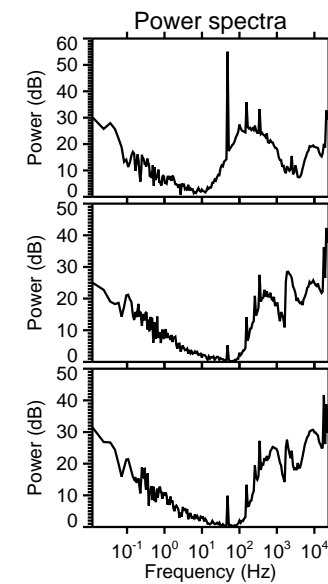
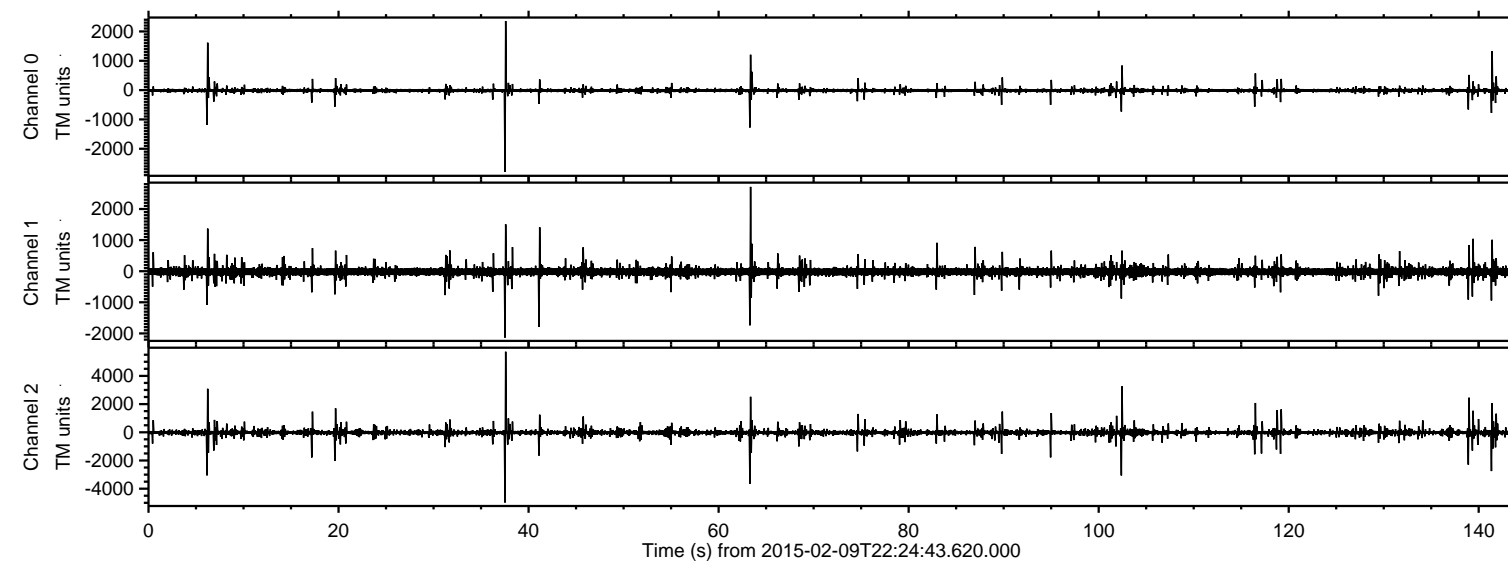
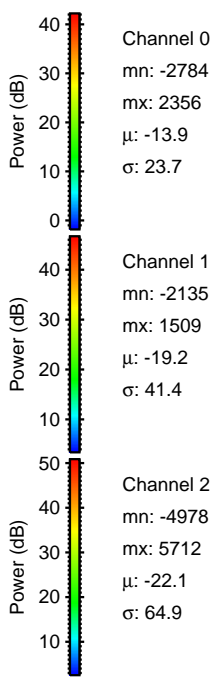
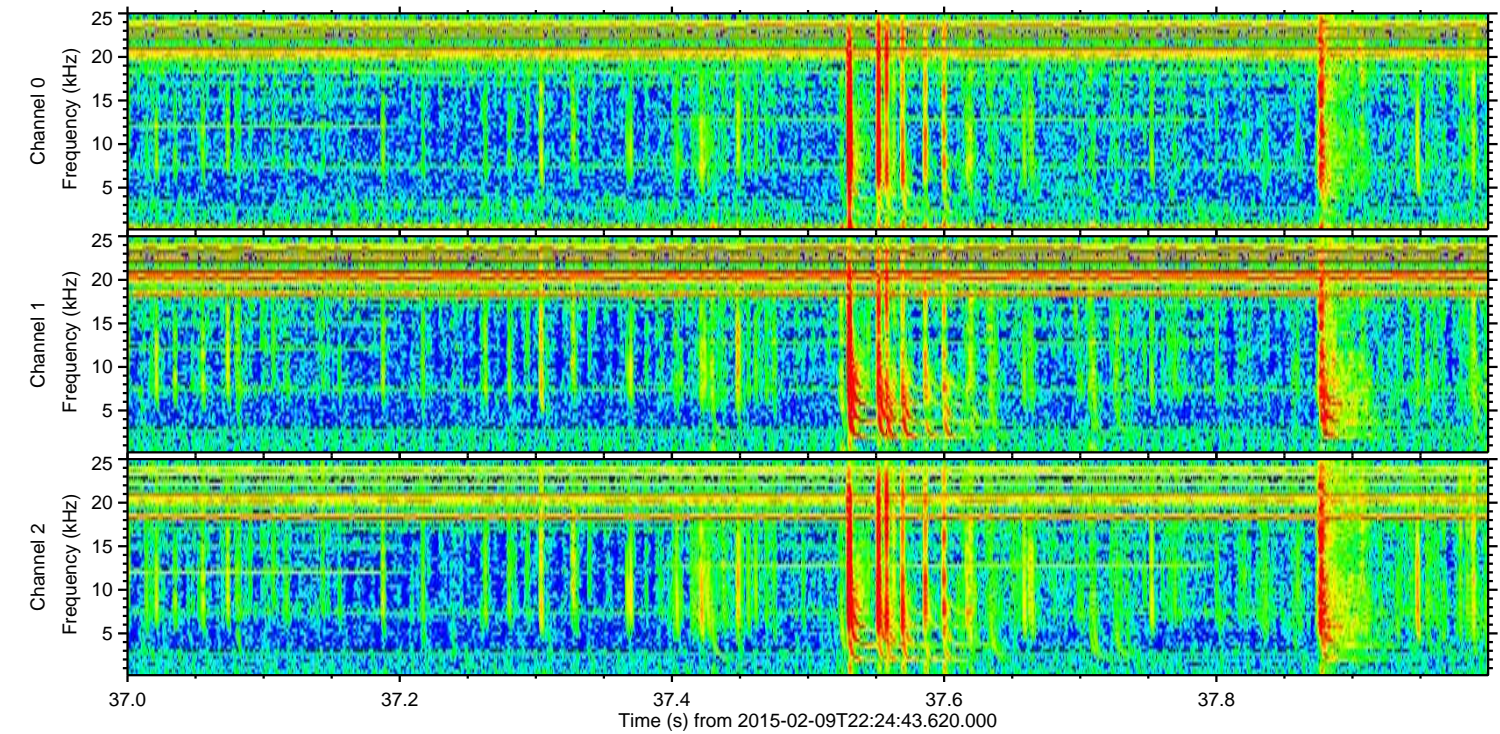
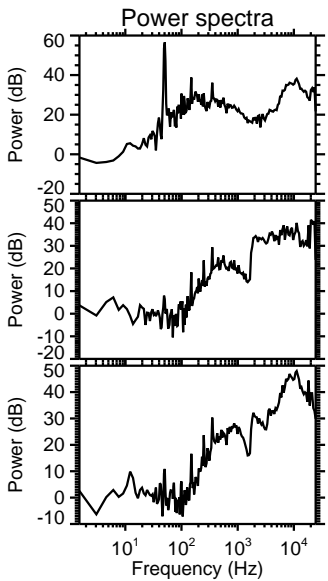
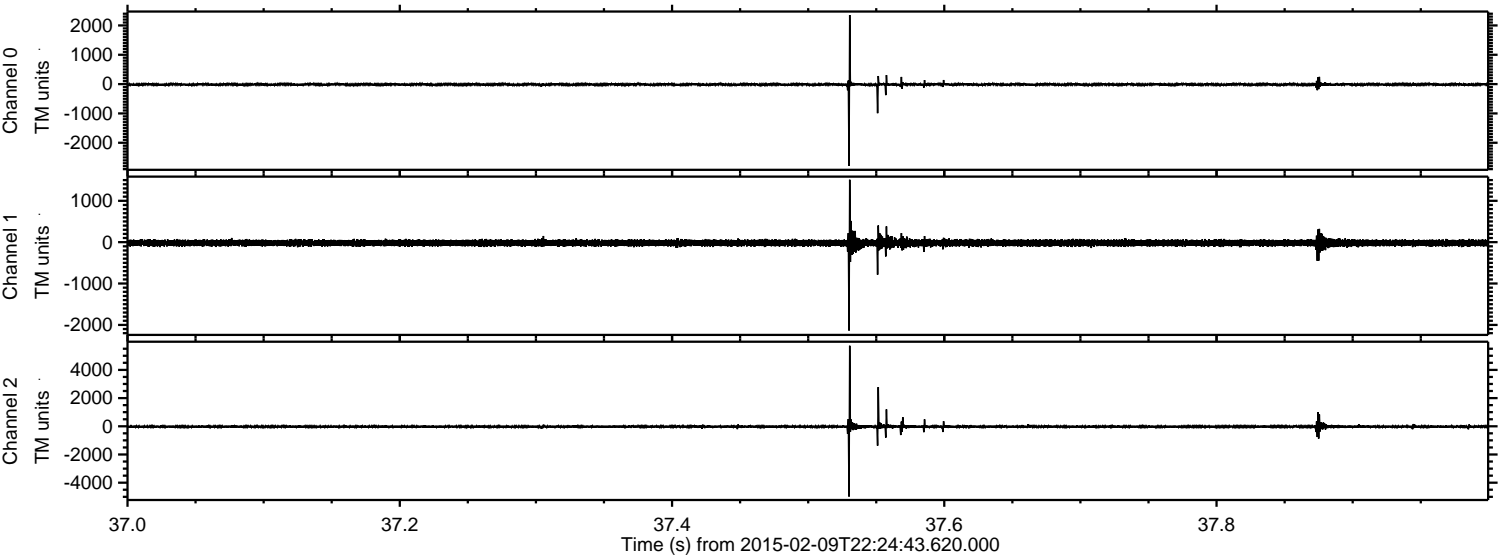


ELMAVAN 3D WAVEFORMS (Measured data sampled at 50 kHz) 49723 packets of 144 samples from 2015-02-09T22:24:43.620.000.

Processed Thu Feb 19 10:20:08 2015 by ELM ver.2012-10-06 from 001__elm20150209_222442__dat00.bin



Processed Thu Feb 19 10:20:24 2015 by ELM ver.2012-10-06 from 001__elm20150209_222442__dat00.bin

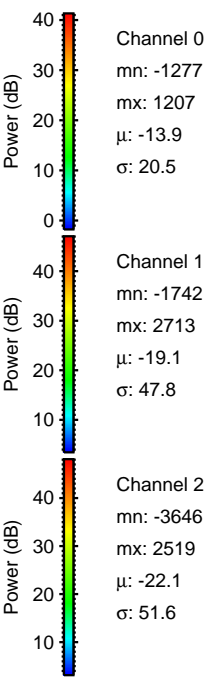
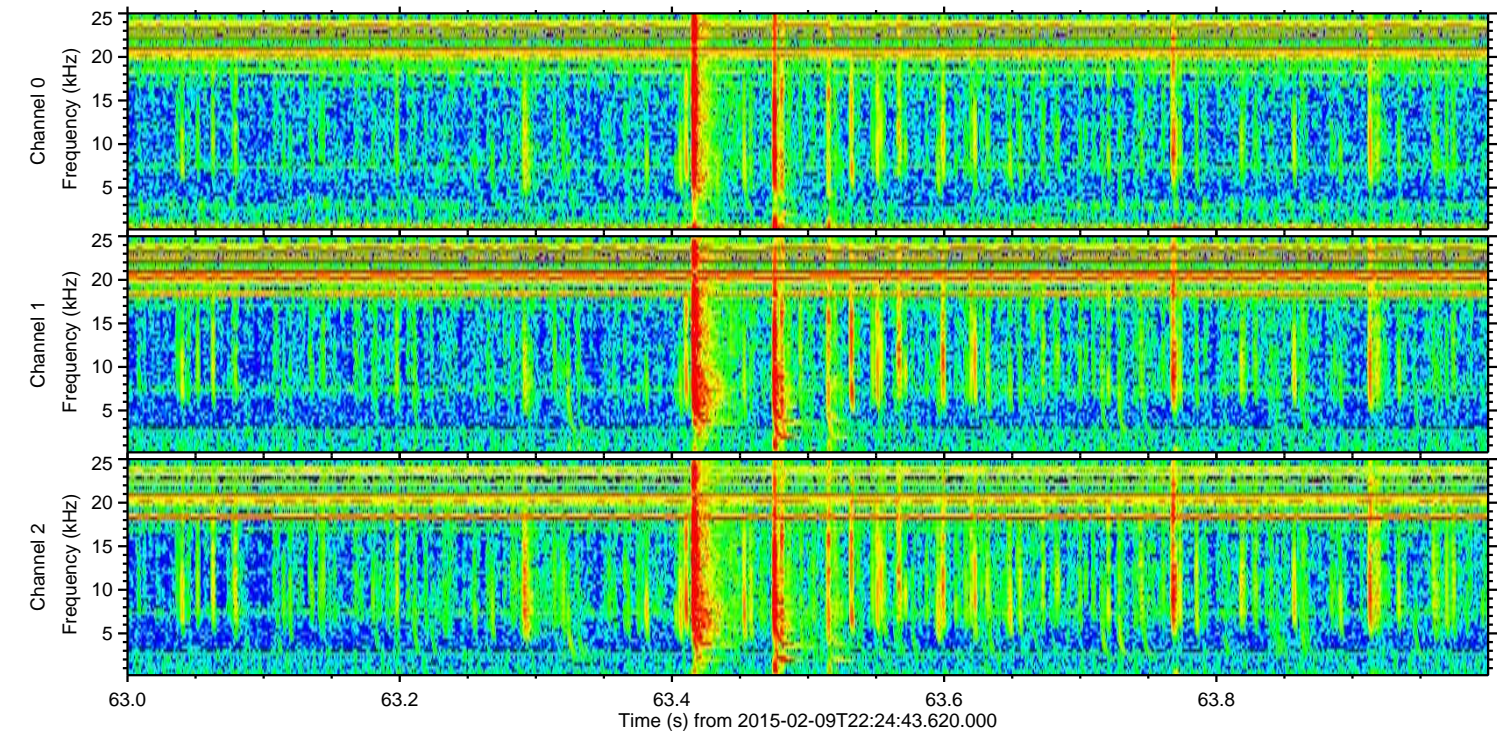
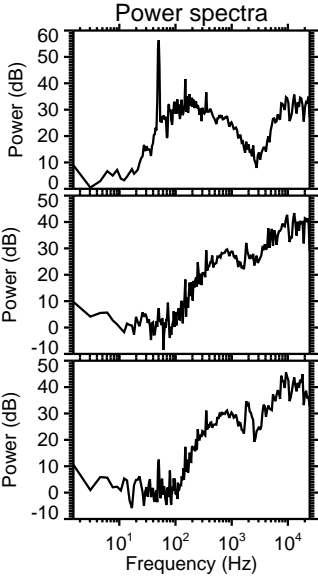
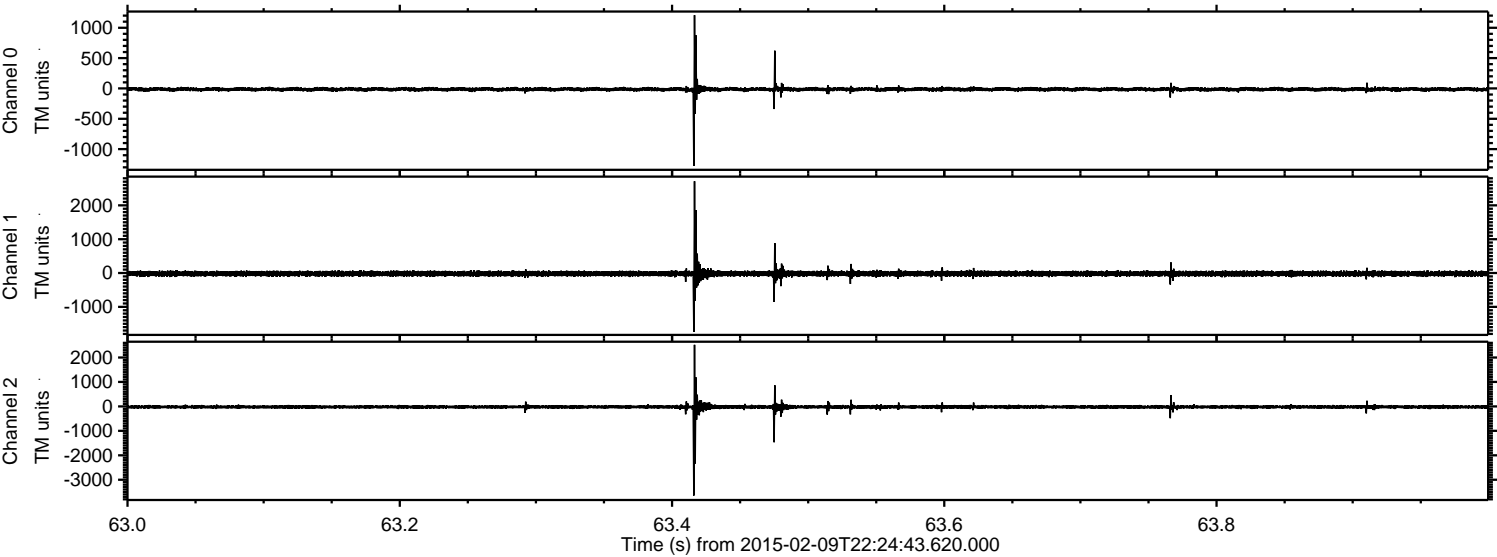


Channel 0
mn: -2784
mx: 2356
 μ : -13.9
 σ : 23.7

Channel 1
mn: -2135
mx: 1509
 μ : -19.2
 σ : 41.4

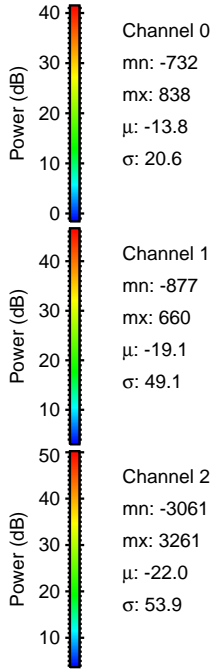
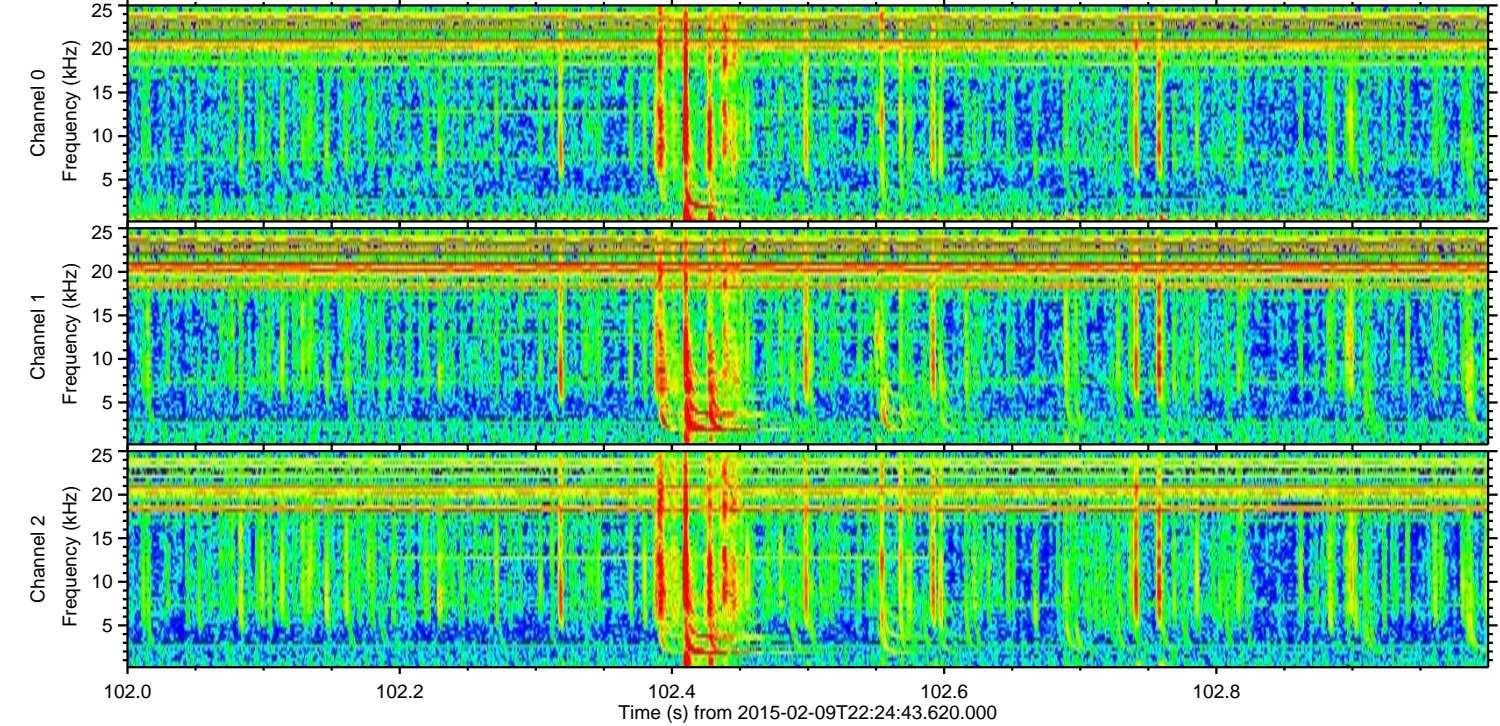
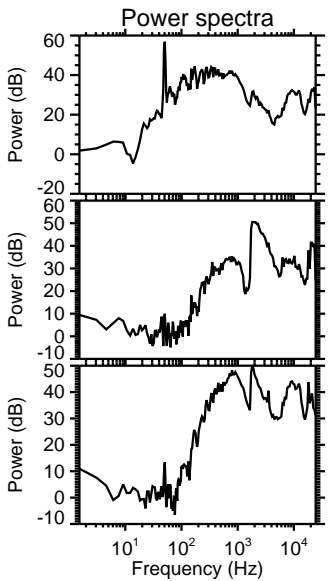
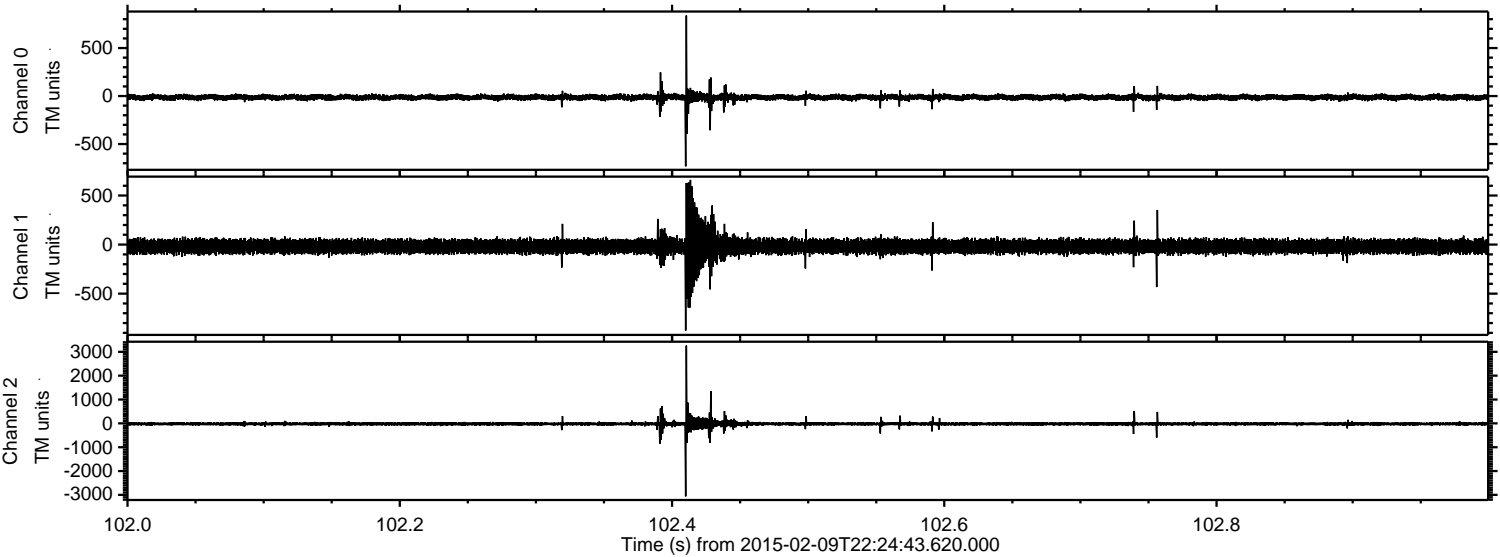
Channel 2
mn: -4978
mx: 5712
 μ : -22.1
 σ : 64.9

Processed Thu Feb 19 10:20:27 2015 by ELM ver.2012-10-06 from 001__elm20150209_222442__dat00.bin



ELMAVAN 3D WAVEFORMS (Measured data sampled at 50 kHz) 49723 packets of 144 samples from 2015-02-09T22:24:43.620.000. Part 103/144

Processed Thu Feb 19 10:20:29 2015 by ELM ver.2012-10-06 from 001__elm20150209_222442__dat00.bin



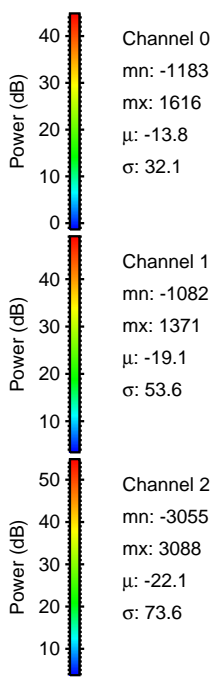
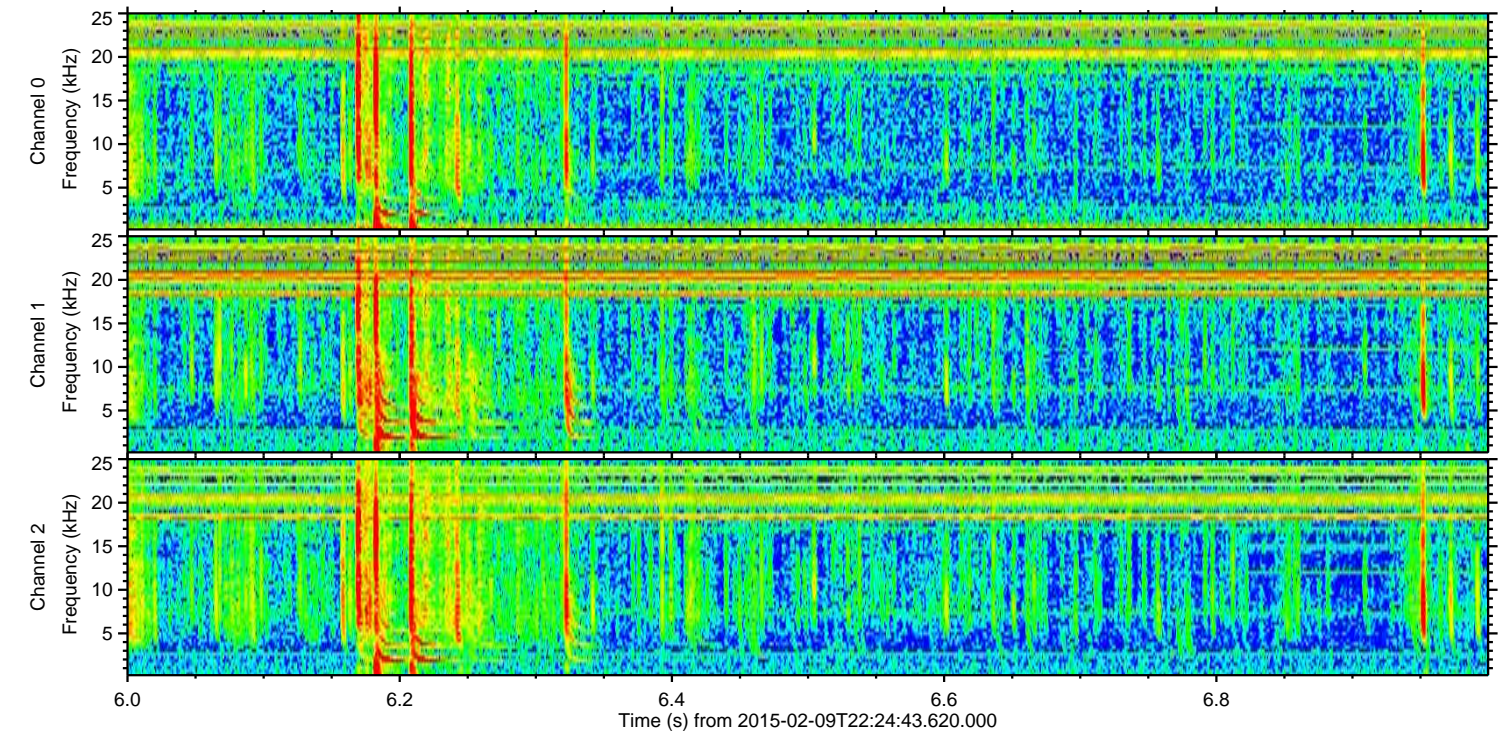
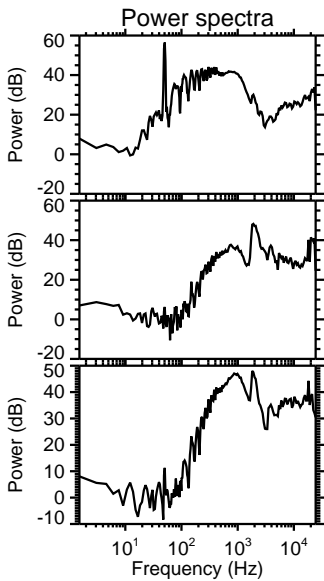
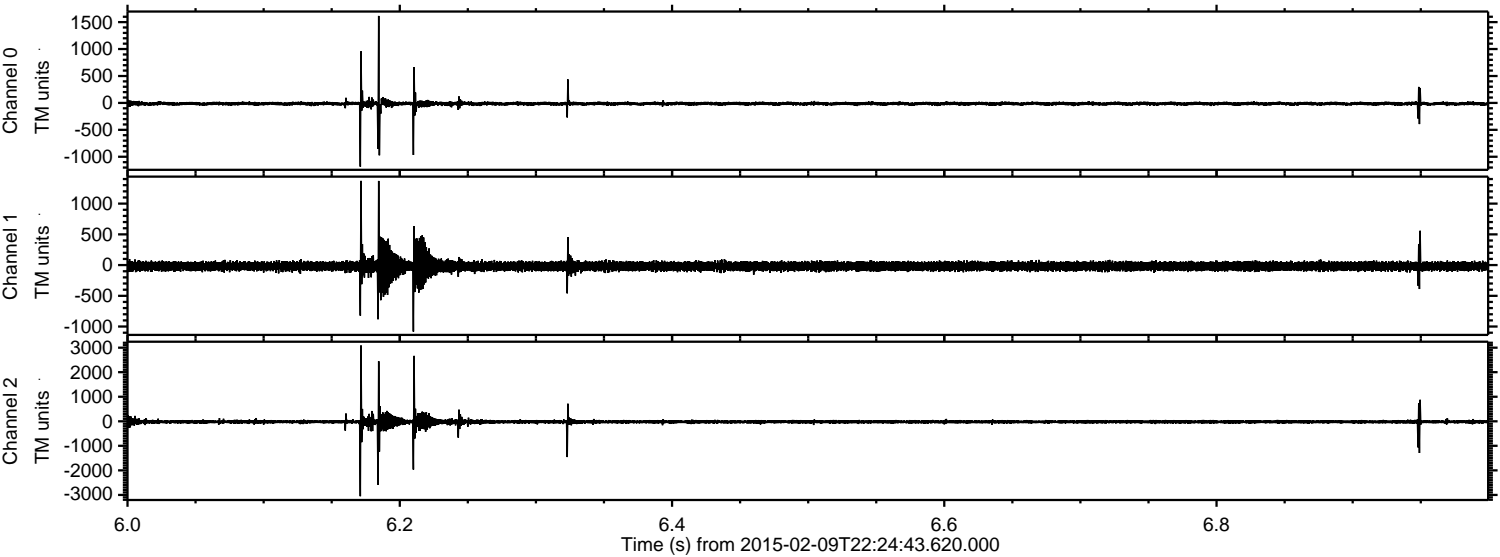
Channel 0
mn: -732
mx: 838
 μ : -13.8
 σ : 20.6

Channel 1
mn: -877
mx: 660
 μ : -19.1
 σ : 49.1

Channel 2
mn: -3061
mx: 3261
 μ : -22.0
 σ : 53.9

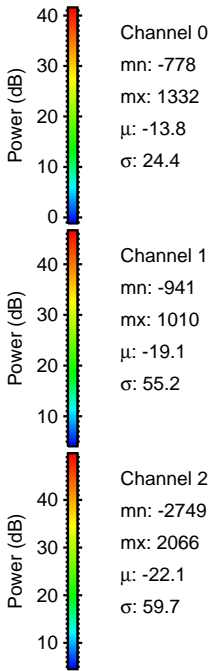
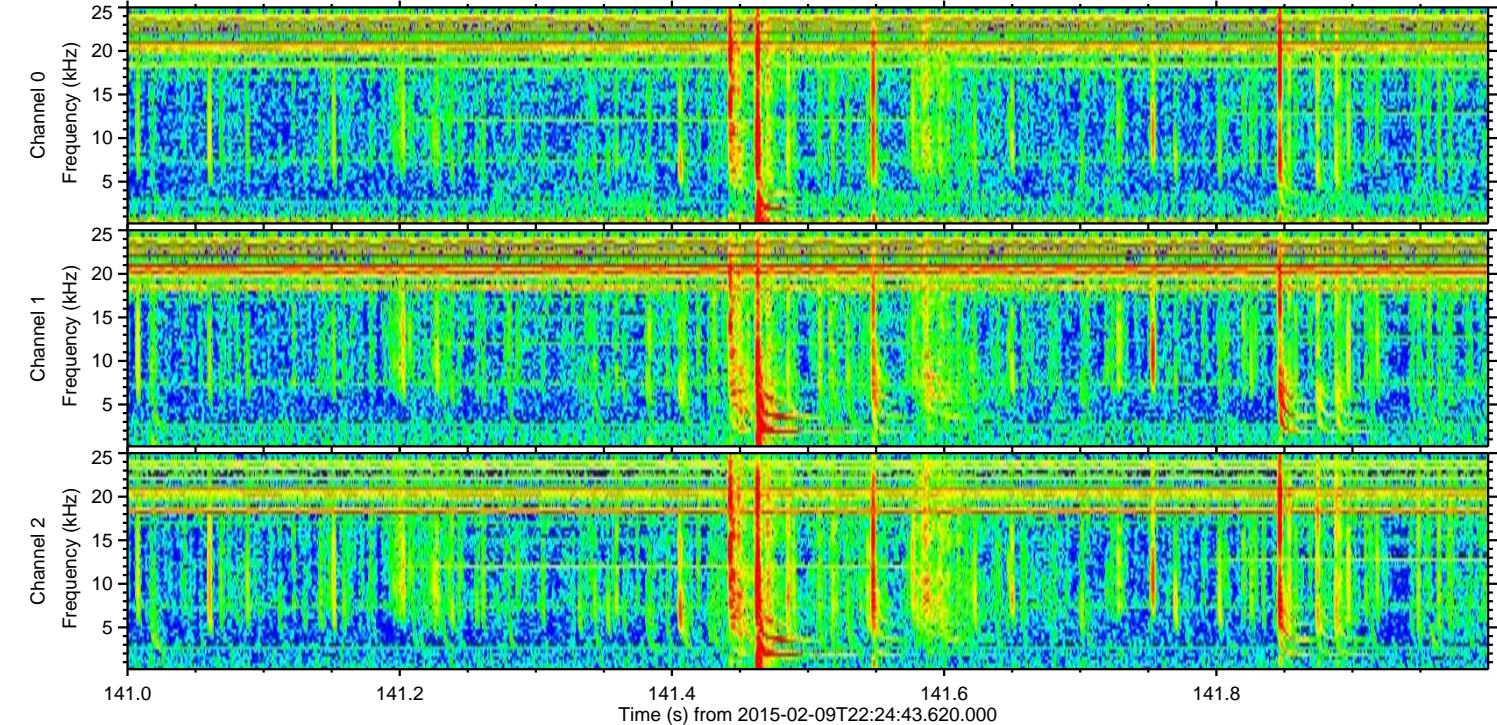
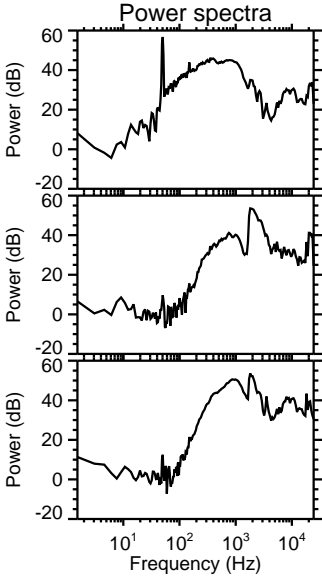
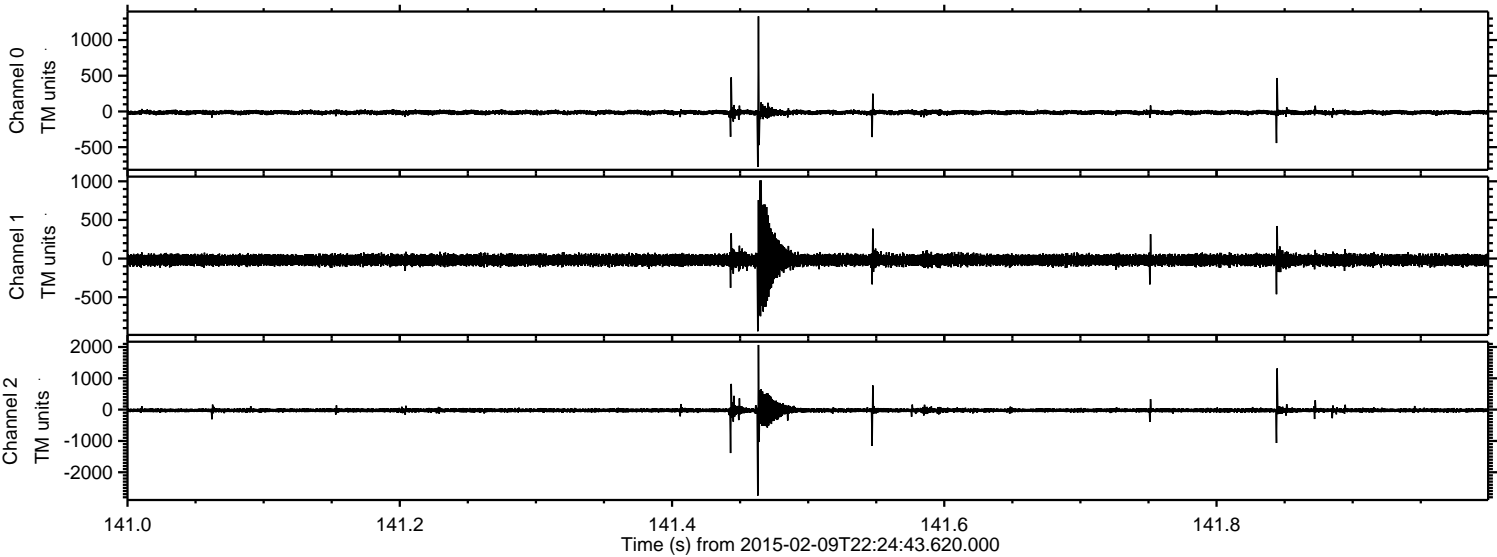
ELMAVAN 3D WAVEFORMS (Measured data sampled at 50 kHz) 49723 packets of 144 samples from 2015-02-09T22:24:43.620.000. Part 7/144

Processed Thu Feb 19 10:20:30 2015 by ELM ver.2012-10-06 from 001__elm20150209_222442__dat00.bin



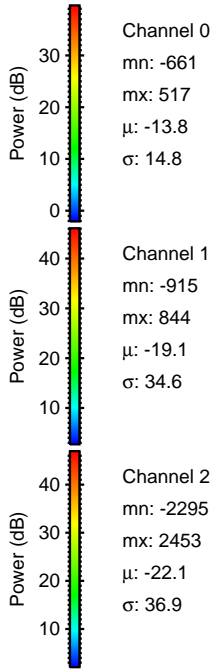
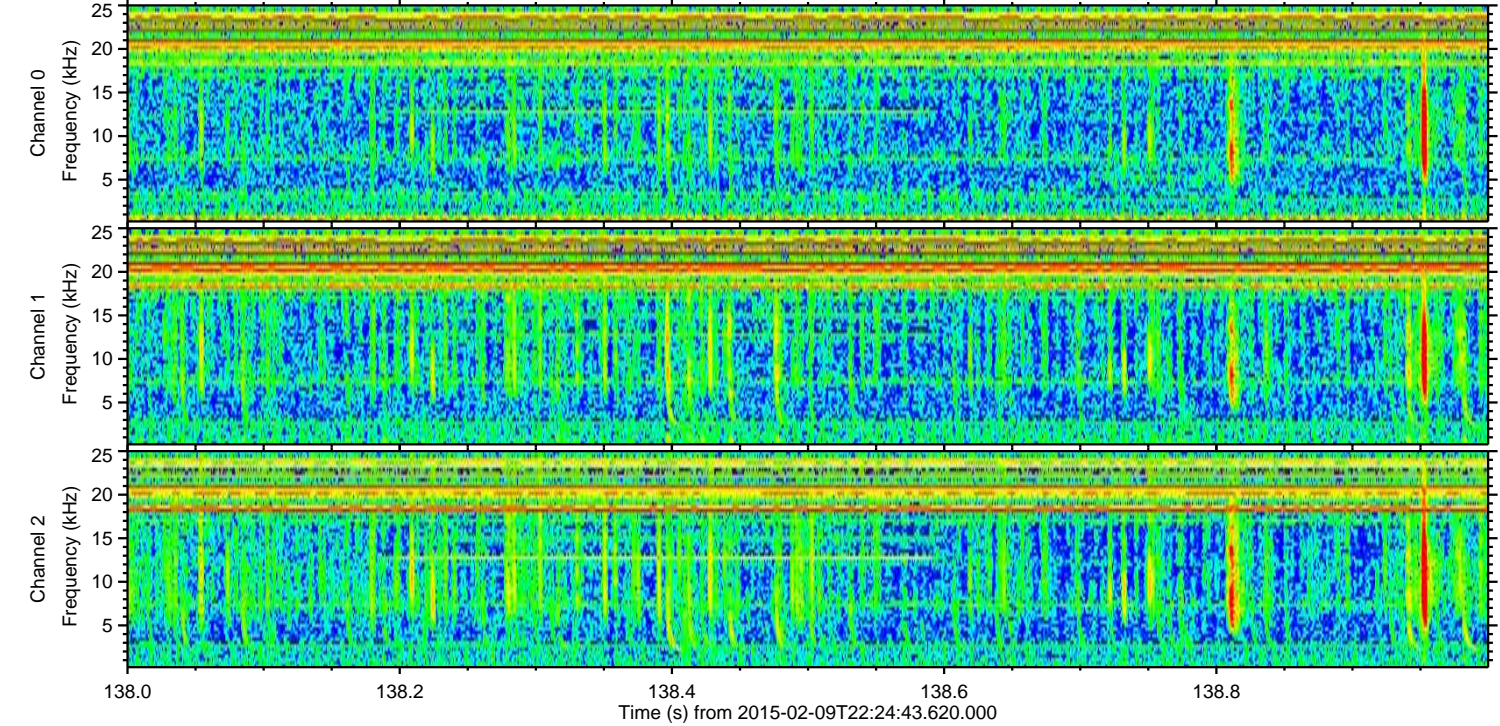
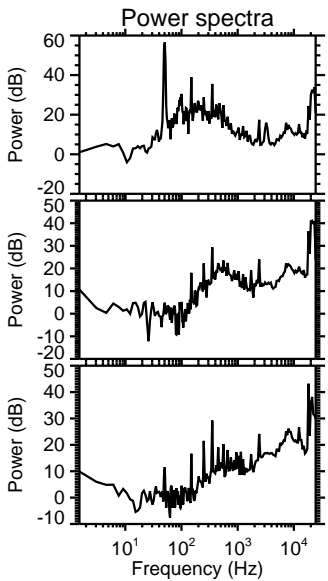
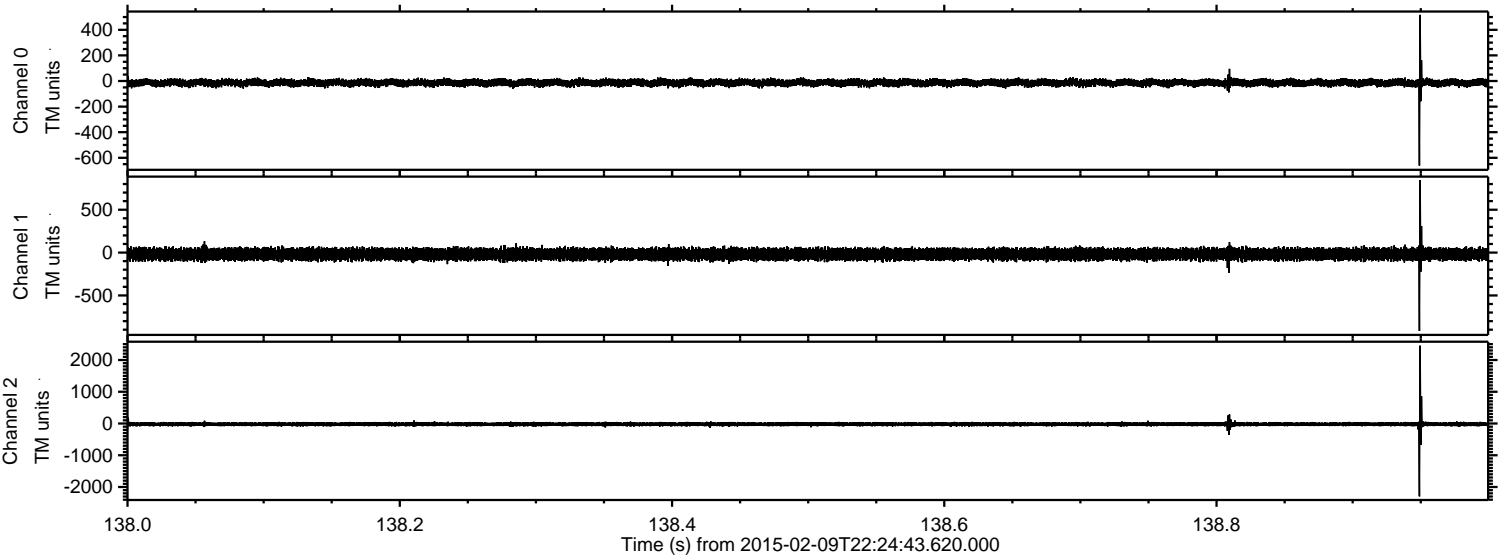
ELMAVAN 3D WAVEFORMS (Measured data sampled at 50 kHz) 49723 packets of 144 samples from 2015-02-09T22:24:43.620.000. Part 142/144

Processed Thu Feb 19 10:20:31 2015 by ELM ver.2012-10-06 from 001__elm20150209_222442__dat00.bin



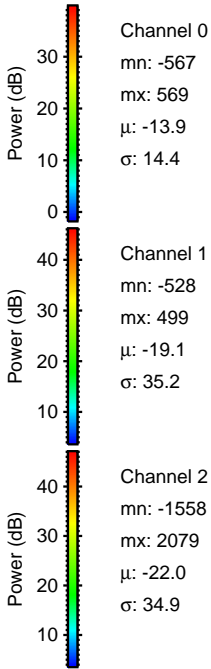
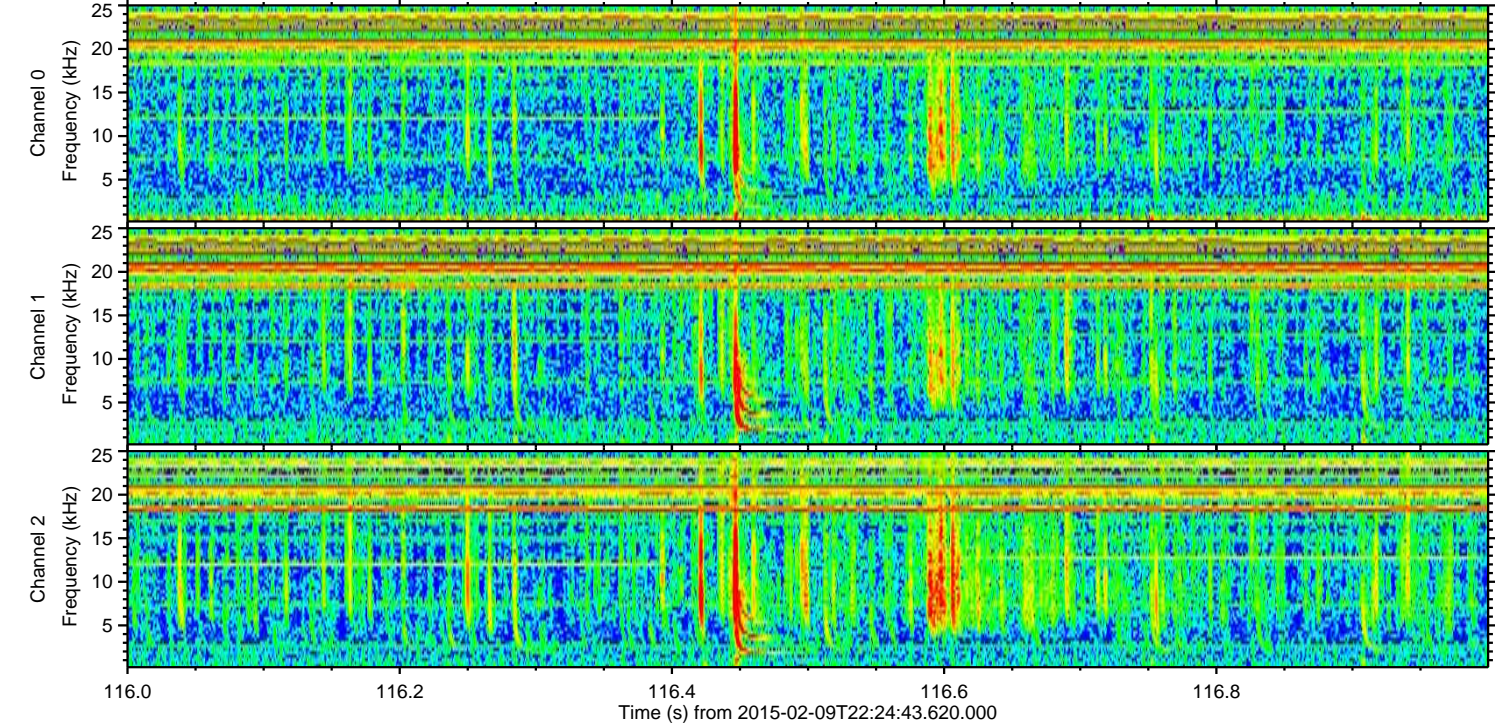
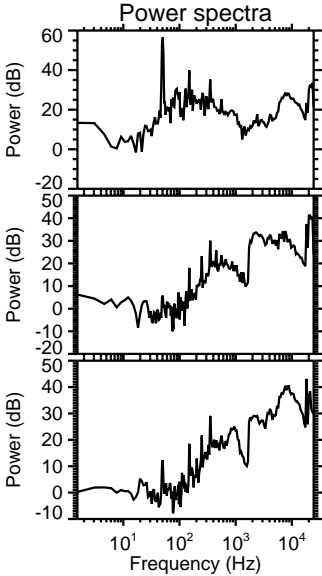
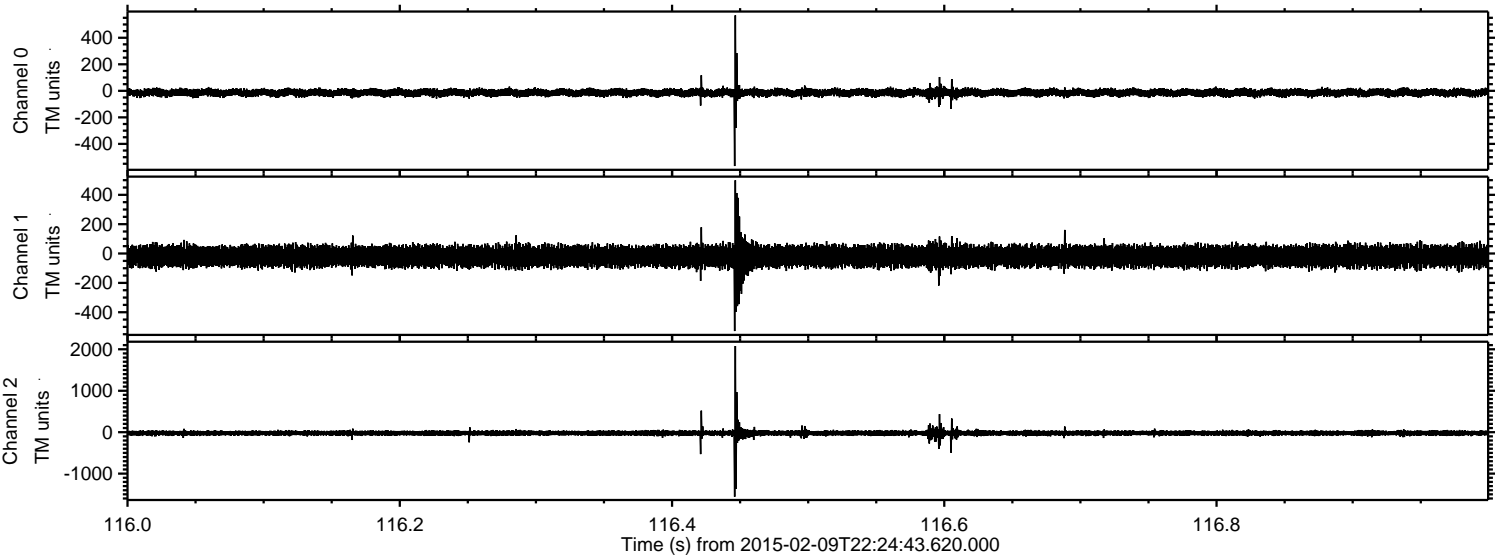
ELMAVAN 3D WAVEFORMS (Measured data sampled at 50 kHz) 49723 packets of 144 samples from 2015-02-09T22:24:43.620.000. Part 139/144

Processed Thu Feb 19 10:20:32 2015 by ELM ver.2012-10-06 from 001__elm20150209_222442__dat00.bin



ELMAVAN 3D WAVEFORMS (Measured data sampled at 50 kHz) 49723 packets of 144 samples from 2015-02-09T22:24:43.620.000. Part 117/144

Processed Thu Feb 19 10:20:33 2015 by ELM ver.2012-10-06 from 001__elm20150209_222442__dat00.bin

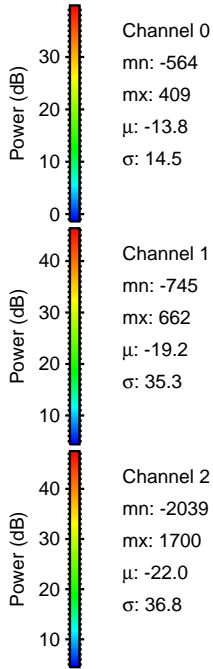
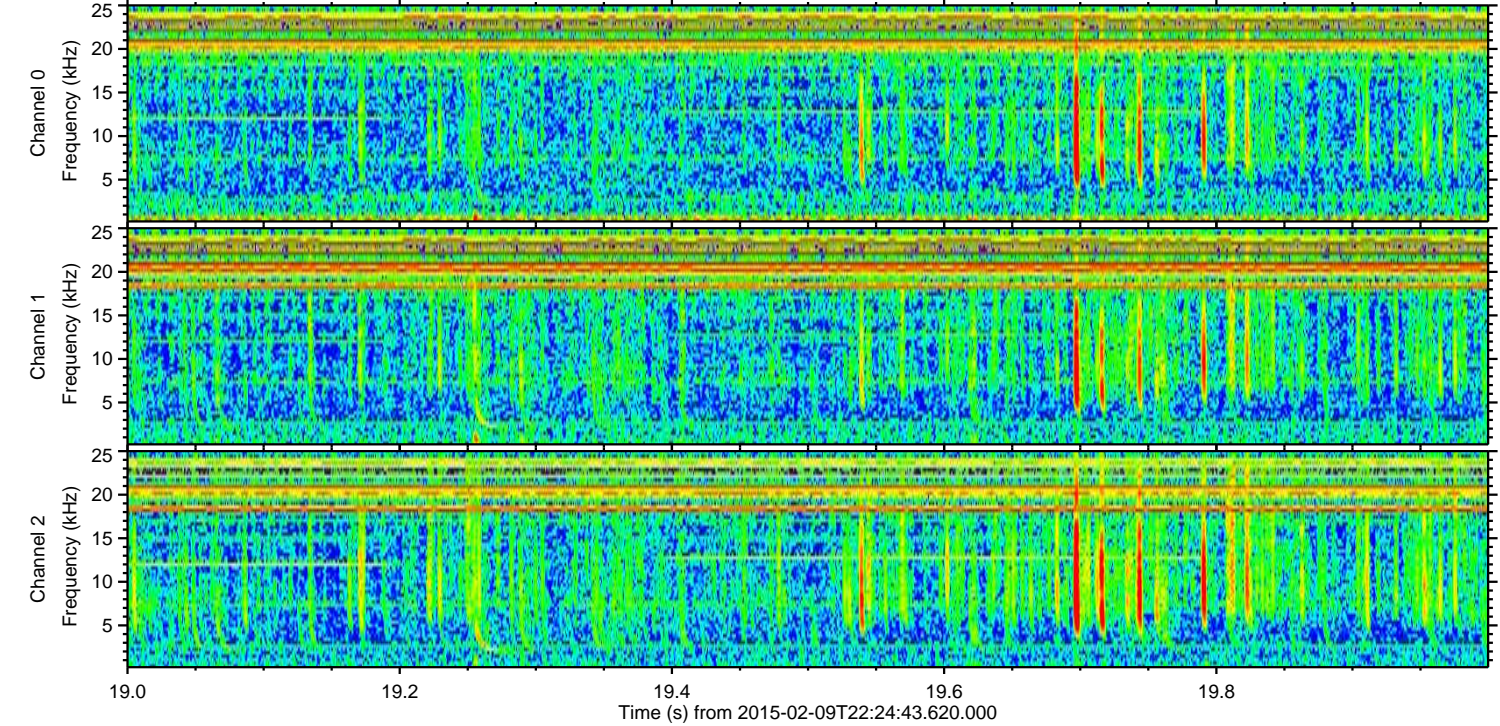
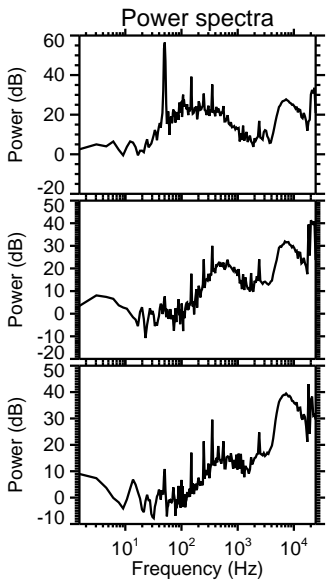
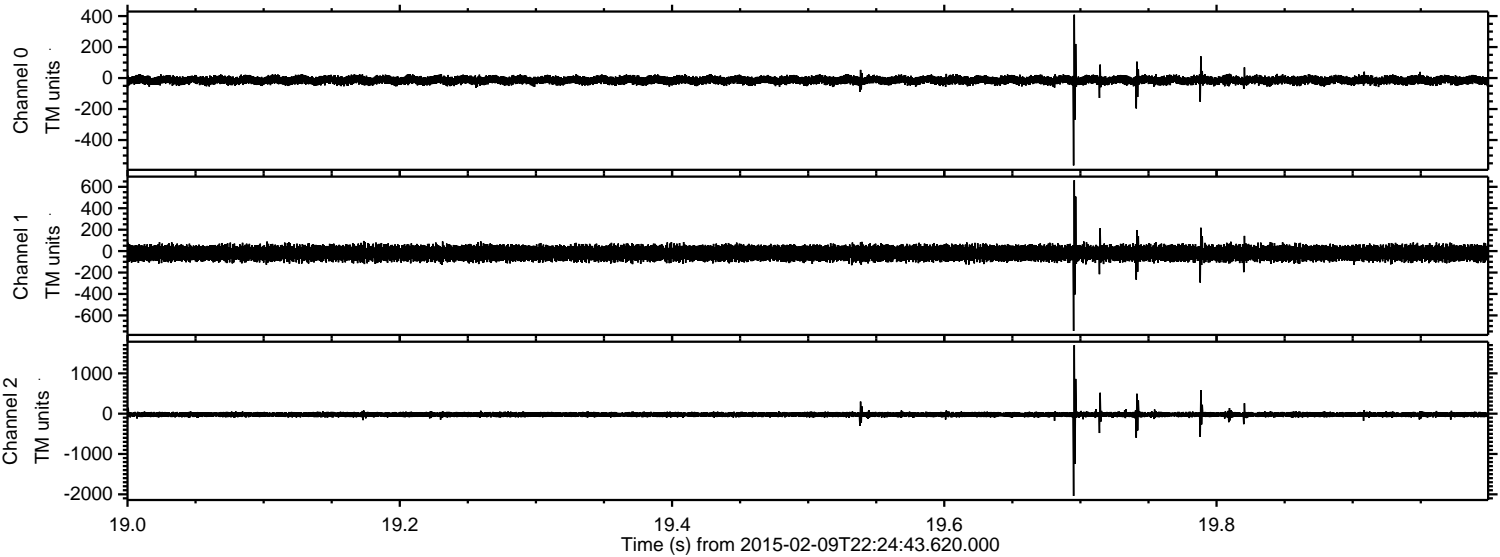


Channel 0
mn: -567
mx: 569
 μ : -13.9
 σ : 14.4

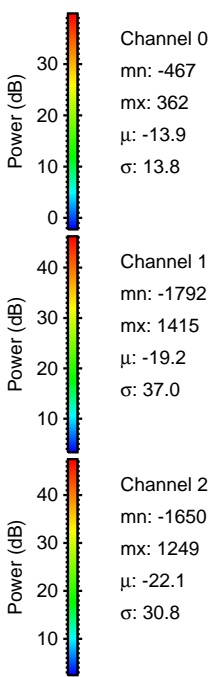
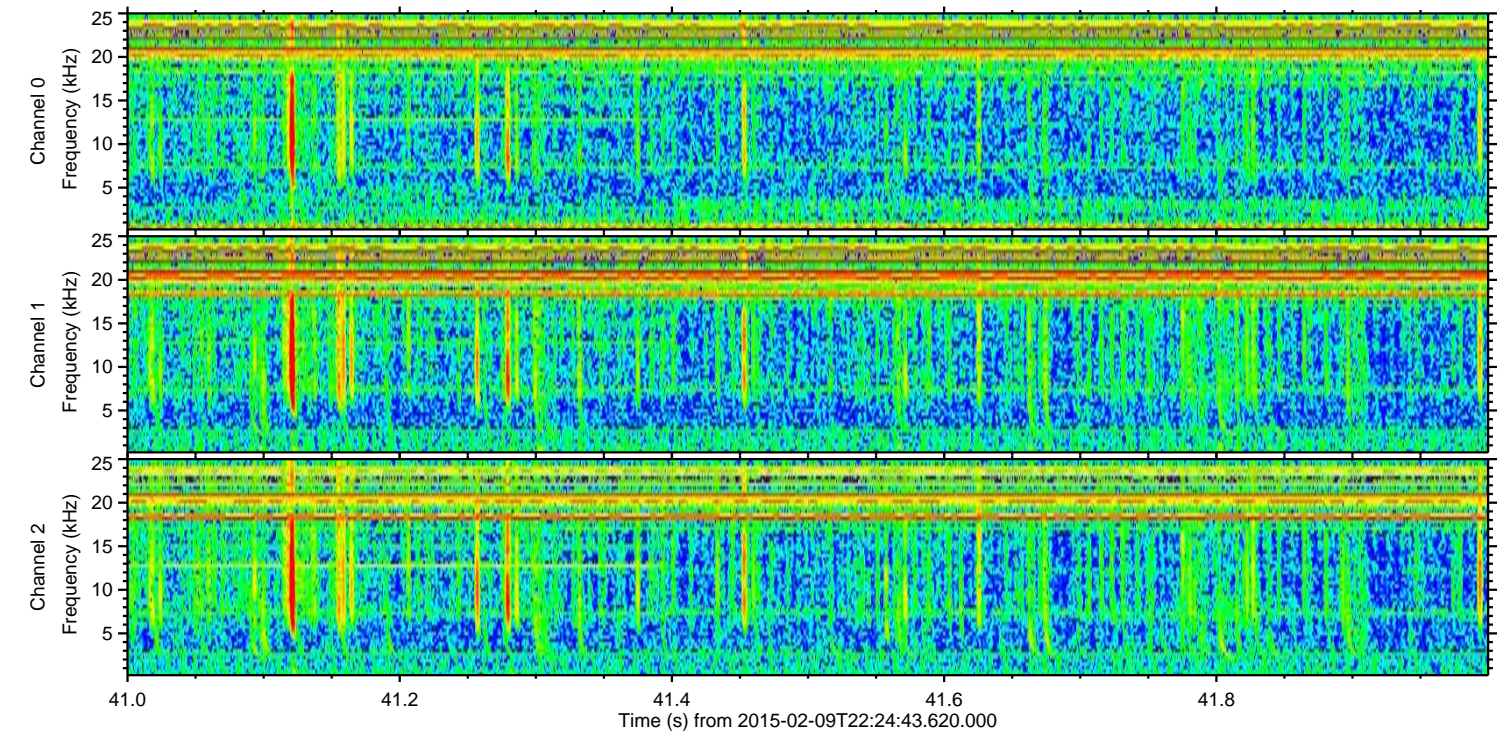
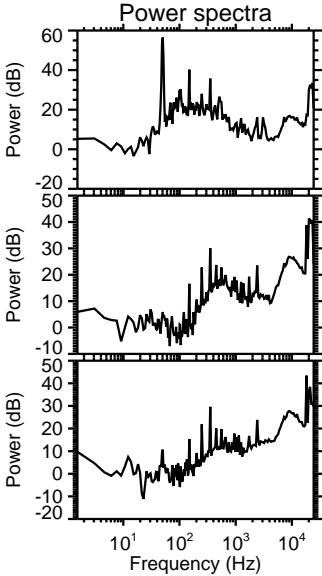
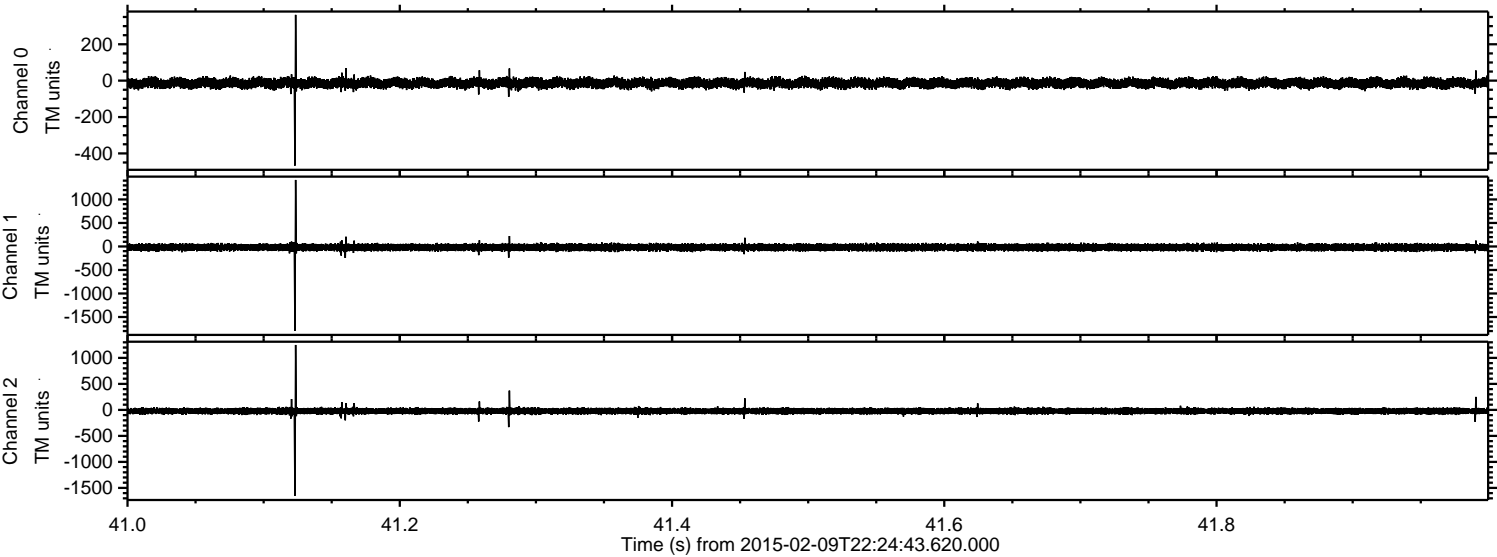
Channel 1
mn: -528
mx: 499
 μ : -19.1
 σ : 35.2

Channel 2
mn: -1558
mx: 2079
 μ : -22.0
 σ : 34.9

Processed Thu Feb 19 10:20:35 2015 by ELM ver.2012-10-06 from 001__elm20150209_222442__dat00.bin



Processed Thu Feb 19 10:20:36 2015 by ELM ver.2012-10-06 from 001__elm20150209_222442__dat00.bin



ELMAVAN 3D WAVEFORMS (Measured data sampled at 50 kHz) 49723 packets of 144 samples from 2015-02-09T22:24:43.620.000. Part 113/144

Processed Thu Feb 19 10:20:37 2015 by ELM ver.2012-10-06 from 001__elm20150209_222442__dat00.bin

