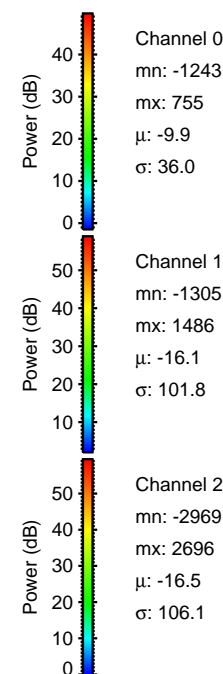
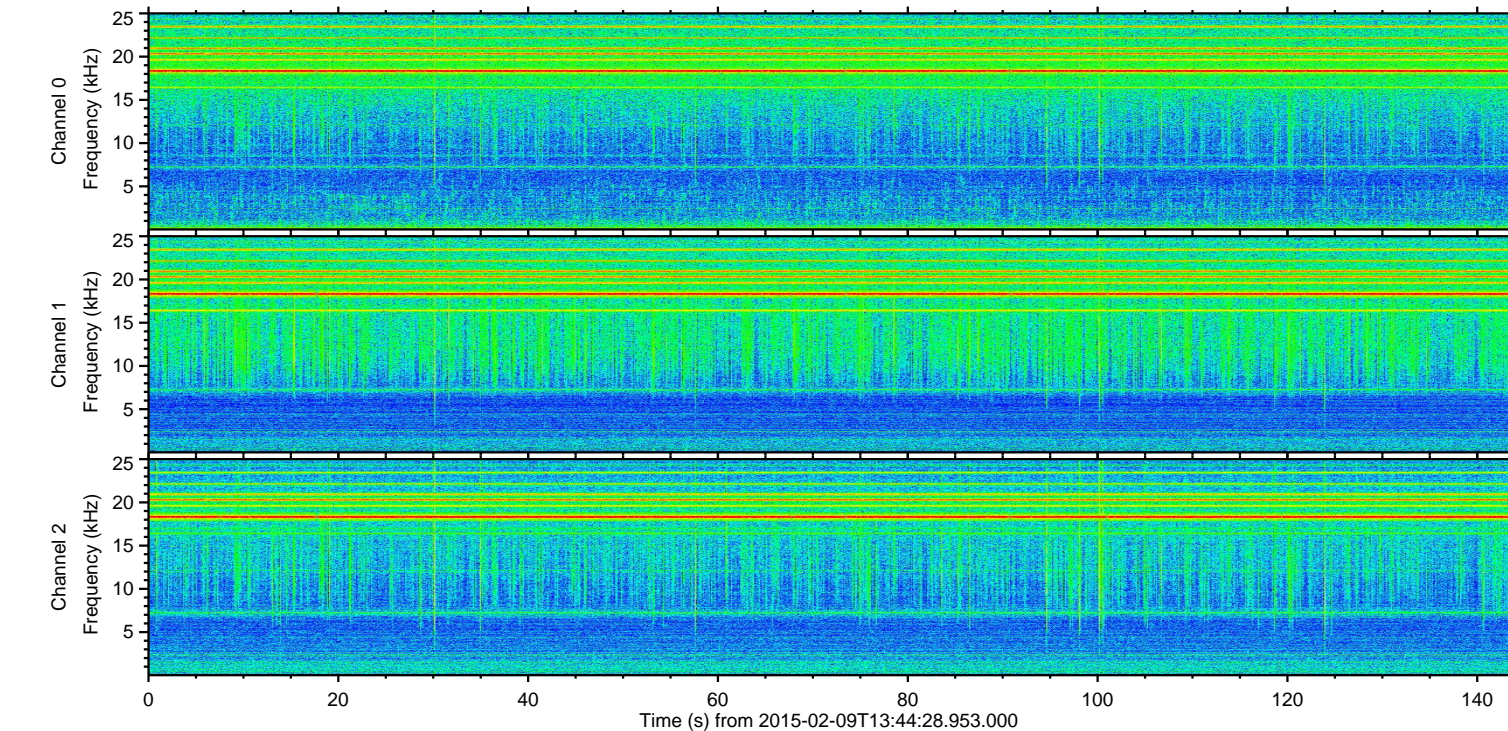
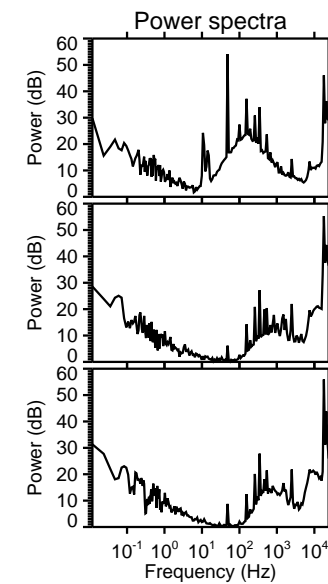
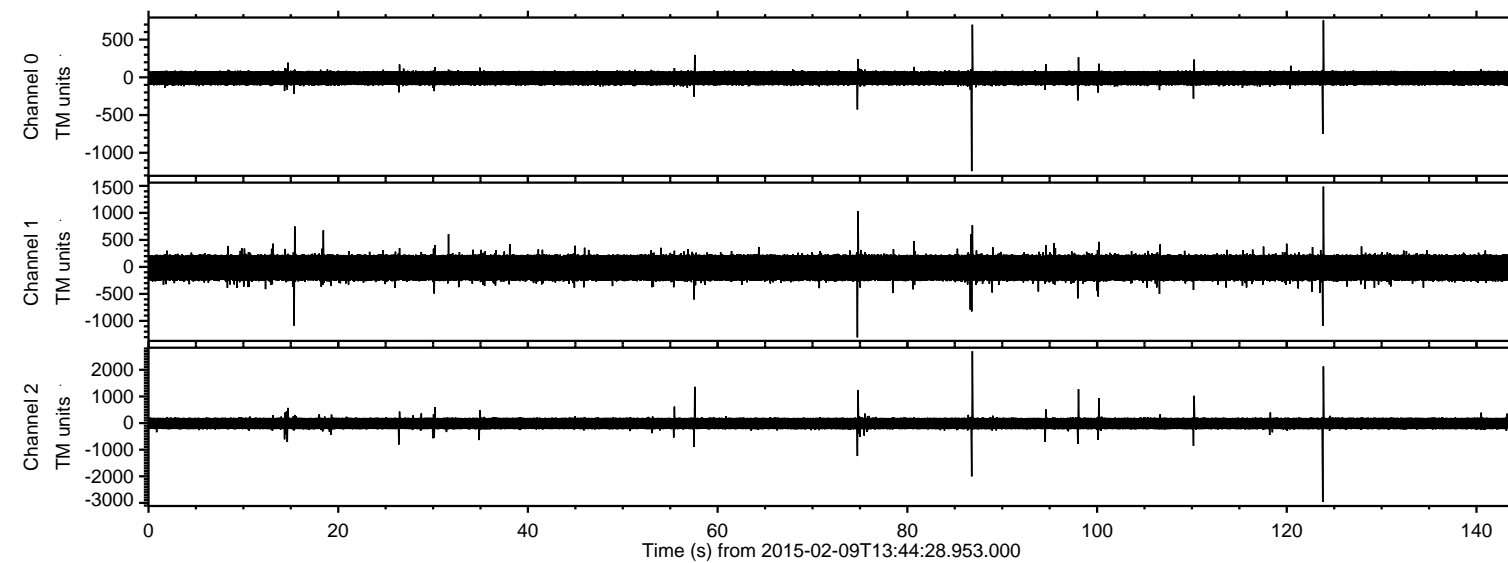


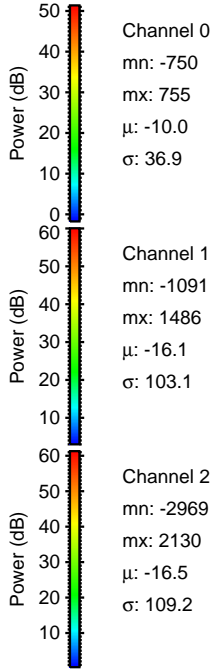
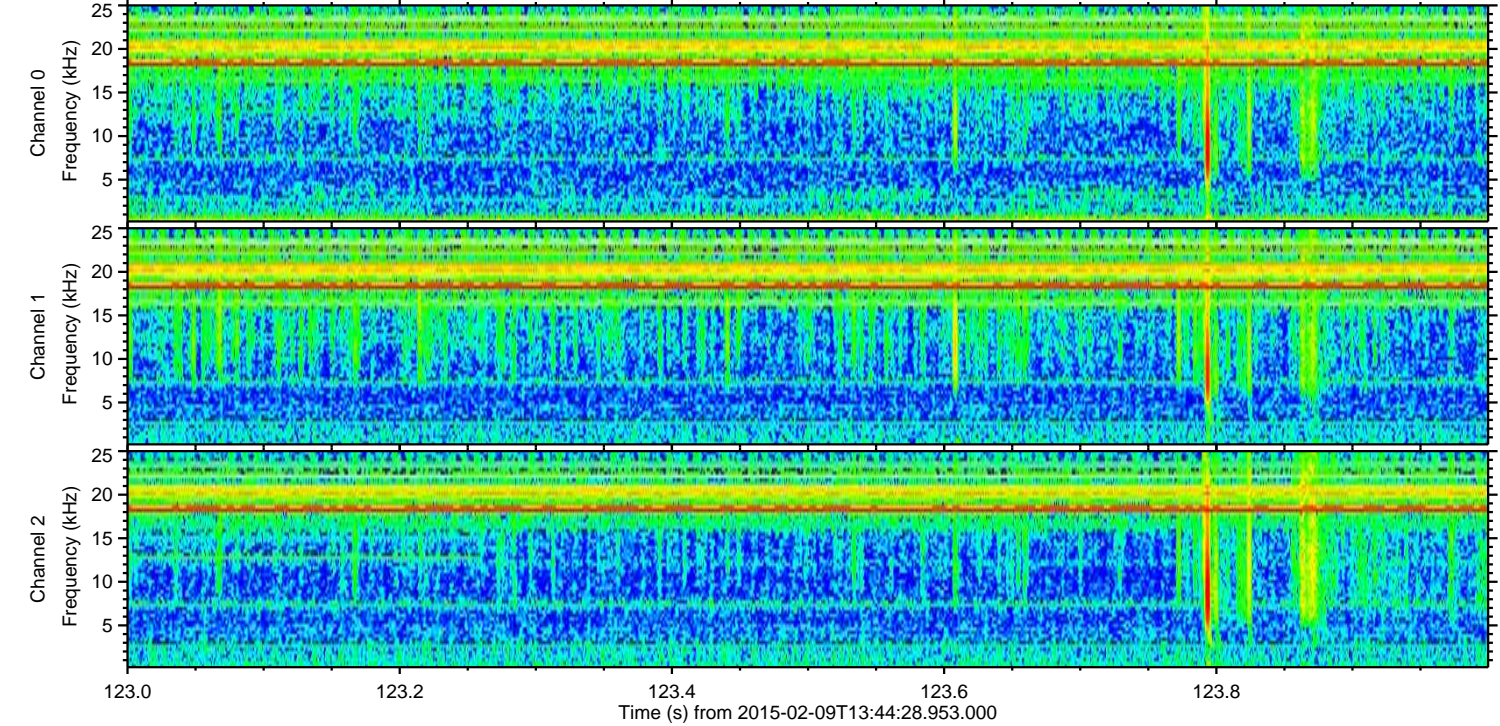
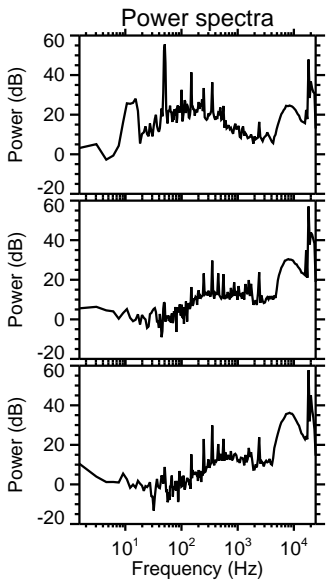
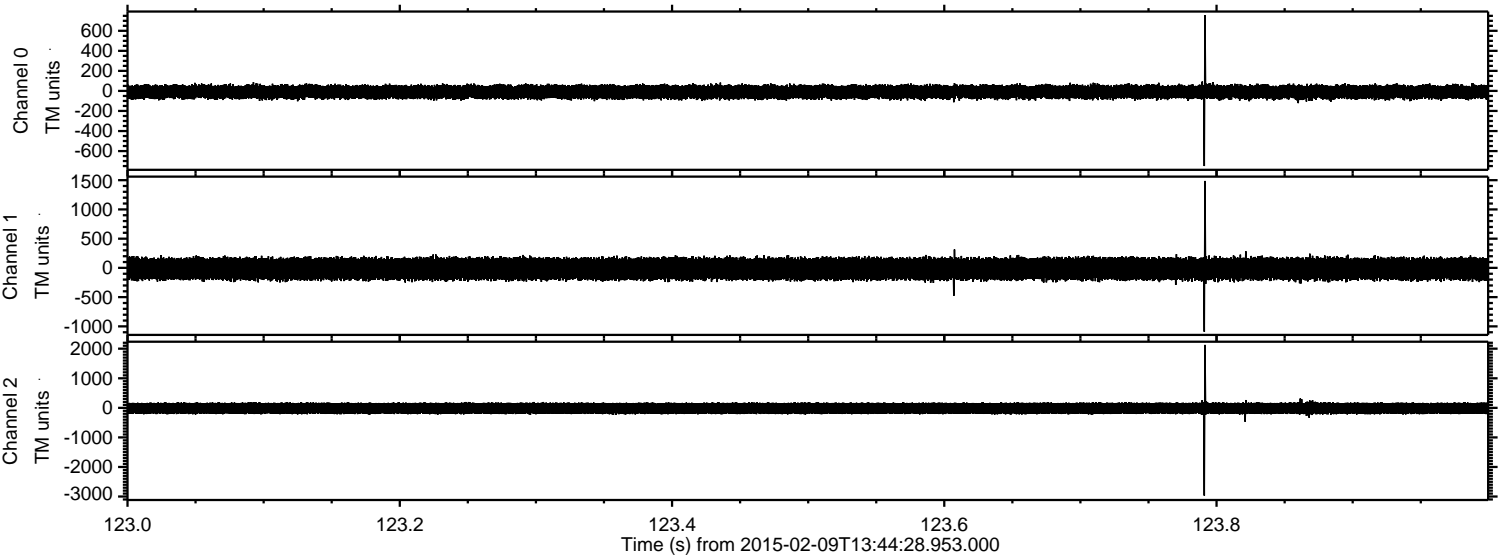
ELMAVAN 3D WAVEFORMS (Measured data sampled at 50 kHz) 49806 packets of 144 samples from 2015-02-09T13:44:28.953.000.

Processed Thu Feb 19 07:23:22 2015 by ELM ver.2012-10-06 from 001__elm20150209_134427__dat00.bin

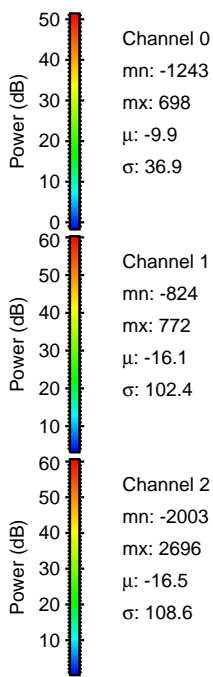
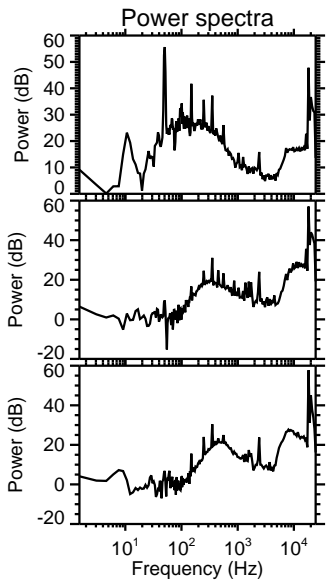
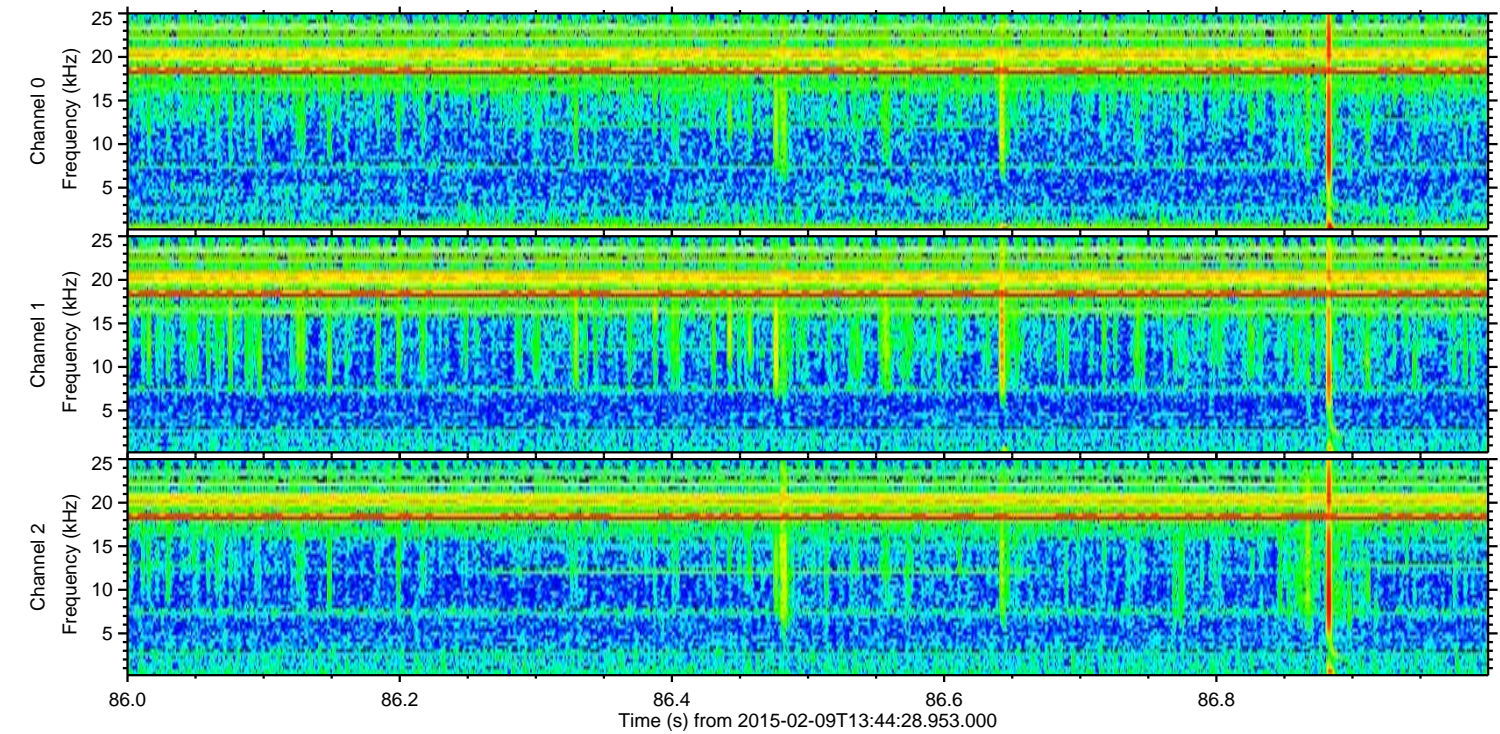
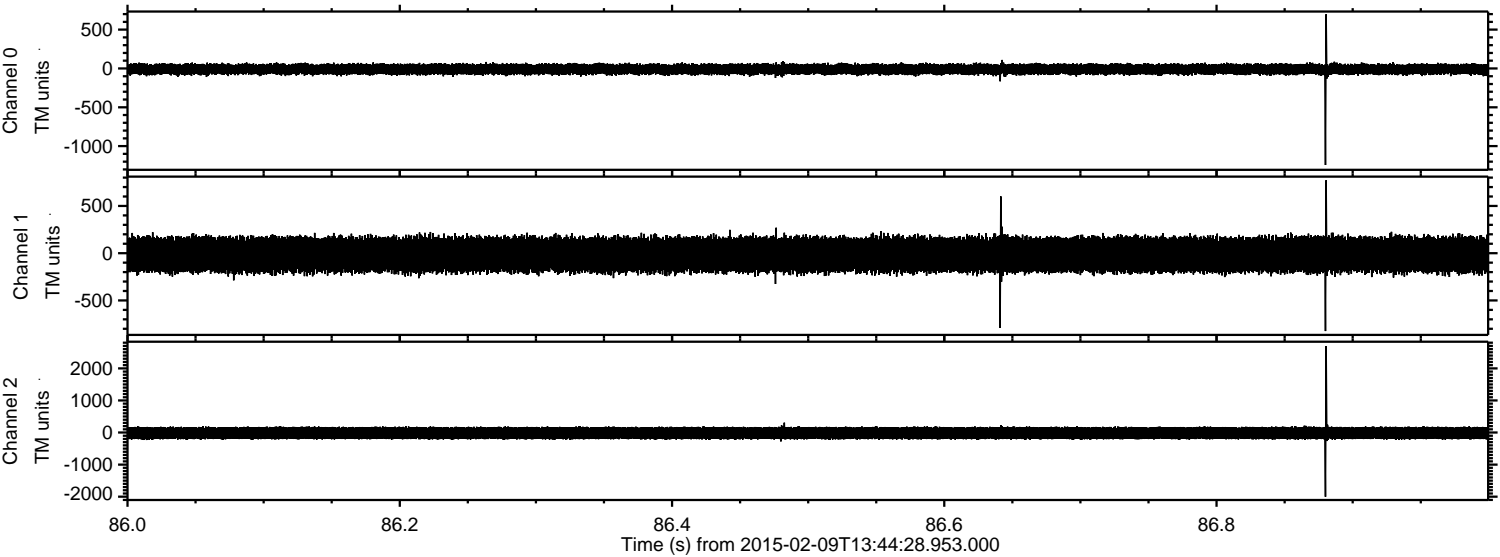


ELMAVAN 3D WAVEFORMS (Measured data sampled at 50 kHz) 49806 packets of 144 samples from 2015-02-09T13:44:28.953.000. Part 124/144

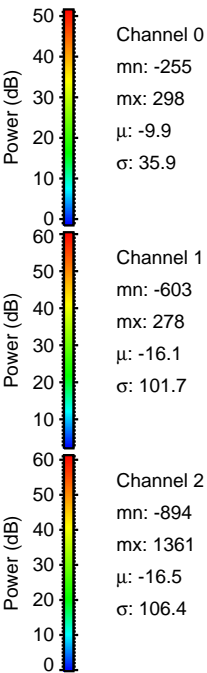
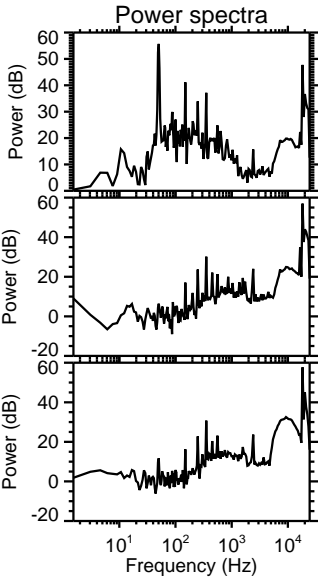
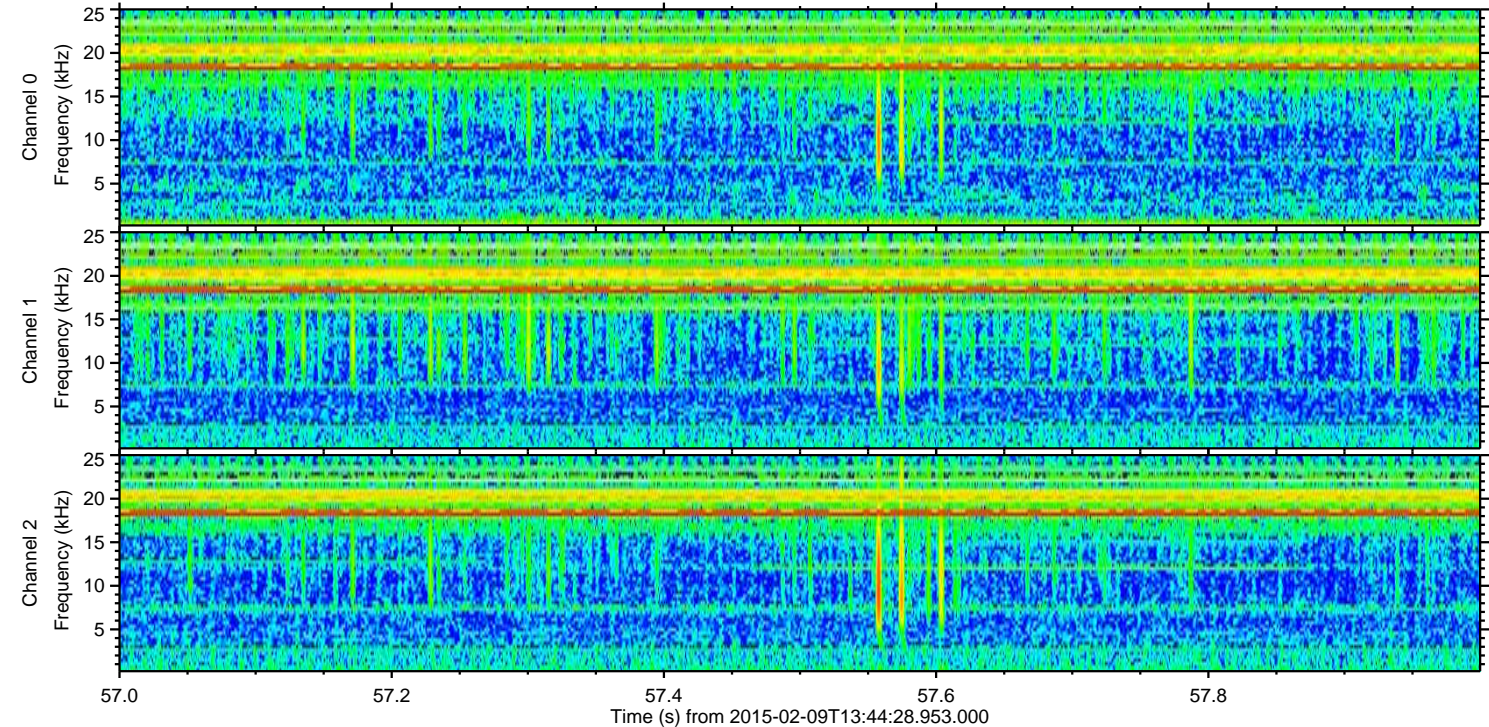
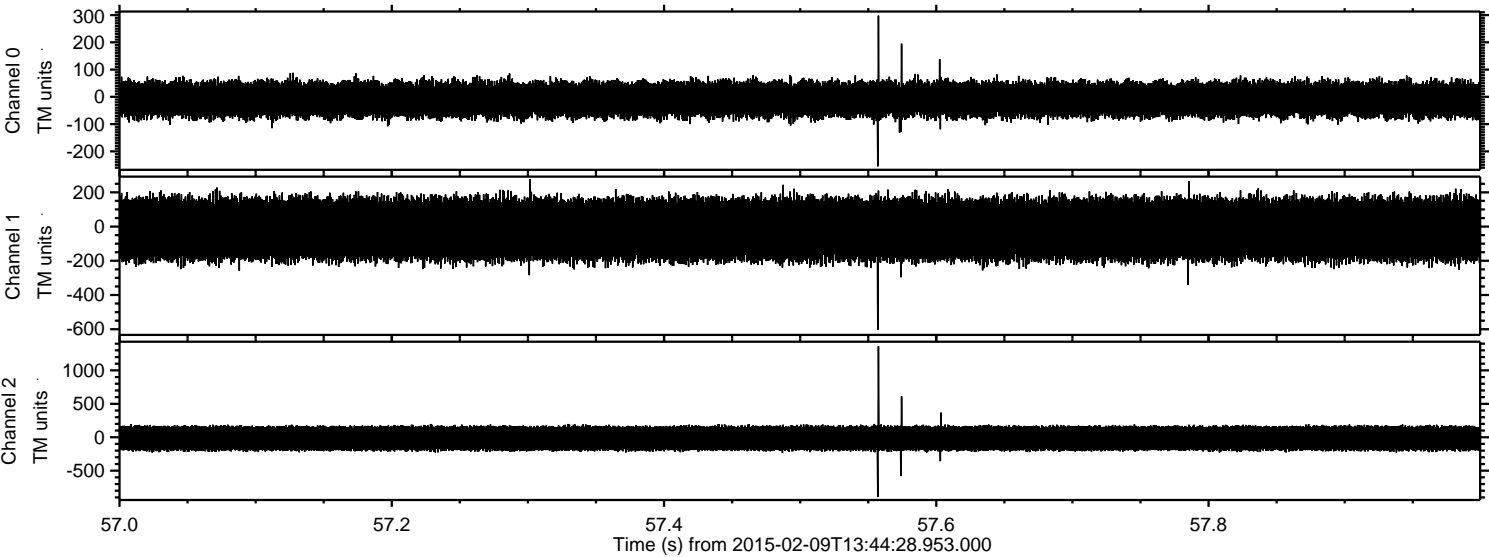
Processed Thu Feb 19 07:23:45 2015 by ELM ver.2012-10-06 from 001__elm20150209_134427__dat00.bin



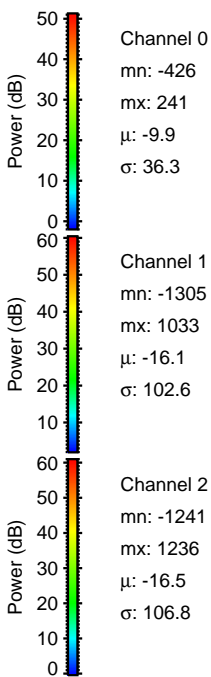
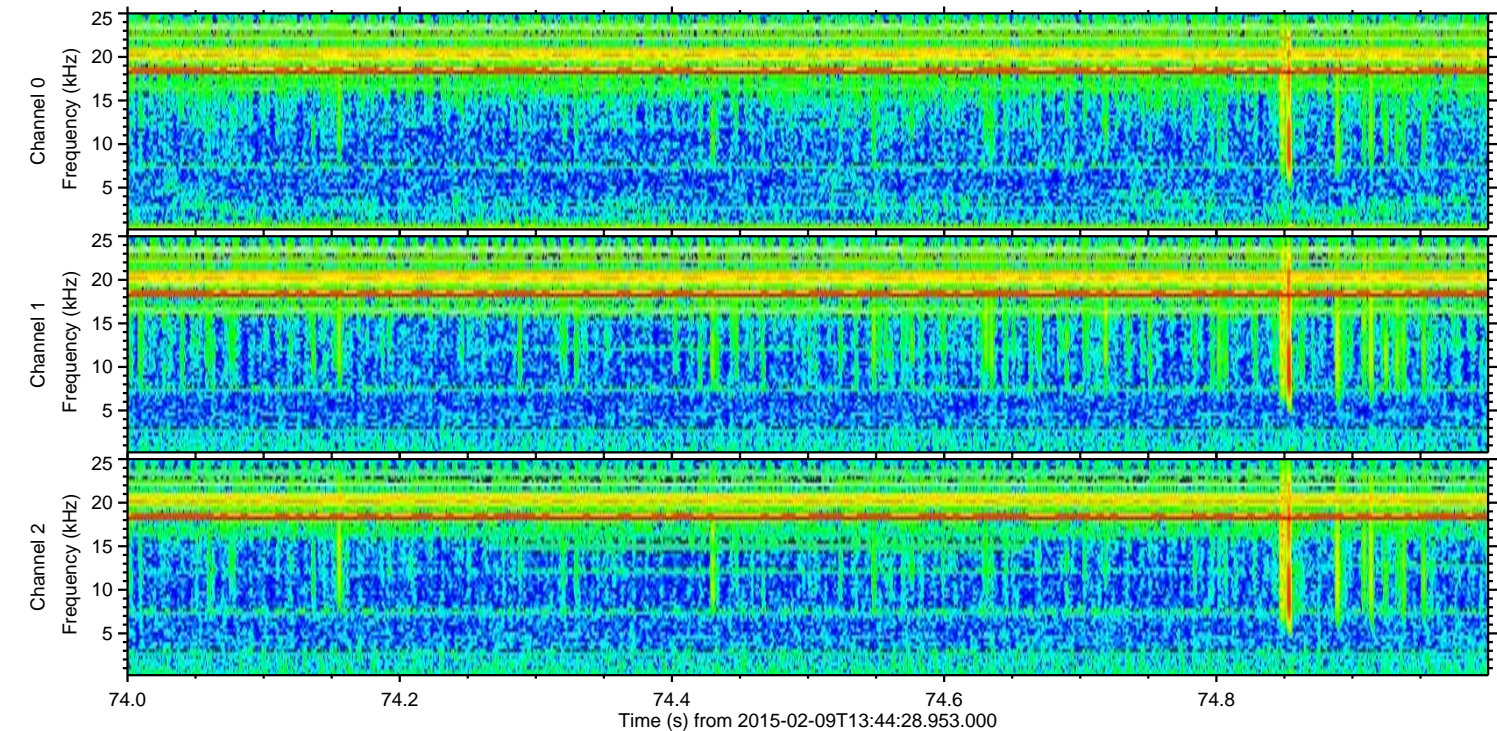
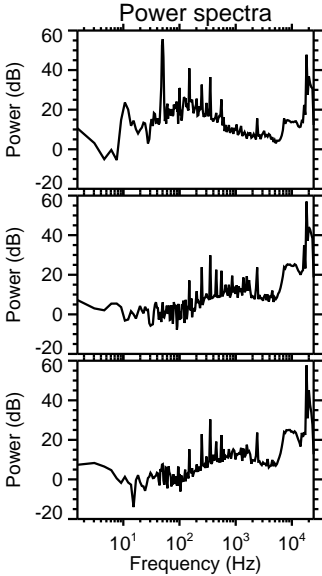
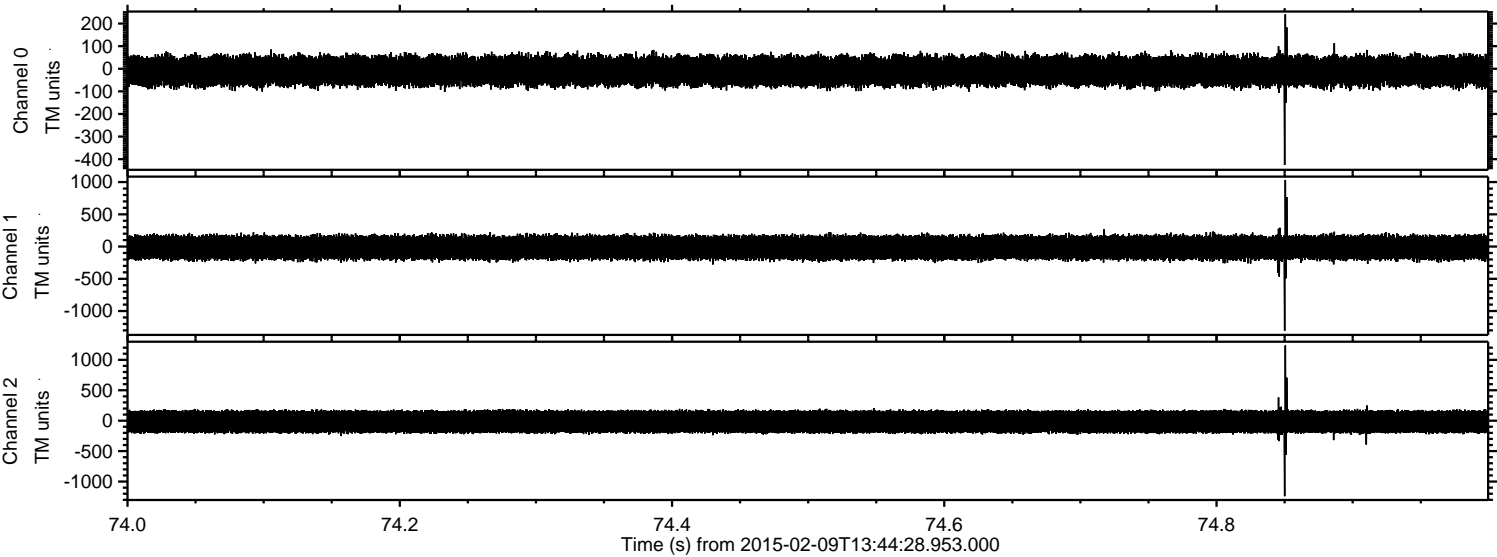
Processed Thu Feb 19 07:23:47 2015 by ELM ver.2012-10-06 from 001__elm20150209_134427__dat00.bin



Processed Thu Feb 19 07:23:49 2015 by ELM ver.2012-10-06 from 001__elm20150209_134427__dat00.bin

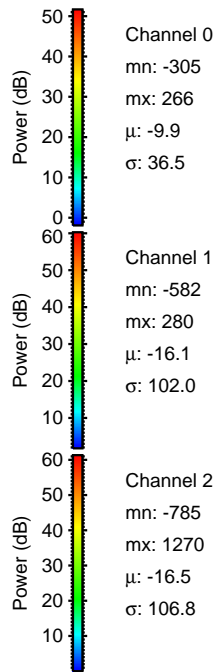
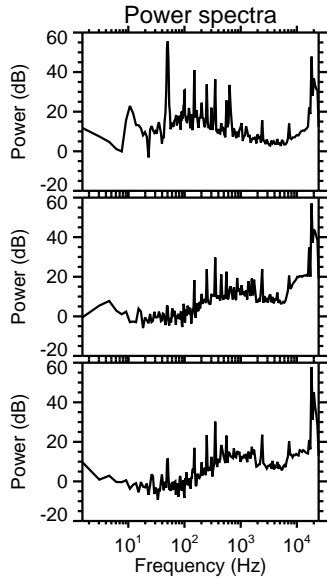
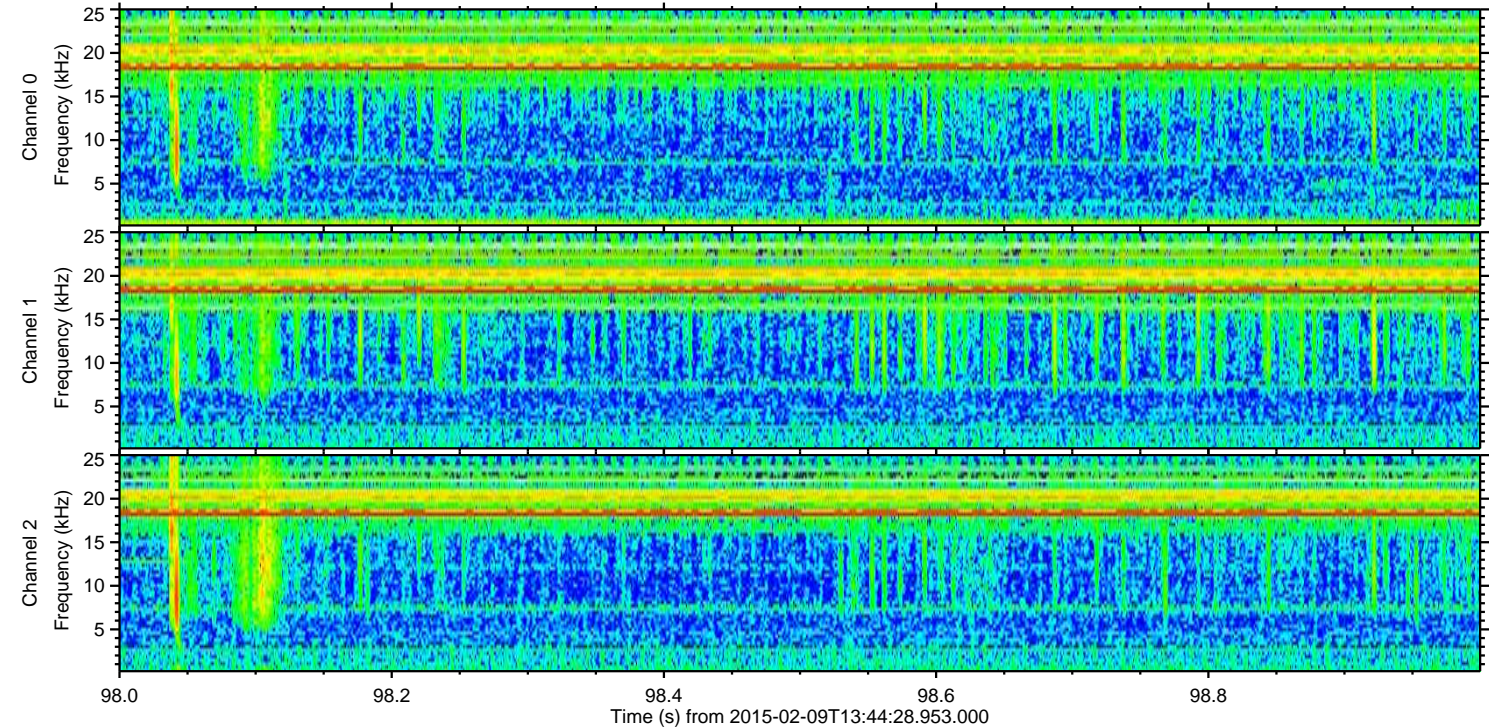
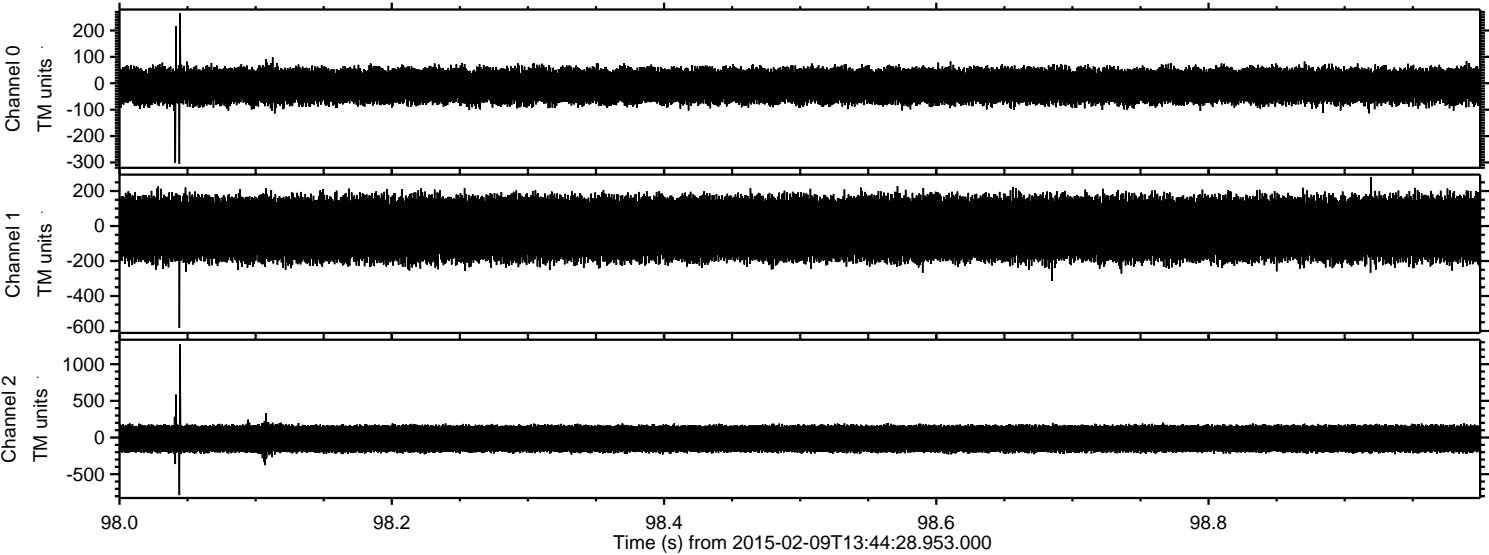


Processed Thu Feb 19 07:23:52 2015 by ELM ver.2012-10-06 from 001__elm20150209_134427__dat00.bin



ELMAVAN 3D WAVEFORMS (Measured data sampled at 50 kHz) 49806 packets of 144 samples from 2015-02-09T13:44:28.953.000. Part 99/144

Processed Thu Feb 19 07:23:54 2015 by ELM ver.2012-10-06 from 001__elm20150209_134427__dat00.bin



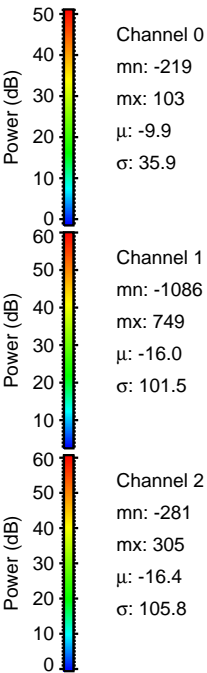
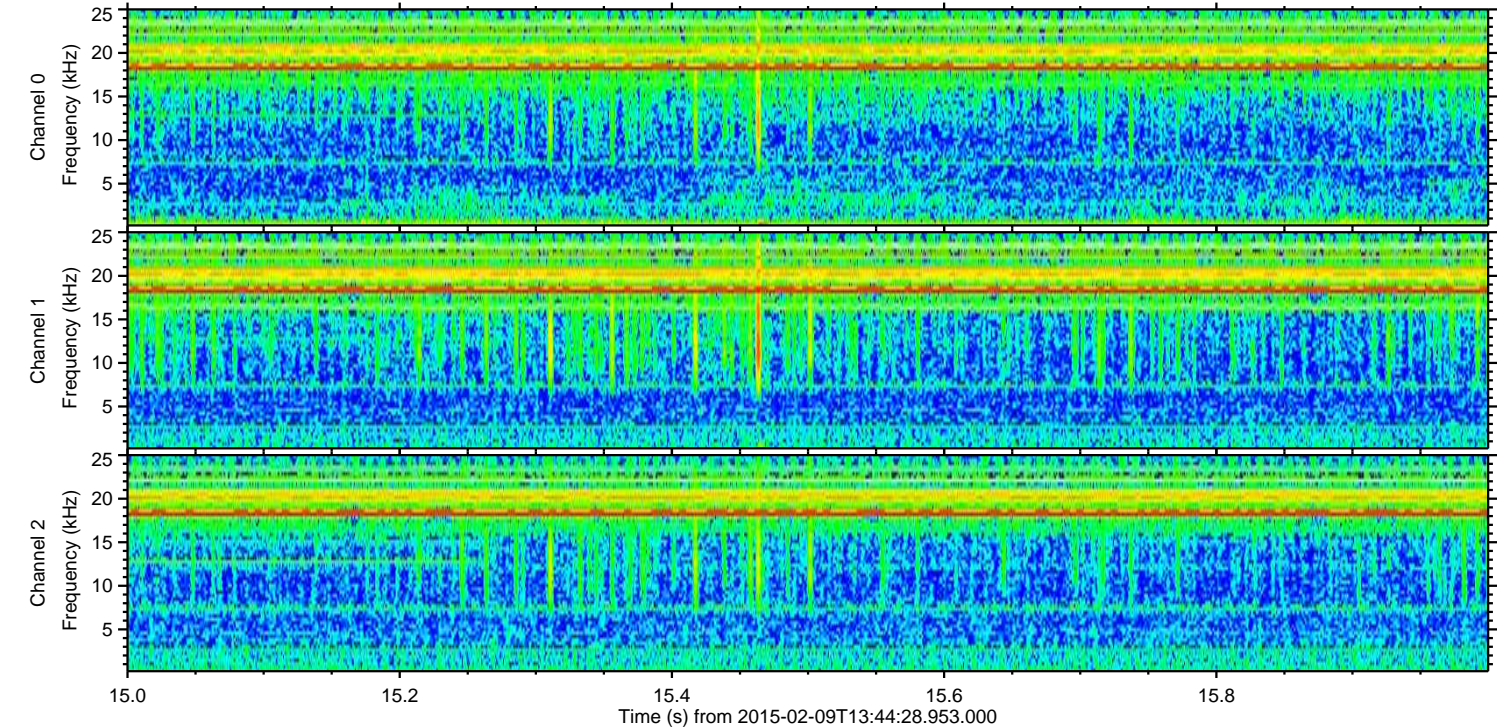
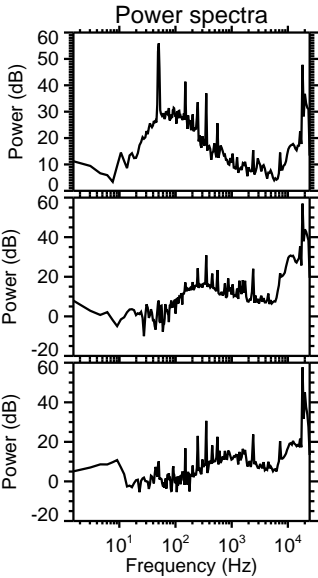
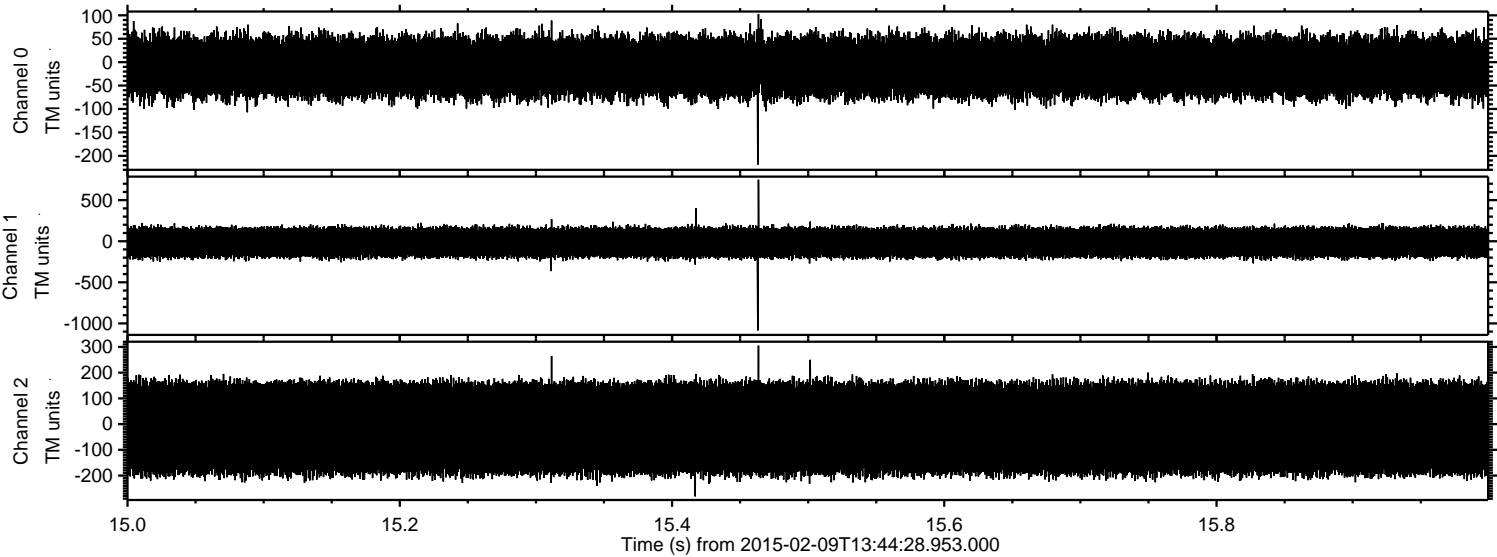
Channel 0
mn: -305
mx: 266
 μ : -9.9
 σ : 36.5

Channel 1
mn: -582
mx: 280
 μ : -16.1
 σ : 102.0

Channel 2
mn: -785
mx: 1270
 μ : -16.5
 σ : 106.8

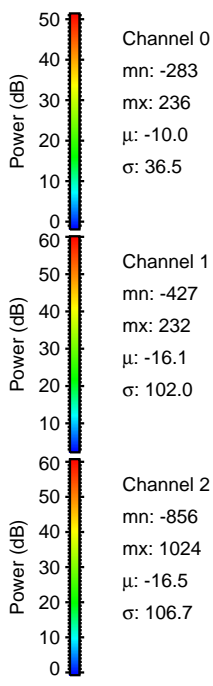
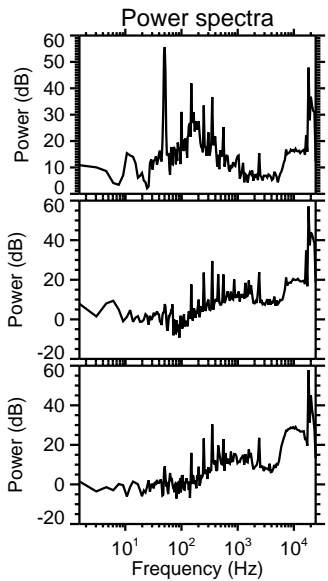
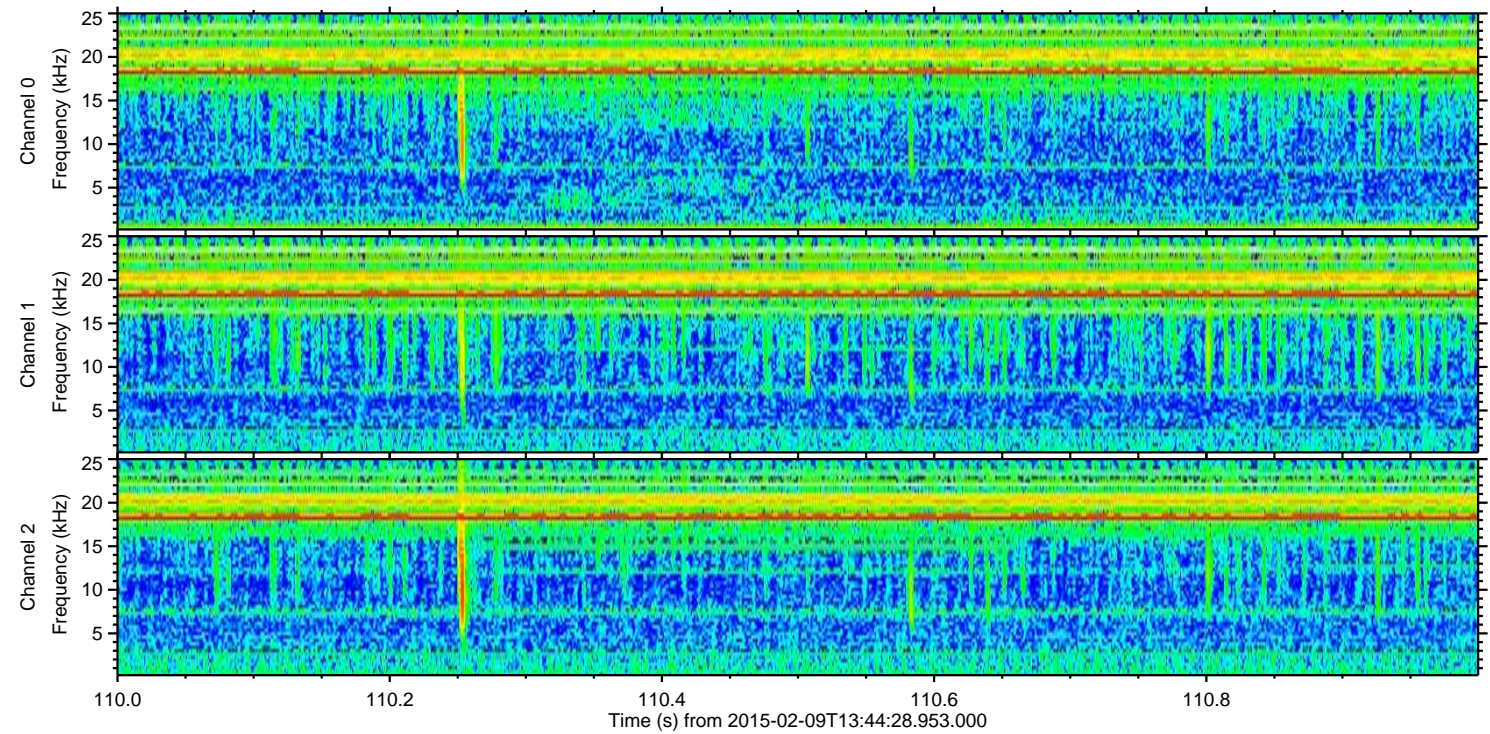
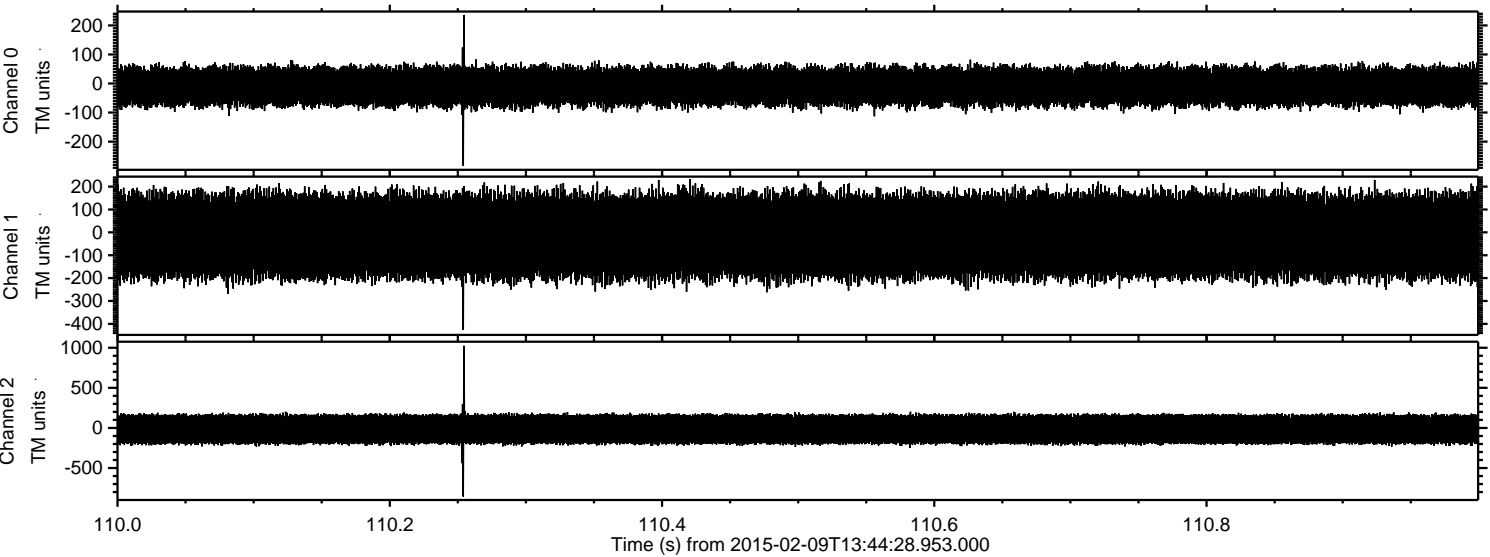
ELMAVAN 3D WAVEFORMS (Measured data sampled at 50 kHz) 49806 packets of 144 samples from 2015-02-09T13:44:28.953.000. Part 16/144

Processed Thu Feb 19 07:23:56 2015 by ELM ver.2012-10-06 from 001__elm20150209_134427__dat00.bin



ELMAVAN 3D WAVEFORMS (Measured data sampled at 50 kHz) 49806 packets of 144 samples from 2015-02-09T13:44:28.953.000. Part 111/144

Processed Thu Feb 19 07:23:57 2015 by ELM ver.2012-10-06 from 001__elm20150209_134427__dat00.bin

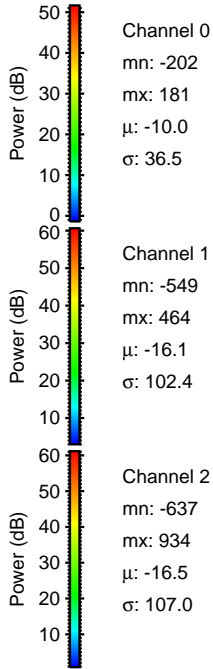
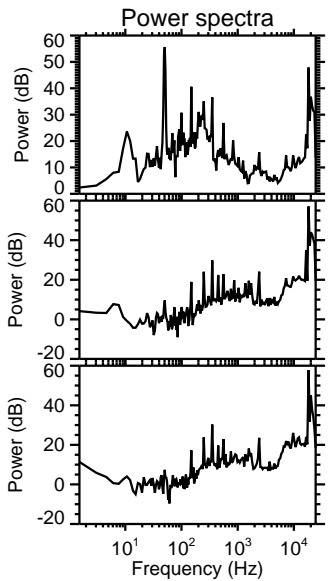
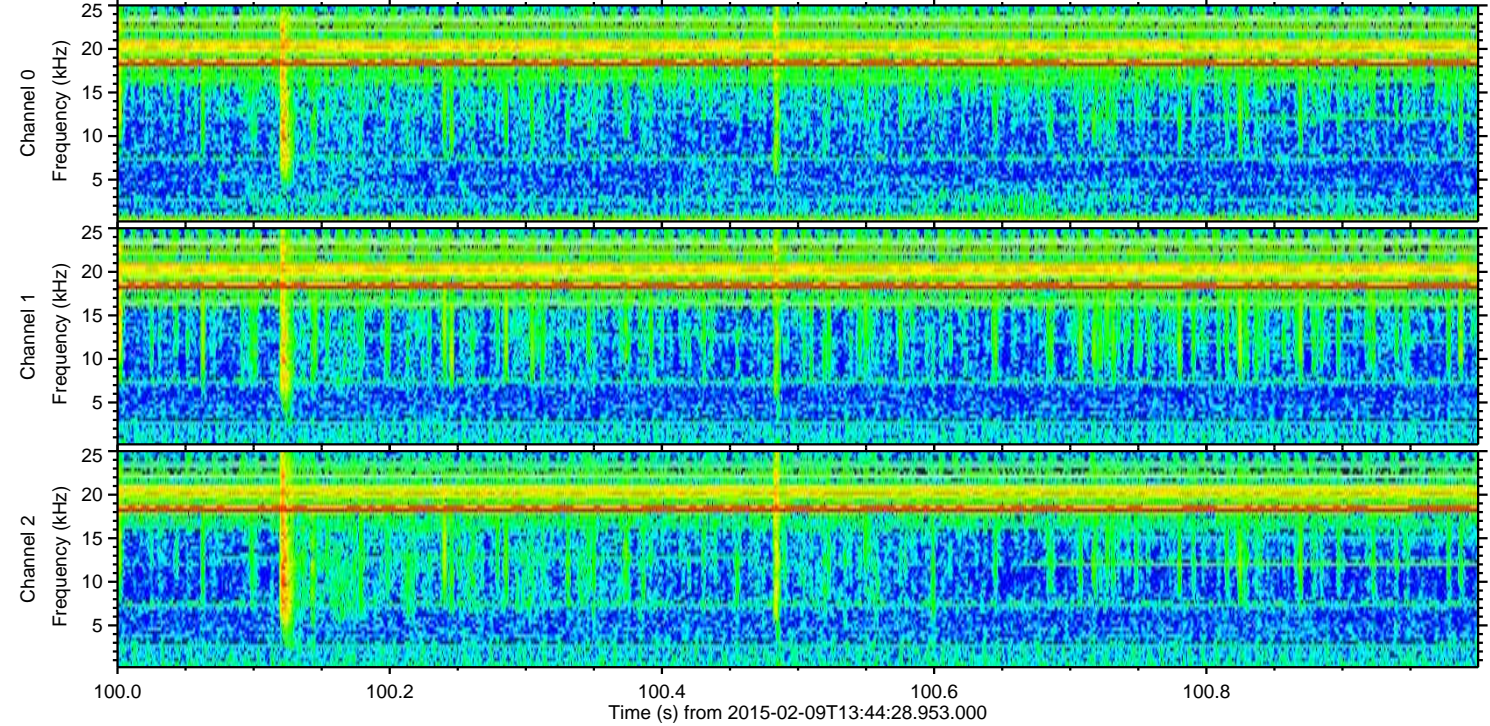
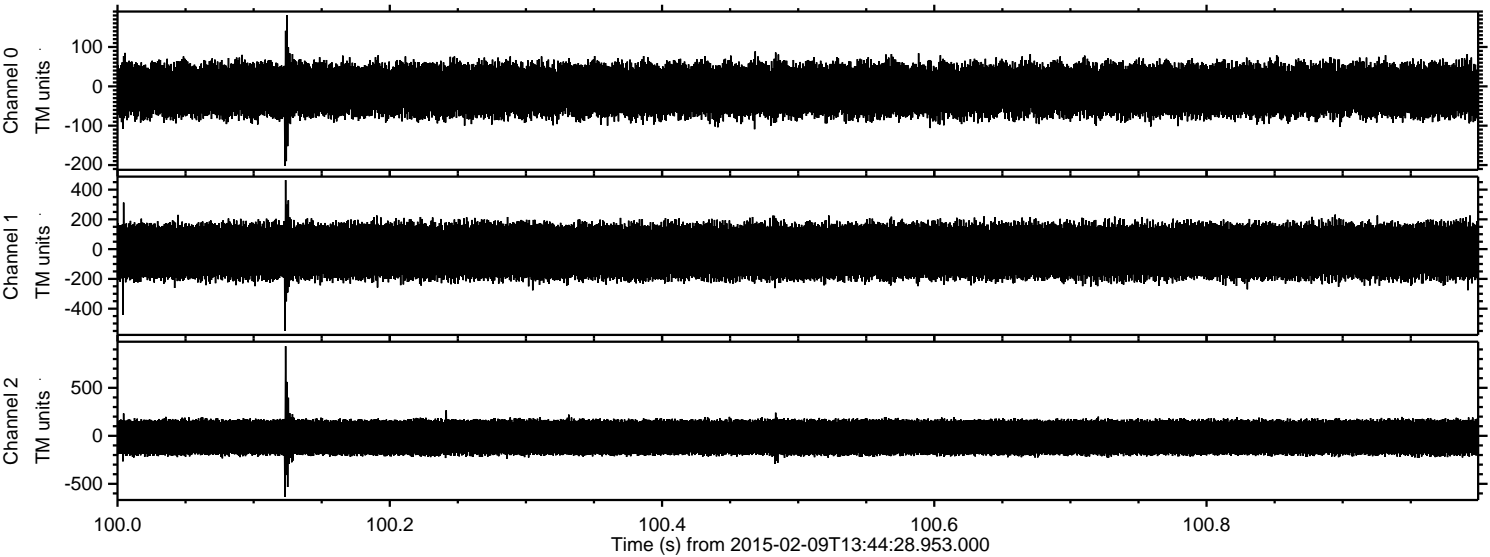


Channel 0
mn: -283
mx: 236
 μ : -10.0
 σ : 36.5

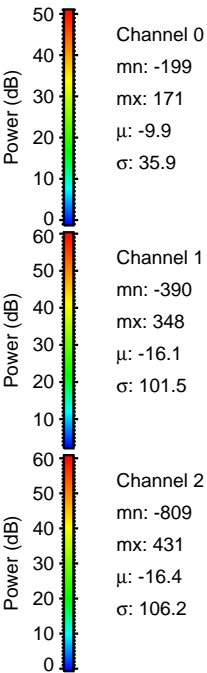
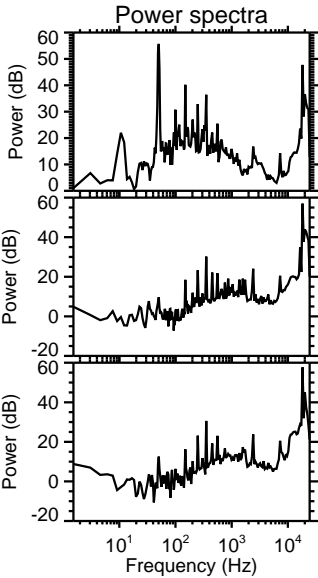
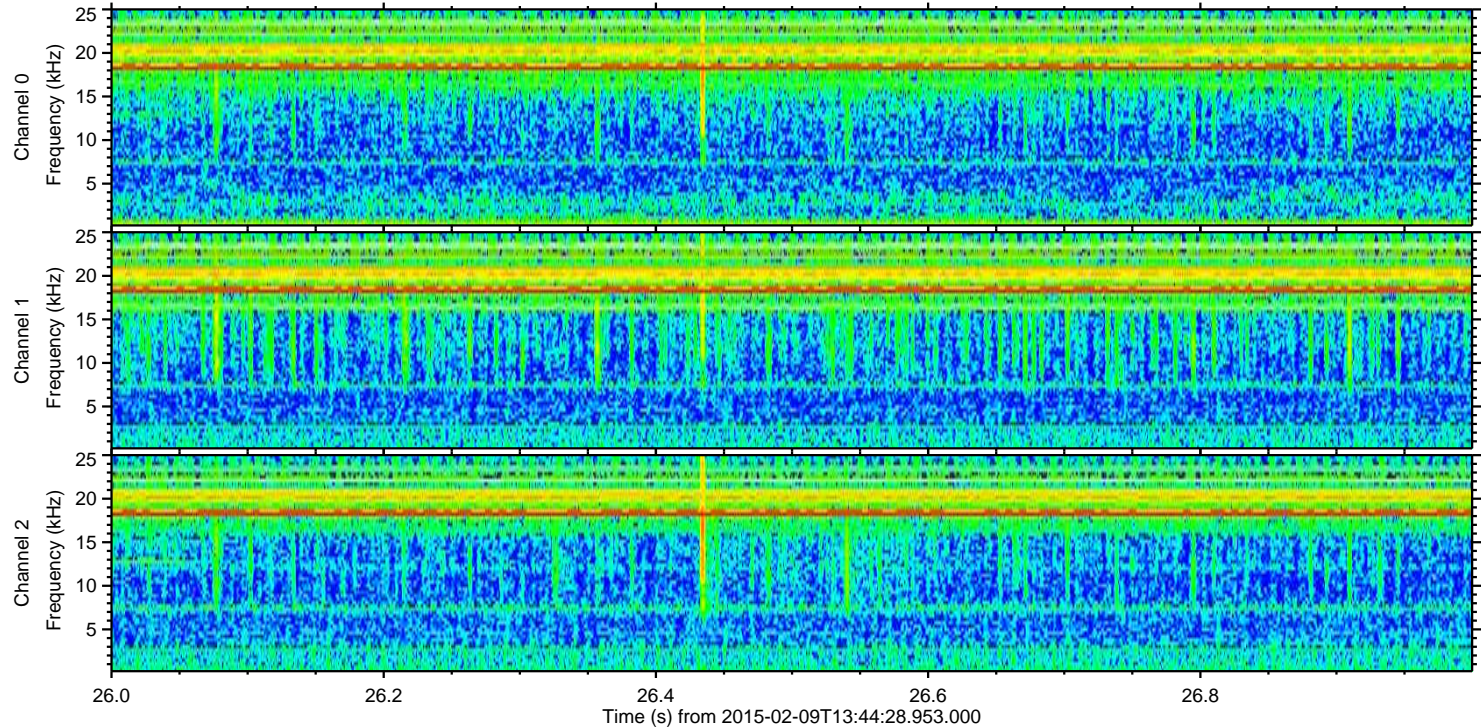
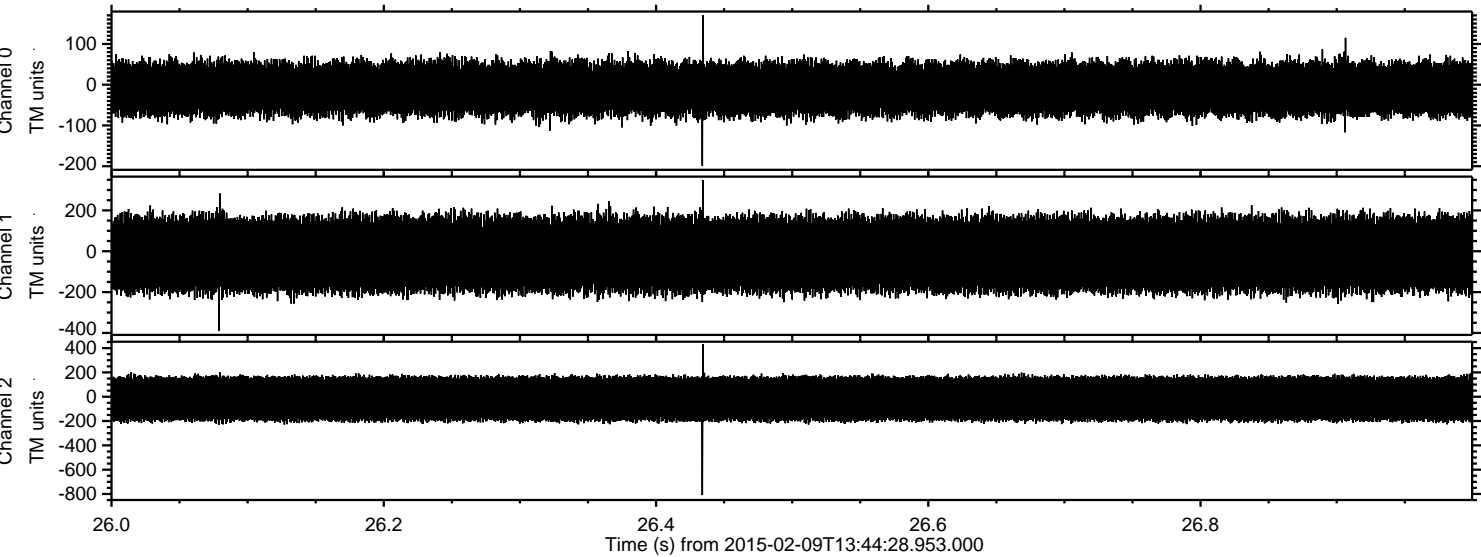
Channel 1
mn: -427
mx: 232
 μ : -16.1
 σ : 102.0

Channel 2
mn: -856
mx: 1024
 μ : -16.5
 σ : 106.7

Processed Thu Feb 19 07:24:00 2015 by ELM ver.2012-10-06 from 001__elm20150209_134427__dat00.bin



Processed Thu Feb 19 07:24:01 2015 by ELM ver.2012-10-06 from 001__elm20150209_134427__dat00.bin



Channel 0
mn: -199
mx: 171
 μ : -9.9
 σ : 35.9

Channel 1
mn: -390
mx: 348
 μ : -16.1
 σ : 101.5

Channel 2
mn: -809
mx: 431
 μ : -16.4
 σ : 106.2

Processed Thu Feb 19 07:24:03 2015 by ELM ver.2012-10-06 from 001__elm20150209_134427__dat00.bin

