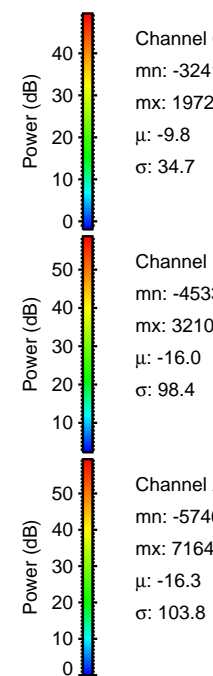
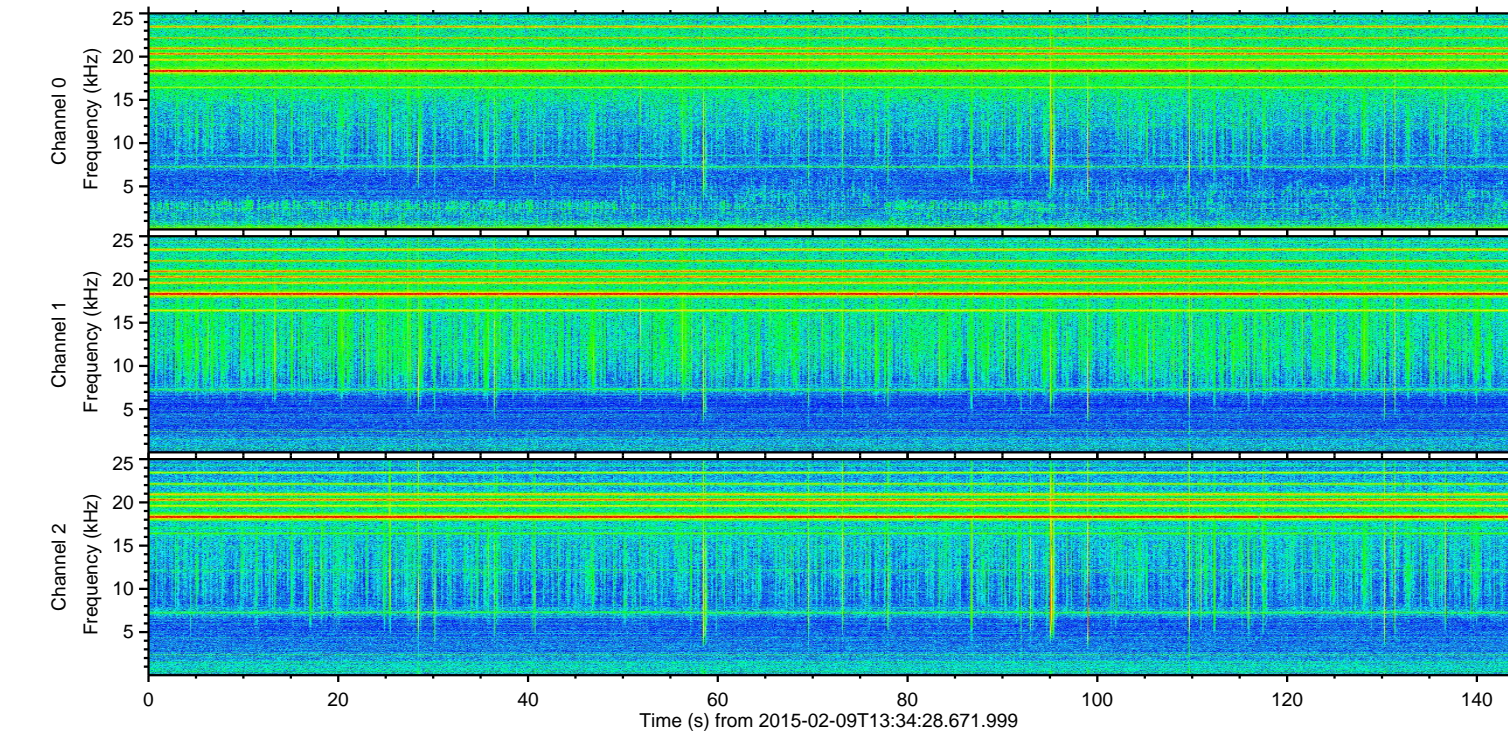
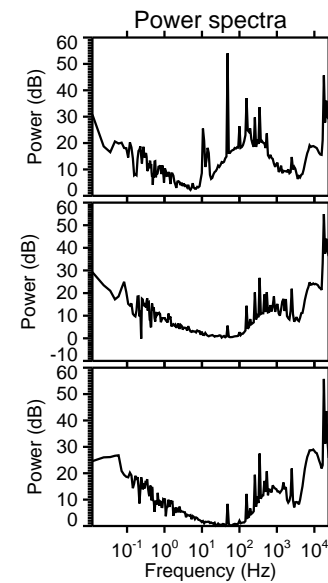
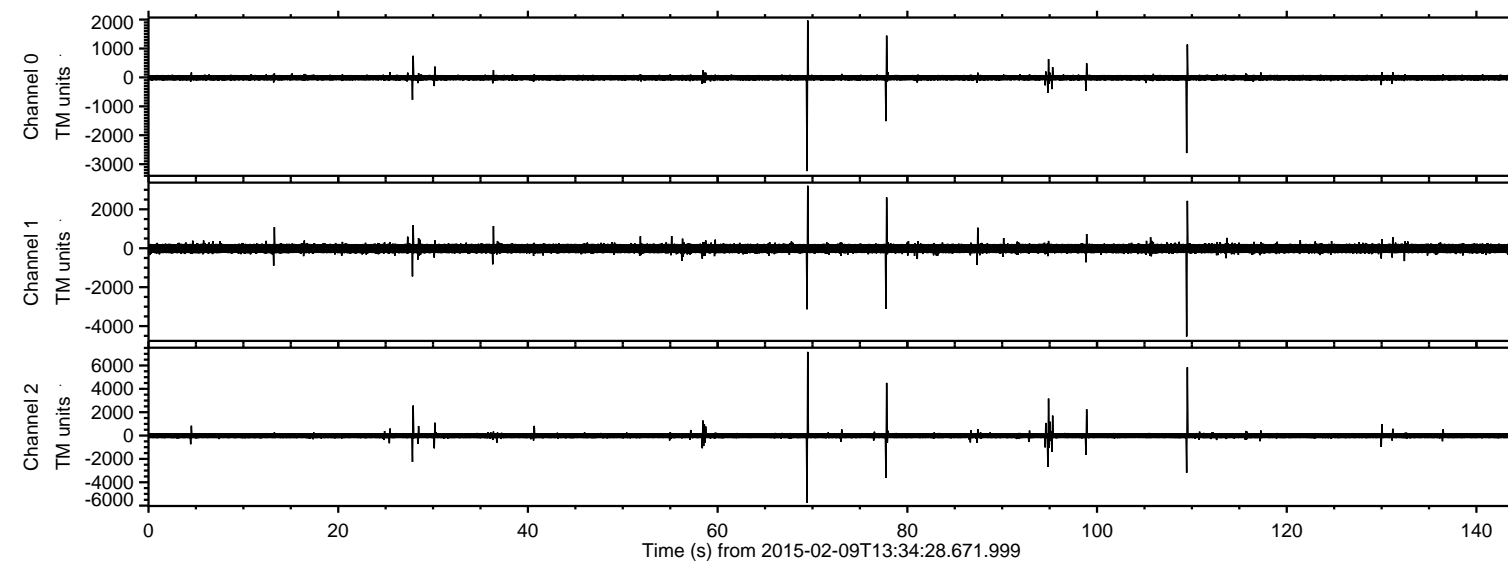
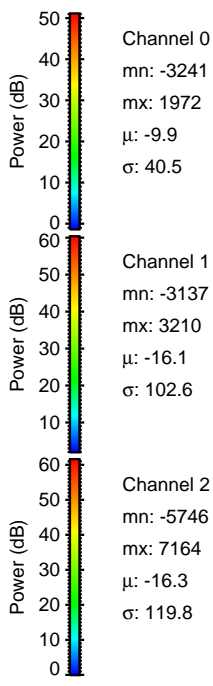
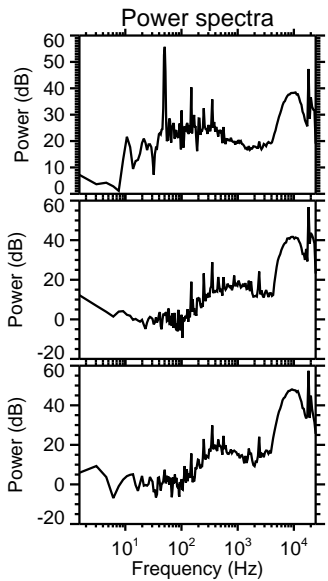
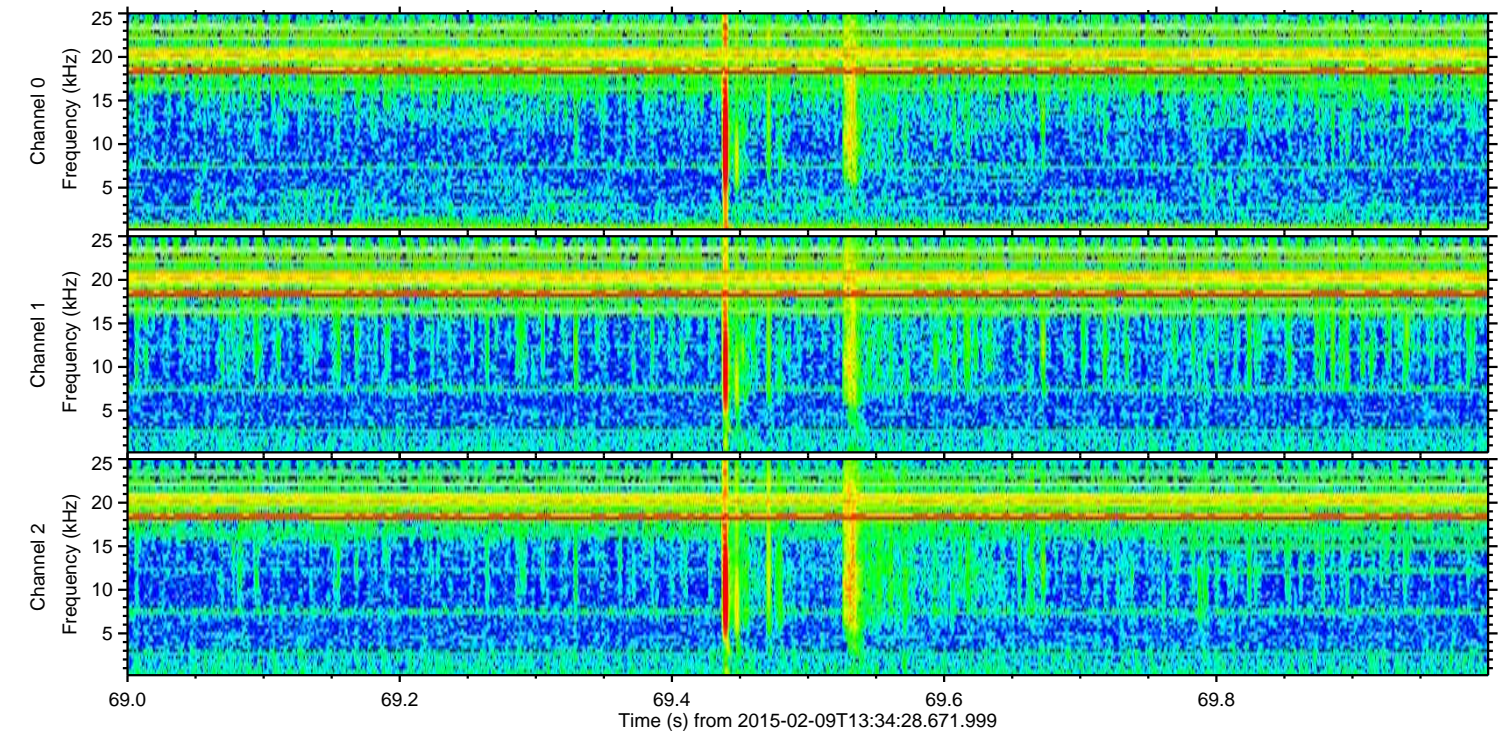
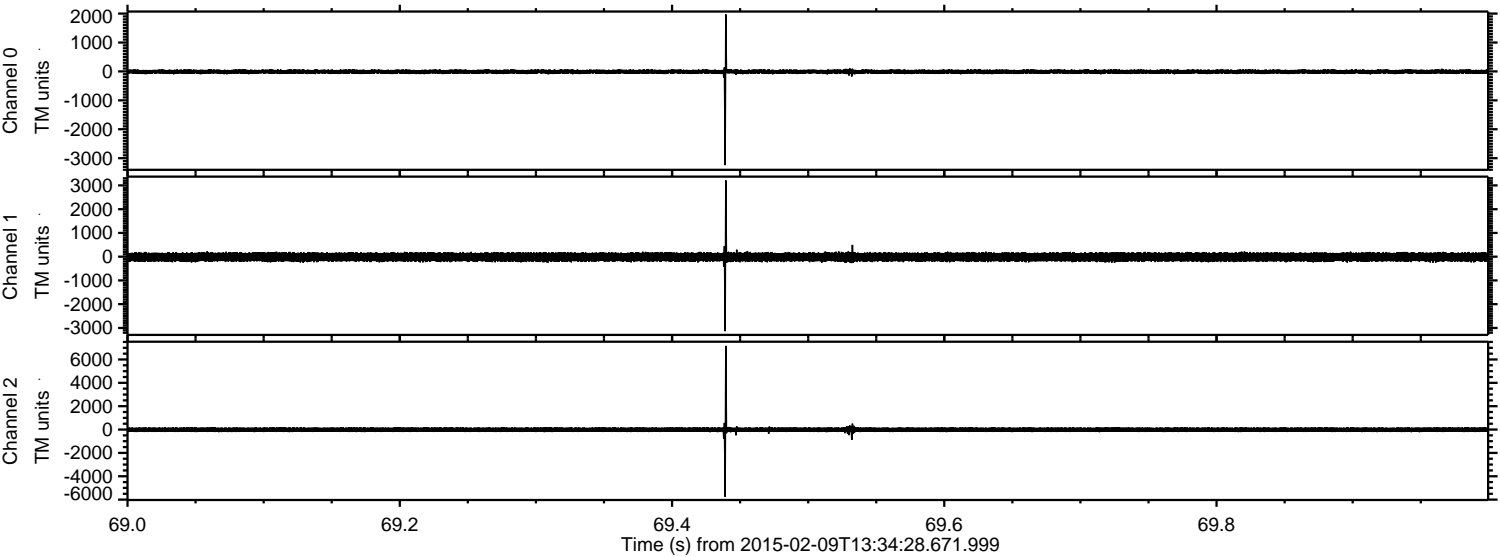


ELMAVAN 3D WAVEFORMS (Measured data sampled at 50 kHz) 49808 packets of 144 samples from 2015-02-09T13:34:28.671.999.

Processed Thu Feb 19 07:19:25 2015 by ELM ver.2012-10-06 from 001__elm20150209_133427__dat00.bin

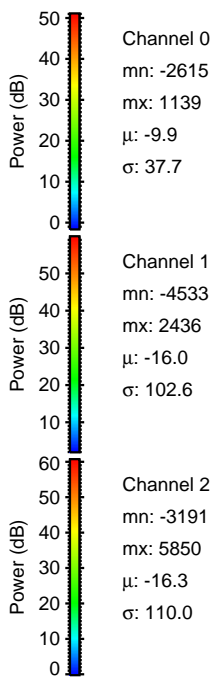
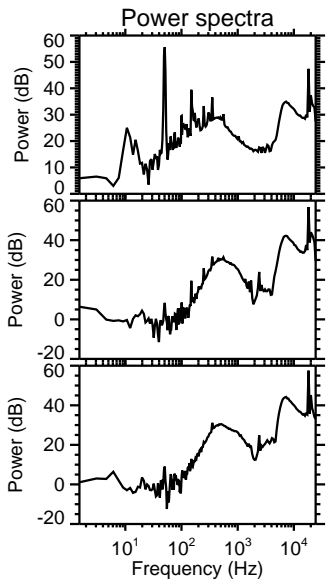
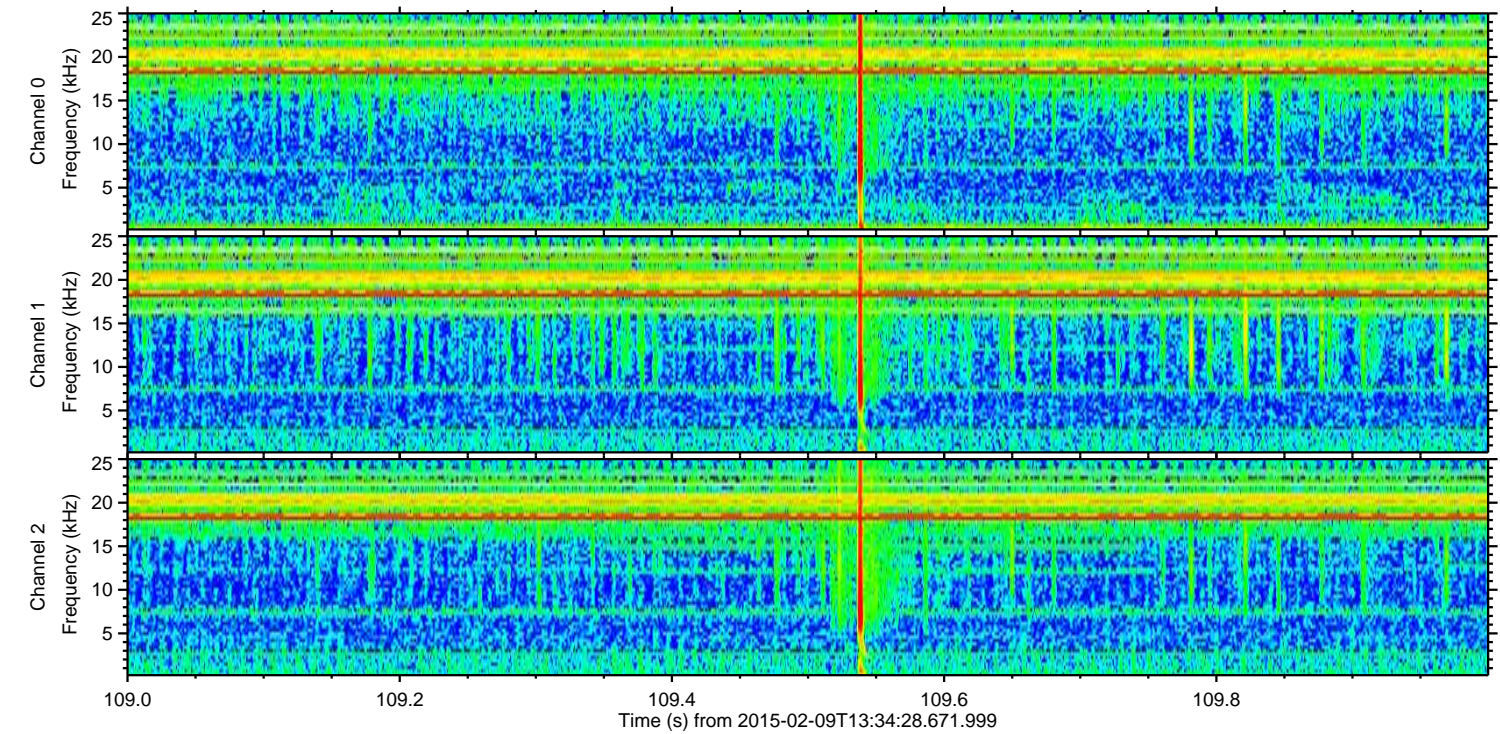
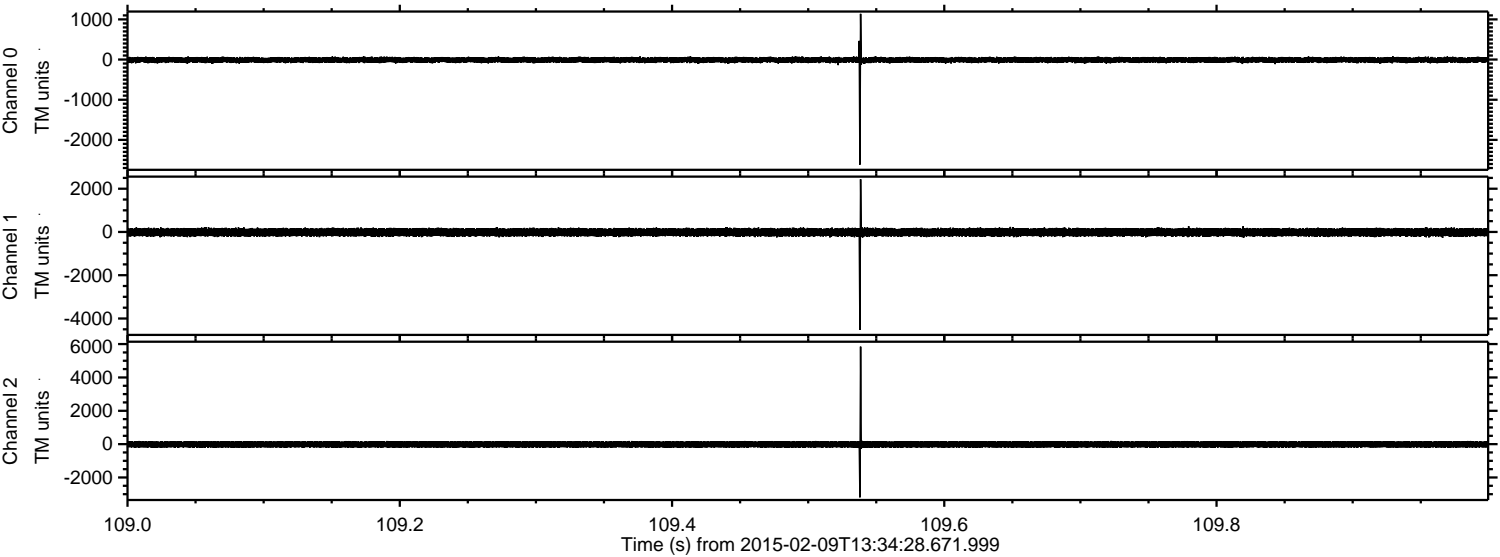


Processed Thu Feb 19 07:19:42 2015 by ELM ver.2012-10-06 from 001__elm20150209_133427__dat00.bin



ELMAVAN 3D WAVEFORMS (Measured data sampled at 50 kHz) 49808 packets of 144 samples from 2015-02-09T13:34:28.671.999. Part 110/144

Processed Thu Feb 19 07:19:43 2015 by ELM ver.2012-10-06 from 001__elm20150209_133427__dat00.bin

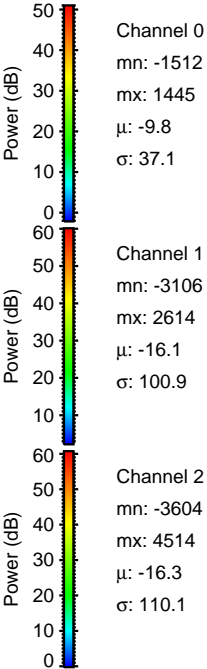
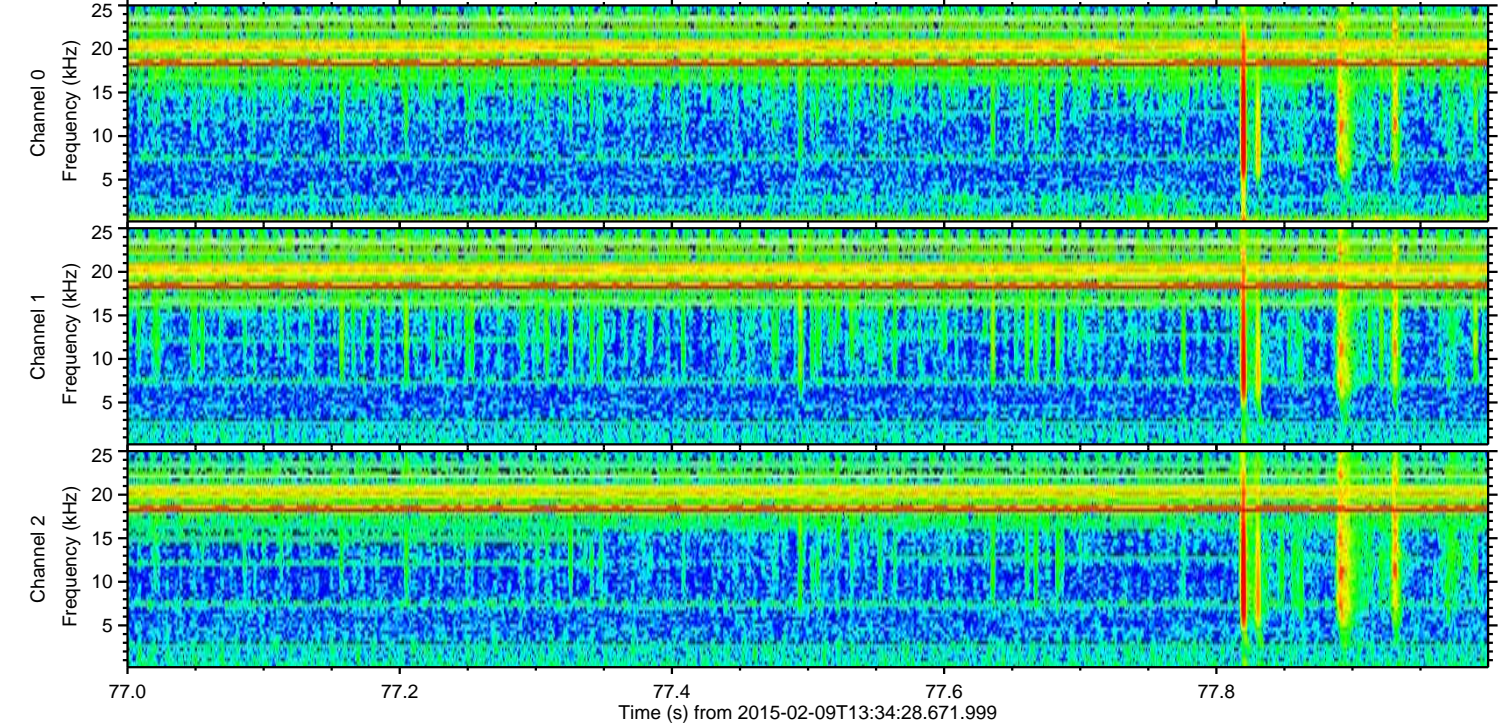
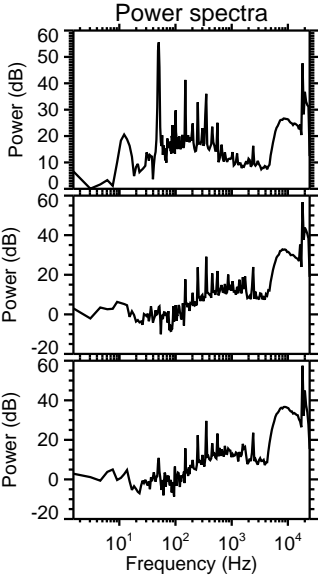
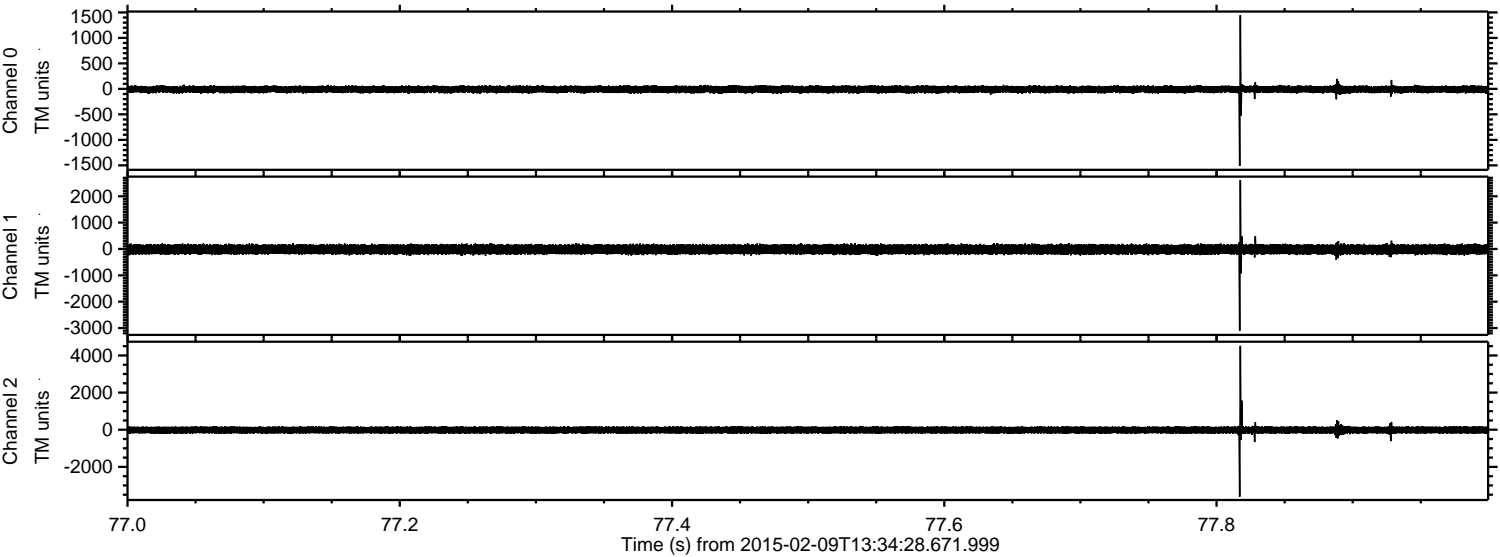


Channel 0
mn: -2615
mx: 1139
 μ : -9.9
 σ : 37.7

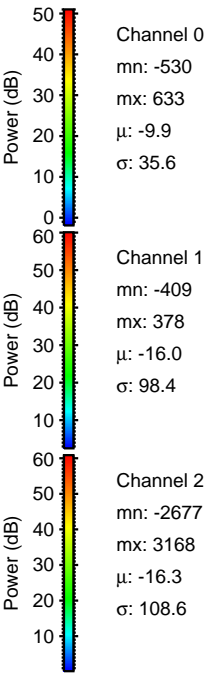
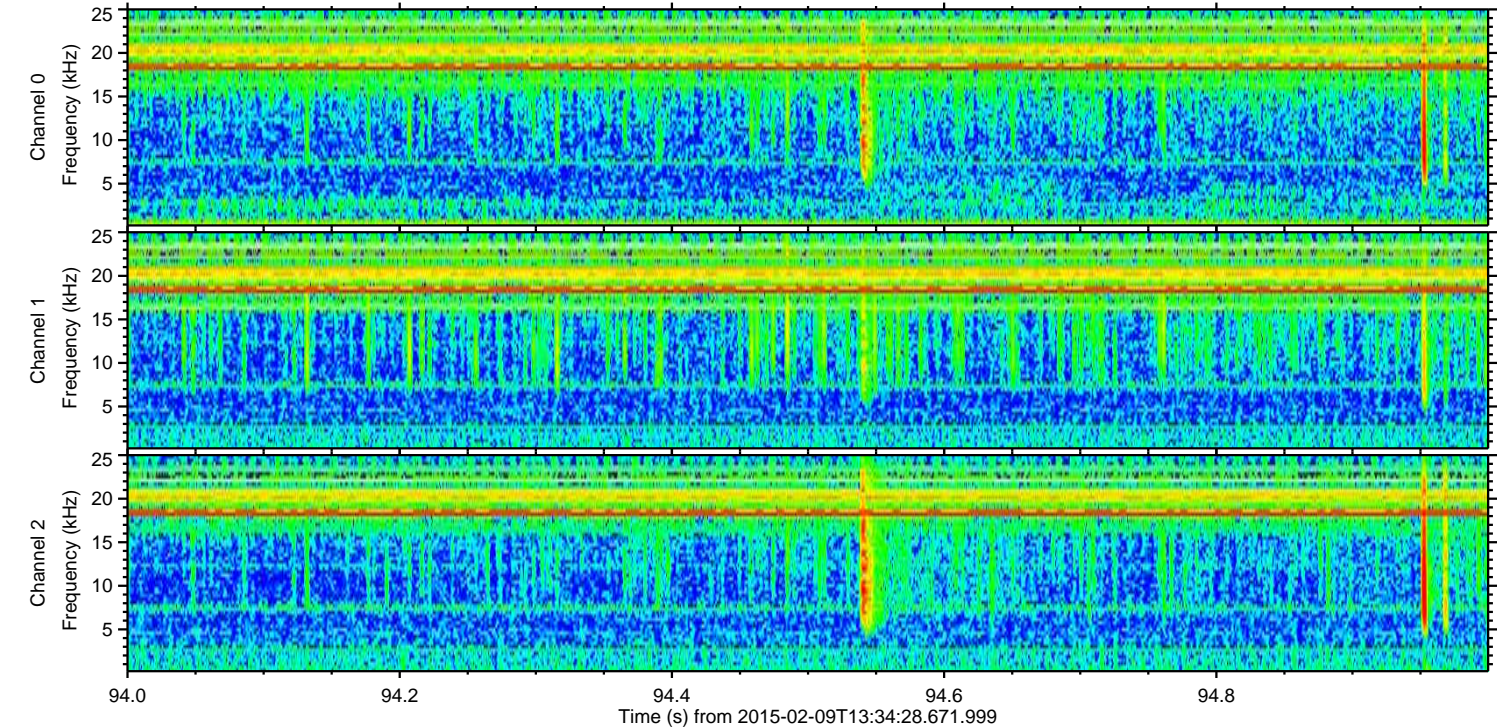
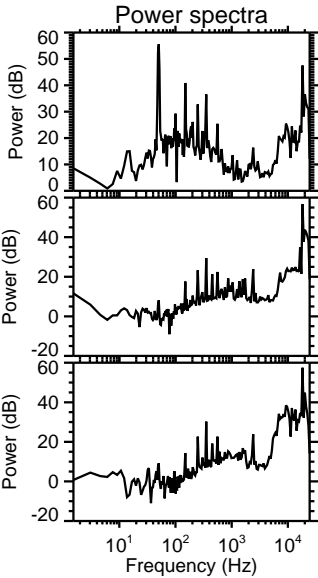
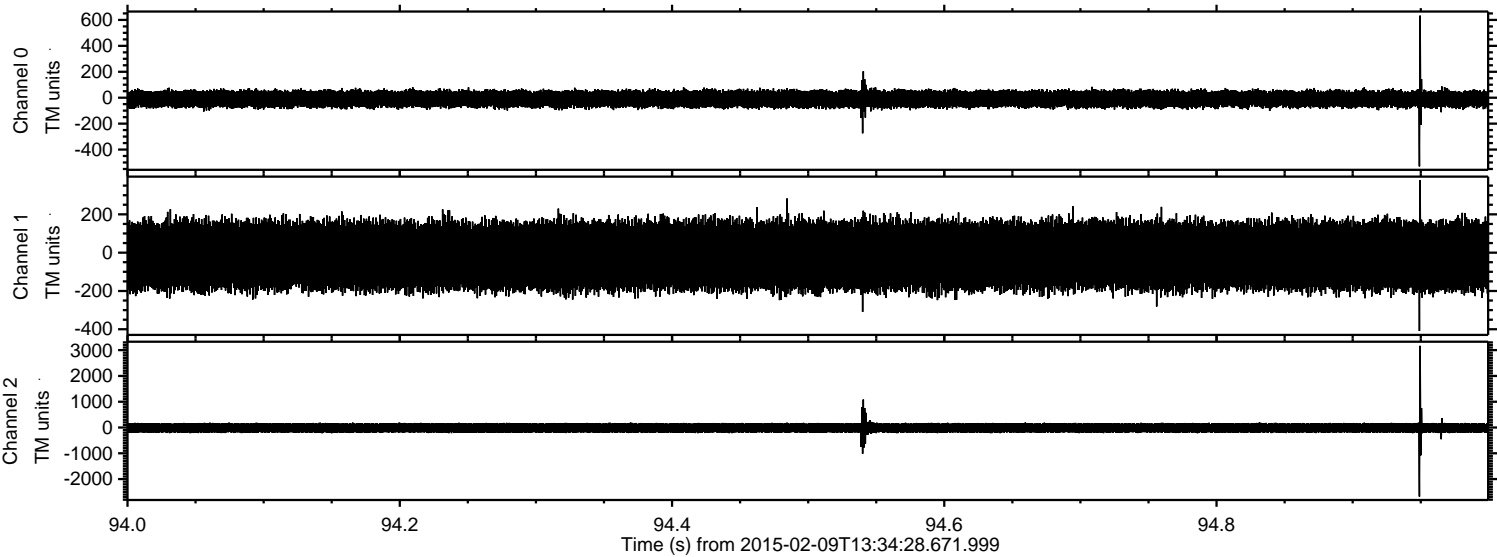
Channel 1
mn: -4533
mx: 2436
 μ : -16.0
 σ : 102.6

Channel 2
mn: -3191
mx: 5850
 μ : -16.3
 σ : 110.0

Processed Thu Feb 19 07:19:44 2015 by ELM ver.2012-10-06 from 001__elm20150209_133427__dat00.bin



Processed Thu Feb 19 07:19:46 2015 by ELM ver.2012-10-06 from 001__elm20150209_133427__dat00.bin

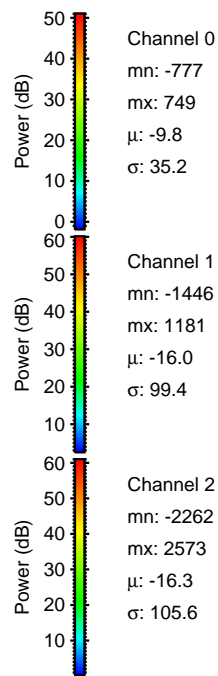
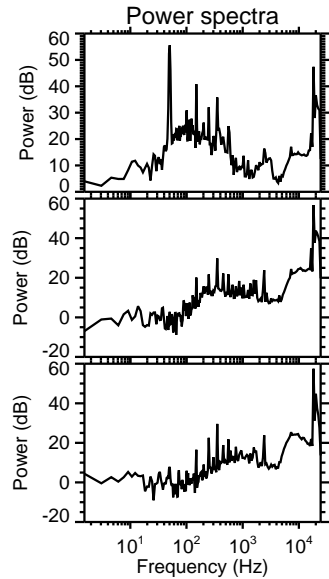
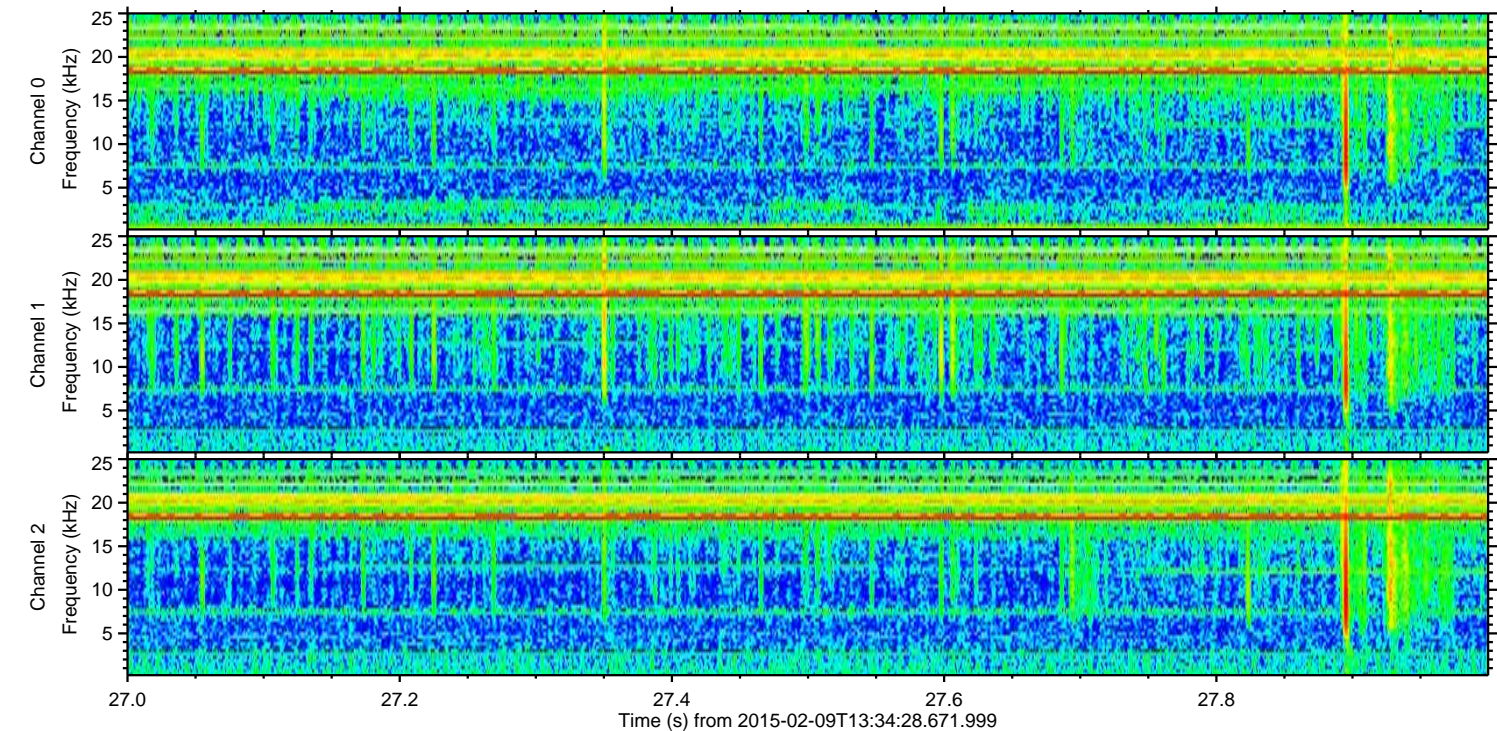
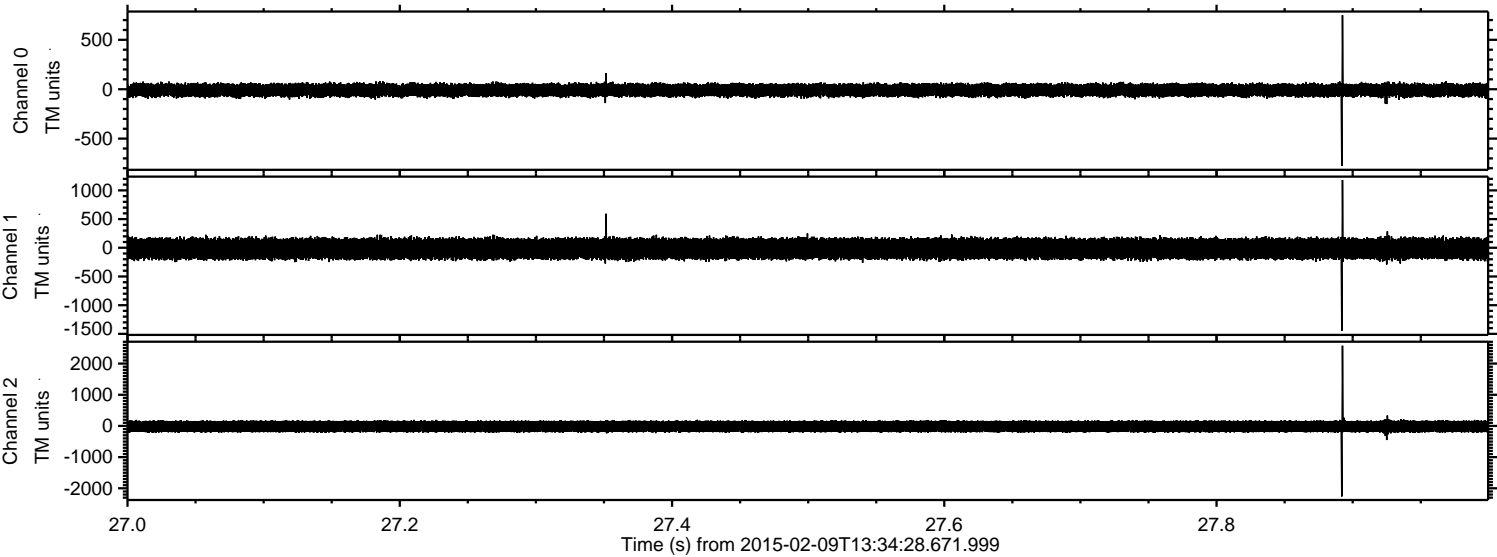


Channel 0
mn: -530
mx: 633
 μ : -9.9
 σ : 35.6

Channel 1
mn: -409
mx: 378
 μ : -16.0
 σ : 98.4

Channel 2
mn: -2677
mx: 3168
 μ : -16.3
 σ : 108.6

Processed Thu Feb 19 07:19:48 2015 by ELM ver.2012-10-06 from 001__elm20150209_133427__dat00.bin



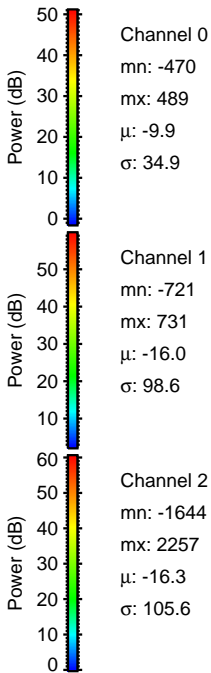
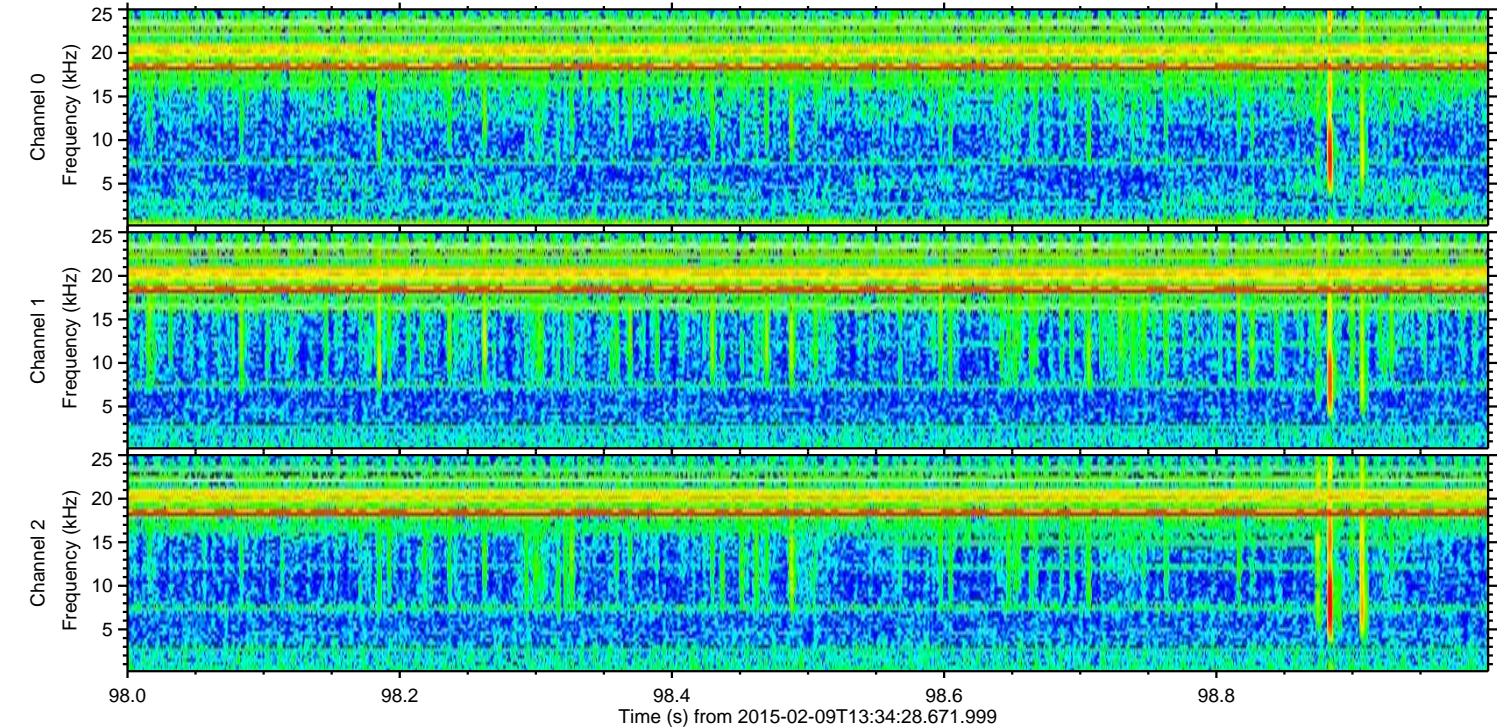
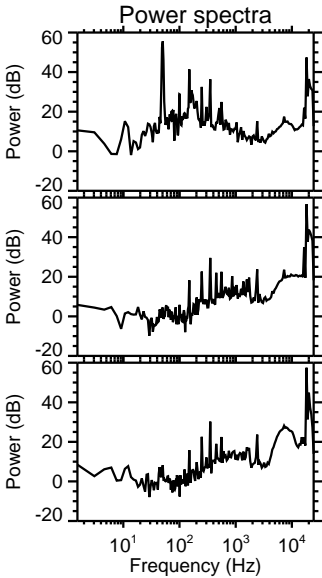
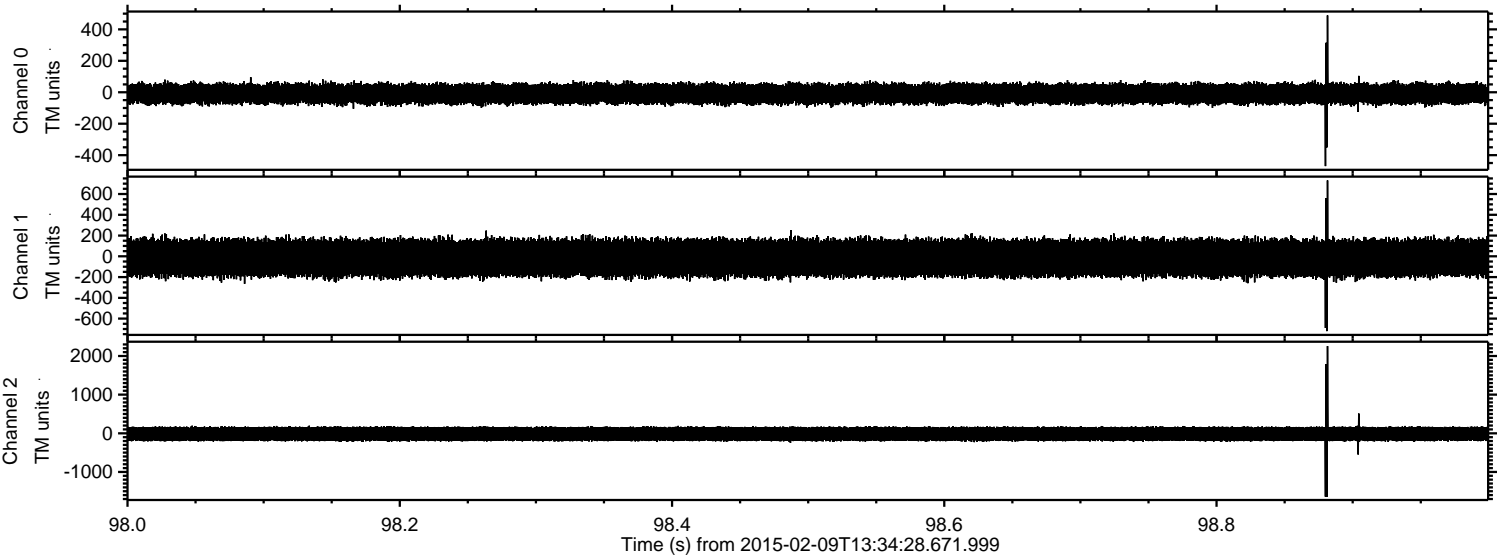
Power spectra

Channel 0
mn: -777
mx: 749
 μ : -9.8
 σ : 35.2

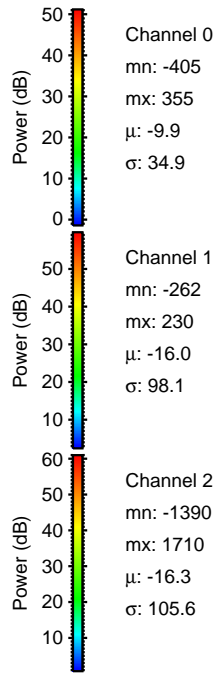
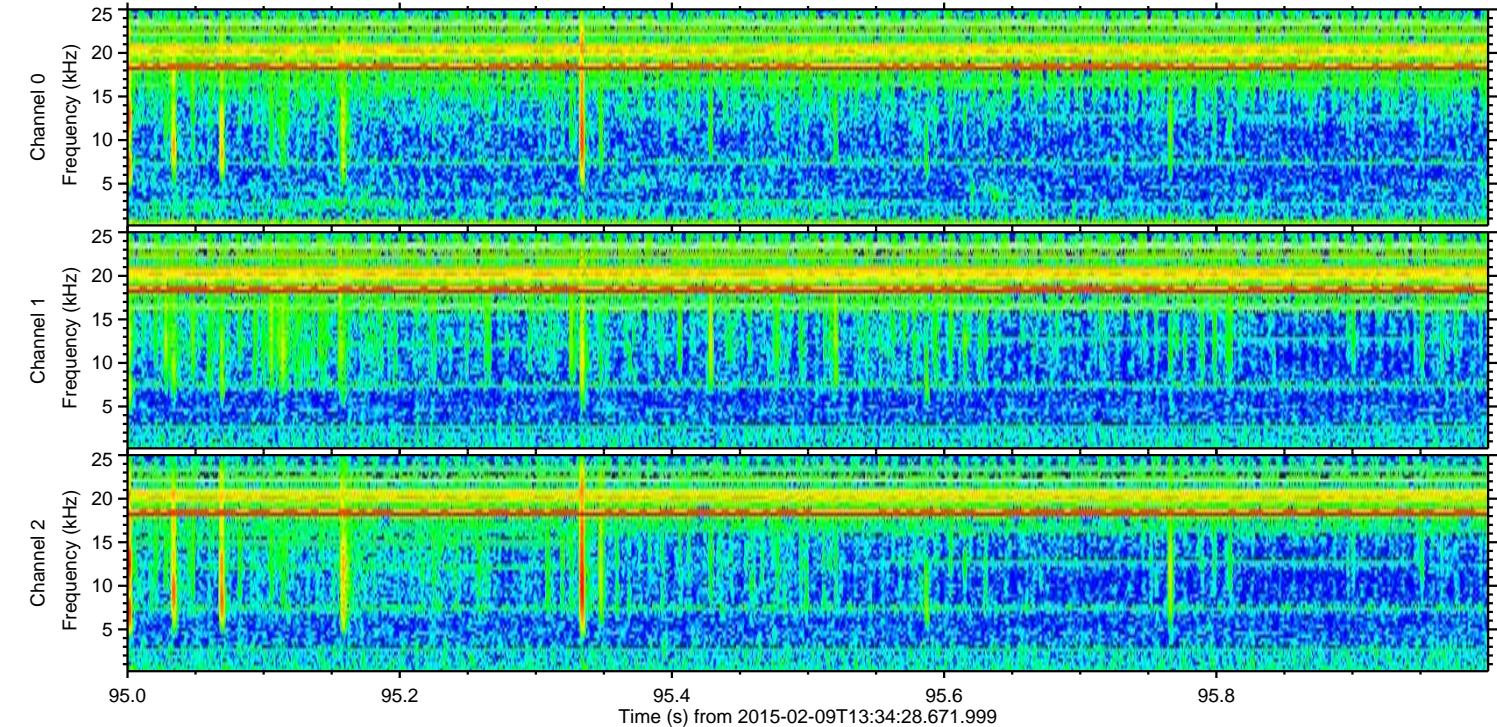
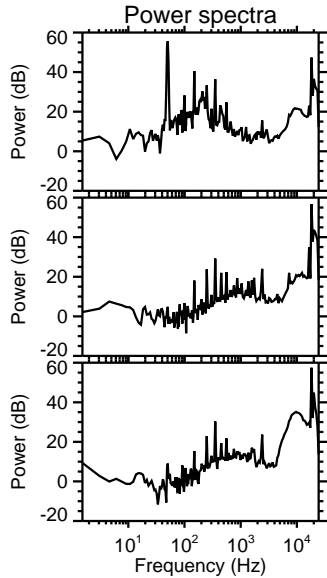
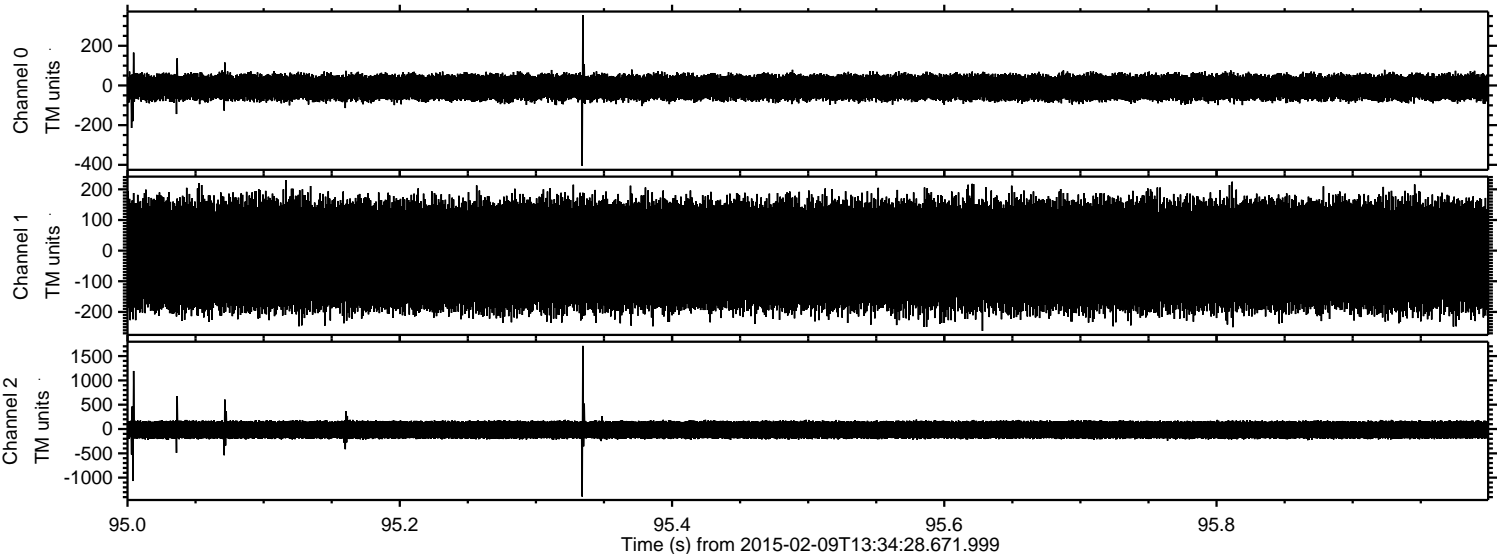
Channel 1
mn: -1446
mx: 1181
 μ : -16.0
 σ : 99.4

Channel 2
mn: -2262
mx: 2573
 μ : -16.3
 σ : 105.6

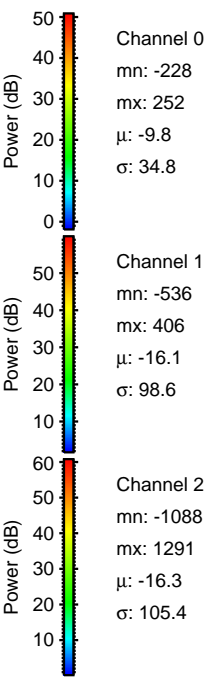
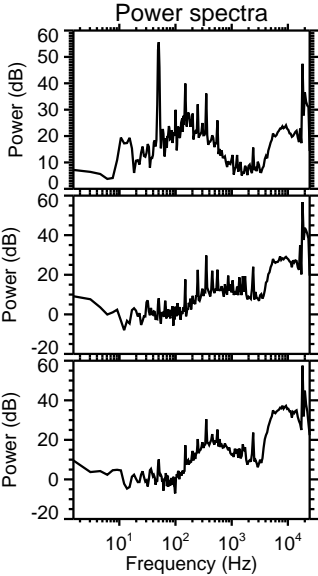
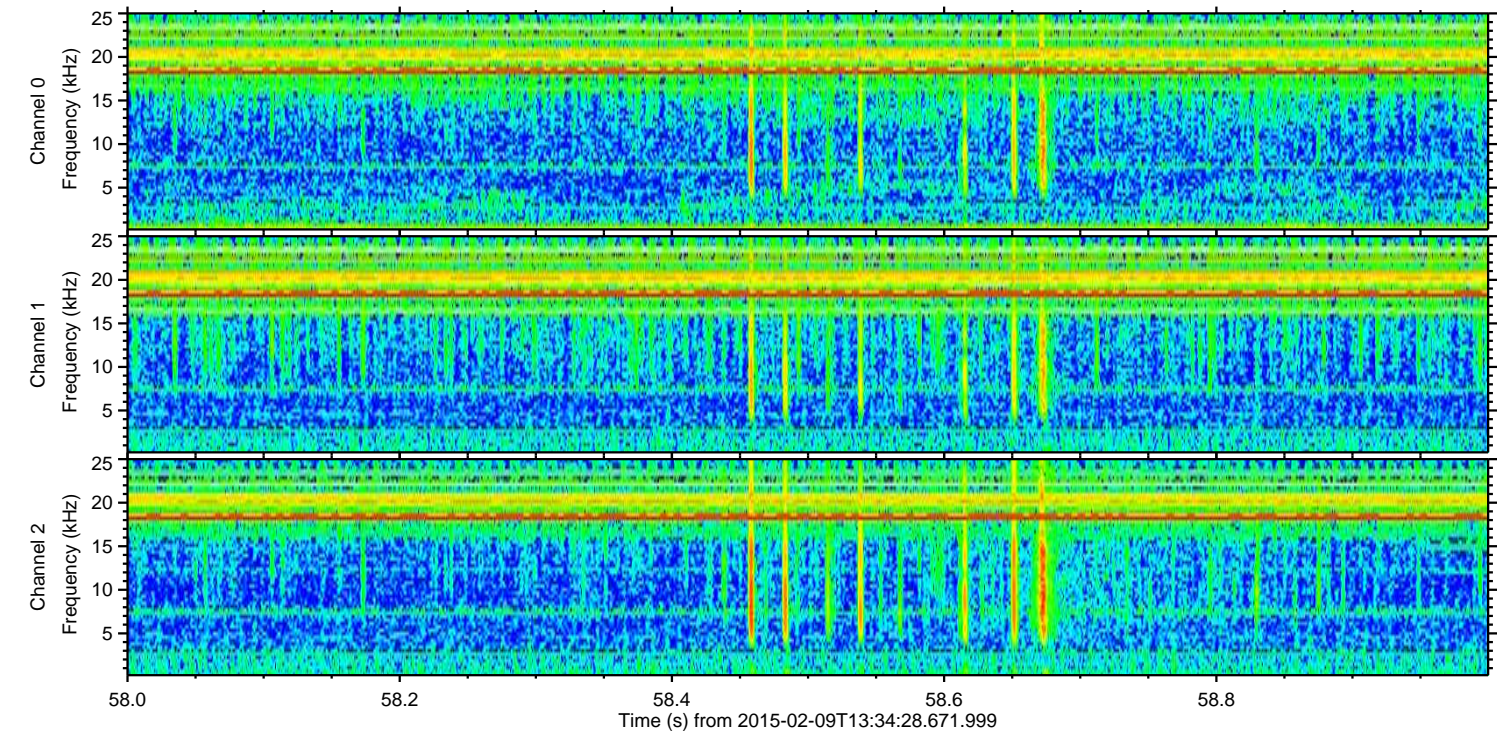
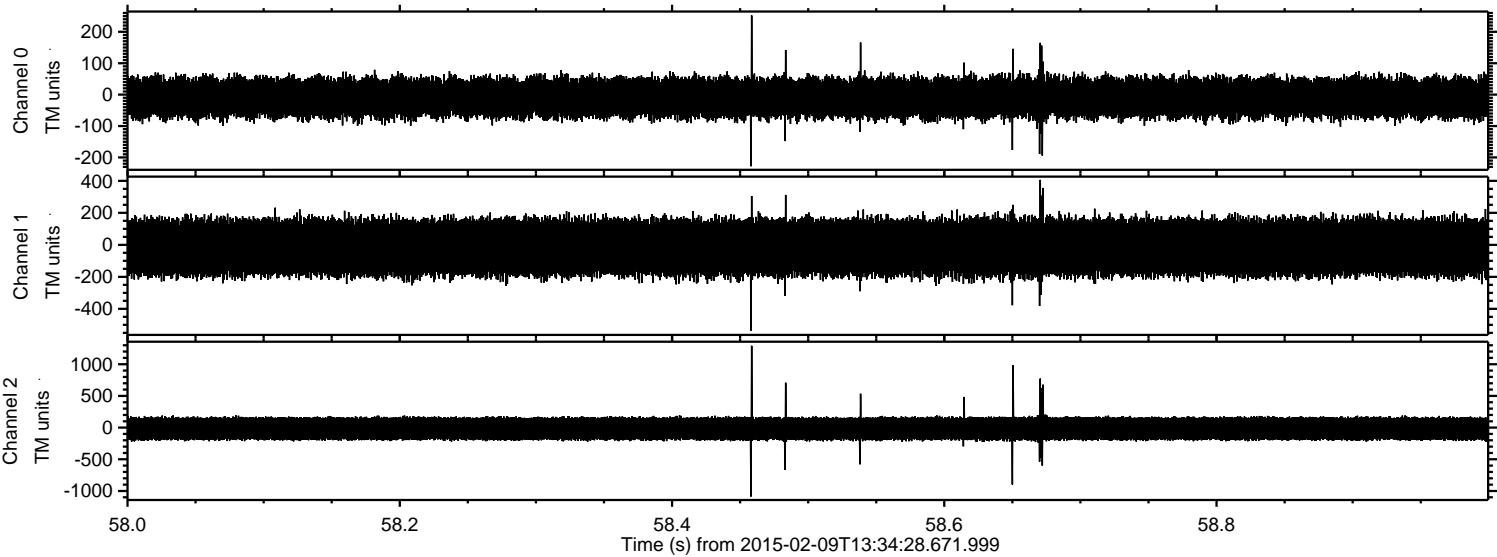
Processed Thu Feb 19 07:19:50 2015 by ELM ver.2012-10-06 from 001__elm20150209_133427__dat00.bin



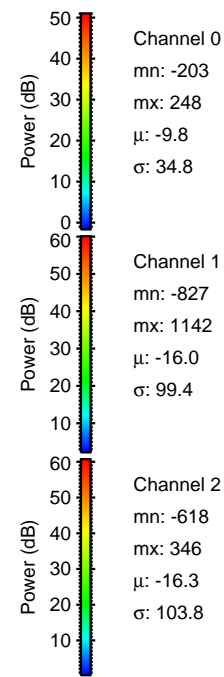
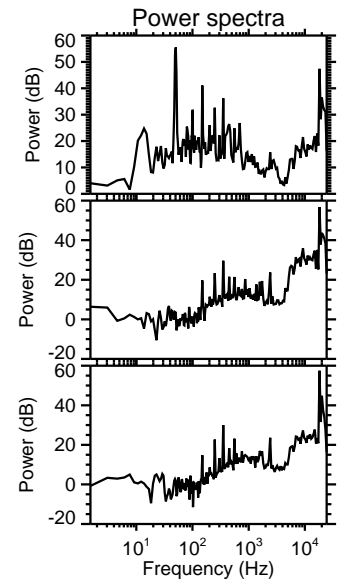
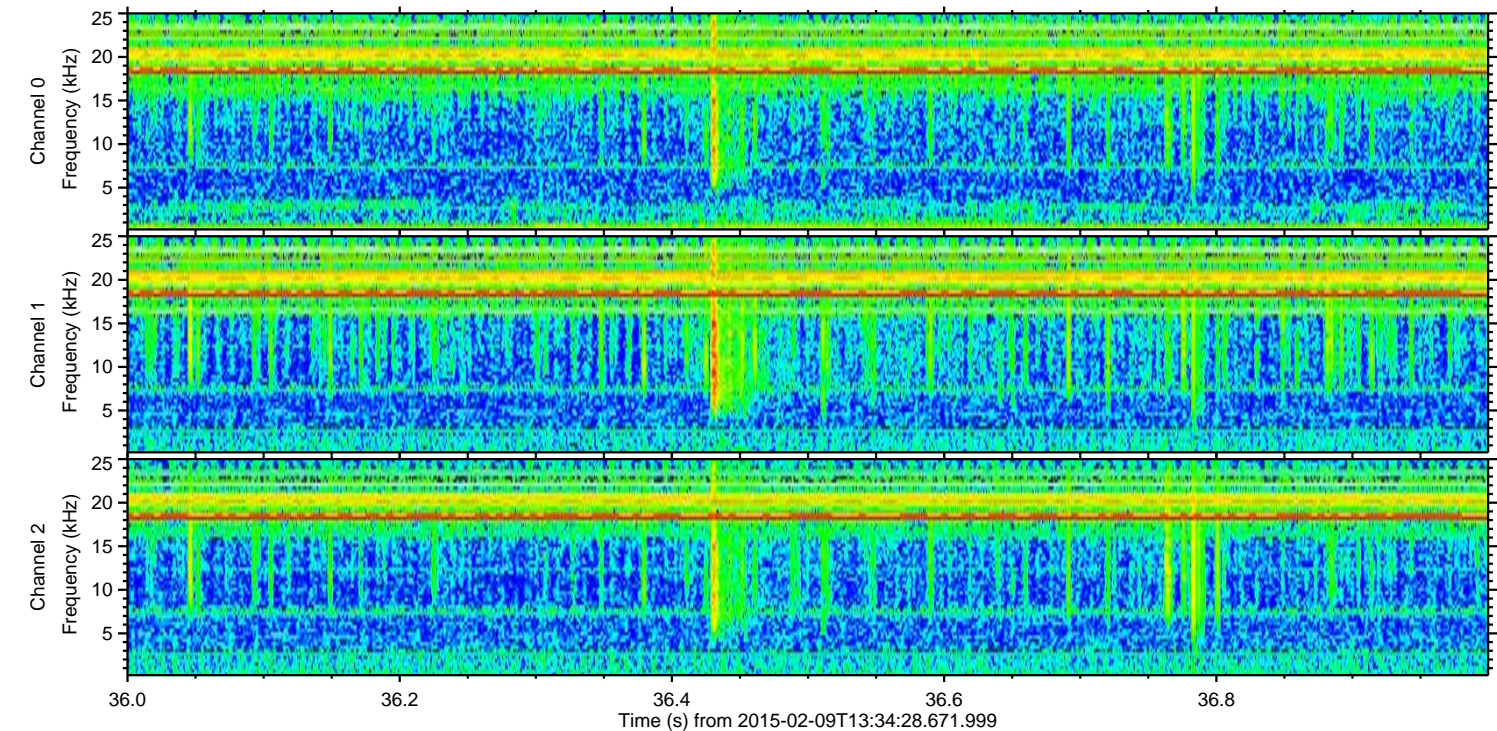
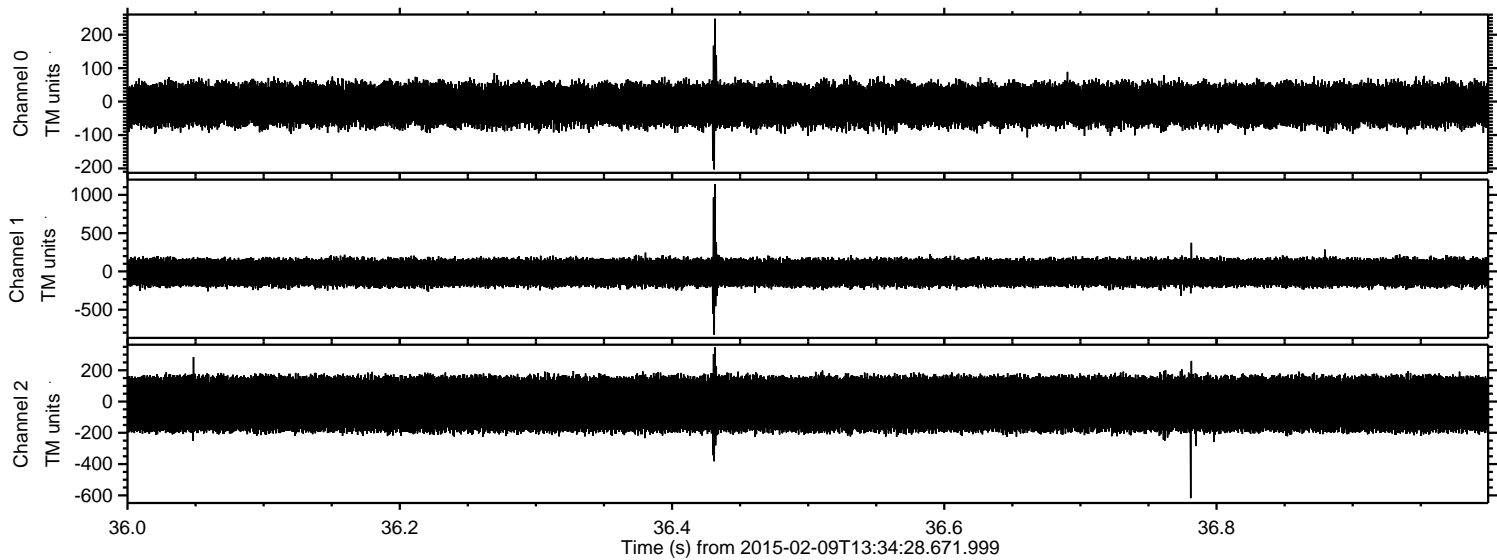
Processed Thu Feb 19 07:19:52 2015 by ELM ver.2012-10-06 from 001__elm20150209_133427__dat00.bin



Processed Thu Feb 19 07:19:53 2015 by ELM ver.2012-10-06 from 001__elm20150209_133427__dat00.bin



Processed Thu Feb 19 07:19:55 2015 by ELM ver.2012-10-06 from 001__elm20150209_133427__dat00.bin



Processed Thu Feb 19 07:19:56 2015 by ELM ver.2012-10-06 from 001__elm20150209_133427__dat00.bin

