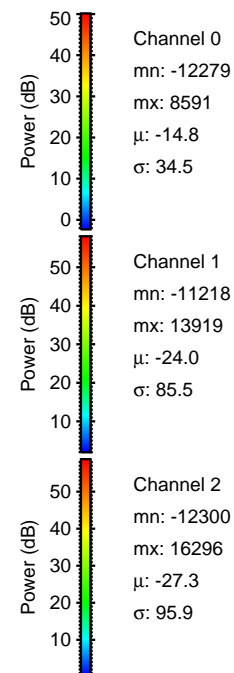
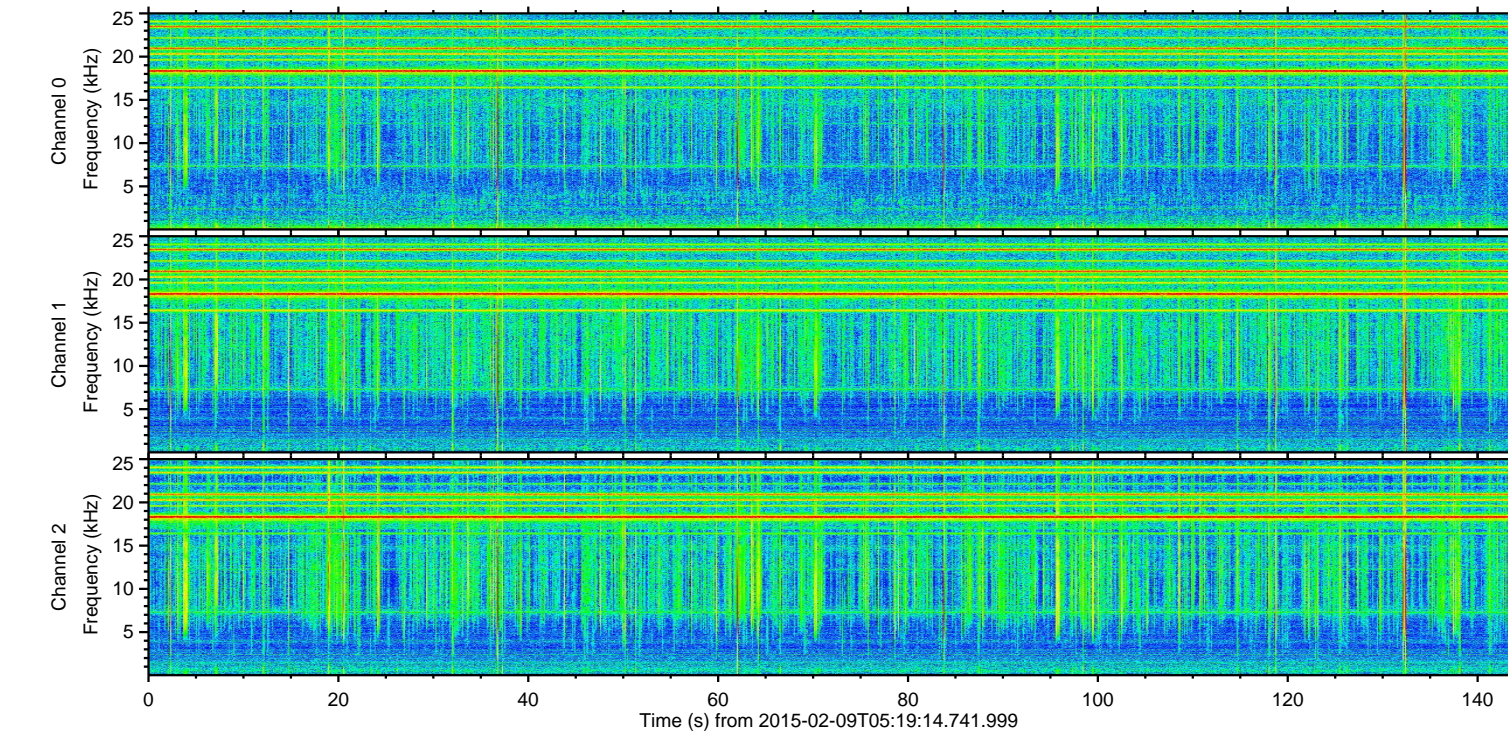
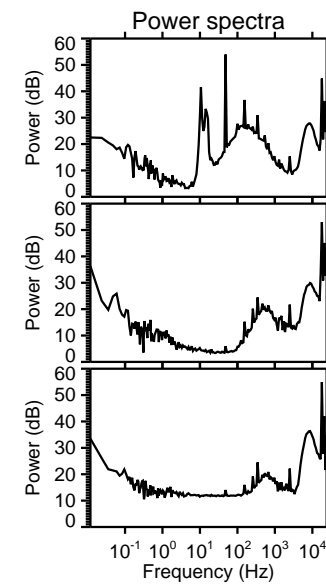
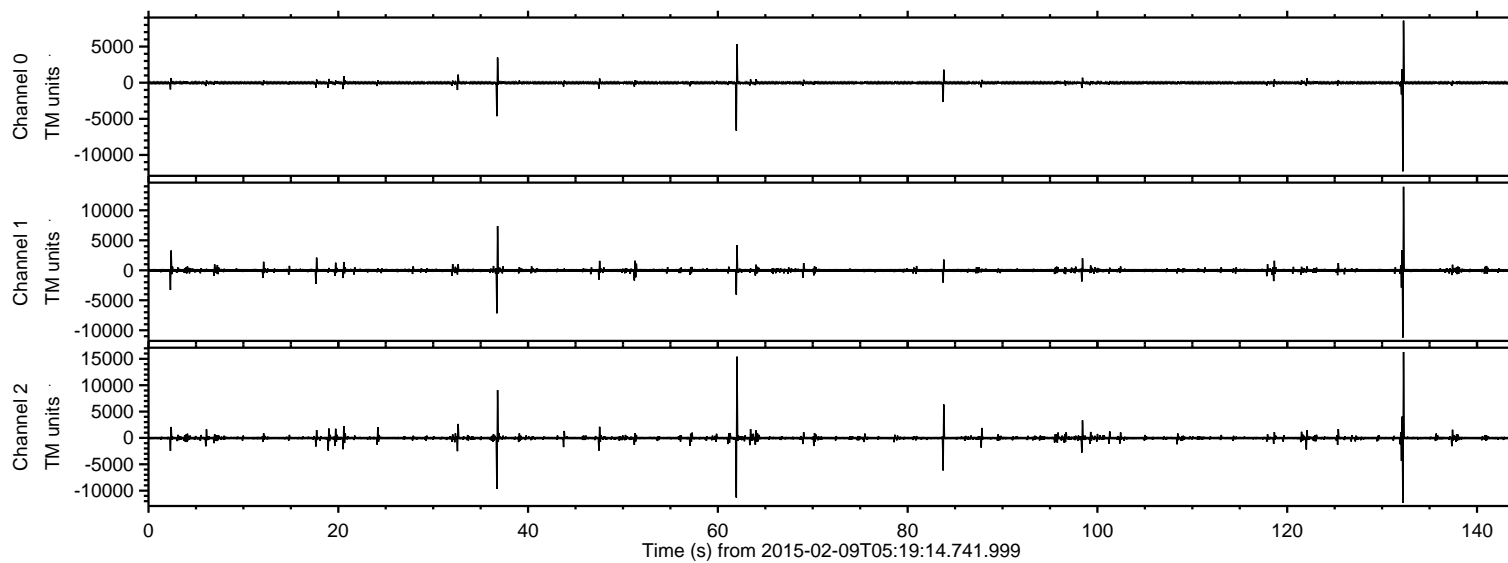


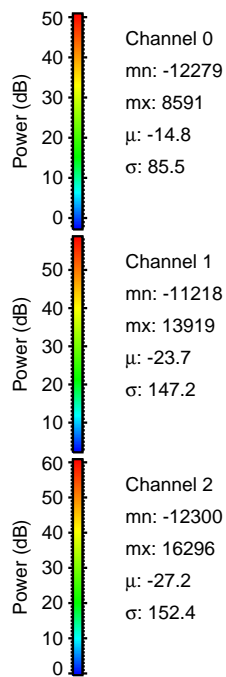
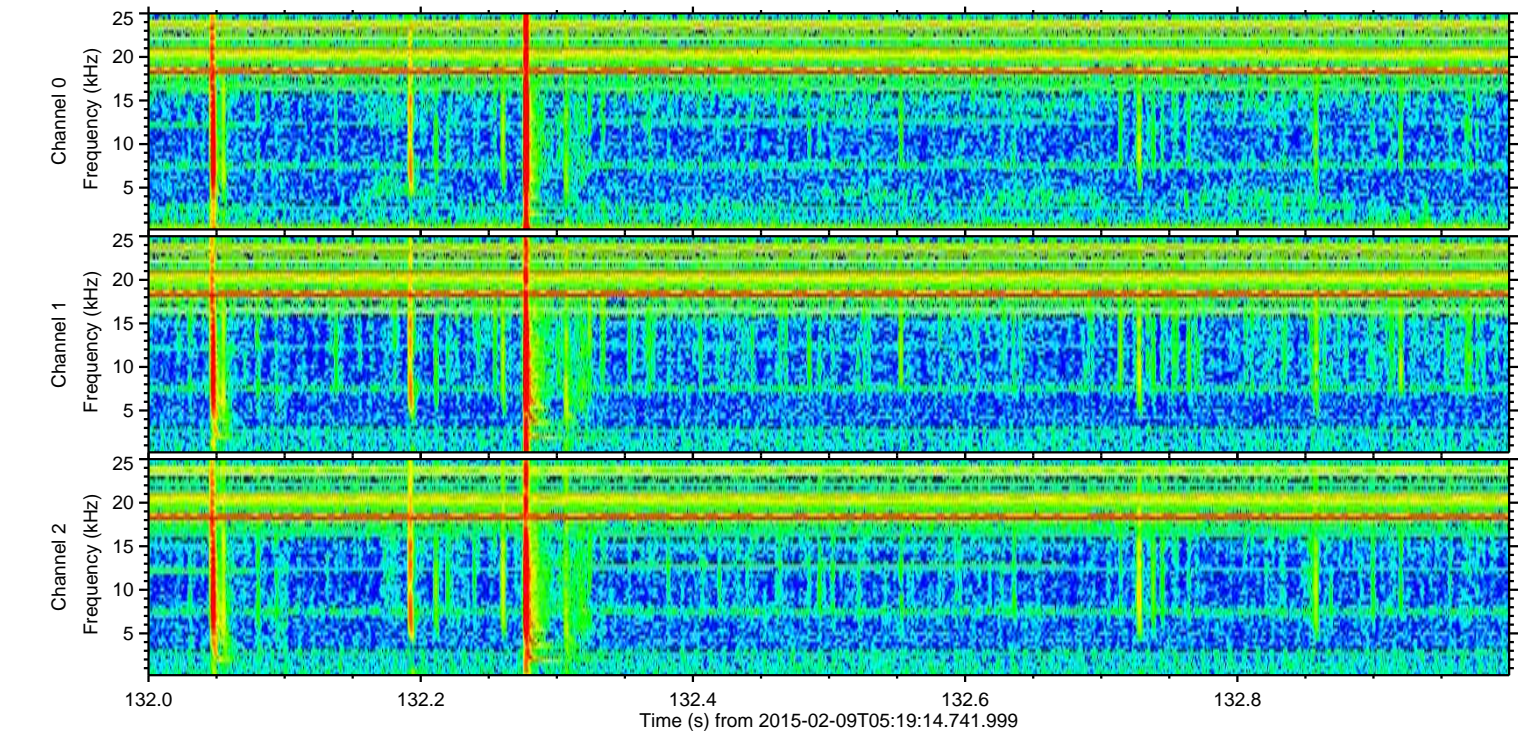
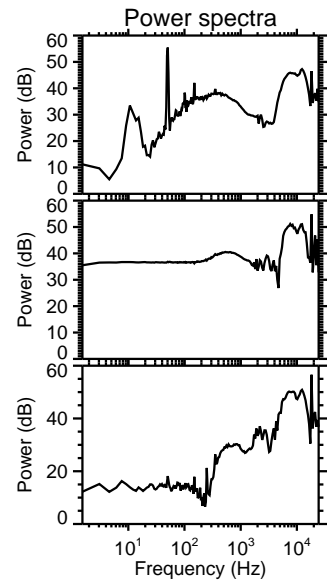
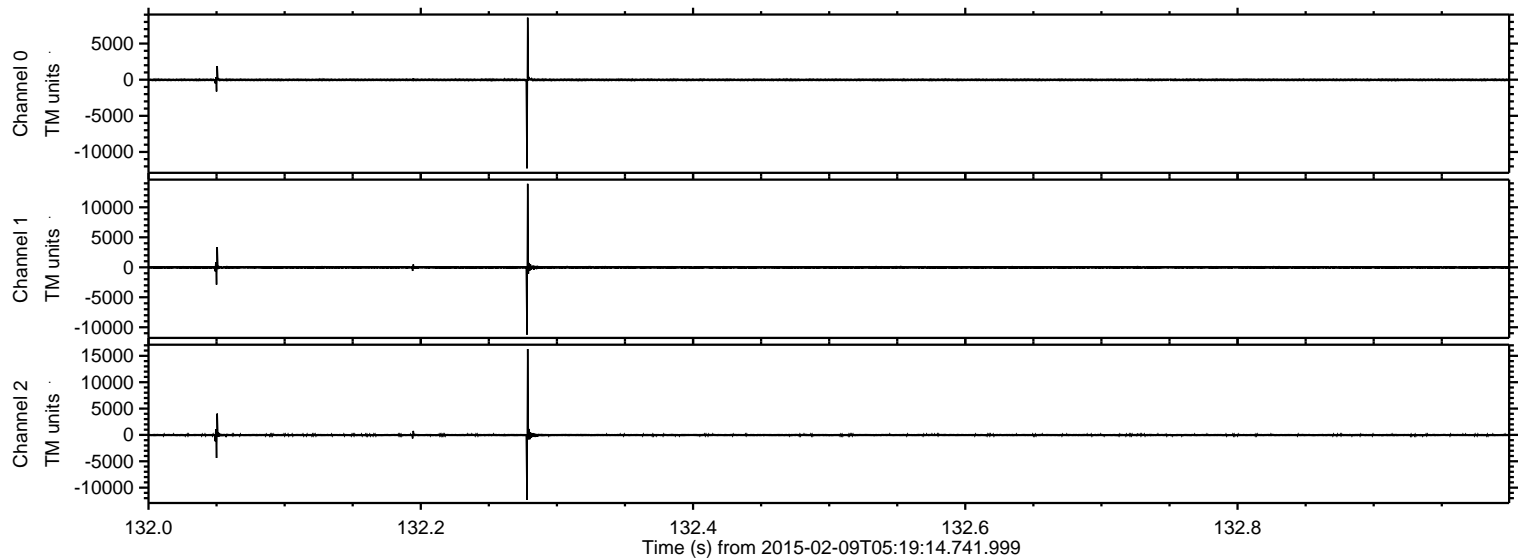
ELMAVAN 3D WAVEFORMS (Measured data sampled at 50 kHz) 49788 packets of 144 samples from 2015-02-09T05:19:14.741.999.

Processed Thu Feb 19 04:38:57 2015 by ELM ver.2012-10-06 from 001__elm20150209_051913__dat00.bin



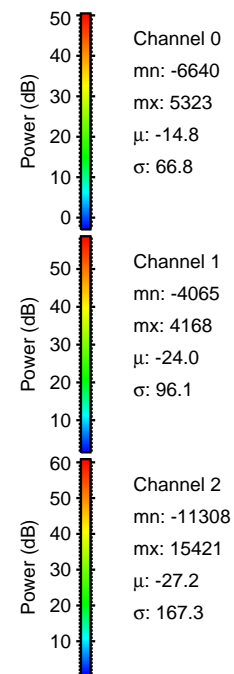
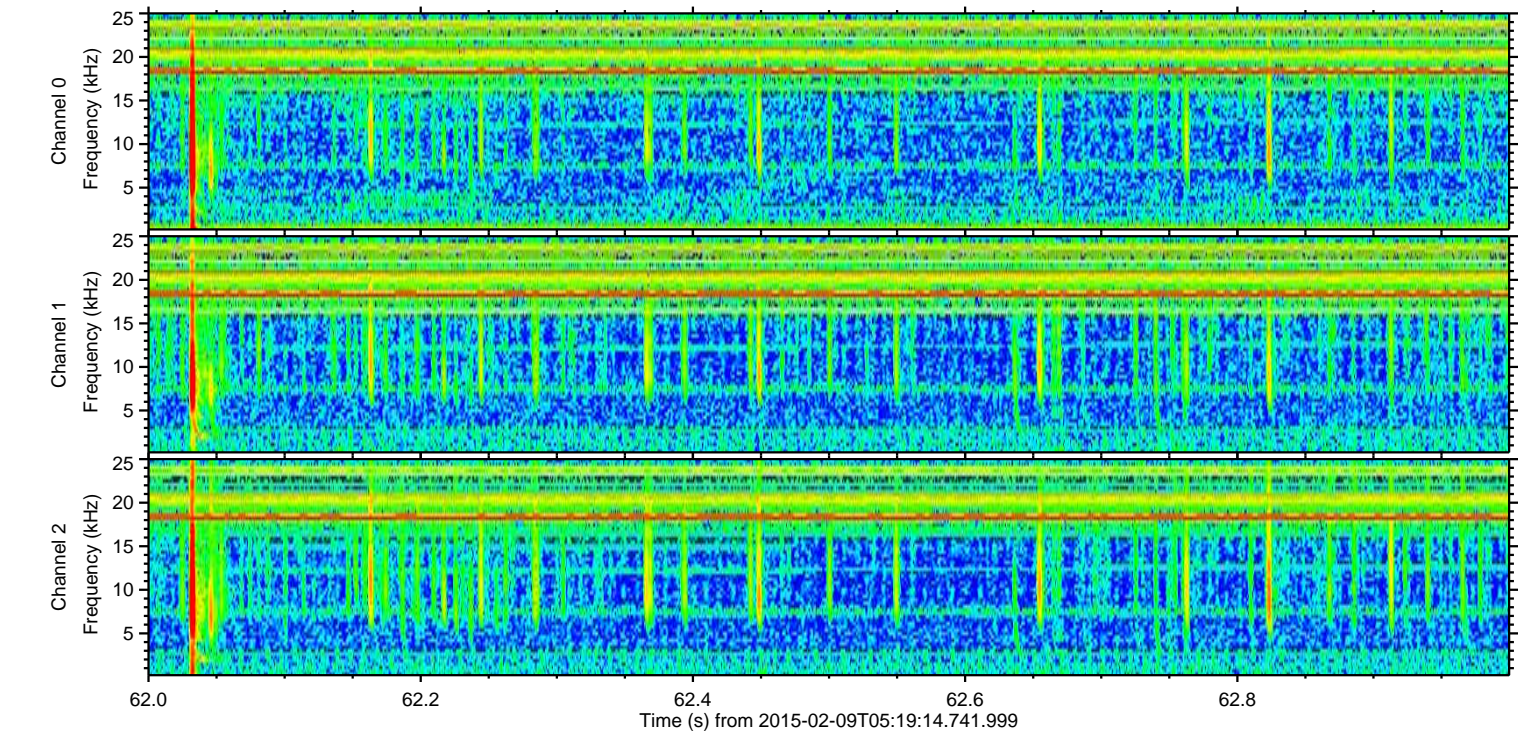
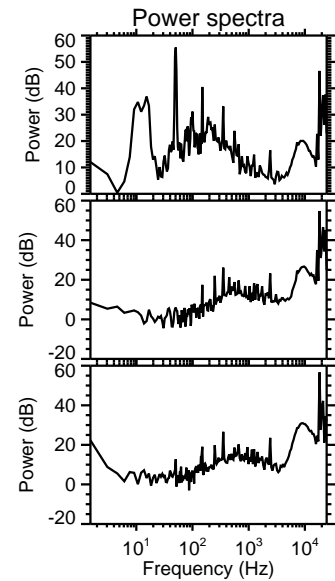
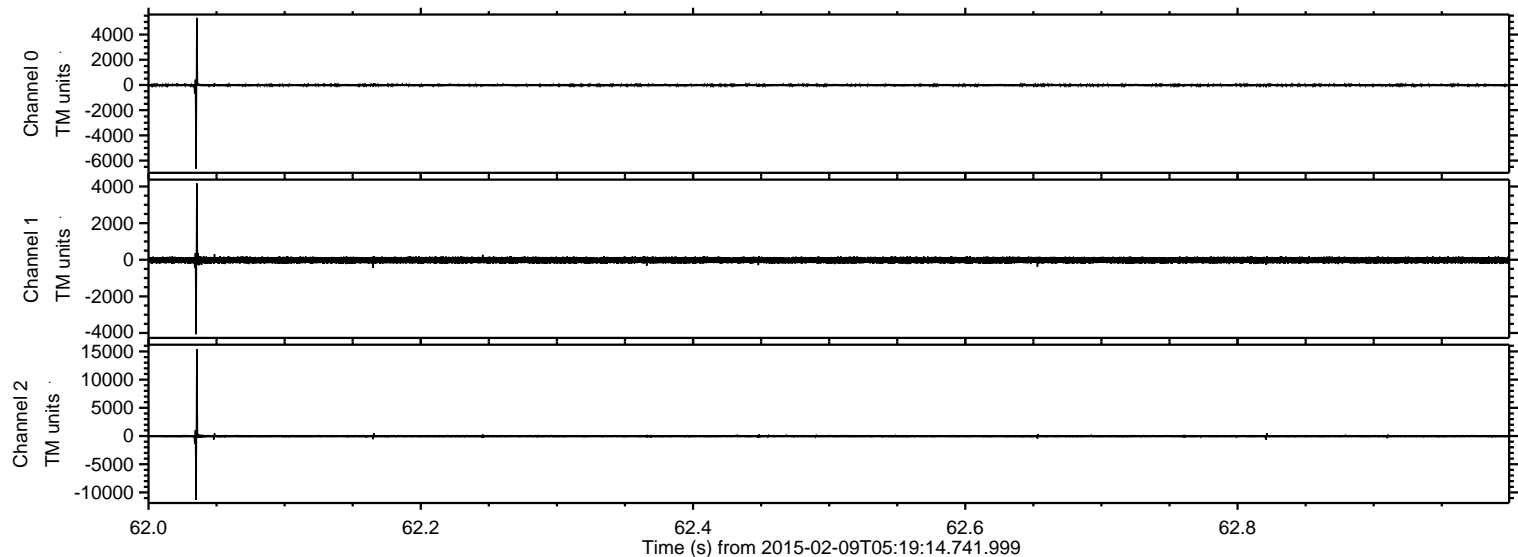
ELMAVAN 3D WAVEFORMS (Measured data sampled at 50 kHz) 49788 packets of 144 samples from 2015-02-09T05:19:14.741.999. Part 133/144

Processed Thu Feb 19 04:39:17 2015 by ELM ver.2012-10-06 from 001__elm20150209_051913__dat00.bin



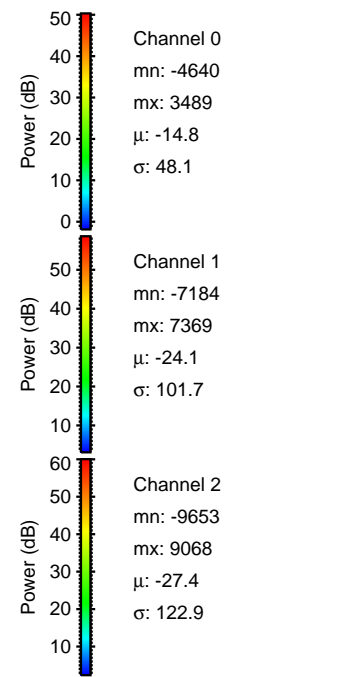
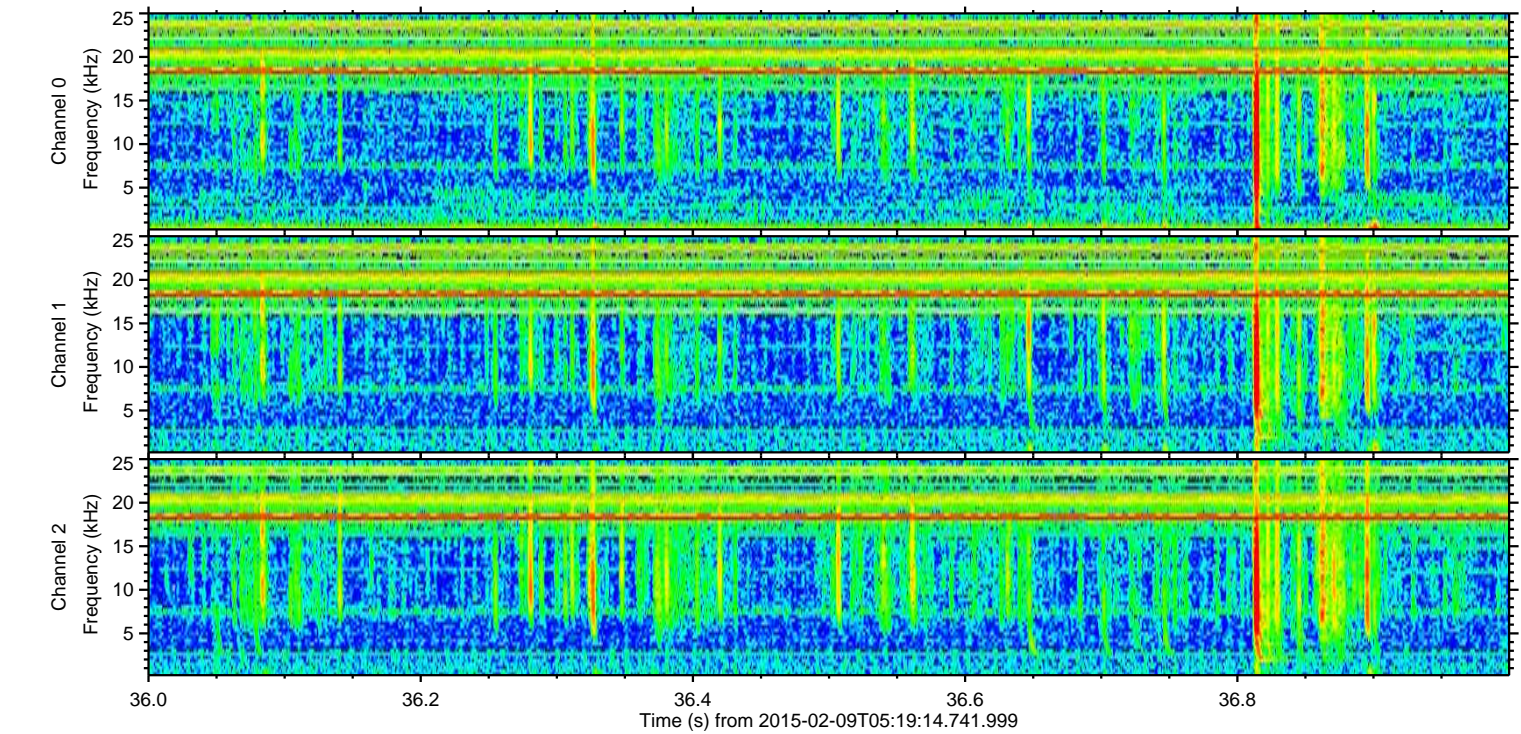
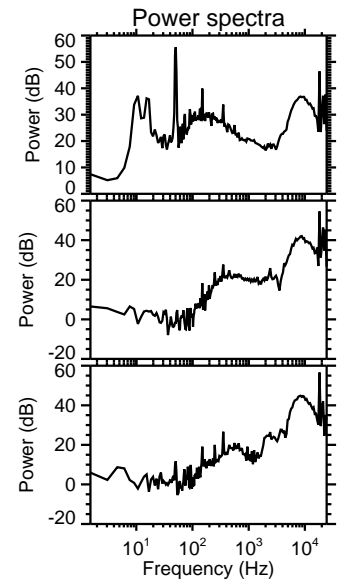
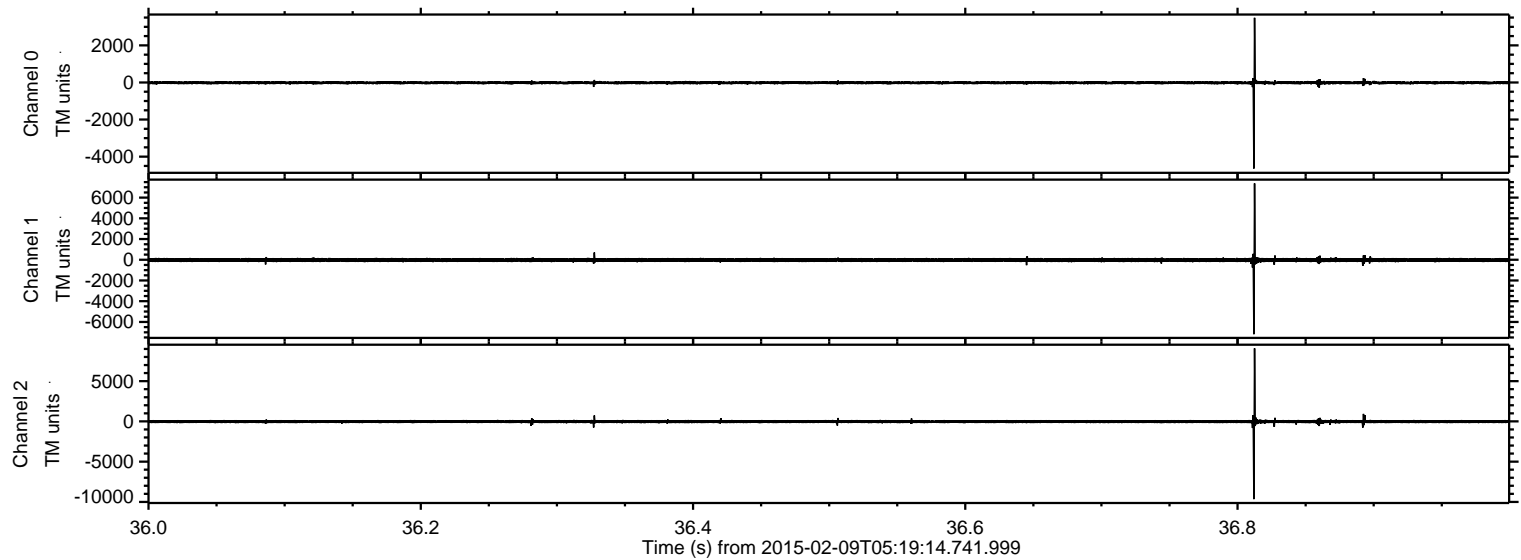
ELMAVAN 3D WAVEFORMS (Measured data sampled at 50 kHz) 49788 packets of 144 samples from 2015-02-09T05:19:14.741.999. Part 63/144

Processed Thu Feb 19 04:39:18 2015 by ELM ver.2012-10-06 from 001__elm20150209_051913__dat00.bin



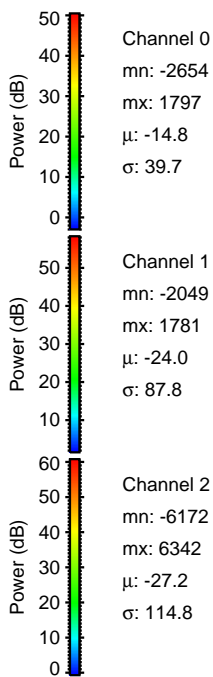
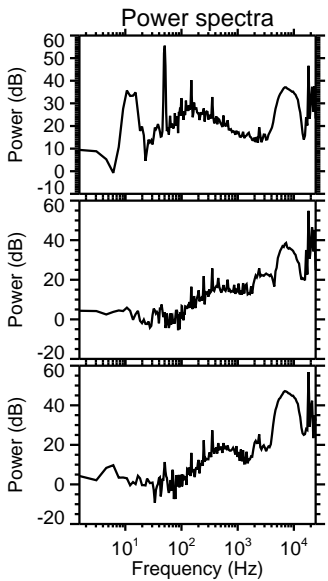
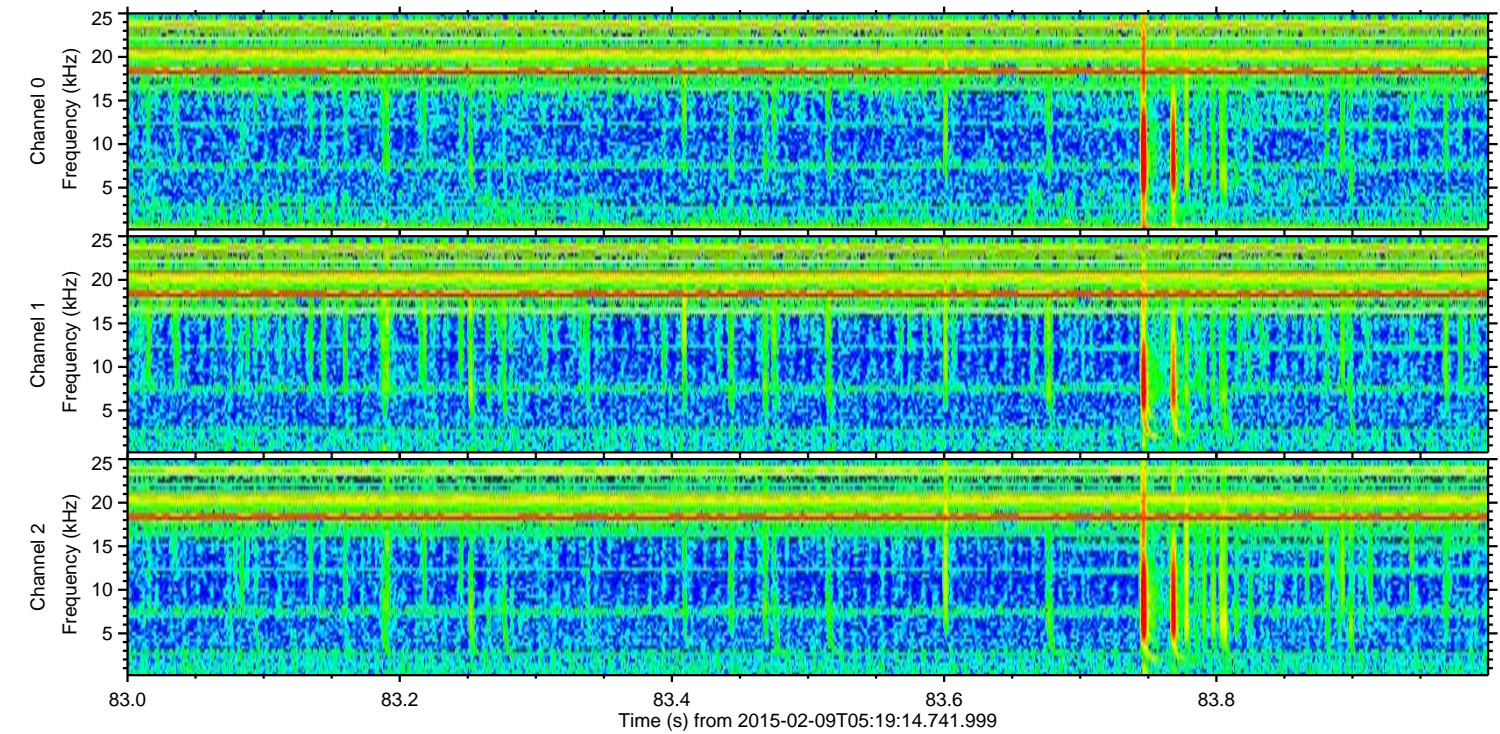
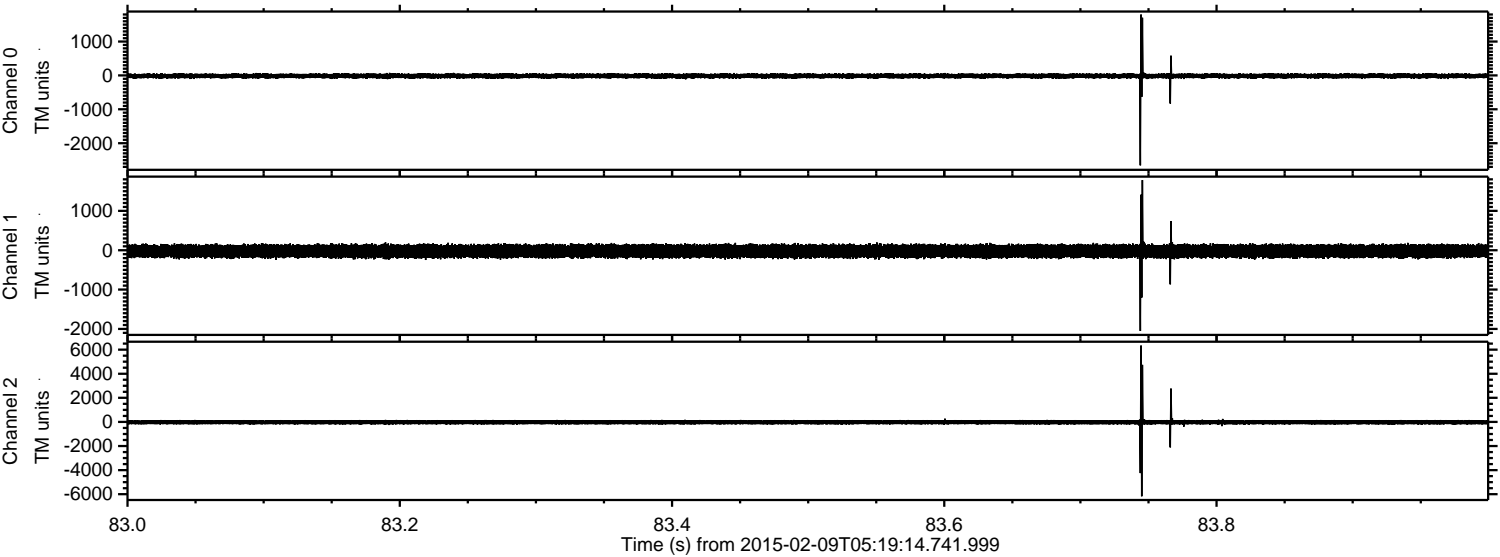
ELMAVAN 3D WAVEFORMS (Measured data sampled at 50 kHz) 49788 packets of 144 samples from 2015-02-09T05:19:14.741.999. Part 37/144

Processed Thu Feb 19 04:39:19 2015 by ELM ver.2012-10-06 from 001__elm20150209_051913__dat00.bin



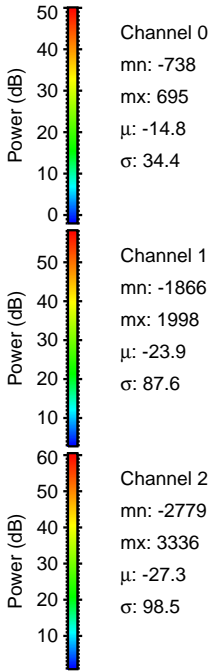
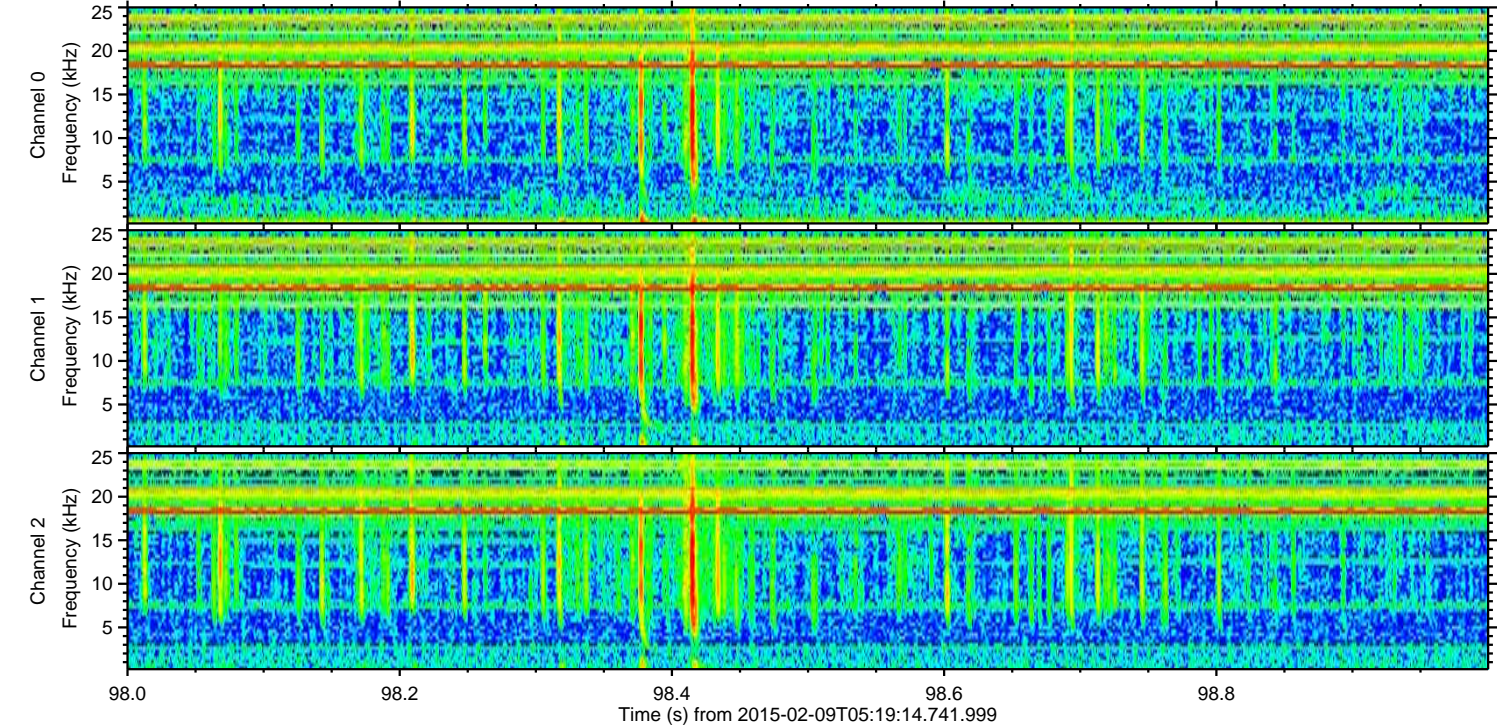
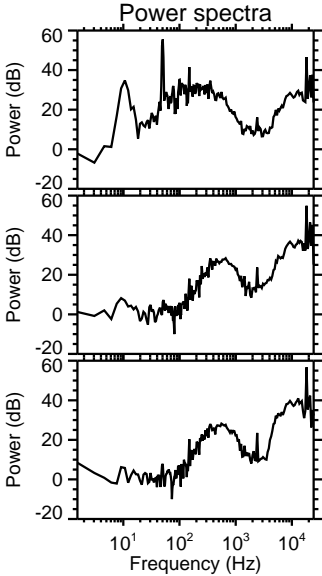
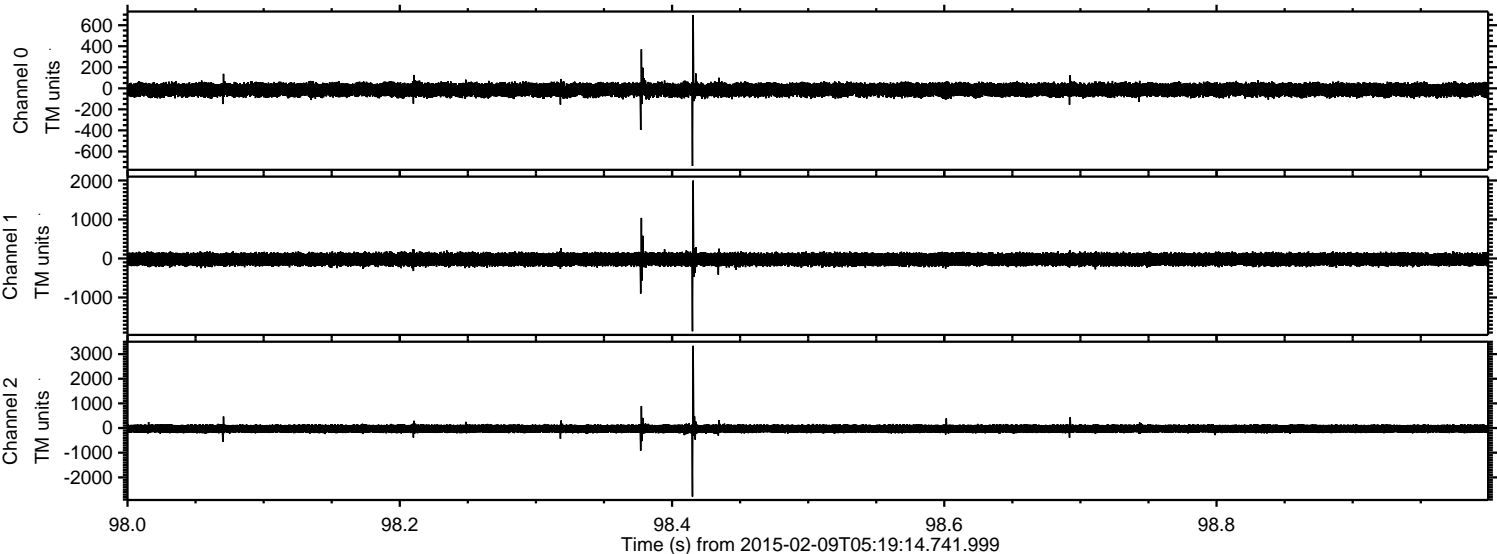
ELMAVAN 3D WAVEFORMS (Measured data sampled at 50 kHz) 49788 packets of 144 samples from 2015-02-09T05:19:14.741.999. Part 84/144

Processed Thu Feb 19 04:39:20 2015 by ELM ver.2012-10-06 from 001__elm20150209_051913__dat00.bin

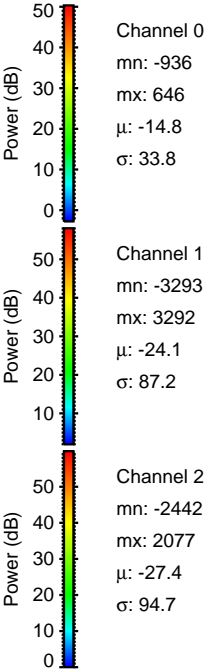
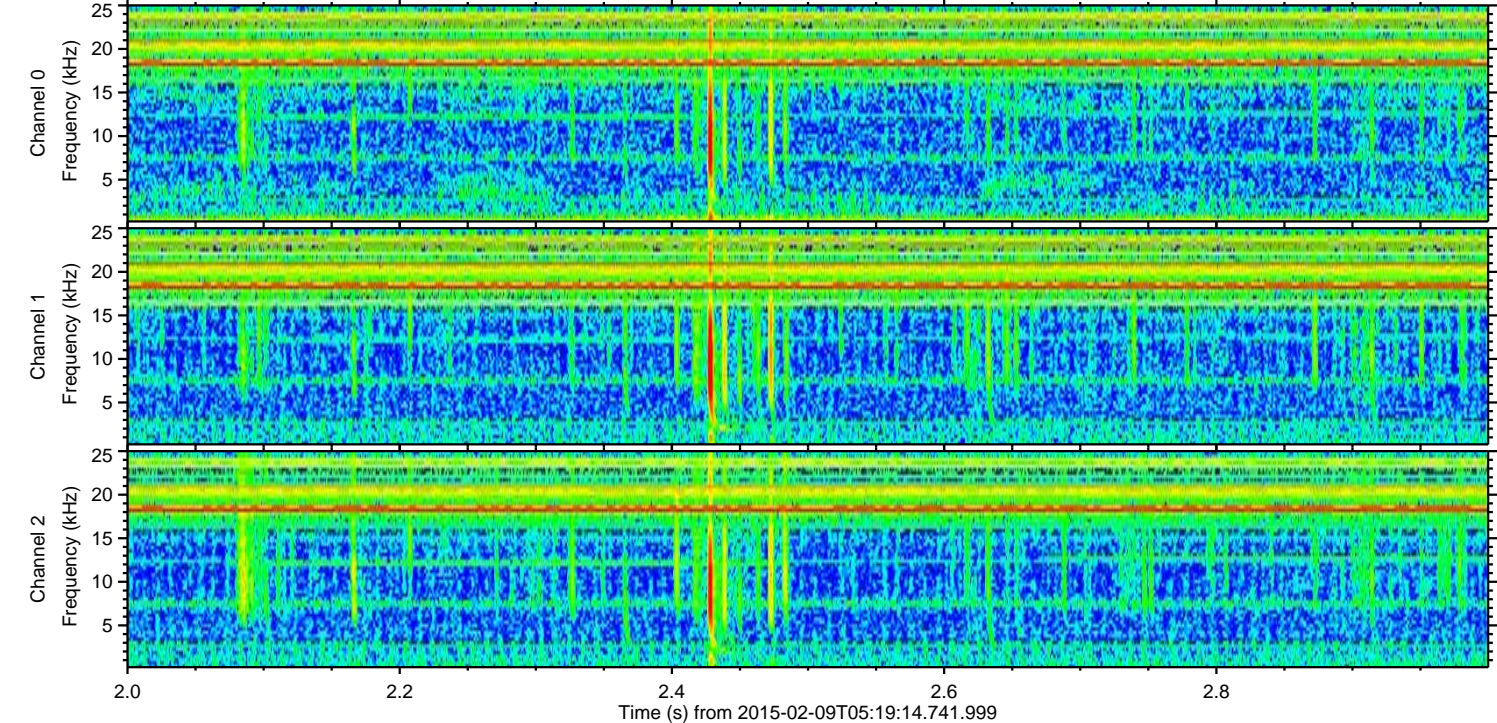
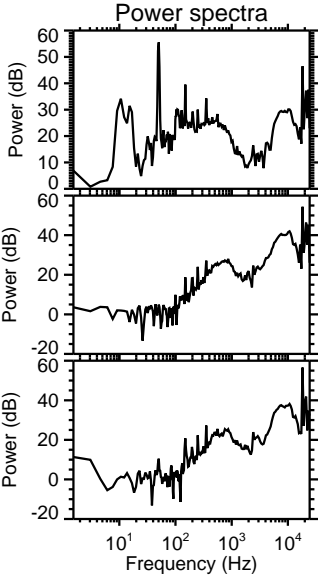
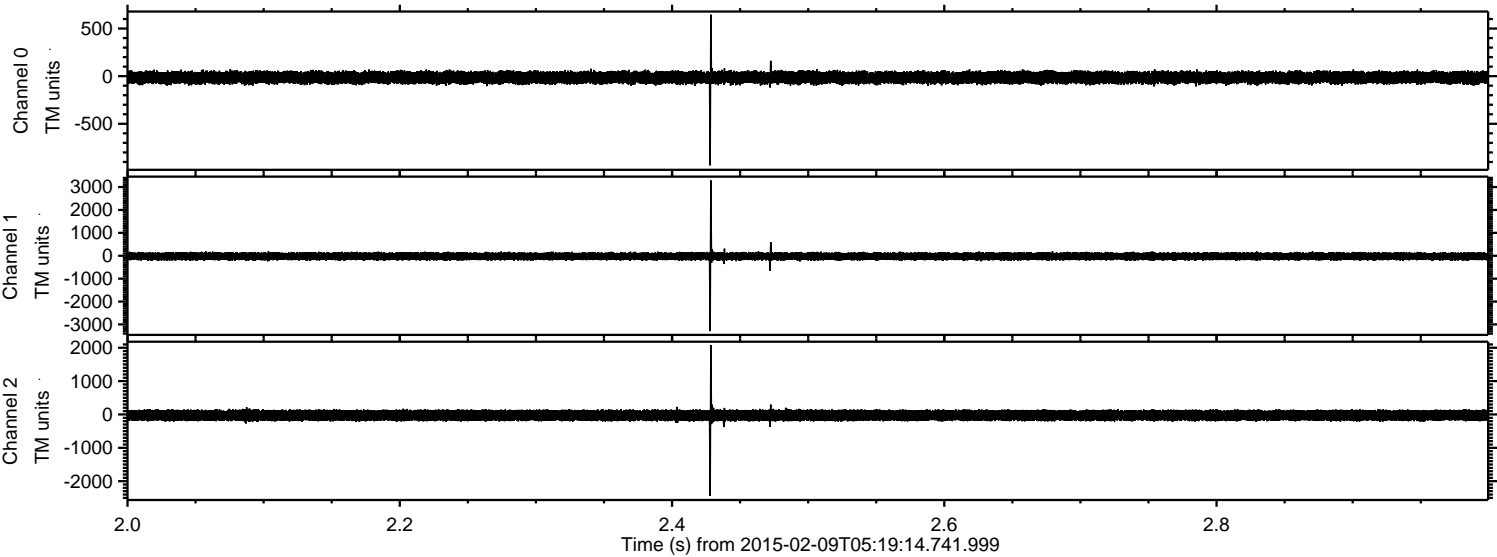


ELMAVAN 3D WAVEFORMS (Measured data sampled at 50 kHz) 49788 packets of 144 samples from 2015-02-09T05:19:14.741.999. Part 99/144

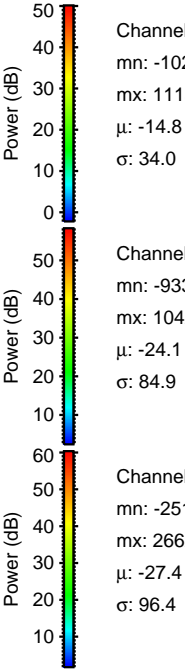
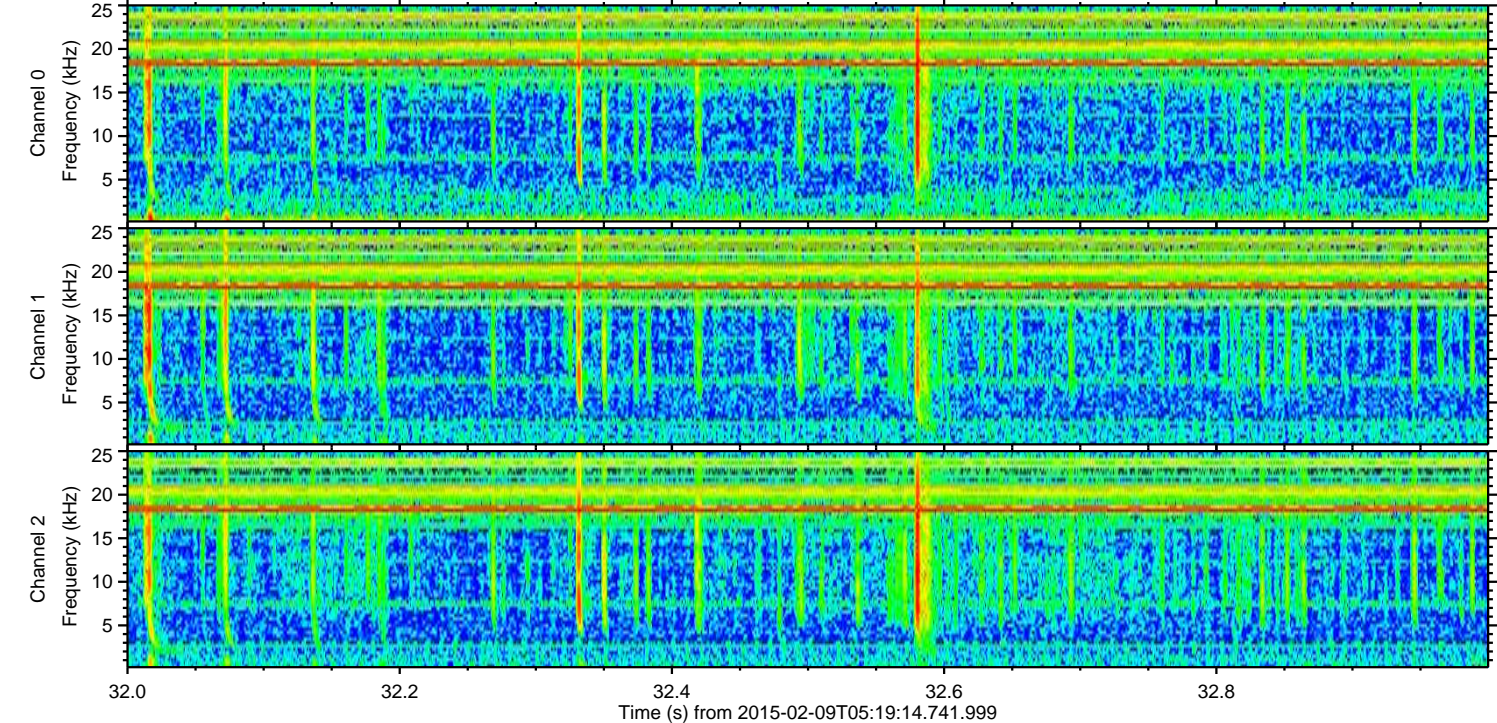
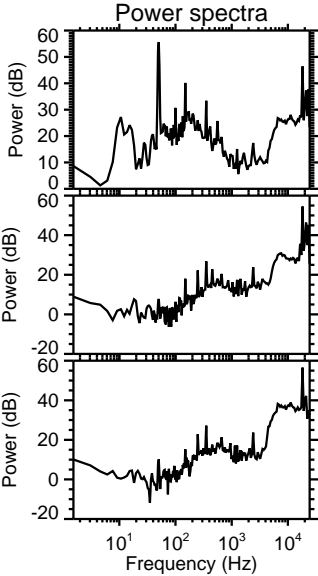
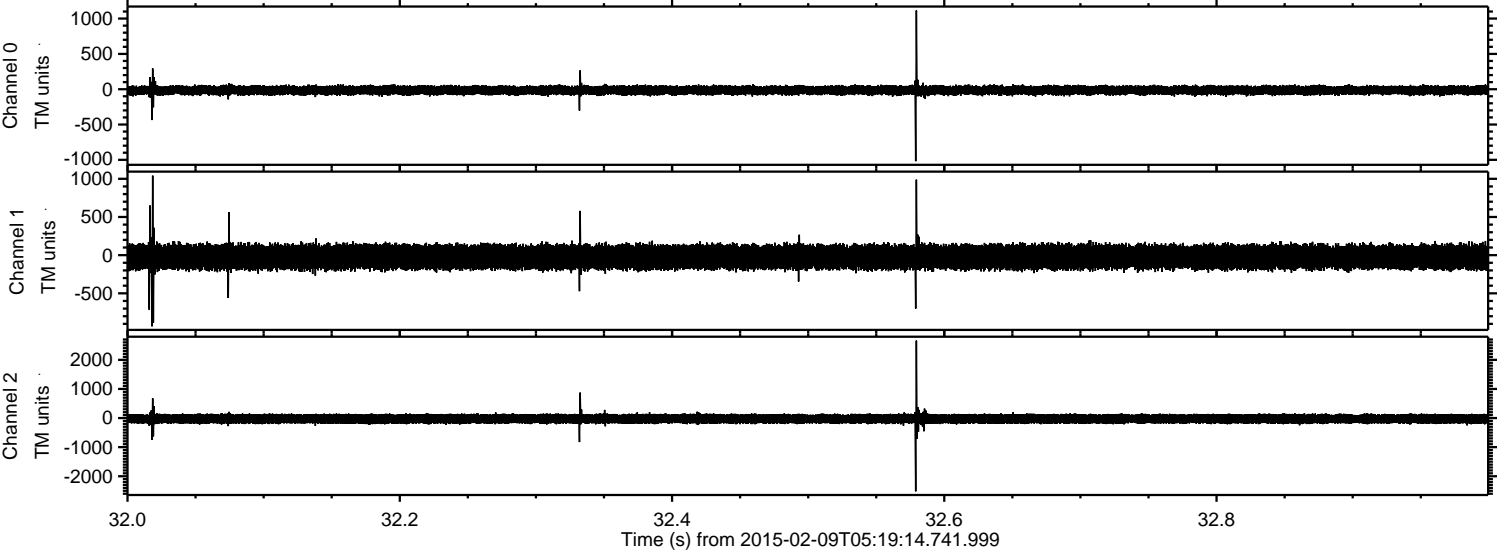
Processed Thu Feb 19 04:39:21 2015 by ELM ver.2012-10-06 from 001__elm20150209_051913__dat00.bin



Processed Thu Feb 19 04:39:22 2015 by ELM ver.2012-10-06 from 001__elm20150209_051913__dat00.bin



Processed Thu Feb 19 04:39:23 2015 by ELM ver.2012-10-06 from 001__elm20150209_051913__dat00.bin

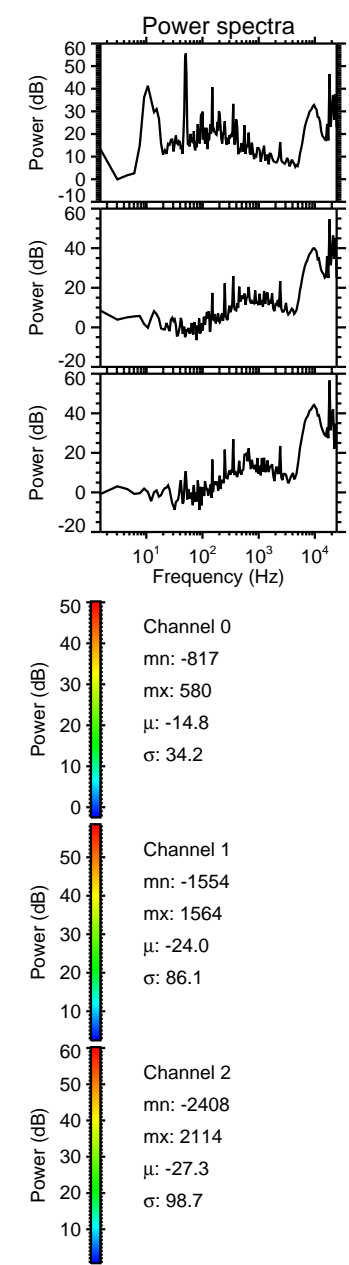
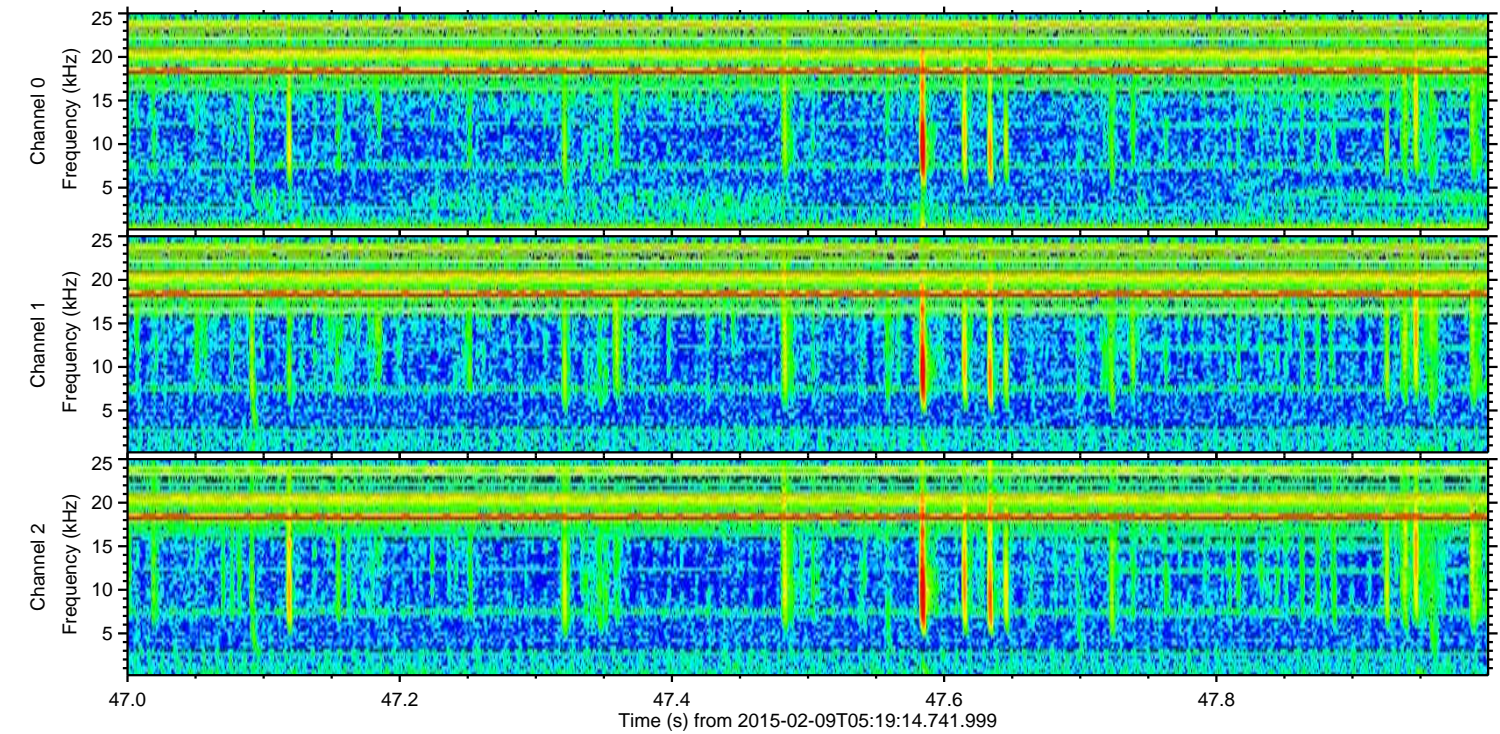
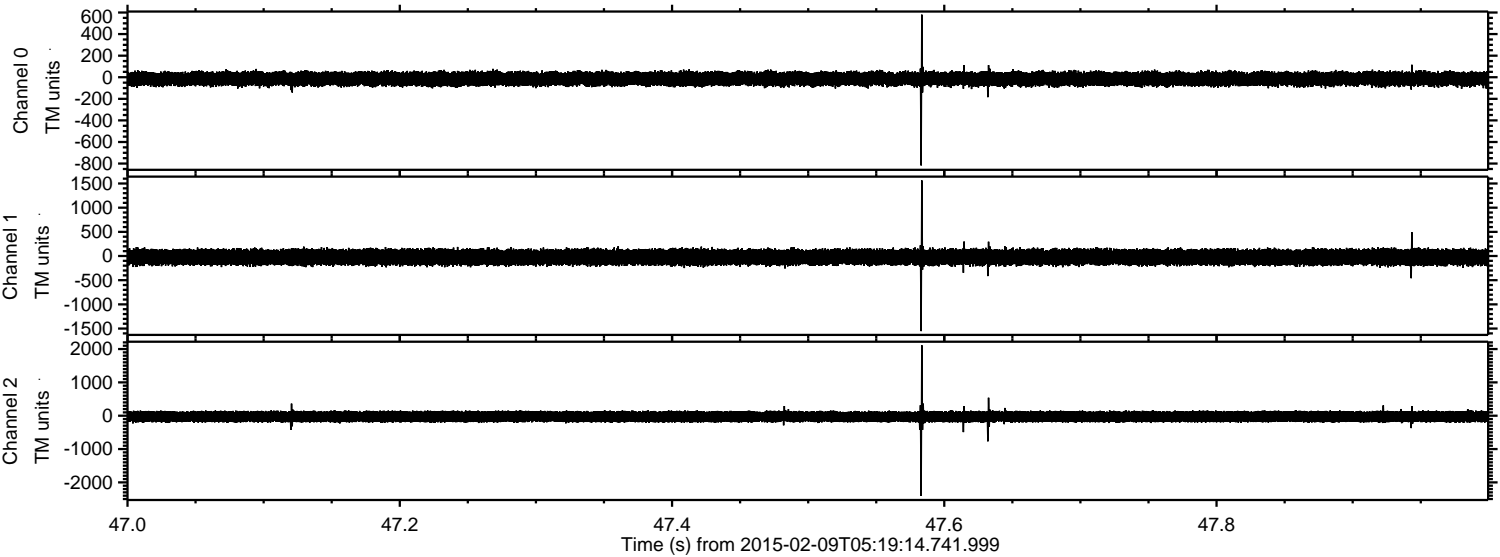


Channel 0
mn: -1020
mx: 1115
μ: -14.8
σ: 34.0

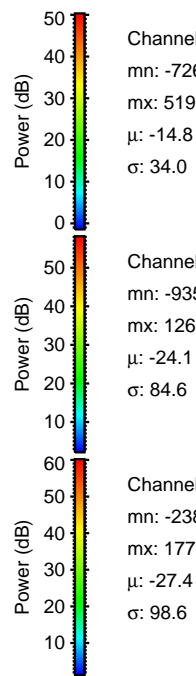
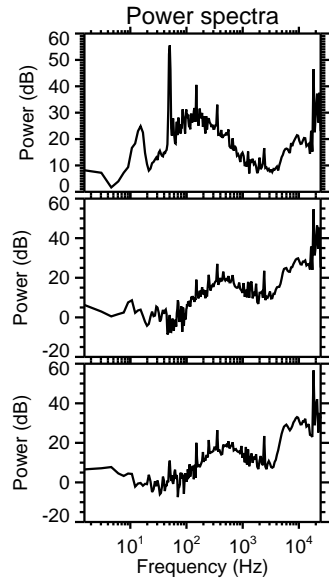
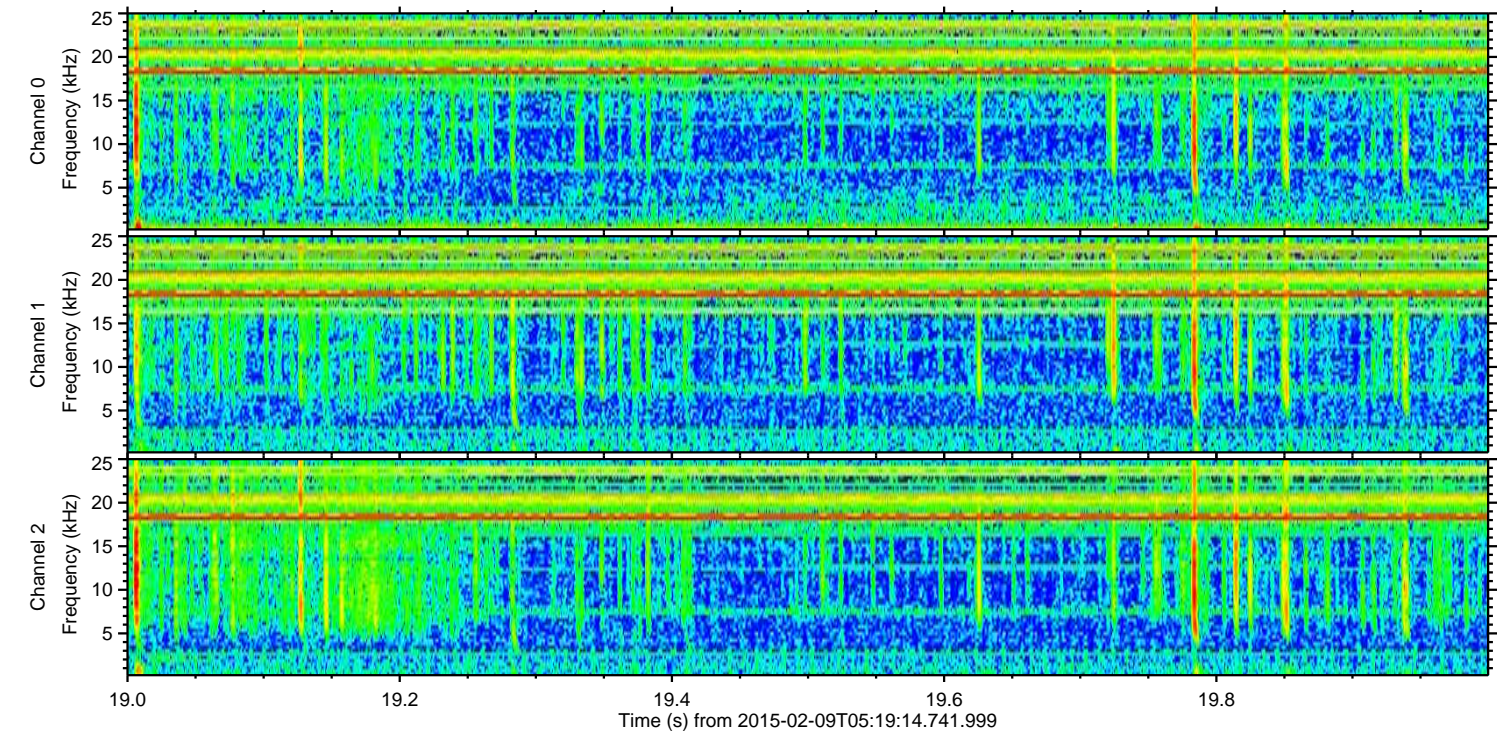
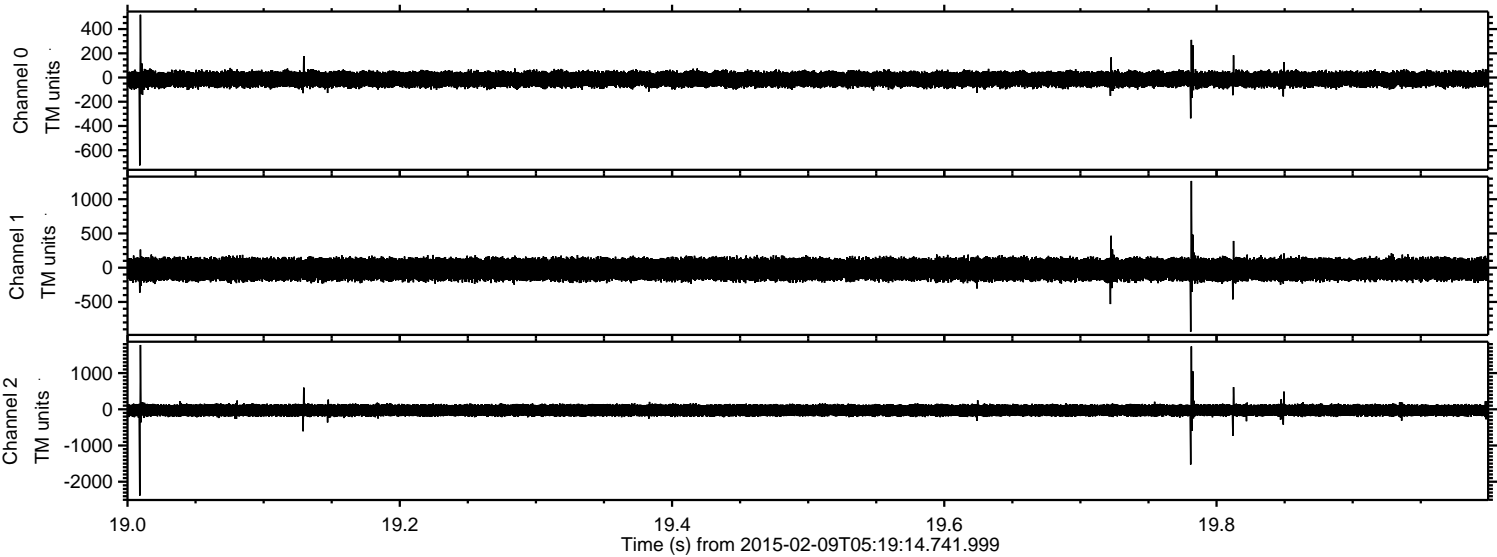
Channel 1
mn: -933
mx: 1042
μ: -24.1
σ: 84.9

Channel 2
mn: -2519
mx: 2662
μ: -27.4
σ: 96.4

Processed Thu Feb 19 04:39:25 2015 by ELM ver.2012-10-06 from 001__elm20150209_051913__dat00.bin



Processed Thu Feb 19 04:39:28 2015 by ELM ver.2012-10-06 from 001__elm20150209_051913__dat00.bin



Channel 0
mn: -726
mx: 519
 μ : -14.8
 σ : 34.0

Channel 1
mn: -935
mx: 1267
 μ : -24.1
 σ : 84.6

Channel 2
mn: -2386
mx: 1778
 μ : -27.4
 σ : 98.6

ELMAVAN 3D WAVEFORMS (Measured data sampled at 50 kHz) 49788 packets of 144 samples from 2015-02-09T05:19:14.741.999. Part 1/144

Processed Thu Feb 19 04:39:30 2015 by ELM ver.2012-10-06 from 001__elm20150209_051913__dat00.bin

