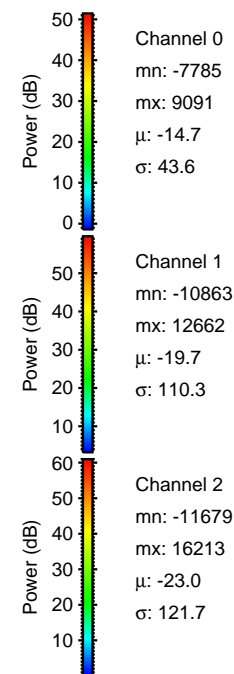
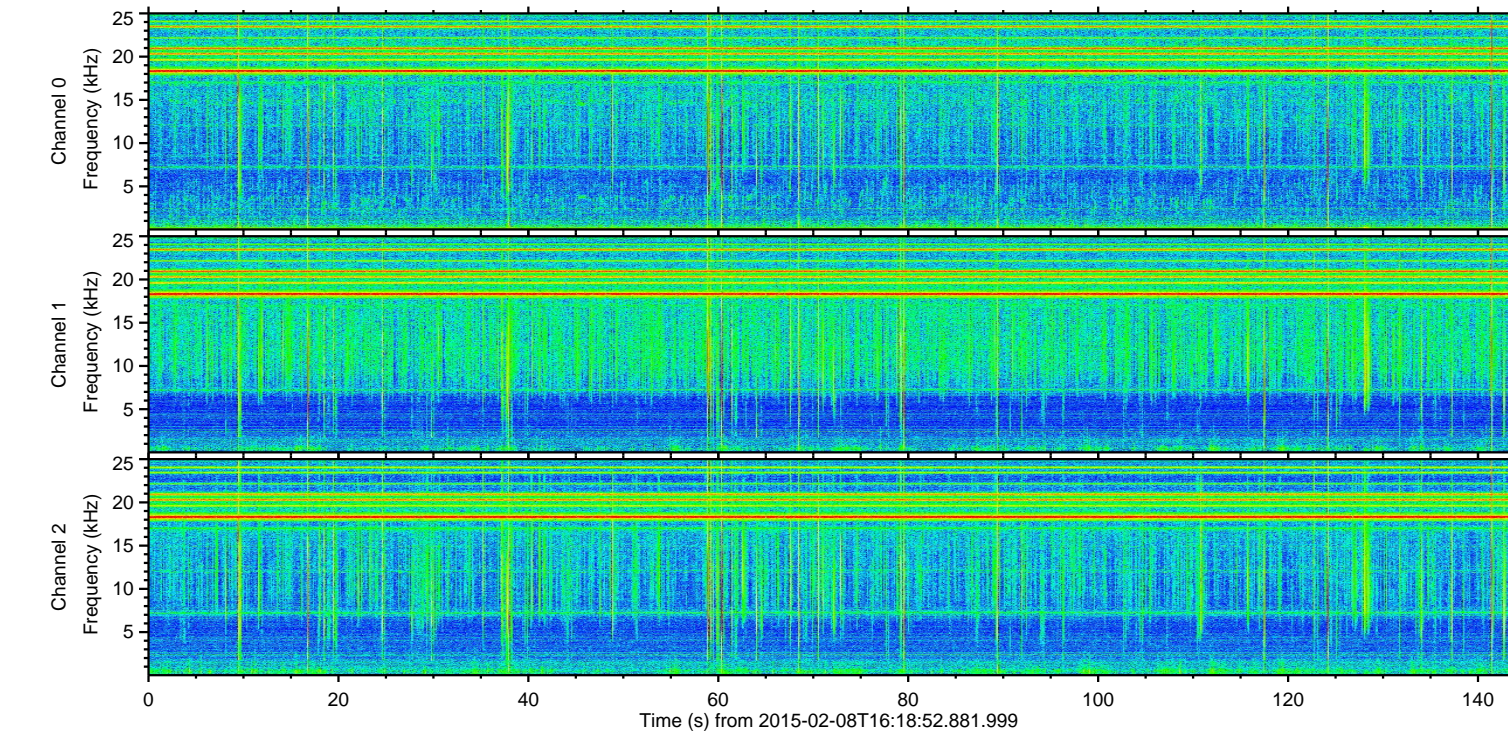
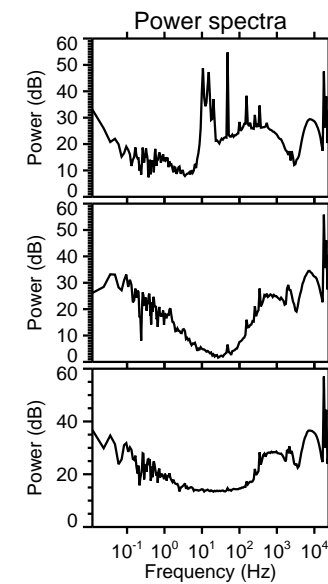
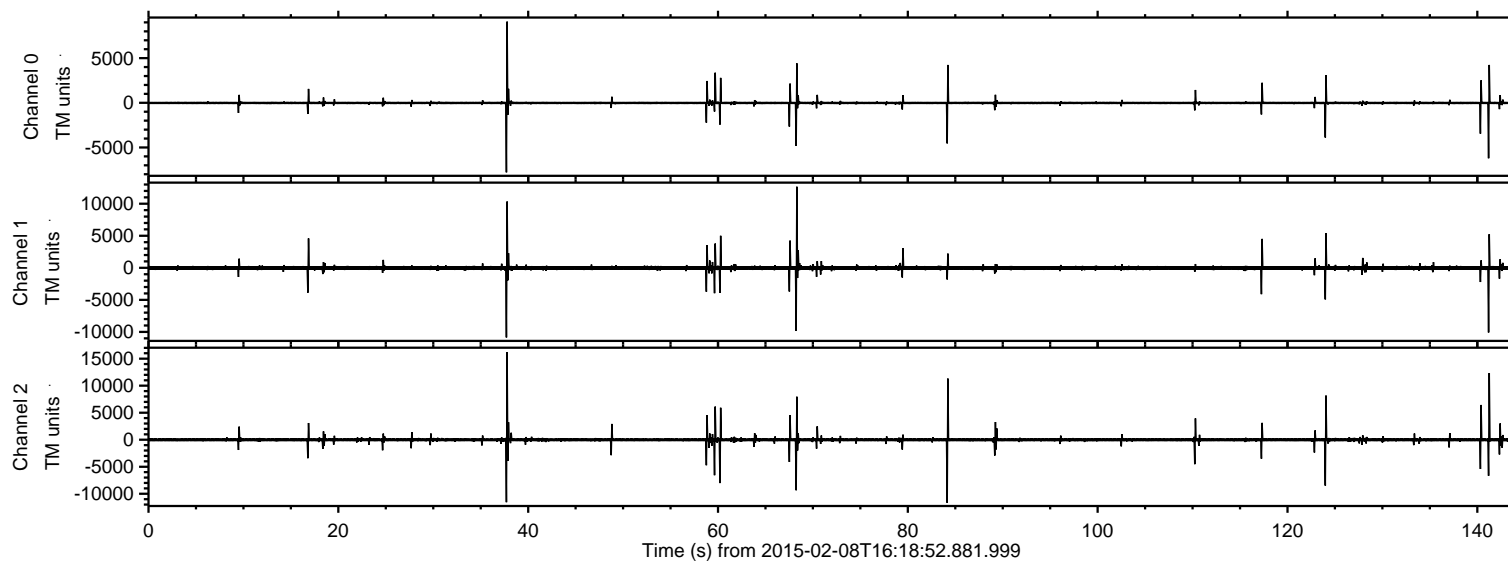
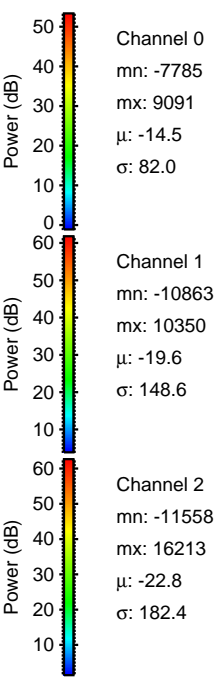
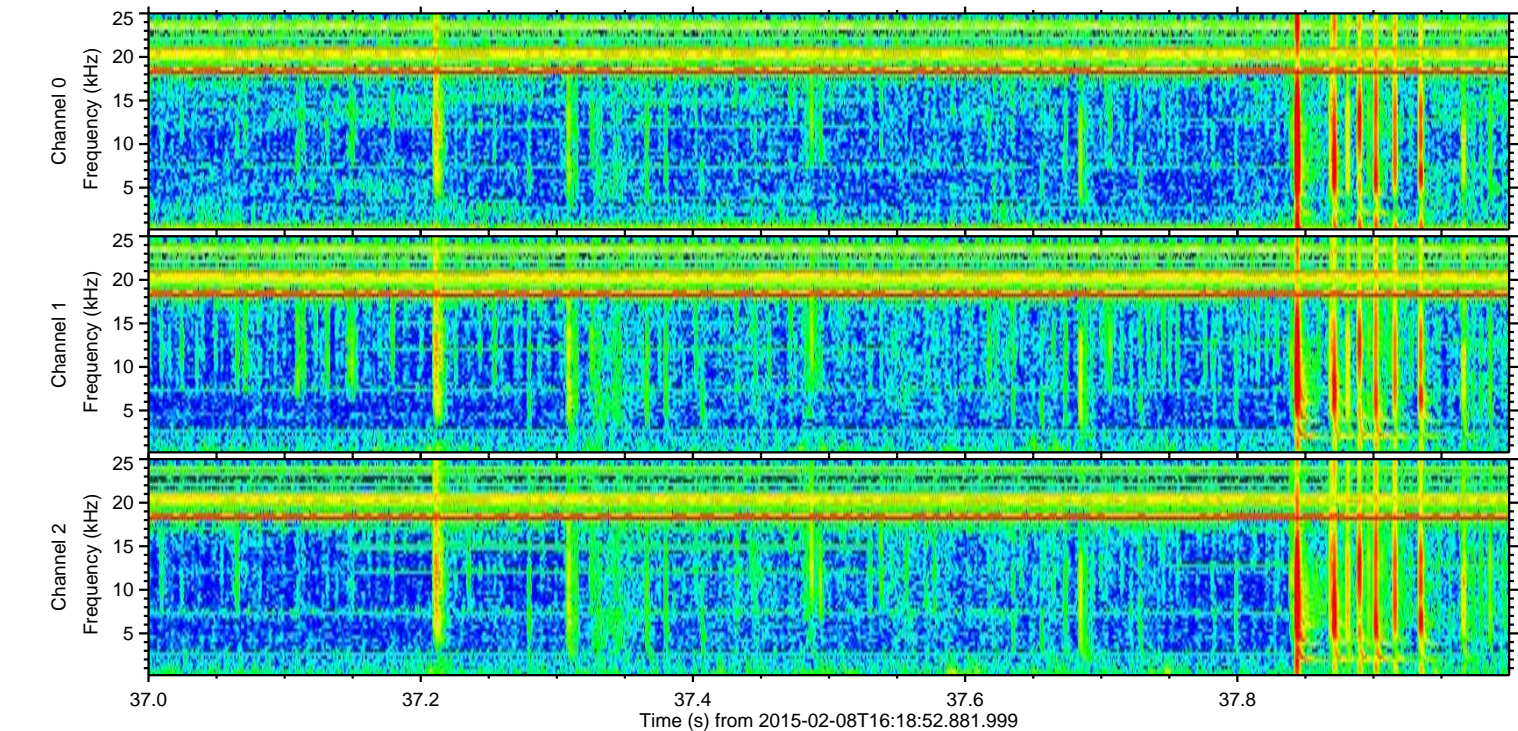
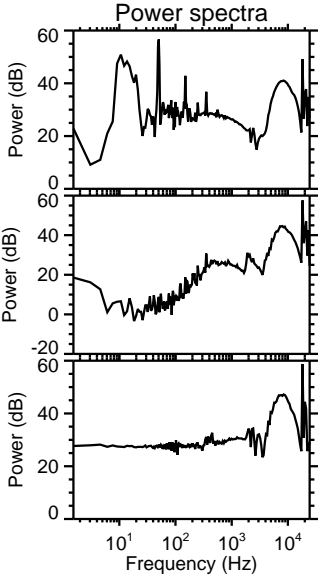
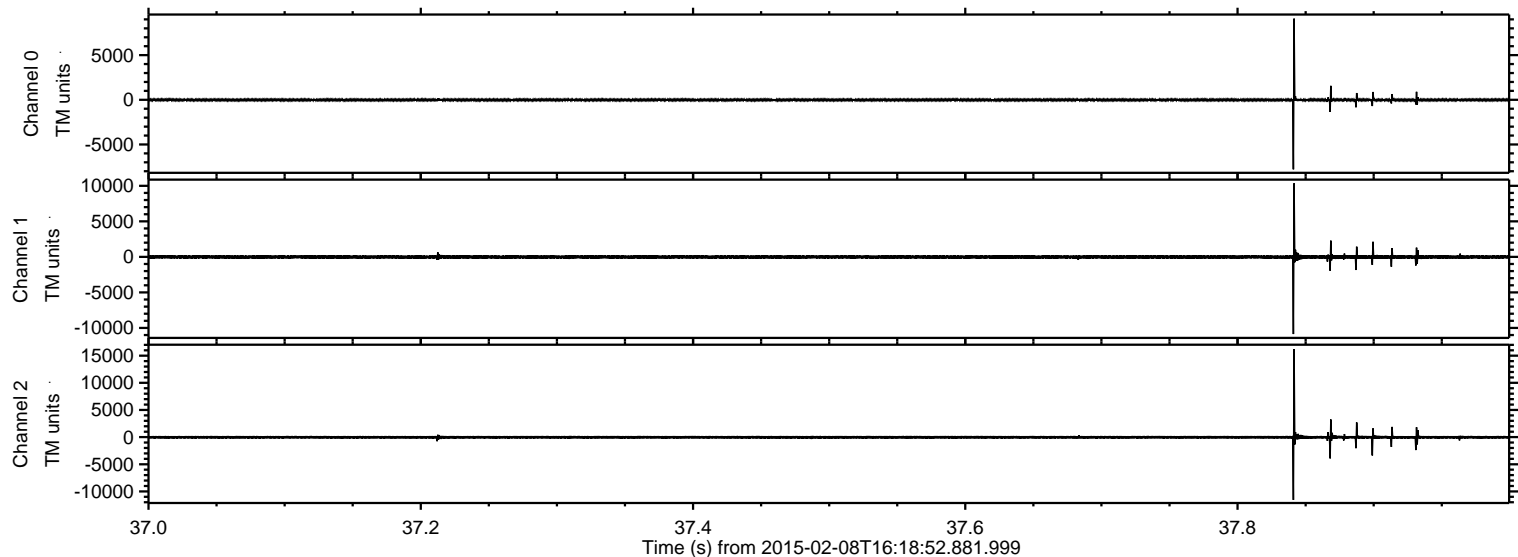


ELMAVAN 3D WAVEFORMS (Measured data sampled at 50 kHz) 49776 packets of 144 samples from 2015-02-08T16:18:52.881.999.

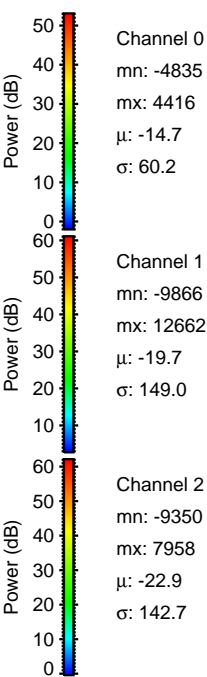
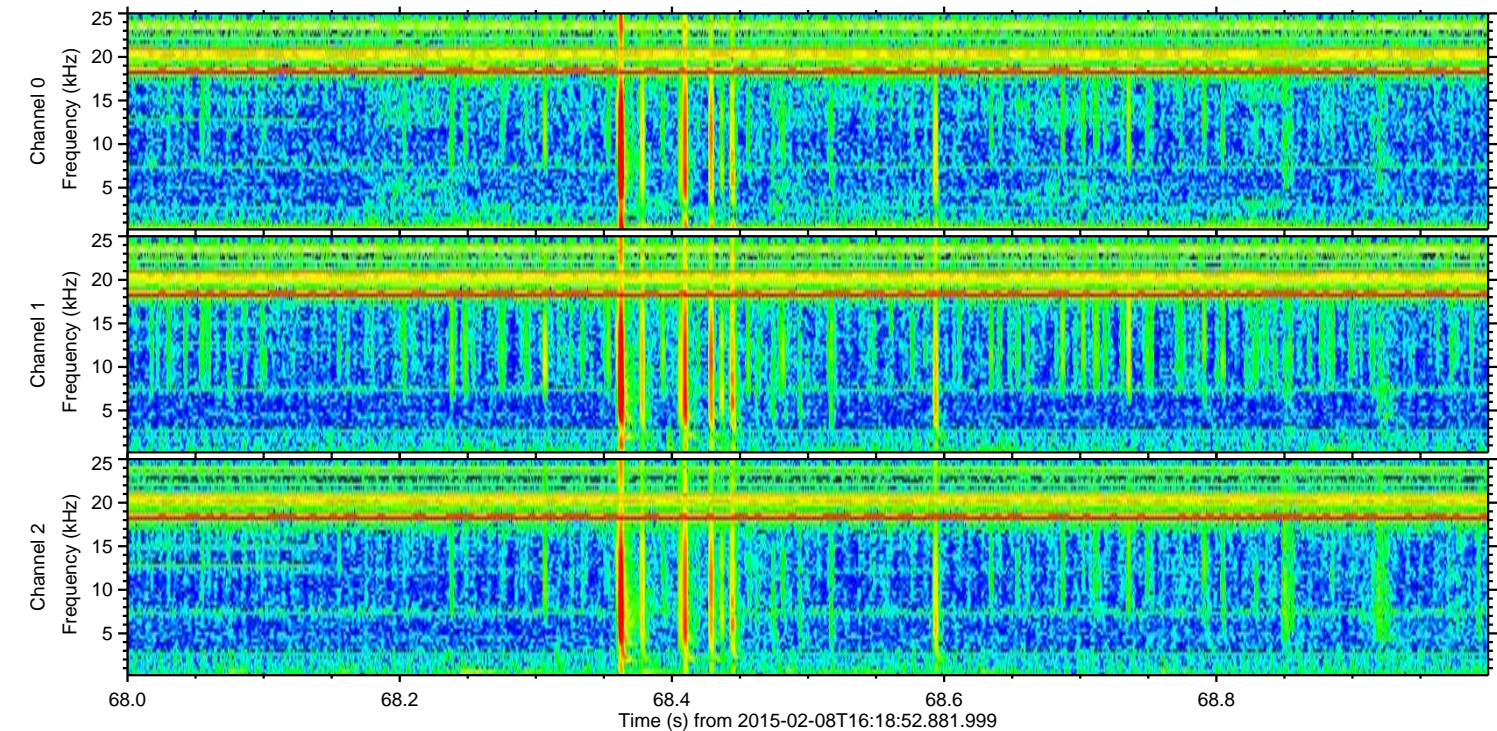
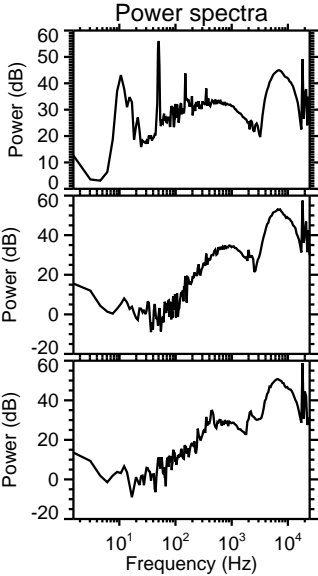
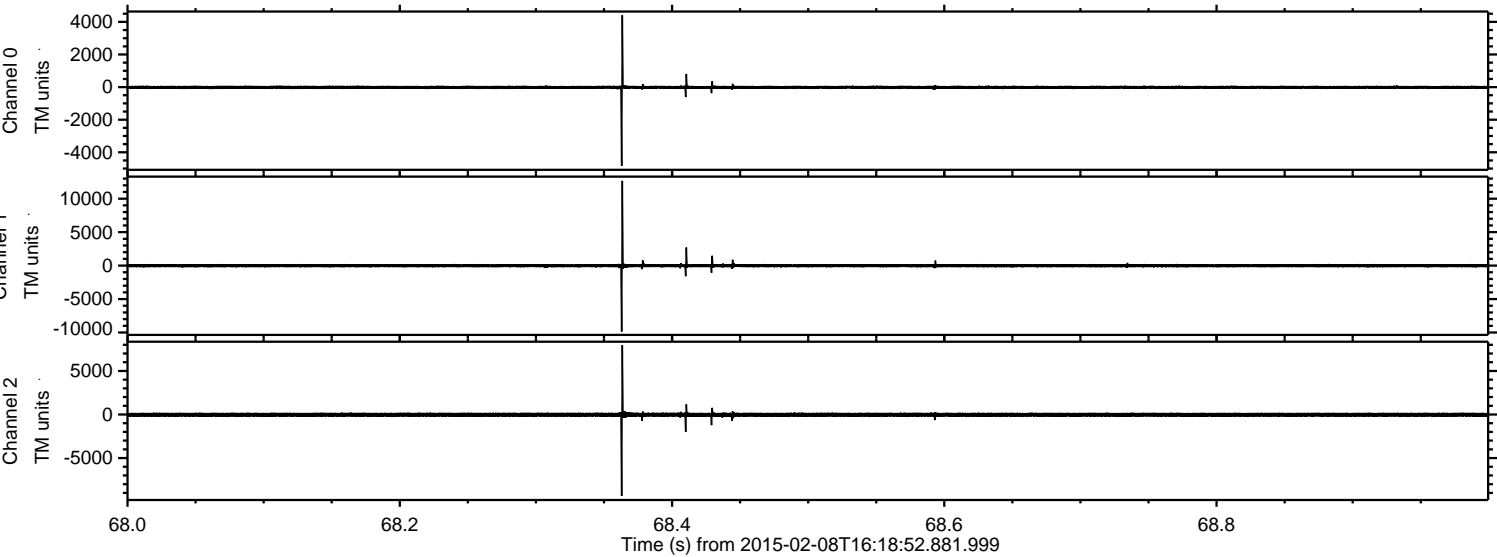
Processed Wed Feb 18 23:24:19 2015 by ELM ver.2012-10-06 from 001__elm20150208_161851__dat00.bin



Processed Wed Feb 18 23:24:38 2015 by ELM ver.2012-10-06 from 001__elm20150208_161851__dat00.bin

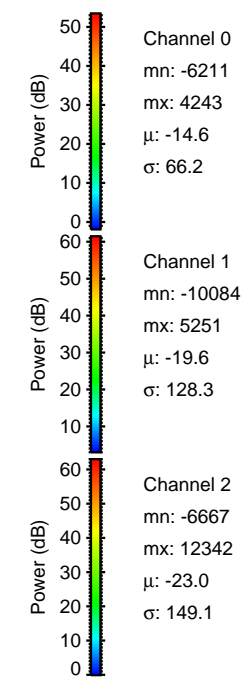
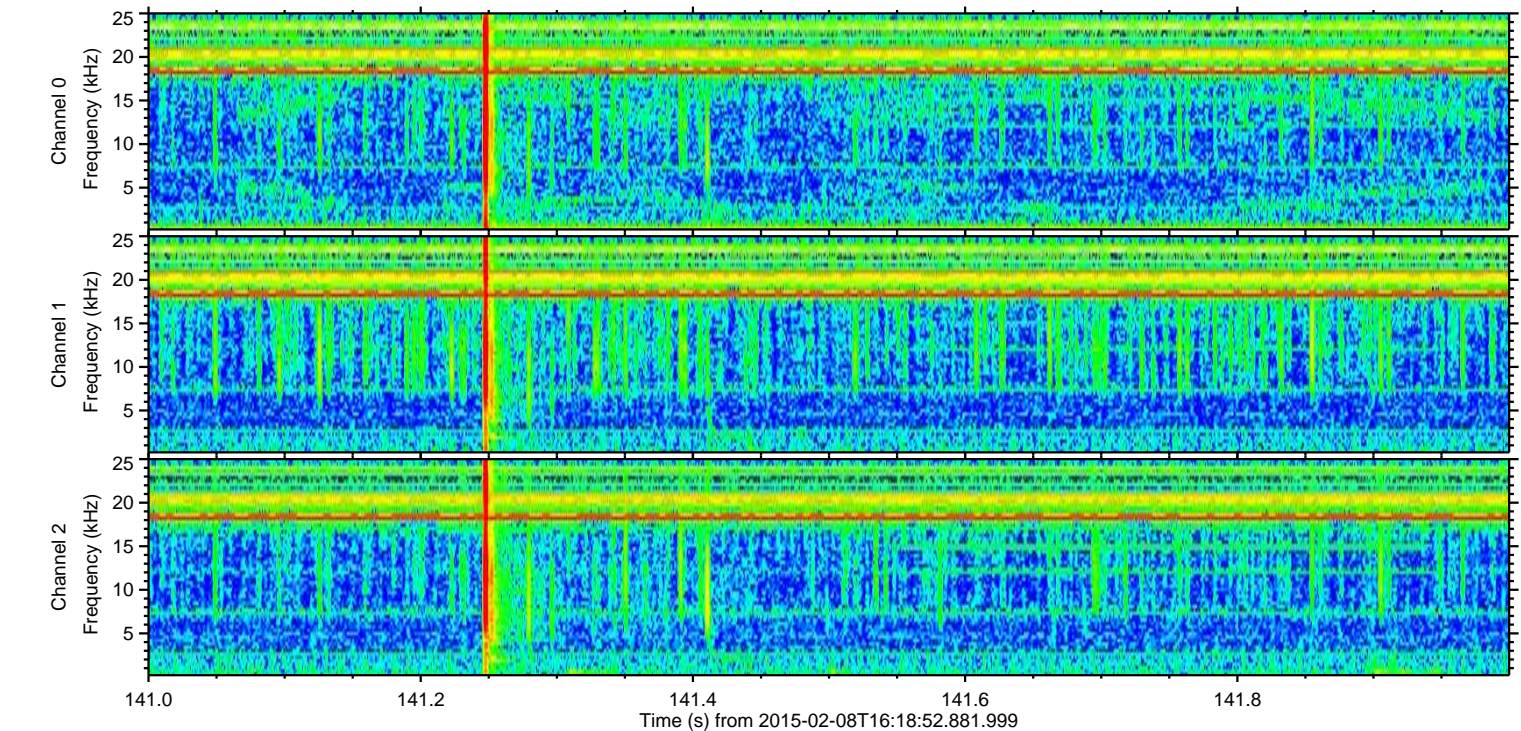
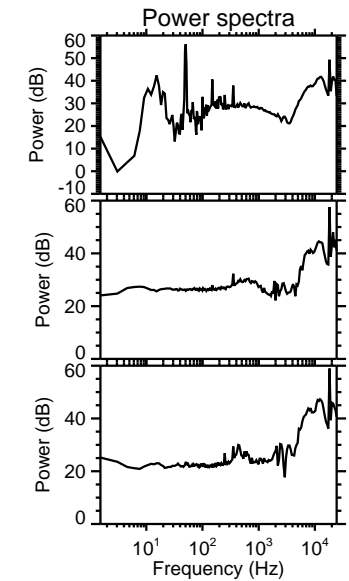
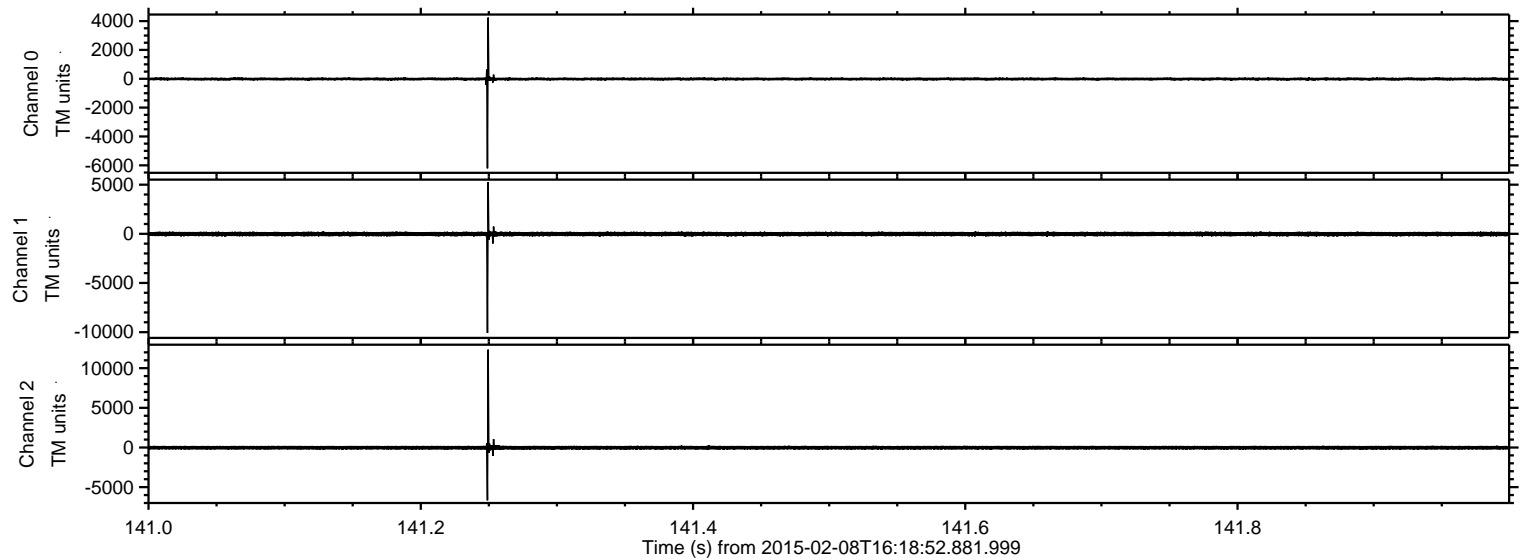


Processed Wed Feb 18 23:24:40 2015 by ELM ver.2012-10-06 from 001__elm20150208_161851__dat00.bin

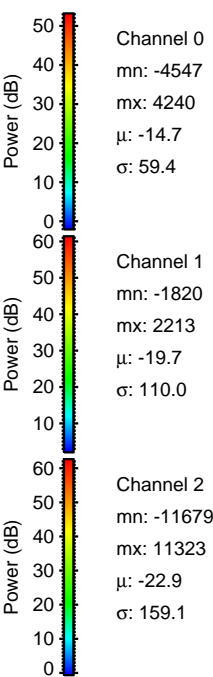
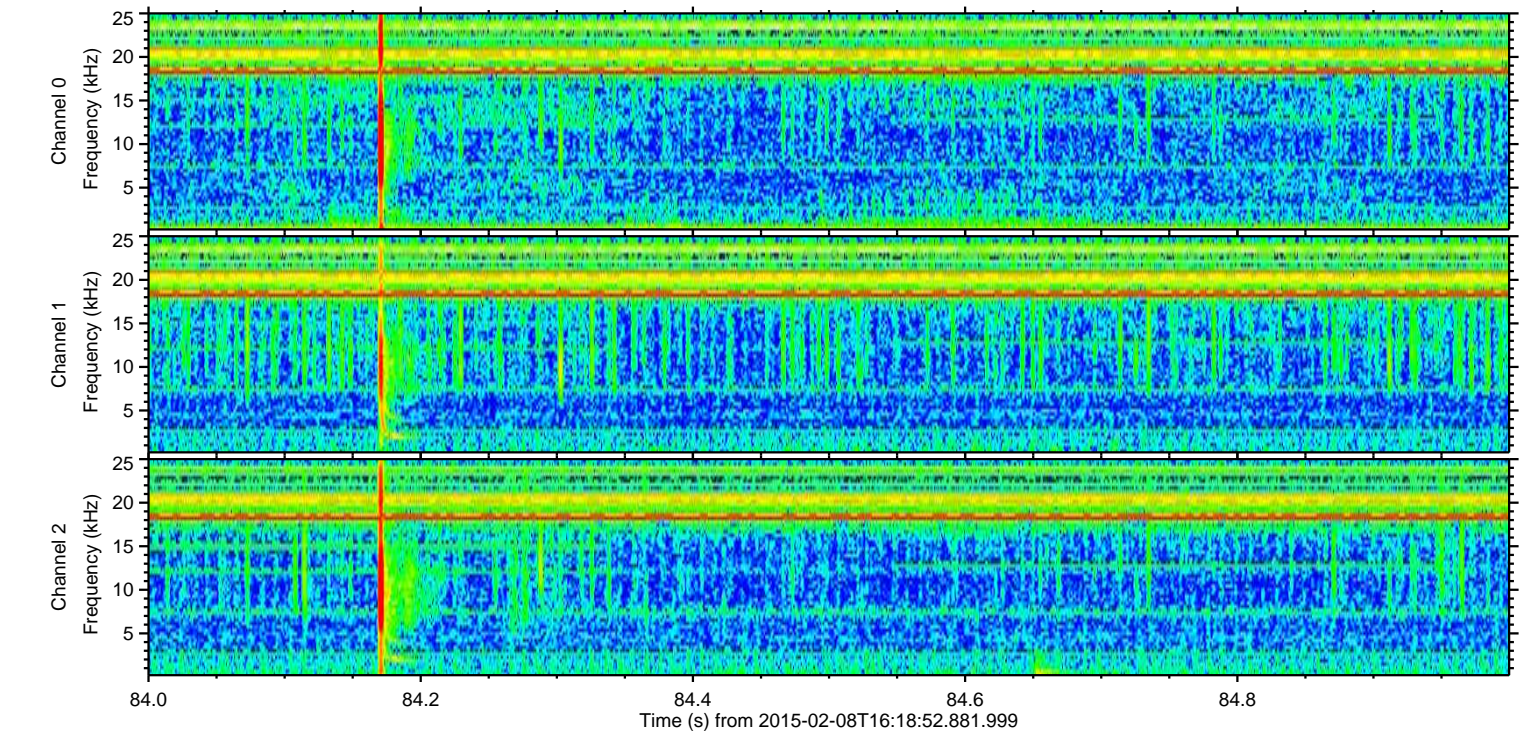
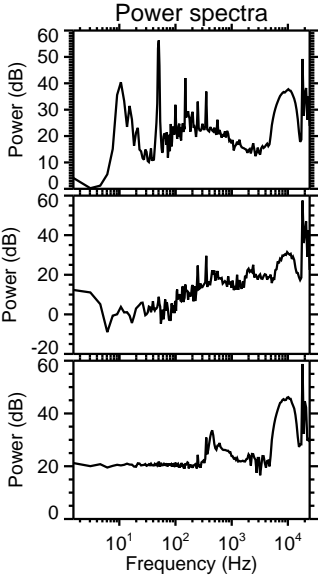
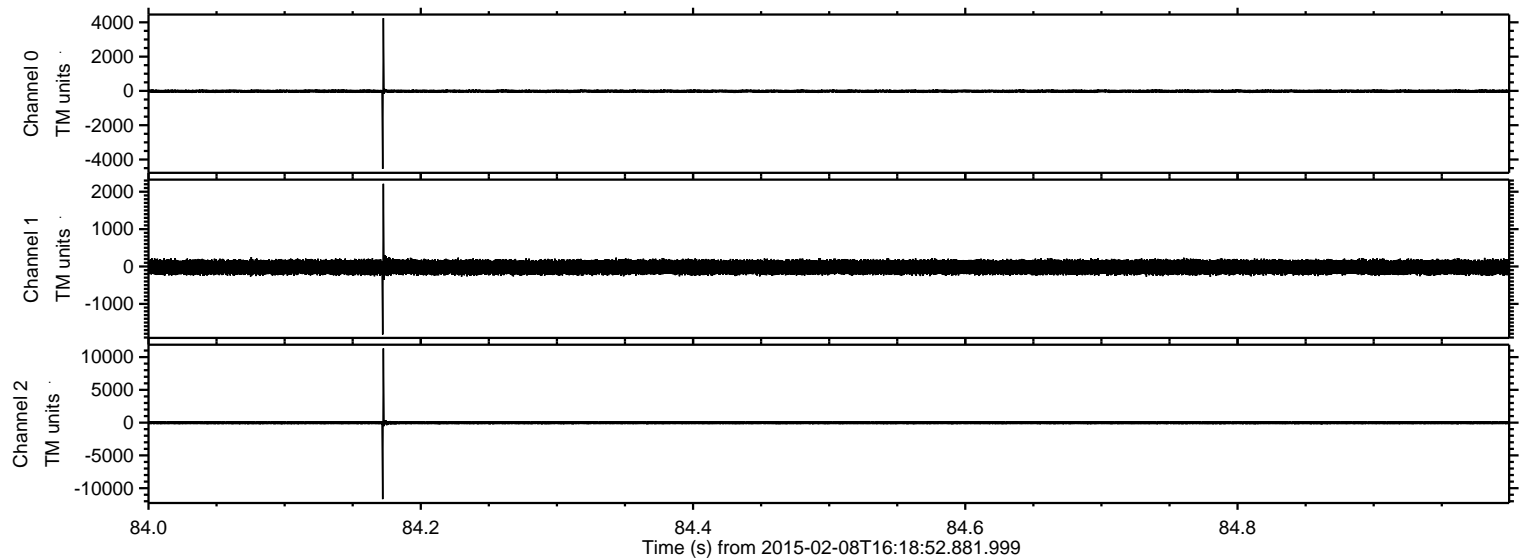


ELMAVAN 3D WAVEFORMS (Measured data sampled at 50 kHz) 49776 packets of 144 samples from 2015-02-08T16:18:52.881.999. Part 142/144

Processed Wed Feb 18 23:24:42 2015 by ELM ver.2012-10-06 from 001__elm20150208_161851__dat00.bin

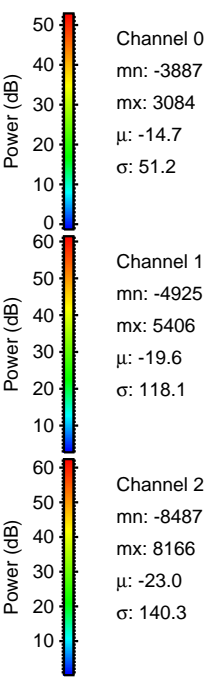
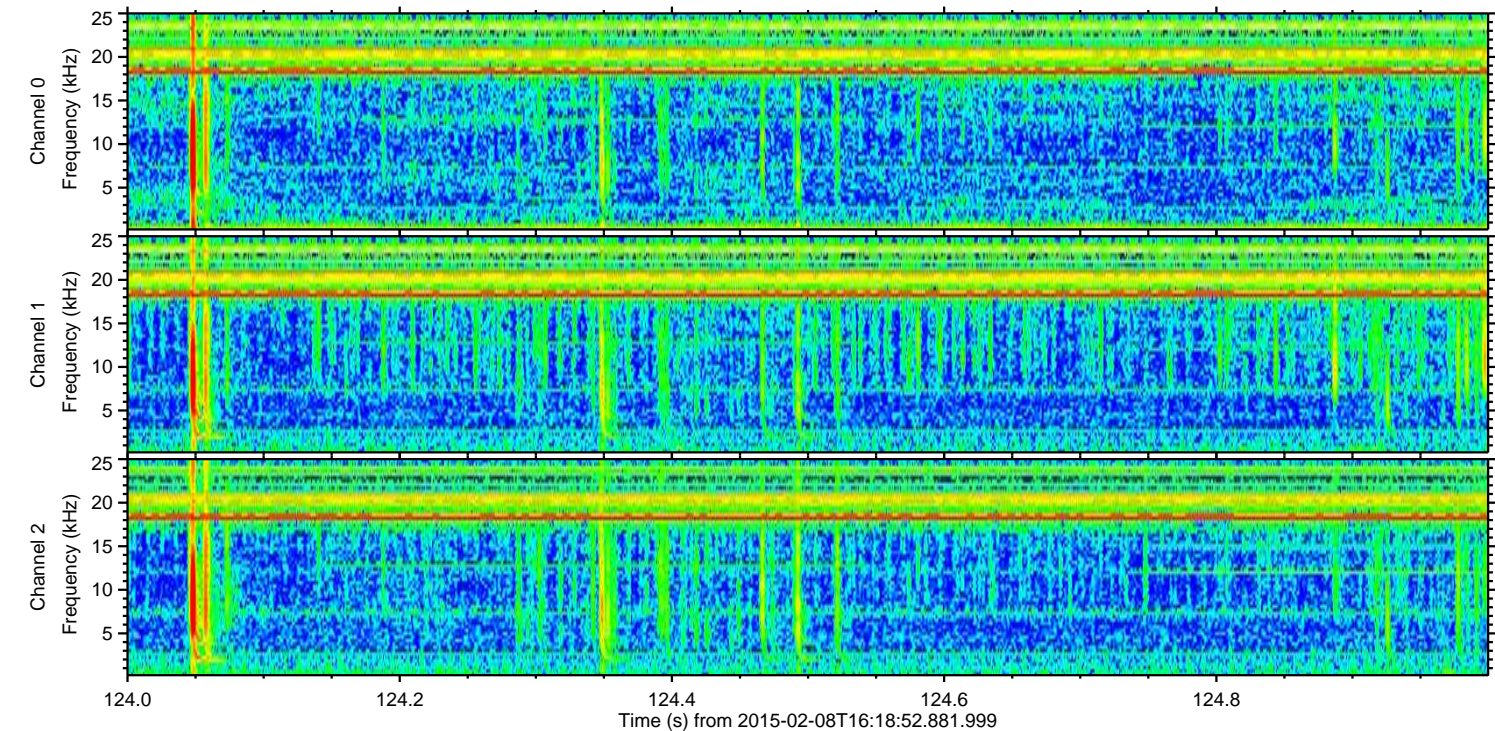
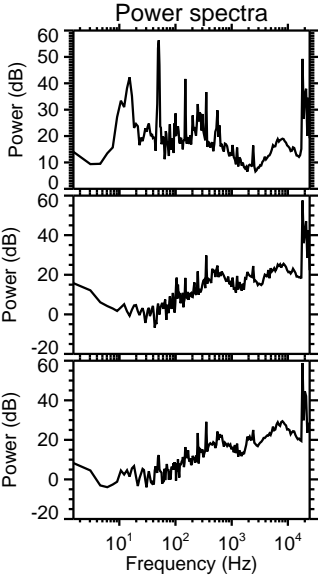
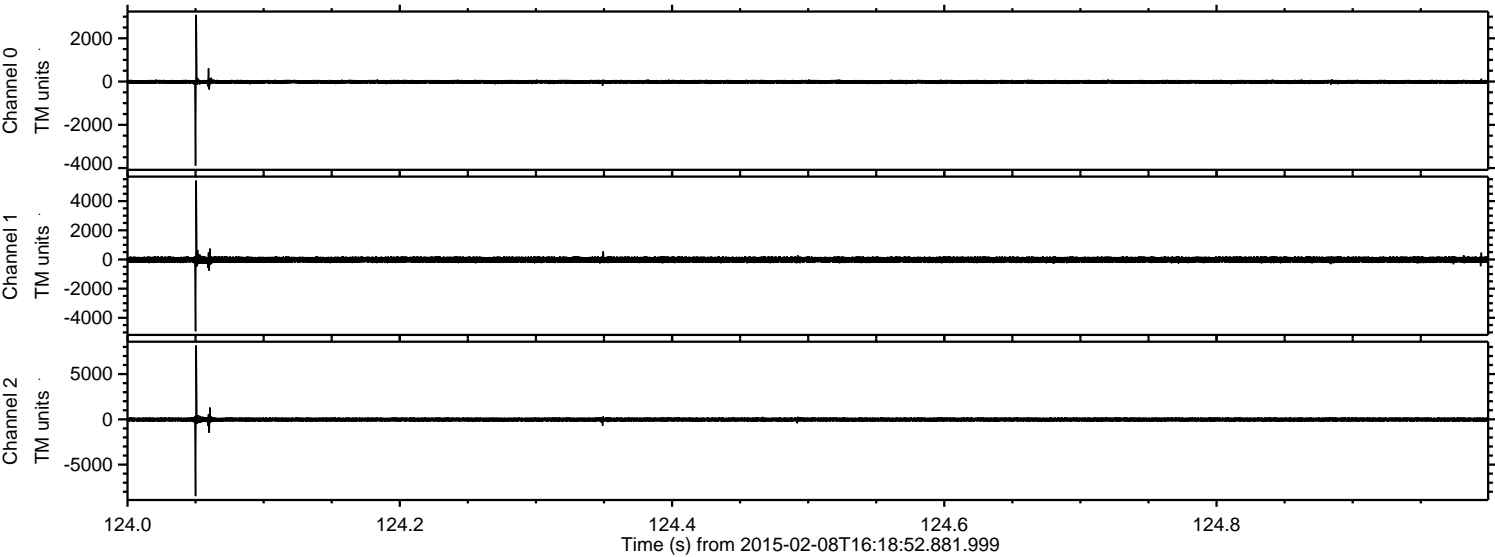


Processed Wed Feb 18 23:24:43 2015 by ELM ver.2012-10-06 from 001__elm20150208_161851__dat00.bin

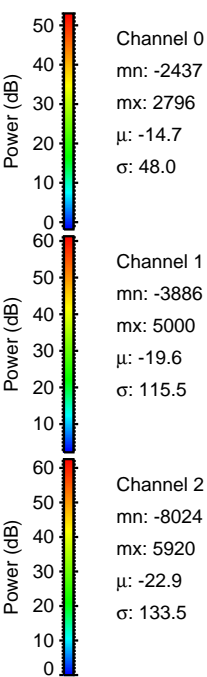
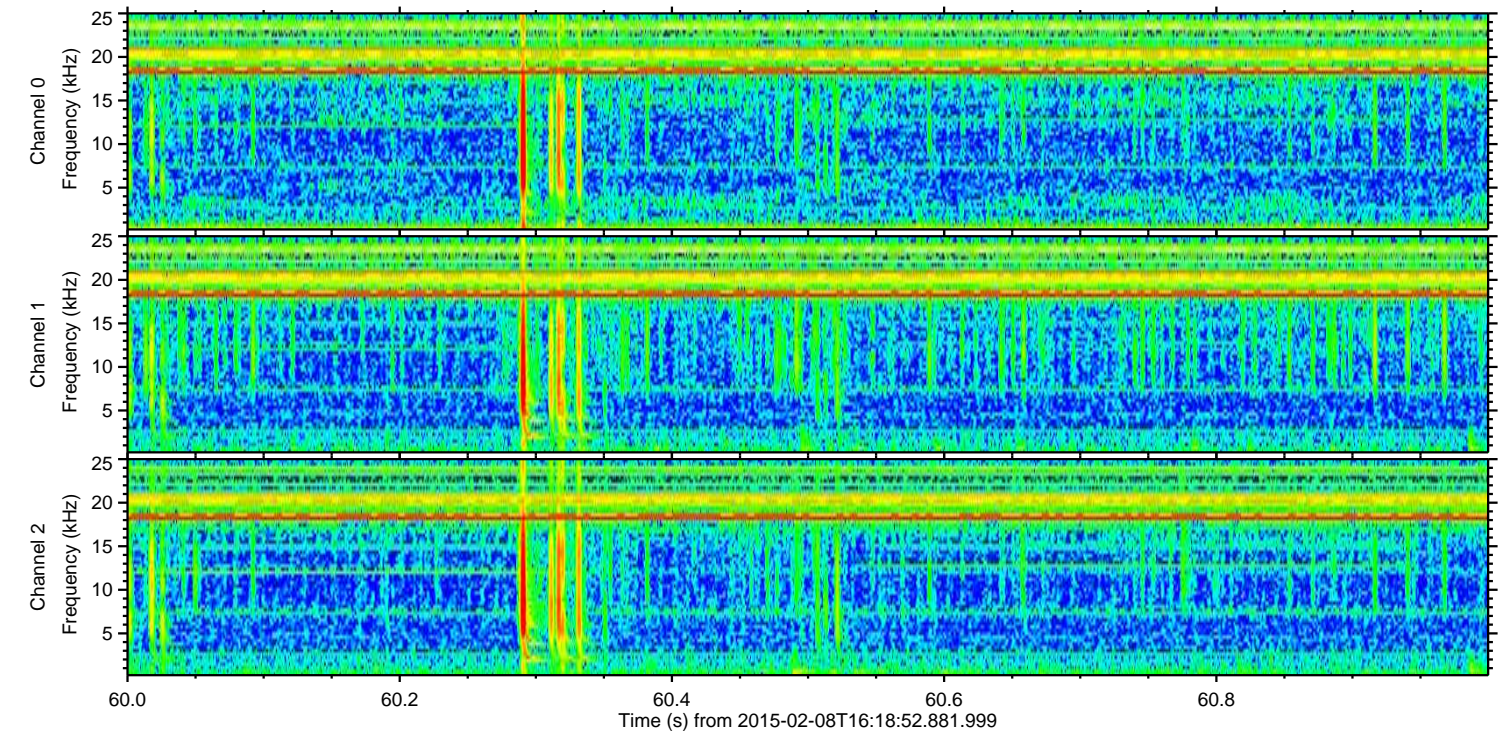
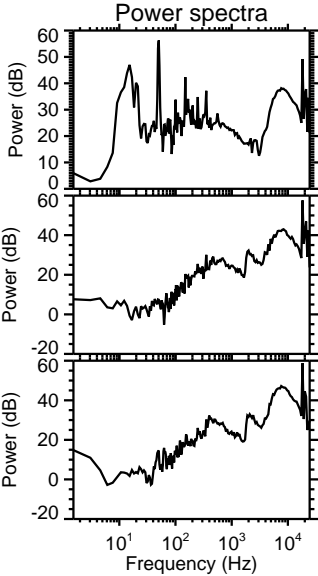
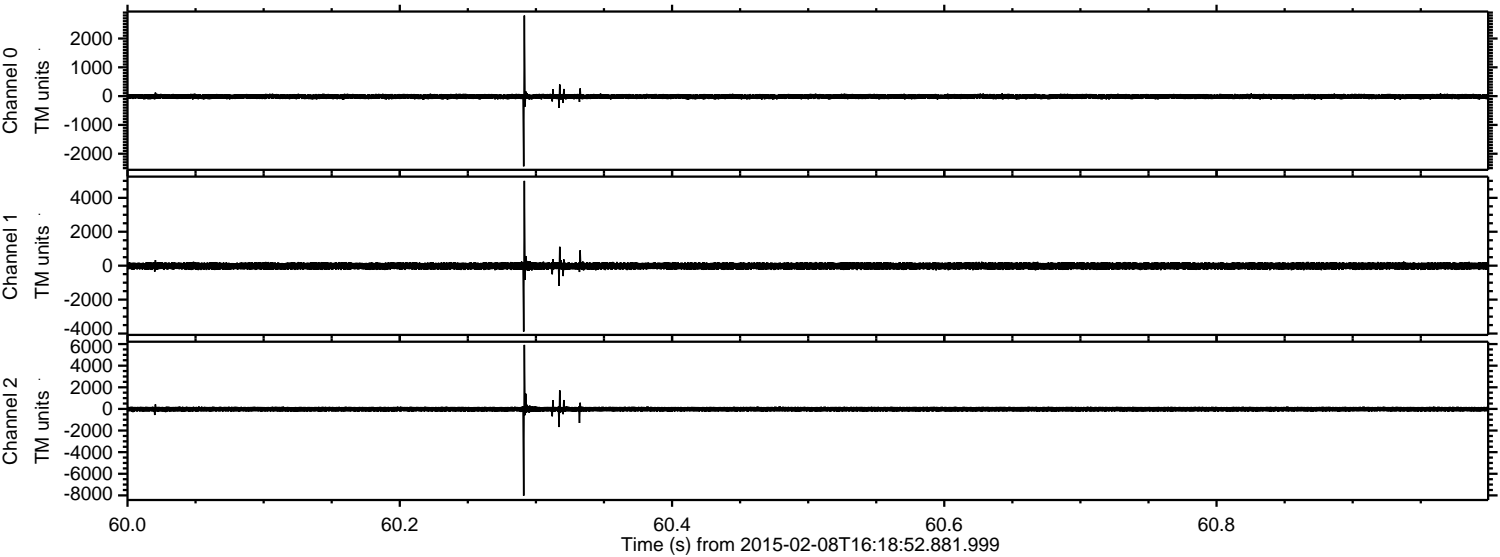


ELMAVAN 3D WAVEFORMS (Measured data sampled at 50 kHz) 49776 packets of 144 samples from 2015-02-08T16:18:52.881.999. Part 125/144

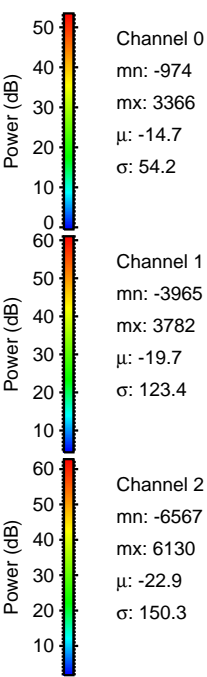
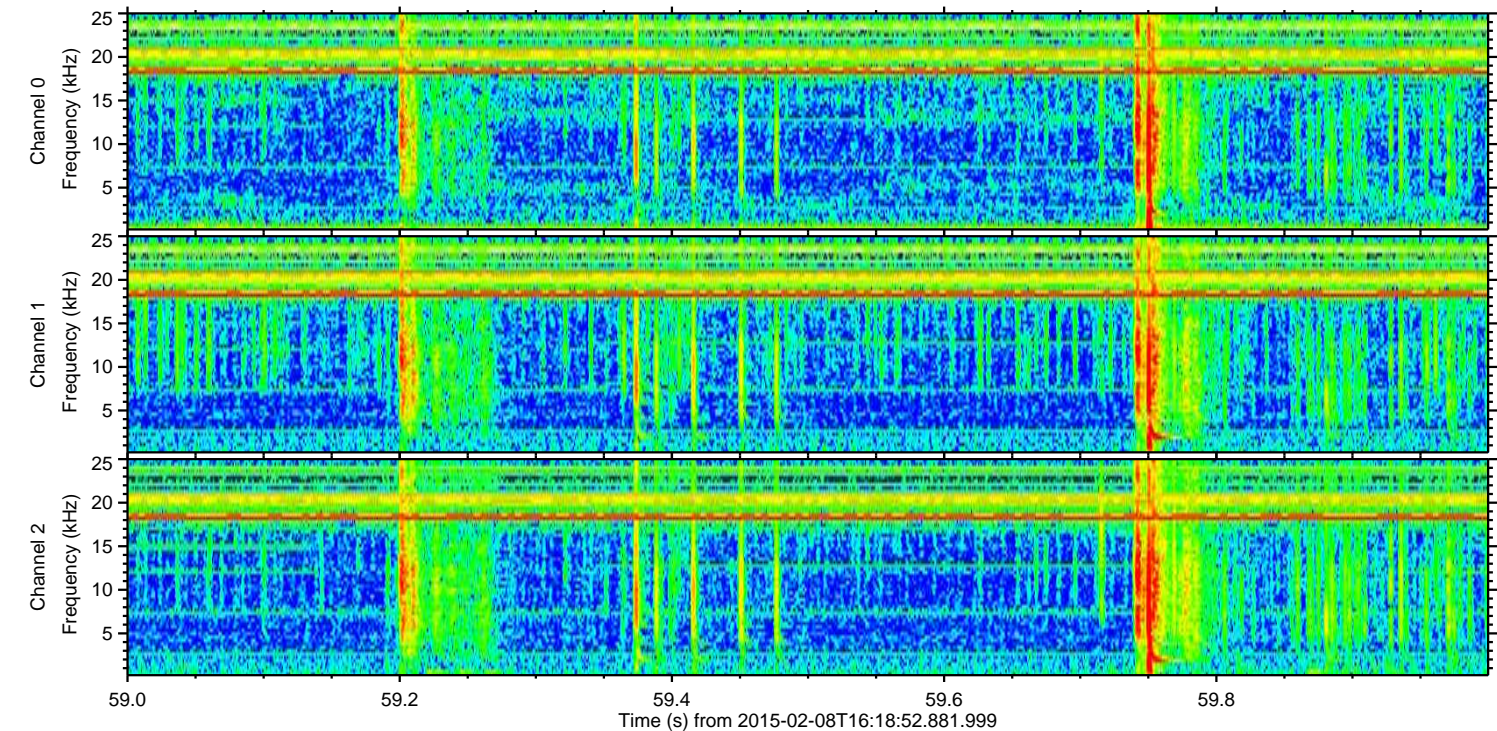
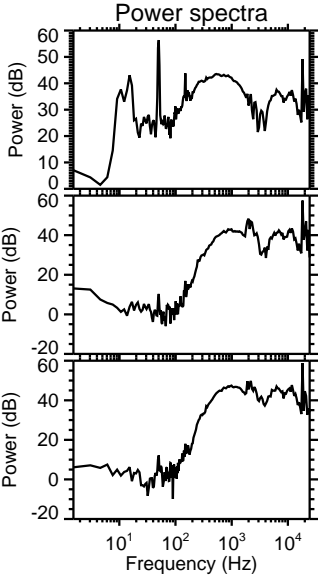
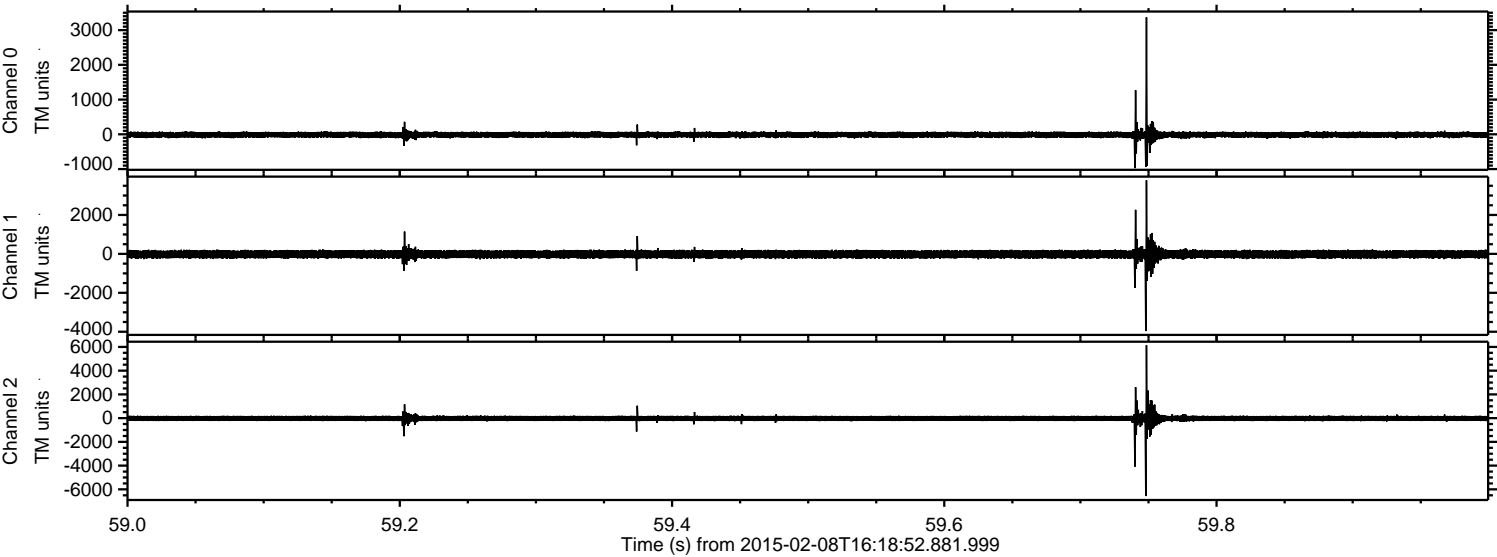
Processed Wed Feb 18 23:24:44 2015 by ELM ver.2012-10-06 from 001__elm20150208_161851__dat00.bin



Processed Wed Feb 18 23:24:46 2015 by ELM ver.2012-10-06 from 001__elm20150208_161851__dat00.bin

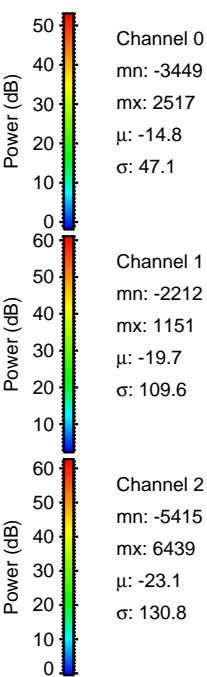
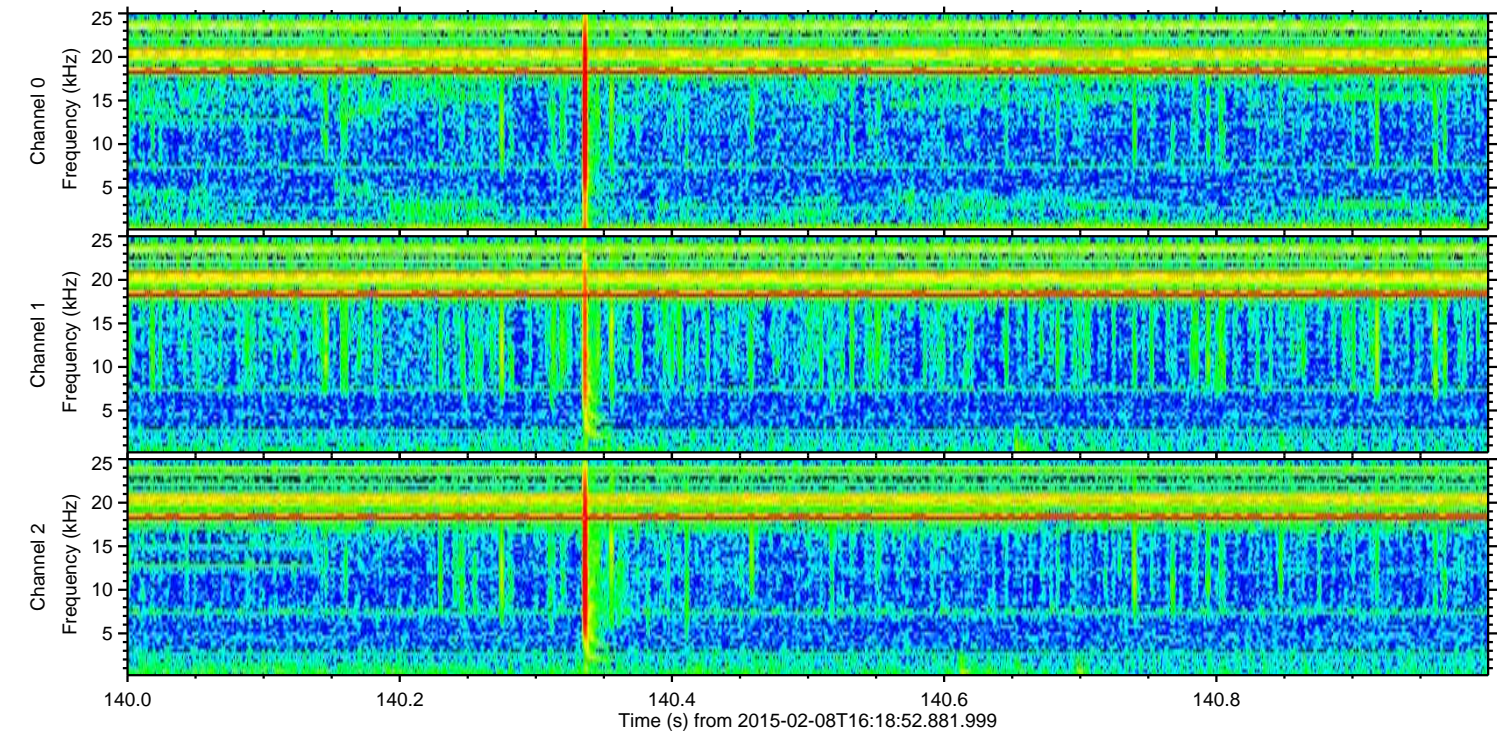
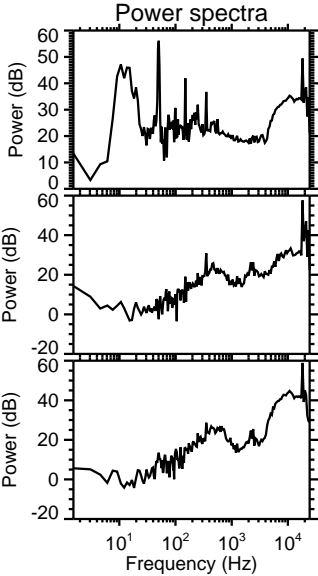
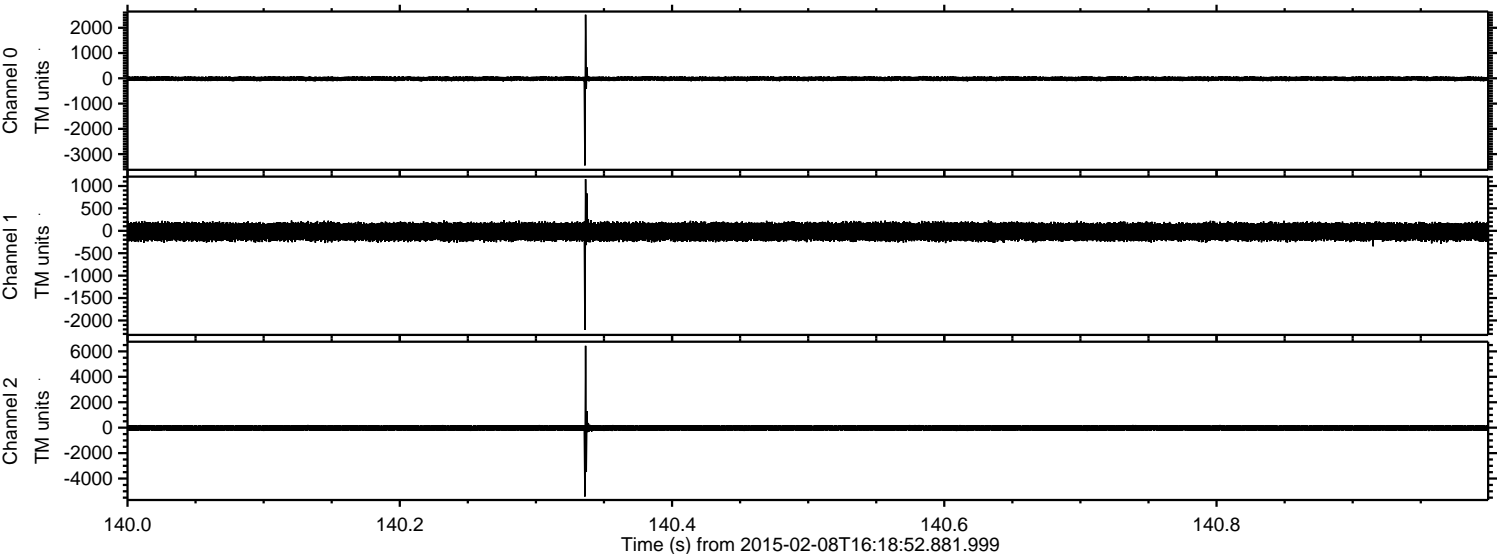


Processed Wed Feb 18 23:24:47 2015 by ELM ver.2012-10-06 from 001__elm20150208_161851__dat00.bin

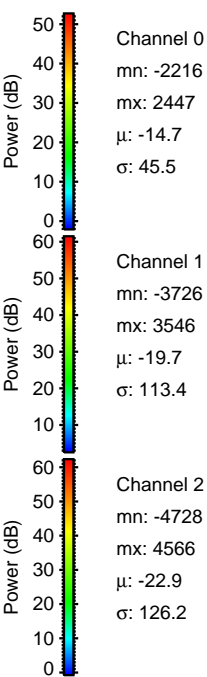
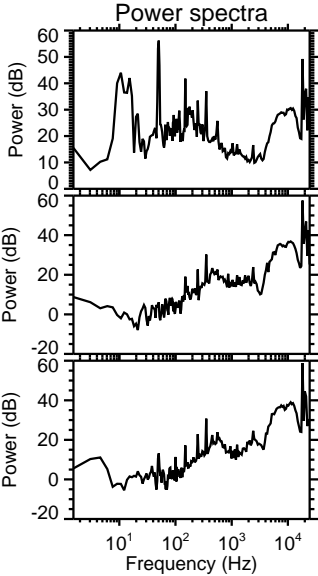
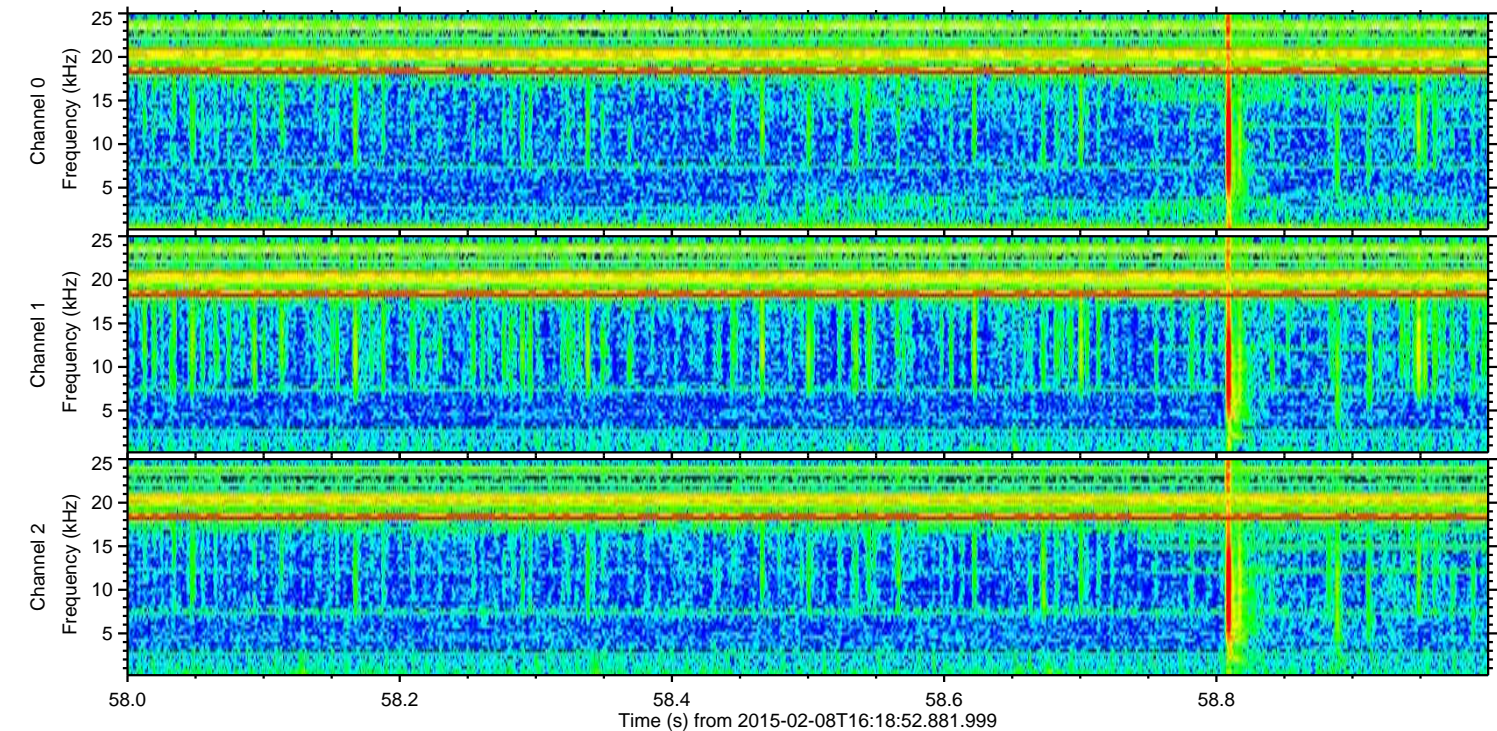
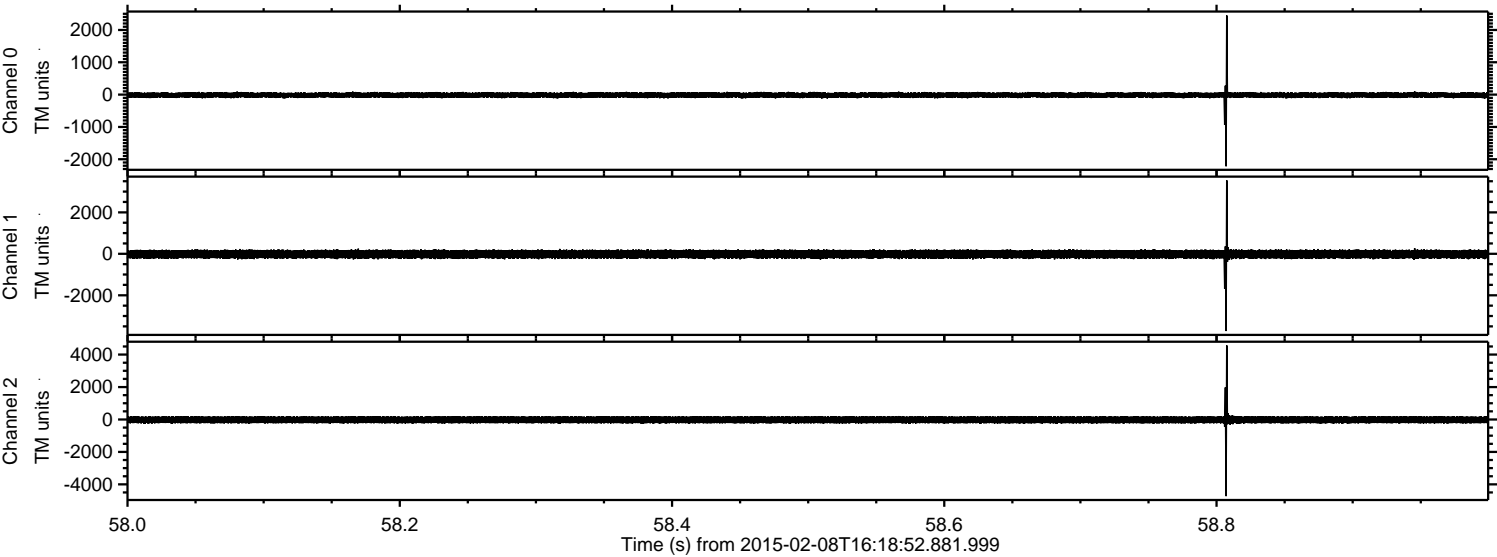


ELMAVAN 3D WAVEFORMS (Measured data sampled at 50 kHz) 49776 packets of 144 samples from 2015-02-08T16:18:52.881.999. Part 141/144

Processed Wed Feb 18 23:24:48 2015 by ELM ver.2012-10-06 from 001__elm20150208_161851__dat00.bin



Processed Wed Feb 18 23:24:50 2015 by ELM ver.2012-10-06 from 001__elm20150208_161851__dat00.bin



Channel 0
mn: -2216
mx: 2447
 μ : -14.7
 σ : 45.5

Channel 1
mn: -3726
mx: 3546
 μ : -19.7
 σ : 113.4

Channel 2
mn: -4728
mx: 4566
 μ : -22.9
 σ : 126.2

Processed Wed Feb 18 23:24:53 2015 by ELM ver.2012-10-06 from 001__elm20150208_161851__dat00.bin

