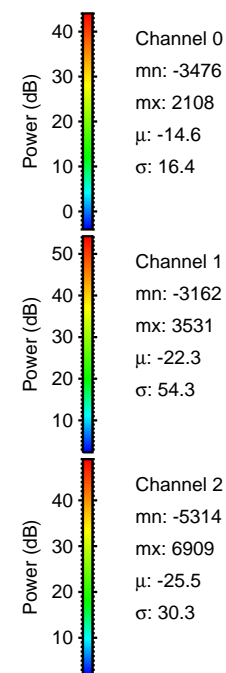
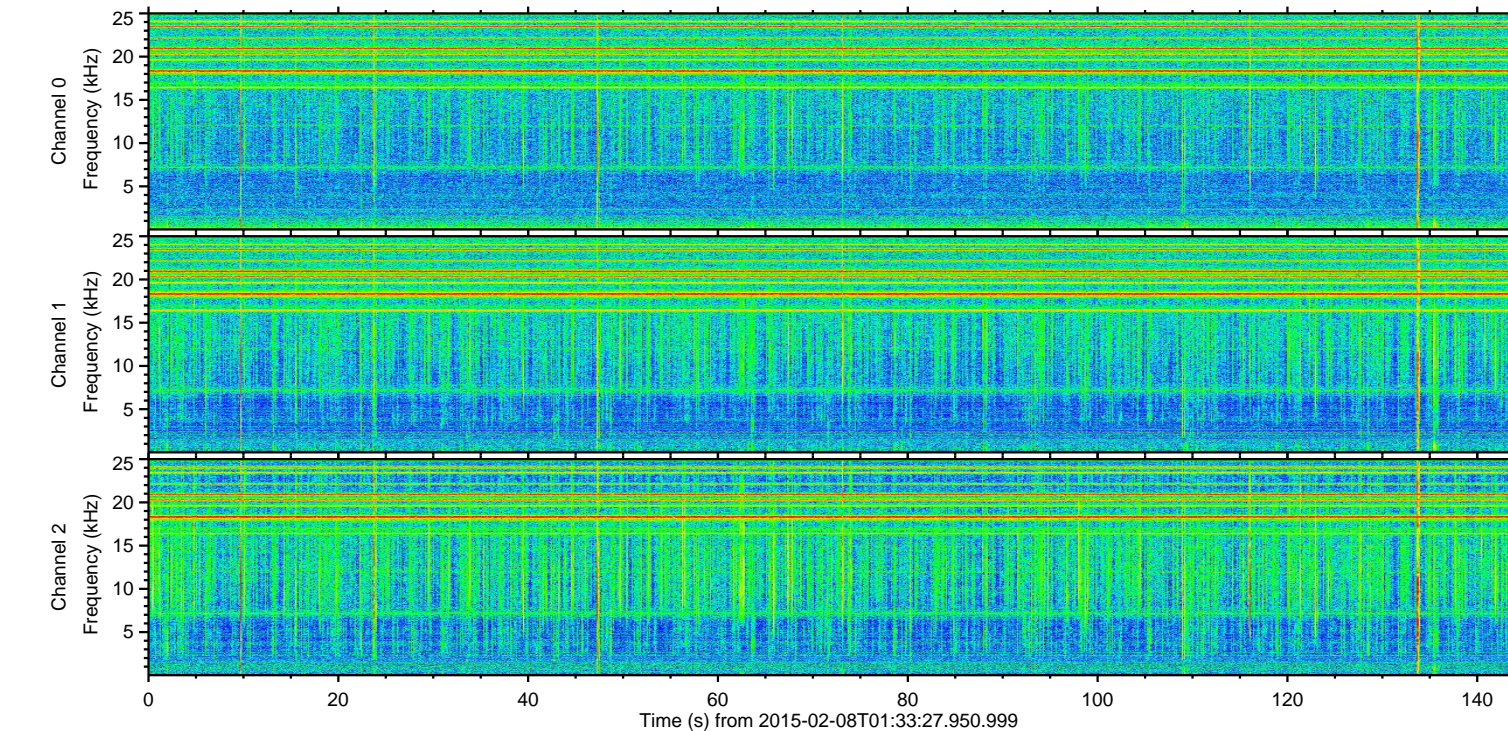
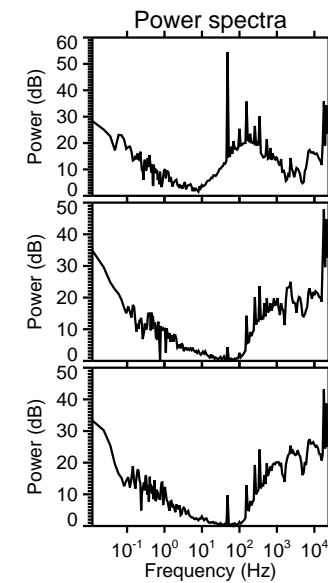
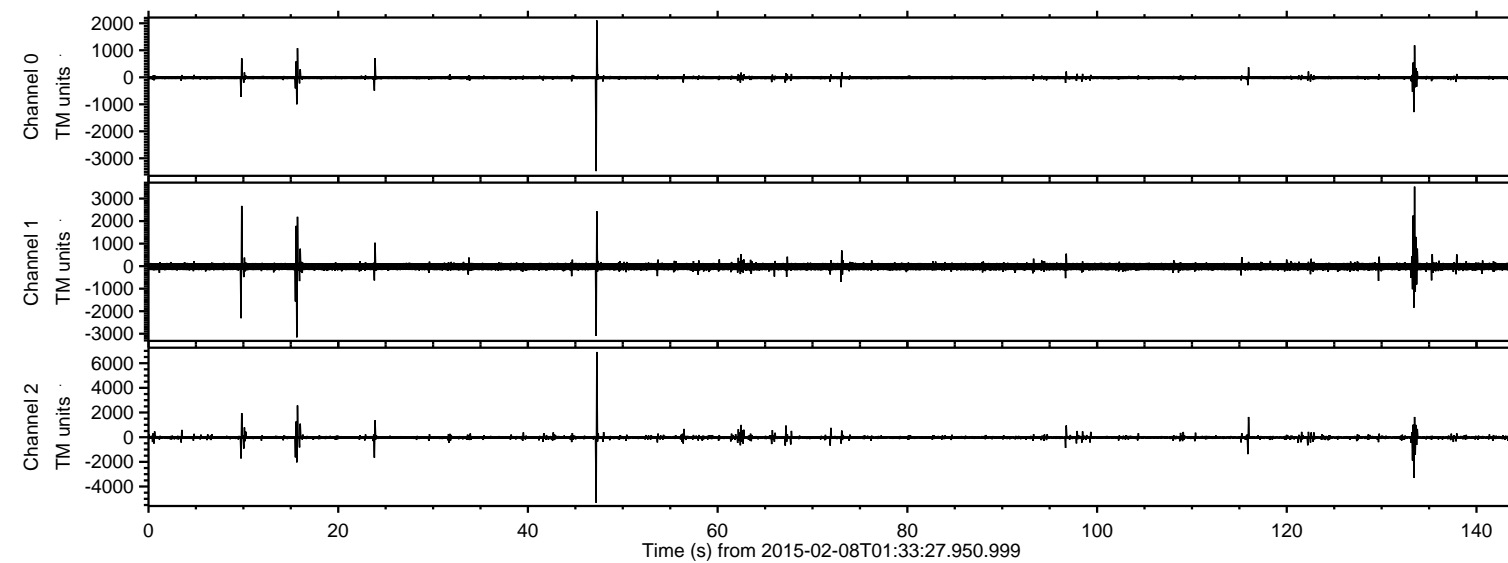


ELMAVAN 3D WAVEFORMS (Measured data sampled at 50 kHz) 49806 packets of 144 samples from 2015-02-08T01:33:27.950.999.

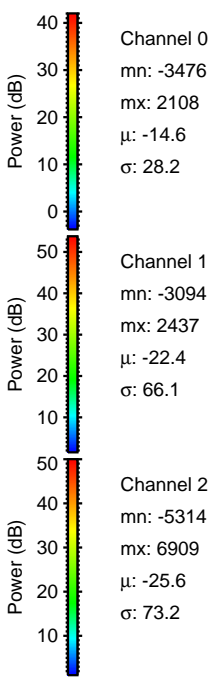
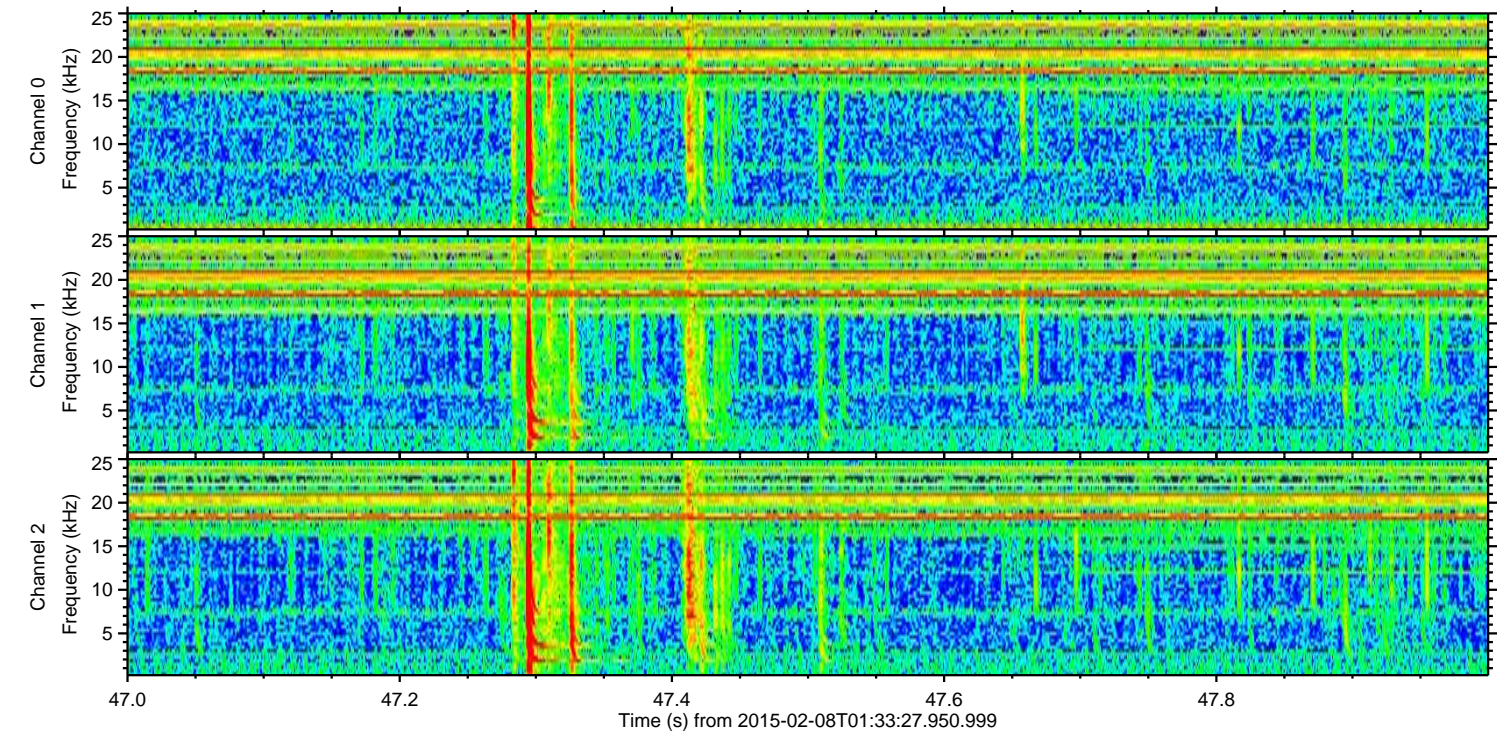
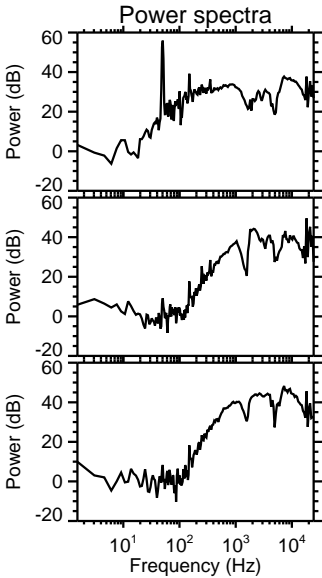
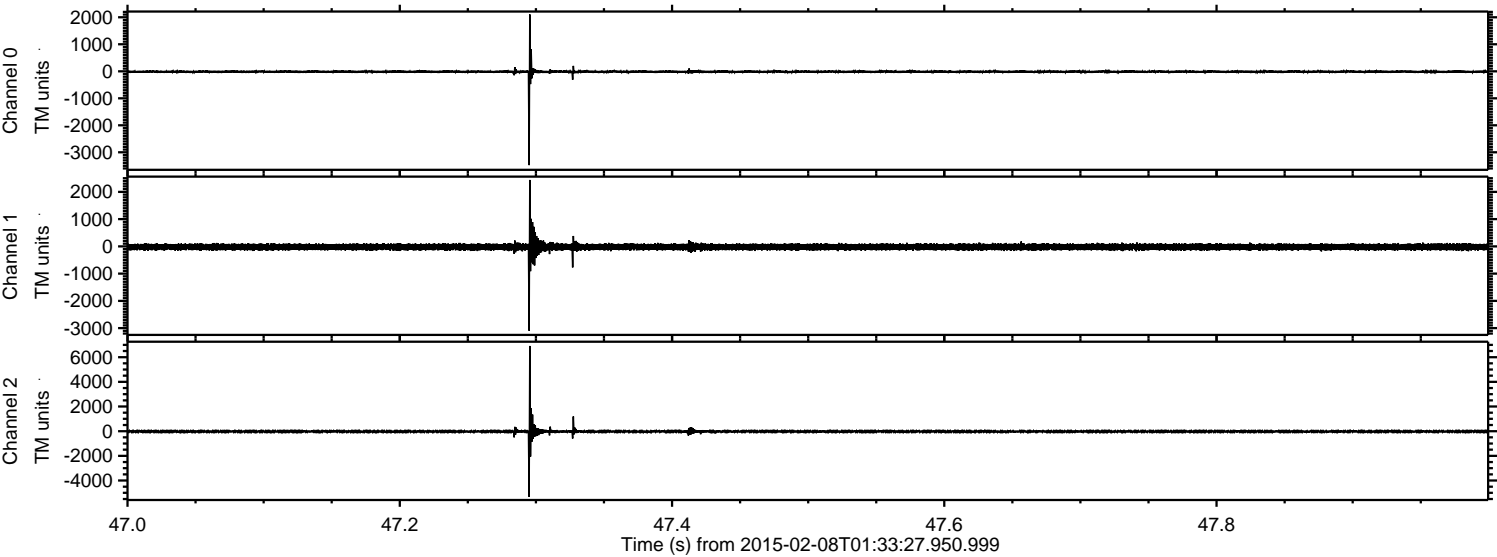
Processed Wed Feb 18 18:00:17 2015 by ELM ver.2012-10-06 from 001\_\_elm20150208\_013326\_\_dat00.bin





ELMAVAN 3D WAVEFORMS (Measured data sampled at 50 kHz) 49806 packets of 144 samples from 2015-02-08T01:33:27.950.999. Part 48/144

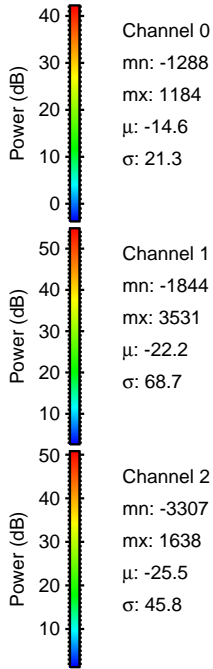
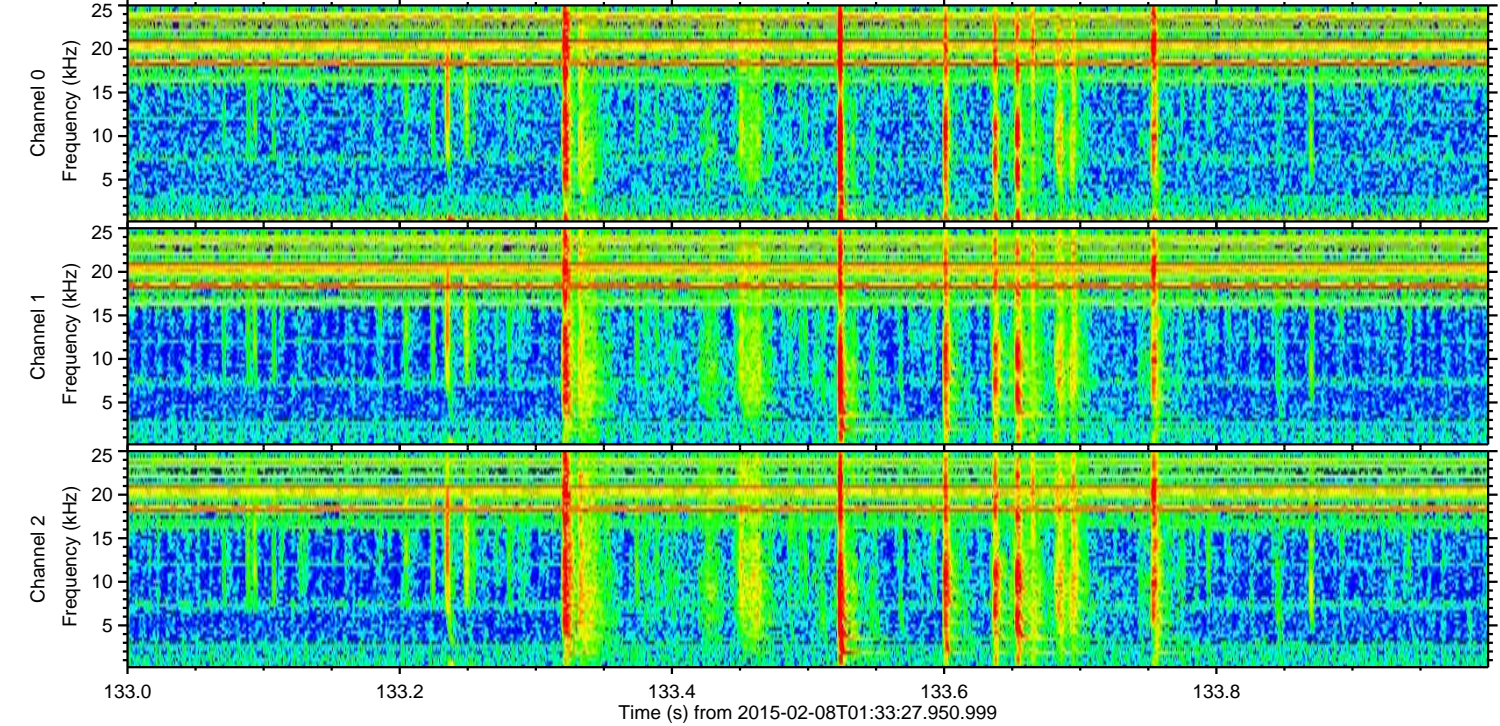
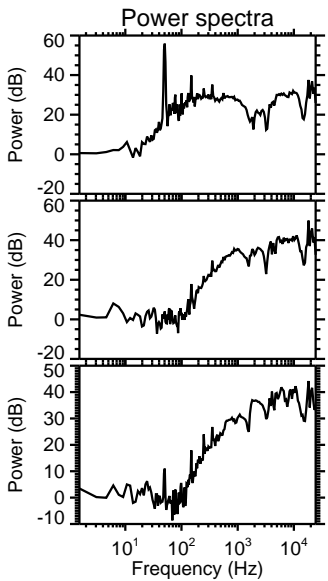
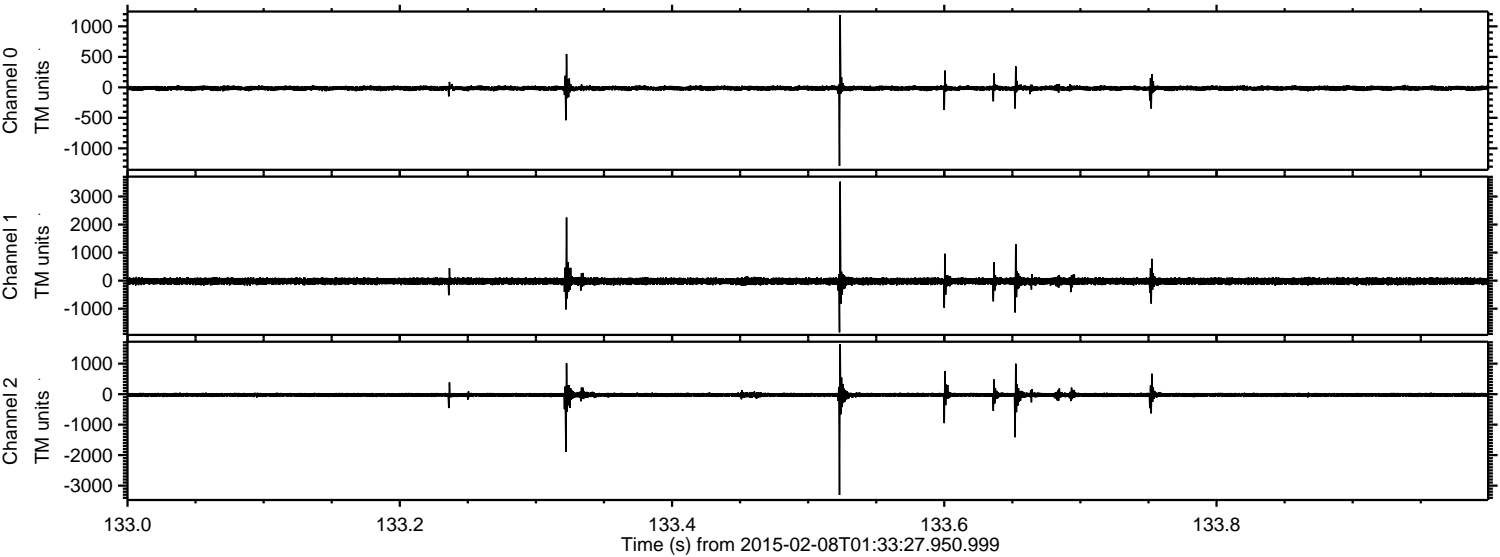
Processed Wed Feb 18 18:00:41 2015 by ELM ver.2012-10-06 from 001\_\_elm20150208\_013326\_\_dat00.bin





ELMAVAN 3D WAVEFORMS (Measured data sampled at 50 kHz) 49806 packets of 144 samples from 2015-02-08T01:33:27.950.999. Part 134/144

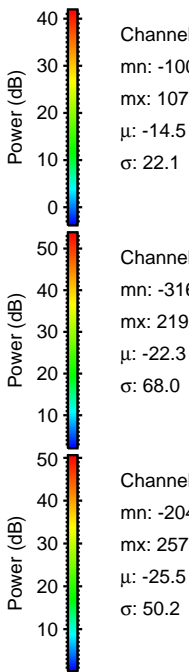
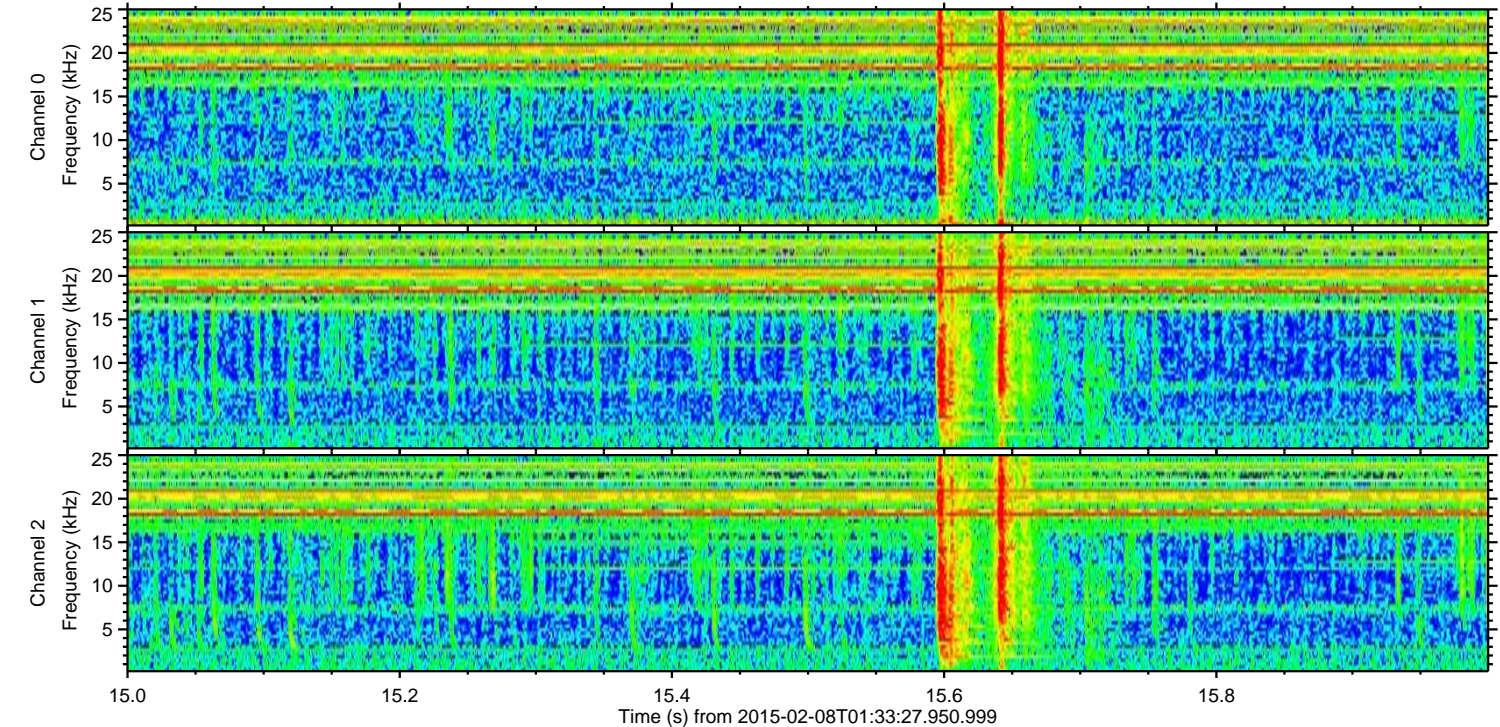
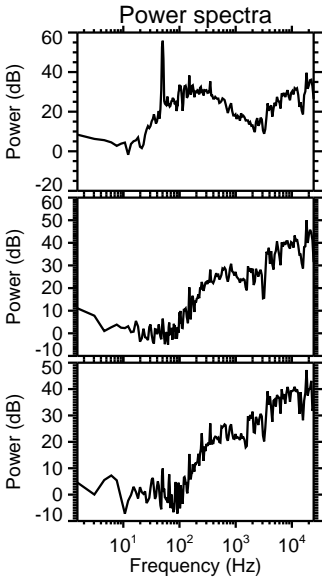
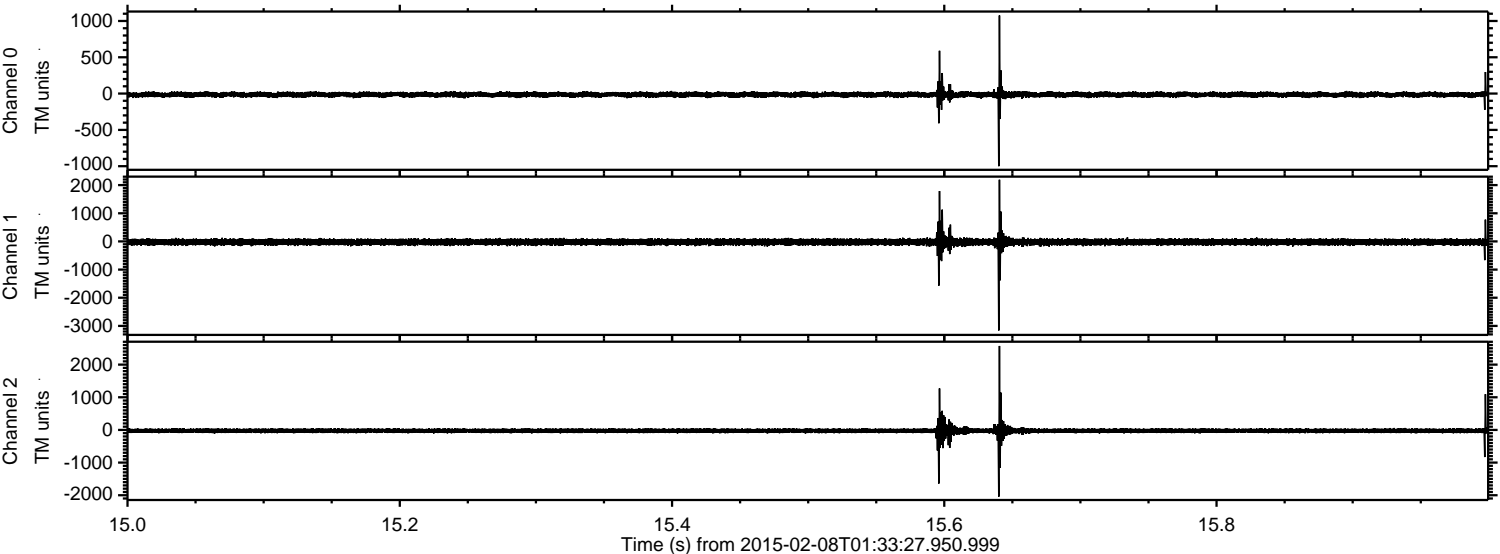
Processed Wed Feb 18 18:00:45 2015 by ELM ver.2012-10-06 from 001\_\_elm20150208\_013326\_\_dat00.bin





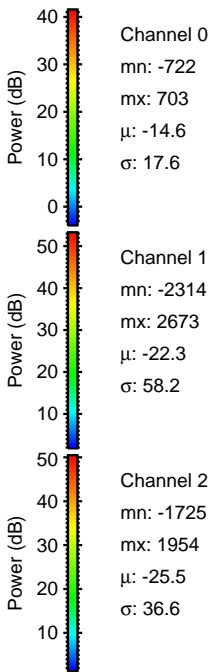
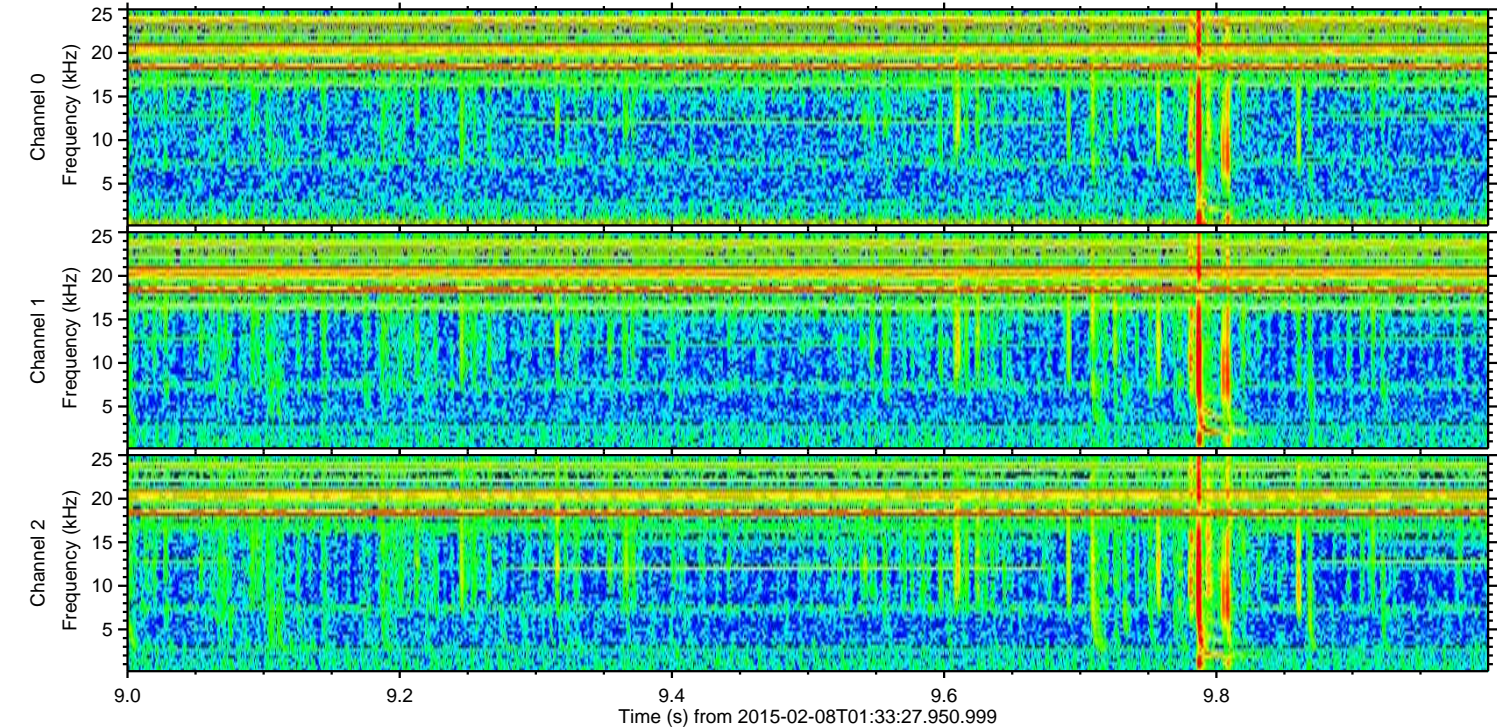
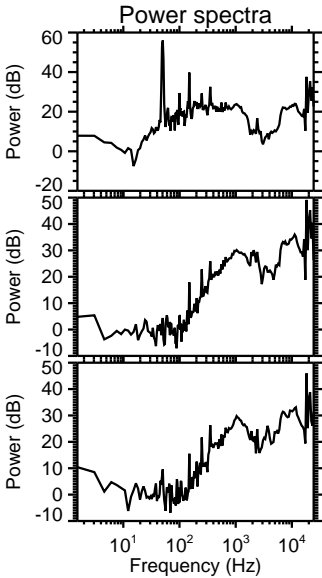
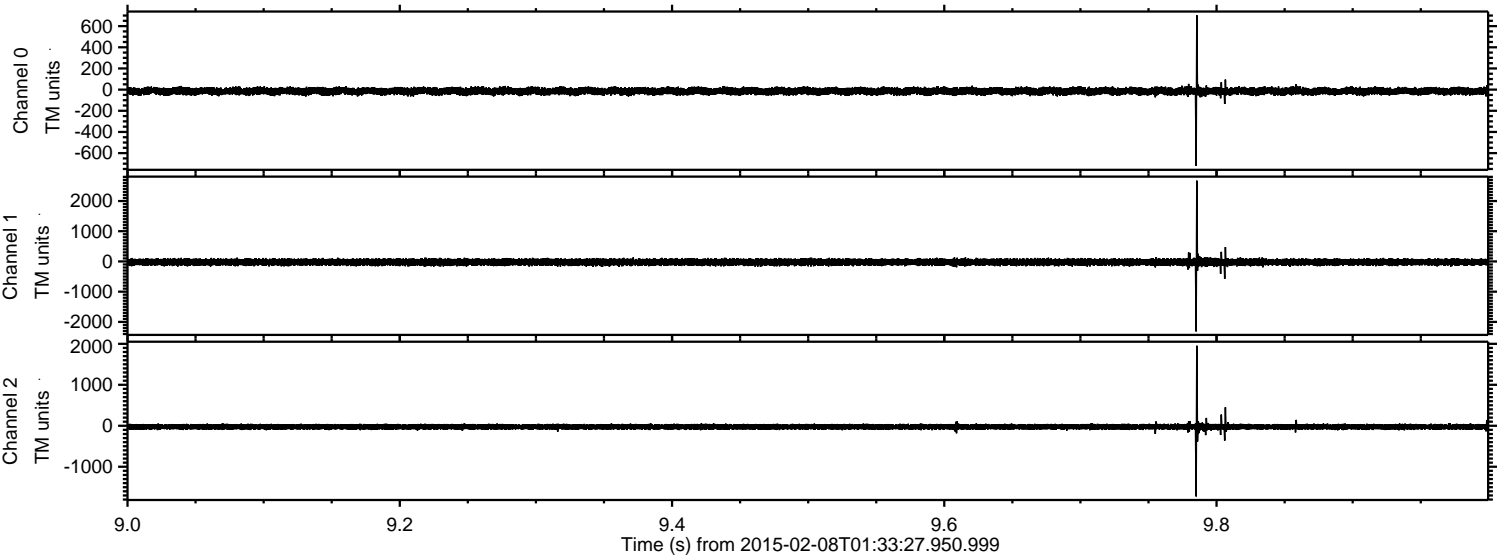
ELMAVAN 3D WAVEFORMS (Measured data sampled at 50 kHz) 49806 packets of 144 samples from 2015-02-08T01:33:27.950.999. Part 16/144

Processed Wed Feb 18 18:00:48 2015 by ELM ver.2012-10-06 from 001\_\_elm20150208\_013326\_\_dat00.bin





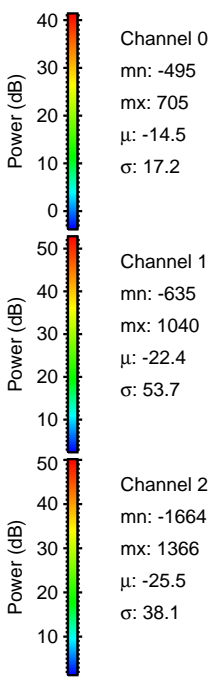
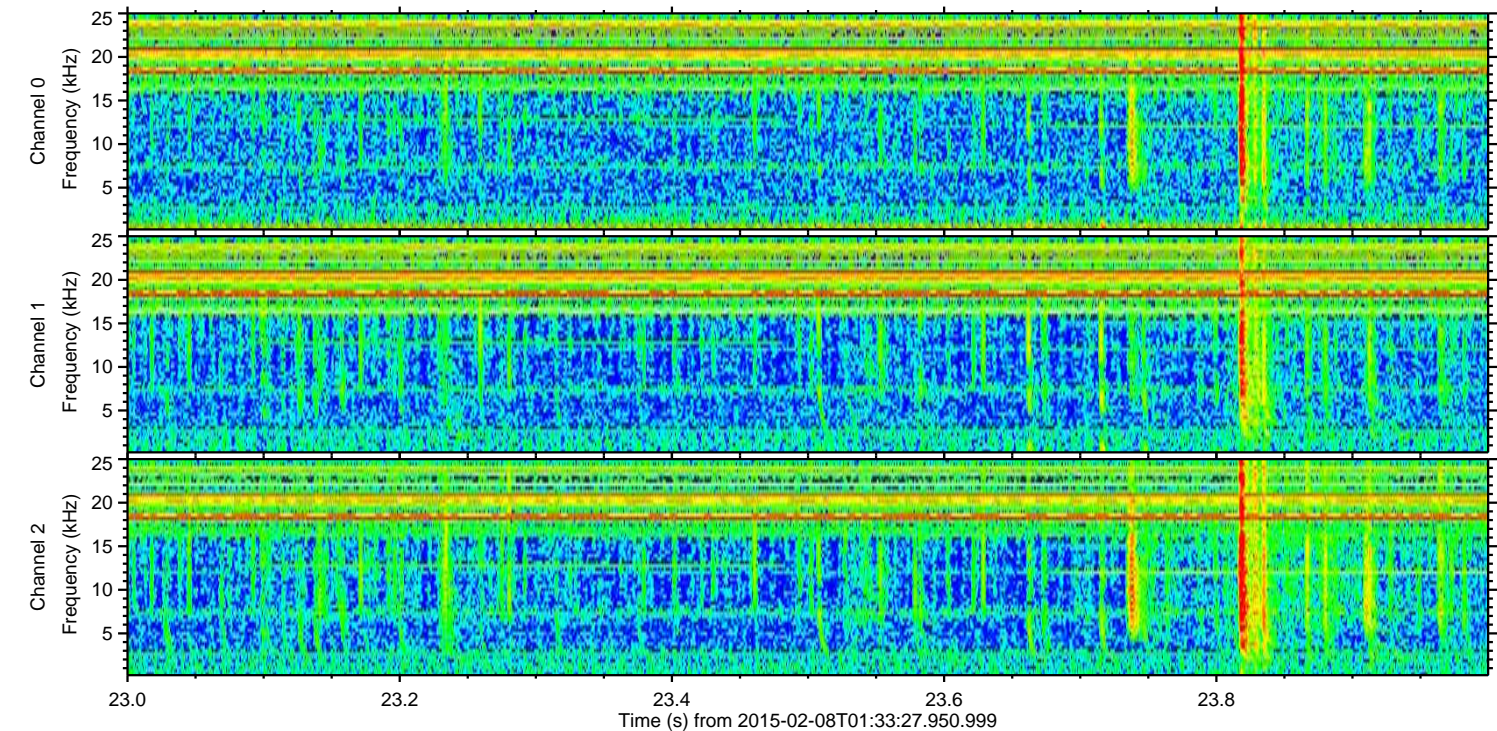
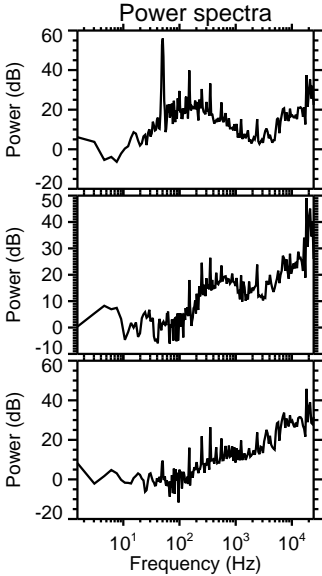
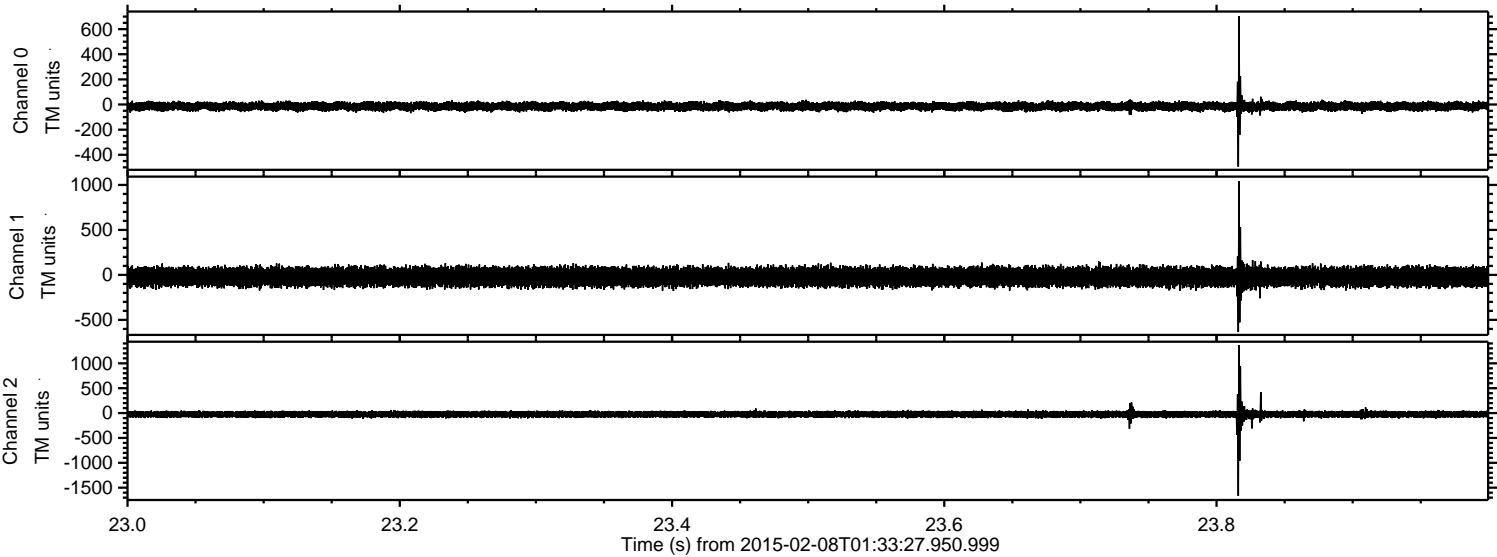
Processed Wed Feb 18 18:00:52 2015 by ELM ver.2012-10-06 from 001\_\_elm20150208\_013326\_\_dat00.bin





ELMAVAN 3D WAVEFORMS (Measured data sampled at 50 kHz) 49806 packets of 144 samples from 2015-02-08T01:33:27.950.999. Part 24/144

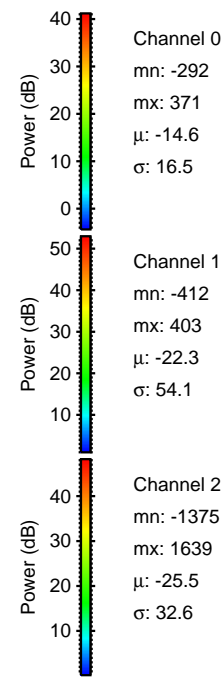
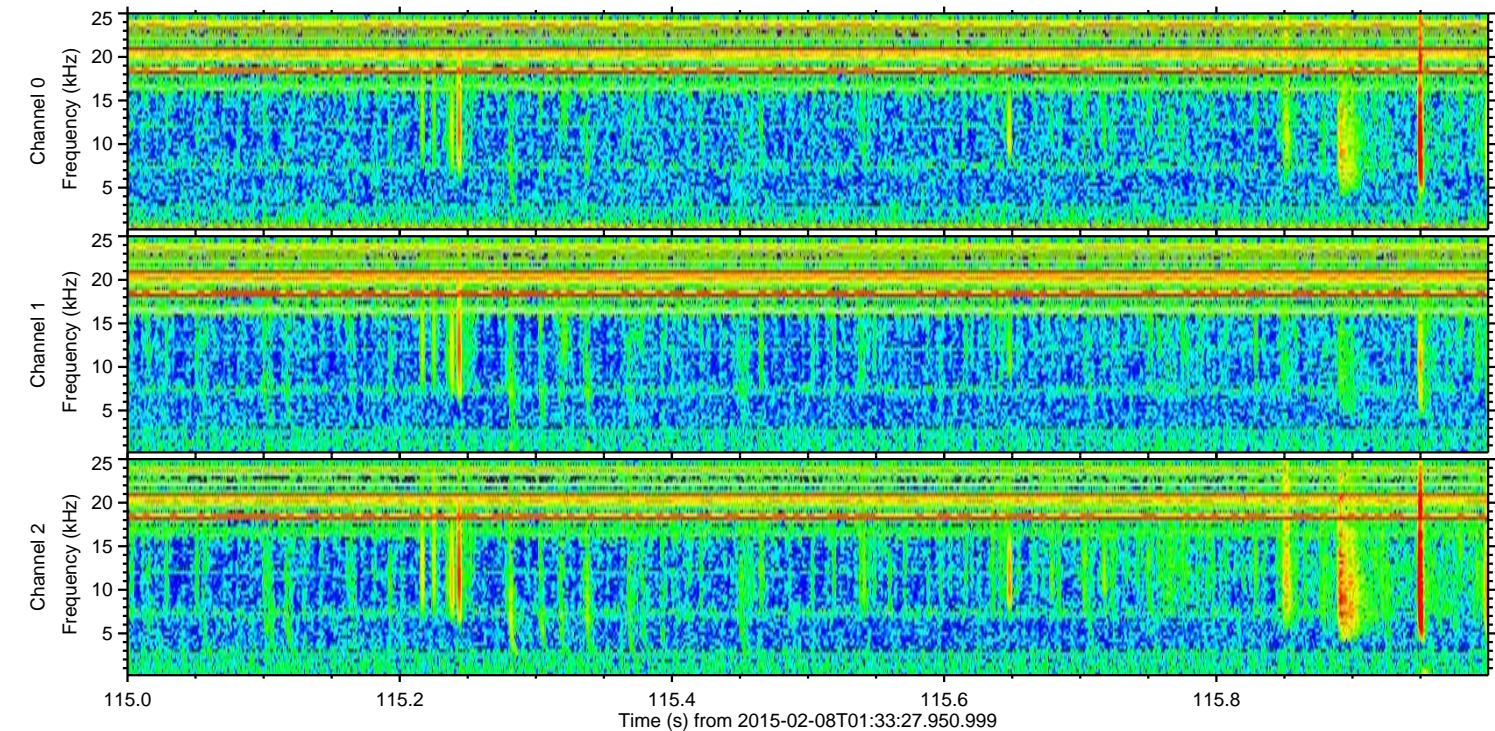
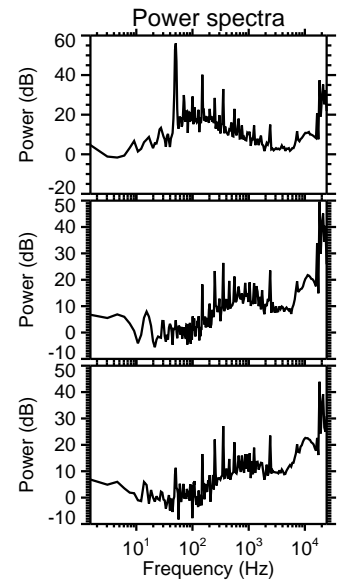
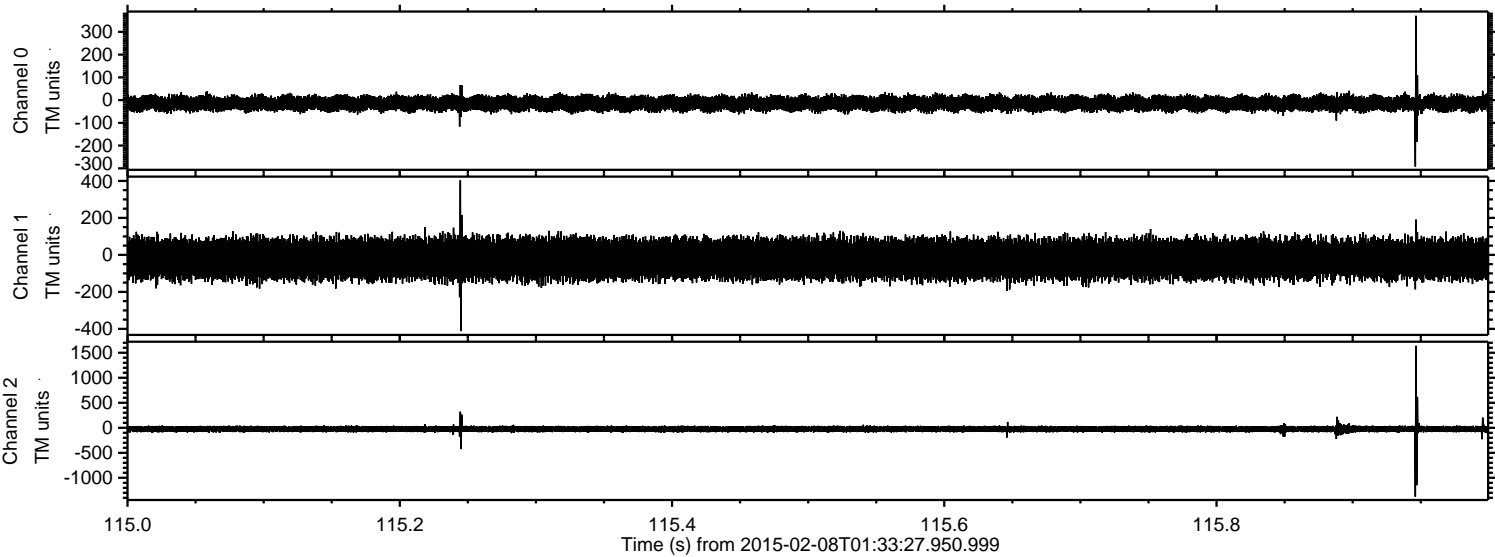
Processed Wed Feb 18 18:00:54 2015 by ELM ver.2012-10-06 from 001\_\_elm20150208\_013326\_\_dat00.bin





ELMAVAN 3D WAVEFORMS (Measured data sampled at 50 kHz) 49806 packets of 144 samples from 2015-02-08T01:33:27.950.999. Part 116/144

Processed Wed Feb 18 18:00:56 2015 by ELM ver.2012-10-06 from 001\_\_elm20150208\_013326\_\_dat00.bin



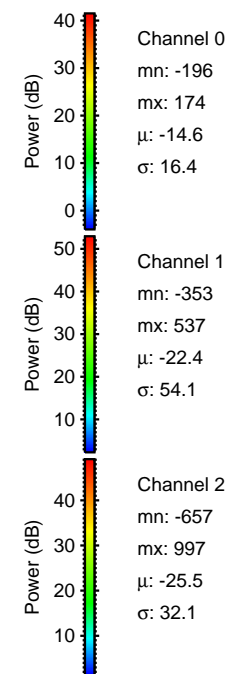
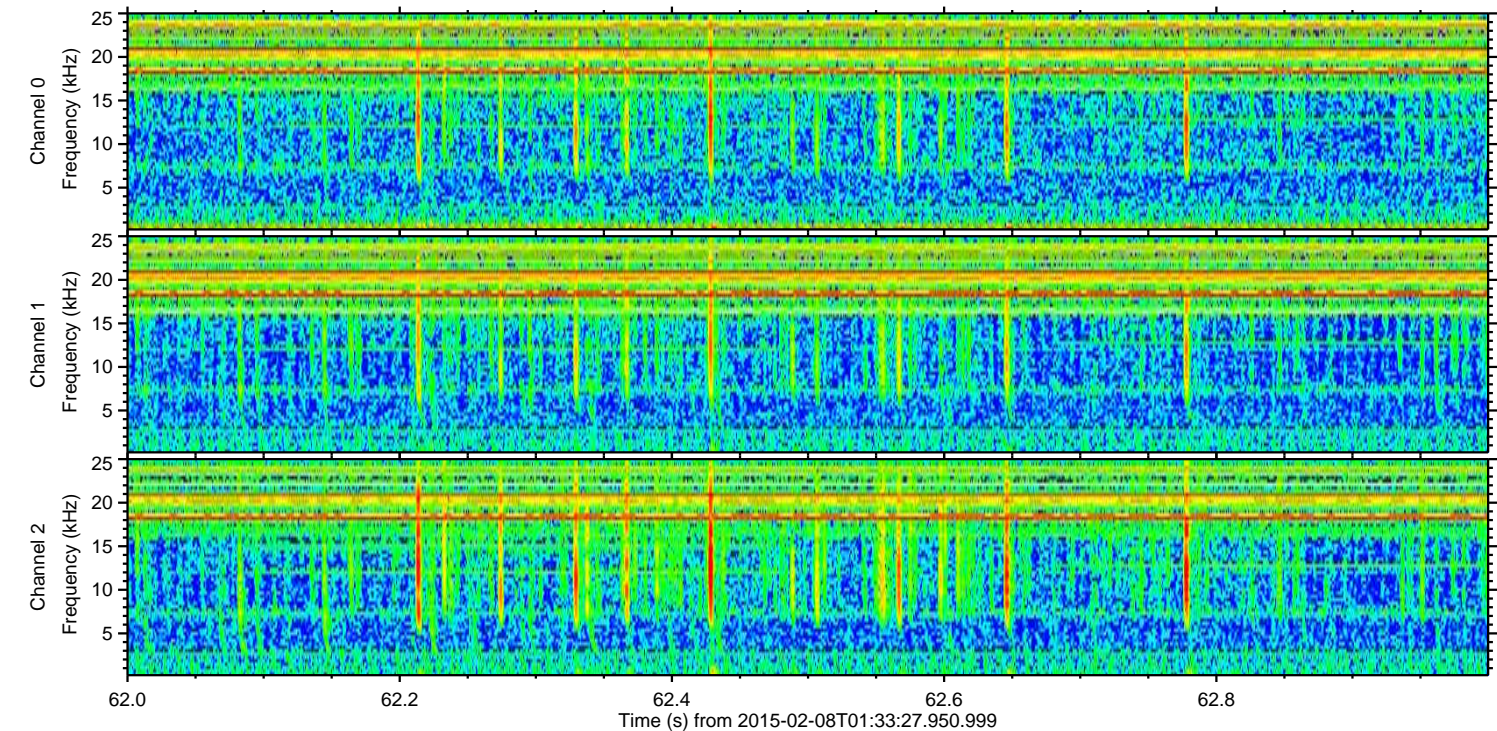
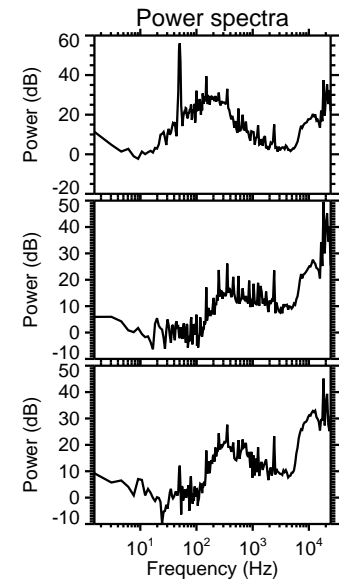
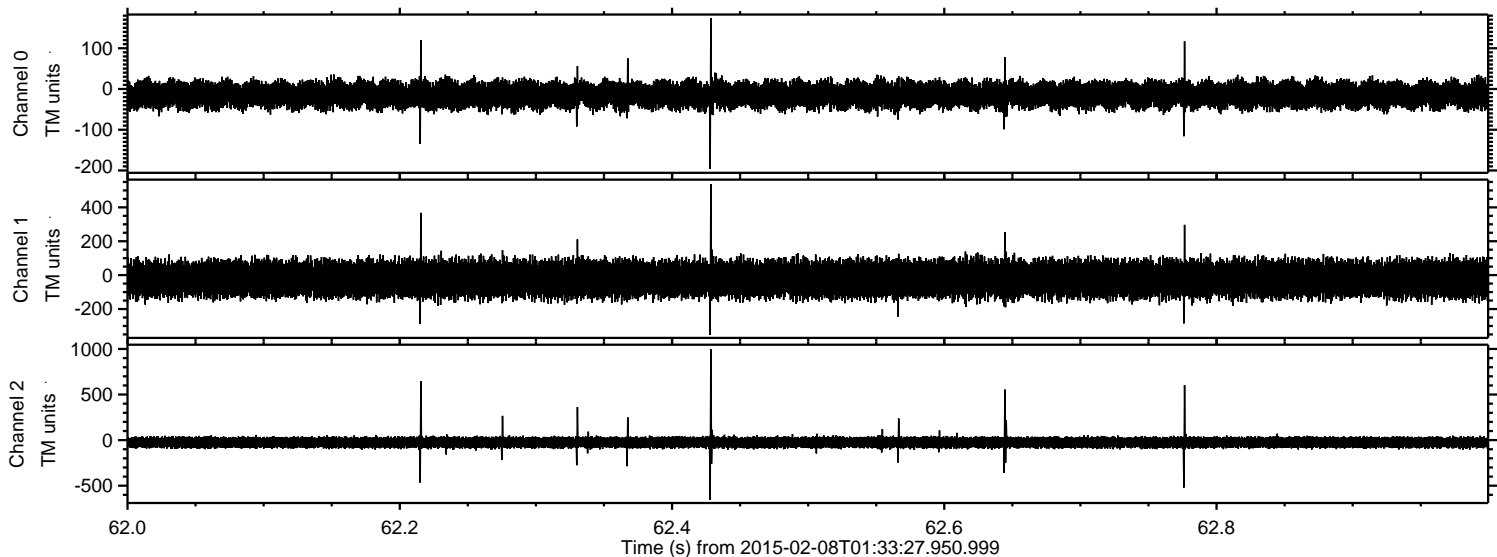
Channel 0  
mn: -292  
mx: 371  
 $\mu$ : -14.6  
 $\sigma$ : 16.5

Channel 1  
mn: -412  
mx: 403  
 $\mu$ : -22.3  
 $\sigma$ : 54.1

Channel 2  
mn: -1375  
mx: 1639  
 $\mu$ : -25.5  
 $\sigma$ : 32.6

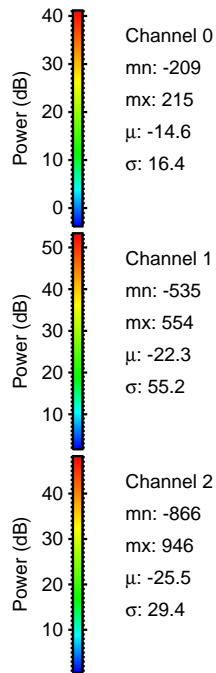
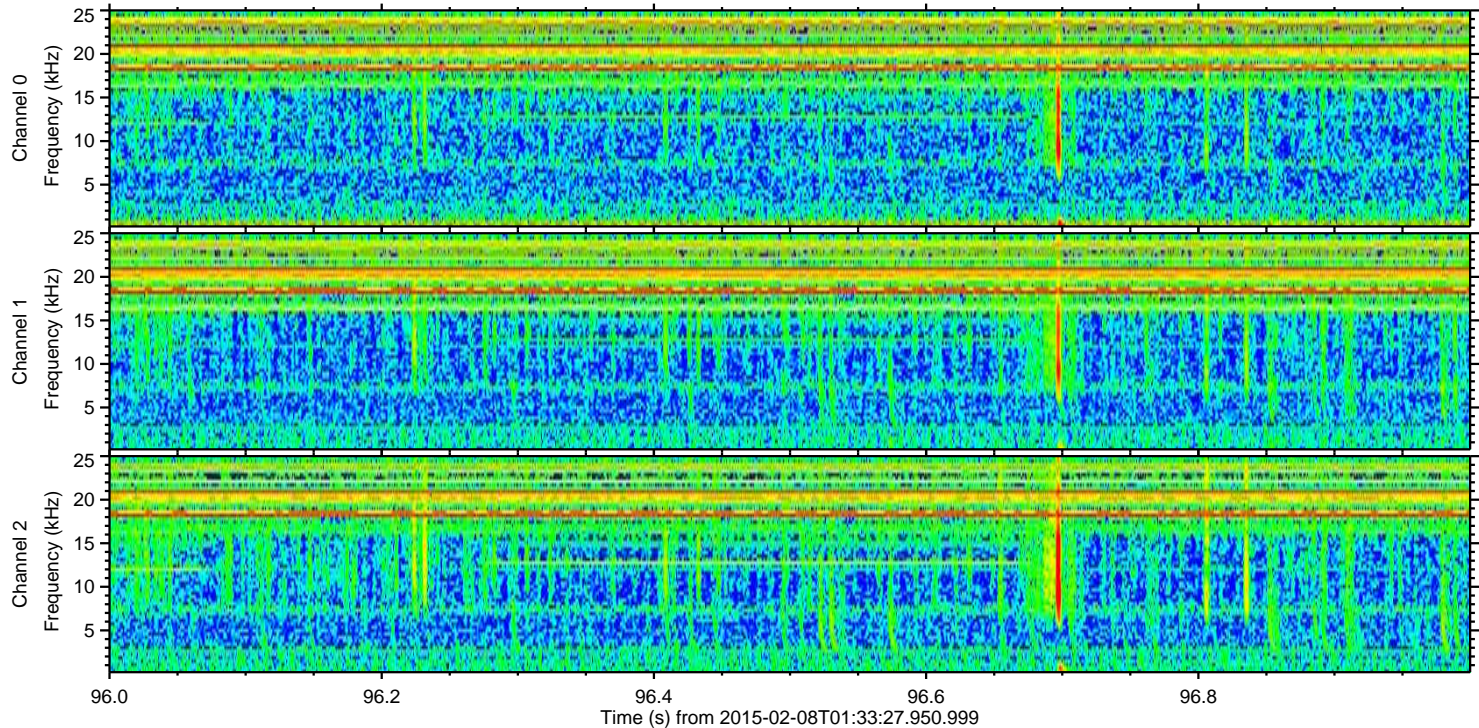
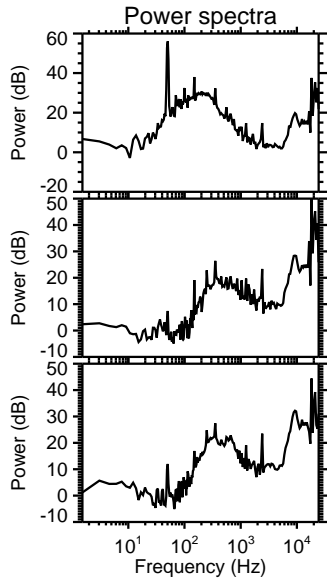
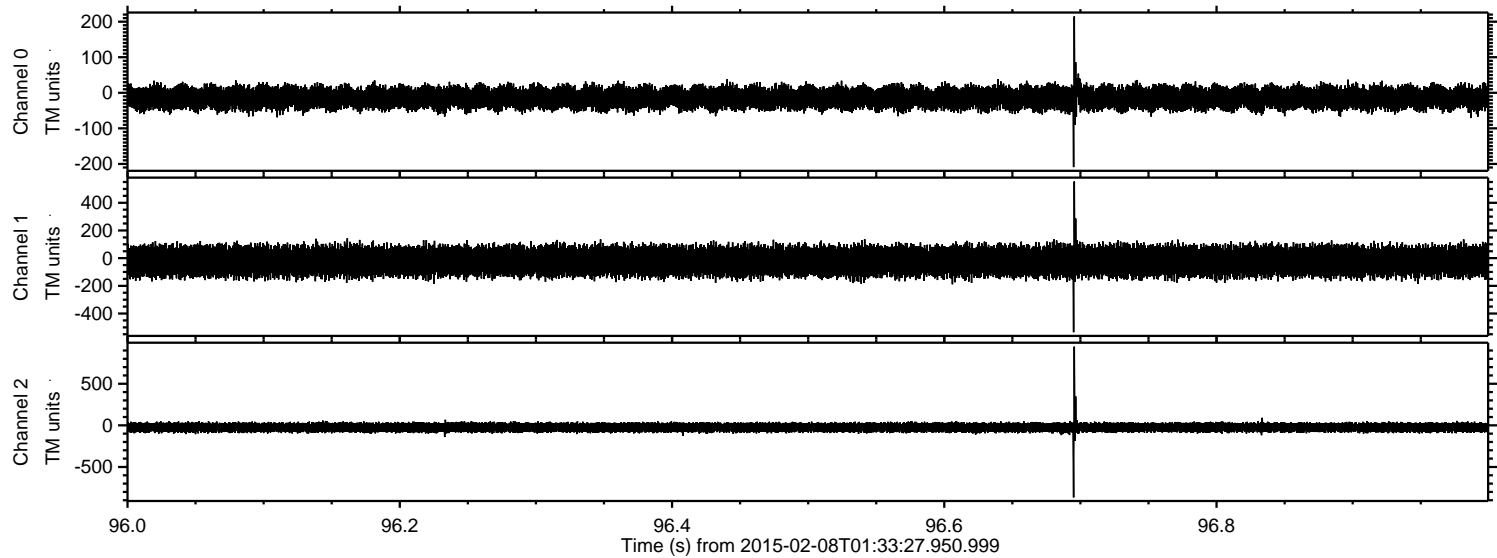


Processed Wed Feb 18 18:00:57 2015 by ELM ver.2012-10-06 from 001\_\_elm20150208\_013326\_\_dat00.bin



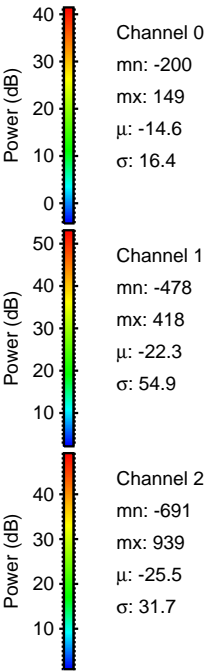
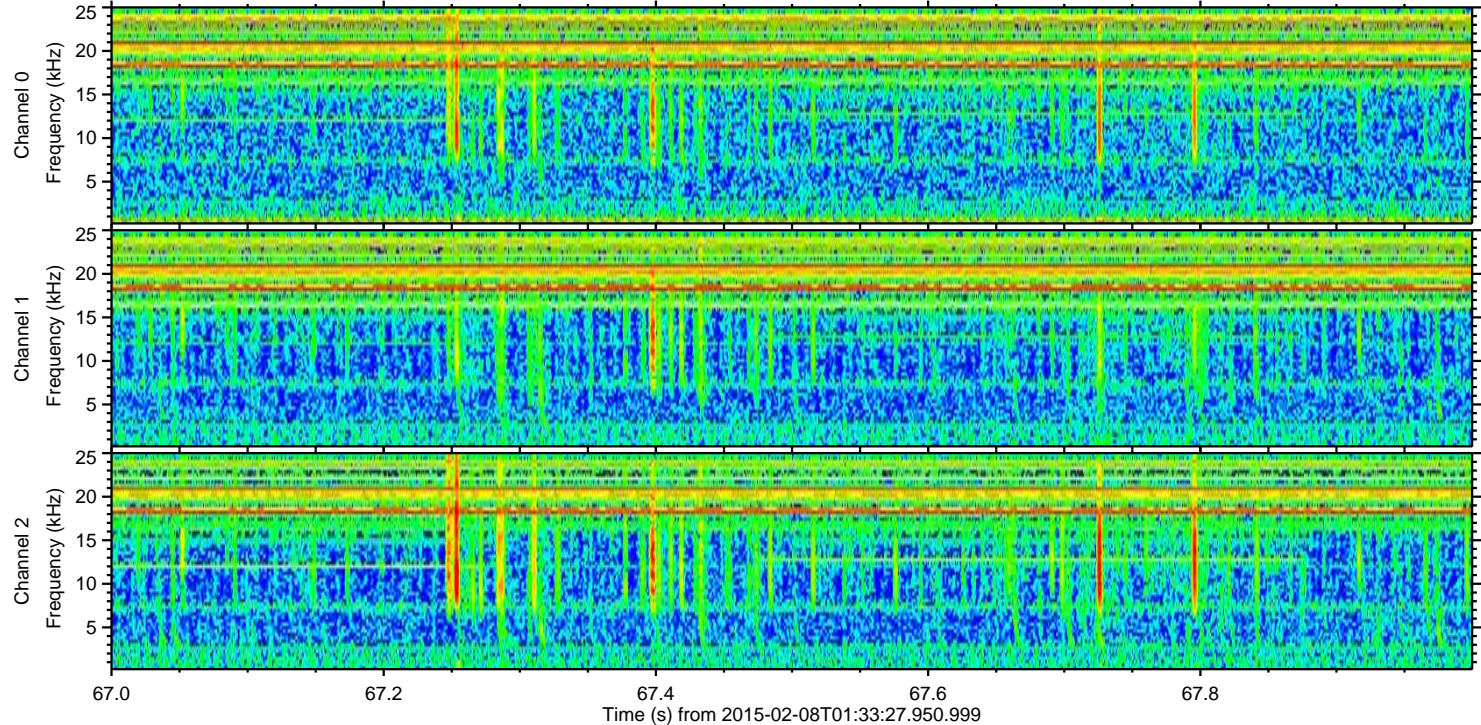
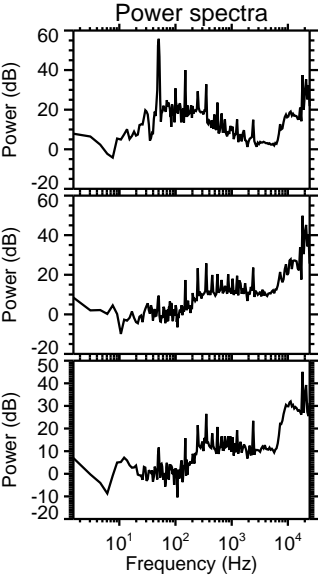
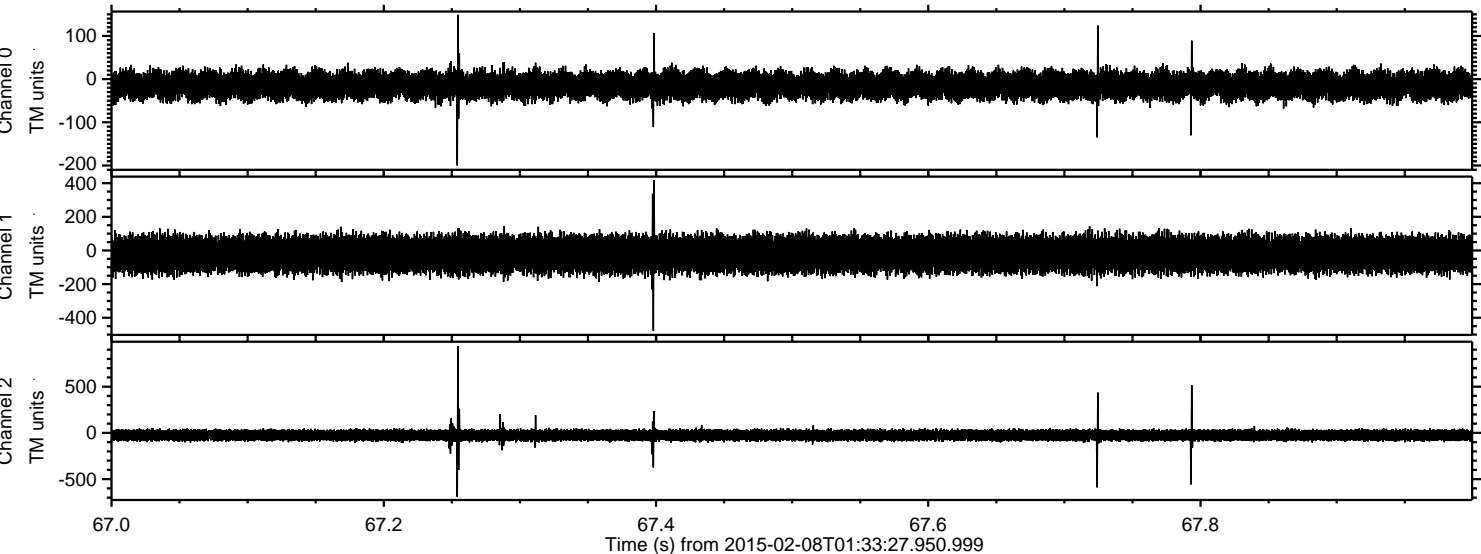


Processed Wed Feb 18 18:00:58 2015 by ELM ver.2012-10-06 from 001\_\_elm20150208\_013326\_\_dat00.bin





Processed Wed Feb 18 18:00:59 2015 by ELM ver.2012-10-06 from 001\_\_elm20150208\_013326\_\_dat00.bin





Processed Wed Feb 18 18:01:00 2015 by ELM ver.2012-10-06 from 001\_\_elm20150208\_013326\_\_dat00.bin

