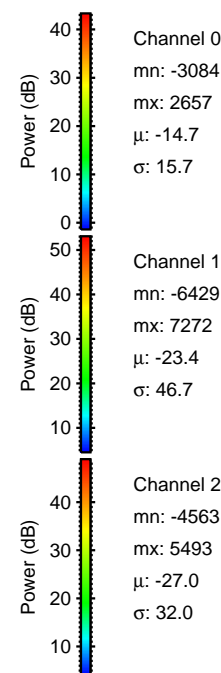
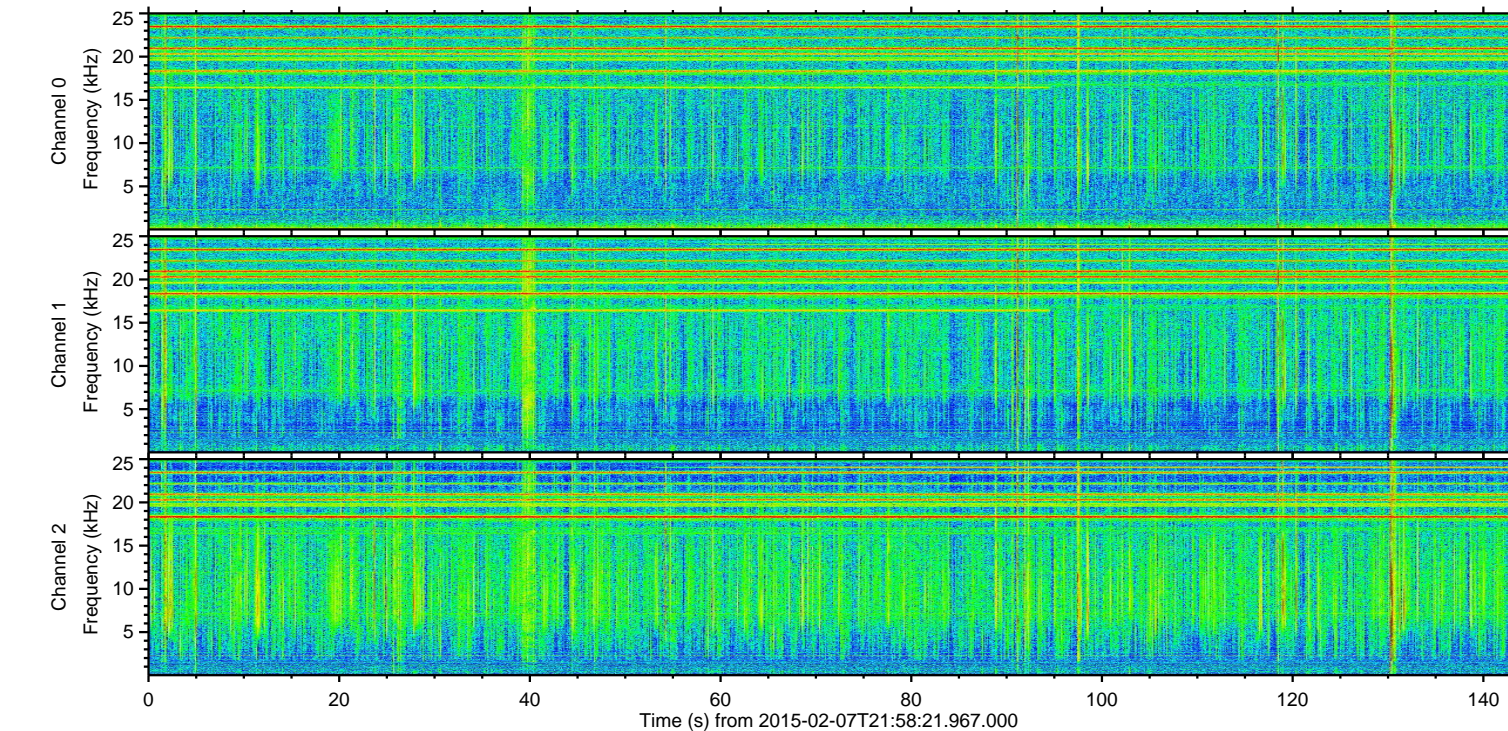
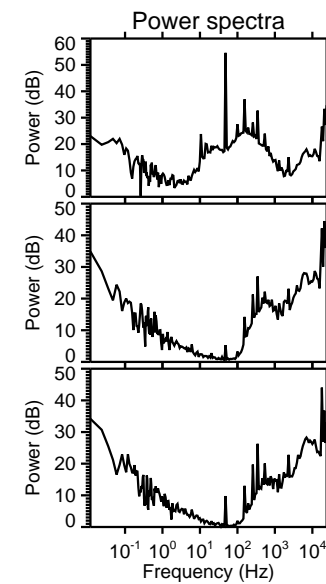
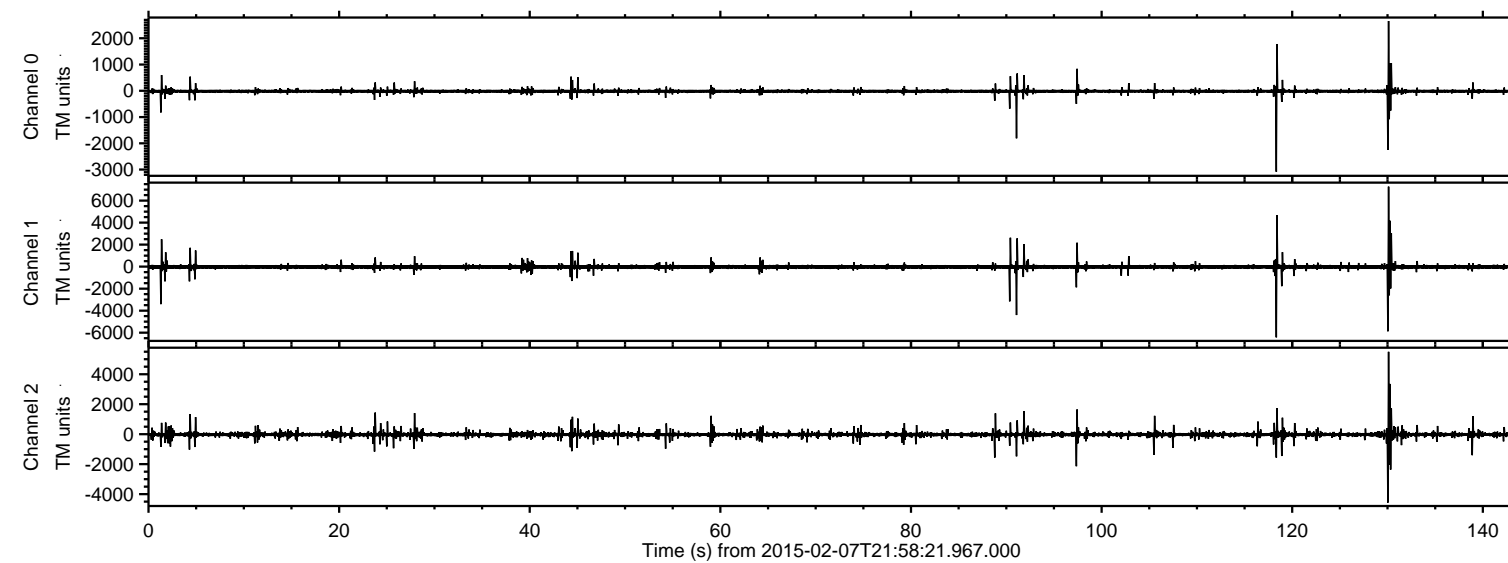


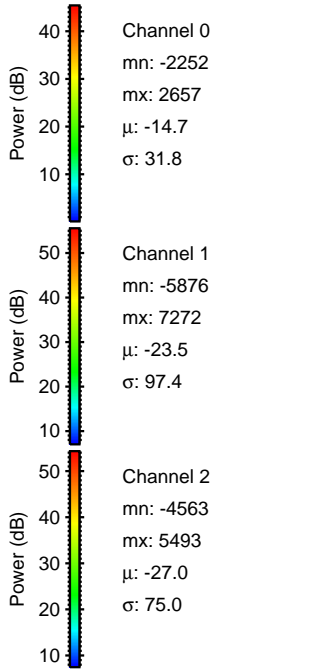
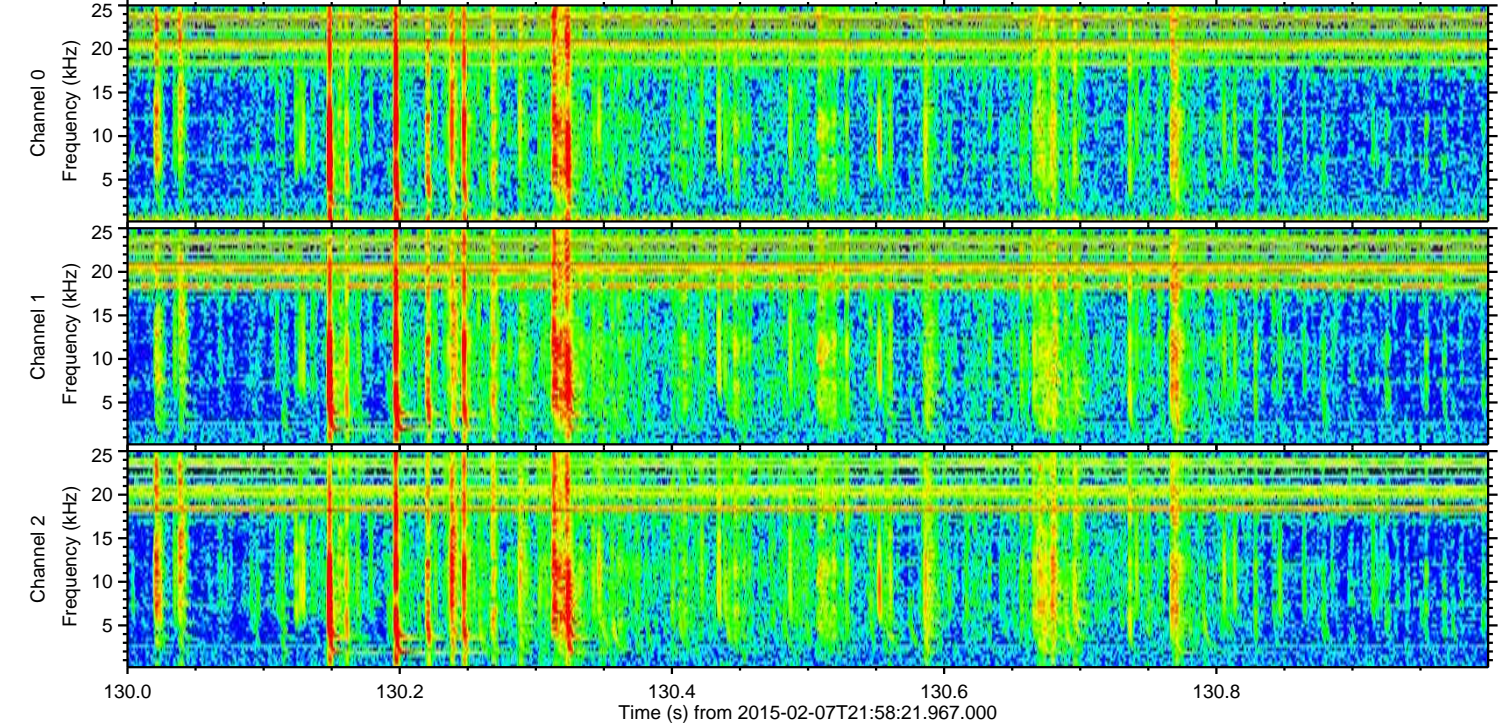
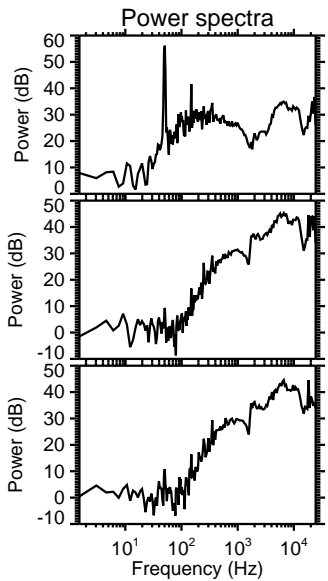
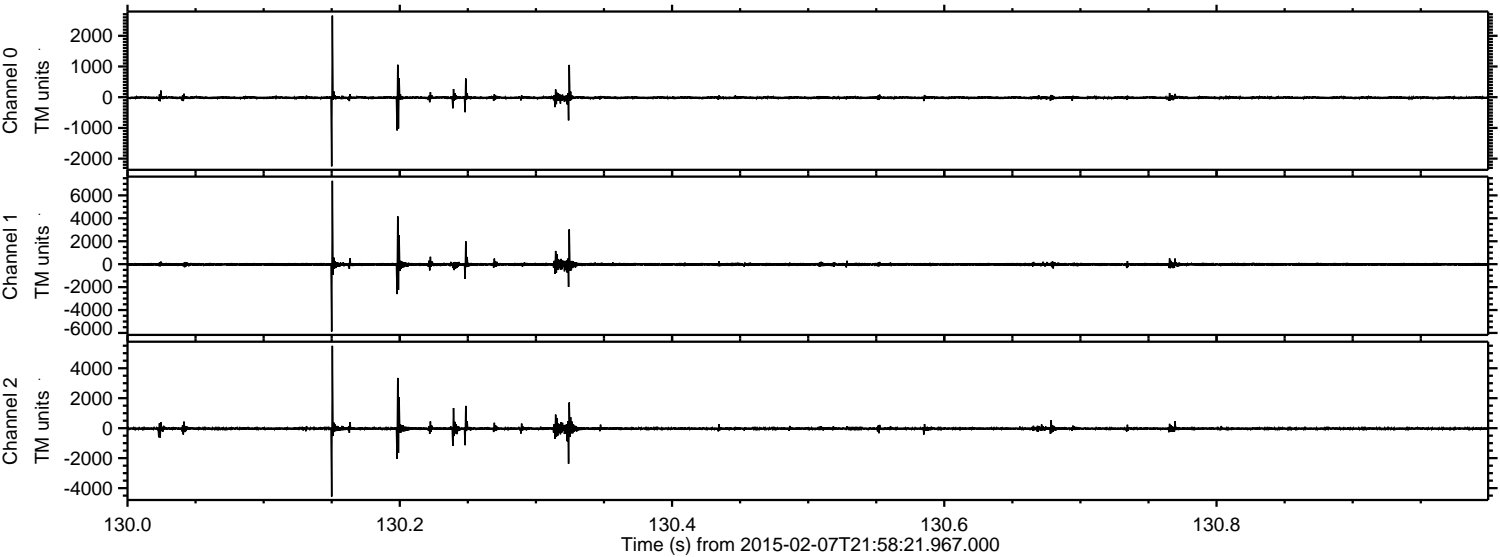
ELMAVAN 3D WAVEFORMS (Measured data sampled at 50 kHz) 49569 packets of 144 samples from 2015-02-07T21:58:21.967.000.

Processed Wed Feb 18 16:41:43 2015 by ELM ver.2012-10-06 from 001__elm20150207_215820__dat00.bin



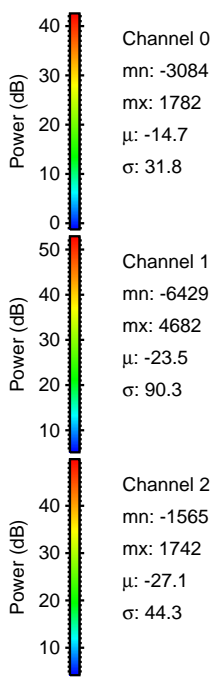
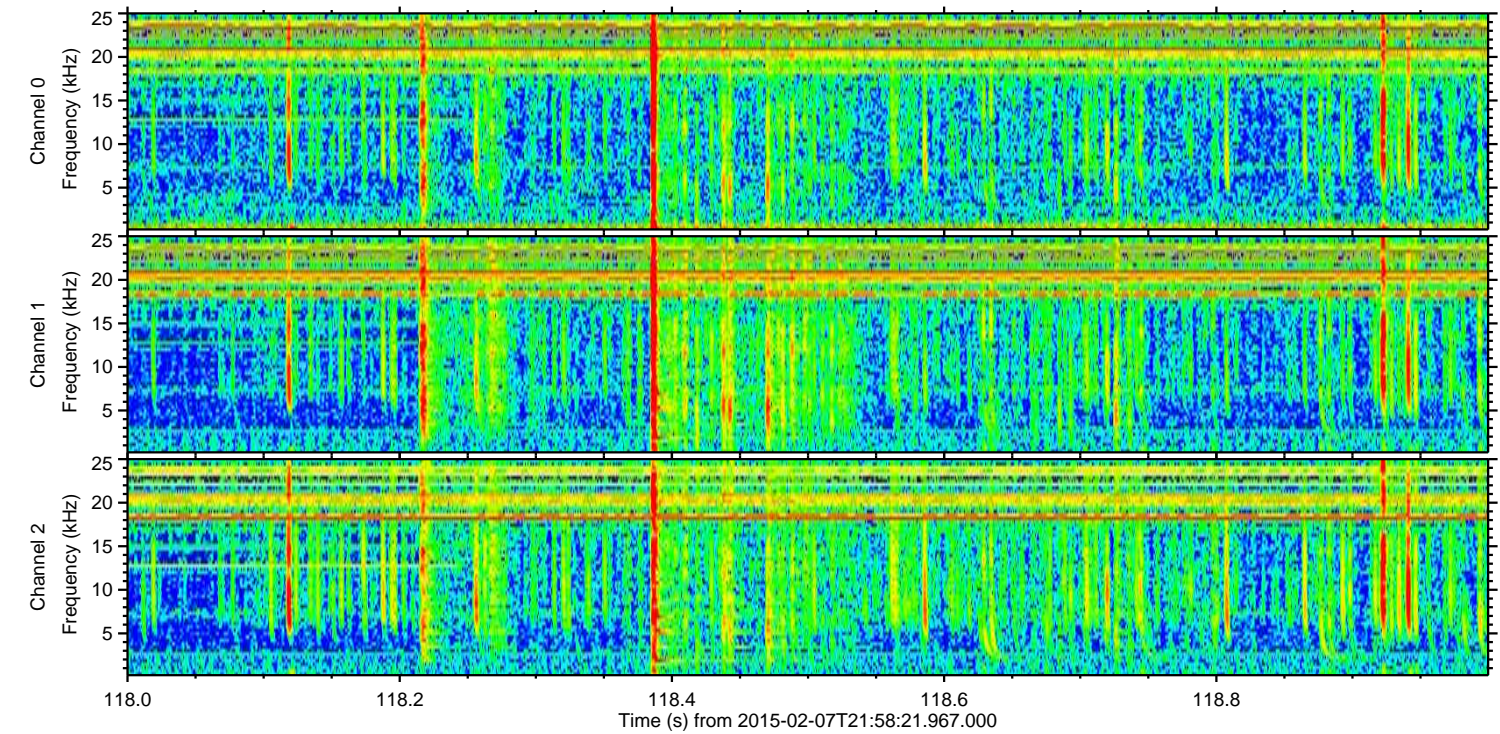
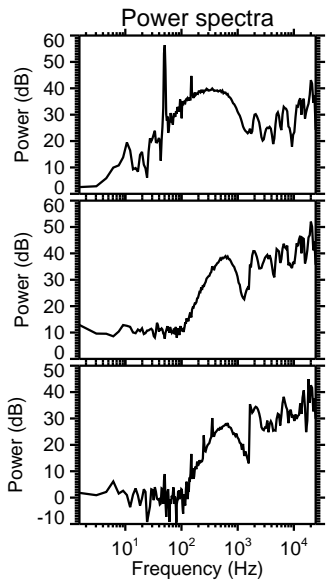
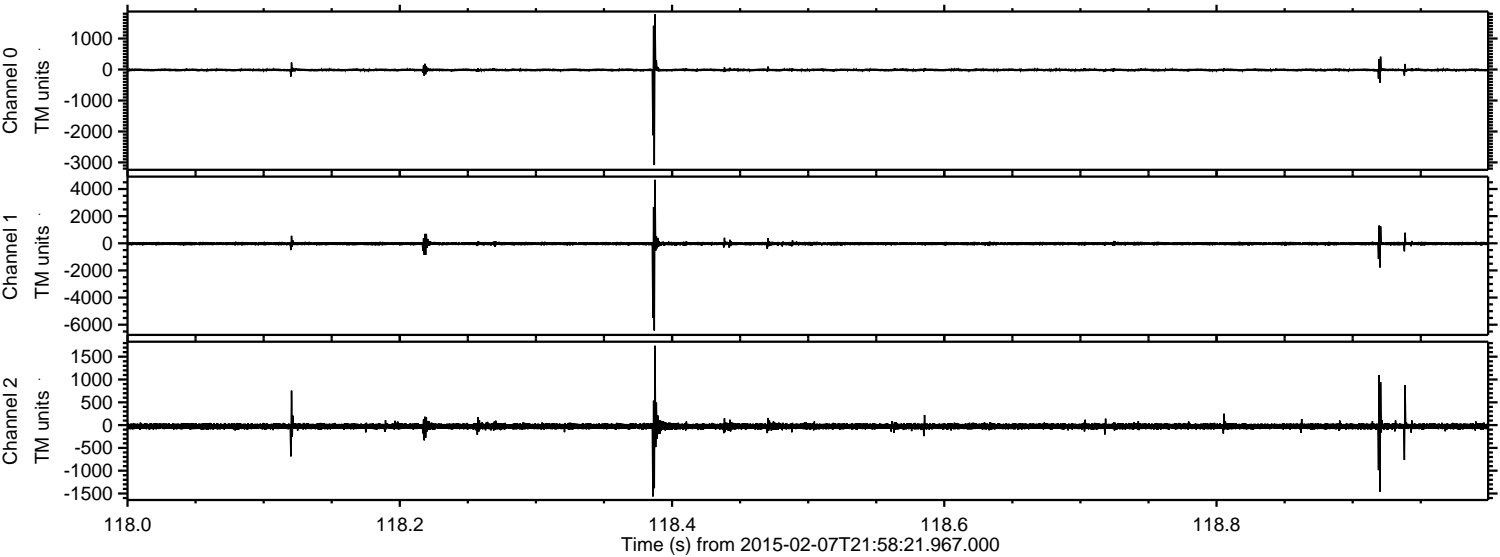
ELMAVAN 3D WAVEFORMS (Measured data sampled at 50 kHz) 49569 packets of 144 samples from 2015-02-07T21:58:21.967.000. Part 131/143

Processed Wed Feb 18 16:42:01 2015 by ELM ver.2012-10-06 from 001__elm20150207_215820__dat00.bin



ELMAVAN 3D WAVEFORMS (Measured data sampled at 50 kHz) 49569 packets of 144 samples from 2015-02-07T21:58:21.967.000. Part 119/143

Processed Wed Feb 18 16:42:03 2015 by ELM ver.2012-10-06 from 001__elm20150207_215820__dat00.bin



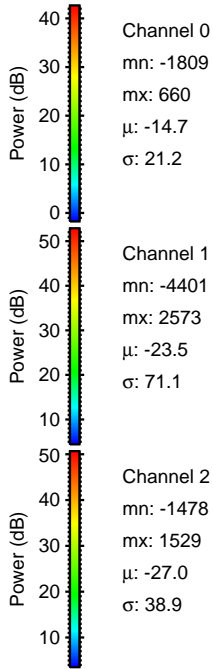
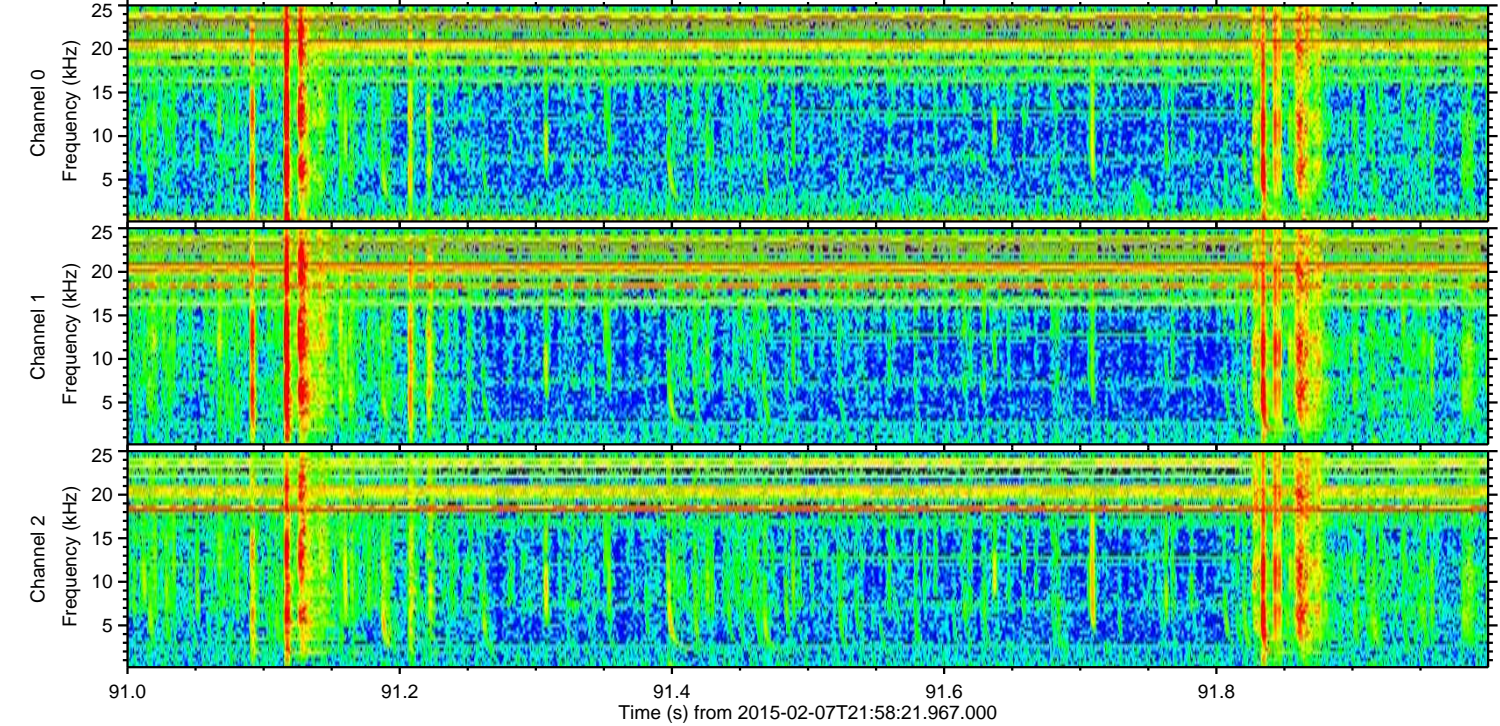
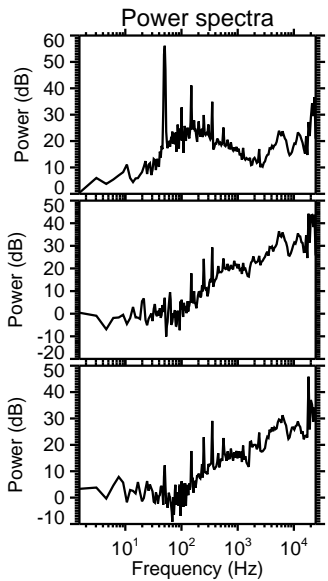
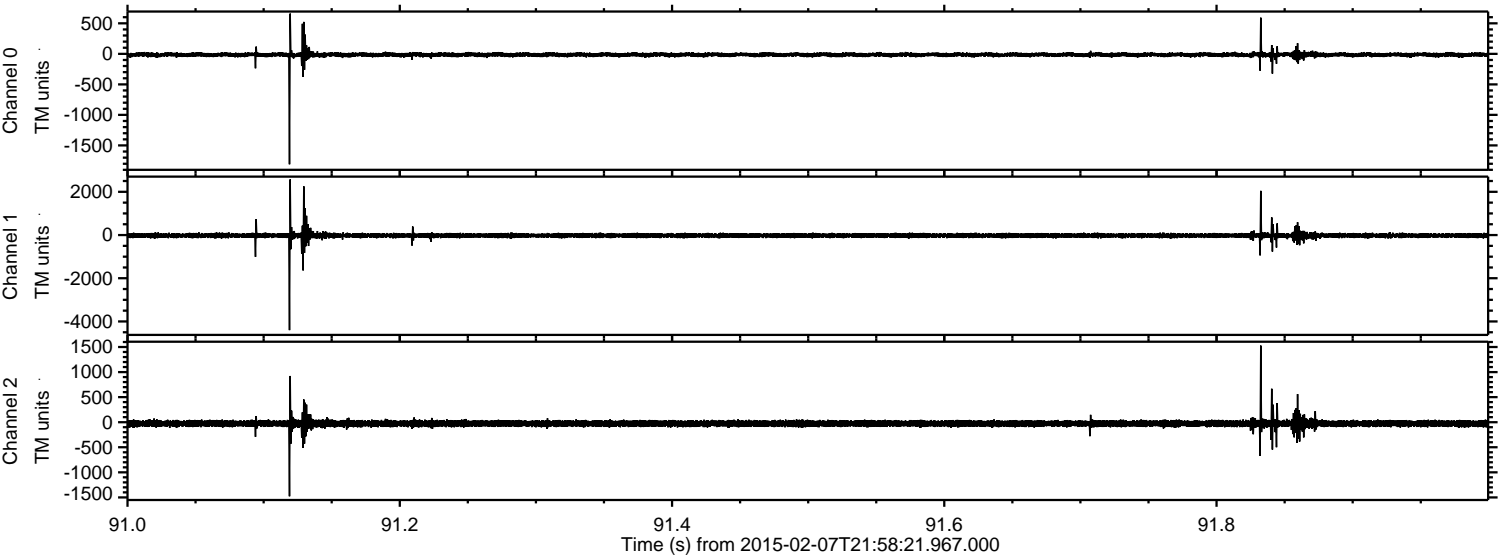
Channel 0
mn: -3084
mx: 1782
 μ : -14.7
 σ : 31.8

Channel 1
mn: -6429
mx: 4682
 μ : -23.5
 σ : 90.3

Channel 2
mn: -1565
mx: 1742
 μ : -27.1
 σ : 44.3

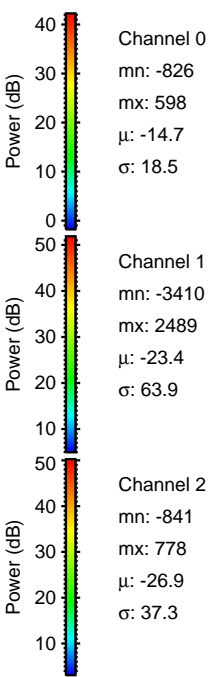
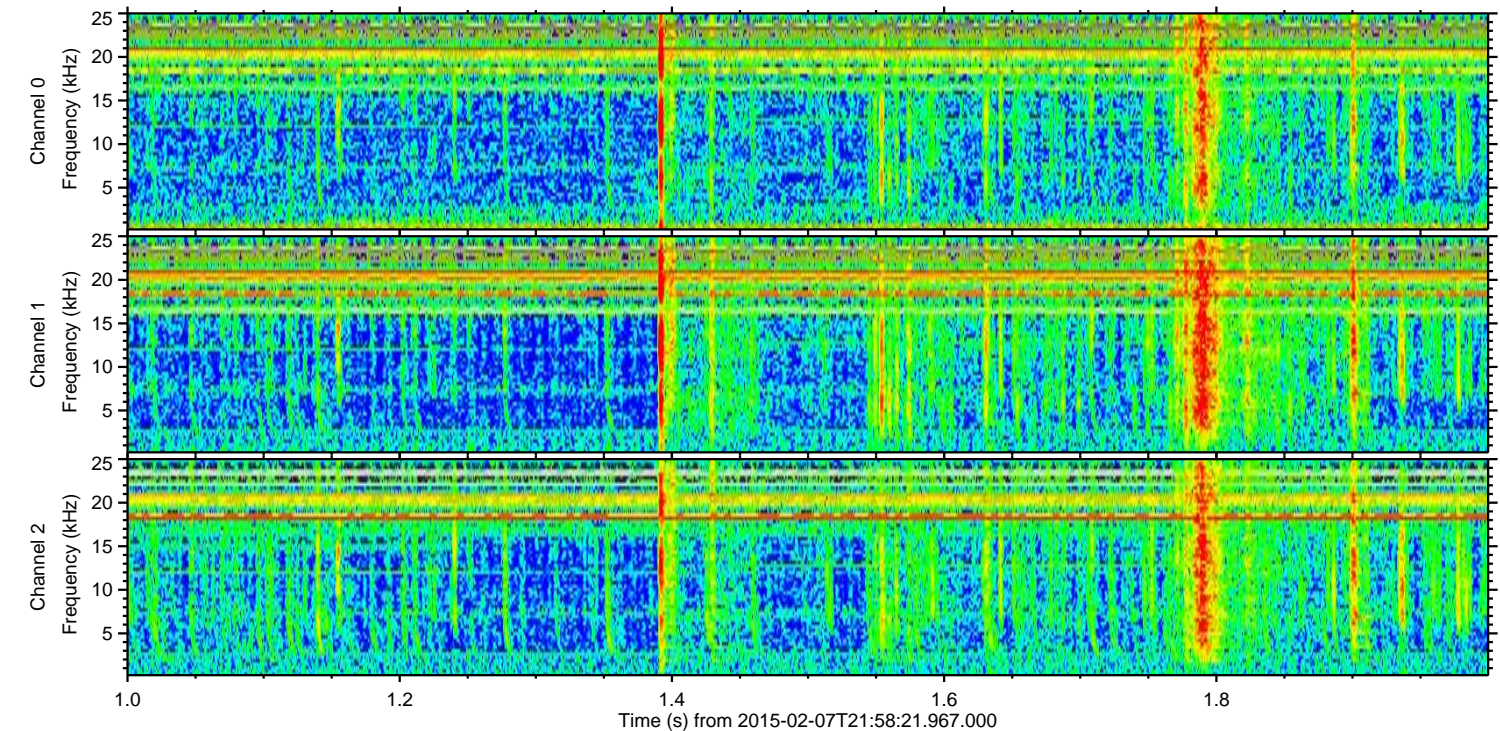
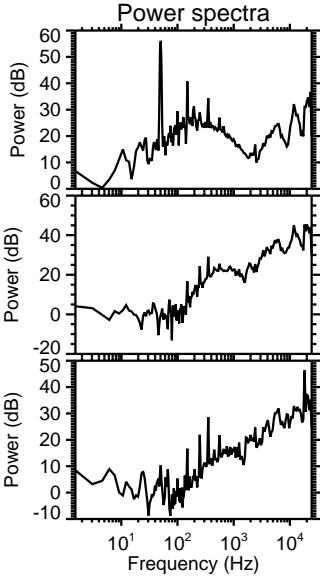
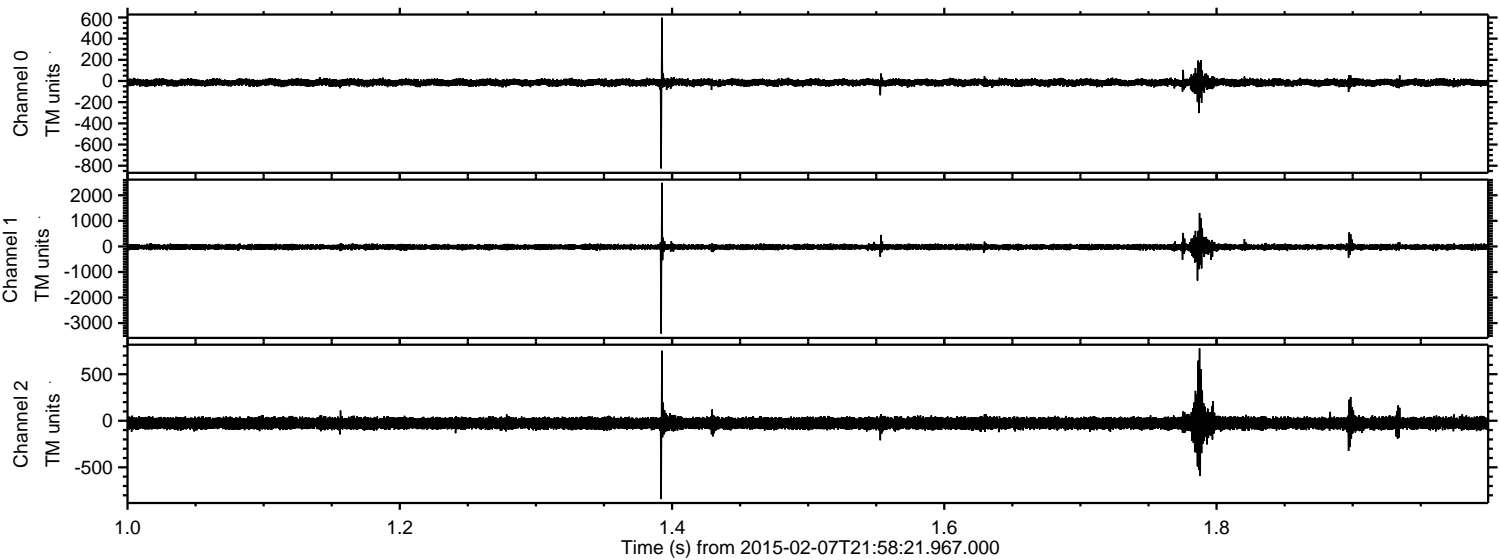
ELMAVAN 3D WAVEFORMS (Measured data sampled at 50 kHz) 49569 packets of 144 samples from 2015-02-07T21:58:21.967.000. Part 92/143

Processed Wed Feb 18 16:42:04 2015 by ELM ver.2012-10-06 from 001__elm20150207_215820__dat00.bin

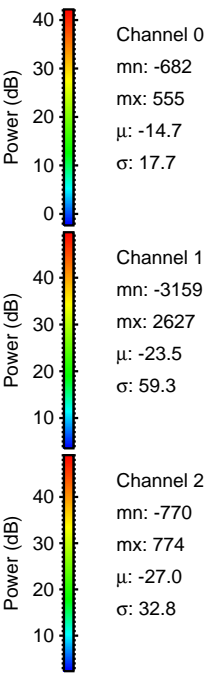
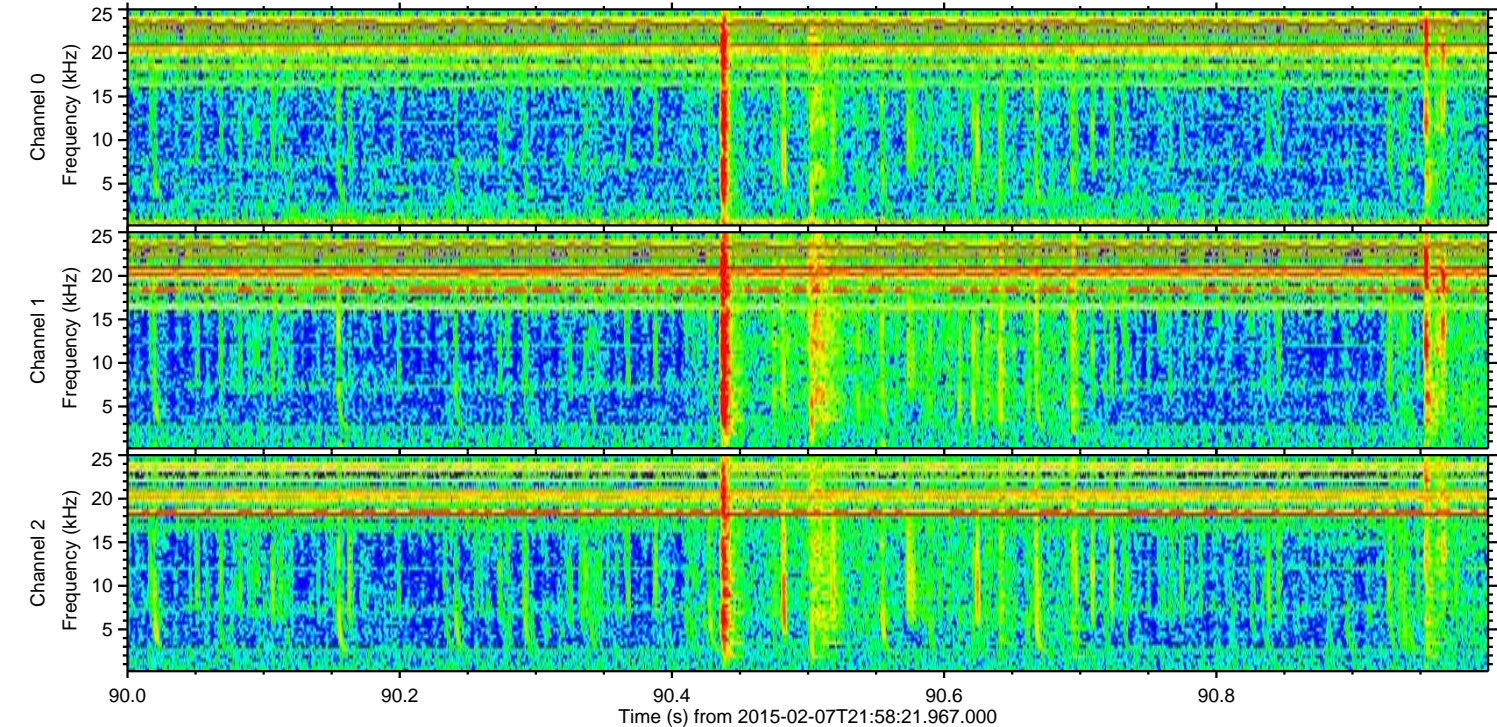
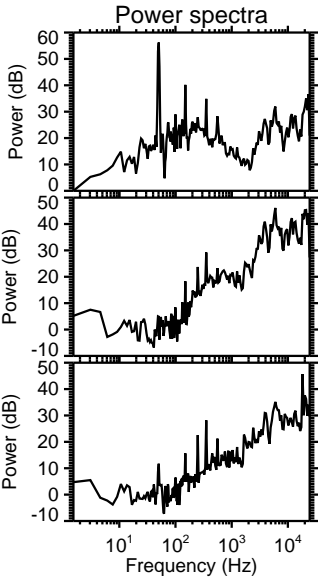
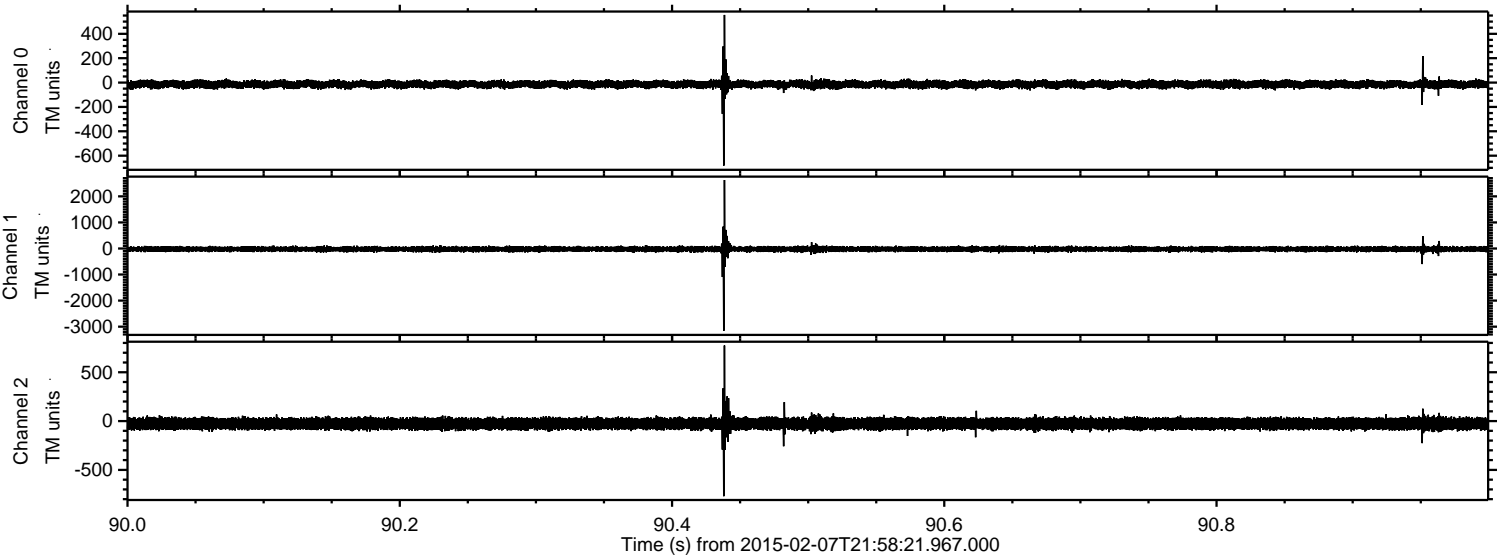


ELMAVAN 3D WAVEFORMS (Measured data sampled at 50 kHz) 49569 packets of 144 samples from 2015-02-07T21:58:21.967.000. Part 2/143

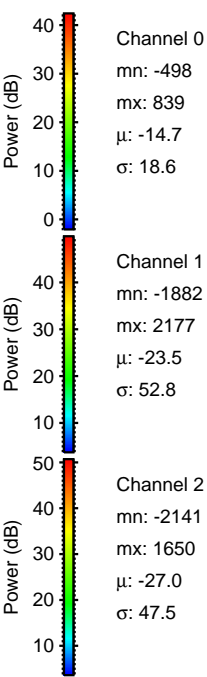
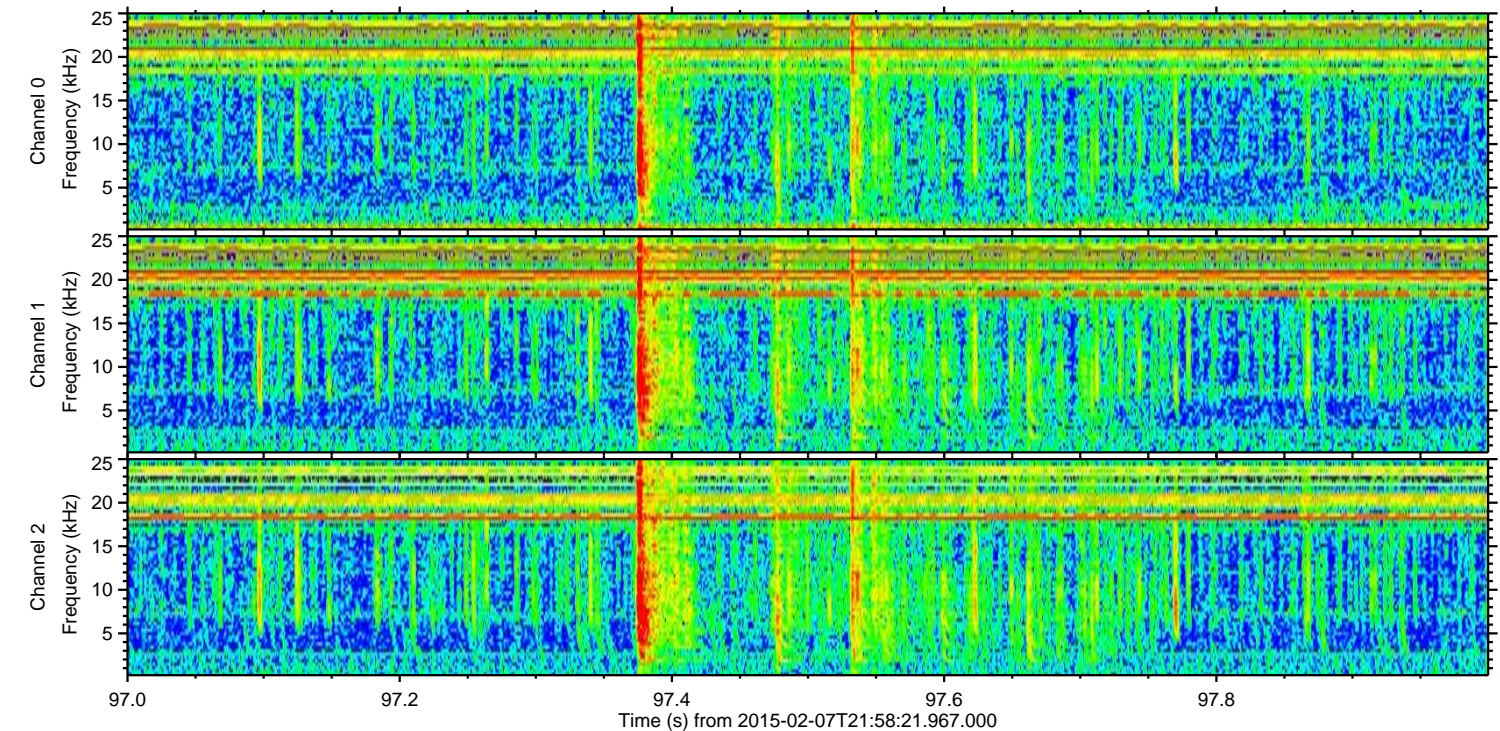
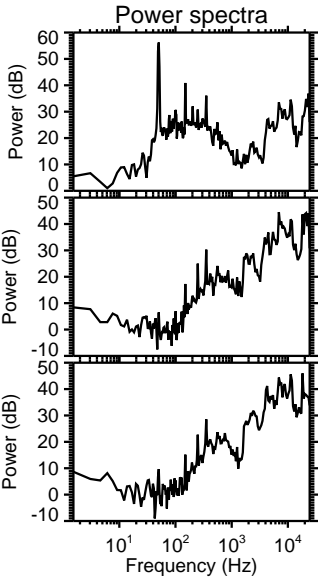
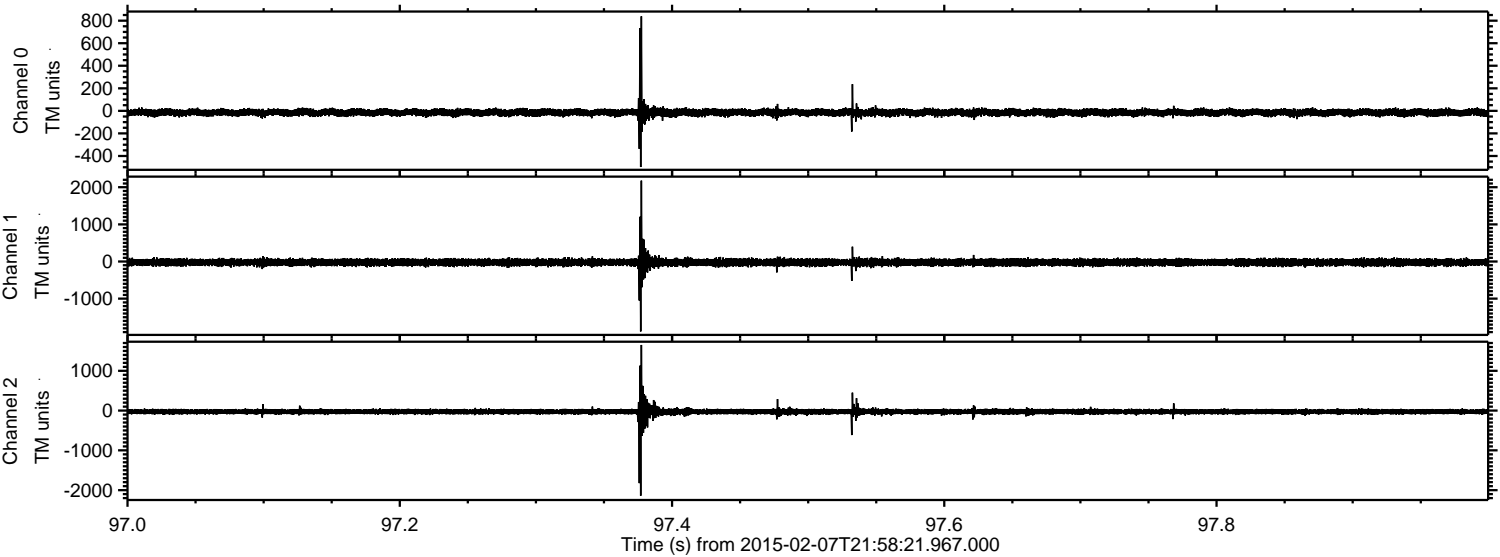
Processed Wed Feb 18 16:42:06 2015 by ELM ver.2012-10-06 from 001__elm20150207_215820__dat00.bin



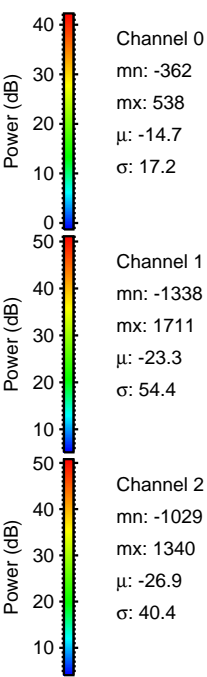
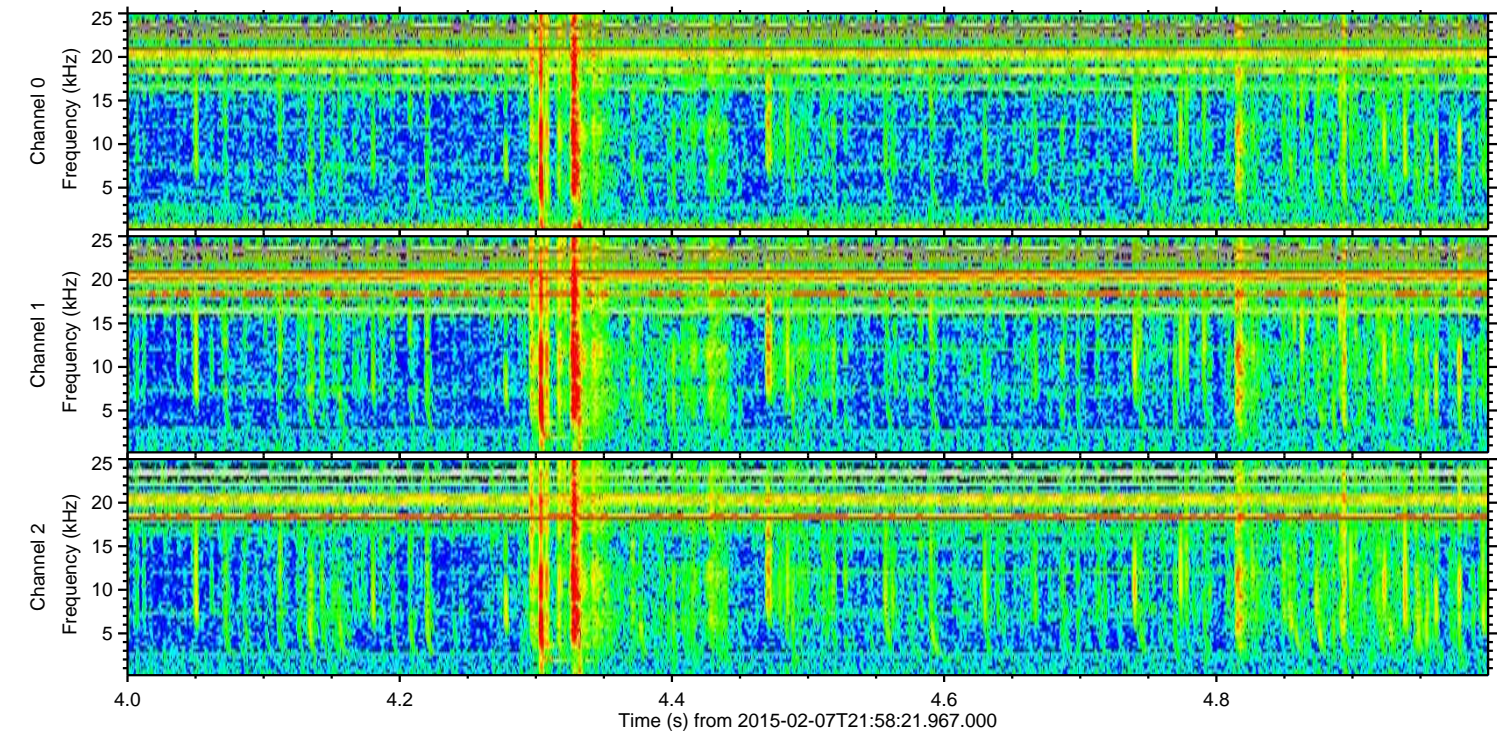
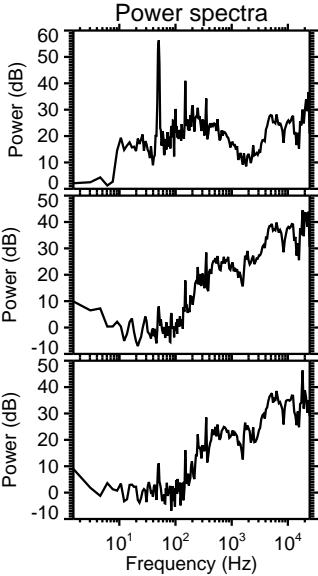
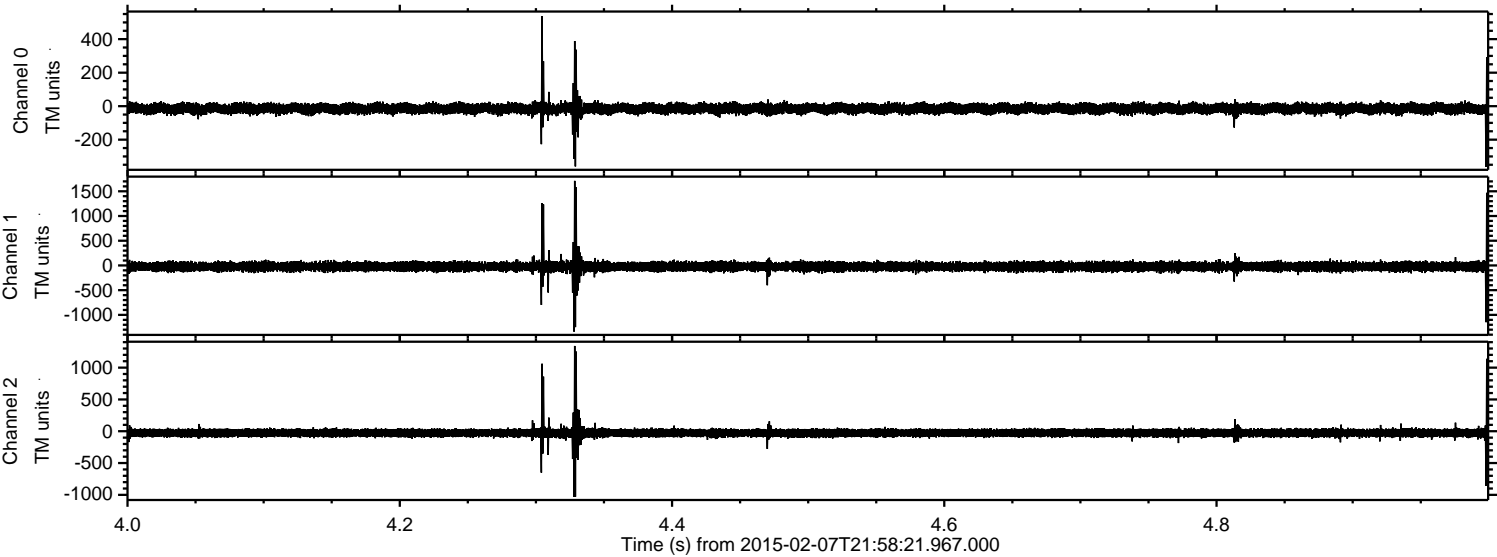
Processed Wed Feb 18 16:42:07 2015 by ELM ver.2012-10-06 from 001__elm20150207_215820__dat00.bin



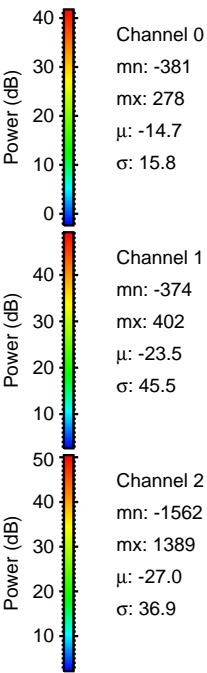
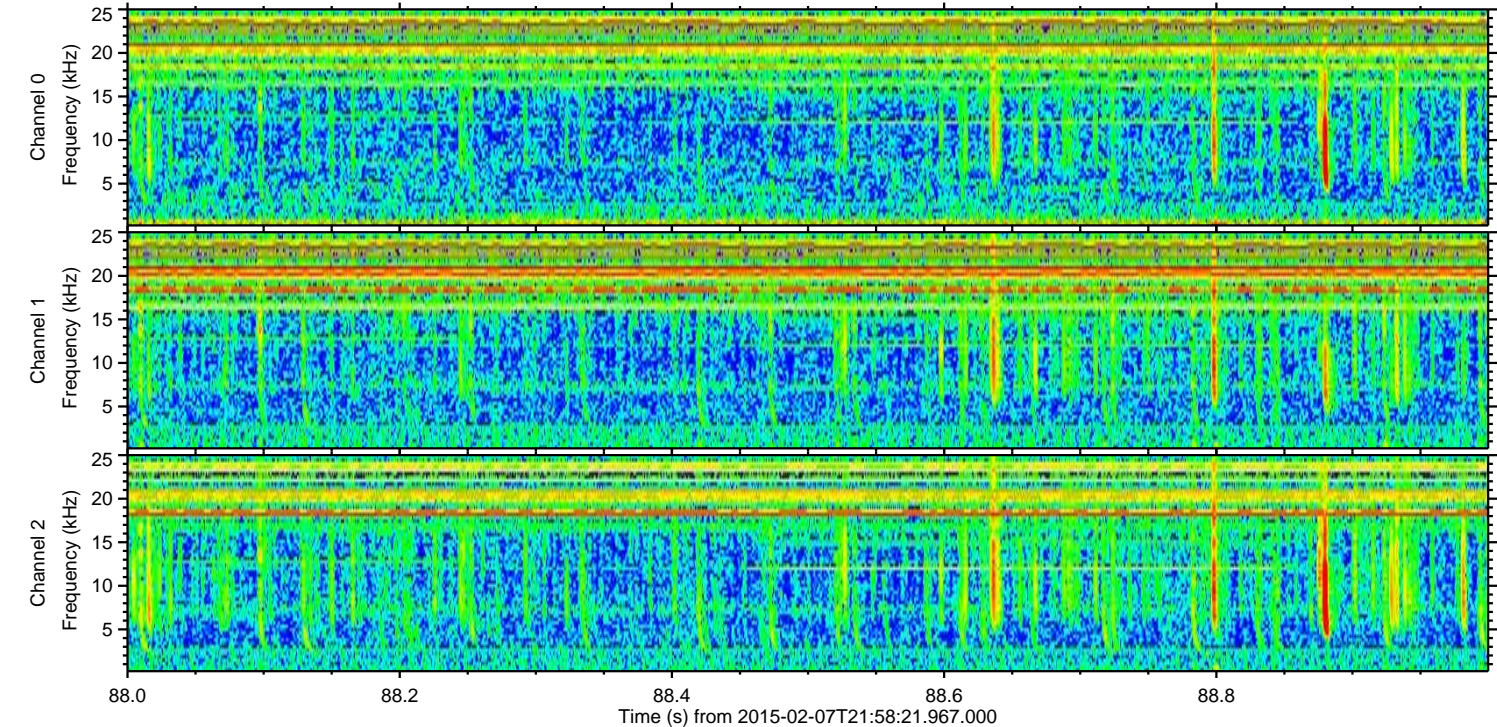
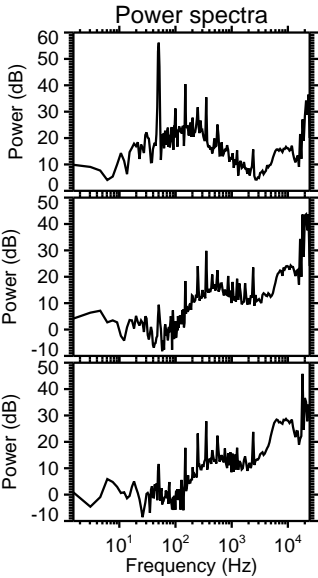
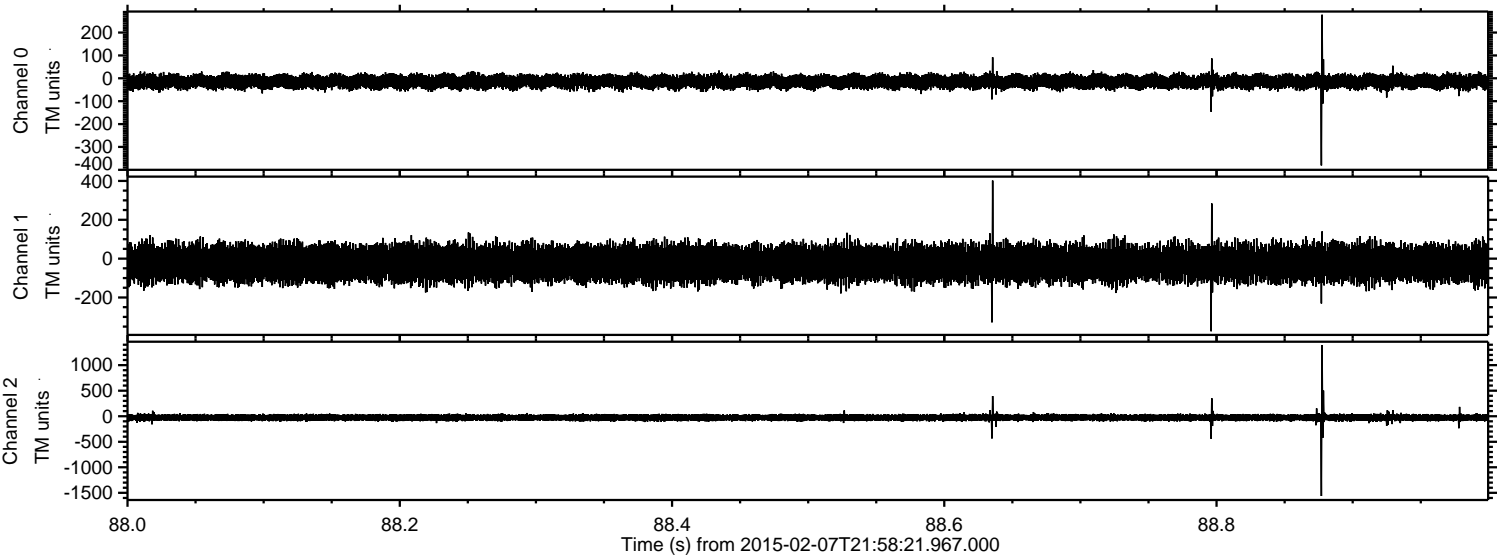
Processed Wed Feb 18 16:42:08 2015 by ELM ver.2012-10-06 from 001__elm20150207_215820__dat00.bin



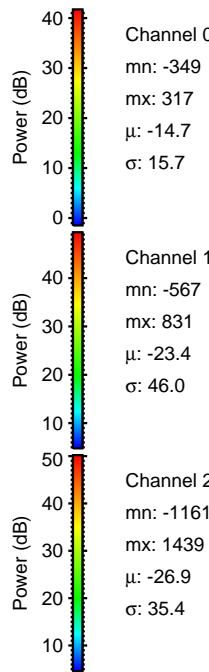
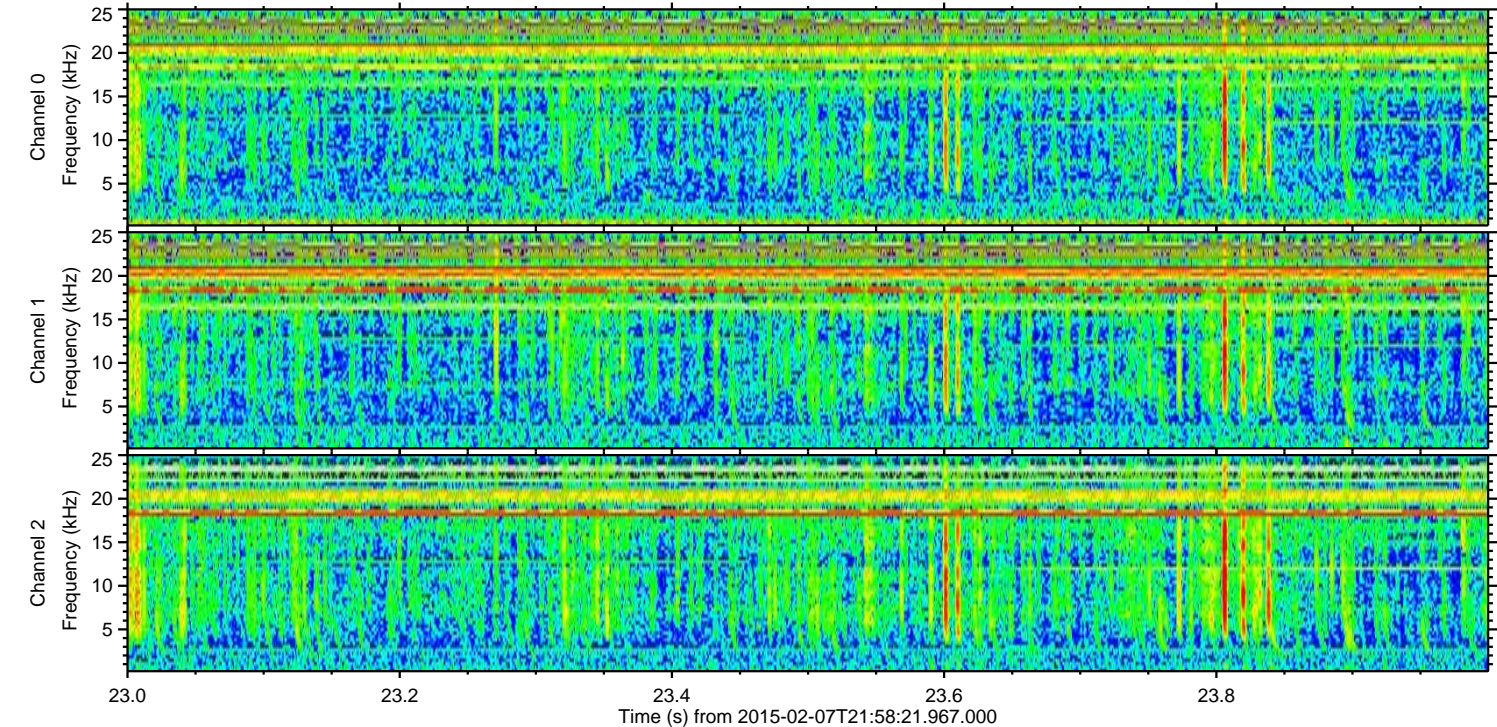
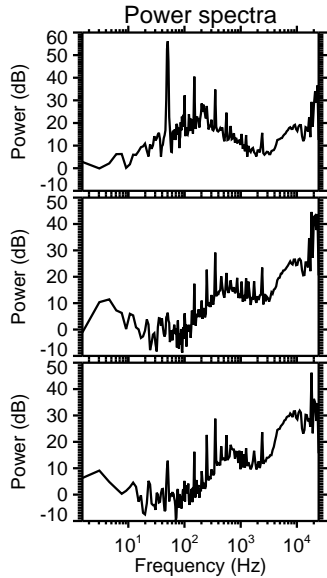
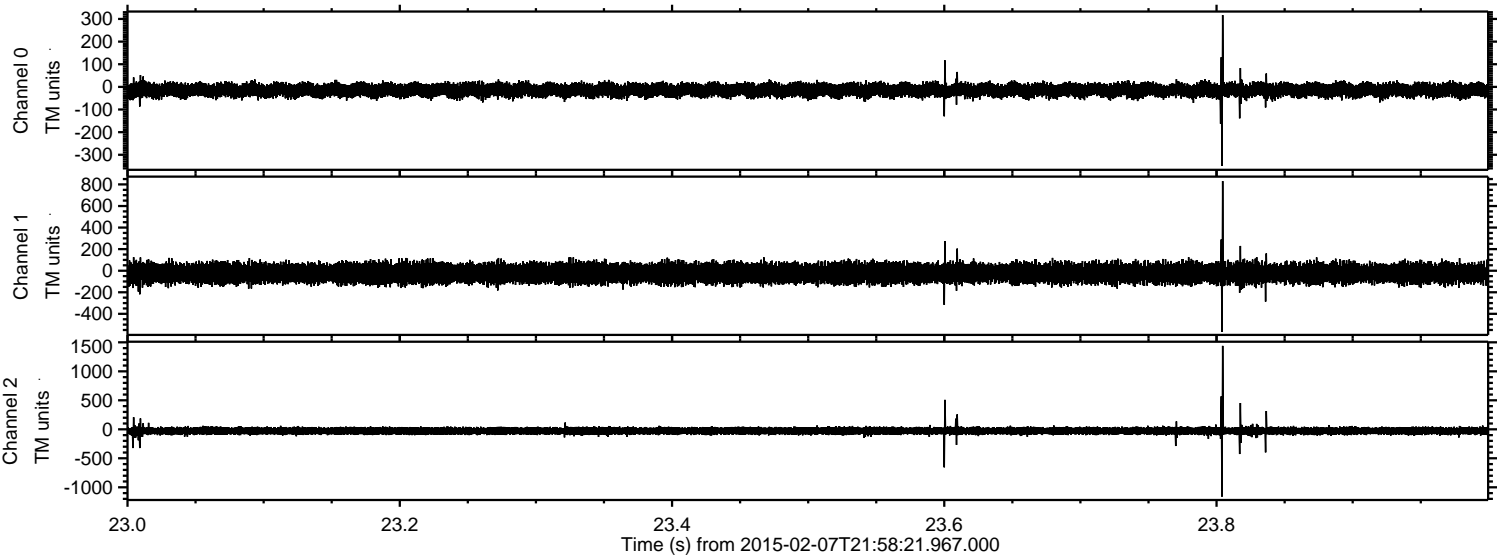
Processed Wed Feb 18 16:42:09 2015 by ELM ver.2012-10-06 from 001__elm20150207_215820__dat00.bin



Processed Wed Feb 18 16:42:10 2015 by ELM ver.2012-10-06 from 001__elm20150207_215820__dat00.bin



Processed Wed Feb 18 16:42:13 2015 by ELM ver.2012-10-06 from 001__elm20150207_215820__dat00.bin



Channel 0
mn: -349
mx: 317
 μ : -14.7
 σ : 15.7

Channel 1
mn: -567
mx: 831
 μ : -23.4
 σ : 46.0

Channel 2
mn: -1161
mx: 1439
 μ : -26.9
 σ : 35.4

Processed Wed Feb 18 16:42:15 2015 by ELM ver.2012-10-06 from 001__elm20150207_215820__dat00.bin

