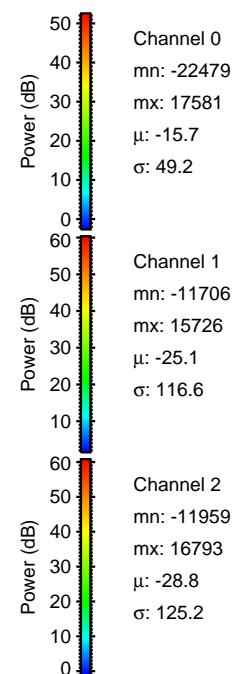
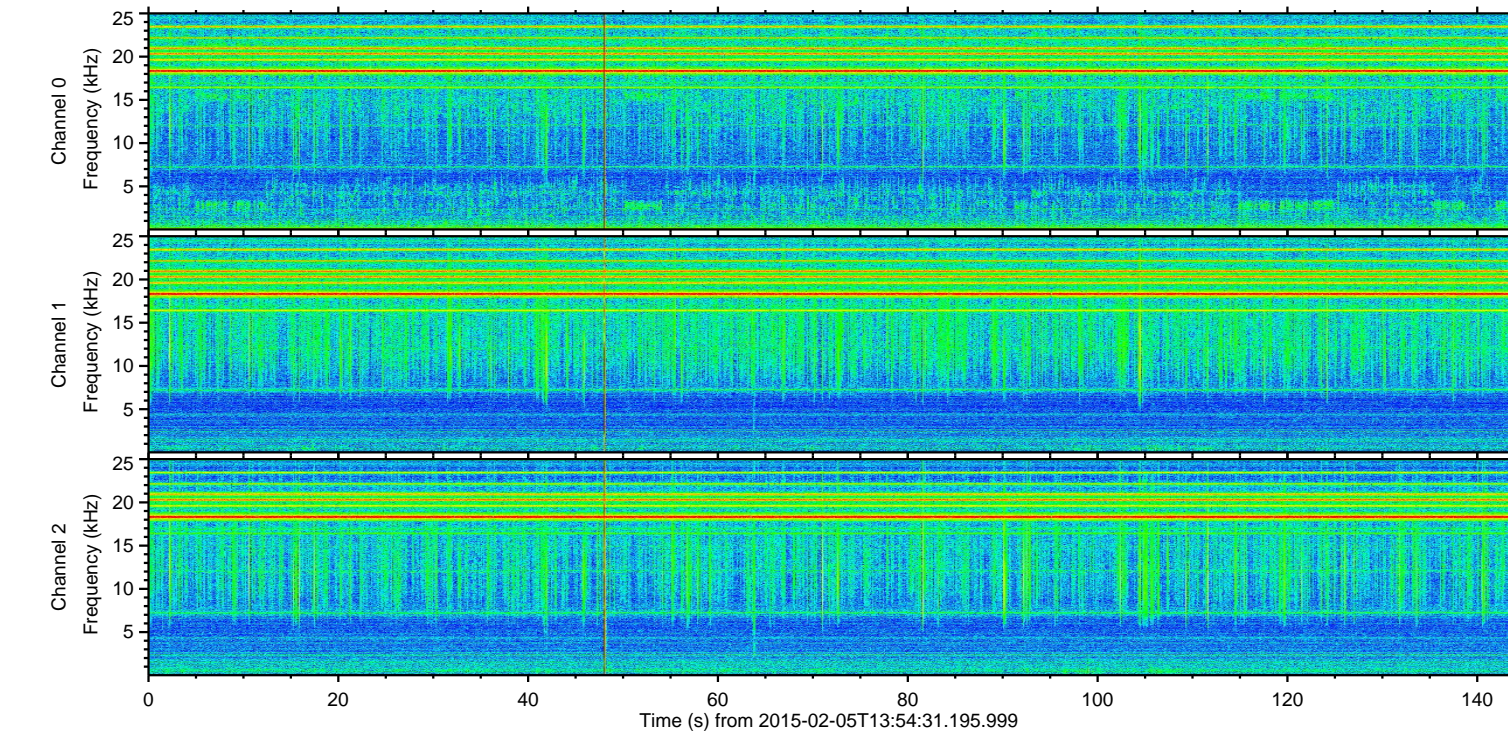
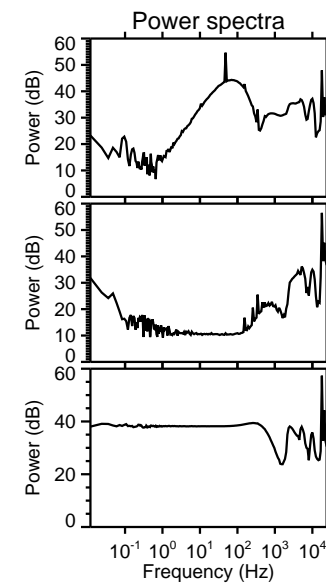
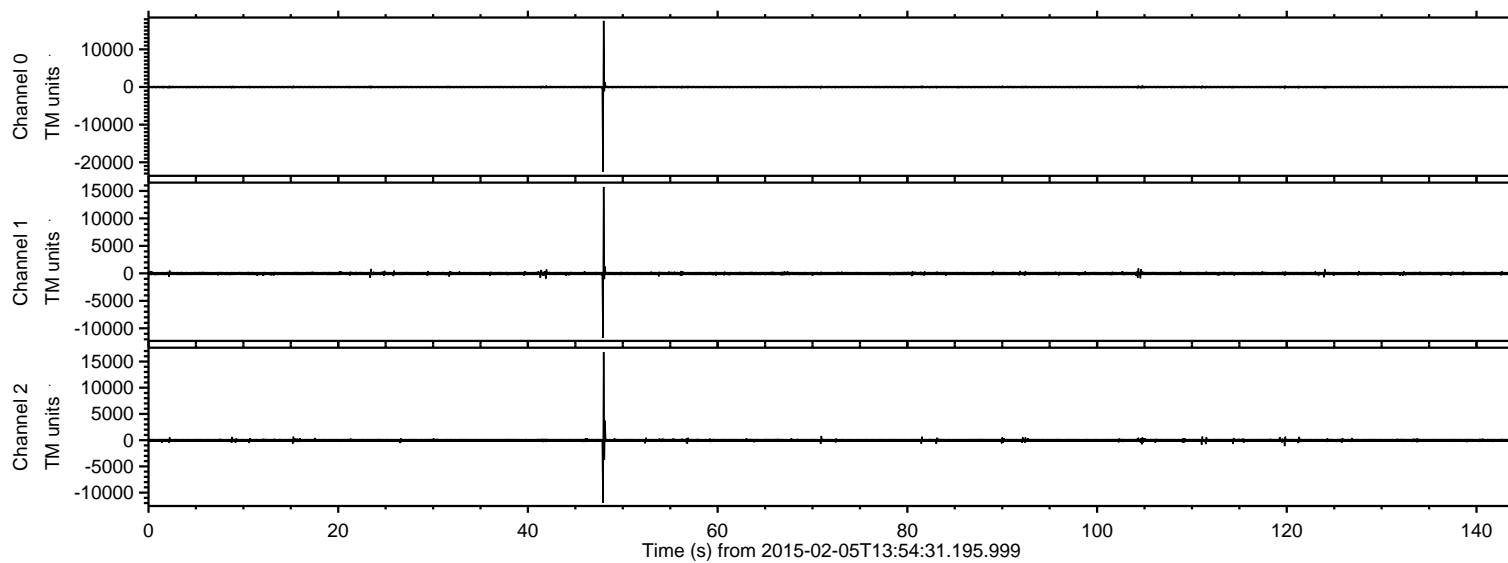


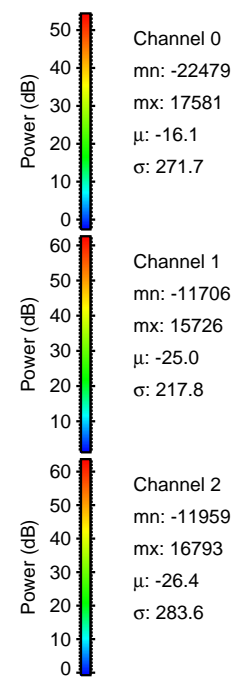
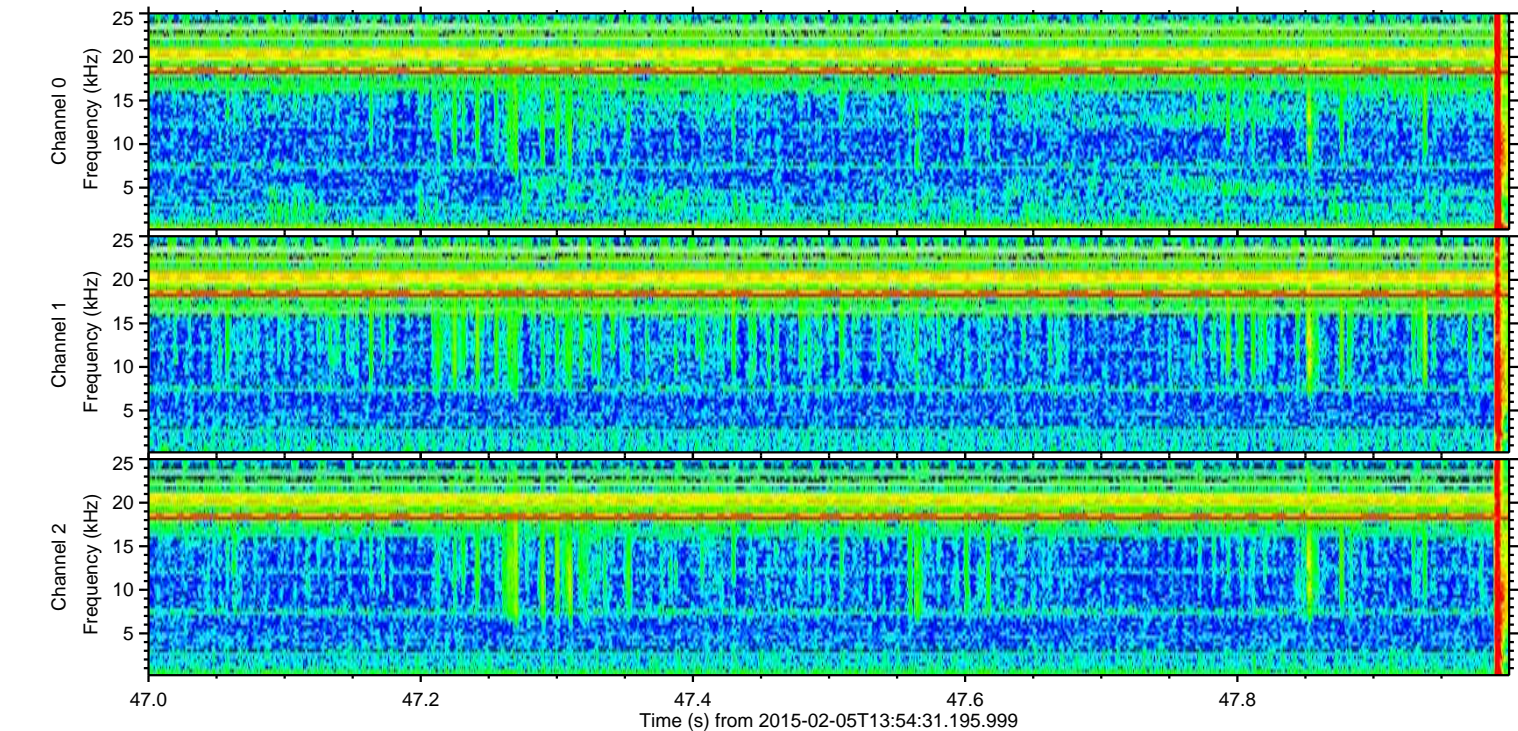
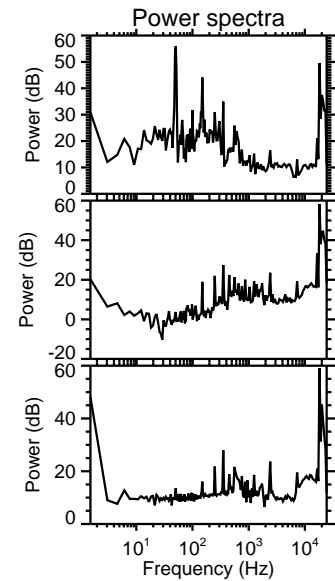
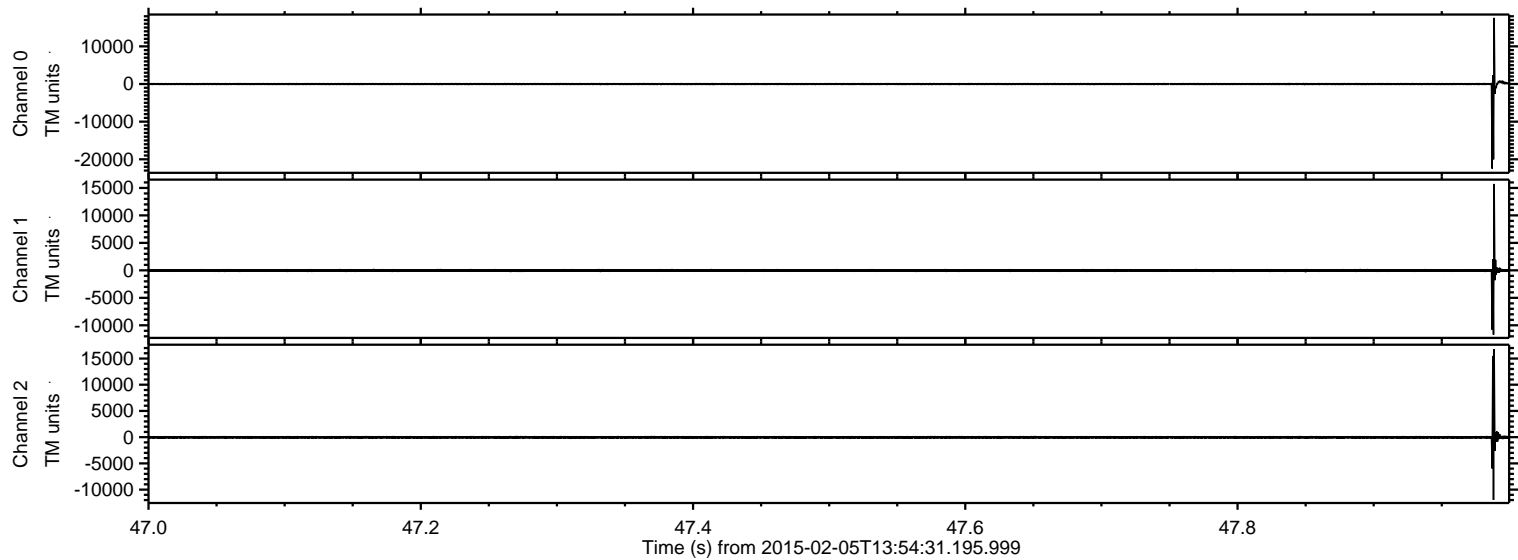
ELMAVAN 3D WAVEFORMS (Measured data sampled at 50 kHz) 49806 packets of 144 samples from 2015-02-05T13:54:31.195.999.

Processed Wed Feb 18 08:57:20 2015 by ELM ver.2012-10-06 from 001__elm20150205_135430__dat00.bin

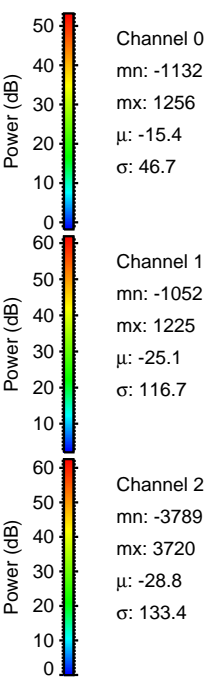
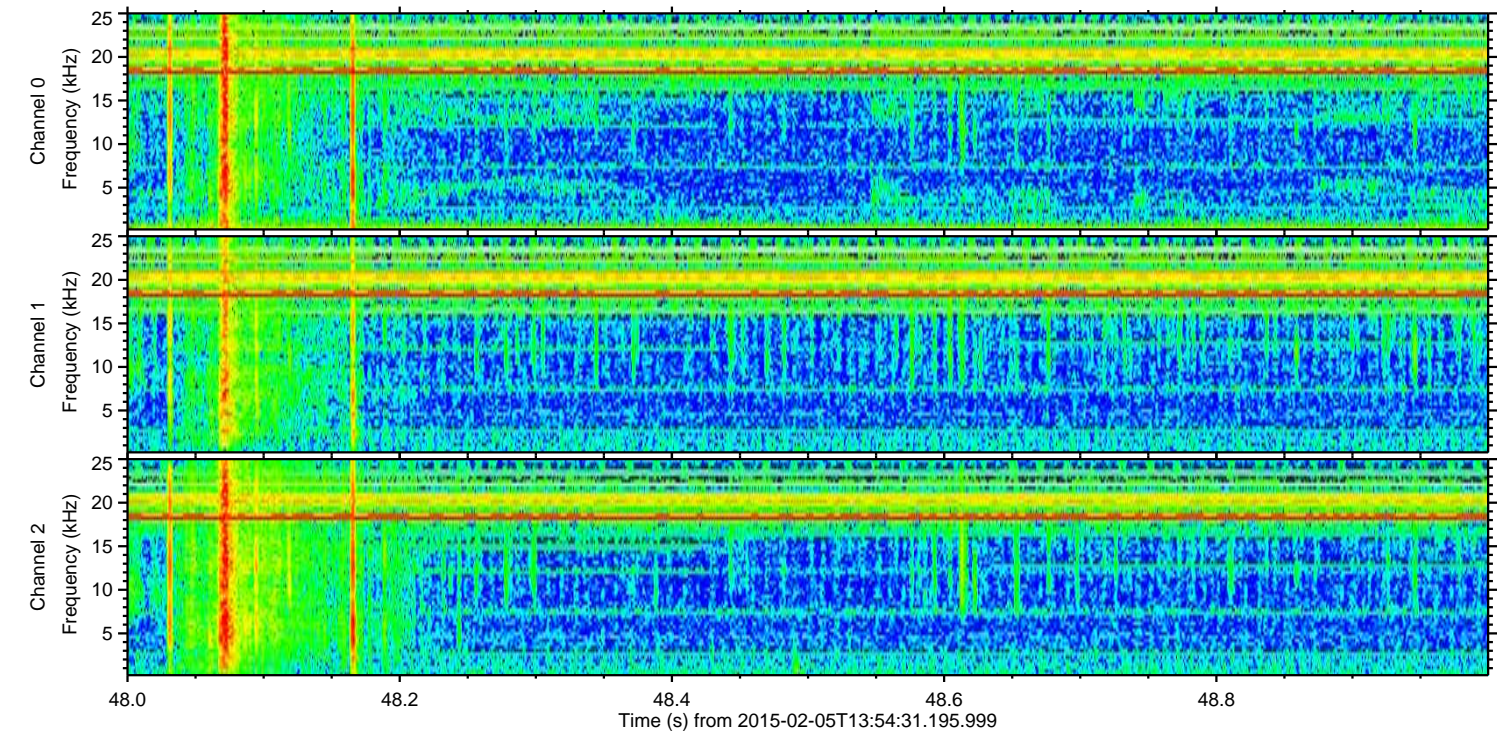
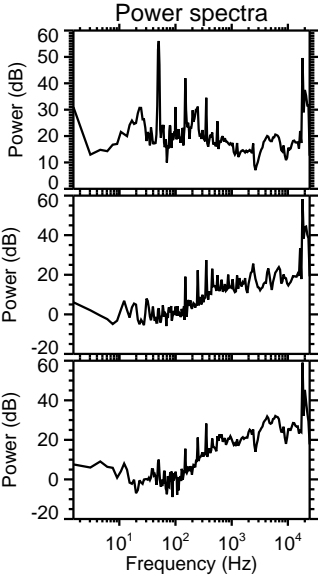
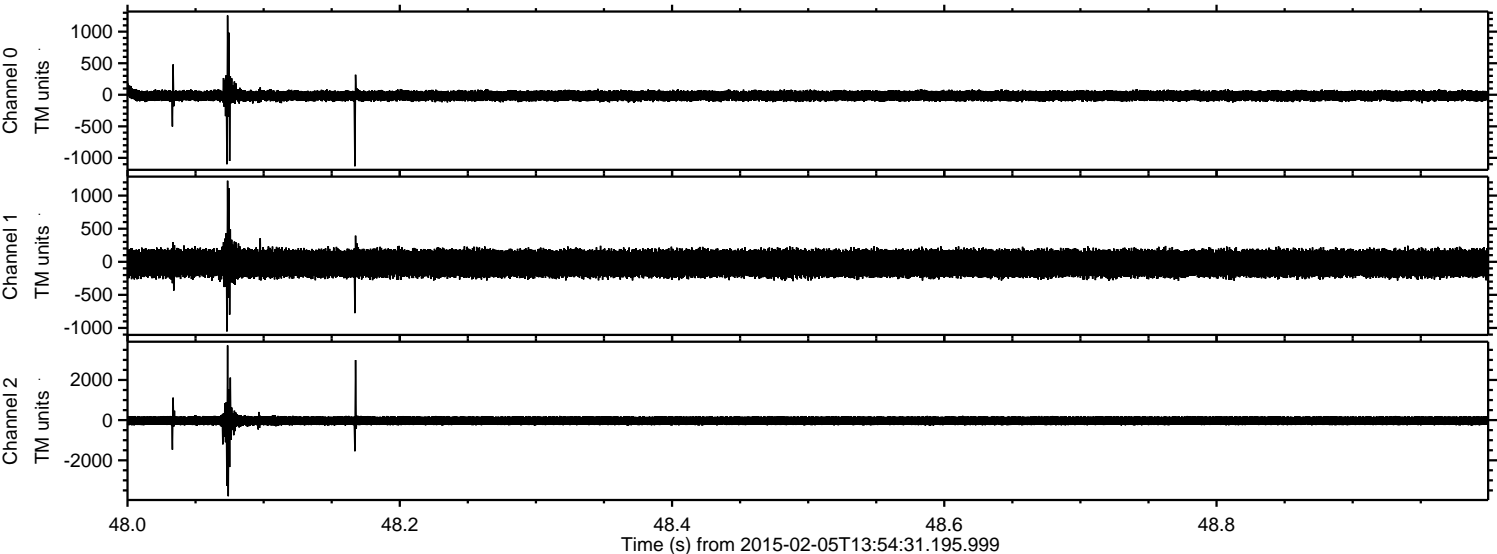


ELMAVAN 3D WAVEFORMS (Measured data sampled at 50 kHz) 49806 packets of 144 samples from 2015-02-05T13:54:31.195.999. Part 48/144

Processed Wed Feb 18 08:57:37 2015 by ELM ver.2012-10-06 from 001__elm20150205_135430__dat00.bin

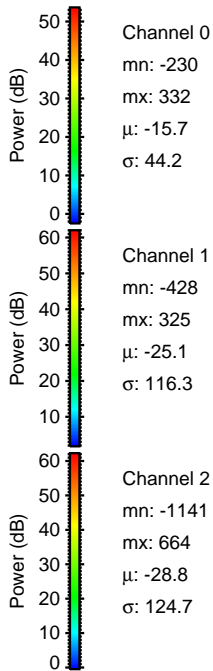
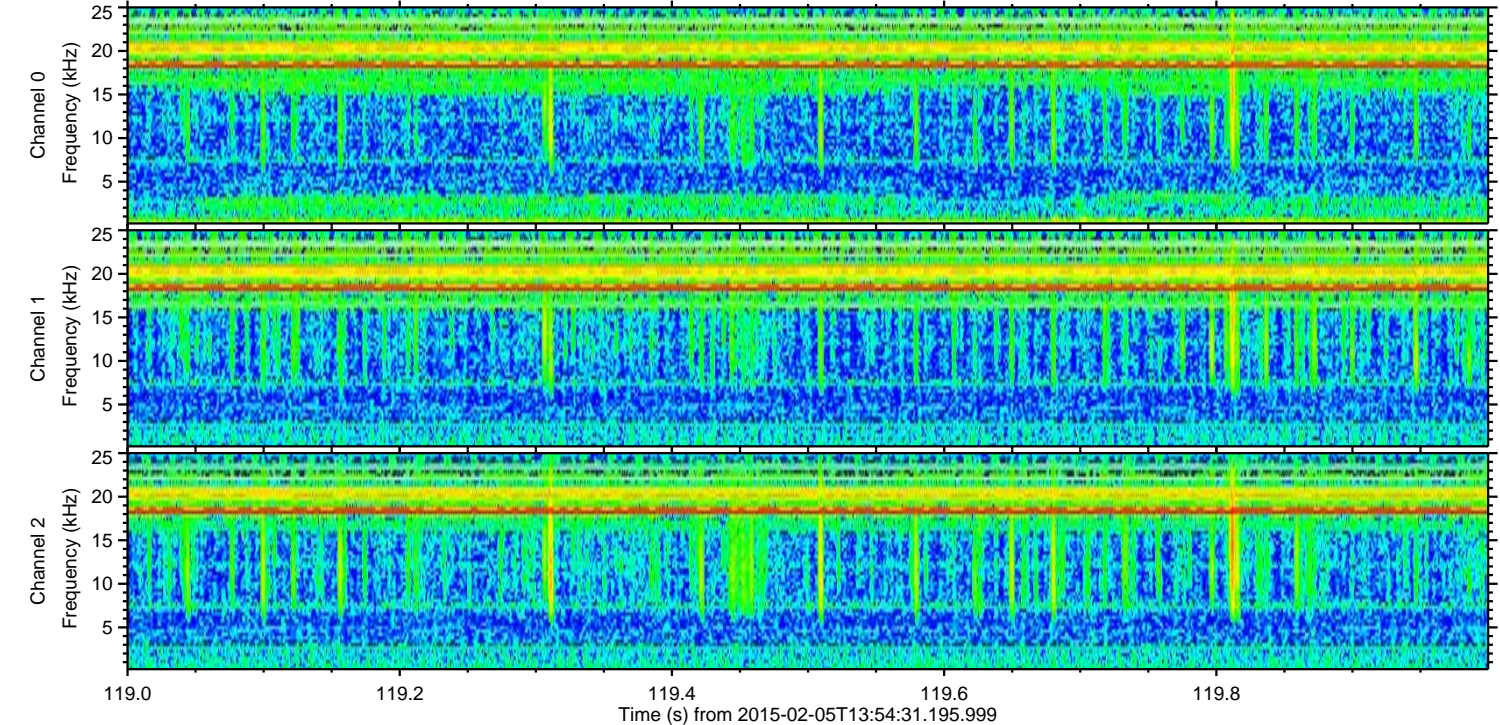
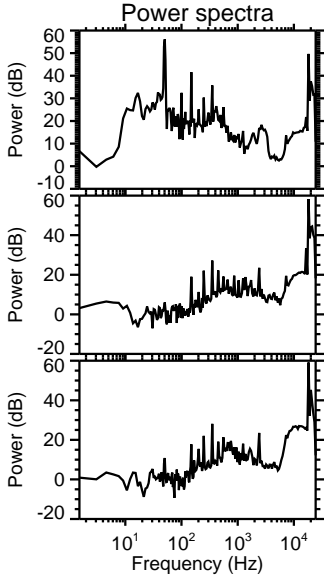
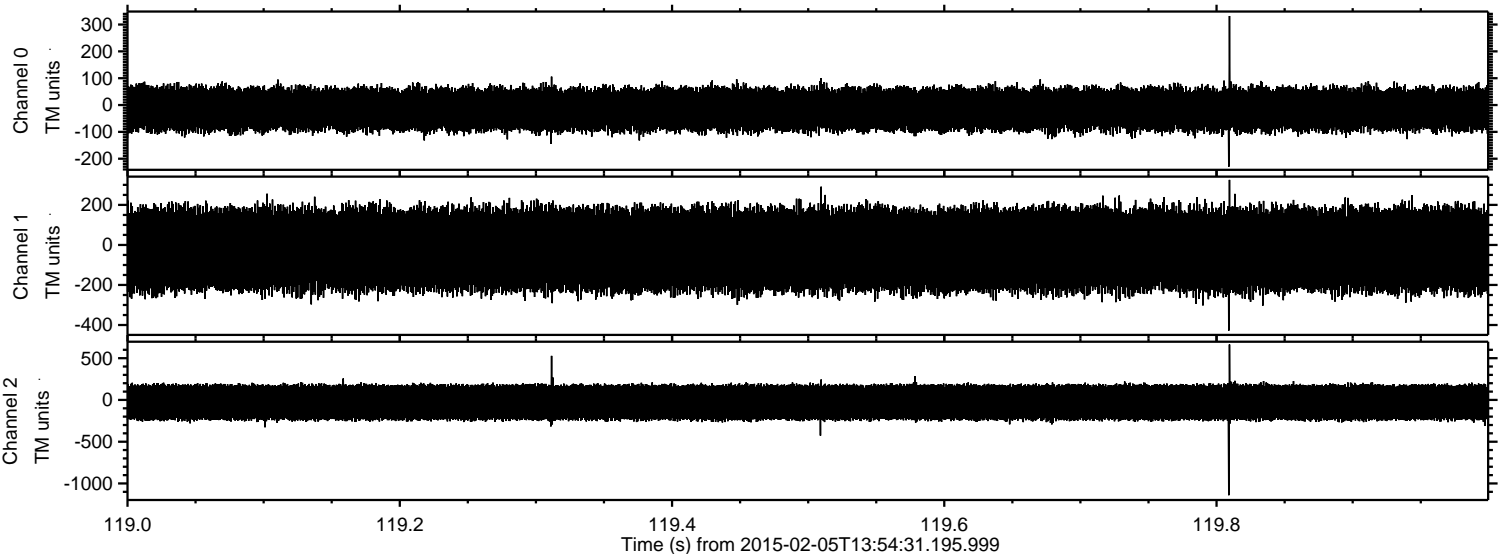


Processed Wed Feb 18 08:57:38 2015 by ELM ver.2012-10-06 from 001__elm20150205_135430__dat00.bin



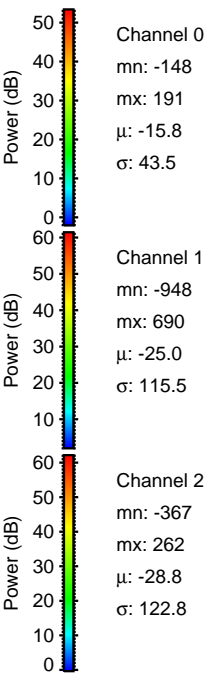
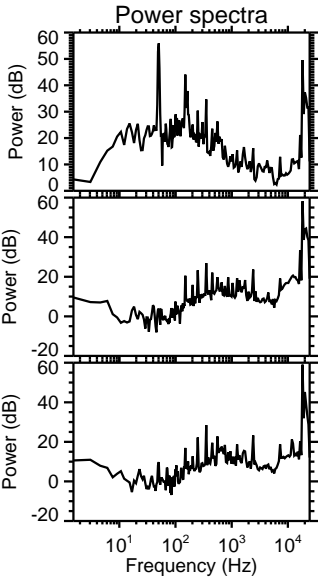
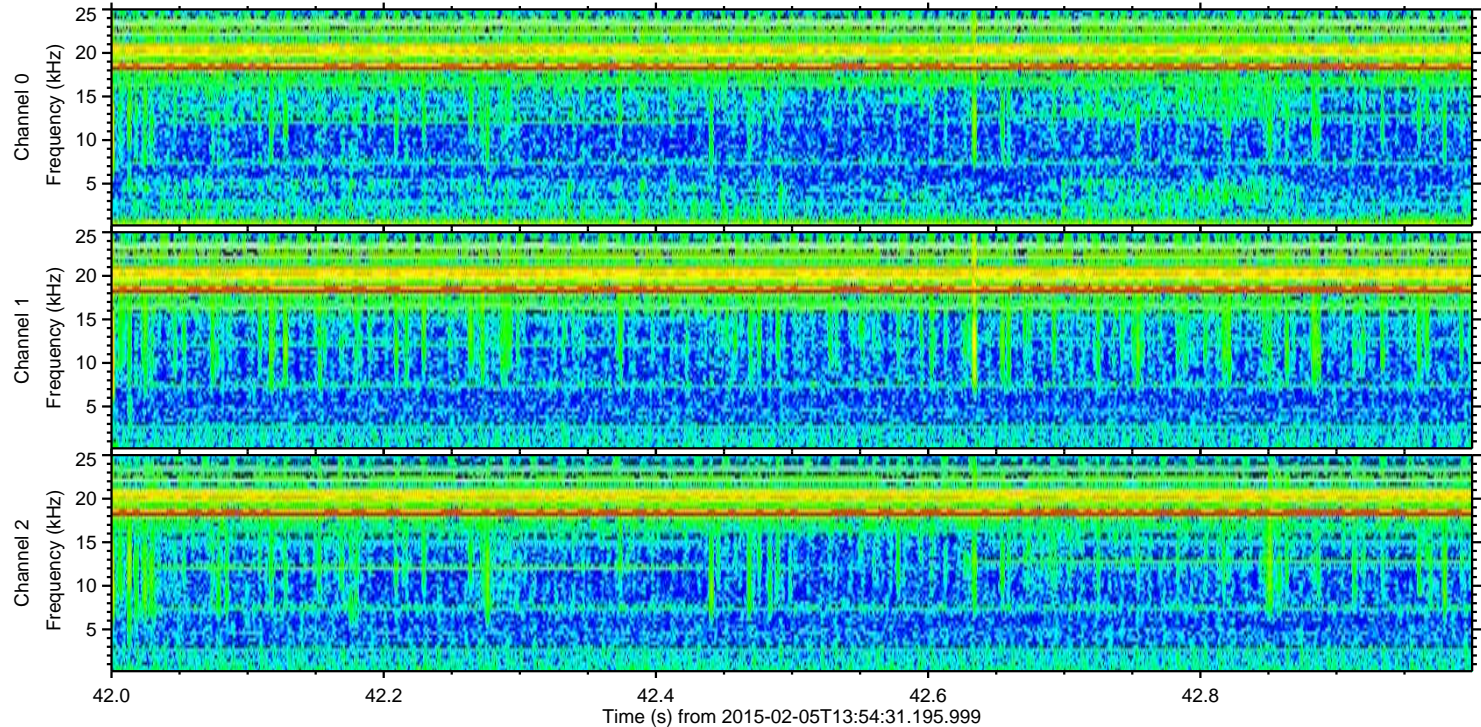
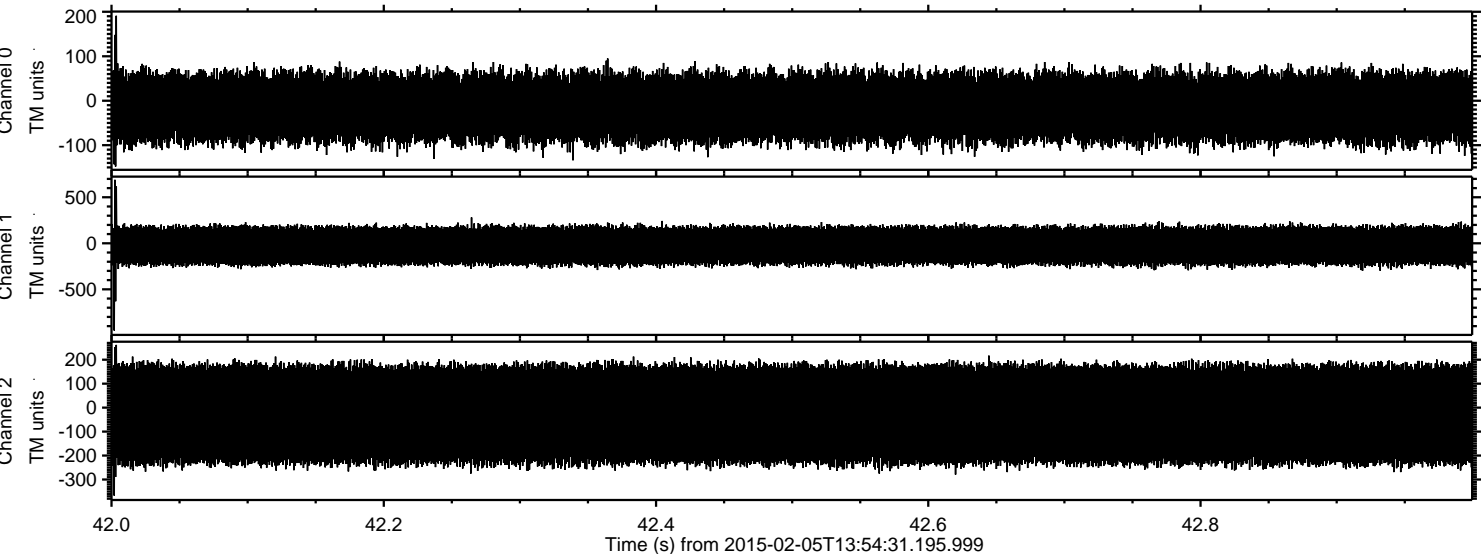
ELMAVAN 3D WAVEFORMS (Measured data sampled at 50 kHz) 49806 packets of 144 samples from 2015-02-05T13:54:31.195.999. Part 120/144

Processed Wed Feb 18 08:57:39 2015 by ELM ver.2012-10-06 from 001__elm20150205_135430__dat00.bin



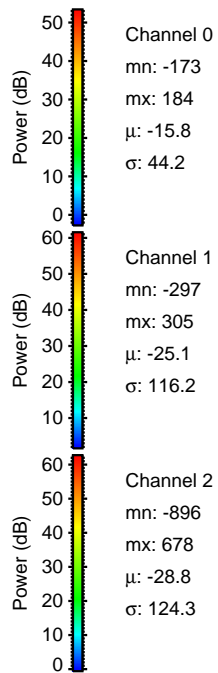
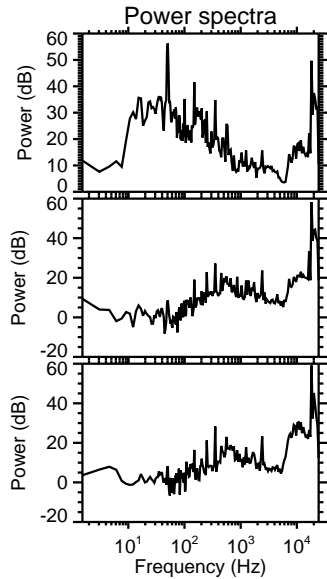
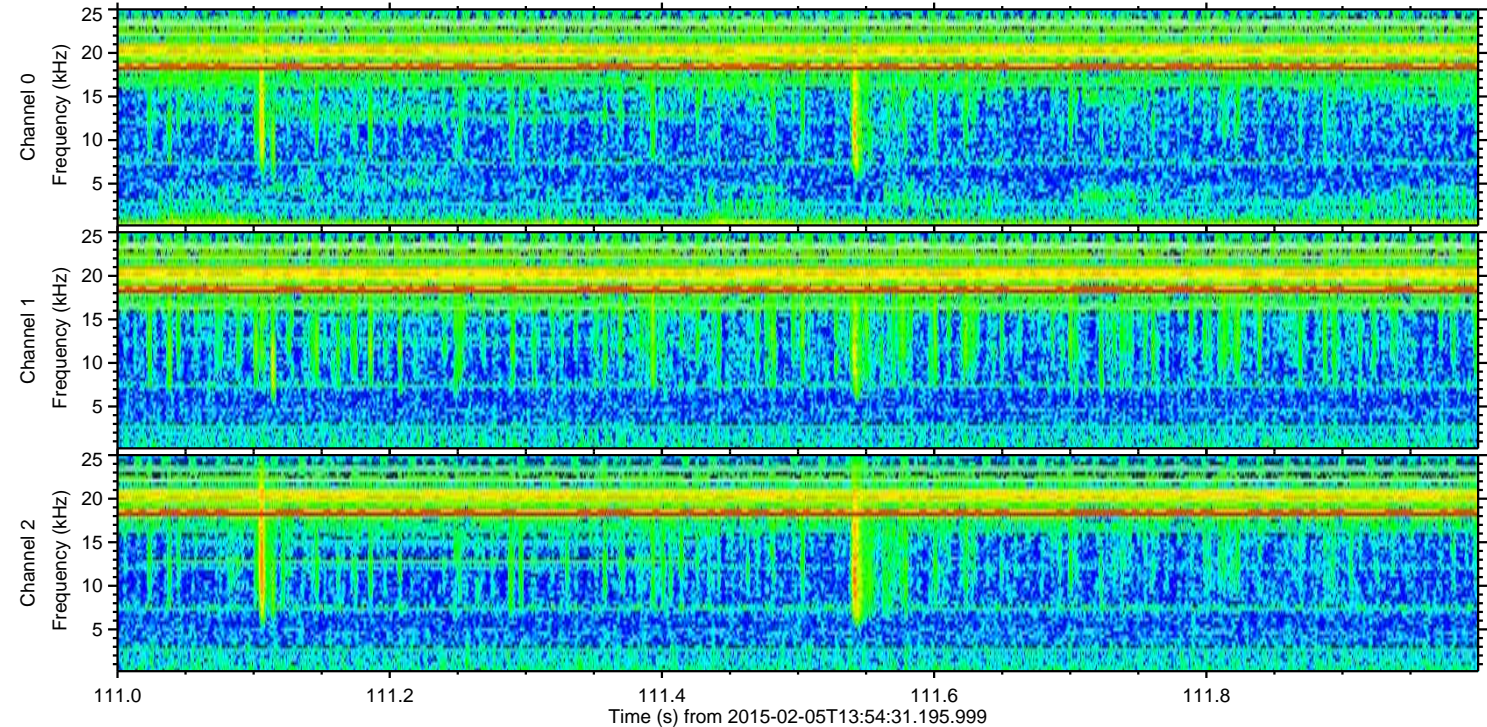
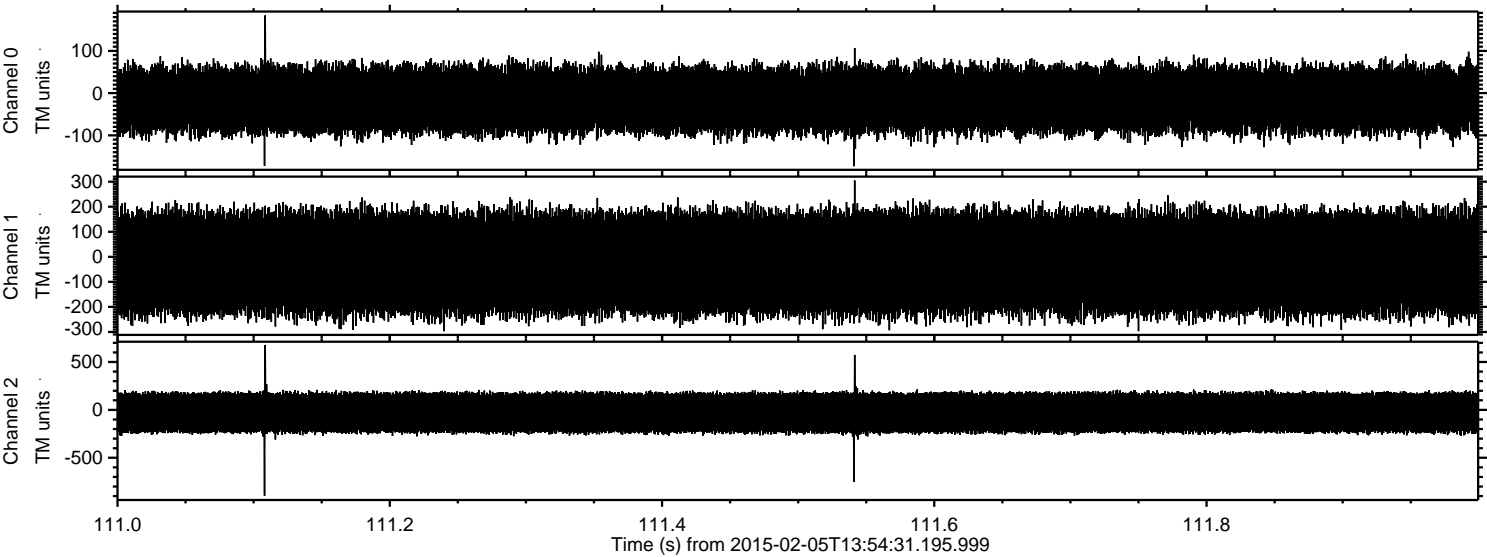
ELMAVAN 3D WAVEFORMS (Measured data sampled at 50 kHz) 49806 packets of 144 samples from 2015-02-05T13:54:31.195.999. Part 43/144

Processed Wed Feb 18 08:57:40 2015 by ELM ver.2012-10-06 from 001__elm20150205_135430__dat00.bin



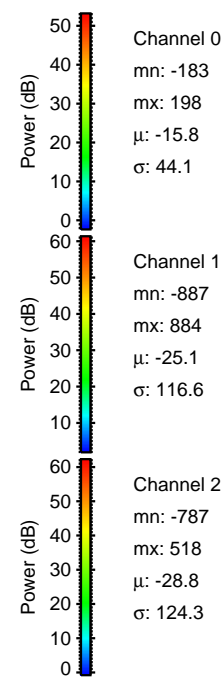
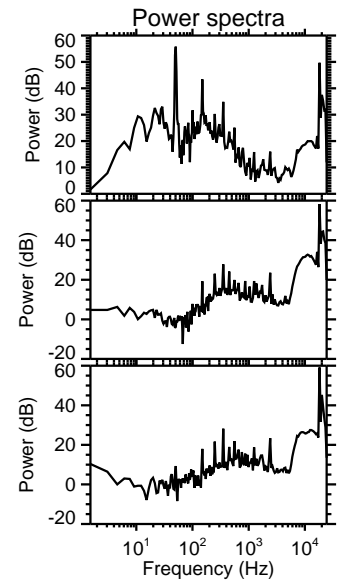
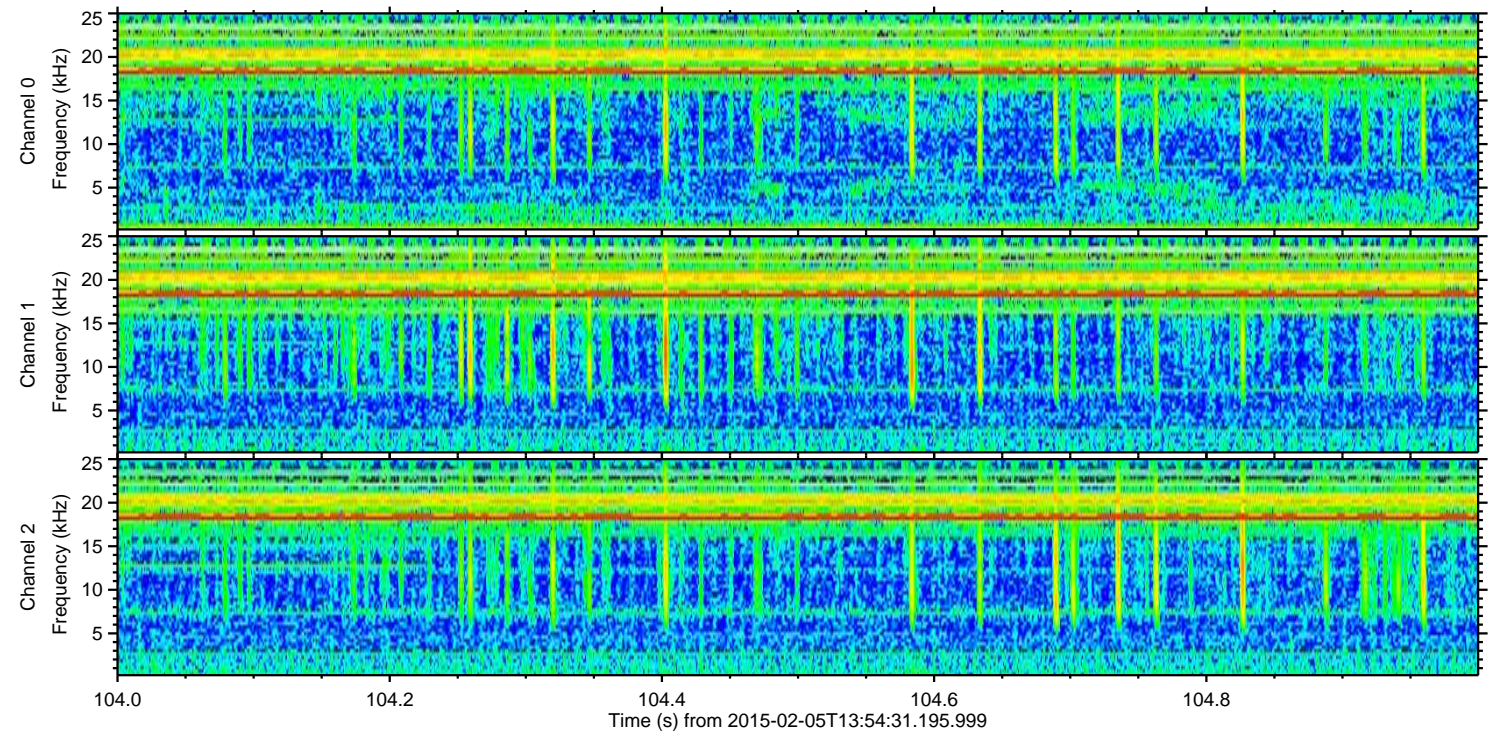
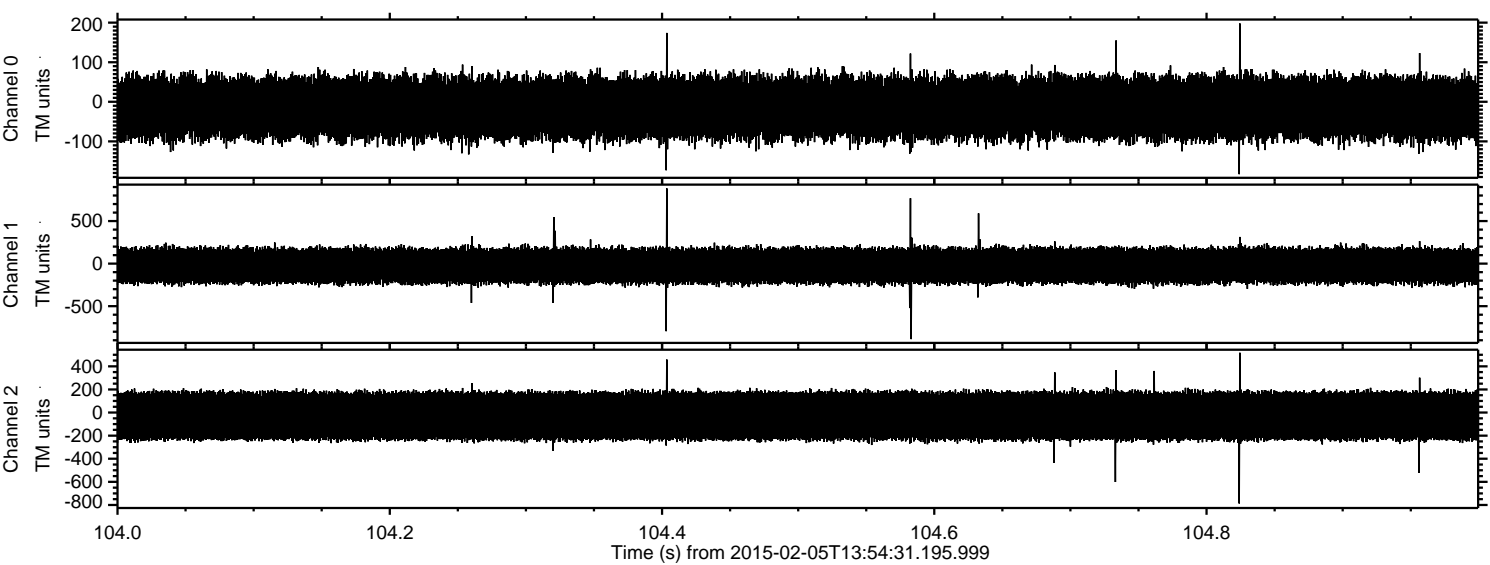
ELMAVAN 3D WAVEFORMS (Measured data sampled at 50 kHz) 49806 packets of 144 samples from 2015-02-05T13:54:31.195.999. Part 112/144

Processed Wed Feb 18 08:57:42 2015 by ELM ver.2012-10-06 from 001__elm20150205_135430__dat00.bin



ELMAVAN 3D WAVEFORMS (Measured data sampled at 50 kHz) 49806 packets of 144 samples from 2015-02-05T13:54:31.195.999. Part 105/144

Processed Wed Feb 18 08:57:43 2015 by ELM ver.2012-10-06 from 001__elm20150205_135430__dat00.bin

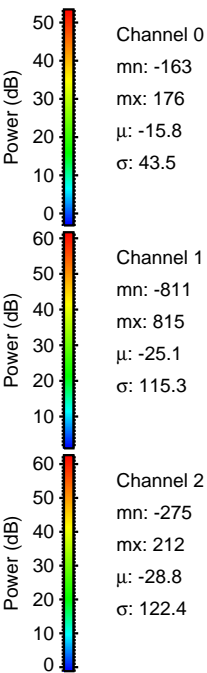
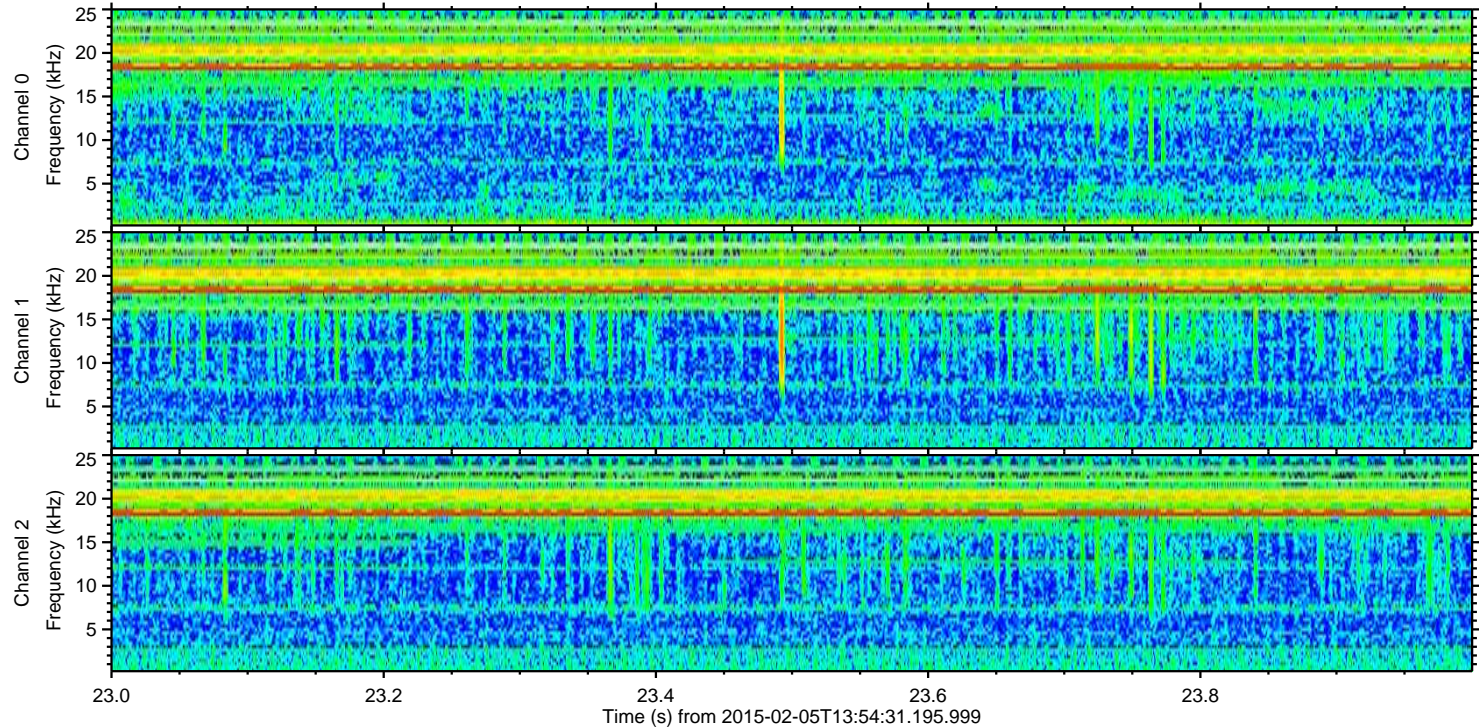
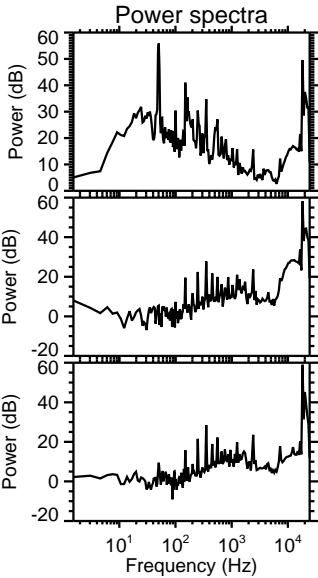
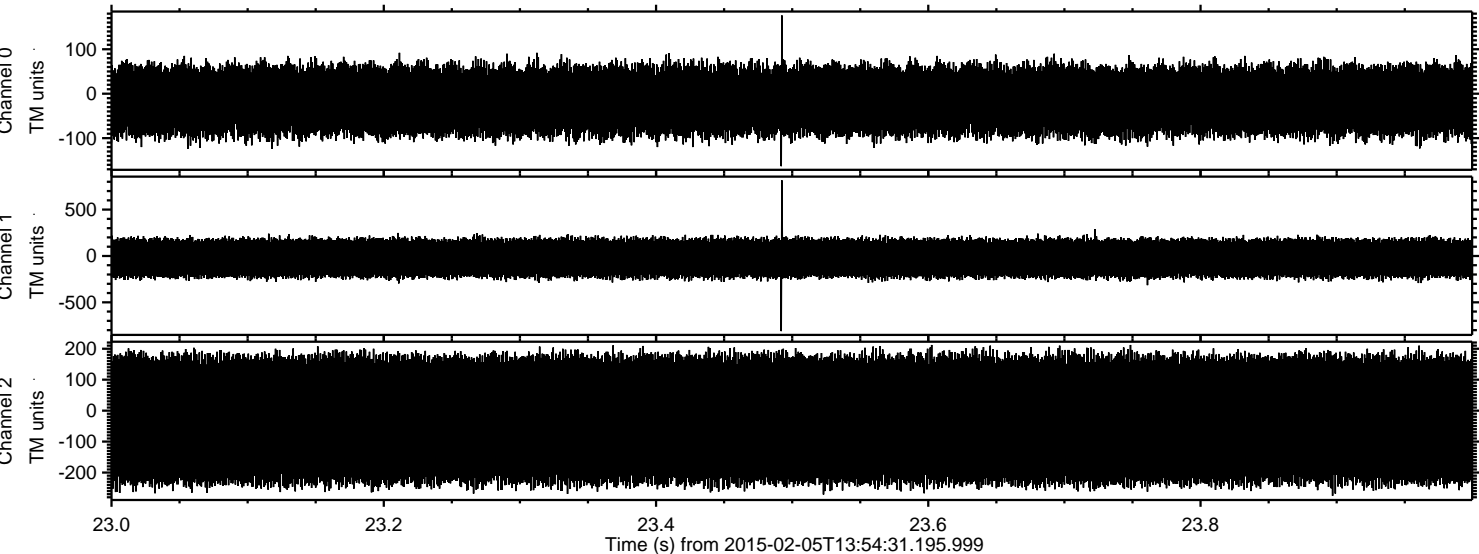


Channel 0
mn: -183
mx: 198
 μ : -15.8
 σ : 44.1

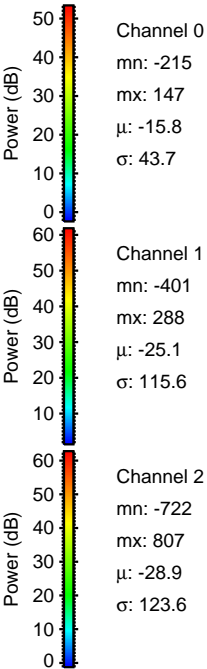
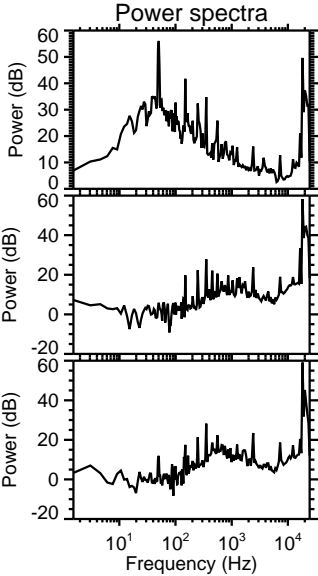
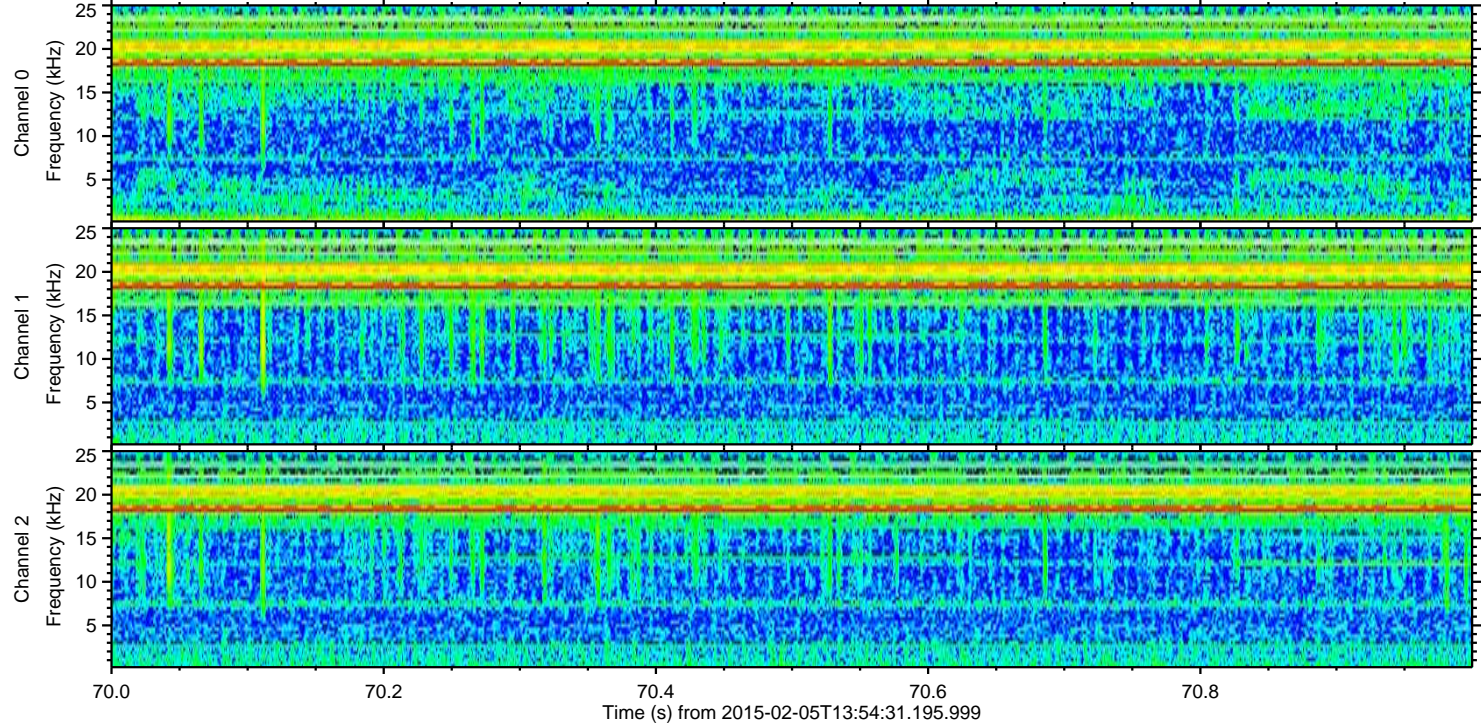
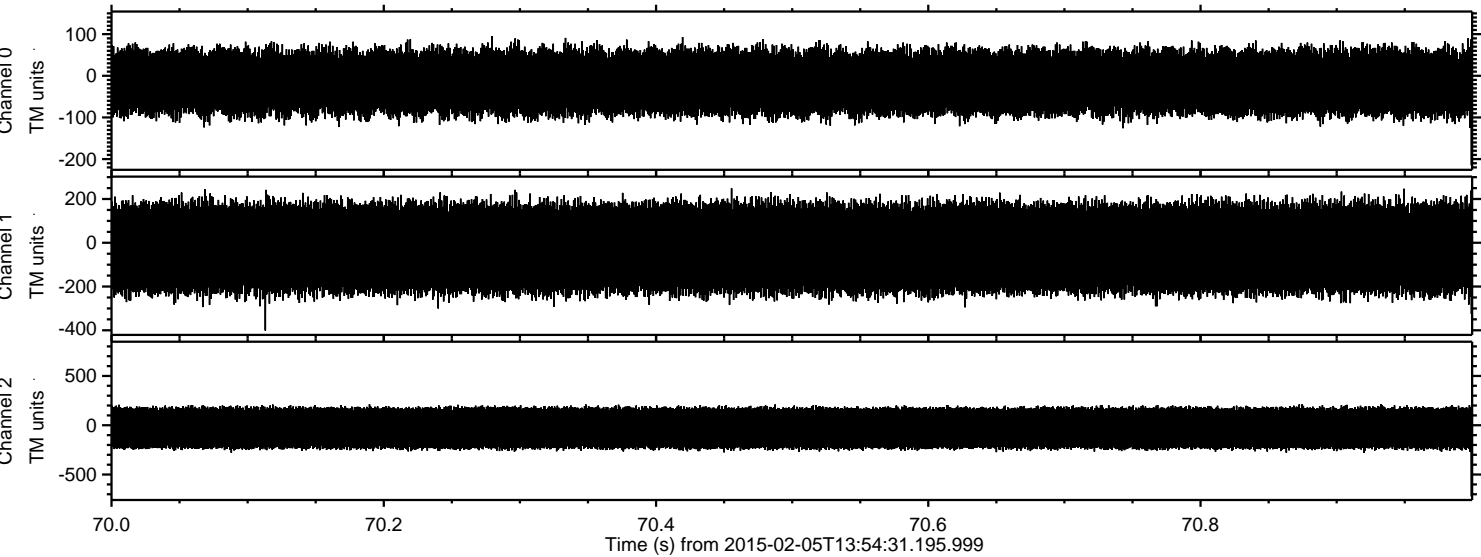
Channel 1
mn: -887
mx: 884
 μ : -25.1
 σ : 116.6

Channel 2
mn: -787
mx: 518
 μ : -28.8
 σ : 124.3

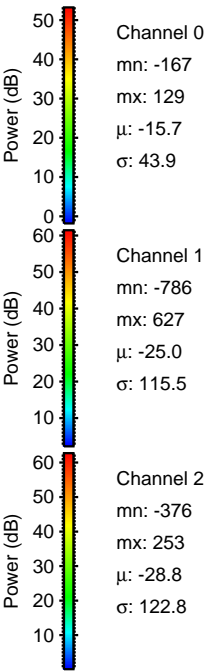
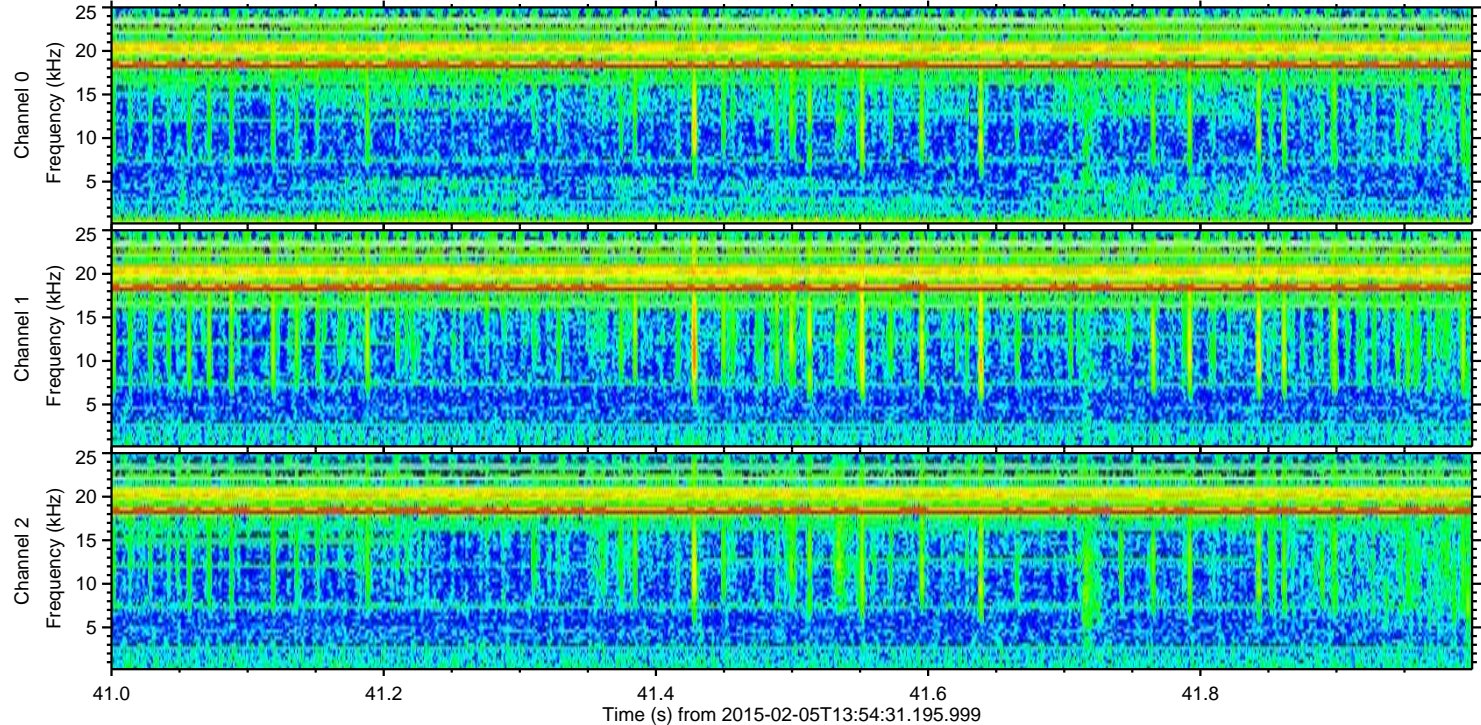
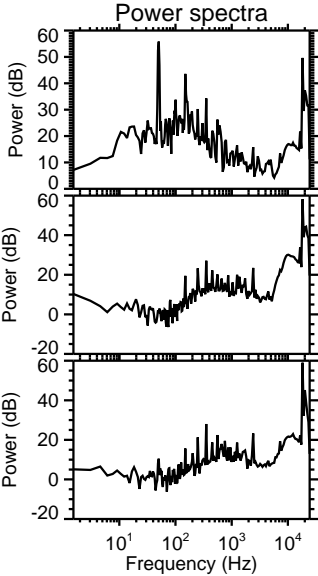
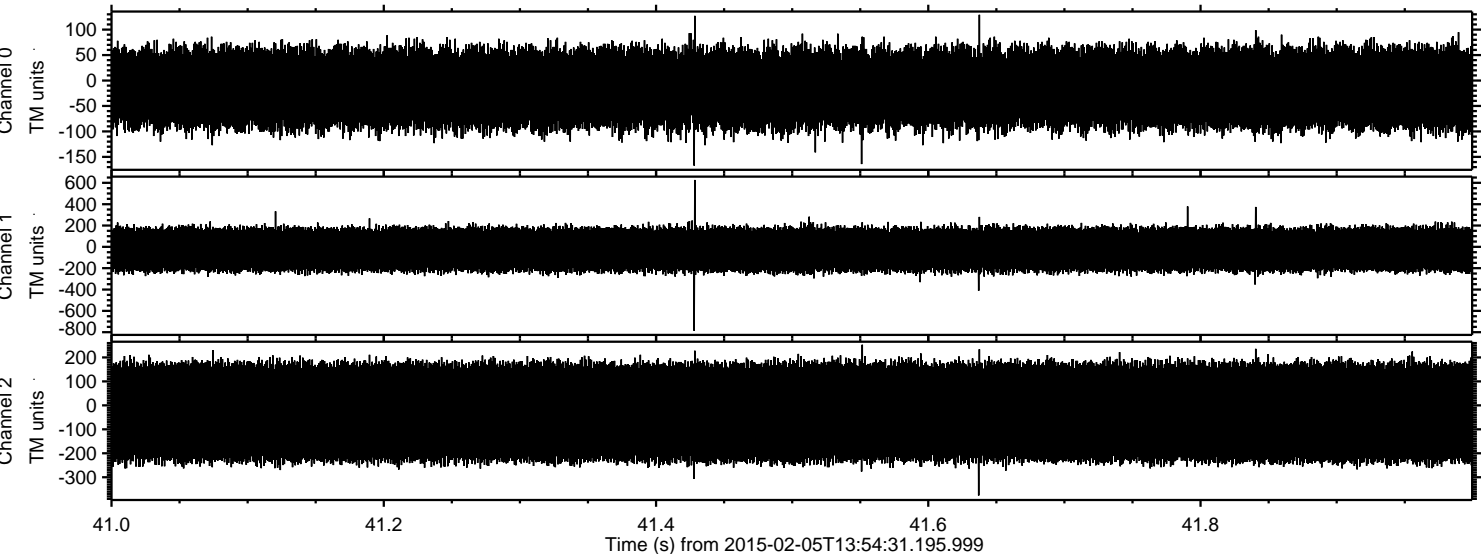
Processed Wed Feb 18 08:57:46 2015 by ELM ver.2012-10-06 from 001__elm20150205_135430__dat00.bin



Processed Wed Feb 18 08:57:48 2015 by ELM ver.2012-10-06 from 001__elm20150205_135430__dat00.bin



Processed Wed Feb 18 08:57:49 2015 by ELM ver.2012-10-06 from 001__elm20150205_135430__dat00.bin



Processed Wed Feb 18 08:57:51 2015 by ELM ver.2012-10-06 from 001__elm20150205_135430__dat00.bin

