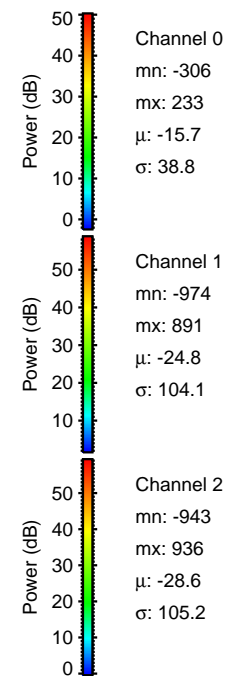
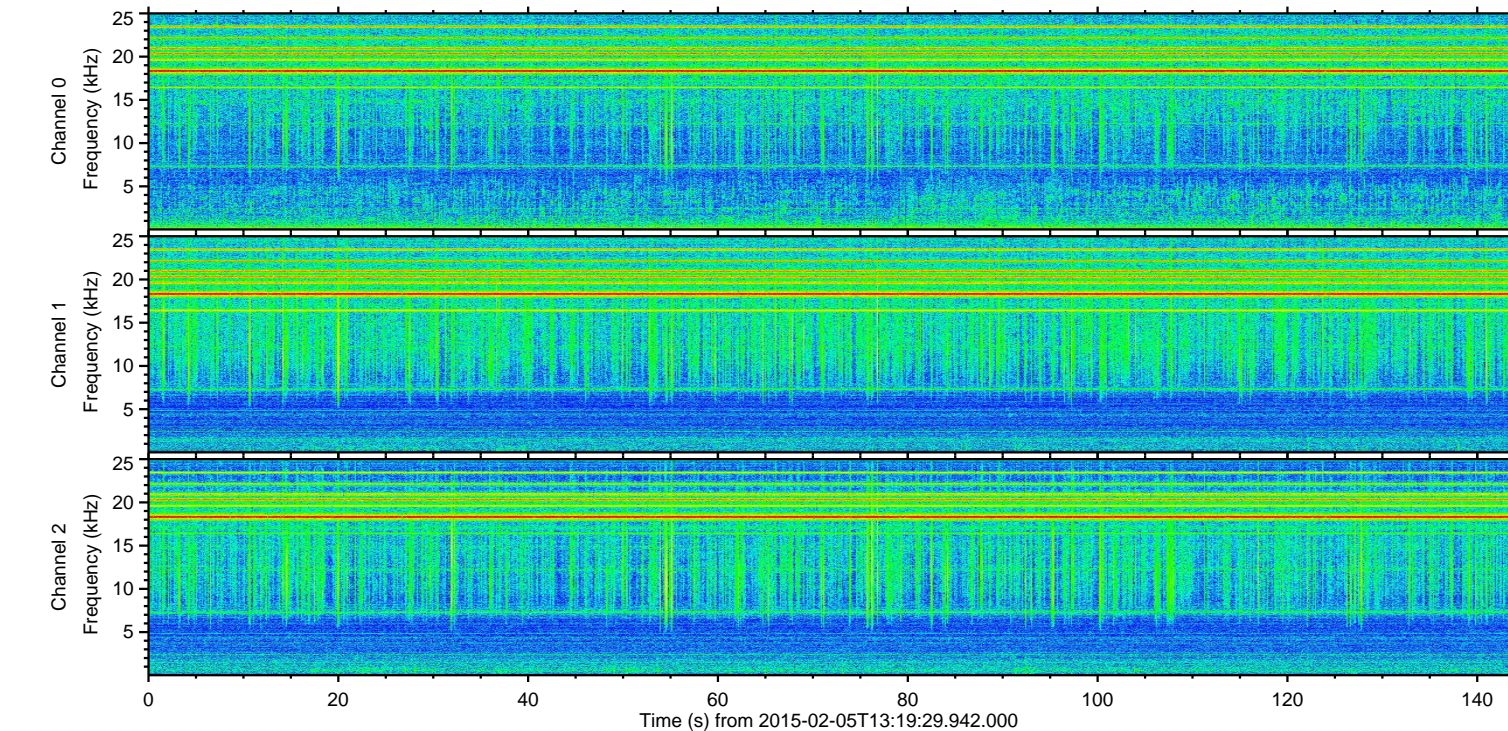
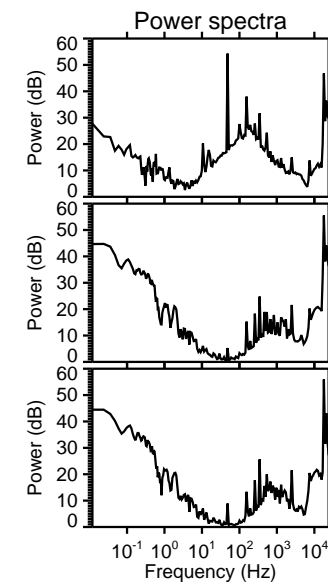
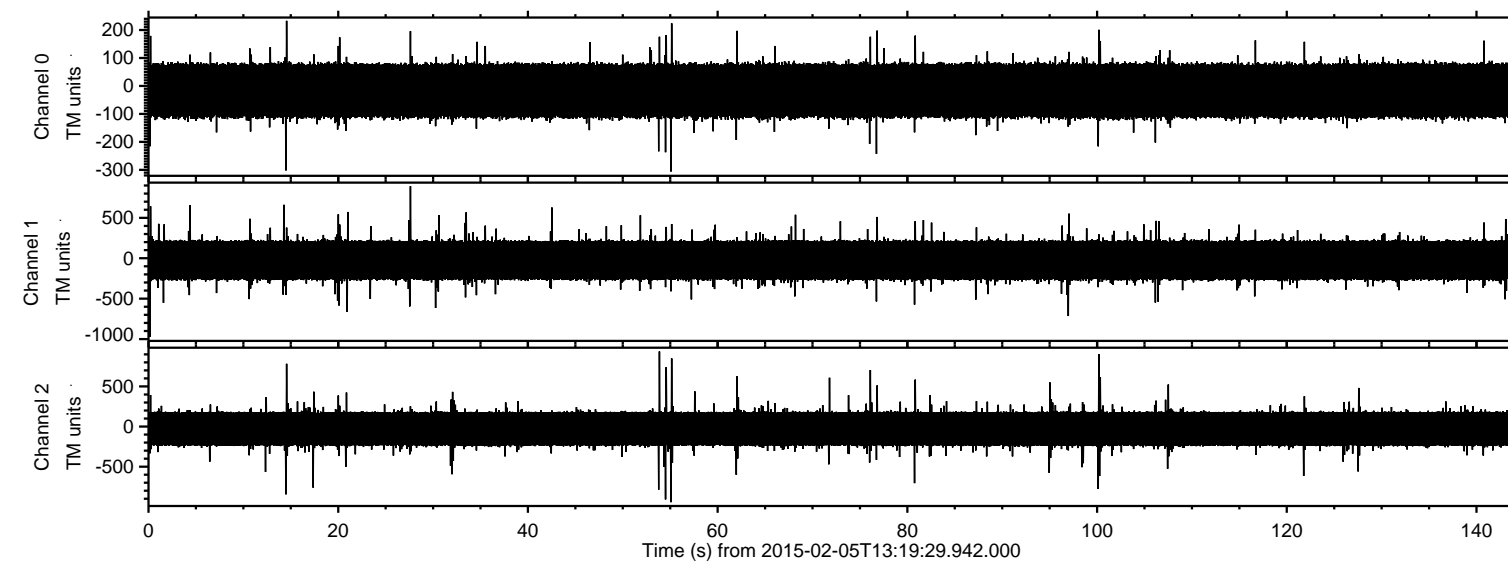
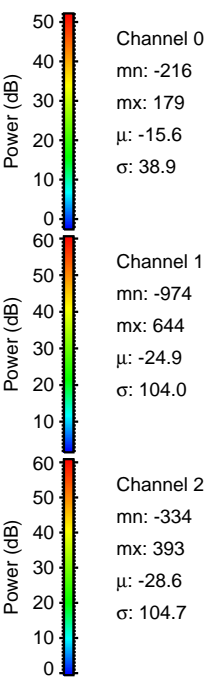
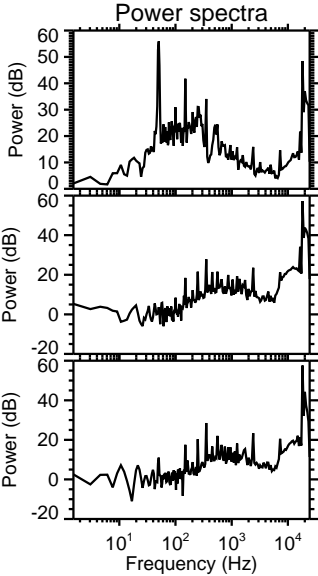
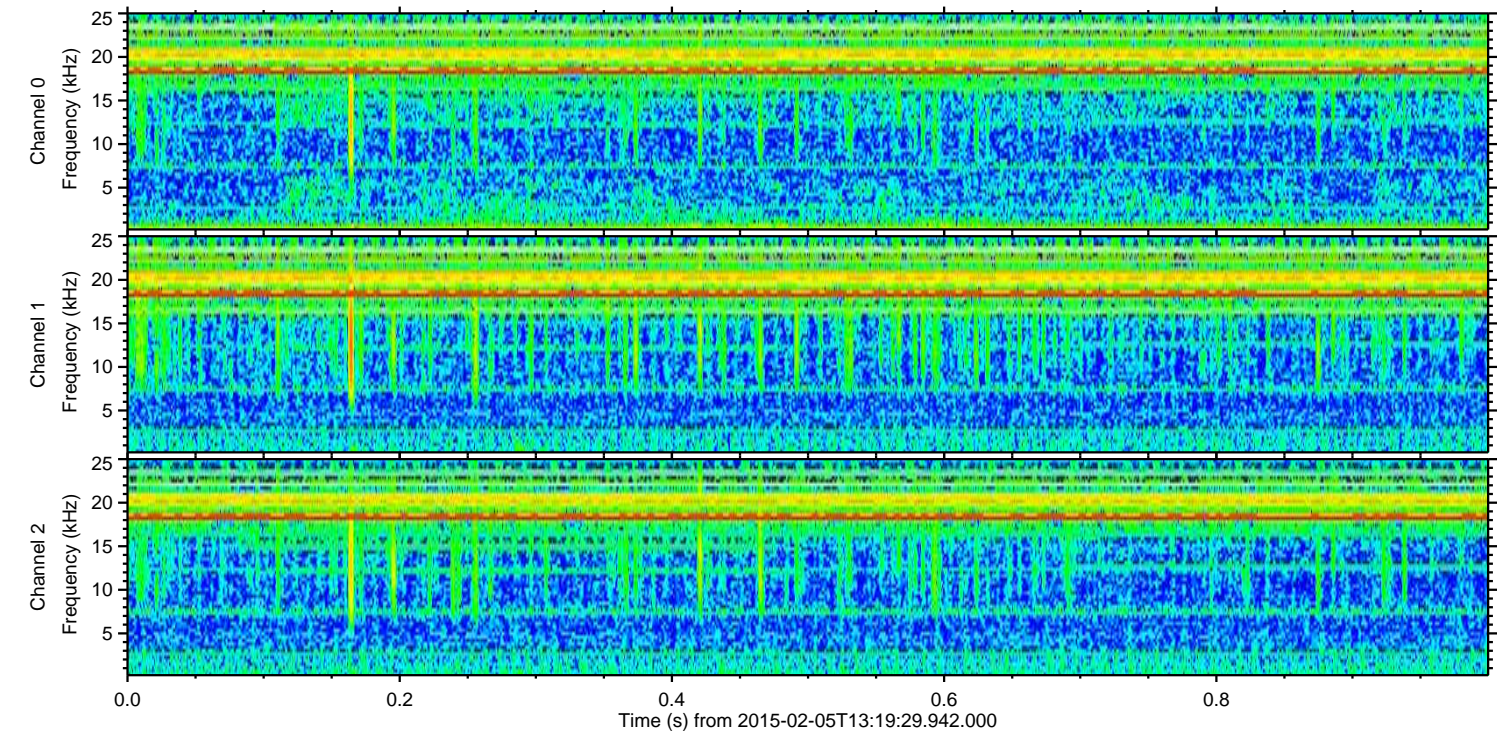
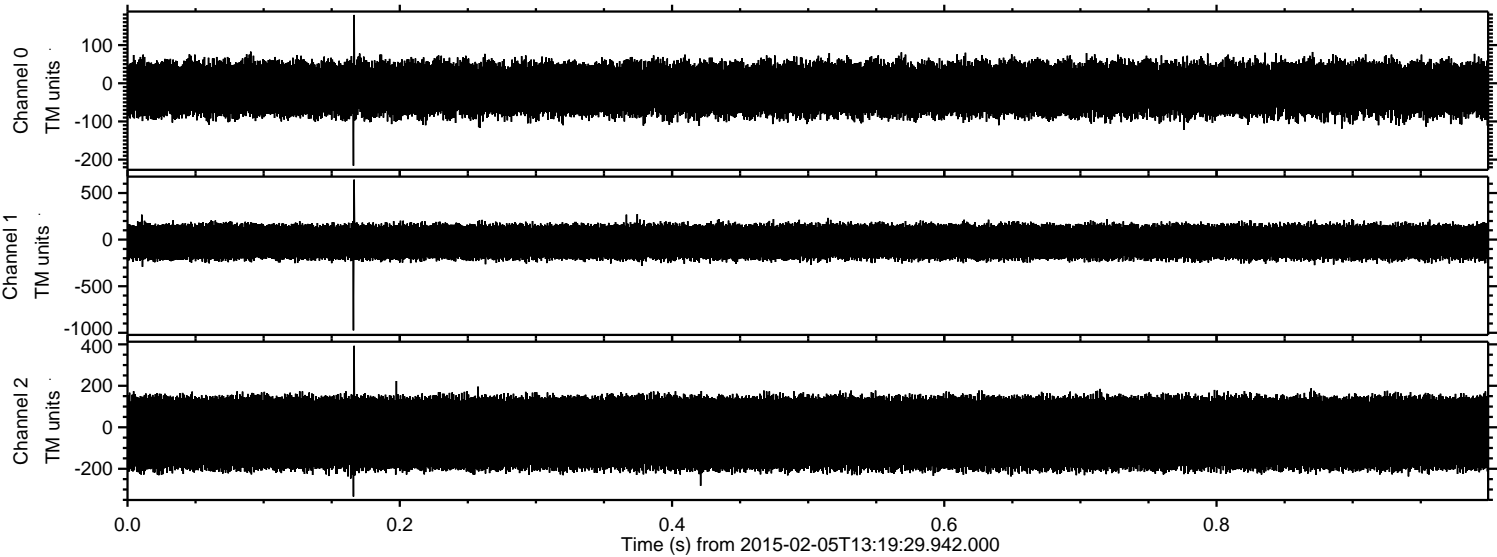


ELMAVAN 3D WAVEFORMS (Measured data sampled at 50 kHz) 49806 packets of 144 samples from 2015-02-05T13:19:29.942.000.

Processed Wed Feb 18 08:35:12 2015 by ELM ver.2012-10-06 from 001__elm20150205_131928__dat00.bin



Processed Wed Feb 18 08:35:30 2015 by ELM ver.2012-10-06 from 001__elm20150205_131928__dat00.bin

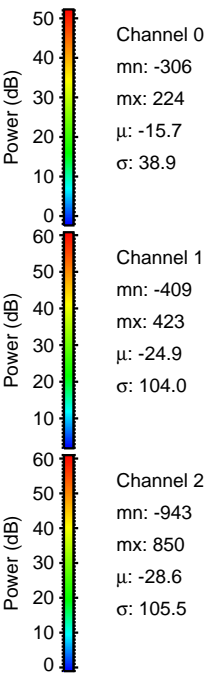
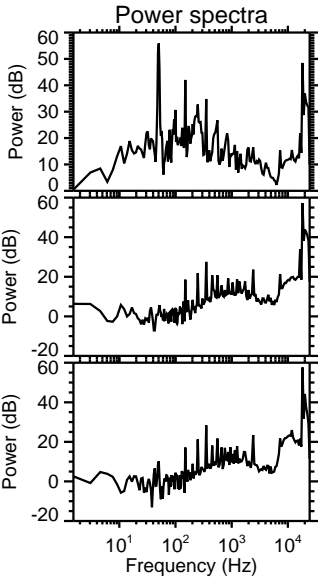
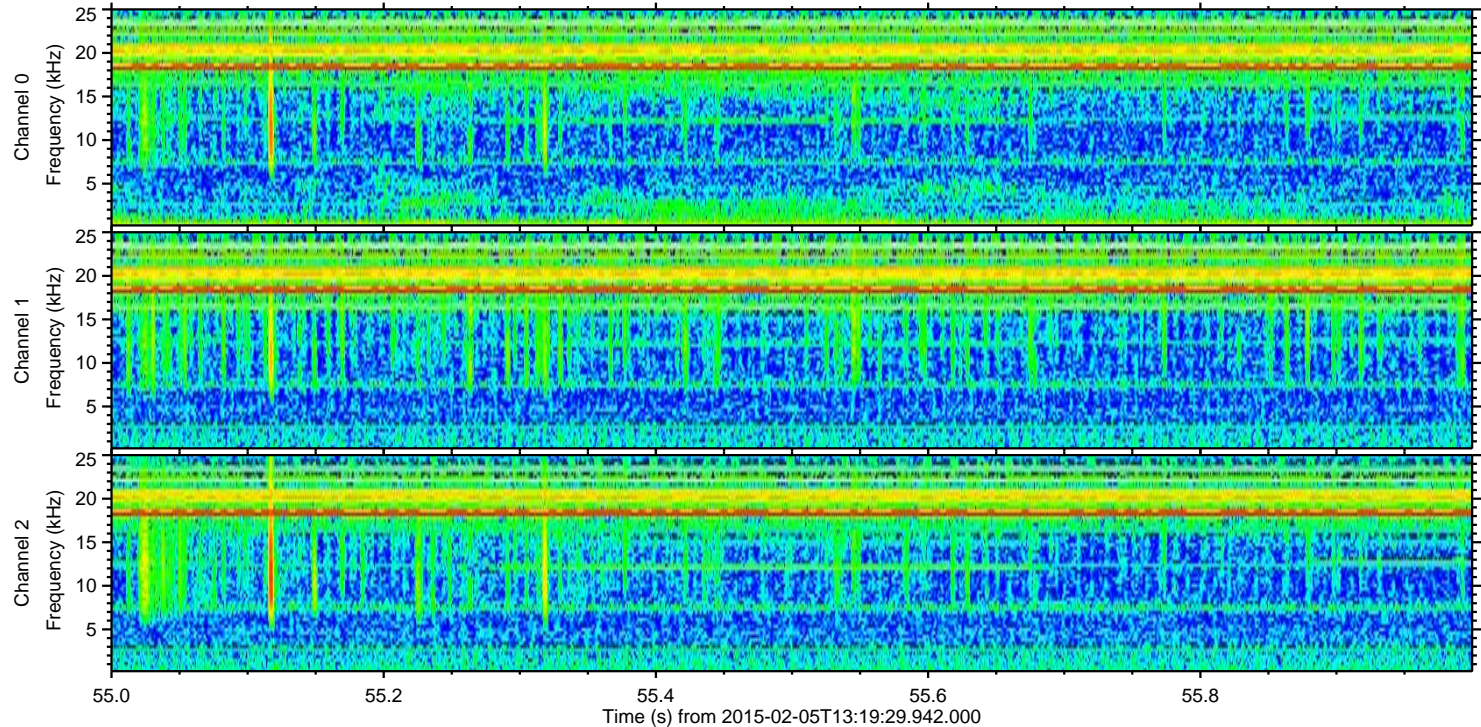
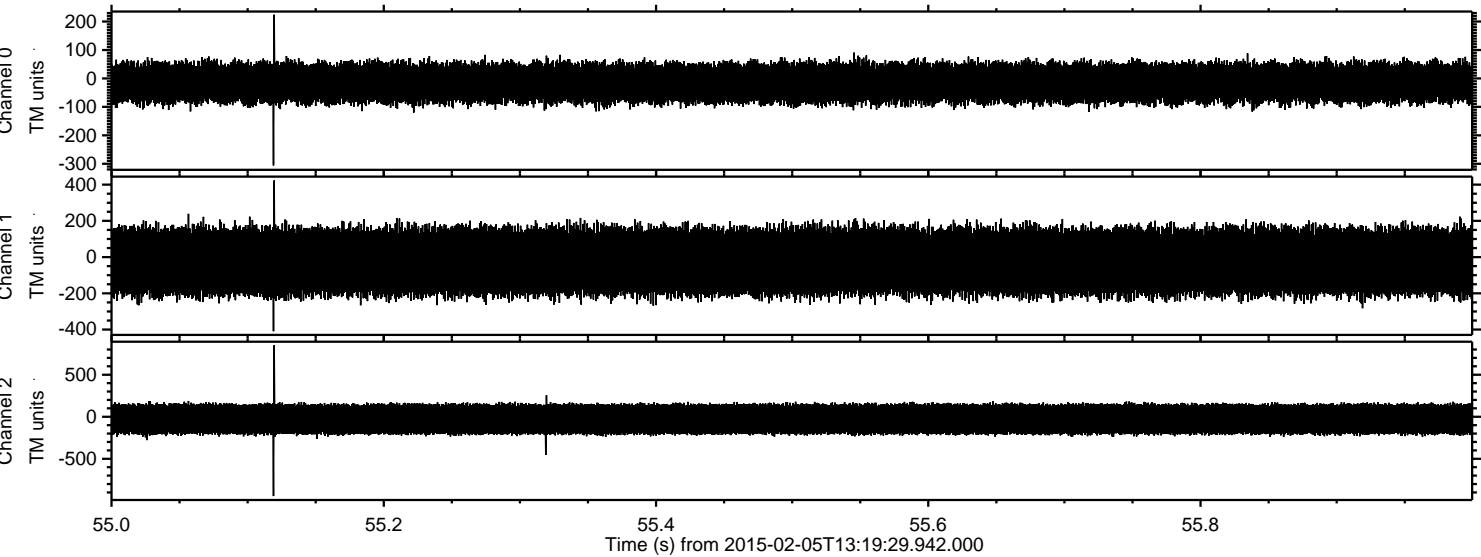


Channel 0
mn: -216
mx: 179
 μ : -15.6
 σ : 38.9

Channel 1
mn: -974
mx: 644
 μ : -24.9
 σ : 104.0

Channel 2
mn: -334
mx: 393
 μ : -28.6
 σ : 104.7

Processed Wed Feb 18 08:35:32 2015 by ELM ver.2012-10-06 from 001__elm20150205_131928__dat00.bin

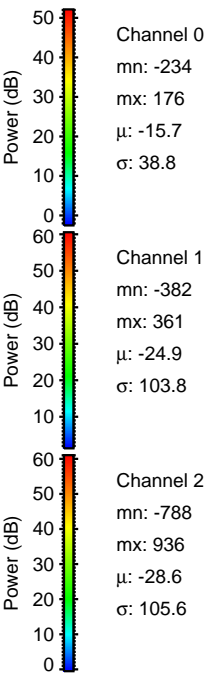
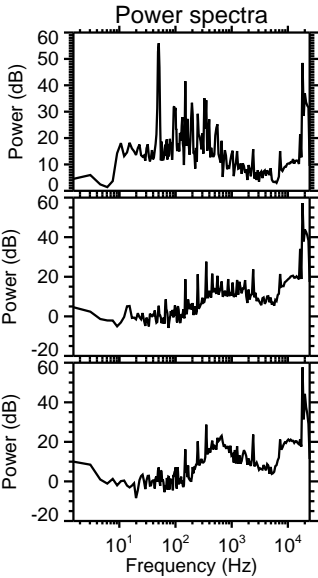
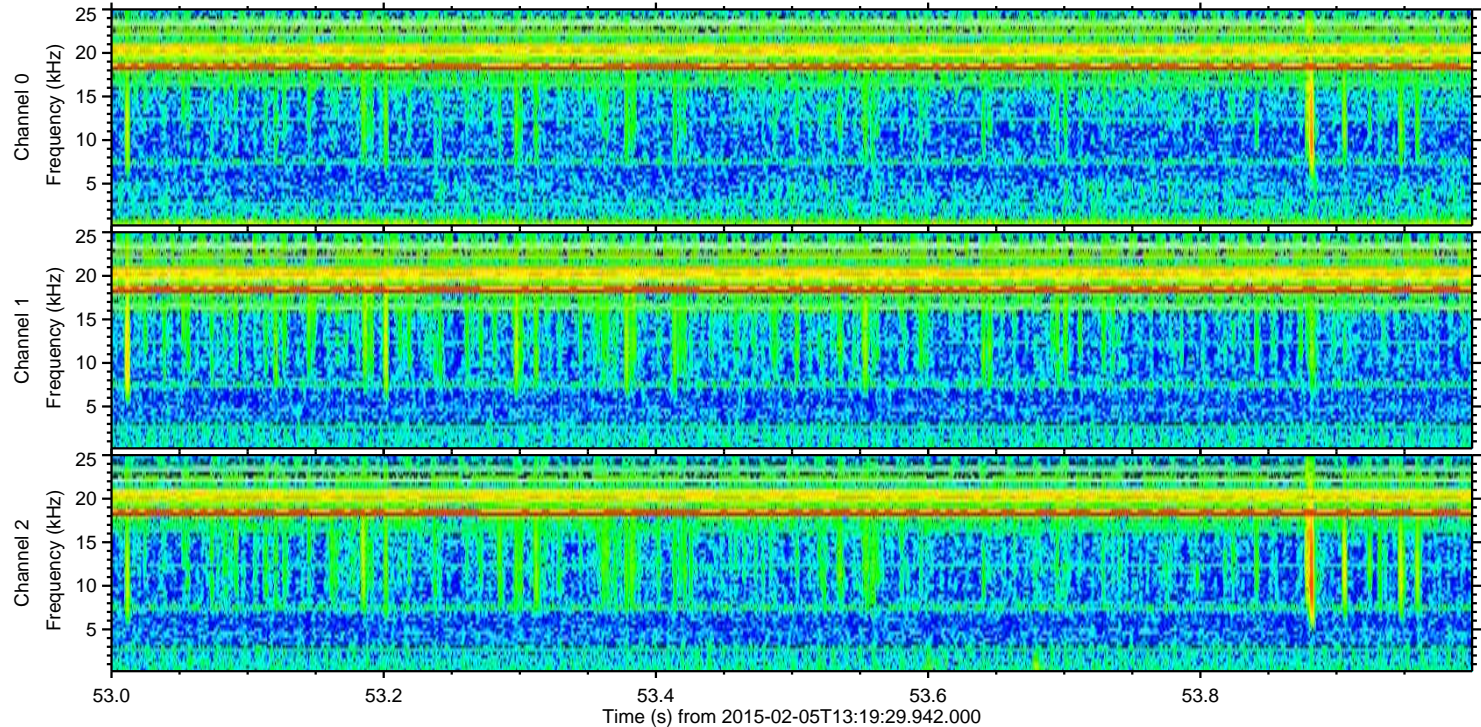
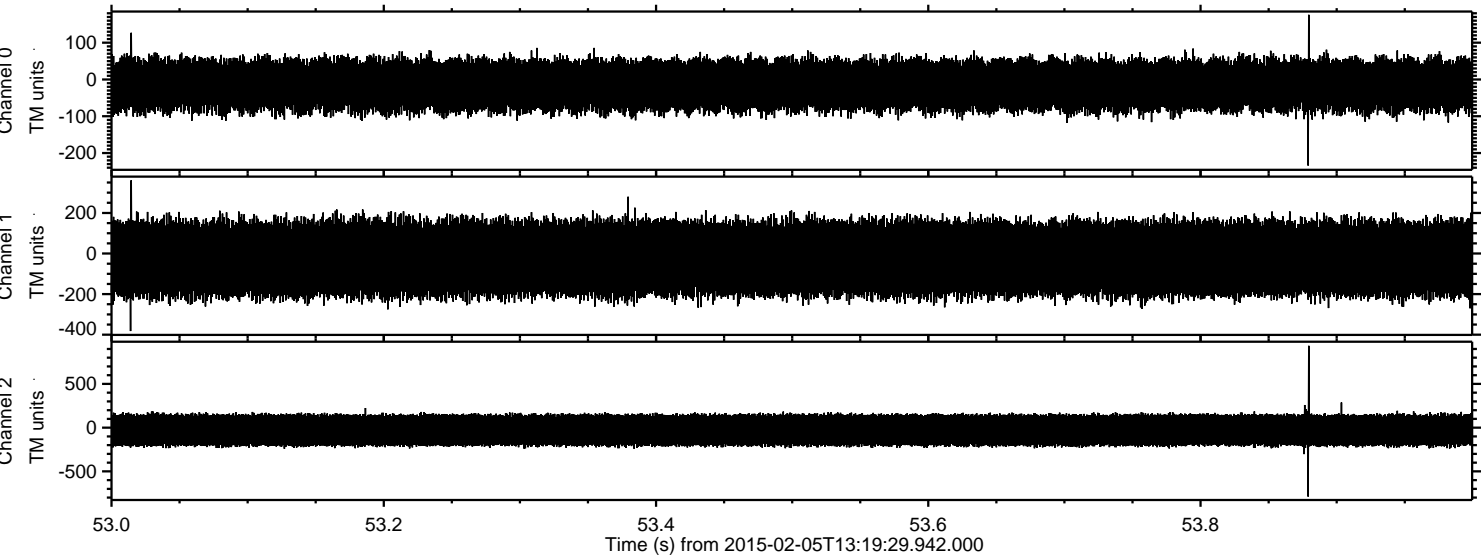


Channel 0
mn: -306
mx: 224
 μ : -15.7
 σ : 38.9

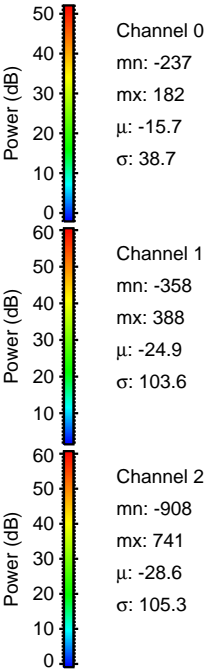
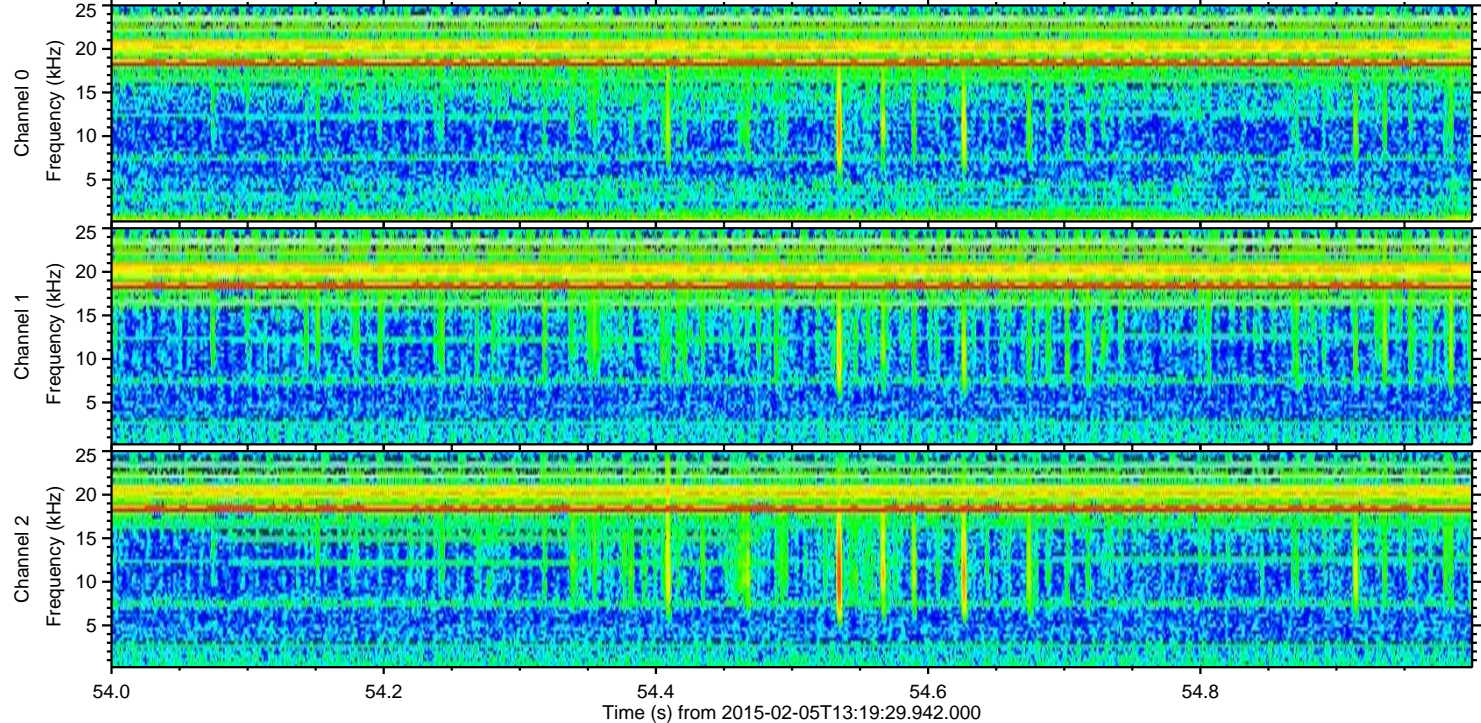
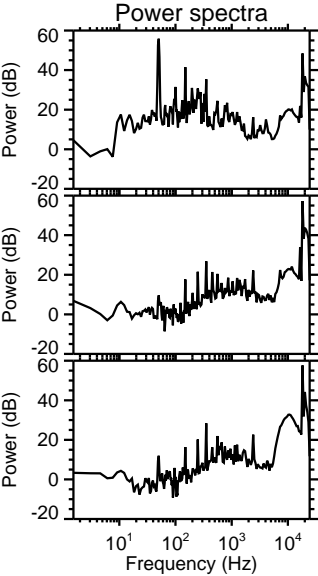
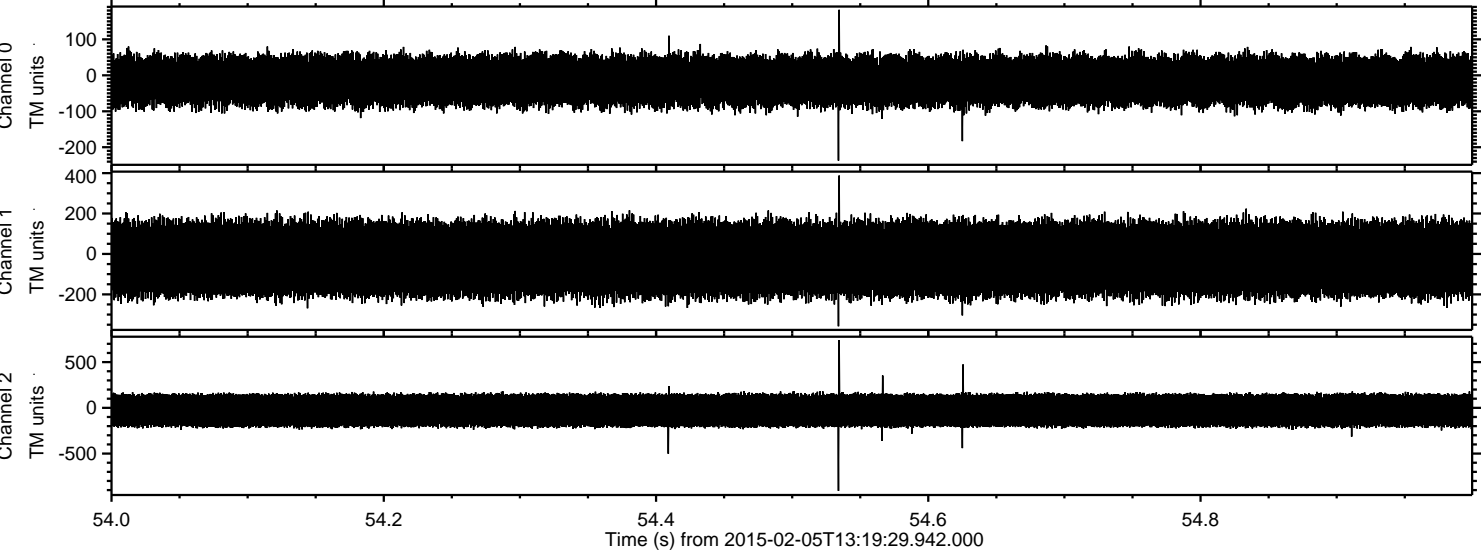
Channel 1
mn: -409
mx: 423
 μ : -24.9
 σ : 104.0

Channel 2
mn: -943
mx: 850
 μ : -28.6
 σ : 105.5

Processed Wed Feb 18 08:35:33 2015 by ELM ver.2012-10-06 from 001__elm20150205_131928__dat00.bin

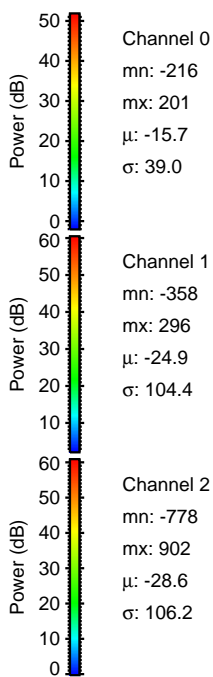
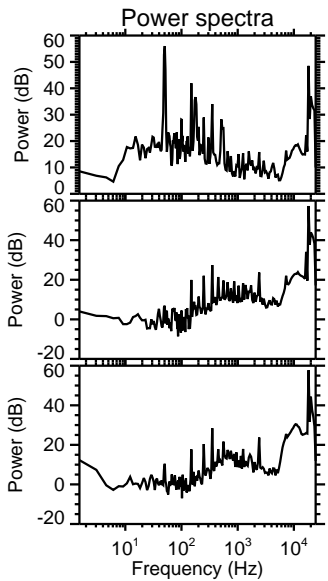
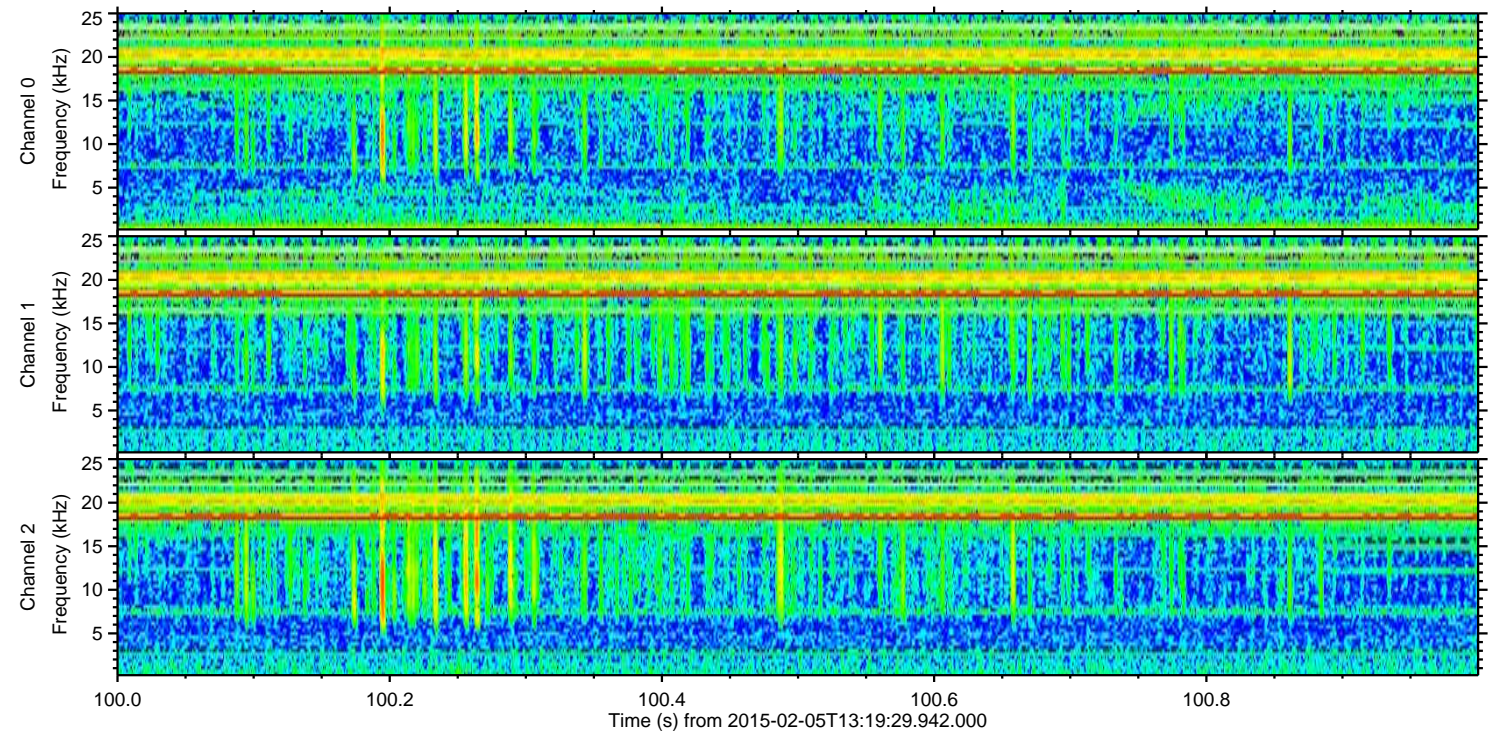
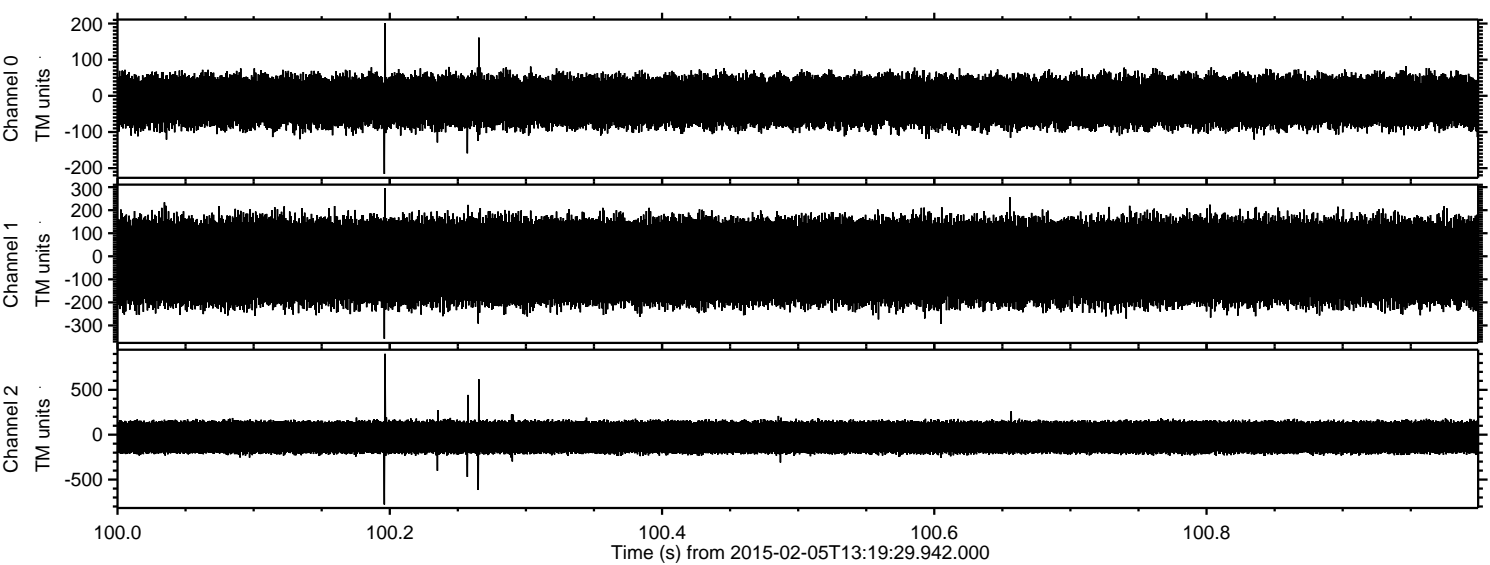


Processed Wed Feb 18 08:35:35 2015 by ELM ver.2012-10-06 from 001__elm20150205_131928__dat00.bin

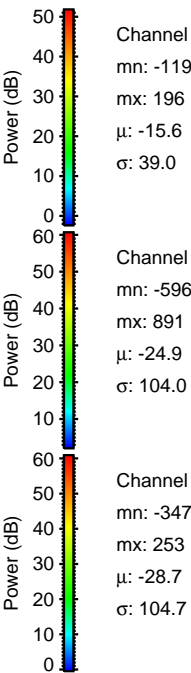
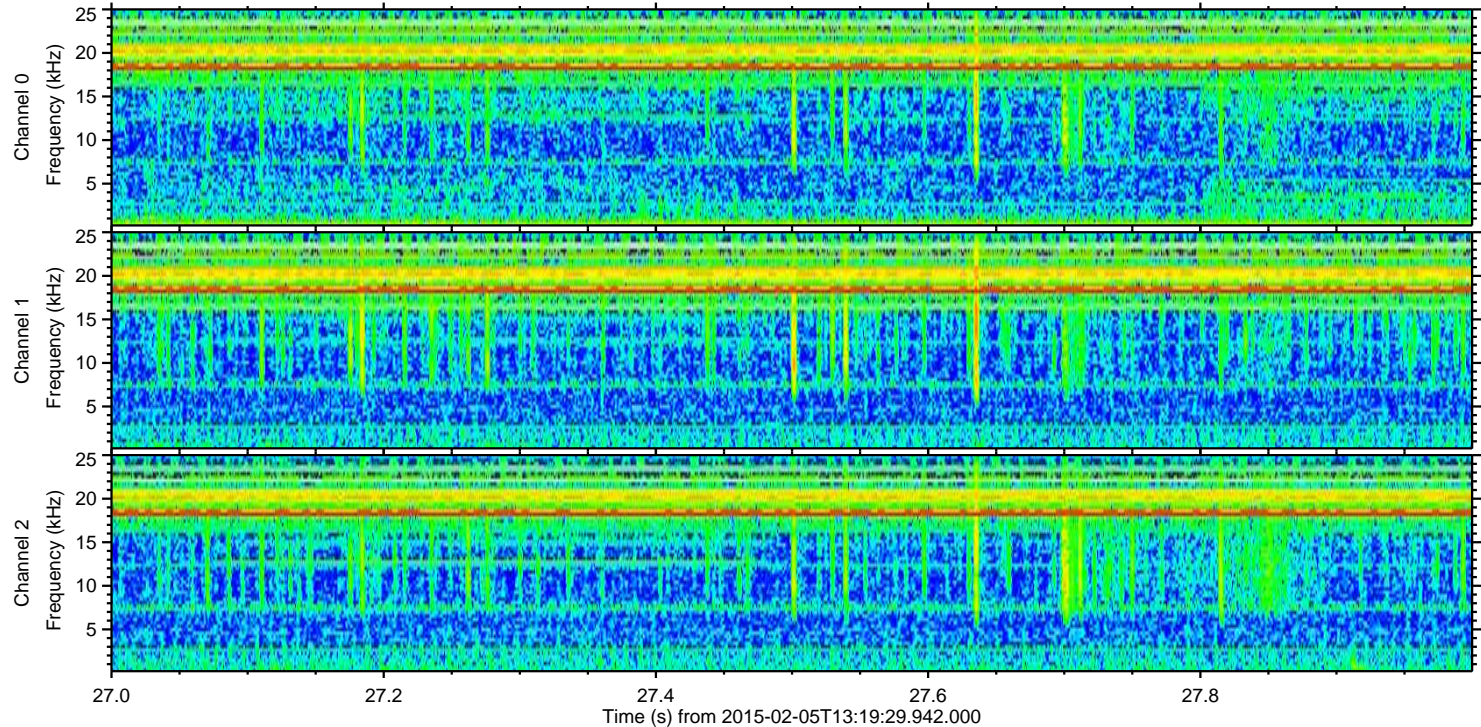
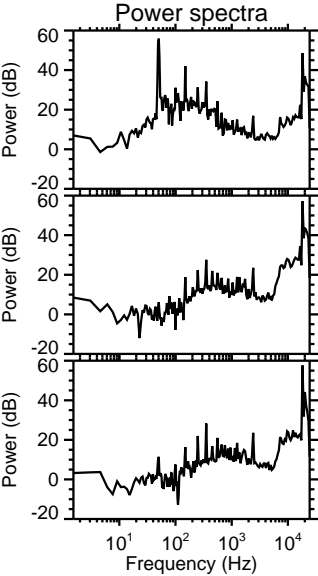
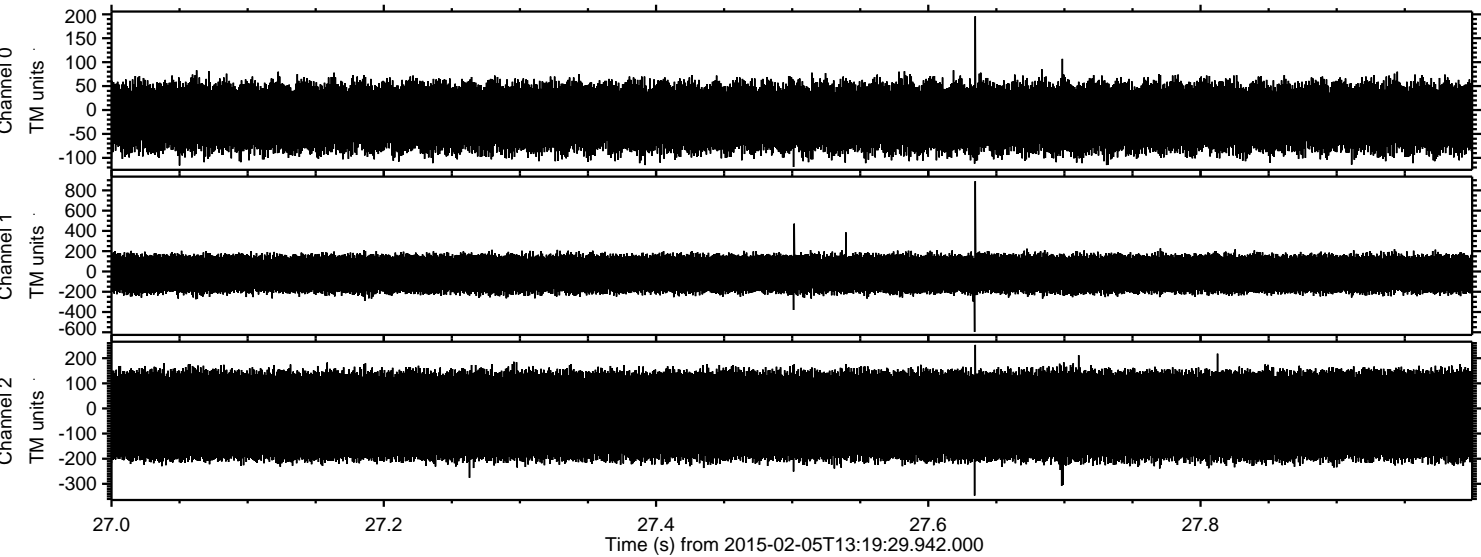


ELMAVAN 3D WAVEFORMS (Measured data sampled at 50 kHz) 49806 packets of 144 samples from 2015-02-05T13:19:29.942.000. Part 101/144

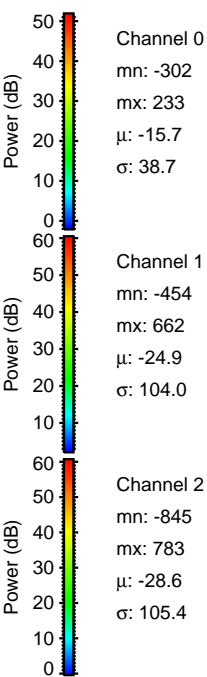
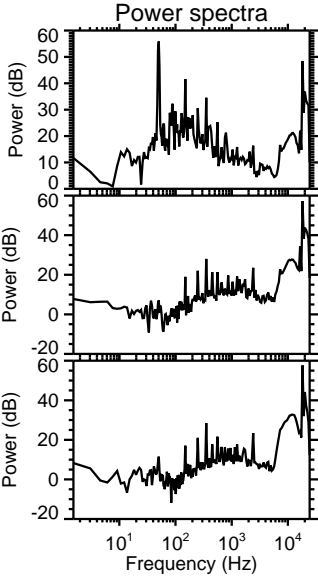
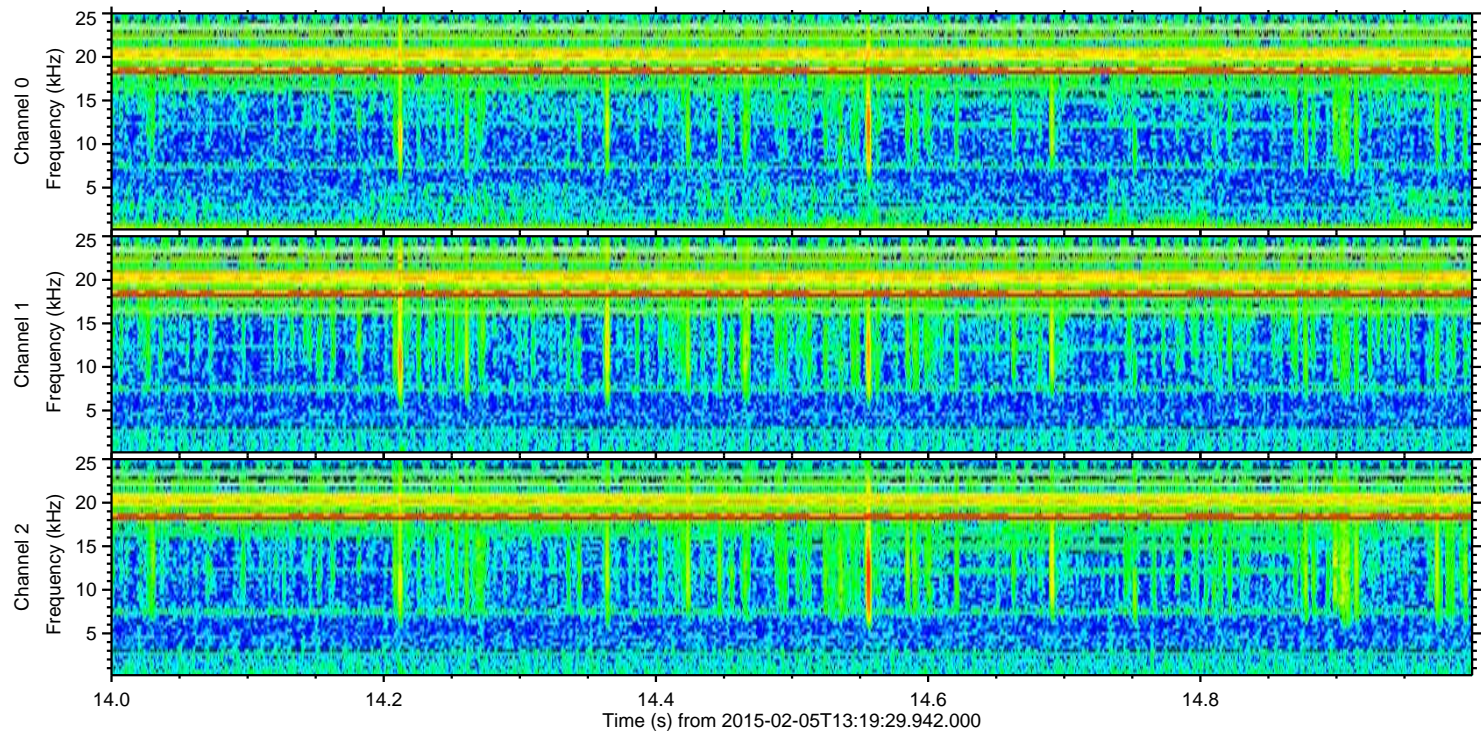
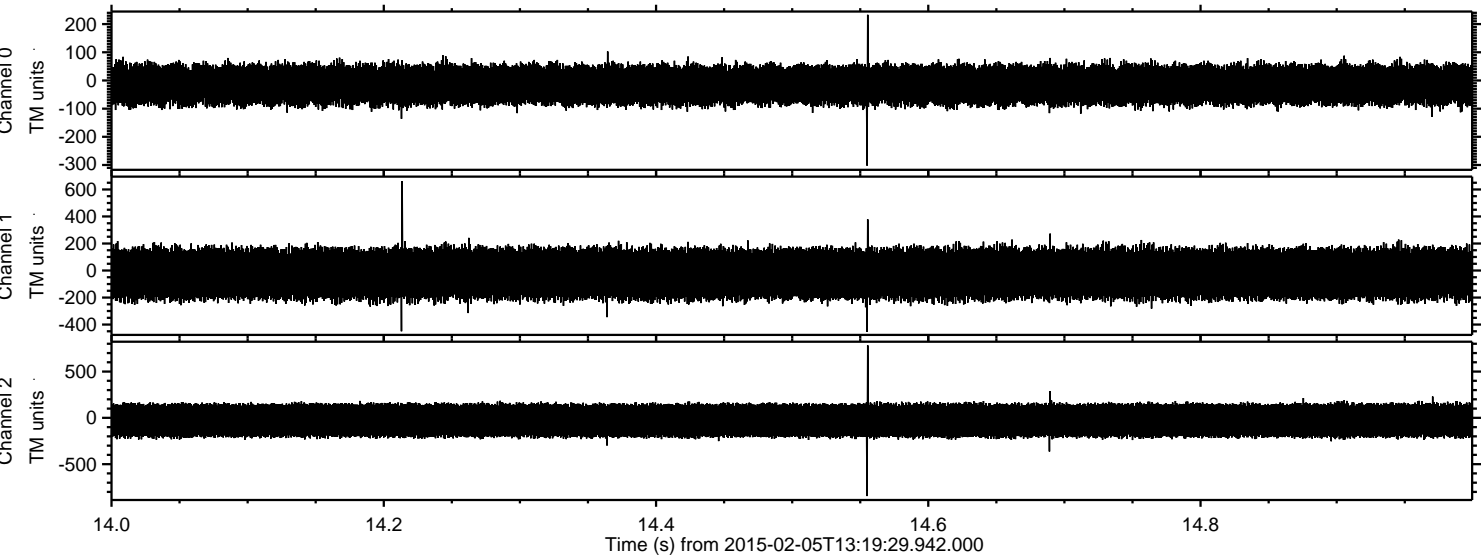
Processed Wed Feb 18 08:35:36 2015 by ELM ver.2012-10-06 from 001__elm20150205_131928__dat00.bin



Processed Wed Feb 18 08:35:37 2015 by ELM ver.2012-10-06 from 001__elm20150205_131928__dat00.bin



Processed Wed Feb 18 08:35:38 2015 by ELM ver.2012-10-06 from 001__elm20150205_131928__dat00.bin

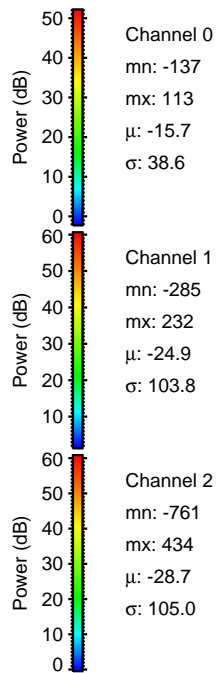
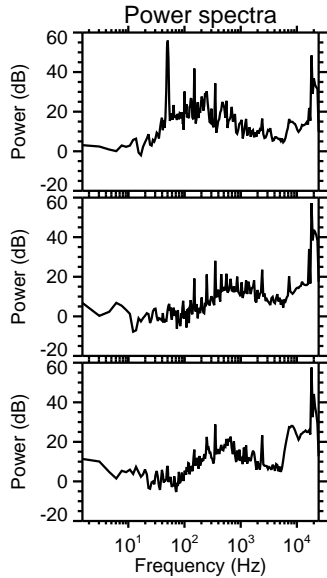
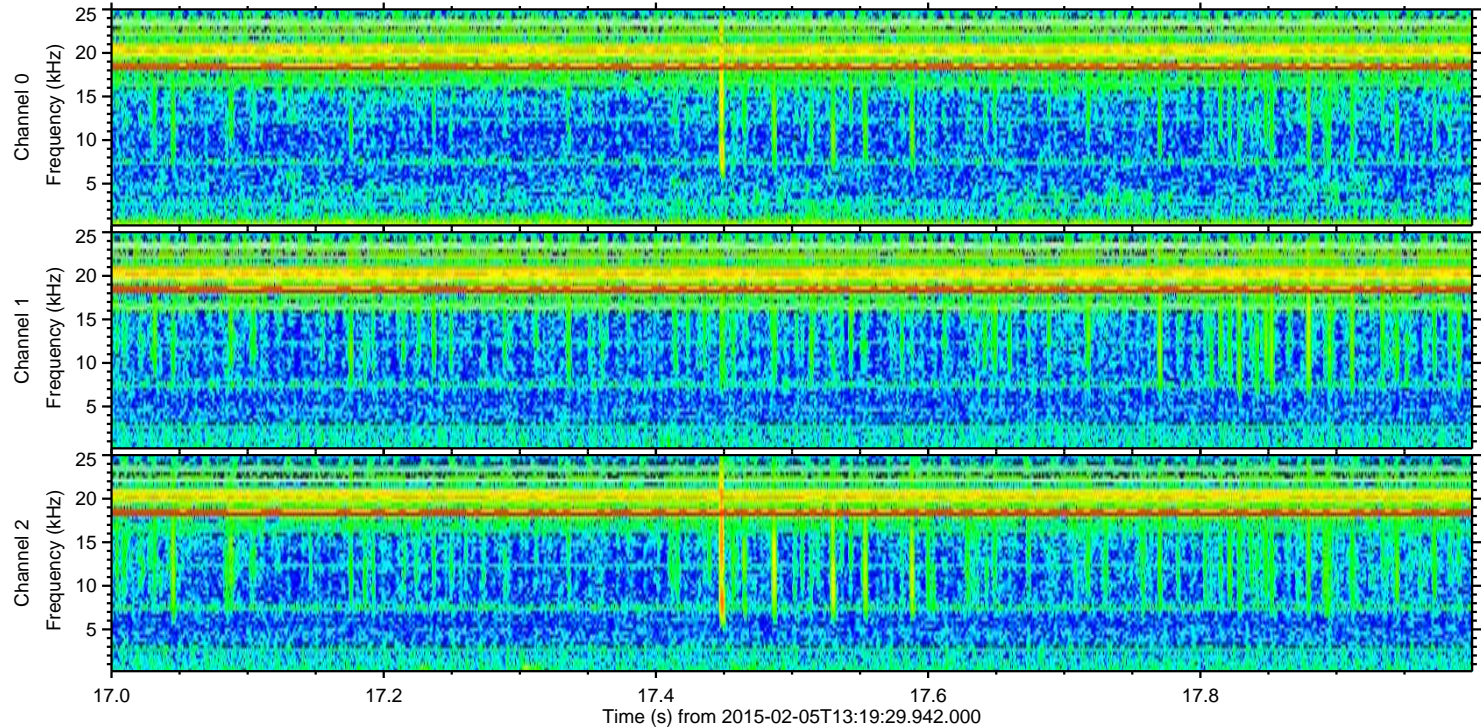
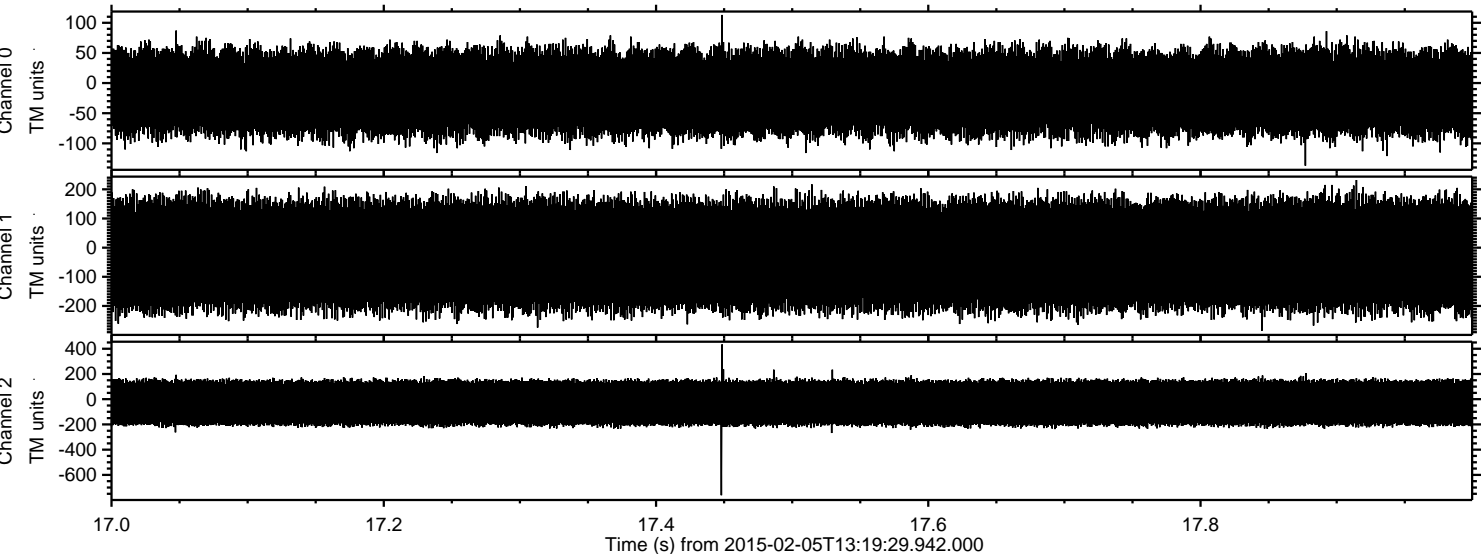


Channel 0
mn: -302
mx: 233
 μ : -15.7
 σ : 38.7

Channel 1
mn: -454
mx: 662
 μ : -24.9
 σ : 104.0

Channel 2
mn: -845
mx: 783
 μ : -28.6
 σ : 105.4

Processed Wed Feb 18 08:35:41 2015 by ELM ver.2012-10-06 from 001__elm20150205_131928__dat00.bin

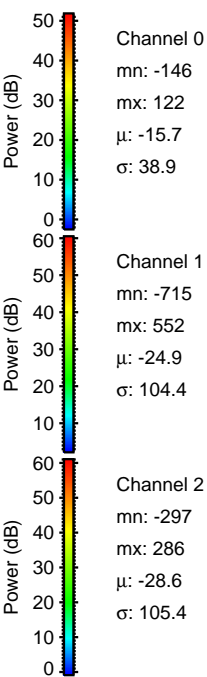
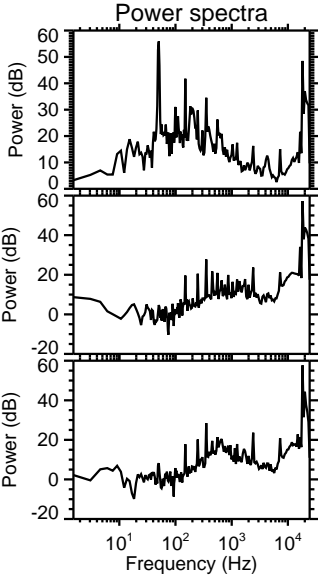
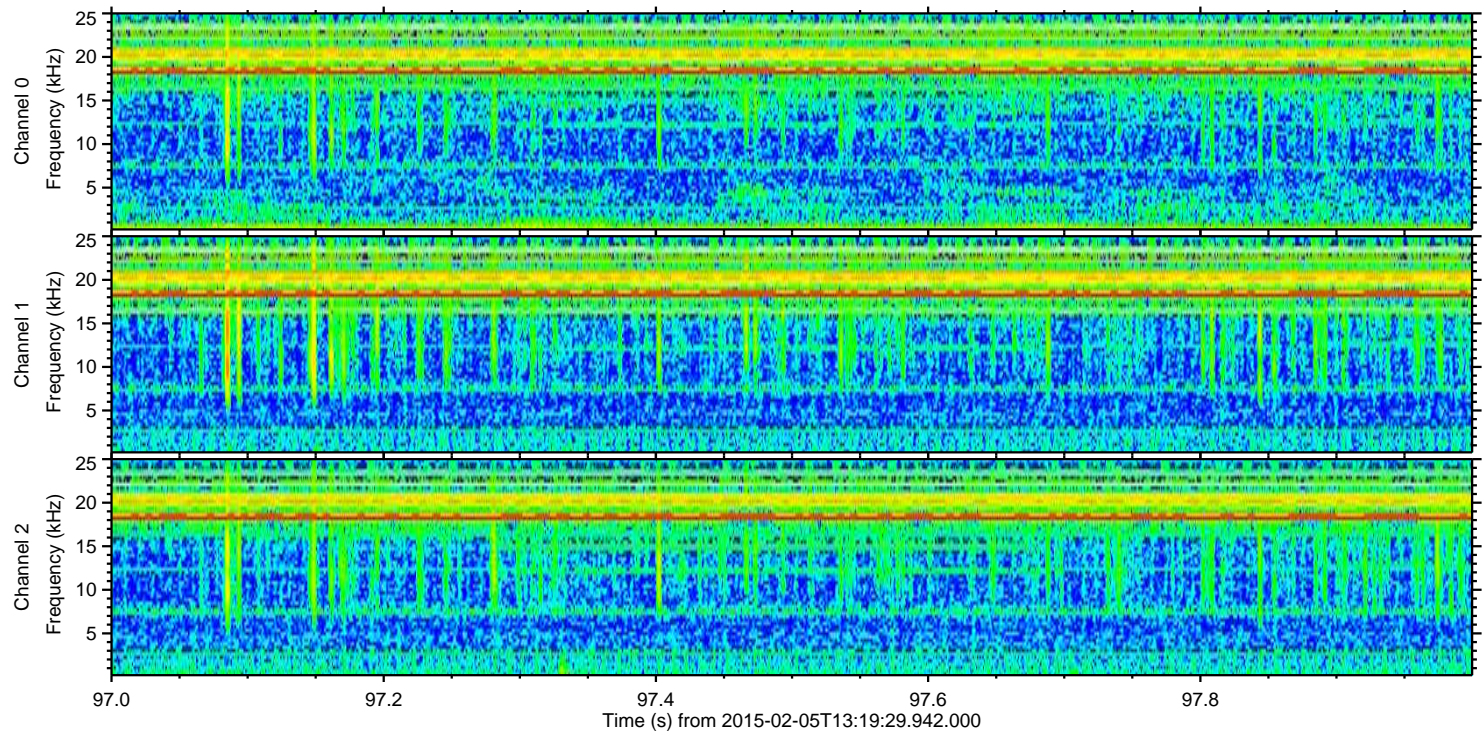
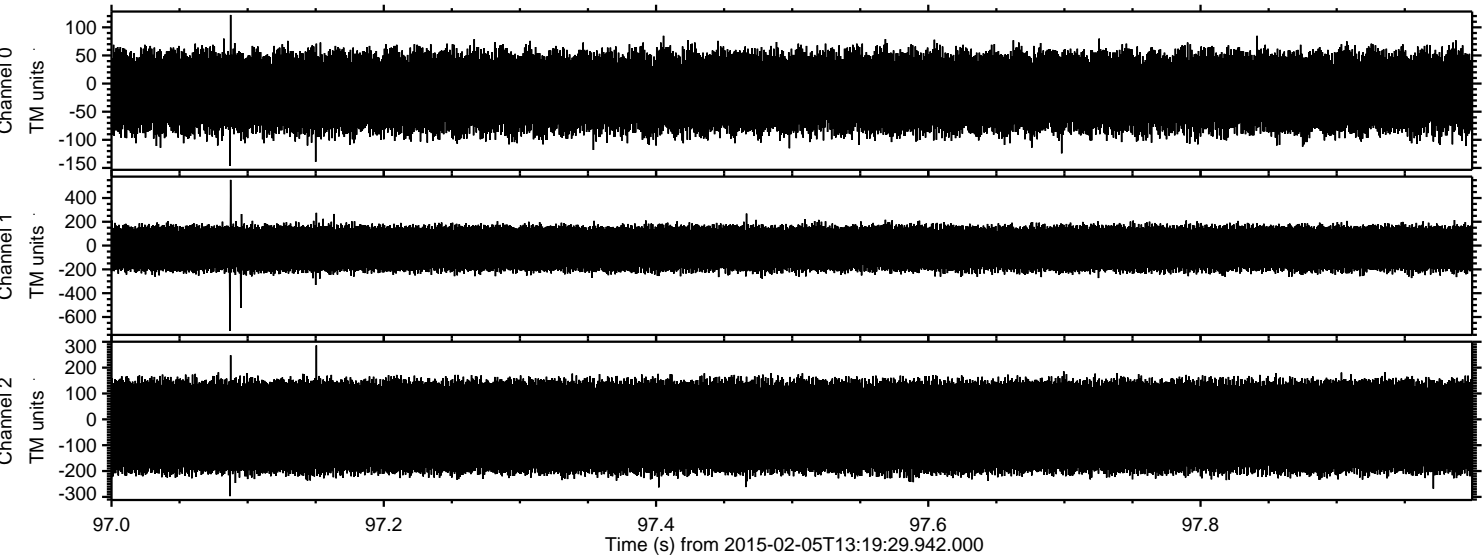


Channel 0
mn: -137
mx: 113
 μ : -15.7
 σ : 38.6

Channel 1
mn: -285
mx: 232
 μ : -24.9
 σ : 103.8

Channel 2
mn: -761
mx: 434
 μ : -28.7
 σ : 105.0

Processed Wed Feb 18 08:35:43 2015 by ELM ver.2012-10-06 from 001__elm20150205_131928__dat00.bin

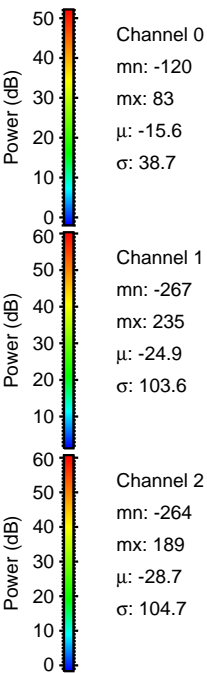
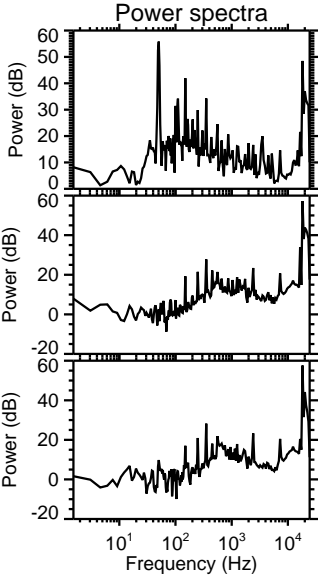
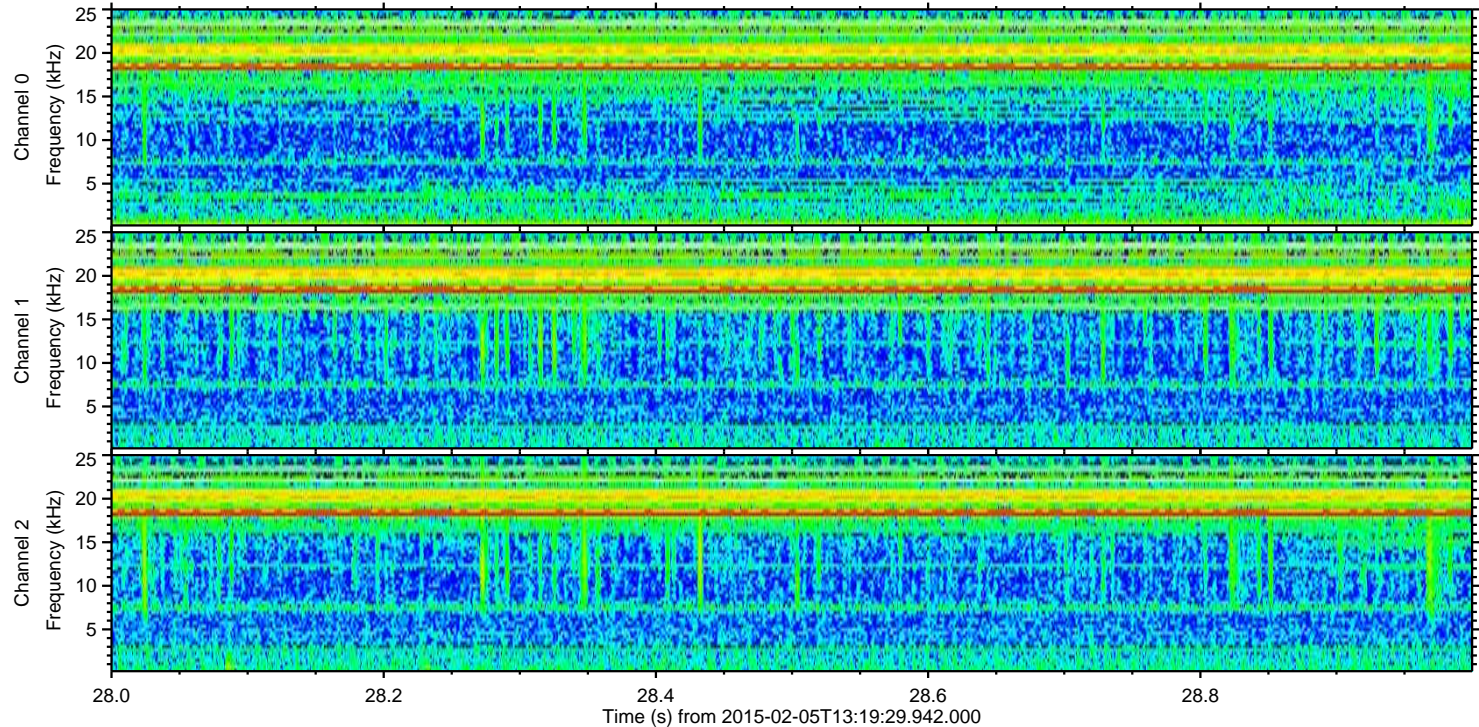
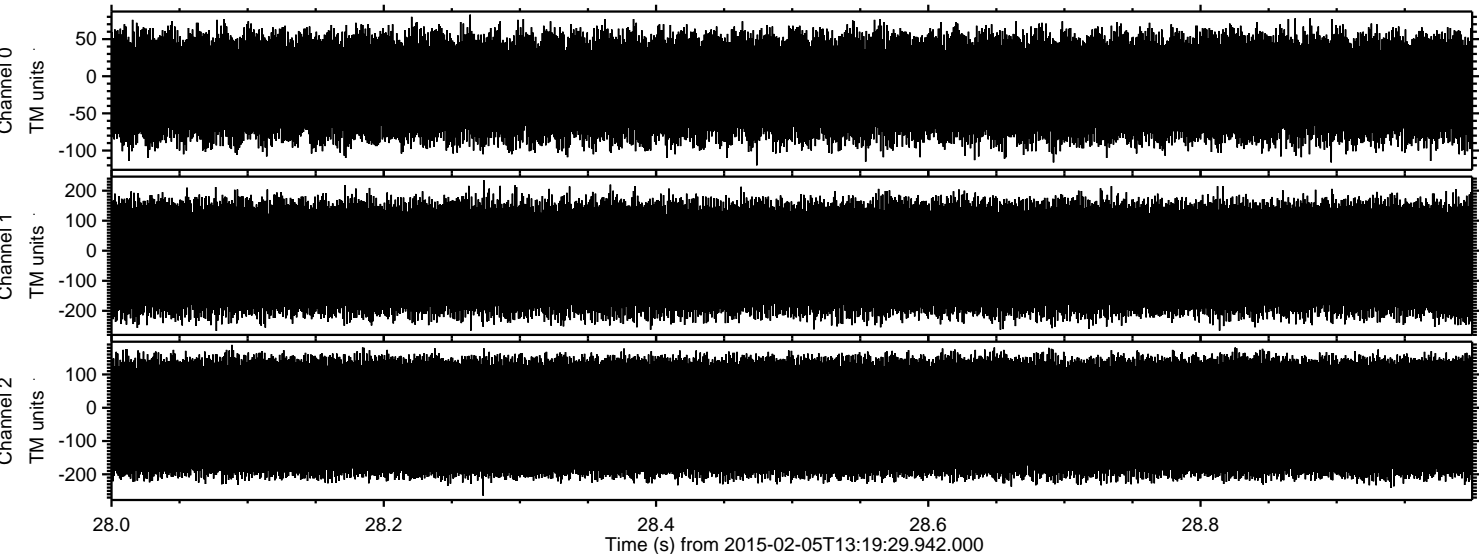


Channel 0
mn: -146
mx: 122
 μ : -15.7
 σ : 38.9

Channel 1
mn: -715
mx: 552
 μ : -24.9
 σ : 104.4

Channel 2
mn: -297
mx: 286
 μ : -28.6
 σ : 105.4

Processed Wed Feb 18 08:35:45 2015 by ELM ver.2012-10-06 from 001__elm20150205_131928__dat00.bin



Channel 0
mn: -120
mx: 83
 μ : -15.6
 σ : 38.7

Channel 1
mn: -267
mx: 235
 μ : -24.9
 σ : 103.6

Channel 2
mn: -264
mx: 189
 μ : -28.7
 σ : 104.7