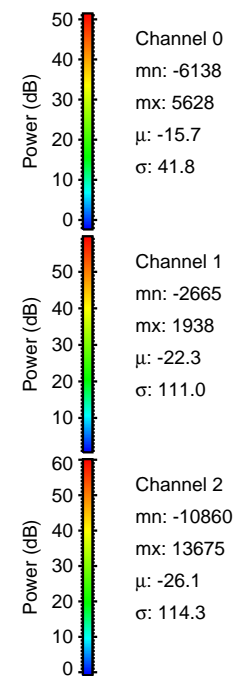
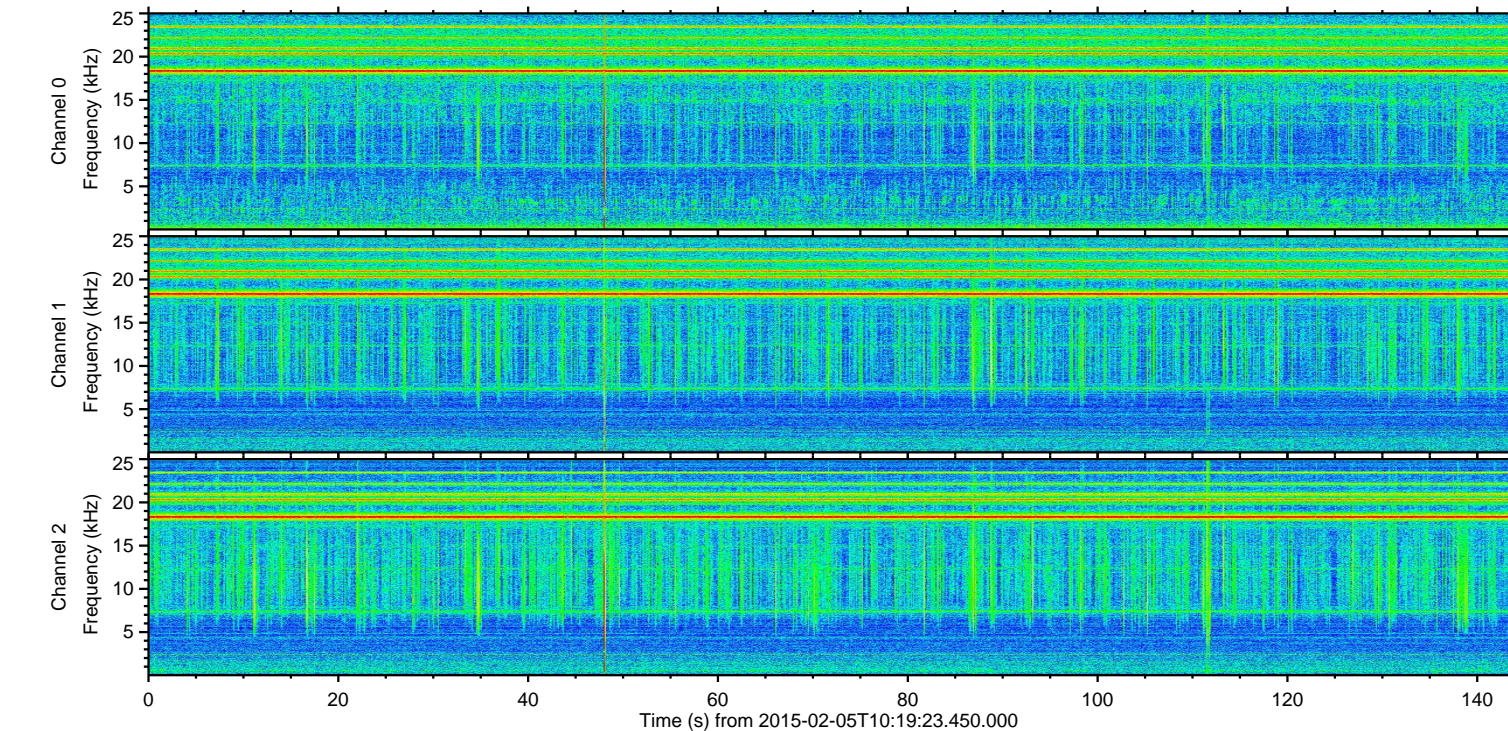
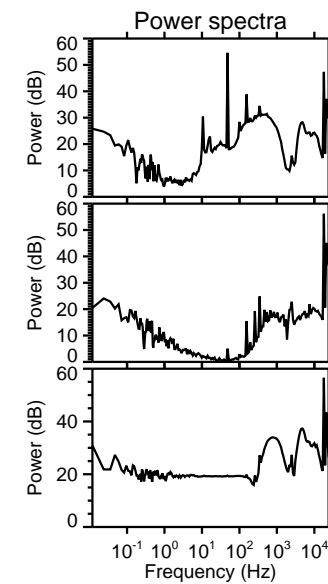
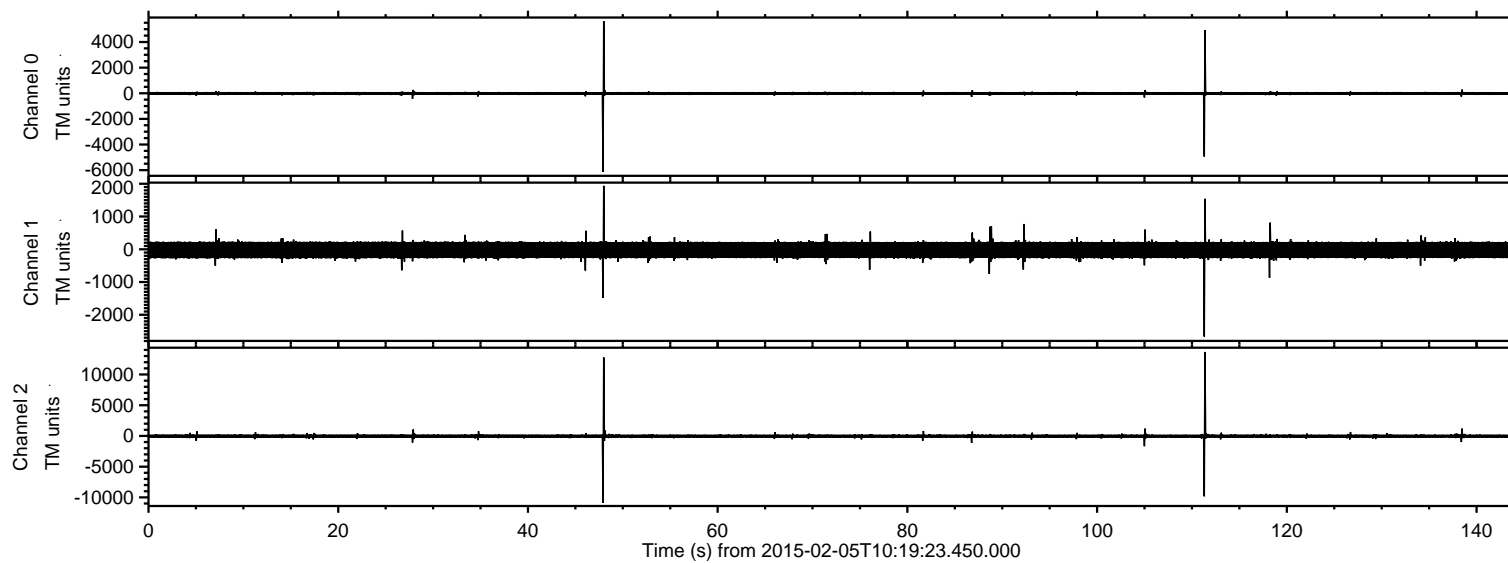


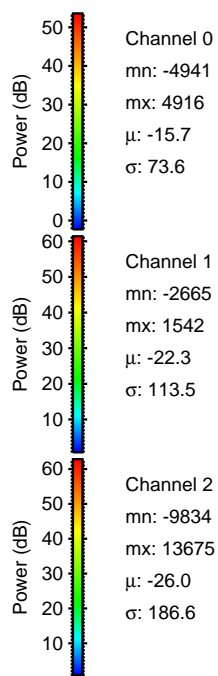
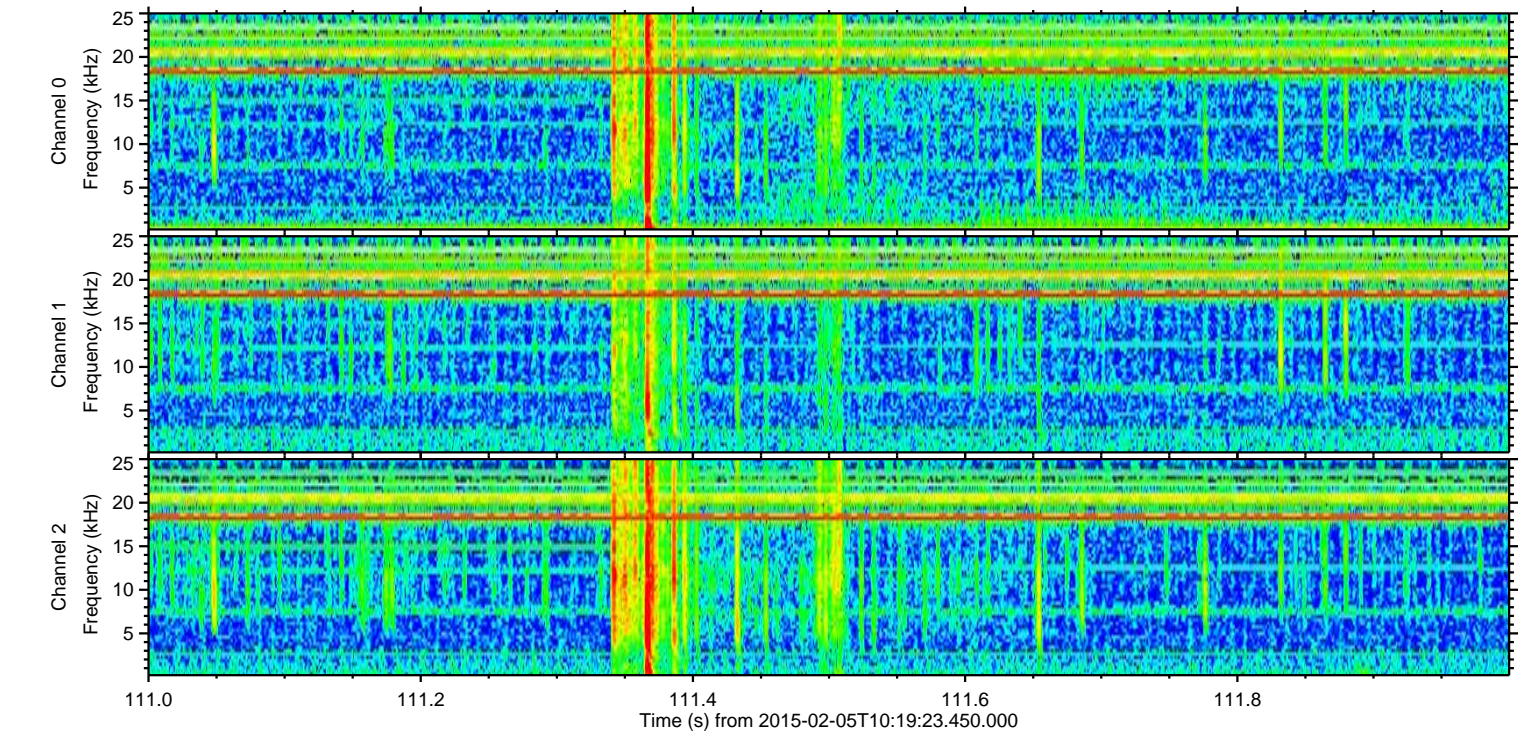
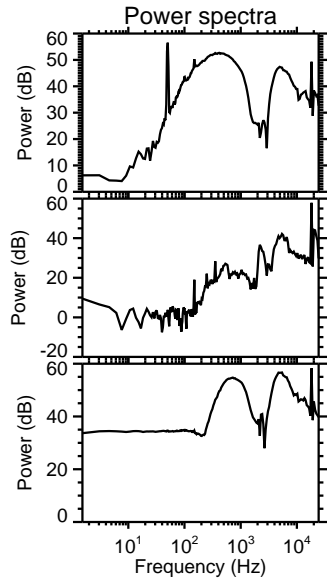
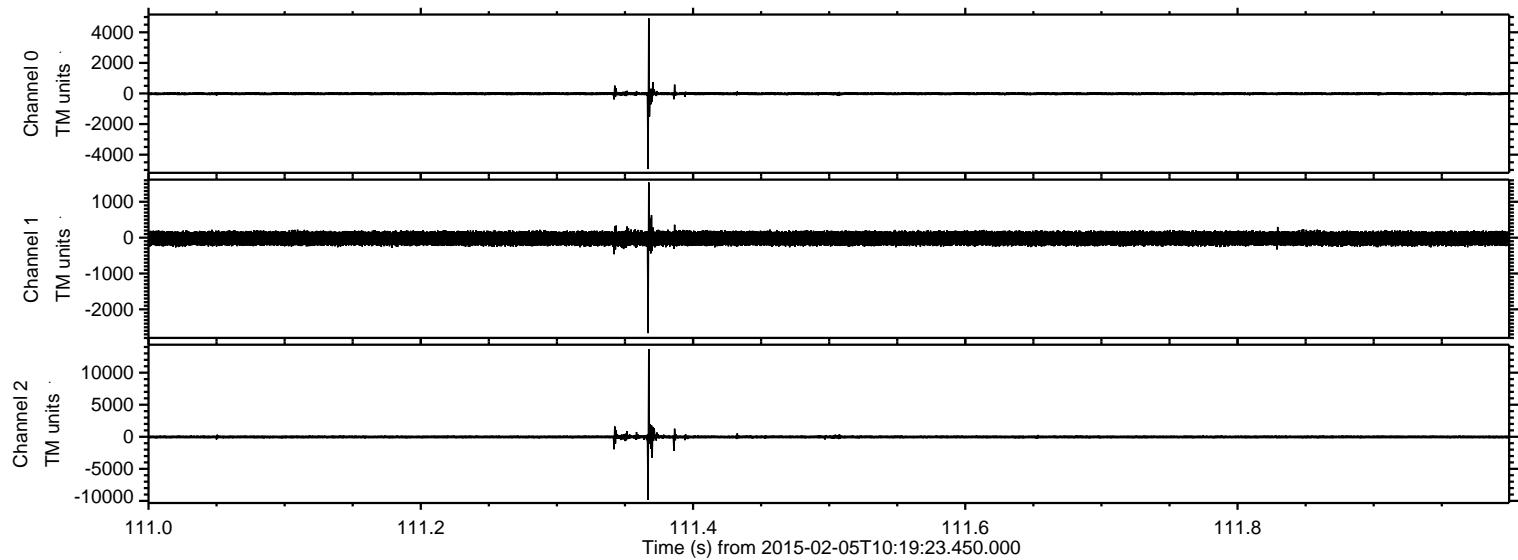
ELMAVAN 3D WAVEFORMS (Measured data sampled at 50 kHz) 49805 packets of 144 samples from 2015-02-05T10:19:23.450.000.

Processed Wed Feb 18 06:55:09 2015 by ELM ver.2012-10-06 from 001__elm20150205_101922__dat00.bin

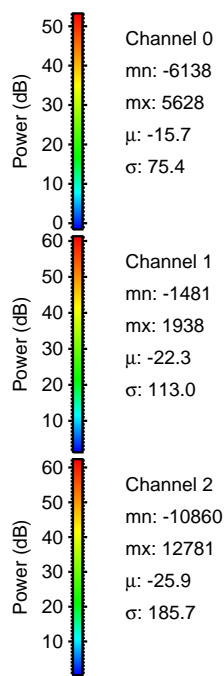
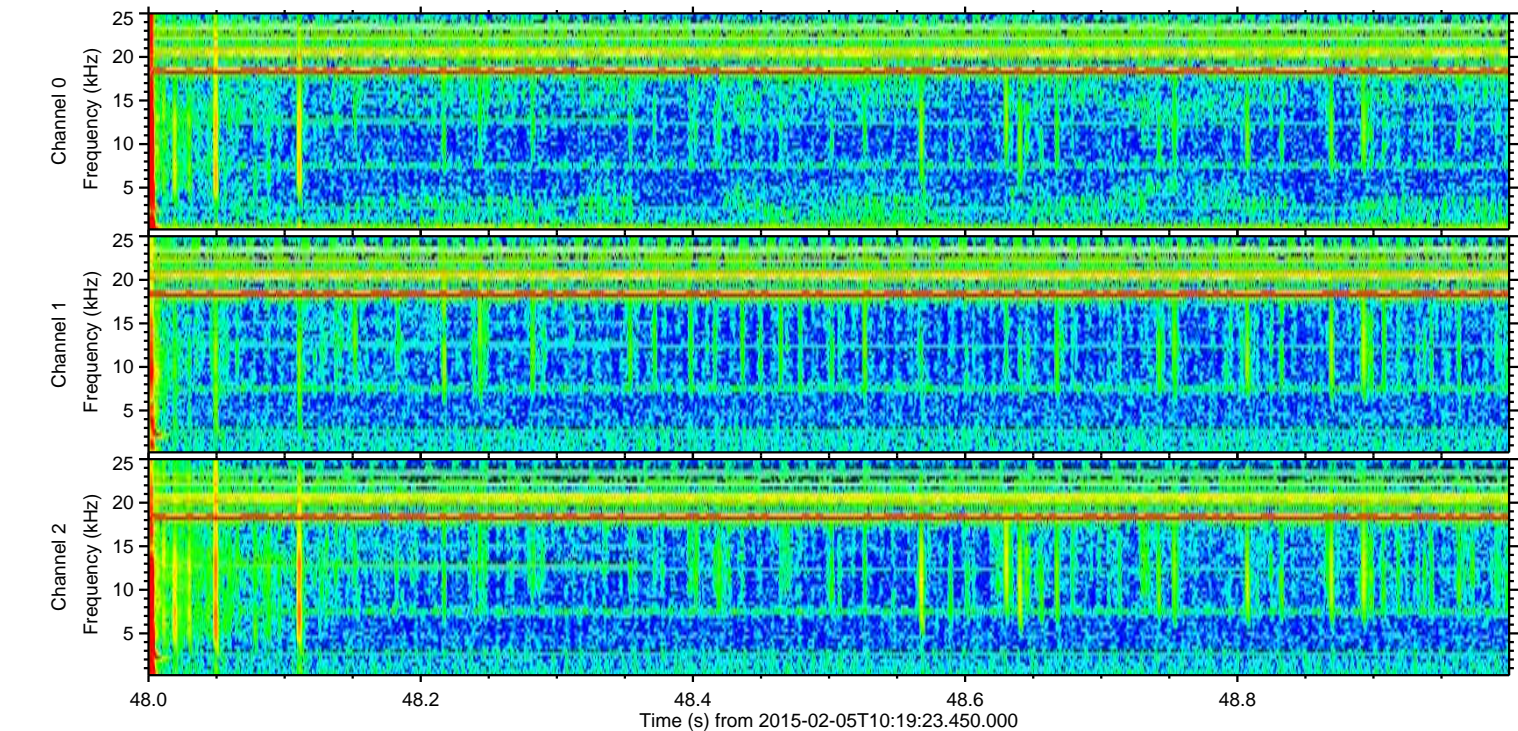
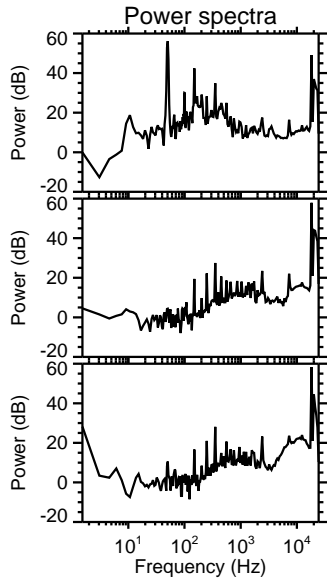
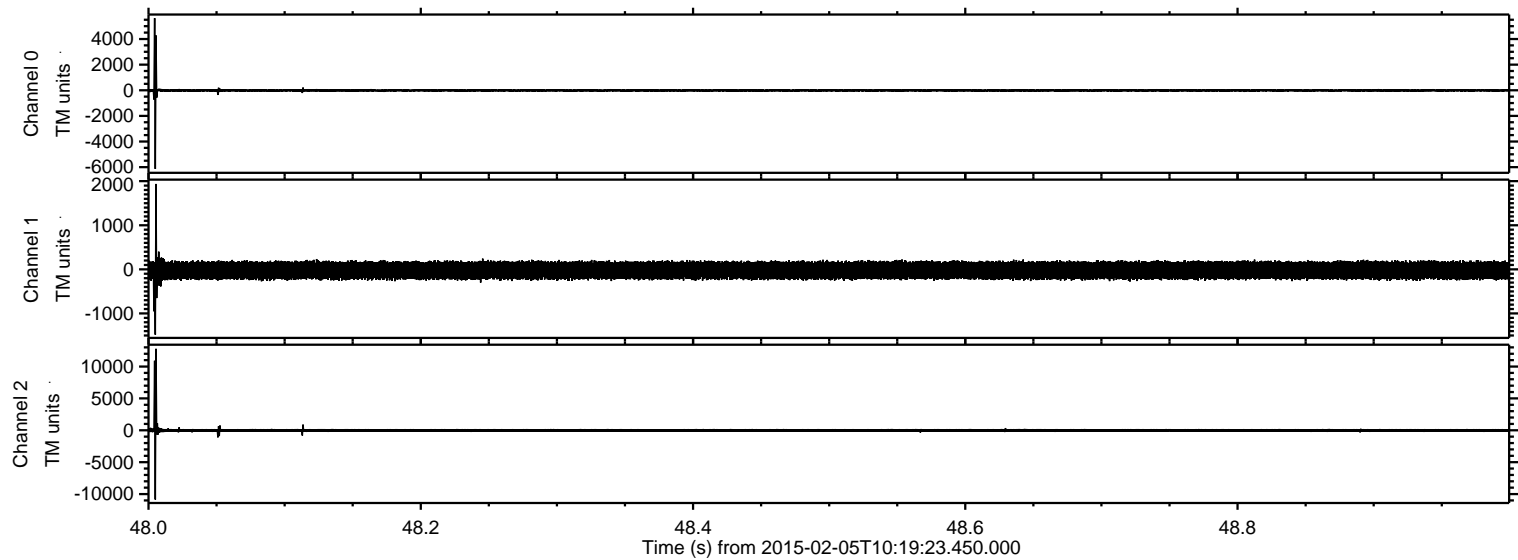


ELMAVAN 3D WAVEFORMS (Measured data sampled at 50 kHz) 49805 packets of 144 samples from 2015-02-05T10:19:23.450.000. Part 112/144

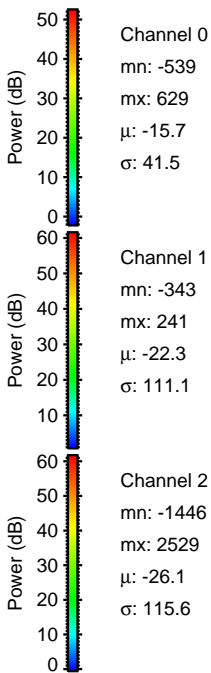
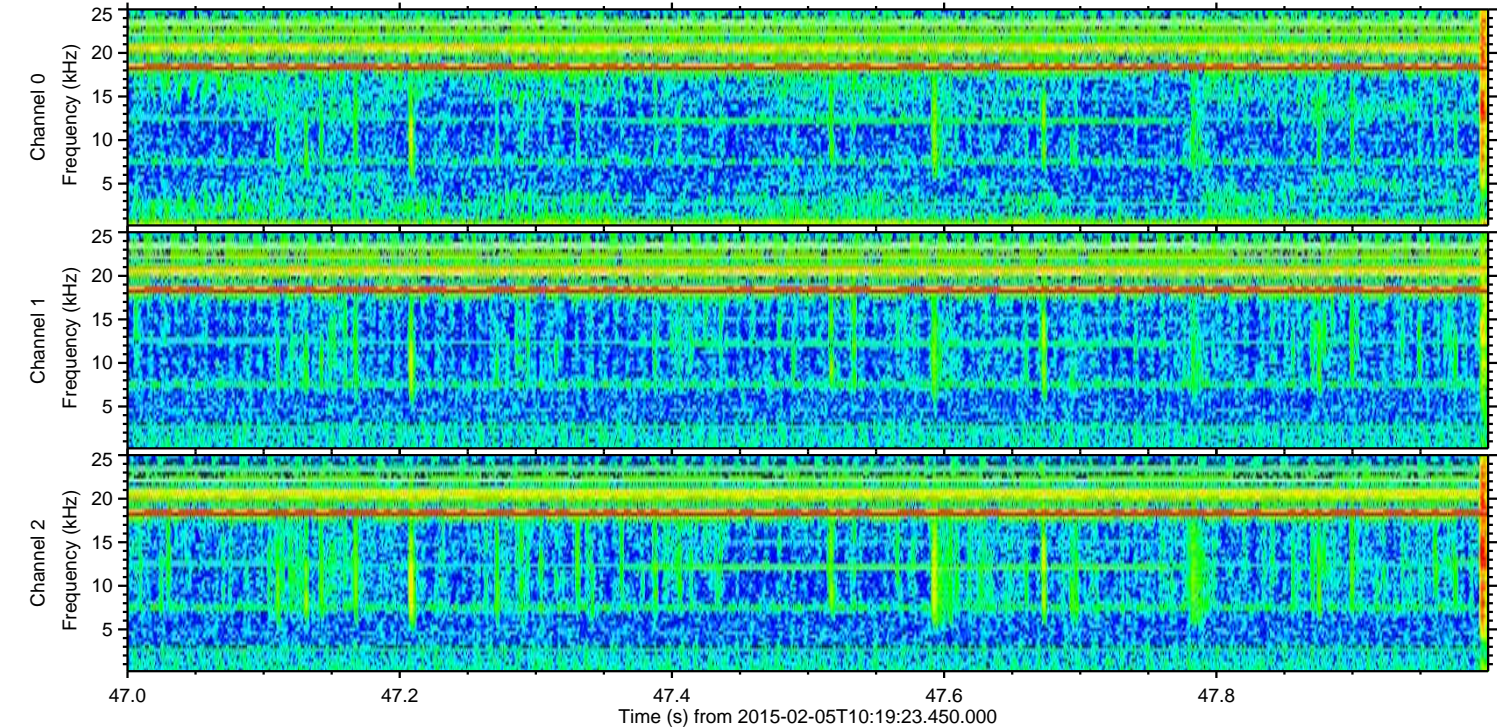
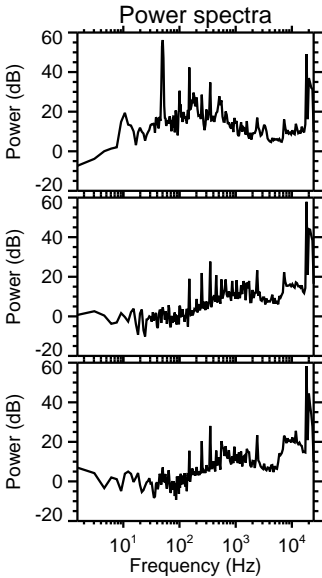
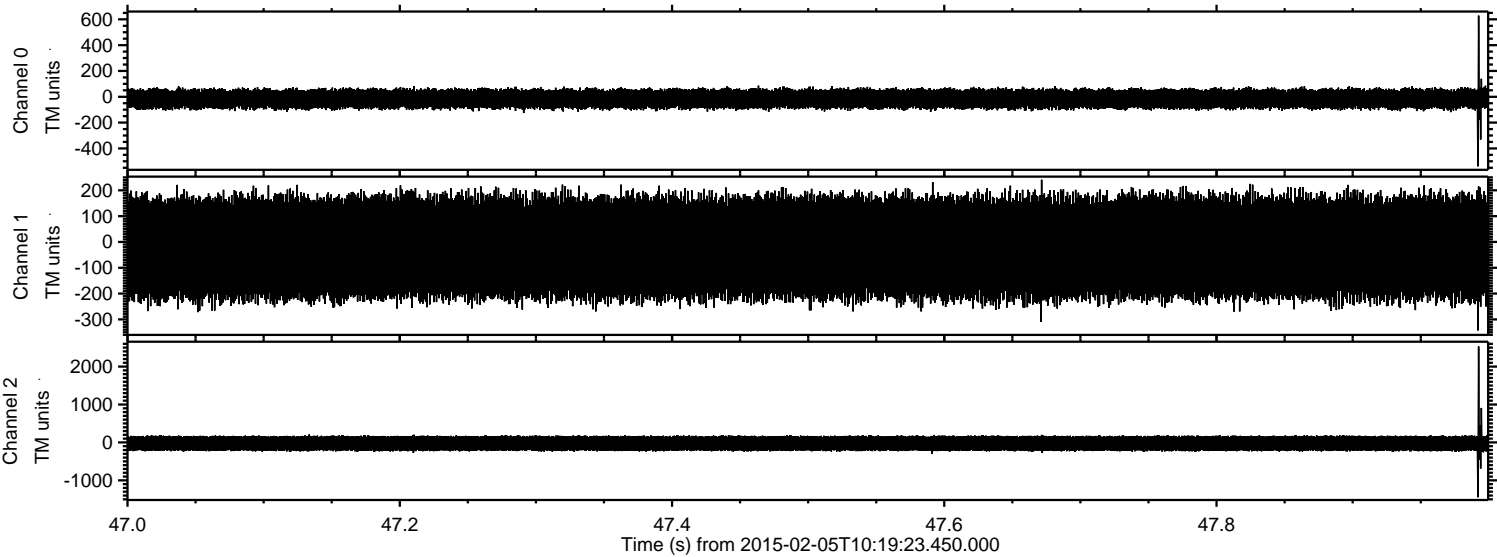
Processed Wed Feb 18 06:55:27 2015 by ELM ver.2012-10-06 from 001__elm20150205_101922__dat00.bin



Processed Wed Feb 18 06:55:28 2015 by ELM ver.2012-10-06 from 001__elm20150205_101922__dat00.bin

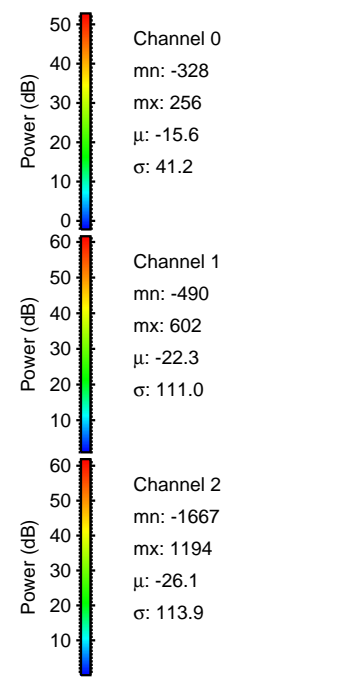
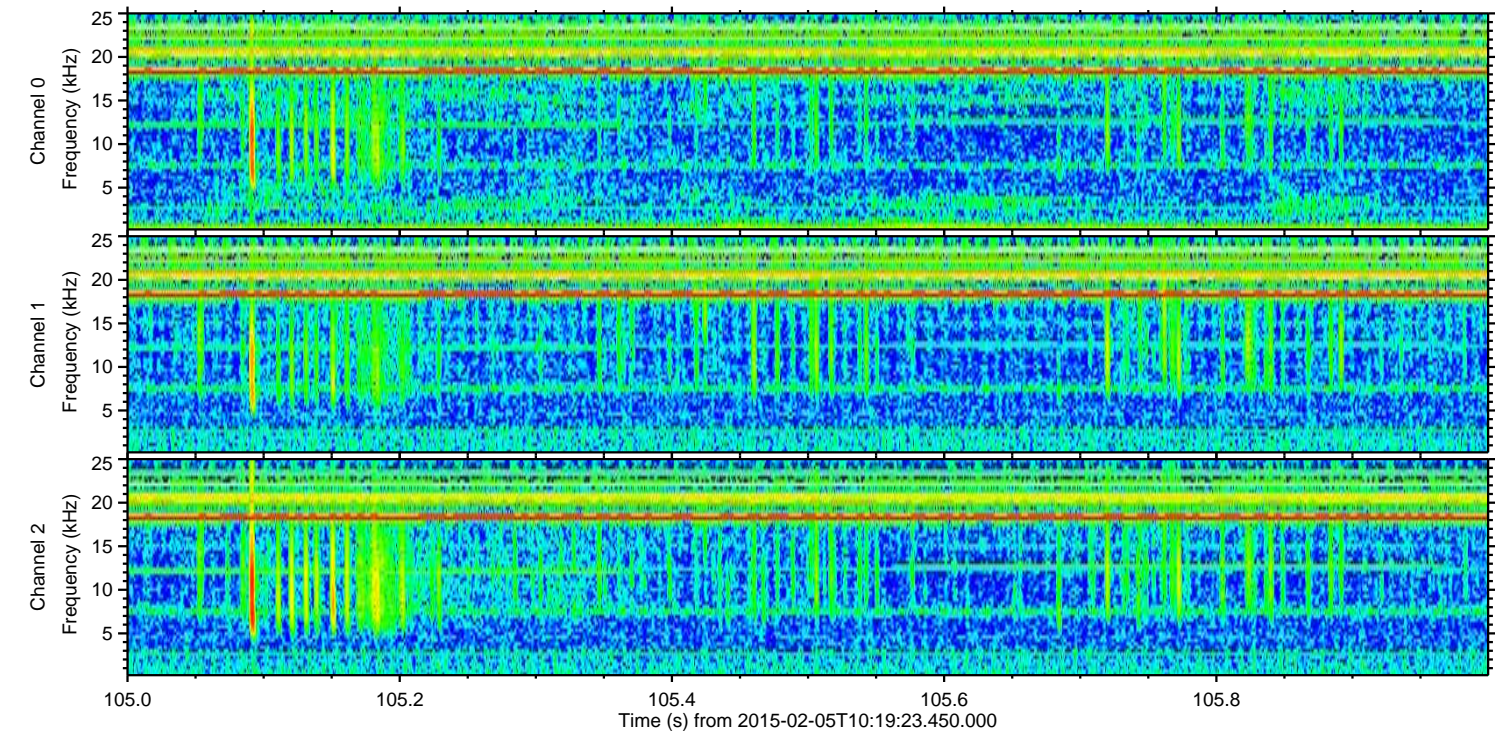
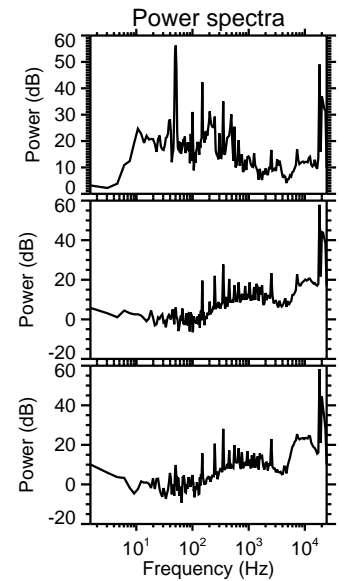
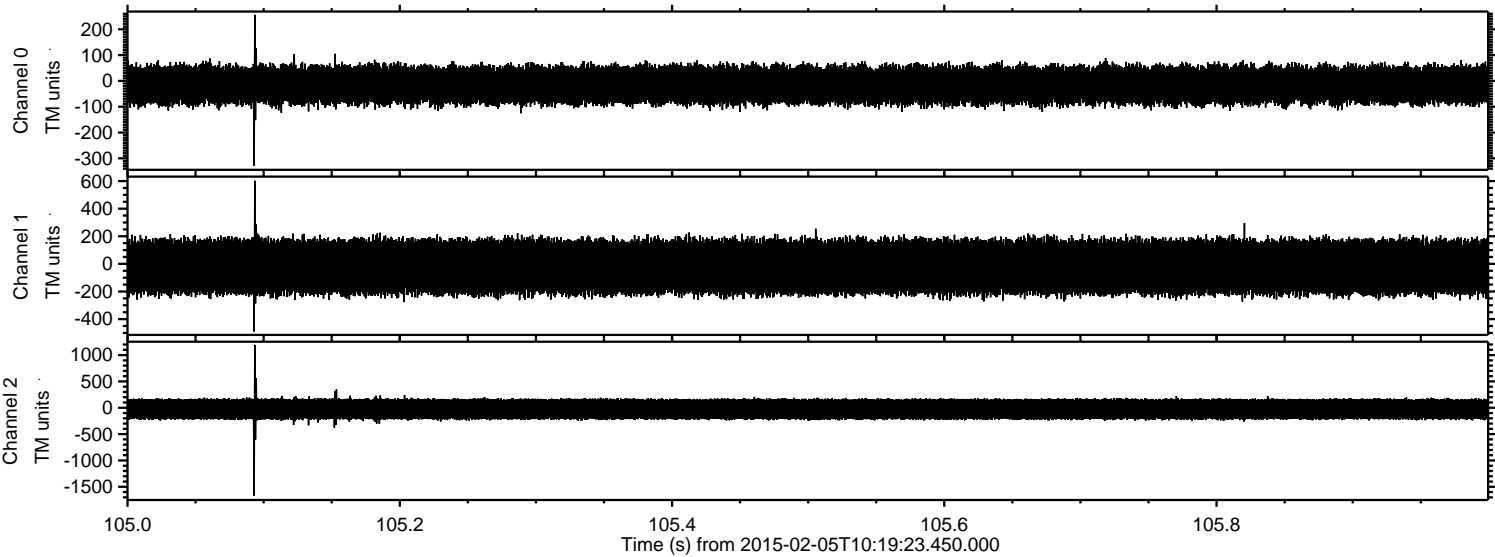


Processed Wed Feb 18 06:55:29 2015 by ELM ver.2012-10-06 from 001__elm20150205_101922__dat00.bin

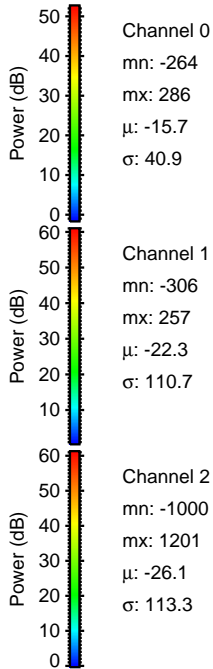
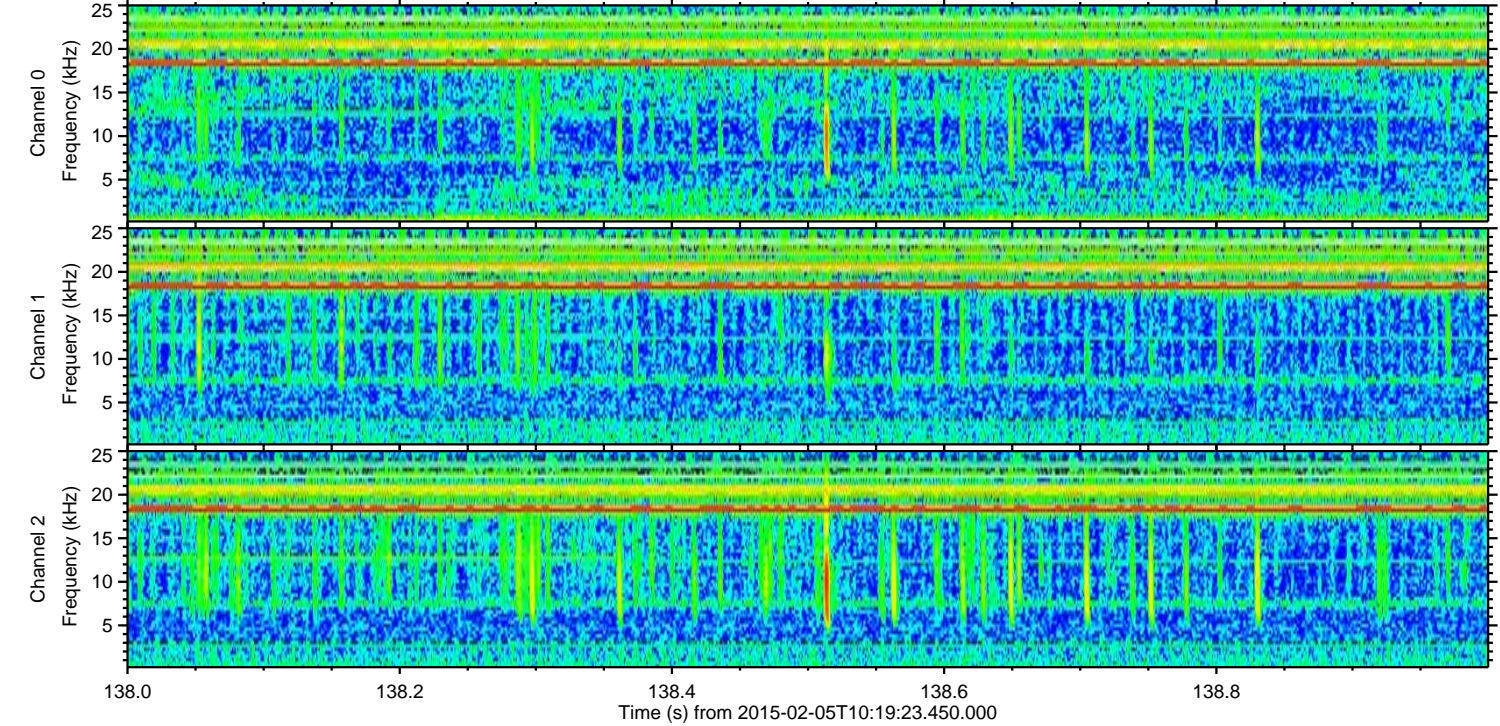
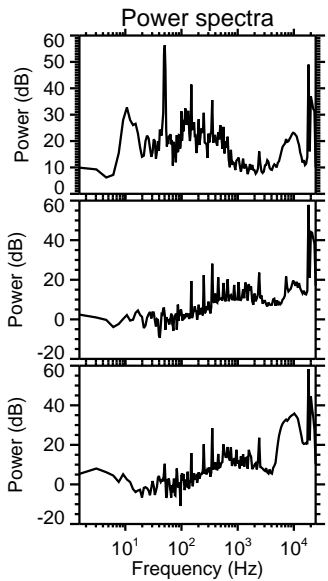
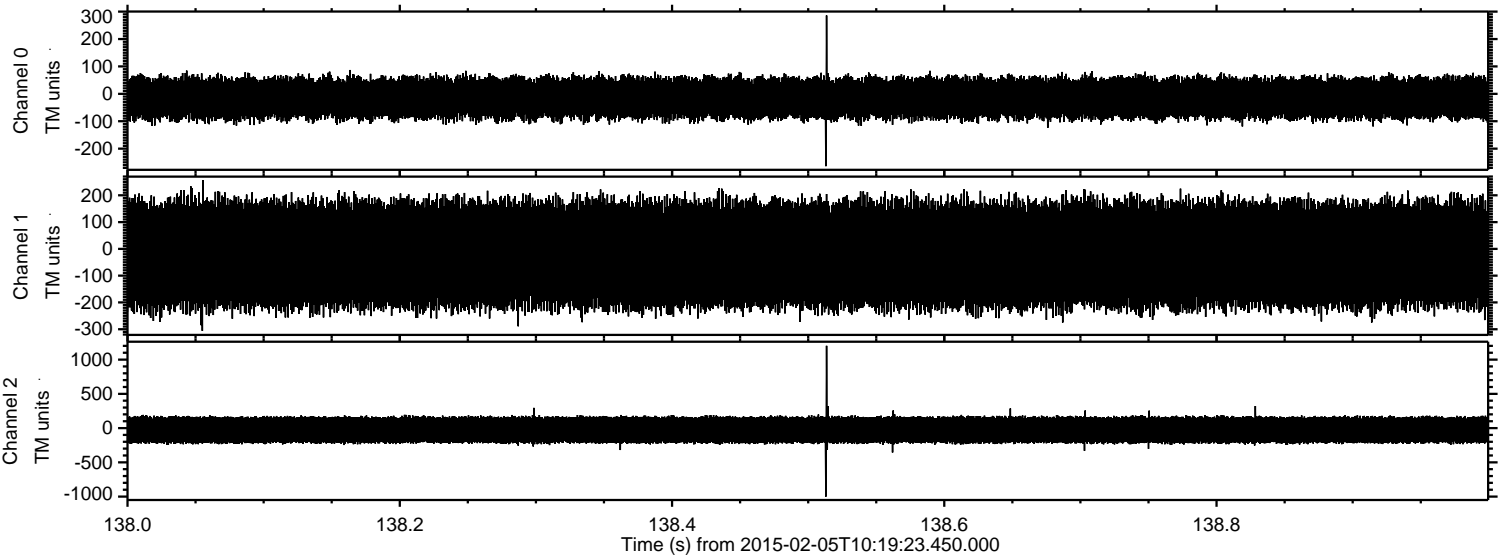


ELMAVAN 3D WAVEFORMS (Measured data sampled at 50 kHz) 49805 packets of 144 samples from 2015-02-05T10:19:23.450.000. Part 106/144

Processed Wed Feb 18 06:55:30 2015 by ELM ver.2012-10-06 from 001__elm20150205_101922__dat00.bin

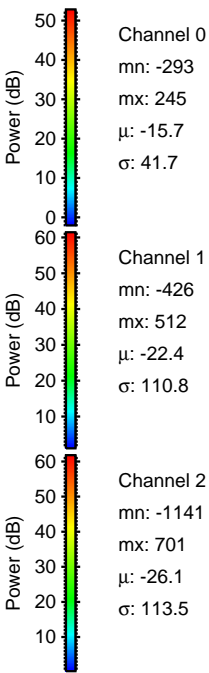
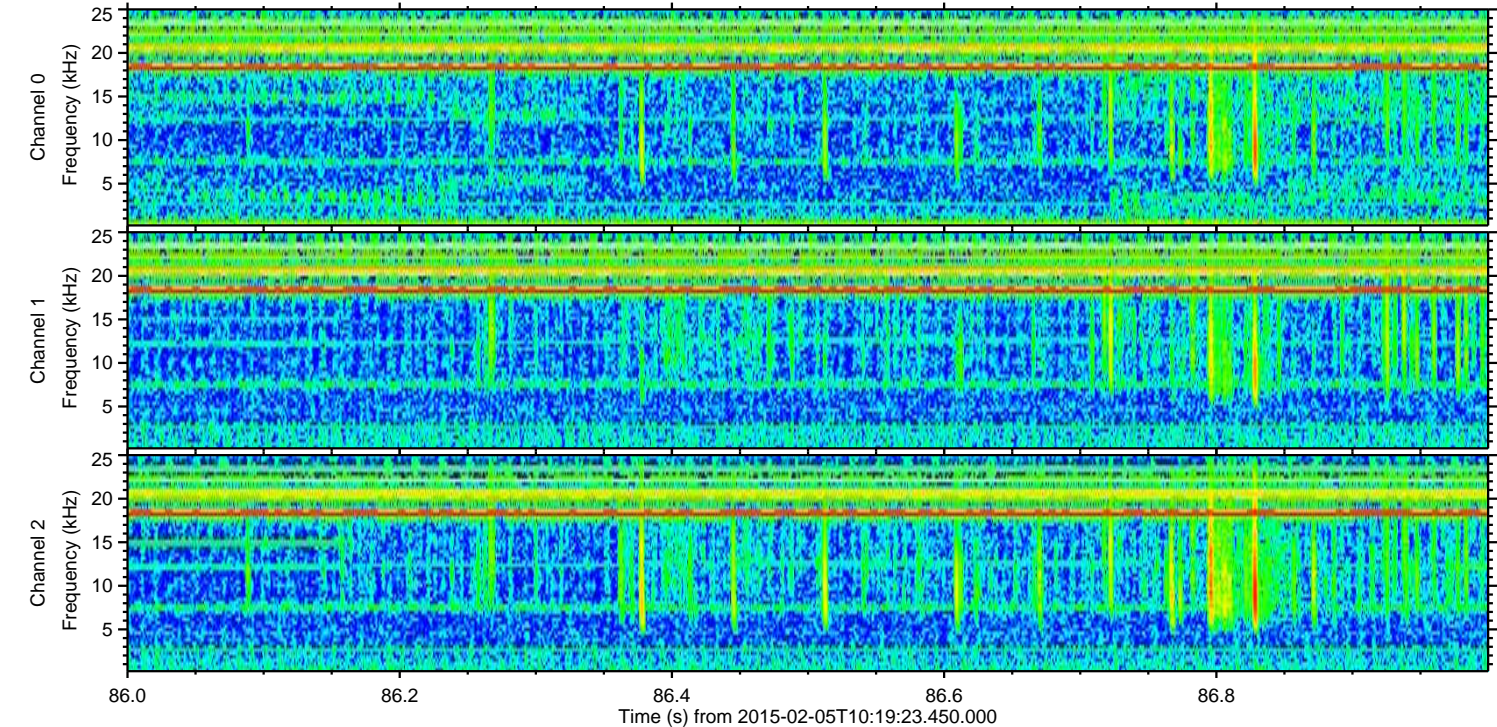
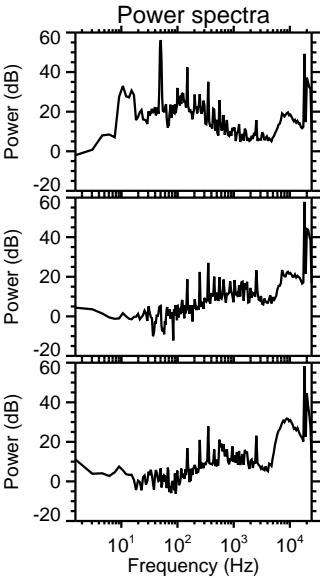
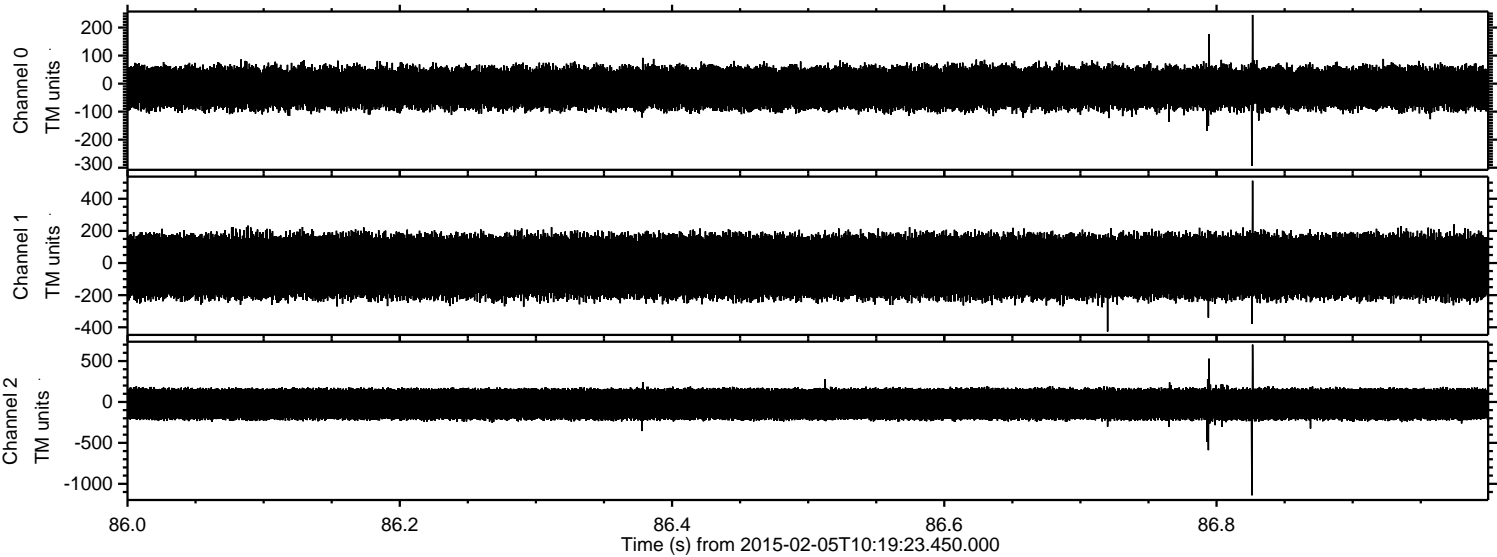


Processed Wed Feb 18 06:55:32 2015 by ELM ver.2012-10-06 from 001__elm20150205_101922__dat00.bin

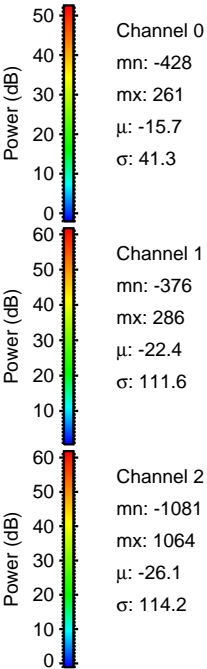
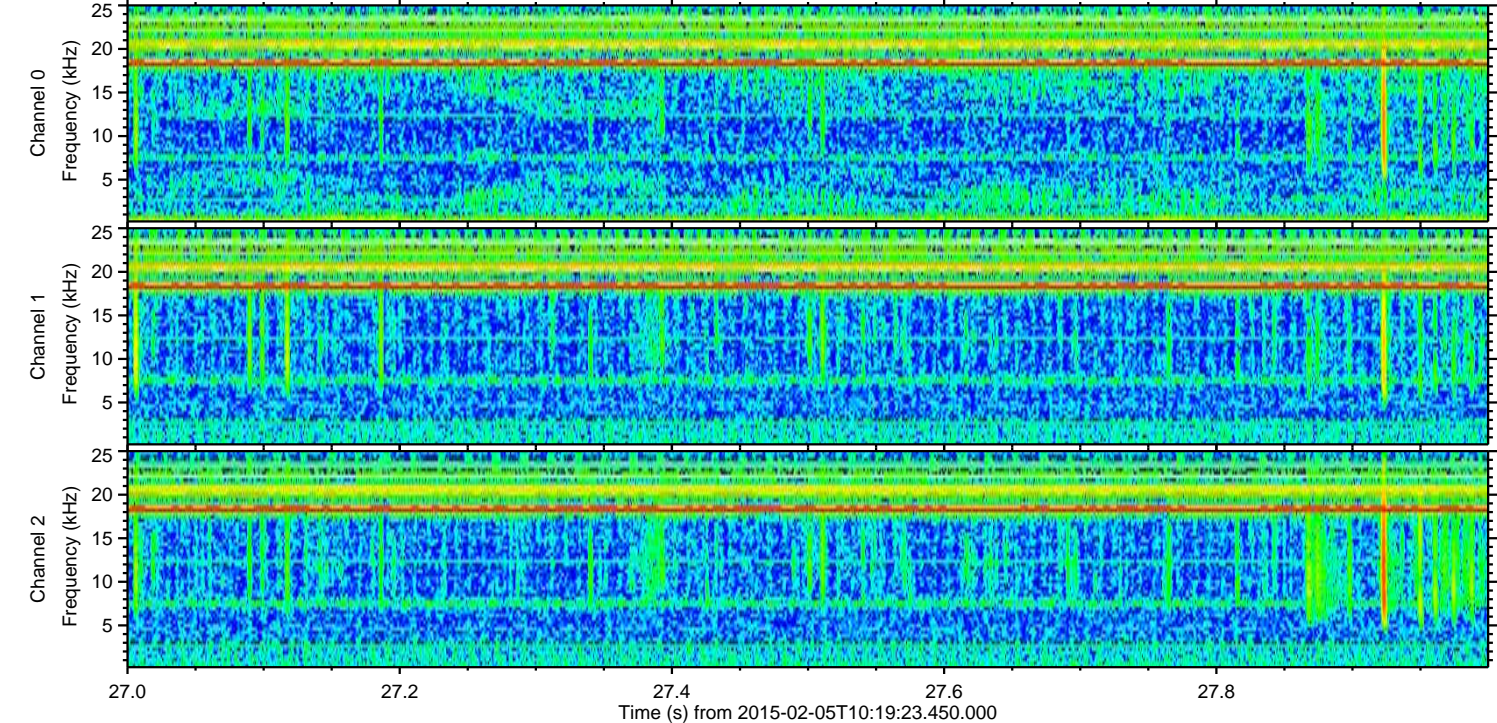
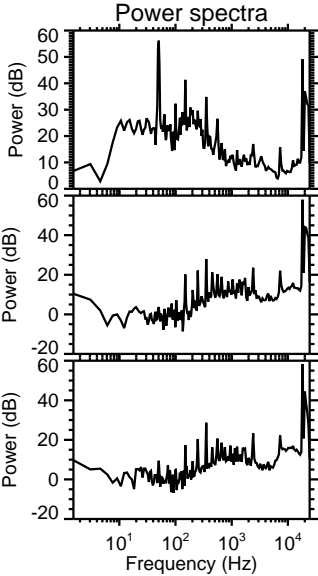
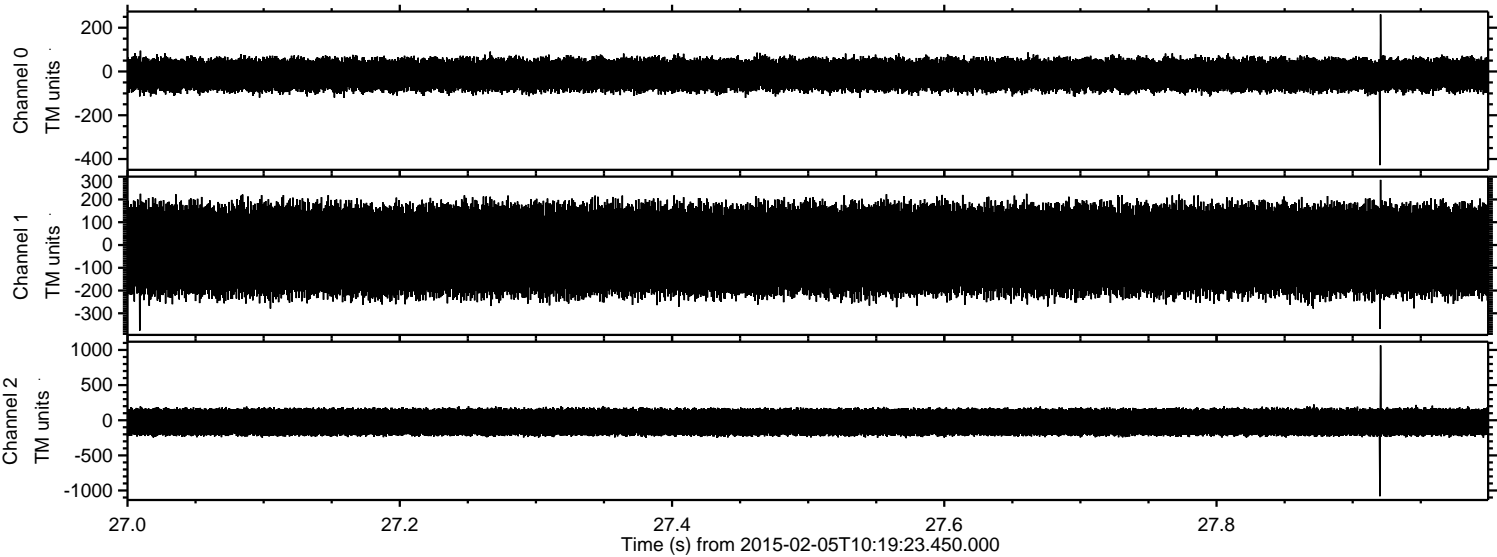


ELMAVAN 3D WAVEFORMS (Measured data sampled at 50 kHz) 49805 packets of 144 samples from 2015-02-05T10:19:23.450.000. Part 87/144

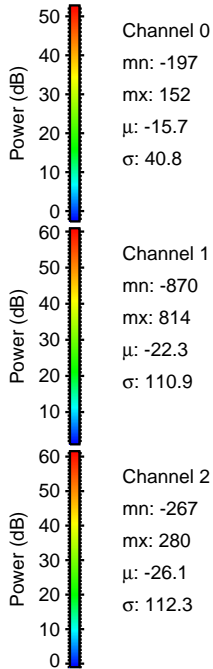
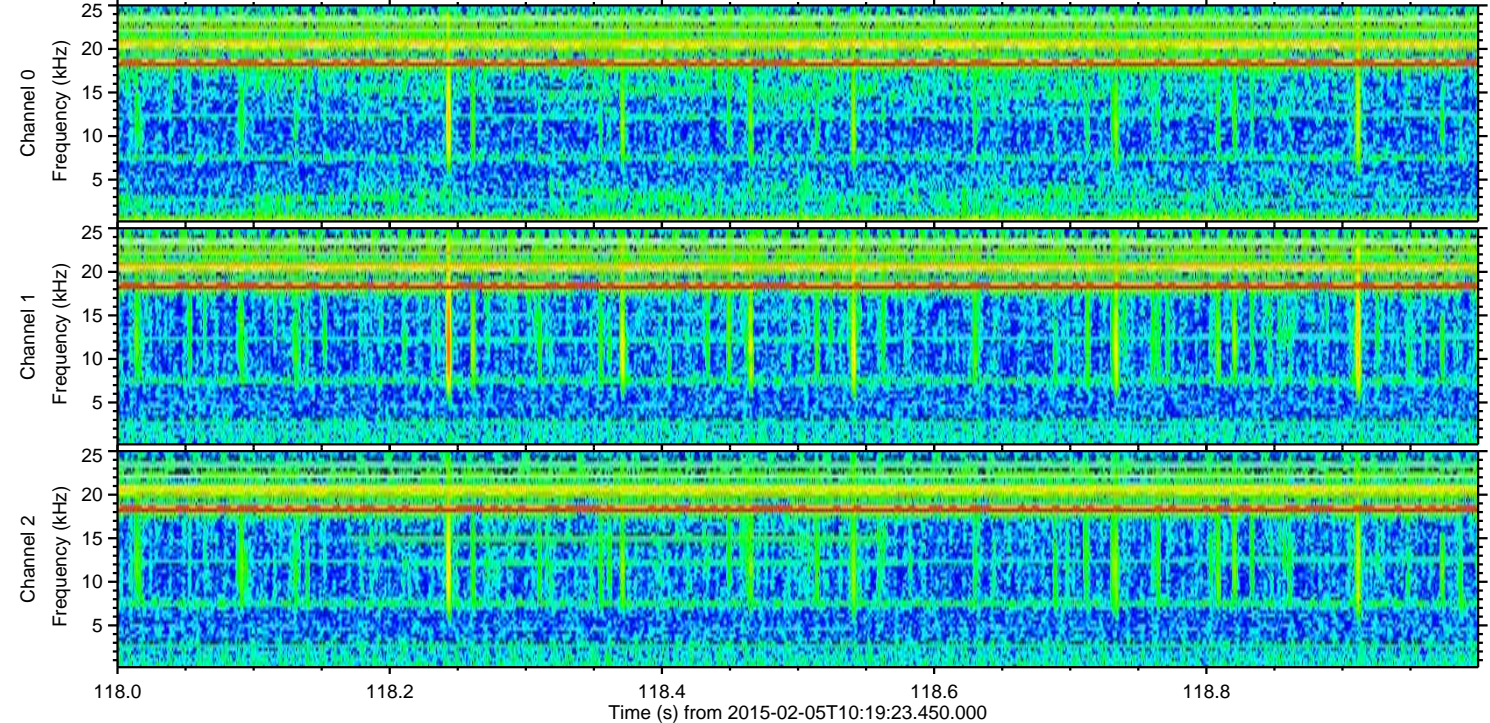
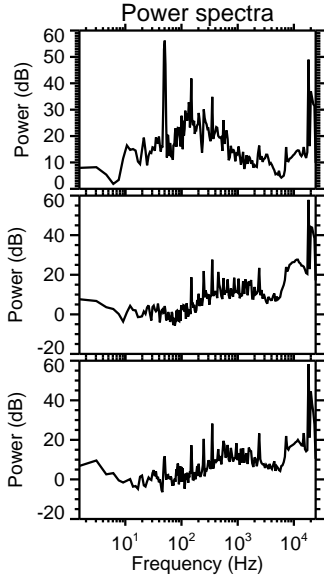
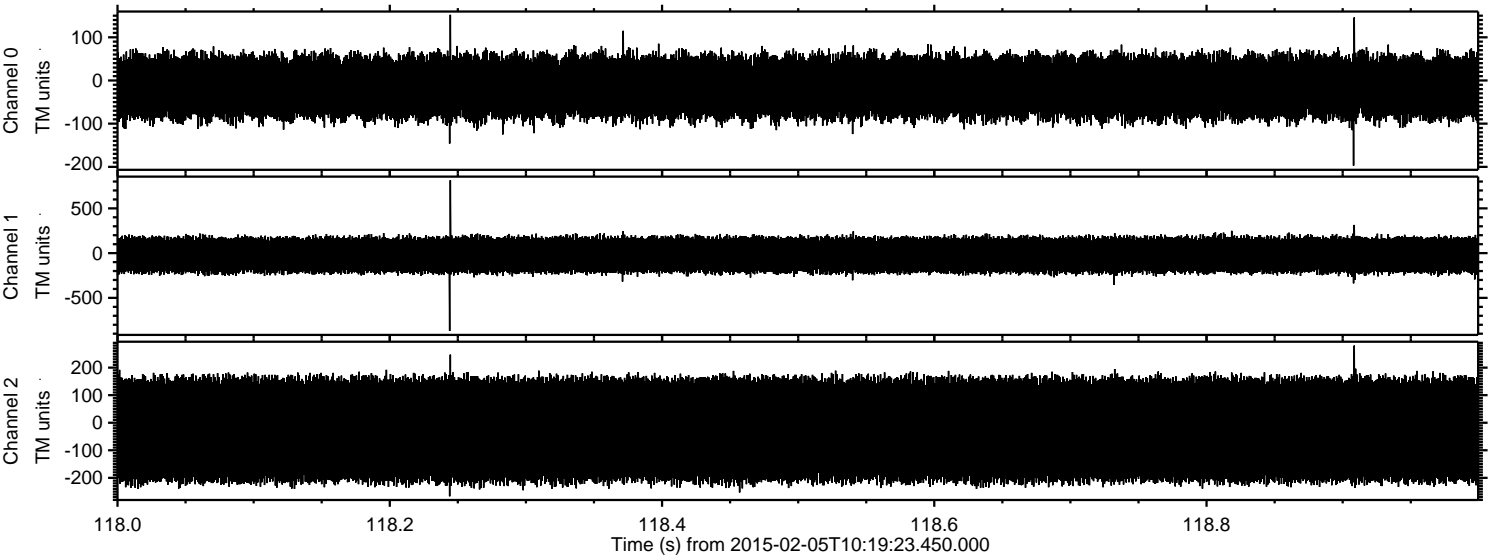
Processed Wed Feb 18 06:55:34 2015 by ELM ver.2012-10-06 from 001__elm20150205_101922__dat00.bin



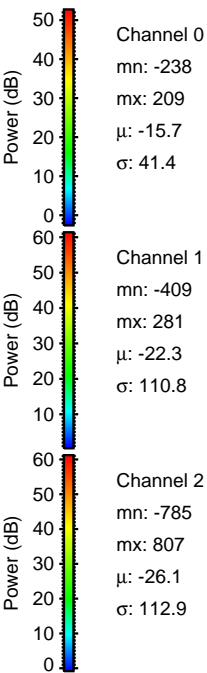
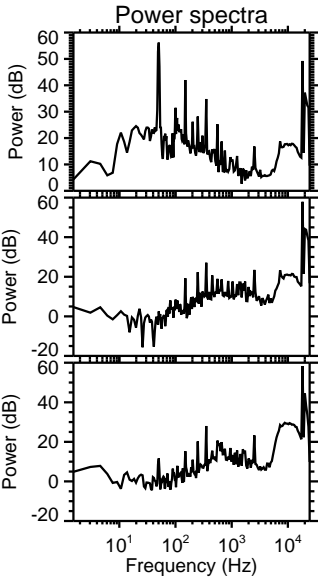
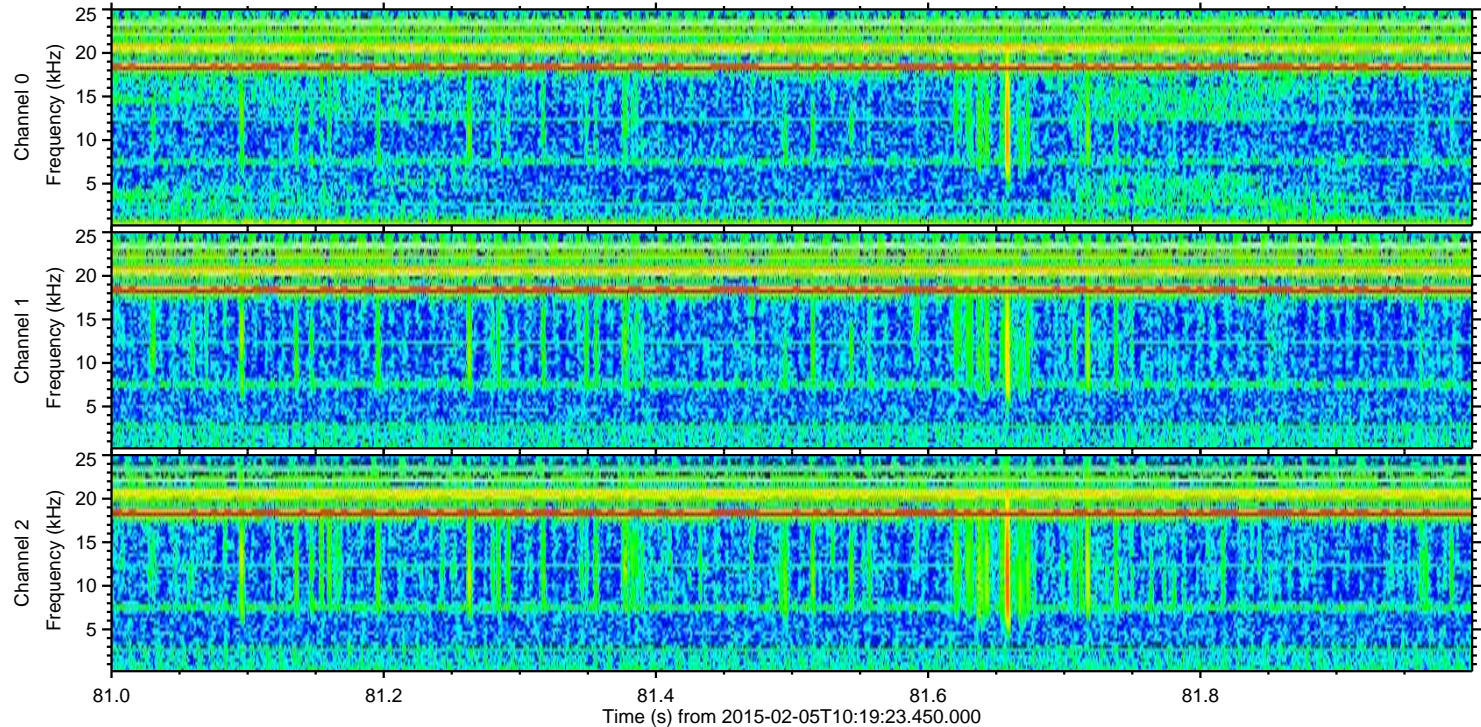
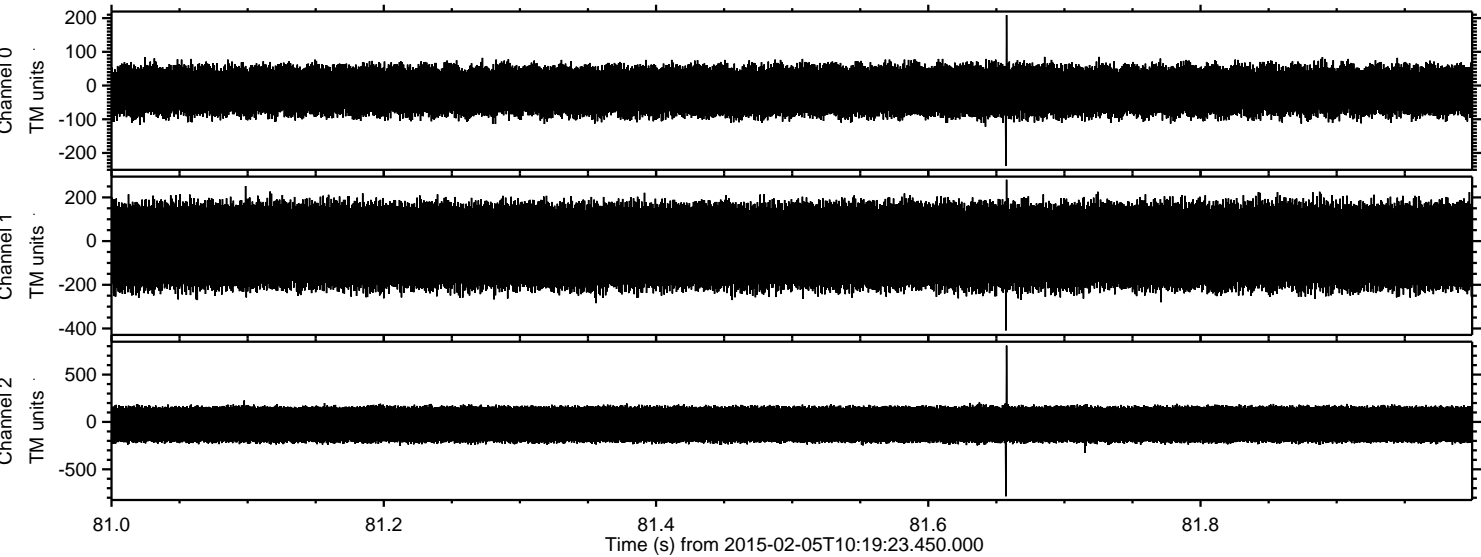
Processed Wed Feb 18 06:55:36 2015 by ELM ver.2012-10-06 from 001__elm20150205_101922__dat00.bin



Processed Wed Feb 18 06:55:37 2015 by ELM ver.2012-10-06 from 001__elm20150205_101922__dat00.bin



Processed Wed Feb 18 06:55:39 2015 by ELM ver.2012-10-06 from 001__elm20150205_101922__dat00.bin



Channel 0
mn: -238
mx: 209
 μ : -15.7
 σ : 41.4

Channel 1
mn: -409
mx: 281
 μ : -22.3
 σ : 110.8

Channel 2
mn: -785
mx: 807
 μ : -26.1
 σ : 112.9

Processed Wed Feb 18 06:55:40 2015 by ELM ver.2012-10-06 from 001__elm20150205_101922__dat00.bin

