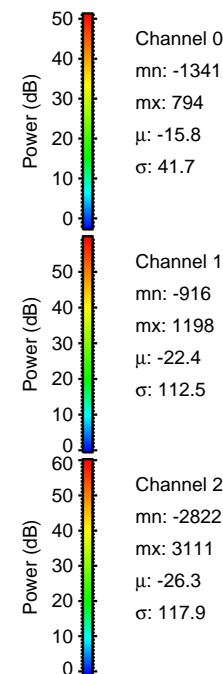
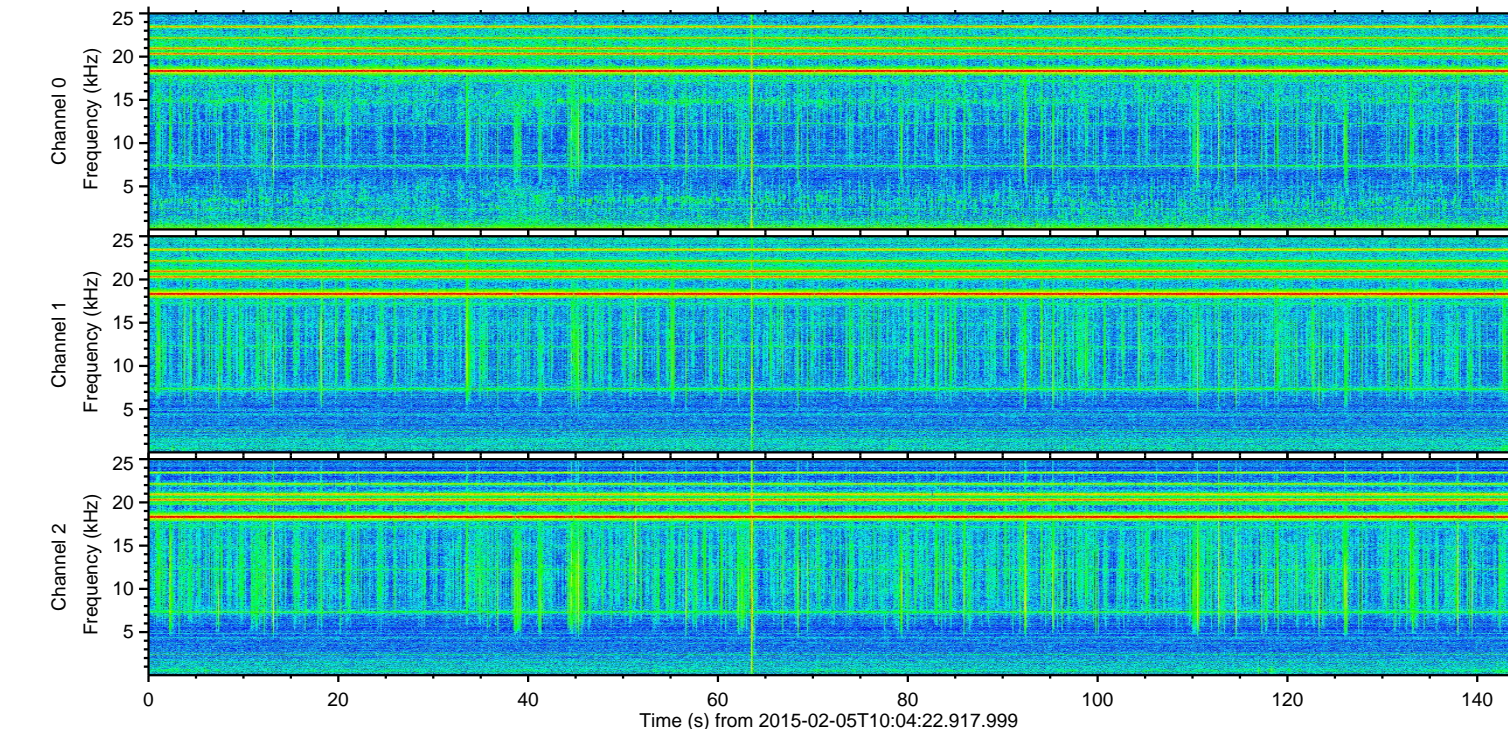
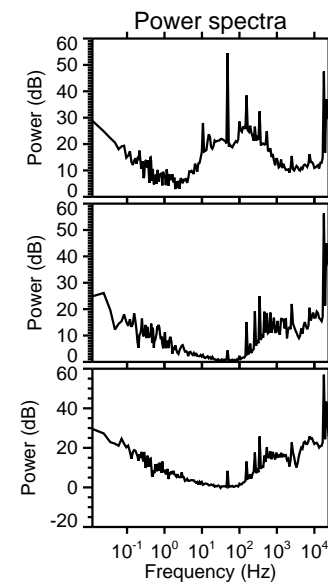
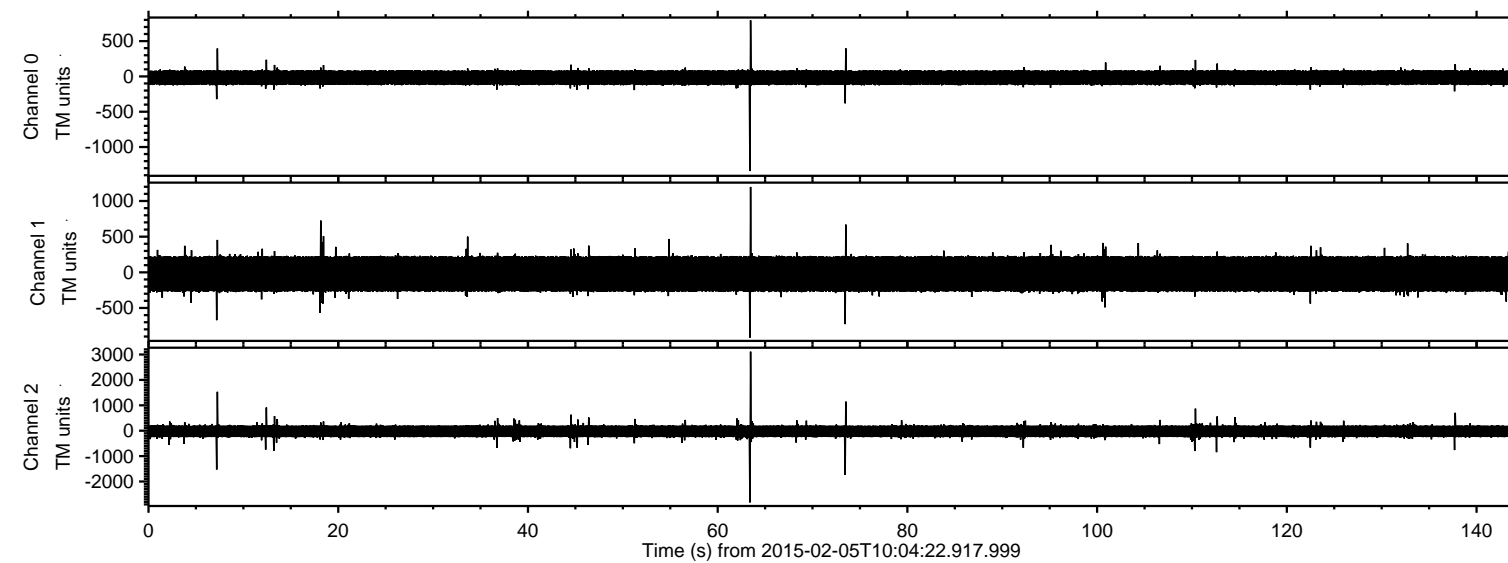
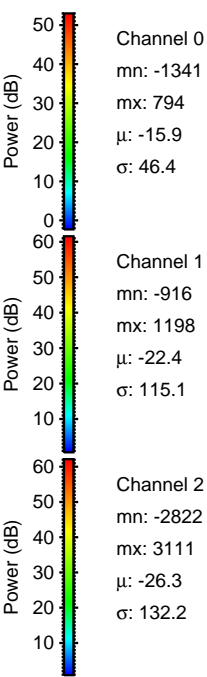
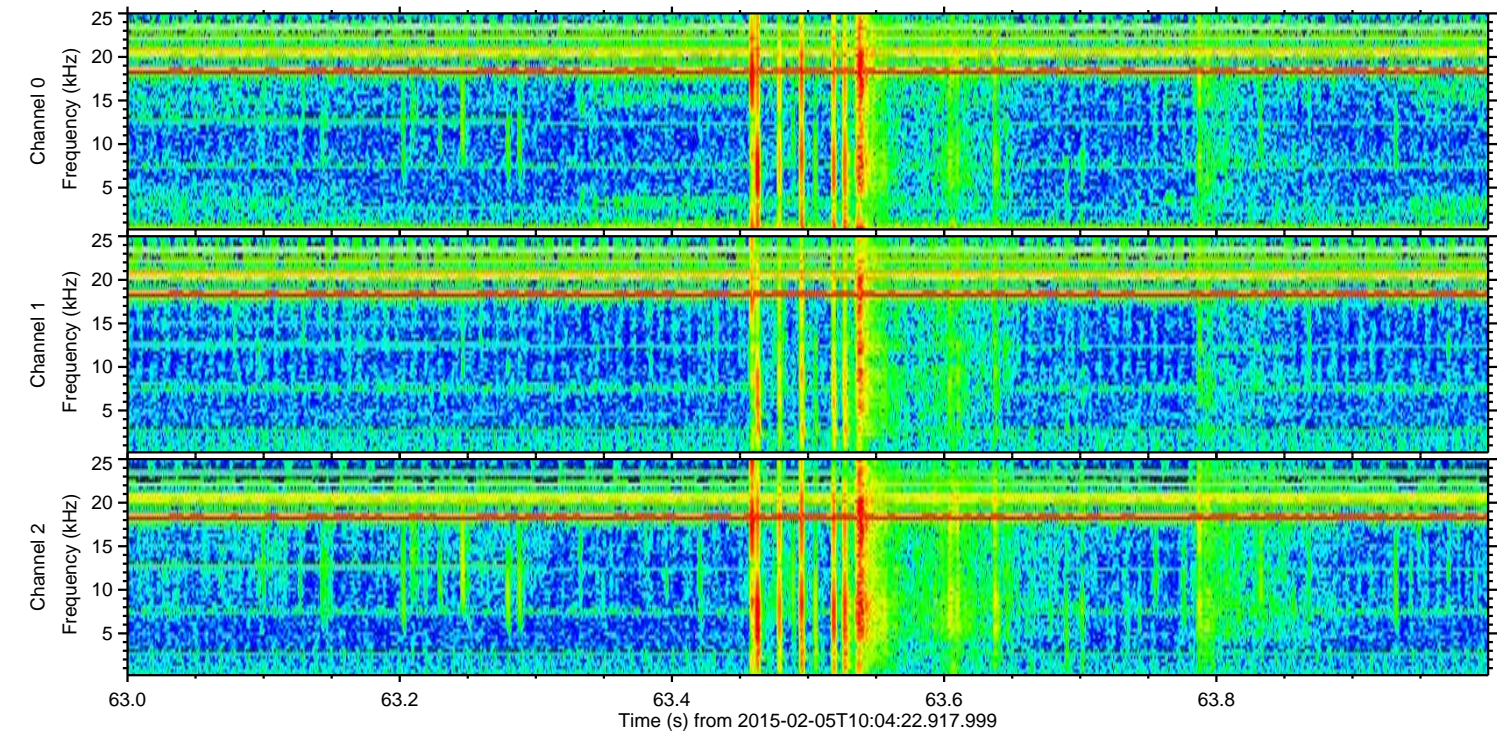
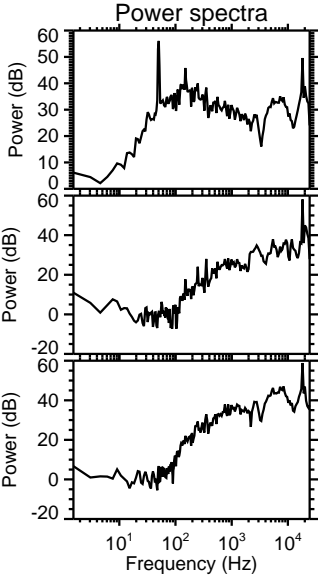
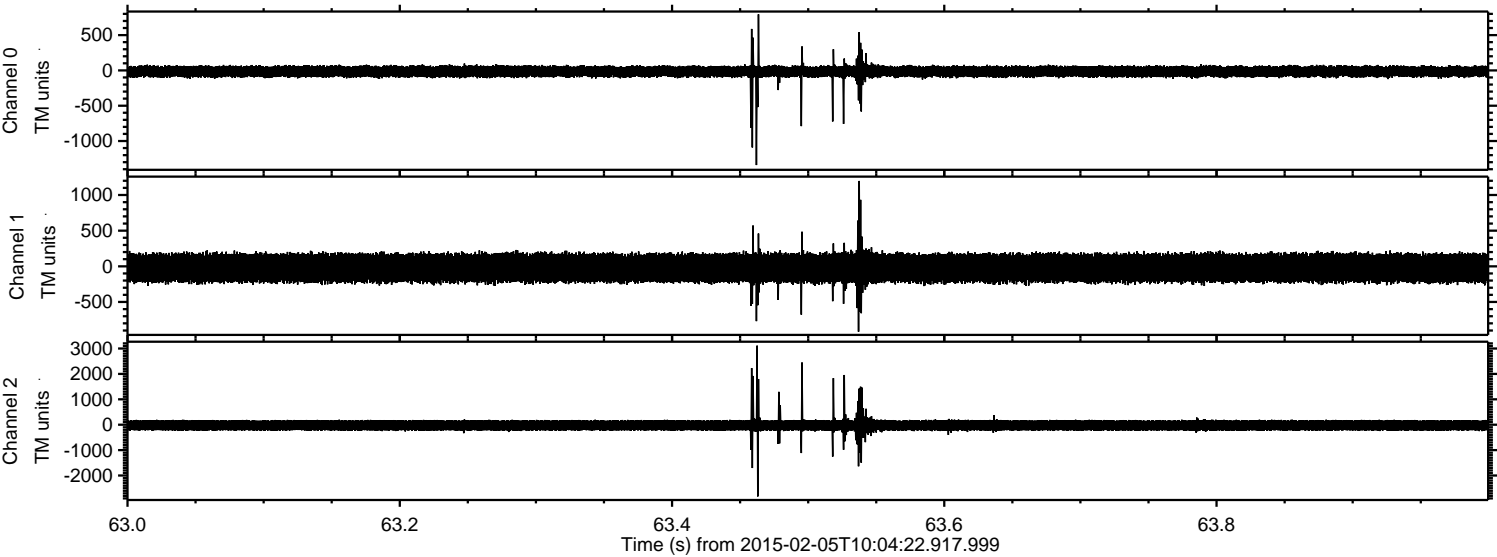


ELMAVAN 3D WAVEFORMS (Measured data sampled at 50 kHz) 49804 packets of 144 samples from 2015-02-05T10:04:22.917.999.

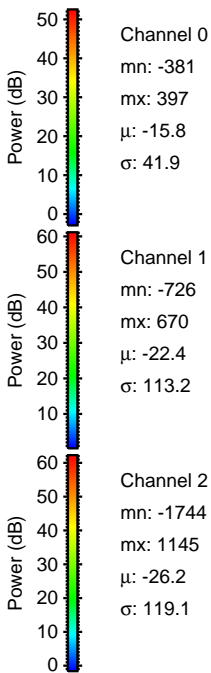
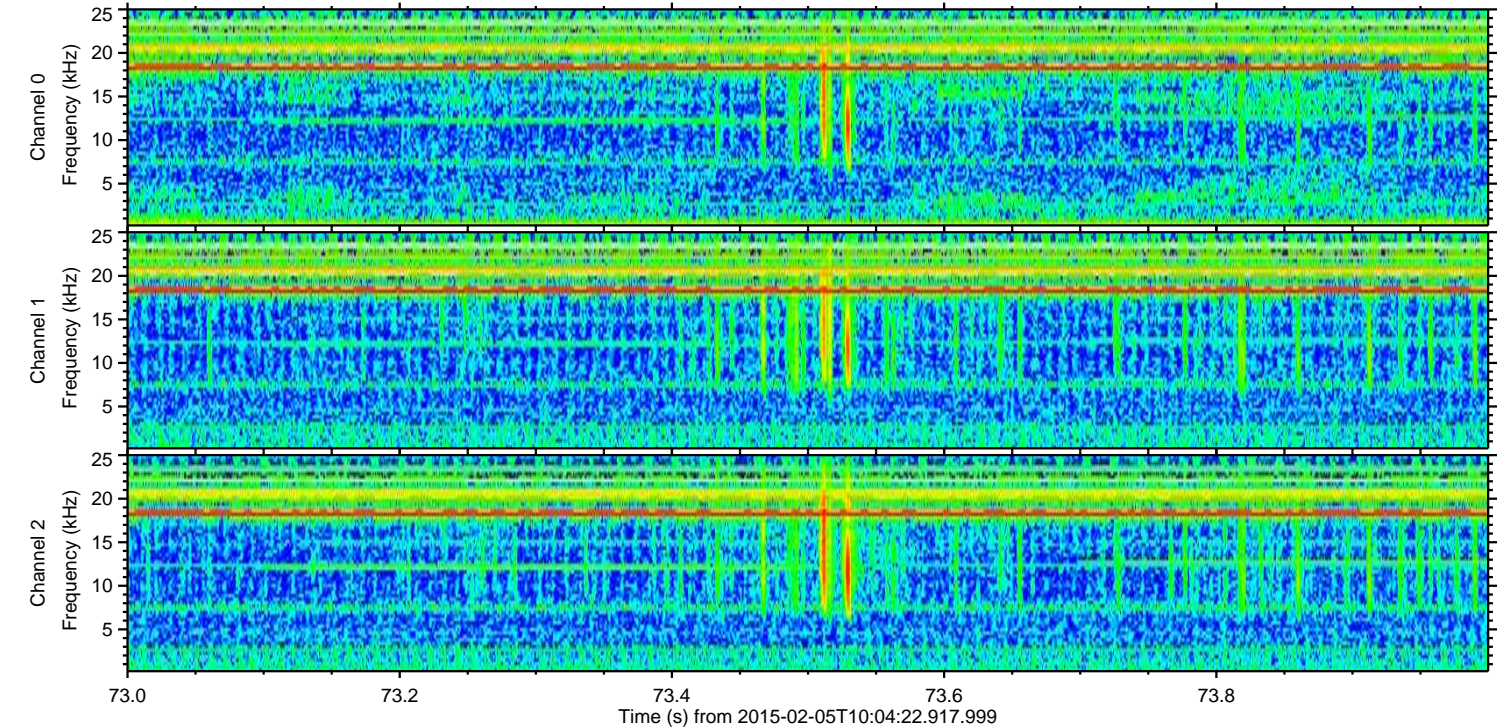
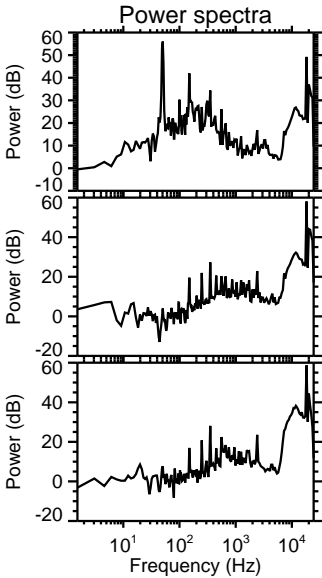
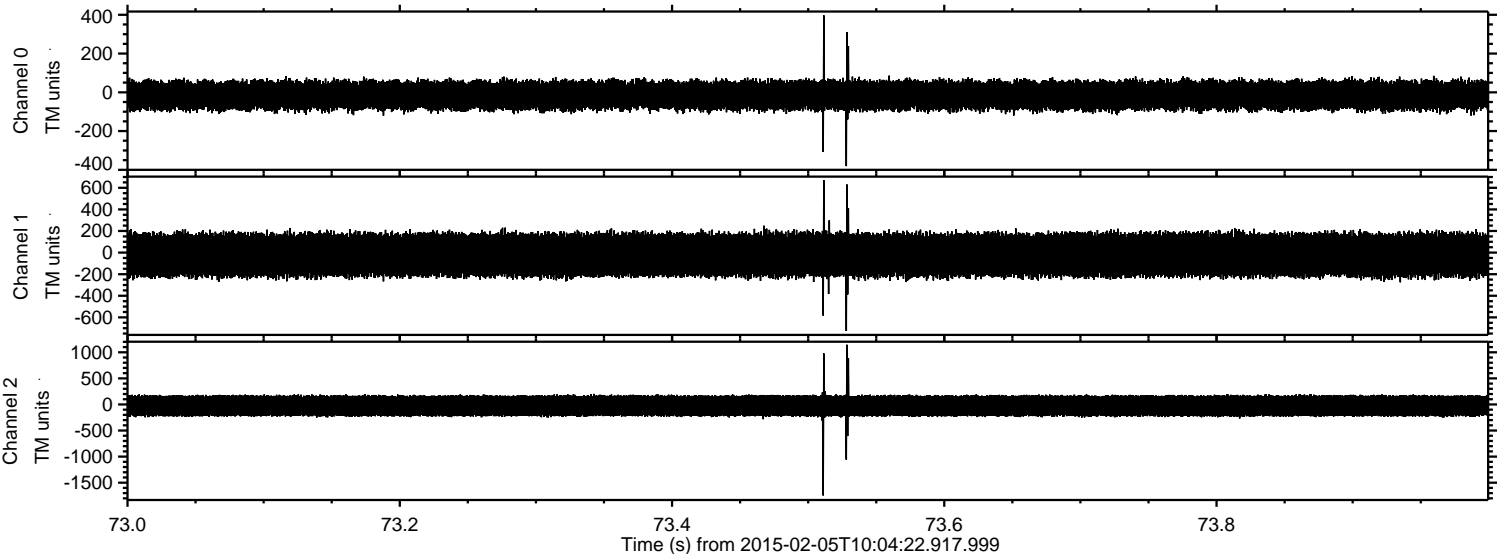
Processed Wed Feb 18 06:50:05 2015 by ELM ver.2012-10-06 from 001__elm20150205_100421__dat00.bin



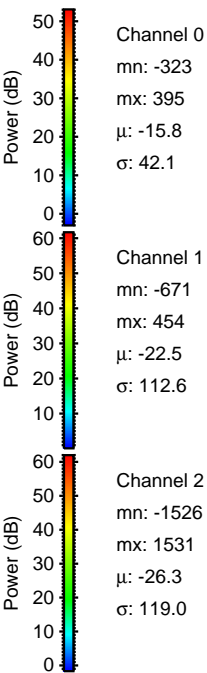
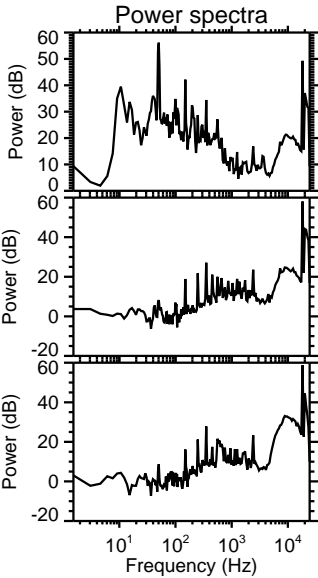
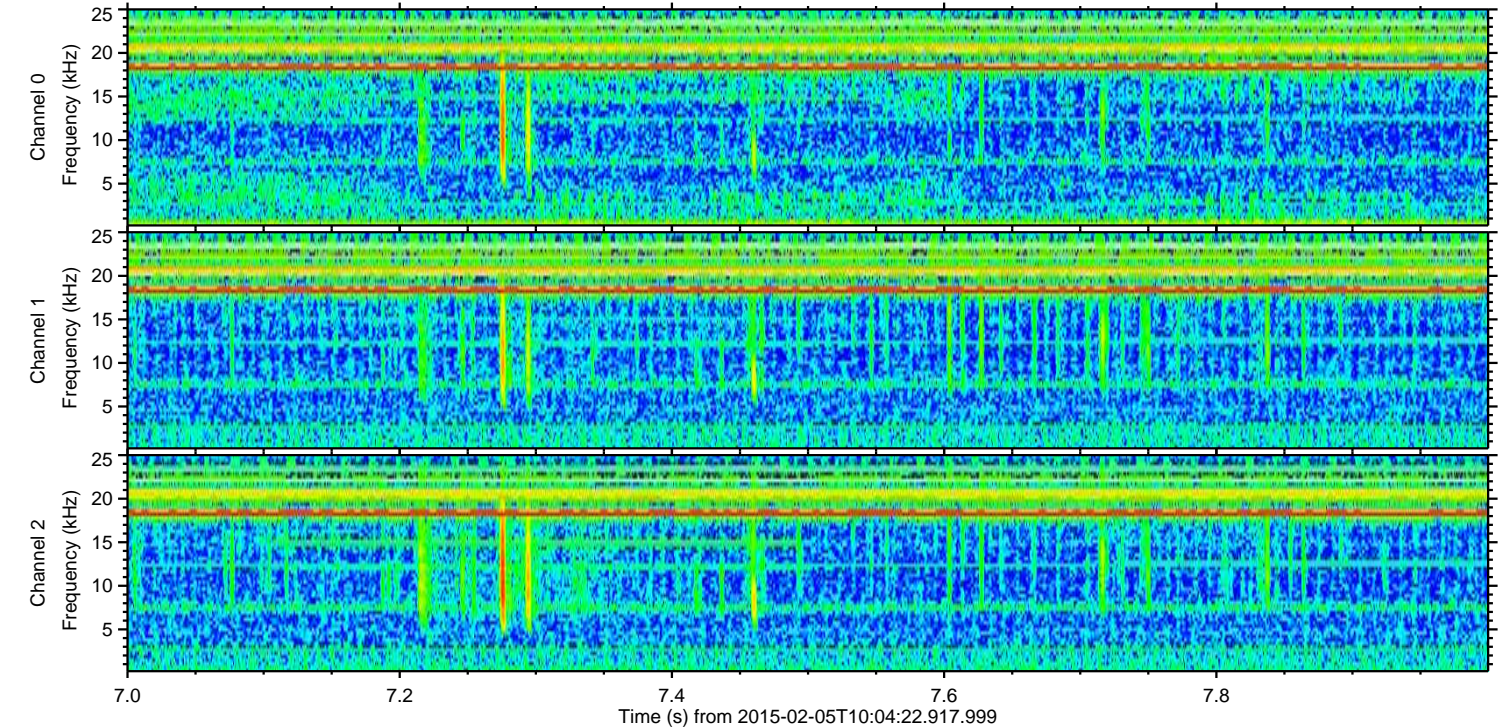
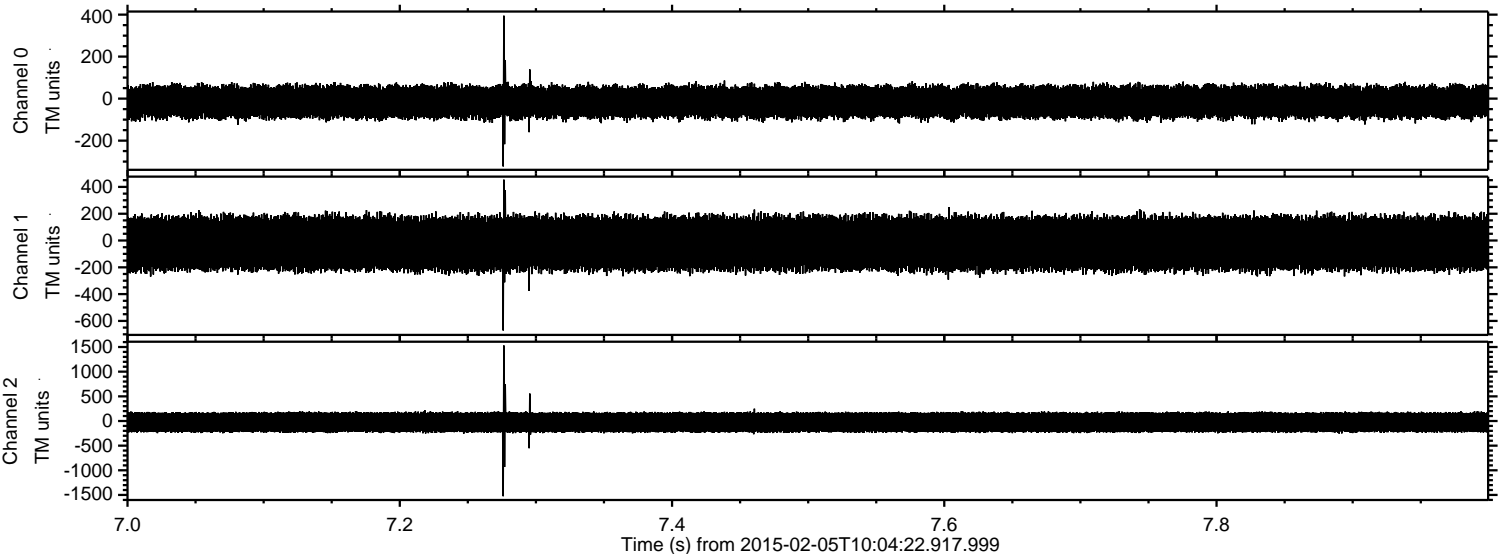
Processed Wed Feb 18 06:50:22 2015 by ELM ver.2012-10-06 from 001__elm20150205_100421__dat00.bin



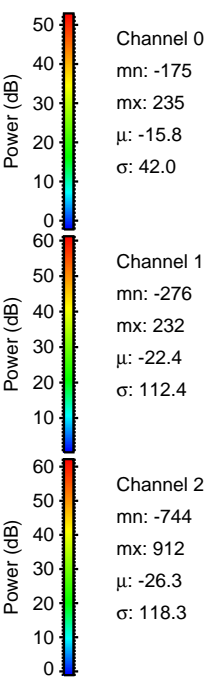
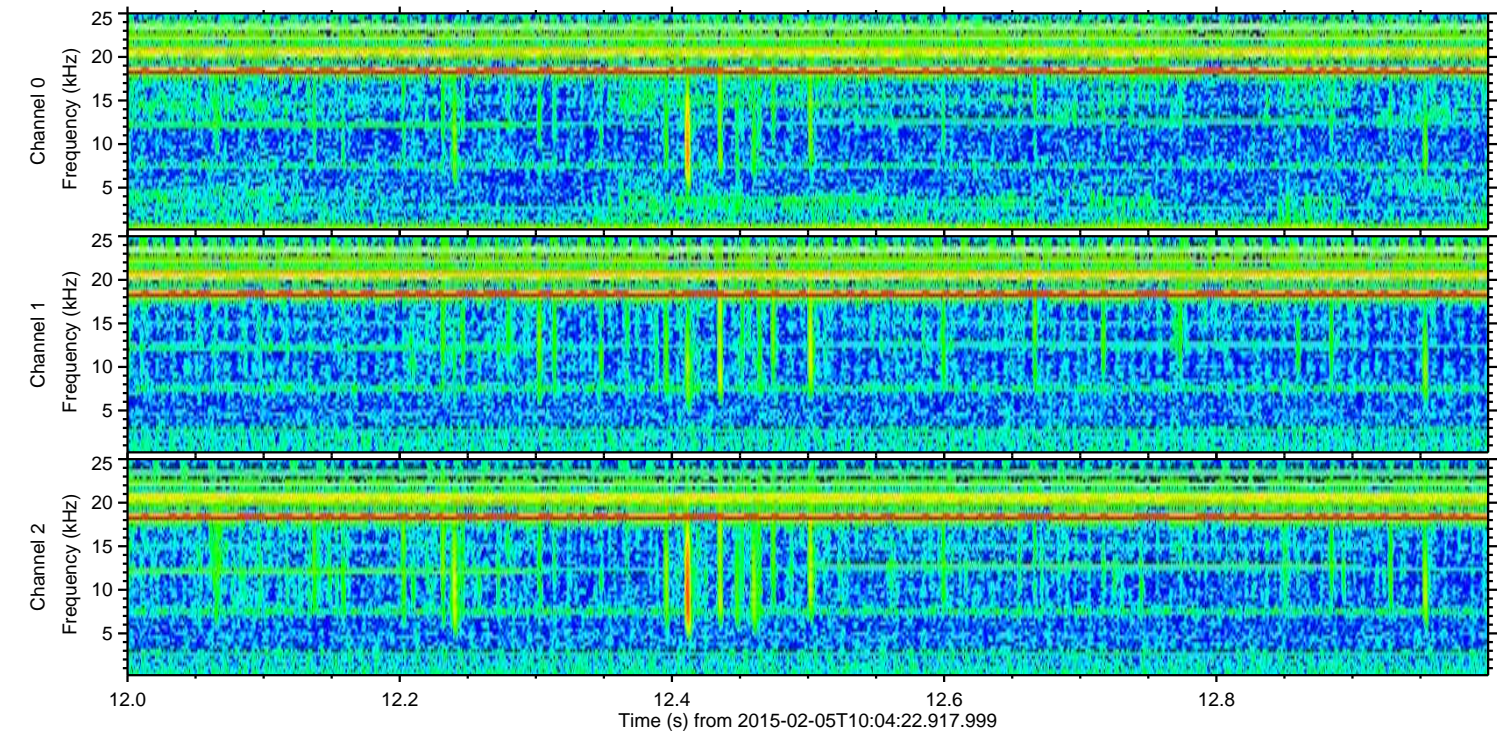
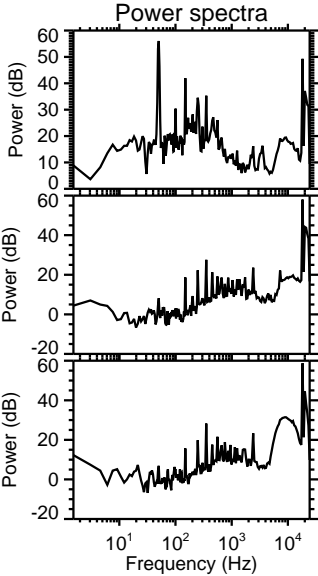
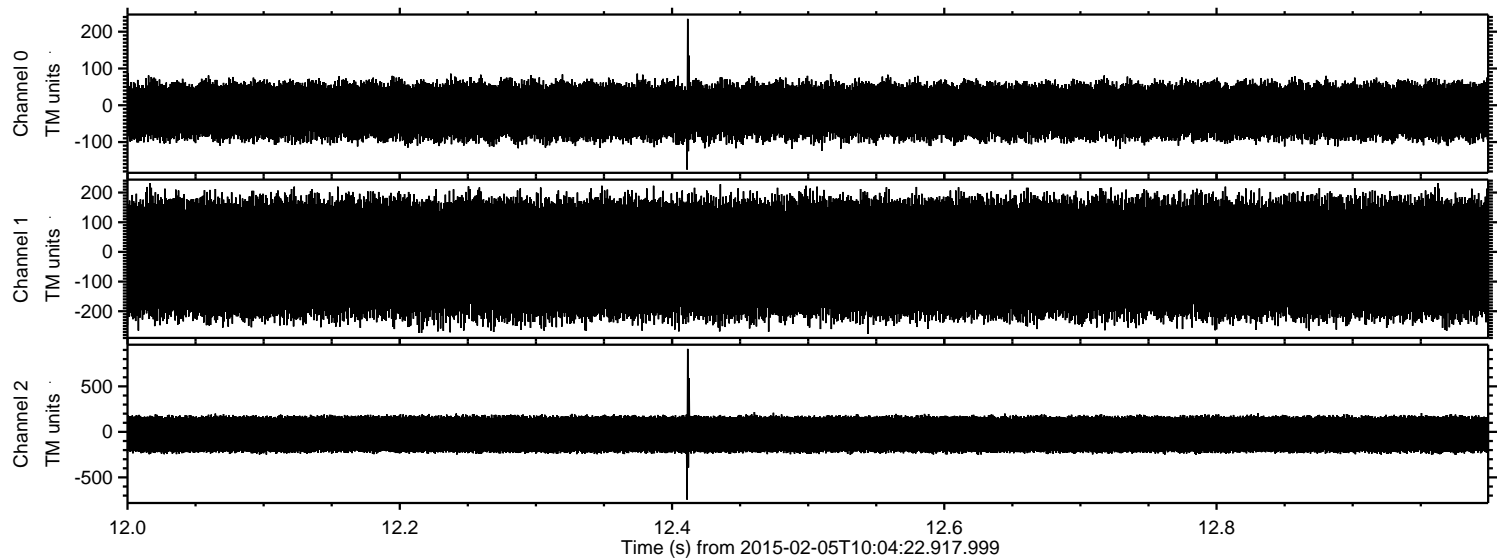
Processed Wed Feb 18 06:50:23 2015 by ELM ver.2012-10-06 from 001__elm20150205_100421__dat00.bin



Processed Wed Feb 18 06:50:24 2015 by ELM ver.2012-10-06 from 001__elm20150205_100421__dat00.bin

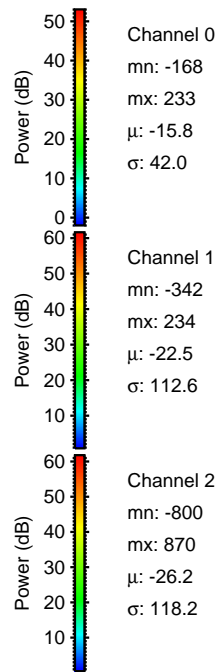
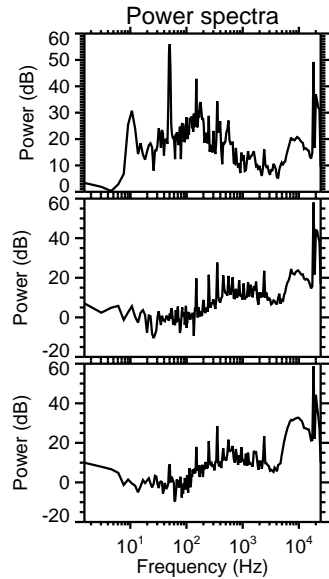
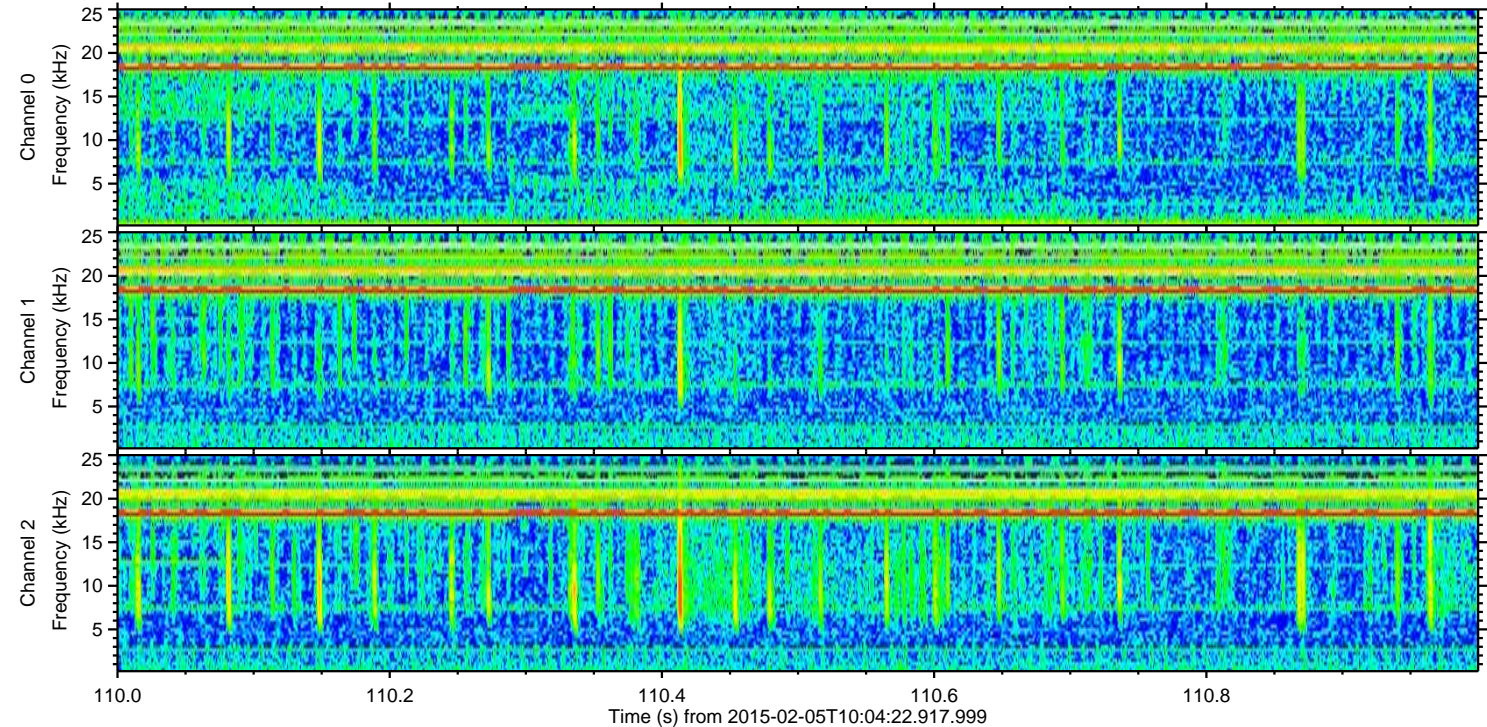
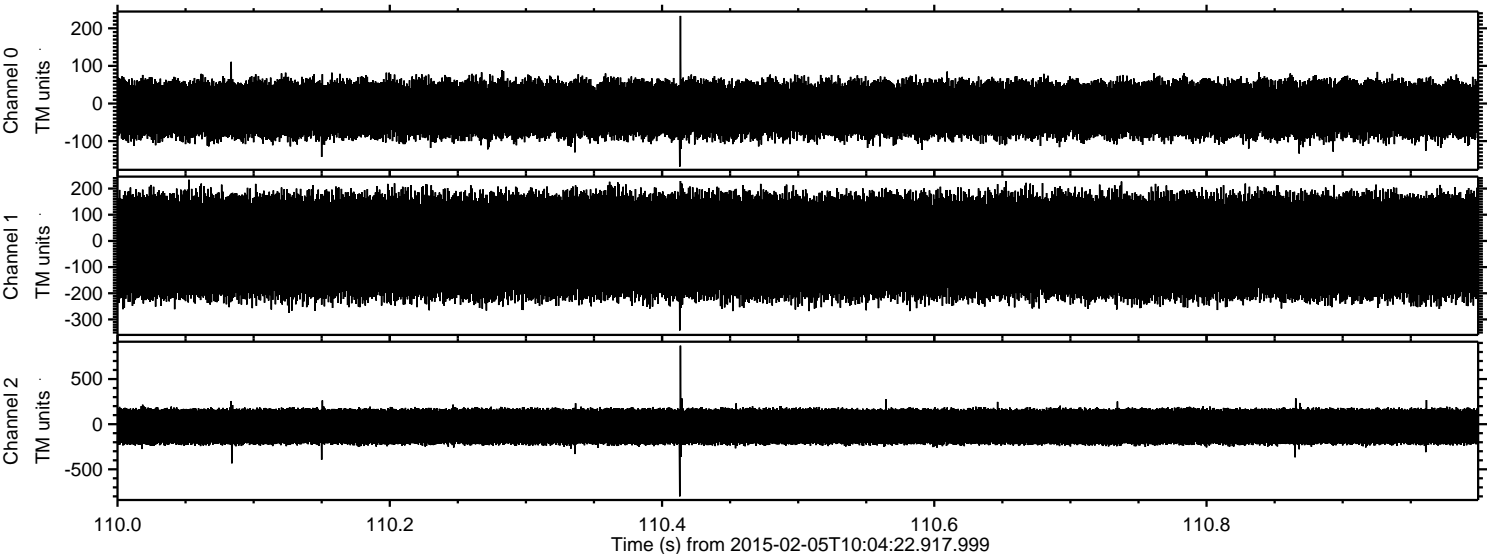


Processed Wed Feb 18 06:50:26 2015 by ELM ver.2012-10-06 from 001__elm20150205_100421__dat00.bin



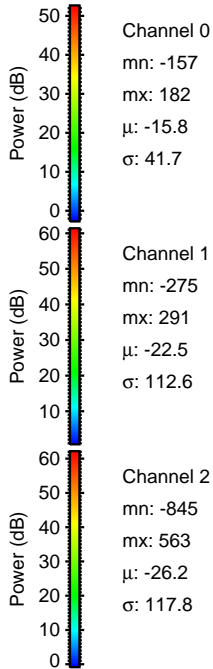
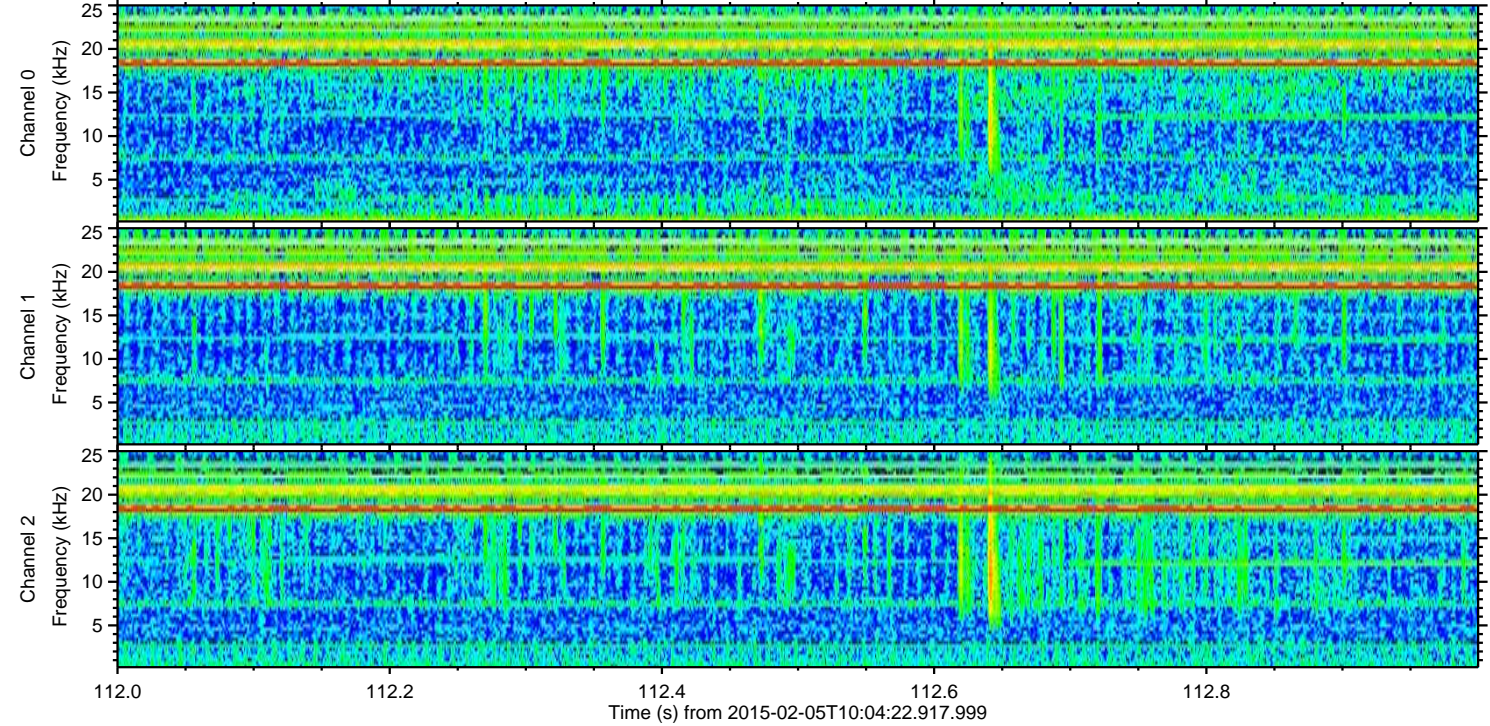
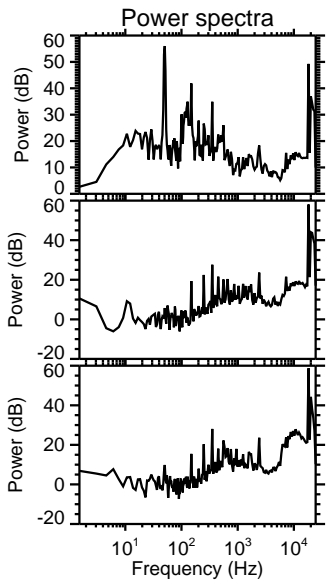
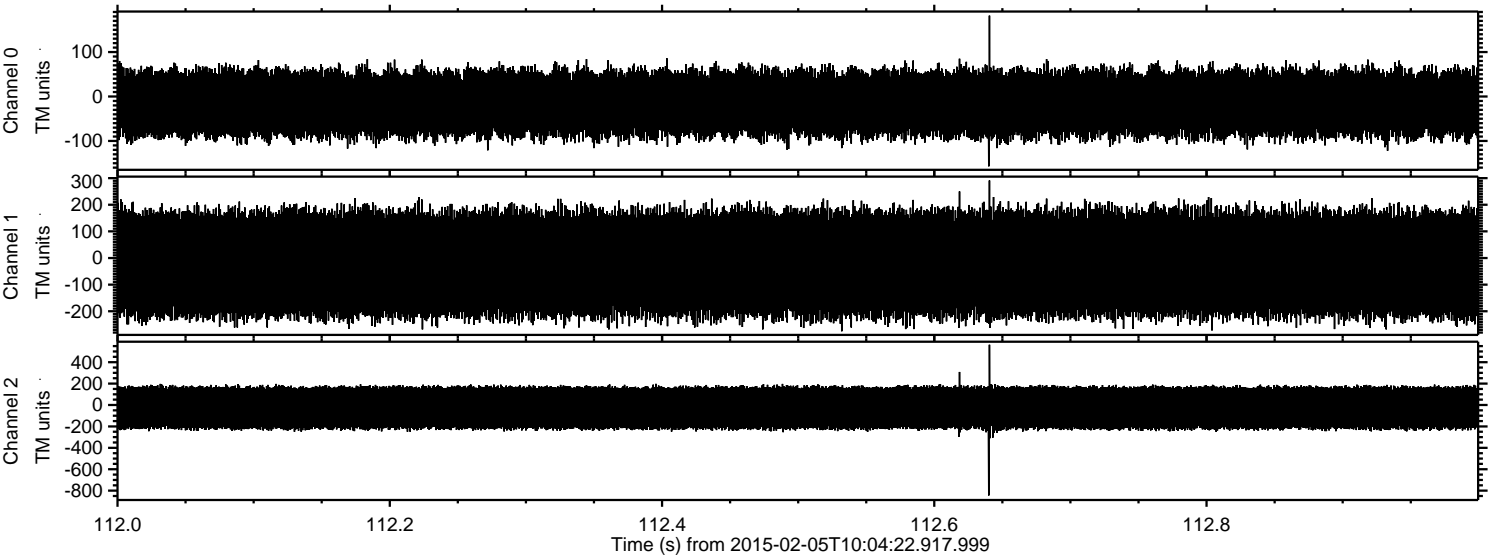
ELMAVAN 3D WAVEFORMS (Measured data sampled at 50 kHz) 49804 packets of 144 samples from 2015-02-05T10:04:22.917.999. Part 111/144

Processed Wed Feb 18 06:50:28 2015 by ELM ver.2012-10-06 from 001__elm20150205_100421__dat00.bin



ELMAVAN 3D WAVEFORMS (Measured data sampled at 50 kHz) 49804 packets of 144 samples from 2015-02-05T10:04:22.917.999. Part 113/144

Processed Wed Feb 18 06:50:30 2015 by ELM ver.2012-10-06 from 001__elm20150205_100421__dat00.bin

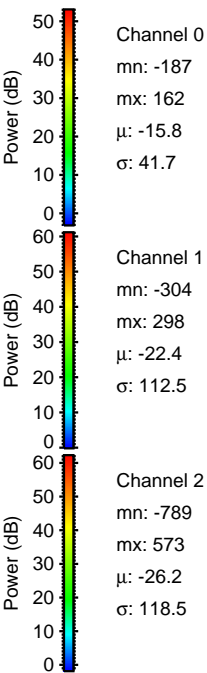
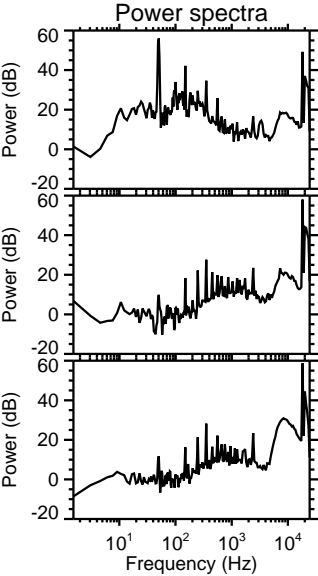
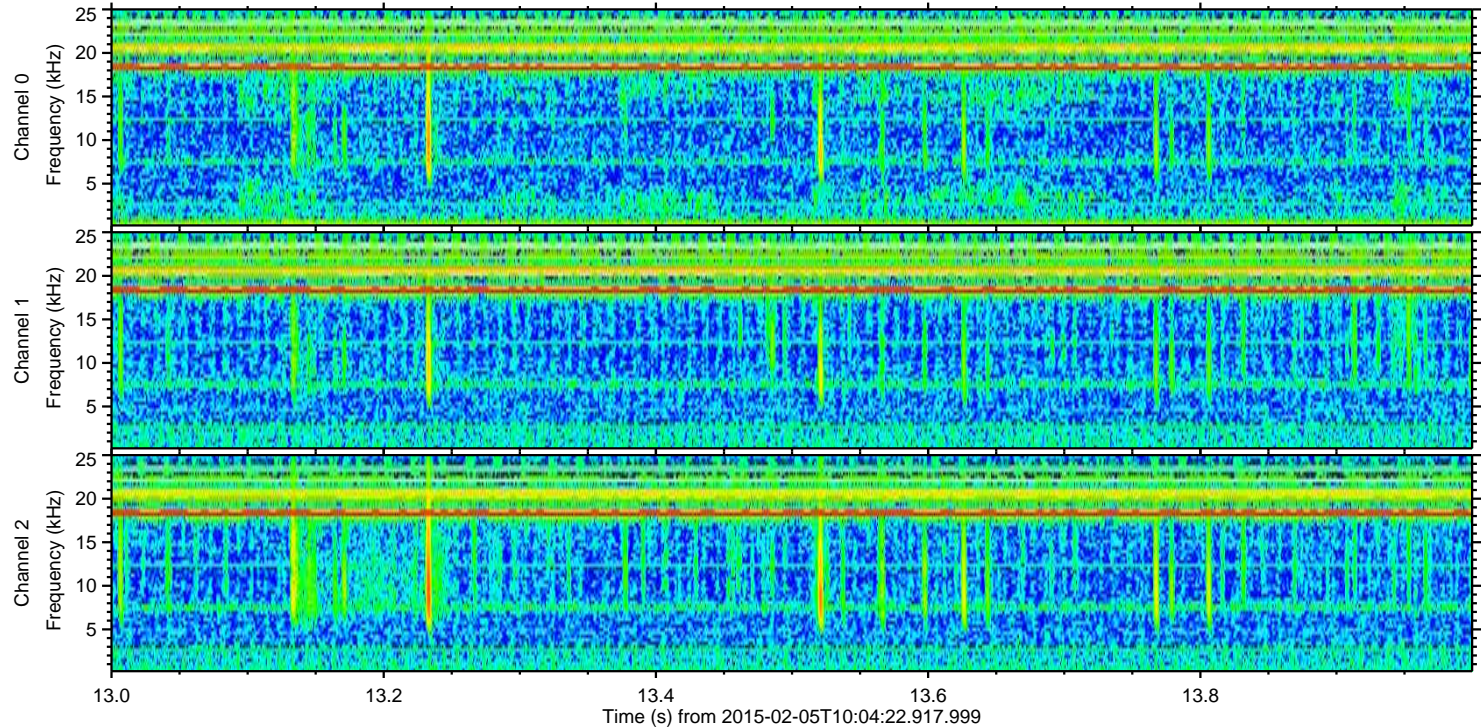
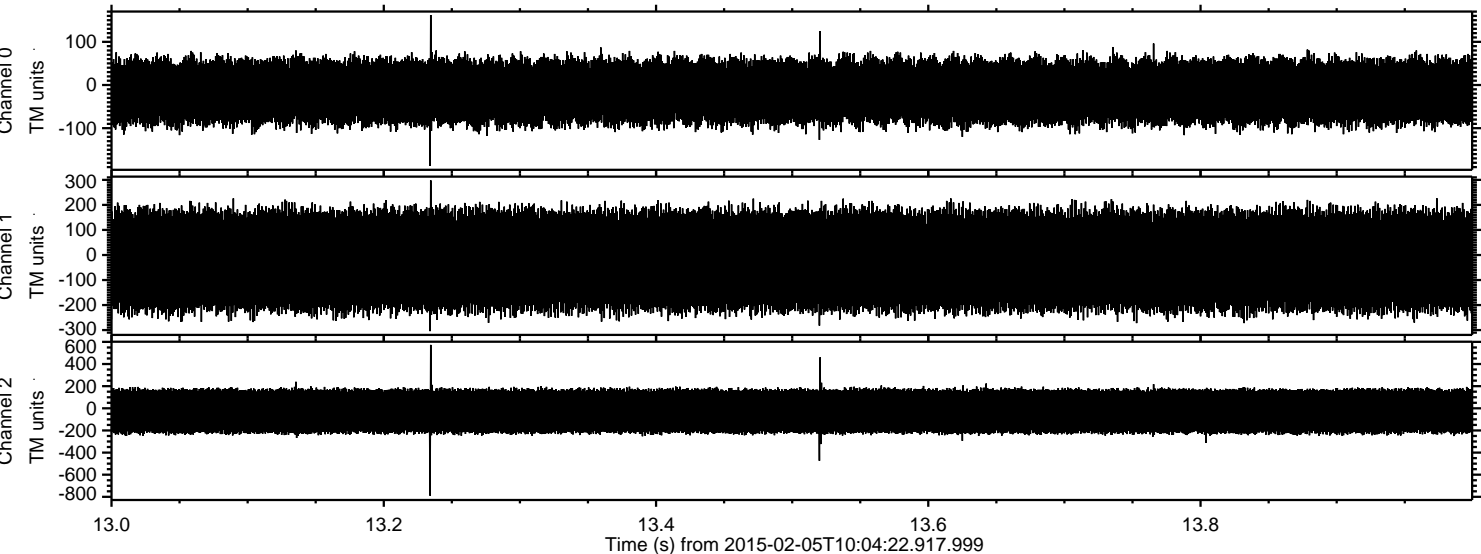


Channel 0
mn: -157
mx: 182
 μ : -15.8
 σ : 41.7

Channel 1
mn: -275
mx: 291
 μ : -22.5
 σ : 112.6

Channel 2
mn: -845
mx: 563
 μ : -26.2
 σ : 117.8

Processed Wed Feb 18 06:50:31 2015 by ELM ver.2012-10-06 from 001__elm20150205_100421__dat00.bin

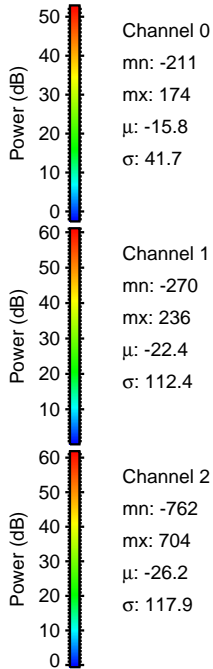
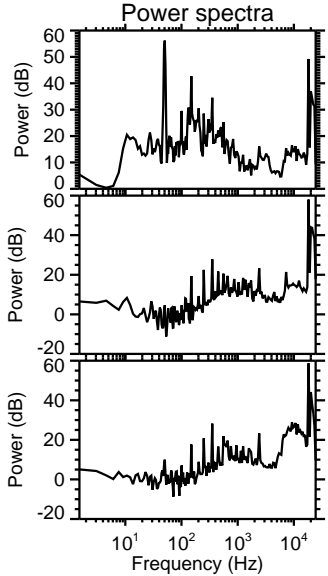
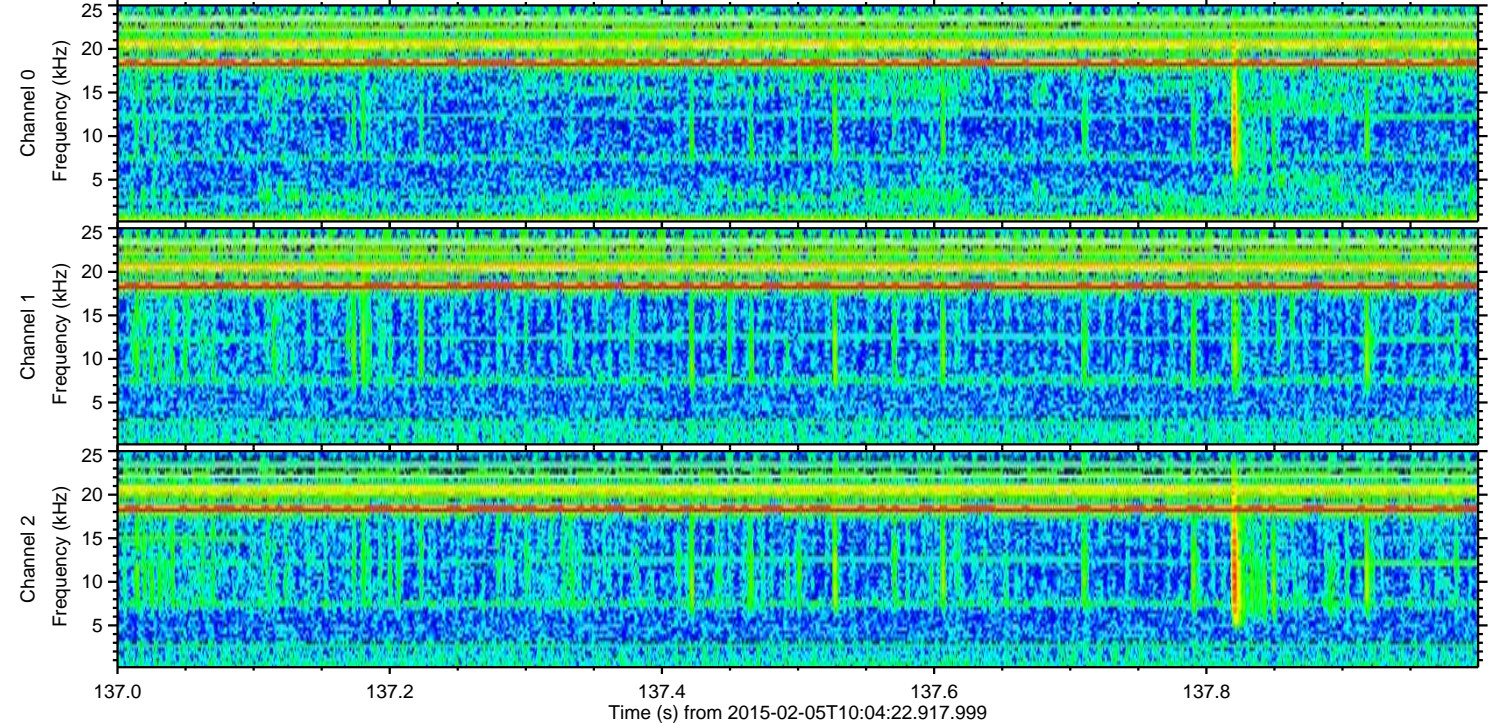
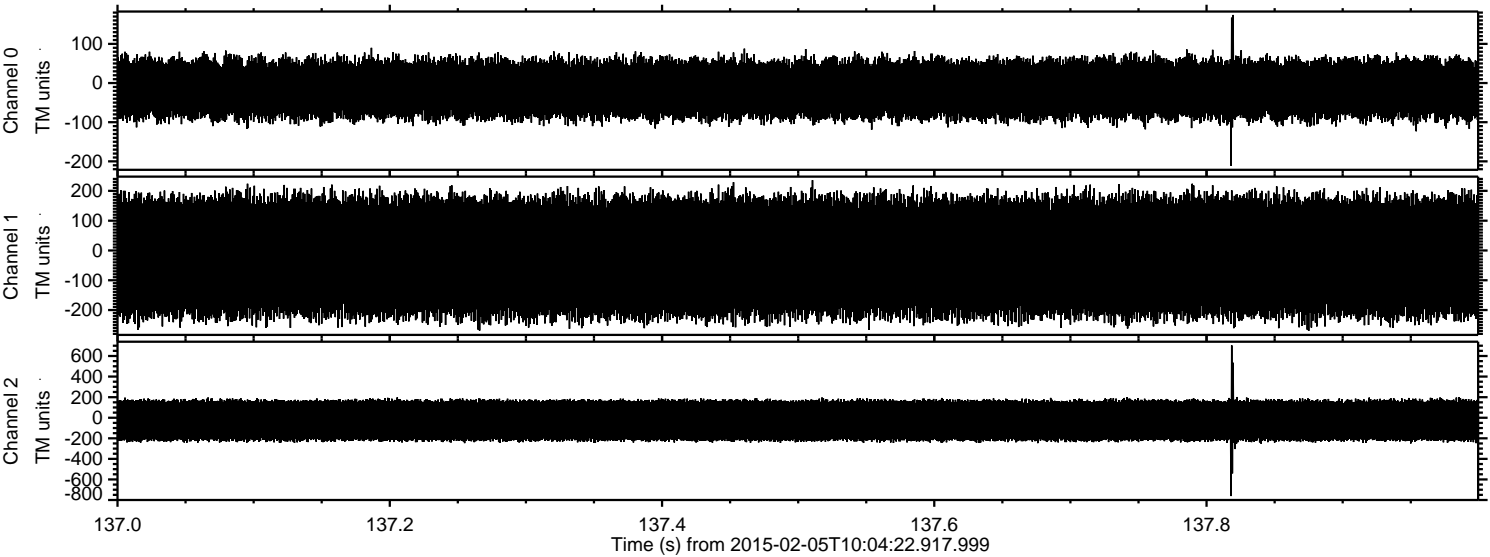


Channel 0
mn: -187
mx: 162
 μ : -15.8
 σ : 41.7

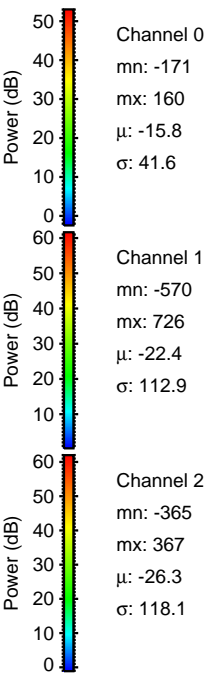
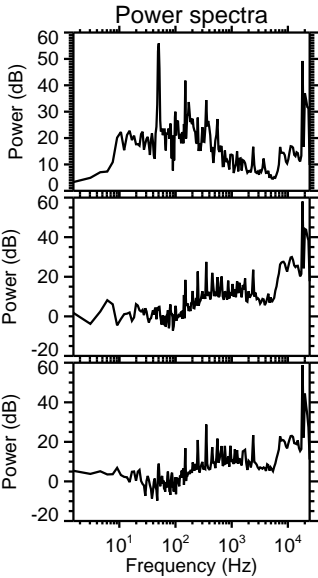
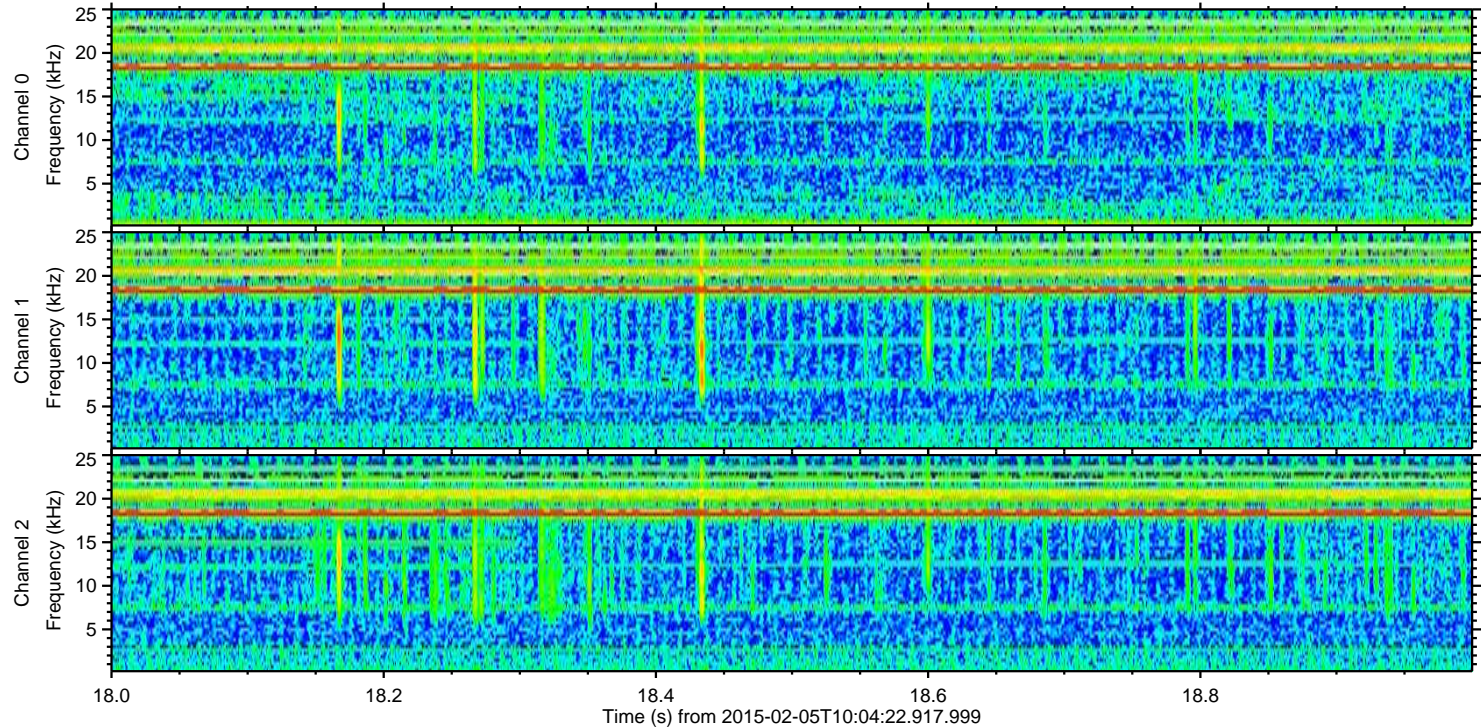
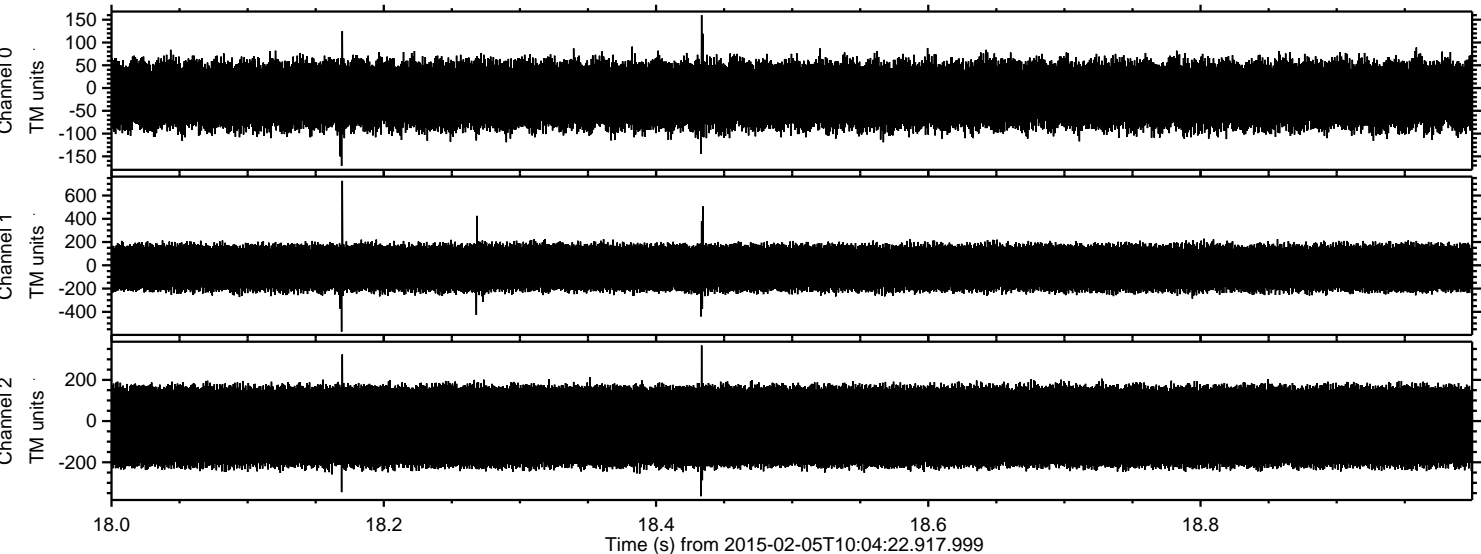
Channel 1
mn: -304
mx: 298
 μ : -22.4
 σ : 112.5

Channel 2
mn: -789
mx: 573
 μ : -26.2
 σ : 118.5

Processed Wed Feb 18 06:50:33 2015 by ELM ver.2012-10-06 from 001__elm20150205_100421__dat00.bin



Processed Wed Feb 18 06:50:34 2015 by ELM ver.2012-10-06 from 001__elm20150205_100421__dat00.bin



Processed Wed Feb 18 06:50:35 2015 by ELM ver.2012-10-06 from 001__elm20150205_100421__dat00.bin

