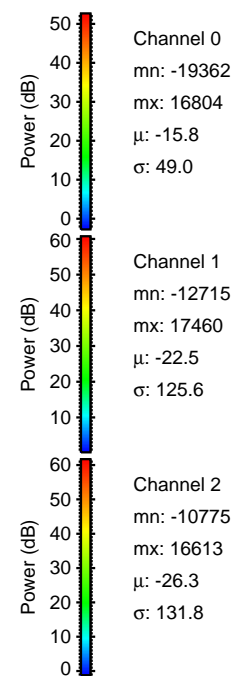
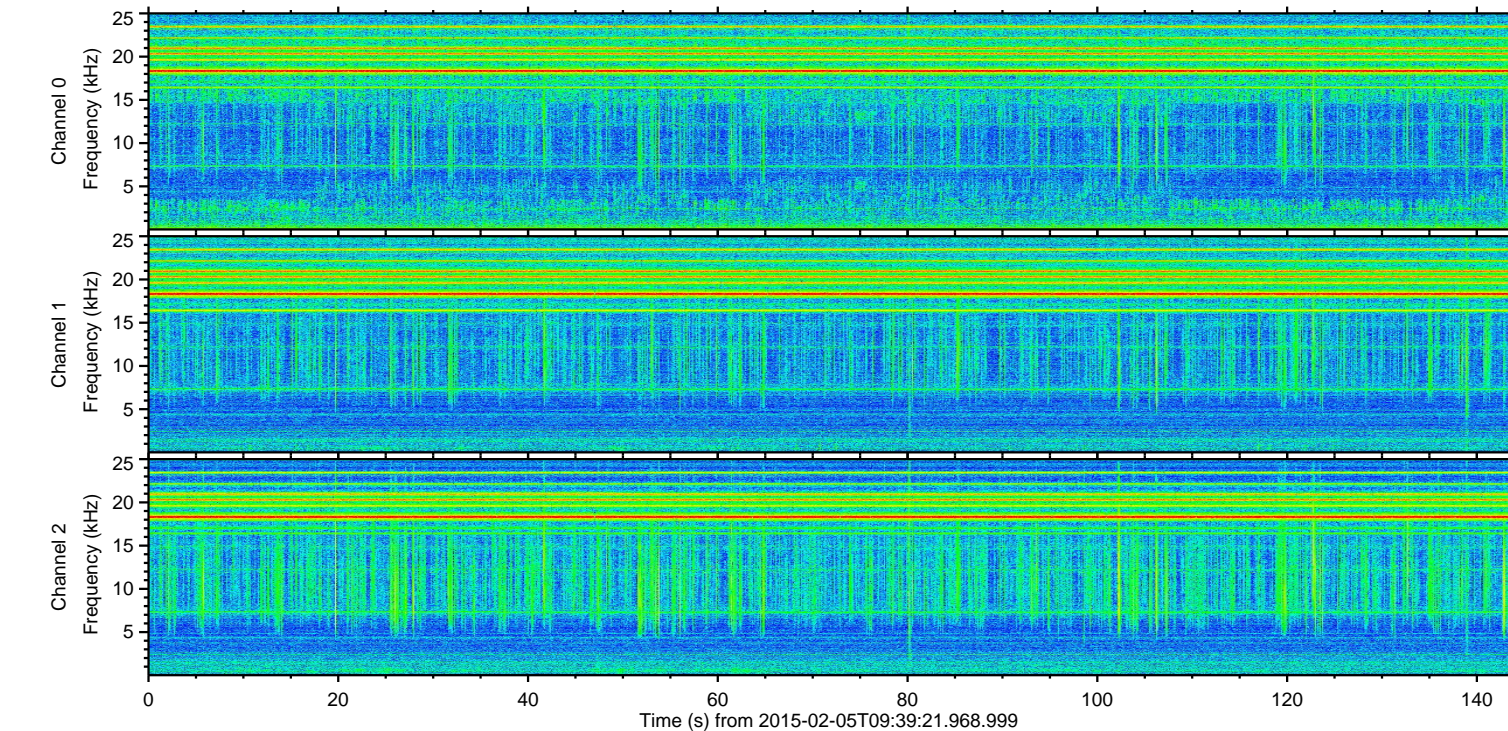
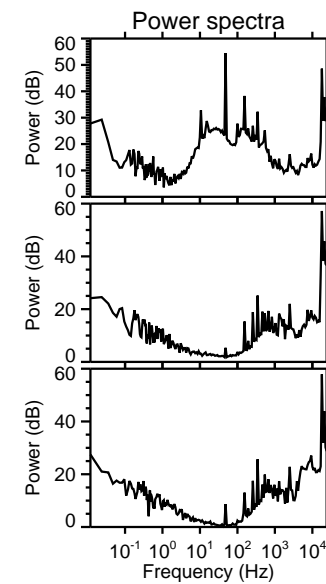
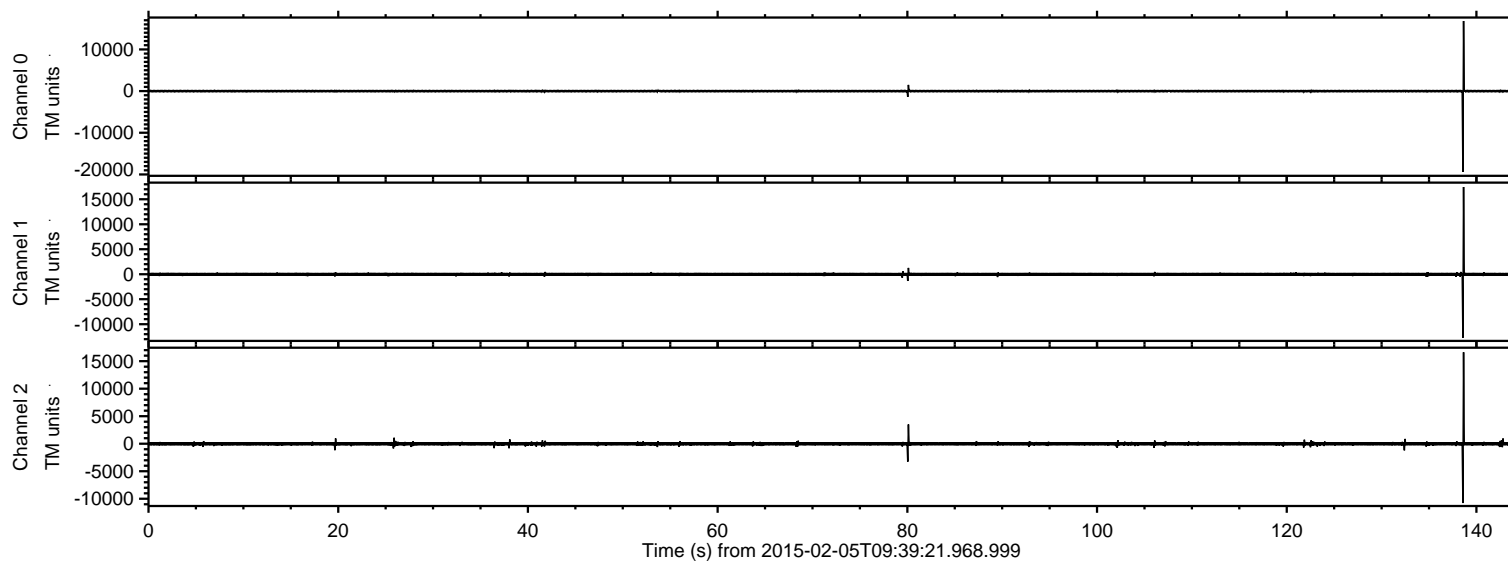


# ELMAVAN 3D WAVEFORMS (Measured data sampled at 50 kHz) 49808 packets of 144 samples from 2015-02-05T09:39:21.968.999.

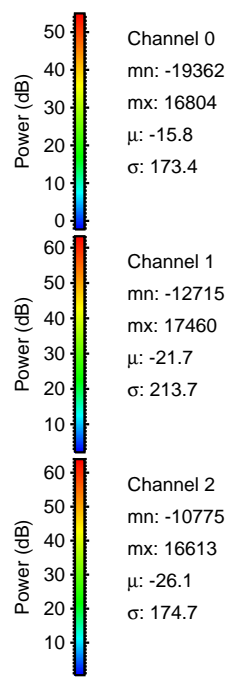
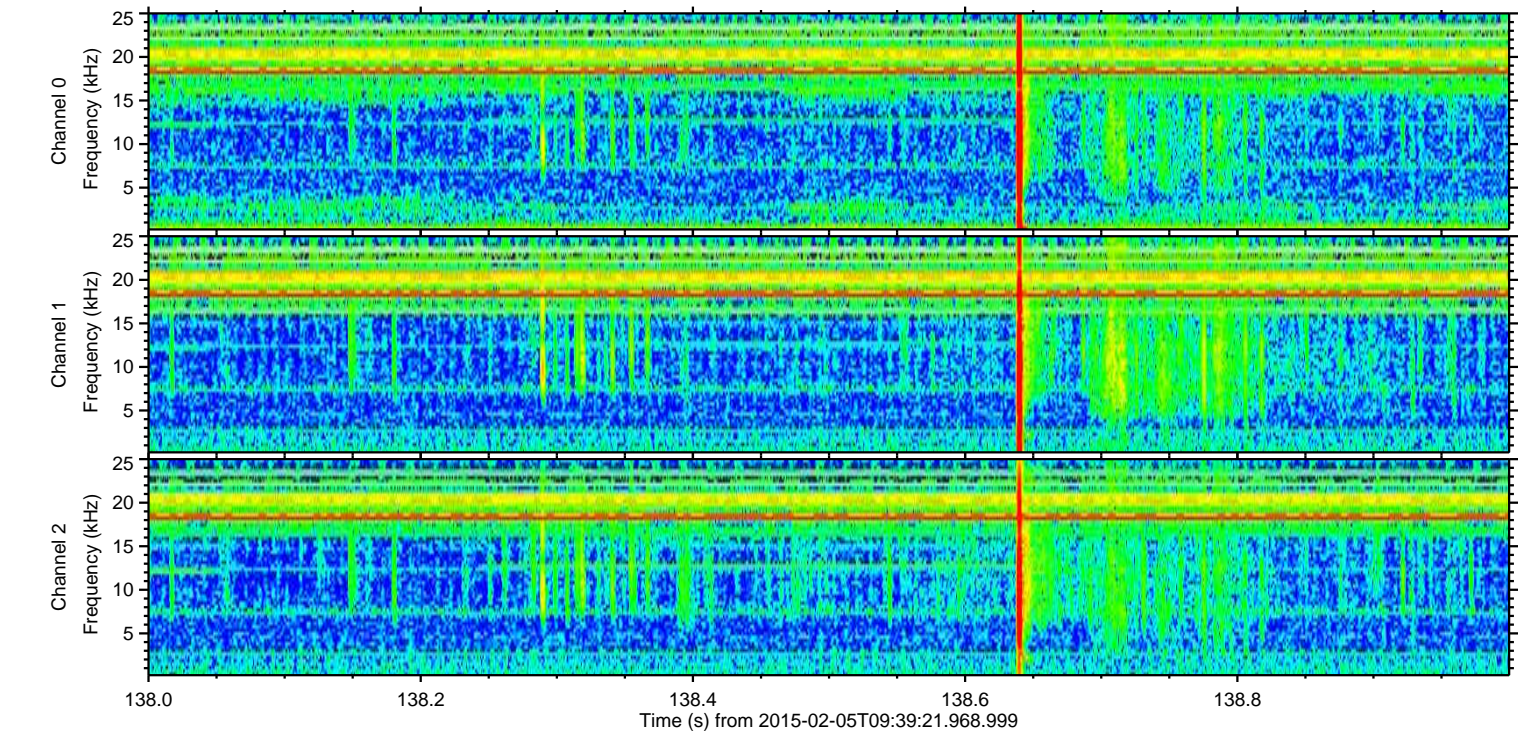
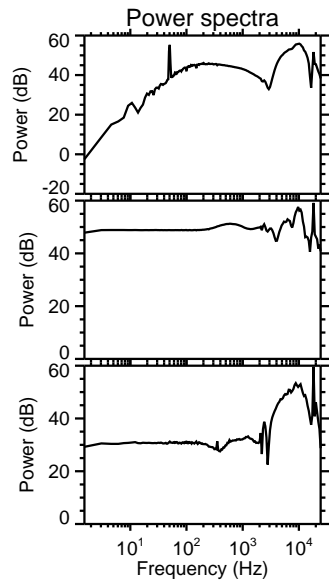
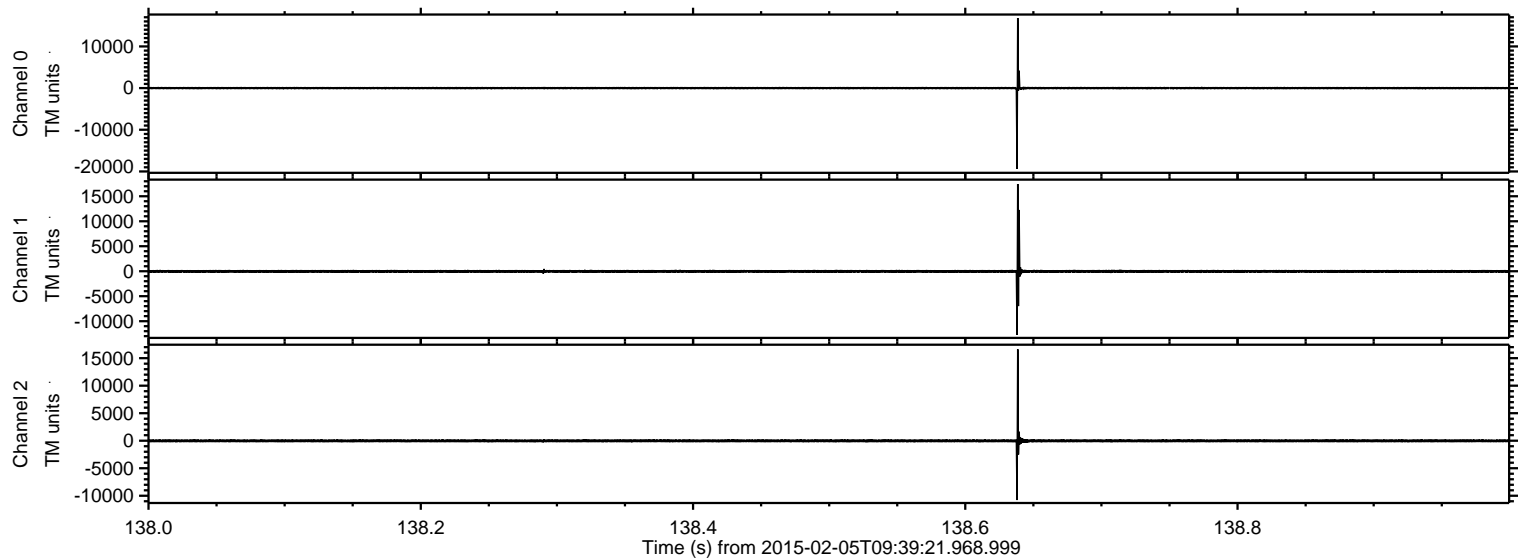
Processed Wed Feb 18 06:34:04 2015 by ELM ver.2012-10-06 from 001\_\_elm20150205\_093920\_\_dat00.bin



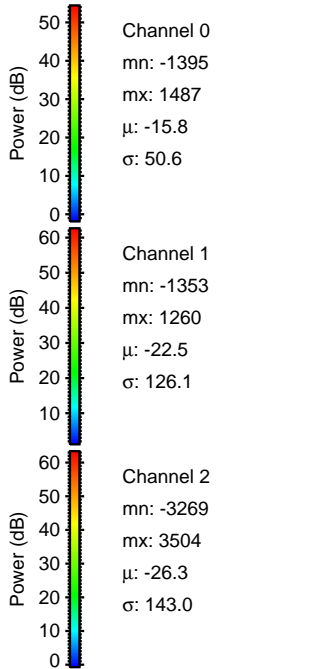
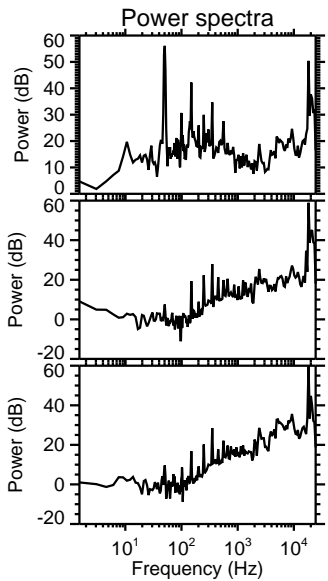
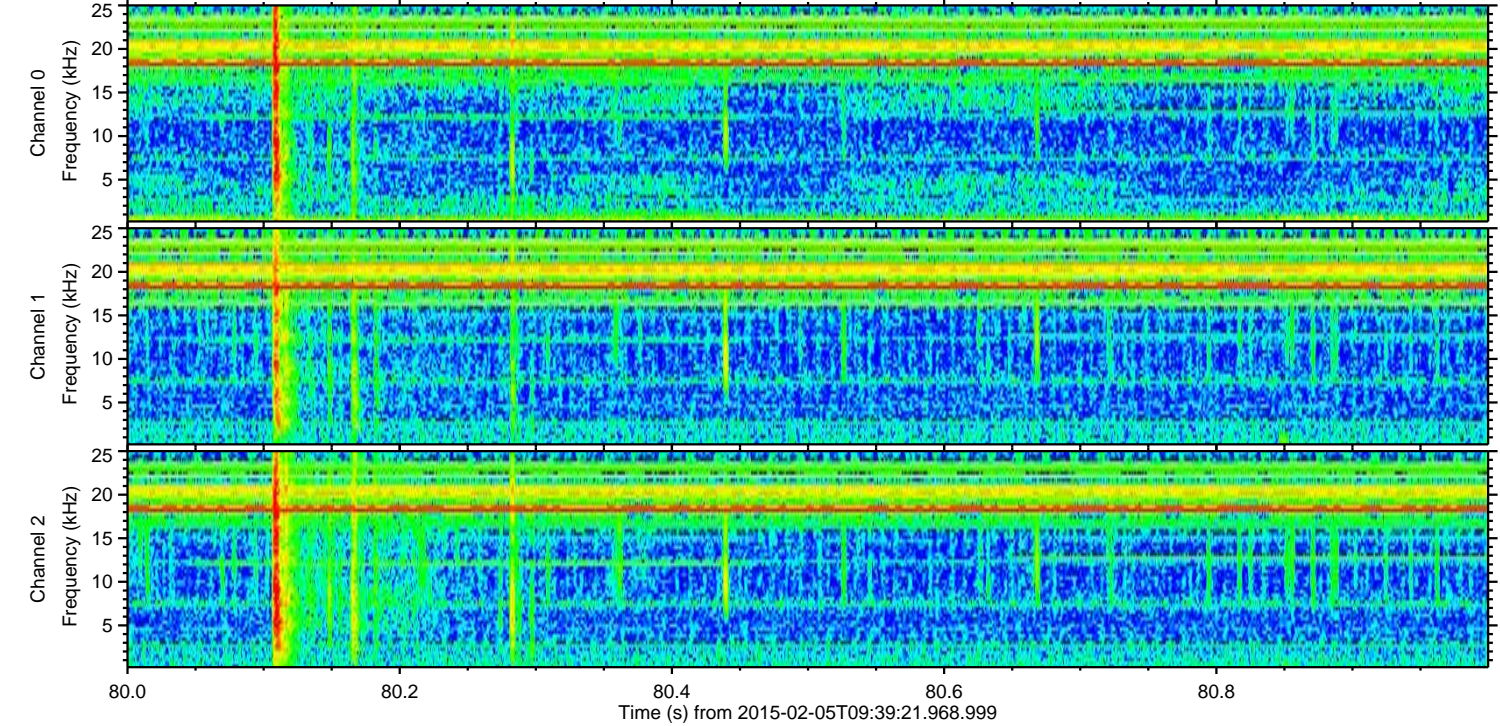
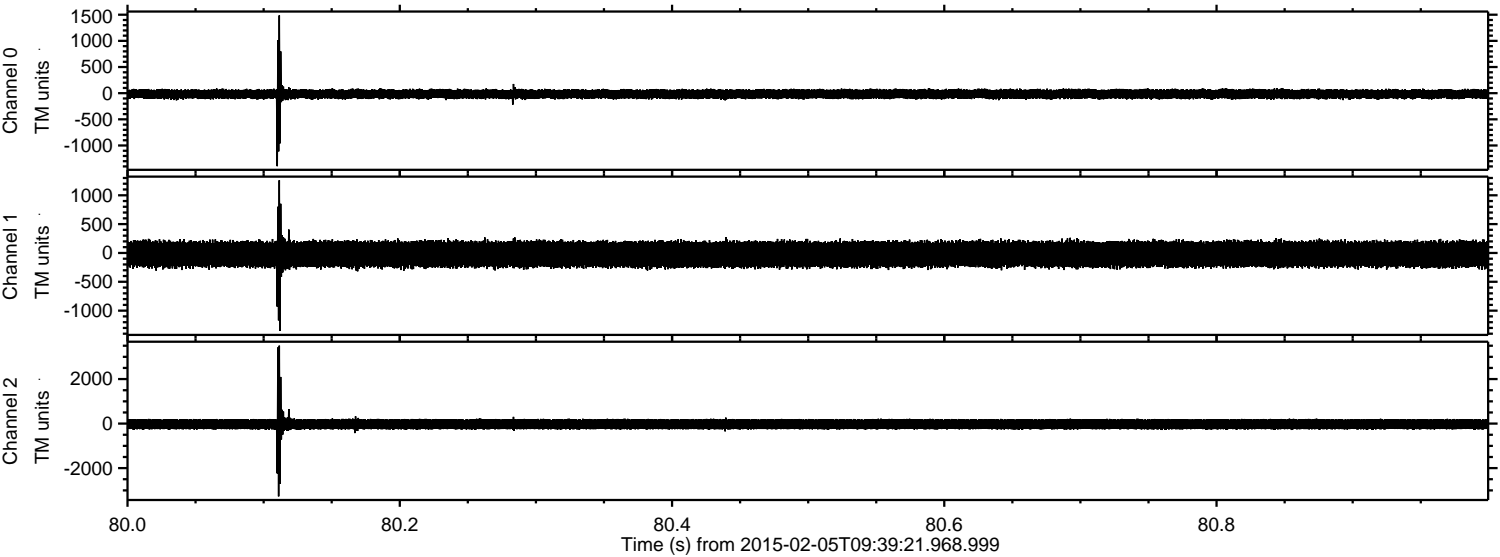


ELMAVAN 3D WAVEFORMS (Measured data sampled at 50 kHz) 49808 packets of 144 samples from 2015-02-05T09:39:21.968.999. Part 139/144

Processed Wed Feb 18 06:34:22 2015 by ELM ver.2012-10-06 from 001\_\_elm20150205\_093920\_\_dat00.bin

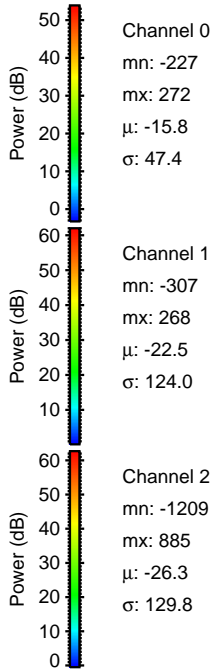
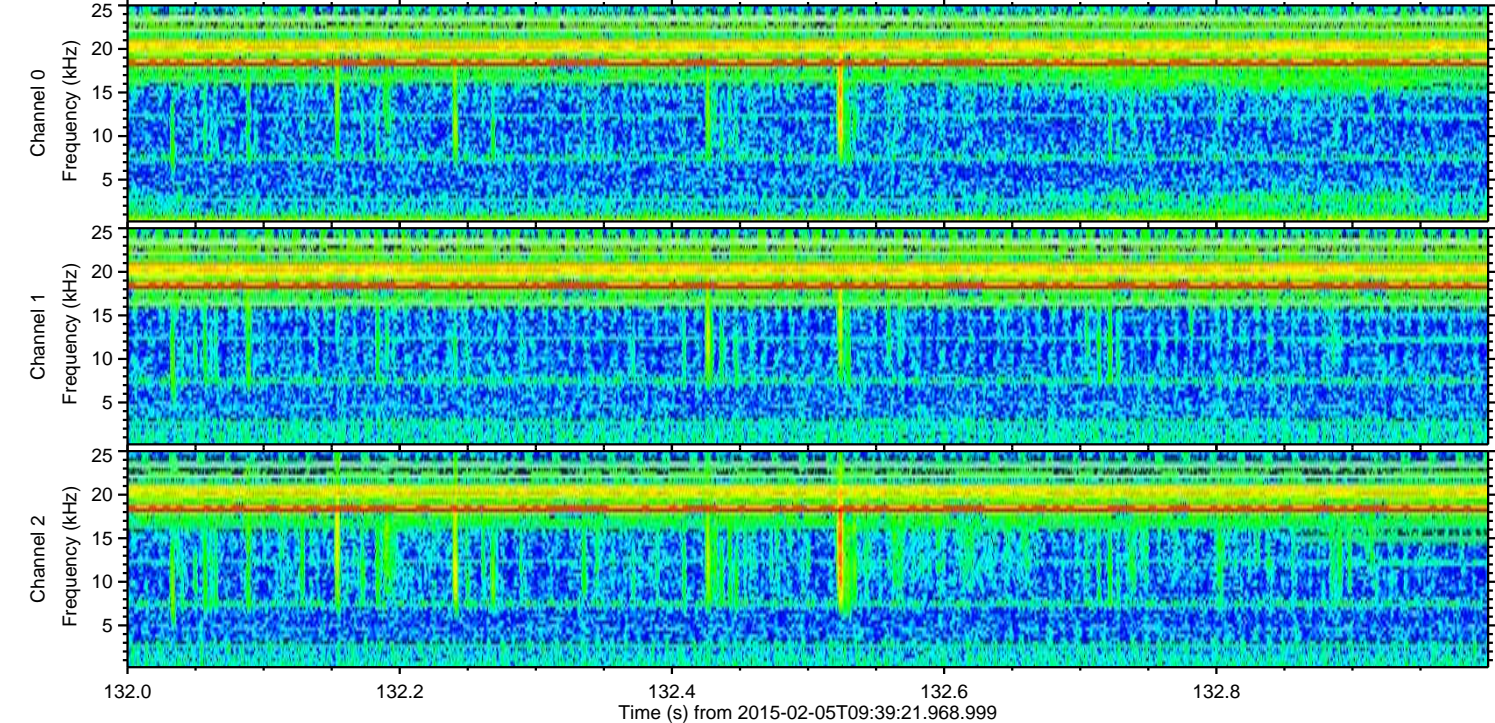
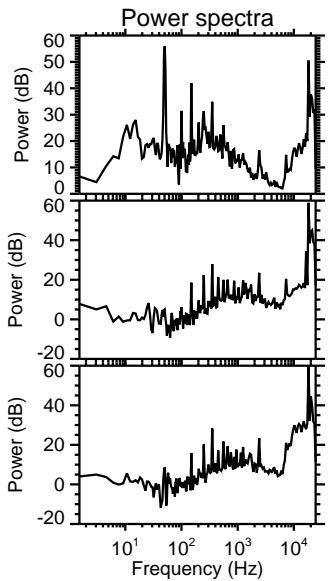
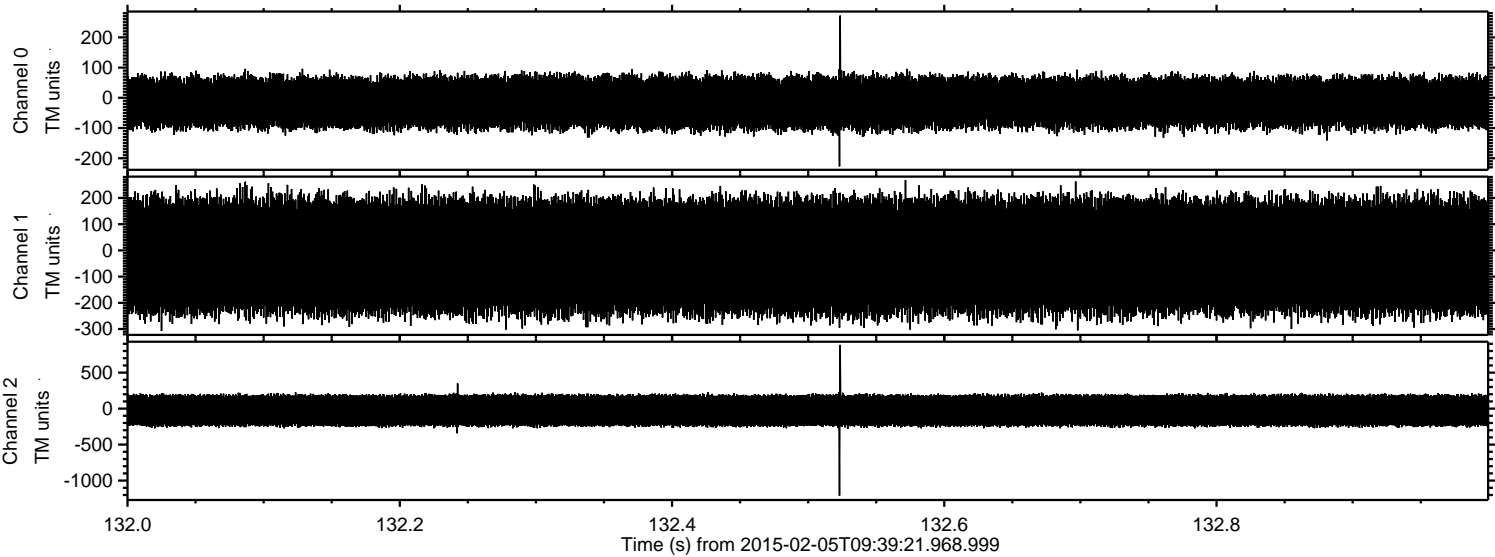


Processed Wed Feb 18 06:34:24 2015 by ELM ver.2012-10-06 from 001\_\_elm20150205\_093920\_\_dat00.bin



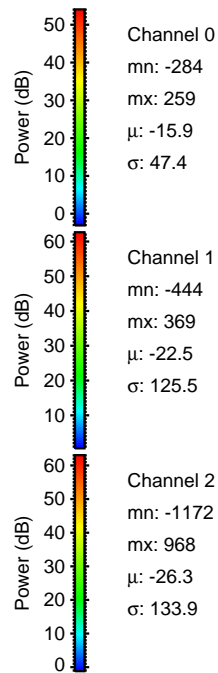
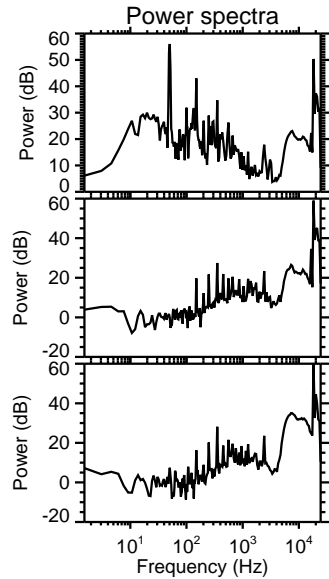
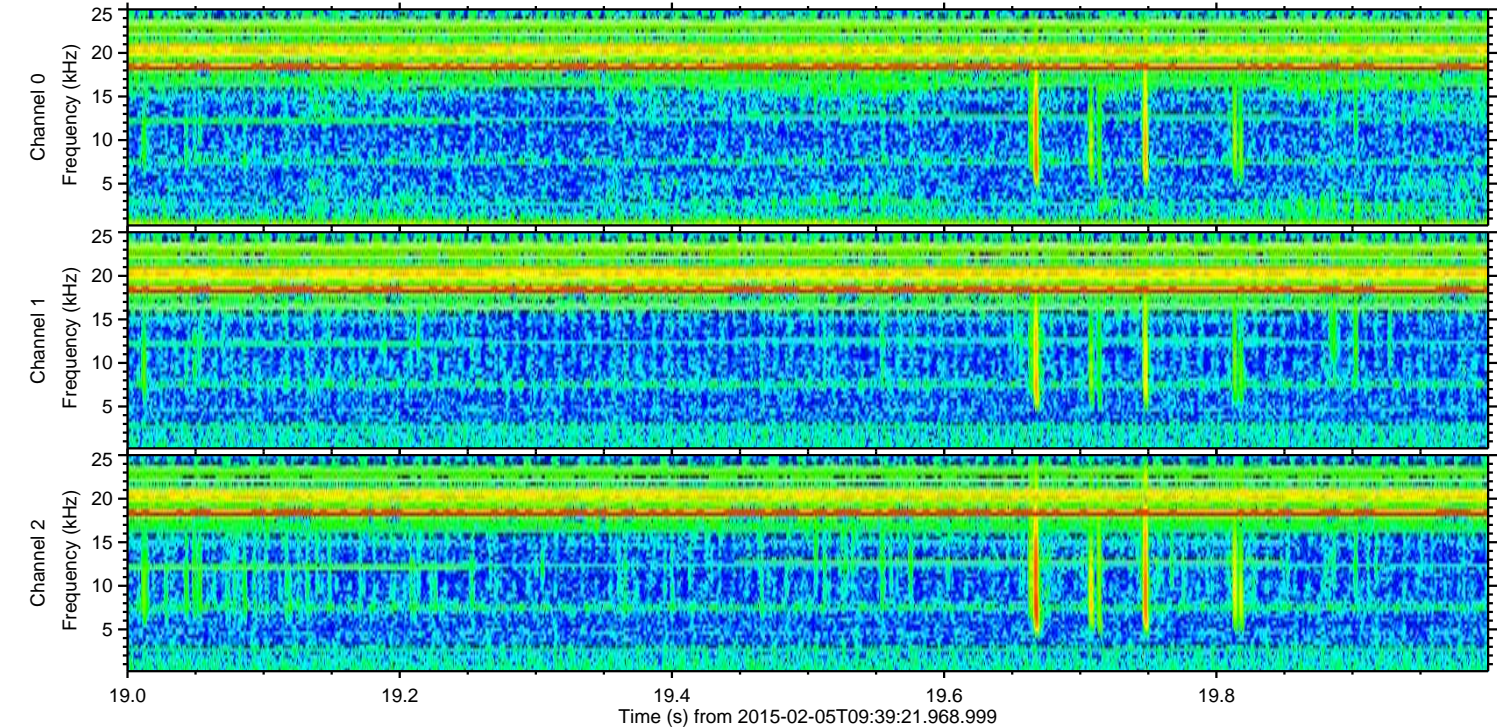
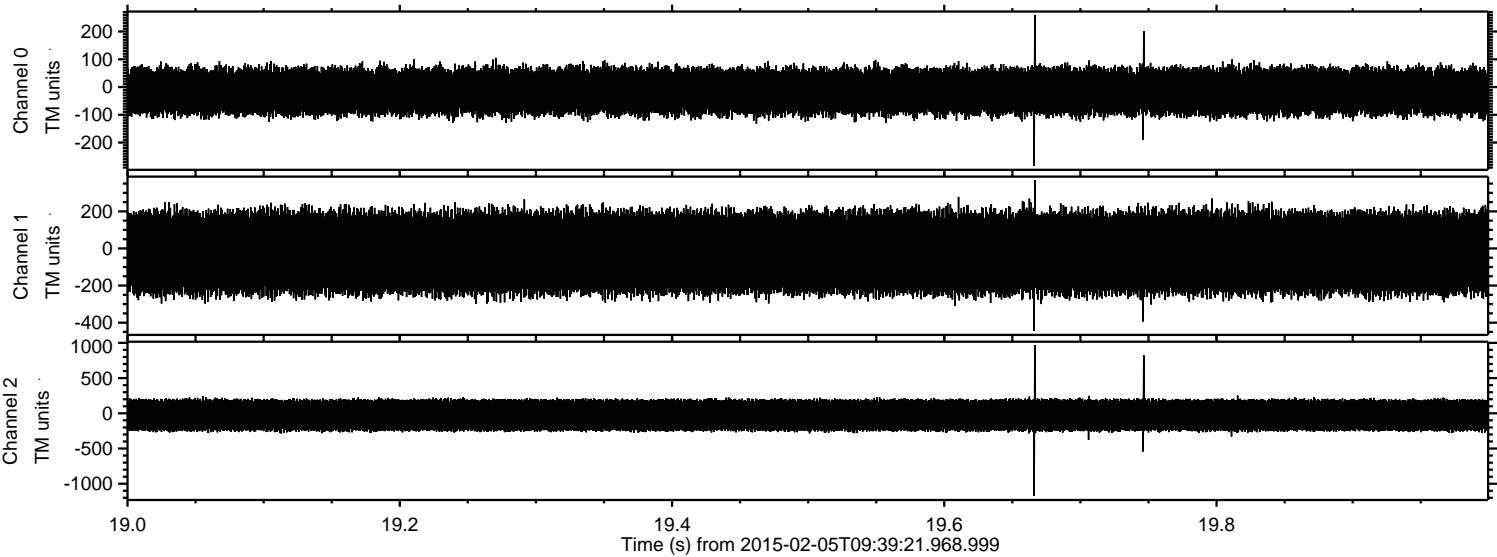


Processed Wed Feb 18 06:34:26 2015 by ELM ver.2012-10-06 from 001\_\_elm20150205\_093920\_\_dat00.bin





Processed Wed Feb 18 06:34:28 2015 by ELM ver.2012-10-06 from 001\_\_elm20150205\_093920\_\_dat00.bin



Channel 0  
mn: -284  
mx: 259  
 $\mu$ : -15.9  
 $\sigma$ : 47.4

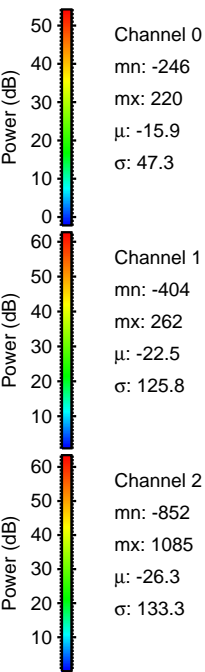
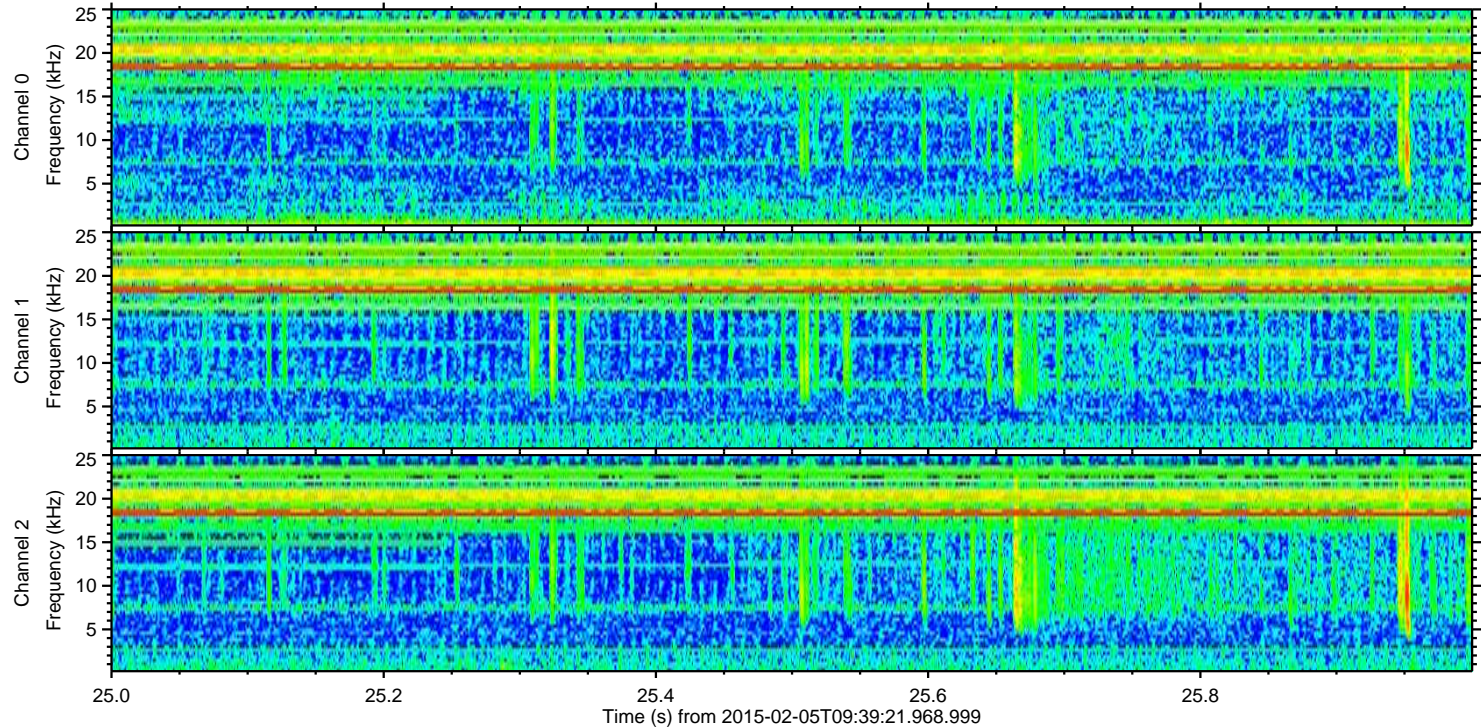
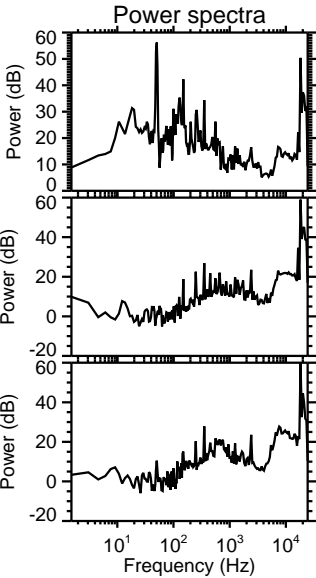
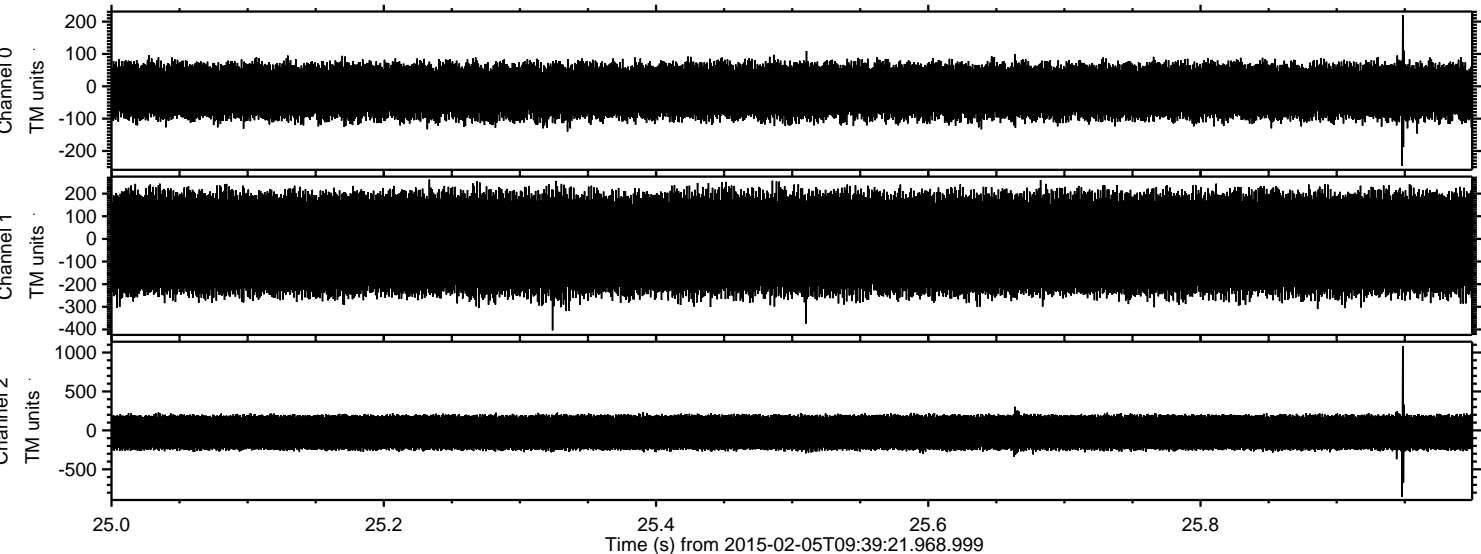
Channel 1  
mn: -444  
mx: 369  
 $\mu$ : -22.5  
 $\sigma$ : 125.5

Channel 2  
mn: -1172  
mx: 968  
 $\mu$ : -26.3  
 $\sigma$ : 133.9



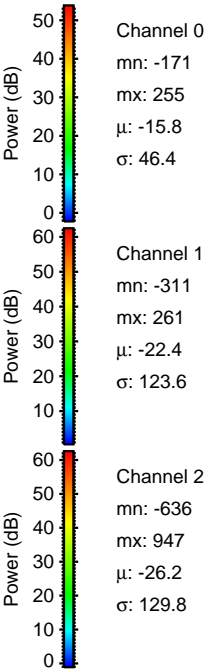
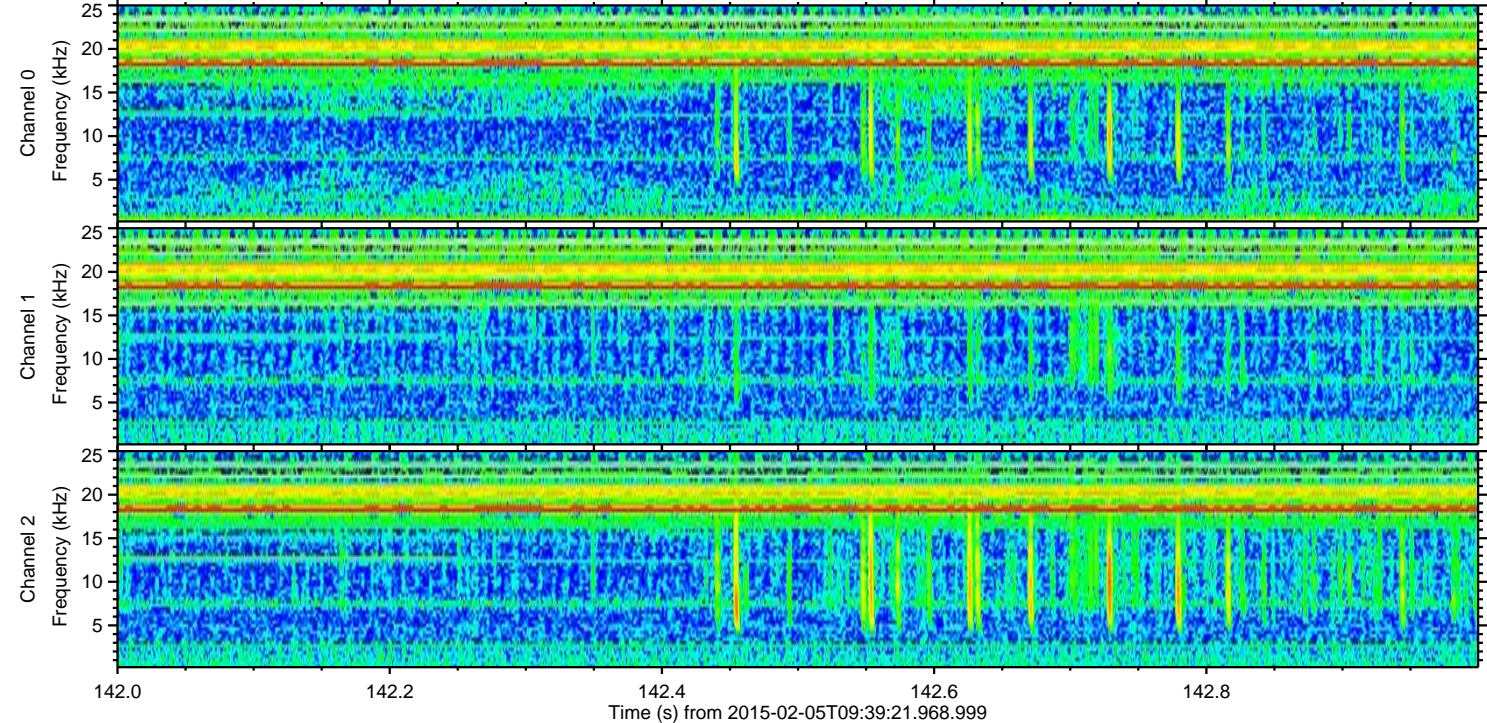
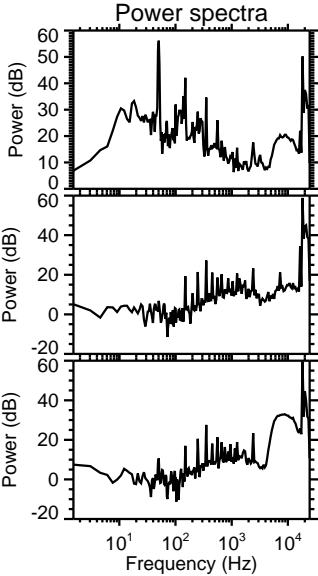
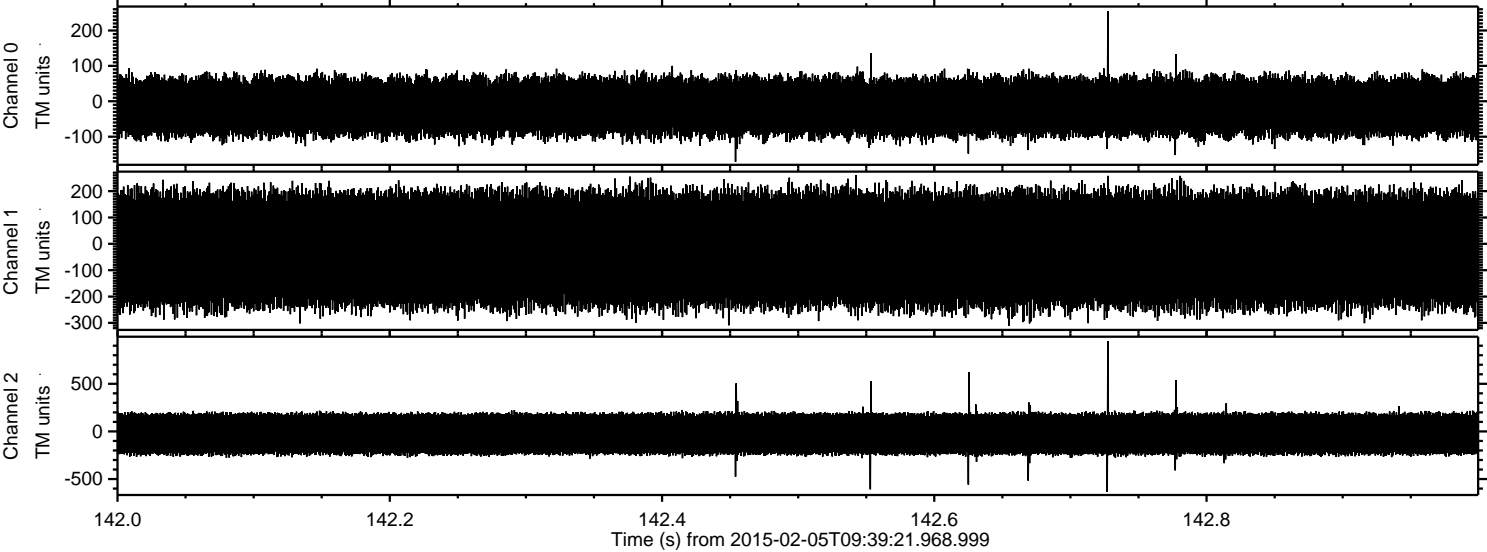
ELMAVAN 3D WAVEFORMS (Measured data sampled at 50 kHz) 49808 packets of 144 samples from 2015-02-05T09:39:21.968.999. Part 26/144

Processed Wed Feb 18 06:34:29 2015 by ELM ver.2012-10-06 from 001\_\_elm20150205\_093920\_\_dat00.bin



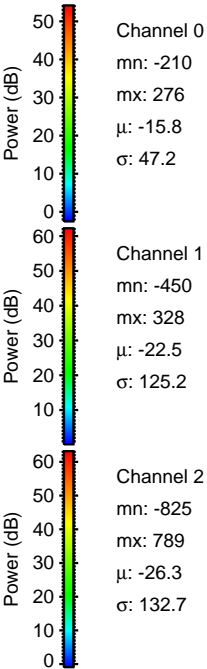
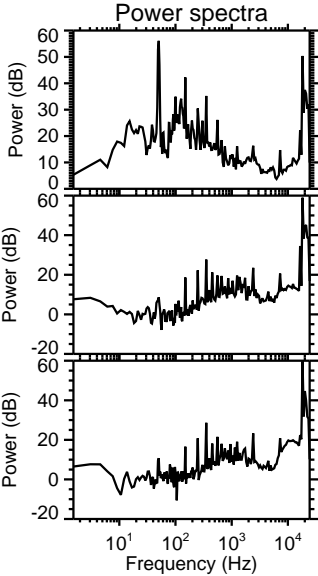
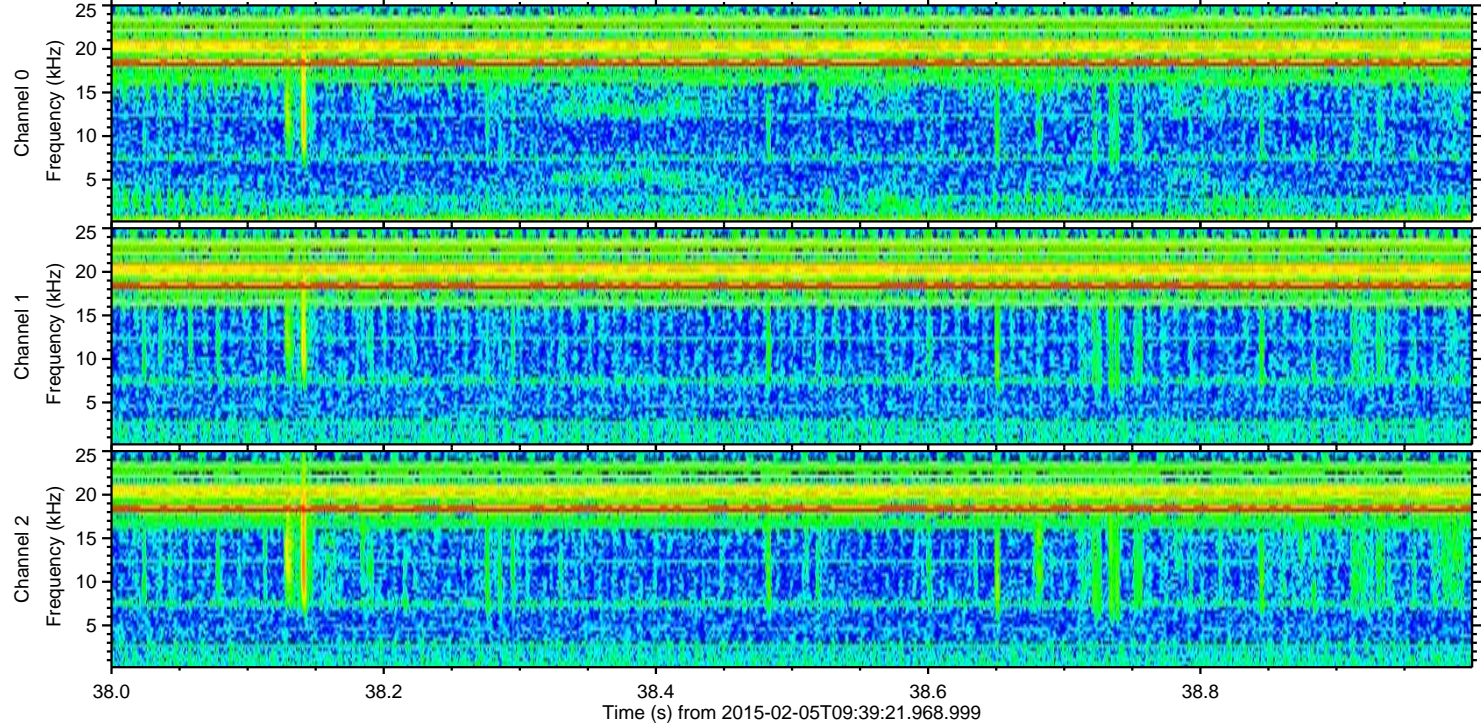
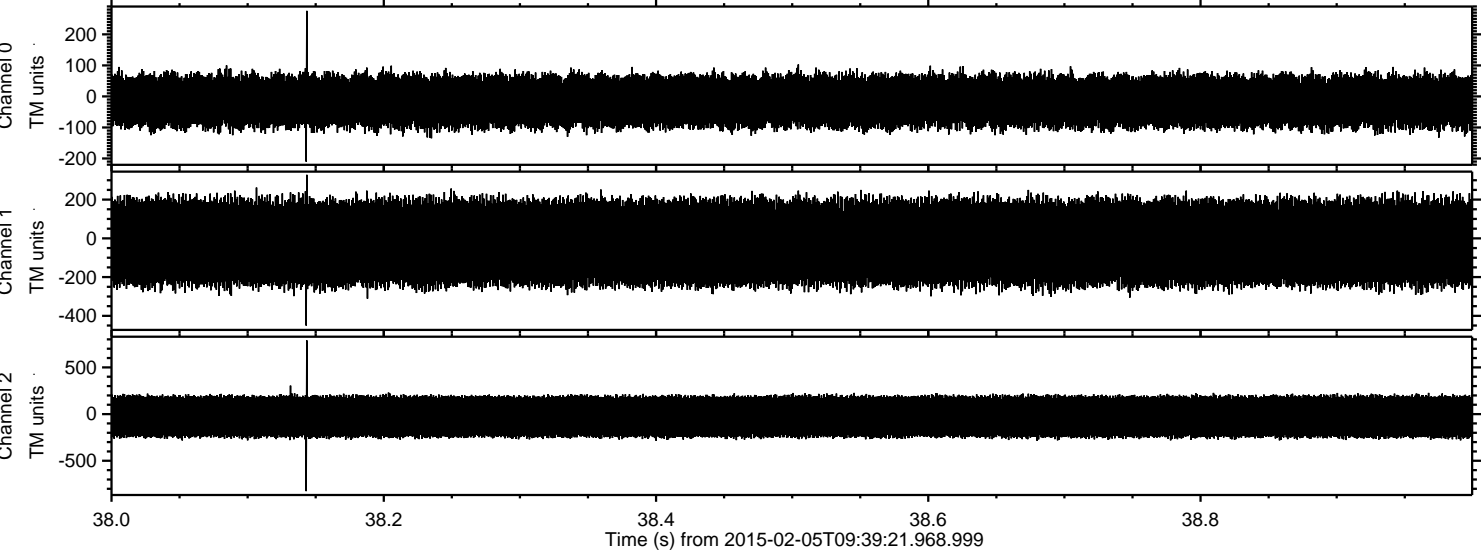


Processed Wed Feb 18 06:34:31 2015 by ELM ver.2012-10-06 from 001\_\_elm20150205\_093920\_\_dat00.bin



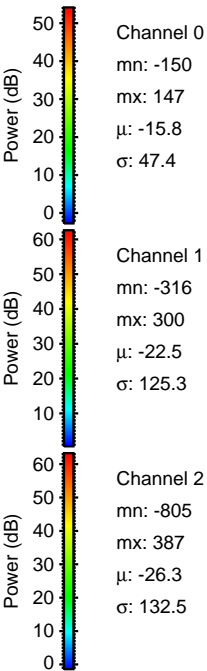
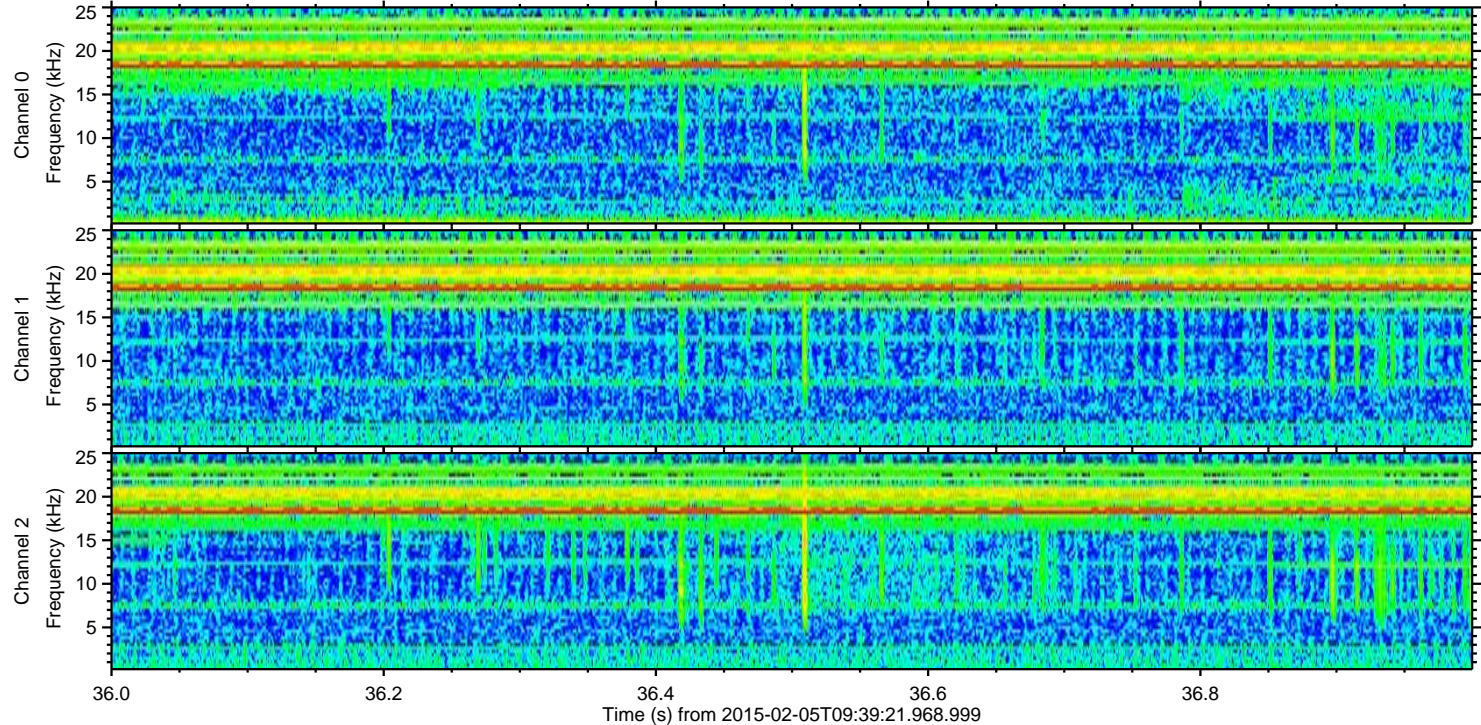
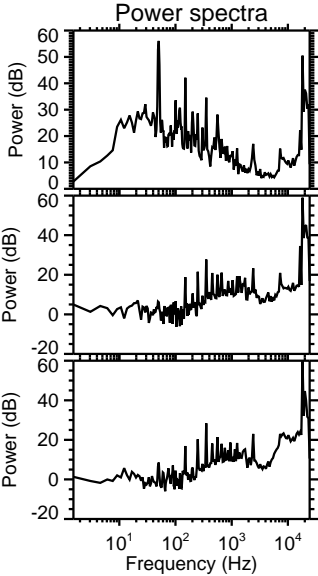
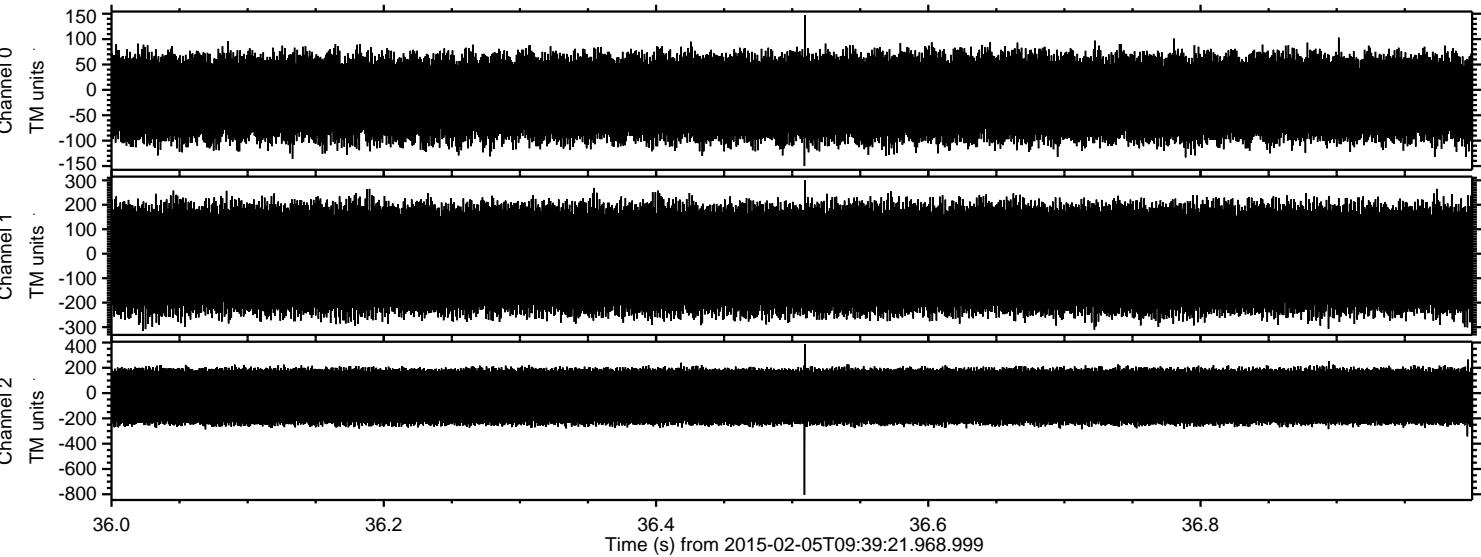


Processed Wed Feb 18 06:34:31 2015 by ELM ver.2012-10-06 from 001\_\_elm20150205\_093920\_\_dat00.bin



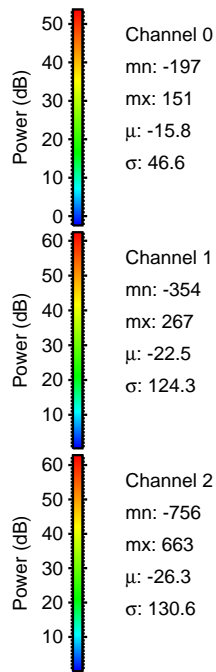
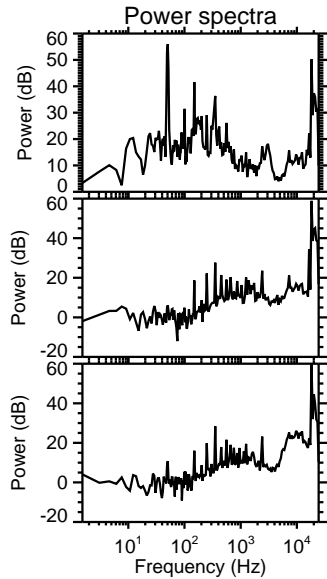
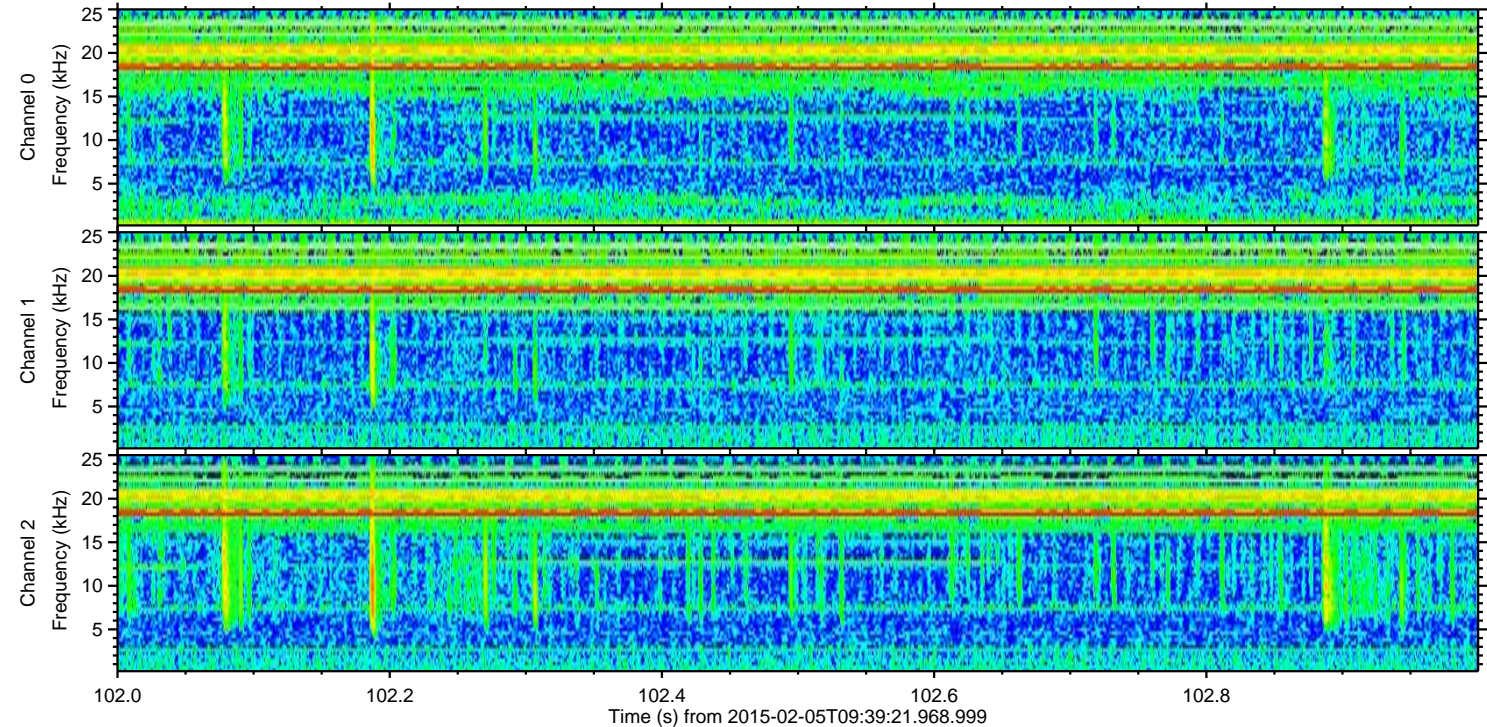
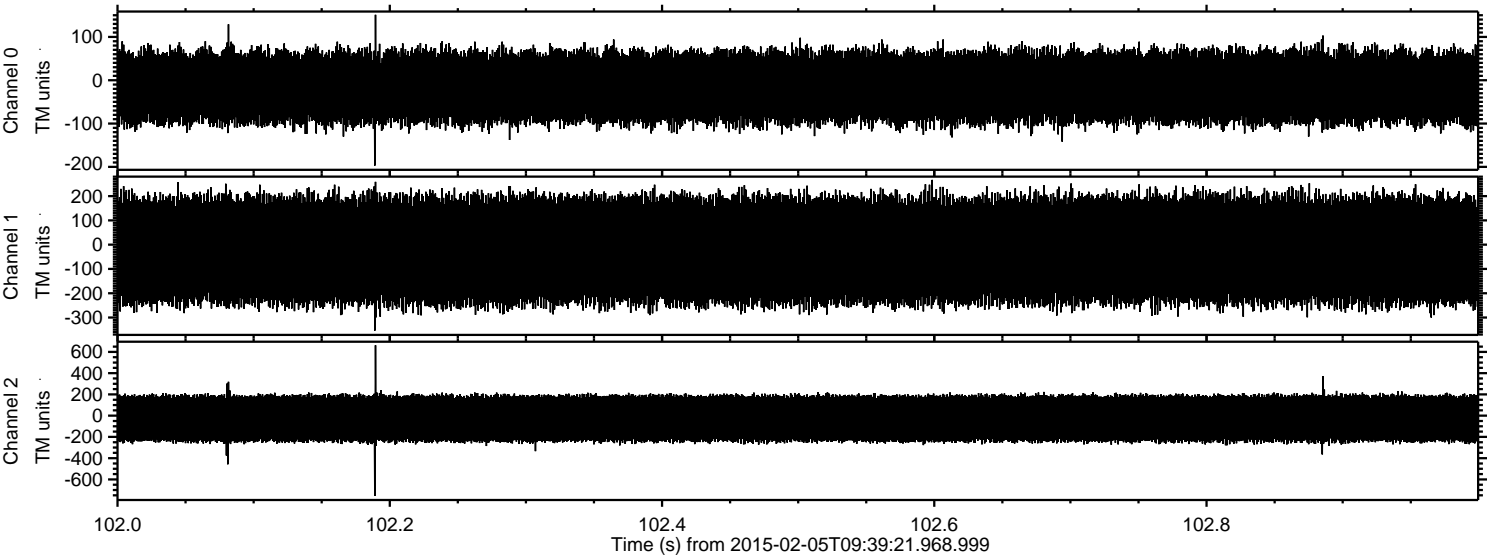


Processed Wed Feb 18 06:34:32 2015 by ELM ver.2012-10-06 from 001\_\_elm20150205\_093920\_\_dat00.bin





Processed Wed Feb 18 06:34:34 2015 by ELM ver.2012-10-06 from 001\_\_elm20150205\_093920\_\_dat00.bin





Processed Wed Feb 18 06:34:36 2015 by ELM ver.2012-10-06 from 001\_\_elm20150205\_093920\_\_dat00.bin

