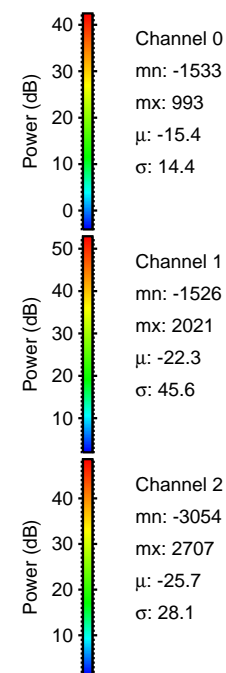
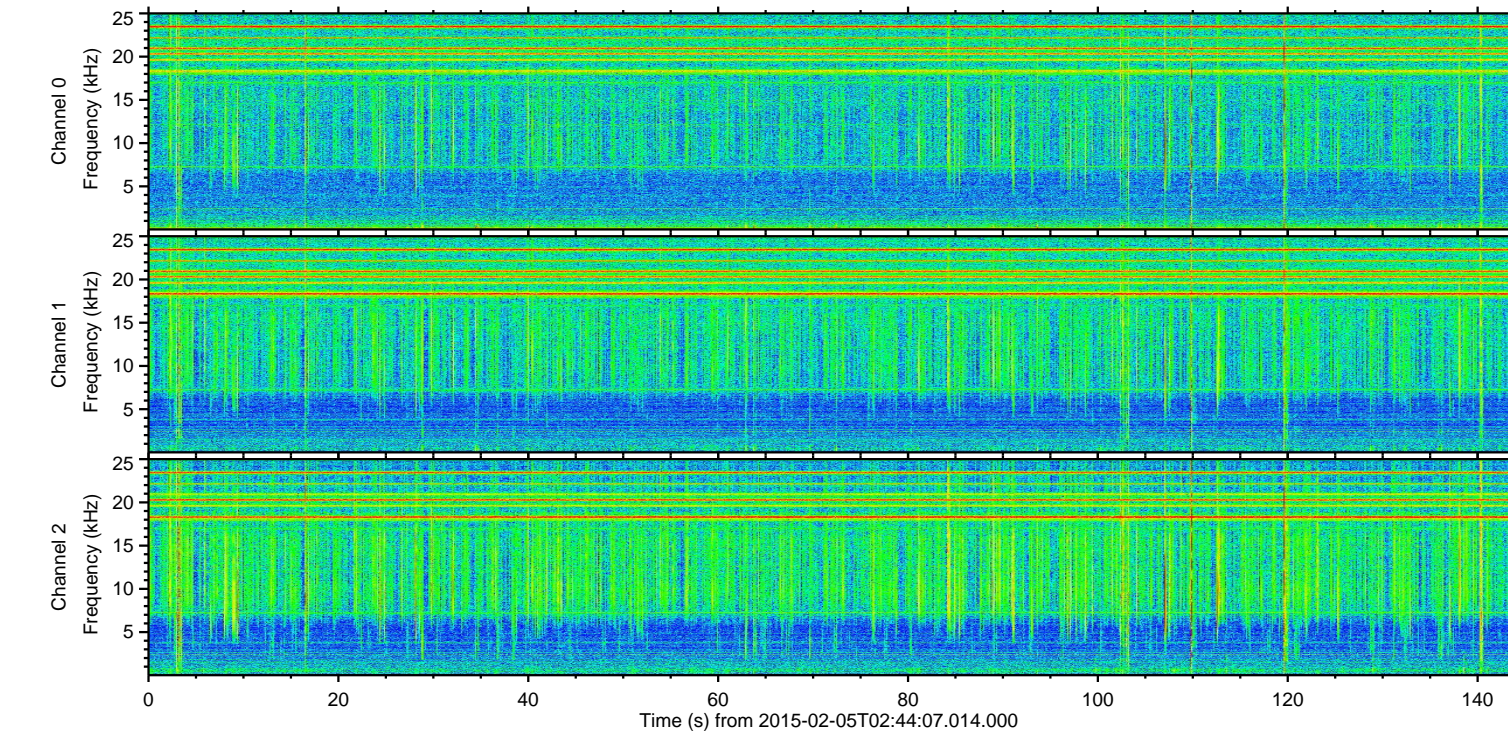
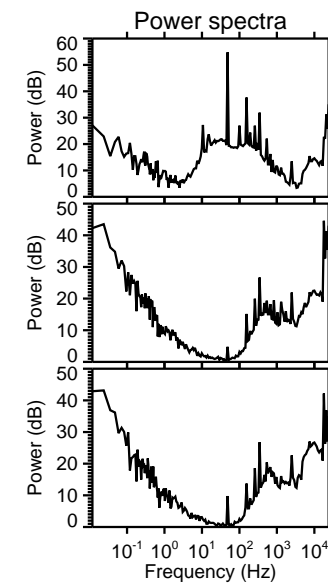
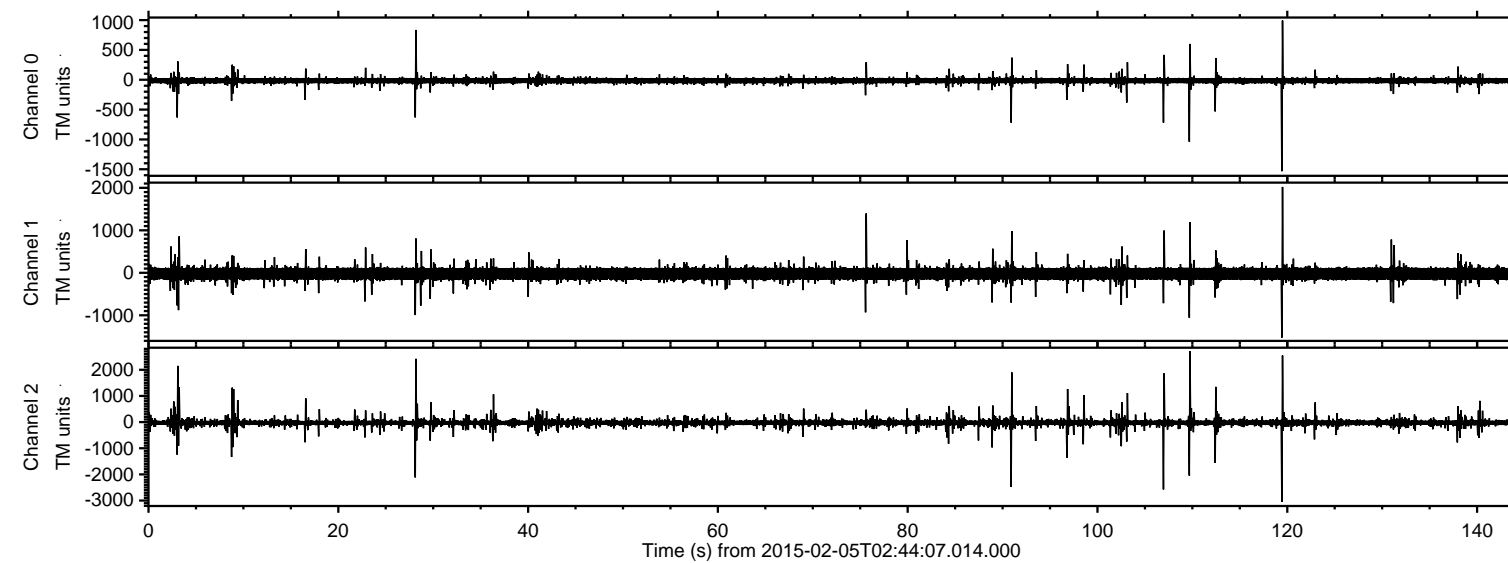


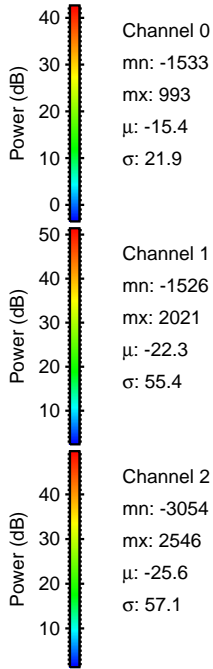
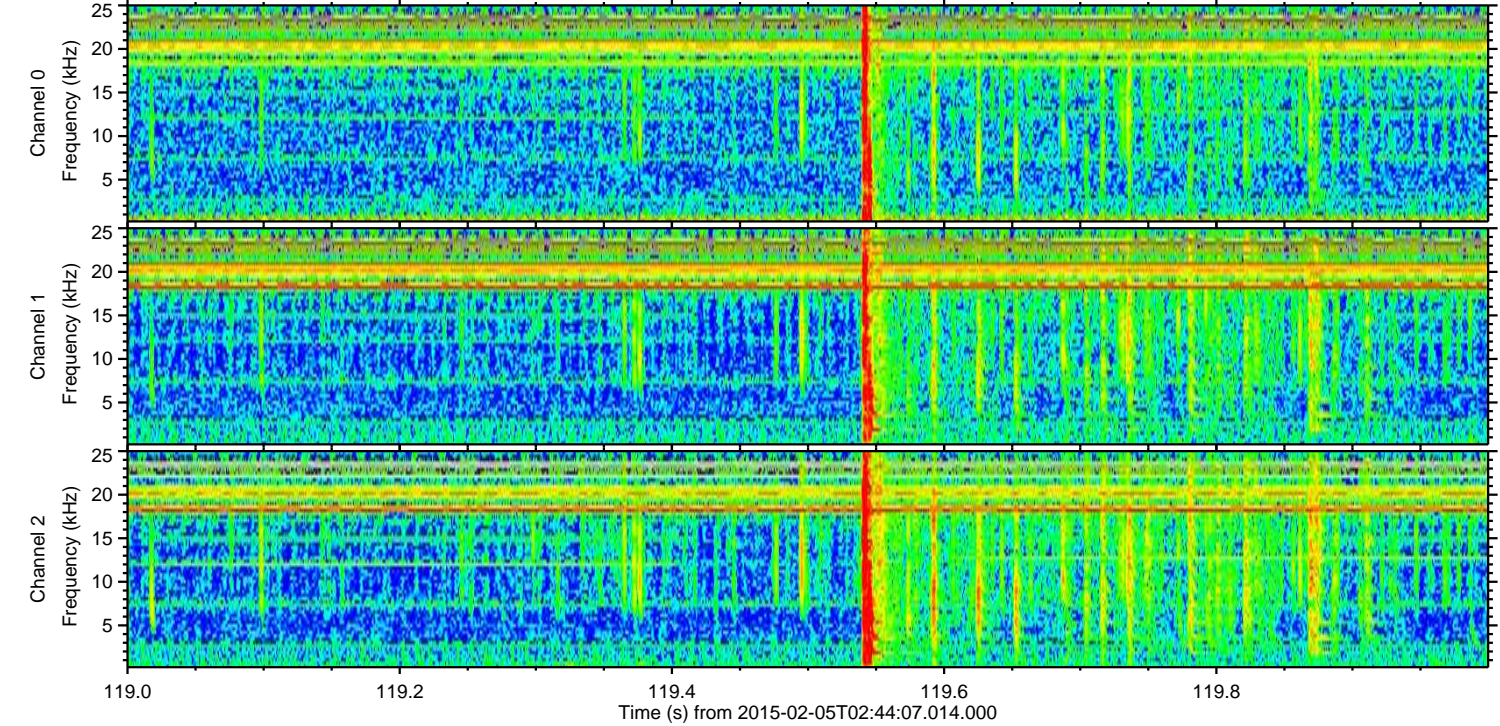
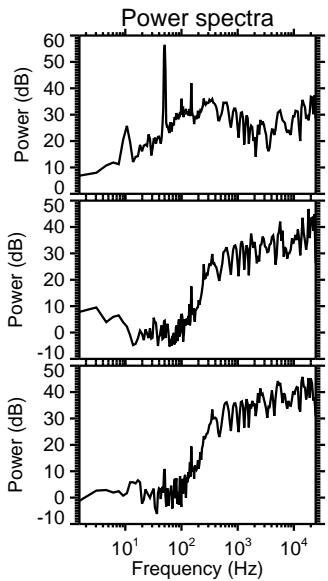
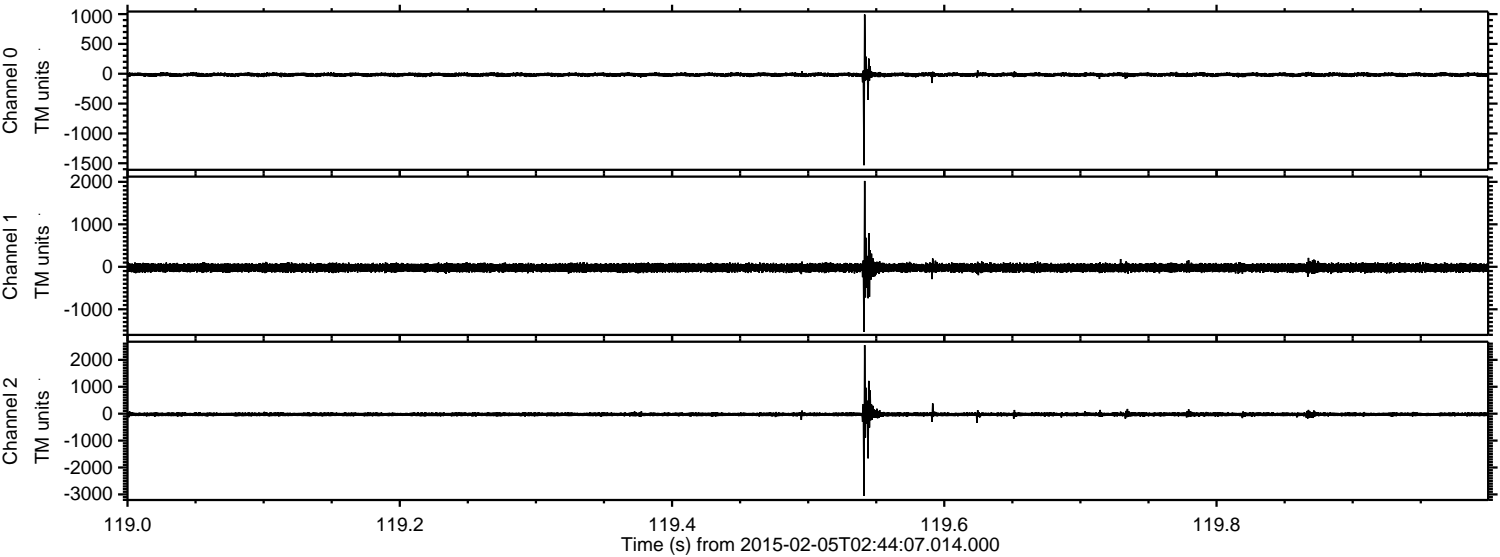
ELMAVAN 3D WAVEFORMS (Measured data sampled at 50 kHz) 49785 packets of 144 samples from 2015-02-05T02:44:07.014.000.

Processed Wed Feb 18 03:39:13 2015 by ELM ver.2012-10-06 from 001__elm20150205_024406__dat00.bin



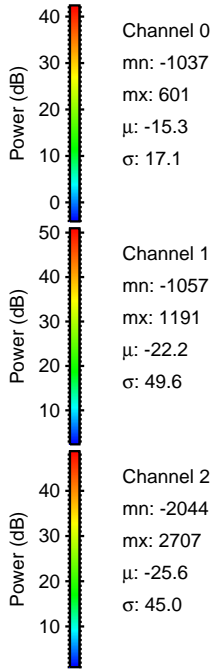
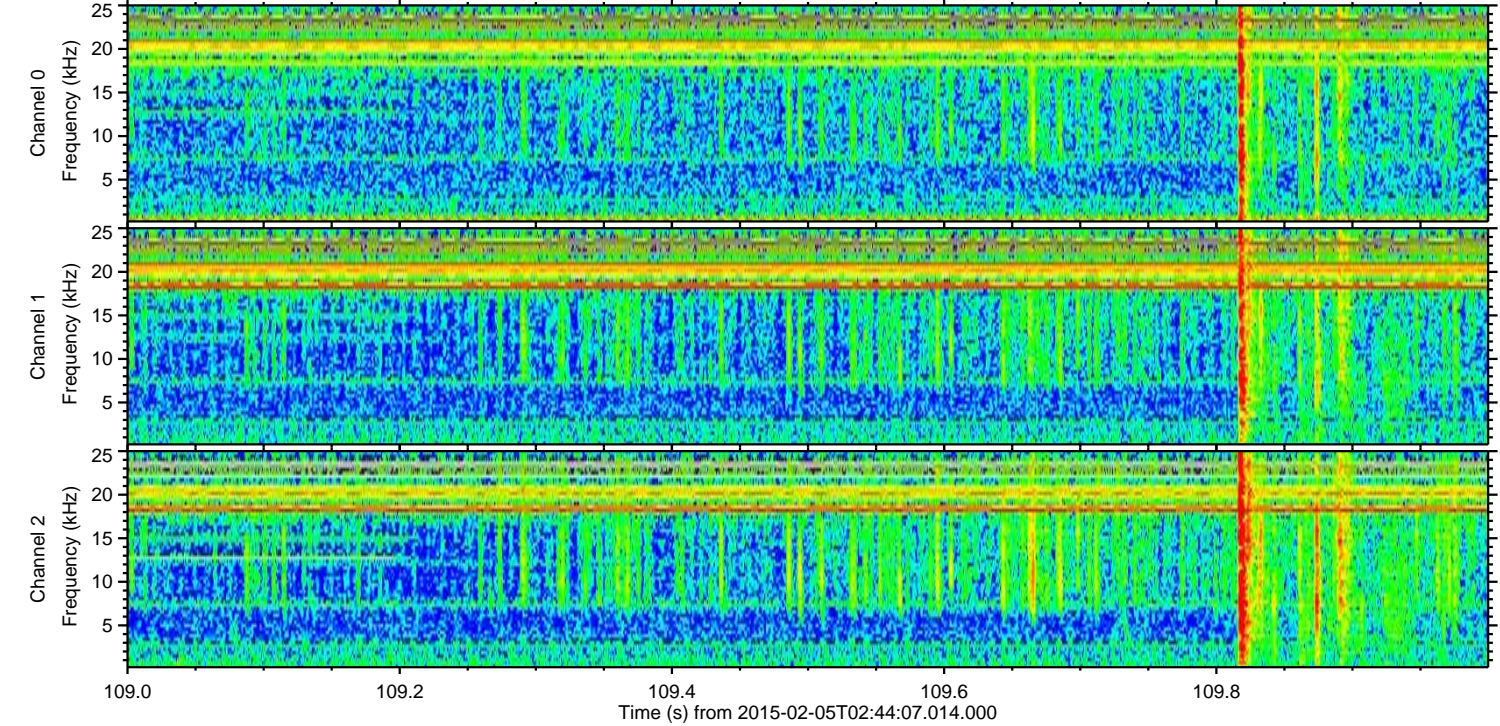
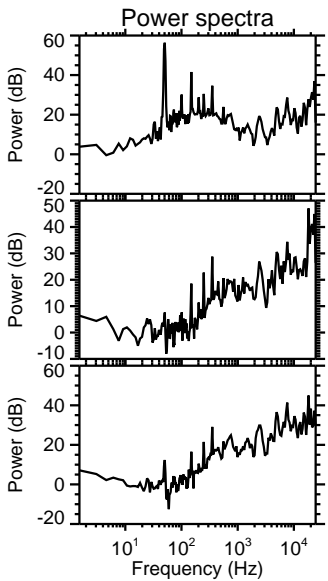
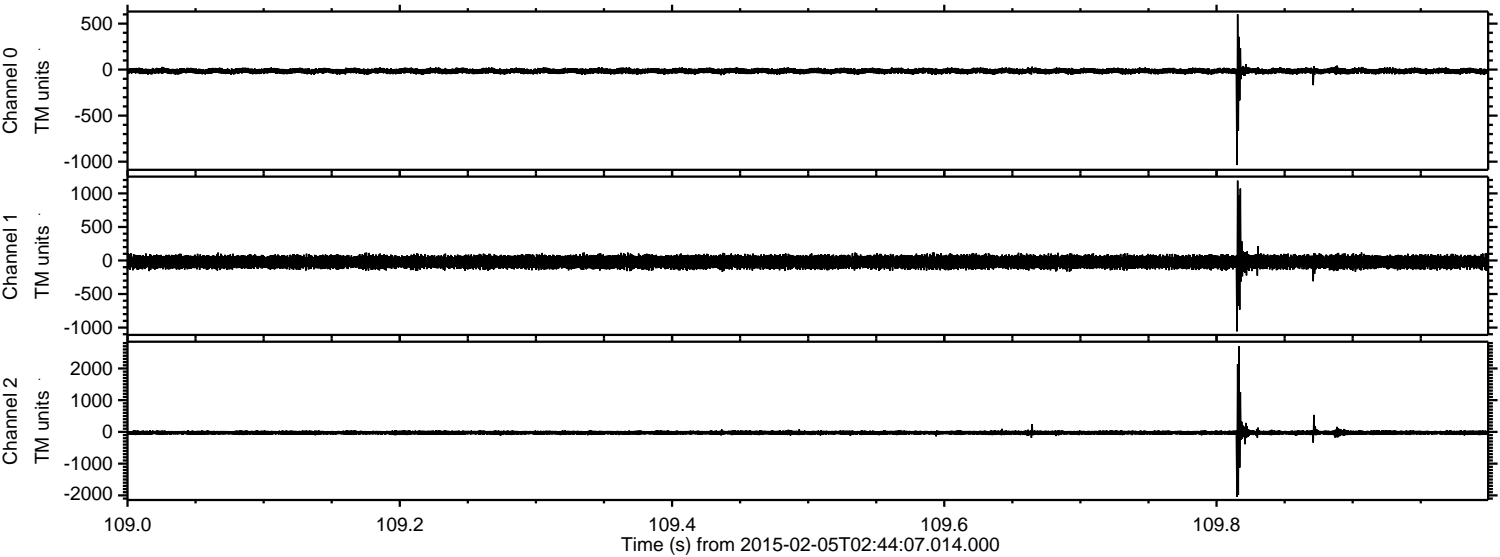
ELMAVAN 3D WAVEFORMS (Measured data sampled at 50 kHz) 49785 packets of 144 samples from 2015-02-05T02:44:07.014.000. Part 120/144

Processed Wed Feb 18 03:39:29 2015 by ELM ver.2012-10-06 from 001__elm20150205_024406__dat00.bin



ELMAVAN 3D WAVEFORMS (Measured data sampled at 50 kHz) 49785 packets of 144 samples from 2015-02-05T02:44:07.014.000. Part 110/144

Processed Wed Feb 18 03:39:30 2015 by ELM ver.2012-10-06 from 001__elm20150205_024406__dat00.bin



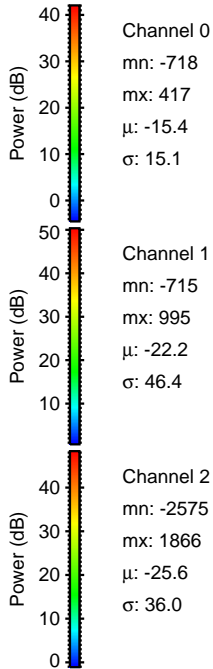
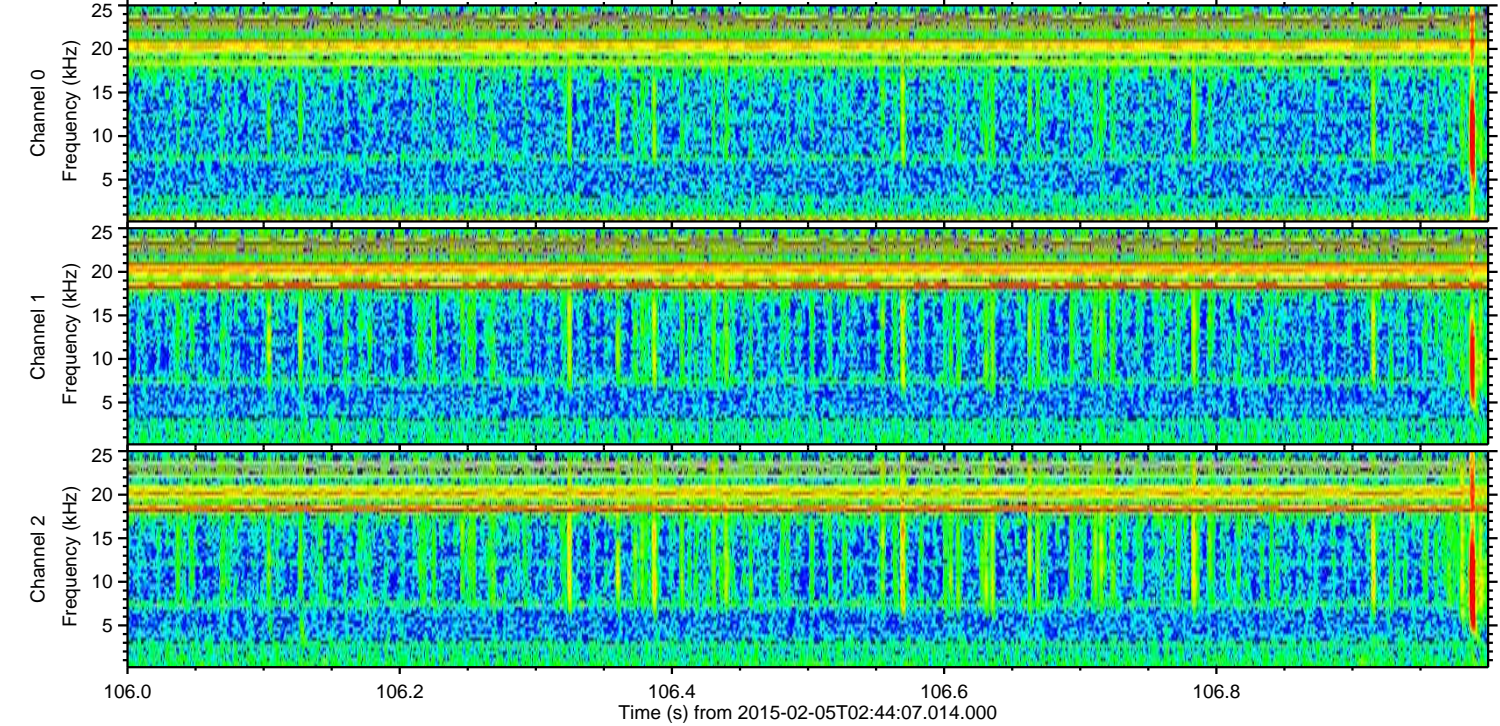
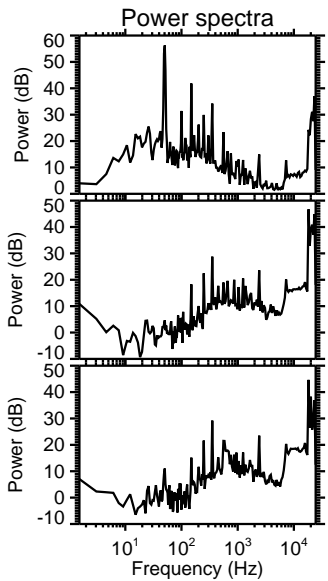
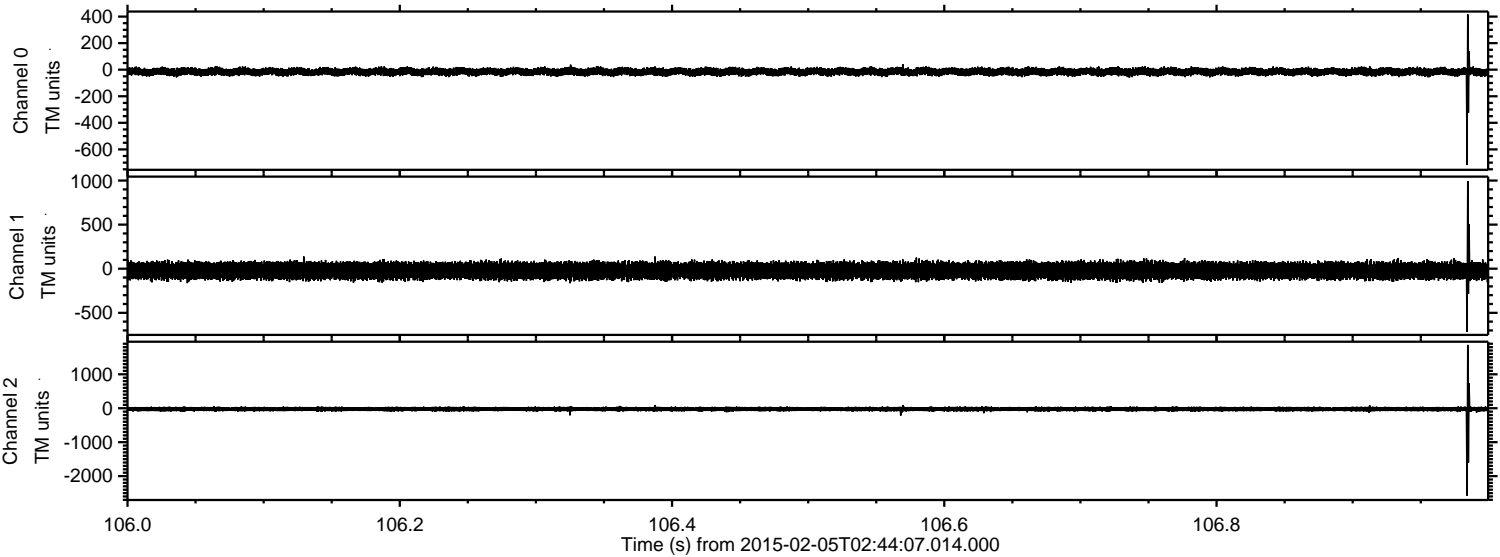
Channel 0
mn: -1037
mx: 601
 μ : -15.3
 σ : 17.1

Channel 1
mn: -1057
mx: 1191
 μ : -22.2
 σ : 49.6

Channel 2
mn: -2044
mx: 2707
 μ : -25.6
 σ : 45.0

ELMAVAN 3D WAVEFORMS (Measured data sampled at 50 kHz) 49785 packets of 144 samples from 2015-02-05T02:44:07.014.000. Part 107/144

Processed Wed Feb 18 03:39:32 2015 by ELM ver.2012-10-06 from 001__elm20150205_024406__dat00.bin



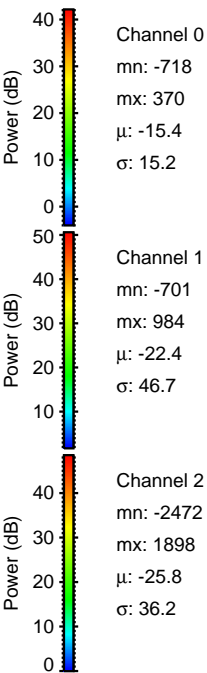
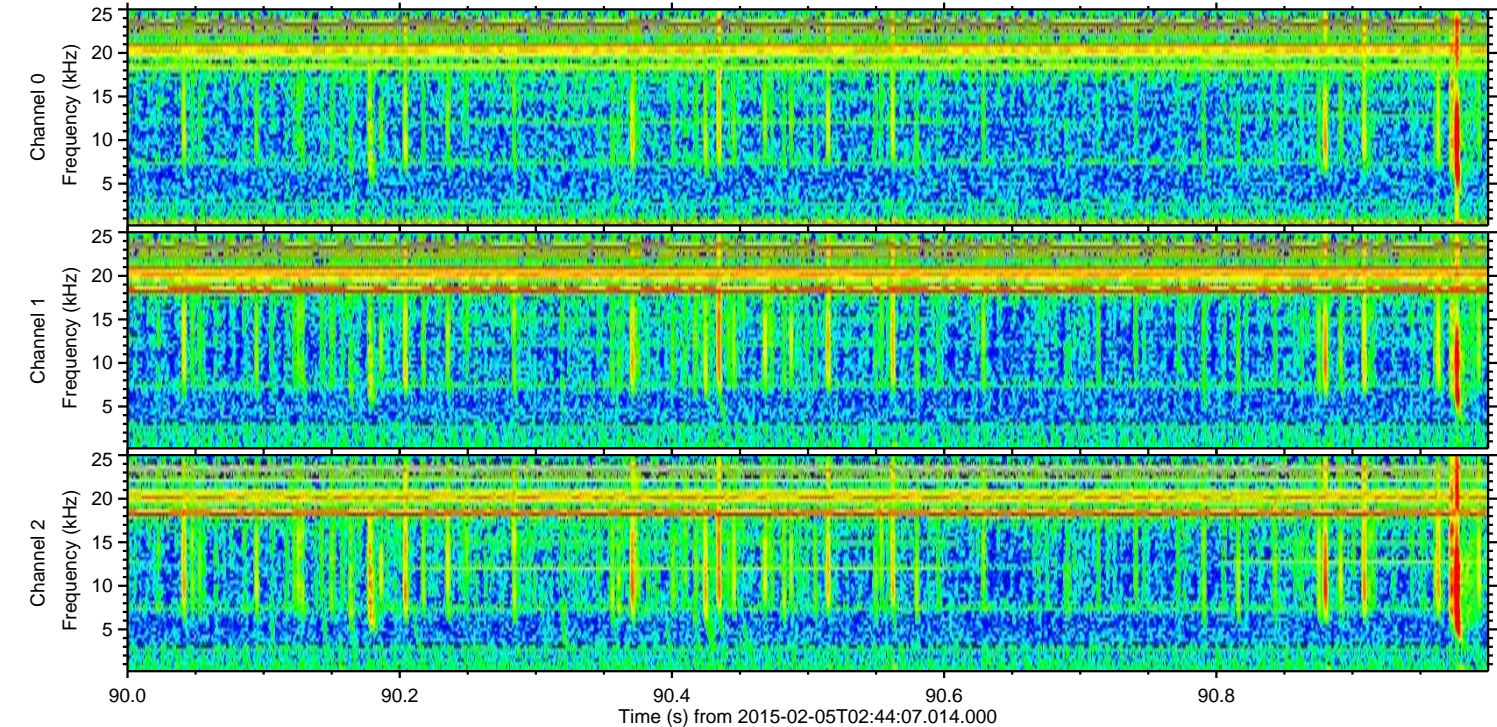
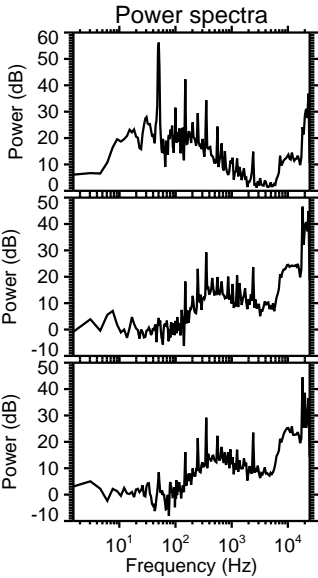
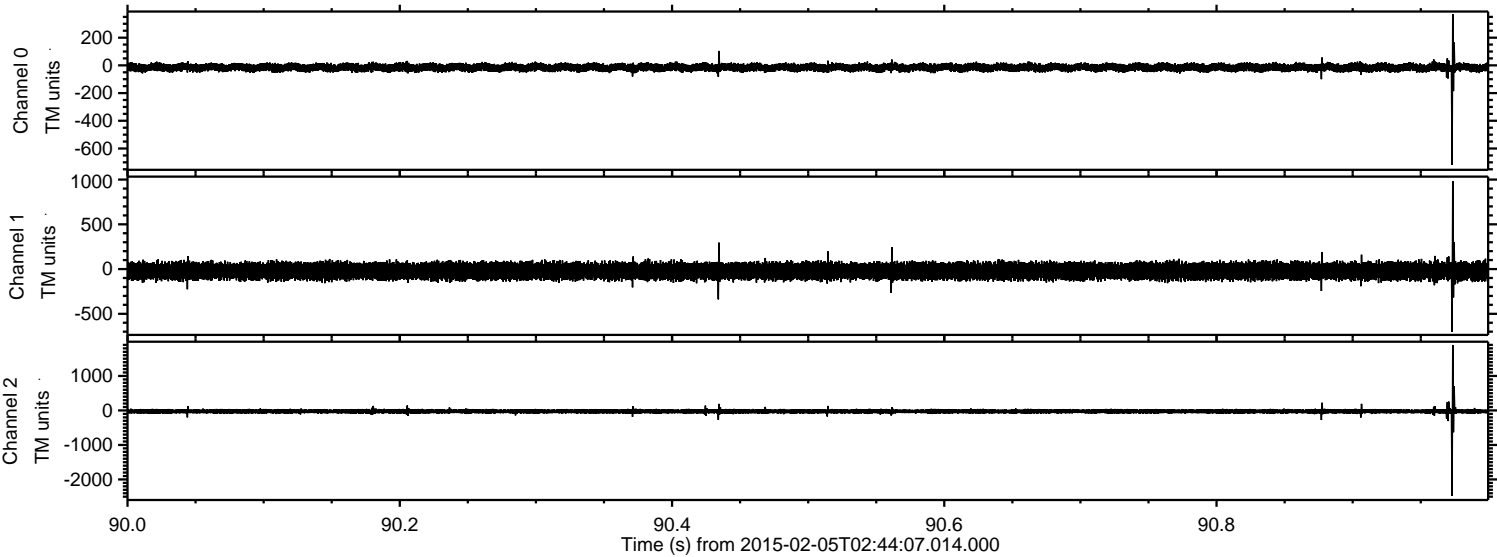
Channel 0
mn: -718
mx: 417
 μ : -15.4
 σ : 15.1

Channel 1
mn: -715
mx: 995
 μ : -22.2
 σ : 46.4

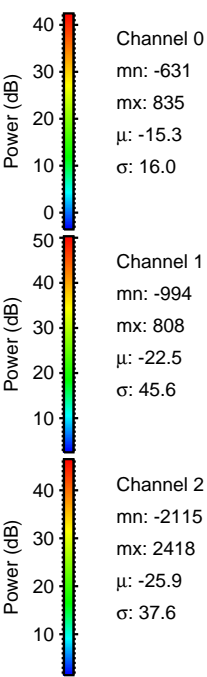
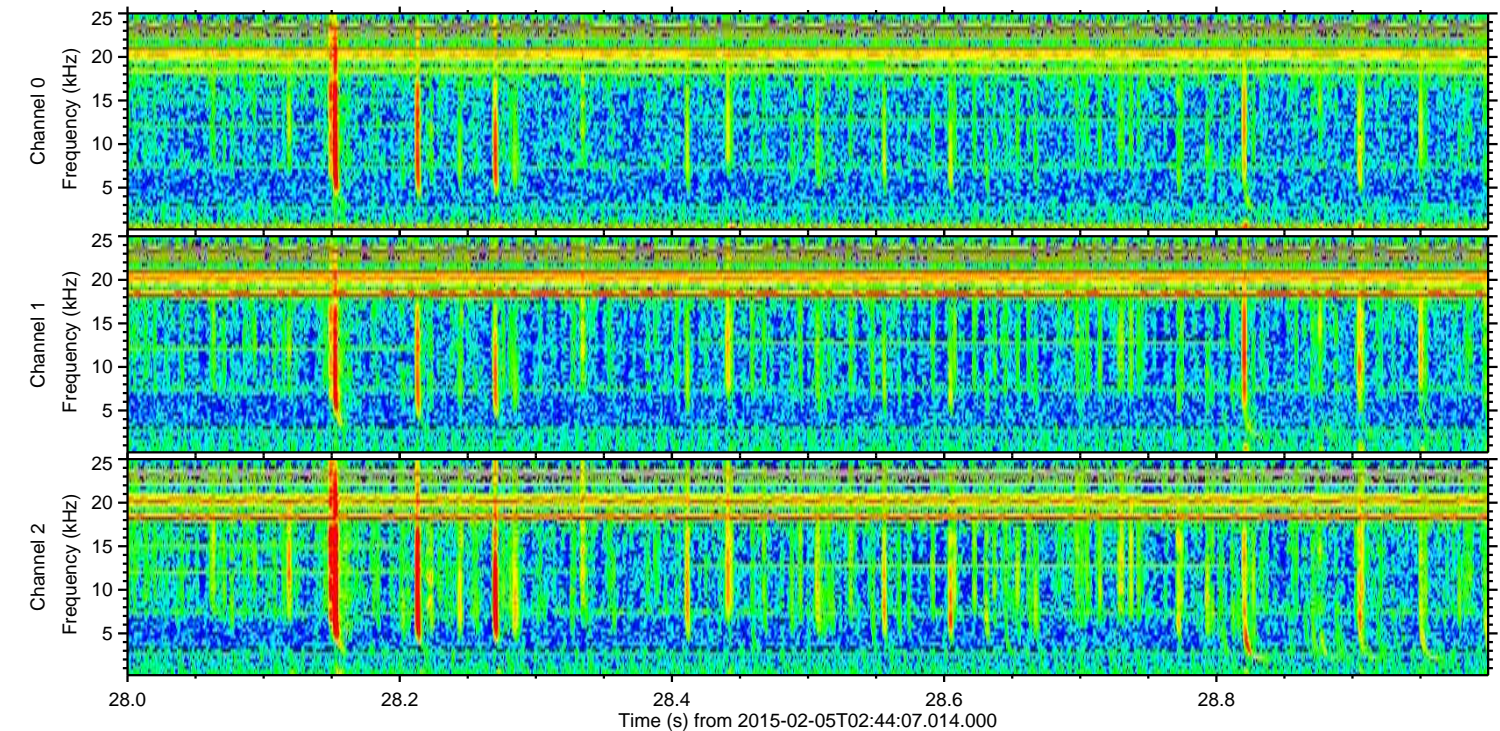
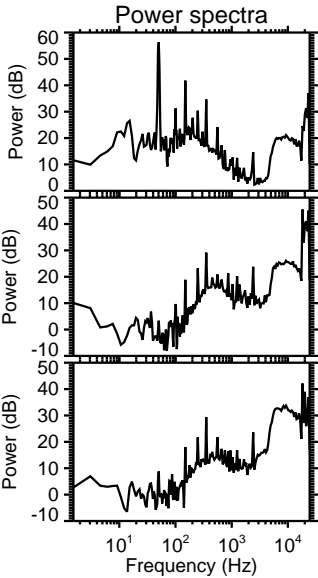
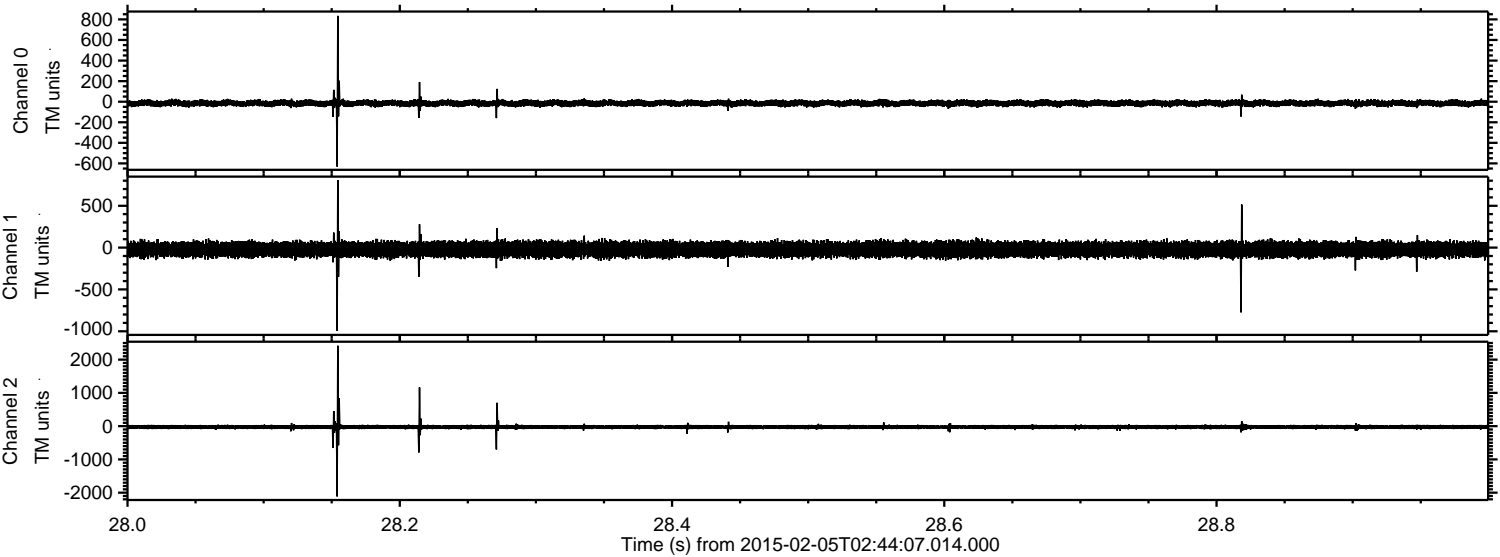
Channel 2
mn: -2575
mx: 1866
 μ : -25.6
 σ : 36.0

ELMAVAN 3D WAVEFORMS (Measured data sampled at 50 kHz) 49785 packets of 144 samples from 2015-02-05T02:44:07.014.000. Part 91/144

Processed Wed Feb 18 03:39:33 2015 by ELM ver.2012-10-06 from 001__elm20150205_024406__dat00.bin

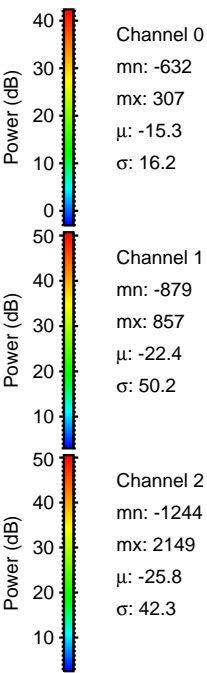
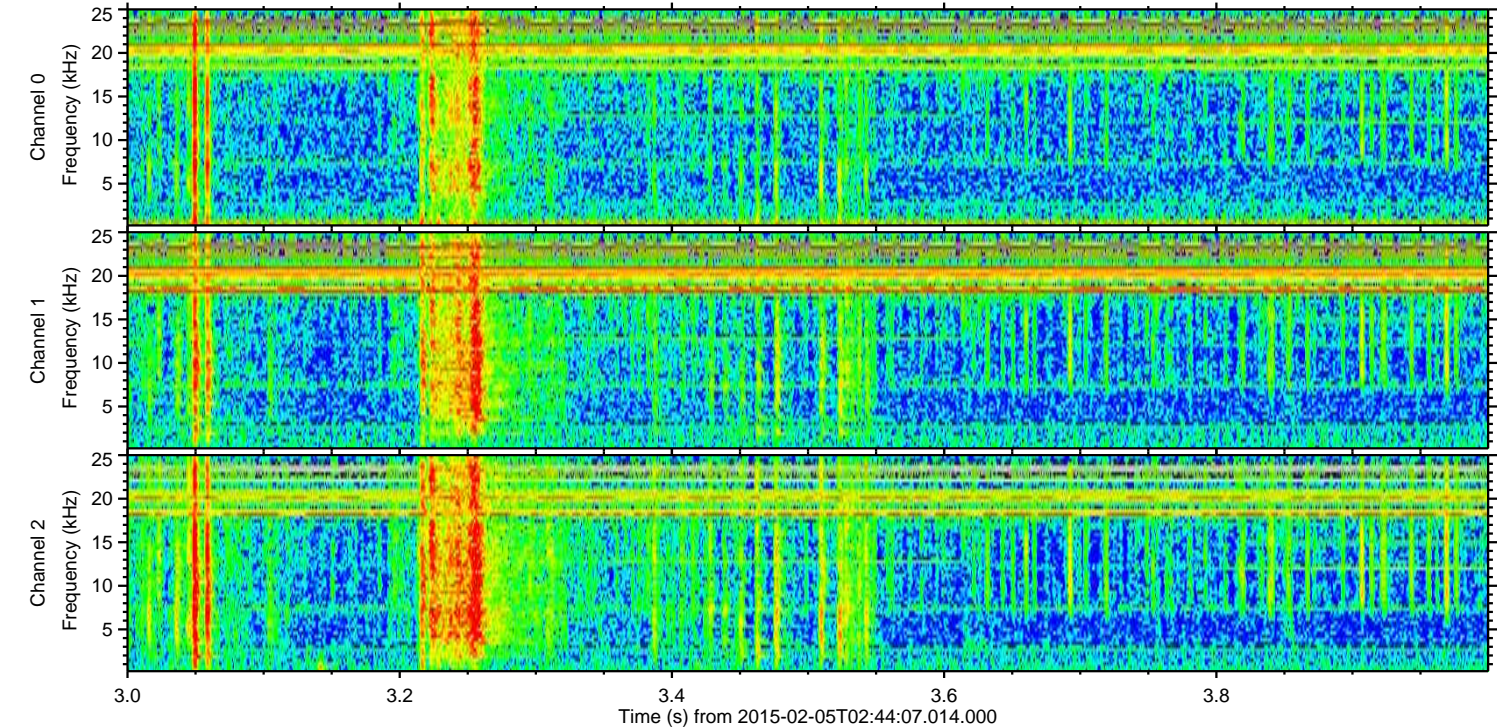
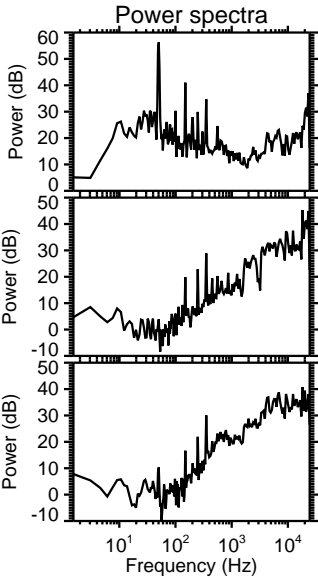
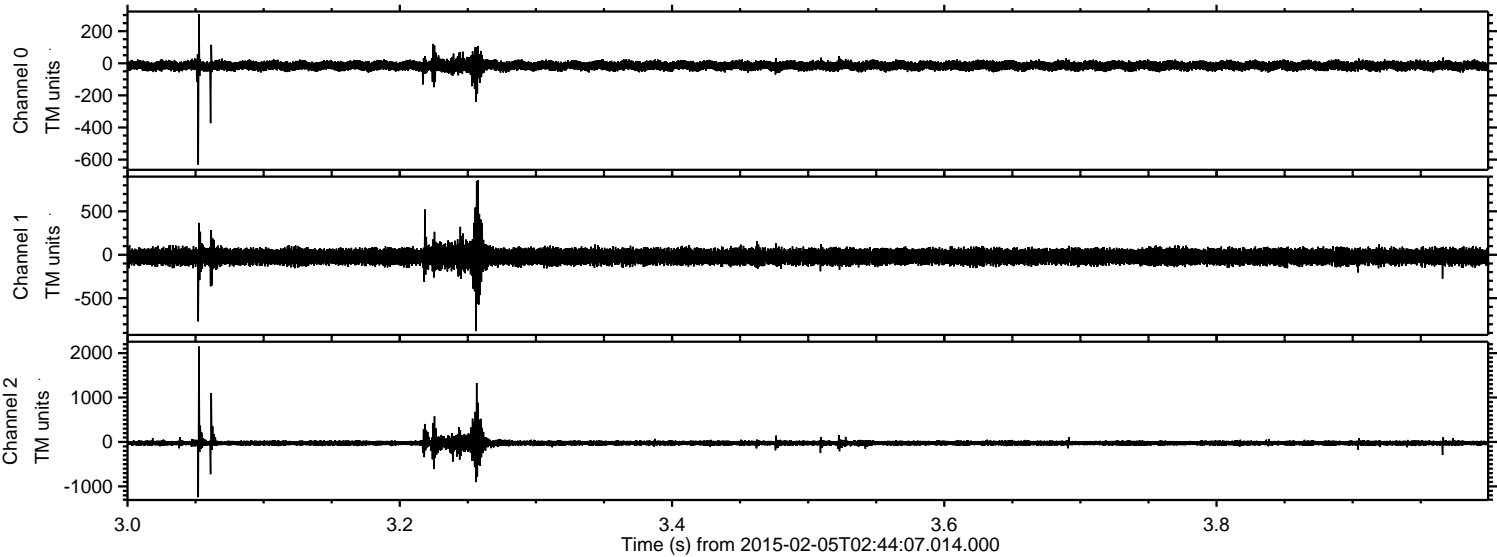


Processed Wed Feb 18 03:39:34 2015 by ELM ver.2012-10-06 from 001__elm20150205_024406__dat00.bin



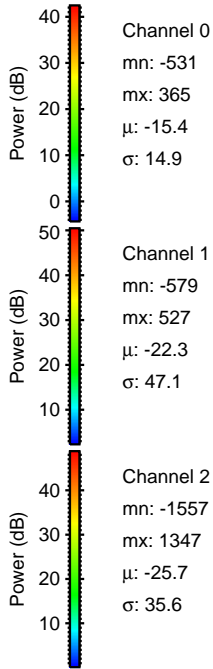
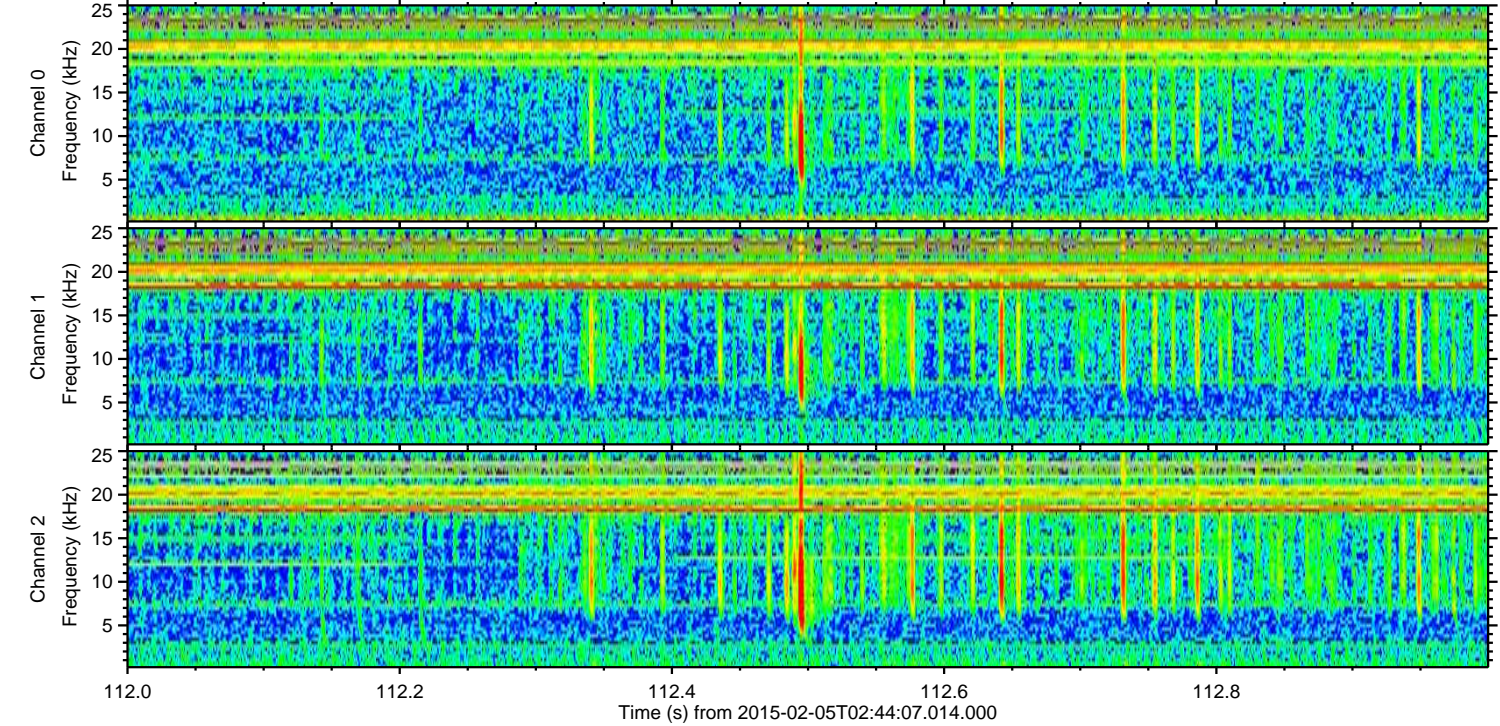
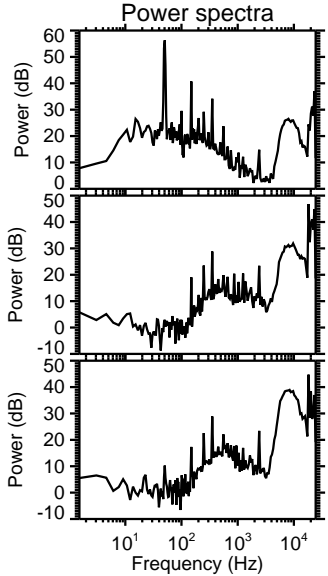
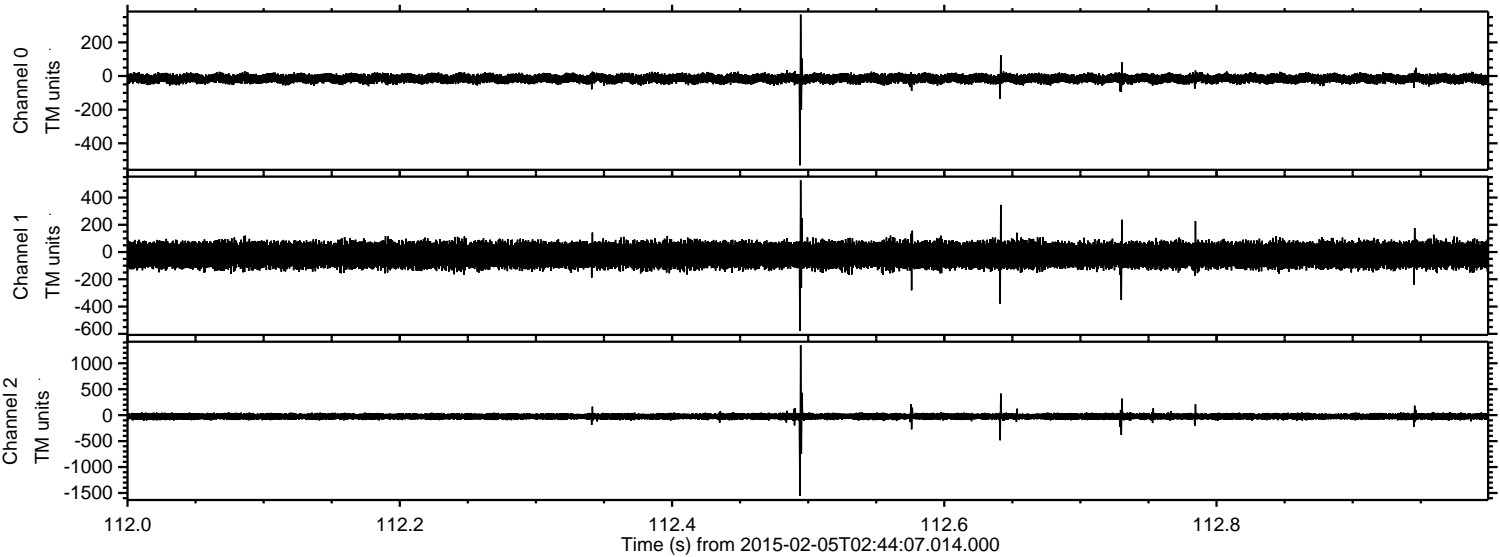
ELMAVAN 3D WAVEFORMS (Measured data sampled at 50 kHz) 49785 packets of 144 samples from 2015-02-05T02:44:07.014.000. Part 4/144

Processed Wed Feb 18 03:39:35 2015 by ELM ver.2012-10-06 from 001__elm20150205_024406__dat00.bin

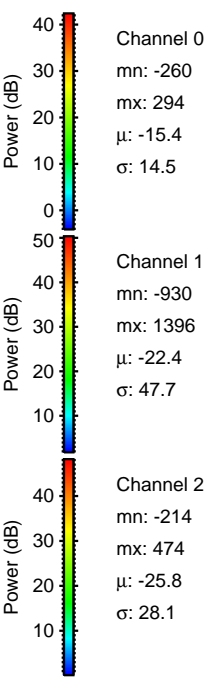
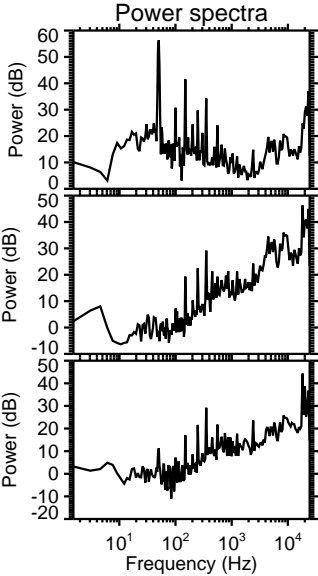
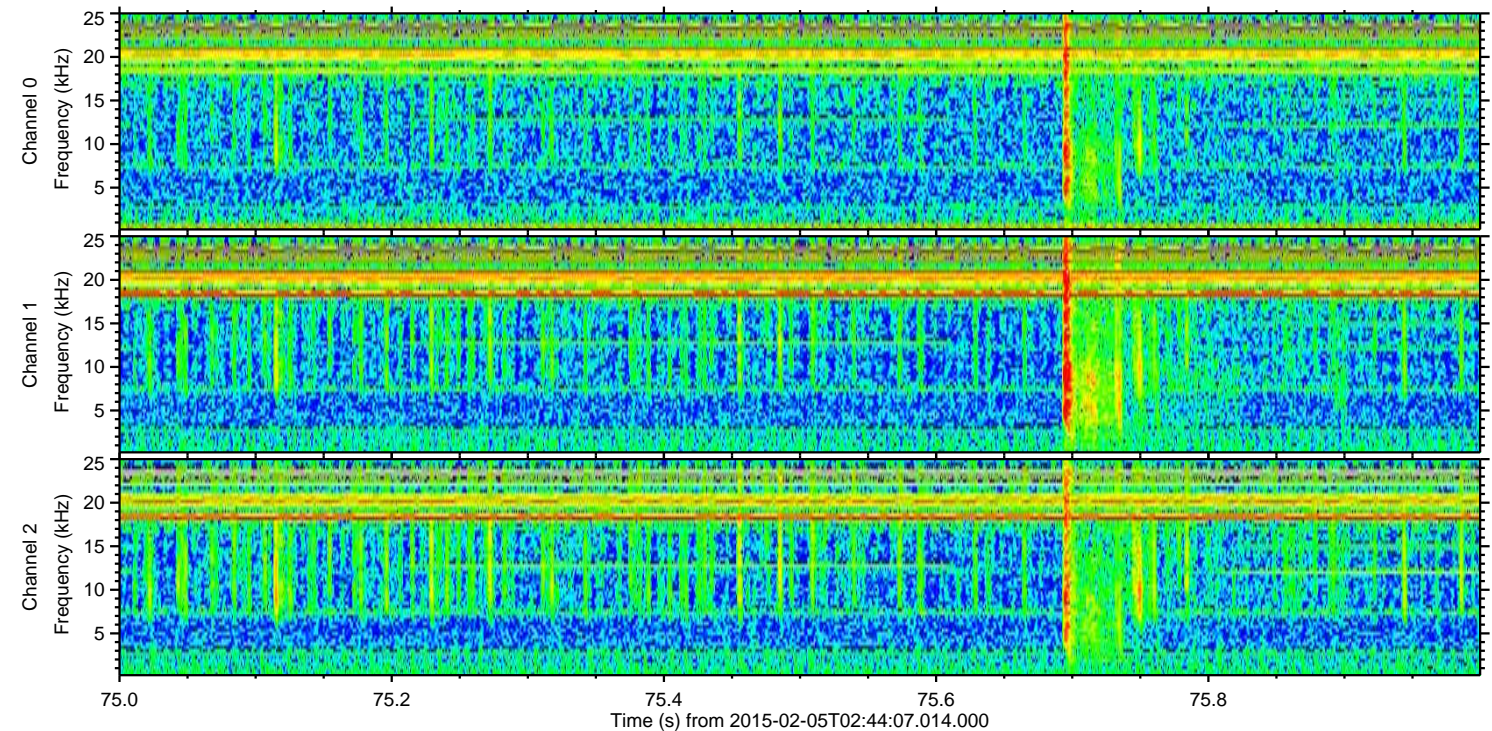
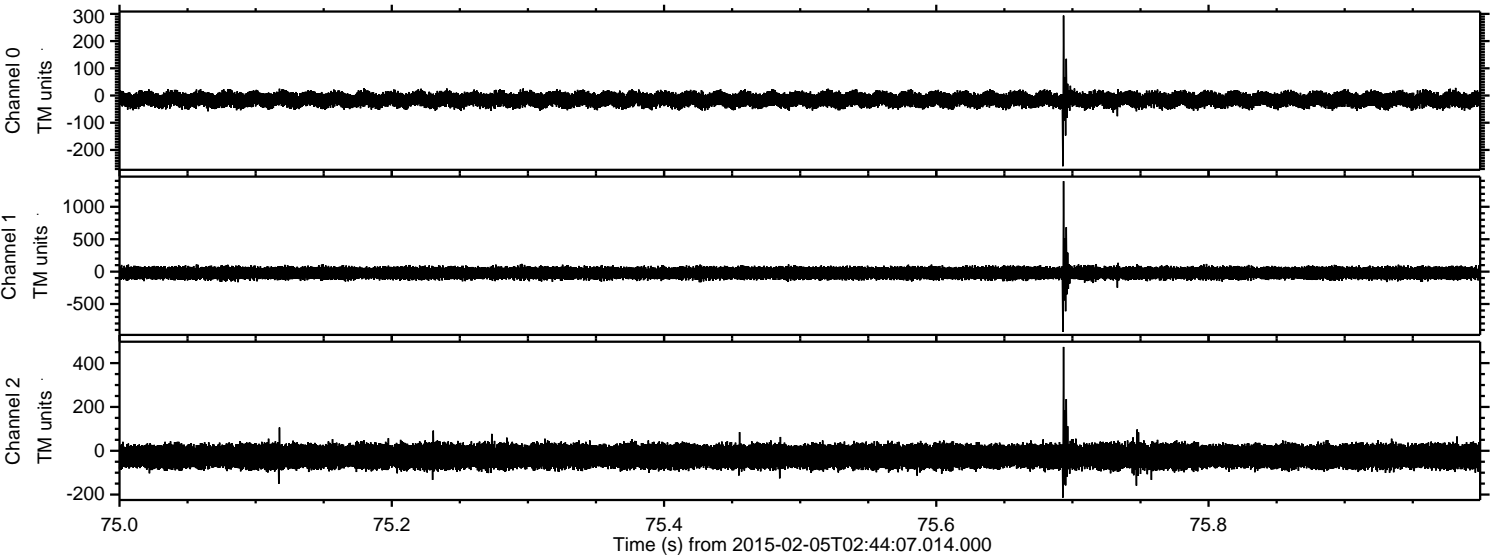


ELMAVAN 3D WAVEFORMS (Measured data sampled at 50 kHz) 49785 packets of 144 samples from 2015-02-05T02:44:07.014.000. Part 113/144

Processed Wed Feb 18 03:39:36 2015 by ELM ver.2012-10-06 from 001__elm20150205_024406__dat00.bin



Processed Wed Feb 18 03:39:38 2015 by ELM ver.2012-10-06 from 001__elm20150205_024406__dat00.bin



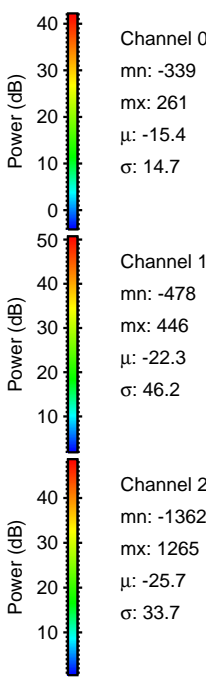
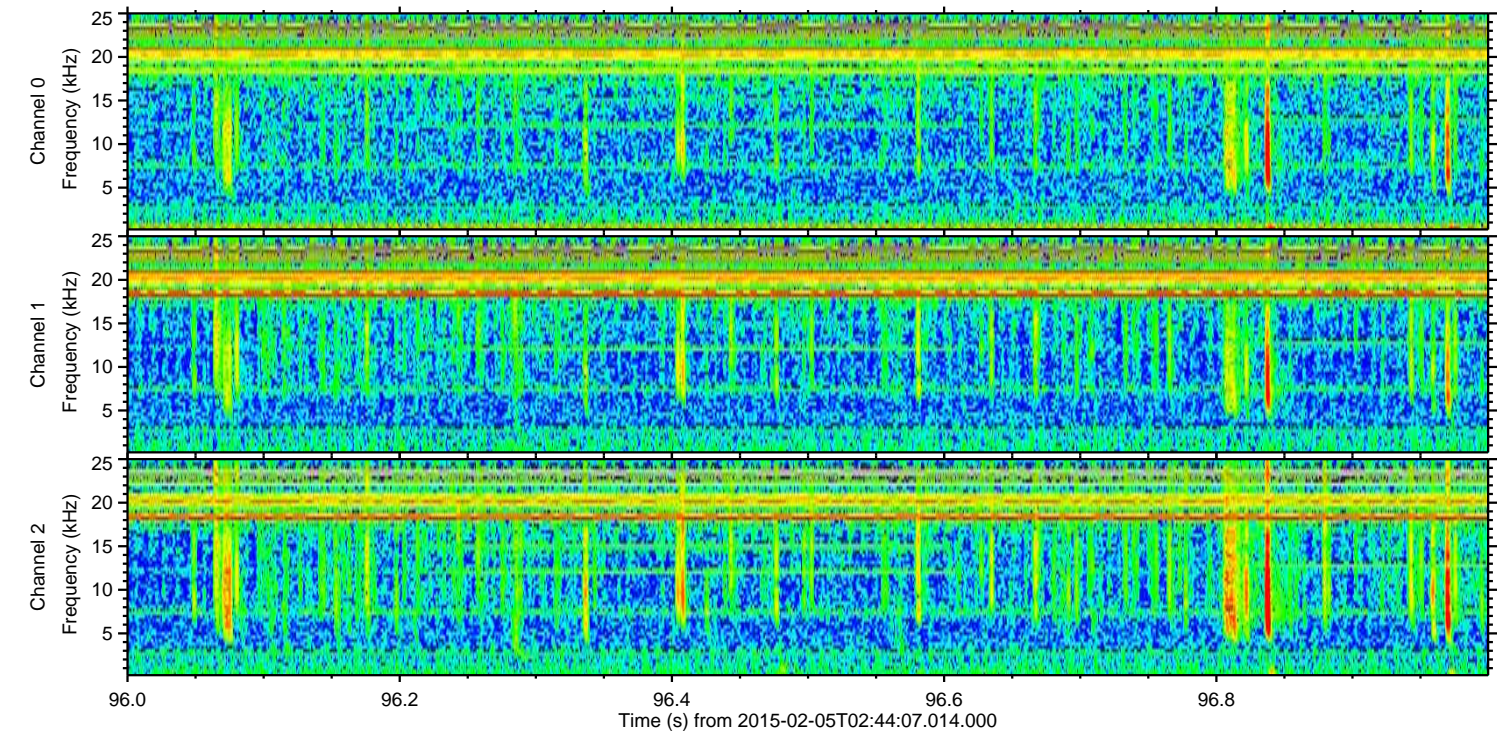
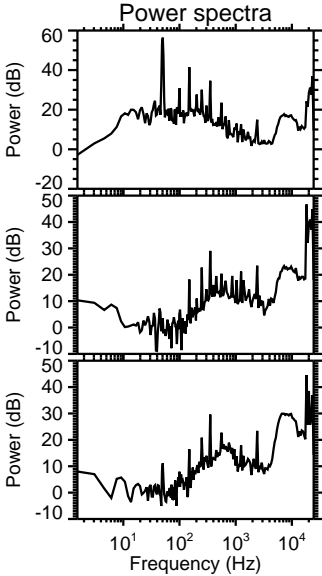
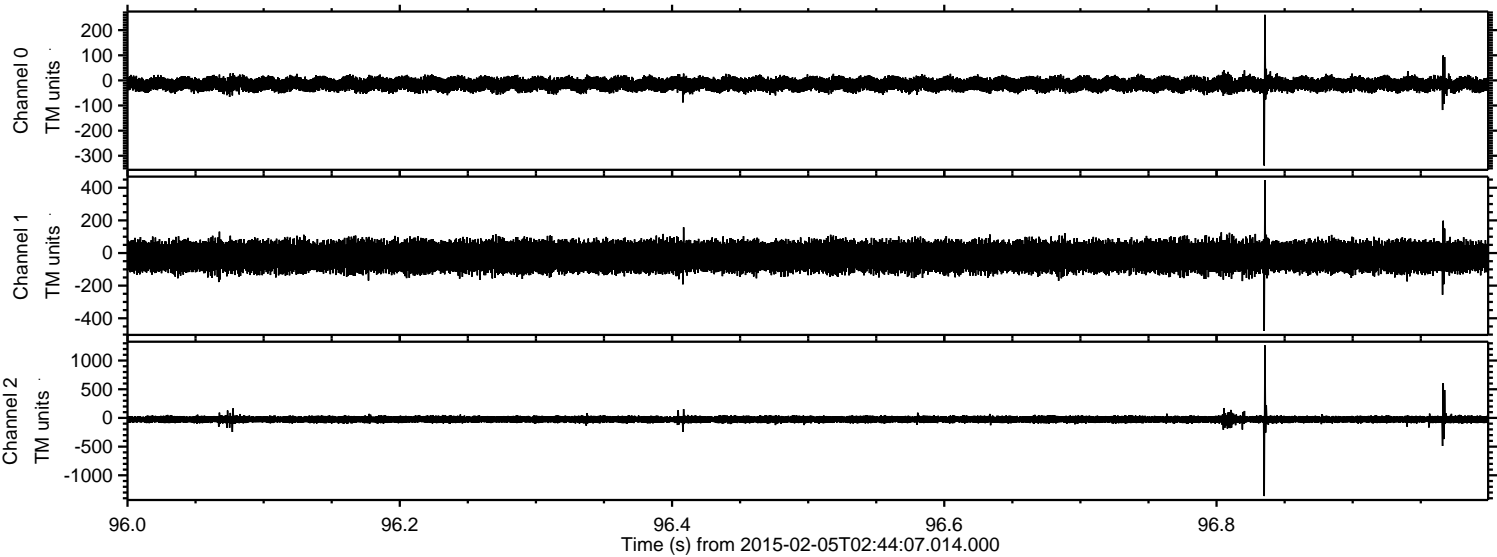
Channel 0
mn: -260
mx: 294
 μ : -15.4
 σ : 14.5

Channel 1
mn: -930
mx: 1396
 μ : -22.4
 σ : 47.7

Channel 2
mn: -214
mx: 474
 μ : -25.8
 σ : 28.1

ELMAVAN 3D WAVEFORMS (Measured data sampled at 50 kHz) 49785 packets of 144 samples from 2015-02-05T02:44:07.014.000. Part 97/144

Processed Wed Feb 18 03:39:40 2015 by ELM ver.2012-10-06 from 001__elm20150205_024406__dat00.bin



Channel 0
mn: -339
mx: 261
 μ : -15.4
 σ : 14.7

Channel 1
mn: -478
mx: 446
 μ : -22.3
 σ : 46.2

Channel 2
mn: -1362
mx: 1265
 μ : -25.7
 σ : 33.7

Processed Wed Feb 18 03:39:42 2015 by ELM ver.2012-10-06 from 001__elm20150205_024406__dat00.bin

