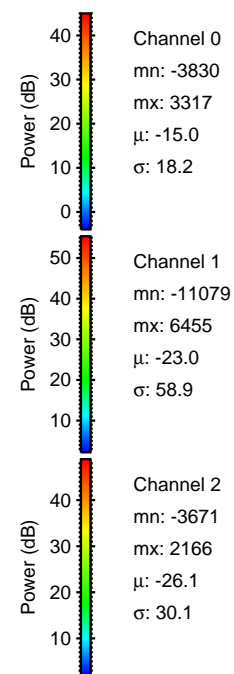
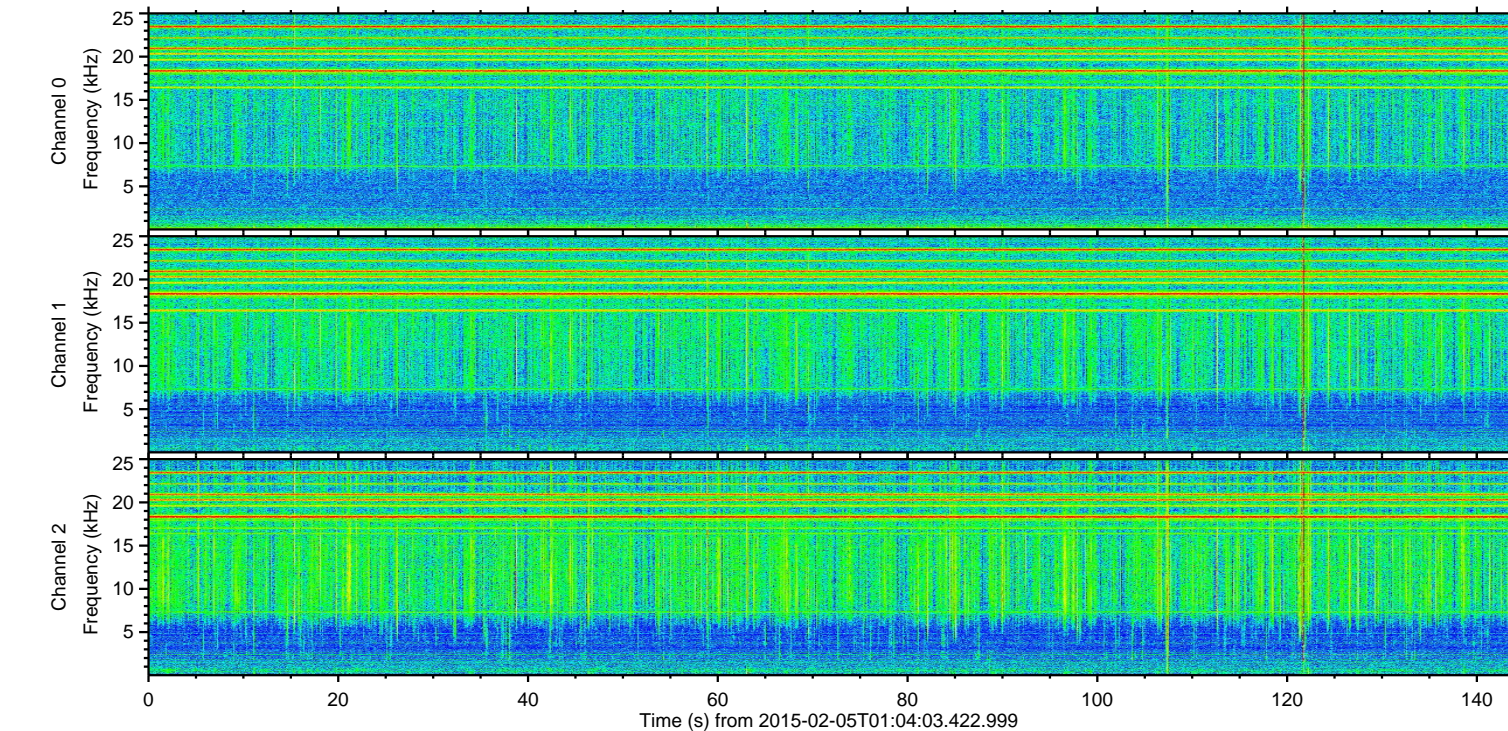
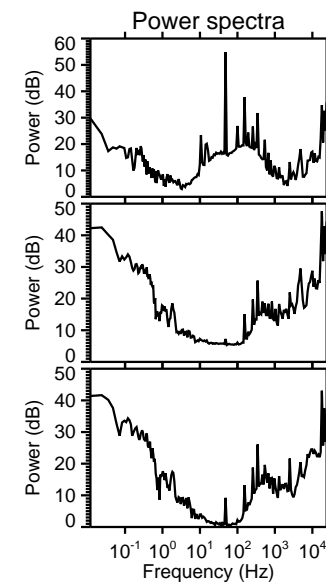
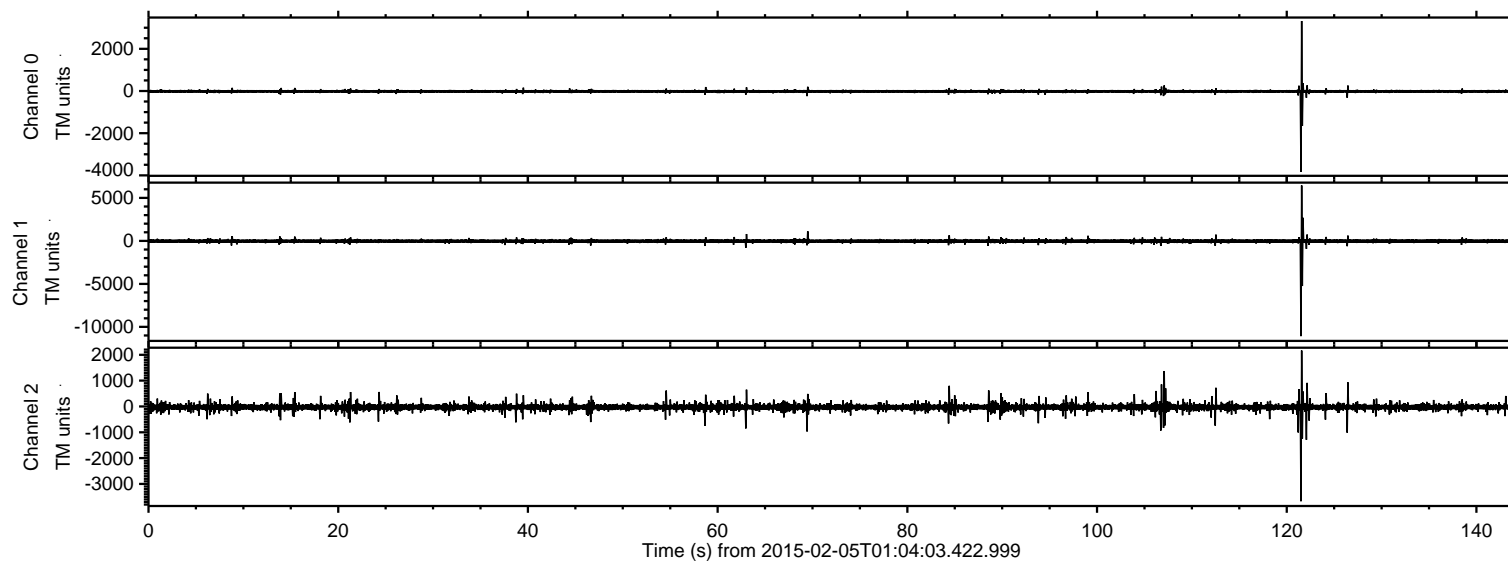


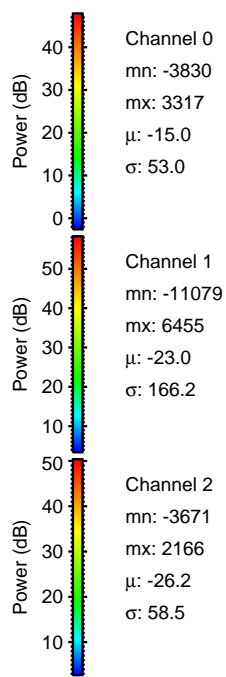
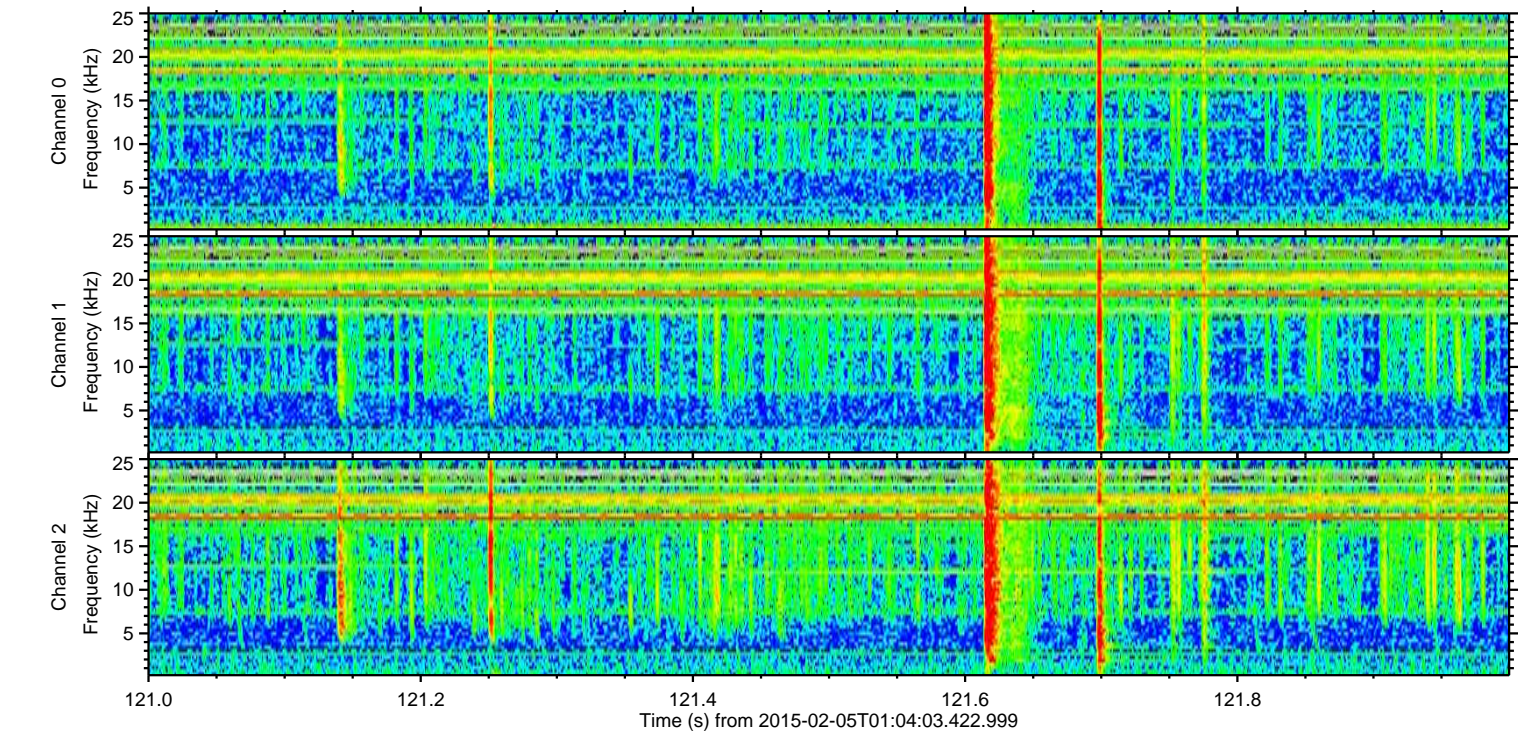
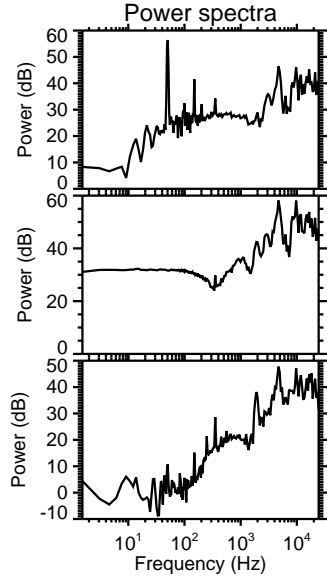
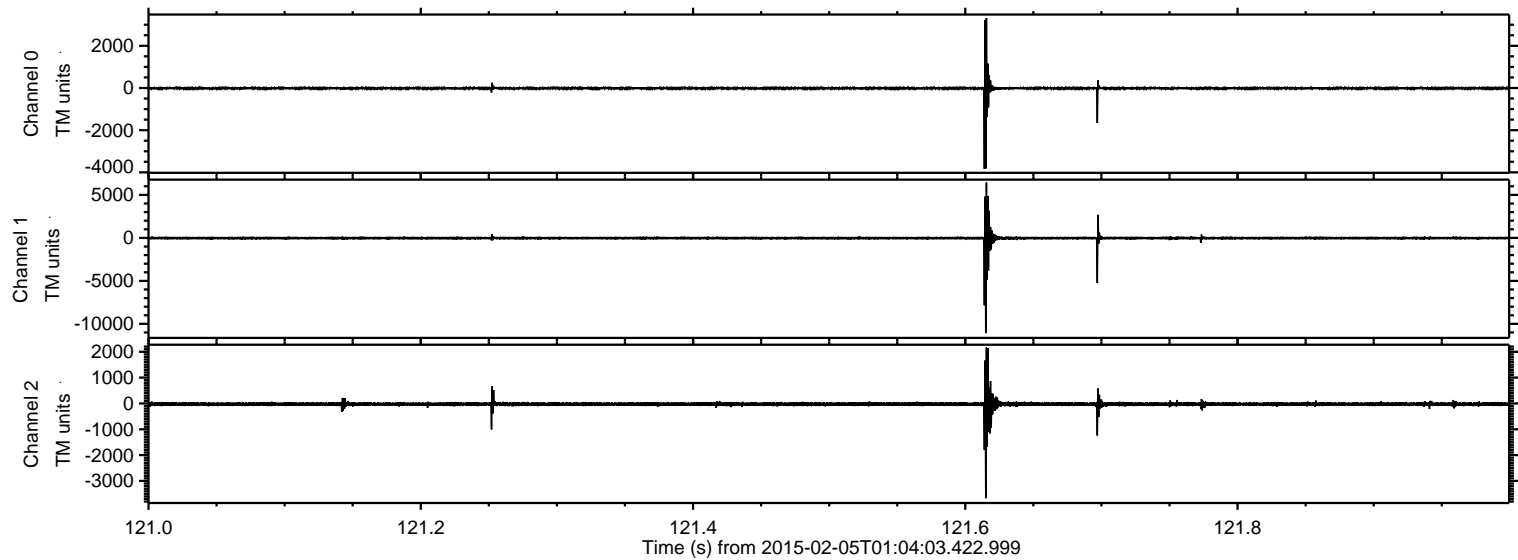
ELMAVAN 3D WAVEFORMS (Measured data sampled at 50 kHz) 49808 packets of 144 samples from 2015-02-05T01:04:03.422.999.

Processed Wed Feb 18 03:05:28 2015 by ELM ver.2012-10-06 from 001__elm20150205_010402__dat00.bin

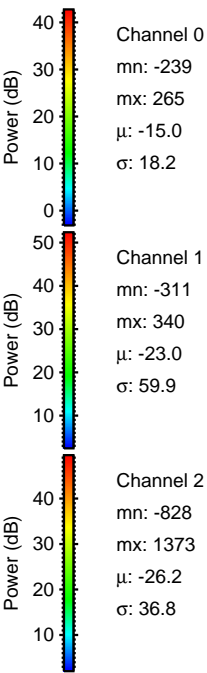
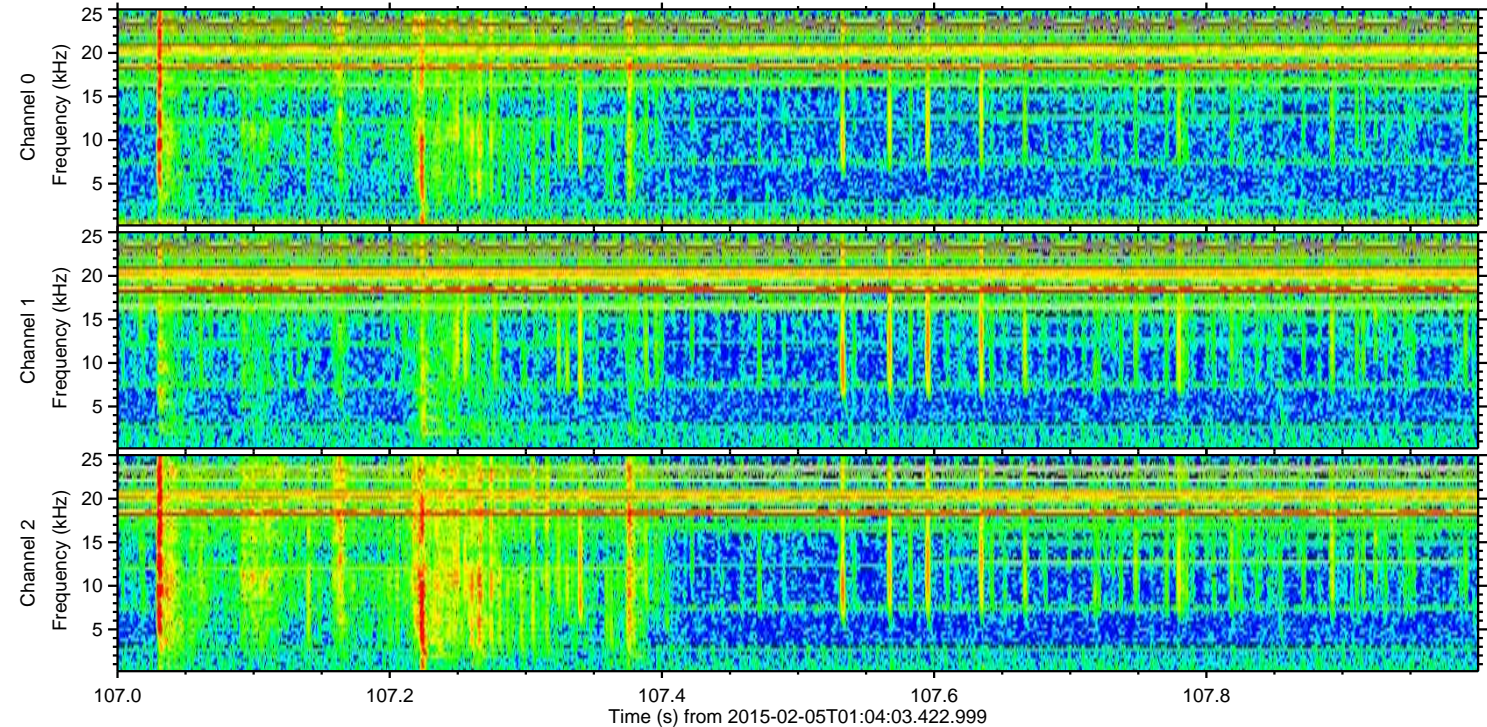
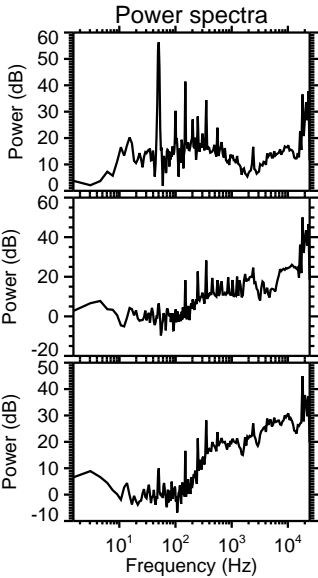
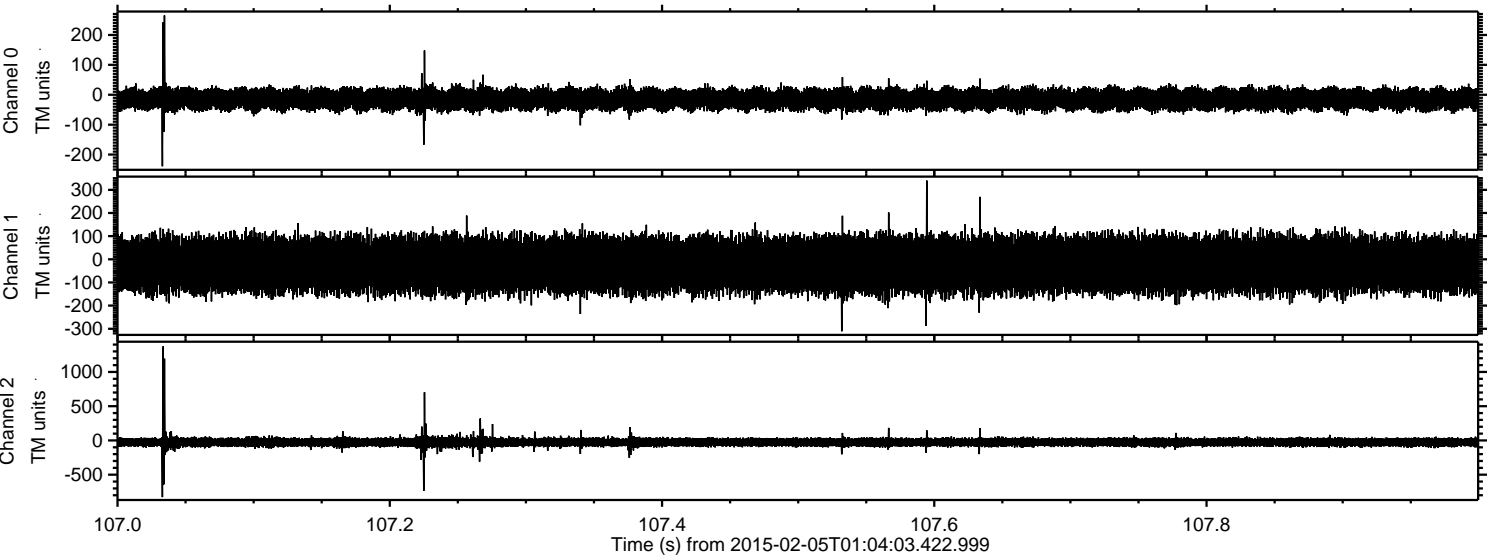


ELMAVAN 3D WAVEFORMS (Measured data sampled at 50 kHz) 49808 packets of 144 samples from 2015-02-05T01:04:03.422.999. Part 122/144

Processed Wed Feb 18 03:05:45 2015 by ELM ver.2012-10-06 from 001__elm20150205_010402__dat00.bin

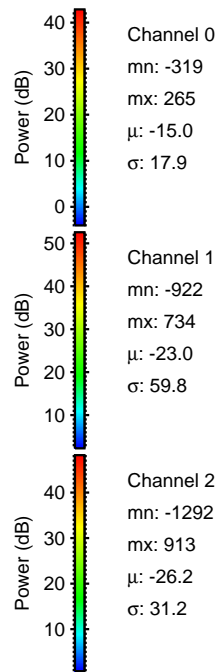
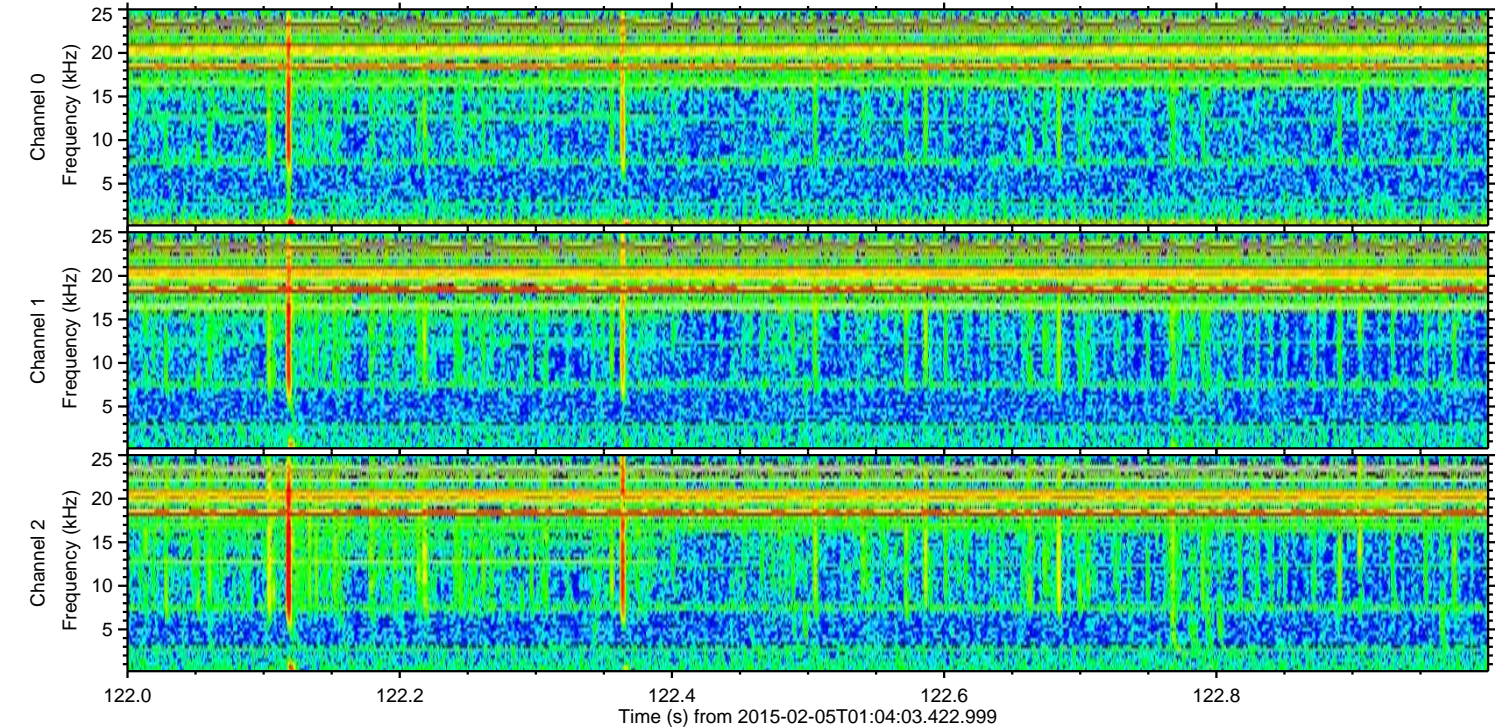
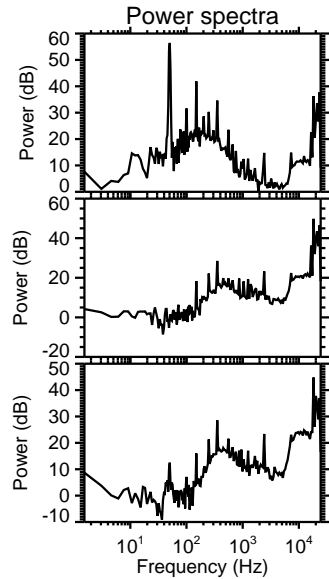
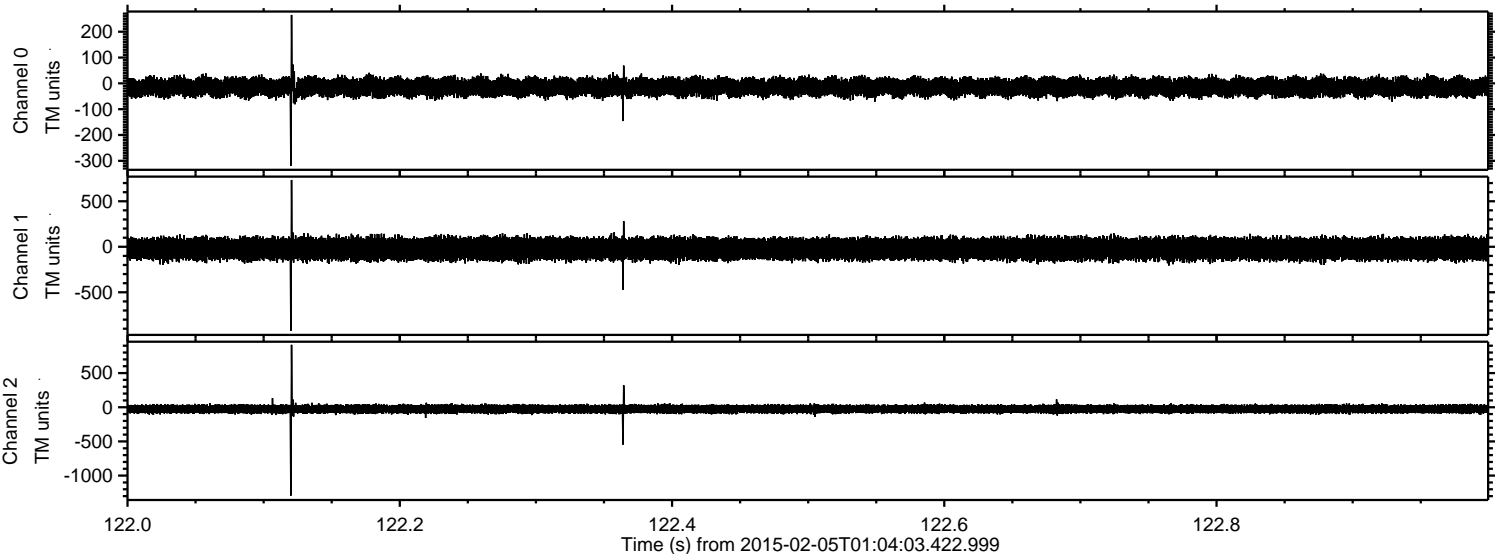


Processed Wed Feb 18 03:05:46 2015 by ELM ver.2012-10-06 from 001__elm20150205_010402__dat00.bin

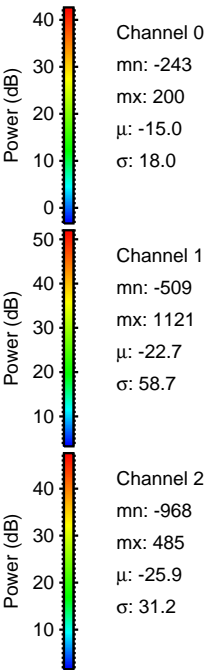
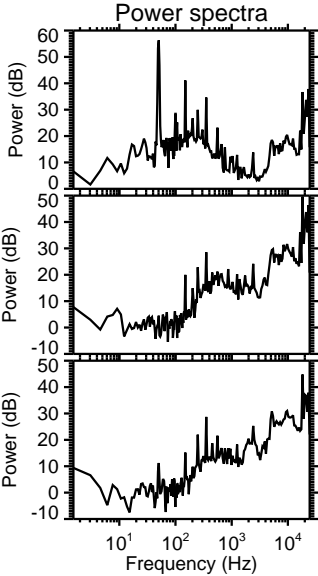
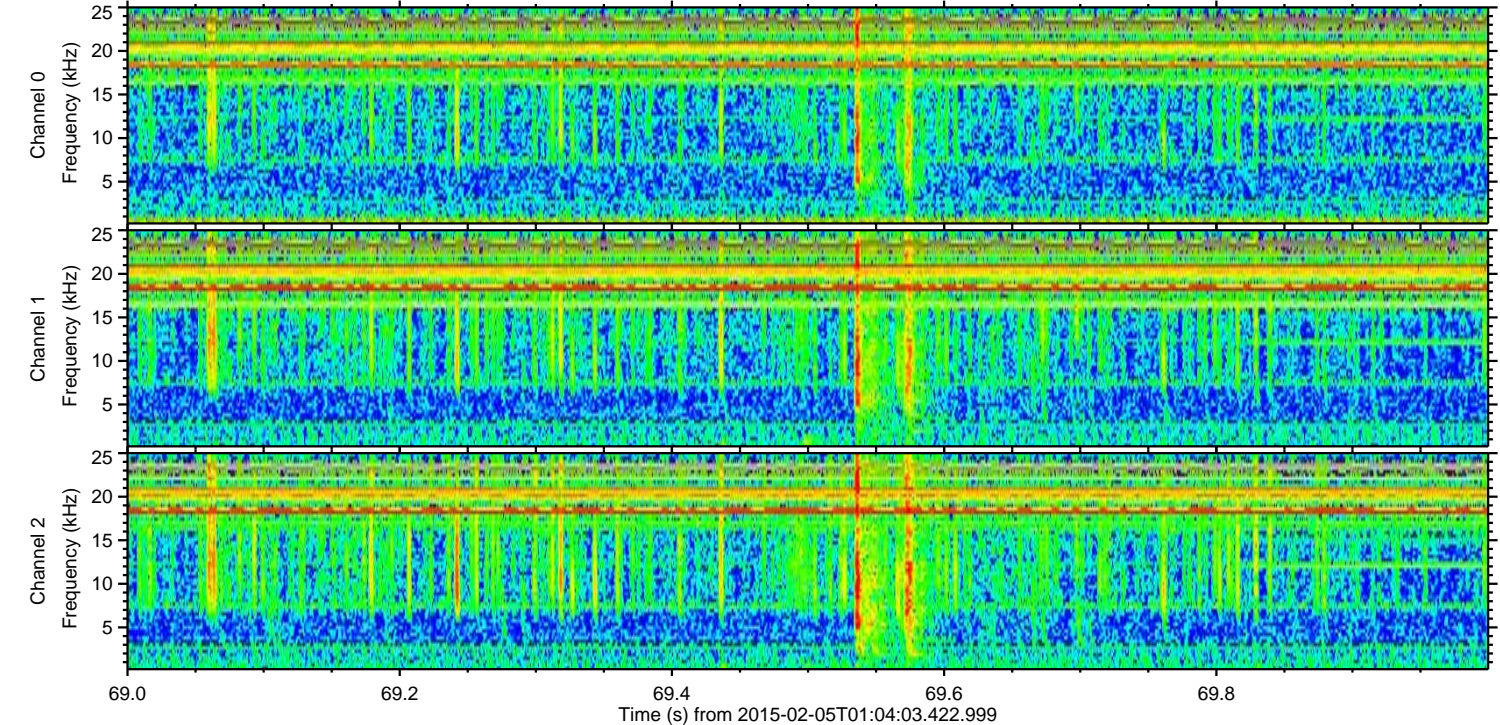
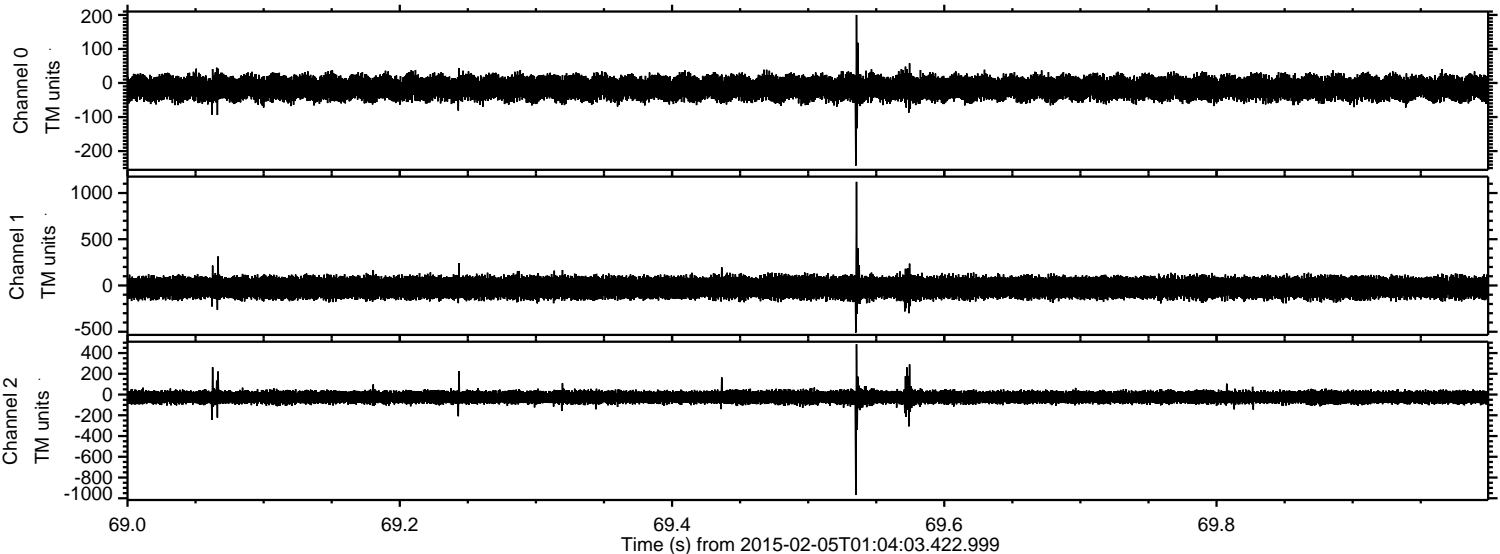


ELMAVAN 3D WAVEFORMS (Measured data sampled at 50 kHz) 49808 packets of 144 samples from 2015-02-05T01:04:03.422.999. Part 123/144

Processed Wed Feb 18 03:05:47 2015 by ELM ver.2012-10-06 from 001__elm20150205_010402__dat00.bin

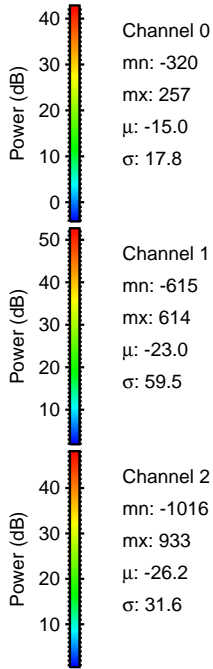
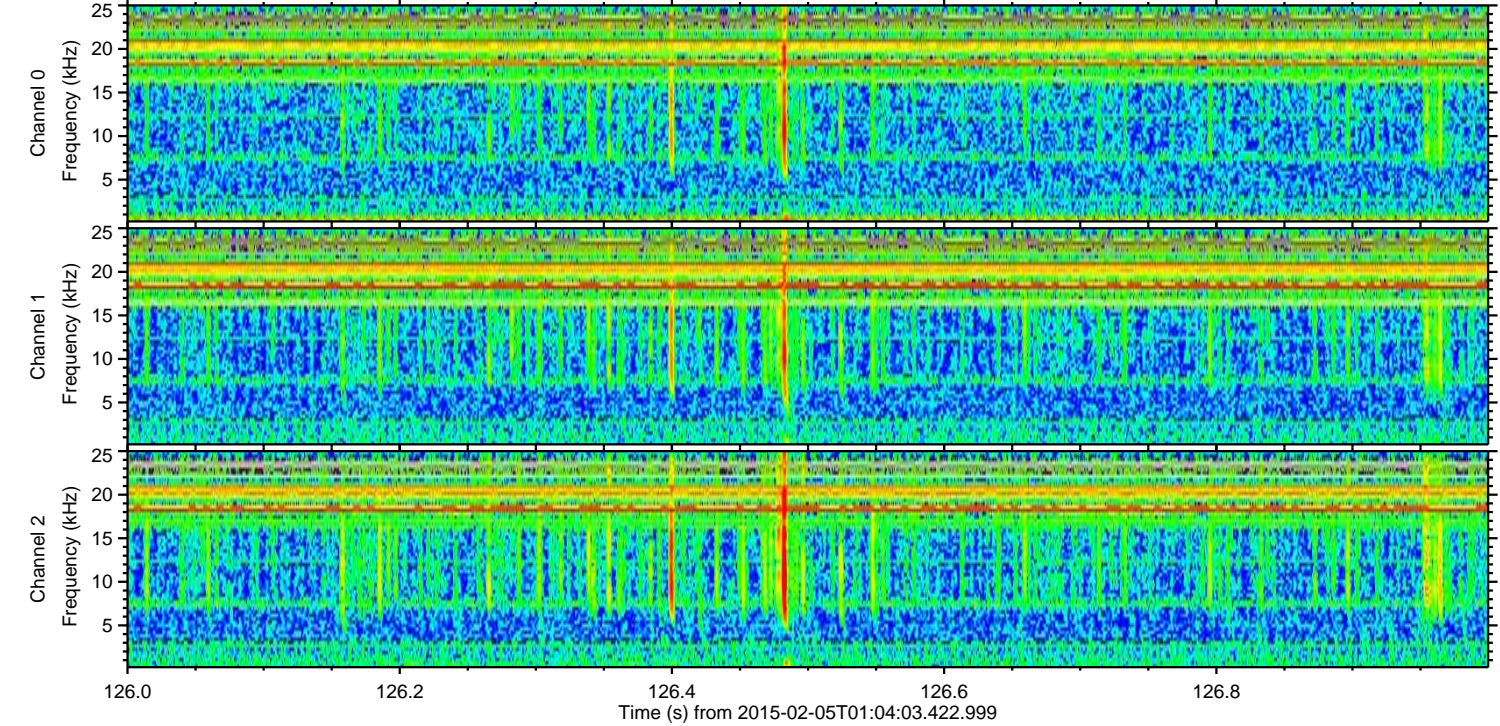
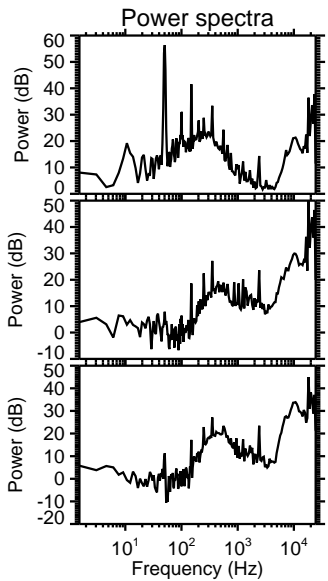
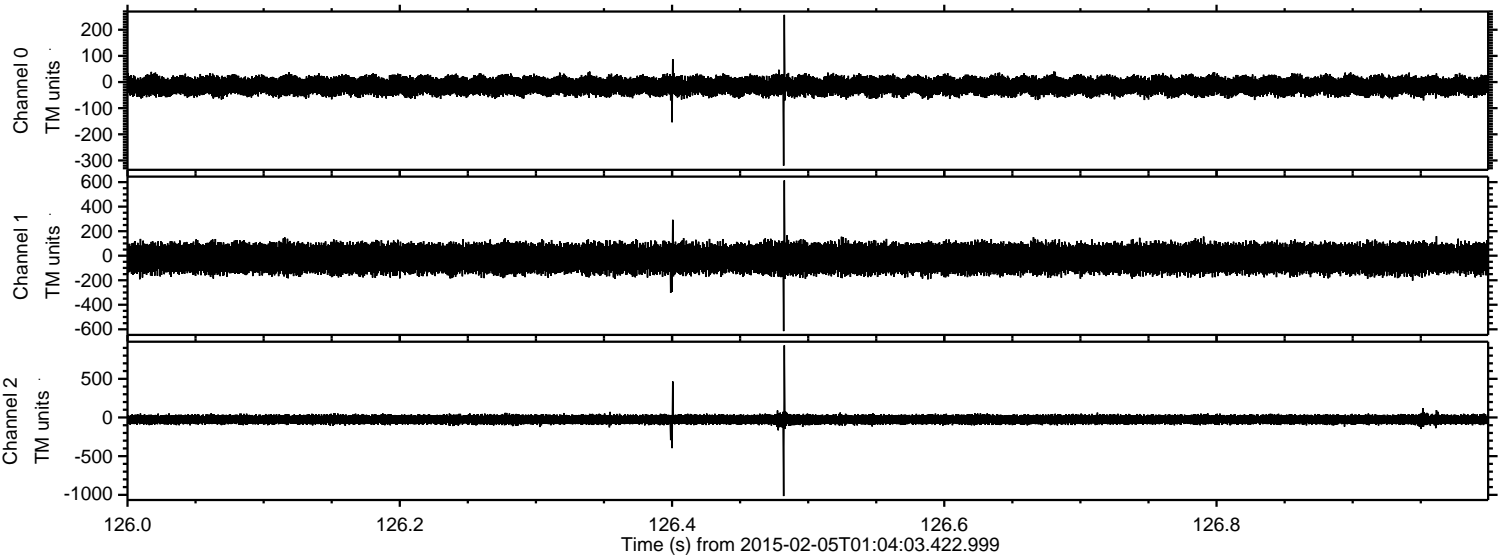


Processed Wed Feb 18 03:05:48 2015 by ELM ver.2012-10-06 from 001__elm20150205_010402__dat00.bin



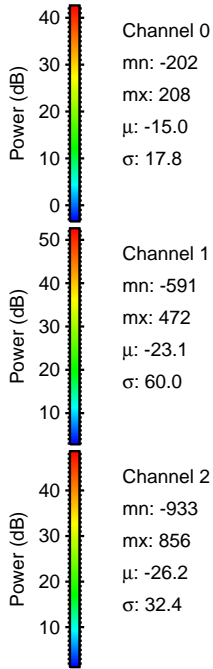
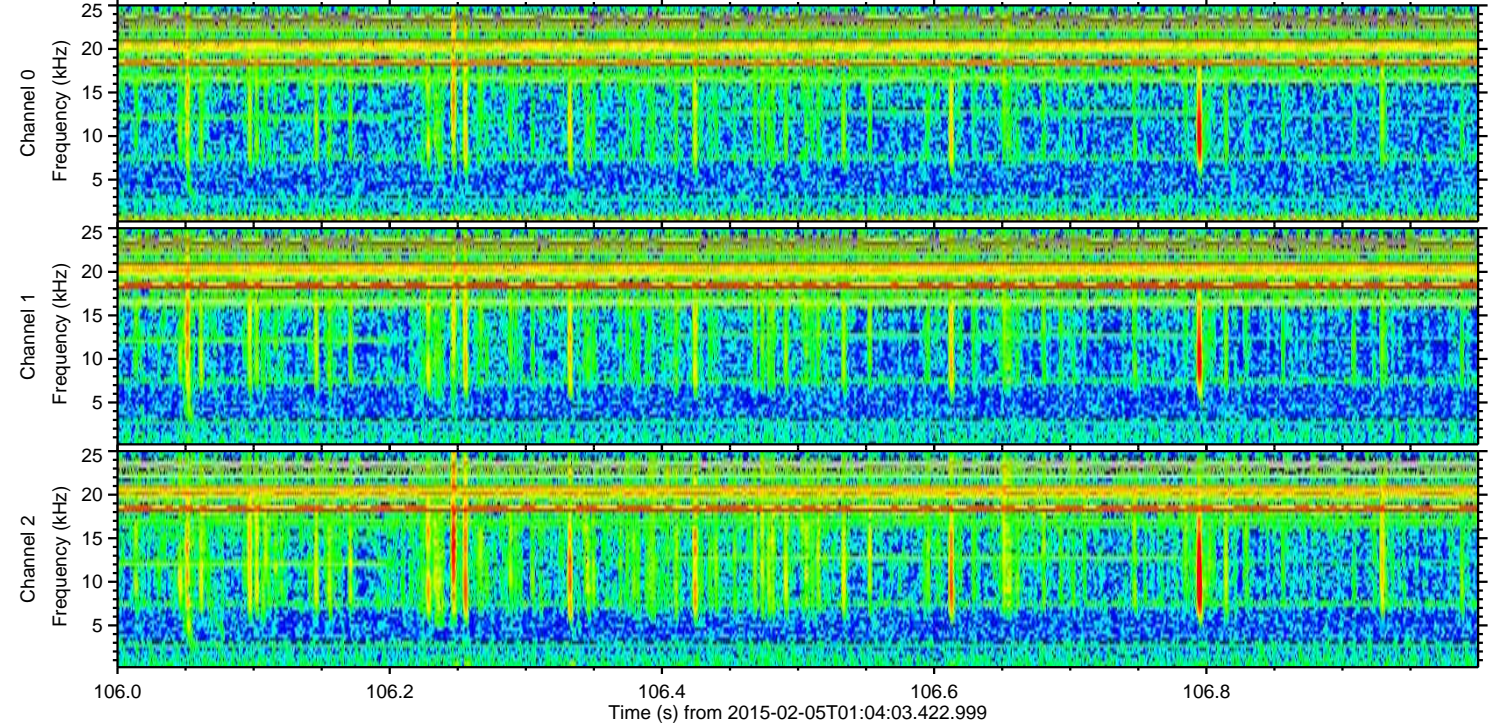
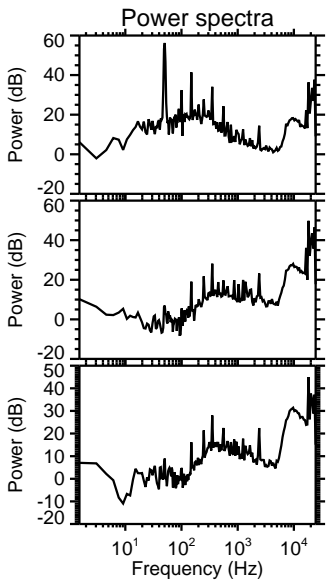
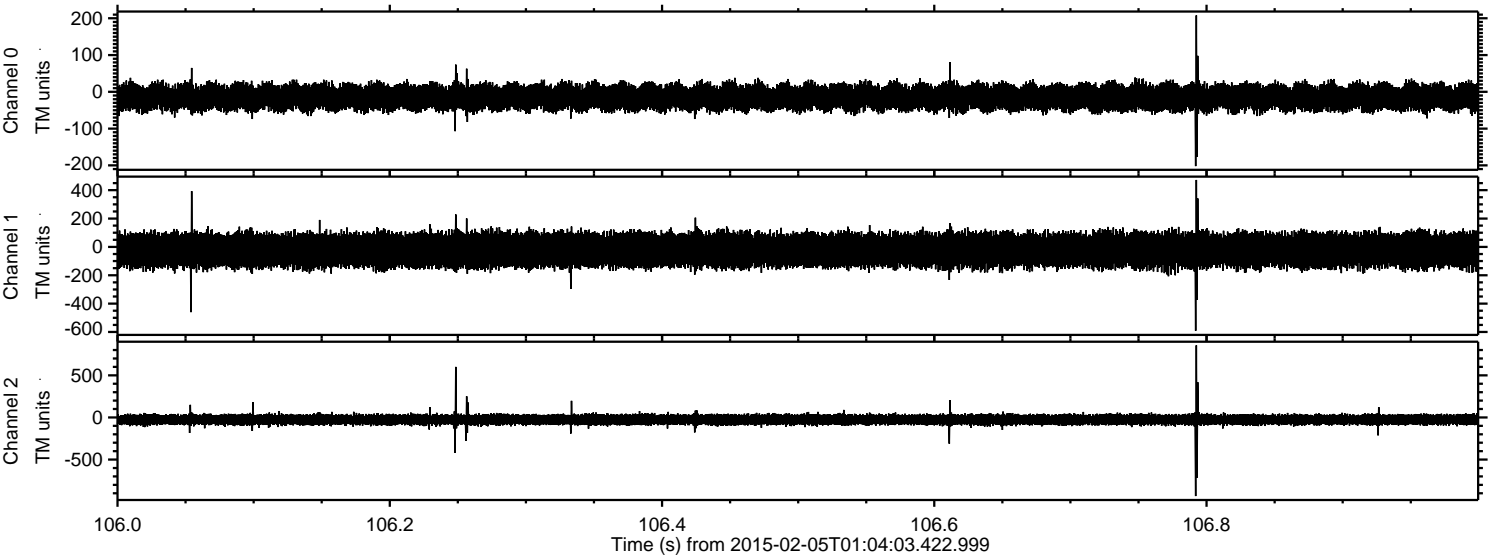
ELMAVAN 3D WAVEFORMS (Measured data sampled at 50 kHz) 49808 packets of 144 samples from 2015-02-05T01:04:03.422.999. Part 127/144

Processed Wed Feb 18 03:05:49 2015 by ELM ver.2012-10-06 from 001__elm20150205_010402__dat00.bin



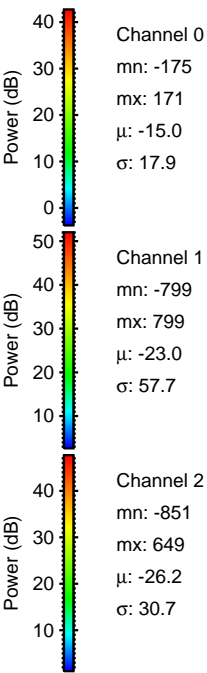
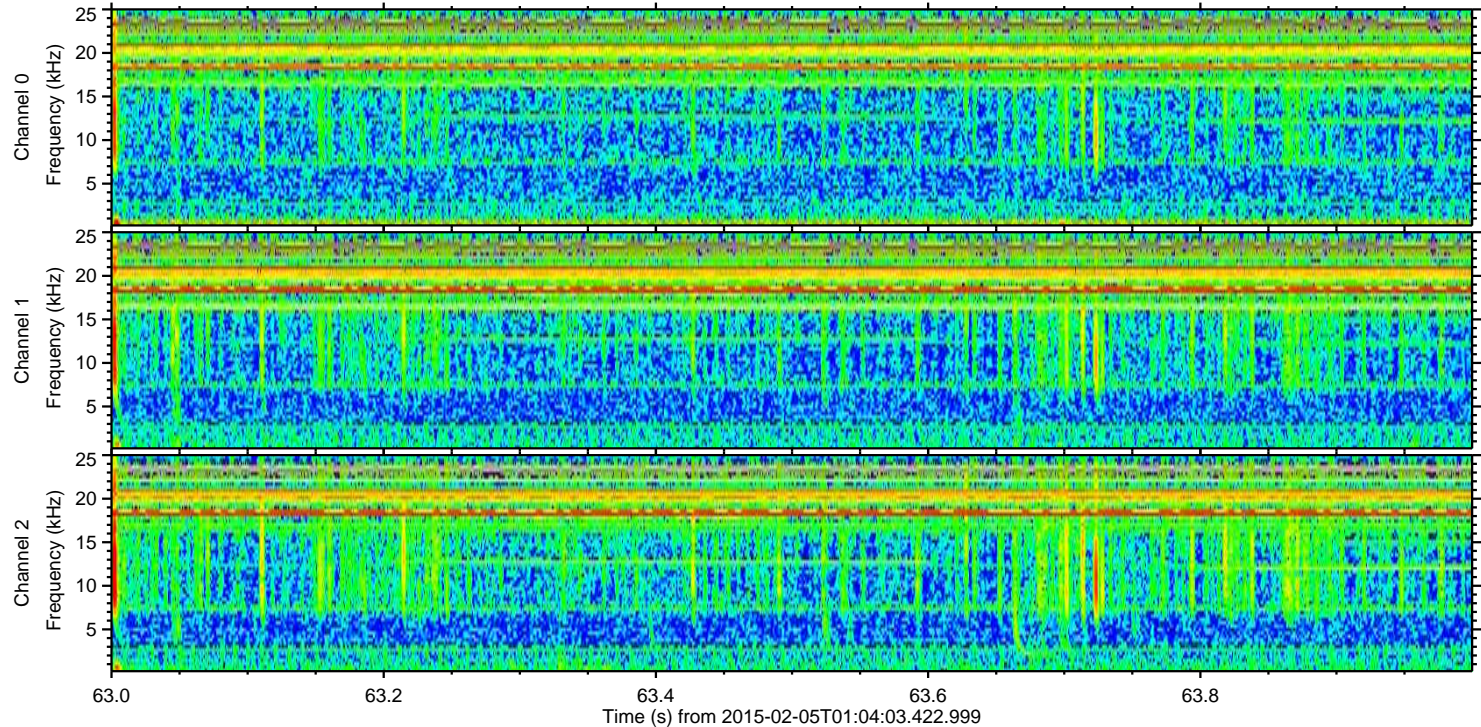
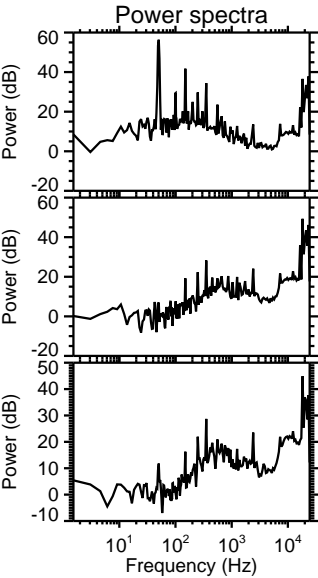
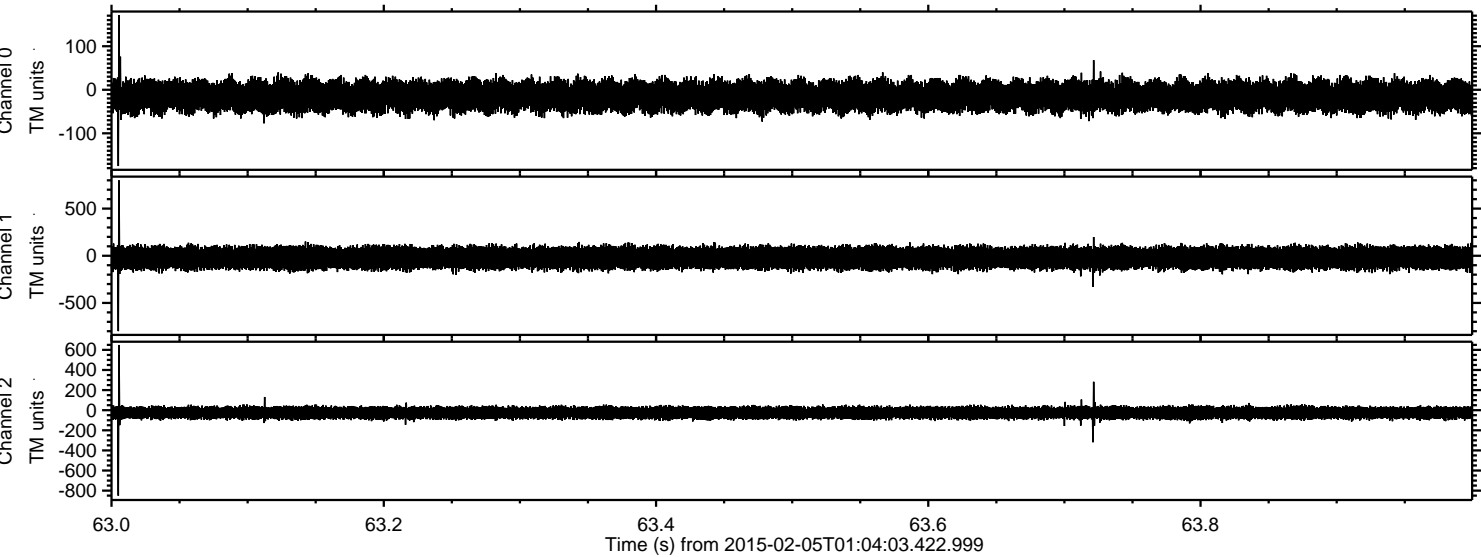
ELMAVAN 3D WAVEFORMS (Measured data sampled at 50 kHz) 49808 packets of 144 samples from 2015-02-05T01:04:03.422.999. Part 107/144

Processed Wed Feb 18 03:05:50 2015 by ELM ver.2012-10-06 from 001__elm20150205_010402__dat00.bin

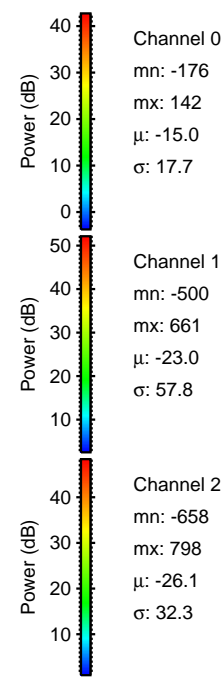
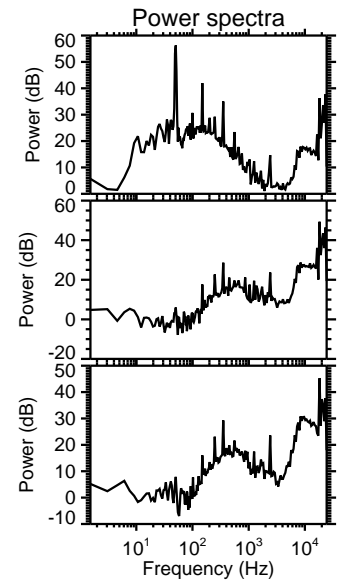
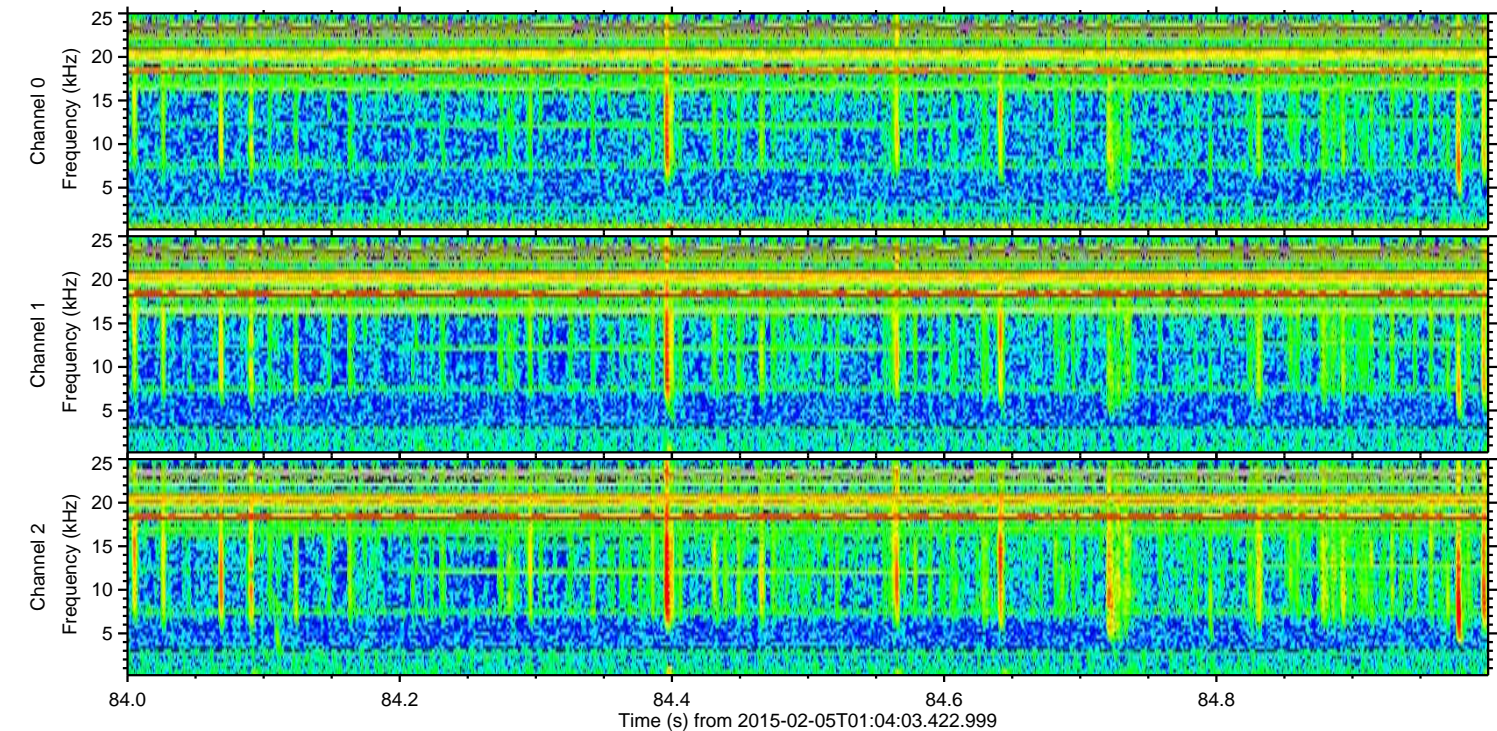
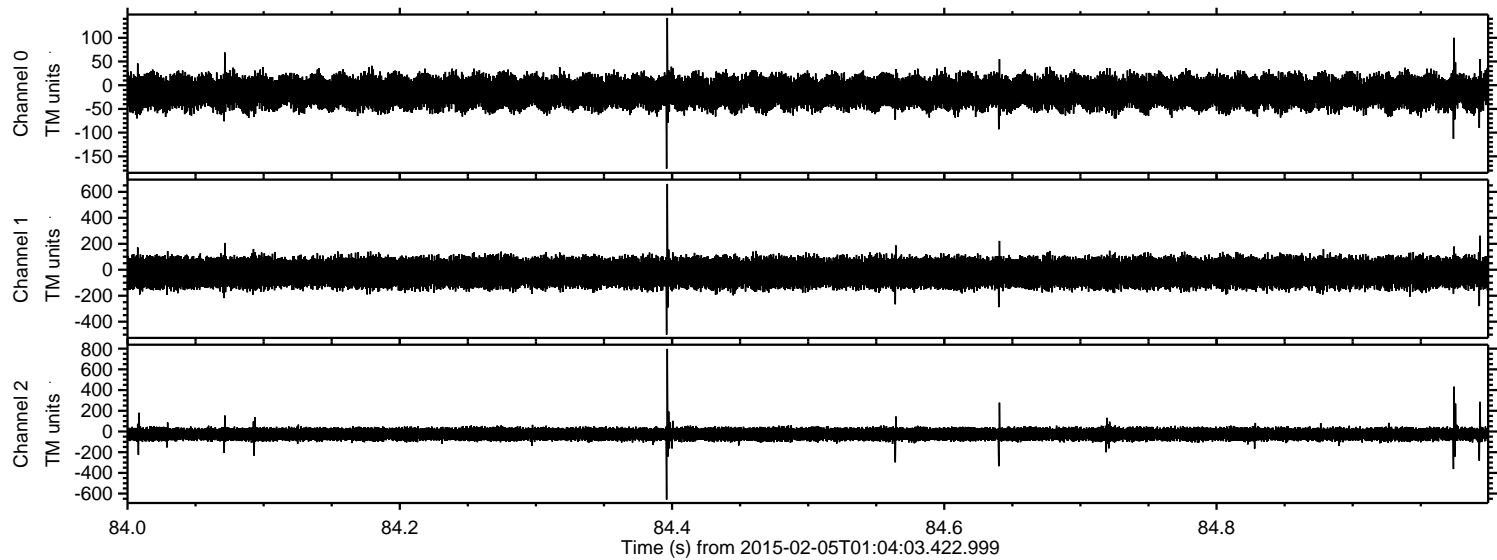


ELMAVAN 3D WAVEFORMS (Measured data sampled at 50 kHz) 49808 packets of 144 samples from 2015-02-05T01:04:03.422.999. Part 64/144

Processed Wed Feb 18 03:05:52 2015 by ELM ver.2012-10-06 from 001__elm20150205_010402__dat00.bin



Processed Wed Feb 18 03:05:54 2015 by ELM ver.2012-10-06 from 001__elm20150205_010402__dat00.bin

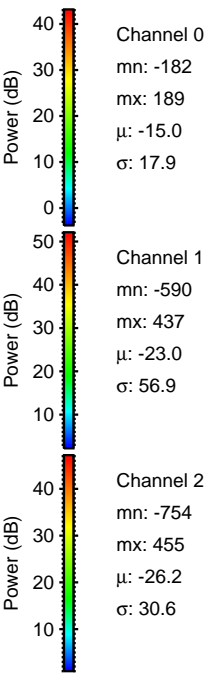
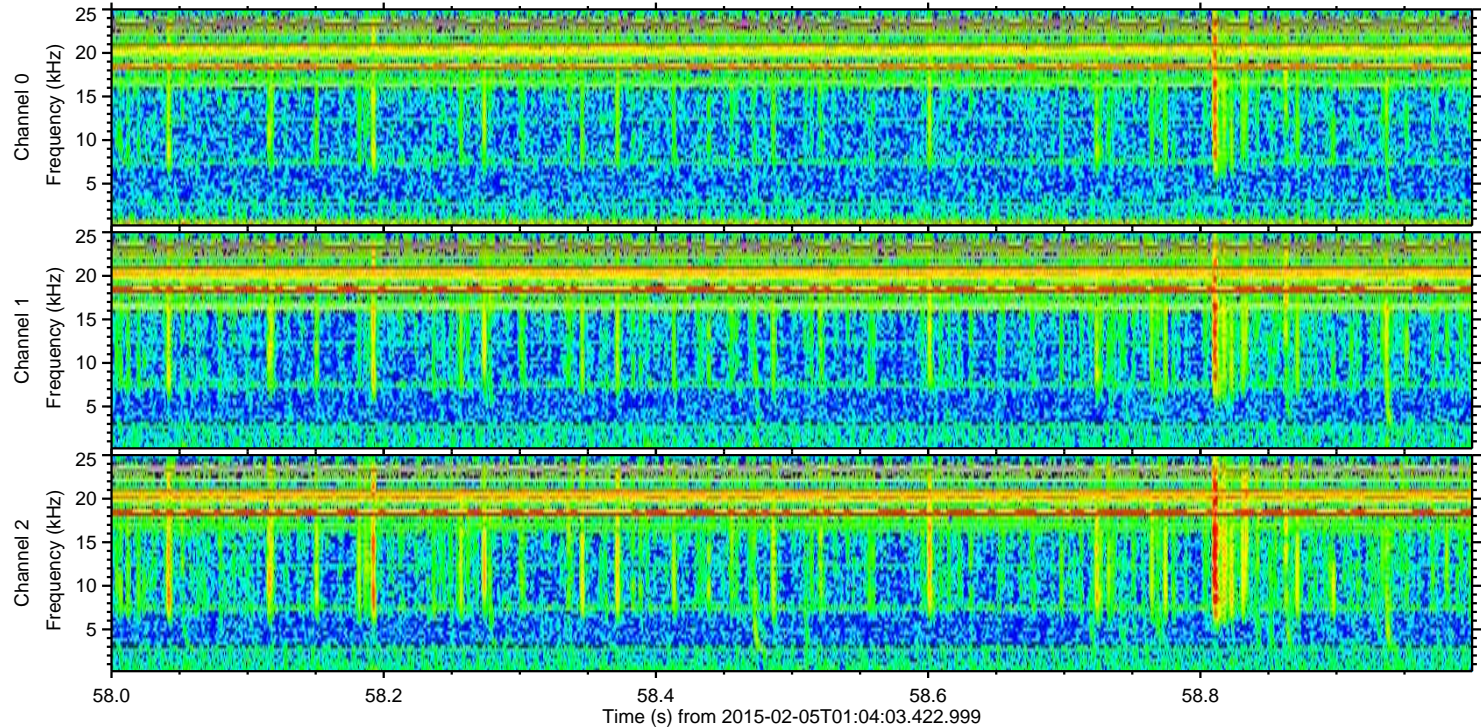
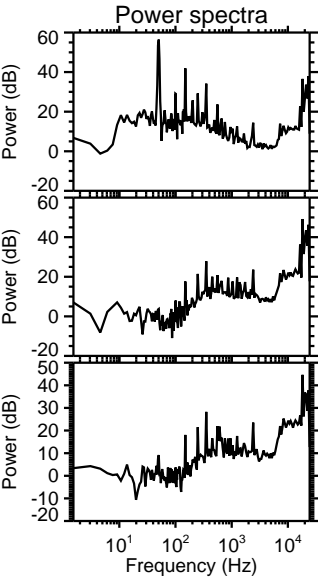
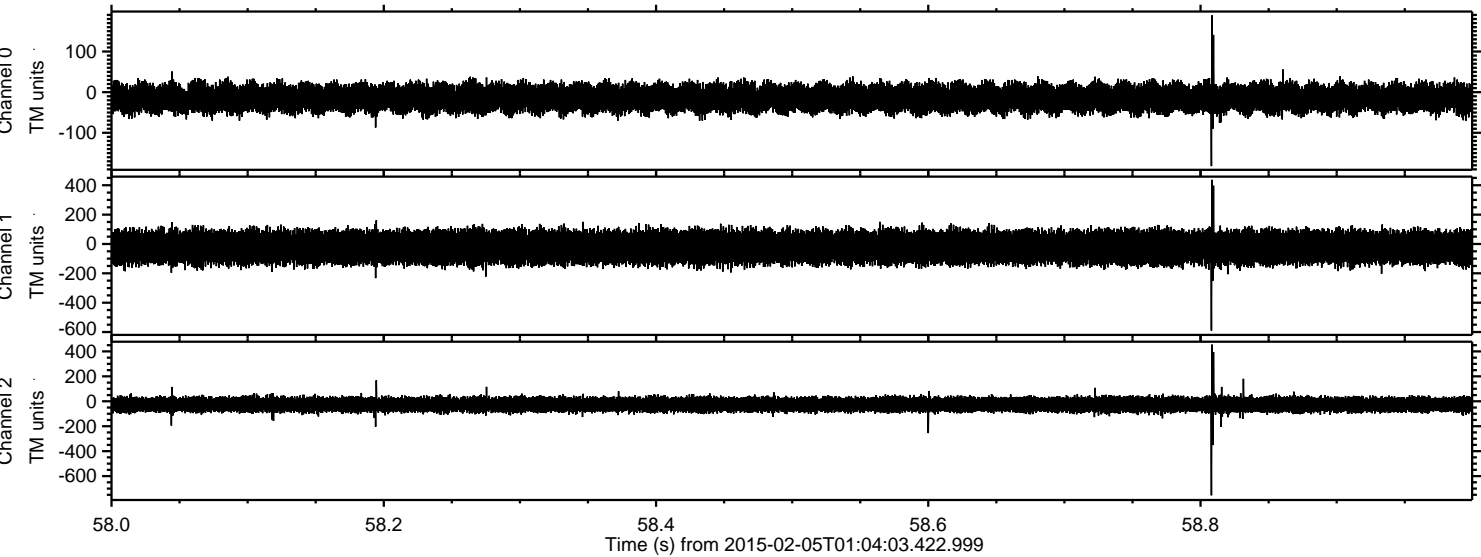


Channel 0
mn: -176
mx: 142
 μ : -15.0
 σ : 17.7

Channel 1
mn: -500
mx: 661
 μ : -23.0
 σ : 57.8

Channel 2
mn: -658
mx: 798
 μ : -26.1
 σ : 32.3

Processed Wed Feb 18 03:05:55 2015 by ELM ver.2012-10-06 from 001__elm20150205_010402__dat00.bin



Processed Wed Feb 18 03:05:57 2015 by ELM ver.2012-10-06 from 001__elm20150205_010402__dat00.bin

