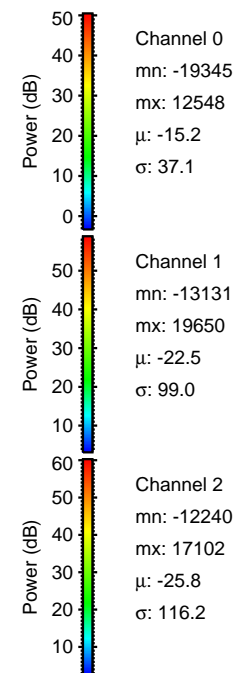
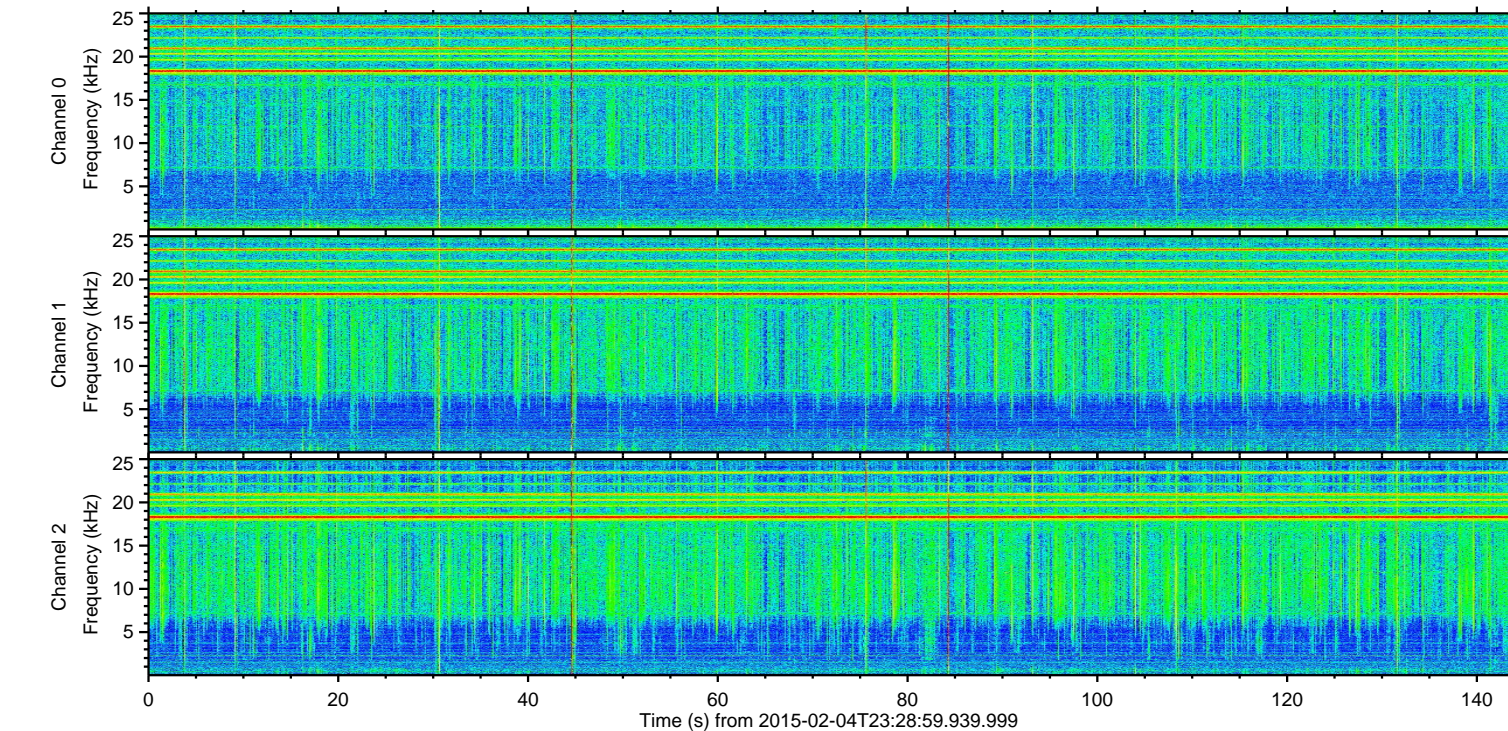
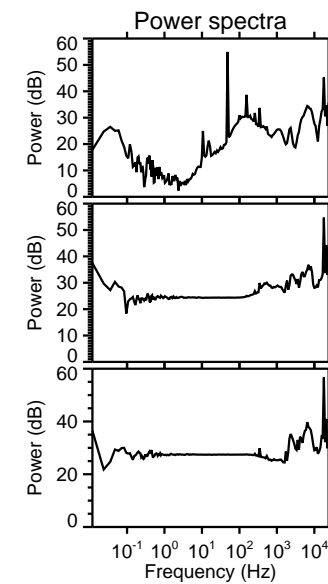
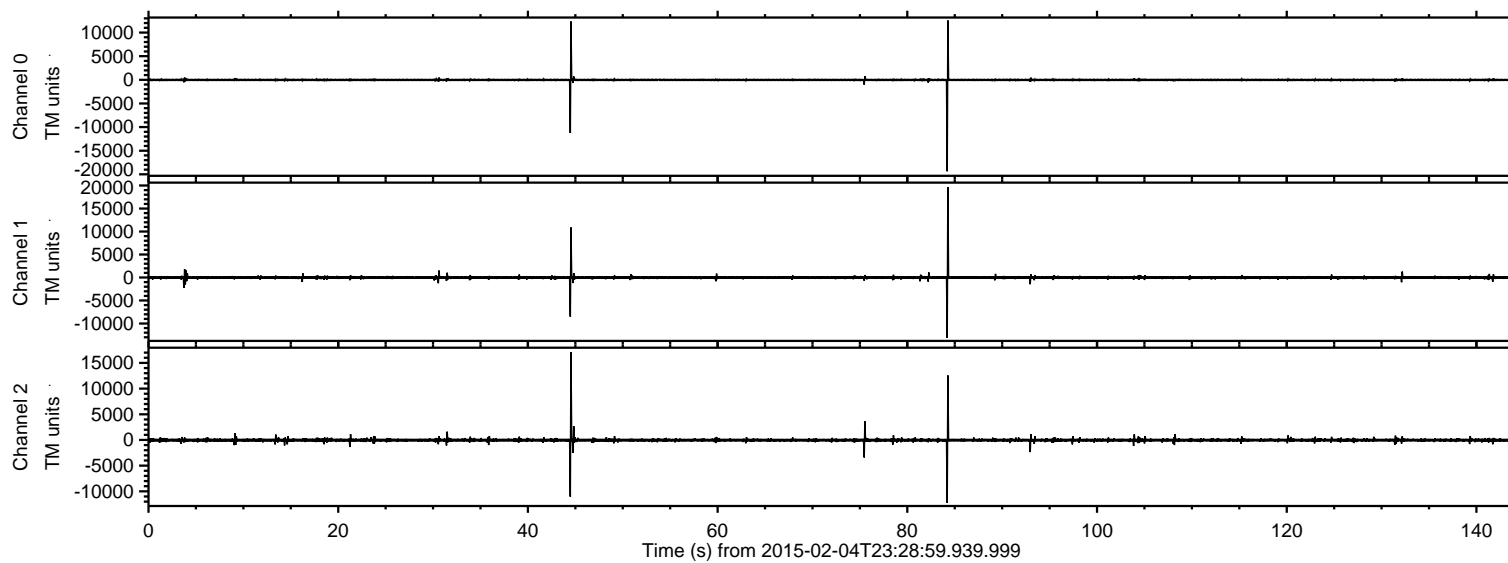
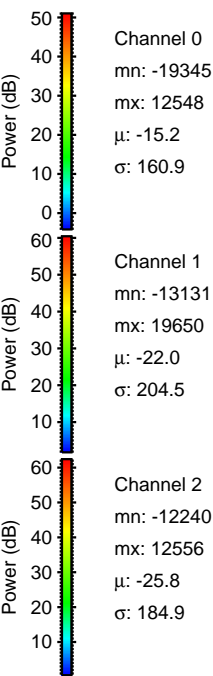
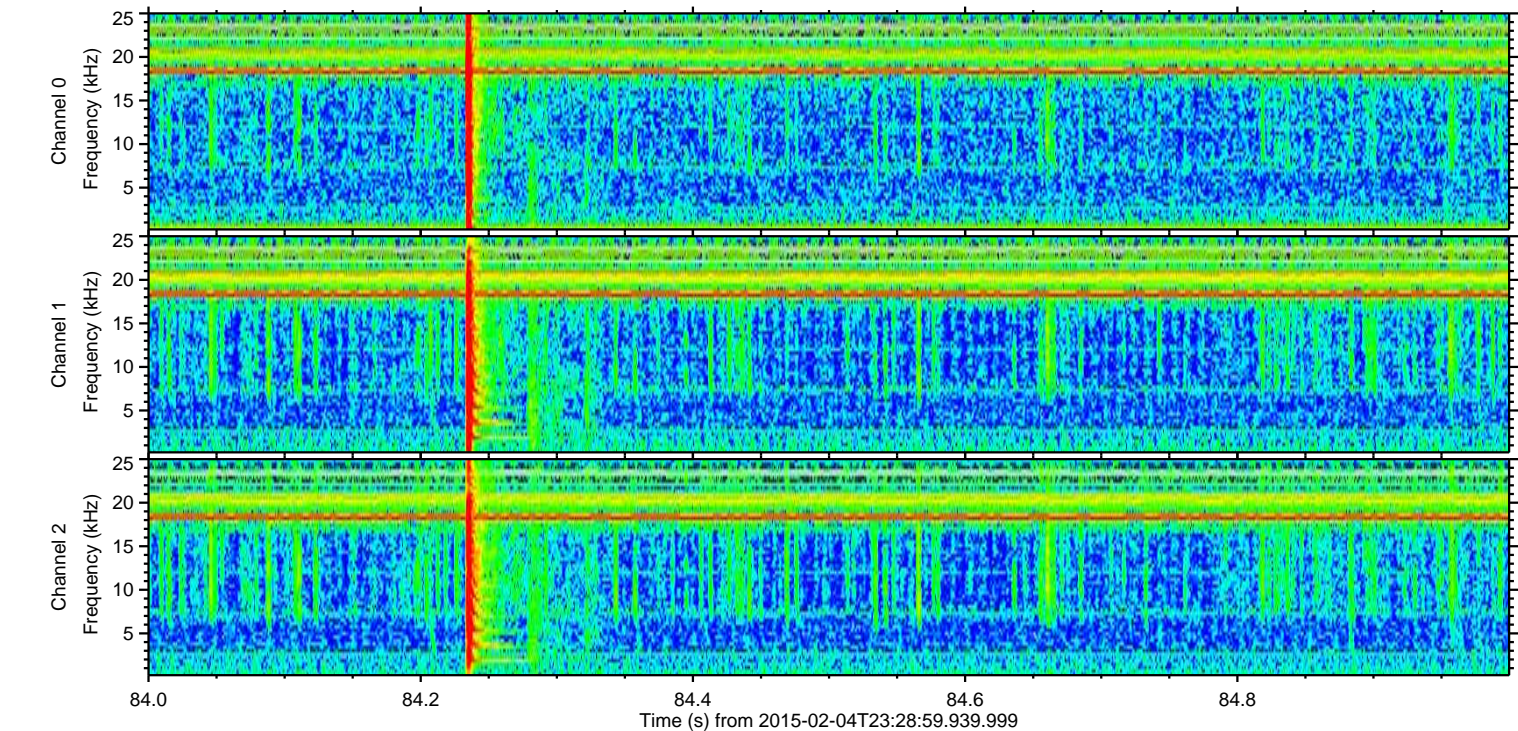
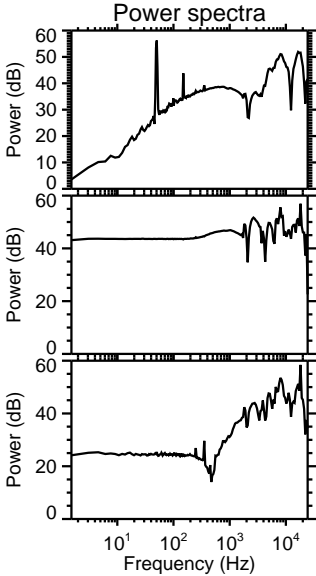
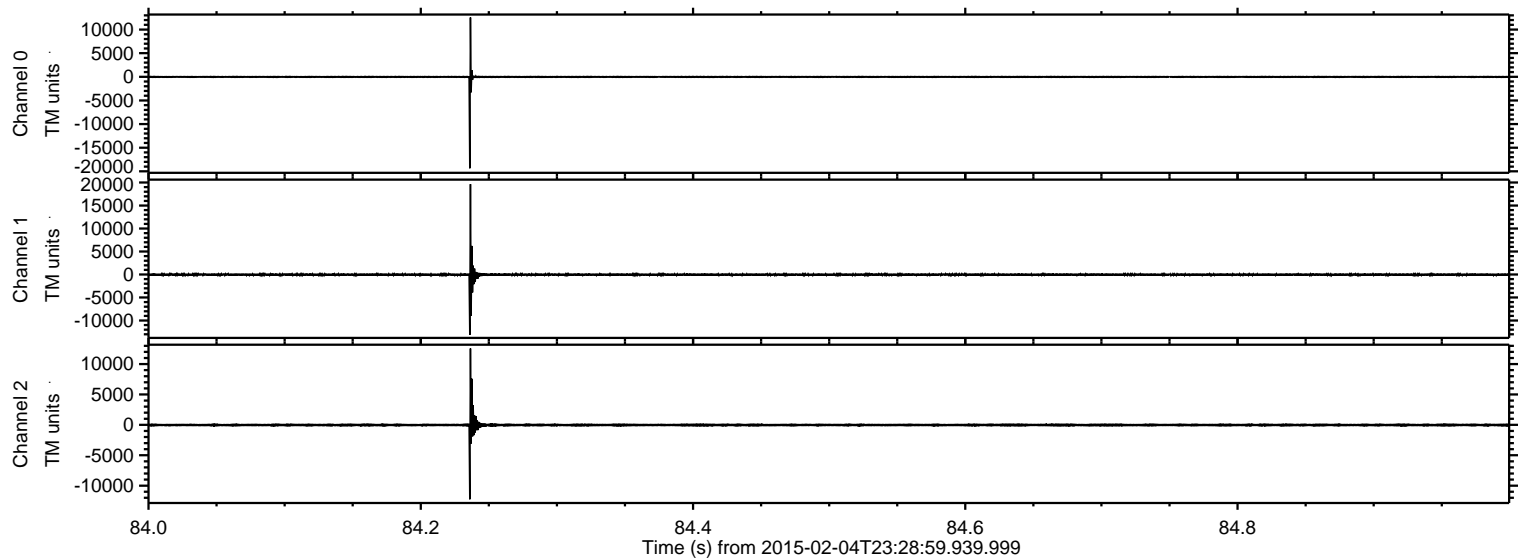


ELMAVAN 3D WAVEFORMS (Measured data sampled at 50 kHz) 49809 packets of 144 samples from 2015-02-04T23:28:59.939.999.

Processed Wed Feb 18 02:33:14 2015 by ELM ver.2012-10-06 from 001__elm20150204_232858__dat00.bin

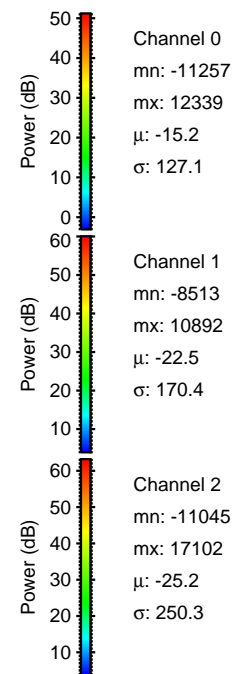
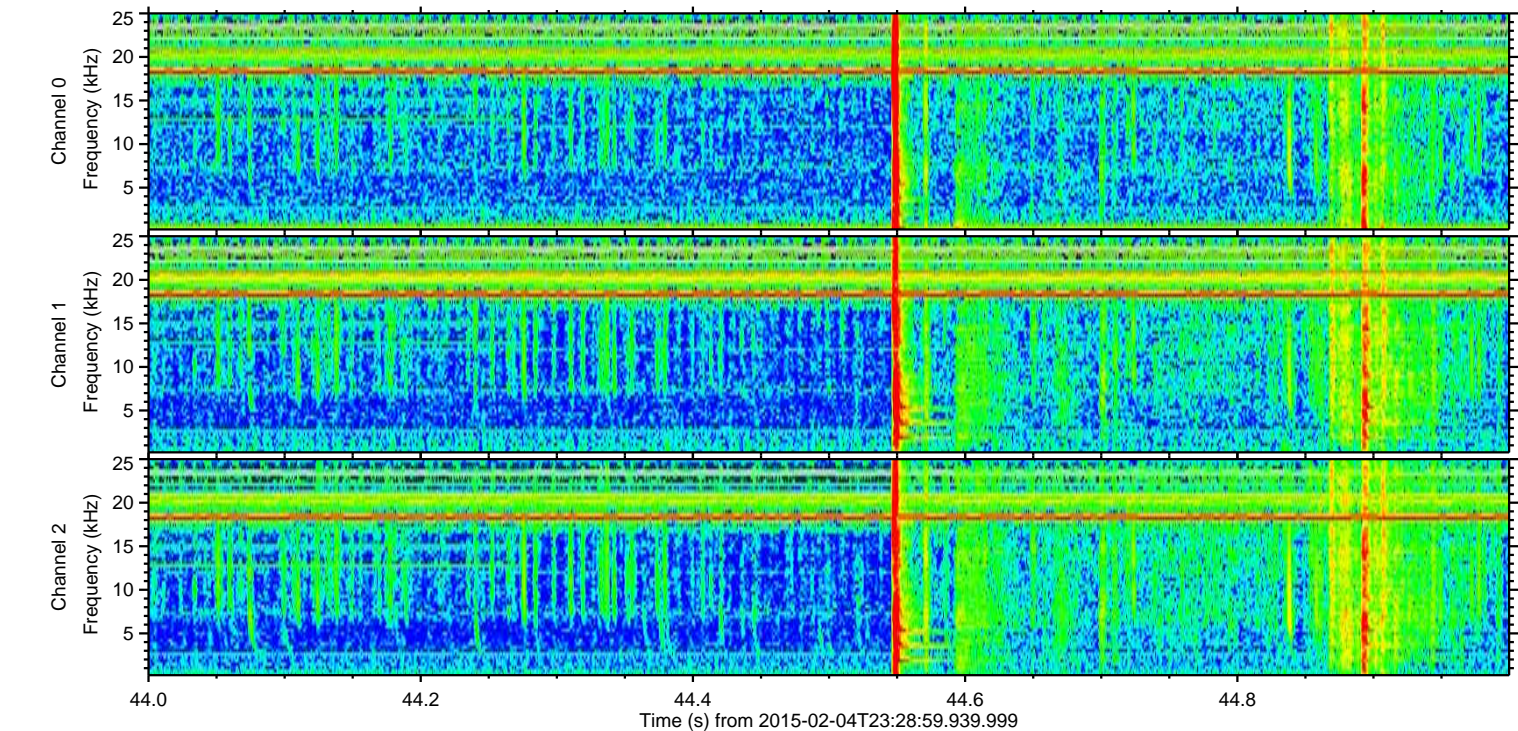
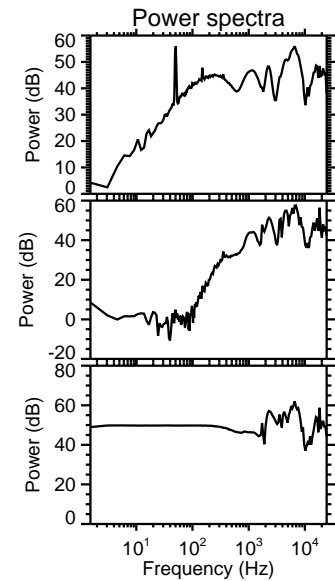
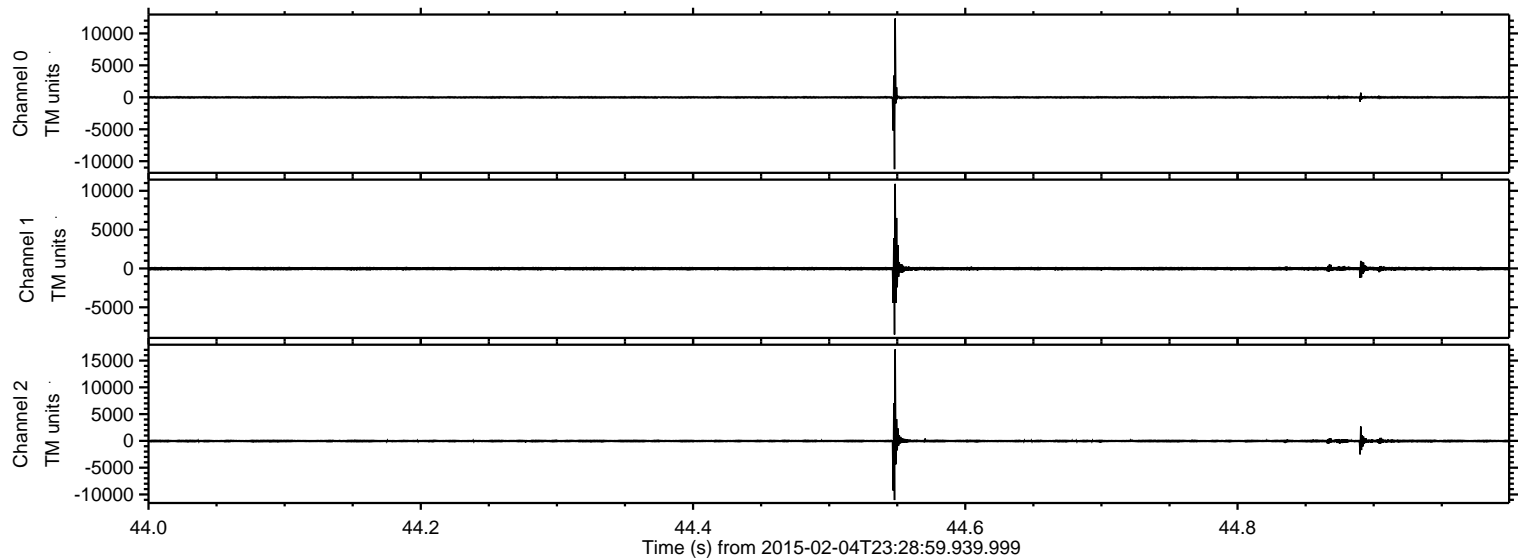


Processed Wed Feb 18 02:33:30 2015 by ELM ver.2012-10-06 from 001__elm20150204_232858__dat00.bin



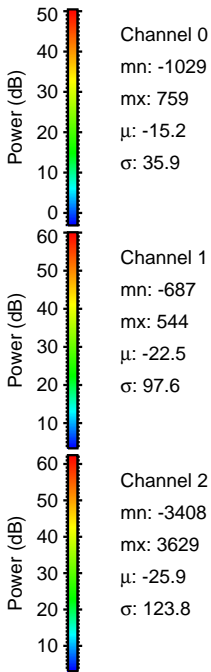
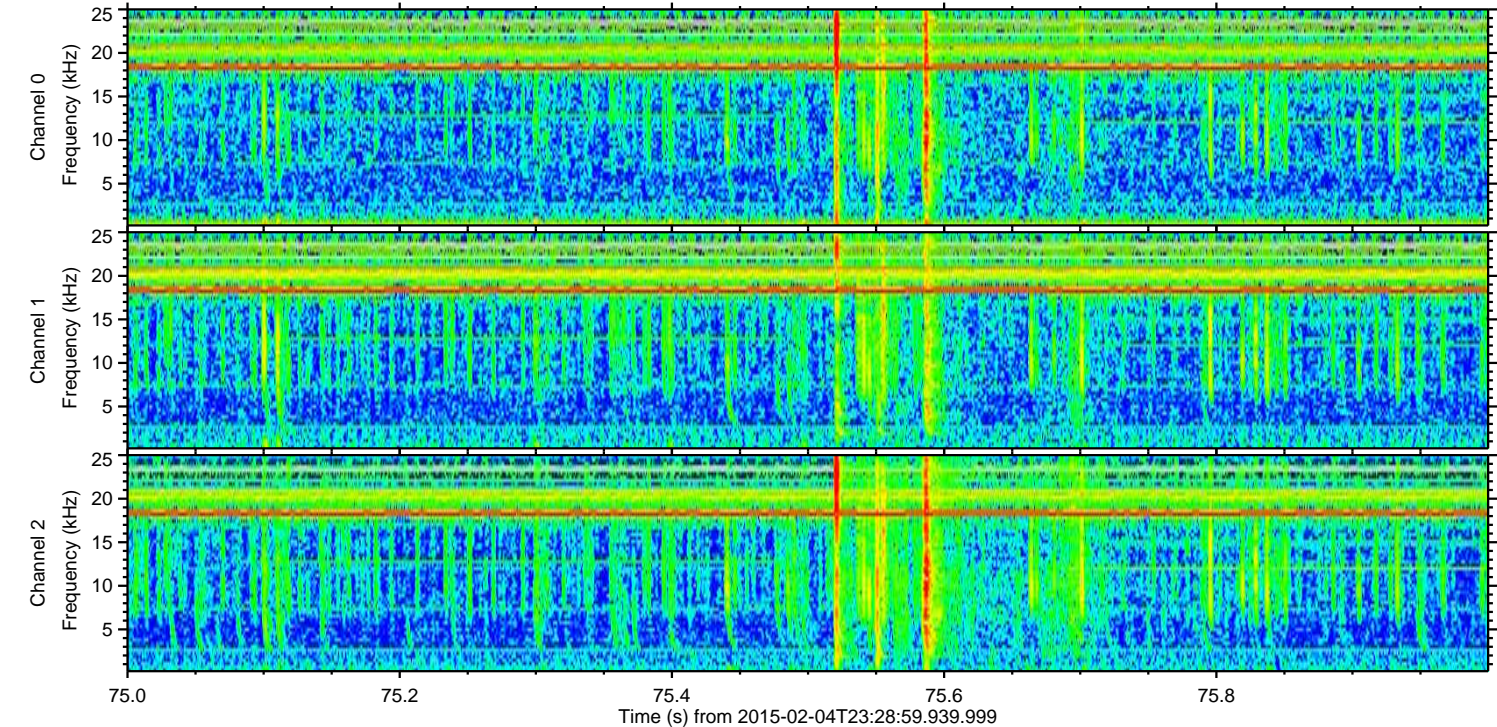
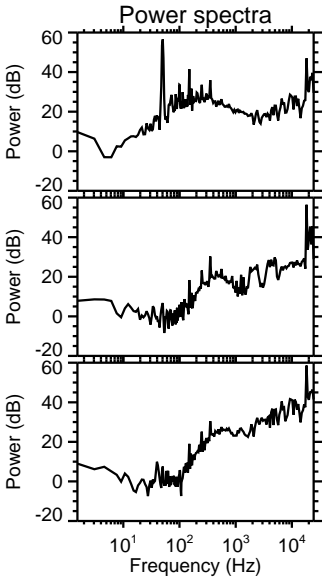
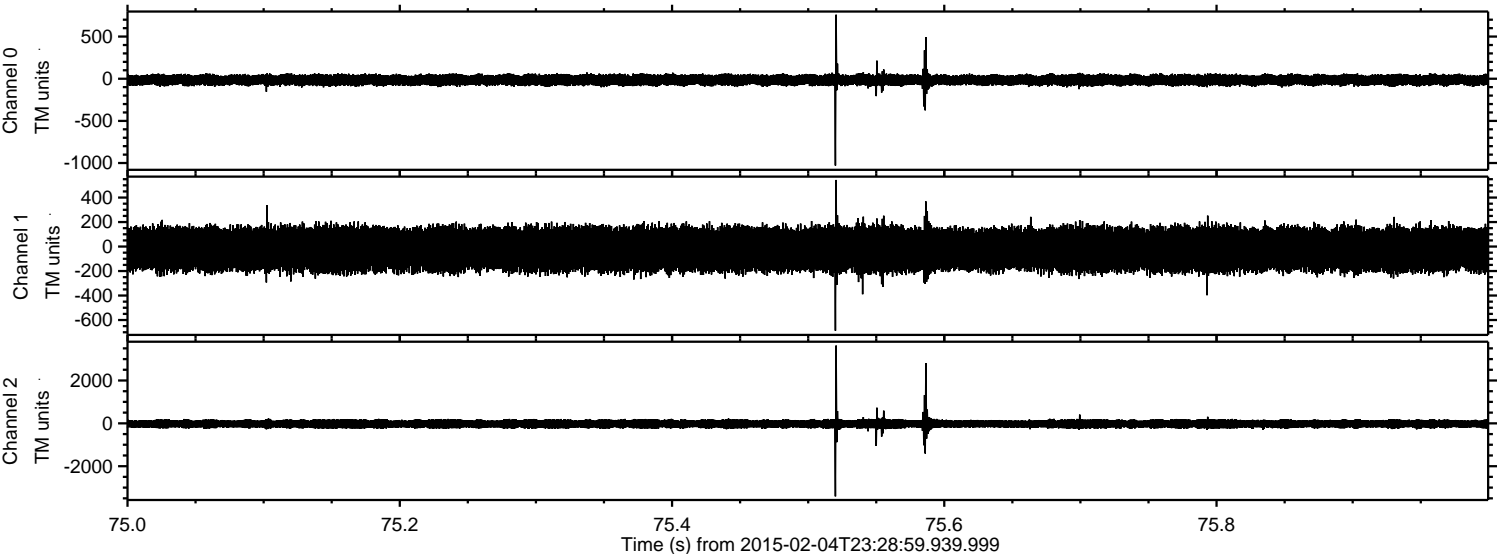
ELMAVAN 3D WAVEFORMS (Measured data sampled at 50 kHz) 49809 packets of 144 samples from 2015-02-04T23:28:59.939.999. Part 45/144

Processed Wed Feb 18 02:33:32 2015 by ELM ver.2012-10-06 from 001__elm20150204_232858__dat00.bin

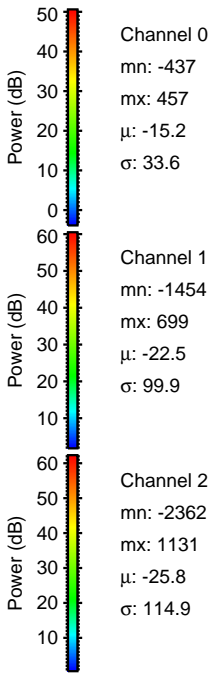
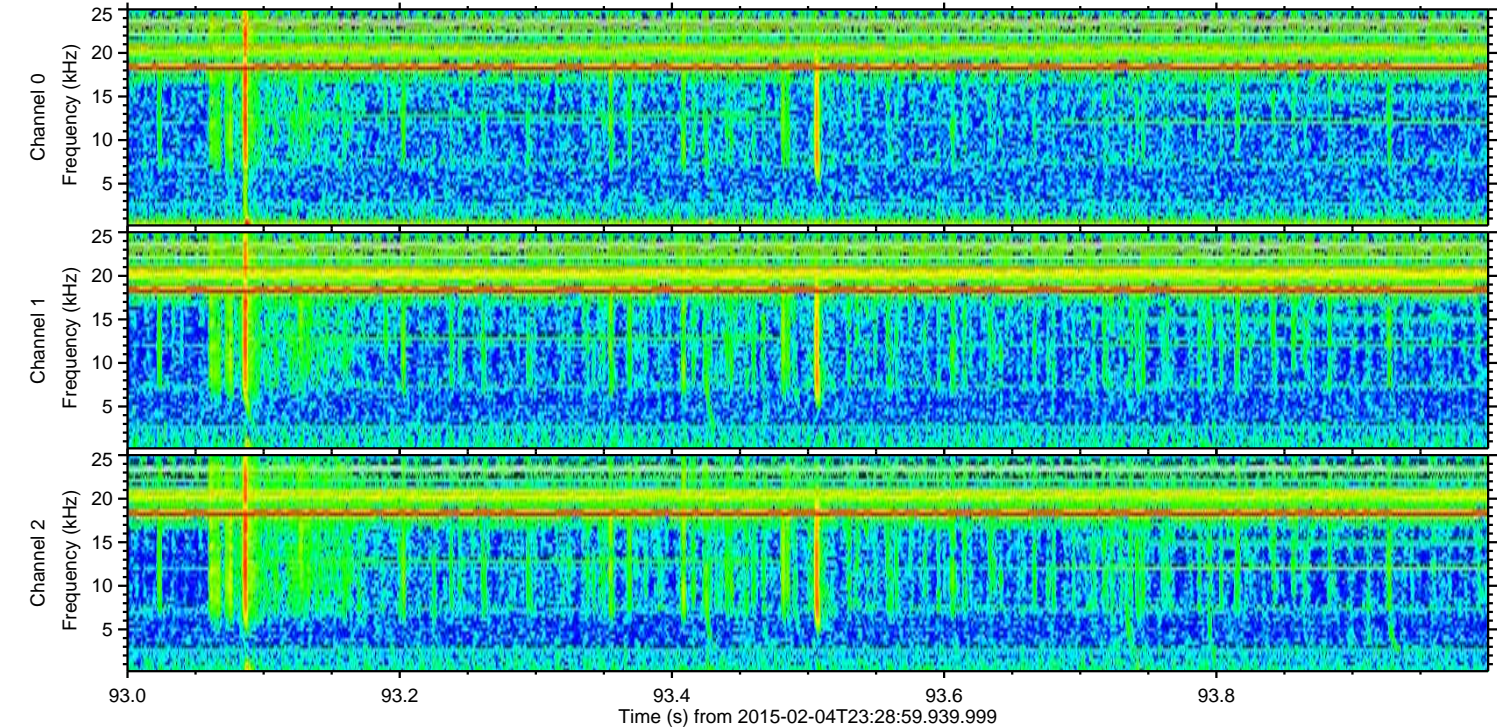
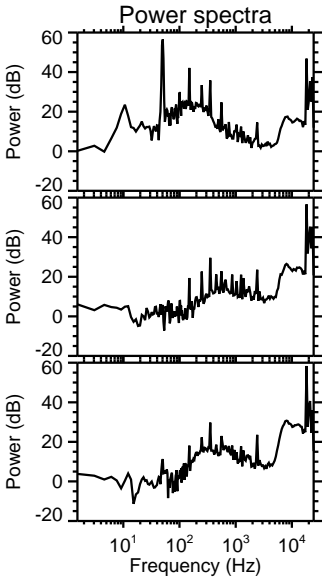
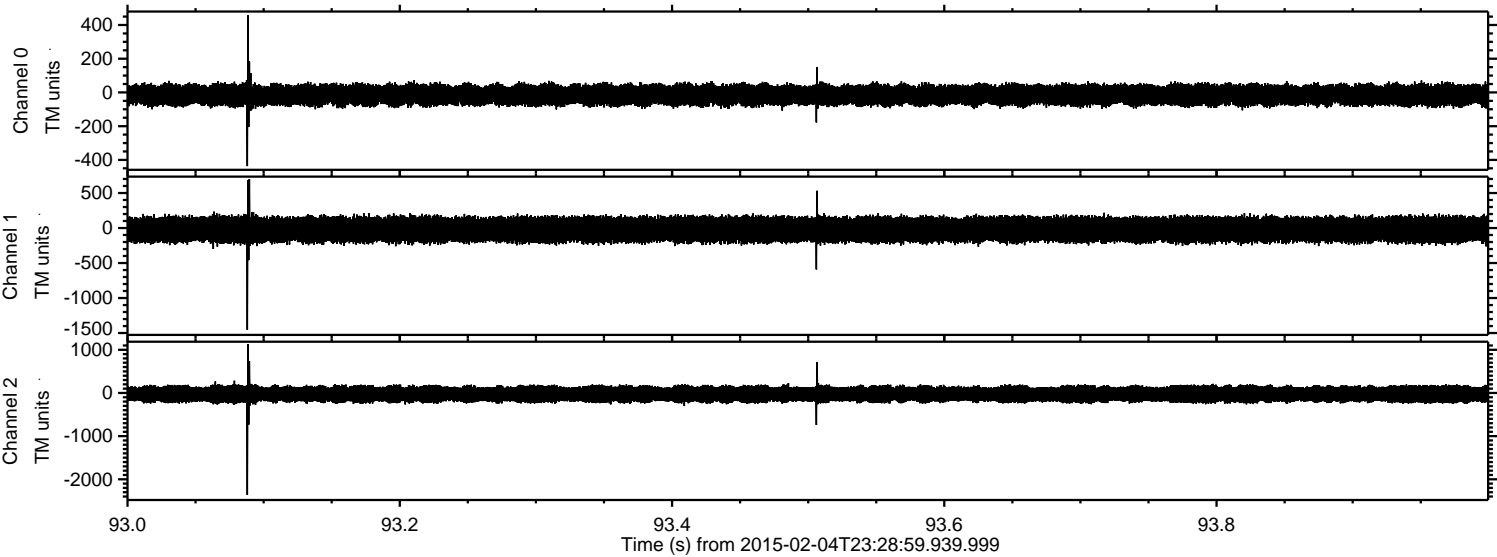


ELMAVAN 3D WAVEFORMS (Measured data sampled at 50 kHz) 49809 packets of 144 samples from 2015-02-04T23:28:59.939.999. Part 76/144

Processed Wed Feb 18 02:33:33 2015 by ELM ver.2012-10-06 from 001__elm20150204_232858__dat00.bin

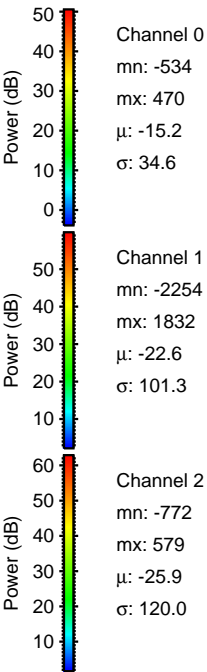
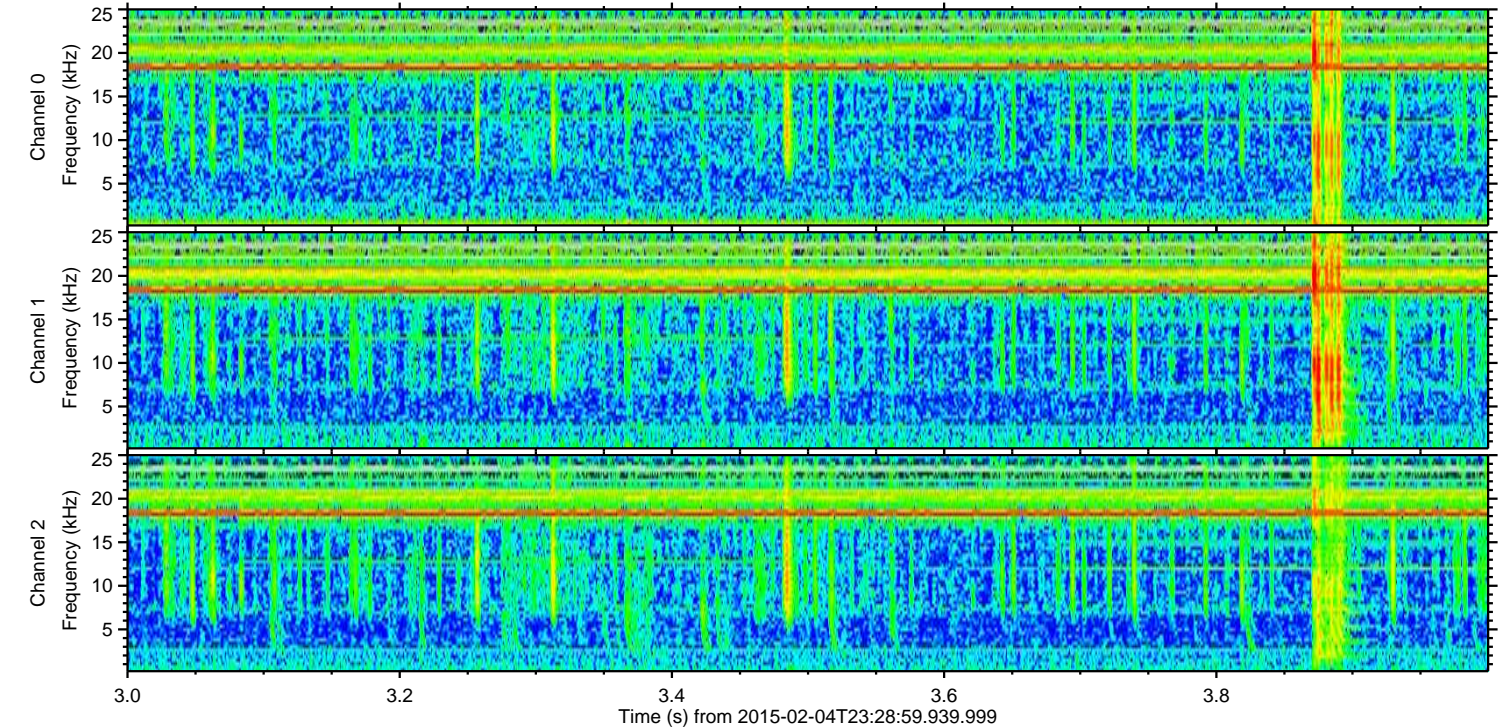
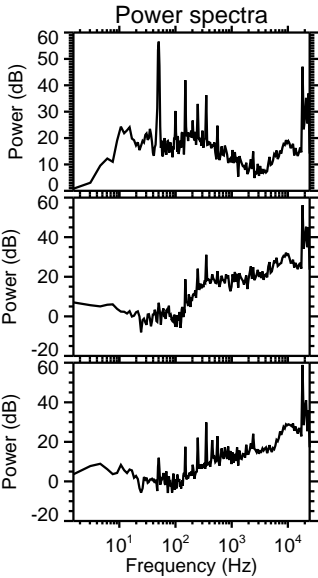
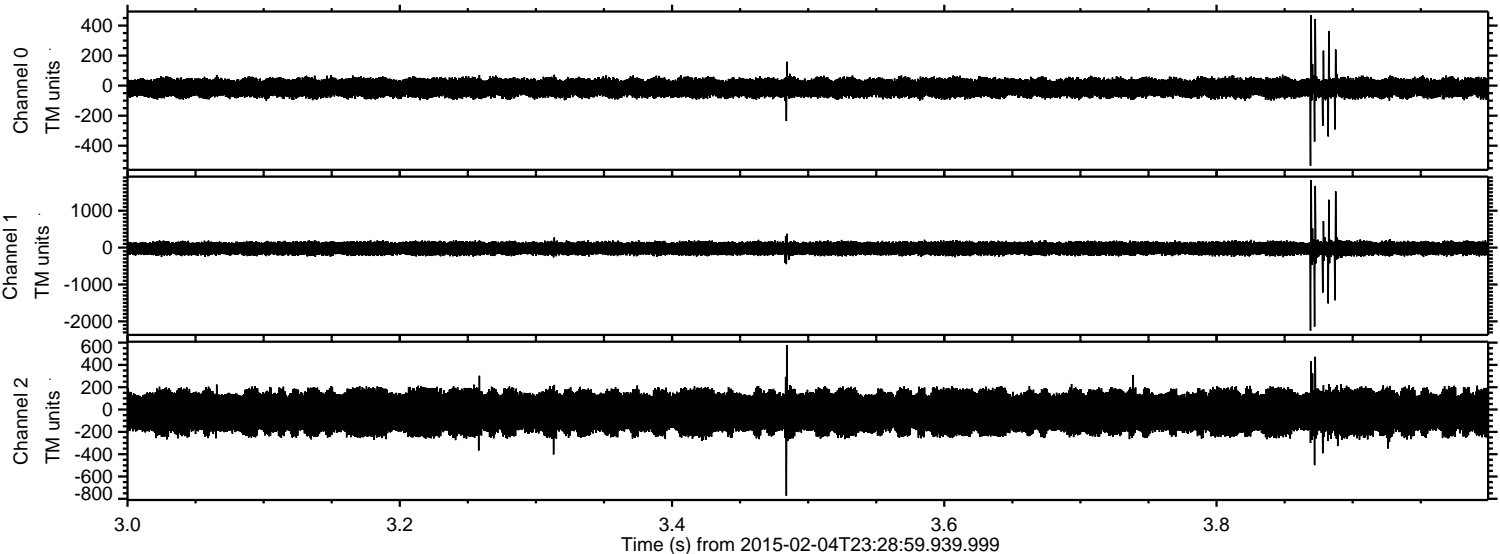


Processed Wed Feb 18 02:33:34 2015 by ELM ver.2012-10-06 from 001__elm20150204_232858__dat00.bin

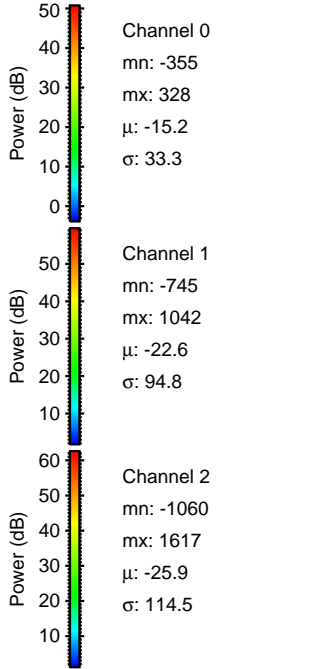
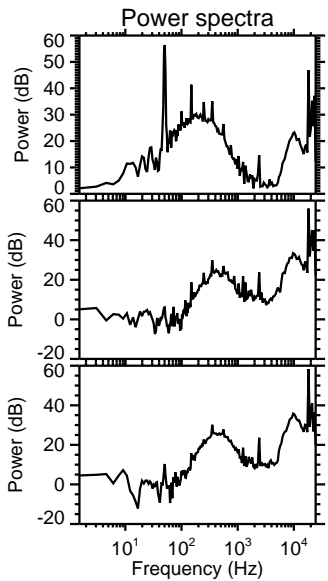
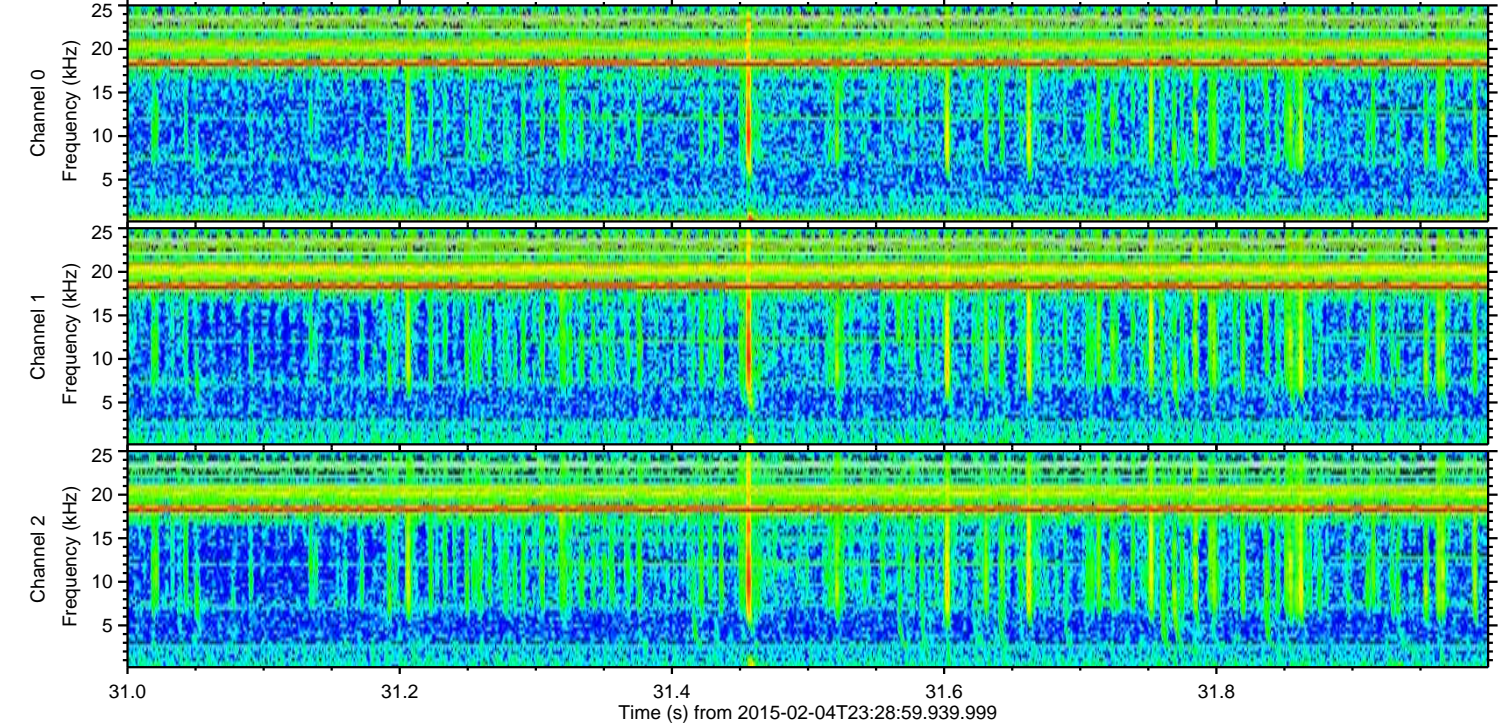
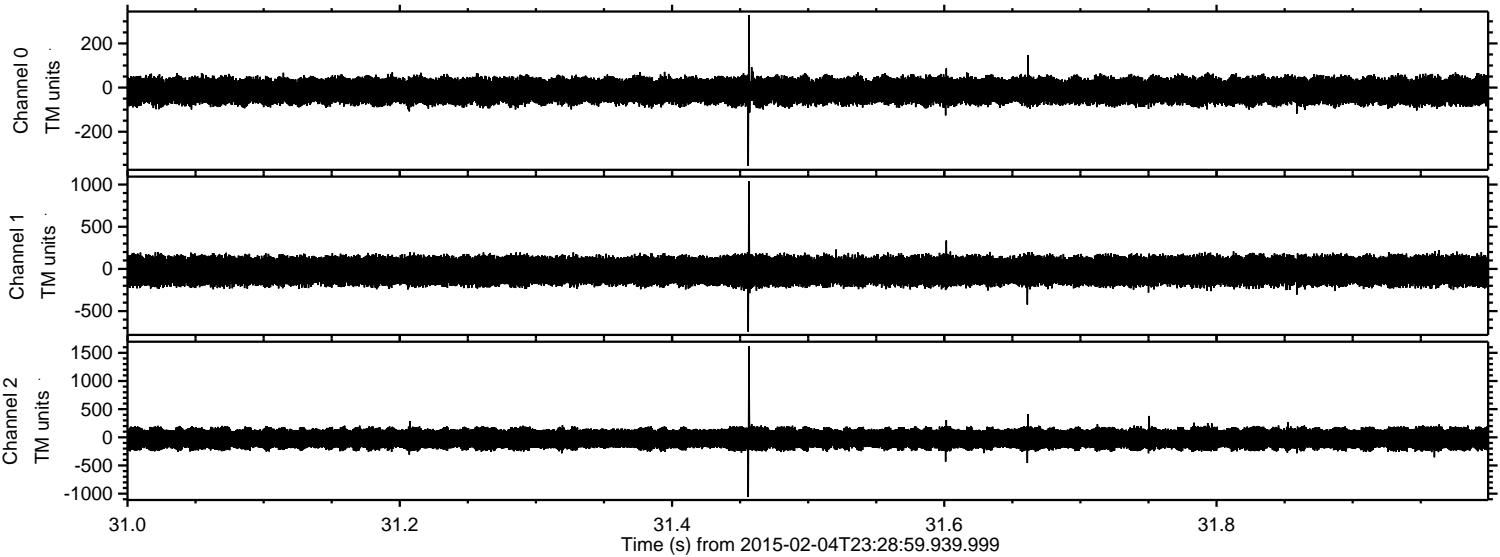


ELMAVAN 3D WAVEFORMS (Measured data sampled at 50 kHz) 49809 packets of 144 samples from 2015-02-04T23:28:59.939.999. Part 4/144

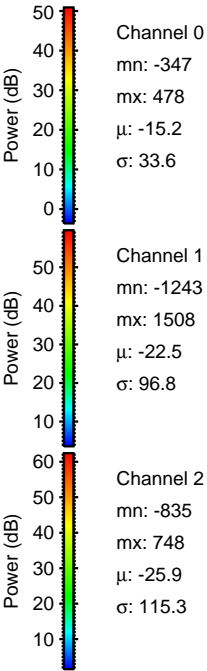
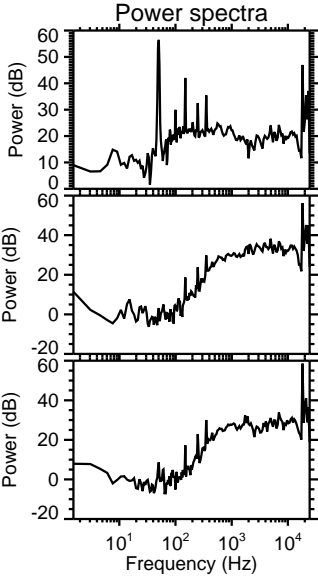
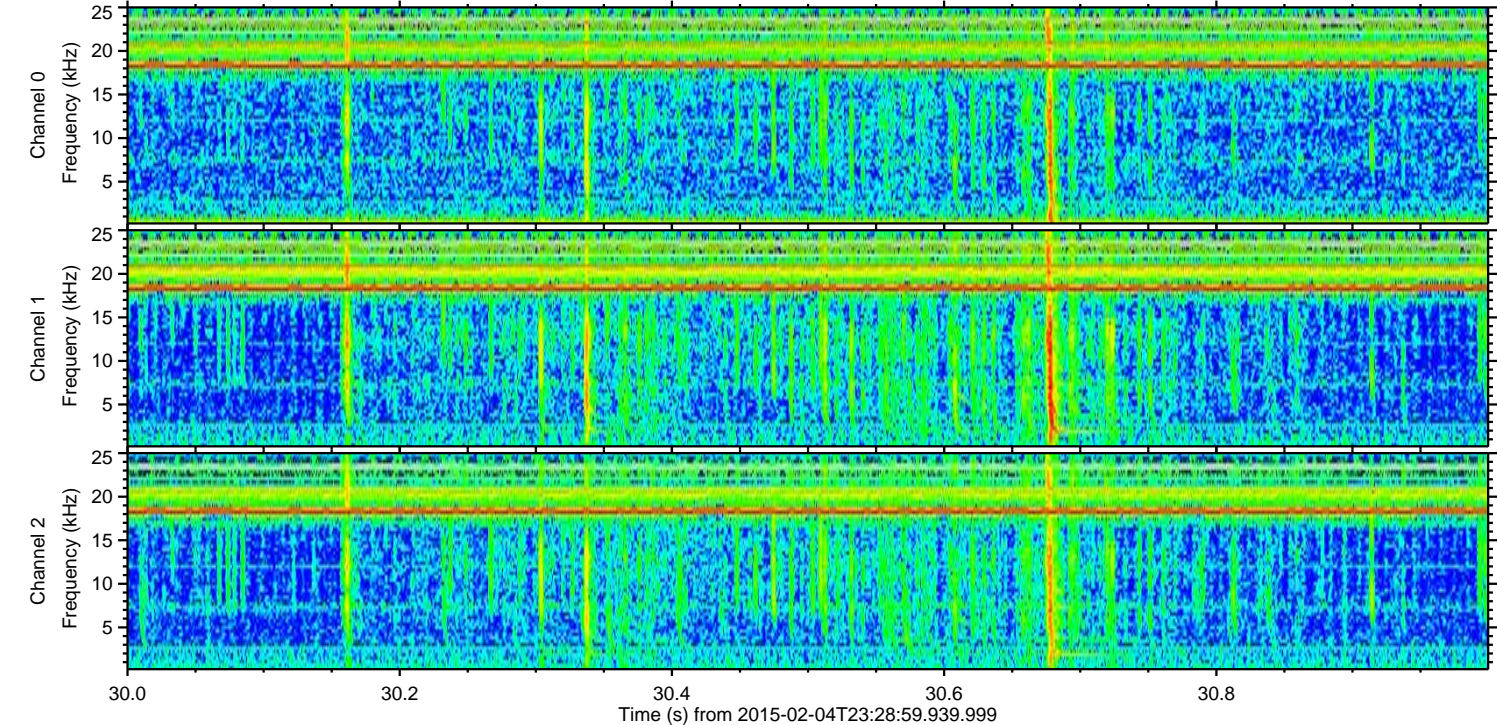
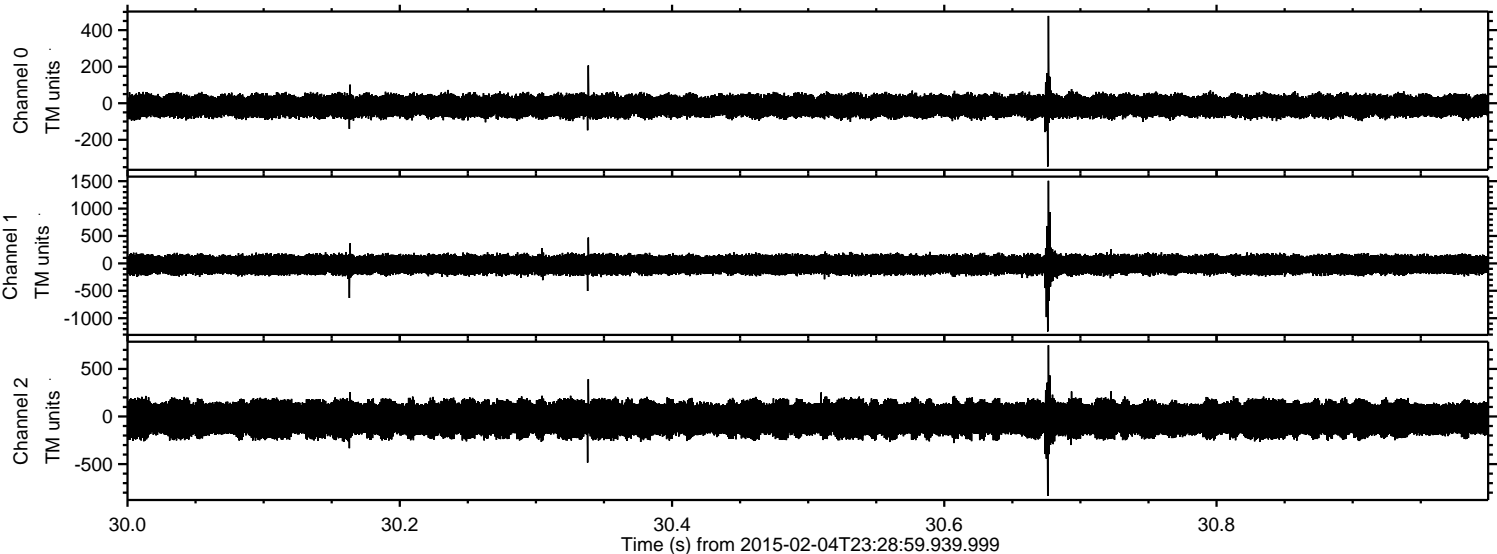
Processed Wed Feb 18 02:33:35 2015 by ELM ver.2012-10-06 from 001__elm20150204_232858__dat00.bin



Processed Wed Feb 18 02:33:38 2015 by ELM ver.2012-10-06 from 001__elm20150204_232858__dat00.bin



Processed Wed Feb 18 02:33:39 2015 by ELM ver.2012-10-06 from 001__elm20150204_232858__dat00.bin

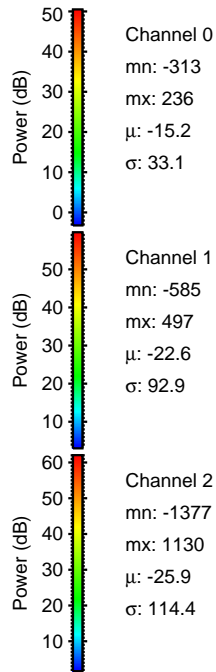
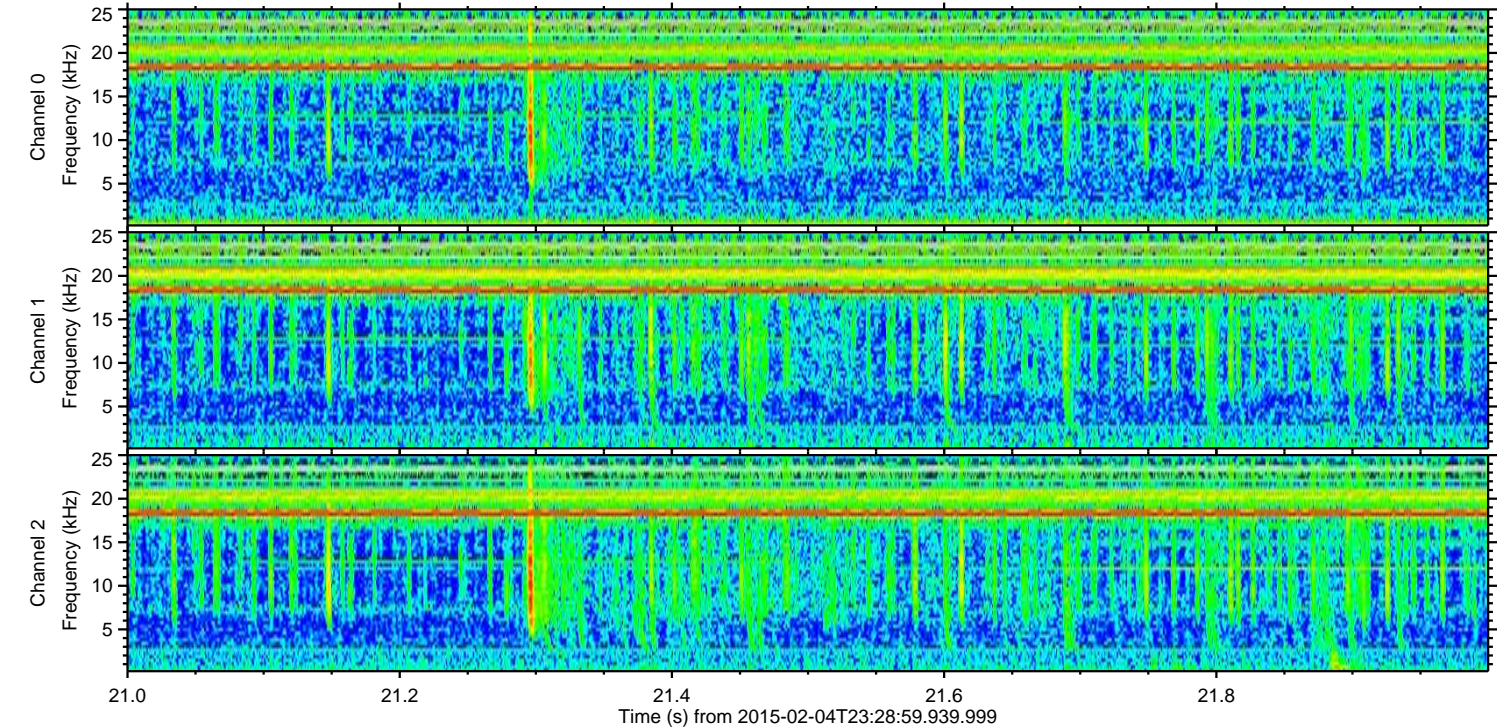
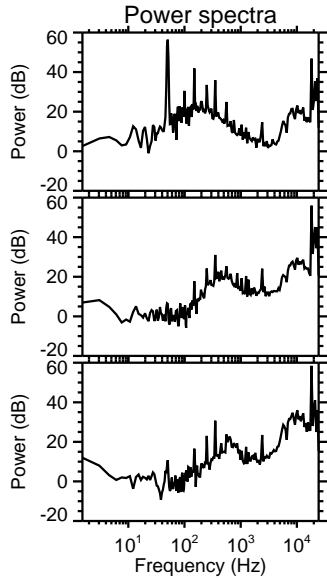
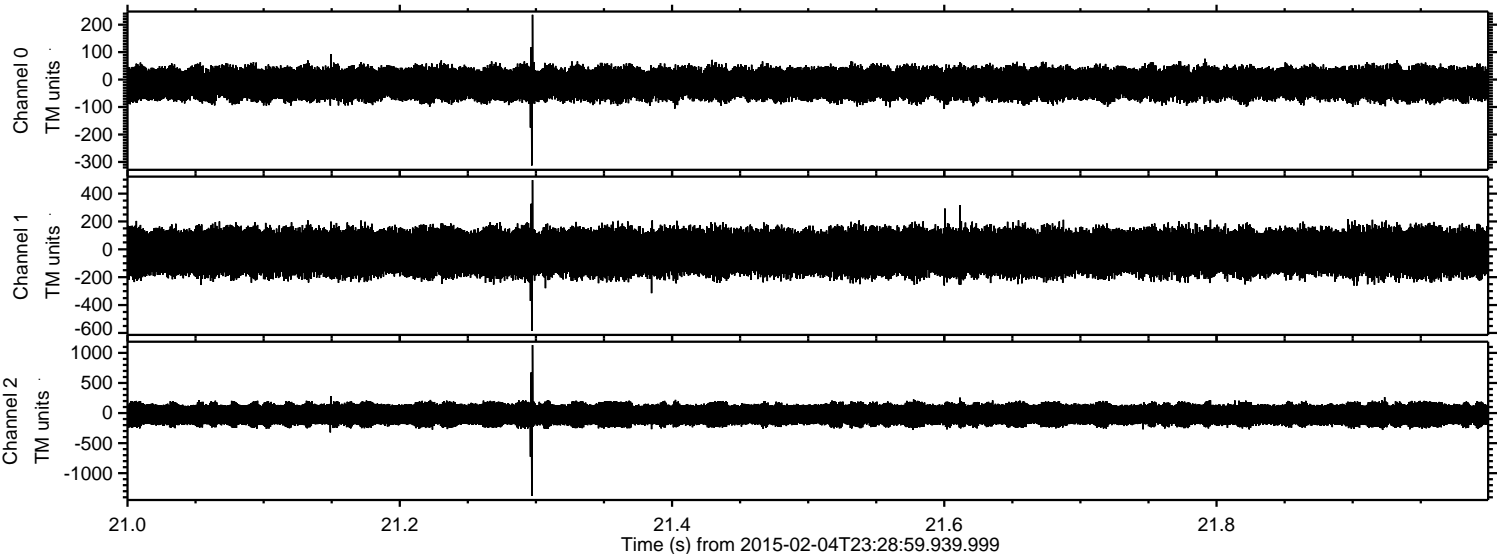


Channel 0
mn: -347
mx: 478
 μ : -15.2
 σ : 33.6

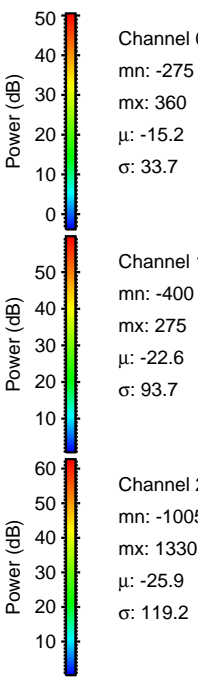
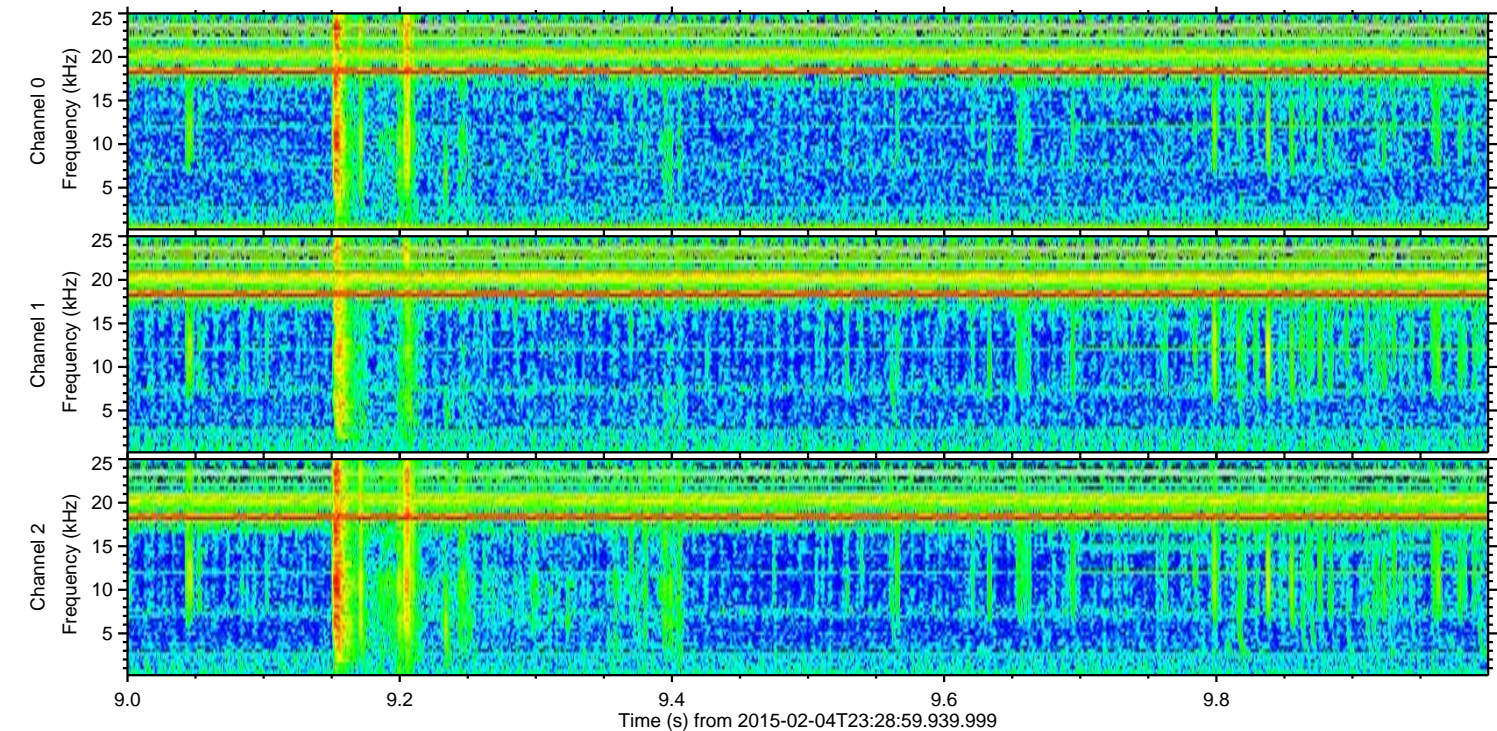
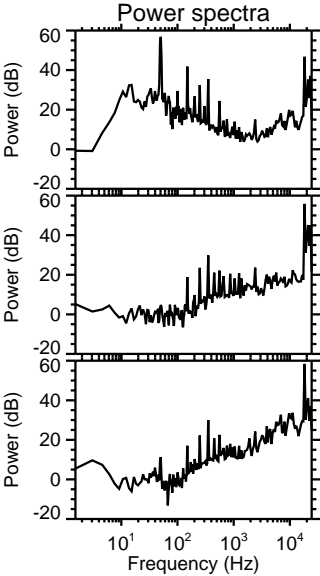
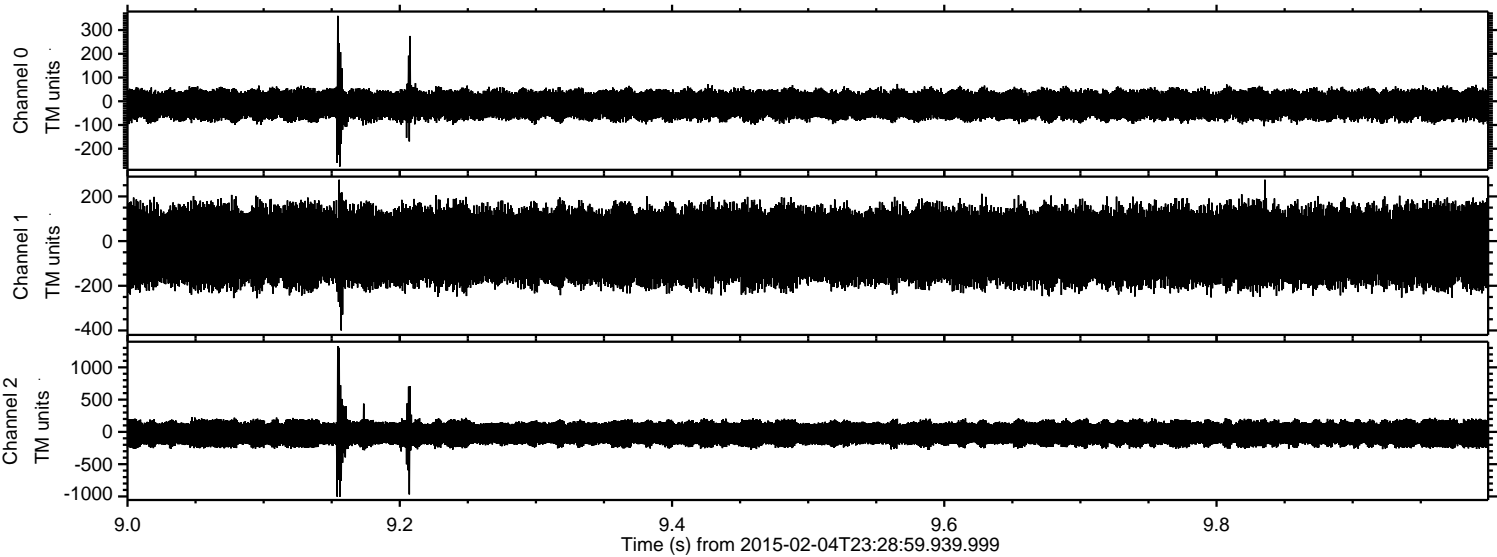
Channel 1
mn: -1243
mx: 1508
 μ : -22.5
 σ : 96.8

Channel 2
mn: -835
mx: 748
 μ : -25.9
 σ : 115.3

Processed Wed Feb 18 02:33:41 2015 by ELM ver.2012-10-06 from 001__elm20150204_232858__dat00.bin



Processed Wed Feb 18 02:33:42 2015 by ELM ver.2012-10-06 from 001__elm20150204_232858__dat00.bin



Channel 0
mn: -275
mx: 360
 μ : -15.2
 σ : 33.7

Channel 1
mn: -400
mx: 275
 μ : -22.6
 σ : 93.7

Channel 2
mn: -1005
mx: 1330
 μ : -25.9
 σ : 119.2

Processed Wed Feb 18 02:33:43 2015 by ELM ver.2012-10-06 from 001__elm20150204_232858__dat00.bin

