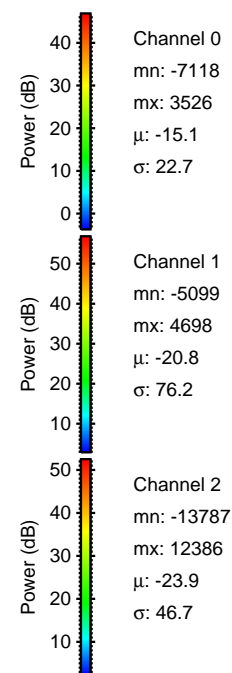
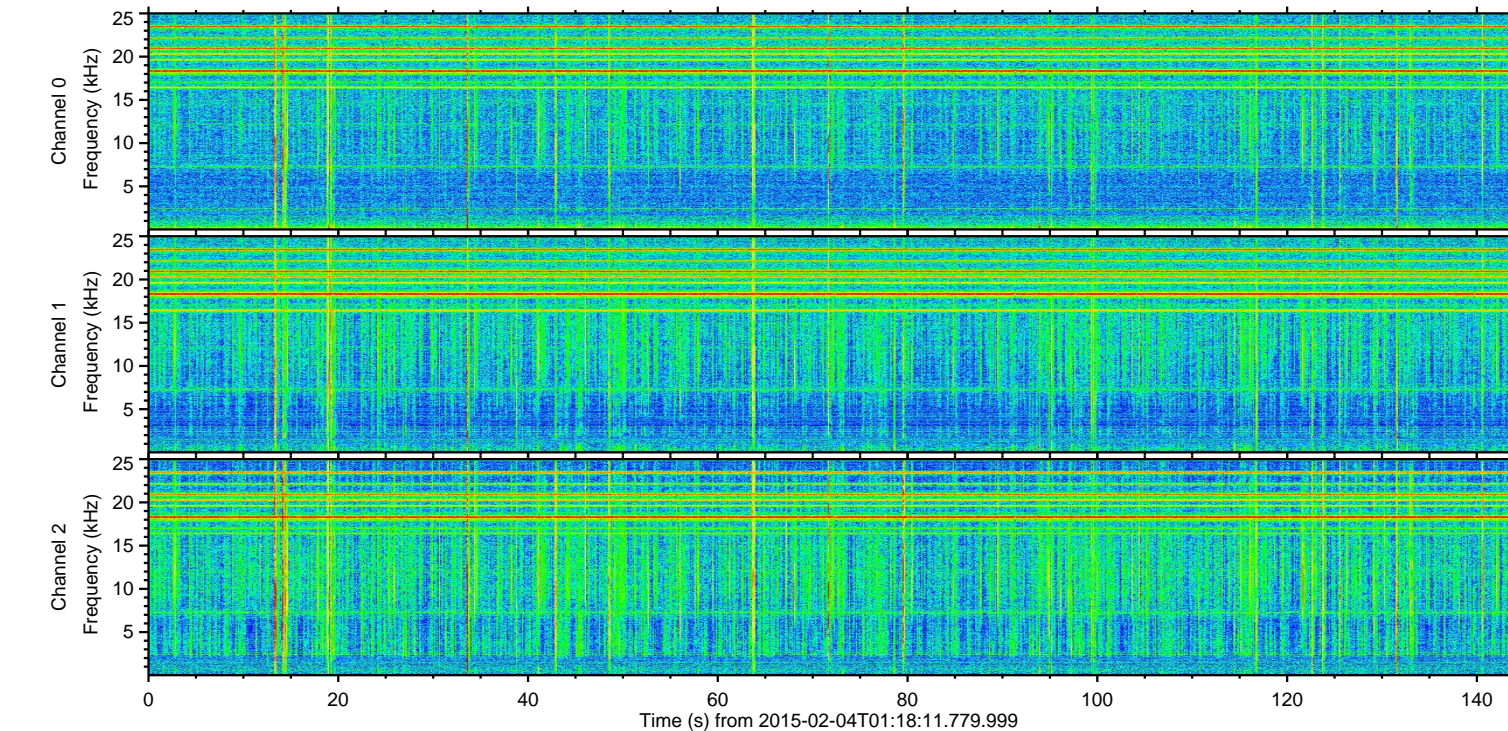
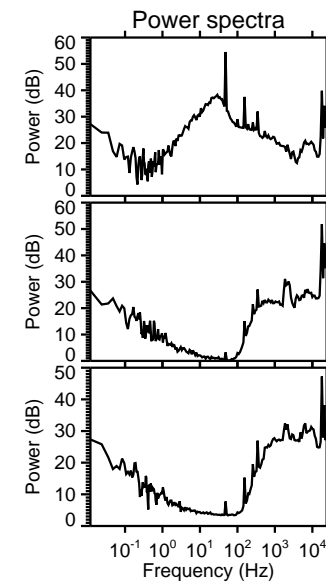
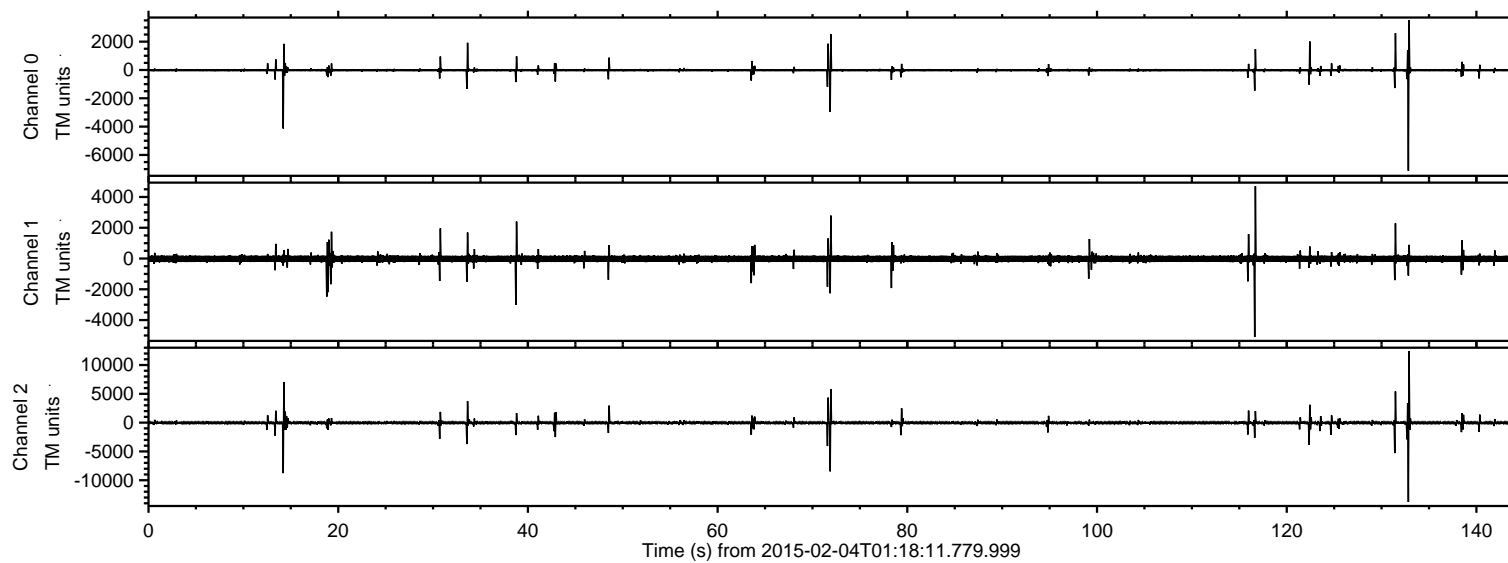


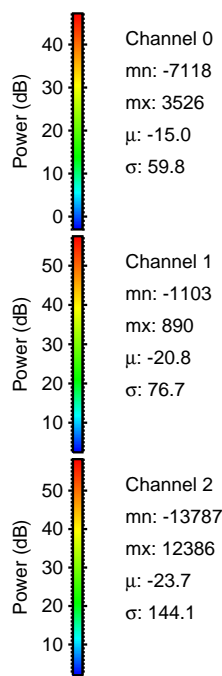
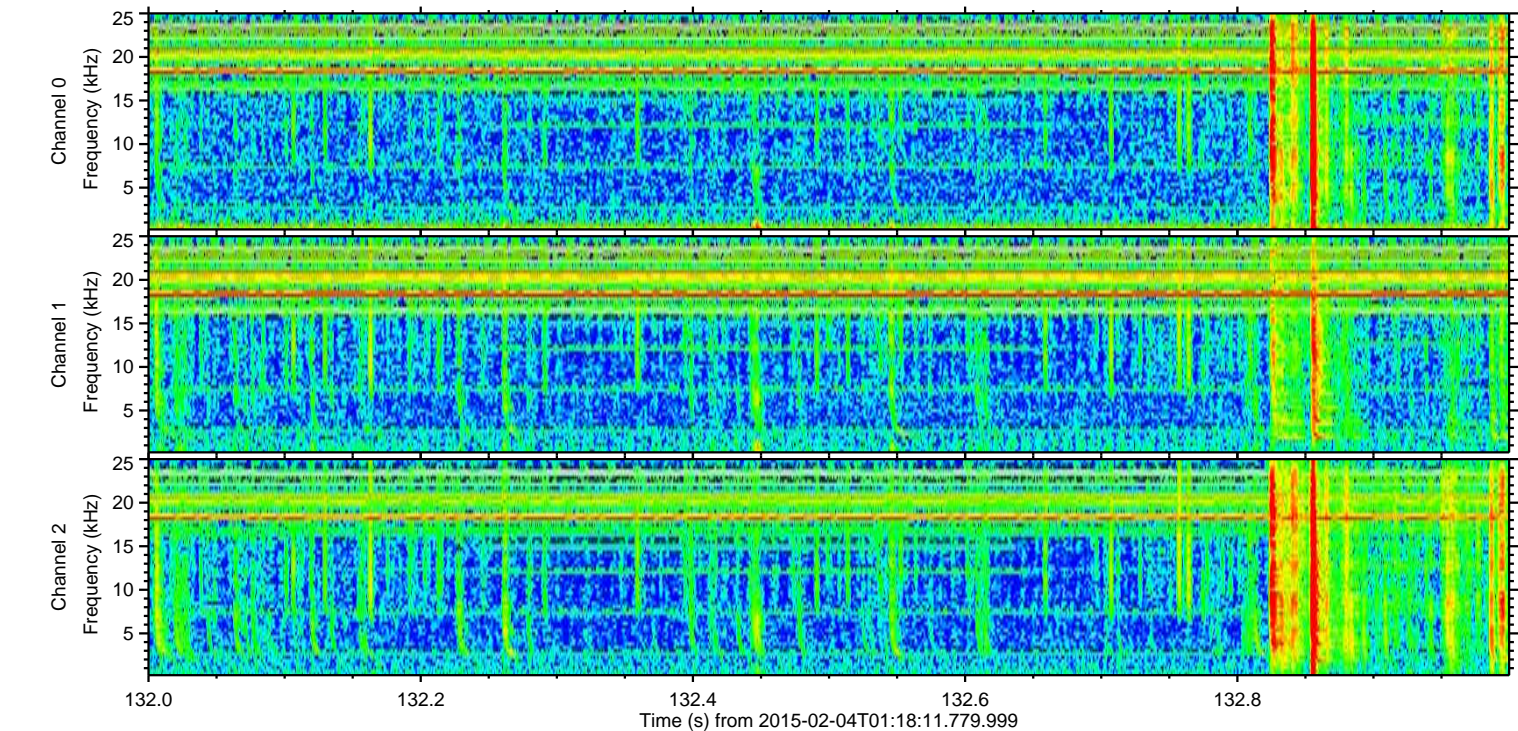
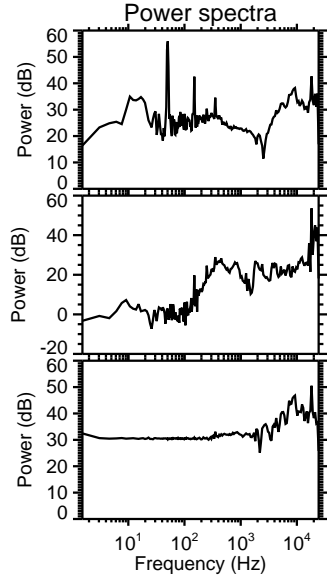
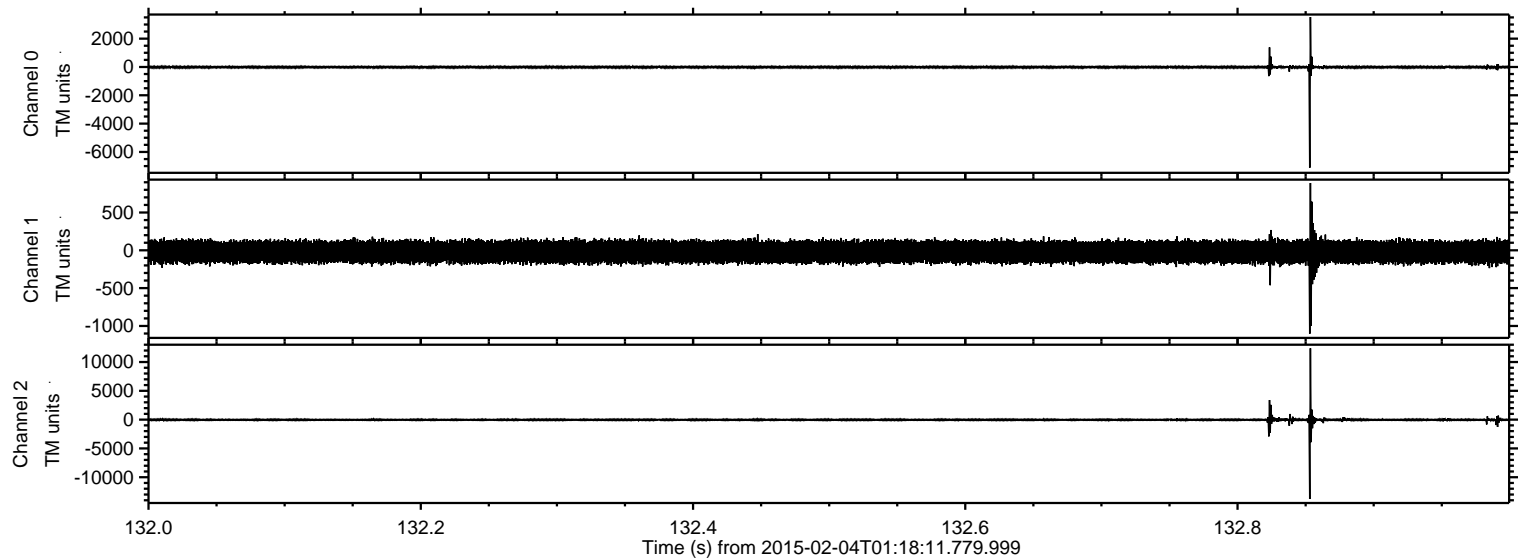
ELMAVAN 3D WAVEFORMS (Measured data sampled at 50 kHz) 49809 packets of 144 samples from 2015-02-04T01:18:11.779.999.

Processed Tue Feb 17 19:42:21 2015 by ELM ver.2012-10-06 from 001__elm20150204_011810__dat00.bin



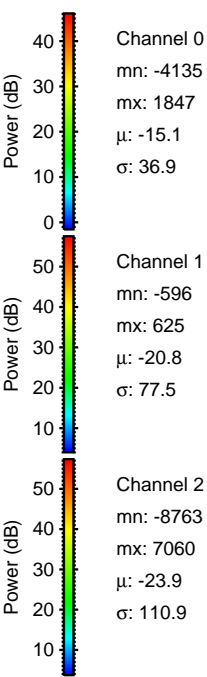
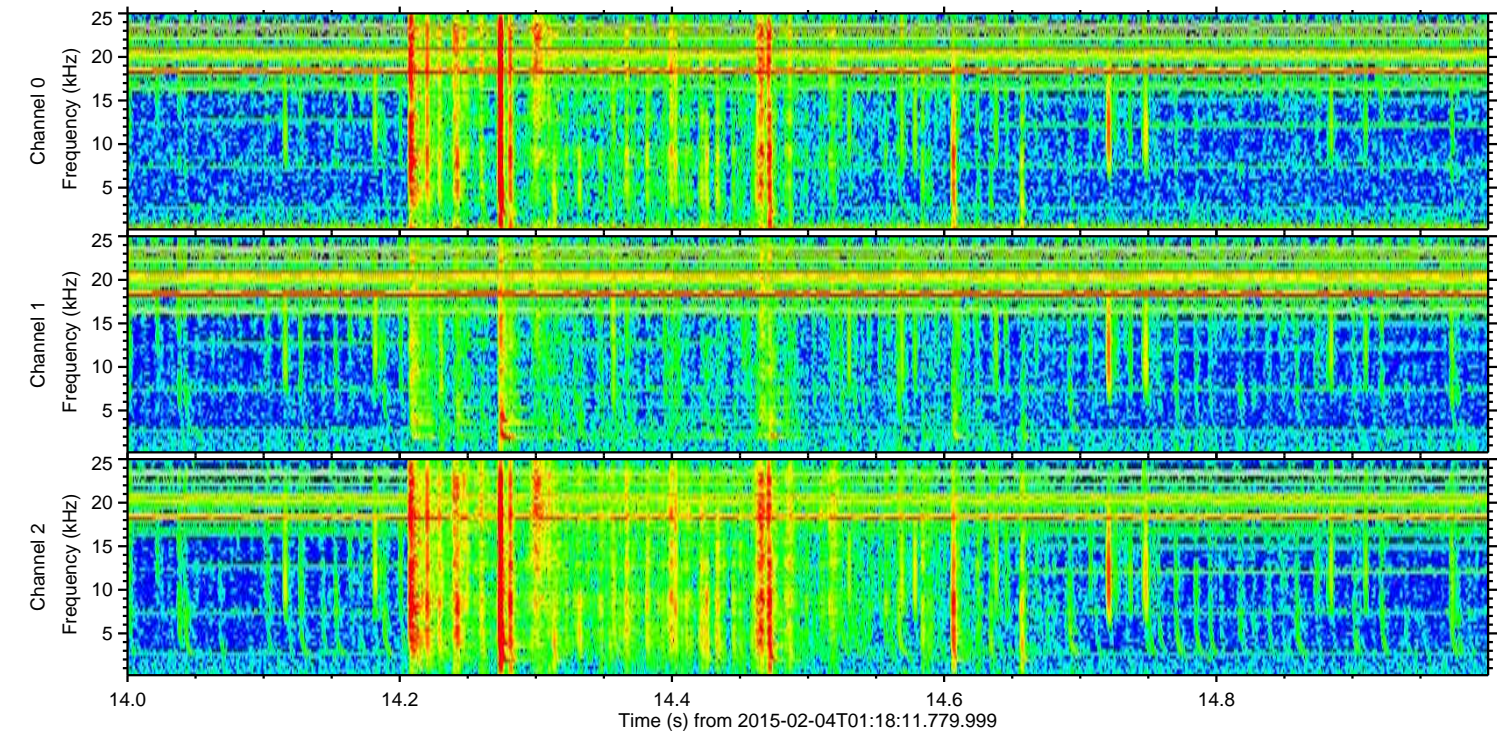
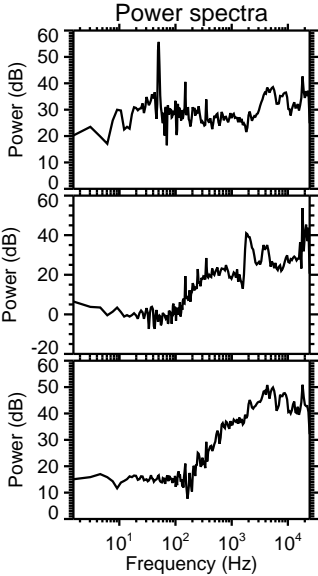
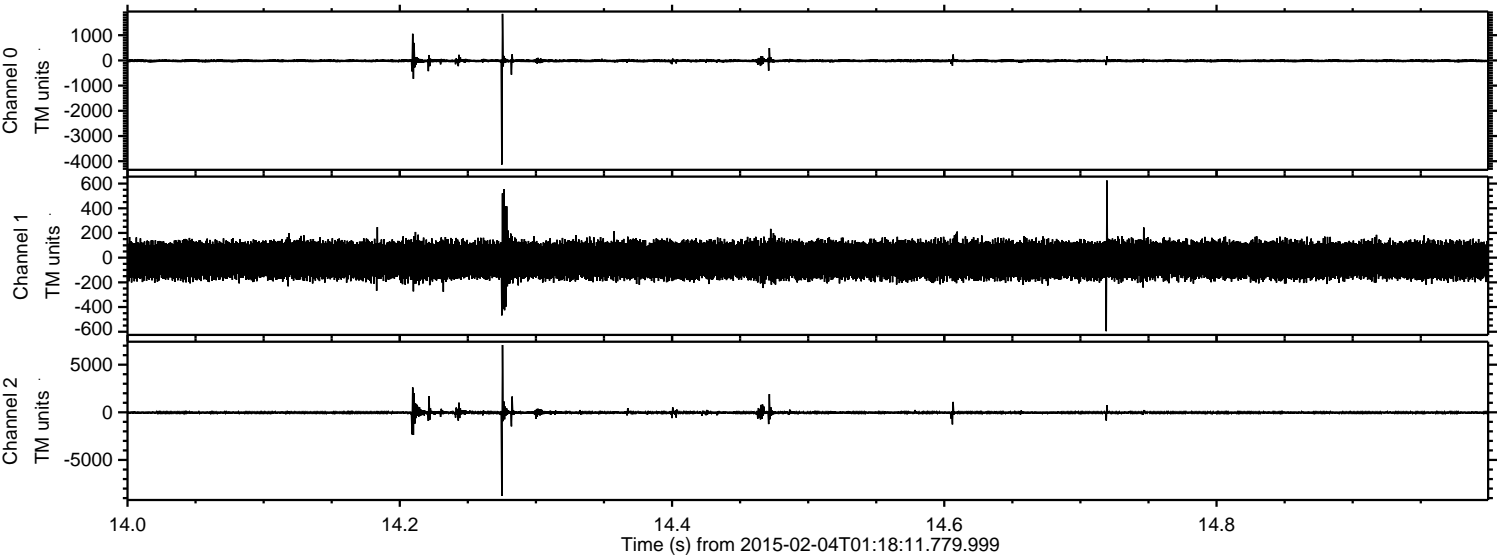
ELMAVAN 3D WAVEFORMS (Measured data sampled at 50 kHz) 49809 packets of 144 samples from 2015-02-04T01:18:11.779.999. Part 133/144

Processed Tue Feb 17 19:42:35 2015 by ELM ver.2012-10-06 from 001__elm20150204_011810__dat00.bin

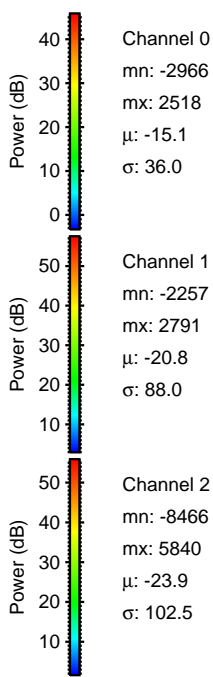
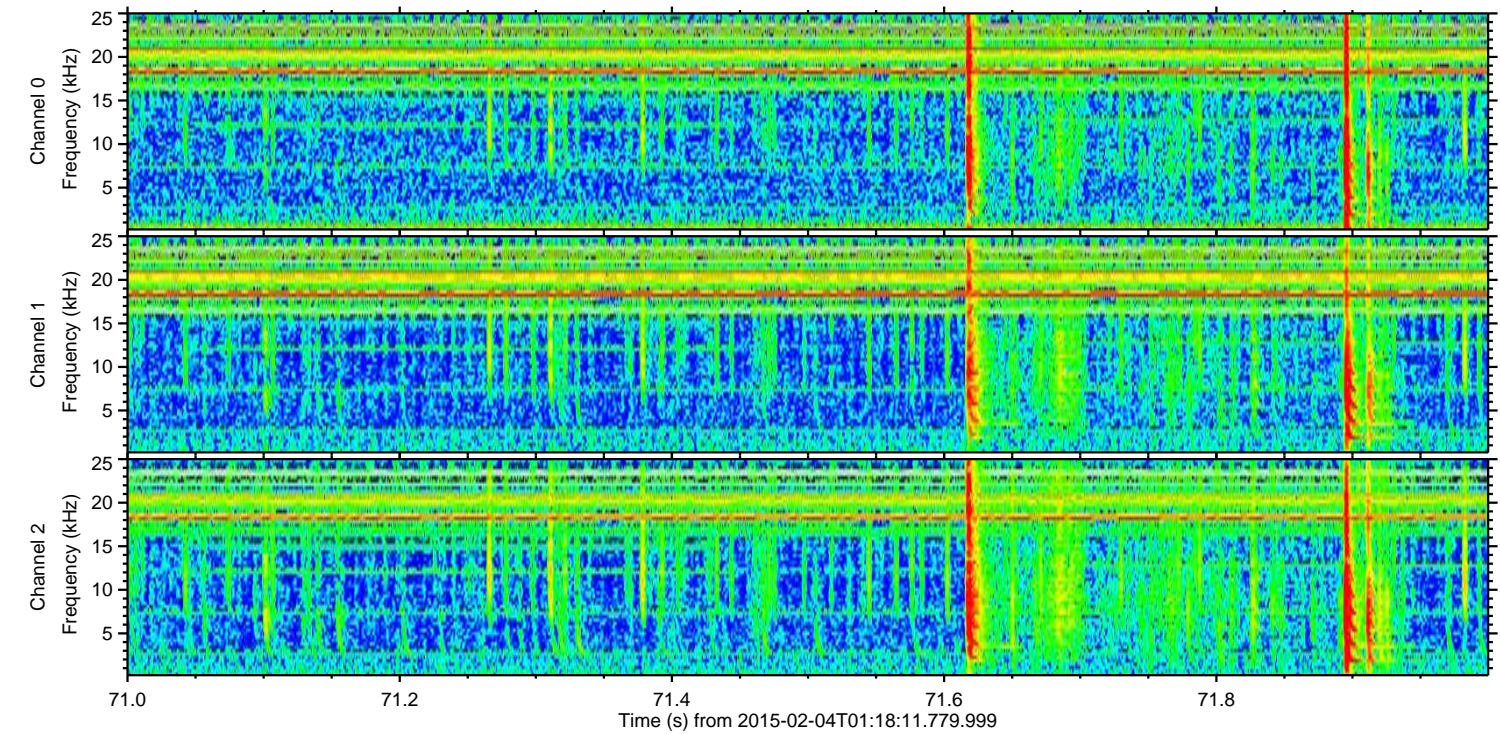
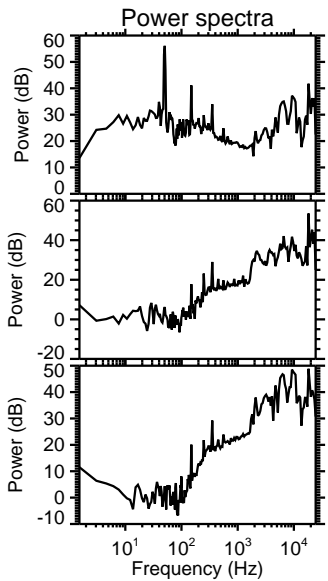
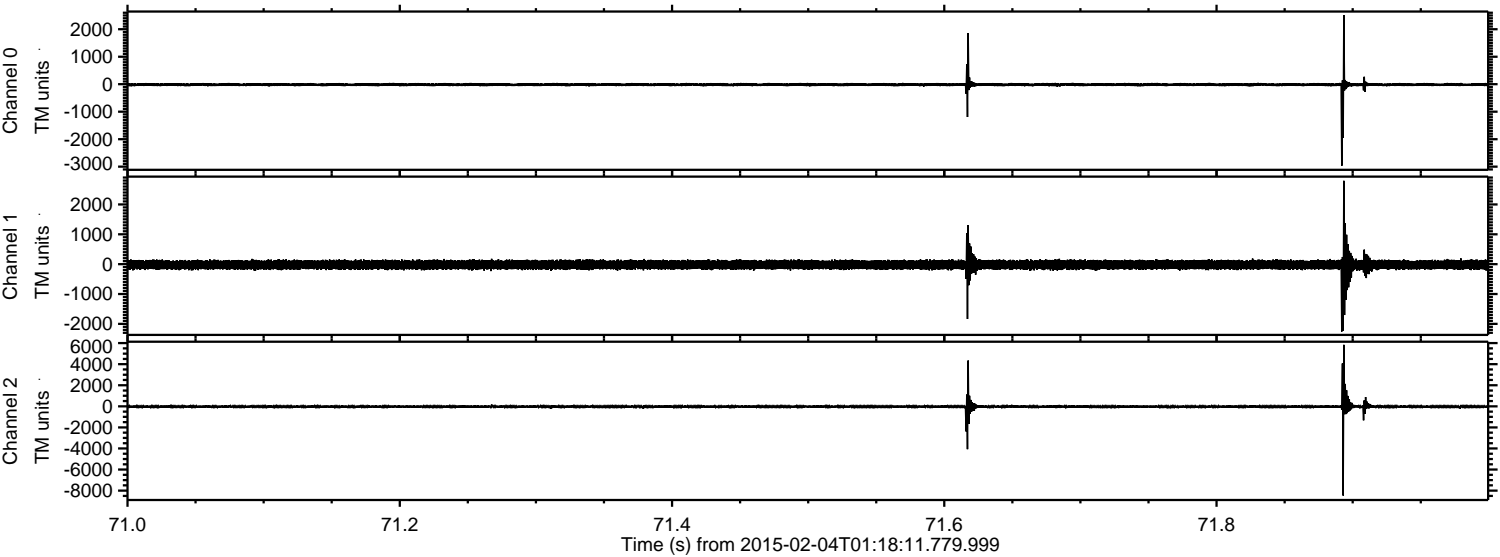


ELMAVAN 3D WAVEFORMS (Measured data sampled at 50 kHz) 49809 packets of 144 samples from 2015-02-04T01:18:11.779.999. Part 15/144

Processed Tue Feb 17 19:42:36 2015 by ELM ver.2012-10-06 from 001__elm20150204_011810__dat00.bin

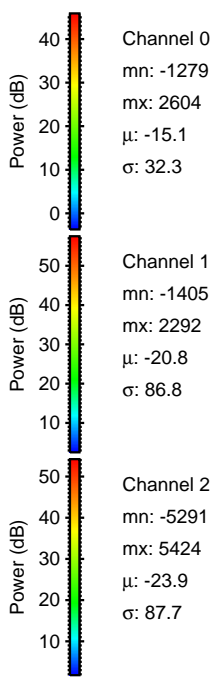
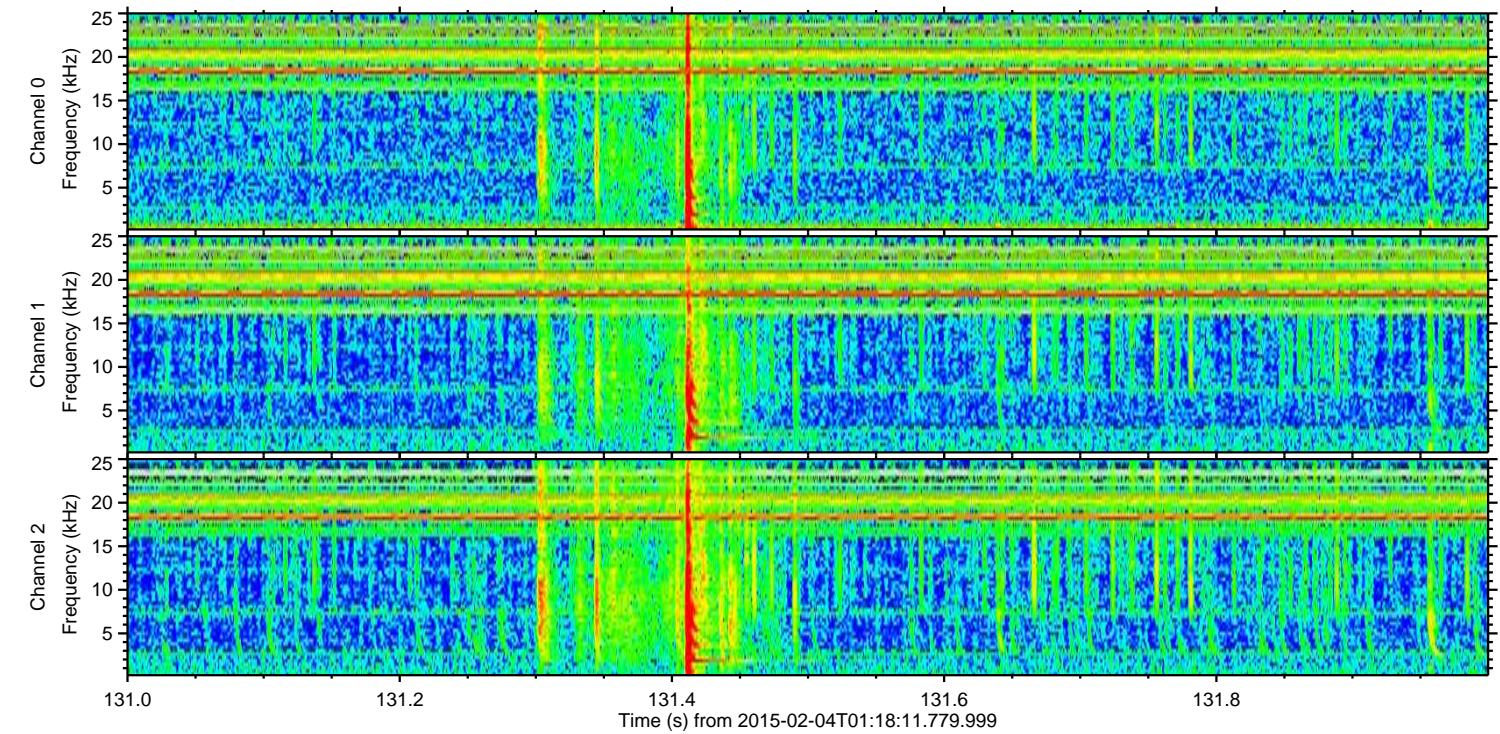
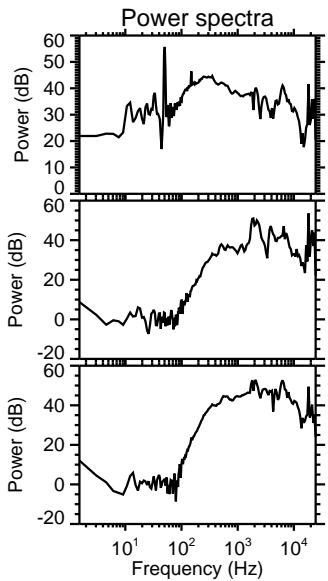
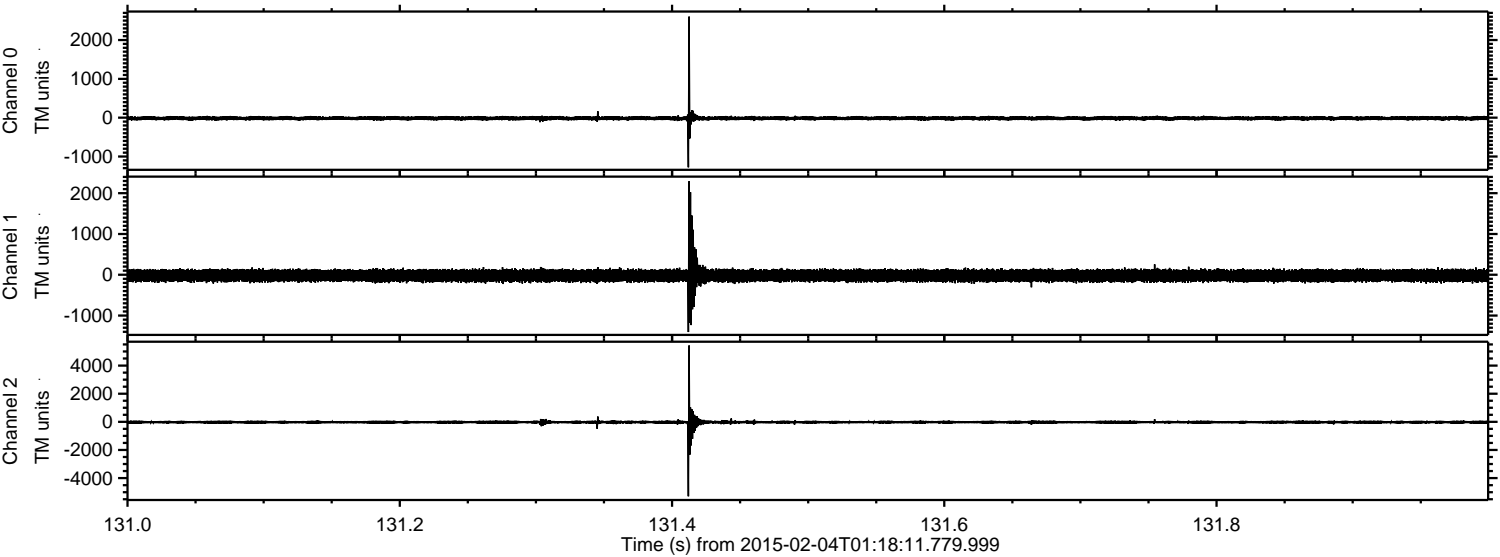


Processed Tue Feb 17 19:42:37 2015 by ELM ver.2012-10-06 from 001__elm20150204_011810__dat00.bin



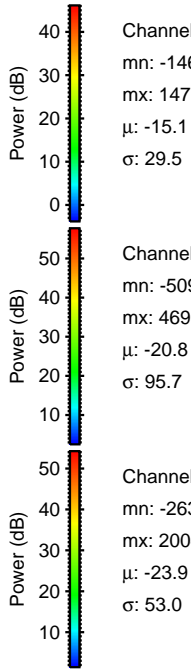
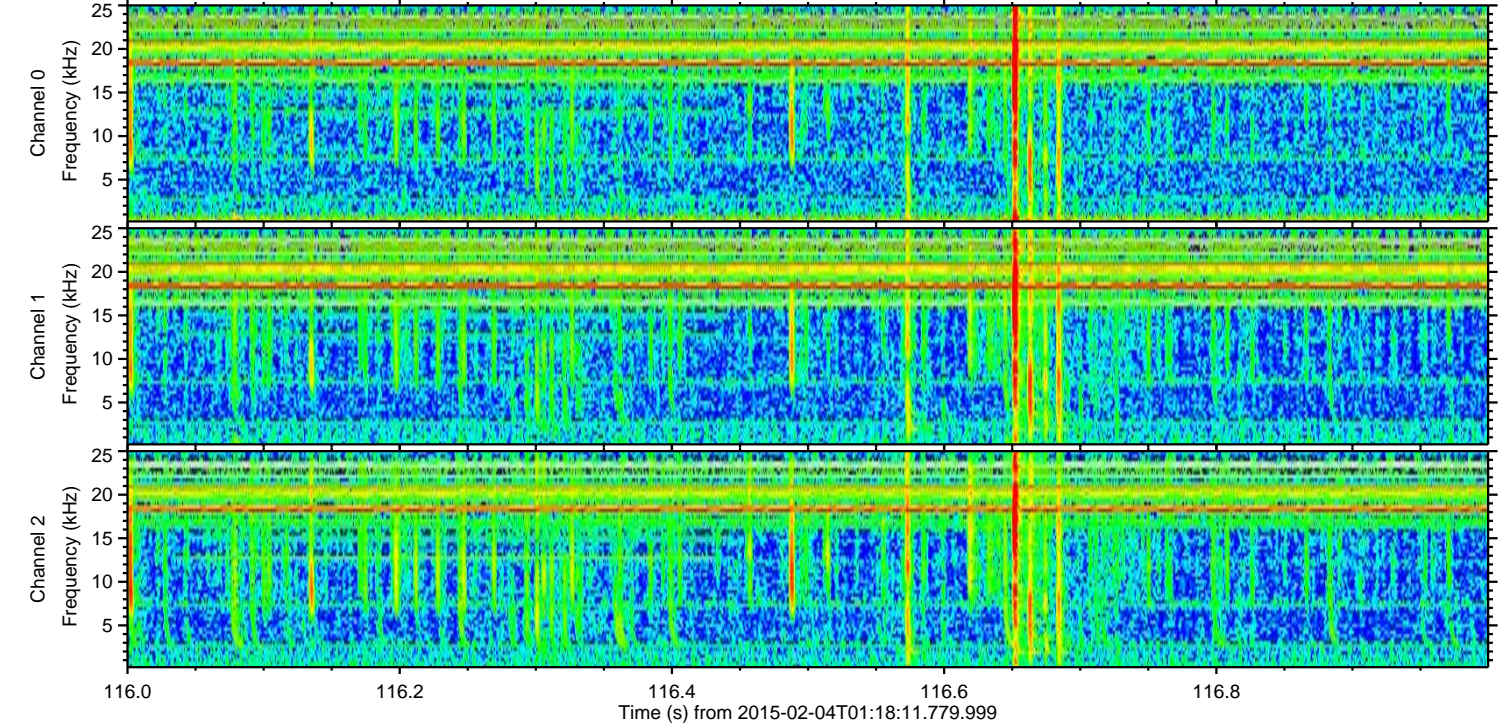
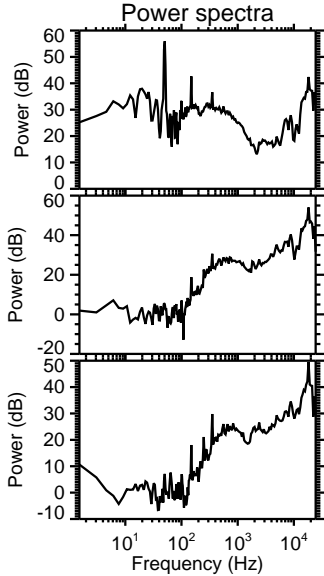
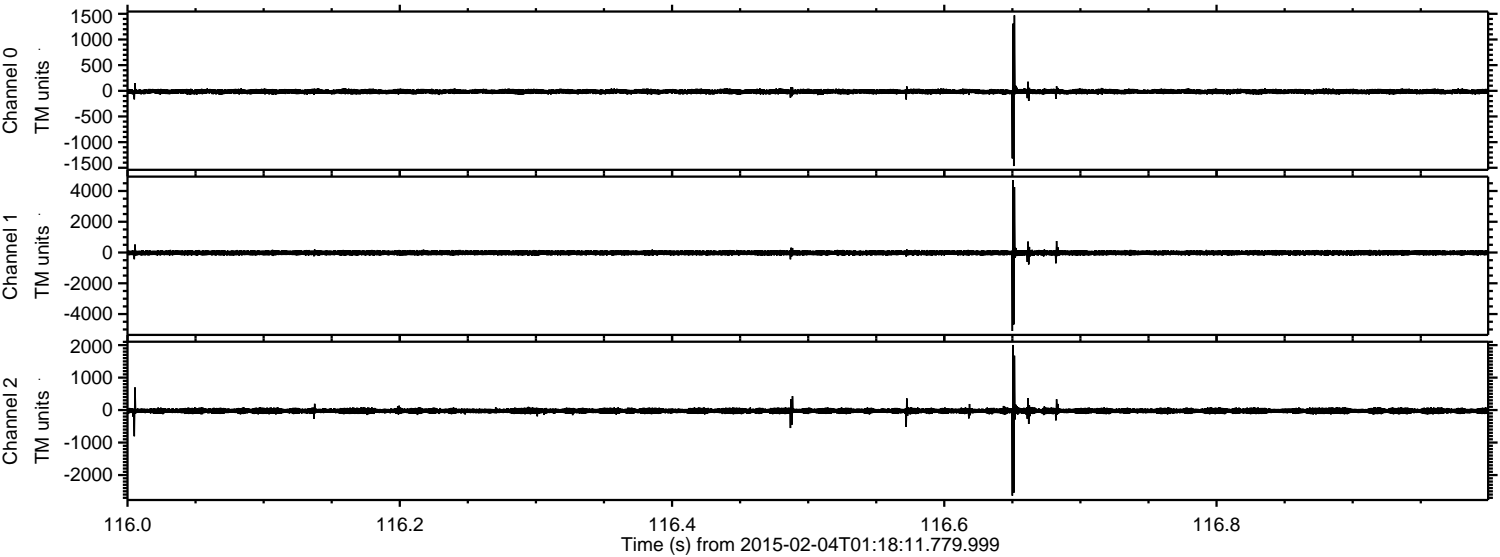
ELMAVAN 3D WAVEFORMS (Measured data sampled at 50 kHz) 49809 packets of 144 samples from 2015-02-04T01:18:11.779.999. Part 132/144

Processed Tue Feb 17 19:42:38 2015 by ELM ver.2012-10-06 from 001__elm20150204_011810__dat00.bin



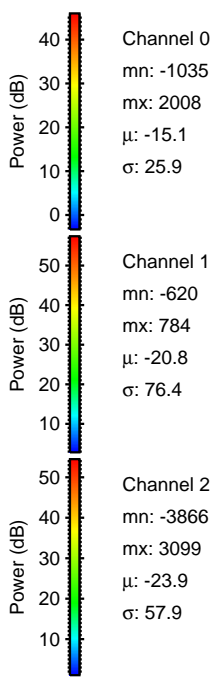
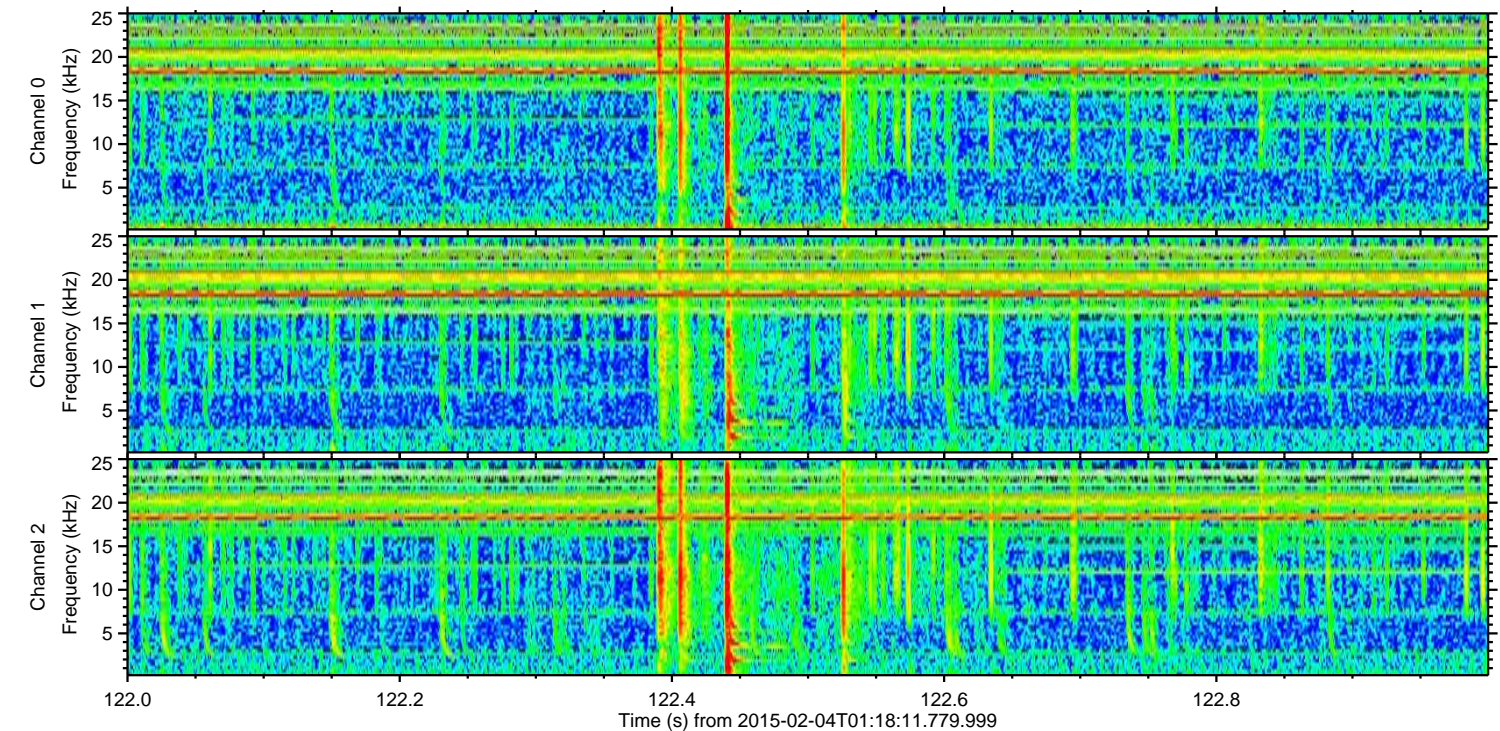
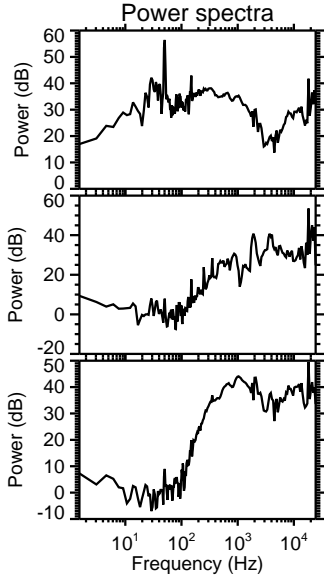
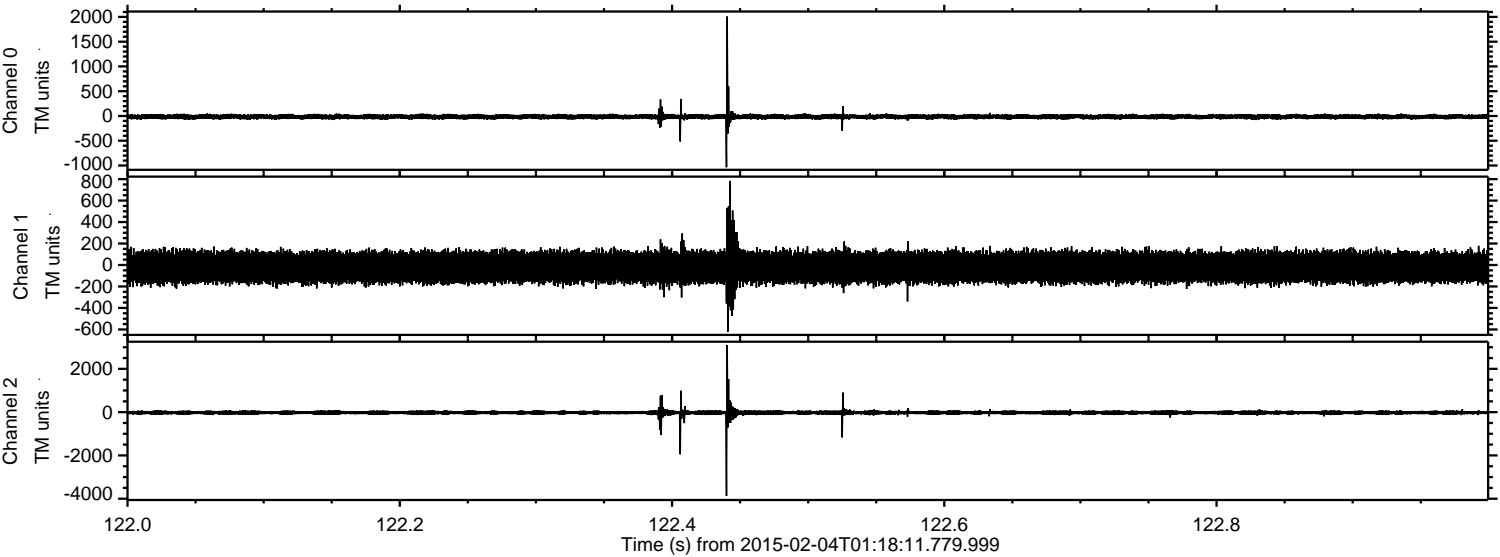
ELMAVAN 3D WAVEFORMS (Measured data sampled at 50 kHz) 49809 packets of 144 samples from 2015-02-04T01:18:11.779.999. Part 117/144

Processed Tue Feb 17 19:42:39 2015 by ELM ver.2012-10-06 from 001__elm20150204_011810__dat00.bin



ELMAVAN 3D WAVEFORMS (Measured data sampled at 50 kHz) 49809 packets of 144 samples from 2015-02-04T01:18:11.779.999. Part 123/144

Processed Tue Feb 17 19:42:40 2015 by ELM ver.2012-10-06 from 001__elm20150204_011810__dat00.bin



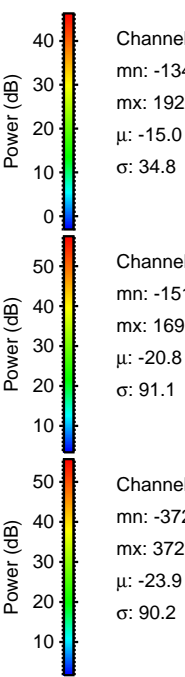
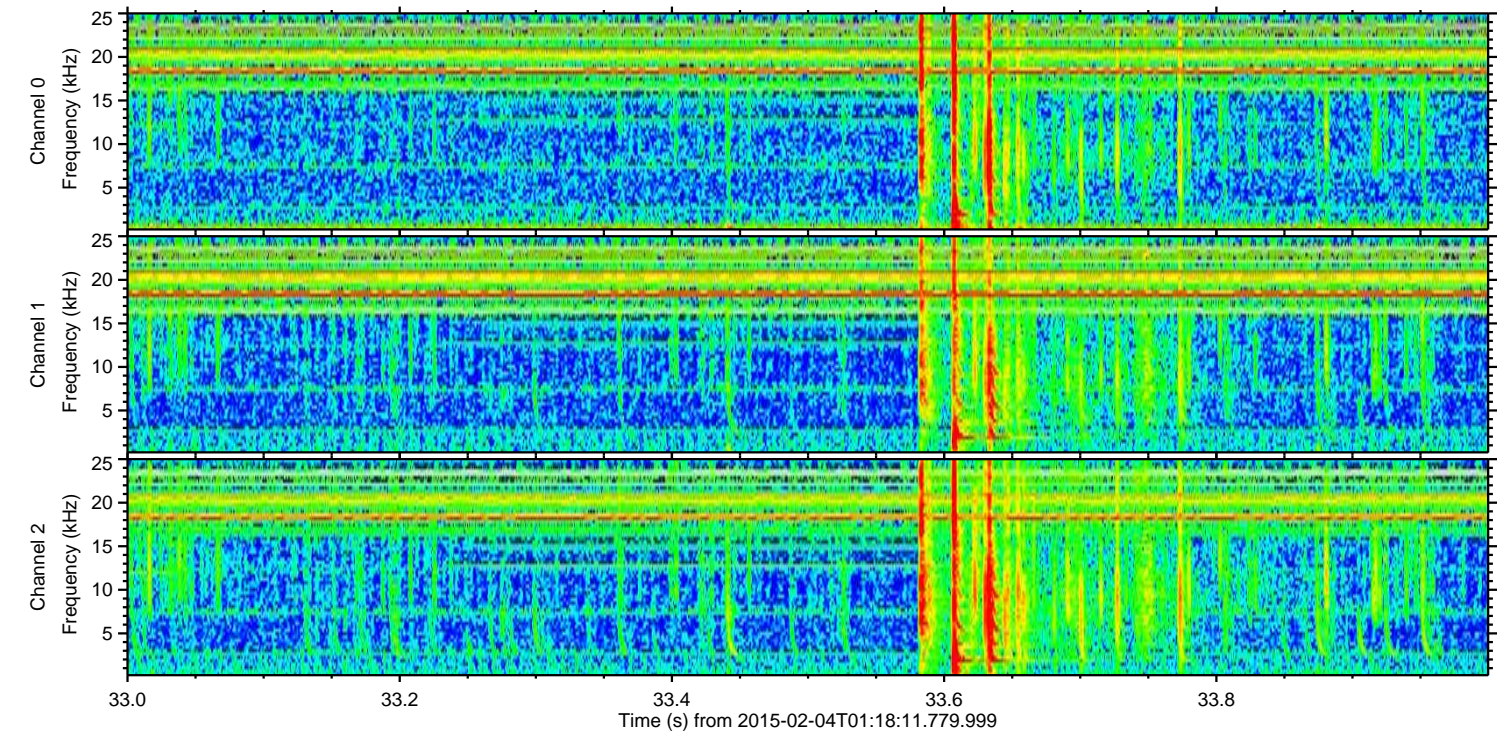
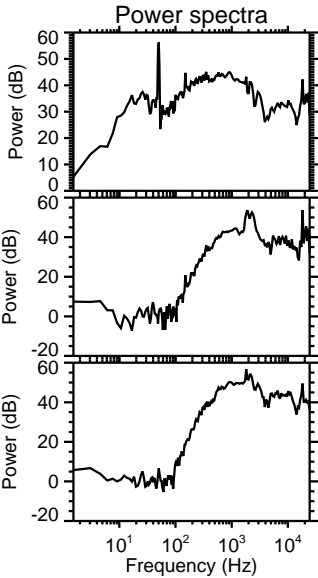
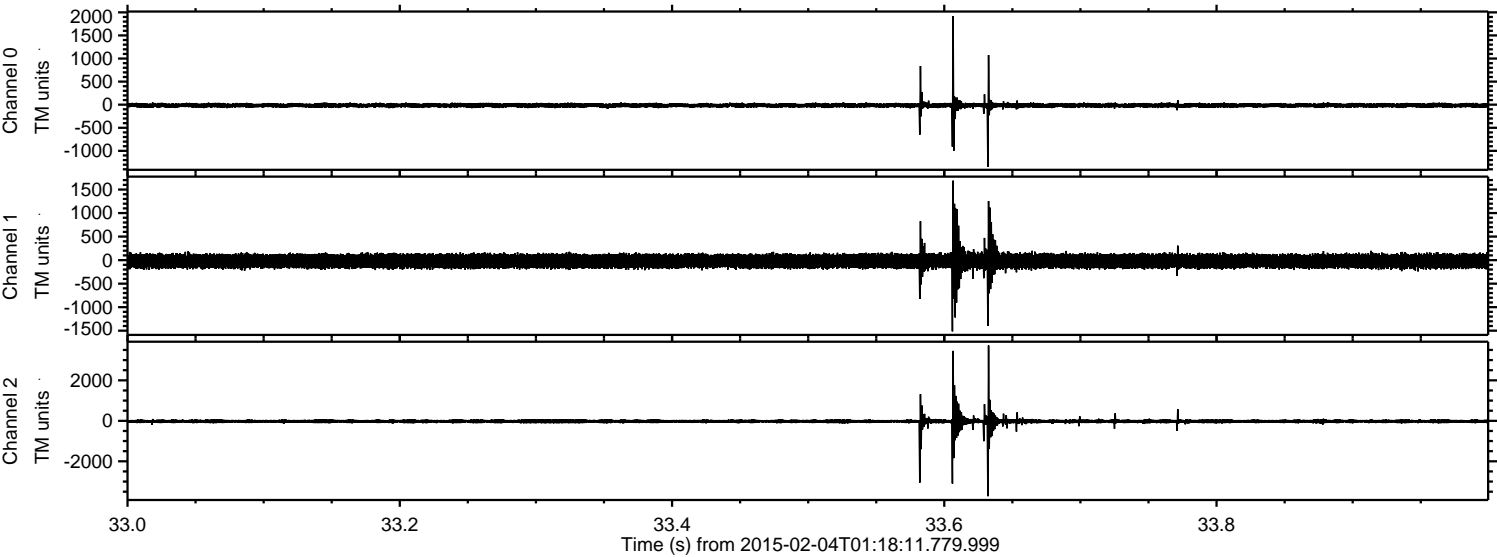
Channel 0
mn: -1035
mx: 2008
 μ : -15.1
 σ : 25.9

Channel 1
mn: -620
mx: 784
 μ : -20.8
 σ : 76.4

Channel 2
mn: -3866
mx: 3099
 μ : -23.9
 σ : 57.9

ELMAVAN 3D WAVEFORMS (Measured data sampled at 50 kHz) 49809 packets of 144 samples from 2015-02-04T01:18:11.779.999. Part 34/144

Processed Tue Feb 17 19:42:42 2015 by ELM ver.2012-10-06 from 001__elm20150204_011810__dat00.bin

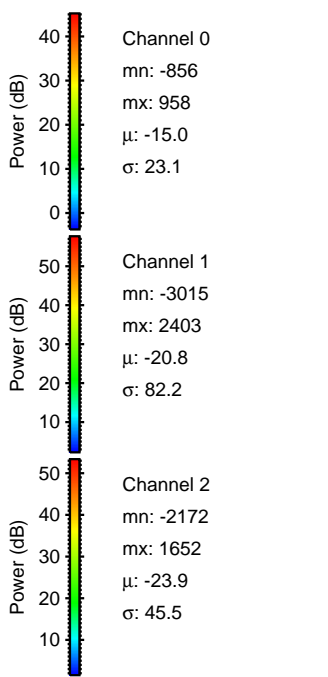
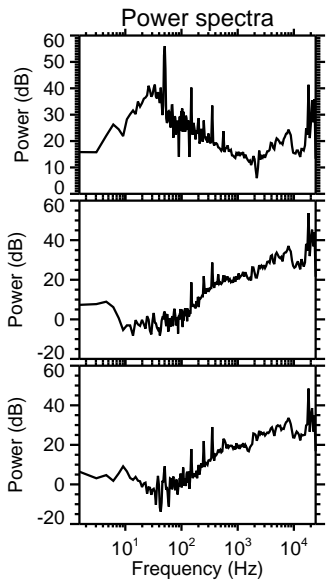
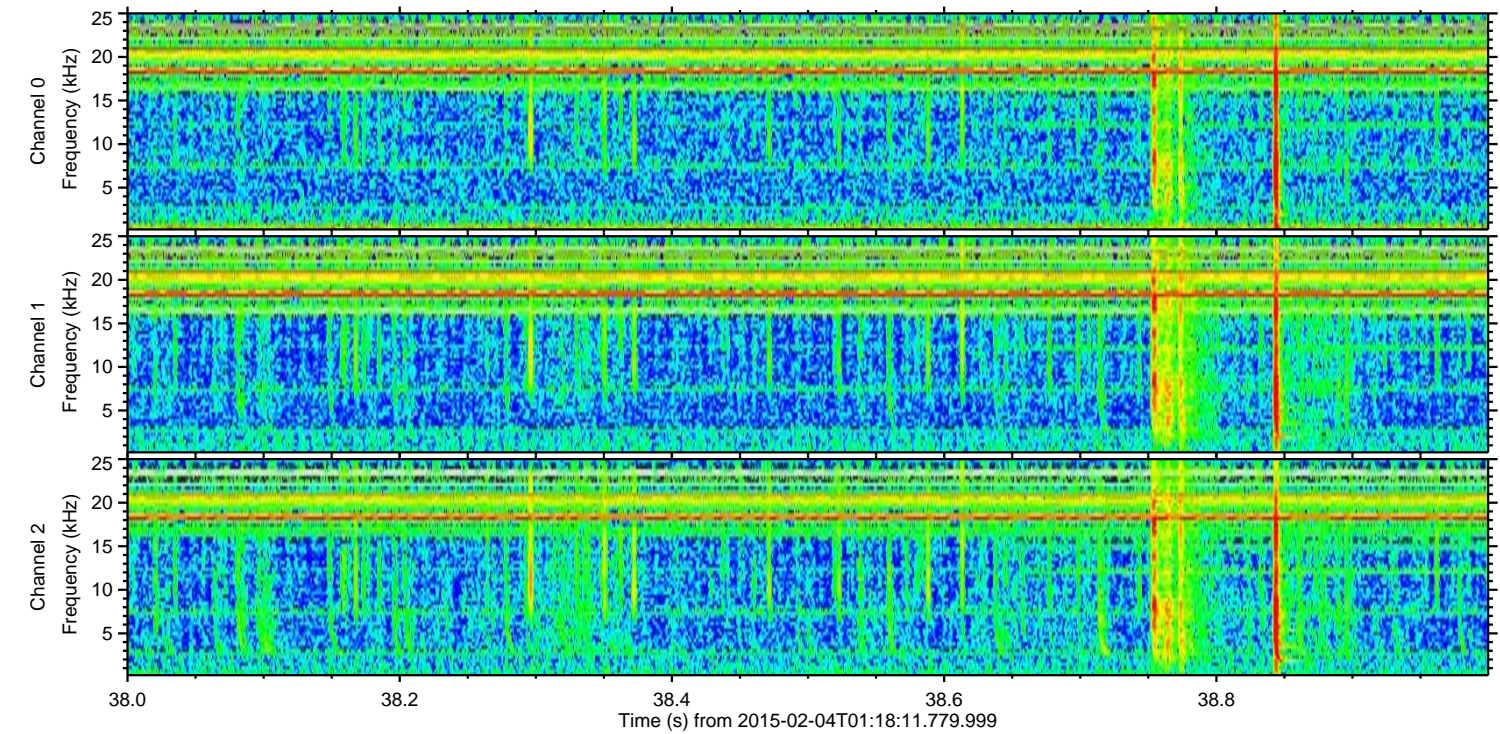
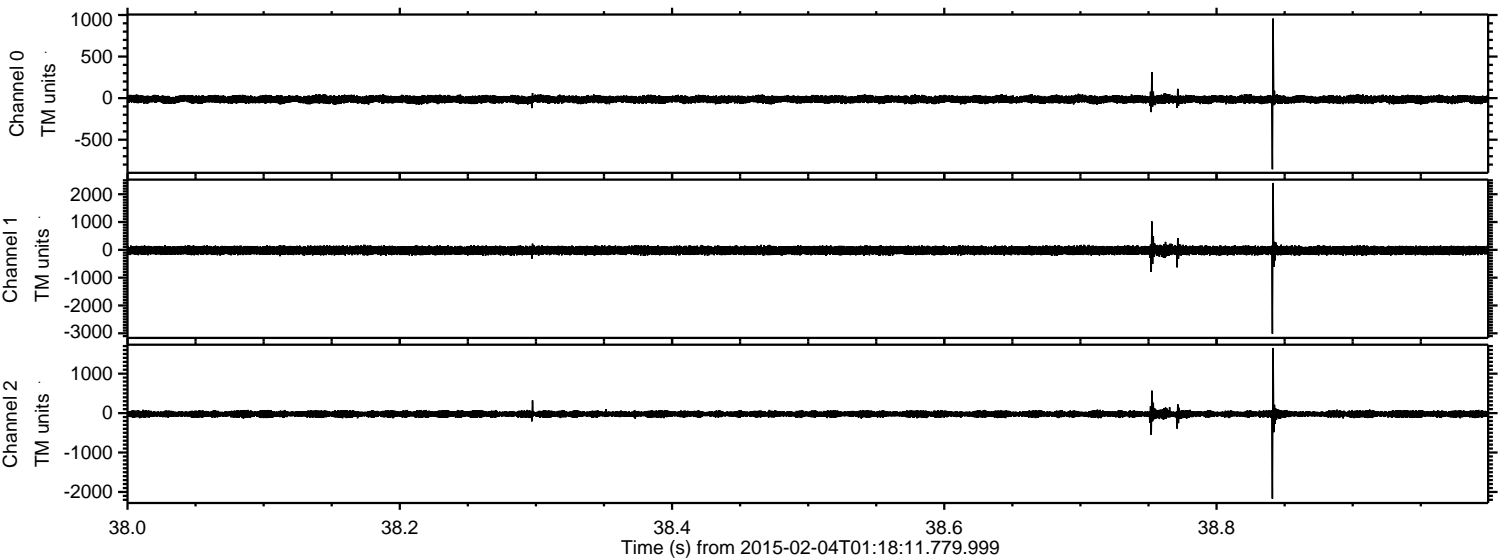


Channel 0
mn: -1344
mx: 1922
 μ : -15.0
 σ : 34.8

Channel 1
mn: -1514
mx: 1690
 μ : -20.8
 σ : 91.1

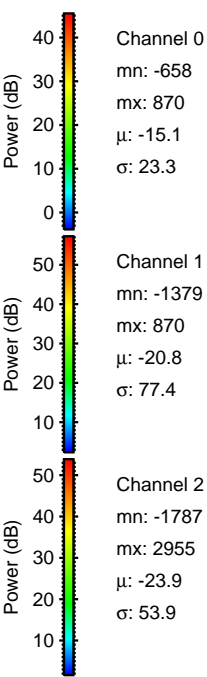
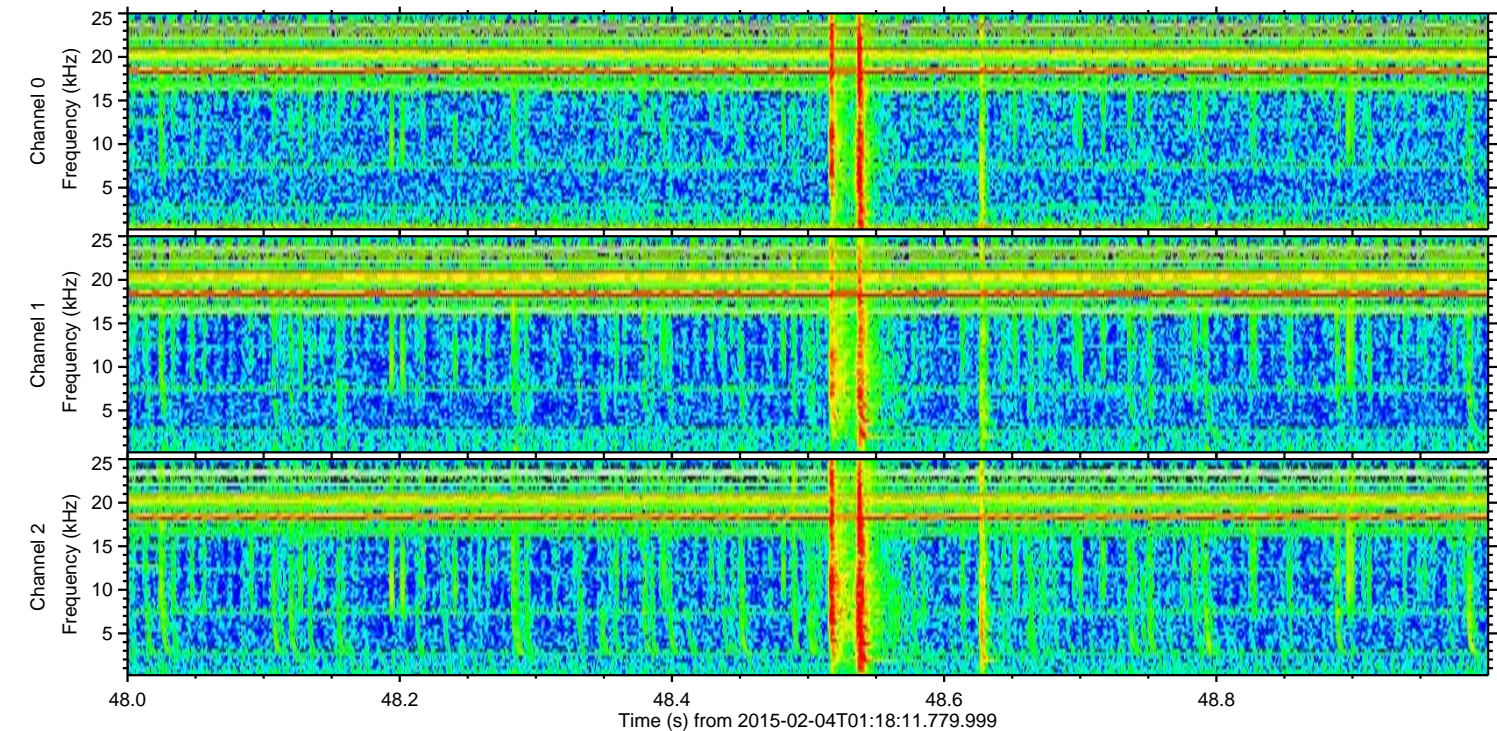
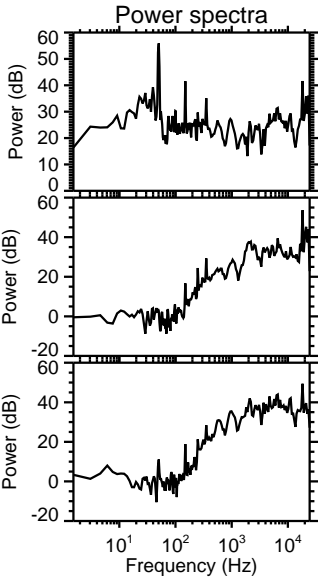
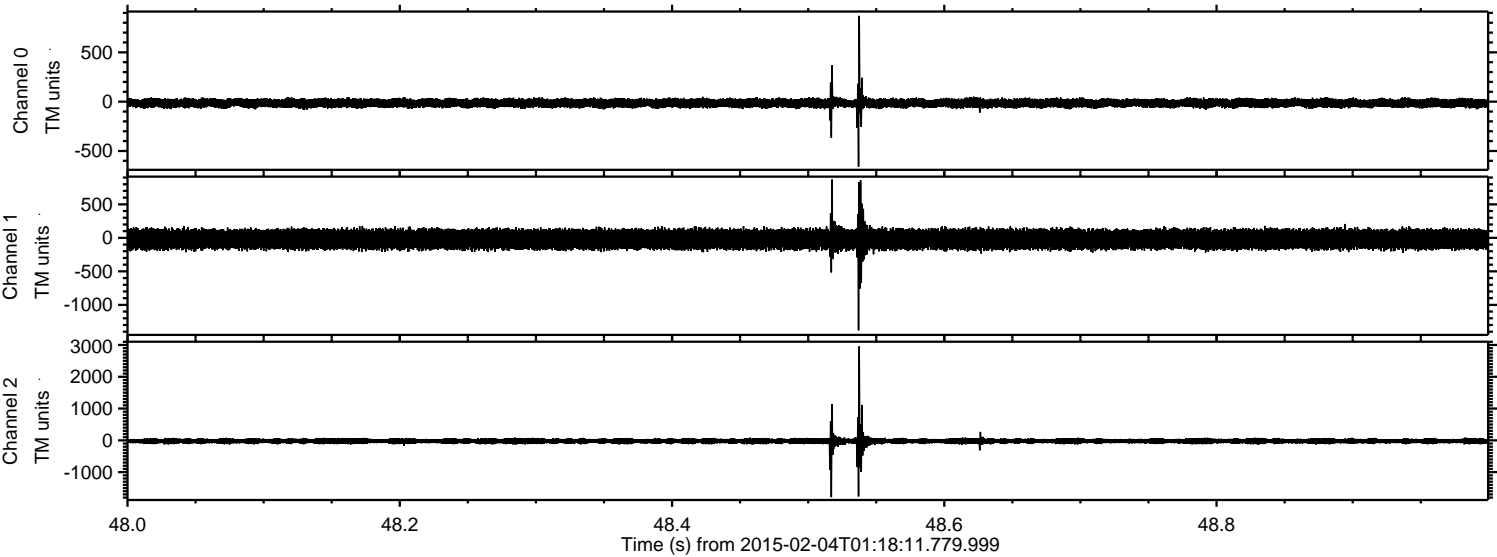
Channel 2
mn: -3724
mx: 3721
 μ : -23.9
 σ : 90.2

Processed Tue Feb 17 19:42:43 2015 by ELM ver.2012-10-06 from 001__elm20150204_011810__dat00.bin



ELMAVAN 3D WAVEFORMS (Measured data sampled at 50 kHz) 49809 packets of 144 samples from 2015-02-04T01:18:11.779.999. Part 49/144

Processed Tue Feb 17 19:42:44 2015 by ELM ver.2012-10-06 from 001__elm20150204_011810__dat00.bin



Processed Tue Feb 17 19:42:45 2015 by ELM ver.2012-10-06 from 001__elm20150204_011810__dat00.bin

