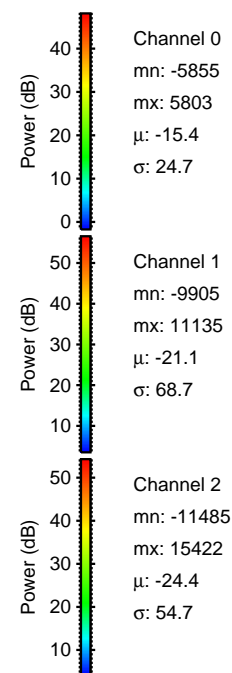
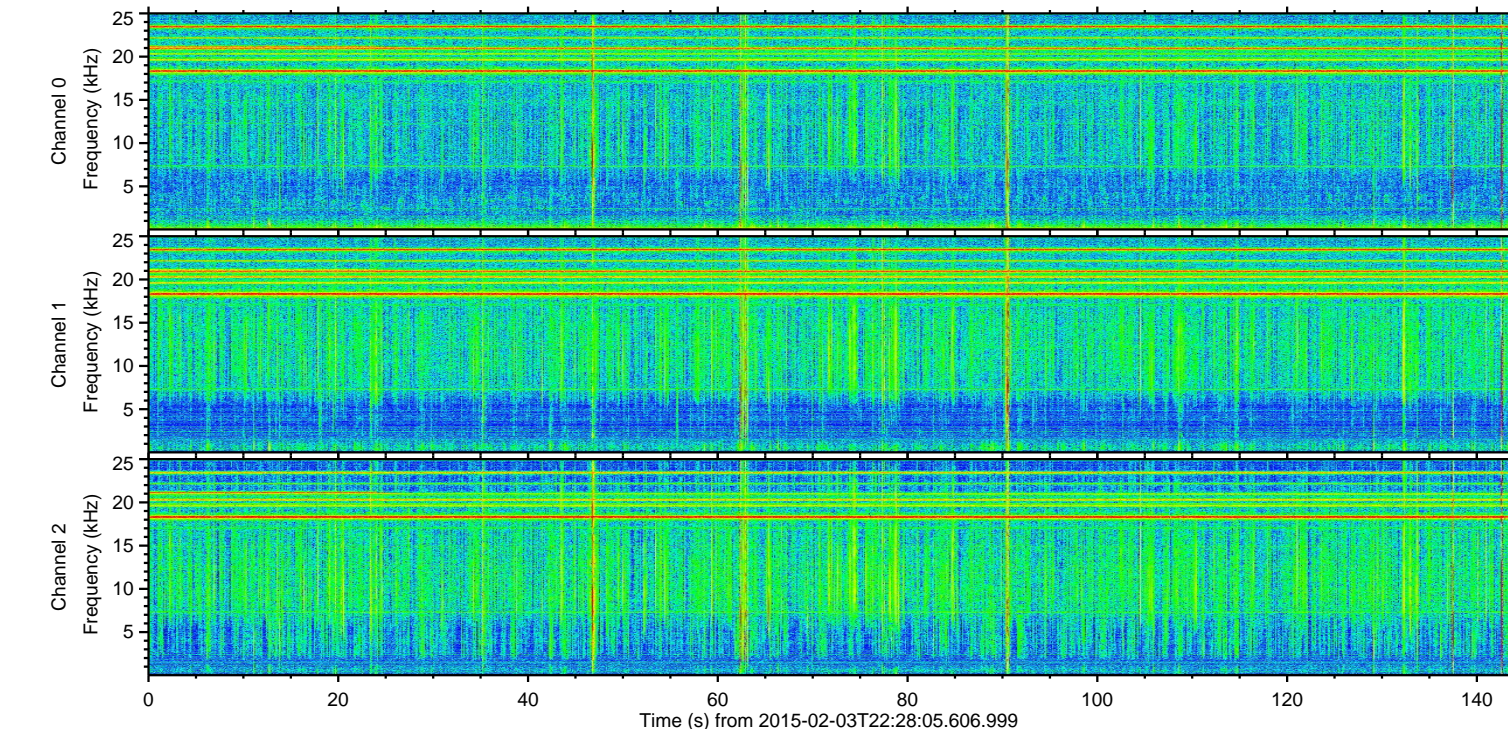
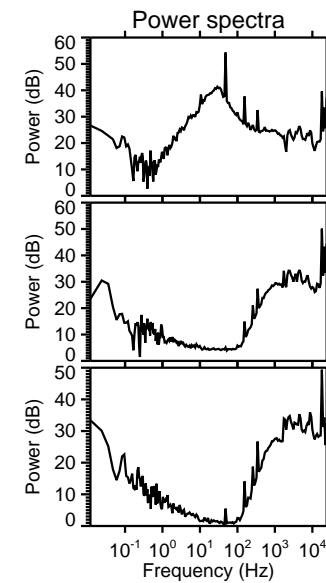
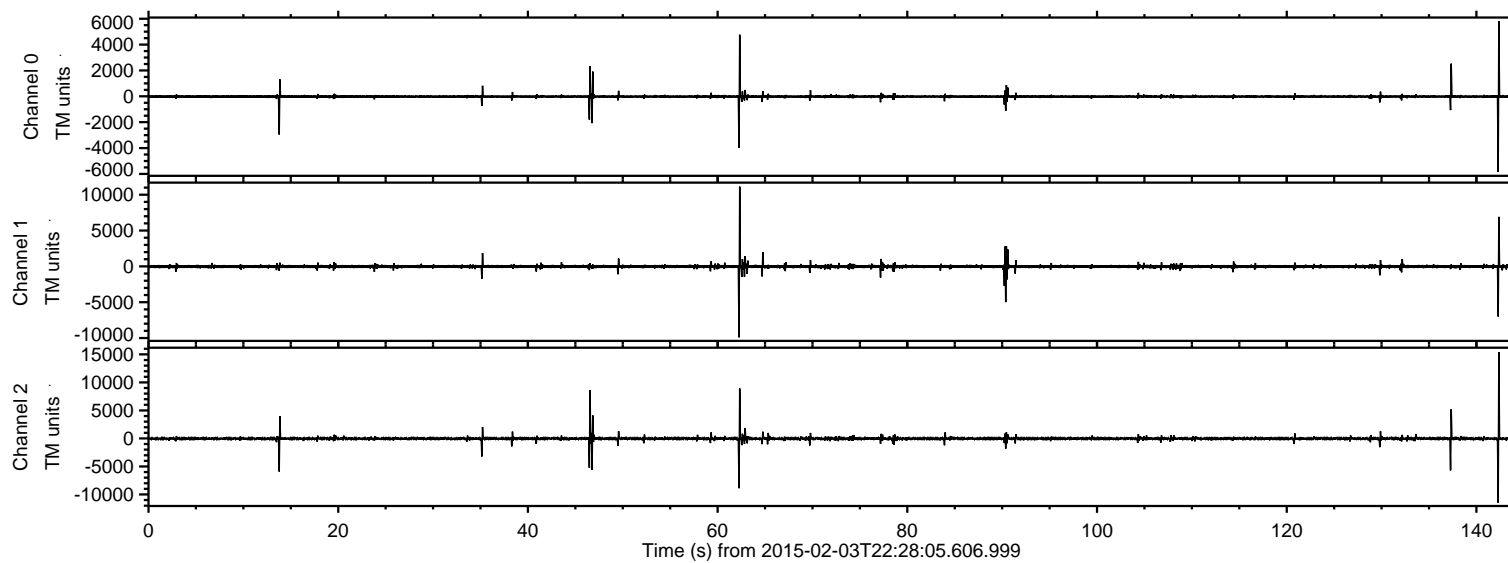


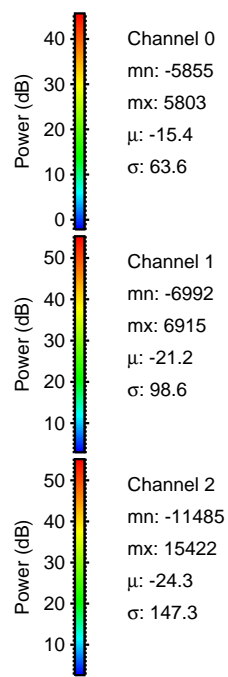
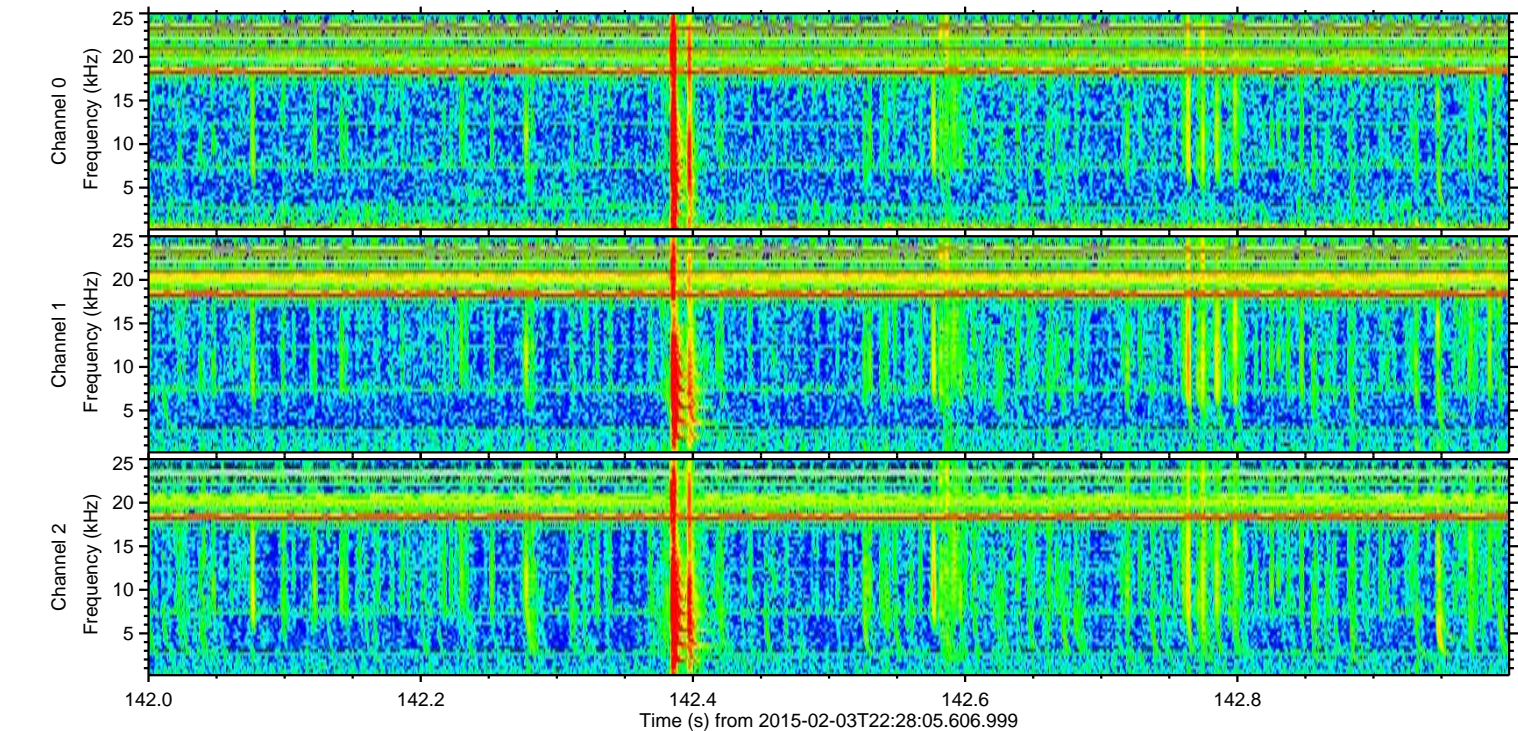
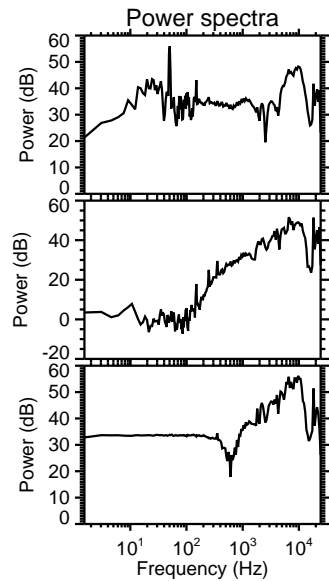
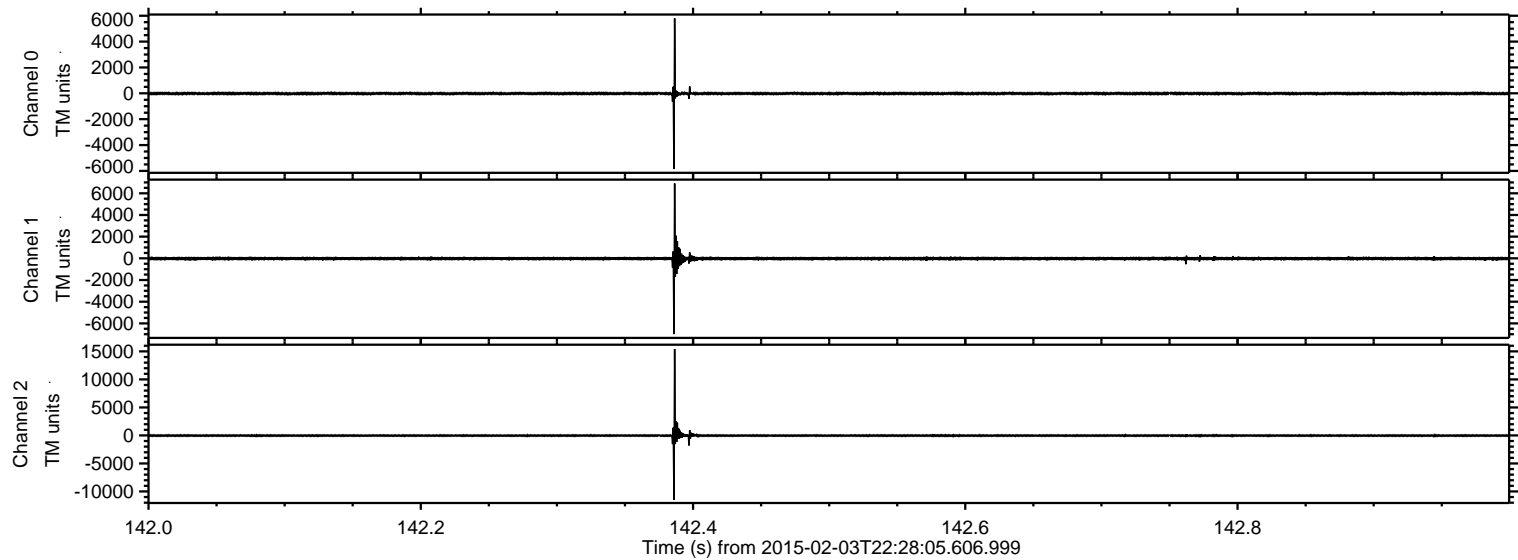
ELMAVAN 3D WAVEFORMS (Measured data sampled at 50 kHz) 49809 packets of 144 samples from 2015-02-03T22:28:05.606.999.

Processed Tue Feb 17 18:47:28 2015 by ELM ver.2012-10-06 from 001__elm20150203_222804__dat00.bin



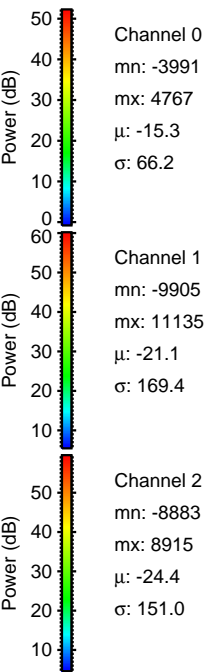
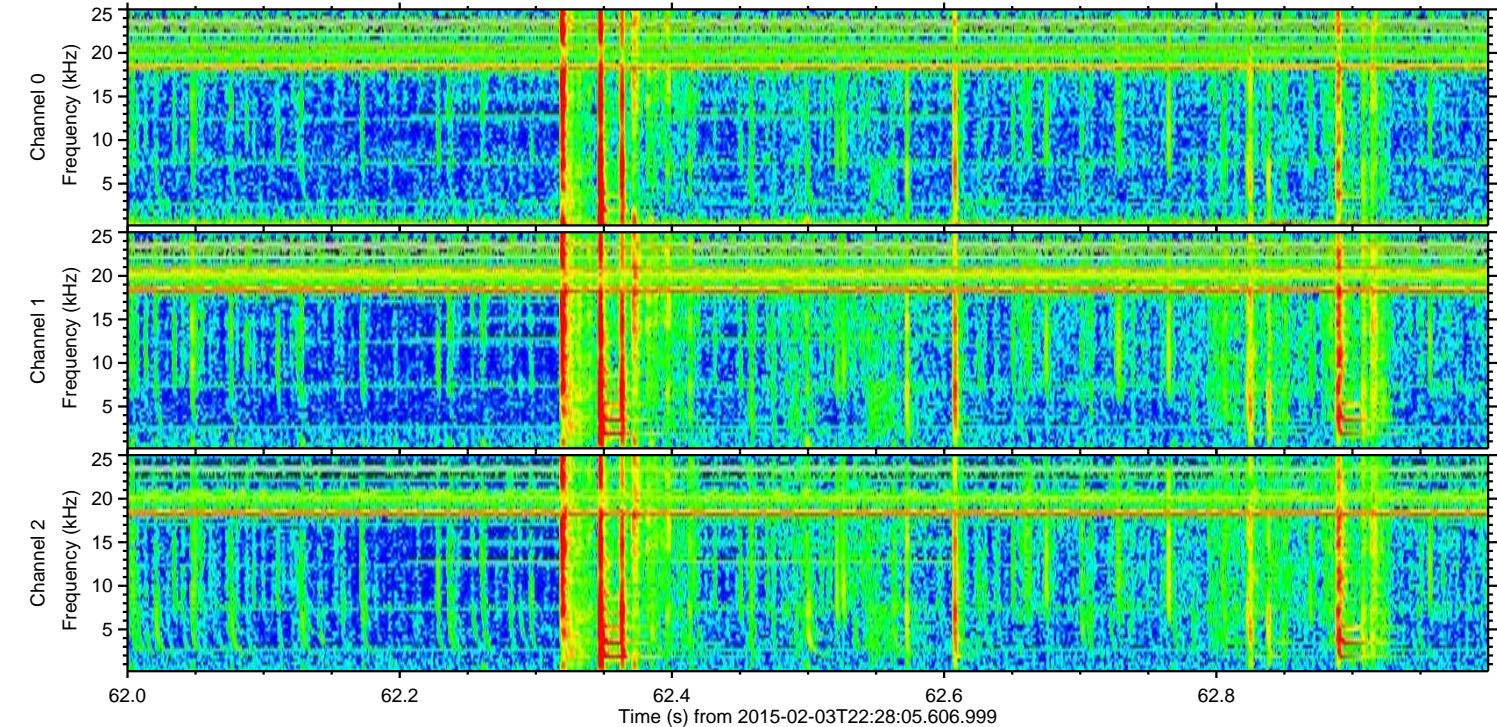
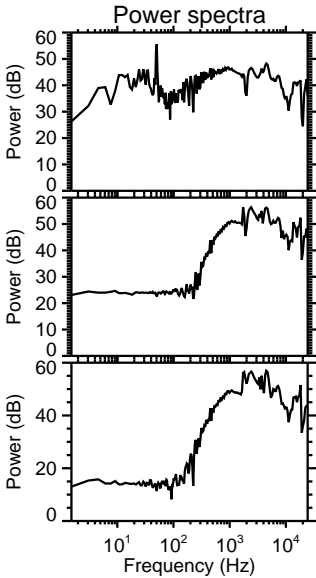
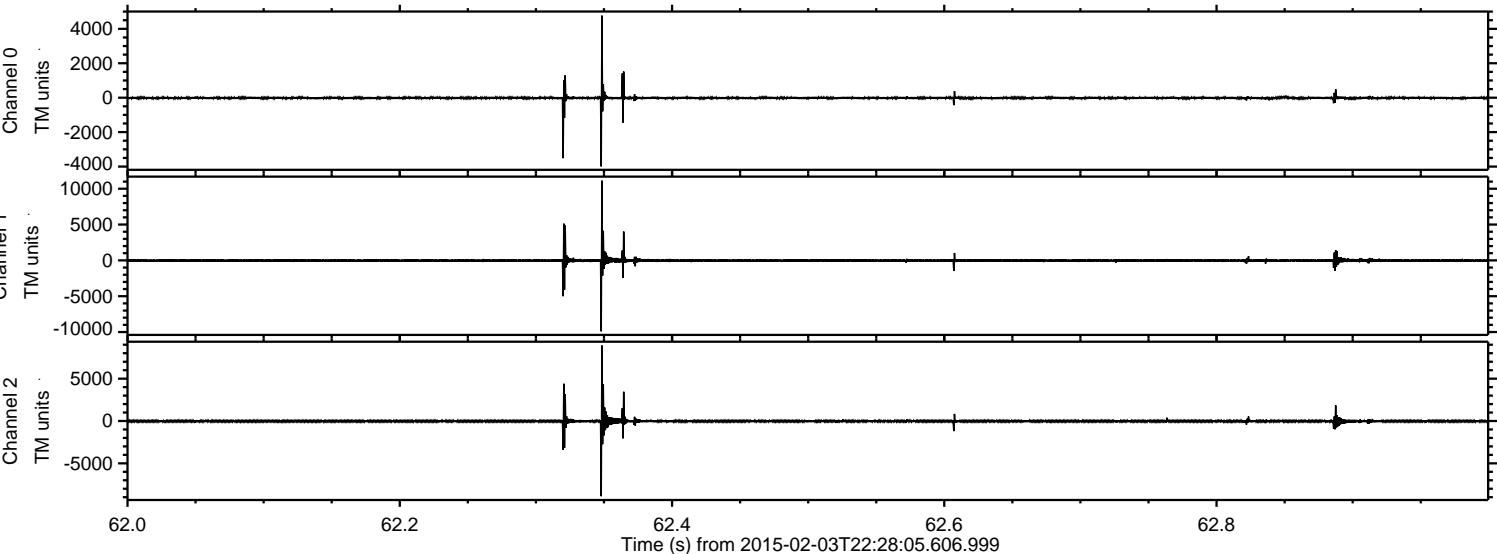
ELMAVAN 3D WAVEFORMS (Measured data sampled at 50 kHz) 49809 packets of 144 samples from 2015-02-03T22:28:05.606.999. Part 143/144

Processed Tue Feb 17 18:47:50 2015 by ELM ver.2012-10-06 from 001__elm20150203_222804__dat00.bin



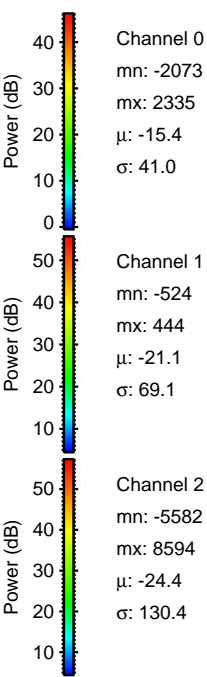
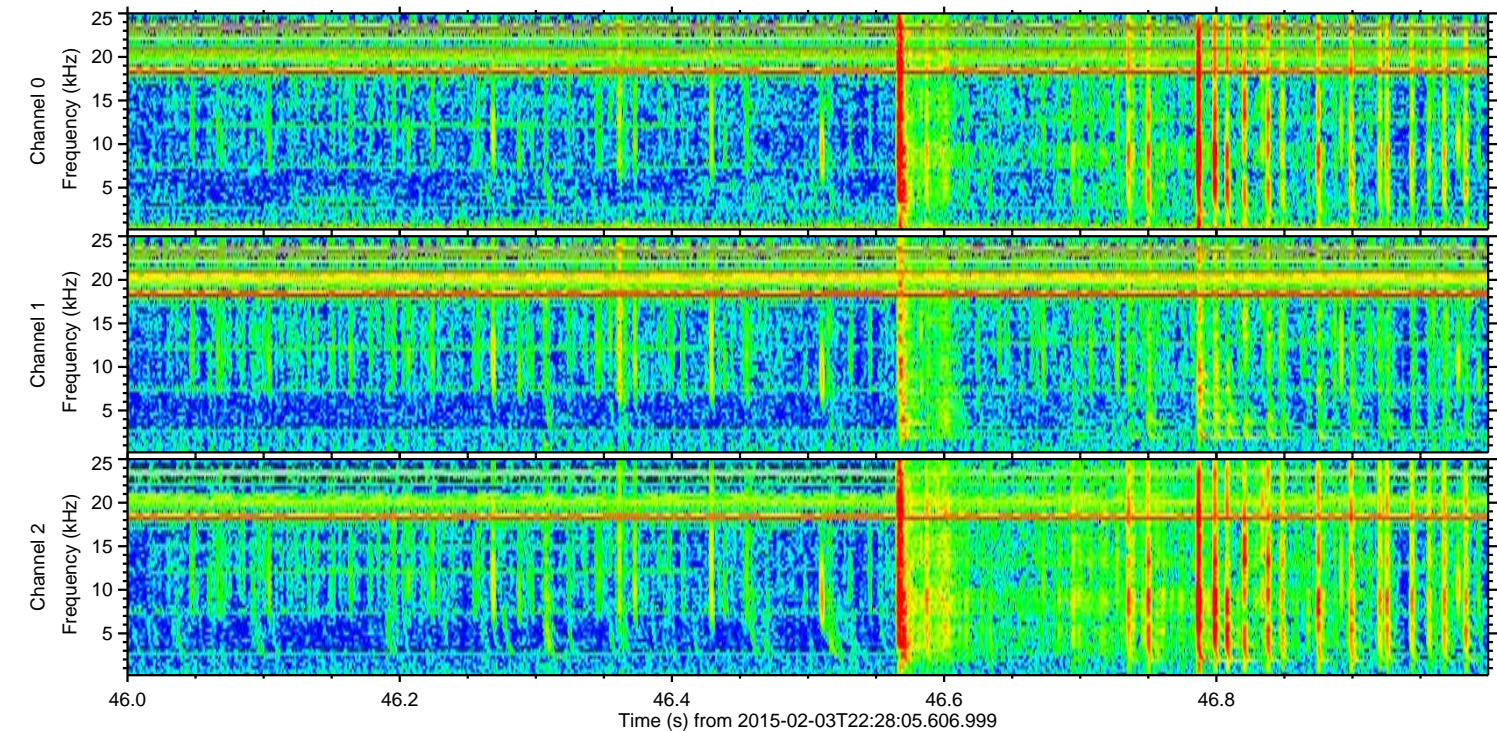
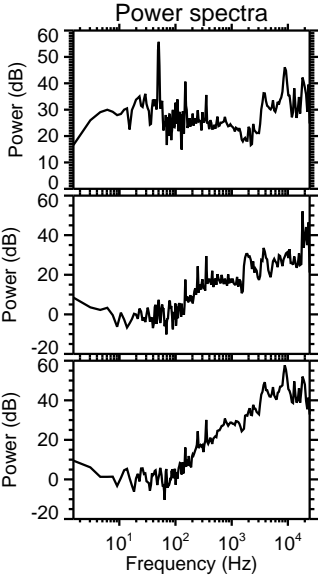
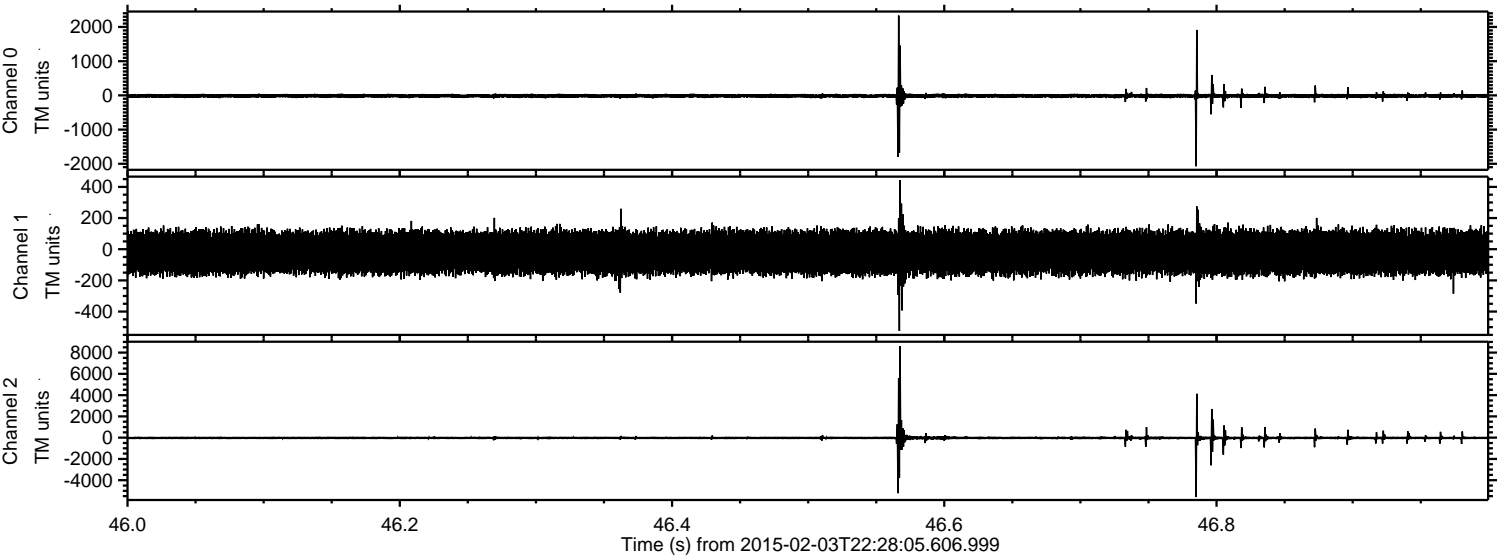
ELMAVAN 3D WAVEFORMS (Measured data sampled at 50 kHz) 49809 packets of 144 samples from 2015-02-03T22:28:05.606.999. Part 63/144

Processed Tue Feb 17 18:47:51 2015 by ELM ver.2012-10-06 from 001__elm20150203_222804__dat00.bin



ELMAVAN 3D WAVEFORMS (Measured data sampled at 50 kHz) 49809 packets of 144 samples from 2015-02-03T22:28:05.606.999. Part 47/144

Processed Tue Feb 17 18:47:52 2015 by ELM ver.2012-10-06 from 001__elm20150203_222804__dat00.bin



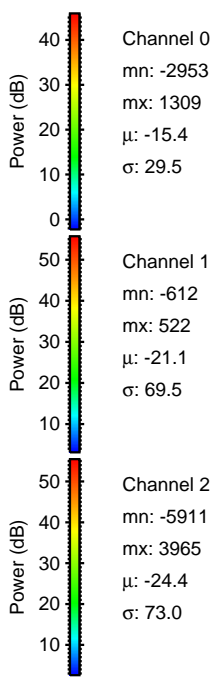
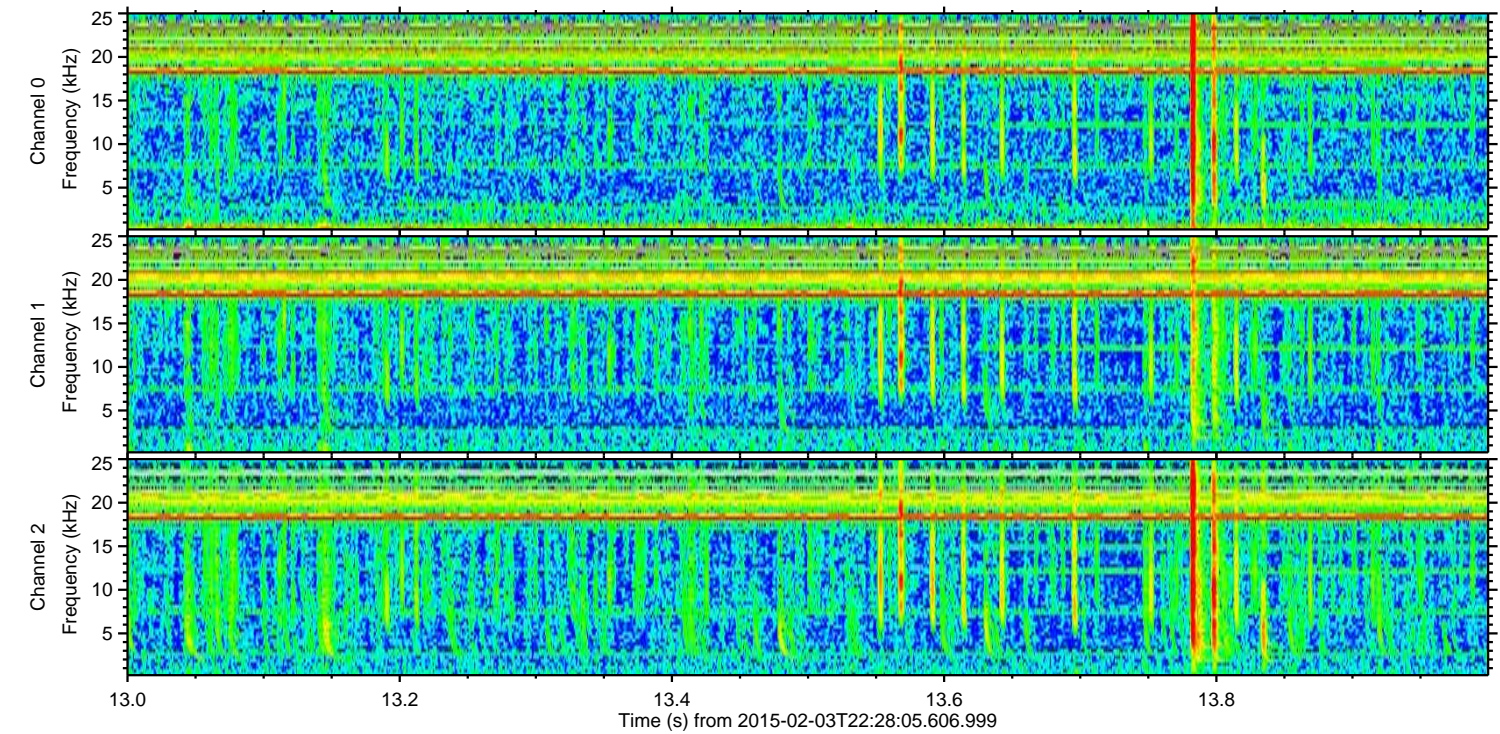
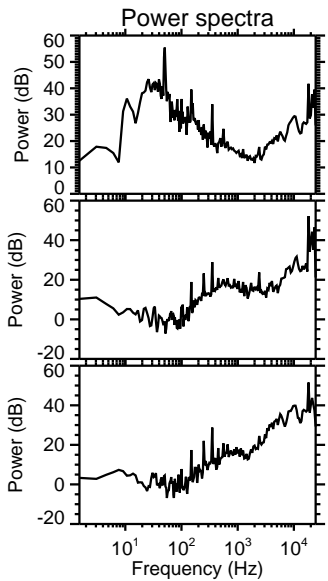
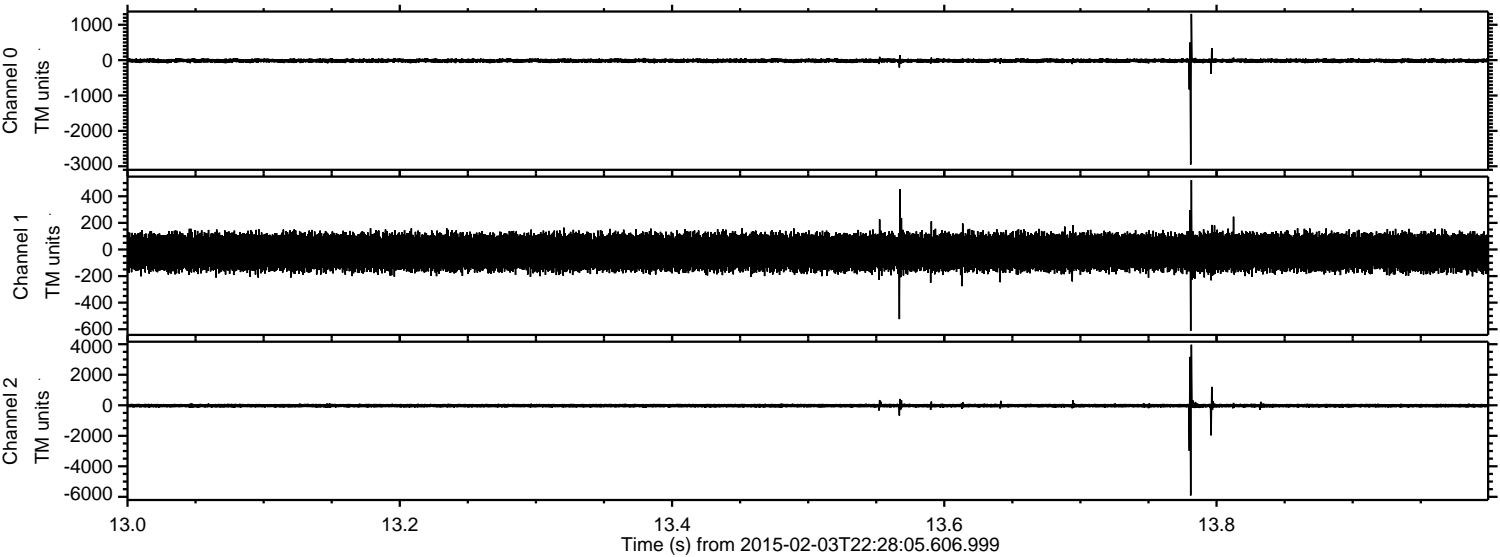
Channel 0
mn: -2073
mx: 2335
 μ : -15.4
 σ : 41.0

Channel 1
mn: -524
mx: 444
 μ : -21.1
 σ : 69.1

Channel 2
mn: -5582
mx: 8594
 μ : -24.4
 σ : 130.4

ELMAVAN 3D WAVEFORMS (Measured data sampled at 50 kHz) 49809 packets of 144 samples from 2015-02-03T22:28:05.606.999. Part 14/144

Processed Tue Feb 17 18:47:53 2015 by ELM ver.2012-10-06 from 001__elm20150203_222804__dat00.bin



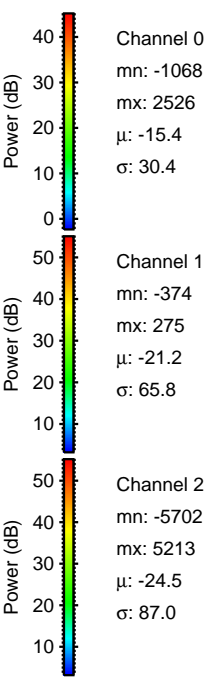
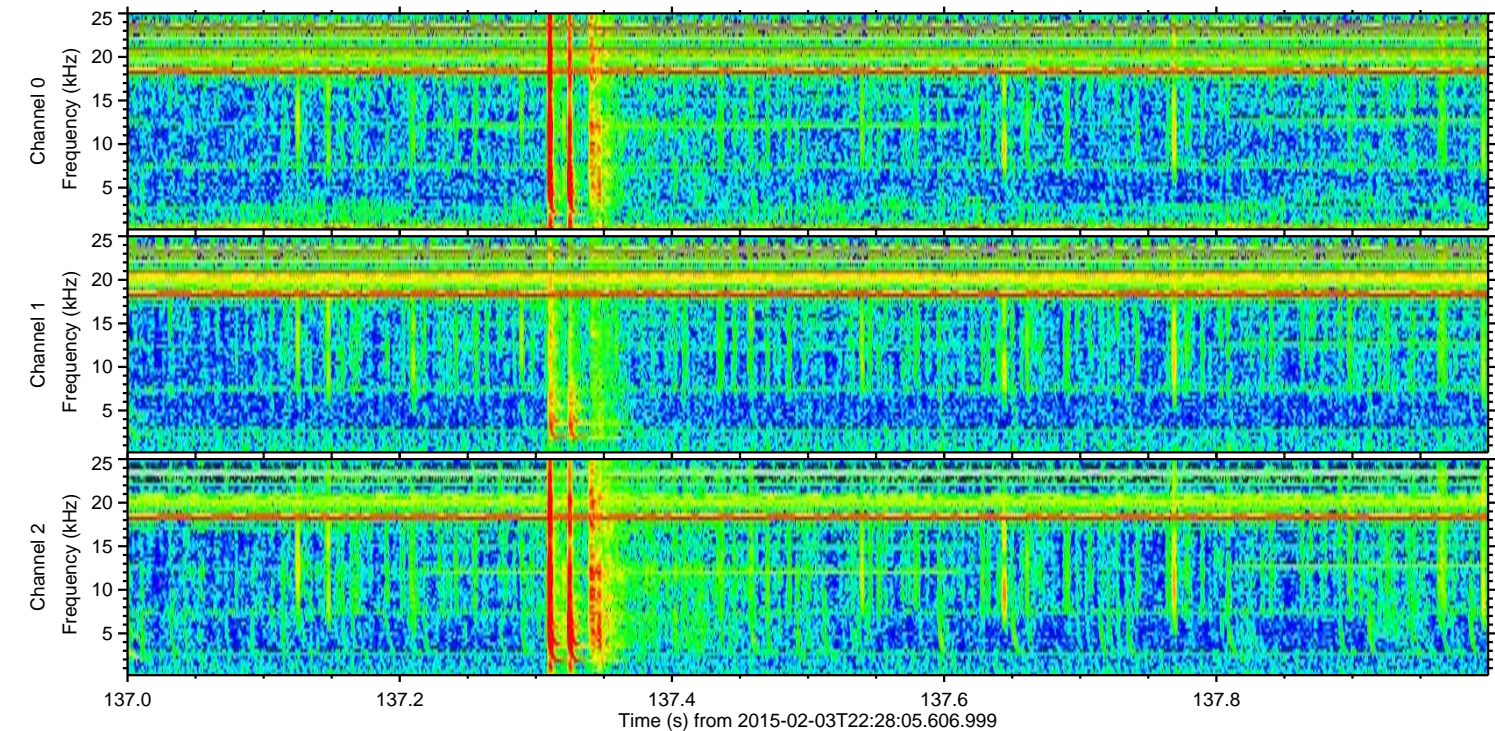
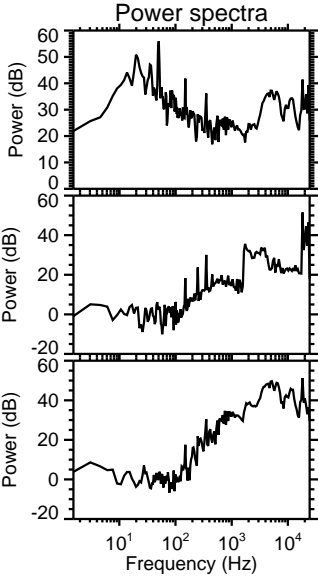
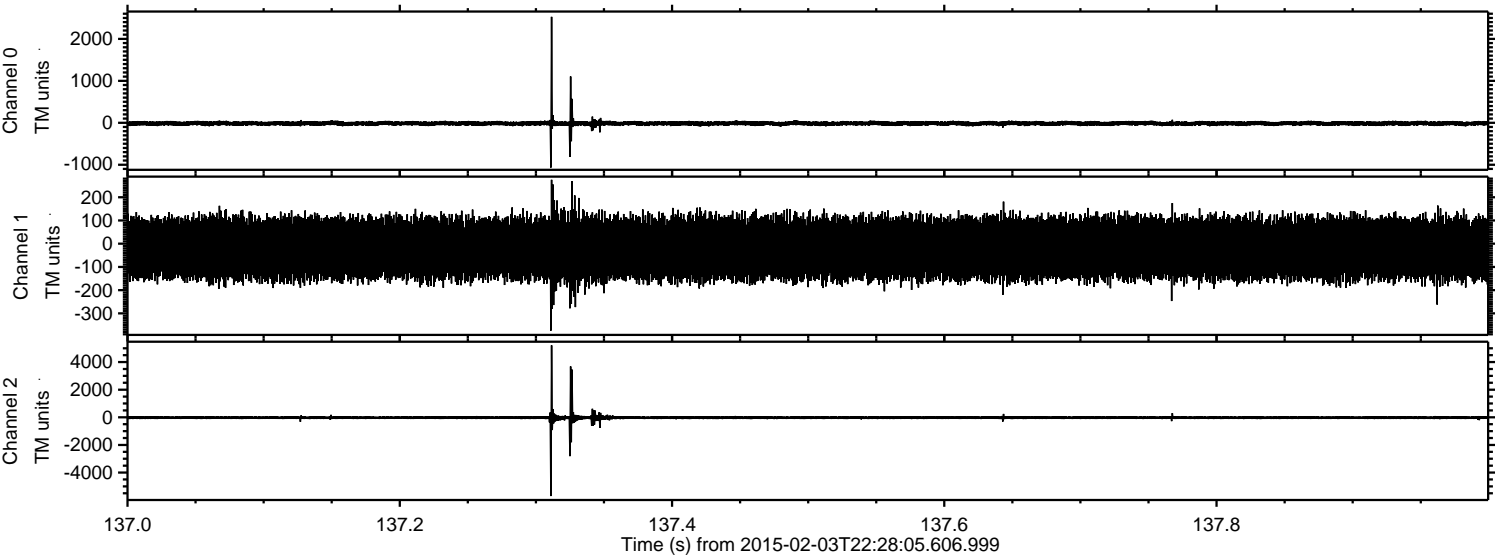
Channel 0
mn: -2953
mx: 1309
 μ : -15.4
 σ : 29.5

Channel 1
mn: -612
mx: 522
 μ : -21.1
 σ : 69.5

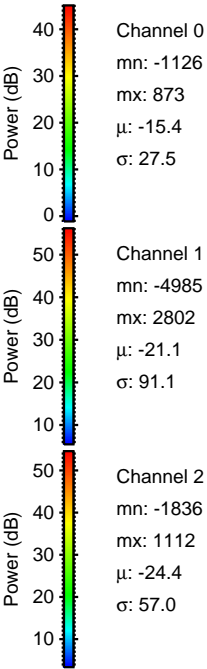
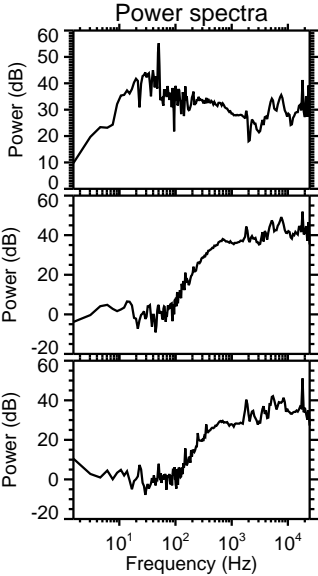
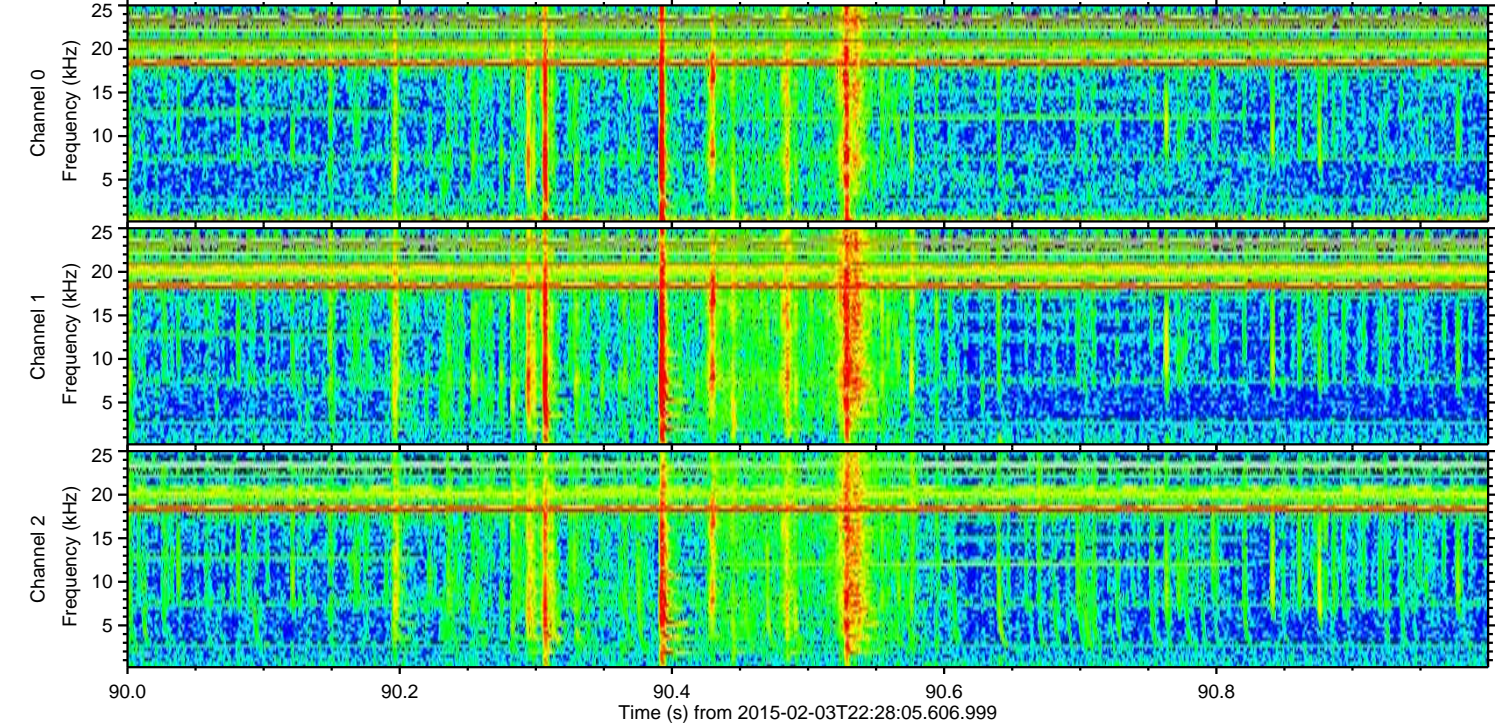
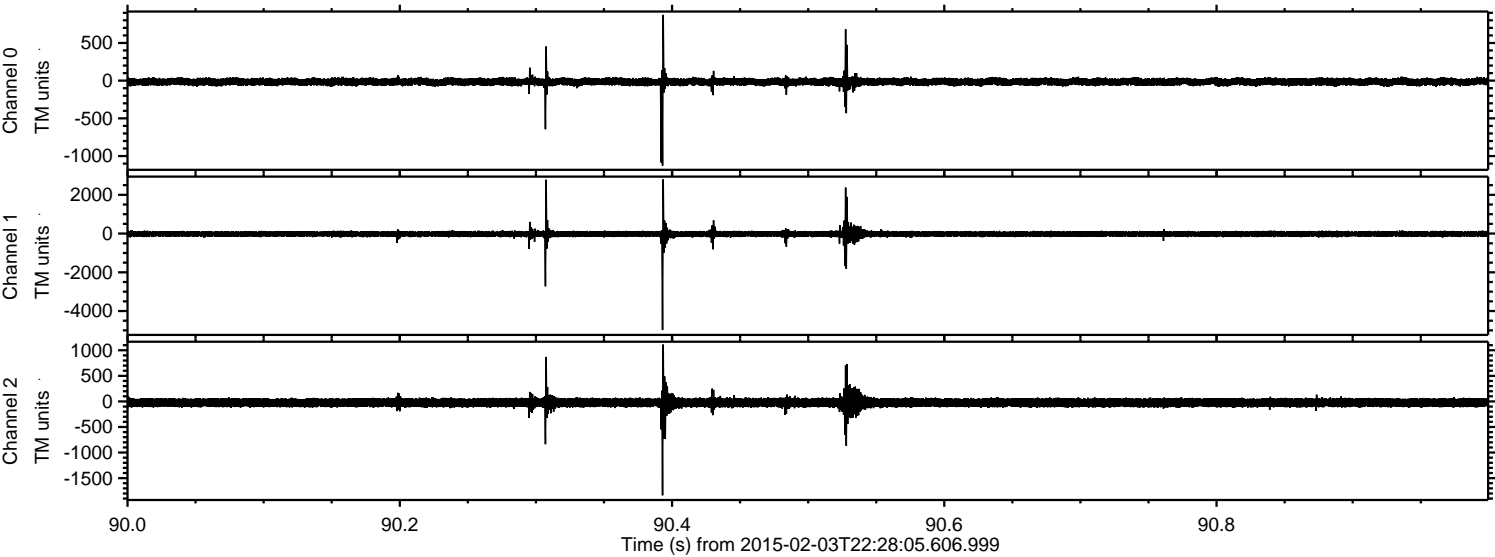
Channel 2
mn: -5911
mx: 3965
 μ : -24.4
 σ : 73.0

ELMAVAN 3D WAVEFORMS (Measured data sampled at 50 kHz) 49809 packets of 144 samples from 2015-02-03T22:28:05.606.999. Part 138/144

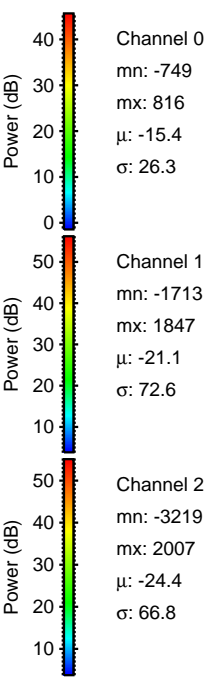
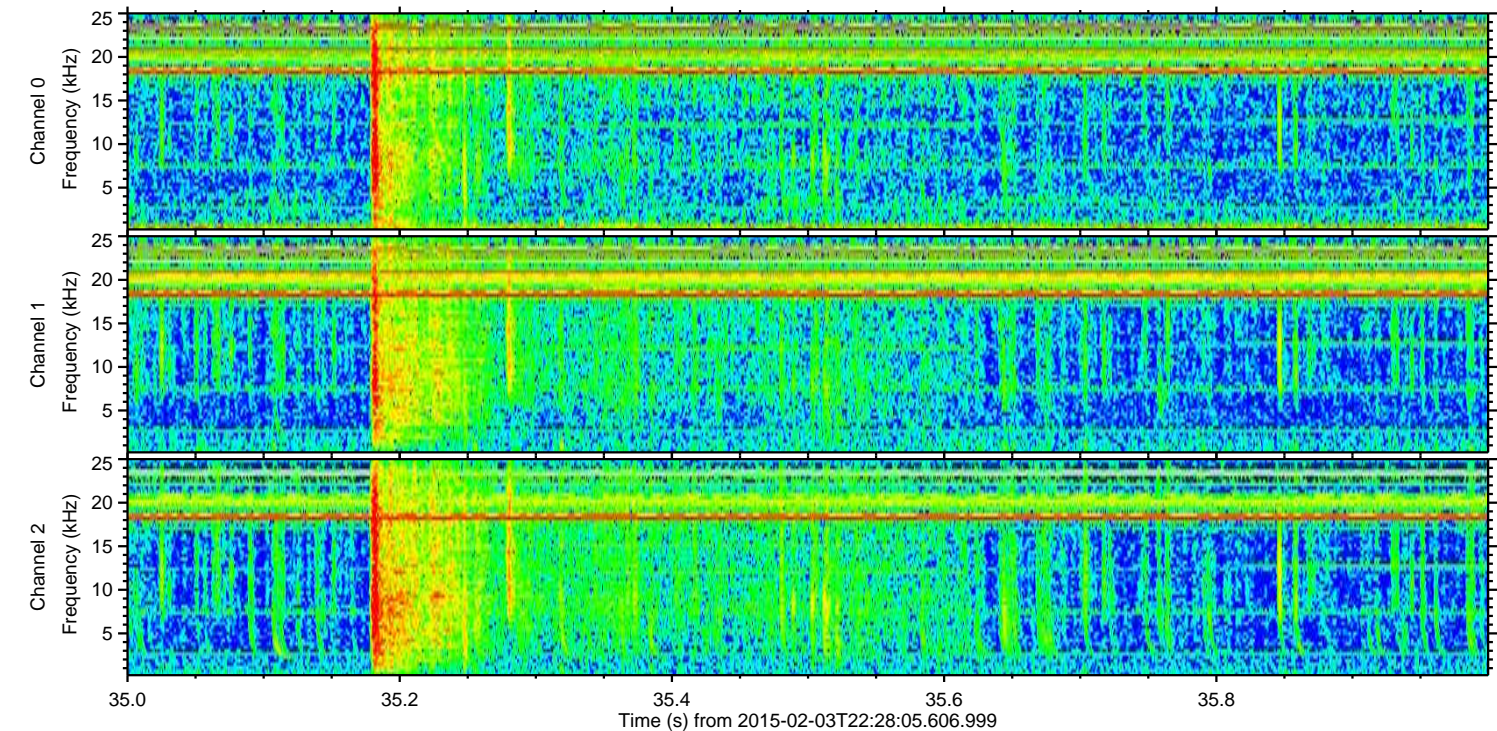
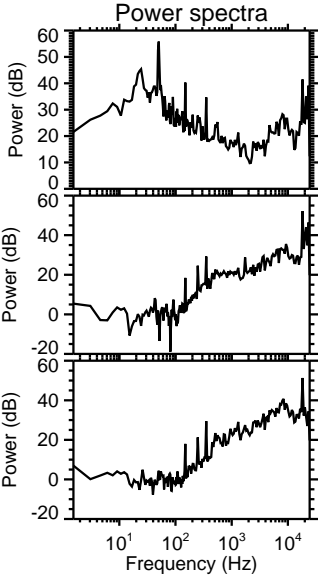
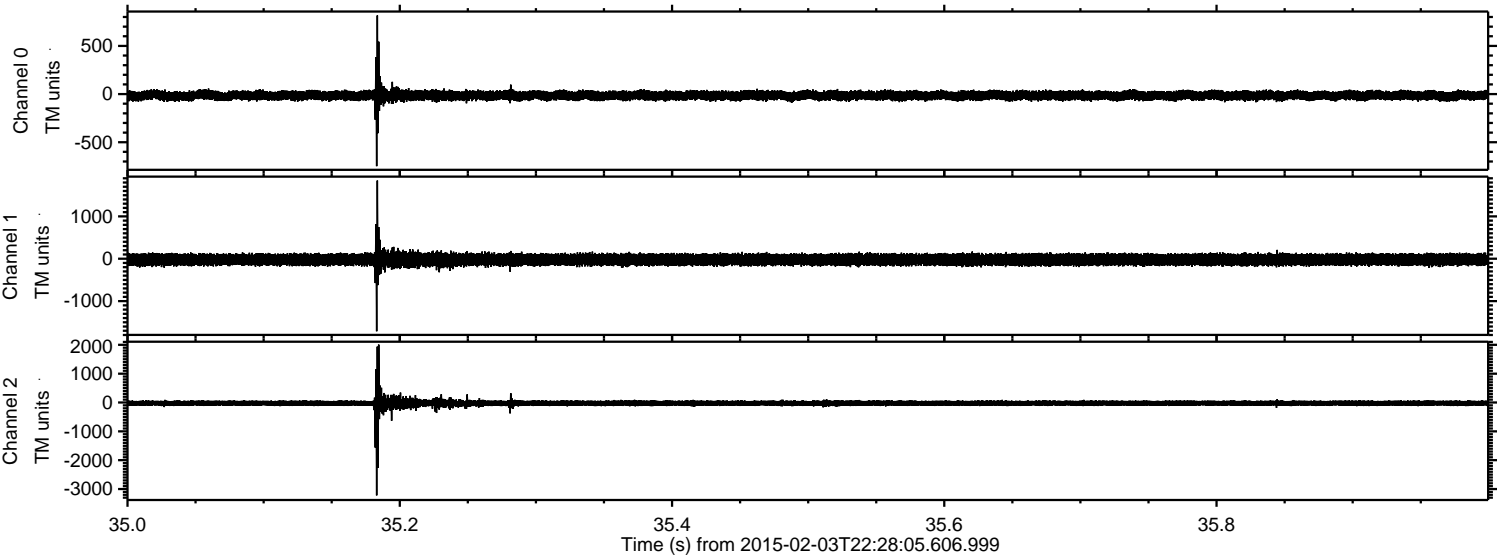
Processed Tue Feb 17 18:47:54 2015 by ELM ver.2012-10-06 from 001__elm20150203_222804__dat00.bin



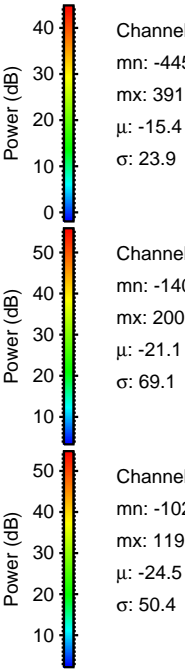
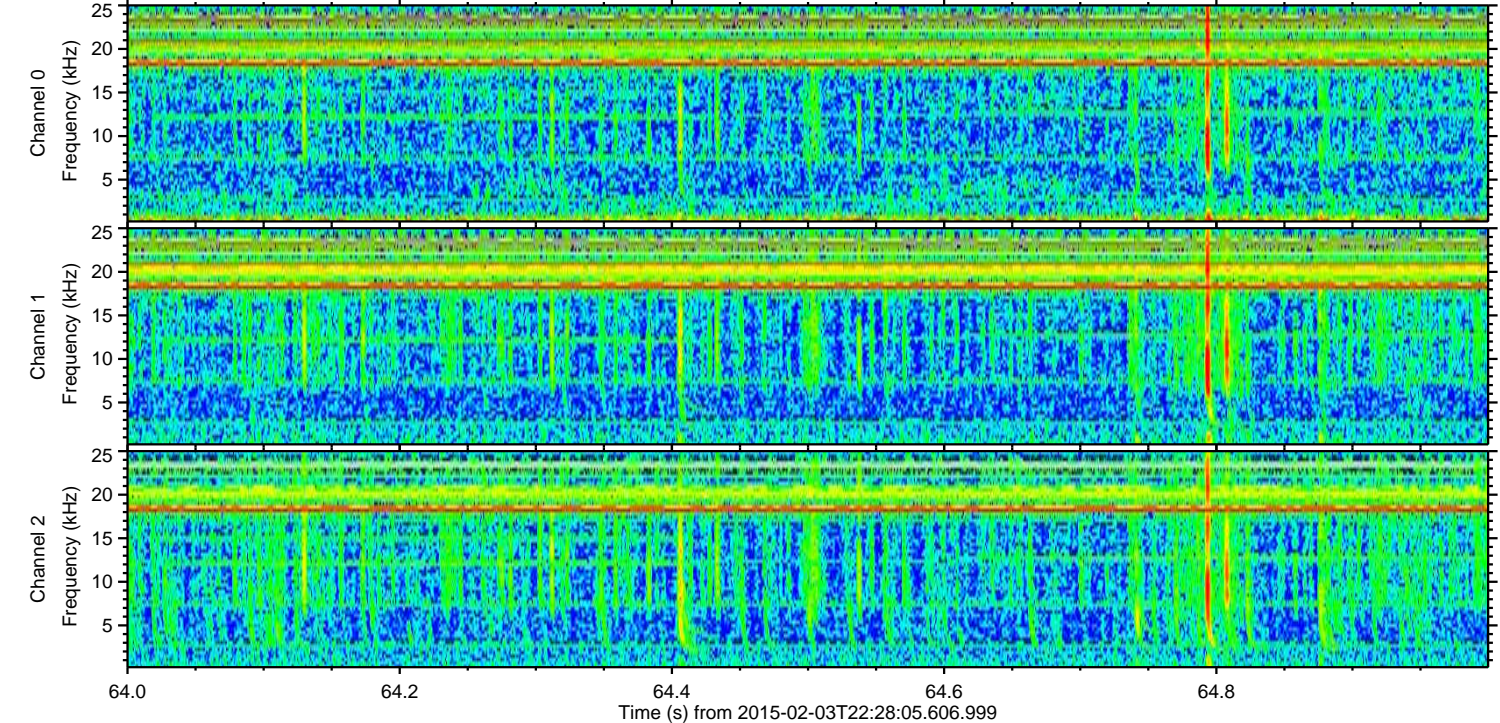
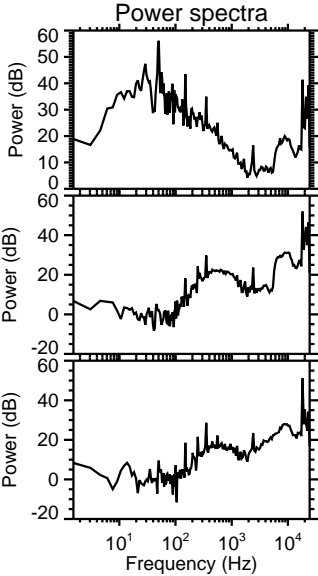
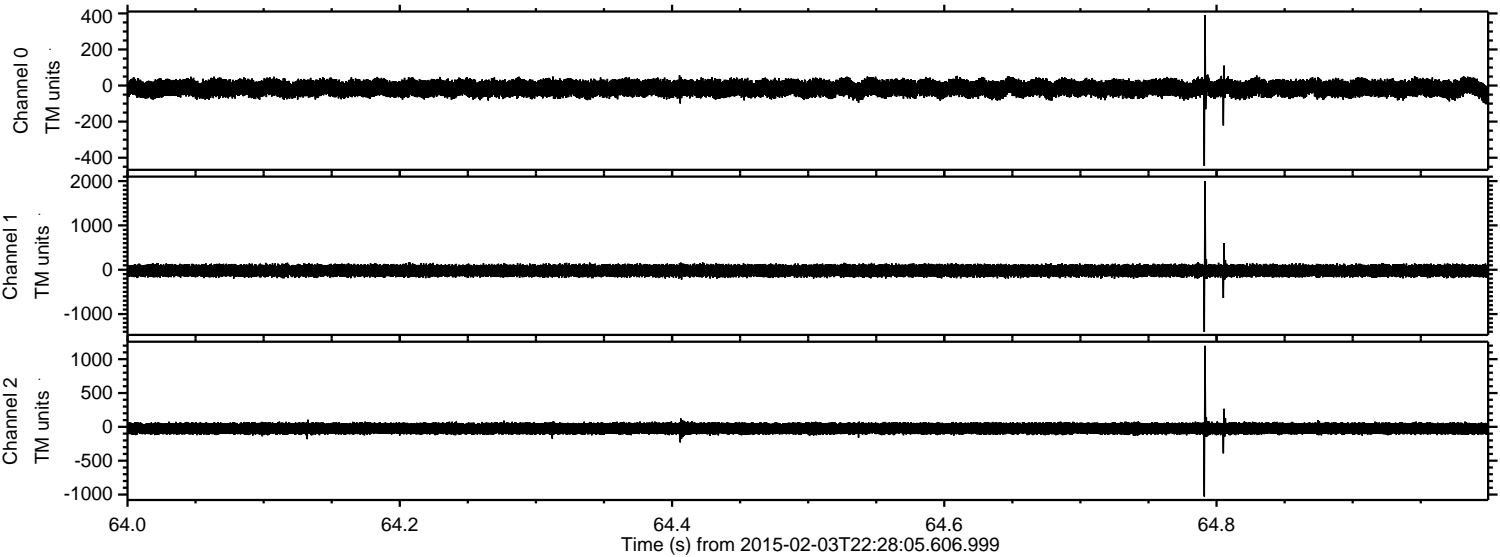
Processed Tue Feb 17 18:47:55 2015 by ELM ver.2012-10-06 from 001__elm20150203_222804__dat00.bin



Processed Tue Feb 17 18:47:56 2015 by ELM ver.2012-10-06 from 001__elm20150203_222804__dat00.bin

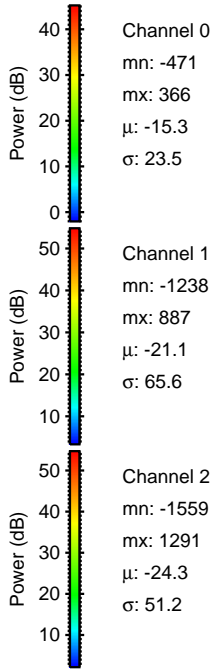
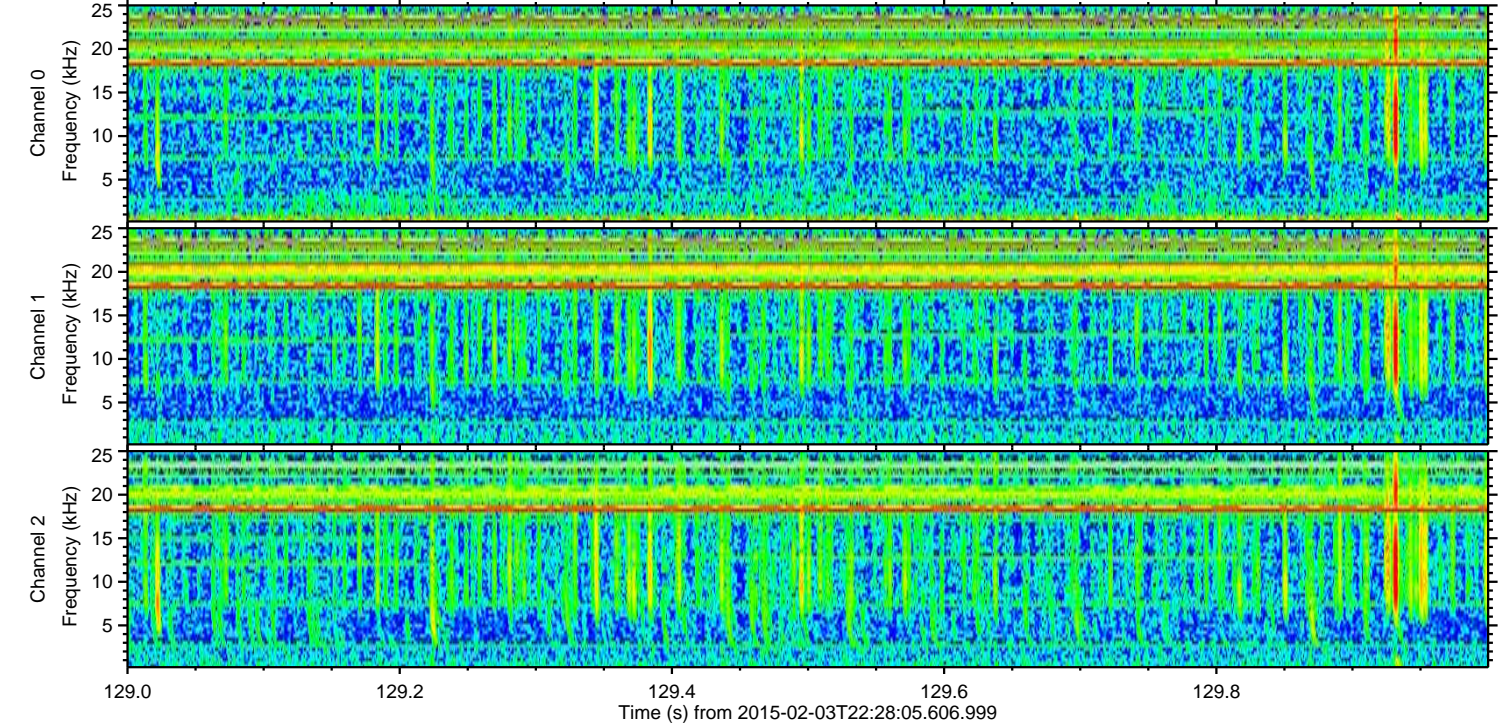
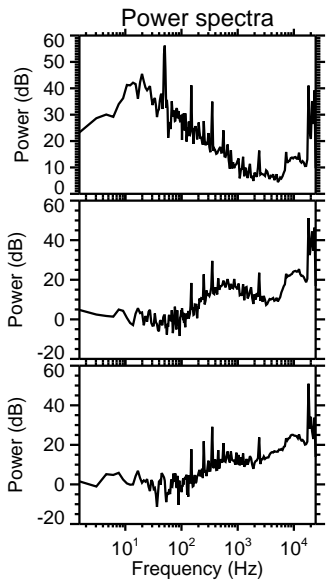
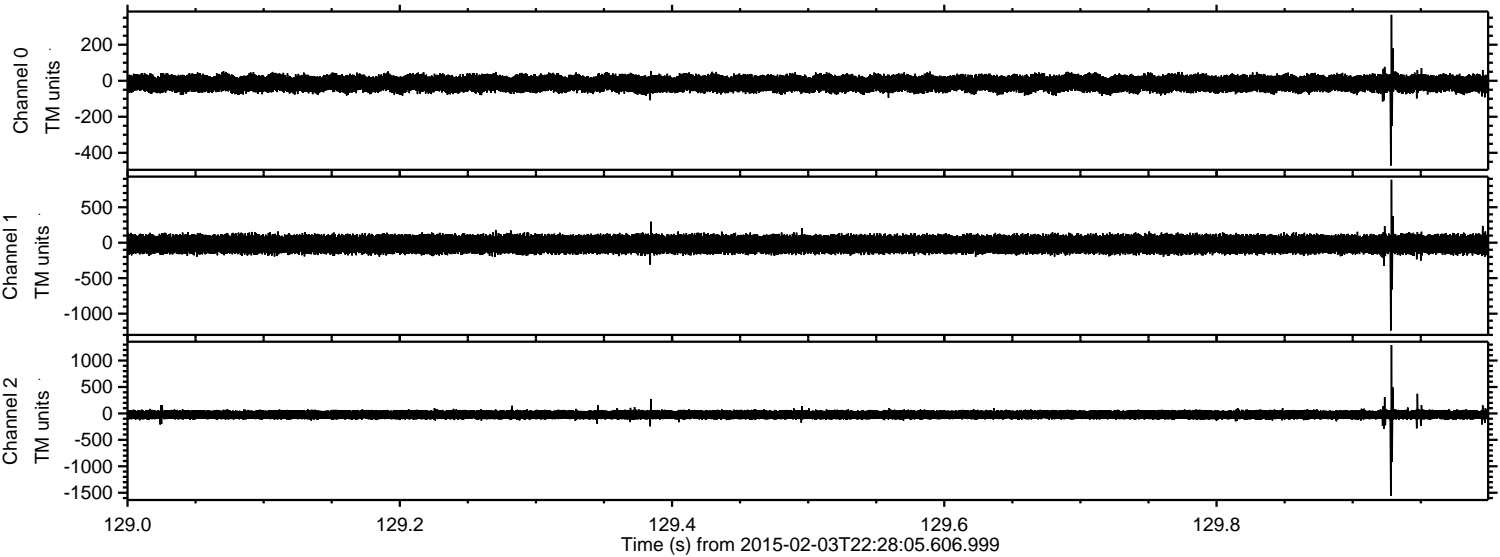


Processed Tue Feb 17 18:47:57 2015 by ELM ver.2012-10-06 from 001__elm20150203_222804__dat00.bin



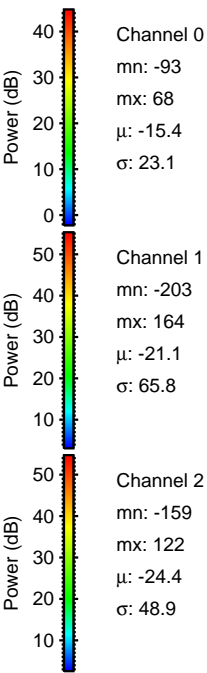
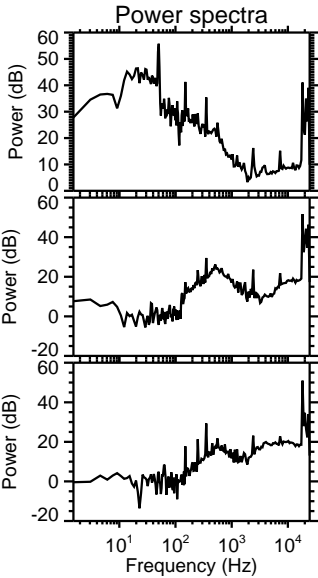
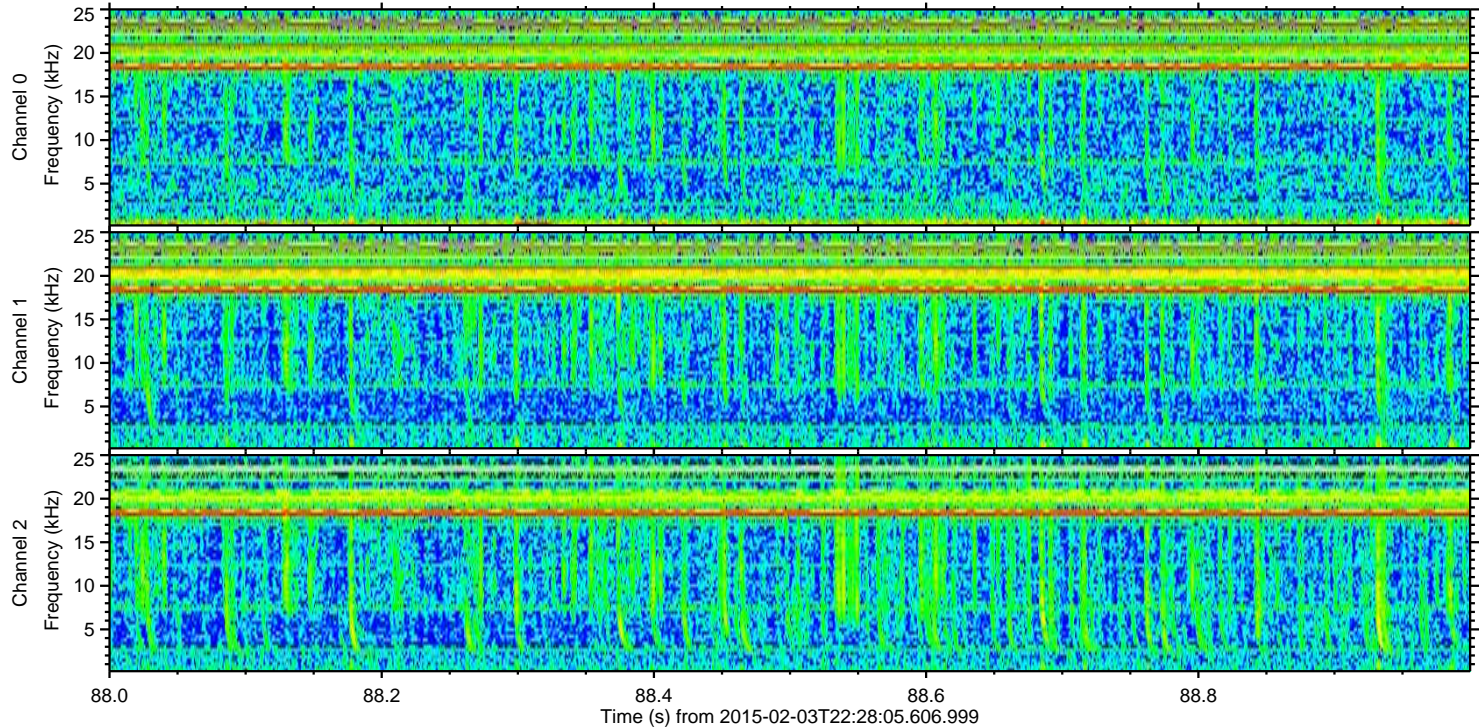
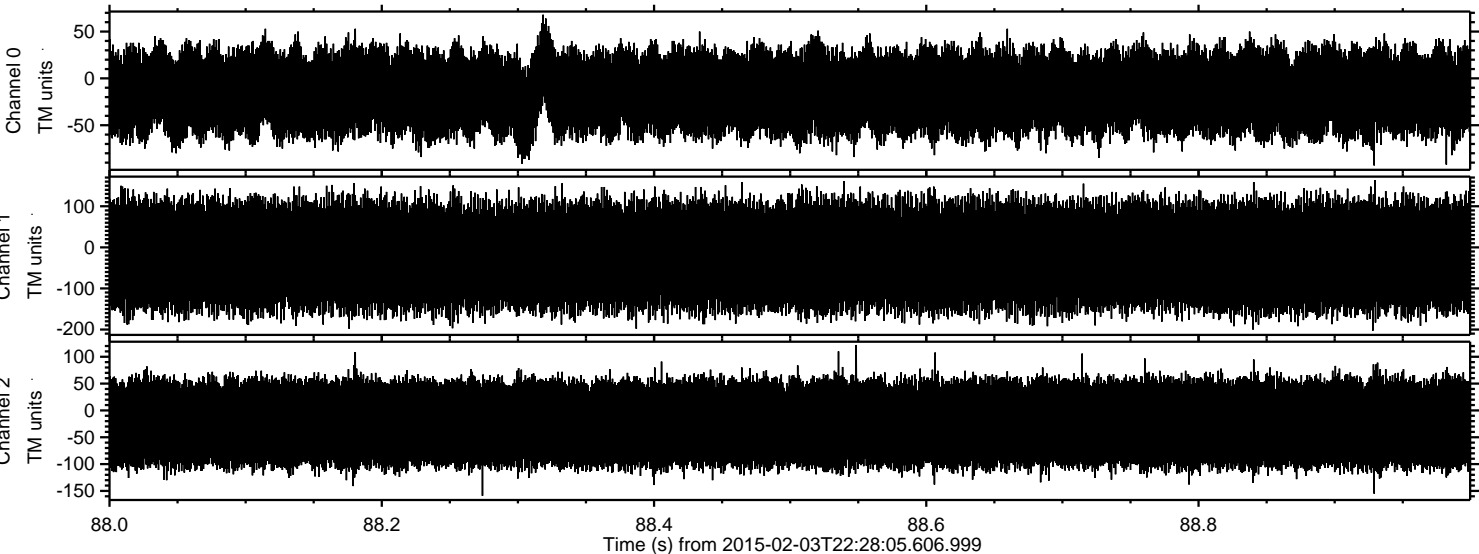
ELMAVAN 3D WAVEFORMS (Measured data sampled at 50 kHz) 49809 packets of 144 samples from 2015-02-03T22:28:05.606.999. Part 130/144

Processed Tue Feb 17 18:47:58 2015 by ELM ver.2012-10-06 from 001__elm20150203_222804__dat00.bin



ELMAVAN 3D WAVEFORMS (Measured data sampled at 50 kHz) 49809 packets of 144 samples from 2015-02-03T22:28:05.606.999. Part 89/144

Processed Tue Feb 17 18:48:00 2015 by ELM ver.2012-10-06 from 001__elm20150203_222804__dat00.bin



Channel 0
mn: -93
mx: 68
 μ : -15.4
 σ : 23.1

Channel 1
mn: -203
mx: 164
 μ : -21.1
 σ : 65.8

Channel 2
mn: -159
mx: 122
 μ : -24.4
 σ : 48.9