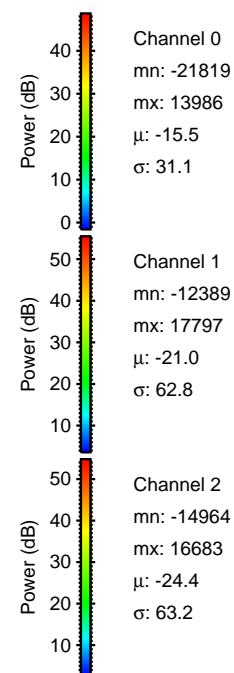
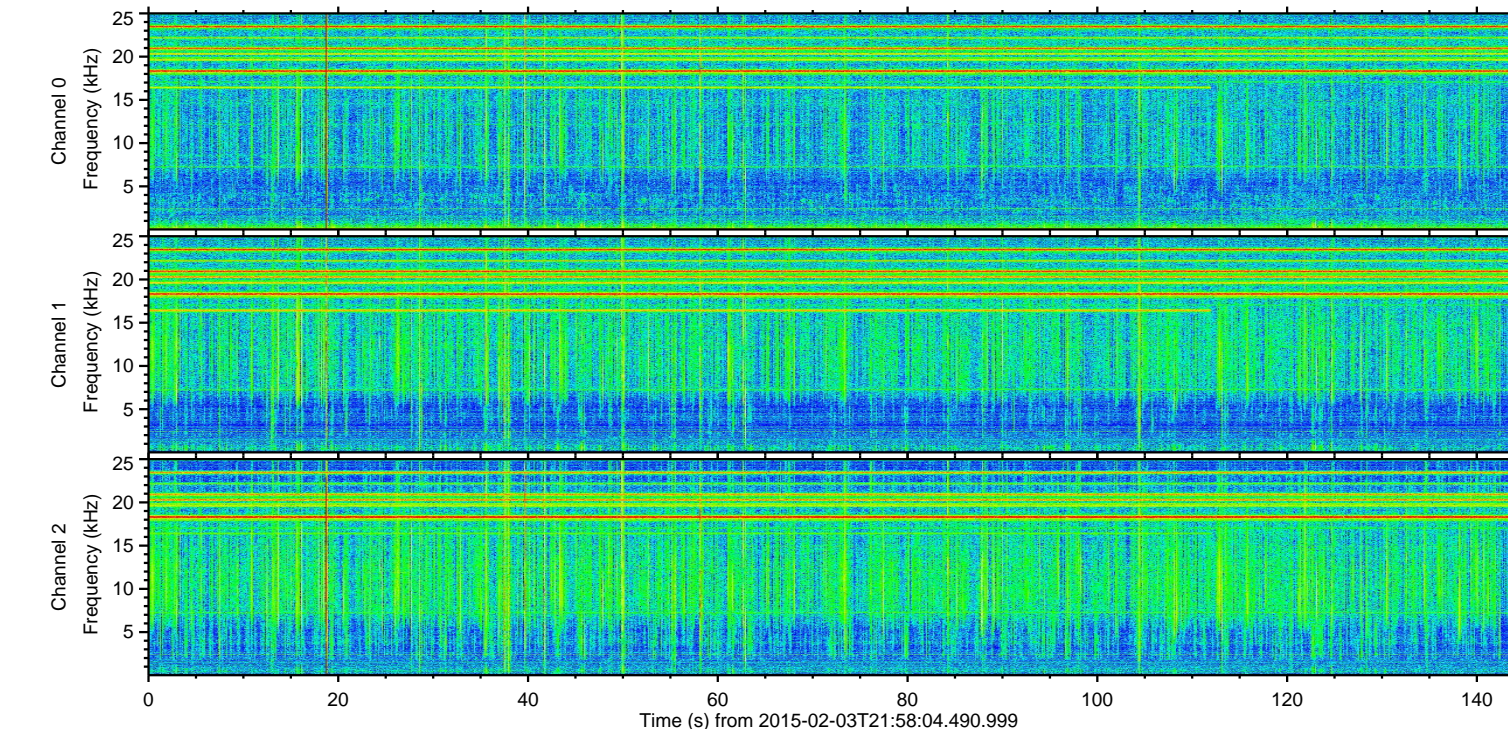
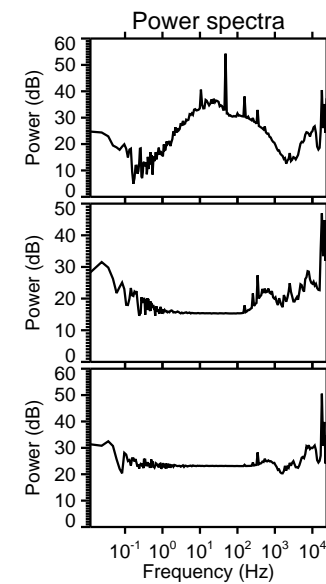
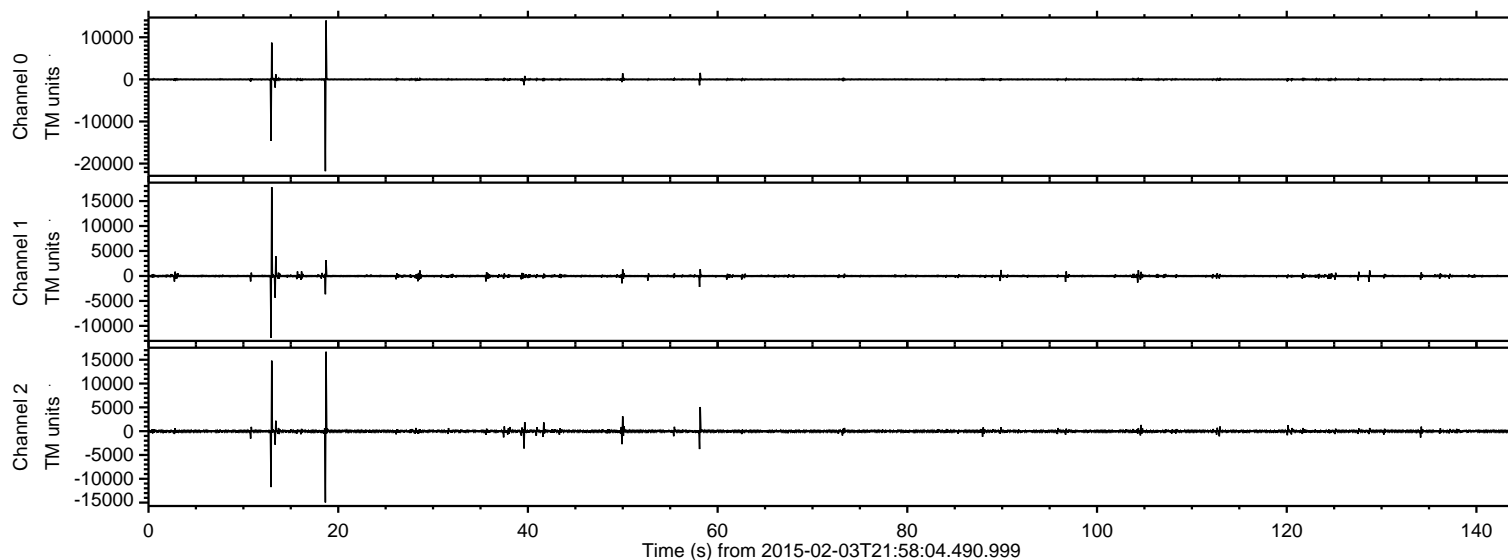


# ELMAVAN 3D WAVEFORMS (Measured data sampled at 50 kHz) 49809 packets of 144 samples from 2015-02-03T21:58:04.490.999.

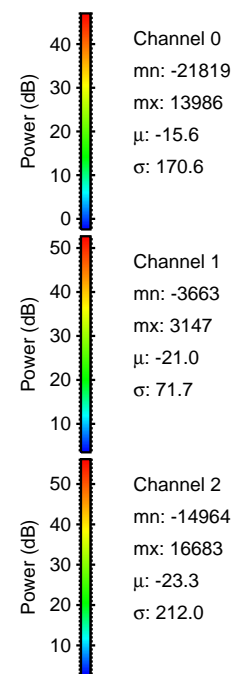
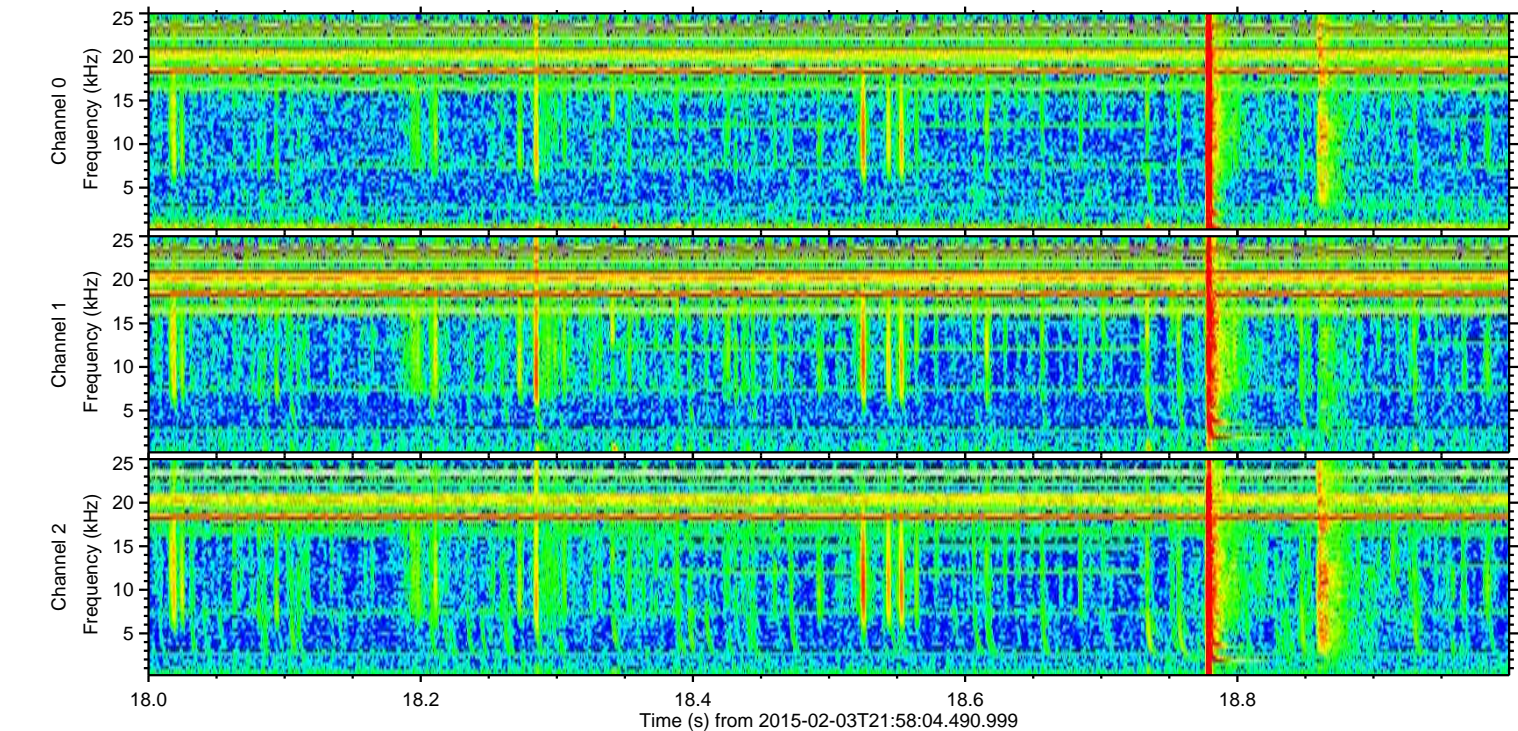
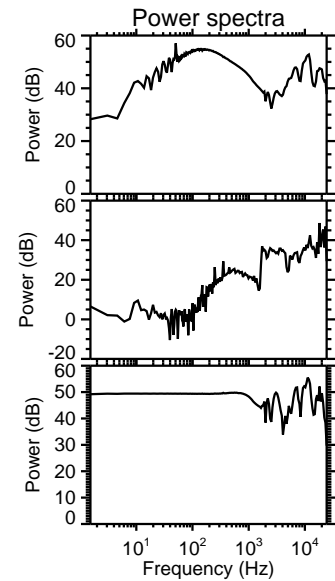
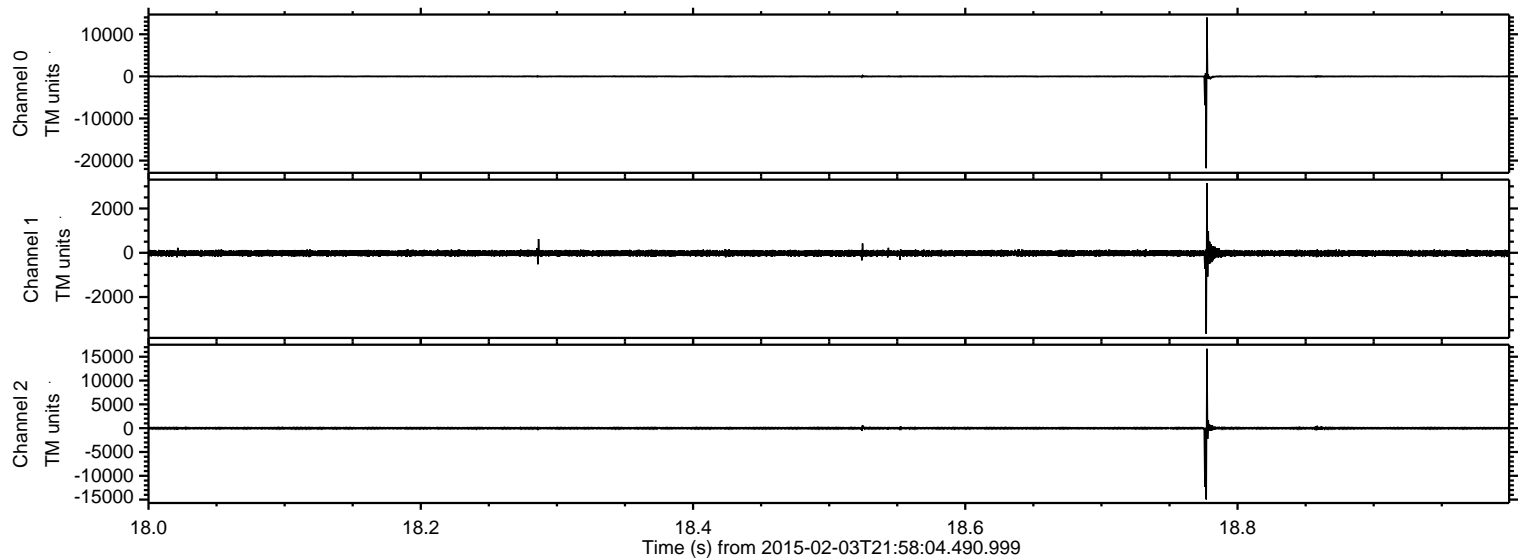
Processed Tue Feb 17 18:36:49 2015 by ELM ver.2012-10-06 from 001\_\_elm20150203\_215803\_\_dat00.bin





ELMAVAN 3D WAVEFORMS (Measured data sampled at 50 kHz) 49809 packets of 144 samples from 2015-02-03T21:58:04.490.999. Part 19/144

Processed Tue Feb 17 18:37:12 2015 by ELM ver.2012-10-06 from 001\_\_elm20150203\_215803\_\_dat00.bin



Channel 0  
mn: -21819  
mx: 13986  
 $\mu$ : -15.6  
 $\sigma$ : 170.6

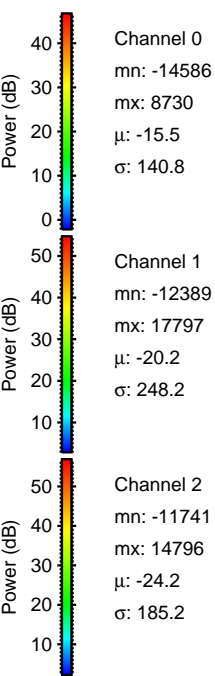
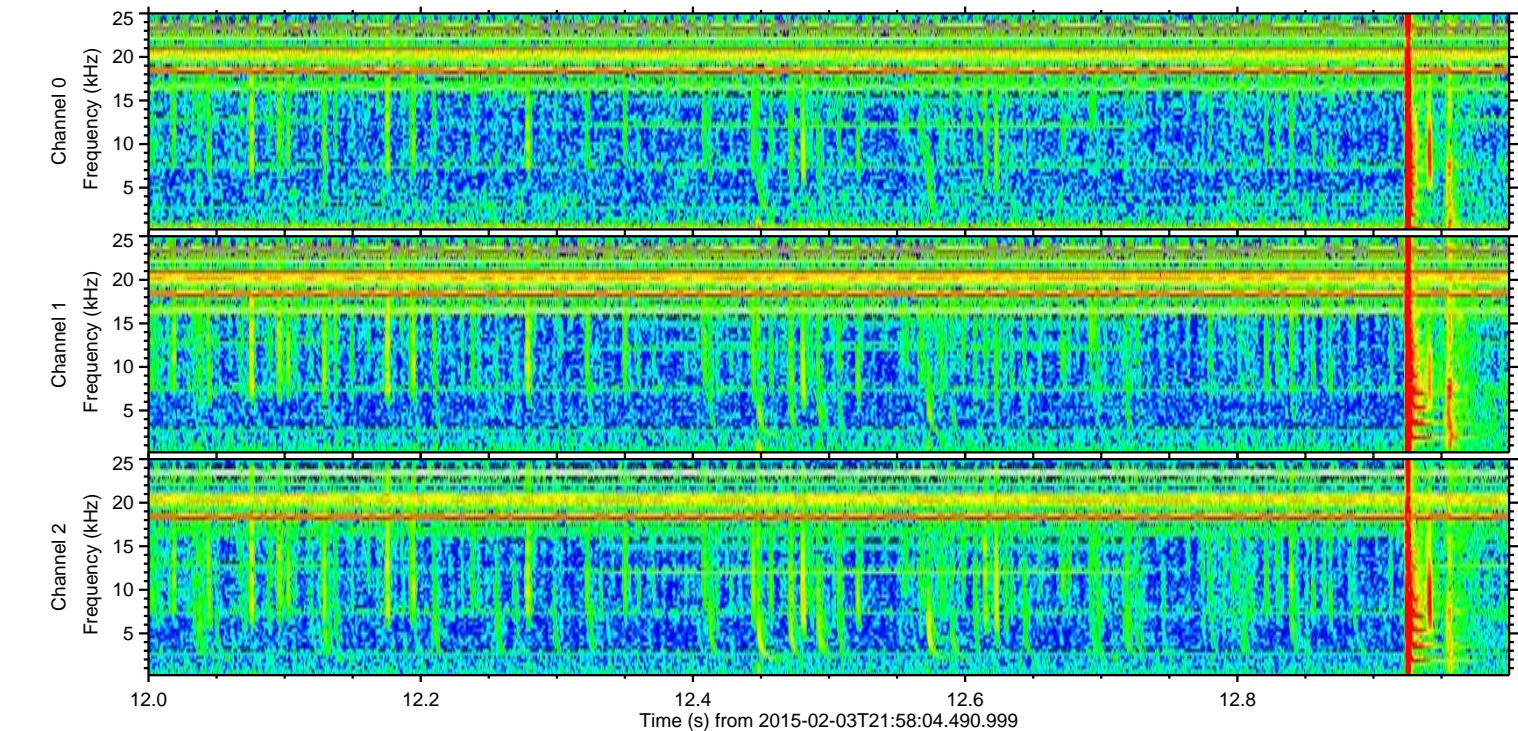
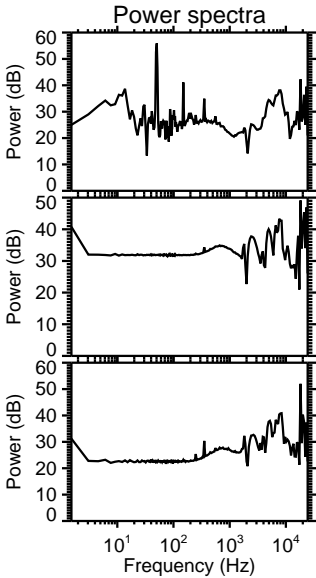
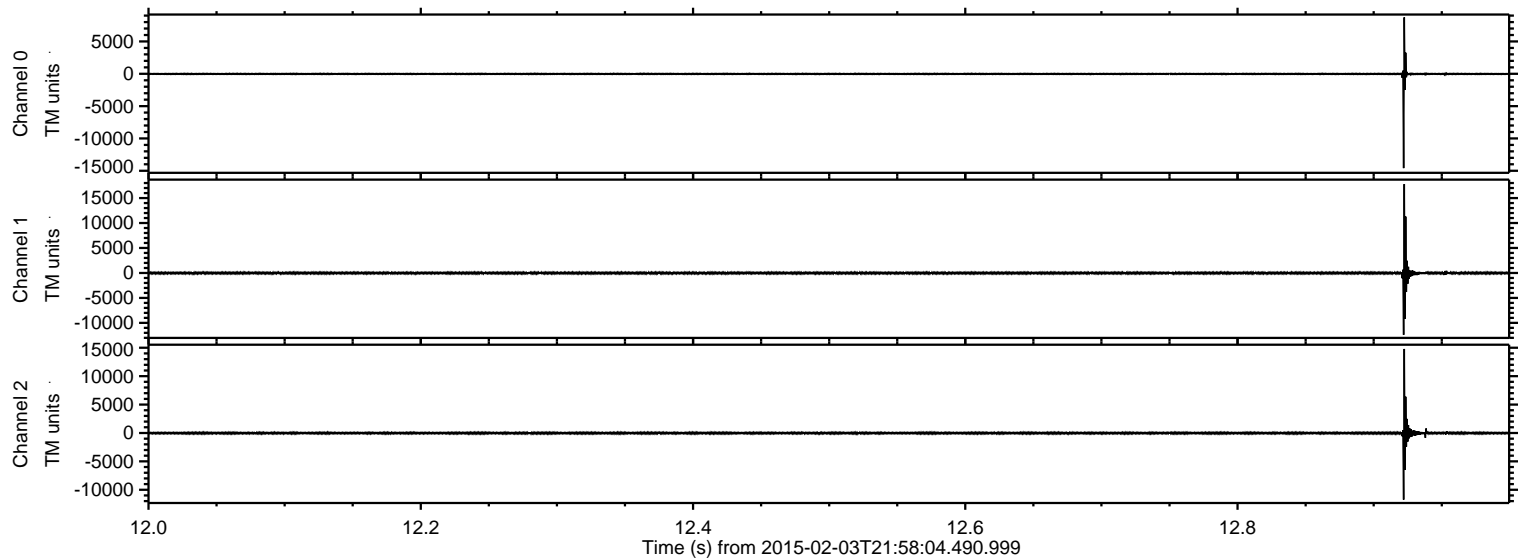
Channel 1  
mn: -3663  
mx: 3147  
 $\mu$ : -21.0  
 $\sigma$ : 71.7

Channel 2  
mn: -14964  
mx: 16683  
 $\mu$ : -23.3  
 $\sigma$ : 212.0



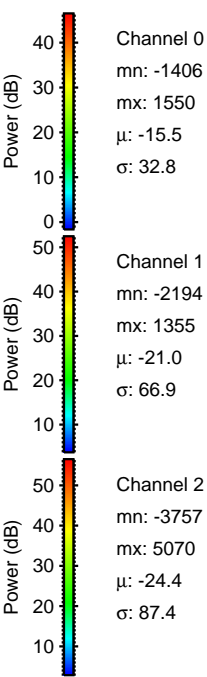
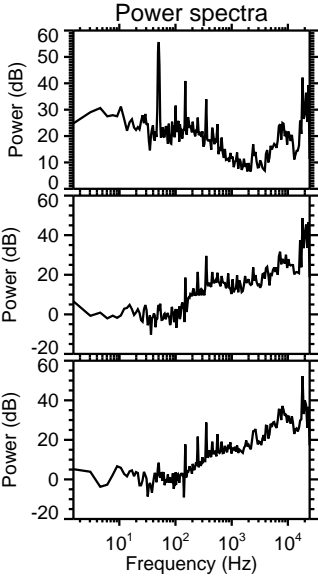
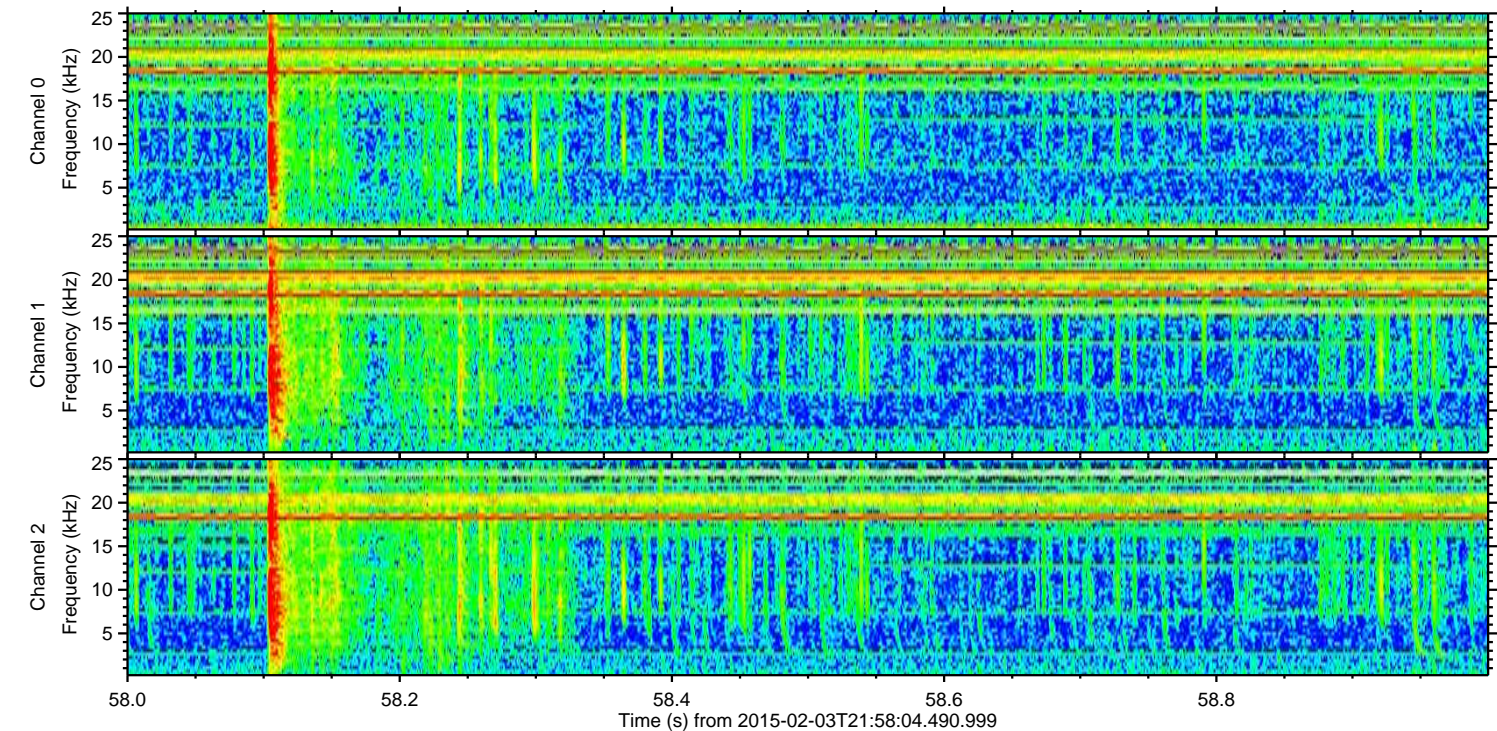
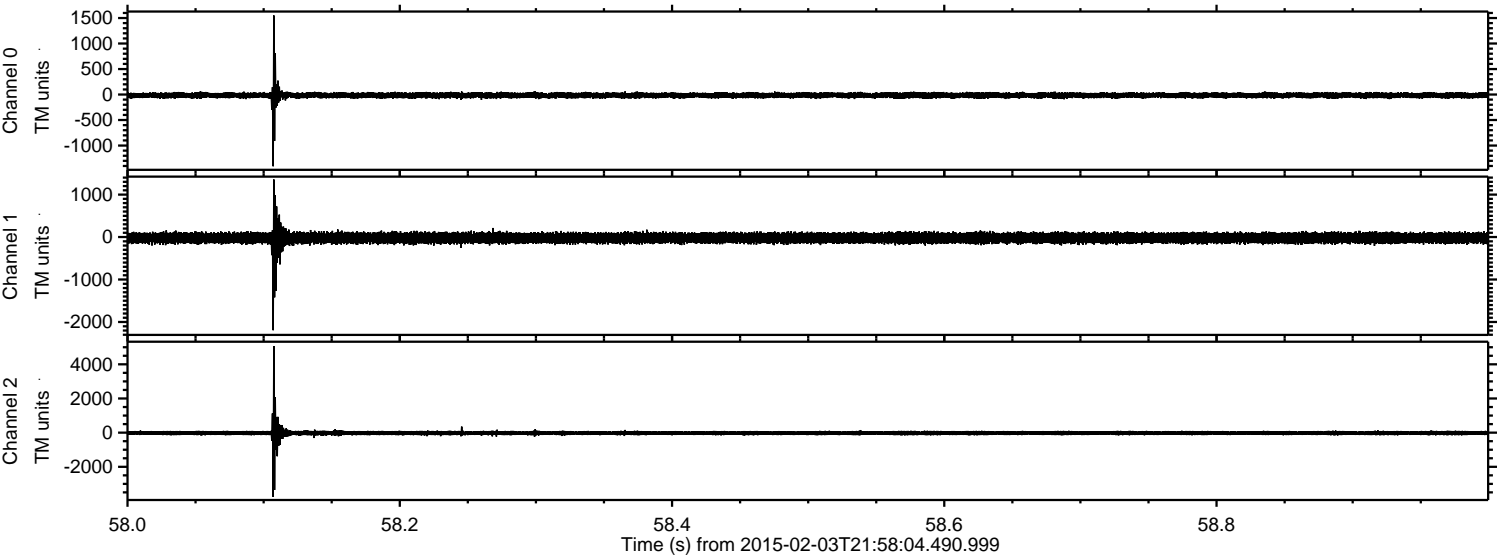
ELMAVAN 3D WAVEFORMS (Measured data sampled at 50 kHz) 49809 packets of 144 samples from 2015-02-03T21:58:04.490.999. Part 13/144

Processed Tue Feb 17 18:37:13 2015 by ELM ver.2012-10-06 from 001\_\_elm20150203\_215803\_\_dat00.bin





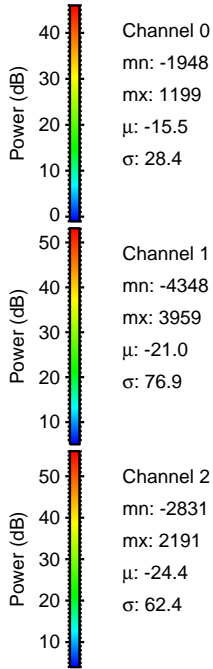
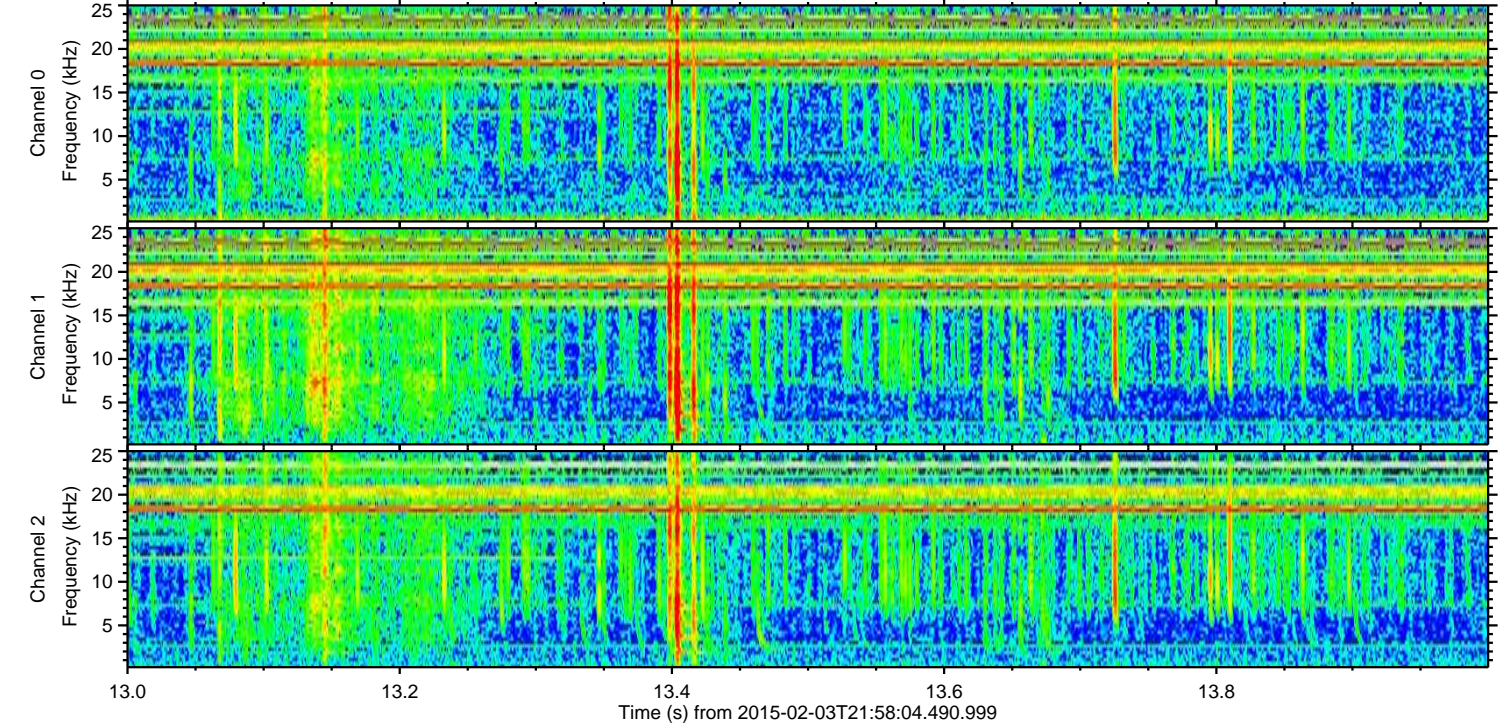
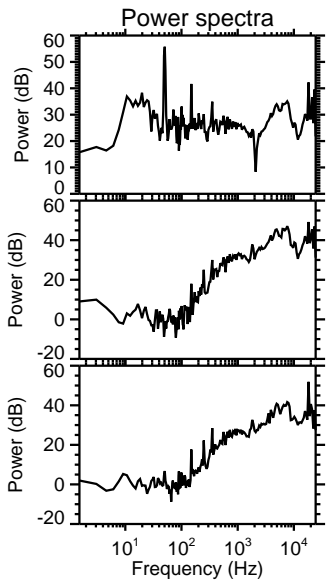
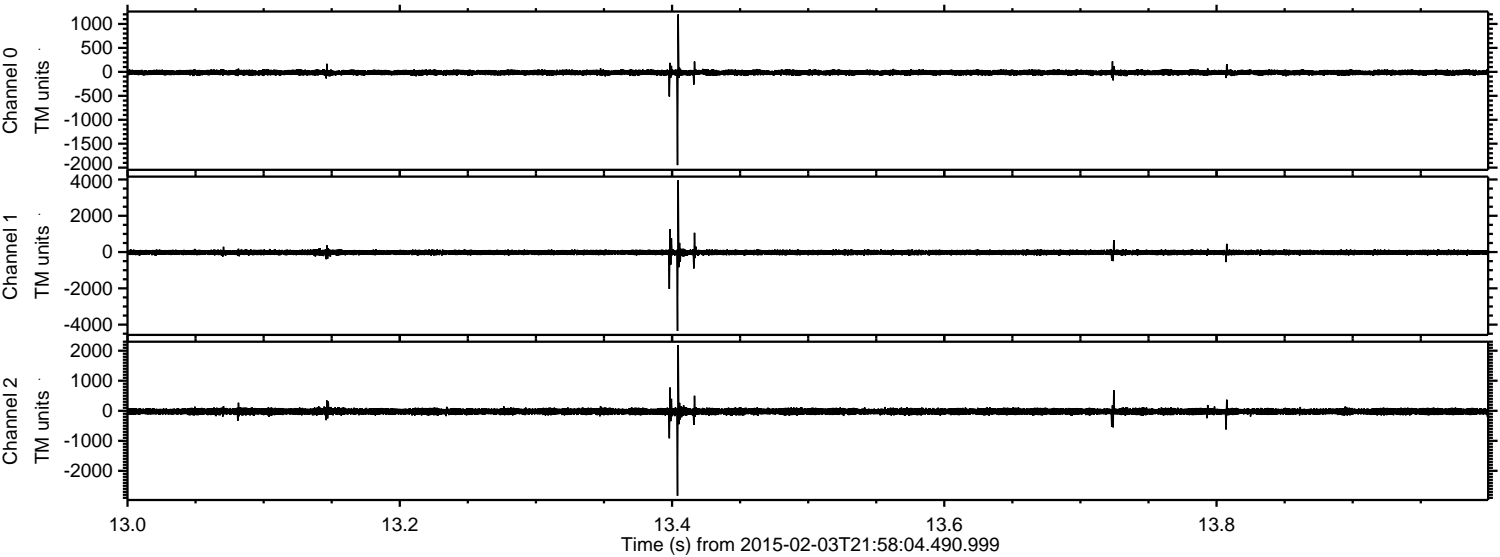
Processed Tue Feb 17 18:37:14 2015 by ELM ver.2012-10-06 from 001\_\_elm20150203\_215803\_\_dat00.bin





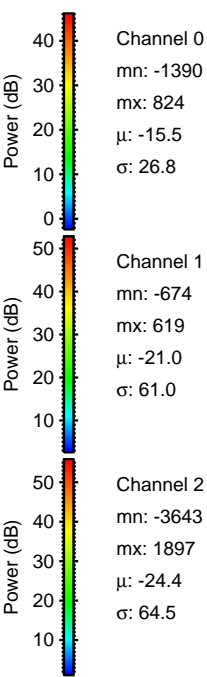
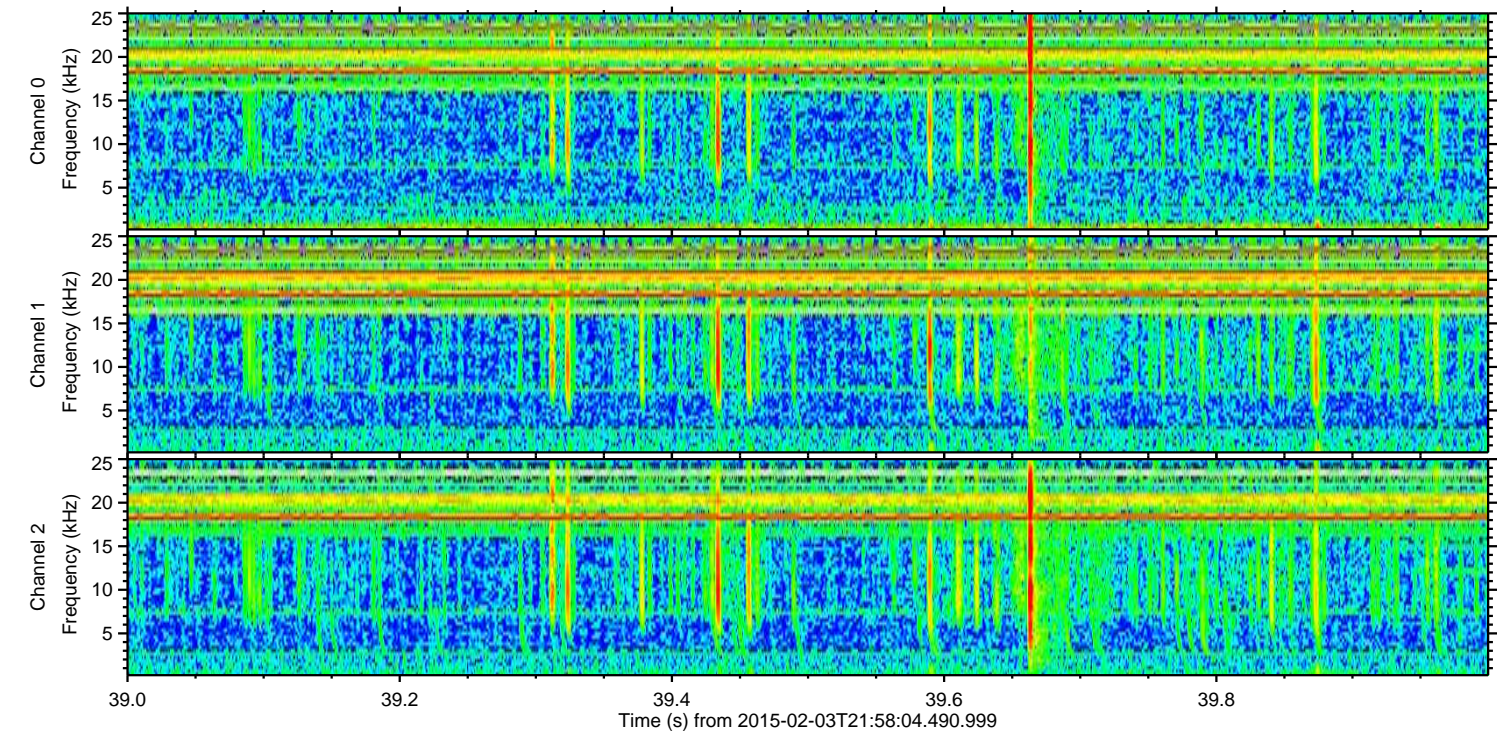
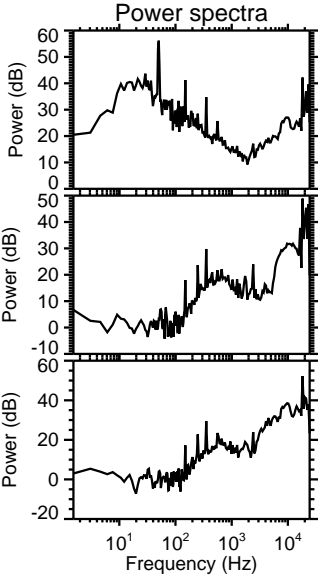
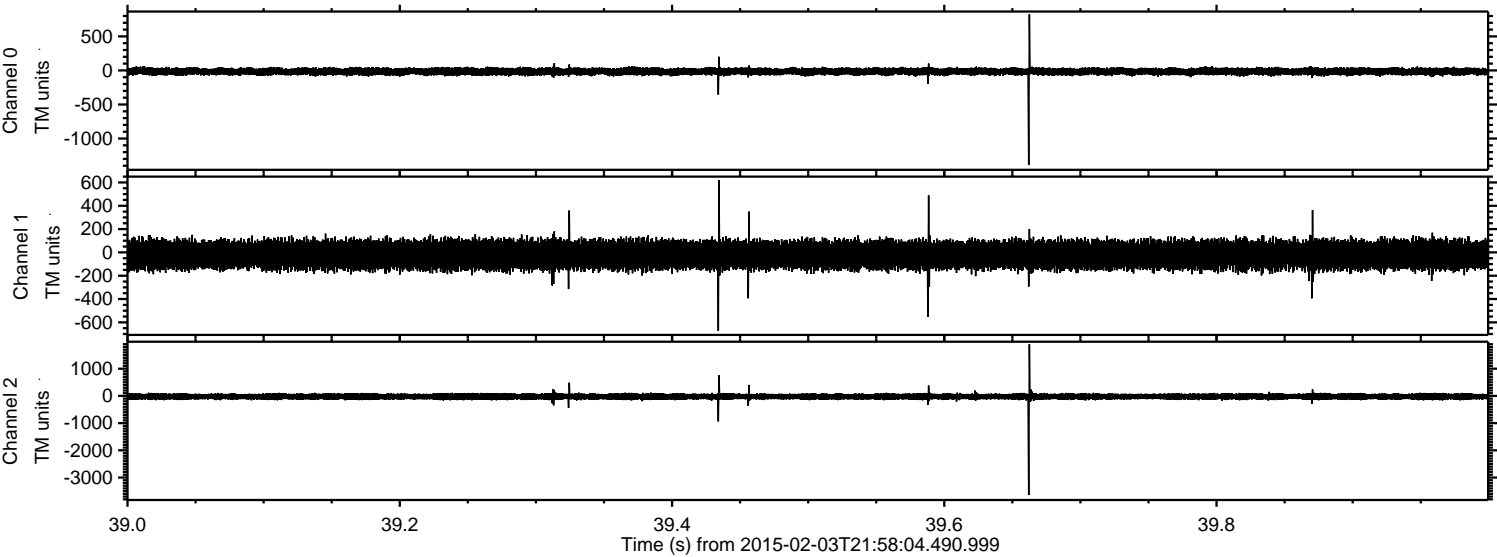
ELMAVAN 3D WAVEFORMS (Measured data sampled at 50 kHz) 49809 packets of 144 samples from 2015-02-03T21:58:04.490.999. Part 14/144

Processed Tue Feb 17 18:37:15 2015 by ELM ver.2012-10-06 from 001\_\_elm20150203\_215803\_\_dat00.bin





Processed Tue Feb 17 18:37:16 2015 by ELM ver.2012-10-06 from 001\_\_elm20150203\_215803\_\_dat00.bin



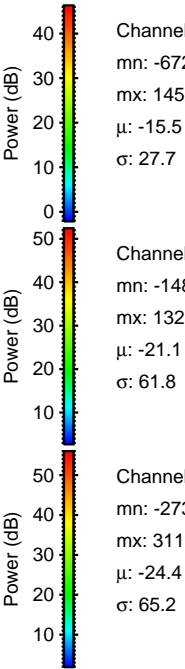
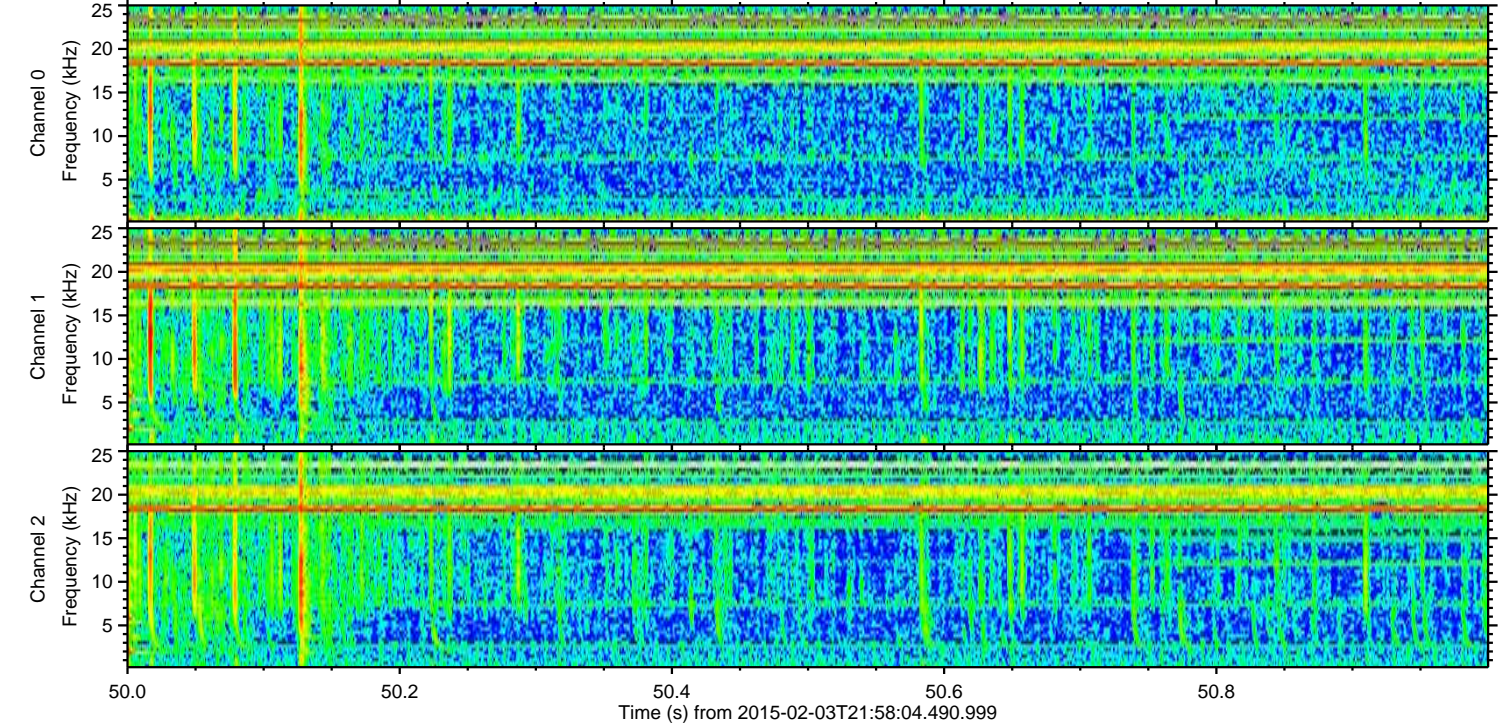
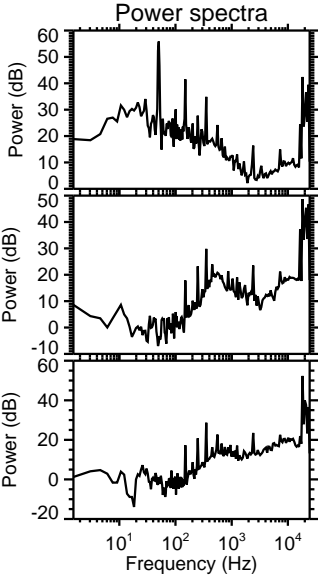
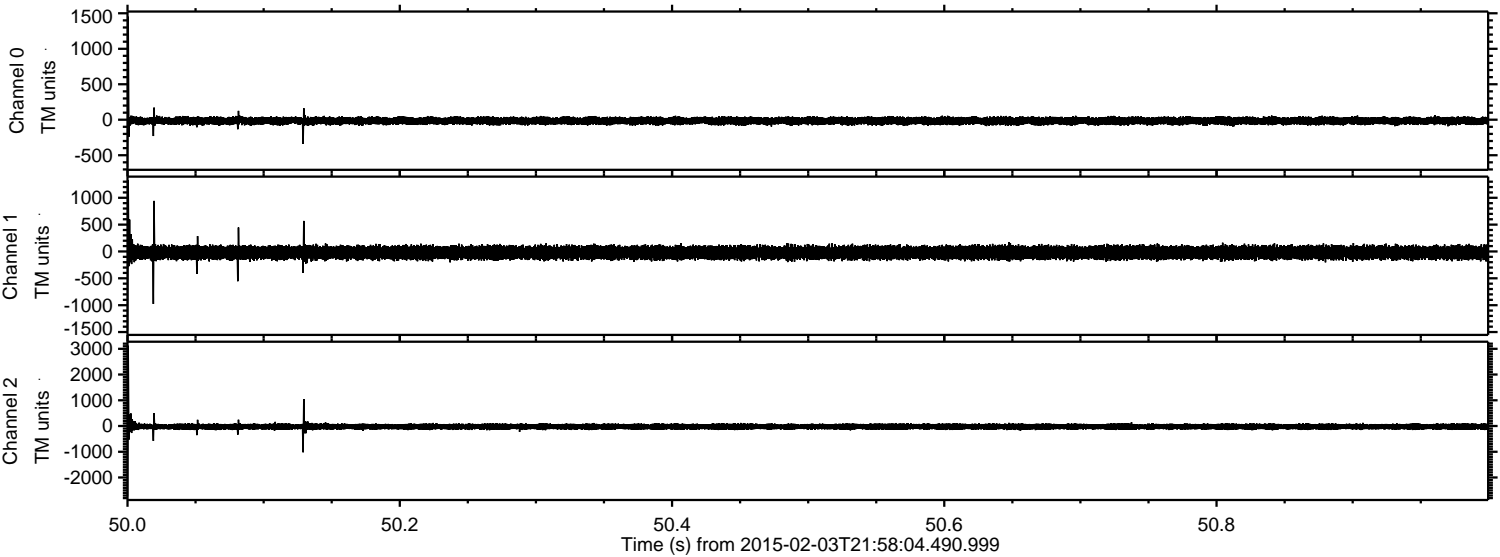
Channel 0  
mn: -1390  
mx: 824  
 $\mu$ : -15.5  
 $\sigma$ : 26.8

Channel 1  
mn: -674  
mx: 619  
 $\mu$ : -21.0  
 $\sigma$ : 61.0

Channel 2  
mn: -3643  
mx: 1897  
 $\mu$ : -24.4  
 $\sigma$ : 64.5

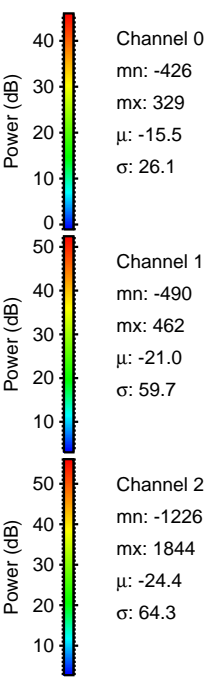
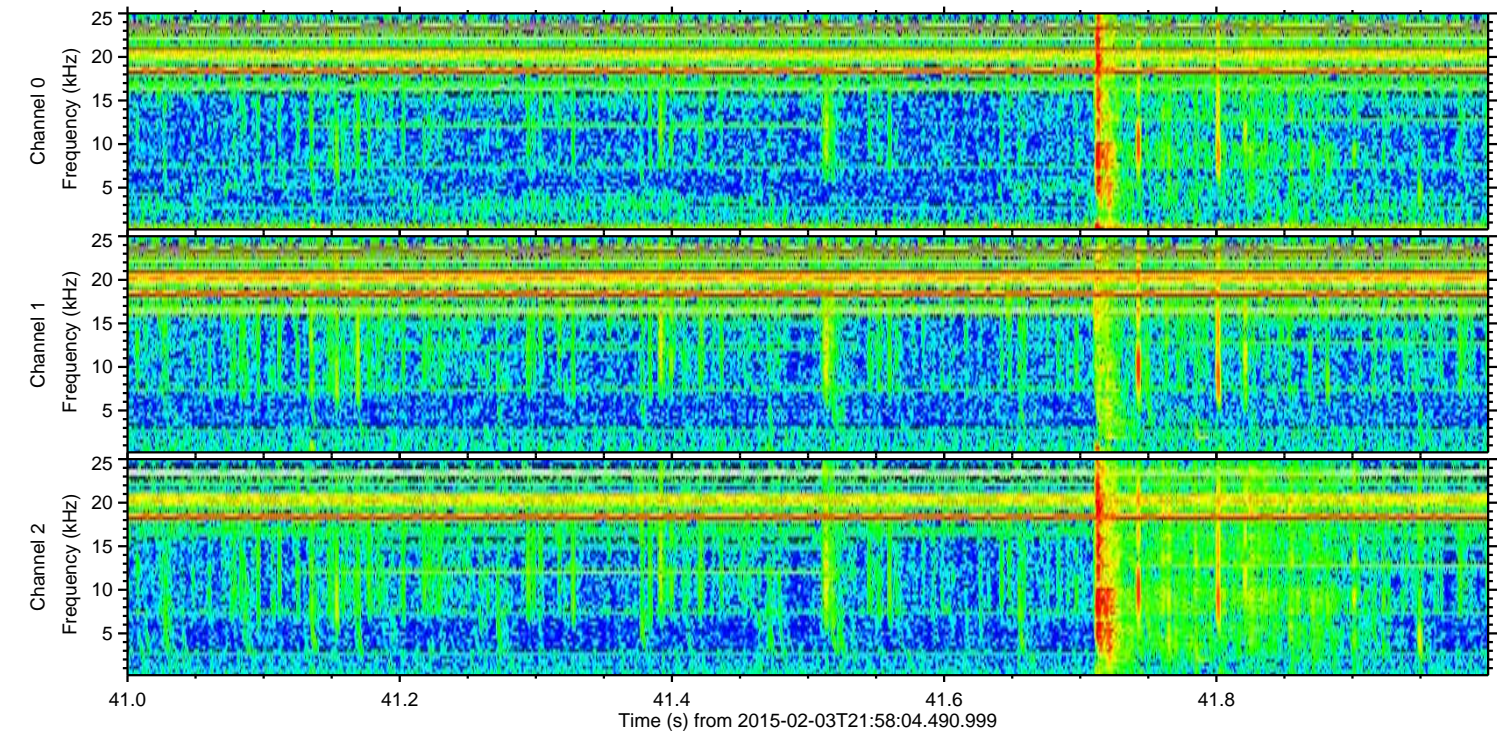
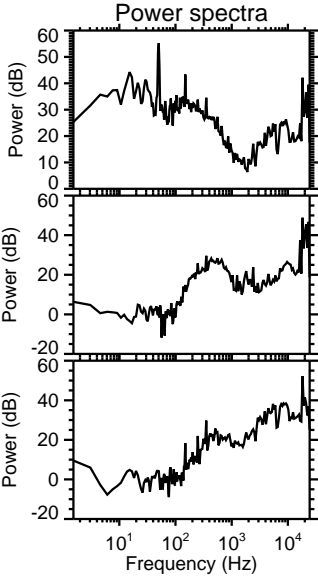
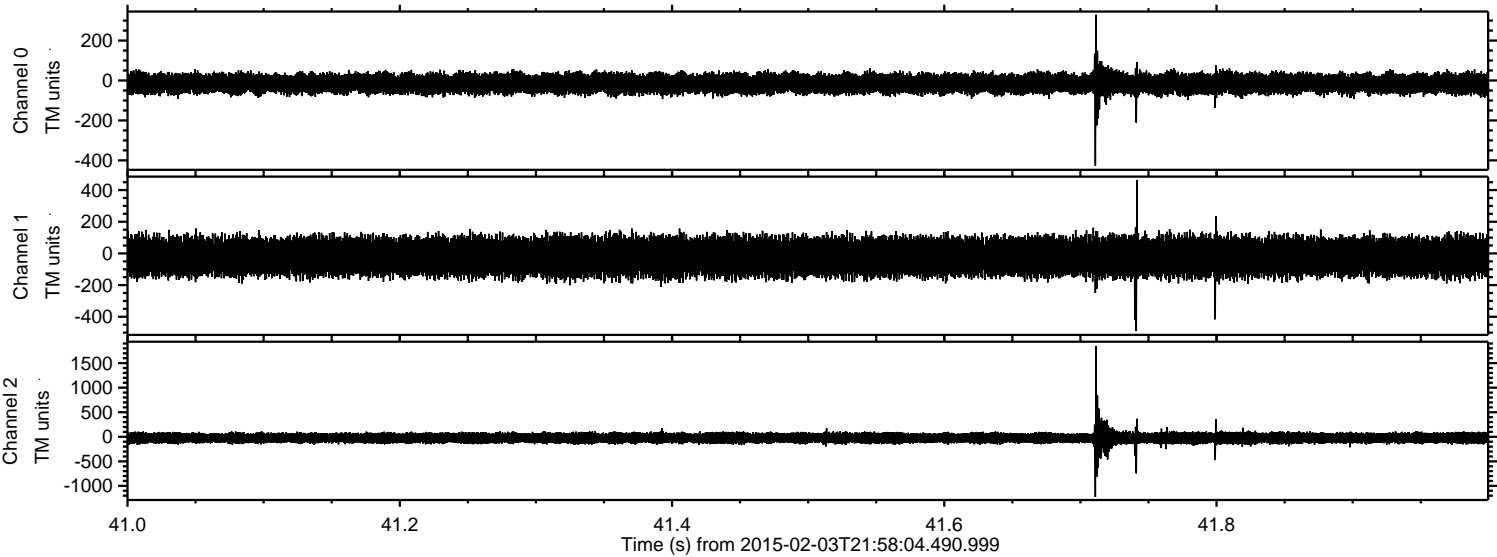


Processed Tue Feb 17 18:37:18 2015 by ELM ver.2012-10-06 from 001\_\_elm20150203\_215803\_\_dat00.bin





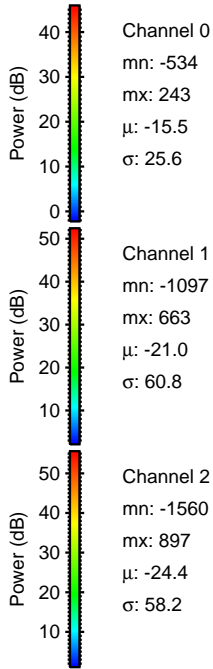
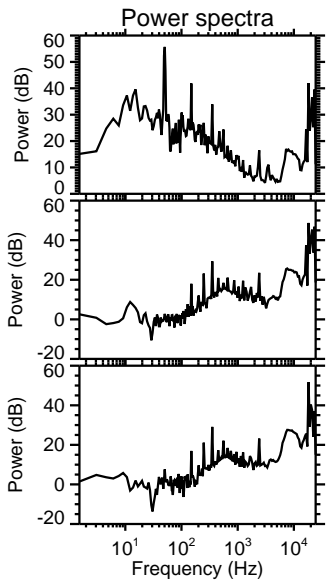
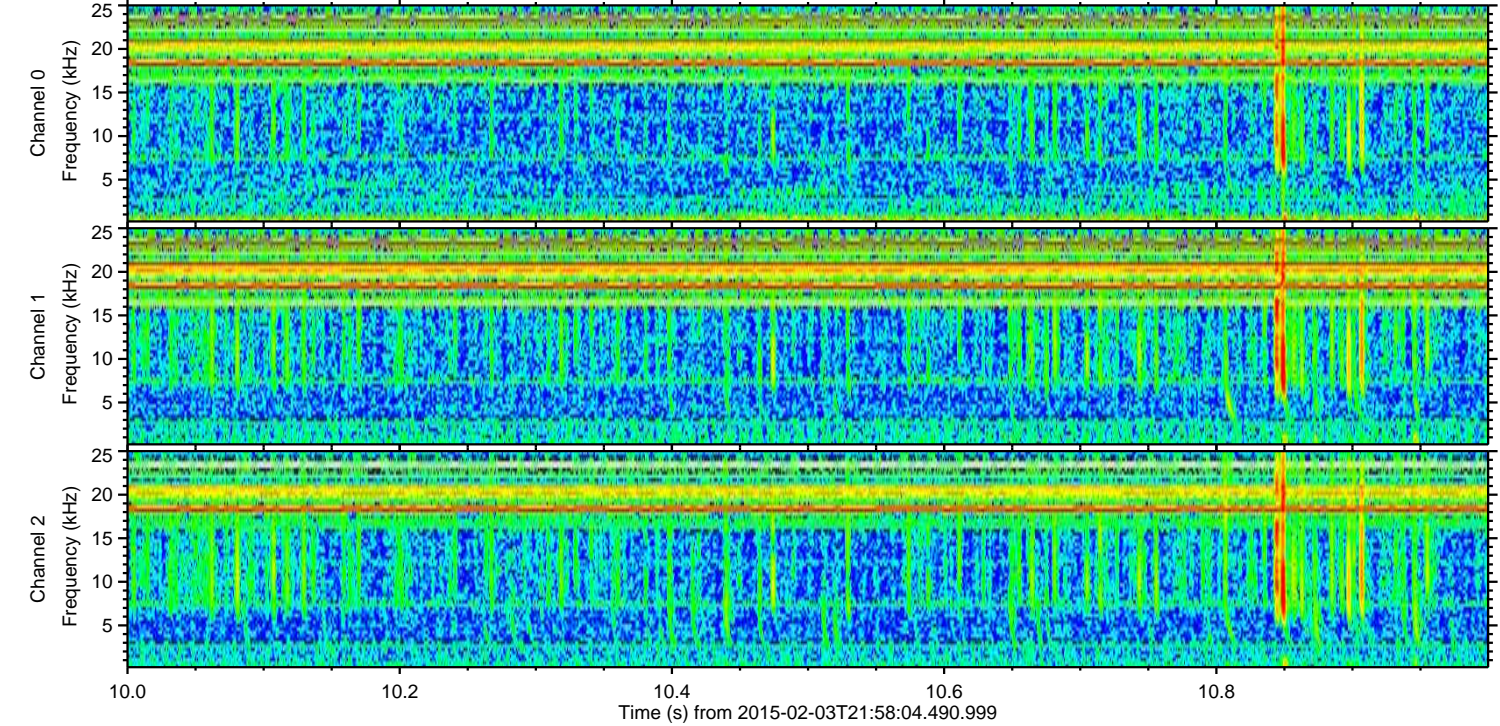
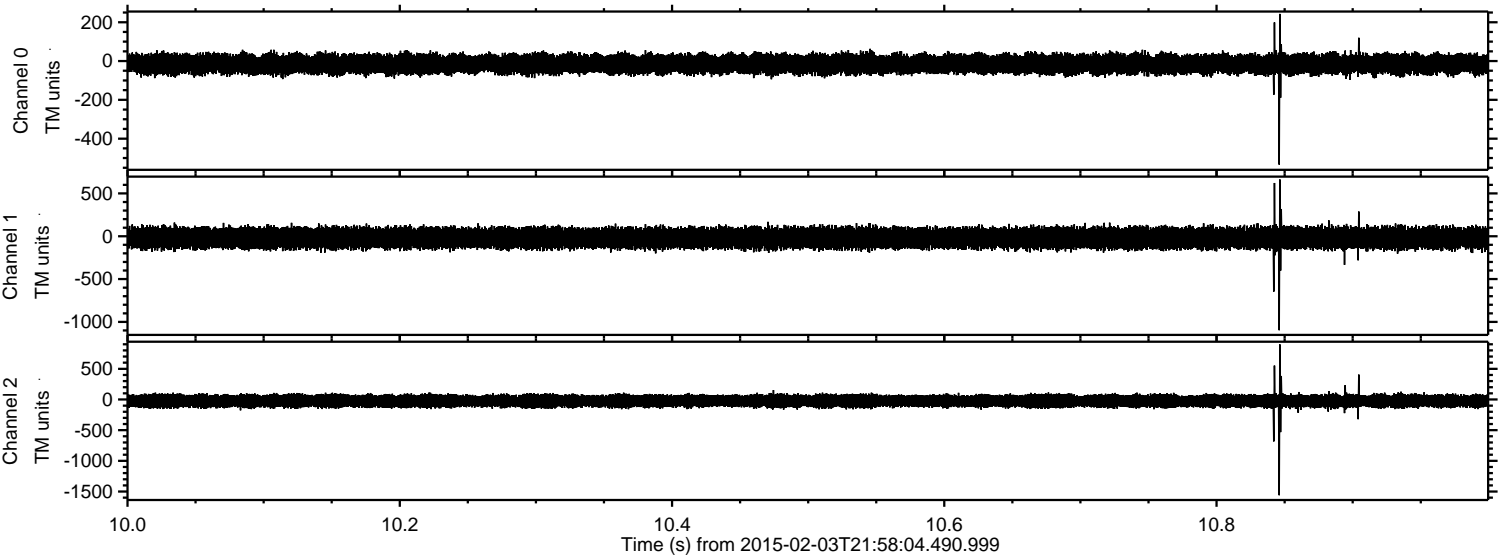
Processed Tue Feb 17 18:37:21 2015 by ELM ver.2012-10-06 from 001\_\_elm20150203\_215803\_\_dat00.bin





ELMAVAN 3D WAVEFORMS (Measured data sampled at 50 kHz) 49809 packets of 144 samples from 2015-02-03T21:58:04.490.999. Part 11/144

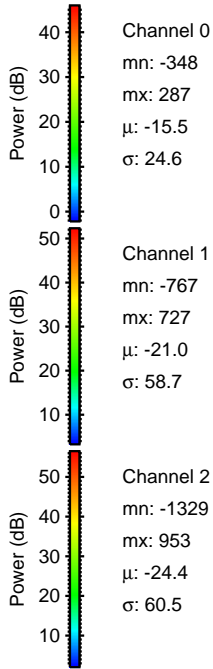
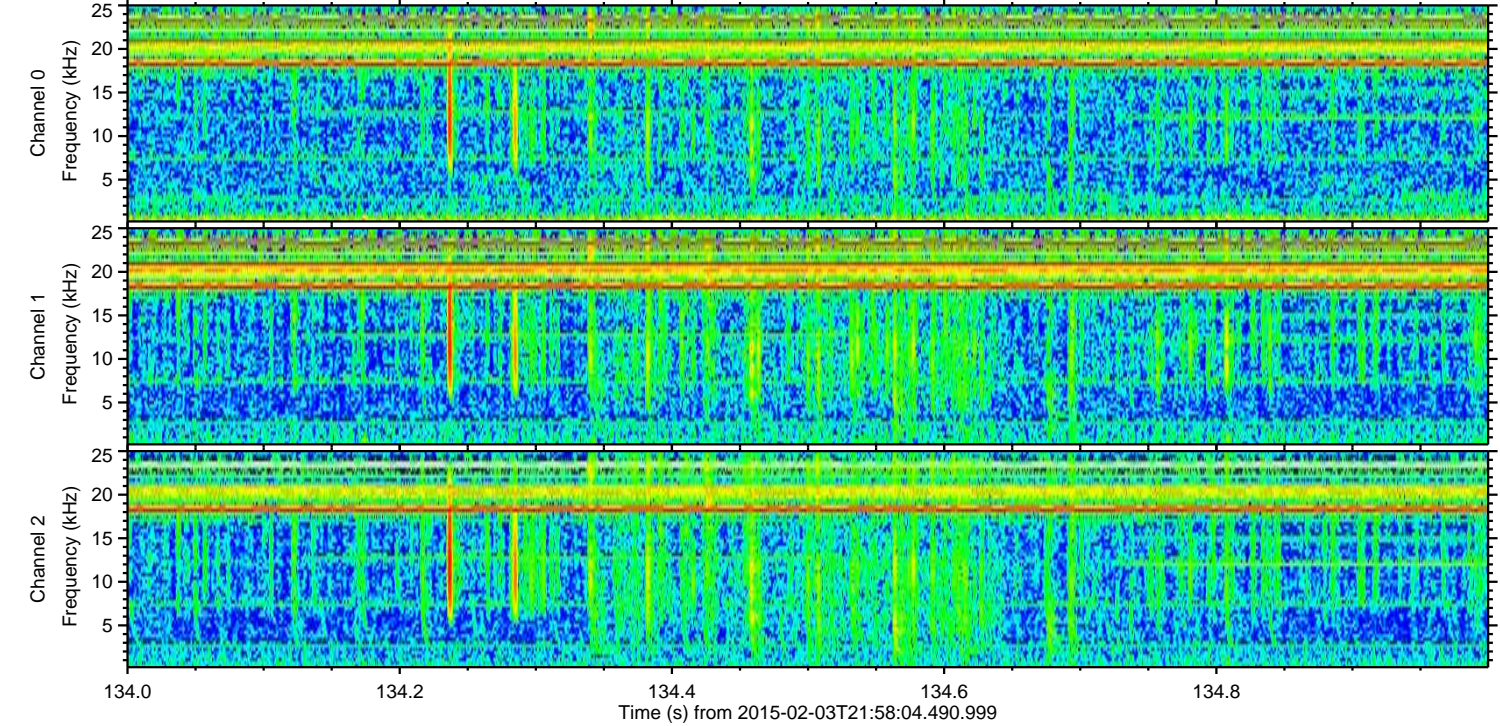
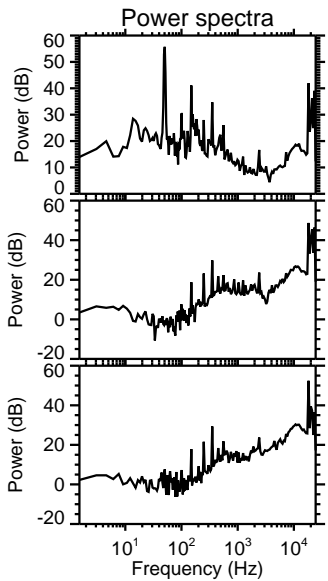
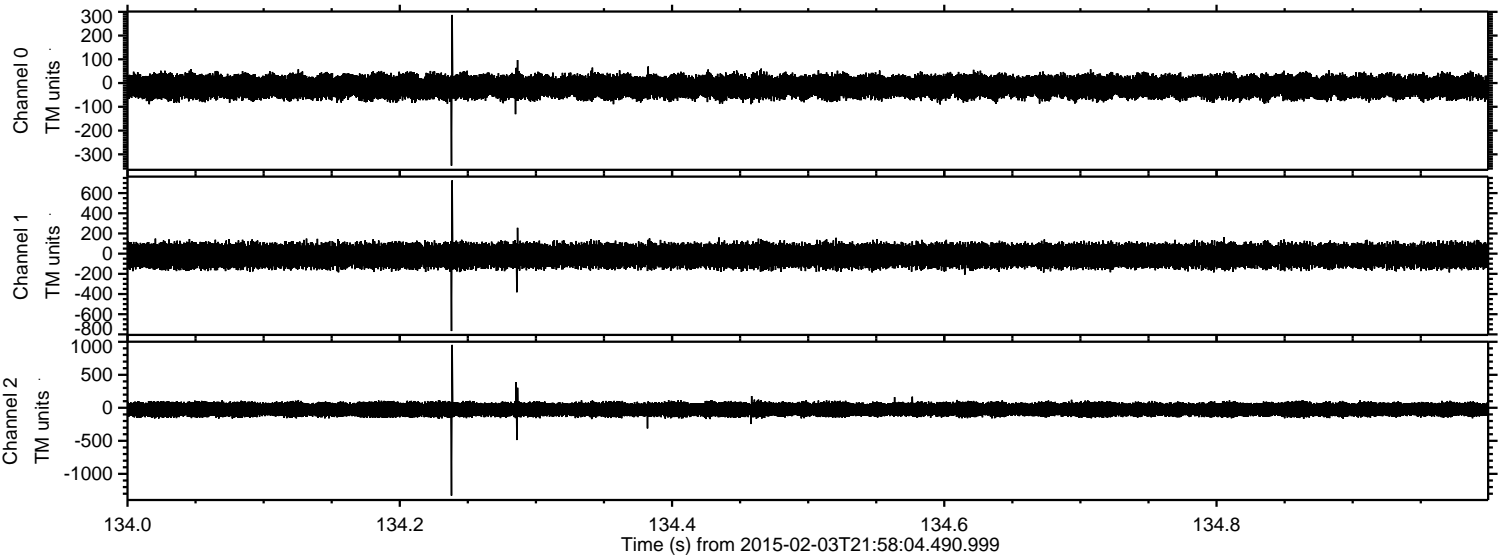
Processed Tue Feb 17 18:37:23 2015 by ELM ver.2012-10-06 from 001\_\_elm20150203\_215803\_\_dat00.bin





ELMAVAN 3D WAVEFORMS (Measured data sampled at 50 kHz) 49809 packets of 144 samples from 2015-02-03T21:58:04.490.999. Part 135/144

Processed Tue Feb 17 18:37:25 2015 by ELM ver.2012-10-06 from 001\_\_elm20150203\_215803\_\_dat00.bin





ELMAVAN 3D WAVEFORMS (Measured data sampled at 50 kHz) 49809 packets of 144 samples from 2015-02-03T21:58:04.490.999. Part 130/144

Processed Tue Feb 17 18:37:27 2015 by ELM ver.2012-10-06 from 001\_\_elm20150203\_215803\_\_dat00.bin

