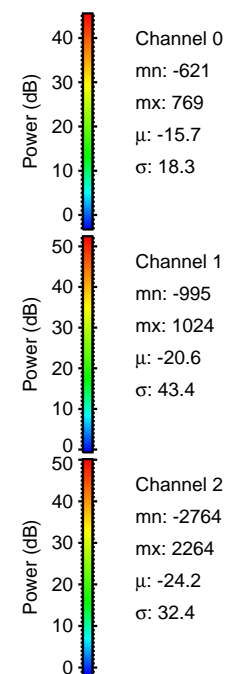
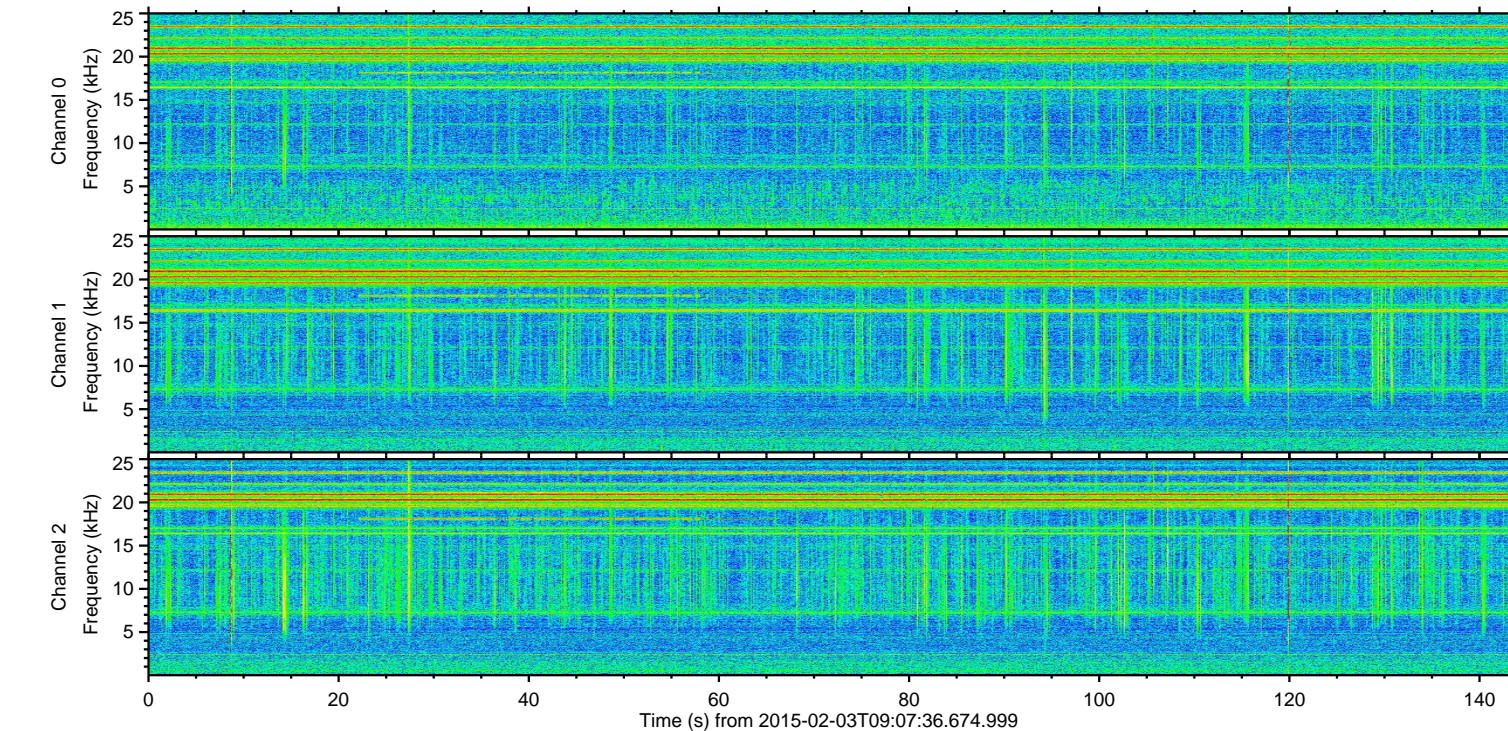
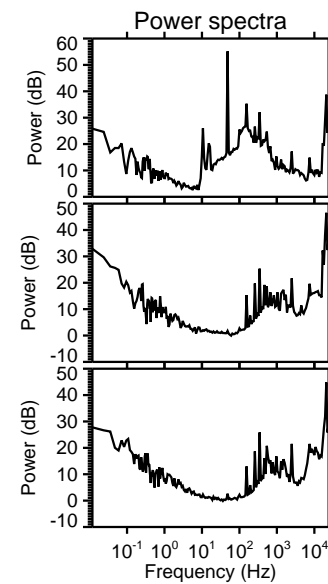
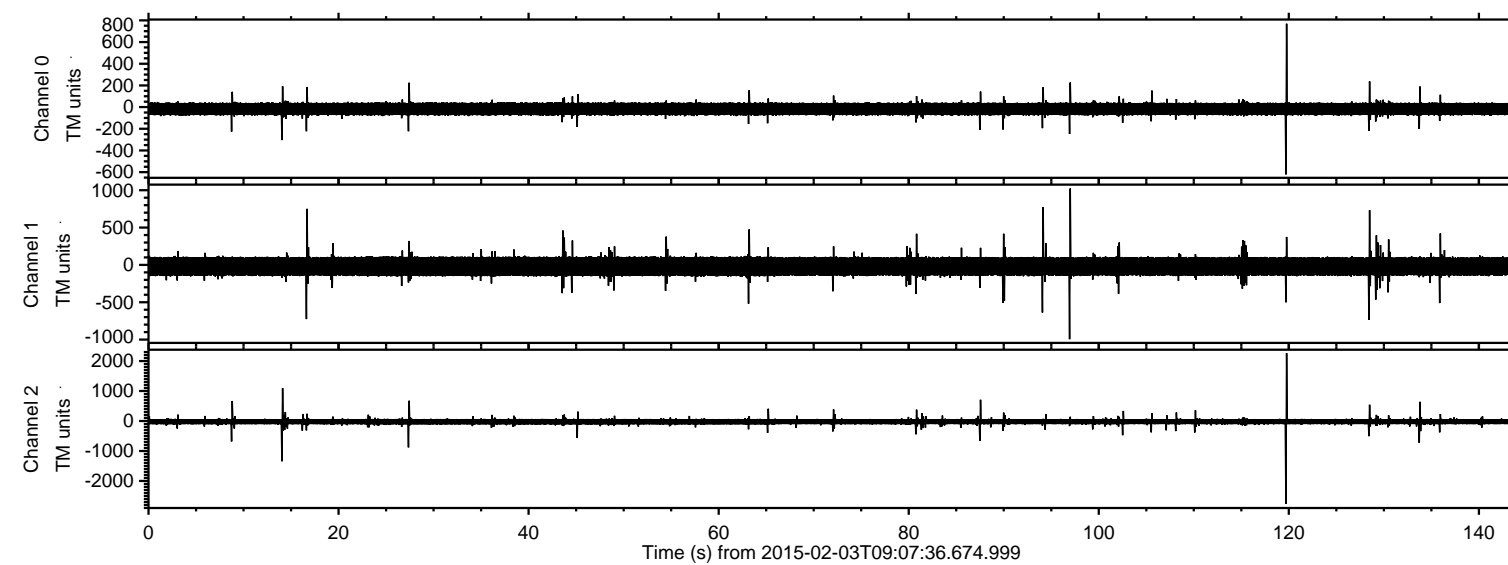


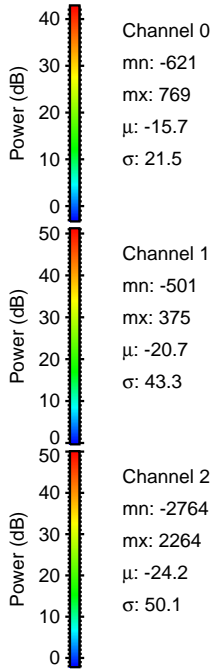
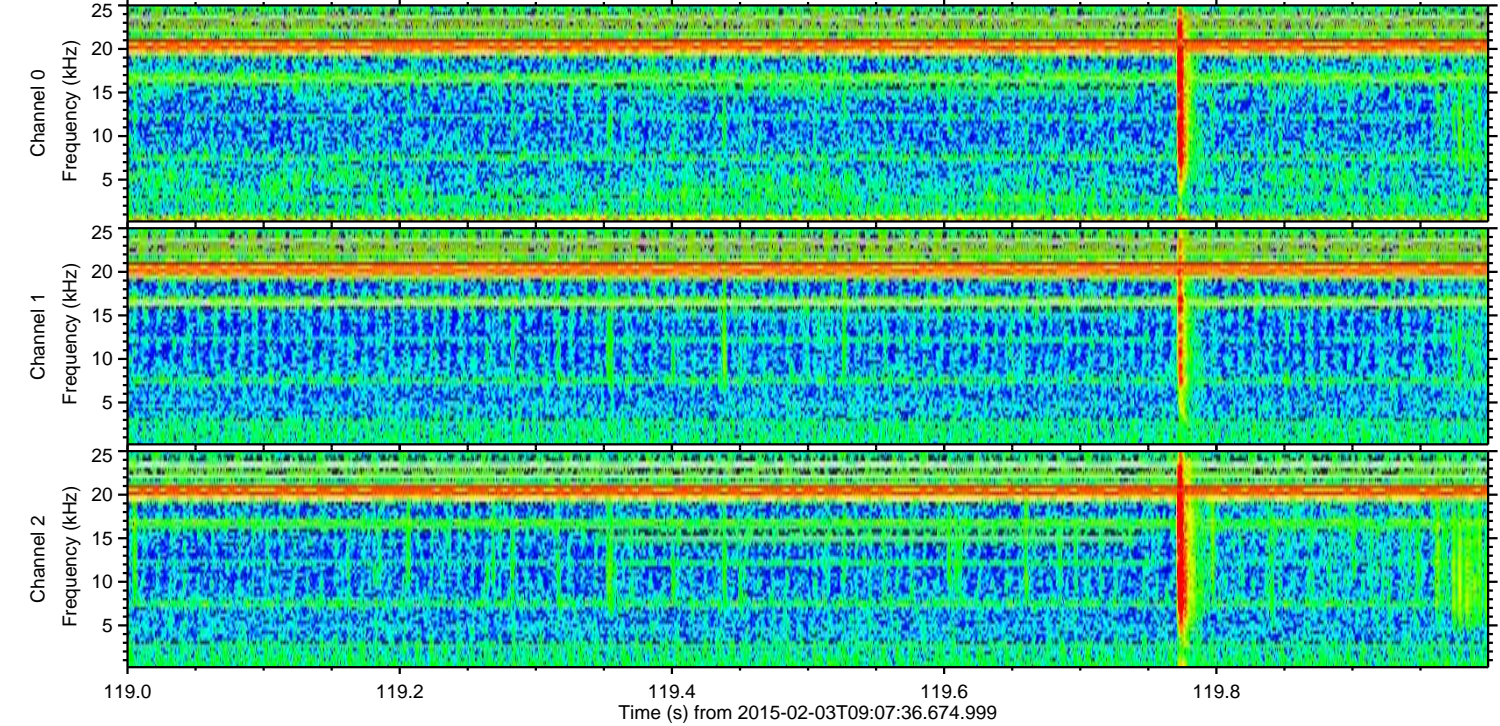
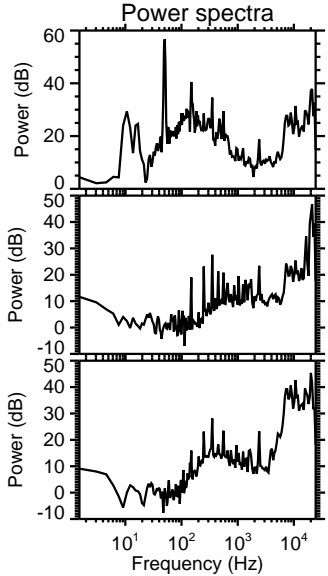
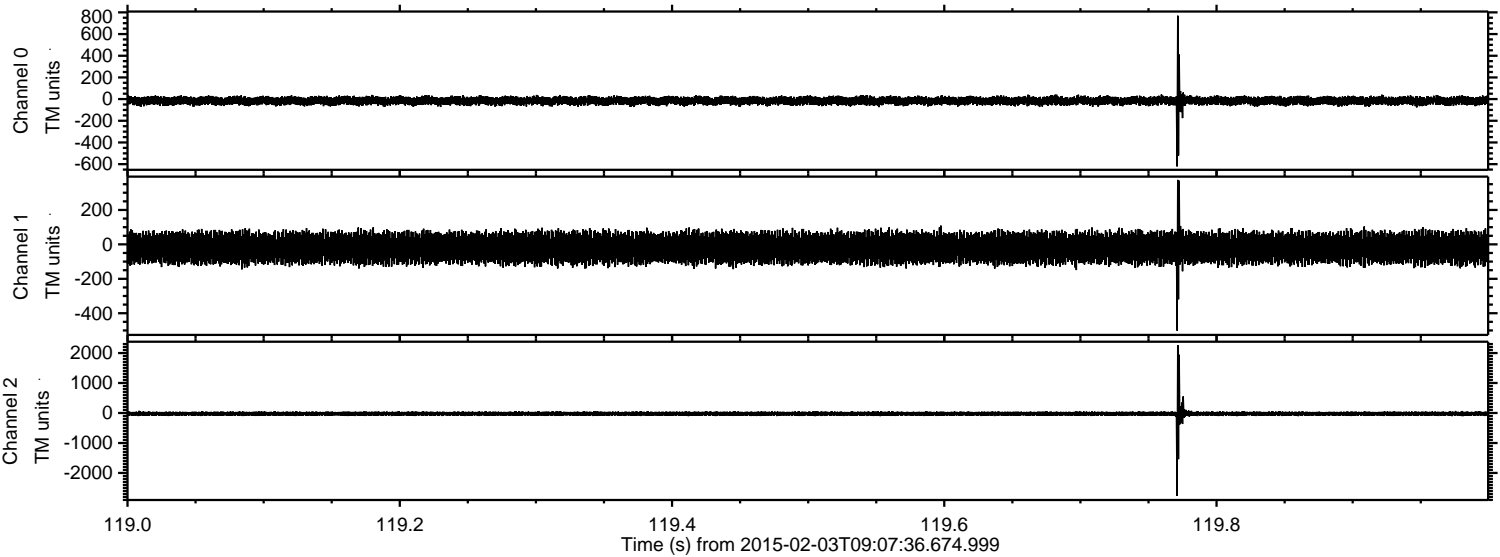
ELMAVAN 3D WAVEFORMS (Measured data sampled at 50 kHz) 49717 packets of 144 samples from 2015-02-03T09:07:36.674.999.

Processed Tue Feb 17 11:01:11 2015 by ELM ver.2012-10-06 from 001__elm20150203_090735__dat00.bin



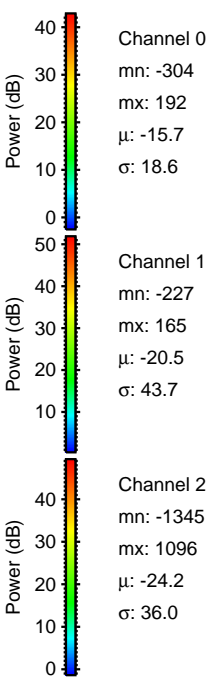
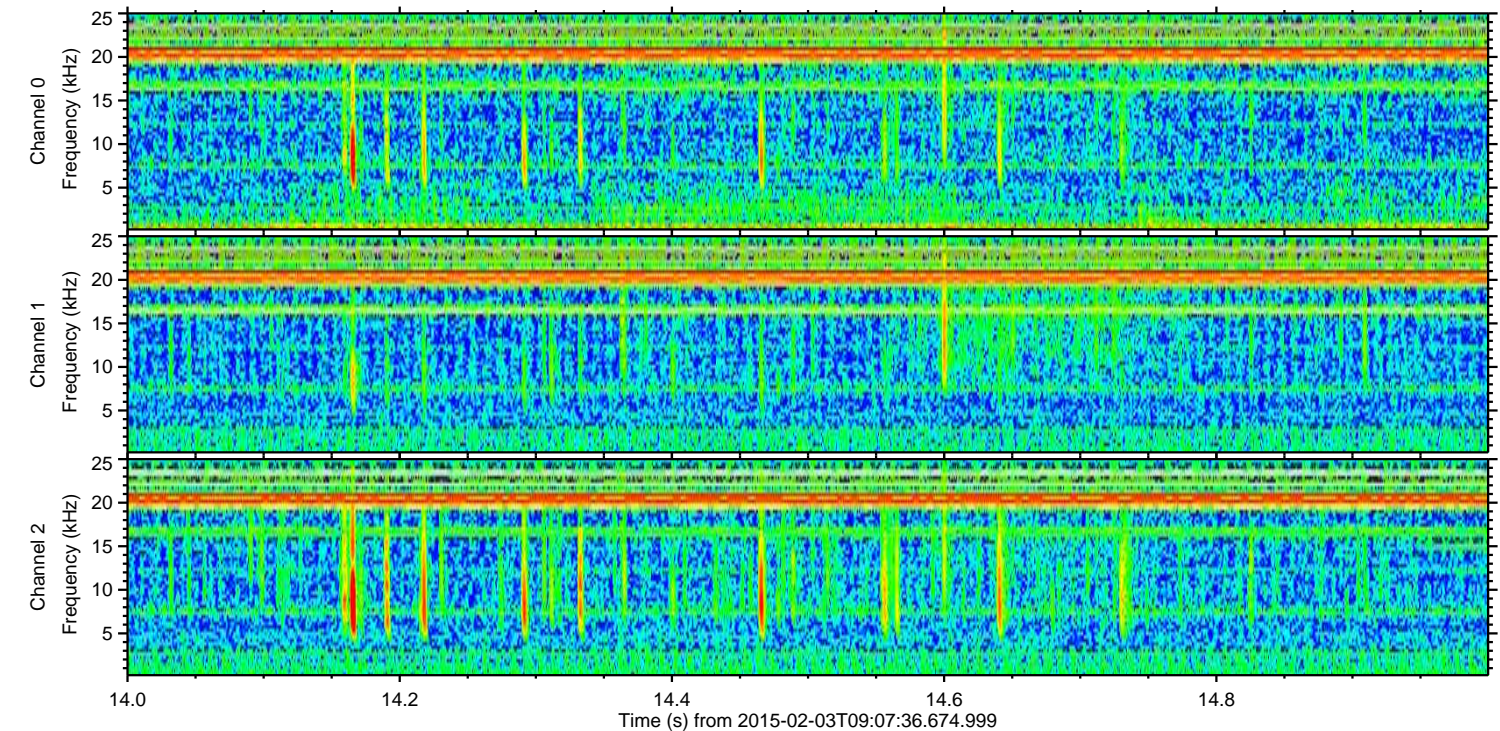
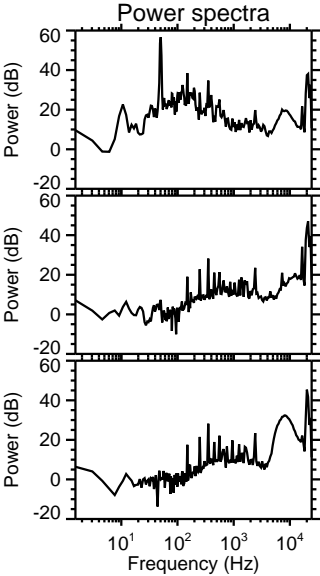
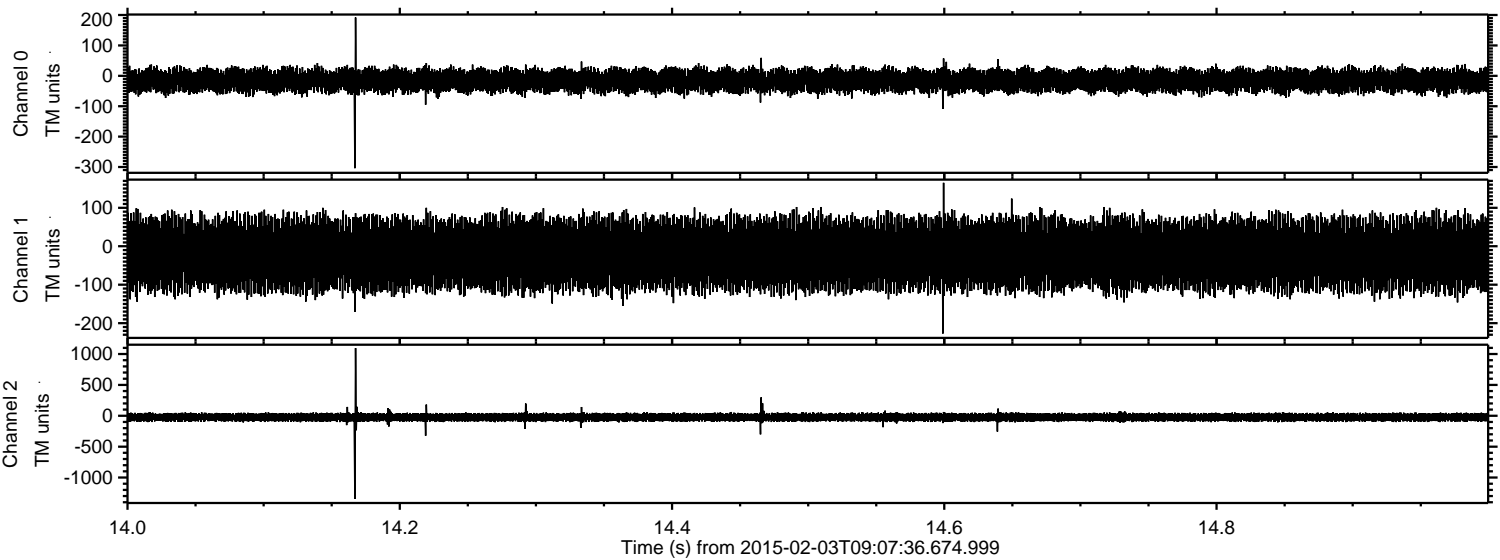
ELMAVAN 3D WAVEFORMS (Measured data sampled at 50 kHz) 49717 packets of 144 samples from 2015-02-03T09:07:36.674.999. Part 120/144

Processed Tue Feb 17 11:01:26 2015 by ELM ver.2012-10-06 from 001__elm20150203_090735__dat00.bin



ELMAVAN 3D WAVEFORMS (Measured data sampled at 50 kHz) 49717 packets of 144 samples from 2015-02-03T09:07:36.674.999. Part 15/144

Processed Tue Feb 17 11:01:27 2015 by ELM ver.2012-10-06 from 001__elm20150203_090735__dat00.bin

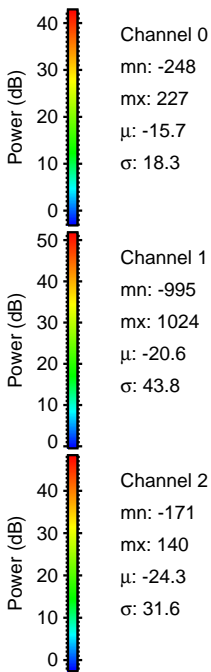
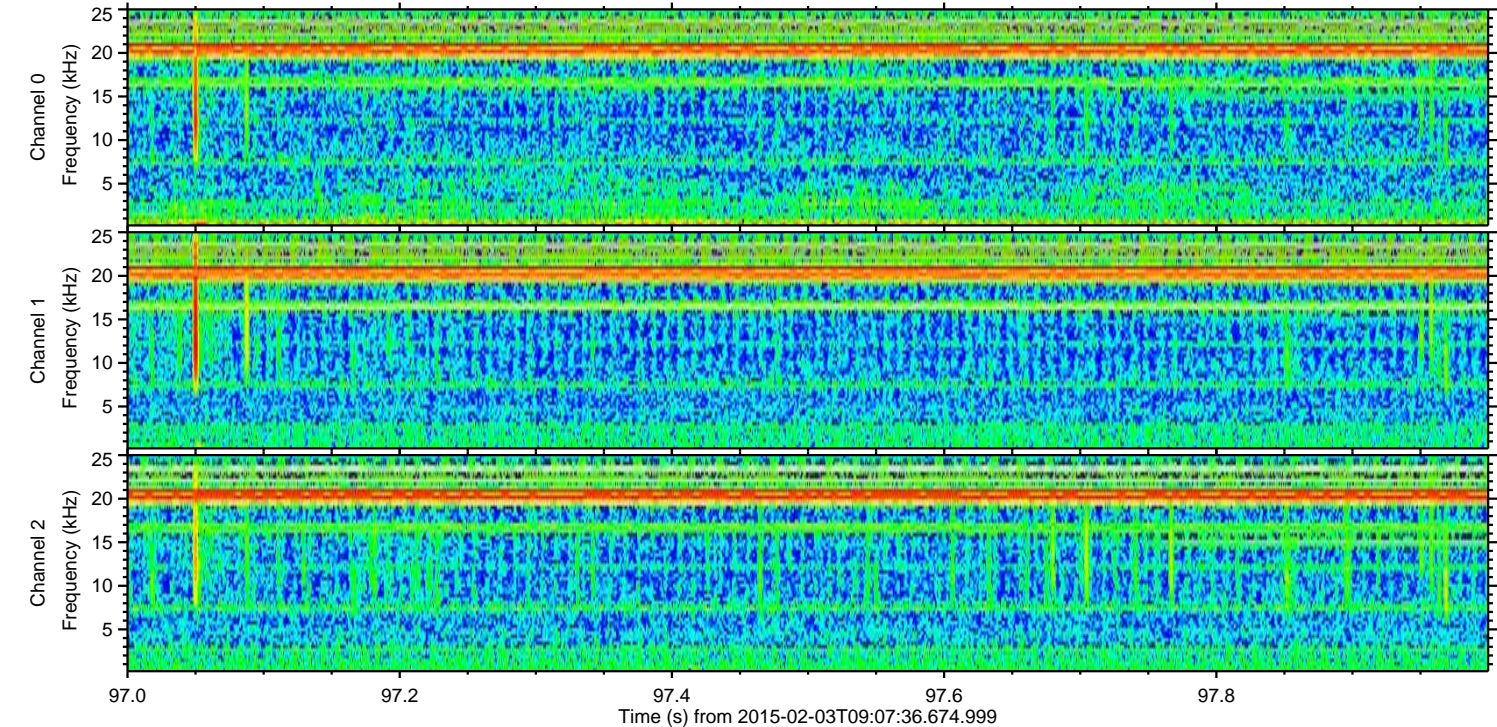
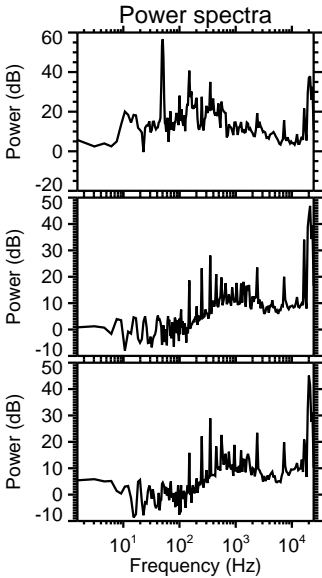
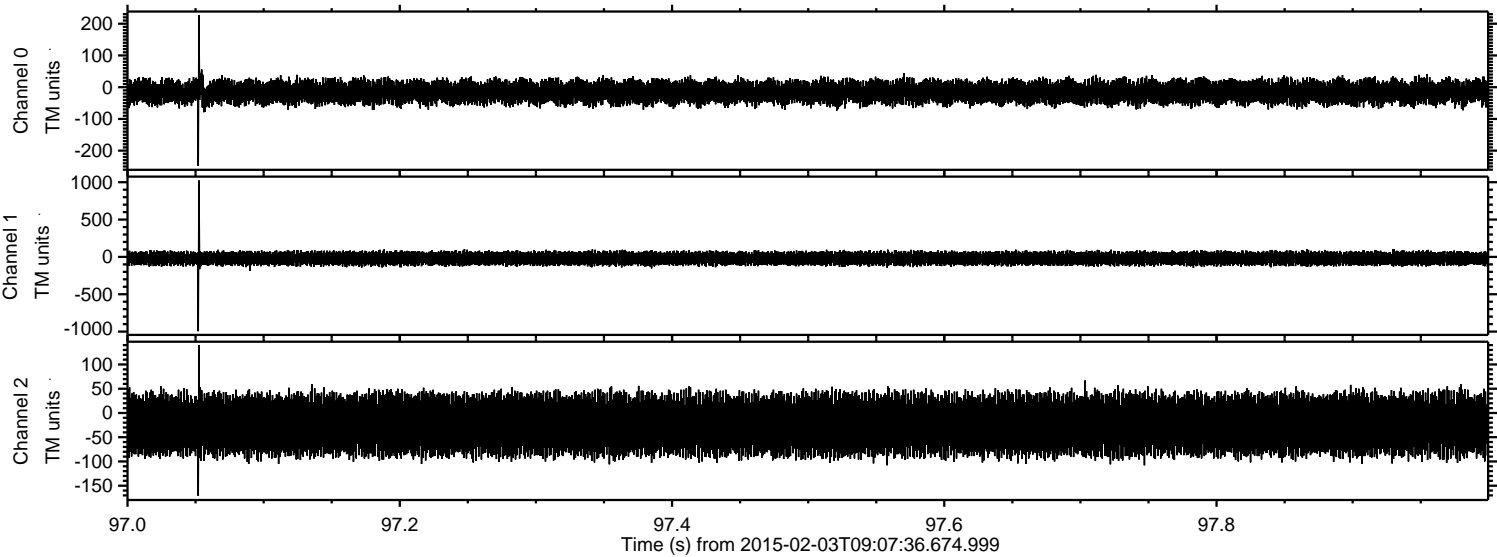


Channel 0
mn: -304
mx: 192
 μ : -15.7
 σ : 18.6

Channel 1
mn: -227
mx: 165
 μ : -20.5
 σ : 43.7

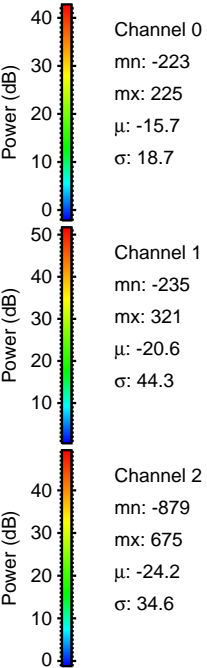
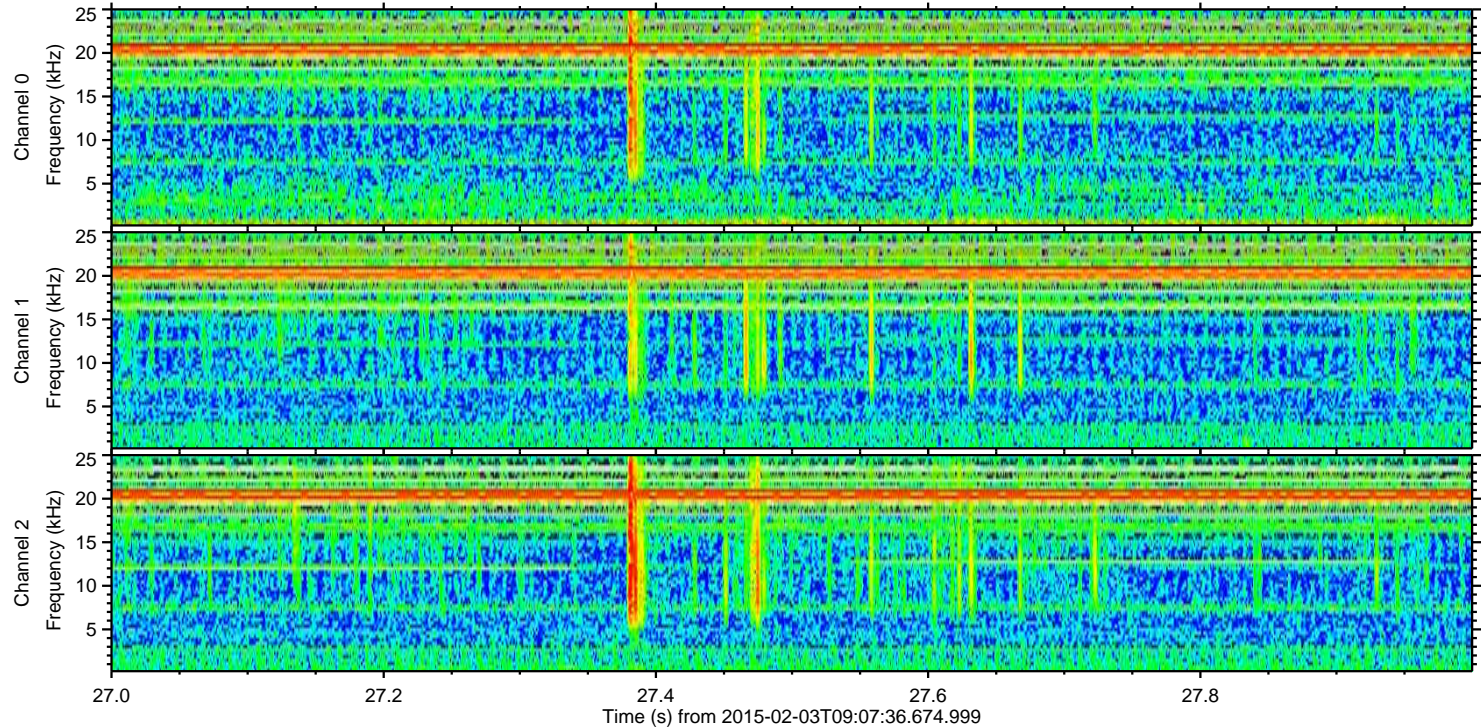
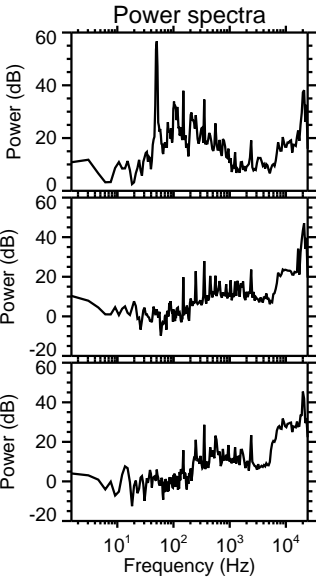
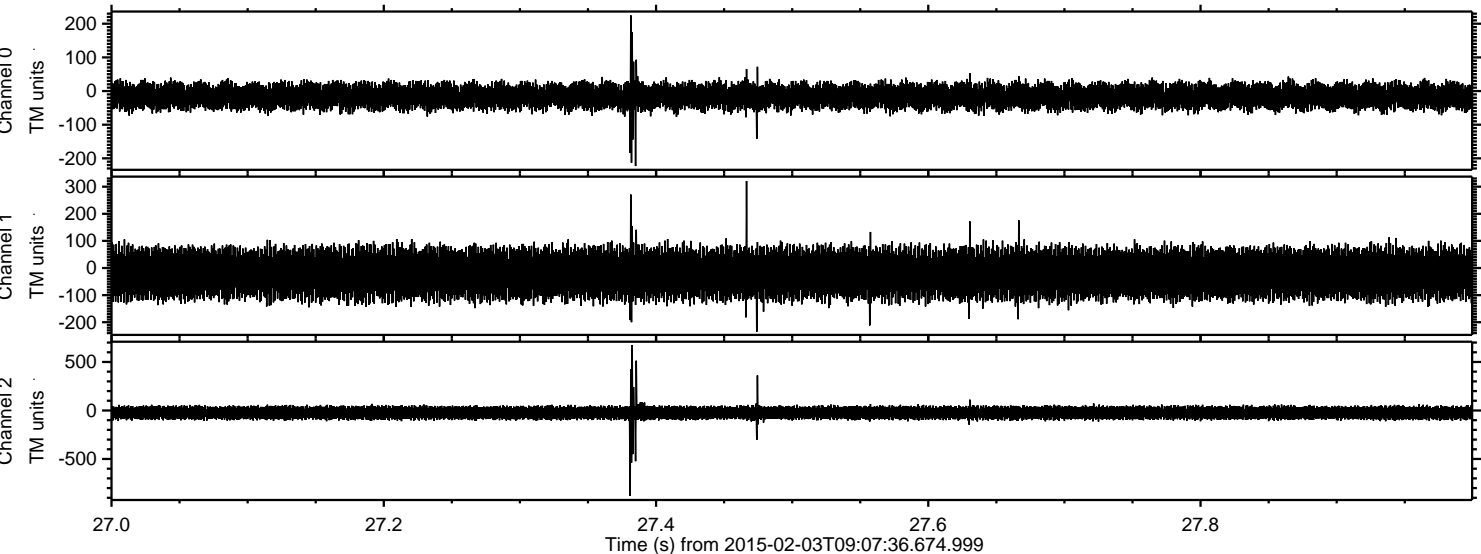
Channel 2
mn: -1345
mx: 1096
 μ : -24.2
 σ : 36.0

Processed Tue Feb 17 11:01:28 2015 by ELM ver.2012-10-06 from 001__elm20150203_090735__dat00.bin

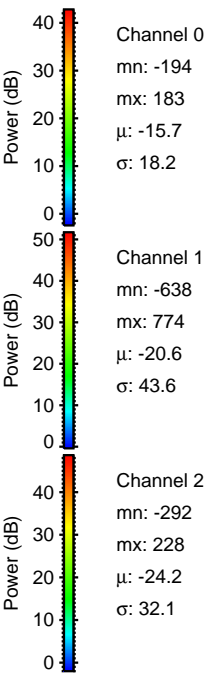
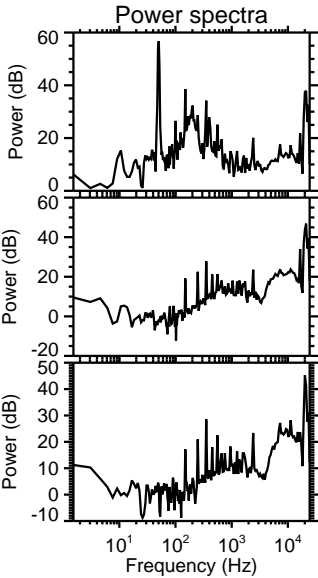
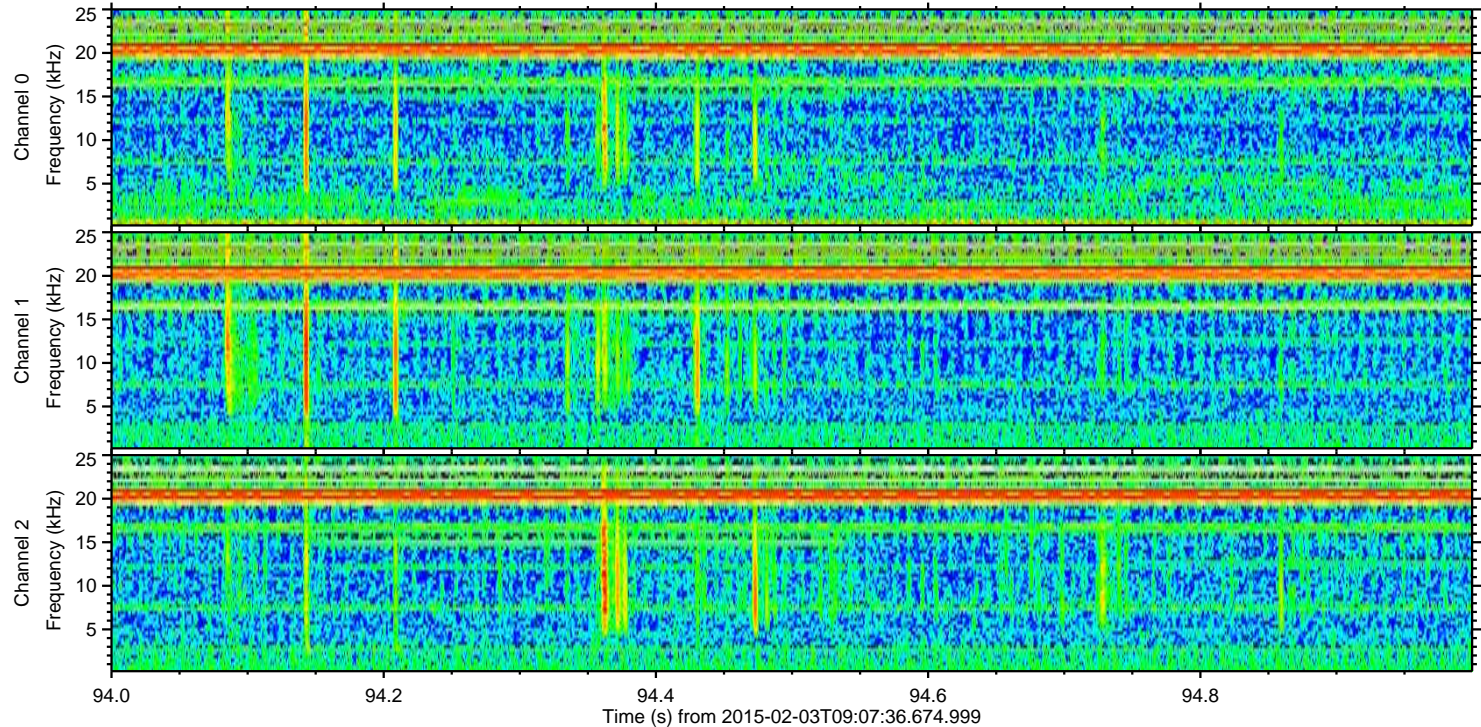
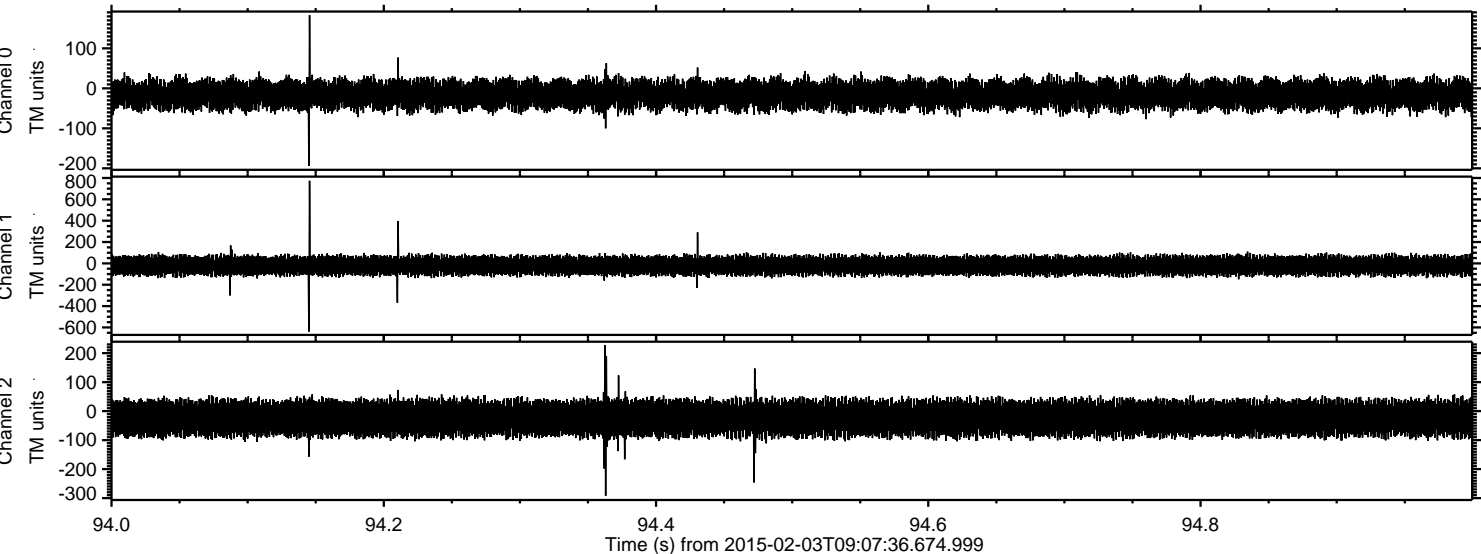


ELMAVAN 3D WAVEFORMS (Measured data sampled at 50 kHz) 49717 packets of 144 samples from 2015-02-03T09:07:36.674.999. Part 28/144

Processed Tue Feb 17 11:01:29 2015 by ELM ver.2012-10-06 from 001__elm20150203_090735__dat00.bin



Processed Tue Feb 17 11:01:30 2015 by ELM ver.2012-10-06 from 001__elm20150203_090735__dat00.bin



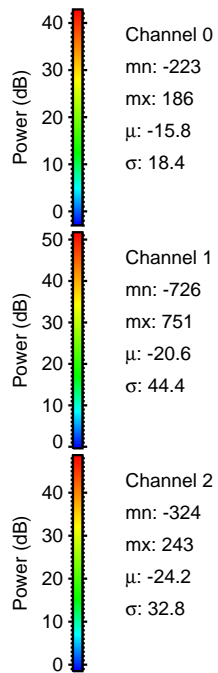
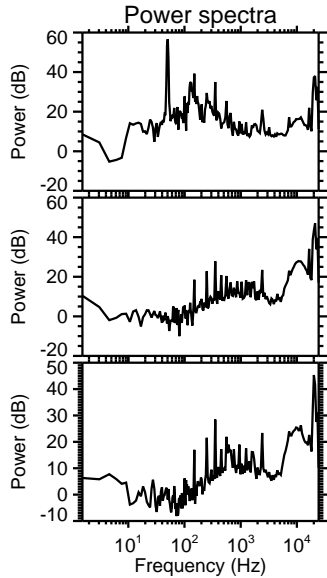
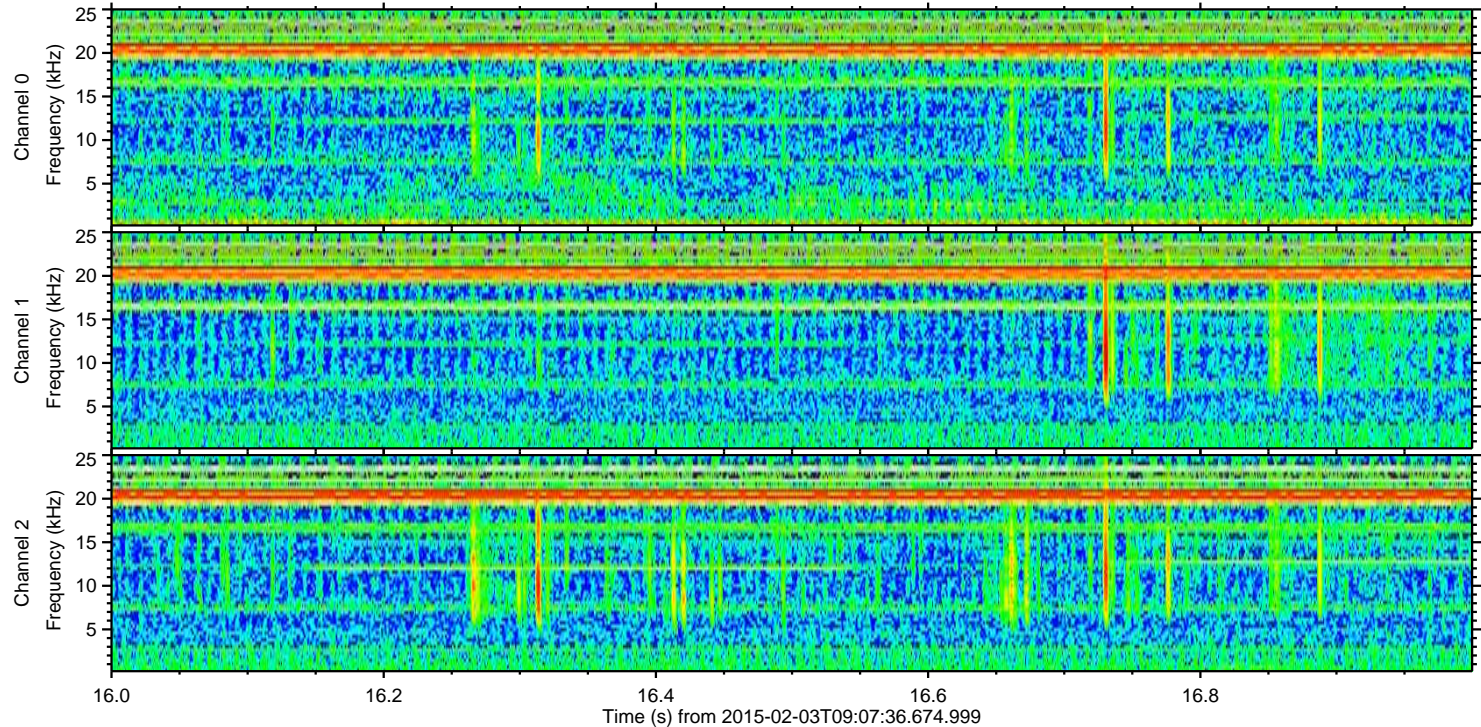
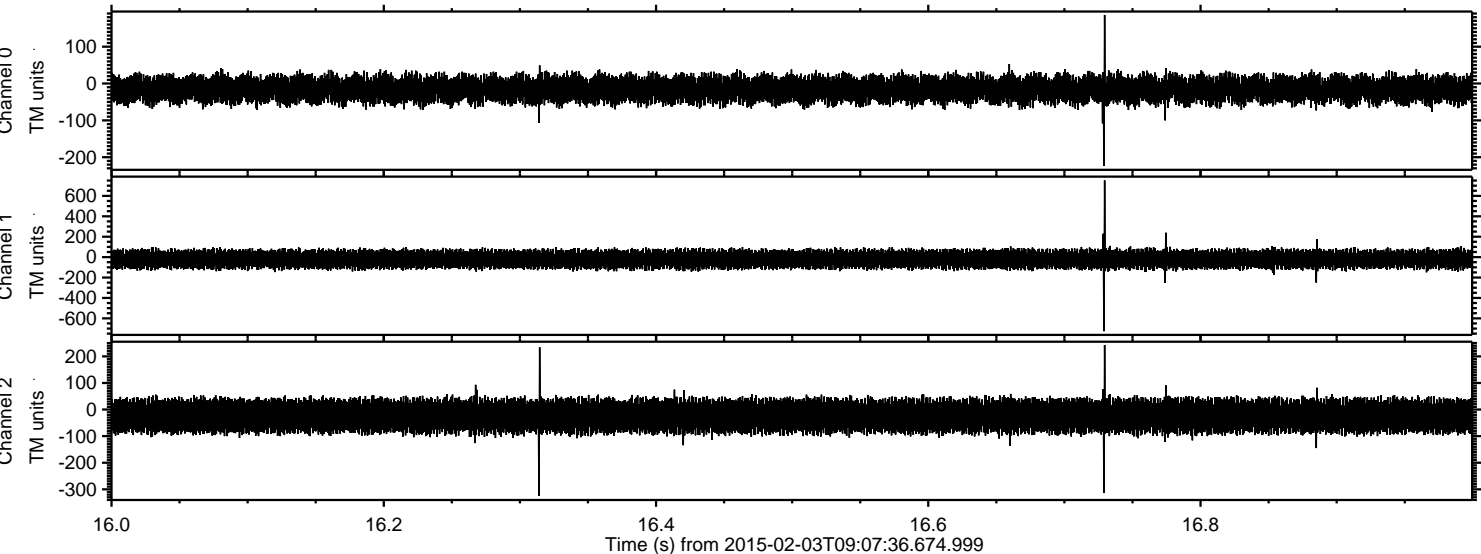
Channel 0
mn: -194
mx: 183
 μ : -15.7
 σ : 18.2

Channel 1
mn: -638
mx: 774
 μ : -20.6
 σ : 43.6

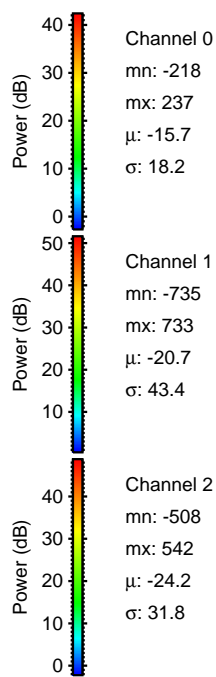
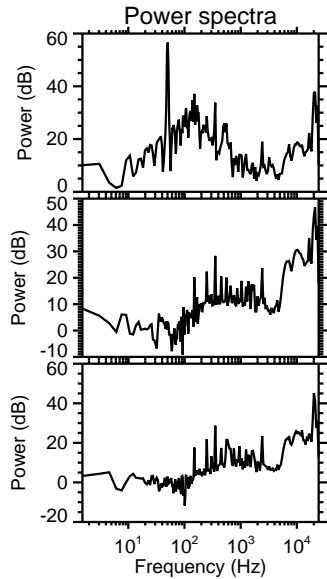
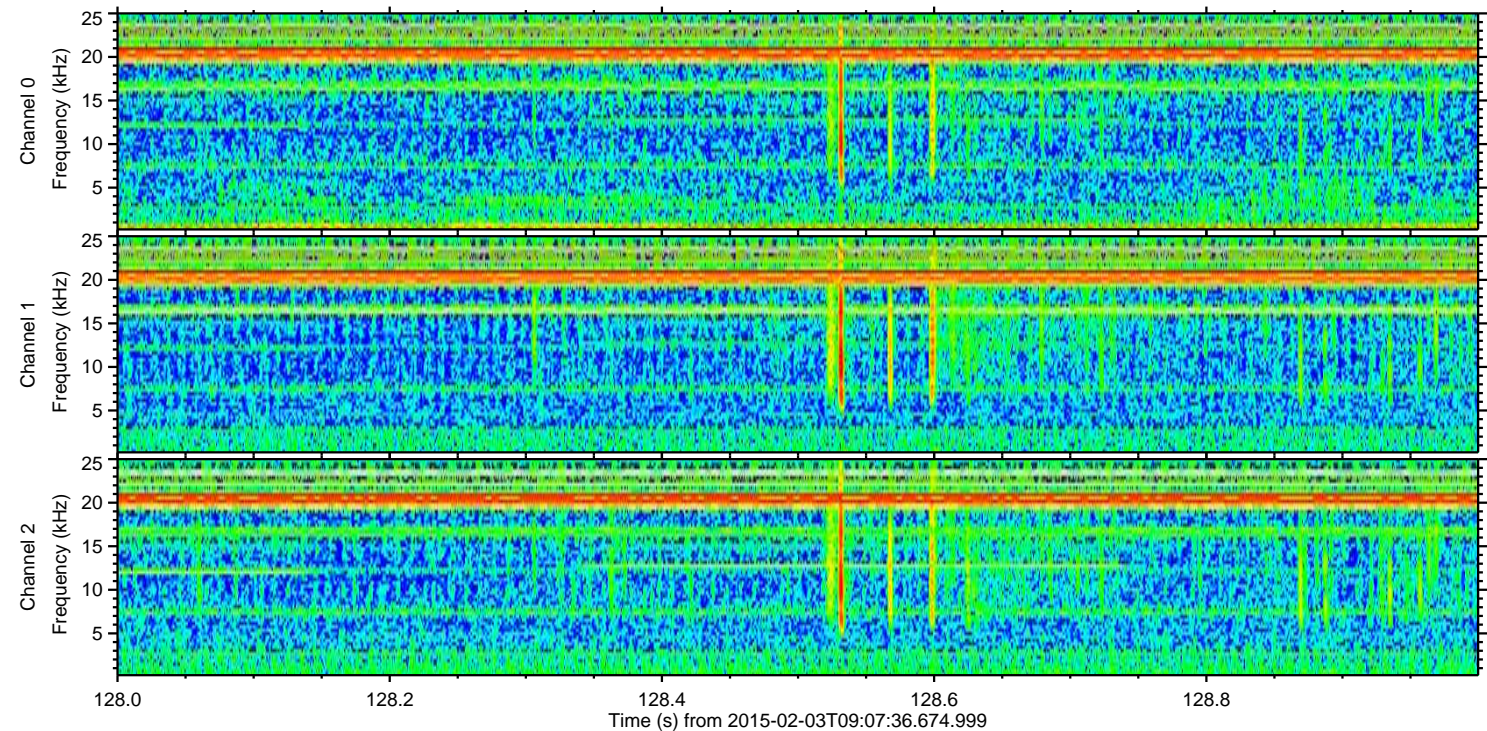
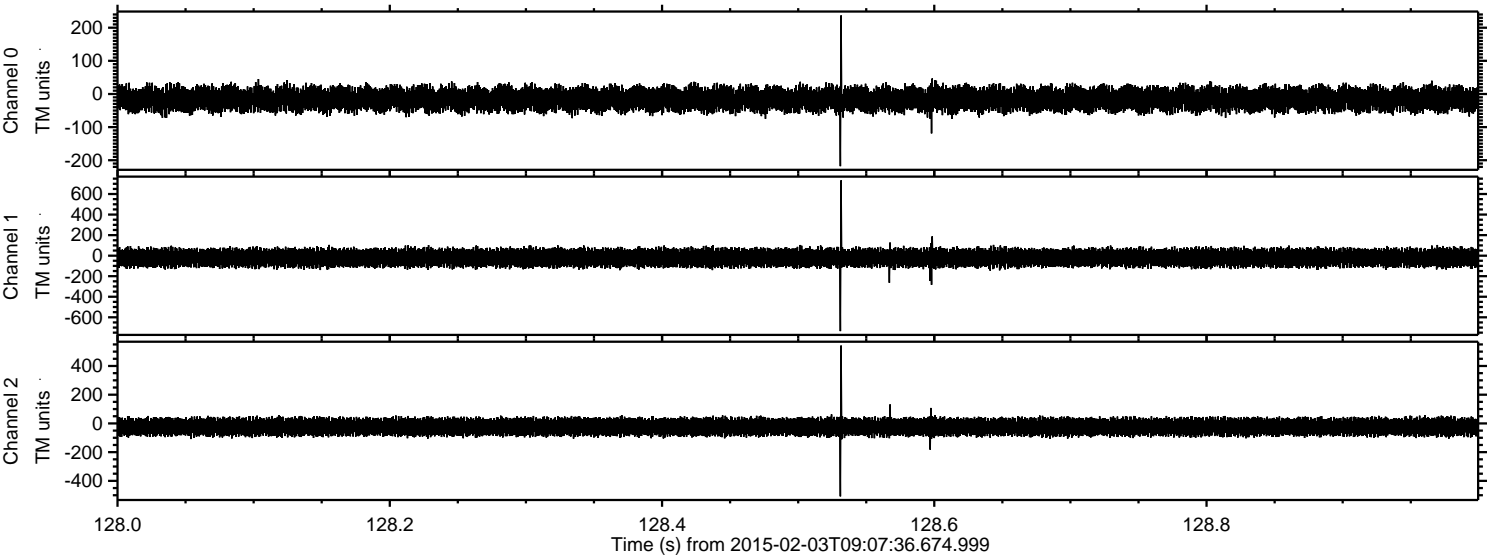
Channel 2
mn: -292
mx: 228
 μ : -24.2
 σ : 32.1

ELMAVAN 3D WAVEFORMS (Measured data sampled at 50 kHz) 49717 packets of 144 samples from 2015-02-03T09:07:36.674.999. Part 17/144

Processed Tue Feb 17 11:01:31 2015 by ELM ver.2012-10-06 from 001__elm20150203_090735__dat00.bin



Processed Tue Feb 17 11:01:32 2015 by ELM ver.2012-10-06 from 001__elm20150203_090735__dat00.bin



Power spectra

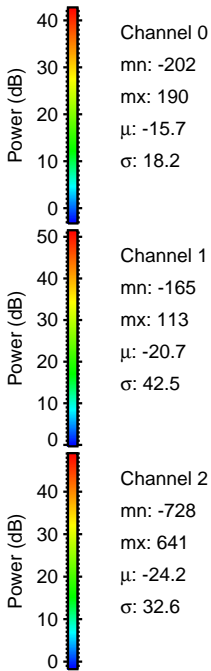
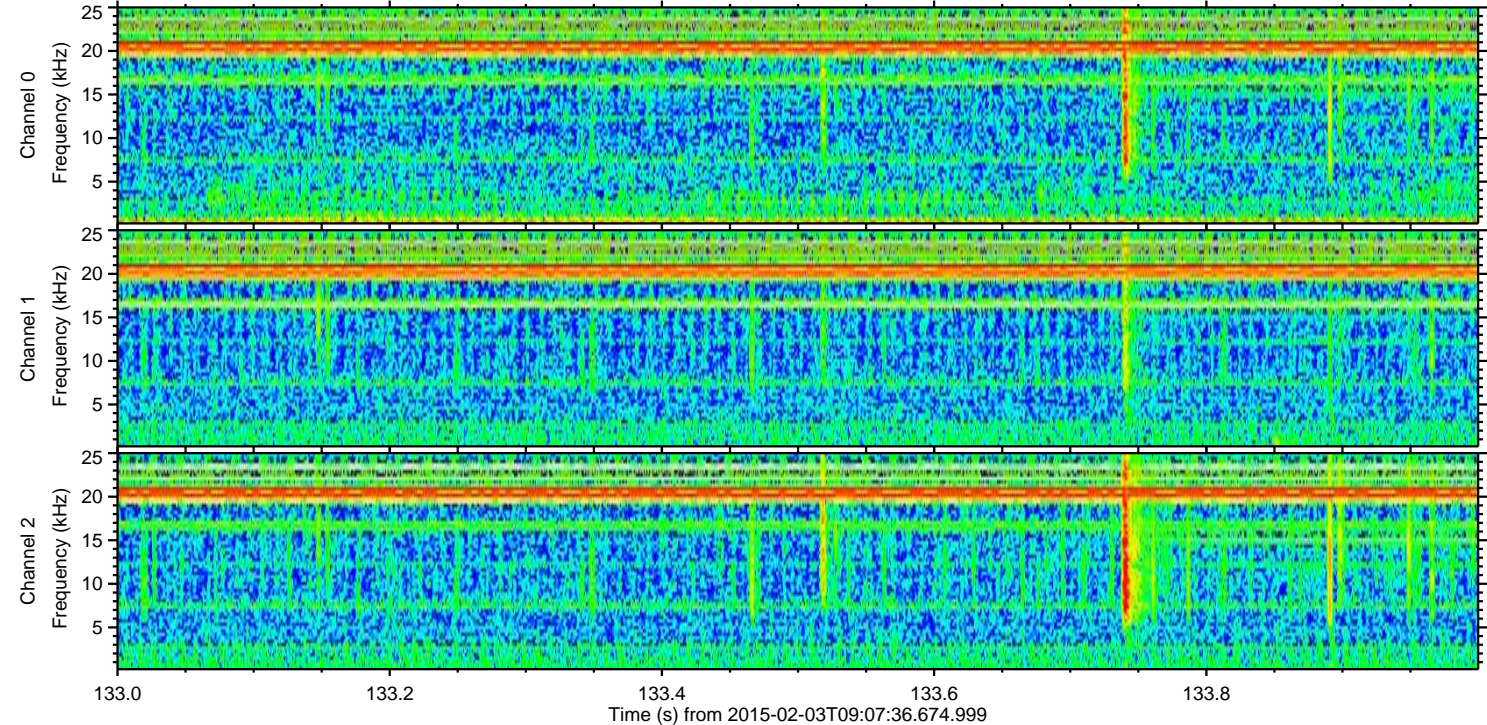
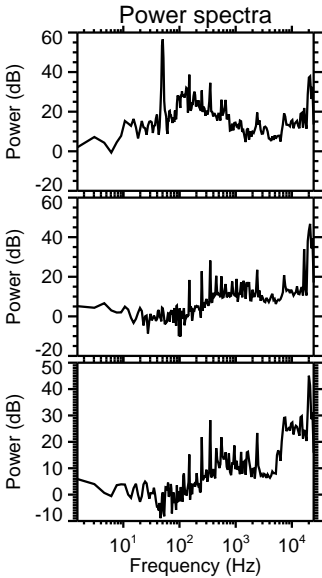
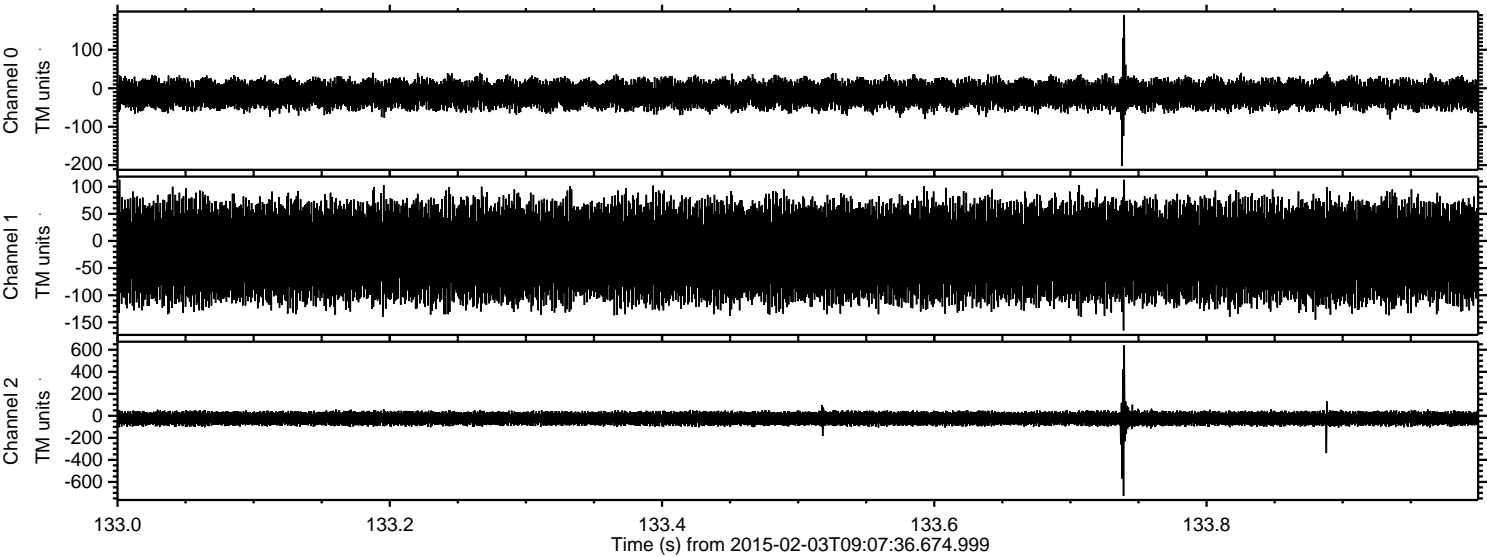
Channel 0
mn: -218
mx: 237
 μ : -15.7
 σ : 18.2

Channel 1
mn: -735
mx: 733
 μ : -20.7
 σ : 43.4

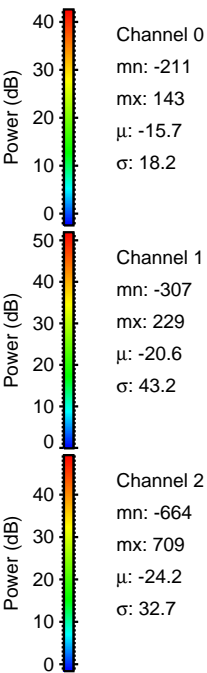
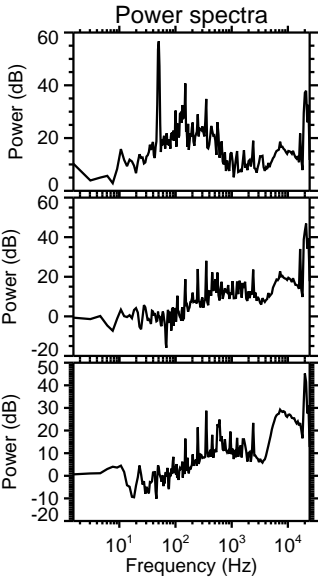
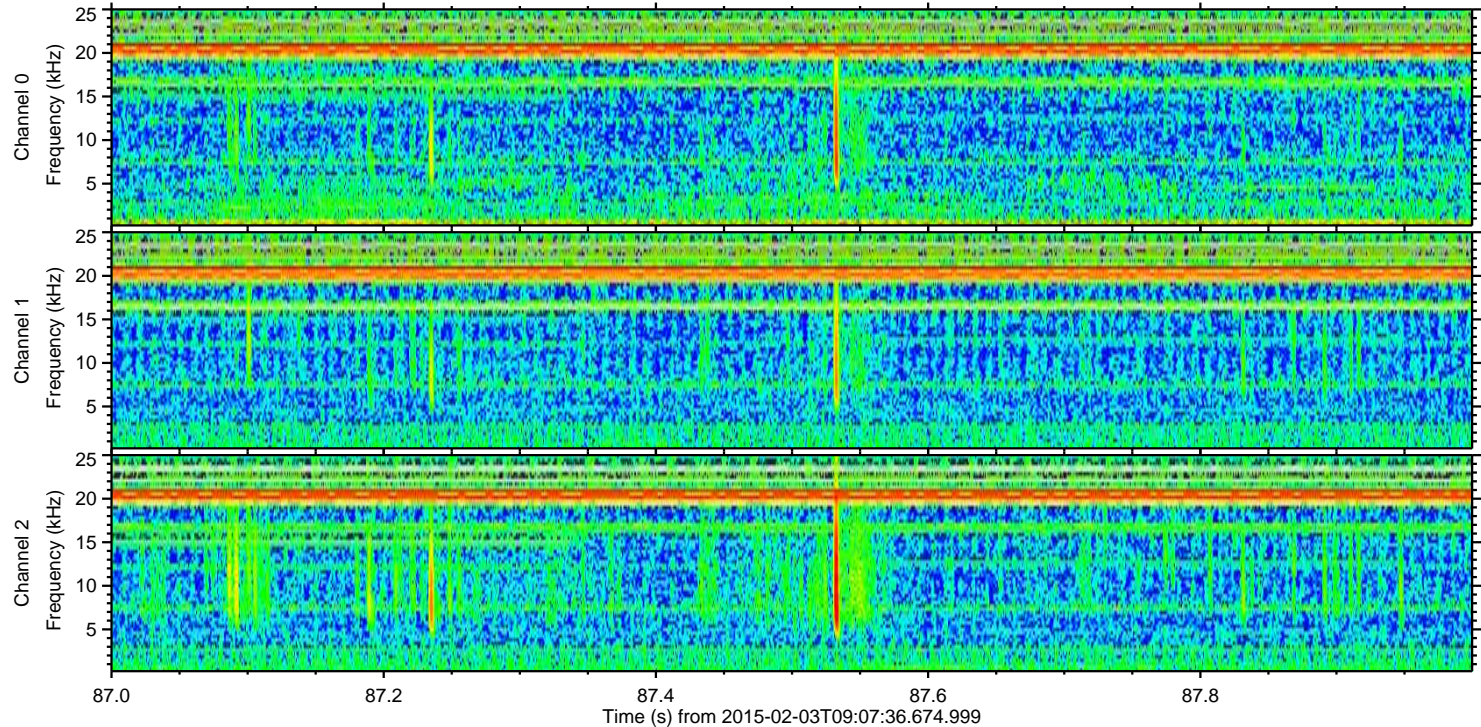
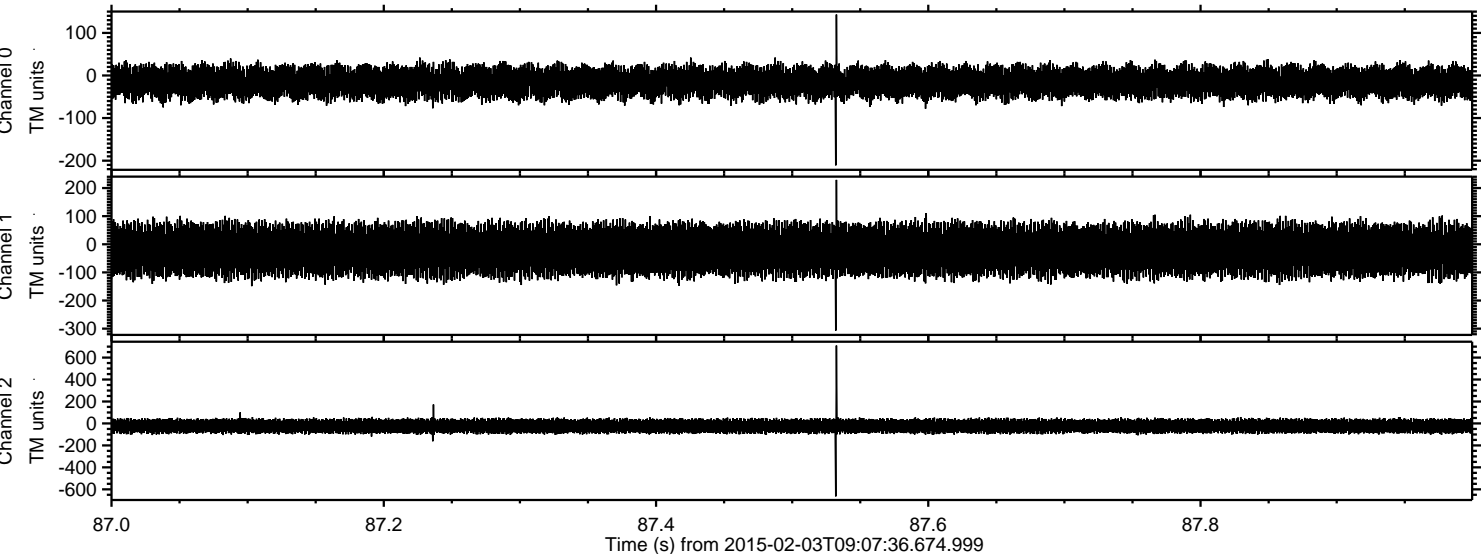
Channel 2
mn: -508
mx: 542
 μ : -24.2
 σ : 31.8

ELMAVAN 3D WAVEFORMS (Measured data sampled at 50 kHz) 49717 packets of 144 samples from 2015-02-03T09:07:36.674.999. Part 134/144

Processed Tue Feb 17 11:01:34 2015 by ELM ver.2012-10-06 from 001__elm20150203_090735__dat00.bin



Processed Tue Feb 17 11:01:35 2015 by ELM ver.2012-10-06 from 001__elm20150203_090735__dat00.bin



ELMAVAN 3D WAVEFORMS (Measured data sampled at 50 kHz) 49717 packets of 144 samples from 2015-02-03T09:07:36.674.999. Part 119/144

