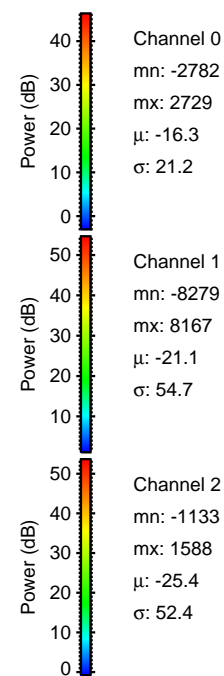
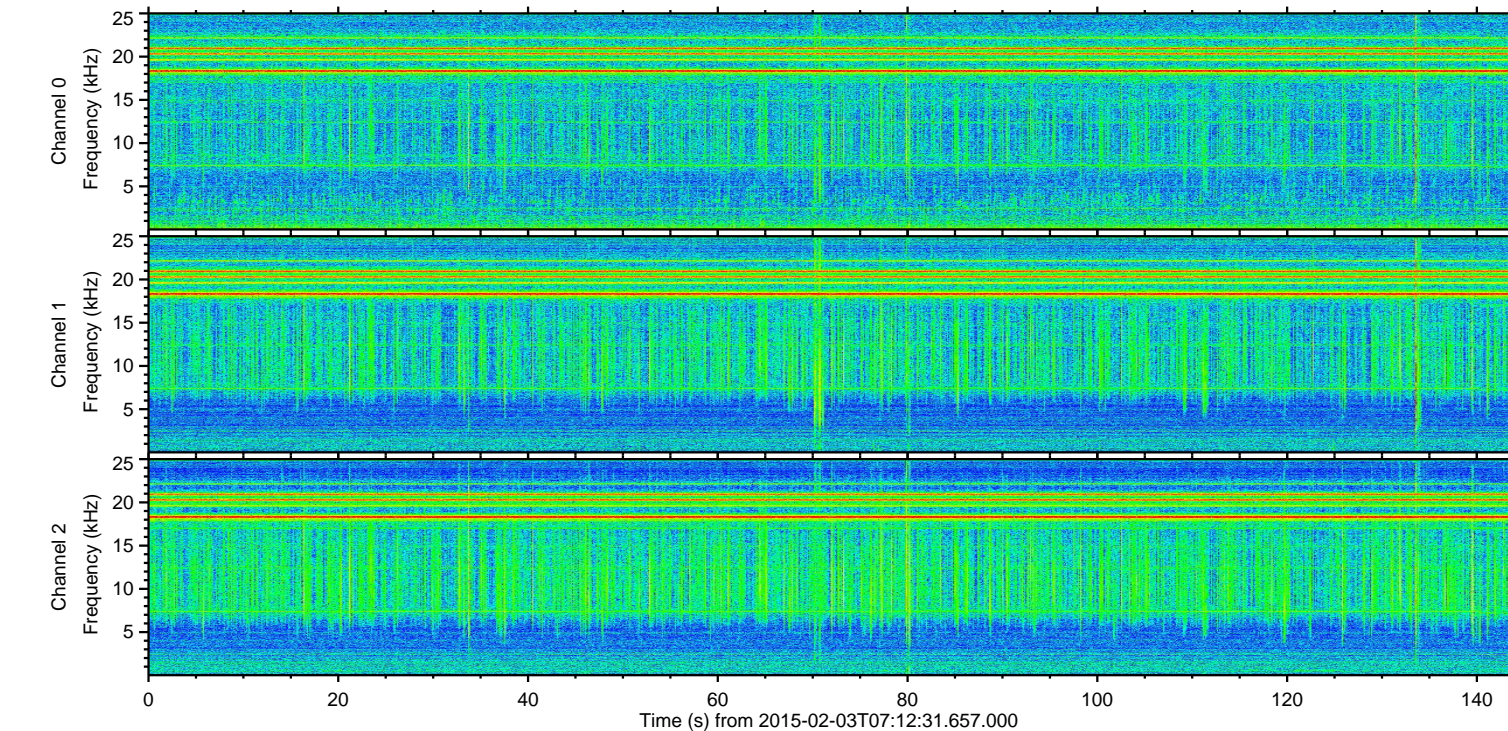
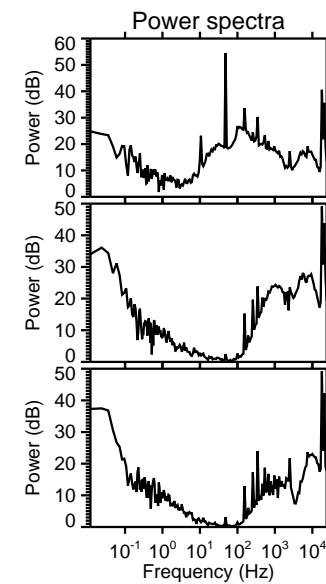
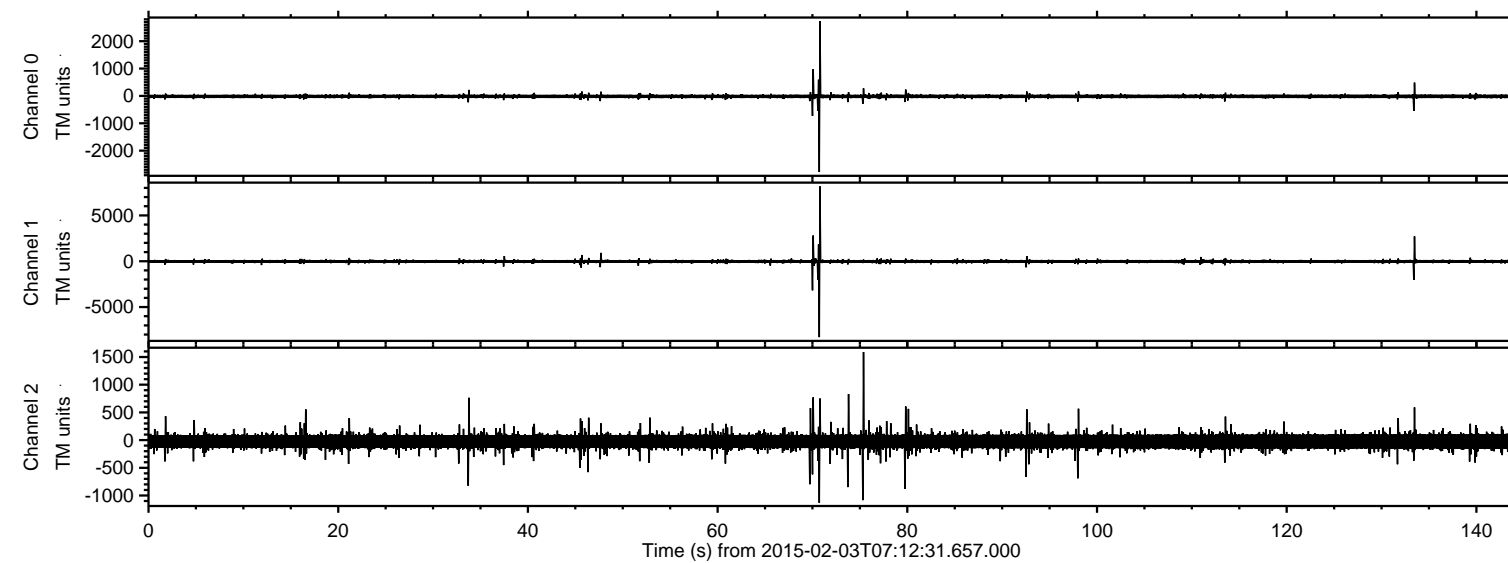


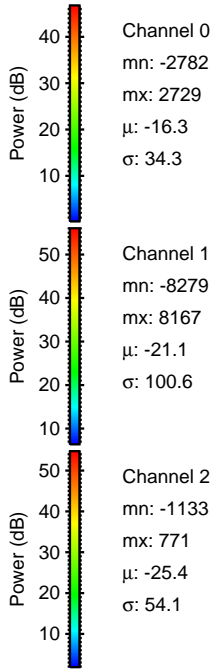
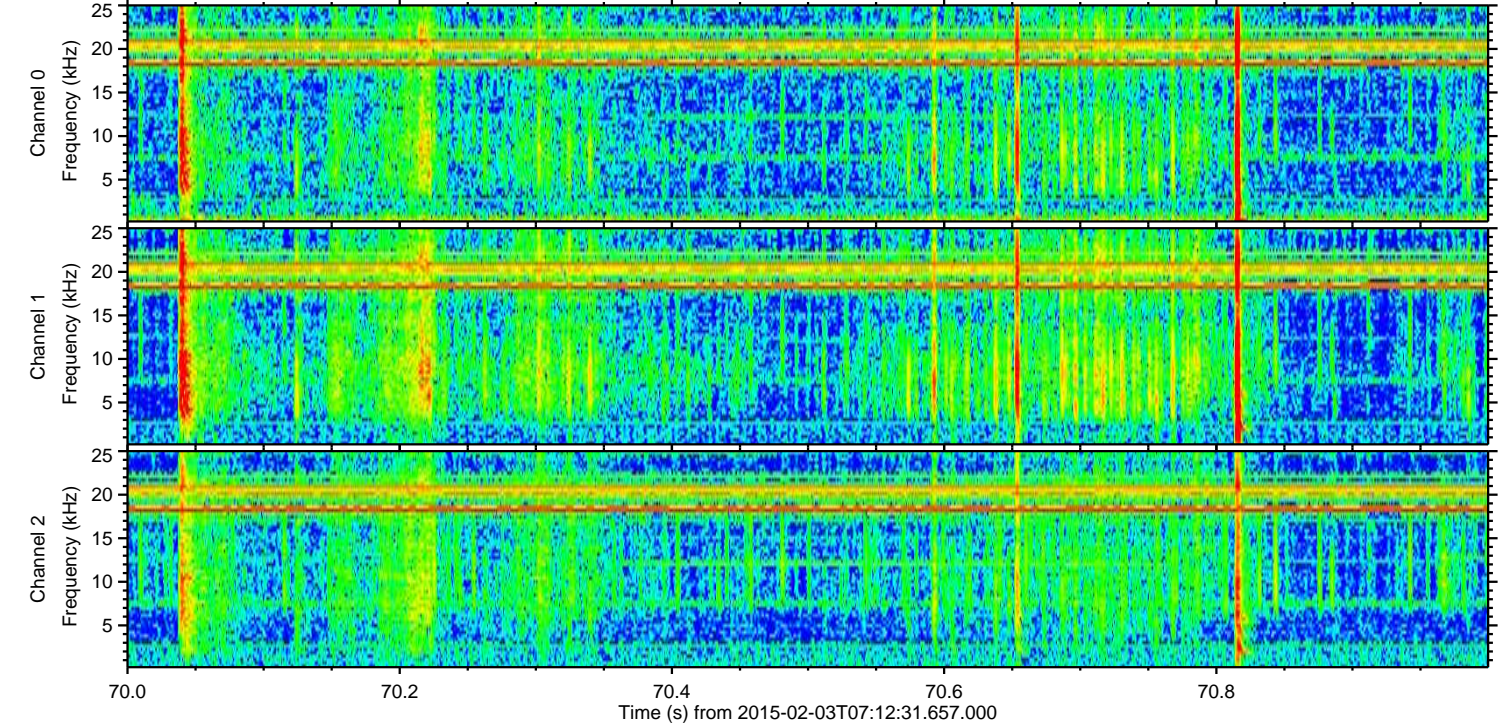
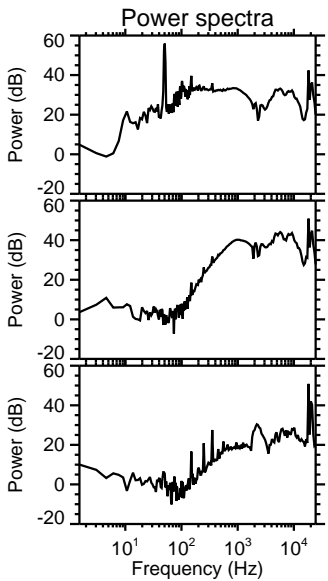
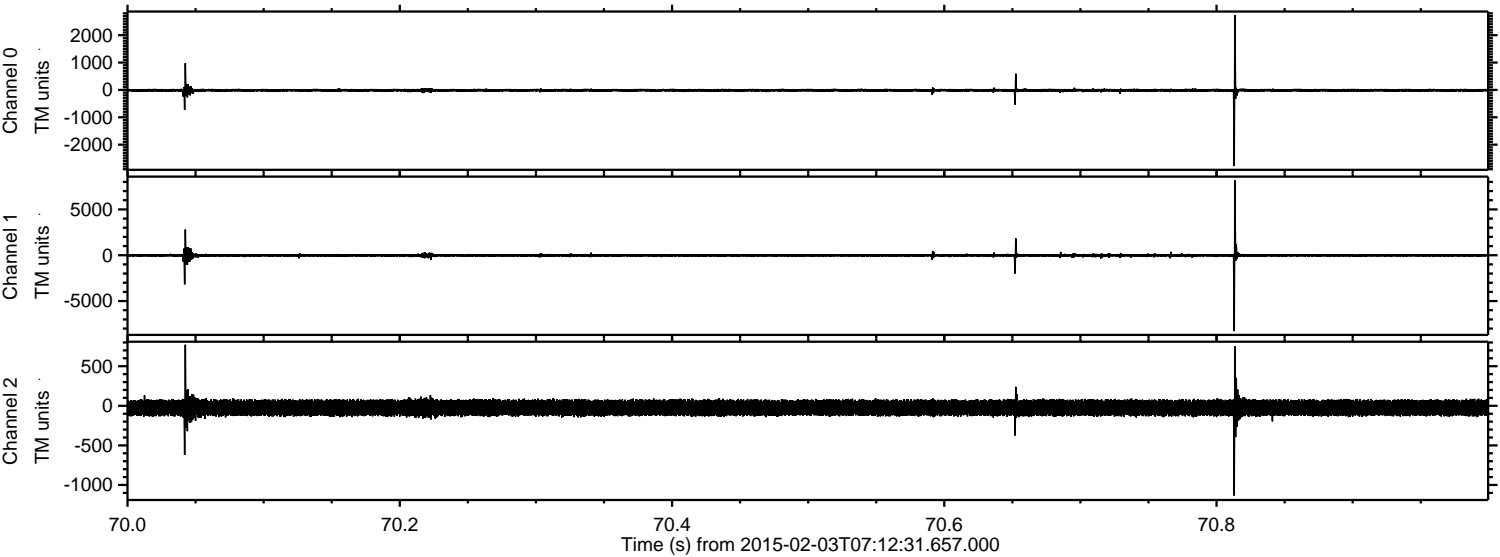
# ELMAVAN 3D WAVEFORMS (Measured data sampled at 50 kHz) 49810 packets of 144 samples from 2015-02-03T07:12:31.657.000.

Processed Tue Feb 17 09:45:11 2015 by ELM ver.2012-10-06 from 001\_\_elm20150203\_071230\_\_dat00.bin





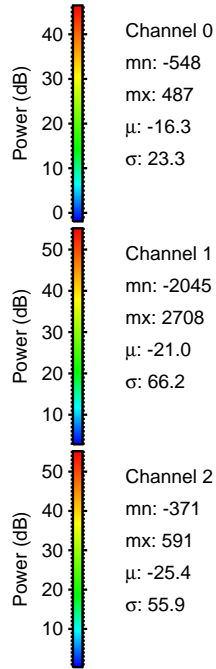
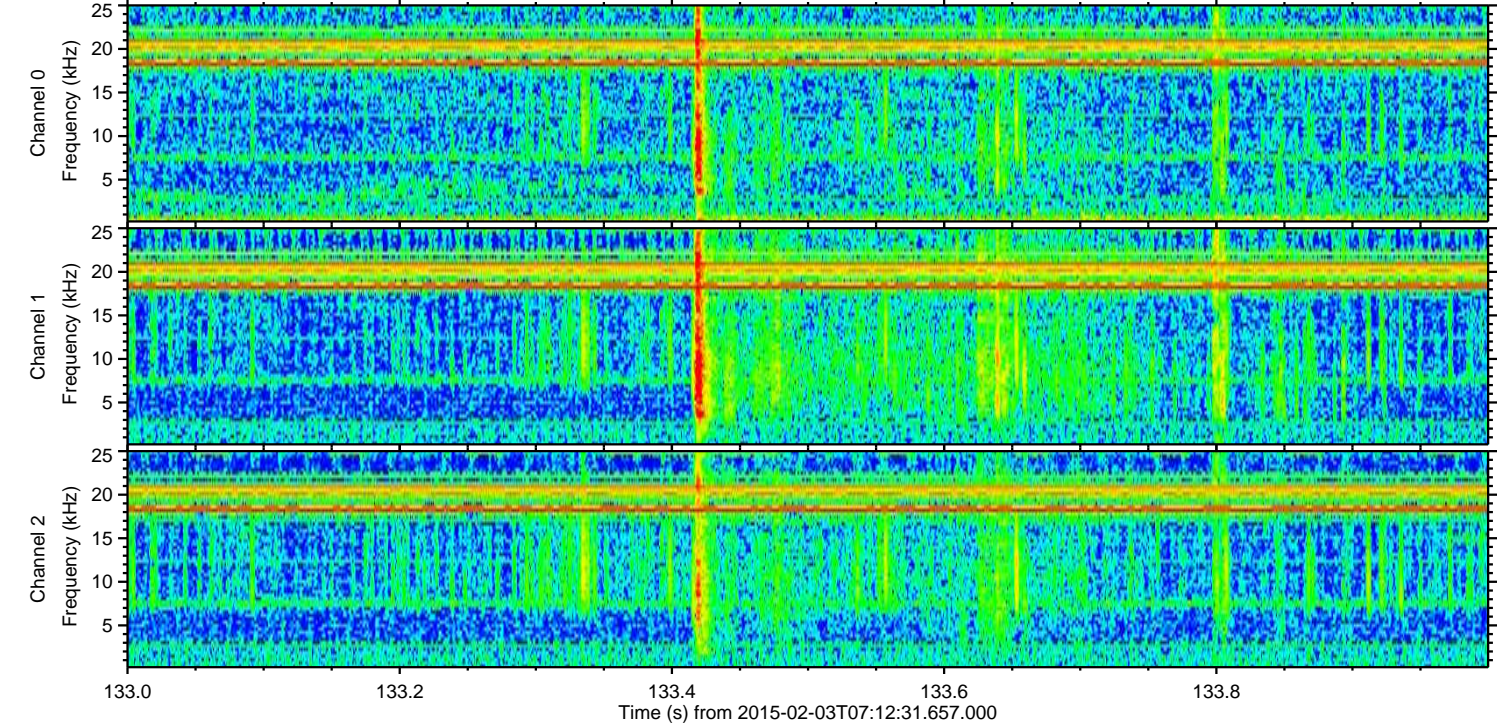
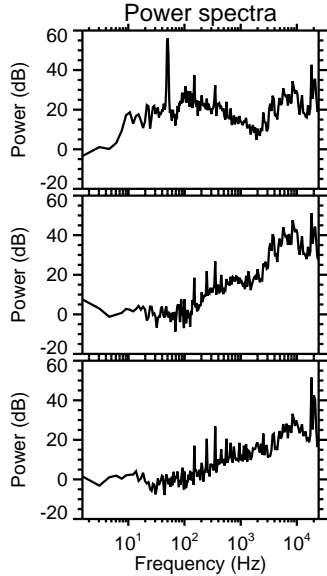
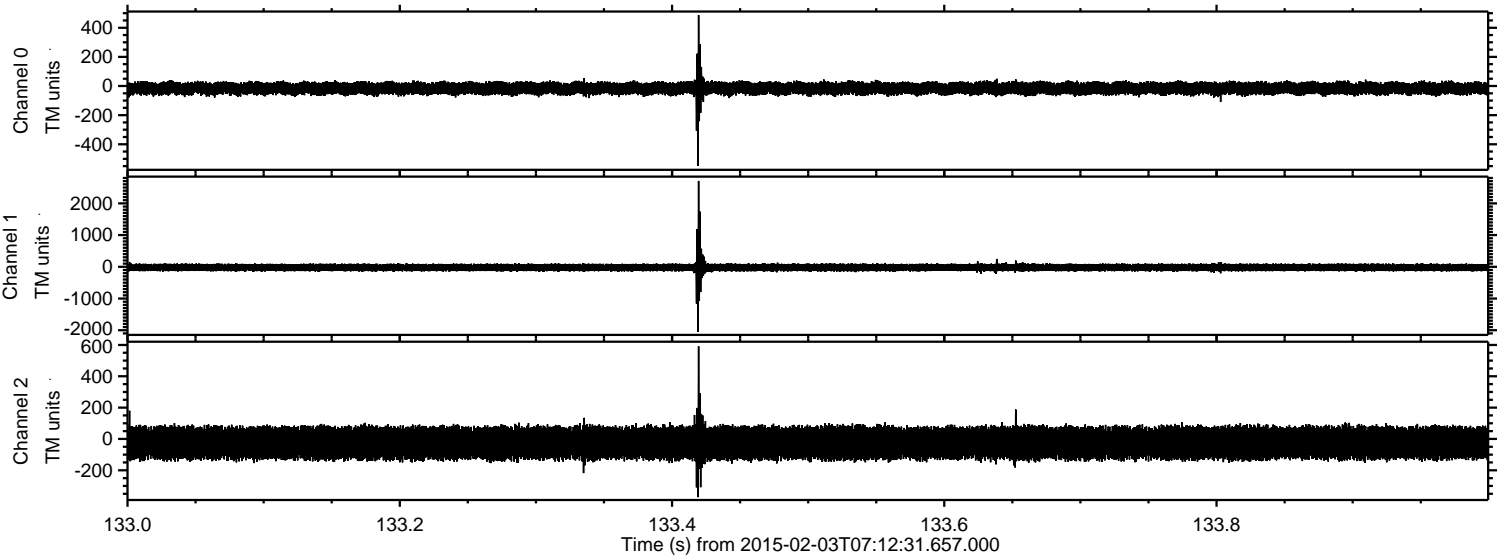
Processed Tue Feb 17 09:45:24 2015 by ELM ver.2012-10-06 from 001\_\_elm20150203\_071230\_\_dat00.bin





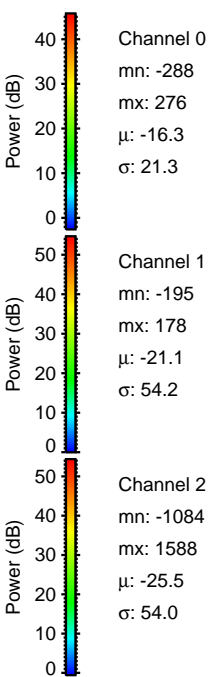
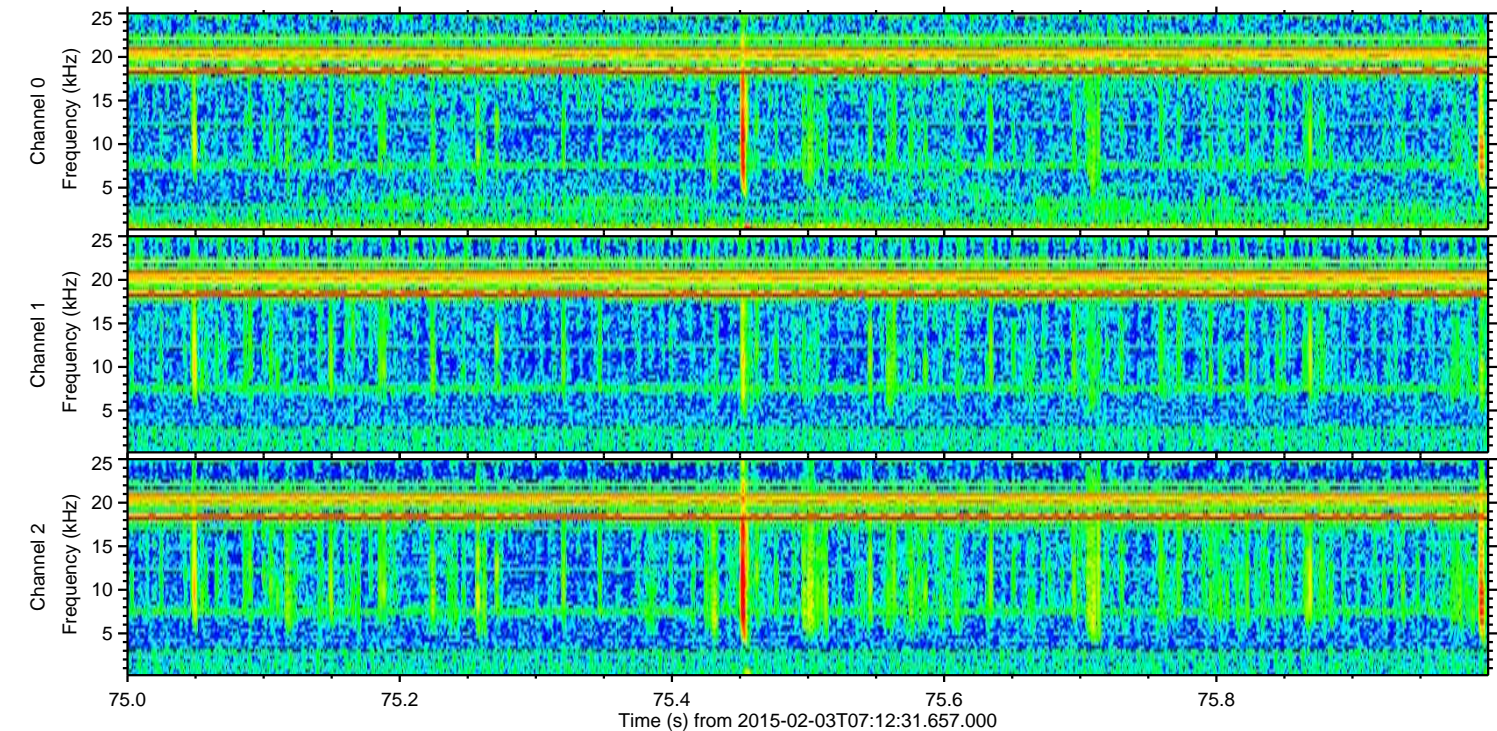
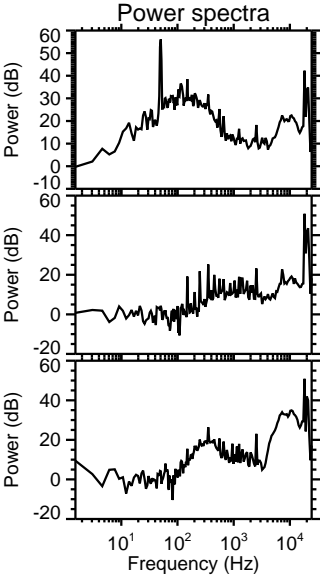
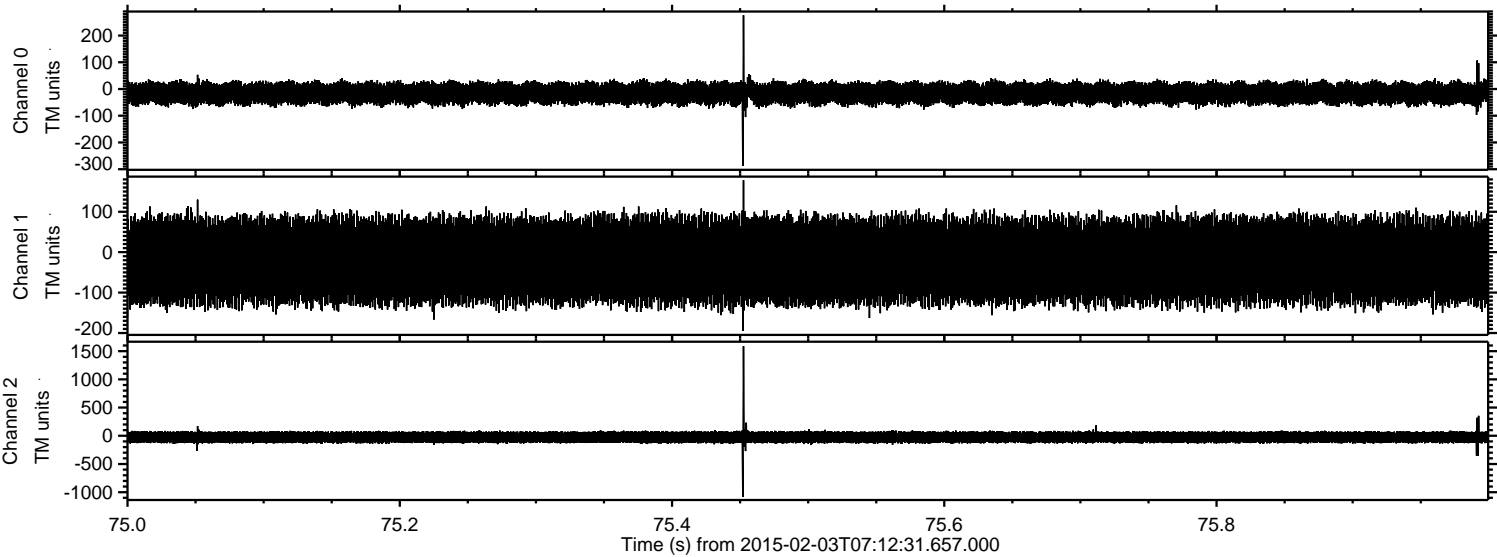
ELMAVAN 3D WAVEFORMS (Measured data sampled at 50 kHz) 49810 packets of 144 samples from 2015-02-03T07:12:31.657.000. Part 134/144

Processed Tue Feb 17 09:45:25 2015 by ELM ver.2012-10-06 from 001\_\_elm20150203\_071230\_\_dat00.bin



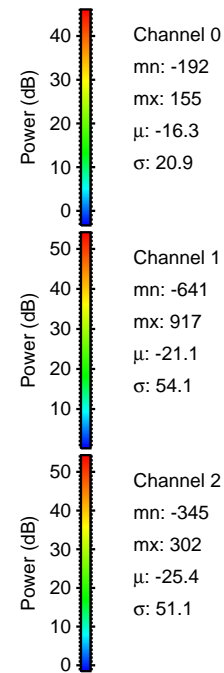
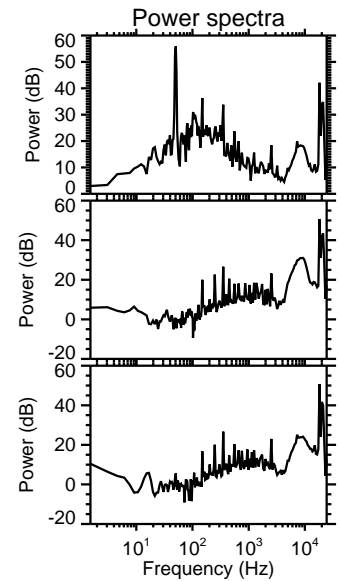
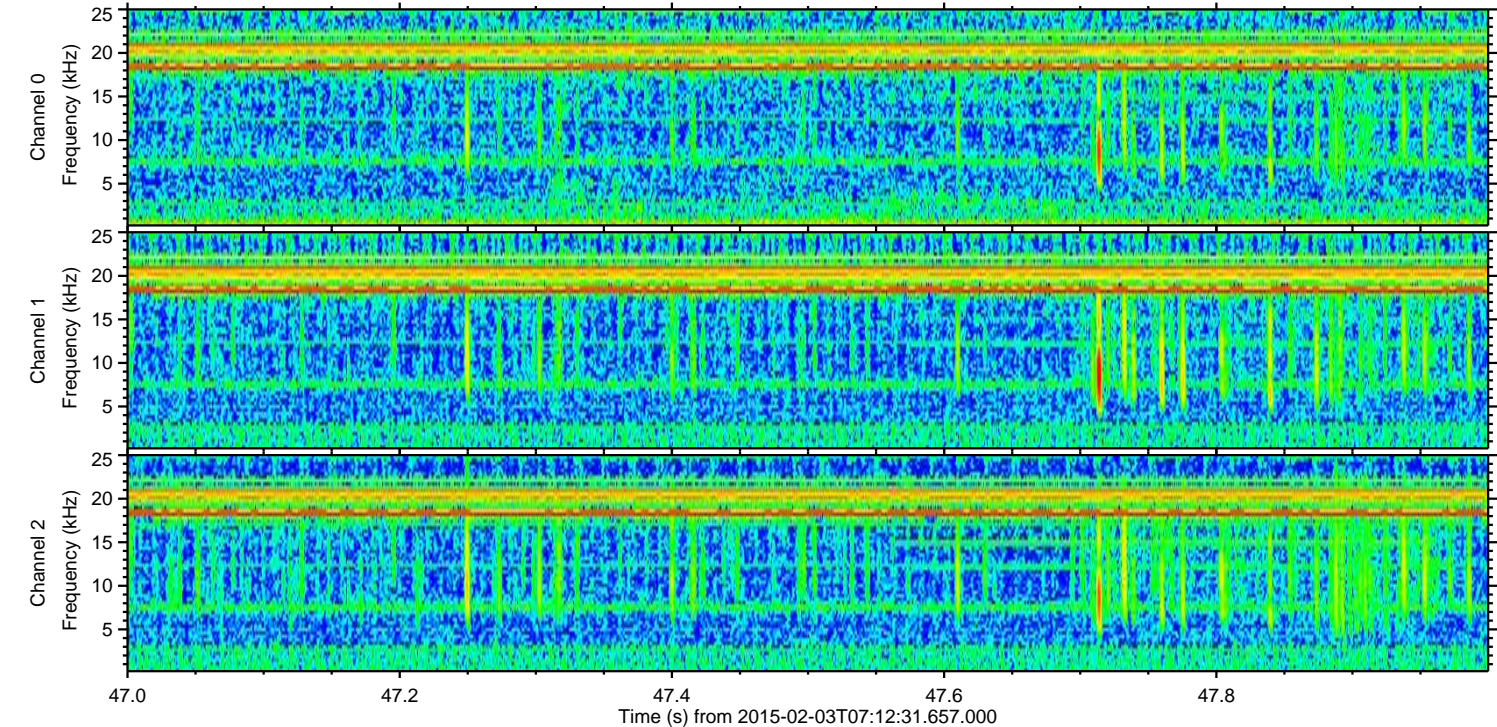
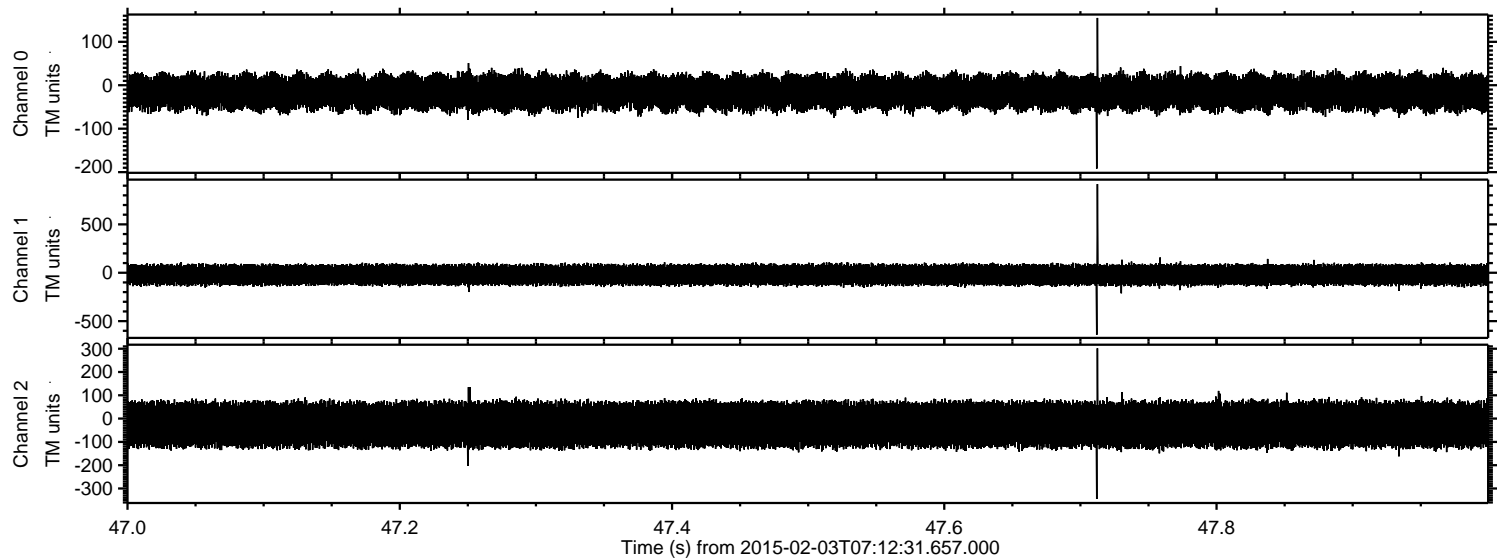


Processed Tue Feb 17 09:45:26 2015 by ELM ver.2012-10-06 from 001\_\_elm20150203\_071230\_\_dat00.bin



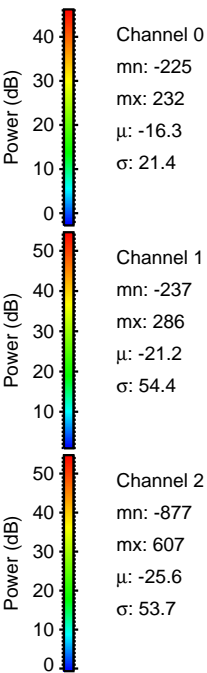
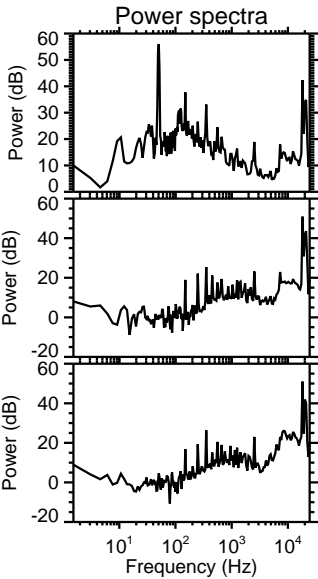
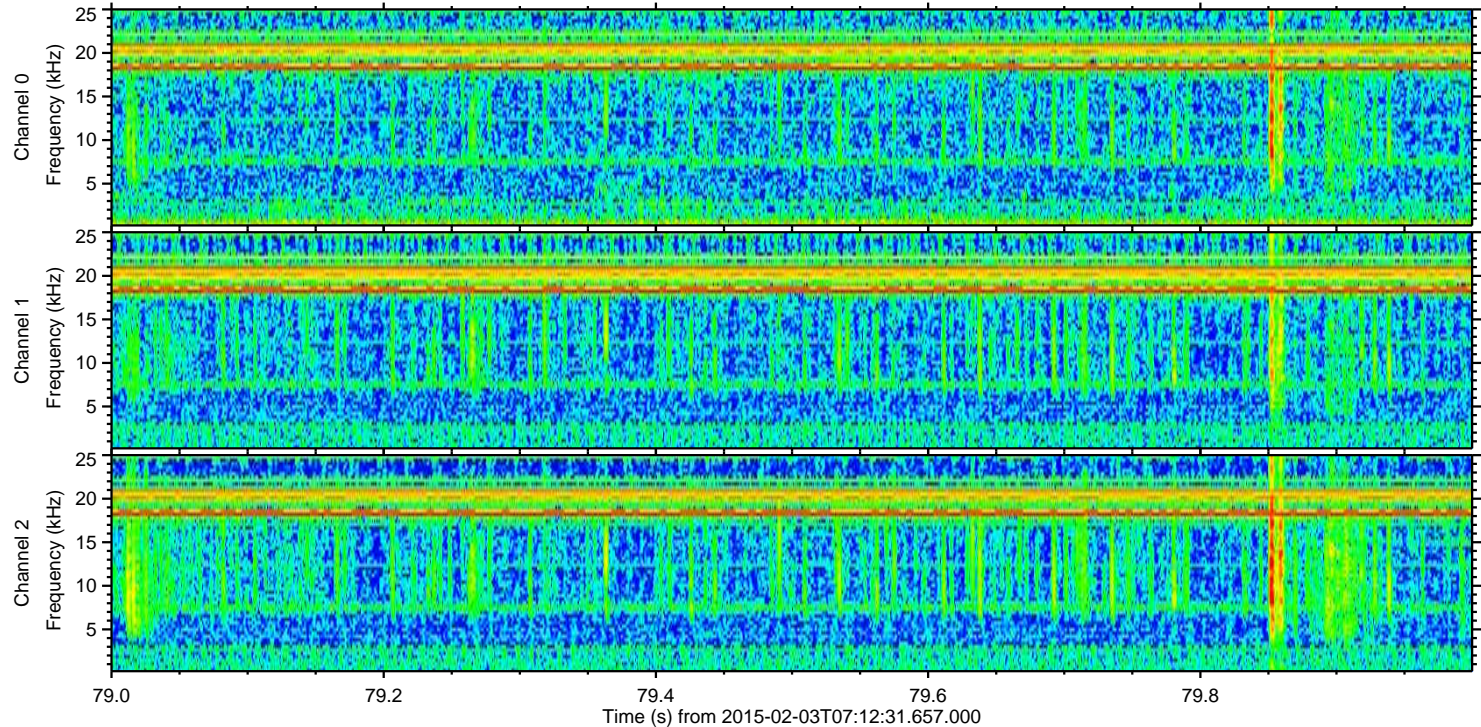
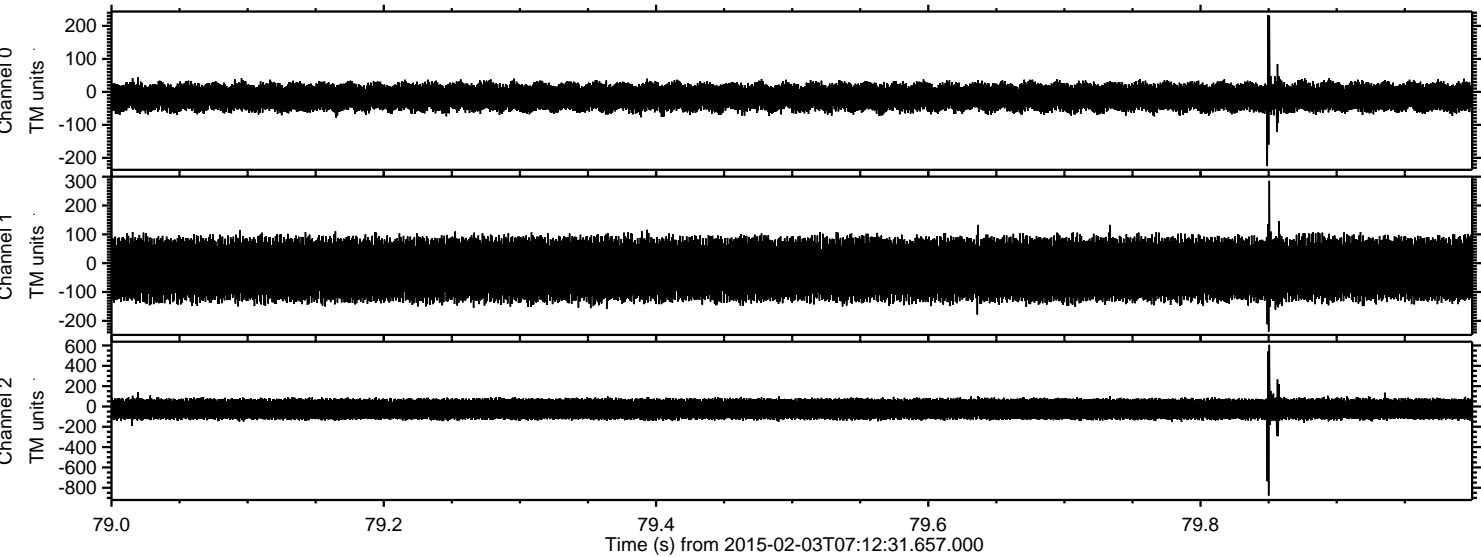


Processed Tue Feb 17 09:45:27 2015 by ELM ver.2012-10-06 from 001\_\_elm20150203\_071230\_\_dat00.bin





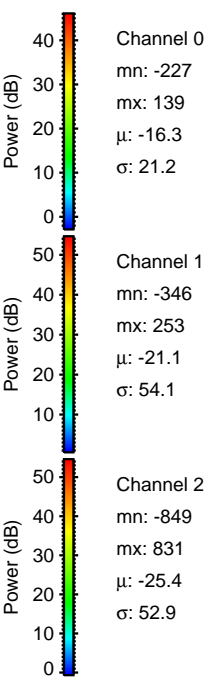
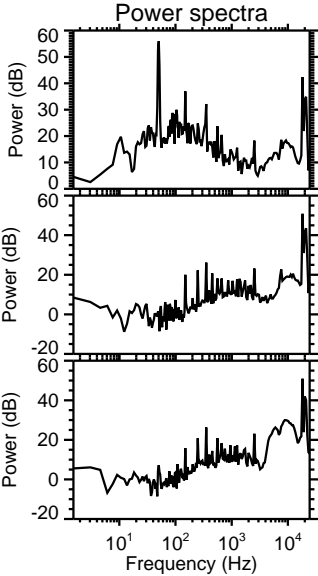
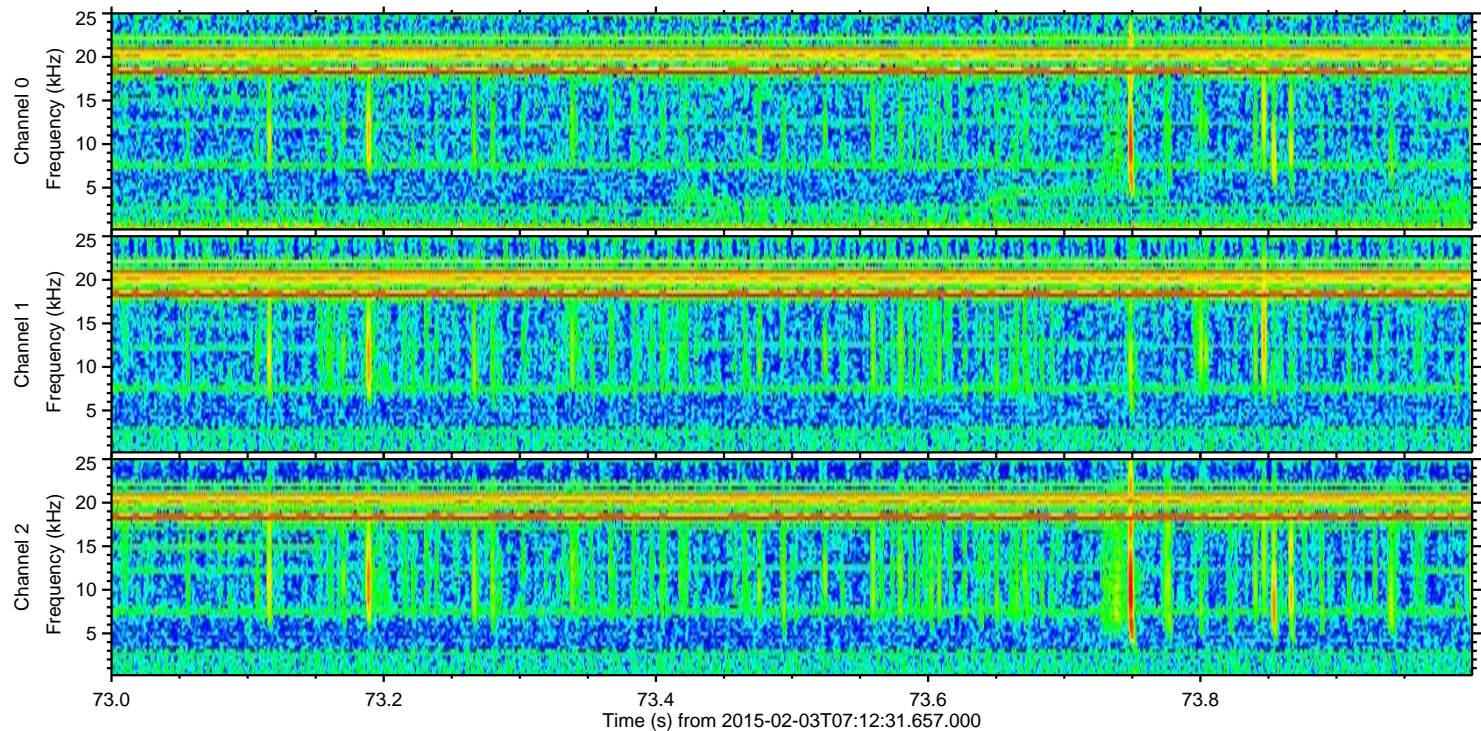
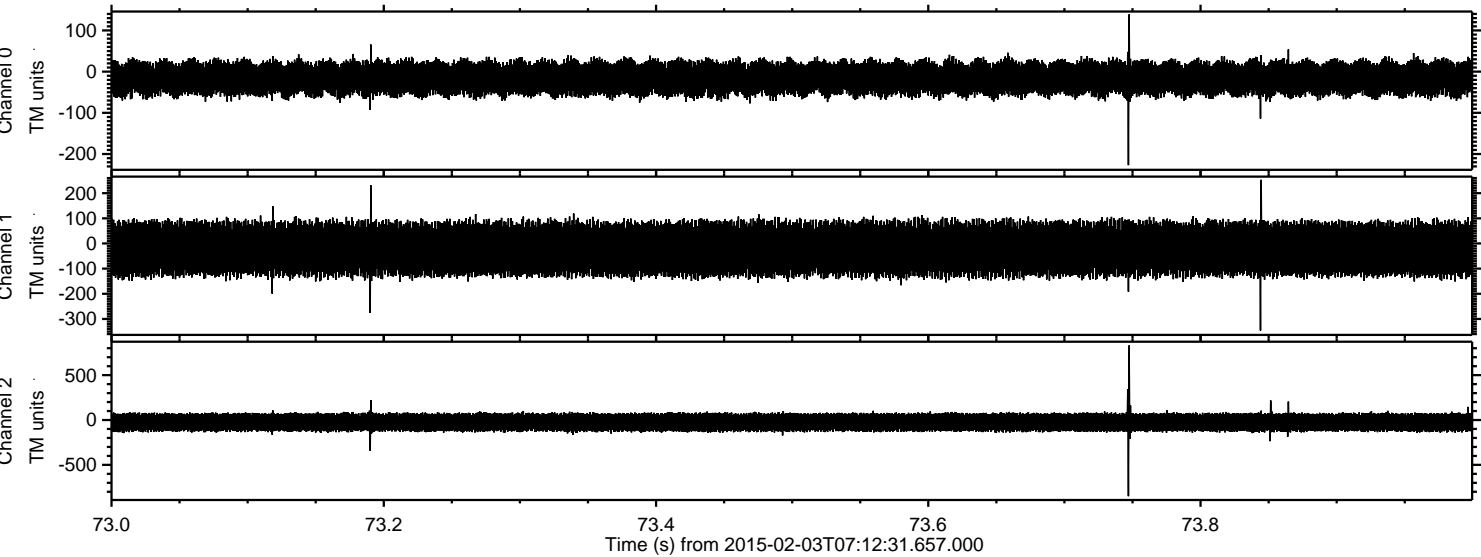
Processed Tue Feb 17 09:45:28 2015 by ELM ver.2012-10-06 from 001\_\_elm20150203\_071230\_\_dat00.bin





ELMAVAN 3D WAVEFORMS (Measured data sampled at 50 kHz) 49810 packets of 144 samples from 2015-02-03T07:12:31.657.000. Part 74/144

Processed Tue Feb 17 09:45:29 2015 by ELM ver.2012-10-06 from 001\_\_elm20150203\_071230\_\_dat00.bin



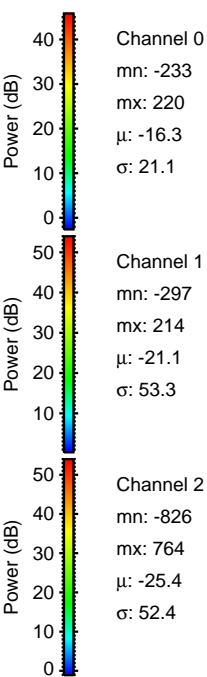
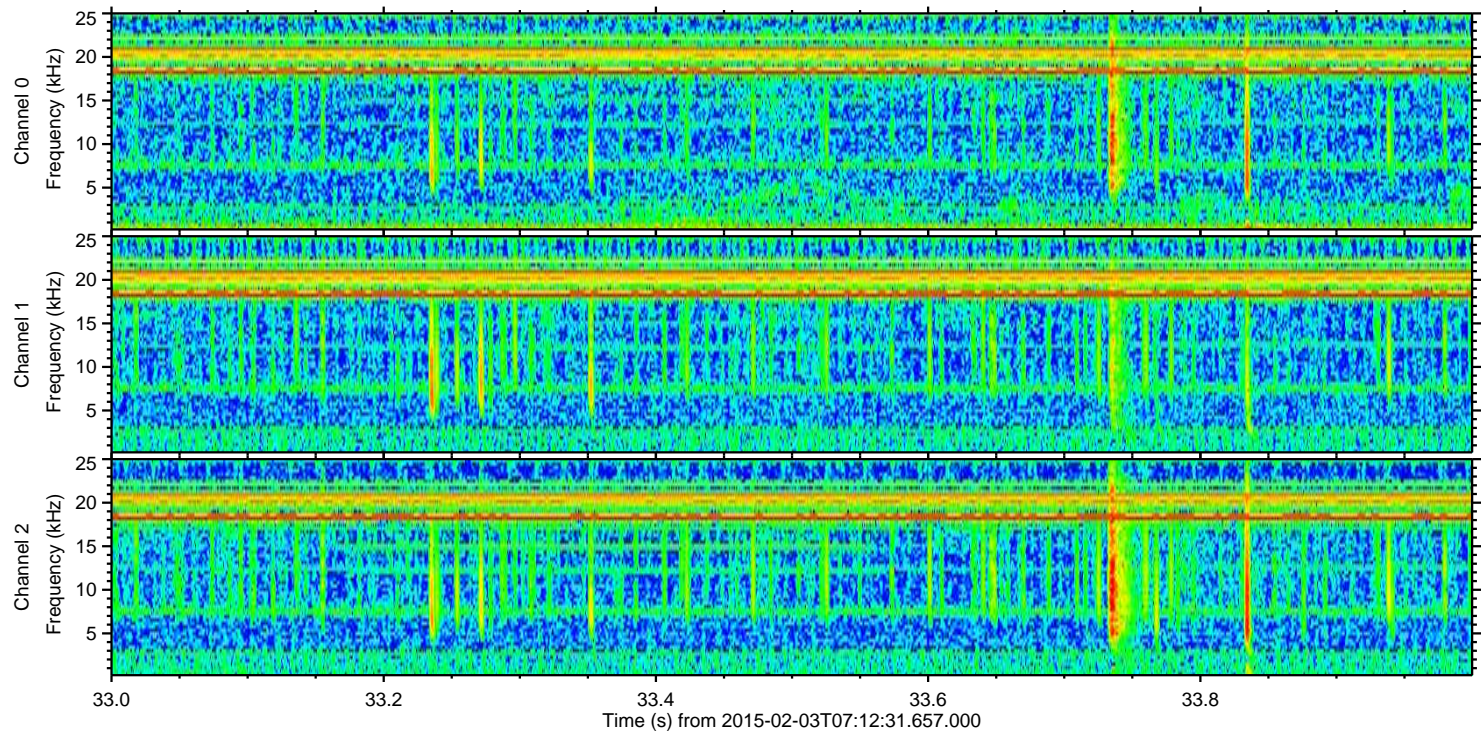
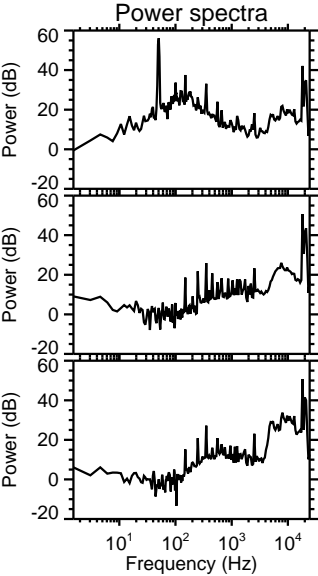
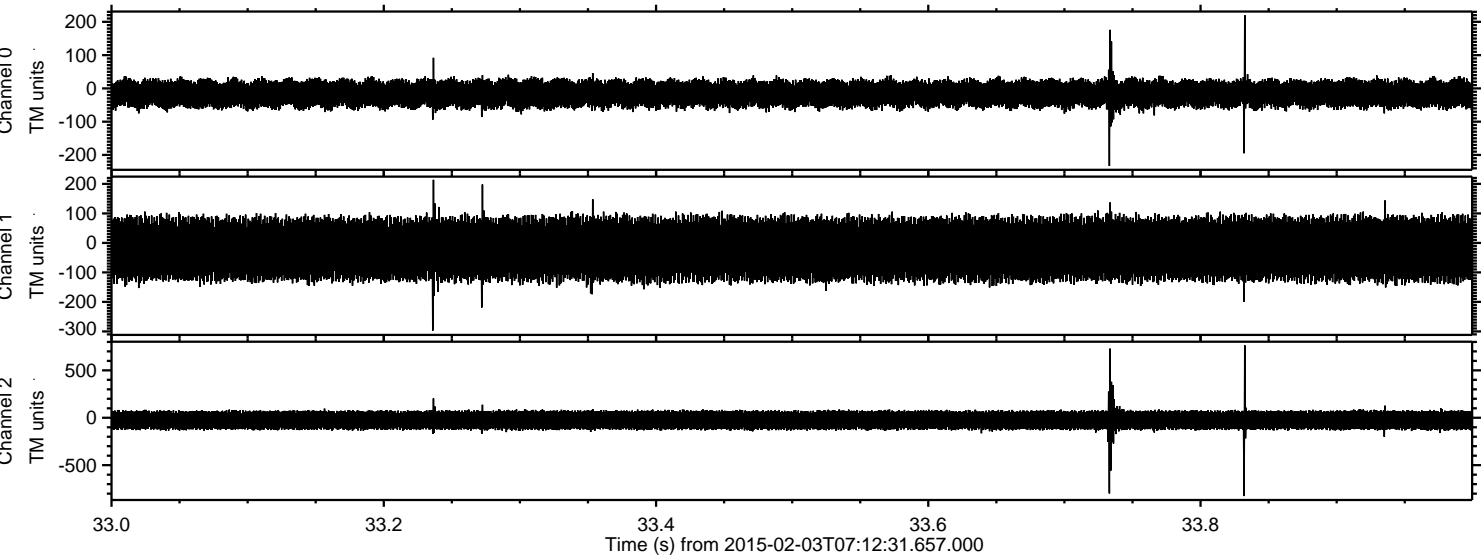
Channel 0  
mn: -227  
mx: 139  
 $\mu$ : -16.3  
 $\sigma$ : 21.2

Channel 1  
mn: -346  
mx: 253  
 $\mu$ : -21.1  
 $\sigma$ : 54.1

Channel 2  
mn: -849  
mx: 831  
 $\mu$ : -25.4  
 $\sigma$ : 52.9

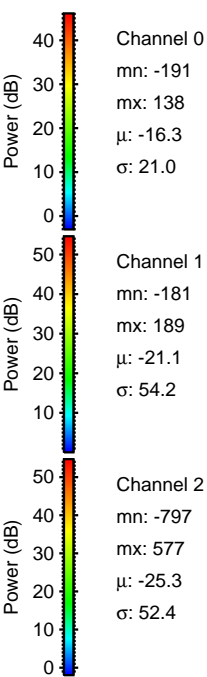
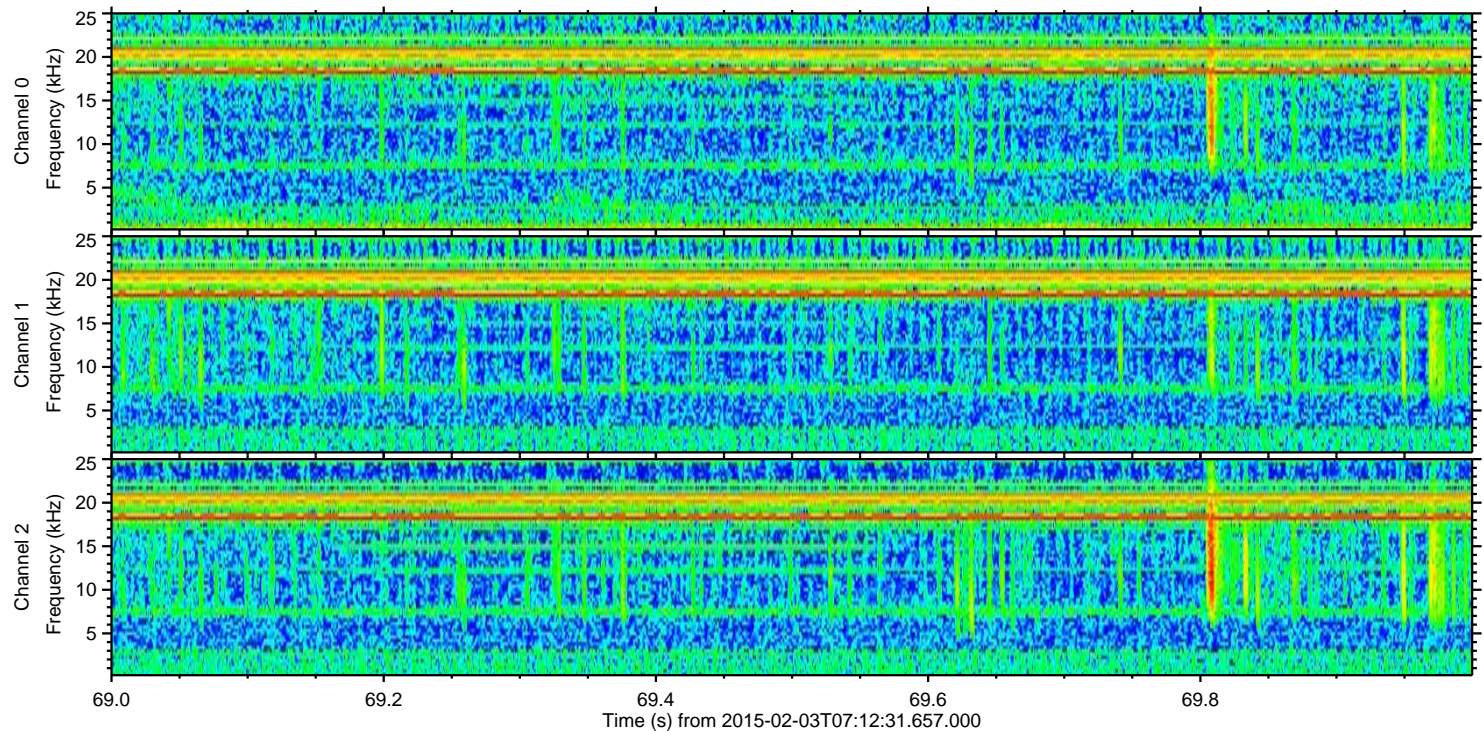
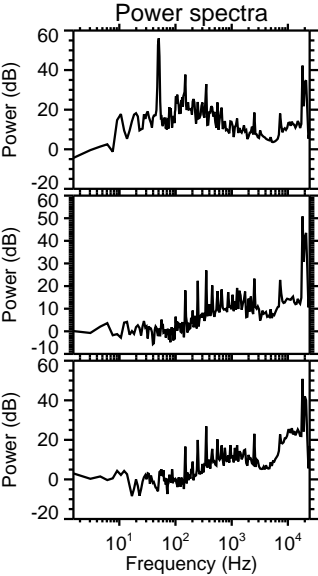
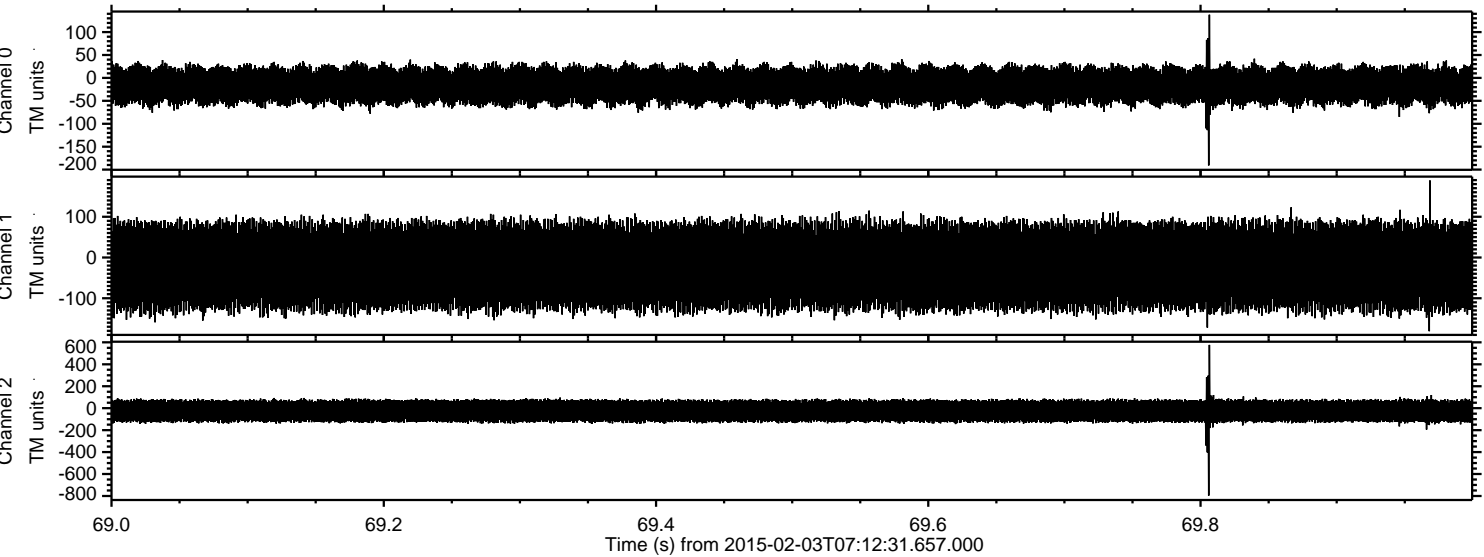


Processed Tue Feb 17 09:45:30 2015 by ELM ver.2012-10-06 from 001\_\_elm20150203\_071230\_\_dat00.bin



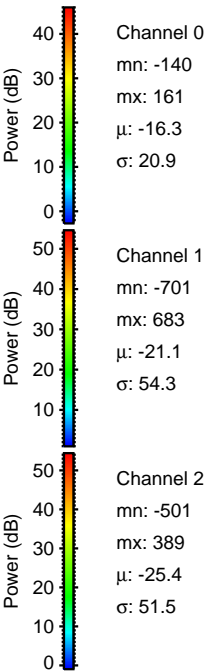
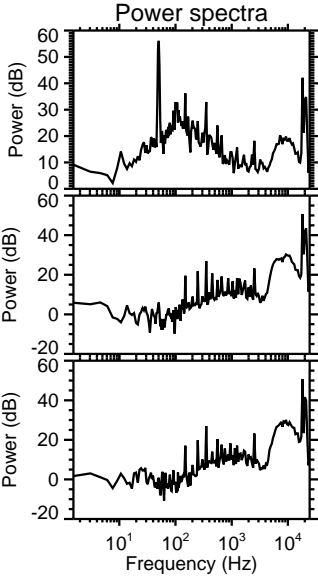
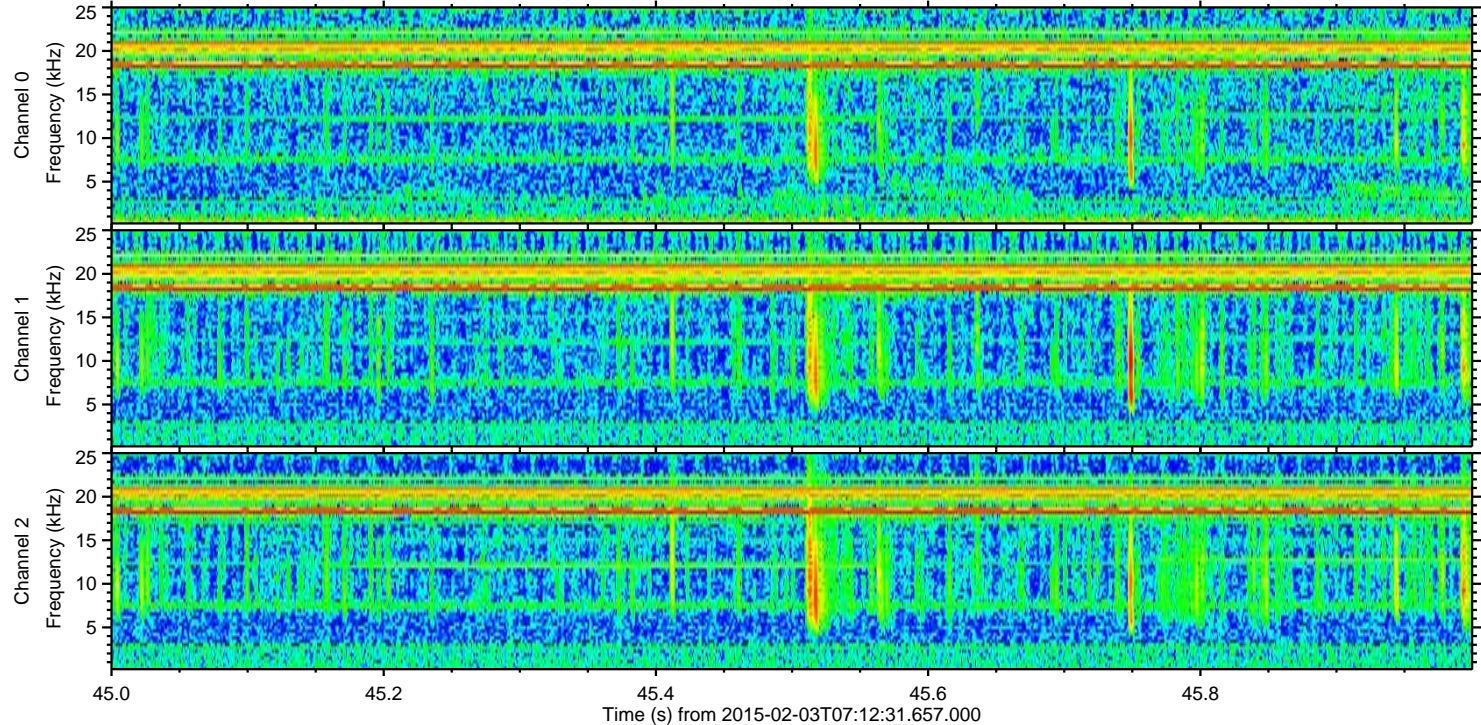
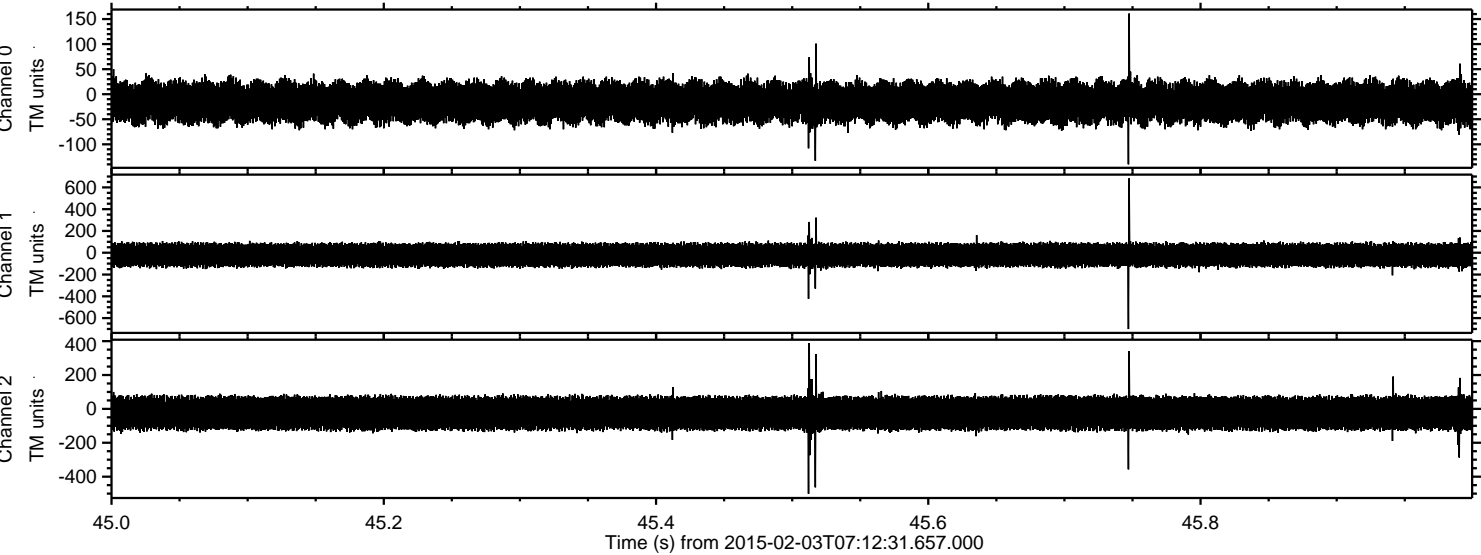


Processed Tue Feb 17 09:45:31 2015 by ELM ver.2012-10-06 from 001\_\_elm20150203\_071230\_\_dat00.bin





Processed Tue Feb 17 09:45:32 2015 by ELM ver.2012-10-06 from 001\_\_elm20150203\_071230\_\_dat00.bin





Processed Tue Feb 17 09:45:33 2015 by ELM ver.2012-10-06 from 001\_\_elm20150203\_071230\_\_dat00.bin

