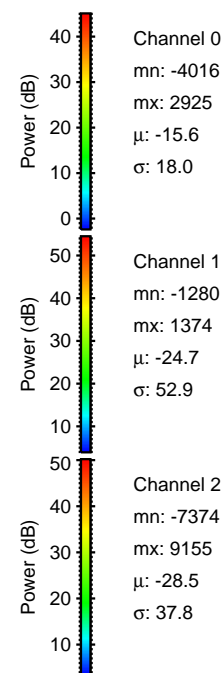
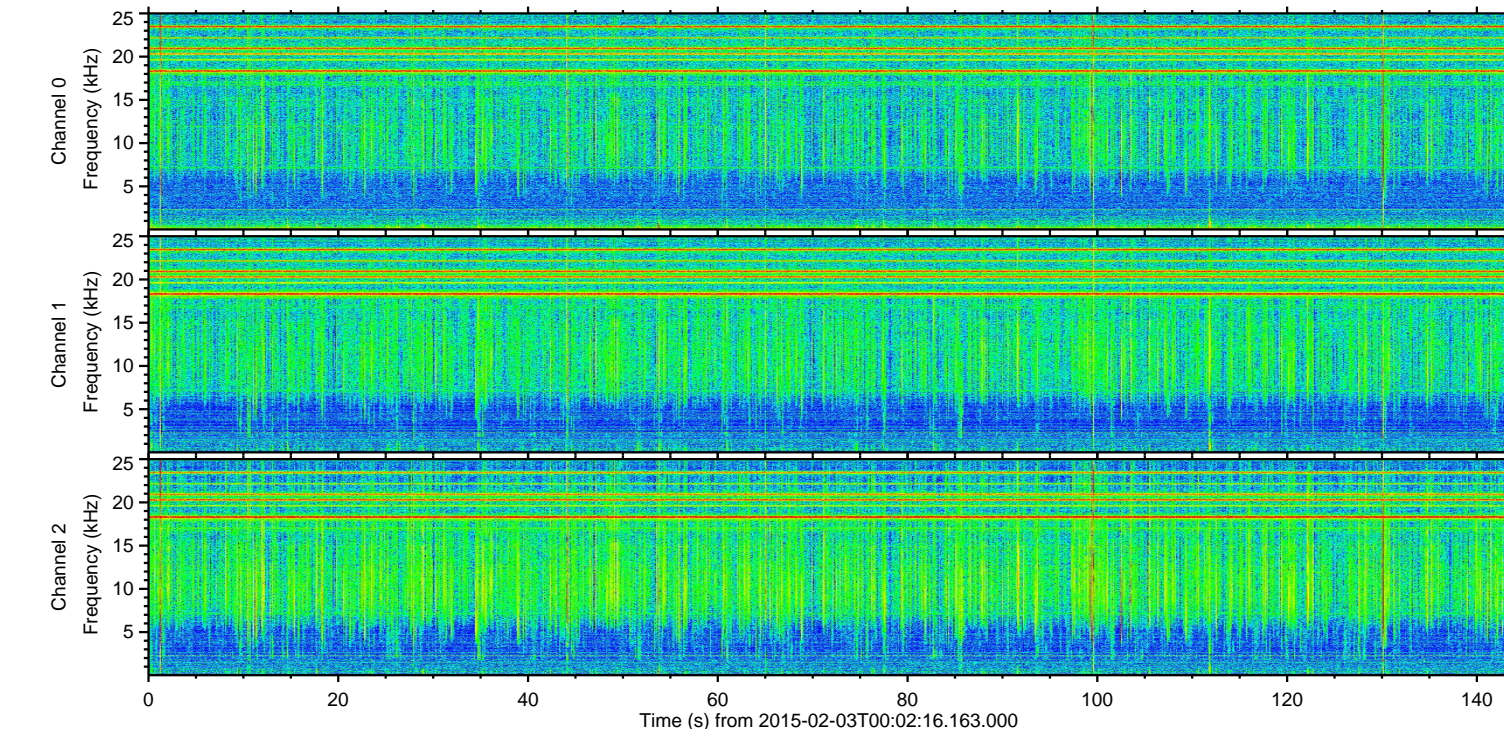
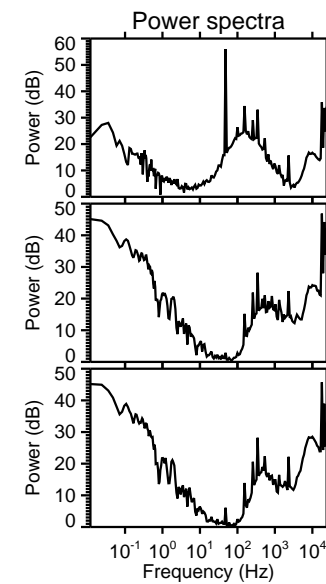
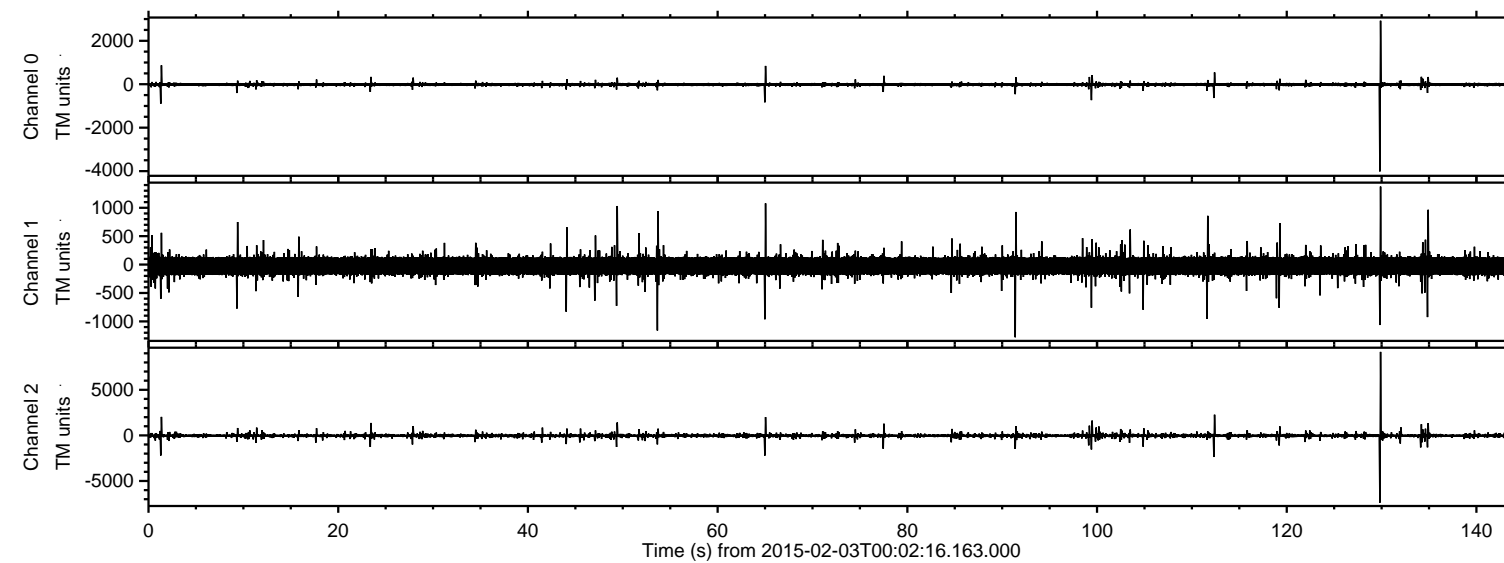


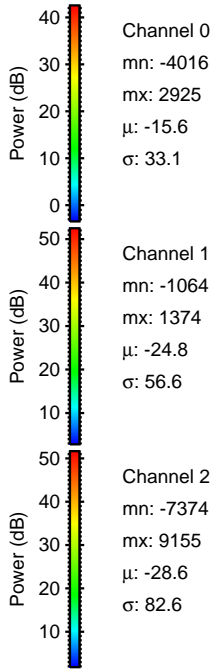
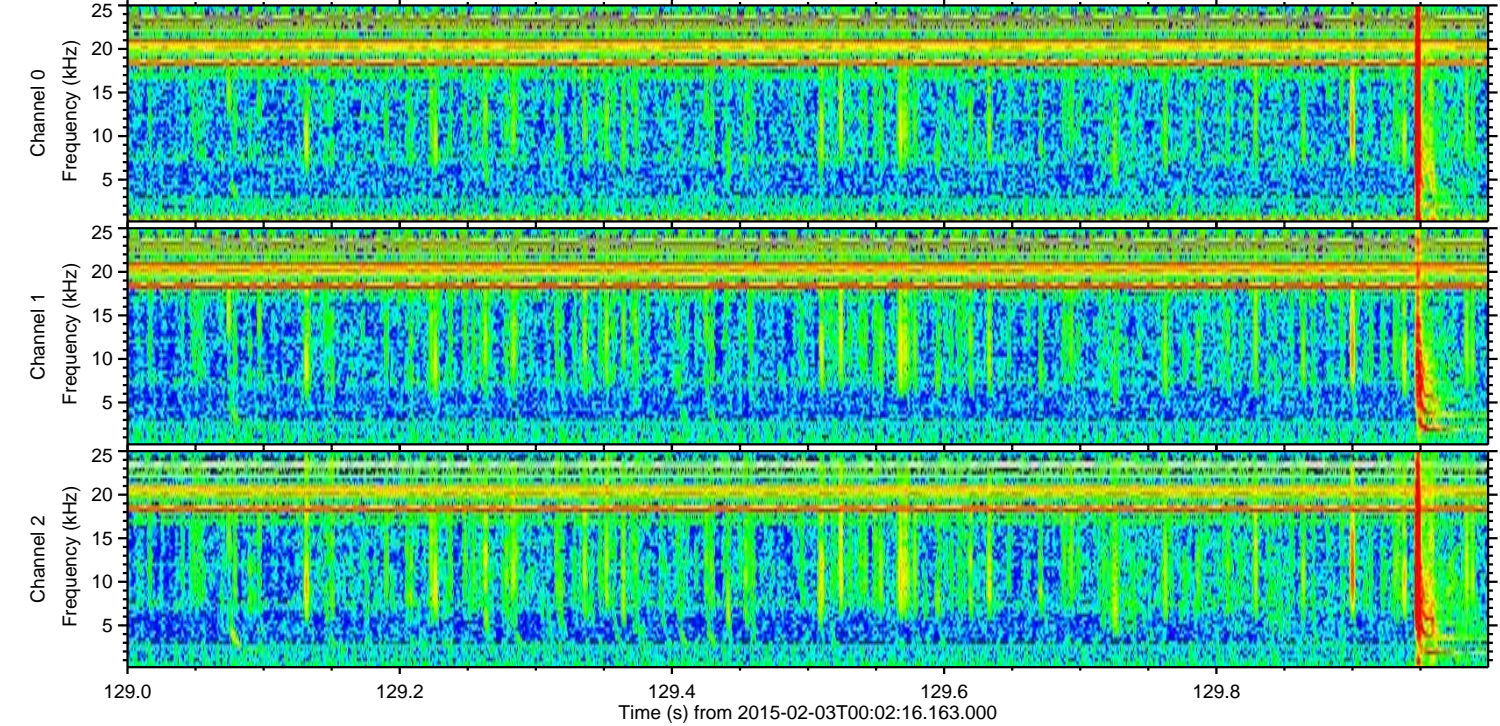
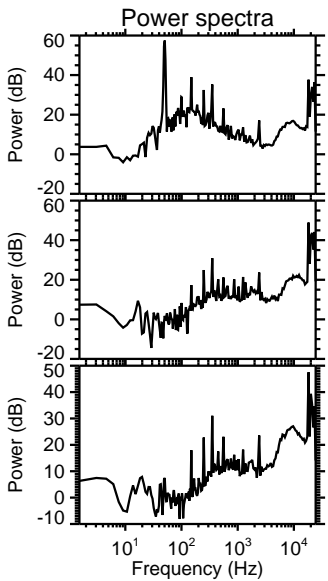
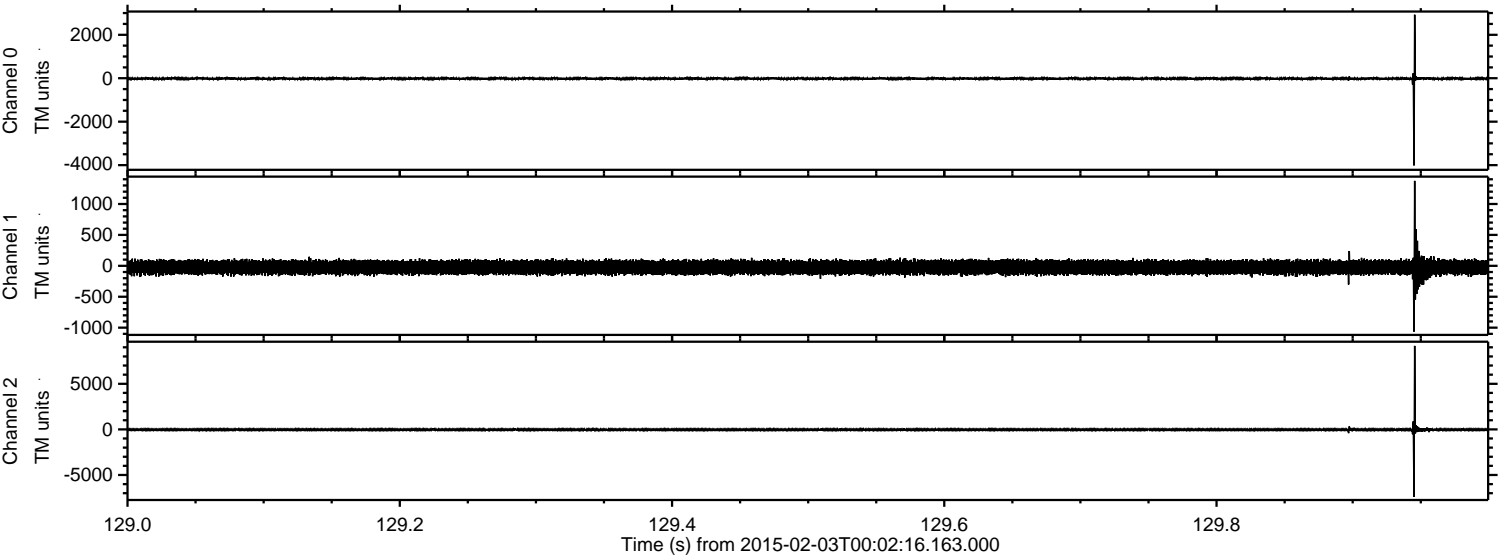
# ELMAVAN 3D WAVEFORMS (Measured data sampled at 50 kHz) 49808 packets of 144 samples from 2015-02-03T00:02:16.163.000.

Processed Tue Feb 17 04:30:51 2015 by ELM ver.2012-10-06 from 001\_\_elm20150203\_000215\_\_dat00.bin



ELMAVAN 3D WAVEFORMS (Measured data sampled at 50 kHz) 49808 packets of 144 samples from 2015-02-03T00:02:16.163.000. Part 130/144

Processed Tue Feb 17 04:31:03 2015 by ELM ver.2012-10-06 from 001\_\_elm20150203\_000215\_\_dat00.bin



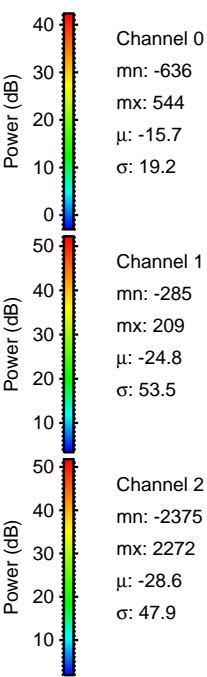
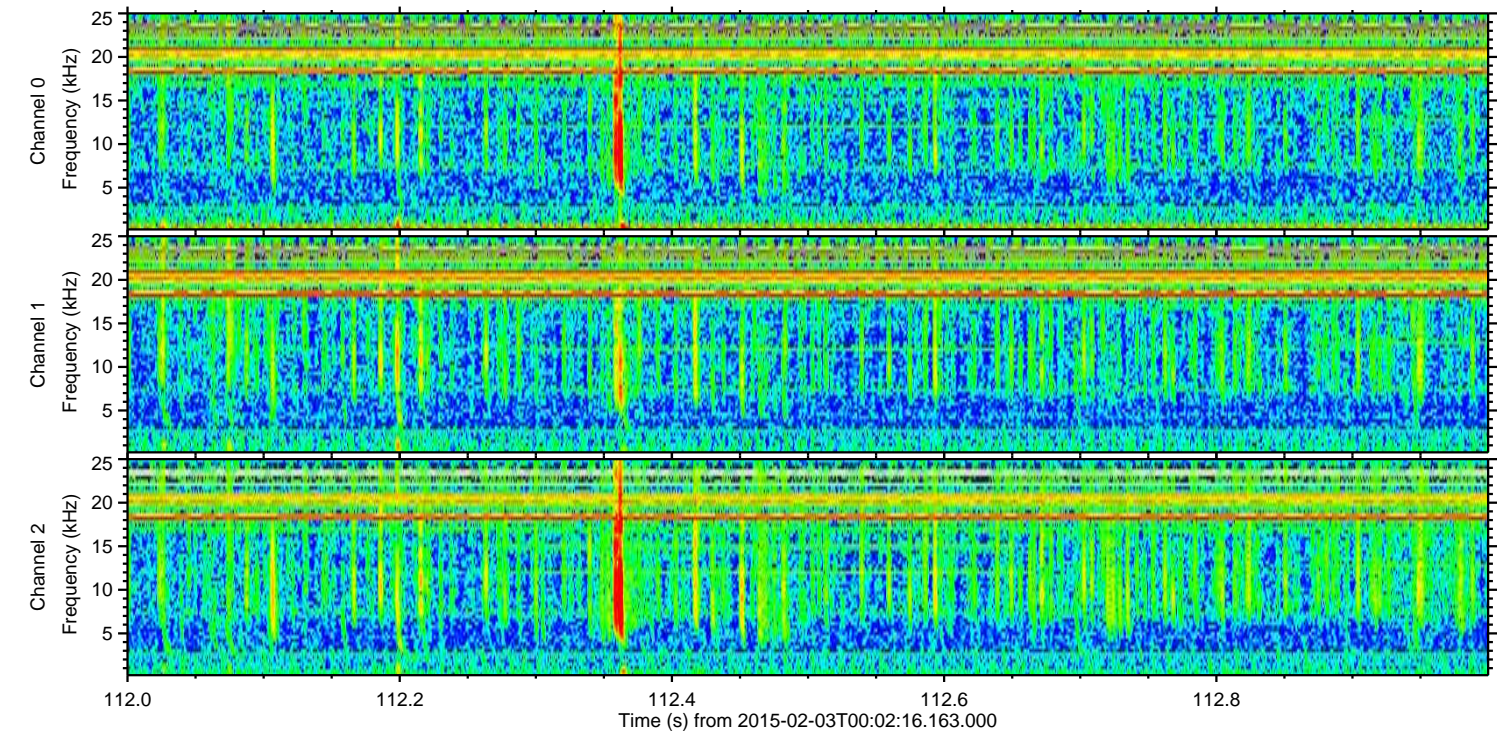
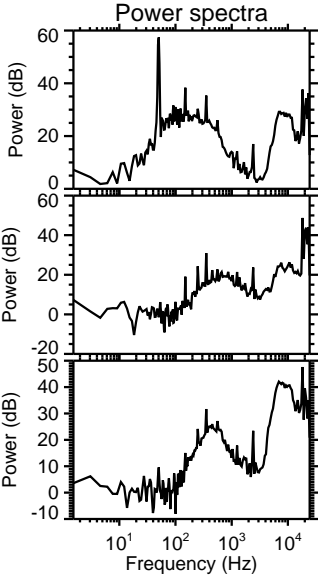
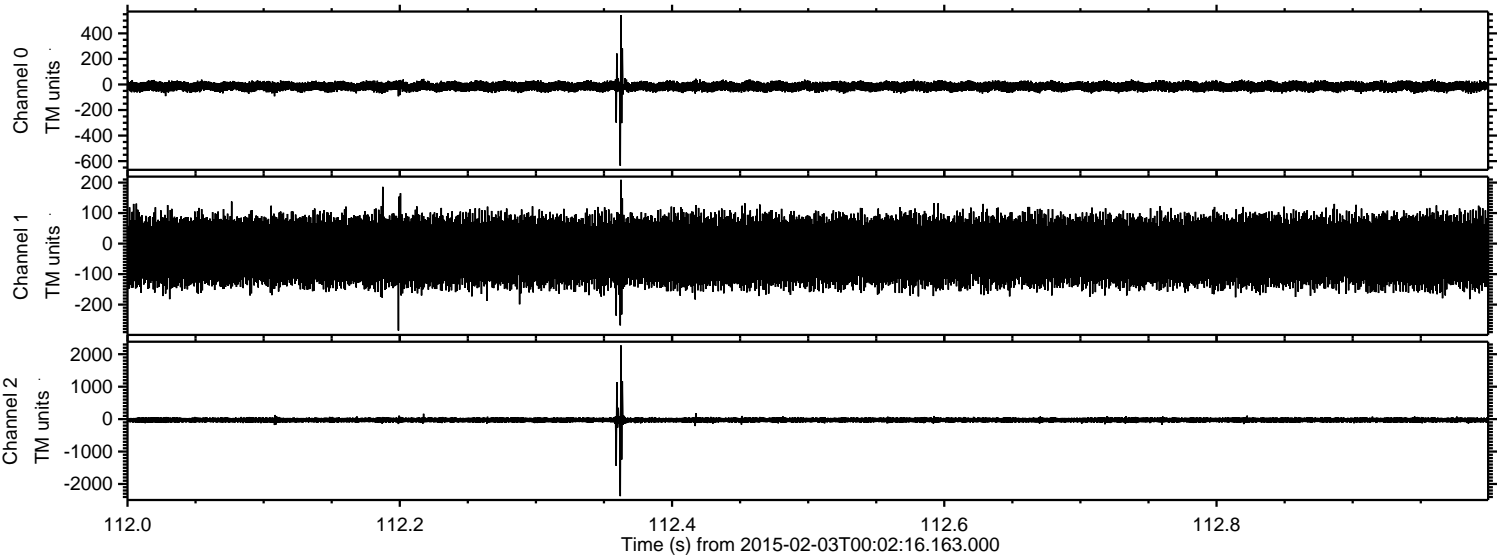
Channel 0  
mn: -4016  
mx: 2925  
 $\mu$ : -15.6  
 $\sigma$ : 33.1

Channel 1  
mn: -1064  
mx: 1374  
 $\mu$ : -24.8  
 $\sigma$ : 56.6

Channel 2  
mn: -7374  
mx: 9155  
 $\mu$ : -28.6  
 $\sigma$ : 82.6

ELMAVAN 3D WAVEFORMS (Measured data sampled at 50 kHz) 49808 packets of 144 samples from 2015-02-03T00:02:16.163.000. Part 113/144

Processed Tue Feb 17 04:31:04 2015 by ELM ver.2012-10-06 from 001\_\_elm20150203\_000215\_\_dat00.bin

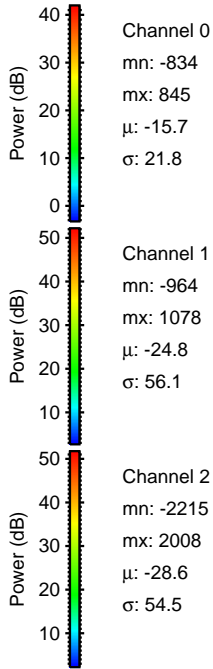
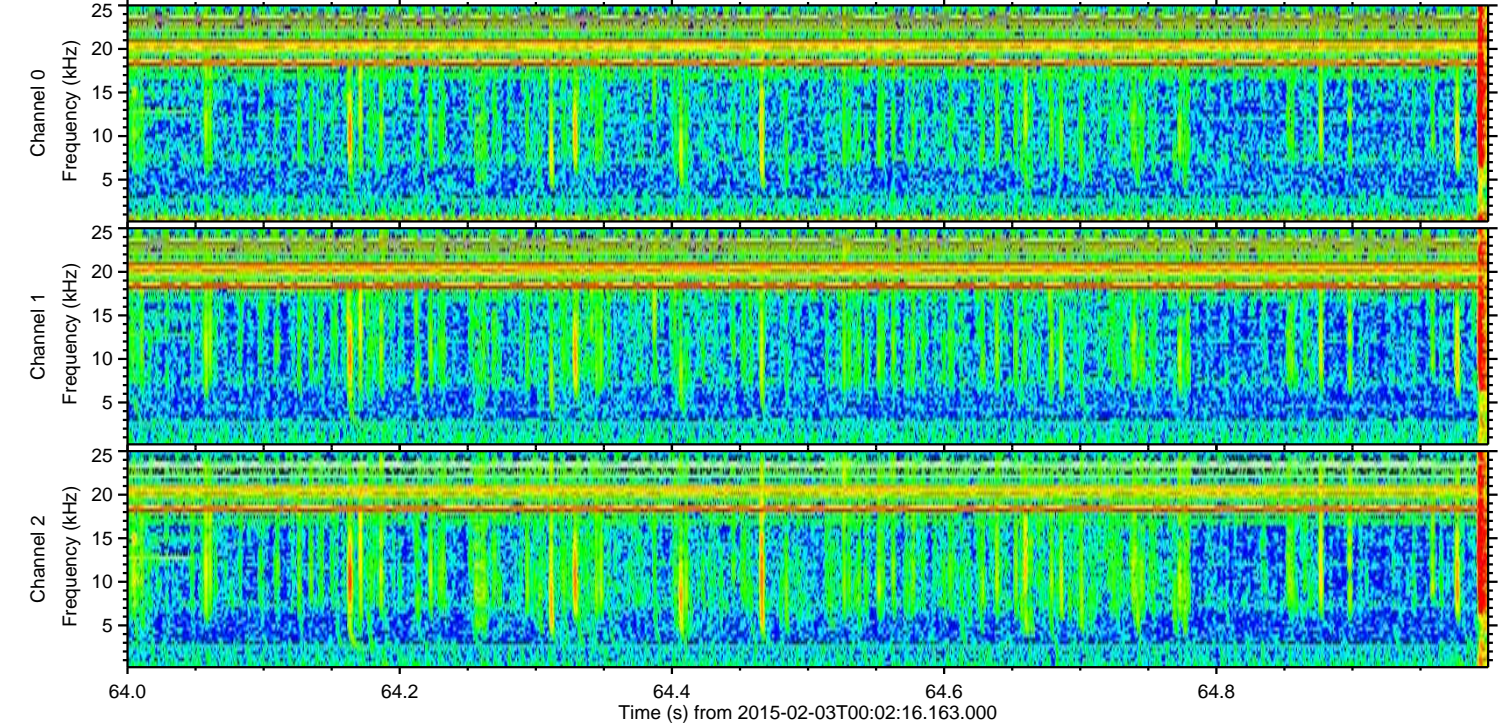
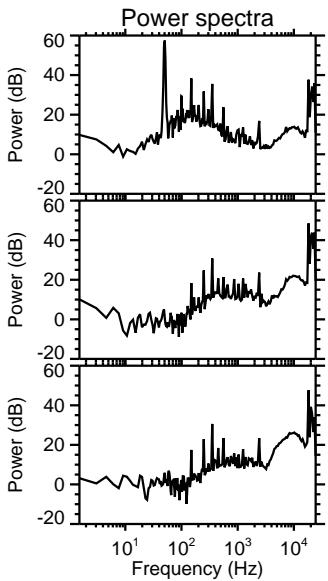
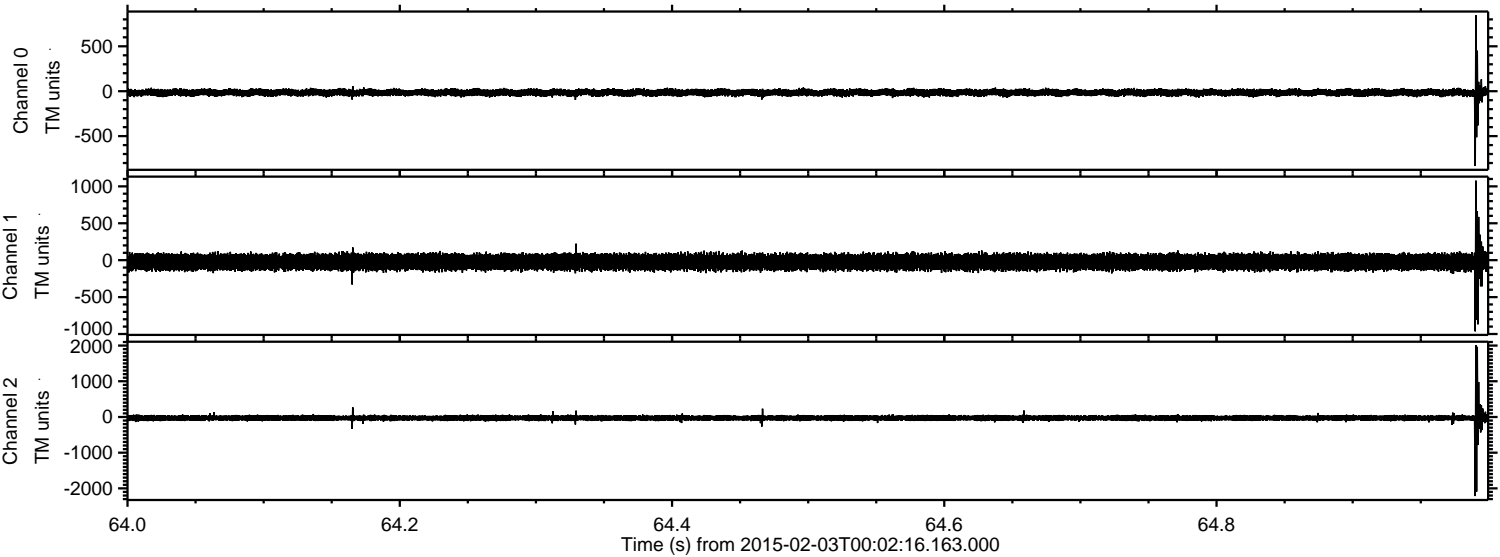


Channel 0  
mn: -636  
mx: 544  
 $\mu$ : -15.7  
 $\sigma$ : 19.2

Channel 1  
mn: -285  
mx: 209  
 $\mu$ : -24.8  
 $\sigma$ : 53.5

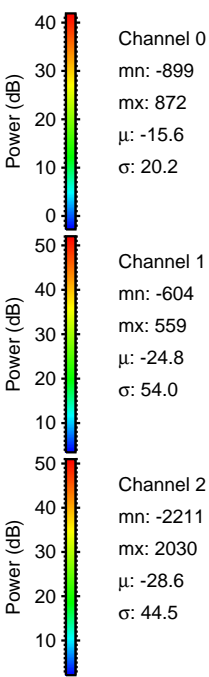
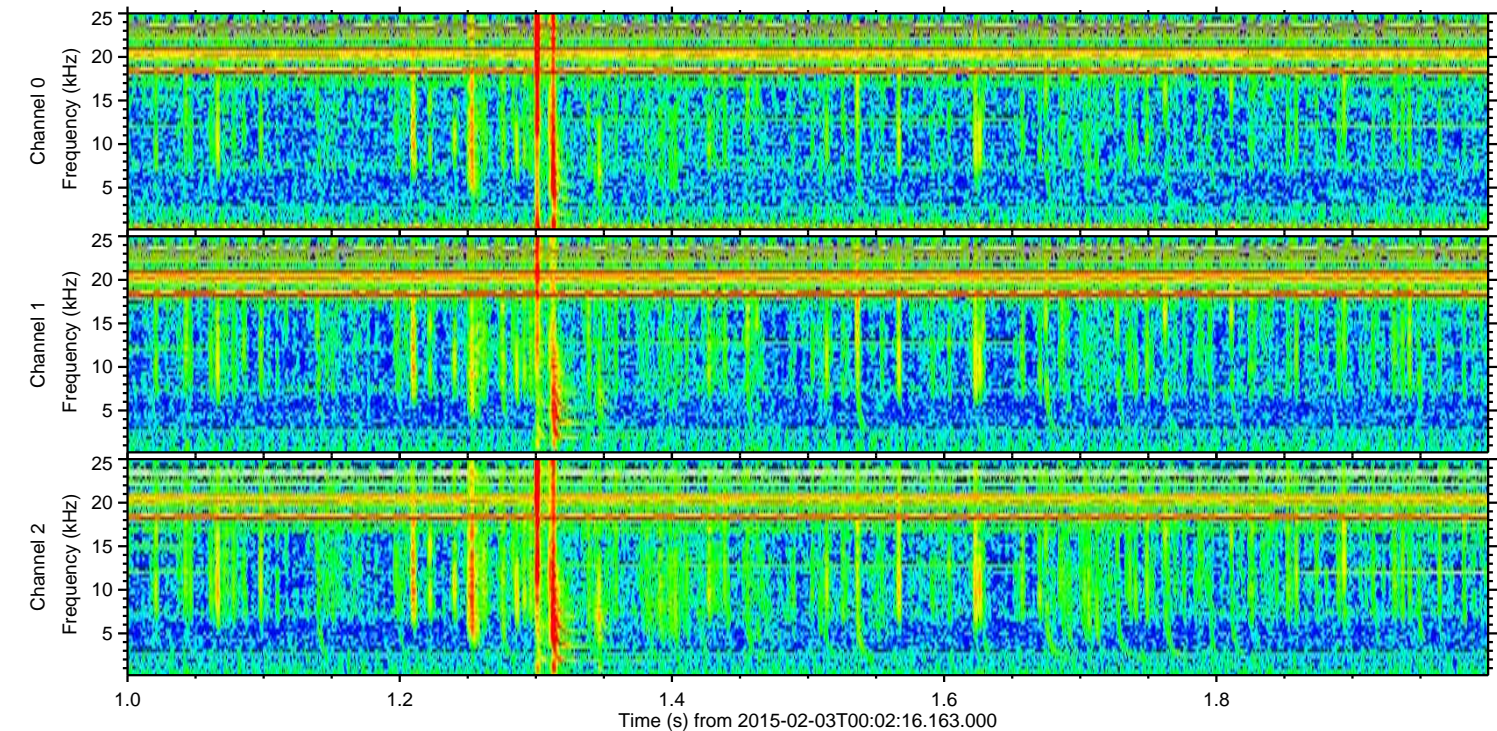
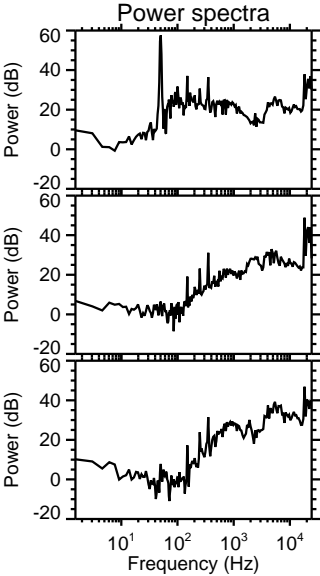
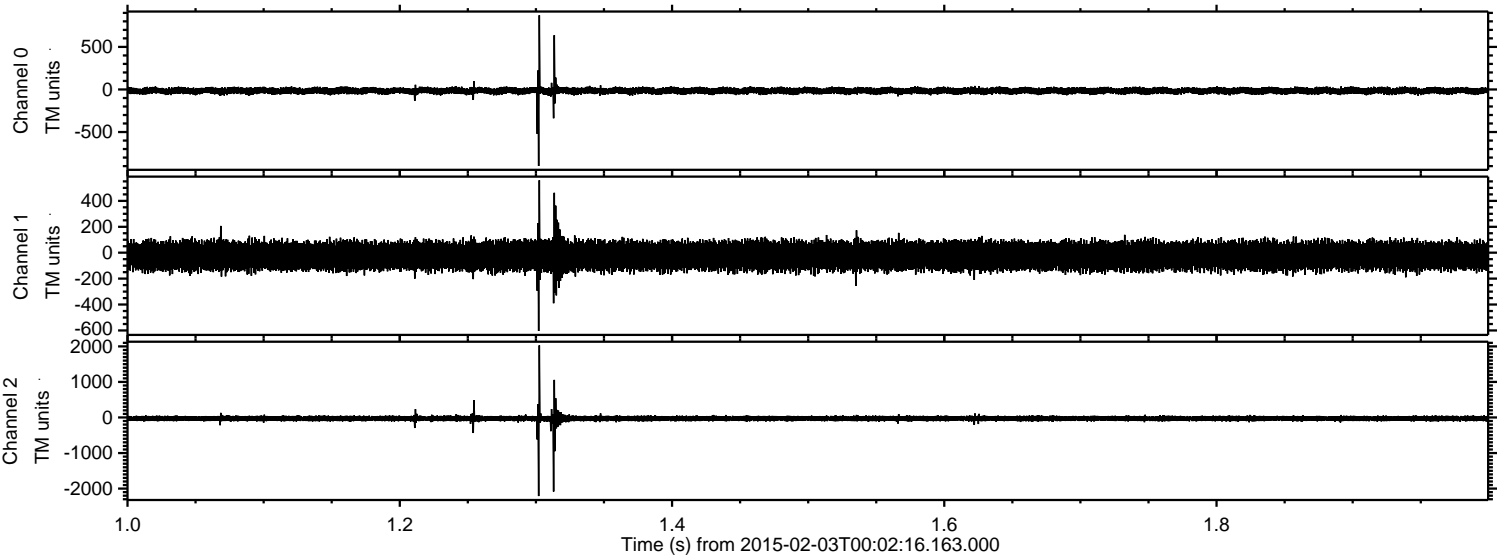
Channel 2  
mn: -2375  
mx: 2272  
 $\mu$ : -28.6  
 $\sigma$ : 47.9

Processed Tue Feb 17 04:31:05 2015 by ELM ver.2012-10-06 from 001\_\_elm20150203\_000215\_\_dat00.bin



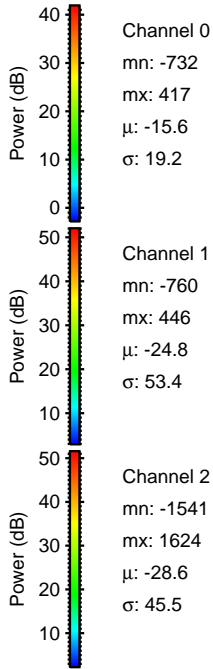
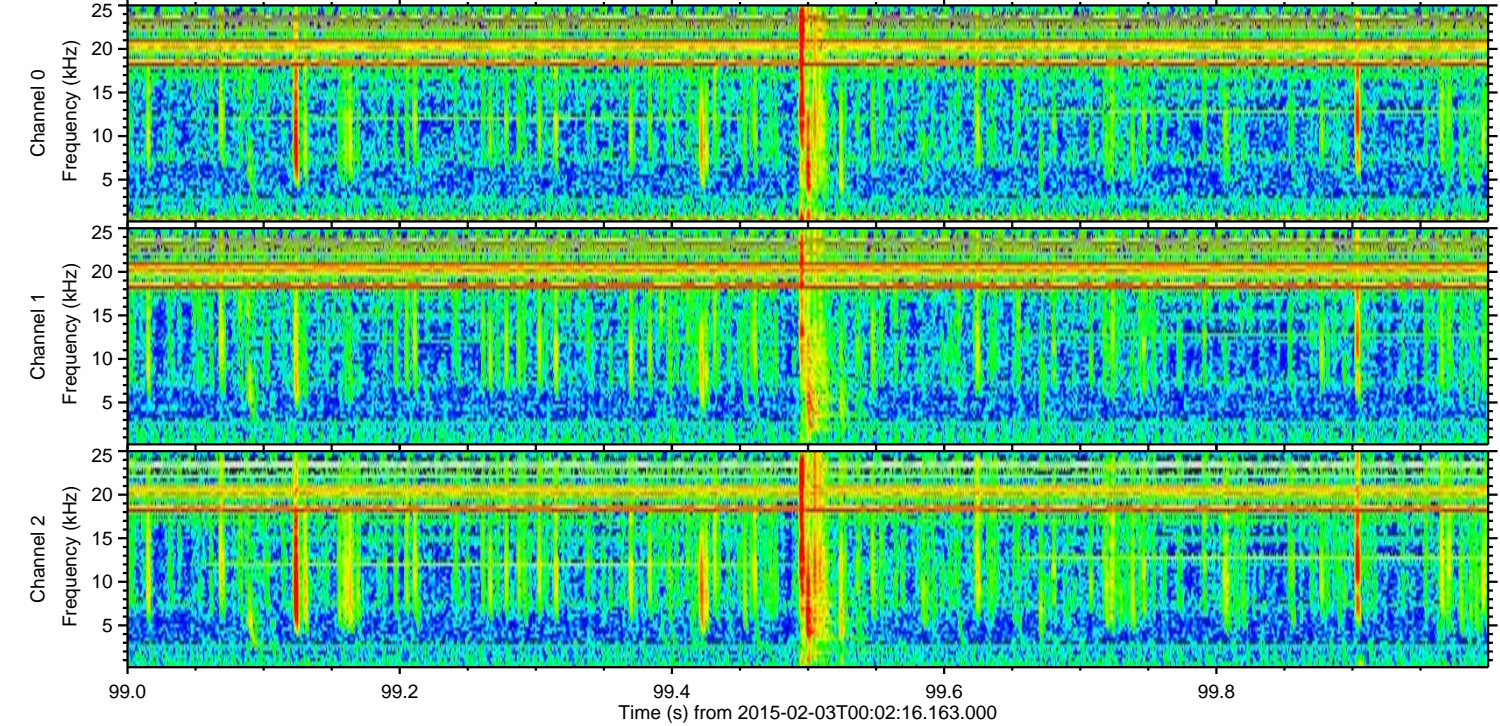
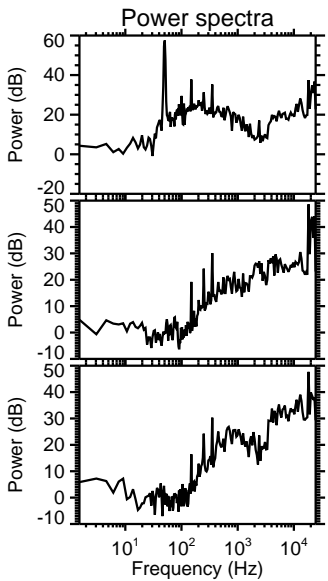
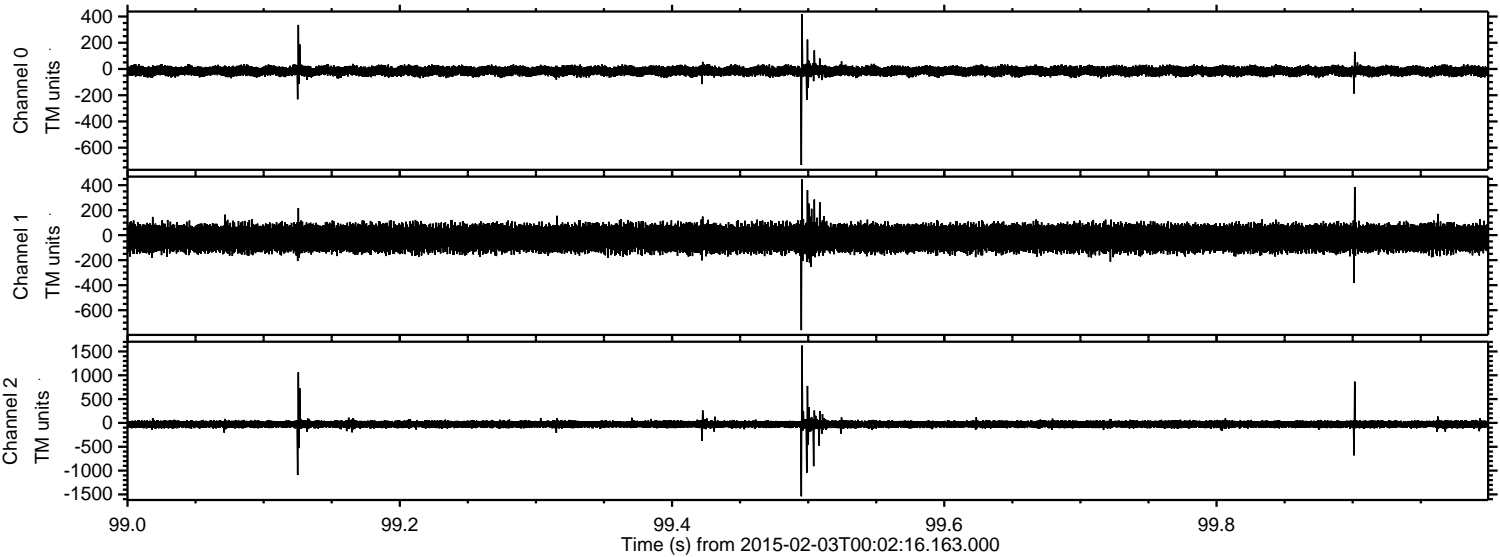
ELMAVAN 3D WAVEFORMS (Measured data sampled at 50 kHz) 49808 packets of 144 samples from 2015-02-03T00:02:16.163.000. Part 2/144

Processed Tue Feb 17 04:31:06 2015 by ELM ver.2012-10-06 from 001\_\_elm20150203\_000215\_\_dat00.bin

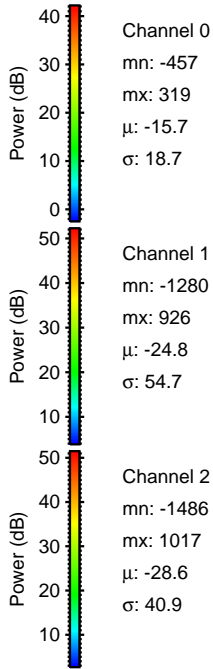
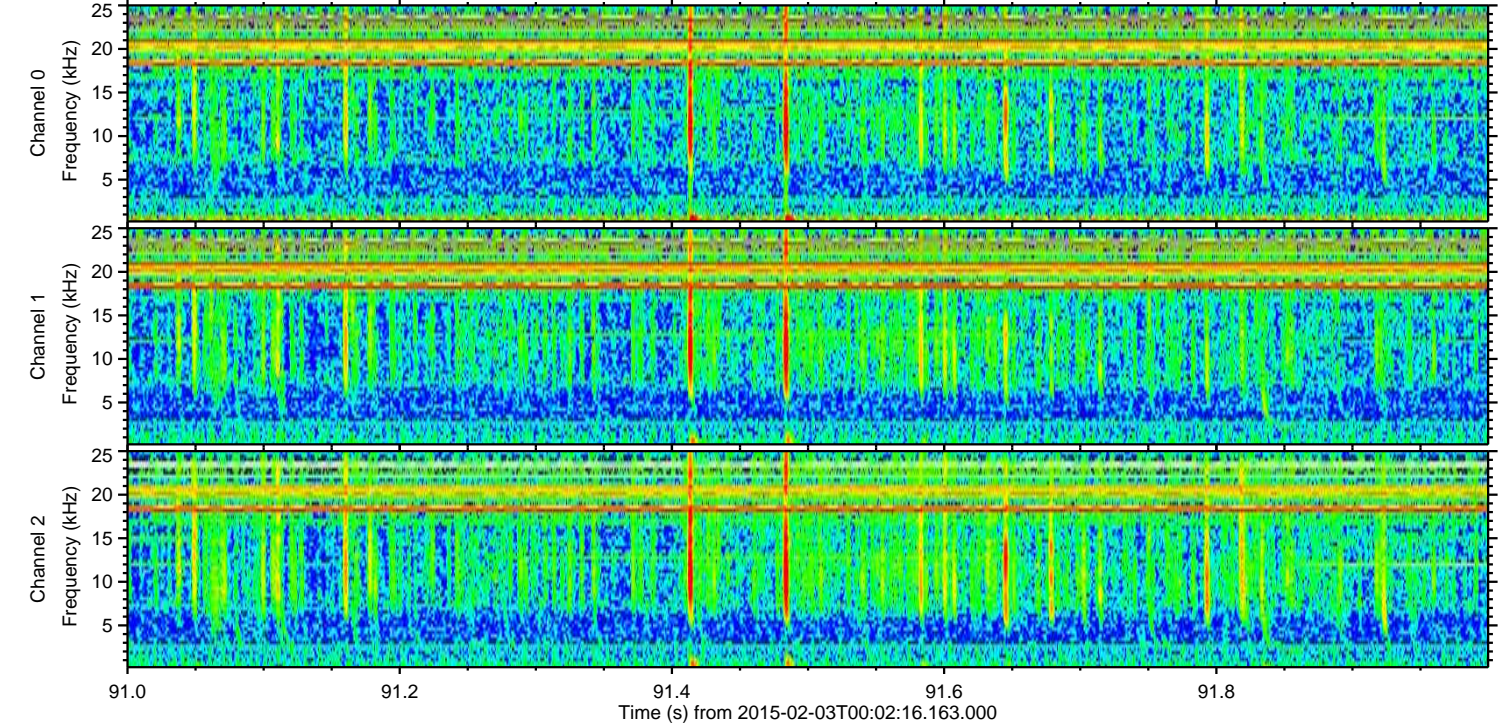
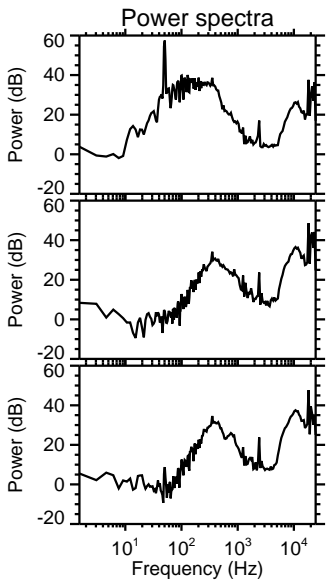
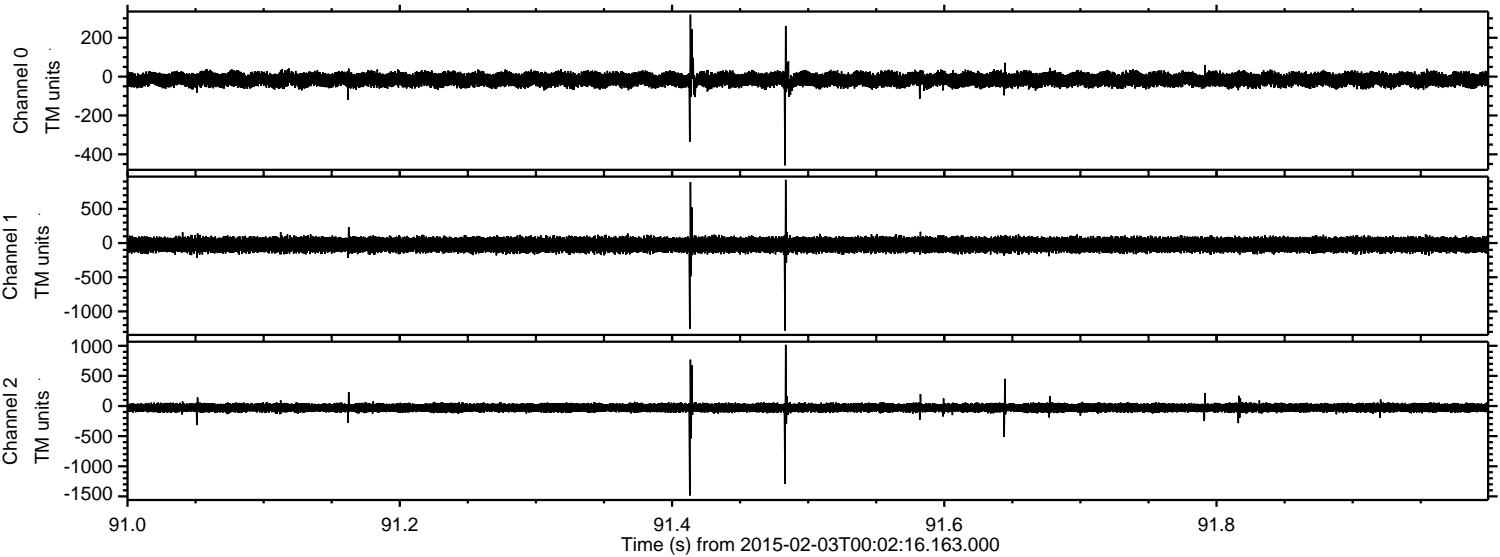


ELMAVAN 3D WAVEFORMS (Measured data sampled at 50 kHz) 49808 packets of 144 samples from 2015-02-03T00:02:16.163.000. Part 100/144

Processed Tue Feb 17 04:31:07 2015 by ELM ver.2012-10-06 from 001\_\_elm20150203\_000215\_\_dat00.bin



Processed Tue Feb 17 04:31:08 2015 by ELM ver.2012-10-06 from 001\_\_elm20150203\_000215\_\_dat00.bin



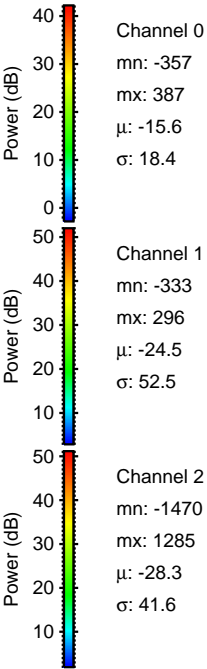
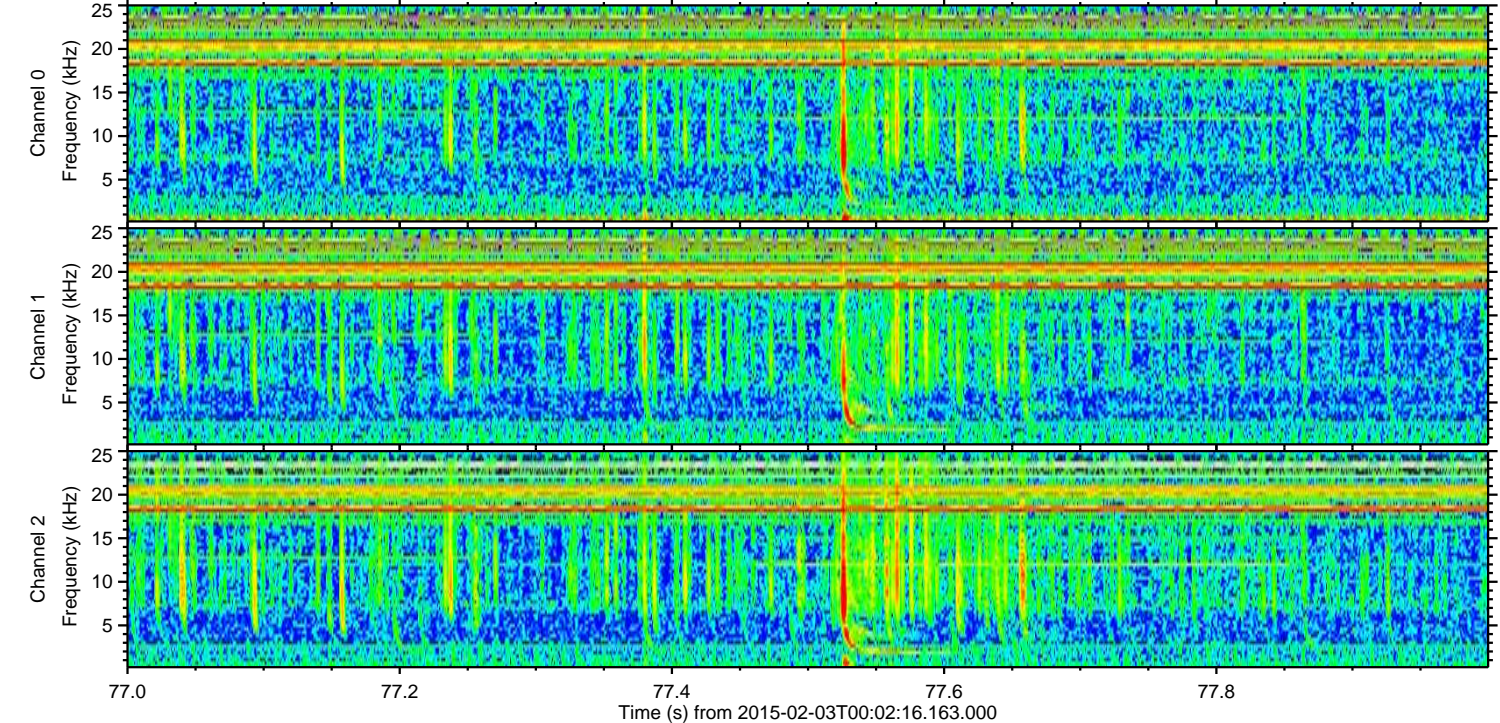
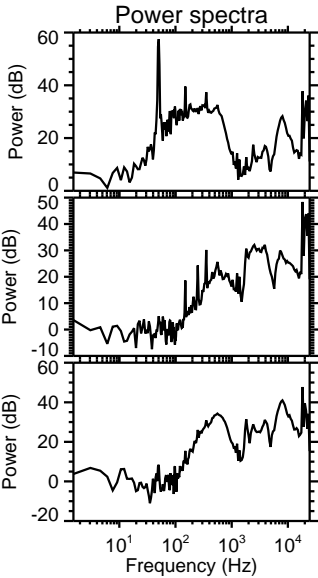
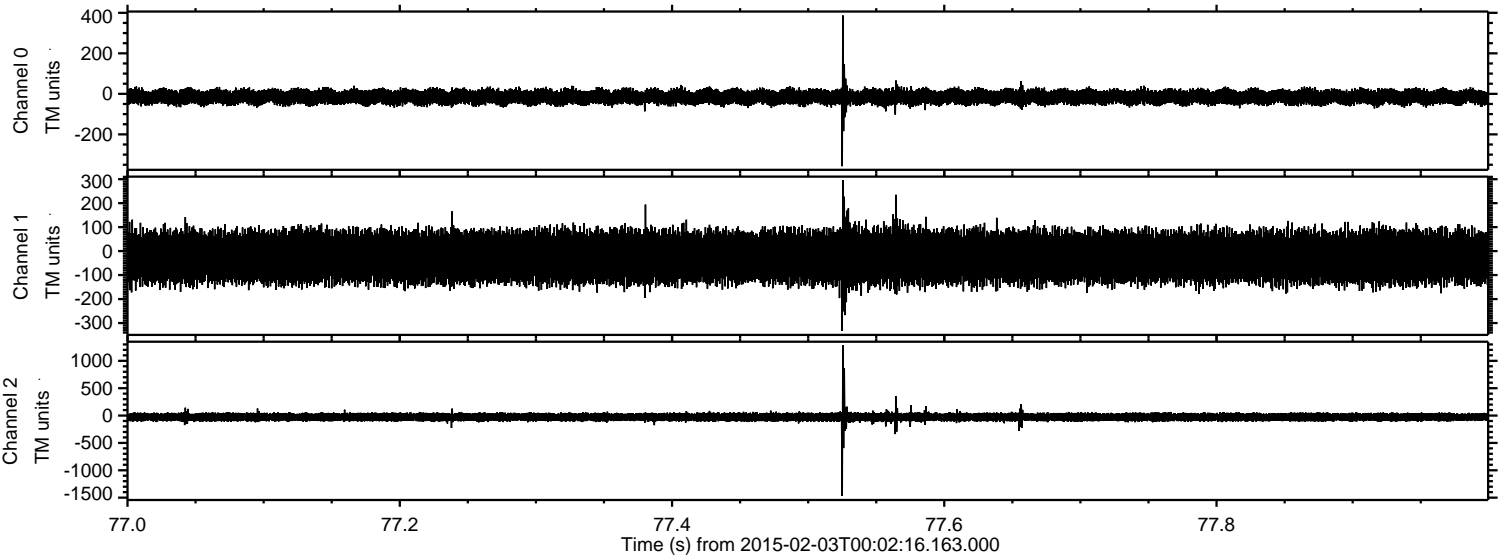
Channel 0  
mn: -457  
mx: 319  
 $\mu$ : -15.7  
 $\sigma$ : 18.7

Channel 1  
mn: -1280  
mx: 926  
 $\mu$ : -24.8  
 $\sigma$ : 54.7

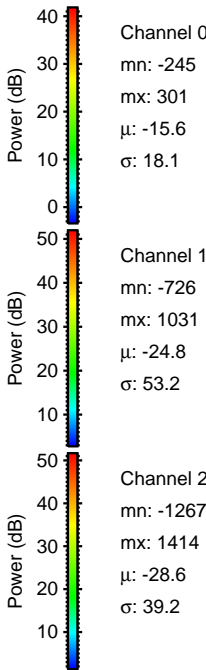
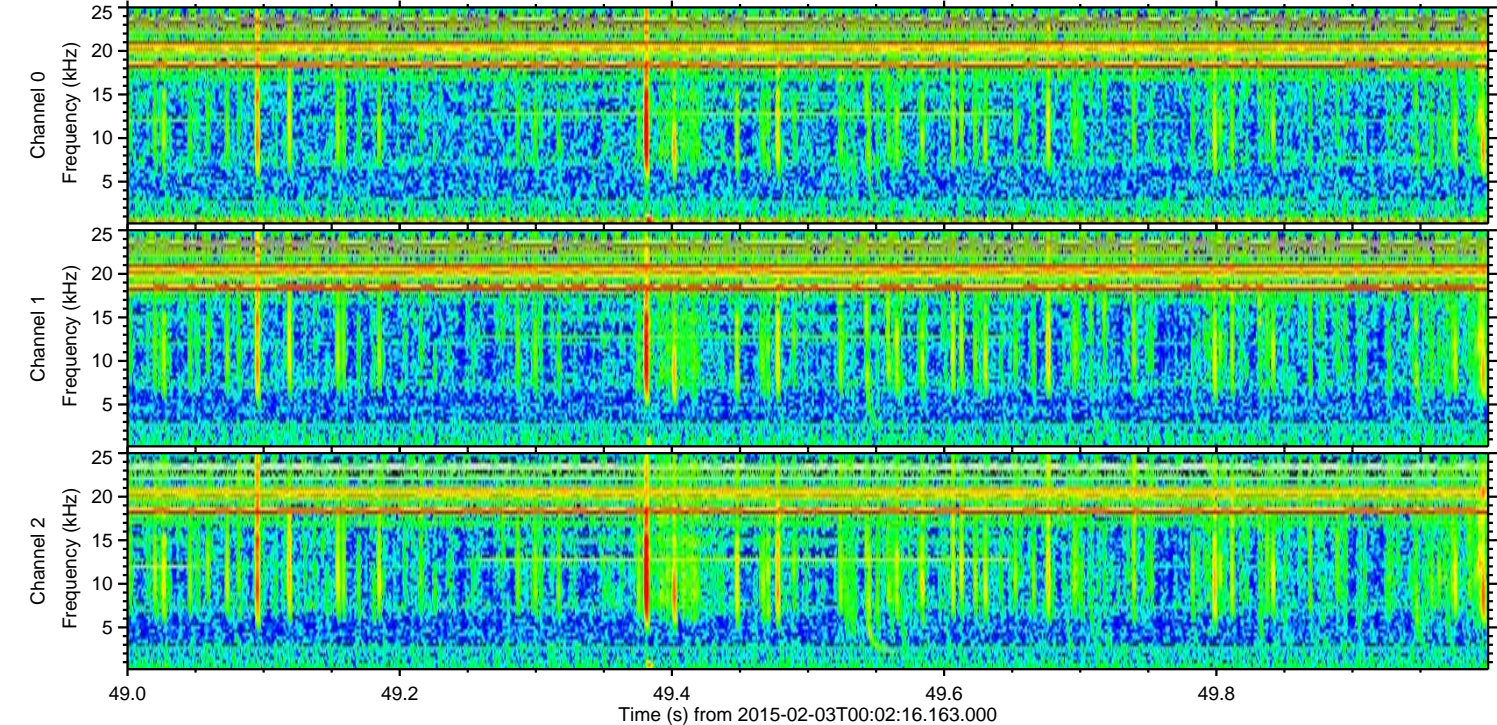
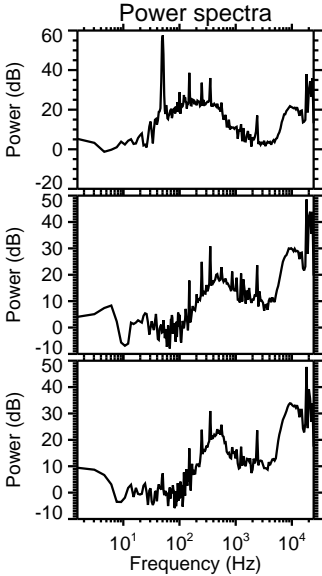
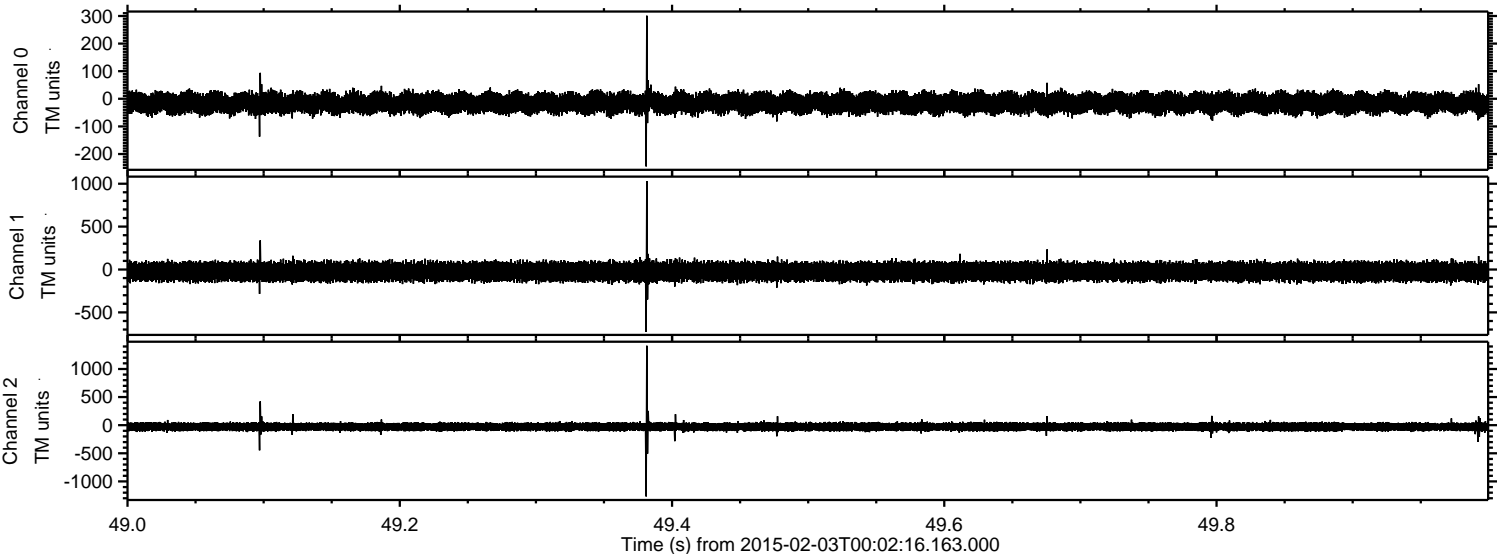
Channel 2  
mn: -1486  
mx: 1017  
 $\mu$ : -28.6  
 $\sigma$ : 40.9

ELMAVAN 3D WAVEFORMS (Measured data sampled at 50 kHz) 49808 packets of 144 samples from 2015-02-03T00:02:16.163.000. Part 78/144

Processed Tue Feb 17 04:31:09 2015 by ELM ver.2012-10-06 from 001\_\_elm20150203\_000215\_\_dat00.bin

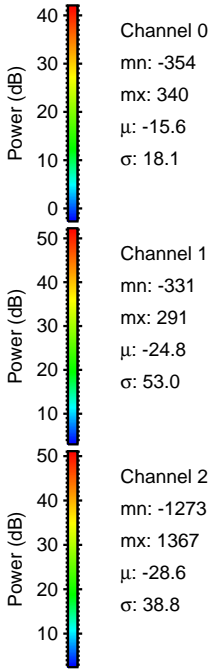
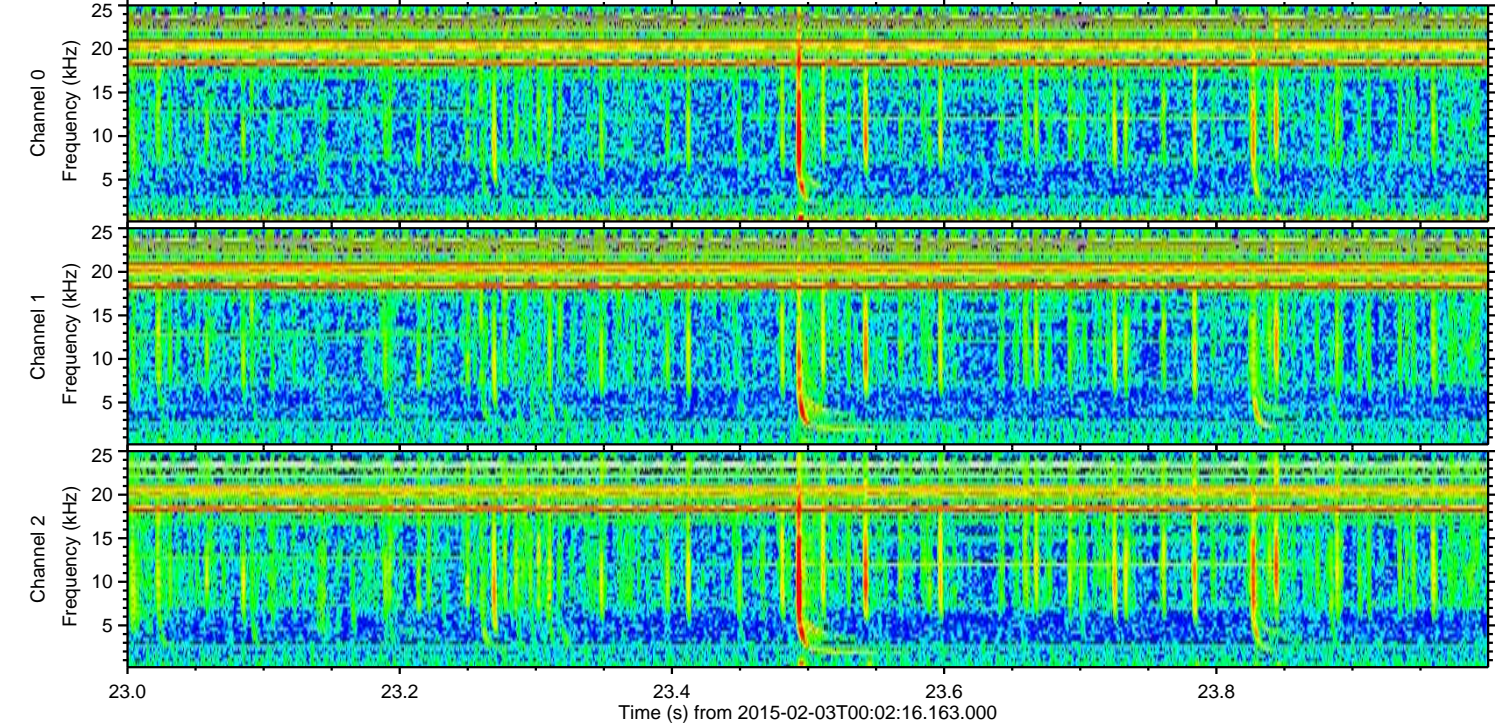
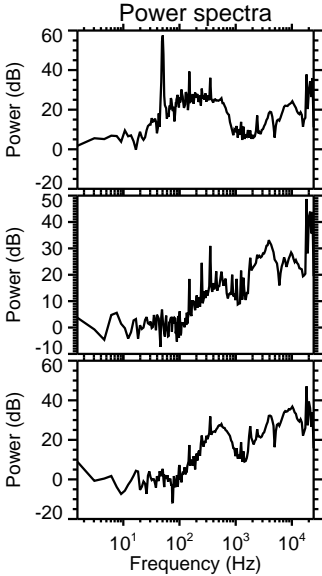
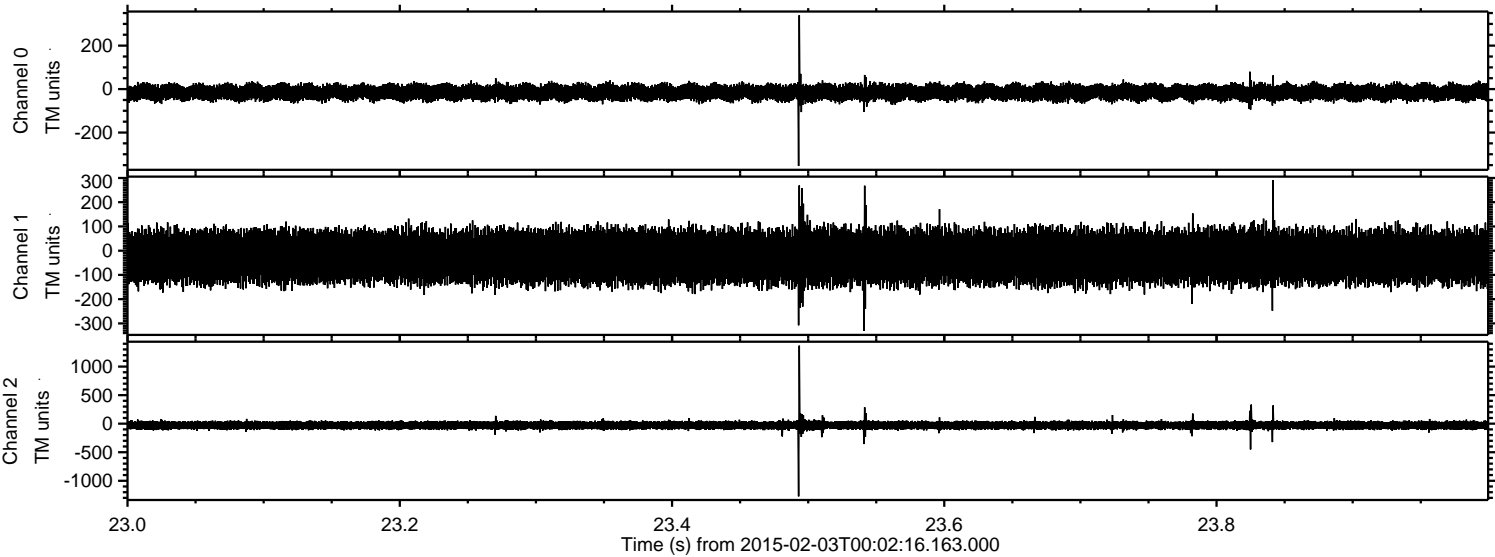


Processed Tue Feb 17 04:31:10 2015 by ELM ver.2012-10-06 from 001\_\_elm20150203\_000215\_\_dat00.bin



ELMAVAN 3D WAVEFORMS (Measured data sampled at 50 kHz) 49808 packets of 144 samples from 2015-02-03T00:02:16.163.000. Part 24/144

Processed Tue Feb 17 04:31:11 2015 by ELM ver.2012-10-06 from 001\_\_elm20150203\_000215\_\_dat00.bin



ELMAVAN 3D WAVEFORMS (Measured data sampled at 50 kHz) 49808 packets of 144 samples from 2015-02-03T00:02:16.163.000. Part 97/144

Processed Tue Feb 17 04:31:11 2015 by ELM ver.2012-10-06 from 001\_\_elm20150203\_000215\_\_dat00.bin

