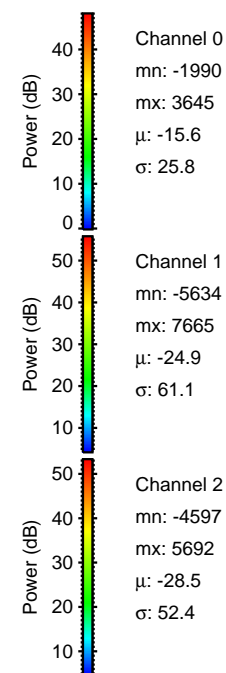
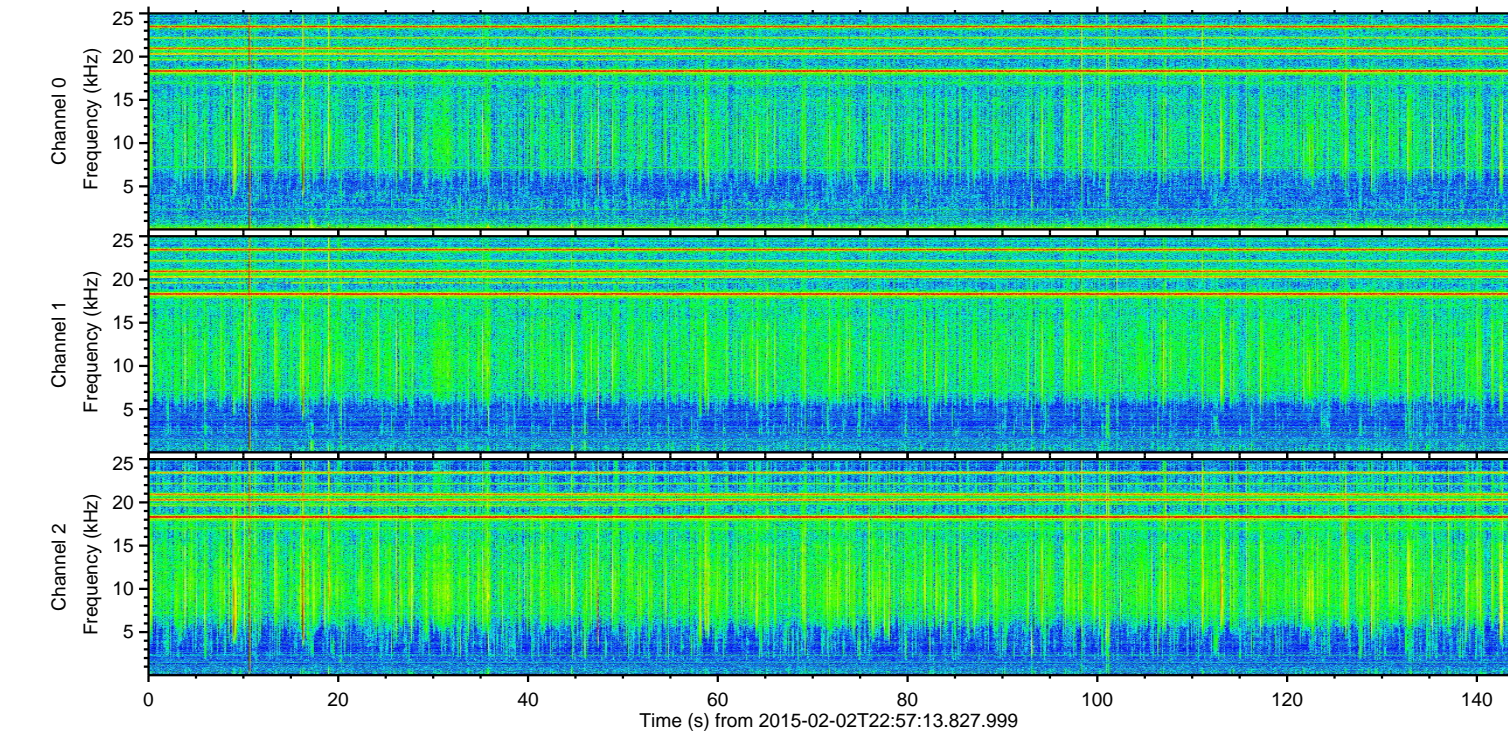
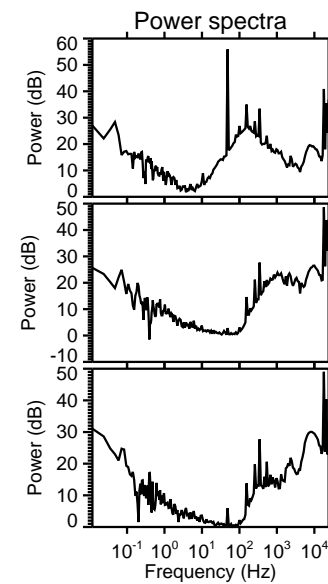
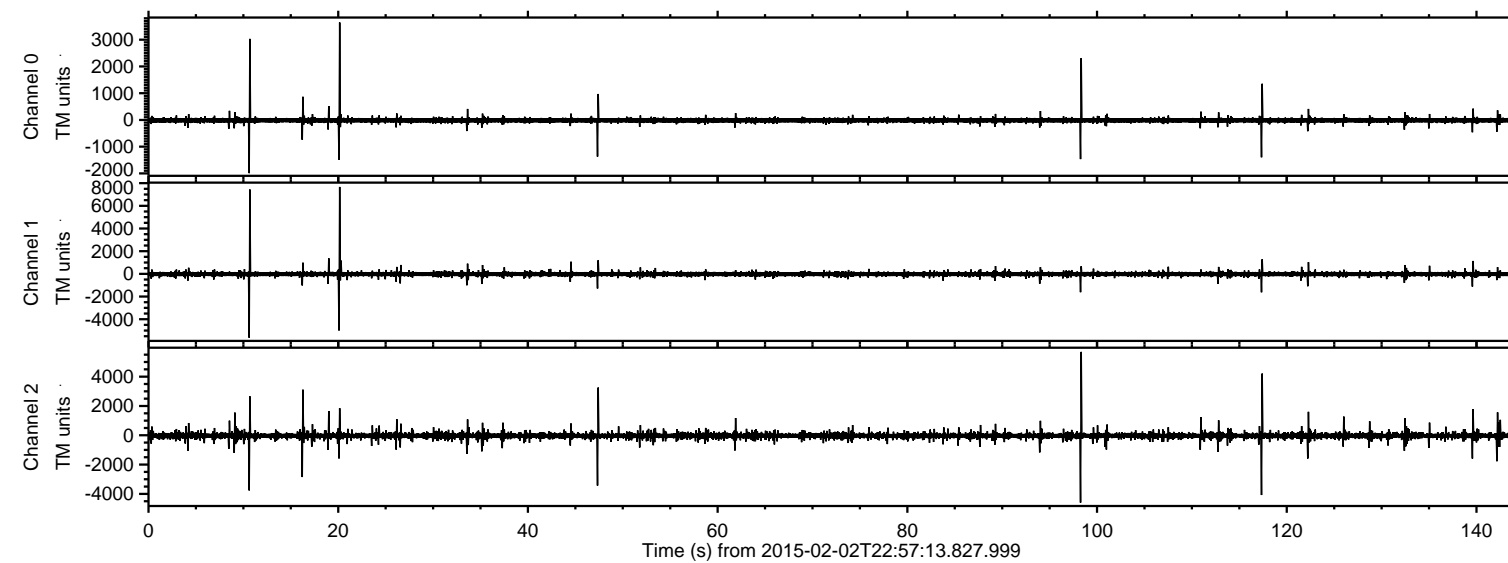


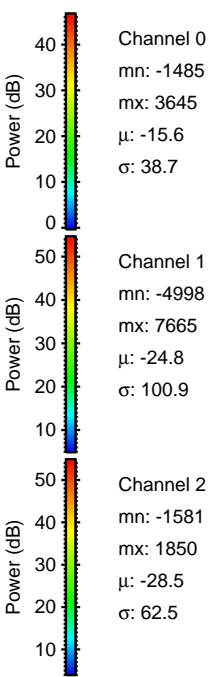
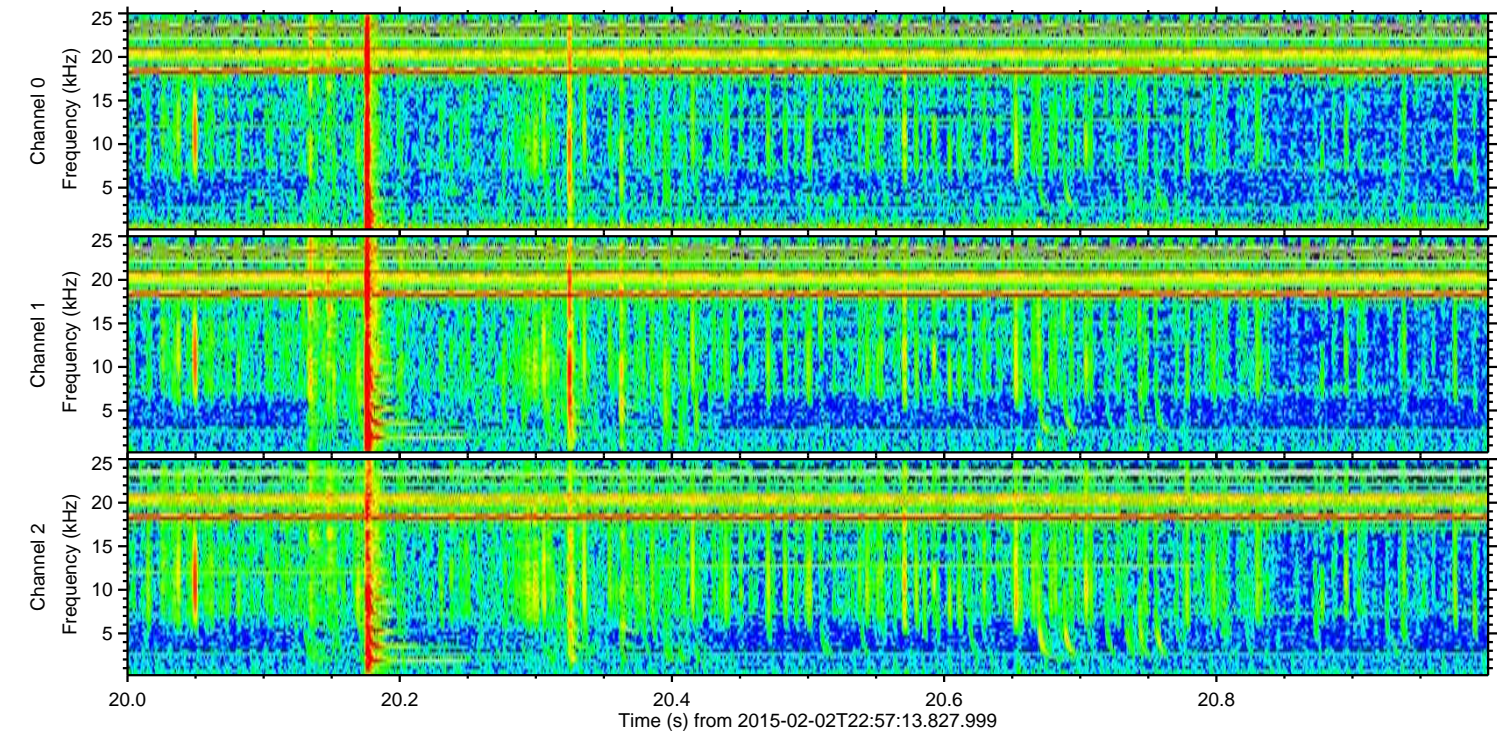
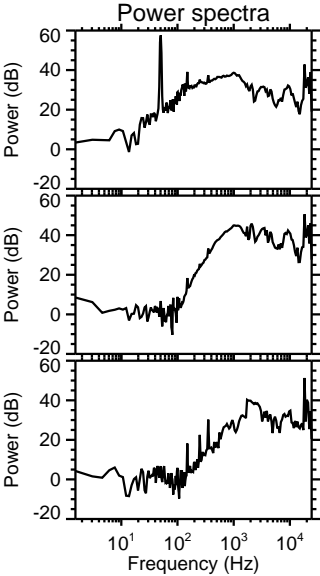
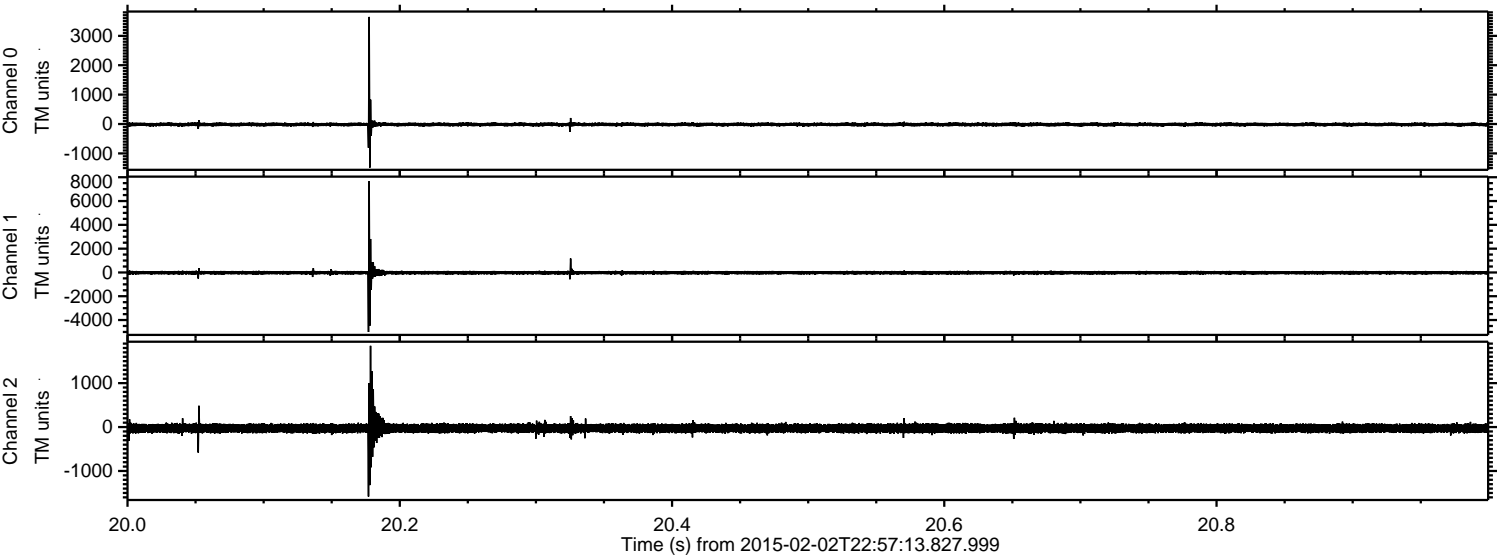
ELMAVAN 3D WAVEFORMS (Measured data sampled at 50 kHz) 49807 packets of 144 samples from 2015-02-02T22:57:13.827.999.

Processed Tue Feb 17 04:02:03 2015 by ELM ver.2012-10-06 from 001__elm20150202_225712__dat00.bin



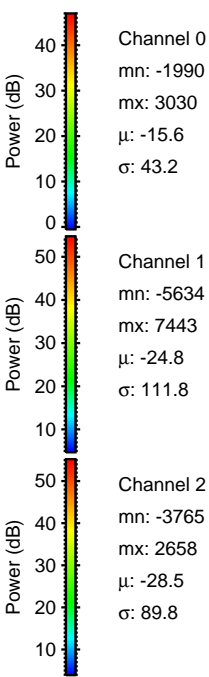
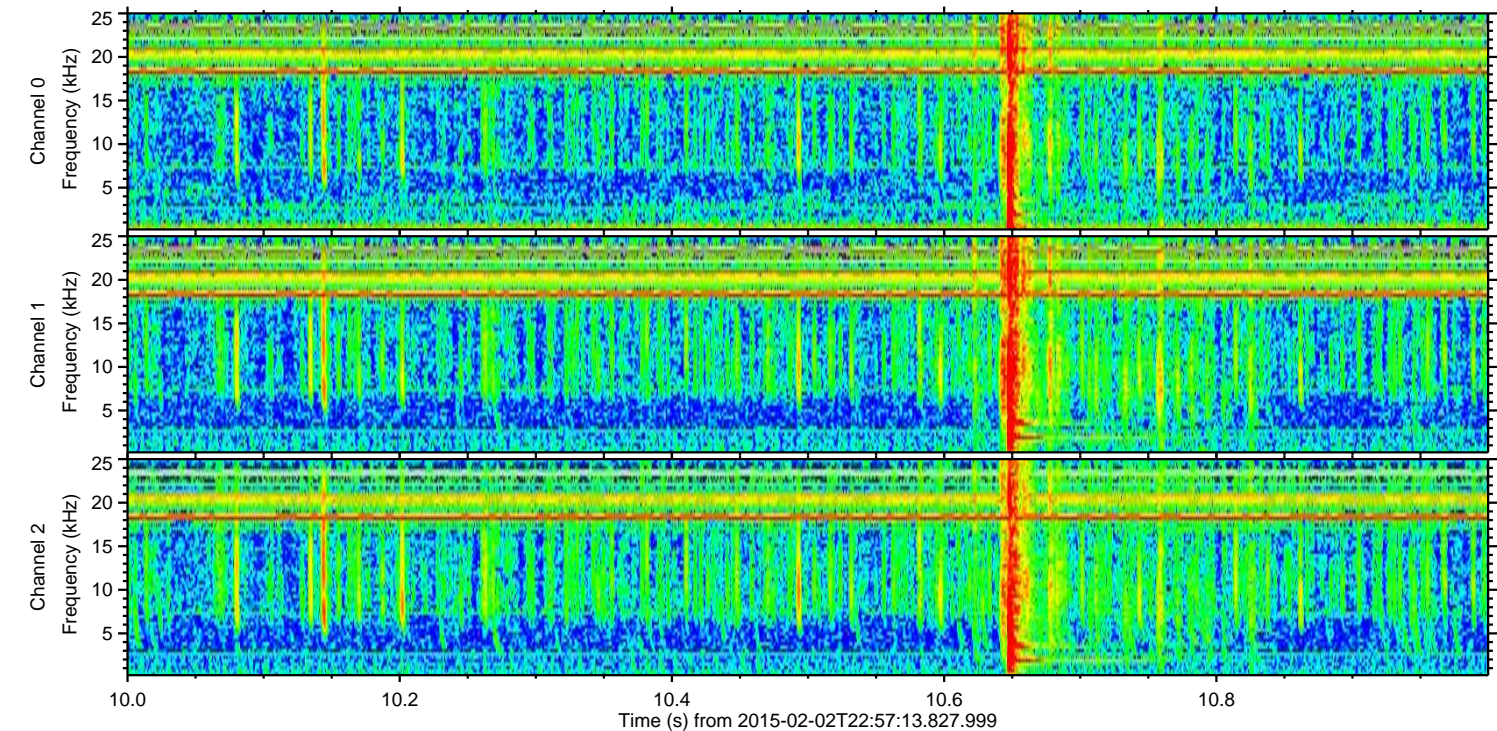
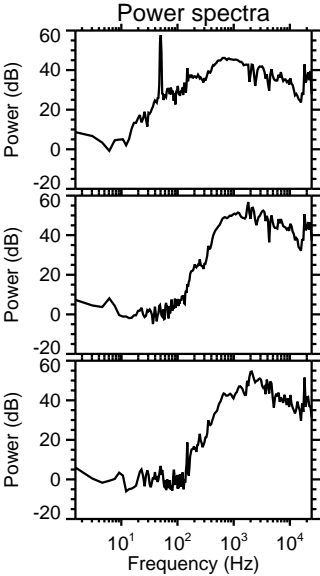
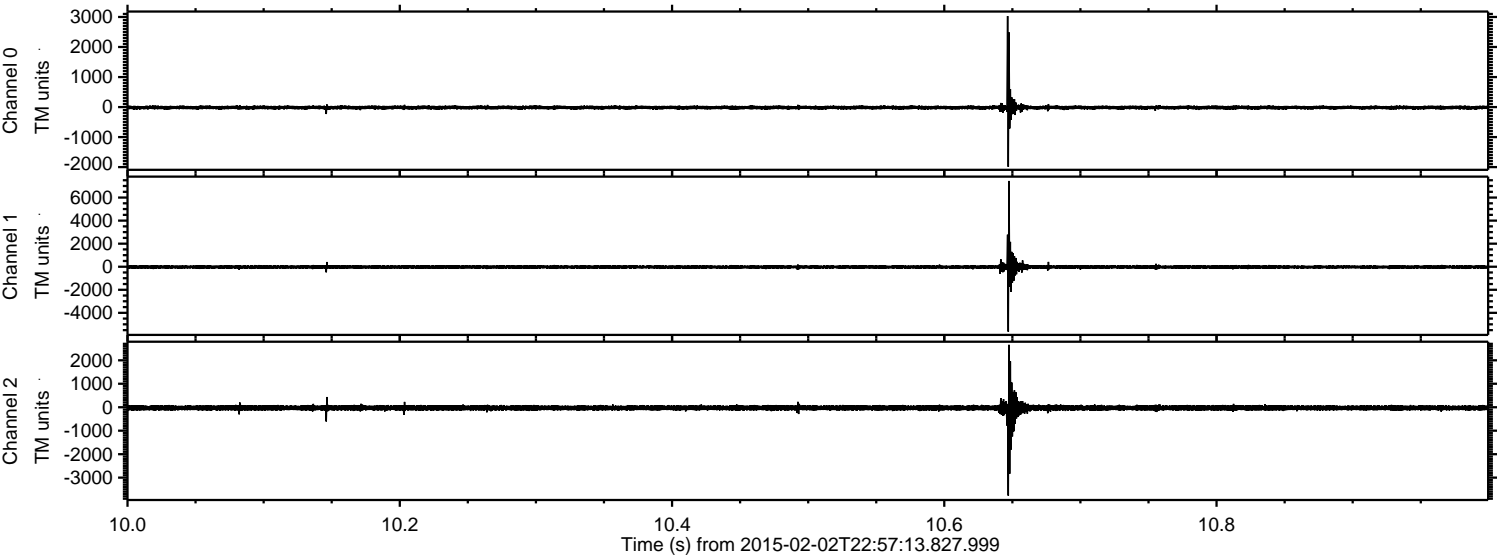
ELMAVAN 3D WAVEFORMS (Measured data sampled at 50 kHz) 49807 packets of 144 samples from 2015-02-02T22:57:13.827.999. Part 21/144

Processed Tue Feb 17 04:02:14 2015 by ELM ver.2012-10-06 from 001__elm20150202_225712__dat00.bin

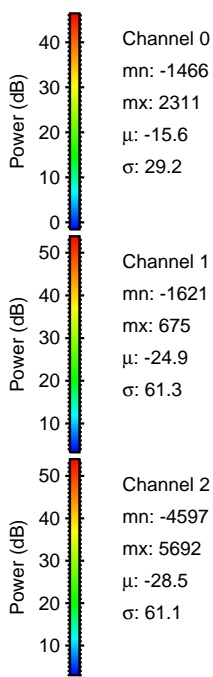
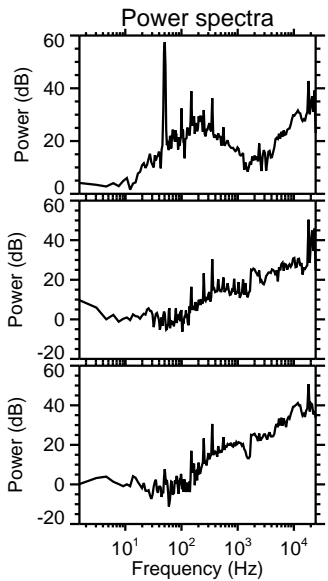
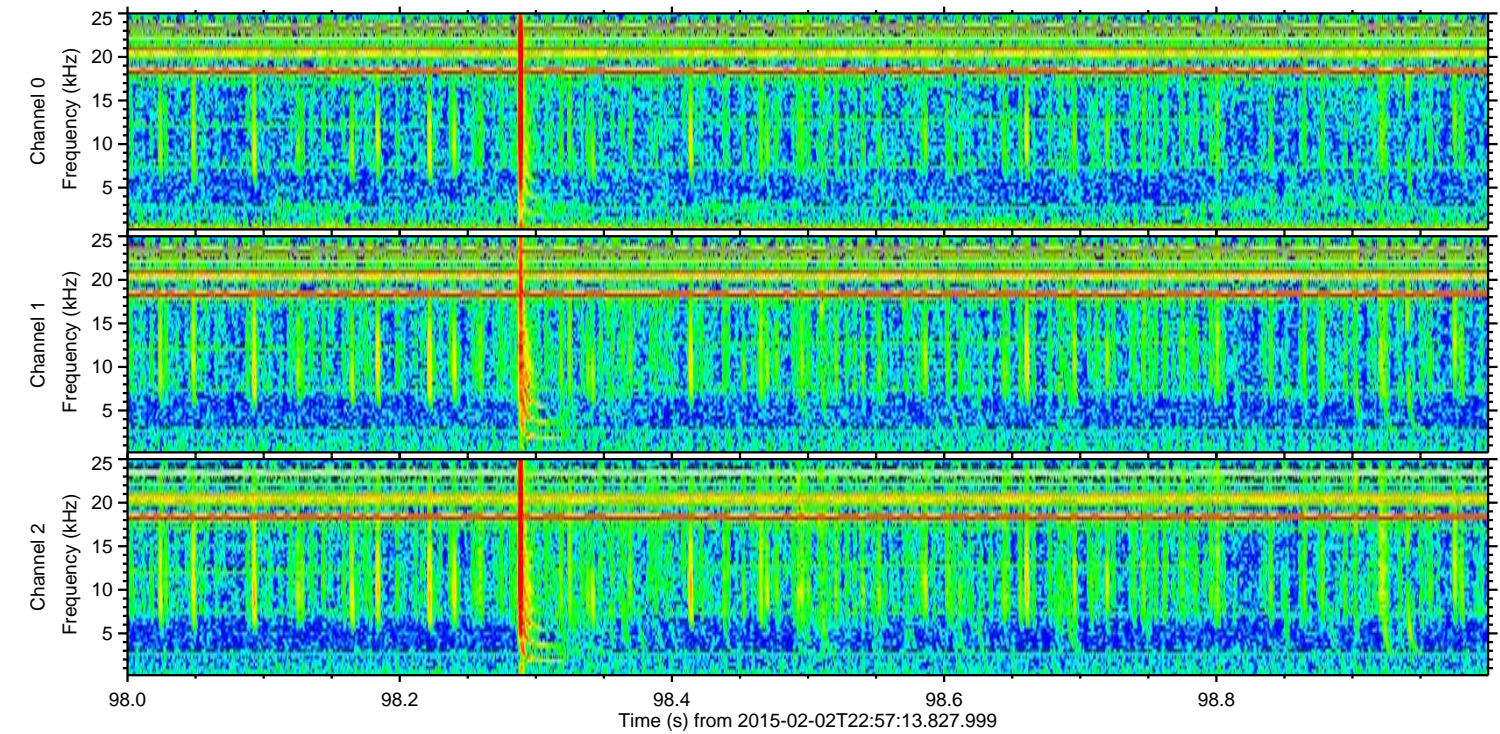
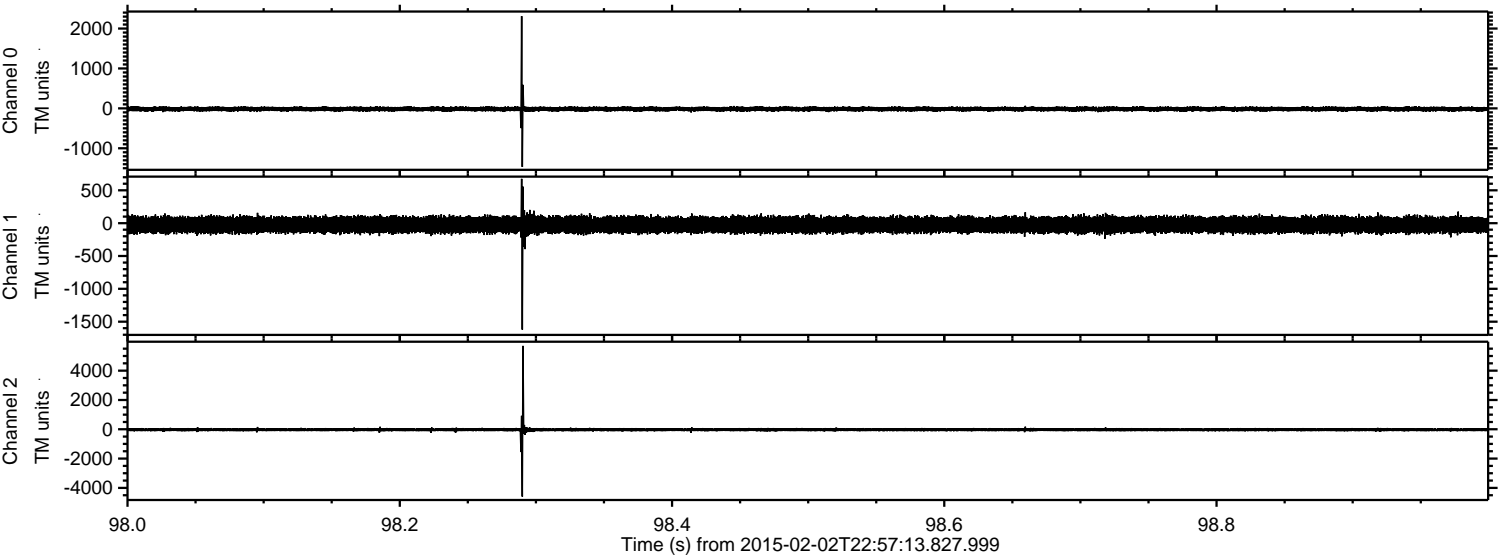


ELMAVAN 3D WAVEFORMS (Measured data sampled at 50 kHz) 49807 packets of 144 samples from 2015-02-02T22:57:13.827.999. Part 11/144

Processed Tue Feb 17 04:02:15 2015 by ELM ver.2012-10-06 from 001__elm20150202_225712__dat00.bin

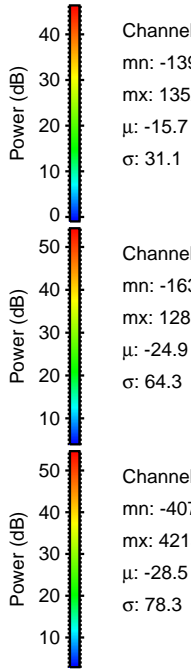
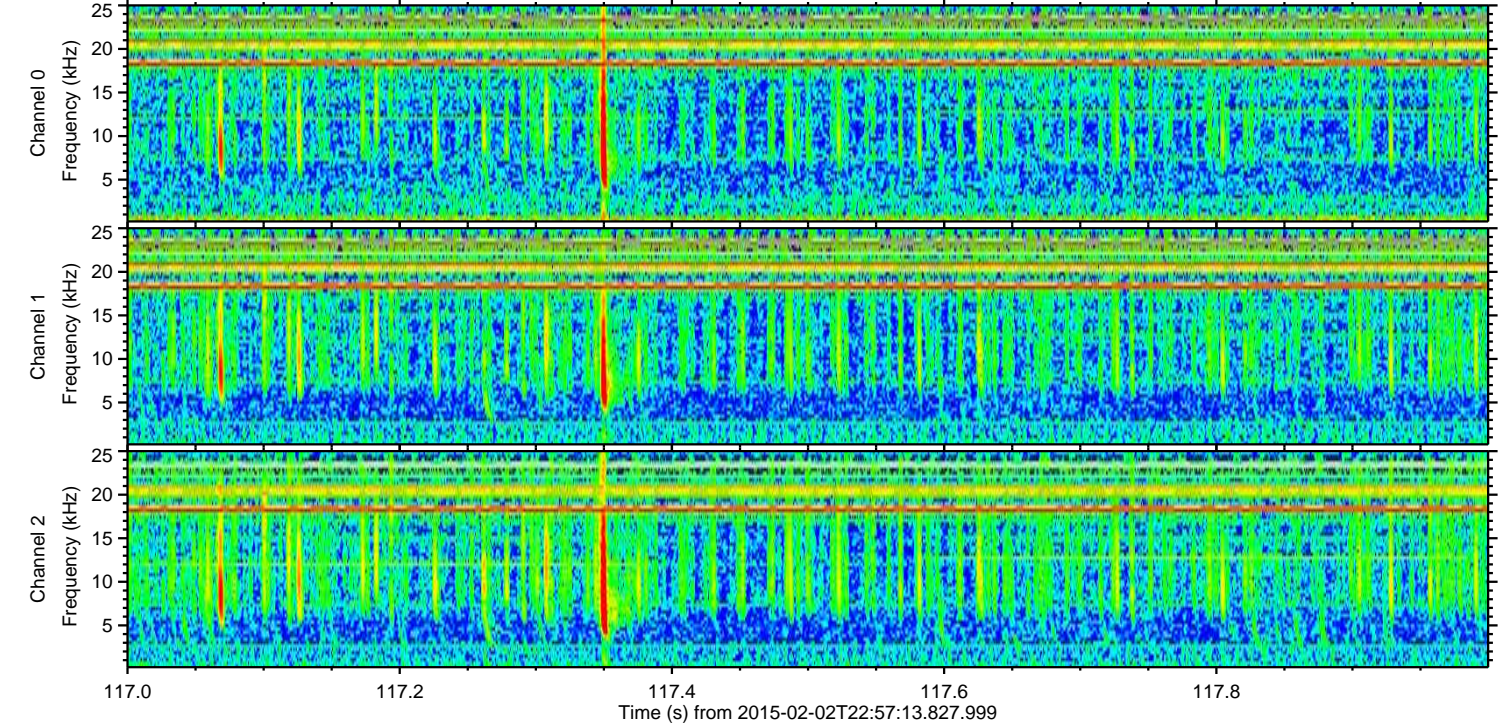
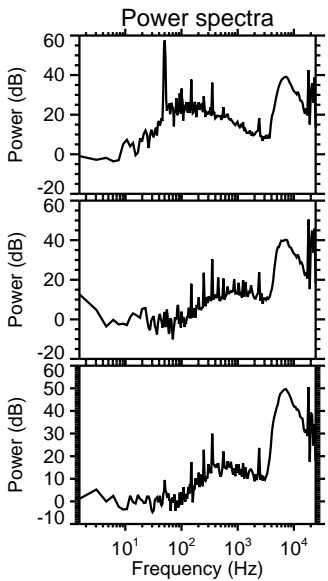
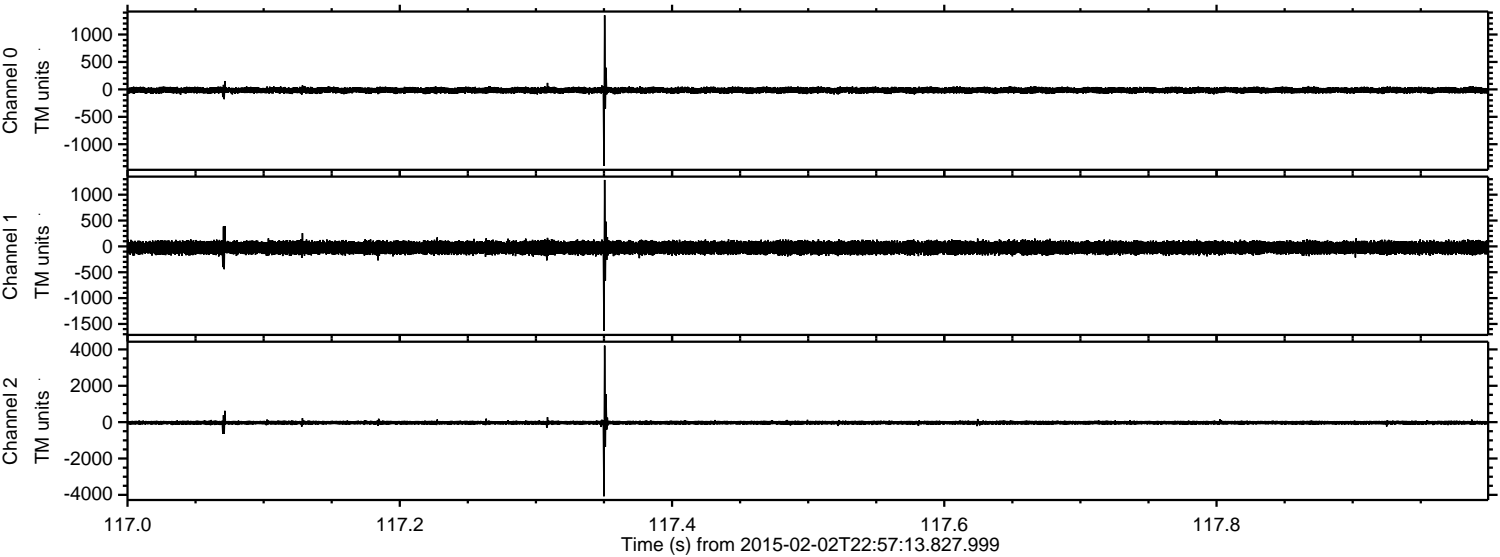


Processed Tue Feb 17 04:02:16 2015 by ELM ver.2012-10-06 from 001__elm20150202_225712__dat00.bin



ELMAVAN 3D WAVEFORMS (Measured data sampled at 50 kHz) 49807 packets of 144 samples from 2015-02-02T22:57:13.827.999. Part 118/144

Processed Tue Feb 17 04:02:17 2015 by ELM ver.2012-10-06 from 001__elm20150202_225712__dat00.bin



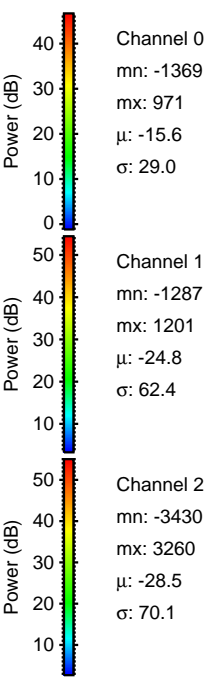
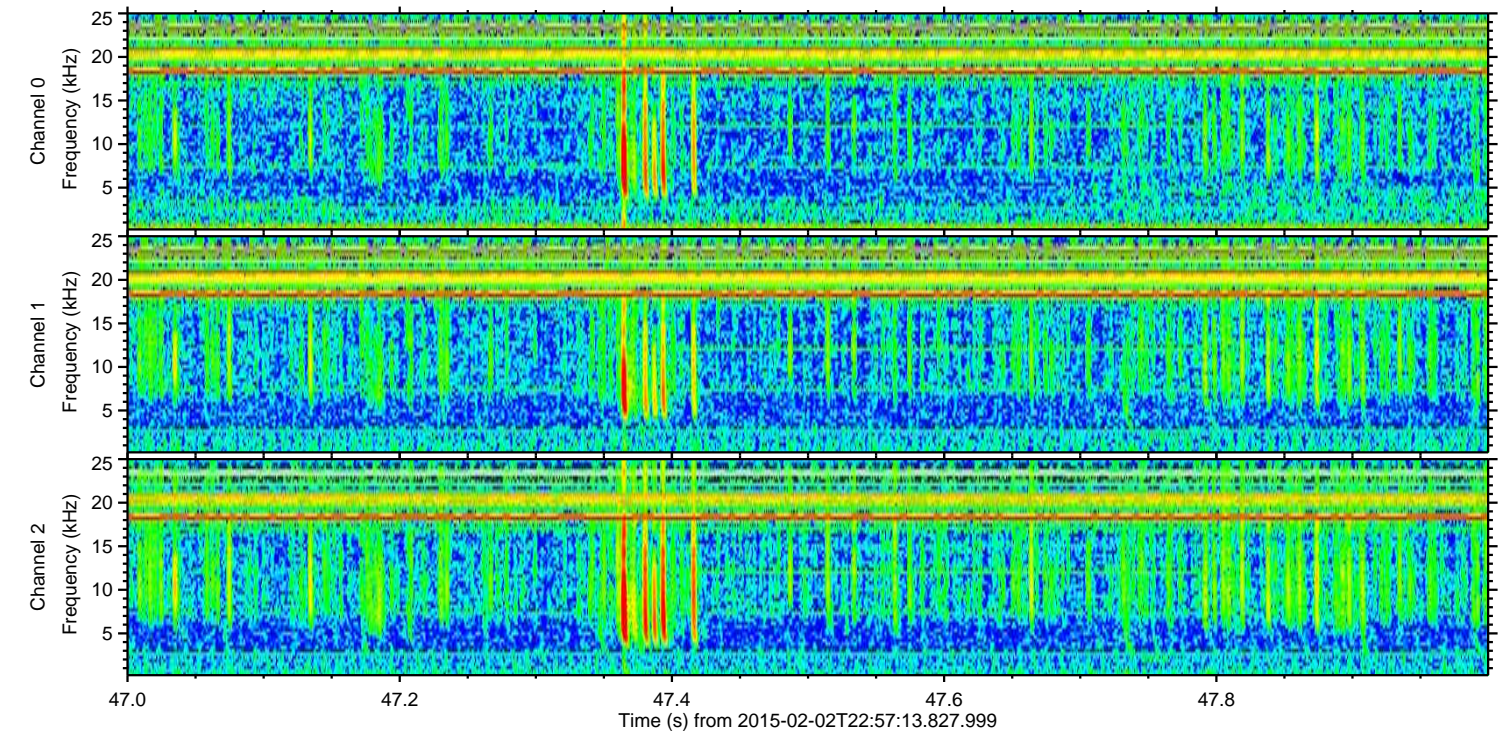
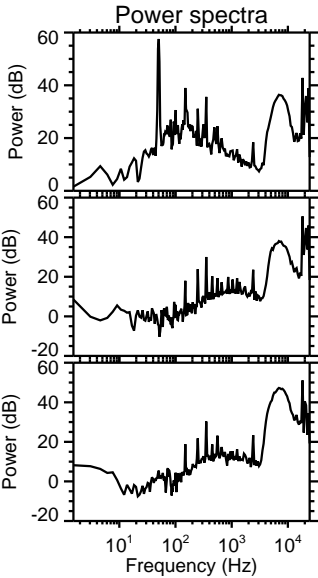
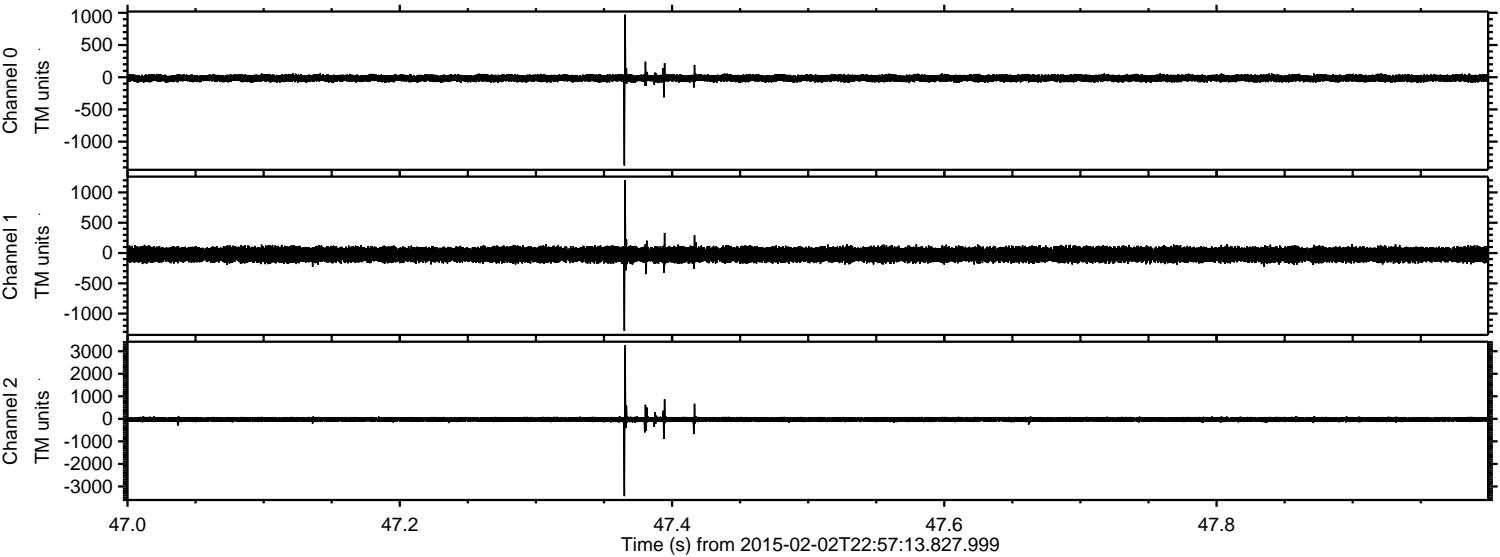
Channel 0
mn: -1397
mx: 1352
 μ : -15.7
 σ : 31.1

Channel 1
mn: -1631
mx: 1286
 μ : -24.9
 σ : 64.3

Channel 2
mn: -4077
mx: 4213
 μ : -28.5
 σ : 78.3

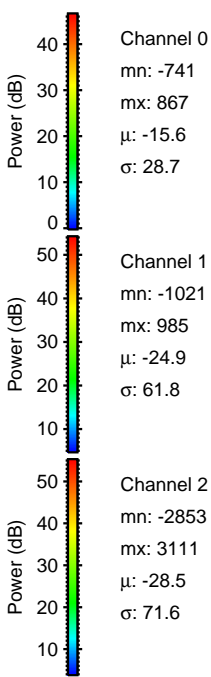
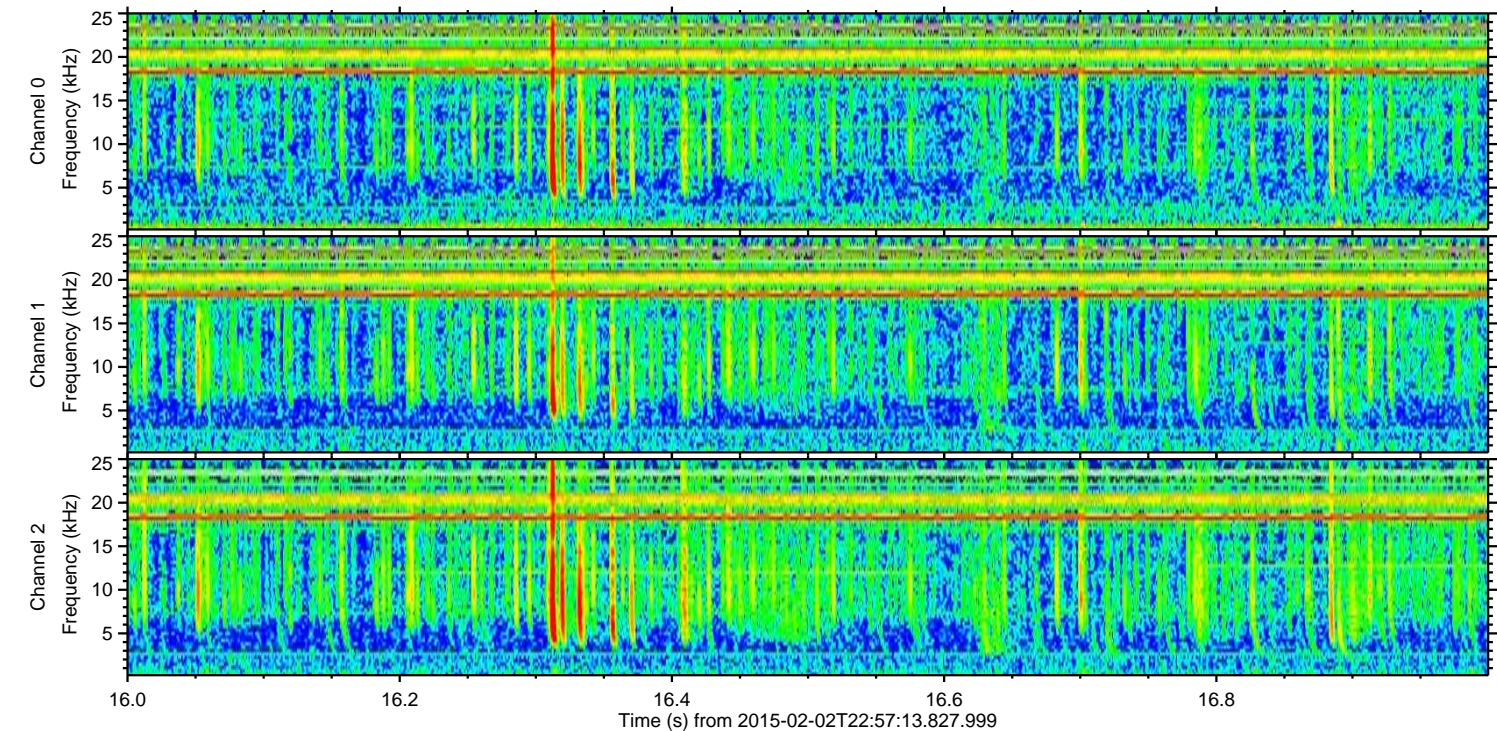
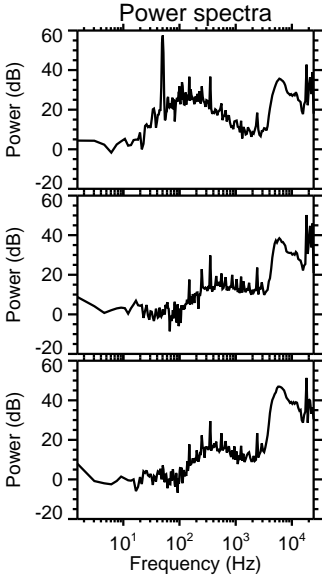
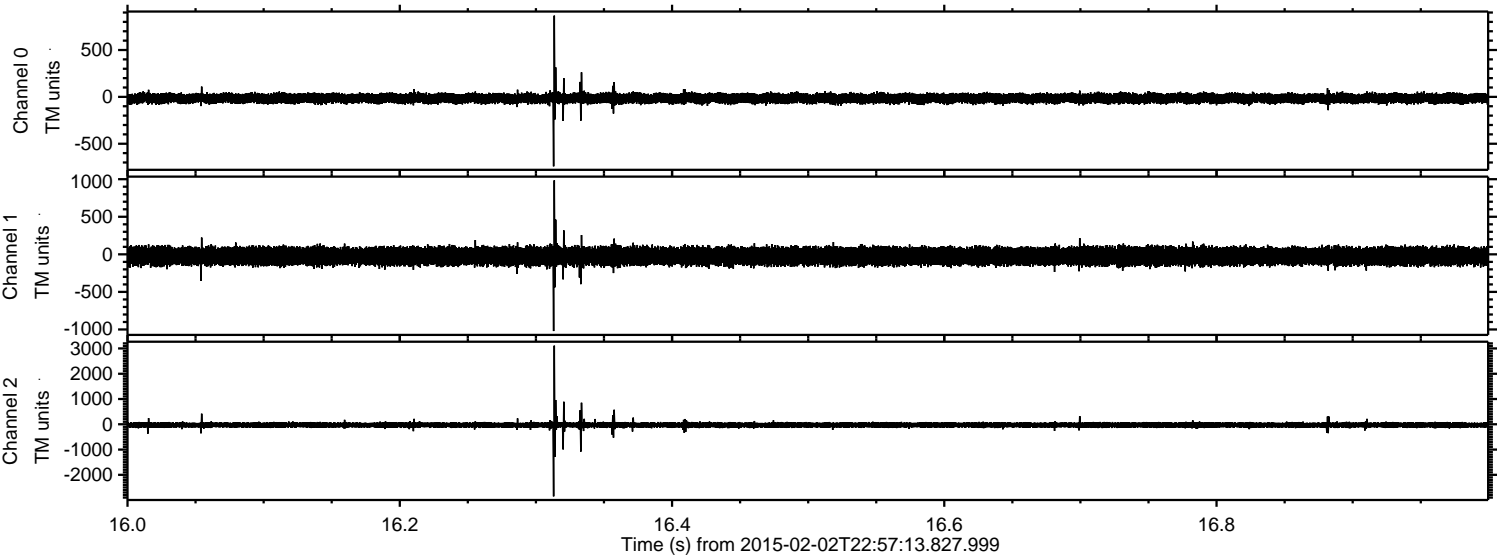
ELMAVAN 3D WAVEFORMS (Measured data sampled at 50 kHz) 49807 packets of 144 samples from 2015-02-02T22:57:13.827.999. Part 48/144

Processed Tue Feb 17 04:02:18 2015 by ELM ver.2012-10-06 from 001__elm20150202_225712__dat00.bin



ELMAVAN 3D WAVEFORMS (Measured data sampled at 50 kHz) 49807 packets of 144 samples from 2015-02-02T22:57:13.827.999. Part 17/144

Processed Tue Feb 17 04:02:19 2015 by ELM ver.2012-10-06 from 001__elm20150202_225712__dat00.bin



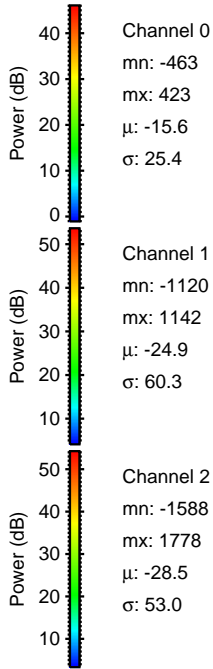
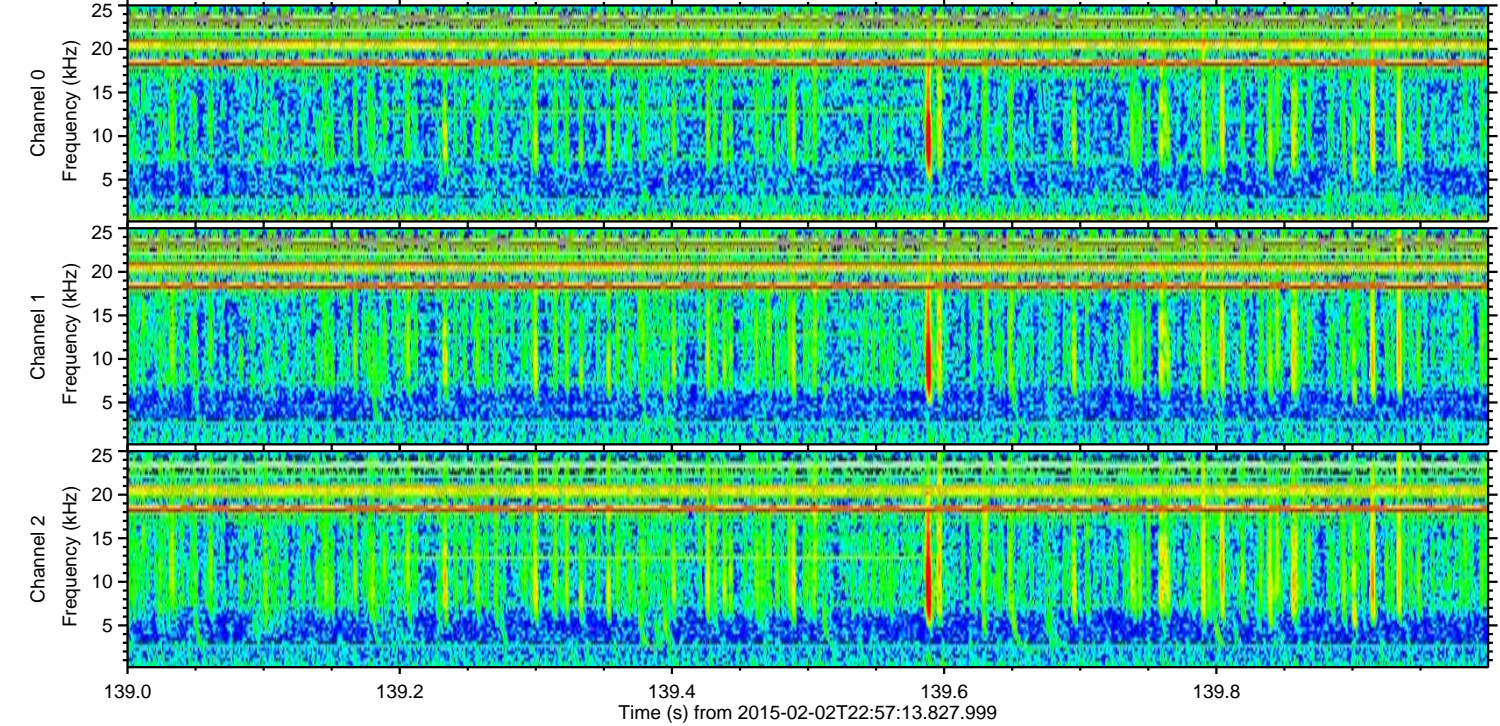
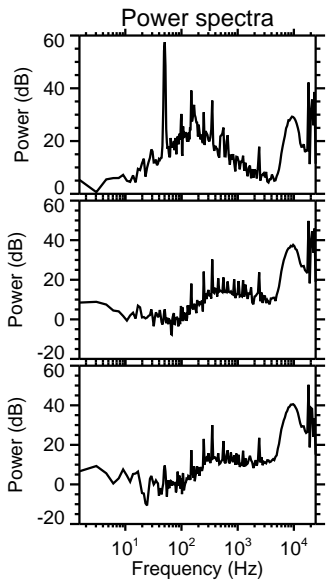
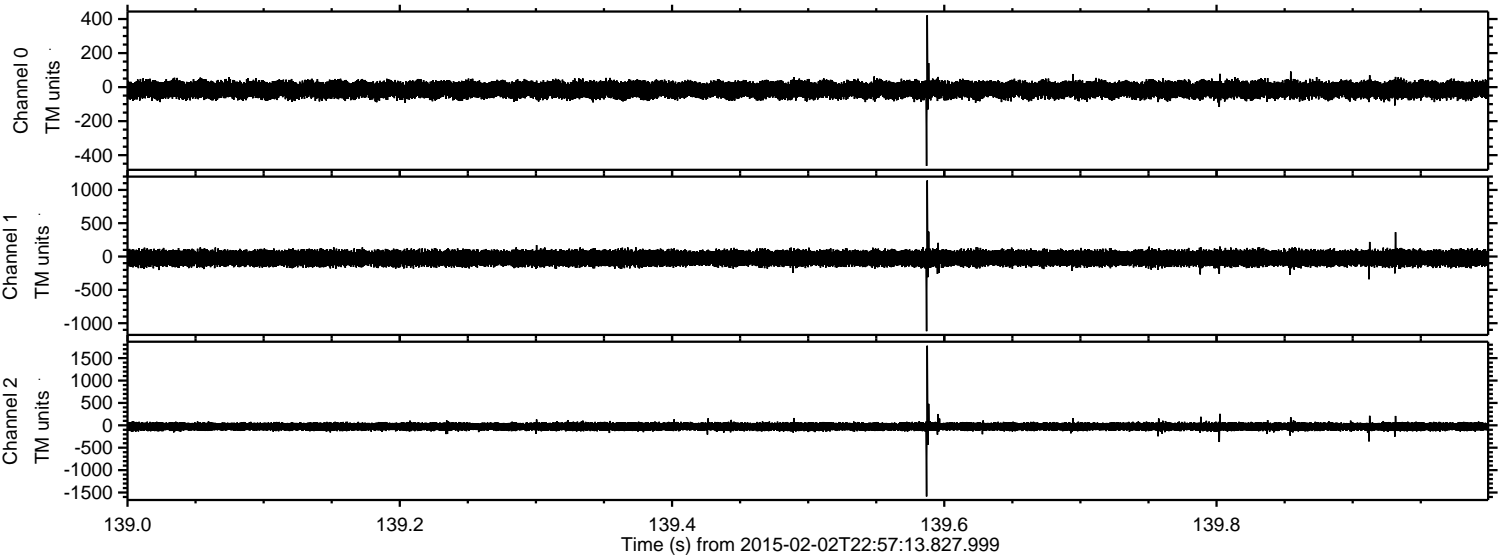
Channel 0
mn: -741
mx: 867
 μ : -15.6
 σ : 28.7

Channel 1
mn: -1021
mx: 985
 μ : -24.9
 σ : 61.8

Channel 2
mn: -2853
mx: 3111
 μ : -28.5
 σ : 71.6

ELMAVAN 3D WAVEFORMS (Measured data sampled at 50 kHz) 49807 packets of 144 samples from 2015-02-02T22:57:13.827.999. Part 140/144

Processed Tue Feb 17 04:02:20 2015 by ELM ver.2012-10-06 from 001__elm20150202_225712__dat00.bin



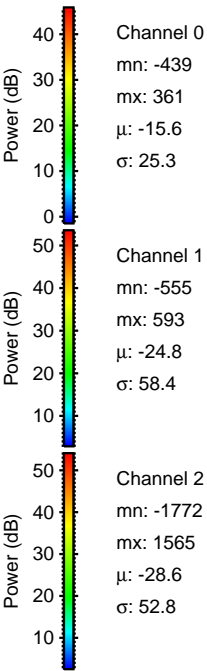
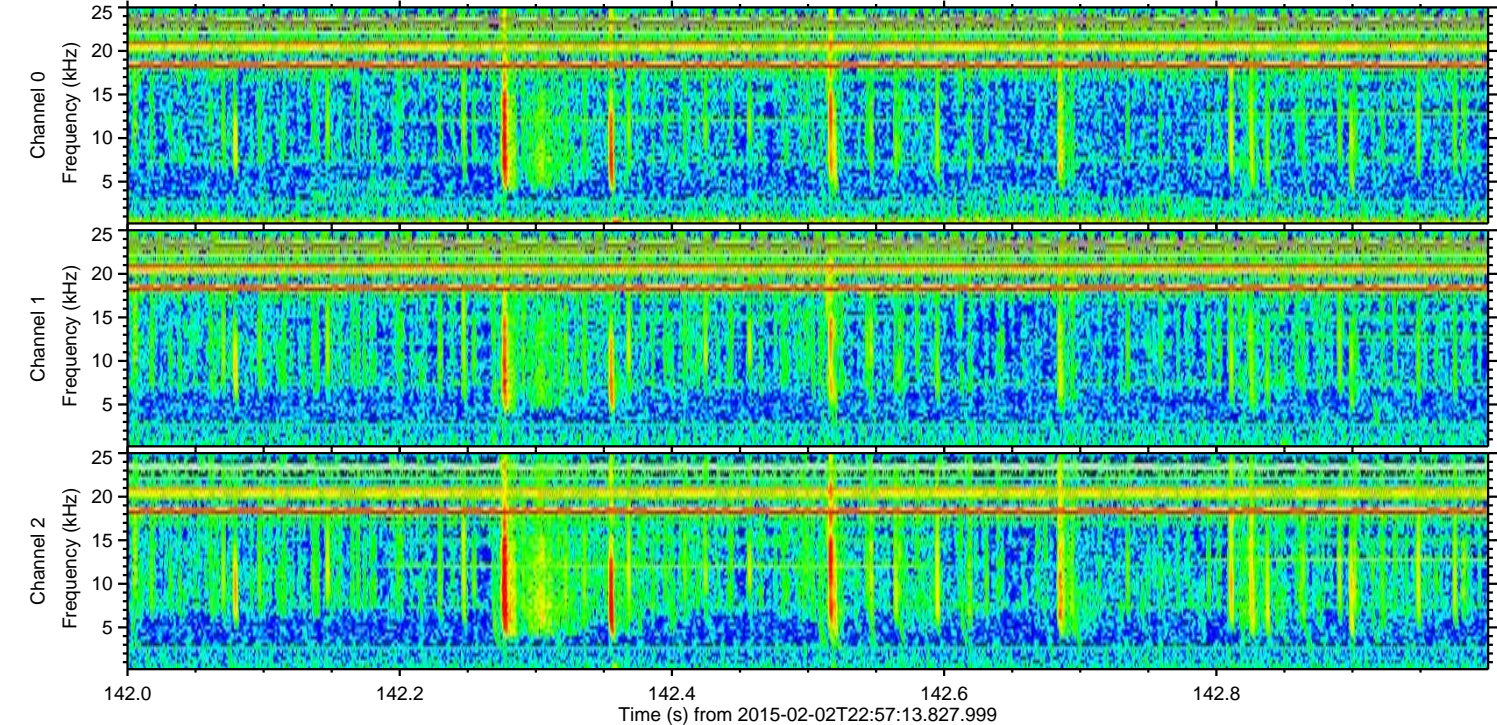
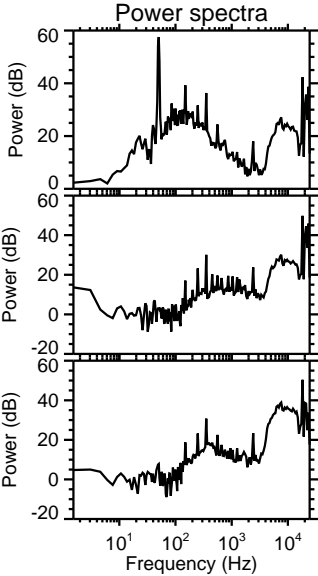
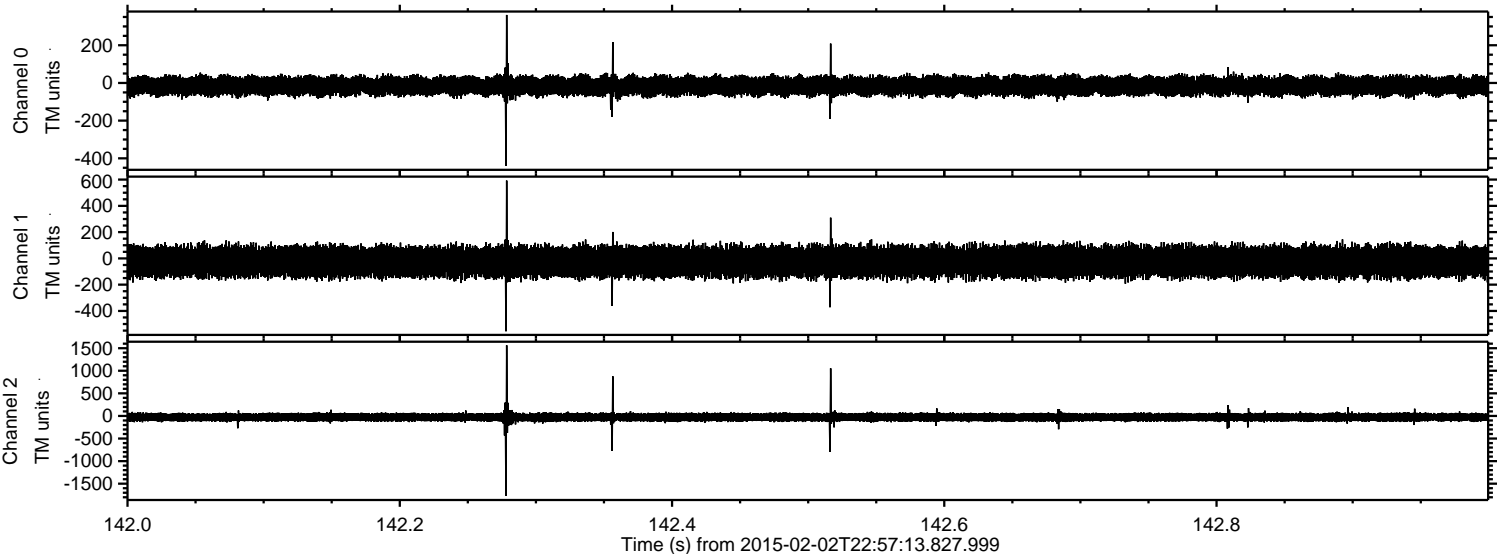
Channel 0
mn: -463
mx: 423
 μ : -15.6
 σ : 25.4

Channel 1
mn: -1120
mx: 1142
 μ : -24.9
 σ : 60.3

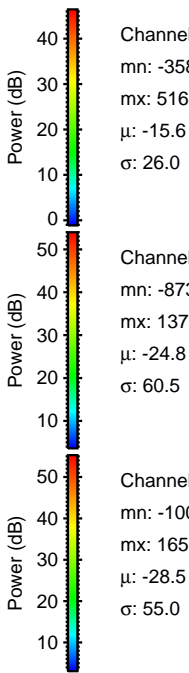
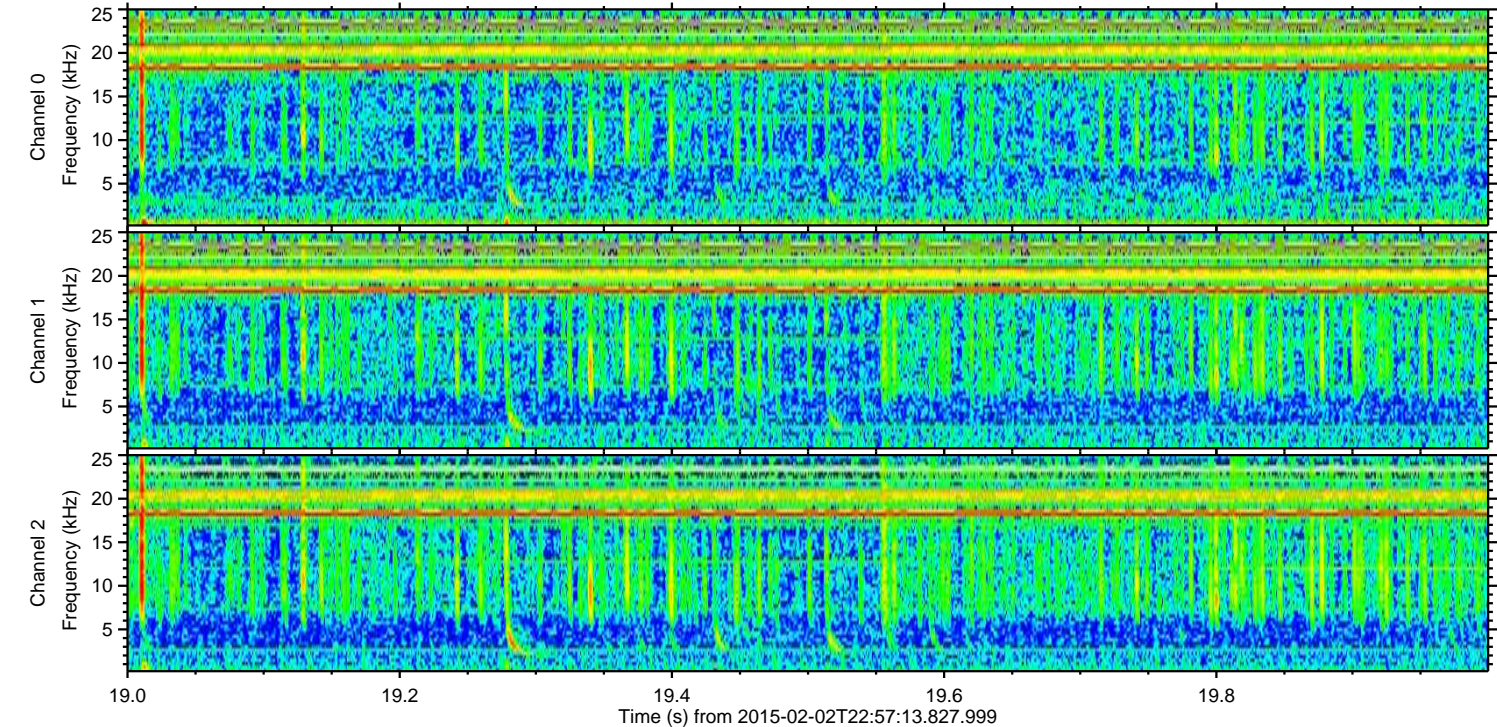
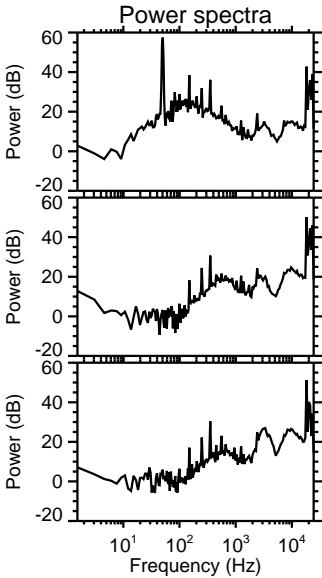
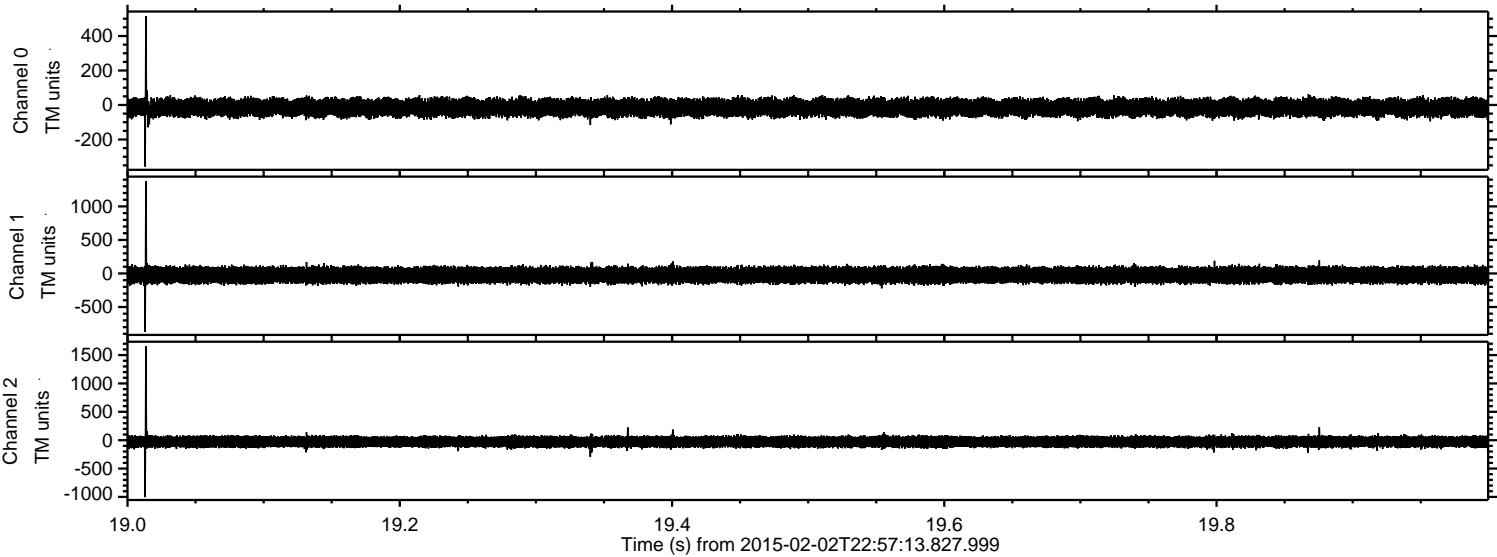
Channel 2
mn: -1588
mx: 1778
 μ : -28.5
 σ : 53.0

ELMAVAN 3D WAVEFORMS (Measured data sampled at 50 kHz) 49807 packets of 144 samples from 2015-02-02T22:57:13.827.999. Part 143/144

Processed Tue Feb 17 04:02:21 2015 by ELM ver.2012-10-06 from 001__elm20150202_225712__dat00.bin

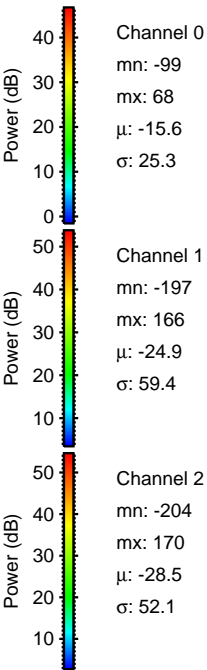
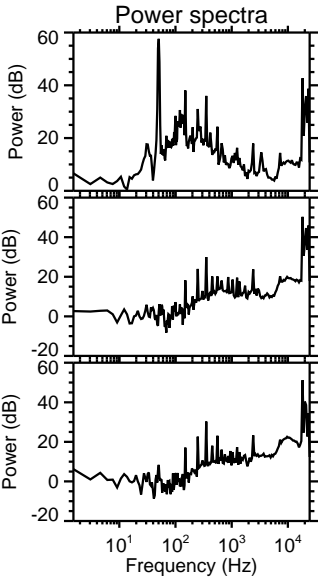
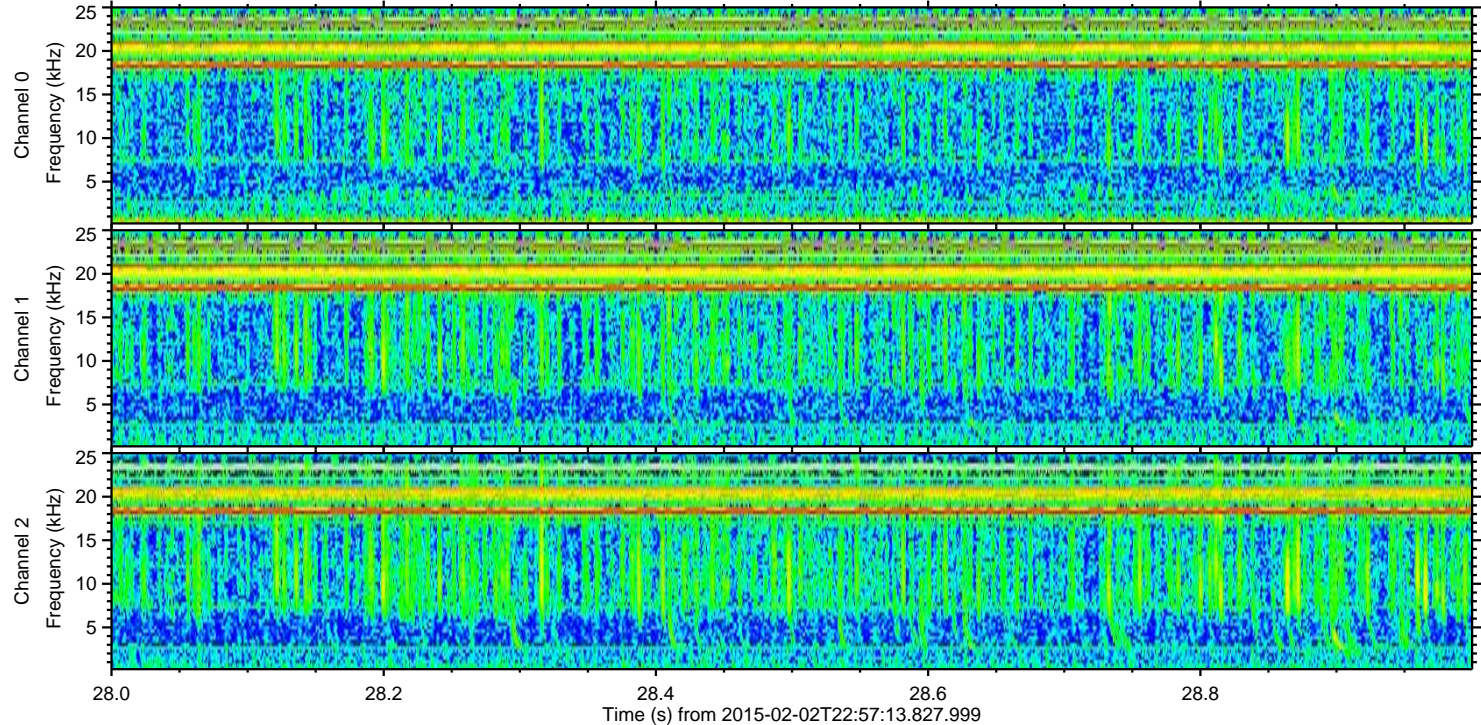
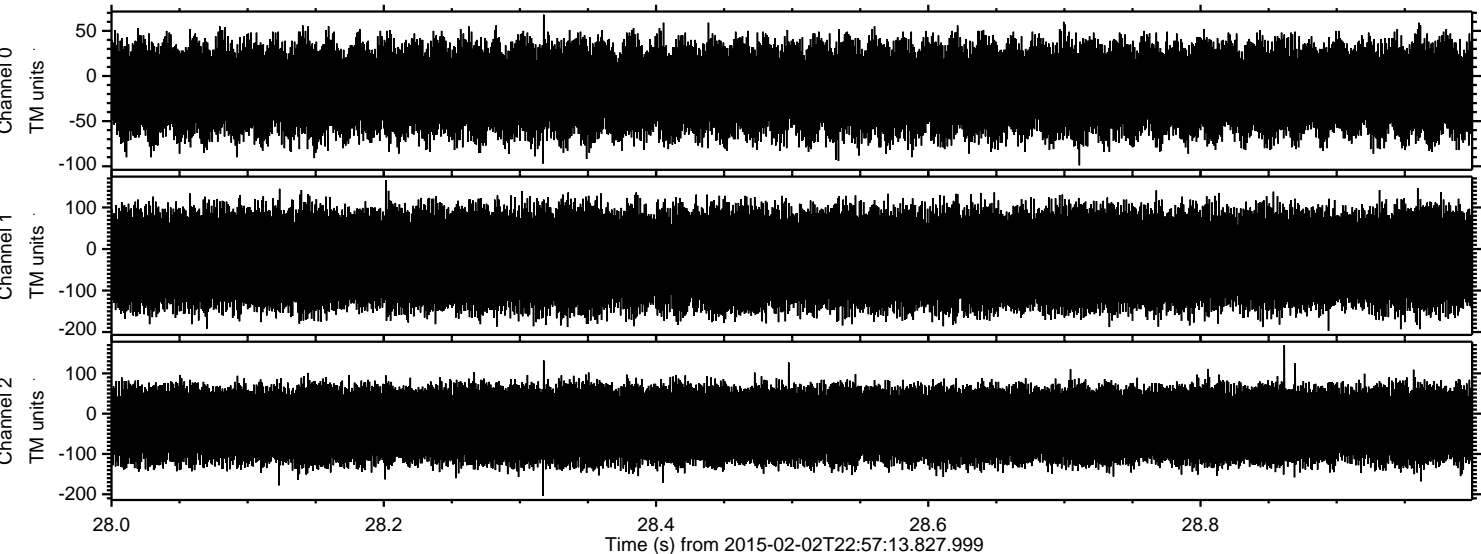


Processed Tue Feb 17 04:02:22 2015 by ELM ver.2012-10-06 from 001__elm20150202_225712__dat00.bin



ELMAVAN 3D WAVEFORMS (Measured data sampled at 50 kHz) 49807 packets of 144 samples from 2015-02-02T22:57:13.827.999. Part 29/144

Processed Tue Feb 17 04:02:23 2015 by ELM ver.2012-10-06 from 001__elm20150202_225712__dat00.bin



Channel 0
mn: -99
mx: 68
 μ : -15.6
 σ : 25.3

Channel 1
mn: -197
mx: 166
 μ : -24.9
 σ : 59.4

Channel 2
mn: -204
mx: 170
 μ : -28.5
 σ : 52.1