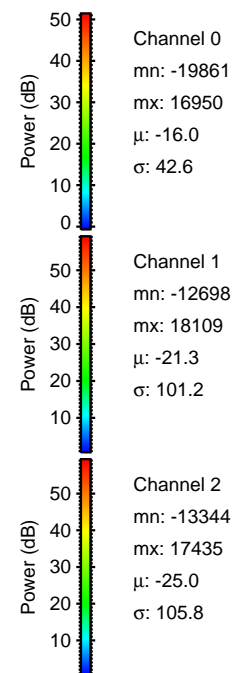
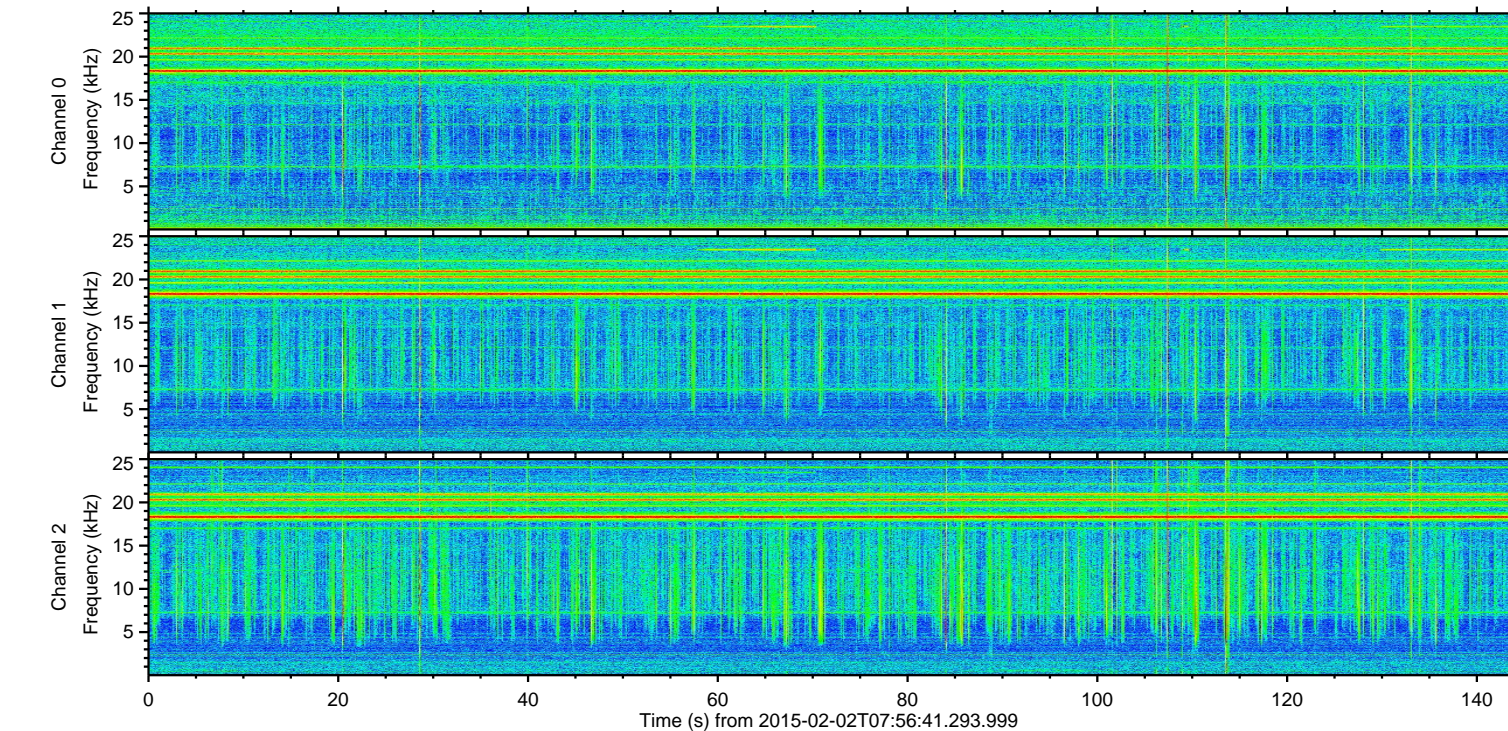
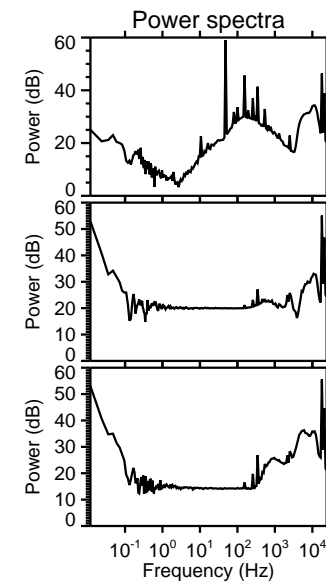
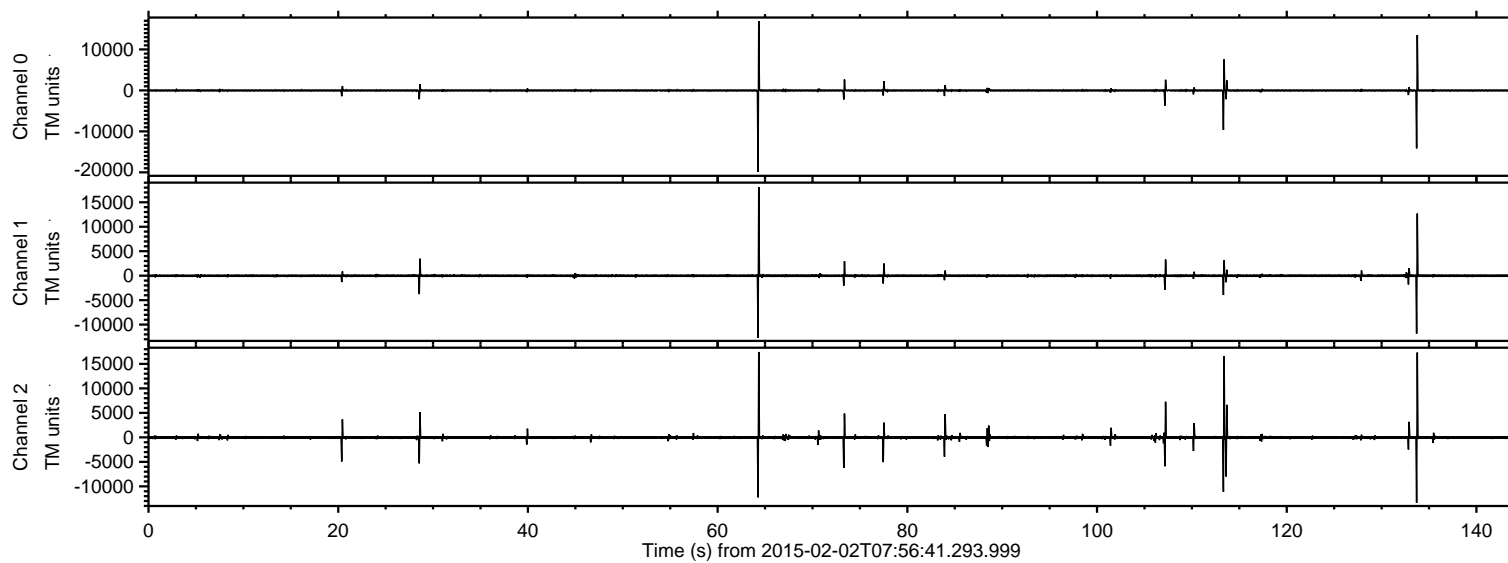
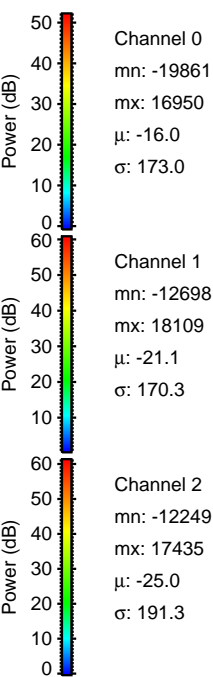
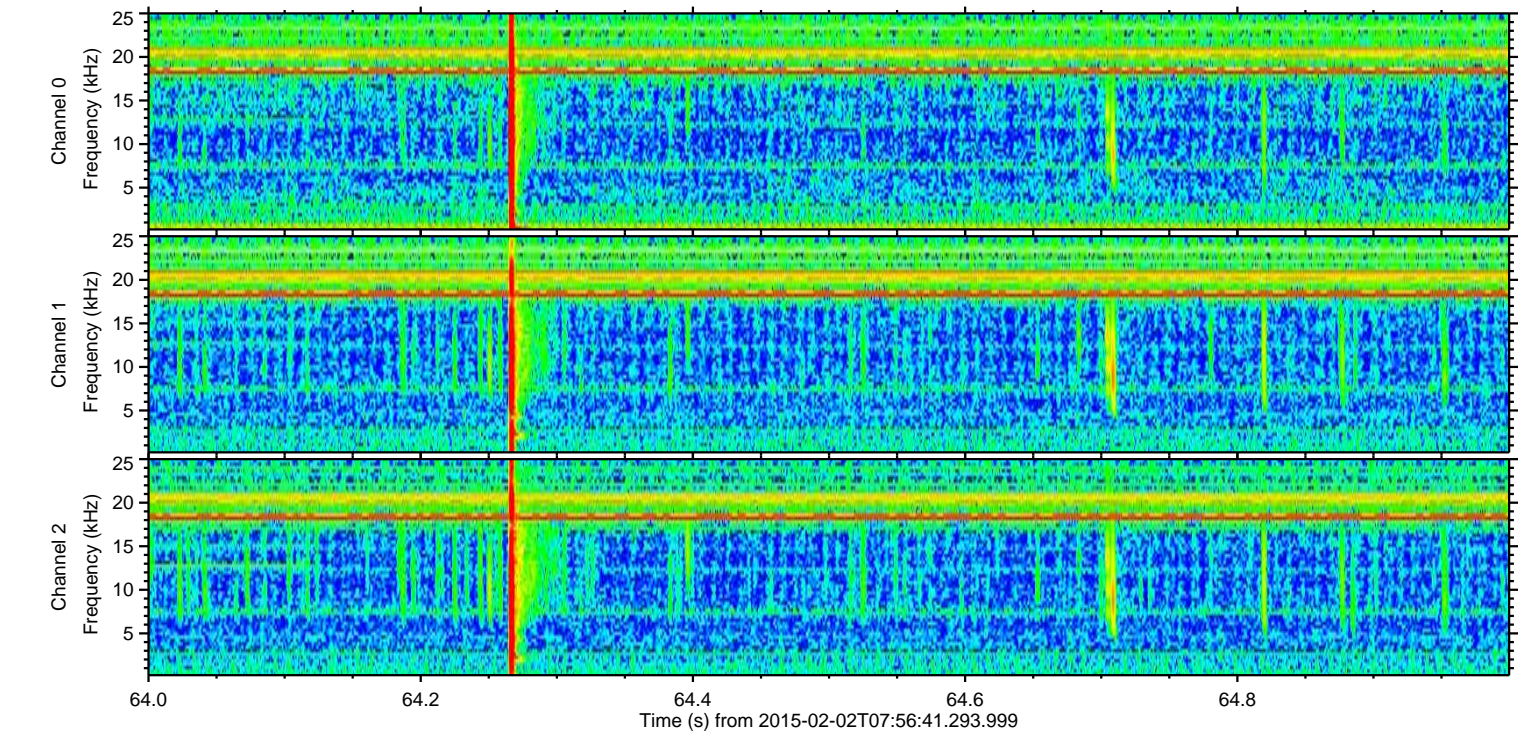
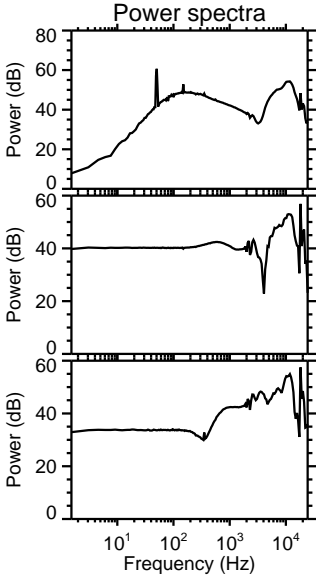
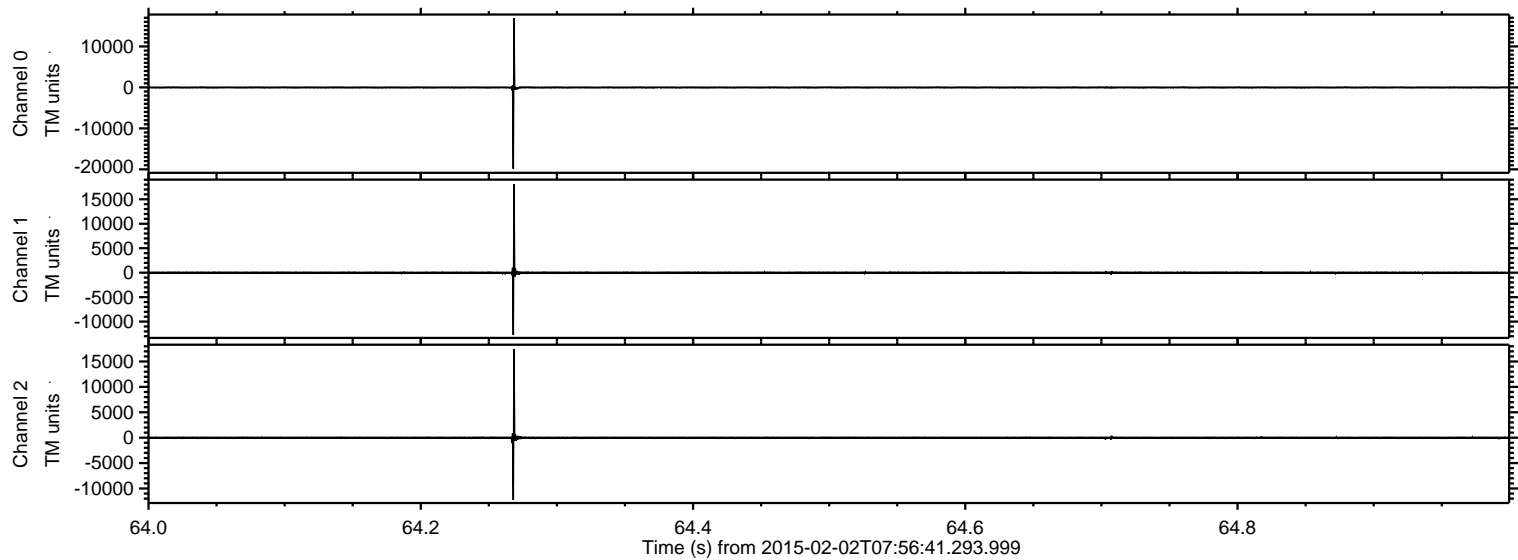


ELMAVAN 3D WAVEFORMS (Measured data sampled at 50 kHz) 49808 packets of 144 samples from 2015-02-02T07:56:41.293.999.

Processed Mon Feb 16 22:21:09 2015 by ELM ver.2012-10-06 from 001__elm20150202_075640__dat00.bin

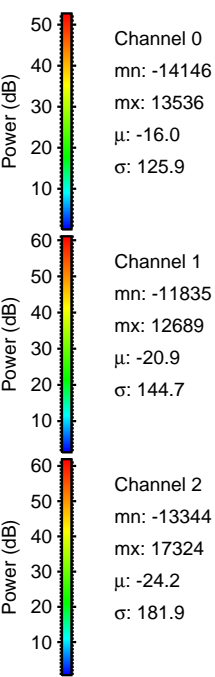
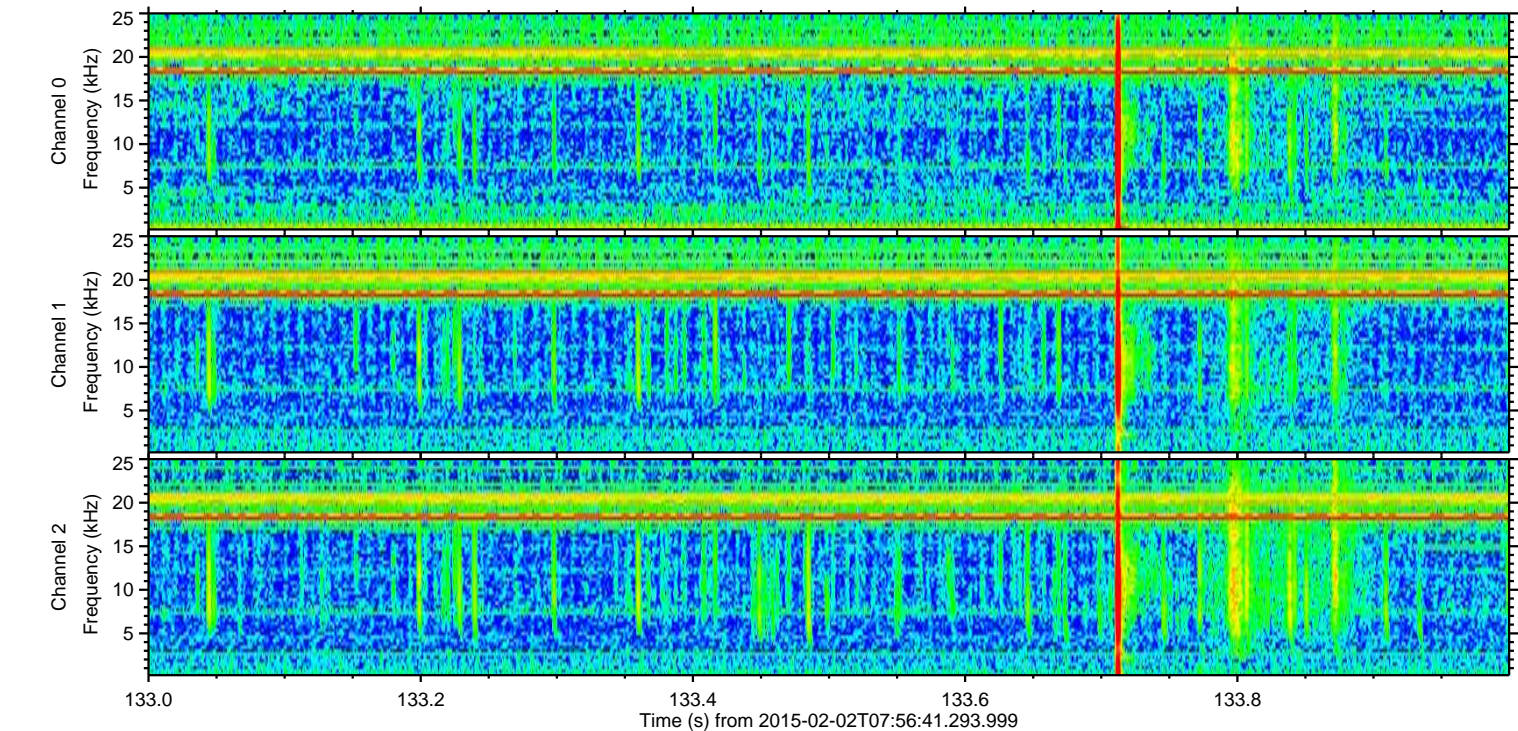
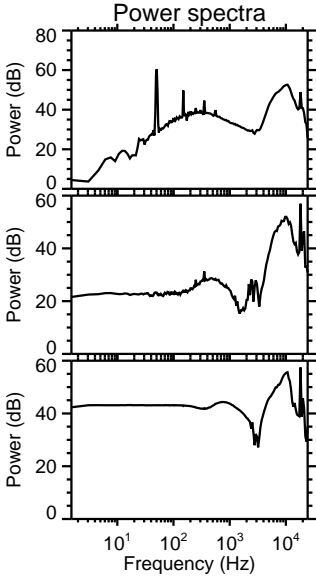
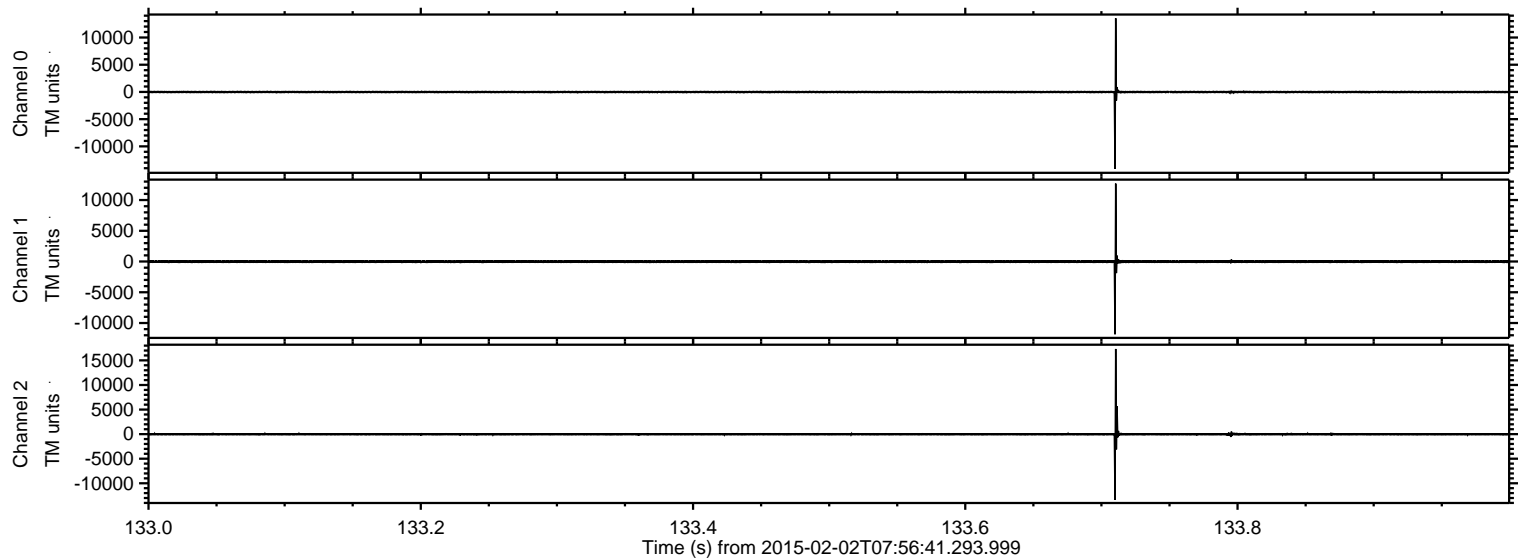


Processed Mon Feb 16 22:21:21 2015 by ELM ver.2012-10-06 from 001__elm20150202_075640__dat00.bin



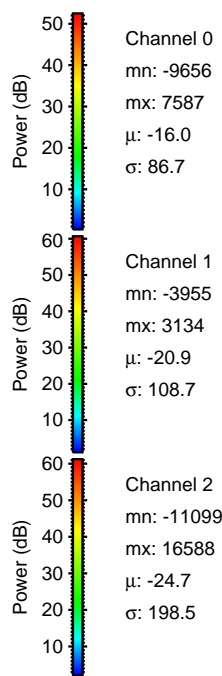
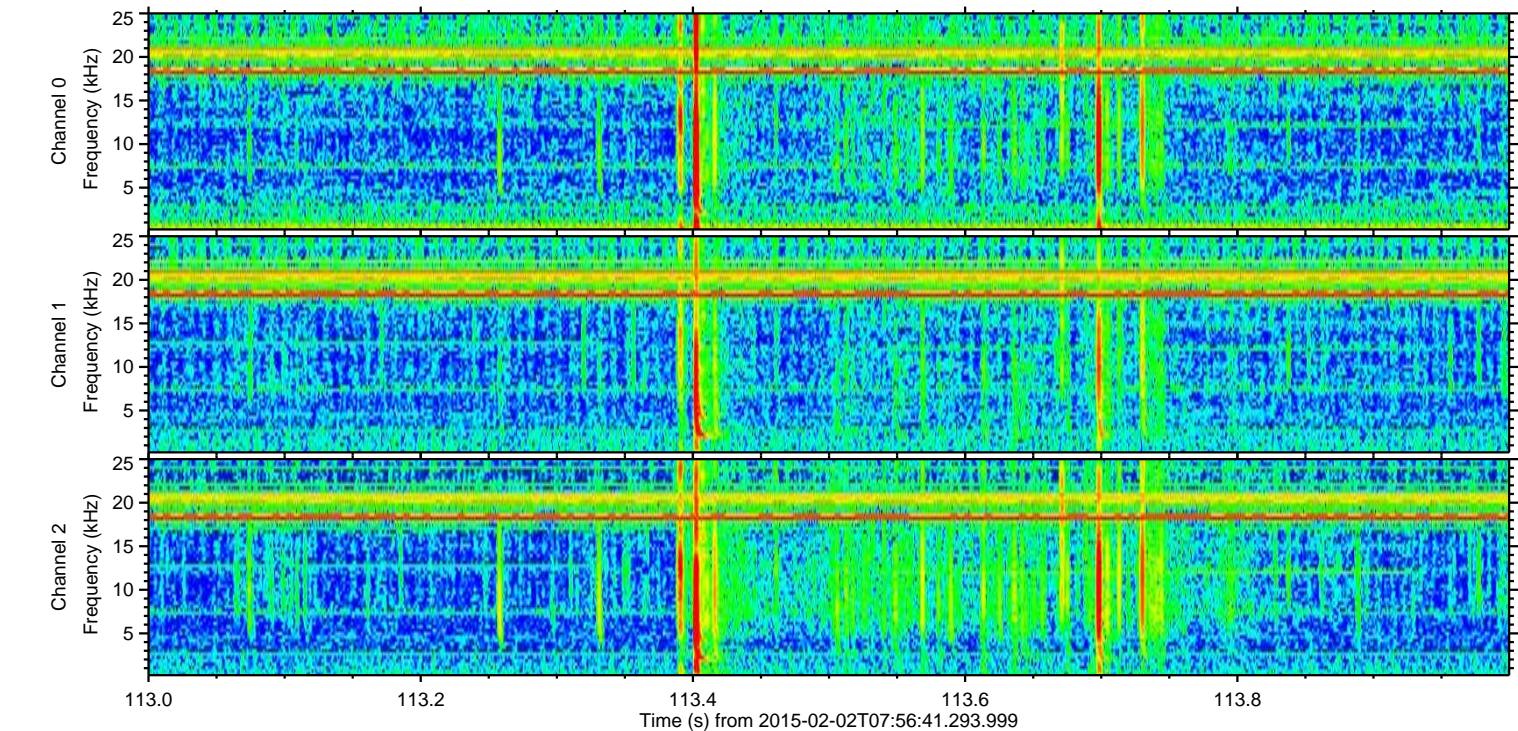
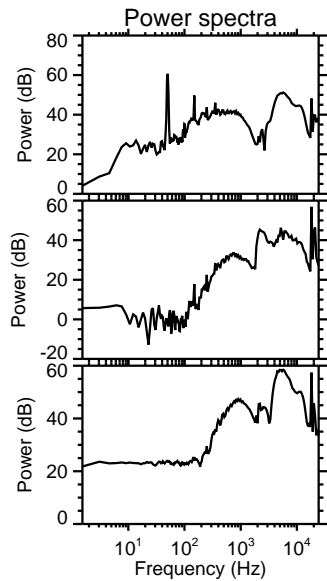
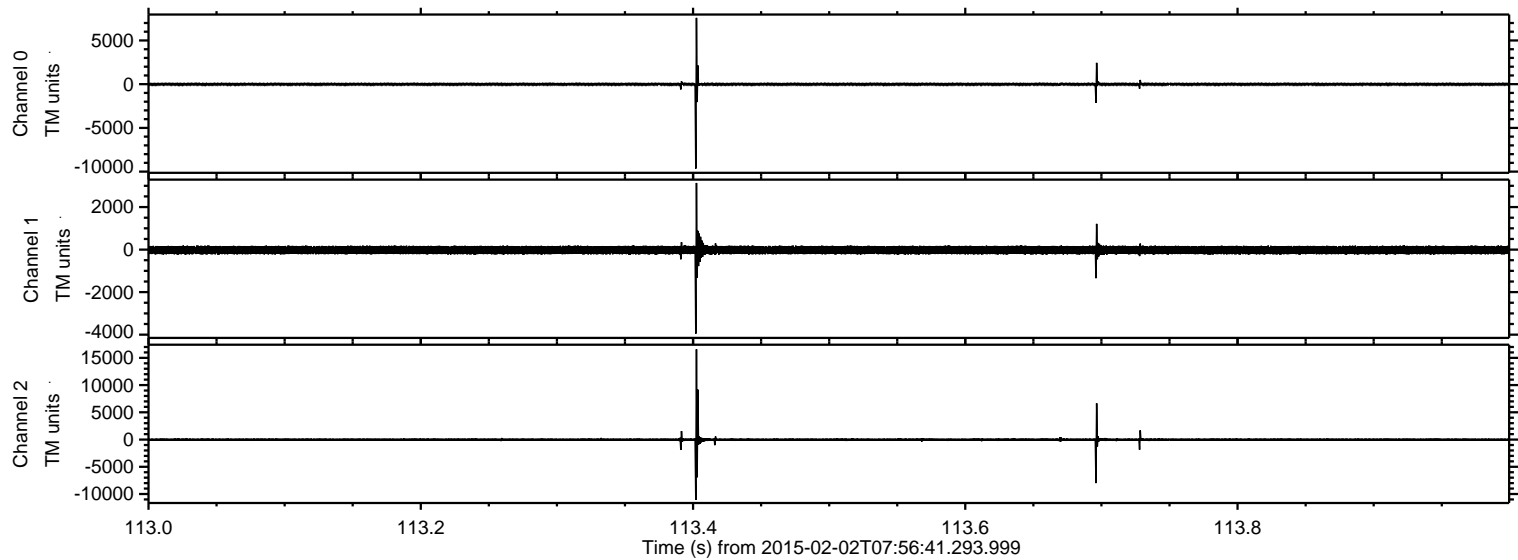
ELMAVAN 3D WAVEFORMS (Measured data sampled at 50 kHz) 49808 packets of 144 samples from 2015-02-02T07:56:41.293.999. Part 134/144

Processed Mon Feb 16 22:21:22 2015 by ELM ver.2012-10-06 from 001__elm20150202_075640__dat00.bin



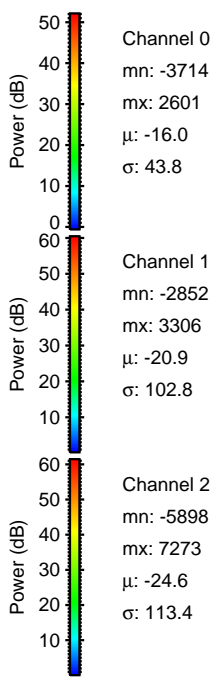
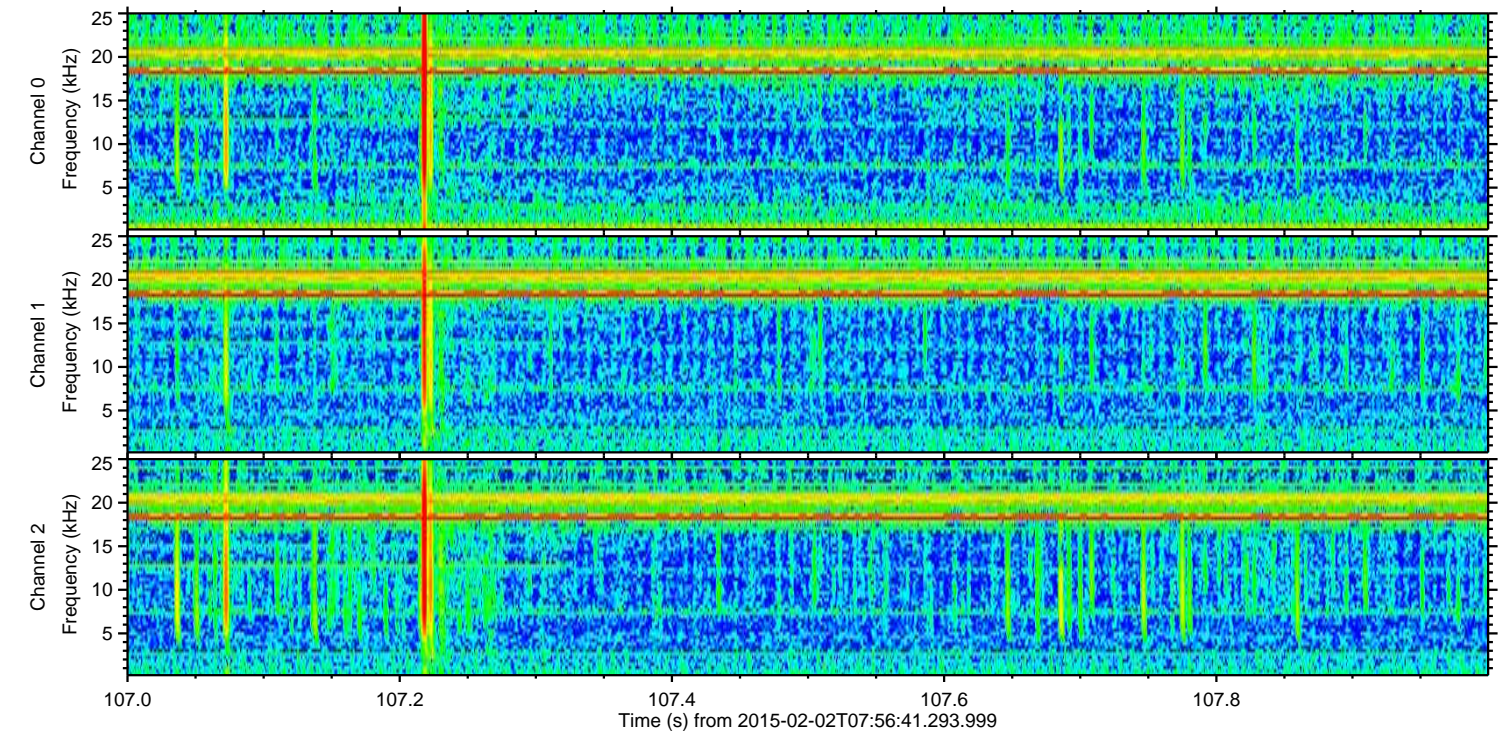
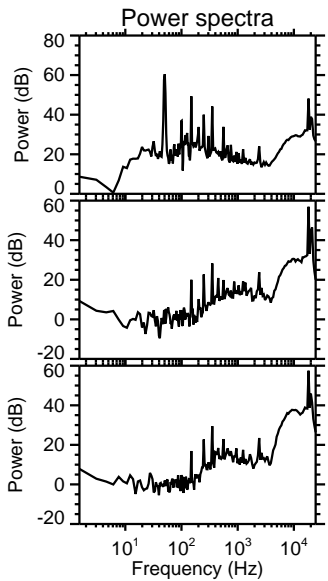
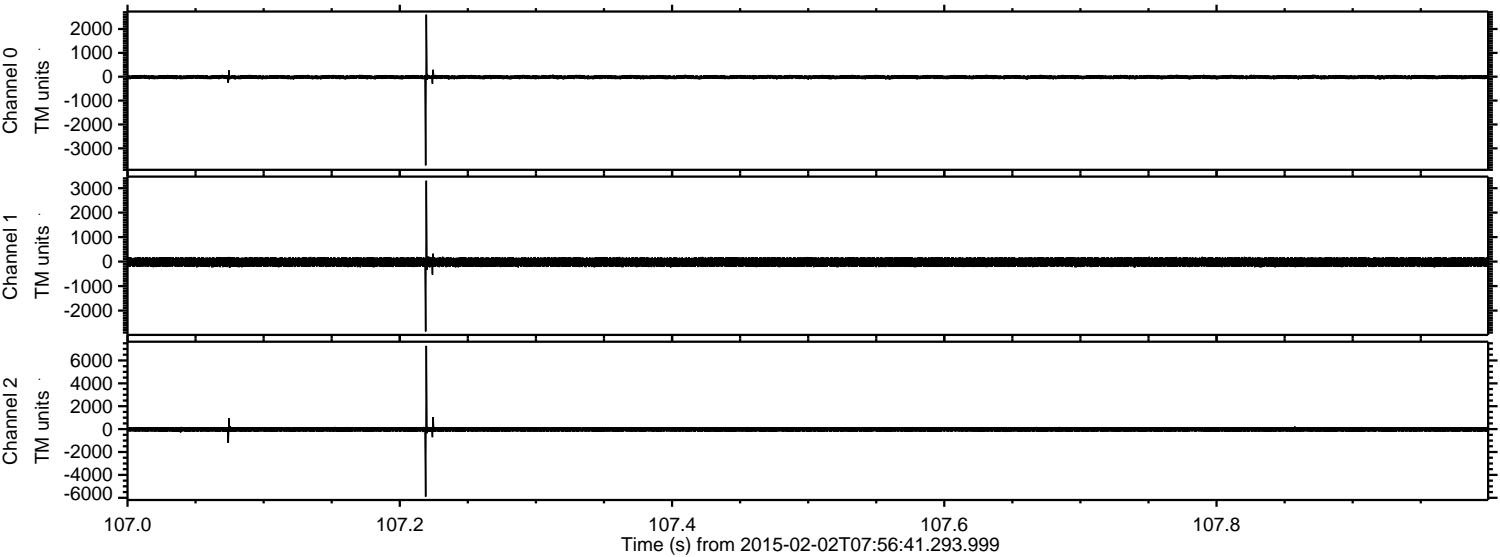
ELMAVAN 3D WAVEFORMS (Measured data sampled at 50 kHz) 49808 packets of 144 samples from 2015-02-02T07:56:41.293.999. Part 114/144

Processed Mon Feb 16 22:21:23 2015 by ELM ver.2012-10-06 from 001__elm20150202_075640__dat00.bin



ELMAVAN 3D WAVEFORMS (Measured data sampled at 50 kHz) 49808 packets of 144 samples from 2015-02-02T07:56:41.293.999. Part 108/144

Processed Mon Feb 16 22:21:24 2015 by ELM ver.2012-10-06 from 001__elm20150202_075640__dat00.bin

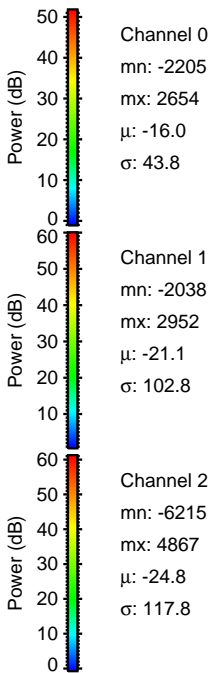
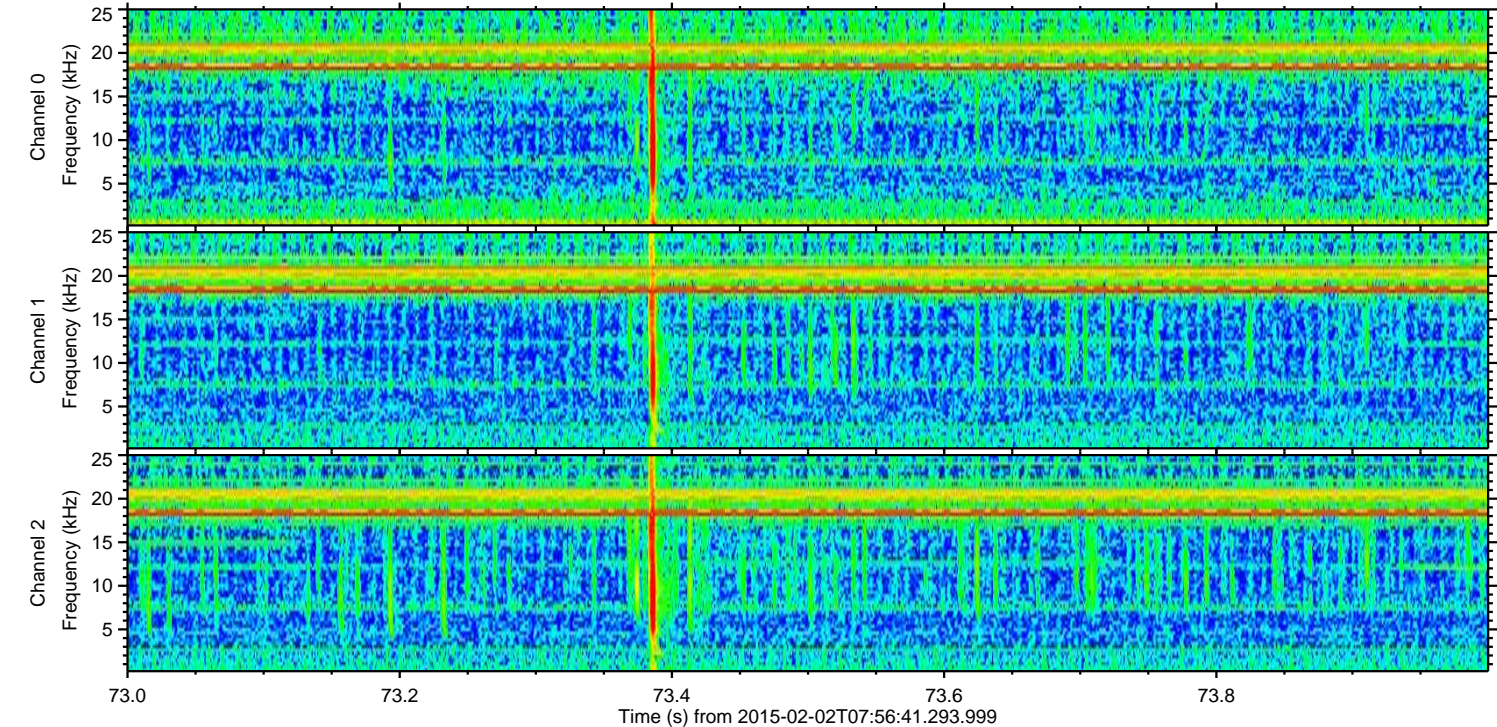
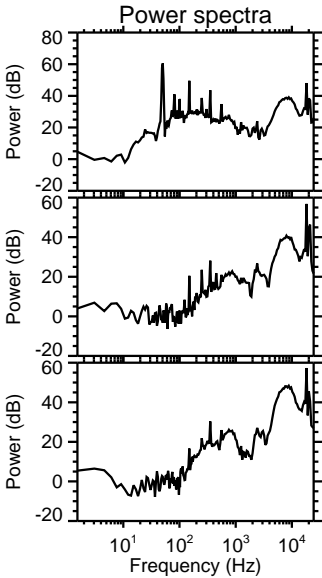
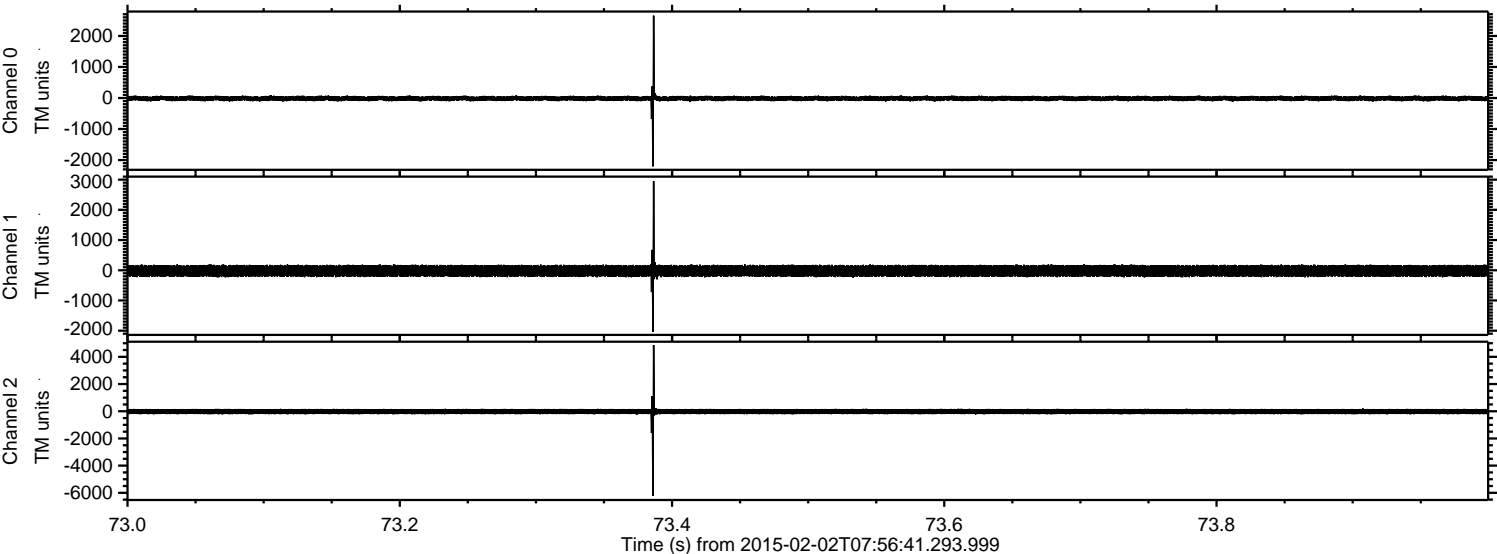


Channel 0
mn: -3714
mx: 2601
 μ : -16.0
 σ : 43.8

Channel 1
mn: -2852
mx: 3306
 μ : -20.9
 σ : 102.8

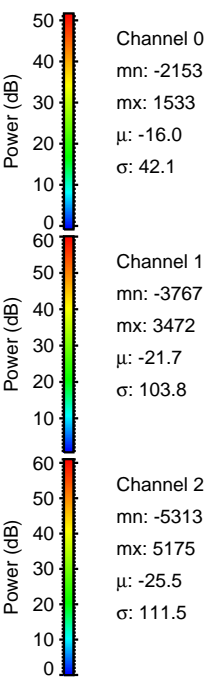
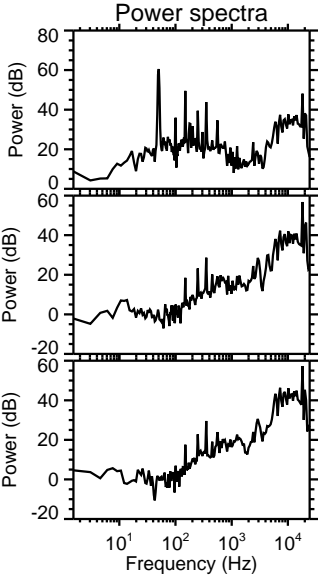
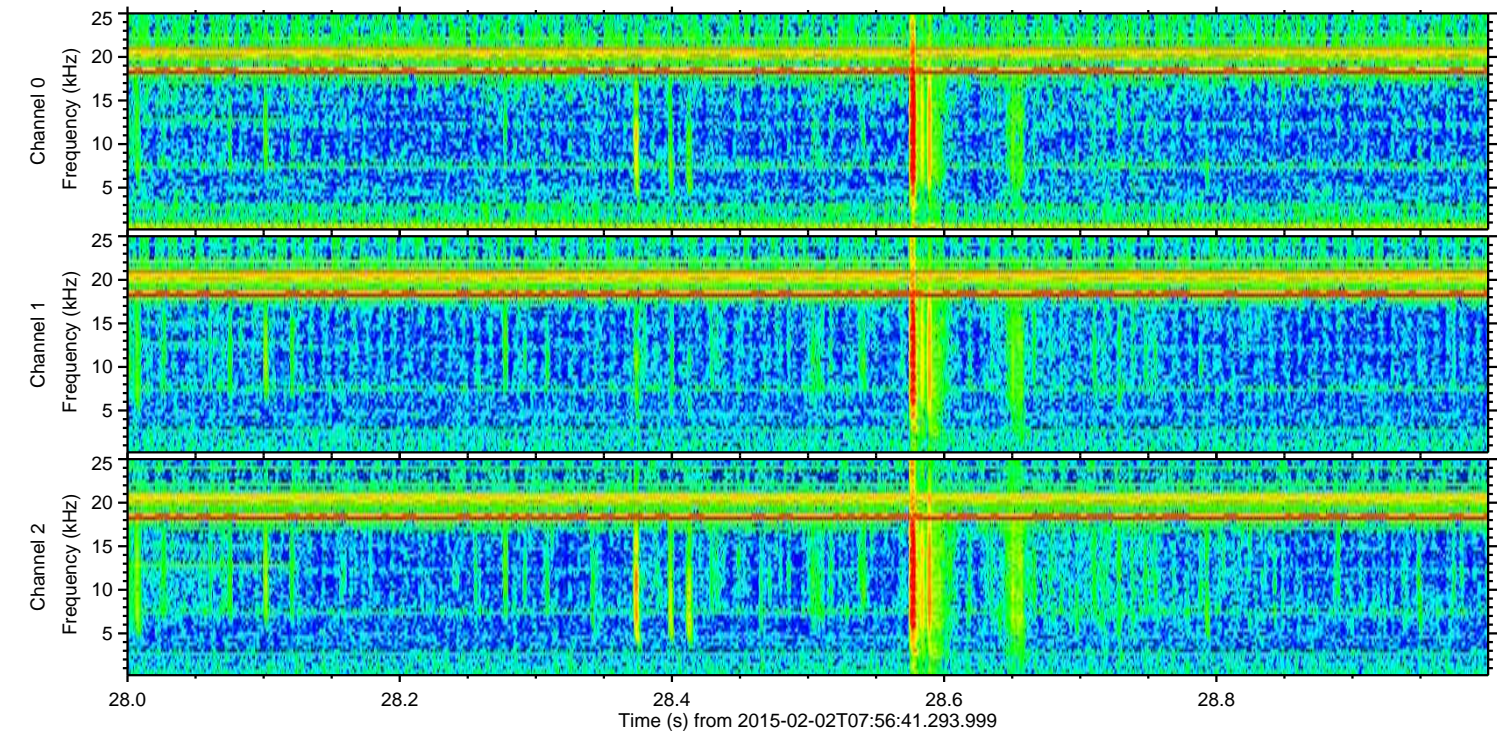
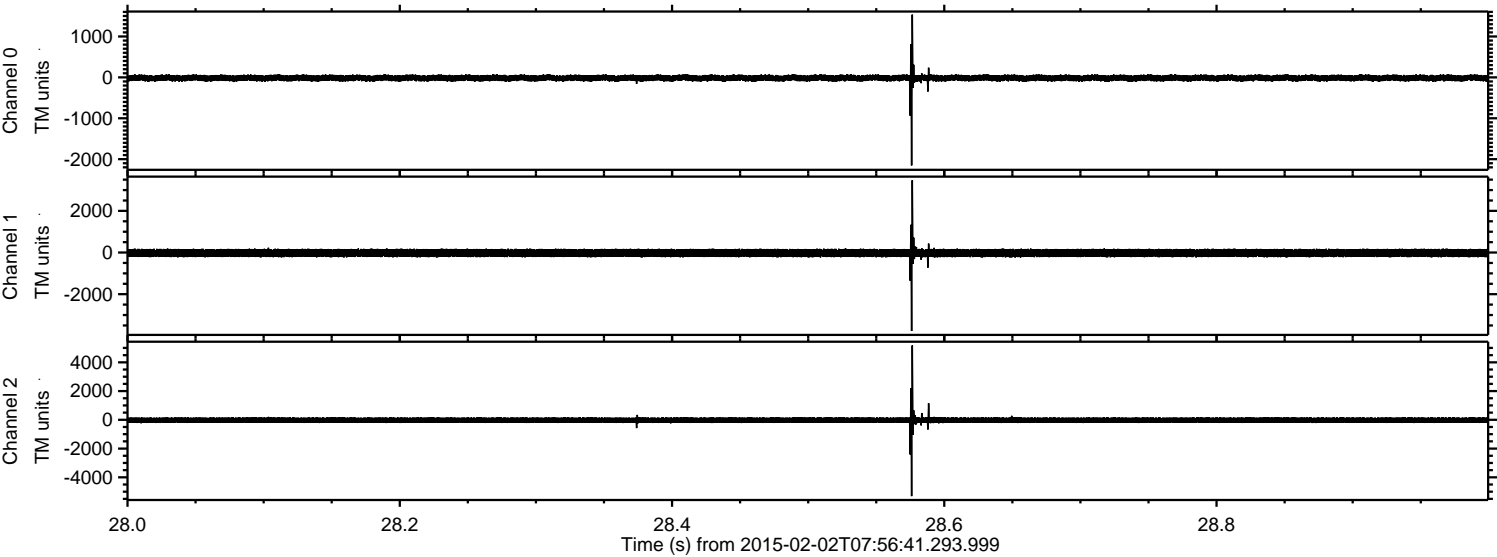
Channel 2
mn: -5898
mx: 7273
 μ : -24.6
 σ : 113.4

Processed Mon Feb 16 22:21:25 2015 by ELM ver.2012-10-06 from 001__elm20150202_075640__dat00.bin

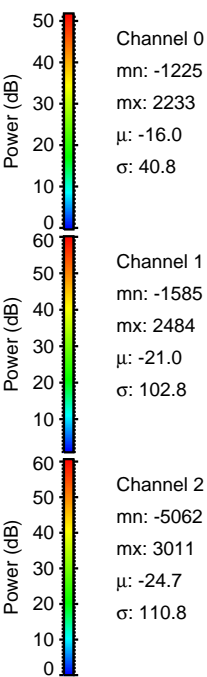
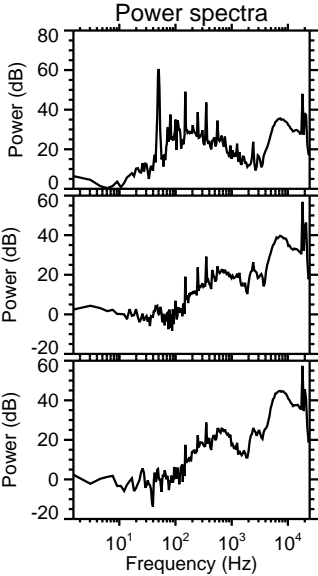
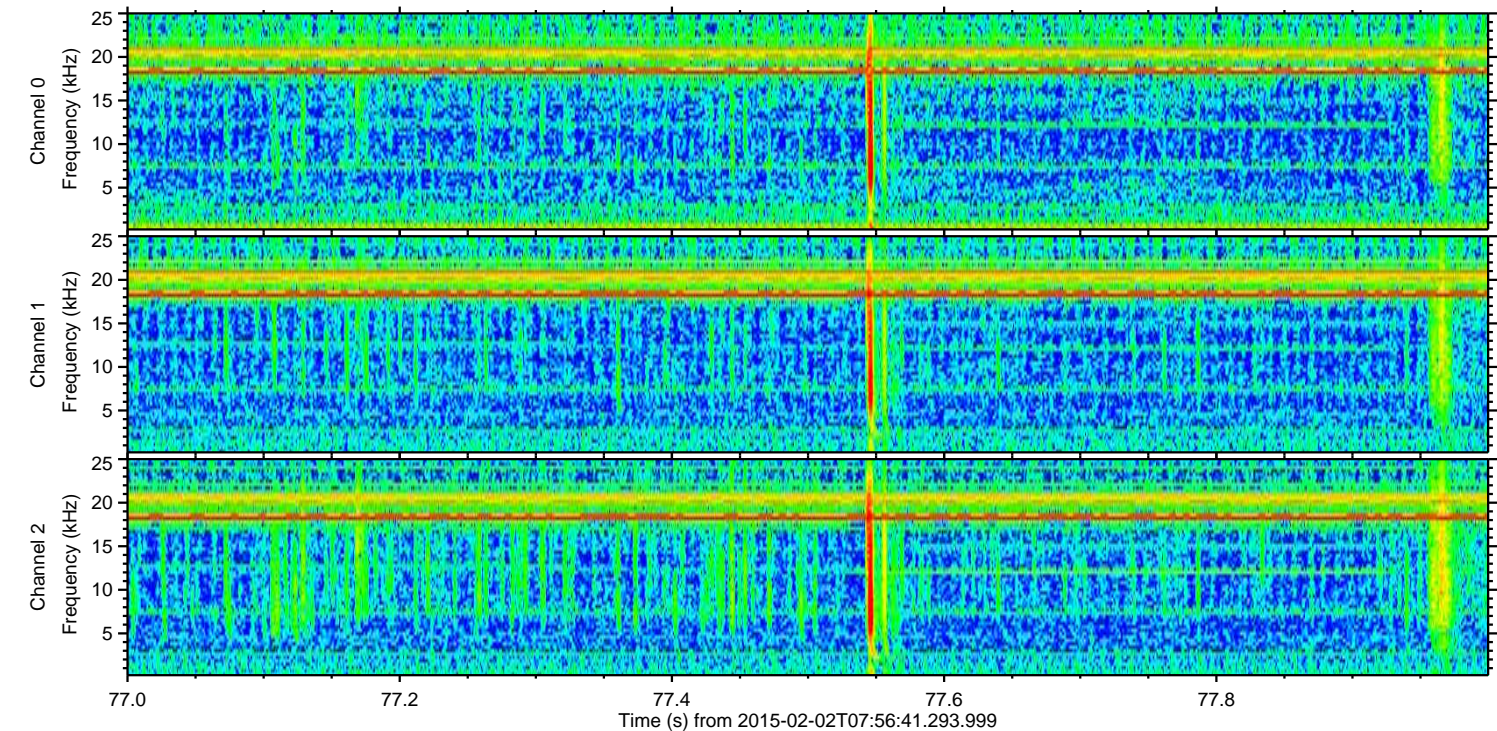
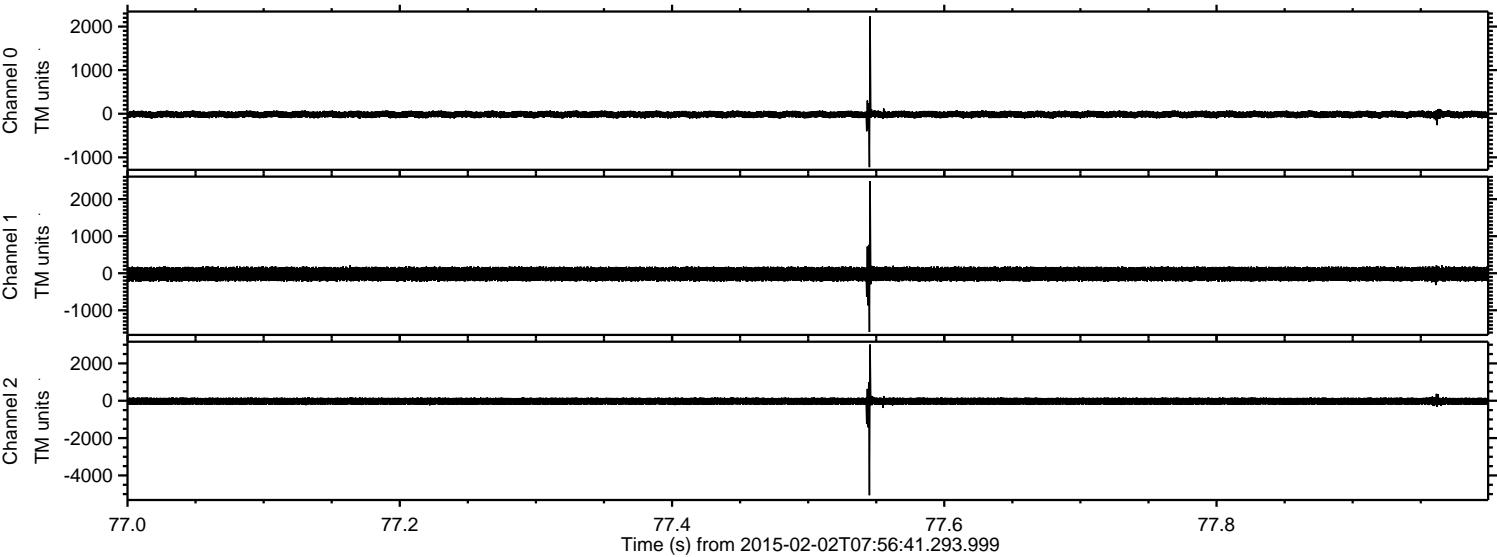


ELMAVAN 3D WAVEFORMS (Measured data sampled at 50 kHz) 49808 packets of 144 samples from 2015-02-02T07:56:41.293.999. Part 29/144

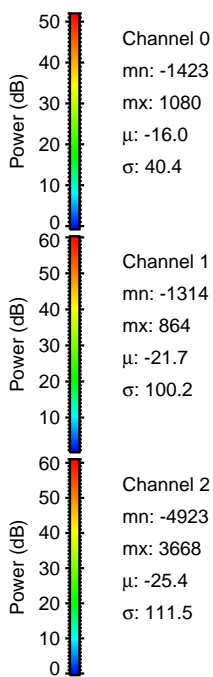
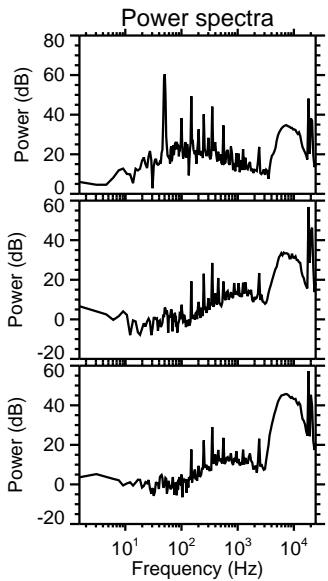
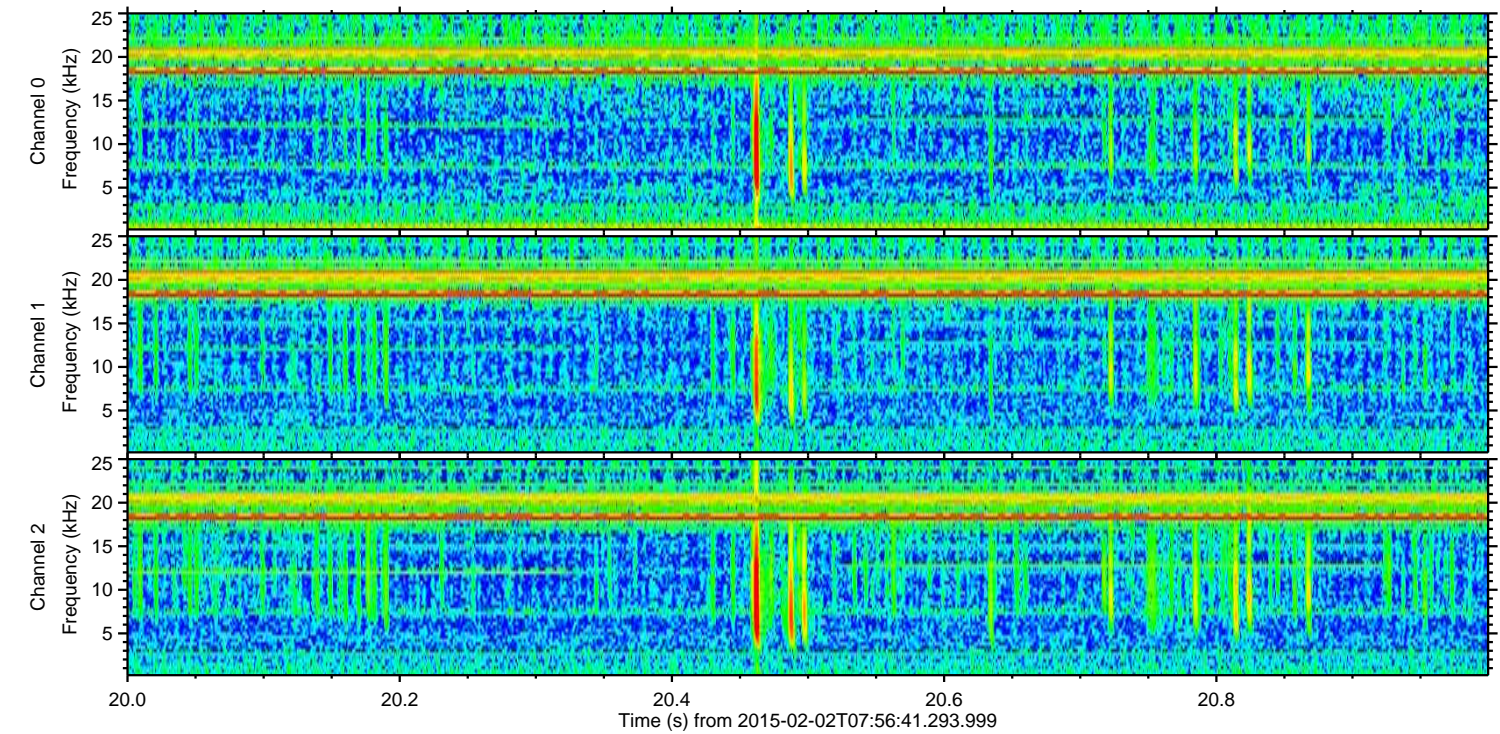
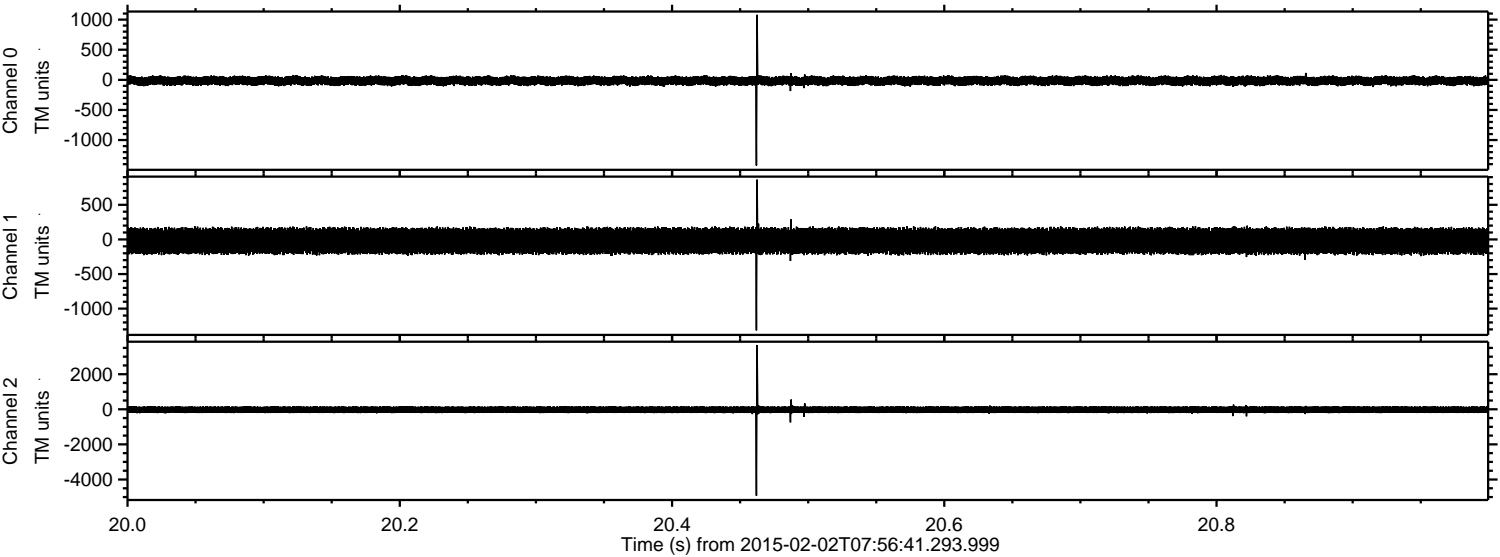
Processed Mon Feb 16 22:21:26 2015 by ELM ver.2012-10-06 from 001__elm20150202_075640__dat00.bin



Processed Mon Feb 16 22:21:27 2015 by ELM ver.2012-10-06 from 001__elm20150202_075640__dat00.bin



Processed Mon Feb 16 22:21:28 2015 by ELM ver.2012-10-06 from 001__elm20150202_075640__dat00.bin

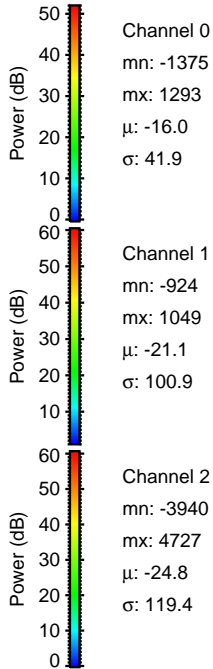
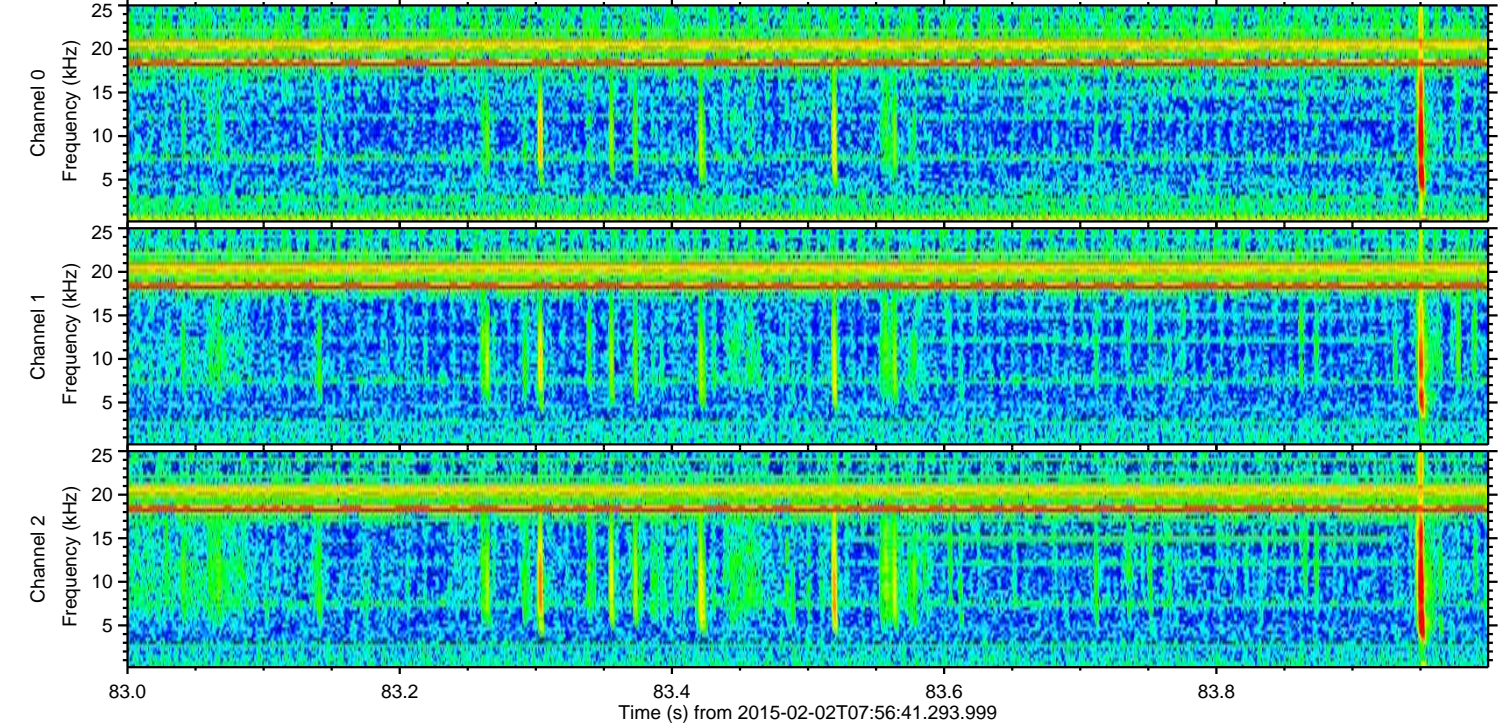
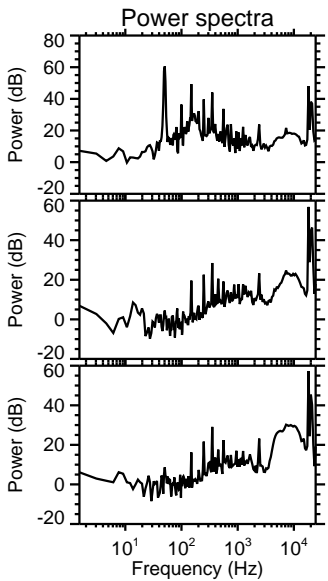
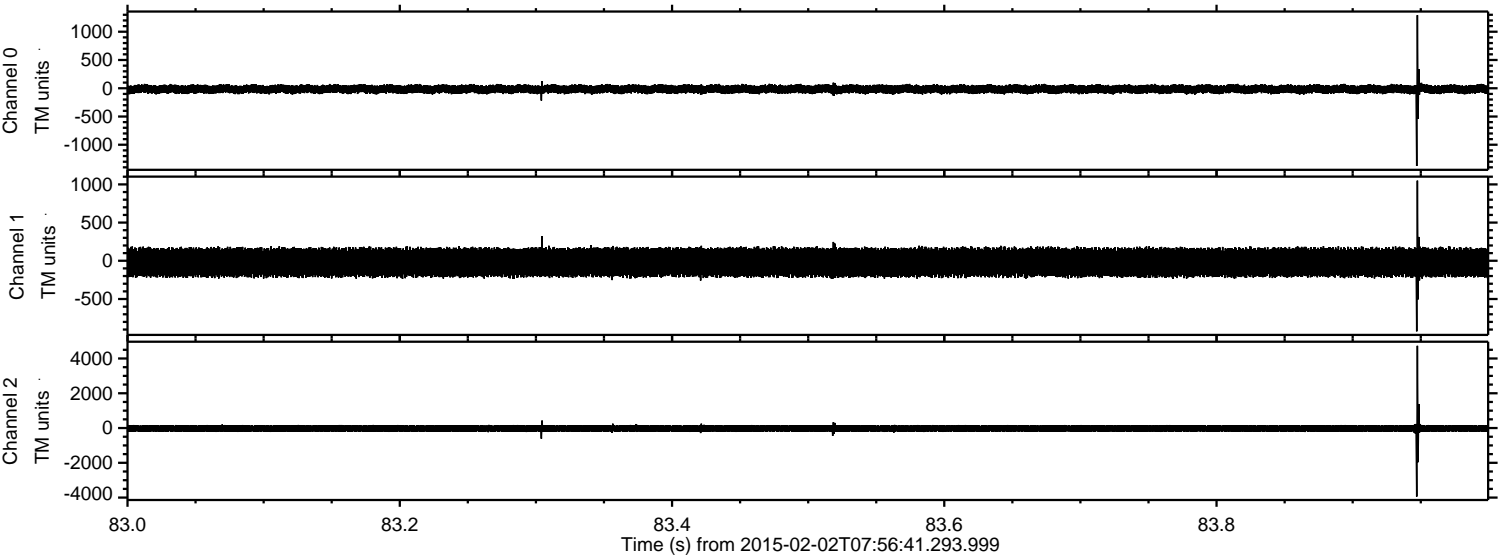


Channel 0
mn: -1423
mx: 1080
 μ : -16.0
 σ : 40.4

Channel 1
mn: -1314
mx: 864
 μ : -21.7
 σ : 100.2

Channel 2
mn: -4923
mx: 3668
 μ : -25.4
 σ : 111.5

Processed Mon Feb 16 22:21:29 2015 by ELM ver.2012-10-06 from 001__elm20150202_075640__dat00.bin



Channel 0
mn: -1375
mx: 1293
 μ : -16.0
 σ : 41.9

Channel 1
mn: -924
mx: 1049
 μ : -21.1
 σ : 100.9

Channel 2
mn: -3940
mx: 4727
 μ : -24.8
 σ : 119.4

Processed Mon Feb 16 22:21:29 2015 by ELM ver.2012-10-06 from 001__elm20150202_075640__dat00.bin

