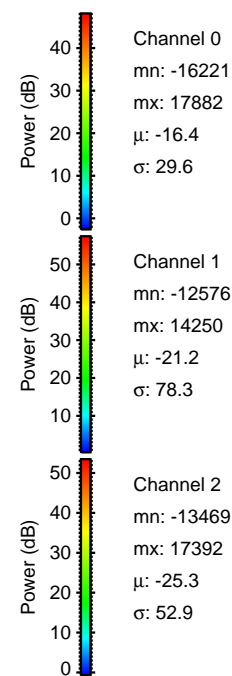
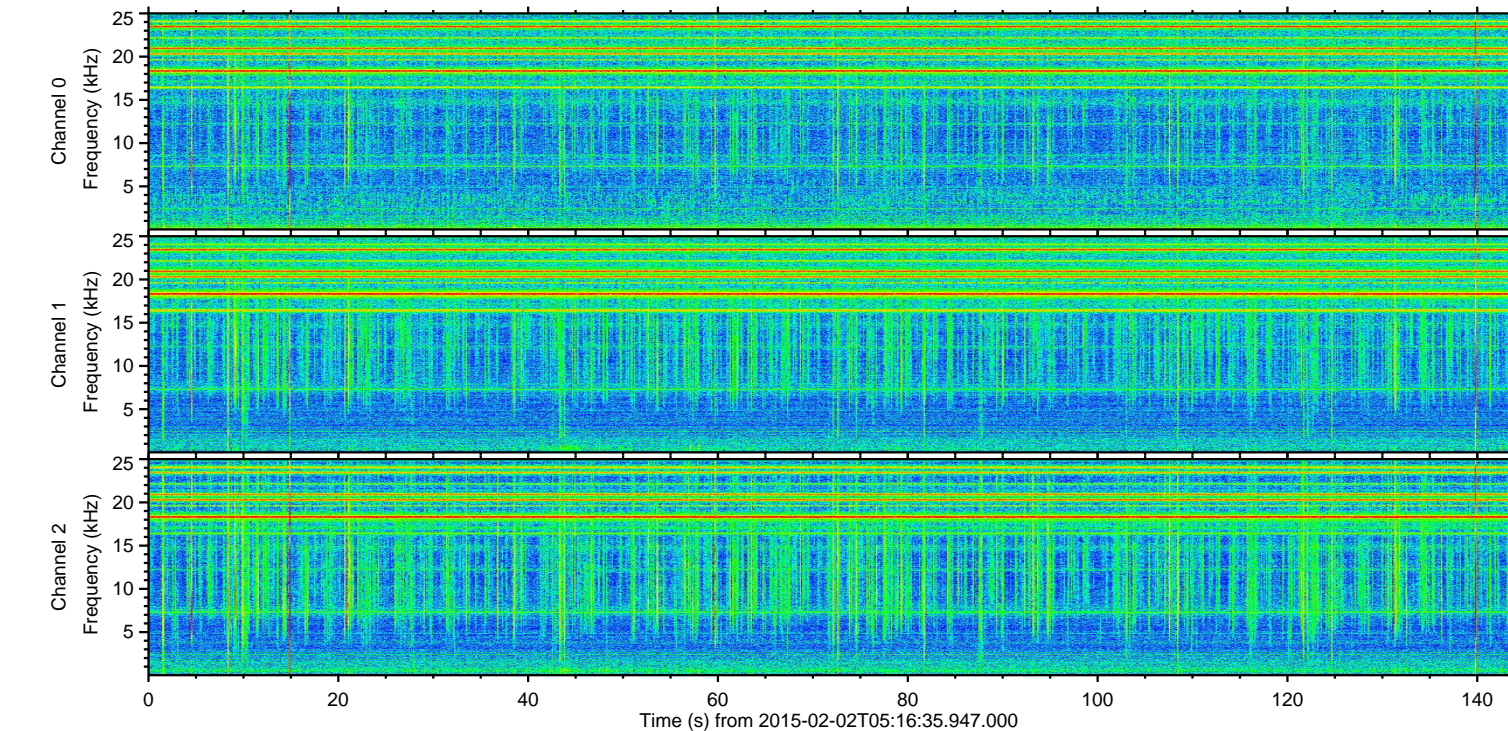
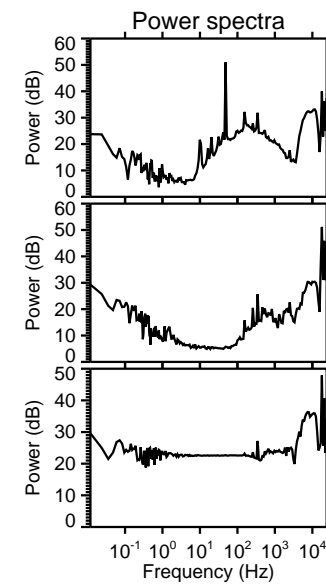
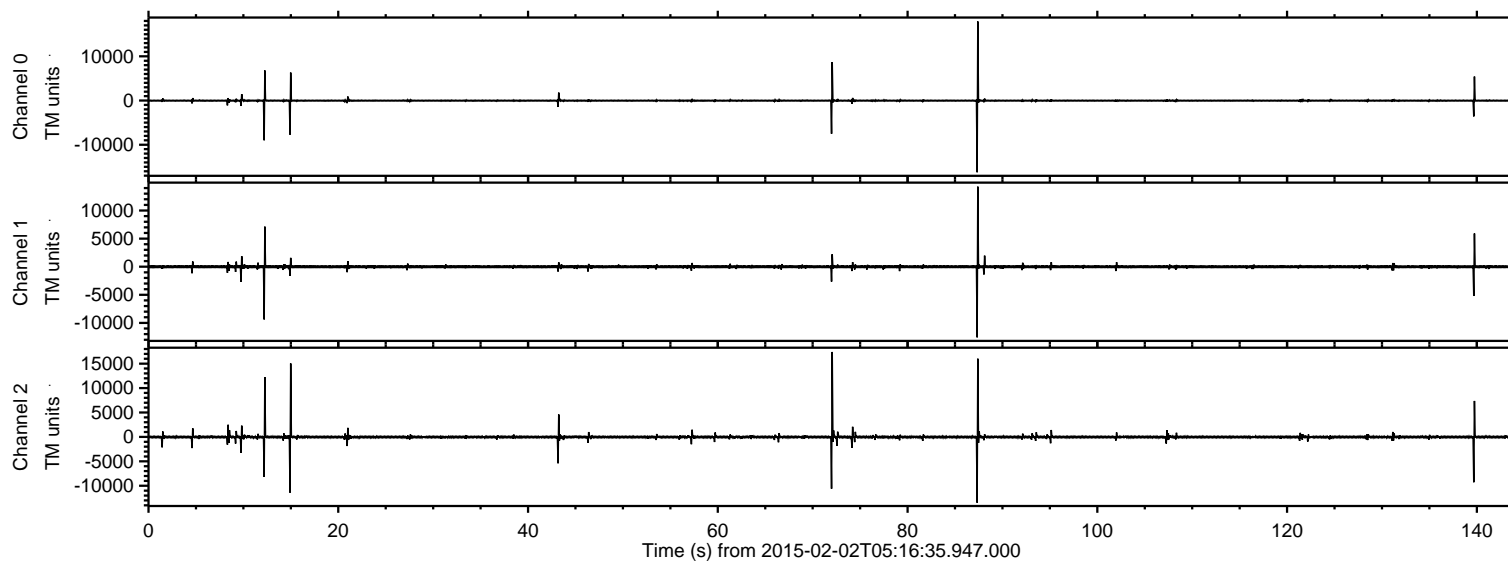
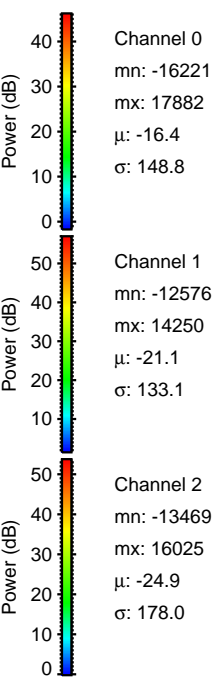
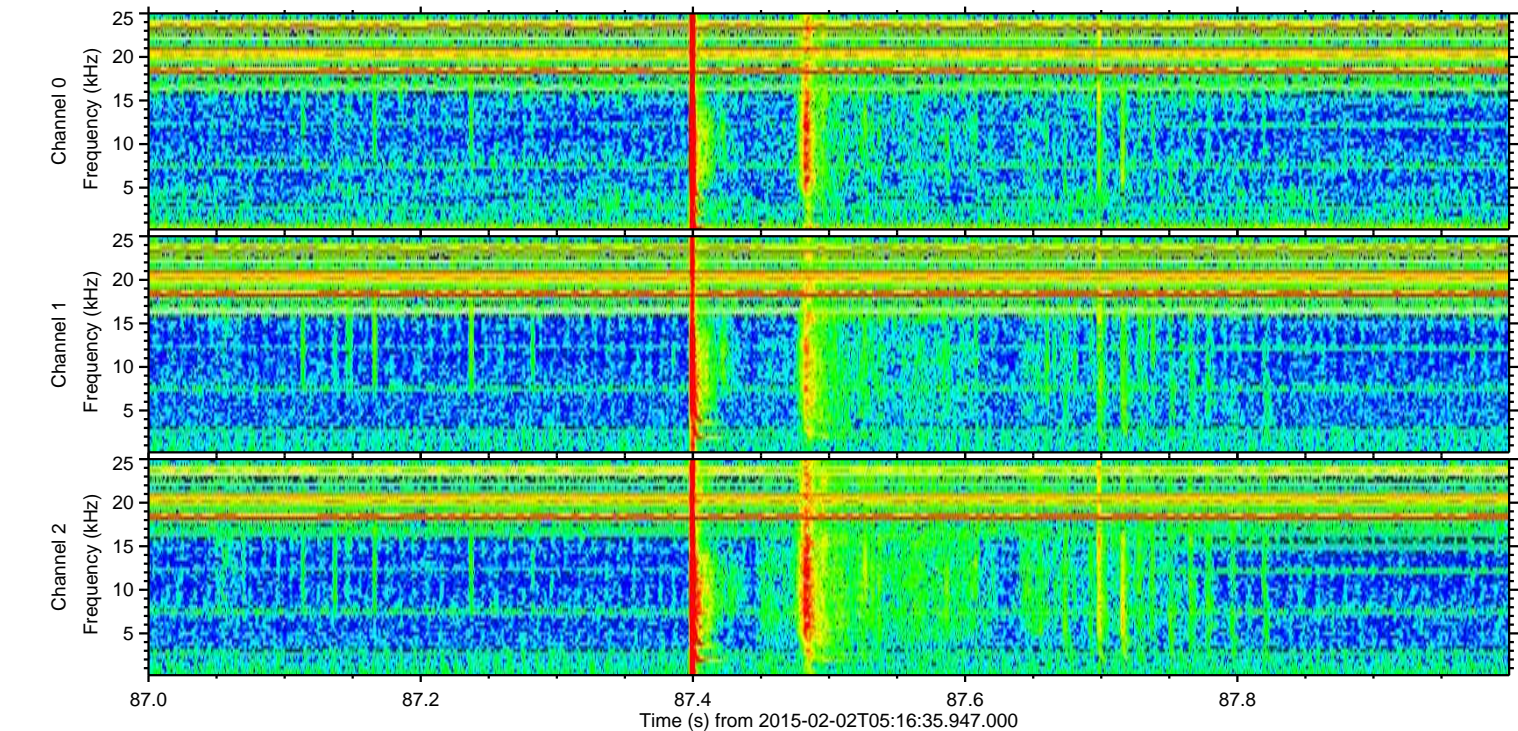
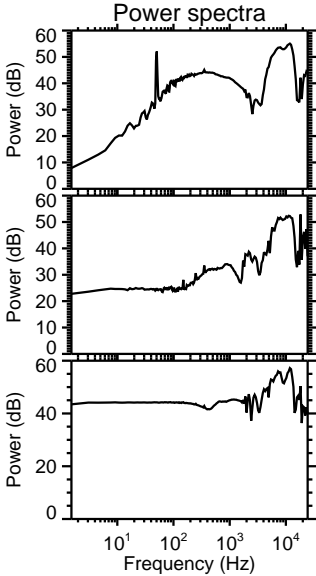
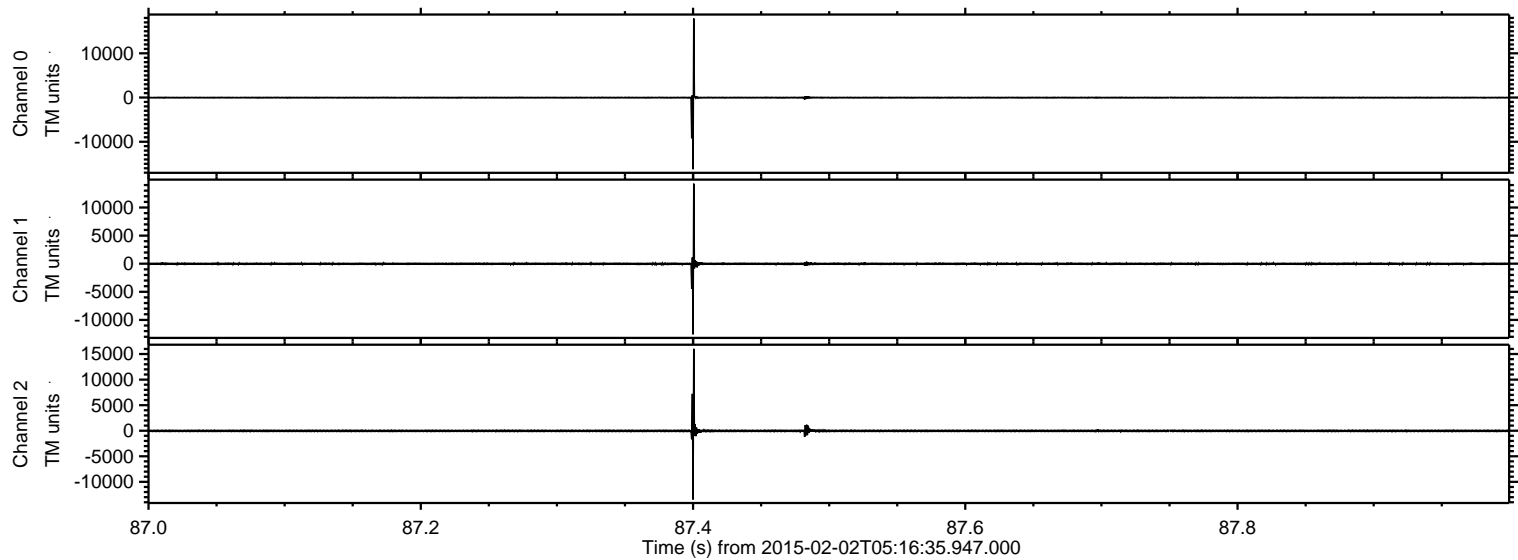


ELMAVAN 3D WAVEFORMS (Measured data sampled at 50 kHz) 49793 packets of 144 samples from 2015-02-02T05:16:35.947.000.

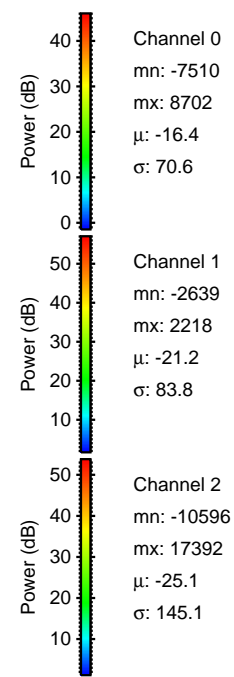
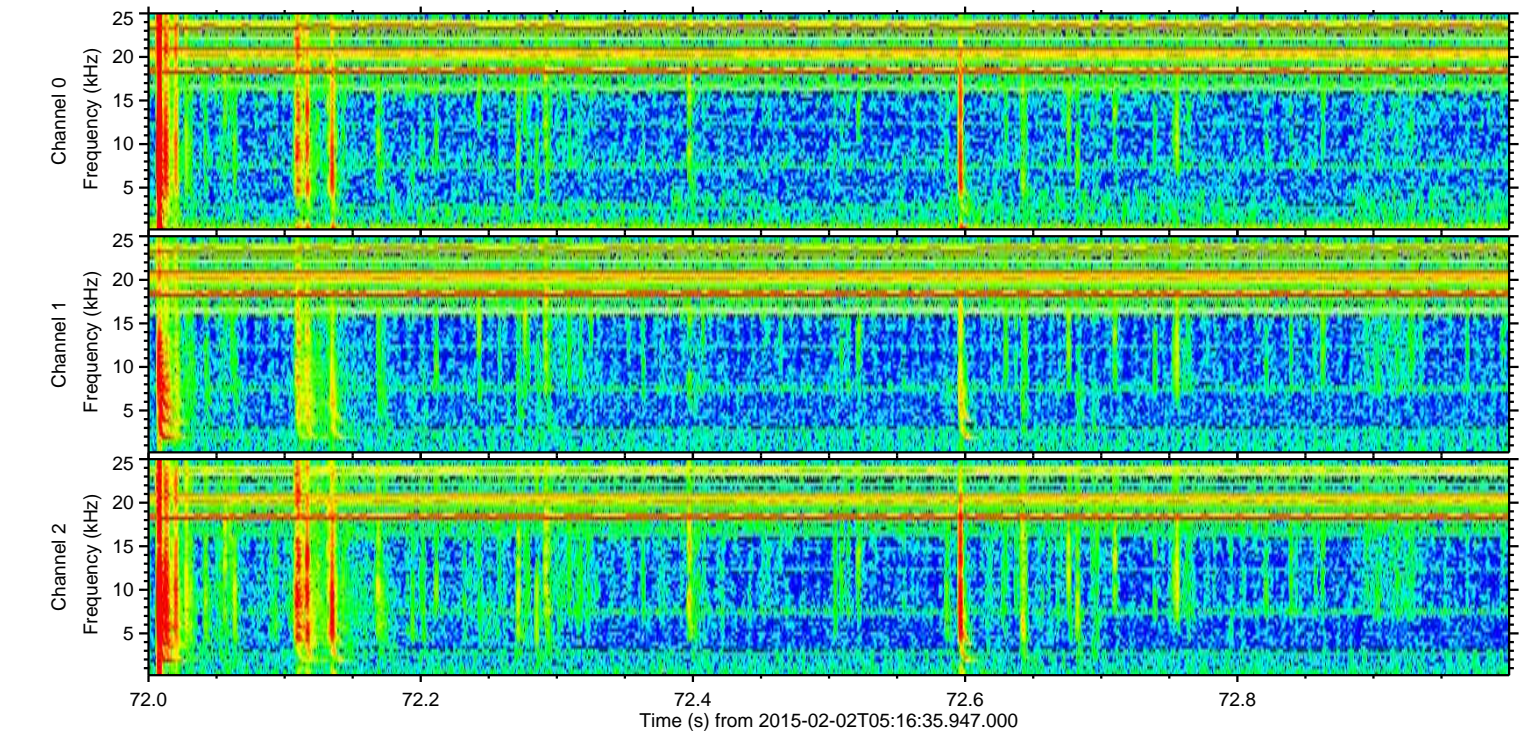
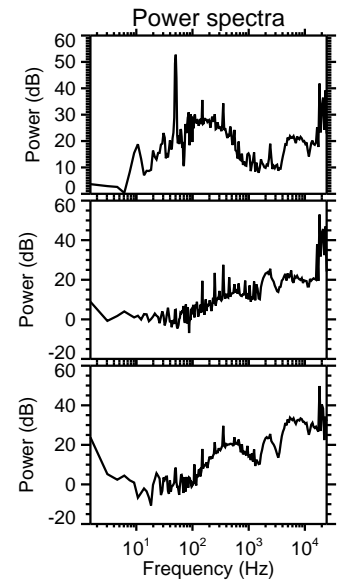
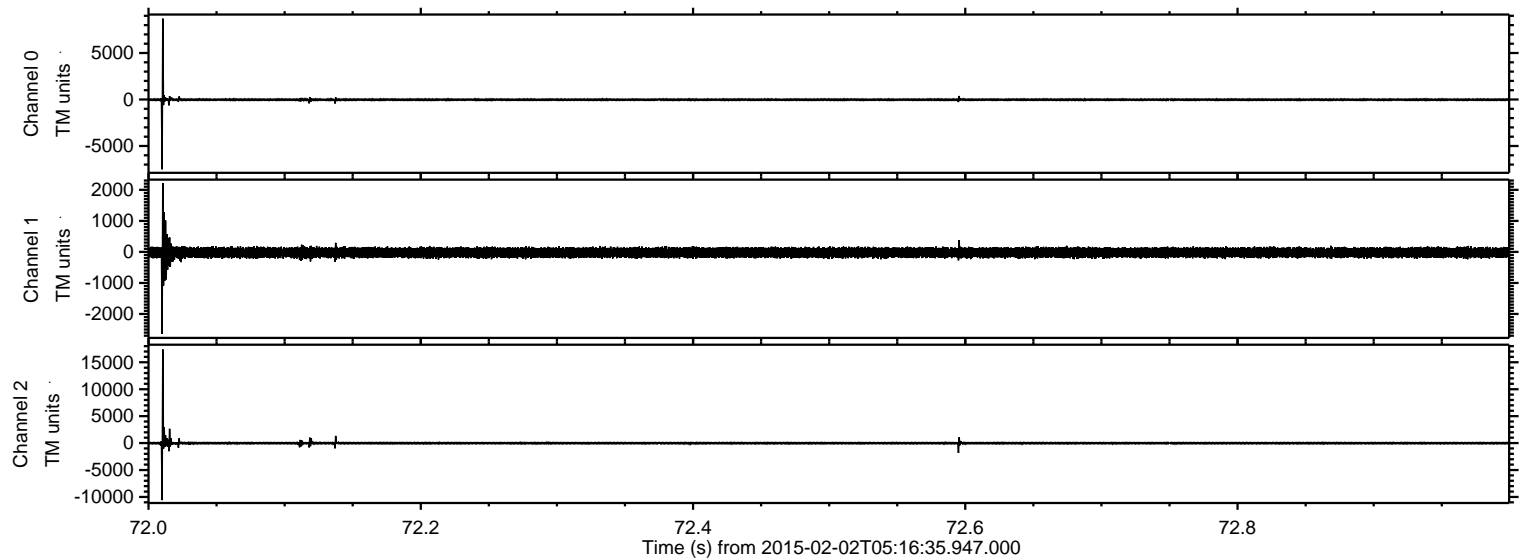
Processed Mon Feb 16 21:32:29 2015 by ELM ver.2012-10-06 from 001__elm20150202_051634__dat00.bin



Processed Mon Feb 16 21:32:40 2015 by ELM ver.2012-10-06 from 001__elm20150202_051634__dat00.bin

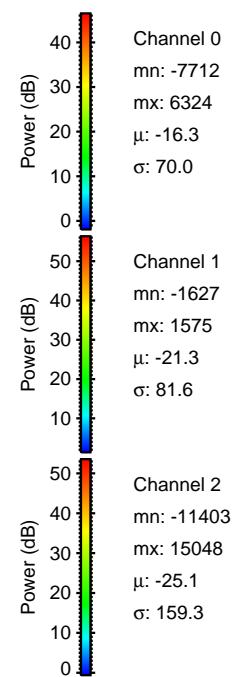
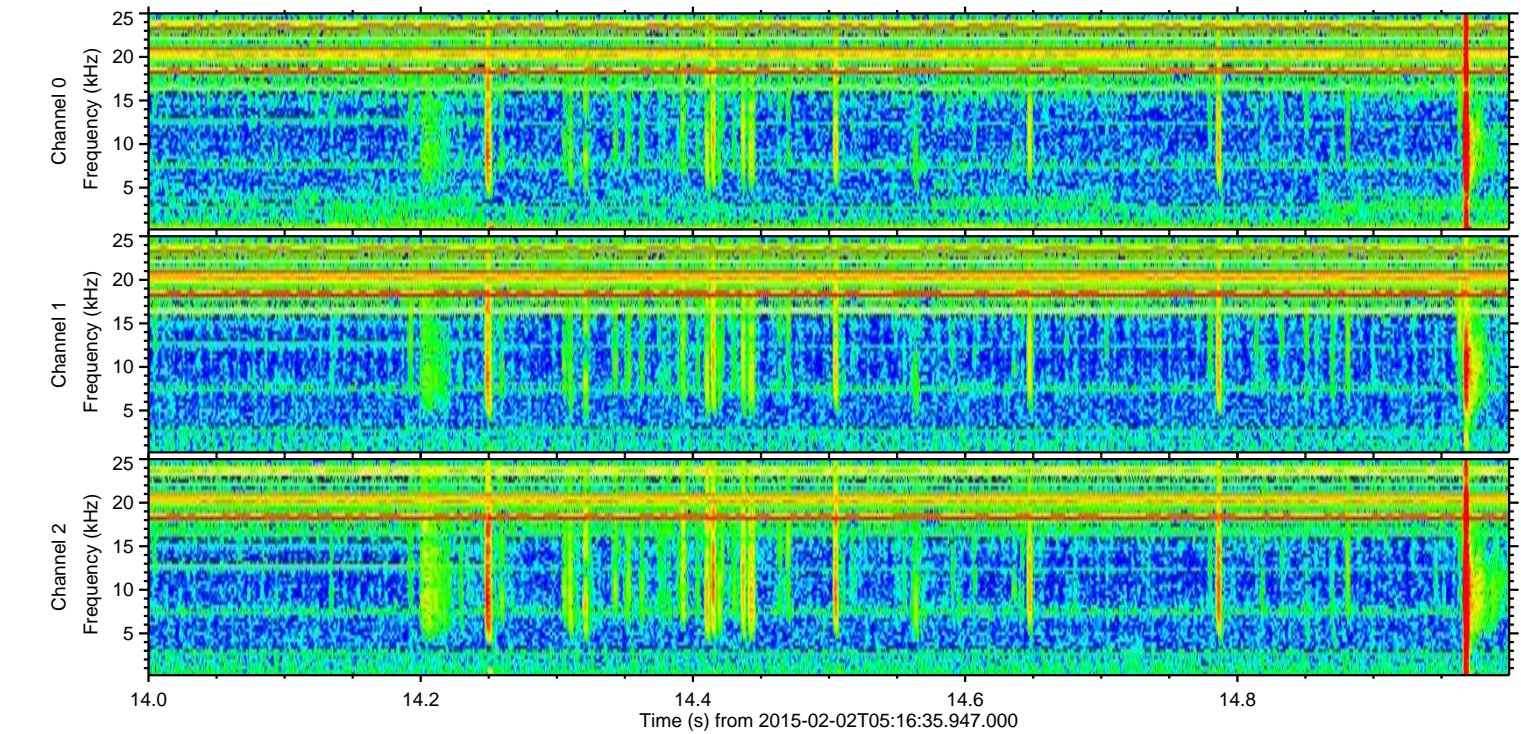
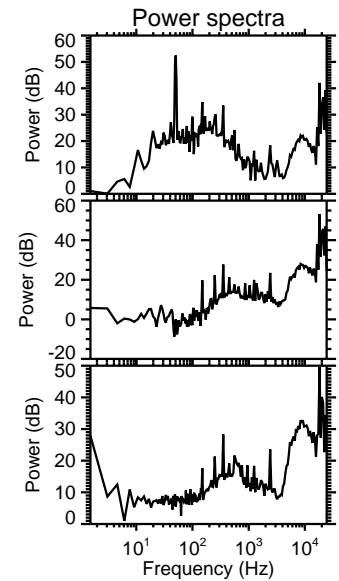
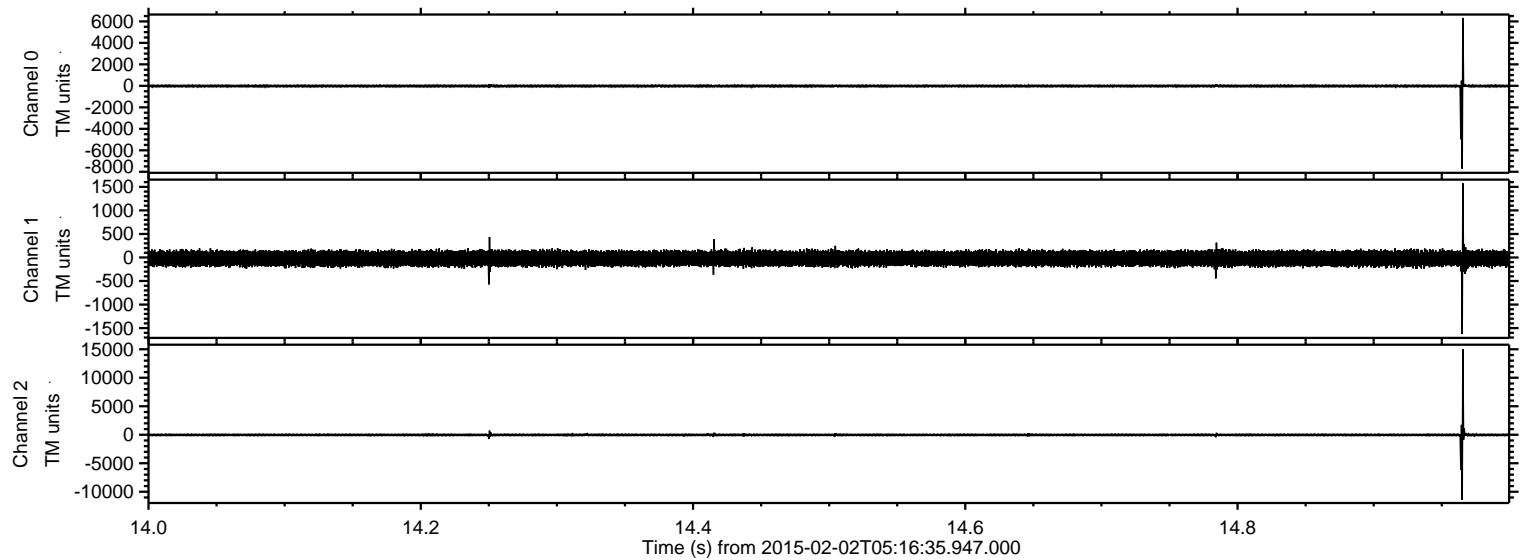


Processed Mon Feb 16 21:32:41 2015 by ELM ver.2012-10-06 from 001__elm20150202_051634__dat00.bin

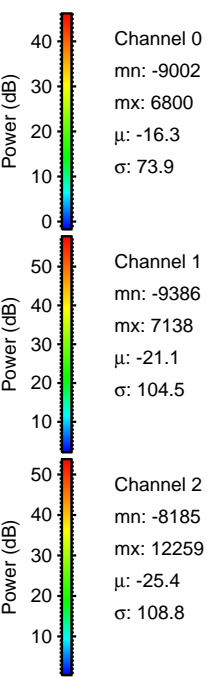
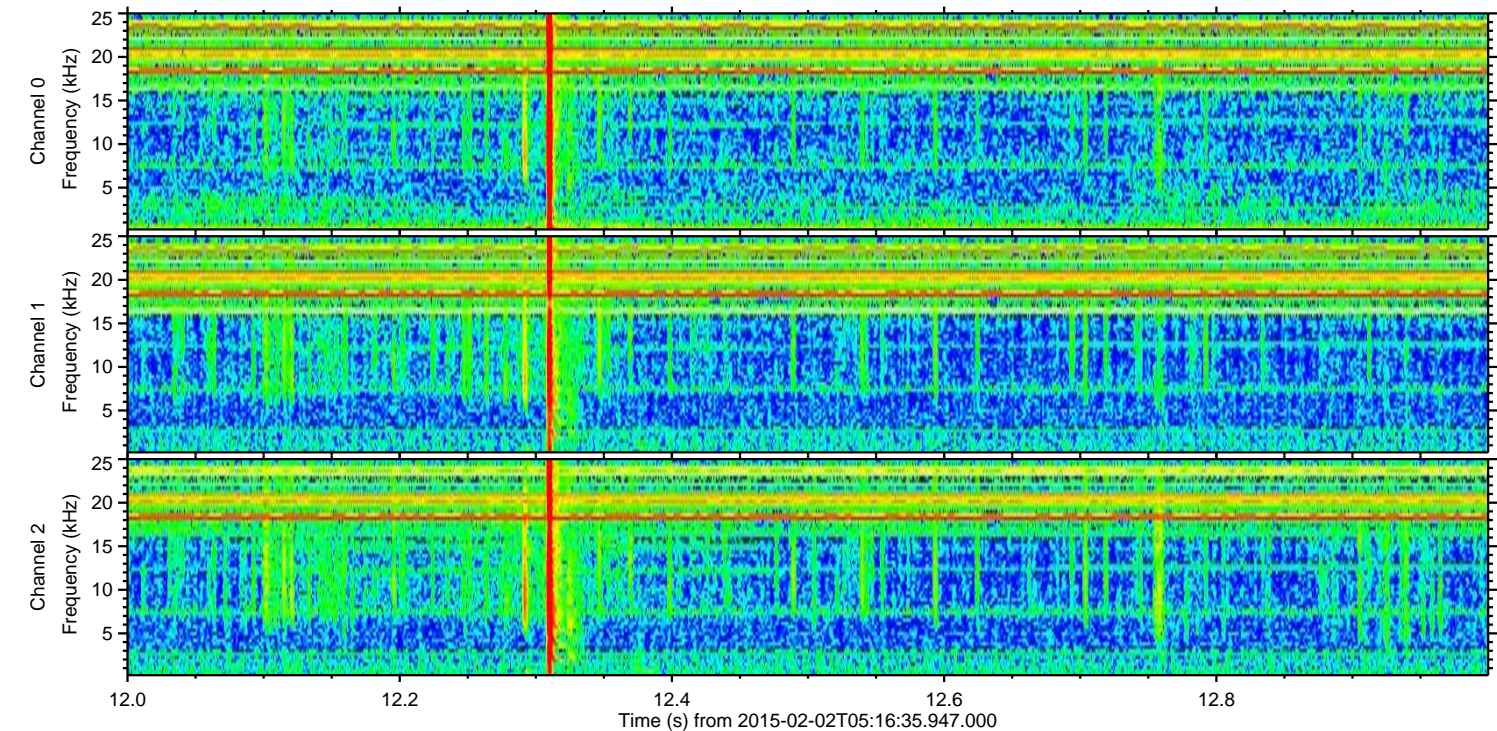
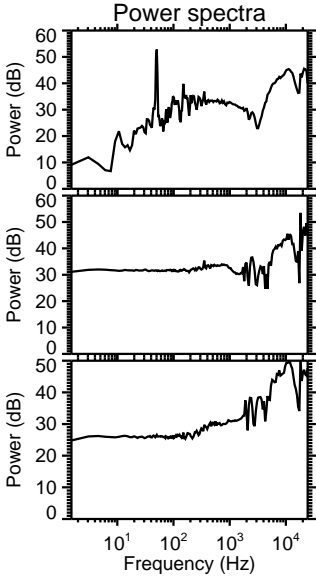
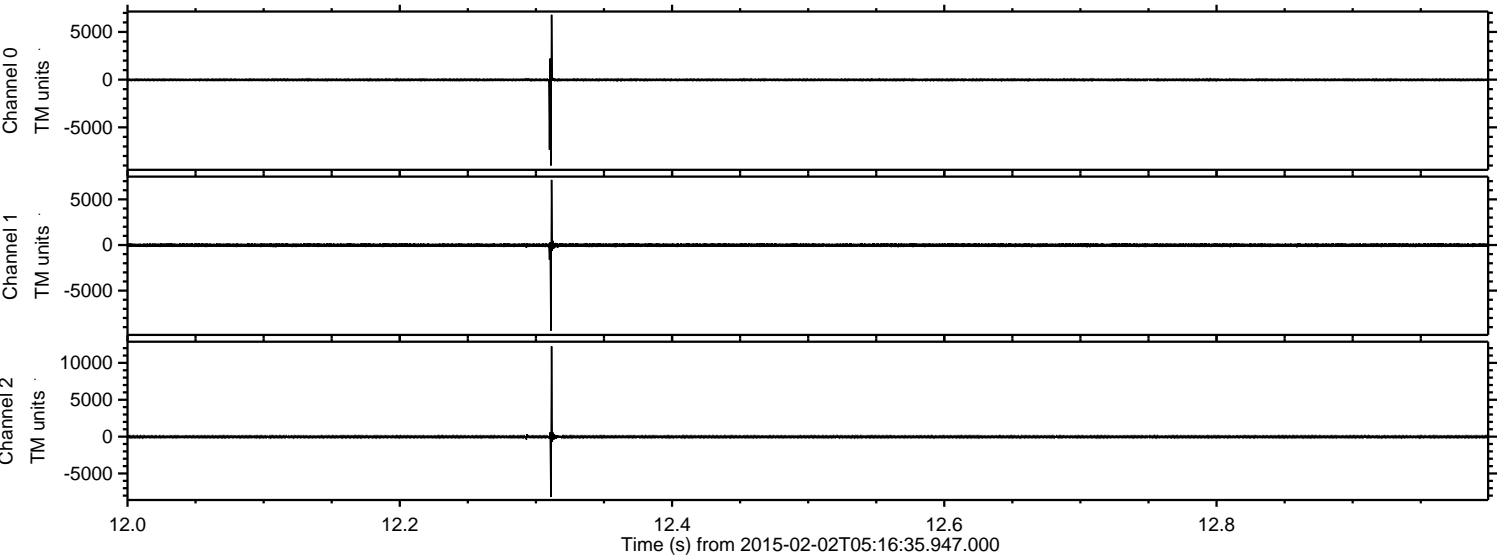


ELMAVAN 3D WAVEFORMS (Measured data sampled at 50 kHz) 49793 packets of 144 samples from 2015-02-02T05:16:35.947.000. Part 15/144

Processed Mon Feb 16 21:32:42 2015 by ELM ver.2012-10-06 from 001__elm20150202_051634__dat00.bin

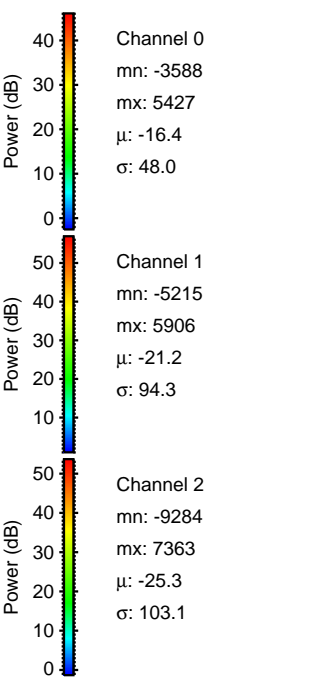
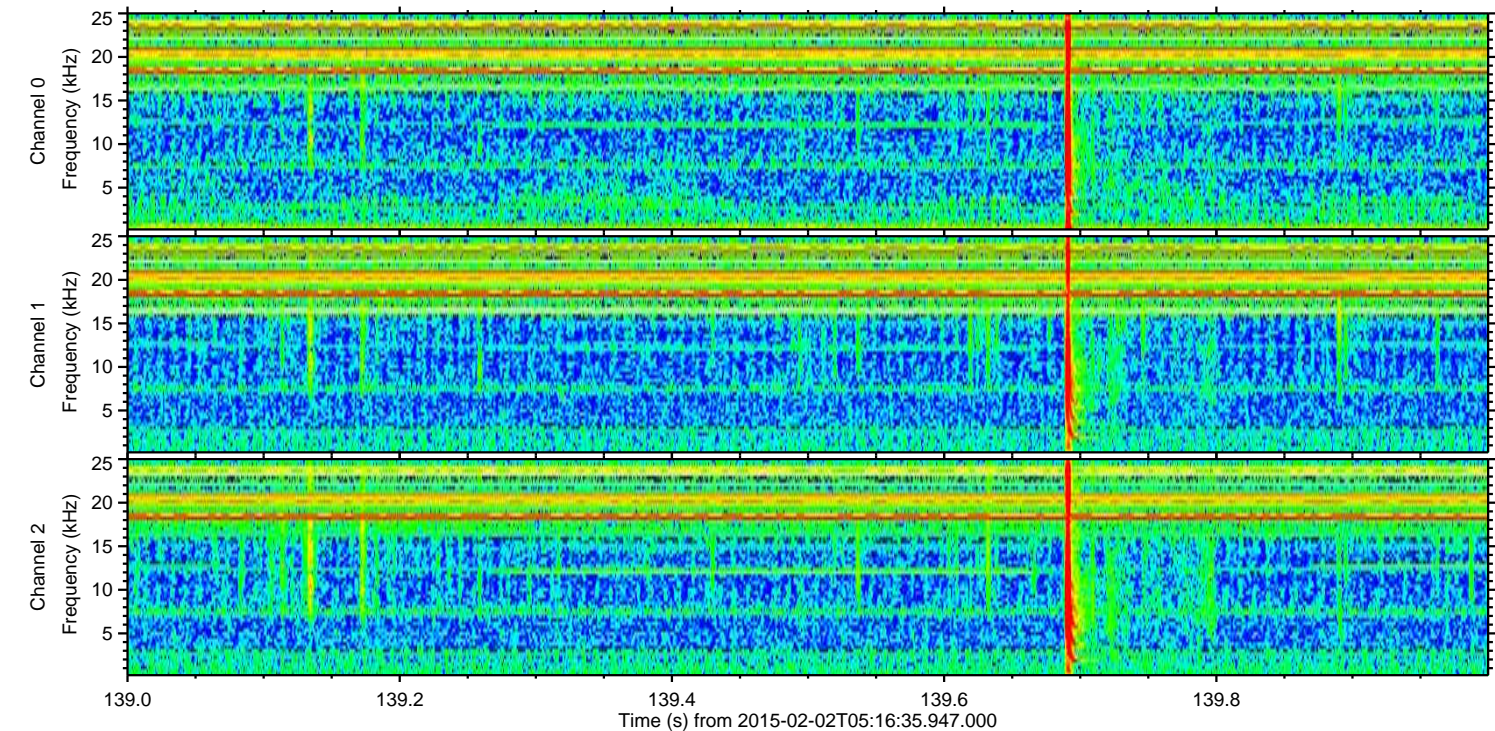
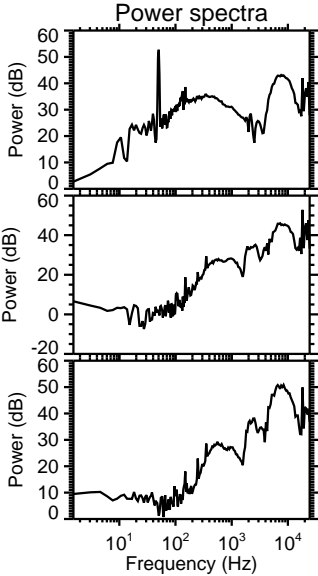
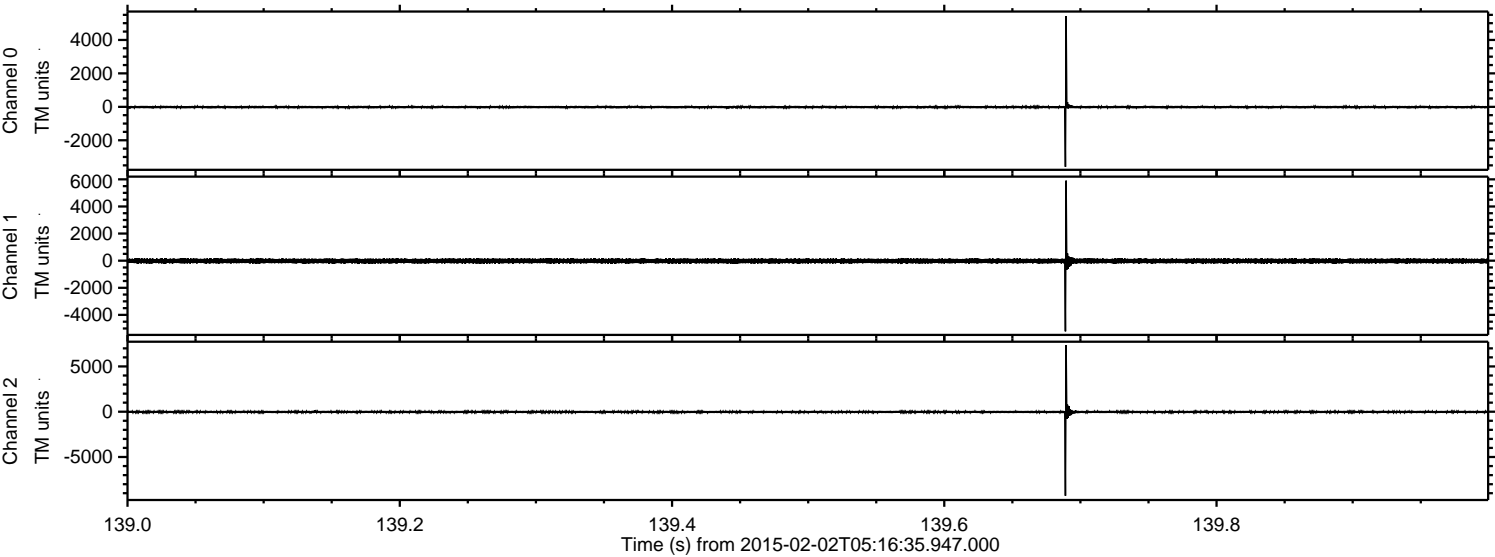


Processed Mon Feb 16 21:32:43 2015 by ELM ver.2012-10-06 from 001__elm20150202_051634__dat00.bin

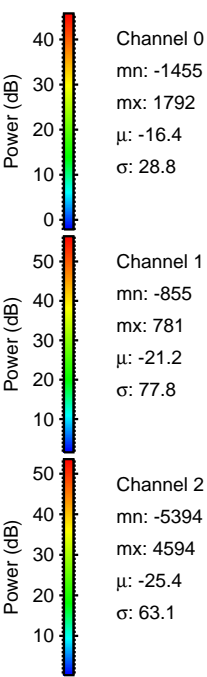
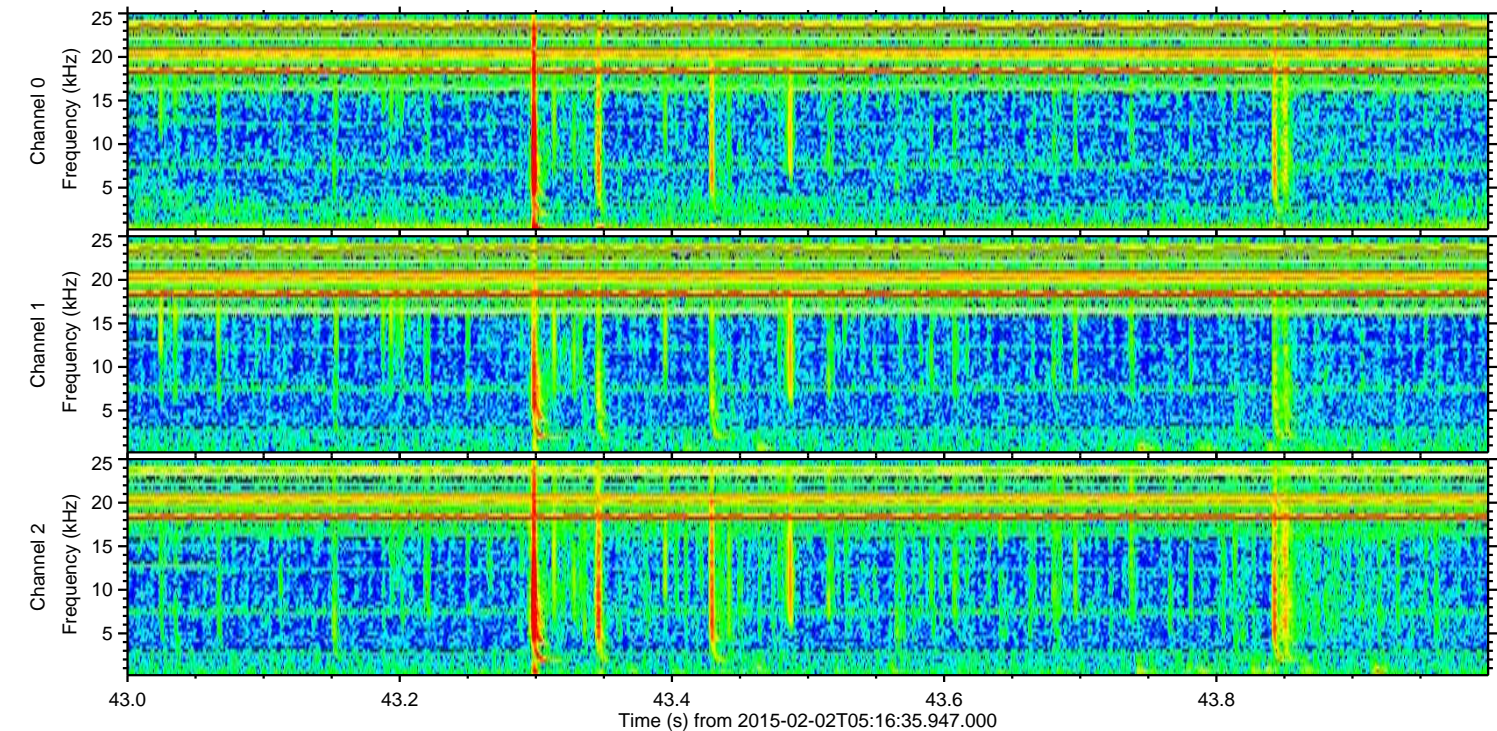
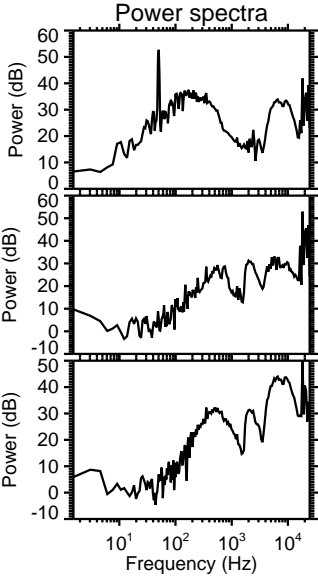
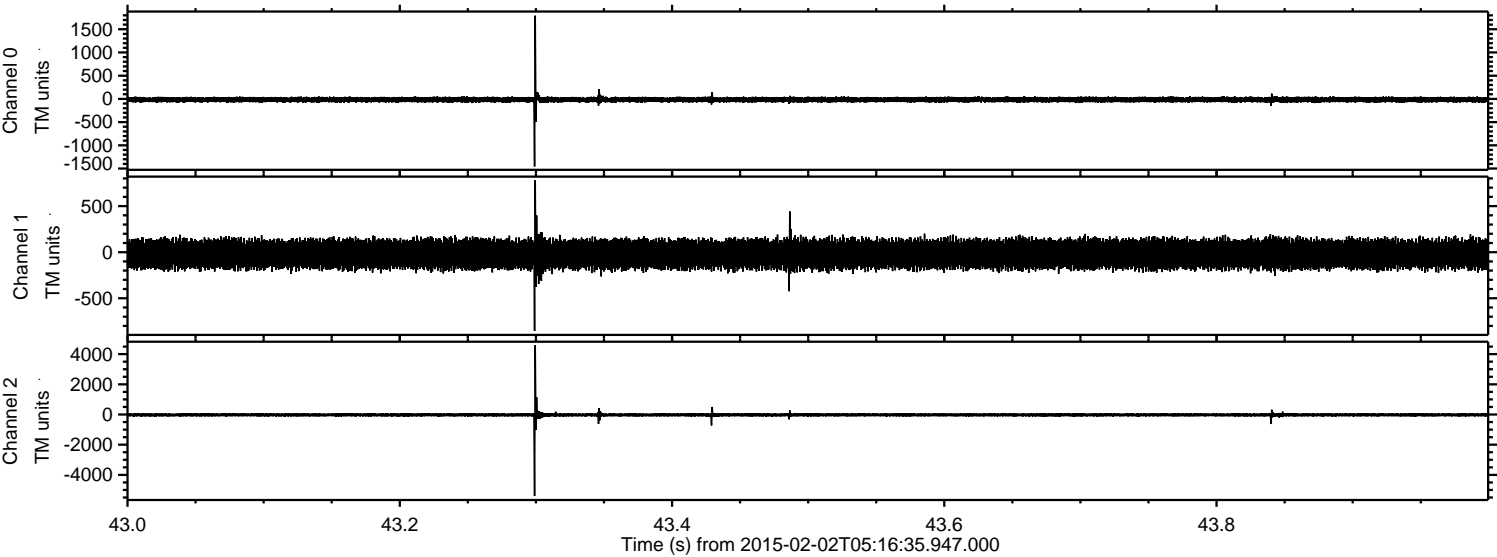


ELMAVAN 3D WAVEFORMS (Measured data sampled at 50 kHz) 49793 packets of 144 samples from 2015-02-02T05:16:35.947.000. Part 140/144

Processed Mon Feb 16 21:32:44 2015 by ELM ver.2012-10-06 from 001__elm20150202_051634__dat00.bin

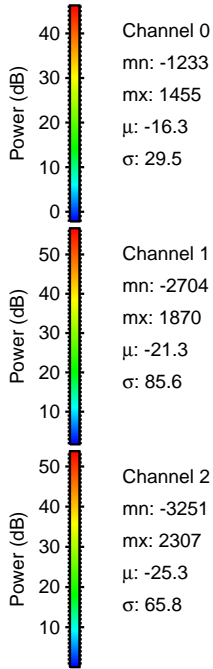
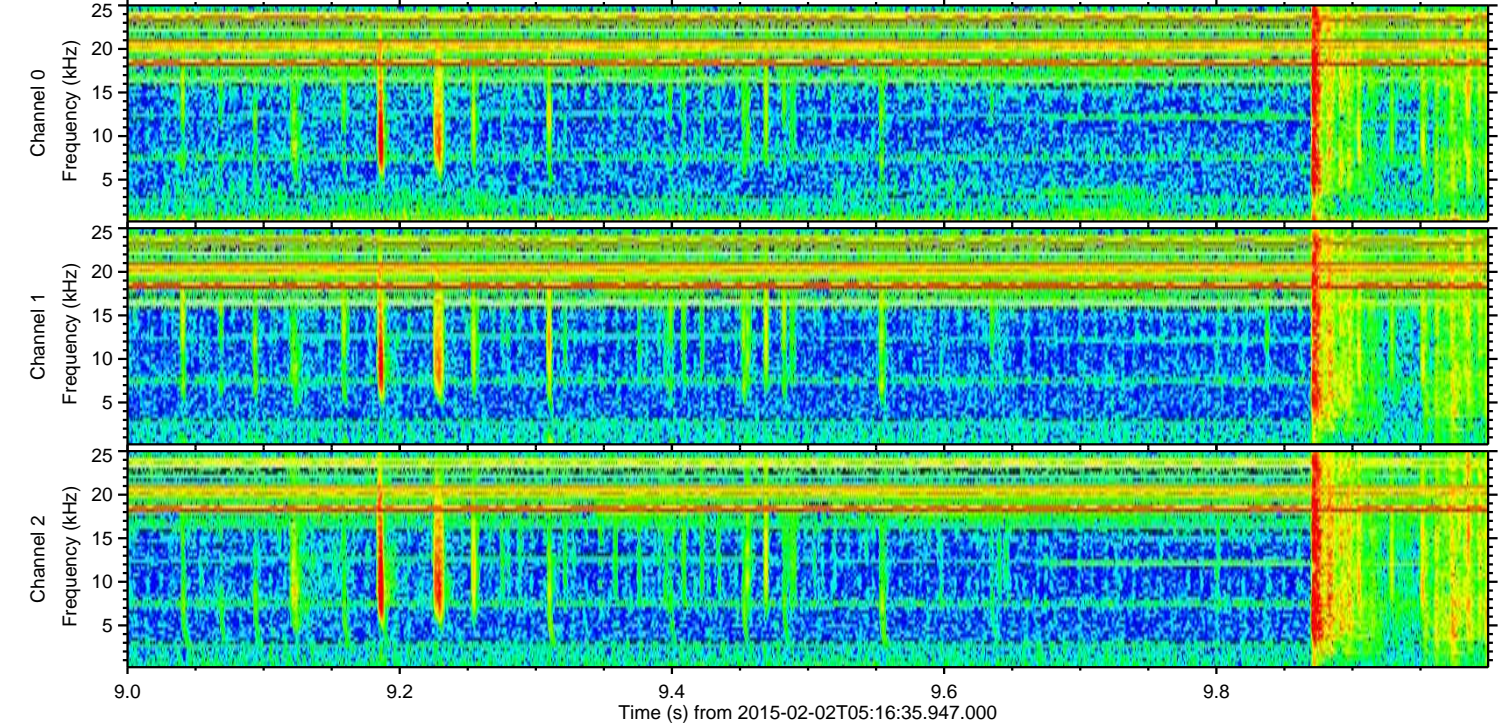
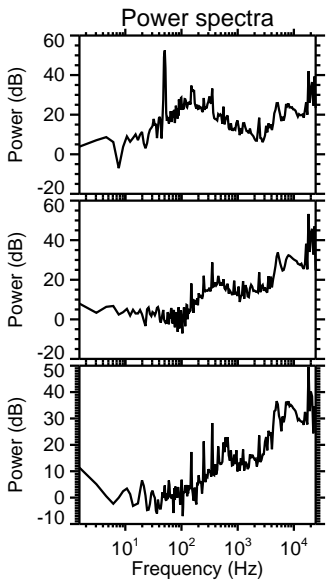
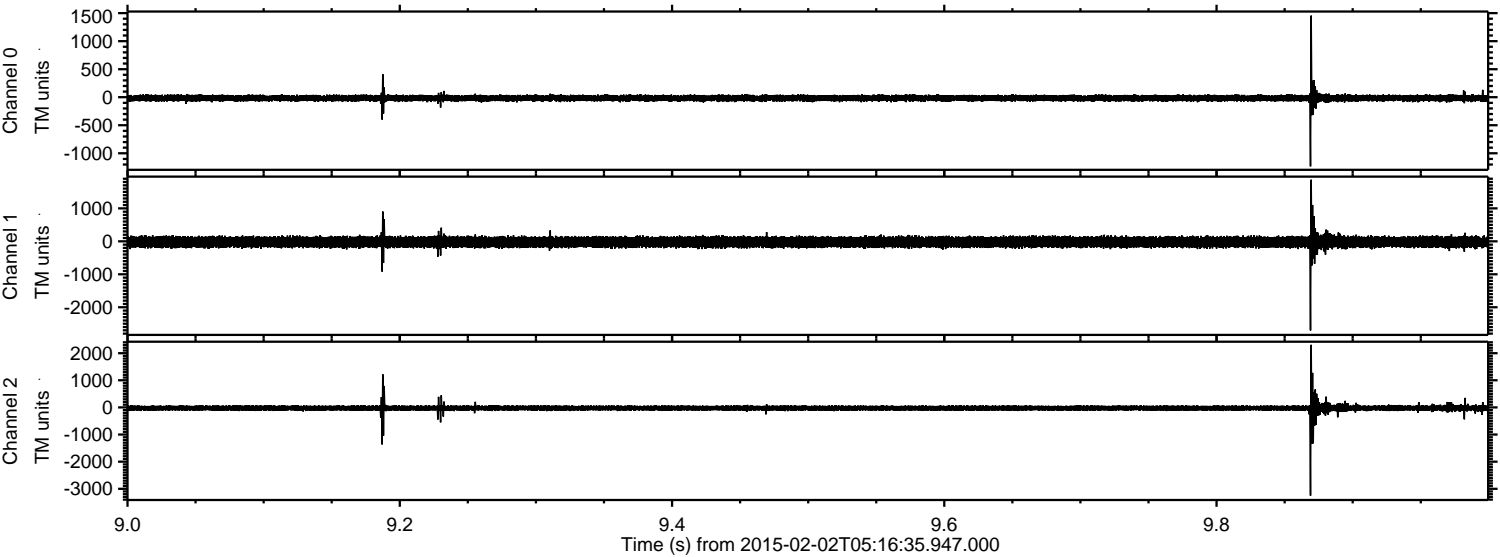


Processed Mon Feb 16 21:32:45 2015 by ELM ver.2012-10-06 from 001__elm20150202_051634__dat00.bin

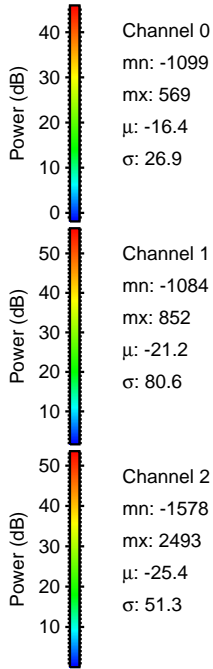
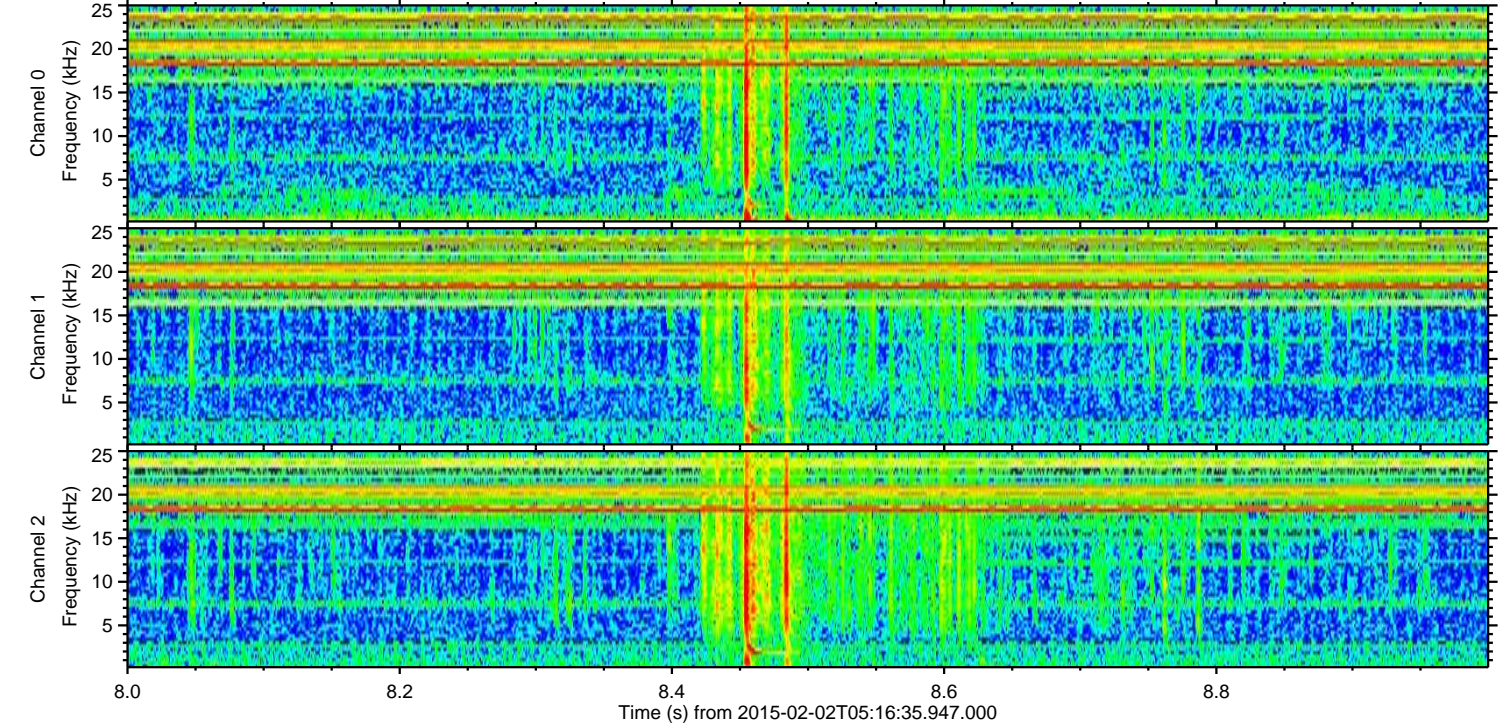
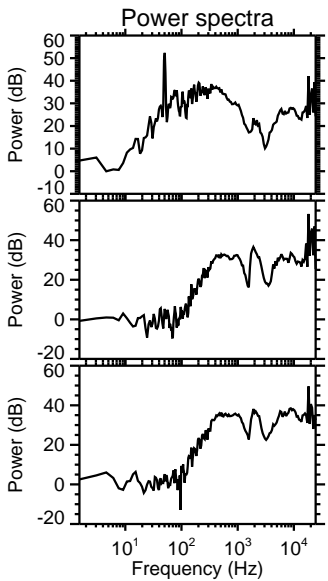
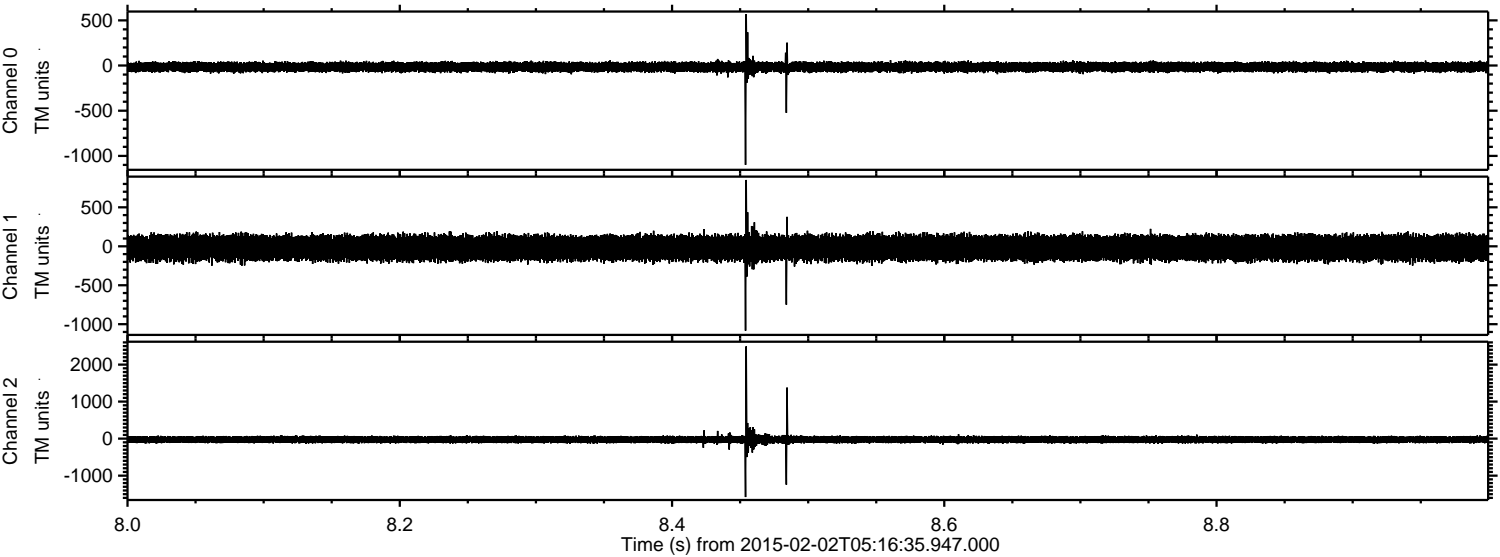


ELMAVAN 3D WAVEFORMS (Measured data sampled at 50 kHz) 49793 packets of 144 samples from 2015-02-02T05:16:35.947.000. Part 10/144

Processed Mon Feb 16 21:32:46 2015 by ELM ver.2012-10-06 from 001__elm20150202_051634__dat00.bin



Processed Mon Feb 16 21:32:47 2015 by ELM ver.2012-10-06 from 001__elm20150202_051634__dat00.bin

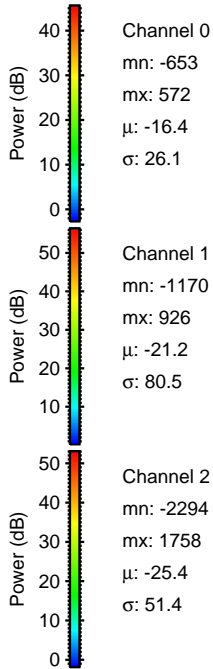
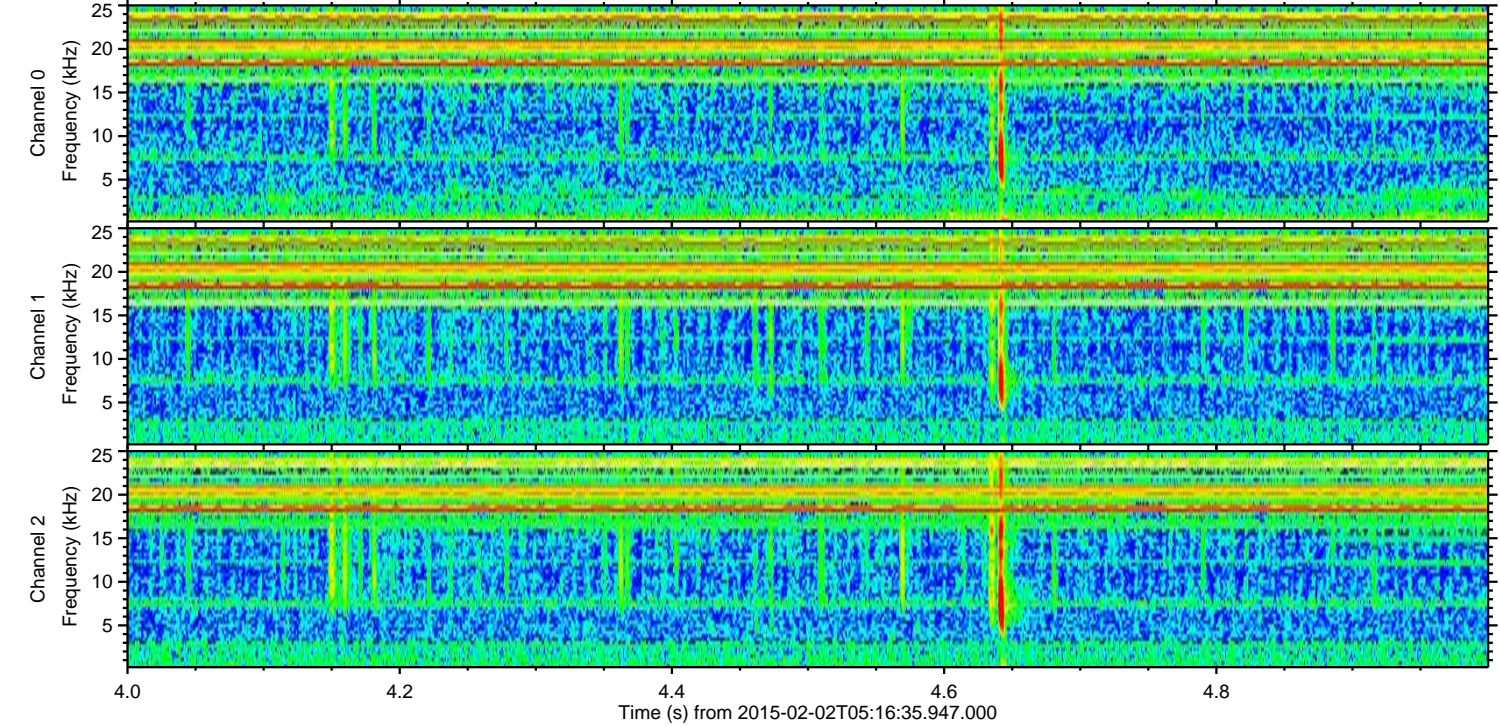
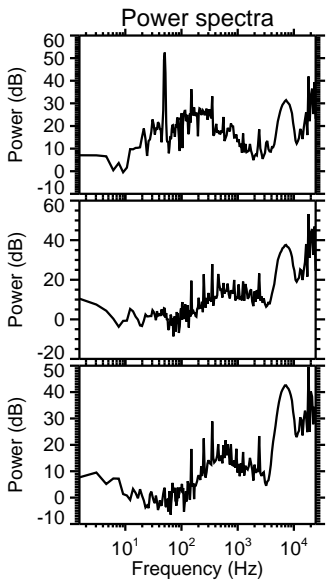
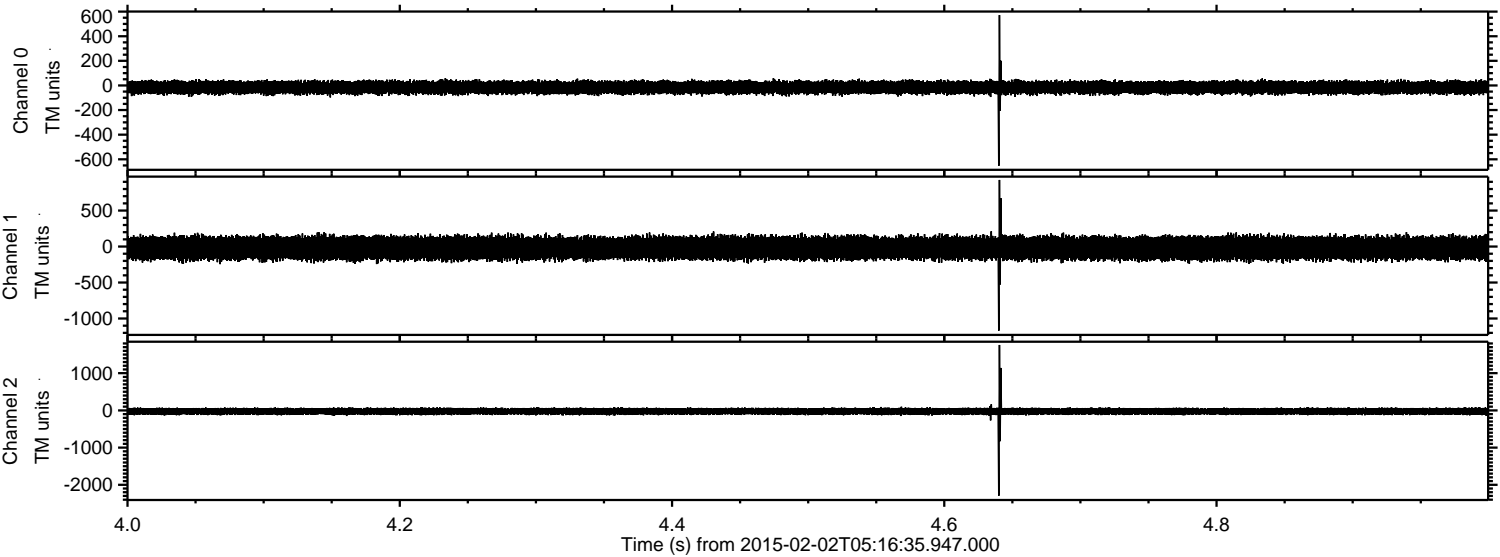


Channel 0
mn: -1099
mx: 569
 μ : -16.4
 σ : 26.9

Channel 1
mn: -1084
mx: 852
 μ : -21.2
 σ : 80.6

Channel 2
mn: -1578
mx: 2493
 μ : -25.4
 σ : 51.3

Processed Mon Feb 16 21:32:48 2015 by ELM ver.2012-10-06 from 001__elm20150202_051634__dat00.bin



Channel 0
mn: -653
mx: 572
 μ : -16.4
 σ : 26.1

Channel 1
mn: -1170
mx: 926
 μ : -21.2
 σ : 80.5

Channel 2
mn: -2294
mx: 1758
 μ : -25.4
 σ : 51.4

Processed Mon Feb 16 21:32:49 2015 by ELM ver.2012-10-06 from 001__elm20150202_051634__dat00.bin

