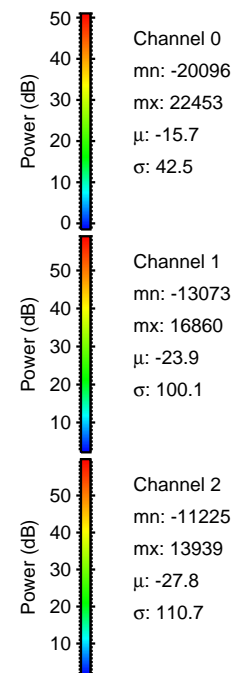
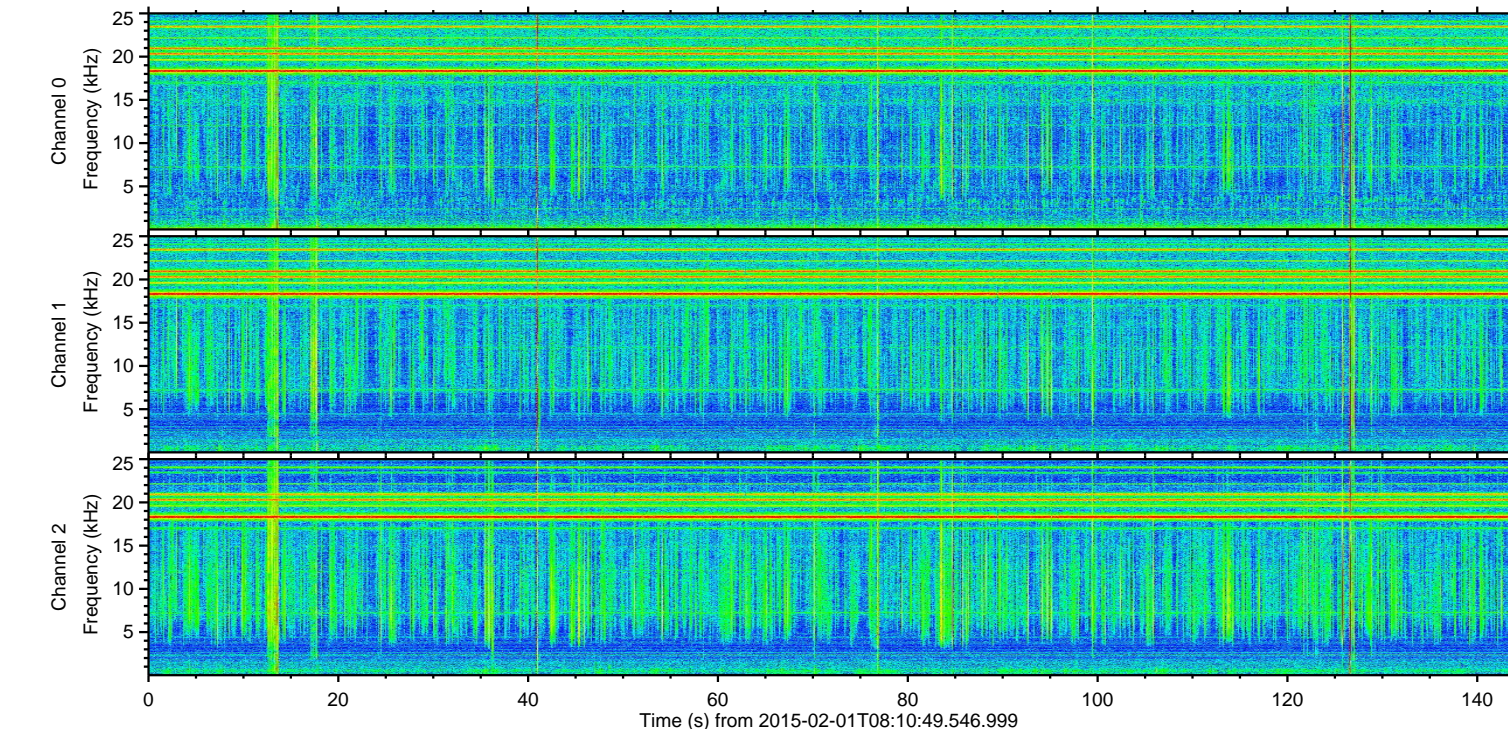
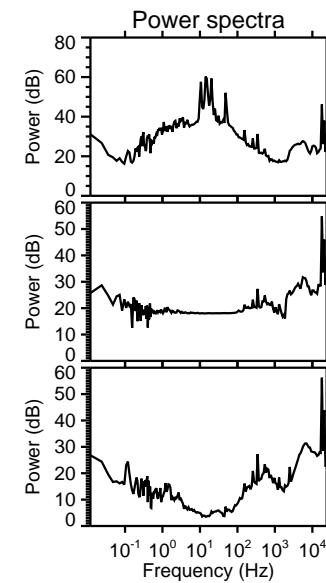
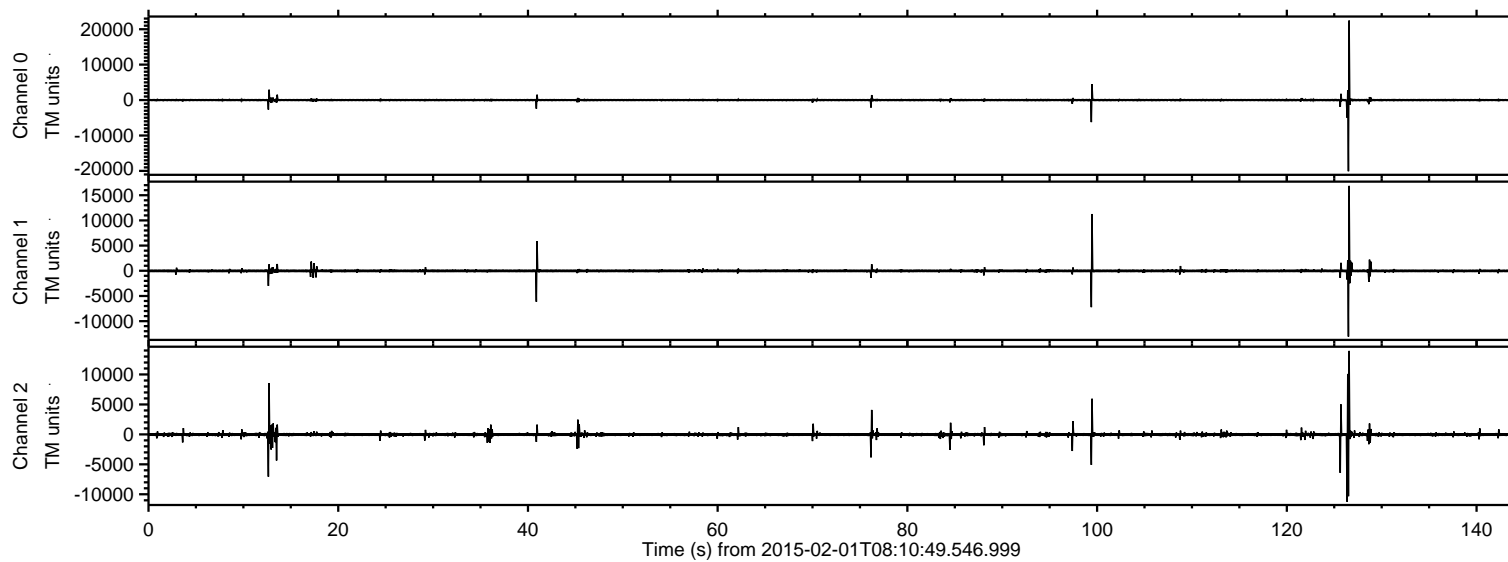


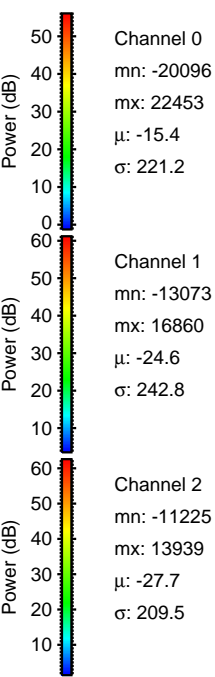
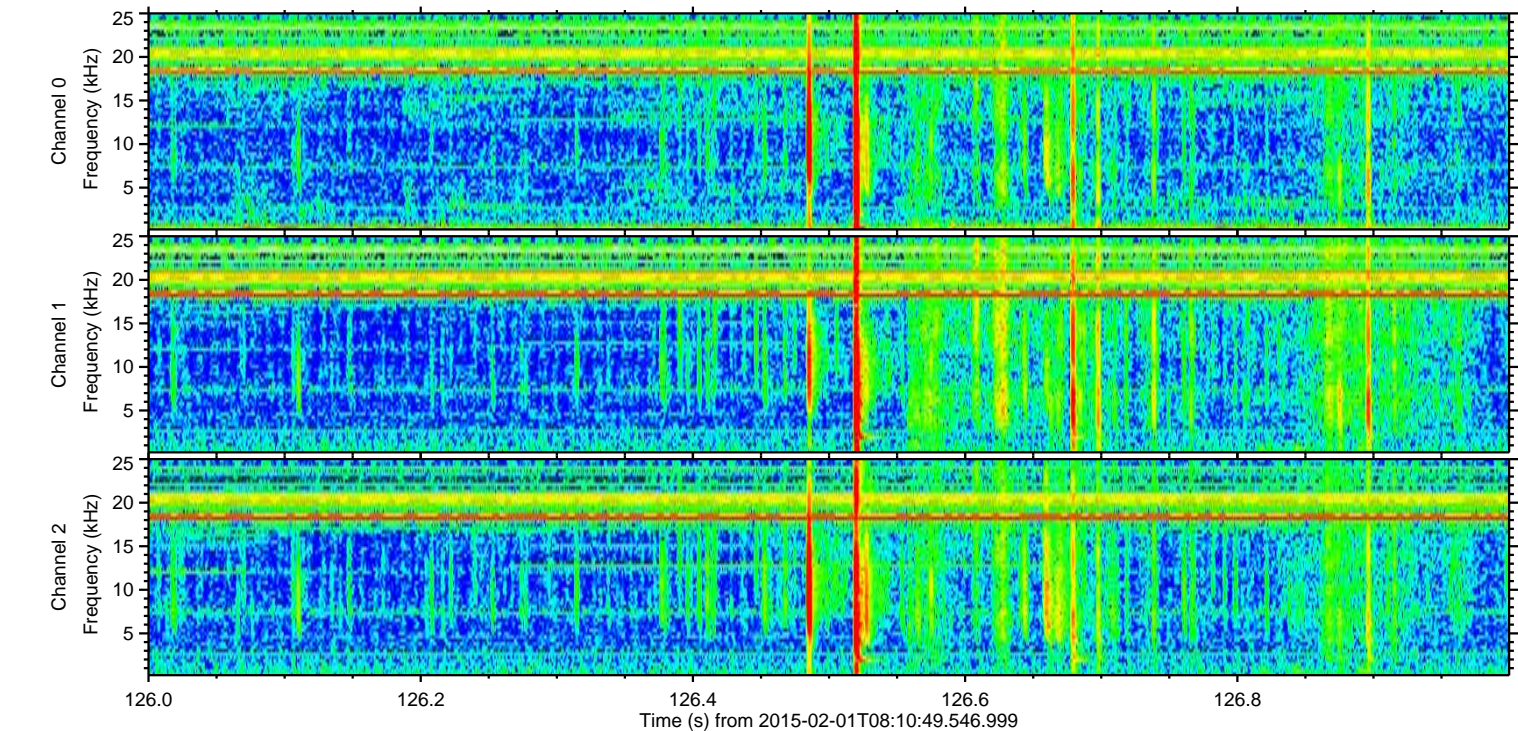
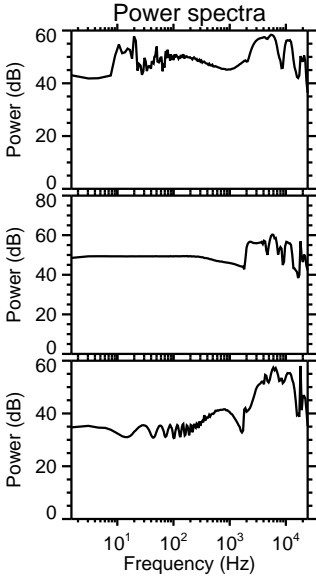
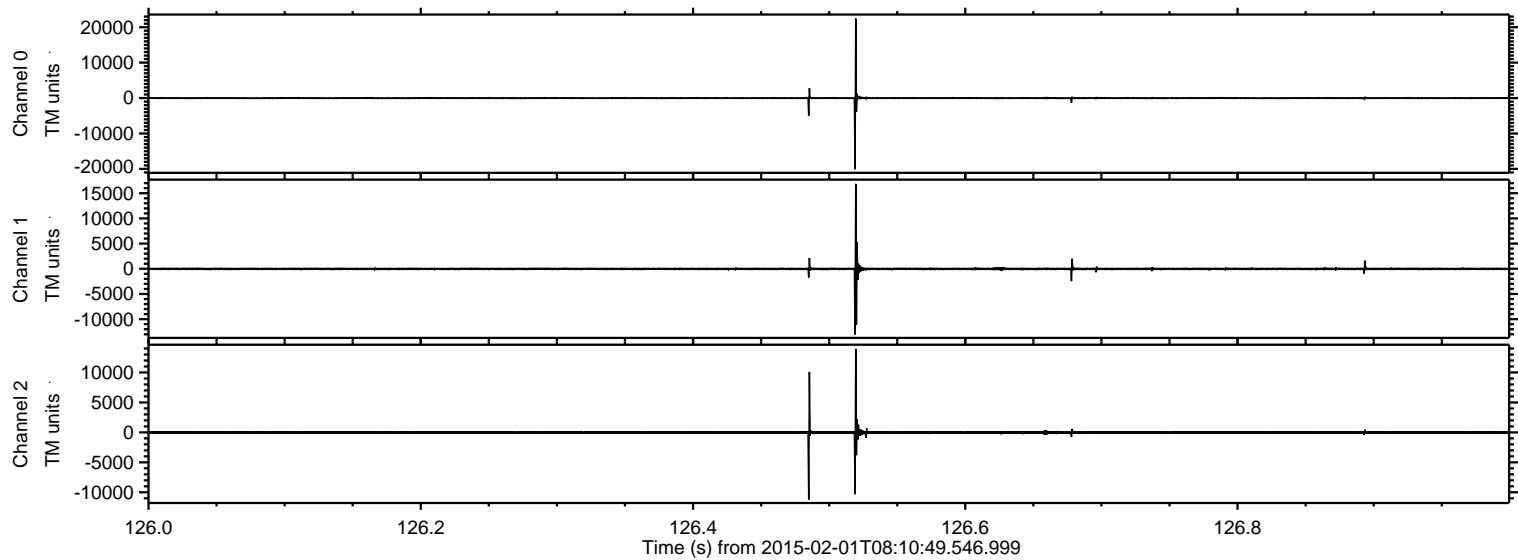
ELMAVAN 3D WAVEFORMS (Measured data sampled at 50 kHz) 49805 packets of 144 samples from 2015-02-01T08:10:49.546.999.

Processed Mon Feb 16 14:41:31 2015 by ELM ver.2012-10-06 from 001__elm20150201_081048__dat00.bin



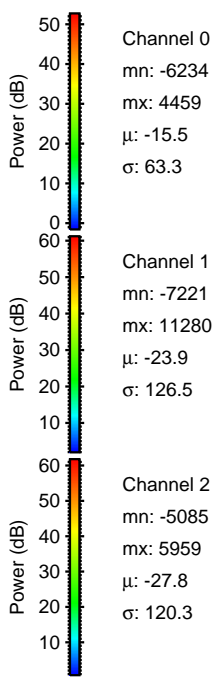
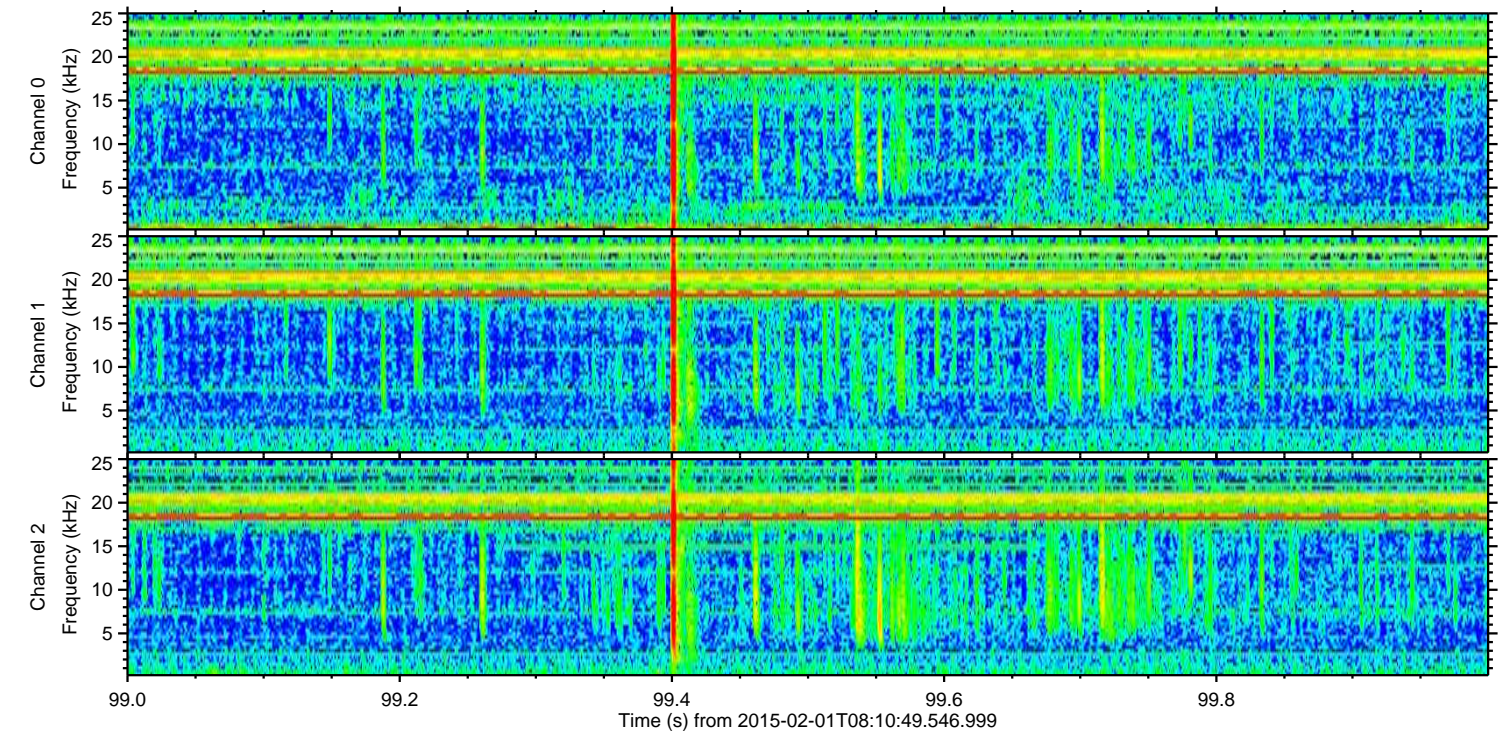
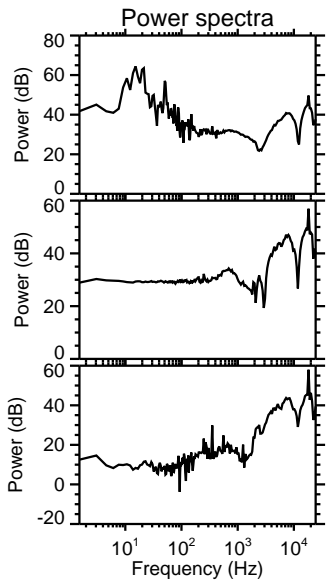
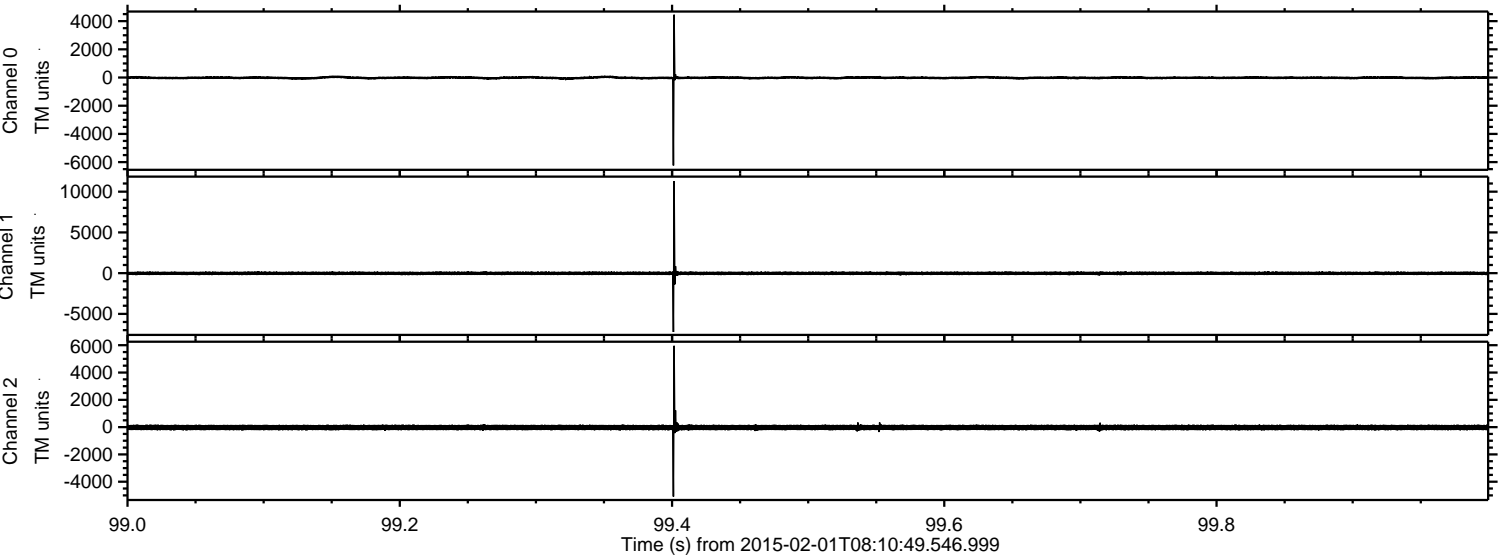
ELMAVAN 3D WAVEFORMS (Measured data sampled at 50 kHz) 49805 packets of 144 samples from 2015-02-01T08:10:49.546.999. Part 127/144

Processed Mon Feb 16 14:41:43 2015 by ELM ver.2012-10-06 from 001__elm20150201_081048__dat00.bin



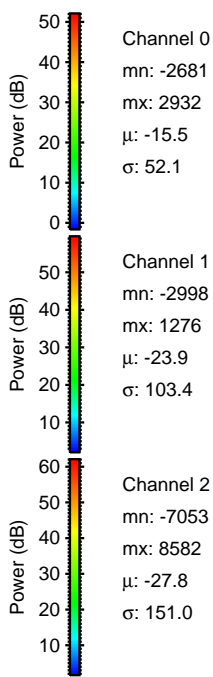
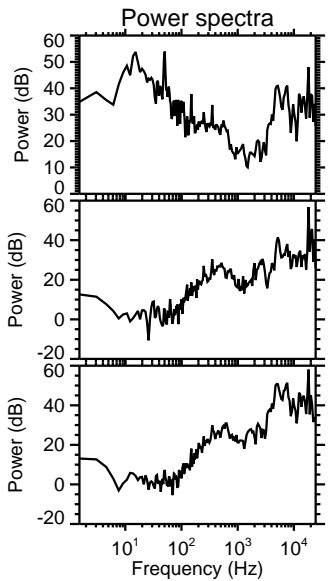
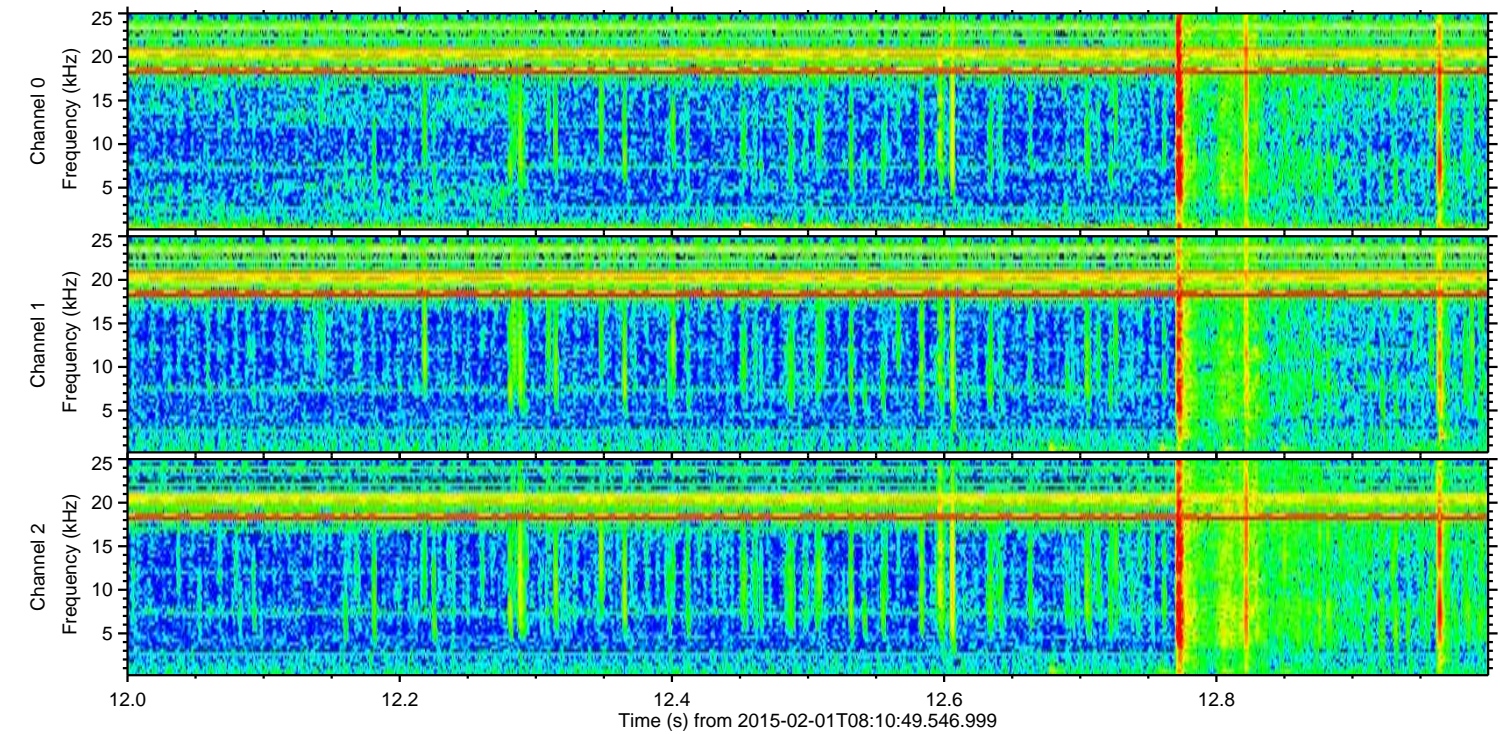
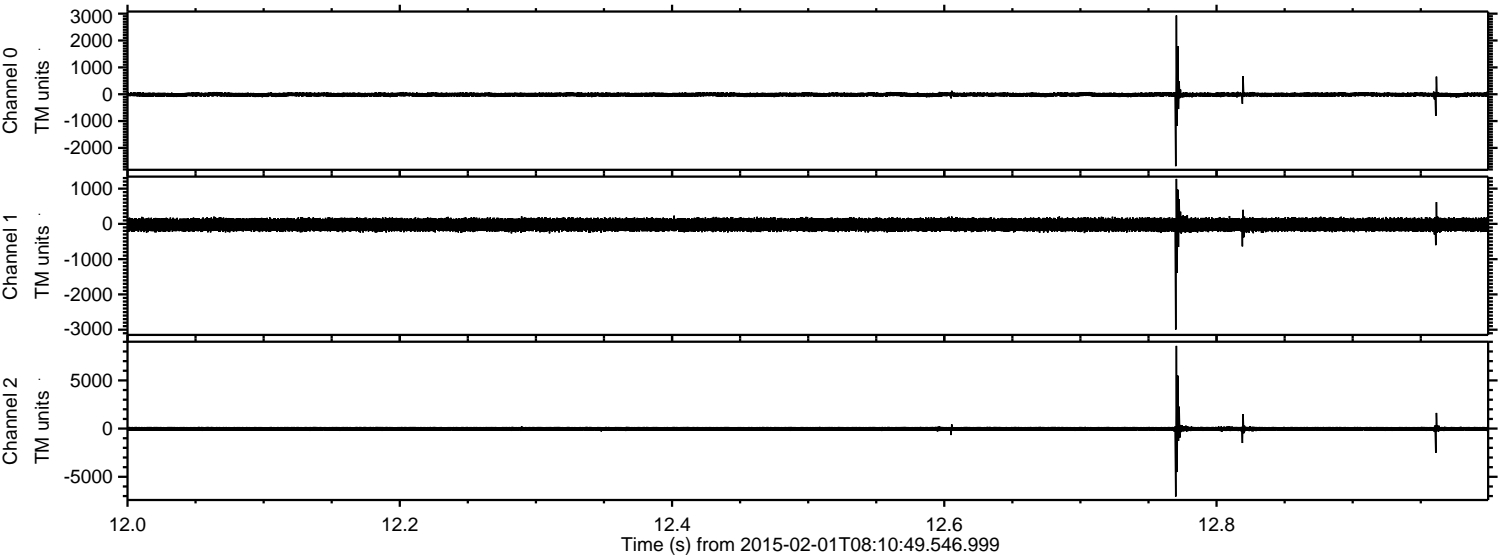
ELMAVAN 3D WAVEFORMS (Measured data sampled at 50 kHz) 49805 packets of 144 samples from 2015-02-01T08:10:49.546.999. Part 100/144

Processed Mon Feb 16 14:41:44 2015 by ELM ver.2012-10-06 from 001__elm20150201_081048__dat00.bin



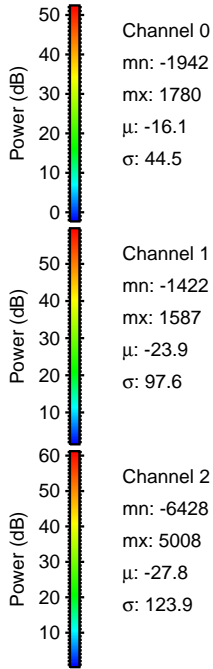
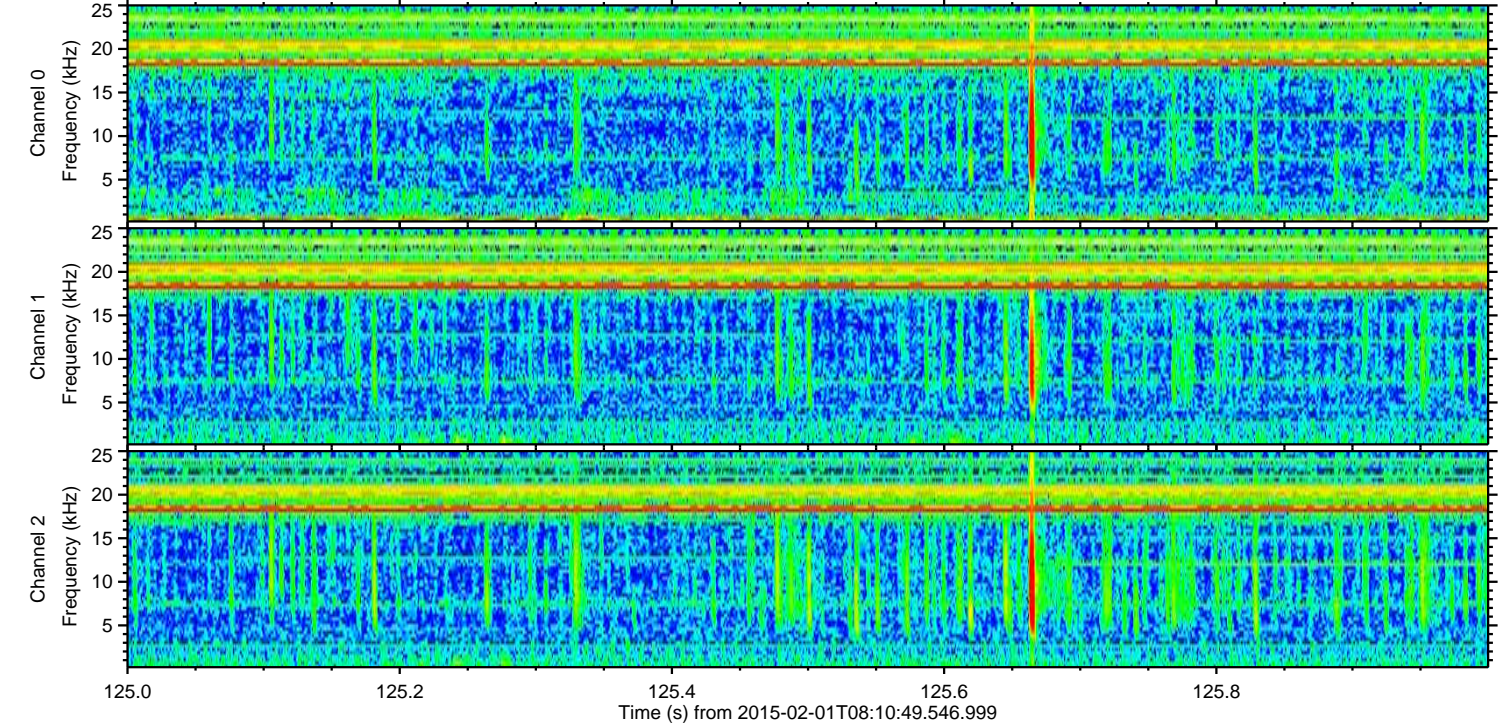
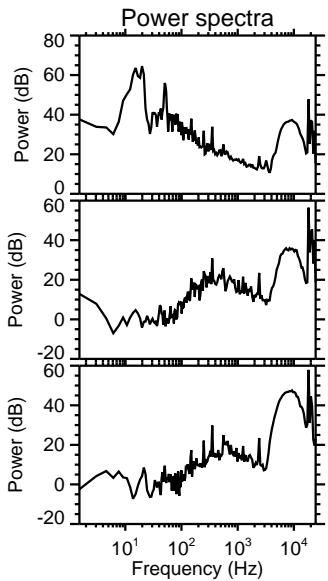
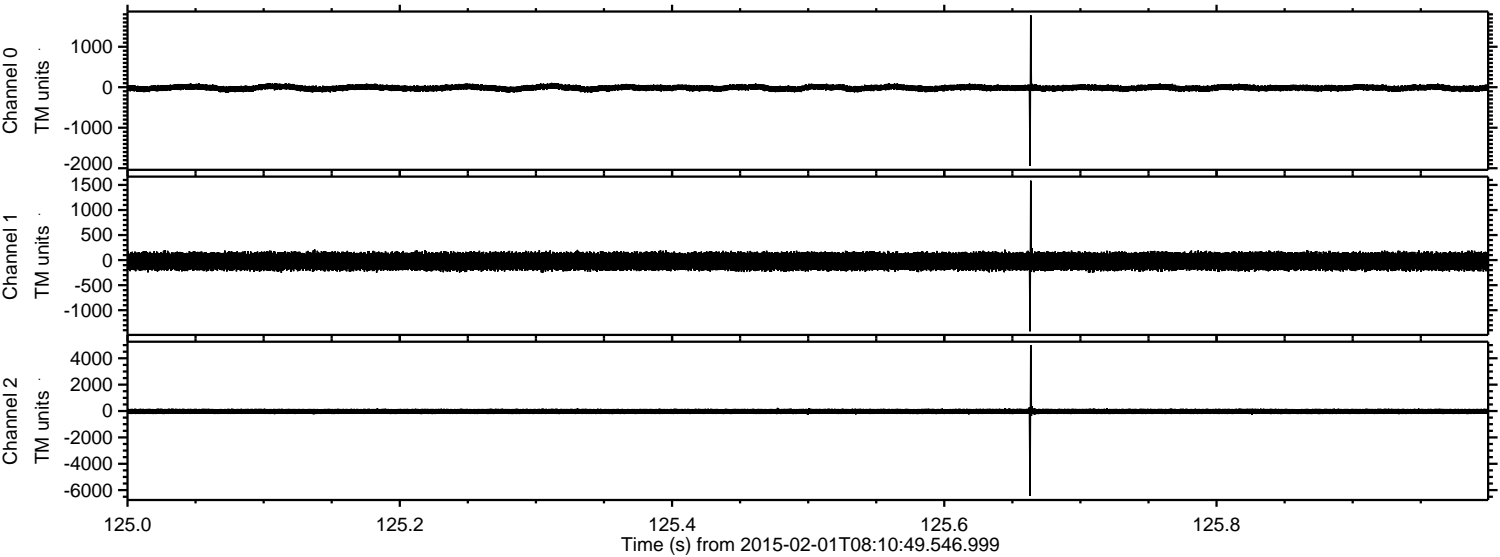
ELMAVAN 3D WAVEFORMS (Measured data sampled at 50 kHz) 49805 packets of 144 samples from 2015-02-01T08:10:49.546.999. Part 13/144

Processed Mon Feb 16 14:41:45 2015 by ELM ver.2012-10-06 from 001__elm20150201_081048__dat00.bin



ELMAVAN 3D WAVEFORMS (Measured data sampled at 50 kHz) 49805 packets of 144 samples from 2015-02-01T08:10:49.546.999. Part 126/144

Processed Mon Feb 16 14:41:46 2015 by ELM ver.2012-10-06 from 001__elm20150201_081048__dat00.bin

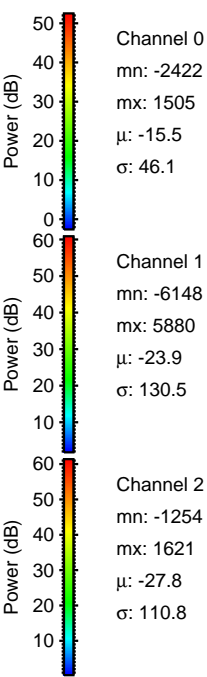
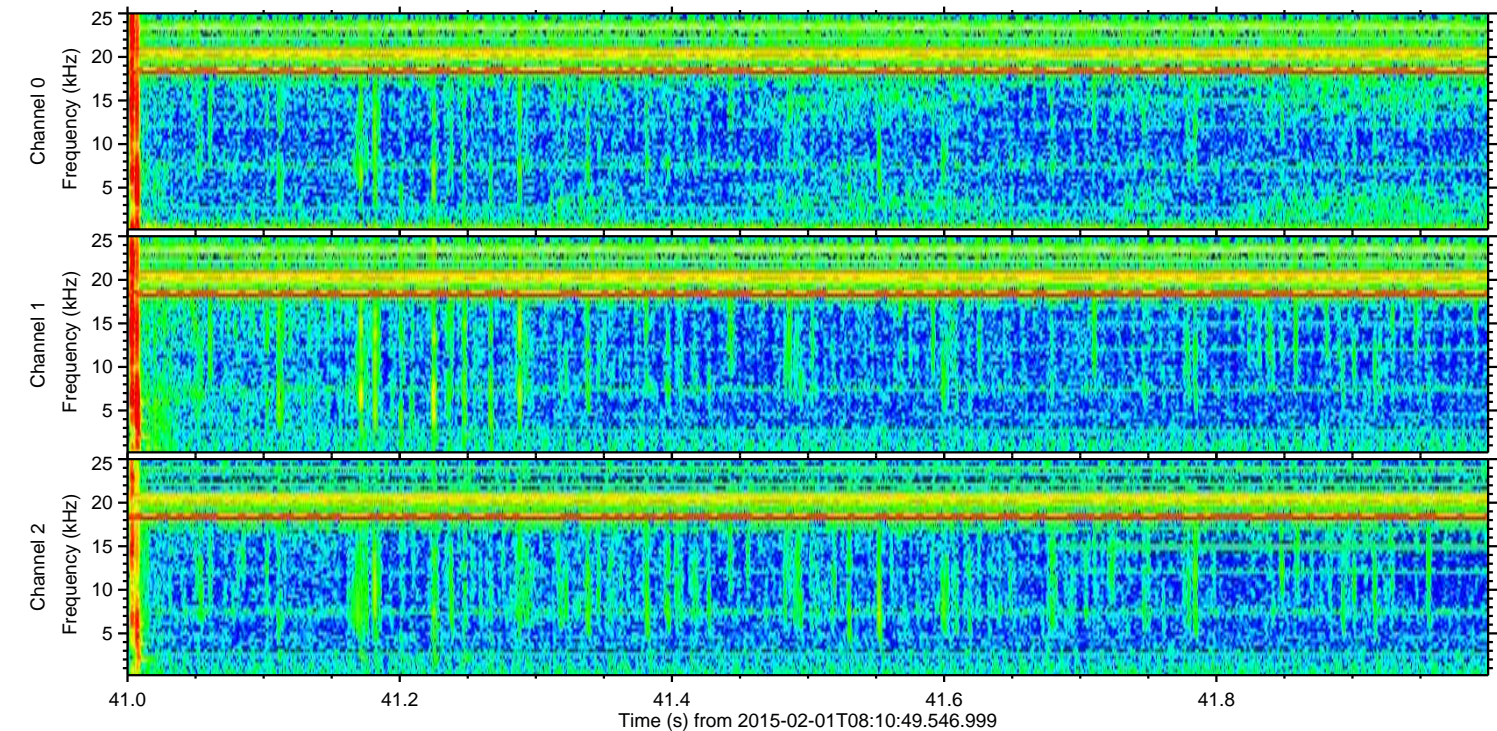
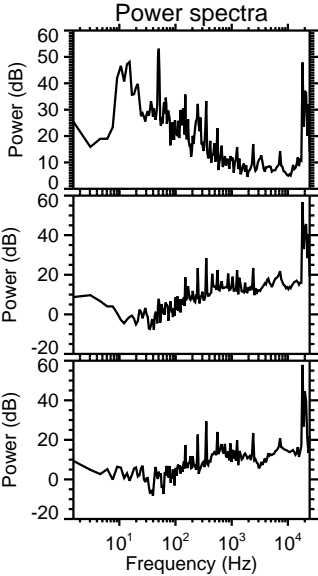
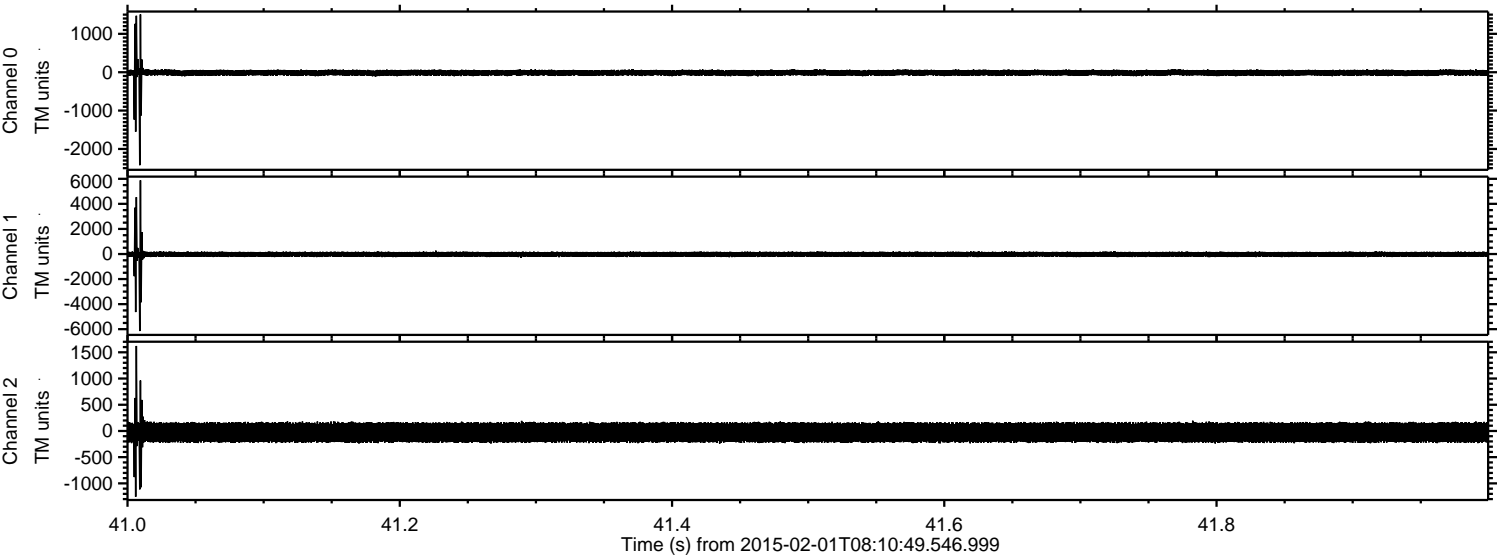


Channel 0
mn: -1942
mx: 1780
 μ : -16.1
 σ : 44.5

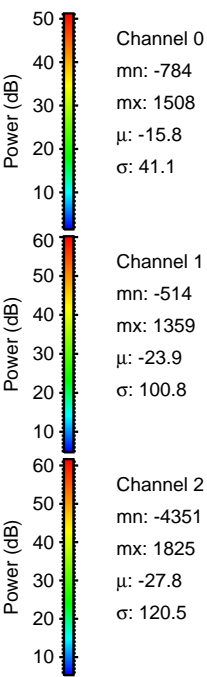
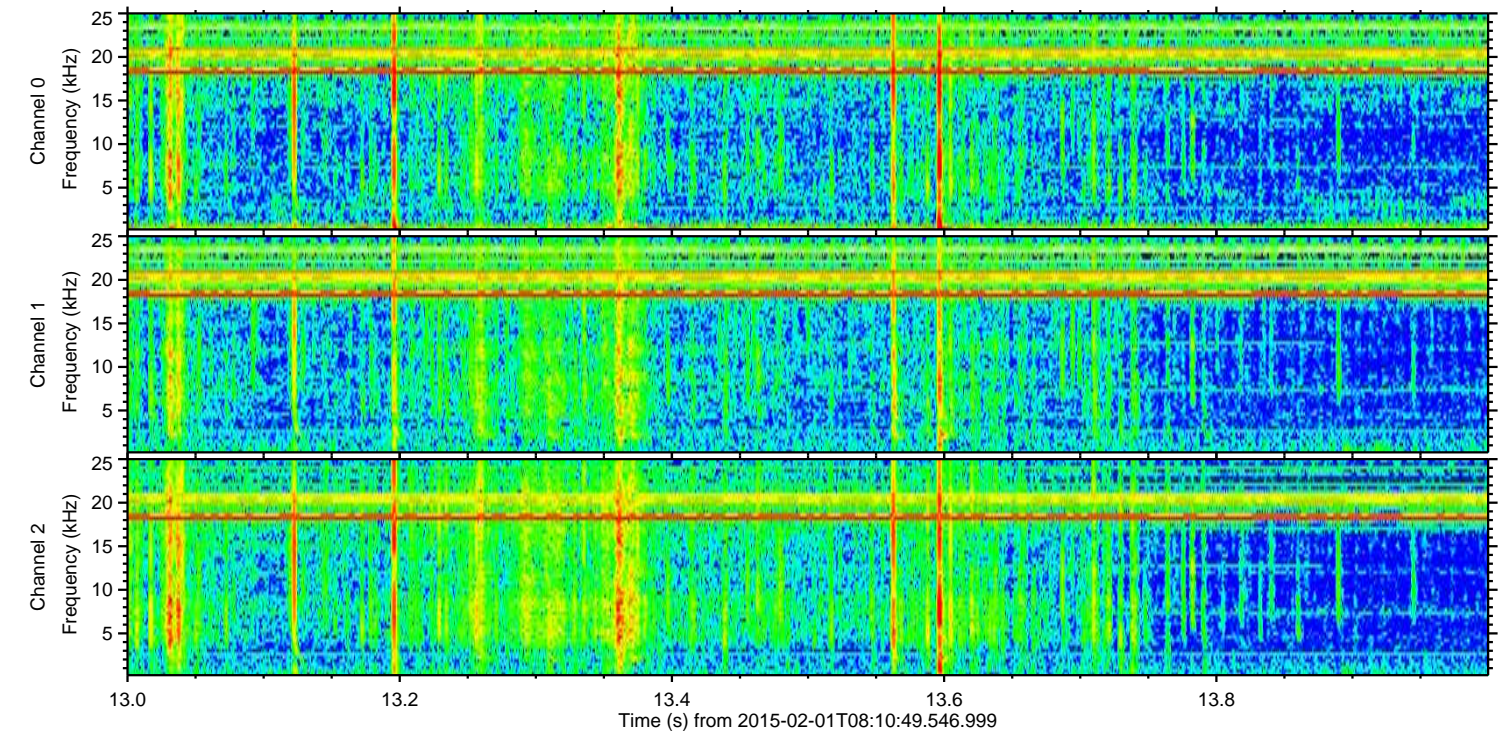
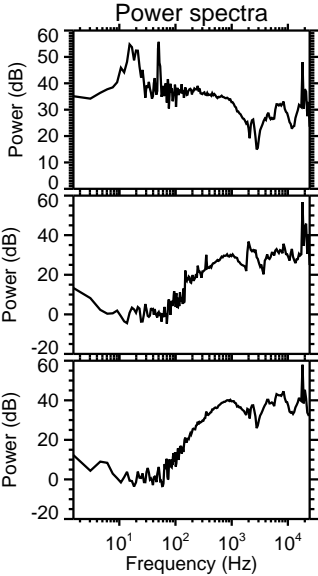
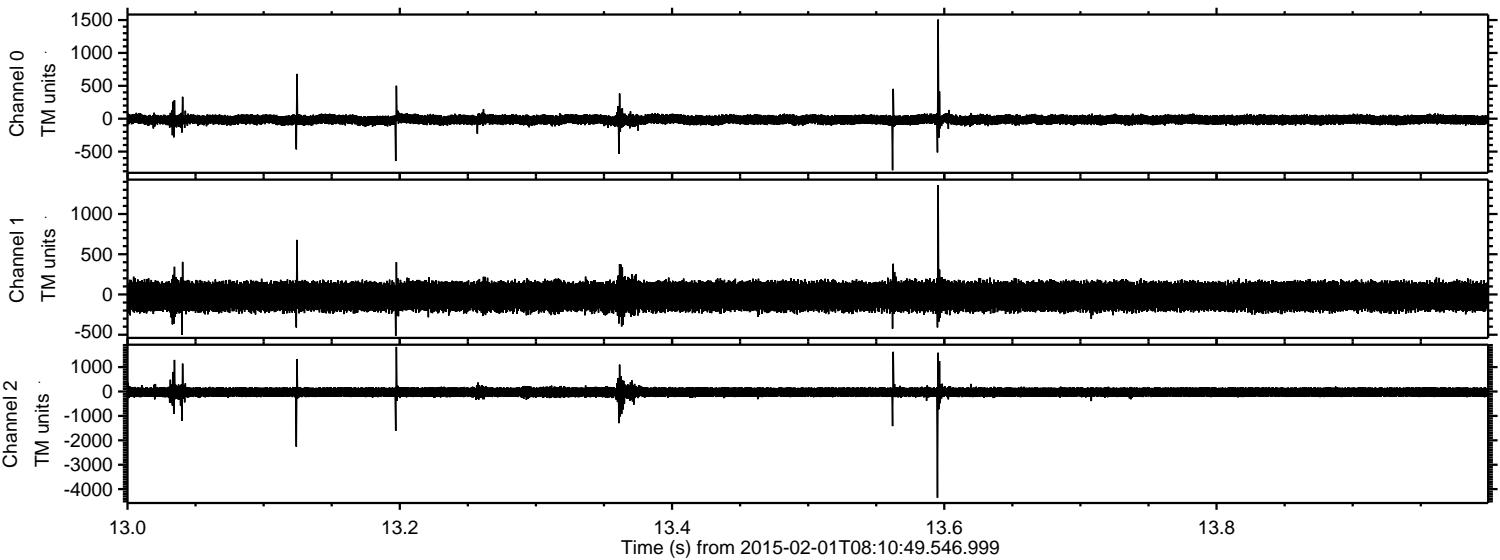
Channel 1
mn: -1422
mx: 1587
 μ : -23.9
 σ : 97.6

Channel 2
mn: -6428
mx: 5008
 μ : -27.8
 σ : 123.9

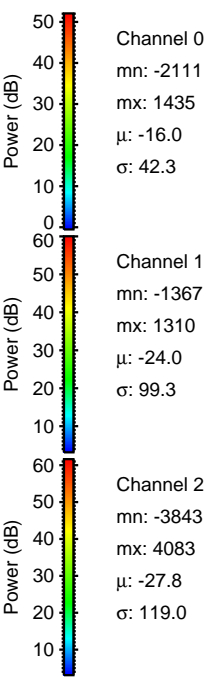
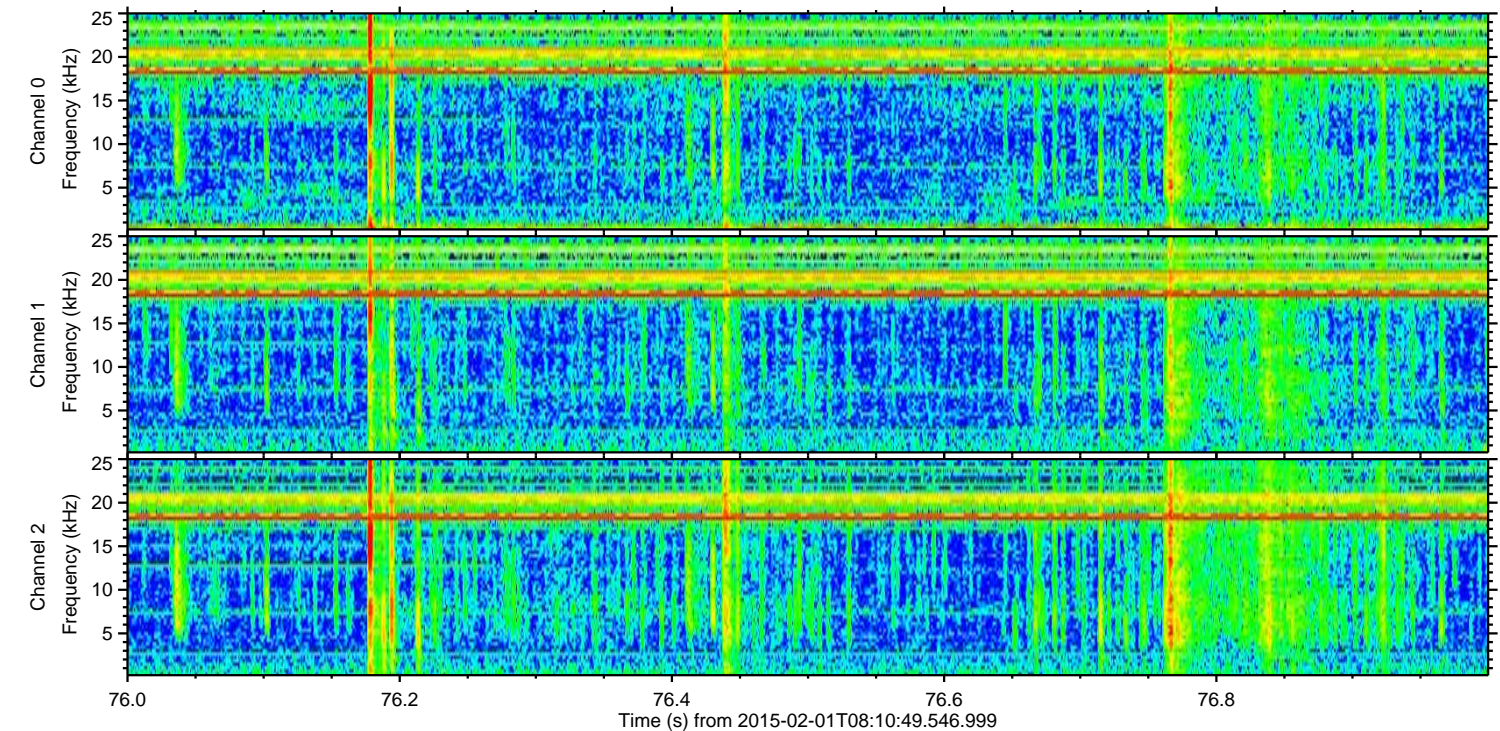
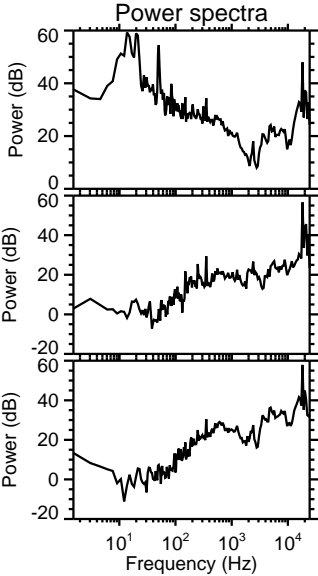
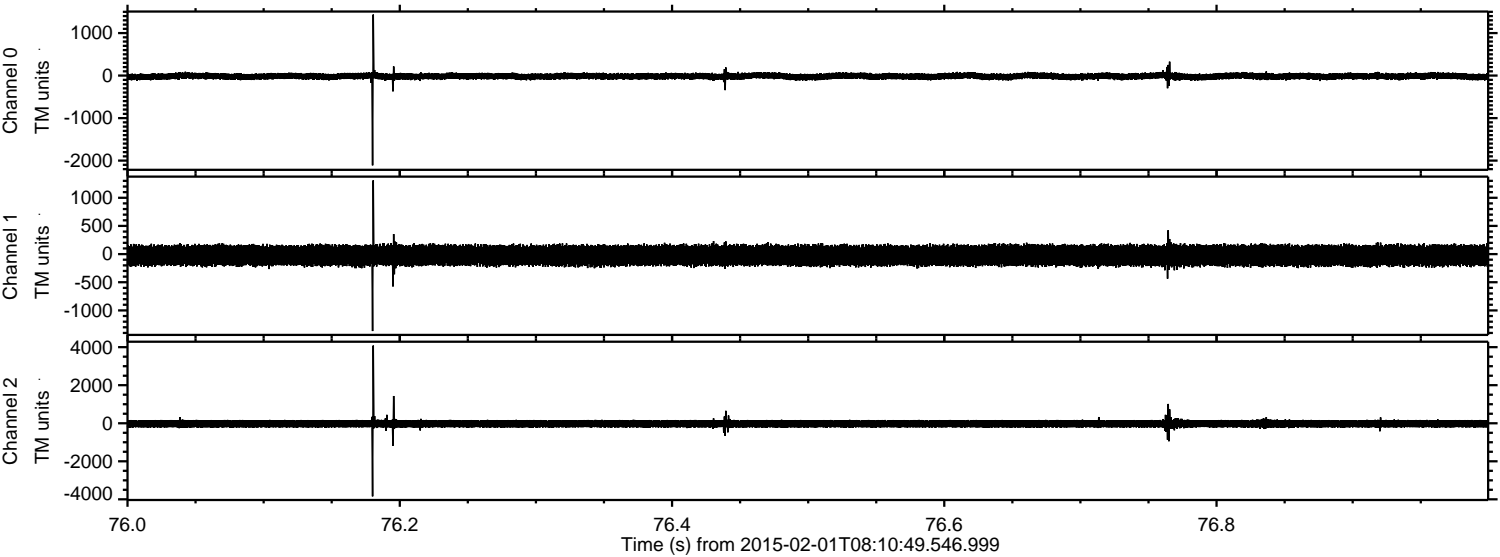
Processed Mon Feb 16 14:41:46 2015 by ELM ver.2012-10-06 from 001__elm20150201_081048__dat00.bin



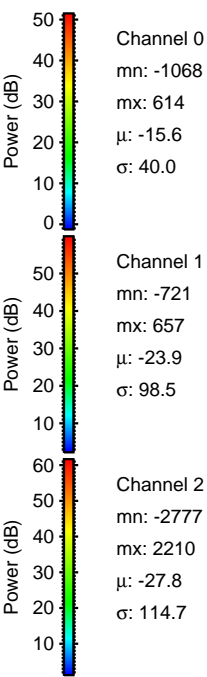
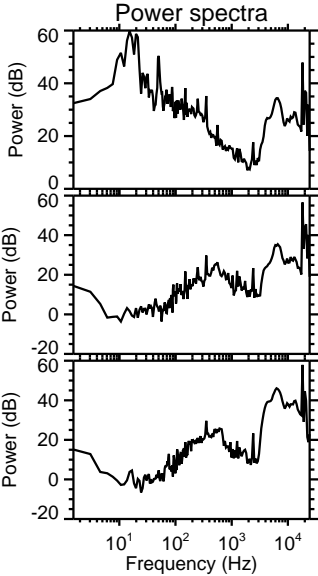
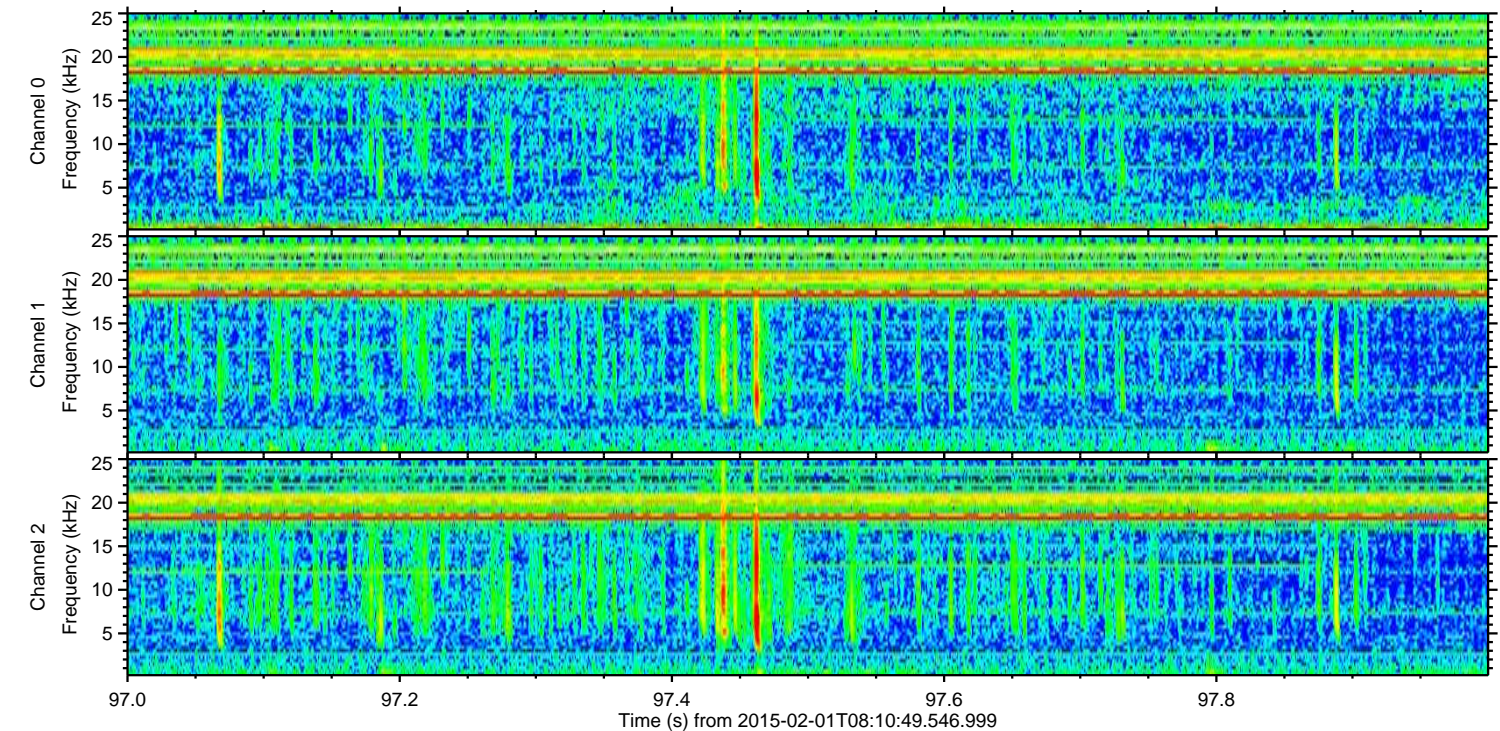
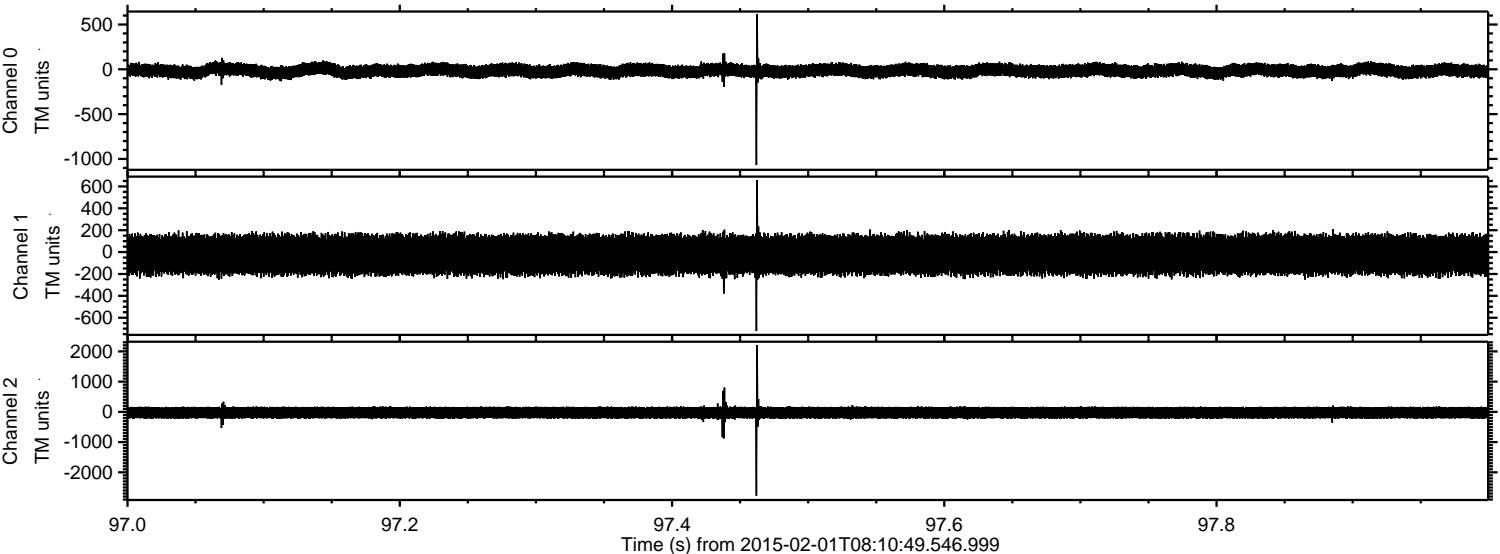
Processed Mon Feb 16 14:41:47 2015 by ELM ver.2012-10-06 from 001__elm20150201_081048__dat00.bin



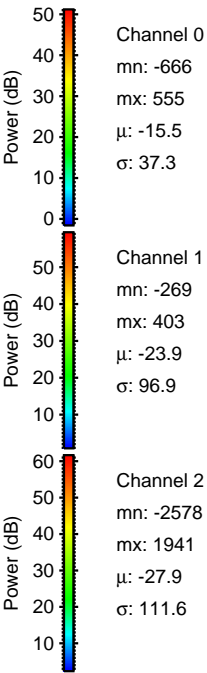
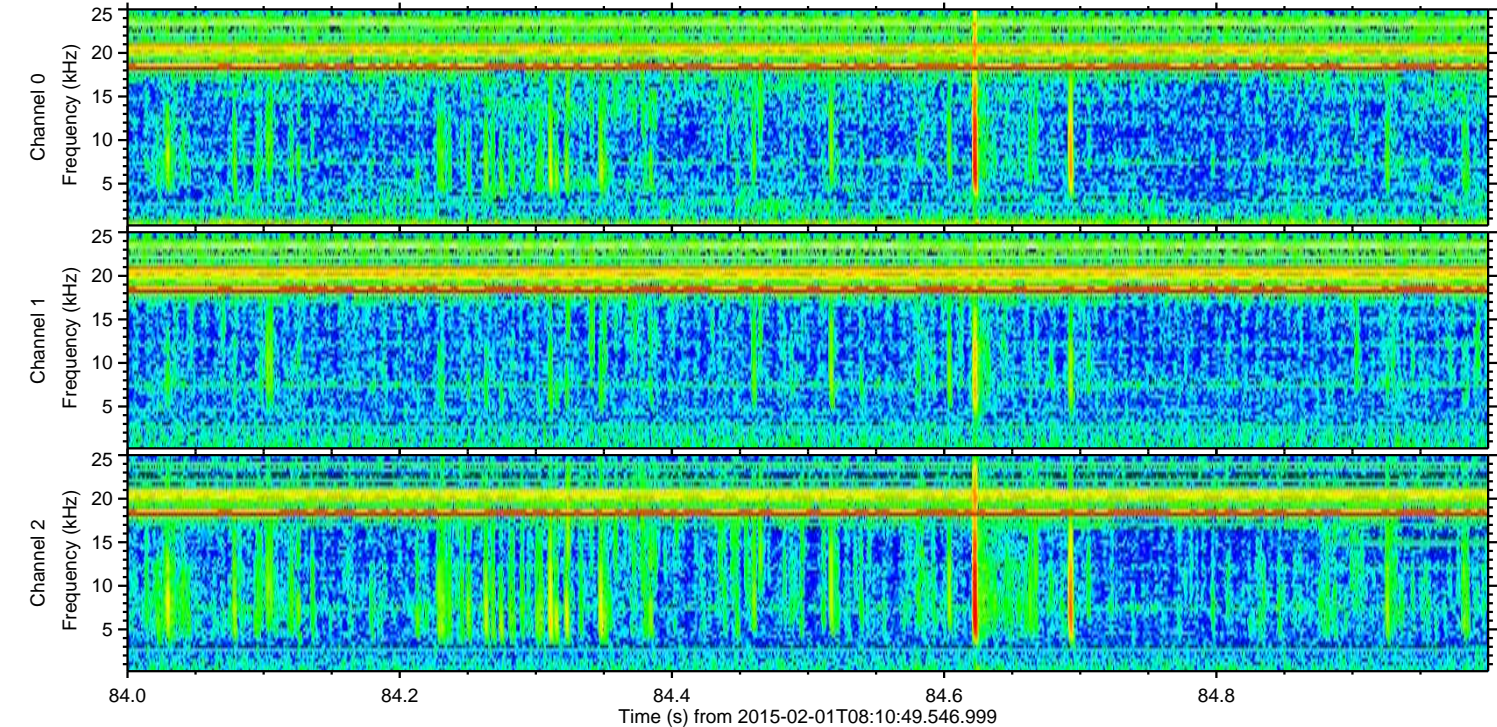
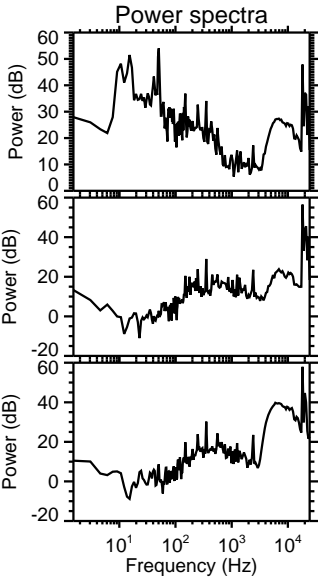
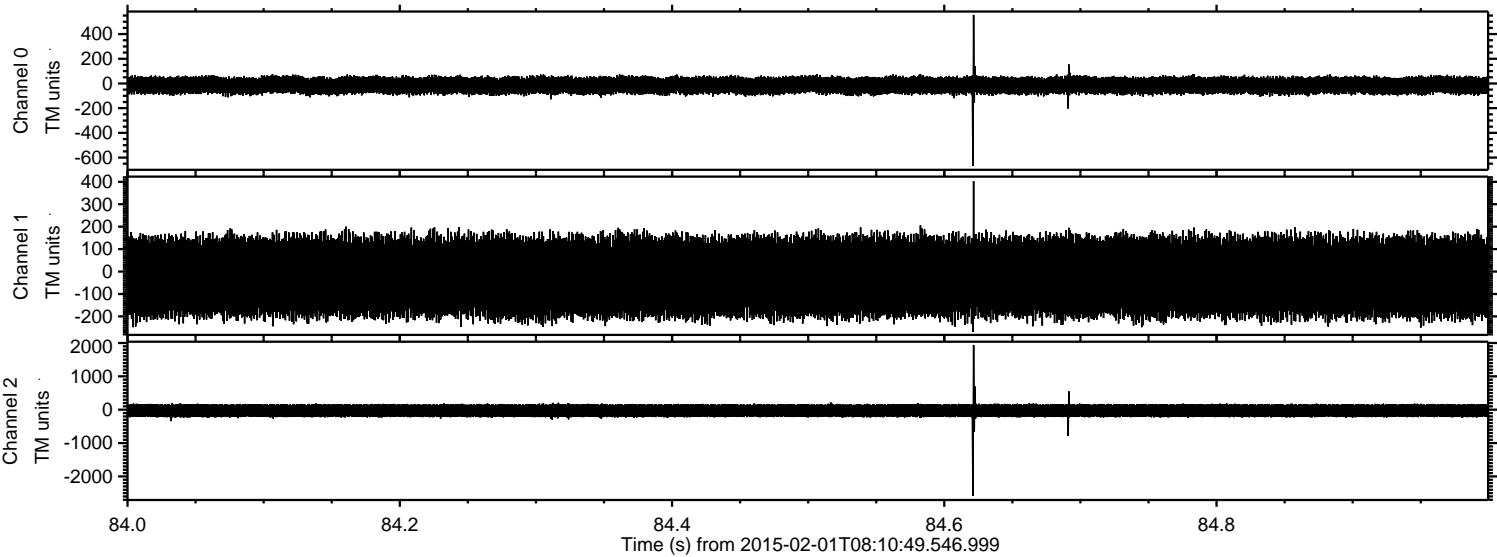
Processed Mon Feb 16 14:41:48 2015 by ELM ver.2012-10-06 from 001__elm20150201_081048__dat00.bin



Processed Mon Feb 16 14:41:49 2015 by ELM ver.2012-10-06 from 001__elm20150201_081048__dat00.bin



Processed Mon Feb 16 14:41:50 2015 by ELM ver.2012-10-06 from 001__elm20150201_081048__dat00.bin



Processed Mon Feb 16 14:41:51 2015 by ELM ver.2012-10-06 from 001__elm20150201_081048__dat00.bin

