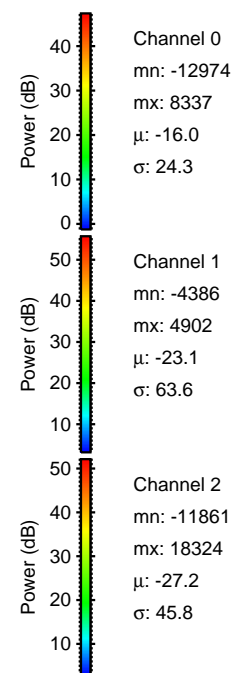
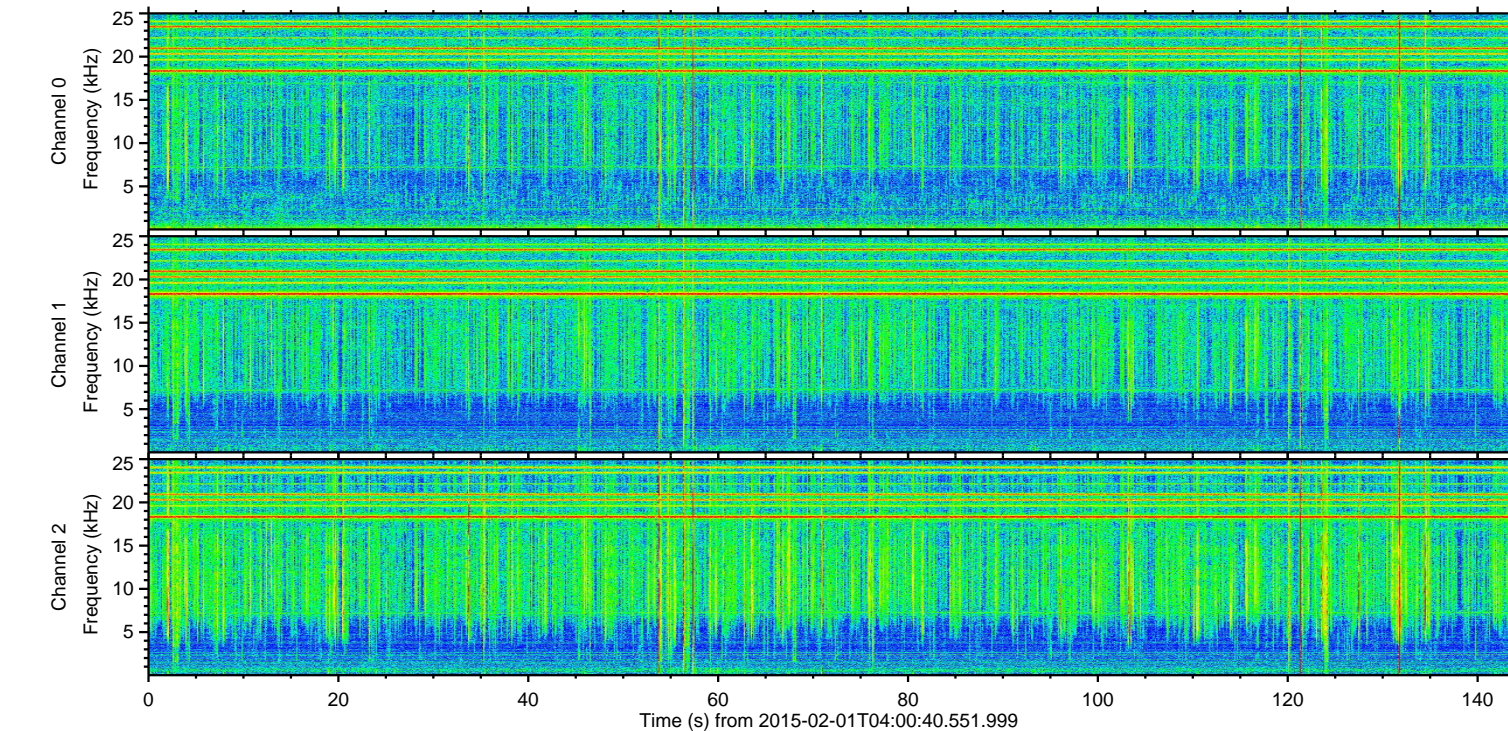
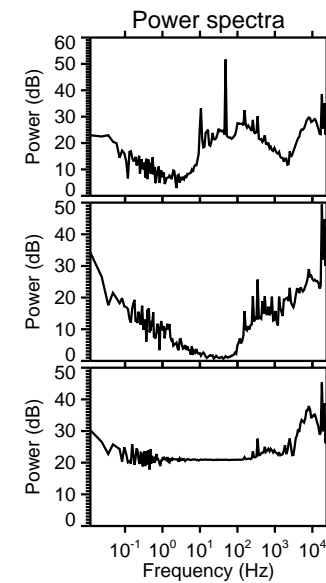
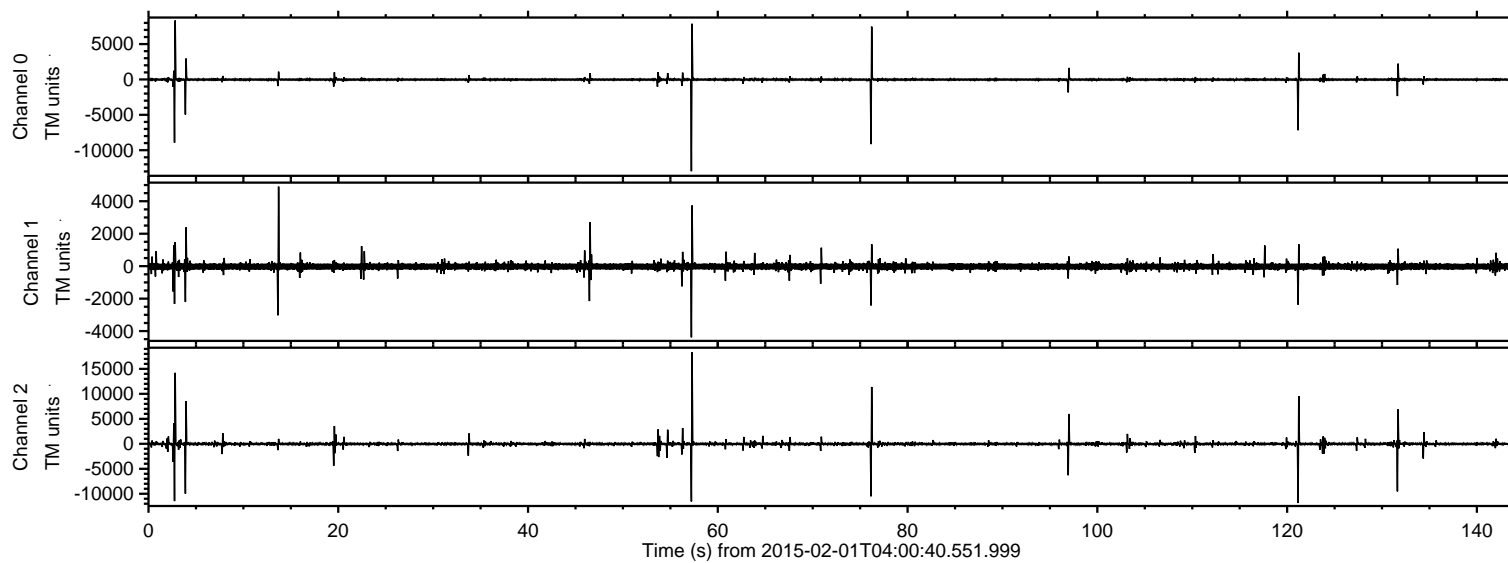
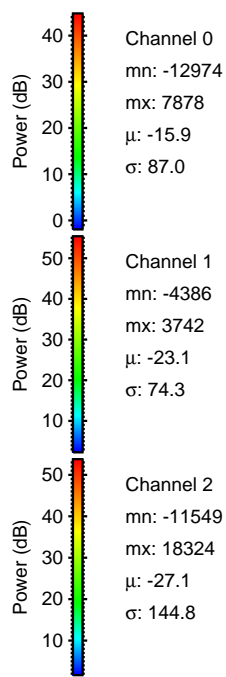
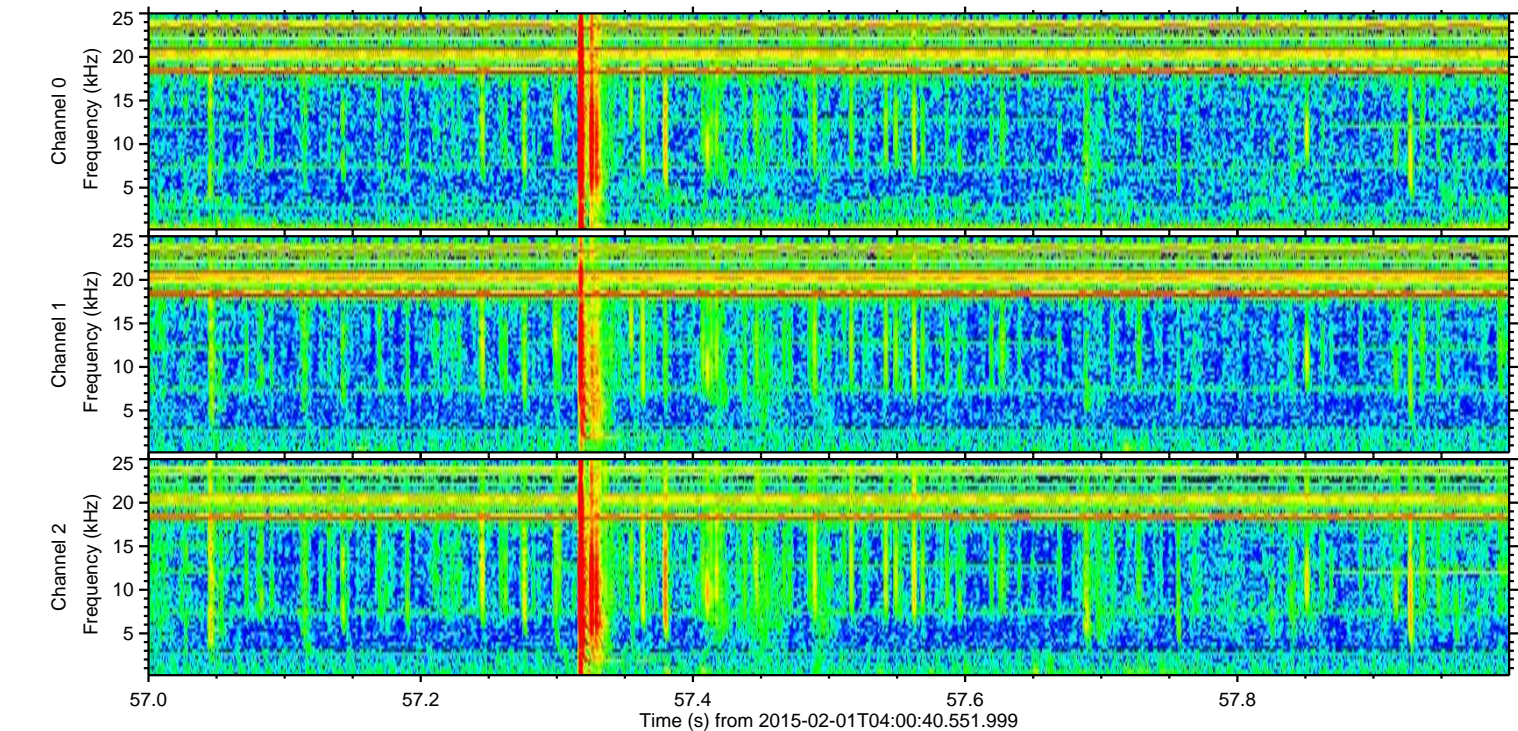
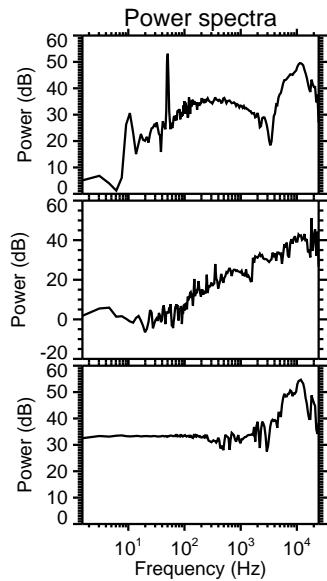
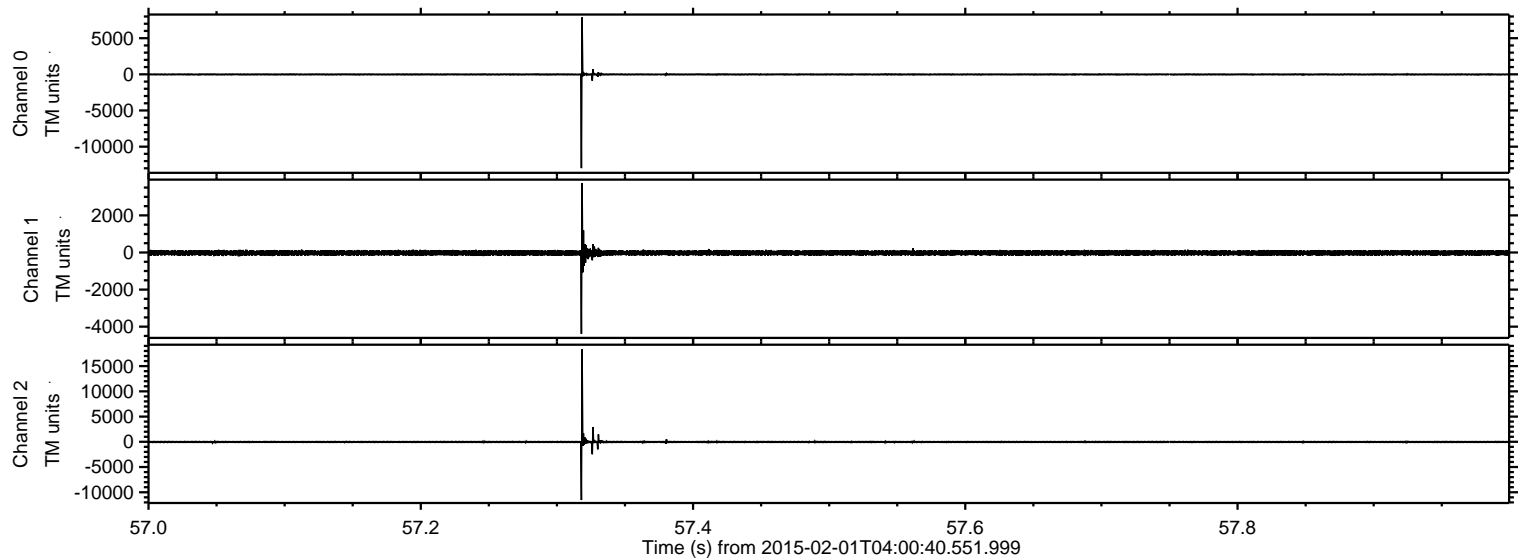


ELMAVAN 3D WAVEFORMS (Measured data sampled at 50 kHz) 49791 packets of 144 samples from 2015-02-01T04:00:40.551.999.

Processed Mon Feb 16 12:25:54 2015 by ELM ver.2012-10-06 from 001__elm20150201_040039__dat00.bin

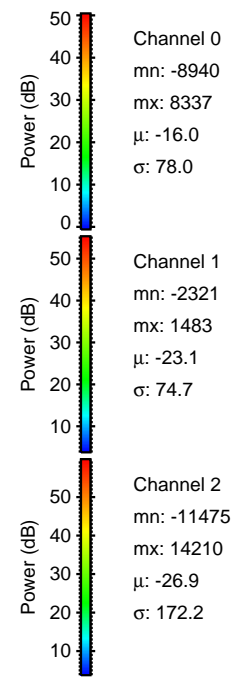
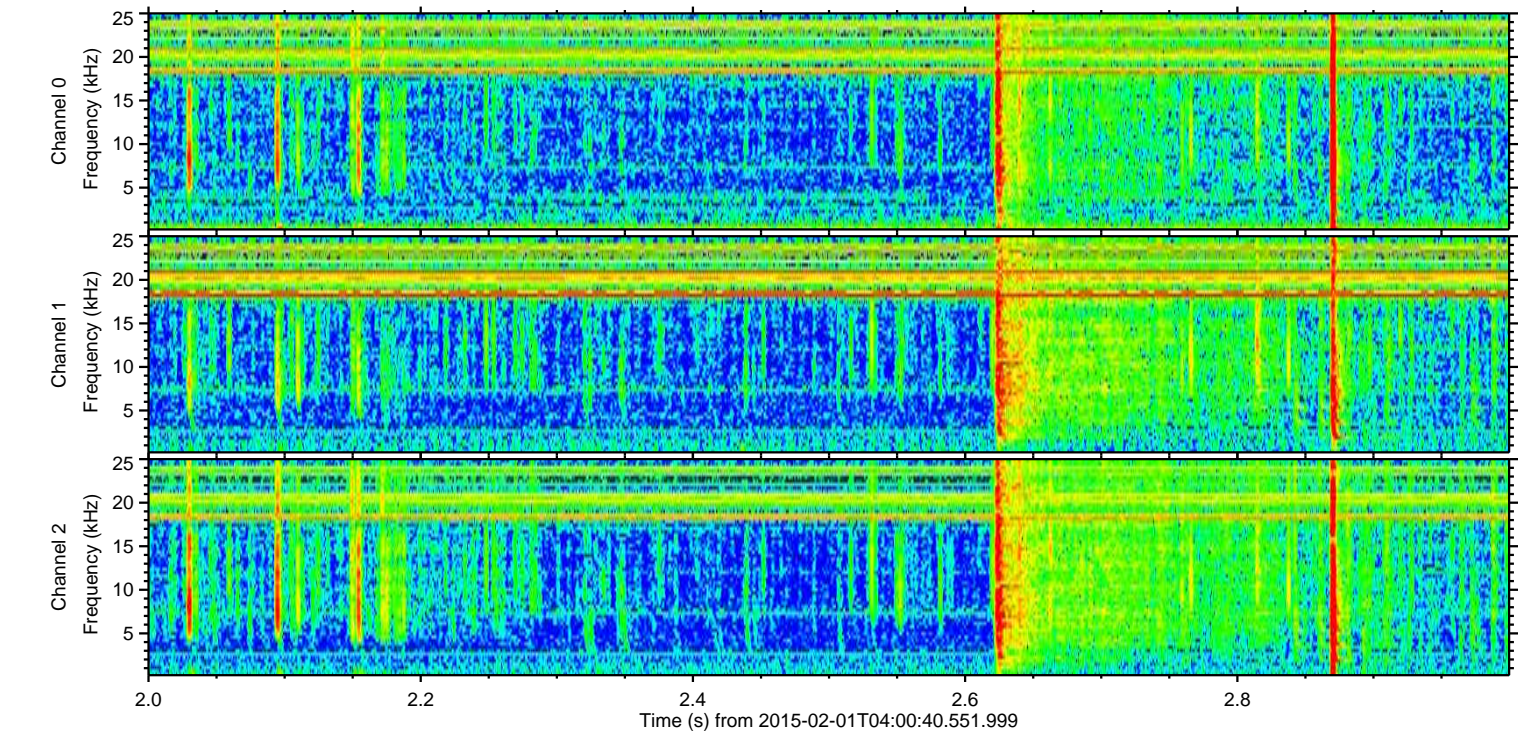
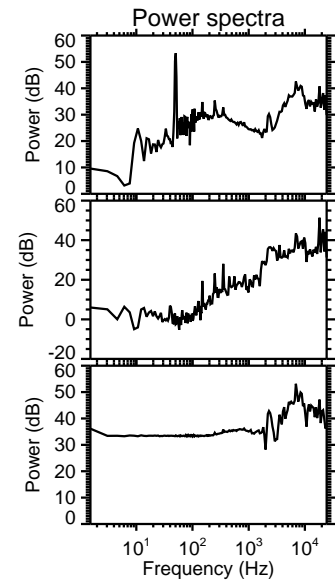
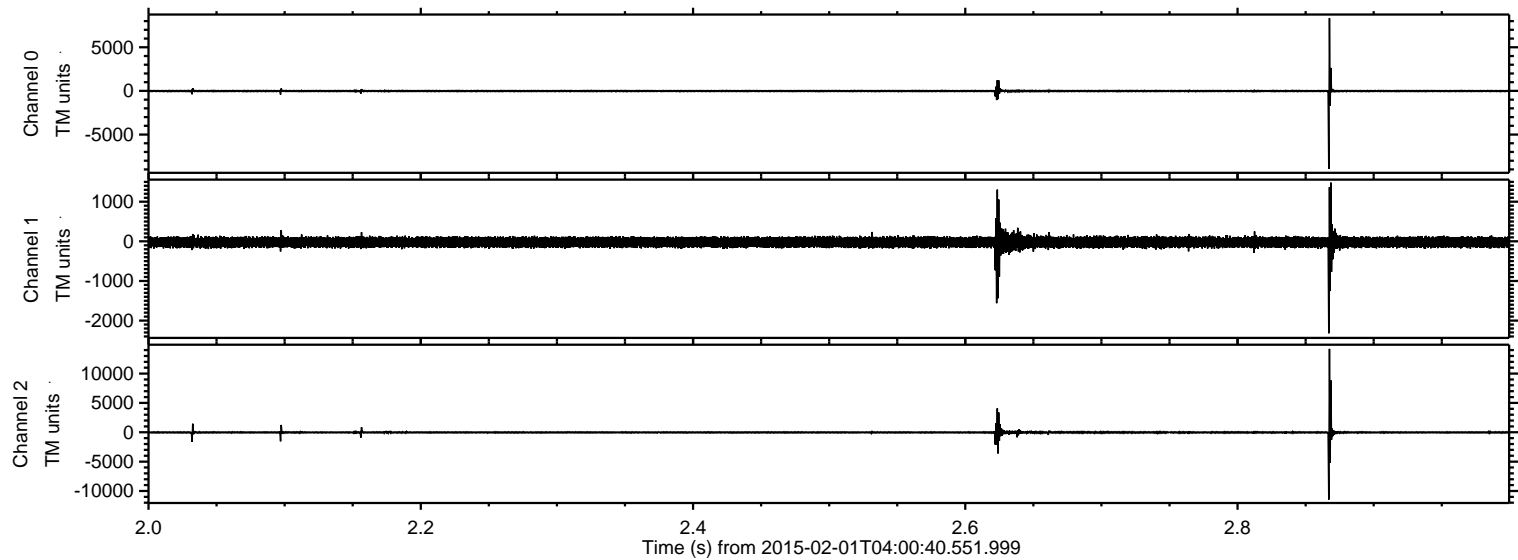


Processed Mon Feb 16 12:26:06 2015 by ELM ver.2012-10-06 from 001__elm20150201_040039__dat00.bin



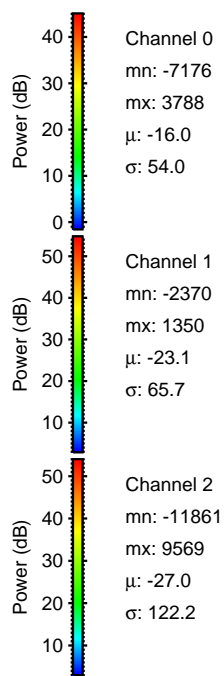
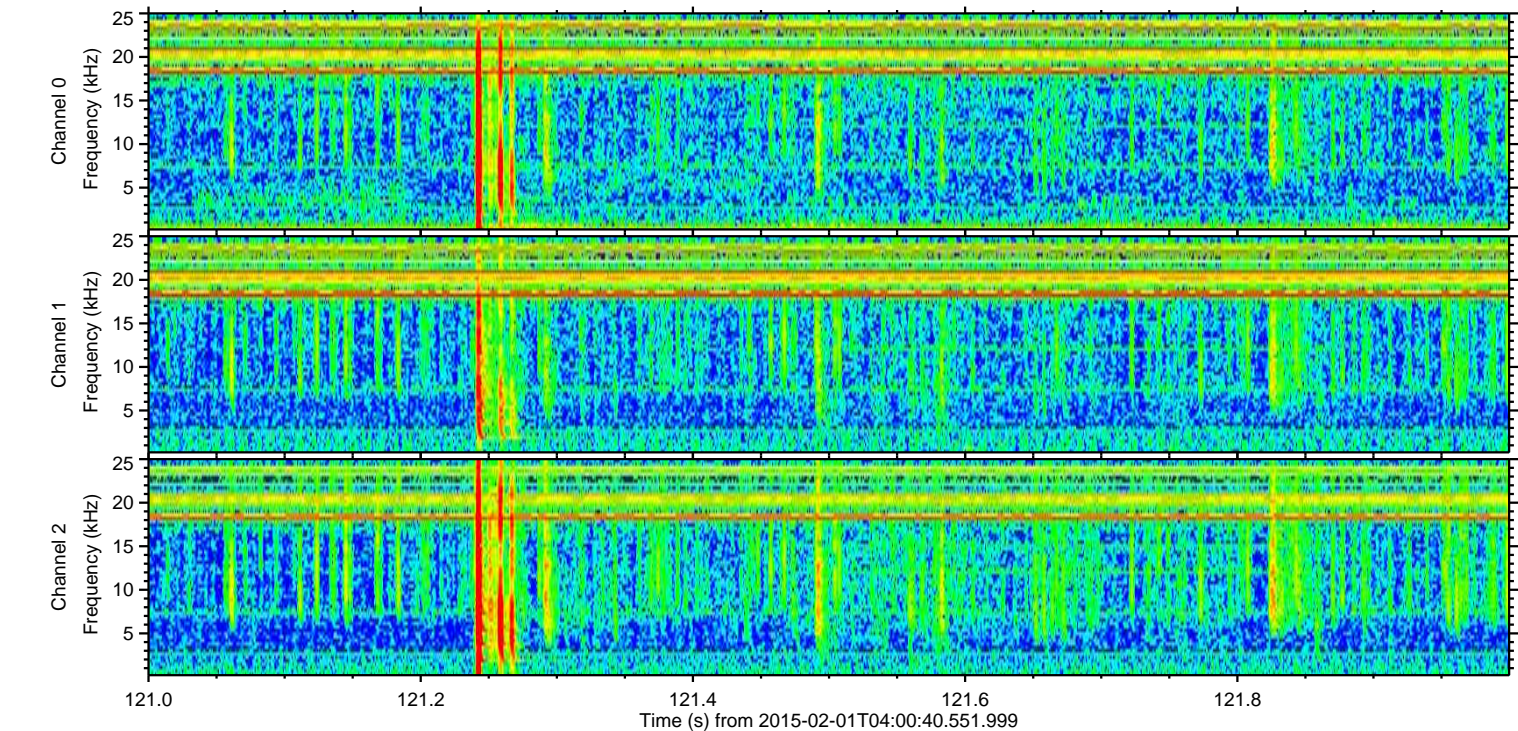
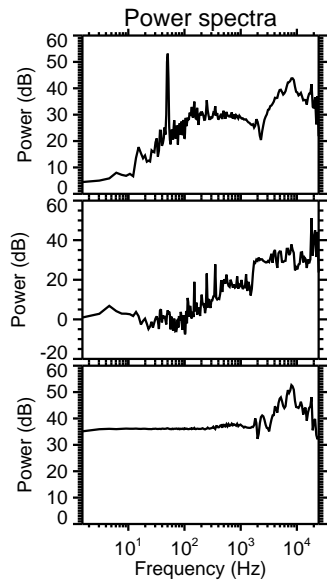
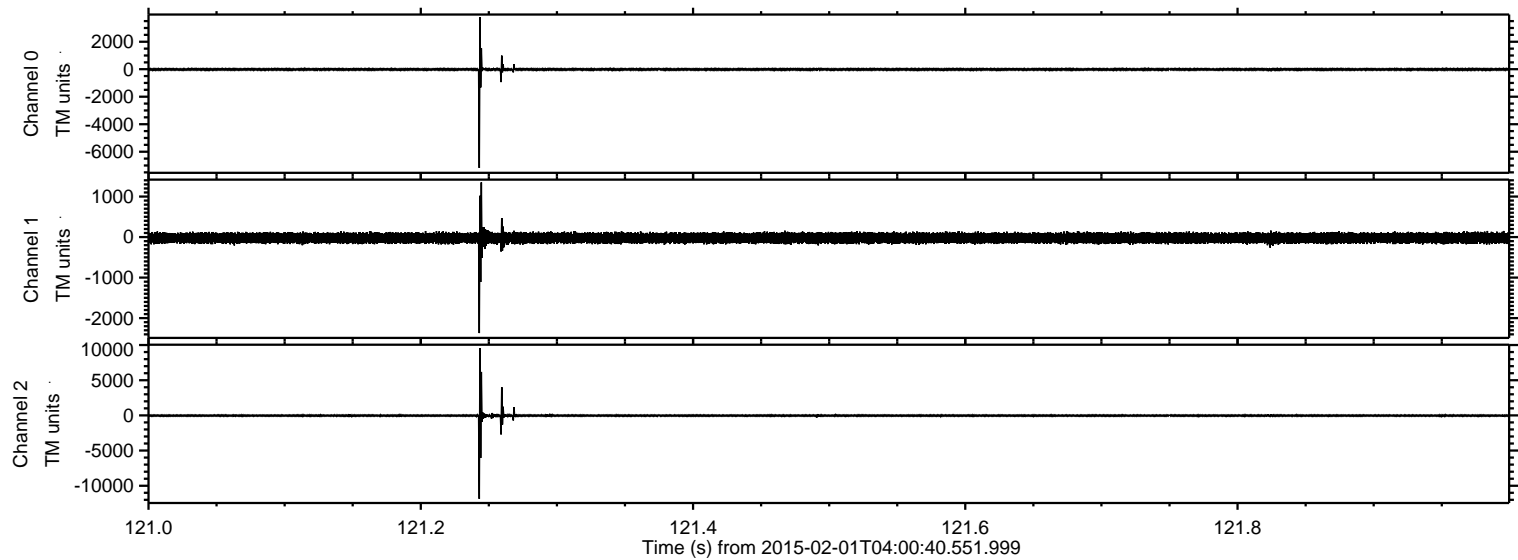
ELMAVAN 3D WAVEFORMS (Measured data sampled at 50 kHz) 49791 packets of 144 samples from 2015-02-01T04:00:40.551.999. Part 3/144

Processed Mon Feb 16 12:26:07 2015 by ELM ver.2012-10-06 from 001__elm20150201_040039__dat00.bin

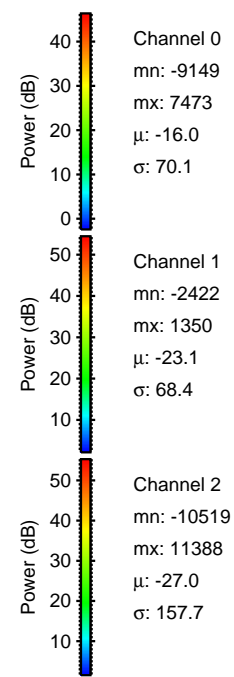
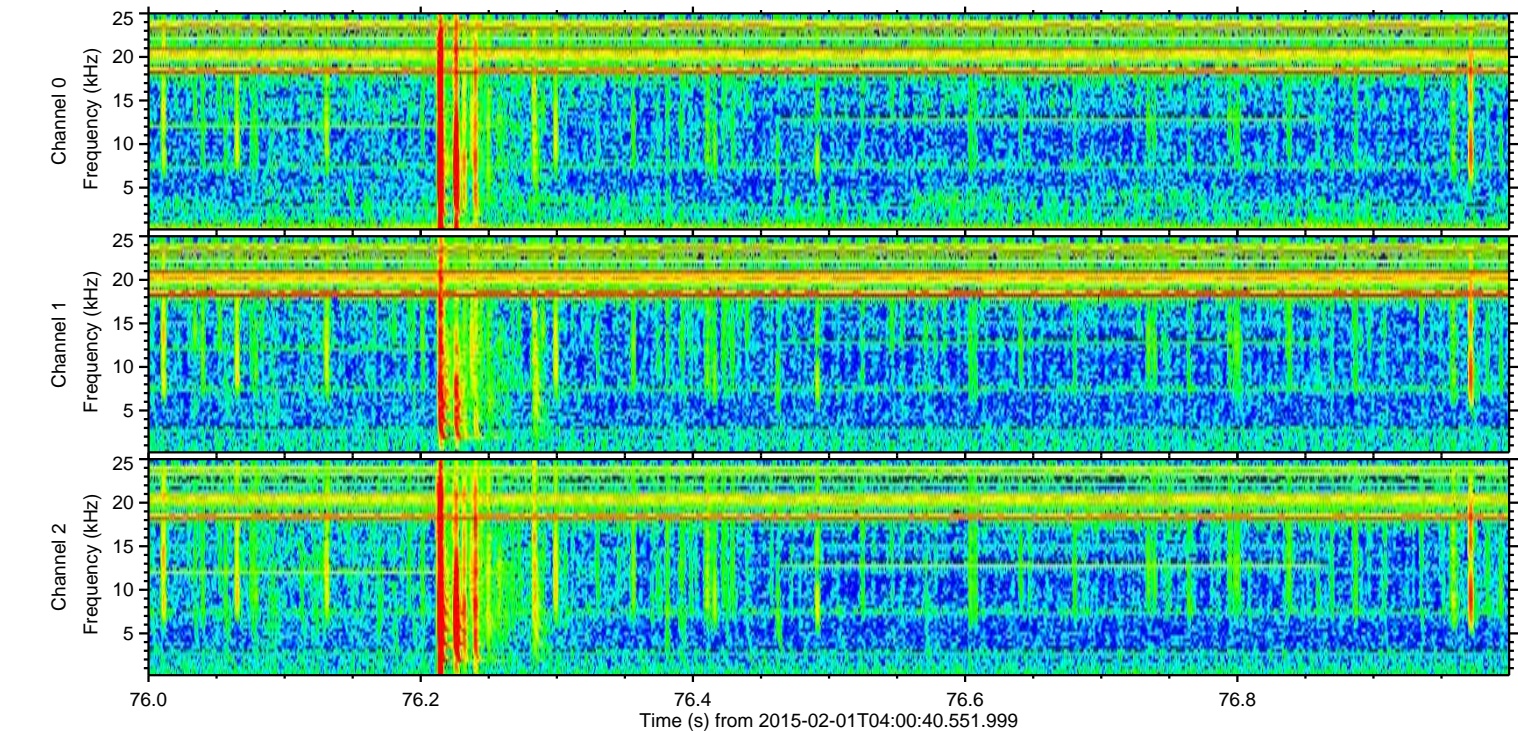
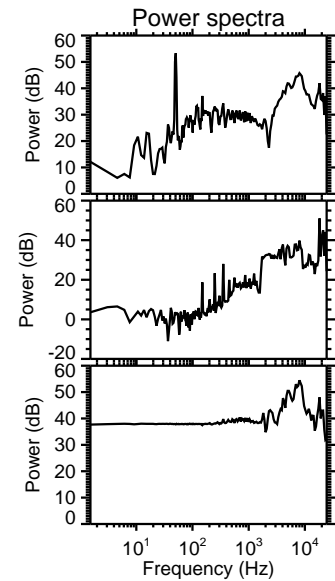
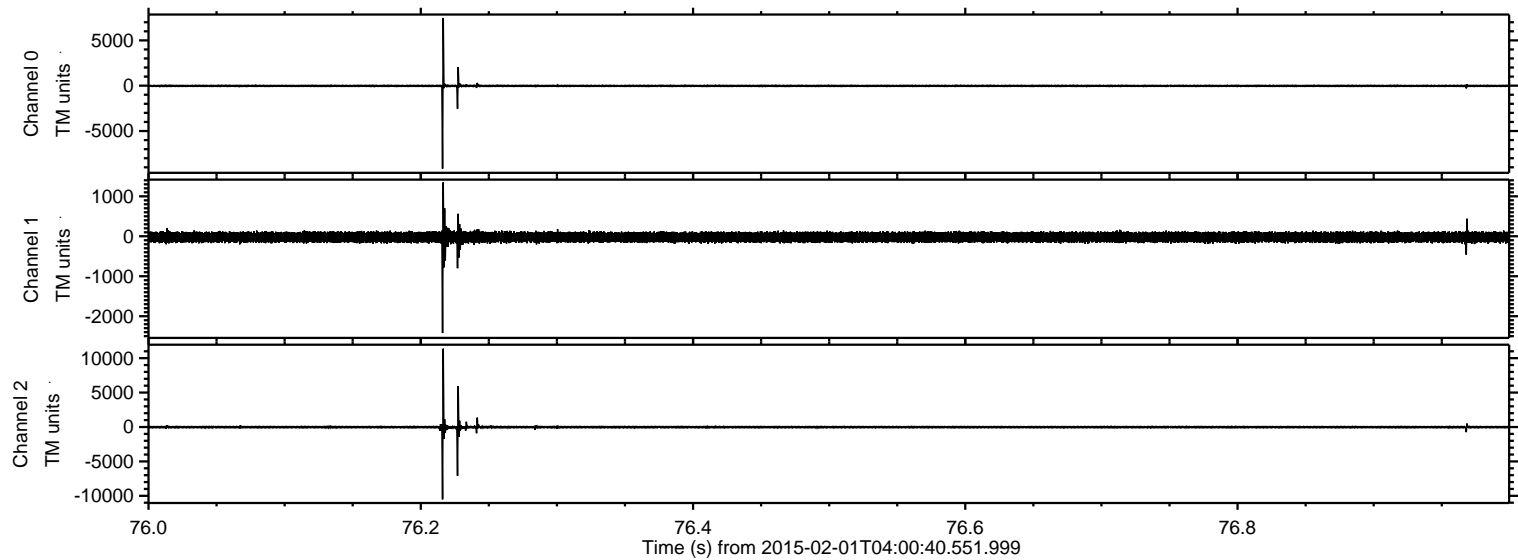


ELMAVAN 3D WAVEFORMS (Measured data sampled at 50 kHz) 49791 packets of 144 samples from 2015-02-01T04:00:40.551.999. Part 122/144

Processed Mon Feb 16 12:26:07 2015 by ELM ver.2012-10-06 from 001__elm20150201_040039__dat00.bin

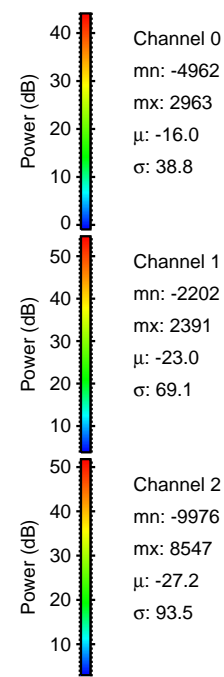
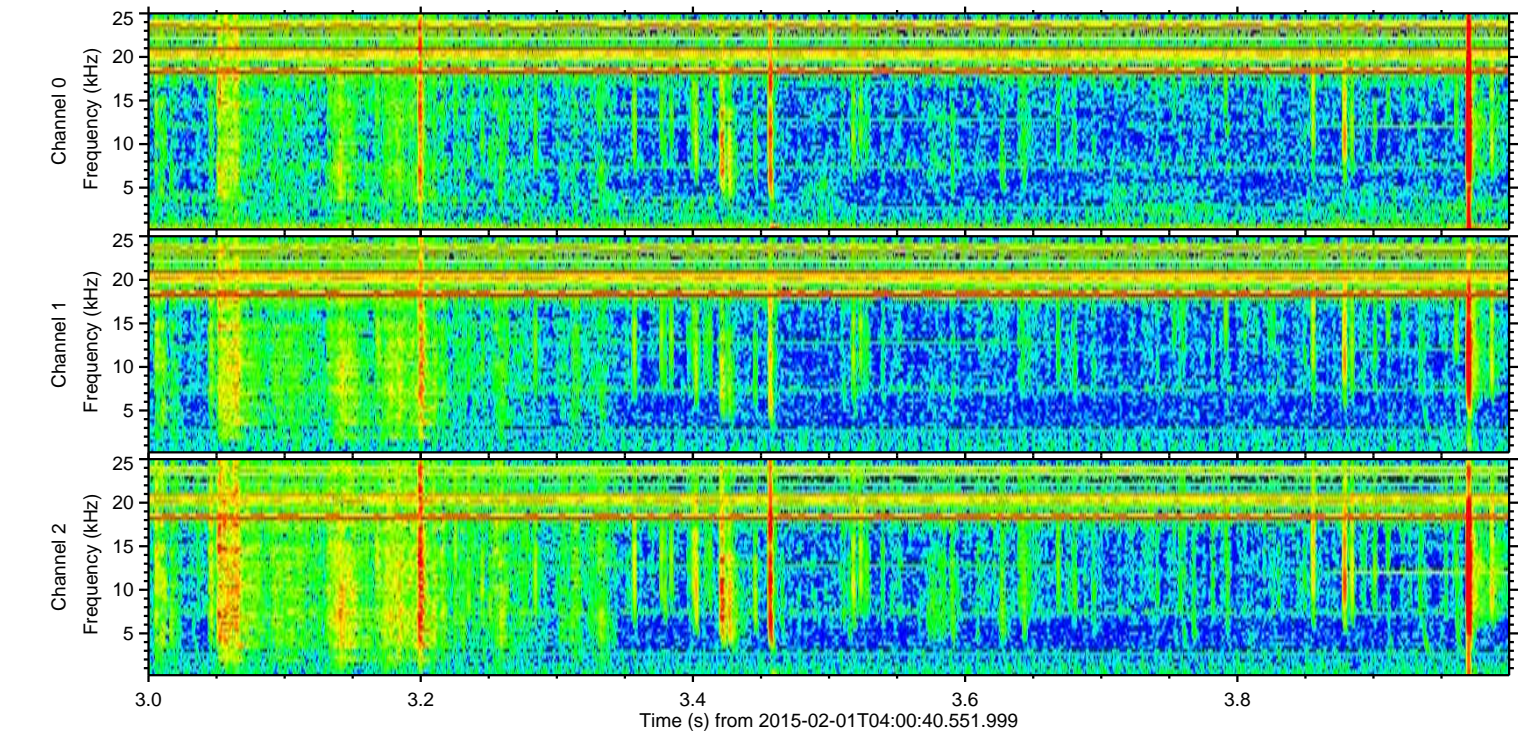
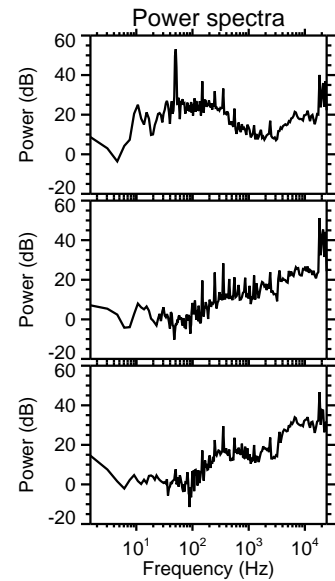
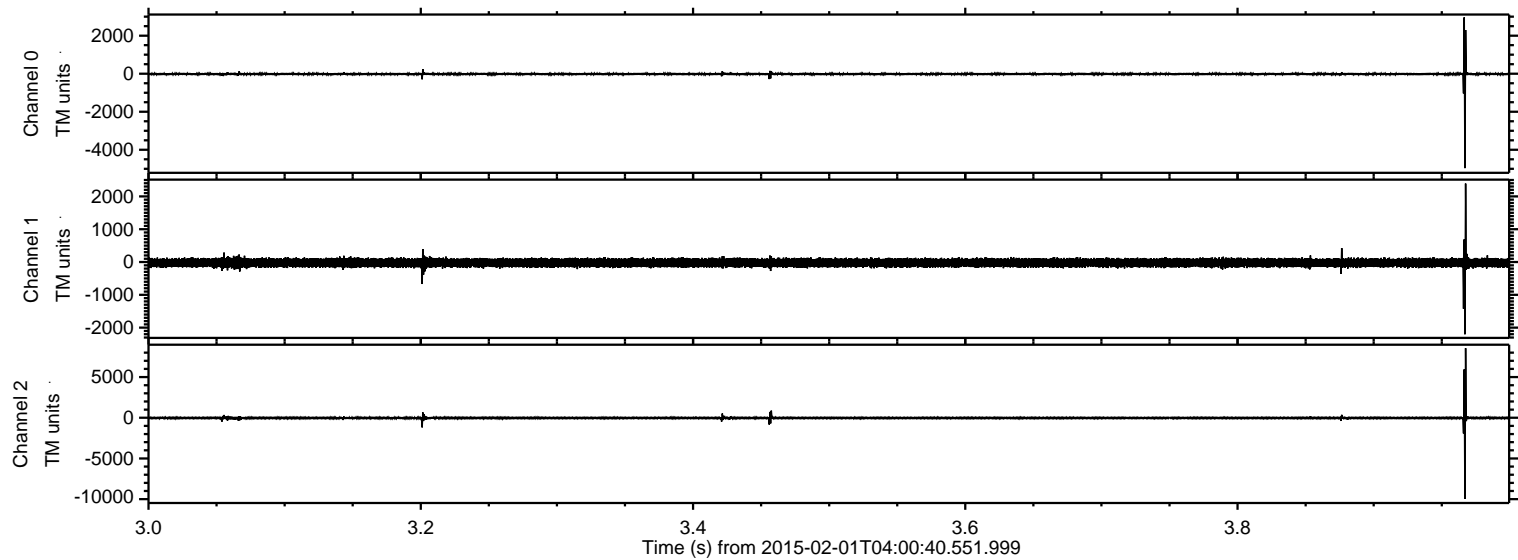


Processed Mon Feb 16 12:26:08 2015 by ELM ver.2012-10-06 from 001__elm20150201_040039__dat00.bin



ELMAVAN 3D WAVEFORMS (Measured data sampled at 50 kHz) 49791 packets of 144 samples from 2015-02-01T04:00:40.551.999. Part 4/144

Processed Mon Feb 16 12:26:09 2015 by ELM ver.2012-10-06 from 001__elm20150201_040039__dat00.bin



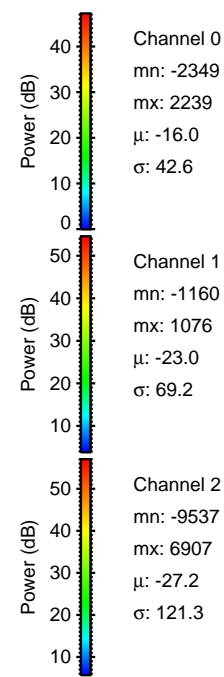
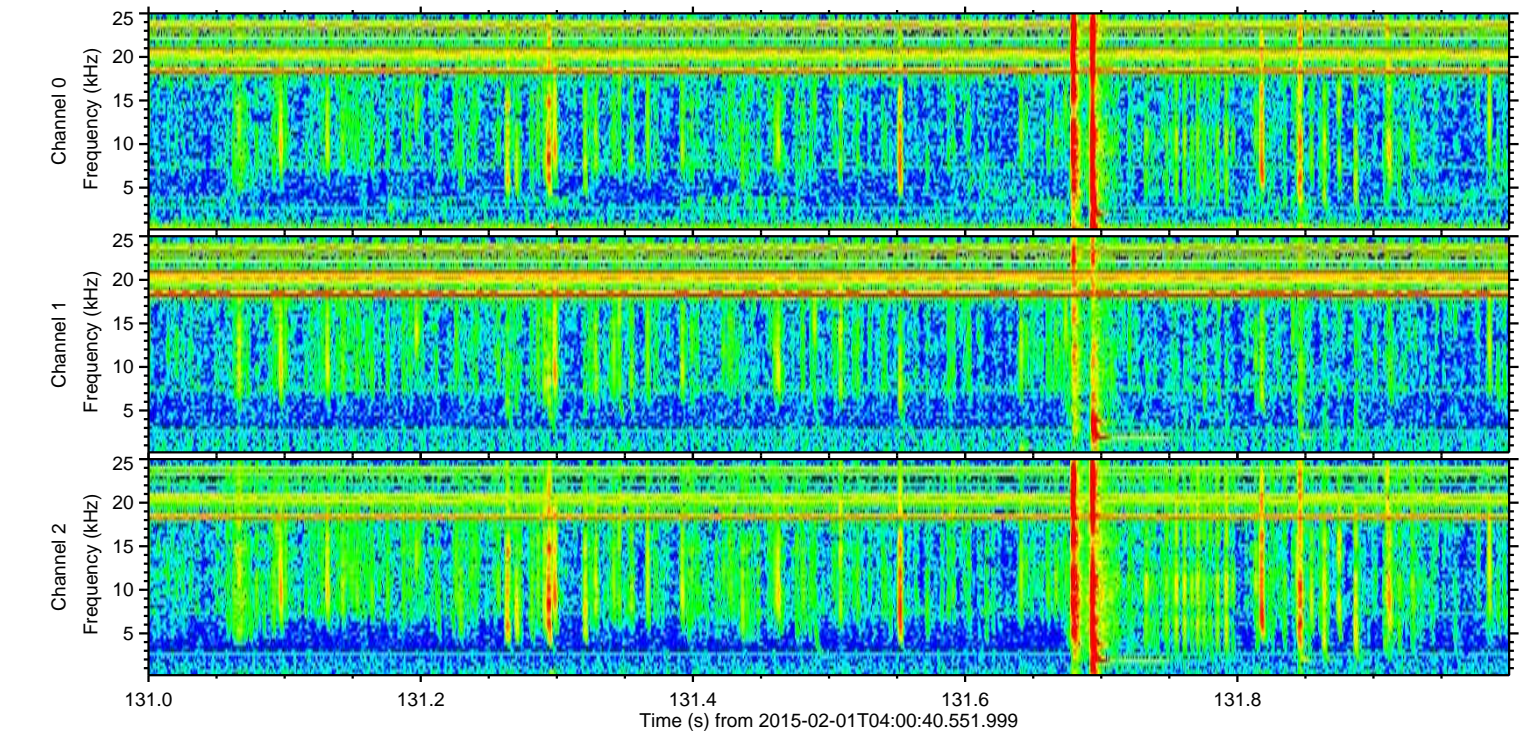
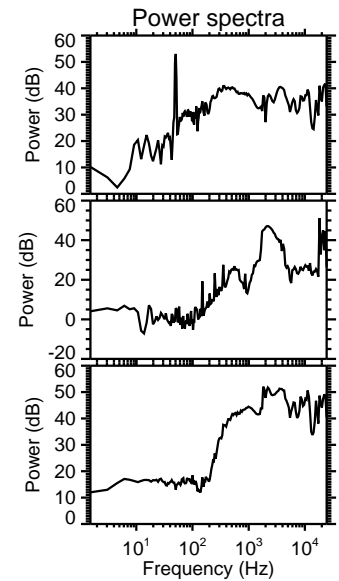
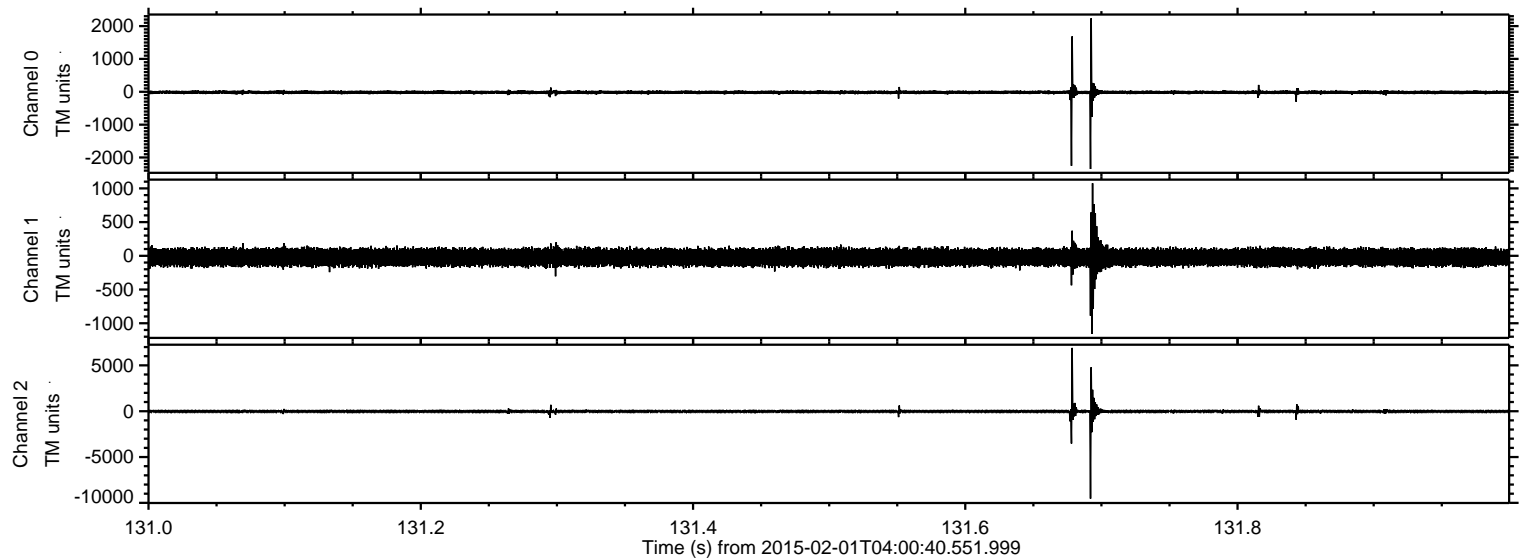
Channel 0
mn: -4962
mx: 2963
 μ : -16.0
 σ : 38.8

Channel 1
mn: -2202
mx: 2391
 μ : -23.0
 σ : 69.1

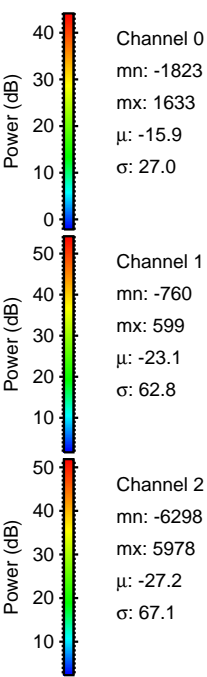
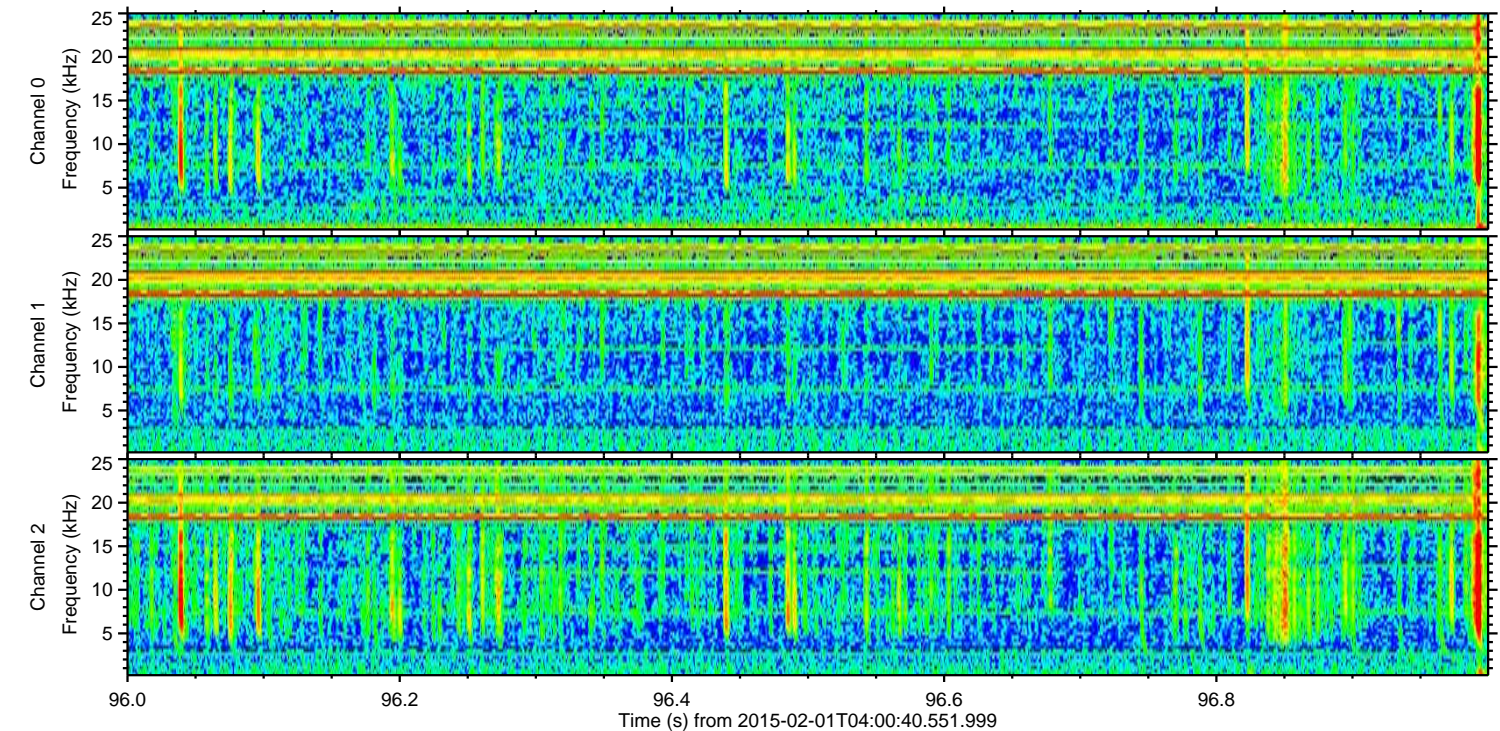
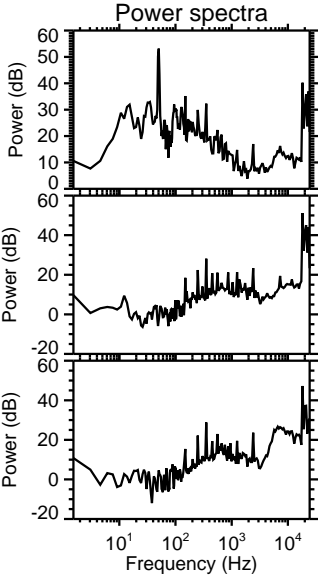
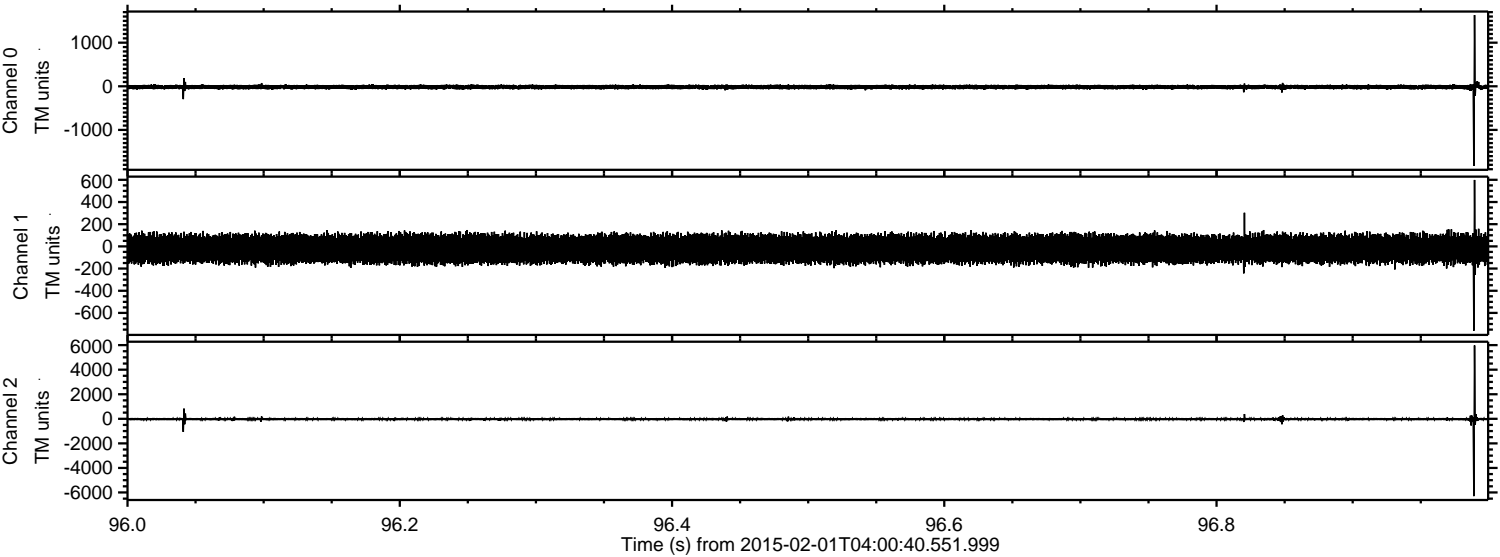
Channel 2
mn: -9976
mx: 8547
 μ : -27.2
 σ : 93.5

ELMAVAN 3D WAVEFORMS (Measured data sampled at 50 kHz) 49791 packets of 144 samples from 2015-02-01T04:00:40.551.999. Part 132/144

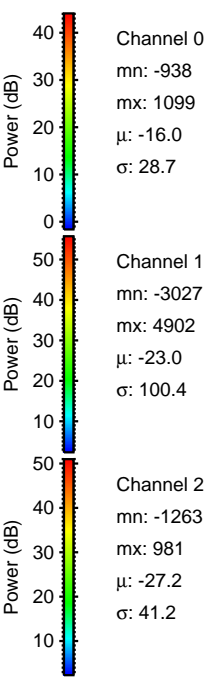
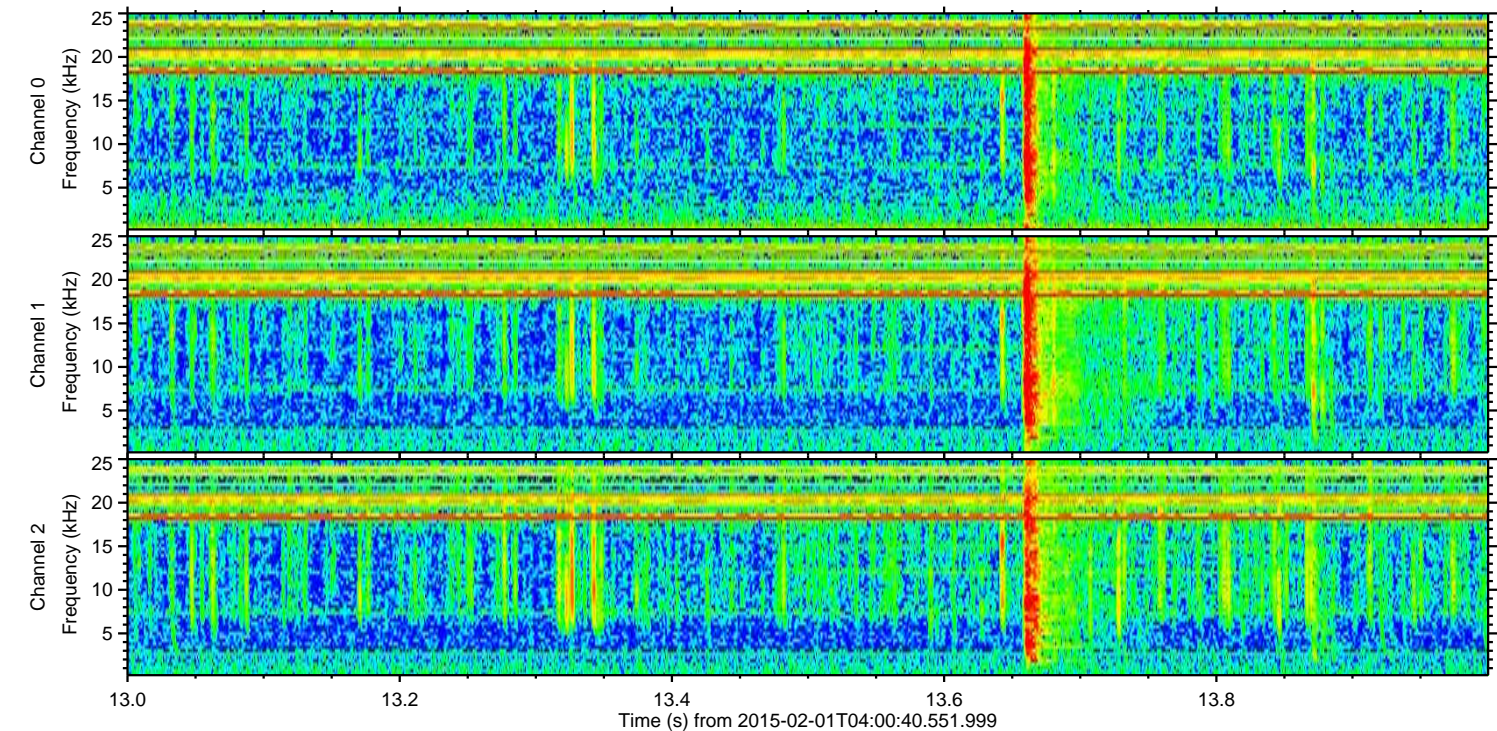
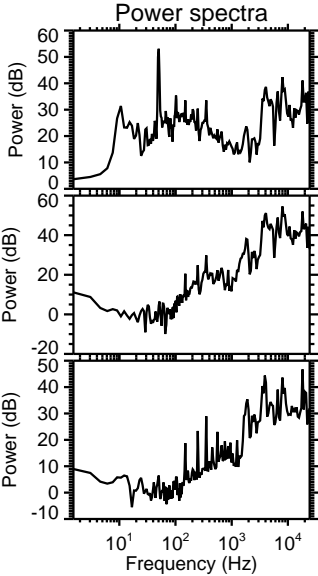
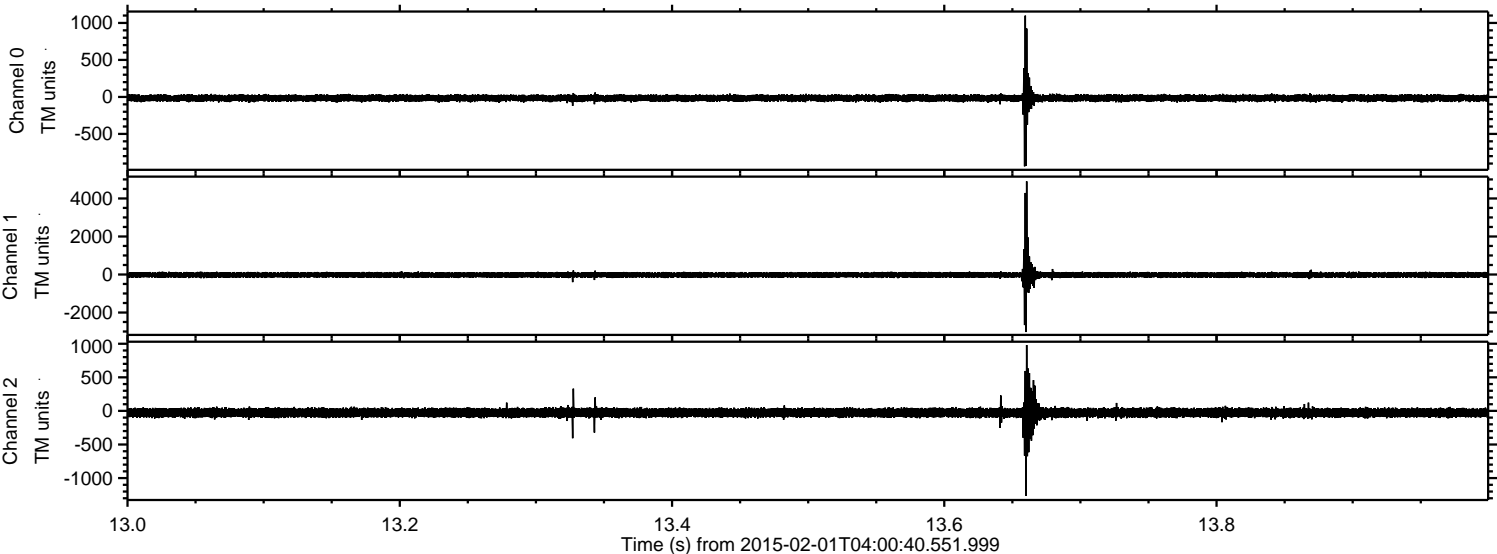
Processed Mon Feb 16 12:26:10 2015 by ELM ver.2012-10-06 from 001__elm20150201_040039__dat00.bin



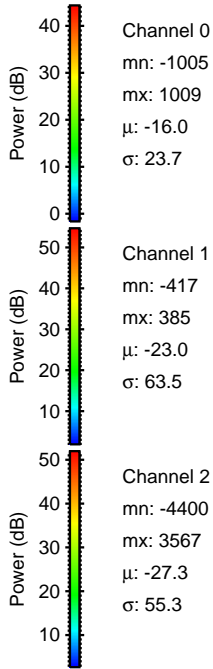
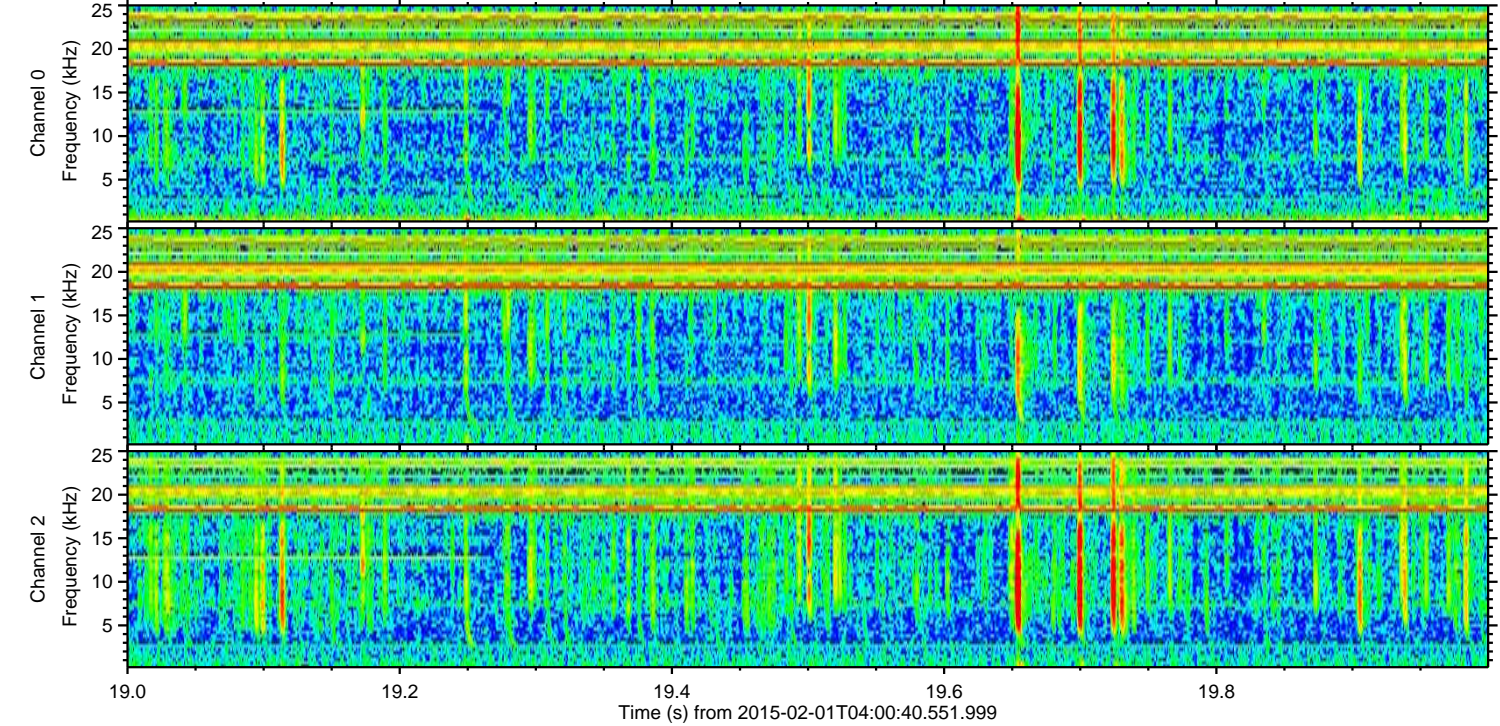
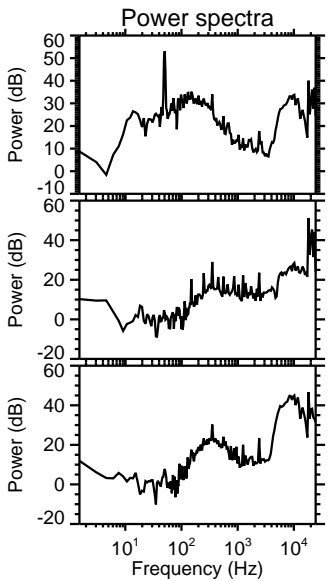
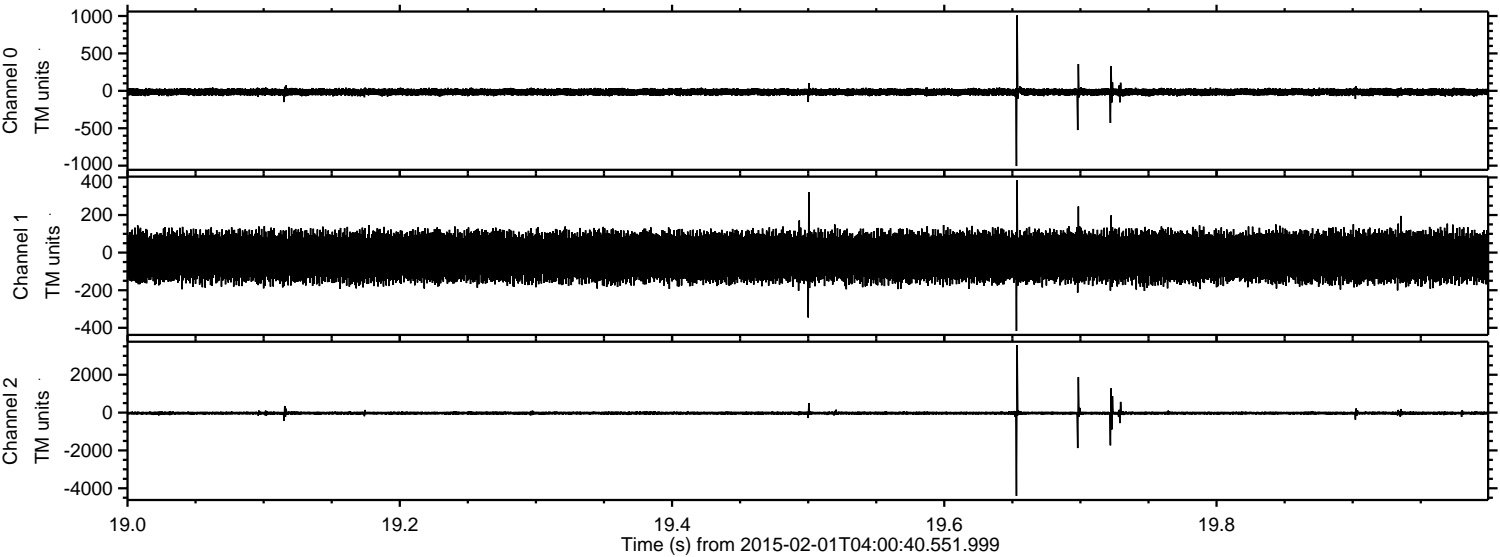
Processed Mon Feb 16 12:26:11 2015 by ELM ver.2012-10-06 from 001__elm20150201_040039__dat00.bin



Processed Mon Feb 16 12:26:12 2015 by ELM ver.2012-10-06 from 001__elm20150201_040039__dat00.bin



Processed Mon Feb 16 12:26:13 2015 by ELM ver.2012-10-06 from 001__elm20150201_040039__dat00.bin



Processed Mon Feb 16 12:26:14 2015 by ELM ver.2012-10-06 from 001__elm20150201_040039__dat00.bin

