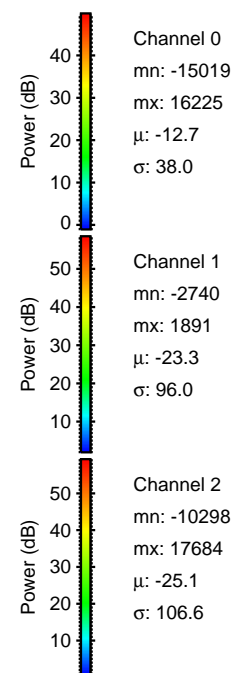
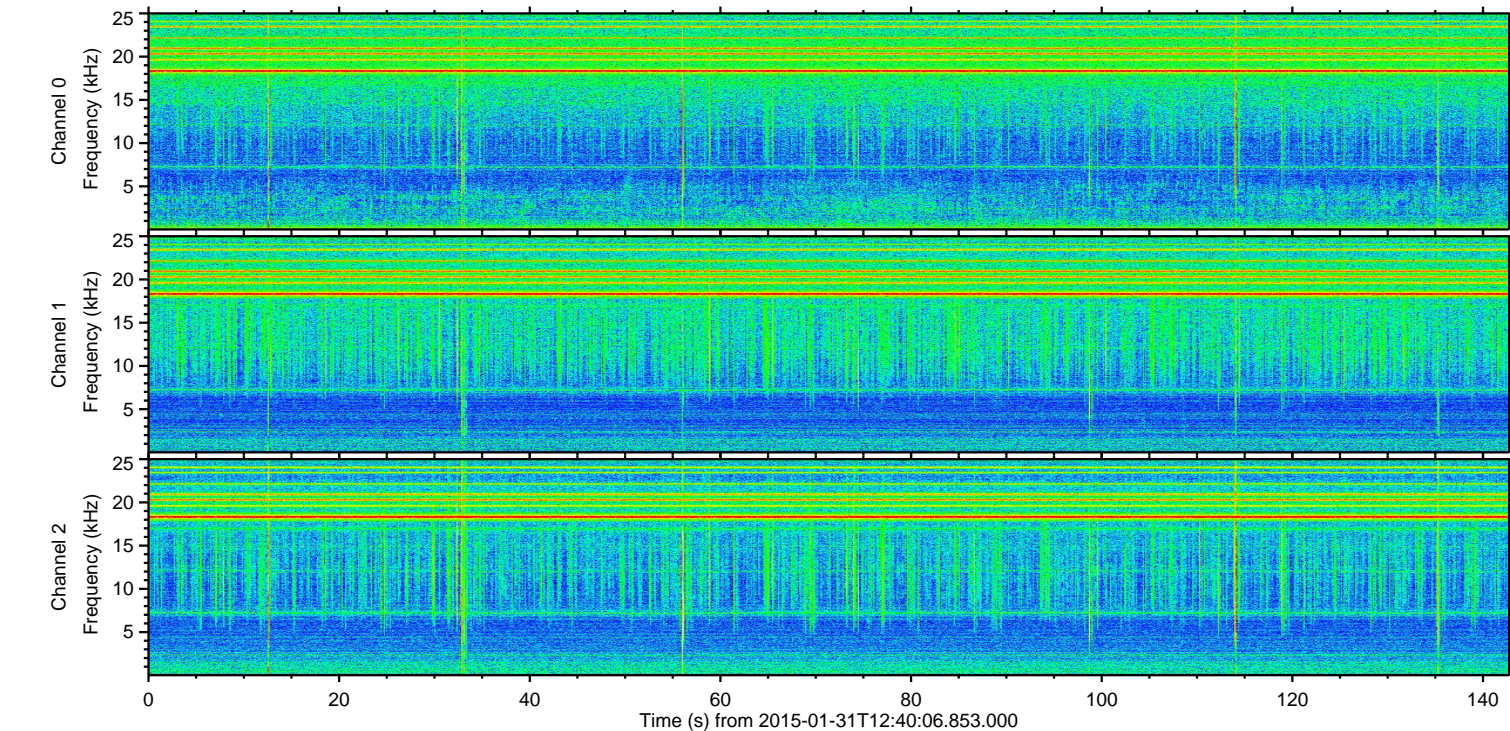
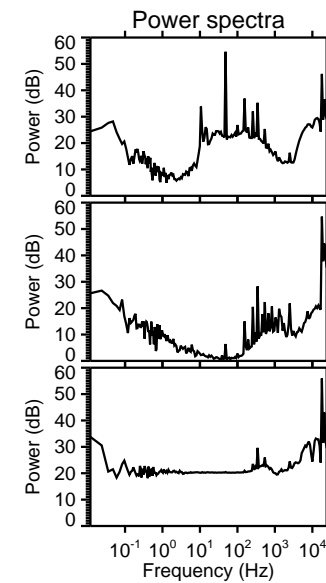
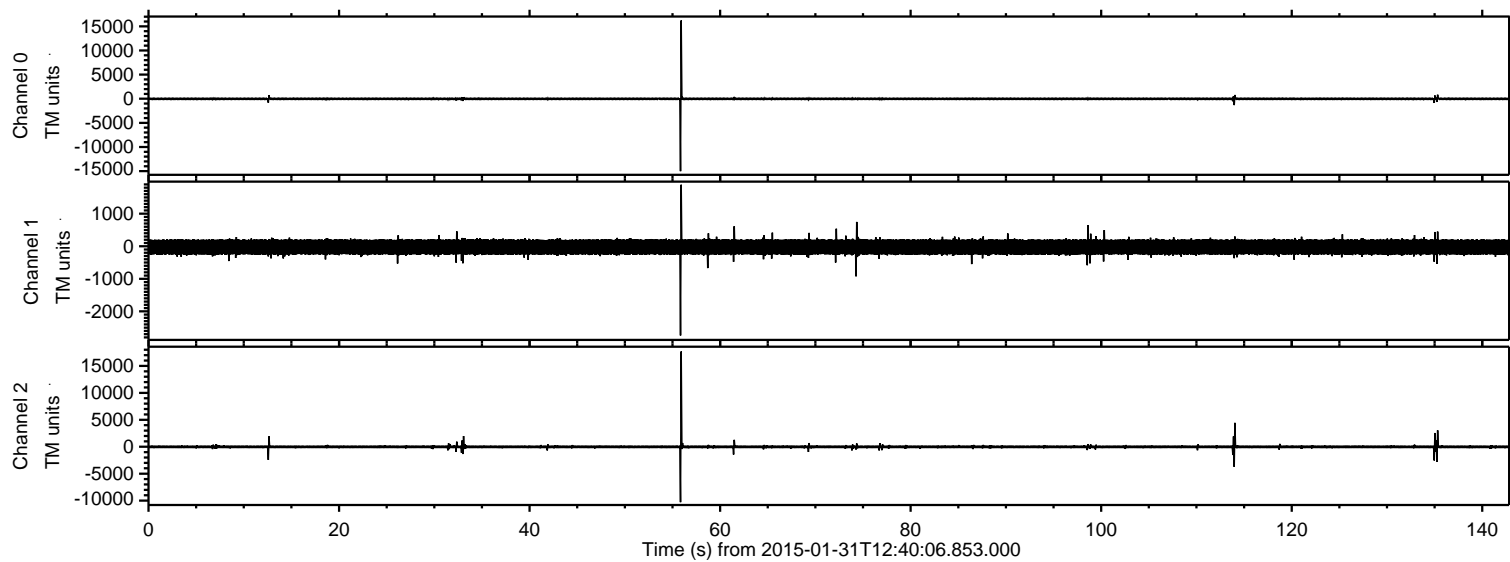
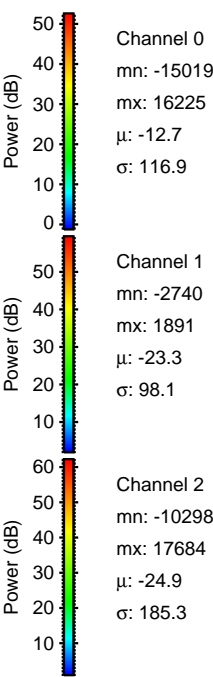
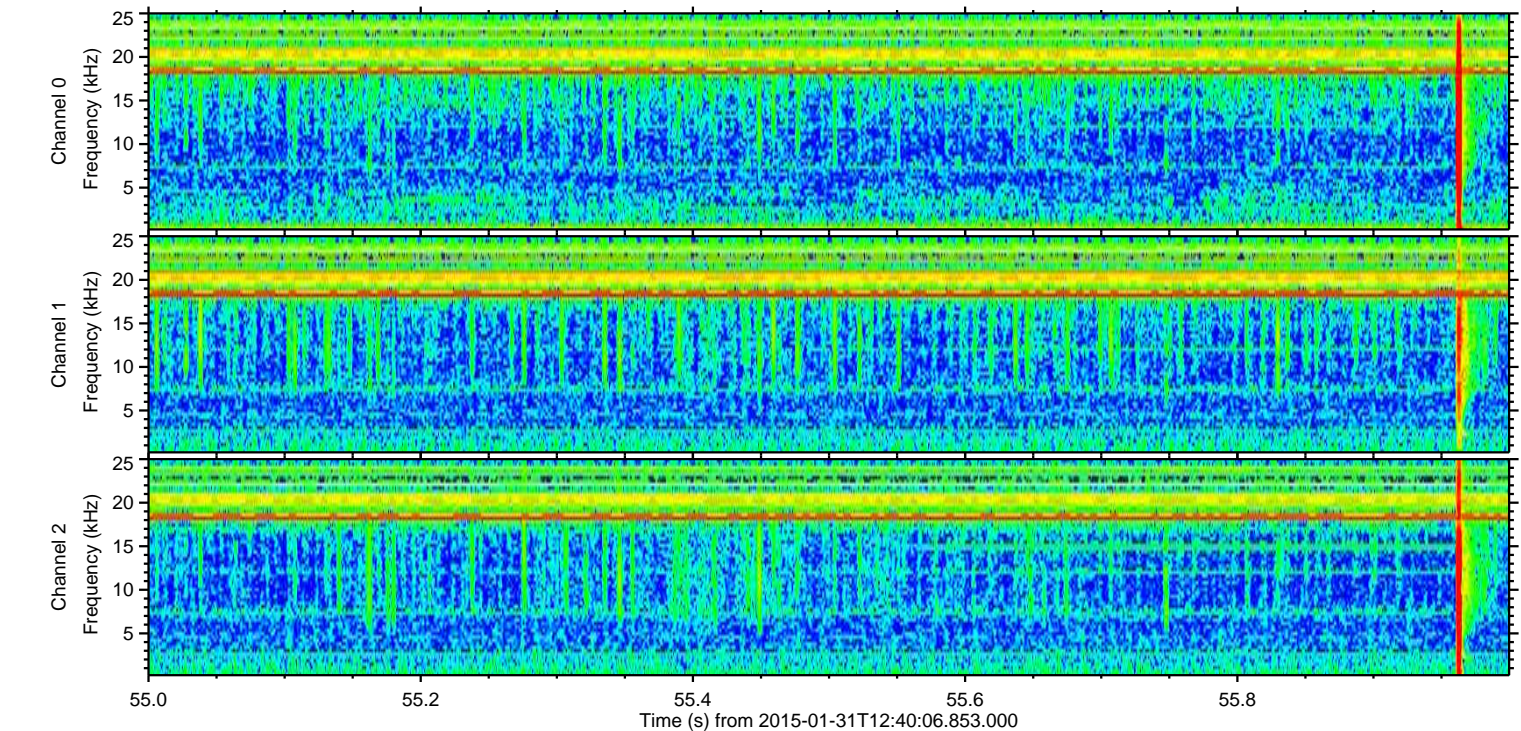
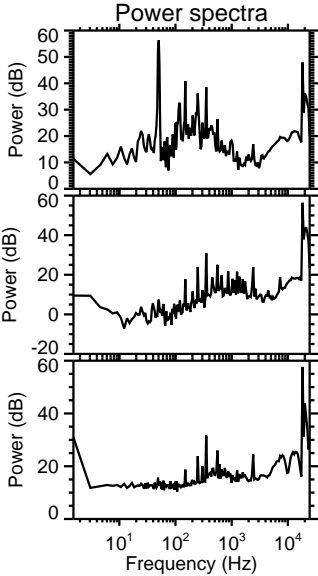
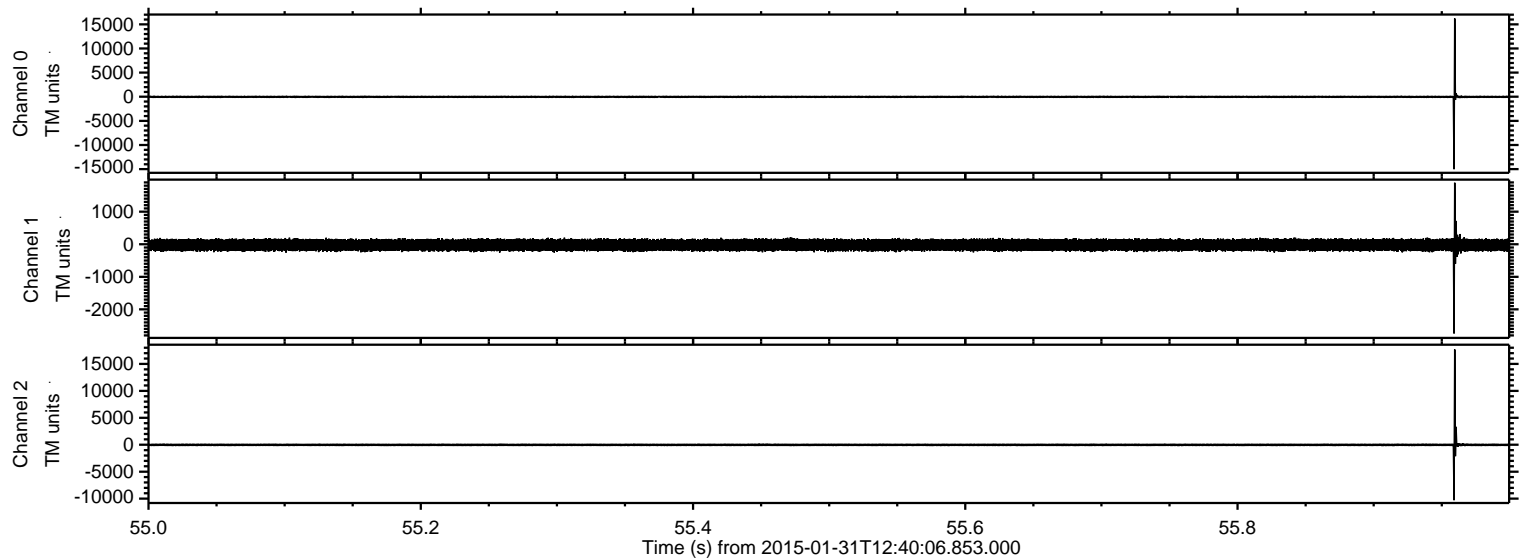


ELMAVAN 3D WAVEFORMS (Measured data sampled at 50 kHz) 49591 packets of 144 samples from 2015-01-31T12:40:06.853.000.

Processed Sat Feb 14 04:16:09 2015 by ELM ver.2012-10-06 from 001__elm20150131_124005__dat00.bin



Processed Sat Feb 14 04:16:20 2015 by ELM ver.2012-10-06 from 001__elm20150131_124005__dat00.bin



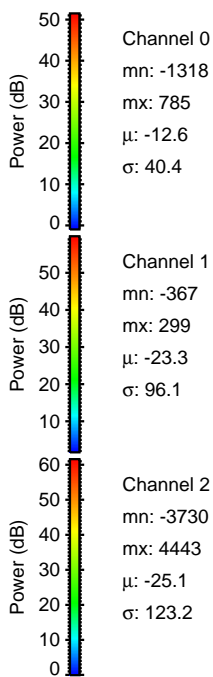
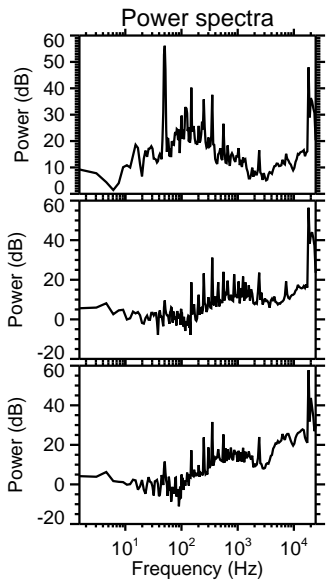
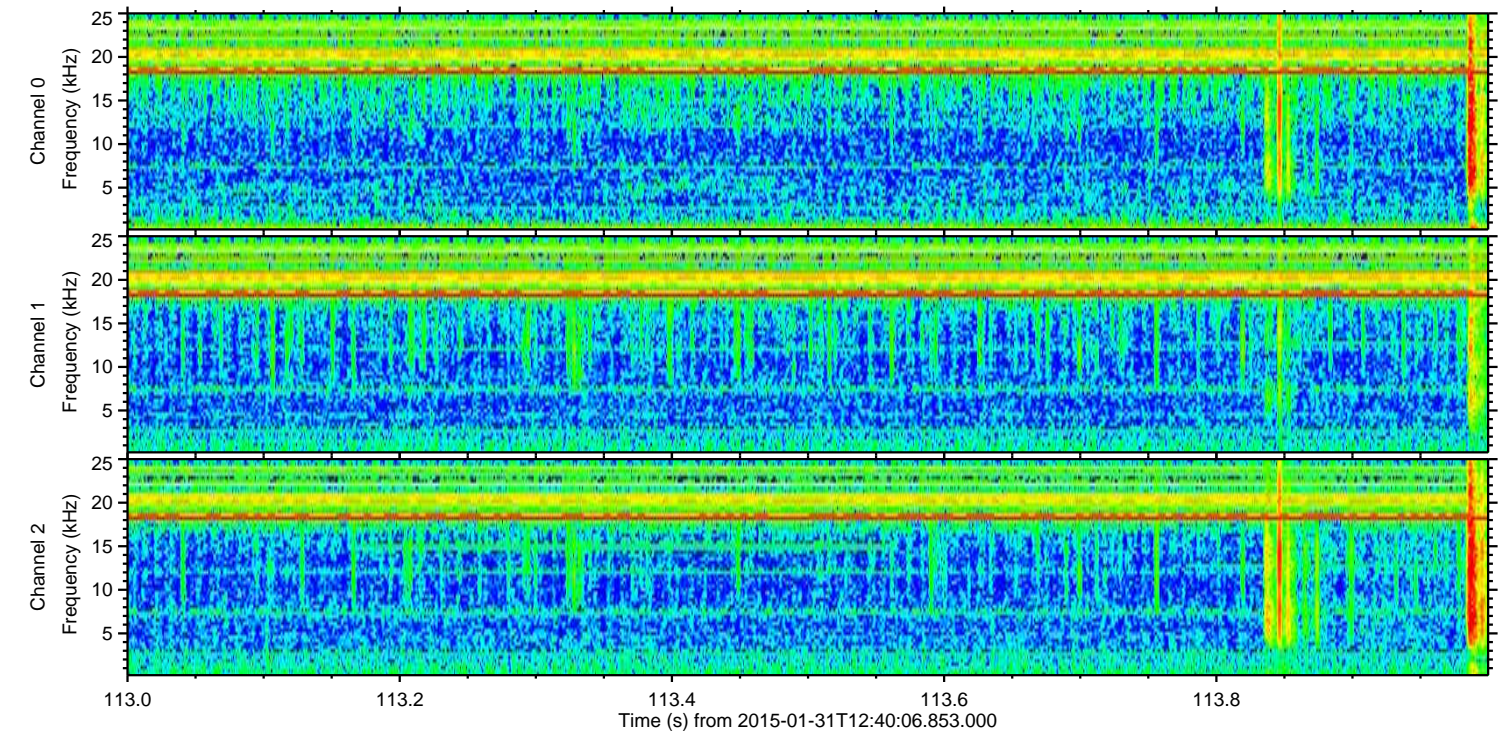
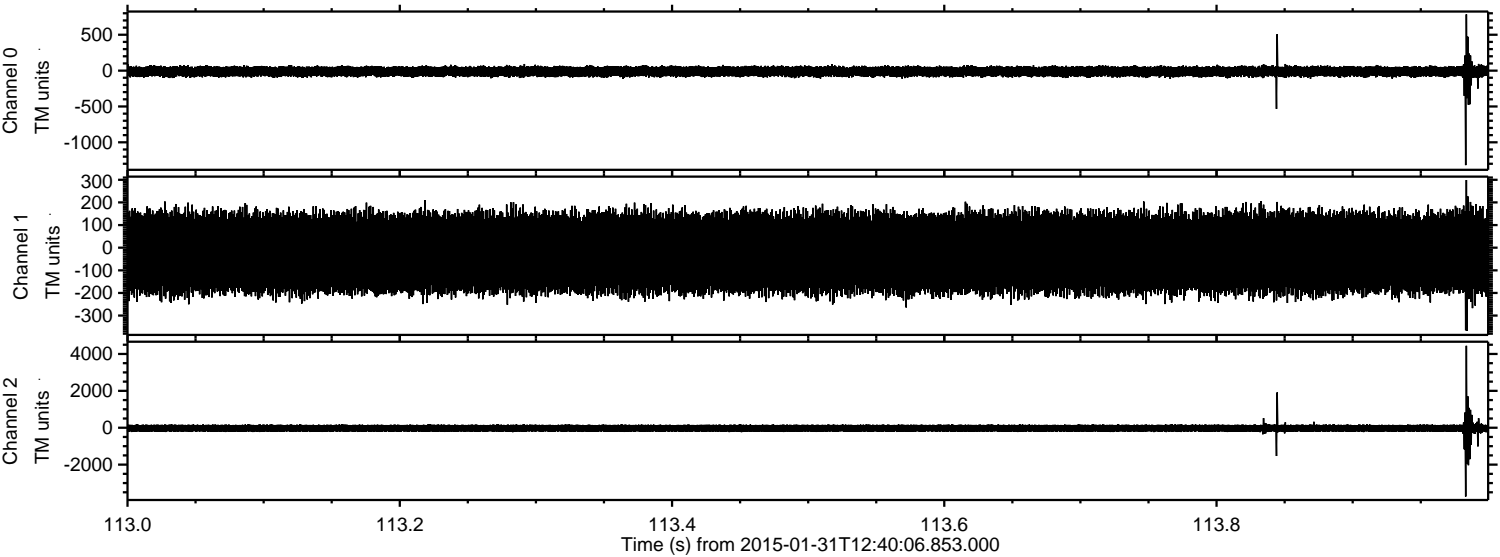
Channel 0
mn: -15019
mx: 16225
 μ : -12.7
 σ : 116.9

Channel 1
mn: -2740
mx: 1891
 μ : -23.3
 σ : 98.1

Channel 2
mn: -10298
mx: 17684
 μ : -24.9
 σ : 185.3

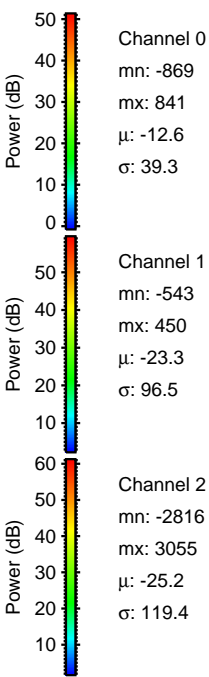
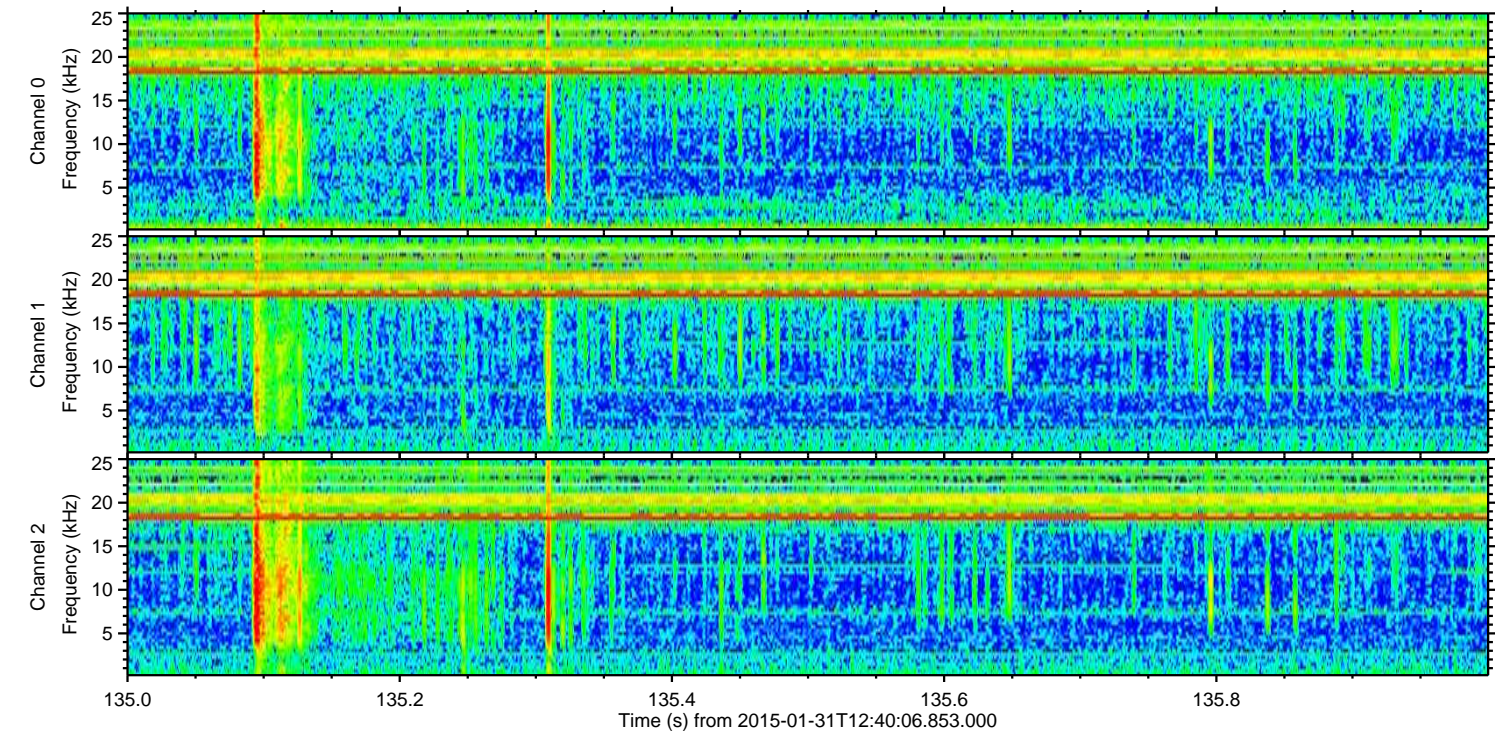
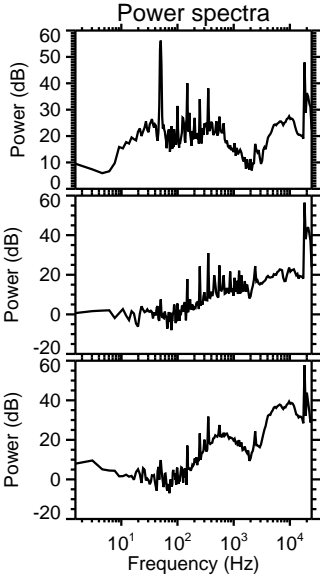
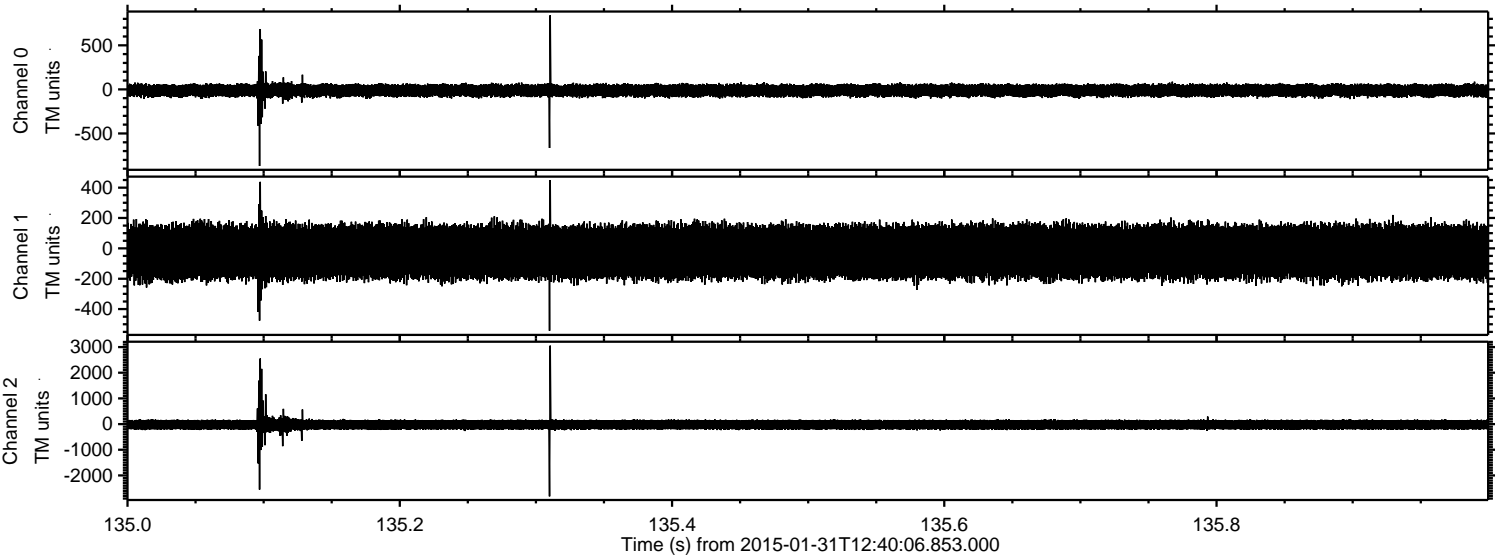
ELMAVAN 3D WAVEFORMS (Measured data sampled at 50 kHz) 49591 packets of 144 samples from 2015-01-31T12:40:06.853.000. Part 114/143

Processed Sat Feb 14 04:16:21 2015 by ELM ver.2012-10-06 from 001__elm20150131_124005__dat00.bin



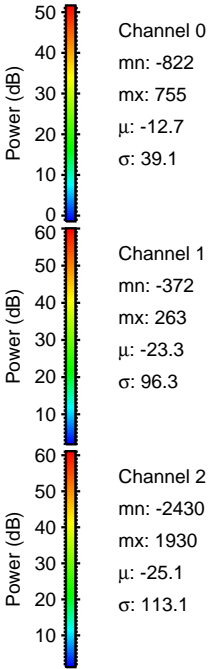
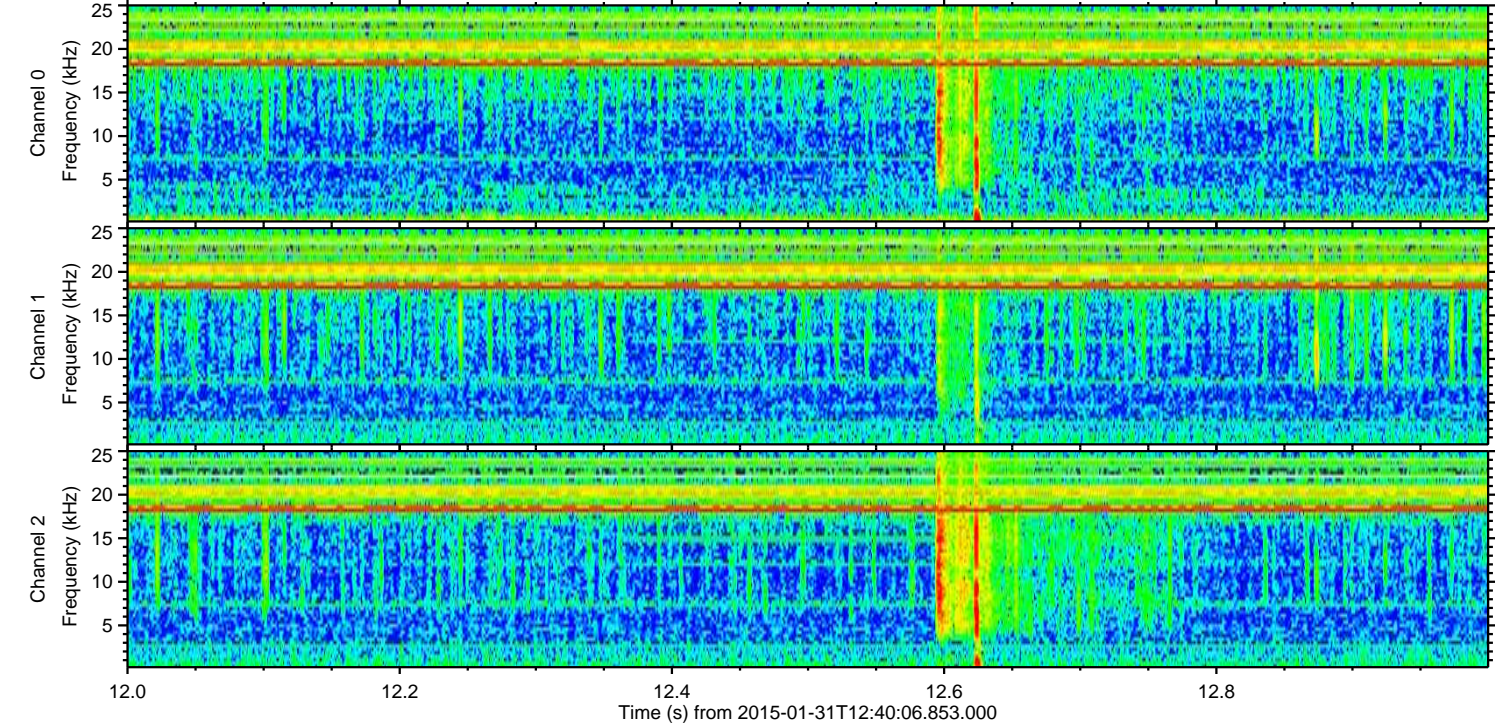
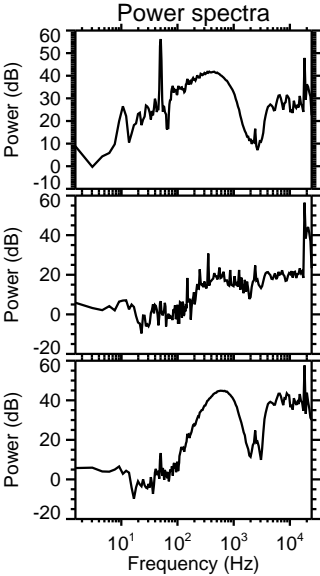
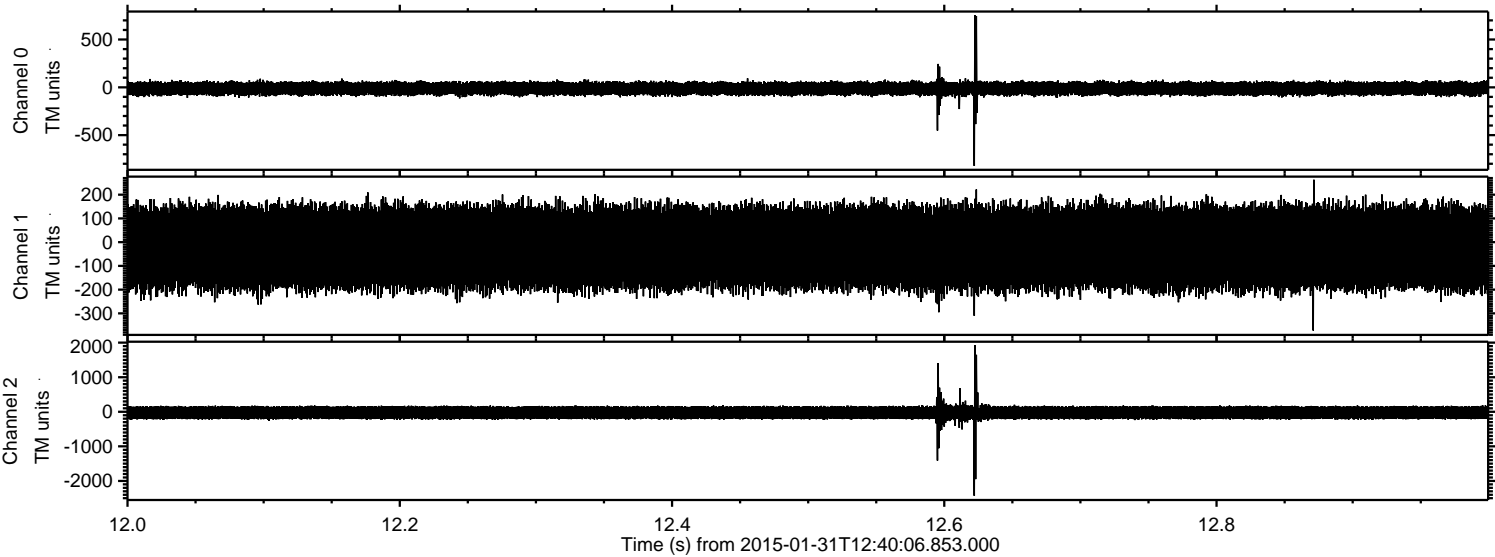
ELMAVAN 3D WAVEFORMS (Measured data sampled at 50 kHz) 49591 packets of 144 samples from 2015-01-31T12:40:06.853.000. Part 136/143

Processed Sat Feb 14 04:16:22 2015 by ELM ver.2012-10-06 from 001__elm20150131_124005__dat00.bin

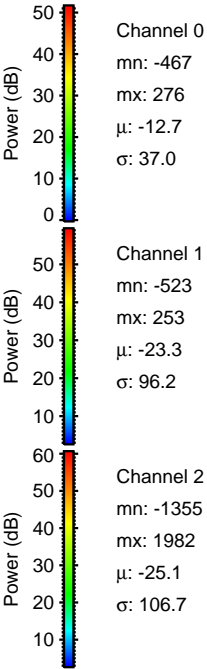
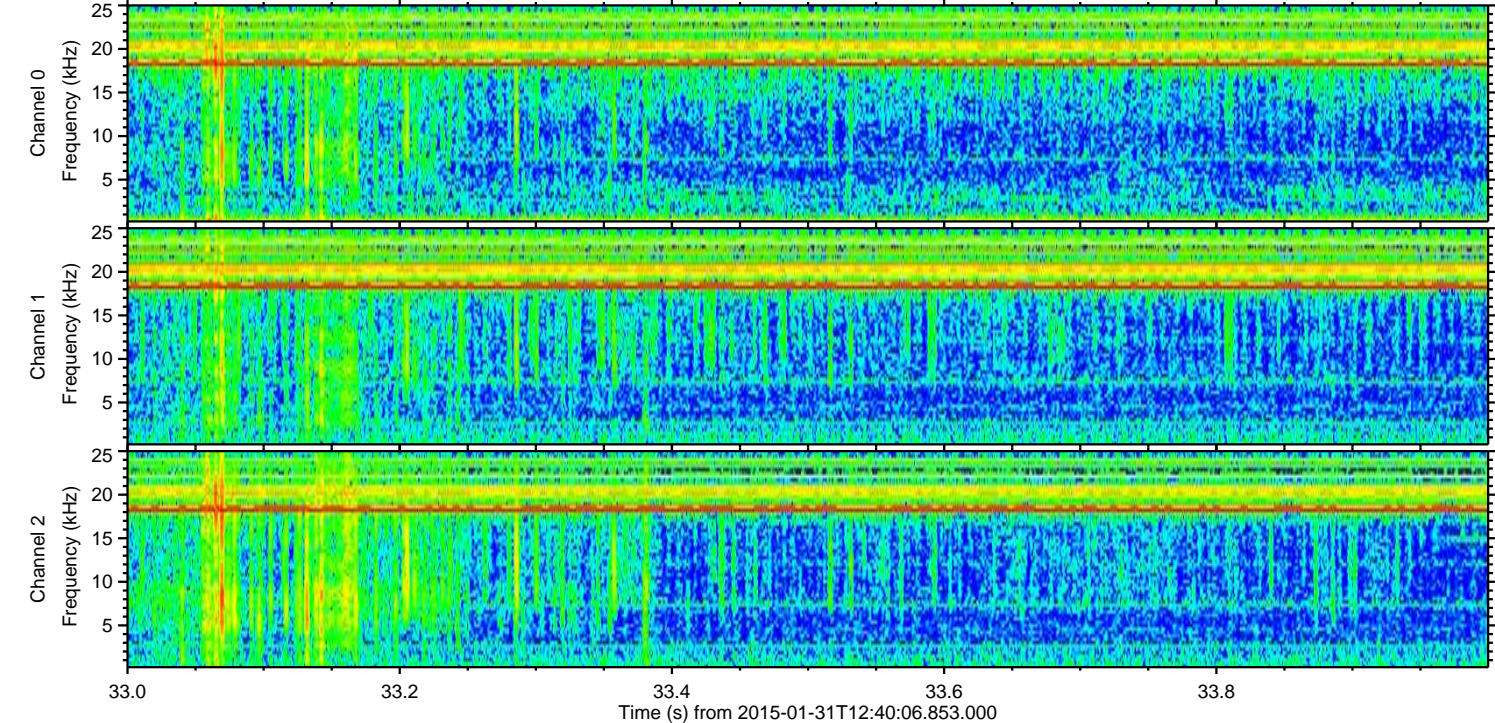
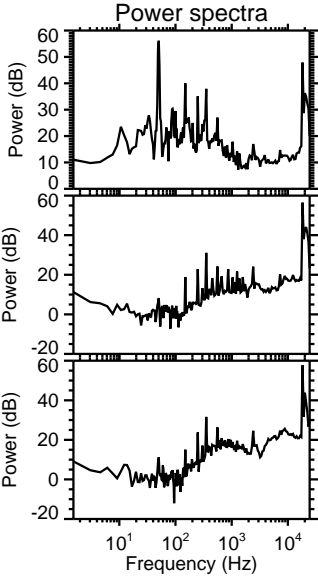
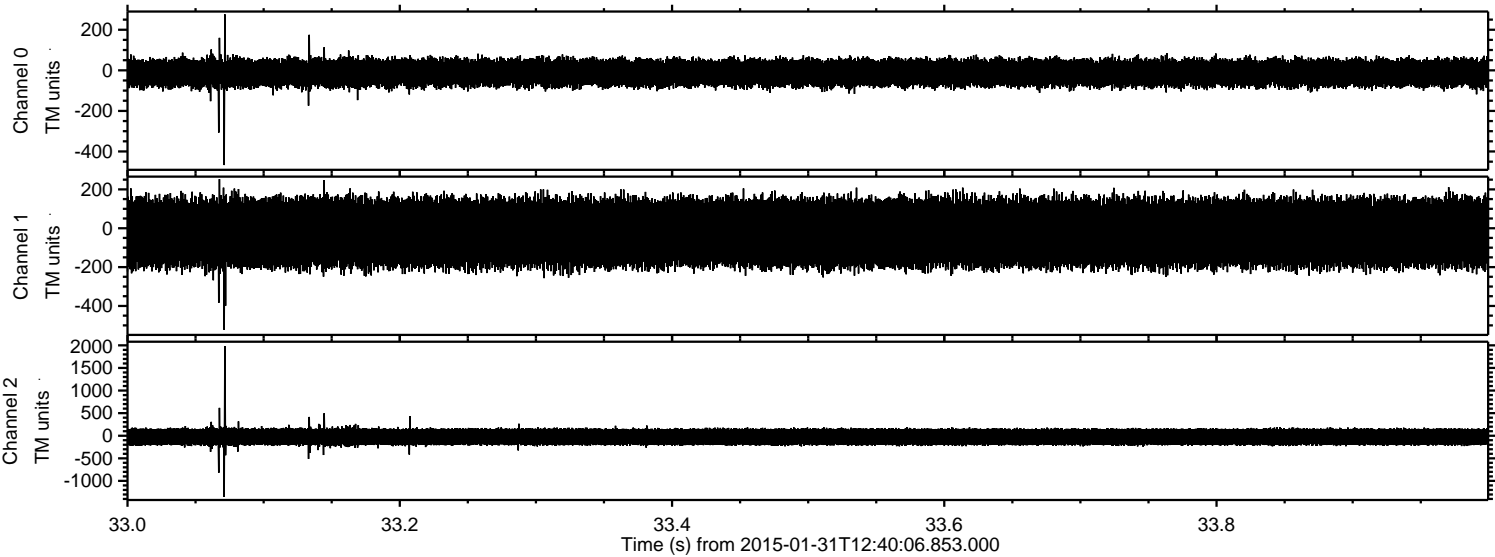


ELMAVAN 3D WAVEFORMS (Measured data sampled at 50 kHz) 49591 packets of 144 samples from 2015-01-31T12:40:06.853.000. Part 13/143

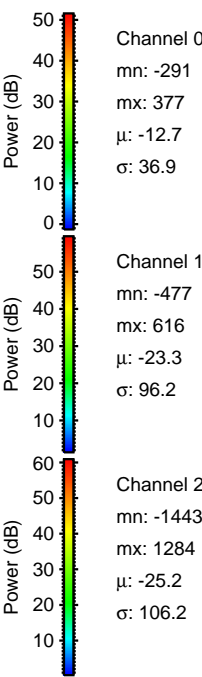
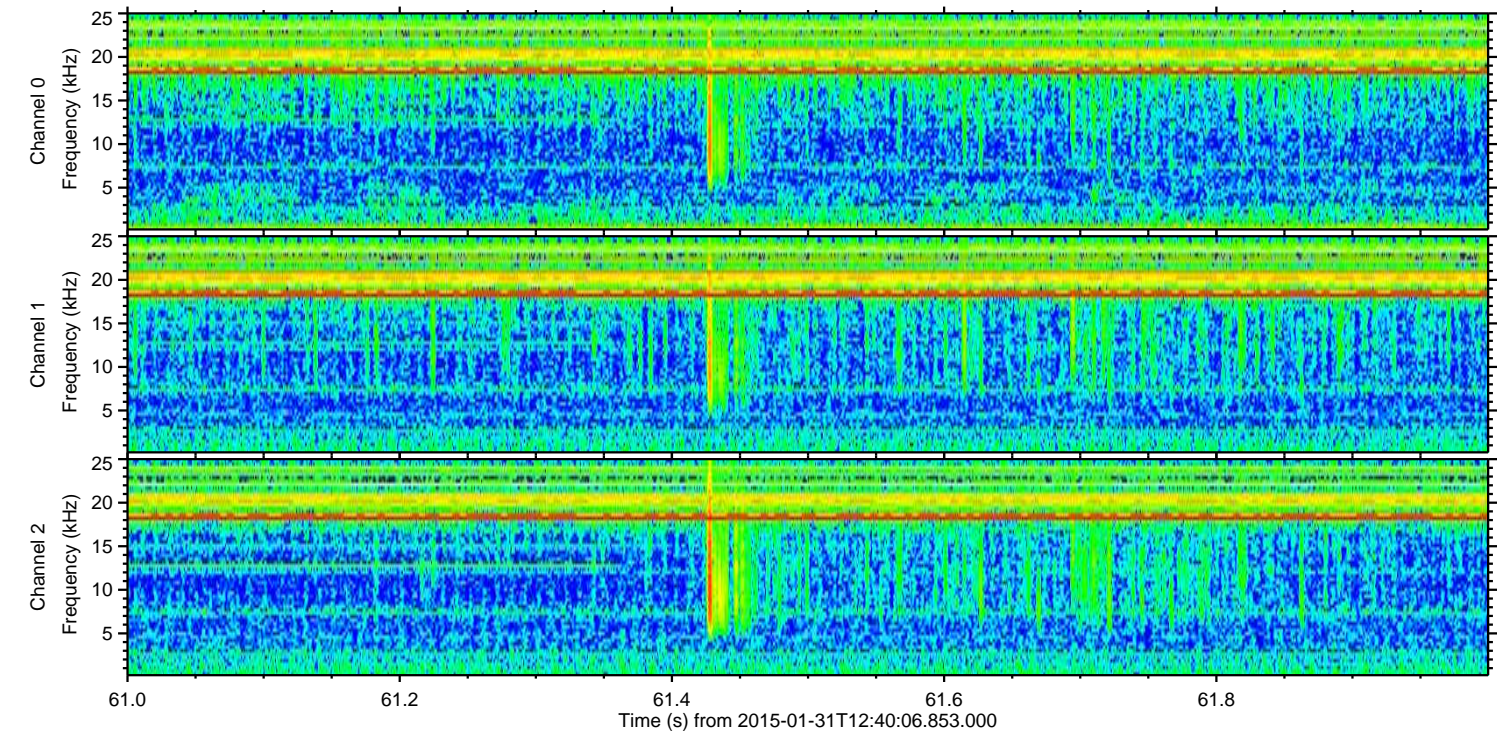
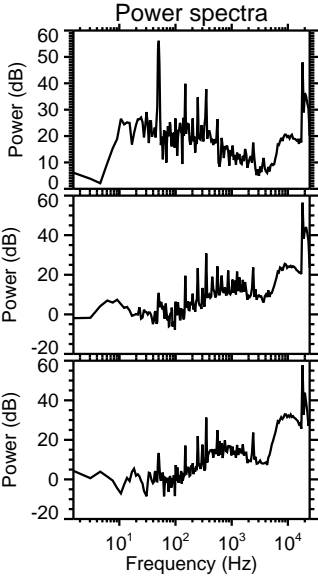
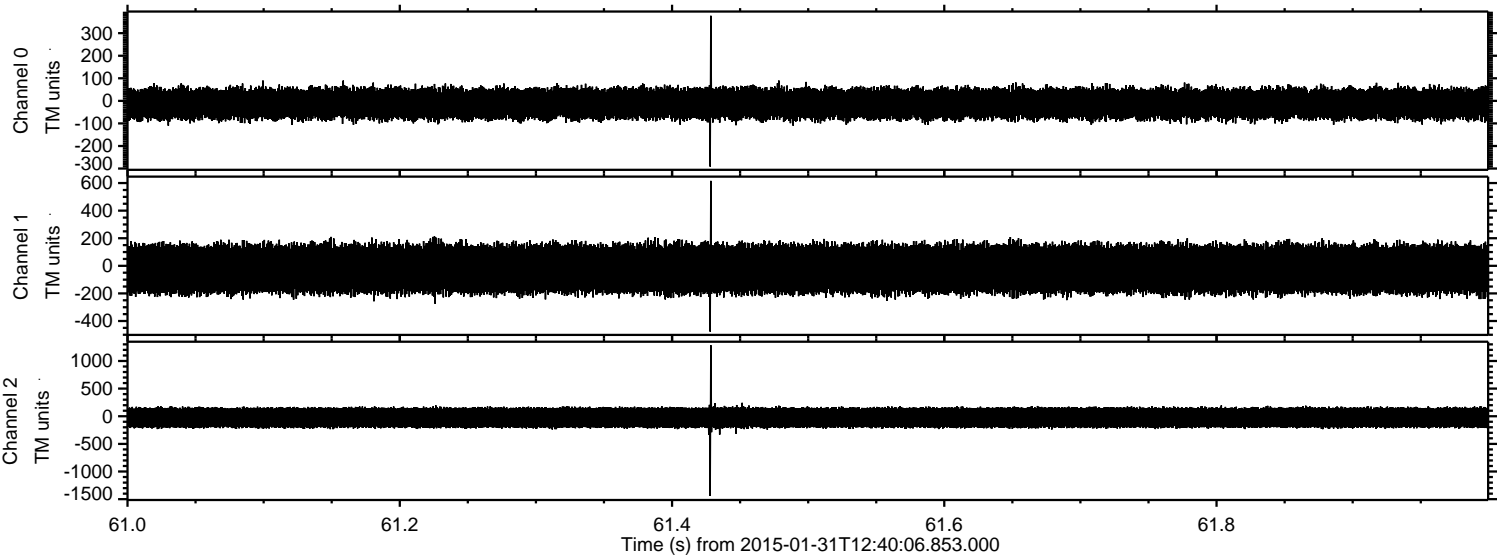
Processed Sat Feb 14 04:16:23 2015 by ELM ver.2012-10-06 from 001__elm20150131_124005__dat00.bin



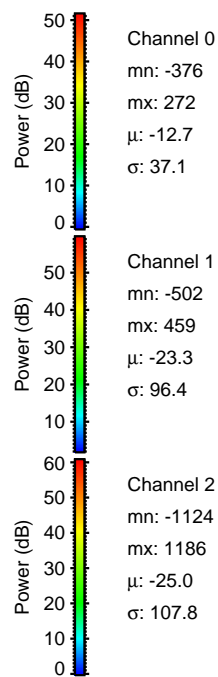
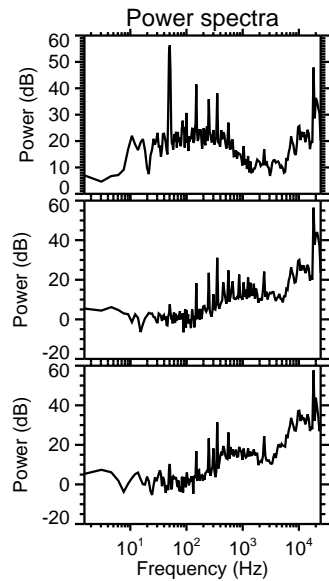
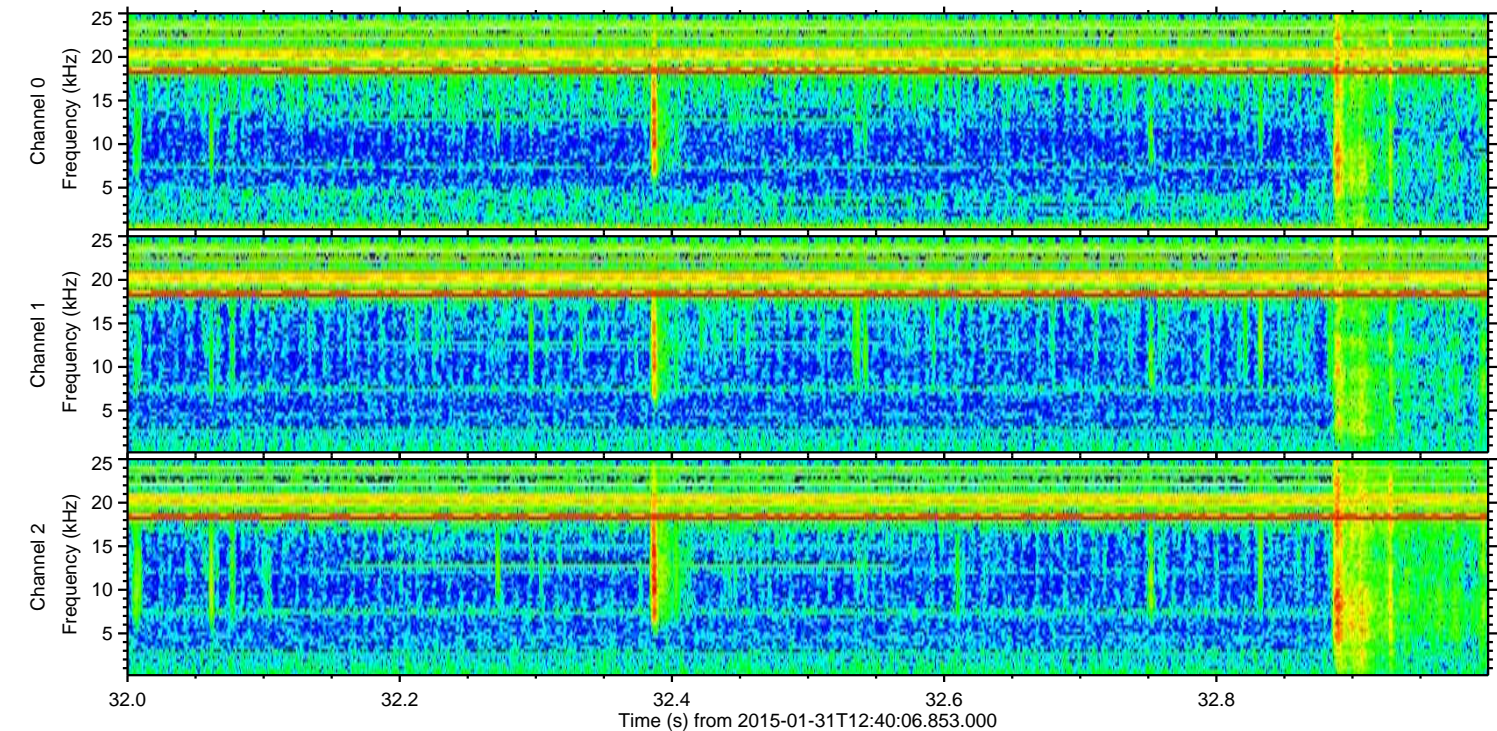
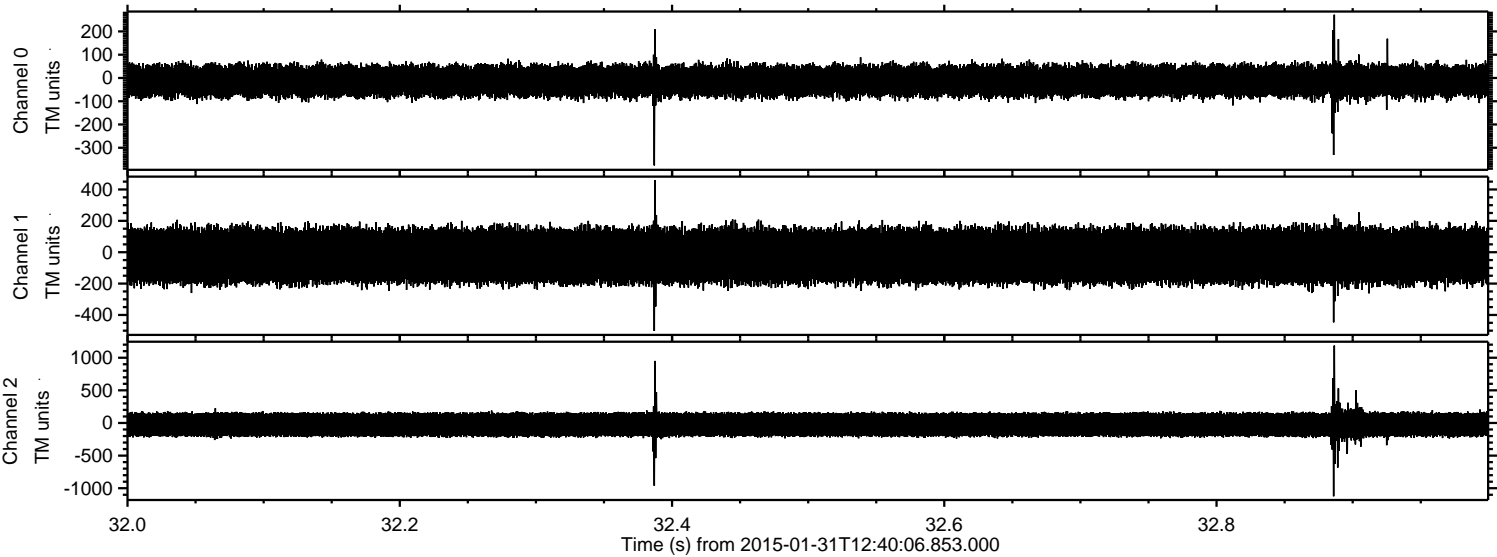
Processed Sat Feb 14 04:16:24 2015 by ELM ver.2012-10-06 from 001__elm20150131_124005__dat00.bin



Processed Sat Feb 14 04:16:25 2015 by ELM ver.2012-10-06 from 001__elm20150131_124005__dat00.bin



Processed Sat Feb 14 04:16:26 2015 by ELM ver.2012-10-06 from 001__elm20150131_124005__dat00.bin

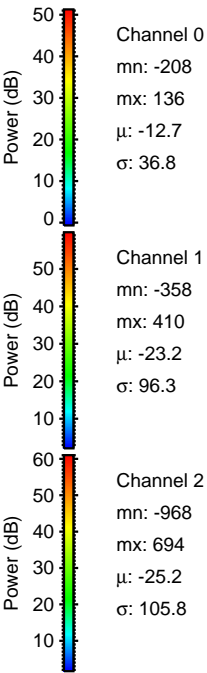
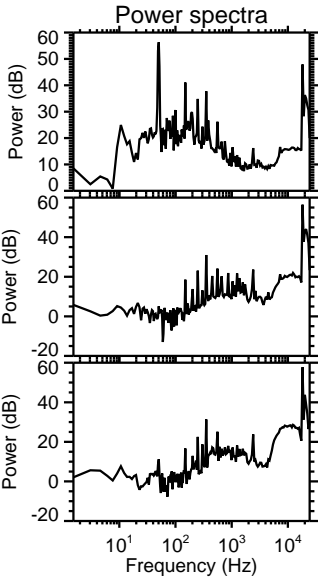
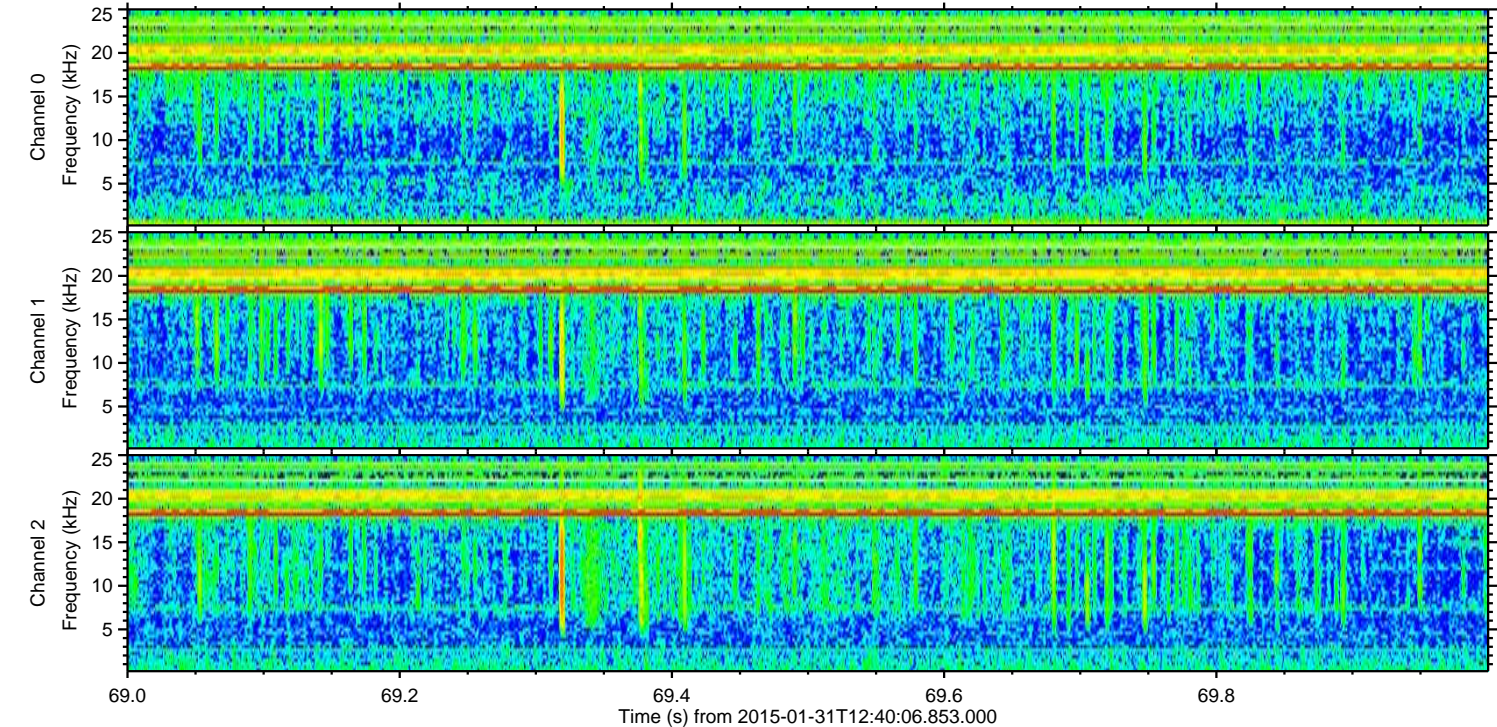
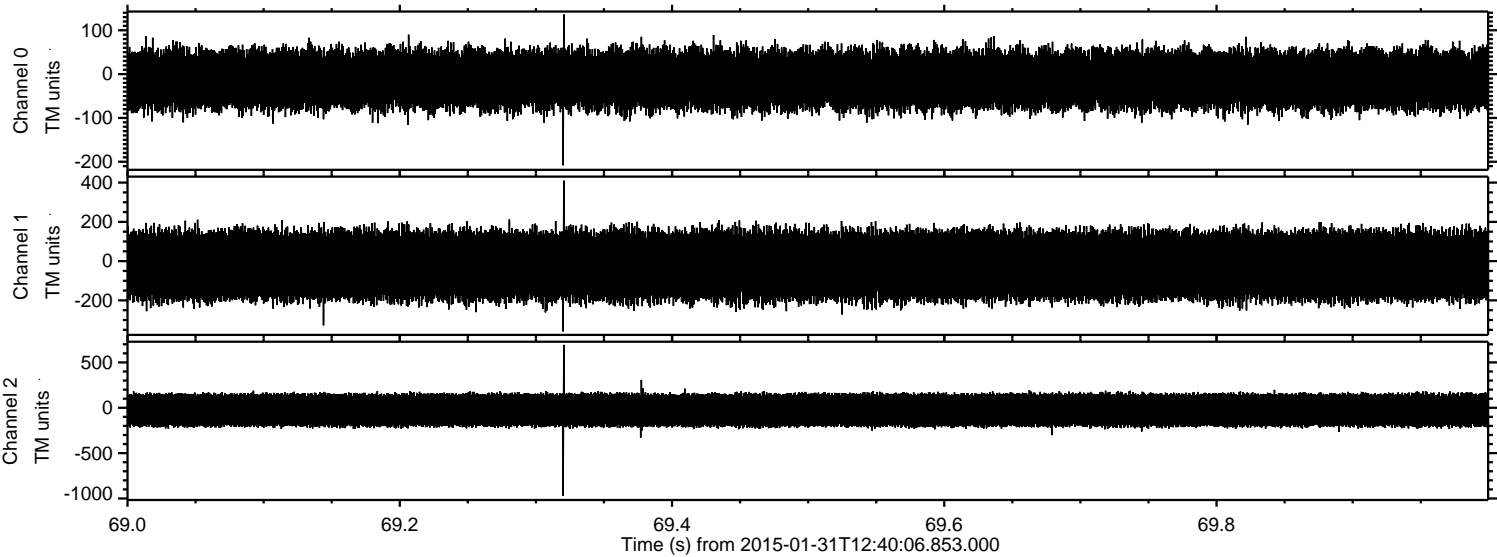


Channel 0
mn: -376
mx: 272
 μ : -12.7
 σ : 37.1

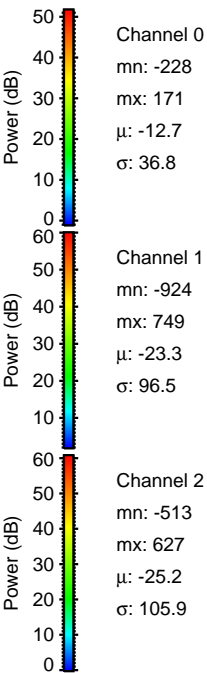
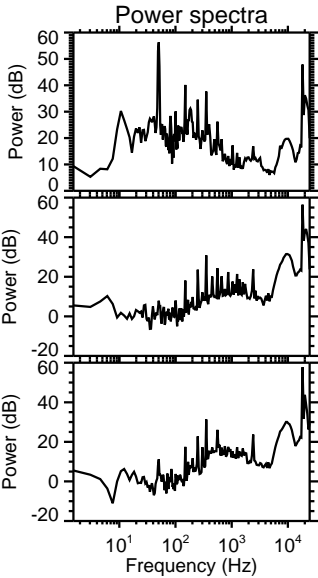
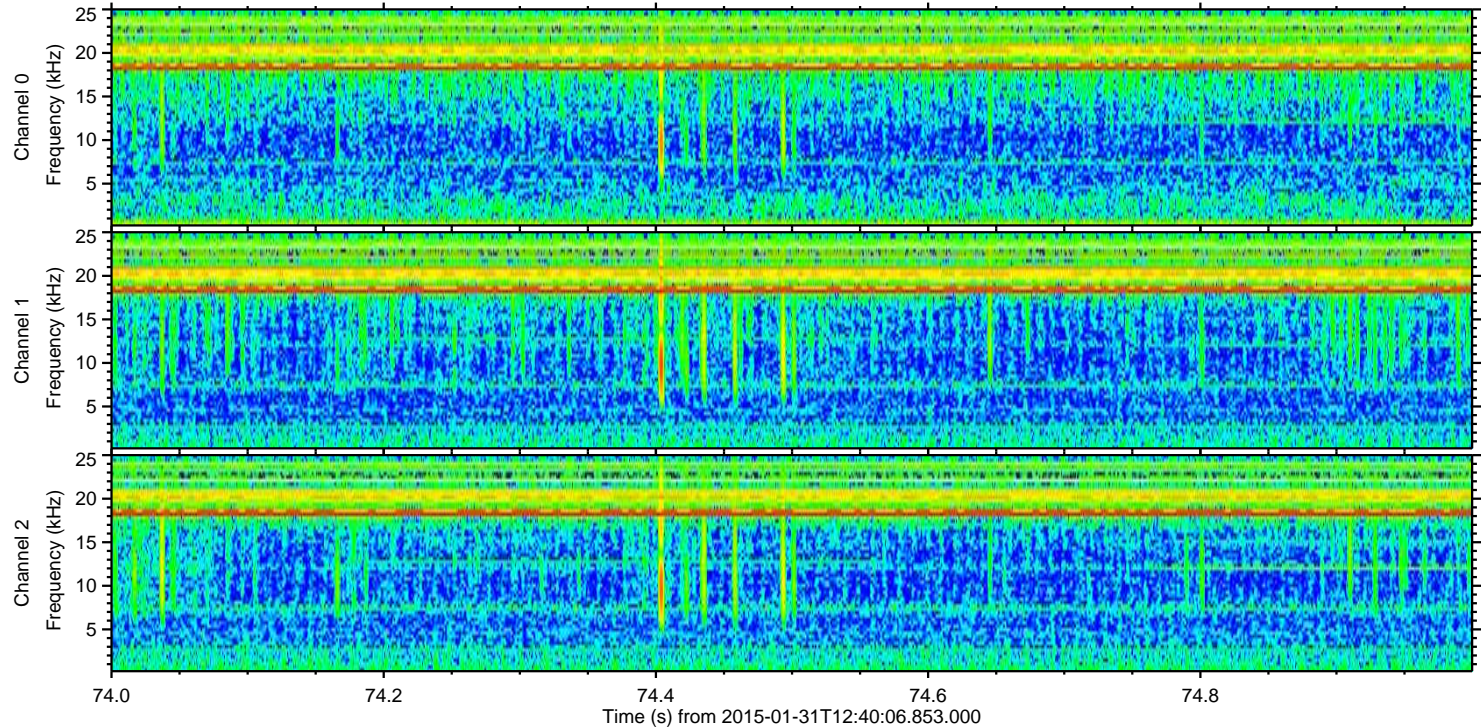
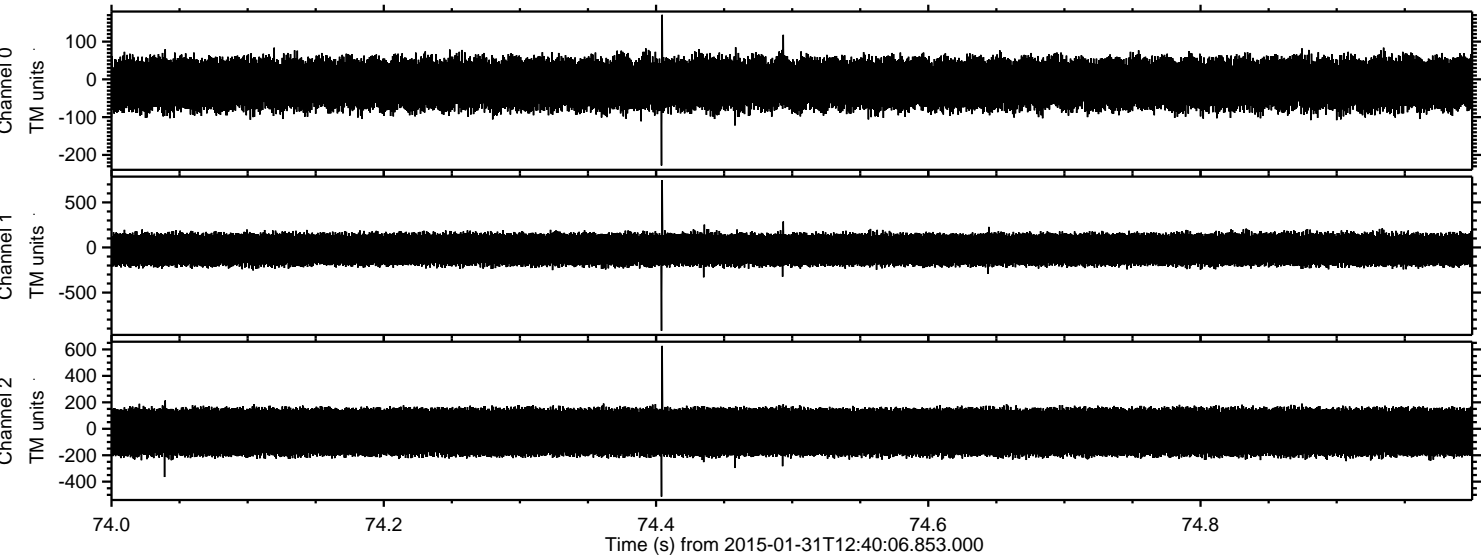
Channel 1
mn: -502
mx: 459
 μ : -23.3
 σ : 96.4

Channel 2
mn: -1124
mx: 1186
 μ : -25.0
 σ : 107.8

Processed Sat Feb 14 04:16:27 2015 by ELM ver.2012-10-06 from 001__elm20150131_124005__dat00.bin



Processed Sat Feb 14 04:16:28 2015 by ELM ver.2012-10-06 from 001__elm20150131_124005__dat00.bin



Channel 0
mn: -228
mx: 171
 μ : -12.7
 σ : 36.8

Channel 1
mn: -924
mx: 749
 μ : -23.3
 σ : 96.5

Channel 2
mn: -513
mx: 627
 μ : -25.2
 σ : 105.9

Processed Sat Feb 14 04:16:29 2015 by ELM ver.2012-10-06 from 001__elm20150131_124005__dat00.bin

