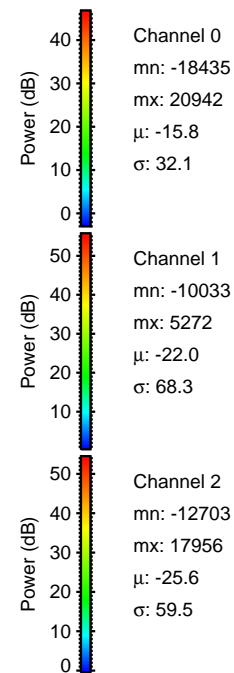
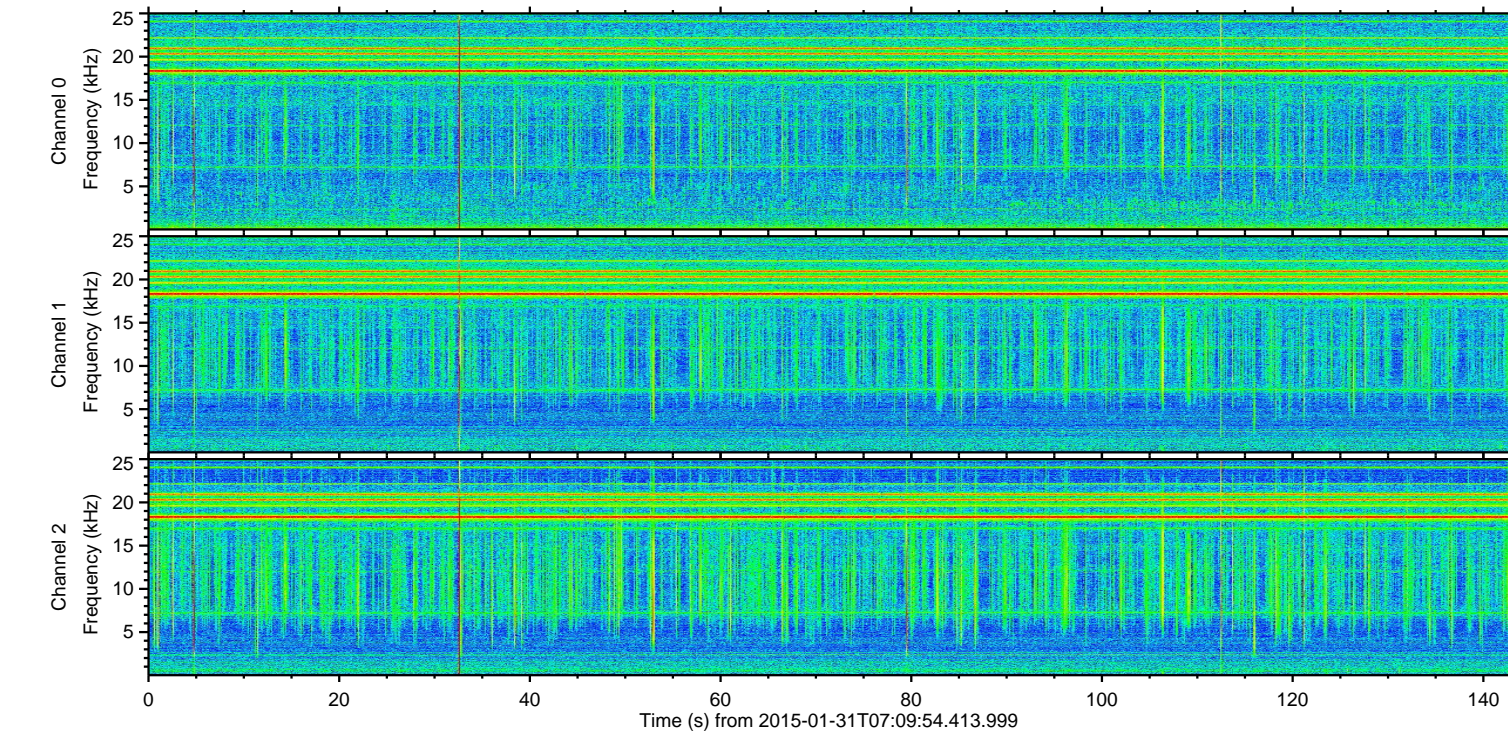
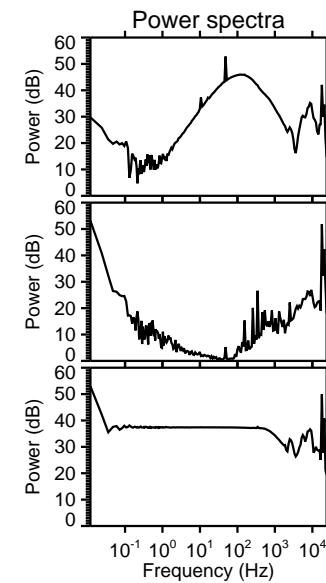
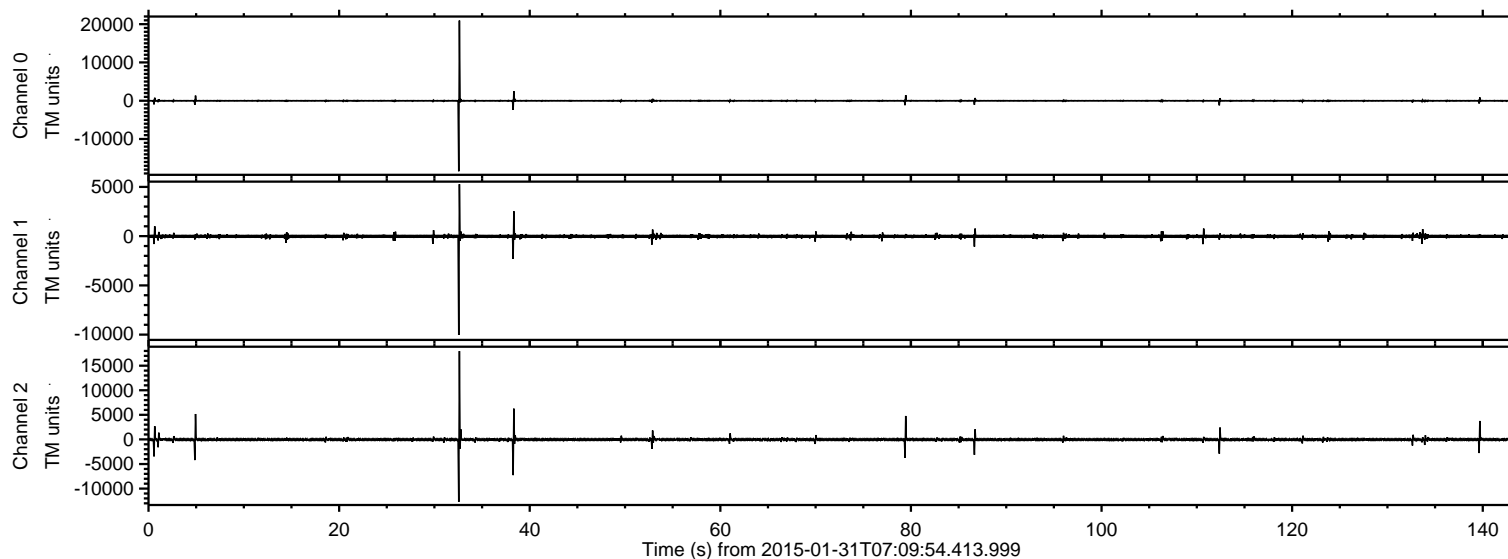


# ELMAVAN 3D WAVEFORMS (Measured data sampled at 50 kHz) 49573 packets of 144 samples from 2015-01-31T07:09:54.413.999.

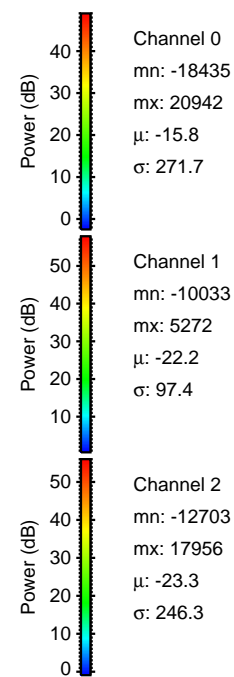
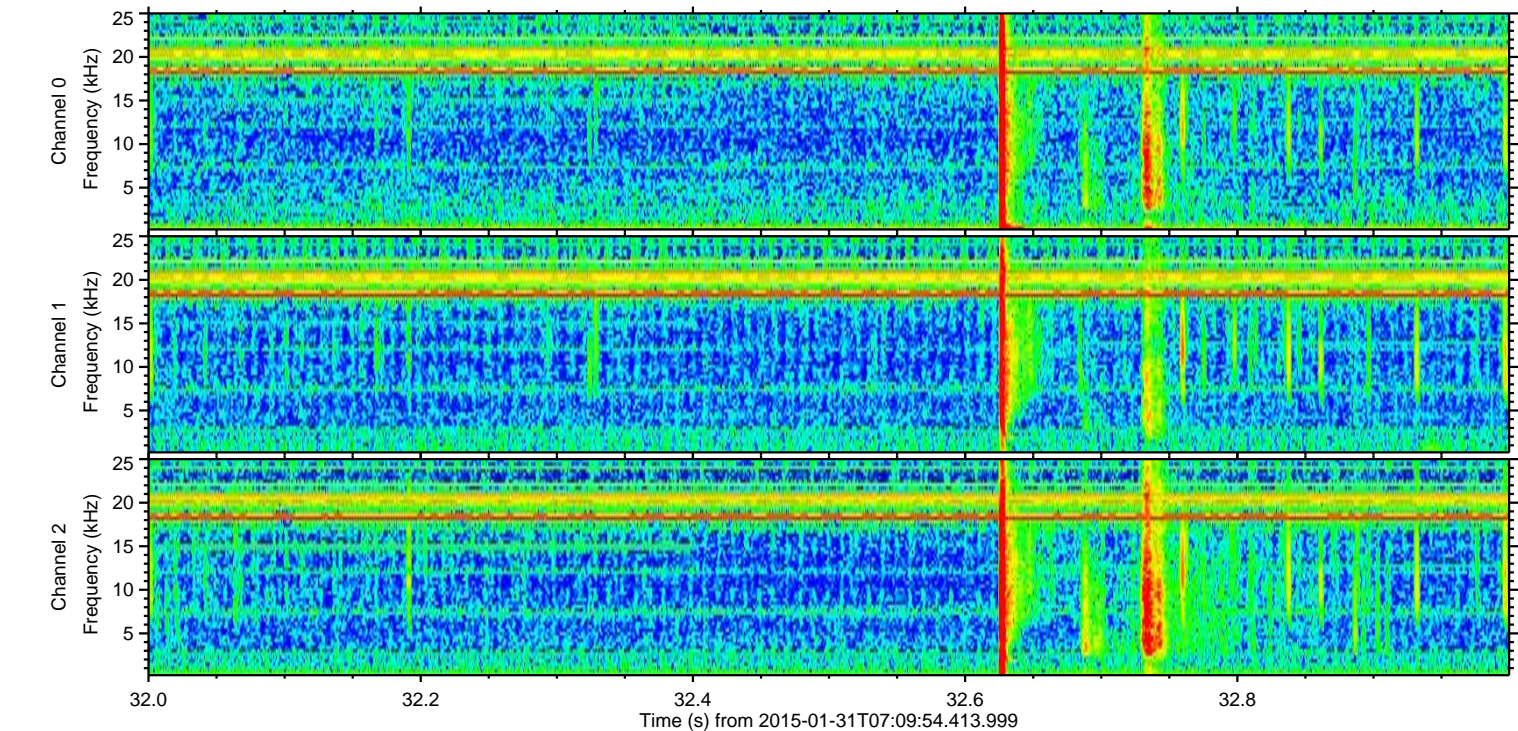
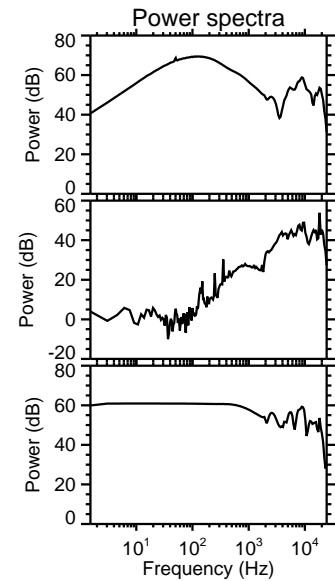
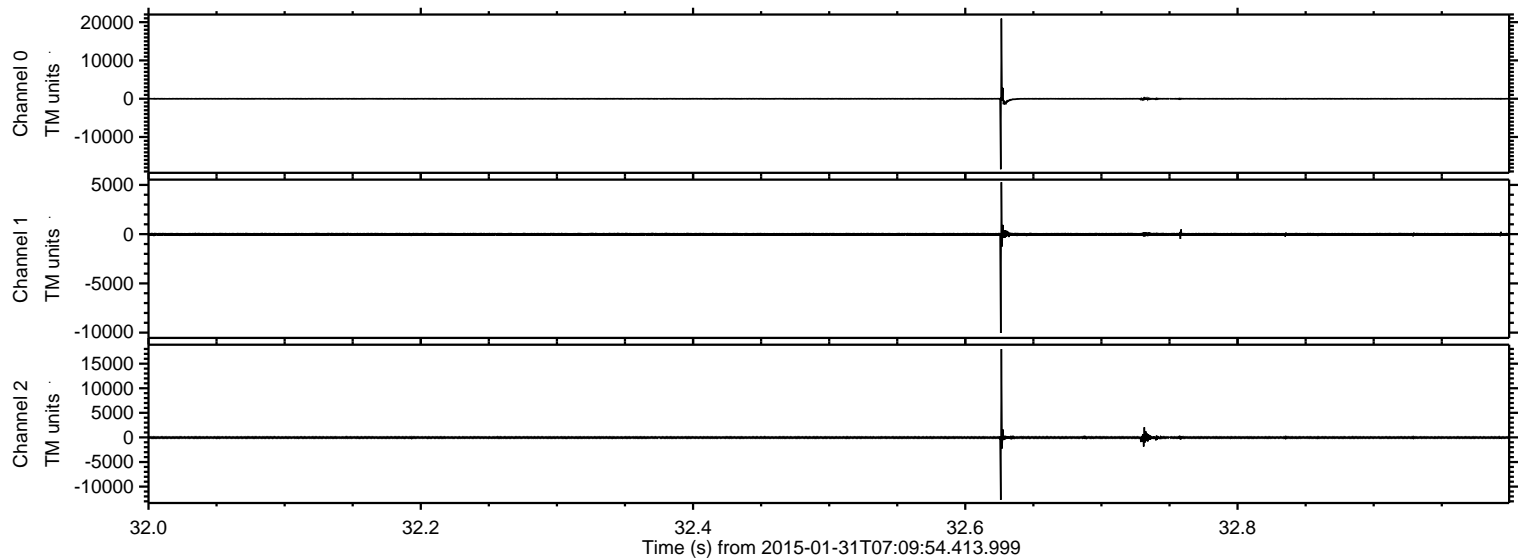
Processed Sat Feb 14 00:00:06 2015 by ELM ver.2012-10-06 from 001\_\_elm20150131\_070953\_\_dat00.bin





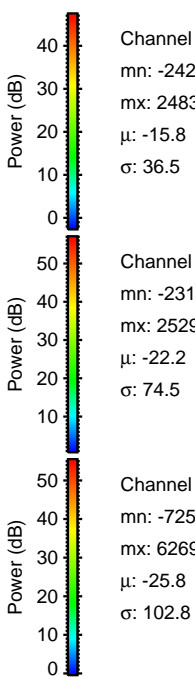
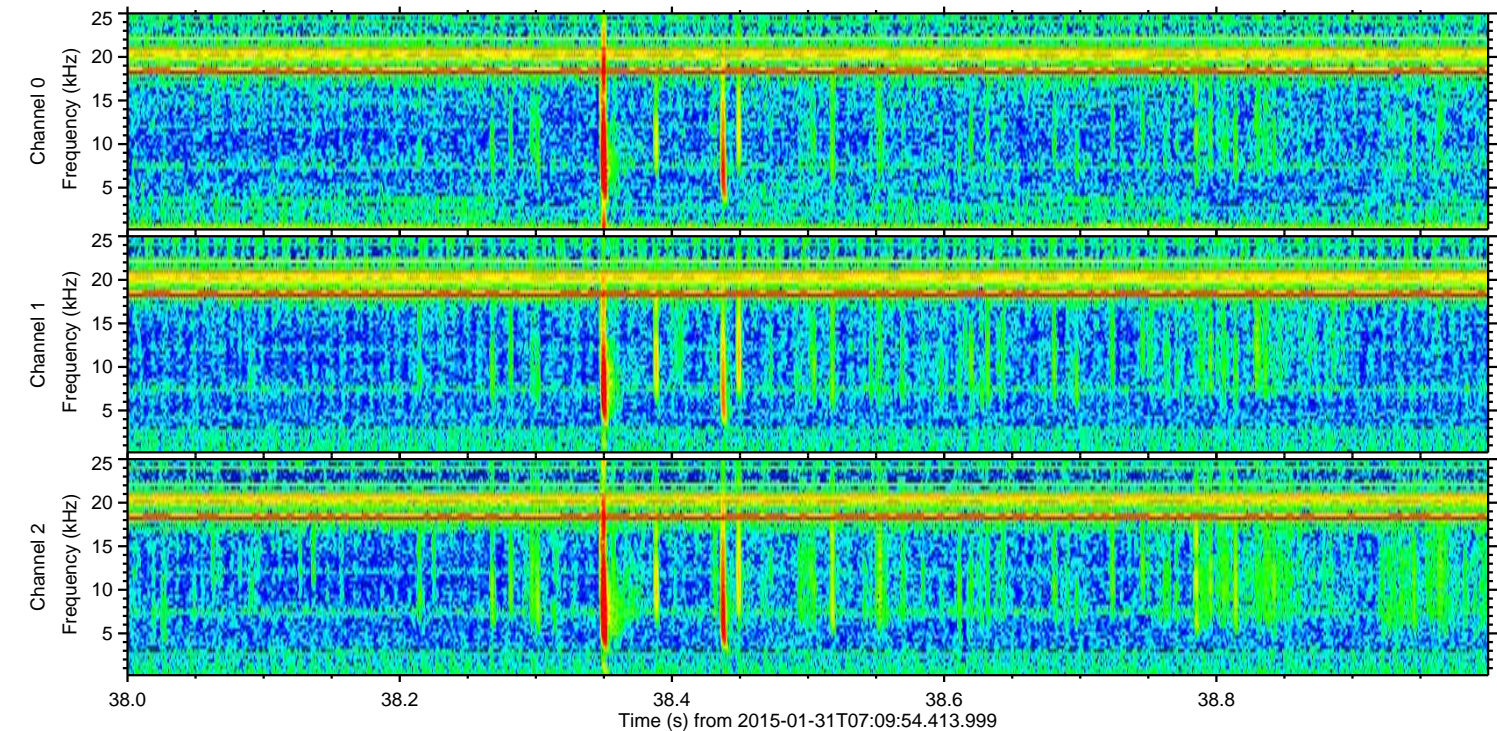
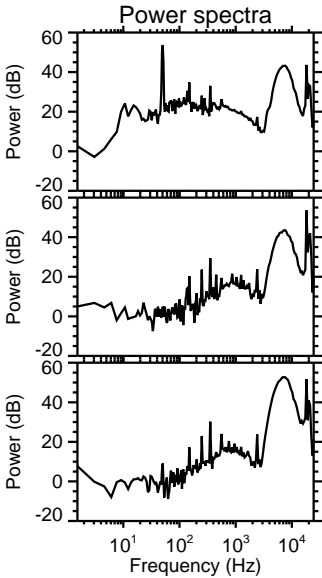
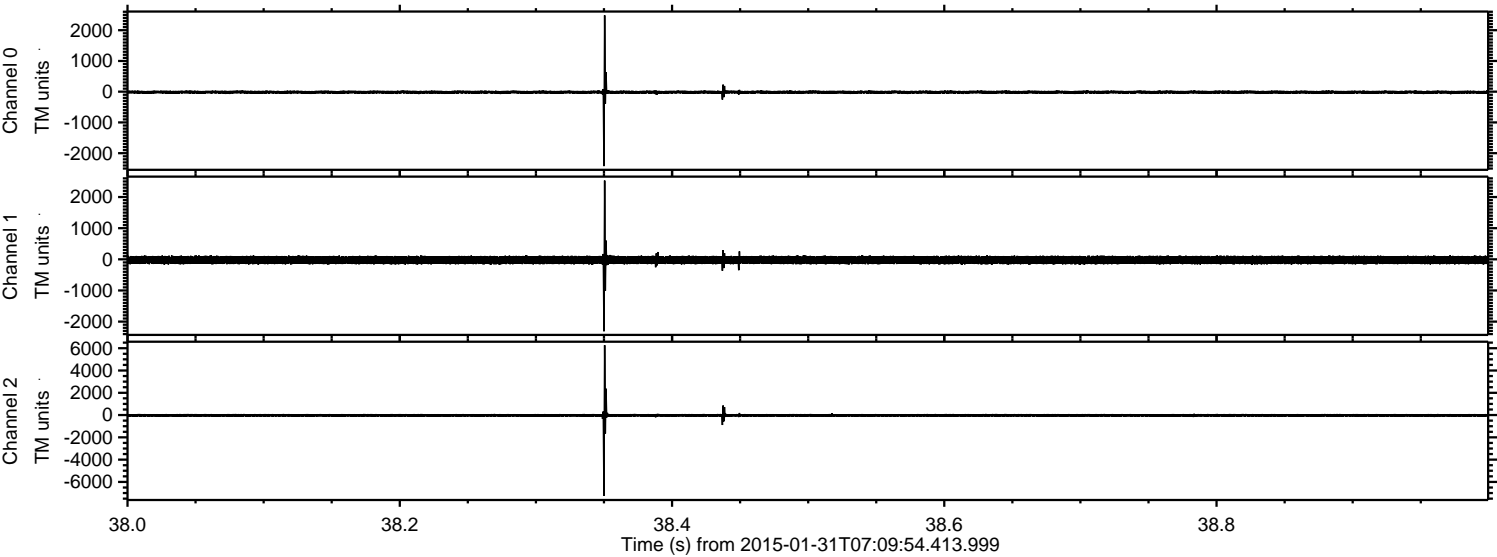
ELMAVAN 3D WAVEFORMS (Measured data sampled at 50 kHz) 49573 packets of 144 samples from 2015-01-31T07:09:54.413.999. Part 33/143

Processed Sat Feb 14 00:00:18 2015 by ELM ver.2012-10-06 from 001\_\_elm20150131\_070953\_\_dat00.bin





Processed Sat Feb 14 00:00:19 2015 by ELM ver.2012-10-06 from 001\_\_elm20150131\_070953\_\_dat00.bin



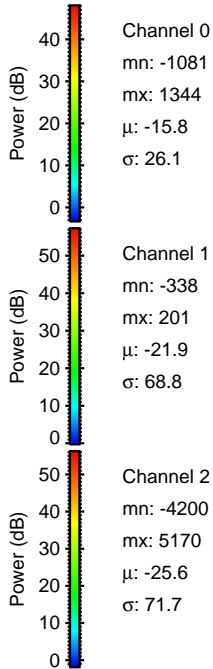
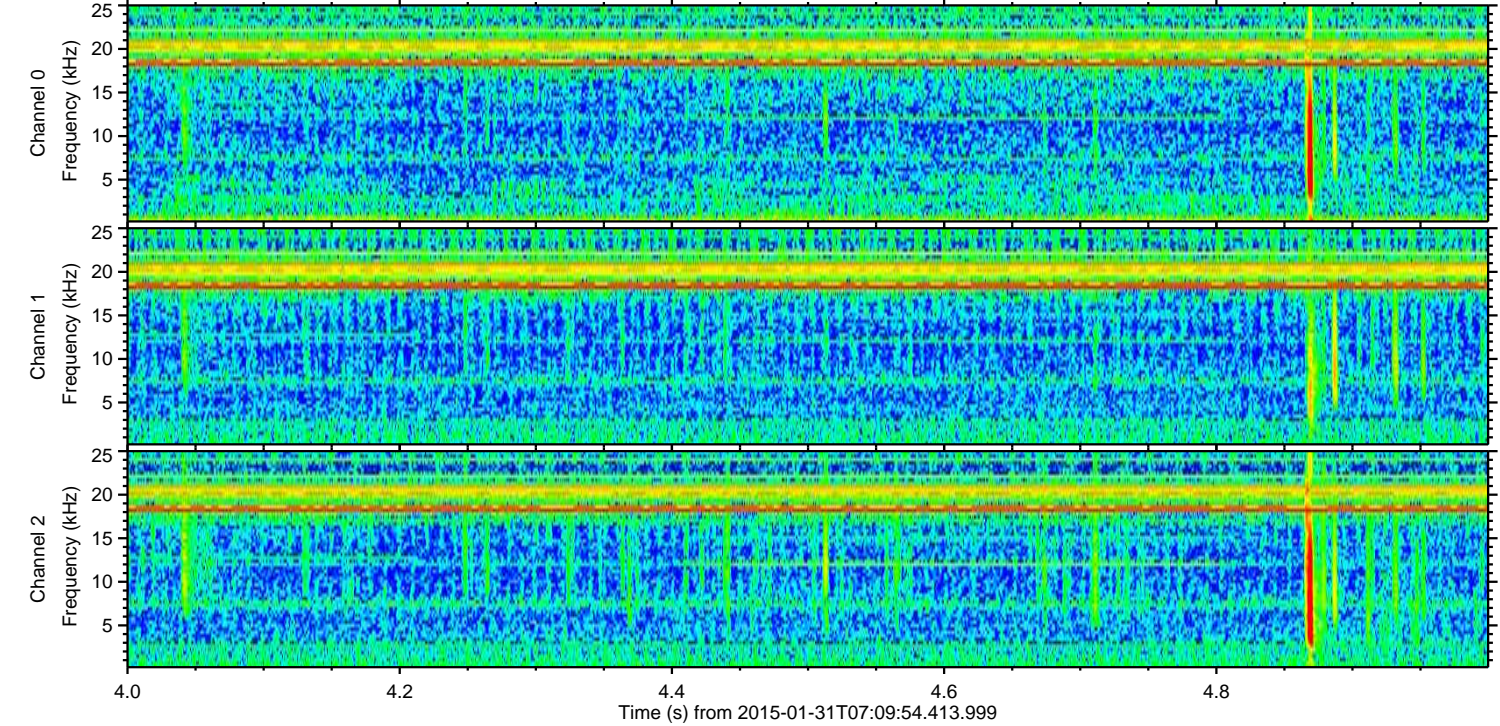
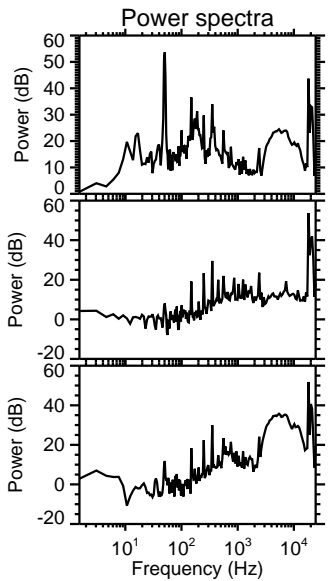
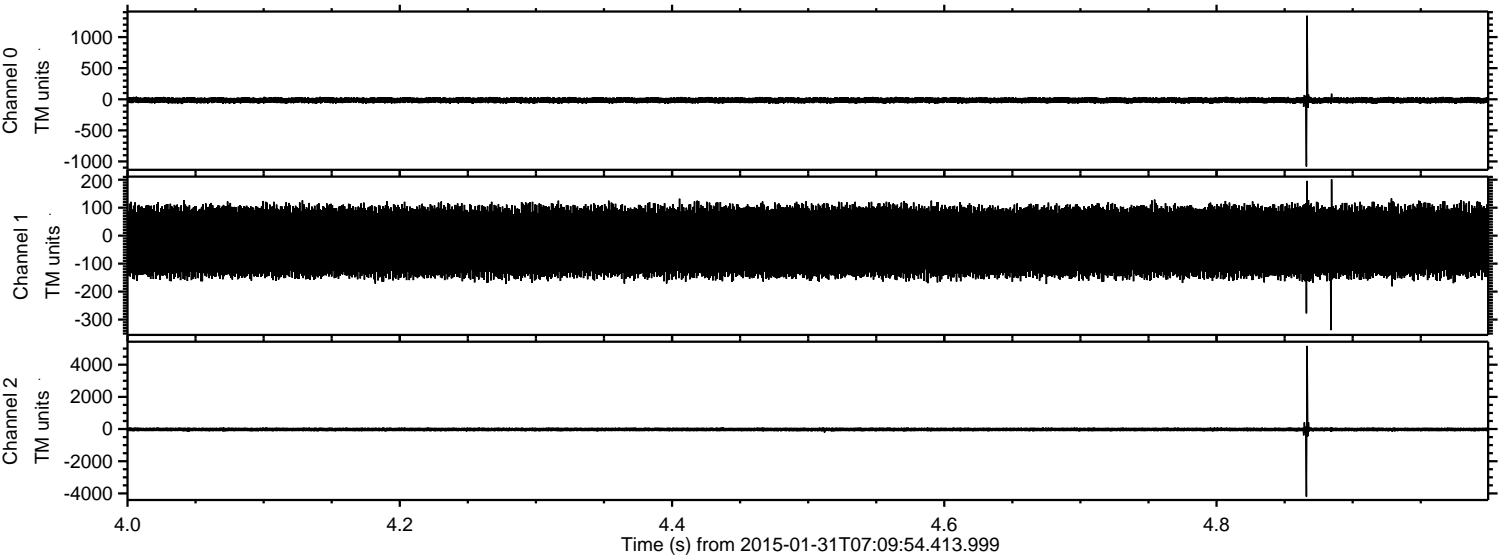
Channel 0  
mn: -2420  
mx: 2483  
 $\mu$ : -15.8  
 $\sigma$ : 36.5

Channel 1  
mn: -2312  
mx: 2529  
 $\mu$ : -22.2  
 $\sigma$ : 74.5

Channel 2  
mn: -7259  
mx: 6269  
 $\mu$ : -25.8  
 $\sigma$ : 102.8



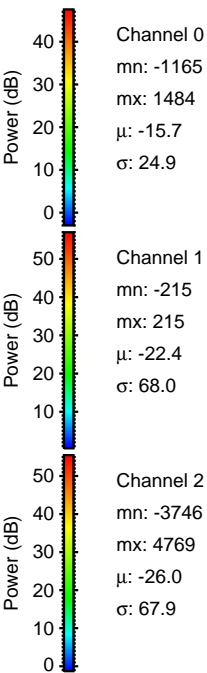
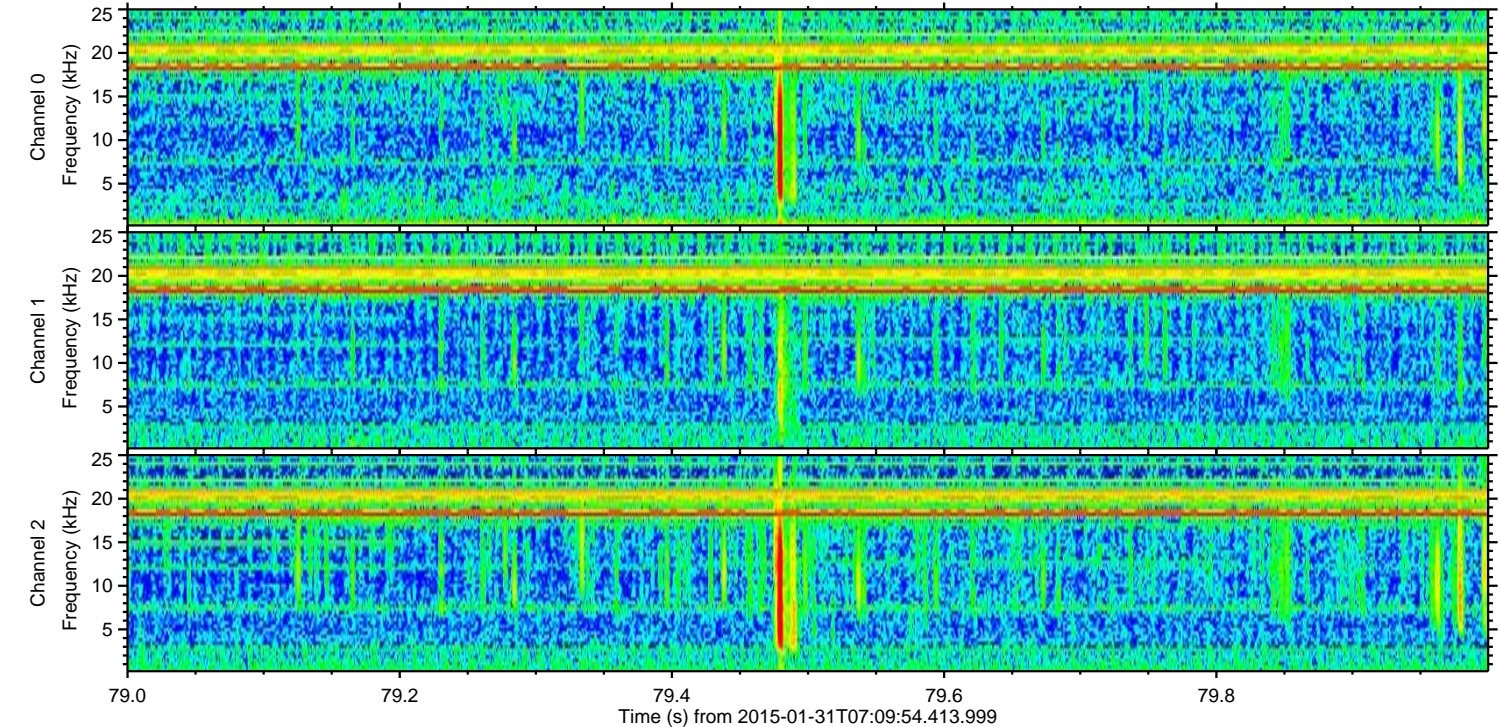
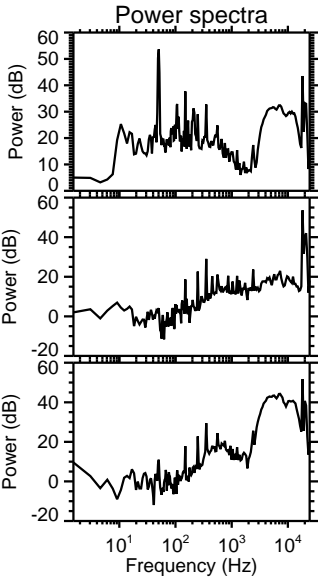
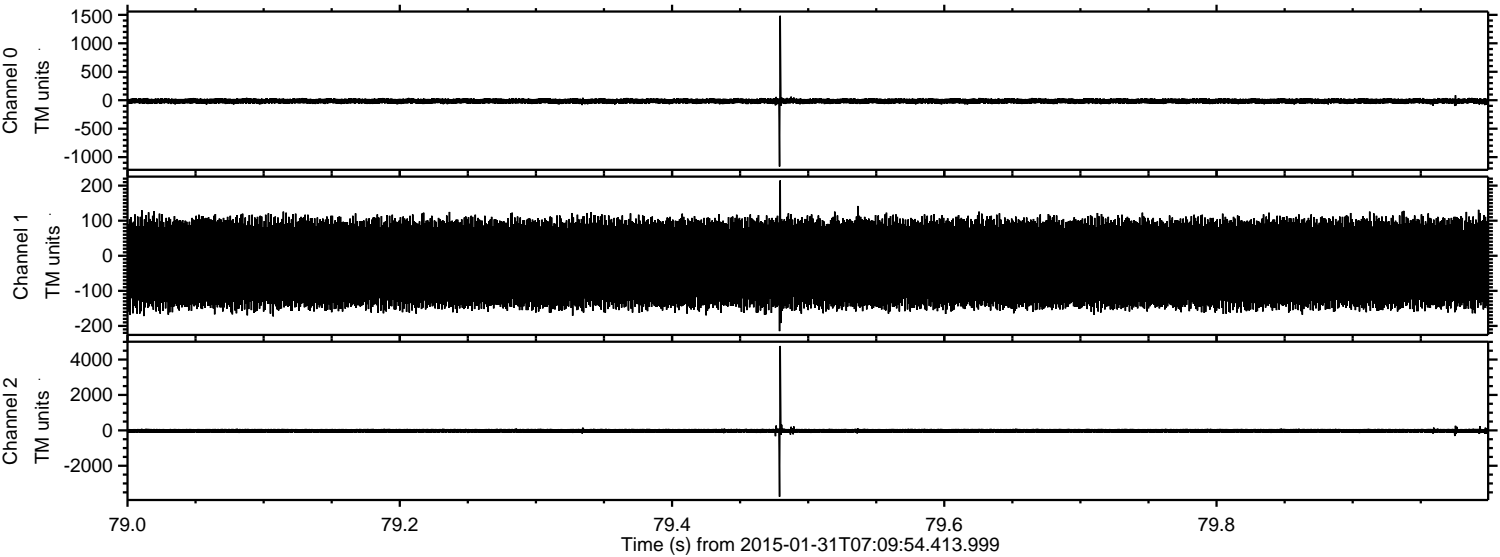
Processed Sat Feb 14 00:00:19 2015 by ELM ver.2012-10-06 from 001\_\_elm20150131\_070953\_\_dat00.bin





ELMAVAN 3D WAVEFORMS (Measured data sampled at 50 kHz) 49573 packets of 144 samples from 2015-01-31T07:09:54.413.999. Part 80/143

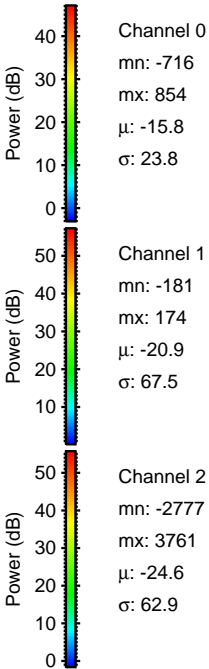
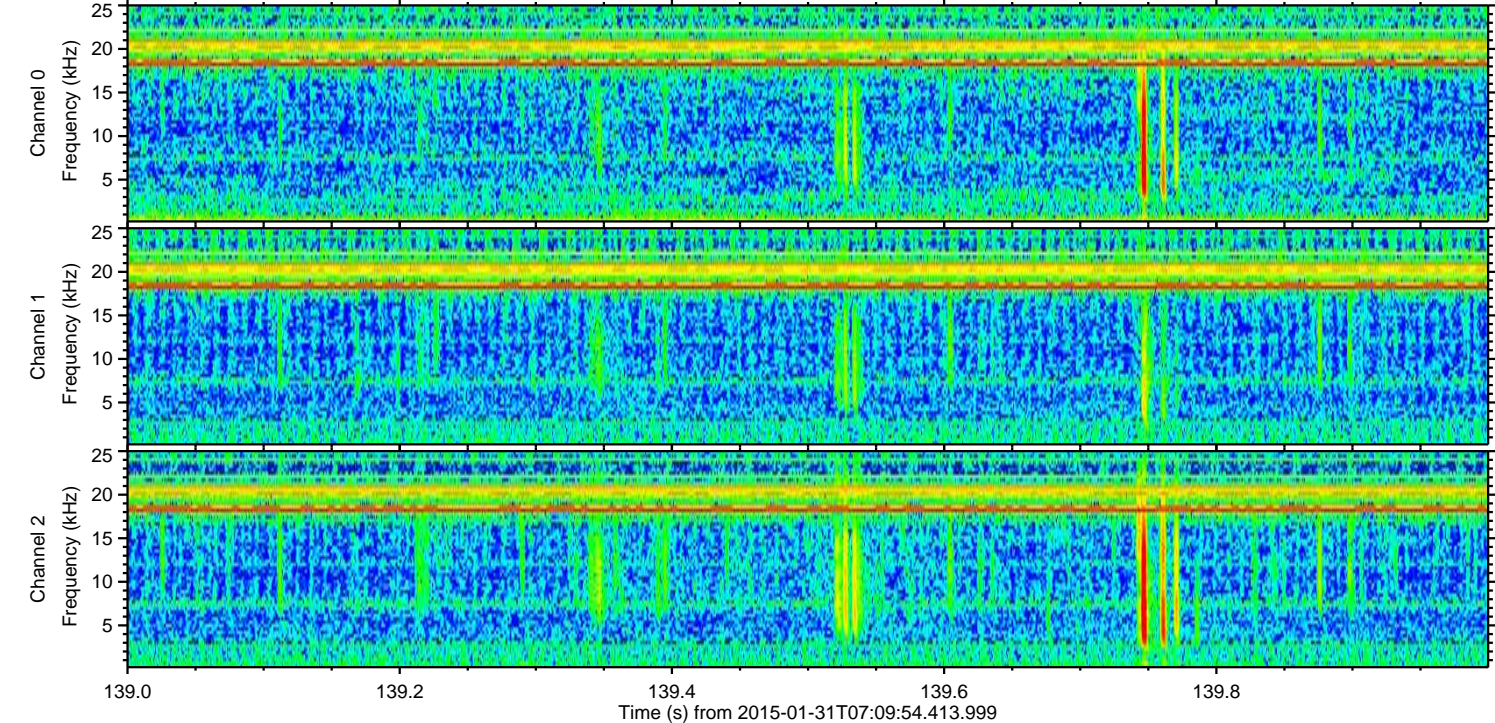
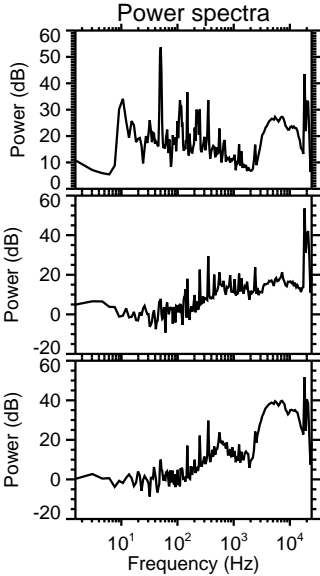
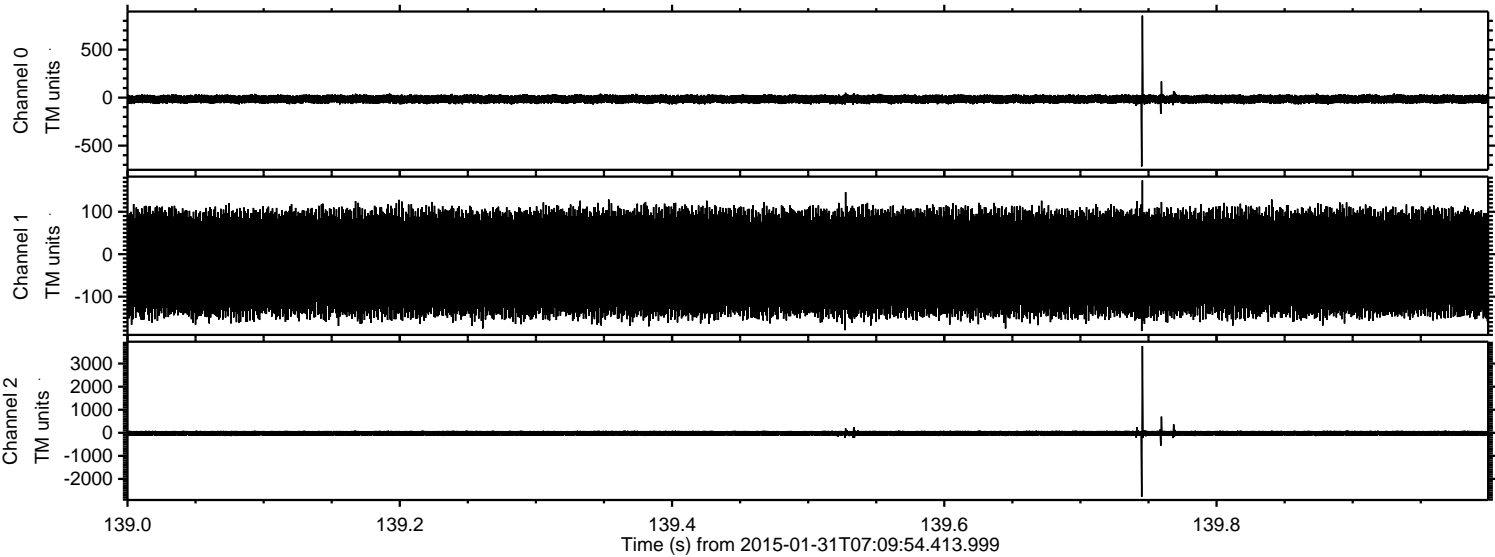
Processed Sat Feb 14 00:00:20 2015 by ELM ver.2012-10-06 from 001\_\_elm20150131\_070953\_\_dat00.bin





ELMAVAN 3D WAVEFORMS (Measured data sampled at 50 kHz) 49573 packets of 144 samples from 2015-01-31T07:09:54.413.999. Part 140/143

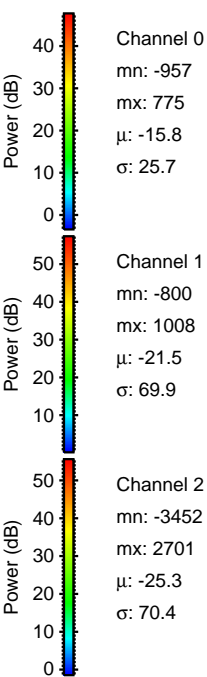
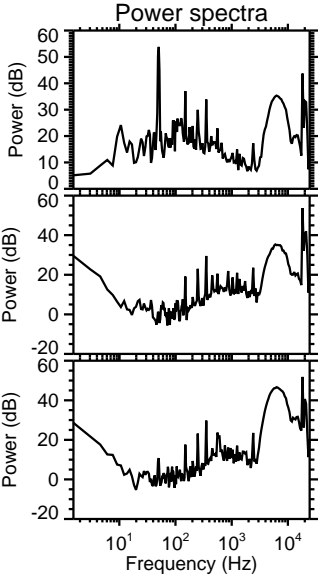
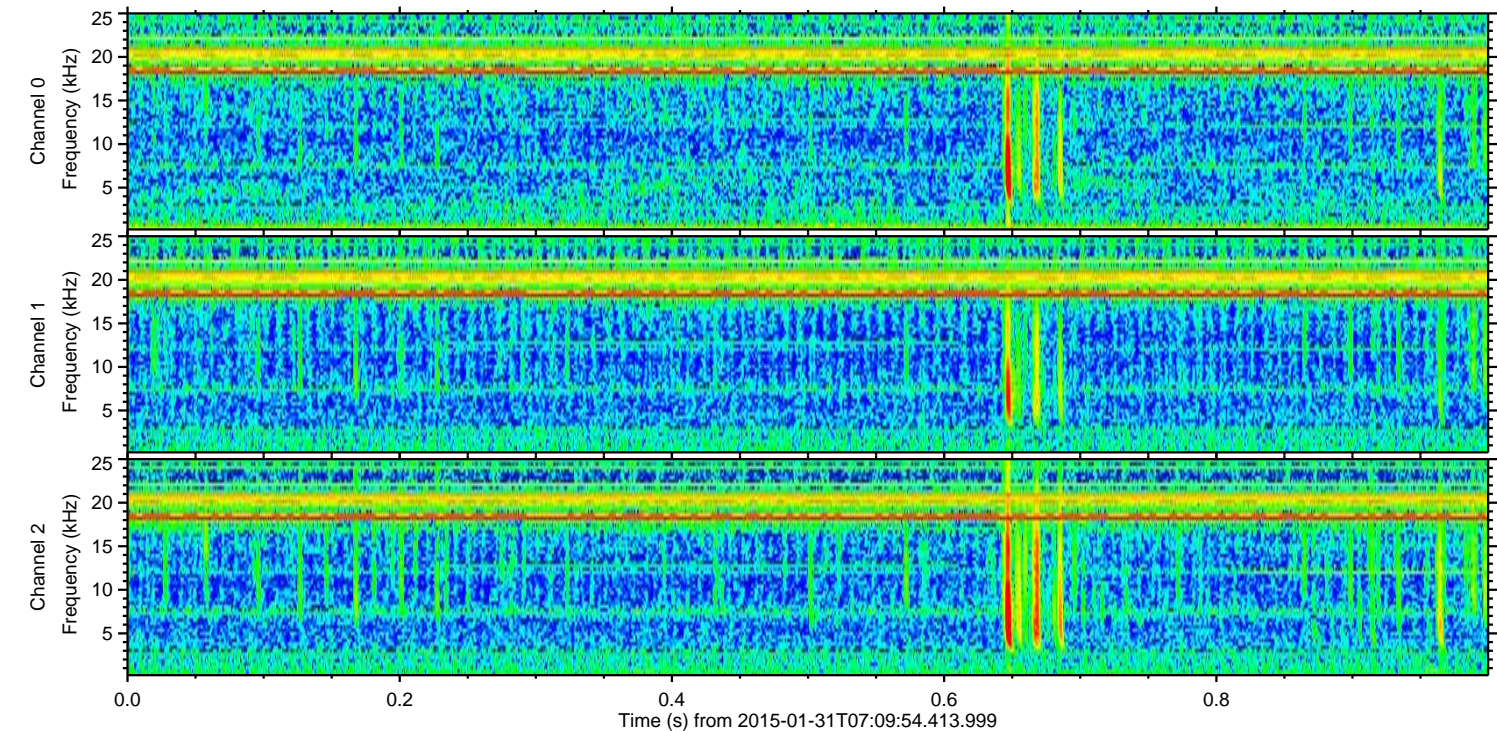
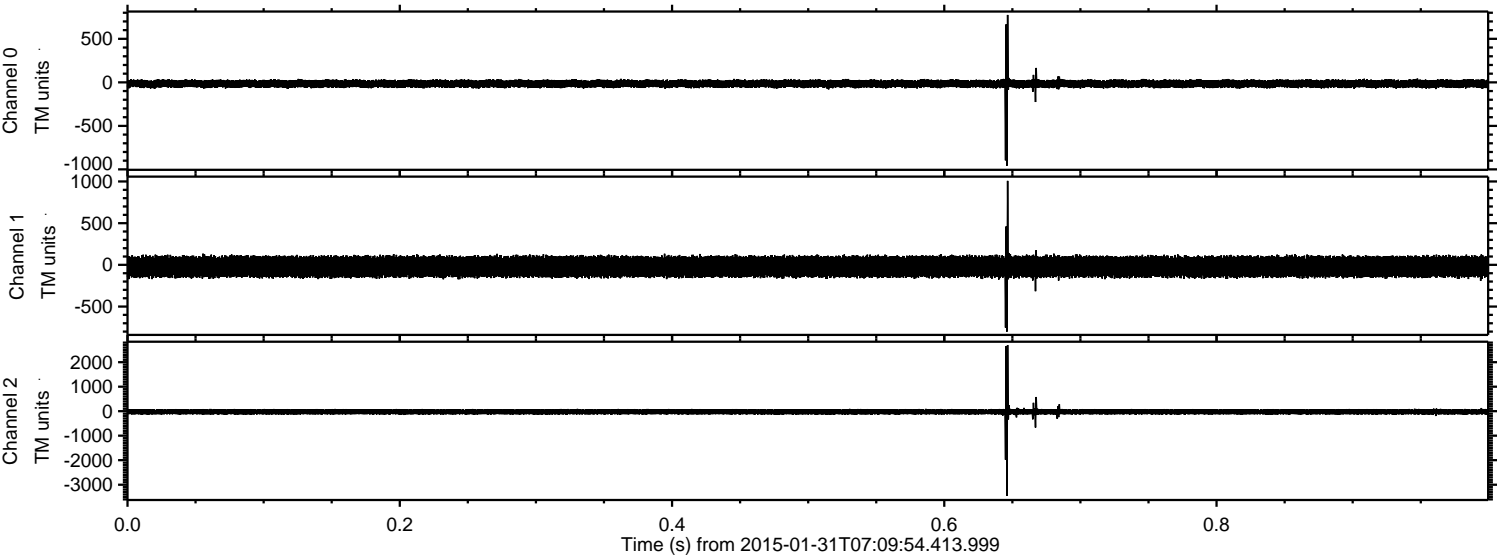
Processed Sat Feb 14 00:00:21 2015 by ELM ver.2012-10-06 from 001\_\_elm20150131\_070953\_\_dat00.bin





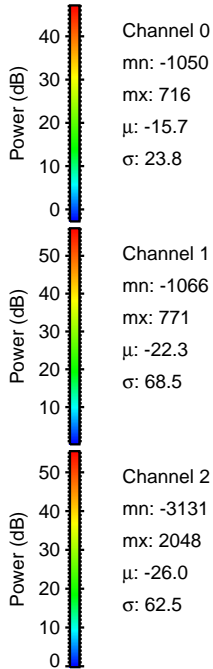
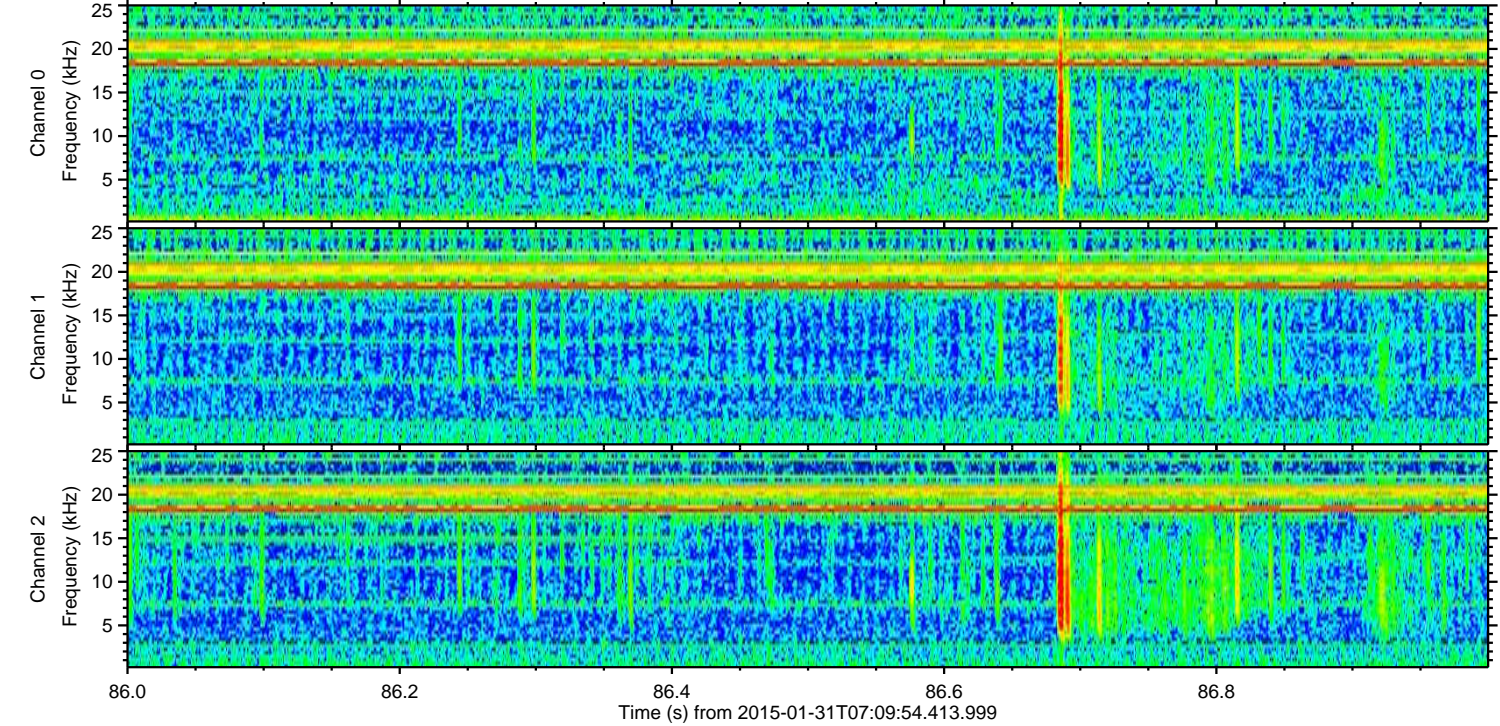
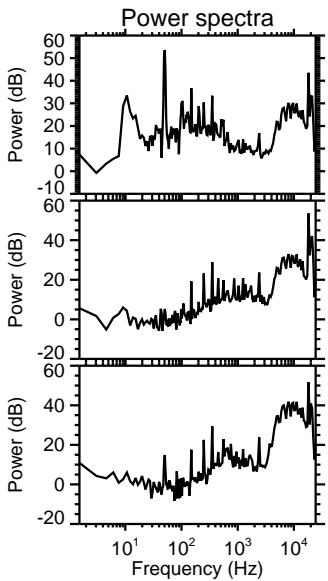
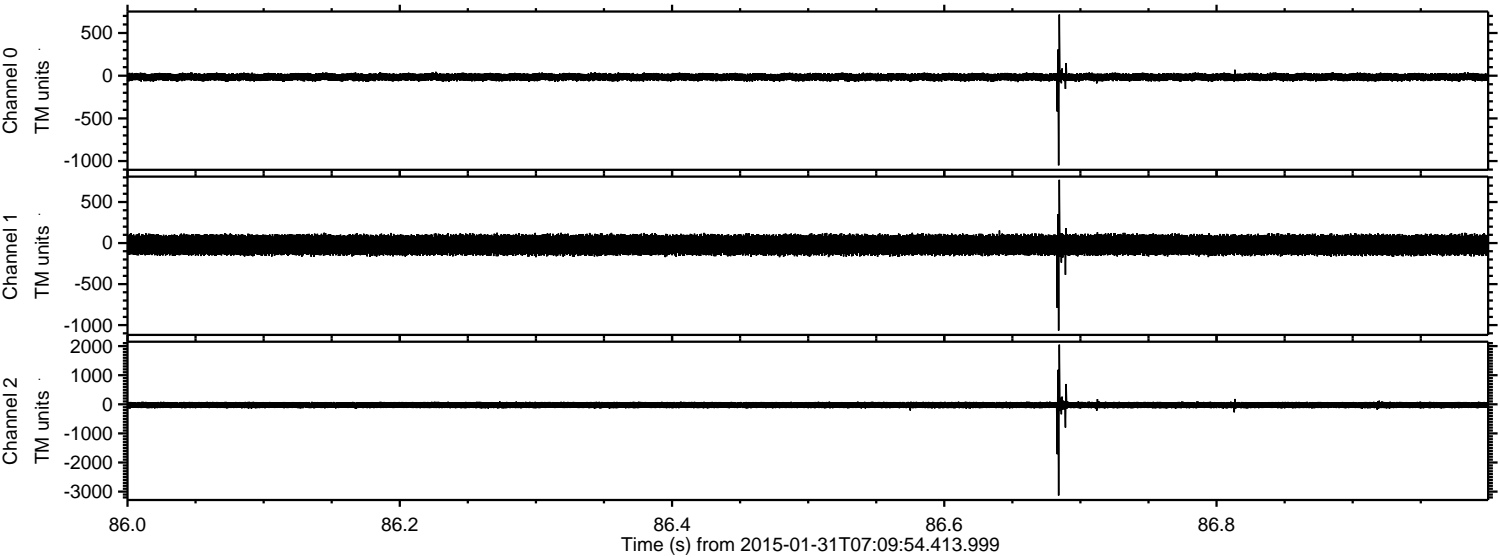
ELMAVAN 3D WAVEFORMS (Measured data sampled at 50 kHz) 49573 packets of 144 samples from 2015-01-31T07:09:54.413.999. Part 1/143

Processed Sat Feb 14 00:00:22 2015 by ELM ver.2012-10-06 from 001\_\_elm20150131\_070953\_\_dat00.bin





Processed Sat Feb 14 00:00:23 2015 by ELM ver.2012-10-06 from 001\_\_elm20150131\_070953\_\_dat00.bin



Channel 0  
mn: -1050  
mx: 716  
 $\mu$ : -15.7  
 $\sigma$ : 23.8

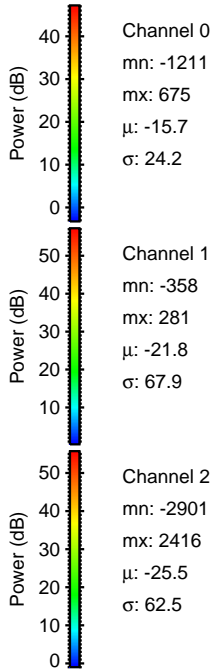
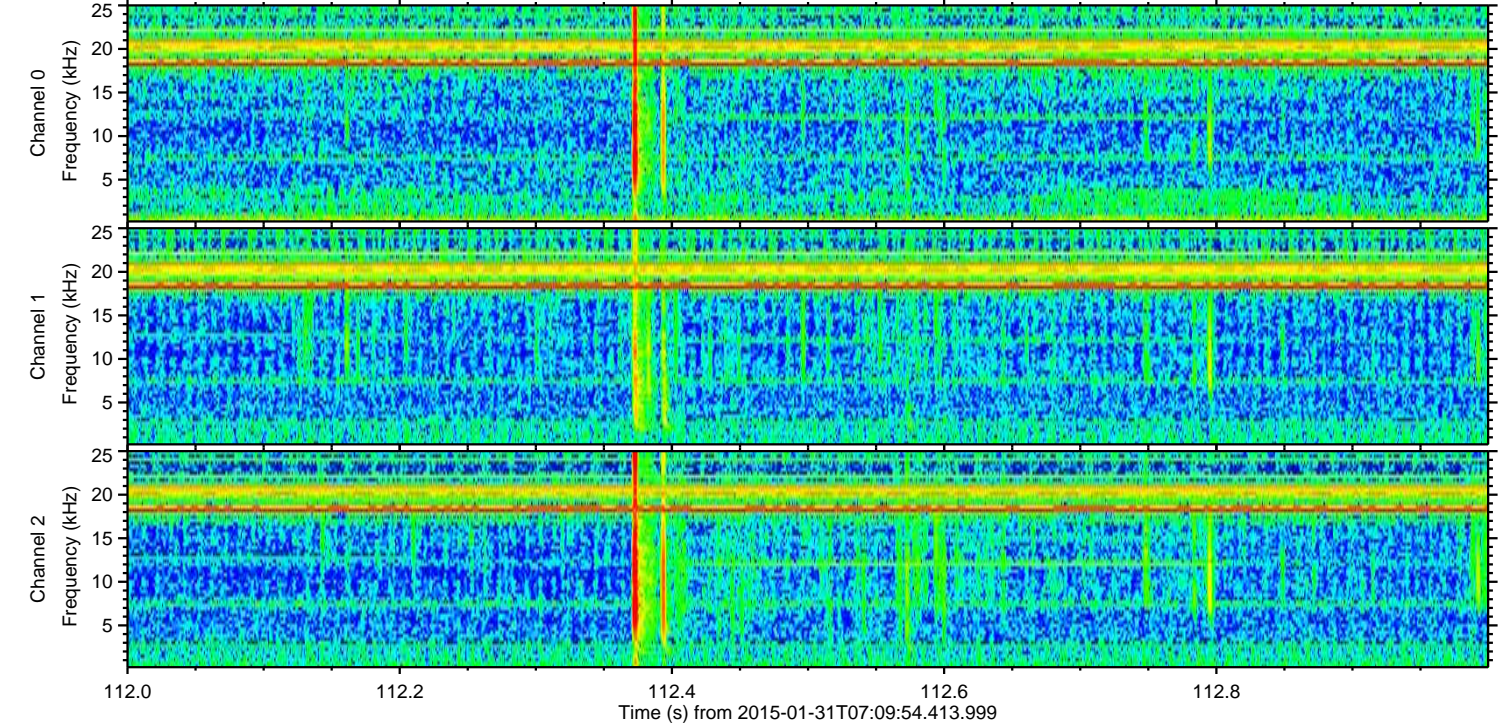
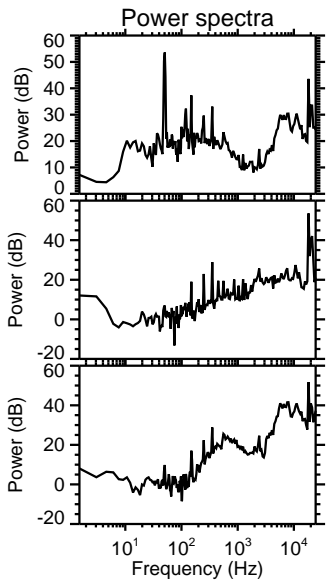
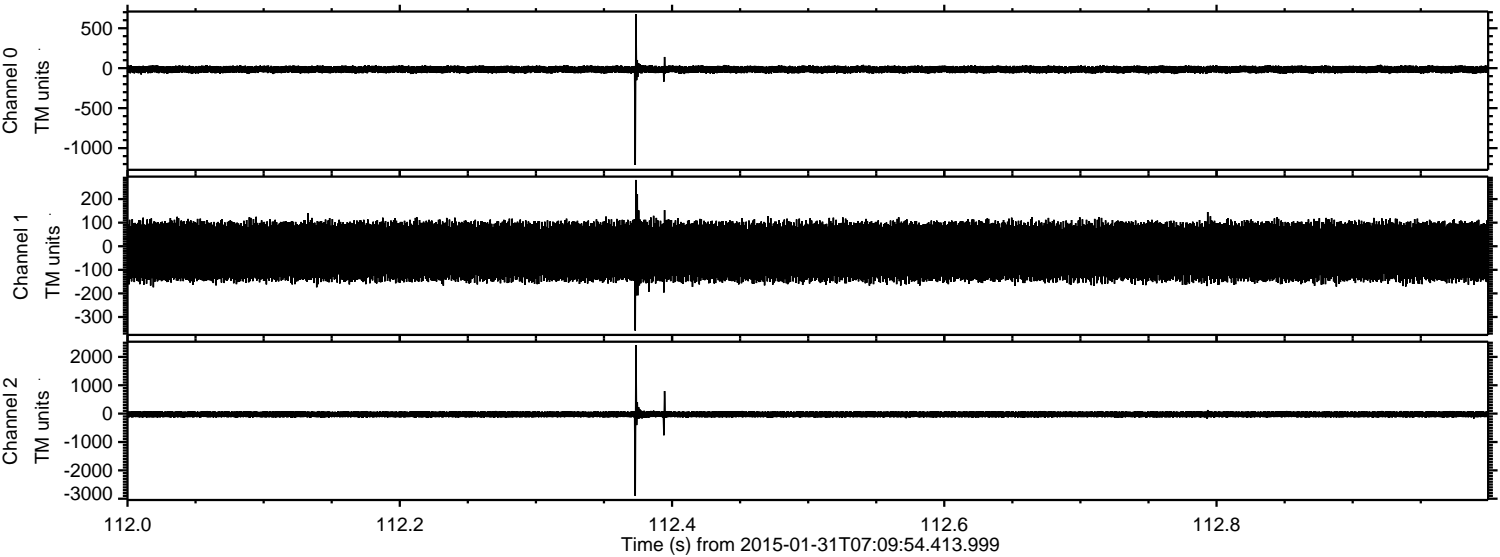
Channel 1  
mn: -1066  
mx: 771  
 $\mu$ : -22.3  
 $\sigma$ : 68.5

Channel 2  
mn: -3131  
mx: 2048  
 $\mu$ : -26.0  
 $\sigma$ : 62.5



ELMAVAN 3D WAVEFORMS (Measured data sampled at 50 kHz) 49573 packets of 144 samples from 2015-01-31T07:09:54.413.999. Part 113/143

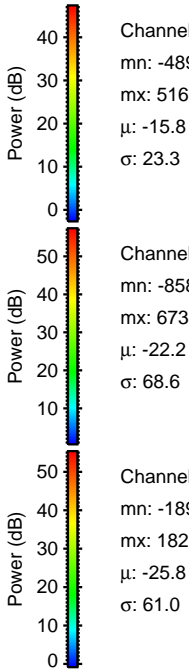
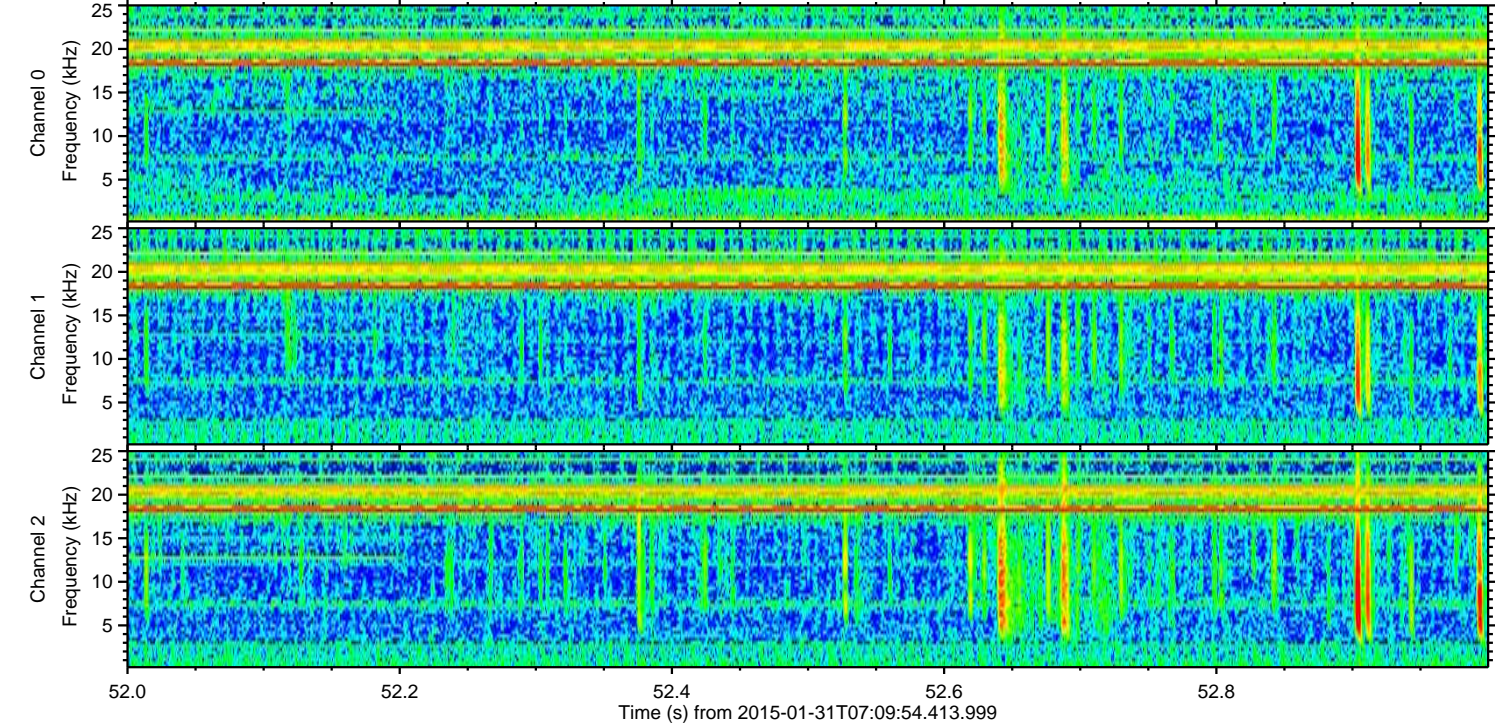
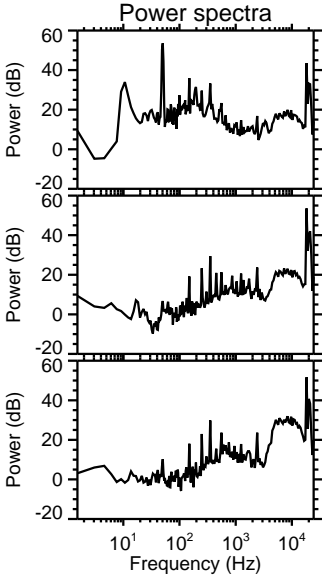
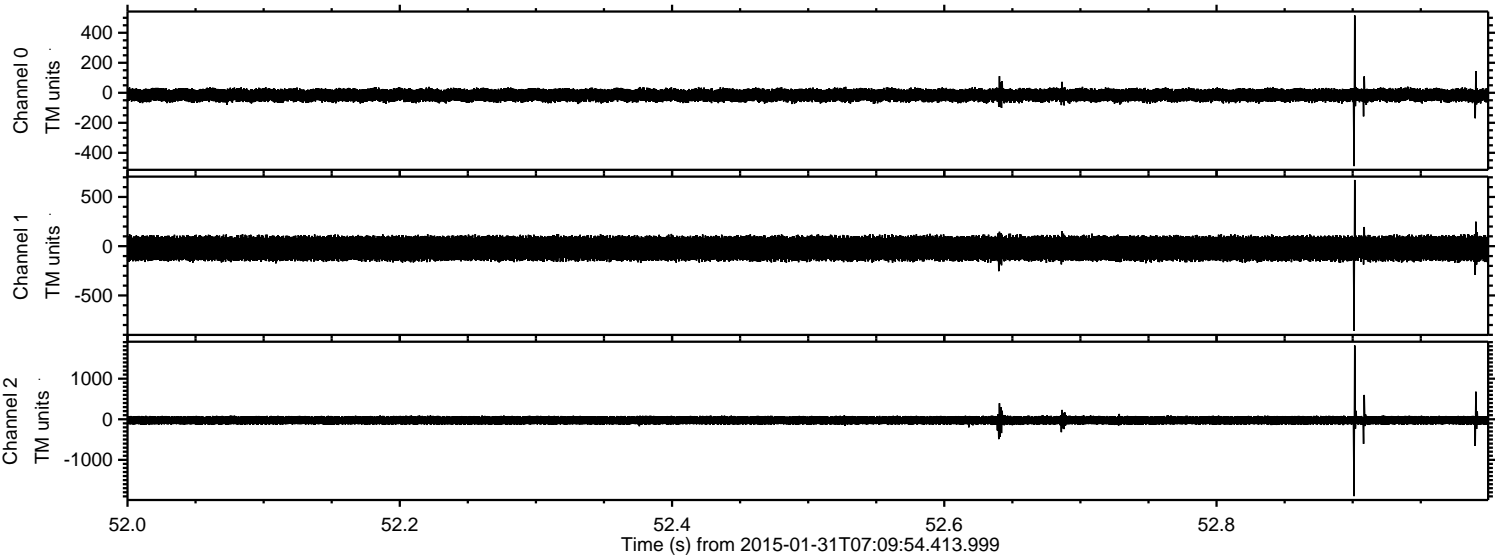
Processed Sat Feb 14 00:00:24 2015 by ELM ver.2012-10-06 from 001\_\_elm20150131\_070953\_\_dat00.bin





ELMAVAN 3D WAVEFORMS (Measured data sampled at 50 kHz) 49573 packets of 144 samples from 2015-01-31T07:09:54.413.999. Part 53/143

Processed Sat Feb 14 00:00:25 2015 by ELM ver.2012-10-06 from 001\_\_elm20150131\_070953\_\_dat00.bin





ELMAVAN 3D WAVEFORMS (Measured data sampled at 50 kHz) 49573 packets of 144 samples from 2015-01-31T07:09:54.413.999. Part 141/143

