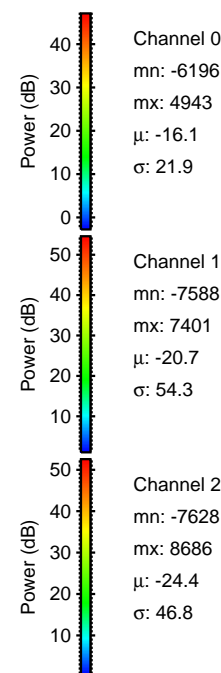
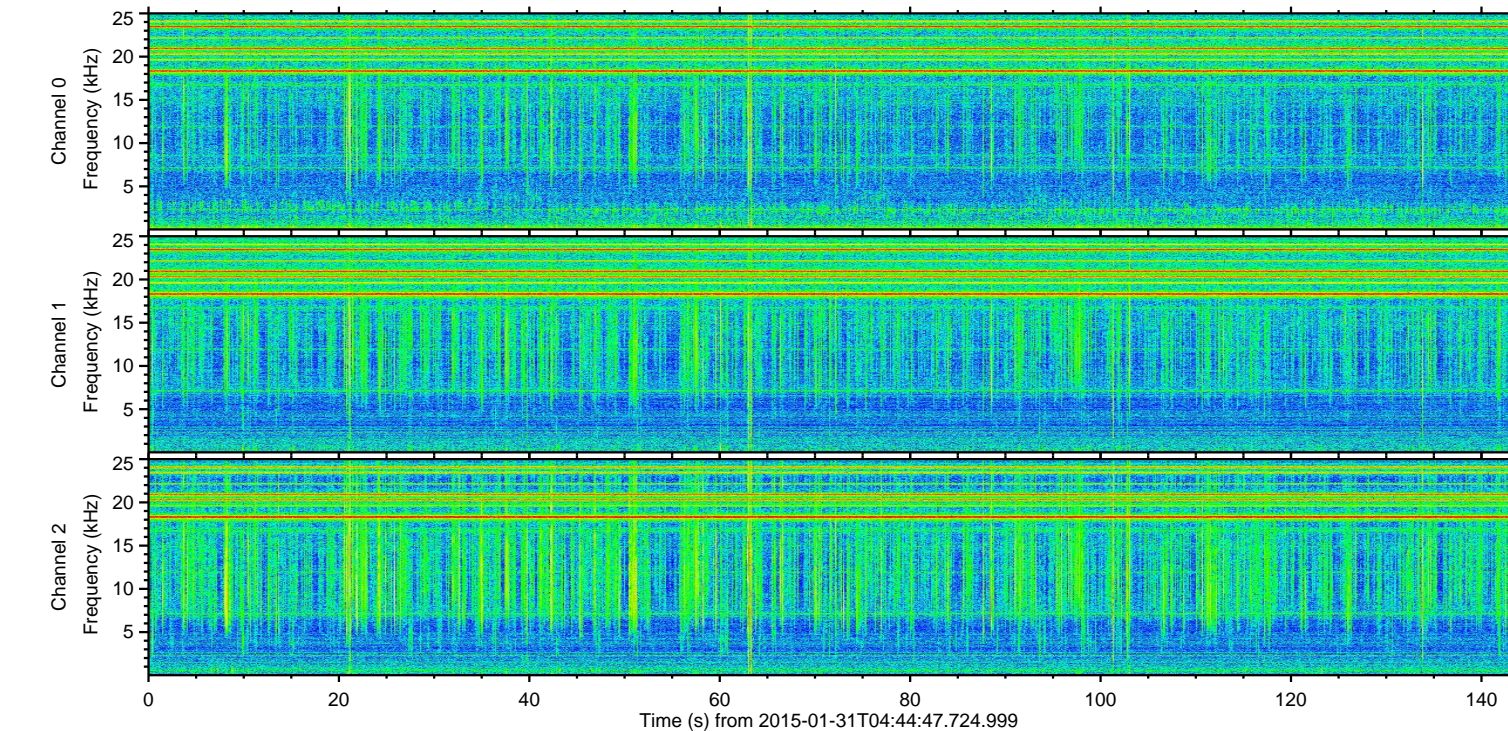
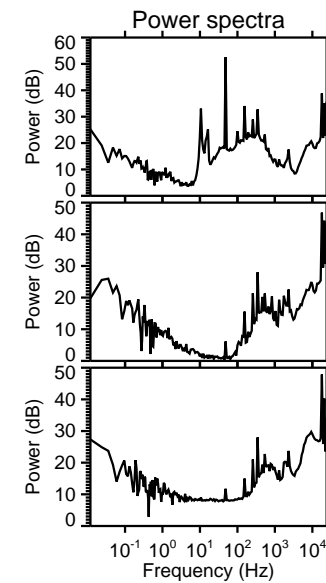
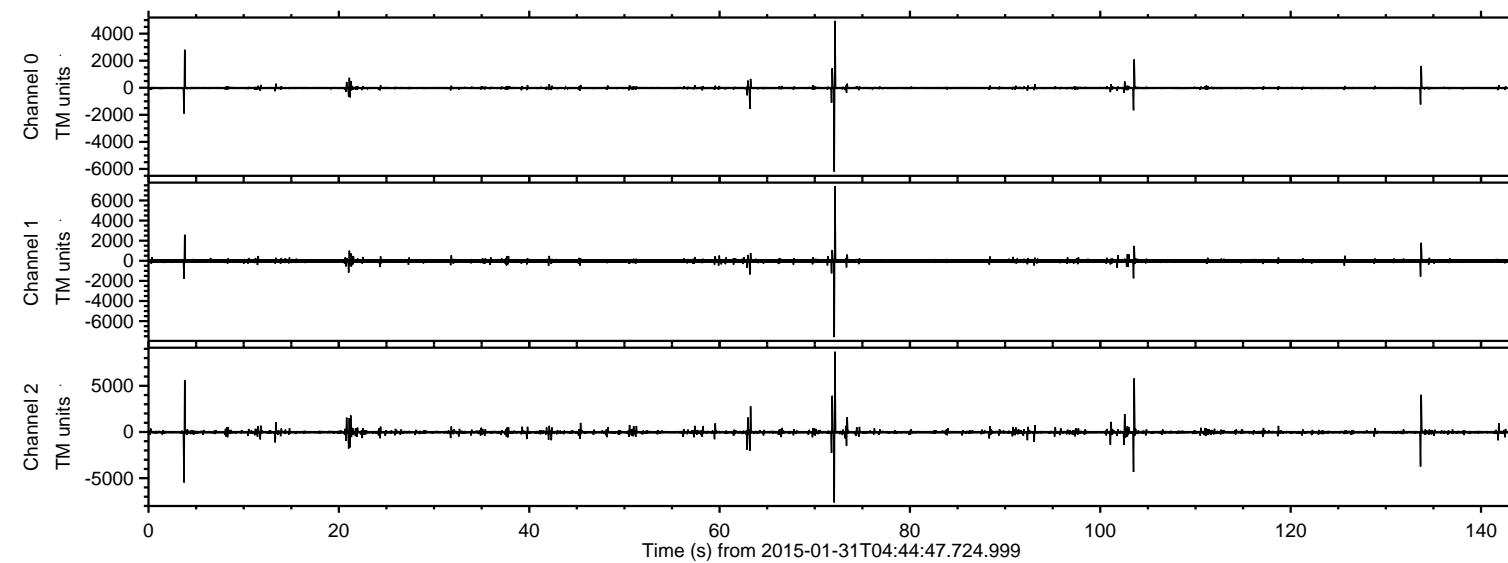
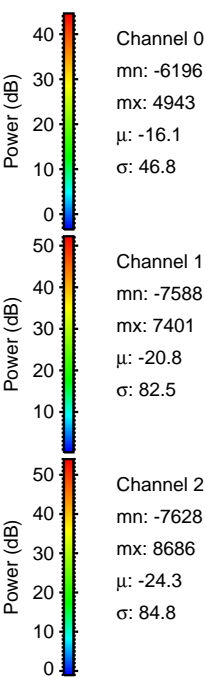
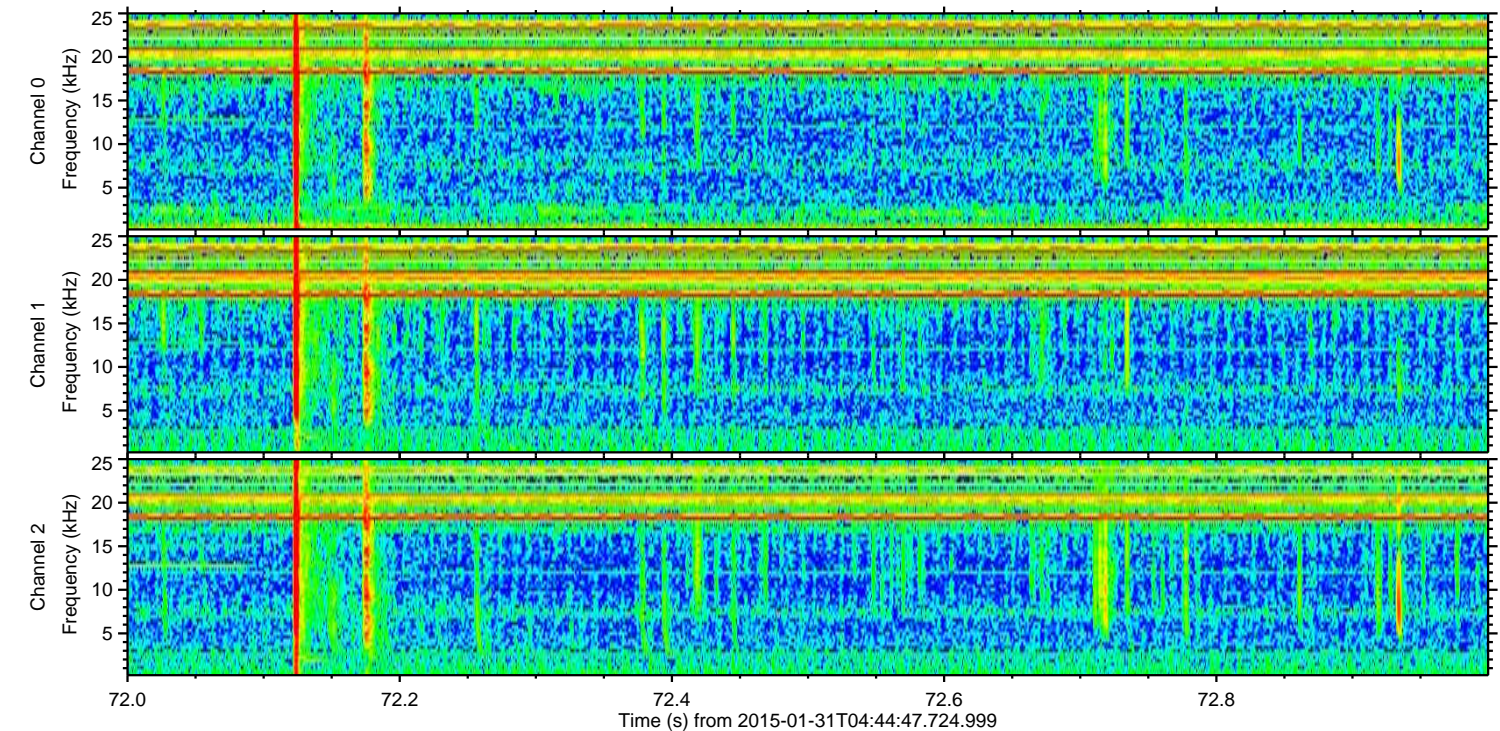
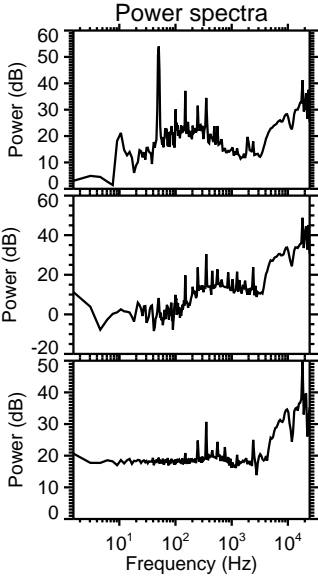
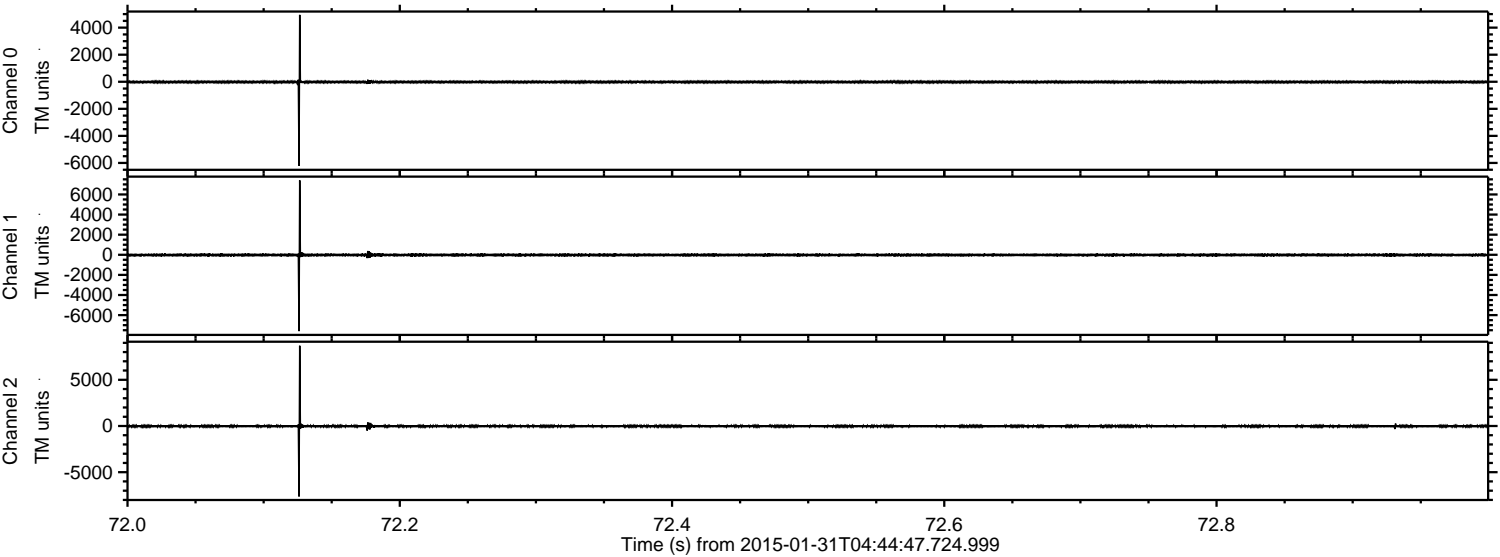


ELMAVAN 3D WAVEFORMS (Measured data sampled at 50 kHz) 49637 packets of 144 samples from 2015-01-31T04:44:47.724.999.

Processed Fri Feb 13 22:40:14 2015 by ELM ver.2012-10-06 from 001__elm20150131_044446__dat00.bin

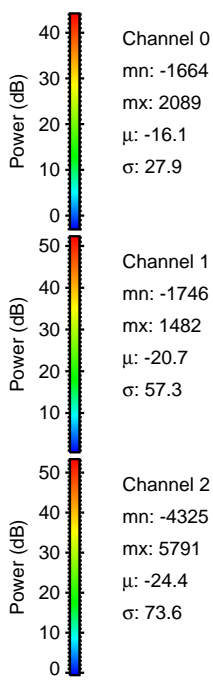
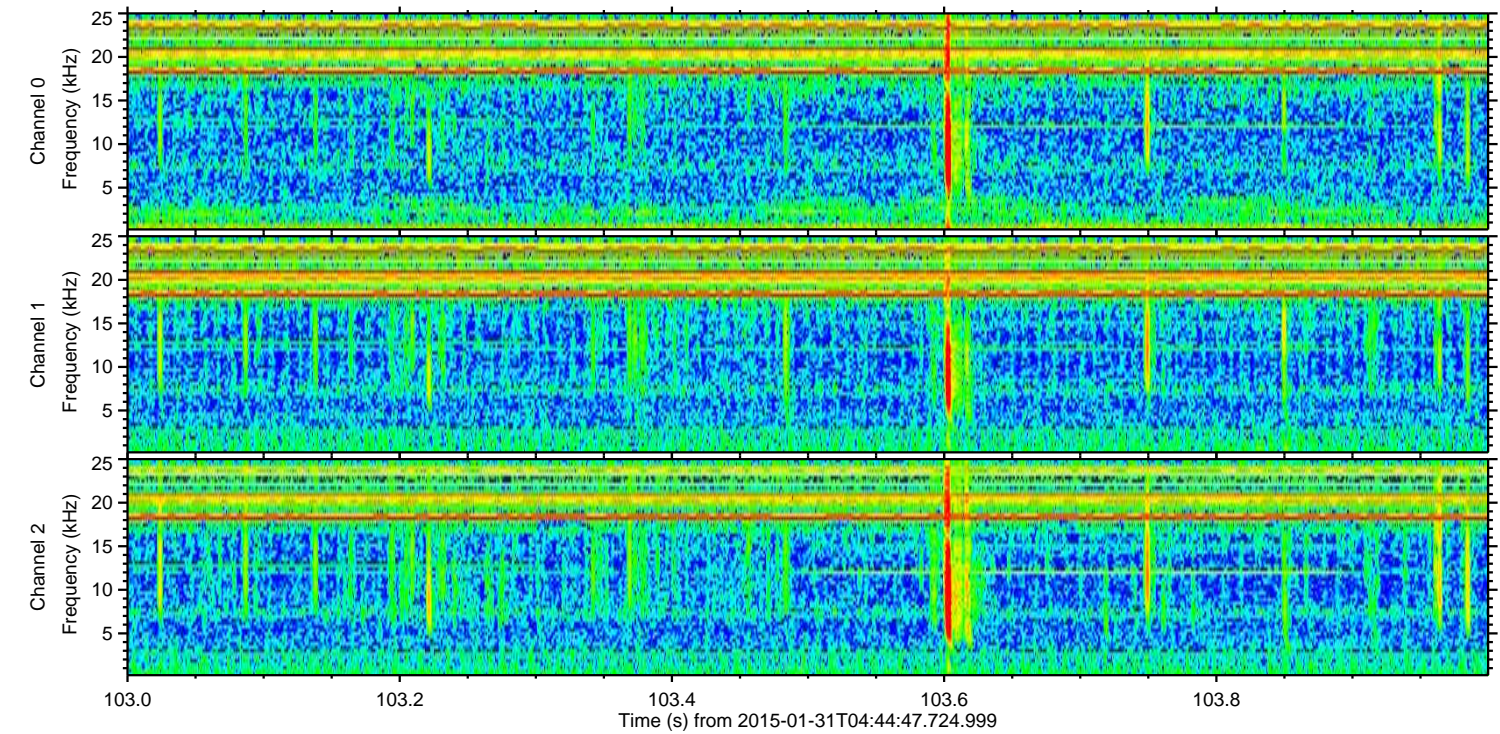
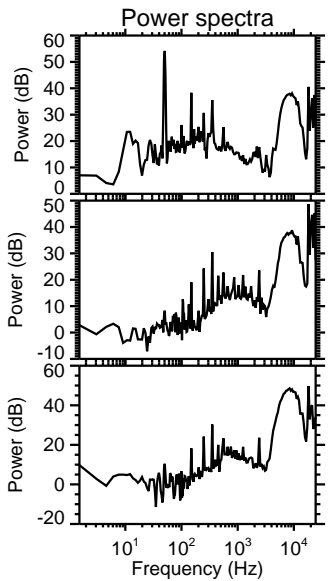
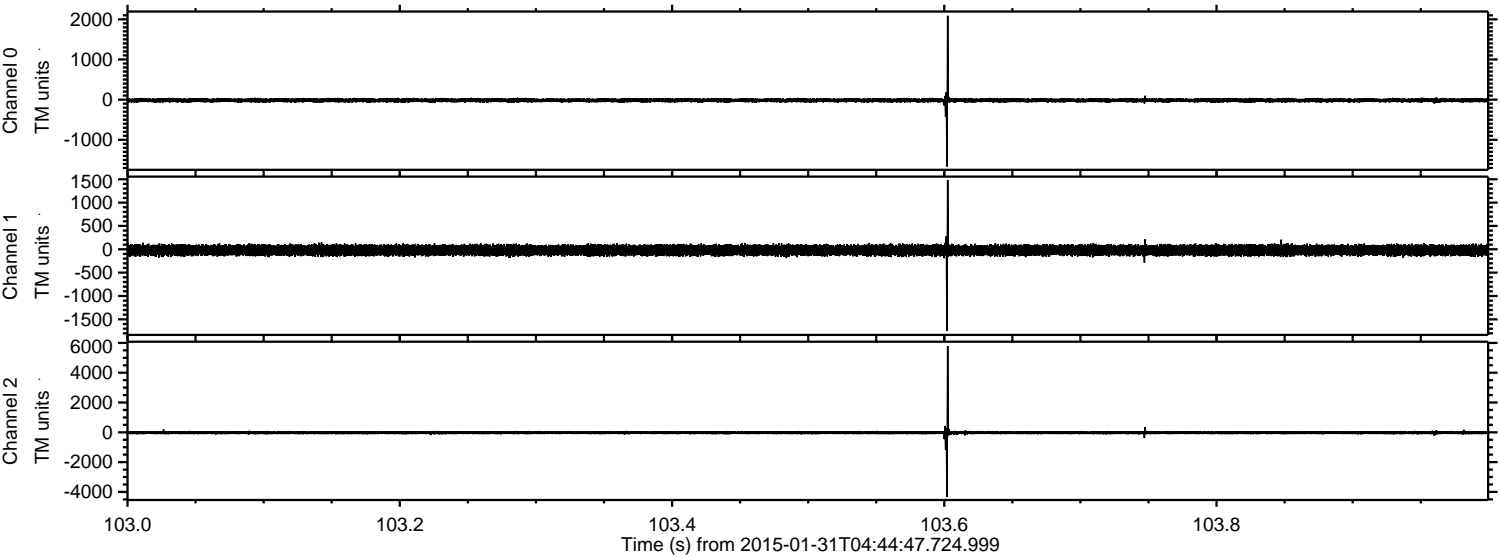


Processed Fri Feb 13 22:40:30 2015 by ELM ver.2012-10-06 from 001__elm20150131_044446__dat00.bin

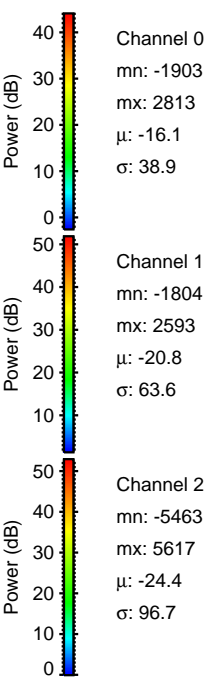
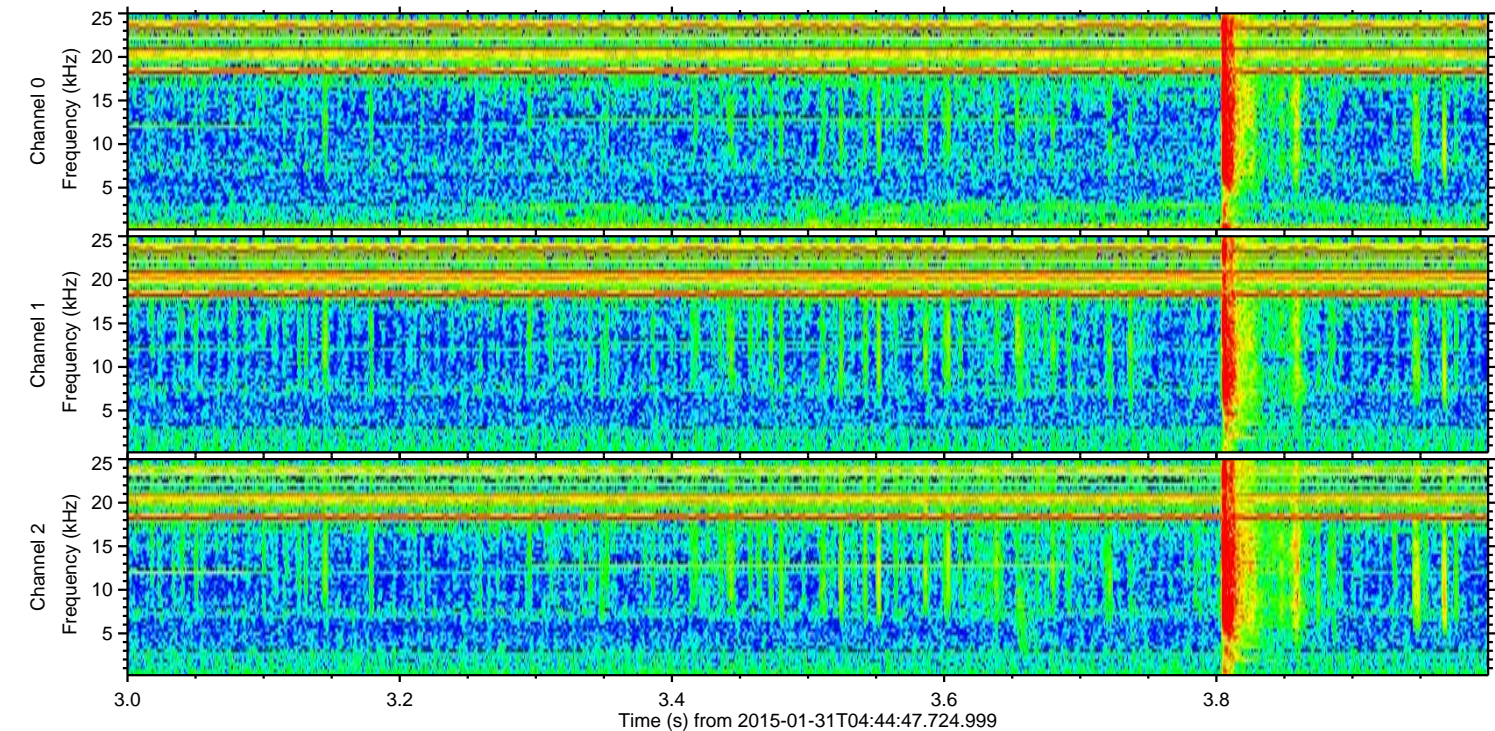
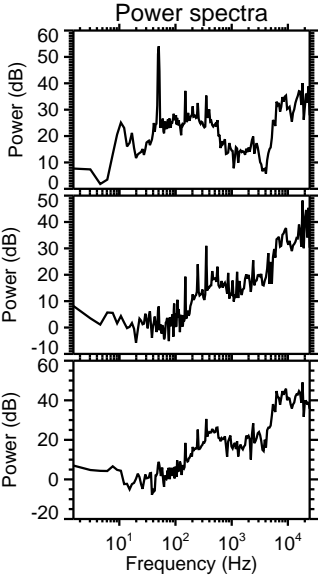
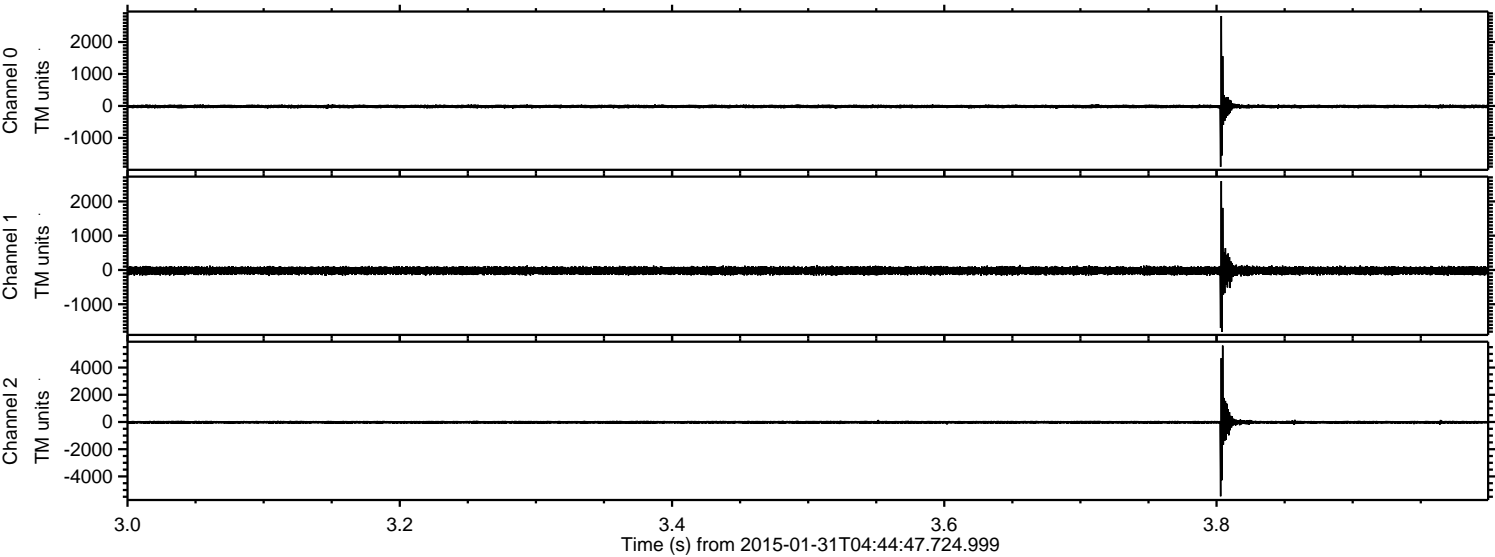


ELMAVAN 3D WAVEFORMS (Measured data sampled at 50 kHz) 49637 packets of 144 samples from 2015-01-31T04:44:47.724.999. Part 104/143

Processed Fri Feb 13 22:40:32 2015 by ELM ver.2012-10-06 from 001__elm20150131_044446__dat00.bin

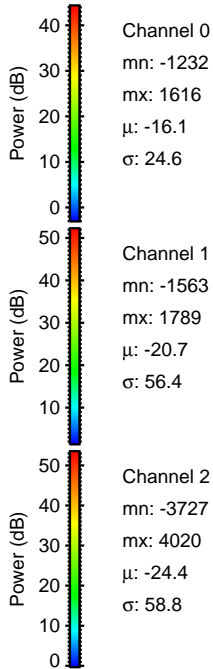
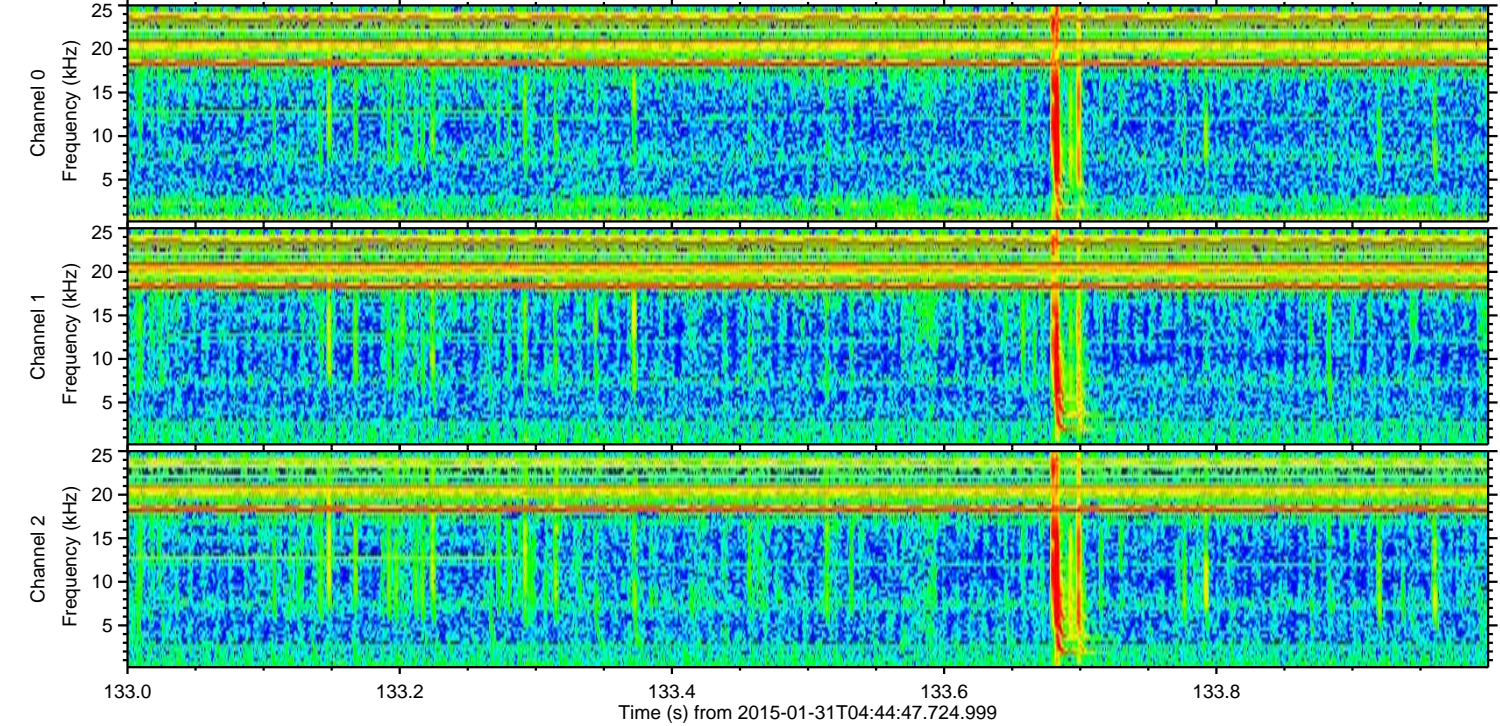
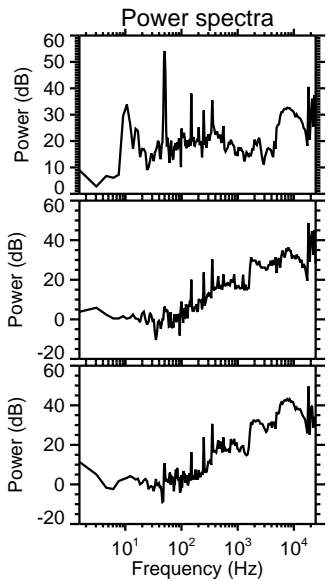
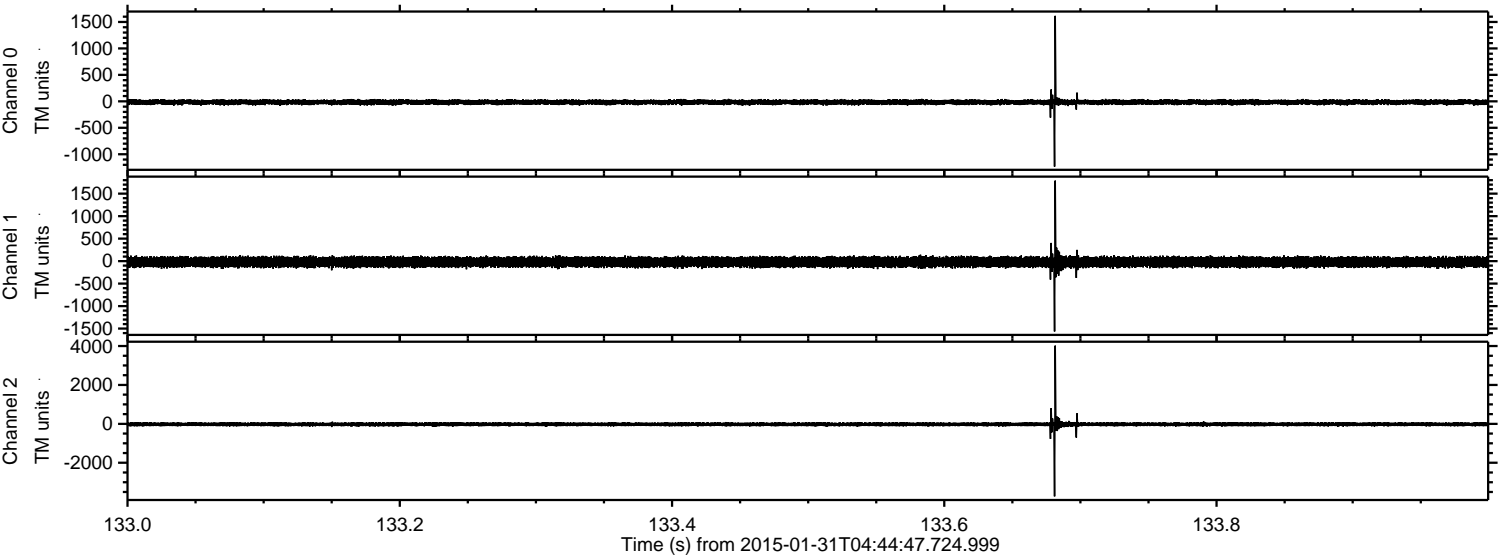


Processed Fri Feb 13 22:40:34 2015 by ELM ver.2012-10-06 from 001__elm20150131_044446__dat00.bin

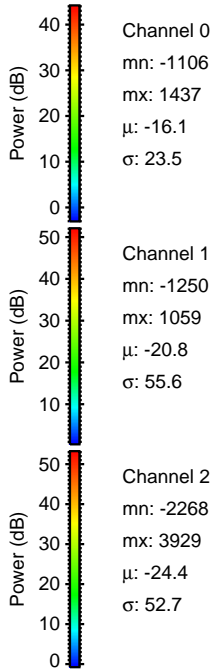
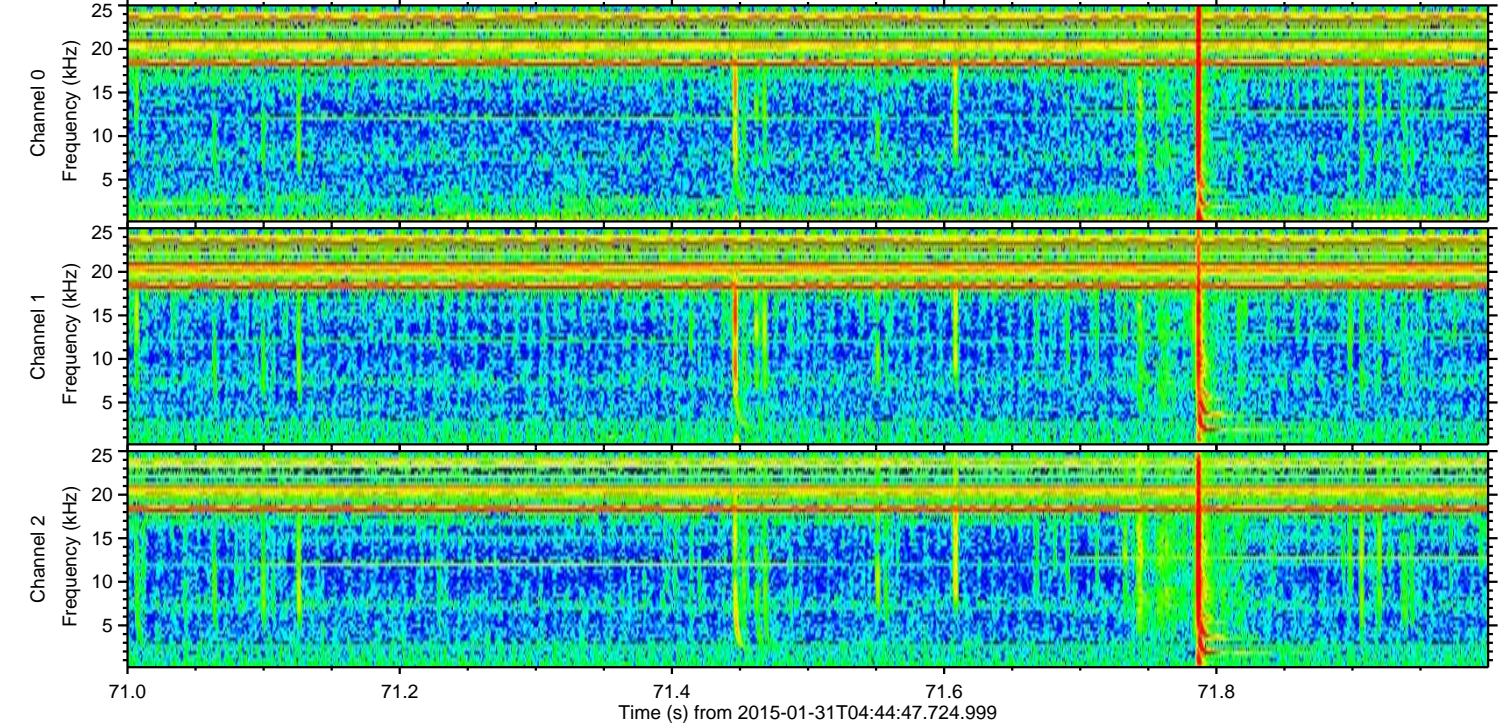
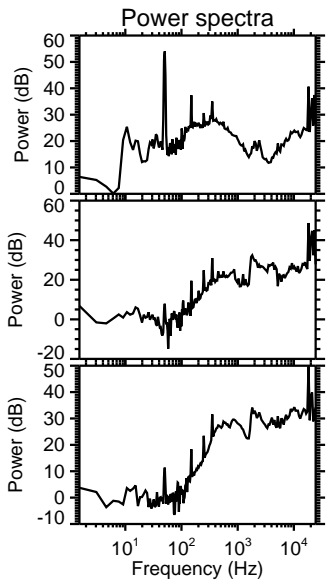
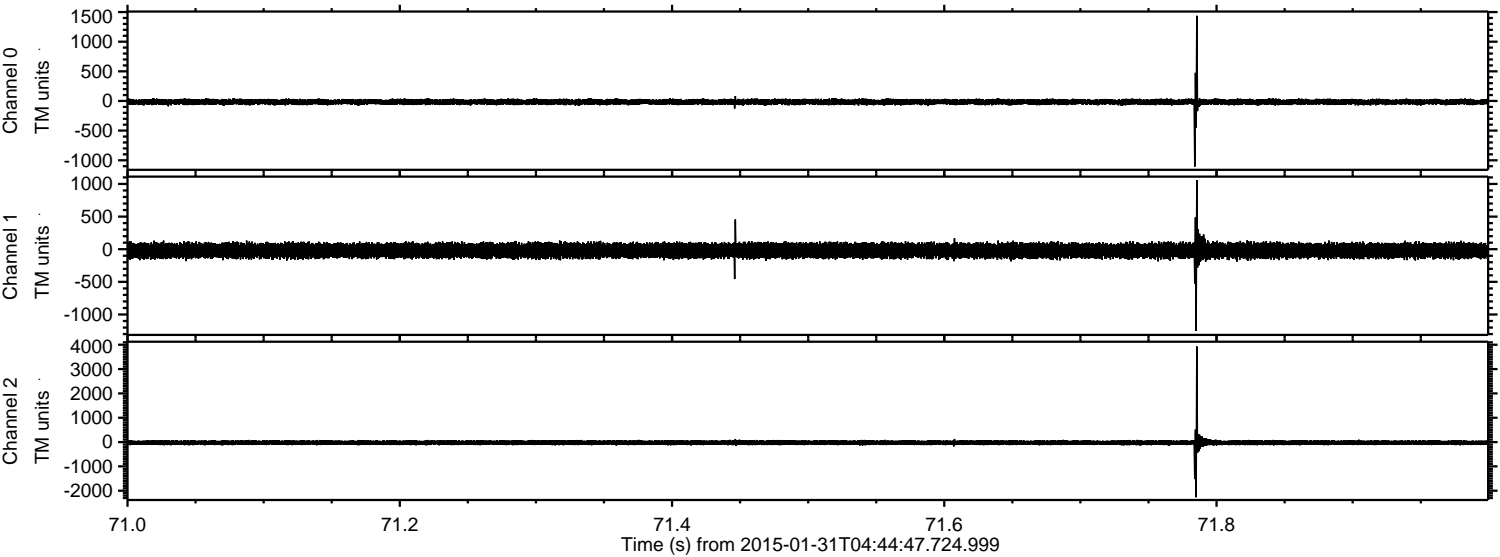


ELMAVAN 3D WAVEFORMS (Measured data sampled at 50 kHz) 49637 packets of 144 samples from 2015-01-31T04:44:47.724.999. Part 134/143

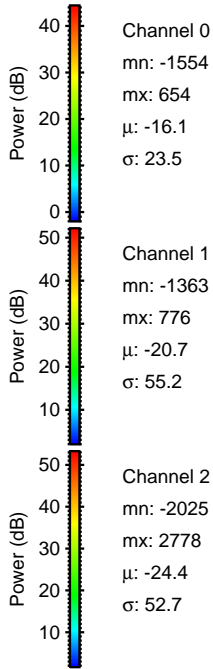
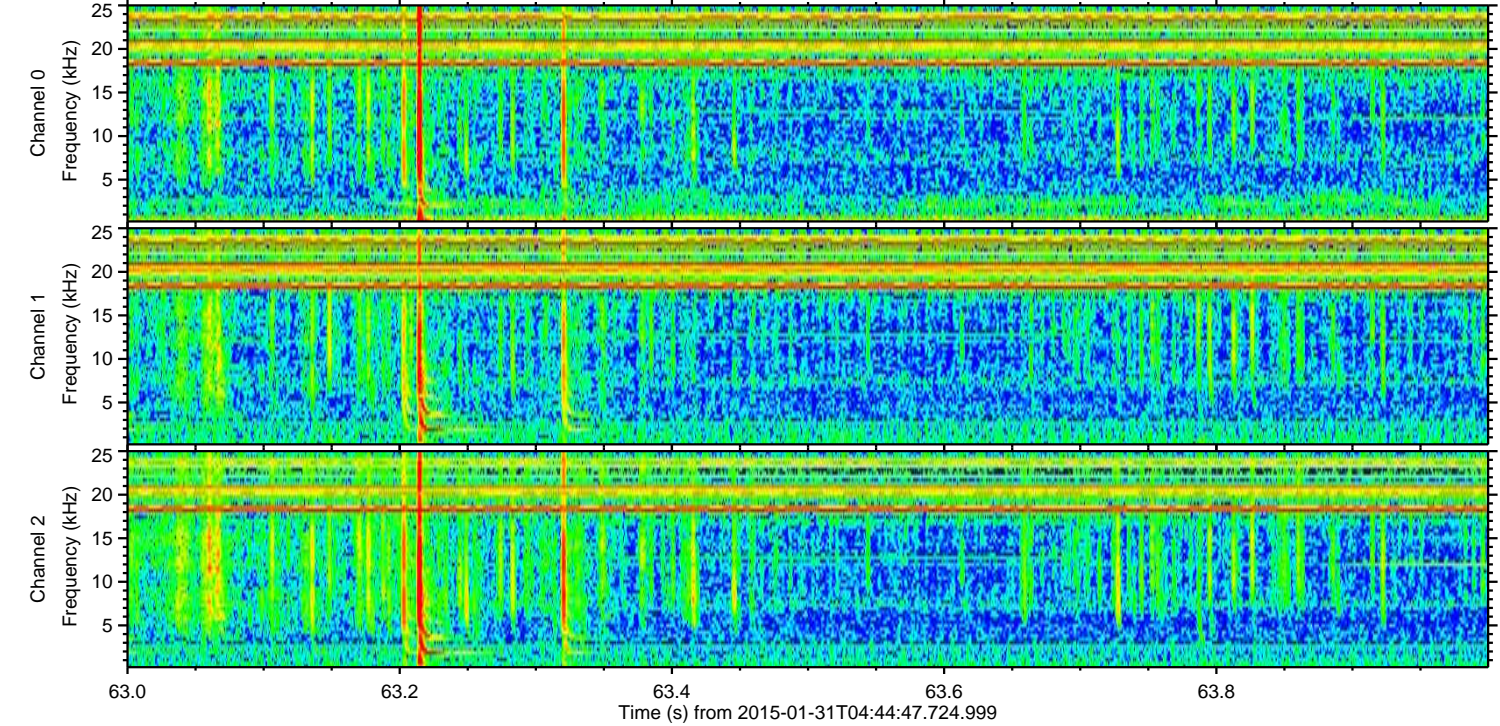
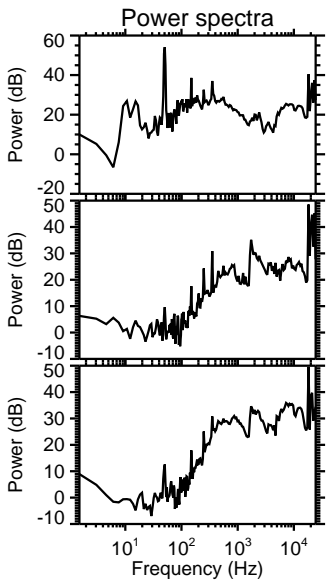
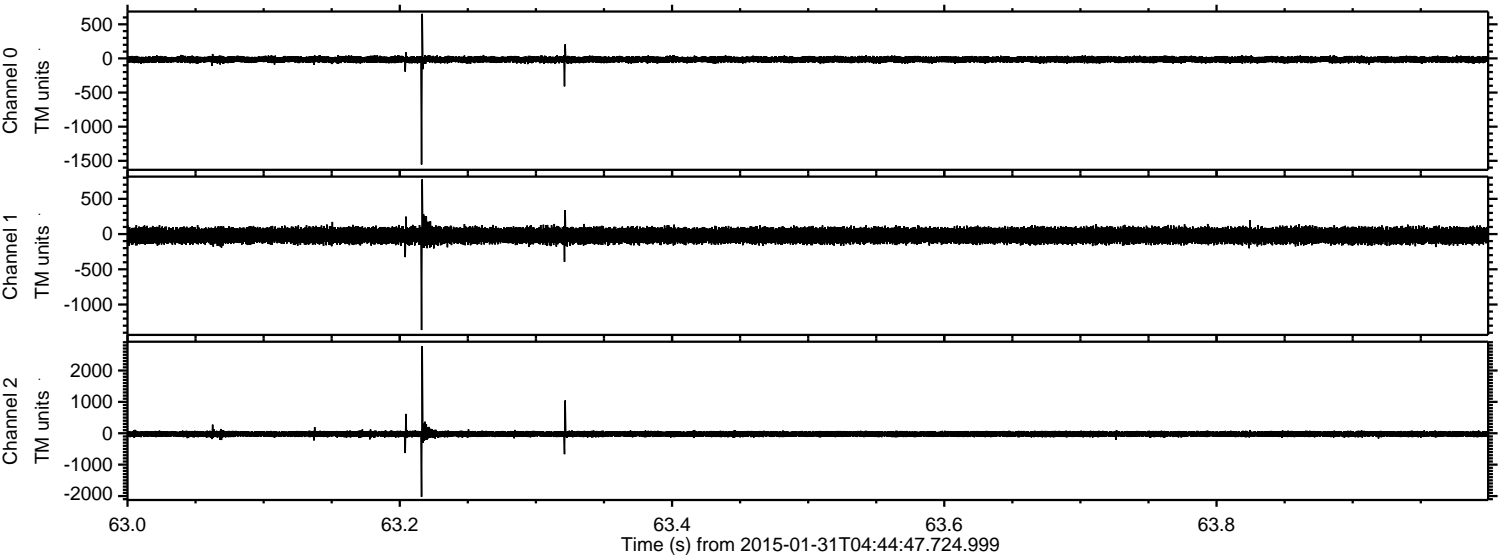
Processed Fri Feb 13 22:40:36 2015 by ELM ver.2012-10-06 from 001__elm20150131_044446__dat00.bin



Processed Fri Feb 13 22:40:38 2015 by ELM ver.2012-10-06 from 001__elm20150131_044446__dat00.bin

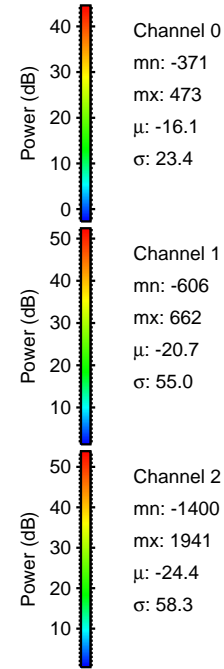
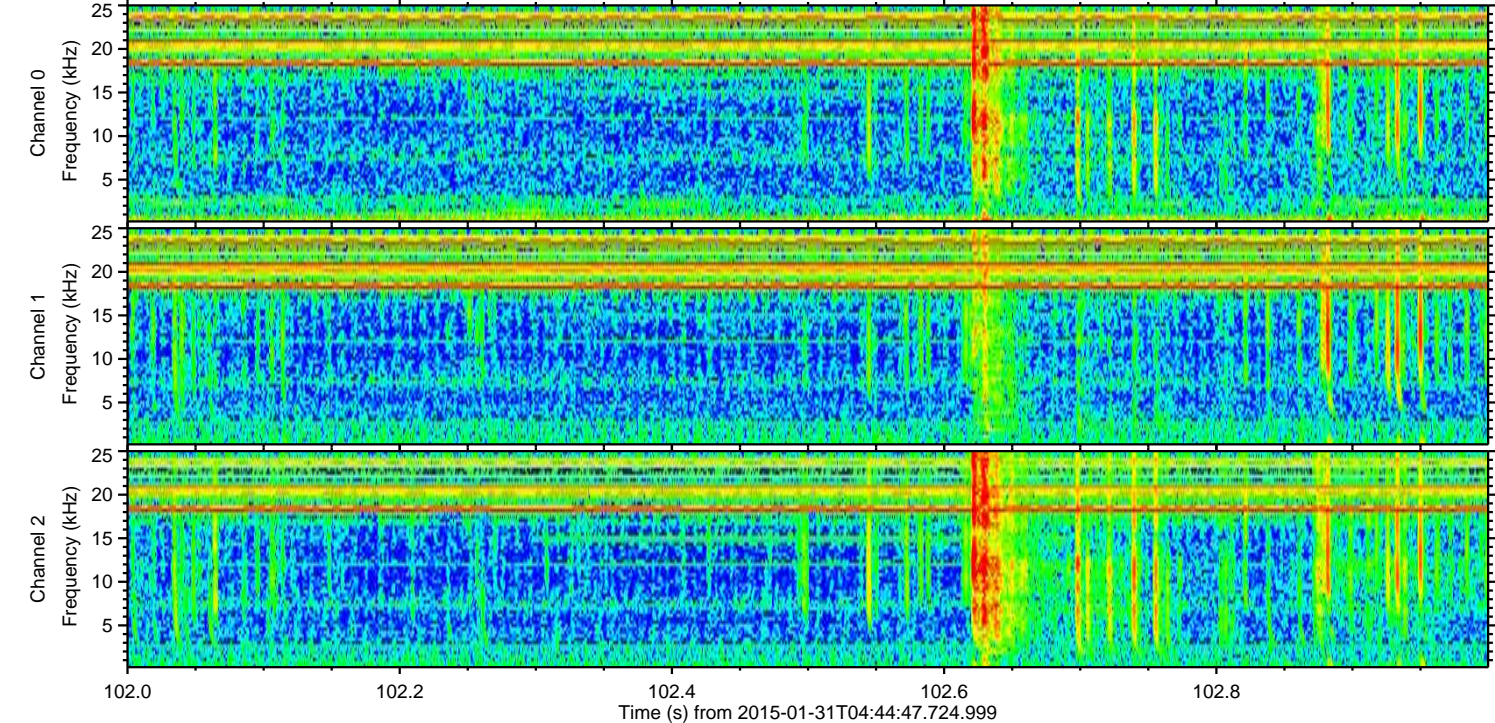
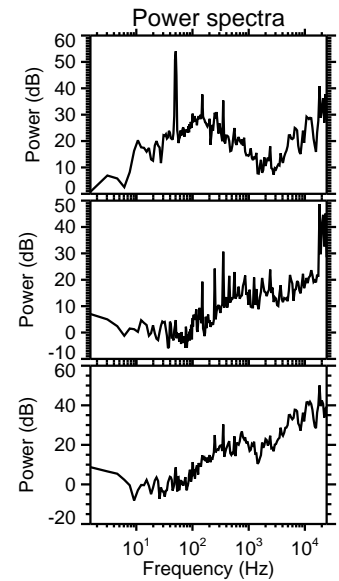
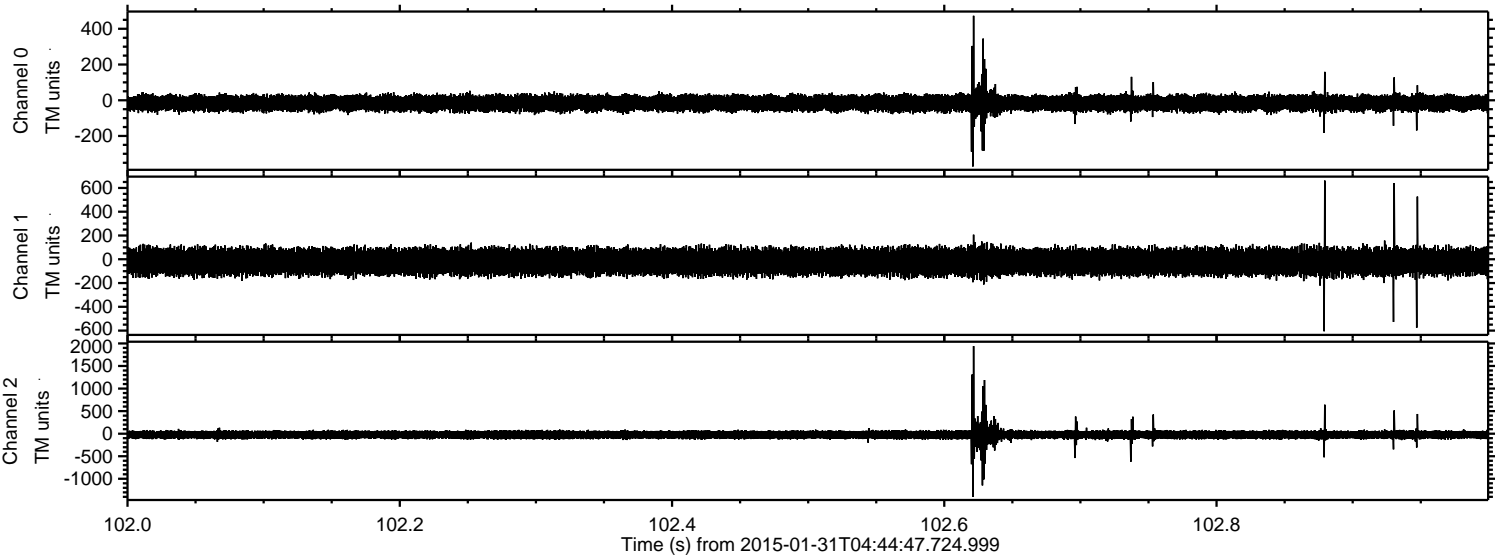


Processed Fri Feb 13 22:40:40 2015 by ELM ver.2012-10-06 from 001__elm20150131_044446__dat00.bin



ELMAVAN 3D WAVEFORMS (Measured data sampled at 50 kHz) 49637 packets of 144 samples from 2015-01-31T04:44:47.724.999. Part 103/143

Processed Fri Feb 13 22:40:41 2015 by ELM ver.2012-10-06 from 001__elm20150131_044446__dat00.bin

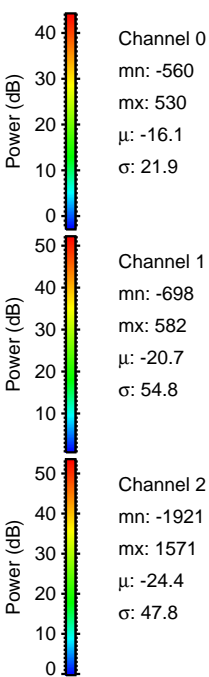
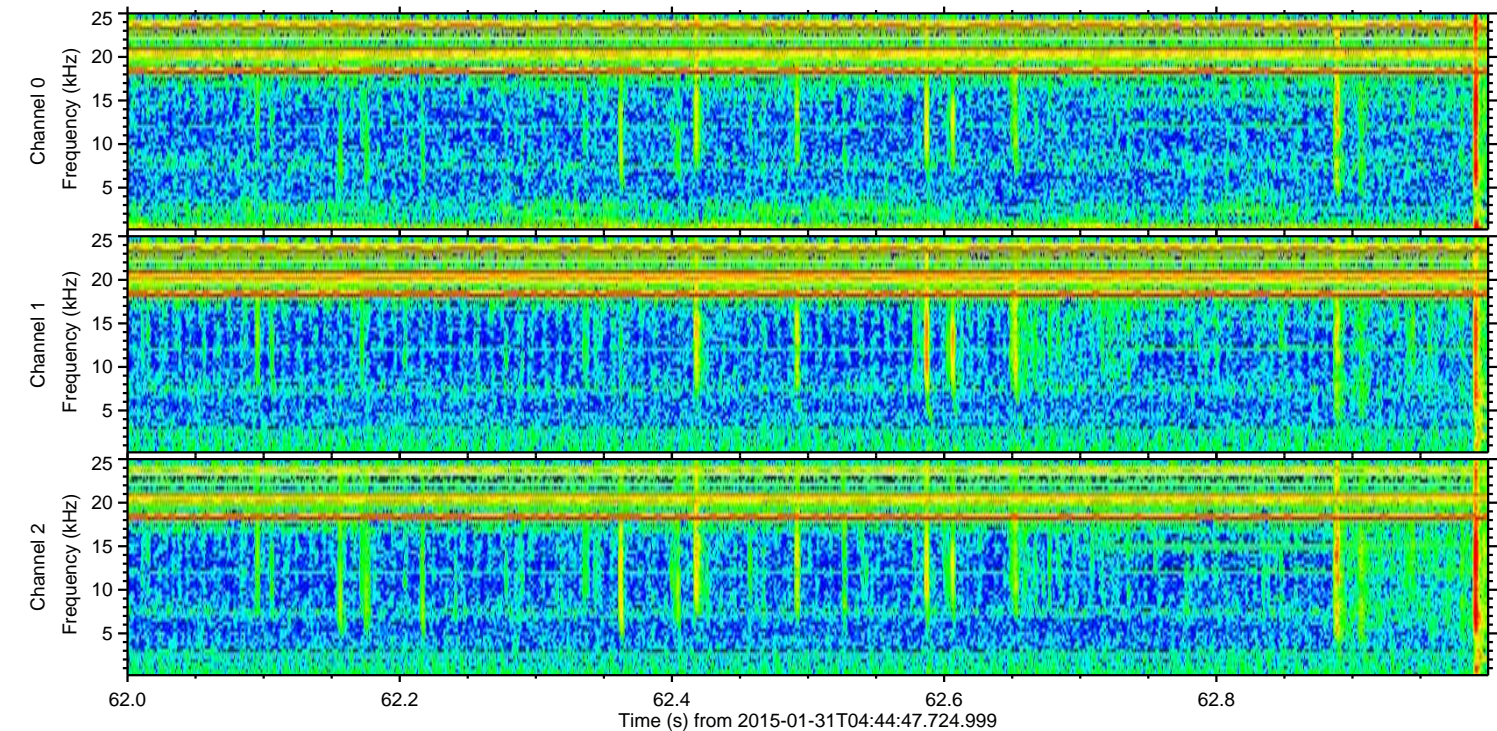
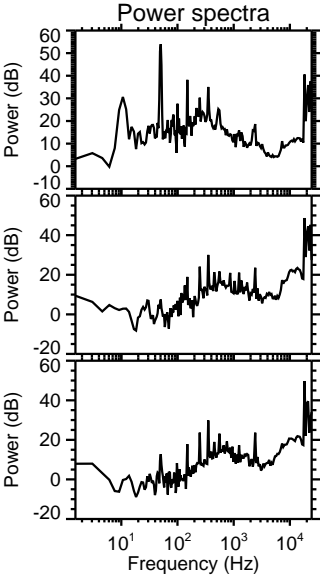
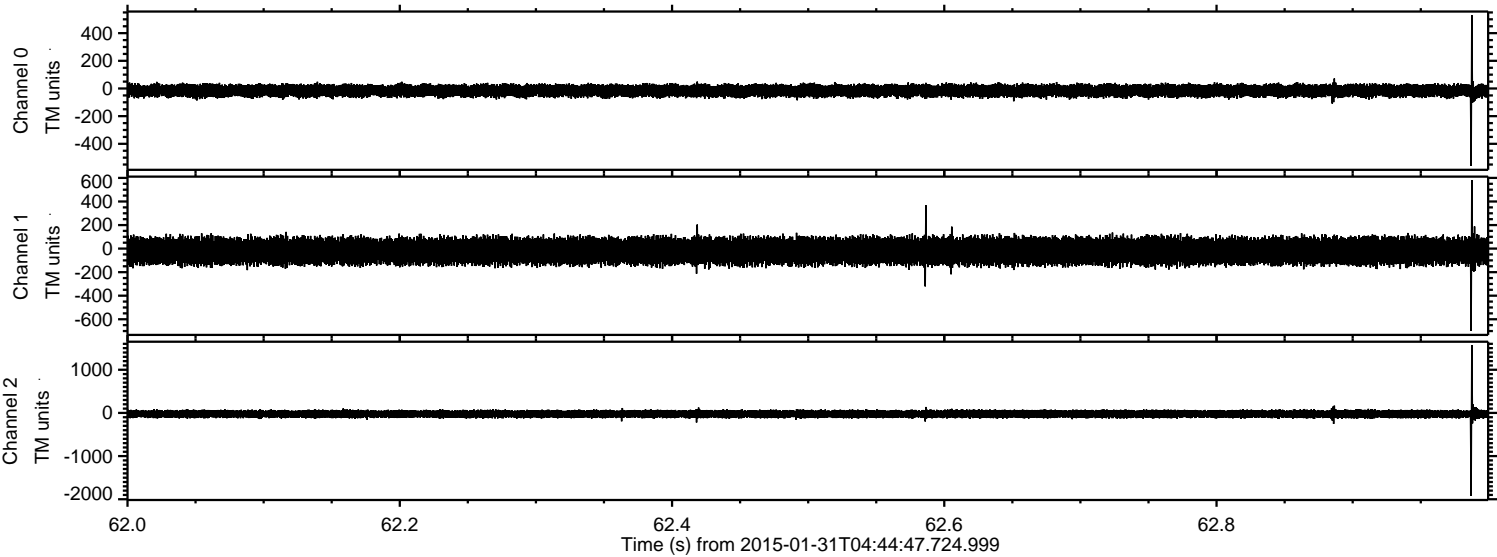


Channel 0
mn: -371
mx: 473
 μ : -16.1
 σ : 23.4

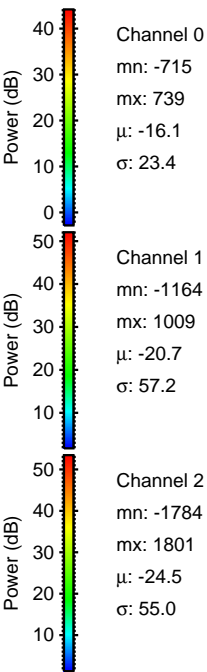
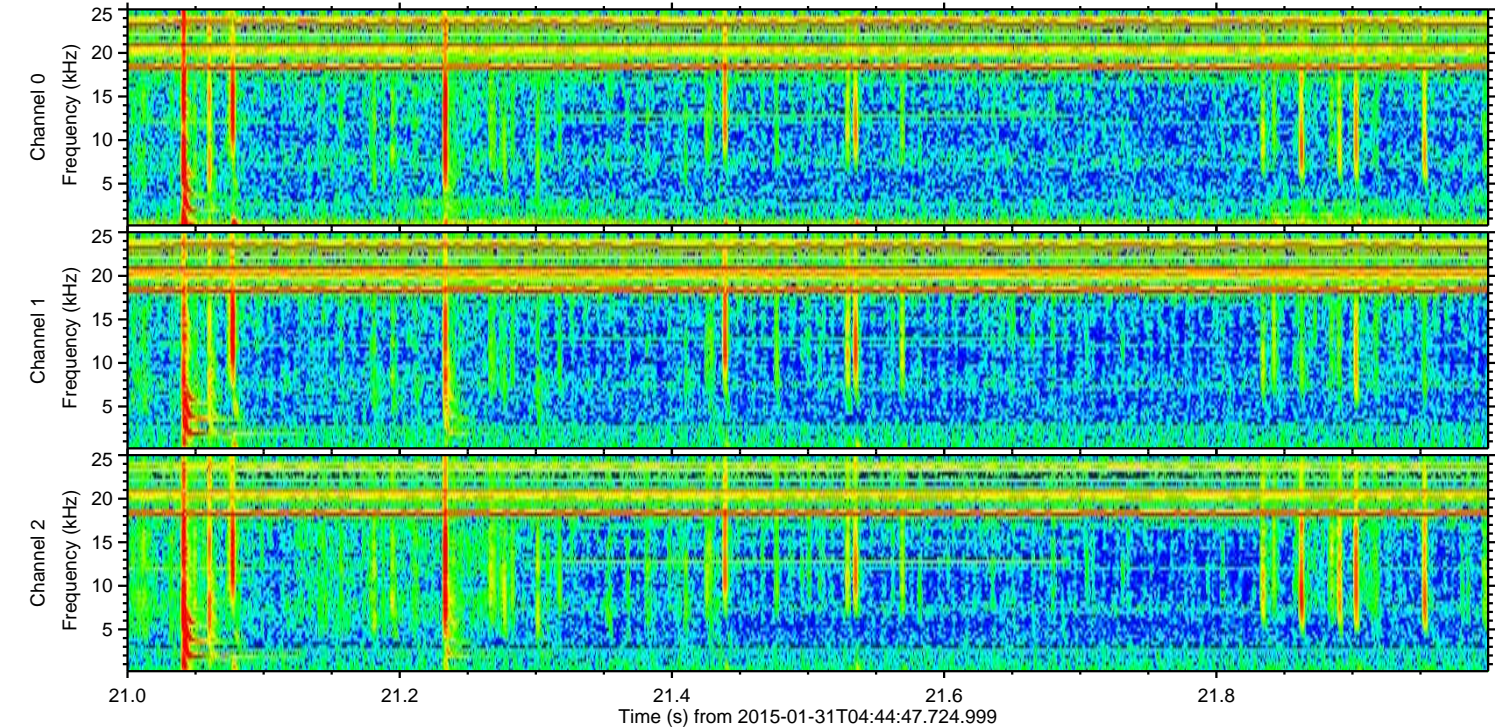
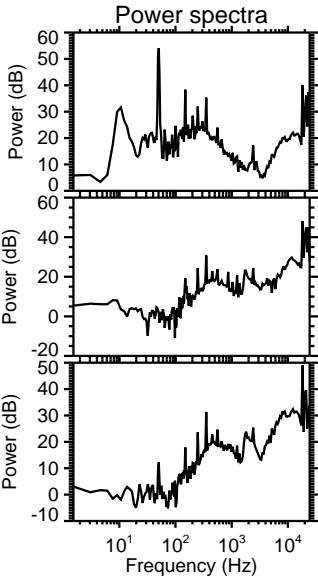
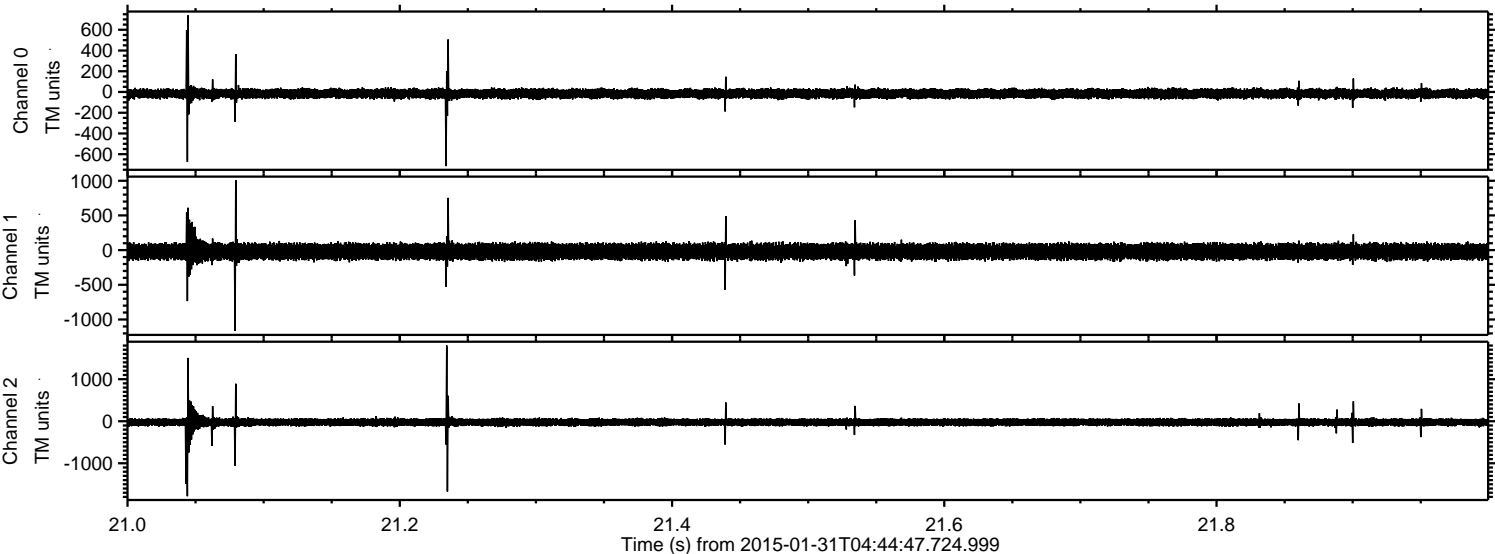
Channel 1
mn: -606
mx: 662
 μ : -20.7
 σ : 55.0

Channel 2
mn: -1400
mx: 1941
 μ : -24.4
 σ : 58.3

Processed Fri Feb 13 22:40:42 2015 by ELM ver.2012-10-06 from 001__elm20150131_044446__dat00.bin



Processed Fri Feb 13 22:40:43 2015 by ELM ver.2012-10-06 from 001__elm20150131_044446__dat00.bin



Processed Fri Feb 13 22:40:44 2015 by ELM ver.2012-10-06 from 001__elm20150131_044446__dat00.bin

